

PRODUCT MONOGRAPH

HALCION*

(triazolam tablets USP)

0.125 mg and 0.25 mg tablets

Hypnotic

Pfizer Canada Inc
17,300 Trans-Canada Highway
Kirkland, Quebec H9J 2M5

Date of Preparation:
September 17, 2003

Control No. 086680

* TM Pharmacia Enterprises S.A.
Pfizer Canada Inc, Licensee
© Pfizer Canada Inc 2003

PRODUCT MONOGRAPH

HALCION*

0.125 mg and 0.25 mg tablets

THERAPEUTIC CLASSIFICATION

Hypnotic

ACTIONS

HALCION (triazolam) is a benzodiazepine hypnotic with a very short elimination half-life (about 3 hours).

In sleep laboratory studies of one to 21 days duration, triazolam significantly decreased sleep latency, increased the duration of sleep and decreased the number of nocturnal awakenings. However, after two weeks of consecutive nightly administration, the drug's effect on total wake time was decreased, and the values recorded in the last third of the night approached baseline levels. On the first and/or second night after drug discontinuance (first or second post-drug night), total time asleep, and percentage of time spent sleeping frequently were significantly decreased, and sleep latency significantly increased when compared to baseline (predrug) nights. This effect is referred to as **"rebound" insomnia**.

The duration of hypnotic effect and the profile of unwanted effects may be influenced by the alpha (distribution) and beta (elimination) half-lives of the administered drug and any active metabolites formed. When half-lives are long, the drug or metabolites may accumulate during periods of nightly administration and be associated with impairments of cognitive and motor performance during waking hours. If half-lives are short, the drug and metabolites will be cleared before the next dose is ingested, and carry-over effects related to sedation or CNS depression should be minimal or absent. However, during nightly use and for an extended period, pharmacodynamic tolerance or adaptation to some effects of benzodiazepine hypnotics may develop. If the drug has a very short elimination half-life, it is possible that a relative deficiency (i.e., in relation to the receptor site) may occur at some point in the interval between each night's use. This sequence of events may account for two clinical findings reported to occur

after several weeks of nightly use of rapidly eliminated benzodiazepine hypnotics: 1) increased wakefulness during the last third of the night and 2) the appearance of increased day-time anxiety (see WARNINGS).

When sedation and psychomotor performance were compared in healthy elderly and young subjects, in response to 0.125 and 0.25 mg doses of triazolam, the degree of sedation was greater and the impairment of psychomotor performance more pronounced in the elderly. The age dependent difference was closely associated with the correspondingly higher plasma triazolam concentrations measured in elderly subjects.

Patients with severe liver disease also demonstrated greater psychomotor impairment than control subjects or patients with minimal liver dysfunction.

Pharmacokinetics:

Triazolam is rapidly absorbed and peak plasma levels are reached within 2 hours following oral administration. Peak plasma concentration (C_{max}) and area under the plasma-concentration curve (AUC) increase in proportion to the dose, while the time to peak plasma concentration (T_{max}), elimination half-life ($t_{1/2\beta}$), and clearance are independent of dose. Triazolam has a short half-life; the range is reported to be 1.5 to 5.5 hours.

Triazolam is metabolized via hepatic microsomal oxidation. The hydroxylated metabolites, which are inactive, are excreted primarily in the urine as conjugated glucuronides. The two primary metabolites account for approximately 80% of the urinary excretion.

Repeated administration of triazolam for 7 days does not lead to accumulation and does not alter the rate of elimination.

Pharmacokinetics in the elderly:

The kinetics of triazolam are significantly influenced by age (see table). Following single oral doses of 0.125 mg and 0.25 mg of triazolam, peak plasma concentrations and area under the curve were significantly higher and

clearance significantly lower in elderly subjects (mean age: 69 years) than in younger ones (mean age: 30 years). Age, however, did not influence the time to peak plasma levels and differences in elimination half-life were small.

Mean (\pm standard deviation) pharmacokinetic parameters following single oral doses of triazolam in young and elderly volunteers.				
Parameter	Triazolam 0.125 mg		Triazolam 0.25 mg	
	Young (n=26)	Elderly (n=21)	Young (n=26)	Elderly (n=21)
C_{max} (ng/ml)	1.08 \pm 0.08	1.67 \pm 0.16*	2.02 \pm 0.15	3.06 \pm 0.22*
T_{max} (hr)	0.88 \pm 0.08	0.95 \pm 0.11	0.96 \pm 0.10	0.88 \pm 0.07
AUC (ng/ml.hr)	3.85 \pm 0.45	6.24 \pm 0.82*	7.01 \pm 0.68	12.03 \pm 1.11*
$t_{1/2\beta}$ (hr)	2.94 \pm 0.4	3.03 \pm 0.25	2.43 \pm 0.16	3.00 \pm 0.24*
Clearance (ml/min/kg)	11.4 \pm 2.2	6.8 \pm 0.9*	10.5 \pm 1.0	5.8 \pm 0.4*

* Statistically significant for young versus elderly at indicated dose.

Pharmacokinetics in patients with renal failure:

Following oral administration of triazolam, 0.5 mg, peak plasma triazolam concentrations were lower in eleven patients with renal failure undergoing dialysis (4.04 \pm 1.83 ng/ml) than in patients with normal renal function (6.54 \pm 1.70 ng/ml). Other pharmacokinetic parameters were not significantly different between patients with impaired and normal renal function.

Pharmacokinetics in patients with hepatic failure:

Following oral administration of triazolam, 0.25 mg, triazolam clearance was reduced in eight subjects with biopsy-proven cirrhosis (4.99 \pm 3.14 ml/min/kg) as compared to seven normal subjects (6.69 \pm 2.52 ml/min/kg). Peak

plasma levels and time to peak concentration were not different between the groups. The reduction in triazolam clearance in subjects with cirrhosis correlated with the severity of liver dysfunction.

INDICATIONS AND CLINICAL USE

HALCION (triazolam) is indicated for the short-term treatment and symptomatic relief of insomnia characterized by difficulty in falling asleep, frequent nocturnal awakenings and/or early morning awakenings.

Treatment with triazolam should usually not exceed 7-10 consecutive days. Use for more than 2-3 consecutive weeks requires complete re-evaluation of the patient.

The use of hypnotics should be restricted for insomnia where disturbed sleep results in impaired daytime functioning.

CONTRAINDICATIONS

HALCION (triazolam) is contraindicated in patients with known hypersensitivity to the drug or any component of its formulation, and in those with severe impairment of respiratory function, eg. significant sleep apnea syndrome.

Triazolam is contraindicated in pregnant women. Benzodiazepines may cause fetal damage when administered during pregnancy. During the first trimester of pregnancy, several studies have suggested an increased risk of congenital malformations associated with the use of benzodiazepines. During the last weeks of pregnancy, ingestion of therapeutic doses of a benzodiazepine hypnotic has resulted in neonatal CNS depression due to transplacental distribution. If triazolam is prescribed to women of child-bearing potential, the patient should be warned of the

potential risk to a fetus and advised to consult her physician regarding the discontinuation of the drug if she intends to become pregnant.

Triazolam is contraindicated in patients who have a history of uncorrected narrow-angle glaucoma.

WARNINGS

General:

Sleep disturbance may be the presenting manifestation of a physical and/or psychiatric disorder. Consequently, a decision to initiate symptomatic treatment of insomnia should only be made after the patient has been carefully evaluated.

The failure of insomnia to remit after 7-10 days of treatment may indicate the presence of a primary psychiatric and/or medical illness.

Worsening of insomnia or the emergence of new abnormalities of thinking or behavior may be the consequence of an unrecognized psychiatric or physical disorder. These have also been reported to occur in association with the use of HALCION (triazolam).

HALCION should be used with caution in patients who in the past manifested paradoxical reactions to alcohol and/or sedative medications.

HALCION should be used with caution in patients who have myasthenia gravis or severe hepatic insufficiency.

Memory disturbance:

- Anterograde amnesia of varying severity has been reported following therapeutic doses of benzodiazepines including triazolam. Anterograde amnesia is a dose-related phenomenon and elderly subjects may be at a particular risk. Data from several sources suggest that anterograde amnesia and next day memory loss may occur at a higher rate with triazolam than with other benzodiazepines.
- Cases of transient global amnesia and "traveler's amnesia" have also been reported in association with triazolam, the latter in individuals who have taken the drug to induce sleep while travelling. Transient global amnesia and traveler's amnesia are unpredictable and not necessarily dose-related phenomena. Patients should be warned not to take triazolam under circumstances in which a full night's sleep and clearance of the drug from the body are not possible before they need again to resume full activity (e.g., an overnight flight of less than 7-8 hours).

Abnormal thinking and psychotic behavioral changes have been reported to occur in association with the use of benzodiazepine hypnotics including triazolam. Some of the changes may be characterized by decreased inhibition, e.g., aggressiveness or extroversion that seem excessive, similar to that seen with alcohol and other CNS depressants (e.g., sedative/hypnotics). Particular caution is warranted in patients with a history of violent behavior. Psychotic behavioral changes that have been reported include bizarre behavior, hallucinations, and depersonalization. Abnormal behaviors associated with triazolam have been reported more with chronic use or high doses.

It can rarely be determined with certainty whether a particular instance of the abnormal behaviors listed above is drug induced, spontaneous in origin, or a result of an underlying psychiatric or physical disorder. Nevertheless, the emergence of any new behavioral sign or symptom of concern requires careful and immediate evaluation.

Confusion:

The benzodiazepines affect mental efficiency e.g., concentration, attention and vigilance. The risk of confusion is greater in the elderly and in patients with cerebral impairment.

Anxiety, restlessness:

An increase in daytime anxiety (interdose rebound anxiety) and/or restlessness have been observed during treatment with triazolam. This may be a manifestation of interdose withdrawal, due to the very short elimination half-life of the drug.

Depression:

Caution should be exercised if triazolam is prescribed to patients with signs or symptoms of depression that could be intensified by hypnotic drugs. Suicidal tendencies e.g., intentional overdose, is more common in these patients thus, the least amount of drug that is feasible should be available to them at any one time.

PRECAUTIONS

Drug interactions:

HALCION (triazolam) produces additive CNS depressant effects when co-administered with alcohol, antihistamines, anticonvulsants, or psychotropic medications which themselves can produce CNS depression.

Pharmacokinetic interactions can occur when triazolam is administered along with drugs that interfere with its metabolism. Examples include cimetidine or erythromycin which when co-administered with triazolam cause an approximate doubling of the plasma levels and elimination half-life of triazolam. Consequently, consideration of dose reduction may be appropriate when patients are treated concomitantly with triazolam and either cimetidine or erythromycin.

When a single oral 0.25 mg dose of HALCION was co-administered with nefazodone (200 mg bid) at steady state, HALCION peak concentrations, half life, and AUC were increased 1.7,3 and 4 fold respectively. The pharmacokinetics of nefazodone were not altered. The concomitant use of HALCION and nefazodone was also associated with an increase in psychomotor impairment presumably due to increased triazolam plasma

concentrations. The interactive effects of higher doses of these agents have not been studied. The concomitant use of nefazodone and HALCION should be avoided.

Drug abuse, dependence and withdrawal:

Withdrawal symptoms, similar in character to those noted with barbiturates and alcohol (convulsions, tremor, abdominal and muscle cramps, vomiting, sweating, dysphoria, perceptual disturbances and insomnia) have occurred following abrupt discontinuance of benzodiazepines, including triazolam. The more severe symptoms are usually associated with higher dosages and longer usage, although patients given therapeutic dosages for as few as 1-2 weeks can also have withdrawal symptoms, including **daytime anxiety**, between nightly doses (see ACTIONS and WARNINGS). Consequently, abrupt discontinuation should be avoided and a gradual dosage tapering schedule is recommended in any patient taking more than the lowest dose for more than a few weeks. The recommendation for tapering is particularly important in patients with a history of seizures.

The risk of dependence is increased in patients with a history of alcoholism, drug abuse, or in patients with marked personality disorders (see WARNINGS). Interdose daytime anxiety and rebound anxiety may increase the risk of dependency in triazolam treated patients.

As with all hypnotics, repeat prescriptions should be limited to those who are under medical supervision.

Patients with specific conditions:

Triazolam should be given with caution to patients with impaired hepatic or renal function, severe pulmonary insufficiency, or sleep apnea. Respiratory depression and apnea have been reported in patients with compromised respiratory function.

Patients requiring mental alertness:

Because of triazolam's CNS depressant effect, patients receiving the drug should be cautioned against engaging in hazardous occupations requiring complete mental alertness such as operating machinery or driving a motor vehicle. For the same reason, patients should be warned against the concomitant ingestion of triazolam and alcohol or CNS depressant drugs.

Use in pregnancy:

For teratogenic effects see CONTRAINDICATIONS. Non-teratogenic effects: a child born to a mother who is on benzodiazepines may be at some risk for withdrawal symptoms from the drug during the postnatal period. Also, neonatal flaccidity has been reported in an infant born to a mother who had been receiving benzodiazepines.

Use in nursing mothers:

Human studies have not been performed but studies in rats have shown that triazolam and its metabolites are secreted in the milk. Therefore, administration of triazolam to nursing mothers is not recommended.

Use in children:

The safety and effectiveness of triazolam in children below the age of 18 have not been established.

Use in the elderly:

Elderly patients are especially susceptible to dose-related adverse effects, such as drowsiness, dizziness, or impaired co-ordination. Therefore, the lowest possible dose should be used in these subjects.

ADVERSE REACTIONS

The most frequent adverse reactions associated with the use of HALCION (triazolam) are extensions of the pharmacological effects of the drug, e.g., sedation (morning drowsiness, somnolence), dizziness, nervousness/irritability and impaired coordination.

The most serious adverse reactions which may occur include memory impairment, abnormal thinking/behavior, confusion, anxiety, and depression (see WARNINGS).

The incidence of adverse reactions among patients receiving triazolam or placebo is listed in the table. The figures cannot be used to predict precisely the incidence of untoward events in the course of usual medical practice where patient characteristics and other factors often differ from those in clinical trials. Comparison of the cited figures, however, can provide the prescriber with some basis for estimating the relative contributions of drug and nondrug factors to the untoward event incidence rate in the population studied.

The adverse reaction profile of triazolam observed in controlled clinical trials illustrates the dose-dependency of most of the adverse reactions. **At present, the higher dose range is not recommended (see DOSAGE AND ADMINISTRATION section).**

PERCENT OF PATIENTS REPORTING ADVERSE REACTIONS (≥0.5%)				
Body System	Adverse Reaction	Triazolam 0.1-0.3mg N=1002	Triazolam 0.4-0.6mg N= 2370	Placebo N=2036
Central Nervous System	- drowsiness/sedation	9.5	18.6	14.5
	- headache	5.9	8.1	6.2
	- dizziness	4.4	9.0	5.8
	- nervousness/irritability	3.7	4.6	6.4
	- impaired coordination	1.7	4.3	1.2
	- insomnia	1.0	1.2	2.8
	- confusion	0.7	1.0	0.5
	- mood changes	0.7	0.8	0.7
	- depression	0.5	1.1	0.7
	- memory impairment	0.2	1.0	0
Metabolic/Nutrition	- appetite change	0	0.5	0.6
Special Senses	- visual disturbance	0.4	0.7	0.2
	- taste alteration	0.4	0.6	0.3
Cardiovascular	- palpitations	0.5	0.4	0.4
Respiratory	- respiratory infection	1.1	1.7	0.9
Gastrointestinal	- nausea/vomiting	2.9	3.8	3.5
	- dry mouth	0.5	0.9	1.4
	- abdominal pain/discomfort	0.4	0.6	0.5
	- diarrhea	0.2	0.8	0.4
Musculoskeletal	- musculoskeletal/joint pain	0.8	0.9	0.7

Rare (i.e., less than 0.5%) adverse reactions include dysesthesia/paresthesia, dream abnormalities, drug abuse/habituation, drug withdrawal symptoms, hallucinations, muscle tone disorder, tremor, tinnitus, hearing impairment, eye irritation/redness, edema, chest pain, hot/cold flashes, hypertension, syncope, dyspnea, constipation, flatulence, oral irritation, micturition difficulties, dermatitis, diaphoresis, muscular cramps, muscular weakness, malaise, sexual dysfunction. Elevated levels of SGOT, bilirubin, and alkaline phosphatase have also been noted.

SYMPTOMS AND TREATMENT OF OVERDOSAGE

Manifestations of HALCION (triazolam) overdose include extensions of its pharmacological effects, namely, somnolence, confusion, impaired coordination, slurred speech, and ultimately, coma. Respiratory depression and apnea have been reported with overdoses of triazolam.

Death has been reported in association with overdoses of triazolam by itself, as it has with other benzodiazepines. In addition, fatalities have been reported in patients who have overdosed with a combination of alcohol and a single benzodiazepine, including triazolam. In some of these cases, blood levels of the benzodiazepine and alcohol were lower than those usually associated with reports of fatalities with either substance alone.

As in all cases of drug overdose, respiration, pulse and blood pressure should be monitored and supported by general measure when necessary. Immediate gastric lavage should be performed. An adequate airway should be maintained. Intravenous fluids may be administered. As with the management of intentional overdose with any drug, the physician should bear in mind that multiple agents may have been ingested by the patient.

The benzodiazepine antagonist, flumazenil ("Anexate"), is a specific antidote in known or suspected benzodiazepine overdose. (For conditions of use see "Anexate" Product Monograph).

Experiments in animals have indicated that cardiopulmonary collapse can occur with massive intravenous doses of triazolam. This could be reversed with positive mechanical respiration and intravenous infusion of norepinephrine bitartrate or metaraminol bitartrate. Hemodialysis and forced diuresis are probably of little value.

DOSAGE AND ADMINISTRATION

The lowest effective dose of HALCION (triazolam) should be used. Treatment with triazolam should usually not exceed 7-10 consecutive days. Use for more than 2-3 consecutive weeks requires complete re-evaluation of the patient.

The starting dose in all patients should be 0.125 mg; for many patients this dose immediately before retiring should be sufficient. In most adults, a dose of 0.25 mg should not be exceeded. A dose of 0.5 mg should be used only for exceptional patients who do not respond adequately to a trial of the lower dose since the risk of several adverse reactions increases with the size of the dose administered.

For elderly, or debilitated patients and patients with disturbed liver/kidney function, the dose should not exceed 0.125 mg before retiring. The 0.25 mg dose should be used only for exceptional patients who do not respond to a trial of the lower dose.

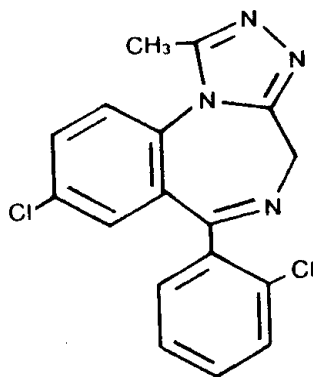
PHARMACEUTICAL INFORMATION

Drug Substance:

Proper name: triazolam

Chemical Name: 8-chloro-6-(0-chlorophenyl)-1-methyl-4H-Triazolo[4,3- α], [1,4] benzodiazepine.

Structural formula:



Molecular Weight: 343.21

Description: Triazolam is a white crystalline powder soluble in alcohol and poorly soluble in water with a melting point of 233 - 235°C.

Composition:

Also contains lactose, colloidal silicon dioxide, docusate sodium, cellulose, magnesium stearate, corn starch and colour (FD & C Blue # 2).

Stability and Storage Recommendations:

Store at controlled room temperature 15-30°C.

AVAILABILITY OF DOSAGE FORMS

HALCION (triazolam) is available as scored tablets (0.125 mg, violet; 0.25 mg, powder blue) in blister packages of 7 tablets each.

INFORMATION FOR THE CONSUMER

FACTS ON HALCION

(triazolam tablets USP)

INTRODUCTION

HALCION is intended to help you sleep. It is one of several benzodiazepine sleeping pills that have generally similar properties.

If you are prescribed one of these medications, you should consider both their benefits and risks. Important risks and limitations include the following:

- the longer you use the medication, the less effective it may become,
- you may become dependent on the medication,
- the medication may affect your mental alertness or memory, particularly when not taken as prescribed.

In order to guide you in the safe use of the product, this leaflet will inform you about this class of medication in general, and about HALCION in particular.

BUT THIS LEAFLET SHOULD NOT REPLACE A DISCUSSION BETWEEN YOU AND YOUR DOCTOR ABOUT THE RISKS AND BENEFITS OF HALCION.

SAFE USE OF HALCION SLEEPING PILLS

- HALCION is a prescription medication, intended to help you sleep. Follow your doctor's advice about how to take HALCION, when to take it, and how long to take it. DO NOT TAKE HALCION if it is not prescribed for you.
- DO NOT TAKE HALCION for more than 7-10 days without first consulting your doctor.
- DO NOT TAKE HALCION when a full night's sleep is not possible before you would again need to be active and functional; e.g., an overnight flight of less than 8 hours. Memory lapses may occur in such situations. Your body needs time to eliminate the medication from your system.
- DO NOT TAKE HALCION at any time during pregnancy. Tell your doctor if you are planning to become pregnant, if you are pregnant, or if you become pregnant while taking this medication.
- Tell your doctor about any alcohol consumption (present or past) or any medicine you are taking now, including drugs you can buy without a prescription. DO NOT CONSUME ALCOHOL WHILE TAKING HALCION.
- DO NOT INCREASE THE PRESCRIBED DOSE.
- DO NOT DRIVE A CAR or operate potentially dangerous machinery until you experience how this drug will affect you.
- If you develop any unusual disturbing thoughts or behavior while using HALCION, discuss the matter immediately with your doctor.
- You may experience an increase in sleep difficulties (rebound insomnia) and/or increased daytime anxiety (rebound anxiety) for one or two days after discontinuing HALCION.

EFFECTIVENESS OF BENZODIAZEPINE SLEEPING PILLS

Benzodiazepine sleeping pills are effective medications and are relatively free of serious problems when used for the short term management of insomnia. Symptoms of insomnia may vary: you may have difficulty in falling asleep, or awaken often during the night, or awaken early in the morning, or you may have all three symptoms.

Insomnia may last only for a short time and may respond to brief treatment. The risks and benefits of prolonged use should be discussed with your doctor.

SIDE EFFECTS

Common Side Effects

Benzodiazepine sleeping pills may cause drowsiness, dizziness, lightheadedness, and difficulty with coordination. Users must be cautious about engaging in hazardous activities requiring complete mental alertness, e.g., operating machinery or driving a motor vehicle.

Avoid alcohol while using HALCION. DO NOT USE benzodiazepine sleeping pills along with other medications without first discussing this with your doctor.

How sleepy you are the day after you use one of these sleeping pills depends on your individual response and on how quickly your body gets rid of the medication. The larger the dose, the more likely that you will experience drowsiness, etc., the next day. For this reason, it is important that you use the lowest effective dose.

Benzodiazepines, which are eliminated rapidly (like HALCION), tend to cause less drowsiness the next day, but may cause withdrawal problems the day after use (see below).

SPECIAL CONCERNS

Memory Problems

All benzodiazepine sleeping pills can cause a special type of memory loss (amnesia); you may not recall events that occurred during some period of time, usually several hours, after taking the drug. This lapse is usually not a problem, because the person taking the sleeping pill intends to be asleep during this critical period of time. But it can be a problem if you take the medication to induce sleep while travelling, such as during an airplane flight, because you may wake up before the effect of the drug is gone. This has been called "traveller's amnesia". HALCION is more likely than other benzodiazepine sleeping pills to cause this problem.

Tolerance/Withdrawal Symptoms

After nightly use for more than a few weeks these drugs may lose some of their effectiveness. You may also develop a degree of dependence.

For benzodiazepine sleeping pills that the body eliminates quickly, there may be a deficiency of the drug in the body at some point between each night's use. This can lead to (1) being awake during the last third of the night, and (2) increased daytime anxiety or nervousness. These side effects have been reported in particular with HALCION.

More severe "withdrawal" effects can occur when patients stop taking benzodiazepine sleeping pills. The effects may occur following use for only a week or two but may be more common and severe after long periods of continuous use. One type of withdrawal symptom is known as "rebound insomnia", i.e., on the first few nights after stopping the medication, insomnia may be worse than before the sleeping pill was given.

Other withdrawal symptoms following abrupt stopping of sleeping pills may range from unpleasant feelings to a major withdrawal syndrome that may include abdominal and muscle cramps, vomiting, sweating, tremor, and rarely, convulsions. The severe symptoms are uncommon.

Dependence/Abuse

All benzodiazepine sleeping pills can cause dependence (addiction) especially when used regularly for more than a few weeks, or at higher doses. Some people develop a need to continue taking these drugs, either at the prescribed

dose or at higher doses - not for continued therapeutic effect, but to avoid withdrawal symptoms or to achieve nontherapeutic effects.

Individuals who depend on alcohol or other drugs may be at particular risk of becoming dependent on drugs of this class. But ALL PEOPLE ARE AT SOME RISK. Consider this matter before you take these medications beyond a few weeks.

Mental and Behavioral Changes

A variety of abnormal thinking and behavior changes may occur when you use benzodiazepine sleeping pills. Some of these changes include aggressiveness and extroversion which seem out of character. Other changes, however, can be more unusual and extreme such as confusion, strange behavior, restlessness, hallucinations, feeling like you are not yourself, and worsening depression, including suicidal thinking.

It is rarely clear whether such symptoms are caused by the medication, or by an underlying illness, or are simply spontaneous happenings. In fact, worsened insomnia may in some cases be associated with illnesses that were present before the medication was used.

IMPORTANT NOTE:

Regardless of the cause, if you take these medications, report any mental or behavioral changes promptly to your doctor.

Effects on Pregnancy

Certain benzodiazepine sleeping pills have been linked to birth defects when taken during the early months of pregnancy. In addition, benzodiazepine sleeping pills taken during the last weeks of pregnancy have been known to sedate the baby. Therefore, AVOID USING THIS MEDICATION DURING PREGNANCY.

PHARMACOLOGY

Triazolam antagonized chemically induced seizures in mice, rats and cats, but, like other benzodiazepines, it was much less effective against electroshock induced seizures.

In tests measuring potential muscle-relaxant activity, triazolam antagonized strychnine lethality and inhibited the traction response in mice and depressed spinal reflexes in the decerebrate cat.

Triazolam was found to potentiate a number of central nervous system depressant agents, as measured by the loss of righting reflex in mice. No loss of righting reflex was noted with triazolam alone, except at toxic doses.

Triazolam significantly lowered the LD₅₀s of chlorpromazine, diphenylhydantoin, glutethimide and pentobarbital, while have little or no effect on the LD₅₀s of a number of other drugs tested.

Triazolam was more active than diazepam in antagonizing foot-shock-induced aggressive behavior in mice, in inhibiting aggressive behavior in monkeys, and in suppressing conflict behavior in rats.

Cross dependence studies with barbiturates, direct physical dependence studies and self-administration studies indicated little potential for physical dependence with triazolam in the animal systems tested.

Triazolam produced changes in EEG activity of monkeys characteristic of those seen with other benzodiazepines.

Triazolam did not change plasma warfarin levels or alter prothrombin time in rats or dogs.

Triazolam crossed the blood-brain barrier in mice after intraperitoneal administration. Brain levels of norepinephrine and dopamine in mice were essentially unchanged by either triazolam or diazepam. Both slowed the utilization of dopamine by the brain and also decreased the incorporation of C¹⁴ tyrosine into norepinephrine and dopamine. Triazolam had no significant effect on serotonin turnover.

Triazolam and diazepam caused similar changes in cardiovascular and pulmonary parameters of cats and dogs at considerably higher doses than those producing central nervous system effects.

Pharmacokinetics in Animals

The pharmacokinetics of triazolam were examined in the rat and the dog. Twelve metabolites were found in rat and 10 metabolites were found in dog urine. All metabolites seen in human urine were seen in rat urine, indicating that triazolam metabolism in the rat may be qualitatively similar to human metabolism. The two major human metabolites were also the major urinary metabolites in the dog, but not in the rat. In the rat, triazolam-related materials were excreted primarily in the faeces whereas the urinary and fecal excretion were approximately equivalent in the dog. The excretion kinetics of the rat were similar to man whereas they were more complicated in the dog.

Tissue distribution of triazolam C¹⁴ radioactivity was studied in the mouse by whole-body section autoradiography. Following oral or intravenous administration, triazolam and/or its metabolites were rapidly and widely distributed throughout the body. The concentration of drug related material in most organs and tissues had reached a maximum within 1 hour of dosing and decreased rapidly thereafter. The C¹⁴ concentration in the brain was reasonably well reflected by the blood C¹⁴ concentration.

When triazolam was given to pregnant mice two days before term, drug-related material was found uniformly distributed in the fetus with concentrations approximately the same as in the brain of the mother.

Lactating rats were given triazolam C¹⁴ orally and mainly triazolam metabolites appeared in milk samples obtained at 6 and 24 hours post administration.

Pharmacokinetics in Humans

Triazolam, administered orally to man as a compressed tablet, had a minimal absorption of 82%. Doses of 0.125 mg and 0.25 mg had peak plasma levels (\pm S.D.) at 1.5 hours of 1.15 ± 0.41 ng/ml and 2.46 ± 0.83 ng/ml respectively.

Triazolam at both doses had a half-life of 2.7 hours and this was consistent with the absence of accumulated triazolam in the plasma 24 hours after each dose for seven consecutive daily 1 mg doses. Studies of blood and plasma indicated no accumulation of triazolam-related material in the formed elements of the blood.

At 37°C, triazolam was 89% bound in human serum. Binding to albumin accounted for only a portion of the total binding observed, since binding in a physiological concentration of human serum albumin amounted to only 49%.

Urine from humans dosed orally with triazolam C¹⁴ contained small amounts of unmetabolized triazolam as well as 6 metabolites. The two metabolites found in highest concentration in human urine were α -hydroxy-triazolam and 4-hydroxy-triazolam which accounted for 69% and 11% of the urinary radioactivity respectively.

In man, approximately 85% of drug related materials following oral administration of triazolam C¹⁴ was excreted in the urine whereas approximately 8% was excreted in the faeces. Biliary excretion appeared relatively unimportant in man. Urinary excretion of drug-related materials was quite rapid in man and could be described by two exponentials. The initial excretion rate was equivalent to a mean excretion half-time of about 6 hours and the mean excretion half-time for the terminal excretion phase was about 36 hours.

TOXICOLOGY

Acute Toxicity

The oral LD₅₀ of triazolam was found to be 5000 mg/kg in the rat. The intraperitoneal LD₅₀ was also 5000 mg/kg in the rat and 2426 mg/kg in the mouse. Signs of toxicity included ataxia, sedation, depression and sleep.

Subacute and Chronic Toxicity

Triazolam was administered orally or intravenously to rats for periods of 14 days, 86 days and 2 years. In the two 14-day studies (0, 500 and 1000 mg/kg/day p.o.; 0, 0.5, 1.0 and 2.0 mg/kg/day i.v.), triazolam produced sedation, drowsiness and ataxia. In the 86-day study (0, 30, 100 and 300 mg/kg/day p.o.), sedation was observed after dosing. However, toward the end of the study, only the 300 mg/kg rats appear to be effected. The higher doses produced increased kidney and adrenal weights in both sexes and increased liver weights in females. In the two-year study (0, 10, 30 and 100 mg/kg/day p.o.), the pharmacologic effects noted were drowsiness, increased aggressiveness in females and some unsteadiness. Male rats receiving the two higher dose levels had shorter mean survival times than did low dose and control animals. These early deaths were associated with urinary calculi and chronic progressive nephrosis. The overall incidence of chronic progressive nephrosis was the same for all males, but developed early in rats receiving the higher triazolam doses. Seven treated rats developed large thrombi, mainly in the heart. Similarly, 10 treated animals had microscopic foreign body granulomas in their lungs. Triazolam tended to aggravate the incidence and extent of hepatic necrosis. Serum cholesterol levels increased slightly with increasing doses.

Dogs were administered triazolam for periods of 9 days, 13 days, 3 months and one year. In the 9-day study (0 and 100 - 300 mg/kg/day p.o.), anxiety ataxia and sedation were seen for the first two days and polydipsia was the only consistent observation throughout the study. In the 13-day study (0, 0.1, 0.5 and 1.0 mg/kg/day i.v.), triazolam produced relaxation and ataxia and a dose related increase in SGOT, cholesterol and BUN. One dog in the mid-dose group had marked elevation of liver enzymes, hepatocellular degeneration with focal necrosis and raised BSP.

In the 3-month study (0, 0.5, 10 and 50 mg/kg/day p.o.), indications of tolerance development were seen and the dose was altered on the thirteenth day (0, 10, 30 and 100 mg/kg/day). Hyperactivity, hyperexcitability, ataxia, sedation and polydipsia were observed. Despite increased food consumption, treated dogs showed lower weight

gain than controls. Dogs treated with the two higher triazolam doses had elevated alkaline phosphatase and slightly increased liver weights.

Two out of four dogs at the highest dose had reduced liver glycogen and one had a suggestion of bile duct proliferation. In the one-year study (0, 3, 10 and 30 mg/kg/day p.o. 6 days/week), triazolam caused ataxia, ptosis, hyperactivity, increased food consumption and loose stools. Dogs in all treated groups had raised alkaline phosphatase levels and decreased prothrombin times. Liver weights were increased in the mid-dose group. At the two higher dose levels, elevations of platelet and leukocyte count were observed. One high-dose dog was sacrificed at one year after being moribund and convulsing for 24 hours and was found to have acute myocardial degeneration.

Reproduction and Teratology Studies

Significant drug-related abnormalities were not seen in the offspring of female rats treated orally with 2 and 5 mg/kg/day of triazolam in the diet prior to mating and throughout the subsequent pregnancy. Similarly, the same regimen administered to males prior to mating had no effect on the pregnancies sired by those males.

Triazolam given orally to pregnant rats from 6 through day 15 at dosage levels of 10 and 30 mg/kg/day did not adversely affect the reproductive parameters studied with the exception of a slight increase in the average number of resorption sites per litter at the 30 mg/kg level. Some skeletal growth retardation occurred at the 30 mg/kg level as indicated by the higher incidence of 5th metacarpals absent and minor sternebra variations (mostly incomplete ossification). One fetus from the 30 mg/kg level exhibited a hypoplastic mandible and premaxilla. Another fetus from the same litter lacked all ribs and vertebra below the 3rd thoracic vertebrae with the exception of one sacral vertebra.

Triazolam administered orally to pregnant rabbits at 10 and 30 mg/kg/day on gestation days 6 through 18 did not adversely affect the reproductive parameters studied. The results of examinations for visceral and skeletal malformations in triazolam treated rabbits revealed minor alterations in rib numbers accompanied by a low incidence

of rib and sternebra malformations suggesting teratogenic activity in this species. The lowest dose level at which the alterations occurred with triazolam was 10 mg/kg/day.

Treatment of pregnant rabbits on gestation days 6 through 18 by gastric intubation of triazolam at 0.2, 0.5, 2 and 5 mg/kg/day or diazepam at 8, 20, 25 and 50 mg/kg/day did not affect the reproductive parameters studied. The incidence of anatomical variations and abnormalities observed were comparable to current or previous control groups with this strain of rabbit or were considered spontaneous due to their isolated nature. No dose-related teratogenic activity was observed following treatment with triazolam or diazepam under the conditions of this study.

REFERENCES

1. Abernathy DR, Greenblatt DJ, Divoll M, Moschitto LJ, Harmatz JS, and Shader RI. Interaction of cimetidine with the triazolobenzodiazepines, alprazolam and triazolam. *Psychopharmacology* 1983;80:275-8.
2. Alexander N, Baldwin RJJ, Cranfield R, Hughes D, Khan GU and Venugopal SS. Comparison of triazolam (HALCION) and flurazepam (DALMANE) for the treatment of insomnia in general practice. *Clin Trials J* 1984;6:371-7.
3. Bakti G, Fisch HU, Karlaganis G, et al. Mechanism of excessive sedative response of cirrhotics to benzodiazepines: model experiments with triazolam. *Hepatology* 1987;7:629-38
4. Dehlin O, Bjornson G, Borjesson L, et al. Pharmacokinetics of triazolam in geriatric patients. *Eur J Clin Pharmacol* 1983;25:91-4.
5. Drugs and insomnia (Consensus conference). *JAMA* 1984;251:2410-14.
6. Friedman H, Greenblatt DJ, Burstein ES, et al. Triazolam kinetics: interaction with cimetidine, propranolol, and the combination. *J Clin Pharmacol* 1988;28:228-33
7. Fisch HU, Bakti G, Karlaganis G, et al. Excessive motor impairment two hours after triazolam in the elderly. *Eur J Clin Pharmacol* 1990;38:229-32.
8. Gillin JC, Byerley WF. The diagnosis and management of insomnia. *N Engl J Med* 1990;322:239-48.
9. Greenblatt DJ, Harmatz JS, Zinny MA and Shader RI. Effect of gradual withdrawal on the rebound sleep disorder after discontinuation of triazolam. *N Engl J Med* 1987;317:722-8.
10. Greenblatt DJ, Harmatz JS, Shader RI. Clinical pharmacokinetics of anxiolytics and hypnotics in the elderly. Therapeutic considerations (Part I). *Clin Pharmacokinet* 1991;21:165-77.
11. Greenblatt DJ, Harmatz JS, Shader RI. Clinical pharmacokinetics of anxiolytics and hypnotics in the elderly. Therapeutic considerations (Part II). *Clin Pharmacokinet* 1991;21:262-73.
12. Greenblatt DJ, Harmatz JS, Shapiro L, et al. Sensitivity to triazolam in the elderly. *N Engl J Med* 1991;324:1691-98.
13. Griffiths RR, Ator NA, Roache JD and Lamb RJ. Abuse liability of triazolam: Experimental measurements in animals and humans. *Clinical Pharmacology in Psychiatry*. Dahl, Gram, Paul, Potter eds. *Psychopharmacology Series 3*, Springer-Verlag Berlin Heidelberg 1987;83-7.
14. Griffiths RR, Lamb RJ, Ator NA, Roache JD, Brady JV. Relative abuse liability of triazolam: experimental assessment in animals and human. *Neurosci Biobehav Rev* 1985;9:133-51.
15. Hare SA. A comparison of three benzodiazepine hypnotics as oral pre-anaesthetic medication. *S Afr Med J* 1975;49:1883-4.
16. Itil TM, Saletu B and Marasa J. Determination of drug-induced changes in sleep quality based on digital computer "sleep-prints". *Pharmackopsychiatr Neuropsychopharmakol* 1974;7(5):265-80.
17. Kales A, Kales JD, Bixler EO, Scharf MB and Russek E. Hypnotic efficacy of triazolam: sleep laboratory evaluation of intermediate - term effectiveness. *J Clin Pharmacol* 1976;16:399-406.

18. Kroboth PD, Smith RB, Silver MR, et al. Effects of end stage renal disease and aluminum hydroxide on triazolam pharmacokinetics. *Br J Clin Pharmacol* 1985;19:839-42.
19. Kroboth PD, Smith RB, Van Thiel DH, Juhl RP. Night-time dosing of triazolam in patients with liver disease and normal subjects: kinetics and daytime effects. *J Clin Pharmacol* 1987;27:555-60.
20. Laird LM, Straw RN, Stewart JC and Francom SF. Tr 7251/83/008 Triazolam, flunitrazepam and placebo comparison in patients with insomnia. 21 February 1983.
21. Laird LM, Straw RN, Todd WM, Newhouse SM, Greenberg HS and Krieger RA. TR/7251/83/018 Seven-day comparison of triazolam and oxazepam for insomnia. (Protocol 6419) 13 April 1980.
22. Lomen P and Linet OI. Hypnotic efficacy of triazolam and methyprylon in insomniac in-patients. *J Int Med Res* 1976;4:55-8.
23. Matta B, Franco AE, LeZotte LA, Rudzik AD and Veldkamp W. Comparison of triazolam, flurazepam and placebo as hypnotic agents in pre-surgical patients. *Curr Ther Res* 1974;16:958-963.
24. Mitler MM, Seidel WF, Van den Hoed J, Greenblatt DJ and Dement WC. Comparative hypnotic effects of flurazepam, triazolam, and placebo: A long-term simultaneous night time and daytime study. *J Clin Psychopharmacol* 1984;4:2-13.
25. Pakes GE, Brogden RN, Heel RC, Speight TM and Avery GS. Triazolam: A review of its pharmacological properties and therapeutic efficacy in patients with insomnia. *Drugs* 1981;22:81-110.
26. Phillips JP, Antal EJ and Smith RB. A pharmacokinetic drug interaction between erythromycin and triazolam. *J Clin Psychopharmacol* 1986;6:297-9.
27. Rickels K, Gingrich RL, Morris RJ, et al. Triazolam in insomniac family practice patients. *Clin Pharmacol Ther* 1975;18:315-24.
28. Roehrs TA, Zorick FJ, Wittig RM and Roth T. Dose determinants of rebound insomnia. *Br J Clin Pharmacol* 1986;22:143-7.
29. Roehrs T, Zorick F, Wittig R, Roth T. Efficacy of a reduced triazolam dose in elderly insomniacs. *Neurobiol Aging* 1985;6:293-6.
30. Roehrs TA, Zorick FJ, Witting M, et al. Dose determinants of rebound insomnia. *Br J Clin Pharmacol* 1986;22:143-7.
31. Roth T, Hartse KM, Saab PG, Piccione PM and Kramer M. The effect of flurazepam, lorazepam and triazolam on sleep and memory. *Psychopharmacology* 1980;70:231-7.
32. Roth T, Kramer M and Lutz T. Intermediate use of triazolam: A sleep, laboratory study. *J Int Med Res* 1976;4:59-63.
33. Roth T, Kramer M and Lutz T. The effects of hypnotics on sleep performance and subjective state. *Drugs Exp Clin Res* 1977;1:279-86.
34. Roth T, Kramer M and Schwartz JL. Triazolam: A sleep laboratory study of a new benzodiazepine hypnotic. *Curr Ther Res* 1974;16:117-23.

35. Rudzik AD, Hester JB, Tang AH, Straw RN and Friis W. Triazolobenzodiazepines: A new class of central nervous system depressant compounds. *The Benzodiazepines*, Raven Press 1973;285-97.
36. Scharf MB, Fletcher K and Graham JB. Comparative amnestic effects of benzodiazepine hypnotic agents. *J Clin Psychiatry* 1988;49:134-7.
37. Schartz JL, Kramer M and Roth T. Triazolam: A new benzodiazepine hypnotic and its effect on mood. *Curr Ther Res* 1974;16:964-70.
38. Shugars KD and Rudzik AD. Seven-day, open-label efficacy study of triazolam in patients with insomnia and undergoing hemodialysis. (Protocol 6412) 15 March 1979.
39. Skatrud JB, Begle RL and Busch MA. Ventilatory effects of single, high dose triazolam in awake human subjects. *Clin Pharmacol Ther* 1988;44:684-9.
40. Smith RB and Phillips JP. Dose proportionality investigation of 0.125, 0.25, 0.5 mg doses of C.T. HALCION* tablet (triazolam) in normal subjects. (Protocol 9112-85-009) 7 August 1985.
41. Spinweber CL, Johnson LC. Effect of Triazolam (.5 mg) on sleep, performance, memory, and arousal threshold. *Psychopharmacology* 1982;76:5-12.
42. Sunshine A. Comparison of the hypnotic activity of triazolam flurazepam HCl and placebo in in-patient insomniacs. *Clin Pharmacol Ther* 1975;17:573-7.
43. Timms RM, Dawson A, Hajdukovic RM and Mitler MM. Effect of triazolam on sleep and arterial oxygen saturation in patients with chronic obstructive pulmonary disease. *Arch Intern Med* 1988;148:2159-63.
44. Veldkamp W, Straw RN, Metzler CM and Demissianos HV. Efficacy and residual effect evaluation of a new hypnotic, triazolam. *J Clin Pharmacol* 1974;14:102-11.
45. Vogel G, Thurmond A, Gibbons P, Edwards K, Sloan KB and Sexton K. The effect of triazolam on the sleep of insomniacs. *Psychopharmacologia* 1975;41:65-9.
46. Vogel GW, Barker K, Gibbons P and Thurmond A. A comparison of the effects of flurazepam 30 mg and triazolam 0.5 mg on the sleep of insomniacs. *Psychopharmacology* 1976;47:81-6.
47. Woods JH, Katz JL and Winger G. Abuse liability of benzodiazepines. *Pharmacol Rev* 1987;39:251-413.