

**PRODUCT MONOGRAPH**

**APO-MILRINONE Injectable  
Milrinone Lactate Injection  
10 mL and 20 mL (1 mg milrinone/mL)**

**INOTROPE / VASODILATOR**

**APOTEX INC.  
150 Signet Drive  
Weston, Ontario  
M9L 1T9**

**DATE OF PREPARATION:**  
April 30, 2004

Submission Control No.: 083487

## **PRODUCT MONOGRAPH**

APO-MILRINONE Injectable  
Milrinone Lactate Injection  
10 mL and 20 mL (1 mg milrinone/mL)

## **THERAPEUTIC CLASSIFICATION**

Inotrope / Vasodilator

## **ACTIONS AND CLINICAL PHARMACOLOGY**

Milrinone lactate injection is a positive inotrope and vasodilator, with little chronotropic activity, different in structure and mode of action from either the digitalis glycosides or catecholamines.

Milrinone, at relevant inotropic and vasorelaxant concentrations, is a selective inhibitor of peak III cAMP phosphodiesterase isozyme in cardiac and vascular muscle. This inhibitory action is consistent with cAMP mediated increases in intracellular ionized calcium and contractile force in cardiac muscle, as well as with cAMP dependent contractile protein phosphorylation and relaxation in vascular muscle. Additional experimental evidence also indicates that it is not a beta-adrenergic agonist, nor does it inhibit sodium-potassium adenosine triphosphatase activity as do the digitalis glycosides.

Clinical studies in patients with congestive heart failure have shown that milrinone lactate injection produces dose and plasma level-related increase in left ventricular dP/dt, increase in forearm blood flow indicating a direct arterial vasodilator activity of the drug, and improves diastolic function as evidenced by improvement in left ventricular diastolic relaxation.

Studies in normal subjects have shown that milrinone lactate injection produces increases in the slope of the left ventricular pressure-dimension relationship, indicating a direct inotropic effect of the drug. Both the inotropic and vasodilatory effects have been observed over the therapeutic range of milrinone plasma concentrations of 100 to 300 ng/mL.

### **Pharmacokinetics**

Following intravenous loading injections of 12.5 to 125 mcg/kg to congestive heart failure patients, intravenous milrinone had a volume of distribution of 0.38 L/kg, a mean terminal elimination half-life of 2.3 hours, and a clearance of 0.13 L/kg/hr. Following intravenous infusions of 0.20 to 0.70 mcg/kg/min to congestive heart failure patients, the drug had a volume of distribution of about 0.45 L/kg, a mean terminal elimination half-life of 2.4 hours, and a clearance of 0.14 L/kg/hr.

These pharmacokinetic parameters were not dose-dependent, while the area under the plasma concentration versus time curve following loading injections was significantly dose-dependent.

The steady-state milrinone plasma levels after approximately 6 to 12 hours of unchanging maintenance infusion of 0.5 mcg/kg/min are approximately 200 ng/mL.

Milrinone has been shown (by ultracentrifugation) to be in excess of 70% bound to human plasma proteins at plasma concentrations of 70 - 400 ng/mL.

The primary route of excretion of milrinone in man is via the urine, with much smaller amounts recovered in the feces. The major urinary excretion products in man are milrinone (83%) and its O-glucuronide metabolite (12%). Elimination in normal subjects via the urine is rapid, with approximately 60% recovered within the first two hours following dosing, and approximately 90% recovered within the first eight hours following dosing. The mean renal clearance of milrinone is approximately 0.3 L/min while that of the metabolites is even greater, indicative of active secretion.

In patients with moderate to severe renal impairment, both  $C_{max}$  (210 ng/mL) and  $t_{max}$  (1.19 hr) were increased compared to subjects with normal renal function (162 ng/mL and 0.64 hr, respectively). The half-life of milrinone increased from 0.94 hr in subjects with normal renal function to 1.71 hr in patients with moderate renal impairment and to 3.09 hr in patients with severe renal impairment.

### **Pharmacodynamics**

In patients with congestive heart failure, intravenous milrinone produces prompt, significant improvements in cardiac output, pulmonary capillary wedge pressure, and vascular resistance

without clinically significant increases in heart rate or myocardial oxygen consumption. Onset of action generally occurs within 5 to 15 minutes.

Improvement in left ventricular function and relief of congestive heart failure symptoms in patients with ischemic heart disease have been observed. The improvement has occurred without inducing symptoms or electrocardiographic signs of myocardial ischemia.

In studies in congestive heart failure patients, milrinone lactate injection administered as a loading injection followed by a maintenance infusion produced the following pharmacodynamic changes:

Dosage Regimen						
Loading dose (mcg/kg)	Maintenance Infusion (mcg/kg/min)	% Change				
		CI	PCWP	SVR	HR	MAP
37.5	0.375	+25	-20	-17	+3	-5
50.0	0.50	+38	-23	-21	+3	-5
75.0	0.75	+42	-36	-37	+10	-17

Patients evaluated for 48 hours maintained improvements in hemodynamic function, with no evidence of diminished response (tachyphylaxis), and in a small number of patients no evidence of tachyphylaxis was seen for as long as 72 hours of infusion.

The duration of therapy should depend upon patient responsiveness. Patients have been maintained on infusion of milrinone up to five days.

Intravenous milrinone is effective in fully digitalized patients without affecting glycoside plasma levels.

Milrinone has been shown to enhance atrio-ventricular nodal conduction rate (see PRECAUTIONS).

### **INDICATIONS AND CLINICAL USE**

APO-MILRINONE Injectable (Milrinone Lactate Injection) is indicated for the short-term management of severe congestive heart failure including low output states following cardiac surgery. The majority of experience with the drug has been in patients receiving digoxin and diuretics. In some patients, milrinone lactate injection has been shown to increase ventricular ectopy (see WARNINGS).

### **CONTRAINDICATIONS**

APO-MILRINONE Injectable (Milrinone Lactate Injection) is contraindicated in patients who are hypersensitive to it or to any of its ingredients.

### **WARNINGS**

Supraventricular and ventricular arrhythmias have been observed in the high risk population of congestive heart failure patients treated with milrinone lactate injection. In using the drug, consideration should be given to the fact that in some patients, milrinone lactate injection has been associated with an increase in ventricular ectopy including ventricular tachycardia or fibrillation (see ADVERSE REACTIONS). The incidence of arrhythmias has not been shown to be related to the dose or plasma level of milrinone. Patients receiving milrinone lactate injection should be closely monitored during infusion.

No clinical studies have been conducted in patients in the acute phase of post-myocardial infarction. Until further clinical experience is gained, milrinone lactate injection is not recommended for these patients.

### **PRECAUTIONS**

Milrinone lactate injection should not be used in lieu of surgical relief of the obstruction in patients with severe obstructive aortic or pulmonic valvular disease. Like other inotropic agents, it may aggravate outflow tract obstruction in hypertrophic subaortic stenosis.

Milrinone lactate injection has been shown to enhance AV nodal conduction rate, indicating a potential for an increased ventricular response rate in patients with atrial flutter/fibrillation which is not being controlled with digitalis therapy. Digitalization of these patients should be considered prior to the administration of milrinone.

During therapy with milrinone lactate injection, blood pressure and heart rate should be monitored and the rate of infusion stopped in patients showing excessive decrease in blood pressure. Once the condition resolves, therapy may be reconsidered but at a lower rate.

Patients who have received vigorous diuretic therapy may have insufficient cardiac filling pressure to respond adequately to milrinone lactate injection, in which case cautious liberalization of fluid and electrolyte intake may be indicated. Milrinone lactate injection should be cautiously administered with monitoring of blood pressure, heart rate and clinical symptomatology.

Fluid and electrolyte changes and renal function should be carefully monitored during therapy with milrinone lactate injection.

Improvement in cardiac output with resultant diuresis may necessitate a reduction in the dose of diuretic. Potassium loss due to excessive diuresis may predispose digitalized patients to arrhythmias. Therefore, hypokalemia should be corrected by potassium supplementation in advance of or during milrinone administration.

#### **Use in Renally Impaired Patients**

Data obtained from patients with severe renal impairment (creatinine clearance = 0 - 30 mL/min) but without congestive heart failure have demonstrated that the presence of renal impairment significantly increases the terminal elimination half-life of milrinone. Reductions in the infusion rate may be necessary in patients with renal impairment (see DOSAGE AND ADMINISTRATION).

#### **Use in Elderly Patients**

Experience so far suggests that no special dosage recommendations for the elderly patient are necessary.

### **Use in Pregnancy**

Milrinone did not appear to be teratogenic when administered intravenously to pregnant rats at doses up to 3 mg/kg/day or pregnant rabbits at doses up to 12 mg/kg/day, although an increase in resorption rate was apparent at both 8 and 12 mg/kg/day (intravenous) in the latter species.

There are no studies in pregnant women. Milrinone lactate injection should be used during pregnancy only if the potential benefit justifies the potential risk to the fetus.

### **Use in Nursing Mothers**

Caution should be exercised when milrinone lactate injection is administered to nursing women, since it is not known whether it is excreted in human milk.

### **Use in Children**

Safety and effectiveness in children have not been established. Milrinone lactate injection should be used in children only if the potential benefit justifies the potential risk to the child.

### **Drug Interactions**

No untoward clinical manifestations have been observed in patients in whom milrinone lactate injection was used concurrently with the following drugs: digitalis glycosides, lidocaine, quinidine, hydralazine, prazosin, isosorbide dinitrate, nitroglycerin, chlorthalidone, furosemide, hydrochlorothiazide, spironolactone, captopril, heparin, warfarin, diazepam, insulin, and potassium supplements.

### **Chemical Interactions**

Precipitation occurs immediately when furosemide is mixed with milrinone solution. Therefore, furosemide should not be administered in intravenous lines containing milrinone lactate injection.

Other drugs should not be mixed with milrinone lactate injection until further compatibility data are available.

### **ADVERSE REACTIONS**

In clinical trials involving 413 patients who received milrinone lactate injection, the most frequent adverse effects observed were ventricular arrhythmias (12.6%) and the most severe adverse effect observed was ventricular fibrillation (0.2%).

Adverse reactions occurring in patients treated with milrinone are shown below in order of decreasing frequency:

Ventricular arrhythmias	12.6%
Ventricular ectopic activity	9.0%
Ventricular tachycardia	3.6%
Ventricular fibrillation	0.2%
Supraventricular arrhythmias	3.6%
Hypotension	3.1%
Headache	2.4%
Angina pectoris/Chest pain	1.4%
Hypokalemia	0.7%
Thrombocytopenia	0.5%
Tremor	0.5%

In post-marketing experience there have been very rare cases (<1/10,000) of "torsades de pointes", anaphylactic shock, bronchospasm, and skin reactions such as rash. Liver function test abnormalities have been reported but are uncommon ( $\geq 1/1000$ , <1/100).

### **SYMPTOMS AND TREATMENT OF OVERDOSAGE**

No specific antidote to milrinone is known, but general measures for circulatory support should be taken. Milrinone lactate injection may produce hypotension and cardiac arrhythmia because of its vasodilator effect. In case of overdose, administration of milrinone lactate injection should be discontinued until the patient's condition stabilizes.



## **DOSAGE AND ADMINISTRATION**

### **General Information**

- Prior correction or adjustment of fluid/electrolytes may be necessary to obtain a satisfactory response with APO-MILRINONE Injectable (Milrinone Lactate Injection) (see PRECAUTIONS).
- APO-MILRINONE Injectable is a clear, colourless to pale yellow solution. Vials should be inspected visually and should not be used if particulate matter or discolouration is present.
- Suitable diluents include 0.45% Sodium Chloride Injection, 0.9% Sodium Chloride Injection and 5% Dextrose Injection.
- Diluted solution should be used within 24 hours.
- Furosemide should not be added to APO-MILRINONE Injectable due to a chemical interaction.

### **Drug Administration**

APO-MILRINONE Injectable should be administered with a loading dose followed by a continuous infusion (maintenance dose) according to the following guidelines:

<b>Loading Dose</b>			
50 mcg/kg: administered slowly over 10 minutes (for ease of administration APO-MILRINONE Injectable may be diluted with suitable diluents or used undiluted if suitable infusion equipment is available)			
<b>Maintenance Dose</b>			
	<b>Infusion Rate</b>	<b>Total Daily Dose (24 hours)</b>	
Minimum	0.375 mcg/kg/min	0.60 mg/kg	Administer as a continuous intravenous infusion
Standard	0.50 mcg/kg/min	0.77 mg/kg	
Maximum	0.75 mcg/kg/min	1.13 mg/kg	

The infusion rate should be adjusted according to hemodynamic and clinical response. Patients should be closely monitored. In controlled clinical studies most patients shows an improvement in hemodynamic status as evidenced by increases in cardiac output and reduction in pulmonary capillary wedge pressure. Dosage may be titrated to the maximum hemodynamic effect but should not exceed 1.13 mg/kg/day. Duration of therapy should depend upon patient responsiveness.

Intravenous infusions of APO-MILRINONE Injectable should be administered as described in the following chart.

Infusion Delivery Rate			
Milrinone Lactate Injection Dosage (mcg/kg/min)	Concentration of Milrinone in Infusion		
	100 mcg/mL <sup>a</sup>	150 mcg/mL <sup>b</sup>	200 mcg/mL <sup>c</sup>
	Delivery Rate		
	(mL/kg/hr)	(mL/kg/hr)	(mL/kg/hr)
0.375	0.22	0.15	0.11
0.400	0.24	0.16	0.12
0.500	0.30	0.20	0.15
0.600	0.36	0.24	0.18
0.700	0.42	0.28	0.21
0.750	0.45	0.30	0.22

In order to calculate flow rate (mL/hr), multiply infusion delivery rate by patient weight in kg.

<sup>a</sup>Prepare by adding 180 mL diluent per 20 mg vial (20 mL) APO-MILRINONE Injectable.

<sup>b</sup>Prepare by adding 113 mL diluent per 20 mg vial (20 mL) APO-MILRINONE Injectable.

<sup>c</sup>Prepare by adding 80 mL diluent per 20 mg vial (20 mL) APO-MILRINONE Injectable.

### **Dosage Adjustment in Renally Impaired Patients**

The loading dosage is not affected, but reductions in the maintenance infusion rate may be necessary according to the following table (see PRECAUTIONS - Use in Renally Impaired Patients).

Creatinine Clearance (mL/min/1.73 m <sup>2</sup> )	Milrinone Lactate Injection Dosage (mcg/kg/min)	Concentration of Milrinone in Infusion		
		100 mcg/mL <sup>a</sup>	150 mcg/mL <sup>b</sup>	200 mcg/mL <sup>c</sup>
		Delivery Rate		
		(mL/kg/hr)	(mL/kg/hr)	(mL/kg/hr)
5	0.20	0.12	0.08	0.06
10	0.23	0.14	0.09	0.07
20	0.28	0.17	0.11	0.08
30	0.33	0.20	0.13	0.10
40	0.38	0.23	0.15	0.11
50	0.43	0.26	0.17	0.13

In order to calculate flow rate (mL/hr), multiply infusion delivery rate by patient weight in kg.

<sup>a</sup>Prepare by adding 180 mL diluent per 20 mg vial (20 mL) APO-MILRINONE Injectable.

<sup>b</sup>Prepare by adding 113 mL diluent per 20 mg vial (20 mL) APO-MILRINONE Injectable.

<sup>c</sup>Prepare by adding 80 mL diluent per 20 mg vial (20 mL) APO-MILRINONE Injectable.



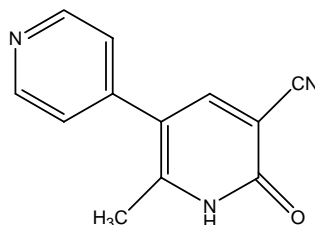
## **PHARMACEUTICAL INFORMATION**

### **DRUG SUBSTANCE**

**Proper/Common Name:** Milrinone

**Chemical Name:** (1) [3,4'-Bipyridine]-5-carbonitrile, 1,6-dihydro-2-methyl-6-oxo-  
(2) 1,6-Dihydro-2-methyl-6-oxo-[3,4'-bipyridine]-5-carbonitrile

**Structural Formula:**



**Molecular Formula:** C<sub>12</sub>H<sub>9</sub>N<sub>3</sub>O

**Molecular Weight:** 211.22

**Description:** Milrinone is an off-white to tan crystalline powder. It is slightly soluble in methanol, and very slightly soluble in chloroform and in water. It is stable and colourless to pale yellow, as the lactate, in solution.

**pKa and pH Values:** In aqueous solution milrinone has pKa values of about 4.6 and 8.5. Milrinone is very stable in solution at 70°C in a pH range of 1.4 to 8.6.

**Melting Point:** Milrinone can exist in two polymorphic forms designated Form I (WIN 47,203) and Form II (WIN 47,203-2). Form II undergoes a solid-solid transition at about 217° to polymorphic Form I which melts at about 319°.

### **COMPOSITION**

Each mL of APO-MILRINONE Injectible (Milrinone Lactate Injection) contains milrinone lactate equivalent to 1 mg milrinone and the following non-medicinal ingredients: 47 mg dextrose anhydrous and 1 mg lactic acid in water for injection. The pH is adjusted to between 3.2 and 4.0

with additional lactic acid or sodium hydroxide. The total concentration of lactic acid can vary between 0.95 and 1.29 mg/mL.

### **STABILITY AND STORAGE RECOMMENDATIONS**

Store at room temperature 15 - 30°C (59-86°F). Avoid freezing.

Single use vials. Discard unused portion.

### **RECONSTITUTED SOLUTIONS**

For ease of administration APO-MILRINONE Injectable (Milrinone Lactate Injection) may be diluted with 0.45% Sodium Chloride Injection, 0.9% Sodium Chloride Injection and 5% Dextrose Injection in a PVC-type container or may be used undiluted if suitable equipment is available.

Diluted solutions should be maintained at room temperature and should be used within 24 hours.

For detailed information regarding dilution, see DOSAGE AND ADMINISTRATION.

Since precipitation occurs immediately when furosemide is mixed with milrinone solution, furosemide should not be administered in intravenous lines containing APO-MILRINONE Injectable.

### **PARENTERAL PRODUCTS**

As with all parenteral drug products, intravenous admixtures should be inspected visually for clarity, particulate matter, precipitate, discolouration and leakage prior to administration, whenever solution and container permit. Solutions showing haziness, particulate matter, precipitate, discolouration or leakage should not be used. Discard unused portions.

### **AVAILABILITY OF DOSAGE FORMS**

APO-MILRINONE Injectable is a Schedule F drug.

APO-MILRINONE Injectable (Milrinone Lactate Injection) is available in single dose vials of 10 and 20 mL in boxes of 10, as a sterile, clear, colourless to pale yellow solution.

## **PHARMACOLOGY**

### **Tissue Distribution and Biotransformation**

Specific study of tissue distribution was conducted in the rat, following oral administration of milrinone at 4.5 mg/kg. At 30 minutes post-medication, the time of peak blood level, the only tissues other than the GI tract showing drug levels significantly higher than blood were the thyroid, kidney and liver. By 2 hours, all tissue levels except the kidney were low and 45% of the dose had already been excreted in the urine.

The biotransformation of <sup>14</sup>C-milrinone was studied in the rat, dog and monkey following oral administration. In all three species, milrinone was the major urinary excretion product, constituting from 67% (monkey) to 98% (rat) of urinary radioactivity. Five metabolites were observed and identified: the pyridyl-N-oxide, the carboxamide, and three glycosidic sugar conjugates of milrinone: a glucuronide, a glucoside and a riboside. The last two were observed only in the dog. Only the glucuronide might be considered a major metabolic pathway, representing 15% and 30% of urinary radioactivity in the dog and monkey, respectively.

### **Animal Pharmacology**

The inotropic and chronotropic activities of milrinone were investigated *in vitro* using isolated guinea pig, cat, rabbit, rat and hamster atria and papillary muscles. Milrinone, in concentrations ranging from 0.1 to 300 mcg/mL, caused concentration-dependent increases in papillary muscle and atrial developed tension, with minimal increases in atrial rate. Compared with the *in vitro* inotropic activity of amrinone, milrinone was approximately 30 times more potent. Milrinone does not increase the sensitivity of myofibrillar proteins to calcium.

In the anesthetized dog, the intravenous bolus administration of milrinone in doses of 0.01 to 0.3 mg/kg caused dose-dependent increases in cardiac contractile force with a minimal effect on blood pressure and heart rate. Milrinone also increases the rate of myocardial relaxation in a dose-related manner (lusitropic effect).

In the failing dog heart model, milrinone significantly reversed propranolol, verapamil and pentobarbital-induced heart failure.

In the isolated rabbit renal artery preparation, milrinone and amrinone were approximately equipotent against both potassium and norepinephrine-induced contractions, with nifedipine being considerably more potent than either milrinone or amrinone in this preparation.

### **Drug Interaction Studies:**

The inotropic potency of milrinone was not affected in anesthetized dogs pretreated with sodium nitroprusside, furosemide or diazepam. Milrinone, at 10-100 mcg/kg, increased cardiac contractile force in the presence of ouabain or dopamine.

Milrinone does potentiate the inotropic activity of beta adrenergic agonists.

Milrinone did not worsen or improve ouabain-induced arrhythmias and the inotropic response to milrinone was not altered in the presence of such arrhythmias.

In the canine hind limb preparations, milrinone, at doses of 0.03 to 0.3 mg/kg, caused dose-related reductions in systolic and diastolic perfusion pressures. This effect was not blocked by either denervation, histamine receptor antagonists, cholinergic or beta adrenergic receptor antagonists or by prostaglandin synthetase inhibition.

In the 24 hour Harris dog model, in which arrhythmias are produced by ligation of the left anterior descending coronary artery, milrinone did not interfere with the antiarrhythmic effects of quinidine, procainamide and disopyramide and reduced their negative inotropic and intracardiac conduction effects.

## **TOXICOLOGY**

### **Acute Toxicity**

The following intravenous 7-day LD<sub>50</sub> values were determined:

<b>Species</b>	<b>Age Range</b>	<b>Sex</b>	<b>LD<sub>50</sub> (mg base/kg)</b>
Mouse	Adults	M	797976737644
Mouse	Adults	F	
Rat	Adults	M	
Rat	Adults	M	
Rat	Adults	F	
Rabbit	Young Adults	F	

Clinical observations for mice, rats and rabbits included ataxia, decreased motor activity, loss of righting reflex, tremors and clonic convulsions. In addition for mice and rats only, ptosis, lacrimation, salivation, spastic limb movements and loss of motor activity were observed. Observations made during necropsies of mice and rats treated with the highest dosages

included: small black pitted areas in the glandular stomach, red or red-black material or mucus in the small intestine and lung consolidation (congestion). For rabbits, macroscopic and histomorphologic lesions: epicardial and endocardial hemorrhage, and papillary muscle fibrosis were observed at intravenous dosages of 12.6 mg base/kg and higher and were related to exaggerated pharmacologic effects of supra-therapeutic dosages.

### **Subacute/Chronic Toxicity**

Toxicologic effects observed in oral and intravenous studies in various laboratory animal species including mice, rats, rabbits, dogs and monkeys were related to responses by animals with normal myocardial function to the exaggerated pharmacologic effects of inotropy and vasodilation. Clinical effects observed for one or more species included: increased heart rate, shortening of P-R and Q-T intervals, conversion of sinus arrhythmia (common to dogs) to normal sinus rhythm, reddening of extremities, and decreases in systolic and diastolic blood pressure. Similarly, pathologic effects observed in various species were related to exaggerated pharmacologic responses by the normal heart to excessive inotropic and vasodilator stimulation and included: myocardial degeneration, necrosis and fibrosis principally affecting the left ventricular papillary muscles, perivasculitis and/or vasculitis of epicardial arteries and subendocardial hemorrhage. Results of intravenous studies in rats and dogs are summarized in the following table:

<b>Summary of Cardiac Histomorphologic Effects in Intravenous Toxicity Studies of Milrinone in Rats and Dogs</b>					
<b>Species (N/group)</b>	<b>Dosage mg base/kg/day</b>	<b>Duration</b>	<b>Dosage: mg base/kg/day</b>		
			<b>No Adverse Effect</b>	<b>Threshold</b>	<b>Toxicity</b>
<b>Sprague-Dawley Rat</b> Study 1 (N= 10M, 10F)	2.5, 10, 40	Bolus inj. daily (4 weeks)	–	2.5 <sup>a</sup> - 10.0 <sup>b</sup>	40.0 <sup>c</sup>
Study 2 (N=10M, 10F)	0.01, 0.1, 1.0, 2.5	Bolus inj. daily (4 weeks)	0.01, 0.1, 1.0, 2.5	–	--
<b>Beagle Dog</b> (N = 2M, 2F)	2, 6, 18	4-Hr Infusion (10 doses in 12 days)	–	2.0 <sup>d</sup>	6.0 <sup>e</sup> 18.0 <sup>e</sup>

<sup>a</sup>Minimal myocardial fibrosis even for 2/20 rats (one of each sex)

<sup>b</sup>Mild myocardial fibrosis and/or degeneration observed for 5/20 rats

<sup>c</sup>Mild to marked myocardial fibrosis observed for 19/20 rats

<sup>d</sup>Minimal myocardial degeneration and/or inflammation observed for 2/4 dogs; coronary arteritis for 1/4 dogs

<sup>e</sup>Minimal to moderate myocardial inflammation and/or fibrosis observed for 4/4 dogs at each dosage; coronary arteritis observed for 1/4 and 2/4 dogs at dosages of 6 and 18 mg base per kg/day, respectively

Coronary vascular lesions characterized by periarterial edema and inflammation have been observed in dogs only. The myocardial/endocardial changes are similar to those produced by



beta-adrenergic receptor agonists such as isoproterenol, while the vascular changes are similar to those produced by minoxidil and hydralazine. Doses within the recommended clinical dose range (up to 1.13 mg/kg/day) for congestive heart failure patients have not produced significant adverse effects in animals.

**Carcinogenicity, Mutagenicity, Teratogenicity, Impairment of Fertility**

Milrinone was not carcinogenic in life-time (two-year) oral studies conducted in mice and rats.

Milrinone was not genotoxic in *in vitro* tests for potential to induce gene mutation (Ames tests and mouse lymphoma cell assay) or in *in vivo* tests for potential to induce chromosomal damage (micronucleus test and metaphase bone marrow analysis). An *in vitro* test for potential to induce chromosomal damage in Chinese Hamster Ovary cells was positive only when conducted in the presence of hepatic microsomes (metabolic activation). This single positive result in an *in vitro* test was not considered to be biologically important since a dose-dependent response was not observed, and negative results were obtained in *in vitro* tests conducted with dosages of milrinone that exceeded the recommended cumulative daily human oral and intravenous dosages by more than 25 fold.

Effects on fertility were not observed in male, female and 3-generation oral reproductive studies in rats. An increased rate of fetal resorptions was observed when milrinone was given as an intravenous bolus injection to rabbits at 7 times the cumulative maximum recommended human therapeutic dosage intended for administration by infusion during a period of 24 hours. Milrinone was not teratogenic when administered orally or intravenously to rats and rabbits.

## **BIBLIOGRAPHY**

- 1) Alousi AA, Canter JM, Montenaro MJ, Fort DJ, Ferrari RA. Cardiotoxic activity of milrinone, a new and potent cardiac bipyridine, on the normal and failing heart of experimental animals. *J Cardiovasc Pharmacol* 1983; 5: 792-803.
- 2) Alousi AA, Stankus GP, Stuart JC, Walton LH. Characterization of the cardiotoxic effects of milrinone, a new and potent cardiac bipyridine, on isolated tissues from several animal species. *J Cardiovasc Pharmacol* 1983; 5: 804-811.
- 3) Anderson JL, Baim DS, Fein SA, Goldstein RA, LeJemtel TH, Likoff MJ. Efficacy and safety of sustained (48 hour) intravenous infusions of milrinone in patients with severe congestive heart failure: A multicenter study. *J Am Coll Cardiol* 1987; 9(4): 711-722.
- 4) Baim DS, Monrad ES, McDowell AV, Smith H, Lanoue A, Braunwald E, Grossman W. Milrinone therapy in patients with severe congestive heart failure: Initial hemodynamic and clinical observations. IN: Braunwald E and Sonnenblick EH et al, eds., *Milrinone: Investigation of New Inotropic Therapy for Congestive Heart Failure*. New York, Raven Press, 1984; pp. 143-153.
- 5) Baker JF, Edelson J. Metabolism and pharmacokinetics of milrinone in laboratory animals. IN: Braunwald E, Sonnenblick EH, Chakrin, LW and Schwarz RP, eds., *Milrinone: Investigation of New Inotropic Therapy for Congestive Heart Failure*. New York, Raven Press; 1984, pp. 49-53.
- 6) Colucci WS, Wright RF, Jaski BE, Fifer MA, Braunwald E. Milrinone and dobutamine in severe heart failure: Differing hemodynamic effects and individual patient responsiveness. *Circulation* 1986; 73(Suppl. 111): 111-175.
- 7) Davidenko JM, Antzelevitch C. The effects of milrinone on conduction, reflection, and automaticity in canine Purkinje fibers. *Circulation* 1984; 69(5): 1026-1035.
- 8) Drobeck HP, Slighter RG Jr, Edelson J. Toxicology studies on milrinone. IN: Braunwald E, Sonnenblick EH, et al, eds., *Milrinone: Investigation of New Inotropic Therapy for Congestive Heart Failure*. New York, Raven Press; 1984, pp. 55-76.
- 9) Goldstein RA, Geraci SA, Gray EL, Rinkenberger RL, Hamilton Dougherty A, Naccarelli GV. Electrophysiologic effects of milrinone in patients with congestive heart failure. *Am J Cardiol* 1986; 57: 624-628.
- 10) Grose R, Strain J, Greenberg M, LeJemtel TH. Systemic and coronary effects of intravenous milrinone and dobutamine in congestive heart failure. *J Am Coll Cardiol* 1986; 7: 1107-1113.
- 11) Jaski BE, Fifer MA, Wright RF, Braunwald E, Colucci WS. Positive inotropic and vasodilator actions of milrinone in patients with severe congestive heart failure. *J Clin Invest* 1985; 75: 643-649.

- 12) LeJemtel TH, Maskin CS, Chadwick B, Sonnenblick EH. Clinical response to long-term milrinone therapy in patients with severe congestive heart failure: 12-Month experience. IN: Braunwald E, Sonnenblick EH, et al, eds., Milrinone: Investigation of New Inotropic Therapy for Congestive Heart Failure. New York, Raven Press; 1984, pp. 177-189.
- 13) Ludmer PL, Wright RF, Arnold JMO, Ganz P, Braunwald E, Colucci WS. Separation of the direct myocardial and vasodilator actions of milrinone administered by an intracoronary infusion technique. *Circulation* 1986; 73(1): 130-137.
- 14) Maskin, CS, Chadwick B, Sonnenblick EH, LeJemtel TH. Withdrawal and reinstatement of long-term milrinone therapy. Evidence of drug-dependent improvement in cardiac performance without tachyphylaxis. IN: Braunwald E, Sonnenblick EH, et al, eds., Milrinone: Investigation of New Inotropic Therapy for Congestive Heart Failure. New York, Raven Press; 1984, pp. 155-166.
- 15) Monrad, ES, Baim DS, Smith HS, Lanoue A, Braunwald E, Grossman W. Effects of milrinone on coronary hemodynamics and myocardial energetics in patients with congestive heart failure. *Circulation* 1985; 71(5): 972-979.
- 16) Monrad ES, Baim DS, Smith HS, Lanoue AS. Milrinone, dobutamine and nitroprusside: Comparative effects on hemodynamics and myocardial energetics in patients with severe congestive heart failure. *Circulation* 1986; 73(Suppl. III): III-168-174.
- 17) Monrad ES, McKay RG, Baim DS, Colucci WS, Fifer MA, Heller GV, Royal HD, Grossman W. Improvement in indexes of diastolic performance in patients with congestive heart failure treated with milrinone. *Circulation* 1984; 70(6): 1030-1037.
- 18) Simonton CA, Chatterjee K, Cody RJ, Kubo SH, Leonard D, Daly P, Rutman H. Milrinone in congestive heart failure: Acute and chronic hemodynamic and clinical evaluation. *J Am Coll Cardiol* 1985; 6(2): 453-459.
- 19) Sonnenblick EH, Grose R, Strain J, Zelcer AA, LeJemtel TH. Effects of milrinone on left ventricular performance and myocardial contractility in patients with severe heart failure. *Circulation* 1986; 73 (Suppl. 111): 111-162.
- 20) Stroshane, RM, Benziger DP, Edelson J. Pharmacokinetics of milrinone in congestive heart failure patients. IN: Braunwald E, Sonnenblick EH, et al, eds., Milrinone: Investigation of New Inotropic Therapy for Congestive Heart Failure. New York, Raven Press; 1984, pp. 119-131.
- 21) White HD, Ribeiro JP, Hartley LH, Colucci WS. Immediate effects of milrinone on metabolic and sympathetic responses to exercise in severe congestive heart failure. *Am J Cardiol* 1985; 56: 93-98.
- 22) Product Monograph. Primacor Injection (milrinone lactate injection), 10 mL and 20 mL vials (1 mg milrinone/mL), 100 mL Flexible Container (200 mcg/mL); Inotrope/Vasodilator. Sanofi Winthrop, Markham, Ontario; Date of Revision: December 11, 1996.

- 23) Prescribing Information. Primacor<sup>®</sup> (milrinone lactate injection) 1 mg/mL. Sanofi-Synthelabo, manufactured for Sanofi-Synthelabo Inc. New York, NY 10016 by Abbott Laboratories North Chicago, IL 60064; Revised January 2003.
- 24) Primacor<sup>®</sup> milrinone lactate injection, Copyright 2001-2002, Sanofi-Synthelabo Inc. (on-line) available: <http://www.primacor.com>.