

PRODUCT MONOGRAPH

Pr PANTOPRAZOLE

Pantoprazole Sodium Enteric-Coated Tablets

40 mg
(of pantoprazole as pantoprazole sodium)

H⁺, K⁺-ATPase Inhibitor

Manufactured by:
Cobalt Pharmaceuticals Inc.
6500 Kitimat Road
Mississauga, Ontario
L5N 2B8

Date of Preparation:
February 4, 2010

Control No. 136161

Table of Contents

PART I: HEALTH PROFESSIONAL INFORMATION.....	3
SUMMARY PRODUCT INFORMATION	3
INDICATIONS AND CLINICAL USE.....	3
CONTRAINDICATIONS	3
WARNINGS AND PRECAUTIONS.....	4
ADVERSE REACTIONS.....	5
DRUG INTERACTIONS	9
DOSAGE AND ADMINISTRATION	10
OVERDOSAGE	11
ACTION AND CLINICAL PHARMACOLOGY	11
STORAGE AND STABILITY.....	13
SPECIAL HANDLING INSTRUCTIONS	13
DOSAGE FORMS, COMPOSITION AND PACKAGING	13
PART II: SCIENTIFIC INFORMATION	14
PHARMACEUTICAL INFORMATION.....	14
CLINICAL TRIALS.....	15
DETAILED PHARMACOLOGY	20
TOXICOLOGY	23
REFERENCES	28
PART III: CONSUMER INFORMATION.....	30

Pr PANTOPRAZOLE

pantoprazole sodium

PART I: HEALTH PROFESSIONAL INFORMATION

SUMMARY PRODUCT INFORMATION

Route of Administration	Dosage Form / Strength	Clinically Relevant Nonmedicinal Ingredients
oral	Enteric-Coated Tablet / 40 mg	None <i>For a complete listing see DOSAGE FORMS, COMPOSITION AND PACKAGING section.</i>

INDICATIONS AND CLINICAL USE

PANTOPRAZOLE (pantoprazole sodium) is indicated for the treatment of conditions where a reduction of gastric acid secretion is required, such as the following:

- Duodenal ulcer
- Gastric ulcer
- Reflux esophagitis
- Symptomatic gastro-esophageal reflux disease (such as, acid regurgitation and heartburn).

For the maintenance treatment of patients with reflux esophagitis and the resolution of symptoms associated with reflux esophagitis, such as heartburn with or without regurgitation, 20 mg or 40 mg pantoprazole once daily have been used for 3 years in controlled clinical trials. In continuous maintenance treatment 20 mg pantoprazole has been used in a limited number of patients for up to eight years.

Geriatrics (> 65 years of age):

No dose adjustment is recommended based on age. The daily dose used in elderly patients, as a rule, should not exceed the recommended dosage regimens. See PHARMACOLOGY.

Pediatrics:

The safety and effectiveness of pantoprazole in children have not yet been established.

CONTRAINDICATIONS

Patients who are hypersensitive to this drug or to any ingredient in the formulation or component of the container. For a complete listing, see the DOSAGE FORMS, COMPOSITION AND

PACKAGING section of the product monograph.

Pantoprazole, like all PPIs, should not be concurrently administered with atazanavir (see DRUG INTERACTIONS).

WARNINGS AND PRECAUTIONS

General

In the presence of any alarm symptom (e.g. significant unintentional weight loss, recurrent vomiting, dysphagia, haematemesis, anaemia, or melaena) and when gastric ulcer is suspected, the possibility of malignancy should be excluded before therapy with pantoprazole sodium is instituted since treatment with pantoprazole sodium may alleviate symptoms and delay diagnosis.

Further investigation should be considered if symptoms persist despite adequate treatment.

Carcinogenesis and Mutagenesis

Effects of long-term treatment include hypergastrinemia, possible enterochromaffin-like (ECL) cell hyperplasia and carcinoid formation in the stomach, adenomas and carcinomas in the liver and neoplastic changes in the thyroid.

In the rat, the mechanism leading to the formation of gastric carcinoids is considered to be due to the elevated gastrin level occurring during chronic treatment. Similar observations have also been made after administration of the other acid secretion inhibitors. (For further details, see TOXICOLOGY).

Short-term and long-term treatment with pantoprazole sodium in a limited number of patients up to 6 years have not resulted in any significant pathological changes in gastric oxyntic exocrine cells.

Hepatic/Biliary/Pancreatic & Renal

The daily dose in patients with severe liver disease should, as a rule, not exceed 20 mg pantoprazole. See ACTION & CLINICAL PHARMACOLOGY, Special Populations & Conditions.

The daily dose used in renal insufficient patients, as a rule, should not exceed the recommended dosage regimens. See ACTION & CLINICAL PHARMACOLOGY, Special Populations & Conditions.

Special Populations

Pregnant Women:

There are no adequate or well-controlled studies in pregnant women. Pantoprazole sodium should not be administered to pregnant women unless the expected benefits outweigh the potential risks to the fetus. See REPRODUCTION and TERATOLOGY.

Nursing Women:

Limited data is available around pantoprazole in nursing women. Pantoprazole excretion in human milk has been detected in a study of a single nursing mother after a single 40 mg oral dose. The clinical relevance of this finding is not known. Pantoprazole sodium should not be given to nursing mothers unless its use is believed to outweigh the potential risks to the infant.

Pediatrics:

The safety and effectiveness of pantoprazole in children have not yet been established.

Geriatric (> 65 years of age):

No dose adjustment is recommended based on age. The daily dose used in elderly patients, as a rule, should not exceed the recommended dosage regimens. See PHARMACOLOGY.

ADVERSE REACTIONS**Adverse Drug Reaction Overview**

Pantoprazole sodium is well tolerated. Most adverse events have been mild and transient showing no consistent relationship with treatment. Adverse events have been recorded during controlled clinical investigations in over 13,000 patients exposed to pantoprazole sodium as the single therapeutic agent for treatment of conditions requiring acid suppression.

The following adverse events (the most frequently reported) have been reported in individuals receiving pantoprazole therapy (40 mg once daily) in controlled clinical trials of at least 6 months duration: headache (2.1%), diarrhea (1.6%), nausea (1.2%).

The following adverse reactions considered possibly, probably, or definitely related by the investigator have been reported in individuals receiving pantoprazole therapy (20 mg or 40 mg once daily) in long-term clinical trials (duration of at least 6 months).

Adverse drug reactions with a frequency of $\geq 1\%$, related to 40 mg pantoprazole assessed as possibly, probably or definitely related by the investigator

Preferred term	Number of patients	Percentage of patients
Headache	24	2.137
Diarrhea	18	1.603
Nausea	13	1.158

For long-term treatment with 20 mg, no such events were reported with a frequency of more than 1%.

Adverse drug reactions with a frequency of 0.1 to 1% related to 20 mg pantoprazole

Gastrointestinal Disorders: Diarrhea, Flatulence, Abdominal Pain, Abdominal Pain Upper, Abdominal Distension, Gastric Polyps, Loose Stools, Frequent Bowel Movements, Eructation, Dyspepsia, Nausea, Vomiting, Constipation

General Disorders: Fatigue

Hepatobiliary Disorders: Alanine Aminotransferase Increased, Aspartate Aminotransferase Increased, Liver Function Tests Abnormal, Transaminases Increased

Laboratory Parameters: Hyperglycaemia

Nervous System Disorders: Headache, Dizziness, Vertigo

Skin and Subcutaneous Tissue Disorders: Pruritus, Rash

Special Senses: Visual Disturbance

Other: Libido Decreased

Adverse drug reactions with a frequency of 0.1 to 1% related to 40 mg pantoprazole

Cardiovascular System: Blood Pressure Increased, Hypertension, ECG Abnormal

Gastrointestinal Disorders: Flatulence, Abdominal Distension, Abdominal Pain, Abdominal Pain Upper, Loose Stools, Esophageal Reflux Aggravated, Gastric Polyps, Abdominal Discomfort, Abdominal Tenderness, Constipation, Eructation, Vomiting, Dyspepsia, Gastroesophageal Reflux, Esophagitis

General Disorders: Fatigue, Peripheral Edema, Pyrexia

Hepatobiliary Disorders: Alanine Aminotransferase Increased, Aspartate Aminotransferase Increased, Liver Function Tests Abnormal, Transaminases Increased

Laboratory Parameters: Hypertriglyceridaemia

Metabolic and Nutritional: Appetite Decreased, Weight Increase

Nervous System Disorders: Dysgeusia, Dizziness, Migraine, Vertigo

Respiratory System: Cough

Skin and Subcutaneous Tissue Disorders: Pruritus, Rash

Special Senses: Mouth Dry, Vision Blurred

Other: neoplasm

The following adverse reactions considered possibly, probably, or definitely related by the investigator have been reported in individuals receiving pantoprazole therapy (20 mg or 40 mg once daily) in short-term clinical trials (duration of up to 3 months).

Adverse drug reactions with a frequency of 0.1 to 1% related to pantoprazole, 20 mg or 40 mg

Gastrointestinal Disorders: Diarrhea, Flatulence, Nausea, Constipation, Abdominal Pain

Nervous System Disorders: Headache, Dizziness

Skin and Subcutaneous Tissue Disorders: Pruritus

In addition, the following adverse events considered unrelated, or unlikely related by the investigator have been reported in individuals receiving pantoprazole therapy (20 mg or 40 mg once daily) in short-term and long-term clinical trials.

Adverse Events with a frequency of \geq 1%, 20 or 40 mg

Influenza Like Illness, Headache, Diarrhea

Adverse Events with a frequency of 0.1 to 1%, 20 or 40 mg

Bronchitis, Nausea, Back Pain, Abdominal Pain Upper, Upper Respiratory Tract Infection, Non-accidental Injury, Sinusitis, Abdominal Pain, Dizziness, Arthralgia, Vomiting, Pharyngitis, Chest Pain, Gastroenteritis, Dyspepsia, Urinary Tract Infection, Eructation, Pyrexia, Cough, Depression, Hypertension, Pain in Limb, Constipation, Fatigue, Operation, Neck Pain, Nasopharyngitis, Alanine Aminotransferase Increased, Hemorrhoids, Pain, Flatulence, Viral Infection, Hypertriglyceridaemia, Toothache, Hypersensitivity, Rash, Abdominal Pain Lower, Pneumonia, Abdominal Distension, Dyspnoea, Muscle Cramp, Rhinitis, Peripheral Edema, Tonsillitis, Angina Pectoris, Cholelithiasis, Sinus Congestion, Influenza, Vertigo, Insomnia, Infection, Osteoarthritis, Hypercholesterolaemia, Pruritus, Eczema, Sleep Disorder, Migraine, Aspartate Aminotransferase Increased, Hyperglycemia, Musculoskeletal Discomfort, Blood Triglycerides, Increased, Myocardial Infarction, Tendonitis, Weight Increased, Rectal Hemorrhage, Cystitis, Nasal Congestion, Arthritis, Contusion, Abdominal Discomfort, Enteritis

The following Serious Adverse Events regardless of causality were reported with a frequency of <0.1% in either 20 mg or 40 mg:

Sepsis

Abnormal Hematological & Clinical Chemistry Findings

Please refer to the Hepatobiliary Disorders and the Laboratory Parameters portions of the ADVERSE REACTION section, the ACTION & CLINICAL PHARMACOLOGY – Special Populations & Conditions section, and the WARNINGS & PRECAUTIONS – Hepatic/Biliary/Pancreatic section.

Adverse Events in Post-Marketing Use

The following adverse events were reported in post-marketing use and causal relation to pantoprazole sodium treatment could not be ruled out:

Skin and Subcutaneous Tissue Disorders: Allergic reactions such as skin rash. Very rare cases of angioedema, severe skin reactions such as Stevens-Johnson syndrome, erythema multiforme, toxic epidermal necrolysis, and photosensitivity. Isolated cases of alopecia, acne, maculopapular rash, urticaria, exfoliative dermatitis.

Nervous System Disorders: Hypokinesia, disturbances in vision (blurred vision). Rare cases of somnolence, insomnia; in isolated cases vertigo, tremor, tinnitus, paresthesia, nervousness, photophobia.

Eye Disorders: Anterior ischemic optic neuropathy

Gastrointestinal Disorders: Occasionally upper abdominal pain, flatulence; rare cases of increased appetite, dry mouth, nausea/vomiting, constipation, dyspeptic symptoms, acid eructation, pancreatitis, increased salivation.

Urogenital: Isolated cases of hematuria and impotence. Interstitial nephritis.

Laboratory Parameter: In rare cases, increased liver enzymes (transaminases, γ -GT), elevated triglycerides.

Hematologic and Lymphatic System: Pancytopenia, isolated cases of eosinophilia. Very rare cases of leukopenia, and thrombocytopenia.

General Disorders: Speech disorder, very rare cases of peripheral edema, increased body temperature

Hepatobiliary Disorders: Very rare cases of severe hepatocellular damage leading to jaundice with or without hepatic failure.

Immune System Disorders: Anaphylactic reactions including anaphylactic shock.

Musculoskeletal, Connective Tissue and Bone Disorders: Elevated creatine phosphokinase, in rare cases, myalgia and arthralgia. In very rare cases rhabdomyolysis.

Psychiatric Disorders: Confusion, rare cases of depression, hallucination, disorientation, confusion especially in pre-disposed patients, as well as the aggravation of these symptoms in the case of pre-existence.

Other: In isolated cases malaise.

DRUG INTERACTIONS

Overview

Pantoprazole undergoes extensive hepatic metabolism via cytochrome P450-mediated oxidation followed by sulphate conjugation via a Phase II reaction (non-saturable, non-cytochrome P450 dependent). Pharmacokinetic drug interaction studies in man did not demonstrate the inhibition of the oxidative metabolism of the drug. No induction of the CYP 450 system by pantoprazole was observed during chronic administration of pantoprazole sodium with antipyrine as a marker. Changes in absorption should be taken into account when drugs whose absorption is pH dependent, e.g., ketoconazole, are taken concomitantly.

It has been shown that co-administration of atazanavir 300mg/ ritonavir 100mg with omeprazole (40mg once daily) or atazanavir 400mg with lansoprazole (60mg single dose) to healthy volunteers resulted in a substantial reduction in the bioavailability of atazanavir. The absorption of atazanavir is pH dependent. Therefore all PPIs, including pantoprazole, should not be co-administered with atazanavir. See CONTRAINDICATIONS.

Drug-Drug Interactions

Pantoprazole sodium does not interact with carbamazepine, caffeine, diclofenac, naproxen, piroxicam, ethanol, glibenclamide, metoprolol, antipyrine, diazepam, phenytoin, nifedipine, theophylline, digoxin, oral contraceptives, or cyclosporine. Concomitant use of antacids does not affect the pharmacokinetics of pantoprazole sodium.

Although no interaction during concomitant administration of warfarin has been observed in clinical pharmacokinetic studies, a few isolated cases of changes in INR have been reported during concomitant treatment in the post-marketing period. Therefore, in patients being treated with coumarin anticoagulants, monitoring of prothrombin time/ INR is recommended after initiation, termination or during irregular use of pantoprazole.

Drug-Food Interactions

Consumption of food does not affect the pharmacokinetics (AUC and Cmax) of pantoprazole sodium. See HUMAN PHARMACOLOGY.

Drug-Laboratory Interactions

There have been reports of false-positive results in some urine screening tests for tetrahydrocannabinol (THC) in patients receiving most proton pump inhibitors, including pantoprazole. A confirmatory method should be considered to verify positive results.

Other

Generally, daily treatment with any acid-blocking medicines over a long time (e.g. longer than 3 years) may lead to malabsorption of cyanocobalamin caused by hypo- or achlorhydria. Rare cases of cyanocobalamin deficiency under acid-blocking therapy have been reported in the literature and should be considered if respective clinical symptoms are observed.

DOSAGE AND ADMINISTRATION

Recommended Dose and Dosage Adjustment

DUODENAL ULCER

The recommended adult dose of PANTOPRAZOLE for the oral treatment of duodenal ulcer is 40 mg as pantoprazole given once daily in the morning. Healing usually occurs within 2 weeks. For patients not healed after this initial course of therapy, an additional course of 2 weeks is recommended.

GASTRIC ULCER

The recommended adult oral dose of pantoprazole for the oral treatment of gastric ulcer is 40 mg given once daily in the morning. Healing usually occurs within 4 weeks. For patients not healed after this initial course of therapy, an additional course of 4 weeks is recommended.

SYMPTOMATIC GASTRO-ESOPHAGEAL REFLUX DISEASE (GERD)

The recommended adult oral dose for the treatment of symptoms of GERD, including heartburn and regurgitation, is 40 mg once daily for up to 4 weeks. If significant symptom relief is not obtained in 4 weeks, further investigation is required.

REFLUX ESOPHAGITIS

The recommended adult oral dose of pantoprazole is 40 mg, given once daily in the morning. In most patients, healing usually occurs within 4 weeks. For patients not healed after this initial course of therapy, an additional 4 weeks of treatment is recommended.

Both 20 mg and 40 mg once daily have been demonstrated to be effective in the maintenance of healing of reflux esophagitis. If maintenance therapy fails when using 20 mg once daily, consideration may be given to the 40 mg daily dose as maintenance therapy.

Missed Dose

If a dose is forgotten, the missed dose should be taken as soon as possible unless it is close to the next scheduled dose. Two doses should never be taken at one time to make up for a missed dose; patients should just return to the regular schedule.

Administration

Pantoprazole sodium is formulated as an enteric-coated tablet. A whole tablet should not be chewed or crushed, and should be swallowed with fluid in the morning either before, during, or after breakfast.

Reconstitution:

Not applicable.

OVERDOSAGE

Some reports of overdosage with pantoprazole have been received. No consistent symptom profile was observed after ingestion of high doses of pantoprazole. Daily doses of up to 272 mg pantoprazole i.v., and single doses of up to 240 mg i.v. administered over 2 minutes, have been administered and were well tolerated.

Treatment of overdosage should be supportive and symptomatic. Pantoprazole is not removed by hemodialysis.

For management of a suspected drug overdose, contact your regional Poison Control Centre.

ACTION AND CLINICAL PHARMACOLOGY

Mechanism of Action

Pantoprazole sodium is a specific inhibitor of the gastric H⁺, K⁺-ATPase enzyme (the proton pump) that is responsible for acid secretion by the parietal cells of the stomach.

Pantoprazole sodium is a substituted benzimidazole that accumulates in the acidic environment of the parietal cells after absorption. Pantoprazole sodium is then converted into the active form, a cyclic sulphenamide, which binds to the H⁺, K⁺-ATPase, thus inhibiting both the basal and stimulated gastric acid secretion. Pantoprazole sodium exerts its effect in an acidic environment (pH < 3), and it is mostly inactive at higher pH. Its pharmacological and therapeutic effect is achieved in the acid-secretory parietal cells.

In clinical studies investigating intravenous (i.v.) and oral administration, pantoprazole sodium inhibited pentagastrin-stimulated gastric acid secretion. With a daily oral dose of 40 mg, inhibition was 51% on Day 1 and 85% on Day 7. Basal 24-hour acidity was reduced by 37% and 98% on Days 1 and 7, respectively.

In long-term international studies involving over 800 patients, a 2 to 3 fold mean increase from the pre-treatment fasting serum gastrin level was observed in the initial months of treatment with pantoprazole at doses of 40 mg per day during GERD maintenance studies and 40 mg or higher per day in patients with refractory GERD. Fasting serum gastrin levels generally remained at approximately 2 to 3 times baseline for up to 4 years of periodic follow-up in clinical trials.

Pharmacodynamics

Pantoprazole is a proton pump inhibitor. It inhibits H⁺, K⁺-ATPase, the enzyme responsible for gastric acid secretion in the parietal cells of the stomach, in a dose-dependent manner. The drug is a substituted benzimidazole that accumulates in the acid canaliculi of parietal cells after absorption. There, pantoprazole is converted into the active form, a cyclic sulfenamide that binds selectively to the proton translocating region of the H⁺, K⁺-ATPase. Pantoprazole's selectivity is due to the fact that it only exerts its maximal effect in a strongly acidic environment (pH < 3).

Pantoprazole remains mostly inactive at higher pH values. As pantoprazole action is distal to the receptor levels, it can inhibit gastric acid secretion irrespective of the nature of the stimulus (acetylcholine, histamine, gastrin).

Pharmacokinetics

Absorption: Pantoprazole is absorbed rapidly following administration of a 40 mg enteric coated tablet. Its oral bioavailability compared to the i.v. dosage form is 77% and does not change upon multiple dosing. Following an oral dose of 40 mg, C_{max} is approximately 2.5 $\mu\text{g/mL}$ with a t_{max} of 2 to 3 hours. The AUC is approximately 5 $\mu\text{g}\cdot\text{h/mL}$. There is no food effect on AUC (bioavailability) and C_{max} .

Distribution: Pantoprazole is 98% bound to serum proteins. Elimination half-life, clearance and volume of distribution are independent of the dose.

Metabolism: Pantoprazole is almost completely metabolized in the liver. Studies with pantoprazole in humans reveal no inhibition or activation of the cytochrome P450 (CYP 450) system of the liver.

Excretion: Renal elimination represents the major route of excretion (about 82%) for the metabolites of pantoprazole sodium, the remaining metabolites are excreted in feces. The main metabolite in both the serum and urine is desmethylpantoprazole as a sulphate conjugate. The half-life of the main metabolite (about 1.5 hours) is not much longer than that of pantoprazole (approximately 1 hour).

Pantoprazole shows linear pharmacokinetics, i.e., AUC and C_{max} increase in proportion with the dose within the dose-range of 10 to 80 mg after both i.v. and oral administration. Elimination half-life, clearance and volume of distribution are considered to be dose-independent. Following repeated i.v. or oral administration, the AUC of pantoprazole was similar to a single dose.

Special Populations and Conditions

Pediatrics:

The safety and effectiveness of pantoprazole in children have not yet been established.

Geriatrics:

An increase in AUC (35%) and C_{max} (22%) for pantoprazole occurs in elderly volunteers when compared to younger volunteers after 7 consecutive days oral dosing with pantoprazole 40 mg. After a single oral dose of pantoprazole 40 mg, an increase in AUC (43%) and C_{max} (26%) occurs in elderly volunteers when compared to younger volunteers. No dose adjustment is recommended based on age. The daily dose in elderly patients, as a rule, should not exceed the recommended dosage regimens.

Hepatic Insufficiency:

The half-life increased to between 7 and 9 h, the AUC increased by a factor of 5 to 7, and the

C_{max} increased by a factor of 1.5 in patients with liver cirrhosis compared with healthy subjects following administration of 40 mg pantoprazole. Similarly, following administration of a 20 mg dose, the AUC increased by a factor of 5.5 and the C_{max} increased by a factor of 1.3 in patients with severe liver cirrhosis compared with healthy subjects. Considering the linear pharmacokinetics of pantoprazole, there is an increase in AUC by a factor of 2.75 in patients with severe liver cirrhosis following administration of a 20 mg dose compared to healthy volunteers following administration of a 40 mg dose. Thus, the daily dose in patients with severe liver disease should, as a rule, not exceed 20 mg pantoprazole.

Renal Insufficiency:

In patients with severe renal impairment, pharmacokinetic parameters for pantoprazole were similar to those of healthy subjects. No dosage adjustment is necessary in patients with renal impairment or in patients undergoing hemodialysis, as the difference in AUCs between patients who are dialyzed and those who are not is 4%.

STORAGE AND STABILITY

Store at temperature (15°C to 30°C).

SPECIAL HANDLING INSTRUCTIONS

None.

DOSAGE FORMS, COMPOSITION AND PACKAGING

Dosage Form:

PANTOPRAZOLE 40 mg tablets are yellow, round, biconvex, enteric-coated tablets printed with “PA 784” in black on one side.

Composition:

Each tablet contains 40 mg (45.1 mg pantoprazole sodium sesquihydrate) as the active medicinal ingredient. Non-medicinal ingredients include: colloidal anhydrous silica, crospovidone, hydroxypropylmethyl-cellulose, magnesium stearate, mannitol, sodium lauryl sulphate, talc. The tablet coatings contain: glycerol monostearate, iron oxide yellow, lecithin (soya), methacrylic acid – ethyl acrylate copolymer, polysorbate 80, polyvinyl alcohol – partially hydrolysed, titanium dioxide, talc, triethyl citrate, quinoline yellow aluminum lake, xanthan gum.

Packaging:

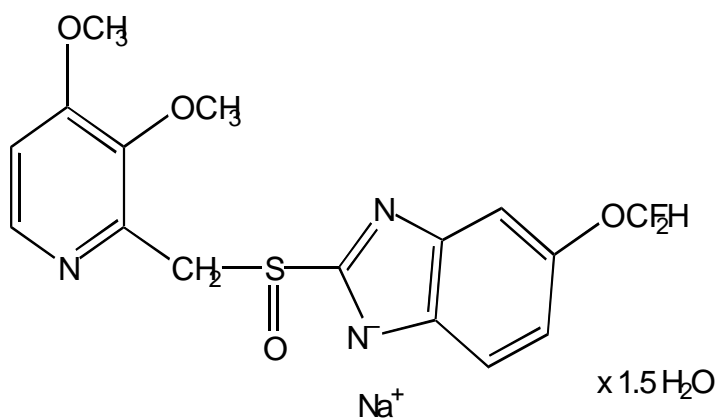
PANTOPRAZOLE tablets are available in bottles of 100 and 500 tablets, and unit dose blister packages of 30 and 100 tablets.

PART II: SCIENTIFIC INFORMATION

PHARMACEUTICAL INFORMATION

Drug Substance

- Common name: pantoprazole sodium
- Chemical name: 5-(difluoromethoxy)-2-[[[3,4-dimethoxy-2-pyridinyl] methyl]sulfinyl]-1*H*-benzimidazole sodium salt sesquihydrate
- Molecular formula: $C_{16}H_{14}F_2N_3NaO_4S \times 1.5 H_2O$
- Molecular mass: 432.4
- Structural formula:



Physicochemical properties:

Physical description: White to off-white crystalline powder

Solubilities in common solvents: Pantoprazole sodium is freely soluble in water, methanol and ethanol, and practically insoluble in diethyl ether and hexane.

pH: 10.5

pKa: pKa₁ = 3.92, pKa₂ = 8.19

CLINICAL TRIALS

BIOEQUIVALENCY STUDIES:

A blinded, single-dose, randomized, two-period, two-sequence, two-sequence, cross-over comparative bioavailability study of PANTOPRAZOLE enteric-coated tablets 40 mg and Pantoloc™ (Solvay) 40 mg enteric-coated tablets was conducted on healthy male and female volunteers under fasting and fed conditions. The results of the study demonstrate that the two formulations are bioequivalent. A summary of the bioavailability data obtained from 36 subjects in the fasting study and 55 subjects in the fed study is presented in the following tables.

Comparative Bioavailability Data for PANTOPRAZOLE 40 mg tablets vs. Pantoloc™ 40 mg tablets Under Fasting Conditions (Uncorrected for Potency)

Analyte: Pantoprazole (1 x 40 mg) From measured data				
Geometric Mean Arithmetic Mean (CV %)				

Parameter	Pantoprazole 40 mg Enteric- Coated Tablets	Pantoloc™ 40 mg Enteric- Coated Tablets [†]	% Ratio of Geometric Means	90% Confidence Interval
AUC _T (ng•h/mL)	5726.7 7315.6 (89)	6037.6 7939.6 (94)	94.85	88.64 – 101.49
AUC _I (ng•h/mL)	5831.6 7771.5 (104)	6146.4 8471.0 (110)	94.88	88.73 – 101.46
C _{MAX} (ng/mL)	3348.6 3636.4 (42)	3437.4 3733.3 (43)	97.42	88.62 – 107.09
T _{MAX} [‡] (h)	3.06 (33)	2.56 (35)		
T _½ [‡] (h)	1.58 (81)	1.63 (90)		

[†] Pantoloc™ (Solvay Pharma Inc., Canada / Altana Pharma AG, Germany) was purchased in Canada.
[‡] Expressed as the arithmetic mean (CV%) only.

Comparative Bioavailability Data for PANTOPRAZOLE 40 mg tablets vs. Pantoloc™ 40 mg tablets Under Fed Conditions (Uncorrected for Potency)

<p>Analyte: Pantoprazole (1 x 40 mg) From measured data</p> <p>Geometric Mean Arithmetic Mean (CV %)</p>
--

Parameter	Pantoprazole 40 mg Enteric- Coated Tablets	Pantoloc™ 40 mg Enteric- Coated Tablets†	% Ratio of Geometric Means#	90% Confidence Interval#
AUC _T (ng•h/mL)	4693.7 6110.7 (102)	4897.7 5999.7 (62)	95.83	83.74 - 109.67
AUC _I (ng•h/mL)	4770.5 6477.6 (127)	5274.2 6107.8 (61)	90.45	83.20 - 98.34
C _{MAX} (ng/mL)	2075.4 2361.4 (46)	2470.0 2777.6 (47)	84.03	74.04 - 95.36
T _{MAX} ‡ (h)	11.20 (56)	10.68 (69)		
T _½ ‡ (h)	1.73 (103)	1.25 (55)		

† Pantoloc™ (Solvay Pharma Inc., Canada / Altana Pharma AG, Germany) was purchased in Canada.

‡ Expressed as the arithmetic mean (CV%) only.

Calculated based on least-square mean estimates.

SAFETY AND EFFICACY STUDIES:

Symptomatic gastro-esophageal reflux disease

In a US placebo-controlled study involving 538 patients, a significantly greater proportion of patients taking pantoprazole 40 mg experienced complete relief of daytime and nighttime heartburn and the absence of regurgitation starting from the first day of treatment compared with placebo. Patients taking pantoprazole consumed significantly fewer antacid tablets per day than those taking placebo.

In a second US study involving 215 patients, a significantly greater proportion of the patients in the pantoprazole treatment groups experienced complete relief of nighttime heartburn and regurgitation starting on the first day and of daytime heartburn on the second day compared with those taking nizatidine 150 mg twice daily. Patients taking pantoprazole consumed significantly fewer antacid tablets per day than those taking nizatidine.

Prevention of relapse of reflux esophagitis

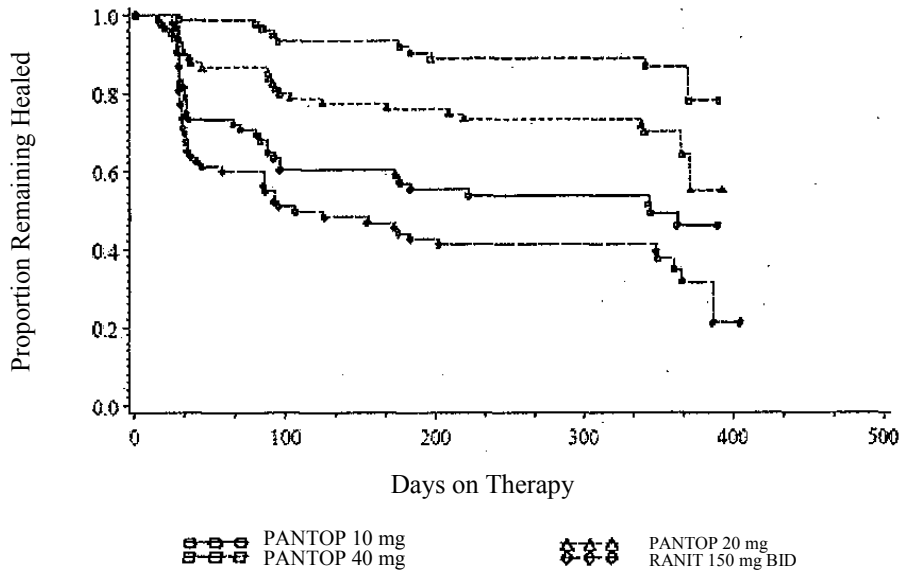
The long-term maintenance of healing of erosive esophagitis was assessed in two U.S. randomised, double-blind, parallel-group, active controlled studies. Eligible patients in both studies had a recent history of grade II or III (Hetzel-Dent) erosive esophagitis, and

endoscopically demonstrated healing. Both studies used as the primary endpoint endoscopically demonstrated recurrence (assessed at month 1, 3, 6 and 12) of erosive esophagitis ('relapse'). Gelusil antacid tablets were to be taken as needed for symptomatic relief after 5 or more minutes of retrosternal pain, acid regurgitation, or dysphagia, but not within 1 hour before or after taking study medication. *Ad hoc* endoscopies were performed when symptoms of GERD occurred for more than 3 consecutive days. As the primary analysis Kaplan Meier's method was performed, whereas the discrete analysis was secondary.

In the US studies, the results of Kaplan Meier's analyses showed that the cumulative proportion of relapse over time was dose-related for the pantoprazole treatment groups. The cumulative proportion of relapse at 12 months for patients treated with pantoprazole 20 mg and pantoprazole 40 mg exhibited a statistically significant difference in the pooled data (p-value=0.001) and in the data of one of the studies (3001A1-302-US: p-value=0.012, 3001A1-303-US: p-value=0.052) (p-values adjusted for pairwise comparison).

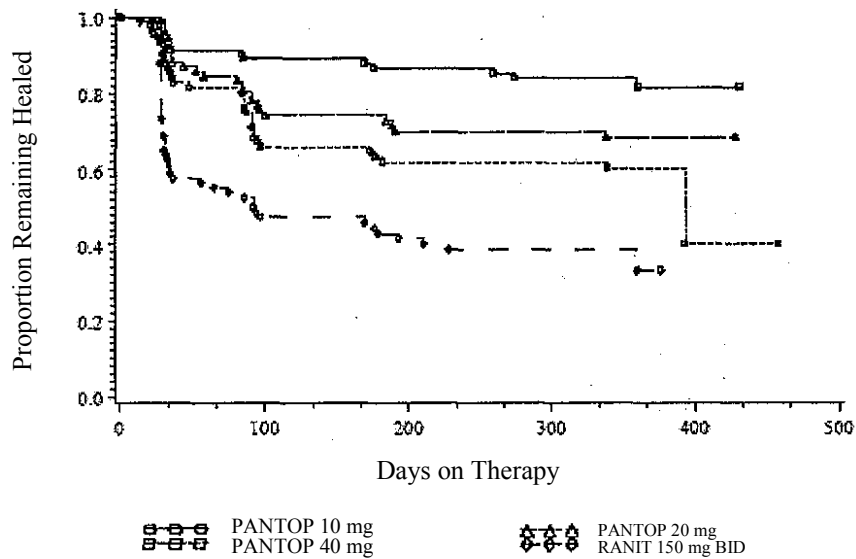
Kaplan-Meier plot; 3001A1-302-US

KAPLAN-MEIER ESTIMATES OF PROPORTION OF PATIENTS REMAINING HEALED IN THE ITT POPULATION RELAPSE DEFINITION



Kaplan-Meier plot; 3001A1-303-US

KAPLAN-MEIER ESTIMATES OF PROPORTION OF PATIENTS REMAINING HEALED IN THE ITT POPULATION RELAPSE DEFINITION



In the discrete analysis of the pooled results of the two U.S. studies, 40 mg was significantly (p-value = 0.004) more effective in the maintenance of the healed erosive esophagitis compared to 20 mg (see following table).

Long-term maintenance of healing of erosive esophagitis: Proportion of patients who relapse in individual studies and pooled studies at 12 months. U.S. Studies.

	Pantoprazole 20 mg n/N (%)	Pantoprazole 40 mg n/N (%)	Ranitidine 150 mg n/N (%)
Study 3001A1-302-US			
Month 1	11/86 (12.8)*	1/78 (1.3)*	32/84 (38.1)
Month 3	17/77 (22.1)*	5/76 (6.6)*	41/81 (50.6)
Month 6	21/77 (27.3)*	8/70 (11.4)*	47/77 (61.0)
Month 12	25/75 (33.3)*	10/64 (15.6)* ^a	52/76 (68.4)
Study 3001A1-303-US			
Month 1	11/87 (12.6)*	8/93 (8.6)*	37/92 (40.2)
Month 3	21/80 (26.3)*	10/88 (11.4)*	45/83 (54.2)
Month 6	24/75 (32.0)*	12/85 (14.1)*	51/79 (64.6)
Month 12	25/73 (34.2)*	15/78 (19.2)*	52/78 (66.7)
Pooled data			
Month 12	50/148 (33.8)*	25/142 (17.6) * ^a	104/154 (67.5)

- * Statistically significant between treatment and ranitidine at 0.05 level
- a Statistically significant between pantoprazole 40 mg and 20 mg with adjusted p-value (Holm procedure). Mean age 302-US 49.2 years, 303-US 48.95 years, 302-US: 28% female/72% male, 303-US: 38% female/62%male, 302-US: 3.9% black, 4.1% Hispanic, <1% Asian, 91% white, <1% other, 303-US: 6.4% black, 6.4% Hispanic, <1% Asian, 86% white, <1% other.

Additionally, long-term maintenance of healing of erosive esophagitis was assessed in two European, randomized, double-blind, parallel-group non-inferiority studies. Eligible patients in both studies had a recent history of grade II or III (Savary-Miller) erosive esophagitis, and endoscopically demonstrated healing. Both studies used as the primary endpoint endoscopically demonstrated recurrence of erosive esophagitis ('relapse'). Pantoprazole 40 mg is non-inferior to pantoprazole 20 mg which means patients who were treated with pantoprazole 40 mg showed no less reduction in the proportion of relapse at 12 months compared to pantoprazole 20 mg.

Long-term maintenance of healing of erosive esophagitis: Proportion of patients who relapse in individual studies and pooled studies at 12 months. European Studies.*

Study	Month	Relapse rates (%)		Difference Between Treatment and 95% CI (%)
		40 mg Pantoprazole	20 mg Pantoprazole	
FK3028	12	39/174 (22)	45/174 (26)	-3.5 (-12.4; 5.5)
FK3033	12	30/151 (20)	49/161 (30)	-10.6 (-20; -1)
Pooled	12	69/325 (21)	94/335 (28)	-6.8 (-13.4; -0.3)

Mean age FK3028 56 years, FK3033 50 years, FK3028 35% female/65% male, FK3033: 28% female/72% male.

DETAILED PHARMACOLOGY

ANIMAL PHARMACOLOGY

Pharmacodynamics:

In vivo, pantoprazole produced marked and long-lasting inhibition of basal and stimulated gastric acid secretion with median effective dose (ED₅₀) values ranging from 0.2 – 2.4 mg/kg in rats and dogs. In addition to the administration of single doses, pantoprazole has been tested upon repeated oral administration (e.g. during 24-h pH-metry in dogs performed under pentagastrin stimulation). While a dose of 1.2 mg/kg did not significantly elevate pH on Day 1, pH rose to values between 4 and 7 after a 5-day dosing regimen. This effect was no longer observed 18 hours after the last drug administration. In various gastric ulcer models in the rat, pantoprazole showed antiulcer activity.

In parallel to the profound inhibition of gastric acid secretion, pantoprazole induced a dose-dependent increase in serum gastrin levels up to values above 1000 pg/mL from a control level of about 100 pg/mL. As a consequence of persisting hypergastrinemia in rats after high/doses of pantoprazole, hyperplastic changes were observed in the fundic mucosa with an increased density of enterochromaffin-like (ECL) cells. These changes were reversible during drug-free recovery periods.

In a battery of standard high-dose pharmacology tests, no influence of pantoprazole was detected on the central and peripheral nervous system. In conscious dogs as well as anaesthetized cats receiving single i.v. doses up to 10 mg/kg pantoprazole, no consistent changes with respect to respiratory rate, ECG, EEG, blood pressure and heart rate were observed. Higher doses led to modest and transient reductions in blood pressure and variable changes in heart rate. No influence of pantoprazole was found on renal function and on autonomic functions, such as pancreatic and bile secretion, gastrointestinal motility and body temperature.

No consistent changes in the effects of ethanol, pentobarbitone, or hexobarbitone were induced by pantoprazole; only doses over 300 mg/kg prolonged the effects of diazepam.

Pharmacokinetics:

Absorption and Distribution

Pantoprazole is absorbed rapidly in both rat and dog. Peak plasma levels are attained within 15 to 20 minutes in the rat and after about 1 hour in the dog. Oral bioavailability is 33% in the rat and 49% in the dog. Following absorption, autoradiography and quantitative tissue distribution experiments have shown that pantoprazole is rapidly distributed to extravascular sites. Following administration of pantoprazole, distribution of radioactivity in the blood and most organs is found to be uniform initially. After 16 hours, radiolabelled pantoprazole is predominantly detected in the stomach wall. After 48 hours, all the administered radioactivity is found to have been excreted. Penetration of the blood-brain barrier by radiolabelled pantoprazole is very low. Protein binding in the rat and dog is 95% and 86%, respectively.

Metabolism and Excretion

Pantoprazole is extensively metabolized. Oxidations and reductions at different sites of the molecule, together with Phase II reactions (sulfation and glucuronidation) and combinations thereof result in the formation of various metabolites. In rats and dogs, 29-33% of a pantoprazole dose is excreted as urinary metabolites, and the remainder as biliary/fecal metabolites. Almost no parent compound can be found in the excreta.

Mammoglandular passage and transplacental transport has been investigated in the rat using radiolabelled pantoprazole. A maximum of 0.23% of the administered dose is excreted in the milk. Radioactivity penetrates the placenta with 0.1-0.2% of the dose/g fetal tissue on the first day after oral administration.

HUMAN PHARMACOLOGY

Pharmacodynamics:

Pantoprazole is a potent inhibitor of gastric acid secretion. This was demonstrated with pantoprazole by use of a gastric acid aspiration technique as well as by continuous intragastric pH monitoring. Using the aspiration technique it was also shown that pantoprazole caused a dose-dependent reduction of secreted gastric acid volume.

Table 1: Percent inhibition of pentagastrin-stimulated acid output (PSAO) in healthy volunteers following single oral doses of pantoprazole vs. placebo during 4 to 7 hours post dosing.

Dose	Mean % Inhibition of PSAO
6 mg	13%
10 mg	24%
20 mg	27%
40 mg	42%
60 mg	54%
80 mg	80%
100 mg	82%

With 40 mg administered orally, effective inhibition of gastric acid secretion was achieved. Pantoprazole 40 mg was significantly superior to standard H₂-blocker therapy (300 mg ranitidine at night) with regard to median 24-hour and daytime pH; however, not for nighttime measurements.

Table 2: Effects of one week oral treatment in healthy volunteers with placebo, pantoprazole 40 mg in the morning, and standard ranitidine therapy with 300 mg in the evening.

Time of Day	Median pH		
	Placebo	Pantoprazole 40 mg	Ranitidine 300 mg
08.00-08.00 (24h)	1.6	4.2*	2.7
08.00-22.00 (Day Time)	1.8	4.4*	2.0
22.00-08.00 (Night Time)	1.3	3.1	3.7

* p < 0.05 vs ranitidine

Increasing the once daily dose from 40 mg to 80 mg pantoprazole did not result in a significantly higher median 24-hour pH.

Table 3: Effect of oral pantoprazole in healthy volunteers on median 24-hour pH on Day 7 (40 vs 80 mg)

40 mg	80 mg	
3.8	3.85	n.s.

n.s. = not significant

Hence, once daily administration of 40 mg pantoprazole should be sufficient for the treatment of most patients with acid-related diseases.

Pharmacokinetics:

The absolute bioavailability of the pantoprazole tablet is 77%. Maximum serum concentrations of pantoprazole are reached within approximately 2.5 hours after oral intake. Following a dose of 40 mg, mean maximum serum concentrations of approximately 2 µg/mL and 3 µg/mL are reached after 2 to 3 hours. There is no food effect on AUC (bioavailability) and C_{max}. However, time to reach maximum serum concentrations is slightly increased when the drug is given together with a high caloric breakfast. Taking into account the long duration of action of pantoprazole, which by far exceeds the time period over which serum concentrations are measurable, this observed variation in t_{max} is considered to be of no clinical importance.

Pantoprazole is approximately 98% bound to serum protein.

Despite its relatively short elimination half-life of approximately 1 hour, the antisecretory effect increases during repeated once daily administration, demonstrating that the duration of action markedly exceeds the serum elimination half-life. This means that there is no direct correlation between the serum concentrations and the pharmacodynamic action.

Morning administration of pantoprazole was significantly superior to evening dosing with regard to 24 hour intragastric pH, hence morning dosing should be recommended for the treatment of patients. Since the intake of the drug before a breakfast did not influence C_{max} and AUC, which characterize rate and extent of absorption, no specific requirements for intake of pantoprazole in relation to breakfast are necessary.

Pantoprazole undergoes metabolic transformation in the liver. Approximately 82% of the oral dose is removed by renal excretion, and the remainder via feces. The main serum metabolites (M1-M3) are sulphate conjugates formed after demethylation at the pyridine moiety, the sulphoxide group being either retained (M2, main metabolite), or oxidized to a sulphone (M1), or reduced to a sulphide (M3). These metabolites also occur in the urine (main metabolite M2). Conjugates with glucuronic acid are also found in the urine.

TOXICOLOGY

ACUTE TOXICITY

In acute toxicity studies in mice the mean lethal dose (LD₅₀) values for pantoprazole were found to be around 390 mg/kg bodyweight for i.v. administration and around 700 mg/kg bodyweight for oral administration.

In the rat the corresponding values were around 250 mg/kg for i.v. administration and > 1000 mg/kg for oral administration.

Acute toxicity studies were conducted on B8810-044, the major degradation product of pantoprazole. The approximate LD₅₀ values for mice (119-167 mg/kg) and rats (73-82 mg/kg) were lower than those for pantoprazole itself, after intravenous injection, but the toxic symptoms were similar to those noted for the drug. A 4-week repeat dose study was also conducted using this degradation product using the intravenous route in rats. Rats received 5 and 25 mg of B8810-044/kg, while a comparison group received 25 mg/kg of pantoprazole. Muscle twitches were observed immediately after injection in rats receiving 25 mg/kg of the degradation product, but not in the pantoprazole-treated animals. Otherwise the compounds were comparable.

Table 4: Acute toxicity studies of Pantoprazole

SPECIES	SEX	ROUTE	ca. LD ₅₀ *
			(mg/kg)
Mouse	M	p.o	>1000
	F	p.o.	747
Mouse	M	i.v.	399
	F	i.v.	395
Rat	M	p.o.	1343
	F	p.o.	1037
Rat	M	i.v.	330
	F	i.v.	343
Dog	M/F	p.o.	300-1000**
	M/F	i.v.	150-300

* Doses refer to the sodium salt administered in solution

** sodium salt as dry powder in gelatine capsules

The symptoms seen after lethal oral or i.v. doses were similar in rats and mice: the animals displayed ataxia, reduced activity, hypothermia and prostration. Surviving animals recovered uneventfully. Salivation, tremor, lethargy, prostration and coma were seen in dogs at lethal oral doses, with death occurring on the following day. Ataxia, tremor and a prone position were noted at sublethal oral and i.v. doses, but the survivors recovered quickly and appeared fully normal after the 2-week observation period.

CHRONIC TOXICITY

Daily oral doses of pantoprazole in 1- and 6-month SD rat repeated-dose studies were 1, 5, 20, and 500 mg/kg and 0.8, 4, 16 and 320 mg/kg, respectively, doses for a 1 month rat i.v. study were 1, 5, and 30 mg/kg.

A 12-month toxicity study in SD rats was conducted using daily oral doses of 5, 50, and 300 mg/kg. Daily oral doses in 1- and 6 month (beagle) dog studies were 7.5, 15, 30, and 100 mg/kg and 5, 15, 30, and 60 mg/kg respectively. In a 12-month oral study in dogs, 2.5, 15, and 60 mg/kg were administered daily.

Hypergastrinemia was dose-related and was observed at all doses investigated in the studies mentioned above, but was reversible upon cessation of treatment. Drug-related effects on the stomach included increased stomach weights and morphologic changes of the mucosa. In the 6-month rat study, increased stomach weight and some cellular changes were detected at all doses. In the 1-month rat study, gastric changes were detected at 5 mg/kg but not at 1 mg/kg. In dogs, increased stomach weight was observed at all doses studied. There were no gastric cellular changes detected at oral doses of 7.5 or 5 mg/kg in the 1- and 6-month dog studies, respectively. In both species, most gastric effects were reversible after a 4- or 8-week recovery period. Hypergastrinemia and gastric changes were considered to be the consequence of the pharmacological action of the compound, namely prolonged and profound inhibition of acid secretion.

Increased liver weight in the rat experiments was considered to be a consequence of the induction of hepatic drug metabolizing systems and was found to be associated with centrilobular hepatocellular hypertrophy at 320 mg/kg in the 6-month study and at 50 and 300 mg/kg after 12 months of treatment. Increased liver weights were also detected at a dose of 16 mg/kg in male rats in the 6-month study and at 500 mg/kg, but not 20 mg/kg, in the 1-month study. Increased liver weight was noted in male dogs of all dose groups in the 1-month study, though only at 100 mg/kg in females on the same study. Both males and females had increased liver weights after 6 months administration of 30 or 60 mg/kg, but not of 15 mg/kg. In the 12-month study, liver weights were increased only in the female dogs dosed with 60 mg/kg. There were no hepatic lesions that correlated with increased liver weight in the dog studies. In dogs, the increase in liver weight was attributed to an activation of hepatic drug metabolizing systems as mentioned for rats.

Thyroid activation in animal experiments is due to the rapid metabolism of thyroid hormones

in the liver and has been described in a similar form for other drugs. Thyroid weights were increased in both sexes at 500 mg/kg in the 1-month rat study and at 320 mg/kg in the rat 6-month study. Thyroid follicular cell hypertrophy was noted in females at these doses, in rats treated with 50 and 300 mg/kg in the 12 month study and also in a few females at 16 mg/kg in the 6 month study. There were no thyroid effects in rats at or below an oral dose of 5 mg/kg even after 1 year. In the dog, no effects were seen on the thyroid after 4 weeks. Only slight, but not dose-dependent, increases in thyroid weights were seen after 6 months, but no changes were observed histologically. In the 12 month study, the relative thyroid weights in the 60 mg/kg group were only slightly higher than those of the control dogs, and changes were detected histologically in only a few animals under 15 and 60 mg/kg. In both species, changes were reversible.

Increased serum cholesterol values were noted in all groups in the 6- and 12 month dog studies and in all groups in the 12 month rat study. The increases were slight and were reversible after cessation of treatment.

In dog studies, oral doses of pantoprazole of 15 mg/kg or above caused a transient pulmonary edema in a proportion of naive dogs during the first week of drug administration. Pulmonary edema caused death in a few dogs after repeated oral doses of 15 mg/kg or above. There is strong evidence that the pulmonary toxicity is due to a thiol metabolite which does not occur in man. No evidence of pulmonary edema was detected in dogs at an oral dose of 7.5 mg/kg nor at 60 mg/kg when administered daily for 6 or 12 months after a 1 week dose escalation phase.

CARCINOGENICITY

Three carcinogenicity studies had been conducted with pantoprazole:

- A 24 month oral study was conducted at doses of 0.5, 5, 50 and 200 mg/kg/day in SD rat.
- A 24 month oral study was conducted at doses of 5, 15 and 50 mg/kg/day in Fischer-344 rat.
- A 24 month oral study was conducted at doses of 5, 25 and 150 mg/kg/day in B6C3F1 mouse.

Pantoprazole, dissolved in distilled water, was administered once a day by oral gavage to groups of 50 male and 50 female B6C3F1 mice at doses of 5, 25 or 150 mg/kg. An identical control group was dosed with distilled water (pH 10), while a second identical control group received no treatment at all. In the first rat study, pantoprazole was administered once a day by oral gavage to groups of 70 male and 70 female SD rats at doses of 0.5, 5, 50, and 200 mg/kg. A control group of 70 males and 70 females received the vehicle. In the second rat study, pantoprazole was administered once a day by oral gavage to groups of 50 male and 50 female Fischer-344 rats at doses of 5, 15, and 50 mg/kg. A control group of 50 males and 50 females received the vehicle, while another group remained untreated.

In the first 2 year carcinogenicity study in rats, which corresponds to a lifetime treatment for rats, neuroendocrine neoplasms were found in the stomach at doses of 50 mg/kg/day and above in

males and at 0.5 mg/kg/day and above in females. Tumor formation occurred late in the life of the animals (only after 17 months treatment), whereas no tumors were found in rats treated with an even higher dose for 1 year. The mechanism leading to the formation of gastric carcinoids by substituted benzimidazoles has been carefully investigated, and it is considered to be due to high levels of serum gastrin observed in the rat during chronic treatment. In the second rat carcinogenicity study, neuroendocrine cell tumors in the stomach were found in all treated female groups and in the male 15 and 50 mg/kg groups. No metastases from any gastric neuroendocrine cell tumours were detected.

ECL-cell neoplasms were not observed in either the carcinogenicity study in the mouse (24 months) or in the chronic studies in the dog. In clinical studies, where pantoprazole was administered at doses up to 80 mg, ECL-cell density remained almost unchanged.

Microscopy of the rat (first carcinogenicity study) and mouse tissues gave evidence for an increase in liver tumors. In the rat experiment, the incidence of benign liver tumors in the 50 and 200 mg/kg groups and the incidence of hepatocellular carcinoma was increased in the males and females of the 200 mg/kg group. There was a slightly higher incidence of hepatocellular adenomas and carcinomas in the female mice of the 150 mg/kg group than in either of the 2 control groups. Other changes in the liver morphology were present as well. Centrilobular hepatocellular hypertrophy increased in incidence and severity with increasing dose, and hepatocellular necrosis was increased in the highest dose in the rat studies and in the mouse study. Hepatocellular tumors are common in mice, and the incidence found for the female 150 mg/kg group was within historical control ranges for this strain. The liver tumor incidences in rats treated with 50 mg/kg and in the male rats treated with 200 mg/kg were also within historical control incidences for the rat. These tumors occurred late in the life of the animals and were primarily benign. The nongenotoxic mechanism of rodent liver tumor formation after prolonged treatment with pantoprazole is associated with enzyme induction leading to hepatomegaly and centrilobular hypertrophy and is characterized by tumor induction in low incidences at high doses only. As pantoprazole acts in a similar fashion to phenobarbital, causing reversible centrilobular hepatocellular hypertrophy and enzyme induction in short-term studies, it is probable that the mechanism of action for induction of the liver tumors seen in long-term rodent studies is also the same. Hepatocellular tumors at high doses in rodents are not indicative of human carcinogenic risk.

A slight increase in neoplastic changes of the thyroid was observed in rats receiving pantoprazole at 200 mg/kg/day. The incidences of these tumors were within the historical control ranges for this rat strain. No thyroid neoplasms were observed in the 12-month study. The no-effect dose for both male and female rats is 50 mg/kg, which is 100 times the most commonly used human dose (i.e. 40 mg dose). The effect of pantoprazole on the thyroid is secondary to the effects on liver enzyme induction, which lead to enhanced metabolism of thyroid hormones in the liver. As a consequence, increased TSH is produced, which has a trophic effect on the thyroid gland. Clinical studies have demonstrated that neither liver enzyme induction nor changes in thyroid hormonal parameters occur in man after therapeutic doses of pantoprazole.

Tumors induced in rats and mice by pantoprazole were the result of nongenotoxic mechanisms

which are not relevant to humans. Tumors were induced in rodents at dosages that provide higher exposure than with human therapeutic use. Based on kinetic data, the exposure to pantoprazole in rats receiving 200 mg/kg was 22.5 times higher than that found in humans receiving 40 mg oral doses. In mice receiving 150 mg/kg, exposure to pantoprazole was 2.5 times higher than that in humans.

MUTAGENICITY

Pantoprazole was studied in several mutagenicity studies: Pantoprazole was found negative in the Ames test, an *in vivo* chromosome aberration assay in rat bone marrow, a mouse lymphoma test, two gene mutation tests in Chinese hamster ovary cell *in vitro*, and two micronucleus test in mice *in vivo*. Pantoprazole was found positive in three of four chromosome aberration assays in human lymphocytes *in vitro*. The *in vitro* tests were conducted both in the presence and absence of metabolic activation. The potential of pantoprazole to induce DNA repair synthesis was tested negative in an *in vitro* assay using rat hepatocytes. In addition, a rat liver DNA covalent binding assay showed no biologically relevant binding of pantoprazole to DNA.

In addition, two *in vitro* cell transformation assays using different cell types were performed to aid in the interpretation of the rodent carcinogenicity studies; in neither test did pantoprazole enhance the morphologic transformation of the cell types used.

A bacterial mutation assay conducted with the degradation product B8810-044, gave no indication of a mutagenic potential.

REPRODUCTION AND TERATOLOGY

Pantoprazole was not teratogenic to rats or rabbits at doses up to 450 and 40 mg/kg/day (gavage) 20 and 15 mg/kg/day (i.v. injection), respectively.

Treatment of male rats with pantoprazole up to 500 mg/kg p.o. for 127 days did not affect fertility. Treatment of pregnant rats induced dose-dependent fetotoxic effects: increased pre- and postnatal deaths (450 mg/kg/day), reduced fetal weight and delayed skeletal ossification (150 mg/kg/day), and reduced pup weight (15 mg/kg/day). These results may be explained by maternal toxicity of pantoprazole at high dose and/or placental transfer of pantoprazole.

Penetration of the placenta was investigated in the rat and was found to increase with advanced gestation. As a result, concentration of pantoprazole in the fetus is increased shortly before birth regardless of the route of administration.

In humans, there are no adequate or well-controlled studies with the use of pantoprazole during pregnancy.

REFERENCES

1. Escourrou J, Deprez P, Saggiaro A, et al. *Maintenance therapy with pantoprazole 20 mg prevents relapse of reflux esophagitis*. *Aliment Pharmacol Ther* 1999 Nov; 13 (11): 1481-91.
2. Gugler R., Hartmann M., Rudi J., Brod I., Huber R., Steinijans V.W., Bliesath H., Wurst W., Klotz U.; *Lack of pharmacokinetic interaction of pantoprazole with diazepam in man*, *Br J Pharmacol* 1996;42(2):249-252.
3. Hanauer G., Graf U., Meissner T.; *In vivo cytochrome P-450 interactions of the newly developed H⁺, K⁺-ATPase inhibitor Pantoprazole (BY1023/SK&F96022) compared to other antiulcer drugs*; *Meth Find Exp Clin Pharmacol* 1991;13(1):63-67.
4. Hannan A., Weil, J., Broom C., Walt RP.; *Effects of oral Pantoprazole on 24 hour intragastric acidity and plasma gastrin profiles*; *Aliment Pharmacol Ther* 1992; 6:373-380.
5. Hartmann M., Theiß U., Bliesath H., Kuhn I., Lühmann R., Huber R., Wurst W., Postius S., Lücker P.; *24 h intragastric pH following oral intake of Pantoprazole and omeprazole*; *Hellenic J. Gastroenterol* 1992;5(suppl.):112(A No. 451).
6. Huber R, Hartmann M, Bliesath H, Lühmann R., Steinijans VW, Zech K. *Pharmacokinetic of pantoprazole in man*; *Internal J Clin Pharmacol Therap* 1996;34:185-194.
7. Judmaier G., Koelz H.R., Pantoprazole-duodenal ulcer-study group; *Comparison of pantoprazole and ranitidine in the treatment of acute duodenal ulcer*; *Aliment Pharmacol Ther* 1994;8:81-86.
8. Kliem V., Bahlmann J., Hartmann M., Huber R., Lühmann R., Wurst W. *Pharmacokinetics of pantoprazole with end-stage renal failure*. *Nephrol Dial Transplant* 1998;13:1189-1193.
9. Kohl B. et al.; *(H⁺,K⁺)-ATPase inhibiting-2-[(2-pyridylmethyl)suftinyl] benzimidazoles. A novel series of dimethoxypyridyl-substituted inhibitors with enhanced selectivity. The selection of Pantoprazole as a clinical candidate*; *J Medicinal Chem* 1992;35:1049-1057.
10. Kovacs TOG, DeVault K., Metz D., et. al. *Pantoprazole prevents relapse of healed erosive esophagitis more effectively than ranitidine in gastroesophageal reflux disease patients*. *Am J Gastroenterol* 1999; 94 (9):2590 (A No. 53).
11. Mossner J., Holscher A.H., Herz R., Schneider A.; *A double-blind study of pantoprazole and omeprazole in the treatment of reflux oesophagitis: a multicentre trial*; *Aliment Pharmacol Ther* 1995;9:321-326.
12. Müller P., Simon B., Khalil H., Lühmann R., Leucht U., Schneider A.; *Dose-range finding study with the proton pump inhibitor Pantoprazole in acute duodenal ulcer patients*; *Z Gastroenterol* 1992;30:771-775.

13. Plein K, Hotz J, Wurzer H, et al. *Pantoprazole 20 mg is an effective maintenance therapy for patients with gastro-oesophageal reflux disease.* Eur J Gastroenterol Hepatol 2000 Apr; 12(4):425-32.
14. Pue M.A., Laroche J., Meineke I., de Mey C.; *Pharmacokinetics of Pantoprazole following single intravenous and oral administration to healthy male subjects;* Eur J Clin Pharmacol 1993;44:575-578.
15. Report 305E/92; *Pantoprazole and B8401-026. Effects on selected hepatic drug-metabolizing enzyme activities following oral administration to female rats for 4 weeks;* Data on file, ALTANA Pharma AG.
16. Schulz H.-U., Hartmann M., Steinijs, V.W., Huber R., Luhrmann B., Bliesath H., Wurst W.; *Lack of influence of Pantoprazole on the disposition kinetics of theophylline in man;* Int J Clin Pharmacol Ther 1991;29(9):369-375.
17. Simon B., Müller P., Bliesath H., Lühmann R., Hartmann M., Huber R., Wurst W.; *Single intravenous administration of the H⁺,K⁺-ATPase inhibitor BY1023/SK&F96022-inhibition of pentagastrin-stimulated gastric acid secretion and pharmacokinetics in man;* Aliment Pharmacol Therap 1990a;4:239-245.
18. Simon B., Müller P., Hartmann M., Bliesath H., Lühmann R., Huber R., Bohnenkamp W., Wurst W.; *Pentagastrin-stimulated gastric acid secretion and pharmacokinetics following single and repeated intravenous administration of the gastric H⁺,K⁺-ATPase inhibitor Pantoprazole (BY1023/SK&F96022) in healthy volunteers;* Z Gastroenterol 1990;28:443-447.
19. Simon B., Müller P., Marinis E., Lühmann R., Huber R., Hartmann M., Wurst W.; *Effect of repeated oral administration of BY1023/SK&F96022 – a new substituted benzimidazole derivative – on pentagastrin-stimulated gastric acid secretion and pharmacokinetics in man;* Aliment Pharmacol Therap 1990c;4:373-379.
20. Steinijs VW, Huber R, Hartmann M, Zech K, Bliesath H, Wurst W, Radtke HW. *Lack of pantoprazole drug interactions in man: an updated review;* Internal J Clin Pharmacol Therap 1996;34:S31-S50.
21. Product Monograph for Pantoloc™ (pantoprazole sodium enteric coated tablets). NYCOMED Canada Inc., Oakville, ON. (Control No. 119851, Date of Revision: June 13, 2008).

PART III: CONSUMER INFORMATION

Pr **PANTOPRAZOLE**
pantoprazole sodium

This leaflet is part III of a three-part "Product Monograph" published when PANTOPRAZOLE was approved for sale in Canada and is designed specifically for Consumers. This leaflet is a summary and will not tell you everything about PANTOPRAZOLE. Contact your doctor or pharmacist if you have any questions about the drug.

ABOUT THIS MEDICATION

What the medication is used for:

PANTOPRAZOLE is used to treat acid-related stomach problems such as stomach ulcers (also known as gastric ulcers), duodenal ulcers, reflux esophagitis (a severe form of heartburn), symptoms of gastro-esophageal reflux disease (heartburn and acid regurgitation).

What it does:

PANTOPRAZOLE works by reducing the amount of acid made in your stomach.

When it should not be used:

You should not take PANTOPRAZOLE if you think you might be allergic to any of the ingredients (see "What the non-medicinal ingredients are"). You should not use PANTOPRAZOLE at the same time as atazanavir sulphate (Reyataz).

What the medicinal ingredient is:

pantoprazole sodium

What the important non-medicinal ingredients are:

Colloidal anhydrous silica, crospovidone, hydroxypropylmethylcellulose, magnesium stearate, mannitol, sodium lauryl sulphate, talc. The tablet coatings contain: glycerol monostearate, iron oxide yellow, lecithin (soya), methacrylic acid – ethyl acrylate copolymer, polysorbate 80, polyvinyl alcohol – partially hydrolysed, titanium dioxide, talc, triethyl citrate, quinoline yellow aluminum lake, xanthan gum

What dosage forms it comes in:

PANTOPRAZOLE are available as 40 mg enteric-coated tablets.

WARNINGS AND PRECAUTIONS

BEFORE you use PANTOPRAZOLE talk to your doctor or pharmacist:

- about all health problems you have now or have had in the past, including liver problems;
- about all other medicines you take, including ones you can get without a prescription;
- if you are allergic to pantoprazole or to the "non-

medicinal" ingredients which are present in PANTOPRAZOLE;

- if you are pregnant, plan to become pregnant or are breastfeeding. In one study, a single case of pantoprazole excretion in human breastmilk was detected. The clinical relevance of this finding is not known. Discuss this with your doctor.
- if you suffer unexplained weight loss, recurrent vomiting or vomiting blood, dark stools, fatigue (anemia) or difficulty in swallowing.

INTERACTIONS WITH THIS MEDICATION

Talk to your doctor or pharmacist if you are taking warfarin. Warfarin may interact with PANTOPRAZOLE.

PANTOPRAZOLE may interact with atazanavir sulphate (Reyataz).

PROPER USE OF THIS MEDICATION

Usual adult dose:

Your doctor will have explained why you need to be treated with PANTOPRAZOLE and will have told you what dose to take. Follow your doctor's directions carefully as they may be different from the information provided in this leaflet.

PANTOPRAZOLE should be taken in the morning, with or without food. Swallow the tablet(s) whole, with water. Do not crush or chew the tablet(s).

Overdose:

If you or someone you know takes a lot more than the recommended dose (an overdose) you should contact a doctor or pharmacist immediately. In the event of overdosage, contact your doctor, hospital emergency department or regional Poison Control Centre.

Missed Dose:

If you forget to take one dose of PANTOPRAZOLE, take a tablet as soon as you remember, unless it is almost time for your next dose. If it is, do not take the missed tablet at all. Never double-up on a dose to make up for the one you have missed, just go back to your regular schedule.

SIDE EFFECTS AND WHAT TO DO ABOUT THEM

Like any medication, PANTOPRAZOLE may cause side effects in some people. When side effects have been reported, they have been generally mild and did not last a long time. Headache, diarrhea and nausea are the most common side effects; less often rash, itchiness and dizziness can occur. If any of these become troublesome, consult your doctor. If you experience any unusual or unexpected symptoms while using PANTOPRAZOLE, consult your doctor.

SERIOUS SIDE EFFECTS, HOW OFTEN THEY HAPPEN AND WHAT TO DO ABOUT THEM				
Symptom / effect		Talk with your doctor or pharmacist		Stop taking drug and call your doctor or pharmacist
		Only if severe	In all cases	
Uncommon	Disturbances in vision*			✓
Very Rare	Liver damage (symptoms include yellowing of the skin and eyes)			✓
Isolated Cases	Severe skin reactions such as, Stevens-Johnson-Syndrome, Erythema multiforme, Exfoliative dermatitis, Toxic epidermal necrolysis, Photosensitivity			✓
Isolated Cases	Muscle wasting			✓

* Most cases reported are not serious.

This is not a complete list of side effects. For any unexpected effects while taking PANTOPRAZOLE, contact your doctor or pharmacist.

HOW TO STORE IT

Keep your tablets at room temperature (15°C to 30°C) and in a safe place, where children cannot reach them.

REPORTING SUSPECTED SIDE EFFECTS

You can report any suspected adverse reactions associated with the use of health products to the Canada Vigilance Program by one of the following 3 ways:

- Report online at www.healthcanada.gc.ca/medeffect
- Call toll-free at 1-866-234-2345
- Complete a Canada Vigilance Reporting Form and:
 - Fax toll-free to 1-866-678-6789, or
 - Mail to: Canada Vigilance Program
Health Canada
Postal Locator 0701C
Ottawa, ON K1A 0K9

Postage paid labels, Canada Vigilance Reporting Form and the adverse reaction reporting guidelines are available on the MedEffect™ Canada Web site at www.healthcanada.gc.ca/medeffect.

NOTE: Should you require information related to the management of side effects, contact your health professional. The Canada Vigilance Program does not provide medical advice.

MORE INFORMATION

This document plus the full product monograph, prepared for health professionals can be found by contacting the sponsor, Cobalt Pharmaceuticals Inc. at: 1-866-254-6111

This leaflet was prepared by Cobalt Pharmaceuticals Inc.

Last revised: February 4, 2010