

**PRODUCT MONOGRAPH**

**<sup>Pr</sup>NU-PRAVASTATIN**

**Pravastatin Sodium**

**10, 20 and 40 mg Tablets**

**Lipid Metabolism Regulator**

**Nu-Pharm Inc.**  
**1165 Creditstone Road, Unit 2**  
**Vaughan, ON**  
**L4K 4N7**  
***Control # 144758***

**DATE OF REVISION:**  
**March 3, 2011**

**Table of Contents**

**PART I: HEALTH PROFESSIONAL INFORMATION..... 3**

SUMMARY PRODUCT INFORMATION ..... 3

INDICATIONS AND CLINICAL USE ..... 3

CONTRAINDICATIONS ..... 5

WARNINGS AND PRECAUTIONS ..... 5

ADVERSE REACTIONS ..... 10

DRUG INTERACTIONS ..... 15

DOSAGE AND ADMINISTRATION ..... 17

OVERDOSAGE ..... 18

ACTION AND CLINICAL PHARMACOLOGY ..... 19

STORAGE AND STABILITY ..... 21

DOSAGE FORMS, COMPOSITION AND PACKAGING ..... 21

**PART II: SCIENTIFIC INFORMATION ..... 22**

PHARMACEUTICAL INFORMATION ..... 22

CLINICAL TRIALS ..... 23

DETAILED PHARMACOLOGY ..... 29

TOXICOLOGY ..... 31

REFERENCES ..... 36

**PART III: CONSUMER INFORMATION..... 40**

<sup>Pr</sup>NU-PRAVASTATIN  
Pravastatin Sodium

**PART I: HEALTH PROFESSIONAL INFORMATION**

**SUMMARY PRODUCT INFORMATION**

<b>Route of Administration</b>	<b>Dosage Form / Strength</b>	<b>Clinically Relevant Nonmedicinal Ingredients</b>
Oral	Tablet 10, 20 and 40 mg	Lactose

**INDICATIONS AND CLINICAL USE**

Therapy with lipid-altering agents should be considered a component of multiple risk factor intervention in those individuals at increased risk for atherosclerotic vascular disease due to dyslipidemia. NU-PRAVASTATIN (pravastatin sodium) should be used in addition to a diet restricted in saturated fat and cholesterol when the response to diet and other non-pharmacological measures alone has been inadequate.

**Hypercholesterolemia**

NU-PRAVASTATIN is indicated as an adjunct to diet (at least an equivalent of the Adult Treatment Panel III [ATP III TLC diet]) for the reduction of elevated Total and Low Density Lipoprotein Cholesterol (LDL-C) levels in patients with primary hypercholesterolemia (Types IIa and IIb), when the response to diet and other non-pharmacologic measures alone has been inadequate.

Prior to initiating therapy with NU-PRAVASTATIN, secondary causes for hypercholesterolemia, such as obesity, poorly controlled diabetes mellitus, hypothyroidism, nephrotic syndrome, dysproteinemias, obstructive liver disease, other drug therapy or alcoholism, should be excluded and it should be determined that patients for whom treatment with NU-PRAVASTATIN is being considered have an elevated LDL-C level as the cause for an elevated total serum cholesterol. A lipid profile should be performed to measure Total Cholesterol, High Density Lipoprotein Cholesterol (HDL-C) and Triglycerides (TG).

For patients with total triglycerides less than 4.52 mmol/L (400 mg/dL), LDL-C can be estimated using the following equation:

$$\text{LDL-C (mmol/L)} = \text{Total Cholesterol} - [(0.37 \times \text{triglycerides}) + \text{HDL-C}]$$

$$\text{LDL-C (mg/dL)} = \text{Total Cholesterol} - [(0.16 \times \text{triglycerides}) + \text{HDL-C}]$$

When total triglyceride levels exceed 4.52 mmol/L (400 mg/dL), this equation is less accurate and LDL-C concentrations should be determined by ultracentrifugation.

As with other lipid-lowering therapy, NU-PRAVASTATIN is not indicated when hypercholesterolemia is due to hyperalphalipoproteinemia (elevated HDL-C). The efficacy of pravastatin has not been evaluated in conditions where the major abnormality is elevation of chylomicrons, VLDL or LDL (i.e. hyperlipoproteinemia or dyslipoproteinemia types I, III, IV or V).

### **Primary Prevention of Coronary Events**

In hypercholesterolemic patients without clinically evident coronary heart disease, NU-PRAVASTATIN is indicated to:

- Reduce the risk of myocardial infarction;
- Reduce the risk for undergoing myocardial revascularization procedures;
- Reduce the risk of total mortality by reducing cardiovascular deaths.

### **Secondary Prevention of Cardiovascular Events**

In patients with total cholesterol in the normal to moderately elevated range who have clinically evident coronary heart disease, NU-PRAVASTATIN is indicated to:

- Reduce the risk of total mortality
- Reduce the risk of death due to coronary heart disease
- Reduce the risk of myocardial infarction
- Reduce the risk of undergoing myocardial revascularization procedures
- Reduce the risk of stroke and transient ischemic attack (TIA)
- Reduce total hospitalization

Pravastatin was also found to reduce the rate of progression of atherosclerosis in patients with coronary heart disease as part of a treatment strategy to lower Total and LDL-cholesterol to target levels. In two trials including this type of patient<sup>1</sup> (i.e. in a secondary prevention intervention), pravastatin monotherapy was shown to reduce the rate of progression of atherosclerosis as evaluated by quantitative angiography and B-mode ultrasound. This effect may be associated with an improvement in the coronary endpoints (fatal or nonfatal myocardial infarction). In these trials, however, no effect was observed in all cause mortality (see CLINICAL TRIALS, Atherosclerotic Disease Progression).

### **Pediatric Use (<16 years of age)**

There is no experience to date with the use of pravastatin in such patients. Treatment in these patients is not recommended at this time.

---

<sup>1</sup>: Pravastatin Limitation of Atherosclerosis in the Coronary/Carotid Arteries (PLAC I and II)

### **Elderly ( $\geq$ 65 years of age)**

Pharmacokinetic evaluation of pravastatin in patients over the age of 65 years indicates an increased AUC. As a precautionary measure, the lowest dose should be administered initially (see REFERENCES).

### **CONTRAINDICATIONS**

Patients who are hypersensitive to this drug or any ingredient in the formulation.

Active liver disease or unexplained persistent elevations in liver function tests (see WARNINGS AND PRECAUTIONS).

### **In Pregnant and Nursing Women**

Cholesterol and other products of cholesterol biosynthesis are essential components for fetal development (including synthesis of steroids and cell membranes). Since HMG-CoA reductase inhibitors such as pravastatin sodium decrease cholesterol synthesis and possibly the synthesis of other biologically active substances derived from cholesterol, they may cause fetal harm when administered to pregnant women. NU-PRAVASTATIN should be administered to women of childbearing age only when such patients are highly unlikely to conceive and have been informed of the possible harm. If the patient becomes pregnant while taking NU-PRAVASTATIN, the drug should be discontinued immediately and the patient apprised of the potential harm to the fetus. Atherosclerosis being a chronic process and discontinuation of lipid metabolism regulating drugs during pregnancy should have little impact on the outcome of long-term therapy of primary hypercholesterolemia. (see WARNINGS AND PRECAUTIONS – Use in Pregnancy, Use in Nursing Mothers).

### **WARNINGS AND PRECAUTIONS**

#### **Muscle Effects**

Elevations of creatinine phosphokinase levels (CPK [MM fraction]), have been reported with the use of HMG-CoA reductase inhibitors, including pravastatin.

Effects on skeletal muscle such as myalgia, myopathy and, rarely, rhabdomyolysis have been reported in patients treated with pravastatin.

Muscle weakness and rhabdomyolysis have been reported in patients receiving other HMG-CoA reductase inhibitors concomitantly with itraconazole and cyclosporine.

The benefits and risks of using HMG-CoA Reductase Inhibitors concomitantly with immunosuppressive drugs, fibrates, erythromycin, systemic azole derivative antifungal agents or lipid-lowering doses of niacin should be carefully considered.

Rare cases of rhabdomyolysis with acute renal failure secondary to myoglobinuria have been reported with pravastatin and with other HMG-CoA reductase inhibitors.

Myopathy defined as muscle pain or muscle weakness in conjunction with increases in creatine phosphokinase (CK) values greater than 10 times the upper limit of normal, should be considered in any patient with diffuse myalgias, muscle tenderness or weakness, and/or marked elevation of CK. Patients should be advised to report promptly any unexplained muscle pain, tenderness or weakness, particularly if associated with malaise or fever. Patients who develop any signs or symptoms suggestive of myopathy should have their CK levels measured. Pravastatin therapy should be discontinued if markedly elevated CK levels are measured or myopathy is diagnosed or suspected.

As with other statins, the risk of myopathy including rhabdomyolysis may be substantially increased by concomitant immunosuppressive therapy including cyclosporine, and by concomitant therapy with gemfibrozil, erythromycin or niacin (see WARNINGS AND PRECAUTIONS).

Myopathy has not been observed in clinical trials involving small numbers of patients who were treated with pravastatin together with immunosuppressants, fibric acid derivatives or niacin (see CLINICAL TRIALS).

The use of fibrates alone is occasionally associated with myopathy. In a limited size clinical trial of combined therapy with pravastatin (40 mg/day) and gemfibrozil (1200 mg/day), myopathy was not reported, although a trend towards CK elevations and musculoskeletal symptoms was seen. The combined use of pravastatin and fibrates should generally be avoided.

No information is available on the combined therapy of pravastatin with erythromycin.

Pre-disposing Factors for Myopathy/Rhabdomyolysis: Pravastatin, as with other HMG-CoA reductase inhibitors, should be prescribed with caution in patients with pre-disposing factors for myopathy/rhabdomyolysis. Such factors include:

- Personal or family history of hereditary muscular disorders
- Previous history of muscle toxicity with another HMG-CoA reductase inhibitor
- Concomitant use of a fibrate or niacin
- Hypothyroidism
- Alcohol abuse
- Excessive physical exercise
- Age > 70 years
- Renal impairment
- Hepatic impairment
- Diabetes with hepatic fatty change
- Surgery and Trauma
- Frailty
- Situation where an increase in plasma levels of active ingredient may occur.

Pravastatin therapy should be temporarily withheld or discontinued in any patient with an acute serious condition, suggestive of a myopathy or predisposing to the development of rhabdomyolysis, (e.g. sepsis, hypotension, major surgery, trauma, severe metabolic, endocrine and electrolyte disorders or uncontrolled seizures).

### **Liver Dysfunction**

HMG-CoA reductase inhibitors have been associated with biochemical abnormalities of liver function. As with other lipid-lowering agents, including non-absorbable bile acid-binding resins, increases in liver enzymes to less than three times the upper limit of normal have occurred during therapy with pravastatin. The significance of these changes, which usually appear during the first few months of treatment initiation, is not known. In the majority of patients treated with pravastatin in clinical trials, these increased values declined to pretreatment levels despite continuation of therapy at the same dose.

**Marked persistent increases (greater than three times the upper limit of normal) in serum transaminases were seen in 6 out of 1142 (0.5%) patients treated with pravastatin in clinical trials** (see ADVERSE REACTIONS). The increases usually appeared 3 to 12 months after the start of therapy with pravastatin. These elevations were not associated with clinical signs and symptoms of liver disease and usually declined to pretreatment levels upon discontinuation of therapy. Patients rarely had persistent marked abnormalities possibly attributable to therapy. In the largest long-term placebo-controlled trial with pravastatin (Pravastatin Primary Prevention Study/WOSCOPS), no patient with normal liver function after 12 weeks of treatment (N=2875 pravastatin-treated patients) had subsequent ALT elevations greater than three times the upper limit of normal on two consecutive measurements. Two of these 2875 patients treated with pravastatin (0.07%) and one of 2919 placebo patients (0.03%) had elevations of AST greater than three times the upper limit of normal on two consecutive measurements during the 4.8 years (median treatment) of the study.

Liver function tests should be performed at baseline and at 12 weeks following initiation of therapy or the elevation of dose. Special attention should be given to patients who develop increased transaminase levels. Liver function tests should be repeated to confirm an elevation and subsequently monitored at more frequent intervals. **If increases in alanine aminotransferase (ALAT) and aspartate aminotransferase (ASAT) equal or exceed three times the upper limit of normal and persist, therapy should be discontinued.**

NU-PRAVASTATIN, as well as other HMG-CoA reductase inhibitors should be used with caution in patients who consume substantial quantities of alcohol and/or have past history of liver disease. Active liver disease or unexplained serum transaminase elevations are contraindications to the use of NU-PRAVASTATIN; if such condition develops during therapy, the drug should be discontinued.

## **General**

Before instituting therapy with NU-PRAVASTATIN (pravastatin sodium), an attempt should be made to control hypercholesterolemia with appropriate diet, exercise, weight reduction in overweight and obese patients, and to treat other underlying medical problems (see INDICATIONS AND CLINICAL USE). The patient should be advised to inform subsequent physicians of the prior use of pravastatin.

Pravastatin may elevate creatine phosphokinase and transaminase levels. This should be considered in the differential diagnosis of chest pain in a patient on therapy with pravastatin.

## **Effect on the Lens**

Current data from clinical trials do not indicate an adverse effect of pravastatin on the human lens.

## **Homozygous Familial Hypercholesterolemia**

Pravastatin has not been evaluated in patients with rare homozygous familial hypercholesterolemia. Most HMG-CoA reductase inhibitors are less or not effective in this subgroup of hypercholesterolemic patients (see REFERENCES).

## **Effect on Lipoprotein (a)**

In some patients, the beneficial effect of lowered total cholesterol and LDL-C levels may be partly blunted by a concomitant increase in the Lipoprotein(a)[Lp(a)] level. Further research is ongoing to elucidate the significance of Lp(a) variations. Therefore, until further experience is obtained, where feasible, it is suggested that measurements of serum Lp(a) be followed up in patients placed on pravastatin therapy (see REFERENCES).

## **Effect on CoQ10 Levels (Ubiquinone)**

A significant short-term decrease in plasma CoQ10 levels in patients treated with pravastatin has been observed. Longer clinical trials have also shown reduced serum ubiquinone levels during treatment with pravastatin and other HMG-CoA reductase inhibitors. The clinical significance of a potential long-term statin-induced deficiency of CoQ10 has not yet been established. It has been reported that a decrease in myocardial ubiquinone levels could lead to impaired cardiac function in patients with borderline congestive heart failure (see REFERENCES).

## **Carcinogenesis**

A 21-month oral study in mice, with doses of 10 to 100 mg/kg daily of pravastatin did not demonstrate any carcinogenic potential. In a 2-year oral study in rats, a statistically significant increase in the incidence of hepatocellular carcinoma was observed in male rats given 100 mg/kg daily (60 times the maximum human dose) of pravastatin. This change was not seen in male rats given 40 mg/kg daily (25 times the recommended human dose) or less, or in female rats at any dose level.



## **Hypersensitivity**

With lovastatin, an apparent hypersensitivity syndrome has been reported rarely which has included one or more of the following features: anaphylaxis, angioedema, lupus-like syndrome, polymyalgia rheumatica, thrombocytopenia, leukopenia, hemolytic anemia, positive antinuclear antibody (ANA), erythrocyte sedimentation rate (ESR) increase, arthritis, arthralgia, urticaria, asthenia, photosensitivity, fever and malaise.

Although to date hypersensitivity syndrome has not been described as such, in few instances eosinophilia and skin eruptions appear to be associated with pravastatin treatment. If hypersensitivity is suspected, NU-PRAVASTATIN should be discontinued. Patients should be advised to report promptly any signs of hypersensitivity such as angioedema, urticaria, photosensitivity, polyarthralgia, fever, malaise.

## **Endocrine Function**

HMG-CoA reductase inhibitors interfere with cholesterol synthesis and as such could theoretically blunt adrenal and/or gonadal steroid production.

In one long-term study investigating the endocrine function in hypercholesterolemic patients, pravastatin exhibited no effect upon basal and stimulated cortisol levels, as well as on aldosterone secretion. Although no change was reported in the testicular function, conflicting results were observed in the analysis of sperm motility after administration of pravastatin. A case of reversible impotence has been reported in a 57-year old man administered pravastatin 20 mg/day and metoprolol (see REFERENCES). A causal relationship to therapy with pravastatin has not been established. Further studies are needed to clarify the effects of HMG-CoA reductase inhibitors on male fertility. Furthermore, the effects, if any, on the pituitary-gonadal axis in premenopausal women are unknown.

Patients treated with NU-PRAVASTATIN who develop clinical evidence of endocrine dysfunction should be evaluated appropriately. Caution should be exercised if an HMG-CoA reductase inhibitor or other agent used to lower cholesterol levels is administered to patients receiving other drugs (e.g. ketoconazole, spironolactone, or cimetidine) that may decrease the levels of endogenous steroid hormones.

## **Patients with Severe Hypercholesterolemia**

Higher doses ( $\geq 40$  mg/day) required for some patients with severe hypercholesterolemia are associated with increased plasma levels of pravastatin. **Caution should be exercised in such patients who are also significantly renally impaired or elderly** (See WARNINGS AND PRECAUTIONS, Muscle Effects).

## **Special Populations**

### **Use in Pregnancy**

**NU-PRAVASTATIN is contraindicated during pregnancy (see CONTRAINDICATIONS).**

Safety in pregnant women has not been established. Although pravastatin was not teratogenic in rats at doses as high as 1000 mg/kg daily nor in rabbits at doses of up to 50 mg/kg daily, NU-PRAVASTATIN should be administered to women of childbearing age only when such patients are highly unlikely to conceive and have been informed of potential hazards. If a woman becomes pregnant while taking NU-PRAVASTATIN, NU-PRAVASTATIN should be discontinued and the patient advised again as to the potential hazards to the fetus.

### **Use in Nursing Mothers**

A negligible amount of pravastatin is excreted in human breast milk. Because of the potential for adverse reactions in nursing infants, if the mother is being treated with NU-PRAVASTATIN, nursing should be discontinued or treatment with NU-PRAVASTATIN stopped.

### **Pediatric Use (<16 years of age)**

Only limited experience with the use of statins in children is available (see REFERENCES). There is no experience to date with the use of pravastatin in such patients. Treatment in these patients is not recommended at this time.

### **Elderly ( $\geq 65$ years of age)**

Pharmacokinetic evaluation of pravastatin in patients over the age of 65 years indicates an increased AUC. There were no reported increases in the incidence of adverse effects in these or other studies involving patients in that age group. As a precautionary measure, the lowest dose should be administered initially (see REFERENCES).

Elderly patients may be more susceptible to myopathy (see WARNINGS AND PRECAUTIONS, Muscle Effects, Predisposing Factors for Myopathy/Rhabdomyolysis).

### **Use in Patients with Impaired Renal Function**

There have been no studies on the use of pravastatin in patients with renal failure. As a precautionary measure, the lowest dose should be used in these patients (see WARNINGS AND PRECAUTIONS, Muscle Effects).

## **ADVERSE REACTIONS**

### **Adverse Drug Reaction Overview**

Pravastatin is generally well tolerated. Adverse events have been usually mild to moderate and transient. Adverse events observed or reported in short- and long-term trials are as follows.

## **Clinical Trial Adverse Drug Reactions**

*Because clinical trials are conducted under very specific conditions the adverse reaction rates observed in the clinical trials may not reflect the rates observed in practice and should not be compared to the rates in the clinical trials of another drug. Adverse drug reaction information from clinical trials is useful for identifying drug-related adverse events and for approximating rates.*

### **Short-term Controlled Trials**

All adverse clinical events (regardless of attribution) reported in more than 2% of pravastatin-treated patients in placebo-controlled trials of up to four months duration are identified in the following table; also shown are the percentages of patients in whom these medical events were believed to be related or possibly related to the drug.

**Adverse Events in > 2 Percent of Patients Treated with Pravastatin 10-40 mg in Short-Term Placebo Controlled Trials**

<b>Body System / Event</b>	<b>All Events</b>		<b>Events Attributed to Study Drug</b>	
	<b>Pravastatin (N=900) % of Patients</b>	<b>Placebo (N=411) % of Patients</b>	<b>Pravastatin (N=900) % of Patients</b>	<b>Placebo (N=411) % of Patients</b>
<i>Cardiovascular</i> Cardiac Chest Pain	4.0	3.4	0.1	0.0
<i>Dermatologic</i> Rash	4.0*	1.1	1.3	0.9
<i>Gastrointestinal</i> Nausea/Vomiting	7.3	7.1	2.9	3.4
Diarrhea	6.2	5.6	2.0	1.9
Abdominal Pain	5.4	6.9	2.0	3.9
Constipation	4.0	7.1	2.4	5.1
Flatulence	3.3	3.6	2.7	3.4
Heartburn	2.9	1.9	2.0	0.7
<i>General</i> Fatigue	3.8	3.4	1.9	1.0
Chest Pain	3.7	1.9	0.3	0.2
Influenza	2.4*	0.7	0.0	0.0
<i>Musculoskeletal</i> Localized Pain	10.0	9.0	1.4	1.5
Myalgia	2.7	1.0	0.6	0.0

Body System / Event	All Events		Events Attributed to Study Drug	
	Pravastatin (N=900) % of Patients	Placebo (N=411) % of Patients	Pravastatin (N=900) % of Patients	Placebo (N=411) % of Patients
<i>Nervous System</i>				
Headache	6.2	3.9	1.7*	0.2
Dizziness	3.3	3.2	1.0	0.5
<i>Renal/Genitourinary</i>				
Urinary Abnormality	2.4	2.9	0.7	1.2
<i>Respiratory</i>				
Common Cold	7.0	6.3	0.0	0.0
Rhinitis	4.0	4.1	0.1	0.0
Cough	2.6	1.7	0.1	0.0

\* statistically significantly different from placebo

The safety and tolerability of pravastatin at a dose of 80 mg in two controlled trials with a mean exposure of 8.6 months was similar to that of pravastatin at lower doses except that 4 out of 464 patients taking 80 mg of pravastatin had a single elevation of CK > 10X ULN compared to 0 out of 115 patients taking 40 mg of pravastatin.

#### Long-Term Controlled Morbidity and Mortality Trials

In seven randomized, double-blind, placebo-controlled trials involving over 21,500 patients treated with pravastatin (N=10,784) or placebo (N=10,719), the safety and tolerability in the pravastatin group was comparable to that of the placebo group. Over 19,000 patients were followed for a median of 4.8-5.9 years, while the remaining patients were followed for two years or more.

Clinical adverse events probably or possibly related, or of uncertain relationship to therapy, occurring in at least 0.5% of patients treated with pravastatin or placebo in these long-term morbidity/mortality trials are shown in the table below:

	<b>Pravastatin (N=10,784) %</b>	<b>Placebo (N=10,719) %</b>
<u>Cardiovascular</u>		
Angina Pectoris	3.1	3.4
Disturbance rhythm subjective	0.8	0.7
Hypertension	0.7	0.9
Edema	0.6	0.6
Myocardial Infarction	0.5	0.7
<u>Gastrointestinal</u>		
Dyspepsia / heartburn	3.5	3.7
Nausea / vomiting	1.4	1.6
Flatulence	1.2	1.1
Constipation	1.2	1.3
Diarrhea	0.9	1.1
Abdominal pain	0.9	1.0
Distension abdomen	0.5	0.5
<u>Musculoskeletal</u>		
Musculoskeletal pain (includes arthralgia)	5.9	5.7
Muscle cramp	2.0	1.8
Myalgia	1.4	1.4
Musculoskeletal trauma	0.5	0.3
<u>Nervous System</u>		
Dizziness	2.2	2.1
Headache	1.9	1.8
Sleep disturbance	1.0	0.9
Depression	1.0	1.0
Anxiety / nervousness	1.0	1.2
Paresthesia	0.9	0.9
Numbness	0.5	0.4
<u>General</u>		
Fatigue	3.4	3.3
Chest pain	2.6	2.6
Weight gain	0.6	0.7
Influenza	0.6	0.5
<u>Special Senses</u>		
Vision disturbance (includes blurred vision)	1.5	1.3
Disturbance eye (includes eye inflammation)	0.8	0.9
Hearing abnormality (includes tinnitus and hearing loss)	0.6	0.5

	<b>Pravastatin (N=10,784) %</b>	<b>Placebo (N=10,719) %</b>
Lens opacity	0.5	0.4
<u>Dermatologic</u>		
Rash	2.1	2.2
Pruritus	0.9	1.0
<u>Renal / Genitourinary</u>		
Urinary abnormality (includes dysuria and nocturia)	1.0	0.8
<u>Respiratory</u>		
Dyspnea	1.6	1.6
Upper respiratory infection	1.3	1.3
Cough	1.0	1.0
Sinus abnormality (includes sinusitis)	0.8	0.8
Pharyngitis	0.5	0.6

### **Abnormal Hematologic and Clinical Chemistry Findings**

Increases in serum transaminases and creatine phosphokinase (CK) in patients treated with pravastatin have been discussed (see WARNINGS AND PRECAUTIONS)

### **Post-Market Adverse Drug Reactions**

The following adverse events have also been rarely reported during post-marketing experience with pravastatin, regardless of causality assessment.

- Cardiovascular:* angioedema.
- Dermatologic:* a variety of skin changes (pruritis, scalp hair abnormalities, skin dryness and dermatitis).
- Gastrointestinal:* pancreatitis, hepatitis and fulminant hepatic necrosis, jaundice (including cholestatic), fatty change in liver, cirrhosis, thrombocytopenia, hepatoma, abnormal stool and appetite change. Liver Function Test (LFT) abnormalities have also been reported.
- General:* chest pain (non cardiovascular), weakness, excess sweating hot flashes and fever.
- Hypersensitivity:* anaphylaxis, lupus erythematosus-like syndrome, polymyalgia, rheumatica, dermatomyositis, vasculitis, purpura, hemolytic anemia, positive ANA, ESR increase, arthritis, arthralgia, asthenia, photosensitivity, chills, malaise, toxic epidermal necrolysis, erythema multiforme, including Stevens-Johnson syndrome.

<i>Immunologic:</i>	allergy.
<i>Musculoskeletal:</i>	myopathy, rhabdomyolysis.
<i>Nervous System:</i>	dysfunction of certain cranial nerves (including alteration of taste, impairment of extra-ocular movement, facial paresis), peripheral nerve palsy, paresthesia equilibrium disturbance, vertigo, memory impairment, tremor, mood change, mood related disorders including depression, sleep disturbances including insomnia and nightmares.
<i>Reproductive:</i>	gynecomastia, impotence (see Endocrine Function), urticaria, sexual dysfunction, libido change.
<i>Special Senses:</i>	eye symptoms (including soreness, dryness or itching), tinnitus, taste disturbance.

The following have also been reported with other statins: hepatitis, cholestatic jaundice, anorexia, psychic disturbances including anxiety, hypospermia and hypersensitivity (see WARNINGS AND PRECAUTIONS).

## **Lens**

Current data from clinical trials do not indicate an adverse effect of pravastatin on the human lens.

## **DRUG INTERACTIONS**

### **Drug-Drug Interactions**

#### **Concomitant Therapy with Other Lipid Metabolism Regulators**

Based on post-marketing surveillance, gemfibrozil, fenofibrate, other fibrates and lipid lowering doses of niacin (nicotinic acid) may increase the risk of myopathy when given concomitantly with HMG-CoA reductase inhibitors, probably because they can produce myopathy when given alone (see WARNINGS AND PRECAUTIONS, Muscle Effects). Therefore, combined drug therapy should be approached with caution.

#### **Bile Acid Sequestrants**

Preliminary evidence suggests that the cholesterol-lowering effects of pravastatin and the bile acid sequestrants, cholestyramine/colestipol are additive.

When pravastatin was administered one hour before or four hours after cholestyramine or one hour before colestipol and a standard meal, there was no clinically significant decrease in bioavailability or therapeutic effect. Concomitant administration resulted in an approximately 40

to 50% decrease in the mean AUC of pravastatin (see DOSAGE AND ADMINISTRATION, Concomitant Therapy).

#### Gemfibrozil and nicotinic acid

Gemfibrozil and nicotinic acid do not statistically significantly affect the bioavailability of pravastatin. However, in a limited size clinical trial, a trend toward CK elevations and musculoskeletal symptoms was seen in patients treated concurrently with pravastatin and gemfibrozil.

Myopathy, including rhabdomyolysis, has occurred in patients who were receiving co administration of HMG-CoA reductase inhibitors with fibric acid derivatives and niacin, particularly in subjects with pre-existing renal insufficiency (see WARNINGS AND PRECAUTIONS - Muscle Effects).

#### Other Concomitant Therapy

The use of HMG-CoA reductase inhibitors has been associated with severe myopathy, including rhabdomyolysis, which may be more frequent when they are administered with drugs that inhibit the cytochrome P-450 enzyme system. *In vitro* and *in vivo* data indicate that pravastatin is not metabolized by cytochrome P450 3A4 to a clinically significant extent. This has been shown in studies with known cytochrome P450 3A4 inhibitors.

#### Digoxin

Co-administration of digoxin and other HMG-CoA reductase inhibitors has been shown to increase the steady state digoxin concentrations. The potential effects of co-administration of digoxin and pravastatin are not known. As a precautionary measure, patients taking digoxin should be closely monitored.

#### Antipyrine

Antipyrine was used as a model for drugs metabolized by the microsomal hepatic enzyme system (cytochrome P450 system). Pravastatin had no effect on the pharmacokinetics of antipyrine.

#### Coumarin Anticoagulants

Pravastatin had no clinically significant effect on prothrombin time when administered in a study to normal elderly subjects who were stabilized on warfarin.

#### Antacids and Cimetidine

On the average, antacids (one hour prior to pravastatin) reduce and cimetidine increases the bioavailability of pravastatin. These changes were not statistically significant. The clinical significance of these interactions is not known but is probably minimal as judged from the interaction with food (see ACTION AND CLINICAL PHARMACOLOGY - Human Pharmacology).



No information is available regarding interactions with erythromycin (see WARNINGS AND PRECAUTIONS - Muscle Effects).

Although specific interaction studies were not performed during clinical trials, no noticeable drug interactions were reported when pravastatin was added to diuretics, antihypertensives, angiotensin converting-enzyme (ACE) inhibitors, calcium channel blockers, or nitroglycerin.

### Propranolol

Co-administration of propranolol and pravastatin reduced the AUC values by 23% and 16% respectively.

### Cyclosporine

In a multicentre study, the AUC values of pravastatin were shown to be five-fold higher in the presence of cyclosporine. There was no accumulation of pravastatin after multiple doses (see DOSAGE AND ADMINISTRATION, REFERENCES).

### **Drug-Laboratory Interactions**

Pravastatin may elevate creatine phosphokinase and transaminase levels. This should be considered in the differential diagnosis of chest pain in patients on therapy with pravastatin.

## **DOSAGE AND ADMINISTRATION**

### **Dosing Considerations**

Patients should be placed on a standard cholesterol-lowering diet (at least equivalent to the Adult Treatment Panel III [ATP III TLC diet]) before receiving NU-PRAVASTATIN (pravastatin), and should continue on this diet during treatment with NU-PRAVASTATIN. If appropriate, a program of weight control and physical exercise should be implemented.

Prior to initiating therapy with pravastatin, secondary causes for elevations in plasma lipid levels should be excluded. A lipid profile should also be performed.

### **Recommended Dose and Dosage Adjustment**

#### **Hypercholesterolemia and Coronary Heart Disease**

The recommended starting dose is 20 mg once daily at bed time. Patients who require a large dose reduction in LDL-C may be started at 40 mg once daily. The dose of 80 mg once daily should be reserved for patients who do not achieve their treatment goal with lower doses. NU-PRAVASTATIN may be taken without regard to meals (see ACTION AND CLINICAL PHARMACOLOGY).

In patients with a history of significant renal or hepatic dysfunction, a starting dose of 10 mg daily is recommended.

### **Concomitant Therapy**

Some patients may require combination therapy with one or more lipid- lowering agents. Pharmacokinetic interaction with pravastatin administered concurrently with nicotinic acid, probucol, or gemfibrozil did not statistically significantly affect the bioavailability of pravastatin. The combined use of pravastatin and fibrates should however generally be avoided (see WARNINGS AND PRECAUTIONS - Muscle Effects).

The lipid-lowering effects of pravastatin on Total and Low Density Lipoprotein Cholesterol are additive when combined with a bile acid- binding resin. However, when administering a bile acid-binding resin (e.g. cholestyramine, colestipol) and pravastatin, NU-PRAVASTATIN should not be administered concomitantly, but should be given either one hour or more before or at least four hours following the resin (see DRUG INTERACTIONS - Concomitant Therapy with Other Lipid Metabolism Regulators).

In patients taking cyclosporine, with or without other immunosuppressive drugs, concomitantly with pravastatin, therapy should be initiated with 10 mg per day and titration to higher doses should be performed with caution. Most patients treated with this combination received a maximum pravastatin dose of 20 mg/day (see WARNINGS AND PRECAUTIONS and DRUG INTERACTIONS, Other Concomitant Therapy, Cyclosporine).

The dosage of pravastatin should be individualized according to baseline LDL-C, total- C/HDL-C ratio and/or TG levels to achieve the desired lipid values at the lowest possible dose.

### **OVERDOSAGE**

There have been two reports of overdosage with pravastatin, both of which were asymptomatic and not associated with clinical laboratory abnormalities.

In the event of overdosage, treatment should be symptomatic and supportive, and appropriate therapy instituted. Until further experience is obtained, no specific therapy of overdosage can be recommended. The dialyzability of pravastatin and its metabolites is not known.

## **ACTION AND CLINICAL PHARMACOLOGY**

### **Mechanism of Action**

Pravastatin sodium is one of a new class of lipid-lowering compounds known as HMG-CoA reductase inhibitors (statins) that reduce cholesterol biosynthesis. These agents are competitive inhibitors of 3-hydroxy-3-methylglutaryl-coenzyme A (HMG-CoA) reductase, the enzyme catalyzing the early rate-limiting step in cholesterol biosynthesis, conversion of HMG-CoA to mevalonate. Pravastatin is isolated from a strain of *Penicillium citrinum*. The active drug substance is the hydroxyacid form.

Pravastatin produces its lipid-lowering effect in two ways. First, as a consequence of its reversible inhibition of HMG-CoA reductase activity, it effects modest reductions in intracellular pools of cholesterol. This results in an increase in the number of Low Density Lipoproteins (LDL)- receptors on cell surfaces and enhanced receptor-mediated catabolism and clearance of circulating LDL. Second, pravastatin inhibits LDL production by inhibiting hepatic synthesis of Very Low Density Lipoproteins (VLDL), the LDL precursor.

Epidemiologic and clinical studies have associated the risk of coronary artery disease (CAD) with elevated levels of Total-C, LDL-C and decreased levels of HDL-C. These abnormalities of lipoprotein metabolism are considered as major contributors to the development of the disease. Other factors, e.g. interactions between lipids/ lipoproteins and endothelium, platelets and macrophages, have also been incriminated in the development of human atherosclerosis and of its complications.

In long-term prospective clinical trials, effective treatment of hypercholesterolemia/dyslipidemia has consistently been associated with a reduction in the risk of CAD. Treatment with pravastatin has been shown to reduce circulating Total-C, LDL-C, and apolipoprotein B, modestly reduce VLDL-C and triglycerides (TG) while producing increases of variable magnitude in HDL-C and apolipoprotein A. Clinical trials suggest that pravastatin's effect on reducing clinical events appears to incorporate both cholesterol modification and some ancillary mechanism.

Pravastatin has complex pharmacokinetic characteristics.

### **Human Pharmacology**

In both normal volunteers and patients with hypercholesterolemia, treatment with pravastatin reduced total-C, LDL-C, apolipoprotein B, VLDL-C and TG while increasing HDL-C and apolipoprotein A. The mechanism of action of pravastatin is complex. Inhibition of hepatic VLDL synthesis and/or secretion occurs, leading to a decrease in LDL precursor formation. The reduction in hepatic cellular pools of cholesterol, resulting from the specific and reversible inhibition of HMG-CoA reductase activity, leads to an increase in the fractional catabolic rate of IDL and LDL via increased expression of LDL receptors on the surface of hepatic cells. Through a combination of these and possibly other unknown metabolic effects, a decline in the serum level of cholesterol results.

## **Pharmacokinetics**

**Absorption:** Pravastatin sodium is administered orally in the active form. Following oral ingestion, pravastatin is rapidly absorbed with peak plasma levels attained at about 1 to 1.5 hours. Average oral absorption of pravastatin, based on urinary recovery of radiolabelled drug after oral and intravenous dosing, is 34%; average absolute bioavailability of the parent drug is 17%. The therapeutic response to pravastatin is similar, whether taken with meals or one hour prior to meals, even though the presence of food in the gastrointestinal tract causes a reduction in systemic bioavailability.

<b>Percent Decrease in LDL-C</b>		
<b>Pravastatin</b>	<b>10 mg bid</b>	<b>20 mg bid</b>
With meals	- 25%	- 37%
Before meals *	- 26%	- 36%
* administered one hour or more prior to eating.		

**Distribution:** Pravastatin undergoes extensive first pass extraction in the liver (estimated hepatic extraction ratio, 66%), its primary site of action, and is excreted in the bile. Therefore, plasma levels of the drug are probably of limited value in predicting therapeutic effectiveness. Nevertheless, measurement of plasma pravastatin concentrations by gas chromatography and mass-spectrometry showed dose proportionality for area under the concentration-time curve (AUC) and maximum and steady-state plasma levels. Steady-state areas under the plasma concentration-time curves and maximum ( $C_{max}$ ) or minimum ( $C_{min}$ ) plasma concentrations showed no accumulation following once or twice-daily administration of pravastatin tablets.

**Metabolism:** Pravastatin is extensively metabolised. The major metabolite is the 3  $\alpha$ -hydroxy isomer, which has one-tenth to one-fortieth of the inhibitory activity of the parent compound on HMG-CoA reductase.

**Excretion:** Protein binding of pravastatin is approximately 50%. The plasma elimination half-life of pravastatin is between 1.5 and 2 hours (2.5 - 3 hours in hypercholesterolemic subjects). Approximately 20% of a radiolabelled oral dose is excreted in the urine and 70% in the feces.

After intravenous administration to healthy subjects, approximately 47% of the total drug clearance occurs via renal excretion of intact pravastatin, and about 53% is cleared by non-renal routes, i.e. biliary excretion and biotransformation.

## **Special Populations and Conditions**

**Pediatrics:** Only limited experience with the use of statins in children is available (see References). There is no experience to date with the use of pravastatin in such patients. Treatment in these patients is not recommended at this time.

**Geriatrics:** Studies of pravastatin administered as a single dose to healthy elderly male and female subjects (age 65 to 78 years) indicated a 30 – 50% increase in plasma levels.

**Renal Insufficiency:** No studies have been carried out in patients with renal insufficiency.

## **STORAGE AND STABILITY**

Store at room temperature (15-30°C). Protect from moisture and light.

## **DOSAGE FORMS, COMPOSITION AND PACKAGING**

**NU-PRAVASTATIN 10 mg tablets:** Each rounded rectangular-shaped, pink to peach, biconvex tablet engraved “PRA” over “10” on one side and “APO” on the other contains 10 mg of pravastatin sodium. Available in bottles of 100, 250 and 500 and in unit dose packages of 30 and 100 tablets.

**NU-PRAVASTATIN 20 mg tablets:** Each rounded rectangular-shaped, yellow, biconvex tablet engraved “PRA” over “20” on one side and “APO” on the other contains 20 mg of pravastatin sodium. Available in bottles of 100, 250 and 500 and in unit dose packages of 30 and 100 tablets.

**NU-PRAVASTATIN 40 mg tablets:** Each rounded rectangular-shaped, green, biconvex tablet engraved “PRA” over “40” on one side and “APO” on the other contains 40 mg of pravastatin sodium. Available in bottles of 100, 250 and 500 and in unit dose packages of 30 and 100 tablets.

In addition to the active ingredient, pravastatin, each tablet also contains the non-medicinal ingredients croscarmellose sodium, lactose monohydrate, magnesium stearate and microcrystalline cellulose.

Colourants are present in the tablets as follows:

10 mg tablet: red ferric oxide

20 mg tablet: yellow ferric oxide

40 mg tablet: D&C yellow #10 and FD&C blue #1

## PART II: SCIENTIFIC INFORMATION

### PHARMACEUTICAL INFORMATION

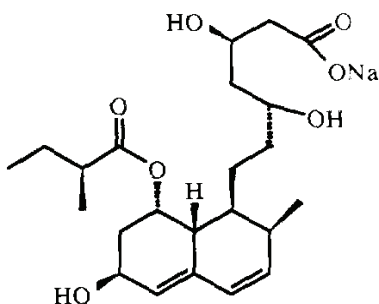
#### Drug Substance

Proper Name: Pravastatin Sodium

Chemical Name: [1S-[1 $\alpha$ ( $\beta$ S\*, $\delta$ S\*)2 $\alpha$ ,6 $\alpha$ ,8 $\beta$ (R\*),8 $\alpha\alpha$ ]]-1,2,6,7,8,8a-hexahydro- $\beta$ , $\delta$ ,6-trihydroxy-2-methyl-8-(2-methyl-1-oxobutoxy)-1-naphthaleneheptanoic acid, monosodium salt

Molecular formula and molecular weight: C<sub>23</sub>H<sub>35</sub>O<sub>7</sub> • Na; 446.52

Structural Formula:



Physicochemical properties: Pravastatin is a white to off white, crystalline powder that is freely soluble in water and methanol, soluble in ethanol, slightly soluble in n-octanol, and practically insoluble in acetonitrile, acetone, chloroform and ether.

## CLINICAL TRIALS

### Hypercholesterolemia

Pravastatin is highly effective in reducing total and LDL cholesterol in patients with primary hypercholesterolemia. A marked response is seen within one week, and the maximum therapeutic response usually occurs within four weeks. The response is maintained during extended periods of therapy. In addition, pravastatin is effective in reducing the progressive cause of atherosclerosis and risk of coronary events, decreasing total mortality, decreasing death due to coronary heart disease, and decreasing the incidence of stroke, in hypercholesterolemic patients with atherosclerotic cardiovascular disease. Pravastatin is also effective in reducing the risk of CHD death (fatal MI and sudden death) plus non-fatal MI with no increase in deaths from non-cardiovascular causes in hypercholesterolemic patients without previous myocardial infarction. Risk reduction is evident within 6 months of the initiation of treatment (see Figure 1).

Single daily doses of pravastatin are effective. As shown in the table which follows, the Total-C and LDL-C lowering effects are the same whether pravastatin is administered in single or divided (bid) doses. Once-daily administration in the evening appears to be marginally more effective than once-daily administration in the morning, perhaps because hepatic cholesterol is synthesized mainly at night.

The results of a multicentre, double-blind regimen response comparative study of placebo and pravastatin, given to parallel groups of patients for 8 weeks are as follows:

#### SINGLE-DAILY VERSUS TWICE-DAILY DOSING\*

Pravastatin	N	Total-C	LDL-C	HDL-C	TG
40 mg qam	41	- 23%	- 30%	+ 4%	- 11%
40 mg qpm	33	- 26%	- 33%	+ 8%	- 24%
20 mg bid	44	- 27%	- 34%	+ 8%	- 25%

\* Evening doses were administered at least 3 hours after the evening meal. Morning doses were administered at least 1 hour prior to breakfast.

Patients with primary hypercholesterolemia (71% Familial or Familial Combined, 29% Non-Familial). Baseline mean LDL-C = 6.34 mmol/L (245.4 mg/dL).

In multicentre, double-blind studies of patients with primary hypercholesterolemia, pravastatin administered in daily doses ranging from 5 mg to 80 mg to over 1100 patients was compared with placebo. Pravastatin significantly decreased Total-C and LDL-C levels, and Total-C/HDL-C and LDL-C/HDL-C ratios. In addition, pravastatin slightly increased HDL-C and decreased VLDL-C and plasma TG levels.

Dose-response effects on lipids from two studies evaluated after 8 weeks of administering pravastatin once or twice-daily are illustrated in the tables below.

**DOSE-RESPONSE RESULTS\***  
**(Once-Daily Administration at Bedtime)**

<b>Pravastatin</b>	<b>N</b>	<b>Total-C</b>	<b>LDL-C</b>	<b>HDL-C</b>	<b>TG</b>
5 mg qd	16	- 14%	- 19%	+ 5%	- 14%
10 mg qd	18	- 16%	- 22%	+ 7%	- 15%
20 mg qd	19	- 24%	- 32%	+ 2%	- 11%
40 mg qd	18	- 25%	- 34%	+ 12%	- 24%
* Patients with primary hypercholesterolemia (28% Familial or Familial Combined, 72% Non-Familial). Baseline mean LDL-C = 5.68 mmol/L (219.6 mg/dL).					

**DOSE-RESPONSE RESULTS \***  
**BID Administration**

<b>Pravastatin</b>	<b>N</b>	<b>Total-C</b>	<b>LDL-C</b>	<b>HDL-C</b>	<b>TG</b>
5 mg bid	59	- 15%	- 20%	+7%	- 14%
10 mg bid	53	- 18%	- 24%	+ 6%	- 17%
20 mg bid	56	- 24%	- 31%	+ 5%	- 17%
* Patients with primary hypercholesterolemia (70% Familial or Familial Combined, 30% Non-Familial). Baseline mean LDL-C = 6.06 mmol/L (234.5 mg/dL).					

Pravastatin is also effective when given with a bile acid-binding resin. In a study of pravastatin administered alone or in combination with cholestyramine, marked reductions in the level of LDL-C were observed. In addition, pravastatin attenuated the increase in TG levels observed with cholestyramine alone. (The results of the study cited in the table which follows should be interpreted in the context of the exceptionally high rate of patient compliance with the bile acid-binding resin [70% of patients were taking 20 or 24 g daily].)

**COMPARISON WITH CHOLESTYRAMINE RESIN\***

	<b>N</b>	<b>Total-C</b>	<b>LDL-C</b>	<b>HDL-C</b>	<b>TG</b>
<b>Pravastatin</b>					
20 mg bid	49	- 24%	- 32%	+ 6%	- 10%
40 mg bid	52	- 30%	- 39%	+ 5%	- 15%
Resin Alone **	41	- 22%	- 31%	+ 2%	+ 16%
<b>Combination</b>					
20 mg bid & Resin **	49	- 38%	- 52%	+ 5%	- 1%
* Patients with primary hypercholesterolemia (68% Familial or Familial Combined; 32% Non-Familial). Baseline mean LDL-C = 6.09 mmol/L (235.3 mg/dL).					
** The dose of resin used in this study was 24 g.					



## Primary Prevention of Coronary Events

Pravastatin has been shown to be effective in reducing the risk of coronary heart disease (CHD) death plus non-fatal MI in hypercholesterolemic patients without previous myocardial infarction.

In the West of Scotland Study (WOS), the effect of pravastatin on fatal and non-fatal coronary heart disease (CHD) was assessed in 6595 patients. The patient population consisted of men 45–66 years of age, without a previous MI, and with LDL-C levels between 4 - 6.7 mmol/L (156–254 mg/dL). In this randomized, double-blind, placebo-controlled study, patients were treated with standard care, including dietary advice, and either pravastatin 40 mg daily (n = 3302) or placebo (n = 3293) for a median duration of 4.8 years.

Pravastatin significantly reduced the risk of CHD death plus non-fatal MI by 31% (248 patients in the placebo group [CHD death = 44, non-fatal MI = 204] vs 174 patients in the pravastatin group [CHD death = 31, non-fatal MI = 143],  $p = 0.0001$ ). As shown in the figure below, divergence in the cumulative event rate curves for this endpoint begins within 6 months of treatment. This reduction was similar and significant throughout the entire range of baseline LDL cholesterol levels with a 37% risk reduction for LDL cholesterol 4 - 4.8 mmol/L (156–188 mg/dL) ( $p = 0.003$ ) and a 27% risk reduction for LDL cholesterol 4.9 - 6.7 mmol/L (189–254 mg/dL) ( $p = 0.03$ ). This reduction was also similar and significant for all age groups studied with a 40% risk reduction for patients younger than 55 years ( $p = 0.002$ ) and 27% risk reduction for patients 55 years and older ( $p = 0.009$ ).

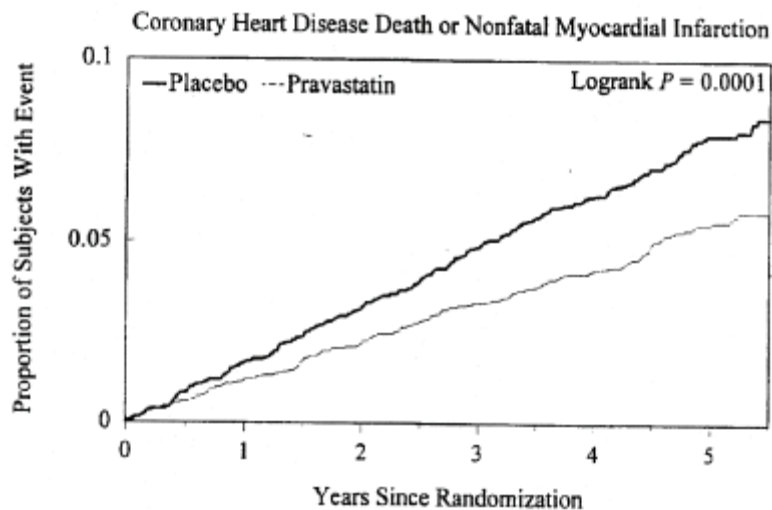


Figure 1.

Total cardiovascular deaths were reduced by 32% (73 vs 50,  $p = 0.03$ ) and overall mortality by 22% (135 vs 106,  $p = 0.051$ ). There was no statistically significant difference between treatment groups in non-cardiovascular mortality, including cancer deaths. Pravastatin also decreased the risk for undergoing myocardial revascularization procedures (coronary artery bypass graft surgery or coronary angioplasty) by 37% (80 vs 51 patients,  $p = 0.009$ ) and coronary angiography by 31% (128 vs 90,  $p = 0.007$ ).

**The West of Scotland Study excluded female patients, elderly subjects and most patients with familial hypercholesterolemia (FH). Consequently it has not been established to what extent the findings of the WOS study can be extrapolated to these subpopulations of hypercholesterolemic patients.**

- In patients with heterozygous FH, optimal reduction in total and LDL cholesterol necessitates a combination drug therapy in the majority of patients (see REFERENCES), (For homozygous FH see WARNINGS AND PRECAUTIONS - Use in Homozygous Familial Hypercholesterolemia).
- Because information on familial combined hyperlipidemic (FCH) patients is not available from the WOS study, the effect of pravastatin in this subgroup of high risk dyslipidemic patients could not be assessed.

### **Secondary Prevention of Cardiovascular Events**

Pravastatin has been shown to be effective in reducing the risk for total mortality, CHD death, recurrent coronary events (including myocardial infarction), frequency of stroke or transient ischemic attacks (TIA), need for myocardial revascularization procedures, and need for hospitalization in patients with a history of either myocardial infarction or unstable angina pectoris.

In the Long-Term Intervention with Pravastatin in Ischemic Disease (LIPID) study, the effect of pravastatin 40 mg daily was assessed in 9014 men and women with normal to elevated serum cholesterol levels (baseline Total-C=155-271 mg/dL [4.0-7.0 mmol/L]; median Total-C=218 mg/dL [5.66 mmol/L]; median LDL-C=150 mg/dL [3.88 mmol/L]), and who had experienced either a myocardial infarction or had been hospitalized for unstable angina pectoris in the preceding 3-36 months. Patients with a wide range of baseline levels of triglycerides were included ( $\leq 443$  mg/dL [5.0 mmol/L]) and enrollment was not restricted by baseline levels of HDL cholesterol. At baseline, 82% of patients were receiving aspirin, 47% were receiving beta blockers, and 76% were receiving antihypertensive medication. Patients in this multicentre, double-blind, placebo-controlled study participated for a mean of 5.6 years (median=5.9 years).

Treatment with pravastatin significantly reduced the risk for CHD death by 24% ( $p=0.0004$ ). The risk for coronary events (either CHD death or nonfatal MI) was significantly reduced by 24% ( $p<0.0001$ ) in the pravastatin treated patients. The risk for fatal or nonfatal myocardial infarction was reduced by 29% ( $p<0.0001$ ). Pravastatin reduced both the risk for total mortality by 23% ( $p<0.0001$ ) and cardiovascular mortality by 25% ( $p<0.0001$ ). The risk for undergoing myocardial revascularization procedures (coronary artery bypass grafting or percutaneous transluminal coronary angioplasty) was significantly reduced by 20% ( $p<0.0001$ ) in the pravastatin treated patients. Pravastatin also significantly reduced the risk for stroke by 19% ( $p=0.0477$ ). Treatment with pravastatin significantly reduced the number of days of hospitalization per 100 person-years of follow-up by 15% ( $p<0.001$ ). The effect of pravastatin on reducing CHD events was consistent regardless of age, gender, or diabetic status. Among patients who qualified with a history of myocardial infarction, pravastatin significantly reduced the risk for total mortality and for fatal or nonfatal MI (risk reduction for total mortality=21%,  $p=0.0016$ ; risk reduction for fatal or nonfatal MI=25%,  $p=0.0008$ ). Among patients who qualified with a history of hospitalization for unstable angina pectoris, pravastatin significantly reduced the risk for total mortality and for fatal or nonfatal MI (risk reduction for total mortality=26%,  $p=0.0035$ ; risk reduction for fatal or nonfatal MI=37%,  $p=0.0003$ ).

In the Cholesterol and Recurrent Events (CARE) study, the effect of pravastatin 40 mg daily on coronary heart disease death and nonfatal MI was assessed in 4159 men and women with normal serum cholesterol levels (baseline mean Total-C=209 mg/dL [5.4 mmol/L]), and who had experienced a myocardial infarction in the preceding 3-20 months. At baseline, 83% of patients were receiving aspirin, 55% had undergone PTCA/CABG, 40% were receiving beta blockers, and 82% were receiving antihypertensive medication. Patients in this double-blind, placebo-controlled study participated for an average of 4.9 years. Treatment with pravastatin significantly reduced the rate of a recurrent coronary event (either CHD death or nonfatal MI) by 24% (274 patients with events [13.3%] in the placebo group vs. 212 patients [10.4%] in the pravastatin group,  $p=0.003$ ). The reduction in risk for this combined endpoint was significant for both men and women; in women, the reduction in risk was 43% ( $p=0.033$ ). The risk of undergoing revascularization procedures (coronary artery bypass grafting or percutaneous transluminal coronary angioplasty) was significantly reduced by 27% ( $p=0.001$ ) in the pravastatin treated patients (391 [19.6%] vs. 294 [14.2%] patients). Pravastatin also significantly reduced the risk for stroke by 32% ( $p=0.032$ ), and stroke or transient ischemic attack (TIA) combined by 26% (124 [6.3%] vs. 93 [4.7%] patients,  $p=0.025$ ).

### **Atherosclerotic Disease Progression**

In two controlled trials [PLAC I, PLAC II] in patients with moderate hypercholesterolemia and atherosclerotic cardiovascular disease, pravastatin was effective in reducing the progressive course of atherosclerosis as evaluated by quantitative angiography and B-mode ultrasound. This effect may be associated with an improvement in the coronary endpoints (fatal or non-fatal MI). No difference in total mortality was detected during the 3 years of double-blind therapy.

In PLAC I (Pravastatin Limitation of Atherosclerosis in the Coronary Arteries), a 3-year, placebo-controlled, multicentre, randomized trial of 408 patients with moderate hypercholesterolemia (baseline LDL-C range = 3.37–4.92 mmol/L (130–190 mg/dL)) and coronary artery disease, treatment with pravastatin reduced the rate of narrowing of the coronary artery lumen diameter as determined by quantitative angiography. The analyses of clinical cardiovascular events showed a favourable effect of pravastatin therapy on events that occurred > 90 days after randomization, as well as for events from the time of randomization. This effect was not accompanied by an improvement in the total mortality endpoint. In PLAC II (Pravastatin Lipids and Atherosclerosis in the Carotid Arteries), a 3-year, placebo-controlled trial in 151 patients with moderate hypercholesterolemia (baseline LDL-C range = 3.76–4.92 mmol/L (145–190 mg/dL)) and coronary and carotid atherosclerosis, treatment with pravastatin significantly reduced the rate of progression of atherosclerosis in common carotid artery, as measured by B-mode ultrasound. The rate of progression of the mean-maximum intimal-medial thickness (IMT) was not significantly reduced. There was a decrease in the incidence of coronary events of borderline significance. No difference in total mortality was observed during the 3 years of double-blind therapy.

### **Solid Organ Transplant**

Myopathy has not been observed in clinical trials involving a total of 100 post-transplant patients (76 cardiac and 24 renal) treated concurrently for two years with pravastatin (10–40 mg) and cyclosporine some of whom also received other immunosuppressants. Further, in clinical trials involving small numbers of patients treated with pravastatin together with niacin, there were no reports of myopathy.

### **Comparative Bioavailability Studies**

A comparative bioavailability study was performed using healthy human volunteers. The rate and extent of absorption of pravastatin was measured and compared following oral administration of a 40 mg dose of Nu-Pravastatin (2x20 mg) tablets or Pravachol (2x20 mg) tablets. The results from measured data are summarized as follows:

### Summary Table of the Comparative Bioavailability Data

Summary Table of the Comparative Bioavailability Data Pravastatin (Dose: 2x20 mg) From Measured Data			
Parameter	Geometric Mean Arithmetic Mean (CV%)		Ratio of Geometric Means (%)**
	Nu-Pravastatin	Pravachol®†	
AUC <sub>T</sub> (ng•hr/mL)	129 151 (56)	135 148 (44)	95.2
AUC <sub>I</sub> (ng•hr/mL)	135 156 (54)	142 155 (43)	95.1
C <sub>max</sub> (ng/mL)	59.3 71.3 (65)	62.6 70.3 (35)	94.8
T <sub>max</sub> (hr)*	0.97 (25)	0.99 (18)	--
t <sub>1/2</sub> (hr)*	2.82 (44)	2.94 (37)	--

\* Arithmetic means (CV%).  
 \*\*Based on the least squares estimate.  
 † Pravachol® (Bristol-Myers Squibb) was purchased at a U.S. retail pharmacy.

## DETAILED PHARMACOLOGY

### Cell/Tissue Selective Inhibition of Cholesterol Synthesis

*In vitro* and animal studies have shown that pravastatin, a hydrophilic HMG-CoA reductase inhibitor, is tissue selective such that inhibitory activity is highest in those tissues with the highest rates of cholesterol synthesis, such as the liver and ileum.

In suspensions of freshly isolated rat hepatocytes and in one-day cultures of rat hepatocytes, pravastatin sodium showed potent inhibition of <sup>14</sup>C incorporation into cholesterol. In cultured human skin fibroblasts and other non-hepatic cell types, pravastatin inhibited cholesterol synthesis 400 times less than in hepatocytes.

The accumulation of <sup>14</sup>C-pravastatin was concentration and time dependent in hepatocytes and barely detectable in fibroblasts.

In tissue slices from rats given oral doses of pravastatin sodium, cholesterol synthesis was inhibited by more than 90% in liver and ileum slices and was substantially lower or not detectable in other tissue slices such as prostate, testes and adrenal.

In the intact rat lens, pravastatin sodium inhibited cholesterol synthesis 10 times less than in liver from the same animals. The inhibition of sterol synthesis in lens epithelial lines derived from the mouse and the rabbit was 400 to 1500 times less than in rat hepatocytes.

### **Specificity as an Inhibitor of HMG-CoA Reductase**

The incorporation of  $^{14}\text{C}$ -mevalonate, the product of HMG-CoA reductase reaction into sterols, was not affected in hepatocytes, fibroblasts, or CHO cells at concentrations of pravastatin sodium at least 20 times greater than those that inhibited  $^{14}\text{C}$ -acetate incorporation into cholesterol.

At concentrations 500 times greater than those that inhibited acetate incorporation into cholesterol, pravastatin sodium did not alter the rate of incorporation of  $^{14}\text{C}$ -acetate into total cell phospholipids in hepatocytes and the distribution of the radiolabel into the separate classes of phospholipids. Pravastatin sodium did not reduce the rate of incorporation of  $^{14}\text{C}$ -acetate into triglycerides. These results demonstrate that pravastatin does not act in the sterol pathway at any step beyond the synthesis of mevalonate nor does it inhibit the enzymes required for the biosynthesis of two other major classes of lipids.

The inhibitory activity of pravastatin on the enzyme HMG-CoA reductase was  $10^6$  times greater than that demonstrated by pravastatin for HMG-CoA lyase. The active site of this enzyme, which also employs HMG-CoA as substrate, does not recognize pravastatin.

### **General Pharmacology**

The effect of pravastatin sodium on major physiologic systems and isolated tissue and its agonist and antagonist effects towards principal neurohumoral transmitters or histamine, behavioral effects, convulsive threshold and tissue- or activity-specific effects were evaluated in animals or *in vitro* tissue preparations. With the exception of a moderate inhibition of gastric secretion at a dose of 300 mg/kg in rats, pravastatin sodium had no effect in any of these pharmacologic tests at doses of 1000 mg/kg in some species.

### **Pharmacokinetics**

Studies in rats, dogs and humans demonstrated that pravastatin sodium given orally has low bioavailability because of extensive first-pass hepatic extraction. Therefore, most of an oral dose of pravastatin sodium is delivered directly to the liver, the primary site of pharmacologic activity.

A relatively low extent of binding of pravastatin to plasma proteins was found in rats, dogs, monkeys and humans. The highest concentrations of  $^{14}\text{C}$ -pravastatin were found in the excretory organs and the GI tract in rats (N=3–5), one dog and one monkey. Similar metabolic patterns and appreciable fecal excretion in rats, dogs, monkeys and man were also evident in these studies.

Dogs are unique as compared to all other species tested, including man, in that they have a much greater systemic exposure to pravastatin. Pharmacokinetic data from a study in dogs at a dose of 1.1 mg/kg (comparable to a 40 mg dose in humans) showed that the elimination of pravastatin is slower in dogs than in humans. Absolute bioavailability is two times greater in dogs compared to humans and estimated renal and hepatic extraction of pravastatin are about one-tenth and one-half, respectively, than those in humans. When concentrations of pravastatin in plasma or serum of rats, dogs, rabbits, monkeys and humans were compared, the exposure in dogs was dramatically higher, based on both  $C_{max}$  and AUC. The mean AUC value in man at a therapeutic dose of 40 mg is approximately 100 times less than that in the dog at the no-effect dose of 12.5 mg/kg, and approximately 180 times lower than that in dogs at the threshold dose of 25 mg/kg for cerebral hemorrhage.

### **Placental Transfer**

Low levels of radioactivity were found in the fetuses of rats dosed orally with radiolabelled pravastatin sodium. Pravastatin sodium was also found to be secreted in the milk of rats.

## **TOXICOLOGY**

### **Acute Toxicology**

<b>Species</b>	<b>Sex (N)</b>	<b>Route</b>	<b>LD<sub>50</sub> (mg/kg)</b>
Mouse	M (50)	Oral	10590
	F (50)		8939
Mouse	M (50)	i.v.	2114
	F (50)		2011
Mouse	M (50)	s.c.	2975
	F (50)		3667
Rat	M (20)	Oral	> 12000
	F (20)		> 12000
Rat	M (50)	i.v.	443
	F (50)		440
Rat	M (50)	s.c.	3172
	F (50)		4455
Dog	M (4)	Oral	> 800

Signs of toxicity in mice were decreased activity, irregular respiration, ptosis, lacrimation, soft stool, diarrhea, urine-stained abdomen, ataxia, creeping behavior, loss of righting reflex, hypothermia, urinary incontinence, pilo-erection convulsion and/or prostration.

Signs of toxicity in rats were soft stool, diarrhea, decreased activity, irregular respiration, waddling gait, ataxia, loss of righting reflex and/or weight loss.

## Subacute and Chronic Toxicity

The spectrum of effects produced by pravastatin in mice, rats, rabbits, dogs and monkeys shown on the following table is not unexpected in view of the magnitude of the dosage levels employed and the potency of pravastatin against the HMG-CoA reductase.

### TARGET ORGANS OBSERVED IN ANIMAL STUDIES

Organ	Mouse	Rat	Rabbit	Dog	Monkey
Liver, neoplastic effect	-	+	-	-	-
Liver, non-neoplastic effect	+	+	+	-	+
Kidney	-	-	+	-	+
Skeletal muscle	-	+	+	-	-
Brain	-	-	-	+	-
+ = Organ affected in some way by drug treatment					
- = No effect observed in this organ in these species					

On a mg/kg basis, rabbits appear to be more sensitive to the nephrotoxic effects of pravastatin sodium than monkeys, the only other species that exhibited renal toxicity. In rabbits, renal dysfunction and hepatic effects were observed at doses  $\geq 25$  mg/kg/day. In monkeys, hepatotoxicity and nephrotoxicity occurred at doses of 100 mg/kg/day. The threshold dose for renal toxicity in rabbits is 31 times greater than the maximum human dose.

### SIGNIFICANT ADVERSE CHANGES

	Pravastatin	
	Minimal Toxic Dose (mg/kg/day)	No-Effect Dose (mg/kg/day)
<b>Mice</b>		
Single-cell necrosis in the liver	40	20
Elevated serum transaminase activity	20	10
<b>Rats</b>		
Hepatic tumors	100	40
Foci of hepatocellular alteration	30	12
Elevated transaminase activity	100	50
Skeletal-muscle myolysis	400	250
<b>Rabbits</b>		
Death	400	100
Hepatocellular necrosis	100	25



	<b>Pravastatin</b>	
	<b>Minimal Toxic Dose (mg/kg/day)</b>	<b>No-Effect Dose (mg/kg/day)</b>
Renal tubular degeneration	25	6.25
Skeletal-muscle myolysis	100	25
Elevated serum transaminase activity	100	25
<b>Dogs</b>		
Death	25	12.5
Cerebral hemorrhage	25	12.5
<b>Monkeys</b>		
Death	200	100
Hepatocellular necrosis	100	50
Renal tubular degeneration	100	50
Elevated serum transaminase activity	100	50

Noteworthy findings in these studies included varying degrees of hepatotoxicity in all species tested, renal toxicity in rabbits and monkeys, skeletal-muscle lesions in rabbits, CNS symptoms and death secondary to cerebral hemorrhage in dogs, and an increased incidence of hepatic lesions and evidence of hepatocarcinoma (the latter at 100 mg/kg) in rats treated for 2 years. In all cases, these changes occurred only at daily doses of 20 mg/kg or more (more than 25 times the maximum human dose).

The findings from the chronic toxicity in dogs are detailed on the following pages.

<b>Species/ Strain</b>	<b>Sex</b>	<b>N/Dose</b>	<b>Dose (mg/kg/day)</b>	<b>Route</b>	<b>Time</b>	<b>Effects</b>
<b>Subacute Toxicity</b>						
Dog Beagle	M F	3 3	0, 12.5, 50 or 200	Oral (capsule)	5 weeks	<u>200 mg/kg</u> : One dog died and 4 dogs sacrificed on days 11 to 22 after exhibiting ataxia and/or convulsions, salivation, urinary incontinence and/or defecation. Ecchymotic lesions (hemorrhagic foci) in the brain.
Dog Beagle	M F	6 6	0 or 100 (2M, 2F controls) (4M, 4F treated)	Oral (capsule)	13 weeks	<u>100 mg/kg</u> : One death (F) on day 42 preceded by marked decrease in activity, serous salivation and vomiting. Diapedetic hemorrhage and degeneration of venular endothelial cells in one F and the F that died.

Chronic Toxicity						
Dog Beagle	M F	4M, 4F at 12.5 & 25 - 6M, 6F at 0, 50 & 100	0, 12.5, 25, 50 or 100	Oral (capsule)	2 years	<p><u>25 mg/kg:</u> Two F sacrificed during weeks 60 and 61. One had lesions consistent with idiopathic coagulopathy. The other showed clinical signs of CNS toxicity prior to sacrifice and had brain lesions. <sup>1</sup></p> <p><u>50 mg/kg:</u> All dogs showed clinical signs of CNS toxicity; 5/6 dogs had brain lesions. <sup>1</sup></p> <p><u>100 mg/kg:</u> Three M and 5 F died or sacrificed between weeks 2 and 24. One M died in week 76. All dogs showed clinical signs of CNS toxicity prior to death/sacrifice. Nine/nine dogs had brain lesions.</p>
<p><sup>1</sup> Brain lesions (primarily in the piriform lobes) were characterized by discrete multifocal perivascular capillary and venular hemorrhages. In more severe lesions, there was an increased number of focal perivascular hemorrhages and associated early degenerative neutrophil changes including vacuolization, edema, and mild neutrophil infiltration. Larger vascular elements were not involved. No vascular endothelial changes were present, based on light- and electron-microscopic studies.</p>						

In dogs, pravastatin sodium was toxic at high doses and caused cerebral hemorrhage with clinical evidence of acute CNS toxicity (e.g. ataxia, convulsions). A dose-response relationship with respect to the incidence of CNS toxicity was clearly evident. In dogs, the threshold dose for CNS toxicity is 25 mg/kg. The high systemic exposure to orally administered pravastatin in dogs (refer to Pharmacokinetics) may be related to a greater bioavailability and slower elimination of pravastatin and likely plays an important role in the development of CNS lesions that occur in the dog.

Cerebral hemorrhages have not been observed to date in any other laboratory species and the CNS toxicity in dogs may represent a species-specific effect.

### **Reproduction and Teratology**

Aside from a slight maternal toxicity in rabbits at 50 mg/kg and in rats at 1000 mg/kg, there were no treatment-related findings.

In rabbits and rats at doses greater than 60 and 600 times respectively the maximum human dose, pravastatin sodium exerted no untoward effects on reproduction through the F<sub>1</sub> generation in rats and did not cause any fetal or anatomic abnormalities through the F<sub>1</sub> generation in rabbits and the F<sub>2</sub> generation rats.

## **Carcinogenicity and Mutagenicity**

In mice and rats treated for 21 months with oral doses 12 and 25 times the maximum human dose respectively (i.e. 20 mg/kg daily and 40 mg/kg daily), pravastatin sodium was found to be non-carcinogenic. After 86 and 104 weeks of dosing in mice and rats respectively, at oral doses 60 times the maximum human dose (i.e. 100 mg/kg daily), statistically significant increases in the incidence of hepatocellular carcinoma were observed in male rats only.

In *in vivo* mutagenicity tests with i.p. doses up to 1400 mg/kg and in *in vitro* mutagenicity tests at concentrations up to 10000 mcg/mL or plate, pravastatin sodium was found to be non-mutagenic.

Pravastatin was found to be non-genotoxic.

## REFERENCES

- 1) Brown WV, Goldberg IJ, Ginsberg HN. Treatment of common lipoprotein disorders. *Prog Cardiovasc Dis* 1984; 27 (1):1-20.
- 2) Byington RP, Jukema JW, Salonen JT, et al. Reduction in cardiovascular events during pravastatin therapy. Pooled analysis of clinical events of the pravastatin atherosclerosis intervention program. *Circulation* 1995; 92: 2419-2425.
- 3) Crouse JR, et al. Pravastatin, lipids and atherosclerosis in the carotid arteries (PLAC II). *Am J Cardiol* 1995; 75: 455-459.
- 4) Crouse JR, Byington RP, Bond MG, et al. Pravastatin, lipids and atherosclerosis in the carotid arteries: design features of a clinical trial with carotid atherosclerosis outcome. *Controlled Clinical Trials* 1992; 13: 495-506.
- 5) Decoulx E, Millaire A, DeGroot P, et al. Rhabdomyolysis due to pravastatin and type I macrocreatine kinase. *Ann Cardiol Angeiol* 1993; 42(5): 267-269.
- 6) Dobs AS, Sarma PS, Schteingart D. Long-term endocrine function in hypercholesterolemic patients treated with pravastatin, a new 3-hydroxy-3-methylglutaryl coenzyme A reductase inhibitor. *Metabolism* 1993; 42: 1146-1152.
- 7) East C, Bilheimer DW, Grundy SM. Combination drug therapy for familial combined hyperlipidemia. *Ann Int Med* 1988; 109(1): 25-32.
- 8) Edelman S, Witztum JL. Hyperkalemia during treatment with HMG-CoA reductase inhibitor. *New Eng J Med* 1989; 320: 1219.
- 9) Endo A. Compactin (ML-236B) and related compounds as potential cholesterol-lowering agents that inhibit HMG-CoA reductase. *J Med Chem* 1985; 28 (4): 401-405.
- 10) Eptastatin Sodium. *Drugs Future* 1987; 12(5): 437-442.
- 11) Folkers K, Langsjoen P, Willis R, et al. Lovastatin decreases coenzyme Q levels in humans. *Proc Nat Acad Sci* 1990; 87(22): 8931-8934.
- 12) Furberg CD, et al. Pravastatin, lipids and major coronary events. *Am J Cardiol* 1994; 73: 1133-1134.
- 13) Ghirlanda G, Oradei A, Manto A, et al. Evidence of plasma C0Q10 lowering effect by HMG CoA reductase inhibitor. Double-blind placebo control study. *J Clin Pharmacol* 1993; 33: 226-229.
- 14) Goto Y. The profile of an HMG-CoA reductase inhibitor, CS-514 (SQ 31,000). *In: Drugs Affecting Lipid Metabolism*, R. Paoletti et al (eds); Springer-Verlag Berlin Heidelberg, pp 247-250, 1987.

- 15) Grundy S.M. HMG–CoA reductase inhibitors for treatment of hypercholesterolemia. *N Eng J Med* 1988; 319 (1): 24-33.
- 16) Halkin A. HMG–CoA reductase inhibitor–induced impotence. *Ann Pharmacother* 1996; 30:192.
- 17) Hoeg JM, Brewer HB. 3–hydroxy–3–methylglutaryl–coenzyme A reductase inhibitors in the treatment of hypercholesterolemia. *JAMA* 1987; 258 (24): 3532-3536.
- 18) Hunninghake DB, Stein EA, Mellies MJ. Effects of one year treatment with pravastatin, an HMG–CoA reductase inhibitor on lipoprotein a. *J Clin Pharmacol* 1993; 33: 574-580.
- 19) Hunninghake DB, Goldberg AC, Insull W, et al. Pravastatin: a tissue–selective once daily HMG–CoA reductase inhibitor in the treatment of primary hypercholesterolemia. *J Am Coll Cardiol* 1988; 11 (2) (Suppl. A): 8A.
- 20) Illingworth DR. Drug therapy in heterozygous familial hypercholesterolemia. *Am J Cardiol* 1993; 72: 54D-58D.
- 21) Kazumi T, Yoshino G, Kasama T, et al. Effects of CS-514, a new Inhibitor of HMG–CoA reductase, on plasma lipids, lipoproteins and apoproteins in patients with primary hypercholesterolemia. *Horm Metabol Res* 1986; 18: 654-655.
- 22) Kliem V, Wanner C, Eisenhauer T, et al. Comparison of pravastatin and lovastatin in renal transplant patients receiving cyclosporin. *Transplant Proc* 1996; 28(6): 3126-3128.
- 23) Lipid Research Clinics Coronary Primary Prevention Trial Results: I. Reduction in incidence of coronary heart disease. II. The relationship of reduction in incidence of coronary heart disease to cholesterol lowering. *JAMA* 1984; 251: 351-374.
- 24) Mabuchi H, Takeda R. Inhibitors of 3–hydroxy–3–methylglutaryl coenzyme A reductase: compactin and its analogues. *In: Pharmacological Control of Hyperlipidemia: Proceedings of an International Telesymposium on Hyperlipidaemia.* J.R. Prous Science Publishers; Barcelona, Spain, pp 251-266, 1986.
- 25) Mabuchi H, Kamon N, Fujita H, et al. Effects of CS-514 on serum lipoprotein lipid and apolipoprotein levels in patients with familial hypercholesterolemia. *Metabolism* 1987; 36 (5): 475-479.
- 26) Mabuchi H, Kamon N, Fujita H, et al. Long–term effects of CS-514 on serum lipoprotein lipid and apolipoprotein levels in patients with familial hypercholesterolemia. *In: Drugs Affecting Lipid Metabolism;* R. Paoletti et al (eds) Springer-Verlag Berling Heidelberg, pp 261-268, 1987.
- 27) Mabuchi H, Fujita H, Michishita I, et al. Effects of CS-514 (eptastatin), an inhibitor of 3–hydroxy–3–methylglutaryl–coenzyme A (HMG–CoA) reductase, on serum lipid and

- apolipoprotein levels in heterozygous familial hypercholesterolemia patients treated by low density lipoprotein (LDL)-apheresis. *Atherosclerosis* 1988; 72:183-188.
- 28) Mellies MJ, DeVault AR, Kassler-Taub K, et al. Pravastatin experience in elderly and non-elderly patients. *Atherosclerosis* 1993; 101: 97-110.
- 29) Mishkel M. Drug treatment of hypercholesterolemia. *Drug Protocol* 1988; 3 (1): 9-17.
- 30) Nakaya N, Homma Y, Tamachi H, Goto Y. The effect of CS-514, an inhibitor of HMG-CoA reductase, on serum lipids on healthy volunteers. *Atherosclerosis* 1986; 61: 125-128.
- 31) Nakaya N, Homma Y, Tamachi H, et al. The effect of CS-514 on serum lipids and apolipoproteins in hypercholesterolemic subjects. *JAMA* 1987; 257 (22): 3088-3093.
- 32) Nakaya N, Goto Y. Effect of CS-514 on hypercholesterolemic patients. *In: Drugs Affecting Lipid Metabolism*; R. Paoletti et al (eds) Springer-Verlag Berlin Heidelberg, pp 274-277 1987.
- 33) Pan HY, Willard DA, Funke PT, McKinstry D. The clinical pharmacology of SQ 31,000 (CS-S 14) in healthy subjects. *In: Drugs Affecting Lipid Metabolism*; R. Paoletti et al (eds) Springer-Verlag Berlin Heidelberg, pp 255-259, 1987.
- 34) Perault MC, Ladouch-Bures L, Dejean C, et al. Rhabdomyolyse associée à la prise de pravastatine (Vasten). *Thérapie* 1993; 48: 483-501.
- 35) Saku K, et al. Long-term effects of CS-514 (HMG-CoA reductase inhibitor) on serum lipids, lipoproteins, and apolipoproteins in patients with hypercholesterolemia. *Curr Ther Res* 1987; 42(3): 491-500.
- 36) Saito Y, Goto Y, Nakaya N, et al. Dose-dependent hypolipidemic effect of an inhibitor of HMG-CoA reductase, pravastatin (CS-514) in hypercholesterolemic subjects. A double-blind test. *Atherosclerosis* 1988; 7: 205-211.
- 37) Scanu AM. Lipoprotein(a) as a cardiovascular risk factor. *Trends Cardiovasc Med* 1991; 1: 294-299.
- 38) Shephard J, Cobbe SM, Ford I, et al. Prevention of coronary heart disease using pravastatin in hypercholesterolemic men. *NEJM* 1995; 333 (20): 1301 - 1307.
- 39) Smith GD, Song F, Sheldon TA. Cholesterol lowering and mortality: the importance of considering initial level of risk. *Br Med J* 1993; 306: 1367-1371.
- 40) Stein EA. Treatment of familial hypercholesterolemia with drugs in children. *Arteriosclerosis* 1989; Suppl. I, 9: I-145 - I-151.
- 41) Tobert J.A. New developments in lipid-lowering therapy: the role of inhibitors of hydroxymethylglutaryl coenzyme A reductase. *Circulation* 1987; 76 (3): 534-538.

- 42) Tsujita Y, Kuroda M, Shimada Y, et al. CS-514, a competitive inhibitor of 3-hydroxy-3-methylglutaryl coenzyme A reductase: tissue-selective inhibition of sterol synthesis and hypolipidemic effect on various animal species. *Biochim Biophys Acta* 1986; 877: 50-60.
- 43) The West of Scotland Coronary Prevention Study Group. A coronary primary prevention study of Scottish men aged 45-55 years: trial design. *J Clin Epidemiol* 1992; 45 No. 8, 849-860.
- 44) The WOSCOPS Study Group. Screening experience and baseline characteristics in the West of Scotland Coronary Prevention Study. *Am J Cardiol* 1995; 76: 485-491, 1995.
- 45) Yamamoto A, Yokoyama S, Yamamura T. Combined drug treatment and plasmapheresis for familial hypercholesterolemia. In: *Pharmacological Control of Hyperlipidemia: Proceedings of an International Telesymposium on Hyperlipidaemia*. J.R. Prous Science Publishers; Barcelona, Spain, pp 333-342, 1986.
- 46) Yamamoto A, Yokoyama S, Yamamura T. Intensive drug treatment for familial hypercholesterolemia. In: *Drugs Affecting Lipid Metabolism*; R. Paoletti et al (eds) Springer-Verlag Berlin Heidelberg, pp 269-273, 1987.
- 47) Yoshimura N, Takahiro O, et al. The effects of pravastatin on hyperlipidemia in renal transplant recipients. *Transplantation* 1992; 53: 94-99.
- 48) Yoshino G, Kazumi T, Iwai M, et al. CS-514 suppresses plasma triglyceride in hypertriglyceridemic subjects without modifying a lipoprotein structural model. *Horm Metabol Res* 1987; 19: 513-514.
- 49) Yoshino G, Kazumi T, Iwai M, et al. Effects of CS-514 on plasma lipids and lipoprotein composition in hypercholesterolemic subjects. *Atherosclerosis* 1986; 71: 95-101.
- 50) Product Monograph - Pravachol (pravastatin sodium), 10, 20 40 and 80 mg. Bristol-Myers Squibb Canada, Date of Revision: October 12, 2010.

## IMPORTANT: PLEASE READ

### PART III: CONSUMER INFORMATION

#### <sup>Pr</sup>NU-PRAVASTATIN (Pravastatin Sodium)

This leaflet is part III of a three-part “Product Monograph” published when NU-PRAVASTATIN was approved for sale in Canada and is designed specifically for Consumers. This leaflet is a summary and will not tell you everything about NU-PRAVASTATIN. Contact your doctor or pharmacist if you have any questions about the drug.

**KEEP ALL MEDICINES OUT OF THE REACH OF CHILDREN**

### ABOUT THIS MEDICATION

#### What the medication is used for:

NU-PRAVASTATIN (pravastatin sodium) is available only with your physician’s prescription. It is to be used as an adjunct to a medically recommended and carefully supervised diet for the long-term treatment of hypercholesterolemia and is not a substitute for such a diet. This has been shown to decrease the chances of experiencing a first or second heart attack, or stroke, and may help prevent heart disease if caused by cholesterol clogging the blood vessels, or slow the progression of atherosclerosis (hardening) of the arteries that nourish your heart, so-called coronary heart disease (CHD). In addition, depending on your condition, your physician may recommend an appropriate regimen of exercise, weight control and other measures.

#### What it does:

NU-PRAVASTATIN lowers the level of cholesterol, particularly Low Density Lipoprotein (LDL) cholesterol, in the blood. NU-PRAVASTATIN reduces cholesterol production by the liver and induces some changes of cholesterol transport and disposition in the blood and tissues.

#### When it should not be used:

- If you are pregnant, since its use in the event of pregnancy may harm the unborn. Only female patients who are highly unlikely to conceive can be candidates for NU-PRAVASTATIN treatment. In the event of pregnancy during treatment, NU-PRAVASTATIN should be discontinued and physician informed.
- If you know you are allergic to pravastatin or any of the non-medicinal ingredients of NU-PRAVASTATIN.
- If you have liver disease

- In adolescents and children since the safety of NU-PRAVASTATIN in this age group has not been established.

#### What the medicinal ingredient is:

Pravastatin sodium

#### What the important nonmedicinal ingredients are:

Non-medicinal ingredients: croscarmellose sodium, lactose monohydrate, magnesium stearate and microcrystalline cellulose.

Colourants are present in the tablets as follows:

10 mg tablet: red ferric oxide  
20 mg tablet: yellow ferric oxide  
40 mg tablet: D&C yellow #10 and FD&C blue #1

#### What dosage forms it comes in:

10, 20 and 40 mg tablets

### WARNINGS AND PRECAUTIONS

Use only as specifically directed. Do not alter the dosage unless ordered to do so by your physician. Check with your physician before discontinuing medication since this may result in an increase of your blood lipids.

Before starting NU-PRAVASTATIN, tell your doctor or pharmacist if you:

- Are breast-feeding or intend to breast feed,
- Have thyroid problems
- Have a family history of muscular disorders
- Had any past problems with muscles (pain, tenderness), after using an HMG-CoA reductase inhibitor (“statin”) such as atorvastatin (Lipitor®)<sup>1</sup>, fluvastatin (Lescor®)<sup>2</sup>, lovastatin (Mevacor®)<sup>3</sup>, pravastatin (Pravachol®)<sup>4</sup>, rosuvastatin (Crestor®)<sup>5</sup> or simvastatin (Zocor®)<sup>3</sup>, or have developed an allergy or intolerance to them.
- Have kidney or liver problems,
- Diabetes,
- Have undergone surgery or other tissue injury,
- Do excessive physical exercise.

<sup>1</sup> Lipitor® is a registered trademark of Pfizer Ireland Pharmaceuticals.

<sup>2</sup> Lescor® is a registered trademark of Sandoz Canada Inc.

<sup>3</sup> Mevacor® & Zocor® are registered trademarks of Merck & Co., Inc.

<sup>4</sup> Pravachol® is a registered trademark of Bristol-Myers Squibb company Inc.

<sup>5</sup> Crestor® is a registered trademark of IPR Pharmaceuticals Inc.



## Pregnancy

Before using this medication, discuss the following with your doctor:

- Cholesterol compounds are essential elements for the development of the fetus.
- Cholesterol-lowering drugs can harm the fetus. If you are of child-bearing age, discuss with your doctor the potential hazards to the fetus and the importance of birth control methods
- NU-PRAVASTATIN should not be used by pregnant women. If you become pregnant, discontinue use immediately and discuss with your doctor.

## INTERACTIONS WITH THIS MEDICATION

NU-PRAVASTATIN may interact with other drugs, including those you take without prescription. You must tell your doctor or pharmacist about all drugs, including prescription and non-prescription, herbal products and supplements, you are taking or planning to take before you take NU-PRAVASTATIN.

You should tell your doctor if you are taking other cholesterol lowering medication such as fibrates (gemfibrozil, fenofibrate), niacin or ezetimibe. If you take these drugs and NU-PRAVASTATIN together you may be at increased risk of myopathy (muscle disease with aching or weakness).

If you are taking a bile acid-binding resin (such as cholestyramine, colestipol), your doctor will recommend that you take NU-PRAVASTATIN either one hour or more before or at least four hours following the resin. Taking them together causes lower amounts of NU-PRAVASTATIN in the blood, making it less effective.

If you are taking cyclosporine, your doctor may need to adjust the dose of NU-PRAVASTATIN.

Excessive alcohol intake should be avoided when taking NU-PRAVASTATIN. Tell your doctor if you regularly drink *three or more* alcoholic drinks daily.

## PROPER USE OF THIS MEDICATION

- Do not change the dose unless directed by a doctor.
- NU-PRAVASTATIN should be taken as a single dose at bedtime, as prescribed by your physician.
- Your physician will monitor your clinical condition and your blood tests at regular intervals. It is important to have these check-ups done on schedule. Please keep your appointments accurately.
- Notify your physician about any illness which may

develop during your treatment with NU-PRAVASTATIN and about any new prescriptions or non-prescription medication you take. If you require medical help for other reasons, inform the attending physician that you are taking NU-PRAVASTATIN.

- Notify your physician if you are going to have major surgery or have sustained a severe injury.
- Notify your physician of any muscle pain, tenderness or weakness developing during treatment with NU-PRAVASTATIN. (see SIDE EFFECTS ).

### Usual dose:

The recommended starting dose is 20 mg once daily at bedtime. Patients who require a large reduction in LDL-C may be started at 40 mg once daily. The dose of 80 mg once daily should be reserved for patients who do not achieve their treatment goal with lower doses. NU-PRAVASTATIN may be taken without regard to meals.

### Overdose:

There is no specific recommended therapy for overdose with NU-PRAVASTATIN.

**In case of overdose, contact your doctor immediately or go to the nearest hospital emergency room.**

## SIDE EFFECTS AND WHAT TO DO ABOUT THEM

Along with its intended action, any medication may cause unwanted effects.

**Check with your physician as soon as possible** if any of the following side effects occurs: aching muscles, muscle cramping, tiredness or weakness, fever and blurred vision.

### Muscle Effects

Side effects such as myalgia (muscle pain), myopathy (muscle disease with aching or weakness), rhabdomyolysis (a muscle wasting disease), associated tenderness, and rare cases of rhabdomyolysis leading to kidney failure have been reported with other drugs of this class known as HMG-CoA reductase inhibitors (“statins”), including NU-PRAVASTATIN.

As these muscle problems are on rare occasions serious, you should contact your physician promptly if you experience any of the side effects listed in the Table below.

Possible side effects reported with some statins: breathing problems including persistent cough and/ or shortness of breath or fever, mood problems including depression, problems sleeping including insomnia and nightmares and sexual problems.

**SERIOUS SIDE EFFECTS, HOW OFTEN THEY HAPPEN AND WHAT TO DO ABOUT THEM**

Symptom / effect		Talk with your doctor or pharmacist		Stop taking drug and call your doctor or pharmacist
		Only if severe	In all cases	
Rare	-muscle pain that you cannot explain		*	
	-muscle tenderness or muscle weakness		*	
	-generalized weakness, especially if you do not feel well (ie. fever or fatigue)		*	
	-brownish or discoloured urine		*	

Other side effects may occasionally occur which usually do not require stopping treatment. They may come and go during treatment without any particular danger, but you should mention them to your physician, without undue delay, if they become persistent or bothersome. Such adverse experiences include abdominal pain, constipation, diarrhea, nausea, headache, dizziness, and skin rashes.

***This is not a complete list of side effects. For any unexpected effects while taking NU-PRAVASTATIN, contact your doctor or pharmacist.***

**HOW TO STORE IT**

NU-PRAVASTATIN should be stored at room temperature (15-30°C). Protect from moisture and light.

**REPORTING SUSPECTED SIDE EFFECTS**

You can report any suspected adverse reactions associated with the use of health products to the Canada Vigilance Program by one of the following 3 ways:

- Report online at [www.healthcanada.gc.ca/medeffect](http://www.healthcanada.gc.ca/medeffect)
- Call toll-free at 1-866-234-2345
- Complete a Canada Vigilance Reporting Form and:
  - Fax toll-free to 1-866-678-6789, or
  - Mail to : Canada Vigilance Program  
Health Canada  
Address Locator: 0701D  
Ottawa, ON K1A 0K9

Postage paid labels, Canada Vigilance Reporting Form and the adverse reaction reporting guidelines are available on the MedEffect™ Canada Web site at [www.healthcanada.gc.ca/medeffect](http://www.healthcanada.gc.ca/medeffect).

*NOTE: Should you require information related to the management of side effects, contact your health professional. The Canada Vigilance Program does not provide medical advice.*

**MORE INFORMATION**

For more information, please contact your doctor, pharmacist or other healthcare professional.

This leaflet plus the full product monograph, prepared for health professionals, can be obtained by contacting the sponsor, Nu-Pharm Inc. at:

1-800-267-1438

This leaflet was prepared by Nu-Pharm Inc., Vaughan, Ontario, L4K 4N7

Last revised: March 3, 2011