

PRODUCT MONOGRAPH

^{Pr}**Ava-Tamsulosin CR**

(tamsulosin hydrochloride)

Controlled-Release Tablets 0.4 mg

SELECTIVE ANTAGONIST OF
ALPHA_{1A/1D} ADRENORECEPTOR SUBTYPES
IN THE PROSTATE AND BLADDER

Avantra Inc.
10761-25th NE, Suite 110, Building B,
Calgary, Alberta, Canada
T2C 3C2

Date of Preparation: April 14, 2011

Submission Control No: 146063

Table of Contents

PART I: HEALTH PROFESSIONAL INFORMATION	3
SUMMARY PRODUCT INFORMATION	3
INDICATIONS AND CLINICAL USE	3
CONTRAINDICATIONS.....	3
WARNINGS AND PRECAUTIONS.....	3
ADVERSE REACTIONS	6
DRUG INTERACTIONS.....	9
DOSAGE AND ADMINISTRATION	11
OVERDOSAGE.....	11
ACTION AND CLINICAL PHARMACOLOGY.....	12
STORAGE AND STABILITY.....	16
DOSAGE FORMS, COMPOSITION AND PACKAGING.....	16
PART II: SCIENTIFIC INFORMATION	17
PHARMACEUTICAL INFORMATION	17
CLINICAL TRIALS	18
DETAILED PHARMACOLOGY.....	23
TOXICOLOGY.....	23
REFERENCES.....	25
PART III: CONSUMER INFORMATION	27

Pr Ava-Tamsulosin CR
(tamsulosin hydrochloride)

PART I: HEALTH PROFESSIONAL INFORMATION

SUMMARY PRODUCT INFORMATION

Route of Administration	Dosage Form/ Strength	Clinically Relevant Nonmedicinal Ingredients
oral	Controlled release tablet/0.4 mg	None For a complete listing see DOSAGE FORMS, COMPOSITION AND PACKAGING.

INDICATIONS AND CLINICAL USE

Ava-Tamsulosin CR (tamsulosin hydrochloride) is indicated for the treatment of Lower Urinary Tract Symptoms (LUTS) associated with benign prostatic hyperplasia (BPH).

Geriatrics (> 65 years of age):

Ava-Tamsulosin CR has been found to be a safe and effective α_1 adrenoceptor antagonist when administered at therapeutic doses (0.4 mg once daily) to patients over the age of 65 years.

Pediatrics :

Ava-Tamsulosin CR is not indicated for use in children.

CONTRAINDICATIONS

Ava-Tamsulosin CR is contraindicated in patients known to have hypersensitivity including drug induced angioedema to tamsulosin or any component of the Ava-Tamsulosin CR controlled release formulation. For a complete listing, see the DOSAGE FORMS, COMPOSITION AND PACKAGING section of the Product Monograph.

WARNINGS AND PRECAUTIONS

As with all α_1 -adrenoceptor antagonists, a reduction in blood pressure can occur in individual cases during treatment with tamsulosin hydrochloride, as a result of which, rarely, syncope can occur. At the first signs of orthostatic hypotension (dizziness, weakness), the patient should sit or lie down until the symptoms have disappeared. Patients beginning treatment with tamsulosin hydrochloride should be cautioned to avoid situations where injury could result should syncope occur (see ADVERSE REACTIONS).

General

Tamsulosin hydrochloride is not indicated for the treatment of hypertension.

Carcinoma of the prostate

Carcinoma of the prostate and BPH cause many of the same symptoms. These two diseases frequently co-exist. Patients should be evaluated to rule out the presence of carcinoma of the prostate.

Orthostatic Hypotension

While syncope is the most severe orthostatic symptom of α_1 -adrenoceptor antagonists, other symptoms can occur (dizziness and postural hypotension). In a phase III, randomized, doubleblind, placebo-controlled trial involving male patients treated once daily with either 0.4 mg tamsulosin hydrochloride controlled release tablets (n=350) or placebo (n=356), both supine and standing blood pressure were monitored over the course of the 12 week treatment period. There was a small, clinically insignificant decrease from baseline in mean supine and standing systolic/diastolic BP in both treatment groups; the decrease in BP from baseline in the tamsulosin hydrochloride group (< 2 mmHg) was comparable to the placebo group (< 1.5 mmHg). There were no cases of orthostatic hypotension or syncope reported in either treatment group.

Patients in occupations in which orthostatic hypotension could be dangerous should be treated with caution.

If hypotension occurs, the patient should be placed in the supine position and if this measure is inadequate, volume expansion with intravenous fluids or vasopressor therapy may be used. A transient hypotensive response is not a contraindication to further therapy with tamsulosin hydrochloride.

Hepatic

The treatment of patients with severe hepatic impairment should be approached with caution as no studies have been conducted in this patient population. No dose adjustment is warranted in hepatic insufficiency.

Renal

The treatment of patients with severe renal impairment (creatinine clearance of <10 mL/min) should be approached with caution, as these patients have not been studied.

Intraoperative Floppy Iris Syndrome

During cataract surgery, a variant of small pupil syndrome known as Intraoperative Floppy Iris Syndrome (IFIS) has been reported during post-marketing surveillance in association with alpha-1 blocker therapy, including tamsulosin hydrochloride. Most reports to date were in patients taking tamsulosin hydrochloride when IFIS occurred, but in some cases, tamsulosin hydrochloride had been stopped prior to surgery. In most of these cases, the tamsulosin hydrochloride had been stopped recently prior to surgery (2 to 14 days), but in a few cases, IFIS was reported after the patient had been off tamsulosin hydrochloride for a longer period. This variant of small pupil syndrome is characterized by the combination of a flaccid iris that billows in response to intraoperative irrigation currents, progressive intraoperative miosis despite preoperative dilation with standard mydriatic drugs and potential prolapse of the iris toward the phacoemulsification incisions. The patient's

ophthalmologist should be prepared for possible modifications to their surgical technique, such as the utilization of iris hooks, iris dilator rings, or viscoelastic substances. The benefit of stopping alpha-1 blocker therapy, including tamsulosin hydrochloride prior to cataract surgery has not been established.

Special Populations

Pregnant Women: Tamsulosin hydrochloride controlled release tablet is not indicated for use in women. Studies in pregnant rats and rabbits at daily doses of 300 and 50 mg/kg, respectively (30,000 and 5,000 times the anticipated human dose), revealed no evidence of harm to the fetus. There are no adequate data on the use of tamsulosin in pregnant women; therefore the potential risk from the use of tamsulosin during pregnancy in humans is unknown.

Nursing Women: Tamsulosin hydrochloride controlled release tablet is not indicated for use in women.

Pediatrics: Tamsulosin hydrochloride controlled release tablet is not indicated for use in children.

Geriatrics (>65 years of age): There were no pharmacokinetic studies conducted in geriatric patients with tamsulosin hydrochloride controlled release tablet. Cross-study comparisons of overall exposure (AUC) and half-life of tamsulosin hydrochloride sustained release capsules indicate that the pharmacokinetic disposition of tamsulosin may be slightly prolonged in geriatric males compared to young healthy male volunteers. However, tamsulosin hydrochloride sustained release capsules have been found to be a safe and effective alpha₁ adrenoreceptor antagonist when administered at therapeutic doses to patients over the age of 65 years.

Gender Effects: Tamsulosin hydrochloride controlled release tablet is not indicated for use in women. Safety, effectiveness, and pharmacokinetics have not been evaluated in women.

Monitoring and Laboratory Tests

No laboratory test interactions with tamsulosin hydrochloride controlled release tablets are known. Treatment with tamsulosin hydrochloride controlled release tablet for up to 3 months had no significant effect on prostate specific antigen (PSA).

Information for the patient (see PART III: Consumer information)

Patients should be advised not to crush or chew Ava-Tamsulosin CR tablets. These tablets are specially formulated to control the delivery of tamsulosin HCl to the blood stream.

There are no specific studies conducted with Ava-Tamsulosin CR tablets and the ability to drive vehicles or use machinery. However patients should be advised that dizziness can occur with Ava-Tamsulosin CR tablets, requiring caution in people who must drive, operate machinery, or perform hazardous tasks.

Patients should be advised about the possibility of priapism as a result of treatment with Ava-Tamsulosin CR tablets and other similar medications. Patients should be informed that this reaction is extremely rare, but if not brought to immediate medical attention, can lead to permanent erectile dysfunction (impotence).

ADVERSE REACTIONS

Adverse Drug Reaction Overview

Information on the safety profile of tamsulosin hydrochloride controlled release tablets was derived from two, 3-month placebo-controlled clinical trials involving 1840 male subjects. Of these, 563 were treated with tamsulosin hydrochloride controlled release tablets 0.4 mg, 709 with tamsulosin hydrochloride sustained release capsules 0.4 mg and 568 with placebo. The results suggest that tamsulosin hydrochloride controlled release tablets 0.4 mg and tamsulosin hydrochloride sustained release capsules 0.4 mg were very well tolerated with the AE profile of tamsulosin hydrochloride controlled release tablets 0.4 mg tending to be more favourable than that of tamsulosin hydrochloride sustained release capsules.

In these studies, 3.6% of patients taking tamsulosin hydrochloride controlled release tablets (0.4 mg) discontinued from the study due to adverse events compared with 1.2% in the placebo group. The most frequently reported Treatment Emergent Adverse Events (TEAE) in the tamsulosin hydrochloride controlled release tablets 0.4 mg group were dizziness and those related to abnormal ejaculation, although the incidence of both were comparable to placebo.

Impotence and other events related to sexual function are commonly associated with other alpha₁-blockers, however in the 3-month studies with tamsulosin hydrochloride controlled release tablets there were minimal effects on sexual function and ejaculatory disorders/abnormalities with no reports of priapism. The difference in incidence of ejaculatory disorders/abnormalities between tamsulosin hydrochloride controlled release tablets and placebo was not statistically significant. No patient discontinued treatment with tamsulosin hydrochloride controlled release tablets 0.4 mg due to ejaculatory disorders/abnormalities.

Clinical Trial Adverse Drug Reactions

Because clinical trials are conducted under very specific conditions the adverse reaction rates observed in the clinical trials may not reflect the rates observed in practice and should not be compared to the rates in the clinical trials of another drug. Adverse drug reaction information from clinical trials is useful for identifying drug-related adverse events and for approximating rates.

Table 1: TREATMENT-EMERGENT ADVERSE EVENTS IN ≥ 2% OF PATIENTS RECEIVING EITHER TAMSULOSIN OR PLACEBO DURING THE 3 MONTH PLACEBO AND ACTIVE-CONTROLLED STUDY

SOC/Preferred term	Placebo N=356	Tamsulosin Hydrochloride Controlled Release Tablets 0.4 mg N=360	Tamsulosin Hydrochloride Sustained Release Capsules 0.4 mg N=709
Any TEAE	71 (19.9%)	93 (25.8%)	168 (23.7%)
Cardiac disorders	8 (2.2%)	8 (2.2%)	16 (2.3%)
Gastrointestinal disorders	7 (2.0%)	14 (3.9%)	34 (4.8%)
General Disorders and administration site conditions	2 (0.6%)	8 (2.2%)	11 (1.6%)
Infections and infestations	16 (4.5%)	20 (5.6%)	32 (4.5%)
Investigations	10 (2.8%)	6 (1.7%)	10 (1.4%)
Musculoskeletal and connective tissue disorders	7 (2.0%)	9 (2.5%)	12* (1.7%)
Nervous system disorders	9 (2.5%)	11 (3.1%)	29 (4.1%)
Reproductive system and breast disorders	2 (0.6%)	12 (3.3%)	28 (3.9%)
Respiratory, thoracic and mediastinal disorders	3 (0.8%)	10 (2.8%)	20 (2.8%)
Vascular disorders	8 (2.2%)	6 [#] (1.7%)	15 (2.1%)

Number (%) of patients

A patient may experience an AE more than once or may experience more than one AE within the same SOC.

* Post database lock: deletion of 1 AE

Post database lock: addition of 1 AE

TABLE 2: NUMBER (%) OF PATIENTS WITH TEAES COMMONLY ASSOCIATED WITH α_1 -AR ANTAGONISTS DURING THE 3 MONTH PLACEBO AND ACTIVE-CONTROLLED STUDY

SOC/Preferred term	Placebo N=356	Tamsulosin Hydrochloride Controlled Release Tablets 0.4mg N=360	Tamsulosin Hydrochloride Sustained Release Capsules 0.4mg N=709
Non-cardiovascular class effects			
Retrograde ejaculation	1 (0.3%)	6 (1.7%)	10 (1.4%)
Ejaculation Failure	0 (0.0%)	0 (0.0%)	2 (0.3%)
Semen volume reduced	0 (0.0%)	1 (0.3%)	2 (0.3%)
Ejaculation delayed	0 (0.0%)	1 (0.3%)	2 (0.3%)
Ejaculation disorder NOS	0 (0.0%)	0 (0.0%)	6 (0.8%)
ABNORMAL EJACULATION POOLED	1 (0.3%)	7 (1.9%)	22 (3.1%)
Headache NOS	4 (1.1%)	3 (0.8%)	10 (1.4%)
Asthenia	1 (0.3%)	1 (0.3%)	1 (0.1%)
Fatigue	1 (0.3%)	3 (0.8%)	2 (0.3%)
Somnolence	0 (0.0%)	0 (0.0%)	2 (0.3%)
Rhinitis NOS	0 (0.0%)	1 (0.3%)	2 (0.3%)
Nasal congestion	0 (0.0%)	1 (0.3%)	1 (0.1%)
Nasal obstruction	0 (0.0%)	0 (0.0%)	0 (0.0%)
SUB-TOTAL	7 (2.0%)	16 (4.4%)	36 (5.1%)
Cardiovascular class effects			
Dizziness	5 (1.4%)	5 (1.4%)	9 (1.3%)
Dizziness aggravated	0 (0.0%)	0 (0.0%)	2 (0.3%)
Dizzy spell	0 (0.0%)	0 (0.0%)	1 (0.1%)
DIZZINESS POOLED	5 (1.4%)	5 (1.4%)	12 (1.7%)
Palpitations	2 (0.6%)	2 (0.6%)	1 (0.1%)
Tachycardia NOS	0 (0.0%)	1 (0.3%)	2 (0.3%)
Hypotension NOS	1 (0.3%)	0 (0.0%)	2 (0.3%)
Orthostatic hypotension	0 (0.0%)	0 (0.0%)	3 (0.4%)
Dizziness postural	0 (0.0%)	0 (0.0%)	2 (0.3%)
Syncope	0 (0.0%)	0 (0.0%)	1 (0.1%)
Orthostatic/circulatory collapse	0 (0.0%)	0 (0.0%)	0 (0.0%)
Depressed level of/loss of consciousness.	0 (0.0%)	1 (0.3%)	1 (0.1%)
SUB-TOTAL	8 (2.2%)	9 (2.5%)	23 (3.2%)
TOTAL	13 (3.7%)	25 (6.9%)	55 (7.8%)

A patient may experience an AE more than once or may experience more than one AE within the same SOC.

Angioedema or priapism were not reported in the phase 2 or 3 studies.

Post-Market Adverse Drug Reactions

The following adverse reactions have been reported during the use of tamsulosin hydrochloride at a frequency of:

>1% AND < 10%:

Nervous System Disorders: dizziness

> 0.1% AND < 1%:

Cardiac disorders: palpitations

Gastrointestinal Disorders: constipation, diarrhea, nausea, and vomiting

General disorders and administration site conditions: asthenia

Nervous systems disorders: headache

Reproductive system and breast disorders: abnormal ejaculation

Respiratory, thoracic and mediastinal disorders: rhinitis

Skin and subcutaneous tissue disorders: rash, pruritus, urticaria

Vascular disorders: postural hypotension

> 0.01% AND < 0.1%:

syncope, angioedema

< 0.01%:

priapism

During cataract surgery, a variant of small pupil syndrome known as Intraoperative Floppy Iris Syndrome (IFIS) has been reported during post-marketing surveillance in association with alpha-1 blocker therapy, including tamsulosin hydrochloride (see WARNINGS AND PRECAUTIONS).

An open label extension study involving 609 male patients with lower urinary tract symptoms (LUTS) associated with BPH demonstrated sustained efficacy, safety and long-term tolerability of tamsulosin for up to 6 years.

DRUG INTERACTIONS

Overview

There were no drug interaction studies conducted specifically with tamsulosin hydrochloride controlled release tablets and it is expected that the interaction profile would not be any different than that of tamsulosin hydrochloride sustained release capsules. As with tamsulosin hydrochloride sustained release capsules, caution should be exercised with concomitant administration of tamsulosin hydrochloride controlled release tablets and other alpha-adrenergic blocking agents.

No clinically significant drug-drug interactions were observed when tamsulosin hydrochloride

sustained release capsules 0.4 mg or 0.8 mg were administered with one of the following therapeutic agents: nifedipine, atenolol, enalapril, digoxin, furosemide or theophylline.

Drug-Drug Interactions

Nifedipine, Atenolol, Enalapril: No dosage adjustments are necessary when tamsulosin hydrochloride controlled release tablets is administered concomitantly with nifedipine, atenolol, or enalapril. In three studies in hypertensive subjects (age range 47-79 years) whose blood pressure was controlled with stable doses of nifedipine, atenolol or enalapril for at least three months, tamsulosin hydrochloride sustained release 0.4 mg capsules for seven days followed by tamsulosin hydrochloride sustained release 0.8 mg capsules for another seven days (n=8 per study) resulted in no clinically significant effects on blood pressure and pulse rate compared to placebo (n=4 per study).

Warfarin: A definitive drug-drug interaction study between tamsulosin and warfarin was not conducted. Results from limited in-vitro and in-vivo studies are inconclusive. Therefore, caution should be exercised with concomitant administration of warfarin and tamsulosin hydrochloride controlled release tablets.

Digoxin and Theophylline: No dosage adjustments are necessary when tamsulosin hydrochloride controlled release tablet is administered concomitantly with digoxin or theophylline. In two studies in healthy volunteers (n=10 per study; age range 19-39 years), receiving tamsulosin hydrochloride sustained release capsules 0.4 mg/day for two days, followed by tamsulosin hydrochloride sustained release capsules 0.8 mg/day for five to eight days, single intravenous doses of digoxin 0.5 mg or theophylline 5 mg/kg resulted in no change in the pharmacokinetics of digoxin or theophylline.

Furosemide: No dosage adjustments are necessary when tamsulosin hydrochloride controlled release tablets is administered concomitantly with furosemide. The pharmacokinetic and pharmacodynamic interaction between tamsulosin hydrochloride sustained release capsules 0.8 mg/day (steady-state) and furosemide 20 mg intravenously (single dose) was evaluated in ten healthy volunteers (age range 21-40 years). Tamsulosin hydrochloride sustained release capsules had no effect on the pharmacodynamics (excretion of electrolytes) of furosemide. While furosemide produced a 11% to 12% reduction in tamsulosin C_{max} and AUC, these changes are expected to be clinically insignificant and do not require adjustment of the tamsulosin hydrochloride controlled release tablet dosage.

Cimetidine: The effects of cimetidine at the highest recommended dose (400 mg every six hours for six days) on the pharmacokinetics of a single tamsulosin hydrochloride sustained release 0.4 mg capsules dose was investigated in ten healthy volunteers (age range 21-38 years). Treatment with cimetidine resulted in a moderate increase in tamsulosin AUC (44%) due to a significant decrease (26%) in the clearance of tamsulosin. Therefore, tamsulosin hydrochloride controlled release tablet should be used with caution in combination with cimetidine.

Drug-Laboratory Interactions

No laboratory test interactions with tamsulosin hydrochloride controlled release tablets are known. Treatment with tamsulosin hydrochloride controlled release tablets for up to 3 months had no

significant effect on prostate specific antigen (PSA).

DOSAGE AND ADMINISTRATION

Dosing Considerations

Ava-Tamsulosin CR tablet 0.4 mg once daily is recommended as the dose for the treatment of lower urinary tract symptoms (LUTS) associated with Benign Prostatic Hyperplasia (BPH).

Missed Dose

If a dose of Ava-Tamsulosin CR tablet is missed, the missed dose can be taken later the same day. If a day is missed, the missed dose should be skipped and the regular dosing schedule should be resumed. Doses must not be doubled.

Administration

Ava-Tamsulosin CR tablets should be taken at the same time each day with or without food. Ava-Tamsulosin CR tablets must be swallowed whole, as crushing or chewing will interfere with the controlled release of the active ingredient.

OVERDOSAGE

Should overdosage of Ava-Tamsulosin CR lead to hypotension, (see WARNINGS AND PRECAUTIONS), support of the cardiovascular system is of first importance. Restoration of blood pressure and normalization of heart rate may be accomplished by keeping the patient in the supine position. If this measure is inadequate, then administration of intravenous fluids should be considered. If necessary, vasopressors should then be used and renal function should be monitored and supported as needed. Laboratory data indicate that tamsulosin is 94% to 99% protein bound: therefore dialysis is unlikely to be of benefit.

Measures such as emesis, can be taken to impede absorption. When large quantities are involved, gastric lavage can be applied and activated charcoal and an osmotic laxative, such as sodium sulphate can be administered.

Acute overdose with 5 mg tamsulosin hydrochloride has been reported. Acute hypotension (systolic blood pressure 70 mmHg), vomiting and diarrhoea were observed, which were treated with fluid replacement and the patient was discharged the same day. One patient reported an overdose of 30 X 0.4 mg tamsulosin hydrochloride sustained release capsules. Following the ingestion of the capsules, the patient reported a headache judged to be severe and probably drug-related that resolved the same day.

For management of a suspected drug overdose, contact your regional Poison Control Centre.

ACTION AND CLINICAL PHARMACOLOGY

Mechanism of Action

Tamsulosin hydrochloride is an α_1 adrenoreceptor (AR) blocking agent used for the treatment of lower urinary tract symptoms (LUTS) associated with benign prostatic hyperplasia (BPH). It exhibits selectivity for both α_{1A} and α_{1D} receptors over the α_{1B} AR subtype. These three AR subtypes have a distinct distribution pattern in human tissue. Whereas approximately 70% of the α_1 -receptors in human prostate are of the α_{1A} subtype, the human bladder contains predominantly the α_{1D} subtype while blood vessels express predominantly α_{1B} subtype.

Stimulation/antagonism of each of the receptor subtypes gives rise to a distinct pharmacological effect.

Lower Urinary Tract Symptoms (LUTS) suggestive of benign prostatic obstruction (BPO) formerly referred to as symptomatic benign prostatic hyperplasia (BPH) are very common in men > 50 years old; the prevalence increases with age. The symptoms associated with LUTS/BPH are comprised of two underlying components: the static and dynamic. The static component is related to an increase in prostate size caused, in part, by a proliferation of smooth muscle cells in the prostatic stroma. However, the severity of BPH symptoms and the degree of urethral obstruction do not correlate well with the size of the prostate. The dynamic component is a function of an increase in smooth muscle tone in the prostate and bladder neck leading to constriction of the bladder outlet. Smooth muscle tone is mediated by the sympathetic nervous stimulation of α_1 adrenoreceptors, which are abundant in the prostate, prostatic capsule, prostatic urethra, and bladder neck. Blockade of these adrenoreceptors can cause smooth muscles in the bladder neck and prostate to relax, resulting in an improvement in urine flow rate and a reduction in symptoms of BPH.

It is further believed that blockade of α_{1D} subtypes in the human obstructed bladder may be responsible for reducing detrusor overactivity and subsequent relief of storage symptoms.

Tamsulosin hydrochloride is not intended for use as an antihypertensive drug.

Pharmacodynamics

Tamsulosin hydrochloride controlled release tablet is designed to provide a consistent slow release of tamsulosin which is maintained throughout the gastro-intestinal tract, resulting in an adequate exposure, with little fluctuation, over 24 hours.

The pharmacokinetics of tamsulosin have been evaluated in adult healthy volunteers with doses ranging from 0.4 mg to 1.6 mg.

Pharmacokinetics

Absorption: After a single oral dose of 0.4 mg tamsulosin hydrochloride controlled release tablet in the fasted state, the plasma concentration of tamsulosin gradually increased reaching C_{max} at a

median time of 6 hours. At steady state, which is reached by day 4 of multiple dosing, plasma concentrations of tamsulosin peak at 4 - 6 hours in the fasted and fed state. Peak plasma concentrations increase from approximately 6 ng/ml after the first dose to 11 ng/ml in steady state. After C_{max} is reached, the plasma concentration decreases, but at approximately 16 - 24 hours post-dose, a small increase or second plateau is observed. The absolute bioavailability of tamsulosin from tamsulosin hydrochloride controlled release tablet was estimated to be 55-59%.

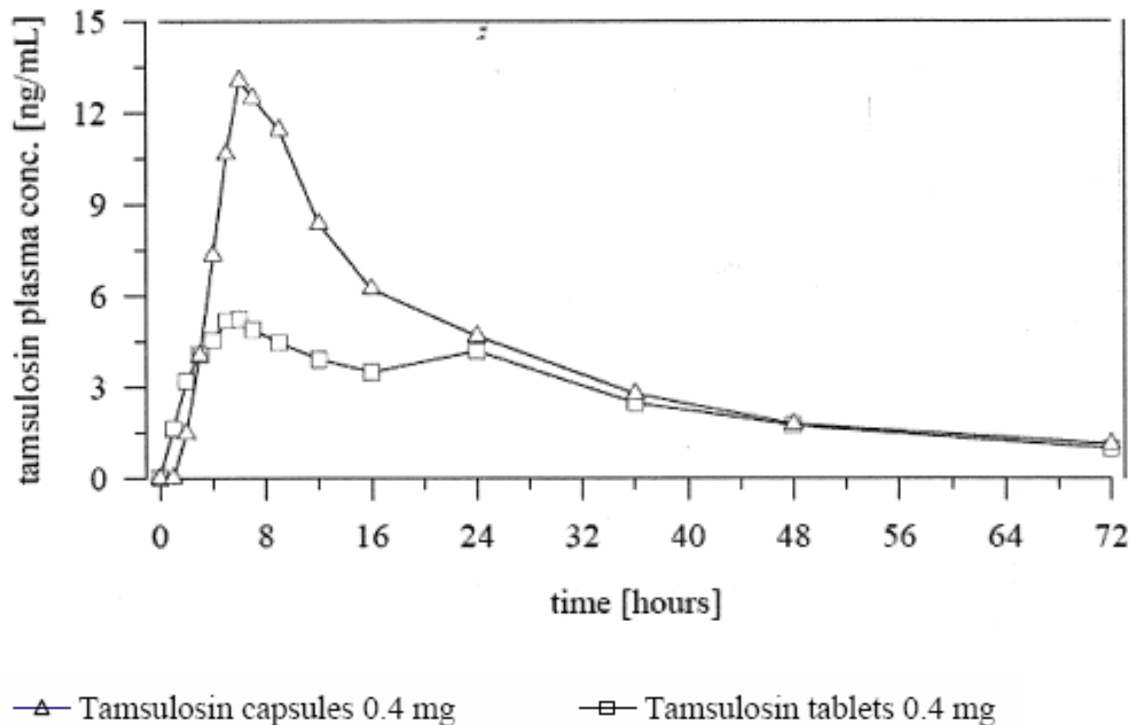
A study conducted at steady state with 0.4 mg tamsulosin hydrochloride controlled release tablet demonstrated that the plasma concentration-time profile in the fed state was bioequivalent to the fasted state, indicating the absence of a food effect (Table 3).

Table 3: MEAN PHARMACOKINETIC PARAMETERS OF TAMSULOSIN AT STEADY STATE FOLLOWING ADMINISTRATION OF ONCE DAILY DOSES OF 0.4 MG TAMSULOSIN HYDROCHLORIDE CONTROLLED RELEASE TABLET IN BOTH THE FED AND FASTED STATE

Parameter	Tamsulosin hydrochloride controlled release tablet 0.4mg (Fed) (n=24)	Tamsulosin hydrochloride controlled release tablet 0.4mg (Fasted) (n=24)
AUC _{0-inf} (ng.h/ml)	291.1	278.7
C_{max} (ng/ml)	11.1	10.7
C_{24} (ng/ml)	4.8	4.6
T_{max} (h)	4.16	4.75
$T_{1/2}$ (h)	14.6	15.6

The 0.4 mg tamsulosin hydrochloride controlled release tablet is not bioequivalent to the 0.4 mg tamsulosin hydrochloride sustained release capsule, as the test/reference ratio for C_{max} and AUC did not fall within the predefined limits of 80-125%. The plasma concentration-time profile presented in Figure 1 shows the lack of a pronounced spike in C_{max} with tamsulosin hydrochloride controlled release tablets compared with sustained release capsules which may be consistent with a more favourable safety profile.

FIGURE 1: MEAN TAMSULOSIN PLASMA VS. TIME PROFILES OF TAMSULOSIN HYDROCHLORIDE CONTROLLED RELEASE TABLET 0.4 MG AND TAMSULOSIN SUSTAINED RELEASE CAPSULES, 0.4 MG (N=12)



Distribution: The mean steady-state apparent volume of distribution of tamsulosin after intravenous administration to ten healthy male adults was 16 litres, which is suggestive of distribution into extracellular fluids in the body. Additionally, whole body autoradiographic studies in mice, rats and dogs indicate that tamsulosin is widely distributed to most tissues including kidney, prostate, liver, gall bladder, heart, aorta, and brown fat, and minimally distributed to the brain, spinal cord, and testes.

Tamsulosin is extensively bound to human plasma proteins (94% to 99%), primarily alpha-1-acid glycoprotein (AAG) in humans, with linear binding over a wide concentration range (20 to 600 ng/mL). The results of two-way in vitro studies indicate that the binding of tamsulosin to human plasma proteins is not affected by amitriptyline, diclofenac, glyburide, simvastatin plus simvastatin-hydroxy acid metabolite, warfarin, diazepam, propranolol, trichlormethiazide, or chlormadinone. Likewise, tamsulosin had no effect on the extent of binding of these drugs.

Metabolism : Tamsulosin is extensively metabolized by cytochrome P450 enzymes (CYP3A) in the liver, followed by extensive glucuronide or sulfate conjugation of metabolites. On administration of a dose of radiolabelled tamsulosin to four healthy volunteers, 97% of the administered radioactivity was recovered, with urine (76%) representing the primary route of

excretion compared to feces (21%) over 168 hours. Less than 10% of the dose was recovered as unchanged (parent) compound in the urine.

Metabolites of tamsulosin do not contribute significantly to tamsulosin adrenoreceptor antagonist activity. Furthermore, there is no enantiomeric bioconversion from tamsulosin [R(-) isomer] to the S(+) isomer in studies with mice, rats, dogs, and humans.

Incubations with human liver microsomes showed no evidence of clinically significant interactions between tamsulosin and drugs which are known to interact or be metabolized by hepatic enzymes, such as amitriptyline, diclofenac, albuterol (beta agonist), glyburide (glibenclamide), finasteride (5 alpha-reductase inhibitor for treatment of BPH), and warfarin. No dose adjustment is warranted in hepatic insufficiency.

Excretion: Tamsulosin undergoes restrictive clearance in humans, with a relatively low systemic clearance (2.88 L/h). Tamsulosin exhibits linear pharmacokinetics following single or multiple dosing of tamsulosin hydrochloride controlled release tablets resulting in a proportional increase in C_{max} and AUC with increasing doses. Intrinsic clearance is independent of tamsulosin binding to AAG, but diminishes with age, resulting in a 40% overall higher exposure (AUC) in subjects of age 55 to 75 years compared to subjects of age 20 to 32 years.

Following intravenous or oral administration of an immediate-release formulation, the elimination half-life of tamsulosin in plasma ranged from five to seven hours. Because of absorption rate-controlled pharmacokinetics with the tamsulosin hydrochloride controlled release tablets formulation, the apparent half-life of tamsulosin increases to approximately 12 to 15 hours in healthy volunteers.

Special Populations and Conditions

Pediatrics: Tamsulosin hydrochloride controlled release tablet is not indicated for use in children. Pharmacokinetics have not been evaluated in pediatrics.

Geriatrics: There were no pharmacokinetic studies conducted in geriatric patients with tamsulosin hydrochloride controlled release tablets. Cross-study comparisons of overall exposure (AUC) and half-life of tamsulosin hydrochloride sustained release capsules indicate that the pharmacokinetic disposition of tamsulosin may be slightly prolonged in geriatric males compared to young healthy male volunteers. However, tamsulosin hydrochloride sustained release capsules have been found to be a safe and effective α_1 adrenoreceptor antagonist when administered at therapeutic doses to patients over the age of 65 years.

Gender Effects: Tamsulosin hydrochloride controlled release tablet is not indicated for use in women. Pharmacokinetics have not been evaluated in women.

Hepatic Insufficiency: The pharmacokinetics of tamsulosin have been compared in subjects with hepatic dysfunction (n=8) and in normal subjects (n=8). While a change in the overall plasma concentration of tamsulosin was observed as the result of altered binding to AAG, the unbound (active) concentration of tamsulosin does not change significantly with only a modest (32%) change in intrinsic clearance of unbound tamsulosin. Therefore, patients with mild to moderate

hepatic dysfunction do not require an adjustment in tamsulosin hydrochloride dosage.

Renal Insufficiency: The pharmacokinetics of tamsulosin have been compared in subjects with moderate (n=6) or severe (n=6) renal impairment and in normal subjects (n=6). While a change in the overall plasma concentration of tamsulosin was observed as the result of altered binding to AAG, the unbound (active) concentration of tamsulosin, as well as the intrinsic clearance, remained relatively constant. Therefore, patients with such renal impairment do not require an adjustment in tamsulosin hydrochloride dosing. Patients with end stage renal disease ($Cl_{cr} < 10$ mL/min) have not been studied.

STORAGE AND STABILITY

Store at room temperature (15°C -30°C).

DOSAGE FORMS, COMPOSITION AND PACKAGING

Ava-Tamsulosin CR are brown, round, biconvex tablets with debossing “0.4” on one side and “SZ” on the other side.

Each Ava-Tamsulosin CR controlled-release formulation tablet for oral administration contains tamsulosin HCl 0.4 mg, and the following non-medicinal ingredients (in alphabetical order): black iron oxide (E172), butylhydroxytoluene, carmine (E120), colloidal anhydrous silica, hydroxypropylcellulose, hypromellose, magnesium stearate, microcrystalline cellulose, polyethylene glycol, polyethylene oxide, quinoline yellow (E104), talc, titanium dioxide.

Ava-Tamsulosin CR (tamsulosin hydrochloride) 0.4 mg is supplied in HDPE bottles of 100 tablets.

PART II: SCIENTIFIC INFORMATION

PHARMACEUTICAL INFORMATION

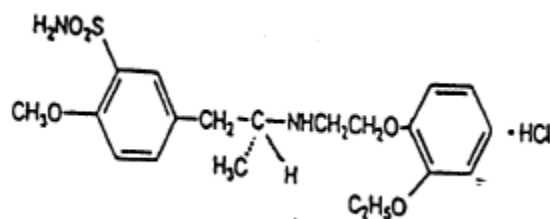
Drug Substance

Proper name: Tamsulosin hydrochloride

Chemical name: (-)-(R)-5-[2-[[2-o-ethoxyphenoxy)ethyl]amino]propyl]-2-methoxybenzenesulfonamide monohydrochloride.

Molecular formula and molecular mass: $C_{20}H_{28}N_2O_5S \cdot HCl$; 444.98

Structural formula:



Physicochemical properties:

Tamsulosin HCl occurs as white crystals that melt with decomposition at approximately 230°C. It is sparingly soluble in water and in methanol, slightly soluble in glacial acetic acid and in ethanol, and practically insoluble in ether.

pH (7.5 mg/mL): 5.20

pKa: 8.37 (secondary amine) ; 10.23 (sulfonamide)

CLINICAL TRIALS

A comparative, single dose, blinded, randomized, 2-way crossover bioequivalence study of Tamsulosin CR (tamsulosin hydrochloride controlled release tablets) vs Flomax CR[®] (tamsulosin hydrochloride Controlled Release tablets, Boehringer Ingelheim, Canada), each administered as 1 x 0.4 mg tablet dose, was conducted on a total of 46 healthy male volunteers, aged 18-55 years, under fasting conditions.

Tamsulosin (1 x 0.4 mg) From measured data Geometric Mean Arithmetic Mean (CV %)				
Parameter	Test*	Reference product †	% Ratio of Geometric Means ¹	90% Confidence Interval ¹
AUC _{0-t} (pg·h/mL)	85230.80	95234.39	89.50 %	80.19 % to 99.88 %
	100232.36 (59.36)	110756.98 (53.90)		
AUC _{0-inf} (pg·h/mL)	96997.08	107274.69	90.42 %	79.06 % to 103.41 %
	117398.13 (62.64)	130448.45 (66.73)		
C _{max} (pg/mL)	4928.53	5011.89	98.34 %	90.33 % to 107.06 %
	5423.85 (48.23)	5384.21 (41.07)		
T _{max} [§] (h)	5.06 (60.07)	6.40 (90.85)		
T _{½ el} [§] (h)	14.15 (44.81)	14.21 (41.91)		

* Tamsulosin CR (tamsulosin hydrochloride controlled release tablets)

† Flomax[®] CR (Manufactured by Astellas Pharma Europe B.V., Pays-Bas; distributed by Boehringer Ingelheim (Canada) Ltd. and purchased in Canada)

§ Expressed as either the arithmetic mean (CV%) only

¹ Based on least-squares mean estimates

A comparative, single dose, blinded, randomized, 2-way crossover bioequivalence study of Tamsulosin CR (tamsulosin hydrochloride controlled release tablets) vs Flomax CR[®] (tamsulosin hydrochloride Controlled Release tablets, Boehringer Ingelheim, Canada), each administered as 1 x 0.4 mg tablet dose, was conducted on a total of 25 healthy male volunteers, aged 18-55 years, under fed conditions.

Tamsulosin Hydrochloride (1 x 0.4 mg) From measured data Geometric Mean Arithmetic Mean (CV %)				
Parameter	Test *	Reference †	% Ratio of Geometric Means ¹	90% Confidence Interval ¹
AUC _{0-t} (pg·h/mL)	146393.08 155162.63 (30.92)	153622.89 161690.74 (32.68)	95.29%	88.59% to 102.50%
AUC _{0-inf} (pg·h/mL)	162224.99 171414.06 (30.65)	165344.01 174817.18 (34.06)	98.11%	91.21% to 105.54%
C _{max} (pg/mL)	9406.47 9830.45 (28.44)	8964.18 9380.37 (33.62)	104.93%	94.32% to 116.75%
T _{max} [§] (h)	6.16 (39.89)	9.22 (58.34)		
T _{1/2 el} [§] (h)	13.25 (33.24)	11.09 (25.42)		

* Tamsulosin CR (tamsulosin hydrochloride controlled release tablets)

† Flomax[®] CR (Manufactured by Astellas Pharma Europe B.V., Pays-Bas; distributed by Boehringer Ingelheim (Canada) Ltd. and purchased in Canada)

§ Expressed as either the arithmetic mean (CV%) only

¹ Based on least-squares mean estimates

A comparative, multiple dose, blinded, randomized, 2-way crossover bioequivalence study of Tamsulosin CR (tamsulosin hydrochloride controlled release tablets) vs Flomax CR[®] (tamsulosin hydrochloride Controlled Release tablets, Boehringer Ingelheim (Canada) Ltd.), each administered as 1 x 0.4 mg tablet dose daily for 7 consecutive days, was conducted on a total of 40 healthy male volunteers, aged 18-55 years, under fasting conditions.

Tamsulosin (1 x 0.4 mg) From measured data Geometric Mean Arithmetic Mean (CV %)				
Parameter	Test*	Reference product †	% Ratio of Geometric Means ¹	90% Confidence Interval ¹
AUC _{0-τ ss} (pg·h/mL)	130636.93 148764.43 (62.75)	124261.72 133863.34 (44.09)	105.13 %	95.46 % to 115.78 %
C _{max ss} (pg·h/mL)	9521.77 10479.85 (48.38)	9355.86 10016.58 (39.04)	101.77 %	92.85 % to 111.55 %
C _{min ss} (pg/mL)	2769.59 3520.21 (88.41)	2523.18 2979.81 (65.08)	109.77 %	94.06 % to 128.09 %
T _{max} [§] (h)	4.04 (28.10)	4.68 (26.01)		
F1 (%)	125.38 (32.04)	134.42 (32.08)		

* Tamsulosin CR (tamsulosin hydrochloride controlled release tablets)

† Flomax[®] CR (Manufactured by Astellas Pharma Europe B.V., Pays-Bas; distributed by Boehringer Ingelheim (Canada) Ltd. and purchased in Canada)

§ Expressed as either the arithmetic mean (CV%) only

¹ Based on least-squares mean estimates

Study demographics and trial design

Efficacy of tamsulosin hydrochloride controlled release tablets has been evaluated in two double-blind, randomized, placebo-controlled studies of 12-weeks duration involving a total of 1840 male subjects. Of these, 563 were treated with tamsulosin hydrochloride controlled release tablets 0.4 mg, 709 with tamsulosin hydrochloride sustained release capsules 0.4 mg and 568 with placebo. The main inclusion criteria in both trials were: male patients aged ≥ 45 years with symptoms diagnosed as LUTS suggestive of BPH. These patients had to have a total International Prostate Symptom Score (I-PSS) of ≥ 13 at enrollment and after 2 week placebo run-in. In both studies, tamsulosin (or placebo) was orally administered at the specified dosage once daily.

The primary efficacy parameter for both studies was the change from baseline to endpoint in Total I-PSS for the full analysis set (FAS). The I-PSS consists of questions that assess the severity of both irritative and obstructive symptoms, with possible scores ranging from 0 to 35. The secondary efficacy analysis contained the changes from baseline in voiding and storage I-PSS subscores, I-PSS QoL score and the individual I-PSS items.

TABLE 4: EFFECT ON TOTAL I-PSS IN THE 3- MONTH STUDIES

Study	Treatment Arm	No. Baseline/Endpoint	Baseline Mean (SD)	Endpoint Mean (SD)	Change at Endpoint Mean (SD) [%]	Difference vs. Placebo Mean (95% CI)	P-value vs. Placebo
617-CL-303	Placebo	210 ^a /211	17.8 (4.0)	11.7 (6.1)	-6.0 (5.4) [-34.5]	-	0.0016
	Tamsulosin Hydrochloride Controlled Release Tablets 0.4 mg	203/203	18.0 (4.3)	10.4 (5.5)	-7.6 (5.3) [-42.4]	-1.6 (-2.5, -0.6)	
617-CL-307	Placebo	350/350	18.3 (4.5)	12.4 (6.4)	-5.8 (5.6) [-32.0]	-	-
	Tamsulosin Hydrochloride Controlled Release Tablets 0.4 mg	354/354	18.5 (4.4)	10.8 (6.2)	-7.7 (5.8) [41.7]	-1.7 (-2.5, -1.0)	<0.0001
	Tamsulosin Hydrochloride Sustained Release Capsules 0.4 mg	700/700	18.5 (4.5)	10.6 (5.9)	-8.0 (5.6) [-43.2]	-2.0 (-2.6, -1.3)	<0.0001

^a Patient 1607 in the placebo group did not have an I-PSS at baseline (Visit 2) and the Visit 1 I-PSS of this

patient was not included in the mean (SD) at baseline.

FIGURE 2: MEAN CHANGE FROM BASELINE IN TOTAL I-PSS OVER TIME IN THE PLACEBO-CONTROLLED STUDY

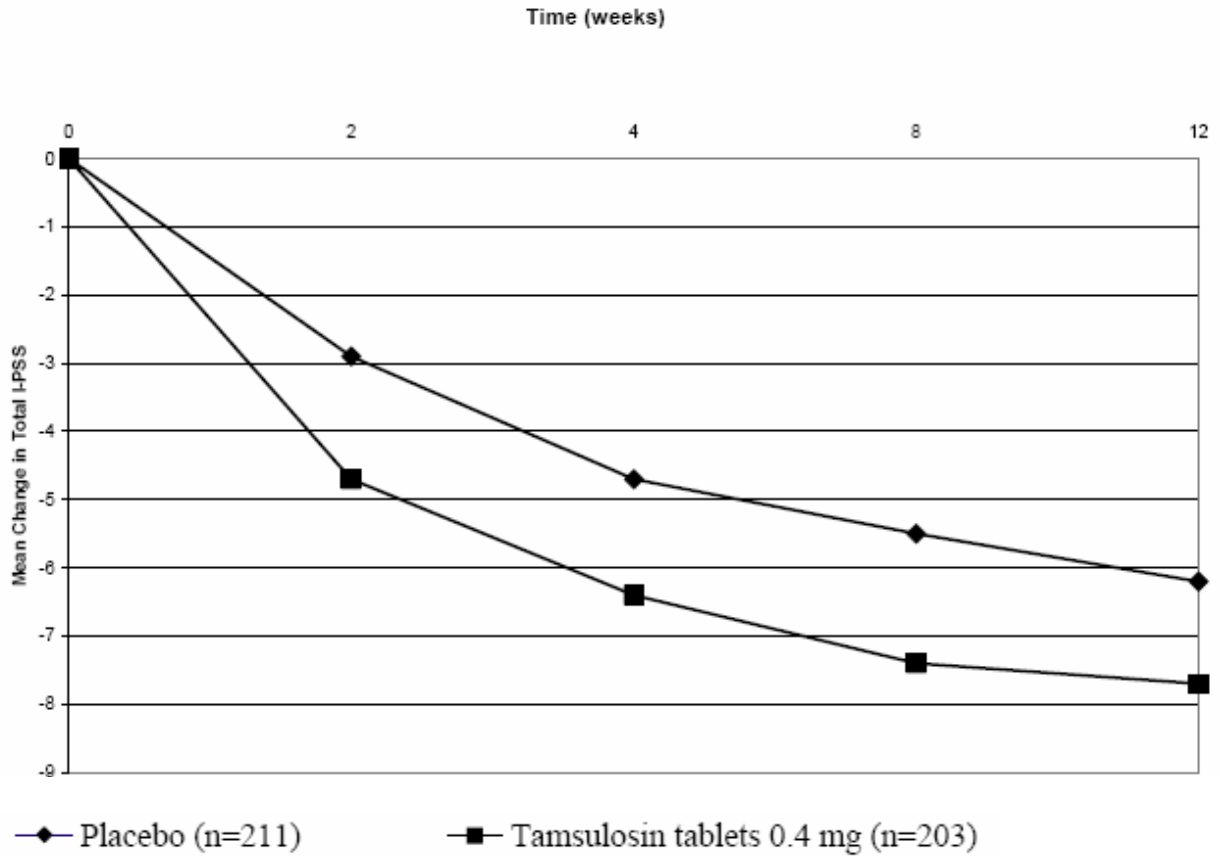
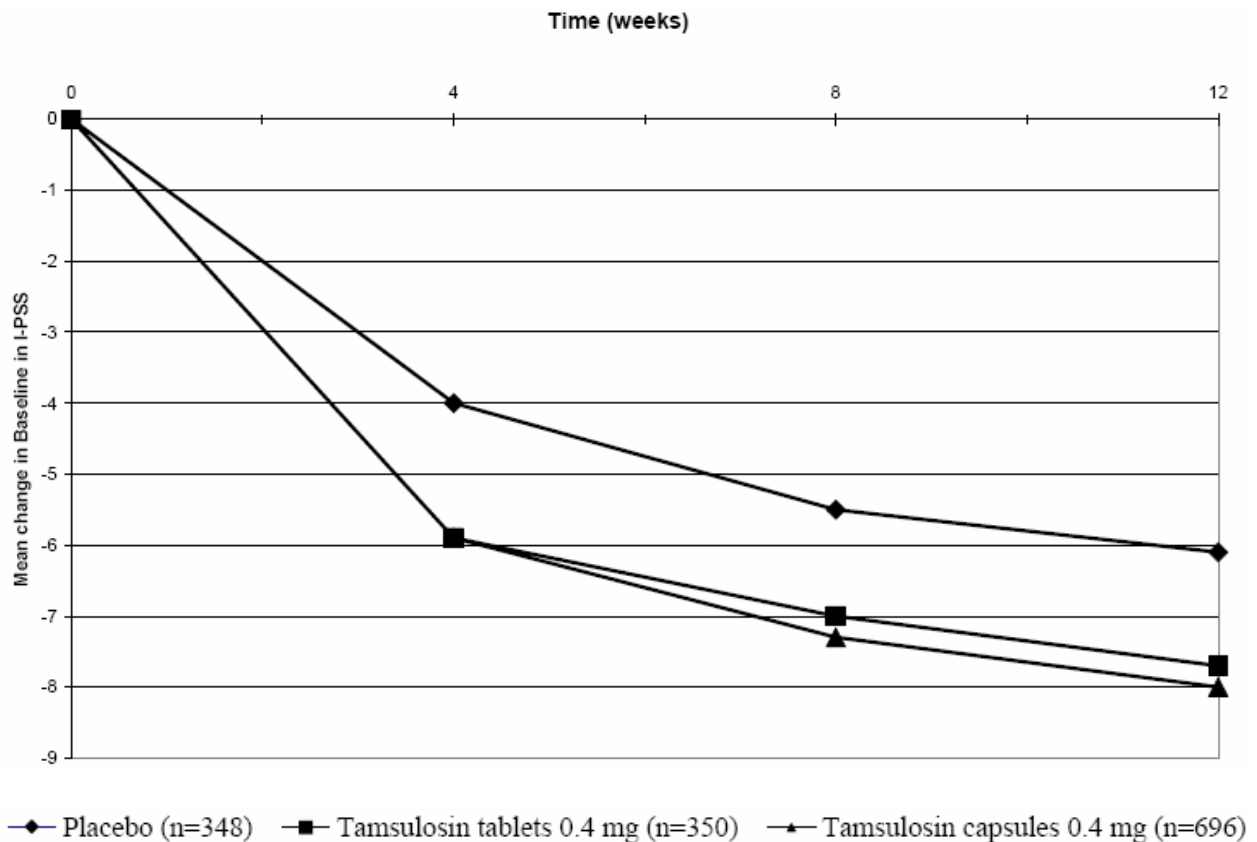


FIGURE 3: MEAN CHANGE FROM BASELINE IN TOTAL I-PSS OVER TIME IN THE PLACEBO- AND ACTIVE-CONTROLLED STUDY



In both studies, tamsulosin hydrochloride controlled release tablets 0.4 mg had a fast onset of action with decrease in I-PSS at 2 - 4 weeks. As evident from Table 4 and Figures 2 and 3, there was a statistically significant reduction ($p < 0.001$) in the I-PSS vs. placebo in both studies indicating a reduction in symptom severity. This was due to a statistically significant improvement in both the irritative and obstructive subscores. Tamsulosin hydrochloride controlled release tablets 0.4 mg was an efficacious dose and provided a response which was equivalent to that of tamsulosin hydrochloride sustained release 0.4 mg capsules confirming the recommendation of once daily dosing of 0.4 mg.

DETAILED PHARMACOLOGY

See ACTION AND CLINICAL PHARMACOLOGY section.

TOXICOLOGY

Carcinogenesis, Mutagenesis, and Impairment of Fertility

Rats administered doses up to 43 mg/kg/day in males and 52 mg/kg/day in females had no

increases in tumour incidence with the exception of a modest increase in the frequency of mammary gland fibroadenomas in female rats receiving doses ≥ 5.4 mg/kg ($P < 0.015$). The highest doses of tamsulosin evaluated in the rat carcinogenicity study produced systemic exposures (AUC) in rats 3 times the exposures in men receiving doses of 0.8 mg/day.

Mice were administered doses up to 127 mg/kg/day in males and 158 mg/kg/day in females. There were no significant tumour findings in male mice. Female mice treated for 2 years with the two highest doses of 45 and 158 mg/kg/day had statistically significant increases in the incidence of mammary gland fibroadenomas ($P < 0.0001$) and adenocarcinomas ($P < 0.0075$). The highest dose levels of tamsulosin evaluated in the mice carcinogenicity study produced systemic exposures (AUC) in mice 8 times the exposures in men receiving doses of 0.8 mg/day.

The increased incidences of mammary gland neoplasms in female rats and mice were considered secondary to tamsulosin-induced hyperprolactinemia. It is not known if tamsulosin elevates prolactin in humans. The relevance for human risk of the findings of prolactin-mediated endocrine tumours in rodents is not known.

Tamsulosin produced no evidence of mutagenic potential *in vitro* in the Ames reverse mutation test, mouse lymphoma thymidine kinase assay, and chromosomal aberration assays in Chinese hamster ovary cells or human lymphocytes. There were no mutagenic effects in the *in vivo* sister chromatid exchange and mouse micronucleus assay.

Studies in rats revealed significantly reduced fertility in males dosed with single or multiple daily doses of 300 mg/kg/day of tamsulosin (AUC exposure in rats about 50 times the human exposure at a dose of 0.8 mg/day). The mechanism of decreased fertility in male rats is considered to be an effect of the compound on the vaginal plug formation possibly due to changes of semen content or impairment of ejaculation. The effects on fertility were reversible showing improvement by 3 days after a single dose and 4 weeks after multiple dosing. Effects on fertility in males were completely reversed within nine weeks of discontinuation of multiple dosing. Multiple doses of 10 and 100 mg/kg/day tamsulosin (1/5 and 16 times the anticipated human AUC exposure) did not significantly alter fertility in male rats. Effects of tamsulosin on sperm counts or sperm function have not been evaluated.

Studies in female rats revealed significant reductions in fertility after single or multiple dosing with 300 mg/kg/day of the R-isomer or racemic mixture of tamsulosin, respectively. In female rats, the reductions in fertility after single doses were considered to be associated with impairments in fertilization. Multiple dosing with 10 or 100 mg/kg/day of the racemic mixture did not significantly alter fertility in female rats.

REFERENCES

1. McGrath, J.C., Lepor H., Wyllit M.G. Report of a unique meeting between the alpha-blocker subcommittee and pharmaceutical industry. *Urol* 48(5), 1996.
2. Price D.T., Lomasney J.W., Allen L.F., Caron M.G., Lefkowitz. Identification, quantification, and localization of mRNA for three distinct α_1 adrenergic receptor subtypes in human prostate. *J Urol* 1993; 150:546-551.
3. Hatano A., Takahashi H., Tamaki M., Komeyama T., Koizumi T., Takeda M. Pharmacological evidence of distinct α_1 - adrenoceptor subtypes mediating the contraction of human prostatic urethra and peripheral artery. *Br J Pharmacol* 1994; 113:723-728.
4. Moriyama N., Hamada K., Takanashi M., Kurimoto S., Kimura K., Inagaki O. Evaluation of α_1 - adrenoceptor subtypes in human hypertrophied prostate using [³H]YM617, an α_1 -selective antagonist. *Acta Histochem Cytochem* 1994; 27 (3):219-225.
5. Faure C., Pimoule C., Vallancien G., Langer S.Z., Graham D. Identification of α_1 – adrenoceptor subtypes present in the human prostate. *Life Sci* 1994;54(21):1595-1605.
6. Michel M.C., Insel P.A. Comparison of cloned and pharmacologically defined rat tissue α_1 – adrenoceptor subtypes. *Naunyn-Schmiedebergs Arch Pharmacol* 1994;350(2):136-142.
7. Yamada S., Suzuki M., Tanaka C., Mori R., Kimura R., Inagaki O. Comparative study on α_1 - adrenoceptor antagonist binding in human prostate and aorta. *Clinical and Experimental Pharmacol and Physiol* 1994;21:405-411.
8. Chapple, CR. The total approach in lower urinary symptoms/ benign prostatic hyperplasia (LUTS/BPH) management: introduction and conclusions. *Eur Urol* 2003; 2:1-5.
9. Dunn C.J., Matheson A., Faulds D.M. Tamsulosin: A review of its pharmacology and therapeutic efficacy in the management of lower urinary tract symptoms. *Drugs Aging* 2002;19(2):135-161.
10. Narayan P., Evans C.P., Moon T., Long-term safety and efficacy of tamsulosin for the treatment of lower urinary tract symptoms associated with benign prostatic hyperplasia. *J Urol* 2003;170:498-502.
11. Foglar R., Shibata K., Horie K., Hirasawa A., Tsujimoto G. Use of recombinant α_1 -adrenoceptors to characterize subtype selectivity of drugs for the treatment of prostatic hypertrophy. *Eur J Pharmacol* 1995; 288:201-207.
12. Kim H.L., Kim J.C., Benson D.A., Bales G., Gerber G.S. Results of treatment with tamsulosin in men with acute urinary retention. *Tech Urol* 2001; 7(4):256-60.

13. Patel R., Fiske J., Lepor H. Tamsulosin reduces the incidence of acute urinary retention following early removal of the urinary catheter after radical retropubic prostatectomy. *Urology* 2003; 62 (2):287-91.
14. Kloner R.A., Jackson G., Emmick J.T., et al. Interaction between the phosphodiesterase 5 inhibitor, tadalafil, and two alpha-blockers: doxazosin and tamsulosin. *J Urol* 2004; 4(Suppl):abstr 1195.
15. Romic I., Kiss T., Kisbenedek L., et al. Tamsulosin drug ratio in prostate versus free fraction in plasma supports pharmacokinetic (pk) contribution to its uroselectivity. *Ann Mtg of the American Urological Association, Chicago, 26 April -1 May 2003.*
16. Davis B.J., Noble A., Chapple C.R, Chess-Williams R. Human prostate-artery selectivity of tamsulosin, doxazosin and alfuzosin. *Br J Pharmacol* 2000; 129(Suppl): abstr 52p.
17. Michel MC., Korstanje C, Krauwinkel W, Shear M, Davies J, Quartel A. Comparison of vascular α_1 -adrenoceptorantagonism of tamsulosin in oral controlled absorption system (OCAS) and modified release (MR) formulations. *European Urology Supplements* 4 (2005) 45-52.
18. Michel MC., Korstanje C, Krauwinkel W, Shear M, Davies J, Quartel A. Cardiovascular safety of the oral controlled absorption system (OCAS) formulation compared to the modified release (MR) formulation. *European Urology Supplements* 4 (2005) 53-60.
19. Boehringer Ingelheim (Canada) Inc., Burlington, (ON), Canada, FLOMAX CR Product Monograph (tamsulosin hydrochloride controlled-release tablets 0.4 mg), Control No.: 117980; Date of Revision: January 21, 2008.

PART III: CONSUMER INFORMATION

^{Pr} **Ava-Tamsulosin CR**
(Tamsulosin Hydrochloride)
Controlled-release Tablets
0.4 mg

This leaflet is part III of a three-part "Product Monograph" published when Ava-Tamsulosin CR was approved for sale in Canada and is designed specifically for consumers. This leaflet is a summary and will not tell you everything about Ava-Tamsulosin CR. Contact your doctor or pharmacist if you have any questions about the drug.

Please read this leaflet before you start taking Ava-Tamsulosin CR (tamsulosin hydrochloride). Also, read it each time you renew your prescription, just in case new information has been added.

ABOUT THIS MEDICATION

What the medication is used for:

Your doctor has prescribed Ava-Tamsulosin CR because you have lower urinary tract symptoms (LUTS) associated with a medical condition called benign prostatic hyperplasia or BPH.

What it does:

Ava-Tamsulosin CR acts by relaxing muscles in the prostate and bladder neck at the site of obstruction, resulting in improved urine flow, and reduced BPH symptoms.

BPH is an enlargement of the prostate gland. BPH is the most common cause of lower urinary tract symptoms (LUTS) in elderly males. After age 50, most men develop enlarged prostates. The prostate is located below the bladder. As the prostate enlarges, it may slowly restrict the flow of urine. This can lead to symptoms such as:

- frequent sleep interruption caused by a need to urinate;
- having a weak urinary stream;
- a sensation of not emptying your bladder completely after you finish urinating;
- pushing or straining to begin urination;
- stopping and starting again several times when urinating;
- urinating again less than 2 hours after you finish urinating;
- finding it difficult to postpone urination.

When it should not be used:

You should not use Ava-Tamsulosin CR if you are allergic (hypersensitive) to tamsulosin or any of the other ingredients in Ava-Tamsulosin CR. Hypersensitivity may present as sudden local swelling of the soft tissues of the body (e.g. the throat or tongue), difficult breathing and/or itching and rash (angioedema).

What the medicinal ingredient is:

Tamsulosin Hydrochloride

What the important nonmedicinal ingredients are:
Black iron oxide (E172), butylhydroxytoluene, carmine (E120), colloidal anhydrous silica, hydroxypropylcellulose, hypromellose, magnesium stearate, microcrystalline cellulose, polyethylene glycol, polyethylene oxide, quinoline yellow (E104), talc, titanium dioxide.

What dosage forms it comes in:

Controlled-release Tablets. Each tablet contains 0.4 mg tamsulosin hydrochloride.

WARNINGS AND PRECAUTIONS

Rarely, fainting can occur during the use of Ava-Tamsulosin CR tablet, as with other medicinal products of this type. At the first signs of dizziness or weakness you should sit or lie down until they have disappeared.

Ava-Tamsulosin CR tablet should not be used in women or children.

BEFORE you use Ava-Tamsulosin CR tablet talk to your doctor or pharmacist:

- if you suffer from severe liver problems;
- if you suffer from fainting due to reduced blood pressure when changing posture (going to sit or stand up);
- if you have kidney problems;
- if you have previously taken Ava-Tamsulosin CR and became unwell;
- if you are going to drive, operate machinery or perform hazardous tasks.

You must see your doctor regularly. While taking Ava-Tamsulosin CR tablet, you must have regular checkups. Follow your doctor's advice about when to have these checkups.

If you are undergoing eye surgery because of cloudiness of the lens (cataract) please inform your eye specialist that you are using or have used Ava-Tamsulosin CR. The specialist can then take appropriate precautions with respect to medication and surgical techniques to be used. Ask your doctor whether or not you should temporarily stop taking this medicine when undergoing eye surgery because of a cloudy lens.

INTERACTIONS WITH THIS MEDICATION

Taking Ava-Tamsulosin CR with other medicines from the same class (alpha₁-adrenoceptor blockers) may cause an unwanted decrease in blood pressure.

Please tell your doctor or pharmacist if you are taking or have recently taken cimetidine or any other medicines, including medicines obtained without a prescription.

PROPER USE OF THIS MEDICATION

Usual dose:

Follow your doctor's advice about how to take Ava-Tamsulosin CR. You should take one tablet (0.4 mg) once daily at the same time each day with or without food.

Do not crush or chew Ava-Tamsulosin CR tablets. These tablets are specially formulated to control the delivery of tamsulosin hydrochloride to the blood stream.

Do not share Ava-Tamsulosin CR with anyone else; it is prescribed only for you.

If you interrupt your treatment for several days or more, resume treatment after consulting with your physician.

Overdose:

Taking too many Ava-Tamsulosin CR tablets may lead to an unwanted decrease in blood pressure and an increase in heart rate, with feelings of faintness. Contact your doctor immediately if you have taken too much Ava-Tamsulosin CR.

For management of a suspected drug overdose, contact your regional Poison Control Centre.

Missed dose:

You may take your daily Ava-Tamsulosin CR tablet later the same day if you have forgotten to take it as recommended. If you have missed a day, just continue to take your daily tablet as prescribed. Never take a double dose to make up for the forgotten tablet.

SIDE EFFECTS AND WHAT TO DO ABOUT THEM

Like any medication, Ava-Tamsulosin CR may cause side effects.

Side effects due to Ava-Tamsulosin CR may include:

Common (1-10%):

Dizziness, particularly when getting up from a seated or lying position.

Some men may experience dizziness or fainting caused by a decrease in blood pressure after taking Ava-Tamsulosin CR. Although these symptoms are unlikely, you should avoid driving or hazardous tasks for 12 hours after the initial dose.

Uncommon (0.1-1%):

Headache, palpitations (a feeling of rapid beating of the heart that may be more forceful), reduced blood pressure e.g. when getting up quickly from a seated or lying position sometimes associated with dizziness; runny or blocked nose (rhinitis), diarrhea, feeling sick and vomiting, constipation, weakness (asthenia), rashes, itching and hives (urticaria), abnormal ejaculation. The latter means that semen does not leave the body via the urethra, but instead goes into the bladder. This phenomenon is harmless.

Rare (0.01-0.1%):

Rarely, fainting can occur during the use of Ava-Tamsulosin CR, as with other medicinal products of this type. At the first signs of dizziness or weakness you should sit or lie down until they have disappeared.

Sudden local swelling of the soft tissues of the body (e.g. the throat or tongue), difficulty breathing and/or itching and rash, often as an allergic reaction (angioedema). If you suspect such symptoms, call your doctor or go to an Emergency Room as soon as possible.

Very rare (<0.01%):

Priapism (painful prolonged unwanted erection for which immediate medical treatment is required).

There have been reports that tamsulosin hydrochloride sustained release capsules and similar medications have caused prolonged, painful erection of the penis, which is unrelieved by sexual intercourse or masturbation. This condition, if untreated, can lead to permanent inability to have an erection. If you suspect such symptoms, call your doctor or go to an Emergency Room as soon as possible.

If you are undergoing eye surgery because of cloudiness of the lens (cataract) and are already taking or have previously taken tamsulosin hydrochloride, the pupil may dilate poorly and the iris (the coloured circular part of the eye) may become floppy during the procedure.

This is not a complete list of side effects. For any unexpected effects while taking Ava-Tamsulosin CR, contact your doctor or pharmacist immediately, so that these effects may be properly addressed.

SERIOUS SIDE EFFECTS, HOW OFTEN THEY HAPPEN AND WHAT TO DO ABOUT THEM

Symptom/effect		Talk with your doctor or pharmacist		Stop taking drug and call your doctor or pharmacist
		Only if severe	In all cases	
Common	Dizziness, particularly when getting up from a seated or lying position		✓	
Uncommon	Palpitations (feeling of rapid beating of the heart that may be more forceful)		✓	
	Rashes, itching and hives (urticaria)			✓
	Reduced blood pressure e.g. when getting up quickly from a seated or lying position, sometimes associated with dizziness		✓	
Rare	Fainting			✓
	*Sudden local swelling of the soft tissues of the body (e.g. the throat or tongue), difficulty breathing and/or itching and rash (angioedema)			✓
Very rare	*Priapism (painful prolonged unwanted erection).			✓

* If you suspect such symptoms, call your doctor or go to an Emergency Room as soon as possible.

HOW TO STORE IT

Store at room temperature (15°C - 30°C).

Keep Ava-Tamsulosin CR and all medicines out of reach of children.

REPORTING SUSPECTED SIDE EFFECTS

You can report any suspected adverse reactions associated with the use of health products to the Canada Vigilance Program by one of the following 3 ways:

Report online at www.healthcanada.gc.ca/medeffect

Call toll-free at 1-866-234-2345

Complete a Canada Vigilance Reporting Form and:

- Fax toll-free to 1-866-678-6789, or

- Mail to: Canada Vigilance Program

Health Canada

Postal Locator 0701D

Ottawa, ON K1A 0K9

Postage paid labels, Canada Vigilance Reporting Form and the adverse reaction reporting guidelines are available on the MedEffect™ Canada Web site at www.healthcanada.gc.ca/medeffect.

NOTE: Should you require information related to the management of side effects, contact your health professional. The Canada Vigilance Program does not provide medical advice.

MORE INFORMATION

This document plus the full Product Monograph, prepared for health professionals can be obtained by contacting the sponsor, Avanstra Inc., at 1-855-708-3678.

or by e-mail, at :
medinfo@avanstra.com

This leaflet was prepared by **Avanstra Inc.**

Last revised: April 14, 2011