

# Product Monograph

<sup>Pr</sup>**Starlix**\*

(nateglinide)

60 and 120 mg Tablets

## THERAPEUTIC CLASSIFICATION

Oral Antidiabetic Agent

**Novartis Pharmaceuticals Canada Inc.**  
385 Boulevard Bouchard  
Dorval, Quebec H9S 1A9

**Date of Revision:**  
June 10, 2011

**CONTROL# 144934**

<sup>Pr</sup>**Starlix**\* is a registered trademark.

## Product Monograph

**PrStarlix\***

(nateglinide)

60 and 120 mg Tablets

### THERAPEUTIC CLASSIFICATION

Oral Antidiabetic Agent

### ACTIONS AND CLINICAL PHARMACOLOGY

**Starlix\*** (nateglinide) is an amino acid derivative that improves glycemic control by restoring early insulin secretion. Nateglinide induces significant insulin secretion within the first 15 minutes following a meal. Early insulin secretion results in suppression of hepatic glucose production, reducing meal-related glucose excursions and post-meal hyperinsulinemia which has been associated with delayed hypoglycemia.

Early insulin secretion is an essential mechanism to maintain normal glycemic control. The loss of early insulin secretion characterizes Type 2 diabetes. Nateglinide when taken just before meals restores early insulin secretion through a rapid and transient interaction with the ATP-sensitive potassium ( $K^+_{ATP}$ ) channel on pancreatic  $\beta$ -cells. Electrophysiologic studies demonstrate that nateglinide has > 300-fold selectivity for pancreatic  $\beta$ -cell versus cardiovascular  $K^+_{ATP}$  channels. The extent of insulin release is dependent on ambient glucose concentrations such that less insulin is secreted as glucose levels fall. The action of nateglinide is dependent upon functioning beta cells in the pancreatic islets.

## **Pharmacokinetics**

### **Absorption**

Following oral administration prior to a meal, nateglinide is rapidly absorbed with mean peak plasma drug concentrations ( $C_{max}$ ) generally occurring within 1 hour to peak plasma concentration ( $T_{max}$ ) after dosing . When administered to patients with Type 2 diabetes over the dosage range of 60 to 240 mg three times a day for one week, nateglinide demonstrated linear pharmacokinetics for both AUC (area under the time/plasma concentration curve) and  $C_{max}$ .  $T_{max}$  was found to be independent of dose in this patient population. Absolute bioavailability is estimated to be 73%. When given with meals, the extent of nateglinide absorption (AUC) remains unaffected. However, there is a delay in the rate of absorption characterized by a decrease in  $C_{max}$  and a delay in time to  $T_{max}$ . Nateglinide is usually taken immediately (1 minute) before a meal but may be taken up to 30 minutes before meals (See Dosage and Administration).

### **Distribution**

Based on intravenous (IV) data, the steady state volume of distribution of nateglinide is estimated to be approximately 10 liters. Nateglinide is extensively bound (98%) to serum proteins, primarily serum albumin and to a lesser extent  $\alpha_1$  acid glycoprotein. The extent of serum protein binding is independent of drug concentration over the test range of 0.1-10  $\mu\text{g/mL}$ .

### **Metabolism**

Nateglinide is extensively metabolized by the mixed-function oxidase system prior to elimination. The major routes of metabolism are hydroxylation followed by glucuronide conjugation. The major metabolites are less potent than nateglinide. The isoprene minor metabolite possesses similar potency as the parent compound nateglinide.

Data available from both *in vitro* and *in vivo* experiments indicate that nateglinide is predominantly metabolized by cytochrome P<sub>450</sub> isoenzyme CYP2C9 (70%) and to a lesser extent by CYP 3A4 (30%) (See Precautions - Drug Interactions).

## **Excretion**

Nateglinide and its metabolites are rapidly and completely eliminated following oral administration. Within 6 hours after dosing, approximately 75% of the administered <sup>14</sup>C-nateglinide is recovered in the urine. Most of the <sup>14</sup>C-nateglinide (83%) is excreted in the urine with an additional 10% eliminated in the feces. Approximately 16% of the <sup>14</sup>C-nateglinide is excreted in the urine as parent compound. In all studies of healthy volunteers and patients with Type 2 diabetes, nateglinide plasma concentrations declined rapidly with an average elimination half-life of 1.5 hours. Consistent with this short elimination half-life, there is no apparent accumulation of nateglinide upon multiple dosing of up to 240 mg three times daily for 7 days.

## **Special Populations**

**Geriatric:** There was no difference in the safety and efficacy profile of nateglinide between the elderly and the general population. In addition, age did not influence the pharmacokinetic properties of nateglinide. Therefore, no special dose adjustments are necessary for elderly patients.

**Gender:** No clinically significant differences in nateglinide pharmacokinetics were observed between men and women. Therefore, no dose adjustment based on gender is needed.

**Race:** Results of a population pharmacokinetic analysis included subjects of Caucasian (n=255), black (n=12) and other ethnic origins (n=45). The results did not indicate any influence of race on the pharmacokinetics of nateglinide, but the numbers are small.

**Renal Impairment:** The systemic availability and the half-life of nateglinide in diabetic subjects with moderate to severe renal insufficiency (CrCl: 0.25-0.83 mL/sec/1.73 m<sup>2</sup> or 15-50 mL/min/1.73m<sup>2</sup>), whether or not on dialysis, do not differ to a clinically significant extent, from those in healthy subjects, therefore no dose adjustment is necessary.

**Hepatic Impairment:** The systemic availability and the half-life of nateglinide in non-diabetic subjects with mild to moderate hepatic insufficiency do not differ to a clinically

significant extent from those in healthy subjects. Consequently, dose adjustment for patients with mild to moderate hepatic disease is not required. Since patients with moderate to severe hepatic disease were not studied, nateglinide should be used with caution in such patients.

### **Pharmacodynamics and Clinical Effects**

In clinical studies, treatment with nateglinide resulted in an improvement in glycemic control, as measured by glycosylated hemoglobin A1c (HbA<sub>1c</sub>) and post-meal glucose. Fasting plasma glucose (FPG) levels were also reduced. This is consistent with the mechanism of action of nateglinide which is to restore early insulin secretion and thereby reduce post-meal glucose. The improvement in glycemic control was durable, with maintenance of effect compared to baseline for at least 52 weeks. In the 24-week, placebo-controlled, clinical trials, the mean weight gain in patients treated with nateglinide was 1 kg or less.

### **Clinical Studies**

Compared to repaglinide in healthy subjects nateglinide was associated with a faster rise of insulin concentrations, (within 30 minutes), and a shorter duration, (return to placebo levels in 1.5 versus 4 hours), resulting in less total insulin exposure. Nateglinide was also more effective in blunting the post-meal plasma glucose excursion compared to repaglinide (89% vs 56%) without inducing prolonged hypoglycemia.

The loss of first phase insulin secretion is a hallmark of Type 2 diabetes. Nateglinide restores this response in patients with Type 2 diabetes.

A total of 2122 patients with Type 2 diabetes were treated with **Starlix**\* in double-blind, placebo or active-controlled studies. These studies included two 24-week placebo controlled studies, two 24-week active controlled studies, and five additional efficacy studies with treatment durations of 8 weeks (2 studies), 12 weeks (2 studies) or 16 weeks. In addition, three controlled extension studies were carried out to 52 weeks. All nine studies were characterized by a lengthy washout period of prior therapy so as to adequately evaluate the treatment effect of **Starlix**\* by minimizing confounding effects of previous antidiabetic

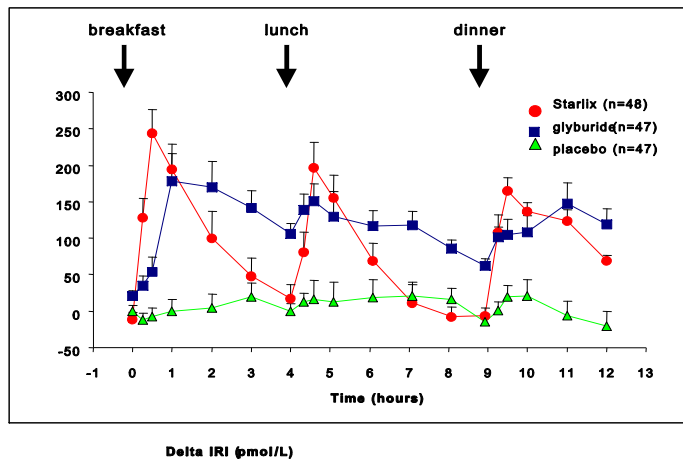
medications. In these studies, **Starlix\*** was administered before main meals, usually breakfast, lunch and dinner.

### **Effect on post-meal (prandial) plasma glucose**

Restoration of early insulin release during meals, resulting in reduced post-meal plasma glucose, is an important component of optimal therapy in Type 2 diabetes.

In an 8-week study that compared the effect of **Starlix\*** 120 mg taken with meals, glyburide 10 mg once daily, and placebo on daytime glucose and insulin profiles, treatment with **Starlix\*** was associated with a greater reduction of the post-meal glucose excursion and less total insulin exposure.

## Unadjusted Insulin Levels-Change from Baseline (Pretreatment)



The rapid rise and short duration of insulin release associated with **Starlix**\* results in a reduction in glucose fluctuations throughout the day. **Starlix**\* significantly reduced the standard deviation of the plasma glucose levels compared to glyburide. The results illustrated in the figure above suggest that the postprandial insulin pattern in response to **Starlix**\* approximates the physiological pattern.

After a liquid (Sustacal<sup>®</sup>, Mead Johnson) meal, both **Starlix**\* and glyburide reduced the incremental glucose exposure over four hours. This reduction was statistically significantly greater for **Starlix**\* compared to glyburide (i.e. The percent change from baseline  $AUC_{0-4}$  was -64%, -32% and -1% for **Starlix**\*, glyburide and placebo respectively).

In a 24-week, placebo-controlled study conducted to evaluate the effect of **Starlix**\* as monotherapy and in combination with metformin, there was a statistically significant reduction in incremental mealtime plasma glucose  $AUC_{(0-130 \text{ min})}$ . The post-meal glycemic excursion was reduced by 16 % with metformin, 34% with **Starlix**\* 120 mg before meals and by 40% with the combination of **Starlix**\* 120 mg before meals plus metformin 500 mg tid. These data confirm that the efficacy of **Starlix**\* in lowering post-meal glucose is maintained when administered with a drug with a complementary mode of action.

## **Monotherapy**

Two 24-week, placebo-controlled studies were conducted in patients with Type 2 diabetes that were inadequately controlled on diet alone. In Study A, statistically significant reductions in HbA<sub>1c</sub> occurred in a dose-dependent manner over the range of 60 to 180 mg when **Starlix\*** was administered just before breakfast, lunch, and dinner as monotherapy. The mean change from baseline for reduction of HbA<sub>1c</sub> was 0.004 to 0.006 (0.4 to 0.6%). The difference from placebo was 0.006 to 0.01 (0.6 to 1.0%) for 120 mg **Starlix\*** before breakfast, lunch, and dinner. Statistically significant reductions in fasting plasma glucose (FPG) over the range of 0.61 to 0.93 mmol/L were also observed.

In a second 24-week study (Study B) conducted to evaluate the effect of **Starlix\*** monotherapy, the mean change from baseline for reduction of HbA<sub>1c</sub> was 0.005 (0.5 %). The difference from placebo was 0.009 (0.9%) for 120 mg **Starlix\*** before breakfast, lunch, and dinner, which was statistically significant.

## **Combination with Metformin**

The results of the above study (Study B) suggest that **Starlix\*** and metformin are synergistic when used in combination, due to complementary modes of action. The combination of the two drugs demonstrated an 84% responder rate based on a reduction of >10% from pretreatment baseline HbA<sub>1c</sub>. The effect on HbA<sub>1c</sub> and FPG was greater with **Starlix\*** plus metformin combination therapy than with either agent alone. Virtually all of the post-meal glucose effect was due to **Starlix\***. Metformin had a greater effect on HbA<sub>1c</sub> than nateglinide.

## **Other**

In a 24-week active controlled study, patients who were stabilized on high dose sulfonylurea for at least three months and directly switched to monotherapy with **Starlix\*** 60 or 120 mg before meals experienced reduced glycemic control as evidenced by increases in FPG and HbA<sub>1c</sub>.

In a 12-week study of patients inadequately controlled on glyburide 10 mg once daily, the addition of **Starlix\*** 120 mg before meals did not produce any additional benefit.



## INDICATIONS AND CLINICAL USE

**Starlix\*** (nateglinide) is indicated as monotherapy in addition to diet and exercise to lower the blood sugar in patients with type 2 diabetes mellitus who are not controlled satisfactorily by diet and exercise alone.

**Starlix\*** (nateglinide) is indicated also in combination with metformin in patients not controlled satisfactorily on diet, exercise, and either nateglinide or metformin alone.

Management of Type 2 diabetes should include diet control. Caloric restriction, weight loss, and exercise are essential for the proper treatment of the diabetic patient. This is important not only in the primary treatment of Type 2 diabetes, but also in maintaining the efficacy of drug therapy. Prior to initiation of therapy with **Starlix\***, secondary causes of poor glycemic control, e.g., infection, should be investigated and treated.

## CONTRAINDICATIONS

**Starlix\*** (nateglinide) is contraindicated in patients with:

1. Known hypersensitivity to the drug or its inactive ingredients.
2. Type 1 diabetes.
3. Diabetic ketoacidosis.
4. Pregnancy and lactation (see section **PRECAUTIONS**-Use in Pregnancy and Nursing Mothers)

## PRECAUTIONS

**Hypoglycemia:** Hypoglycemia has been observed in patients with Type 2 diabetes treated with oral antidiabetic agents (see section **ADVERSE REACTIONS**). Geriatric patients, malnourished patients and those with adrenal or pituitary insufficiency or severe renal impairment are more susceptible to the glucose lowering effect of these treatments. The risk

of hypoglycemia may be increased by strenuous physical exercise, ingestion of alcohol, and/or insufficient caloric intake.

Combination with other oral antidiabetic agents may increase the risk of hypoglycemia.

Hypoglycemia may be difficult to recognize in elderly subjects and in subjects receiving  $\beta$ -blockers.

When a patient stabilized on any oral antidiabetic agent is exposed to stress such as fever, trauma, infection or surgery, a loss of glycemic control may occur. At such times, it may be necessary to discontinue oral antidiabetic treatment and replace it with insulin on a temporary basis.

**Starlix\*** should be used with caution in patients with moderate to severe hepatic impairment because such patients have not been studied.

### **Use in Pregnancy**

There are no adequate and well-controlled studies in pregnant women. **Starlix\*** should not be used during pregnancy (see **CONTRAINDICATIONS**).

In the rabbit, embryonic development was adversely affected and the incidence of gallbladder agenesis or small gallbladder was increased at 300 mg/kg (36-times the maximum daily human dose based on systemic exposure to nateglinide), but not at 150 mg/kg (25 times the maximum human daily therapeutic exposure). At 500 mg/kg (42 times the maximum human daily therapeutic exposure), maternal toxicity and total litter loss were noted.

Nateglinide was not teratogenic in rats at doses up to 1000 mg/kg (59 times the maximum human daily therapeutic exposure)

The above exposures were based on the human dosing regimen of 120 mg, three times daily.

Because current information strongly suggests that abnormal blood glucose levels during pregnancy are associated with a higher incidence of congenital anomalies as well as increased neonatal morbidity and mortality, most experts recommend that insulin be used during pregnancy to maintain blood glucose levels as close to normal as possible.

### **Labor and Delivery**

The effect of **Starlix\*** on labor and delivery in humans is not known, **Starlix\*** should not be used during pregnancy (see **CONTRAINDICATIONS**).

### **Nursing Mothers**

Studies in lactating rats showed that nateglinide is excreted in the milk; the  $AUC_{0-48h}$  ratio in milk to plasma was about 1.4. Body weights were lower in offspring of rats administered nateglinide at 1000 mg/kg during the peri- and postnatal period. It is not known whether **Starlix\*** is excreted in human milk. Because many drugs are excreted in human milk, **Starlix\*** should not be administered to a nursing woman.

### **Use in Children and Adolescents**

The safety and effectiveness of **Starlix\*** in pediatric patients have not been established.

### **Use in the Elderly**

Among patients receiving **Starlix\*** as monotherapy in controlled clinical studies ranging from 8 weeks to 1 year in duration, 436 patients (30%) were 65 or older and 80 patients (5.4%) were 75 or older. No differences in safety or efficacy between these subjects and those less than 65 were observed for **Starlix\***. There was no increase in frequency of hypoglycemia in patients over the age of 65. However, greater sensitivity of some older individuals to **Starlix\*** therapy cannot be ruled out.

### **Drug Interactions**

**Starlix\*** is highly bound to plasma proteins (98 %), mainly albumin. In an *in vitro* displacement study with highly protein-bound drugs such as furosemide, propranolol,

captopril, nicardipine, pravastatin, glyburide, warfarin, phenytoin, acetylsalicylic acid, tolbutamide, and metformin, there was no influence by these drugs on the extent of nateglinide protein binding. In a separate *in vitro* study, **Starlix\*** had no influence on the serum protein binding of propranolol, glyburide, nicardipine, warfarin, phenytoin, acetylsalicylic acid, and tolbutamide.

Data available from both *in vitro* and *in vivo* drug metabolism experiments indicate that nateglinide is predominantly metabolized by the cytochrome p450 isoenzyme CYP2C9 (70%) and to a lesser extent by CYP3A4 (30%). Nateglinide has the ability to inhibit the *in vitro* metabolism of tolbutamide, a CYP2C9 substrate. No inhibition of CYP 3A4 metabolic reactions is expected based on *in vitro* experiments, suggesting a low potential for clinically significant pharmacokinetic drug interactions.

<b>Drugs with no significant pharmacokinetic interactions with Starlix*</b>	
<b>Glyburide</b>	Concomitant administration of <b>Starlix*</b> (120 mg t.i.d) and glyburide (10 mg/day) to healthy volunteers had no clinically relevant effect on the pharmacokinetics of either agent.
<b>Metformin</b>	In healthy volunteers, <b>Starlix*</b> (120 mg t.i.d) taken with metformin (500 mg/day) did not alter the pharmacokinetics of either agent.
<b>Digoxin</b>	<b>Starlix*</b> (120 mg t.i.d) when administered with digoxin (1 mg/day) to healthy volunteers, did not alter the steady-state pharmacokinetic properties of either agent.
<b>Warfarin</b>	<b>Starlix*</b> (120 mg t.i.d) taken with warfarin (30 mg/day) by healthy volunteers had no clinically relevant effect on the pharmacokinetics of either agent.
<b>Diclofenac</b>	Administration of <b>Starlix*</b> (120 mg b.i.d) with diclofenac (75 mg/day) to healthy volunteers did not alter the pharmacokinetics of either agent.

<b>Potential Drug-Drug Interactions with Starlix*</b>	
<p><b>CYP2C9 Inhibitors:</b></p> <ul style="list-style-type: none"> <li>• <b>Fluconazole</b></li> <li>• <b>Gemfibrozil</b></li> <li>• <b>Sulfinpyrazone</b></li> </ul> <p><b>Others:</b></p> <ul style="list-style-type: none"> <li>• <b>Nonsteroidal anti-inflammatory agents</b></li> <li>• <b>Salicylates</b></li> <li>• <b>Monoamine oxidase inhibitors</b></li> <li>• <b>Non-selective beta-adrenergic-blocking agents</b></li> <li>• <b>Anabolic hormones</b></li> <li>• <b>Guanithidine</b></li> <li>• <b>Gymnema sylvestre</b></li> <li>• <b>Glucomannan thioctic acid</b></li> </ul>	<ul style="list-style-type: none"> <li>• Drugs and Class of drugs that <b>may potentiate</b> the hypoglycemic action of oral antidiabetic drugs.</li> <li>• In an interaction trial with sulfinpyrazone, a potent and selective CYP2C9 inhibitor, a modest increase in nateglinide AUC (28%) was observed in healthy volunteers, with no changes in the mean Cmax and elimination half-life. A more prolonged effect and possibly a risk of hypoglycemia cannot be excluded in patients when nateglinide is co-administered with potent CYP2C9 inhibitors.</li> <li>• When these drugs are administered to or withdrawn from patients receiving <b>Starlix*</b>, the patient should be observed closely for changes in glycemic control.</li> </ul>

<b>Potential Drug-Drug Interactions with Starlix*</b>	
<ul style="list-style-type: none"> <li>• <b>Thiazides</b></li> <li>• <b>Corticosteroids</b></li> <li>• <b>Thyroid products</b></li> <li>• <b>Sympathomimetics</b></li> <li>• <b>Somatropin,</b></li> <li>• <b>Somatostatin analogues (e.g. lanreotide, octreotide)</b></li> <li>• <b>Rifampin,</b></li> <li>• <b>Phenytoin</b></li> <li>• <b>St John's wort</b></li> </ul>	<ul style="list-style-type: none"> <li>• Drugs and Class of Drugs that <b>may reduce</b> the hypoglycemic action of oral antidiabetic drugs.</li> <li>• When these drugs are administered to or withdrawn from patients receiving <b>Starlix</b>, the patient should be observed closely for changes in glycemic control.</li> </ul>

### **Food Interactions**

The pharmacokinetics of **Starlix\*** are not affected by the composition of a meal (high protein, fat or carbohydrate). **Starlix\*** does not have any effect on gastric emptying.

### **Information for Patients**

Patients should be informed of the following:

Management of Type 2 diabetes should include adherence to dietary instructions, regular exercise and routine testing of blood glucose and glycosylated hemoglobin (HbA<sub>1c</sub>).

All oral antidiabetic treatments have the potential to cause hypoglycemia. Geriatric patients, malnourished patients and those with adrenal or pituitary insufficiency are more susceptible to the glucose lowering effects of these treatments. A missed or delayed meal, strenuous physical exercise, or concomitant use of oral antidiabetic agents may increase the risk of hypoglycemia. Patients experiencing hypoglycemia should not drive or operate machinery.

Hypoglycemia may be difficult to recognize in elderly patients and in patients receiving  $\beta$ -blockers.

**Starlix\* should be taken before meals and is usually taken immediately (1 minute) before meals but may be taken up to 30 minutes before meals. Patients who skip a meal should be instructed to skip a dose for that meal (see DOSAGE AND ADMINISTRATION).**

### **Laboratory Tests**

Since the primary mechanism of action for **Starlix\*** is reducing post-meal glucose (an essential contributor to HbA<sub>1c</sub>), the therapeutic response to **Starlix\*** may be monitored with 1-2 hour post-meal glucose measurements. In addition, glycosylated hemoglobin (HbA<sub>1c</sub>) should also be measured periodically.

### **ADVERSE REACTIONS**

**Starlix\*** (nateglinide) was administered either as monotherapy or combination therapy to 2122 patients with Type 2 diabetes including 1791 exposed for at least 12 weeks, 1224 for at least 24 weeks and 190 for 52 weeks. Of these, 1136, 789 and 113 patients were exposed to **Starlix\*** monotherapy for 12, 24 and 52 weeks respectively.

Discontinuation due to adverse events occurred in 4.9% of **Starlix\*** treated patients vs 5.5% in patients receiving placebo. Among **Starlix\*** treated patients, the most common reasons for discontinuation were fatigue (0.8%), thirst (0.7%), and polyuria (0.5). Only 0.3% of **Starlix\*** treated patients discontinued due to hypoglycemia.

The following table list common adverse events for **Starlix\*** patients, regardless of attribution, in placebo controlled studies and active controlled studies (i.e metformin and glyburide) of up to 24 weeks in duration.

Commonly reported adverse events (% of Patients)\*

EVENT	Placebo controlled studies		Active controlled studies		
	Starlix N=973	Placebo N=458	Starlix N=378	Metformin N=194	Glyburide N=243
<b>Body as A Whole- General Disorders</b>					
Accidental trauma	2.7	1.7	1.9	1.0	5.3
<b>Central and Peripheral Nervous System Disorders</b>					
Dizziness	3.6	2.2	3.7	1.5	3.7
<b>Gastrointestinal</b>					
Abdominal Pain	3.1	3.1	2.1	0.5	0.8
Dyspepsia	2.5	2.2	0.5	2.1	1.2
<b>Metabolic</b>					
Hypoglycemia (confirmed)**	2.8	0.4	0.3	0.5	5.3
<b>Musculoskeletal</b>					
Arthropathy	2.7	2.2	1.3	3.1	2.5
<b>Respiratory</b>					
Coughing	2.2	2.2	0.5	2.6	2.5
Upper resp tract infection	10.4	8.1	6.9	3.6	10.3

\*Events  $\geq 2\%$  for the **Starlix**\* group in the placebo-controlled studies and = events in the placebo group

\*\* Any symptomatic event confirmed by a plasma glucose equivalent of  $\leq 3.3$  mmol/L

The most frequently occurring symptoms of hypoglycemia among patients who received **Starlix**\* were tremor, increased sweating, dizziness, increased appetite, palpitations, nausea, fatigue, and asthenia. These events were generally mild; most events took place during the day, within 4 hours of the previous meal and drug intake.

Rare cases of elevations in liver enzymes were reported.



Rare cases of hypersensitivity reactions such as rash, itching and urticaria were reported.

In all completed clinical studies there was no relation of dose on the overall incidence of adverse experiences.

## **SYMPTOMS AND TREATMENT OF OVERDOSAGE**

For management of a suspected drug overdose, contact your regional Poison Control Centre.

In a clinical study in patients with Type 2 diabetes, **Starlix\*** (nateglinide) was administered in increasing doses up to 720 mg a day for 7 days and there was no clinically significant adverse events reported. There have been no instances of overdose with **Starlix\*** in clinical trials. However, an overdose may result in an exaggerated glucose lowering effect with the development of hypoglycemic symptoms. Hypoglycemic symptoms without loss of consciousness or neurological findings should be treated with oral glucose and adjustments in dosage and/or meal patterns. Severe hypoglycemic reactions with coma, seizure or other neurological symptoms should be treated with intravenous glucose. As nateglinide is highly protein bound, dialysis is not an efficient means of removing it from the blood.

## **DOSAGE AND ADMINISTRATION**

**Starlix\*** should be taken before meals and is usually taken immediately (1 minute) before meals but may be taken up to 30 minutes before meals. Patients who skip a meal should be instructed to skip a dose for that meal.

### **Monotherapy**

The usual starting and maintenance dose is 120 mg before meals.

If an adequate response is not achieved, a dose of 180 mg before meals may be used or metformin may be added to the current dose (see **Combination Therapy with Metformin**).

The 60 mg dose of **Starlix\*** may be used in patients who are near goal HbA<sub>1c</sub> (e.g. HbA<sub>1c</sub> < 0.075), when treatment is initiated.

Since the primary mechanism of **Starlix\*** is reducing mealtime glucose (an essential contributor to HbA<sub>1c</sub>), the therapeutic response to **Starlix\*** may be monitored with 1-2 hour post-meal glucose. In addition, glycosylated hemoglobin (HbA<sub>1c</sub>) should be measured periodically.

### **Combination Therapy with Metformin**

For patients on **Starlix\*** monotherapy who require additional therapy, metformin may be added to the maintenance dose.

For patients on metformin monotherapy who require additional therapy, the usual dose of **Starlix\*** is 120 mg before meals. For some patients who are close to their therapeutic target (e.g. HbA<sub>1c</sub> < 0.075), **Starlix\*** 60 mg before meals may be sufficient.

### **Dosage in the elderly**

No special dose adjustments are usually necessary.

### **Dosage in renal and hepatic impairment**

No dosage adjustment is necessary in patients with mild to severe renal insufficiency or in patients with mild hepatic insufficiency. Dosing of patients with moderate to severe hepatic dysfunction has not been studied. Therefore, **Starlix\*** should be used with caution in patients with moderate to severe liver disease.

## **INFORMATION FOR THE CONSUMER**

What is **Starlix\*** and what does **Starlix\*** do?

**Starlix\*** tablet contains the active substance nateglinide. **Starlix\*** tablets also contain the following non-medicinal ingredients : colloidal silicon dioxide, croscarmellose sodium, hydroxypropyl methylcellulose, iron oxide (red or yellow), lactose, magnesium stearate, microcrystalline cellulose, polyethylene glycol, povidone, talc and titanium dioxide.

**Starlix\*** is a medicine to lower blood sugar (glucose). **Starlix\*** tablets are taken by mouth (such medicines are known as oral antidiabetics).

It is used in patients with type 2 diabetes whose condition cannot be controlled by diet and exercise alone. This kind of diabetes is also called non-insulin-dependent diabetes mellitus.

### **How Starlix works**

Insulin (produced by an organ called the pancreas) is a substance, which helps to decrease blood sugar levels, especially after meals. In patients with type 2 diabetes, the body does not respond well to insulin and may not start to make it quickly enough after meals. **Starlix\*** works by stimulating the pancreas to produce insulin more quickly and this helps to keep the blood sugar controlled after meals.

Your doctor will prescribe **Starlix\*** either by itself or together with metformin if one medicine alone is not sufficient to control your blood sugar levels. Even though you are now starting a medicine for your diabetes, it is important that you continue to follow the diet and/or exercise advised for you.

**Starlix\*** tablets start to act within a very short time after intake and are eliminated from the body rapidly.

Your doctor may check the amount of **Starlix\*** that you are taking on a regular basis. He or she might adjust the dose according to your needs. If you have any questions about **Starlix\*** or why this medicine has been prescribed for you, ask your doctor.

### **Before you take Starlix\***

Follow all the doctor's or pharmacist instructions carefully.

### **Do not take Starlix\***

- **If you are allergic** (hypersensitive) to **Starlix\***(nateglinide) or any of the other ingredients of **Starlix\***
- **If you have** type 1 diabetes (i.e. your body does not produce any insulin)
- **If you** have diabetic ketoacidosis
- **If you** are pregnant or planning to become pregnant
- **If you** are breast-feeding
- If you are experiencing any symptoms of severe hyperglycemia (too high blood sugar and/or diabetic ketoacidosis) e.g. excessive thirst, frequent urination, weakness or fatigue, nausea, shortness of breath or confusion.
- **If you** are experiencing any symptoms of hypoglycemia, e.g. sweating, tremors (feeling shaky), anxiety, difficulty concentrating, confusion, weakness or fainting.

If any of these apply to you, **tell your doctor and do not take Starlix\***.

If you think you may be allergic, ask your doctor for advice.

### **Before you use Starlix\* talk to your doctor or pharmacist if you:**

If any of the following apply to you, **tell your doctor and do not take Starlix\***.

- **Have** a history of liver or kidney problems

Diabetic patients may develop symptoms associated with low blood sugar (also known as hypoglycemia). These symptoms include sweating, dizziness, shaking, weakness, hunger, palpitations (perceivable and fast heart beat), tiredness and nausea.

Oral antidiabetic drugs, including **Starlix\***, may also produce symptoms of hypoglycemia. Certain patients are more sensitive to this effect of antidiabetic treatment than others. These include patients who have exercised more strenuously than usual or drunk alcohol, who are elderly or undernourished, who are taking other oral antidiabetics, or who have another

medical condition that may cause low blood sugar (e.g. an underactive pituitary or adrenal gland or kidney problems).

- If any of these conditions apply to you, talk to your doctor about it. Your blood sugar level might need to be more carefully monitored.

Your blood sugar may get too high (hyperglycemia) if you have fever, infection, surgery, or trauma (stress conditions). In such cases contact your doctor as your medication may need to be adjusted.

### **Taking Starlix\* with food and drink**

Take **Starlix\*** before meals (see under section “When to take **Starlix\***”); its effect may be delayed if it is taken during or after meals.

Since alcohol may disturb the way **Starlix\*** works, you are advised to avoid alcohol and talk to your doctor about this.

### **Use in the elderly**

**Starlix\*** can be used by elderly patients.

### **Use in children and adolescents**

The use of **Starlix\*** in children has not been studied and therefore it is not recommended.

### **Pregnancy**

- Consult your doctor as soon as possible if you become pregnant during treatment.
- Do not take **Starlix\*** if you are pregnant (see also section ‘Do not take **Starlix\***’). Your doctor will discuss with you the potential risk of taking **Starlix\*** during pregnancy.
- Ask your doctor or pharmacist for advice before taking any medicine during pregnancy.

### **Breast-feeding**

Do not breast-feed during treatment with **Starlix\***.

Ask your doctor or pharmacist for advice before taking any medicine while you are breast-feeding.

### **Driving and using machines**

All diabetic patients who drive need to be particularly careful to avoid low blood sugar. If you experience symptoms of low blood sugar you should not drive or use machines.

### **Information about some of the ingredients of Starlix\*.**

**Starlix\***tablets contain lactose (milk sugar). If you have severe lactose intolerance, tell your doctor before taking **Starlix\***.

### **Taking other medicines**

Tell your doctor or pharmacist if you are taking or have recently taken any other medicines, including medicines obtained without a prescription.

Other medicines may affect the actions of **Starlix\*** and, conversely, **Starlix\*** may affect the actions of other medicines. This may result in an increase or a decrease in your blood sugar levels, requiring a dose adjustment of **Starlix\***.

It is particularly important that you tell your doctor or pharmacist if you are taking any of the following:

- Nonsteroidal anti-inflammatory agents (used, for example, to treat muscle and joint pain).
- Salicylates such as aspirin (used as pain-killers).
- Monoamine oxidase inhibitors (used to treat depression).
- Beta-blockers (used, for example, to treat high blood pressure and certain heart conditions).
- Thiazides (used in the treatment of high blood pressure).
- Corticosteroids such as prednisone and cortisone (used to treat inflammatory disorders).

- Thyroid products (used to treat patients with low production of thyroid hormones).
- Sympathomimetics (used, for example, to treat asthma).
- Sulfinpyrazone (used to treat chronic gout).
- Gemfibrozil (used to lower high levels of lipids in the blood).
- Fluconazole, ketaconazole, itroconazole (used to treat fungal infections).
- anabolic hormones (used to treat anemia).
- guanethidine, gymnema sylvestre, glucomannan, thioctic acid and St John's wort (food, dietary supplements or herbal medicine).
- somatropin (a growth hormone).
- somatostatin analogues (eg. lanreotide, octreotide).
- rifampin (used, for example, to treat tuberculosis).
- Phenytoin, carbamazepine, phenobarbitol (used, for example, to treat seizures-epilepsy).
- Angiotensin converting enzyme (ACE) - inhibitors (used to treat certain heart conditions)
- Oral contraceptives (used for birth control)
- Danazol (used to treat breast cysts and endometriosis)
- Cyclosporine
- Alcohol

Grapefruit juice may increase the effect of **Starlix\***. Tell your doctor if you have recently taken any of these medicines obtained without a prescription.

Your doctor may adjust the dose of these medicines.

### **How to take Starlix\***

Follow all instructions given to you by your doctor and pharmacist carefully even if they differ from the ones given in this leaflet. Do not exceed the recommended dose.

### **How much Starlix\* to take**

The usual daily dose of **Starlix\*** is 120 mg before main meals (usually breakfast, lunch and dinner). A lower dose of 60 mg may be considered if your blood sugar levels are near the normal values. The maximum recommended dose is 180 mg before main meals. Your doctor may need to adjust the dosage to your particular needs.



He/she will prescribe **Starlix\*** either by itself or together with metformin if one medicine alone is not sufficient to control your blood sugar levels.

**How to take Starlix\***

The tablets should be swallowed whole with a glass of water.

**When to take Starlix\***

**Starlix\*** is best taken immediately before a main meal (1 minute) but can be taken at any time in the 30 minutes before starting the meal.

If you have to skip a main meal, do not take the corresponding dose of **Starlix\***.

**How long to take Starlix\***

Take **Starlix\*** daily before main meals as long as recommended by your doctor.

Continue taking **Starlix\*** as your doctor tells you.

If you have questions about how long to take **Starlix\***, talk to your doctor or your pharmacist.

**If you take more Starlix\* than you should**

Seek medical advice if you have accidentally taken too many tablets. If you experience symptoms of low blood sugar – e.g. you feel dizzy, light-headed, hungry, nervous and shaky, drowsy, confused and/or sweaty – you should eat or drink something containing sugar.

Call for urgent medical assistance – or make sure that someone else does this for you - if you feel as if you are about to suffer a severe hypoglycemic episode (loss of consciousness, seizure).

In case of drug overdose, contact a health care practitioner, hospital emergency department or regional Poison Control Centre immediately, even if there are no symptoms.

**If you forget to take Starlix\***

If you forget to take a tablet simply skip that dose and take the next one before your next meal.

Do not take a double dose of **Starlix\*** to make up for the one that you missed.

### **If you stop taking Starlix\***

Do not stop taking **Starlix\*** unless your doctor tells you to. If you stop taking it, elevated blood sugar levels will no longer be controlled (see also above section “**How long to take Starlix\***”).

### **Possible side effects**

The following side effects may occur during your treatment with **Starlix\***:

#### **Very Common**

- Hypoglycemia (low blood sugar)

If your blood sugar is low, or you experience any of the symptoms of hypoglycemia such as cold sweat, dizziness, shaking, weakness, cool pale skin, headache, rapid heart beat, feeling sick and/or difficulty in concentrating, eat a glucose tablet or high sugar drink or snack, then rest.

#### **Common**

- Hyperglycemia (high blood sugar)

If your blood sugar is high or you experience any of the symptoms of hyperglycemia such as increased urination, feeling thirsty, dry skin and dry mouth, talk to your doctor,

- Visual disorder
- Abdominal pain
- Nausea
- Vomiting
- Constipation

#### **Uncommon**

- Liver dysfunction
- Allergy
- Itching

If you experience any of these symptoms **talk to your doctor.**

### **Serious Side Effects**

Sudden severe headache or worsening of headache, dizziness, fatigue or increased sweating. If you experience any of these side effects, stop taking **Starlix\*** and talk to your doctor.

*This is not a complete list of side effects. For any unexpected effects while taking **Starlix\***, contact your doctor or pharmacist.*

### **REPORTING SUSPECTED SIDE EFFECTS**

You can report any suspected adverse reactions associated with the use of health products to the Canada Vigilance Program by one of the following 3 ways:

- Report online at [www.healthcanada.gc.ca/medeffect](http://www.healthcanada.gc.ca/medeffect)
- Call toll-free at 1-866-234-2345
- Complete a Canada Vigilance Reporting Form and:
  - Fax toll-free to 1-866-678-6789, or
  - Mail to:

Canada Vigilance Program  
Health Canada  
Postal Locator 0701C  
Ottawa, ON K1A 0K9

Postage paid labels, Canada Vigilance Reporting Form and the adverse reaction reporting guidelines are available on the MedEffect™ Canada Web site at [www.healthcanada.gc.ca/medeffect](http://www.healthcanada.gc.ca/medeffect).

*NOTE: Should you require information related to the management of side effects, contact your health professional. The Canada Vigilance Program does not provide medical advice.*

### **Storing Starlix\***

Keep out of the reach and sight of children.

Store in the original package.

Store between 15-30°C.

Do not use **Starlix\*** after the expiry date shown on the box.

Do not use any **Starlix\*** pack that is damaged or shows signs of tampering.

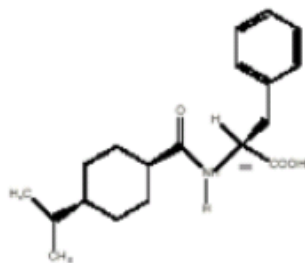
## PHARMACEUTICAL INFORMATION

### DRUG SUBSTANCE

**Proper Name:** nateglinide

**Chemical Name:** [N-[trans-4-isopropylcyclohexylcarbonyl]-D-phenylalanine]

**Structural Formula:**



**Molecular Formula:** C<sub>19</sub>H<sub>27</sub>NO<sub>3</sub>

**Molecular Weight:** 317.43

**Physical Form:** White crystalline powder

**Solubility:** Freely soluble in methanol, ethanol and in chloroform, soluble in ethylether, sparingly soluble in acetonitrile and in octanol, and practically insoluble in water.

**pK<sub>a</sub> values:** pK<sub>a</sub>=3.1

**Melting Point:** 138.9<sup>0</sup>C

### COMPOSITION OF DRUG PRODUCT

**Starlix\*** film-coated tablets contain the following non-medicinal ingredients: colloidal silicon dioxide, croscarmellose sodium, hydroxypropyl methylcellulose, iron oxide (red or yellow), lactose (hydrous), magnesium stearate, microcrystalline cellulose, polyethylene glycol, povidone, talc and titanium dioxide.

## STABILITY AND STORAGE RECOMMENDATIONS

Store between 15-30°C. Keep bottles tightly closed.

## AVAILABILITY OF DOSAGE FORM

**Starlix\*** (nateglinide) 60 mg tablets are pink, round, beveled edge with “**Starlix**” debossed on one side and “60” on the other side. Available in bottles of 100, 500 and 1000 and in cartons containing 1 and 7 blister strips of 12 tablets.

**Starlix\*** (nateglinide) 120 mg tablets are yellow, ovaloid with “**Starlix**” debossed on one side and “120” on the other side. Available in bottles of 100, 500, and 1000 and in cartons containing 1 and 7 blister strips of 12 tablets.

## PHARMACOLOGY

In animal models the rapid, transient and glucose dependent nature of the insulinotropic action of nateglinide markedly reduces mealtime glucose excursions while minimizing total insulin exposure and hypoglycemic potential. Chronic studies in animal models have demonstrated that nateglinide preserved pancreatic insulin content and had long-term efficacy in controlling mealtime glucose excursions when compared to long acting insulinotropic agents and placebo.

## TOXICOLOGY

### Acute Toxicity

The acute toxicity of nateglinide was assessed orally in rats and dogs, and following i.v. injection in mice and dogs. The results are summarized in the following Table:

### Single dose toxicity studies

Species	Route	Dose (mg/kg)	Major findings
Mouse	iv	100 – 400	LD <sub>50</sub> ≈ 200-400 mg/kg
Rat	oral (gavage)	500 - 2000	LD <sub>50</sub> > 2000 mg/kg
Dog	oral (capsule)	100 - 2000	LD <sub>50</sub> > 2000 mg/kg

Nateglinide showed low acute toxic potential. No lethality was observed after single oral doses up to 2000 mg/kg in either rats or dogs. Intravenous administration to mice caused tonic convulsions (=200 mg/kg) and death at 400 mg/kg.

The low acute toxicity indicates that there is a minimal risk of intoxication following accidental or deliberate overdosing.

## LONG TERM TOXICITY STUDIES

Species	Route	Duration	Dose (mg/kg)	Major findings
Mouse	oral (diet)	13 weeks	0.5, 1, 2%*	NTEL = 0.5% Decreased body weight gain and low packed cell volume at 1 and 2%.
Rat	oral (diet)	13 weeks	5000, 10000, 20000 ppm**	All doses: decreased body weight gain. 20000 ppm: small increase in ALT No NOEL
Rat	oral (diet)	13 weeks	625, 1250, 2500 ppm***	NOEL = 2500 ppm
Rat	oral (gavage)	13 weeks	100, 300, 1000, 2000	NTEL = 100 mg/kg ≥1000 mg/kg: Stomach erosions/ulcers 2000 mg/kg: mortality (terminated on day 10)
Rat	oral (gavage)	52 weeks	30, 100, 500	NTEL = 100 mg/kg 500 mg/kg: Stomach erosions/ulcers
Rat	i.v.	5 days	6, 24, 48	48 mg/kg: Local irritation and necrosis at injection site.
Rat	i.v.	2 weeks	6, 24	NTEL = 24 mg/kg; necrosis at injection site.
Dog	oral (capsule)	13 weeks	10, 30, 100, 300	NOEL = 30 mg/kg 300 mg/kg: Mortality, increased ALT, AST, bilirubin. Bile plugs in liver; ulceration of duodenum, erosion of stomach.
Dog	oral (capsule)	up to 13 weeks, + up to 5 weeks recovery	300	Elevated ALT, AST, ALP, total bilirubin. Yellowish change in organs, tissues & subcutis. Deposition of brown pigment in hepatocytes and hypertrophy of zona fasciculata in adrenals. Reversible single cell necrosis, fat deposition and cytoplasmic degeneration of hepatocytes, atrophy and ulcer of gallbladder mucosa, duodenal ulcers.
Dog	oral (capsule)	12 months	10, 30, 100	NTEL = 100 mg/kg
Dog	i.v.	acute and 5 days	5, 10, 20 (single dose) 20 (5 days)	MTD not achieved.
Dog	i.v.	2 weeks	4, 20	NTEL = 20 mg/kg; inflammatory lesions at injection site.

\* 0.5, 1, 2% = 981/1352, 2643/2944, 6145/7067 mg/kg for males/females, respectively

\*\* 5000, 10000, 20000 ppm = 364/438, 724/844, 1522/1817 mg/kg for males/females, respectively

\*\*\* 625, 1250, 2500 ppm = 52/58, 103/119, 201/240 mg/kg for males/females, respectively

## CARCINOGENICITY

Study type	Species/s train	Route	Dose	Comments
104 week carcinogenicity	Mouse/B6C3F1	Oral (diet)	0.1, 0.3, 1.0% * weeks 1-23 0.03, 0.1, 0.3% ** week 24 to termination	Dose levels of all groups were decreased in week 24 due to decreased body weight gain. At 0.3/0.1% and 1.0/0.3%: increased mortality and peripheral neuropathy in females No tumorigenic response
104 week carcinogenicity	Rat/Crl: CD(SD) BR	Oral (diet)	625, 1250, 2500 ppm***	At 2500 ppm: Slight increase in benign pancreatic islet cell tumors in females.
104 week carcinogenicity	Rat/Crl: CD(SD) BR	Oral (diet)	100, 300, 600, 900 mg/kg	No tumorigenic response.

\* Equivalent to 178/233, 535/690, 1991/2552 mg/kg in males/females

\*\* Equivalent to 37/36, 124/123, 390/409 mg/kg in males/females

\*\*\* Equivalent to 29/40, 58/79, 117/165 mg/kg in males/females

No evidence of a tumorigenic response was found when nateglinide was administered for 104 weeks to mice at doses up to 400 mg/kg/day or to rats at doses up to 900 mg/kg/day (4.5 and 21 times the maximum recommended human dose in mice and rats, respectively, when compared on the basis of body surface area).

## Mutagenesis

Nateglinide was not genotoxic in a variety of *in vitro* (Ames test mouse lymphoma assay, and chromosome aberration assays in Chinese hamster lung cells and V79 cells and *in vivo* (mouse micronucleus) tests.

## REPRODUCTION AND TERATOLOGY

### Reproductive function

Study type	Species	Route	Dose (mg/kg)	Major findings
Fertility Studies – Segment 1 Studies				
Segment I	Rat	Oral (gavage)	100, 300, 600	No effect on fertility or reproductive function
Segment II pilot	Rat	Oral (gavage)	100, 300, 1000	No maternal or fetal toxicity
Embryo Toxicity Studies – Segment 2				
Segment II	Rat	Oral (gavage)	100, 300, 1000	No embryotoxicity. No teratogenicity
Segment II range-finding	Rabbit	Oral (gavage)	250, 500, 1000	1000 mg/kg: severe maternal toxicity
Segment II	Rabbit	Oral (gavage)	50, 150, 500	500 mg/kg: maternal and embryo toxicity; gallbladder agenesis NOEL = 150 mg/kg
Supplementary study on fetal gall bladder	Rabbit	Oral (gavage)	300, 500	300 mg/kg: gallbladder agenesis in 5 fetuses from 1 dam; no bile duct abnormalities in these fetuses 500 mg/kg: 11/20 dams died; no live fetuses
Perinatal and Postnatal Studies				
Segment III	Rat	Oral (gavage)	100, 300, 1000	1000 mg/kg: ↓ fetal body weight during lactation. No effect on development or reproductive function.

Fertility was unaffected by administration of nateglinide to rats at doses up to 600 mg/kg (13.5 and 11.4 times the maximum daily human dose in male and female rats respectively, when compared on the basis of body surface area.



1. Bruce DG, Chisholmn DJ, Storlien LH, Kraegen EW. Physiological importance of deficiency in early prandial insulin secretion in non-insulin-dependent diabetes. *Diabetes* 1988;37:736-44.
2. Calles-Escandon, J and D.C. Robbins. 1987. Loss of early phase insulin release in humans impairs glucose tolerance and blunts thermic effect of glucose. *Diabetes* 36: 1167-1172.
3. Ceriello Antonio: The emerging role of post-prandial hyperglycaemic spikes in the pathogenesis of diabetic complications. *Diabet. Med.* 15:188-193, 1998
4. de Souza, C.J., N. Dragonas, K. Gagen, and B. Dunning. 1998. A-4166, unlike glibenclamide, maintains long term efficacy when administered for 10 weeks to diabetic rats. *Diabetes* 47:A355(Abstr.)
5. DECODE Study Group on behalf of the European Diabetes Epidemiology Study Group. Glucose tolerance and mortality: comparison of WHO criteria and American Diabetes Association diagnostic criteria. *Lancet* 1999; 354:617-621.
6. Del Prato S, Metabolic control in type 2 diabetes: the impact of prandial glucose. *Curr Opin Endocrinol Diabetes* 1999; 8 suppl 1: 51-58
7. Ikenoue T, Okazaki K, Fujitani S, Tsuchiya Y, Akiyoshi M, Maki T, Kondo N. Effect of a new hypoglycemic agent, A-4166 [(-)-N-(trans-4-isopropylcyclohexanecarbonyl)-D-Phenylalanine], on posprandial blood glucose excursion: comparison with voglibose and glibenclamide. *Biol.Pharm.Bull.* 1997;20(4):354-9.
8. Ikenoue T, Akiyoshi M, Fujitani S, Okazaki K, Kondo N, Maki T. Hypoglycaemic and insulinotropic effects of a novel oral antidiabetic agent, (-)-N(trans-4-isopropylcyclohexane-carbonyl)-D-phenylalanine (A-4166). *Br. J. Pharmacol.* 1997;120:137-45.
9. Karara AH, Dunning BE, McLeod JF. The effect of food on the oral bioavailability and the pharmacodynamic actions of the insulinotropic agent nateglinide in healthy subjects. *J.Clin.Pharmacol.* 1999;39:172-9.
10. Morimoto S, Mokuda O, Sakamoto Y. AY-4166 increases the sensitivity of insulin secretion to glucose in isolated perfused rat pancreas. *Horm.Metab.Res.* 1998;30:77-9.
11. Takesada H, Matsuda K, Ohtake R, Mihara R, Ono I, Tanaka K, Naito M, Yatagai M, Suzuki E. Structure determination of metabolites isolated from urine and bile after administration of AY4166, a novel D-phenylalanine-derivative hypoglycemic agent. *Bioorg Med Chem* 1996; 4:1771-81.
12. UKPDS group: Intensive blood glucose control with sulphonylureas or insulin compared with conventional treatment and risk of complications in patients with type 2 diabetes (UKPDS 33) *Lancet*, 1998; 352:837-853.
13. Hanefeld M, Fischer S, Julius U, Schulze J, Schwanebeck U, Schmechel H, Ziegelasch H, Lindner J. Risk factors for myocardial infarction and death in newly detected NIDDM: the Diabetes Intervention Study, 11-year follow-up. *Diabetologia* (1996) 39: 1577-1583

