

## PRODUCT MONOGRAPH

**Pr AVA-OLANZAPINE**  
(olanzapine)  
2.5mg, 5mg, 7.5mg, 10mg and 15 mg tablets

Antipsychotic Agent

Avantra Inc.  
10761 – 25th Street NE, Suite 110  
Calgary, Alberta  
T3N 0A4  
Canada

Date of Preparation:  
September 13, 2011

Submission Control No: 149732

## Table of Contents

<b>PART I: HEALTH PROFESSIONAL INFORMATION .....</b>	<b>3</b>
SUMMARY PRODUCT INFORMATION.....	3
INDICATIONS AND CLINICAL USE .....	3
CONTRAINDICATIONS.....	4
WARNINGS AND PRECAUTIONS .....	4
ADVERSE REACTIONS .....	12
DRUG INTERACTIONS .....	24
DOSAGE AND ADMINISTRATION .....	26
OVERDOSAGE.....	27
ACTION AND CLINICAL PHARMACOLOGY .....	28
STORAGE AND STABILITY .....	30
DOSAGE FORMS, COMPOSITION AND PACKAGING.....	30
<b>PART II: SCIENTIFIC INFORMATION .....</b>	<b>32</b>
PHARMACEUTICAL INFORMATION .....	32
CLINICAL TRIALS .....	33
DETAILED PHARMACOLOGY .....	34
TOXICOLOGY .....	46
REFERENCES.....	50
<b>PART III: CONSUMER INFORMATION.....</b>	<b>54</b>

**Pr AVA-OLANZAPINE**  
(olanzapine)  
2.5mg, 5mg, 7.5mg, 10mg and 15 mg tablets

**PART I: HEALTH PROFESSIONAL INFORMATION**

**SUMMARY PRODUCT INFORMATION**

<b>Route of Administration</b>	<b>Dosage Form / Strength</b>	<b>Clinically Relevant Nonmedicinal Ingredients*</b>
Oral	Tablet 2.5mg, 5mg, 7.5mg, 10mg and 15mg	Crospovidone, hydroxypropyl cellulose, lactose monohydrate, magnesium stearate, silicified microcrystalline cellulose  Colour Coating contain some or all of the following ingredients: glycerol triacetate, hypromellose, macrogol, polydextrose, titanium dioxide, FD & C Blue 2 aluminium lake, polysorbate

\* see Dosage Forms, Composition and Packaging section for more information.

**INDICATIONS AND CLINICAL USE**

Adults

***Schizophrenia and Related Disorders***

AVA-OLANZAPINE (olanzapine) is indicated for the acute and maintenance treatment of schizophrenia and related psychotic disorders. In controlled clinical trials, olanzapine was found to improve both positive and negative symptoms.

Olanzapine has been shown to be effective in maintaining clinical improvement during 1-year of continuation therapy in patients who had shown an initial treatment response.

***Bipolar Disorder***

AVA-OLANZAPINE (olanzapine) is indicated for the acute treatment of manic or mixed episodes in bipolar I disorder. Olanzapine may be used as monotherapy or cotherapy with agents commonly used in the treatment of acute bipolar disorder (e.g., lithium or divalproex sodium).

The efficacy of olanzapine as monotherapy maintenance treatment in bipolar patients with manic or mixed episodes who responded to acute treatment with olanzapine was demonstrated in two 1-year "time to relapse" trials (see Part II: CLINICAL TRIALS section).

The physician who elects to use AVA-OLANZAPINE (olanzapine) for extended periods should periodically re-evaluate the long-term usefulness of the drug for the individual patient (see DOSAGE AND ADMINISTRATION section).

**Geriatrics ( $\geq 65$  years): AVA-OLANZAPINE is not indicated in elderly patients with dementia.** See **WARNINGS AND PRECAUTIONS-Serious Warnings and Precautions Box** and **Special Populations**. Caution should be used when treating geriatric patients with AVA-OLANZAPINE. See ACTION AND CLINICAL PHARMACOLOGY, WARNINGS AND PRECAUTIONS, Special Populations, and DOSAGE AND ADMINISTRATION sections.

**Pediatrics (<18 years of age):**

The safety and efficacy of olanzapine has not been studied in pediatric populations and its use is not recommended.

## CONTRAINDICATIONS

AVA-OLANZAPINE (olanzapine) is contraindicated in those patients with a known hypersensitivity to the drug or the excipients of the product. For a complete listing, see DOSAGE FORMS, COMPOSITION and PACKAGING section.

## WARNINGS AND PRECAUTIONS

### SERIOUS WARNINGS AND PRECAUTIONS

Increased Mortality in Elderly Patients with Dementia:

Elderly patients with dementia treated with atypical antipsychotic drugs are at an increased risk of death compared to placebo. Analyses of thirteen placebo controlled trials with various atypical antipsychotics (modal duration of 10 weeks) in these patients showed a mean 1.6 fold increase in death rate in the drug-treated patients. Although the causes of death were varied, most of the deaths appeared to be either cardiovascular (e.g., heart failure, sudden death) or infectious (e.g., pneumonia) in nature. (See WARNINGS AND PRECAUTIONS, Special Populations and Use in Geriatric Patients with Dementia).

**General**

Neuroleptic Malignant Syndrome:

Neuroleptic Malignant Syndrome (NMS) has been reported very rarely ( $\leq 0.0025\%$ ) in pre-marketed and post-market surveillance. However, NMS is a potentially fatal symptom complex that has been reported in association with antipsychotic drugs. Clinical manifestations of NMS are hyperpyrexia, muscle rigidity, altered mental status, and evidence of autonomic instability (irregular pulse or blood pressure, tachycardia, diaphoresis, and cardiac dysrhythmia). Additional signs may include elevated creatine phosphokinase, myoglobinuria (rhabdomyolysis), and acute renal failure.

The management of NMS should include immediate discontinuation of all antipsychotic drugs including AVA-OLANZAPINE, intensive monitoring of symptoms and treatment of any associated medical problems. There is no general agreement about specific pharmacological treatment for NMS. If a patient requires antipsychotic drug treatment after recovery from NMS, the re-introduction of therapy should be very carefully considered, since recurrence of NMS has been reported.

#### Weight Gain:

Olanzapine was associated with weight gain during clinical trials. Clinically significant weight gain was observed across all baseline body mass index (BMI) categories (see ADVERSE REACTIONS, Other Adverse Events Observed During Clinical Trials with Oral Olanzapine Across All Indications, Weight Changes). Using pooled data from patients treated with olanzapine over the dosage range of 5 mg to 20 mg per day, mean gain of 5.4 kg. The mean change in weight was comparable for patients with schizophrenia and bipolar mania. A retrospective analysis of 573 patients receiving olanzapine for up to 3 years found that dose was not a significant predictor of greater long-term changes in weight.

In long-term studies (at least 48 weeks), both the magnitude of weight gain and the proportion of olanzapine-treated patients who had clinically significant weight gain were greater than in short-term studies. The percentage of patients who gained  $\geq 25\%$  of their baseline body weight with long-term exposure was very common ( $\geq 10\%$ ).

#### Body Temperature Regulation:

Disruption of the body's ability to reduce core body temperature has been attributed to antipsychotic agents. Appropriate care is advised when prescribing olanzapine for patients who will be experiencing conditions which may contribute to an elevation of core temperature, e.g. exercising strenuously, exposure to extreme heat, receiving concomitant medication with anticholinergic activity, or being subject to dehydration.

#### Potential Effect on Cognitive and Motor Performance:

Because AVA-OLANZAPINE (olanzapine) may cause somnolence, patients should be cautioned about operating hazardous machinery, including motor vehicles, until they are reasonably certain that olanzapine therapy does not affect them adversely.

#### **Carcinogenesis and Mutagenesis**

For animal data, see Part II: TOXICOLOGY section.

#### **Cardiovascular**

##### Hypotension and Syncope:

As with other drugs that have high alpha-1 adrenergic receptor blocking activity, olanzapine may induce orthostatic hypotension, tachycardia, dizziness, and sometimes syncope, especially at the initiation of treatment. In a clinical trial database of 2500 patients treated with oral olanzapine, syncope was reported in 0.6% (15/2500). The risk of orthostatic hypotension and syncope may be minimized by initiating therapy with 5 mg QD (see DOSAGE AND ADMINISTRATION section). A more gradual titration to the target dose should be considered if hypotension occurs.

AVA-OLANZAPINE should be used with particular caution in patients with known cardiovascular disease (history of myocardial infarction or ischemia, heart failure, or conduction abnormalities), cerebrovascular disease, and conditions which would predispose patients to hypotension (dehydration, hypovolemia, and treatment with antihypertensive medications).

#### QT Interval:

In clinical trials, clinically meaningful QTc prolongations (Fridericia QT correction [QTcF]  $\geq$  500 milliseconds [msec] at any time post baseline in patients with baseline QTcF < 500 msec) were uncommon (0.1% to 1%) in patients treated with olanzapine, with no significant differences in associated cardiac events compared to placebo. However, as with other antipsychotics, caution should be exercised when olanzapine is prescribed with medicines known to increase QTc interval, especially in the elderly, in patients with congenital long QT syndrome, congestive heart failure, heart hypertrophy, hypokalaemia or hypomagnesaemia (see ADVERSE REACTIONS, Post-Market Adverse Drug Reactions).

#### Cardiac Death:

In a retrospective observational study, patients treated with atypical antipsychotics (including olanzapine) or typical antipsychotics had a similar dose-related increase of presumed sudden cardiac death (SCD) compared to non-users of antipsychotics (almost twice the risk than that for non-users). In postmarketing reports with olanzapine, the event of SCD has been reported very rarely.

### **Endocrine and Metabolism**

#### Hyperglycaemia:

As with some other antipsychotics, exacerbation of pre-existing diabetes and hyperglycaemia have been reported rarely and, diabetic ketoacidosis, and diabetic coma including some fatal cases have been reported very rarely during the use of olanzapine, sometimes in patients with no reported history of hyperglycaemia (see ADVERSE REACTIONS; Post-Market Adverse Drug Reactions section). In some cases, a prior increase in body weight has been reported which may be a predisposing factor.

In clinical trials (up to 52 weeks) olanzapine was associated with a greater mean change in glucose relative to placebo. Treatment-emergent clinically significant changes in fasting glucose were observed in patients with or without evidence of glucose dysregulation at baseline (see ADVERSE REACTIONS, Other Adverse Events Observed During Clinical Trials with Oral and Intramuscular Olanzapine Across All Indications, Glucose Changes).

Assessment of the relationship between atypical antipsychotic use and glucose abnormalities is complicated by the possibility of an increased background risk of diabetes mellitus in patients with schizophrenia and the increasing incidence of diabetes mellitus in the general population. Given these confounders, the relationship between atypical antipsychotic use and hyperglycemia-related adverse events is not completely understood. However, epidemiological studies suggest an increased risk of treatment-emergent hyperglycemia-related adverse events in patients treated with the atypical antipsychotics. Precise risk estimates for hyperglycemia-related adverse events in patients treated with atypical antipsychotics are not available.

Any patient treated with atypical antipsychotics should be monitored for symptoms of hyperglycemia including polydipsia, polyuria, polyphagia, and weakness. Patients who develop symptoms of hyperglycemia during treatment with atypical antipsychotics should undergo fasting blood glucose testing. In some cases, hyperglycemia has resolved when the atypical antipsychotic was discontinued; however, some patients required continuation of anti-diabetic treatment despite discontinuation of the suspect drug. Patients with risk factors for diabetes mellitus (e.g., obesity, family history of diabetes) who are starting treatment with atypical antipsychotics should undergo fasting blood glucose testing at the beginning of treatment and periodically during treatment. Patients with an established diagnosis of diabetes mellitus who are started on atypical antipsychotics should be monitored regularly for worsening of glucose control.

#### Hyperprolactinemia:

As with other drugs that block dopamine D<sub>2</sub> and/or serotonin 5-HT<sub>2</sub> receptors, olanzapine may elevate prolactin levels. Elevations associated with olanzapine treatment are generally mild, and may decline during continued administration.

Since tissue culture experiments indicate that approximately one third of human breast cancers are prolactin-dependent *in vitro* AVA-OLANZAPINE should only be administered to patients with previously detected breast cancer if the benefits outweigh the potential risks. Caution should also be exercised when considering AVA-OLANZAPINE treatment in patients with pituitary tumours. Possible manifestations associated with elevated prolactin levels are amenorrhea, galactorrhea, and menorrhagia.

As is common with compounds which stimulate prolactin release, the administration of olanzapine resulted in an increase in the incidence of mammary neoplasms in both rats and mice. The physiological differences between rats and humans with regard to prolactin make the clinical significance of these findings unclear. To date, neither clinical nor epidemiological studies have shown an association between chronic administration of these drugs and mammary tumorigenesis.

#### Lipids

Increases in lipids have been observed in olanzapine-treated patients in placebo-controlled clinical trials. Treatment-emergent clinically significant changes in fasting lipids were observed in patients with or without evidence of dyslipidemia at baseline (see ADVERSE REACTIONS; Other Adverse Events Observed During Clinical Trials with Oral and Intramuscular Olanzapine Across All Indications, Lipids subsection). Appropriate clinical monitoring is recommended, including baseline and follow-up lipid evaluations.

#### **Gastrointestinal**

##### Antiemetic Effect:

Consistent with its dopamine antagonist effects, olanzapine may have an antiemetic effect. Such an effect may mask signs of toxicity due to overdosage of other drugs, or may mask symptoms of disease such as brain tumour or intestinal obstruction.

#### **Genitourinary**

##### Priapism:

Rare cases of priapism have been reported with olanzapine. This adverse reaction, as with other psychotropic drugs, did not appear to be dose-dependent and did not correlate with the duration of treatment. The most likely mechanism of action of priapism is a relative decrease in sympathetic tone.

### **Hematologic**

#### **Hematologic Indices:**

In oral olanzapine clinical trials, there were no data to suggest olanzapine adversely affected bone marrow function, even in patients with a history of clozapine-associated neutropenia or leukopenia. Olanzapine was associated with a 5.7% incidence of mainly transient treatment-emergent elevations of eosinophil counts above the normal range. Elevations were not associated with any symptoms, identifiable allergic phenomena, or changes in other hematologic indices. Rare cases of leukopenia have been reported with olanzapine. In case of symptoms of infection, WBC count and differential count should be considered.

### **Hepatic**

#### **Transaminase Elevations:**

During pre-marketing clinical trials therapy with oral olanzapine was associated with elevation of hepatic transaminases, primarily ALT (SGPT). Within a clinical trial database of 2280 olanzapine-treated patients, with baseline ALT (SGPT) levels  $\leq 60$  IU/L, 5.9% (134/2280) had treatment-emergent ALT (SGPT) elevations to  $>120$  IU/L, 1.9% (44/2280) had elevations to  $>200$  IU/L, and 0.2% (5/2280) had elevations to  $>400$  IU/L. No patients had values in excess of 700 IU/L. None of the olanzapine-treated patients who had elevated transaminase values manifested clinical symptomatology associated with liver impairment. The majority of transaminase elevations were seen during the first six weeks of treatment. Most elevations were transient (66%) while patients continued on olanzapine therapy, or falling (11%) at the last available measurement. Of the 134 olanzapine-treated patients whose enzyme levels increased to  $>120$  IU/L, 20 discontinued treatment (6 for hepatic, 14 for other reasons) while their ALT (SGPT) values were still rising. In 38 olanzapine-treated patients with baseline ALT (SGPT)  $>90$  IU/L, none experienced an elevation to  $>400$  IU/L.

Rare reports of hepatitis have been received. Very rare cases of cholestatic or mixed liver injury have also been reported in the post-marketing period. Hepatic failure, including fatalities have also been reported very rarely in the post-marketing period. (See POST-MARKET ADVERSE DRUG REACTIONS section.)

Precaution should be exercised when using AVA-OLANZAPINE in patients with pre-existing hepatic disorders, in patients who are being treated with potentially hepatotoxic drugs, or if treatment-emergent signs or symptoms of hepatic impairment appear.

For patients who have known or suspected abnormal hepatic function prior to starting olanzapine, standard clinical assessment including measurement of transaminase levels is recommended. Periodic clinical reassessment with transaminase levels is recommended for such patients, as well as for patients who develop any signs and symptoms suggestive of a new onset liver disorder during olanzapine therapy.

### **Neurologic**



### Tardive Dyskinesia:

Tardive dyskinesia (TD), a syndrome consisting of potentially irreversible involuntary dyskinetic movements, is associated with the use of antipsychotic drugs. Tardive dyskinesia occurs more frequently in elderly patients; however, patients of any age can be affected. It is unknown whether antipsychotic drugs may differ in their potential to cause TD. However, during long-term, double-blind, extension schizophrenia maintenance trials (894 olanzapine-treated patients; median olanzapine treatment, 237 days), olanzapine was associated with a statistically significantly lower incidence of treatment-emergent dyskinesia compared to haloperidol. During long-term, double-blind, monotherapy extension bipolar maintenance trials (567 olanzapine-treated patients, for up to 1 year), there were no cases of TD in the olanzapine arms, as determined by either reported adverse events or the Abnormal Involuntary Movement Scale (AIMS). TD has been reported very rarely ( $\leq 0.0025\%$ ) in post-market surveillance.

The risk of developing tardive dyskinesia and the chance of it becoming irreversible are believed to increase as the duration of treatment and the cumulative dose of antipsychotic drug increase. However, the syndrome can develop, although less commonly, after relatively brief periods of treatment at low doses. There is no known treatment for established cases of TD. The syndrome may remit, partially or completely, if antipsychotic drug treatment is withdrawn. Antipsychotic drug treatment itself, however, may suppress the signs and symptoms of tardive dyskinesia, thereby masking the underlying process.

Given these considerations, AVA-OLANZAPINE should be prescribed in a manner that is most likely to minimize the risk of tardive dyskinesia. As with any antipsychotic drug, AVA-OLANZAPINE should be reserved for patients who appear to be receiving substantial benefit from the drug. In such patients the lowest effective dose and the shortest duration of treatment should be sought. The need for continued treatment should be reassessed periodically.

If signs or symptoms of tardive dyskinesia appear in a patient on AVA-OLANZAPINE, drug discontinuation should be considered. However, some patients may benefit from continued treatment with AVA-OLANZAPINE despite the presence of the syndrome.

### Seizures:

Conventional neuroleptics are known to lower seizure threshold. In clinical trials, seizures have occurred in a small number (0.9%, 22/2500) of olanzapine-treated patients. There were confounding factors that may have contributed to the occurrence of seizures in many of these cases. AVA-OLANZAPINE should be used cautiously in patients who have a history of seizures or have conditions associated with seizure or have a lowered seizure threshold.

### **Psychiatric**

#### Suicide:

The possibility of suicide or attempted suicide is inherent in psychosis, and thus close supervision and appropriate clinical management of high-risk patients should accompany drug therapy.

### **Renal**

#### Uric Acid:

In the pre-marketing clinical trial database, oral olanzapine was associated with mild elevations of uric acid in some patients. However, only 1 olanzapine-treated patient experienced treatment-emergent gout, and the baseline uric acid concentration for this patient was at least as large as all concentrations observed while the patient was receiving olanzapine.

### **Special Populations**

#### **Pregnant Women:**

There are no adequate and well-controlled studies in pregnant women. Patients should be advised to notify their physician if they become pregnant or intend to become pregnant during treatment with AVA-OLANZAPINE. Because human experience in pregnant females is limited, this drug should be used in pregnancy only if the potential benefit justifies the potential risk to the fetus.

#### **Labour and Delivery:**

Parturition in rats was not affected by olanzapine. The effect of olanzapine on labour and delivery in humans is not known.

#### **Nursing Women:**

##### **Lactation:**

In a study in lactating, healthy women, olanzapine was excreted in breast milk. Mean infant exposure (mg/kg) at steady state was estimated to be 1.8% of the maternal olanzapine dose (mg/kg). Patients should be advised not to breast feed an infant if they are taking AVA-OLANZAPINE.

**Pediatrics (< 18 years of age):** The safety and efficacy of olanzapine in children under the age of 18 years have not been established.

#### **Geriatrics (≥ 65 years of age):**

The number of patients 65 years of age or over with schizophrenia or related disorders exposed to oral olanzapine during clinical trials was limited (N=44). Caution should thus be exercised with the use of olanzapine in the elderly patient, recognizing the more frequent hepatic, renal, central nervous system, and cardiovascular dysfunctions, and more frequent use of concomitant medication in this population (see DOSAGE AND ADMINISTRATION section).

### **Use in Geriatric Patients with Dementia**

#### **Overall Mortality.**

Elderly patients with dementia treated with atypical antipsychotic drugs showed increased mortality compared to placebo in a meta-analysis of 13 controlled trials of various atypical antipsychotic drugs. In five placebo-controlled trials with oral olanzapine in this population, the incidence of mortality was 3.5 % for olanzapine-treated patients compared to 1.5 % for placebo-treated patients. AVA-OLANZAPINE is not indicated in elderly patients with dementia.

#### **Dysphagia:**

Esophageal dysmotility and aspiration have been associated with antipsychotic drug use. Aspiration pneumonia is a common cause of morbidity and mortality in patients with advanced Alzheimer's disease. Olanzapine and other antipsychotic drugs should be used cautiously in patients at risk for aspiration pneumonia.

Cerebrovascular Adverse Events (CVAEs), Including Stroke, in Elderly Patients with Dementia: Cerebrovascular adverse events (e.g., stroke, transient ischemic attack), including fatalities, were reported in trials of olanzapine in elderly patients with dementia-related psychosis. In placebo-controlled studies, there was a higher incidence of CVAEs in patients treated with olanzapine compared to patients treated with placebo (1.3% vs. 0.4%, respectively; see ADVERSE REACTIONS section). Olanzapine is not approved for the treatment of elderly patients with dementia.

There is insufficient evidence to determine whether CVAEs in elderly patients with dementia are associated specifically with olanzapine or all antipsychotic agents. Clinical trial data appear to suggest that patients with a dementia diagnosis of vascular or mixed type had a higher likelihood of experiencing CVAEs than other types of dementia.

The risks and benefits of the use of olanzapine in elderly patients with dementia-related psychosis should be assessed taking into account the risk predictors for CVAEs in the individual patient. Patients/caregivers should be advised to immediately report signs and symptoms of potential CVAEs, such as sudden weakness or numbness in the face, arms, or legs, and speech or vision problems.

**Use in Patients with Other Concomitant Illness:**

Clinical experience with olanzapine in patients with concomitant illness is limited. Caution is thus advised when using AVA-OLANZAPINE in patients with diseases or conditions that could affect the metabolism or the pharmacodynamic activity of olanzapine (see DOSAGE AND ADMINISTRATION section and Part II: DETAILED PHARMACOLOGY).

*Use in Patients with Cardiac Disorders:*

Olanzapine has not been evaluated in patients with a recent history of myocardial infarction or unstable heart disease. Patients with these conditions were excluded from pre-marketing clinical trials.

*Use in Patients with Diabetes and Risk Factors for Development of Diabetes:*

As with some other antipsychotics, exacerbation of pre-existing diabetes and hyperglycaemia have been reported rarely, and diabetic ketoacidosis, and diabetic coma including some fatal cases have been reported very rarely during the use of olanzapine, sometimes in patients with no reported history of hyperglycaemia (see ADVERSE REACTIONS, Post-Market Adverse Drug Reactions section). In some cases, a prior increase in body weight has been reported which may be a pre-disposing factor. Appropriate clinical monitoring is advisable in diabetic patients and in patients with risk factors for the development of diabetes mellitus.

*Use in Patients with Renal and Hepatic Impairment:*

Small single-dose clinical pharmacology studies (see Part II: DETAILED PHARMACOLOGY section) did not reveal any major alterations in olanzapine pharmacokinetics in subjects with renal or hepatic impairment. Given the limited clinical experience with olanzapine in patients with these conditions, caution should be exercised (see DOSAGE AND ADMINISTRATION section).

*Other Concomitant Illnesses:*

As olanzapine demonstrated anticholinergic activity *in vitro*, caution is advised when prescribing for patients with symptomatic prostatic enlargement, narrow-angle glaucoma or paralytic ileus and related conditions.

In clinical trials, a single case of pre-existing intracranial hypertension was exacerbated.

## **ADVERSE REACTIONS**

The stated frequencies of adverse events represent the proportion of individuals who experienced at least once, a treatment-emergent adverse event of the type listed. An event was considered treatment-emergent if it occurred for the first time or worsened while receiving therapy following baseline evaluation. It is important to emphasize that although the events were reported during therapy, they were not necessarily caused by the therapy.

### **Clinical Trial Adverse Drug Reactions**

The prescriber should be aware that the figures in the tables and tabulations cannot be used to predict the incidence of side effects in the course of usual medical practice where patient characteristics and other factors differ from those that prevailed in the clinical trials. Similarly, the cited frequencies cannot be compared with figures obtained from other clinical investigations involving different treatments, uses, and investigators. The figures cited, however, do provide the prescribing physician with some basis for estimating the relative contribution of drug and non-drug factors to the side effect incidence in the populations studied.

### **Incidence of Adverse Events Associated with Discontinuation:**

#### *Schizophrenia and Related Disorders:*

In short-term, placebo-controlled trials, there was no statistically significant difference in rates of discontinuation of olanzapine or placebo attributed to adverse events. Overall, 5% of olanzapine-treated patients discontinued treatment for adverse events compared with 6% of placebo-treated patients. Discontinuations due to ALT (SGPT) elevations, however, were considered to be drug related (2% for olanzapine versus 0% for placebo) (see WARNINGS AND PRECAUTIONS, Renal subsection).

#### *Bipolar Disorder:*

##### *Bipolar Mania*

In short-term, placebo-controlled clinical trials, there was no difference overall in the incidence of discontinuation due to adverse events (2% for olanzapine versus 2% for placebo).

##### *Bipolar Maintenance*

In the long-term (1-year), placebo-controlled clinical trial, of the 225 olanzapine-treated patients, 16% (n= 35) discontinued due to an adverse event, compared with 9% (n = 12) of 136 placebo-treated patients.

In the long-term (1-year), active-controlled clinical trial, of the 217 olanzapine-treated patients, 19% (n = 41) discontinued due to an adverse event, compared with 26% (n = 55) of 214 lithium-treated patients.

#### *All Short-Term Trials - Schizophrenia and Bipolar Mania Trials:*

In short-term, active-controlled clinical trials, of the 1796 oral olanzapine-treated patients in comparative clinical trials with haloperidol, 98 (5%) discontinued treatment for adverse events compared with 66 of 810 (8%) haloperidol-treated patients.

*All Short-Term Trials - Overall Integrated Safety Database:*

In a pre-marketing clinical trial database of 2500 olanzapine-treated patients, 14.9% (372/2500) discontinued due to an adverse event. About half (183/372) of these discontinuations were associated with the underlying psychopathology. Other adverse events most commonly (incidence of 0.5% - 0.6%) reported as the reason for discontinuation among olanzapine-treated patients were: ALT (SGPT) increased, unintended pregnancy, creatine phosphokinase increased, and convulsion.

**Incidence of Commonly Observed Adverse Events:**

*Schizophrenia and Related Disorders:*

In the schizophrenia placebo-controlled trials, the most commonly observed adverse events associated with the use of olanzapine (incidence of  $\geq 5\%$  and at least twice placebo) were: dizziness (11% for olanzapine vs 4% for placebo), constipation (9% vs 3%), ALT (SGPT) increased (8% vs 3%), personality disorder (8% vs 4%), weight gain (6% vs 1%), akathisia (5% vs 1%), and postural hypotension (5% vs 2%).

*Bipolar Disorder:*

*Bipolar Mania*

In the bipolar mania monotherapy placebo-controlled trials, the most commonly observed adverse events associated with the use of olanzapine (incidence of  $\geq 5\%$  and at least twice placebo) were: somnolence (35% vs 13%), dry mouth (22% vs 7%), dizziness (18% vs 6%), asthenia (15% vs 6%), constipation (11% vs 5%), dyspepsia (11% vs 5%), increased appetite (6% vs 3%), and tremor (6% vs 3%).

In bipolar mania combination placebo-controlled trials, the most commonly observed adverse events associated with the combination of olanzapine and lithium or valproate (incidence of  $\geq 5\%$  and at least twice placebo) were: dry mouth (32% for olanzapine combination vs 9% for placebo), weight gain (26% vs 7%), increased appetite (24% vs 8%), dizziness (14% vs 7%), back pain (8% vs 4%), constipation (8% vs 4%), speech disorder (7% vs 1%), increased salivation (6% vs 2%), amnesia (5% vs 2%), and paresthesia (5% vs 2%). In addition to the latter list of adverse events identified during bipolar mania combination clinical trials tremor ( $\geq 10\%$ ) has also been identified.

*Bipolar Maintenance*

In the one-year 'time to relapse' placebo-controlled clinical trial in bipolar disorder, the most commonly observed adverse events associated with olanzapine (incidence of  $\geq 5\%$  and at least twice placebo) were: weight increased (8% for olanzapine vs 1.5% for placebo), headache NOS (6.7% vs 2.9%), fatigue (6.2% vs 1.5%), depression (5.8% vs 2.9%).

*Other Indication Trials:*

Abnormal gait and falls have been observed very commonly ( $\geq 10\%$ ) in clinical trials with elderly patients with dementia-related psychosis. Also, urinary incontinence and pneumonia were commonly reported ( $\geq 1\%$  and  $< 10\%$ ) in these patients.

In clinical trials in patients with drug-induced (dopamine agonist) psychosis associated with Parkinson's disease, worsening of Parkinsonian symptomatology and hallucinations were reported very commonly and more frequently than with placebo.

**Adverse Events Occurring at an Incidence of 1 % or More Among Oral Olanzapine-Treated Patients:**

Certain portions of the discussion below relating to objective or numeric safety parameters are derived from studies in patients with schizophrenia and have not been duplicated for bipolar disorder trials. However, this information is also generally applicable to bipolar disorder. Table 1 enumerates the incidence of treatment-emergent adverse events, rounded to the nearest percent, that occurred during acute therapy (up to 6 weeks) of schizophrenia in 1 % or more of patients treated with oral olanzapine (doses  $\geq 2.5$  mg/day) where the incidence in patients treated with olanzapine was greater than the incidence in placebo-treated patients.

**Table 1: Schizophrenia Trials: Treatment-Emergent Adverse Events Incidence in Placebo-Controlled Clinical Trials with Oral Olanzapine – Acute Phase<sup>1</sup>**

Body System/Adverse Event	Percentage of Patients Reporting Event	
	Olanzapine (N = 248)	Placebo (N – 118)
<b>Body as a Whole</b>		
Headache	17%	15%
Pain	10%	9%
Fever	5%	3%
Abdominal pain	4%	2%
Back pain	4%	3%
Chest pain	4%	2%
Neck rigidity	2%	1%
Intentional injury	1%	0%
<b>Cardiovascular System</b>		
Postural hypotension	5%	2%
Tachycardia	4%	1%
Hypotension	2%	1%
<b>Digestive System</b>		
Constipation	9%	3%
Dry Mouth	7%	4%
Gamma glutamyl transpeptidase increased	2%	1%
Increased appetite	2%	1%
<b>Hemic and Lymphatic</b>		
Leukopenia	1%	0%
<b>Metabolic and Nutritional Disorders</b>		
SGPT increased	8%	3%
Weight gain <sup>2</sup>	6%	1%
<b>Metabolic and Nutritional Disorders (con't)</b>		
Edema	2%	0%
Peripheral edema	2%	0%
SGOT increased	2%	0%
Creatine phosphokinase increased	1%	0%
<b>Musculoskeletal System</b>		
Arthralgia	3%	2%
Joint Disorder	2%	1%

Body System/Adverse Event	Percentage of Patients Reporting Event	
	Olanzapine (N = 248)	Placebo (N = 118)
Twitching	2%	1%
<b>Nervous System</b>		
Somnolence <sup>2</sup>	26%	15%
Agitation	23%	17%
Insomnia	20%	19%
Nervousness	16%	14%
Hostility	15%	14%
Dizziness <sup>2</sup>	11%	4%
Anxiety	9%	8%
Personality disorder	8%	4%
Akathisia <sup>2</sup>	5%	1%
Hypertonia	4%	3%
Speech disorder	4%	1%
Tremor	4%	3%
Amnesia	2%	0%
Drug dependence	2%	0%
Euphoria	2%	0%
Neurosis	1%	0%
<b>Respiratory System</b>		
Rhinitis	10%	6%
Cough increased	5%	3%
Pharyngitis	5%	3%
<b>Skin and Appendages</b>		
Fungal dermatitis	2%	0%
Vesiculobullous rash	2%	1%
<b>Special Senses</b>		
Amblyopia	5%	4%
Blepharitis	2%	1%
Eye disorder	2%	1%
Corneal lesion	1%	0%
<b>Urogenital System</b>		
Menstrual disorder <sup>3</sup>	2%	0%

1 The following events had an incidence equal to or less than placebo: abnormal dreams, accidental injury, anorexia, apathy, asthenia, cogwheel rigidity, confusion, conjunctivitis, depression, diarrhea, dysmenorrhea<sup>3</sup>, dyspepsia, ecchymosis, emotional lability, hallucinations, hyperkinesia, hypertension, hypokinesia, libido increased, myalgia, nausea, paranoid reaction, paresthesia, pruritus, rash, schizophrenic reaction, sweating, thinking abnormal, tooth caries, vaginitis<sup>3</sup>, vomiting.

2 Statistically significantly more frequent in patients treated with oral olanzapine than in patients treated with placebo.

3 Denominator used was for females only (N=41 olanzapine; N = 23 Placebo),

### **Other Adverse Events from Schizophrenia Trials:**

Certain portions of the discussion below relating to objective or numeric safety parameters, namely, vital sign changes, weight gain, laboratory changes, and ECG changes are derived from studies in patients with schizophrenia and have not been duplicated for bipolar mania. However, this information is also generally applicable to bipolar mania.

### ***Weight Changes:***

During acute therapy (up to 6 weeks) in controlled clinical trials comparing olanzapine with placebo in the treatment of schizophrenia, the percentages of patients with weight gain  $\geq 7\%$  of baseline body weight at any time were 29% for olanzapine and 3% for placebo, which was a

statistically significant difference. The average weight gain during acute therapy in patients treated with olanzapine was 2.8 kg. Clinically significant weight gain was observed across all baseline body mass index (BMI) categories. In long-term extension schizophrenia trials, weight gain tended to level off after 6-8 months of treatment, with an average gain of 5.4 kg, and with 56% of olanzapine-treated patients with weight gain >7% of baseline body weight. In long-term extension bipolar maintenance trials, there was a mean weight gain of 3.8 kg, and with 31% of olanzapine-treated patients with weight gain >7% of baseline body weight (see WARNINGS AND PRECAUTIONS, Endocrine and Metabolism subsection).

*Vital Sign Changes:*

In placebo-controlled clinical trials, orthostatic hypotension (greater than 30 mm decrease in systolic blood pressure) occurred with an incidence of 5% in oral olanzapine-treated patients compared to 2% in placebo-treated patients (vital sign measurements collected only after 3-7 days of olanzapine treatment). Oral olanzapine was associated with a mean baseline to endpoint increase in heart rate of 2.4 beats per minute compared to no change among placebo-treated patients (see WARNINGS AND PRECAUTIONS, Cardiovascular subsection).

*Laboratory Changes:*

Olanzapine is associated with asymptomatic increases in SGPT, SGOT, and GGT (see WARNINGS AND PRECAUTIONS, Hepatic subsection). Olanzapine is also associated with generally mild increases in serum prolactin, which usually decreases with continued drug treatment. Olanzapine is also associated with asymptomatic elevations of eosinophils and uric acid (see WARNINGS AND PRECAUTIONS, Renal subsection), and with decreases in serum bicarbonate.

*ECG Changes:*

Between-group comparisons for pooled placebo-controlled trials revealed no statistically significant olanzapine/placebo differences in the proportions of patients experiencing potentially important changes in ECG parameters, including QT, QTc, and PR intervals.

***Other Adverse Events Observed During Clinical Trials with Oral and Intramuscular Olanzapine Across All Indications***

The following discussion relates primarily to weight gain, lipids, and glucose changes observed during clinical trials across all indications.

*Weight Changes:*

Weight gain has been very commonly observed in olanzapine-treated patients during clinical trials. In 13 placebo-controlled olanzapine monotherapy studies, 22.2% of olanzapine-treated patients gained  $\geq 7\%$  of their baseline body weight versus 3% of placebo-treated patients, with a median exposure of 8 weeks; 4.2% of olanzapine-treated patients gained  $\geq 15\%$  of their baseline weight versus 0.3% of placebo-treated patients, with a median exposure of 12 weeks. Clinically significant weight gain was observed across all baseline body mass index (BMI) categories.

In long-term studies (at least 48 weeks), both the magnitude of weight gain and the proportion of olanzapine-treated patients who had clinically significant weight gain were greater than in short-term studies. The percentage of patients who gained  $\geq 25\%$  of their baseline body weight with long-term exposure was very common ( $\geq 10\%$ ).



*Lipids:*

In placebo-controlled clinical trials of up to 12 weeks in duration, olanzapine-treated patients had a greater mean increase in fasting total cholesterol, LDL cholesterol, and triglycerides compared to placebo-treated patients.

Mean increases in fasting lipid values (total cholesterol, LDL cholesterol, and triglycerides) were greater in patients without evidence of lipid dysregulation at baseline. However, for mean changes in fasting triglycerides, the difference between olanzapine and placebo was greater in patients with evidence of lipid dysregulation at baseline. Elevations in fasting triglyceride levels  $\geq 11.3$  mmol/L were uncommonly observed with olanzapine use (8 week median duration of exposure).

**Table 2: Changes in Fasting Lipids Values from Adult Placebo-Controlled Olanzapine Monotherapy Studies with Treatment Duration up to 12 Weeks**

Laboratory Analyte	Olanzapine*	Placebo
Triglycerides: fasting normal to high (<1.70 mmol/L to $\geq 2.26$ mmol/L)	9.2% (N=457)	4.4% (N=251)
Triglycerides: fasting borderline to high ( $\geq 1.70$ mmol/L and <2.26 mmol/L to $\geq 2.26$ mmol/L)	39.3% (N=135)	20.0% (N=65)
Cholesterol-Total: fasting normal to high (<5.18 mmol/L to $\geq 6.22$ mmol/L)	2.8% (N=392)	2.4% (N=207)
Cholesterol-Total: fasting borderline to high ( $\geq 5.18$ mmol/L and <6.22 mmol/L to $\geq 6.22$ mmol/L)	23.0% (N=222)	12.5% (N=112)
LDL cholesterol: fasting normal to high (<2.59mmol/L to $\geq 4.14$ mmol/L)	0% (N=154)	1.2% (N=82)
LDL cholesterol: fasting borderline to high ( $\geq 2.59$ mmol/L and < 4.14 mmol/L to $\geq 4.14$ mmol/L)	10.6% (N=302)	8.1% (N=173)

\* Median duration of exposure 8 weeks

For fasting HDL cholesterol, no statistically significant differences were observed between olanzapine-treated patients and placebo-treated patients (see WARNINGS AND PRECAUTIONS, Endocrine and Metabolism subsection).

The proportion of patients who had changes in total cholesterol, LDL cholesterol or triglycerides from normal or borderline to high, or changes in HDL cholesterol from normal or borderline to low, was greater in long-term studies (at least 48 weeks) as compared with short-term studies. Treatment-emergent clinically significant changes in fasting lipids were observed in patients with or without evidence of dyslipidemia at baseline.

*Glucose Changes:*

In adult clinical trials (up to 52 weeks) olanzapine was associated with a greater mean change in glucose relative to placebo.

The difference in mean changes between olanzapine and placebo was greater in patients with evidence of glucose dysregulation at baseline (including those patients diagnosed with diabetes mellitus or who met criteria suggestive of hyperglycemia), and these patients had a greater increase in HbA1c compared to placebo.

In patients with baseline normal fasting glucose levels (<5.5mmol/L), 2.2% (N=543) of those treated with olanzapine (median exposure duration of 8 weeks) were found to have high glucose levels ( $\geq 6.99$  mmol/L) during olanzapine treatment versus 3.4% (N=293) of those treated with placebo. In patients with baseline borderline fasting glucose levels ( $\geq 5.5$  mmol/L and < 6.99 mmol/L), 17.4% (N=178) of those treated with olanzapine (median exposure duration of 5 weeks) were found to have high glucose levels ( $\geq 6.99$  mmol/L) during olanzapine treatment versus 11.5% (N=96) of those treated with placebo. The proportion of patients who had a change in glucose level from normal or borderline at baseline to high increased over time. Treatment-emergent clinically significant changes in fasting glucose were observed in patients with or without evidence of glucose dysregulation at baseline.

Glycosuria was commonly reported in olanzapine-treated patients during clinical trials.

*Vital Sign Changes:*

Bradycardia was uncommonly observed in clinical trials.

*Photosensitivity Reactions:*

Photosensitivity reactions were uncommonly observed in clinical trials.

**Dose-Dependent Adverse Events:**

Dose-relatedness of adverse events was assessed using data from a clinical trial with a fixed dosage range. Table 2 3 enumerates the treatment-emergent adverse events in which there was a statistically significantly increasing dose response in this clinical trial.

**Table 2 3: Schizophrenia Trials: Dose-Dependent Adverse Events in a Fixed Dosage Range, Placebo-Controlled Clinical Trial<sup>1</sup> of Oral Olanzapine**

Body System/ Adverse Event	Percentage of Patients Reporting Event			
	Placebo (N = 68)	Olanzapine 5 ± 2.5 mg/day (N = 65)	Olanzapine 10 ± 2.5 mg/day (N = 64)	Olanzapine 15 ± 2.5 mg/day (N = 69)
<b>Digestive System</b>				
Constipation	0%	6.2%	9.4%	14.5%
<b>Nervous System</b>				
Abnormal dreams	0%	0%	1.6%	4.3%
Dizziness	2.9%	7.7%	9.4%	17.4%
Somnolence	16.2%	20.0%	29.7%	39.1%
<b>Respiratory System</b>				
Pharyngitis	1.5%	3.1%	1.6%	10.1%

<sup>1</sup> Fungal dermatitis was also reported with a statistically significantly increasing dose response, but is not included as a drug cause was remote.

Table 4 enumerates the treatment-emergent adverse events from one 8-week, randomized, double-blind, fixed-dose trial comparing 10 (N=199), 20 (N=200) and 40 (N=200) mg/day of olanzapine in patients with schizophrenia or schizoaffective disorder. Statistically significant differences among the 3 dose groups were observed for the following safety outcomes: fatigue, dizziness, prolactin elevation, and weight gain (mean change).

**Table 4: Schizophrenia Trial: Dose-Dependent Adverse Events in a Fixed Dose, Placebo-Controlled Clinical Trial<sup>1</sup> of Oral Olanzapine**

Adverse Event	Olanzapine 10 mg/day (N=195)	Olanzapine 20 mg/day (N=191)	Olanzapine 40 mg/day (N=197)
Fatigue <sup>2,3</sup> (% reporting event)	1.5%	2.1%	6.6%
Dizziness <sup>3</sup> (% reporting event)	2.6%	1.6%	6.6%
Prolactin Elevation <sup>2,3,4</sup> (% reporting event)	31.2%	42.7%	61.1%
Prolactin Elevation <sup>2,3</sup> (mean change from baseline to endpoint)	-10.5 ng/mL	- 1.7 ng/mL	4.9 ng/mL
Weight Gain $\geq$ 7% at any time (% reporting event)	14.0%	18.4%	20.5%
Weight Gain <sup>2</sup> (mean change from baseline to endpoint)	1.9 Kg	2.3 Kg	3.0 Kg

<sup>1</sup> Study HGLF: 8-week, Phase IV, parallel, randomized, double-blind, fixed-dose study in patients with schizophrenia and schizoaffective disorder evaluating the dose-response efficacy and safety of olanzapine 10, 20, and 40 mg/day. Patients were titrated up to their randomized dose over 2 weeks.

<sup>2</sup> significant difference between 10 vs. 40 mg/day

<sup>3</sup> significant difference between 20 vs. 40 mg/day

<sup>4</sup> >24.2 ng/mL (female) or >18.77 ng/mL (male) at any time during the trial

**Incidence of Treatment-Emergent Extrapyramidal Symptoms:**

Table 5 enumerates the percentage of patients with treatment-emergent extrapyramidal symptoms as assessed by categorical analyses of formal rating scales during acute therapy in a controlled clinical trial comparing oral olanzapine at 3 fixed dosage ranges with placebo in the treatment of schizophrenia.

**Table 5: Schizophrenia Trials: Treatment-Emergent Extrapyramidal Symptoms Assessed by Rating Scales Incidence In a Fixed Dosage Range, Placebo-Controlled Clinical Trial – Acute Phase<sup>1</sup>.**

	Percentage of Patients			
	Placebo	Olanzapine 5 ± 2.5 mg/day	Olanzapine 10 ± 2.5 mg/day	Olanzapine 15 ± 2.5 mg/day
Parkinsonism <sup>2</sup>	15%	14%	12%	14%
Akathisia <sup>3</sup>	23%	16%	19%	27%

<sup>1</sup> No statistically significant difference

<sup>2</sup> Percentage of patients with a Simpson-Angus Scale total score  $\geq$ 3.

<sup>3</sup> Percentage of patients with a Barnes Akathisia Scale global score  $\geq$ 2.

Table 6 enumerates the percentage of patients with treatment-emergent extrapyramidal symptoms as assessed by spontaneously reported adverse events during acute therapy in the same controlled clinical trial comparing oral olanzapine at 3 fixed dosage ranges with placebo in the treatment of schizophrenia. Similar results were found during the long-term (up to 1 -year) double-blind monotherapy extension bipolar maintenance trial comparing olanzapine with placebo; there was a higher statistical incidence of akathisia for combined doses of olanzapine versus placebo.

**Table 6: Schizophrenia Trials: Treatment-Emergent Extrapyramidal Symptoms Assessed by Adverse Events Incidence in an Oral Fixed Dosage Range, Placebo-Controlled Clinical Trial - Acute Phase<sup>1</sup>**

Extrapyramidal Symptoms	Percentage of Patients Reporting Event			
	Placebo (N=68)	Olanzapine 5 ± 2.5 mg/day (N=65)	Olanzapine 10 ± 2.5 mg/day (N=64)	Olanzapine 15 ± 2.5 mg/day (N=69)
Dystonic events <sup>2</sup>	1%	3%	2%	3%
Parkinsonism events <sup>3</sup>	10%	8%	14%	20%

Extrapyramidal Symptoms	Percentage of Patients Reporting Event			
	Placebo (N=68)	Olanzapine 5 ± 2.5 mg/day (N=65)	Olanzapine 10 ± 2.5 mg/day (N=64)	Olanzapine 15 ± 2.5 mg/day (N=69)
Akathisia events <sup>4</sup>	1%	5%	11% <sup>1</sup>	10% <sup>1</sup>
Dyskinetic events <sup>5</sup>	4%	0%	2%	1%
Residual events <sup>6</sup>	1%	2%	5%	1%
Any extrapyramidal event	16%	15%	25%	32% <sup>1</sup>

<sup>1</sup> Statistically significantly different from placebo.

<sup>2</sup> Patients with the following COSTART terms were counted in this category: dystonia, generalized spasm, neck rigidity, oculogyric crisis, opisthotonos, torticollis.

<sup>3</sup> Patients with the following COSTART terms were counted in this category: akinesia, cogwheel rigidity, extrapyramidal syndrome, hypertonia, hypokinesia, masked facies, tremor.

<sup>4</sup> Patients with the following COSTART terms were counted in this category: akathisia, hyperkinesia.

<sup>5</sup> Patients with the following COSTART terms were counted in this category: buccoglossal syndrome, choreoathetosis, dyskinesia, tardive dyskinesia.

<sup>6</sup> Patients with the following COSTART terms were counted in this category: movement disorder, myoclonus, twitching.

### **Other Investigational Trials**

#### **Cerebrovascular Adverse Events (CVAEs) in Elderly Patients with Dementia**

Data from 5 placebo-controlled trials in elderly patients with dementia-related psychosis (Alzheimer's, vascular, and mixed; olanzapine n=1178 and placebo n=478) suggest that there was a higher incidence of CVAE in patients treated with olanzapine compared to patients treated with placebo (1.3% vs. 0.4%, respectively). Although the incidence of CVAE was not significantly different when analyzed with Fisher's Exact Test (p=0.177), the difference was found to be significant when simultaneously controlling for age, gender, and type of dementia using Poisson Regression (p=0.0428). Four patients died in the olanzapine group versus 1 patient in the placebo group. In open-label safety trials studied for up to 59 weeks in dementia patients (N=231), 7 cases of CVAEs, including 2 fatalities, were reported (see WARNINGS AND PRECAUTIONS section).

Data from these trials suggest that patients with a dementia diagnosis of vascular or mixed type had a 5-fold higher likelihood of experiencing CVAEs than patients with a diagnosis of Alzheimer's. There is insufficient information to determine whether CVAEs in elderly patients with dementia are associated specifically with olanzapine or all antipsychotic agents.

Olanzapine is not approved for use in elderly patients with dementia.

#### **Overall Mortality.**

Elderly patients with dementia treated with atypical antipsychotic drugs showed increased mortality compared to placebo in a meta-analysis of 13 controlled trials of various atypical antipsychotic drugs. In five placebo-controlled trials with oral olanzapine in this population, the incidence of mortality was 3.5 % for olanzapine-treated patients compared to 1.5 % for placebo-treated patients. AVA-OLANZAPINE is not indicated in elderly patients with dementia.

#### **Laboratory Changes**

In 5 double-blind, placebo controlled clinical trials of elderly patients with dementia-related psychosis (n = 1184 total in the olanzapine arms and n = 478 total in placebo arms), olanzapine-treated patients showed significantly greater incidence rates compared to placebo-treated patients of low albumin (10.4% vs 5.5%, respectively), low hemoglobin (4.2% vs 1.8%) and low

hematocrit (4.6% vs 2.4%). Of patients who had low albumin values, 3.6% in the olanzapine-treated group vs 1.4% in the placebo-treated also experienced a treatment-emergent respiratory infection. A causal relationship between the two adverse events has not been determined.

*Adverse Events in Adolescent Patients (ages 13-17 years)*

The types of adverse events observed in adolescent patients treated with olanzapine were similar to those seen in adult patients. Although no clinical trials designed to compare adolescents to adults were conducted, the data from the adolescent trials were compared to those of the adult trials.

Mean increase in weight in adolescents (4.6 kg over 3 weeks median duration of exposure) was greater than in adults (2.6 kg over 7 weeks median duration of exposure).

In long-term studies (at least 24 weeks), both the magnitude of weight gain and the proportion of adolescent olanzapine-treated patients who had clinically significant weight gain were greater than in short-term studies and were greater than in adult patients with comparable exposures. With long-term exposure, approximately half of adolescent patients gained  $\geq 15\%$  and almost a third gained  $\geq 25\%$  of their baseline body weight. Among adolescent patients, mean weight gain was greatest in patients who were overweight or obese at baseline.

Mean increases in fasting glucose were similar in adolescents and adults treated with olanzapine; however, the difference between olanzapine and placebo groups was greater in adolescents compared to adults.

In long-term studies (at least 24 weeks), changes in glucose from normal at baseline to high were uncommon ( $<1\%$  and  $\geq 0.1\%$ ).

Mean increases in fasting total cholesterol, LDL cholesterol, and triglycerides were generally greater in adolescents than in adults treated with olanzapine. However, in short term trials, the differences between olanzapine and placebo were similar for adolescents and adults.

The proportion of treatment-emergent clinically significant changes in normal-to-high or borderline-to-high fasting total cholesterol, LDL cholesterol and triglycerides was greater in adolescents compared to adults, and the differences between olanzapine and placebo in these categories of laboratory values were also generally greater in adolescents. In long-term studies, treatment-emergent clinically significant changes in total cholesterol, LDL cholesterol, and triglycerides were observed in adolescents with or without evidence of dyslipidemia at baseline.

Table 7 summarizes core adverse drug reaction terms for olanzapine compared to placebo and their frequencies identified only during clinical trials in adolescent patients (ages 13 to 17 years). Olanzapine is not indicated in adolescent patients (ages 13-17 years).

**Table 7: Core Adverse Drug Reactions and Frequencies from Clinical Trials in Adolescent Patients (ages 13-17 years)**

Body System/Adverse Reaction Term	Olanzapine		Placebo	
	Frequency	N	Frequency	N
<b>Body as a whole</b>				
Weight gain $\geq 7\%$ of baseline body weight (kg) <sup>7</sup>	40.6%	197	9.8	112
Weight gain $\geq 15\%$ of baseline body weight (kg) <sup>8</sup>	7.1%	197	2.7%	112
<b>Digestive System</b>				
Dry Mouth	6.15%	179	0%	89
Increased Appetite	24%	179	6%	89
<b>Nervous System</b>				
Sedation <sup>1</sup>	44.1%	179	9%	89
<b>Clinical Chemistry</b>				
ALT/SGPT $>3X$ ULN all randomized patients with ALT baseline $\leq 3X$ ULN <sup>2</sup>	12.1%	174	2.3%	87
AST/SGOT – Increased <sup>3</sup>	27.6%	163	3.8%	79
Total Bilirubin – Decreased <sup>4</sup>	22.1%	154	6.7%	75
GGT – Increased <sup>5</sup>	10.1%	169	1.2%	83
Prolactin – Increased <sup>6</sup>	47.4%	116	6.8%	59
Cholesterol – total, fasting normal to high ( $<4.40$ mmol/L to $\geq 5.18$ mmol/L) <sup>9</sup>	6.9%	87	2.3%	43
Cholesterol – total, fasting borderline to high ( $\geq 4.40$ mmol/L and $<5.18$ mmol/L) <sup>9</sup>	38.9%	36	7.7%	13
LDL cholesterol: fasting normal to high ( $<2.85$ mmol/L to $\geq 3.37$ mmol/L)	5.1%	98	4.5%	44
LDL cholesterol: fasting borderline to high ( $\geq 2.85$ mmol/L and $<3.37$ mmol/L to $\geq 3.37$ mmol/L)	48.3%	29	0%	9
Triglycerides, fasting normal to high ( $<1.02$ mmol/L to $>1.47$ mmol/L) <sup>9</sup>	26.9%	67	10.7%	28
Triglycerides, fasting borderline to high ( $\geq 1.02$ mmol/L and $\leq 1.47$ mmol/L to $>1.47$ mmol/L) <sup>9</sup>	59.5%	37	35.3%	17
Glucose, fasting normal to high ( $<5.55$ mmol/L to $\geq 6.99$ mmol/L) <sup>9</sup>	0%	124	1.9%	53
Glucose, fasting borderline to high ( $\geq 5.55$ mmol/L and $<6.99$ mmol/L to $\geq 6.99$ mmol/L) <sup>10</sup>	14.3%	14	0%	13

1 = Represented cluster of MedDRA terms including: hypersomnia, lethargy, sedation, somnolence

2 = Covance reference ranges:

		Low	High	
Female 13 - $\leq 17.999$		6	34	(U/L)
Male 13 - $\leq 17.999$	6	43		(U/L)

3 = Covance reference ranges:

		Low	High	
Female 13 - $\leq 17.999$		10	40	(U/L)
Male 13 - $\leq 17.999$	10	40		(U/L)

4 = Covance reference ranges:

			Low	High	
	Female 13 - ≤ 17.999		3	21	(mmol/L)
	Male 13 - ≤ 17.999	3	21		(mmol/L)

5 = Covance reference ranges:

			Low	High	
	Female 13 - ≤ 17.999		0	33	(U/L)
	Male 13 - ≤ 17.999	0	51		(U/L)

6 = Covance reference ranges for prolactin as published by Wiedemann and Jonetz-Mentzel (1993)

Female:	12 to 14 years:	2.52 – 16.90 ng/mL
	14 to 19 years:	4.20 – 39.00 ng/mL
Male:	12 to 14 years:	2.84 – 24.00 ng/mL
	14 to 19 years:	2.76 – 16.10 ng/mL

7 = Median duration of exposure was 4 weeks  
8 = Median duration of exposure was 19 weeks  
9 = Median duration of exposure was 3 weeks  
10 = Median duration of exposure was 5 weeks

### **Post-Market Adverse Drug Reactions**

Table 8 summarizes the additional core adverse drug reaction terms and their frequencies identified from global post-marketing surveillance: A causal relationship between olanzapine and the emergence of these events has not been established.

**Table 8: Core Adverse Drug Reactions Seen with Olanzapine Formulations<sup>1</sup>**

Body System/Adverse Reaction Term	Frequency				
	≥ 10%	< 10% and ≥1%	<1% and ≥0.1%	<0.1% and ≥0.01%	<0.01%
<b><i>Body as a Whole</i></b>					
Allergic reaction <sup>2</sup>					X
Discontinuation reaction <sup>3</sup>					X
<b><i>Cardiovascular</i></b>					
Venous Thromboembolism including Pulmonary Embolism and Deep Vein Thrombosis					X
<b><i>Digestive System</i></b>					
Pancreatitis					X
<b><i>Hematologic</i></b>					
Thrombocytopenia <sup>4</sup>					X
Leukopenia, including Neutropenia				X	
<b><i>Hepatobiliary disorders</i></b>					
Hepatitis				X	
Jaundice					X
Hepatic failure					X
<b><i>Metabolic</i></b>					
Diabetic Coma					X
Diabetic Ketoacidosis <sup>5</sup>					X
Hypercholesterolemia <sup>7</sup>					X
Hyperglycaemia				X	
Hypertriglyceridemia <sup>6,7</sup>					X
Exacerbation of pre-existing diabetes				X	
<b><i>Musculoskeletal System</i></b>					
Rhabdomyolysis					X
<b><i>Nervous System</i></b>					
Seizures				X	
<b><i>Skin and Appendages</i></b>					
Alopecia					X

Body System/Adverse Reaction Term	Frequency				
	≥ 10%	< 10% and ≥1%	<1% and ≥0.1%	<0.1% and ≥0.01%	<0.01%
Rash				X	
<b><i>Urogenital System</i></b>					
Priapism					X
<b><i>Laboratory Analytes</i></b>					
Clinical Chemistry					
Alkaline phosphatase –Increased					X
Total bilirubin –Increased					X

<sup>1</sup> Adverse event identified from spontaneous post-marketing surveillance.

<sup>2</sup> e.g., maculopapular rash, anaphylactoid reaction, angioedema, pruritis, or urticaria.

<sup>3</sup> i.e., diaphoresis, nausea or vomiting.

<sup>4</sup> Including a case of thrombocytopenic purpura.

<sup>5</sup> COSTART term is diabetic acidosis.

<sup>6</sup> COSTART term is hyperlipemia.

<sup>7</sup> Random cholesterol levels of  $\geq 6.22$  mmol/L and random triglyceride levels of  $\geq 11.30$  mmol/L have been very rarely reported.

As with other atypical anti-psychotics, there have been isolated post-market reports with olanzapine of serious cardiovascular-related adverse events, including fatalities (see WARNINGS AND PRECAUTIONS, Cardiovascular).

## DRUG INTERACTIONS

### Drug-Drug Interactions

*Alcohol*: Given the primary CNS effects of AVA-OLANZAPINE, caution should be used when it is taken in combination with other centrally acting drugs and alcohol.

*Levodopa and Dopamine Agonists*: As it exhibits *in vitro* dopamine antagonism, olanzapine may antagonize the effects of levodopa and dopamine agonists.

*Antihypertensive Agents*: Because of its potential for inducing hypotension, olanzapine may enhance the effects of certain antihypertensive agents. Caution should be exercised in patients who receive medicinal products that can induce hypotension, bradycardia, or respiratory depression.

### Potential for Other Drugs to Affect AVA-OLANZAPINE:

*Carbamazepine*: Concomitant carbamazepine therapy may induce the metabolism of olanzapine.

*Activated Charcoal*: The concomitant administration of activated charcoal reduced the oral bioavailability of olanzapine by 50% to 60%.

*Antacids*: Single doses of antacid (aluminium, magnesium) or cimetidine did not affect the oral bioavailability of olanzapine.

*Valproate*: Studies *in vitro* using human liver microsomes showed that olanzapine has little potential to inhibit the glucuronidation of valproate, which is the major metabolic pathway. Furthermore, valproate was found to have little effect on the metabolism of olanzapine *in vitro*.



Daily concomitant *in vivo* administration of 10 mg olanzapine for 2 weeks did not affect steady state plasma concentrations of valproate. Therefore, concomitant olanzapine administration does not require dosage adjustment of valproate.

*Fluoxetine*: Fluoxetine (60 mg single dose or 60 mg daily for 8 days) causes a mean 16% increase in the maximum concentration of olanzapine and a mean 16% decrease in olanzapine clearance. The magnitude of the impact of this factor is small in comparison to the overall variability between individuals, and therefore dose modification is not routinely recommended.

*CYP1A2 Inducers*: Agents that induce CYP1A2 such as omeprazole may increase clearance of olanzapine.

*CYP1A2 Inhibitors*: Fluvoxamine, a specific CYP1A2 inhibitor, has been shown to significantly inhibit the metabolism of olanzapine. The mean increase in olanzapine  $C_{max}$  following fluvoxamine was 54% in female nonsmokers and 77% in male smokers. The mean increase in olanzapine AUC was 52% and 108%, respectively. A lower starting dose of olanzapine should be considered in patients who are using fluvoxamine or any other CYP1A2 inhibitors, such as ciprofloxacin or ketoconazole. A decrease in the dose of olanzapine should be considered if treatment with an inhibitor of CYP1A2 is initiated.

*Potential for AVA-OLANZAPINE to Affect Other Drugs:*

*Theophylline*: The pharmacokinetics of theophylline, a drug principally metabolized by CYP1A2, were not altered by olanzapine in a clinical trial with single doses of IV theophylline.

*Imipramine/Desipramine*: In clinical trials with single doses of oral olanzapine, no inhibition of the metabolism of imipramine/desipramine (P450-CYP2D6) was evident.

*Warfarin*: In clinical trials with single doses of oral olanzapine, no inhibition of the metabolism of warfarin (P450 CYP2C9) was evident.

*Diazepam*: In clinical trials with single doses of oral olanzapine, no inhibition of the metabolism of diazepam (P450 CYP3A4) was evident.

*Lithium or Biperiden*: Oral olanzapine showed no interaction when coadministered with lithium or biperiden.

*Drugs Metabolized via P450-CYP1A2, -CYP2C9, -CYP2C19, -CYP2D6, and -CYP3A4*: In *in vitro* studies with human microsomes, olanzapine showed little potential to inhibit cytochromes P450-CYP1A2, -CYP2C9, -CYP2C19, -CYP2D6, and -CYP3A4 (see PART II: DETAILED PHARMACOLOGY). Olanzapine is thus unlikely to cause clinically important drug-drug interactions mediated through the metabolic routes outlined above. However, the possibility that olanzapine may alter the metabolism of other drugs, or that other drugs may alter the metabolism of olanzapine, should be considered when prescribing olanzapine.

**Drug-Food Interactions**

Absorption of olanzapine is not affected by food.

### **Drug-Herb Interactions**

Interactions with herbal products have not been identified.

### **Drug-Laboratory Interactions**

Interactions with laboratory tests have not been identified.

### **Drug-Lifestyle Interactions**

*Smoking:* Concomitant smoking may induce the metabolism of olanzapine.

## **DOSAGE AND ADMINISTRATION**

### **Dosing Considerations**

#### **Schizophrenia and Related Disorders**

Adults: AVA-OLANZAPINE (olanzapine) should be administered on a once-a-day schedule without regard to meals, generally beginning with 5 to 10 mg, with a target dose of 10 mg/day within several days. Further dosage adjustments, if indicated, should generally occur at intervals of not less than 1 week, since steady state for AVA-OLANZAPINE would not be achieved for approximately 1 week in the typical patient. When dosage adjustments are necessary, dose increments/decrements of 5 mg per day are recommended. An increase to a dose greater than target dose of 10 mg/day (i.e., to a dose of 15 mg/day or greater) is normally recommended only after clinical assessment.

In clinical trials a dose range of 5-20 mg/day was studied (see Part II: CLINICAL TRIALS). The safety and efficacy of doses above 20 mg/day have not been evaluated.

Doses above 20mg/day have been evaluated from a safety perspective (see Table 4 in Adverse Events, Dose-Dependent Adverse Events subsection); however, efficacy at doses above 20mg/day has not been systematically evaluated.

#### **Maintenance Therapy in Schizophrenia:**

It is recommended that responding patients with schizophrenia be continued on olanzapine at the lowest dose needed to maintain remission. Patients should be reassessed periodically to determine the need for maintenance treatment. While there is no body of evidence available to answer the question of how long the patient should be treated with AVA-OLANZAPINE, the effectiveness of maintenance treatment is well established for many other antipsychotic drugs.

### **Bipolar Disorder**

#### **Bipolar Mania**

Adults: The recommended starting dose for olanzapine is 15 mg administered once a day in monotherapy and 10 mg daily in combination therapy.

It may be given without regard to meals as its absorption is not affected by food. The dosage range of olanzapine is from 5 mg to 20 mg per day. Daily dosage should be adjusted in response to clinical assessment.

#### **Maintenance Therapy in Bipolar Disorder:**

Patients who have been receiving and responding to AVA-OLANZAPINE for the treatment of acute manic or mixed episodes of bipolar disorder should initially continue maintenance therapy at the same dose (see Part II CLINICAL TRIALS). Subsequent daily dosage should be adjusted on the basis of clinical status within a range of 5-20 mg per day.

Patients should be periodically reassessed to determine the need for maintenance treatment and the appropriate dose for such treatment.

### **General Considerations for Oral Dosing in Special Populations**

#### **The Elderly or Debilitated Patient:**

In clinical trials, 44 patients with schizophrenia or related disorders who were 65 years of age or over were treated with olanzapine (5-20 mg daily) (see WARNINGS AND PRECAUTIONS, Special Populations). Given the limited experience with olanzapine in the elderly, and the higher incidence of concomitant illness and concomitant medication in this population, AVA-OLANZAPINE should be used with caution.

The recommended starting dose is 5 mg in patients who are elderly, debilitated, who have a predisposition to hypotensive reactions, who otherwise exhibit a combination of factors that may result in slower metabolism of olanzapine (e.g., nonsmoking female patients), or who may be pharmacodynamically more sensitive to olanzapine. When indicated, dose escalation should be performed with caution in these patients.

#### **Patients with Hepatic and/or Renal Impairment:**

As clinical experience is lacking in these patients, the lower initial starting dose and slower titration to initial target dose should be considered. Further dose escalation, when indicated, should be conservative (see WARNINGS AND PRECAUTIONS, Special Populations).

#### **Missed Dose**

If a patient misses a dose by a few hours, advise patient to take as soon as he/she remembers. If most of the day has passed, advise patient to wait until the next scheduled dose. Advise patients to not take 2 doses of AVA-OLANZAPINE at once.

## **OVERDOSAGE**

#### **Signs and Symptoms**

Very common symptoms reported in olanzapine overdose ( $\geq 10\%$  incidence) include tachycardia, agitation/aggressiveness, dysarthria, various extrapyramidal symptoms, and reduced level of consciousness ranging from sedation to coma.

Other medically significant sequelae of olanzapine overdose include delirium, convulsion, possible neuroleptic malignant syndrome, respiratory depression, aspiration, hypertension or hypotension, cardiac arrhythmias (<2% of overdose cases) and cardiopulmonary arrest. Fatal outcomes have been reported for acute overdoses as low as 450 mg but survival has also been reported following acute overdose of 1,500 mg.

#### **Management of Overdose**

There is no specific antidote for olanzapine. Induction of emesis is not recommended. Standard procedures for management of overdose may be indicated (i.e. gastric lavage, administration of activated charcoal). The concomitant administration of activated charcoal was shown to reduce the oral bioavailability of olanzapine by 50 to 60%.

Symptomatic treatment and monitoring of vital organ function should be instituted according to clinical presentation, including treatment of hypotension and circulatory collapse and support of respiratory function. Do not use epinephrine, dopamine, or other sympathomimetic agents with beta-agonist activity since beta stimulation may worsen hypotension.

For management of a suspected drug overdose, contact your regional Poison Control Centre.

## **ACTION AND CLINICAL PHARMACOLOGY**

### **Pharmacodynamics**

#### **Pharmacodynamic Properties:**

Olanzapine, a thienobenzodiazepine, is an antipsychotic and antimanic agent that demonstrates a broad pharmacologic profile across a number of receptor systems. Olanzapine displays high receptor affinity binding *in vitro* at dopamine D<sub>1</sub>, D<sub>3</sub>, D<sub>4</sub> (K<sub>i</sub> = 11-31 nM), 5-HT<sub>2A/C</sub> (K<sub>i</sub> = 4 and 11 nM, respectively), 5-HT<sub>3</sub>, 5-HT<sub>6</sub>, muscarinic M<sub>1</sub>-M<sub>5</sub>, (K<sub>i</sub> = 1.9-2.5 nM), adrenergic α<sub>1</sub> (K<sub>i</sub> = 19 nM), and histamine H<sub>1</sub> (K<sub>i</sub> = 7 nM) receptor subtypes. In a behavioural paradigm predictive of antipsychotic activity, olanzapine reduced conditioned avoidance response in rats at doses lower than 4 times those required to produce catalepsy. In a single dose (10 mg) PET study in healthy subjects, olanzapine produced higher 5-HT<sub>2A</sub>, than dopamine D<sub>2</sub> receptor occupancy. The percent of D<sub>2</sub> occupancy was less than the threshold value predictive of extrapyramidal events.

In animals olanzapine has been observed to produce a significant reduction in the firing of A10 dopaminergic cells. The number of spontaneously active A9 neurons either remained constant or was increased. This may explain the low incidence of extrapyramidal side effects with olanzapine usually associated with the typical antipsychotics.

Olanzapine also increases extracellular levels of dopamine in a regionally specific manner in the prefrontal cortex, similar to mood stabilizers, lithium and valproate.

### **Pharmacokinetics**

**Absorption:** Olanzapine is well absorbed after oral administration, reaching peak plasma concentrations within 5 to 8 hours. The absorption is not affected by food

**Distribution:** Plasma concentrations of orally administered olanzapine were linear and dose proportional in trials studying doses from 1 to 15 mg. The maximum plasma concentrations (C<sub>max</sub>) of olanzapine after single oral doses of 5, 10 and 15 mg averaged 7, 14, and 21 ng/mL, respectively (20 ng/mL = 0.064 μM). In young healthy volunteers, after once-a-day repeated dosing, steady-state C<sub>max</sub> was approximately twice that achieved after a single dose (e.g. 23 ng/mL versus 12 ng/mL for a 10-mg dose). In the elderly, the steady state plasma concentration was approximately 3-fold higher than that achieved after a single dose (e.g. 16 ng/mL, versus 5

ng/mL, for a 5-mg dose). In both, young and elderly, steady-state concentrations of olanzapine were obtained after seven days of once daily dosing.

Over time and dosage range, pharmacokinetic parameters within an individual are very consistent. However, plasma concentrations, half-life and clearance of olanzapine may vary between individuals on the basis of smoking status, gender, and age (see Special Populations). Data from pooled, single dose pharmacokinetic studies showed the half-life of olanzapine to range from 21 to 54 hours (5th to 95th percentile), and the apparent plasma clearance to range from 12 to 47 L/hr (5th to 95th percentile).

The plasma protein binding of olanzapine was about 93% over the concentration range of about 7 to about 1000 ng/mL. Olanzapine is bound predominantly to albumin and  $\alpha_1$ -acid glycoprotein.

**Metabolism:** Olanzapine is metabolized in the liver by conjugative and oxidative pathways. The major circulating metabolite is the 10-N-glucuronide, which is pharmacologically inactive and does not pass the blood brain barrier. Cytochrome P450 isoforms CYP1A2 and CYP2D6 contribute to the formation of the N-desmethyl and 2-hydroxymethyl metabolites. Both metabolites exhibited significantly less *in vivo* pharmacological activity than olanzapine in animal studies. The predominant pharmacologic activity is from the parent olanzapine.

*In vitro* microsomal studies show that olanzapine is a weak inhibitor of CYP1A2 ( $K_i = 36 \mu\text{M}$ ), CYP2D6 ( $K_i = 89 \mu\text{M}$ ), and CYP3A4 ( $K_i = 490 \mu\text{M}$ ). Based upon these  $K_i$  values, little inhibition of these cytochrome P-450 enzymes is expected *in vivo* at concentrations below  $5 \mu\text{M}$  (roughly 1500 ng/mL,) because the olanzapine concentration will be less than 10% of its  $K_i$  value. In clinical studies, observed steady-state plasma concentrations of olanzapine are rarely  $>150 \text{ ng/mL}$ , (approximately  $0.5 \mu\text{M}$ ). Olanzapine is thus not likely to cause clinically important pharmacokinetic drug-drug interactions mediated through the metabolic routes outlined above. (See DRUG INTERACTIONS section).

**Elimination:** After oral administration to healthy subjects, the mean terminal elimination half-life was 33 hours (21 to 54 hours for 5<sup>th</sup> to 95<sup>th</sup> percentile) and the mean olanzapine plasma clearance was 26 L/hr (12 to 47 L/hr for the 5<sup>th</sup> to 95<sup>th</sup> percentile). Olanzapine pharmacokinetics varied on the basis of smoking status, gender, and age. Table 6 summarizes these effects:

**Table 9: Olanzapine Key Pharmacokinetics**

Patient Characteristics	Half-Life (hours)	Plasma Clearance (L/hr)
Nonsmoking	38.6	18.6
Smoking	30.4	27.7
Female	36.7	18.9
Male	32.3	27.3
Elderly (65 and older)	51.8	17.5
Non-elderly	33.8	18.2

Although smoking status, gender, and, to a lesser extent, age may affect olanzapine clearance and half-life, the magnitude of the impact of these single factors is small in comparison to the overall variability between individuals.

### **Special Populations and Conditions**

**Geriatrics:** In a study involving 24 healthy subjects, the mean elimination half-life of olanzapine was about 1.5 times greater in elderly (>65 years) than in non-elderly subjects (≤65 years). Caution should be used in dosing the elderly, especially if there are other factors that might additively influence drug metabolism and/or pharmacodynamic sensitivity (see DOSAGE AND ADMINISTRATION section).

**Gender:** Clearance of olanzapine is approximately 30% lower in women than in men. There were, however, no apparent differences between men and women in effectiveness or adverse effects. Dosage modifications based on gender should not be needed.

**Race:** In a study of Caucasians, Japanese, and Chinese subjects, there were no differences in olanzapine pharmacokinetics among the three populations. Cytochrome P450 isoform CYP2D6 status does not affect the metabolism of olanzapine.

**Hepatic Insufficiency:** No differences in the single-dose pharmacokinetics of oral olanzapine were noted in subjects with clinically significant cirrhosis (who were mostly smokers) when compared to healthy subjects (all non-smokers). Multiple-dose studies in patients with hepatic impairment, however, have not been performed.

**Renal Insufficiency:** There was no significant difference in mean elimination half-life or olanzapine plasma clearance between subjects with severely impaired renal function compared to individuals with normal renal function. Approximately 57% of radio-labelled olanzapine is excreted in urine, principally as metabolites.

### **STORAGE AND STABILITY**

AVA-OLANZAPINE Tablets:  
Store tablets at 15-30°C. Protect from light and moisture.

### **DOSAGE FORMS, COMPOSITION AND PACKAGING**

*AVA-OLANZAPINE Tablets:*

Non-medicinal ingredients (2.5 mg, 5 mg, 7.5 mg and 10 mg): Crospovidone, glycerol triacetate, hypromellose, hydroxypropyl cellulose, lactose monohydrate, macrogol, magnesium stearate, polydextrose, silicified microcrystalline cellulose and titanium dioxide.

Non-medicinal ingredients (15 mg): Crospovidone, FD & C Blue # 2 indigo carmine aluminium lake, hypromellose, hydroxypropyl cellulose, lactose monohydrate, macrogol, magnesium stearate, polysorbate, silicified microcrystalline cellulose and titanium dioxide.

## AVAILABILITY OF DOSAGE FORMS

AVA-OLANZAPINE (olanzapine) 2.5mg tablets: white, round film coated tablets engraved with "2.5" on one side and "N" on the other side. They are available in white HDPE bottles of 100 tablets.

AVA-OLANZAPINE (olanzapine) 5mg tablets: white, round film coated tablets engraved with "5" on one side and "N" on the other side. They are available in white HDPE bottles of 100 tablets.

AVA-OLANZAPINE (olanzapine) 7.5mg tablets: white, round film coated tablets engraved with "7.5" on one side and "N" on the other side. They are available in white HDPE bottles of 100 tablets.

AVA-OLANZAPINE (olanzapine) 10mg tablets: white, round film coated tablets engraved with "10" on one side and "N" on the other side. They are available in white HDPE bottles of 100 tablets.

AVA-OLANZAPINE (olanzapine) 15mg tablets: Light blue, elliptical film coated tablets engraved with "15" on one side and "N" on the other side. They are available in white HDPE bottles of 100 tablets.

## PART II: SCIENTIFIC INFORMATION

### PHARMACEUTICAL INFORMATION

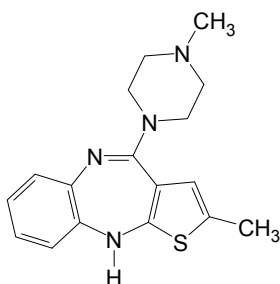
#### Drug Substance

Common name: Olanzapine

Chemical name: (1) 2-methyl-4-(4-methyl-1-piperazinyl)-10H-thieno[2,3-b][1,5]benzodiazepine  
(2) 10H-thieno[2,3-b][1,5]benzodiazepine, 2-methyl-4-(4-methyl-1-piperazinyl)

Molecular formula and molecular mass: C<sub>17</sub>H<sub>20</sub>N<sub>4</sub>S 312.44

Structural formula:



Physicochemical properties:

*Description:* Olanzapine is an antipsychotic agent of the thienobenzodiazepine class. It is a pale yellow to yellow crystalline powder, which is freely soluble in chloroform.

*pK<sub>a</sub>:* pK<sub>a</sub>1: 7.37  
pK<sub>a</sub>2: 4.69

*Melting Point:* 188.0 – 194.0°C



## CLINICAL TRIALS

### Bioequivalence Studies:

A blinded, single-dose, randomized, two-period, two-sequence, two-treatment crossover study designed to evaluate the comparative bioavailability of two formulations of Olanzapine 2.5mg, (AVA-Olanzapine, manufactured by Avantra Inc. and ZYPREXA<sup>®</sup> manufactured by Eli Lilly Canada) in 23 healthy male volunteers under fasting conditions.

**Table -10:**

<b>TABLE OF COMPARATIVE BIOAVAILABILITY DATA</b> <b>Olanzapine Tablets (N = 23)</b> <b>(1 x 2.5mg)</b> <b>From measured data</b> <b>Geometric Mean</b> <b>Arithmetic Mean (CV%)</b>				
Parameter	Test*	Reference <sup>†</sup>	% Ratio of Geometric Means	90% Confidence Interval
AUC <sub>0-72</sub> (ng hr/mL)	106.250 110.723 (29)	106.299 110.708 (29)	99.95	96.02 - 104.05
AUC <sub>0-inf</sub> (ng*h/mL)	139.374 146.384 (31)	145.905 152.277 (34)	95.52	90.81 – 100.48
C <sub>MAX</sub> (ng.mL)	3.154 3.310 (31)	3.197 3.329 (30)	98.66	93.17 - 104.48
T <sub>MAX</sub> <sup>§</sup> (h)	6.61 (58)	7.24 (47)		
Thalf <sup>§</sup> (h)	34.71 (31)	36.28 (27)		

\* AVA-Olanzapine 2.5mg tablets (NT Pharma Canada Limited)

† Zyprexa<sup>®</sup> 2.5mg tablets (Eli Lilly Canada Inc., Canada); Purchased in Canada

§ Expressed as the arithmetic mean (CV%) only.

A blinded, single-dose, randomized, two-period, two-sequence, two-treatment crossover study designed to evaluate the comparative bioavailability of two formulations of Olanzapine 15mg, (AVA-Olanzapine, manufactured by Avantra Inc. and ZYPREXA<sup>®</sup> manufactured by Eli Lilly Canada) in 19 healthy male volunteers under fasting conditions.

**Table 11:**

<b>TABLE OF COMPARATIVE BIOAVAILABILITY DATA</b> <b>Olanzapine Tablets (N = 19)</b> <b>(1 x 15 mg)</b> <b>From measured data</b> <b>Geometric Mean</b> <b>Arithmetic Mean (CV%)</b>				
Parameter	Test*	Reference <sup>†</sup>	% Ratio of Geometric Means	90% Confidence Interval
AUC <sub>0-72</sub> (ng hr/mL)	704.435 724.609 (27)	683.715 704.431 (26)	103.03	98.03 - 108.29
AUC <sub>0-inf</sub> (ng*h/mL)	905.221 943.372 (31)	891.549 920.367 (27)	101.53	95.47 – 107.98
C <sub>MAX</sub> (ng.mL)	25.041 26.189 (35)	23.633 24.474 (30)	105.96	96.35 - 116.52
T <sub>MAX</sub> <sup>§</sup> (h)	3.74 (56)	3.81 (45)		
Thalf <sup>§</sup> (h)	33.92 (33)	34.86 (20)		

\* AVA-Olanzapine 15mg tablets (NT Pharma Canada Limited)

† Zyprexa® 15mg tablets (Eli Lilly Canada Inc., Canada); Purchased in Canada  
§ Expressed as the arithmetic mean (CV%) only.

### **Schizophrenia and Related Disorders Trials**

The efficacy of oral olanzapine in the reduction of and maintenance of the reduction of the manifestations of schizophrenia and related psychotic disorders was established in 3 well-controlled clinical trials of psychotic inpatients who, at entry met the DSM-III-R criteria for schizophrenia (most with a course at entry of 'chronic with acute exacerbation') and 1 well-controlled clinical trial of psychotic inpatients and outpatients who, at entry, met the DSM-III-R criteria for schizophrenia, schizophreniform disorder, or schizoaffective disorder. The results of the trials follow:

- (1) A 6-week, placebo-controlled trial (N=335) compared 3 fixed dosage ranges of olanzapine ( $5 \pm 2.5$ ,  $10 \pm 2.5$ , and  $15 \pm 2.5$  mg/day QD), 1 dosage range of haloperidol ( $15 \pm 5$  mg/day on a BID schedule), and placebo. The 2 higher dosage ranges of olanzapine were statistically significantly superior to placebo on the Brief Psychiatric Rating Scale (BPRS) total, the Clinical Global Impressions - Severity of Illness (CGI-S) scale, and the BPRS positive psychosis cluster. The highest dosage range of olanzapine was statistically significantly superior to placebo and to haloperidol on the Scale for the Assessment of Negative Symptoms (SANS). Efficacy of olanzapine generally increased with dose. The  $5 \pm 2.5$  mg/day dosage range of olanzapine was numerically, but not statistically, significantly superior to placebo on BPRS total and other assessments of overall psychopathology.
- (2) A 6-week, placebo-controlled trial (N = 152) compared 2 fixed doses of olanzapine (1 or 10 mg/day QD) and placebo. Olanzapine, 10 mg/day, was statistically significantly superior to placebo on the BPRS total, the BPRS positive psychosis cluster, the CGI-S scale, the Positive and Negative Syndrome Scale (PANSS) total, the PANSS positive subscale, and the PANSS negative subscale. Olanzapine, 1 mg/day, appeared to be a no-effect dose with no difference, clinically or statistically, from placebo on any assessment of psychopathology.
- (3) A 6-week, dose comparison trial (N=431) compared 3 fixed dosage ranges of olanzapine ( $5 \pm 2.5$ ,  $10 \pm 2.5$  and  $15 \pm 2.5$  mg/day QD), olanzapine (1 mg/day QD), and haloperidol ( $15 \pm 5$  mg/day on a BID schedule). There were no statistically significant differences between groups on efficacy measures except for the highest dosage range of olanzapine, which was statistically significantly superior to olanzapine, 1 mg, on the BPRS positive psychosis cluster, PANSS positive subscale, and the CGI-S scale.
- (4) A 6-week comparator-controlled trial (N=1996, 2:1 randomization, olanzapine: haloperidol) compared 1 dosage range of olanzapine (5 to 20 mg/day QD) and 1 dosage range of haloperidol (5 to 20 mg/day QD). The acute mean modal doses (for those patients with at least 3 weeks of treatment) were 13.2 mg/day for olanzapine and 11.8 mg/day for haloperidol. Olanzapine was statistically significantly superior to haloperidol on the BPRS total, the BPRS negative psychosis cluster, the PANSS negative subscale, and the CGI-S scale. Olanzapine was also statistically significantly superior to haloperidol

on the Montgomery-Asberg Depression Rating Scale (MADRS). The validity of this scale in patients with schizophrenia, however, is not established.

- (5) The effectiveness of olanzapine in long-term therapy, ie, >6 weeks, was evaluated in 3 double-blind, controlled, extension maintenance trials (of acute trials 1, 3, and 4 above). Patients who showed adequate clinical improvement following double-blind acute therapy were allowed to continue on in a double-blind, long-term extension maintenance phase on their acute dosage regimen. Long-term maintenance of treatment response (as defined by continued reduction in signs and symptoms sufficient to not require hospitalization for psychosis) was compared over time (894 olanzapine -treated patients; median length of treatment was 237 days). The percentage of patients maintaining treatment response over one year was compared. Olanzapine was statistically significantly superior to placebo in the one placebo-controlled trial and was comparable or statistically significantly superior to the active comparator in 3 of 3 active comparator-controlled trials.

### ***Summary of Schizophrenia and Related Disorders Trials***

While the efficacy of olanzapine at a dose of 5 mg/day was not statistically superior to placebo (see (1 above)), some individual patients receiving this dose had a good acute response, and were well maintained during a 1-year extension phase.

The above trials (including open-label extension) and an additional trial in geriatric patients with primary degenerative dementia of the Alzheimer's type constitute the primary database (N=2500 patients treated with olanzapine, corresponding to 1122.2 patient-years; N=810 patients treated with haloperidol, corresponding to 193.0 patient-years; N=236 patients treated with placebo, corresponding to 27.1 patient-years).

### ***Bipolar Disorder Trials***

#### ***Bipolar Mania:***

The efficacy of oral olanzapine in treating acute bipolar mania was demonstrated in 5 controlled studies, including 2 placebo-controlled studies, 2 active comparator studies and 1 cotherapy study. All patients enrolled in these studies had a diagnosis of bipolar 1 disorder and displayed an acute manic or mixed episode (with or without psychotic features) according to the DSM-IV criteria based on clinical assessment and confirmed by the structured clinical interview for the diagnostic and statistical manual, SCID-P.

- (1) ***Placebo-Controlled Trials:*** The 2 placebo-controlled trials evaluated the efficacy of olanzapine versus placebo in treating bipolar manic or bipolar mixed episodes as measured by the Y-MRS total score LOCF mean change from baseline to endpoint over 3 weeks (n=70 and n=69, respectively) and 4 weeks (n=60 and n=55, respectively). These trials demonstrated superiority in the efficacy of olanzapine compared with placebo. The key findings were as follows:
  - Olanzapine, at a dose range of 5-20 mg/day, was statistically superior to placebo in improving manic symptoms in each study (p=0.019 and p<0.001, respectively).
  - In each study, a statistically significantly greater percentage of olanzapine-treated patients (48.6% and 64.8%, respectively) compared with placebo-treated patients

(24.2% and 42.9%, respectively) responded to treatment ( $\geq 50\%$  reduction in Y-MRS total score) ( $p=0.004$  and  $p=0.023$ , respectively).

- In each study, the percentage of patients that were in clinical remission (endpoint Y-MRS total score  $\leq 12$ ) were significantly greater among olanzapine patients (45.7% and 61.1 %, respectively) compared with placebo patients (25.8% and 35.7%, respectively) ( $p=0.020$  and  $p=0.013$ , respectively).
- Olanzapine efficacy did not differ significantly among the main subtypes of bipolar mania, for example patients with a history of rapid cycling, with or without psychotic features, and bipolar mixed or bipolar manic.

(2) **Active Comparator Trials:** Two active comparator trials were conducted.

(a) The first active comparator study evaluated the efficacy of olanzapine versus divalproex in treating bipolar manic and bipolar mixed episodes by using the Y-MRS total score LOCF mean change from baseline to endpoint. This study was a 3-week, double-blind study with a double-blind continuation phase of 11 months. The primary objective of the study was to demonstrate non-inferiority in the efficacy of olanzapine compared with divalproex at 3 weeks. Patients were randomized to either olanzapine (5-20 mg/day,  $n=125$ ) or divalproex (500-2500 mg/day,  $n=126$ ). The key findings were as follows:

- Olanzapine was statistically superior to divalproex in improving manic symptoms as measured by Y-MRS change score at 3 weeks (mean improvements of 13.4 and 10.4 points, respectively,  $p=0.028$ ).
- The proportion of patients meeting the criteria for response was not statistically significantly different between olanzapine and divalproex groups (54.4% and 42.3%, respectively) ( $p=0.059$ ).
- The proportion of patients that was in clinical remission was significantly greater among olanzapine patients (47.2%) compared with divalproex patients (34.1 %) ( $p=0.039$ ).

(b) The second active comparator study evaluated the efficacy of olanzapine versus haloperidol in treating bipolar manic or mixed episodes by assessing the proportion of patients in protocol-defined remission from manic and depressive symptoms at 6 weeks. Remission was defined as: 1) achieving improvement in clinical symptomatology in manic and depressive symptoms; 2) having achieved specific reductions in Y-MRS and HAMD-21 total scores; and 3) continuing to take study medication at Week 6. This trial consisted of a 6-week double-blind phase followed by a 6-week double-blind maintenance of response phase in the absence of a placebo arm. Patients were randomly assigned to treatment with olanzapine 5-20 mg/day ( $n=234$ ) or haloperidol 3-15 mg/day ( $n=219$ ). The key findings were as follows:

- Olanzapine and haloperidol were similarly effective in improving manic symptoms.
- A clinical response to treatment was defined as a  $\geq 50\%$  improvement in Y-MRS total score from baseline to endpoint. In both treatment groups, a large proportion of patients responded to treatment. At the end of the acute phase 72.3% and 74.2% of olanzapine and haloperidol patients, respectively met the response criteria, and at the

end of the continuation phase almost all patients were classified as responders (96.3% of 160 olanzapine patients and 94.1% of 136 haloperidol patients).

- The proportion of patients in symptomatic remission at the end of the acute phase (6 weeks) was similar for olanzapine and haloperidol patients (52.1 % versus 46.1 %, respectively (p=0.152)). Among patients who entered the continuation phase and were not in symptomatic remission at 6-weeks, significantly more olanzapine patients (68.3%) than haloperidol patients (41.0% ) were in remission by the end of the continuation period (p = 0.014).
- Manic symptoms continued to improve among olanzapine patients to a statistically significant extent.
- Olanzapine was statistically significantly more efficacious than haloperidol in patients without psychotic features (acute phase remission rates were 56.7% in 104 olanzapine patients and 41.6% in 89 haloperidol patients, respectively) (p=0.043).

(3) ***Cotherapy Trial:*** This trial evaluated the efficacy of olanzapine plus either valproate or lithium (cotherapy, n=229) versus valproate or lithium alone (monotherapy, n=115) in treating bipolar manic or mixed episodes as measured by the Y-MRS total score LOCF mean change from baseline to endpoint, This study was a 6-week, double-blind study with a re-randomized double-blind phase of 18 months. The key findings were as follows:

- Olanzapine in combination with either valproate or lithium was significantly more efficacious than monotherapy (valproate or lithium) in improving manic symptoms (mean improvements of 13.1 and 9.1 points, respectively) (p=0.003).
- The proportion of patients that clinically responded to treatment was statistically significantly greater among patients receiving olanzapine cotherapy (67.7%) than lithium or valproate monotherapy (44.7%, p<0.001).
- The percentage of patients that were in clinical remission was significantly greater in the olanzapine cotherapy group (78.6%) compared with the lithium or valproate monotherapy group (65.8%, p=0.012).
- The difference in time to remission was also statistically significantly different (p=0.002). The median estimated remission time was 14 days for olanzapine cotherapy-treated patients and 22 days for monotherapy-treated patients.

#### *Bipolar Maintenance:*

The efficacy of oral olanzapine as monotherapy for maintenance treatment of bipolar disorder in patients who responded to acute treatment with olanzapine for a manic or mixed episode was demonstrated in two 1-year 'time to event' controlled trials: one placebo-controlled and one active comparator trial against lithium monotherapy.

All patients enrolled in these studies had a diagnosis of bipolar I disorder and displayed an acute manic or mixed episode (with or without psychotic features) according to the DSM-IV criteria.

For both studies: Patients had to meet study-defined response criteria (YMRS total score of  $\leq 12$  and a HAM-D-21 total score  $\leq 8$ ) during open-label treatment with olanzapine (or olanzapine plus lithium in the active comparator study) in order to be randomized into the double-blind maintenance period for observation of study-defined relapse. Dosing was flexible (5 – 20 mg/day for olanzapine; serum levels 0.6 - 1.2 mEq/L for lithium).

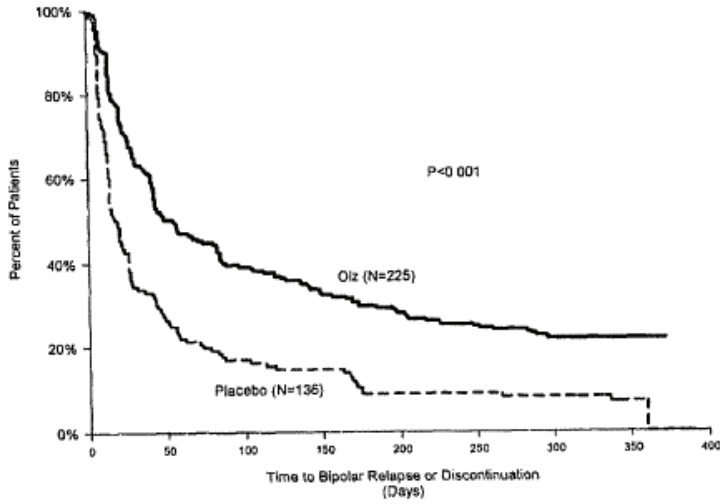
The exit criteria was symptomatic relapse of bipolar disorder, either mania or depression. Symptomatic relapse of mania was defined as reaching a YMRS total score  $\geq 15$ , and symptomatic relapse of depression as reaching a HAMD-21 total score  $\geq 15$ ; for the placebo-controlled study only, the definitions also included being hospitalized for mania or depression. Thus, the primary efficacy variable was time to, and incidence of, the exit symptomatic relapse of bipolar disorder, based on analysis of Kaplan-Meier time-to-relapse curves.

### **1) Placebo-controlled trial:**

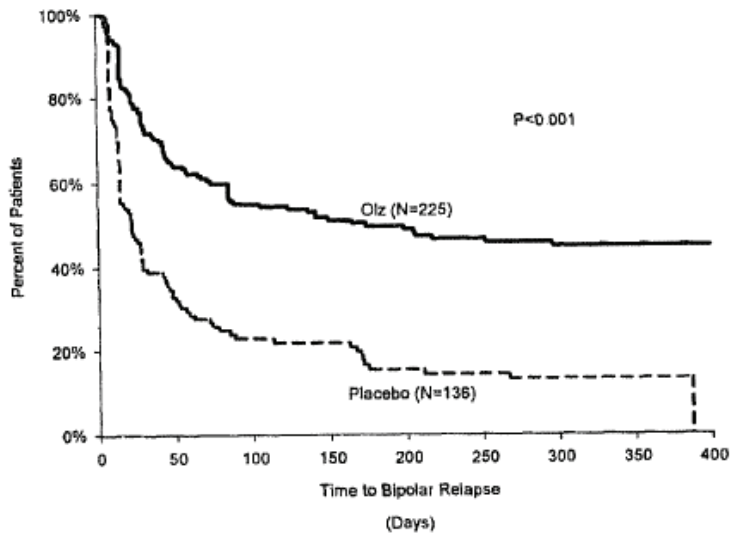
The study evaluated the efficacy of olanzapine vs placebo in maintenance treatment of manic or mixed bipolar episodes by using survival curve analysis to assess the time to, and incidence of, relapse of bipolar disorder. In this trial, 361 patients who had demonstrated response criteria for an average of 16 days were randomized to either continuation of olanzapine at their same dose (n = 225) or to placebo (n = 136), for observation of relapse for up to one year.

The key findings were as follows:

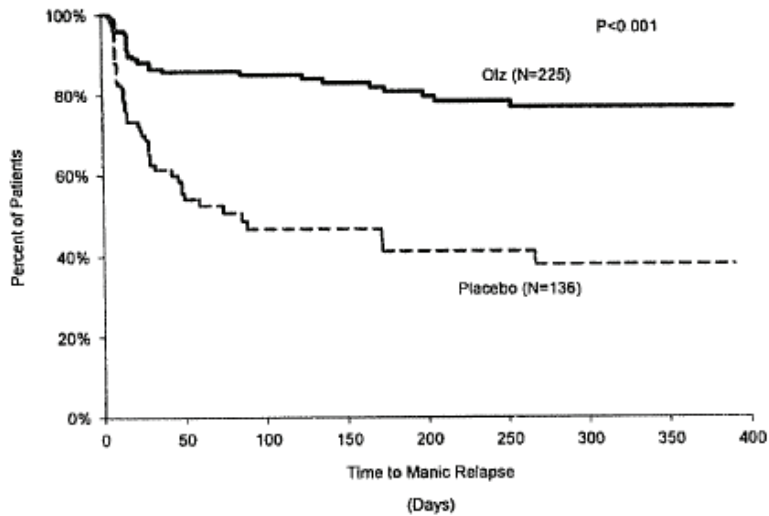
- Figure 1 shows the 1-year time-to-relapse curves for total discontinuations from the study in each arm over time, whether exiting due to relapse, or withdrawal due to adverse events or other reasons. The percentage of patients remaining in the study (i.e. relapse-free, and have not withdrawn for any reason) can be seen at each of the 3, 6, 9 and 12 month points; at study-end, this is 24% (n = 53) for olanzapine and 10% (n = 13) for placebo. The time-point at which 50% of the patients in a specific arm had withdrawn for any reason was Day 59 for the olanzapine group compared to Day 23 for the placebo group.
- Figure 2 shows the 1-year time-to-relapse curves for specifically the exit criterion of bipolar relapse (i.e. patients who withdrew for other reasons were censored and excluded from the calculated numerators and denominators). Olanzapine was superior to placebo, for both incidence of bipolar relapse (46.7% vs 80.1%, respectively), and median time to relapse (174 days vs 22 days, respectively). Note that a high relapse incidence for the placebo arm is not unexpected given the limited time that patients had been demonstrating response criteria prior to randomization.
- Figures 2a and 2b show the efficacy time-to-relapse curves for each of manic and depressive relapse, respectively. Olanzapine showed a statistically significant advantage over placebo in terms of each of mania and depression, although a greater advantage was seen in mania.



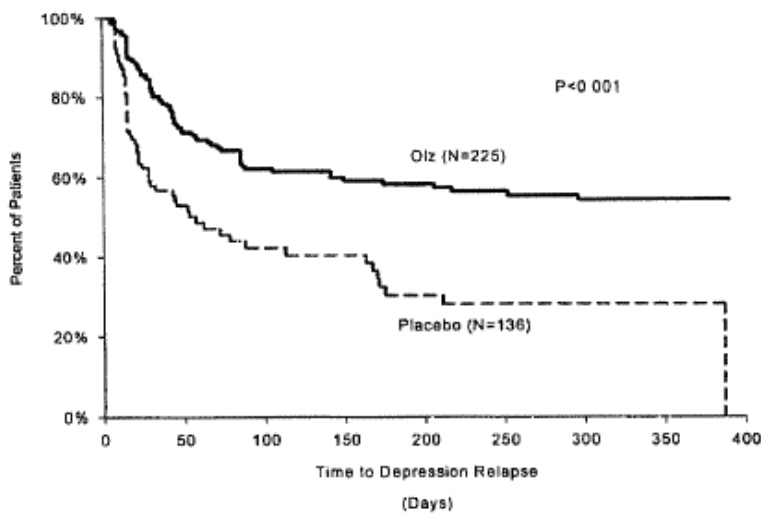
**Figure 1: Time to Event (Relapse or Discontinuation) Study HGHL; Double-Blind Treatment Phase**



**Figure 2: Time to Symptomatic Relapse of Bipolar Disorder, Including Hospitalization Study HGHL; Double-Blind Treatment Phase**



**Figure 2a: Time to Symptomatic Relapse of Mania, Including Hospitalization  
Study HGHL; Double-Blind Treatment Phase**



**Figure 2b: Time to Symptomatic Relapse of Depression, Including Hospitalization  
Study HGHL; Double-Blind Treatment Phase**

**2) Active comparator trial:**

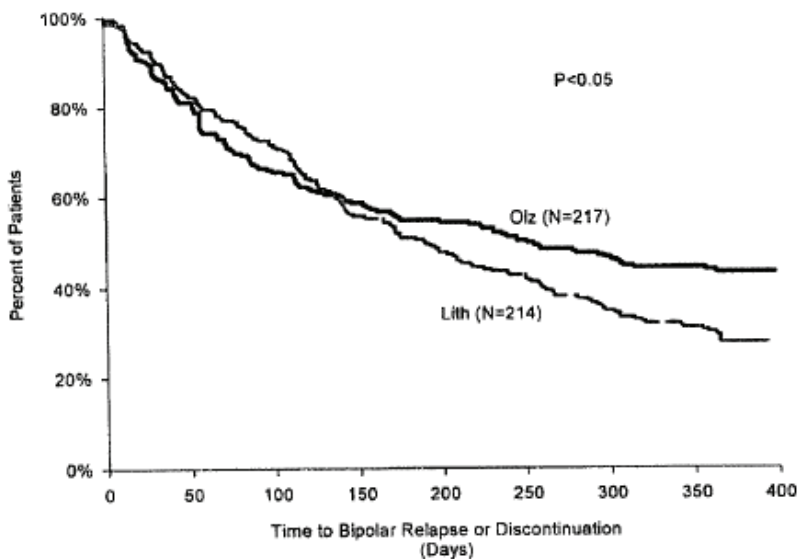
The study evaluated the efficacy of olanzapine vs lithium in maintenance treatment of manic or mixed bipolar episodes in a non-inferiority design to assess the incidence of relapse of bipolar disorder and further, by using survival curve analysis to assess time to relapse. In this trial, 543 patients who had demonstrated response criteria for an average of 20 days were randomized to



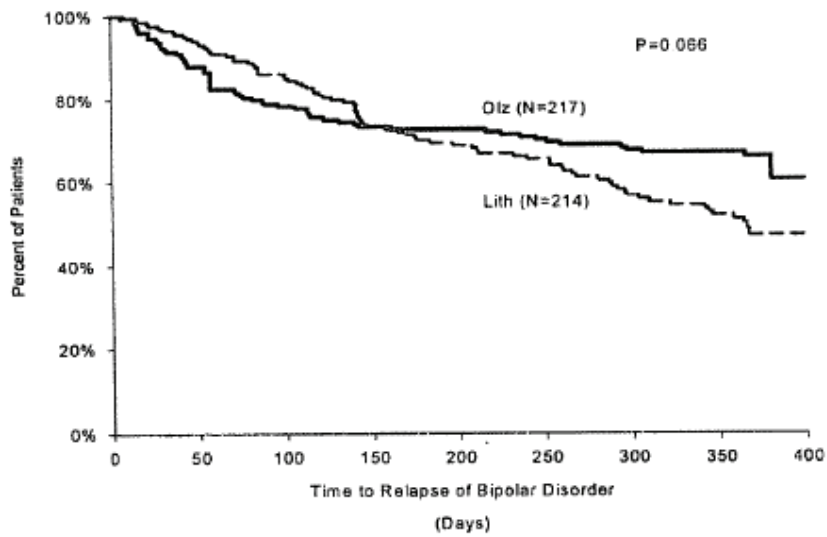
either olanzapine plus placebo (n = 217) or lithium plus placebo (n = 214) for observation of relapse for up to one year. The first month of the double blind period was a taper period to allow for non-abrupt lithium discontinuation. The non-inferiority margin used in this study was:  $\pm 20\%$  of the efficacy seen for the reference population.

The key findings were as follows:

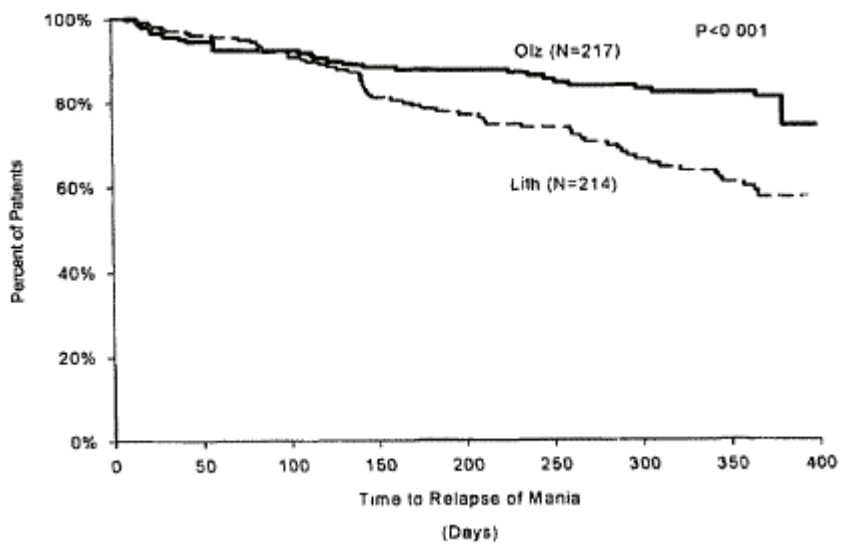
- Figure 3 shows the 1-year time-to-relapse curves for total discontinuations from the study in each arm over time, whether exiting due to relapse, or withdrawal due to adverse events or other reasons. The percentage of patients remaining in the study (i.e. relapse-free, and have not withdrawn for any reason) can be seen at each of the 3, 6, 9 and 12 month points; at study-end, this is 42% (n = 94) for olanzapine and 28% (n = 61) for lithium. The time-point at which 50% of the patients in a specific arm had withdrawn for any reason was Day 255 for the olanzapine group compared to Day 192 for the lithium group.
- Figure 4 shows the 1-year time-to-relapse curves for specifically the exit criterion of bipolar relapse (i.e. patients who withdrew for other reasons were censored and excluded from the calculations of numerators and denominators). Olanzapine was non-inferior to lithium for both incidence of bipolar relapse (30.0% vs 38.8%, respectively), and time to 25% of patients experiencing relapse (122 days vs 143 days, respectively).
- It can be seen from Figure 4 that for approximately the first five months of the 1-year trial, relapse rate was higher in olanzapine-treated patients; thereafter, the rate of relapse for lithium increases, while that for olanzapine flattens out.
- Figures 4a and 4b are the 1-year time-to-relapse curves for each of the exit criterion of manic and depressive relapse respectively. Olanzapine showed a statistically significant advantage over lithium in rate of mania relapse, and was non-inferior for depressive relapse.



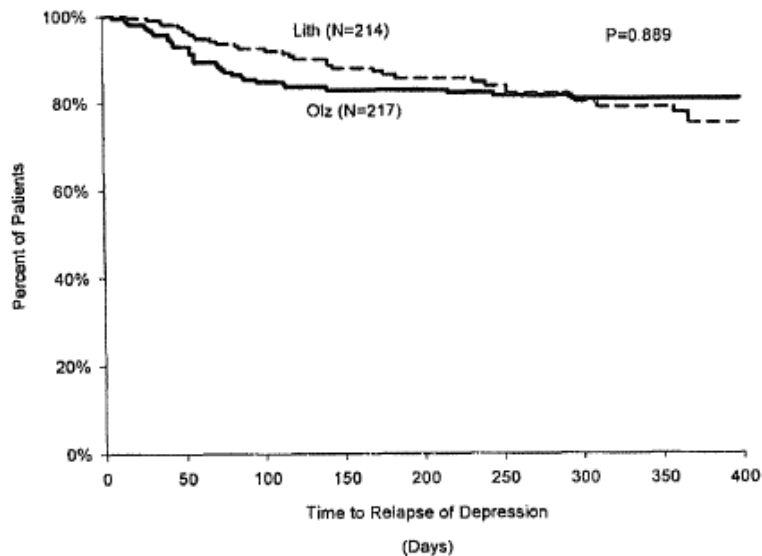
**Figure 3: Time to Event (Relapse or Discontinuation) Study HGHT; Double-Blind Treatment Phase**



**Figure 4: Time to Symptomatic Relapse of Bipolar Disorder Study HGHT; Double-Blind Treatment Phase**



**Figure 4a: Time to Symptomatic Relapse of Mania Study HGHT; Double-Blind Treatment Phase**



**Figure 4b: Time to Symptomatic Relapse of Depression  
Study HGHT; Double-Blind Treatment Phase**

### ***Summary of Bipolar Disorder Trials***

***Bipolar Mania:*** Olanzapine was more efficacious than placebo and divalproex and as effective as haloperidol in improving overall manic symptomatology in patients with acute bipolar I disorder, manic or mixed episode, with or without psychotic symptoms, and with or without a history of rapid cycling. Olanzapine is associated with a faster onset of action (based on median time to remission estimated with Kaplan-Meier analysis) compared to divalproex and similar to that of haloperidol. The addition of olanzapine also improved patients not responding to lithium or valproate. Olanzapine was not associated with inducing or worsening symptoms of depression.

***Bipolar Maintenance:*** Two 1-year controlled studies support the use of olanzapine monotherapy in maintenance treatment of bipolar patients who responded to acute olanzapine treatment for a manic or mixed episode. Based on analysis of one-year Kaplan-Meier survival curves, olanzapine was superior to placebo, and non-inferior to lithium, in both time to, and incidence of, bipolar relapse over one year.

## **DETAILED PHARMACOLOGY**

Pharmacodynamics:

***In Vitro Receptor Binding Affinities:***

The binding affinities of olanzapine versus clozapine and haloperidol are summarized in Table 7. The binding profile of olanzapine has similarities to that produced by clozapine, although the affinity of olanzapine is somewhat greater for dopamine D<sub>1</sub> and D<sub>2</sub> receptors and lower at 2 receptors. With respect to 5-HT receptor subtypes, both agents show greatest affinity for 5-HT<sub>2A</sub> and 5-HT<sub>2C</sub> receptors. The ratio of activity between 5-HT<sub>2A</sub> and D<sub>2</sub> receptors is slightly less for olanzapine than for clozapine, although olanzapine is still about twice as active at 5-HT<sub>2A</sub> receptors compared with D<sub>2</sub> receptors. Both compounds also have a high affinity for muscarinic

receptor subtypes, particularly the  $m_1$  site. The affinity constants ( $K_i$ , nM) for olanzapine, clozapine, and haloperidol are shown below:

**Table 12: Affinity constants for olanzapine, clozapine, and haloperidol.**

Compound	Dopamine D <sub>1</sub>	Dopamine D <sub>2</sub>	$\alpha_1$	$\alpha_2$	Histamine H <sub>1</sub>
Olanzapine	31 ± 0.7	11 ± 2	19 ± 1	230 ± 40	7 ± 0.3
Clozapine	85 ± 0.7	125 ± 20	7 ± 4	8 ± 3	6 ± 2
Haloperidol	25 ± 7	1 ± 0.04	46 ± 6	360 ± 100	3630 ± 85

Compound	5-HT 1A	5-HT 1B	5-HT 1D	5-HT 2A	5-HT 2C	5-HT3
Olanzapine	>10,000	1355 ± 380	800 ± 190	4 ± 0.4	11 ± 1	57
Clozapine	770 ± 220	1200 ± 170	980 ± 115	12 ± 3	8 ± 0.8	69
Haloperidol	7930 ± 500	>10,000	6950 ± 950	78 ± 22	3085	>1000

Compound	$m_1$	$m_2$	$m_3$	$m_4$	$m_5$
Olanzapine	1.9 ± 0.1	18 ± 5	25 ± 2	13 ± 2	6 ± 0.8
Clozapine	1.9 ± 0.4	10 ± 1	14 ± 1	18 ± 5	5 ± 1.2
Haloperidol	1475 ± 300	1200 ± 180	1600 ± 305	>10,000	Not Tested

Olanzapine has no significant activity at GABA<sub>A</sub>, benzodiazepine, or  $\beta$  receptors. Olanzapine also interacts with dopamine D<sub>4</sub> receptors ( $K_i$  27 nM).

*In vivo* biochemical studies were conducted to confirm the binding data and investigate the functional consequences of interacting with these neurotransmitter receptor sites.

#### *In Vivo* Neuroendocrine Studies:

It has been shown that corticosterone concentrations in rats can be elevated by 5-HT-mediated or dopamine-mediated mechanisms. Olanzapine antagonizes the 5-HT (quipazine-induced) (ED<sub>50</sub> 0.57 mg/kg) and D<sub>2</sub> dopamine receptor-mediated (pergolide-induced) (ED<sub>50</sub> 3 mg/kg) increases in corticosterone. These results show that olanzapine has greater activity at 5-HT compared with D<sub>2</sub> dopamine receptors *in vivo*. These results complement the behavioural studies showing that olanzapine preferentially antagonizes a 5-HT-induced response.

#### *In Vivo* Behavioural Pharmacology:

In behavioural studies, olanzapine exhibits a broad pharmacologic profile, as predicted from the biochemical data.

Olanzapine blocks apomorphine-induced climbing behaviour with an ED<sub>50</sub> of approximately 5 mg/kg. The climbing response has previously been shown to require both D<sub>1</sub> and D<sub>2</sub> receptor activation. These results therefore indicate that olanzapine possesses dopamine antagonist activity *in vivo*.

A second study in mice looked at the ability of olanzapine to block 5-hydroxytryptophan (5-HTP)-induced head twitches, a test probably mediated by 5-HT<sub>2</sub> receptors. Olanzapine produced dose-related reductions in the head-twitch response with approximate ED<sub>50</sub>s of 2 mg/kg. Olanzapine preferentially blocks the head twitch, compared with the climbing response, demonstrating that this agent exhibits greater activity at the 5-HT receptor compared with

dopamine receptors *in vivo*. These results agree with those reported in rats, showing that olanzapine preferentially antagonizes 5-HT-mediated rather than dopamine-mediated elevations in corticosterone (Moore et al. 1993).

Olanzapine doses of 2.5 to 10 mg/kg produced a significant reduction in oxotremorine-induced tremor in mice, with an ED<sub>50</sub> of 3 mg/kg. These results demonstrate that olanzapine possesses anticholinergic activity *in vivo* at doses which also antagonize dopamine-mediated effects.

Inhibition of a conditioned avoidance response has been widely used as a test to predict the antipsychotic potential of a compound, while the induction of catalepsy in rats is associated with the occurrence of extrapyramidal symptoms in the clinic. ED<sub>50</sub>s for the various compounds in blocking a conditioned avoidance response or inducing catalepsy in rats are given in Table 10.

**Table 13: Effect of Olanzapine and Haloperidol on Conditioned Avoidance Responding (CAR) and the Induction of Catalepsy (CAT) in Lister Hooded Rats**

Compound	CAR	CAT	Ratio
Olanzapine	5.6 (4.6 – 6.8)	23 (18.7 – 29)	4.1
Haloperidol	0.28 (0.24 – 0.33)	0.74 (0.6 – 0.9)	2.6

**Note:** The results are expressed as ED<sub>50</sub> values (mg/kg p.o.) with 95% confidence intervals stated in parentheses. The ratio is the ED<sub>50</sub> CAT / ED<sub>50</sub> CAR.

Although olanzapine induces catalepsy, this only occurs at doses higher than those required to block the conditioned avoidance response.

A number of reports have shown that the "atypical" agent, clozapine, differs from "typical" antipsychotics in its effects on schedule-controlled behaviour. In a rat or pigeon conflict test, olanzapine, clozapine, and chlordiazepoxide produced the characteristic changes in rates of responding associated with anxiolytics, although the effect of olanzapine and clozapine was smaller than that seen with chlordiazepoxide. All three compounds decreased or had no effect on the high rates of responding produced in the reward component, whereas the rates in time-out and particularly the conflict period were increased. This type of profile was not seen with the "typical" antipsychotic, haloperidol, which only decreased the rates in all the components. These data further emphasize the "atypical" profile of olanzapine.

*In Vivo* Electrophysiology:

"Typical" antipsychotic agents, such as haloperidol, reduce the spontaneous firing of both A9 and A10 dopaminergic neurons in the CNS following chronic dosing. The A9 (nigrostriatal system) is thought to mediate extrapyramidal motor disturbances, while the A10 (mesolimbic system) has been associated with the antipsychotic activity of compounds. Olanzapine (10 and 20 mg/kg subcutaneously for 21 days) produced a significant reduction in the firing of A10 dopaminergic cells. The number of spontaneously active A9 neurons either remained constant or was increased. These results are very similar to those reported previously for clozapine and further emphasize the "atypical" pharmacologic profile of olanzapine.

### *Human Versus Animal Metabolism:*

In animal species (mice, rats, and dogs) used for toxicologic evaluation, olanzapine was metabolized through aromatic hydroxylation (forming phenolic metabolites and/or their glucuronide conjugates), allylic (alkyl) oxidation, N-dealkylation, and N-oxidation reactions.

Although similarities in the metabolic fate of olanzapine in animals (mice, rats, and dogs) and humans include the 2-alkyl hydroxylation, N-dealkylation, and N-oxidation pathways, two significant differences can be noted. First, direct glucuronidation, producing mainly 10-N-glucuronide and to a lesser extent 4'-N-glucuronide, was a significant metabolic pathway in humans. These N-glucuronides were absent in animal species except for a trace amount of 10-N-glucuronide in dog urine. Second, metabolites resulting from aromatic oxidation were not found in any human biological fluids. The monkey also did not appear to form 10-N-glucuronide, but was similar to humans in apparently not forming metabolites resulting from the oxidative attack of the benzene ring of olanzapine.

## **TOXICOLOGY**

An extensive series of acute, subchronic, chronic, reproduction, and genetic toxicity as well as oncogenicity studies have been conducted to support clinical trials with olanzapine. In most of these studies, olanzapine was given by the oral route to rodents, rabbits, and monkeys in an aqueous suspension with 5% to 10% acacia and to dogs as neat material in capsules.

The predominant effects in laboratory animals given olanzapine were CNS depression and anticholinergic effects related to the pharmacology of the drug. Tolerance to the CNS depression developed in repeated-dose studies. Depressed body weight gain was a consistent finding in mice given 30 mg/kg/day and in rats given 4 mg/kg/day. Effects on hematology parameters were found in each species studied in repeated-dose studies. Rats given 16 mg/kg/day had decreased lymphocyte and neutrophil counts and atrophy of bone marrow consistent with the marked reduction in body weight gain. Mice given 3 mg/kg/day developed leukopenia, due primarily to lymphocytopenia, but also associated with neutropenia. Lymphoid necrosis of thymus and spleen was seen in mice given 0mg/kg/day. Instances of reversible neutropenia, with or without thrombocytopenia, or anemia developed in a low number of individual dogs treated with 8 or 10 mg/kg/day. Bone marrow from some dogs with olanzapine-induced neutropenia responded to olanzapine with lower than expected numbers of maturing granulocytic cells; however, progenitor and proliferating cells were present in adequate numbers. No olanzapine-related hematologic effects were seen in dogs receiving olanzapine at either 2 or 5 mg/kg/day.

Effects observed in rats consistent with increased plasma concentrations of prolactin in rats included decreased weights of ovaries and uterus. Histopathologic tissue alterations in mammary gland morphology and vaginal epithelium and increased prominence of ovarian follicles were also consistent with elevated prolactin concentrations. Prolactin-induced histopathologic tissue alterations found in rats regressed after treatment cessation. No unexpected toxicologically important findings unrelated to pharmacologic activity were found in the 1-year studies in rats given 4 mg/kg/day or in dogs given 5 mg/kg/day.

In a rat oncogenicity study, the only neoplasm with increased incidence related to treatment was malignant mammary gland tumours in females of the 4- and 8-mg/kg/day groups (initial dose levels were increased from 2.5 and 4 mg/kg/day, respectively, on Day 211). The overall incidence of mammary gland tumours was not increased. The shift in expression of mammary gland tumours was not unexpected and was consistent with effects due to elevated prolactin concentrations in rodents. Also consistent with increased prolactin concentrations was an increased total incidence of mammary gland tumours in female mice given 10 or 20 mg/kg/day (the high dose was decreased from 30 mg/kg/day due to excess mortality).

Olanzapine had no mutagenic or teratogenic effects. Mating performance was affected in male rats given 5 mg/kg/day, but the effect was quickly reversed when treatment stopped. Estrous cycles were affected and reproduction parameters were influenced in rats given the higher doses of 1 mg/kg/day. No adverse effects were observed on numbers of corpora lutea, implantations, fetal viability, or fetal weight, and there were no effects on litter size or on the survival, growth, or development of the offspring from parents given up to 5 mg/kg/day. Transient modest decreases in activity levels of the progeny from females given 0.25 mg/kg/day and skeletal changes indicative of growth retardation in fetuses from females given 5 mg/kg/day were observed. Although the reproductive process in female rats from mating through fertilization was not adversely affected by treatment, this evidence does not exclude a possible interference with maintenance of pregnancy at high doses of olanzapine.

The findings of toxicology studies support the safety of olanzapine for oral use in humans as an antipsychotic agent.

Acute Toxicity Studies:

The acute toxicity of olanzapine was studied in mice, rats, dogs, and monkeys. The estimated median lethal dose for each species is shown below in Table 11:

**Table 14: Acute Toxicity Summary**

Species	Route	Estimated Median Lethal Dose (mg/kg/day)	
		Males	Females
Mouse	Oral	211	208
Rat	Oral	174	177
Dog	Oral	Both sexes >100 mg/kg	
Monkey	Nasogastric	Both sexes >100 mg/kg	
Rat	Intraperitoneal	112	107

Signs of toxicity in rodents included hypoactivity, lethargy, leg weakness, coma, tremors, clonic convulsions, salivation, poor grooming, and depressed body weight gain.

The potential for irritation of an aqueous intramuscular formulation of olanzapine was tested in one *in vitro* and two *in vivo* (dog and rabbit) studies. The intent of these studies was to characterize the effects at the site of injection. Overall, these tests indicated that formulations of olanzapine, at 1.7 to 8.4 mg/mL in a tartaric acid/lactose vehicle, have the potential to cause slight irritation of skeletal muscle. While the *in vitro* model suggested a potential for moderate irritation at the higher concentrations tested, the *in vivo* models indicated either very little or slight potential for irritation.

### Subchronic/Chronic/Carcinogenicity and Related Toxicity Studies:

#### *Subchronic Toxicity Studies:*

Subchronic administration studies of up to 3 months in duration have been conducted by the oral route in mice, rats, and dogs.

#### *Chronic Toxicity Studies:*

Chronic administration studies of up to 1 year were conducted by the oral route in rats and dogs.

#### *Carcinogenicity Studies:*

The oncogenic potential of olanzapine was evaluated in studies in rats and mice. Carcinogenicity studies were conducted in CD-1 mice and Fischer 344 rats. Olanzapine was administered orally to mice at doses of 3, 10, or 20 mg/kg for 19 months (males) or 21 months (females) in an initial study, and in a subsequent study at doses of 0.5, 2, or 8 mg/kg for 21 months (males and females). Rats received oral doses of 0.25, 1, 2.5, or 4 mg/kg (males) or 0.25, 1, 2.5, 4, or 8 mg/kg (females) for 24 months. These doses are equivalent to 2 to 70 times the maximum daily human dose (mouse studies) or 0.9 to 28 times the maximum daily human dose (rats). A maximum tolerated dose was achieved in both mouse and rat studies. Increased mortality was seen in mice at doses of 10 and 20 mg/kg and decreases in circulating lymphocytes and neutrophils were seen at doses 0.5 mg/kg. In female mice treated with olanzapine, the incidence of mammary tumours was increased at doses 2 mg/kg. Female rats treated with 4 or 8 mg/kg had an increase in malignant mammary tumours, but the overall incidence of mammary gland neoplasia was unchanged. Antipsychotic drugs, including olanzapine, have been shown to chronically elevate prolactin concentrations in rodents. An increase in mammary neoplasms has been found in rodents after chronic administration of other antipsychotic drugs and is considered to be prolactin mediated. The role of prolactin in human breast cancer has not been defined conclusively, and there are presently no epidemiologic data indicating increased risk for breast cancer for humans using antipsychotic drugs.

#### Reproduction Studies:

Fertility studies in male and female rats and teratology studies in rats and rabbits have been conducted by the oral route. Mating performance was affected by administration of olanzapine due to sedation in male rats given doses greater than 18 times the maximum daily human dose, but the effect was quickly reversed when treatment stopped. Estrous cycles were affected and reproduction parameters were influenced in rats given doses greater than 4 times the maximum daily human dose. No adverse effects were observed on numbers of corpora lutea, implantations, fetal viability, or fetal weight, and there were no effects on litter size or on the survival, growth, or development of the offspring from parents given up to 18 times the maximum daily human dose. Although the reproductive process in female rats from mating through fertilization was not adversely affected by treatment, this evidence does not exclude a possible interference with maintenance of pregnancy at high doses of olanzapine. Reproduction studies, performed in rats and rabbits at doses of olanzapine 3.5 and 7 times the maximum daily human dose (20 mg), respectively, have revealed no evidence of harm to the fetus. Maternal toxicity, developmental toxicity (indicated by fetal growth retardation and slightly delayed ossification at birth), and increased numbers of nonviable offspring occurred at higher doses (in rats at 14 and 63 times the maximum daily human dose and in rabbits at 28 and 105 times the maximum daily human dose). However, fetal malformations were not increased. Transient decreases in offspring activity have



occurred at all doses; however, there were no effects on body weight, growth, mating, fertility, or live births in second-generation animals. Placental transfer of olanzapine occurs in rat fetuses. Olanzapine was also detected in the milk of rats at concentrations up to three-fold higher than those in the plasma.

#### Mutagenicity Studies:

Olanzapine was not mutagenic or clastogenic in a full range of standard tests which included bacterial mutation tests and *in vitro* and *in vivo* mammalian tests. Appropriate positive controls were used in each test to verify the sensitivity of the test systems.

#### Hematologic Indices:

In animal studies with olanzapine, the principal hematologic findings were reversible peripheral cytopenias in individual dogs given high doses of olanzapine (24 to 30 times the maximum daily human dose), dose-related decreases in lymphocytes; and neutrophils in mice, and lymphopenia secondary to compromised nutritional status in rats. A few dogs treated with 24 to 30 times the maximum daily human dose developed reversible neutropenia or reversible hemolytic anemia between 1 and 10 months of treatment. Effects on hematology parameters in each species involved circulating blood cells, and no evidence of bone marrow cytotoxicity was found in any of the species examined.

## REFERENCES

1. Baxter LR, Jr, Schwartz JM, Phelps ME, Mazziotta JC, Guze BH, Selin CE, Gerner RH, Sumida RM. 1989. Reduction of prefrontal cortex glucose metabolism common to three types of depression. *Arch Gen Psychiatry* 46:243-250.
2. Beasley CM, Tollefson G, Tran P, Satterlee W, Sanger T, Hamilton S. 1996. Olanzapine versus placebo and haloperidol: acute phase results of the North American double-blind olanzapine trial. *Neuropsychopharmacology* 14(2): 111-123.
3. Beasley CM, Tran PV, Tollefson GD, Satterlee W, Crawford AM, Wharton I, Luttman C, Voegele T. 1995. Long term efficacy and safety of olanzapine: a novel "atypical" antipsychotic agent [abstract]. In: American Psychiatric Association Meeting; 1995 May 20-25; Miami, FL.
4. Berk M, Ichim L, Brook S. 1999. Olanzapine compared to lithium in mania: a double-blind randomized controlled trial. *International Clinical Psychopharmacology* 14(6): 339-343.
5. Bymaster FP, Calligaro DO, Falcone JF, Marsh RD, Moore N, Tye NC, Seeman P, Wong DT. 1996. Radioreceptor binding profile of the atypical antipsychotic olanzapine. *Neuropsychopharmacology* 14(2):87-96.
6. Bymaster FP, Perry KW, Hemrick-Luecke SK, Fuller RW. 1995. Neurochemical evidence for antagonism by olanzapine of dopamine, serotonin, 1 -adrenergic and muscarinic receptors. *Psychopharmacology* 124:87-94.
7. Bymaster FP, Nelson DL, DeLapp NW, Falcone JF, Eckols K, Truex LL, Foreman MM, Lucaites VL, Calligaro DO. 1999. Antagonism by olanzapine of dopamine D<sub>1</sub>, serotonin<sub>2</sub>, muscarinic, histamine H<sub>1</sub> and  $\alpha_1$ -adrenergic receptors *in vitro*. *Schizophrenia Res* 37:107-122.
8. Canadian Diabetes Association Clinical Practice Guidelines Expert Committee. 2003. Canadian Diabetes Association 2003 Clinical Practice Guidelines for the Prevention and Management of Diabetes in Canada. *Can J Diabetes* 27(supp1 2):S1-S140.
9. Chiu JA, Franklin RB. Submitted March 1995. Measurement of olanzapine (LY170053) and two metabolites in rat plasma using reversed-phase HPLC with electrochemical detection. *J Pharm Biomed Anal*.
10. Dixon L, Weiden P, Delehanty J, Goldberg R, Postrado L., Lucksted A, Lehman A. 2000. Prevalence and correlates of diabetes in national schizophrenia samples. *Schizophren Bull* 26:903-912.
11. Greenhouse JB, Meyer MM. 1991. A note on randomization and selection bias in maintenance therapy clinical trials. *Psychopharmacol Bull* 27(3):225-229.

12. Greenhouse JB, Stangl D, Kupfer DJ, Prein RF. 1991. Methodologic issues in maintenance therapy clinical trials. *Arch Gen Psychiatry* 48:3 13-318.
13. Haro JM, Edgell ET, Frewer P, Alonso J, Jones PB. 2003. The European Schizophrenia Outpatient Health Outcomes Study: baseline findings across country and treatment. *Acta Psychiatr Scand* 107 (Suppl. 41 6):7-15.
14. Ichikawa J, Meltzer HY. 1999. Valproate and carbamazepine increase prefrontal dopamine release by 5-HT<sub>1A</sub> receptor activation. *Eur J Pharmacol* 380:R1-R3
15. Kinon BJ, Basson BR, Gilmore JA, Tollefson GD. 2001. Long-term olanzapine treatment: weight change and weight-related health factors in schizophrenia. *J Clin Psychiatry* 62:92-100.
16. Li XM, Perry KW, Wong DT, Bymaster FP. 1998. Olanzapine increases in vivo dopamine and norepinephrine release in rat prefrontal cortex, nucleus accumbens and striatum. *Psychopharmacology* 136: 153-161.
17. Meehan K, Wang H, David SR, Nisivaccia JR, Jones B, Beasley CM, Feldman PD, Mintzer JE, Beckett LM, Breier A. 2002. Comparison of rapidly acting intramuscular olanzapine, lorazepam, and placebo: A double-blind, randomized study in acutely agitated patients with dementia. *Neuropsychopharmacology* 26(4):494-504.
18. Meehan K, Zhang F, David S, Tohen M, Janicak P, Small J, Koch K, Rizk R, Walker D, Tran P, Breier A. 2001. A double-blind, randomized comparison of the efficacy and safety of intramuscular injections of olanzapine, lorazepam, or placebo in treating acutely agitated patients diagnosed with bipolar mania. *J Clin Psychopharmacology* 21(4):389-397.
19. Moore NA, Calligaro DO, Wong DT, Bymaster F, Tye NC. 1993. The pharmacology of olanzapine and other antipsychotic agents. *Curr Opin Invest Drugs* 2(4):281-293.
20. Mukherjee S, Decina P, Bocola V, Saraceni F, Scapicchio P. 1996. Diabetes mellitus in schizophrenic patients. *Compr Psychiatry* 37( 1):68-73.
21. Ray WA, Chung CP, Murray KT, Hall K, Stein CM. Atypical antipsychotic drugs and the risk of sudden cardiac death. *N Engl J Med* 2009;360:225-35.
22. Regenold WT, Thapar RK, Marano C, Gavireni S, Kondapavuluru PV. 2002. Increased prevalence of type 2 diabetes mellitus among psychiatric inpatients with bipolar I affective and schizoaffective disorders independent of psychotropic drug use. *J Affect Disord* 70: 19-26.
23. Robertson GS, Fibiger HC. 1996. Effects of olanzapine on regional c-Fos expression in rat forebrain. *Neuropsychopharmacology* 14(2): 105- 110.

24. Satterlee WG, Reams S, Burns P, Hamilton S, Tran P, Tollefson G. 1995. Olanzapine in elderly psychotic patients [abstract]. In: New Clinical Drug Evaluation Unit; 1995 June 2; Orlando, FL.
25. Schultz SK, Arndt S, Ho BC, Oliver SE, Andreasen NC. 1999. Impaired glucose tolerance and abnormal movements in patients with schizophrenia. *Am J Psychiatry* 156:640-642.
26. Stefanski R, Goldberg SR. 1997. Serotonin 5-HT<sub>2</sub> receptor antagonists: potential in the treatment of psychiatric disorders. *CNS Drugs* 5:388-409.
27. Stockton ME, Rasmussen K. 1996. Olanzapine, a novel atypical antipsychotic, reverses d-amphetamine-induced inhibition of midbrain dopamine cell. *Psychopharmacology* 124:50-56.
28. Stockton MD, Rasmussen K. 1996. Electrophysiological effects of olanzapine, a novel atypical antipsychotic, on A9 and A10 dopamine neurons. *Neuropsychopharmacology* 14(2):97-104.
29. Tohen M, Sanger TM, et al. For the Olanzapine HGEH Study Group. 1999. Olanzapine Versus Placebo in the Treatment of Acute Mania. *Am J Psychiatry* 156:702-709.
30. Tohen M, Jacobs TG, et. al. For the Olanzapine HGGW Study Group. 2000. Efficacy of Olanzapine in Acute Bipolar Mania - A Double-Blind, Placebo Controlled Study. *Arch Gen Psychiatry* 57:841-849.
31. Tohen M, Chengappa KNR, et al. 2002. Efficacy of Olanzapine in Combination with Valproate or lithium in the Treatment of Mania in Patients Partially Nonresponsive to Valproate or Lithium Monotherapy. *Arch Gen Psychiatry* 59:62-69.
32. Tohen M. 2002. Olanzapine Versus Divalproex in the Treatment of Acute Mania. *Am J Psychiatry* 159:1011-1017.
33. Tohen M., Goldberg JF et al. 2003. A 12-Week, Double-blind Comparison of Olanzapine vs. Haloperidol in the Treatment of Acute Mania. *Arch Gen Psychiatry* 60: 1218-1226.
34. Tohen M., Greil W., Calabrese J.R., Sachs G.S., Yatham L.N., Oerlinghausen B.M., Koukopoulos A., Cassano G.B., Grunze H., Licht R.W., Dell'Osso L., Evans A.R., Risser R. 2005. Olanzapine Versus Lithium in the Maintenance Treatment of Bipolar Disorder: A 12-Month, Randomized, Double-Blind, Controlled Clinical Trial. *Am J Psychiatry* 162:1281-1290.
35. Tohen M, Calabrese JR, Sachs GS, Banov MD, Detke HC, Risser R, Baker RW, Chou JC, Bowden CL. 2006. Randomized, Placebo-Controlled Trial of Olanzapine as Maintenance Therapy in Patients with Bipolar I Disorder Responding to Acute Treatment With Olanzapine. *Am J Psychiatry* 163:247-256.

36. Tollefson GD. 1994. The next generation of antipsychotics [abstract]. In: XIXth Collegium Internationale Neuro-Psychopharmacologicum Congress; 1994 June 27 - July 1 ; Washington, DC.
37. Tollefson GD. 1994. Olanzapine: a novel antipsychotic with a broad spectrum profile. *Neuropsychopharmacology* 10(3) Suppl Pt 1 :805S.
38. Tollefson GD, Sanger TM, Lu Y, Thieme ME. 1998. Depressive signs and symptoms in schizophrenia: a prospective blinded trials of olanzapine and haloperidol. *Arch Gen Psychiatry* 55:250-258.
39. Tran PV, Beasley CM, Dellva MA, Ne1 J, Shoshani D, Dossenbach M, Tuynman-Qua HG, Haski RR, Ngo TK, Tollefson GD. 1995. Clinical efficacy and safety of increasing doses of olanzapine: a new "atypical" antipsychotic agent [abstract]. In: New Clinical Drug Evaluation Unit Program; 1995 May 31-June 3; Orlando, FL.
40. Wood AJ, Beasley C, Tollefson G, Tran P. 1994. Efficacy of olanzapine in the positive and negative symptoms of schizophrenia [abstract]. *European Neuropsychopharmacology* 4(3):224.
41. Product Monograph for Zyprexa®. Eli Lilly Canada Inc., Toronto, Ontario, Canada, Control #134508, Date of Revision: October 18, 2010.
42. A Single-Dose, Comparative Bioavailability Study of Two Formulations of Olanzapine Tablets 2.5 mg Under Fasting Conditions. Study number 2004-728. Data on File at Avanstra Inc.
43. A Single-Dose, Comparative Bioavailability Study of Two Formulations of Olanzapine Tablets 15 mg Under Fasting Conditions. Study number 2004-731. Data on File at Avanstra Inc.

**PART III: CONSUMER INFORMATION**

**Pr AVA-OLANZAPINE  
(olanzapine tablets)**

This leaflet is part III of a three-part "Product Monograph" published when AVA-OLANZAPINE was approved for sale in Canada and is designed specifically for Consumers. This leaflet is a summary and will not tell you everything about AVA-OLANZAPINE. Contact your doctor or pharmacist if you have any questions about the drug.

Keep this information with your medicine in case you need to read it again.

**ABOUT THIS MEDICATION**

The name of your medicine is AVA-OLANZAPINE and your doctor has prescribed it to help relieve the symptoms that are bothering you. AVA-OLANZAPINE can help to control your symptoms and reduce the risk of relapse. Although AVA-OLANZAPINE cannot cure your symptoms, it can help you keep them under control as you continue your treatment.

**What the medication is used for:**

AVA-OLANZAPINE is used to treat symptoms of schizophrenia and related psychotic disorders as well as those of bipolar disorder.

Your doctor may have prescribed AVA-OLANZAPINE for another reason. Ask your doctor if you have any questions about why AVA-OLANZAPINE has been prescribed for you.

**What it does:**

AVA-OLANZAPINE belongs to a group of medicines called antipsychotics/antimanics. AVA-OLANZAPINE is used to treat symptoms of schizophrenia and related psychotic disorders as well as those of bipolar disorder. Schizophrenia may cause symptoms such as hallucinations (e.g. hearing, seeing, or sensing things which are not there), delusions, unusual suspiciousness, feeling withdrawn, lack of emotions. People with schizophrenia may also feel depressed, anxious or tense. Signs and symptoms of bipolar mania include but are not limited to: feeling invincible or all powerful, inflated self-esteem, racing thoughts, easily lose your train of thought, overreaction to what you see or hear, misinterpretation of events, speeded-up activity, talking very quickly, talking too loudly, or talking more than usual, decreased need for sleep, and poor judgment.

**When it should not be used:**

Do not take AVA-OLANZAPINE if you have had an allergic reaction to olanzapine or any of the ingredients listed in the "Nonmedicinal Ingredients" section of this leaflet. Signs of allergic reaction may include a skin rash, itching, shortness of breath or swelling of the face, lips or tongue.

**What the medicinal ingredient is:**

AVA-OLANZAPINE tablets contain the active ingredient called olanzapine.

**What the nonmedicinal ingredients are:**

*2.5 mg, 5 mg, 7.5 mg and 10 mg Tablets:*  
Crosprovidone, glycerol triacetate, hypromellose, hydroxypropyl cellulose, lactose monohydrate, macrogol, magnesium stearate, polydextrose, silicified microcrystalline cellulose and titanium dioxide.

*15 mg Tablets:*

Crosprovidone, FD & C Blue # 2 indigo carmine aluminium lake, hypromellose, hydroxypropyl cellulose, lactose monohydrate, macrogol, magnesium stearate, polysorbate, silicified microcrystalline cellulose and titanium dioxide.

**What dosage forms it comes in:**

*AVA-OLANZAPINE Tablets:*

AVA-OLANZAPINE tablets are available in 2.5mg, 5mg, 7.5mg, 10mg and 15mg strengths.

**WARNINGS AND PRECAUTIONS**

**Serious Warnings and Precautions**

Studies with various medicines of the group to which AVA-Olanzapine belongs, including AVA-Olanzapine, when used in elderly patients with dementia have been associated with an increased rate of death. AVA-Olanzapine is not indicated in elderly patients with dementia.

Before starting AVA-OLANZAPINE and to get the best possible treatment, be sure to tell your doctor if you:

- are pregnant or plan to become pregnant
- are breast feeding or plan on breast feeding
- have had an allergic reaction to any medicine which you have taken previously to treat your current condition
- have diabetes or a family history of diabetes
- have a history of any problems with the way your heart beats or have any heart problems
- have a history of stroke or high blood pressure
- are a smoker
- have ever had blackouts or seizures
- are taking any other medicines (prescriptions or over-the-counter medicines)
- drink alcoholic beverages or use drugs
- exercise vigorously or work in hot or sunny places
- have a history of liver problems, hepatitis, or yellowing of the eyes and skin (jaundice)
- have prostate problems
- have intestinal congestion (paralytic ileus)
- have raised pressure within the eye (glaucoma)
- suffer from lactose intolerance because AVA-OLANZAPINE tablets contain lactose

It is important for your doctor to have this information before prescribing your treatment and dosage.

## INTERACTIONS WITH THIS MEDICATION

Tell all doctors, dentists and pharmacists who are treating you that you are taking AVA-OLANZAPINE.

Tell your doctor or pharmacist that you are taking AVA-OLANZAPINE before you start taking any new medicines.

A combination of AVA-OLANZAPINE with the following medicines might make you feel drowsy:

- medicines taken for anxiety or to help you sleep
- medicines taken for depression.

The effects of alcohol could be made worse while taking AVA-OLANZAPINE. It is recommended that you DO NOT drink alcohol while taking AVA-OLANZAPINE.

You should tell your doctor if you are taking fluvoxamine (antidepressant), ketoconazole (antifungal), or ciprofloxacin (antibiotic), as these medicines may lead to higher concentrations of olanzapine in your blood.

You should also tell your doctor if you are taking carbamazepine as it may lead to lower concentrations of AVA-OLANZAPINE in your blood, making AVA-OLANZAPINE less effective.

Only take other medicines while you are on AVA-OLANZAPINE if your doctor tells you that you can. DO NOT give AVA-OLANZAPINE to anyone else. Your doctor has prescribed it for you and your condition.

## PROPER USE OF THIS MEDICATION

### Usual dose:

The most important thing about taking AVA-OLANZAPINE is to take it the way your doctor has prescribed - the right dose, every day. Your doctor has decided on the best dosage for you based on your individual situation and needs. Your doctor may increase or decrease your dose depending on your response.

Although AVA-OLANZAPINE cannot cure your condition, it can help relieve your symptoms. If your symptoms improve or disappear, it is probably because your treatment is working. Studies have shown that, after coming off medication, a relapse of symptoms occurs in about 2 out of 3 patients and is more than double that of patients staying on their medication. That is why it is so important to keep taking AVA-OLANZAPINE, even after your symptoms have improved or disappeared. AVA-OLANZAPINE should be taken for as long as you and your doctor believe it is helping you.

### *Proper Handling Instructions*

*AVA-OLANZAPINE Tablets:*

AVA-OLANZAPINE tablets should be swallowed whole with a glass of water. AVA-OLANZAPINE tablets can be taken with or without food.

### Overdose:

If you take too much, immediately contact your doctor or go to your nearest hospital emergency department. Show the doctor your bottle of tablets. Do this even if there are no signs of discomfort or poisoning. The most common signs if you have taken too much AVA-OLANZAPINE are drowsiness and slurred speech.

### Missed Dose:

Take your prescribed dose at the same time each day. If you miss a dose of AVA-OLANZAPINE by a few hours, take the dose when you remember. If most of the day has passed, wait until your next scheduled dose and try not to miss any more. **Do not take 2 doses at once.**

## SIDE EFFECTS AND WHAT TO DO ABOUT THEM

Like other medicines, AVA-OLANZAPINE can cause some side effects. These side effects are most likely to be minor and temporary. However, some may be serious and need medical attention. Many of the side effects are dose related, so it is important not to exceed your prescribed dose. The most common side effects of AVA-OLANZAPINE are:

- drowsiness
- weight gain
- dizziness
- increased appetite
- fluid retention
- constipation
- dry mouth
- a feeling of restlessness (akathisia)

You should also tell your doctor if you notice any symptoms that worry you, even if you think the problems are not connected with the medicine or are not listed here.

Because some people experience drowsiness, you should avoid driving a car or operating machinery until you know how AVA-OLANZAPINE affects you. Some people may feel dizzy in the early stages of treatment, especially when getting up from a lying or sitting position. This side effect usually passes after taking AVA-OLANZAPINE for a few days.

After prolonged use in women, medicines of this type can cause milk secretion or changes in the regularity of their monthly period and on rare occasion breast enlargement in men. Abnormal liver function tests have also been reported on occasion.

Do not be alarmed by this list of side effects, you may not experience any of them. If any of these side effects are experienced, they are usually mild and temporary.

**SERIOUS SIDE EFFECTS, HOW OFTEN THEY HAPPEN AND WHAT TO DO ABOUT THEM**

Symptom / effect	Talk with your doctor or pharmacist		Stop taking drug and call your doctor or pharmacist
	Only if severe	In all cases	
<b>Uncommon</b>			
Slow Heartbeat <sup>1</sup>		X	
<b>Rare</b>			
Liver inflammation [symptoms of fever, yellow skin or eyes, dark urine, weakness, abdominal pain, nausea, vomiting, loss of appetite, itching] <sup>2</sup>		X*	
Low white blood cell count [symptoms of infection, such as cold, flu-like symptoms, fever, sore throat, as well as weakness or general feeling of unwellness] <sup>2</sup>		X	
Rash <sup>2</sup> (see also Allergic Reaction below)	X		
Seizure [i.e. loss of consciousness with uncontrollable shaking (“fit”)] <sup>2</sup>			X*
<b>Very rare</b>			
Allergic reaction [symptoms include skin rash, hives, swelling, difficulty breathing] <sup>2</sup>			X*
Bruise easily, excessive bleeding <sup>2</sup>		X	
High fever, muscle rigidity, rapid heartbeat, profuse sweating, irregular pulse <sup>1,2</sup>			X*
Increased thirst & hunger, frequent urination <sup>1,2</sup>		X	
Muscle twitching or abnormal movements of the face or tongue <sup>2</sup>		X*	
Pancreas inflammation [symptoms of severe abdominal pain, fever, nausea, vomiting] <sup>2</sup>			X
Priapism [prolonged and painful erection] <sup>2</sup>			X
Sudden weakness or numbness in the face, arms, or legs, and speech or vision problems <sup>3</sup>			X*
Very dark (“tea coloured”) urine, muscle tenderness and/or aching <sup>2</sup>			X

<sup>1</sup> Identified from the clinical trial database.

<sup>2</sup> Identified from adverse events reported after release onto market.

<sup>3</sup> Identified from data from 5 placebo-controlled trials in elderly patients with dementia-related psychosis.

\* If you think you have these side effects, it is important that you seek medical advice from your doctor immediately.

***This is not a complete list of side effects. For any unexpected effects while taking AVA-OLANZAPINE, contact your doctor or pharmacist.***

**HOW TO STORE IT**

All medicines should be kept out of the reach of children. AVA-OLANZAPINE should be stored in its original package at room temperature, in a dry place and out of direct light. The expiry date of this medicine is printed on the package label. Do not use the medicine after this date. If your doctor tells you to stop taking

AVA-OLANZAPINE or you find that they have passed their expiry date, please return any left over medicine to your pharmacist.

**REPORTING SUSPECTED SIDE EFFECTS**

You can report any suspected adverse reactions associated with the use of health products to the Canada Vigilance Program by one of the following 3 ways:

- Report online at [www.healthcanada.gc.ca/medeffect](http://www.healthcanada.gc.ca/medeffect)
- Call toll-free at 1-866-234-2345
- Complete a Canada Vigilance Reporting Form and:
  - Fax toll-free to 1-866-678-6789, or
  - Mail to: Canada Vigilance Program  
Health Canada  
Postal Locator 0701C  
Ottawa, ON K1A 0K9

Postage paid labels, Canada Vigilance Reporting Form and the adverse reaction reporting guidelines are available on the MedEffect™ Canada Web site [www.healthcanada.gc.ca/medeffect](http://www.healthcanada.gc.ca/medeffect).

***NOTE: Should you require information related to the management of side effects, contact your health professional. The Canada Vigilance Program does not provide medical advice.***

**MORE INFORMATION**

This document plus the full product monograph, prepared for health professionals can be obtained by contacting, Avanstra Inc.: 1-855-709-3678 or [medinfo@avanstra.com](mailto:medinfo@avanstra.com)

This leaflet was prepared by:  
Avanstra Inc.  
Calgary (Alberta)  
T3N 0A4  
Website: [www.avanstra.com](http://www.avanstra.com)

Last revised: September 13, 2011.