

PRODUCT MONOGRAPH

Pr ROPIVACAINE HYDROCHLORIDE INJECTION

Ropivacaine Hydrochloride Injection
2 mg/mL

Local Anaesthetic

Teva Standard

Teva Canada Limited
30 Novopharm Court
Toronto, Ontario
M1B 2K9

Date of Preparation:
June 21, 2013

Submission Control No: 157874

Table of Contents

PART I: HEALTH PROFESSIONAL INFORMATION.....3
SUMMARY PRODUCT INFORMATION3
INDICATIONS AND CLINICAL USE.....3
CONTRAINDICATIONS3
WARNINGS AND PRECAUTIONS.....4
ADVERSE REACTIONS.....11
DRUG INTERACTIONS19
DOSAGE AND ADMINISTRATION.....20
OVERDOSAGE22
ACTION AND CLINICAL PHARMACOLOGY25
STORAGE AND STABILITY.....27
SPECIAL HANDLING INSTRUCTIONS27
DOSAGE FORMS, COMPOSITION AND PACKAGING29

PART II: SCIENTIFIC INFORMATION30
PHARMACEUTICAL INFORMATION.....30
CLINICAL TRIALS.....31
DETAILED PHARMACOLOGY33
TOXICOLOGY34
REFERENCES36

PART III: CONSUMER INFORMATION.....39

Pr **ROPIVACAINE HYDROCHLORIDE INJECTION**

Ropivacaine Hydrochloride Injection
2 mg/mL

PART I: HEALTH PROFESSIONAL INFORMATION

SUMMARY PRODUCT INFORMATION

Route of Administration	Dosage Form / Strength	Non-medicinal Ingredients
Parenteral	Sterile solution / 2 mg/mL	Sodium chloride, sodium hydroxide, hydrochloric acid and water for injection

INDICATIONS AND CLINICAL USE

Adults (> 18 years of age):

ROPIVACAINE HYDROCHLORIDE INJECTION is indicated for:

Analgnesia

Acute pain management in connection with:

- continuous epidural infusion or intermittent bolus administration e.g. postoperative or labour pain;
- field block e.g. infiltration

Geriatrics (> 65 years of age):

Elderly patients should be given reduced doses of ropivacaine, commensurate with their age and physical condition (see **WARNINGS AND PRECAUTIONS, Geriatrics** and **DOSAGE AND ADMINISTRATION, Special Populations**).

Pediatrics (< 18 years of age):

The safety and efficacy of ropivacaine hydrochloride have not been investigated in children under 18 years of age. ROPIVACAINE HYDROCHLORIDE INJECTION is not indicated for use in patients below the age of 18 years (see **WARNINGS AND PRECAUTIONS, Special Populations**).

CONTRAINDICATIONS

ROPIVACAINE HYDROCHLORIDE INJECTION is contraindicated:

- in patients with a hypersensitivity to ropivacaine or any other local anaesthetic agent of the amide type.
- for intravenous regional anaesthesia (Bier block)
- in obstetric paracervical block anaesthesia. Use of other local anaesthetics in this technique has resulted in foetal bradycardia and death.

WARNINGS AND PRECAUTIONS

General

IN PERFORMING ROPIVACAINE HYDROCHLORIDE INJECTION BLOCKS, UNINTENDED INTRAVASCULAR OR SUBARACHNOID INJECTION IS POSSIBLE AND MAY RESULT IN CARDIAC ARRHYTHMIA OR CARDIAC ARREST. THE POTENTIAL FOR SUCCESSFUL RESUSCITATION HAS NOT BEEN STUDIED IN HUMANS.

LOCAL ANAESTHETICS SHOULD ONLY BE EMPLOYED BY CLINICIANS WHO ARE WELL VERSED IN THE DIAGNOSIS AND MANAGEMENT OF DOSE-RELATED TOXICITY AND OTHER ACUTE EMERGENCIES WHICH MIGHT ARISE FROM THE BLOCK TO BE EMPLOYED. FOR MANAGEMENT OF TOXIC REACTIONS AND RELATED EMERGENCIES, CARDIOPULMONARY RESUSCITATIVE EQUIPMENT, OXYGEN, RESUSCITATIVE DRUGS, AND PERSONNEL RESOURCES SHOULD BE IMMEDIATELY AVAILABLE WHEN ANY LOCAL ANAESTHETIC IS USED. DELAY IN PROPER MANAGEMENT OF DOSE-RELATED TOXICITY, UNDERVENTILATION FROM ANY CAUSE AND/OR ALTERED SENSITIVITY MAY LEAD TO THE DEVELOPMENT OF ACIDOSIS, CARDIAC ARREST AND, POSSIBLY, DEATH (see ADVERSE REACTIONS and OVERDOSAGE).

PRIOR TO RECEIVING MAJOR BLOCKS THE GENERAL CONDITION OF THE PATIENT SHOULD BE OPTIMIZED AND THE PATIENT SHOULD HAVE AN I.V. LINE INSERTED. ALL NECESSARY PRECAUTIONS SHOULD BE TAKEN TO AVOID INTRAVASCULAR INJECTION.

ROPIVACAINE HYDROCHLORIDE INJECTION SHOULD BE ADMINISTERED IN INCREMENTAL DOSES. IT IS NOT RECOMMENDED FOR EMERGENCY SITUATIONS, WHERE A FAST ONSET OF SURGICAL ANAESTHESIA IS NECESSARY.

IT IS ESSENTIAL THAT ASPIRATION FOR BLOOD AND CEREBROSPINAL FLUID BE DONE PRIOR TO INJECTING ANY LOCAL ANAESTHETIC, BOTH FOR THE ORIGINAL DOSE AND ALL SUBSEQUENT DOSES, TO AVOID INTRAVASCULAR OR SUBARACHNOID INJECTION. HOWEVER, A NEGATIVE ASPIRATION DOES NOT ENSURE AGAINST AN INTRAVASCULAR OR SUBARACHNOID INJECTION.

SOLUTIONS OF ROPIVACAINE HYDROCHLORIDE INJECTION SHOULD NOT BE USED FOR THE PRODUCTION OF RETROBULBAR BLOCK OR SPINAL ANAESTHESIA (SUBARACHNOID BLOCK) DUE TO INSUFFICIENT DATA TO SUPPORT SUCH USE.

For Caesarean section, doses up to 150 mg are recommended. Historically, pregnant patients were reported to have a high risk for cardiac arrhythmias, cardiac/circulatory arrest and death when 0.75% bupivacaine (another member of the amino amide class of local anaesthetics) was inadvertently rapidly injected intravenously.

Reports of Irreversible Chondrolysis with Intra-articular Infusions of Local Anaesthetics Following Surgery: Intra-articular infusions of local anaesthetics following arthroscopic and other surgical procedures is an unapproved use, and there have been post-marketing reports of irreversible chondrolysis in patients receiving such infusions. The majority of reported cases of irreversible chondrolysis have involved the shoulder joint; cases of glenohumeral irreversible chondrolysis have been described in pediatric and adult patients following intra-articular infusions of local anaesthetics with and without epinephrine for periods of 48 to 72 hours. The time of onset of symptoms, such as joint pain, stiffness and loss of motion can be variable, but may begin as early as the 2nd month after surgery. Currently, there is no effective treatment for irreversible chondrolysis; patients who experienced irreversible chondrolysis have required additional diagnostic and therapeutic procedures and some required arthroplasty or shoulder replacement. **ROPIVACAINE HYDROCHLORIDE INJECTION should not be used for post-operative intra-articular infusion (See DOSAGE AND ADMINISTRATION).**

Major Peripheral Nerve Blocks: Major peripheral nerve blocks may imply the administration of a large volume of local anaesthetic in highly vascularized areas, often close to large vessels where there is increased risk of intravascular injection and/or rapid systemic absorption, which can lead to high plasma concentrations and serious adverse reactions (see **ADVERSE REACTIONS**).

Inflammation and Sepsis: Local anaesthetic procedures should be performed with care in inflamed regions. Injections should not be performed through inflamed tissue or when there is sepsis at or near the injection site.

Use with Other Local Anaesthetics: ROPIVACAINE HYDROCHLORIDE INJECTION should be used with caution in patients receiving other local anaesthetics or agents structurally related to amide-type local anaesthetics, since the toxic effects are additive (see **DRUG INTERACTIONS**).

Use in Patients Treated with Class III Antiarrhythmic Drugs: Patients treated with class III antiarrhythmic drugs (e.g., amiodarone) should be under close surveillance and ECG monitoring, since cardiac effects may be additive (see **DRUG INTERACTIONS**).

High Risk Populations

Local anaesthetics should be used with caution in patients in poor general condition due to advanced age, debilitation, or other compromising factors such as partial or complete heart conduction block, advanced liver disease, or severe renal dysfunction (see **DOSAGE AND ADMINISTRATION**). Patients treated with class III anti-arrhythmic drugs (e.g. amiodarone) should be under close surveillance and ECG monitoring.

There have been rare reports of cardiac arrest during the use of ropivacaine hydrochloride for epidural anaesthesia or peripheral nerve blockade, especially after unintentional accidental intravascular administration in elderly patients or in patients with concomitant heart disease. In some instances, resuscitation has been difficult. Should cardiac arrest occur; prolonged resuscitative efforts may be required to improve the likelihood of a successful outcome.

Ropivacaine hydrochloride is possibly porphyrinogenic and should only be prescribed to patients with acute porphyria when no safer alternative is available. Appropriate precautions should be taken in the case of vulnerable patients.

Cardiovascular Disease

There have been rare reports of cardiac arrest during the use of ropivacaine hydrochloride for epidural anaesthesia or peripheral nerve blockade, especially after unintentional accidental intravascular administration in patients with concomitant heart disease (see **WARNINGS AND PRECAUTIONS, High Risk Populations**).

Local anaesthetics should be used with caution in patients with impaired cardiovascular function who may be less able to compensate for functional changes associated with prolongation of AV conduction produced by these drugs. Hypotension, hypovolemia, or partial or complete heart block represent risk factors.

Peri-Operative Considerations

The safe and effective use of local anaesthetics depends on proper dosage, correct technique, adequate precautions and readiness for emergencies. Resuscitative equipment, oxygen and resuscitative drugs should be available for immediate use (see **ADVERSE REACTIONS and OVERDOSAGE**). During major regional nerve blocks, the patients should be in an optimal condition and have i.v. fluids running via an indwelling catheter to assure a functioning intravenous pathway. The clinician responsible should take the necessary precautions to avoid intravascular injection (see **DOSAGE AND ADMINISTRATION**) and be trained, and familiar with, the diagnosis and treatment of side effects, systemic toxicity, and other complications. The lowest dosage of local anaesthetics that results in effective anaesthesia should be used. Injections should be made slowly and incrementally. When a continuous catheter technique is used, syringe aspirations should be performed before and during each supplemental injection.

If blood is aspirated, relocate the needle. Inadvertent intravascular injection may cause serious consequences. Absorption is more rapid when injections are made into highly vascular tissues.

Administration of higher than recommended doses of ROPIVACAINE HYDROCHLORIDE INJECTION to achieve greater motor blockade or increased duration of sensory blockade may pose a particular risk in the event that an inadvertent intravascular injection occurs. In epidural administration, the procedure should be discontinued and re-initiated if the subarachnoid space has been entered, as shown by aspiration of spinal fluid.

Careful and constant monitoring of cardiovascular and respiratory vital signs (adequacy of ventilation) and the patient's state of consciousness should be performed during the anaesthetic procedure. It should be kept in mind at such times that restlessness, anxiety, incoherent speech, lightheadedness, numbness and tingling of the mouth and lips, metallic taste, tinnitus, dizziness, blurred vision, tremors, twitching, depression, or drowsiness may be early warning signs of central nervous system toxicity.

Ropivacaine plasma concentrations may approach the threshold for central nervous system toxicity after the administration of 300 mg of ropivacaine for brachial plexus block. Caution should be exercised when using the 300 mg dose.

Epidural Anaesthesia and Analgesia

A well known risk of epidural anaesthesia is unintentional subarachnoid injection of the local anaesthetic. Two clinical studies have been performed to verify the safety of ropivacaine hydrochloride injected into the subarachnoid space at a volume of 3 mL, selected to be representative of an incremental epidural volume that could be unintentionally injected. The 15 and 22.5 mg doses injected resulted in sensory block levels as high as T5 and T4, respectively. Sensory block started in the sacral dermatomes in 2-3 minutes, extended to the T10 level in 10-13 minutes and lasted for approximately 2 hours. The results of these two clinical studies showed that a 3 mL dose did not produce any serious adverse events when spinal anaesthesia was achieved.

Epidural anaesthesia or analgesia may lead to hypotension and bradycardia. This risk can be reduced either by preloading the circulation or by injecting a vasopressor such as ephedrine 20-40 mg i.m. Hypotension should be treated promptly with e.g. ephedrine 5-10 mg intravenously and repeated as necessary.

During epidural administration, it is recommended that a test dose of a local anaesthetic with a fast onset of action be administered initially. The patient should be monitored for central nervous system and cardiovascular toxicity, as well as for signs of unintended intrathecal administration, before proceeding. When clinical conditions permit, test doses of local anaesthetic solutions which contain epinephrine should be considered because circulatory changes compatible with epinephrine may also serve as a warning sign of unintended intravascular injection. If injected into a blood vessel, this amount of epinephrine is likely to produce a transient "epinephrine response" within 45 seconds, consisting of an increase in heart rate and systolic blood pressure, circumoral pallor, palpitations and nervousness in the unsedated patient. The sedated patient may exhibit only a pulse rate increase of 20 or more beats per minute for 15 or more seconds. Therefore, following the test dose, the heart rate should be continuously monitored. Patients on

beta-blockers may not manifest changes in heart rate, but blood pressure monitoring can detect a rise in systolic blood pressure. A test dose of a short-acting amide anaesthetic such as lidocaine (30-40 mg) is recommended to detect an unintentional intrathecal administration. This will be manifested within a few minutes by signs of spinal block (e.g., decreased sensation of the buttocks, paresis of the legs, or, in the sedated patient, absent knee jerk). An intravascular or subarachnoid injection is still possible even if results of the test dose are negative. The test dose itself may produce a systemic toxic reaction, high spinal or epinephrine-induced cardiovascular effects.

During epidural administration, ropivacaine should be administered in incremental doses of 3 to 5 mL with sufficient time between doses to detect toxic manifestations of unintentional intravascular or subarachnoid injection. Frequent aspirations for blood or cerebrospinal fluid (where applicable, i.e. when using a “continuous” intermittent catheter technique) should be performed before and during each supplemental injection because plastic tubing in the epidural space can migrate into a blood vessel or through the dura. A negative aspiration, however, does not ensure against an intravascular or intrathecal injection.

Head and Neck Area

Small doses of local anaesthetics injected into the head and neck area, including dental and stellate ganglion blocks, may produce adverse reactions as a result of inadvertent intra-arterial injection and subsequent retrograde flow to the cerebral circulation. These adverse reactions may be similar to systemic toxicity seen with unintentional intravascular injections of larger doses. Confusion, convulsions, respiratory depression, and/or respiratory arrest, and cardiovascular stimulation or depression have been reported. Patients receiving these blocks should have their circulation and respiration monitored and be constantly observed. Resuscitative equipment and personnel for treating adverse reactions should be immediately available. Dosage recommendations should not be exceeded.

Hepatic

Because amide-type local anaesthetics such as ropivacaine are metabolized by the liver, these drugs, especially repeat doses, should be used cautiously in patients with hepatic disease.

Patients with severe hepatic disease, because of their inability to metabolize local anaesthetics normally, are at an increased risk of developing toxic plasma concentrations (see **WARNINGS AND PRECAUTIONS, High Risk Populations**, and **DOSAGE AND ADMINISTRATION, Special Populations**).

Neurologic

Psychomotor effects: Local anaesthetics may have a dose-dependent effect on mental function and coordination, causing temporary impairment of locomotion and alertness, even in the absence of overt CNS toxicity.

Ophthalmologic

Solutions of ROPIVACAINE HYDROCHLORIDE INJECTION should not be used for the production of retrobulbar block due to insufficient data to support such use.

Until appropriate experience is gained, the use of ROPIVACAINE HYDROCHLORIDE INJECTION for such surgery is not recommended.

Renal

Local anaesthetics should be used with caution in patients in poor general condition due to severe renal dysfunction (see **DOSAGE AND ADMINISTRATION**).

Normally there is no need to modify the dose of ROPIVACAINE HYDROCHLORIDE INJECTION when used for single dose or short term treatment in patients with impaired renal function. Acidosis and reduced plasma protein concentration, frequently seen in patients with chronic renal failure, may increase the risk of systemic toxicity (see **ACTIONS AND CLINICAL PHARMACOLOGY, Pharmacokinetics**).

Special Populations

Pregnant Women: Reproductive studies have been performed in rats and rabbits.

No effects on fertility and general reproductive performance were seen in rats over two generations. At the highest dose level, increased pup loss was seen during the first three days post-partum, which was considered to be secondary to impaired maternal care of the newborn, due to maternal toxicity.

Teratogenicity studies in rats and rabbits did not show evidence of any adverse effects of ropivacaine on organogenesis or early foetal development. There were no treatment-related effects on late foetal development, parturition, lactation, neonatal viability or growth of the offspring in a perinatal and postnatal study in rats using the maximum tolerated dose.

An additional perinatal and postnatal study in rats, in which ropivacaine was compared with bupivacaine, showed that maternal toxicity was observed at much lower dose levels and at lower unbound plasma concentrations of bupivacaine than of ropivacaine.

There are no clinical studies in preterm pregnant women on the effects of ropivacaine on the developing foetus. Ropivacaine should be used during pregnancy only if the potential benefit justifies the potential risk to the foetus. The use of ropivacaine at term for obstetric anaesthesia or analgesia is well documented.

Labour and Delivery: Local anaesthetics, including ropivacaine hydrochloride, rapidly cross the placenta, and when used for an epidural block, can cause varying degrees of maternal, foetal

and neonatal toxicity. The incidence and degree of toxicity depend upon the procedure performed, the type and amount of drug used, and the technique of drug administration. Adverse reactions in the parturient, foetus and neonate involve alterations of the central nervous system, peripheral vascular tone and cardiac function.

Maternal hypotension has resulted from epidural analgesia with ropivacaine hydrochloride for obstetrical pain relief. Elevating the patient's legs and positioning her on her left side will help prevent decreases in blood pressure. The foetal heart rate also should be monitored continuously, and electronic foetal monitoring is highly advisable.

It is extremely important to avoid aorto-caval compression by the gravid uterus during administration of regional block to parturients. The patient should be maintained in the left lateral decubitus position if possible or manual displacement of the uterus off the great vessels be accomplished.

Nursing Women: The excretion of ropivacaine or its metabolites in human milk has not been studied. Based on the milk/plasma concentration ratio in rats, the estimated daily dose to a pup will be about 4% of the dose given to the mother. Caution should be exercised when ROPIVACAINE HYDROCHLORIDE INJECTION is administered to a nursing woman. Assuming that the milk/plasma concentration ratio in humans is of the same order, the total ropivacaine dose to which the baby is exposed by breast-feeding is far lower than by exposure *in utero* in pregnant women at term.

Pediatrics (< 18 years of age): The safety and efficacy of ROPIVACAINE HYDROCHLORIDE INJECTION have not been investigated in children under 18 years of age. In children early signs of local anaesthetic toxicity may be difficult to detect in cases where the block is given during general anaesthesia (see **OVERDOSAGE**). ROPIVACAINE HYDROCHLORIDE INJECTION is not indicated for use in patients below the age of 18 years.

Geriatrics (> 65 years of age): Elderly patients should be given reduced doses of ropivacaine, commensurate with their age and physical condition (see **DOSAGE AND ADMINISTRATION, Special Populations**). The risk of hypotension and bradycardia in patients receiving epidural anaesthesia with ROPIVACAINE HYDROCHLORIDE INJECTION increases in an age-dependent manner (see Table 5 in **ADVERSE REACTIONS**).

ADVERSE REACTIONS

Reactions to ropivacaine hydrochloride are characteristic of those associated with other long-acting local anaesthetics of the amide type.

Clinical Trial Adverse Drug Reactions

Because clinical trials are conducted under very specific conditions the adverse reaction rates observed in the clinical trials may not reflect the rates observed in practice and should not be compared to the rates in the clinical trials of another drug. Adverse drug reaction information from clinical trials is useful for identifying drug-related adverse events and for approximating rates.

In clinical trials, the great majority of adverse events reported with ropivacaine were related to the expected effects of the block and to the clinical situation, rather than reactions to the drug. When all clinical studies were pooled (total n=3056), hypotension and nausea were registered in 41.2% (n=1259) and 28.4% (n=867) of the patients, respectively. Similar incidences were reported for bupivacaine in the double-blind comparisons.

Adverse reactions to local anaesthetics are very rare in the absence of overdose or inadvertent intravascular injection. The effects of systemic overdose and unintentional intravascular injections can be serious, but should be distinguished from the physiological effects of the nerve block itself e.g. a decrease in blood pressure, bradycardia, urinary retention after epidural and intrathecal block, and events caused directly by needle puncture (e.g. spinal haematoma, postdural puncture, headache), or indirectly by introduction of micro-organisms (e.g. meningitis and epidural abscess).

Acute systemic toxicity from local anaesthetics is generally dose-related and due to high plasma levels which may result from overdosage (see **OVERDOSAGE**), rapid absorption from the injection site, diminished tolerance, or from inadvertent intravascular injection. Most commonly, the acute adverse experiences originate from the central nervous and cardiovascular systems.

Table 1: Adverse Events Reported in $\geq 1\%$ of Adult Patients Receiving Regional or Local Anaesthesia (Surgery, Labour, Caesarean Section, Peripheral Nerve Block, Local Infiltration and Post-Operative Pain Management)

Adverse Reaction	Total Number of Patients = 2867							
	2 mg/mL		5 mg/mL		7.5 mg/mL		10 mg/mL	
	Total n=1360		Total n=740		Total n=540		Total n=222	
	n	%	n	%	n	%	n	%
Hypotension	641	47.1	224	30.1	174	32.2	116	52.3
Nausea	550	40.4	84	11.3	98	18.1	41	18.5
Fever	281	20.7	11	1.5	6	1.1	6	2.7
Vomiting	272	20.0	41	5.5	43	8.0	16	7.2
Post-operative complications	204	15.0	21	2.8	3	0.6	3	1.4
Anaemia	188	13.8	4	0.5	1	0.2	1	0.5
Bradycardia	140	10.3	48	6.4	82	15.2	35	15.8
Pain	140	10.3	42	5.6	15	2.8	2	0.9
Oliguria	139	10.2						
Dizziness	136	10.0	20	2.7	11	2.0	4	1.8
Pruritus	123	9.0	10	1.3	16	3.0	2	0.9
Hypertension	113	8.3	4	0.5	3	0.6		
Unexpected therapeutic effect	108	7.9						
Paraesthesia	107	7.9	51	6.8	14	2.6	3	1.4
Hypoxia	86	6.3			2	0.4		
Rigors (chills)	84	6.2	11	1.5	10	1.9	12	5.4
Hypokalaemia	79	5.8	2	0.3				
Headache	74	5.4	21	2.8	30	5.6	18	8.1
Back pain	74	5.4	31	4.2	33	6.1	24	10.8
Hypoproteinaemia	74	5.4						
Diarrhoea	66	4.9	1	0.1	1	0.2	1	0.5
Bradycardia Foetal	66	4.9	2	0.3				
Haematuria	63	4.6					2	0.9
Urinary retention	62	4.6	7	0.9	8	1.5	5	2.3
Hypothermia	62	4.6	1	0.1				
Tachycardia	60	4.4	7	0.9			1	0.5
Constipation	59	4.3	1	0.1	1	0.2		

Adverse Reaction	Total Number of Patients = 2867							
	2 mg/mL		5 mg/mL		7.5 mg/mL		10 mg/mL	
	Total n=1360		Total n=740		Total n=540		Total n=222	
	n	%	n	%	n	%	n	%
Abdominal pain	59	4.3	8	1.1				
Urinary tract infection	48	3.5	1	0.1				
Creatine phosphokinase increased	46	3.4						
Hypoaesthesia	45	3.3	7	0.9	6	1.1	5	2.3
Leukocytosis	44	3.2						
Dyspepsia	42	3.1	1	0.1				
Hypocalcaemia	41	3.0						
Urine abnormal	40	2.9						
Chest pain	39	2.9	4	0.5	3	0.6	1	0.5
Anxiety	36	2.6	7	0.9	1	0.2	1	0.5
Dyspnoea	35	2.6	3	0.4	1	0.2	2	0.9
Hypotension postural	34	2.5						
Abdomen enlarged	34	2.5	1	0.1				
Edema peripheral	33	2.4			3	0.6		
Phosphatase alkaline increased	29	2.1						
Injection site reaction	28	2.1			1	0.2		
Insomnia	27	2.0						
Thrombocytopenia	27	2.0						
Infection	27	2.0			6	1.1	1	0.5
Pleural effusion	26	1.9						
Thrombocythaemia	26	1.9						
Rash	25	1.8	4	0.5	3	0.6		
SGOT increased	25	1.8						
Pyuria	25	1.8						
Confusion	24	1.8	2	0.3	1	0.2		
Faecal incontinence	24	1.8						
Hyperglycaemia	23	1.7						
Arthralgia	22	1.6	4	0.5			1	0.5
Atelectasis	22	1.6						

Adverse Reaction	Total Number of Patients = 2867							
	2 mg/mL		5 mg/mL		7.5 mg/mL		10 mg/mL	
	Total n=1360		Total n=740		Total n=540		Total n=222	
	n	%	n	%	n	%	n	%
Bronchospasm	21	1.5	1	0.1				
Rales	21	1.5						
Albuminuria	20	1.5						
Progression of labour poor/failed	20	1.5						
BUN decreased	19	1.4						
Sweating increased	18	1.3			2	0.4	1	0.5
Urinary incontinence	18	1.3	4	0.5	4	0.7	1	0.5
Agitation	18	1.3			1	0.2		
Somnolence	18	1.3			3	0.6		
SGPT increased	18	1.3			1	0.2		
Coughing	18	1.3						
Respiratory disorder	18	1.3						
Respiratory insufficiency	18	1.3						
Paresis	17	1.3	1	0.1				
Injection site inflammation	16	1.2						
Prothrombin decreased	16	1.2						
Tremor	15	1.1	5	0.7	1	0.2	2	0.9
Purpura	15	1.1	3	0.4			1	0.5
Application site reactions	14	1.0						
Myalgia	14	1.0	1	0.1				
Hepatic function abnormal	14	1.0						
Arrhythmia	14	1.0			1	0.2	1	0.5
Micturition disorder	14	1.0			1	0.2	1	0.5
Dysuria	8	0.6	2	0.3	2	0.4	3	1.4
Jaundice neonatal	3	0.2	9	1.2				

Table 2A: Adverse Events Reported in $\geq 1\%$ of Women who Received Ropivacaine Hydrochloride 5 mg/mL During Caesarean Section

Adverse Reaction	Total Number of Patients = 173*	
	n	%
Hypotension	101	58.4
Paraesthesia	44	25.4
Pain	29	16.8
Nausea	27	15.6
Vomiting	10	5.8
Dizziness	7	4.0
Anxiety	7	4.0
Abdominal pain	7	4.0
Pruritus	5	2.9
Bradycardia	5	2.9
Back pain	5	2.9
Dyskinesia	4	2.3
Headache	4	2.3
Tachycardia	4	2.3
Hypoaesthesia	3	1.7
Tremor	2	1.2
Anaemia	2	1.2
Rigors (chills)	2	1.2
Postoperative complications	2	1.2
Postpartum haemorrhage	2	1.2

*Some patients experienced more than one adverse event.

Table 2B: Adverse Events Reported in $\geq 1\%$ of Foetuses or Neonates of Mothers who Received Ropivacaine Hydrochloride 5 mg/mL During Caesarean Section

Adverse Reaction	Total Number of Patients = 173*	
	n	%
Jaundice neonatal	9	5.2
Tachypnoea neonatal	6	3.5
respiratory disorder neonatal	3	1.7
Bradycardia foetal	2	1.2

*Some patients experienced more than one adverse event.

Table 2C: Adverse Events Reported in $\geq 1\%$ of Women who Received Ropivacaine Hydrochloride 2 mg/mL During Labour

Adverse Reaction	Total Number of Patients = 231*	
	n	%
Hypotension	35	15.2
Progression of labour poor/failed	20	8.7
Paraesthesia	15	6.5

Adverse Reaction	Total Number of Patients = 231*	
	n	%
Fever	15	6.5
Back pain	13	5.6
Nausea	9	3.9
Pain	7	3.0
Vomiting	6	2.6
Rigor (chills)	6	2.6
Bradycardia	5	2.2
Urinary tract infection	4	1.7
Dystocia	4	1.7
Urinary retention	3	1.3
Tachycardia	3	1.3
Jaundice	3	1.3

*Some patients experienced more than one adverse event.

Table 2D: Adverse Events Reported in $\geq 1\%$ of Foetuses or Neonates of Mothers who Received Ropivacaine Hydrochloride 2 mg/mL During Labour

Adverse Reaction	Total Number of Patients = 231*	
	n	%
Bradycardia foetal	66	28.6
Foetal distress	10	4.3
Tachycardia foetal	7	3.0
Fever neonatal	6	2.6
Vomiting neonatal	4	1.7
Apgar score low	4	1.7
Jaundice neonatal	3	1.3
Hypoglycaemia neonatal	3	1.3
Neonatal complication (Not Other Specified)	3	1.3
Tachypnea neonatal	3	1.3
Respiratory disorder neonatal	3	1.3

*Some patients experienced more than one adverse event.

Table 3: Common Events (Epidural Administration)

Adverse Reactions	Ropivacaine Hydrochloride					
	5 mg/mL Total		7.5 mg/mL Total		10 mg/mL Total	
	n=256		n=297		n=207	
	n	%	n	%	n	%
Hypotension	99	38.7	146	49.2	113	54.6
Nausea	34	13.3	68	22.9		
Bradycardia	29	11.3	58	19.5	40	19.3
Back pain	18	7.0	23	7.7	34	16.4
Vomiting	18	7.0	33	11.1	23	11.1

Adverse Reactions	Ropivacaine Hydrochloride					
	5 mg/mL Total		7.5 mg/mL Total		10 mg/mL Total	
	n=256		n=297		n=207	
	n	%	n	%	n	%
Headache	12	4.7	20	6.7	16	7.7
Fever	8	3.1	5	1.7	18	8.7

Table 4: Most Common Adverse Events by Gender (Epidural Administration)
Total n: females =405, males =355

Adverse Reactions	Female		Male	
	n	%	n	%
Hypotension	220	54.3	138	38.9
Nausea	119	29.4	23	6.5
Bradycardia	65	16.0	56	15.8
Vomiting	59	14.6	8	2.3
Back pain	41	10.1	23	6.5
Headache	33	8.1	17	4.8
Chills	18	4.4	5	1.4
Fever	16	4.0	3	0.8
pruritus	16	4.0	1	0.3

Table 5: Incidence of Hypotension in Relation to Age (Epidural Administration)
Total n: Ropivacaine Hydrochloride = 700

Age	Ropivacaine Hydrochloride					
	5 mg/mL		7.5 mg/mL		10 mg/mL	
	n	%	n	%	n	%
< 65	68	32.2	99	43.2	87	51.5
≥ 65	31	68.9	47	69.1	26	68.4

Central Nervous System: These are characterized by excitation and/or depression. Restlessness, anxiety, dizziness, tinnitus, blurred vision or tremors may occur, possibly proceeding to convulsions. However, excitement may be transient or absent, with depression being the first manifestation of an adverse reaction. This may quickly be followed by drowsiness merging into unconsciousness and respiratory arrest. Other central nervous system effects may be nausea, vomiting, chills, and constriction of the pupils.

The incidence of convulsions associated with the use of local anaesthetics varies with the procedure used and the total dose administered.

For a detailed description of Central Nervous System toxicity, please refer to 'OVERDOSAGE'.

Cardiovascular System: High doses or unintentional intravascular injection may lead to high plasma levels and related depression of the myocardium, decreased cardiac output, heart block, hypotension, bradycardia, ventricular arrhythmias, including ventricular tachycardia and ventricular fibrillation, and cardiac arrest. Reactions due to systemic absorption may be either slow or rapid in onset. Cardiovascular collapse and cardiac arrest can occur rapidly (see **WARNINGS AND PRECAUTIONS, General** and **OVERDOSAGE**).

Allergic: Allergic type reactions are rare and may occur as a result of sensitivity to local anaesthetics of the amide-type. These reactions are characterized by signs such as urticaria, pruritus, erythema, angioneurotic oedema (including laryngeal oedema), tachycardia, sneezing, nausea, vomiting, dizziness, syncope, excessive sweating, elevated temperature, and in the most severe instances, anaphylactic shock.

Neurologic: The incidence of adverse neurologic reactions may be related to the total dose of local anaesthetic administered but is also dependent upon the particular drug used, the route of administration and the physical status of the patient. Neuropathy and spinal cord dysfunction (e.g. anterior spinal artery syndrome, arachnoiditis, cauda equina syndrome) have been associated with regional anaesthesia. Neurological effects may be related to local anaesthetic techniques, with or without a contribution from the drug.

During epidural block, occasional unintentional penetration of the subarachnoid space by the catheter or needle may occur. Neurologic effects following unintentional subarachnoid administration during epidural anaesthesia may include spinal block of varying magnitude (including total or high spinal block) and hypotension secondary to spinal block. A high spinal block is characterized by limb paralysis, loss of consciousness, respiratory paralysis and bradycardia.

Other neurological effects following unintentional subarachnoid administration during epidural anaesthesia may include persistent anaesthesia, paraesthesia, weakness, paralysis of the extremities and loss of sphincter control, all of which may have slow, incomplete or no recovery. Urinary retention, loss of bladder and bowel control (faecal and urinary incontinence), and loss of perineal sensation and sexual functions are extremely rare but possible neurotoxic complications. Headache, septic meningitis, meningismus, slowing of labour, increased incidence of forceps delivery, or cranial nerve palsies due to traction on nerves from loss of cerebrospinal fluid have been reported.

Elevation of Body Temperature: Epidural infusion of ropivacaine hydrochloride has, in some cases, been associated with transient elevations in body temperature to $>38.5^{\circ}\text{C}$. This has occurred more frequently at doses greater than 16 mg/hour. The pyrexia seen in connection with postoperative epidural infusion of ropivacaine is similar to that seen with bupivacaine. Body temperature is not affected by systemic concentrations of ropivacaine.

DRUG INTERACTIONS

Drug-Drug Interactions

Local anaesthetics and agents structurally related to amide-type local anaesthetics

ROPIVACAINE HYDROCHLORIDE INJECTION should be used with caution in patients receiving other amide-type local anaesthetics such as lidocaine, bupivacaine, mepivacaine and prilocaine since toxic effects are additive.

Antiarrhythmic Drugs

ROPIVACAINE HYDROCHLORIDE INJECTION should also be used with caution with structurally related agents such as the antiarrhythmics procainamide, disopyramide, tocainide, mexiletine and flecainide.

Class III Antiarrhythmic drugs

Specific interactions studies with ropivacaine and class III anti-arrhythmic drugs (e.g. amiodarone) have not been performed. Caution is advised when using Class III antiarrhythmic drugs concomitantly with ropivacaine due to potential pharmacodynamic or pharmacokinetic interactions, or both (see **WARNINGS AND PRECAUTIONS, High Risk Populations**). Patients treated with class III antiarrhythmic drugs should be under close surveillance and ECG monitoring, since cardiac effects may be additive.

Sedatives

If sedatives are employed to reduce patient apprehension, they should be used in reduced doses, since local anaesthetic agents, like sedatives, are central nervous system depressants which in combination may have an additive effect.

Strong Inhibitors of P4501A2

In vitro studies indicate that the cytochrome P4501A2 is involved in the formation of 3-hydroxy ropivacaine, the major metabolite.

Fluvoxamine and Enoxacin: In healthy volunteers, the plasma clearance of ropivacaine was reduced by up to 77% during co-administration of fluvoxamine, a selective and potent P4501A2 inhibitor. Thus strong inhibitors of cytochrome P4501A2, such as fluvoxamine, and enoxacin, given concomitantly during repeated administration of ROPIVACAINE HYDROCHLORIDE INJECTION, can interact with ROPIVACAINE HYDROCHLORIDE INJECTION. Prolonged administration should be avoided in patients treated with such strong inhibitors of P4501A2.

Theophylline and Imipramine: Possible interactions with drugs known to be metabolized by P4501A2 via competitive inhibition, such as theophylline and imipramine will occur, but should be of less importance.

Drug-Food Interactions

Interactions of ropivacaine with food have not been established.

Drug-Herb Interactions

Interactions of ropivacaine with herbal products have not been established.

Drug-Laboratory Interactions

Interactions of ropivacaine with laboratory tests have not been established.

Drug-Lifestyle Interactions

Interactions of ropivacaine with lifestyle have not been established.

DOSAGE AND ADMINISTRATION

Dosing Considerations

General

ROPIVACINE HYDROCHLORIDE INJECTION should only be used by or under the supervision of clinicians experienced in regional anaesthesia.

It is recommended that hospitals using local anaesthetic infusions have a treatment protocol in place for nursing to follow in order to safely monitor the level of the block and for the proper management of complications and/or toxic reactions. If toxic reactions occur, the infusion should be stopped immediately.

There have been adverse event reports of irreversible chondrolysis in patients receiving intra-articular infusions of local anaesthetics following arthroscopic and other surgical procedures. ROPIVACINE HYDROCHLORIDE INJECTION is not approved for this use (see **WARNINGS AND PRECAUTIONS, General**).

ROPIVACINE HYDROCHLORIDE INJECTION should be administered at the smallest dose and the lowest concentration which are consistent with the necessary degree of anaesthesia or analgesia. The rapid injection of a large volume of local anaesthetic solution should be avoided and fractional doses should always be used. In general, surgical anaesthesia, e.g. epidural administration, requires the use of higher concentrations and doses. For analgesia, e.g. epidural administration for acute pain management, lower concentrations and doses are recommended.

The dose of any local anaesthetic administered varies with the anaesthetic procedure, the area to be anaesthetized, the vascularity of the tissues, the number of neuronal segments to be blocked, the depth of anaesthesia and degree of muscle relaxation required, the duration of anaesthesia desired, individual tolerance, and the physical condition of the patient. Patients in poor general condition due to advanced age or other compromising factors such as partial or complete heart conduction block, advanced liver disease or severe renal dysfunction require special attention

although regional anaesthesia is frequently indicated in these patients. To reduce the risk of potentially serious adverse reactions, attempts should be made to optimize the patient's condition before major blocks are performed, and the dosage should be adjusted accordingly.

Parenteral drug products should be inspected visually for particulate matter and discoloration prior to administration, whenever solution and container permit. Solutions which are discoloured or which contain particulate matter should not be administered. For specific techniques and procedures, refer to standard contemporary textbooks.

Special Populations

Local anaesthetics should be used with caution in patients in poor general condition due to advanced age, debilitation, or other compromising factors such as partial or complete heart conduction block, advanced liver disease, or severe renal dysfunction.

Elderly and acutely ill patients should be given reduced doses of ropivacaine, commensurate with their age and physical condition.

Recommended Dose and Dosage Adjustment

Adults: The dosages in Table 6 are recommended as a guide for use in the average adult for the more commonly used blocks. The clinician's experience and knowledge of the patient's physical status are of importance in calculating the required dose.

Table 6: Adult Dosage Recommendations for ROPIVACAINE HYDROCHLORIDE INJECTION

Type of Block	Concentration (mg/mL)	Volume (mL)	Dose (mg)
ACUTE PAIN MANAGEMENT			
Lumbar Epidural Bolus (initial dose)	2	10-20	20-40
Intermittent injections (top-up) (eg. labour pain management)	2	10-15 (min. interval of 30 minutes)	20-30
Lumbar Epidural Continuous infusion (e.g. labour pain & postoperative pain management)	2	6-14 mL/h	12-28 mg/h
Thoracic Epidural Continuous infusion (e.g. postoperative pain management)	2	6-14 mL/h	12-28 mg/h
Field Block e.g. infiltration	2	1-100	2-200

Note 1: The doses in the table are those considered to be necessary to produce a successful block and should be regarded as guidelines for use in adults. The figures reflect the expected average dose range needed. For other local anaesthetic techniques standard textbooks should be consulted.

Note 2: There have been post-marketing reports of irreversible chondrolysis in patients receiving post-operative intra-articular infusion of local anaesthetics. ROPIVACAINE HYDROCHLORIDE INJECTION is not approved for this use (see WARNINGS AND PRECAUTIONS).

Careful aspiration before and during injection is recommended to prevent intravascular injection. When employing an epidural block, a test dose of 3-5 mL lidocaine (XYLOCAINE® 1-2%) with epinephrine is recommended. An inadvertent intravascular injection may be recognized by a temporary increase in heart rate and an accidental subarachnoid injection by signs of a spinal block. Aspiration should be repeated prior to and during administration of the main dose, which should be injected slowly or in incremental doses, at a rate of 25-50 mg/min, while closely observing the patient's vital functions and maintaining verbal contact. If toxic symptoms occur, the injection should be stopped immediately. The test dose should be repeated if the patient is moved in such a fashion as to have displaced the epidural catheter.

For treatment of postoperative pain, the following technique is recommended: Unless preoperatively instituted, an initial epidural block with ropivacaine hydrochloride 5 mg/mL is induced via an epidural catheter. Analgesia is maintained with ROPIVACAINE HYDROCHLORIDE INJECTION 2 mg/mL infusion. Clinical studies have demonstrated that infusion rates of 6-14 mL (12-28 mg) per hour provide adequate analgesia with only slight and non-progressive motor block in most cases of moderate to severe postoperative pain. With this technique, a significant reduction in the need for narcotics has been observed. Clinical experience supports the use of ropivacaine hydrochloride epidural infusions at rates up to 28 mg/h for 72 hours.

When prolonged blocks are used, either through continuous infusion or through repeated bolus administration, the risks of reaching a toxic plasma concentration or inducing local neural injury must be considered. Clinical experience to date indicates that a cumulative dose of up to 770 mg ropivacaine administered over 24 hours and continuous epidural infusion at rates up to 28 mg/h for 72 hours have been well tolerated in adults when used for postoperative pain management (i.e., ≥ 2000 mg).

The duration and intensity of ropivacaine block are not improved by the addition of epinephrine.

Children: The safety and efficacy of ROPIVACAINE HYDROCHLORIDE INJECTION have not been investigated in children under 18 years of age. ROPIVACAINE HYDROCHLORIDE INJECTION is not indicated for use in patients below the age of 18 years.

OVERDOSAGE

For management of a suspected drug overdose, contact your regional Poison Control Centre immediately.

Systemic toxic reactions primarily involve the central nervous system and cardiovascular system. Such reactions are caused by high plasma levels encountered during therapeutic use, overdose, or

to unintended intravascular or subarachnoid injection (see **ADVERSE REACTIONS** and **WARNINGS AND PRECAUTIONS**). CNS reactions are similar for all amide local anaesthetics, while cardiac reactions are more dependent on the drug, both quantitatively and qualitatively.

Symptoms

Accidental intravascular injections may cause immediate (within seconds to a few minutes) toxic effects. In the event of overdose, peak plasma concentrations may not be reached for 1 to 2 hours, depending on the site of injection, with signs of toxicity thus being delayed.

Central nervous system toxicity is a graded response with symptoms and signs of escalating severity. First symptoms are usually light-headedness, circumoral paraesthesia, numbness of the tongue, hyperacusis, tinnitus and visual disturbances. Dysarthria, muscular rigidity and muscular twitching are more serious and may precede the onset of generalized convulsions. These signs must not be mistaken for a neurotic behaviour. Unconsciousness and grand mal convulsions may follow which may last from a few seconds to several minutes. Hypoxia and hypercarbia occur rapidly following convulsions due to the increased muscular activity, together with the interference with normal respiration and loss of the airway. In severe cases apnoea may occur. Acidosis, hyperkalaemia, hypocalcaemia and hypoxia increase and extend the toxic effects of local anaesthetics.

Recovery is due to redistribution and metabolism of the local anaesthetic drug. Recovery may be rapid unless large amounts of the drug have been administered.

Cardiovascular system toxicity indicates a more severe situation and is generally preceded by signs of toxicity in the central nervous system, unless the patient is receiving a general anaesthetic or is heavily sedated with drugs such as a benzodiazepine or barbiturate. Hypotension, bradycardia, arrhythmia and cardiac arrest may occur as a result of high systemic concentrations of local anaesthetic. In volunteers, the intravenous infusion of ropivacaine resulted in signs of depression of conductivity and contractility.

In children early signs of local anaesthetic toxicity may be difficult to detect in cases where the block is given during general anaesthesia. It should be noted that ROPIVACAINE HYDROCHLORIDE INJECTION is not approved for use in paediatric patients.

Treatment

The first consideration is prevention, best accomplished by incremental injection of ROPIVACAINE HYDROCHLORIDE INJECTION, careful and constant monitoring of cardiovascular and respiratory vital signs and the patient's state of consciousness after each local anaesthetic injection and during continuous infusion. At the first sign of change, oxygen should be administered. If signs of acute systemic toxicity appear, injection of the local anaesthetic should be immediately stopped.

The first step in the management of systemic toxic reactions, as well as under-ventilation or apnoea due to unintentional subarachnoid injection of drug solution, consists of immediate attention to the establishment and maintenance of a patent airway and assisted or controlled ventilation with oxygen and a delivery system capable of permitting immediate positive airway pressure by mask and bag or tracheal intubation.

This may prevent convulsions if they have not already occurred.

If necessary, use drugs to control the convulsions. An anticonvulsant should be given i.v. if the convulsions do not stop spontaneously in 15-20 seconds. Thiopental 1–3 mg/kg i.v. will abort the convulsions rapidly. Alternatively diazepam 0.1 mg/kg i.v. may be used, although its action will be slow. Both these drugs, however, depress the central nervous system, respiratory and cardiac function, add to postictal depression, and may result in apnoea.

Prolonged convulsions may jeopardize the patient's ventilation and oxygenation. If so, injection of a muscle relaxant such as succinylcholine (1 mg/kg) will stop the muscle convulsions rapidly, so that ventilation and oxygenation can be controlled. Endo-tracheal intubation must be considered in such situations.

If cardiovascular depression is evident (hypotension, bradycardia) administration of intravenous fluids or a vasopressor such as ephedrine or epinephrine may be required.

Should circulatory arrest occur; immediate cardiopulmonary resuscitation should be instituted. Optimal oxygenation and ventilation and circulatory support as well as treatment of acidosis are of vital importance.

Should cardiac arrest occur; prolonged resuscitative efforts may be required to improve the likelihood of a successful outcome.

Clinical data from patients experiencing local anaesthetic-induced convulsions demonstrated rapid development of hypoxia, hypercarbia, and acidosis within a minute of the onset of convulsions. These observations suggest that oxygen consumption and carbon dioxide production are greatly increased during local anaesthetic convulsions and emphasize the importance of immediate and effective ventilation with oxygen which may avoid cardiac arrest.

The supine position is dangerous in pregnant women at term because of aorto-caval compression by the gravid uterus. Therefore, during treatment of systemic toxicity, maternal hypotension or foetal bradycardia following regional block, the parturient should be maintained in the left lateral decubitus position if possible, or manual displacement of the uterus off the great vessels should be accomplished. Resuscitation of obstetrical patients may take longer than resuscitation of non-pregnant patients and closed-chest cardiac compression may be ineffective. Rapid delivery of the foetus may improve the response to resuscitative efforts.

In human volunteers given intravenous ropivacaine hydrochloride, the mean maximum tolerated total and free arterial plasma concentrations were 4.3 and 0.6 µg/mL respectively, at which time moderate CNS symptoms (muscle twitching) were noted.

ACTION AND CLINICAL PHARMACOLOGY

ROPIVACAINE HYDROCHLORIDE INJECTION, a local anaesthetic of the amino amide class, is supplied as the pure S-(-)-enantiomer.

Ropivacaine hydrochloride has both local anaesthetic and analgesic effects. At high doses, surgical anaesthesia is achieved. At lower doses, ropivacaine hydrochloride produces sensory block (analgesia) with limited and non-progressive motor block.

Mechanism of Action

Ropivacaine hydrochloride, like other local anaesthetics, causes reversible blockade of impulse propagation along nerve fibers by preventing the inward movement of sodium ions through the cell membrane of the nerve fibers.

Onset and Duration of Action

The duration of action of local anaesthetics depends on the injection site, the route of administration, and the concentration and volume of the drug. The duration and intensity of ropivacaine block are not improved by the addition of epinephrine.

After epidural infusion of ropivacaine, the spread of sensory block and the degree of motor block, as well as their subsequent regression, are dose-dependent.

Pharmacodynamics

Ropivacaine, like other local anaesthetics, can also have effects on the central nervous and cardiovascular systems. If excessive amounts of drug reach the systemic circulation, symptoms and signs of central nervous system toxicity and cardiotoxicity may appear.

Signs and symptoms of central nervous system toxicity (see **OVERDOSAGE**) generally occur at lower plasma concentrations than do those of cardiotoxicity. Following systemic absorption, local anaesthetics can produce central nervous system stimulation, depression or both. Apparent central stimulation is usually manifested as restlessness, tremors, and shivering, progressing to convulsions, followed by depression and coma, leading ultimately to respiratory arrest. However, the local anaesthetics have a primary depressant effect on the medulla and on higher centers. The depressed stage may occur without a prior excited stage. High blood concentrations of local anaesthetics resulting from systemic absorption or intravascular injection can depress cardiac conduction and excitability. At toxic levels, atrioventricular block, ventricular arrhythmias, cardiac arrest, and death are possibilities.

Indirect cardiovascular effects (hypotension, bradycardia) may occur after epidural administration, depending on the extent of the concomitant sympathetic block.

In two clinical pharmacology studies (total N=24); ropivacaine and bupivacaine were infused (10 mg/min) in human volunteers until the appearance of CNS symptoms, e.g., visual or hearing disturbances, perioral numbness, tingling and others occurred. Similar symptoms were seen with both drugs. In one study, the mean \pm SD maximum tolerated intravenous dose of ropivacaine infused (124 ± 38 mg) was significantly higher than that of bupivacaine (99 ± 30 mg), while in the other study the doses were not different (115 ± 29 mg of ropivacaine and 103 ± 30 mg of bupivacaine). In the latter study, the number of subjects reporting each symptom was similar for both drugs with the exception of muscle twitching, which was reported by more subjects with bupivacaine than ropivacaine at comparable intravenous doses. At the end of the infusion, ropivacaine in both studies caused significantly less depression of cardiac conductivity (less QRS widening) than bupivacaine. Ropivacaine and bupivacaine caused evidence of depression of cardiac contractility, but there were no changes in cardiac output.

Pharmacokinetics

Absorption: The systemic concentration of local anaesthetics is dependent upon the total dose and the concentration administered, the route of administration, the patient's hemodynamic/circulatory condition, and the vascularity of the injection site. Ropivacaine follows linear pharmacokinetics and the maximum plasma concentration is proportional to the dose.

Ropivacaine shows complete and biphasic absorption from the epidural space. The mean half-lives of the two phases are in the order of 14 min and 4 h. The slow absorption is the rate-limiting factor in the elimination of ropivacaine, which explains why the apparent elimination half-life is longer after epidural than after intravenous administration. Ropivacaine shows dose proportionality at epidural doses up to 250 mg and intravenous doses up to 80 mg.

Distribution: Following intravenous administration, the volume of distribution of ropivacaine hydrochloride is approximately 40 L. Ropivacaine hydrochloride is extensively bound to alpha1-acid glycoprotein in plasma with an unbound, i.e. pharmacologically active, fraction of about 6%. An increase in total plasma concentration during continuous epidural infusion has been observed in postoperative patients and is related to the postoperative increase of alpha1-acid glycoprotein. Variations in unbound concentration have been much less than in total plasma concentration.

Ropivacaine readily crosses the placenta and equilibrium, in regard to unbound concentration, is rapidly reached. The degree of plasma protein binding in the foetus is less than in the mother, which results in lower total plasma concentrations in the foetus than in the mother. The ratios of umbilical vein to maternal vein total and free concentrations are 0.31 and 0.74, respectively.

Metabolism: There is no evidence of *in vivo* racemization of ropivacaine. Ropivacaine is extensively metabolized in the liver predominantly to 3-hydroxy-ropivacaine by an aromatic hydroxylation process mediated by cytochrome P4501A2 and N-dealkylation to S-PPX mediated by CYP3A4. Conjugated and unconjugated 3-hydroxyropivacaine represent the major urinary metabolites. Urinary excretion of 4-hydroxy ropivacaine, N-dealkylated pipecoloxylidide (S-

PPX) and both the 3-hydroxy and 4-hydroxy N-dealkylated metabolites account for less than 3% of the dose. An additional metabolite, 2-hydroxy-methyl-ropivacaine has been identified, but not quantified in urine. S-PPX and 3-hydroxy ropivacaine are the major metabolites excreted in the urine during epidural infusion. A total S-PPX concentration in the plasma was about half that of total ropivacaine however, mean unbound concentrations of S-PPX were about 7 – 9 times higher than that of unbound ropivacaine following continuous epidural infusion up to 72 hours. The threshold for CNS toxicity in rats due to unbound plasma concentrations of S-PPX is approximately 12 times higher than that of unbound ropivacaine. S-PPX, 3-hydroxy ropivacaine, and 4-hydroxy ropivacaine have a pharmacological activity in animal models less than that of ropivacaine.

Impaired renal function has little or no influence on unchanged ropivacaine pharmacokinetics. The renal clearance of S-PPX is significantly correlated with creatinine clearance. A lack of correlation between total exposure, expressed as AUC, with creatinine clearance indicates that the total clearance of S-PPX includes a non-renal elimination in addition to renal excretion. Some patients with impaired renal function may show an increased exposure to S-PPX resulting from a low non-renal clearance. The relevance to humans of this increased exposure to S-PPX is unknown at this time.

Excretion: After intravascular administration, 86% of the total dose of ropivacaine is excreted in the urine of which approximately 1% is the parent compound and 36% is 3-hydroxy-ropivacaine. Ropivacaine has a mean total plasma clearance in the order of 440 mL/min, an unbound plasma clearance of 8 L/min, a renal clearance of 1 mL/min, and a volume of distribution at steady state of 47 L. Ropivacaine has an intermediate hepatic extraction ratio of about 0.4. The terminal elimination half-life is 1.6 to 1.8 hours after intravenous administration, 4.1-6.5 hours after epidural administration, and 5.7-8.0 hours after brachial plexus block. The total and unbound clearance of epidural ropivacaine at term in pregnancy (223-256 mL/min and 2.8-3.3 L/min, respectively), are lower than that observed in non-pregnant patients.

STORAGE AND STABILITY

ROPIVACAINE HYDROCHLORIDE INJECTION should be stored at 15°C to 30°C. Do not freeze.

SPECIAL HANDLING INSTRUCTIONS

Do not freeze.

ROPIVACAINE HYDROCHLORIDE INJECTION is a preservative-free, sterile solution and is for single use only. Discard unused portions.

Drug Compatibilities

ROPIVACAINE HYDROCHLORIDE INJECTION for infusion in polypropylene infusion bags is chemically and physically compatible with the following drugs:

ROPIVACAINE HYDROCHLORIDE INJECTION 2 mg/mL	
Additive	Concentration
Fentanyl citrate	1.0 – 10.0 µg/mL
Sufentanil citrate	0.4 – 4.0 µg/mL
Morphine sulfate	20.0 – 100.0 µg/mL
Clonidine hydrochloride	5.0 – 50.0 µg/mL

The mixtures should be used immediately. As with all parenteral products intravenous admixtures should be visually inspected for clarity, particulate matter, precipitate, discoloration and leakage prior to administration, whenever solution and container permit. Solutions showing haziness, particulate matter, precipitate, discoloration or leakage should not be used. Discard unused portions.

Incompatibility

Alkalinization may lead to precipitation since ropivacaine is poorly soluble above pH 6.0.

DOSAGE FORMS, COMPOSITION AND PACKAGING

ROPIVACAINE HYDROCHLORIDE INJECTION is a sterile, preservative-free isotonic solution.

ROPIVACAINE HYDROCHLORIDE INJECTION contains 2 mg/mL of ropivacaine hydrochloride as well as the following non-medicinal ingredients; sodium chloride, water for injection and sodium hydroxide/hydrochloric acid to adjust the pH.

ROPIVACAINE HYDROCHLORIDE INJECTION 2 mg/mL for infusion is available in 100 mL and 200 mL plastic infusion bags fitted with two infusion ports closed with rubber stoppers and snap caps, packed into plastic overpouches as 1, 5 or 10 bags per overpouch.

PART II: SCIENTIFIC INFORMATION

PHARMACEUTICAL INFORMATION

Drug Substance

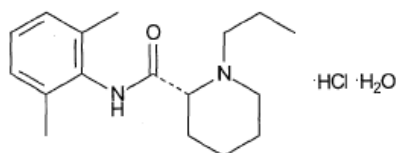
Proper name: ropivacaine hydrochloride monohydrate

Chemical name: (-)-(2S)-N-(2,6-dimethylphenyl)-1-propylpiperidine-2-carboxamide hydrochloride monohydrate

Molecular formula: $C_{17}H_{26}N_2O \cdot HCl \cdot H_2O$

Molecular mass: 328.89

Structural formula:



Physicochemical properties: Ropivacaine hydrochloride is a white to off-white crystalline powder, as the (S) enantiomer. Ropivacaine hydrochloride is soluble in water and ethanol, slightly soluble in methylene chloride and acetone and freely soluble in methanol. Ropivacaine hydrochloride has a solubility of 53.8 mg/mL in water at 25°C. The distribution ratio between n-octanol and phosphate buffer at pH 7.4 is 14:1 and the pKa is 8.07 in 0.1M KCl solution.

CLINICAL TRIALS

Epidural Administration in Labour and Delivery

Nine studies have been performed to investigate the use of epidural ropivacaine hydrochloride for pain relief during labour in pregnant females with full term singleton foetuses in the vertex presentation. Loading doses of approximately 25 mg were administered as fractionated doses. In four clinical trials in which continuous infusions were administered, the total infusion dose ranged from 3-30 mg/h with median values of 22-25 mg/h. Infusion times up to 13 hours have been studied. In the remaining studies, supplementary analgesia was provided by up to 8 top up doses of ropivacaine hydrochloride at median doses ranging from 14-18 mg/hr. In these studies, the median values for the onset of pain relief after the main dose ranged from 9-18 min. Median upper spread of sensory block ranged from T5 to T10.

Epidural Administration in Postoperative Pain Management

Sixteen clinical trials (n=1049) have been performed to investigate the lumbar-thoracic epidural use of ropivacaine hydrochloride 2 mg/mL in postoperative pain management following orthopaedic or upper or lower abdominal surgery. All patients received epidural anaesthesia with ropivacaine hydrochloride 5, 7.5 or 10 mg/mL or general anaesthesia intra-operatively prior to the initiation of postoperative epidural infusion.

In studies investigating infusion times up to 21 hours, the infusion of ropivacaine hydrochloride at doses ranging from 10-30 mg/h was associated with decreases in pain scores and narcotic requirement. The frequency and intensity of motor block tended to decrease during the 21-hour period. Motor block was dose rate-dependent. In two dose-controlled studies, infusion rates of 12-28 mg/h provided satisfactory analgesia (85-100% rated good or excellent) with relatively slight motor block. Sensory block was also dose rate-dependent and a decrease in spread was observed during the infusion period.

Two clinical studies have investigated the epidural infusion of ropivacaine hydrochloride 2 mg/mL (6-14 mL/h) for up to 72 hours of postoperative pain management following major abdominal surgery. Also included in this series, were study groups receiving epidural infusion of ropivacaine hydrochloride 2 mg/mL mixed with fentanyl 1-4 µg/mL at rates up to 28 mg/hour. Ropivacaine hydrochloride admixed with or without fentanyl, provided good/excellent pain relief for 87-100% of patients treated for up to 72 hours. In both studies, after 24 hours, 87-92% of the patients were without measurable motor block. No motor block was reported thereafter in 97-100% of patients. Although the combination of ropivacaine hydrochloride and fentanyl provided improved pain relief, there were narcotic side effects and hospitalization was prolonged.

Infiltration

Pre- and postoperative wound infiltrations with ropivacaine hydrochloride for postoperative pain relief have been studied in six clinical trials. An additional study examined local infiltration with ropivacaine for operation upon benign nevi. In total, 308 patients were studied. In the wound infiltration studies, ropivacaine at doses of 100-200 mg resulted in lower pain scores and/or a decreased analgesia requirement in the immediate post-operative period in 3 of 4 studies which contained inactive control groups. In the study of nevus excision, doses of 5-20 mg were considered to provide adequate analgesia in the 30 patients studied.

DETAILED PHARMACOLOGY

Animal

Pharmacodynamics

Ropivacaine has been demonstrated to produce topical, infiltration, epidural, and brachial plexus anaesthesia in a range of animal models with potency and pharmacodynamic characteristics similar to those of bupivacaine. Like bupivacaine, ropivacaine is also capable of inducing convulsions and hemodynamic changes when administered intravenously in large doses.

The convulsant doses of intravenously administered ropivacaine and bupivacaine were similar in mice, rats, and dogs. In sheep, ropivacaine was less proconvulsant than was bupivacaine when the drugs were administered by intravenous infusion. Both ropivacaine and bupivacaine exhibited considerably more proconvulsant activity than did lidocaine.

The cardiovascular effects of convulsant and superconvulsant doses of ropivacaine and bupivacaine have been assessed in unanaesthetized and anaesthetized animals. In unanaesthetized rats, convulsant doses of i.v. ropivacaine caused a 50% increase in QRS duration while bupivacaine resulted in a 100% increase. In unanaesthetized dogs, 2/6 animals which received i.v. ropivacaine at two times the convulsant dose experienced ventricular arrhythmias, while the incidence for bupivacaine was 5/6 animals.

Cardiovascular changes were similar for both drugs in pentobarbital anaesthetized pigs administered maximum i.v. doses of ropivacaine (4 mg/kg) and bupivacaine (3 mg/kg).

In a blinded study of sheep, the dose of ropivacaine required to produce cardiotoxicity (circulatory collapse) was consistently greater than that for bupivacaine (Table 7). Ropivacaine and other class-related local anaesthetics caused convulsions at lower doses in pregnant ewes compared to non-pregnant ewes, but pregnancy did not increase the sensitivity of ewes to other serious manifestations of systemic toxicity (e.g. hypotension, apnoea and circulatory collapse).

Table 7: Dose Required to Produce Convulsions (CNS) and Circulatory Collapse (CC) in Pregnant Sheep

	I.V. Dose (mg/kg)			
	CNS		CC	
	Non-pregnant	Pregnant	Non-pregnant	Pregnant
Ropivacaine	6.1	7.5	11.6	12.9
Bupivacaine	4.6	5.0	8.9	8.5

TOXICOLOGY

Single Dose Studies

Acute toxicity has been studied in mice and rats and besides death, the main signs observed were decreased motor activity, dyspnoea, piloerection, tremor, ataxia and clonic convulsions. These were all expected signs after administration of high doses of a local anaesthetic agent.

Table 8: Toxicity after Single Administration of Ropivacaine to Mice and Rats

Species/Strain	Body Weight (g)	Number Dose Groups	Number Animals/Group	Route of Administration	Estimated LD50 (mg/kg)
Mouse/NMRI	17-25	7	2-5	s.c.	>120
	15-21	5	2-5	s.c.	100
	16-20	4	5	i.v.	14-20
	15-19	4	5	i.v.	28
Rat/Sprague Dawley	270-340	4	5	s.c.	58-69
	180-220	4	2-5	s.c.	76
	180-210	4	2-5	i.v.	9.9
	150-180	4	2-5	i.v.	12

Long-Term Multi-dose Studies

In a two-week dose finding study in rats, the maximum tolerated s.c. dose of ropivacaine was determined to be below 30 mg/kg when 7 of 12 animals at this dose experienced convulsions which were fatal in 3 cases. In the main study, rats were treated subcutaneously with 3.3, 9.9 or 26 mg/kg ropivacaine for 1 month. A single male at the highest dose level showed convulsions and cyanosis on one occasion. The clinical chemistry investigation showed a slight, but dose dependent, decrease in serum potassium concentration. However, all values were within the laboratory reference limits. The pathological investigation did not disclose any changes that were caused by treatment with ropivacaine.

In dogs, the maximum tolerated s.c. dose of ropivacaine was reported to be below 16 mg/kg after convulsions were observed in one of six animals at this dose level. In a later study, also performed in dogs, repeated daily administration of ropivacaine for 1 month at 3.3, 6.6 and 13 mg/kg, caused vomiting and tremor in all drug treated groups with females at the highest dose level being most affected. These signs are comparable with known actions of other local anaesthetics on the CNS at this dosage range. No clinical, chemical or pathologic changes that could be attributed to treatment were seen.

Local Tolerance

Single perineural or intraneural (intrafascicular) injection of ropivacaine 7.9 mg/mL in rats produced no evidence of neurotoxicity in any of the treated nerves. Neither was there any

indication of a neurotoxic effect in dogs after single epidural or intrathecal injection of ropivacaine 7.9-10.6 mg/mL, or after continuous epidural infusion of ropivacaine 6 mg/mL for 5 days. The effects of ropivacaine on the spinal cord were also evaluated in rats after twice daily i.t. injections of 2.6, 5.3 or 11 mg/mL ropivacaine for two weeks. Assessment of the dose required to produce spinal anaesthesia did not change with time and, again, there was no evidence of neurotoxicity.

Continuous epidural infusion (up to 0.34 mg/kg) for 4 consecutive weeks of ropivacaine 4 mg/mL with or without fentanyl in Beagles produced no treatment-related neurological signs, other than paresis and paralysis which were considered to be consistent with the pharmacological actions of an epidurally administered local anaesthetic agent. Generally, these responses decreased during the latter half of the 4 week infusion period and disappeared on discontinuation of the infusion. The presence of fentanyl necessitated a step-up dosing procedure, but once the highest dose of ropivacaine had been achieved fentanyl did not change the response to the drug.

Reproduction Studies

Ropivacaine did not affect fertility or general reproductive performance over two generations in rats at dose levels up to 23 mg/kg when administered s.c. to males for 9 weeks up until mating, and in females, for two weeks prior to mating and up to 42 days post coitus. An increased pup loss was observed during the first few days post parturition in the 23 mg/kg dose group, but this was considered secondary to impaired maternal care of the newborn. Pregnant rats given up to 26 mg/kg ropivacaine subcutaneously on days 6-15 of pregnancy showed no signs of adverse effects on organogenesis and early foetal development.

In a dose finding study, pregnant rabbits administered 16 or 21 mg/kg ropivacaine subcutaneously on days 6-18 of pregnancy experienced a reduction in motor activity, reduction in body weight gain and convulsions. The convulsions resulted in the death of 2 of 4 animals. Foetal weight gain was decreased. Thus, the highest dose level was reduced in the main teratology study. In this study, ropivacaine at doses of up to 13 mg/kg subcutaneously did not affect organogenesis and early foetal development.

Mutagenicity

Weak mutagenic activity was found in the two mouse lymphoma tests performed. In the first test, weakly positive results were observed at the highest concentration of ropivacaine (890 mg/L) without metabolic activation and with metabolic activation in the 49-160 mg/L range. In the repeat test, in which a physiological medium was used, ropivacaine showed no mutagenic activity in the absence of activation despite achieving a two-fold increase in test compound concentration. With metabolic activation, a lower magnitude of mutagenic activity than in the first study was seen at concentrations of 70-210 mg/mL. No mutagenic activity was noted in any of the other *in vitro* systems or *in vivo* systems studied.

REFERENCES

1. Badner NH, Reid D, Sullivan P, Ganapathy S, Crosby ET, McKenna J, Liu A. Continuous epidural infusion of ropivacaine for the prevention of postoperative pain after major orthopaedic surgery: a dose-finding study. *Can J Anaesth* 1996;43(1):17-22.
2. Bailie D, Ellenbecker T. Severe chondrolysis after shoulder arthroscopy: A case series. *J Shoulder Elbow Surg* 2009;18(5):742-747.
3. Cederholm I, Anskar S, Bengtsson M. Sensory, motor and sympathetic block during epidural analgesia with 0.5% and 0.75% ropivacaine with and without epinephrine. *Reg Anesth* 1994;19(1):18-33.
4. Datta S, Camann W, Bader A, VanderBurgh L. Clinical effects and maternal and foetal plasma concentrations of epidural ropivacaine versus bupivacaine for Caesarean section. *Anesthesiology* 1995;82:1346-1352.
5. Eddleston JM, Holland JJ, Griffin RP, Corbett A, Horsman EL, Reynolds F. A double-blind comparison of 0.25% ropivacaine and 0.25% bupivacaine for extradural analgesia in labour. *Br J Anaesth* 1996;76:66-71.
6. Feldman HS. Toxicity of local anaesthetic agents. In: Rice SA, Fish KJ, eds. *Anaesthetic toxicity*. New York, USA, Raven Press 1994;7:107-133.
7. Feldman HS, Arthur GR, Pitkanen M, Hurley R, Doucette AM, Covino BG. Treatment of acute systemic toxicity after the rapid intravenous injection of ropivacaine and bupivacaine in the conscious dog. *Anesth Analg* 1991;73(4):373-384.
8. Feldman HS, Covino BG. Comparative motor-blocking effects of bupivacaine and ropivacaine a new amino amide local anaesthetic in rat and dog. *Anesth Analg* 1988;67:1047-1052.
9. Finucane BT, Sandler AN, McKenna J, Reid D, Milner A-L, Friedlander M, Muzyka D, O'Callaghan-Enright S, Chan V. A double-blind comparison of ropivacaine 0.5%, 0.75%, 1.0% and bupivacaine 0.5%, injected epidurally, in patients undergoing abdominal hysterectomy. *Can J Anaesth* 1996;43(5):442-449.
10. Hickey R, Candido KD, Ramamurthy S, Winnie AP, Blanchard J, Raza SM, Hoffman J, Durrani Z, Masters RW. Brachial plexus block with a new local anaesthetic: 0.5 percent ropivacaine. *Can J Anaesth* 1990;37:732-738. Comment in: *Can J Anaesth* 1990;37:722-725.
11. Hickey R, Blanchard J, Hoffman J, Sjövall J, Ramamurthy S. Plasma concentrations of ropivacaine given with or without epinephrine for brachial plexus block. *Can J Anaesth* 1990;37(8):878-882.

12. Johansson B, Glise H, Hallerback B, Dalman P, Kristoffersson A. Preoperative local infiltration with ropivacaine for postoperative pain relief after cholecystectomy. *Anesth Analg* 1994;78(2):210-214.
13. Katz JA, Knarr D, Bridenbaugh PO. A double-blind comparison of 0.5% bupivacaine and 0.75% ropivacaine administered epidurally in humans. *Reg Anesth* 1990;15:250-252.
14. Lee A, Fagan D, Lamont M, Tucker GT, Halldin M, Scott DB. Disposition kinetics of ropivacaine in humans. *Anesth Analg* 1989;69:736-738.
15. McClure JH. Ropivacaine. *Br J Anaesth* 1996;76:300-307.
16. McCrae AF, Jozwiak H, McClure JH. Comparison of ropivacaine and bupivacaine in extradural analgesia for the relief of pain in labour. *Br J Anaesth* 1995;74:261-265.
17. McNickle A, L'Heureux D, Provencher M, Romeo A, Cole B. Postsurgical Glenohumeral Arthritis in Young Adults. *Am J Sports Med* 2009; 37(9):1784-1791.
18. Morrison LMM, Emanuelsson BM, McClure JH, Pollock AJ, McKeown DW, Brockway M, Jozwiak H, Wildsmith JAW. Efficacy and kinetics of extradural ropivacaine: Comparison with bupivacaine. *Br J Anaesth* 1994;72(2):164-169.
19. Pitkanen M, Feldman HS, Arthur GR, Covino BG. Chronotropic and inotropic effects of ropivacaine, bupivacaine and lidocaine in the spontaneously beating and electrically paced isolated, perfused rabbit heart. *Reg Anesth* 1992;17(4):183-192.
20. Santos AC, Arthur GR, Pedersen H, Morishima HO, Finster M, Covino BG. Systemic toxicity of ropivacaine during ovine pregnancy. *Anesthesiology* 1991;75(1):137-141.
21. Santos AC, Pedersen H, Sallusto JA, Johnson HV, Morishima HO, Finster M, Arthur GR, Covino BG. Pharmacokinetics of ropivacaine in nonpregnant and pregnant ewes. *Anesth Analg* 1990;70(3):262-266.
22. Schug SA, Scott DA, Payne J, Mooney PH, Häggglöf B. Postoperative analgesia by continuous extradural infusion of ropivacaine after upper abdominal surgery. *Br J Anaesth* 1996;76:487-491.
23. Scott DA, Chamley DM, Mooney PH, Deam RK, Mark AH, Häggglöf B. Epidural ropivacaine infusion for postoperative analgesia after major lower abdominal surgery - a dose finding study. *Anesth Analg* 1995;81:982-986.
24. Scott DB, Lee A, Fagan D, Bowler GMR, Bloomfield P, Lundh R. Acute toxicity of ropivacaine compared with that of bupivacaine. *Anesth Analg* 1989;69:563-569.

25. Solomon D, Navaie M, Stedje-Larsen E, Smith J, Provencher M. Glenohumeral Chondrolysis After Arthroscopy: A Systematic Review of Potential Contributors and Causal Pathways. *J Arthr Rel Surg* 2009; 25(11):1329-1342.
26. Stienstra R, Jonker TA, Boudrez P, Kuijpers JC, VanKlees JW, Lundberg U. Ropivacaine 0.25% versus bupivacaine 0.25% for continuous epidural analgesia in labor: A double-blind comparison. *Anesth Analg* 1995;80:285-289.
27. Turner G, Blake D, Buckland M, Chamley D, Dawson P, Goodchild C, Mezzatesta J, Scott D, Sultana A, Walker S, Hendrata M, Mooney P, Armstrong M. Continuous extradural infusion of ropivacaine for prevention of postoperative pain after major orthopaedic surgery. *Br J Anaesth* 1996;76:606-610.
28. Wolff AP, Hasselström L, Kerkkamp HE, Gielen MJ. Extradural ropivacaine and bupivacaine in hip surgery. *Br J Anaesth* 1995;74(4):458-460.
29. Wood MB, Rubin AP. A comparison of epidural 1% ropivacaine and 0.75% bupivacaine for lower abdominal gynecologic surgery. *Anesth Analg* 1993;76(6):1274-1278.
30. Zaric D, Axelsson K, Nydahl PA, Philipsson L, Larsson P, Jansson JR. Sensory and motor blockade during epidural analgesia with 1.0%, 0.75% and 0.5% ropivacaine-a double-blind study. *Anesth Analg* 1991;72:509-515.
31. Zaric D, Nydahl P-A, Philipson L, Samuelsson L, Heierson A, Axelsson K. The effect of continuous lumbar epidural infusion of ropivacaine (0.1%, 0.2% and 0.3%) and 0.25% bupivacaine on sensory and motor block in volunteers. *Reg Anesth* 1996;21(1):14-25.
32. Product Monograph for Naropin[®] (ropivacaine hydrochloride) 2 mg/mL Injection for Epidural Infusion, AstraZeneca Canada Inc., Submission Control No. 153035, Date of Revision January 14, 2013.

PART III: CONSUMER INFORMATION

Pr ROPIVACAINE HYDROCHLORIDE INJECTION
Ropivacaine Hydrochloride Injection
2 mg/mL

This leaflet is part III of a three-part "Product Monograph" published when ROPIVACAINE HYDROCHLORIDE INJECTION was approved for sale in Canada and is designed specifically for Consumers. This leaflet is a summary and will not tell you everything about ROPIVACAINE HYDROCHLORIDE INJECTION. Contact your doctor or pharmacist if you have any questions about the drug.

ABOUT THIS MEDICATION

What the medication is used for:

ROPIVACAINE HYDROCHLORIDE INJECTION is for pain relief, and can be used:

- To provide pain relief in labour and after surgery or acute injury.

What it does:

ROPIVACAINE HYDROCHLORIDE INJECTION acts by temporarily preventing the nerves in the injected area from transmitting sensations of pain, heat or cold. However, you may still experience sensations such as pressure and touch. In many cases this means that the nerves to the muscles in the area will also be blocked, causing temporary weakness or paralysis.

When it should not be used:

ROPIVACAINE HYDROCHLORIDE INJECTION should not be used in patients who:

- are allergic to ropivacaine, any other “-caine” type anaesthetics, or any of the non-medicinal ingredients in the product (see **What the non-medicinal ingredients are** below).

Because of the potential for irreversible joint damage, pain following joint surgery should not be managed by infusing ROPIVACAINE HYDROCHLORIDE INJECTION into the joint (i.e. by use of a post-operative ‘pain pump’).

What the medicinal ingredient is:

The medicinal ingredient is ropivacaine hydrochloride.

What the important nonmedicinal ingredients are:

ROPIVACAINE HYDROCHLORIDE INJECTION also contains sodium chloride, hydrochloric acid and/or sodium hydroxide and water for injection.

What dosage forms it comes in:

ROPIVACAINE HYDROCHLORIDE INJECTION 2 mg/mL for infusion is available in 100 mL and 200 mL infusion bags.

WARNINGS AND PRECAUTIONS

You should talk to your doctor prior to surgery:

- about all health problems you have now or have had in the past;
- about other medications you take, including ones you can buy without a prescription;
- if you are taking other medicines such as drugs used to treat irregular heart activity (anti-arrhythmics);
- if you have ever had a bad, unusual allergic reaction to ropivacaine or any other medicines ending with “-caine”;
- if you have a heart, liver or kidney disease, since the dose of ROPIVACAINE HYDROCHLORIDE INJECTION may have to be adjusted;
- if you are pregnant, plan to become pregnant or are breastfeeding;
- if you are planning to drive or operate any tools or machinery on the day of surgery, because ROPIVACAINE HYDROCHLORIDE INJECTION may temporarily interfere with your reactions and muscular coordination;
- if you have been diagnosed with porphyria, a rare hereditary disorder.

INTERACTIONS WITH THIS MEDICATION

Many drugs interact with ROPIVACAINE HYDROCHLORIDE INJECTION. Tell your doctor about all prescription, over-the-counter and natural health products that you are using (see **WARNINGS AND PRECAUTIONS** above).

Usage of some medicines at the same time as ROPIVACAINE HYDROCHLORIDE INJECTION may increase the risk of serious side effects.

PROPER USE OF THIS MEDICATION

Usual dose:

ROPIVACAINE HYDROCHLORIDE INJECTION should be administered by a doctor, or occasionally by an anaesthesia professional under the supervision of a doctor. The dose to be given is decided by the doctor, based on the clinical need and your physical condition.

Overdose:

Serious side effects from getting too much ROPIVACAINE HYDROCHLORIDE INJECTION need special treatment and the doctor treating you is trained to deal with these situations. The first signs of being given too much ROPIVACAINE HYDROCHLORIDE INJECTION are usually as follows:

- felling dizzy or light-headed,
- numbness of the lips and around the mouth,
- numbness of the tongue,
- hearing problems,
- tingling in the ears,
- problems with your sight (vision).

More serious side effects from being given too much ROPIVACAINE HYDROCHLORIDE INJECTION include problems with your speech, twitching of your muscles, tremors,

trembling, fits (seizures), and loss of consciousness.

To reduce the risk of serious side effects, your doctor will stop giving you ROPIVACAINE HYDROCHLORIDE INJECTION as soon as these signs appear. This means that if any of these happen to you, or you think you have received too much ROPIVACAINE HYDROCHLORIDE INJECTION, **seek immediate emergency assistance.**

In case of drug overdose, contact a health care practitioner, hospital emergency department or regional Poison Control Centre immediately, even if there are no symptoms.

SIDE EFFECTS AND WHAT TO DO ABOUT THEM

Like any medication, ROPIVACAINE HYDROCHLORIDE INJECTION may cause side effects in some people.

Medicines affect different people in different ways. Just because side effects have occurred in some patients, does not mean that you will get them.

Tell your doctor as soon as possible if you do not feel well during treatment with ROPIVACAINE HYDROCHLORIDE INJECTION.

SERIOUS SIDE EFFECTS, HOW OFTEN THEY HAPPEN AND WHAT TO DO ABOUT THEM

Sudden life-threatening allergic reactions (such as anaphylaxis) are rare, affecting less than 1 in 1,000 people. Possible symptoms include sudden onset of rash, itching or lumpy rash (hives); swelling of the face, lips, tongue or other parts of the body; and shortness of breath, wheezing or difficulty breathing. **If you think that ROPIVACAINE HYDROCHLORIDE INJECTION is causing an allergic reaction, seek immediate emergency assistance.**

There are other possible side effects that have been reported for ROPIVACAINE HYDROCHLORIDE INJECTION. Tell your doctor or anaesthesia professional or seek immediate emergency assistance if you experience any of the following side effects:

SERIOUS SIDE EFFECTS, HOW OFTEN THEY HAPPEN AND WHAT TO DO ABOUT THEM			
Symptom / effect	Talk with your doctor		Seek immediate emergency assistance
	Only if severe	In all cases	
Very Common			
Low blood pressure (hypotension). This might make you feel dizzy or light-headed.		X	
Feeling sick (nausea)	X		
Common			
Pins and needles		X	
Feeling dizzy		X	
Headache	X		
Slow or fast heartbeat (bradycardia, tachycardia)			X
High blood pressure (hypertension)		X	
Being sick (vomiting)	X		
Difficulty in passing urine		X	
High temperature (fever) or stiffness (rigor)		X	
Back pain	X		
Uncommon			
Anxiety	X		
Decreased sensitivity or feeling in the skin		X	
Fainting		X	
Difficulty in breathing			X
Low body temperature (hypothermia)		X	
Some symptoms can happen if the injection was given into a blood vessel by mistake, or if you have been given too much ROPIVACAINE HYDROCHLORIDE INJECTION (see also "OVERDOSAGE" section above). These include fits (seizures), feeling dizzy or light-headed, numbness of the lips and around the mouth, numbness of the tongue, hearing problems, problems with your sight (vision), problems with your speech, stiff muscles and trembling.			X
Rare			
Heart attack (cardiac arrest)			X
Uneven heart beat (arrhythmias)			X

Other possible side effects include:

- Numbness, due to nerve irritation caused by the needle or the injection. This does not usually last for long.

Possible side effects seen with other local anaesthetics which might also be caused by ROPIVACAINE HYDROCHLORIDE INJECTION include:

- Damaged nerves, rarely (affecting less than 1 in 1,000)

people), this may cause permanent problems.

- If too much ROPIVACAINE HYDROCHLORIDE INJECTION is given into the spinal fluid, the whole body may become numbed (anaesthetised).

This is not a complete list of side effects. For any unexpected effects while taking ROPIVACAINE HYDROCHLORIDE INJECTION, contact your doctor or pharmacist.

HOW TO STORE IT

ROPIVACAINE HYDROCHLORIDE INJECTION should be stored at 15°C to 30°C. Do not freeze.

REPORTING SUSPECTED SIDE EFFECTS

You can report any suspected adverse reactions associated with the use of health products to the Canada Vigilance Program by one of the following 3 ways:

- Report online at www.healthcanada.gc.ca/medeffect
- Call toll-free at 1-866-234-2345
- Complete a Canada Vigilance Reporting Form and:
 - Fax toll-free to 1-866-678-6789, or
 - Mail to: Canada Vigilance Program
Health Canada
Postal Locator 0701E
Ottawa, Ontario
K1A 0K9

Postage paid labels, Canada Vigilance Reporting Form and the adverse reaction reporting guidelines are available on the MedEffect[®] Canada Web site at www.healthcanada.gc.ca/medeffect.

NOTE: Should you require information related to the management of side effects, contact your health professional. The Canada Vigilance Program does not provide medical advice.

MORE INFORMATION

This document plus the full product monograph, prepared for health professionals can be obtained by contacting the sponsor, Teva Canada Limited at:
1-800-268-4127 ext. 5005 (English);
1-877-777-9117 (French)
or druginfo@tevacanada.com

This leaflet was prepared by:
Teva Canada Limited
30 Novopharm Court
Toronto, Ontario
Canada, M1B 2K9

Last revised: June 21, 2013