

PRODUCT MONOGRAPH

**PrEPIRUBICIN FOR INJECTION**

2 mg/mL

(2 mg Epirubicin Hydrochloride/ mL)

Sterile

Antineoplastic Agent

Teva Canada Limited  
30 Novopharm Court  
Toronto, Ontario  
M1B 2K9

Date of Revision:  
August 20, 2014

**Submission Control No.:** 176954

## TABLE OF CONTENTS

<b>PART I: HEALTH PROFESSIONAL INFORMATION.....</b>	<b>3</b>
SUMMARY PRODUCT INFORMATION .....	3
INDICATIONS AND CLINICAL USE.....	3
CONTRAINDICATIONS .....	4
WARNINGS AND PRECAUTIONS.....	4
ADVERSE REACTIONS.....	10
DRUG INTERACTIONS .....	14
DOSAGE AND ADMINISTRATION .....	14
OVERDOSAGE .....	17
ACTION AND CLINICAL PHARMACOLOGY .....	17
STORAGE AND STABILITY.....	19
SPECIAL HANDLING INSTRUCTIONS .....	19
DOSAGE FORMS, COMPOSITION AND PACKAGING .....	21
<b>PART II: SCIENTIFIC INFORMATION .....</b>	<b>23</b>
PHARMACEUTICAL INFORMATION.....	23
CLINICAL TRIALS.....	24
DETAILED PHARMACOLOGY .....	27
TOXICOLOGY .....	27
REFERENCES .....	29
<b>PART III: CONSUMER INFORMATION.....</b>	<b>35</b>

# **PrEPIRUBICIN FOR INJECTION**

2 mg/mL

(2 mg Epirubicin Hydrochloride/ mL)

## **PART I: HEALTH PROFESSIONAL INFORMATION**

### **CAUTION**

EPIRUBICIN FOR INJECTION IS A POTENT DRUG AND SHOULD BE USED ONLY BY PHYSICIANS EXPERIENCED WITH CANCER CHEMOTHERAPEUTIC DRUGS (SEE WARNINGS AND PRECAUTIONS). BLOOD COUNTS AND HEPATIC FUNCTION TESTS SHOULD BE PERFORMED REGULARLY. IRREVERSIBLE CARDIAC TOXICITY MAY OCCUR AS THE CUMULATIVE DOSE APPROACHES 1000 mg/m<sup>2</sup>. CARDIAC MONITORING IS ADVISED IN THOSE PATIENTS WHO HAVE RECEIVED MEDIASTINAL RADIOTHERAPY, OTHER ANTHRACYCLINE OR ANTHRACENE THERAPY, WITH PRE-EXISTING CARDIAC DISEASE, OR RECEIVED PRIOR EPIRUBICIN CUMULATIVE DOSES EXCEEDING 650 mg/m<sup>2</sup>.

SECONDARY ACUTE MYELOID LEUKEMIA (AML) WITH OR WITHOUT A PRELEUKEMIC PHASE (MYELODYSPLASTIC SYNDROME OR MDS) HAS BEEN REPORTED IN PATIENTS TREATED WITH EPIRUBICIN-CONTAINING REGIMENS. THE CUMULATIVE RISK OF DEVELOPING TREATMENT-RELATED AML/MDS IN 7110 PATIENTS WITH EARLY BREAST CANCER WHO RECEIVED ADJUVANT TREATMENT WITH EPIRUBICIN-CONTAINING REGIMENS WAS ESTIMATED AS 0.27% AT 3 YEARS, 0.46% AT 5 YEARS, AND 0.55% AT 8 YEARS.

### **SUMMARY PRODUCT INFORMATION**

<b>Route of Administration</b>	<b>Dosage Form/ Strength</b>	<b>Clinically Relevant Nonmedicinal Ingredients</b>
Intravenous	Sterile solution for injection/ 2 mg/mL	Not applicable <i>For a complete listing see Dosage Forms, Composition and Packaging section</i>

### **INDICATIONS AND CLINICAL USE**

Epirubicin hydrochloride has been used successfully as a single agent and in combination with other chemotherapeutic agents to produce regression in a variety of tumour types such as lymphoma, lung, cancer of the breast, ovary and stomach.

EPIRUBICIN FOR INJECTION (epirubicin hydrochloride) is recommended for the treatment of metastatic breast cancer.

EPIRUBICIN FOR INJECTION may also be used as a component in the adjuvant treatment of early stage breast cancer for pre- and peri- menopausal women.

EPIRUBICIN FOR INJECTION is also recommended in small cell lung cancer (both limited and extensive disease) advanced non-small cell lung cancer, non-Hodgkin's lymphoma, Hodgkin's disease, Stage III and IV (FIGO) ovarian carcinoma and metastatic and locally unresectable gastric carcinoma.

## CONTRAINDICATIONS

- Hypersensitivity to epirubicin or any other component of the product, or other anthracyclines or anthracenediones such as doxorubicin hydrochloride, daunorubicin hydrochloride, mitoxantrone or mitomycin C.
- Marked persistent myelosuppression induced by prior treatment with other antitumour agents or by radiotherapy
- Severe hepatic impairment
- Severe myocardial insufficiency
- Recent myocardial infarction
- Severe arrhythmias
- History of severe cardiac disease
- Previous treatments with maximum cumulative doses of epirubicin and/or other anthracyclines and anthracenediones (see WARNINGS AND PRECAUTIONS).

## WARNINGS AND PRECAUTIONS

### Serious Warnings and Precautions

- EPIRUBICIN HYDROCHLORIDE INJECTION IS A POTENT DRUG AND SHOULD BE USED ONLY BY PHYSICIANS EXPERIENCED WITH CANCER CHEMOTHERAPEUTIC DRUGS (SEE WARNINGS AND PRECAUTIONS). BLOOD COUNTS AND HEPATIC FUNCTION TESTS SHOULD BE PERFORMED REGULARLY. IRREVERSIBLE CARDIAC TOXICITY MAY OCCUR AS THE CUMULATIVE DOSE APPROACHES 1000 mg/m<sup>2</sup>. CARDIAC MONITORING IS ADVISED IN THOSE PATIENTS WHO HAVE RECEIVED MEDIASTINAL RADIOTHERAPY, OTHER ANTHRACYCLINE OR ANTHRACENE THERAPY, WITH PRE-EXISTING CARDIAC DISEASE, OR RECEIVED PRIOR EPIRUBICIN CUMULATIVE DOSES EXCEEDING 650 mg/m<sup>2</sup>
- SECONDARY ACUTE MYELOID LEUKEMIA (AML) WITH OR WITHOUT A

PRELEUKEMIC PHASE (MYELOYDYSPLASTIC SYNDROME OR MDS) HAS BEEN REPORTED IN PATIENTS TREATED WITH EPIRUBICIN-CONTAINING REGIMENS. THE CUMULATIVE RISK OF DEVELOPING TREATMENT-RELATED AML/MDS IN 7110 PATIENTS WITH EARLY BREAST CANCER WHO RECEIVED ADJUVANT TREATMENT WITH EPIRUBICIN-CONTAINING REGIMENS WAS ESTIMATED AS 0.27% AT 3 YEARS, 0.46% AT 5 YEARS, AND 0.55% AT 8 YEARS

- SEVERE LOCAL TISSUE NECROSIS ASSOCIATED WITH EXTRAVASATION DURING ADMINISTRATION
- MYOCARDIA TOXICITY, MANIFESTED IN ITS MOST SEVERE FORM BY POTENTIALLY FATAL CONGESTIVE HEART FAILURE (CHF)
- SEVERE MYELOSUPPRESSION

### **Cardiac Function:**

Cardiotoxicity is a risk of anthracycline treatment that may be manifested by early (i.e., acute) or late (i.e., delayed) events.

**Early (i.e., Acute) Events.** Early cardiotoxicity of epirubicin consists mainly of sinus tachycardia and/or ECG abnormalities such as non-specific ST-T wave changes. Tachyarrhythmias, including premature ventricular contractions, ventricular tachycardia, and bradycardia, as well as atrioventricular and bundle-branch block have also been reported. These effects do not usually predict subsequent development of delayed cardiotoxicity, are rarely of clinical importance, and are generally not a consideration for the discontinuation of epirubicin treatment.

**Late (i.e., Delayed) Events.** Delayed cardiotoxicity usually develops late in the course of therapy with epirubicin or within 2 to 3 months after treatment termination, but later events several months to years after completion of treatment have also been reported. Delayed cardiomyopathy is manifested by reduced left ventricular ejection fraction (LVEF) and/or signs and symptoms of congestive heart failure (CHF) such as dyspnea, pulmonary edema, dependent edema, cardiomegaly and hepatomegaly, oliguria, ascites, pleural effusion, and gallop rhythm. Life-threatening CHF is the most severe form of anthracycline-induced cardiomyopathy and represents the cumulative dose-limiting toxicity of the drug.

Cardiac function should be assessed before patients undergo treatment with epirubicin and must be monitored throughout therapy to minimize the risk of incurring severe cardiac impairment. The risk may be decreased through regular monitoring of LVEF during the course of treatment with prompt discontinuation of epirubicin at the first sign of impaired function. The appropriate quantitative method for repeated assessment of cardiac function (evaluation of LVEF) includes multi-gated radionuclide angiography (MUGA) or echocardiography (ECHO). A baseline cardiac evaluation with an ECG and either a MUGA scan or an ECHO is recommended, especially in patients with risk factors for increased cardiotoxicity. Repeated MUGA or ECHO determinations of LVEF

should be performed, particularly with higher, cumulative anthracycline doses. The technique used for assessment should be consistent throughout follow-up.

Congestive heart failure and/or cardiomyopathy may be encountered several weeks after discontinuation of EPIRUBICIN FOR INJECTION therapy.

Given the risk of cardiomyopathy, a cumulative dose of 900 to 1000 mg/m<sup>2</sup> epirubicin should generally not be exceeded. Risk factors for cardiac toxicity include active or dormant cardiovascular disease, prior or concomitant radiotherapy to the mediastinal/pericardial area, previous therapy with other anthracyclines or anthracenediones, and concomitant use of other drugs with the ability to suppress cardiac contractility or cardiotoxic drugs. Anthracyclines including epirubicin should not be administered in combination with other cardiotoxic agents unless the patient's cardiac function is closely monitored.

Patients receiving anthracyclines after stopping treatment with other cardiotoxic agents, especially those with long half-lives such as trastuzumab, may also be at an increased risk of developing cardiotoxicity. The reported half-life of trastuzumab is approximately 28 - 38 days and may persist in the circulation for up to 27 weeks. Therefore, physicians should avoid anthracycline-based therapy for up to 27 weeks after stopping trastuzumab when possible. If anthracyclines are used before this time, careful monitoring of cardiac function is recommended.

Cardiac function monitoring must be particularly strict in patients receiving high cumulative doses and in those with risk factors. While cardiotoxicity with epirubicin may occur at lower cumulative doses whether or not cardiac risk factors are present, it may be more likely to occur at lower cumulative doses in patients with these risk factors.

Available evidence appears to indicate that cardiotoxicity is cumulative across members of the anthracycline and anthracene class of drugs. Patients who have previously received other anthracyclines and anthracenes are at particular risk for possible cardiotoxic effects of EPIRUBICIN FOR INJECTION at a lower total dose than previously untreated patients and, therefore, should be carefully monitored. The total dose of EPIRUBICIN FOR INJECTION administered to a patient should take into account: prior or concomitant therapy with related compounds such as doxorubicin and daunorubicin or anthracene derivatives; and/or radiotherapy to the mediastinal area.

Anthracycline-induced cardiac failure is often resistant to currently available therapeutic and physical measures used for the treatment of cardiac failure. Early clinical diagnosis of drug-induced heart failure is essential. Treatment measures include digitalis, diuretics, peripheral vasodilators, low salt diet, and bed rest. Severe cardiac toxicity may occur precipitously without antecedent EKG changes. An EKG, echocardiogram or radionuclide angiography (MUGA) performed at baseline and prior to each dose or course after a cumulative dose of 650 mg/m<sup>2</sup> is suggested. Transient EKG changes consisting of T-wave flattening, S-T depression and arrhythmias occurring up to two weeks after a dose or course of EPIRUBICIN FOR INJECTION are presently not considered indications for suspension of EPIRUBICIN FOR INJECTION therapy.

Epirubicin hydrochloride cardiomyopathy has been reported to be associated with a reduction of the ejection fraction as determined by radionuclide scan or echocardiography. None of these tests have yet consistently identified those individual patients that are approaching their maximally tolerated cumulative dose of epirubicin hydrochloride. If test results indicate a change in cardiac status associated with EPIRUBICIN FOR INJECTION therapy, the benefit of continued therapy must be carefully weighed against the risk of producing irreversible cardiac damage.

### **Haematologic Toxicity:**

Careful haematologic monitoring is required since bone marrow depression, primarily of leukocytes may occur. Haematologic profiles should be assessed before and during each cycle of therapy with epirubicin, including differential white blood cell counts (WBC).

With the recommended dosage schedule (see DOSAGE AND ADMINISTRATION) leukopenia is transient, reaching its nadir 10-14 days after treatment, with recovery usually occurring by the 21st day. White blood cell counts as low as  $1000/\text{mm}^3$  are to be expected during treatment with EPIRUBICIN FOR INJECTION.

Red blood cell and platelet levels should be monitored since they may also be depressed. Haematologic toxicity may require dose reduction or delay or suspension of EPIRUBICIN FOR INJECTION therapy. Persistent myelosuppression may result in infection or haemorrhage.

EPIRUBICIN FOR INJECTION may potentiate the toxicity of other anticancer therapies as well as radiation induced toxicity to the myocardium, mucosa and skin. Patients should recover from acute toxicities (such as stomatitis, neutropenia, thrombocytopenia and generalized infections) of prior cytotoxic treatment before beginning treatment with EPIRUBICIN FOR INJECTION.

While treatment with high doses of epirubicin (e.g.,  $\geq 90 \text{ mg}/\text{m}^2$  every 3 to 4 weeks) causes adverse events generally similar to those seen at standard doses ( $< 90 \text{ mg}/\text{m}^2$  every 3 to 4 weeks), the severity of the neutropenia and stomatitis/mucositis may be increased. Treatment with high doses of the drug does require special attention for possible clinical complications due to profound myelosuppression.

### **Immunosuppressant Effects/Increased Susceptibility to Infections:**

Administration of live or live-attenuated vaccines in patients immunocompromised by chemotherapeutic agents including epirubicin, may result in serious or fatal infections. Vaccination with a live vaccine should be avoided in patients receiving epirubicin. Killed or inactivated vaccines may be administered; however, the response to such vaccines may be diminished.

### **Liver Function:**

Epirubicin is extensively metabolized by the liver and its major route of elimination is the hepatobiliary system. Serum total bilirubin and AST levels should be evaluated before and during treatment with epirubicin. Patients with elevated bilirubin or AST may experience slower clearance

of drug with an increase in overall toxicity. Lower doses are recommended in these patients (see DOSAGE AND ADMINISTRATION). Patients with severe hepatic impairment should not receive epirubicin (see CONTRAINDICATIONS).

### **Renal Function:**

Serum creatinine should be assessed before and during therapy. Dosage adjustment is necessary in patients with serum creatinine > 5 mg/dL (see DOSAGE AND ADMINISTRATION).

### **Secondary Leukemia:**

The occurrence of secondary acute myeloid leukemia (AML) with or without a preleukemic phase (myelodysplastic syndrome or MDS) has been reported in patients treated with epirubicin-containing regimens. Such cases could have a short (1-3 years) latency period (see below and in Table 2 under ADVERSE REACTIONS).

The quantified risk of developing acute myeloid leukemia (AML), including myelodysplastic syndrome (MDS), following epirubicin or epirubicin-containing therapy, has been estimated by analyzing data collected prospectively from 19 randomized trials for the adjuvant treatment of early breast cancer, that were either company-sponsored or conducted by independent institutions (including the National Institute of Canada's MA.5 trial, see CLINICAL TRIALS, Early Stage Breast Cancer Studies). As of 31 December 2001, 28 (0.39%) of the 7,110 evaluable patients treated with epirubicin, had presented with either AML or MDS. An additional 4 patients were diagnosed with other types of leukemia: 3 with acute lymphoblastic leukemia (ALL), and 1 with chronic lymphocytic leukemia (CLL). The time elapsed from the start of adjuvant treatment to the diagnosis of AML/MDS ranged from 8 to 126 months, with a median of 33 months. Of the 23 cases of AML/MDS for whom cytogenetic information was available, in 12 there was evidence of balanced chromosome translocations, and in 7 these translocations involved chromosome 11 or 21. Therapy-induced leukemia secondary to topoisomerase inhibitors generally has a short induction period (6 months to 5 years) and is known to be associated with translocations involving chromosome 11 or 21.

In this most recent analysis, the cumulative risk of developing AML/MDS in the 7,110 patients treated with epirubicin was 0.27% (95% confidence interval 0.14%, 0.40%) at 3 years, 0.46% (95% confidence interval 0.28%, 0.65%) at 5 years, and 0.55% (95% confidence interval, 0.33%, 0.78%) at 8 years. AML/MDS rates increased with epirubicin dose per cycle, and cumulative dose. For instance, in the MA.5 trial, in patients that received intensive doses of epirubicin (120 mg/m<sup>2</sup>), the incidence of AML/MDS was 1.1 % at 5 years with no additional cases observed during the second 5 years (years 6-10) of follow-up.

Since the completion of these analyses, in the period up to and including September 2003, further spontaneous, literature and study reports of AML/MDS have been received.

In addition, in 10 trials for the treatment of advanced breast cancer (3061 patients, follow-up until March 1999), two cases of AML occurred. However, due to the small number of cases and the



limited follow-up as a result of the natural history of advanced breast cancer in these patients, risk estimates could not be made for this patient population.

### **General:**

EPIRUBICIN FOR INJECTION must not be administered by intramuscular or subcutaneous injection.

Severe local tissue necrosis can occur if EPIRUBICIN FOR INJECTION is extravasated during intravenous administration. Extravasation may occur with or without an accompanying stinging or burning sensation even if blood returns well on aspiration of the infusion needle (see DOSAGE AND ADMINISTRATION). If signs or symptoms of extravasation occur the injection or infusion should be terminated immediately and restarted in another vein.

As with other cytotoxic agents, thrombophlebitis and thromboembolic phenomena, including pulmonary embolism (in some cases fatal) have been coincidentally reported with the use of epirubicin.

Epirubicin hydrochloride is mutagenic, clastogenic, and carcinogenic in animals and has been associated with an increased risk of secondary leukemia (AML) in clinical trials of adjuvant treatment of breast cancer (see ADVERSE REACTIONS). In addition, epirubicin could induce chromosomal damage in human spermatozoa. Men undergoing treatment with epirubicin should use effective contraceptive methods.

Epirubicin may cause amenorrhea or premature menopause in premenopausal women.

EPIRUBICIN FOR INJECTION imparts a red colouration to the urine for 1 or 2 days after administration. Patients should be advised to expect this during active therapy.

### **Usage in Pregnancy:**

There is no conclusive information about epirubicin adversely affecting human fertility, or causing teratogenesis; however, at high doses epirubicin hydrochloride is embryotoxic and teratogenic in rats and embryotoxic and abortifacient in rabbits. There are no studies in pregnant women. Therefore, women of childbearing potential should be advised to avoid becoming pregnant during treatment and should use effective contraceptive methods

Epirubicin should be used during pregnancy only if the potential benefit justifies the potential risk to the fetus. If EPIRUBICIN FOR INJECTION is to be used during pregnancy, or if the patient becomes pregnant during therapy, the patient should be informed of the potential hazard to the fetus. Mothers should be advised not to breast-feed while undergoing chemotherapy with EPIRUBICIN FOR INJECTION.

### **Monitoring and Laboratory Tests:**

Initial treatment with EPIRUBICIN FOR INJECTION requires close observation of the patient and extensive laboratory monitoring. Like other cytotoxic drugs, EPIRUBICIN FOR INJECTION may induce hyperuricemia secondary to rapid lysis of neoplastic cells. The physician should monitor the patient's serum chemistry and blood uric acid level and be prepared to institute appropriate measures that might be necessary to control this problem. Hydration, urine alkalinization, and prophylaxis with allopurinol to prevent hyperuricemia may minimize potential complications of tumour-lysis syndrome.

EPIRUBICIN FOR INJECTION is not an anti-microbial agent.

### **Information to be given to the patient:**

Patients should be counseled about the known adverse effects that they could experience during chemotherapy with EPIRUBICIN FOR INJECTION, including cardiotoxicity, myelosuppression and risk of infection, thrombocytopenia, anemia, nausea, vomiting, and stomatitis.

Physicians should also clearly lay out early on the risks and benefits of the various chemotherapeutic options available, thus enabling the patient to make an informed treatment choice. Patients should be aware that higher dose regimens may have a greater toxicity that includes secondary leukemia. Wherever possible, the physician should discuss the information presented in the “PART III: CONSUMER INFORMATION” section.

### **ADVERSE REACTIONS**

Dose limiting toxicities are myelosuppression and cardiotoxicity (see WARNINGS AND PRECAUTIONS). Other reactions reported are:

**Cutaneous** - Reversible partial or complete alopecia occurs in most patients. Alopecia and lack of beard growth in males are usually reversible. Recall of skin reaction associated with prior radiotherapy may occur with EPIRUBICIN FOR INJECTION administration. Local toxicity, rash/itch and skin changes may also occur.

**Gastrointestinal** - Acute nausea and vomiting occurs frequently in most patients. This may be alleviated by antiemetic therapy. Mucositis (stomatitis and esophagitis) has been reported to occur 5-10 days after administration. This may lead to ulceration and represents a site of origin for severe infections. Diarrhea has been reported. Most patients recover from this adverse event by the third week of therapy.

**Local** - Severe cellulitis, vesication, local pain and tissue necrosis can occur if EPIRUBICIN FOR INJECTION is extravasated during administration (see DOSAGE AND ADMINISTRATION). Erythematous streaking and/or transient urticaria along the vein proximal to the site of administration may occur. Venous sclerosis may result from injection into small veins or repeated injection into the same vein. Following the recommended administration procedures may minimize the risk of phlebitis/thrombophlebitis at the injection site (see SPECIAL HANDLING INSTRUCTIONS).

**Haematological** - A dose-dependent, reversible leukopenia and/or granulocytopenia (neutropenia) are the predominant manifestations of epirubicin bone marrow/haematologic toxicity and represents the acute dose-limiting toxicity of this drug. Leukopenia and neutropenia are usually more severe after administration of high-dose regimens; under these conditions appropriate bone marrow support (eg. peripheral blood progenitor cells and/or colony-stimulating factors) may be required. Thrombocytopenia, anemia, pancytopenia, neutropenia and febrile neutropenia may also occur. Clinical consequences of severe myelosuppression include fever, infection, sepsis/septicemia, septic shock, hemorrhage, tissue hypoxia, or death.

**Secondary Leukemia:** see WARNINGS AND PRECAUTIONS.

**Body as a Whole** - Phlebitis, thromboembolism, sepsis/septicemia, septic shock, fever and malaise/asthenia have been reported following administration of epirubicin hydrochloride.

Drug-related adverse events also occurred in the following systems:

**Endocrine** - amenorrhea and hot flashes

**Cardiovascular** - asymptomatic drops in left ventricular ejection fraction and congestive heart failure, ventricular tachycardia, bradycardia, atrioventricular (AV) block, bundle branch block

**Ocular** - conjunctivitis, keratitis

**Other** - infection, pneumonia, acute lymphocytic leukemia, acute myelogenous leukemia, hyperuricemia

**Adverse Reactions in Early Breast Cancer Adjuvant Treatment:**

*On-Study Events*

Integrated safety data are available from two studies (Studies MA.5 and GFEA-05 (FASG-05), see CLINICAL TRIALS, Early Stage Breast Cancer Studies) evaluating epirubicin-containing combination regimens in patients with early breast cancer. Of the 1260 patients treated in these studies, 620 patients received the higher-dose epirubicin regimen (FEC- 100/CEF- 120), 280 patients received the lower-dose epirubicin regimen (FEC-50), and 360 patients received CMF. Serotonin-specific anti-emetic therapy and colony-stimulating factors were not used in these trials. Clinically relevant acute adverse events are summarized in Table 1.

**Table 1. Clinically Relevant Acute Adverse Events in Patients with Early Breast Cancer**

Event	% of Patients					
	FEC-100/CEF-120 (N=620)		FEC-50 (N=280)		CMF (N=360)	
	Grades 1-4	Grades 3/4	Grades 1-4	Grades 3/4	Grades 1-4	Grades 3/4
<b>Haematologic</b>						
Leukopenia	80.3	58.6	49.6	1.5	98.1	60.3
Neutropenia	80.3	67.2	53.9	10.5	95.8	78.1

Event	% of Patients					
	FEC-100/CEF-120 (N=620)		FEC-50 (N=280)		CMF (N=360)	
	Grades 1-4	Grades 3/4	Grades 1-4	Grades 3/4	Grades 1-4	Grades 3/4
Anemia	72.2	5.8	12.9	0	70.9	0.9
Thrombocytopenia	48.8	5.4	4.6	0	51.4	3.6
<b>Endocrine</b>						
Amenorrhea	71.8	0	69.3	0	67.7	0
Hot Flashes	38.9	4.0	5.4	0	69.1	6.4
<b>Body as a Whole</b>						
Lethargy	45.8	1.9	1.1	0	72.7	0.3
Fever	5.2	0	1.4	0	4.5	0
<b>Gastrointestinal</b>						
Nausea/Vomiting	92.4	25.0	83.2	22.1	85.0	6.4
Mucositis	58.5	8.9	9.3	0	52.9	1.9
Diarrhea	24.8	0.8	7.1	0	50.7	2.8
Anorexia	2.9	0	1.8	0	5.8	0.3
<b>Infection</b>						
Infection	21.5	1.6	15.0	0	25.9	0.6
Febrile neutropenia	NA	6.1	0	0	NA	1.1
<b>Ocular</b>						
Conjunctivitis/keratitis	14.8	0	1.1	0	38.4	0
<b>Skin</b>						
Alopecia	95.5	56.6	69.6	19.3	84.4	6.7
Local Toxicity	19.5	0.3	2.5	0.4	8.1	0
Rash/itch	8.9	0.3	1.4	0	14.2	0
Skin changes	4.7	0	0.7	0	7.2	0

FEC & CEF = cyclophosphamide + epirubicin + fluorouracil

CMF = cyclophosphamide + methotrexate + fluorouracil

NA = not available

Grade 1 or 2 changes in transaminase levels were observed but were more frequently seen with CMF than with CEF.

### Delayed Events

Table 2 describes the incidence of delayed adverse events in patients participating in the MA.5 and GFEA-05 (FASG-05) trials.

**Table 2. Long-term Adverse Events in Patients with Early Breast Cancer (5-year follow-up data)\***

Event	% of Patients		
	FEC-100/CEF-120 (N=620)	FEC-50 (N=280)	CMF (N=360)
<b>Cardiac events</b>			
Asymptomatic drops in LVEF	1.8	1.4	0.8
CHF	1.5	0.4	0.3
<b>AML/MDS</b>			
AML	0.8	0	0.3
MDS	0	0	0

\*In study MA.5 cardiac function was not monitored after 5 years. In study GFEA-05 (FASG-05) monitoring of cardiac function was optional.

Within the first 5 year follow-up period, two cases of acute lymphoid leukemia (ALL) were also observed in patients receiving epirubicin. However, an association between anthracyclines such as epirubicin and ALL has not been clearly established.

Over the 10 year follow-up period for study GFEA-05 (FASG-05), the overall incidence of cardiac events in patients treated with FEC-100 remained similar to that reported in patients receiving FEC-50. There were, however, two new cases of decreased left ventricular ejection fraction reported in FEC-100 treated patients. Therefore, the incidence of decreased left ventricular ejection fraction was 1.1 % (3/280) in the FEC-50 group and 3% (8/266) in the FEC-100 group. No new cases of delayed CHF were reported. Thus the frequency of CHF remains at 0.4% (1/280) in the FEC-50 and at 1.1% (3/266) in the FEC-100 group. In a subset of patients from this study who were without disease at median follow up time of 102 months, a subsequent analysis of long term cardiac function identified 2 patients with CHF amongst the 85 FEC-100 patients evaluated (see reference 72). Cardiac function was not monitored after 5 years in MA.5 study.

No new cases of secondary leukemia were reported in the 10 year follow up for both MA.5 and GFEA-05 (FASG-05) trials.

### **Postmarketing Surveillance:**

The following adverse reactions have been derived from spontaneous case reports, literature cases and clinical studies. The criteria for including these adverse reactions is based on the seriousness. Because these reactions are reported voluntarily from a population of uncertain size, it is not always possible to reliably estimate their frequency or establish a causal relationship to drug exposure.

Cardiac disorders: Myocardial infarction

Infections and infestations: sepsis/septic shock, pneumonia

Metabolism and nutrition disorders: hyperuricemia

Vascular disorders: haemorrhage, embolism arterial

Respiratory, thoracic and mediastinal disorders: interstitial lung disease, pulmonary embolism

Gastrointestinal: pain or burning sensation, erythema, erosions, ulcerations, bleeding, dehydration, hyperpigmentation of the oral mucosa

Cutaneous: flushes, skin and nail hyperpigmentation, photosensitivity, hypersensitivity to irradiated skin (radiation-recall reaction)

Hypersensitivity Reactions: urticaria, anaphylaxis, fever, chills, shock

Vascular: phlebitis, thrombophlebitis

Urological: red colouration of urine for 1 to 2 days after administration

## DRUG INTERACTIONS

Epirubicin is mainly used in combination with other cytotoxic drugs. Additive toxicity may occur especially with regard to bone marrow/haematologic and gastro-intestinal effects (see WARNINGS AND PRECAUTIONS). The use of epirubicin in combination chemotherapy with other potentially cardiotoxic drugs, as well as the concomitant use of other cardioactive compounds (e.g., calcium channel blockers), requires monitoring of cardiac function throughout treatment.

Cimetidine increased the AUC of epirubicin by 50% when given for seven days, starting five days before chemotherapy. Cimetidine should be stopped prior to treatment with epirubicin.

## DOSAGE AND ADMINISTRATION

Refer to SPECIAL HANDLING INSTRUCTIONS.

### DOSAGE:

A variety of dose schedules have been used. The following recommendations are for use as a single agent or in combination with other chemotherapeutic agents.

Dosage is usually calculated on the basis of body surface area. The lower dose should be given to patients with inadequate marrow reserves due to prior therapy or neoplastic marrow infiltration. Standard starting doses and regimens have been used in the elderly.

**Hepatic Dysfunction.** As EPIRUBICIN FOR INJECTION is extensively metabolized by the liver and excreted primarily by the biliary system, its dosage must be reduced in patients with impaired liver function indicated by elevated bilirubin or serum AST values as follows: Serum bilirubin 21-51  $\mu\text{mol/L}$  or AST 2 to 4 times upper limit of normal - give  $\frac{1}{2}$  of recommended starting dose; Serum bilirubin  $> 51 \mu\text{mol/L}$  or AST  $> 4$  times upper limit of normal - give  $\frac{1}{4}$  of recommended starting dose. Patients with severe hepatic impairment should not receive epirubicin (see CONTRAINDICATIONS).

**Renal Dysfunction.** While no specific dose recommendation can be made based on the limited available data in patients with renal impairment, lower starting doses are necessary in patients with severe renal impairment (serum creatinine  $>5 \text{ mg/dl}$ ).

**Other Special Populations.** Lower starting doses or longer intervals between cycles may need to be considered for heavily pretreated patients or patients with neoplastic bone marrow infiltration (see WARNINGS AND PRECAUTIONS). Standard starting doses and regimens have been used in the elderly.

## CARCINOMA OF THE BREAST

### ***Early Breast Cancer-Adjuvant Treatment***

Breast cancer has been managed using epirubicin in combination with various chemotherapeutic agents. The recommended adjuvant treatment of early breast cancer should employ a cyclophosphamide, epirubicin, and 5-fluorouracil combination regimen (CEF 120) in a cycle to be repeated every 4 weeks for 6 cycles as follows:

- Cyclophosphamide 75 mg/m<sup>2</sup> p.o. on days 1 to 14,
- Epirubicin 60 mg/m<sup>2</sup> i.v. on days 1 and 8, and
- 5-fluorouracil 500 mg/m<sup>2</sup> i.v. days 1 and 8.

### ***Metastatic Breast Cancer***

**Single Agent:** The most commonly used dosage schedule of EPIRUBICIN FOR INJECTION in metastatic breast cancer, when employed as a single agent for adults, is 75-90 mg/m<sup>2</sup> administered at 21-day intervals. The recommended single dose may be divided over 2 successive days. An alternative weekly dosage schedule of 12.5 to 25 mg/m<sup>2</sup> has been used and has been reported to produce less clinical toxicity than higher doses given every three weeks.

**Combination Therapy:** In metastatic breast cancer, epirubicin can be used in combination with cyclophosphamide and 5-fluorouracil (FEC), at a dose of 50 mg/m<sup>2</sup>.

### **SMALL CELL LUNG CANCER**

**Single Agent:** EPIRUBICIN FOR INJECTION, as a single agent, can be used at 90-120 mg/m<sup>2</sup> administered every 3 weeks.

**Combination Therapy:** Epirubicin has been used in several different combinations with other antineoplastic agents at doses ranging from 50-90 mg/m<sup>2</sup>. The following combinations have proven effective: Epirubicin in combination with either cisplatin or ifosfamide; epirubicin with cyclophosphamide and vincristine (CEV); epirubicin with cyclophosphamide and etoposide (CEVP-16) and epirubicin with cisplatin and etoposide.

### **NON-SMALL CELL LUNG CANCER**

**Single Agent:** EPIRUBICIN FOR INJECTION, as a single agent, can be used at doses of 120-150 mg/m<sup>2</sup> administered day 1, every 3-4 weeks.

**Combination Therapy:** Epirubicin, in combination with etoposide, cisplatin, mitomycin, vindesine and vinblastine, can be used at doses of 90-120 mg/m<sup>2</sup> administered day 1, every 3-4 weeks.

### **NON-HODGKIN'S LYMPHOMA**

**Single Agent:** EPIRUBICIN FOR INJECTION, as a single agent, can be used at doses of 75-90 mg/m<sup>2</sup> at 21 day intervals.

**Combination Therapy:** Epirubicin at doses of 60-75 mg/m<sup>2</sup> can be used in combination with cyclophosphamide, vincristine and prednisone with or without bleomycin (replacing doxorubicin in the CHOP, CHOP-Bleo or BACOP regimens) for the treatment of newly diagnosed non-Hodgkin's lymphoma.

## **HODGKIN'S DISEASE**

**Combination Therapy:** Epirubicin, in combination with bleomycin, vinblastine and dacarbazine, can be used at 35 mg/m<sup>2</sup> every 2 weeks or 70 mg/m<sup>2</sup> every 3-4 weeks (replacing doxorubicin in the ABVD regimen).

## **OVARIAN CANCER**

**Single Agent:** In patients with prior therapy, epirubicin can be used as single agent at doses of 50-90 mg/m<sup>2</sup> at 3-4 week intervals.

**Combination Therapy:** In patients with prior therapy epirubicin can be used in combination at doses of 50-90 mg/m<sup>2</sup> at 3-4 week intervals. Epirubicin at doses of 50-90 mg/m<sup>2</sup> in combination with cisplatin and cyclophosphamide can be used for initial therapy of ovarian cancer repeated at 3-4 week intervals.

## **GASTRIC CANCER**

**Single Agent:** Epirubicin, as a single agent, can be used for the treatment of locally unresectable or metastatic gastric carcinoma at doses of 75-100 mg/m<sup>2</sup>.

**Combination Therapy:** Epirubicin, at a dose of 80 mg/m<sup>2</sup> can be used in combination with fluorouracil for the treatment of locally unresectable or metastatic gastric carcinoma.

## **ADMINISTRATION:**

Care in the administration of EPIRUBICIN FOR INJECTION will reduce the chance of perivenous infiltration. It may also decrease the chance of local reactions such as urticaria and erythematous streaking. On intravenous administration of EPIRUBICIN FOR INJECTION extravasation may occur with or without an accompanying stinging or burning sensation even if blood returns well on aspiration of the infusion needle. If any signs or symptoms of extravasation have occurred the injection or infusion should be immediately terminated and restarted in another vein. If it is known or suspected that subcutaneous extravasation has occurred, the following steps are recommended:

1. Attempt aspiration of the infiltrated EPIRUBICIN FOR INJECTION solution.
2. Local intermittent application of ice for up to 3 days.
3. Elevation of the affected limb.
4. Close observation of the lesion.
5. Consultation with a plastic surgeon familiar with drug extravasation if local pain persists or skin changes progress after 3 to 4 days. If ulceration begins, early wide excision of the involved area should be considered.

EPIRUBICIN FOR INJECTION should be slowly administered into the tubing of a freely running intravenous infusion of Sodium Chloride Solution USP (0.9%) or 5% Dextrose Solution USP. The tubing should be attached to a Butterfly<sup>®</sup> needle or other suitable device and inserted preferably into a large vein. If possible, avoid veins over joints or in extremities with compromised venous or lymphatic drainage. To minimize the risk of thrombosis or perivenous extravasation, the usual infusion times range between 3 and 20 minutes depending upon dosage and volume of the infusion



solution. The infusion time should be not less than 3 to 5 minutes. A direct push injection is not recommended due to the risk of extravasation, which may occur even in the presence of adequate blood return upon needle aspiration (see WARNING AND PRECAUTIONS). Local erythematous streaking along the vein as well as facial flushing may be indicative of too rapid administration. A burning or stinging may be indicative of perivenous infiltration and the infusion should be immediately terminated and restarted in another vein. Perivenous infiltration may occur painlessly.

Unless specific compatibility data are available, mixing EPIRUBICIN FOR INJECTION with other drugs is not recommended.

Epirubicin hydrochloride has been used concurrently with other approved chemotherapeutic agents. Evidence is available that combination chemotherapy is superior to single agents. The benefits and risks of such therapy continue to be elucidated.

Solutions should be inspected visually for clarity, particulate matter, precipitation, discoloration and leakage prior to administration whenever solution and container permit. Solutions showing haziness, particulate matter, precipitate, discoloration or leakage should not be used.

**For Safe Preparation and Handling of EPIRUBICIN FOR INJECTION refer to "SPECIAL HANDLING INSTRUCTIONS".**

## **OVERDOSAGE**

For management of a suspected drug overdose, contact your regional Poison Control Centre.
---

Acute overdosage with EPIRUBICIN FOR INJECTION may cause an acute myocardial dysfunction within 24 hours. Pronounced mucositis, leukopenia and thrombocytopenia could be observed within 7-14 days. Treatment of acute overdosage consists of hospitalization of the severely myelosuppressed patient, platelet and granulocyte transfusions, antibiotics, and symptomatic treatment of mucositis.

## **ACTION AND CLINICAL PHARMACOLOGY**

The mechanism of action of epirubicin, although not completely elucidated, appears to be related to its ability to bind to nucleic acids by intercalation of the planar anthracycline nucleus with the DNA double helix.

Binding to cell membranes as well as to plasma proteins may also be involved. Cell culture studies have demonstrated rapid cell penetration and perinucleolar chromatin binding, rapid inhibition of mitotic activity, mutagenesis and chromosomal aberrations.

Animal studies have shown activity in a wide spectrum of experimental tumours, immunosuppression, mutagenic and carcinogenic properties in rodents, and a variety of toxic effects, including myelosuppression in all species and atrophy of the seminiferous tubules of testes in rats and dogs.

Data from different animal species and *in vitro* models have shown that epirubicin is less toxic, and in particular less cardiotoxic than doxorubicin.

At equally effective doses, epirubicin produces less severe non-haematologic side effects such as vomiting and mucositis, than doxorubicin.

### **Early Stage Breast Cancer Studies:**

Two randomized, open-label, multi center studies evaluated epirubicin hydrochloride 100 to 120 mg/m<sup>2</sup> in combination with cyclophosphamide and fluorouracil in adjuvant treatment of axillary-node-positive breast cancer with no evidence of distant metastatic disease. (See CLINICAL TRIALS for complete study descriptions and overall results; see ADVERSE REACTIONS.)

Study MA.5 evaluated 120 mg/m<sup>2</sup> doses of epirubicin per course in combination with cyclophosphamide and fluorouracil (CEF- 120 regimen) versus a CMF (methotrexate) regimen in pre- and peri-menopausal women.

Study GFEA-05 (FASG-05) evaluated 100 mg/m<sup>2</sup> doses of epirubicin per course in combination with fluorouracil and cyclophosphamide (FEC- 100) or lower-dose FEC-50 in pre- and post-menopausal women.

In the pivotal trial MA.5, the Cox proportional model showed that node number is a significant (p=0.0001) outcome predictor overall (conditional risk ratio of 1.7 for  $\geq 4$  versus  $< 3$  involved nodes). Non-significant trends indicate that the CEF treatment may show superiority over CMF in patients with  $\geq 4$  nodes than those with  $< 3$ . The trial was insufficiently powered to demonstrate a subset difference; it must be borne in mind that the majority of patients (61%) in both treatments had 1-3 positive nodes, yet CEF-120 still produced overall advantages in relapse free survival (RFS) and overall survival (OS) (see below and CLINICAL TRIALS). Nonetheless, CEF versus CMF RFS in the  $<3$  node group was 68 vs. 62%, while in the  $\geq 4$  node group the values were 52 vs. 39%.

In the supporting trial GFEA-05 (FASG-05), similar improvements in RFS and OS were observed in both pre- and postmenopausal women treated with FEC-100 compared to FEC-50.

Overall efficacy results for the two studies are shown in Table 4 (see CLINICAL TRIALS). The median follow-up time in the MA.5 study was 8.8 years (range: 0.2 to 12.1 years) and 8.7 years (range: 0.7 to 12.1 years) for the CEF and CMF treatment groups, respectively. In MA.5, the CEF-120 therapy demonstrated superior RFS to CMF, both over the 5- and 10-year follow-up. The overall reduction in risk of relapse was 24% over 5 years and 22% over 10 years. The 5- and 10-year OS were also greater for the epirubicin-containing CEF-120 regimen than for the CMF

regimen. The overall relative reduction in the risk of death was 29% over 5 years and 18% over 10 years.

### **Pharmacokinetics:**

Pharmacokinetic studies show an initial rapid elimination of the parent compound from plasma. The terminal half-life of elimination of the parent drug from plasma approximates 30-40 hours in humans. Urinary excretion accounts for approximately 9-10% of the administered dose in 48 hours. Biliary excretion represents the major route of elimination, about 40% of the administered dose being recovered in the bile in 72 hours. The major metabolites that have been identified are epirubicinol (13-OH epirubicin) and glucuronides of epirubicin and epirubicinol.

The 4'-O-glucuronidation distinguishes epirubicin from doxorubicin and may account for the faster elimination of epirubicin and its reduced toxicity. Plasma levels of the main metabolite, the 13-OH derivative (epirubicinol) are consistently lower and virtually parallel to those of the unchanged drug.

Impairment of hepatic function results in higher plasma levels.

Distribution studies in the rat have shown that epirubicin does not appear to cross the blood-brain barrier.

### **STORAGE AND STABILITY**

EPIRUBICIN FOR INJECTION should be stored under refrigeration (2 – 8°C), protected from light, and retained in original carton until time of use. Unused solution should be discarded.

Dispensing from the Pharmacy Bulk Vial should be completed within eight hours of initial entry because of the potential for microbial contamination.

#### **Incompatibility:**

Unless specific compatibility data are available, EPIRUBICIN FOR INJECTION should not be mixed with other drugs.

Contact with any solution of an alkaline pH should be avoided, as it will result in hydrolysis of the drug. Epirubicin should also not be mixed with heparin due to chemical incompatibility that may lead to precipitation.

### **SPECIAL HANDLING INSTRUCTIONS**

#### **Preparation and Handling:**

1. Personnel should be trained in good technique for reconstitution and handling. Pregnant staff should be excluded from working with this drug.

2. Preparation of antineoplastic solutions should be done in a vertical laminar flow hood (Biological Safety Cabinet - Class II) and the work surface should be protected by disposable, plastic-backed absorbent paper.
3. Personnel handling epirubicin solutions should wear PVC gloves, safety glasses and protective clothing such as disposable gowns and masks. If epirubicin solutions contact the skin or mucosa, the area should be washed with soap and water or sodium bicarbonate immediately. Do not abrade the skin by using a scrub brush and always wash hands after removing gloves.
4. In case of contact with the eye(s), hold back the eyelid of the affected eye(s) and flush with copious amounts of water for at least 15 minutes, proceed to a physician for medical evaluation.
5. Personnel regularly involved in the preparation and handling of antineoplastics should have blood examinations on a regular basis.
6. Directions for Dispensing from Pharmacy Bulk Vial

The use of Pharmacy Bulk Vials is restricted to hospitals with a recognized intravenous admixture program. The Pharmacy Bulk Vial is intended for single puncture, multiple dispensing and for intravenous use only.

Entry into the vial must be made with a sterile dispensing device such as the Econ-O-Set<sup>®</sup> Sterile Transfer System<sup>1</sup>. Multiple use of a syringe with needle is not recommended since it may cause leakage as well as increasing the potential for microbial and particulate contamination.

Swab the vial stopper with an antiseptic solution. Following carefully the manufacturer's instructions, insert the device into the vial. Withdraw contents of vials into syringes, using aseptic technique. Discard any unused portion within eight hours of initial entry.

(<sup>1</sup> Distributed by International Medication Systems of Canada, Ltd.)

### **Disposal:**

1. Avoid contact with skin and inhalation of airborne particles by use of PVC gloves and disposable gowns and masks.
2. All needles, syringes, vials and other materials which have come in contact with epirubicin should be segregated in plastic bags, sealed, and marked as hazardous waste. Incinerate at 1000°C or higher. Sealed containers may explode if a tight seal exists.
3. If incineration is not available, epirubicin hydrochloride may be detoxified by adding sodium hypochlorite solution (household bleach) to the vial, in sufficient quantity to decolourize the epirubicin, care being taken to vent the vial to avoid a pressure build-up of the chlorine gas which is generated. Dispose of detoxified vials in a safe manner.

**Needles, syringes, disposable and non-disposable equipment:**

Rinse equipment with an appropriate quantity of sodium hypochlorite solution. Discard the solution in the sewer system with running water and discard disposable equipment in a safe manner. Thoroughly wash non-disposable equipment in soap and water.

**Spillage/Contamination:**

Wear gloves, mask, protective clothing. Treat spilled liquid with sodium hypochlorite solution. Carefully absorb solution with gauze pads or towels, wash area with water and absorb with gauze or towels again and place in polyethylene bag; seal, double bag and mark as hazardous waste. Disposal of waste by incineration or by other methods approved for hazardous materials. Personnel involved in clean-up should wash with soap and water.

**DOSAGE FORMS, COMPOSITION AND PACKAGING**

EPIRUBICIN FOR INJECTION is available in 5 mL, 10 mL, 25 mL, 75 mL and 100 mL glass vials, each vial containing 2 mg/mL of epirubicin hydrochloride.

The 5 mL vials are packaged and supplied in single vial cartons.

The 10 mL vials are packaged and supplied in single vial cartons.

The 25 mL vials are packaged and supplied in single vial cartons.

The 75 mL vials are packaged and supplied in single vial cartons.

The 100 mL PHARMACY BULK vials are packaged and supplied in single vial cartons.

**NOTE:**

THE USE OF PHARMACY BULK VIALS IS RESTRICTED TO HOSPITALS WITH A RECOGNIZED INTRAVENOUS ADMIXTURE PROGRAM. THE PHARMACY BULK VIAL IS INTENDED FOR SINGLE PUNCTURE, MULTIPLE DISPENSING AND FOR INTRAVENOUS USE ONLY.

Entry into the vial must be made with a suitable, sterile transfer or dispensing device. Multiple use of a syringe with needle is not recommended since it may cause leakage as well as it may increase the potential for microbial and particulate matter contamination.

In a suitable work area such as a laminar flow hood, swab the vial stopper with an antiseptic solution. Insert the device into the vial. Withdraw contents of the vial into sterile syringes using strict aseptic techniques. Dispensing from the Pharmacy Bulk Vial should be completed within eight hours of the initial entry because of the potential for microbial contamination. Discard any unused portion. The contents of the syringes filled from the Pharmacy Bulk Vial should be used within 24 hours at room temperature or 48 hours when refrigerated from the time of the initial entry into the Pharmacy Bulk Vial.

**Composition:**

EPIRUBICIN FOR INJECTION is a sterile, ready-to-use clear red solution. It is supplied in glass vials as a 2 mg/mL isotonic, non-preserved solution.

For the 5 mL, 10 mL, 25 mL, 75 mL and 100 mL vials:

**Each mL contains:** 2 mg Epirubicin hydrochloride; 9 mg sodium chloride; Water for Injection and Hydrochloric acid for pH adjustment.

## PART II: SCIENTIFIC INFORMATION

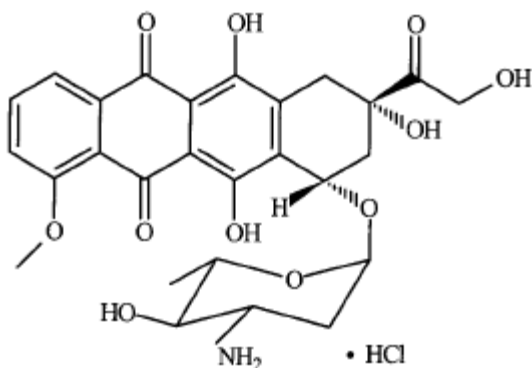
### PHARMACEUTICAL INFORMATION

#### Drug Substance:

**Proper Name:** Epirubicin hydrochloride

**Chemical Name:** 5,12-Naphthacenedione, 10-[(3-amino-2,3,6-trideoxy- $\alpha$ -L-arabino-hexopyranosyl)oxy]-7,8,9,10-tetrahydro-6,8,11-trihydroxy-8-(hydroxyacetyl)-1-methoxy-, (8S-cis)-

#### **Structural Formula:**



**Molecular Formula:**  $C_{27}H_{30}ClNO_{11}$

**Molecular Weight:** 579.99

#### **Description:**

Epirubicin HCl is an orange-red powder. Soluble in water and in methanol, slightly soluble in anhydrous ethanol and practically insoluble in acetone. pKa in water is 7.7. Melting Point is 185° C.

## CLINICAL TRIALS

### Early Stage Breast Cancer Studies (see ADVERSE REACTIONS)

Two randomized, open-label, multi center studies evaluated the use of epirubicin hydrochloride 100 to 120 mg/m<sup>2</sup> in combination with cyclophosphamide and fluorouracil for the adjuvant treatment in 1281 women with:

- Axillary-node-positive breast cancer,
- No evidence of distant metastatic disease (Stage II or III), and
- No T4 tumours.

Study MA.5 evaluated 120 mg/m<sup>2</sup> of epirubicin per course in combination with cyclophosphamide and fluorouracil (CEF- 120 regimen). Pre- and peri-menopausal women with one or more positive lymph nodes were randomized to either the CEF-120 regimen or a CMF regimen.

Study GFEA-05 (FASG-05) evaluated the use of 100 mg/m<sup>2</sup> of epirubicin per course in combination with fluorouracil and cyclophosphamide (FEC- 100). Pre- and post-menopausal women were randomized to either the FEC-100 or lower-dose FEC-50 regimens. Eligible patients were either required to have 4 nodes involved with tumour or, if only 1 to 3 nodes were positive, to have negative estrogen- and progesterone-receptors and a histologic tumour grade of 2 or 3.

Table 3 shows the treatment regimens that the patients received.

**Table 3. Treatment Regimens Used in Early Breast Cancer Phase 3 Studies**

	Treatment Groups	Agent	Regimen
MA.5 <sup>1</sup> N = 716	CEF – 120 (total, 6 cycles) <sup>2</sup>  N = 356	Cyclophosphamide	75 mg/m <sup>2</sup> PO d 1-14, q 28 days
		Epirubicin Hydrochloride	60 mg/m <sup>2</sup> IV d 1 & 8, q 28 days
		Fluorouracil	500 mg/m <sup>2</sup> IV d 1 & 8, q 28 days
	CMF (total, 6 cycles)  N = 360	Cyclophosphamide	100 mg/m <sup>2</sup> PO day 1-14, q 28 days
		Methotrexate	4 mg/m <sup>2</sup> IV day 1 & 8, q 28 days
		Fluorouracil	600 mg/m <sup>2</sup> IV d 1 & 8, q 28 days
GFEA-05 (FASG-05) <sup>3</sup> N = 565	FEC-100 (total, 6 cycles)  N = 276	Fluorouracil	500 mg/m <sup>2</sup> IV day 1, q 21 days
		Epirubicin Hydrochloride	100 mg/m <sup>2</sup> IV day 1, q 21 days
		Cyclophosphamide	500 mg/m <sup>2</sup> IV day 1, q 21 days
	FEC-50 (total, 6 cycles)  N = 289	Fluorouracil	500 mg/m <sup>2</sup> IV day 1, q 21 days
		Epirubicin Hydrochloride	50 mg/m <sup>2</sup> IV day 1, q 21 days
	Tamoxifen 30 mg daily x 3		



	years, postmenopausal women, any receptor status.	Cyclophosphamide	500 mg/m <sup>2</sup> IV day 1, q 21 days
--	---	------------------	---

<sup>1</sup> In women who underwent lumpectomy, breast irradiation was to be administered after completion of study chemotherapy.

<sup>2</sup> Patients also received prophylactic antibiotic therapy with trimethoprim-sulfamethoxazole or fluroquinolone for the duration of their chemotherapy.

<sup>3</sup> All women were to receive breast irradiation after the completion of chemotherapy.

The efficacy endpoints of relapse-free survival (RFS) and overall survival (OS) were analyzed using Kaplan-Meier methods in the intent-to-treat (ITT) patient populations in each study. Results for endpoints are described in terms of the outcomes over 5 and 10 years.

**MA.5 results:** The median age of the study population was 45 years. Approximately 60% of patients had 1 to 3 involved nodes and approximately 40% had  $\geq 4$  nodes involved with tumour. The median follow-up time was 8.8 years (range: 0.2 to 12.1 years) and 8.7 years (range: 0.7 to 12.1 years) for the CEF and CMF treatment groups, respectively. The epirubicin-containing combination therapy (CEF-120) demonstrated superior RFS to CMF, both over the 5- and 10- year follow-up (Table 4). The overall reduction in risk of relapse was 24% over 5 years and 22% over 10 years. The 5- and 10-year OS were also greater for the CEF-120 regimen than for the CMF regimen (Table 4). The overall relative reduction in the risk of death was 29% over 5 years and 18% over 10 years.

**GFEA-05 (FASG-05) results:** The median age was 51 years and approximately half of the patients were postmenopausal. About 17% of the study population had 1 to 3 positive nodes and 80% of patients had  $\geq 4$  involved lymph nodes. Demographic and tumour characteristics were well-balanced between treatment arms in each study. The median follow-up time was 7.7 years (range: 0.3 to 12.5 years) and 8.7 years (range: 0.2 to 12.7 years) in the FEC-50 and FEC-100 treatment groups, respectively. Patients treated with the higher-dose epirubicin regimen (FEC-100) had a significantly longer RFS and OS over 5- and 10-years (Table 4) than patients given the lower dose regimen (FEC-50). The overall reduction in risk of relapse was 32% over 5 years and 22% over 10 years. The relative reduction in the risk of death was 31% over 5 years and 25% over 10 years.

Although the trials were not powered for subgroup analyses, in the MA-5 study improvement in favor of CEF-120 vs. CMF were observed over 5- and 10-years in RFS and OS both in patients with 1-3 node positive and those with  $\geq 4$  node positive tumour involvement. In the GFEA-05 (FASG-05) study, improvements in RFS and OS were observed over 5- and 10-years in both pre- and post-menopausal women treated with FEC-100 compared to FEC-50.

Efficacy results for the two studies are shown in Table 4.

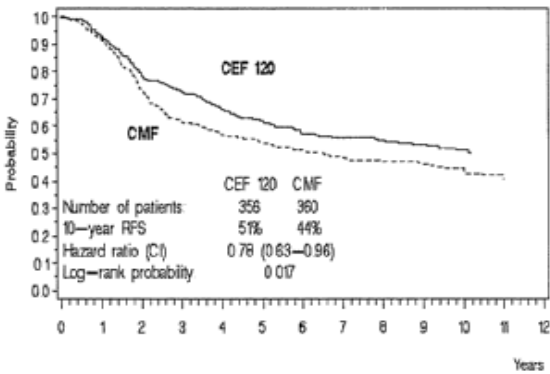
**Table 4. Efficacy Results from Early Breast Cancer Phase 3 Studies\***

	MA.5 Study		GFEA-05 (FASG-05) Study	
	CEF-120 N = 356	CMF N = 360	FEC-100 N = 276	FEC 50 N = 289
RFS over 5 years (%)	62	53	65	52
Log-Rank Test	(stratified p = 0.013)		(p = 0.007)	
OS over 5 years (%)	77	70	76	65
Log-Rank Test	(stratified p = 0.043) (unstratified p = 0.13)		(p = 0.007)	
RFS over 10 years (%)	51	44	49	43
Log-Rank Test (stratified)	(p = 0.017)		(p = 0.040)	
OS over 10 years (%)	61	57	56	50
Log-Rank Test (stratified)	(p = 0.100)		(p = 0.023)	

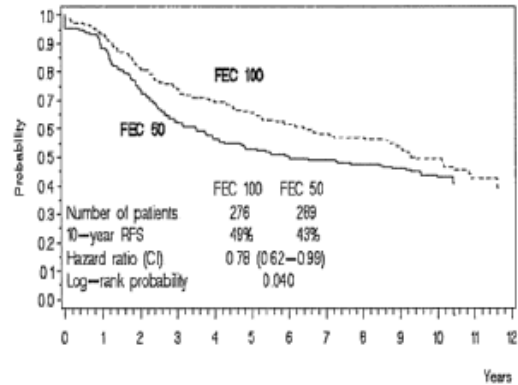
\* Based on Kaplan-Meier estimates

The Kaplan-Meier curves for RFS and OS from Study MA.5 are shown in Figures 1 and 2 and those for Study GFEA-05 (FASG-05) are shown in Figure 3 and 4.

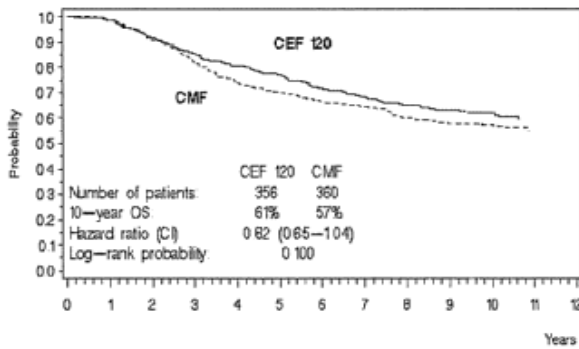
**Figure 1. Relapse Free Survival in Study MA-5**



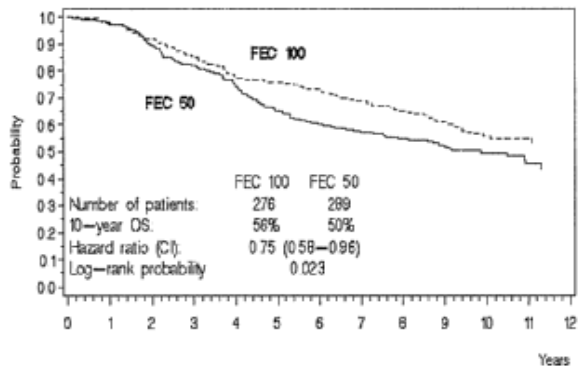
**Figure 3. Relapse-Free Survival in Study GFEA-05 (FASG-05)**



**Figure 2. Overall Survival in Study MA-5**



**Figure 4. Overall Survival in Study GFEA-05 (FASG-05)**



## DETAILED PHARMACOLOGY

The *in vitro* cytotoxicity of epirubicin, compared to doxorubicin, was investigated using the HeLa cloning efficiency test, the human tumour stem cell assay and the inhibition of mouse embryo fibroblast proliferation test. In the first test, epirubicin had less activity than doxorubicin. In the other two tests the activity of the two compounds was similar.

The antitumoural activity of epirubicin was compared with doxorubicin on various mouse experimental tumours. Administered i.p. or i.v. as a single injection (sarcoma 180 ascites, leukemia L1210, leukemia P388, Gross leukemia), the two compounds had the same antitumour effect at the same dose. One sub-line of leukemia P388 resistant to doxorubicin showed cross-resistance to epirubicin. Administered i.v. and at the same dose, the two compounds had exactly the same effect on solid sarcoma 180 and on both advanced and early mammary carcinoma.

The antitumoural effect of epirubicin was slightly greater than that of doxorubicin on Lewis lung carcinoma and MS-2 sarcoma lung metastases and also on MSV-induced rhabdomyosarcoma and on colon 38 adenocarcinoma.

Epirubicin was found active on mammary carcinoma, melanoma, epidermoid carcinoma of the lung and soft tissue sarcoma, transplanted to nude mice.

Epirubicin was found active against breast, lung, prostate and ovarian tumours transplanted in nude mice; it showed particularly good activity against melanomas. No statistically significant effect was observed against colorectal human tumours transplanted into nude mice.

Pharmacokinetic studies in man show an initial rapid elimination of the parent compound from plasma. The terminal half-life of elimination of the parent drug from plasma approximates 30-40 hours. Urinary excretion accounts for approximately 9-10% of the administered dose in 48 hours. Biliary excretion represents the major route of elimination, about 40% of the administered dose being recovered in the bile in 72 hours. The major metabolites that have been identified are epirubicinol (13-OH epirubicin) and glucuronides of epirubicin and epirubicinol.

Glucuronidation distinguishes epirubicin from doxorubicin and may account for its reduced toxicity. Other metabolites found are aglycones of 7-deoxydoxorubicin and 7-deoxydoxorubicinol. Plasma levels of the main metabolite, the 13-OH derivative (epirubicinol) are consistently lower and virtually parallel to those of the unchanged drug.

## TOXICOLOGY

The acute toxicity of epirubicin i.v. was studied in the mouse, rat and dog.

In the mouse, single doses caused dose-dependent deaths between the 4th and 180th day after injection. Calculated at stabilization, the LD<sub>50</sub> was 15.06 mg/kg.

In the rat, single doses of epirubicin produced dose-dependent mortality between the 4th and 15th day after injection. Calculated at stabilization, the LD<sub>50</sub> was 13.95 mg/kg.

In the dog, single doses were lethal at 2 mg/kg, while the lower dose (1 mg/kg) can be held to be just within the safety limit.

Chronic toxicity studies were carried out in the rabbit and in the dog after i.v. courses of three consecutive days per week for a total of 6 weeks on the rabbit and 6 and 13 weeks in the dog. The results showed that, in the rabbit, the pharmacological-toxicological mechanism of action of epirubicin is very similar to that of doxorubicin. In qualitative terms, epirubicin is very similar to that of doxorubicin. In quantitative terms, epirubicin was approximately one-third less toxic than doxorubicin with respect to systemic toxicity and myocardial toxicity.

In the dog, the two drugs had the same toxicity profile. The safe dose of epirubicin can be set at 0.1 mg/kg in this species.

*In vitro* cardiotoxicity tests showed that epirubicin was less cardiotoxic than doxorubicin (on isolated rabbit heart and guinea pig heart); unlike doxorubicin, sometimes it had no effect at all on myocardial cells from newborn mice.

*In vivo* cardiotoxicity tests showed that in all the animal species tested (mouse i.v., rat i.p., rabbit i.v.) epirubicin was appreciably less cardiotoxic than doxorubicin.

Ultrastructural studies of myocardial tissue from hamsters treated i.p. with epirubicin and doxorubicin showed that the two drugs produce similar alterations in the same length of time. Carcinogenesis tests *in vivo* run in newborn rats treated with epirubicin s.c. showed that the drug had considerable carcinogenic activity. Mutagenic activity of epirubicin was investigated in various *in vitro* and *in vivo* tests. In the *in vitro* and *in vivo* tests, *Schizosaccharomyces pombe* P1, epirubicin showed no mutagenic activity; it was mutagenic, however, *in vitro* on *Salmonella typhimurium*.

Epirubicin has not shown teratogenic effects in rats or rabbits; embryotoxicity and/or abortions were seen in both species only at very high doses.

## REFERENCES

1. Ganzina F. 4'epi-doxorubicin, a new analogue of doxorubicin: A preliminary overview of preclinical and clinical data. *Cancer Treat Rev* 1983; 10: 1-22.
2. Jones WG, Mattsson W. Phase II study of weekly low-dose 4'-epi-doxorubicin in advance postmenopausal breast cancer. *Cancer Treat Rep* 1984; 68:675-677.
3. Bonfante V, Villani F, Bonadonna G. Toxic and therapeutic activity of 4'-epi-doxorubicin. *Tumori* 1982; 68:105-111.
4. Hurteloup P, Cappelaere P, Armand JP, Mathe G. Phase II clinical evaluation of 4'-epi-doxorubicin. *Cancer Treat Rep* 1983; 67:337-341.
5. Rozenzweig M et al. Randomized phase II trial of carminomycin versus 4'-epi- doxorubicin in advanced breast cancer. *J. of Clinical Oncology* 1984; 2:4:275-281.
6. Robustelli della Cuna G et al. Clinical evaluation of 4'-epi-doxorubicin in advanced solid tumours. *Investigational New Drugs* 1983; 1:349-353.
7. Coombes RC, et al. Adjuvant cyclophosphamide, methotrexate, and fluorouracil versus fluorouracil, epirubicin, and cyclophosphamide chemotherapy in premenopausal women with axillary node-positive operable breast cancer: results of a randomized trial. The international collaborative cancer group. *J Clin Oncol* 1996; 14(1):35-45.
8. Brufman G, et al. Doubling epirubicin dose intensity (100 mg/m<sup>2</sup> versus 50 mg/m<sup>2</sup>) in the FEC regimen significantly increases response rates. An international randomized phase III study in metastatic breast cancer. *Ann Oncol* 1997; 8: 155-162.
9. Pyrhonen SO, Kouri MO. Phase II study of epirubicin sequential methotrexate and 5-fluorouracil for advanced colorectal cancer. *Eur J. Cancer* 1992; 28A(11): 1828-1832.
10. Raderer et al. Tolerance of the novel chemo-sensitizer dexverapamil in combination with anthracycline chemotherapy: a prospective toxicity analysis in advanced gastrointestinal cancer. *Onkologie* 1995; 18(5): 462-467.
11. Michaelson R, Kemeny N, Young C. Phase II evaluation of 4'-epi-doxorubicin in patients with advanced colorectal carcinoma. *Cancer Treat Rep* 1982; 66(9):1757-1758.
12. Martoni A, Tomasi L, Farabegoli G, Giovannini M, Monetti N, Ganzina F, Pannuti F. The phase II study of 4'-epi-doxorubicin plus cisplatinum in advanced solid tumours. *Eur J Cancer Clin Oncol* 1984; 20:1: 11-17.

13. Wils J, et al. Cyclophosphamide, epirubicin and cisplatin (CEP versus epirubicin plus cisplatin (EP) in stage Ic-IV ovarian cancer: a randomized phase III trial of the gynecologic oncology group of the comprehensive cancer center Limburg. *Anti-Cancer Drugs* 1999; 10:257-261.
14. Conte PF, et al. High-dose versus low-dose cisplatin in combination with cyclophosphamide and epidoxorubicin in suboptimal ovarian cancer: a randomized study of the gruppo oncologico Nord-Ovest. *J Clin Oncol* 1996; 14(2):351-356.
15. Peláez, et al. Phase II trial of epirubicin at standard dose in relapsed ovarian cancer. *Eur J Cancer* 1996; 32A(5):899-900.
16. Pronzato P, et al. A feasibility study of accelerated polychemotherapy with cisplatin, epidoxorubicin and cyclophosphamide (PEC) in advanced ovarian cancer. *Br J Ca* 1996; 73: 1425-1427.
17. Villani F, Comazzi R, Lacaíta G, Genitoni V, Guindani A, Martini A. Preliminary echocardiographic and polygraphic evaluation of cardiac toxicity of 4'-epi-doxorubicin. *International Journal of Clinical Pharmacology, Therapy and Toxicology* 1983; 21 :4:203-208.
18. Weenen H, Van Maanen JMS, De Planque MM, McVie JG, Pinedo HM. Metabolism of 4'-modified analogs of doxorubicin. Unique glucuronidation pathway for 4'epidoxorubicin. *Eur J Cancer Clin Oncol* 1984; 20:7:919-926.
19. Topham C. et al: Randomised trial of epirubicin alone versus 5-fluorouracil, epirubicin and mitomycin C in locally advanced and metastatic carcinoma of the pancreas. *Br J Cancer* 1991 ; 64; 179-181.
20. Wagener DJ.TH, et al. Results of a phase II trial of epirubicin and cisplatin (EP) before and after irradiation and 5-fluorouracil in locally advanced pancreatic cancer: an EORTC GITCCG study. *Eur J Cancer* 1996; 32A(8): 1310- 1313.
21. Martoni A, Giovannini M, Tomasi L, Camaggi CM, Bellanova B, Monetti N, Rossini G, Tarquinni M, Martini A, Panutti F. A phase II clinical trial of 4'-epi-doxorubicin in advanced solid tumours. *Cancer Chemother Pharmacol* 1984; 12: 179-182.
22. Bonadonna G. *Advances in anthracycline chemotherapy: Epirubicin*. Masson Italia Editori, Milan 1984.
23. Wils J et al. Phase II study of epirubicin in advanced adenocarcinoma of the pancreas. *Eur J Cancer Clin Oncol* 1985; 21:2:191-194.
24. Bezwoda WR Treatment of advanced ovarian cancer: A randomized trial comparing Adriamycin or 4'-epi-Adriamycin in combination with cisplatin and cyclophosphamide. *Med and Ped Oncology* 1986; 14:26-29.

25. Walder S, Green M, Muggia F. The role of anthracyclines in the treatment of gastric cancer. *Cancer Treat Rev* 1985; 12:105-132.
26. Brambilla C, Rossi A, Bonfante V, Ferrari L, Villani F, Crippa F, Bonadonna G. Phase II study of doxorubicin versus epirubicin in advance breast cancer. *Cancer Treat Rep* 1986; 70:2:261-266.
27. Hochester H, Green MD, Speyer JL, Wernz JC, Blum RH, Muggia FM. Activity of epirubicin in pancreatic carcinoma. *Cancer Treat Rep* 1986; 70:2:299-300.
28. Lopez M et al. Epirubicin in non-Hodgkin's lymphoma. *Am J Clin Oncol* 1985; 8:151-153.
29. Eridani S, Pearson TC, Slater NGP, Singh AK. A pilot study of epirubicin (NSC 256942) in combination treatment of acute leukemia and non-Hodgkin's lymphoma. *Oncology* 1984; 41:383-386.
30. Avilés A, et al. Results of a randomized study of early stage Hodgkin's disease using ABVD, EBVD, or MBVD. *Med Pediatr Oncol* 1995; 24: 171 - 175.
31. Gobbi PG, et al. MOOP/EBV/CAD hybrid chemotherapy with or without limited radiotherapy in advanced or unfavorably presenting Hodgkin's disease: a report from the Italian lymphoma study group. *J Clin Oncol* 1993; 11(4):712-719.
32. Martoni A, Tomasi L., Farabegoli G, Fruet F, Panutti F. 4'-epi-doxorubicin in combination with cisplatin in advanced ovarian cancer. *Cancer Treat Rep* 1984; 68:11.
33. Christmann D. Epirubicin in der kombinations-chemotherapie des metastasierten mammarkarzinoms (VEC) und des fortgeschrittenen ovarialkarzinoms (PEC). *Onkologie* 1986; 9:1:11-12.
34. Scarffe JH, Kenny JB, Johnson RJ, Owens SE, Giles GR, Leveson SH, Maley WV. Phase II trial of epirubicin in gastric cancer. *Cancer Treat Rep* 1985; 69:11:1275-1277.
35. Kolaric K, Potrebica V, Cervek J. Phase II clinical trials of 4'-epi-doxorubicin in metastatic solid tumors. *J of Cancer Research and Clin Oncol* 1983; 106:2: 148- 152.
36. Ferrazzi E, Nocoletto O, Vinante O, Pagnin P, Maraglino G, Ganzina F, Florentino V. Phase II study of 4'-epi-doxorubicin. *Tumori* 1982; 68:431-435.
37. Kolaric K, Potrebica V, Stanovnik M. Controlled phase III clinical study of 4'-epi-doxorubicin + 5-fluorouracil vs 5-fluorouracil alone in metastatic gastric and rectosigmoid cancer. 3rd European Conference on Clinical Oncology and Cancer Nursing. June 16-20, 1985, Stockholm, Sweden 1985; 105.

38. Blackstein M, Eisenhauer E, Wierzbicki R. Phase II study of epirubicin in extensive small cell lung cancer. Unpublished. Final report prepared by E. Eisenhauer of the National Cancer Institute of Canada. Data on file.
39. Fetscher S, et al. Dose-intense therapy with etoposide, ifosfamide, cisplatin, and epirubicin (VIP-E) in 100 consecutive patients with limited- and extensive-disease small-cell lung cancer. *Ann Oncol* 1997; 8:49-56.
40. Jassem J, et al. Combination chemotherapy with vincristine, epirubicin and cyclophosphamide in small cell lung carcinoma. *Eur J Cancer* 1992; 28(2/3):473-476.
41. Blackstein M. Epirubicin in extensive small-cell lung cancer: a phase II study in previously untreated patients: a national cancer institute of Canada clinical trials group study. *J Clin Oncol* 1990; 8(3):385-389.
42. A randomized, double-blind clinical study comparing cyclophosphamide, epirubicin, and vincristine to cyclophosphamide, doxorubicin, and vincristine in the treatment of small cell bronchogenic carcinoma. Data on file.
43. Feld R, Wierzbicki R, Walde D, Shepherd F, Evans WK, Gupta S, Shannon P, Lassus M. Phase I-II study of high dose epirubicin in advanced non-small cell lung cancer. Unpublished. Data on file.
44. Henss H, Fiebig HH, Holdener EE, Kaplan E. Phase II study of high dose epirubicin in non-small cell lung cancer. *Contrib Oncol* 1989; 37: 126-140.
45. Martoni A. et al: A phase II study of high-dose epirubicin plus cisplatin in advanced non-small-cell lung cancer (NSCLC). *Annals of Oncology* 1992; 3; 864-866.
46. Fetscher S, et al. Dose-intense therapy with etoposide, ifosfamide, cisplatin, and epirubicin (VIP-E) in 107 consecutive patients with limited- and extensive-stage non-small-cell lung cancer. *Ann Oncol* 1997; 8:57-64.
47. Comella P, et al. Alternated approach with local irradiation and combination chemotherapy including cisplatin or carboplatin plus epirubicin and etoposide in intermediate stage non-small-cell lung cancer. *Cancer* 1994; 74: 1874-1881.
48. Feld R, et al. Phase I-II study of high-dose epirubicin in advanced non-small-cell lung cancer. *J Clin Oncol* 1992;10(2):297-303.
49. Smit EF, et al. A phase II study of high dose epirubicin in unresectable non small cell lung cancer. *Br J Cancer* 1992; 65(3):405-408.
50. Wils J, Utama I, Sala L, Smeets J, Riva A. Phase II Study of High Dose Epirubicin in Non-Small Cell Lung Cancer 1990; 26: 1140-1141.



51. Levine MN, Bramwell VH, Pritchard KI, et al. Randomized Trial of Intensive Cyclophosphamide, Epirubicin, and Fluorouracil chemotherapy Compared With Cyclophosphamide, Methotrexate, and Fluorouracil in Premenopausal Women With Node-Positive Breast Cancer. *J Clin Oncol*. 1998; 16: 2651-2658.
52. Praga C, et al. Anthracycline-induced cardiotoxicity and its relevance in cancer treatment. In Nimmo WS & AL: *Clinical Measurement in Drug Evaluation*. Wolfe, Publishing Ltd, London, 1991, 131 - 142.
53. Camaggi C.M. et al: Epirubicin plasma and blood pharmacokinetics after single i.v. bolus in advanced cancer patients. *Drugs Exp Clin Res* 1985; 11 (4):285-294.
54. Twelves C.J. et al: Clinical pharmacokinetics of epirubicin: the importance of liver biochemistry tests. *Br J Cancer* 1992; 66(4):765-769.
55. Camaggi CM, et al. Pharmacokinetic studies of 4'-epidoxorubicin in cancer patients with normal and impaired renal function and with hepatic metastases. *Cancer Treat Rep* 1982; 66(10): 1819-1824.
56. Bauer KA, Levine M. Evaluation and management of the cancer patient with thrombosis. In: *American Society of Clinical Oncology (ASCO) Educational Book* 1999; 223-233.
57. Mazué G, Williams GM, Iatropoulos MJ, et al. Anthracyclines: review of genotoxicity and carcinogenicity studies. *Int J Oncol* 1996; 8:525-536.
58. Murry LS, et al. The effect of cimetidine on the pharmacokinetics of epirubicin in patients with advanced breast cancer: preliminary evidence of a potentially common interaction. *Clin Oncol (Royal College of Radiologists)* 1998; 10(1):35-38.
59. El Helw LM, Lorigan PC, Robinson MH, et al. VEDex (vincristine, epirubicin dexamethasone): an effective and well-tolerated palliative chemotherapy regimen for non-Hodgkin's lymphoma. *Int J Oncol* 2000; 16(4):777-782.
60. Bocchia M, Bigazzi C, Marconcini S, et al. Favorable impact of low-dose fludarabine plus epirubicin and cyclophosphamide regimen (FLEC) as treatment for low-grade non-Hodgkin's lymphomas. *Haematologica* 1999; 84(8):716-720.
61. Aviles A, Nambo MJ, Talavera A, et al. Epirubicin (CEOP-Bleo) versus idarubicin (CIOP-Bleo) in the treatment of elderly patients with aggressive non-Hodgkin's lymphoma: dose escalation studies. *Anti-Cancer Drugs* 1997; 8(10):937-942.
62. Bertini M, Freilone R., Vitolo U, et al. The treatment of elderly patients with aggressive non-Hodgkin's lymphomas: feasibility and efficacy of an intensive multidrug regimen. *Leukemia & Lymphoma* 1996; 22(5-6):483-493.

63. Lambertenghi Delilieri G, Butti C, et al. A cooperative study of epirubicin with cyclophosphamide, vincristine and prednisone (CEOP) in non-Hodgkin's lymphoma. *Haematologica* 1995; 80(4):318-324.
64. Huan SD, Stewart DJ, Aitken SE, et al. Combination of epirubicin and cisplatin in hormone-refractory metastatic prostate cancer. *Am J Clin Oncol* 1999; 22(5):471-474.
65. Veronesi A, Re GL, Foladore S, et al. Multidrug chemotherapy in the treatment of non- elderly patients with hormone-refractory prostatic carcinoma. A phase II study. North-Eastern Italian Oncology Group (GOCCNE). *Eur Urol* 1996; 29(4):434-438.
66. Veronesi A, Lo Re G, Carbone A, et al. Multimodal treatment of locally advanced transitional cell bladder carcinoma in elderly patients. *Eur J Cancer* 1994; 30A(7):918-920.
67. Quoix EA, Giaccone G, Jassem J, et al. Epirubicin in previously untreated patients with small cell lung cancer: a phase II study by the EORTC Lung Cancer Cooperative Group. *Eur J Cancer* 1992; 28A(10): 1667-1670.
68. Lehnert M, Mross K, Schueller J, et al. Phase II trial of dexverapamil and epirubicin in patients with non-responsive metastatic breast cancer. *Br J Cancer* 1998; 77(7): 1155-1163.
69. Neri B, Pacini P, Bartalucci S, et al. Epirubicin high dose therapy in advanced breast cancer: preliminary clinical data. *Int J Clin Pharmacol Ther Toxicol* 1989; 27:388-391.
70. Piccart MJ, Bruning P, Wildiers J, et al. An EORTC pilot study of filgrastim (recombinant human granulocyte colony stimulating factor) as support to a high dose-intensive epirubicin cyclophosphamide regimen in chemotherapy-naïve patients with locally advanced or metastatic breast cancer. *Ann Oncol* 1995; 6(7):673-677.
71. Jakobsen P, Steiness E, Bastholt L, et al. Multiple-dose pharmacokinetics of epirubicin at four different dose levels: Studies in patients with metastatic breast cancer. *Cancer Chemother Pharmacol* 1991; 28(1):63-68.
72. Bonneterre J et al. Long-term cardiac follow-up in relapse-free patients after six courses of fluorouracil, epirubicin, and cyclophosphamide, with either 50 or 100 mg of epirubicin, as adjuvant therapy for node-positive breast cancer: French Adjuvant Study Group. *J Clin Onc* 2004 (August 1); 22(15) 3070-3079.
73. Pharmorubicin\* PFS Product Monograph. Revision Date: July 9, 2014, Control Number 173657, Pfizer Canada Inc., Kirkland, Quebec.

**PART III: CONSUMER INFORMATION**

**<sup>Pr</sup>EPIRUBICIN FOR INJECTION**  
 2 mg/mL  
 (2 mg Epirubicin Hydrochloride/ mL)

**This leaflet is part III of a three-part "Product Monograph" published when EPIRUBICIN FOR INJECTION was approved for sale in Canada and is designed specifically for Consumers. This leaflet is a summary and will not tell you everything about EPIRUBICIN FOR INJECTION. Contact your doctor or pharmacist if you have any questions about the drug.**

**ABOUT THIS MEDICATION**

**EPIRUBICIN FOR INJECTION (epirubicin hydrochloride) and cancer treatment:**

**What is EPIRUBICIN FOR INJECTION used for:**  
 EPIRUBICIN FOR INJECTION alone or in combination with other anticancer drugs is used in the treatment of:

- Metastatic breast cancer
- Small cell lung cancer, advanced non-small cell lung cancer
- Stage III and IV ovarian cancer
- Metastatic and locally unresectable gastric carcinoma

EPIRUBICIN FOR INJECTION in combination with other anticancer drugs is also used in the adjuvant treatment of early stage of breast cancer for pre- and peri-menopausal women.

**What it does:**  
 EPIRUBICIN FOR INJECTION is a chemotherapy drug, often used in combination with other drugs to kill cancer cells. Most chemotherapy agents (including EPIRUBICIN FOR INJECTION) work by killing rapidly dividing cells, such as cancer cells. This action can affect normal cells as well.

In breast cancer, it can be used following surgery and/or radiation as adjuvant or additional therapy. Here, it is used to kill cancer cells that have “escaped” the tumour and could spread to other parts of the body (like the bones, liver, or lungs), where the cancer can grow again and recur. If breast cancer has spread to the lymph nodes in the axilla (armpit), there is higher chance of recurrence if no treatment is given. (The axillary lymph nodes normally drain fluid from the breast and arm.) The extent of the cancer cell spreading may be a factor when a chemotherapy regimen is chosen. **BEFORE STARTING TREATMENT YOU AND YOUR DOCTOR SHOULD DISCUSS TREATMENT OPTIONS BEST SUITED TO YOU, TAKING INTO CONSIDERATION YOUR CONDITION AND OTHER HEALTH CONCERNS THAT YOU MAY HAVE.**

In other cancers, chemotherapy can be used to reduce tumour size, or stop them from growing. Understand why your doctor has chosen the particular chemotherapy regimen to be used, and know all the risk and benefits before starting therapy.

**When it should not be used:**  
 Do not use the drugs if you:

- are allergic to epirubicin or any of the ingredients of the drug or its container (see *What the important non-medicinal ingredients are*),
- are allergic to other anthracyclines or anthracenediones such as doxorubicin, daunorubicin, mitoxanthrone or mitomycin C.
- have persistent low blood count (myelosuppression)
- have severe liver impairment
- have severe heart disease
- have had a recent heart attack
- have irregular heartbeat
- have a history of severe cardiac disease
- have been treated with a maximum cumulative dose of epirubicin and/or other anthracyclines and anthracenediones

**What the medicinal ingredient is:**  
 Epirubicin hydrochloride.

**What the important non-medicinal ingredients are:**  
 Sodium chloride; Water for Injection and Hydrochloric acid for pH adjustment.

**What dosage form it comes in:**  
 EPIRUBICIN FOR INJECTION 2 mg/mL (epirubicin hydrochloride) is available in 5mL, 10 mL, 25mL, 75 mL and 100mL glass vials.

**WARNINGS AND PRECAUTIONS**

**Severe local tissue degradation caused by fluid leakage from the veins to the surrounding tissues during administration**

**Cardiac toxicity, manifested in its most severe form by potentially fatal heart failure**

**A severe decrease in the ability of the bone marrow to produce blood cells**

**EPIRUBICIN FOR INJECTION should be given under the supervision of a doctor experienced with the use of anticancer drugs.**

**EPIRUBICIN FOR INJECTION should not be given to patients with the following conditions:**

- **A low blood count (bone marrow suppression induced by previous drug therapy or radiotherapy);**
- **A heart disease and/or previous treatment with anthracyclines (cardiotoxic drugs).**

Before using EPIRUBICIN FOR INJECTION, tell your doctor if any of the following applies to you:

- if you have or have experienced a sensitivity or allergic reaction to epirubicin or any other component of the product (see *What the important non-medicinal ingredients are*), other anthracyclines or anthracenediones such as doxorubicin

## IMPORTANT: PLEASE READ

hydrochloride, daunorubicin hydrochloride, mitoxantrone or mitomycin C.

- if you have low blood cell counts due to a decreased ability of the bone marrow to produce blood cells
- if you have severe liver disease
- if you have a heart disease, recent heart attack or irregular heartbeat
- if you are taking other drugs (including calcium channel blockers) or have been previously treated with EPIRUBICIN FOR INJECTION or other anti-cancer drugs, including anthracyclines (cardiotoxic drugs).

As EPIRUBICIN FOR INJECTION may be harmful to an unborn child, women should be advised to avoid becoming pregnant. Effective contraceptive methods should be used.

Tell your doctor right away if you become pregnant during treatment. If you have been nursing, you should stop before starting treatment with EPIRUBICIN FOR INJECTION. Ask your baby's doctor to recommend a formula that would be best for your baby.

### INTERACTIONS WITH THIS MEDICATION

Administration of live vaccines to immunosuppressed patients including those undergoing cytotoxic chemotherapy should be avoided.

### PROPER USE OF THIS MEDICATION

#### *How is EPIRUBICIN FOR INJECTION given?*

Some patients may receive EPIRUBICIN FOR INJECTION through a vein in the arm ("intravenously" or "IV") by their doctor or nurse, usually in the hospital, outpatient department or clinic.

If you are getting many injections over several weeks or months, for your convenience, your doctor may insert a catheter (thin tube) or port into a large vein in your body that is placed there as long as it is needed. Medicines get injected through the catheter or port rather than directly into a vein.

#### *How much time does it take to get a treatment with EPIRUBICIN FOR INJECTION?*

It usually takes about 5 minutes to inject EPIRUBICIN FOR INJECTION. However, you may get other medicines before or after EPIRUBICIN FOR INJECTION, so your entire treatment may last an hour or longer.

#### *How long will I need treatment?*

Your doctor will determine the length of your treatment based on your treatment goals, the medicines you receive, and how your body responds to those medicines. Adjuvant chemotherapy for breast cancer usually lasts 3-6 months, however.

Chemotherapy is usually given in cycles that include rest periods between treatments. The rest periods give your body a chance to build healthy new cells and regain your strength before your next treatment. EPIRUBICIN FOR INJECTION is given in treatment

cycles of 21 days or 28 days. You may receive one dose of EPIRUBICIN FOR INJECTION every three or four weeks (on Day 1 of the cycle). Or, you may receive EPIRUBICIN FOR INJECTION in two doses - one dose on Day 1 of the cycle, and another dose on Day 8. Your treatment cycle will depend on your medical condition and the other chemotherapy medicines you are getting.

#### *Will I be able to work?*

Some people work full time, while others work part time or wait until their chemotherapy treatments are finished. It depends on the type of job you have and the side effects you experience.

#### *Is it okay to become pregnant or nurse a baby?*

No. EPIRUBICIN FOR INJECTION can be harmful to an unborn child. If there is any possibility that you may become pregnant, ask your doctor about using birth control to prevent pregnancy during your treatment with EPIRUBICIN FOR INJECTION. Tell your doctor right away if you become pregnant during treatment. If you have been nursing, you should stop before starting treatment with EPIRUBICIN FOR INJECTION. Ask your baby's doctor to recommend a formula that would be best for your baby.

#### *What should men consider when taking EPIRUBICIN FOR INJECTION?*

Men undergoing treatment with epirubicin should use effective contraceptive methods.

#### *What happens after treatment?*

After you have completed all your chemotherapy treatments, your doctor will check you regularly to make sure the cancer has not returned.

#### **Overdose:**

If you think you are given more EPIRUBICIN FOR INJECTION than you should contact your doctor, nurse, or poison control centre immediately.

#### **Missed Dose:**

If you miss your scheduled treatment with the drug, contact your doctor as soon as possible to schedule your next treatment.

### SIDE EFFECTS AND WHAT TO DO ABOUT THEM

Like all medicines, EPIRUBICIN FOR INJECTION may cause side effects. Everyone reacts differently to chemotherapy and not all people will experience every side effect.

Common side effects include:

- hair loss, which is temporary and usually starts to grow back within 2 or 3 months after you have finished your treatments.
- increased risk of infection, as a result of low white blood cell count. The signs of infection include fever over 38°C (100°F), chills or sweating, sore throat or coughing, redness or swelling around a cut, wound or a catheter site, a burning feeling when you urinate, unusual vaginal itching or discharge.

**IMPORTANT: PLEASE READ**

- nausea and vomiting,
- fatigue, or feeling tired.
- mouth sores.
- EPIRUBICIN FOR INJECTION is a clear red coloured liquid and will make your urine turn red for a few days after treatment.

The kinds of side effects, how often they occur, and how bad they may be could be related to the dose of chemotherapy, or the regimen used.

**Rare side effects include:**

- Damage to the heart muscle, which can cause symptoms such as shortness of breath, swelling in the ankles, and fluid retention. If you have these symptoms, call your doctor right away. There are medicines to treat this condition.
- Secondary leukemia (less than 1% of patients) up to 5 years after treatment with EPIRUBICIN FOR INJECTION.

The chances of developing heart damage or leukemia appear to be related to either how much chemotherapy you have received, or the dose of EPIRUBICIN FOR INJECTION used. Be sure you discuss the risks and benefits of various chemotherapy options with your doctor, and understand the side-effects both immediate and long-term that you could have from your treatment before you start therapy.

**This is not a complete list of side effects. For any unexpected effects while taking EPIRUBICIN FOR INJECTION, contact your doctor or pharmacist.**

**REPORTING SUSPECTED SIDE EFFECTS**

To monitor drug safety, Health Canada through the Canada Vigilance Program collects information on serious and unexpected side effects of drugs. If you suspect you have had a serious or unexpected reaction to this drug you may notify Canada Vigilance:

By Toll-free telephone: 1-866-234-2345  
 By Toll-free fax: 1-866-678-6789  
 Online: [www.healthcanada.gc.ca/medeffect](http://www.healthcanada.gc.ca/medeffect)  
 By email: [CanadaVigilance@hc-sc.gc.ca](mailto:CanadaVigilance@hc-sc.gc.ca)

By regular mail:  
 Canada Vigilance National Office  
 Marketed Health Products Safety and Effectiveness Information Bureau  
 Marketed Health Products Directorate  
 Health Products and Food Branch  
 Health Canada  
 Tunney's Pasture, AL 0701C  
 Ottawa, ON K1A 0K9

**NOTE: Should you require information related to the management of the side effect, please contact your healthcare provider before notifying Canada Vigilance. The Canada Vigilance Program does not provide medical advice.**

**SERIOUS SIDE EFFECTS AND WHAT TO DO ABOUT THEM**

Symptom / effect	Talk with your doctor or pharmacist	
	Only if severe	In all cases
<b>Low white blood cell count</b> and symptoms such as increased infection, fever > 38°C, chills or sweating, sore throat, mouth sores, burning feeling when urinating, unusual vaginal itching or discharge		✓
<b>Anemia</b> (reduced red blood cell) and symptoms such as feeling weak, dizzy, shortness of breath		✓
<b>Injection site reactions</b> such as pain, sores, burning.		✓
<b>Increased bleeding</b> with symptoms such as dark urine or dark/bloody stool, unexplained bruising		✓
<b>Cardiovascular problems</b> with symptoms such as irregular heartbeat, chest pain, swelling of the ankle, shortness of breath / cardiac problems		✓
<b>Bowel inflammation</b> (colitis) or, digestive tract bleeding and symptoms such as bloody stools, bloody vomit		✓

**MORE INFORMATION**

EPIRUBICIN FOR INJECTION should be stored under refrigeration (2 – 8°C), protected from light, and retained in original carton until time of use. Unused solution should be discarded.

This document plus the full product monograph, prepared for health professionals can be found by contacting Teva Canada Limited  
 at: 1-800-268-4127 ext. 1255005 (**English Canada**)  
 or [druginfo@tevacanada.com](mailto:druginfo@tevacanada.com)

or 1-877-777-9117 (**French Canada**)

This leaflet was prepared by:  
 Teva Canada Limited  
 30 Novopharm Court  
 Toronto, Ontario  
 Canada, M1B 2K9

Last Revised: August 20, 2014