

PRODUCT MONOGRAPH

IBUPROFEN

Ibuprofen Tablets
Manufacturer Std.

200 mg
400 mg

Non-Steroidal Anti-inflammatory Drug
Analgesic, Antipyretic Agent

1466406 Ontario Ltd.
665 Millway Avenue
Concord, Ontario
L4K 3T8

Date of Preparation: November 17, 2011

Date of Revision: December 19, 2014

Control # 177509

Table of Contents

| | |
|--|-----------|
| PART I: HEALTH PROFESSIONAL INFORMATION | 3 |
| SUMMARY PRODUCT INFORMATION | 3 |
| INDICATIONS AND CLINICAL USE | 3 |
| CONTRAINDICATIONS | 4 |
| WARNINGS AND PRECAUTIONS | 4 |
| ADVERSE REACTIONS | 10 |
| DRUG INTERACTIONS..... | 13 |
| DOSAGE AND ADMINISTRATION | 15 |
| OVERDOSAGE | 16 |
| ACTION AND CLINICAL PHARMACOLOGY | 17 |
| STORAGE AND STABILITY | 18 |
| SPECIAL HANDLING INSTRUCTIONS | 18 |
| DOSAGE FORMS, COMPOSITION AND PACKAGING | 19 |
| | |
| PART II: SCIENTIFIC INFORMATION | 20 |
| PHARMACEUTICAL INFORMATION | 20 |
| CLINICAL TRIALS | 20 |
| DETAILED PHARMACOLOGY | 24 |
| MICROBIOLOGY | 26 |
| TOXICOLOGY | 26 |
| REFERENCES | 31 |
| | |
| PART III: CONSUMER INFORMATION | 37 |

IBUPROFEN

Ibuprofen Tablets
Manufacturer Std.

200 mg, 400 mg

PART I: HEALTH PROFESSIONAL INFORMATION

SUMMARY PRODUCT INFORMATION

| Route of Administration | Dosage Form/ Strength | Clinically Relevant Non-Medicinal Ingredients |
|-------------------------|------------------------|--|
| Oral | Tablets 200 mg, 400 mg | None For a complete listing see Dosage Forms, Composition and Packaging Section |

INDICATIONS AND CLINICAL USE

Ibuprofen is indicated for fast and effective relief of:

- headache pain (including mild to moderate migraine and tension headache)
- menstrual pain
- toothache (dental pain)
- pain from inflammation associated with conditions including:
 - arthritis
 - physical or athletic overexertion, (e.g. sprains or strains)
- minor aches and pains in muscles, bones and joints
- backache
- the aches and pain due to the common cold and flu
- reduction of fever

Geriatrics (>65 years of age):

Evidence from clinical studies and experience suggest that use in the geriatric population is associated with differences in safety or effectiveness and a brief discussion can be found in the appropriate sections (e.g., Warnings and Precautions).

Pediatrics (<12 years of age):

Children's ibuprofen formulations are available to treat children under 12 years of age.

CONTRAINDICATIONS

The following are contraindications to the use of Ibuprofen Tablets:

- Patients who are hypersensitive to ibuprofen, other non-steroidal anti-inflammatory drugs (NSAIDs), or to any ingredient in the formulation. For a complete listing of ingredients, see the Dosage Forms, Composition and Packaging section of the product monograph. The potential for cross-reactivity between different NSAIDs must be kept in mind.
- Ibuprofen should not be used in patients with the complete or partial syndrome of acetylsalicylic acid (ASA) intolerance (rhinosinusitis, urticaria/angioedema, nasal polyps, asthma) in whom asthma, anaphylaxis, urticaria/angioedema, rhinitis or other allergic manifestations are precipitated by ASA or other nonsteroidal anti-inflammatory agents. Fatal anaphylactoid reactions have occurred in such individuals. As well, individuals with the above medical problems are at risk of a severe reaction even if they have taken NSAIDs in the past without any adverse effects.
- Active gastric or duodenal ulcer, a history of recurrent ulceration, gastrointestinal bleeding, or active inflammatory disease of the gastrointestinal system.
- Significant hepatic impairment or active liver disease.
- Severely impaired or deteriorating renal function (creatinine clearance <30 ml/min).
- Ibuprofen should not be used in the presence of known hyperkalemia (also see Warnings and Precautions - Renal section).
- Children with kidney disease and/or who have suffered significant fluid loss.
- Ibuprofen is contraindicated in patients with systemic lupus erythematosus as an anaphylaxis-like reaction with fever may occur, particularly when ibuprofen has been administered previously.
- Ibuprofen should not be used during pregnancy.

WARNINGS AND PRECAUTIONS

- Patients with heart disease and high blood pressure should not take this drug unless directed by a physician
- Caution in patients with heart failure, hypertension or other conditions predisposing to fluid retention.
- Caution in patients prone to gastrointestinal tract irritation, particularly those with a history of peptic ulcer, diverticulosis or other inflammatory disease of the gastrointestinal tract such as ulcerative colitis and Crohn's disease.

- The elderly and patients with impaired renal function, heart failure, liver dysfunction, and those taking diuretics are at increased risk of renal toxicity.
- If persistent urinary symptoms (bladder pain, dysuria, urinary frequency), hematuria and cystitis occur, the drug should be stopped immediately.
- Ibuprofen use during nursing should be avoided

General

Several medical conditions that can predispose patients to the adverse effects of non-steroidal anti-inflammatory drugs in general may be applicable to ibuprofen.

Patients with any serious medical condition should consult a physician before using ibuprofen as an analgesic or antipyretic (1).

In common with other anti-inflammatory drugs, ibuprofen may suppress fever.

Cardiovascular

Some patients with pre-existing hypertension may develop worsening of blood pressure control when placed on an NSAID and regular monitoring of blood pressure should be performed under such circumstances. NSAIDs may exacerbate congestive heart failure.

Patients who are taking low-dose ASA as cardio protective therapy should consult with a health professional prior to taking ibuprofen (see also Drug Interactions - Acetylsalicylic Acid).

Gastrointestinal

Serious GI toxicity, such as ulceration, perforation, obstruction and gastrointestinal bleeding, sometimes severe and occasionally fatal, can occur at any time, with or without symptoms in patients treated with nonsteroidal anti-inflammatory drugs (NSAIDs) including ibuprofen.

GI symptoms, such as dyspepsia, are common, usually developing early in therapy. Health providers should remain alert for ulceration and bleeding in patients treated with non-steroidal anti-inflammatory drugs, even in the absence of previous GI tract symptoms.

In patients observed in clinical trials of such agents, symptomatic upper GI ulcers, gross bleeding, or perforation occur in approximately 1% of patients treated for 3-6 months and in about 2-4% of patients treated for one year. The risk continues beyond one year. The incidence of these complications is related to dose, past history of known ulcer disease, and advanced age (see Special Populations). Studies have shown that the use of oral corticosteroids increases the risk of upper gastrointestinal complications associated with NSAIDs (2, 3, 4, 5, 6)

Ibuprofen should be given under close medical supervision to patients with a history of ulcer of the upper gastrointestinal tract or inflammatory disease of the gastrointestinal tract such as

ulcerative colitis and Crohn's disease. In these cases the health provider must weigh the benefits of treatment against the possible hazards.

Health providers should inform patients about the signs and symptoms of serious GI toxicity and instruct them to contact a health provider immediately if they experience persistent dyspepsia or other symptoms or signs suggestive of gastrointestinal ulceration or bleeding.

Because serious GI tract ulceration and bleeding can occur without warning symptoms, health providers should follow chronically treated patients and watch for the signs and symptoms of ulceration and bleeding and should inform the patients of the importance of this follow-up.

If ulceration is suspected or confirmed, or if GI bleeding occurs ibuprofen should be discontinued immediately, appropriate treatment instituted and the patient monitored closely.

No studies, to date, have identified any group of patients *not* at risk of developing ulceration and bleeding. The major risk factors are a prior history of serious GI events and increasing age. Possible risk factors include *Helicobacter pylori* infection, excess alcohol intake, smoking, and concomitant oral steroids, anti-coagulants, anti-platelet agents (including ASA), or selective serotonin reuptake inhibitors (SSRIs).

The administration of ibuprofen with food or milk is recommended since occasional and mild heartburn, upset stomach or stomach pain may occur with its use. Patients should be advised to seek the consultation of a physician if gastrointestinal side effects occur consistently, persist, or appear to worsen (1).

Genitourinary

Some NSAIDs are associated with persistent urinary symptoms (bladder pain, dysuria, urinary frequency), hematuria or cystitis. The onset of these symptoms may occur at any time after the initiation of therapy with an NSAID. Should urinary symptoms occur, in the absence of an alternate explanation, treatment with ibuprofen should be stopped to ascertain if symptoms disappear. This should be done before urological investigations or treatments are considered.

Hematologic

Ibuprofen, like other non-steroidal anti-inflammatory agents, can inhibit platelet aggregation but the effect is quantitatively less than that seen with acetylsalicylic acid. Ibuprofen has been shown to prolong bleeding time (but within the normal range) in normal subjects. Because this prolonged bleeding effect may be exaggerated in patients with underlying haemostatic defects, ibuprofen should be avoided by persons with intrinsic coagulation defects and by those on anticoagulant therapy. Concurrent therapy of ibuprofen with warfarin requires close monitoring of INR (see Drug Interactions).

Also, patients with underlying medical or pharmacologically - induced haemostatic defects could experience further prolongation of bleeding time through the inhibition of platelet aggregation induced to varying degrees by this class of drugs (1).

Blood dyscrasias (such as neutropenia, leukopenia, thrombocytopenia, aplastic anemia and agranulocytosis) associated with the use of non-steroidal anti-inflammatory drugs are rare, but could occur with severe consequences.

Hepatic

As with other nonsteroidal anti-inflammatory drugs, borderline elevations of one or more liver enzyme tests (AST, ALT, ALP) may occur in up to 15% of patients. These abnormalities may progress, may remain essentially unchanged, or may be transient with continued therapy.

A patient with symptoms and/or signs suggesting liver dysfunction, or in whom an abnormal liver test has occurred, should be evaluated for evidence of the development of a more severe hepatic reaction while on therapy with this drug. Severe hepatic reactions including jaundice and cases of fatal hepatitis have been reported with nonsteroidal anti-inflammatory drugs.

Although such reactions are rare, if abnormal liver tests persist or worsen, if clinical signs and symptoms consistent with liver disease develop (e.g. jaundice), or if systemic manifestations occur (e.g. eosinophilia, associated with rash, etc.), this drug should be discontinued.

If there is a need to prescribe this drug in the presence of impaired liver function, it must be done under strict observation.

Immune

Patients sensitive to any one of the nonsteroidal anti-inflammatory drugs may be sensitive to any of the other NSAIDs also.

As with NSAIDs in general, some patients may experience urticaria and angioedema upon exposure to ibuprofen. Ibuprofen should not be given to patients with the complete or partial syndrome of ASA-intolerance (See Contraindications).

Neurologic

Some patients may experience drowsiness, dizziness, vertigo, tinnitus or hearing loss with the use of ibuprofen. If patients experience these side effects, they should exercise caution in carrying out activities that require alertness.

In occasional rare cases, with some NSAIDs, the symptoms of aseptic meningitis (stiff neck, severe headaches, nausea and vomiting, fever or clouding of consciousness) have been observed. Patients with autoimmune disorders (systemic lupus erythematosus, mixed connective tissues diseases, etc.) seem to be pre-disposed. Therefore, in such patients, the health provider must be vigilant to the development of this complication.

Ophthalmologic

Blurred and/or diminished vision, scotoma, and/or changes in colour vision have been reported. If a patient develops such complaints while taking ibuprofen, the drug should be discontinued. Patients with any visual disturbances should have an ophthalmologic examination.

Peri-Operative Considerations

In general, NAIDS should be discontinued prior to surgeries to decrease the risk of post-operative bleeding.

Renal

Long-term administration of nonsteroidal anti-inflammatory drugs to animals has resulted in renal papillary necrosis and other abnormal renal pathology. In humans, there have been reports of acute interstitial nephritis with hematuria, proteinuria, and occasionally nephrotic syndrome.

A second form of renal toxicity has been seen in patients with pre-renal conditions leading to reduction in renal blood flow or blood volume, where the renal prostaglandins have a supportive role in the maintenance of renal perfusion. In these patients, administration of a non-steroidal anti-inflammatory drug may cause a dose dependent reduction in prostaglandin formation and may precipitate overt renal decompensation. Patients at greatest risk of this reaction are those with impaired renal function (Glomerular Filtration Rate (GFR) < 60 ml/min or 1 ml/sec), patients on salt restricted diets, those with congestive heart failure, cirrhosis, liver dysfunction, those taking diuretics, angiotensin-converting enzyme inhibitors, angiotensin-II receptor blockers, cyclosporin, ASA and the elderly. Serious or life-threatening renal failure has been reported in patients with normal or impaired renal function after short-term therapy with NSAIDs. Even patients at risk who demonstrate the ability to tolerate an NSAID under stable conditions may decompensate during periods of added stress, for example during states of fluid restriction as can occur during gastroenteritis. Discontinuation of nonsteroidal anti-inflammatory therapy is usually followed by recovery to the pretreatment state.

NSAIDs can increase the risk of hyperkalemia. In patients on dialysis, NSAIDs should be used with caution.

Fluid retention and edema have been observed in patients treated with ibuprofen. Therefore, as with many other NSAIDs, the possibility of precipitating congestive heart failure in elderly patients or those with compromised cardiac function should be borne in mind. Ibuprofen should be used with caution in patients with heart failure, hypertension or other conditions predisposing to fluid retention. Ask patients who are on chronic therapy and at risk for fluid retention to weigh themselves at regular intervals to assist in monitoring for fluid accumulation.

With nonsteroidal anti-inflammatory treatment there is a potential risk of hyperkalemia, particularly in patients with conditions such as diabetes mellitus or renal failure; elderly patients; or in patients receiving concomitant therapy with angiotensin-II receptor antagonists, adrenergic

blockers, angiotensin-converting enzyme inhibitors or some diuretics. Patients at risk should be monitored periodically during long-term therapy.

Respiratory

ASA-induced asthma is an uncommon but very important indication of ASA and NSAID sensitivity. It occurs more frequently in patients with asthma who have nasal polyps.

Skin

In rare cases, serious skin reactions such as Stevens-Johnson syndrome, toxic epidermal necrolysis, exfoliative dermatitis and erythema multiforme have been associated with the use of some NSAIDs. Because the rate of these reactions is low, they have usually been noted during post-marketing surveillance in patients taking other medications also associated with the potential development of these serious skin reactions. Thus, causality is not clear. These reactions are potentially life threatening but may be reversible if the causative agent is discontinued and appropriate treatment instituted. Patients should be advised that if they experience a skin rash they should discontinue their NSAID and contact their physician for assessment and advice, including which additional therapies to discontinue.

Special Populations

Pregnant Women:

No evidence specifically identifies exposure to analgesic doses of ibuprofen as a cause of harm to either mother or fetus during pregnancy (1, 7). Non-steroidal anti-inflammatory drugs in general, however, are known to affect the action of prostaglandin synthetase which could alter a variety of the physiological functions of prostaglandins or platelets during delivery such as facilitating uterine contraction in the mother, closure of the ductus arteriosus in the fetus, and platelet-related haemostasis. Patients should therefore be advised not to use ibuprofen during pregnancy without the advice of a physician, particularly during the last trimester (1). Clinical information is limited on the effects of ibuprofen in pregnancy.

Nursing Women:

Pharmacokinetic studies indicated that following oral administration of ibuprofen 400 mg the level of drug that appeared in breast milk was below detection levels of 1 µg/mL. The amount of ibuprofen to which an infant would be exposed through this source was considered negligible (8). However, since the absolute safety of ibuprofen ingested under these circumstances has not been determined, nursing mothers should be advised to consult a physician before using ibuprofen (1).

Geriatrics (>65 years of age):

Patients older than 65 years and frail or debilitated patients are most susceptible to a variety of adverse reactions from nonsteroidal anti-inflammatory drugs (NSAIDs); the incidence of these adverse reactions increases with dose and duration of treatment. In addition, these patients are less tolerant to ulceration and bleeding. Most reports of fatal GI events are in this population, especially those with cardiovascular disease. Older patients are also at risk of lower esophageal

ulceration and bleeding. Elderly patients appear to be more susceptible to the central nervous system reactions; cognitive dysfunction (forgetfulness, inability to concentrate, a feeling of separation from the surroundings) in such patients has been reported.

For such patients, consideration should be given to a starting dose lower than the one usually recommended, with individual adjustment when necessary and under close supervision.

ADVERSE REACTIONS

Post-Market Adverse Drug Reactions

The most common adverse reactions encountered with nonsteroidal anti-inflammatory drugs are gastrointestinal, of which gastric or duodenal ulcer, with or without bleeding, is the most severe. Fatalities have occurred, particularly in the elderly.

Experience reported with prescription use of ibuprofen has included the following adverse reactions. Note: Reactions listed below under Causal Relationship Unknown are those where a causal relationship could not be established; however, in these rarely reported events, the possibility of a relationship to ibuprofen also cannot be excluded.

| Adverse Effect | Common (>1% but <10%) | | Less Common (<1%) |
|-------------------------------|--|---|--|
| | Incidence 3-9% | Incidence 1-3% | |
| Allergic | | | <ul style="list-style-type: none"> • anaphylaxis (See Contraindications) |
| | Also reported but with unknown causal relationship, rarely: <ul style="list-style-type: none"> • fever • serum sickness • lupus erythematosus syndrome | | |
| Cardiovascular | | | <ul style="list-style-type: none"> • congestive heart failure in patients with marginal cardiac function • elevated blood pressure <p>Conditions such as congestive heart failure and hypertension may be aggravated by sodium retention and edema caused by ibuprofen in such patients.</p> |
| | Also reported but with unknown causal relationship, rare cases of: <ul style="list-style-type: none"> • arrhythmias (sinus tachycardia, sinus bradycardia, palpitations) | | |
| Central Nervous System | <ul style="list-style-type: none"> • dizziness | <ul style="list-style-type: none"> • headache • nervousness | <ul style="list-style-type: none"> • depression • insomnia |
| | Also reported but with unknown causal relationship: <ul style="list-style-type: none"> • paresthesias • hallucinations • dream abnormalities • aseptic meningitis has been reported in patients with systemic lupus erythematosus or other connective tissue disease • aseptic meningitis and meningioencephalitis, in one case accompanied by eosinophilia in the cerebrospinal fluids, has been reported in patients who took ibuprofen intermittently and did not have any connective tissue disease • cognitive dysfunction has been observed in elderly patients who took ibuprofen | | |
| Dermatologic | <ul style="list-style-type: none"> • rash (including maculopapular type) | <ul style="list-style-type: none"> • pruritis | <ul style="list-style-type: none"> • vesiculobullous eruptions • urticaria • erythema multiforme |
| | Also reported but with unknown causal relationship: <ul style="list-style-type: none"> • alopecia • Stevens-Johnson Syndrome | | |
| Endocrine | Also reported but with unknown causal relationship, rare cases of: <ul style="list-style-type: none"> • gynecomastia • hypoglycemic reaction • menstrual delays of up to two weeks and dysfunctional uterine | | |

| Adverse Effect | Common (>1% but <10%) | | Less Common (<1%) |
|-------------------------|--|---|--|
| | Incidence 3-9% | Incidence 1-3% | |
| | bleeding occurred in nine patients taking ibuprofen 400 mg three times a day for three days before menses | | |
| Gastrointestinal | <ul style="list-style-type: none"> • nausea • epigastric pain • heartburn | <ul style="list-style-type: none"> • diarrhea • abdominal distress • nausea and vomiting • indigestion • constipation • abdominal cramps and pain • gastrointestinal tract fullness (bloating or flatulence) | <ul style="list-style-type: none"> • gastric or duodenal ulcer with bleeding and/or perforation • gastrointestinal hemorrhage • melena • hepatitis • jaundice • abnormal liver function (SGOT, serum bilirubin and alkaline phosphatase) |
| | The generally modest elevations of serum transaminase activity that has been observed are usually without clinical sequelae but severe, potentially fatal toxic hepatitis can occur. | | |
| Hematologic | | | <ul style="list-style-type: none"> • leukopenia and decreases in hemoglobin and hematocrit |
| | Also reported but with unknown causal relationship, rare cases of: <ul style="list-style-type: none"> • hemolytic anemia • thrombocytopenia • granulocytopenia • bleeding episodes (e.g. prupura, epistaxis, hematuria, menorrhagia) • auto-immune hematological anemia occurred in one patient taking 400 mg of ibuprofen three times a day for ten days • fatal aplastic anemia was reported in one patient who took 600 mg per day for eight months | | |
| Metabolic | | <ul style="list-style-type: none"> • decreased appetite • edema • fluid retention | |
| | Fluid retention generally responds promptly to drug discontinuation. | | |
| Renal | Also reported but with unknown causal relationship: <ul style="list-style-type: none"> • decreased creatinine clearance • polyuria • azotemia | | |

| Adverse Effect | Common (>1% but <10%) | | Less Common (<1%) |
|----------------|---|--|--|
| | Incidence 3-9% | Incidence 1-3% | |
| | Like other non-steroidal anti-inflammatory agents, ibuprofen inhibits renal prostaglandin synthesis that may decrease renal function and cause sodium retention. Renal blood flow glomerular filtration rate decreased in patients with mild impairment of renal functions who took 1200 mg/day of ibuprofen for one week. <ul style="list-style-type: none"> • Renal papillary necrosis has been reported. A number of factors appear to increase the risk of renal toxicity (See Warnings and Precautions) | | |
| Special Senses | | <ul style="list-style-type: none"> • tinnitus | <ul style="list-style-type: none"> • amblyopia (blurred and/or diminished vision, scotomata and/or changes in colour vision) Any patient with eye complaints during ibuprofen therapy should have an ophthalmological examination |
| | Also reported but with unknown causal relationship: <ul style="list-style-type: none"> • conjunctivitis • diplopia • optic neuritis | | |

DRUG INTERACTIONS

Serious Drug Interactions

- Use with acetylsalicylic acid (ASA) or other NSAIDs, including ibuprofen, may result in possible additive adverse side effects.
- Use with acetaminophen, may increase the risk of adverse renal effect.
- Use with anticoagulants may increase the risk of GI adverse events (e.g., bleeding).
- Use with hypoglycemic agents (oral agents and insulin) may increase the risk of hypoglycaemia.
- Use with antihypertensives may interference with circulatory control.
- Use with diuretics may reduce the diuretic effect.
- Use with methotrexate may increase the risk of methotrexate toxicity.
- Use with lithium may increase the risk of lithium toxicity.

Acetylsalicylic Acid (ASA) or other NSAIDs

The use of ibuprofen in addition to any other NSAID is not recommended because of the absence of any evidence demonstrating synergistic benefits and the potential for additive side effects.

Animal studies show that ASA given with NSAID agents, including ibuprofen, yield a net decrease in anti-inflammatory activity with lowered blood levels of the non-ASA drug. Single dose bioavailability studies in normal volunteers have failed to show an effect of ASA on ibuprofen blood levels. Correlative clinical studies have not been done.

Also, some NSAIDs may interfere with the anti-platelet effects of low dose ASA (81-325 mg per day), possibly by competing with ASA for access to the active site of cyclooxygenase-I. The concomitant administration of ibuprofen but not acetaminophen has been shown to antagonize the irreversible platelet inhibition induced by ASA (9). Regular use of ibuprofen in patients with increased cardiovascular risk may limit the cardio protective effects of ASA (9,10). To minimize this interaction, regular users of ibuprofen and low-dose, immediate-release ASA should take the ibuprofen at least one hour after or 11 hours before the daily low-dose ASA. The use of delayed-release (e.g. enteric coated) ASA is not recommended when using ibuprofen regularly. Healthcare professionals should advise consumers and patients regarding the appropriate concomitant use of ibuprofen and ASA.

Anti-Platelet Agents (including ASA): See Warnings and Precautions - Hematologic section.

Anticoagulants: See Warnings and Precautions -Hematologic section.

Coumarin Type Anticoagulants:

Several short-term controlled studies failed to show that ibuprofen significantly affected prothrombin time or a variety of other clotting factors when administered to individuals on coumarin-type anticoagulants. However, bleeding has been reported when ibuprofen and other NSAID agents have been administered to patients on coumarin-type anticoagulants. The use of ibuprofen in patients who are taking anticoagulants should therefore be avoided because of the possibility of enhanced GI bleeding or an additive effect due to ibuprofen's reversible anti-platelet actions.

Oral hypoglycemics

Ibuprofen may increase the hypoglycemic effects of oral sulfonylurea hypoglycemic agents.

Anti-hypertensives

NSAIDs may diminish the antihypertensive effect of Angiotensin Converting Enzyme (ACE) inhibitors.

Combinations of ACE inhibitors, diuretics and NSAIDs might have an increased risk for acute renal failure and hyperkalemia. In longer term therapy blood pressure and kidney function

should be monitored more closely, as occasionally there can be a substantial increase in blood pressure.

Diuretics

Ibuprofen, because of its fluid retention properties, can decrease the diuretic and anti-hypertensive effects of diuretics, and increased diuretic dosage may be needed. Patients with impaired renal function taking potassium-sparing diuretics who develop ibuprofen-induced renal insufficiency might be in serious danger of fatal hyperkalemia.

Glucocorticoids

Some studies have shown that the concomitant use of NSAIDs and oral glucocorticoids increases the risk of GI side effects such as ulceration and bleeding. This is especially the case in older (>65 years of age) individuals.

Lithium

Monitoring of plasma lithium concentrations is advised when stopping or starting an NSAID, as increased lithium concentrations can occur.

Other Drug Interactions

Although ibuprofen binds to a significant extent to plasma proteins, interactions with other protein bound drugs occur uncommonly. Nevertheless, caution should be observed when other drugs also having a high affinity for protein binding sites are used concurrently. Some observations have suggested a potential for ibuprofen to interact with digoxin, methotrexate, and phenytoin. However, the mechanisms and clinical significance of these observations are presently not known.

Patients taking other prescribed medications should consult a physician before using ibuprofen to assure its compatibility with the other medications (1).

DOSAGE AND ADMINISTRATION

Dosing Considerations

Do not take for pain for more than 5 consecutive days or fever for more than 3 days unless directed by a physician.

If your condition deteriorates or new symptoms occur (such as the painful area becomes unusually red, swollen or tender), consult a physician.

Individuals older than 65 years who are frail or debilitated should be given a starting dose lower than the one usually recommended, with individual adjustments when necessary.

Missed Dose

If you miss a dose, take the missed dose as soon as you remember. If it is almost time for your next dose, wait until then to take your medicine and skip the missed dose. Do not take two doses at the same time.

Recommended Dose

Mild to moderate pain or fever.

Adults: Single oral dose may be taken every 4–6 hours, as required, not to exceed the maximum daily dose (1200 mg) in 24 hours unless directed by a physician.

| PRODUCT | STRENGTH (Ibuprofen mg/tablet) | SINGLE ORAL DOSE | MAXIMUM DAILY DOSE (1200 MG) |
|-------------------|---|-------------------------|---|
| Ibuprofen Tablets | 200 mg | 1 or 2 tablets | 6 tablets |
| Ibuprofen Tablets | 400 mg | 1 tablet | 3 tablets |

OVERDOSAGE

For management of a suspected drug overdose, contact your regional Poison Control Centre.

Clinical Features

A clear pattern of clinical features associated with accidental or intentional overdose of ibuprofen has not been established. Reported cases of overdose have often been complicated by co-ingestions or additional suicidal gestures. The range of symptoms observed has included nausea, vomiting, abdominal pain, drowsiness, nystagmus, diplopia, headache, tinnitus, impaired renal function, coma and hypotension. A review of four fatalities associated with ibuprofen overdose indicates other contributing factors co-existed so it would be difficult to identify the toxicity of ibuprofen as a specific cause of death (0, 11).

Post-ingestion blood levels may be useful to confirm a diagnosis and to quantify the degree of exposure but otherwise have not been helpful in predicting clinical outcome. Generally, full recovery can be expected with appropriate symptomatic management.

The following cases of overdose have been reported. A 19-month-old child, 1-1/2 hours after the ingestion of seven to ten 400 mg tablets of ibuprofen presented apnea, cyanosis and responded only to painful stimuli. After treatment with O₂, NaHCO₃, infusion of dextrose and normal saline, the child was responsive and 12 hours after ingestion appeared completely recovered. Blood levels of ibuprofen reached 102.9 µg/mL, 8-1/2 hours after the accident. Two other children weighing approximately 10 kg had taken an estimated 120 mg/kg. There were no signs

of acute intoxication or late sequelae. In one child the ibuprofen blood level at 90 minutes after ingestion was approximately 700 µg/mL. A nineteen-year-old male who ingested 8000 mg of ibuprofen reported dizziness and nystagmus was noted. He recovered with no reported sequelae after parenteral hydration and 3 days of bed rest.

For perspective, a single 200 mg oral dose study in 6 fasting healthy men produced a peak plasma concentration of 15.0 µg/mL at 0.75 hr (12). Another study using a single oral 400 mg dose in humans produced a peak serum level of 31.9± 8.8 µg/mL 0.5 hour after ingestion, and at 16 hours serum concentrations had dropped to 1 µg/mL (13). (See Detailed Pharmacology — Human Studies — Pharmacokinetics - Absorption)

Management of Overdose

Appropriate interventions to decontaminate the gastrointestinal tract may be beneficial within the first four hours after ingestion. Routine symptomatic and supportive treatment is then recommended (11). Physicians should contact the Regional Poison Control Centre for additional guidance about ibuprofen overdose management.

ACTION AND CLINICAL PHARMACOLOGY

Mechanism of Action

Ibuprofen is a member of the class of agents commonly known as non-steroidal anti-inflammatory drugs (NSAID). Like all NSAIDs, ibuprofen is an analgesic, antipyretic, and anti-inflammatory medication (14).

It is generally accepted that the basic mechanism of pharmacological action of ibuprofen, and other NSAIDs, is the inhibition of prostaglandin synthesis (15, 16).

Nonselective NSAIDs (such as ibuprofen) and ASA act by inhibiting systemic (peripheral and central) prostaglandin G/H synthase isoenzymes, also known as cyclooxygenase-1 (COX- 1) and cyclooxygenase-2 (COX-2). These isoenzymes are responsible for the conversion of arachidonic acid to various tissue specific prostaglandins and thromboxanes (17, 15). COX- 1 is constitutively expressed in all tissues and is responsible for generating prostaglandins that maintain organ function, protect the integrity of the gastric mucosa and generate platelet-derived thromboxane responsible for platelet aggregation and vasoconstriction (18). During the inflammatory process COX-2 is induced, generating prostaglandins that mediate pain and inflammation (19). COX-2 is also present constitutively in the kidneys and vascular endothelium (15). Reported adverse experiences with ASA and other NSAIDs can be understood on the basis of this mechanism of action.

Pharmacodynamics

Consistent with the NSAID classification, ibuprofen exhibits anti-inflammatory activity at higher dosage ranges (20). At lower adult single doses relevant to a nonprescription dosage (200 mg to 400 mg) ibuprofen relieves pain of mild to moderate intensity (21, 22, 23, 24, 25) and reduces fever (26, 27, 28). Analogous to acetylsalicylic acid, the prototype of this class, this analgesic/

antipyretic activity of ibuprofen occurs at lower doses than necessary for anti-inflammatory effects, which are thought to require sustained administration of higher individual doses (16).

Clinical studies indicate a duration of clinical effect for up to 8 hours for fever and up to 6 hours for pain.

Pharmacokinetics

Absorption: Ibuprofen is rapidly absorbed after oral administration, with peak serum or plasma levels generally appearing within 1 to 2 hours. Oral absorption is estimated to be 80% of the dose. Both the rate of absorption and peak plasma concentrations are reduced when the drug is taken with food, but bioavailability as measured by total area under the concentration-time curve is minimally altered.

Distribution: Ibuprofen, like most drugs of its class, is highly protein bound (>99% bound at 20 µg/mL) (29, 30). Tissue distribution of ibuprofen is also extensive in humans. Studies comparing synovial fluid levels with serum concentrations indicated that equilibration time post-ingestion occurred within approximately 3 to 5 hours (31).

Metabolism: It is rapidly metabolized through oxidation and glucuronic acid conjugation with urinary excretion of the inactive metabolites usually complete within 24 hours. Less than 10% is excreted unchanged in the urine (8).

Excretion: Ibuprofen has an elimination half-life of approximately two hours.

Special Populations and Conditions

Geriatrics: Studies demonstrate no apparent clinically significant alterations in ibuprofen pharmacokinetics in the elderly (32).

Hepatic Insufficiency: Ibuprofen pharmacokinetics have also been studied in patients with alcoholic liver disease who have been assessed to have fair to poor hepatic function. Results suggest that, despite the liver being the primary organ of metabolism of ibuprofen, its kinetic parameters are not substantially altered by this condition (33).

STORAGE AND STABILITY

Tablets

Ibuprofen 200 mg and 400 mg tablets should be stored at room temperature (15-30°C). Keep out of the reach of children.

SPECIAL HANDLING INSTRUCTIONS:

Not applicable.

DOSAGE FORMS, COMPOSITION AND PACKAGING

IBUPROFEN 200 mg tablets are available as a brown, biconvex, round film-coated tablets with edge; and capsule format, film-coated tablet (caplet).

IBUPROFEN 400 mg tablets are available as brown, capsule format, film-coated tablet (caplet).

IBUPROFEN 200 mg tablets contain ibuprofen 200 mg. IBUPROFEN 400 mg tablets contain ibuprofen 400 mg. Both tablets contain sodium croscarmellose, colloidal silicon dioxide, modified cornstarch, stearic acid. Also contains: carnauba wax, ferric oxide, hydroxypropyl methylcellulose, polyethylene glycol, polydextrose and titanium oxide.

Available formats:

200 mg Tablets: 24, 30, 50, 60, 100, 120, 150, 200 or 500 tablets per bottle

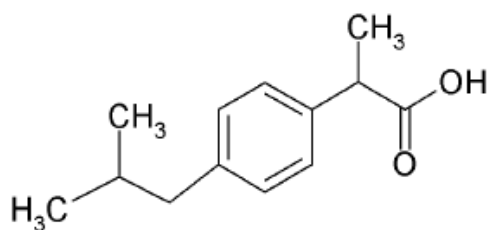
400 mg Tablets: 10, 16, 20, 32, 40, 72, 84, 144, 200, 250, 300 or 1000 tablets per bottle

PART II: SCIENTIFIC INFORMATION

PHARMACEUTICAL INFORMATION

Drug Substance

- a) **Proper name:** Ibuprofen
- b) **Chemical name:** Ibuprofen is described chemically as 2 - (p-isobutylphenyl) propionic acid
- c) **Molecular formula and molecular mass:** 206.28
- d) **Structural formula:**



e) **Physicochemical properties:**

- Ibuprofen is a white crystalline powder with a characteristic odour and slight taste.
- It is very slightly soluble in water and very soluble in alcohol and other common organic solvents.
- The apparent pKa of ibuprofen is 5.2
- Its melting point is 75°C to 75.5°C.

CLINICAL TRIALS

Comparative Bioequivalence Studies

Following a single 200 mg dose of ibuprofen in humans, blood levels were demonstrable in 45 minutes and still present in six hours but at barely detectable levels. Peak serum ibuprofen levels are generally attained 1-15. hours administration of an ibuprofen tablet.

When ibuprofen is administered immediately after a meal, there is a reduction in the rate of absorption but no appreciable decrease in the extent of absorption. Ibuprofen is extensively bound (99%) to human serum albumin. Approximately 15% of the primary binding sites were estimated to be occupied at therapeutic drug concentrations. Studies suggest that ibuprofen binds to a single binding site on the albumin molecule.

Ibuprofen is rapidly metabolized and eliminated in the urine. The excretion of ibuprofen is virtually complete 24 hours after the last dose. The serum half-life of ibuprofen is 1.8 to 2.0 hours. There is no evidence of drug accumulation or enzyme induction.

Comparative Bioavailability Evaluation of Ibuprofen 200 mg with Motrin IB using a selective analysis of (R) and (S) isomers *in vivo* is tabled below:

**Summary Table of the Comparative Bioavailability Data of Ibuprofen
200 mg Tablets (R) Isomers (RJ-92-588)**

**Ibuprofen
(2 x 200 mg)**

**Geometric Mean
Arithmetic Mean (C.V.%)**

| (R) Ibuprofen | Test Ibuprofen | Reference Mortin IB * | Ratio of Means (%) |
|-------------------------------|---------------------------|----------------------------------|-----------------------------------|
| AUC _r (µg.h/mL) | 40.85 42.87 (30.4) | 38.47 40.15 (28.1) | 106.43 |
| AUC _∞ (µg.h/mL) | 41.68 43.53 (30.2) | 39.25 40.86 (27.3) | 106.06 |
| C _{max} (µg.h/mL) | 12.43 12.75 (25.9) | 13.20 14.01 (33.5) | 94.07 |
| T _{max} (h) | 1.72 (1.02) | 1.51 (0.69) | - |
| T _{1/2 el} (h) | 2.49 (0.55) | 2.47 (0.80) | - |

* Motrin IB manufactured by McNeil, purchased in Canada

For the T_{max} and T_{1/2el} parameters these are the arithmetic means with standard deviation in parenthesis.

**Summary Table of the Comparative Bioavailability Data of Ibuprofen
200 mg Tablets (S) Isomers) (RJ-92-588)**

**Ibuprofen
(2 x 200 mg)**

**Geometric Mean
Arithmetic Mean (C.V.%)**

| (S) Ibuprofen | Test Ibuprofen | Reference Mortin IB * | Ratio of Means (%) |
|-------------------------------|---------------------------|----------------------------------|-----------------------------------|
| AUC _r (µg.h/mL) | 61.56 63.84 (27.1) | 57.97 60.63 (29.3) | 106.06 |
| AUC _∞ (µg.h/mL) | 63.43 65.78 (25.6) | 60.34 62.90 (28.4) | 104.87 |
| C _{max} (µg.h/mL) | 13.46 13.83 (25.6) | 13.67 14.70 (32.7) | 96.90 |
| T _{max} (h) | 1.99 (0.99) | 1.86 (1.23) | - |
| T _{1/2 el} (h) | 2.93 (0.76) | 3.09 (2.17) | - |

For the T_{max} and T_{1/2el} parameters these are the arithmetic means with standard deviation in parenthesis.

The efficacy of ibuprofen as an analgesic and antipyretic has been demonstrated by a variety of clinical studies and pain models.

Dental Pain

In adults, the effects of a drug on post-surgical dental extraction pain serves as a standard model for relief of pain of mild to moderate intensity. Ibuprofen 200 mg and 400 mg has been clearly demonstrated to provide pain relief significantly superior to placebo. When compared to the “standard” non-prescription analgesics, ibuprofen 200 mg is found to be comparable to ASA 650 mg (21, 41).

Sore Throat or Ear Pain (Pediatric Models)

In children 6 - 12 years, ibuprofen 10 mg/kg was found to be effective for the relief of pain using a sore throat model, both post-op sore throat (tonsillectomy) (42) and pharyngitis due to upper respiratory infection (43).

Controlled clinical trials comparing doses of 5 and 10 mg/kg ibuprofen and 12.5 mg/kg acetaminophen have been conducted in children 5 to 12 years of age with sore throat pain believed due to an infectious agent or ear pain believed due to acute otitis media. All three active treatments provided significant pain relief versus placebo within 1 to 2 hours of administration and had a duration of action of up to 6 hours. There were no statistically significant differences

among the three active treatments in the degree of maximum pain relief, although the trends favored ibuprofen 10 mg/kg. Ibuprofen 5 mg/kg demonstrated pain relief comparable to acetaminophen 12.5 mg/kg. Ibuprofen 10 mg/kg demonstrated greater pain relief than acetaminophen 12.5 mg/kg from 3 to 6 hours after administration. A pediatric dosage schedule has been developed for Children's ibuprofen based on an ibuprofen dose of approximately 7.5 mg/kg body weight.

Dysmenorrhea

Nonsteroidal anti-inflammatory drugs, which inhibit prostaglandin synthesis such as ibuprofen, are particularly suitable for management of primary dysmenorrhea. Menstrual pain is now thought to result from abnormal uterine activity, which is secondary to increased production and release of endometrial prostaglandins at the time of menstruation.

Several adequate and well-controlled clinical trials provide substantial evidence of the safety and efficacy of ibuprofen at doses of 200 to 400 mg in relieving the pain of menstrual cramps (44, 45, 46).

A summary of trials of ibuprofen in the treatment of dysmenorrhea indicates the usual dose administered to be 400 mg. The few studies, which are available at a 200 mg dosage, indicate superiority of both ibuprofen 200 mg and 400 mg compared with ASA 650 mg (47).

Pain of Osteoarthritis

Several controlled clinical studies in adults provide substantial evidence of the safety and efficacy of ibuprofen at doses of 1200 mg or less per day in relieving the pain of osteoarthritis (48, 49, 50, 51, 52). Collectively, these studies support an indication for the temporary relief of minor pains of arthritis and, in conjunction with single dose analgesia studies, support the broader indication: for the temporary relief of minor aches and pains.

Headache

Ibuprofen has also been used satisfactorily in the management of headache. The efficacy of 200 mg of ibuprofen has been reported to be significantly superior to placebo and ASA 650 mg in the treatment of muscle contraction headaches (24). No differences in the frequency of side effects were found in the treatment groups. Similar results were reported in a study with patients referred to a Headache Clinic with frequent muscle contraction headache (53).

Soft Tissue Injury

Several studies also document the efficacy of analgesic doses of ibuprofen in the treatment of soft tissue injuries such as muscular aches or athletic injuries (54, 55).

Fever

Studies of its efficacy in the management of fever in adults and children demonstrate ibuprofen to be an effective antipyretic (26, 27, 28, 56, 57), with a duration of action of up to eight hours when administered at a dose of 7.5 mg/kg.

Controlled clinical trials comparing doses between 5 and 10 mg/kg of ibuprofen and 10-15 mg/kg of acetaminophen have been conducted in children 6 months to 12 years of age with fever

primarily due to viral illnesses. In these studies, there were few differences between treatments in fever reduction in the first hour and maximum fever reduction occurred between 2 and 4 hours. There was some evidence that the higher dosage range of ibuprofen (10 mg/kg) resulted in a prolonged duration of effect (from six to eight hours) and that it was more effective for children with higher baseline temperatures (above 102.5°F/39.1°C) but the numbers of patients were not adequate to draw definitive conclusions. In children with baseline temperatures at or below 102.5°F (39.1°C) both ibuprofen doses and acetaminophen were equally effective in their maximum effect.

One controlled clinical trial comparing a single dose of ibuprofen 7.5 mg/kg with acetaminophen 12.5 mg/kg demonstrated the superiority of ibuprofen over an eight-hour period.

DETAILED PHARMACOLOGY

Animal Studies

Pharmacodynamics

While the mechanism of action of ibuprofen is not definitely known, the generally accepted mechanism is the inhibition of prostaglandin synthesis. Inhibition of prostaglandin biosynthesis prevents sensitization of tissues by prostaglandins to other inflammatory, pain and thermoregulatory mediators, hence accounting for the activity of ibuprofen and other nonsteroidal anti-inflammatory drugs against pain, inflammation and fever (16).

Inhibition of prostaglandin synthesis by ibuprofen has been demonstrated in several different experimental models: bull seminal vesicle microsomes (34), stomach, duodenum, kidney and brain of the rat, (35) microsomal preparations from rabbit brain and kidney medulla (36).

The analgesic efficacy of ibuprofen has been demonstrated in several animal models: phenylbenzoquinone-induced writhing in the mouse, acetylcholine-induced writhing in the mouse, the Randall-Selitto inflamed paw model in the rat, the mouse hot plate and adjuvant-induced arthritis model in the rat (37, 38, 39).

The antipyretic activity of ibuprofen has been demonstrated in yeast-induced fever in rats (37, 38, 39).

Pharmacokinetics

Several aspects of the pharmacokinetics of ibuprofen have been studied *in vivo* in rats, rabbits, dogs and baboons.

Studies in rats indicate that while limited absorption of ibuprofen occurs in the stomach, the principal site of absorption is the intestine. Single dose studies using C¹⁴ labelled ibuprofen in rats, rabbits and dogs show rapid absorption rates (40).

Tissue distribution studies performed in rats after both single and repeated doses of 20 mg/kg of C¹⁴ labelled ibuprofen demonstrate broad distribution with accumulation of radioactivity in the thyroid, adrenals, ovaries, fat and skin. Transplacental passage of ibuprofen was also noted with similar plasma levels measured in both the pregnant rats and fetuses (40).

Protein binding studies with plasma levels of 20 µg/mL indicate the percent bound in rats 96%, dogs 99%, baboons 95% and man 99% (29).

Four metabolites of ibuprofen have been found in the plasma of rabbits, three in rats, none in dogs, two in baboons and two in man, with the liver suggested as the principal organ of metabolism (40, 29). Excretion of metabolites was noted to varying degrees through both urine and feces indicating species variability in the bile and kidney excretion ratios.

Human Studies

Pharmacodynamics

Effect of Ibuprofen on Platelet Aggregation, Bleeding and Clotting Times in Normal Volunteers: Experimental data suggest that ibuprofen may inhibit the effect of low dose ASA (81-325 mg per day) on platelet aggregation when they are dosed concomitantly. In one study, when a single dose of ibuprofen 400 mg was taken within 8 hours before or within 30 minutes after immediate-release ASA dosing, a decreased effect of ASA on the formation of thromboxane or platelet aggregation occurred. However, the limitations of these data and the uncertainties regarding extrapolation of *ex vivo* data to the clinical situation imply that no firm conclusions can be made for regular ibuprofen use, and no clinically relevant effect is considered to be likely for occasional ibuprofen use.

Pharmacokinetics

The pharmacokinetics of ibuprofen has also been studied in humans. Although there is little evidence of clinically significant age dependent kinetics in febrile children ages 3 months to 12 years (58), some differences in the pharmacokinetic parameters of volume of distribution and clearance have been observed between adults and children (59).

Absorption: *In-vivo* studies indicate that ibuprofen is well absorbed orally with peak plasma levels usually occurring within 1 to 2 hours. A single 200 mg oral dose study in 6 fasting healthy men produced a peak plasma concentration of 15.0 µg/mL at 0.75 hr (12). Another study using a single oral 400 mg dose in humans produced a peak serum level of 31.9 ± 8.8 µg/mL 0.5 hour after ingestion, and at 16 hours serum concentrations had dropped to 1µg/mL (13). Comparable serum levels and time to peak within 1-2 hours were confirmed by other investigations with 200 mg and 400 mg solid doses (60, 31). A multiple dose study of administration of a 200 mg ibuprofen tablet three times a day for 2 weeks showed no evidence of accumulation of ibuprofen (29). As is true with most tablet and suspension formulations, Children's Ibuprofen suspension is absorbed somewhat faster than a tablet with a time to peak generally within one hour.

Distribution: Ibuprofen, like most drugs of its class, is highly protein bound (>99% bound at

20 µg/mL) (29, 30). Based on oral dosing data there is an age-or fever-related change in volume of distribution for ibuprofen. Febrile children <11 years old have a volume of approximately 0.2 L/kg while adults have a volume of approximately 0.12 L/kg. The clinical significance of these findings is unknown (59). Tissue distribution of ibuprofen is also extensive in humans. Studies comparing synovial fluid levels with serum concentrations indicated that equilibration time post-ingestion occurred within approximately 3 to 5 hours (31).

Metabolism: Ibuprofen is extensively metabolized in humans with approximately 84% recoverable in the urine, primarily as conjugated hydroxy- and carboxy-metabolites, with only approximately 1% excreted unchanged (8). The two major metabolites of ibuprofen in humans have been found to have no activity in the ultraviolet erythema test in guinea pigs and in the acetylcholine-induced mouse writhing test at doses of 10 mg/kg and 15 mg/kg respectively (38).

Elimination: Ibuprofen is rapidly metabolized and eliminated in the urine. The excretion of ibuprofen is virtually complete 24 hours after the last dose. It has a biphasic plasma elimination time curve with a half-life of approximately 2.0 hours. There is no difference in the observed terminal elimination rate or half-life between children and adults, however, there is an age-or fever-related change in total clearance (59). This suggests that the observed difference in clearance is due to differences in the volume of distribution of ibuprofen, as described above. The clinical relevance of these differences in clearance is unknown, although extensive clinical experience with ibuprofen in children at the pertinent dosage range (5 - 10 mg/kg) indicates a wide margin of safety.

MICROBIOLOGY

Not applicable.

TOXICOLOGY

Toxicity studies have been conducted using a variety of species, including: mice, rats, rabbits, guinea pigs and beagle dogs.

Acute Toxicity Studies

Single-dose acute toxicity studies indicate that ibuprofen in lethal doses depresses the central nervous system of rodents and that large doses are ulcerogenic in both rodents and nonrodents. Ulcerogenesis may occur with both parenteral and oral administration indicating that the mechanism may have both a systemic as well as topical component.

Acute toxicity of ibuprofen in the rodent was studied in a number of models.

Single graded doses of ibuprofen were administered by oral intubation or by intraperitoneal or subcutaneous injection to groups of 10 male albino mice and male albino rats. Gross reactions were observed and mortalities recorded over a period of 14 days. The LD₅₀ values determined by this method were 800 mg/kg orally and 320 mg/kg intraperitoneally in the mouse and

1600 mg/kg orally and 1300 mg/kg subcutaneously in the rat. Acute signs of poisoning were prostration in mice, and sedation, prostration, loss of righting reflex and labored respiration in rats. Death occurred within 3 days from perforated gastric ulcers in mice and intestinal ulceration in rats, irrespective of the route of administration (40).

Similar LD₅₀ determinations in other strains of rats and mice are summarized in the following Table 1.

Table 1 - Acute Toxicity in Rodents (LD₅₀)

| Species | Route | LD ₅₀ Range (mg/kg) |
|------------------------------------|-----------------|--------------------------------|
| Albino Mice ^(40,37) | Oral | 800-1000 |
| | Intraperitoneal | 320 |
| Albino Rats ⁽⁴⁰⁾ | Oral | 1600 |
| | Subcutaneous | 1300 |
| Sprague Dawley Rat ⁽⁶¹⁾ | | 1050 |
| Long Evans Rat ⁽⁶²⁾ | | 1000 |

In a comparison of several non-steroidal anti-inflammatory drugs (NSAID) including ibuprofen, male rats were sacrificed and the stomachs removed and examined for ulceration either 3 or 24 hours after oral administration of various single doses of ibuprofen (63). Using a standard scoring technique a mean score for each dosage group was calculated and the ulcerogenic potential was expressed as a minimum ulcerogenic dose. The minimum oral ulcerogenic dose for ibuprofen in rats was calculated to be 6-13 mg/kg.

Another group studied the production of gastrointestinal lesions in the rat comparing ulcerogenic doses of ibuprofen and other NSAIDs after oral or intravenous administration (62). Both male and female Long Evans rats were used in all experiments. Prior to drug administration the animals were fasted for 8 hours. After treatment they were fed a normal diet and sacrificed after 17 hours. Gastric and intestinal mucosa was examined for presence of ulcers. The ulcerogenic dose in 50% of treated animals (UD₅₀) was calculated. The UD₅₀ following oral administration of ibuprofen was determined to be 70 mg/kg while for intravenous ibuprofen it was 210 mg/kg. The intestinal UD₅₀ was 88 mg/kg following oral and 172 mg/kg with intravenous administrations. A calculated “severity index” of gastric lesions was higher by the oral than the IV route at all doses tested.

Studies of the ulcerogenic potential of ibuprofen are summarized in the following Table 2.

Table 2 - Single Dose Ulcerogenicity Studies in Rodents

| Species | Route | UD ₅₀ *(mg/kg) | MUD**(mg/kg) |
|------------------------------------|-------|---------------------------|--------------|
| Long Evans Rat ⁽⁶²⁾ | Oral | 70 | 50 |
| | IV | 210 | - |
| Sprague Dawley Rat ⁽⁶³⁾ | Oral | - | 6-13 |

* UD₅₀ ulcerogenic dose in 50% treated animals

** MUD = minimum ulcerogenic dose

Acute toxicity has also been studied in dogs.

Various single oral doses of ibuprofen were administered to dogs with subsequent hematologic examination and biochemical analyses of blood and urine, and examination of feces for occult blood (40). Gross examination of the major organs occurred after the animals were sacrificed. No ill effects were seen following doses of 20 or 50 mg/kg. Oral doses of 125 mg/kg or greater produced emesis, scouring, albuminuria, fecal blood loss and erosions in the gastric antrum and pylorus.

Multiple Dose Toxicity Studies

Multiple dose ulcerogenicity studies of ibuprofen have also been conducted.

Rats were dosed by the oral route for a specific number of consecutive days, then sacrificed for examination. The ulcerogenic effect of oral ibuprofen was graded and reported by various scoring systems such as percent of animals in which ulcers were produced by a specific dose, or the UD₅₀.

In one typical such study, Long Evans rats were administered comparative NSAIDs orally once a day for 5 days (62). The gastric and small intestinal mucosa were then examined for ulceration. The UD₅₀, MUD and potency ratio of the drugs tested were calculated. The minimal ulcerogenic doses of ibuprofen were 25 mg/kg for the stomach and 50 mg/kg for the intestine.

Similar studies of multiple dose ulcerogenic potential of ibuprofen are summarized in the following Table 3.

Table 3 - Multiple Oral Dose Toxicity Studies

| Species | Daily Dose | Duration | Ulcerogenic Factor |
|------------------------------------|--------------------------------|-------------------------------|--|
| Albino Rat ⁽⁶⁴⁾ | 400mg/kg | 30 hours | Ulcers in 100% |
| Albino Rat ⁽³⁷⁾ | | 4 days | UD ₅₀ = 455 mg/kg/day UD ₂₈ = 240 mg/kg/day |
| Long Evans Rat ⁽⁶²⁾ | | 5 days | MUD =25-50 mg/kg/day |
| Sprague Dawley Rat ⁽⁶⁵⁾ | 5.8-225 mg/kg | 10 days | None |
| Albino Rat ⁽⁴⁰⁾ | 7.5 mg/kg 180 mg/kg | 26 weeks 26 weeks | None Ulcers in 20% |
| Dog ⁽⁴⁰⁾ | 4 mg/kg 8 mg/kg 16 mg/kg | 30 days 30 days 30 days | None 100% 100% |

No other organ systems were generally noted to be significantly affected by these chronic administration studies. In one 30-day study (66), Wistar rats receiving 157 mg/kg/day ibuprofen had serum transaminase levels approximately double of those of a control, untreated group. Lower doses of ibuprofen in the same study had no significant effect on the activity of these enzymes.

Chronic toxicity studies in dogs demonstrated no gross or clinical signs of toxicity at 4, 8 or 16 mg/kg/day for 30 days (40). However, in all dogs given 8 or 16 mg/kg/day, postmortem examination revealed gastric ulcers or erosions. No lesions were observed in dogs given 4 mg/kg/day.

A more complete assessment of chronic toxicity of ibuprofen in dogs studied the effects of administration of oral doses of 0, 2, 4 or 26 mg/kg/day over 26 weeks (40). Periodic blood, urine and fecal sample analyses were performed. Histologic examination of selected organs and tissues was performed at the completion of the study. During the 26 week period, some reversible signs of gastrointestinal disturbance characterized by frequent vomiting, diarrhea, occasional passage of fresh blood and weight loss occurred in the 2 female dogs but not the males receiving 16 mg/kg ibuprofen. Occult blood was irregularly detected in fecal samples but urinalysis, liver function tests and other hematologic and blood biochemical values were not altered significantly. Gross examination of organs was normal except for ulcerative lesions in the gastrointestinal tract of organs of all dogs receiving 16 mg/kg/day. Dogs given 2 and 4 mg/kg/day suffered no adverse reactions or gastrointestinal damage.

Carcinogenicity

A study to evaluate the potential carcinogenic activity of ibuprofen involved administration of a minimum of 100 mg/kg/day to mice for 80 weeks and 60 mg/kg/day to rats for 2 years (67). The proportion of animals with tumors of all types examined did not differ from those in the control group. The studies confirm that in the rat and mouse, ibuprofen does not induce tumors of the liver or other organs. Further, despite prolonged treatment, no other drug-induced hepatic lesions were seen in either species.

Teratogenicity and Reproduction Studies

Teratogenicity studies of ibuprofen have been conducted in rabbits and rats (40). Results of the experiments indicate that ibuprofen is not teratogenic when given in toxic doses to rabbits nor is there embryotoxic or teratogenic activity in pregnant rats even when administered in ulcerogenic doses.

Effects of ibuprofen on circular strips of fetal lamb ductus arteriosus indicate that exposure may produced contraction of the ductus (68). Such an effect might be anticipated because of the known prostaglandin inhibiting properties of ibuprofen.

REFERENCES

1. Arthritis Advisory Committee. Transcript of proceedings. Review of ibuprofen for non-prescription sale. Food and Drug Administration, Department of Health and Human Services, Bethesda. August 18, 1983.
2. Wolfe MM, Lichtenstein DR, Singh G. Gastrointestinal toxicity of nonsteroidal antiinflammatory drugs. *N Engl J Med* 1999; 340: 1888-1899.
3. García Rodríguez LA, Hernández- Díaz S. The risk of upper gastrointestinal complications associated with non-steroidal anti-inflammatory drugs, glucocorticoids, acetaminophen, and combinations of these agents. *Arthritis Res* 2001; 3: 98-101.
4. Piper JM, Ray WA, Daugherty JR, Griffin MR. Corticosteroid use and peptic ulcer disease: role of nonsteroidal anti-inflammatory drugs. *Ann Internal Med* 1991; 114: 735-740.
5. Gabriel SE, Jaakkimainen L, Bombardier C. Risk for serious gastrointestinal complications related to use of nonsteroidal anti-inflammatory drugs. *Ann Internal Med* 1991; 115: 787- 796.
6. Moller Hansen J, Hallas J, Lauritsen JM, Bytzer P. Non-steroidal anti-inflammatory drugs and ulcer complications: a risk factor analysis for clinical decision-making. *Scand J Gastroenterol* 1996; 31: 126-130.
7. Barry WS, Meinzinger MM, Howse CR. Ibuprofen overdose and exposure in utero: results from a postmarketing voluntary reporting system. *Am J Med* 1984; 77(1A):35-39.
8. Albert KS, Gernaat CM. Pharmacokinetics of ibuprofen. *Amer J Med* 1984; 77(1A): 40-46.
9. Catella-Lawson F, Reilly MP, Kapoor SC, Cucchiara AJ, DeMarco S, Tournier B et al. Cyclooxygenase inhibitors and the antiplatelet effects of aspirin. *N Engl J Med*. 2001;345: 1809-1817.
10. Kurth T, Glynn RJ, Walker AM, Chan KA, Buring JE, Hennekens CH, et al. Inhibition of clinical benefits of aspirin on first myocardial infarction by nonsteroidal antiinflammatory Drugs. *Circulation*. 2003; 108: 1191 — 1195.
11. Court H, Volans GN. Poisoning after overdose with non-steroidal anti-inflammatory drugs. *Adverse Drug React Acute Poisoning Rev* 1984; 3:1-21.
12. Adams SS, Cliffe EE, Lessel B, Nicholson JS. Some biological properties of 2-(4-isobutylphenyl)-propionic acid. *J Pharm Sci* 1967; 56:1686.

13. Kaiser DG, Martin RS. Electron-capture GLC determination of ibuprofen in serum. *J Pharm Sci* 1978; 67:627-630.
14. Insel PA. Analgesic-antipyretic and anti-inflammatory agents and drugs employed in the treatment of gout. In MolinoffPB, Ruddon RW, editors. *Goodman & Gilman's The Pharmacological Basis of Therapeutics*. New York: McGraw-Hill, 1996: 617-657.
15. Hillis WS. Areas of emerging interest in analgesia: Cardiovascular complications. *Am J Ther* 2002; 9:259-269.
16. Flower RJ, Moncada S, Vane JR. Analgesic-antipyretics and anti-inflammatory agents; drugs employed in the treatment of gout. In: Gilman AG, Goodman LS, Rall TW, Murad F. *Goodman and Gilman's The pharmacological basis of therapeutics*. Toronto: Collier MacMillan, Canada 1985; 674-689, 700-703.
17. FitzGerald GA, Patrono C. The Coxibs, selective inhibitors of cyclooxygenase-2. *N Engl J Med* 2001; 345: 433-442. Review
18. Konstam MA, Weir MR, Reicin A, Shapiro D, Sperling RS, Barr E, et al. Cardiovascular thrombotic events in controlled, clinical trials of refecoxib. *Circulation* 2001; 104:2280-2288.
19. Bombardier C, Laine L, Reicin A, Shapiro D, Burgo-Vargas R, Davis B, et al. Comparison of upper gastrointestinal toxicity of refecoxib and naproxen in patients with rheumatoid arthritis. *N Engl J Med* 2000; 343: 1520-1528.
20. Brooks CD, Schlagel CA, Sekhar NC, Sobota JT. Tolerance and pharmacology of ibuprofen. *Curr Ther Res* 1973; 15:180-190.
21. Cooper SA, Needle SE, Kruger GO. Comparative analgesic potency of aspirin and ibuprofen. *J Oral Surgery* 1977; 35:898-903.
22. Gallardo F, Rossi E. Double-blind evaluation of naproxen and ibuprofen in periodontal surgery. *Pharm Ther Dent* 1980; 5:69-72.
23. Jain AK, Ryan JR, McMahon FG, Kuebel JO, Walters PJ, Noveck C. Analgesic efficacy of low doses of ibuprofen in dental extraction pain. *Clin Pharmacol Ther* 1984; 3 5:249.
24. Vecchio TJ, Heilman CJ, O'Connel MJ. Efficacy of ibuprofen in muscle extraction headache. *Clin Pharmacol Ther* 1983; 33:199.
25. Iles JD. Relief of postoperative pain by ibuprofen: a report of two studies. *Can J Surg* 1980; 23:288-290.
26. Gaitonde BB, Dattani K, Morwani K. Antipyretic activity of ibuprofen (Brufen). *J Assoc Physicians India* 1973; 21:579-584.

27. Sheth UK, Gupta K, Paul T, Pispati PK. Measurement of antipyretic activity of ibuprofen and paracetamol in children. *J Clin Pharmacol* 1980; 20:672-675.
28. Simila S, Kouvalainen K, Keinanen S. Oral antipyretic therapy: evaluation of ibuprofen. *Scand J Rheumatol* 1976; 581-583.
29. Mills RF, Adams SS, Cliffe EE, Dickinson W, Nicholson JS. The metabolism of ibuprofen. *Xenobiotica* 1973; 3:589-598.
30. Kober A, Sjöholm I. The binding sites of human serum albumin for some nonsteroidal antiinflammatory drugs. *Mol Pharmacol* 1980; 18:421-426.
31. Glass RC, Swannell AJ Concentrations of ibuprofen in serum and synovial fluid from patients with arthritis. *Br J Clin Pharmacol* 1978; 6:453-454.
32. Albert KS, Gillespie WR, Wagner JG, Pau A, Lockwood GF. Effects of age on the clinical pharmacokinetics of ibuprofen. *Am J Med* 1984; 77(1A):47-50.
33. Juhl RP, Van Thiel DH, Dittert LW, Albert KS, Smith RB. Ibuprofen and sulindac kinetics in alcoholic liver disease. *Clin Pharmacol Ther* 1983; 34:104-109.
34. Cushman DW, Cheung HS. Effect of substrate concentration on inhibition of prostaglandin synthetase of bull seminal vesicles by anti-inflammatory drugs and fenamic acid analogs. *Biochim Biophys Acta* 1976; 424:449-459.
35. Fitzpatrick FA, Wynalda MA. *In Vivo* suppression of prostaglandin biosynthesis by non-steroidal anti-inflammatory agents. *Prostaglandins* 1976; 12:1037-1051.
36. Szczeklik A, Gryglewski RJ, Czerniawska-Mysik G, Zmuda A. Aspirin induced asthma: hypersensitivity to fenoprofen and ibuprofen in relation to their inhibitory action on prostaglandin generation by different microsomal enzymic preparations. *J Allergy Clin Immunol* 1976; 58:10-18.
37. Aparicio L. Some aspects of the pharmacology of butibufen, a non-steroidal anti-inflammatory agent. *Arch Int Pharmacodyn Ther* 1977; 227:130-141.
38. Adams SS, McCullough KF, Nicholson JS. The pharmacological properties of ibuprofen, an anti-inflammatory, analgesic and antipyretic agent. *Arch Int Pharmacodyn Ther* 1969; 178:115-129.
39. Romer D. Pharmacological evaluation of mild analgesics. *Br J Clin Pharmacol* 1980; 10:247S-251S.
40. Adams SS, Bough RG, Cliffe EE, Lessel B, Mills RFN. Absorption, distribution and toxicity of ibuprofen. *Toxicol Appl Pharmacol* 1969; 15:310-330.

41. Cooper SA. Five studies on ibuprofen for postsurgical dental pain. *Am J Med* 1984; 77(1A):70-77.
42. Bertin L, Pons G, d'Athis P, Lasfargues G, Maudelonde C, Duhamel JF, et al. Randomized, double-blind, multicentre, controlled trial of ibuprofen versus acetaminophen (paracetamol) and placebo for treatment of symptoms of tonsillitis and pharyngitis in children. *J. Pediatr* 1991; 119:811-814.
43. Schachtel BP, Thoden WR. A placebo-controlled model for assaying systemic analgesics in children. *Clin Pharmacol Ther* 1993; 53:593-601.
44. Molla AL, Donald JF. A comparative study of ibuprofen and paracetamol in primary dysmenorrhea. *J Int Med Res* 1974; 2:395-3 99.
45. Shapiro SS, Diem K. The effect of ibuprofen in the treatment of dysmenorrhea. *Curr Ther Res* 1981; 30:327-334.
46. Gookin KS, Forman ES, Vecchio TJ, Wisner WL, Morrison JC. Comparative efficacy of ibuprofen, indomethacin and placebo in the treatment of primary dysmenorrhea. *South Med J* 1983; 76:1361-1362, 1367.
47. Dawood MY. Ibuprofen and dysmenorrhea. *Am J Med* 1984; 77(1A):87-94.
48. 48. Miller AC, Buckler JW, Sheldrake FE. Clinical studies of ibuprofen. *Curr Med Res Opin* 1975; 3:589-593
49. de Blecourt JJ. A comparative study of ibuprofen ('Brufen') and indomethacin in uncomplicated arthroses. *Curr Med Res Opin* 1975; 3:477-480.
50. Chahade WH, Federico WA, Josef H, Cohen M. The evaluation of the analgesic activity and anti-inflammatory activity of ibuprofen in comparison with aspirin in patients suffering from osteoarthritis of the hips, knee and/or cervical, dorsal and/or lumbar spinal column in a double blind study. *Revista Brasileira de Medicina* 1976; 33:347-350.
51. Tyson VC, Glynn A. A comparative study of benoxaprofen and ibuprofen in osteoarthritis in general practice. *J Rheumatol(Suppl 6)*1980; 7:132-138.
52. Ruoff G, Williams S, Cooper W, Procaccini RL. Aspirin-acetaminophen vs. ibuprofen in a controlled multicenter double-blind study with patients experiencing pain associated with osteoarthritis. *Curr Ther Res* 1982; 31:821-831.
53. Diamond S. Ibuprofen versus aspirin and placebo in the treatment of muscle contraction headache. *Headache* 1983; 23:206-210.

54. Muckle DS. Comparative study of ibuprofen and aspirin in soft-tissue injuries. *Rheumatol Rehab* 1974; 13:141-147.
55. Nasution AR. Study of the analgesic activities of ibuprofen compared with paracetamol. *Proceeding of the 13th International Congress of Rheumatology, Kyoto, Japan* 1973.
56. Walson PD, Galletta G, Braden NJ, Alexander L. Ibuprofen, acetaminophen, and placebo treatment of febrile children. *Clin Pharmacol Ther* 1989; 46:9-17.
57. Wilson JT, Brown RD, Kearns GL, Eichler VF, Johnson VA, Bertrand KM, et al. Single-dose, placebo-controlled comparative study of ibuprofen and acetaminophen antipyresis in children. *J Pediatr* 1991; 119:803-811.
58. Kauffman RE, Fox B, Gupta N. Ibuprofen antipyresis and pharmacokinetics in children. *Clin Pharmacol Ther* 1989; 45:139 (abstract).
59. McEvoy GK, Editor. Ibuprofen. In: *AHFS DI 1997*. Bethesda: American Society of Health - Systems Pharmacists, 1997. p. 1499-1503
60. Kaiser DG, Vangiessen GJ. GLC determination of ibuprofen [(+)-2-(p-isobutylphenyl) propionic acid] in plasma. *J Pharm Sci* 1974; 63 :219-221.
61. Fukawa K., Kanazuka T, Ohba S, Kawano O, Hibi M, Misaki N, et al. Studies on an anti-inflammatory agent. III. Pharmacological investigations of a new non-steroidal anti-inflammatory agent: 2-oxo-3-[4-(1-oxo-2-isindoliny)-phenyl]-butanamide (GP 650). *Arzneimittelforschung* 1982; 32:225-230.
62. Cioli V, Putzolu S, Rossi V, Corradino C. A toxicological and pharmacological study of ibuprofen guaiacol ester (AF 2259) in the rat. *Toxicol Appl Pharmacol* 1980; 54:332-339.
63. Atkinson DC, Leach EC. Anti-inflammatory and related properties of 2-(2,4-dichlorophenoxy) phenylacetic acid (fenclofenac). *Agent Actions* 1976; 6:657-666.
64. Parmar NS, Ghosh MN. Gastric anti-ulcer activity of(+)-cyanidanol-3, a histidine decarboxylase inhibitor. *Eur J Pharmacol* 1981; 69:25-32.
65. Paroli E, Nencini P, Anania MC. Correlations of DNA, RNA and protein levels in duodenal mucosa with antiinflammatory potency and disposition to gut damage of non-steroidal agents. Comparative behaviour of glucametacine, indomethacin, phenylbutazone and ibuprofen. *Arzneimittelforschung* 1978; 28:819-824.
66. Dudkiewicz J. Ibuprofen-induced gastrointestinal changes. *Acta Physiol Pol (Poland)* 1981; 32:693-701.

67. Adams SS, Bough RG, Cliffe EE, Dickinson W, Lessel B, McCullough KF, et al.. Some aspects of the pharmacology, metabolism and toxicology of ibuprofen. *Rheumatol Phys Med* 1970; 10 (Suppl 10):9-26.
68. Coceani F, White E, Bodach E, Olley PM. Age-dependent changes in the response of the lamb ductus arteriosus to oxygen and ibuprofen. *Can J Physiol Pharmacol* 1979; 57:825-831.
69. Proceedings of Joint Meeting, Arthritis Drugs Advisory Committee and Nonprescription Drugs Advisory Committee. Centre for Drug Evaluation and Research. Department of Health and Human Services, Rockville, Maryland. March 28, 1995.
70. Motrin, Product Monograph, January 31, 2013, Control #159889.

IMPORTANT PLEASE READ

PART III: CONSUMER INFORMATION

IBUPROFEN Tablets **Ibuprofen Tablets Manufacturer Std.** **200 mg and 400 mg**

This leaflet is part III of a three-part “Product Monograph” published when IBUPROFEN Tablets were approved for sale in Canada and is designed specifically for Consumers. This leaflet is a summary and will not tell you everything about Ibuprofen Tablets. Contact your doctor or pharmacist if you have any questions about the drug.

ABOUT THIS MEDICATION

What the medication is used for:

Since everyone’s pain is different, Ibuprofen Tablets offer 2 levels of pain relief to suit your needs. So you can choose your relief, Ibuprofen Tablets are available in two strengths, including: IBUPROFEN (200 mg) and IBUPROFEN (400 mg) Tablets.

Ibuprofen Tablets provide fast and effective relief of PAIN from:

- headache, including mild to moderate migraine and tension headache
- menstrual cramps
- toothache (dental pain), including dental extraction
- inflammation from arthritis, muscle strain, and sprains, muscles, bones and joints, including back pain

Ibuprofen Tablets is also an effective fever reducer and will provide relief from the aches and fever due to the common cold and flu.

Clinical studies show long lasting relief for up to 8 hours for fever and up to 6 hours for pain.

What it does:

Ibuprofen Tablets starts to work fast and treats pain where it starts.

Ibuprofen is a member of a class of drugs called non-steroidal anti-inflammatory drugs (NSAIDs). NSAIDs work within the body by blocking the production of substances, called prostaglandins, which are involved in the development of pain and inflammation.

When it should not be used:

Ibuprofen Tablets should not be used if you:

- are taking acetylsalicylic acid (ASA) or any other non-steroidal anti-inflammatory medication, including any other ibuprofen product.
- are allergic or have had a reaction to ibuprofen, acetylsalicylic acid (ASA), other non-steroidal anti-inflammatory drugs (NSAIDs) or salicylates, or to any ingredient in the formulation (see non-medicinal ingredients below). Allergic reactions may appear as hives, difficulty breathing, rash, swelling of the face or throat or sudden collapse.
- have nasal polyps (swelling of the inside of the nose), or allergic manifestations such as asthma, anaphylaxis (sudden severe life-threatening anaphylactic reactions), urticaria/hives, rhinitis (stuffed or runny nose that may be due to allergies), skin rash or other allergic symptoms.
- **have been diagnosed with severe high blood pressure or have severe coronary artery disease.**
- are dehydrated (significant fluid loss) due to vomiting, diarrhea or lack of fluid intake.
- have active or recurrent stomach ulcer, gastrointestinal (GI) bleeding, or active inflammatory bowel disease (e.g. Crohn’s, colitis)
- have liver or kidney disease.
- have systemic lupus erythematosus.
- are pregnant or nursing, unless advised otherwise by a doctor

What the medicinal ingredient is:

Ibuprofen

What the important nonmedicinal ingredients are:

Ibuprofen 200 mg tablets are available as brown, biconvex, round film-coated tablets with edge; and capsule format, film-coated tablet (caplet). Ibuprofen

400 mg tablets are available as brown, capsule format, film-coated tablet (caplet).

Ibuprofen 200 mg tablets contain ibuprofen 200 mg.

Ibuprofen 400 mg tablets contain ibuprofen 400 mg.

Both tablets contain the following non-medicinal ingredients: sodium croscarmellose, colloidal silicon dioxide, modified cornstarch, stearic acid. Also contains: carnauba wax, ferric oxide, hydroxypropyl methylcellulose, polyethylene glycol, polydextrose and titanium oxide.

What dosage forms it comes in:

Tablets: 200 mg, 400 mg

WARNINGS AND PRECAUTIONS

Serious Warnings and Precautions

Caution in patients prone to gastrointestinal tract irritation, including those with a history of peptic ulcer.

Keep this medication out of the reach of children.

BEFORE you use Ibuprofen Tablets talk to your doctor or pharmacist if you:

- have stomach ulcers, high blood pressure, asthma, heart failure, kidney or liver disease, diabetes, alcoholism, a history of stomach bleeding, systemic lupus erythematosus, or any other serious disease or condition.
- are taking an anticoagulant (blood thinning medication), oral corticosteroid or any other drug.
- are nursing an infant.
- are over 65 years of age.
- are taking low-dose ASA.
- suffer from asthma or have nasal polyps (a swelling inside the nose).
- are dehydrated (severe fluid loss).
- have a blood-clotting disorder (e.g. hemophilia, sickle cell anemia, etc.).
- have a heart disease.
- have any unusual urinary symptoms (e.g. bladder problems).
- are on a special diet (e.g. low-sodium)
- suffer from hyperkalemia (high levels of potassium in your blood).

They may recommend an alternative analgesic such as acetaminophen.

INTERACTIONS WITH THIS MEDICATION

Always tell any doctor, dentist, or pharmacist you consult that you are taking this medicine.

Drugs that may interact with Ibuprofen Tablets include: acetylsalicylic acid (ASA) or other NSAIDs, blood thinning medications (anticoagulants), blood pressure medication (anti-hypertensives), diuretics (water pills), oral steroids (glucocorticoids), lithium, diabetes medications (hypoglycemics), methotrexate, phenytoin, acetaminophen and digoxin.

Do not use this product if you are taking daily low dose ASA (81-325 mg) without talking to a doctor or pharmacist. Ibuprofen may interfere with the preventive benefits of ASA.

PROPER USE OF THIS MEDICATION

Usual dose:

For accurate dosing of each product strength, refer to the dosage table and follow the instructions carefully.

| PRODUCT | STRENGTH (IBUPROFEN MG/TABLET) | SINGLE ORAL DOSE | MAXIMUM DAILY DOSE (1200 MG) |
|----------------------|---|---------------------------------|---|
| Ibuprofen Tablets | 200 mg | 1 or 2 tablets | 6 tablets |
| Ibuprofen Tablets | 400 mg | 1 tablet | 3 tablets |

The single oral dose may be taken every 4-6 hours as needed. Do not take more than the maximum daily dose (1200 mg in 24 hours) unless advised by a doctor. Take with food or milk if mild stomach upset occurs with use. Ibuprofen Tablets should not be taken for pain for more than 5 consecutive days or for fever for more than 3 days without first talking to your doctor or dentist.

Do not take this product while taking ASA, other ibuprofen containing products or any other pain or fever medicine.

For effective use of this medicine, unless recommended by your doctor or dentist, **DO NOT** take:

- more than the recommended number of tablets in each single dose
- a dose more often than every 4-6 hours

- this product longer than the recommended period of time
- more than the smallest dose that will relieve your symptoms

Overdose:

In case of drug overdose, contact a health care practitioner, hospital emergency department or regional Poison Control Centre immediately, even if there are no symptoms.

Missed Dose:

Take the missed dose as soon as you remember. If it is almost time for your next dose, wait until then to take your medicine and skip the missed dose. Do not take two doses at the same time.

SIDE EFFECTS AND WHAT TO DO ABOUT THEM

If unusual symptoms or any of the following reactions develop during treatment, stop use and see a doctor immediately: nausea, vomiting, abdominal pain or diarrhea; heartburn, bloating or constipation; fluid retention; skin rash or itching; dizziness; any change in vision; ringing or buzzing in the ears, vomiting any blood or have tarry stools, jaundice (yellowing of the eyes or skin due to liver problems).

If you experience dizziness, blurred vision, or hearing problems while taking Ibuprofen Tablets, please use caution when carrying out activities requiring alertness.

Ibuprofen may cause a severe allergic reaction that could include wheezing, facial swelling, hives, shortness of breath, shock or a fast, irregular heartbeat. Any of these reactions could be serious. Stop using the product and get emergency medical help immediately.

This is not a complete list of side effects. For any unexpected effects while taking IBUPROFEN, contact your doctor or pharmacist.

HOW TO STORE IT

Tablets: Ibuprofen 200 mg and 400 mg tablets should be stored at room temperature (15-30°C).

Keep out of the reach of children.

REPORTING SUSPECTED SIDE EFFECTS

You can report any suspected adverse reactions associated with the use of health products to the Canada Vigilance Program by one of the following 3 ways:

-
- Report online at www.healthcanada.gc.ca/medeffect
 - Call toll-free at 1-866-234-2345
 - Complete a Canada Vigilance Reporting Form and:
 - Fax toll-free to 1-866-678-6789, or
 - Mail to: Canada Vigilance Program
Health Canada
Postal Locator 0701E
Ottawa, Ontario
K1A 0K9

Postage paid labels, Canada Vigilance Reporting Form and the adverse reaction reporting guidelines are available on the MedEffect™ Canada Web site at www.healthcanada.gc.ca/medeffect.

NOTE: Should you require information related to the management of side effects, contact your health professional. The Canada Vigilance Program does not provide medical advice.

MORE INFORMATION

This document plus the full product monograph, prepared for health professionals can be obtained by request by contacting the sponsor 1466406 Ontario Ltd. at:

1466406 Ontario Ltd.
665 Millway Avenue
Concord, Ontario
L4K 3T8

This leaflet was prepared by 1466406 Ontario Ltd.

Last revised: December 19, 2014