

# PRODUCT MONOGRAPH

<sup>Pr</sup> **MYLAN-NAPROXEN EC**

Naproxen Enteric-Coated Tablet

250 mg, 375 mg and 500 mg

Pharmaceutical Standard: Professed

Non-Steroidal Anti-Inflammatory Drug (NSAID)

Mylan Pharmaceuticals ULC  
85 Advance Road  
Etobicoke, Ontario  
Canada M8Z 2S6

Date of Revision: March 10, 2015

Submission Control No.: 181728

## Table of Contents

<b>PART I: HEALTH PROFESSIONAL INFORMATION.....</b>	<b>3</b>
SUMMARY PRODUCT INFORMATION .....	3
INDICATIONS AND CLINICAL USE.....	3
CONTRAINDICATIONS .....	4
WARNINGS AND PRECAUTIONS.....	5
ADVERSE REACTIONS.....	13
DRUG INTERACTIONS .....	17
DOSAGE AND ADMINISTRATION.....	20
OVERDOSAGE .....	21
ACTION AND CLINICAL PHARMACOLOGY .....	22
STORAGE AND STABILITY.....	23
DOSAGE FORMS, COMPOSITION AND PACKAGING .....	23
<b>PART II: SCIENTIFIC INFORMATION .....</b>	<b>24</b>
PHARMACEUTICAL INFORMATION.....	24
CLINICAL TRIALS.....	25
DETAILED PHARMACOLOGY .....	28
TOXICOLOGY .....	29
REFERENCES .....	32
<b>PART III: CONSUMER INFORMATION.....</b>	<b>36</b>

# Pr MYLAN-NAPROXEN EC

Naproxen Enteric-Coated Tablet

250 mg, 375 mg and 500 mg

## PART I: HEALTH PROFESSIONAL INFORMATION

### SUMMARY PRODUCT INFORMATION

Route of Administration	Dosage Form / Strength	All Non-Medicinal Ingredients
Oral	250 mg, 375 mg and 500 mg Enteric-Coated Tablets	Croscarmellose sodium, magnesium stearate and povidone, as inactive ingredients. The coating suspension consists of methacrylic acid copolymer, polyethylene glycol, simethicone emulsion, sodium hydroxide, talc, and titanium dioxide. The black ink for printing MYLAN-NAPROXEN EC (250 mg, 375 mg and 500 mg) contains alcohol, ammonium hydroxide, ethanol, iron oxide black, propylene glycol and shellac.

### INDICATIONS AND CLINICAL USE

MYLAN-NAPROXEN EC (naproxen) is indicated for:

- The treatment of the signs and symptoms of osteoarthritis, rheumatoid arthritis, and ankylosing spondylitis.
- The relief of minor aches and pains in muscles, bones and joints, mild to moderate pain accompanied by inflammation in musculoskeletal injuries (sprains and strains) and primary dysmenorrhea.

Modified release formulations of naproxen (i.e., enteric coated) are not recommended for initial treatment of acute pain because the absorption of naproxen is delayed.

**For patients with an increased risk of developing cardiovascular and/or gastrointestinal adverse events, other management strategies that do NOT include the use of NSAIDs should be considered first (See CONTRAINDICATIONS and WARNINGS AND PRECAUTIONS).**

**Use of MYLAN-NAPROXEN EC should be limited to the lowest effective dose for the shortest possible duration of treatment in order to minimize the potential risk for cardiovascular or gastrointestinal adverse events. (See CONTRAINDICATIONS and WARNINGS AND PRECAUTIONS)**

MYLAN-NAPROXEN EC, as a NSAID, does NOT treat clinical disease or prevent its progression.

MYLAN-NAPROXEN EC, as a NSAID, only relieves symptoms and decreases inflammation for as long as the patient continues to take it.

**Geriatrics (> 65 years of age):**

Evidence from clinical studies and post-market experience suggests that use in the geriatric population is associated with differences in safety (see WARNINGS AND PRECAUTIONS).

**Pediatrics (< 18 years of age):**

MYLAN-NAPROXEN EC is contraindicated in children and adolescents less than 18 years of age (see CONTRAINDICATIONS).

## **CONTRAINDICATIONS**

MYLAN-NAPROXEN EC is contraindicated in:

- the peri-operative setting of coronary artery bypass graft surgery (CABG). Although naproxen has NOT been studied in this patient population, a selective COX-2 inhibitor NSAID studied in such a setting has led to an increased incidence of cardiovascular/thromboembolic events, deep surgical infections and sternal wound complications.
- the third trimester of pregnancy, because of risk of premature closure of the ductus arteriosus and prolonged parturition
- women who are breastfeeding, because of the potential for serious adverse reactions in nursing infants
- severe uncontrolled heart failure
- known hypersensitivity to naproxen or to any of the components/excipients
- history of asthma, urticaria, or allergic-type reactions after taking ASA or other NSAIDs (i.e. complete or partial syndrome of ASA-intolerance - rhinosinusitis, urticaria/angioedema, nasal polyps, asthma). Fatal anaphylactoid reactions have occurred in such individuals. Individuals with the above medical problems are at risk of a severe reaction even if they have taken NSAIDs in the past without any adverse reaction. The potential for cross-reactivity between different NSAIDs must be kept in mind (see WARNINGS AND PRECAUTIONS: Hypersensitivity Reactions, Anaphylactoid Reactions).
- active gastric / duodenal / peptic ulcer, active GI bleeding.
- cerebrovascular bleeding or other bleeding disorders
- inflammatory bowel disease
- severe liver impairment or active liver disease
- severe renal impairment (creatinine clearance <30 mL/min or 0.5 mL/sec) or deteriorating renal disease (individuals with lesser degrees of renal impairment are at risk of deterioration of their renal function when prescribed NSAIDs and must be monitored)

(see WARNINGS AND PRECAUTIONS: Renal)

- known hyperkalemia (see WARNINGS AND PRECAUTIONS: Renal, Fluid and Electrolyte Balance)
- children and adolescents less than 18 years of age since naproxen enteric-coated tablets have not been studied in subjects under the age of 18.

## WARNINGS AND PRECAUTIONS

**Risk of Cardiovascular (CV) Adverse Events: Ischemic Heart Disease, Cerebrovascular Disease, Congestive Heart Failure (NYHA II-IV) (See WARNINGS AND PRECAUTIONS - Cardiovascular).**

**MYLAN-NAPROXEN EC is a non-steroidal anti-inflammatory drug (NSAID). Use of some NSAIDs is associated with an increased incidence of cardiovascular adverse events (such as myocardial infarction, stroke or thrombotic events) which can be fatal. The risk may increase with duration of use. Patients with cardiovascular disease or risk factors for cardiovascular disease may be at greater risk.**

**Caution should be exercised in prescribing MYLAN-NAPROXEN EC to any patient with ischemic heart disease (including but NOT limited to acute myocardial infarction, history of myocardial infarction and/or angina), cerebrovascular disease (including but NOT limited to stroke, cerebrovascular accident, transient ischemic attacks and/or amaurosis fugax) and/or congestive heart failure (NYHA II-IV).**

**Use of NSAIDs, such as MYLAN-NAPROXEN EC, can promote sodium retention in a dose-dependent manner, through a renal mechanism, which can result in increased blood pressure and/or exacerbation of congestive heart failure. (see also WARNINGS AND PRECAUTIONS: Renal, Fluid and Electrolyte Balance)**

**Randomized clinical trials with naproxen have not been designed to detect differences in cardiovascular events in a chronic setting. Therefore, caution should be exercised when prescribing MYLAN-NAPROXEN EC.**

**Risk of Gastrointestinal (GI) Adverse Events (see WARNINGS AND PRECAUTIONS: Gastrointestinal).**

**Use of NSAIDs, such as MYLAN-NAPROXEN EC, is associated with an increased incidence of gastrointestinal adverse events (such as ulceration, bleeding, perforation and obstruction of the upper and lower gastrointestinal tract).**

### General

Frail or debilitated patients may tolerate side effects less well and therefore special care should be taken in treating this population. **To minimize the potential risk for an adverse event, the**

**lowest effective dose should be used for the shortest possible duration.** As with other NSAIDs, caution should be used in the treatment of elderly patients who are more likely to be suffering from impaired renal, hepatic or cardiac function. For high-risk patients, alternate therapies that do not involve NSAIDs should be considered.

MYLAN-NAPROXEN EC is NOT recommended for use with other NSAIDs, with the exception of low-dose ASA for cardiovascular prophylaxis, because of the absence of any evidence demonstrating synergistic benefits and the potential for additive adverse reactions. (See DRUG INTERACTIONS: Drug-Drug Interactions, Acetylsalicylic acid (ASA) or other NSAIDs)

MYLAN-NAPROXEN EC should not be used concomitantly with the related drug Anaprox<sup>®</sup> (naproxen sodium) since they both circulate in plasma as the naproxen anion.

### **Carcinogenesis and Mutagenesis**

There is no evidence from animal data that naproxen is carcinogenic or mutagenic (see Part II, TOXICOLOGY, for animal studies).

### **Cardiovascular and Cerebrovascular Events**

**MYLAN-NAPROXEN EC is a non-steroidal anti-inflammatory drug (NSAID). Use of some NSAIDs is associated with an increased incidence of cardiovascular adverse events (such as myocardial infarction, stroke or thrombotic events) which can be fatal. The risk may increase with duration of use. Patients with cardiovascular disease or risk factors for cardiovascular disease may be at greater risk.**

**Caution should be exercised in prescribing MYLAN-NAPROXEN EC to patients with risk factors for cardiovascular disease, cerebrovascular disease or renal disease, such as any of the following (NOT an exhaustive list)**

- **Hypertension**
- **Dyslipidemia / Hyperlipidemia**
- **Diabetes Mellitus**
- **Congestive Heart Failure (NYHA I)**
- **Coronary Artery Disease (Atherosclerosis)**
- **Peripheral Arterial Disease**
- **Smoking**
- **Creatinine Clearance < 60 mL/min or 1 mL/sec**

Use of NSAIDs, such as MYLAN-NAPROXEN EC, can lead to new hypertension or can worsen pre-existing hypertension, either of which may increase the risk of cardiovascular events as described above. Thus blood pressure should be monitored regularly. Consideration should be given to discontinuing MYLAN-NAPROXEN EC should hypertension either develop or worsen with its use. Use of NSAIDs, such as MYLAN-NAPROXEN EC, can induce fluid retention and edema, and may exacerbate congestive heart failure, through a renally mediated mechanism. (See WARNINGS AND PRECAUTIONS: Renal, Fluid and Electrolyte Balance).

For patients with a high risk of developing an adverse CV event, other management strategies that do NOT include the use of NSAIDs should be considered first. **To minimize the potential risk for an adverse CV event, the lowest effective dose should be used for the shortest possible duration.**

### **Endocrine and Metabolism**

**Corticosteroids:** MYLAN-NAPROXEN EC is NOT a substitute for corticosteroids. It does NOT treat corticosteroid insufficiency. Abrupt discontinuation of corticosteroids may lead to exacerbation of corticosteroid-responsive illness. Patients on prolonged corticosteroid therapy should have their therapy tapered slowly if a decision is made to discontinue corticosteroids. (see DRUG INTERACTIONS: Drug-Drug Interactions, Glucocorticoids)

### **Gastrointestinal**

Serious GI toxicity (sometimes fatal), such as ulceration, inflammation, gastrointestinal bleeding, perforation and obstruction of the upper and lower gastrointestinal tract, can occur at any time, with or without warning symptoms, in patients treated with NSAIDs, such as MYLAN-NAPROXEN EC. Minor upper GI problems, such as dyspepsia, commonly occur at any time. Health care providers should remain alert for ulceration and bleeding in patients treated with MYLAN-NAPROXEN EC, even in the absence of previous GI tract symptoms. Most spontaneous reports of fatal GI events are in elderly or debilitated patients and therefore special care should be taken in treating this population. **To minimize the potential risk for an adverse GI event, the lowest effective dose should be used for the shortest possible duration.** For high-risk patients, alternate therapies that do not involve NSAIDs should be considered. (see WARNINGS AND PRECAUTIONS: Special Populations, Geriatrics)

Patients should be informed about the signs and/or symptoms of serious GI toxicity and instructed to discontinue using MYLAN-NAPROXEN EC and seek emergency medical attention if they experience any such symptoms. The utility of periodic laboratory monitoring has NOT been demonstrated, nor has it been adequately assessed. Most patients who develop a serious upper GI adverse event on NSAID therapy have no symptoms. Upper GI ulcers, gross bleeding or perforation, caused by NSAIDs, appear to occur in approximately 1% of patients treated for 3-6 months, and in about 2-4% of patients treated for one year. These trends continue, thus increasing the likelihood of developing a serious GI event at some time during the course of therapy. Even short-term therapy has its risks.

Caution should be taken if prescribing MYLAN-NAPROXEN EC to patients with a prior history of peptic / duodenal ulcer disease or gastrointestinal bleeding as these individuals have a greater than 10-fold higher risk for developing a GI bleed when taking a NSAID than patients with neither of these risk factors. Other risk factors for GI ulceration and bleeding include the following: *Helicobacter pylori* infection, increased age, prolonged use of NSAID therapy, excess alcohol intake, smoking, poor general health status or concomitant therapy with any of the following:

- Anti-coagulants (e.g. warfarin)
- Anti-platelet agents (e.g. ASA, clopidogrel)

- Oral corticosteroids (e.g. prednisone)
- Selective Serotonin Reuptake Inhibitors (SSRIs) (e.g. citalopram, fluoxetine, paroxetine, sertraline)

### **Genitourinary**

Some NSAIDs are associated with persistent urinary symptoms (bladder pain, dysuria, urinary frequency), hematuria or cystitis. The onset of these symptoms may occur at any time after the initiation of therapy with a NSAID. Should urinary symptoms occur, in the absence of an alternate explanation, treatment with MYLAN- NAPROXEN EC should be stopped to ascertain if symptoms disappear. This should be done before urological investigations or treatments are carried out.

### **Hematologic**

NSAIDs inhibiting prostaglandin biosynthesis interfere with platelet function to varying degrees; patients who may be adversely affected by such an action, such as those on anti-coagulants or suffering from haemophilia or platelet disorders should be carefully observed when MYLAN- NAPROXEN EC is administered.

***Anti-coagulants:*** Numerous studies have shown that the concomitant use of NSAIDs and anticoagulants increases the risk of bleeding. Concurrent therapy of MYLAN-NAPROXEN EC with warfarin requires close monitoring of the international normalized ratio (INR).

Even with therapeutic INR monitoring, increased bleeding may occur.

***Anti-platelet Effects:*** NSAIDs inhibit platelet aggregation and have been shown to prolong bleeding time in some patients. Unlike acetylsalicylic acid (ASA), their effect on platelet function is quantitatively less, or of shorter duration, and is reversible.

Naproxen and other NSAIDs have no proven efficacy as anti-platelet agents and should NOT be used as a substitute for ASA or other anti-platelet agents for prophylaxis of cardiovascular thromboembolic diseases. Anti-platelet therapies (e.g. ASA) should NOT be discontinued. There is some evidence that use of NSAIDs with ASA can markedly attenuate the cardioprotective effects of ASA. (see DRUG INTERACTIONS: Drug-Drug Interactions, Acetylsalicylic Acid or other NSAIDs)

Concomitant administration of naproxen with low dose ASA increases the risk of GI ulceration and associated complications.

***Blood dyscrasias:*** Blood dyscrasias (such as neutropenia, leukopenia, thrombocytopenia, aplastic anemia and agranulocytosis) associated with the use of NSAIDs are rare, but could occur with severe consequences.

Anemia is sometimes seen in patients receiving NSAIDs, including naproxen. This may be due to fluid retention, GI blood loss, or an incompletely described effect upon erythropoiesis. Patients on long-term treatment with NSAIDs, including MYLAN-NAPROXEN EC, should



have their hemoglobin or hematocrit checked if they exhibit any signs or symptoms of anemia or blood loss.

### **Hepatic/Biliary/Pancreatic**

As with other NSAIDs, borderline elevations of one or more liver enzyme tests (AST, ALT, alkaline phosphatase) may occur in up to 15% of patients. These abnormalities may progress, may remain essentially unchanged, or may be transient with continued therapy.

Chronic alcoholic liver disease and probably also other forms of cirrhosis reduce the total plasma concentration of naproxen, but the plasma concentration of unbound naproxen is increased. The implication of this finding for naproxen dosing is unknown, but caution is advised when high doses are required. It is prudent to use the lowest effective dose.

A patient with symptoms and/or signs suggesting liver dysfunction, or in whom an abnormal liver function test has occurred, should be evaluated for evidence of the development of a more severe hepatic reaction while on therapy with this drug. Severe hepatic reactions including jaundice and cases of fatal hepatitis, liver necrosis and hepatic failure, some of them with fatal outcomes, have been reported with NSAIDs.

Although such reactions are rare, if abnormal liver tests persist or worsen, if clinical signs and symptoms consistent with liver disease develop (e.g. jaundice), or if systemic manifestations occur (e.g. eosinophilia, associated with rash, etc.), this drug should be discontinued.

If there is a need to prescribe this drug in the presence of impaired liver function, it must be done under strict observation.

### **Hypersensitivity Reactions:**

***Anaphylactoid Reactions:*** As with NSAIDs in general, anaphylactoid reactions have occurred in patients without known prior exposure to naproxen. In post-marketing experience, rare cases of anaphylactic/ anaphylactoid reactions and angioedema have been reported in patients receiving naproxen. MYLAN-NAPROXEN EC should NOT be given to patients with the ASA-triad. This symptom complex typically occurs in asthmatic patients who experience rhinitis with or without nasal polyps, or who exhibit severe, potentially fatal bronchospasm after taking ASA or other NSAIDs (see CONTRAINDICATIONS).

***ASA-Intolerance:*** MYLAN-NAPROXEN EC should NOT be given to patients with complete or partial syndrome of ASA-intolerance (rhinosinusitis, urticaria/angioedema, nasal polyps, asthma) in whom asthma, anaphylaxis, urticaria/angioedema, rhinitis or other allergic manifestations are precipitated by ASA or other NSAIDs. Fatal anaphylactoid reactions have occurred in such individuals. As well, individuals with the above medical problems are at risk of a severe reaction even if they have taken NSAIDs in the past without any adverse reaction (see CONTRAINDICATIONS).

***Cross-sensitivity:*** Patients sensitive to one NSAID may be sensitive to any of the other NSAIDs as well.

***Serious skin reactions:*** (See WARNINGS AND PRECAUTIONS: Skin)

**Immune**

(See WARNINGS AND PRECAUTIONS: Infection, Aseptic Meningitis)

**Infection**

MYLAN-NAPROXEN EC, in common with other NSAIDs, may mask signs and symptoms of an underlying infectious disease.

***Aseptic Meningitis:*** Rarely, with some NSAIDs, the symptoms of aseptic meningitis (stiff neck, severe headaches, nausea and vomiting, fever or clouding of consciousness) have been observed. Patients with autoimmune disorders (systemic lupus erythematosus, mixed connective tissue diseases, etc.) seem to be pre-disposed. Therefore, in such patients, the health care provider must be vigilant to the development of this complication.

**Neurologic**

Some patients may experience drowsiness, dizziness, blurred vision, vertigo, tinnitus, hearing loss, insomnia or depression with the use of NSAIDs, such as MYLAN-NAPROXEN EC. If patients experience such adverse reaction(s), they should exercise caution in carrying out activities that require alertness.

**Ophthalmologic**

Blurred and/or diminished vision has been reported with the use of NSAIDs. If such symptoms develop MYLAN-NAPROXEN EC should be discontinued and an ophthalmologic examination performed. Ophthalmologic examination should be carried out at periodic intervals in any patient receiving MYLAN-NAPROXEN EC for an extended period of time.

**Peri-Operative Considerations**

(See CONTRAINDICATIONS: Coronary Artery Bypass Graft Surgery)

**Psychiatric**

(See WARNINGS AND PRECAUTIONS: Neurologic)

**Renal**

Long term administration of NSAIDs to animals has resulted in renal papillary necrosis and other abnormal renal pathology. In humans, there have been reports of acute interstitial nephritis, hematuria, low grade proteinuria and occasionally nephrotic syndrome.

Renal insufficiency due to NSAID use is seen in patients with pre-renal conditions leading to reduction in renal blood flow or blood volume. Under these circumstances, renal prostaglandins help maintain renal perfusion and glomerular filtration rate (GFR). In these patients, administration of a NSAID may cause a reduction in prostaglandin synthesis leading to impaired renal function. Patients at greatest risk of this reaction are those with pre-existing renal insufficiency (GFR < 60 mL/min or 1 mL/s), dehydrated patients, patients on salt restricted diets,

those with congestive heart failure, cirrhosis, liver dysfunction, taking angiotensin-converting enzyme inhibitors, angiotensin receptor blockers, cyclosporin, diuretics, and those who are elderly. Serious or life-threatening renal failure has been reported in patients with normal or impaired renal function after short term therapy with NSAIDs. Even patients at risk who demonstrate the ability to tolerate a NSAID under stable conditions may decompensate during periods of added stress (e.g. dehydration due to gastroenteritis). Discontinuation of NSAIDs is usually followed by recovery to the pre-treatment state.

Caution should be used when initiating treatment with NSAIDs, such as MYLAN-NAPROXEN EC, in patients with considerable dehydration. Such patients should be rehydrated prior to initiation of therapy. Caution is also recommended in patients with pre-existing kidney disease.

***Advanced Renal Disease:*** (See CONTRAINDICATIONS)

***Fluid and Electrolyte Balance:*** Use of NSAIDs, such as MYLAN-NAPROXEN EC, can promote sodium retention in a dose-dependent manner, which can lead to fluid retention and edema, and consequences of increased blood pressure and exacerbation of congestive heart failure. Thus, caution should be exercised in prescribing MYLAN-NAPROXEN EC in patients with a history of congestive heart failure, compromised cardiac function, hypertension, increased age or other conditions predisposing to fluid retention (see WARNINGS AND PRECAUTIONS: Cardiovascular).

Use of NSAIDs, such as MYLAN-NAPROXEN EC, can increase the risk of hyperkalemia, especially in patients with diabetes mellitus, renal failure, increased age, or those receiving concomitant therapy with adrenergic blockers, angiotensin-converting enzyme inhibitors, angiotensin-II receptor antagonists, cyclosporin, or some diuretics.

Electrolytes should be monitored periodically (see CONTRAINDICATIONS).

### **Respiratory**

ASA-induced asthma is an uncommon but very important indication of ASA and NSAID sensitivity. It occurs more frequently in patients with asthma who have nasal polyps.

### **Sexual Function/Reproduction**

The use of MYLAN-NAPROXEN EC, as with any drug known to inhibit cyclooxygenase/prostaglandin synthesis, may impair fertility and is not recommended in women attempting to conceive. Therefore, in women who have difficulties conceiving, or who are undergoing investigation of infertility, withdrawal of MYLAN-NAPROXEN EC should be considered.

### **Skin**

In rare cases, serious skin reactions such as Stevens-Johnson syndrome, toxic epidermal necrolysis, exfoliative dermatitis and erythema multiforme have been associated with the use of some NSAIDs. Because the rate of these reactions is low, they have usually been noted during post-marketing surveillance in patients taking other medications also associated with the potential development of these serious skin reactions. Thus, causality is NOT clear. These

reactions are potentially life threatening but may be reversible if the causative agent is discontinued and appropriate treatment instituted. Patients should be advised that if they experience a skin rash they should discontinue their NSAID and contact their physician for assessment and advice, including which additional therapies to discontinue.

### **Special Populations**

***Pregnant Women:* MYLAN-NAPROXEN EC is CONTRAINDICATED for use during the third trimester of pregnancy because of risk of premature closure of the ductus arteriosus and the potential to prolong parturition (see TOXICOLOGY).**

**Caution should be exercised in prescribing MYLAN-NAPROXEN EC during the first and second trimesters of pregnancy (see TOXICOLOGY).**

Inhibition of prostaglandin synthesis may adversely affect pregnancy and/or the embryo-foetal development. Data from epidemiological studies suggest an increased risk of miscarriage and of cardiac malformation after use of a prostaglandin synthesis inhibitor in early pregnancy.

In animals, administration of a prostaglandin synthesis inhibitor has been shown to result in increased pre- and post-implantation loss and embryo-foetal lethality. In addition, increased incidences of various malformations, including cardiovascular, have been reported in animals given a prostaglandin synthesis inhibitor during the organogenetic period.

MYLAN-NAPROXEN EC is not recommended in labour and delivery because, through their prostaglandin synthesis inhibitory effect, they may adversely affect fetal circulation and inhibit uterine contractions, thus increasing the risk of uterine hemorrhage.

***Nursing Women:*** (See CONTRAINDICATIONS)

***Pediatrics:*** (See CONTRAINDICATIONS)

***Geriatrics:*** Patients older than 65 years (referred to in this document as older or elderly) and frail or debilitated patients are more susceptible to a variety of adverse reactions from NSAIDs. The incidence of these adverse reactions increases with dose and duration of treatment. In addition, these patients are less tolerant to ulceration and bleeding. Most reports of fatal GI events are in this population. Older patients are also at risk of lower esophageal injury including ulceration and bleeding. For such patients, consideration should be given to a starting dose lower than the one usually recommended, with individual adjustment when necessary and under close supervision.

### **Monitoring and Laboratory Tests**

Patients on long-term treatment with MYLAN-NAPROXEN EC should have their blood pressure monitored regularly and an ophthalmic examination should be carried out at periodic intervals (See WARNINGS AND PRECAUTIONS: Cardiovascular and Ophthalmic).

Hemoglobin, hematocrit, red blood cells (RBCs), white blood cells (WBCs), and platelets should be checked in patients on long-term treatment with MYLAN-NAPROXEN EC. Additionally, concurrent therapy with warfarin requires close monitoring of the international normalized ratio (INR) (See WARNINGS AND PRECAUTIONS: Hematology).

Serum transaminase and bilirubin should be monitored regularly during MYLAN-NAPROXEN EC therapy (see WARNINGS AND PRECAUTIONS: Hepatic, Biliary, Pancreatic).

Serum creatinine, creatine clearance and serum urea should be checked in patient during MYLAN-NAPROXEN EC therapy. Electrolytes including serum potassium should be monitored periodically (see WARNINGS AND PRECAUTIONS: Renal).

Monitoring of plasma lithium concentration is recommended when stopping or starting MYLAN-NAPROXEN EC therapy.

## **ADVERSE REACTIONS**

### **Adverse Drug Reaction Overview**

The most common adverse reactions encountered with non-steroidal anti-inflammatory drugs are gastrointestinal, of which peptic ulcer, with or without bleeding, is the most severe. Fatalities have occurred particularly in the elderly.

As with all drugs in this class, the frequency and severity of adverse events depends on several factors: the dose of the drug and duration of treatment; the age, the sex, physical condition of the patient; any concurrent medical diagnoses or individual risk factors.

### **Clinical Trial Adverse Drug Reactions**

*Because clinical trials are conducted under very specific conditions the adverse reaction rates observed in the clinical trials may not reflect the rates observed in practice and should not be compared to the rates in the clinical trials of another drug. Adverse drug reaction information from clinical trials is useful for identifying drug-related adverse events and for approximating rates.*

A clinical study found gastrointestinal reactions to be more frequent and more severe in rheumatoid arthritis patients taking daily doses of 1500 mg naproxen compared to those taking 750 mg naproxen.

The adverse reactions in controlled clinical trials in 960 patients with rheumatoid arthritis or osteoarthritis treated with the naproxen standard tablets are listed below.

**Table 1: Most Common Clinical Trial Adverse Drug Reactions (3%-9% and 1%-3%)**

<b>Body System</b>	<b>Incidence</b>	<b>Adverse Reaction</b>
<b>Gastrointestinal</b>	3%-9%	Heartburn, constipation, abdominal pain, nausea
	1%-3%	Diarrhea, dyspepsia, stomatitis, diverticulitis, gastrointestinal bleeding
<b>Central Nervous System</b>	3%-9%	Headache, dizziness, drowsiness
	1%-3%	Light-headedness, vertigo, depression, fatigue. Occasionally patients had to discontinue treatment because of the severity of some of these complaints (headache and dizziness).
<b>Dermatologic</b>	3%-9%	Pruritus, ecchymoses, skin eruptions
	1%-3%	Sweating, purpura
<b>Cardiovascular</b>	3%-9%	Dyspnea, peripheral edema
	1%-3%	Palpitations
<b>Special Senses</b>	3%-9%	Tinnitus
	1%-3%	Hearing disturbances
<b>General</b>	1%-3%	Thirst

**Table 2: Less Common Clinical Trial Adverse Drug Reactions (<1%)**

<b>Gastrointestinal</b>	Gastrointestinal bleeding, hematemesis, melena, peptic ulceration with or without bleeding and/or perforation, vomiting, ulcerative stomatitis.
<b>Central Nervous System</b>	Inability to concentrate, malaise, myalgia, insomnia and cognitive dysfunction (i.e. decreased attention span, loss of short-term memory, difficulty with calculations).
<b>Dermatologic</b>	Alopecia, urticaria, skin rash, erythema multiforme, Stevens-Johnson syndrome, epidermal necrolysis, photosensitive dermatitis, exfoliative dermatitis, erythema nodosum.
<b>Hepatic</b>	Abnormal liver function tests, jaundice, cholestasis and hepatitis.
<b>Cardiovascular</b>	Congestive heart failure and vasculitis.
<b>Renal</b>	Glomerular nephritis, hematuria, interstitial nephritis, nephrotic syndrome, nephropathy and tubular necrosis.
<b>Hematologic</b>	Eosinophilia, granulocytopenia, leukopenia, thrombocytopenia, agranulocytosis, aplastic anemia and hemolytic anemia.
<b>Special Senses</b>	Hearing impairment and visual disturbances.
<b>Reproductive</b>	Female infertility
<b>General</b>	Muscle weakness, anaphylactoid reactions, menstrual disorders, pyrexia (chills and fever), angioneurotic edema, hyperglycemia, hypoglycemia and eosinophilic pneumonitis.

**Post-Market Adverse Drug Reactions**

The following additional adverse events have been reported with NSAIDs including naproxen and naproxen sodium:

<b>Gastrointestinal:</b>	Inflammation, bleeding (sometimes fatal, particularly in the elderly), ulceration, perforation and obstruction of the upper or lower gastrointestinal tract. Oesophagitis, gastritis, pancreatitis, stomatitis. Exacerbation of ulcerative colitis and Crohn's disease. Heartburn, dyspepsia, abdominal pain, nausea, vomiting, diarrhoea, flatulence, constipation, haematemesis, melaena.
<b>Infections:</b>	Aseptic meningitis
<b>Blood and Lymphatic System Disorders:</b>	Agranulocytosis, aplastic anaemia, eosinophilia, haemolytic anaemia, leucopenia, thrombocytopenia
<b>Immune System Disorders:</b>	Anaphylactoid reactions
<b>Metabolic and Nutrition Disorders:</b>	Hyperkalemia
<b>Psychiatric Disorders:</b>	Depression, dream abnormalities, insomnia
<b>Nervous System Disorders:</b>	Dizziness, drowsiness, headache, lightheadedness, retrobulbar optic neuritis convulsions, cognitive dysfunction, inability to concentrate
<b>Eye Disorders:</b>	Visual disturbances, corneal opacity, papillitis, papilloedema
<b>Ear and Labyrinth Disorders:</b>	Hearing impairment, hearing disturbances, tinnitus, vertigo
<b>Cardiac Disorders:</b>	Palpitations, cardiac failure has been reported in association with NSAID treatment, congestive heart failure
<b>Vascular Disorders:</b>	Hypertension, vasculitis
	Clinical trial and epidemiological data suggest that use of coxibs and some NSAIDs (particularly at high doses and in long term treatment) may be associated with a small increased risk of arterial thrombotic events (for example myocardial infarction or stroke).
<b>Respiratory, Thoracic and Mediastinal Disorders:</b>	Dyspnoea, pulmonary oedema, asthma, eosinophilic pneumonitis.
<b>Hepatobiliary Disorders:</b>	Hepatitis (some cases of hepatitis have been fatal), jaundice.
<b>Skin and Subcutaneous Tissue Disorders:</b>	Ecchymoses, itching (pruritus), purpura, skin eruptions, sweating, alopecia, epidermal necrolysis, very rarely toxic epidermal necrolysis, erythema multiforme, bullous reactions, including Stevens-Johnson syndrome, erythema nodosum, fixed drug eruption, lichen planus, pustular reaction, skin rashes, SLE, urticaria, photosensitivity



	reactions, including rare cases resembling porphyria cutanea tarda (“pseudoporphyria”) or epidermolysis bullosa and angioneurotic oedema.
	If skin fragility, blistering or other symptoms suggestive of pseudoporphyria occur, treatment should be discontinued and the patient monitored.
<b>Musculoskeletal and Connective Tissue Disorders:</b>	Myalgia, muscle weakness.
<b>Renal and Urinary Disorders:</b>	Haematuria, interstitial nephritis, nephrotic syndrome, renal disease, renal failure, renal papillary necrosis
<b>Reproductive System and Breast Disorders:</b>	Female infertility
<b>General Disorders and Administration Site Conditions:</b>	Oedema, thirst, pyrexia (chills and fever), malaise
<b>Investigations:</b>	Abnormal liver function tests, raised serum creatinine

## DRUG INTERACTIONS

### Drug-Drug Interactions

**Acetylsalicylic acid (ASA) or other NSAIDs:** The use of MYLAN-NAPROXEN EC in addition to any other NSAID, including over-the-counter ones (such as ASA and ibuprofen) for analgesic and/or anti-inflammatory effects is NOT recommended because of the absence of any evidence demonstrating synergistic benefits and the potential for additive adverse reactions.

The exception is the use of low dose ASA for cardiovascular protection, when another NSAID is being used for its analgesic/anti-inflammatory effect, keeping in mind that combination NSAID therapy is associated with additive adverse reactions.

Some NSAIDs (e.g. ibuprofen) may interfere with the anti-platelet effects of low dose ASA, possibly by competing with ASA for access to the active site of cyclooxygenase-1.

**Albumin Bound Drugs:** The naproxen anion may displace from their binding sites other drugs which are also albumin-bound and may lead to drug interactions. For example, in patients receiving bishydroxycoumarin or warfarin, the addition of naproxen could prolong the prothrombin time. These patients should, therefore, be under careful observation. Similarly, patients receiving MYLAN-NAPROXEN EC and a hydantoin, sulfonamide or sulfonylurea should be observed for adjustment of dose if required.

**Antacids:** The rate of absorption of naproxen is altered by concomitant administration of antacids but is not adversely influenced by the presence of food.

***Anti-coagulants:*** (See WARNINGS AND PRECAUTIONS: Hematologic, Anticoagulants)

***Anti-hypertensives:*** NSAIDs may diminish the anti-hypertensive effect of angiotensin converting enzyme (ACE) inhibitors and angiotensin receptor blockers (ARBs).

Concomitant use of NSAIDs with ACE inhibitors or angiotensin receptor blockers may increase the risk of renal dysfunction, especially in patients with pre-existing poor renal function (see WARNINGS AND PRECAUTIONS: Renal).

Combinations of ACE inhibitors, angiotensin-II antagonists, or diuretics with NSAIDs might have an increased risk for acute renal failure and hyperkalemia. Blood pressure and renal function (including electrolytes) should be monitored more closely in this situation, as occasionally there can be a substantial increase in blood pressure.

Naproxen and other non-steroidal anti-inflammatory drugs can reduce the antihypertensive effect of propranolol and other beta blockers as well as other antihypertensive agents.

***Anti-platelet Agents (including ASA):*** There is an increased risk of bleeding, via inhibition of platelet function, when anti-platelet agents are combined with NSAIDs, such as MYLAN-NAPROXEN EC. (see WARNINGS AND PRECAUTIONS: Hematologic, Anti-platelet Effects)

***Cyclosporin:*** Inhibition of renal prostaglandin activity by NSAIDs may increase the plasma concentration of cyclosporine and/or the risk of cyclosporine induced nephrotoxicity. Patients should be carefully monitored during concurrent use.

#### ***Cholestyramine***

Concomitant administration of cholestyramine can delay the absorption of naproxen, but does not affect its extent.

***Digoxin:*** Concomitant administration of an NSAID with digoxin can result in an increase in digoxin concentrations which may result in digitalis toxicity. Increased monitoring and dosage adjustments of digitalis glycosides may be necessary during and following concurrent NSAID therapy.

***Diuretics:*** Clinical studies as well as post-marketing observations have shown that NSAIDs can reduce the effect of diuretics.

***Glucocorticoids:*** Some studies have shown that the concomitant use of NSAIDs and oral glucocorticoids increases the risk of GI adverse events such as ulceration and bleeding. This is especially the case in older (> 65 years of age) individuals.

***Lithium:*** Monitoring of plasma lithium concentrations is advised when stopping or starting a NSAID, as increased lithium concentrations can occur.

***Methotrexate:*** Caution is advised in the concomitant administration of naproxen and methotrexate since naproxen and other non-steroidal anti-inflammatory agents have been reported to reduce the tubular secretion of methotrexate in an animal model, thereby possibly enhancing its toxicity.

***Probenecid***

Probenecid given concurrently increases naproxen anion plasma levels and extends its plasma half-life significantly. Caution is advised when probenecid is administered concurrently.

***Selective Serotonin Reuptake Inhibitors (SSRIs):*** Concomitant administration of NSAIDs and SSRIs may increase the risk of gastrointestinal ulceration and bleeding (see WARNINGS AND PRECAUTIONS: Gastrointestinal).

**Drug-Food Interactions**

Concomitant administration of food can delay the absorption of naproxen, but does not affect its extent.

**Drug-Herb Interactions**

Interactions with herbal products have not been established.

**Drug-Laboratory Interactions**

Interactions with laboratory tests have not been established.

**Drug-Lifestyle Interactions**

There are no specific studies about effects on the ability to drive vehicles and to use machinery. Patients who experience visual disturbances or other central nervous system disturbances should refrain from these activities.

Concurrent use of alcohol with an NSAID may increase the risk of gastrointestinal side effects, including ulceration and hemorrhage.

## DOSAGE AND ADMINISTRATION

### **Recommended Dose and Dosage Adjustment**

#### **Adult:**

**Use of MYLAN-NAPROXEN EC should be limited to the lowest effective dose for the shortest possible duration of treatment (see INDICATIONS AND CLINICAL USE). For all indications, treatment must be initiated with the lowest dose.**

#### ***Osteoarthritis/Rheumatoid Arthritis/Ankylosing Spondylitis***

The usual total dosage of naproxen for osteoarthritis, rheumatoid arthritis and ankylosing spondylitis is 250 mg twice a day. It may be increased gradually to 375 or 500 mg twice a day depending on the patient's response.

Recommended Daily Dosing		
MYLAN-NAPROXEN EC (Enteric-Coated Tablets)	250 mg or 375 mg or 500 mg	twice daily twice daily twice daily

Studies have not shown any clinically significant benefit in using doses higher than 1000 mg/day. In patients who tolerate lower doses of naproxen well and who exhibit only a partial response to 1000 mg/day, the dose may be increased to 1500 mg/day for limited periods. Experience with 1500 mg/day naproxen is limited to using the standard tablets. MYLAN-NAPROXEN EC tablets should be swallowed with food or milk.

When treating such patients with naproxen 1500 mg/day, the physician should observe sufficient increased clinical benefit to offset the potential increased risk (see ADVERSE REACTIONS).

In addition, patients on 1500 mg/day need to be followed closely for the development of any adverse events.

During long-term administration the dose of MYLAN-NAPROXEN EC may be adjusted up or down depending on the clinical response of the patient. A lower dose may suffice for long-term administration.

Naproxen enteric-coated tablets have not been studied in subjects under the age of 18.

#### ***Analgesia/Musculoskeletal Injuries***

The recommended dose for naproxen is 250 mg three times a day or 375 mg twice a day. This may be increased to 500 mg twice a day if needed. The lowest effective dose should be used.

Modified release formulations of naproxen (i.e., enteric coated) are not recommended for initial treatment of acute pain because the absorption of naproxen is delayed.

### ***Dysmenorrhea***

The recommended starting dose for naproxen is two 250 mg tablets (or one 500 mg tablet), followed by one 250 mg tablet every 6 - 8 hours, as required. The total daily dose should not exceed 5 tablets (1250 mg). Alternatively, one 500 mg tablet given twice daily may be used.

Modified release formulations of naproxen (i.e., enteric coated) are not recommended for initial treatment of acute pain because the absorption of naproxen is delayed.

### **Missed Dose**

The missed dose should be taken as soon as remembered, and then the regular dosing schedule should be continued. Two doses of MYLAN-NAPROXEN EC should not be taken at the same time.

### **Administration**

MYLAN-NAPROXEN EC (enteric-coated tablets) should be swallowed whole.

## **OVERDOSAGE**

For management of a suspected drug overdose, contact your regional Poison Control Centre.
---

### **Symptoms and Signs**

Significant overdose may be characterized by drowsiness, dizziness, disorientation, heartburn, indigestion, epigastric pain, abdominal discomfort, nausea, vomiting, transient alterations in liver function, hypoprothrombinemia, renal dysfunction, metabolic acidosis and apnea. A few patients have experienced convulsions, but it is not clear whether or not these were naproxen related.

Gastrointestinal bleeding may occur. Hypertension, acute renal failure, respiratory depression and coma may occur after the ingestion of NSAIDs but are rare.

Anaphylactoid reactions have been reported with therapeutic ingestion of NSAIDs, and may occur following an overdose.

### **Treatment**

Patients should be managed by symptomatic and supportive care following NSAIDs overdose. There are no specific antidotes. Prevention of further absorption (e.g. activated charcoal) may be indicated in patients seen within 4 hours of ingestion with symptoms or following a large overdose. Forced diuresis, alkalinization of urine, haemodialysis, or haemoperfusion may not be useful due to high protein binding.

## **ACTION AND CLINICAL PHARMACOLOGY**

### **Mechanism of Action**

MYLAN-NAPROXEN EC contains naproxen, a member of the arylacetic acid group of NSAIDs.

Naproxen is a non-steroidal anti-inflammatory drug (NSAID) with analgesic properties. The mechanism of action of naproxen, like that of other NSAIDs, is not completely understood but may be related to prostaglandin synthetase inhibition.

### **Pharmacodynamics**

(See DETAILED PHARMACOLOGY)

### **Pharmacokinetics**

Naproxen is rapidly and completely absorbed from the gastro-intestinal tract. After oral administration of naproxen, peak plasma levels of naproxen anion are attained in 2 to 4 hours, with steady state conditions normally achieved after 4 to 5 doses. Plasma naproxen levels and areas under plasma concentration vs. time curves increased linearly with dose increments up to 500 mg twice a day, but larger doses resulted in a plateau effect. The mean biological half-life of the anion in humans is approximately 13 hours, and at therapeutic levels it is greater than 99% albumin bound. Approximately 95% of the dose is excreted in the urine, primarily as naproxen, 6-O-desmethyl naproxen or their conjugates. The rate of excretion has been found to coincide closely with the rate of drug disappearance from the plasma. The drug does not induce metabolizing enzymes.

Enteric-coated naproxen is designed to be dispersed and dissolved in the small bowel rather than the stomach, so the absorption is delayed until the stomach is emptied. Naproxen (enteric-coated tablets) were bioequivalent to the standard 375 mg and 500 mg tablets, except for a substantially increased time to peak plasma concentration ( $T_{max}$ ). The average maximum plasma concentration ( $C_{max}$ ) following the 375 mg, 2 x 250 mg and 500 mg enteric-coated tablets were 47.9, 58.2 and 60.7  $\mu\text{g/mL}$ , while the  $C_{max}$  following the 375 mg and 500 mg standard immediate release tablets were 46.6 and 63.1  $\mu\text{g/mL}$ , respectively. The  $T_{max}$ 's were 4.5, 4.2 and 4.2 hr. for the respective enteric-coated formulations as compared to 2.3 and 2.6 hr. after standard naproxen tablets. At steady state (multiple dosing) naproxen (enteric coated) and naproxen (standard) were equivalent to each other with respect to  $C_{max}$ ,  $C_{ave}$ ,  $C_{max}/C_{ave}$ , 0-12 hr. AUC and half-life. In addition, fluctuation in plasma levels about  $C_{ave}$  were considerably less with naproxen (enteric-coated tablet as compared to standard naproxen (49.3% vs. 85.3%). Administration of 500 mg enteric-coated naproxen tablets with food and antacid did not alter the extent of absorption of naproxen as compared to the fasting condition. However, antacid treatment resulted in a higher  $C_{max}$  (70.7 vs. 58.5  $\mu\text{g/mL}$ ) and earlier  $T_{max}$  (5.2 hr vs. 8.7 hr.) in comparison to the fasting condition. Relative to the fasting state, the average  $T_{max}$  was delayed following a high fat meal (5.6 - 8.7 hr. fasting, 9.2 - 10.8 hr. post-prandial) while the average  $C_{max}$  and AUC were bioequivalent.

## **STORAGE AND STABILITY**

Store at room temperature (between 15°C and 30°C), protect from moisture and light.

Keep out of reach and sight of children.

## **DOSAGE FORMS, COMPOSITION AND PACKAGING**

MYLAN-NAPROXEN EC is available as:

Enteric-Coated Tablets 250 mg – white to off-white, convex, enteric-coated tablet imprinted “NP-250” in black ink. Available in bottles of 100, 500 and 1000 tablets.

Enteric-Coated Tablets 375 mg - white to off-white, deep convex, oblong, enteric-coated tablet imprinted “NP-375” in black ink. Available in bottles of 100 and 500 tablets.

Enteric-Coated Tablets 500 mg - white to off-white, convex, oblong, enteric-coated tablet imprinted “NP-500” in black ink. Available in bottles of 100 and 500 tablets.

MYLAN-NAPROXEN EC (naproxen enteric-coated tablets) (250 mg, 375 mg and 500 mg) contains croscarmellose sodium, magnesium stearate and povidone, as inactive ingredients. The coating suspension consists of methacrylic acid copolymer, polyethylene glycol, simethicone emulsion, sodium hydroxide, talc, and titanium dioxide. The black ink for printing MYLAN-NAPROXEN EC (250 mg, 375 mg and 500 mg) contains alcohol, ammonium hydroxide, ethanol, iron oxide black, propylene glycol and shellac.

## PART II: SCIENTIFIC INFORMATION

### PHARMACEUTICAL INFORMATION

#### Drug Substance

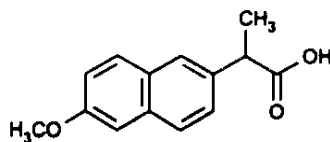
Proper name: Naproxen

Chemical name: 2- Naphthaleneacetic acid, 6-methoxy- $\alpha$ -methyl-, (S) -

Molecular formula:  $C_{14}H_{14}O_3$

Molecular mass: 230.26 g/mol

Structural formula:



Physicochemical properties: Naproxen is a white to off-white, practically odourless, crystalline powder. It is practically insoluble in water and in water at pH 2, freely soluble in water at pH 8 or above. It is soluble in 25 parts of ethanol (96%), in 20 parts of methanol, in 15 parts of chloroform and in 40 parts of ether. Naproxen has a melting point of 154°C to 158°C. It has a pKa value of 4.2 (25°C).



## CLINICAL TRIALS

Three bioequivalence studies were conducted and results are summarized in the following tables.

Single-dose, randomized, two-way, crossover bioequivalence study was performed using 24 normal, healthy, non-smoking male subjects under fasting condition to compare the bioavailability of MYLAN-NAPROXEN EC (Naproxen Enteric-Coated Tablets, 500 mg, of Mylan Pharmaceuticals ULC, Canada) and that of Naprosyn<sup>®</sup> Tablets, 500 mg, (Hoffmann-La Roche Ltd. Canada) as a 1 X 500 mg tablet. The pharmacokinetic data calculated for these naproxen enteric-coated tablets are in the table.

<b>FASTED STUDY</b> <b>SUMMARY TABLE OF THE COMPARATIVE BIOAVAILABILITY DATA</b> <b>NAPROXEN ENTERIC-COATED TABLETS</b> <b>(1 X 500 mg)</b> <b>Mean Pharmacokinetic Parameters for Plasma Naproxen</b>				
From measured data:				
Parameter	Geometric Mean Arithmetic Mean (CV%)		% Ratio of Geometric Means	90% Confidence Interval
	MYLAN- NAPROXEN EC 500 mg Tablet	NAPROSYN E <sup>®</sup> * 500 mg Tablet		
AUC <sub>0-t</sub> hours (mcg·hr/mL)	1070.58 1083.04 (15.75)	1132.44 1146.05 (15.88)	94.54 (91.55 – 7.62)	97.69 (94.60 – 100.88)
AUC <sub>0-infinity</sub> (mcg·hr/mL)	1138.22 1154.53 (17.63)	1204.82 1222.58 (17.72)	94.47 (91.39 – 97.66)	97.62 (94.44 – 100.91)
C <sub>MAX</sub> (mcg/mL)	64.75 65.47 (15.16)	65.17 66.09 (16.57)	99.35 (91.47 – 107.92)	102.67 (94.51 – 111.52)
T <sub>MAX</sub> ** (hour)	3.98 (33.03)	3.19 (50.84)	---	---
T <sub>1/2</sub> (hour)**	17.44 (13.74)	17.70 (12.92)	---	---
K <sub>el</sub> ** (hour <sup>-1</sup> )	0.040 (12.702)	0.040 (12.138)	---	---

\* The reference product Naprosyn E<sup>®</sup> Tablets 500 mg, Hoffmann-La Roche Limited, was purchased in Canada.

\*\* The T<sub>MAX</sub> and T<sub>1/2</sub> and K<sub>el</sub> parameters are expressed as the arithmetic means (CV%).

--- - Not Applicable

Single-dose, randomized, two-way, crossover bioequivalence study was performed using 17 normal, healthy, non-smoking male subjects under fed condition to compare the bioavailability of MYLAN-NAPROXEN EC (Naproxen Enteric-Coated Tablets, 500 mg, of Mylan Pharmaceuticals ULC, Canada) and that of Naprosyn<sup>®</sup> Tablets, 500 mg, (Hoffmann-La Roche Ltd. Canada) as a 1 X 500 mg tablet. The pharmacokinetic data calculated for these naproxen enteric-coated tablets are in the table.

<b>FED STUDY</b>				
<b>SUMMARY TABLE OF THE COMPARATIVE BIOAVAILABILITY DATA</b>				
<b>NAPROXEN ENTERIC-COATED TABLETS</b>				
<b>(1 X 500 mg)</b>				
<b>Mean Pharmacokinetic Parameters for Plasma Naproxen</b>				
From measured data:				
Parameter	Geometric Mean Arithmetic Mean (CV%)		% Ratio of Geometric Means	90% Confidence Interval
	MYLAN- NAPROXEN EC 500 mg Tablet	NAPROSYN E <sup>®</sup> * 500 mg Tablet		
AUC <sub>0-t</sub> hours (mcg·hr/mL)	990.53 1020.10 (27.32)	999.46 1041.32 (29.79)	99.11 (91.99 – 106.77)	102.41 (95.06 – 110.33)
AUC <sub>0-infinity</sub> (mcg·hr/mL)	1070.31 1107.23 (29.16)	1099.03 1140.90 (28.74)	103.09 (98.38 – 108.02)	106.53 (101.67 – 111.62)
C <sub>MAX</sub> (mcg/mL)	54.10 57.05 (33.51)	59.41 63.20 (35.77)	91.06 (70.91 – 116.94)	94.10 (73.10 – 120.83)
T <sub>MAX</sub> ** (hour)	13.00 (83.70)	9.81 (90.92)	---	---
T <sub>1/2</sub> (hour) **	16.17 (11.90)	16.07 (13.77)	---	---
K <sub>el</sub> ** (hour <sup>-1</sup> )	0.043 (11.191)	0.044 (13.483)	---	---

\* The reference product Naprosyn E<sup>®</sup> Tablets 500 mg, Hoffmann-La Roche Limited, was purchased in Canada.

\*\* The T<sub>MAX</sub> and T<sub>1/2</sub> and K<sub>el</sub> parameters are expressed as the arithmetic means (CV%).

--- - Not Applicable

Single-dose, randomized, two-way, crossover bioequivalence study was performed using 26 normal, healthy, non-smoking male subjects under fasting condition to compare the bioavailability of MYLAN-NAPROXEN EC (Naproxen Enteric-Coated Tablets, 250 mg, of Mylan Pharmaceuticals ULC, Canada) and that of Naprosyn<sup>®</sup> Tablets, 250 mg, (Hoffmann-La Roche Ltd. Canada) as a 1 X 250 mg tablet. The pharmacokinetic data calculated for these naproxen enteric-coated tablets are in the table.

<b>FASTED STUDY</b>				
<b>SUMMARY TABLE OF THE COMPARATIVE BIOAVAILABILITY DATA</b>				
<b>NAPROXEN ENTERIC-COATED TABLETS</b>				
<b>(1 X 250 mg)</b>				
<b>Mean Pharmacokinetic Parameters for Plasma Naproxen</b>				
From measured data:				
Parameter	Geometric Mean Arithmetic Mean (CV%)		% Ratio of Geometric Means	90% Confidence Interval
	MYLAN- NAPROXEN EC 250 mg Tablet	NAPROSYN E <sup>®</sup> * 250 mg Tablet		
AUC <sub>0-t</sub> hours (mcg·hr/mL)	621.44 630.29 (17.38)	606.15 617.32 (19.80)	103	104.80 (102.33 – 107.34)
AUC <sub>0-infinity</sub> (mcg·hr/mL)	665.04 677.62 (20.20)	658.63 671.87 (20.90)	101	103.27 (100.66 – 105.95)
C <sub>MAX</sub> (mcg/mL)	40.23 41.01 (20.24)	41.87 42.46 (16.16)	96	98.16 (90.63 – 106.32)
T <sub>MAX</sub> ** (hour)	3.09 (54.22)	3.39 (43.55)	---	---
T <sub>1/2</sub> (hour) **	18.34 (15.04)	18.79 (12.65)	---	---
K <sub>el</sub> ** (hour <sup>-1</sup> )	0.039 (13.82)	0.037 (12.29)	---	---

\* The reference product Naprosyn E<sup>®</sup> Tablets 500 mg, Hoffmann-La Roche Limited, was purchased in Canada.

\*\* The T<sub>MAX</sub> and T<sub>1/2</sub> and K<sub>el</sub> parameters are expressed as the arithmetic means (CV%).

--- - Not Applicable

## DETAILED PHARMACOLOGY

Naproxen has been shown to possess anti-inflammatory and analgesic activity as assessed by a variety of animal test procedures.

**Anti-inflammatory activity:** In the rat paw edema assay, naproxen was more potent than phenylbutazone and acetylsalicylic acid, and slightly less potent than indomethacin.

In the rat granuloma assay, naproxen was more active than phenylbutazone and less active than indomethacin.

**Analgesic activity:** In a mouse analgesic assay using phenylquinone for pain induction, naproxen was more active than phenylbutazone and acetylsalicylic acid, and less active than indomethacin. Parallel comparative analgesic studies were done in rats with yeast induced paw edema.

In these assays, naproxen had a higher relative potency than phenylbutazone and acetylsalicylic acid, but lower relative potency when compared to indomethacin.

The comparative absorption, distribution, metabolism and excretion of naproxen were studied in several species, including man. Naproxen was found to be rapidly absorbed in all species and, once in the blood was eliminated with half-lives ranging from 2 to 35 hours. Estimated volumes of distribution indicated that a large fraction of the drug is held in the blood, much like salicylates are. Virtually all the drug present in the blood of humans was determined to be unchanged naproxen, while the rat and the monkey showed minor amounts of transformation products. With the exception of the dog, all species excreted naproxen and its metabolic transformation products predominantly in the urine. In the dog the preferred route was fecal.

Studies by Tomlinson, et al have shown that naproxen can inhibit the synthesis of prostaglandin E2 from arachidonic acid by bovine seminal vesicle microsomes. Naproxen therefore appears to act at least in part in a manner similar to other anti-inflammatory agents which block prostaglandin biosynthesis.

### **Human metabolic studies:**

The plasma level response to oral naproxen doses ranging up to 900 mg twice daily was studied in normal subjects. Experiments with tritium labelled naproxen showed that there was no difference in the fraction of ingested drug excreted in the stools whether the dose was 250 mg or 900 mg, thus eliminating the possibility that this effect was a result of incomplete absorption. Accelerated renal clearance at high doses because of disproportionate increases in the amount of unbound drug appeared to be the most likely explanation for the plateau effect.

In patients treated with maintenance dialysis for terminal renal failure, serum level studies indicated that the metabolite 6-O-desmethyl naproxen is dialysed, whilst naproxen is not. No accumulation of naproxen was found although serum levels of the metabolite increased.

## TOXICOLOGY

### Acute Animal Toxicity

The oral LD<sub>50</sub> values for naproxen are as follows:

Hamster	4110 mg/kg
Rats	543 mg/kg
Dogs	> 1000mg/kg
Mice	1234 mg/kg

### Subacute and Chronic Oral Toxicity

In subacute and chronic oral studies with naproxen in a variety of species, the principal pathologic effect was gastrointestinal irritation and ulceration. The lesions seen were predominantly in the small intestine and ranged from hyperemia to perforation and peritonitis.

Nephropathy was seen occasionally in rats, mice and rabbits at high dose levels of naproxen, but not in rhesus monkeys or miniature pigs. In the affected species the pathologic changes occurred in the cortex and papilla. Some rats examined 14 days after single oral doses of 230 mg/kg or more of naproxen evidenced necrotic areas of cortical and papillary tissue. Tubular dilation (ectasia) occurred in rabbits dosed orally for 14 days with 200 mg/kg/day or more of naproxen. An examination of unfixed renal tissue from rabbits so treated was conducted and revealed the presence of diffraction patterns similar to that of crystalline naproxen. This suggests that the ectasia observed was physical response to deposition of excreted naproxen within the tubules.

In mice given oral doses of 120 mg/kg/day or more of naproxen for 6 months, the kidneys were characterized by a low but non dosage related incidence of cortical sclerosis and papillary tip necrosis. Chronic administration of high doses of naproxen to mice appears to be associated with exacerbation of spontaneous murine nephropathy.

A wide variation in susceptibility to gastrointestinal lesions from administration of naproxen was evident in the various species tested. For example, 30 mg/kg/day was tolerated well by rats for 90 days, but the same dose was ulcerogenic when administered for 6 months. Rhesus monkeys and miniature swine exhibited no significant pathology when dosed with naproxen at 45 mg/kg/day for 30 days. This dose of naproxen was also tolerated by miniature swine without obvious evidence of adverse effects when administered daily for 1 year. In rhesus monkeys doses as high as 120 mg/kg/day administered twice daily for 6 months produced no clinical or histopathological evidence of gastrointestinal irritation although occult blood in the feces occurred more frequently in these animals as compared to controls. In rabbits the maximum tolerated repeated oral dose is 200 mg/kg/day. Mice tolerated oral daily doses of 240 mg/kg/day for 6 months. In both rabbits and mice, gastrointestinal and renal toxicity was reported at these dose levels. In dogs, on the other hand, 5.0 mg/kg/day approaches the maximum tolerated dose. This peculiar canine susceptibility to gastrointestinal effects of non-steroidal anti-inflammatory agents has also been shown with indomethacin and ibuprofen.

In dogs, naproxen exhibits a considerably longer plasma half-life than it does in rats, guinea pigs,

miniature swine, monkeys and man. The same observation has been made with ibuprofen in dogs compared to rats and man. In addition, in the species listed, only the dog excretes significant amounts of administered naproxen in the feces (50%). In the rat, guinea pigs, miniature swine, monkeys and man, 86.94% of the administered drug is excreted in the urine. The suggested enterohepatic circulation of naproxen in the dog (as judged by the fecal excretion) may be a major factor in the susceptibility of the dog to gastrointestinal irritation by this compound.

Pathologic changes in the spleen and mesenteric lymph nodes as well as peritoneal inflammation and adhesions were considered to be clearly secondary to the effects of high doses of naproxen on the gastrointestinal tract. Moderate weight loss of the male secondary sex glands occurred in some studies in naproxen treated rats and dogs. Histopathologically the affected glands in some instances exhibited atrophic and/or hypoplastic changes characterized by decreased secretory material. A possible estrogenic action of naproxen as a causative factor seems highly unlikely since in standard bioassay procedures the drug exhibited no estrogenic activity. Nevertheless, daily doses of naproxen as high as 30 mg/kg administered for 60 days before mating had no effect on fertility and reproductive performance of male rats. These results reflect the physiological integrity of the entire male reproductive apparatus after administration of naproxen throughout the spermatogenic cycle.

#### Effect on Induced Infections in Rabbits

To determine whether treatment with naproxen affects the ability of animals to respond to bacterial infection, rabbits were inoculated subcutaneously with *Diplococcus pneumoniae*. For 21 days before bacterial challenge and during a 2-week post-challenge period, the animals were dosed daily by gavage with 2, 10 or 20 mg/kg of naproxen. Clinical condition, morbidity, mortality, gross and histopathologic changes were evaluated. There were no apparent effects of naproxen in altering the response of the animals to bacterial challenge.

#### Teratology

In teratology studies, no skeletal or visceral anomalies or pathologic changes were induced in the fetuses of pregnant rats and rabbits treated during organogenesis with daily oral doses of naproxen up to 20 mg/kg. In these studies there were also no significant differences from controls in the number of live fetuses, resorptions, fetal weights or ano-genital distances.

#### Reproductive Studies

Daily oral administration of 15, 30 or 60 mg/kg of naproxen to female rabbits from 2 weeks before mating until day 20 of pregnancy did not affect fertility, gestation or the numbers of live fetuses.

In a peri- and post-natal study in rats, oral doses of naproxen up to 20 mg/kg administered daily during the last part of pregnancy through weaning did not result in adverse effects in viability of pups, lactation index, sex ratio or weight gain of offspring. However, there was a slight increase

in gestation length at the 10 and 20 mg/kg dose levels; and, at the 10 mg/kg dose level, there was a significant increase in stillbirths.

Naproxen at daily oral doses of 12, 36 or 108 mg/kg to female mice from 2 weeks before mating until weaning of the pups did not cause changes in length of gestation, number of live pups born, average pup weight at 0, 4, 7, 14 or 21 days, or sex distribution. The fertility index, gestation index and 4 day viability index were similar for mice from the control and treated groups. The 21 day survival and lactation indexes were decreased for mice from the group fed 108 mg/kg/day of naproxen but not for mice given 12 or 36 mg/kg/day. Most of this change was due to maternal mortality in the high dose group.

Recent evidence suggests that inhibition of prostaglandin synthesis by non-steroidal anti-inflammatory compounds may be related to decreased uterine contractility. Thus, the onset of labor in a rat model system can be delayed with naproxen administration without causing maternal or fetal deaths in excess of that seen in controls. Since it has been shown that Naproxen inhibits prostaglandin synthesis in vitro, it has been suggested that the effects of naproxen on uterine contractility are mediated through that mechanism.

Maternal and fetal deaths seen in naproxen treated rats were, therefore, apparently related to dystocia rather than to a direct toxic effect of the compound. Naproxen is not unique in this regard since comparable results were obtained in the rat with other commonly used non-steroidal anti-inflammatory agents.

#### Carcinogenicity

Naproxen was administered with food to Sprague-Dawley rats for 24 months at doses of 8, 16 and 24 mg/kg/day. Naproxen was not carcinogenic in rats.

#### Mutagenicity

Mutagenicity was not seen in *Salmonella typhimurium* (5 cell lines), *Sachharomyces cerevisisae* (1 cell line), and mouse lymphoma tests.

## REFERENCES

1. Adams SS, Bough RG, Cliffe EE, Lessel B and Mills RFN. Absorption, distribution and toxicity of ibuprofen. *Tox Appl Pharmacol* 1969; 15:310.
2. Allen B, Edwards RI. A safety profile of controlled release naproxen tablets. Manuscript submitted to the *New Zealand Journal of Medicine* (Nov.1988).
3. Berry H, Swinson D, Jones J and Hamilton EBD. Indomethacin and naproxen suppositories in the treatment of rheumatoid arthritis. *Ann Rheumatic Dis* 1978; 37:370-372.
4. Brogden RN, Heel RC, Speight TM and Avery GS. Naproxen up to date: a review of its pharmacological properties and therapeutic efficacy and use in rheumatic diseases and pain states. *Drugs* 1979; 18:241-277.
5. Cleland LG. Microbleeding in 28-day naproxen controlled-release (NAPROSYN SR) therapy. *Clinical Trials Journal* 1988; 25: 103-108.
6. Davis SS, Hardy JG, Wilson GC, Feeley LC, and Palin KJ. Gastrointestinal transit of a controlled release naproxen tablet formulation. *Intern J of Pharma* 1986; 32:85-90.
7. Harrison IT, Lewis B, Nelson P, Rooks WH and Roskowski AP. Non-steroidal anti-inflammatory agents I 6-substituted 2-naphthylactic acids. 1970; *J Med Chem* 13:203-205.
8. Information letter, Health Protection Branch. Nonsteroidal Anti-inflammatory Drugs. DD-33; August 21,1985.
9. Julou L, Ducrot R, Fournel J, Ganter P, Populaire P, Durel J, Myon J, Pascal S and Pasquet J. Etude toxicologique l'acide metiazinque. *Artzn Forsch* 1969; 19:1207.
10. Ling TL, Yee JP, Cohen A, Hsiao C, Gonzalez MA, Garg DC, and Weidler DJ. A multiple-dose pharmacokinetic comparison of naproxen as a once-daily controlled-release tablet and a twice-daily conventional tablet. *J Clin Pharmacol* 1987; 27:325-329.
11. Luftschein S, Bienenstock H, Varady JC and Stitt FW. Increasing dose of naproxen in rheumatoid arthritis: use with and without corticosteroids. *J Rheumatol* 1979; 6:397-404.
12. McVerry, Lethbridge J, Martin N, Mukerjee SK, Littler T, Tallis R, Sibeon R, and Orme MLE. Pharmacokinetics of naproxen in elderly patients. *Eur J Clin Pharmacol* 1986; 31:463-468.
13. Nadell J, Bruno J, Varady J, and Segre E. Effect of naproxen and aspirin on bleeding time and platelet aggregation. *J Clin Pharmacol* 1974; 14(4):76-82.
14. Naproxen. Proceedings from an international medical symposium presented by Syntex Corporation. *Scan J Rheumatol* 1973; suppl 2.



15. Physician's Desk Reference 1987; p 1535.
16. Rooks WH. The activity of d-2- (6'-methoxy-2''-naphthyl) -propionic acid (naproxen) versus adjuvant-induced arthritis. Fedn Proc Fedn Am Socs Exp Biol 1971; 30(2): Abst 386.
17. Roskovski AP, Rooks WH, Tomolonis AJ and Miller LM. Anti-inflammatory analgesic properties of d-2-(6'-methoxy-2'-naphthyl) propionic acid (naproxen). J Pharmac Exp Ther 1971; 179(1):114-124.
18. Runkel R, Chaplin M, Boost G, Segre E and Forchielli E. Absorption, distribution, metabolism, and excretion of naproxen in various laboratory animals and human subjects. J Pharm Sci 1972; 61(5):703-708.
19. Runkel R, Chaplin MD, Sevelius H, Ortega E and Segre E. Pharmacokinetics of naproxen overdoses. Clin Pharmacol Therp 1976; 20:269-277.
20. Runkel R, Forchielli E, Sevelius H, Chaplin M and Segre E. Non-linear plasma level response to high doses of naproxen. Clin Pharmacol Therap 1974; 15(3): 261-266.
21. Ryley NJ, and Lingam G. A pharmacokinetic comparison of controlled-release and standard naproxen tablets. Current Med Research & Opinion 1988; 11(1):10-15.
22. Canadian Multicentre Study Group. Clinical evaluation of a new controlled-release formulation of naproxen in osteoarthritis and rheumatoid arthritis. Current Med Research & Opinion 1988; 11:16-17.
23. Segre E. Long term experience with naproxen; open-label cohort survey of nearly 900 rheumatoid arthritis and osteoarthritis patients. Curr Therap Res 1980;28:47-60.
24. Syntex, (CL5850) Six-Week, Multiple-Dose Safety and Efficacy Comparison of Enteric-Coated 500-mg Naproxen and Standard 500-mg Naproxen in Arthritis Patients with NSAID Intolerance, November, 1991.
25. Tomlinson RV, Ringold HJ, Qureshi HC, Forchielli E. Relationship between inhibition of prostaglandin synthesis and drug efficacy: Support for the current therapy on mode of action of aspirin-like drugs. Biochem Biophys Res Comm 1972; 46(2):552-559.
26. Upton RA, Williams RL, Kelly J and Jones RM. Naproxen pharmacokinetics in the elderly. Br J Clin Pharmac 1984; 18:207-214.
27. Wallis WJ, and Simkin PA. Antirheumatic drug concentrations in human synovial fluid and synovial tissue - observations on extravascular pharmacokinetics. Clin Pharmacokinetics 1983; 8:496-522.

28. Williams RL. Naproxen disposition in patients with alcoholic cirrhosis. *Eur J Clin Pharmacol* 1984; 27:291-296.
29. Aabakken L, Ugstad M, Gamst ON, et al. Naproxen-associated gastroduodenal toxicity: enteric coated granules versus plain tablets. *Eur J Rheumatol Inflamm* 1992;12:43-8.
30. Bellamy N, Beaulieu A, Bombardier C, et al. Efficacy and tolerability of enteric-coated naproxen in the treatment of osteoarthritis and rheumatoid arthritis: a double-blind comparison with standard naproxen followed by an open-label trial. *Curr Med Res Opin* 1992;12:640-51.
31. Bellamy N, Beaulieu A, Bombardier C, et al. Open-label tolerability study of enteric-coated naproxen in the treatment of osteoarthritis and rheumatoid arthritis. *Curr Med Res Opin* 1992;12:652-61.
32. Caldwell JR, Roth SH. A double-blind study comparing the efficacy and safety of enteric coated naproxen to naproxen in the management of NSAID intolerant patients with rheumatoid arthritis and osteoarthritis. Naproxen EC Study Group. *J Rheumatol* 1994;21:689-95.
33. Henry D, Dobson A, Turner C. Variability in the risk of major gastrointestinal complications from nonaspirin nonsteroidal anti-inflammatory drugs. *Gastroenterology* 1993;105:1078-88.
34. Jung D, Schwartz KE. Steady-state pharmacokinetics of enteric-coated naproxen tablets compared with standard naproxen tablets. *Clin Ther* 1994;16:923-9.
35. Lehn OF, Jensen ON, Andersen LA, et al. Enteric-coated and plain naproxen tablets in osteoarthritis; tolerability and efficacy. *Eur J Rheumatol Inflamm* 1992;12:31-6.
36. Mehta S, Dasarathy S, Tandon RK, et al. A prospective randomized study of the injurious effects of aspirin and naproxen on the gastroduodenal mucosa in patients with rheumatoid arthritis. *Am J Gastroenterol* 1992;87:996-1000.
37. Niazi SK, Alam SM, Ahmad SI. Dose dependent pharmacokinetics of naproxen in man. *Biopharm Drug Dispos* 1996;17:355-61.
38. Simon LS, Basch CM, Young DY, et al. Effects of naproxen on renal function in older patients with mild to moderate renal dysfunction. *Br J Rheumatol* 1992;31:163-8.
39. Vree TB, van den Biggelaar-Martea M, Verwey-van Wissen CP, et al. The effects of cimetidine, ranitidine and famotidine on the single-dose pharmacokinetics of naproxen and its metabolites in humans. *Int J Clin Pharmacol Ther Toxicol* 1993;31:597-601.
40. Vree TB, van den Biggelaar-Martea M, Verwey-van Wissen CP, et al. Pharmacokinetics of naproxen, its metabolite O-desmethylnaproxen, and their acyl glucuronides in humans. *Biopharm Drug Dispos* 1993;14:491-502.

41. Aabakken L. NSAID-associated gastrointestinal damage: methodological considerations and a review of the experience with enteric coated naproxen. *Eur J Rheumatol Inflamm* 1992;12:9-20.
42. Gamst ON. Enteric coated naproxen tablets. *Eur J Rheumatol Inflamm* 1992;12:5-8.
43. Mowat AG. Naproxen: its current place in therapeutics. *Eur J Rheumatol Inflamm* 1992; 12:1-3.
44. Todd PA, Clissold SP. Naproxen. A reappraisal of its pharmacology, and therapeutic use in rheumatic diseases and pain states. *Drugs* 1990;40:91-137.
45. G Smith et al. Reversible ovulatory failure associated with the development of luteinized unruptured follicles in women with inflammatory arthritis taking non-steroidal anti-inflammatory drugs. *British J of Rheumatology* 1996; 35: 458-462.
46. LLF Mendonca et al. Non-steroidal anti-inflammatory drugs as a possible cause for reversible infertility. *Rheumatology* 2000;39:880-882.
47. RJ Norman. Reproductive consequences of COX-2 inhibition. *The Lancet* October 20, 2001; 358:1287-1288.
48. Naprosyn<sup>®</sup> Product Monograph, Submission Control No.: 176980, Date of Revision: October 9, 2014, Hoffmann-La Roche Limited, Mississauga, Ontario, Canada.

**PART III: CONSUMER INFORMATION**

**Pr MYLAN-NAPROXEN EC**  
**Naproxen Enteric-Coated Tablet**  
**250 mg, 375 mg and 500 mg**

Read this information each time you refill your prescription in case new information has been added.

This leaflet is a summary designed specifically for you to read. It will NOT tell you everything about MYLAN-NAPROXEN EC. See your health care provider and pharmacist regularly and ask them questions about your health and any medications you take.

**ABOUT THIS MEDICATION**

**What the medication is used for:**

Your health care provider has prescribed MYLAN-NAPROXEN EC for you for one or more of the following medical conditions:

- For the treatment of the signs and symptoms of osteoarthritis, rheumatoid arthritis, and ankylosing spondylitis.
- For the relief of minor aches and pains in muscles, bones and joints, mild to moderate pain accompanied by inflammation in sprains and strains and primary dysmenorrhea.

**What it does:**

MYLAN-NAPROXEN EC (naproxen), as a non-steroidal anti-inflammatory drug (NSAID), can reduce the chemicals produced by your body which cause pain and swelling.

MYLAN-NAPROXEN EC, as a non-steroidal anti-inflammatory drug (NSAID), does NOT cure your illness or prevent it from getting worse. MYLAN-NAPROXEN EC can only relieve pain and reduce swelling as long as you continue to take it.

**When it should not be used:**

**DO NOT TAKE MYLAN-NAPROXEN EC if you have any of the following medical conditions:**

- Heart bypass surgery (planning to have or recently had)
- Severe, uncontrolled heart failure
- Bleeding in the brain or other bleeding disorders
- Current pregnancy (after 28 weeks of pregnancy)
- Currently breastfeeding (or planning to breastfeed)
- Allergy to ASA (Acetylsalicylic Acid) or other NSAIDs (Non-steroidal Anti-Inflammatory Drugs)
- Ulcer (active)
- Bleeding from the stomach or gut (active)
- Inflammatory bowel disease (Crohn's Disease or Ulcerative Colitis)
- Liver disease (active or severe)

- Kidney disease (severe or worsening)
- High potassium in the blood

Patients who took a drug in the same class as naproxen after a type of heart surgery (coronary artery bypass grafting (CABG)) were more likely to have heart attacks, strokes, blood clots in the leg(s) or lung(s), and infections or other complications than those who did NOT take that drug.

MYLAN-NAPROXEN EC should NOT be used in patients under 18 years of age since the safety and effectiveness have NOT been established.

**What the medicinal ingredient is:**

naproxen

**What the important non-medicinal ingredients are:**

MYLAN-NAPROXEN EC Tablets contain croscarmellose sodium, magnesium stearate and povidone, as inactive ingredients. The coating suspension consists of methacrylic acid copolymer, polyethylene glycol, simethicone emulsion, sodium hydroxide, talc, and titanium dioxide. The black ink for printing MYLAN-NAPROXEN EC (250 mg, 375 mg and 500 mg) contains alcohol, ammonium hydroxide, ethanol, iron oxide black, propylene glycol and shellac.

**What dosage forms it comes in:**

MYLAN-NAPROXEN EC is available as: enteric-coated tablets (250 mg, 375 mg and 500 mg).

**WARNINGS AND PRECAUTIONS**

**If you have, or previously had, any of the following medical conditions, see your health care provider to discuss treatment options other than MYLAN-NAPROXEN EC:**

- Heart Attack or Angina
- Stroke or Mini-stroke
- Loss of Vision
- Current Pregnancy (less than 28 weeks)
- Congestive Heart Failure

Before taking this medication, tell your health care provider if you have any of the following:

- High blood pressure
- High cholesterol
- Diabetes mellitus or on a low sugar diet
- Atherosclerosis
- Poor circulation to your extremities
- Smoker or ex-smoker
- Kidney disease or urine problems
- Previous ulcer or bleeding from the stomach or gut (small or large intestine)
- Previous bleeding in the brain
- Bleeding problems
- Family history of allergy to NSAIDs, such as acetylsalicylic acid (ASA), celecoxib, diclofenac,

diflunisal, etodolac, fenoprofen, flurbiprofen, ibuprofen, indomethacin, ketoprofen, ketorolac, mefenamic acid, meloxicam, nabumetone, naproxen, oxaprozin, piroxicam, rofecoxib, sulindac, tenoxicam, tiaprofenic acid, tolmetin, or valdecoxib (NOT a complete list)

- Family history of asthma, nasal polyps, long-term swelling of the sinus (chronic sinusitis) or hives

Also, before taking this medication, tell your health care provider if you are planning to get pregnant.

While taking this medication:

- tell any other doctor, dentist, pharmacist or other health care professional that you see, that you are taking this medication, especially if you are planning to have heart surgery;
- do NOT drink alcoholic beverages while taking this medication because you would be more likely to develop stomach problems;
- fertility may be decreased. The use of MYLAN-NAPROXEN EC is not recommended in women trying to get pregnant. In women who have difficulty conceiving, stopping MYLAN-NAPROXEN EC should be considered.

### INTERACTIONS WITH THIS MEDICATION

Talk to your health care provider and pharmacist if you are taking any other medication (prescription or non-prescription) such as any of the following (NOT a complete list):

- Acetylsalicylic Acid (ASA) or other NSAIDs
  - e.g. ASA, celecoxib, diclofenac, ibuprofen, indomethacin, ketorolac, meloxicam, naproxen
- Antacids
- Antidepressants
  - Selective Serotonin Reuptake Inhibitors (SSRIs)
    - e.g. citalopram, fluoxetine, paroxetine, sertraline
- Blood pressure medications
  - ACE (angiotensin converting enzyme) inhibitors
    - e.g. enalapril, lisinopril, perindopril, ramipril
  - ARBs (angiotensin II receptor blockers)
    - e.g. candesartan, irbesartan, losartan, valsartan
- Blood thinners
  - e.g. warfarin, ASA, clopidogrel
- Corticosteroids (including glucocorticoids)
  - e.g. prednisone
- Cyclosporin
- Digoxin
- Diuretics
  - e.g. furosemide, hydrochlorothiazide
- Lithium
- Methotrexate

- Oral contraceptives
- Oral hypoglycemics (diabetes medications)
- Tacrolimus

Your health care provider may prescribe low dose ASA (acetylsalicylic acid) as a blood thinner to reduce your risk of having a heart attack or stroke while you are taking MYLAN-NAPROXEN EC. Take only the amount of ASA prescribed by your health care provider. You are more likely to upset or damage your stomach if you take both MYLAN-NAPROXEN EC and ASA than if you took MYLAN-NAPROXEN EC alone.

### PROPER USE OF THIS MEDICATION

MYLAN-NAPROXEN EC is intended for use in patients greater than 18 years of age for the shortest possible duration.

#### Usual dose: 18 years of age and older:

Medical Condition	Starting Dose	Maximum Dose (per day)
Osteoarthritis/Rheumatoid Arthritis/Ankylosing Spondylitis	250 mg twice daily	1000 mg (given as 500 mg twice daily)
Analgesia/Musculoskeletal Injuries	250 mg three times daily	1000 mg (given as 500 mg twice daily)
Dysmenorrhea	500 mg initial dose then 250 mg every 6-8 hours	1250 mg (given in divided doses)

Note: Do not increase the dose above the starting dose unless directed by your doctor.

Take MYLAN-NAPROXEN EC only as directed by your health care provider. **Do NOT take more of it, do NOT take it more often and do NOT take it for a longer period of time than your health care provider recommended. If possible, you should take the lowest dose of this medication for the shortest time period.** Taking too much MYLAN-NAPROXEN EC may increase your chances of unwanted and sometimes dangerous side effects, especially if you are elderly, have other diseases or take other medications.

If you will be using MYLAN-NAPROXEN EC for more than 7 days, see your health care provider regularly to discuss whether this medicine is working for you and if it is causing you any unwanted effects.

**This medication has been prescribed specifically for you. Do NOT give it to anyone else. It may harm them, even if their symptoms seem to be similar to yours.**

**MYLAN-NAPROXEN EC should not be used in patients under 18 years of age since safety and effectiveness have NOT been established.**

MYLAN-NAPROXEN EC tablets should be swallowed with food or milk. MYLAN-NAPROXEN EC tablets should be swallowed whole; do not split, chew, or crush them.

**Missed Dose:**

It may be a good idea to ask your doctor or pharmacist ahead of time what to do about missed doses. If you forget to take a dose of MYLAN-NAPROXEN EC take it as soon as possible, then just carry on with the regular times you take your medication. If you remember your missed dose close to the time of your next dose, do not take the missed dose.

**Overdose:**

If you think you have taken too much MYLAN-NAPROXEN EC, contact your healthcare professional, hospital emergency department or regional Poison Control Centre immediately, even if there are no symptoms.

**SIDE EFFECTS AND WHAT TO DO ABOUT THEM**

MYLAN-NAPROXEN EC may cause some side effects, especially when used for a long time or in large doses. When these side effects occur, you may require medical attention. Report all symptoms or side effects to your health care provider.

MYLAN-NAPROXEN EC may cause you to become drowsy or tired. Be careful about driving or participating in activities that require you to be alert. If you become drowsy, dizzy or light-headed after taking MYLAN-NAPROXEN EC, do NOT drive or operate machinery.

MYLAN-NAPROXEN EC may cause you to become more sensitive to sunlight. Any exposure to sunlight or sunlamps may cause sunburn, skin blisters, skin rash, redness, itching or discoloration, or vision changes. If you have a reaction from the sun, check with your health care provider.

Check with your health care provider IMMEDIATELY if you develop chills, fever, muscle aches or pains, or other flu-like symptoms, especially if they occur before or together with a skin rash. These symptoms may be the first signs of a SERIOUS ALLERGIC REACTION to this medication.

**SERIOUS SIDE EFFECTS, HOW OFTEN THEY HAPPEN AND WHAT TO DO ABOUT THEM**

Symptom	STOP taking drug and get emergency medical attention IMMEDIATELY	Stop taking drug and talk to your physician or pharmacist
Bloody or black tarry stools	✓	
Shortness of breath, wheezing, any trouble breathing or chest tightness	✓	
Skin rash, hives, swelling or itching	✓	
Blurred vision, or any visual disturbance	✓	
Any change in the amount or colour of your urine (red or brown)	✓	
Any pain or difficulty experienced while urinating		✓
Swelling of the feet, lower legs; weight gain		✓
Vomiting or persistent indigestion, nausea, stomach pain or diarrhea		✓
Yellow discolouration of the skin or eyes, with or without itchy skin		✓
Malaise, fatigue, loss of appetite		✓
Headaches, stiff neck		✓
Mental confusion, depression		✓
Dizziness, lightheadedness		✓
Hearing problems		✓

This is NOT a complete list of side effects. If you develop any other symptoms while taking MYLAN-NAPROXEN EC, see your health care provider.

**HOW TO STORE IT**

Store at room temperature (between 15°C to 30°C), protect from moisture and light.

**Do NOT keep outdated medicine or medicine no longer needed.** Any outdated or unused medicine should be returned to your pharmacist.

**Keep out of reach and sight of children.**

**REPORTING SIDE EFFECTS**

You can help improve the safe use of health products for Canadians by reporting serious and unexpected side effects to Health Canada. Your report may help to identify new side effects and change the product safety information.

3 ways to report:

- Online at MedEffect (<http://hc-sc.gc.ca/dhp-mps/medeff/index-eng.php>);
- By calling 1-866-234-2345 (toll-free);
- By completing a Consumer Side Effect Reporting Form and sending it by:
  - Fax to 1-866-678-6789 (toll-free), or
  - Mail to: Canada Vigilance Program  
Health Canada, Postal Locator 0701E  
Ottawa, ON  
K1A 0K9

Postage paid labels and the Consumer Side Effect Reporting Form are available at MedEffect (<http://hc-sc.gc.ca/dhp-mps/medeff/index-eng.php>).

*NOTE: Contact your health professional if you need information about how to manage your side effects. The Canada Vigilance Program does not provide medical advice.*

**MORE INFORMATION**

This document can be found at: [www.mylan.ca](http://www.mylan.ca).

The full Product Monograph prepared for health professionals can be obtained by contacting the sponsor, Mylan Pharmaceuticals ULC at: 1-800-575-1379

This leaflet was prepared by Mylan Pharmaceuticals ULC  
Etobicoke, Ontario M8Z 2S6

Revised on: March 10, 2015



Mylan Pharmaceuticals ULC  
Etobicoke, ON M8Z 2S6  
1-800-575-1379  
[www.mylan.com](http://www.mylan.com)