

PRODUCT MONOGRAPH

**Pr MILRINONE LACTATE INJECTION
(Milrinone Lactate Injection)**

1 mg/mL milrinone (as milrinone lactate)

Inotrope - Vasodilator

Sterimax Inc.
2770 Portland Drive
Oakville, ON
L6H 6R4

Date of Preparation
October 21, 2015

Control # 182944

PRODUCT MONOGRAPH

Pr MILRINONE LACTATE INJECTION
(Milrinone Lactate Injection)
1 mg/mL milrinone (as milrinone lactate)

THERAPEUTIC CLASSIFICATION
Inotrope/Vasodilator

ACTIONS AND CLINICAL PHARMACOLOGY

Milrinone lactate injection is a positive inotrope and vasodilator, with little chronotropic activity, different in structure and mode of action from either the digitalis glycosides or catecholamines.

Milrinone, at relevant inotropic and vasorelaxant concentrations, is a selective inhibitor of peak III cAMP phosphodiesterase isozyme in cardiac and vascular muscle. This inhibitory action is consistent with cAMP-mediated increases in intracellular ionized calcium and contractile force in cardiac muscle, as well as with cAMP-dependent contractile protein phosphorylation and relaxation in vascular muscle. Additional experimental evidence also indicates that it is not a beta-adrenergic agonist, nor does it inhibit sodium-potassium adenosine triphosphatase activity as do the digitalis glycosides.

Clinical studies in patients with congestive heart failure have shown that milrinone lactate injection produces dose and plasma level-related increase in left ventricular dP/dt, increase in forearm blood flow indicating a direct arterial vasodilator activity of the drug, and improves diastolic function as evidenced by improvement in left ventricular diastolic relaxation.

Studies in normal subjects have shown that milrinone lactate injection produces increases in the slope of the left ventricular pressure-dimension relationship, indicating a direct inotropic effect of the drug. Both the inotropic and vasodilatory effects have been observed over the therapeutic range of milrinone plasma concentrations of 100-300 ng/mL.

Pharmacokinetics

Following intravenous loading injections of 12.5 to 125.0 µg/kg to congestive heart failure patients, intravenous milrinone had a volume of distribution of 0.38 liters/kg, a mean terminal elimination half-life of 2.3 hours, and a clearance of 0.13 liters/kg/hr. Following intravenous infusions of 0.20 to 0.70 µg/kg/min to congestive heart failure patients, the drug had a volume of distribution of about 0.45 liters/kg, a mean terminal elimination half-life of 2.4 hours, and a clearance of 0.14 liters/kg/hr.

These pharmacokinetic parameters were not dose-dependent, while the area under the plasma concentration *versus* time curve following loading injections was significantly dose-dependent.

The steady-state milrinone plasma levels after approximately 6-12 hours of unchanging maintenance infusion of 0.50 µg/kg/min are approximately 200 ng/mL. Milrinone has been shown (by ultracentrifugation) to be in excess of 70% bound to human plasma proteins at plasma concentrations

of 70-400 ng/mL.

The primary route of excretion of milrinone in man is *via* the urine, with much smaller amounts recovered in the feces. The major urinary excretion products in man are milrinone (83%) and its O-glucuronide metabolite (12%). Elimination in normal subjects *via* the urine is rapid, with approximately 60% recovered within the first two hours following dosing, and approximately 90% recovered within the first eight hours following dosing. The mean renal clearance of milrinone is approximately 0.3 liters/min while that of the metabolites is even greater, indicative of active secretion.

In patients with moderate to severe renal impairment, both C_{max} (210 ng/mL) and t_{max} (1.19 hr) were increased compared to subjects with normal renal function (162 ng/mL and 0.64 hr, respectively). The half-life of milrinone increased from 0.94 hr in subjects with normal renal function to 1.71 hr in patients with moderate renal impairment and to 3.09 hr in patients with severe renal impairment.

Pharmacodynamics

In patients with congestive heart failure, intravenous milrinone produces prompt, significant improvements in cardiac output, pulmonary capillary wedge pressure and vascular resistance without clinically significant increases in heart rate or myocardial oxygen consumption. Onset of action generally occurs within 5 to 15 minutes.

Improvement in left ventricular function and relief of congestive heart failure symptoms in patients with ischemic heart disease have been observed. The improvement has occurred without inducing symptoms or electrocardiographic signs of myocardial ischemia.

In studies in congestive heart failure patients, milrinone lactate injection administered as a loading injection followed by a maintenance infusion produced the following pharmacodynamic changes.

DOSAGE REGIMEN						
Loading Dose	Maintenance Infusion	CI	PCWP	SVR	HR	MAP
($\mu\text{g}/\text{kg}$)	($\mu\text{g}/\text{kg}/\text{min}$)	Percent Change				
37.5	0.375	+25	-20	-17	+3	-5
50.0	0.50	+38	-23	-21	+3	-5
75.0	0.75	+42	-36	-37	+10	-17

Patients evaluated for 48 hours maintained improvements in hemodynamic function, with no evidence of diminished response (tachyphylaxis), and in a small number of patients no evidence of tachyphylaxis was seen for as long as 72 hours of infusion.

The duration of therapy should depend upon patient responsiveness. Patients have been maintained on infusion of milrinone up to five days.

Intravenous milrinone is effective in fully digitalized patients without affecting glycoside plasma levels.

Milrinone has been shown to enhance atrioventricular nodal conduction rate (see **PRECAUTIONS**).

INDICATIONS AND CLINICAL USE

Milrinone lactate injection is indicated for the short-term management of severe congestive heart failure including low output states following cardiac surgery. The majority of experience with the drug has been in patients receiving digoxin and diuretics. In some patients, milrinone lactate injection has been shown to increase ventricular ectopy (see **WARNINGS**).

CONTRAINDICATIONS

Milrinone lactate injection is contraindicated in patients who are hypersensitive to it or to any of its ingredients.

WARNINGS

Supraventricular and ventricular arrhythmias have been observed in the high-risk population of congestive heart failure patients treated with milrinone lactate injection. In using the drug, consideration should be given to the fact that in some patients, milrinone lactate injection has been associated with an increase in ventricular ectopy including ventricular tachycardia or fibrillation (see **ADVERSE REACTIONS**). The incidence of arrhythmias has not been shown to be related to the dose or plasma level of milrinone. Patients receiving milrinone lactate injection should be closely monitored during infusion.

No clinical studies have been conducted in patients in the acute phase of post myocardial infarction. Until further clinical experience is gained, milrinone is not recommended in these patients.

PRECAUTIONS

Milrinone lactate injection should not be used in lieu of surgical relief of the obstruction in patients with severe obstructive aortic or pulmonic valvular disease or hypertrophic subaortic stenosis. Like other inotropic agents, it may aggravate outflow tract obstruction in hypertrophic subaortic stenosis.

Milrinone lactate injection has been shown to enhance A-V nodal conduction rate, indicating a potential for an increased ventricular response rate in patients with atrial flutter/fibrillation which is not being controlled with digitalis therapy. Digitalisation of these patients should be considered prior to the administration of milrinone.

During therapy with milrinone lactate injection, blood pressure and heart rate should be monitored and the rate of infusion stopped in patients showing excessive decrease in blood pressure, until resolved, then resumed at a lower rate if resumption is considered.

Patients who have received vigorous diuretic therapy may have insufficient cardiac filling pressure to

respond adequately to milrinone lactate injection, in which case cautious liberalization of fluid and electrolyte intake may be indicated. For these patients milrinone lactate should be cautiously administered while monitoring blood pressure, heart rate and clinical symptomatology.

Fluid and electrolyte changes and renal function should be carefully monitored during therapy with milrinone lactate injection.

Improvement in cardiac output with resultant diuresis may necessitate a reduction in the dose of diuretic. Potassium loss due to excessive diuresis may predispose digitalized patients to arrhythmias. Therefore, hypokalemia should be corrected by potassium supplementation in advance of or during milrinone administration.

Use in Renally Impaired Patients: Data obtained from patients with severe renal impairment (creatinine clearance = 0-30 mL/min) but without congestive heart failure have demonstrated that the presence of renal impairment significantly increases the terminal elimination half-life of milrinone. Reductions in the infusion rate may be necessary in patients with renal impairment (see **DOSAGE AND ADMINISTRATION**).

Use in Elderly Patients: Experience so far suggests that no special dosage recommendations for the elderly patients are necessary.

Use in Pregnancy: Milrinone did not appear to be teratogenic when administered intravenously to pregnant rats at doses up to 3 mg/kg/day or pregnant rabbits at doses up to 12 mg/kg/day, although an increase in resorption rate was apparent at both 8 and 12 mg/kg/day (intravenous) in the latter species.

There are no studies in pregnant women. Milrinone lactate injection should be used during pregnancy only if the potential benefit justifies the potential risk to the fetus.

Use in Nursing Mothers: Caution should be exercised when milrinone lactate injection is administered to nursing women, since it is not known whether it is excreted in human milk.

Use in Children: Safety and effectiveness in children have not been established. Therefore, milrinone lactate should only be used when the potential benefits outweigh the potential risks.

Drug Interactions: No untoward clinical manifestations have been observed in patients in whom milrinone lactate injection was used concurrently with the following drugs: digitalis glycosides, lidocaine, quinidine, hydralazine, prazosin, isosorbide dinitrate, nitroglycerin, chlorthalidone, furosemide, hydrochlorothiazide, spironolactone, captopril, heparin, warfarin, diazepam, insulin, and potassium supplements.

Chemical Interactions: Precipitation occurs immediately when furosemide is mixed with milrinone solution. Therefore, furosemide should not be administered in intravenous lines containing milrinone lactate injection.

Other drugs should not be mixed with milrinone lactate injection until further compatibility data are available.

ADVERSE REACTIONS

In clinical trials involving 413 patients who received milrinone lactate injection, the most frequent adverse effects observed were ventricular arrhythmias (12.6%) and the most severe adverse effect observed was ventricular fibrillation (0.2%).

Adverse reactions occurring in patients treated with milrinone lactate injection are shown below in order of decreasing frequency:

	% Frequency
Ventricular Arrhythmias	12.6%
Ventricular ectopic activity	9.0%
Ventricular tachycardia	3.6%
Ventricular fibrillation	0.2%
Supraventricular Arrhythmias	3.6%
Hypotension	3.1%
Headache, usually mild to moderate severity	2.4%
Angina Pectoris/Chest Pain	1.4%
Hypokalemia	0.7%
Thrombocytopenia	0.5%
Tremor	0.5%

The following adverse events have also been reported in postmarketing experience: Adverse reactions that have occurred very rarely (<1/10,000) include torsades de points, anaphylactic shock, bronchospasm and skin reactions such as rash. Liver function tests abnormalities have been reported but are uncommon ($\geq 1/1,000$, <1/100).

Reporting Suspected Side Effects

You can help improve the safe use of health products for Canadians by reporting serious and unexpected side effects to Health Canada. Your report may help to identify new side effects and change the product safety information.

3 ways to report:

- Online at [MedEffect](#);
- By calling 1-866-234-2345 (toll-free);
- By completing a Consumer Side Effect Reporting Form and sending it by:
 - Fax to 1-866-678-6789 (toll-free), or
 - Mail to: Canada Vigilance Program
Health Canada, Postal Locator 0701E
Ottawa, ON
K1A 0K9

Postage paid labels and the Consumer Side Effect Reporting Form are available at [MedEffect](#).

NOTE: Contact your health professional if you need information about how to manage your side effects. The Canada Vigilance Program does not provide medical advice.

SYMPTOMS AND TREATMENT OF OVERDOSAGE

No specific antidote to milrinone is known, but general measures for circulatory support should be taken. Milrinone lactate injection may produce hypotension and cardiac arrhythmia because of its vasodilator effect. In case of overdose, administration of milrinone lactate injection should be discontinued until the patient's condition stabilizes.

DOSAGE AND ADMINISTRATION

General Information

Prior correction or adjustment of fluid/electrolytes may be necessary to obtain a satisfactory response with milrinone lactate injection (see **PRECAUTIONS**).

Milrinone lactate injection is a clear colourless to pale yellow solution.

As with all parenteral drug products, intravenous admixtures should be inspected visually for clarity, particulate matter, precipitate, discolouration and leakage prior to administration whenever solution and container permit. Solutions showing haziness, particulate matter, precipitate, discolouration or leakage should not be used. Discard unused portions.

For ease of administration, milrinone lactate injection may be diluted with suitable diluents such as sodium chloride injection USP 0.9 % and 0.45 % or dextrose injection USP 5 % in polyvinylchloride (PVC) bags. Milrinone lactate injection may be used undiluted if suitable equipment is available.

Diluted solutions should be maintained at room temperature and should be used within 24 hours.

Precipitation occurs immediately when furosemide is mixed with milrinone solution. Therefore, furosemide should not be administered in intravenous lines containing milrinone lactate injection.

Drug Administration

Milrinone lactate injection should be administered with a loading dose followed by a continuous infusion (maintenance dose) according to the following guidelines:

LOADING DOSE

50 µg/kg: administered slowly over 10 minutes

(For ease of administration, milrinone lactate injection may be diluted with suitable diluents or used undiluted if suitable infusion equipment is available.)

MAINTENANCE DOSE

	Infusion Rate	Total Daily Dose (24 hours)
Minimum	0.375 µg/kg/min	0.60 mg/kg
Standard	0.50 µg/kg/min	0.77 mg/kg
Maximum	0.75 µg/kg/min	1.13 mg/kg

Administer as a continuous intravenous infusion

The infusion rate should be adjusted according to hemodynamic and clinical response. Patients should be closely monitored. In controlled clinical studies, most patients showed an improvement in hemodynamic status as evidenced by increases in cardiac output and reduction in pulmonary capillary wedge pressure. Dosage may be titrated to the maximum hemodynamic effect but should not exceed 1.13 mg/kg/day. Duration of therapy should depend upon patient responsiveness.

Intravenous infusions of milrinone lactate injection should be administered as described in the following chart:

Infusion Delivery Rate

Milrinone Lactate

Injection Dosage

($\mu\text{g}/\text{kg}/\text{min}$)

Concentration of Milrinone in Infusion

100 $\mu\text{g}/\text{mL}$ *

150 $\mu\text{g}/\text{mL}$ **

200 $\mu\text{g}/\text{mL}$ +

Delivery Rate

	(mL/kg/hr)	(mL/kg/hr)	(mL/kg/hr)
0.375	0.22	0.15	0.11
0.400	0.24	0.16	0.12
0.500	0.30	0.20	0.15
0.600	0.36	0.24	0.18
0.700	0.42	0.28	0.21
0.750	0.45	0.30	0.22

In order to calculate flow rate (mL/hr), multiply infusion delivery rate by patient weight in kilograms.

* Prepare by adding 180 mL diluent per 20 mg vial (20 mL) milrinone lactate injection.

** Prepare by adding 113 mL diluent per 20 mg vial (20 mL) milrinone lactate injection.

+ Prepare by adding 80 mL diluent per 20 mL vial (20 mL) milrinone lactate injection.

Dosage Adjustment in Renally Impaired Patients

The loading dosage is not affected, but reductions in the maintenance infusion rate may be necessary according to the following table. (See **PRECAUTIONS**, Use in Renally Impaired Patients).

Creatinine Clearance (mL/min/1.73m ²)	Milrinone Lactate Injection Dosage ($\mu\text{g}/\text{kg}/\text{min}$)	Concentration of Milrinone in Infusion		
		100 $\mu\text{g}/\text{mL}$ *	150 $\mu\text{g}/\text{mL}$ **	200 $\mu\text{g}/\text{mL}$ +
		Delivery Rate		
		(mL/kg/hr)	(mL/kg/hr)	(mL/kg/hr)
5	0.20	0.12	0.08	0.06
10	0.23	0.14	0.09	0.07
20	0.28	0.17	0.11	0.08
30	0.33	0.20	0.13	0.10
40	0.38	0.23	0.15	0.11
50	0.43	0.26	0.17	0.13

In order to calculate flow rate mL/hr, multiply infusion delivery rate by patient weight in kilograms.

* Prepare by adding 180 mL diluent per 20 mg vial (20 mL) milrinone lactate injection.

** Prepare by adding 113 mL diluent per 20 mg vial (20 mL) milrinone lactate injection.

+ Prepare by adding 80 mL diluent per 20 mL vial (20 mL) milrinone lactate injection.

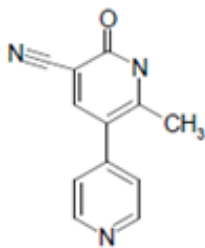
PHARMACEUTICAL INFORMATION

Drug Substance

Proper or Common Name: milrinone

Chemical Names: [3,4'-Bipyridine]-5-carbonitrile, 1,6-dihydro-2-methyl-6-oxo-1,6-Dihydro-2-methyl-6-oxo-[3,4'-bipyridine]-5-carbonitrile

Structural Formula:



Molecular Formula: C₁₂H₉N₃O

Molecular Weight: 211.22 g/mol

Description: Off-white to tan crystalline powder.

Solubility: Freely soluble in DMSO; slightly soluble in methanol and very slightly soluble in chloroform and in water.

pKa Values: 4.6 and 8.5, in aqueous solution.

Polymorphism: Milrinone can exist in two polymorphic forms, designated as Form I and Form II respectively. Form II undergoes a transition at about 217°C to Form I, which melts at about 319°C.

Melting Point: About 319°C

Composition

Milrinone lactate injection is a sterile, clear, colourless to pale yellow solution.

Each mL of milrinone lactate injection contains milrinone lactate equivalent to 1 mg milrinone, anhydrous dextrose 47 mg and water for injection. The pH of intravenous milrinone is adjusted to between 3.2 and 4.0 with lactic acid and/or sodium hydroxide. The total concentration of lactic acid can vary between 0.95 and 1.29 mg/mL.

Stability and storage recommendations

Store between 15 and 30°C. Protect from light. Protect from freezing. Discard unused portion.

Diluted Solutions

For ease of administration, milrinone lactate injection may be diluted with suitable diluents such as sodium chloride injection USP 0.9 % and 0.45 % or dextrose injection USP 5 % in polyvinylchloride (PVC) bags. Milrinone lactate injection may be used undiluted if suitable equipment is available.

Diluted solutions should be maintained at room temperature and should be used within 24 hours.

Precipitation occurs immediately when furosemide is mixed with milrinone solution. Therefore, furosemide should not be administered in intravenous lines containing milrinone lactate injection.

As with all parenteral drug products, intravenous admixtures should be inspected visually for clarity, particulate matter, precipitate, discoloration and leakage prior to administration, whenever solution and container permit. Solutions showing haziness, particulate matter, precipitate, discoloration or leakage should not be used. Discard unused portions.

AVAILABILITY OF DOSAGE FORMS

Milrinone lactate injection is available in single-dose vials of 10 mL and 20 mL.

PHARMACOLOGY

Tissue Distribution and Biotransformation

Specific study of tissue distribution was conducted in the rat, following oral administration of milrinone at 4.5 mg/kg. At 30 minutes post-medication, the time of peak blood level, the only tissues, other than the G.I. tract, showing drug levels significantly higher than blood were the thyroid, kidney and liver. By 2 hrs, all tissue levels except the kidney were low and 45% of the dose had already been excreted in the urine.

The biotransformation of ¹⁴C-milrinone was studied in the rat, dog and monkey following oral administration. In all three species, milrinone was the major urinary excretion product, constituting from 67% (monkey) to 98% (rat) of urinary radioactivity. Five metabolites were observed and identified: the pyridyl-N-oxide, the carboxamide, and three glycosidic sugar conjugates of milrinone: a glucuronide, a glucoside and a riboside. The last two were observed only in the dog. Only the glucuronide might be considered a major metabolic pathway, representing 15% and 30% of urinary radioactivity in the dog and monkey, respectively.

Animal Pharmacology

The inotropic and chronotropic activities of milrinone were investigated *in vitro*, using isolated guinea pig, cat, rabbit, rat and hamster atria and papillary muscles. Milrinone, in concentrations ranging from 0.1 to 300 µg/mL, caused concentration-dependent increases in papillary muscle and atrial developed tension, with minimal increases in atrial rate.

Compared with the *in vitro* inotropic activity of amrinone, milrinone was approximately 30 times more potent. Milrinone does not increase the sensitivity of the myofibrillar proteins to calcium.

In the anesthetized dog, the intravenous bolus administration of milrinone in doses of 0.01 to 0.3 mg/kg caused dose-dependent increases in cardiac contractile force with a minimal effect on blood pressure and heart rate. Milrinone also increases the rate of myocardial relaxation in a dose-related manner (lusitropic effect).

In the failing dog heart model, milrinone significantly reversed propranolol, verapamil and pentobarbital-induced heart failure.

In the isolated rabbit renal artery preparation, milrinone and amrinone were approximately equipotent against both potassium and norepinephrine-induced contractions, with nifedipine being considerably more potent than either milrinone or amrinone in this preparation.

Drug Interaction Studies

The inotropic potency of milrinone was not affected in anesthetized dogs pretreated with sodium nitroprusside, furosemide or diazepam. Milrinone, at 10-100 µg/kg, increased cardiac contractile force in the presence of ouabain or dopamine.

Milrinone does potentiate the inotropic activity of beta adrenergic agonists.

Milrinone did not worsen or improve ouabain-induced arrhythmias and the inotropic response to milrinone was not altered in the presence of such arrhythmias.

In the canine hind limb preparations, milrinone, at doses of 0.03 to 0.3 mg/kg caused dose-related reductions in systolic and diastolic perfusion pressures. This effect was not blocked by either denervation, histamine receptor antagonists, cholinergic or beta adrenergic receptor antagonists or by prostaglandin synthetase inhibition.

In the 24 hour Harris dog model, in which arrhythmias are produced by ligation of the left anterior descending coronary artery, milrinone did not interfere with the antiarrhythmic effects of quinidine, procainamide and disopyramide and reduced their negative inotropic and intracardiac conduction effects.

TOXICOLOGY

A. Acute Toxicity

The following intravenous 7-day LD₅₀ values were determined:

Species	Age Range	Sex	LD ₅₀ (mg base/kg)
Mouse	Adults	M	79
Mouse	Adults	F	79
Rat	Adults	M	76
Rat	Adults	M	73
Rat	Adults	F	73
Rabbit	Young Adults	F	44

Clinical observations for mice, rats and rabbits included ataxia, decreased motor activity, loss of righting reflex, tremors and clonic convulsions. In addition, for mice and rats only, ptosis, lacrimation, salivation, spastic limb movements and loss of motor activity were observed. Observations made during necropsies of mice and rats treated with the highest dosages included: small black pitted areas in the glandular stomach, red or red-black material or mucous in the small intestine and lung consolidation (congestion).

For rabbits, macroscopic and histomorphologic lesions: epicardial and endocardial hemorrhage, and papillary muscle fibrosis were observed at intravenous dosages of 12.6 mg base/kg and higher and were related to exaggerated pharmacologic effects of supra-therapeutic dosages.

B. Subacute/Chronic Toxicity

Toxicologic effects observed in oral and intravenous studies in various laboratory animal species including mice, rats, rabbits, dogs and monkeys were related to responses by animals with normal myocardial function to the exaggerated pharmacologic effects of inotropy and vasodilation. Clinical effects observed for one or more species included: increased heart rate, shortening of P-R and Q-T intervals, conversion of sinus arrhythmia (common to dogs) to normal sinus rhythm, reddening of extremities, and decreases in systolic and diastolic blood pressure. Similarly, pathologic effects observed in various species were related to exaggerated pharmacologic responses by the normal heart to excessive inotropic and vasodilator stimulation and included: myocardial degeneration, necrosis and fibrosis principally affecting the left ventricular papillary muscles, perivasculitis and/or vasculitis of epicardial arteries and subendocardial hemorrhage. Coronary vascular lesions characterized by periarterial edema and inflammation have been observed in dogs only. The myocardial/endocardial changes are similar to those produced by beta adrenergic receptor agonists such as isoproterenol, while the vascular changes are similar to those produced by minoxidil and hydralazine. Doses within the recommended clinical dose range (up to 1.13 mg/kg/day) for congestive heart failure patients have not produced significant adverse effects in animals. Results of intravenous studies in rats and dogs are summarized in the following table:

SUMMARY OF CARDIAC HISTOMORPHOLOGIC EFFECTS IN INTRAVENOUS TOXICITY STUDIES OF MILRINONE IN RATS AND DOGS

Species (N/group)	Dosage mg base/kg/day	Dosage: mg base/kg/day		Threshold	Toxicity
		Duration	No Adverse Effect		
Sprague-Dawley Rat					
Study 1 (N = 10M, 10F)	2.5, 10, 40	Bolus Inj. Daily (4 weeks)	-----	2.5 ^a -10.0 ^b	40.0 ^c
Study 2 (N = 10M, 10F)	0.01, 0.1, 1.0, 2.5	Bolus Inj. Daily (4 weeks)	0.01, 0.1, 1.0, 2.5	-----	-----
Beagle Dog (N = 2M, 2F)	2, 6, 18	4-Hr Infusion (10 doses in 12 days)	----- -----	2.0 ^d	6.0 ^e 18.0 ^e

- a: Minimal myocardial fibrosis even for 2/20 rats (one of each sex)
- b: Mild myocardial fibrosis and/or degeneration observed for 5/20 rats
- c: Mild to marked myocardial fibrosis observed for 19/19 rats
- d: Minimal myocardial degeneration and/or inflammation observed for 2/4 dogs; coronary arteritis for 1/4 dogs
- e: Minimal to moderate myocardial inflammation and/or fibrosis observed for 4/4 dogs at each dosage; coronary arteritis observed for 1/4 and 2/4 dogs at dosages of 6 and 18 mg base per kg/day, respectively.

C. Carcinogenicity, Mutagenicity, Teratogenicity, Impairment of Fertility

Milrinone was not carcinogenic in life-time (two-year) oral studies conducted in mice and rats.

Milrinone was not genotoxic in in vitro tests for potential to induce gene mutation (Ames tests and mouse lymphoma cell assay) or in in vivo tests for potential to induce chromosomal damage (micronucleus test and metaphase bone marrow analysis). An in vitro test for potential to induce chromosomal damage in Chinese Hamster Ovary cells was positive only when conducted in the presence of hepatic microsomes (metabolic activation). This single positive result in an in vitro test was not considered to be biologically important since a dose-dependent response was not observed, and negative results were obtained in in vitro tests conducted with dosages of milrinone that exceeded the recommended cumulative daily human oral and intravenous dosages by more than 25 fold.

Effects on fertility were not observed in male, female and 3-generation oral reproductive studies in rats. An increased rate of fetal resorptions was observed when milrinone was given as an intravenous bolus injection to rabbits at 7 times the cumulative maximum recommended human therapeutic dosage intended for administration by infusion during a period of 24 hours.

Milrinone was not teratogenic when administered orally or intravenously to rats and rabbits.

BIBLIOGRAPHY

1. Alousi AA, Canter JM, Montenaro MJ, Fort DJ and Ferrari RA. Cardiotonic Activity of Milrinone. A New and Potent Cardiac Bipyridine, on the Normal and Failing Heart of Experimental Animals. *Journal of Cardiovascular Pharmacology* 5:792-803.1983.
2. Alousi AA, Stankus GP, Stuart JC and Walton LH. Characterization of the Cardiotonic Effects of Milrinone. A New and Potent Cardiac Bipyridine. On Isolated Tissues from Several Animal Species. *Journal of Cardiovascular Pharmacology* 5:804-811.1993.
3. Anderson JL, Baim DS, Fein SA, Goldstein RA, LeJemtel TH, Likoff MJ. Efficacy and Safety of Sustained (48 hour) Intravenous Infusions of Milrinone in Patients with Severe Congestive Heart Failure: A Multicenter Study. *Journal of the American College of Cardiology*. 9(4):711-22.1987.
4. Baim DS, Monrad ES, McDowell AF, Smith H, Lanoue A, Brauwald E and Grossman W. Milrinone Therapy in Patients with Severe Congestive Heart Failure: Initial Hemodynamic and Clinical Observations. In Braunwald E and Sonnenblick EH et al. eds. *Milrinone: Investigation of New Inotropic Therapy for Congestive Heart Failure*. New York, Raven Press. 143-153.1984.
5. Baker JF and Edelson J. Metabolism and Pharmacokinetics of Milrinone in Laboratory Animals. In Braunwald E, Sonnenblick EH, Chakrin LW and Schwarz RP, eds. *Milrinone Investigation of New Inotropic Therapy for Congestive Heart Failure*. New York, Raven Press, 49-53.1984
6. Colucci WS, Wright RF, Jaski BE, Fifer MA, Braunwald E. Milrinone and dobutamine in severe heart failure: differing hemodynamic effects and individual patient responsiveness. *Circulation* 73 (suppl. 111): 111-175.1986.
7. Davidenko JM and Antzelevitch C. The Effects of Milrinone on Conduction, Reflection, and Automaticity in Canine Purkinje Fibers. *Circulation*, 69(5):1026-1035.1984.
8. Drobeck HP, Slighter RG Jr. and Edelson J. Toxicology Studies on Milrinone. In Braunwald E and Sonnenblick EH et al., eds. *Milrinone: Investigation of New Inotropic Therapy for Congestive Heart Failure*. New York, Raven Press. 55-76.1984.
9. Goldstein RA, Geraci SA, Gray EL, Rinkenberger RL, Hamilton Dougherty A, Naccarelli GV. Electrophysiologic Effects of Milrinone in Patients with Congestive Heart Failure. *American Journal of Cardiology* 57:624-628. 1986.
10. Grose R, Strain J, Greenberg M, LeJemtel TH. Systemic and Coronary Effects of Intravenous Milrinone and Dobutamine in Congestive Heart Failure. *Journal of American Coll. Cardiology* 7:1107-13.1986.

11. Jaski BE, Fifer MA, Wright RF, Braunwald E, Colucci WS. Positive Inotropic and Vasodilator Actions of Milrinone in Patients with Severe Congestive Heart Failure. *J. Clin. Invest.* 75:643-649.1985.
12. LeJemtel TH, Maskin CS, Chadwick B and Sonnenblick EH. Clinical Response to Long-Term Milrinone Therapy in Patients with Severe Congestive Heart Failure: 12-Month Experience. In Braunwald E and Sonnenblick EH et. al., eds. *Milrinone: Investigation of New Inotropic Therapy for Congestive Heart Failure.* New York, Raven Press. 177-189.1984.
13. Ludmer PL, Wright RF, Arnold JMO, Ganz P, Braunwald E, Colucci WS. Separation of the direct myocardial and vasodilator actions of milrinone administered by an intracoronary infusion technique. *Circulation* 73(1):130-137.1986.
14. Maskin CS, Chadwick B, Sonnenblick EH and LeJemtel TH. Withdrawal and Reinstitution of Long-Term Milrinone Therapy: Evidence of Drug-Dependent Improvement in Cardiac Performance without Tachyphylaxis. In Braunwald E and Sonnenblick EH et al., eds. *Milrinone Investigation of New Inotropic Therapy for Congestive Heart Failure.* New York, Raven Press. 155-166.1984.
15. Monrad ES, Baim DS, Smith HS, Lanoue A, Braunwald E and Grossman W. Effects of Milrinone on Coronary Hemodynamics and Myocardial Energetics in Patients with Congestive Heart Failure. *Circulation* 72(5):972-979.1985.
16. Monrad ES, Baim DS, Smith HS, Lanoue AS. Milrinone, bodutamine, and nitroprusside: comparative effects on hemodynamics and myocardial energetics in patients with severe congestive heart failure. *Circulation* 73 (suppl III): III-168-174.1986.
17. Monrad ES, McKay RG, Baim DS, Colucci WS, Fifer MA, Heller GV, Royal HD, Grossman W. Improvement in indexes of diastolic performance in patients with congestive heart failure treated with milrinone. *Circulation* 70(6): 1030-1037.1984.
18. Simonton CA, Chatterjee K, Cody RJ, Kubo SH, Leonard D, Daly P and Rutman H. Milrinone in Congestive Heart Failure: Acute and Chronic Hemodynamic and Clinical Evaluation. *Journal of American College of Cardiology* 6(2):453-459.1985.
19. Sonnenblick EH, Grose R, Strain J, Zelcer AA, LeJemtel TH. Effects of milrinone on left ventricular performance and myocardial contractility in patients with severe heart failure. *Circulation* 73 (suppl 111): 111-162.1986.
20. Stroshane RM, Benziger DP and Edelson J. Pharmacokinetics of Milrinone in Congestive Heart Failure Patients. In Braunwald E and Sonnenblick EH et. al., eds. *Milrinone: Investigation of New Inotropic Therapy for Congestive Heart Failure.* New York, Raven Press, 119-131.1984.

21. White HD, Ribeiro JP, Hartley LH, Colucci WS. Immediate Effects of Milrinone on Metabolic and Sympathetic Responses to Exercise in Severe Congestive Heart Failure. *American Journal of Cardiology* 56:93-98.1985.
22. Milrinone Lactate Injection, Sandoz Canada Inc., Product Monograph, August 18, 2015
23. PRIMACOR (Milrinone Lactate Injection), SANOFI-SYNTHELABO CANADA INC., Product Monograph, January 16, 2004