

**PRODUCT MONOGRAPH**

**LAMOTRIGINE – 25  
LAMOTRIGINE – 100  
LAMOTRIGINE – 150**

**Lamotrigine Tablets**

**25 mg, 100 mg and 150 mg Tablets**

**ANTIEPILEPTIC**

**PRO DOC LTÉE**  
2925, boul. Industriel  
Laval, Quebec  
H7L 3W9

**DATE OF REVISION:**  
December 1, 2015

*Control #: 189980*

## PRODUCT MONOGRAPH

**Do not exceed the recommended initial dose and subsequent dose escalations of LAMOTRIGINE. More rapid initial titration has been associated with an increased incidence of serious dermatological reactions (see WARNINGS).**

LAMOTRIGINE – 25  
LAMOTRIGINE – 100  
LAMOTRIGINE – 150  
Lamotrigine Tablets  
25 mg, 100 mg and 150 mg

Antiepileptic

**This product does not have dosage strengths small enough to initiate treatment in children under 12 years of age.**

### ACTIONS AND CLINICAL PHARMACOLOGY

Lamotrigine is a drug of the phenyltriazine class chemically unrelated to existing antiepileptic drugs (AEDs).

Lamotrigine is thought to act at voltage-sensitive sodium channels to stabilize neuronal membranes and inhibit the release of excitatory amino acid neurotransmitters (eg. glutamate and aspartate) that are thought to play a role in the generation and spread of epileptic seizures.

#### **Clinical Trials**

In adult placebo-controlled clinical studies, lamotrigine has been shown to be effective in reducing seizure frequency and the number of days with seizures when added to existing antiepileptic drug therapy in adult patients with partial seizures, with or without generalized tonic-clonic seizures, that are not satisfactorily controlled.

The effectiveness of lamotrigine adjunctive therapy has also been shown in pediatric and adult patients with Lennox-Gastaut syndrome. A significant reduction in major motor seizures, drop attacks, and tonic-clonic seizures were seen following lamotrigine treatment compared with placebo treated patients. Improvements in cognitive skills (speech, nonverbal communication, alertness, attention and intellectual capacity), behaviour and fine co-ordination have been seen with lamotrigine treatment in these patients.

Studies have also been conducted using lamotrigine monotherapy in adult patients (n = 443) newly diagnosed with epilepsy (partial seizures, with or without secondary generalization or primary generalized tonic clonic). Results have shown comparable efficacy (time to first seizure, seizure frequency and percentage of patients seizure-free) with fewer side effects than currently approved therapies.

Clinical trials have also demonstrated that adult patients (any seizure type) can be converted to lamotrigine monotherapy from polytherapy with significant numbers of patients maintaining or improving seizure control. Efficacy was maintained during long-term treatment (up to 152 weeks).

A 24-week monotherapy trial was conducted in elderly newly diagnosed patients (102 patients received lamotrigine and 48 received carbamazepine). The findings indicate comparable efficacy, and demonstrate that lamotrigine was well tolerated in the elderly. However, the small and unbalanced number of patients in the study precludes any firm conclusions on the relative safety of the two drugs.

## **Pharmacokinetics**

### **Adults:**

Lamotrigine is rapidly and completely absorbed following oral administration, reaching peak plasma concentrations 1.4 to 4.8 hours ( $T_{max}$ ) post-dosing. When administered with food, the rate of absorption is slightly reduced, but the extent remains unchanged. Following single lamotrigine doses of 50 to 400 mg, peak plasma concentration ( $C_{max}$  = 0.6 to 4.6  $\mu\text{g/mL}$ ) and the area under the plasma concentration-versus-time curve ( $AUC$  = 29.9 to 211  $\text{h}\cdot\mu\text{g/mL}$ ) increase linearly with dose. The time-to-peak concentration, elimination half-life ( $t_{1/2}$ ) and volume of distribution ( $Vd/F$ ) are independent of dose. The  $t_{1/2}$  averages 33 hours after single doses and  $Vd/F$  ranges from 0.9 to 1.4 L/kg. Following repeated dosing in healthy volunteers for 14 days, the  $t_{1/2}$  decreased by an average of 26% (mean steady state  $t_{1/2}$  of 26.4 hours) and plasma clearance increased by an average of 33%. In a single-dose study where healthy volunteers were administered both oral and intravenous doses of lamotrigine, the absolute bioavailability of oral lamotrigine was 98%.

Lamotrigine is approximately 55% bound to human plasma proteins. This binding is unaffected by therapeutic concentrations of phenytoin, phenobarbital or valproic acid. Lamotrigine does not displace other antiepileptic drugs (carbamazepine, phenytoin and phenobarbital) from protein binding sites.

Lamotrigine is metabolized predominantly in the liver by glucuronic acid conjugation. The major metabolite is an inactive 2-N-glucuronide conjugate that can be hydrolyzed by  $\beta$ -glucuronidase. Approximately 70% of an oral lamotrigine dose is recovered in urine as this metabolite.

### **Pediatrics:**

Lamotrigine was rapidly absorbed in children, with a  $T_{max}$  ranging from 1 to 6 hours. The mean  $Vd/F$  of lamotrigine in children aged 5 to 11 years (1.3 to 1.4 L/kg) was similar to those seen in adults (0.9 to 1.4 L/kg) but was larger in younger children (1.8 to 2.3 L/kg). As with adults, the elimination of lamotrigine in pediatric patients was similarly affected by concomitant AEDs. While the  $CL/F$  was higher and  $t_{1/2}$  was shorter in younger children than in older children, the mean  $CL/F$  was higher and mean  $t_{1/2}$  was shorter in both pediatric groups than in adults. Population analysis results showed that the estimated apparent plasma clearances in patients aged 13 to 18 years were similar to those found in adult patients.

### **Elderly ( $\geq 65$ years):**

Results of a population pharmacokinetic analysis, based on individual trials in which both adult ( $n=138$ ) and elderly ( $n=13$ ) patients with epilepsy were enrolled, indicated that the clearance of lamotrigine in elderly patients did not change to a clinically relevant extent. After single doses, apparent clearance was lower in the elderly by 12% (31 mL/min at age 70 vs. 35 mL/min at age 20). After 48 weeks of

treatment, the difference in clearance was 10% (37 mL/min at age 70 vs. 41 mL/min at age 20). In addition, the pharmacokinetics of lamotrigine were studied in 12 healthy elderly volunteers who each received a single oral dose of 150 mg. The mean clearance in the elderly (0.39 mL/min) lies within the range of mean clearance values (0.31 to 0.65 mL/min) obtained in 9 studies with non-elderly adults after single doses of 30 to 450 mg (see also DOSAGE AND ADMINISTRATION, and ADVERSE REACTIONS).

### **Renal Impairment:**

The pharmacokinetics of a single oral dose of lamotrigine (100 mg) were evaluated in 12 individuals with chronic renal failure (with mean creatinine clearance of 13 mL/min) who were not receiving other antiepileptic drugs. In this study, the elimination half-life of unchanged lamotrigine was prolonged (by an average of 63%) relative to individuals with normal renal function (see PRECAUTIONS: Renal Failure and DOSAGE AND ADMINISTRATION).

### **Hemodialysis:**

In six hemodialysis patients, the elimination half-life of unchanged lamotrigine was doubled off dialysis, and reduced by 50% on dialysis, relative to individuals with normal renal function.

### **Hepatic Impairment:**

A single dose pharmacokinetic study was performed in 24 subjects with hepatic impairment (n=12 mild/Grade A; n=5 moderate/Grade B and n=7 severe/Grade C), vs. 12 healthy controls. For the moderate and severe subgroups, the mean values for AUC and plasma half-life were increased approximately two-fold and threefold respectively over control values, with clearance decreased proportionately. For the mild group, while mean values were not statistically different from those of controls, a subgroup of 1-4 subjects (dependant on pharmacokinetic parameter examined) showed abnormal individual values which were in the range of the moderately impaired subjects (see also DOSAGE AND ADMINISTRATION and PRECAUTIONS).

## Gilbert's Syndrome:

Gilbert's syndrome (idiopathic unconjugated hyperbilirubinemia) does not appear to affect the pharmacokinetic profile of lamotrigine.

## Concomitant Antiepileptic Drugs:

In patients with epilepsy, concomitant administration of lamotrigine with AEDs that induce lamotrigine glucuronidation (phenytoin, carbamazepine, primidone or phenobarbital) decreases the mean lamotrigine  $t_{1/2}$  to 13 hours. Concomitant administration of lamotrigine with valproic acid significantly increases  $t_{1/2}$  and decreases the clearance of lamotrigine, whereas concomitant administration of lamotrigine with valproic acid plus AEDs that induce lamotrigine glucuronidation can prolong  $t_{1/2}$  up to approximately 27 hours. The key lamotrigine parameters for adult patients and healthy volunteers are summarized in Table 1, and for pediatric patients in Table 2:

<b>Table 1. Mean pharmacokinetic parameters in adult patients with epilepsy or healthy volunteers</b>						
<b>Lamotrigine Administered</b>		<b>Healthy Young Volunteers</b>		<b>Patients with Epilepsy</b>		
		<b>Lamotrigine</b>	<b>Lamotrigine + Valproic Acid<sup>2</sup></b>	<b>Lamotrigine + AEDs that induce lamotrigine glucuronidation</b>	<b>Lamotrigine + Valproic Acid</b>	<b>Lamotrigine + AEDs that induce lamotrigine glucuronidation + Valproic Acid</b>
$T_{max}$ (hr)	Single Dose	2.2 (0.25-12.0) <sup>1</sup>	1.8 (1.0-4.0)	2.3 (0.5-5.0)	4.8 (1.8-8.4)	3.8 (1.0-10.0)
	Multiple Dose	1.7 (0.5-4.0)	1.9 (0.5-3.5)	2.0 (0.75-5.93)	ND	ND
$t_{1/2}$ (hr)	Single Dose	32.8 (14.0-103.0)	48.3 (31.5-88.6)	14.4 (6.4-30.4)	58.8 (30.5-88.8)	27.2 (11.2-51.6)
	Multiple Dose	25.4 (11.6-61.6)	70.3 (41.9-113.5)	12.6 (7.5-23.1)	ND	ND
Plasma Clearance (mL/min/kg)	Single Dose	0.44 (0.12-1.10)	0.30 (0.14-0.42)	1.10 (0.51-2.22)	0.28 (0.16-0.40)	0.53 (0.27-1.04)
	Multiple Dose	0.58 (0.25-1.15)	0.18 (0.12-0.33)	1.21 (0.66-1.82)	ND	ND

ND = Not done.

- Range of individual values across studies.
- Valproic Acid administered chronically (Multiple Dose Study) or for 2 days (Single Dose Study).

<b>Table 2. Mean pharmacokinetic parameters in pediatric patients with epilepsy</b>				
<b>Pediatric Study Population</b>	<b>Number of Subjects</b>	<b>T<sub>max</sub> (h)</b>	<b>t<sub>1/2</sub> (h)</b>	<b>CL/F (mL/min/kg)</b>
<b>Ages 10 months To 5.3 years</b>				
Patients taking AEDs that induce lamotrigine glucuronidation	10	3.0 (1.0-5.9)	7.7 (5.7-11.4)	3.62 (2.44-5.28)
Patients Taking AEDs with no known effect on drug metabolizing enzymes	7	5.2 (2.9-6.1)	19.0 (12.9-27.1)	1.2 (0.75-2.42)
Patients taking VPA only	8	2.9 (1.0-6.0)	44.9 (29.5-52.5)	0.47 (0.23-0.77)
<b>Ages 5 to 11 years</b>				
Patients taking AEDs that induce lamotrigine glucuronidation	7	1.6 (1.0-3.0)	7.0 (3.8-9.8)	2.54 (1.35-5.58)
Patients taking AEDs that induce lamotrigine glucuronidation plus VPA	8	3.3 (1.0-6.4)	19.1 (7.0-31.2)	0.89 (0.39-1.93)
Patients taking VPA only*	3	4.5 (3.0-6.0)	55.4 (24.3-73.7)	0.31 (0.20-0.54)
<b>Ages 13 to 18 years</b>				
Patients taking AEDs that induce lamotrigine glucuronidation	11	†	†	1.3
Patients taking AEDs that induce lamotrigine glucuronidation plus VPA	8	†	†	0.5
Patients taking VPA only	4	†	†	0.3
VPA = Valproic Acid.				
* Two subjects were included in the calculation for mean T <sub>max</sub>				
† Parameter not estimated				

Oxcarbazepine, gabapentin, levetiracetam, pregabalin, felbamate, zonisamide and topiramate did not affect the plasma concentrations of lamotrigine (see PRECAUTIONS: Drug Interactions, Antiepileptic Drugs).

### **Other Drug Interactions:**

Chronic administration of acetaminophen was shown to slightly decrease the t<sub>1/2</sub> and increase the clearance of a single dose of lamotrigine. Oral contraceptives and rifampin have also been shown to increase the apparent clearance of lamotrigine (see PRECAUTIONS: Drug Interactions). Co-administration of olanzapine did not have a clinically relevant effect on lamotrigine pharmacokinetics (see PRECAUTIONS: Drug Interactions).

### Comparative Bioavailability

A randomized, single-dose (1 x 150 mg), standard two-way crossover comparative bioavailability study, conducted under fasting and fed conditions, were performed on healthy male volunteers. The results obtained from 18 volunteers for fasting study and 24 volunteers for fed study whom completed the study are summarized in the following tables (refer to Tables 3-A and 3-B). The rate and extent of absorption of Lamotrigine were measured and compared following a single dose (1 x 150 mg tablet) of LAMOTRIGINE (lamotrigine) 150 mg (Pro Doc Ltée) and Lamictal® (lamotrigine) 150 mg tablet (Glaxo Wellcome Inc.).

**Table 3-A: Summary Table of the Comparative Bioavailability Data  
Lamotrigine  
(A single 150 mg dose: 1 x 150 mg tablet)  
From Measured Data/Fasting Conditions  
Geometric Mean#  
Arithmetic Mean (CV%)**

<b>Parameter</b>	<b>Test*</b>	<b>Reference†</b>	<b>Ratio of Geometric Means (%)</b>	<b>95% Confidence Interval (%)</b>
AUC <sub>0-72</sub> (ng•h/mL)	64344 65595 (21)	62630 64032 (22)	102.7	98.9 – 106.6
AUC <sub>inf</sub> (ng•h/mL)	82702 90561 (61)	83533 100484 (94)	99.0	89.2 – 109.8
C <sub>max</sub> (ng/mL)	1961 1972 (11)	2037 2071 (18)	96.3	90.3 – 102.7
T <sub>max</sub> § (h)	2.07 (47)	1.52 (55)	-	
T <sub>1/2</sub> § (h)	34.2 (67)	40.1 (107)	-	

\*LAMOTRIGINE (Lamotrigine) 150 mg tablets (Pro Doc Ltée).

† Lamictal®(Lamotrigine)150 mg tablets (Glaxo Wellcome Inc) were purchased in Canada.

# Based on the least squares estimate.

§ Expressed as arithmetic means (CV%) only.

**Table 3-B: Summary Table of the Comparative Bioavailability Data  
Lamotrigine  
(A single 150 mg dose: 1 x 150 mg tablet)  
From Measured Data/Fed Conditions  
Geometric Mean#  
Arithmetic Mean (CV%)**

<b>Parameter</b>	<b>Test*</b>	<b>Reference†</b>	<b>Ratio of Geometric Means (%)</b>	<b>95% Confidence Interval (%)</b>
AUC <sub>0-72</sub> (ng•h/mL)	57240 58343 (21)	55105 56073 (20)	103.9	101.0 – 106.8
AUC <sub>inf</sub> (ng•h/mL)	73939 78732 (43)	71396 76631 (45)	103.5	99.0 – 108.2
C <sub>max</sub> (ng/mL)	1671 1679 (10)	1638 1642 (8)	102.1	99.7 – 104.5
T <sub>max</sub> § (h)	3.41 (26)	3.56 (19)	-	
T <sub>1/2</sub> § (h)	32.9 (39)	33.5 (47)	-	

\*LAMOTRIGINE (Lamotrigine) 150 mg tablets (Pro Doc Ltée).

† Lamictal®(Lamotrigine)150 mg tablets (Glaxo Wellcome Inc) were purchased in Canada.

# Based on the least squares estimate.

§ Expressed as arithmetic means (CV%) only.

## INDICATIONS AND CLINICAL USE

LAMOTRIGINE (lamotrigine) is indicated:

- as adjunctive therapy for the management of adult patients with epilepsy who are not satisfactorily controlled by conventional therapy,
- for use as monotherapy in adults following withdrawal of concomitant antiepileptic drugs:
- as adjunctive therapy for the management of the seizures associated with Lennox-Gastaut syndrome in pediatric and adult patients.

## CONTRAINDICATIONS



LAMOTRIGINE (lamotrigine) is contraindicated in patients with known hypersensitivity to lamotrigine or to any components of the formulation.

## **WARNINGS**

**This product does not have dosage strengths small enough to initiate treatment in children under 12 years of age.**

### **SERIOUS SKIN RASHES**

SERIOUS RASHES ASSOCIATED WITH HOSPITALIZATION HAVE OCCURRED WITH THE USE OF LAMOTRIGINE. THE INCIDENCE OF THESE RASHES IN CLINICAL TRIALS WAS 1% (1/100) IN PEDIATRIC PATIENTS (AGE < 16 YEARS) AND 0.3% (3/1000) IN ADULTS. THE INCIDENCE OF SERIOUS RASH REPORTED AS STEVENS-JOHNSON SYNDROME (SJS) IN CLINICAL TRIALS WAS 0.5% (1/200) IN PEDIATRIC PATIENTS AND 0.1% (1/1000) IN ADULTS. IN WORLDWIDE POST-MARKETING EXPERIENCE, RARE CASES OF TOXIC EPIDERMAL NECROLYSIS AND/OR DEATH ASSOCIATED WITH RASH HAVE BEEN REPORTED, BUT THEIR NUMBERS ARE TOO FEW TO PERMIT A PRECISE ESTIMATE OF THE RATE.

IN CHILDREN, THE INITIAL PRESENTATION OF A RASH CAN BE MISTAKEN FOR AN INFECTION. PHYSICIANS SHOULD CONSIDER THE POSSIBILITY OF A DRUG REACTION IN CHILDREN THAT DEVELOP SYMPTOMS OF RASH AND FEVER DURING THE FIRST EIGHT WEEKS OF THERAPY.

### **SERIOUS RASH ASSOCIATED WITH RAPID TITRATION**

A HIGHER INCIDENCE OF SERIOUS DERMATOLOGIC EVENTS (SEE PRECAUTIONS: SKIN-RELATED EVENTS, TABLES 4 AND 5; SEE ALSO DOSAGE AND ADMINISTRATION) HAS BEEN ASSOCIATED WITH MORE RAPID INITIAL TITRATION (EXCEEDING THE RECOMMENDED INITIAL DOSE OR EXCEEDING THE RECOMMENDED DOSE ESCALATION), AND USE OF CONCOMITANT VALPROIC ACID.

### **RASH ASSOCIATED WITH A HISTORY OF RASH TO OTHER ANTI-EPILEPTIC DRUGS**

IN TWO STUDIES (N = 767 AND N = 988), THE FREQUENCY OF RASH WITH LAMOTRIGINE TREATMENT WAS APPROXIMATELY 3-4 TIMES HIGHER IN PATIENTS WITH A HISTORY OF ALLERGY OR RASH TO OTHER ANTI-EPILEPTICS, COMPARED TO THOSE WITHOUT SUCH HISTORY.

NEARLY ALL CASES OF RASH ASSOCIATED WITH LAMOTRIGINE HAVE OCCURRED WITHIN 2 TO 8 WEEKS OF TREATMENT INITIATION. HOWEVER, ISOLATED CASES HAVE BEEN REPORTED AFTER PROLONGED TREATMENT (E.G., 6 MONTHS). ACCORDINGLY, DURATION OF THERAPY CANNOT BE RELIED UPON AS A MEANS TO PREDICT THE POTENTIAL RISK SIGNALLED BY THE FIRST APPEARANCE OF A RASH.

ALTHOUGH BENIGN RASHES ALSO OCCUR WITH LAMOTRIGINE, IT IS NOT POSSIBLE TO PREDICT RELIABLY WHICH RASHES WILL PROVE TO BE LIFE THREATENING. ACCORDINGLY, ALL PATIENTS WHO DEVELOP RASH SHOULD BE PROMPTLY EVALUATED AND LAMOTRIGINE WITHDRAWN IMMEDIATELY, UNLESS THE RASH IS CLEARLY NOT DRUG RELATED.

### **Hypersensitivity Reactions**

Multiorgan hypersensitivity reactions, also known as Drug Reaction with Eosinophilia and Systemic Symptoms (DRESS), have occurred with lamotrigine. Some have been fatal or life-threatening. DRESS typically, although not exclusively, presents with fever, rash, and/or lymphadenopathy in association with other organ system involvement, such as hepatitis, nephritis, hematologic abnormalities, aseptic meningitis, myocarditis, or myositis, sometimes resembling an acute viral infection (see ADVERSE REACTIONS). Eosinophilia is often present. This disorder is variable in its expression and other organ systems not noted here may be involved. The syndrome shows a wide spectrum of clinical severity and may rarely lead to disseminated intravascular coagulation (DIC) and multiorgan failure.

It is important to note that early manifestations of hypersensitivity (e.g., fever, lymphadenopathy) may be present even though a rash is not evident. If such signs or symptoms are present, the patient should be evaluated immediately. Lamotrigine should be discontinued if an alternative etiology for the signs or symptoms cannot be established.

**Prior to initiation of treatment with lamotrigine, the patient should be instructed that a rash or other signs or symptoms of hypersensitivity (e.g. fever, lymphadenopathy) may herald a serious medical event and that the patient should report any such occurrence to a physician immediately.**

### **Acute Multiorgan Failure**

Multiorgan failure, which in some cases has been fatal or irreversible, has been observed in patients receiving Lamotrigine. Fatalities associated with multiorgan failure and various degrees of hepatic failure have been reported in 2 of 3,796 adult patients and 4 of 2,435 pediatric patients who received Lamotrigine in epilepsy clinical trials. No such fatalities have been reported in bipolar patients in clinical trials. Rare fatalities from multiorgan failure have also been reported in compassionate use and postmarketing use. The majority of these deaths occurred in association with other serious medical events, including status epilepticus and overwhelming sepsis, and hantavirus, making it difficult to identify the initial cause.

Additionally, 3-patients (a 45-year old woman, a 3.5-year old boy, and an 11-year old girl) developed multiorgan dysfunction and disseminated intravascular coagulation 9 to 14 days after Lamotrigine was added to their AED regimens. Rash and elevated transaminases were also present in all patients and rhabdomyolysis was noted in 2 patients. Both pediatric patients were receiving concomitant therapy with valproate, while the adult patient was being treated with carbamazepine and clonazepam. All patients subsequently recovered with supportive care after treatment with Lamotrigine was discontinued.

### **Aseptic Meningitis**

Therapy with lamotrigine increases the risk of developing aseptic meningitis.

Because of the potential for serious outcomes of untreated meningitis due to other causes, patients should also be evaluated for other causes of meningitis and treated as appropriate.

Post marketing cases of aseptic meningitis have been reported in pediatric and adult patients taking lamotrigine for various indications. Symptoms upon presentation have included headache, fever, nausea, vomiting, and nuchal rigidity. Rash photophobia, myalgia, chills, altered consciousness, and somnolence were also noted in some cases. Symptoms have been reported to occur within 1 to 40 days following the initiation of treatment. In most cases, symptoms were reported to resolve after discontinuation of lamotrigine. Re-exposure resulted in a rapid return of symptoms (from within 30 minutes to 1 day following re-initiation of treatment) that were frequently more severe.

Some of the patients treated with lamotrigine who developed aseptic meningitis had underlying diagnoses of systemic lupus erythematosus or other autoimmune diseases. Lamotrigine should not be restarted in patients who have discontinued due to aseptic meningitis associated with prior treatment of lamotrigine.

Cerebrospinal fluid (CSF) analysed at the time of clinical presentation in reported cases was characterized by a mild to moderate pleocytosis, normal glucose levels, and mild to moderate increase in protein. CSF white blood cell count differentials showed a predominance of neutrophils in a majority of the cases, although a predominance of lymphocytes was reported in approximately one third of the cases. Some patients also had new onset of signs and symptoms of involvement of other organs (predominantly hepatic and renal involvement) which may suggest that in these cases the aseptic meningitis observed was part of a hypersensitivity reaction.

### **Blood Dyscrasias**

There have been reports of blood dyscrasias that may or may not be associated with the hypersensitivity syndrome. These have included neutropenia, leukopenia, anemia, thrombocytopenia, pancytopenia, and, rarely, aplastic anemia and pure red cell aplasia.

### **Concomitant medication**

#### **Hormonal Contraceptives**

Patients taking lamotrigine should be advised not to start or stop their oral contraceptives without consulting their physician. Significant adjustments in the maintenance dose of lamotrigine may be required in some patients. (See PRECAUTIONS, Drug Interactions, Oral Contraceptives, and DOSAGE AND ADMINISTRATION, Women and Oral Contraceptives).

### **Organic Cationic Transporter 2 (OCT 2) Substrates**

Lamotrigine is an inhibitor of renal tubular secretion via OCT 2 proteins (see PRECAUTIONS, Drug Interactions). This may result in increased plasma levels of certain drugs that are substantially excreted via this route. Co-administration of lamotrigine with OCT 2 substrates (i.e., procainamide and metformin) with a narrow therapeutic index is not recommended.

### **Other products containing lamotrigine**

Lamotrigine tablets should not be administered to patients currently being treated with any other preparation containing lamotrigine without consulting a doctor.

### **Status Epilepticus**

There are reports in the literature that severe convulsive seizures including status epilepticus may lead to rhabdomyolysis, multiorgan dysfunction and disseminated intravascular coagulation, sometimes with fatal outcome. Similar cases have occurred in association with the use of lamotrigine.

### **Suicidal Behaviour and Ideation**

Symptoms of depression and/or bipolar disorder may occur in patients with epilepsy, and there is evidence that patients with epilepsy and bipolar disorder have an elevated risk for suicidality.

Twenty-five to 50% of patients with bipolar disorder attempt suicide at least once, and may experience worsening of their depressive symptoms and/or the emergence of suicidal ideation and behaviours (suicidality) whether or not they are taking medications for bipolar disorder, including lamotrigine.

Suicidal ideation and behavior have been reported in patients treated with antiepileptic agents in several indications.

All patients treated with antiepileptic drugs, irrespective of indication, should be monitored for signs of suicidal ideation and behavior and appropriate treatment should be considered. Patients (and caregivers of patients) should be advised to seek medical advice should signs of suicidal ideation or behavior emerge.

An FDA meta-analysis of randomized placebo controlled trials, in which antiepileptic drugs were used for various indications, has shown a small increased risk of suicidal ideation and behavior in patients treated with these drugs. The mechanism of this risk is not known.

There were 43,892 patients treated in the placebo controlled clinical trials that were included in the meta-analysis. Approximately 75% of patients in these clinical trials were treated for indications other than epilepsy and, for the majority of non-epilepsy indications the treatment (antiepileptic drug or placebo) was administered as monotherapy. Patients with epilepsy represented approximately 25% of the total number of patients treated in the placebo controlled clinical trials and, for the majority of epilepsy patients, treatment (antiepileptic drug or placebo) was administered as adjunct to other antiepileptic agents (i.e., patients in both treatment arms were being treated with one or more antiepileptic drug). Therefore, the small increased risk of suicidal ideation and behaviour reported from meta-analysis (0.43% for patients on antiepileptic drugs compared to 0.24% for patients on placebo) is based largely on patients that received monotherapy treatment (antiepileptic drug or placebo) for non-epilepsy indications. The study design does not allow an estimation of the risk of suicidal ideation and behaviour for patients with epilepsy that are taking antiepileptic drugs, due both both to this population being the minority in the study, and the drug-placebo comparison in this population being confounded by the presence of adjunct antiepileptic drug treatment in both arms.

## **PRECAUTIONS**

### **Drug Discontinuation**

Abrupt discontinuation of any antiepileptic drug (AED) in a responsive patient with epilepsy may provoke rebound seizures. In general, withdrawal of an AED should be gradual to minimize this risk.

Unless safety concerns (*i.e.* rash) require a more rapid withdrawal, the dose of lamotrigine should be tapered over a period of at least two weeks (see DOSAGE AND ADMINISTRATION).

### **Occupational Hazards**

Patients with uncontrolled epilepsy should not drive or handle potentially dangerous machinery. During clinical trials common adverse effects included dizziness, ataxia, drowsiness, diplopia and blurred vision. Patients should be advised to refrain from activities requiring mental alertness or physical coordination until they are sure that lamotrigine does not affect them adversely.

### **Skin-Related Events**

In adult controlled studies of adjunctive lamotrigine therapy, the incidence of rash (usually maculopapular and/or erythematous) in patients receiving lamotrigine was 10% compared with 5% in placebo patients. The rash usually occurred within the first six weeks of therapy and resolved during continued administration of lamotrigine. Lamotrigine was discontinued because of rash in 1.1% of adult patients in controlled studies and 3.8% of all patients in all studies. The rate of rash-related withdrawal in clinical studies was higher with more rapid initial titration dosing, and in patients receiving concomitant valproic acid (VPA), particularly in the absence of AEDs that induce lamotrigine glucuronidation. See Tables 4 and 5; see also WARNINGS and DOSAGE AND ADMINISTRATION.

<b>Table 4. Effect of concomitant AEDs on rash associated with lamotrigine in all adult controlled and uncontrolled clinical trials regardless of dosing escalation scheme.</b>				
<b>AED Group</b>	<b>Total Patient Number</b>	<b>All Rashes</b>	<b>Withdrawal Due To Rash</b>	<b>Hospitalization In Association With Rash</b>
<b>AEDs that induce lamotrigine glucuronidation<sup>1</sup></b>	1788	9.2%	1.8%	0.1%
<b>AEDs that induce lamotrigine glucuronidation<sup>1</sup> + VPA</b>	318	8.8%	3.5%	0.9%
<b>VPA ± AEDs that neither inhibit nor induce lamotrigine glucuronidation<sup>2</sup></b>	159	20.8%	11.9%	2.5%
<b>AEDs that neither inhibit nor induce lamotrigine glucuronidation<sup>2</sup></b>	27	18.5%	0.0%	0.0%

1. AEDs that induce lamotrigine glucuronidation include carbamazepine, phenobarbital, phenytoin and primidone.  
2. AEDs that neither inhibit nor induce lamotrigine glucuronidation, include clonazepam, clobazam, ethosuximide, methsuximide, vigabatrin and gabapentin.

<b>Table 5. Effect of the initial daily dose<sup>1</sup> of lamotrigine in the presence of concomitant AEDs, on the incidence of rash leading to withdrawal of treatment in adult add-on clinical trials.</b>						
<b>AED Group</b>	<b>AEDs that induce lamotrigine glucuronidation<sup>2</sup></b>		<b>AEDs that induce lamotrigine glucuronidation<sup>2</sup> + VPA</b>		<b>VPA±AEDs that neither inhibit nor induce lamotrigine glucuronidation<sup>3</sup></b>	
<b>LAM Average Daily Dose (mg)</b>	<b>Total Patient Number</b>	<b>% of Patients Withdrawn</b>	<b>Total Patient Number</b>	<b>% of Patients Withdrawn</b>	<b>Total Patient Number</b>	<b>% of Patients Withdrawn</b>
12.5	9	0.0	10	0.0	51	7.8
25	3	0.0	7	0.0	58	12.1
50	182	1.1	111	0.9	35	5.7
100	993	1.4	179	4.5	15	40.0
≥125	601	2.8	11	18.2	0	0.0

LAM = Lamotrigine.  
VPA = Valproic acid.  
1. Average daily dose in week 1.  
2. AEDs that induce lamotrigine glucuronidation, include carbamazepine, phenobarbital, phenytoin and primidone.  
3. AEDs that induce lamotrigine glucuronidation, include clonazepam, clobazam, ethosuximide, methsuximide, vigabatrin and gabapentin.

Increased incidence of rash-related withdrawal was seen when initial doses were higher and titration more rapid than recommended under DOSAGE AND ADMINISTRATION.

**Patients with a history of allergy or rash to other antiepileptic drugs.**

Caution is also required when treating patients with a history of allergy or rash to other antiepileptic drugs, as it was found in two studies (n = 767 and n = 998) on the frequency of rash after treatment with lamotrigine that the rate of rash was approximately three to four times higher in patients with such a history than those without.

**Restarting lamotrigine Therapy**

It is recommended that lamotrigine not be restarted in patients who discontinued due to rash associated with prior treatment with lamotrigine unless the potential benefits clearly outweigh the risks. If the decision is made to restart a patient who has discontinued lamotrigine for any reason, the need to restart with the initial dosing recommendations should be assessed. The greater the interval of time since the previous dose, the greater consideration should be given to restarting with the initial dosing recommendations. If a patient has discontinued lamotrigine for a period of more than 5 half-lives, it is recommended that initial dosing recommendations and guidelines be followed. The half-life of lamotrigine is affected by other concomitant medications (see ACTION AND CLINICAL PHARMACOLOGY: Pharmacokinetics and DOSAGE AND ADMINISTRATION).

**Potential Medication Errors**

Medication errors involving lamotrigine have occurred. In particular, the names LAMOTRIGINE or lamotrigine can be confused with the names of other commonly used medications. Medication errors may also occur between the different formulations of lamotrigine. To reduce the potential of medication errors, write and say Lamotrigine clearly. To avoid the medication error of using the wrong drug or formulation, patients should be strongly advised to visually inspect their tablets to verify that they are lamotrigine, as well as the correct formulation of lamotrigine, each time they fill their prescription.

## DRUG INTERACTIONS

### Antiepileptic Drugs (AEDs)

The net effects of co-administration of lamotrigine with other antiepileptic drugs are summarized in Table 6. Additional details of these drug interaction studies are provided below.

<b>Table 6. Summary of AED interactions with lamotrigine</b>		
<b>AED</b>	<b>AED Plasma Concentration With Adjunctive LAM<sup>1</sup></b>	<b>LAM Plasma Concentration With Adjunctive AEDs<sup>2</sup></b>
Carbamazepine (CBZ) CBZ exopoxide <sup>3</sup>	No significant effect Conflicting data	↓40%
Felbamate	Not evaluated	No significant effect
Gabapentin	Not evaluated	No significant effect
Levetiracetam	No significant effect	No significant effect
Oxcarbazepine 10-monohydroxy oxcarbazepine metabolite	No significant effect No significant effect	No significant effect Not evaluated
Phenytoin (PHT)	No significant effect	↓ 50%
Pregabalin	No significant effect	No significant effect
Topiramate	No significant effect <sup>4</sup>	No significant effect
Valproic Acid (VPA)	Decreased <sup>5</sup>	↑ 200%
VPA + PHT and/or CBZ	Not evaluated	No significant effect
Zonisamide	Not evaluated	No significant effect

LAM = Lamotrigine.

- From adjunctive clinical trials and volunteer studies.
- Net effects were estimated by comparing the mean clearance values obtained in adjunctive clinical trials and volunteer studies.
- Not administered, but an active metabolite of carbamazepine.
- Slight increase, not expected to be clinically relevant.
- Refer to Valproic Acid paragraph below for additional information.

↓ Decreased (induces lamotrigine glucuronidation)  
 ↑ Increased (inhibits lamotrigine glucuronidation)

Lamotrigine does not affect the plasma concentrations of concomitantly administered AEDs that induce lamotrigine glucuronidation. Antiepileptic drugs that induce lamotrigine glucuronidation (such as phenytoin, carbamazepine, phenobarbital, and primidone) increase the plasma clearance and reduce the elimination half-life of lamotrigine (see ACTION AND CLINICAL PHARMACOLOGY).

#### *Felbamate*

In a cross-over study of 21 healthy male volunteers, coadministration of felbamate (1200 mg twice daily) with lamotrigine (100 mg twice daily for 10 days) appeared to have no clinically relevant effects on the pharmacokinetics of lamotrigine. Furthermore, felbamate had no significant effect on urinary excretion of total lamotrigine, unconjugated lamotrigine or N-glucuronide metabolite.



### ***Gabapentin***

Based on retrospective analysis of plasma levels of 34 epileptic patients who received lamotrigine both with and without gabapentin, gabapentin did not appear to change the apparent clearance of lamotrigine. No information is available about the effects of gabapentin on  $C_{max}$  or AUC of lamotrigine.

### ***Levetiracetam***

Potential drug interactions between levetiracetam and lamotrigine were assessed by evaluating serum concentrations of both agents during placebo-controlled clinical trials. In 48 refractory epileptic patients receiving stable doses of lamotrigine, concomitant levetiracetam (1000-4000 mg/day) did not influence mean steady serum concentrations of lamotrigine. Similarly, lamotrigine did not influence the pharmacokinetics of levetiracetam.

### ***Oxcarbazepine***

The AUC and  $C_{max}$  of oxcarbazepine and its active 10-monohydroxy oxcarbazepine metabolite were not significantly different following the addition of oxcarbazepine (600 mg twice daily) to lamotrigine (200 mg once daily) in healthy male volunteers (n=13) compared to healthy male volunteers receiving oxcarbazepine alone (n=13). Limited clinical data suggest a higher incidence of headache, dizziness, nausea, and somnolence with coadministration of lamotrigine and oxcarbazepine compared to lamotrigine alone or oxcarbazepine alone.

### ***Pregabalin***

In 12 patients with partial-onset seizures receiving combination lamotrigine (mean lamotrigine dose 287.5 mg/day, range 100-600 mg/day) and pregabalin 600 mg/day (200 mg three times daily) therapy, steady-state trough plasma concentrations of lamotrigine were not affected by pregabalin. The pharmacokinetics of pregabalin when coadministered with lamotrigine in this study appeared similar to historical values for pregabalin in healthy volunteers.

### ***Topiramate***

In three studies in patients with epilepsy (n=52), topiramate (dose range of topiramate in the 2 studies where this was recorded was 75-800 mg/day) resulted in no change in plasma concentrations of lamotrigine. Administration of lamotrigine resulted in a 15% increase in plasma concentrations of topiramate.

### ***Valproic Acid***

Valproic acid reduces the plasma clearance and prolongs the elimination half-life of lamotrigine (see ACTION AND CLINICAL PHARMACOLOGY). When lamotrigine was administered to 18 healthy volunteers already receiving valproic acid, a modest decrease (25% on average) in the trough steady-state valproic acid plasma concentrations was observed over a 3-week period, followed by stabilization. However, the addition of lamotrigine did not affect the plasma concentration of valproic acid in patients receiving AEDs that induce lamotrigine glucuronidation in combination with valproic acid. See also PRECAUTIONS: Skin-Related Events.

### ***Zonisamide***

In a study of 18 patients with epilepsy, coadministration of zonisamide (200 to 400 mg/day) with lamotrigine (150 to 500 mg/day) for 35 days had no significant effect on the pharmacokinetics of lamotrigine. Although the effects of lamotrigine on pharmacokinetics of zonisamide have not been studied, two post-marketing cases have reported zonisamide toxicity when lamotrigine was administered (zonisamide dose: 600-800 mg daily; lamotrigine dose: 400 mg daily). In both cases, positive dechallenge and rechallenge were observed.

### **Other Drug Interactions**

#### ***Aripiprazole***

In a study of 18 adult patients with bipolar I disorder, receiving an established regimen of lamotrigine ( $\geq 100$  mg/day), doses of aripiprazole were increased from 10 mg/day to a target of 30 mg/day over a 7 day period and continued once daily for a further 7 days. An average reduction of approximately 10% in  $C_{max}$  and AUC of lamotrigine was observed. An effect of this magnitude is not expected to be of clinical consequence.

#### ***Atazanavir/ritonavir***

In a study of 21 healthy adult volunteers, atazanavir/ritonavir combination (300 mg/100 mg) reduced the plasma AUC,  $C_{max}$  and elimination half-life of lamotrigine (single 100 mg dose) by an average of 32%, 6% and 27%, respectively. However, atazanavir alone did not induce lamotrigine glucuronidation (did not change pharmacokinetics of lamotrigine) to a clinically significant extent. In patients receiving concomitant therapy with atazanavir/ritonavir, the treatment regimen recommended for concomitant medications that induce lamotrigine glucuronidation (without VPA) should be used (see DOSAGE AND ADMINISTRATION, Table 9)

In patients already taking maintenance doses of lamotrigine: if other glucuronidation inducers are not already being taken, the lamotrigine dose may need to be increased if atazanavir/ritonavir is added, or decreased if atazanavir/ritonavir is discontinued.

#### ***Lopinavir/ritonavir***

In a study in healthy volunteers, lopinavir/ritonavir approximately halved the plasma concentrations of lamotrigine. At least 14 out of 22 healthy adult volunteers reported diarrhea and 5 out of 22 subjects reported rash following the addition of lopinavir/ritonavir (400 mg/100 mg b.i.d.) to lamotrigine (up to 200 mg b.i.d.), compared to 1 out of 24 reporting diarrhea or rash, when lamotrigine was administered alone (up to 100 mg b.i.d). Diarrhea is a common adverse event reported for lopinavir/ritonavir. The titration of lamotrigine in this study was rapid, which is a known risk factor for the development of a rash. The rashes necessitated the discontinuation of the medications. One subject also discontinued the medications due to elevated AST and ALT levels. Caution is advised for the co-administration of lopinavir/ritonavir with lamotrigine. In patients receiving concomitant therapy with lopinavir/ritonavir, the treatment regimen recommended for concomitant medications that induce lamotrigine glucuronidation (without VAP) should be used (see DOSAGE AND ADMINISTRATION, Table 10)

## ***Olanzapine***

The AUC and  $C_{\max}$  of lamotrigine was reduced on average by 24% and 20%, respectively, following the addition of olanzapine (15 mg once daily) to lamotrigine (200 mg once daily) in healthy male volunteers (n=16) compared to healthy male volunteers receiving lamotrigine alone (n=12). This reduction in lamotrigine plasma concentrations is not expected to be clinically relevant.

## ***Organic Cationic Transporter 2 (OCT 2)***

Data from in vitro assessment of the effect of lamotrigine at OCT 2 demonstrate that lamotrigine, but not the N(2)-glucuronide metabolite, is an inhibitor of OCT 2 at potentially clinically relevant concentrations. These data demonstrate that lamotrigine is a more potent inhibitor of OCT 2 than cimetidine, with  $IC_{50}$  values of 53.8  $\mu$ M and 186  $\mu$ M, respectively (see WARNINGS).

## ***Oral Contraceptives***

### Effect of Oral Contraceptives on Lamotrigine

In a study of 16 female volunteers, an oral contraceptive preparation containing 30 mcg ethinylestradiol and 150 mcg levonorgestrel increased the apparent clearance of lamotrigine (300 mg/day) by approximately 2-fold with a mean decrease in AUC of 52% and in  $C_{\max}$  of 39%. In this study, trough serum lamotrigine concentrations gradually increased and were approximately 2-fold higher on average at the end of the week of the inactive preparation compared to trough lamotrigine concentrations at the end of the active hormone cycle.

Gradual transient increases in lamotrigine levels will occur during the week of no active hormone preparation (pill-free week) for women not also taking a drug that increases the clearance of lamotrigine (carbamazepine, phenytoin, phenobarbital, primidone, or rifampin). The increase in lamotrigine levels will be greater if the dose of lamotrigine is increased in the few days before or during the pill-free week.

There have been post-marketing reports of breakthrough seizures in women taking lamotrigine and hormonal contraceptives. Dosage adjustments will be necessary in most cases for women receiving oral contraceptive preparations (see DOSAGE AND ADMINISTRATION: Women and Oral Contraceptives and ADVERSE REACTIONS, Post-Marketing Adverse Drug Reactions).

### Effect of Lamotrigine on Oral Contraceptives

Co-administration of lamotrigine (300 mg/day) in 16 female volunteers did not affect the pharmacokinetics of the ethinylestradiol component of an oral contraceptive preparation containing 30 mcg ethinylestradiol and 150 mcg levonorgestrel. There was a mean decrease in the AUC and  $C_{\max}$  of the levonorgestrel component of 19% and 12%, respectively. Measurement of serum progesterone indicated that there was no hormonal evidence of ovulation in any of the 16 volunteers, although measurement of serum FSH, LH, and estradiol indicated that there was some loss of suppression of the hypothalamic-pituitary-ovarian axis.

The effects of doses of lamotrigine other than 300 mg/day have not been studied.

The clinical significance of the observed hormonal changes on ovulatory activity is unknown. However, the possibility of decreased contraceptive efficacy in some patients cannot be excluded. Therefore, patients should be instructed to promptly report changes in their menstrual pattern (e.g. break-through bleeding).

#### Interactions With Other Hormonal Contraceptives or Hormone Replacement Therapy

The effect of other hormonal contraceptive preparations or hormone replacement therapy on the pharmacokinetics of lamotrigine has not been evaluated, although the effect may be similar to oral contraceptive preparations. Therefore, as for oral contraceptives, dosage adjustments will be necessary in most cases (see DOSAGE AND ADMINISTRATION: Women and Oral Contraceptives and ADVERSE REACTIONS, Post-Marketing Adverse Drug Reactions)

#### ***Rifampin***

In a study in 10 male volunteers, rifampin (600 mg/day for 5 days) significantly increased the apparent clearance of a single 25 mg dose of lamotrigine by approximately 2-fold (AUC decreased by approximately 40%). For patients taking rifampin with lamotrigine, follow the titration schedule for concomitant medications that induce lamotrigine glucuronidation (without VPA) (see DOSAGE AND ADMINISTRATION, Table 10)

#### ***Risperidone***

Following the co-administration of 2 mg risperidone with lamotrigine (up to 400 mg daily), 12 out of the 14 healthy adult volunteers reported somnolence compared to 1 out of 20 when risperidone was given alone, and 0 out of 20 when lamotrigine was administered alone.

#### **Drugs Depressing Cardiac Conduction**

(See Patients with Special Diseases And Conditions: Cardiac Conduction Abnormalities).

#### **Drug/Laboratory Test Interactions**

LAMOTRIGINE (lamotrigine) has been reported to interfere with the assay used in some rapid urine drug screens, which can result in false positive readings, particularly for phencyclidine (PCP). A more specific alternative chemical method should be used to confirm a positive result.

#### **Use in Pediatrics**

**This product does not have dosage strengths small enough to initiate treatment in children under 12 years of age (see WARNINGS).**

Safety and efficacy in patients below the age of 16 years, other than those with Lennox-Gastaut Syndrome, have not been established.

#### **Use in the Elderly**

As the pharmacokinetics in this age group do not differ significantly from a non-elderly adult population, no dosage adjustment from the recommended adult schedule is required (see also DOSAGE AND ADMINISTRATION, ADVERSE REACTIONS, and ACTION AND CLINICAL PHARMACOLOGY).

## **Use in Obstetrics**

### ***Pregnancy***

Studies in mice, rats and rabbits given lamotrigine orally or intravenously revealed no evidence of teratogenicity; however, maternal and secondary fetal toxicity producing reduced fetal weight and/or delayed ossification in mice and rats were observed. In rats, enhanced fetal as well as post-natal mortality was observed when lamotrigine was administered during late gestation and through the early post-natal period. These effects were observed at the expected clinical exposure. Lamotrigine reduced fetal folic acid levels in rats. Folic acid deficiency is assumed to be associated with an enhanced risk of congenital malformations in animals as well as in humans. Intake of folic acid when planning pregnancy and during early pregnancy may be considered. Studies in rats and rabbits indicate that lamotrigine crosses the placenta; placental and fetal plasma concentrations of lamotrigine are comparable to levels in maternal plasma. In studies where simultaneous maternal and umbilical cord samples were taken, the ratio of umbilical cord/maternal lamotrigine plasma concentrations were generally close to unity (range of 0.4 – 1.4).

### **Pregnancy Registries**

Postmarketing data from six prospective pregnancy registries have documented outcomes in approximately 4000 women exposed to lamotrigine monotherapy during the first trimester of pregnancy. Two registries have reported an increase in the risk of isolated oral cleft (isolated) malformations with exposure to lamotrigine in the first trimester, over both the study reference population and reported background rates from the literature.

North American RegistryThe North American Anti-Epileptic Drug Registry reported rates of: 7.3/1000 for lamotrigine exposures in the registry with n=684 vs. 0.70/1000 for the reference population and 0.50-2.16/1000 for the background rates.

### **Swedish Registry**

The Swedish Medical Birth Register reported rates of 9.9/1000 for lamotrigine exposures in the registry with n=403 vs. 2.0/1000 for the registry reference population and 0.50-2.16/1000 for the background rates. In the remaining registries with approximately 3000 women, 4 cases of isolated oral cleft malformation were found (1.3/1000 vs. 0.50-2.16/1000 for the background rates).

## EUROCAT

The European Network of Congenital Anomaly and Twin Registries (EUROCAT) is a network of 40 registries across 20 European countries. The results of a case control design using the EUROCAT dataset demonstrated that the risk of development of oral clefts in the newborn infants was similar to other defects following exposure to lamotrigine in the first trimester. Within the EUROCAT network, rates of exposure to lamotrigine in the first trimester of pregnancy were similar among 4571 non chromosomal, isolated oral cleft cases and 80052 non chromosomal, non oral cleft defect controls.

The data on use of lamotrigine in polytherapy combinations are insufficient to assess whether the risk of malformation associated with other agents is affected by concomitant lamotrigine use.

**LAMOTRIGINE should only be used during pregnancy if the expected benefits outweigh the potential risks.** If therapy with LAMOTRIGINE is considered necessary during pregnancy, the lowest possible therapeutic dose is recommended.

Physiological changes during pregnancy may affect lamotrigine levels and/or therapeutic effect. There have been reports of decreased lamotrigine levels during pregnancy. Appropriate clinical management of pregnant women during lamotrigine therapy should be ensured.

To provide information regarding the effects of in utero exposure to LAMOTRIGINE, physicians are advised to recommend that pregnant patients taking LAMOTRIGINE enroll in the North American Antiepileptic Drug (NAAED) Pregnancy Registry. This can be done by calling the toll-free number 1-888-233-2334, and must be done by patients themselves. Information on the registry can also be found at the website <http://www.aedpregnancyregistry.org/>.

***Labour and Delivery*** The effect of lamotrigine on labour and delivery in humans is unknown.

### **Nursing Mothers**

Lamotrigine has been reported to pass into breast milk resulting in total lamotrigine levels in infant's plasma, including neonates as well as older infants, of up to approximately 50% of the mother's plasma. Therefore, in some breast-fed infants, plasma concentrations of lamotrigine may reach levels at which pharmacological effects do occur.

Because of the potential for adverse reactions from lamotrigine in nursing infants, breast-feeding while taking this medication is not recommended. Should a woman breast-feed while on therapy with lamotrigine, the infant should be monitored for adverse effects. Events including apnea, drowsiness, and poor sucking have been reported in infants who have been human milk-fed by mothers using lamotrigine; whether or not these events were caused by lamotrigine is unknown.

### **Patients with Special Diseases and Conditions**

Clinical experience with lamotrigine in patients with concomitant illness is limited. Caution is advised when using lamotrigine in patients with diseases or conditions that could affect the metabolism or elimination of the drug.

### ***Renal Failure***

A study in individuals with chronic renal failure (not receiving other AEDs) indicated that the elimination half-life of unchanged lamotrigine is prolonged relative to individuals with normal renal function (see ACTION AND CLINICAL PHARMACOLOGY). Use of lamotrigine in patients with severe renal impairment should proceed with caution.

### ***Hepatic Impairment***

Results from a single dose pharmacokinetic study indicate that the apparent clearance of lamotrigine decreased in subjects with Grades A, B or C hepatic impairment. A reduced dosage should be used for all hepatically impaired patients, and lamotrigine should be administered with caution particularly in those patients with severe hepatic impairment (See also DOSAGE AND ADMINISTRATION and ACTIONS AND CLINICAL PHARMACOLOGY).

### ***Cardiac Conduction Abnormalities***

One placebo-controlled trial that compared electrocardiograms at baseline and during treatment demonstrated a mild prolongation of the P-R interval associated with lamotrigine administration. The prolongation was statistically significant but clinically insignificant. Patients with significant cardiovascular disease or electrocardiographic abnormalities were, however, systematically excluded from clinical trials. Thus, lamotrigine should be used with caution in patients with cardiac conduction abnormalities, and in patients taking concomitant medications which depress AV conduction.

### **Dependence Liability**

No evidence of abuse potential has been associated with lamotrigine, nor is there evidence of psychological or physical dependence in humans.

### **Laboratory Tests**

The relationship between clinical efficacy and plasma concentrations has not been clearly established. Based on the possible pharmacokinetic interactions between lamotrigine and other drugs including AEDs, monitoring of the plasma levels of lamotrigine and concomitant drugs may be indicated, particularly during dosage adjustments. In general, clinical judgment should be exercised regarding monitoring of plasma levels of lamotrigine and other drugs and whether or not dosage adjustments are necessary.

## **ADVERSE REACTIONS**

RARELY, SERIOUS SKIN RASHES, INCLUDING STEVENS JOHNSON SYNDROME AND TOXIC EPIDERMAL NECROLYSIS (LYELL SYNDROME) HAVE BEEN REPORTED. ALTHOUGH THE MAJORITY RECOVER FOLLOWING DRUG WITHDRAWAL, SOME PATIENTS EXPERIENCE IRREVERSIBLE SCARRING AND THERE HAVE BEEN RARE CASES OF ASSOCIATED DEATH (SEE WARNINGS).

Adverse experiences in patients receiving lamotrigine were generally mild, occurred within the first two weeks of therapy, and resolved without discontinuation of the drug.

### **Commonly Observed**

The most commonly observed adverse experiences associated with the use of adjunctive therapy with lamotrigine (incidence of at least 10%) were dizziness, headache, diplopia, somnolence, ataxia, nausea and asthenia.

Dizziness, diplopia, ataxia and blurred vision were dose-related and occurred more commonly in patients receiving carbamazepine in combination with lamotrigine than in patients receiving other AEDs that induce lamotrigine glucuronidation in combination with lamotrigine. Reduction of the daily dose and/or alteration of the timing of doses of concomitant antiepileptic drugs and/or lamotrigine may reduce or eliminate these symptoms. Clinical data suggest a higher incidence of rash in patients who are receiving concomitant valproic acid, or non-inducing AEDs (see WARNINGS; see also PRECAUTIONS: Skin-Related Events, Table 4).

### **Adverse Events Associated with Discontinuation of Treatment**

Across all adult add-on studies, the most common adverse experiences associated with discontinuation of lamotrigine were rash, dizziness, headache, ataxia, nausea, diplopia, somnolence, seizure exacerbation, asthenia and blurred vision. In controlled clinical trials, 6.9% of the 711 patients receiving lamotrigine discontinued therapy due to an adverse experience, versus 2.9% of the 419 patients receiving placebo. Of 3501 patients and volunteers who received lamotrigine in pre-marketing clinical studies, 358 (10.2%) discontinued therapy due to an adverse experience.

### **Serious Adverse Events Associated With Discontinuation of Treatment**

Discontinuation due to an adverse experience classified as serious occurred in 2.3% of adult patients and volunteers who received lamotrigine in the pre-marketing studies. Rash accounted for almost half of the discontinuations due to serious adverse experiences. More rapid initial titration of lamotrigine, and concomitant use of valproic acid were associated with higher incidences of rash-related withdrawal in clinical studies (see WARNINGS and PRECAUTIONS: Skin-Related Events, Table 5).

### **Adult Controlled Add-On Clinical Studies**

Table 7 enumerates adverse experiences that occurred with an incidence of 2% or greater among refractory patients with epilepsy treated with lamotrigine.

### **Other Events Observed During Clinical Studies**

During clinical testing, multiple doses of lamotrigine were administered to 3501 patients and volunteers. The conditions and duration of exposure to lamotrigine during these clinical studies varied greatly. Studies included monotherapy and pediatric trials. A substantial proportion of the exposure was gained in open, uncontrolled clinical studies. Adverse experiences associated with exposure to lamotrigine were recorded by clinical investigators using terminology of their own choosing. Consequently, it is not possible to provide a meaningful estimate of the proportion of individuals experiencing adverse events without first grouping similar types of adverse experiences into a smaller number of standardized event categories.

Since the adverse experiences reported occurred during treatment with lamotrigine in combination with other antiepileptic drugs, they were not necessarily caused by lamotrigine.

The following adverse events have been reported on one or more occasions by at least 1% of patients and volunteers exposed to lamotrigine: anorexia, weight gain, amnesia, concentration disturbance, confusion,



emotional lability, nervousness, nystagmus, paresthesia, thinking abnormality and vertigo (all types of events are included except those already listed in Table 7).

**Adult Monotherapy Clinical Studies**

Withdrawals due to adverse events were reported in 42 (9.5%) of newly diagnosed patients treated with lamotrigine monotherapy. The most common adverse experiences associated with discontinuation of lamotrigine were rash (6.1%), asthenia (1.1%), headache (1.1%), nausea (0.7%) and vomiting (0.7%).

**Elderly Monotherapy Clinical Studies**

A study with elderly newly-diagnosed epilepsy patients yielded rates of adverse events which were generally similar to those reported in adults (see Table 7). The rate of withdrawal due to adverse events was 21.6%, with rash (3%), nausea (3%) and coordination abnormalities (3%) representing the most common events associated with withdrawal, followed by somnolence (2%), depression (2%), accidental injury (2%) and malaise (2%) (see also DOSAGE AND ADMINISTRATION and ACTION AND CLINICAL PHARMACOLOGY).

**Adjunctive Therapy in Lennox-Gastaut Syndrome**

In 169 adult and pediatric patients with Lennox-Gastaut syndrome, 3.8% of patients on lamotrigine and 7.8% of patients on placebo discontinued due to adverse experiences. The most commonly reported adverse experiences that led to discontinuation were rash for patients treated with lamotrigine and deterioration of seizure control for patients treated with placebo. Fever and infection occurred at least 10% more frequently in patients ≤12 years of age than in patients >12 years of age on lamotrigine. Rash occurred at least 10% more frequently in female patients than male patients on lamotrigine. Table 8 lists adverse events that occurred in at least 1% of 79 adult and pediatric patients who received lamotrigine up to 15 mg/kg per day or a maximum of 400 mg per day.

	<b>ADULTS (ADJUNCTIVE THERAPY)<sup>2</sup></b>		<b>ELDERLY (MONOTHERAPY)<sup>3</sup></b>
	<b>Lamotrigine (and other AEDs)</b>	<b>Placebo (and other AEDs)</b>	<b>Lamotrigine</b>
<b>Total number of Patients</b>	<b>(n = 711)</b>	<b>(n = 419)</b>	<b>(n = 102)</b>
<b>Body System/Adverse Experience<sup>4</sup></b>			
<b>BODY AS A WHOLE</b>			
Headache	29.1	19.1	8.8
Accidental Injury	9.1	8.6	8.8
Asthenia	8.6	8.8	4.9
Flu Syndrome	7.0	5.5	4.9
Pain	6.2	2.9	5.9
Back Pain	5.8	6.2	3.9
Fever	5.5	3.6	0.9
Abdominal Pain	5.2	3.6	3.9
Infection	4.4	4.1	5.9
Neck Pain	2.4	1.2	0
Malaise	2.3	1.9	4.9

Seizure Exacerbation	2.3	0.5	n/a
<b>CARDIOVASCULAR</b>			
Chest pain	n/a	n/a	2.9
Syncope	n/a	n/a	2.9
Cerebrovascular accident	n/a	n/a	3.9
<b>DIGESTIVE</b>			
Nausea	18.6	9.5	8.8
Vomiting	9.4	4.3	8.8
Diarrhea	6.3	4.1	6.9
Dyspepsia	5.3	2.1	5.9
Constipation	4.1	3.1	8.9
Tooth Disorder	3.2	1.7	0
<b>MUSCULOSKELETAL</b>			
Myalgia	2.8	3.1	0.9
Arthralgia	2.0	0.2	2.9
<b>NERVOUS</b>			
Dizziness	38.4	13.4	9.8
Ataxia	21.7	5.5	0
Somnolence	14.2	6.9	11.8
Incoordination	6.0	2.1	12.7
Insomnia	5.6	1.9	3.9

	ADULTS (ADJUNCTIVE THERAPY) <sup>2</sup>		ELDERLY (MONOTHERAPY) <sup>3</sup>
	Lamotrigine (and other AEDs)	Placebo (and other AEDs)	Lamotrigine
<b>Total number of Patients</b>	<b>(n = 711)</b>	<b>(n = 419)</b>	<b>(n = 102)</b>
<b>Body System/Adverse Experience<sup>4</sup></b>			
Tremor	4.4	1.4	0.9
Depression	4.2	2.6	4.9
Anxiety	3.8	2.6	0.9
Convulsion	3.2	1.2	1.9
Irritability	3.0	1.9	0
Speech Disorder	2.5	0.2	0.9
Memory Decreased	2.4	1.9	n/a
Memory Decreased (Memory Rating Question)	n/a	n/a	19.6
<b>RESPIRATORY</b>			
Rhinitis	13.6	9.3	0.9
Pharyngitis	9.8	8.8	1.9
Cough Increased	7.5	5.7	2.9
Respiratory Disorder	5.3	5.5	0.9
Asthma			3.0
<b>SKIN AND APPENDAGES</b>			
Rash	10.0	5.0	8.8
Pruritus	3.1	1.7	5.9
Herpes Zoster	n/a	n/a	3.0
Eczema	n/a	n/a	2.0
Ulcer Skin	n/a	n/a	2.0
<b>SPECIAL SENSES</b>			
Diplopia	27.6	6.7	0
Blurred Vision	15.5	4.5	0
Vision Abnormality	3.4	1.0	0
<b>UROGENITAL</b>			
<b>Female Patients</b>	<b>(n = 365)</b>	<b>(n = 207)</b>	<b>(n = 47)</b>
Dysmenorrhea	6.6	6.3	n/a
Menstrual Disorder	5.2	5.8	n/a
Vaginitis	4.1	0.5	0

1. Patients from the studies summarized in the first two columns were receiving 1 to 3 concomitant enzyme-inducing antiepileptic drugs in addition to lamotrigine or placebo. Patients from the single study summarized in the last column were compared to n=48 patients receiving carbamazepine. Patients may have reported multiple adverse experiences during the study or at discontinuation. Thus, patients may be included in more than one category.
2. Studies 05, 06, 16 (US) & 16, 21, 35 & 37 (UK)
3. Study 105 – 124 – C93
4. All adverse experiences reported by at least 2% of patients treated with either lamotrigine add-on or monotherapy are included.

**Table 8. Treatment-emergent Adverse Experience Incidence in Placebo-controlled Add-on Trial in Adult and Pediatric Patients with Lennox-Gastaut Syndrome<sup>1</sup>**

Body System/ Adverse Experience	Percent Of Patients Receiving Lamotrigine (n = 79)	Percent Of Patients Receiving Placebo (n = 90)
	<i>Infection</i>	13
	<i>Accidental Injury</i>	9
	<i>Flu Syndrome</i>	5
	<i>Asthenia</i>	3
	<i>Abdominal Pain</i>	3
	<i>Back Pain</i>	1
	<i>Edema Of The Face</i>	1
	<i>Lab Test Abnormal</i>	1
	<i>Pain</i>	1
<b>Cardiovascular</b>	<i>Hemorrhage</i>	3
<b>Digestive</b>	<i>Vomiting</i>	9
	<i>Constipation</i>	5
	<i>Diarrhea</i>	4
	<i>Nausea</i>	4
	<i>Anorexia</i>	3
	<i>Stomatitis Aphtha</i>	1
	<i>Tooth Disorder</i>	1
<b>Endocrine</b>	<i>Cushing's Syndrome</i>	1
	<i>Hypothyroidism</i>	1
<b>Hemic And Lymphatic</b>	<i>Lymphadenopathy (Enlarged Cervical Nodes)</i>	1
<b>Nervous System</b>	<i>Ataxia</i>	4
	<i>Convulsions</i>	4
	<i>Tremor</i>	3
	<i>Agitation</i>	1
	<i>Coordination</i>	1
	<i>Dizziness</i>	1
	<i>Emotional Lability</i>	1

**Table 8. Treatment-emergent Adverse Experience Incidence in Placebo-controlled Add-on Trial in Adult and Pediatric Patients with Lennox-Gastaut Syndrome<sup>1</sup>**

Body System/ Adverse Experience	Percent Of Patients Receiving Lamotrigine	Percent Of Patients Receiving Placebo
	(n = 79)	(n = 90)
	<i>Nervousness</i>	1
	<i>Vertigo</i>	1
<b>Respiratory</b>	<i>Pharyngitis</i>	14
	<i>Bronchitis</i>	9
	<i>Pneumonia</i>	3
	<i>Dyspnea</i>	1
<b>Skin</b>	<i>Rash</i>	9
	<i>Eczema</i>	4
	<i>Nail disorder</i>	1
<b>Special Senses</b>	<i>Blepharitis</i>	1
	<i>Conjunctivitis</i>	1
	<i>Keratitis</i>	1
	<i>Ear Pain</i>	1
	<i>Eye Pain</i>	1
<b>Urogenital</b>	<i>Urinary Tract Infection</i>	3
	<i>Balanitis</i>	2
	<i>Penis Disorder</i>	2

1. The most frequently reported adverse reactions in children  $\leq 12$  years of age in both treatment groups were pharyngitis, fever and infection.

### Post-Marketing Adverse Drug Reactions

In addition to the adverse experiences reported during clinical testing of lamotrigine, the following adverse experiences have been reported in patients receiving marketed lamotrigine and from worldwide noncontrolled investigational use. These adverse experiences have not been listed above, and data are insufficient to establish causation.

**Table 9 Post-Marketing Adverse Drug Reactions**

Adverse Event	Reported Frequency				
	Very Common >10%	Common >1% to <10%	Uncommon >0.1% to <1%	Rare >0.01% to <0.1%	Very Rare <0.01%
<b>Blood and Lymphatic</b> Hematological abnormalities (disseminated intravascular coagulation, hemolytic anemia, neutropenia, leucopenia, pancytopenia, anemia, thrombocytopenia, red cell aplasia, agranulocytosis and aplastic anemia) Lymphadenopathy*					X
<b>Gastrointestinal</b> Esophagitis§					
<b>Hepatobiliary Tract and Pancreas</b> Pancreatitis§ Elevations of liver function tests Hepatic dysfunction, including hepatic failure*					X X
<b>Immunologic</b> Lupus-like reaction Vasculitis§					X
<b>Lower Respiratory</b> Apnea§					
<b>Musculoskeletal</b> Rhabdomyolysis (observed in patients experiencing hypersensitivity reactions)					X
<b>Neurology</b> Aseptic meningitis* Hallucinations Exacerbation of parkinsonian symptoms* Extrapyrimal effects Choreoathetosis Movement disorders (such as tics and unsteadiness)					X X X X X X
<b>Non-site Specific</b> Hypersensitivity reaction Multiorgan failure Progressive immunosuppression§.					X X

\*see additional information below

§ Data are insufficient to support an estimate of incidence or to establish causation

**Hepatic:** Hepatic dysfunction usually occurs in association with hypersensitivity reactions but isolated cases have been reported without overt signs of hypersensitivity.

**Lymphatic:** There have been reported cases of lymphadenopathy in the absence of hypersensitivity reactions, in patients with or without previous history, and taking lamotrigine alone or in combination with other medications (including other AEDs). Discontinuation of lamotrigine or, in some cases, dose reduction resolved the reaction.

**Neurology** There have been reports that lamotrigine may worsen parkinsonian symptoms in patients with pre-existing Parkinson's disease and isolated reports of extrapyramidal effects and choreoathetosis in patients without this underlying condition. There have been very rare reports of aseptic meningitis in patients taking lamotrigine alone or in combination with other AEDs. In some cases, discontinuation of lamotrigine resolved this reaction (see Warnings, Hypersensitivity Reactions).

**Non-site Specific:** Hypersensitivity reaction, multiorgan failure, progressive immunosuppression.

**Oral Contraceptives:** There have been post-marketing reports of breakthrough seizures in patients taking lamotrigine and hormonal contraceptives. In some cases, reduced serum lamotrigine levels during coadministration with a hormonal contraceptive have been documented. Most cases have responded to lamotrigine dose increase (see DOSAGE AND ADMINISTRATION: Women and Oral Contraceptives and PRECAUTIONS, Drug Interactions, Oral Contraceptives).

## **OVERDOSAGE**

For management of a suspected drug overdose, contact your regional Poison Control Centre.

### **Adults**

Acute ingestion of doses in excess of 20 times the maximum therapeutic dose has been reported. In general, overdose has resulted in symptoms including nystagmus, ataxia, grand mal convulsions, impaired consciousness, coma, and intraventricular conduction delay (QRS broadening).

However, there has been one fatality reported, a 22 year old female who intentionally ingested 15 g of lamotrigine. The patient experienced acute clonic seizures and heart failure, then became asystolic and was resuscitated, but she died 2 days later.

### **Pediatrics**

Among patients  $\leq 16$  years of age, the two highest known single doses of lamotrigine have been 3 g by a 14 year old female and approximately 1 g by a 4 year old male. The 14 year old female was taking marketed lamotrigine; after the dose, she lost consciousness and was admitted to the hospital for supportive therapy, where she recovered fully (time to recovery not reported). The 4 year old male was drowsy and agitated when found, and his condition worsened to coma level II after hospitalization. He was given supportive therapy, and his condition improved rapidly with full recovery in 3 days.

There are no specific antidotes for lamotrigine. Following a suspected overdose, immediate hospitalization of the patient is advised. In the event of a very recent overdose/ingestion of a potentially life-threatening amount of the drug, emesis may be induced if indicated. General supportive care is indicated, including frequent monitoring of vital signs and close observation of the patient. It is uncertain whether hemodialysis

is an effective means of removing lamotrigine from the blood. In six renal failure patients, about 20% of the amount of lamotrigine in the body was removed during 4 hours of hemodialysis.

## DOSAGE AND ADMINISTRATION

### Potential for Serious Dermatological Reactions

**Do not exceed the recommended initial dose and subsequent dose escalations of lamotrigine. More rapid initial titration has been associated with an increased incidence of serious dermatological reactions (see WARNINGS), as has concomitant use of valproic acid, particularly in the absence of AEDs that induce lamotrigine glucuronidation (see WARNINGS and PRECAUTIONS). Patients with a history of rash or allergy to other AEDs are more at risk for lamotrigine associated rash than those without such history (see WARNINGS and PRECAUTIONS).**

### General

LAMOTRIGINE should be added to the patient's current antiepileptic therapy.

LAMOTRIGINE (lamotrigine) is intended for oral administration and may be taken with or without food. LAMOTRIGINE tablets should be swallowed whole and should not be chewed or crushed. Valproic acid more than doubles the elimination half-life of lamotrigine and reduces the plasma clearance by 50%; conversely, drugs that induce lamotrigine glucuronidation such as carbamazepine, phenytoin, phenobarbital and primidone reduce the elimination half-life of lamotrigine by 50% and double the plasma clearance (see ACTION AND CLINICAL PHARMACOLOGY). These clinically important interactions require dosage schedules of LAMOTRIGINE as summarized in Table 10 .

LAMOTRIGINE does not alter plasma concentrations of concomitantly administered AEDs that induce lamotrigine glucuronidation and therefore they do not usually require dose adjustment to maintain therapeutic plasma concentrations. For patients receiving LAMOTRIGINE in combination with other AEDs, an evaluation of all AEDs in the regimen should be considered if a change in seizure control or an appearance or worsening of adverse experiences is observed. If there is a need to discontinue therapy with LAMOTRIGINE, a step-wise reduction of dose over at least two weeks (approximately 50% per week) is recommended unless safety concerns (*i.e.* rash) require a more rapid withdrawal (see WARNINGS and PRECAUTIONS).

The relationship of plasma concentration to clinical response has not been established for lamotrigine. Dosing of LAMOTRIGINE should be based on therapeutic response. In controlled clinical studies, doses of lamotrigine that were efficacious generally produced steady-state trough plasma lamotrigine concentrations of 1 to 4 µg/mL in patients receiving one or more concomitant AEDs. Doses of lamotrigine producing this plasma concentration range were well tolerated. As with any antiepileptic drug, the oral dose of LAMOTRIGINE should be adjusted to the needs of the individual patient, taking into consideration the concomitant AED therapy the patient is receiving.

### Women and Oral Contraceptives



**Starting LAMOTRIGINE in Women Taking Oral Contraceptives:** Although oral contraceptives have been shown to increase the clearance of lamotrigine (see PRECAUTIONS: Drug Interactions), no adjustments to the recommended dose escalations guidelines for LAMOTRIGINE should be necessary solely based on the use of oral contraceptives. Therefore, dose escalation should follow the recommended guidelines based on whether LAMOTRIGINE is added to valproate (an inhibitor of lamotrigine glucuronidation) or an inducer of lamotrigine glucuronidation, or whether LAMOTRIGINE is added in the absence of valproate or an inducer of lamotrigine glucuronidation.

### **Adjustments to the Maintenance Dose of LAMOTRIGINE**

Taking or Starting Oral Contraceptives: For women not taking inducers of lamotrigine glucuronidation, the maintenance dose of LAMOTRIGINE will in most cases need to be increased, by as much as 2-fold over the recommended target maintenance dose. (see PRECAUTIONS: Drug Interactions). It is recommended that from the time that the hormonal contraceptive is started, the LAMOTRIGINE dose is increased by 50 to 100 mg/day every week, according to the individual clinical response. Dose increases should not exceed this rate, unless the clinical response supports larger increases.

Stopping Oral Contraceptives: For women not taking inducers of lamotrigine glucuronidation (e.g., carbamazepine, phenytoin, phenobarbital, primidone, or rifampin), the maintenance dose of LAMOTRIGINE will in most cases need to be decreased by as much as 50% of the maintenance dose with concurrent oral contraceptives, (see PRECAUTIONS: Drug Interactions). It is recommended to gradually decrease the daily dose of LAMOTRIGINE by 50 to 100 mg each week (at a rate not exceeding 25% of the total daily dose per week) over a period of 3 weeks, unless the clinical response indicates otherwise.

#### ***Women and Other Hormonal Contraceptive Preparations or Hormone Replacement Therapy:***

Although the effect of other hormonal contraceptive preparations or hormone replacement therapy on the pharmacokinetics of lamotrigine has not been evaluated, the effect may be similar to oral contraceptives (see PRECAUTIONS: Drug Interactions).

Therefore, similar adjustments to the dosage of LAMOTRIGINE may be needed, based on clinical response.

#### **Restarting LAMOTRIGINE Therapy**

It is recommended that LAMOTRIGINE not be restarted in patients who discontinued due to rash associated with prior treatment with LAMOTRIGINE, unless the potential benefits clearly outweigh the risks. If the decision is made to restart a patient who has discontinued LAMOTRIGINE for any reason, the need to restart with the initial dosing recommendations should be assessed. The greater the interval of time since the previous dose, the greater consideration should be given to restarting with the initial dosing recommendations. If a patient has discontinued LAMOTRIGINE for a period of more than 5 half-lives, it is recommended that initial dosing recommendations and guidelines be followed. The half-life of LAMOTRIGINE is affected by other concomitant medications (see ACTIONS and CLINICAL PHARMACOLOGY: Pharmacokinetics).

#### **Adults and Children Over 12 Years of Age**

**Do not exceed the recommended initial dose and subsequent dose escalations of LAMOTRIGINE. More rapid initial titration has been associated with an increased incidence of serious dermatological reactions (see WARNINGS).**

For patients taking AEDs whose pharmacokinetic interactions with lamotrigine are currently unknown, follow the titration schedule for concomitant VPA (regardless of any concomitant medication).

**Table 10. Escalation regimen for LAMOTRIGINE in Patients over 12 Years of Age**

	Patients Taking Medications that induce lamotrigine glucuronidation <sup>1</sup>		Patients Taking Medications that neither induce nor inhibit lamotrigine glucuronidation <sup>2</sup>	<i>For Information Only*</i> Patients taking Valproic Acid <sup>3</sup> (regardless of any concomitant medication)
	with valproate <sup>3</sup>	without valproate <sup>3</sup>		
<b>Weeks 1 and 2</b>	25 mg once a day	50 mg once a day	25 mg once a day	25 mg every other day
<b>Weeks 3 and 4</b>	25 mg twice a day	50 mg twice a day	25 mg twice a day	25 mg once a day
<b>Weeks 5 onwards to maintenance</b>	Increase by 25-50 mg every 1 to 2 weeks	Increase by 100 mg every 1 to 2 weeks	Increase by 25-50 mg every 1 to 2 weeks	Increase by 25-50 mg every 1 to 2 weeks
<b>Usual Maintenance Dose</b>	50-100 mg twice a day	150- 250 mg twice a day	150-100 mg twice a day	50-100 mg twice a day

VPA = Valproic acid.

1. Medications that induce lamotrigine glucuronidation, include carbamazepine, phenobarbital, phenytoin, primidone, rifampin, lopinavir/ritonavir and atazanavir/ritonavir
2. Medications that neither inhibit nor induce lamotrigine glucuronidation include olanzapine, oxcarbazepine, felbamate, gabapentin, levetiracetam, pregabalin, topiramate and zonisamide
3. Valproic acid is an inhibitor of lamotrigine glucuronidation

\* Column reflects dosage recommendations in the United Kingdom and is provided for information.

**There have been no controlled studies to establish the effectiveness or optimal dosing regimen of add-on lamotrigine therapy in patients receiving only AEDs that neither inhibit nor induce lamotrigine glucuronidation or valproic acid. However, available data from open clinical trials indicate that the addition of lamotrigine under these conditions is associated with a higher incidence of serious rash or rash-related withdrawal, even at an initial titration dose of 12.5 mg daily (see PRECAUTIONS:Skin-Related Events, Tables 4 and 5; see also WARNINGS).** The potential medical benefits of the addition of LAMOTRIGINE under these conditions must be weighed against the increased risk of serious rash. If use of LAMOTRIGINE under these conditions is considered clinically indicated, titration should proceed with extreme caution, especially during the first six weeks of treatment.

### **Withdrawal of Concomitant AEDS in Adults**

Concomitant AEDs may be decreased over a 5-week period, by approximately 20% of the original dose every week. However, a slower taper may be used if clinically indicated. During this period, the dose of LAMOTRIGINE administered will be dependent upon the effect of the drug being withdrawn on the pharmacokinetics of lamotrigine, together with the overall clinical response of the patient. The withdrawal of enzyme inducing AEDs (*i.e.* phenytoin, phenobarbital, primidone and carbamazepine) will result in an approximate doubling of the  $t_{1/2}$  of lamotrigine. Under these conditions, it may be necessary to reduce the dose of LAMOTRIGINE. In contrast, the withdrawal of enzyme inhibiting AEDs (*i.e.* valproic acid) will result in a decrease in the  $t_{1/2}$  of lamotrigine and may require an increase in the dose of LAMOTRIGINE.

### **Pediatric Dosing**

**This product does not have dosage strengths small enough to initiate treatment in children under 12 years of age.**

**Elderly Patients (>65 years of age)**

No dosage adjustment from the recommended adult schedule is required. The pharmacokinetics of lamotrigine in this age group do not differ significantly from a non-elderly population (see also ACTION AND CLINICAL PHARMACOLOGY and ADVERSE REACTIONS).

**Patients with Impaired Renal Function**

The elimination half-life of lamotrigine is prolonged in patients with impaired renal function (see ACTION AND CLINICAL PHARMACOLOGY). Caution should be exercised in dose selection for patients with impaired renal function.

**Patients with Impaired Hepatic Function**

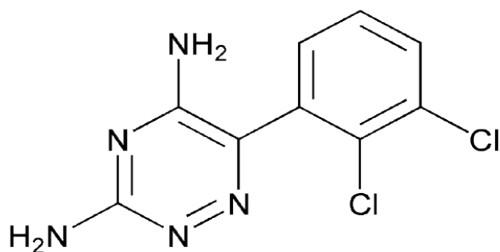
**This product does not have dosage strengths small enough to initiate treatment in patients with impaired hepatic function.**

## PHARMACEUTICAL INFORMATION

### Drug Substance

Trade Name:	LAMOTRIGINE
Proper Name:	Lamotrigine
Chemical Name:	1) 1,2,4-Triazine-3,5-diamine,6-(2,3-dichlorophenyl)- [Chem. Abstr.]] 2) 1,2,4-Triazine-3,5-diamine,6-(2,3-dichlorophenyl)-[USAN]

### Structural Formula:



Molecular Formula:	C <sub>9</sub> H <sub>7</sub> Cl <sub>2</sub> N <sub>5</sub>
Molecular Weight:	256.09 g/mol

Description: Lamotrigine is a white to off-white powder that is non-hygroscopic and has moderate surface area and porosity. It has a melting point between 215 to 219°C, the pH of a saturated water solution is 6.88, and the pKa at 25°C is 5.7. It is soluble in dimethylformamide, slightly soluble in acetone, and very slightly soluble in water (0.153 g/L).

### **Composition**

In addition to the active ingredient lamotrigine, each LAMOTRIGINE tablet contains the following non-medicinal ingredients: colloidal silicon dioxide, magnesium stearate, microcrystalline cellulose, sodium starch glycolate, yellow aluminum lake (100 mg tablets only) and yellow ferric oxide (150 mg tablets only).

## Stability and Storage Recommendations

Store at controlled room temperature (15°C to 30°C) in tight containers, in a dry place and protected from light.

## AVAILABILITY OF DOSAGE FORMS

LAMOTRIGINE 25 mg Tablets: Each white, shield-shaped, flat faced, bevelled edge tablet, scored and engraved "25" on one side and plain on the other side, contains 25 mg of lamotrigine. Available in bottles of 100 and 500 tablets.

LAMOTRIGINE 100 mg Tablets: Each peach, shield-shaped, flat faced, bevelled edge tablet, scored and engraved "LAM" over "100" on one side and engraved plain on the other side, contains 100 mg of lamotrigine. Available in bottles of 100 and 500 tablets.

LAMOTRIGINE 150 mg Tablets: Each cream, shield-shaped, flat faced, bevelled edge tablet, scored and engraved "LAM" over "150" on one side and engraved plain on the other side, contains 150 mg of lamotrigine. Available in bottles of 60 and 100 tablets.

## DETAILED PHARMACOLOGY

### Animal Pharmacology

#### *In Vivo Studies*

In *in vivo* studies in animal models, lamotrigine has an antiepileptic profile suggesting utility in the treatment of partial seizures and generalized tonic-clonic seizures. Lamotrigine was effective in the maximal electroshock (MES), maximum pentylenetetrazol, electrically evoked after discharge (EEAD) tests and in visually evoked after discharge (VEAD) tests. In mice and rats, lamotrigine has a longer duration of action than phenytoin, carbamazepine, diazepam or valproate. Lamotrigine's potency is similar to that of phenytoin (mouse), phenobarbital (rat), carbamazepine (rat) and diazepam (mouse) (see Table 11).

<b>Table 11. Potency and duration of lamotrigine following maximal electroshock-induced seizures.</b>				
<b>Drug</b>	<b>ED<sub>50</sub> For Abolition Of Hind Leg Extension (mg/kg p.o.)</b>		<b>Duration Maintenance Of Peak Activity (hours)</b>	
	<b>Mouse</b>	<b>Rat</b>	<b>Mouse</b>	<b>Rat</b>
Lamotrigine	2.6 to 3.8	1.9 to 3.3	1 to 8	1 to 8
Phenytoin	3.5	19.7	8	1
Phenobarbital	9.1	4.7	1	1
Carbamazepine	6.9	2.5	1	0.25
Valproate	332.4	238	0.25	1
Diazepam	3.2	16.9	1	1

In single-dose mouse and rat studies, the anticonvulsant ED<sub>50</sub>s of orally administered lamotrigine ranged from 1.9 to 3.8 mg/kg. Signs of CNS toxicity did not occur until high multiples of the lamotrigine ED<sub>50</sub>s were reached, and consisted of ataxia and tremors (at 140 mg/kg), and convulsions (at 300 and 675 mg/kg in mice and rats, respectively). In multiple-dose studies in mice and rats, the anticonvulsant ED<sub>50</sub>s were unchanged. In mice, lamotrigine was well tolerated at chronic doses up to 30 mg/kg/day. In rats, convulsions possibly related to drug administration were rarely observed (in no more than 1 of 46 to 49 animals per dose group) and did not occur until week 24 of chronic oral dosing with 15 mg/kg/day.

### ***Preclinical Pharmacokinetics***

Lamotrigine was found to accumulate in the kidney of the male rat, bind to melanin-containing ocular tissue of the pigmented rat and cynomolgus monkey, and prolong gastric emptying time in rats. In dogs, lamotrigine was extensively metabolized to a 2-N-methyl metabolite which produced dose-dependent prolongations of the P-R interval and QRS duration in ECG tracings in this species. Only trace amounts of this metabolite (< 0.6% of lamotrigine dose) were found in human urine. Clinical studies showed no evidence in humans for manifestations of these preclinical observations regarding accumulation in the kidney, melanin binding, gastric emptying or cardiac effects.

### ***In Vitro Studies***

*In vitro* pharmacological studies suggest that lamotrigine acts at voltage-sensitive sodium channels to stabilize neuronal membranes and inhibit the release of excitatory amino acid neurotransmitters (eg. glutamate and aspartate) that are thought to play a role in the generation and spread of epileptic seizures.

Lamotrigine was shown to be a weak inhibitor of dihydrofolate reductase *in vitro*, hence there is a possibility of interference with folate metabolism during long term therapy (See section **Use in Obstetrics**). In clinical studies, lamotrigine did not affect blood folate concentrations or associated hematologic parameters.

## TOXICOLOGY

### Acute Toxicity

Single-dose lethality values were calculated in male and female mice and rats receiving lamotrigine by the oral and intravenous routes of administration. The calculated LD<sub>50</sub> values are listed in Table 12.

<b>Table 12. Acute toxicity studies.</b>				
<b>Route</b>	<b>LD<sub>50</sub> Dose (mg/kg)</b>			
	<b>Mouse</b>		<b>Rat</b>	
	<b>Male</b>	<b>Female</b>	<b>Male</b>	<b>Female</b>
Oral	245	292	205	163
I.V.	141	134	107	112

The lowest doses (mg/kg) at which any deaths occurred were 300 (oral) and 125 (I.V.) in mice and 140 (oral) and 100 (I.V.) in rats. Deaths were seen as early as 1 minute following I.V. dosing and 30 minutes following oral dosing. The most severe sign noted was clonic convulsions (rats only). Other signs, including tremors, ataxia, hypoactivity, decreased respiration and hypothermia were also observed. Survivors generally recovered within 24 hours, but hypoactivity lasted for several days in some animals.

### Long-Term Toxicity

Subacute to subchronic (14 to 30 days) studies were conducted in rats (oral and intravenous), marmosets (oral) and cynomolgus monkeys (intravenous).

Effects seen in rats which were considered to be consistently associated with oral lamotrigine administration included specific nephropathy (males, 1 mg/kg/day), increased weight of stomach contents (6.25 mg/kg/day), increased water consumption and urine output (10 mg/kg/day), reduced weight gain and food consumption (22.5 mg/kg/day), and convulsions (50 mg/kg/day).

Marmosets were given either single daily lamotrigine doses of 10 to 100 mg/kg/day or 3 daily doses ranging from 10 to 50 mg/kg/dose. The following effects were observed at the following lowest doses given: slight decreases in WBC, RBC and related values at (100 mg/kg/day or 22.5 mg/kg/dose t.i.d.); post-dose incoordination, slight body weight loss, decreased food consumption (50 mg/kg/day or 22.5 mg/kg/dose t.i.d.); post-dose salivation and vomiting (10 mg/kg/day or 22.5 mg/kg/dose t.i.d.). Blood, brain and liver folate levels were not affected.

In a 14-day intravenous study in cynomolgus monkeys, daily lamotrigine doses ranged from 5 to 20 mg/kg. The following effects were observed (shortly after dosing) at the following lowest doses given: ataxia, vomiting and decreased food consumption (10 mg/kg); nystagmus (15 mg/kg); agitation, slight body weight loss (20 mg/kg).

In chronic oral toxicity studies, mice were given daily lamotrigine doses of up to 60 mg/kg for 90 days. Rats were given doses of up to 30 mg/kg/day for 90 days, up to 25 mg/kg/day for 6 months, and up to 15

mg/kg/day for one year. The only effect seen in mice was increased stomach content weight, likely related to delayed gastric emptying (30 and 60 mg/kg/day). The most prominent drug-related effects in rats were renal histopathological changes, seen at all dose levels, other effects seen were similar to those documented in the subacute and subchronic rat studies. Other species were also evaluated by light microscopic examination of kidney sections from animals given lamotrigine and by *in vitro* studies of kidney cortex slice uptake of radio-labelled lamotrigine. The studies demonstrated that the renal effects seen are limited to male rats and represent exacerbation of spontaneous hyaline droplet changes related to the renal proximal tubular handling of  $\alpha_{2u}$ -globulin. This globulin is a specific protein synthesized by the liver in male rats only. The hyaline droplets are secondary lysosomes and contain  $\alpha_{2u}$ -globulin. Lamotrigine is also accumulated in the renal proximal tubular epithelium in the form of rectilinear and crystalline inclusions which likely contain both  $\alpha_{2u}$ -globulin and lamotrigine. Time-and-dose dependent loading of these cells leads to cellular degeneration and eventual regeneration. Changes are consistent with those seen in "light hydrocarbon nephropathy", a male-rat-specific condition, which is reversible following termination of treatment and has no human counterpart.

Cynomolgus monkeys were treated with daily oral lamotrigine doses of up to 20 mg/kg in 13-week, 26-week and 52-week studies. Effects noted were limited to animals given 20 mg/kg/day and included post-dose ataxia, lethargy, trembling, locomotor incoordination and convulsions in some animals in the 26-week study. A reduced rate of body weight gain and transient weight loss was seen at doses as low as 5 mg/kg/day, but only in the 52-week study.

### **Carcinogenicity**

There was no evidence of carcinogenicity in mice treated orally with lamotrigine (10 to 30 mg/kg/day) for up to 106 weeks. Lamotrigine was not carcinogenic in two rat studies where animals received doses of 1 to 10 mg/kg/day for up to 104 weeks (females) or 112 weeks (males). In both studies, survival was not affected by treatment.

### **Mutagenicity**

*In vitro*, lamotrigine was not mutagenic in microbial (Ames) or mammalian (mouse lymphoma) mutagenicity tests with or without metabolic activation. Lamotrigine had no effect on the incidence of chromosomal abnormalities in cultured human lymphocytes exposed to concentrations of up to 1000 mcg/mL in the presence or absence of S9 metabolic activation. Concentrations of 500 and 1000 mcg/mL without activation were cytotoxic.

*In vivo*, there was no increase in the incidence of chromosomal abnormalities in bone marrow cells of rats given doses of lamotrigine of up to 200 mg/kg.

### **Reproduction and Teratology**

No evidence of teratogenicity was observed in mice, rats and rabbits given oral doses of lamotrigine at up to 14, 4 and 4 times, respectively, the currently recommended upper human maintenance dose (500 mg/day or 7 mg/kg/day). This was true when lamotrigine was given during the period of major organogenesis or was started prior to and continued throughout the period of organogenesis. In these same oral dosing studies maternal toxicity and secondary fetal toxicity, resulting in reduced fetal weight and/or delayed ossification were seen. Teratology studies were also conducted using bolus intravenous (I.V.) administration of the isethionate salt of lamotrigine in multiples of the projected human oral dose. Intravenous lamotrigine resulted in convulsions or impaired coordination in rat and rabbit dams at 30 mg/kg and 15 mg/kg,



respectively. The 30 mg/kg dose also produced an increased incidence of intrauterine death without signs of teratogenicity in rats only.

When rats were dosed prior to and during mating, and throughout gestation and lactation at daily oral doses of 5, 10 and 20 mg/kg, gestation was slightly longer in the dams allowed to deliver in the 20 mg/kg/group ( $22.0 \pm 0.0$  vs.  $21.5 \pm 0.5$  days in non-treated controls). These doses are approximately 1, 1.5 and 3 times the currently recommended upper human maintenance dose (500 mg/kg or 7 mg/kg/day). In this same study, body weight gain and food consumption of the parent generation ( $F_0$ ) dams dosed at 20 mg/kg/day were less than the control dams and were indicative of maternal toxicity. There was no evidence of teratogenic effects in the litters of the dams designated for cesarean section. Effects secondary to maternal toxicity consisted of a decrease in mean fetal weight and length of 20 mg/kg pups, the incidence of two skeletal variants was increased and the incidence of one skeletal variant was decreased. When pregnant rats of the same strain were dosed only on days 15 to 20 of gestation at the same daily doses of 5, 10 and 20 mg/kg, more pronounced maternal toxicity than noted in the previously described study at the same doses was seen in dams given 10 and 20 mg/kg doses and consisted of dehydration, hypothermia and decreased weight gain and food consumption. A smaller decrease in body weight gain was seen in the 5 mg/kg group. Gestation was prolonged in the 20 mg/kg group ( $22.6$  vs.  $22.0$  days in non-treated controls) and secondary to maternal toxicity there were increased numbers of stillborn pups (partial to entire litters) in the 10 and 20 mg/kg groups and increased early neonatal mortality.

Even at maternally toxic levels leading to fetal death, there was no evidence of teratogenicity. There are, however, no adequate and well-controlled studies in pregnant women. Because animal reproduction studies are not always predictive of human response, this drug should be used during pregnancy, only if clearly needed. Clinical data indicate that lamotrigine has no effect on blood folate concentrations in adults; however, the effects of lamotrigine on fetal blood folate levels *in utero* are unknown.

## **BIBLIOGRAPHY**

1. Anon. Lamotrigine. *Drugs Future* 1987; 12(6):595-596.
2. Betts T, Goodwin G, Withers RM, Yuen AW. Human safety of lamotrigine. *Epilepsia* 1991; 32 Suppl 2:S17-S21.
3. Binnie CD, van Emde BW, Kasteleijn-Nolste-Trenite DG, de Korte RA, Meijer JW, Meinardi H et al. Acute effects of lamotrigine (BW430C) in persons with epilepsy. *Epilepsia* 1986; 27(3):248-254.
4. Binnie CD, Debets RM, Engelsman M, Meijer JW, Meinardi H, Overweg J et al. Double-blind crossover trial of lamotrigine (Lamictal) as add-on therapy in intractable epilepsy. *Epilepsy Res* 1989; 4(3):222-229.
5. Binnie CD, Van Wieringen A, Meijer JW, Peck AW, de Vries J. Comparison of the effects of lamotrigine and phenytoin on the EEG power spectrum and cortical and brainstem-evoked responses of normal human volunteers. *Neuropsychobiology* 1989; 21(3):157-169.
6. Binnie CD. Lamotrigine. *Comprehensive Epileptology* Ed M Dam and L Gram New York, Raven Press, 1991;665-670.
7. Brodie MJ, Richens A, Yuen AW. Double-blind comparison of lamotrigine and carbamazepine in newly diagnosed epilepsy. UK Lamotrigine/Carbamazepine Monotherapy Trial Group. *Lancet* 1995; 345(8948):476-479.
8. Brodie MJ. Lamotrigine monotherapy: An overview. *R Soc Med: Int Congr Symp Ser* 1996;(214):43-49.
9. Brodie MJ, Overstall PW, Giorgi L. Multicentre, double-blind, randomized comparison between lamotrigine and carbamazepine in elderly patients with newly diagnosed epilepsy. The UK Lamotrigine Elderly Study Group. *Epilepsy Res* 1999; 37(1):81-87.
10. Cohen AF, Ashby L, Crowley D, Land G, Peck AW, Miller AA. Lamotrigine (BW430C), a potential anticonvulsant. Effects on the central nervous system in comparison with phenytoin and diazepam. *Br J Clin Pharmacol* 1985; 20(6):619-629.
11. Cohen AF, Land GS, Breimer DD, Yuen WC, Winton C, Peck AW. Lamotrigine, a new anticonvulsant: pharmacokinetics in normal humans. *Clin Pharmacol Ther* 1987; 42(5):535-541.
12. Depot M, Powell JR, Messenheimer JA, Jr., Cloutier G, Dalton MJ. Kinetic effects of multiple oral doses of acetaminophen on a single oral dose of lamotrigine. *Clin Pharmacol Ther* 1990; 48(4):346-355.
13. Donaldson JA, Glauser TA, Olberding LS. Lamotrigine adjunctive therapy in childhood epileptic encephalopathy (the Lennox Gastaut syndrome). *Epilepsia* 1997; 38(1):68-73.
14. Dulac O, Kaminska A. Use of lamotrigine in Lennox-Gastaut and related epilepsy syndromes. *J Child Neurol* 1997; 12 Suppl 1:S23-S28.
15. Fitton A, Goa KL. Lamotrigine. An update of its pharmacology and therapeutic use in epilepsy. *Drugs* 1995; 50(4):691-713.
16. Goa KL, Ross SR, Chrisp P. Lamotrigine. A review of its pharmacological properties and clinical efficacy in epilepsy. *Drugs* 1993; 46(1):152-176.

17. Jawad S, Oxley J, Yuen WC, Richens A. The effect of lamotrigine, a novel anticonvulsant, on interictal spikes in patients with epilepsy. *Br J Clin Pharmacol* 1986; 22(2):191-193.
18. Jawad S, Richens A, Goodwin G, Yuen WC. Controlled trial of lamotrigine (Lamictal) for refractory partial seizures. *Epilepsia* 1989; 30(3):356-363.
19. Leach MJ, Baxter MG, Critchley MA. Neurochemical and behavioral aspects of lamotrigine. *Epilepsia* 1991; 32 Suppl 2:S4-S8.
20. Loiseau P, Yuen AW, Duche B, Menager T, Arne-Bes MC. A randomized double-blind placebo-controlled crossover add-on trial of lamotrigine in patients with treatment-resistant partial seizures. *Epilepsy Res* 1990; 7(2):136-145.
21. Matsuo F, Bergen D, Faught E, Messenheimer JA, Dren AT, Rudd GD et al. Placebo-controlled study of the efficacy and safety of lamotrigine in patients with partial seizures. U.S. Lamotrigine Protocol 0.5 Clinical Trial Group. *Neurology* 1993; 43(11):2284-2291.
22. Messenheimer J, Ramsay RE, Willmore LJ, Leroy RF, Zielinski JJ, Mattson R et al. Lamotrigine therapy for partial seizures: a multicenter, placebo-controlled, double-blind, cross-over trial. *Epilepsia* 1994; 35(1):113-121.
23. Mikati MA, Schachter SC, Schomer DL, Keally M, Osborne-Shafer P, Seaman CA et al. Long-term tolerability, pharmacokinetic and preliminary efficacy study of lamotrigine in patients with resistant partial seizures. *Clin Neuropharmacol* 1989; 12(4):312-321.
24. Miller AA, Sawyer DA, Roth B, Peck AW, Leach MJ, Wheatley PL et al. Lamotrigine. *New Anticonvulsant Drugs* Meldrum BS, Porter RJ, Eds London: Libbey, 1986;165-177.
25. Motte J, Trevathan E, Arvidsson JF, Barrera MN, Mullens EL, Manasco P. Lamotrigine for generalized seizures associated with the Lennox-Gastaut syndrome. Lamictal Lennox-Gastaut Study Group. *N Engl J Med* 1997; 337(25):1807-1812.
26. Peck AW. Clinical pharmacology of lamotrigine. *Epilepsia* 1991; 32 Suppl 2:S9-12.
27. Posner J, Cohen AF, Land G, Winton C, Peck AW. The pharmacokinetics of lamotrigine (BW430C) in healthy subjects with unconjugated hyperbilirubinaemia (Gilbert's syndrome). *Br J Clin Pharmacol* 1989; 28(1):117-120.
28. Posner J, Holdich T, Crome P. Comparison of lamotrigine pharmacokinetics in young and elderly healthy volunteers. *J Pharm Med* 1991; 1(3):121-128.
29. Richens A, Yuen AW. Overview of the clinical efficacy of lamotrigine. *Epilepsia* 1991; 32 Suppl 2:S13-S16.
30. Richens A. Pharmacokinetics of lamotrigine. In: Richens A., ed. *Clinical update on lamotrigine: a novel antiepileptic agent*. Wells Medical Limited, Kent, 1992;21-27.
31. Sander JW, Patsalos PN, Oxley JR, Hamilton MJ, Yuen WC. A randomized double-blind placebo-controlled add-on trial of lamotrigine in patients with severe epilepsy. *Epilepsy Res* 1990; 6(3):221-226.
32. Schlumberger E, Chavez F, Palacios L, Rey E, Pajot N, Dulac O. Lamotrigine in treatment of 120 children with epilepsy. *Epilepsia* 1994; 35(2):359-367.

33. Smith D, Baker G, Davies G, Dewey M, Chadwick DW. Outcomes of add-on treatment with lamotrigine in partial epilepsy. *Epilepsia* 1993; 34(2):312-322.
34. Timmings PL, Richens A. Lamotrigine as an add-on drug in the management of Lennox-Gastaut syndrome. *Eur Neurol* 1992; 32(6):305-307.
35. Uvebrant P, Bauziene R. Intractable epilepsy in children. The efficacy of lamotrigine treatment, including non-seizure-related benefits. *Neuropediatrics* 1994; 25(6):284-289.
36. Yuen AW. Lamotrigine: a review of antiepileptic efficacy. *Epilepsia* 1994; 35 Suppl 5:S33-S36.
37. Product Monograph - LAMICTAL® 25, 100 and 150 mg Tablets, 2 and 5 mg Chewable/Dispersible Tablets. GlaxoSmithKline Inc. Canada. Date of Revision : October 22, 2013, 2012 (Control Number: 166556 ).

**PART III: CONSUMER INFORMATION**

LAMOTRIGINE – 25  
LAMOTRIGINE – 100  
LAMOTRIGINE – 150  
(Lamotrigine)

This leaflet is part III of a three-part “Product Monograph” published when LAMOTRIGINE was approved for sale in Canada and is designed specifically for Consumers. This leaflet is a summary and will not tell you everything about LAMOTRIGINE. Contact your doctor or pharmacist if you have any questions about the drug.

The information provided below is for patients, or parents of patients, who will be receiving LAMOTRIGINE. Please read the following information carefully before you start to take LAMOTRIGINE, even if you have taken this drug before.

Please do not discard this leaflet; you may need to read it again

**ABOUT THIS MEDICATION**

**What the medication is used for:**

LAMOTRIGINE, the brand name for lamotrigine, has been prescribed to you/your child to control your/their epilepsy. Please follow your doctor's recommendations carefully.

**What it does:**

LAMOTRIGINE affects chemicals in the brain that are involved in sending signals to the nerves. LAMOTRIGINE helps to control epileptic seizures.

**When it should not be used:**

Do NOT take or use LAMOTRIGINE if you are hypersensitive (allergic) to lamotrigine or any of the other ingredients of LAMOTRIGINE Tablets (see What the nonmedicinal ingredients are).

**What the medicinal ingredient is:**

The medicinal ingredient in LAMOTRIGINE is lamotrigine.

**What the important nonmedicinal ingredients are:**

The nonmedicinal ingredients in LAMOTRIGINE are: colloidal silicon dioxide, magnesium stearate, microcrystalline cellulose, sodium starch glycolate, yellow aluminum lake (100 mg tablets only) and yellow ferric oxide (150 mg tablets only).

**What dosage forms it comes in:**

25 mg, 100 mg and 150 mg tablets.

**WARNINGS AND PRECAUTIONS**

Before you use LAMOTRIGINE talk to your doctor or pharmacist if you or your child:

- Ever had an unusual or allergic reaction to LAMOTRIGINE.
- Are/is allergic to any component of LAMOTRIGINE tablets.
- If you or your child ever had a rash during previous treatment with lamotrigine or with any other antiepileptic drug.
- Have ever developed meningitis after taking lamotrigine
- Are/is pregnant or are planning to become pregnant. One reason for this is that a study has reported a risk of cleft lip or cleft palate associated with the use of LAMOTRIGINE in the first few months of pregnancy.
- Are/is breast-feeding (nursing).
- Are/is taking any other prescription or over-the-counter medicine, including birth control pills or other female hormonal products.
- Have/has liver or kidney disease, heart problems. or other medical conditions.
- Consume alcohol on a regular basis.

A small number of people taking LAMOTRIGINE get an allergic reaction or potentially serious skin reaction, which may develop into more serious problems such as organ failure if not treated. Please read the Serious Side Effects, How Often Do They Happen and What to do About Them section of this leaflet for more information.

There have been a small number of reports of suicidal behaviour (including suicidal thoughts and suicide attempts) in patients being treated with anti-epileptic medicines such as LAMOTRIGINE. If at any time you have these thoughts, contact your doctor immediately. **Do not discontinue LAMOTRIGINE on your own.**

The seizures in some types of epilepsy may occasionally become worse or happen more often while you're taking LAMOTRIGINE. Some patients may experience severe seizures, which may cause serious health problems. If your seizures happen more often or if you experience a more severe seizure while you're taking LAMOTRIGINE, contact a doctor as soon as possible.

## IMPORTANT: PLEASE READ

Do not stop taking/giving LAMOTRIGINE unless directed by your doctor. Always check that you have an adequate supply of LAMOTRIGINE. Remember that this medicine was prescribed only for you/your child; never give it to anyone else.

Patients prescribed LAMOTRIGINE have sometimes been given the wrong medicine because many medicines have similar names to LAMOTRIGINE, so always check that you receive LAMOTRIGINE.

Taking the wrong medication can cause serious health problems. When your healthcare provider gives you a prescription for LAMOTRIGINE, make sure you can read it clearly and talk to your pharmacists to check that you are given the correct medicine.

### INTERACTIONS WITH THIS MEDICATION

Consult your doctor before taking/giving your child any other medication, including over-the-counter medicines, herbal and alternative medicines. Some drugs can produce various side-effects when they are used in combination with LAMOTRIGINE. Do not start or stop using birth control pills or other female hormonal products, without consulting with your doctor.

Tell your doctor as soon as possible if you experience changes in your menstrual pattern (e.g., break through bleeding) while taking LAMOTRIGINE and birth control pills or other female hormonal products.

LAMOTRIGINE may interfere with some laboratory tests to detect other drugs. If you require a laboratory test, tell your doctor or hospital that you are taking LAMOTRIGINE.

#### Drug-Drug Interactions

Drugs that may interact with LAMOTRIGINE include:

- Valproic acid (valproate)
- Carbamazepine,
- Phenytoin,
- Phenobarbital
- Primidone
- Birth control pills or other female hormonal products.

#### Drug-Lifestyle Interactions

It is very important that you/your child do not perform any hazardous tasks such as driving or operating machinery.

### PROPER USE OF THIS MEDICATION

#### Usual dose:

It is very important that you/your child take LAMOTRIGINE exactly as your doctor instructed.

Your doctor may increase or decrease your/your child's medication according to your/their specific needs. Carefully follow the instructions you were given. Do not change the dose yourself

If you plan to start or stop taking hormonal contraceptives or other female hormonal products, your doctor will give you specific instructions on the dose of LAMOTRIGINE.

Do not stop taking your medication abruptly, because your/your child's seizures may increase. Speak to your doctor before stopping LAMOTRIGINE.

LAMOTRIGINE may be taken with or without food.

It is important to keep your/your child's appointments for medical checkups.

#### Overdose:

In case of drug overdose, contact a health care practitioner, hospital emergency department or regional Poison Control Centre immediately, even if there are no symptoms.

#### Missed Dose:

If you/your child happens to miss a dose, do not try to make up for it by doubling up on the dose next time. Just take/give the next regularly scheduled dose and try not to miss any more. Ask your doctor for advice on how to start taking it again, even if you only stop for a few days.

### SIDE EFFECTS AND WHAT TO DO ABOUT THEM

Like all medicines, LACMITAL can cause side effects, although not everybody gets them. The most common side effects include:

- double vision (diplopia), blurred vision
- tremor; poor coordination (ataxia)
- dizziness
- nausea; vomiting ; stomach upset
- pain in your neck, abdomen, or joints
- feeling of weakness or fatigue

**IMPORTANT: PLEASE READ**

- sleepiness/drowsiness (somnolence)
- difficulty sleeping (insomnia),
- nasal congestion (rhinitis)
- rash
- aggression, agitation or irritability

**SERIOUS SIDE EFFECTS, HOW OFTEN THEY HAPPEN AND WHAT TO DO ABOUT THEM**

Symptom / effect		Talk with your doctor or pharmacist right away		Stop taking drug and seek immediate emergency medical assistance
		Only if severe	In all cases	
Very common	Skin rashes or redness		√	
Rare	Skin rashes or redness, which may develop into severe skin reactions including widespread rash with blisters and peeling skin, particularly around the mouth, nose, eyes and genitals, sore mouth or eyes, a high temperature (fever), flu-like symptoms or drowsiness			√
Rare	Abnormal uncontrollable muscle movements (choreoathetosis) that may involve the face, eyes (nystagmus), neck, trunk, arms or legs	√		

Rare	Conjunctivitis: symptoms like itchy eyes with discharge and crusty eyelids		√	
Rare	Aseptic meningitis (fever, nausea, vomiting, headache, stiff neck and extreme sensitivity to bright light)			√
Very Rare	Hallucinations: seeing or hearing things that aren't really there		√	
Very Rare	Liver and blood problems [symptoms include yellowing of the skin, itching, abdominal pain and/or tenderness, feeling very tired, unexpected bleeding or bruising, or the fingers turning blue, a sore throat or more infections (such as colds) than usual]		√	
Very Rare	swelling of the face or swollen glands in the neck, armpits or groin (symptoms for lymphadenopathy)		√	

## IMPORTANT: PLEASE READ

Very Rare	Serious blood clotting disorder with symptoms such as: unexpected or prolonged bleeding, including from your gums or nose; blood in your urine; and unexpected bruising, including in the form of small dots on the skin.			√
Not Known	Thoughts of suicide or hurting yourself		√	
Not known	Seizures happening more often in people who already have epilepsy			√

This is not a complete list of side effects. For any unexpected effects while taking LAMOTRIGINE contact your doctor or pharmacist.

### HOW TO STORE IT

Store your LAMOTRIGINE tablets at room temperature (15°C to 30°C) in tight containers, in a dry place and protected from light. Cap the bottle tightly immediately after use..

**Keep out of sight and reach of children.**

### REPORTING SUSPECTED SIDE EFFECTS

You can report any suspected adverse reactions associated with the use of health products to the Canada Vigilance Program by one of the following 3 ways:

- Report online at [www.healthcanada.gc.ca/medeffect](http://www.healthcanada.gc.ca/medeffect)
- Call toll-free at 1-866-234-2345
- Complete a Canada Vigilance Reporting Form and:
  - Fax toll-free to 1-866-678-6789, or
  - Mail to : Canada Vigilance Program  
Health Canada  
Address Locator: 0701E  
Ottawa, ON K1A 0K9

Postage paid labels, Canada Vigilance Reporting Form and the adverse reaction reporting guidelines are available on the MedEffect™ Canada Web site at [www.healthcanada.gc.ca/medeffect](http://www.healthcanada.gc.ca/medeffect).

*NOTE: Should you require information related to the management of side effects, contact your health professional. The Canada Vigilance Program does not provide medical advice.*

### MORE INFORMATION

This leaflet plus the full product monograph, prepared for health professionals, can be obtained by contacting Pro Doc Ltée at 1-800-361-8559, [www.prodoc.qc.ca](http://www.prodoc.qc.ca) or [info@prodoc.qc.ca](mailto:info@prodoc.qc.ca).

This leaflet was prepared by  
Pro Doc Ltée, Laval, Québec, H7L 3W9

Last revised: December 1, 2015