

PRODUCT MONOGRAPH

Pr[®]Dom-TERBINAFINE

Terbinafine Tablets, USP

250 mg Terbinafine, as Terbinafine Hydrochloride

Antifungal Agent

DOMINION PHARMACAL

6111 Royalmount Ave., Suite 100

Montréal, Québec

H4P 2T4

Date of Revision:

September 30, 2016

Submission Control No.: 197956

Table of Contents

PART I: HEALTH PROFESSIONAL INFORMATION.....3

SUMMARY PRODUCT INFORMATION 3

INDICATIONS AND CLINICAL USE 3

CONTRAINDICATIONS 3

WARNINGS AND PRECAUTIONS 4

ADVERSE REACTIONS 7

DRUG INTERACTIONS 10

DOSAGE AND ADMINISTRATION 13

OVERDOSAGE 13

ACTION AND CLINICAL PHARMACOLOGY 14

STORAGE AND STABILITY 15

DOSAGE FORMS, COMPOSITION AND PACKAGING 15

PART II: SCIENTIFIC INFORMATION 16

PHARMACEUTICAL INFORMATION 16

CLINICAL TRIALS 17

DETAILED PHARMACOLOGY 23

MICROBIOLOGY 24

TOXICOLOGY 26

REFERENCES 34

PART III: CONSUMER INFORMATION.....39

Pr Dom-TERBINAFINE
Terbinafine Tablets, USP
250 mg Terbinafine, as Terbinafine Hydrochloride

PART I: HEALTH PROFESSIONAL INFORMATION

SUMMARY PRODUCT INFORMATION

| Route of Administration | Dosage Form/ Strength | All Non-Medicinal Ingredients |
|--------------------------------|---|--|
| Oral | Tablets: 250 mg Terbinafine (as terbinafine hydrochloride) | Colloidal silicon dioxide, hydroxypropyl methylcellulose, magnesium stearate, microcrystalline cellulose, and sodium starch glycolate. |

INDICATIONS AND CLINICAL USE

Dom-TERBINAFINE (terbinafine) is indicated in the treatment of fungal infections of the skin and nails caused by dermatophytes such as *Trichophyton* (e.g. *T. rubrum*, *T. mentagrophytes*, *T. verrucosum*, *T. violaceum*), *Microsporum canis*, *Epidermophyton floccosum* and yeasts of the genus *Candida* (eg. *C. albicans*), as well as *Malassezia furfur*.

Oral Dom-TERBINAFINE is indicated in the treatment of onychomycosis (fungal infection of the nail) caused by dermatophyte fungi.

Prior to initiating treatment with Dom-TERBINAFINE, appropriate nail or skin specimens should be obtained for laboratory testing (KOH preparation, fungal culture, or nail biopsy) in order to confirm the diagnosis of onychomycosis or dermatomycosis.

Oral Dom-TERBINAFINE may be considered for the treatment of severe tinea skin infections (tinea corporis, tinea cruris and tinea pedis) which have been unresponsive to topical treatment.

Note: Dom-TERBINAFINE is not effective in pityriasis versicolor (also known as *Tinea versicolor*).

CONTRAINDICATIONS

Dom-TERBINAFINE (terbinafine) is contraindicated in patients with a known hypersensitivity to terbinafine or to any of the excipients of Dom-TERBINAFINE or component of the container. (see DOSAGE FORMS, COMPOSITION AND PACKAGING).

Dom-TERBINAFINE (terbinafine hydrochloride) tablets are contraindicated for patients with chronic or active hepatic disease (see WARNINGS AND PRECAUTIONS, ADVERSE REACTIONS).

WARNINGS AND PRECAUTIONS

Serious Warnings and Precautions

Dom-TERBINAFFINE (terbinafine hydrochloride) tablets are contraindicated in patients with pre-existing chronic or active hepatic disease. Serious and life-threatening hepatic adverse reactions (including hepatic failure leading to death and liver transplant) have been reported in patients with or without pre-existing chronic or active hepatic disease receiving terbinafine tablets for the treatment of onychomycosis and dermatomycosis.

Baseline liver function test should be recommended before initiating treatment with Dom-TERBINAFFINE tablets. Dom-TERBINAFFINE tablets should be discontinued if biochemical or clinical evidence of liver injury develops (see Hepatic section below).

Hepatic

Dom-TERBINAFFINE (terbinafine hydrochloride) tablets are contraindicated for patients with chronic or active hepatic disease. Before prescribing Dom-TERBINAFFINE tablets, a baseline liver function test should be performed to assess any pre-existing liver disease since hepatotoxicity may occur in patients with and without pre-existing liver disease. Periodic monitoring (after 4-6 weeks of treatment) of liver function tests is recommended. Dom-TERBINAFFINE should be immediately discontinued in case of elevation of liver function tests. Patients prescribed Dom-TERBINAFFINE tablets should be warned to report immediately to their physician any symptoms of persistent nausea, decreased appetite, fatigue, vomiting, right upper abdominal pain or jaundice, dark urine or pale feces. Patients with these symptoms should be advised to discontinue taking oral terbinafine, and the patient's hepatic function should be immediately evaluated (see Laboratory Monitoring and ADVERSE REACTIONS).

Renal

The pharmacokinetics of terbinafine have been investigated in patients with renal impairment (creatinine clearance ≤ 50 mL/min); based on this study the use of terbinafine in renally impaired patients is not recommended (see CLINICAL PHARMACOLOGY, Pharmacokinetics).

Metabolism

In vitro and *in vivo* studies have shown that terbinafine inhibits the CYP2D6 metabolism. Therefore, patients receiving concomitant treatment with drugs predominantly metabolized by this enzyme, e.g. certain members of the following drug classes, tricyclic antidepressants (TCAs), β -blockers, selective serotonin reuptake inhibitors (SSRIs), antiarrhythmics class 1A, 1B and 1C and monoamine oxidase inhibitors (MAO-Is) Type B, should be followed up, if the co-administered drug has a narrow therapeutic window (see DRUG INTERACTIONS).

Skin

Serious skin reactions (e.g. Stevens-Johnson syndrome, toxic epidermal necrolysis, drug rash with eosinophilia and systemic symptoms) have been very rarely reported in patients taking terbinafine

tablets. If progressive skin rash occurs, treatment with Dom-TERBINAFFINE should be discontinued.

Terbinafine should be used with caution in patients with pre-existing psoriasis or lupus erythematosus as precipitation and exacerbation of psoriasis and cutaneous and systemic lupus erythematosus have been reported in a postmarketing setting.

Ophthalmologic

Changes in the ocular lens and retina have been reported following the use of terbinafine tablets in controlled trials. The changes noted were non-specific and the significance of these changes is unknown.

Immune

Transient decreases in absolute lymphocyte counts (ALC) have been observed in controlled clinical trials. The clinical significance of this observation is unknown. However, in patients with known or suspected immunodeficiency, physicians should consider monitoring complete blood counts in individuals using Dom-TERBINAFFINE therapy for greater than six weeks.

Lupus erythematosus:

During post-marketing experience, precipitation and exacerbation of cutaneous and systemic lupus erythematosus have been reported infrequently in patients taking terbinafine. Dom-TERBINAFFINE therapy should be discontinued in patients with clinical signs and symptoms suggestive of lupus erythematosus.

Hematologic

Very rare cases of blood dyscrasias (neutropenia, agranulocytosis, thrombocytopenia, pancytopenia) have been reported in patients treated with terbinafine tablets. Etiology of any blood dyscrasias that occur in patients treated with terbinafine tablets should be evaluated and consideration should be given for a possible change in medication regimen, including discontinuation of treatment with Dom-TERBINAFFINE tablets.

Neurologic, Special Senses

Sensory disturbances

Disturbances of visual, auditory and tactile senses have been reported (see ADVERSE REACTIONS). If visual or hearing disturbances occur, Dom-TERBINAFFINE tablets should be discontinued.

Taste Disturbance Including Loss of Taste

Taste disturbance, including taste loss, has been reported with the use of terbinafine tablets. It can be severe enough to result in decreased food intake, weight loss, and depressive symptoms. Taste disturbance usually resolves within several weeks after discontinuation of treatment.

Isolated cases of prolonged taste disturbances have also been reported. If symptoms of a taste disturbance occur, Dom-TERBINAFINE tablets should be discontinued.

Smell Disturbance Including Loss of Smell

Smell disturbance, including loss of smell, has been reported with the use of terbinafine tablets. Smell disturbance may resolve after discontinuation of treatment, but may be prolonged (greater than one year), or may be permanent. If symptoms of a smell disturbance occur, Dom-TERBINAFINE tablets should be discontinued.

Psychiatric

Anxiety and depressive symptoms

Anxiety and depressive symptoms have occurred during postmarketing use of terbinafine secondary to taste disturbances, as well as independent of taste disturbances. If depressive symptoms occur, Dom-TERBINAFINE tablets should be discontinued.

Carcinogenesis and Mutagenesis

An increase in liver tumours was observed in male rats at the highest dose level (69 mg/kg) during a life-time (123 weeks) carcinogenicity study. The changes included increased enzyme activity, peroxisome proliferation and altered triglyceride metabolism. The changes have been shown to be species specific since they were not seen in mice or monkeys.

Laboratory Monitoring

Measurement of serum transaminases (ALT and AST) is advised for all patients before taking Dom-TERBINAFINE tablets.

General

Special Populations

Women of child-bearing potential: Some cases of menstrual irregularities have been reported in patients taking terbinafine tablets concomitantly with oral contraceptives, although the incidence of these disorders remains within the background incidence of patients taking oral contraceptives alone. There are no data to suggest special recommendations for women of child-bearing potential.

Pregnant Women: Animal fetal toxicity studies did not reveal any teratogenic or embryofetotoxic potential of terbinafine. However, there is only very limited documented clinical experience with terbinafine in pregnant women; therefore, unless the potential benefits outweigh any potential risks, oral Dom-TERBINAFINE should not be used during pregnancy.

Nursing Women: Terbinafine is excreted in breast milk; therefore mothers receiving oral treatment with Dom-TERBINAFINE should not breast feed.

Fertility: No effect of terbinafine on fertility has been seen in animal studies (see section TOXICOLOGY) and there are no data to suggest an effect on fertility in humans.

Geriatrics: Plasma concentrations and drug half-life appear to be slightly higher in elderly patients than in the general population. In addition, the incidence of all adverse events in a Post Marketing Surveillance study appeared to be slightly higher in the elderly at normal adult doses; however, the overall rate of adverse events possibly or probably related to terbinafine did not appear to be different compared to the general population. When prescribing tablets for patients in this age group, the possibility of pre-existing impairment of liver or kidney function should be considered (see ACTION AND CLINICAL PHARMACOLOGY-Pharmacokinetics).

Pediatrics: The safety and efficacy of terbinafine have not been established in pediatric patients. Dom-TERBINAFINE should be kept out of the reach of children.

Occupational Hazards

Effects on ability to drive and use machines

No studies on the effects of terbinafine tablets treatment on the ability to drive and use machines have been performed. Patients who experience dizziness as an undesirable effect should avoid driving vehicles or using machines.

ADVERSE REACTIONS

Adverse Drug Reaction Overview

Because clinical trials are conducted under very specific conditions, the adverse reaction rates observed in the clinical trials may not reflect the rates observed in practice and should not be compared to the rates in the clinical trials of another drug. Adverse drug reaction information from clinical trials is useful for identifying drug-related adverse events and for approximating rates.

Frequency estimate: very common $\geq 10\%$, common $\geq 1\%$ to $< 10\%$, uncommon $\geq 0.1\%$ to $< 1\%$, rare $\geq 0.01\%$ to $< 0.1\%$, very rare $< 0.01\%$ (includes isolated reports).

Clinical Trials Adverse Drug Reactions

Serious and life-threatening hepatic adverse reactions, including fatal outcome or requiring liver transplant, have been reported in patients receiving terbinafine tablets.

In clinical trials submitted for purposes of marketing approval in Canada adverse events occurred in 10.4% of patients receiving the recommended oral dose. Of these, 5% were mild to moderate gastrointestinal events (abdominal distension, decreased appetite, dyspepsia, nausea, mild abdominal pain, diarrhea), 3% were rash, urticaria and the remainder were for musculoskeletal reactions (arthralgia, myalgia) and miscellaneous non-specific events such as malaise or tiredness.

The following table of adverse events illustrates some of these results:

TABLE I

| Organ System Adverse Event | Terbinafine 250 mg (n = 998) | |
|---|---------------------------------|------|
| | Number | (%) |
| SKIN (overall) | 27 | 2.7% |
| Erythema or rash | 9 | 0.9 |
| Urticaria | 5 | 0.5 |
| Eczema | 1 | 0.1 |
| Pruritis | 4 | 0.4 |
| Other | 8 | 0.8 |
| GI (overall) | 52 | 5.2 |
| Diarrhea and/or cramps | 10 | 1.0 |
| Nausea and/or vomiting | 11 | 1.1 |
| Fullness | 5 | 0.5 |
| Sickness | 1 | 0.1 |
| G.I. irritation, dyspepsia, gastritis | 22 | 2.2 |
| Other | 3 | 0.3 |
| CNS (overall) | 12 | 1.2 |
| Headache | 9 | 0.9 |
| Concentration | 2 | 0.2 |
| Other | 1 | 0.1 |
| OTHER (overall) | 11 | 1.1 |
| Tiredness, fatigue | 3 | 0.3 |
| Pain (back, knee, legs, feet, kidney) | 1 | 0.1 |
| Change of taste or dry mouth | 1 | 0.1 |
| Other | 6 | 0.6 |
| LABORATORY ADVERSE CHANGES (overall) | 2 | 0.2 |
| Hypoglycemia | 1 | 0.1 |
| Elevated Liver enzymes | 1 | 0.1 |
| TOTAL | 104 | 10.4 |

Less Common Clinical Trial Adverse Drug Reactions (<1%)

Adverse events not frequently observed include the following:

Uncommon: Paresthesia and hypoesthesia

Rare: Idiosyncratic and symptomatic hepatobiliary reactions (2/3 primarily cholestatic in nature and the remainder involving hepatocytic damage or both) have been reported in association with terbinafine treatment, including very rare cases of serious hepatic failure (some leading to liver transplant or death). Unspecific prodromal symptoms (nausea, anorexia, fatigue, general malaise) have been reported. Liver enzyme increases have been noted in asymptomatic patients as well as in patients with more specific symptoms of hepatic dysfunction (jaundice, upper abdominal right quadrant pain, pruritus, pale stools, dark urine). Hepatic failure, hepatitis, jaundice, cholestasis, hepatic enzyme increased (see WARNINGS AND PRECAUTIONS).

The frequency of reported apparent hepatic dysfunctions has varied. An analysis of 7 key placebo-controlled trials (262 placebo vs 1624 terbinafine patients) suggested increases of 1.4% vs 3.4% in liver function test indicators (APase, SGPT (AST), SGOT (ALT), g-GT, bilirubin >2x above upper normal). In a European post-marketing study in 25 884 patients, asymptomatic liver enzyme increases were reported in 0.17% of patients treated. The reporting frequency for symptomatic liver disorder possibly related to terbinafine was 1:13 000. The relative risk of acute liver injury in this group was considered to be 4.2 times the background incidence.

In the less controlled circumstances of spontaneous worldwide reporting, the development of clinically significant signs and symptoms of hepatobiliary dysfunction for which no other cause was apparent, and in which terbinafine was considered the possible causative agent, was calculated to be approximately 1:37 000 treated patients. The reporting frequency overall for hepatobiliary events including elevations in liver enzymes was 1:15 000. Very rare cases of liver failure, some fatal, have been associated with terbinafine treatment and the incidence rate is about 1:1 000 000 exposed patients.

Post-Market Adverse Drug Reactions

The following adverse drug reactions have been identified based on post-marketing spontaneous reports with terbinafine tablets and are organized by system organ classes. Because these reactions are reported voluntarily from a population of uncertain size, it is not always possible to reliably estimate their frequency.

Blood and lymphatic system disorders: neutropenia, agranulocytosis, thrombocytopenia, anemia, pancytopenia, thrombocytopenic purpura (TPP). The mechanism of TPP induction and the role of terbinafine have not been elucidated.

Hepatobiliary disorders: Cases of hepatic failure some leading to liver transplant or death and idiosyncratic and symptomatic hepatic injury. Cases of hepatitis, cholestasis, and increased hepatic enzymes have been seen with the use of terbinafine tablets.

Immune system disorders: anaphylactic reaction including anaphylactic shock, respiratory compromised symptoms such as dyspnea, angioedema, serum sickness-like reaction, skin reactions (see Skin section), precipitation or exacerbation of cutaneous or systemic lupus erythematosus.

Psychiatric disorders: anxiety and depressive symptoms secondary to taste disturbances. Anxiety and depressive symptoms independent of taste disturbance have also been reported with use of terbinafine tablets.

Eye disorders: visual impairment, vision blurred, visual acuity reduced.

Ear and labyrinth disorders: hypoacusis, impaired hearing, tinnitus.

Vascular disorders: vasculitis.

Nervous system disorders: dizziness, anosmia including permanent anosmia, hyposmia. Dysgeusia including ageusia (hypogeusia, including ageusia, which usually recover within several

weeks after discontinuation of the drug. Isolated cases of prolonged hypogeusia have been reported)

Gastrointestinal disorders: pancreatitis.

Musculoskeletal and connective tissue disorders: rhabdomyolysis, arthritis.

General disorders and administration site conditions: influenza-like illness, pyrexia.

Investigations: blood creatine phosphokinase increased, weight decreased (secondary to dysgeusia).

Skin and subcutaneous tissue disorders: Stevens Johnson syndrome, Toxic Epidermal Necrolysis, erythema multiforme, acute generalized exanthematous pustulosis, toxic skin eruption, dermatitis exfoliative, dermatitis bullous, psoriasiform eruptions or exacerbation of psoriasis, photosensitivity reactions (e.g. photodermatitis, photosensitivity allergic reaction and polymorphic light eruption) and alopecia.

DRUG INTERACTIONS

Overview

Tablets: Many categories of drugs are known to inhibit or induce drug metabolism by cytochrome P450 (CYP) enzymes located in the liver and intestine. Co-administration of such drugs may impact metabolic elimination of drugs, and in some cases, bioavailability may be either increased or decreased and accordingly, possibly necessitate dosage adjustments (See ACTION AND CLINICAL PHARMACOLOGY, Metabolism and Excretion).

Drug-Drug Interactions

Effects of other medicinal products on terbinafine:

The following medicinal products may increase the effect or plasma concentration of terbinafine:

Cimetidine decreased the clearance of terbinafine by 33%.

Fluconazole increased the C_{max} and AUC of terbinafine by 52% and 69%, respectively, in a randomized, open-label, single-dose, three-period crossover study (7 day washout) in healthy male adult subjects (n = 18), treated with 750 mg terbinafine, 100 mg fluconazole and 750 mg terbinafine plus 100 mg fluconazole. The interaction likely involves inhibition of CYP2C9 and CYP3A4 enzymes.

Theophylline increased the C_{max} and AUC of terbinafine by 25% each, and decreased the oral clearance of terbinafine by 24% in a randomized, open-label, single-dose, three-period crossover study, in healthy male and female adult subjects (n = 18) treated orally with 250 mg terbinafine, 375 mg theophylline, and 250 mg terbinafine plus 375 mg theophylline.

Ketoconazole may increase the systemic exposure to terbinafine, based on predicted inhibition of CYP2C9 and CYP3A4 (no studies were performed).

Amiodarone may increase the systemic exposure to terbinafine, based on predicted inhibition of CYP2C9 and CYP3A4 (no studies were performed).

Cotrimoxazole (trimethoprim sulfamethoxazole) did not alter the pharmacokinetics of terbinafine, in a randomized, open-label, single-dose, three-period crossover study (7 day washout) in healthy male and female adult subjects (n = 18), treated with 750 mg terbinafine, 160 mg trimethoprim plus 800 mg sulfamethoxazole, and 750 mg terbinafine plus 160 mg trimethoprim plus 800 mg sulfamethoxazole.

Zidovudine did not alter the pharmacokinetics of terbinafine, in a randomized, open-label, single-dose, three-period crossover study (7 day washout) in healthy male and female adult subjects (n = 18), treated with 750 mg terbinafine, 200 mg zidovudine, and 750 mg terbinafine plus 200 mg zidovudine.

The following medicinal products may decrease the effect or plasma concentration of terbinafine:

Rifampicin increased the clearance of terbinafine by 100%.

Effect of terbinafine on other medicinal products:

According to the results from studies undertaken *in vitro* and in healthy volunteers, terbinafine shows negligible potential for inhibiting or enhancing the clearance of most drugs that are metabolized via the cytochrome P450 system (e.g. terfenadine, triazolam, tolbutamide or oral contraceptives) with exception of those metabolized through CYP2D6 (see below).

Terbinafine does not interfere with the clearance of antipyrine or digoxin.

Terbinafine did not alter the pharmacokinetics of fluconazole in a randomized, open-label, single-dose, three-period crossover study (7 day washout) in healthy male adult subjects, treated with 750 mg terbinafine, 100 mg fluconazole and 750 mg terbinafine plus 100 mg fluconazole.

Terbinafine did not alter the pharmacokinetics of cotrimoxazole (trimethoprim and sulfamethoxazole), in a randomized, open-label, single-dose, three-period crossover study (7 day washout) in healthy male and female adult subjects (n = 18), treated with 750 mg terbinafine, 160 mg trimethoprim plus 800 mg sulfamethoxazole, and 750 mg terbinafine plus 160 mg trimethoprim plus 800 mg sulfamethoxazole.

Terbinafine reduced zidovudine C_{max} by 25%, increased AUC by 15%, reduced oral clearance by 15% and did not alter zidovudine plasma elimination half-life, in a randomized, open-label, single-dose, three-period crossover study (7 day washout) in healthy male and female adult subjects (n = 18), treated with 750 mg terbinafine, 200 mg zidovudine, and 750 mg terbinafine plus 200 mg zidovudine.

Some cases of menstrual irregularities have been reported in patients taking terbinafine tablets concomitantly with oral contraceptives, although the incidence of these disorders remains within the background incidence of patients taking oral contraceptives alone.

Single dose terbinafine did not significantly alter the pharmacokinetics of theophylline in a randomized, open-label, single-dose, three-period crossover study, in healthy male and female adult subjects (n = 18) treated orally with 250 mg terbinafine, 375 mg theophylline, and 250 mg terbinafine plus 375 mg theophylline.

Multiple dose terbinafine increased the AUC and half-life of theophylline by 16% and 24%, respectively, and decreased the oral clearance of theophylline by 14%, in a randomized, open-label, two-period crossover study in healthy male and female adult subjects (n = 12) treated orally with a single dose of 5 mg/kg theophylline alone (mean 345 mg, range 307 to 397 mg) and 2 hours after the last of 4 daily doses of 250 mg terbinafine.

Terbinafine may increase the effect or plasma concentration of the following medicinal products:

Caffeine: Terbinafine decreased the clearance of caffeine administered intravenously by 19%.

Compounds predominantly metabolized by CYP2D6

In vitro and *in vivo* studies have shown that terbinafine inhibits the CYP2D6-mediated metabolism. This finding may be of clinical relevance for compounds predominantly metabolized by CYP2D6, e.g. certain members of the following drug classes: tricyclic antidepressants (TCAs), beta-blockers, selective serotonin reuptake inhibitors (SSRIs), antiarrhythmics (including class 1A, 1B and 1C) and monoamine oxidase inhibitors (MAO-Is) Type B, particularly if they also have a narrow therapeutic window (see WARNINGS AND PRECAUTIONS). Case reports indicating interactions of terbinafine with tricyclic antidepressants e.g. nortriptyline and imipramine) have been reported in a post-marketing setting.

Terbinafine decreased the clearance of desipramine by 82%.

Terbinafine increased the dextromethorphan/dextrorphan metabolic ratio in urine by 16- to 97-fold on average, in healthy subjects, converting some extensive CYP2D6 metabolizers to poor metabolizer status after treatment with 250 mg terbinafine once daily for 14 days.

The effect of terbinafine on the dextromethorphan/dextrorphan metabolic ratio in urine was shown to be reversible, though the interaction potential may last for several weeks after termination of a terbinafine treatment cycle.

Terbinafine may decrease the effect or plasma concentration of the following medicinal products:

Terbinafine increased the clearance of ciclosporin by 15%.

Drug-Herb Interactions

St John's wort may considerably decrease the plasma concentration and exposure of terbinafine, however the extent of decrease in exposure is not known.

DOSAGE AND ADMINISTRATION

Dom-TERBINAFINE tablets

Adults: 250 mg once daily (see also DOSING CONSIDERATIONS).

The scored tablets are taken orally with water. They should preferably be taken at the same time each day and can be taken on an empty stomach or after a meal.

The duration of treatment varies according to the indication and the severity of infection:

TABLE II

| Indication | Duration of Treatment |
|--|------------------------------|
| Onychomycosis (of fingers and toes)* | 6 weeks to 3 months |
| Skin Infections** | |
| Tinea pedis (interdigital & plantar/moccasin type) | 2-6 weeks |
| Tinea corporis, cruris | 2-4 weeks |

* In patients with fingernail infections or toenail infections other than the big toe, or in younger patients, treatment periods of less than 3 months may be adequate. In patients with infections of the big toenail, treatment for 3 months is usually sufficient, although some patients may require treatment for 6 months or longer. Poor nail outgrowth during the first weeks of treatment may enable identification of those patients in whom longer therapy is required. In onychomycosis the optimal clinical effect is seen some months after mycological cure and cessation of treatment. This is related to the period required for outgrowth of healthy nail tissue.

** Complete resolution of the signs and symptoms may not occur until several weeks after mycological cure.

DOSING CONSIDERATIONS

Special populations:

Liver impairment

Dom-TERBINAFINE tablets are contraindicated for patients with chronic or active hepatic disease (see CONTRAINDICATIONS and WARNINGS AND PRECAUTIONS).

Renal impairment

The use of terbinafine tablets has not been adequately studied in patients with renal impairment and is therefore not recommended in this population (see WARNINGS AND PRECAUTIONS).

OVERDOSAGE

A few cases of overdosage with terbinafine tablets (up to 5 g) have been reported giving rise to headache, nausea, epigastric pain and dizziness. The recommended treatment of overdosage consists of eliminating the drug, primarily by the administration of activated charcoal and giving symptomatic supportive therapy, if needed.

For management of a suspected drug overdose, contact your regional
Poison Control Centre immediately.

ACTION AND CLINICAL PHARMACOLOGY

Mechanism of Action

Terbinafine is an allylamine which has a broad spectrum of antifungal activity. At low concentrations, terbinafine is fungicidal against dermatophytes, molds and certain dimorphic fungi. Its activity against yeasts is fungicidal or fungistatic, depending on the species.

Pharmacodynamics

Terbinafine interferes specifically with fungal sterol biosynthesis at an early step. This leads to a deficiency in ergosterol and to an intracellular accumulation of squalene, resulting in fungal cell death. Terbinafine acts by inhibition of squalene epoxidase in the fungal cell membrane. The enzyme squalene epoxidase is not linked to the cytochrome P450 system.

When given orally, terbinafine accumulates rapidly in skin, hair and nails at levels associated with fungicidal activity.

Pharmacokinetics

Absorption: Following oral administration, terbinafine is well absorbed (>70%) and the absolute bioavailability of terbinafine from terbinafine tablets as a result of first-pass metabolism is approximately 50 %. A single 250 mg dose of terbinafine tablets resulted in mean peak plasma concentration of 1.3 mcg/ml within 1.5 hours after administration. At steady-state (70% steady state is achieved in approximately 28 days), in comparison to a single dose, peak concentration of terbinafine was on average 25% higher and plasma AUC increased by a factor of 2.3. From the increase in plasma AUC an effective half-life of ~30 hours can be calculated. The bioavailability of terbinafine is moderately affected by food (increase in the AUC of less than 20%), but not sufficiently to require dosing adjustments.

Distribution: Terbinafine binds strongly to plasma proteins (99%) and is lipophilic. Terbinafine is widely distributed in the body including adipose tissue. It rapidly diffuses through the dermis and accumulates in lipophilic stratum corneum. It is also secreted in sebum, thus achieving high concentrations in hair follicles, hair and sebum-rich skin. There is evidence that terbinafine is distributed in the nail plate within the first few weeks of commencing therapy.

Metabolism and Excretion: Oral terbinafine is excreted mainly in urine (80%) and in feces (20%). Following absorption terbinafine is metabolized rapidly and extensively by the liver. At least seven cytochrome isoenzymes are involved in its metabolism with major contributions from CYP 2C9, CYP 1A2, CYP 3A4, CYP 2C8 and CYP 2C19. Biotransformation results in metabolites with no antifungal activity which are excreted predominantly through the urine. No clinically relevant age-dependent changes in steady-state plasma concentrations of terbinafine have been observed. Multiple dose administration followed by extended blood sampling revealed a triphasic elimination with a terminal half-life of approximately 16.5 days

Following a single 250 mg dose in 12 hepatically impaired cirrhotic (alcoholic) patients, total clearance of terbinafine was reduced by about 40%. In a sample of 12 renally impaired patients (median creatinine clearance of 17.6 mL/min), Terbinafine clearance following a single 250 mg

dose was halved resulting in the doubling or more of peak plasma concentrations or AUC. Patients at the highest and lowest ends of the renal impairment spectrum were not represented. There was no direct correlation between creatinine clearance and terbinafine clearance in renally impaired patients, the metabolism of the drug having been impaired in these patients due to competition between metabolite and parent drug.

STORAGE AND STABILITY

Store between 15°C and 30°C. Protect from light.

DOSAGE FORMS, COMPOSITION AND PACKAGING

Availability of Dosage Forms

Dom-TERBINAFINE (terbinafine hydrochloride) tablets:

250 mg: Each white, round, biconvex, uncoated tablet, debossed with a “P” logo on one side and central breakline on the other side, contains 250 mg of terbinafine (as terbinafine hydrochloride) and the following non-medicinal ingredients: colloidal silicon dioxide, hydroxypropyl methylcellulose, magnesium stearate, microcrystalline cellulose and sodium starch glycolate. Available in HDPE bottles of 100 tablets and blisters of 30 tablets.

PART II: SCIENTIFIC INFORMATION

PHARMACEUTICAL INFORMATION

Drug Substance

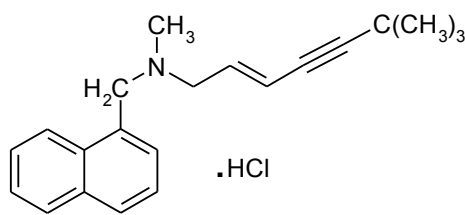
Proper Name: Terbinafine Hydrochloride

Chemical Name: (E)-N-(6,6-dimethyl-2-hepten-4-ynyl)-N-methyl-1-naphthalene-methanamine, hydrochloride

Molecular formula: $C_{21}H_{25}N \cdot HCl$,

Molecular mass: Terbinafine base: 291.43 g/mol
Terbinafine Hydrochloride: 328 g/mol

Structural formula:



Physicochemical properties: Terbinafine hydrochloride is a white to off-white finely crystalline powder. It is soluble in methanol, methylene dichloride and chloroform, and slightly soluble in acetone. Solubility in water is 0.63% (w/v).

pH and pKa values: The pKa (I) value is 7.10 and the pH of a solution (0.5%) in methanol/water 4:6 (v/v) is ~4.7 at 25°C

Melting range: 200°C to 208°C

CLINICAL TRIALS

Comparative Bioavailability Studies

A two-way, crossover, blinded, single-dose, comparative bioequivalence study was performed in 24 healthy, non-smoking males under fasting conditions on terbinafine hydrochloride tablets using Dominion Pharmacal Dom-TERBINAFINE 250 mg tablets versus the reference product, LAMISIL[®] 250 mg Tablets, by Novartis Pharmaceuticals Canada Inc. The pharmacokinetic data calculated for the Dom-TERBINAFINE 250 mg tablets and LAMISIL[®] 250 mg tablets formulation are tabulated below:

SUMMARY TABLE OF THE COMPARATIVE BIOAVAILABILITY DATA

| Terbinafine Hydrochloride (1 x 250 mg) From measured data uncorrected for potency Least-Square Mean Arithmetic Mean (CV %) | | | | |
|--|----------------------------|---|-------------------------------|--------------------------------------|
| Parameter | Dom- TERBINAFINE | LAMISIL, Novartis Pharmaceuticals [†] | % Ratio of Geometric Means | 90% Confidence Interval [#] |
| AUC ₀₋₇₂ (ng·h/mL) | 4277.83 4524.73 (34.18) | 4465.34 4783.97 (37.01) | 96.04 | 88.60-104.10 |
| AUC ₁ (ng·h/mL) | 4715.45 4996.28 (34.62) | 4809.27 5152.59 (36.69) | 96.00 | 87.70-105.09 |
| C _{max} (ng/mL) | 1038.47 1092.10 (31.75) | 954.80 1022.61 (35.90) | 109.38 | 98.32-121.68 |
| T _{max} [§] (h) | 1.33 (1.00-2.33) | 2.00 (1.00-3.00) | | |
| T _{1/2} [€] (h) | 21.12 (50.88) | 23.36 (45.35) | | |

[†] LAMISIL[®] was manufactured by Novartis Pharmaceuticals Canada Inc., and was purchased in Canada.

[§] Expressed as the median (range) only

[€] Expressed as the arithmetic mean (CV%) only

ORAL

Onychomycosis

Two studies evaluated the efficacy of oral terbinafine in the treatment of toe or fingernail onychomycosis.

Study Demographics and Trial Design

Summary of patient demographics for oral terbinafine clinical trials in onychomycosis

| Study # | Trial design | Dosage, route of administration and duration | Study subjects (n=number) | Mean age (Range) | Gender | Race |
|----------------|---|---|----------------------------------|-------------------------|--------------------------|-------------------|
| SF1501 | Randomized, double-blind (double-dummy), multicenter, parallel group, stratified enrolment (toe/fingernail) b.i.d. vs o.d. dosage | Terbinafine tablets, oral 125 mg b.i.d up to 48 wk (toenail) or 24 wk (fingernail) | 51 enrolled 43 evaluable | 45 (18-74) | Male = 34 Female = 9 | Not reported |
| | | Terbinafine tablets, 2x125 mg o.d. up to 48 wk (toenail) or 24 wk (fingernail) | 52 enrolled 48 evaluable | 45 (18-74) | Male = 34 Female = 14 | Not reported |
| SF00423 | Randomized, double-blind, multicenter, parallel group, griseofulvin-comparative | Terbinafine capsules: Oral, 250 mg bid for 3-6 months | 47 enrolled 29 evaluable | 44.6 (21-76 yr) | Male = 24 | Caucasian 100% |
| | | Griseofulvin capsules: Oral 250 mg bid for up to 6 months (standard treatment period is up to 12 months) | 34 enrolled 22 evaluable | 43.5 (20-61 yr) | Male = 15 | Caucasian 100% |

Study Results

Results of study SF1501 in onychomycosis

| Primary Endpoints | b.i.d. | o.d. |
|--|---------------------|---------------------|
| | Number (%) patients | Number (%) patients |
| Mycological cure (negative KOH and culture) – all infections | Toenails | |
| | 25/31 (81%) | 28/35 (80%) |
| | Fingernails | |
| | 10/10 (100%) | 10/11 (91%) |
| Effective treatment (negative mycology plus continuous or limited nail growth) at end of treatment at week 24 - all infections | Toenails | |
| | 24/32 (75%) | 26/37 (70%) |
| | Fingernails | |
| | 10/11 (91%) | 10/11 (91%) |

There were no significant differences between b.i.d and o.d. treatment regimens with respect to mycological cure rates or rates of effective treatment. Mycological cure at end of treatment was 95 % for fingernails and 80 % for toenails. At follow-up visit 3-12 months later, over 81 % of toenail onychomycosis were cured without relapse.

Results of study SFO0423 in onychomycosis

| Primary Endpoints | Terbinafine | Comparator |
|--|---------------------|---------------------|
| | Number (%) patients | Number (%) patients |
| Effective treatment (negative mycology plus continuous or limited nail growth) at end of treatment at week 24* | Toenail | |
| | 11/20 (55%) | 5/12 (42%) |
| | Fingernail | |
| | 7/9 (78%) | 8/10 (80%) |
| Mycological cure (negative culture and KOH) at week 24 | Toenail | |
| | 12/20 (60%) | 5/12 (42%) |
| | Fingernail | |
| | 7/9 (78%) | 7/10 (70%) |

*The combined clinical/mycological endpoint was not specified in the protocol

Effective treatment in the terbinafine treated group was 78 % fingernail and 55% toenail with treatment durations of 3-6 months. Griseofulvin was 80% and 42% effective for fingernails and toenails respectively. Thus, short duration therapy (3-6 months) using 500 mg per day of terbinafine appears effective in many patients with onychomycosis due to dermatophyte infections.

Tinea corporis/cruris

Study demographics and trial design

Summary of patient demographics for oral terbinafine clinical trials in tinea corporis/cruris

| Study # | Trial design | Dosage, route of administration and duration | Study subjects (n=number) | Mean age across studies (Range) | Gender | Race: Percent Caucasian |
|---|--|--|------------------------------------|---------------------------------|-------------------------------|-------------------------|
| Placebo-controlled: SFO041B 5-OR SFO041C | Randomized, single or multicenter, parallel group, double-blind, placebo controlled | Terbinafine oral, capsules, 125 mg bid for 4 wk; 2 wk follow-up | Entered 79 Evaluable 62 | 34 - 40 years (18-74) | Male = 50 Female 11 | 71-100% |
| | | Matching placebo | Entered 77 Evaluable 62 | 37-42 (18-70) | Male = 49 Female = 13 | |
| Griseofulvin-controlled: 11-OR SFO044 | Randomized, single or multicenter, parallel group, double-blind, double-dummy, griseofulvin-controlled | Terbinafine oral capsules, 125 mg and placebo bid for up to 6 wk; 2-6 wk follow-up | Entered 189 Evaluable 174 | 37-38 (17-69) | Male = 105 Female = 69 | 85-99% |
| | | Griseofulvin oral capsules 2x250 mg bid for up to 6 wk; 2-6 wk follow-up | Entered 192 Evaluable 170 | 31-34 (17-85) | Male = 107 Female = 63 | |
| Ketoconazole controlled: SF3006 SF0047 | Randomized, single or multicenter, parallel group, double-blind, double-dummy, griseofulvin-controlled | Terbinafine oral capsules, 125 mg and placebo bid for up to 6 wk; 4-8 wk follow-up | Entered 73 Evaluable 65 | 34-48 (18-80) | Male = 40 Female = 25 | 60-92% |
| | | Ketoconazole oral capsules 200 mg od (placebo od) for up to 6 wk; 2-6 wk follow-up | Entered = 71 Evaluable = 62 | 31-43 (16-70) | Male = 40 Female = 22 | |

Study results

Combined results of placebo-controlled studies SF 0041 B, 5-OR, SF 0041C in tinea corporis/cruris¹

| Primary Endpoints | Terbinafine Number (%) | Placebo Number (%) |
|--|------------------------|--------------------|
| Mycological cure (negative culture and KOH) at follow-up | 7-30 (100 - 64%) | 0-4 (0-36%) |
| Effective treatment (mycological cure and no to minimal signs or symptoms) at follow-up | 8-30 (62-91%) | 0-4 (0-23%) |
| 5-OR: mycological cure results (combined culture and KOH results) were not provided and too few patients returned at follow-up for meaningful assessments. However, at end of treatment, terbinafine was significantly better than placebo in terms of mycological cures and negative KOH results (Negative KOH of 73% vs 17% for active and placebo, p = 0.043; Negative cultures of 73% vs 0% for active and placebo, p = 0.007) . | | |

SF 0041B: too few placebo patients returned at follow-up for meaningful assessments; however, at end of therapy the proportion of patients with mycological cures was greater in the terbinafine group compared with placebo; effective treatment was noted in 75% and 23% of active and placebo groups

¹ Range of values represents the highest and lowest values noted across the studies represented

The efficacy of a up to 6 weeks of treatment with terbinafine was consistently positive across 3 placebo-controlled trials both in rates of mycological cures and in the combination of mycological and clinical endpoints. In the placebo-controlled trials, placebo patients often did not return at the post-treatment follow-up to provide meaningful results at that visit. However, results at the end of treatment speak to the high degree of efficacy of terbinafine using clinical and/or mycological endpoints. Results of 4 studies with active comparators show terbinafine to be at least as good as, if not better than, systemically administered griseofulvin and ketoconazole.

Results of griseofulvin-controlled studies 11-OR and SF 0044 in tinea corporis/cruris¹

| Primary Endpoints | Terbinafine Number (%) | Comparator Number (%) |
|---|---------------------------|--------------------------|
| Mycological cure (negative culture and KOH) at follow-up | 111 - 40 (93-100%) | 101- 36 (94 – 95%) |
| Effective treatment (mycological cure and no to minimal signs or symptoms) at follow-up | 119 – 37 (94 – 77%) | 108 – 36 (86-82%) |

¹ Range of values represents the highest and lowest values noted across the studies represented

Results of ketoconazole-controlled studies SF 3006 and SF 0047 in tinea corporis/cruris¹

| Primary Endpoints | Terbinafine Number (%) | Comparator Number (%) |
|---|---------------------------|--------------------------|
| Mycological cure (negative culture and KOH) at follow-up | 28-36 (100 – 97%) | 23 – 31 (92-86) |
| Effective treatment (mycological cure and no to minimal signs or symptoms) at follow-up | 28 – 35 (100 – 95%) | 23 – 29 (92 – 78 %) |

¹ Range of values represents the highest and lowest values noted across the studies represented

Tinea Pedis

Study demographics and trial design

Summary of patient demographics for clinical trials in tinea pedis

| Study # | Trial design | Dosage, route of administration and duration | Study subjects (n=number) | Mean age (Range) | Gender | Race |
|---------|---|--|--|---------------------|------------------------|------------------|
| 39-40OR | Randomized, double-blind, multicenter, placebo-controlled | Terbinafine tablets (or matching placebo) 125 mg bid for 6 weeks; 2 week follow-up | Terbinafine Enrolled 26 Evaluable 23 | 37 years (20-64) | Male = 15 Female =8 | 92% Caucasian |
| | | | Placebo Enrolled 24 Evaluable 18 | 40 years (20-68) | Male = 13 Female=5 | |

| Study # | Trial design | Dosage, route of administration and duration | Study subjects (n=number) | Mean age (Range) | Gender | Race |
|---------|--|---|--|---------------------|--------------------------|------------------|
| SF 0508 | Randomized, double-blind, multicenter, placebo-controlled | Terbinafine tablets (or matching placebo) 125x2 mg od for 2 weeks; 6 week follow-up | Terbinafine Enrolled 18 Evaluable 14 | 39 years (19-72) | Male = 20 Female =6 | 79% Caucasian |
| | | | Placebo Enrolled 19 Evaluable 14 | 45 years (20-82) | Male =23 Female = 4 | |
| SF 0025 | Randomized, double-blind, multicenter, griseofulvin controlled | Terbinafine capsules, 125 mg bid for 6 wk; 2 wk follow-up | Enrolled 39 Evaluable 33 | 38 years (18-79) | Male = 17 Female = 16 | 95% Caucasian |
| | | Griseofulvin capsules 250 mg bid for 6 wk; 2 wk follow-up | Enrolled 37 Evaluable 33 | 35 years (14-59) | Male = 18 Female = 15 | |
| 20-OR | Randomized, double-blind, multicenter, griseofulvin controlled | Terbinafine capsules, 125 mg bid for 6 wk; 2 wk follow-up | Enrolled 18 Evaluable 16 | 38 years (22-63) | Male = 11 Female = 5 | 82% Caucasian |
| | | Griseofulvin capsules 250 mg bid for 6 wk; 2 wk follow-up | Enrolled 18 Evaluable 12 | 36 years (20-49) | Male = 9 Female = 3 | |

Study results

Results of placebo controlled studies 39-40OR, SFO508 in tinea pedis

| Primary Endpoints | Terbinafine Number (%) | Placebo Number (%) |
|---|---------------------------|-----------------------|
| Mycological cure (negative culture and microscopy) at follow-up | | |
| Study 39-40OR* | 17/22 (77%) | 0/6 (0%) |
| Study SF0508 [†] | 12/14 (86)% | 1/14(7%) |
| Effective treatment (negative mycology and minimal signs and symptoms) at follow-up | | |
| Study 39-40OR* | 15/23 (65%) | 0/18 (0%) |
| Study SF0508 [†] | 10/14 (71%) | 0/14 (0%) |

* Too few placebo patients at follow-up to determine

[†] P <0.001, Fisher Exact test, one-sided

Placebo-controlled trials demonstrated a consistent treatment effect 2-6 weeks after cessation of treatment, whether assessed solely by mycological results, or when assessed by combined mycological and clinical parameters. Both 6-week and 2-week, o.d., and b.i.d. regimens were effective. In study 39-40OR, too few placebo patients returned at the follow-up visit to allow meaningful statistical analysis of results. Mycological cures and effective treatment rates at end of the 6 week treatment period, however, were significantly greater in the terbinafine treatment group than in the placebo group.

Results of study griseofulvin-controlled studies SF 0025 and 20-OR in tinea pedis

| Primary Endpoints | Terbinafine Number (%) | Comparator Number (%) |
|---|---------------------------|--------------------------|
| Mycological cure (negative culture and microscopy) at follow-up | | |
| SF 0025* | 32/33 (97%) | 28/31 (90%) |
| 20-OR* | 16/16 (100%) | 6/11 (55%) |
| Effective treatment (negative mycology and minimal signs and symptoms) at follow-up | | |
| SF 0025 [†] | 32/33 (97%) | 26/33 (79%) |
| 20-OR [†] | 14/16 (88%) | 5/11 (45%) |

* Statistical significance not reported

[†] p = 0.054 Fishers Exact test

Two weeks after the end of 6 week courses of treatment, two small studies showed terbinafine to be better than griseofulvin in terms of mycological or combined mycological and clinical parameters.

DETAILED PHARMACOLOGY

The mechanism of action of terbinafine involves specific inhibition of fungal ergosterol biosynthesis at the point of squalene epoxidation, leading to a deficiency of an essential component of the fungal cell membranes (i.e. ergosterol) and to intracellular accumulation of the precursor squalene. The latter effect appears to be responsible for the primary fungicidal activity, its consequent disruption of cell membranes and cell wall synthesis having been noted in ultrastructural studies of terbinafine treated fungi. This mechanism distinguishes terbinafine from the azole antimycotics, which affect a later step in ergosterol biosynthesis by inhibiting 14 α -demethylase, a cytochrome P-450 enzyme upon which terbinafine has no effect. In contrast to many azoles, terbinafine does not bind to cytochromes P-450 in mammalian steroidogenic tissues.

Oral

The pharmacokinetics of orally administered terbinafine in plasma can best be described by a 2-compartment model. More than 80% of the dose is absorbed, clearance of the drug is high, it is extensively metabolized in the liver, and it is extensively distributed in the tissues. The peak plasma concentration is proportional to the dose, and the time to peak is ~ 2 hours, independent of the dose.

Mean concentrations of terbinafine (in mcg/g) measured in the stratum corneum, dermis/epidermis, hair, sweat, and sebum during and after 12 days of 250 mg terbinafine per day in 10 healthy volunteers were as follows before (day 0), during (days 2, 6, 12) and after treatment (days 13 and 16).

| Day | 0 | 2 | 6 | 12 | 13 | 16 |
|-----|---|---|---|----|----|----|
| | | | | | | |

| Day | 0 | 2 | 6 | 12 | 13 | 16 |
|-----------------|------|------|------|------|------|------|
| Stratum corneum | 0.11 | 0.86 | 2.84 | 9.05 | 5.08 | 3.06 |
| Derm / epiderm | 0 | 0.05 | 0.23 | 0.35 | 0.11 | 0.14 |
| Sebum | 0 | 38.2 | 43.1 | 39.7 | 45.1 | 18.8 |
| Hair | 0.02 | 0.24 | 1.30 | 2.60 | 2.11 | 1.35 |
| Sweat | 0 | 0 | 0 | 0 | 0 | 0 |

The pattern of tissue distribution suggests a rapid diffusion of drug through the dermis/lower epidermis into the stratum corneum, where maximal concentrations were achieved at day 12, and the $t_{1/2}$ was 3-4 days (this implies that the concentrations of terbinafine would remain above the MIC for most dermatophytes for 3 weeks). Another route of terbinafine distribution likely to be important for the treatment of dermatomycosis would be secretion into sebum, in which drug levels were high and persisted for several days after cessation of treatment.

In a study evaluating the efficacy of terbinafine in the treatment of onychomycosis, plasma levels were measured monthly in 9 patients, half of whom received 250 mg terbinafine q.d. in the evening and the other half 125 mg b.i.d. A pharmacokinetic steady state was attained at or before 4 weeks, the first analysis time point available. The steady-state plasma concentrations were 0.22 - 0.56 and 0.15 - 0.35 mcg/ml for the b.i.d. and q.d. doses, respectively, and did not increase over time.

MICROBIOLOGY

In vitro

The minimum inhibitory concentrations (MICs) of terbinafine were determined by serial dilution tests against yeasts, molds, dermatophytes, the mycelial form of *Candida albicans*, *Pityrosporum* spp., and *Sporothrix schenkil*. The spectrum and MIC values obtained for the various species and strains of fungi at different research laboratories (summarized as a range of activity in the following table) demonstrate that terbinafine possesses a high activity against dermatophytes, aspergilli, and dimorphous or dermatiaceous fungi. The susceptibility of blastospores of various species and strains of yeasts to terbinafine is much lower with MIC's ranging from 0.1 to > 128 mcg/ml. The efficacy of terbinafine against 2 clinically important yeasts was confirmed by an evaluation of the susceptibility of 78 clinical isolates of *Candida albicans* and 20 of *Candida parapsilosis*. Blastophores of the *Candida parapsilosis* were more sensitive than those of *Candida albicans*, but the mycelial growth form of the *Candida albicans* (considered the pathogenic form) was the most sensitive form (MIC 50 = 0.195 mcg/mL).

Summary of results published on *in vitro* activities of terbinafine against pathogenic and opportunistic fungi

| Fungus | MIC range (mcg/mL) |
|-------------------------------|--------------------|
| I. Dermatophytic Fungi | |
| Trichophyton mentagrophytes | 0.001-0.01 |
| rubrum | 0.001-0.01 |
| rubrum verrucosum | 0.001-0.006 |
| Epidermophyton floccosum | 0.001-<0.06 |

| Fungus | MIC range (mcg/mL) |
|----------------------------------|--------------------|
| Microsporum canis | 0.005-0.01 |
| Microsporum gypseum | 0.005-0.01 |
| Microsporum persicolor | 0.002-0.003 |
| II. Filamentous Fungi | |
| Aspergillus spp. | 0.005-5.0 |
| Aspergillus flavus | 0.01-0.5 |
| Aspergillus fumigatus | 0.02-5.0 |
| Aspergillus niger | 0.005-0.5 |
| Aspergillus terreus | 0.05-5.0 |
| Pseudallescheria boydii | 32.00->64.0 |
| Mucor, Rhizopus spp. | 64.0->128.00 |
| Acremonium spp. | 1.0-4.0 |
| Curcularia fallax | 0.25-0.5 |
| Fusarium spp. | 32.0->64.0 |
| Hendersonula toruloidea | 1.0-4.0 |
| Lasiodiplodia theobromae | 0.25-0.5 |
| Paecilomyces spp. | 8.0-64.0 |
| Scopulariopsis brevicaulis | 0.5-8.8 |
| Scytalidium hyalinum | 1.0-4.0 |
| III. Dimorphic Fungi | |
| Blastomyces dermatitidis | □ 0.05-0.39 |
| Histoplasma capsulatum | 0.05-0.2 |
| Sporothrix schenckii | 0.05-2.0 |
| IV. Pathogenic Yeasts | |
| Candida albicans (yeast form) | 6.25->128.0 |
| Candida albicans (mycelial form) | 0.098-0.78 |
| Candida parapsilosis | 0.1-3.13 |
| Candida tropicalis | 10.0-128.0 |
| Candida pseudotropicalis | 0.5-50.0 |
| Candida krusei | 50.0->100.0 |
| Candida guilliermondii | 6.25-100.0 |
| Candida glabrata (T.glabrata) | >100.0->128.0 |
| Cryptococcus neoformans | 0.25-2.0 |
| Pityrosporum spp. | 0.2-0.8 |
| V. Dematiaceae | |
| Phaeochyphomycosis complex* | <0.06-0.5 |
| Chromoblastomycosis complex** | 0.06-2.0 |

* = *Exophiala jeanselmei*, *Wangiella dermatitidis*, *Cladosporium bantianum* ** = *Fonseceas pedrosoi*, *Phialophora spp.*

Terbinafine was primarily fungicidal against *T. mantagrophytes*, *M. canis*, *A. fumigatus*, *Sc. brevicaulis*, *S. schenkii*, and *C. parapsilosis*, and fungistatic against *C. albicans*.

TOXICOLOGY

Acute Toxicity

| Species | Sex | Route | LD₅₀ |
|----------------|------------|----------------------|---------------------------|
| Mouse | M,F | oral | >4 g/kg |
| | M,F | i.v. | 393 mg/kg |
| | M,F | 1% solution orally | > 250 mg/kg |
| Rat | M,F | oral | 213 mg/kg |
| | M,F | i.v. | 25 mg/kg (no mortalities) |
| | M,F | 1% cream orally | >200 mg/kg |
| | M,F | 1% solution orally | >200 mg/kg |
| Rabbits | M, F | Topical (suspension) | >1.5 g/kg |

Long Term Toxicity**LONG-TERM TOXICITY**

| SPECIES | LENGTH OF ADMIN. | ROUTE | DOSES (mg/kg) | RESULTS |
|----------------------------|-------------------------|--------------|----------------------------------|--|
| RAT | 26 weeks | oral | 0, 30, 100, & 300 | ↑ in liver weights in the mid & high dose groups; ↑ in kidney and heart weights in high dose group; ↑ adrenal weight all dose groups. In all animals allowed a recovery period organ weights showed signs of reversibility. At all doses males showed ↑ incidence & severity of spontaneous nephropathy. At mid & high doses, livers of female rats showed enlargement of centrilobular hepatocytes. Histological evidence of recovery in liver but not in kidney on cessation of treatment. |
| | 52 weeks | oral | M: 6.9, 20, 68 F: 9.3, 28, 95 | Reversible ↑ in kidney weight in mid and high-dose males and liver weight in high dose females. No histopathological organ or tissue changes or evidence of drug-related tumorigenesis. No proliferation of smooth endoplasmic reticulum or peroxisomes. No-toxic-effect level in males 68 mg/kg; in females 95 mg/kg. |
| Pre and Post pubertal RATS | 55 days | oral | 0, 25, 75, 250 | In 15 day old rats treated until 70 days of age, the mid and high doses were toxic as shown by death of some animals at these dose levels. Reduction in mean body weight gain was also seen in these dose groups. |
| Juvenile RATS | 55 days | oral | 0, 10, 25, 45, 100 | Well tolerated in rats treated from 15 to 70 days of age. 1 death in low dose group. Slight increase in liver weights of high dose females. |
| DOGS | 26 weeks | oral | 0, 20, 60, 200 | Initial hypersalivation in mid and high dose groups; sporadic emesis in high dose group. Haematological parameters remained unchanged throughout experiment. At end of treatment livers of 3 of 4 high dose dogs contained lamellated intracytoplasmic inclusions. The no-toxic-effect level was 60 mg/kg. |
| | 52 weeks | oral | 0, 10, 25, 100 | Mid and high dose groups showed sporadic emesis and slightly inhibited body weight gain. High dose groups showed sporadic hypersalivation and reduced food intake. Females of all dose groups showed slightly lower triglyceride values. |

REPRODUCTION STUDIES

| SPECIES | DURATION | ROUTE OF ADMIN. | DOSES (mg/kg) | RESULTS |
|---------|---|-----------------|---------------|---|
| RATS | Fertility & Reproduction Study M: 63 days prior to mating F: 14 days prior to mating to weaning | oral | 10, 50, 250 | In the high dose group a lower pregnancy rate, mean number of implants and living pups per dam were observed as well as a high pre- and perinatal offspring mortality. Physical and functional development of the offspring was also retarded. The fertility and general reproductive performance of the offspring were normal at all dose levels tested. |
| | Embryotoxicity study Days 6 to 15 postcoitum | oral | 30, 100, 300 | Inseminated female rats treated with terbinafine tolerated doses up to 100 mg/kg well. Lower body weight gain was seen at 300 mg/kg. No embryolethal or teratogenic effects were seen. |
| | Peri & post-natal study Day 15 postcoitum to day 21 postpartum | oral | 30, 100, 300 | Inseminated female rats treated with terbinafine tolerated all doses well. No clinical signs or relevant reproductive changes in any group. |
| | Embryotoxicity study Day 6 to 15 postcoitum" | subcutaneous | 10, 30, 100 | In the high dose group dams gained less body weight and had skin irritation at the injection site. A tendency to lower body weight gains was also noted in the mid-dose group. No adverse effects observed on pregnancy or embryonic or fetal development in any group. |
| RABBITS | Embryotoxicity study Day 6 to 18 postcoitum | oral | 30, 100, 300 | Inseminated female rabbits treated with terbinafine tolerated doses up to 100 mg/kg well. In the high-dose group weight loss was observed in some dams, 2 of which had to be euthanized due to poor health. No relevant reproductive alterations were seen at any dose level. |

Mutagenicity

In vitro and *in vivo* mutagenicity testing revealed no specific mutagenic or genotoxic properties of terbinafine. *In vitro* tests of cell transformation to malignancy were negative.

CARCINOGENICITY

| SPECIES | DURATION | ROUTE | DOSES (mg/kg) | RESULTS |
|----------------|-----------------|--------------|----------------------------------|---|
| MICE | 100 weeks | oral | M: 14, 40, 130 F: 16, 60, 156 | There was a slight inhibition of body weight gain in the mid- and high-dose females. Macroscopic and microscopic examinations revealed no neoplastic or other findings which were attributable to treatment with terbinafine. |
| RATS | 123 weeks | oral | M: 6.9, 20, 69 F: 9.6, 28, 97 | Ophthalmoscopy revealed an ↑ in incidence of cataracts in males at high doses. No treatment related cataract changes occurred after 52 weeks, and such eye changes are known to occur spontaneously in old rats. ↑ incidence of enlarged swollen livers and liver nodules in the high dose animals, particularly males. Slight ↑ incidence of hepatocellular tumours in the high dose males. Females of the high dose group showed a slightly greater incidence and extent of hepatocellular necrosis, suggesting the high dose was at the threshold of a toxic response. |

Additional studies

The following additional chronic toxicity and genotoxicity studies were performed to investigate the findings of the life-time rat study and their relevance to man.

4-week oral toxicity study in rats with special emphasis on hepatic alterations

4-WEEK ORAL TOXICITY STUDY IN RATS WITH SPECIAL EMPHASIS ON HEPATIC ALTERATIONS

| SPECIES | DURATION | ROUTE | DOSES (mg/kg) |
|--------------------------------|--|--------------|--------------------------|
| RAT | 4 weeks | oral | M: 100, 465; F: 108, 530 |
| RESULTS | | | |
| FEED INTAKE & BODY WEIGHT GAIN | Only at the high dose level were significant decreases in food intake and body weight gain recorded. | | |
| CLINICAL CHEMISTRY | At the high-dose level reduced serum glucose (both sexes) and serum triglyceride levels (both sexes) and increased SGPT, SAP (females), and BUN (males) were seen. Significantly lower corticosterone plasma levels were found in high-dose animals and higher testosterone and estradiol plasma levels in low-dose males and females respectively. | | |
| LIVER MEASUREMENTS | Increased cytochrome P-450 content (high dose males) cytochrome b ₅ contents (high dose males and females), cytochrome b ₅ reductase activity (high dose males), 7-ethoxy-coumarin-O-deethylase activity (per mg cytochrome P-450; in low- and high-dose females), and peroxisomal palmitoyl-CoA epoxidase activity (low dose females and high dose males and females). Determination of liver compartments indicated a slight reduction of water content (high dose males), an unchanged protein content, and an increased lipid moiety (low dose males and high-dose males and females). | | |
| POSTMORTEM FINDINGS | Increased absolute and relative liver, and relative kidney weights (high dose males and females), mild hepatic centrilobular hypertrophy (high-dose only), increase in peroxisome numbers, and abnormal peroxisome shape (high-dose males). Slight increase in hepatic peroxisome size and number (high dose males and females). In high-dose group, numerous abnormal peroxisomes were found in both sexes, as well as a slight proliferation of the SER. | | |

Effects of 13-week treatment on selected toxicological variables in rats

EFFECTS OF A 13-WEEK TREATMENT ON SELECTED TOXICOLOGICAL VARIABLES IN RATS

| SPECIES | DURATION | ROUTE | DOSES (mg/kg) | RESULTS |
|---------|----------|-------|-----------------|---|
| RATS | 13 weeks | oral | M: 72 F: 102 | Slight decrease in serum triglycerides (significant in males only), slight increase in albumin (females); these changes were observed in test weeks 5 and 8 only. Relative liver weights were increased as was palmitoyl-CoA epoxidase activity. There was no evidence of hepatic peroxisomal morphological abnormalities; however peroxisome numbers were increased in both sexes. |

4-week oral toxicity study in mice

4-WEEK ORAL TOXICITY STUDY IN MICE

| SPECIES | DURATION | ROUTE | DOSES (mg/kg) | RESULTS |
|---------|----------|-------|----------------------------|---|
| MICE | 4 weeks | Oral | M: 103, 510 F: 107, 512 | Slightly impaired liver function in males only. Slight induction of the cytochrome P-450 and b ₅ systems was seen (biologically relevant only at the high-dose level and more marked in males than females), as well as ethoxycoumarin-O-deethylase activity. The peroxisomal marker palmitoyl-CoA-epoxidase was slightly increased at all dose levels (in both sexes); no changes in the size or number of peroxisomes were seen. There seemed to be a link between the degree of induction of some major hepatic <i>enzyme</i> systems and the moderate hepatic centrilobular hypertrophy observed histologically (and more generally the liver weight increases). Endocrinological examinations revealed higher basal corticosterone levels in a number of low and high-dose animals. |

Preliminary toxicity study in monkeys

PRELIMINARY TOXICITY STUDY IN MONKEYS

| SPECIES | DURATION | ROUTE | DOSES (mg/kg) | RESULTS |
|---------|----------|-----------|---------------|---|
| MONKEYS | 28 days | by gavage | 500 | Emesis and hypersalivation were observed on several occasions. The female showed consistent weight loss during the first 3 weeks and slight recovery thereafter. Liver weights were increased in both the treated animals, but there were no histopathological changes. No treatment-related changes in the peroxisome population or general cellular ultrastructure were seen. Increased activity of hepatic palmitoyl CoA-epoxidase indicated increased peroxisomal fatty oxidation. Cytosolic epoxide hydrolase activity was below detectable limit. |

32-week oral toxicity in monkeys

32-WEEK ORAL TOXICITY STUDY IN MONKEYS

| SPECIES | DURATION | ROUTE | DOSE (mg/kg) | RESULTS |
|----------------|-----------------|--------------|---------------------|--|
| MONKEY | 32 weeks | Oral | 50, 150, 300 | Eye lesions were seen after 26 weeks of treatment. Ophthalmoscopy revealed white spots on the retina in mid and high dose animals. No similar changes were seen at earlier examination. No morphological changes were seen in any layer of the retina. After withdrawal of terbinafine, the changes described recover fully (after a 13 week recovery period). |

Test for tumour-initiating activity in the rat liver foci bioassay

After partial hepatectomy, rats were treated with a single oral dose of 1 g/kg terbinafine (controls were treated with N-nitrosomorpholine [NNM]) followed by an 8-week treatment with phenobarbital (for promotion of growth of putative preneoplastic foci). A significant increase in foci/cm was seen only in NNM-treated animals in comparison with the respective control groups. No differences were observed between control animals (treated only with phenobarbital) and those treated with terbinafine plus phenobarbital. It was concluded that terbinafine did not have tumour-initiating potential even in combination with a tumour promoting agent.

Autoradiographic determination of the induction of DNA repair/synthesis and cell replication in rat hepatocyte primary cultures after *in vivo* treatment

No evidence was found for any induction of either DNA repair or DNA replication in the hepatocytes from terbinafine treated rats, and the frequency of replicating nuclei were in the control range.

Mutagenicity test using *Salmonella typhimurium*

Liver fractions from male rats treated for 13 weeks with 69 mg/kg/day of terbinafine and non-treated control rats were used to evaluate terbinafine for genetic activity. There was no evidence that repeated treatment of rats with terbinafine induces enzymes capable of producing mutagenic intermediates of terbinafine.

REFERENCES

1. Battig FA, Nefzger M, Schulz G. Major biotransformation routes of some allylamine antimycotics. IN: Recent trends in the discovery, development and evaluation of antifungal agents. Edit RA Fromtling; Publ JR Prous Science Publishers S.A., Barcelona 1987; pp 479-495
2. Battig FA, Nefzger M, Czok R. Pharmacokinetics and biotransformation of the ¹⁴C labelled drug in laboratory animals and man. IN: Proceedings, 13th International Congr of Chemother Austria, Aug 28-Sept 2, 1983; Edit KH Spitzzy, K Krrer; Publ H Egermann, Neulengbach, Austria. Part 116, pp 37-40
3. Baudraz-Rosselet F, Rakosi T, Wili PB, Kenzelmann R. Treatment of Onychomycosis with terbinafine. Brit J Derm; Vol 126, suppl 39, February 1992
4. Bechter R. Effects of antimycotic compounds on sperm function, on fertilization and on preimplantation embryos *in vitro*. Experientia (Basel) Vol 45 (suppl) p A67; 1989; Abstr no P PHA 332; ISSN 0014-4754
5. Bergstresser PR et al. Topical terbinafine and clotrimazole in interdigital tinea pedis: A multicenter comparison of cure and relapse rates with 1- and 4- week treatment regimens. J Am Acad Dermatol Vol 28, pp 648-651, 1993
6. Berman B. et al. Efficacy of a 1 week, twice daily regimen of terbinafine 1% cream in the treatment of interdigital tinea pedis. Results of placebo-controlled, double-blind multicenter trials. J Am Acad Dermatol Vol 26 (6), pp 956-960, 1992
7. Bertz R.J., Granneman, G.R. Use of *in vitro* and *in vivo* data to estimate the likelihood of metabolic pharmacokinetic interactions. Clin Pharmacokinet Vol. 32 (3), pp. 210-58, 1997
8. Boxenbaum H, Battle M. (1995) Effective half-life in clinical pharmacology. Journal of Clinical Pharmacology 35:763-766.
9. Clayton YM. Dermatophyte infections. Bailliere's Clin Trop Med Commun Dis, 1989; Vol. 4, no 1, pp 1-29
10. Cordero C, de la Rosa I, Espinosa Z, Rojas RF, Zaias N. Short-term therapy of tinea cruris/corporis with topical terbinafine. J of Dermatological Treatment, Vol. 3, (Suppl. 1), p. 23-24, 1992
11. Del Palacio-Hernanz A, Lopez-Gomez S, Gonzalez-Lastra F and al. A comparative double-blind study of terbinafine (LAMISIL) and griseofulvin in tinea corporis and tinea cruris. Clin Exp Dermatol 1990; Vol 15, pp 210-216; ISSN 0307-6938
12. Del Palacio-Hernanz A, Lopez-Gomez S, Iglesias-Diez L and al. Clinical evaluation of terbinafine (LAMISIL) in dermatophytosis Vol 89, p 40. J Dermatol Treat 1990; Vol 1, suppl 2, pp 339-40
13. De-wit RFE. A randomized double-blind multicentre comparative study of LAMISIL (terbinafine) versus ketoconazole in tinea corporis. J Dermatol Treat 1990; Vol 1, supp 2, pp 41-42
14. Editorial. Onychomycosis and terbinafine. Lancet 1990; Vol 335; p 636. ISSN 0140-6736

15. Effendy I, Krause W. *In vivo* effects of terbinafine and ketoconazole on testosterone plasma levels in healthy males. *Dermatologica* (Basel) 1989; Vol 178, pp 103-106; ISSN 0011-9075
16. Espinel-Ingroff A, Gebhart RJ, Shadomy S. *In vitro* studies with SF 86-327, an orally active antifungal agent. IN: 24th Interscience conference on antimicrobial agents and chemother Washington, Oct 1984; Publ Amer Soc Microbiology 1984; p 144, Abstr 305; ISSN 0733-6373
17. Evans EGV. A double-blind comparison of 1, 3, 5 and 7 day topical therapy with 1 % terbinafine (LAMISIL⁷) cream in tinea pedis. *Br J Dermatology*, Vol 127, p 21, 1992
18. Evans EGV, Seaman RAJ, James IGV. Short-duration therapy with terbinafine 1% cream in dermatophyte skin infections. *B J of Dermatology*, Vol. 130, p. 83-87, 1994
19. Evans EGV, Shah JM, Joshipura RC. One-week treatment of tinea corporis and tinea cruris with terbinafine (LAMISIL⁷) cream: a placebo-controlled study. *J of Dermatological Treatment*, Vol. 3, p. 181-184, 1992
20. Glyn E., Evans, V., Sigurgeirsson, B. Double-Blind Reandomised Study of continuous terbinafine compared with intermittent itraconazole in treatment of toenail onychomycosis. *BMJ* Volume 318, 1999, p.1031-1035
21. Goodfield MJD. Clinical results with terbinafine in onychomycosis. *J Dermatol Treat* 1990; Vol 1, suppl 2; pp 55-57
22. Goodfield MJD, Rowell NR, Forster RA and al. Treatment of dermatophyte infection of the finger- and toe-nails with terbinafine (SF 86-327, LAMISIL) an orally active fungicidal agent. *Brit J Derm* 1989; Vol 121, pp 753-757; ISSN 0007-0963
23. Grimus R, Schuster I. Uptake distribution and metabolism in the rat. A comparison of *in vitro* and *in vivo* data (SF 86-327). IN: Proceedings, 13th Internat Congr of Chemother, Austria, Sept 28, 1983. Edit KH Spitzzy, K Karrer. Publ H Egermann, Neulengbach, Austria. Part 116 pp 47-51
24. Jensen JC. Clinical pharmacokinetics of terbinafine (LAMISIL) *Clin Exp Dermatol* 1989; Vol 14, pp 110-113; ISSN 0307-6938
25. Jensen JC. Pharmacokinetics of LAMISIL in humans. *J Dermatol Treat* 1990; Vol 1, suppl 2, pp 15-18
26. Jones TC, Villars VV. Terbinafine. *Chemotherapy of fungal diseases*. Edit. JF Ryley. Publ Springer-Verlag, Berlin, Heidelberg, 1990; pp 483-503 (series Handbook of experimental pharmacology, vol 96)
27. Kagawa S. Clinical efficacy of terbinafine in 629 Japanese patients with dermatomycosis. *Clin Exp Dermatol* 1989; Vol 14, pp 114-115; ISSN 0307-6938
28. Kovarik JM, Mueller EA, Zehender H, Denouel J, Caplain H, Milleroux L. Multiple-dose pharmacokinetics and distribution in tissue of terbinafine and metabolites. *Antimicrobial Agents and Chemotherapy* 1995, 39:2738-2741.
29. Lazard K, Urbina JA, De-Souza W. Ultrastructural alterations induced by two ergosterol biosynthesis inhibitors, ketoconazole and terbinafine, on epimastigotes and amastigotes

- of trypanosoma (schizotrypanum) Cruzi. Antimicrob Agents-Chemother 1990; Vol 34, pp 2097-2105; ISSN 0066-4804
30. Lever LR, Thomas R, Dykes PJ and al. Investigation of the pharmacokinetics of oral and topical terbinafine. Clin Res 1989; Vol 37, p 726A; ISSN 0009-9279
 31. Long C.C., Hill S.A., Thomas R.C., Johnston A, Smith S.G., Kendall F. and Finlay A.Y. (1994) Effect of terbinafine on the pharmacokinetics of cyclosporin in humans. Journal of Investigative Dermatology; 102:740-743.
 32. Madani S, Barilla D, Cramer J, Wang Y, Paul C, Effect of terbinafine on the pharmacokinetics and pharmacodynamics of desipramine in healthy volunteers identified as cytochrome P450 2D6 (CYP2D6) extensive metabolizers. Journal of Clinical Pharmacology 2002; 42:1211-1218.
 33. Male O, Stephen A, Mieth H. Allylamines: a novel therapeutic option in the treatment of fungal skin infections. IN: Recent advances in chemotherapy: antimicrobiol section. 14th Internat Congr Chemother, June 23-28 1985. Publ Univ Tokyo Press, 1985; pp 1950-1951
 34. Male O, Villars V. The topical treatment of dermatomycoses with allylamines. IN: Proceed 10th Congr Int Soc for human and animal mycology, Barcelona 1988. Edit JM Torres-Rodriguez; Publ JR Prous Science, Barcelona 1988; pp 227-230
 35. Mekler PH, Richardson BP, Brueggemann S and al. Evaluation of toxicity in laboratory animals, tolerance and pharmacokinetics after oral application to man. IN: Proceed. 13th Internat Congr of Chemother Vienna, Aug 28 - Sept 2, 1983. Publ H Egermann, Neulengbach, Austria 1983; Vol 89, p 53. Part 116 pp 52-58
 36. Mieth H, Petranyi G. Preclinical evaluation of terbinafine *in vivo*. Clin Exp Dermatol 1989; Vol 14, pp 104-107; ISSN 0307-6938
 37. Millikan LE. Efficacy and tolerability of topical terbinafine in the treatment of tinea cruris. J Amer Acad Dermatol 1990; Vol 23 (no 4/part 2 suppl) pp 795-799; ISSN 0190-9622
 38. Nashan D, Knuth UA, Weidinger G and al. The antimycotic drug terbinafine in contrast to ketoconazole lacks acute effects on the pituitary-testicular function of healthy men: a placebo-controlled double-blind trial. Acta Endocr (Copenh) 1989; Vol 120, pp 677-681;ISSN 0001-5598
 39. Nedelman J, Cramer JA, Robbins B, Gibiansky E, Chang C, Gareffa S, Cohen A, Meligeni J (1997). The effect of food on the pharmacokinetics of multiple dose terbinafine in young and elderly healthy subjects. Biopharmaceutics & Drug Disposition 18 (2):127-138.
 40. Petranyi G, Meingassner JG, Mieth H. Experimental chemotherapeutic results with SF 86-327, a new antimycotic agent. ZBL Bakteriolog Mikrobiol Hygiene (A) 1986; Vol 262, pp 158-159
 41. Ryder NS. The mechanism of action of terbinafine. Clin Exp Dermatol 1989; Vol 14, pp 98-100; ISSN 0307-6938
 42. Ryder NS. Mode of action of SF 86-327 in candida and trichophyton. IN: 24th Interscience Conference on antimicrobial agents and chemotherapy, Washington US, Oct 1984. Publ Amer Soc Microbiology; Vol 10, pp 104-144. Abstr 306; ISSN 0733-6373

43. Ryder NS. Specific inhibition of fungal sterol biosynthesis by SF 86-327, a new allylamine antimycotic agent. *Antimicrob agents-chemother* 1985; Vol 27, pp 252-256; ISSN 0066-4804
44. Savin RC. Successful treatment of chronic tinea pedis (moccasin type) with terbinafine (LAMISIL). *Clin Exp Dermatol* 1989; Vol 14, pp 116-119; ISSN 0307-6938
45. Savin RC. Treatment of chronic tinea pedis (athlete's foot type) with topical terbinafine. *J Amer Acad Dermatol* 1990; Vol 23 (no 4/part 2, suppl) pp 786-789; ISSN 0190-9622
46. Schuster I. The interaction of representative members from two classes of antimycotics - The azoles and the allylamines - with cytochromes-450 in steroidogenic tissues and liver. *Xenobiotica* 1985; Vol 15, pp 529-546; ISSN 0049-8254
47. Seyffer R., Eichelbaum M., Jensen J.C., Klotz U. Antipyrine metabolism is not affected by terbinafine, a new antifungal agent. *European journal of clinical pharmacology*. 1989, 37:231-233.
48. Smith EB, Zaias N, Savin RC. Successful treatment of tinea pedis (athlete's foot type) with topical SF 86-327 Cream. IN: *Progress in antimicrobial and anticancer chemotherapy*, Vol 2; 15th Internat Congr Chemother, Istanbul, July 19-24 1987; *Publ Ecomed* 1987; pp 1017-1019
49. Stephen A, Czok R, Male O. Terbinafine: initial clinical results. IN: *Recent trends in the discovery, development and evaluation of antifungal agents*; *Publ JR Prous Science Publ SA*, Barcelona 1987; pp 511-520
50. Stephen A, Ganzinger U. Oral treatment of dermatophytosis with a new antifungal agent. IN: *Proceed, 13th Internat Congr of Chemother*, Vienna, Aug 28-Sept 2 1983; *Publ H Egermann, Neulengbach, Austria* 1983. Part 116, pp 59-60
51. Stephen A, Ganzinger U, Czok R. SF 86-327: Results of Phase II studies with a new antifungal agent for oral and topical application. IN: *Recent advances in chemotherapy: antimicrobiol section*; 14th Internat Congress of chemotherapy, Kyoto, June 23-38, 1985. *Publ Univ Tokyo Press*, 1985; pp 1946-1947
52. Tarral A., Francheteau P., Guerret M. Effects of terbinafine on the pharmacokinetics of digoxin in healthy volunteers. *Pharmacotherapy*. 1997, 17: 791-795.
53. Trépanier E., Nafziger A., Amsden G. Effect of Terbinafine on Theophylline Pharmacokinetics in Healthy Volunteers. *Antimicrobial Agents And Chemotherapy*; 1998, 42: 695-697
54. Wahllaender A, Paumgartner G. Effect of ketoconazole and terbinafine on the pharmacokinetics of caffeine in healthy volunteers. *European Journal of Clinical Pharmacology* 1989;37:279-283.
55. Zaias N. Management of onychomycosis with oral terbinafine. *J Amer Acad Dermatol* 1990; Vol 23 (no 4/part 2, suppl) pp 810-812; ISSN 0190-9622
56. Zaias N, Berman B, Cordero C et al. Efficacy of a 1-week, once-daily regimen of Terbinafine 1% Cream in the treatment of t. cruris and t. corporis. *J of the Amer Academy of Dermatology*, Vol. 29, p. 646-648, 1993

57. Zaias N, Serrano L. Effectiveness and safety of SF 86-327 (terbinafine) in the treatment of T Rubrum onychomycosis. IN: Dermatology in five continents, Proceed of the 27th World Congr of Dermatol Berlin May 24-29, 1987. Publ Springer-Verlag 1988; pp 913-914
58. Zanger UM., Sebastian Raimundo S., Eichelbaum M. Cytochrome P450 2D6: overview and update on pharmacology, genetics, biochemistry. Naunyn-Schmiedeberg's Arch Pharmacol 2004, 369: 23-37.
59. LAMISIL[®] Product Monograph (Novartis Pharmaceuticals Canada Inc.), Revision date: May 17, 2016, control number: 192408.

PART III: CONSUMER INFORMATION

PrDom-TERBINAFINE

Terbinafine Tablets, USP

250 mg Terbinafine, as Terbinafine Hydrochloride

This leaflet is part III of a three-part “Product Monograph” published when Dom-TERBINAFINE was approved for sale in Canada and is designed specifically for Consumers. This leaflet is a summary and will not tell you everything about Dom-TERBINAFINE. Contact your doctor or pharmacist if you have any questions about the drug.

Keep this leaflet. You may need to read it again. This medicine has been prescribed only for you. Do not give it to anybody else or use it for other illnesses. Read all of this leaflet carefully before you start treatment. Follow all your doctor’s instructions carefully, even if they differ from the general information contained in this leaflet.

ABOUT THIS MEDICATION

What the medication is used for:

Dom-TERBINAFINE is used to treat fungal infections of skin, fingernails and toenails:

- Dom-TERBINAFINE tablets are used to treat fungal infections of the nail (toes, fingers) and may be used for certain fungal skin infections that do not respond to topical treatment.

Consult your doctor to confirm which type of fungal skin infection you have. Your doctor can determine if Dom-TERBINAFINE is the right treatment for you.

The treatment should only be taken as prescribed by your doctor. Some evidence of infection may still be present at the end of treatment. This will gradually diminish.

What it does:

Terbinafine interferes in the production of a substance (ergosterol) that the fungus needs to grow and causes a build-up of another substance in the cells (squalene). Both actions cause the death of the fungus and elimination of the infection.

When it should not be used:

Do not use Dom-TERBINAFINE if you are allergic to terbinafine (the active antifungal ingredient) or any of the ingredients in the formulation (See *What*

the nonmedicinal ingredients are). If you think you may be allergic, ask your doctor for advice.

Do not take Dom-TERBINAFINE if you have chronic or active liver disease.

What the medicinal ingredient is:

Terbinafine hydrochloride

What the non-medicinal ingredients are:

Colloidal silicon dioxide, hydroxypropyl methylcellulose, magnesium stearate, microcrystalline cellulose and sodium starch glycolate.

What dosage forms it comes in:

Tablets: 250 mg

WARNINGS AND PRECAUTIONS

Serious Warnings and Precautions

Dom-TERBINAFINE (terbinafine hydrochloride) tablets must not be used if you have pre-existing chronic or active liver disease. Serious and life-threatening cases of liver failure, including death, or requiring liver transplant, have been reported in patients with or without pre-existing chronic or active liver disease receiving terbinafine tablets.

Stop taking Dom-TERBINAFINE tablets and consult your doctor immediately should you develop jaundice (yellowness of skin and/or eyes or other symptoms). See *Table of Serious Side Effects*.

Your doctor may order blood tests before you start Dom-TERBINAFINE and during Dom-TERBINAFINE treatment.

Before you use Dom-TERBINAFINE, talk to your doctor if you:

- have or have a history of any other medical problems such as liver or kidney problems, blood diseases (e.g. anemia), serious skin reactions, or alcohol abuse
- if you have or have had liver problems, your doctor may require blood tests before and during Dom-TERBINAFINE treatment to test liver function
- are allergic to any other medicines (either prescription or non-prescription) or foods
- are pregnant or intend to become pregnant while using Dom-TERBINAFINE.
- are breast-feeding; oral Dom-TERBINAFINE is

excreted in breast milk. Nursing mothers should avoid topical applications of Dom-TERBINAFINE to the breast and infants should not come into contact with areas treated with topical Dom-TERBINAFINE.

Contact your doctor immediately, while taking Dom-TERBINAFINE, if you develop conditions such as:

- liver problems with symptoms such as persistent nausea, vomiting, abdominal pain, dark urine, pale stools, fatigue, loss of appetite, yellowing of the skin and eyes
- serious skin reactions such as blistering or peeling skin, blistering of the lips, eye or mouth, red/inflamed skin, hives, fever (due to skin reactions), rash (due to high white blood cell count-eosinophilia)
- experience symptoms of lupus erythematosus such as thickened patches of red/silver skin (psoriasis) , joint pain, muscle disorder/pain and fever
- blood disorder with symptoms such as weakness, unusual bleeding, bruising, sore throat or frequent infections

INTERACTIONS WITH THIS MEDICATION

Tablets:

Tell your doctor or pharmacist if you are taking or have recently taken any other medicines, including herbal medicines, oral contraceptives (birth control pills) and non-prescription medicines. Some other medicines may interact with Dom-TERBINAFINE. These include:

- some medicines used to treat infectious diseases called antibiotics (e.g. rifampicin),
- some medicines used to treat mood disorders (some antidepressants (such as tricyclic antidepressants, selective serotonin reuptake inhibitors including class 1A, 1B and 1C, monoamine oxidase inhibitors Type B, desipramine),
- some medicines used to treat irregular heart rhythm (antiarrhythmics (e.g. propafenone, amiodarone),
- some medicines used to treat high blood pressure (e.g. beta-blockers such as metoprolol),
- theophylline, a medicine used to relieve bronchospasm in asthma
- some medicines used to treat cough (e.g. dextromethorphan),
- cyclosporine, a medicine used to control your body's immune system (e.g. in order to prevent rejection of transplanted organs).

- St John's wort [*Hypericum perforatum*]), a herbal medicine used to treat depression

Some cases of menstrual irregularities and pregnancies have been reported in patients taking terbinafine hydrochloride concomitantly with oral contraceptives; however, the rate of occurrence appears to be within the background incidence for patients taking oral contraceptives alone.

PROPER USE OF THIS MEDICATION

To help clear up your infection completely, it is very important that you keep taking this medicine for the prescribed treatment period, even if your symptoms begin to clear up or you begin to feel better after a few days. Since fungal infections may be very slow to clear up, stopping your medication too soon can cause the symptoms and the fungal infection to flare up again.

Missed Dose:

Try not to miss any doses. If you do miss a dose, take it as soon as possible. However, if it is almost time for your next dose (up to 4 hours), skip the missed dose and go back to your regular schedule. Do not double the doses and never make dose changes on your own. Take as prescribed by *your* doctor.

Usual Adult Dose:

Follow your doctor's instructions carefully. Do not exceed the recommended dosage. If you have the impression that the effect of Dom-TERBINAFINE is too strong or too weak, talk to your doctor or pharmacist.

Dom-TERBINAFINE tablets

Adults: 250 mg once daily.

Taking Dom-TERBINAFINE at the same time each day will help you remember when to take your medicine. Dom-TERBINAFINE tablets can be taken on an empty stomach or after a meal.

You can take Dom-TERBINAFINE tablets if you are aged 65 years and over at the same dose as younger adults.

The duration of treatment varies according to the indication and the severity of infection:

TABLE I

| Indication | Duration of Treatment |
|------------|-----------------------|
|------------|-----------------------|

| Indication | Duration of Treatment |
|---|-----------------------|
| Onychomycosis (of fingers and toes) | 6 weeks to 3 months |
| Skin Infections Tinea pedis (interdigital & plantar/moccasin type) | 2 - 6 weeks |
| Tinea corporis, cruris | 2 – 4 weeks |

Overdose:

Symptoms caused by an overdose of Dom-TERBINAFINE tablets include headache, nausea, stomach pain and dizziness.

If you think you have taken too much Dom-TERBINAFINE, contact your healthcare professional, hospital emergency department or regional Poison Control Centre immediately, even if there are no symptoms.

SIDE EFFECTS AND WHAT TO DO ABOUT THEM

Dom-TERBINAFINE tablets

As with all medicines, some patients taking Dom-TERBINAFINE tablets may experience some unwanted effects (side effects), although not everybody gets them.

The following side effects have been reported with terbinafine hydrochloride tablets:

Very common (*likely to affect more than 1 in every 10 patients*): headache, nausea, mild abdominal pain, stomach discomfort after meal (heartburn), diarrhea, swelling or bloating (a feeling of fullness) of the abdomen, loss of appetite, skin rashes (itchy), joint pain and muscle pain.

Common (*likely to affect 1 to 10 in every 100 patients*): Mood disorder (depression), disturbance or loss of sense of taste, dizziness, eye disorder and tiredness. If you suffer dizziness, do not drive or operate machinery.

Uncommon (*likely to affect 1 to 10 in every 1,000 patients*): If you notice abnormal pale skin, mucosal lining or nail beds, unusual tiredness or weakness or breathlessness on exertion (possible signs of a disease that affects the level of red blood cells), anxiety, tingling or numbness and decreased skin sensitivity, increased sensitivity of the skin to sun, noises (e.g. hissing) in ears, fever and weight loss.

Rare (*likely to affect less than 1 to 10 in every 10,000 patients*): Yellow eyes or skin (liver problems) and abnormal liver function test results.

Very rare (*likely to affect less than 1 in every 10,000 patients*): Decrease in certain types of blood cells, lupus (an autoimmune disease), serious skin reactions, allergic reactions, psoriasis- like skin eruptions (rash with silver coloured appearance), worsening of psoriasis, skin rash with flaking or peeling and hair loss.

If you experience smell, taste, visual or hearing disorders or symptoms of depression, then stop using Dom-TERBINAFINE and call your doctor.

If any of the listed side effects affect you severely, discuss this with your doctor.

Other side effects not listed above may also occur in some patients. If you notice any other side effects not mentioned in this leaflet, inform your doctor or pharmacist.

Some side effects could be serious:

- if you develop fever, shivering, a sore throat or mouth ulcers due to infections and weakness or if you get infections more frequently or
- if you experience difficulty in breathing, dizziness, swelling mainly of the face and throat, flushing, crampy abdominal pain and loss of consciousness or if you experience symptoms such as joint pain, stiffness, rash, fever or swollen/enlarged lymph nodes (possible signs of severe allergic reactions).
- If you develop any skin problems such as rash, red skin, blistering of the lips, eyes or mouth, skin peeling, fever.
- If you experience severe upper stomach pain with radiation to the back (possible signs of pancreas inflammation).
- If you experience unexplained muscle weakness and pain or dark (red-brown) urine (possible signs of muscle necrosis).

| SERIOUS SIDE EFFECTS, HOW OFTEN THEY HAPPEN AND WHAT TO DO ABOUT THEM | | | |
|---|-------------------------------------|--------------|---|
| Symptom / effect | Talk with your doctor or pharmacist | | Stop taking drug and seek immediate emergency medical attention |
| | Only if severe | In all cases | |

SERIOUS SIDE EFFECTS, HOW OFTEN THEY HAPPEN AND WHAT TO DO ABOUT THEM

| Symptom / effect | Talk with your doctor or pharmacist | | Stop taking drug and seek immediate medical attention |
|---|-------------------------------------|--------------|---|
| | Only if severe | In all cases | |
| Rare Liver problems, sometimes fatal with symptoms such as persistent nausea and vomiting, abdominal pain, fatigue, loss of appetite, dark urine, pale stools or jaundice (yellowing of the skin and eyes). | | | √ |
| Very Rare Blood abnormalities with symptoms of sore throat, fever, mouth sore, unusual bleeding or bruising, low level of red blood cells (anemia) | | | √ |
| Very Rare Inflammation of the blood vessels (vasculitis) or the pancreas (pancreatitis) | | | √ |
| Very Rare Serious allergic reactions (anaphylactic or serum sickness reactions) or infections | | | √ |
| Very Rare Muscle breakdown (rhabdomyolysis) | | | √ |
| Very Rare Immune system disorders (lupus) | | | √ |
| Very Rare Serious skin reactions (blistering, peeling skin) | | | √ |

HOW TO STORE IT

Store between 15°C and 30°C.

Protect tablets from light.

Keep out of reach and sight of children.

REPORTING SIDE EFFECTS

Reporting Side Effects

You can help improve the safe use of health products for Canadians by reporting serious and unexpected side effects to Health Canada. Your report may help to identify new side effects and change the product safety information.

3 ways to report:

- Online at [MedEffect](http://www.healthcanada.gc.ca/medeffect) (www.healthcanada.gc.ca/medeffect);
- By calling 1-866-234-2345 (toll-free);
- By completing a Consumer Side Effect Reporting Form and sending it by:
 - Fax to 1-866-678-6789 (toll-free), or
 - Mail to: Canada Vigilance Program
Health Canada, Postal Locator 0701E
Ottawa, ON
K1A 0K9
 Postage paid labels and the Consumer Side Effect Reporting Form are available at [MedEffect](http://www.healthcanada.gc.ca/medeffect) (www.healthcanada.gc.ca/medeffect).

NOTE: Contact your health professional if you need information about how to manage your side effects. The Canada Vigilance Program does not provide medical advice.

MORE INFORMATION

This document plus the full product monograph, prepared for health professionals, can be obtained by contacting the sponsor, Dominion Pharmacal at, 1-888-550-6060.

This leaflet was prepared by
Dominion Pharmacal
Montréal Québec
H4P 2T4

Last revised: September 30, 2016