

PRODUCT MONOGRAPH

Pr AURO-METFORMIN

Metformin Tablets

500 mg and 850 mg

BP

Oral Antihyperglycemic Agent

Auro Pharma Inc.
3700 Steeles Avenue West, Suite # 402
Woodbridge, Ontario, L4L 8K8
CANADA

Date of Preparation:
February 17, 2017

Submission Control No.: 193430

Table of Contents

PART I: HEALTH PROFESSIONAL INFORMATION.....3

SUMMARY PRODUCT INFORMATION 3

INDICATIONS AND CLINICAL USE 3

CONTRAINDICATIONS..... 4

WARNINGS AND PRECAUTIONS..... 4

ADVERSE REACTIONS 10

DRUG INTERACTIONS..... 12

DOSAGE AND ADMINISTRATION..... 14

OVERDOSAGE 16

ACTION AND CLINICAL PHARMACOLOGY 16

STORAGE AND STABILITY 17

DOSAGE FORMS, COMPOSITION AND PACKAGING 17

PART II: SCIENTIFIC INFORMATION 18

PHARMACEUTICAL INFORMATION 18

CLINICAL TRIALS 19

DETAILED PHARMACOLOGY 20

TOXICOLOGY 22

REFERENCES 24

PART III: PATIENT MEDICATION INFORMATION 28

PRODUCT MONOGRAPH

Pr AURO-METFORMIN

Metformin Tablets

500 mg and 850 mg

BP

Oral Antihyperglycemic Agent

PART I: HEALTH PROFESSIONAL INFORMATION

SUMMARY PRODUCT INFORMATION

Route of Administration	Dosage Form / Strength	All Non-medicinal Ingredients
Oral	Tablets 500 mg and 850 mg	Povidone, Magnesium Stearate Coating Ingredients: Opadry Clear 03G590004: It contains HPMC 2910/Hypromellose, Macrogol / PEG, Artificial Blackberry Flavour 501167 AP0551.

INDICATIONS AND CLINICAL USE

AURO-METFORMIN (metformin) is indicated to control hyperglycemia in adult patients with responsive, stable, mild, non-ketosis prone, type 2 diabetes as an adjunct in patients who cannot be controlled by proper dietary management, exercise and weight reduction, or when insulin therapy is not appropriate. AURO-METFORMIN can be used as monotherapy or in combination with other antidiabetic agents.

Pediatrics (< 18 years of age): The safety and effectiveness of metformin have not been studied in patients under 18 years of age. AURO-METFORMIN should not be used in pediatric patients.

Geriatrics (> 65 years of age): Controlled clinical studies of metformin did not include sufficient numbers of elderly patients to determine whether they respond differently from younger patients. Metformin is substantially excreted by the kidney and because the risk of serious adverse reactions to the drug is greater in patients with impaired renal function, AURO-METFORMIN should only be used in patients with normal renal function (see **CONTRAINDICATIONS** and **WARNINGS AND PRECAUTIONS, Renal**). Because aging is associated with reduced renal function, AURO-METFORMIN should be used with caution in geriatric patients. AURO-METFORMIN treatment should not be initiated in patients older than 80 years of age, unless measurement of creatinine clearance demonstrates that renal function is

not reduced (see **WARNINGS AND PRECAUTIONS, Endocrine and Metabolism, Lactic Acidosis, Special Populations, Geriatrics, and DOSAGE AND ADMINISTRATION**).

CONTRAINDICATIONS

- Unstable and/or insulin-dependent (Type I) diabetes mellitus.
- Acute or chronic metabolic acidosis, including diabetic ketoacidosis, with or without coma, history of ketoacidosis with or without coma. Diabetic ketoacidosis should be treated with insulin.
- In patients with a history of lactic acidosis, irrespective of precipitating factors.
- In the presence of renal impairment or when renal function is not known, and also in patients with serum creatinine levels above the upper limit of normal range. Renal disease or renal dysfunction (e.g., as suggested by serum creatinine levels ≥ 136 $\mu\text{mol/L}$ (males), ≥ 124 $\mu\text{mol/L}$ (females) or abnormal creatinine clearance <60 mL/min) which may result from conditions such as cardiovascular collapse (shock), acute myocardial infarction, and septicemia (see also **WARNINGS AND PRECAUTIONS**).
- In excessive alcohol intake, acute or chronic.
- In patients suffering from severe hepatic dysfunction, since severe hepatic dysfunction has been associated with some cases of lactic acidosis, AURO-METFORMIN should generally be avoided in patients with clinical or laboratory evidence of hepatic disease.
- AURO-METFORMIN should be temporarily discontinued in patients undergoing radiologic studies involving intravascular administration of iodinated contrast materials, because use of such products may result in acute alteration of renal function (see **WARNINGS AND PRECAUTIONS**).
- In cases of cardiovascular collapse and in disease states associated with hypoxemia such as cardiorespiratory insufficiency, which are often associated with hyperlactacidemia.
- During stress conditions, such as severe infections, trauma or surgery and the recovery phase thereafter.
- In patients suffering from severe dehydration or shock.
- Known hypersensitivity or allergy to metformin or any of the excipients. For a complete listing, see the **DOSAGE FORMS, COMPOSITION AND PACKAGING** section of the product monograph.
- During pregnancy and breastfeeding.

WARNINGS AND PRECAUTIONS

Serious Warnings and Precautions

- Lactic acidosis is a rare, but serious, metabolic complication that occurs due to metformin accumulation during treatment with AURO-METFORMIN (see **Endocrine and Metabolism, Lactic Acidosis** section below).
- Patients should be cautioned against excessive alcohol intake, either acute or chronic,

when taking AURO-METFORMIN, since alcohol intake potentiates the effect of metformin on lactate metabolism (see **Endocrine and Metabolism**, Lactic Acidosis section below).

General

Patient Selection and Follow-up:

Careful selection of patients is important. It is imperative that there be rigid attention to diet and careful adjustment of dosage. Regular thorough follow-up examinations are necessary.

If vomiting occurs, withdraw drug temporarily, exclude lactic acidosis, and then resume dosage cautiously (see **ADVERSE REACTIONS**).

Particular attention should be paid to short range and long range complications which are peculiar to diabetes (see **Monitoring and Laboratory Tests**).

Use of AURO-METFORMIN must be considered as treatment in addition to proper dietary regimen and not as a substitute for diet.

If during AURO-METFORMIN therapy the patient develops acute intercurrent disease such as: clinically significant hepatic dysfunction, cardiovascular collapse, congestive heart failure, acute myocardial infarction, or other conditions complicated by hypoxemia, the drug should be discontinued.

Change in clinical status of previously controlled diabetes patients:

A diabetic patient previously well controlled on metformin who develops laboratory abnormalities or clinical illness (especially vague and poorly defined illness) should be evaluated promptly for evidence of ketoacidosis or lactic acidosis. Evaluation should include serum electrolytes and ketones, blood glucose and, if indicated, blood pH, lactate, pyruvate and metformin levels. If acidosis of either form occurs, metformin must be stopped immediately and appropriate corrective measures must be initiated.

Hypoxic states: Cardiovascular collapse (shock) from whatever cause, acute congestive heart failure, acute myocardial infarction and other conditions characterized by hypoxemia have been associated with lactic acidosis and may also cause prerenal azotemia. When such events occur in patients on metformin therapy, the drug should be promptly discontinued.

Endocrine and Metabolism

Lactic Acidosis:

Lactic acidosis is a rare, but serious, metabolic complication that occurs due to metformin accumulation during treatment with metformin. When it occurs, it is fatal in approximately 50% of cases. Lactic acidosis may also occur in association with a number of pathophysiologic conditions, including diabetes mellitus, and whenever there is significant tissue hypoperfusion

and hypoxemia. Lactic acidosis is characterized by elevated blood lactate levels (> 5 mmol/L), decreased blood pH, electrolyte disturbances with an increased anion gap, and an increased lactate/pyruvate ratio. When metformin is implicated as the cause of lactic acidosis, metformin plasma levels >5 $\mu\text{g/mL}$ are generally found.

The reported incidence of lactic acidosis in patients receiving metformin is very low (approximately 0.03 cases / 1000 patient-years, with approximately 0.015 fatal cases / 1000 patient-years) and occurs primarily in diabetic patients with significant renal insufficiency, including both intrinsic renal disease and renal hypoperfusion, often in the setting of multiple concomitant medical/surgical problems and multiple concomitant medications. Patients with congestive heart failure requiring pharmacologic management, in particular those with unstable or acute congestive heart failure who are at risk of hypoperfusion and hypoxemia, are at increased risk of lactic acidosis. In particular, treatment of the elderly should be accompanied by careful monitoring of renal function. AURO-METFORMIN treatment should not be initiated in patients ≥ 80 years of age, unless measurement of creatinine clearance demonstrates that renal function is not reduced, as the patients are more susceptible to developing lactic acidosis. The risk of lactic acidosis increases with the degree of renal dysfunction and the patient's age. The risk of lactic acidosis may, therefore, be significantly decreased by regular monitoring of renal function in patients taking metformin and by use of the minimum effective dose of metformin. In addition, AURO-METFORMIN should be promptly withheld in the presence of any condition associated with hypoxemia, dehydration or sepsis. Because impaired hepatic function may significantly limit the ability to clear lactate, AURO-METFORMIN should generally be avoided in patients with clinical or laboratory evidence of hepatic disease. Patients should be cautioned against excessive alcohol intake, either acute or chronic, when taking metformin, since alcohol intake potentiates the effect of metformin on lactate metabolism. In addition, AURO-METFORMIN should be temporarily discontinued prior to any intravascular radiocontrast study and for any surgical procedure.

The onset of lactic acidosis is often subtle, and accompanied only by nonspecific symptoms such as malaise, myalgia, respiratory distress, increasing somnolence and non-specific abdominal distress. There may be associated hypothermia, hypotension and resistance bradyarrhythmias with more marked acidosis. The patient and the patient's physician must be aware of the possible importance of such symptoms and the patient should be instructed to notify the physician immediately if they occur. AURO-METFORMIN should be withdrawn until the situation is clarified. Serum electrolytes, ketones, blood glucose and, if indicated, blood pH, lactate levels and even blood metformin levels may be useful. Once a patient is stabilized on any dose level of metformin, gastrointestinal symptoms, which are common during initiation of therapy, are unlikely to be drug related. Later occurrence of gastrointestinal symptoms could be due to lactic acidosis or other serious disease. In patients taking metformin, levels of fasting venous plasma lactate above the upper limit of normal but less than 5 mmol/L, do not necessarily indicate impending lactic acidosis and may be explainable by other mechanisms, such as poorly controlled diabetes or obesity, vigorous physical activity or technical problems in sample handling. Lactic acidosis should be suspected in any diabetic patient with metabolic acidosis lacking evidence of ketoacidosis (ketonuria and ketonemia).

Lactic acidosis is a medical emergency that must be treated in a hospital setting. In a patient with

lactic acidosis who is taking AURO-METFORMIN, the drug should be discontinued immediately and general supportive measures should be promptly instituted. Because metformin is dialysable (with clearance of up to 170 mL/min under good hemodynamic conditions), prompt hemodialysis is recommended to correct the acidosis and remove the accumulated metformin.

Physicians should instruct their patients to recognize the symptoms which could be signal onset of lactic acidosis. If acidosis of any kind develops, AURO-METFORMIN should be discontinued immediately and the patient should be immediately hospitalized.

Loss of control of blood glucose:

When a patient stabilized on any diabetic regimen is exposed to stress such as fever, trauma, infection, or surgery, a temporary loss of glycemic control may occur. At such times, it may be necessary to withhold AURO-METFORMIN and temporarily administer insulin. AURO-METFORMIN may be reinstated after the acute episode is resolved.

The effectiveness of oral antidiabetic drugs in lowering blood glucose to a targeted level decreases in many patients over a period of time. This phenomenon, which may be due to progression of the underlying disease or to diminished responsiveness to the drug, is known as secondary failure, to distinguish it from primary failure in which the drug is ineffective during initial therapy.

Should secondary failure occur with AURO-METFORMIN, therapeutic alternatives should be considered.

Vitamin B₁₂ levels:

Impairment of vitamin B₁₂ absorption has been reported in some patients. Therefore, measurements of serum vitamin B₁₂ are advisable at least every one to two years in patients on long-term treatment with metformin.

A decrease to subnormal levels of previously normal serum Vitamin B₁₂ levels, without clinical manifestations, is observed in approximately 7% of patients receiving metformin in controlled clinical trials of 28 weeks duration. Such decrease, possibly due to interference with B₁₂ absorption from B₁₂-intrinsic factor complex is, however, very rarely associated with anemia and appears to be rapidly reversible with discontinuation of metformin or vitamin B₁₂ supplementation. Measurement of hematologic parameters on an annual basis is advised in patients on AURO-METFORMIN and any apparent abnormalities should be appropriately investigated and managed (see **Monitoring and Laboratory Tests**). Certain individuals (those with inadequate vitamin B₁₂ or calcium intake or absorption) appear to be predisposed to developing subnormal vitamin B₁₂ levels.

Hepatic/Biliary/Pancreatic

Since impaired hepatic function has been associated with some cases of lactic acidosis, AURO-METFORMIN should generally be avoided in patients with clinical or laboratory evidence of hepatic disease.

Hypoglycemia

Hypoglycemia does not occur in patients receiving metformin alone under usual circumstances of use, but could occur when caloric intake is deficient, when strenuous exercise is not compensated by caloric supplementation or during concomitant use with other glucose lowering agents or ethanol.

Elderly, debilitated or malnourished patients, and those with adrenal or pituitary insufficiency or alcohol intoxication are particularly susceptible to hypoglycemic effects. Hypoglycemia may be difficult to recognize in the elderly, and in people who are taking beta-adrenergic blocking drugs.

Peri-Operative Considerations

AURO-METFORMIN therapy should be temporarily suspended for any surgical procedure (except minor procedures not associated with restricted intake of food and fluids). AURO-METFORMIN should be discontinued 2 days before surgical intervention and should not be restarted until the patient's oral intake has resumed and renal function has been evaluated as normal.

Renal

Metformin is known to be substantially excreted by the kidney, and the risk of metformin accumulation and lactic acidosis increases with the degree of impairment of renal function. Thus, patients with serum creatinine levels above the upper limit of the normal range for their age should not receive AURO-METFORMIN. In patients with advanced age, AURO-METFORMIN should be carefully titrated to establish the minimum dose for adequate glycemic effect, because aging is associated with reduced renal function. In elderly patients, renal function should be monitored regularly and generally, AURO-METFORMIN should not be titrated to the maximum dose (see **DOSAGE AND ADMINISTRATION**).

Before initiation of AURO-METFORMIN therapy and every 6 months while on AURO-METFORMIN therapy, renal function should be assessed and verified as being within normal range.

In patients in whom development of renal dysfunction is anticipated, renal function should be assessed more frequently and AURO-METFORMIN must be discontinued if evidence of renal impairment is present.

Special caution should be exercised in situations where renal function may become impaired, for example in the elderly, in the case of dehydration, when initiating antihypertensive therapy or diuretic therapy, or when starting therapy with an NSAID.

Use of concomitant medications that may affect renal function or metformin disposition:

Concomitant medication(s) that may affect renal function or result in significant hemodynamic change or may interfere with the disposition of metformin such as cationic drugs that are eliminated by renal tubular secretion (see **DRUG INTERACTIONS**), should be used with caution.

Radiological studies involving the use of intravascular iodinated contrast materials (for example,

intravenous urogram, intravenous cholangiography, angiography, and computed tomography (CT) scans with intravascular contrast material:

Intravascular contrast studies with iodinated materials can lead to acute alteration of renal function and have been associated with lactic acidosis in patients receiving metformin (see **CONTRAINDICATIONS**). Therefore, in patients in whom any such study is planned, AURO-METFORMIN should be temporarily discontinued at the time of or prior to the procedure, withheld for 48 hours subsequent to the procedure, and reinstated only after renal function has been re-evaluated and found to be normal.

Special Populations

Pregnant Women: Safety of metformin in pregnant women has not been established. There are no adequate and well-controlled studies of metformin in pregnant women. AURO-METFORMIN is contraindicated in pregnant women (see **CONTRAINDICATIONS**).

Metformin was not teratogenic in rats and rabbits at doses up to 600 mg/kg/day, or about two times the maximum recommended human daily dose on a body surface area basis. Determination of fetal concentrations demonstrated a partial placental barrier to metformin. Because animal reproduction studies are not always predictive of human response, AURO-METFORMIN is contraindicated during pregnancy (see **CONTRAINDICATIONS**).

Nursing Women: Studies in lactating rats show that metformin is excreted into milk and reaches levels comparable to those in plasma. Metformin is also excreted into human breast milk in very small amounts. AURO-METFORMIN is contraindicated in nursing women (see **CONTRAINDICATIONS**).

Pediatrics (< 18 years of age): Safety and effectiveness in pediatric patients have not been established. Therefore, AURO-METFORMIN should not be used in this population.

Geriatrics (> 65 years of age): Controlled clinical studies of metformin did not include sufficient numbers of elderly patients to determine whether they respond differently from younger patients. Metformin is known to be substantially excreted by the kidney and because the risk of serious adverse reactions to the drug is greater in patients with impaired renal function, AURO-METFORMIN should only be used in patients with normal renal function (see **CONTRAINDICATIONS** and **WARNINGS AND PRECAUTIONS, Renal**). Because aging is associated with reduced renal function, AURO-METFORMIN should be used with caution as age increases. AURO-METFORMIN treatment should not be initiated in patients older than 80 years of age, unless measurement of creatinine clearance demonstrates that renal function is not reduced, as elderly patients are more susceptible to developing lactic acidosis (see **WARNINGS AND PRECAUTIONS, Endocrine and Metabolism, Lactic Acidosis**). Care should be taken in dose selection which should be based on careful and regular monitoring of renal function. AURO-METFORMIN should be carefully titrated to establish the minimum dose for adequate glycemic effect. Generally, elderly patients should not be titrated to the maximum dose of AURO-METFORMIN (see **DOSAGE AND ADMINISTRATION, Geriatrics**).

Monitoring and Laboratory Tests

Response to all diabetic therapies should be monitored by periodic measurements of fasting blood glucose and glycosylated hemoglobin levels, with a goal of decreasing these levels toward the normal range. During initial dose titration, fasting glucose can be used to determine the therapeutic response. Thereafter, both glucose and glycosylated hemoglobin should be monitored. Measurements of glycosylated hemoglobin may be especially useful for evaluating long-term control (see **DOSAGE AND ADMINISTRATION**).

Initial and periodic monitoring of hematologic parameters (e.g., hemoglobin/hematocrit and red blood cell indices) and renal function (serum creatinine) should be performed, at least on an annual basis. While megaloblastic anemia has rarely been seen with metformin therapy, if this is suspected, vitamin B₁₂ deficiency should be excluded.

Periodic cardiovascular, ophthalmic, hematological, hepatic, and renal assessments are advisable (See **WARNINGS AND PRECAUTIONS**).

ADVERSE REACTIONS

Adverse Drug Reaction Overview

Lactic acidosis is a rare, but serious adverse reaction associated with metformin treatment. Lactic acidosis is fatal in approximately 50% of cases (see **WARNINGS AND PRECAUTIONS**).

The adverse reactions most commonly associated with metformin treatment are diarrhea, nausea, vomiting, abdominal pain, abdominal distention, dyspepsia, and flatulence.

The most common adverse reactions resulting in discontinuation of metformin treatment are gastrointestinal disturbances described as diarrhea, nausea, vomiting, abdominal pain, and dyspepsia.

Clinical Trial Adverse Drug Reactions

Because clinical trials are conducted under very specific conditions the adverse drug reaction rates observed in the clinical trials may not reflect the rates observed in practice and should not be compared to the rates in the clinical trials of another drug. Adverse drug reaction information from clinical trials is useful for identifying drug-related adverse events and for approximating rates.

The clinical trials which formed the basis of approval for the original metformin submission are not available (see **CLINICAL TRIALS**).

The following adverse drug reactions (a combination of clinical trials and post-marketing data) were reported for metformin:

Lactic Acidosis: very rare (<1/10,000 and isolated reports) (see **WARNINGS AND PRECAUTIONS**, and **OVERDOSAGE** Sections).

Gastrointestinal Reactions: very common ($>1/10$). Gastrointestinal symptoms (diarrhea, nausea, vomiting, abdominal bloating, flatulence, and anorexia) are the most common reactions to metformin and are approximately 30% more frequent in patients on metformin monotherapy than in placebo-treated patients, particularly during initiation of metformin therapy. These symptoms are generally transient and resolve spontaneously during continued treatment. Occasionally, temporary dose reduction may be useful.

Because gastrointestinal symptoms during therapy initiation appear to be dose-related, they may be decreased by gradual dose escalation and by having patients take metformin with meals (see **DOSAGE AND ADMINISTRATION**).

Because significant diarrhea and/or vomiting can cause dehydration and prerenal azotemia, AURO-METFORMIN should be temporarily discontinued under such circumstances.

For patients who have been stabilized on metformin, nonspecific gastrointestinal symptoms should not be attributed to therapy unless intercurrent illness or lactic acidosis has been excluded.

Special Senses: common ($\geq 1/100$). During initiation of metformin therapy complaints of taste disturbance are common, i.e. metallic taste.

Dermatologic Reactions: very rare ($<1/10,000$ and isolated reports). The incidence of rash/dermatitis in controlled clinical trials was comparable to placebo for metformin monotherapy and to sulfonylurea for metformin /sulfonylurea therapy. Reports of skin reactions such as erythema, pruritus, and urticaria are very rare.

Hematologic: During controlled clinical trials of 29 weeks duration, approximately 9% of patients on metformin monotherapy and 6% of patients on metformin /sulfonylurea therapy developed asymptomatic subnormal serum vitamin B12 levels; serum folic acid levels did not decrease significantly. However, only five cases of megaloblastic anemia have been reported with metformin administration (none during U.S. clinical studies) and no increased incidence of neuropathy has been observed (see also **WARNINGS AND PRECAUTIONS**).

Decrease of vitamin B12 absorption with decrease of serum levels during long-term use of metformin is rare ($\geq 1/10,000$ and $<1/1,000$). Consideration of such aetiology is recommended if a patient presents with megaloblastic anemia.

Hepatic: very rare ($<1/10,000$ and isolated reports). Liver function tests abnormalities or hepatitis resolving upon metformin discontinuation has been documented in isolated reports.

Post-Market Adverse Drug Reactions

Gastrointestinal Disorders: Abdominal discomfort, abdominal distension, abdominal pain, abdominal pain upper, constipation, diarrhea, dry mouth, dyspepsia, flatulence, gastric disorder, gastric ulcer, gastrointestinal disorder, nausea, vomiting

Hepatobiliary Disorders: Liver function tests abnormalities or hepatitis resolving upon metformin discontinuation, autoimmune hepatitis, drug-induced liver injury, hepatitis

Investigations: Blood lactic acid increased

Metabolism and Nutrition Disorders: Lactic acidosis, decrease of vitamin B12 absorption with decrease of serum levels during long-term use of metformin, weight decreased, decreased appetite

Skin and Subcutaneous Tissue Disorders: Erythema, pruritus, rash, skin lesion, urticaria

DRUG INTERACTIONS

Overview

Certain drugs may potentiate the effect of metformin, particularly sulfonylurea type of drugs in the treatment of diabetes. The simultaneous administration of these two types of drugs could produce a hypoglycemic reaction, especially if they are given in patients already receiving other drugs which, themselves, can potentiate the effect of sulfonylureas. These drugs can be: long-acting sulfonamides, tuberculostatics, phenylbutazone, clofibrate, monoamine oxidase inhibitors, salicylates, probenecid and propranolol.

In healthy volunteers, the pharmacokinetics of propranolol and ibuprofen were not affected by metformin when co-administered in single-dose interaction studies.

Metformin is negligibly bound to plasma proteins and is, therefore, less likely to interact with highly protein-bound drugs such as salicylates, sulfonamides, chloramphenicol, and probenecid, as compared to sulfonylureas, which are extensively bound to serum proteins.

Drug-Drug Interactions

Glyburide: In a single-dose interaction study in NIDDM subjects, co-administration of metformin and glyburide did not result in any changes in either metformin pharmacokinetics or pharmacodynamics. Decreases in glyburide AUC and C_{max} were observed, but were highly variable. The single-dose nature of this study and the lack of correlation between glyburide blood levels and pharmacodynamics effects, make the clinical significance of this interaction uncertain.

Furosemide: A single-dose study, metformin-furosemide drug interaction study in healthy subjects demonstrated that pharmacokinetic parameters of both compounds were affected by co-administration. Furosemide increased the metformin plasma and blood C_{max} by 22% and blood AUC by 15%, without any significant change in metformin renal clearance. When administered with metformin, the C_{max} and AUC of furosemide were 31% and 12% smaller, respectively, than when administered alone, and the terminal half-life was decreased by 32%, without any significant change in furosemide renal clearance. No information is available about the interaction of metformin and furosemide when co-administered chronically.

Nifedipine: A single-dose, metformin-nifedipine drug interaction study in healthy volunteers demonstrated that co-administration of nifedipine increased plasma metformin C_{max} and AUC by 20% and 9%, respectively, and increased the amount excreted in the urine. T_{max} and half-life were unaffected. Nifedipine appears to enhance the absorption of metformin. Metformin had minimal effects on nifedipine.

Cationic Drugs: Cationic drugs (e.g., amiloride, digoxin, morphine, procainamide, quinidine, quinine, ranitidine, triamterene, trimethoprim, and vancomycin) that are eliminated by renal tubular secretion, theoretically have the potential for interaction with metformin by competing for common renal tubular transport systems. Such an interaction has been observed between metformin and oral cimetidine in normal healthy volunteers. In both single and multiple-dose metformin-cimetidine drug interaction studies, there was a 60% increase in peak metformin plasma and whole blood concentrations, as well as a 40% increase in plasma and whole blood metformin AUC. There was no change in elimination half-life in the single-dose study. Metformin had no effect on cimetidine pharmacokinetics. Therefore, careful patient monitoring and dose adjustment of AURO-METFORMIN or the interfering drug is recommended in patients who are taking cationic medications that are excreted via renal tubular secretion.

Other

Other drugs tend to produce hyperglycemia and may lead to a loss of blood sugar control. These include thiazide and other diuretics, corticosteroids, phenothiazines, thyroid products, estrogens, estrogen plus progestogen, oral contraceptives, phenytoin, nicotinic acid, sympathomimetics, calcium channel blocking drugs, isoniazid, and beta-2-agonists. ACE-inhibitors may decrease the blood glucose levels. When such drugs are administered to patients receiving AURO-METFORMIN, the patient should be closely observed to maintain adequate glycemic control. More frequent blood glucose monitoring may be required, especially at the beginning of treatment. If necessary, adjust the metformin dosage during therapy with the respective medicinal product and upon its discontinuation.

Diuretics, especially loop diuretics, may increase the risk of lactic acidosis due to their potential to decrease renal function

Elimination rate of the anticoagulant phenprocoumon has been reported to be increased by 20% when used concurrently with metformin. Therefore, patients receiving phenprocoumon or other antivitamin K anticoagulants should be monitored carefully when both types of drugs are used simultaneously. In such cases, an important increase of prothrombin time may occur upon cessation of AURO-METFORMIN therapy, with an increased risk of hemorrhage.

Drug-Food Interactions

Interactions with food have not been established.

Drug-Herb Interactions

Interactions with herbal products have not been established.

Drug-Laboratory Test Interactions

Intravascular contrast studies with iodinated materials can lead to acute alteration of renal

function and have been associated with lactic acidosis in patients receiving metformin (see **CONTRAINDICATIONS** and **WARNINGS AND PRECAUTIONS**).

Drug-Lifestyle Interactions

Patients should be cautioned against excessive alcohol intake, either acute or chronic, when taking AURO-METFORMIN, since alcohol intake potentiates the effect of metformin on lactate metabolism (see **CONTRAINDICATIONS**). The risk of lactic acidosis is increased in acute alcohol intoxication, particularly in case of fasting or malnutrition or hepatic insufficiency. It is recommended that consumption of alcohol and alcohol-containing medicinal product be avoided.

Patients should be warned about driving a vehicle or operating machinery under conditions where risk of hypoglycaemia is present (see **WARNINGS AND PRECAUTIONS, Hypoglycemia**).

DOSAGE AND ADMINISTRATION

Dosing Considerations

In diabetic patients, individual determination of the minimum dose that will lower blood glucose adequately should be made, aiming for glycemic targets as close to normal as possible. A lower recommended starting dose and gradually increased dosage is advised to minimize gastrointestinal symptoms.

Over a period of time, patients may become progressively less responsive to therapy with oral hypoglycemic agents because of the deterioration of their diabetic state. Patients should therefore be monitored with regular clinical and laboratory evaluations, including blood glucose and glycosylated hemoglobin (A_{1C}) determinations, to determine the minimum effective dosage and to detect primary failure or secondary failure (see **WARNINGS AND PRECAUTIONS**).

In patients in whom the maximum dose fails to lower the blood glucose adequately, therapeutic alternatives should be considered.

Metformin is substantially excreted by the kidney, and the risk of metformin accumulation and lactic acidosis increases with the degree of impairment of renal function. AURO-METFORMIN should not be used in patients with serum creatinine levels above the upper limit of the normal range for their age (see **CONTRAINDICATIONS** and **WARNINGS AND PRECAUTIONS, Renal**).

In elderly patients, AURO-METFORMIN should be carefully titrated to establish the minimum dose for adequate glycemic effect, because aging is associated with reduced renal function and the risk of developing lactic acidosis (see **WARNINGS AND PRECAUTIONS, Endocrine and Metabolism, Lactic Acidosis**). AURO-METFORMIN treatment should not be initiated in patients older than 80 years of age, unless measurement of creatinine clearance demonstrates that renal function is not reduced, as elderly patients are more susceptible to developing lactic acidosis (see **WARNINGS AND PRECAUTIONS, Special Populations, Geriatrics**).

Caution should be exercised when using concomitant medication(s) that may decrease renal function (like diuretics, particularly loop diuretics) or may interfere with the disposition of AURO-METFORMIN, such as cationic drugs that are eliminated by renal tubular secretion, due to the increased risk of developing lactic acidosis during co-administration (see **DRUG INTERACTIONS**).

Recommended Dose and Dosage Adjustment

The usual dose is 500 mg three or four times a day or 850 mg two or three times a day. Maximal dose should not exceed 2.55 g a day. To minimize gastric intolerance such as nausea and vomiting, AURO-METFORMIN (metformin) should be taken with food whenever possible.

Transfer from Other Antidiabetic Therapy

When transferring patients from standard oral hypoglycaemic agents, other than chlorpropamide, to AURO-METFORMIN, no transition period generally is necessary. When transferring patients from chlorpropamide, care should be exercised during the first two weeks because of the prolonged retention of chlorpropamide in the body, leading to overlapping drug effects and possible hypoglycaemia.

Pediatrics (< 18 years of age): Safety and effectiveness of metformin in pediatric and adolescent patients have not been established. Therefore, AURO-METFORMIN should not be used in this population.

Geriatrics (> 65 years of age): AURO-METFORMIN should be carefully titrated in geriatric patients to establish the minimum dose for adequate glycemic effect, because of reduced renal function associated with aging and the risk of developing lactic acidosis (see **WARNINGS AND PRECAUTIONS**, **Endocrine and Metabolism**, **Lactic Acidosis**). In elderly patients, the initial and maintenance dose of AURO-METFORMIN should be conservative, and any dose adjustment should be based on careful assessment of renal function. Renal function should be monitored regularly and generally, AURO-METFORMIN should not be titrated to the maximum dose (see **WARNINGS AND PRECAUTIONS**, **Special Populations**, **Geriatrics**).

Renal Impairment: AURO-METFORMIN should not be used in patients with impaired renal function, unknown renal function, or in patients with serum creatinine levels above the upper limit of the normal range for their age, due to the risk of lactic acidosis (see **CONTRAINDICATIONS** and **WARNINGS AND PRECAUTIONS**).

Hepatic Impairment: AURO-METFORMIN should not be used in patients with clinical or laboratory evidence of hepatic disease. Impaired hepatic function has been associated with some cases of lactic acidosis (see **CONTRAINDICATIONS** and **WARNINGS AND PRECAUTIONS**).

Missed Dose

In case the patient forgets to take AURO-METFORMIN tablets, he/she should wait for the next dose at the usual time. He/she should not double the dose to make up for the forgotten dose.

OVERDOSAGE

Available information concerning treatment of a massive overdose of AURO-METFORMIN (metformin) is very limited. It would be expected that adverse reactions of a more intense character including epigastric discomfort, nausea and vomiting followed by diarrhea, drowsiness, weakness, dizziness, malaise and headache might be seen. Should those symptoms persist, lactic acidosis should be excluded. The drug should be discontinued and proper supportive therapy should be instituted.

Overdose of metformin has occurred, including ingestion of amounts greater than 50 grams. Hypoglycemia was reported in approximately 10% of cases, but no causal association with metformin has been established. Lactic acidosis has been reported in approximately 32% of metformin overdose cases (see **WARNINGS AND PRECAUTIONS**). Metformin is dialyzable with a clearance of up to 170 mL/min under good hemodynamic conditions. Therefore, hemodialysis may be useful for removal of accumulated drug from patients in whom metformin overdose is suspected.

For management of a suspected drug overdose, contact your regional Poison Control Centre immediately.

ACTION AND CLINICAL PHARMACOLOGY

Mechanism of Action

Metformin is a biguanide derivative producing an antihyperglycemic effect which can only be observed in man or in the diabetic animal and only when there is insulin secretion. Metformin, at therapeutic doses, does not cause hypoglycemia when used alone in man or in the non-diabetic animal, except when using a near lethal dose. Metformin has no effects on the pancreatic beta cells. The mode of action of metformin is not fully understood. It has been postulated that metformin might potentiate the effect of insulin or that it might enhance the effect of insulin on the peripheral receptor site. This increased sensitivity seems to follow an increase in the number of insulin receptors on cell surface membranes.

Pharmacodynamics

Few data are available on the relationship between pharmacodynamics and pharmacokinetics, and therefore the effect of metformin on glucose control cannot be predicted from pharmacokinetic data alone. Tissue concentrations of metformin in the dual target sites of the liver and muscle appear to be more informative, and the deep metformin compartment supplying these tissues is critical and related to plasma concentrations. This view substantiates the clinical observation that the glucose-lowering action of metformin takes time to be fully expressed and also that activity is not lost immediately on drug withdrawal.

Pharmacokinetics

Absorption: Metformin absorption is relatively slow and may extend over about 6 hours.

Distribution: Plasma protein binding is negligible. Metformin partitions into erythrocytes. The blood peak is lower than the plasma peak and appears at approximately the same time. The red

blood cells most likely represent a secondary compartment of distribution. The mean volume of distribution (Vd) ranged between 63-276 l.

Metabolism: Metformin is not metabolized. Its main sites of concentration are the intestinal mucosa and the salivary glands. The plasma concentration at steady-state ranges about 1 to 2 mcg/mL. Certain drugs may potentiate the effects of metformin (see **WARNINGS AND PRECAUTIONS** and **DRUG INTERACTIONS**).

Excretion: The drug is excreted in urine at high renal clearance rate of about 450 mL/min. The initial elimination of metformin is rapid with a half-life varying between 1.7 and 3 hours. The terminal elimination phase accounting for about 4 to 5 % of the absorbed dose is slow with a half-life between 9 and 17 hours.

STORAGE AND STABILITY

Store at room temperature (15° to 30°C).

DOSAGE FORMS, COMPOSITION AND PACKAGING

Dosage form	Tablets	
Strength	500 mg Metformin Hydrochloride	850 mg Metformin Hydrochloride
Description	White, round, biconvex, film-coated, with blackberry scent tablets debossed with 'N' on one side and '6' and '3' on either side of line on the other side.	White, capsule shaped, biconvex, film-coated, with blackberry scent tablets debossed with 'N' on one side and '64' on the other side
Composition	Povidone, Magnesium Stearate Coating Ingredients: Opadry Clear 03G590004: It contains HPMC 2910/Hypromellose, Macrogol/PEG, Artificial Blackberry Flavour 501167AP0551.	
Packaging	HDPE container of 100 and 500 tablets.	HDPE container of 100 and 500 tablets.

PART II: SCIENTIFIC INFORMATION

PHARMACEUTICAL INFORMATION

Drug Substance

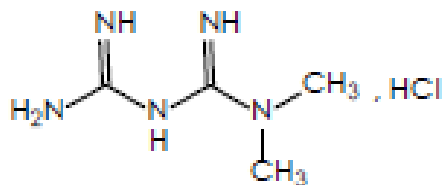
Proper name: Metformin Hydrochloride

Chemical name: 1,1- Dimethylbiguanide Hydrochloride
OR
N,N-Dimethyldiguanide Hydrochloride
OR
N'-Dimethylguanylguanidine Hydrochloride.

Molecular formula: $C_4H_{11}N_5 \cdot HCl$

Molecular mass: 165.6 g/mol

Structural formula:



Physicochemical properties: White or almost white crystals.
Freely soluble in water, slightly soluble in alcohol,
practically insoluble in acetone and in methylene
chloride.

Melting range: Between 222°C and 226°C.

CLINICAL TRIALS

Comparative Bioavailability

A double blind, randomized, two-treatment, two-sequence, two-period, crossover, single-dose, oral bioequivalence study of AURO-METFORMIN Tablets 500 mg [Test; Aurobindo Pharma Limited, India manufactured for Auro Pharma Inc. (Canada)] GLUCOPHAGE® (Metformin Hydrochloride) Tablets 500 mg [Reference; Sanofi-Aventis Canada Inc., Canada] was conducted in 30 healthy, adult, human subjects under fasting conditions. A summary of the bioavailability data of 29 subjects who completed the study is presented in the following table.

SUMMARY TABLE OF THE COMPARATIVE BIOAVAILABILITY DATA

Metformin Tablets BP (1 X 500 mg) From measured data				
Geometric Mean Arithmetic Mean (CV %)				
Parameter	Test*	Reference†	% Ratio of Geometric Means	90% Confidence Interval
AUC_{0→t} (hr. ng/mL)	7140.3 7346.1 (25.6)	6617.6 6814.1 (26.1)	107.9	102.8-113.2
AUC_{0→∞} (hr. ng/mL)	7328.0 7537.5 (25.6)	6827.2 7029.6 (26.1)	107.3	102.2-112.7
C_{max} (ng/mL)	935.8 965.1 (25.6)	780.1 801.0 (24.7)	120.00	113.3-127.0
T_{max}§ (hr)	1.50 (0.7-5.0)	3.00 (0.5-5.0)		
T_½§ (hr)	4.4 (15.8)	4.6 (22.3)		

*AURO-METFORMIN (Metformin Tablets BP 500 mg), by Auro Pharma Inc.

† GLUCOPHAGE® (Metformin Hydrochloride Tablets 500 mg), of Sanofi-Aventis Canada Inc., Canada were purchased from Canada.

§ Expressed as the median (range) only.

\$ Expressed as arithmetic mean (% CV) only.

The data which formed the basis of approval for the original metformin submission are not available. Rather, this section presents data from a published study which investigated the safety and efficacy of metformin.

The prospective randomized (UKPDS) study has established the long-term benefit of intensive blood glucose control in adult patients with type 2 diabetes. Analysis of the results for overweight patients treated with metformin after failure of diet alone showed:

- A significant reduction of the absolute risk of any diabetes-related complication in the

metformin group (29.8 events/1000 patient-years) versus diet alone (43.3 events/1000 patient-years), $p=0.0023$, and versus the combined sulfonylurea and insulin monotherapy groups (40.1 events/1000 patient-years), $p=0.0034$.

- A significant reduction of the absolute risk of diabetes-related mortality: metformin 7.5 events//1000 patient years, diet alone 12.7 events/1000 patient-years, $p=0.017$. There was no significant difference between the metformin group and those assigned intensive therapy with sulfonylurea or insulin.
- A significant reduction of the absolute risk of overall mortality; metformin 13.5 events/1000 patient-years versus diet alone 20.6 events/1000 patient-years ($p=0.011$), and versus the combined sulfonylurea and insulin monotherapy groups 18.9 events/1000 patient-years ($p=0.021$).
- A significant reduction in the absolute risk of myocardial infarction: metformin 11 events/1000 patient-years, diet alone 18 events/1000 patient-years ($p=0.01$). There was no significant difference between the metformin group and those assigned intensive therapy with sulfonylurea or insulin.
- There were no significant differences between the metformin group and the diet alone in the other aggregate endpoints (stroke, peripheral vascular disease and microvascular complications).

DETAILED PHARMACOLOGY

Metformin absorption is relatively slow and may extend over about 6 hours.

Animal studies with metformin, labelled with ^{14}C have shown that the drug is neither concentrated by liver cells nor is it excreted in the bile; it is concentrated in the intestinal mucosa and salivary glands.

It has been shown that, following a 2 g dose of metformin, the blood level remains under 10 mcg/mL even at the peak, occurring 2 hours after absorption. During the experiments, metformin was shown to be devoid of any notable action in the body, apart from its specific metabolic activity.

In the healthy animal, metformin lowers blood sugar only at a nearly lethal dose. Different animal species are of unequal sensitivity. On the other hand, the animal with experimental diabetes, is sensitive to a much lower dosage, providing some insulin is still secreted.

The antihyperglycemic action of metformin is probably mediated through insulin: Metformin improves the K co-efficient of glucose assimilation. Metformin improves the co-efficient of insulin efficiency.

In the obese diabetic with hyperinsulinemia, metformin is reported to normalize insulin output.

This normalizing effect is concurrent to that of glycemia.

Metformin has little effect on liver glycogen of the healthy animal. In low and average doses, no change occurs. In high doses nearing lethal levels, liver glycogen decreases. This lowering precedes the fall in blood sugar. This reaction represents a defense mechanism tending to mobilize body reserves in order to combat hypoglycemia.

In the diabetic animal with a low liver glycogen reserve, the opposite occurs and metformin builds up glycogen stores of the liver. *In vitro*, on muscular tissue isolated in Warburg's apparatus, metformin increases glucose uptake by the muscle. This action follows an aerobic pathway. Even in high concentration, contrary to phenethyl-biguanide, metformin apparently does not block respiration or change carbohydrate metabolism via the anaerobic pathway.

Metformin is eliminated in faeces and urine. It is rapidly excreted by the kidneys in an unchanged form.

Renal clearance is 450 mL/minute; this appears to explain the absence of accumulation.

Metabolites of metformin have not been identified, neither by radio-active nor by chemical methods.

A single Rf spot is always present following radiochromatographic study of urine and always corresponds to that of pure metformin. Administration during 10 consecutive days has not shown any sign of accumulation.

Inhibition of glyconeogenesis has been observed in animals following its stimulation by fasting, cortisol, alcohol or other substrates such as alanine lactate or pyruvate. However, such an effect varies according to the type and dosage of the biguanide used, nutritional state of the animal species and design of experimental model.

This inhibition of glyconeogenesis is observed only in the presence of insulin and it does not appear to play an important role in man.

Inhibition of intestinal absorption of sugars, which is not related to a malabsorption phenomenon, has been observed with biguanides under certain experimental conditions in animal and in man. In one study, a 20% retardation of galactose absorption was observed in man receiving metformin. However, such an effect of metformin could not be confirmed in another study in man.

Recent findings appear to indicate that most of the metabolic effects of the biguanides are exerted through a single mechanism, namely inhibition of fatty acid oxidation and of acetyl-CoA generation.

However, inhibition of insulin-stimulated lipogenesis which has also been observed appears to be due to the inhibition of acetyl-CoA carboxylase by the biguanides. Such an effect may

explain, at least partly, the weight-reducing effect exerted by these drugs in obese diabetic patients.

TOXICOLOGY

1. Animal Toxicity

Acute Toxicity (LD₅₀)

<u>Animal</u>	<u>Subcutaneously</u>	<u>Orally</u>
Mouse	225 mg/kg	3500 mg/kg
Chicken	150 mg/kg	
Rat	300 mg/kg	1000 mg/kg
Rabbit	150 mg/kg	350 mg/kg
Guinea Pig	150 mg/kg	500 mg/kg

Chronic Toxicity

- A) The following doses of metformin produced no organ toxicity:
- | | | |
|---------|-----------|----------------------------|
| Rats | 125 mg/kg | per os for one year |
| Rabbits | 100 mg/kg | per os for one year |
| Dogs | 50 mg/kg | subcutaneously for 2 years |

Acute or chronic organ toxicity was not produced in the animal species involved.

- B) A study was carried out during 9 months with 80 rats, male and female, divided in 4 groups, with the following dosage regimen:

1st Group	control
2nd Group	150 mg/kg per os
3rd Group	300 mg/kg per os
4th Group	300 mg/kg per os, dose increased by 100 mg/kg/day every 15 days

In summary, the authors report the excellent tolerance of metformin by rats, even when administered in very high doses. No drug related lesion has been observed.

- C) Chronic toxicity studies of 9 months duration were carried through with 16 beagle dogs, although the complete intolerance of this animal species to oral hypoglycemic agents is a well established fact. Trophic and neurologic disorders with cachexia rapidly lead to the dog's death. During the periods of metformin administration, laboratory findings were within normal limits. The levels of enzymes were somewhat elevated, but it is difficult to ascribe a pathological significance to their values, since subjects in the control group were at the same level as treated animals.

Pathological studies show an extreme degree of undernutrition in all metformin treated animals. Profound wasting especially marked in fat tissues was evident in all organs. Cachexia appears as the common cause of death of these animals.

2. Human Toxicity

In man, no adverse effect has been reported on liver or kidney function, the hematopoietic system or on the blood vessels.

The reported incidence of lactic acidosis in patients receiving metformin hydrochloride is very low (approximately 0.03 cases / 1000 patient/years with approximately 0.015 fatal cases / 1000 patients/years).

The consecutive administration of both phenformin and metformin to the same patient has allowed for the demonstration of a fundamental difference between these two biguanides in relation to lactacidemia. In some instances, patients developed hyperlactacidemia with phenformin when the same patients were presenting normal lactic acid levels while being treated with metformin. In other instances, hyperlactacidemia observed during a treatment with phenformin did regress when metformin was substituted for phenformin. Metformin may increase lactacidemia but to a degree that is clinically less significant than the elevation seen after phenformin.

3. Teratology

Teratological studies were carried out in albino rats divided in three groups: No abnormalities were found, even when high doses were administered. The number of animals was the same in each group.

Death rate in the three groups of treated animals and controls was approximately the same. However, the number of living animals in each group treated was slightly lower than in the control group. Also, the frequency of litters exceeding 10 live animals was slightly higher in the control group. A loss of weight at the time of weaning has been observed when compared to the control group.

Nevertheless, on a statistical basis, differences were shown to be non-significant. There is no difference between the groups of treated animals and the control group regarding the number of stillborn. The number of deaths after birth was slightly higher in metformin treated groups than in the control group, but the comparison of average death rates is not significant ($p < 0.05$).

REFERENCES

1. Alberti KGM, et al. Lactic Acidosis. *The Lancet*. 1977 July;2:25-29.
2. Beckmann R. Résorption, distribution dans l'organisme et élimination de la Metformine. *Diabétologia*. 1969;5:318-324.
3. Benoit R, et al. Acidose lactique et phenformine. *L'Union Médicale du Canada*. 1976;105:1810-1814.
4. Berger W, et al. Problèmes d'actualité concernant le mécanisme d'action des biguanides. *Jour. Diab. Hôtel-Dieu Paris*. 1975; 239-258.
5. Bermond P, The coefficient of insulin efficacy. Effect of Metformin on this parameter. *Xième Congrès Fédération Int. Diabétologie, Stockholm; 1967*. Ed. Excerpta Medica F. Amsterdam; 1968.
6. Biron P. Metformin monitoring. *C.M.A.J.* 1980;123:11-12.
7. Bouaziz Pl. Apport à l'étude de l'épreuve d'hyperglycémie provoquée par voie veineuse sous thérapie diabétique. Thèse de doctorat en Médecine, Paris. 1966.
8. Canadian Diabetes Association. Nephropathy. *Canadian Journal of Diabetes*. 2003 *Clinical Practice Guidelines*;2013:S142-144.
9. Canadian Diabetes Association. Pharmacologic management of type 2 diabetes. *Canadian Journal of Diabetes*. 2013 *Clinical Practice Guidelines*;2013:S61-68.
10. Canadian Diabetes Association. Physical activity and diabetes. *Canadian Journal of Diabetes*. 2013 *Clinical Practice Guidelines*;2013:S40-44.
11. Canadian Diabetes Association. Targets for glycemic control. *Canadian Journal of Diabetes*. 2013 *Clinical Practice Guidelines*;2013:S31-34.
12. Canadian Diabetes Association. Pre-existing diabetes and pregnancy. *Canadian Journal of Diabetes*. *Clinical Practice Guidelines Expert Committee*;2013;S168-183.
13. Chan JCN, et al. Drug-induced disorders of glucose metabolism. Mechanisms and management. *Drug Safety*, 1996 Aug; 15(2):135-157.
14. Cohen RD. The relative risks of different biguanides in the causation of lactic acidosis. *Research and Clinical Forums*. 1979;1(4):125-134.
15. Cohen Y, et al. Etude autoradiographique chez la souris d'un antidiabétique oral, le N.N. Diméthylbiguanide, marqué au C¹⁴Thérapie. 1961;109-120.

16. Cohen Y, et al. Etude autoradiographique chez la souris d'un antidiabétique oral marqué au C¹⁴, le N.N. Diméthylbiguanide, après administrations répétées. *Thérapie*. 1968;23:1185-1191.
17. Cox D, et al. The effects of glucose fluctuation on cognitive function and QOL: the functional costs of hypoglycaemia and hyperglycaemia among adults with Type 1 or Type 2 diabetes. *IJCP* 2002 July; (Suppl.129):20-26.
18. Daubresse JC, et al. Acidose lactique et thérapeutique par biguanides. *Méd. EtHyg.* 1975;1168.
19. Debry G, et al. Etude du mode d'excrétion du N.N. Diméthylbiguanide chez le diabétique adulte. *Thérapie*. 1965;20:351-358.
20. Derot M, et al. Retrospective study of the cardiovascular fate of 190 patients treated for 5 year or more with biguanides alone. Abstracts, 11th Annual Meeting, Munich.Sept.; 1975.
21. Duval D. Contribution à l'étude de l'action hypoglycémiant des biguanides. Thèse de Doctorat en Médecine, Paris. 1960.
22. Duwoos H, et al: Hyperlactacidémie réversible induite par la phenformine avec asthenia musculaire et signes cardio-respiratoires. *PresseMéd.* 1970;78:23-26.
23. Glueck CJ, Wang P, Kobayashi S, Phillips H, Sieve-Smith L. Metformin therapy throughout pregnancy reduces the development of gestational diabetes in women with polycystic ovary syndrome. *Fertility and Sterility*. 2002;77(3):520-525.
24. Hermann LS. Metformin: A review of its pharmacological properties and therapeutic use. *Diabète et Métabolisme*. 1979;3:233-245.
25. Hermann LS. Metabolic effects of Metformin in relation to clinical effects and side effects in Biguanide Therapy Today. International Congress and Symposium, series published by the Royal Society of Medicine. 1981;48:17-43.
26. Holle A, et al. Biguanide treatment increases the number of insulin receptor sites on human erythrocytes. *The New Engl. J. Med.* 1981;305(10):563-566.
27. Hunt JA, et al. The use of phenformin and metformin. Letter to the Editor, *C.M.A.J.* 1977;117(5):429-430.
28. Irsigler K. Glucoseutilisation and Plasmaliporide bei adiposen Patienten unter dem Einfluss von Dimethylbiguanide (GLUCOPHAGE). *wiener med. Wsch.* 1969;119:191-194.
29. Isnard F, et al. Acidose lactique et biguanides. Etatactuel de la question en France. *Journées Annuelles de diabétologie de l'Hôtel-Dieu*. 1977;362-375.

30. Joncas F. Evaluation clinique de GLUCOPHAGE pour le traitement du diabète de l'adulte. Hôpital Maisonneuve, Montréal. L'Union Médicale du Canada, Jan. Issue, 1972.
31. Laurendeau Ed, et al: Traitement du diabetesucré chez des patients âgés, hospitalisés avec le N.N. Diméthylbuguanide (GLUCOPHAGE). Hôpital Notre-Dame de la Merci. Montréal. 1970. Ref Lab. Franca (non publié).
32. Lefebvre P, et al. Le mécanisme d'action des biaguanides. Biguanides et secretion insulinique. Congrès International de Diabétologie de Rémini. 1968.
33. Le Jeune C, et al: Les effets hyperglycémians des médicaments. *Sem. Hop. Paris*. January 1994:100-107.
34. Mainguet P, et al. Le diabète. 1972;20(1):39.
35. McKlish A. Toxicité du N.N. Diméthylbiguanide chez le chien Beagle. Centre de recherches Laval, Québec (1970). Ref. Laboratoires Franca Inc. (non publié).
36. Meyer F, et al. Données nouvelles sur le mécanisme d'action des biguanide hypoglycémians. Journée annuelles de diabétologie de l'hôtel-Dieu. 1976;341-347.
37. Pelletier G, et al. Etude de toxicité chronique de N.N. Diméthylbiguanide chez le rat. Centre de recherche Laval, Québec. Ref. Laboratoires Franca Inc. (non publiée).
38. Pelletier G, et al. Etude tératologique avec le N.N. Diméthylbiguanide chez le rat. Centre de Recherche Laval, Québec (1970). Ref. laboratoires Franca Inc. (non publiée).
39. Pignard P. Dosage spectrotométrique du N.N. Diméthylbiguanide dans le sang et l'urine. *Annales de Biologie Clinique*. 1962;20:225-233.
40. Sterne J. Oral Hypoglycemic agents. *Medicinal Chemistry*. 1969;9(5):193-294.
41. Sterne JM, et al. Oral hypoglycemic agents: Clinical Pharmacology and Therapeutic Use. *Drugs*. 1977;14:41-56.
42. Sterne J. Pharmacology and mechanism of action of the antidiabetic biguanides. Paper read in Moscow, April 1977, Unpublished.
43. Stowers JM. Long-term therapy with biguanides in Biguanide Therapy Today. International Congress and Symposium, series published by the Royal Society of Medicine. 1981;48:49-57.
44. Stowers JM, et al. Oral hypoglycemic agents: Clinical pharmacology and therapeutic use. *Drugs*. 1977;14:41-56.

45. Vague P. Effet d'une dose unique de metformin sur la tolérance au glucose des sujets normaux ou obèses. *Le Diabète*. 1970;18:35-39.
46. Vermulen A, et al. Influence of dimethylbiguanide (metformin) on carbohydrate metabolism in obese, non diabetic women. *Diabetologia*. 1972;8:8-11.
47. UK Prospective Diabetes Study (UKPDS) Group. Effect of intensive blood-glucose control with metformin on complications in overweight patients with type 2 diabetes (UKPDS 34). *The Lancet*. 1998;352:854-865.
48. UK Prospective Diabetes Study (UKPDS) Group. Intensive blood-glucose control with sulphonylureas or insulin compared with conventional treatment and risk of complications in patients with type 2 diabetes (UKPDS 33). *The Lancet*. 1998;352:837-853.
49. Product Monograph GLUCOPHAGE[®] Metformin Hydrochloride Tablets, Date of Revision September 10, 2015, Submission Control No. 156892.

**PART III: PATIENT MEDICATION
INFORMATION**

^{Pr} AURO-METFORMIN
Metformin Tablets

500 mg and 850 mg

BP

This leaflet is part III of a three-part "Product Monograph" published when AURO-METFORMIN was approved for sale in Canada and is designed specifically for Consumers. Read this leaflet carefully before you start taking AURO-METFORMIN and each time you get a refill. This leaflet is a summary and will not tell you everything about this drug. Talk to your healthcare professional about your medical condition and treatment, and ask if there is any new information about AURO-METFORMIN.

ABOUT THIS MEDICATION

What is AURO-METFORMIN used for?

AURO-METFORMIN is used, in addition to diet and exercise, to improve blood sugar levels in adults with type 2 diabetes.

How does AURO-METFORMIN work?

People with type 2 diabetes are not able to make enough insulin or respond normally to the insulin their bodies make. When this happens, sugar (glucose) builds up in the blood. This can lead to serious medical problems including kidney damage, amputations, and blindness. Diabetes is also closely linked to heart disease. The main goal of treating diabetes is to lower your blood sugar to a normal level.

High blood sugar can be lowered by diet and exercise, by a number of medicines taken by mouth, and by insulin shots. While you take your diabetes medicine, continue to exercise and follow the diet advised for your diabetes, by your doctor.

No matter what your recommended diabetes management plan is, studies have shown that maintaining good blood sugar control can prevent or delay complications of diabetes, such as blindness.

AURO-METFORMIN helps to control your blood sugar.

Although the mode of action of AURO-METFORMIN is not fully understood, it is believed to help your body respond better to the insulin it makes naturally by:

- decreasing the amount of sugar your liver makes, and
- decreasing the amount of sugar your intestines absorb.

What are the ingredients in AURO-METFORMIN?

Medicinal ingredients:

The medicinal ingredient for AURO-METFORMIN is Metformin Hydrochloride.

Nonmedicinal ingredients:

AURO-METFORMIN tablets contain the following non-medicinal ingredients: Povidone, Magnesium Stearate, Coating Ingredients: Opadry Clear 03G590004: It contains HPMC 2910/Hypromellose, Macrogol /PEG, Artificial Blackberry Flavour 501167 AP0551.

AURO-METFORMIN comes in the following dosage forms:

AURO-METFORMIN is formulated into 500 mg and 850 mg tablets for oral administration.

500 mg and 850 mg: Bottles of 100 and 500 tablets

Do not use AURO-METFORMIN if:

- You have unstable and/or insulin-dependent (Type I) diabetes mellitus.
- You have acute or chronic metabolic acidosis (including diabetic ketoacidosis, with or without coma, history of ketoacidosis with or without coma)
- You have a history of lactic acidosis (too much lactic acid in the blood)
- You drink a lot of alcohol
- You have severe liver dysfunction or liver disease
- You have kidney disease or impairment
- You are going to have an x-ray procedure with injection of iodinated contrast materials
- You have a severe infection or trauma
- Prior to surgery and during your recovery phase
- You suffer from severe dehydration (have lost a lot of water from your body)
- You are hypersensitive or allergic to metformin hydrochloride or any ingredient in the formulation or component of the container
- You are pregnant or planning to become pregnant
- You are breastfeeding

IMPORTANT: READ THIS FOR SAFE AND EFFECTIVE USE OF YOUR MEDICINE

- You have cardiovascular collapse (abrupt failure of blood circulation) or cardiorespiratory insufficiency

WARNINGS AND PRECAUTIONS

Serious Warnings and Precautions

- AURO-METFORMIN may rarely cause a serious, life-threatening condition called lactic acidosis (see **Lactic Acidosis** section below).
- You should not drink a lot of alcohol if you take AURO-METFORMIN (see **Lactic Acidosis** section below).

To help avoid side effects and ensure proper use, talk to your healthcare professional before you take AURO-METFORMIN. Talk about any health conditions or problems you may have.

Lactic Acidosis

AURO-METFORMIN may rarely cause a serious, life-threatening condition called lactic acidosis.

You should not take AURO-METFORMIN due to greater risk for lactic acidosis if you:

- have kidney problems or a history of kidney disease
- are 80 years or older and you have NOT had your kidney function tested
- are seriously dehydrated (have lost a lot of water from your body)
- have liver disease
- have metabolic acidosis (e.g. diabetic ketoacidosis)
- drink a lot of alcohol (regularly drink alcohol or sometimes drink a lot of alcohol, binge drinking)
- have an x-ray procedure with injection of dyes (contrast agents)
- prior to surgery and during recovery phase
- develop a serious medical condition, such as heart attack, severe infection, or a stroke

Due to greater risk for lactic acidosis, you should talk to your doctor if you take AURO-METFORMIN and if you:

- develop or experience a worsening of heart disease and particularly heart failure

Signs and symptoms of lactic acidosis include: discomfort, muscle pain, difficult or fast breathing, extreme tiredness, weakness, upset stomach, stomach

pain, feeling cold, low blood pressure or slow heartbeat.

If any of the above side effects occur, consult your doctor immediately.

Other warnings you should know about:

You should not take AURO-METFORMIN if you:

- are pregnant or planning to become pregnant
- are breastfeeding
- have vitamin B-12 deficiency or anemia
- have any known hypersensitivity or allergy to the medicinal or non medicinal ingredients

Do not start or stop any medicine without the approval of your healthcare professional.

INTERACTIONS WITH THIS MEDICATION

Tell your healthcare professional about all the medicines you take, including any drugs, vitamins, minerals, natural supplements or alternative medicines.

The following drugs may interact with AURO-METFORMIN and require careful monitoring of your dose or condition:

- other diabetes drugs such as glyburide
- furosemide
- nifedipine
- cationic drugs (e.g., amiloride, digoxin, morphine, procainamide, quinidine, quinine, ranitidine, triamterene, trimethoprim, and vancomycin)
- certain “blood thinners” (phenprocoumon or other antivitamin K anticoagulants)
- diuretics, especially loop diuretics, that may increase the risk of lactic acidosis due to their potential to decrease renal function
- drugs that tend to produce hyperglycemia (high blood sugar) and may lead to a loss of blood sugar control. Some example of drugs that can increase the blood sugar include:
 - Thiazide and other diuretics (water pills)
 - Corticosteroids
 - Phenothiazines
 - Thyroid products
 - Estrogens or estrogens plus progestogen
 - Oral contraceptives
 - Phenytoin
 - Nicotinic Acid
 - Sympathomimetics
 - Calcium channel blocking drugs

IMPORTANT: READ THIS FOR SAFE AND EFFECTIVE USE OF YOUR MEDICINE

- Isoniazid
 - Beta-2-agonists
- ACE inhibitors drugs may lower blood glucose and the combination with AURO-METFORMIN should be carefully monitored.

Before using any drugs or herbal products, consult your healthcare professional.

PROPER USE OF THIS MEDICATION

How to take AURO-METFORMIN:

AURO-METFORMIN tablets are to be taken orally (by mouth).

Usual dose:

Your doctor will tell you how much medicine to take and when to take it. Follow the directions provided by your doctor for using this medicine. Taking this medicine with food will decrease symptoms such as nausea and vomiting.

Overdose:

In general, an overdose may lead to increased symptoms as described under “**SIDE EFFECTS AND WHAT TO DO ABOUT THEM**” including stomach discomfort, nausea, vomiting, diarrhea, drowsiness, weakness, dizziness, malaise, and headache.

A serious, life-threatening condition called lactic acidosis may also occur (see **WARNINGS and PRECAUTIONS**, Lactic Acidosis).

If you think you have taken too much AURO-METFORMIN, contact your healthcare professional, hospital emergency department or regional Poison Control Centre immediately, even if there are no symptoms.

Missed Dose:

If you forget to take AURO-METFORMIN tablets, do not take a double dose to make up for forgotten individual doses. Take the next dose at the usual time.

SIDE EFFECTS AND WHAT TO DO ABOUT THEM

What are possible side effects from using AURO-METFORMIN?

These are not all the possible side effects you may feel when taking AURO-METFORMIN. If you experience any side effects not listed here, contact

your healthcare professional. Please also see Warnings and Precautions.

Common side effects of AURO-METFORMIN include:

- diarrhea
- nausea
- upset stomach
- abdominal bloating
- gas
- loss of appetite

These side effects generally go away after you take the medicine for a while. Taking your medicine with meals can help reduce these side effects. Tell your doctor if the side effects bother you a lot, last for more than a few weeks, come back after they've gone away, or start later in therapy. You may need a lower dose or need to stop taking the medicine for a short period or for good.

After you are on the same dose for several days or weeks, if any of these symptoms come back, tell your doctor immediately. A late recurrence of stomach symptoms may be due to a serious medical condition (lactic acidosis).

AURO-METFORMIN rarely cause hypoglycemia (low blood sugar) by itself. However, hypoglycemia can happen if you do not eat enough, if you drink alcohol, or if you take other medicines to lower blood sugar.

Lactic Acidosis: In rare cases, AURO-METFORMIN can cause a serious side effect called lactic acidosis. This is caused by a buildup of lactic acid in your blood. This build-up can cause serious damage. Lactic acidosis caused by AURO-METFORMIN is rare and has occurred mostly in people whose kidneys were not working normally. Although rare, if lactic acidosis does occur, it can be fatal in up to half the people who develop it.

It is also important for your liver to be working normally when you take AURO-METFORMIN. Your liver helps remove lactic acid from your blood.

Make sure you tell your doctor before you use AURO-METFORMIN if you have kidney or liver problems.

You should also **stop using AURO-METFORMIN and call your doctor right away if you have signs of lactic acidosis. Lactic acidosis is a medical**

IMPORTANT: READ THIS FOR SAFE AND EFFECTIVE USE OF YOUR MEDICINE

emergency that must be treated in a hospital.

If your medical condition suddenly changes, stop taking AURO-METFORMIN and call your doctor right away. This may be a sign of lactic acidosis or another serious side effect.

unexpected effects while taking AURO-METFORMIN, contact your healthcare professional. If you have a troublesome symptom or side effect that is not listed here or becomes bad enough to interfere with your daily activities, talk to your healthcare professional.

SERIOUS SIDE EFFECTS, HOW OFTEN THEY HAPPEN AND WHAT TO DO ABOUT THEM	
Symptom / effect	Stop taking drug and get immediate medical help
Uncommon	
Feeling very weak, tired or uncomfortable	√
Unusual muscle pain	√
Trouble breathing	√
Unusual or unexpected stomach discomfort	√
Feeling cold	√
Feeling dizzy or lightheaded	√
Suddenly developing a slow or irregular heartbeat	√
Rare	
Lactic Acidosis (a build up of lactic acid in the blood) that can cause death or cardiovascular mortality Symptoms include:	√
<ul style="list-style-type: none"> • Feeling very weak, tired, or uncomfortable • Unusual muscle pain • Trouble breathing • Unusual or unexpected stomach discomfort • Stomach pain with nausea and vomiting, or diarrhea • Feeling cold • Feeling dizzy or lightheaded • Suddenly developing a slow or irregular heartbeat 	

Reporting Side Effects

You can report any suspected side effects associated with the use of health products to Health Canada by:

- Visiting the Web page on Adverse Reaction Reporting (<http://www.hcsc.gc.ca/dhpmps/medeff/report-declaration/index-eng.php>) for information on how to report online, by mail or by fax; or
- Calling toll-free at 1-866-234-2345.

NOTE: Contact your health professional if you need information about how to manage your side effects. The Canada Vigilance Program does not provide medical advice.

HOW TO STORE IT

Store at room temperature (15°C to 30°C). Throw away any medication that is outdated or no longer needed. Talk to your pharmacist about the proper disposal of your medication.

Keep out of reach and sight of children.

MORE INFORMATION

If you want more information about AURO-METFORMIN:

- Talk to your healthcare professional
- Find the full product monograph that is prepared for healthcare professionals and includes this PATIENT MEDICATION INFORMATION by visiting the Health Canada website (<http://hc-sc.gc.ca/index-eng.php>); the manufacturer's website www.auropharma.ca, or by calling 1-855-648-6681.

This leaflet was prepared by:

Auro Pharma Inc.
3700 Steeles Avenue West,
Suite # 402 Woodbridge,
Ontario, L4L 8K8,
Canada.

Date of Preparation: February 17, 2017

This is not a complete list of side effects. For any