

## PRODUCT MONOGRAPH

**PrTEGRETOL<sup>®</sup>**

(carbamazepine)

PrTEGRETOL<sup>®</sup> Tablets, 200 mg  
Novartis Standard

PrTEGRETOL<sup>®</sup> Chewtabs (Chewable Tablets), 100 mg and 200 mg  
Novartis Standard

PrTEGRETOL<sup>®</sup> CR (Controlled-Release Tablets), 200 mg and 400 mg  
Novartis Standard

PrTEGRETOL<sup>®</sup> Suspension, 100 mg/tsp (5 mL)  
Novartis Standard

Anticonvulsant  
For Symptomatic Relief of Trigeminal Neuralgia  
Antimanic

Novartis Pharmaceuticals Canada Inc.  
385 Bouchard Blvd.,  
Dorval, Quebec  
H9S 1A9

Date of Preparation:  
April 26, 1976

Date of Revision:  
May 4, 2018

Submission Control No: 213356

TEGRETOL is a registered trademark.

**Table of Contents**

**PART I: HEALTH PROFESSIONAL INFORMATION.....3**  
SUMMARY PRODUCT INFORMATION .....3  
INDICATIONS AND CLINICAL USE.....3  
CONTRAINDICATIONS .....5  
WARNINGS AND PRECAUTIONS.....5  
ADVERSE REACTIONS.....16  
DRUG INTERACTIONS .....20  
DOSAGE AND ADMINISTRATION .....25  
OVERDOSAGE .....27  
ACTION AND CLINICAL PHARMACOLOGY .....28  
STORAGE AND STABILITY .....30  
DOSAGE FORMS, COMPOSITION AND PACKAGING .....30

**PART II: SCIENTIFIC INFORMATION .....32**  
PHARMACEUTICAL INFORMATION.....32  
CLINICAL TRIALS.....32  
DETAILED PHARMACOLOGY .....33  
TOXICOLOGY .....33

**PART III: CONSUMER INFORMATION.....41**

# Pr<sup>®</sup>TEGRETOL<sup>®</sup>

(carbamazepine)

## PART I: HEALTH PROFESSIONAL INFORMATION

### SUMMARY PRODUCT INFORMATION

Route of Administration	Dosage Form / Strength	Nonmedicinal Ingredients
Oral	Tablets; 200 mg	Cellulose compounds, magnesium stearate, silicon dioxide.
Oral	Chewable Tablets; 100 mg and 200 mg	Cherry-mint flavour, cornstarch, erythrosine, gelatin, glycerin, magnesium stearate, silicon dioxide, sodium starch glycolate, stearic acid, sugar.
Oral	Controlled-Release Tablets; 200 mg and 400 mg	Acrylic esters, cellulose compounds, iron oxides, magnesium stearate, silicon dioxide, talc, titanium dioxide, castor oil derivative.
Oral	Suspension; 100 mg/tsp (5 mL)	Citric acid, citrus-vanilla flavour, FD&C Yellow No. 6, pluronic polyol, potassium sorbate, propylene glycol, sucrose, sorbitol, water, xanthan gum.

### INDICATIONS AND CLINICAL USE

#### **Epilepsy:**

##### **Adults (> 18 years of age)**

TEGRETOL (carbamazepine) is indicated for use as an anticonvulsant drug either alone or in combination with other anticonvulsant drugs.

Carbamazepine is not effective in controlling absence, myoclonic or atonic seizures, and does not prevent the generalization of epileptic discharge. Moreover, exacerbation of seizures may occasionally occur in patients with atypical absences.

##### **Pediatrics (> 6 years of age):**

TEGRETOL is indicated for use as an anticonvulsant drug either alone or in combination with other anticonvulsant drugs (see DOSAGE and ADMINISTRATION, **Recommended Dose and Dosage Adjustment, Use in Epilepsy, Adults and Children Over 12 Years of Age and Children 6-12 Years of Age**).

**Trigeminal Neuralgia:****Adults (> 18 years of age)**

TEGRETOL is indicated for the symptomatic relief of pain of trigeminal neuralgia only during periods of exacerbation of true or primary trigeminal neuralgia (tic douloureux). It should not be used preventively during periods of remission. In some patients, TEGRETOL has relieved glossopharyngeal neuralgia. For patients who fail to respond to TEGRETOL, or who are sensitive to the drug, recourse to other accepted measures must be considered.

Carbamazepine is not a simple analgesic and should not be used to relieve trivial facial pains or headaches.

**Pediatrics (< 18 years of age)**

The safety and efficacy of TEGRETOL have not been established in patients under 18 years of age and its use in this age group is not recommended.

**Treatment of Acute Mania and Prophylaxis in Bipolar (Manic-Depressive) Disorders:****Adults (> 18 years of age)**

TEGRETOL may be used as a monotherapy or as an adjunct to lithium in the treatment of acute mania or prophylaxis of bipolar (manic-depressive) disorders in patients who are resistant to or are intolerant of conventional antimanic drugs. Carbamazepine may be a useful alternative to neuroleptics in such patients. Patients with severe mania, dysphoric mania or rapid cycling who are non-responsive to lithium may show a positive response when treated with carbamazepine.

It is important to note that these recommendations are based on extensive clinical experience and some clinical trials versus active comparison agents.

**Pediatrics (< 18 years of age)**

The safety and efficacy of TEGRETOL have not been established in patients under 18 years of age and its use in this age group is not recommended.

**Geriatrics (> 65 years of age)**

For all indications, due to drug interactions and different antiepileptic drug pharmacokinetics, the dosage of TEGRETOL should be selected with caution in elderly patients. (see **WARNINGS AND PRECAUTIONS, Special Populations, Geriatrics and DOSAGE AND ADMINISTRATION, Dosing Considerations, Geriatrics**).

## CONTRAINDICATIONS

TEGRETOL (carbamazepine) is contraindicated in:

- Patients who are hypersensitive to carbamazepine or to any of the components of the tablets or suspension. For a complete listing, see **DOSAGE FORMS, COMPOSITION AND PACKAGING** section of the product monograph.
- Patients who are hypersensitive to any of the tricyclic compounds, such as: amitriptyline, trimipramine, imipramine, or their analogues or metabolites, because of the similarity in chemical structure.
- Patients with hepatic disease, a history of bone-marrow depression, a history of hepatic porphyria (acute intermittent porphyria, variegate porphyria, porphyria cutanea tarda), or serious blood disorder.
- Conjunction with, or immediately after a monoamine oxidase (MAO) inhibitor (see **DRUG INTERACTIONS**).
- Conjunction with itraconazole and voriconazole (see **DRUG INTERACTIONS**).
- Patients presenting atrioventricular heart block (see **WARNINGS AND PRECAUTIONS, Cardiovascular**).

## WARNINGS AND PRECAUTIONS

### Serious Warnings and Precautions

**HEMATOLOGIC:** Although reported infrequently, serious adverse effects have been observed during the use of TEGRETOL (carbamazepine). Agranulocytosis and aplastic anemia, with a fatal outcome, have occurred very rarely. Leucopenia, thrombocytopenia, hepatocellular and cholestatic jaundice, and hepatitis have also been reported. However, in the majority of cases, leucopenia and thrombocytopenia were transient and did not signal the onset of either aplastic anemia or agranulocytosis. It is important that TEGRETOL be used carefully and close clinical and frequent laboratory supervision should be maintained throughout treatment in order to detect as early as possible signs and symptoms of a possible blood dyscrasia. TEGRETOL should be discontinued if any evidence of significant bone marrow depression appears (see **WARNINGS AND PRECAUTIONS**).

**DERMATOLOGIC: Steven's-Johnson Syndrome and Toxic Epidermal Necrolysis:** Serious and sometimes fatal dermatologic reactions, including Toxic Epidermal Necrolysis (TEN) and Stevens-Johnson Syndrome (SJS), have been reported with TEGRETOL. In countries with mainly Caucasian populations, these reactions are estimated to occur in 1 to 6 per

10,000 new users, but in some Asian countries (e.g., Taiwan, Malaysia and the Philippines) the risk is estimated to be about 10 times higher.

Human Leukocyte Antigens (HLA)-A\*3101 and HLA-B\*1502 may be risk factors for the development of serious cutaneous adverse drug reactions. Retrospective genome-wide studies in Japanese and Northern European populations reported an association between severe skin reactions (SJS, TEN, Drug Rash with Eosinophilia and Systemic Symptoms (DRESS), Acute Generalized Exanthematous Pustulosis (AGEP) and maculopapular rash) associated with carbamazepine use and the presence of the HLA-A\*3101 allele in these patients. Similarly, in studies that included small samples of patients of Han Chinese ancestry, a strong association was found between the risk of developing SJS/TEN and the presence of the HLA-B\*1502 allele. The HLA-B\*1502 allele is found almost exclusively in individuals with ancestry across broad areas of Asia<sup>†</sup>. It is therefore, recommended that physicians consider HLA-A\*3101 and HLA-B\*1502 genotyping as a screening tool in genetically at-risk populations (see WARNINGS AND PRECAUTIONS, Ancestry and Allelic Variations in the HLA-A Gene and Ancestry; Allelic Variations in the HLA-B Gene). Until further information is available, the use of TEGRETOL and other anti-epileptic drugs associated with SJS/TEN should be avoided in patients who test positive for the HLA-A\*3101 or HLA-B\*1502 alleles (see WARNINGS AND PRECAUTIONS, Ancestry and Allelic Variations in the HLA-A Gene; Ancestry and Allelic Variation in the HLA-B Gene; Important Limitations of HLA-A and HLA-B Genotyping).

**Treatment recommendations for dermatological reactions:** TEGRETOL should be discontinued at the first sign of a rash, unless the rash is clearly not drug-related. If signs or symptoms suggest SJS/TEN, use of this drug should not be resumed and alternative therapy should be considered. The use of other anti-epileptic drugs associated with SJS/TEN should be avoided in patients who have shown severe dermatological reactions during TEGRETOL treatment.

**CARCINOGENICITY:** Long-term toxicity studies in rats indicated a potential carcinogenic risk (see TOXICOLOGY). Therefore, the possible risk of the drug must be weighed against the potential benefits before prescribing TEGRETOL to individual patients.

### **Pharmacogenomics**

**There is growing evidence of the role of different HLA alleles in predisposing patients to**

---

<sup>†</sup> The following provide a rough estimate of the frequency of HLA-B\*1502 allele in various populations: from 2 to 12% in Han Chinese populations, about 8% in Thai populations, and above 15% in the Philippines and some Malaysian populations. Allele frequencies up to about 2% and 6% have been reported in Korea and India, respectively. The frequency of the HLA-B\*1502 allele is negligible in persons from European descent, several African populations, indigenous peoples of the Americas, Hispanic populations sampled and in Japanese (< 1%). The estimated frequencies have limitations due to the wide variation in allele frequencies that exist within ethnic groups, the difficulties in ascertaining ethnic ancestry and the likelihood of mixed ancestry.

**immune-mediated adverse reactions.**

### **Ancestry and Allelic Variation in the HLA-A Gene**

**The frequency of the HLA-A\*3101 allele, an inherited allelic variant of the HLA-A gene, varies widely between ethnic populations and its frequency is about 2 to 5% in European populations and about 10% in the Japanese population. The frequency of this allele is estimated to be less than 5% in the majority of Australian, Asian, African and North American populations with some exceptions within 5-12%. Prevalence above 15% has been estimated in some ethnic groups in South America (Argentina and Brazil), North America (US Navajo and Sioux, and Mexico Sonora Seri) and Southern India (Tamil Nadu) and between 10%-15% in other native ethnicities in these same regions.**

**Testing for the presence of HLA-A\*3101 allele should be considered in patients with ancestry in genetically at-risk populations (for example, patients of the Japanese and Caucasian populations, patients who belong to the indigenous populations of the Americas, Hispanic populations, people of southern India, and people of Arabic descent), prior to initiating treatment with TEGRETOL (see WARNINGS AND PRECAUTIONS, Important Limitations of HLA-A and HLA-B Genotyping). The use of TEGRETOL should be avoided in patients who are found to be positive for HLA-A\*3101, unless the benefits clearly outweigh the risks. Screening is generally not recommended for any current TEGRETOL users, as the risk of SJS/TEN, AGEP, DRESS and maculopapular rash is largely confined to the first few months of therapy, regardless of HLA-A\*3101 status (see WARNINGS AND PRECAUTIONS, Important Limitations of HLA-A and HLA-B Genotyping).**

### **Ancestry and Allelic Variation in the HLA-B Gene**

**In studies that included small samples of carbamazepine-treated patients of Han Chinese and Thai origin, a strong association was found between the risk of developing SJS/TEN and the presence of HLA-B\*1502, an inherited allelic variant of the HLA-B gene. The HLA-B\*1502 allele is found almost exclusively in individuals with ancestry across broad areas of Asia. Results of these studies suggest that the presence of the HLA-B\*1502 allele may be one of the risk factors for carbamazepine-associated SJS/TEN in patients with Asian ancestry. Therefore, physicians should consider HLA-B\*1502 genotyping as a screening tool in these patients. Until further information is available, the use of TEGRETOL and other anti-epileptic drugs associated with SJS/TEN should also be avoided in patients who test positive for the HLA-B\*1502 allele.**

### **Important Limitations of HLA-A and HLA-B Genotyping**

**HLA-A\*3101 and HLA-B\*1502 genotyping as screening tools have important limitations and must never substitute for appropriate clinical vigilance and patient management. Many patients positive for HLA-A\*3101 and treated with TEGRETOL will not develop SJS, TEN, DRESS, AGEP or maculopapular rash and patients negative for HLA-A\*3101**

of any ethnicity can still develop these severe cutaneous adverse reactions. Similarly, many HLA-B\*1502-positive Asian patients treated with TEGRETOL will not develop SJS/TEN, and these reactions can still occur infrequently in HLA-B\*1502-negative patients of any ethnicity. The role of other possible factors in the development of, and morbidity from, these severe cutaneous adverse reactions, such as antiepileptic drug (AED) dose, compliance, concomitant medications, co-morbidities, and the level of dermatologic monitoring have not been studied.

In addition, it should be kept in mind that over 90% of TEGRETOL treated patients who will experience SJS/TEN have this reaction within the first few months of treatment. This information may be taken into consideration when deciding whether to screen genetically at-risk patients currently on TEGRETOL.

The identification of subjects carrying the HLA-B\*1502 allele and the avoidance of carbamazepine therapy in these subjects has been shown to decrease the incidence of carbamazepine-induced SJS/TEN.

Should signs and symptoms suggest a severe skin reaction such as SJS or TEN, TEGRETOL should be withdrawn at once.

### **Hypersensitivity**

TEGRETOL can trigger hypersensitivity reactions, including DRESS, a delayed multi-organ hypersensitivity disorder with fever, rash, vasculitis, lymphadenopathy, pseudo lymphoma, arthralgia, leukopenia, eosinophilia, hepato-splenomegaly, abnormal liver function tests and vanishing bile duct syndrome (destruction and disappearance of the intrahepatic bile ducts), that may occur in various combinations. One or more organs such as skin, liver, lungs, kidneys, pancreas, myocardium, bone marrow, spleen, thymus, lymph nodes and colon may be affected (see ADVERSE REACTIONS).

The HLA-A\*3101 allele has been found to be associated with the occurrence of hypersensitivity syndrome, including maculopapular rash.

In general, if signs and symptoms suggestive of hypersensitivity reactions occur, TEGRETOL should be withdrawn immediately, and alternative therapy should be considered.

Patients who have exhibited hypersensitivity reactions to carbamazepine should be informed that approximately 25 to 30 % of these patients may experience hypersensitivity reactions with oxcarbazepine (TRILEPTAL<sup>®</sup>).

Cross-hypersensitivity can occur between carbamazepine and aromatic antiepileptic drugs (e.g. phenytoin, primidone and phenobarbital).

### **General**



A tolerance may develop to the action of carbamazepine after a few months of treatment and should be watched for (see **PART II: SCIENTIFIC INFORMATION-CLINICAL TRIALS**).

TEGRETOL should not be used in conjunction with the antiretroviral agent delavirdine due to potential for loss of virologic response and possible resistance to delavirdine or to the class of non-nucleoside reverse transcriptase inhibitors.

### **Anticholinergic effects**

Like other tricyclic compounds, carbamazepine has a moderate anticholinergic action which is responsible for some of its side effects. Because of its anticholinergic action, carbamazepine should be given cautiously, if at all, to patients with increased intraocular pressure or urinary retention.

### **Falls**

TEGRETOL treatment has been associated with ataxia, dizziness, somnolence, hypotension, confusional state, sedation (see **Adverse Reactions; Post-Market Adverse Drug Reactions**) which may lead to falls and, consequently fractures or other injuries. For patients with diseases, conditions, or medications that could exacerbate these effects, complete risk assessment of fall should be considered recurrently for patients on long-term TEGRETOL treatment.

### **Special excipients**

TEGRETOL oral suspension contains parahydroxybenzoates which may cause allergic reactions (possibly delayed).

### **Carcinogenesis and Mutagenesis**

Long-term toxicity studies in rats indicated a potential carcinogenic risk (see **TOXICOLOGY**). Therefore, the possible risk of the drug must be weighed against the potential benefits before prescribing TEGRETOL to individual patients.

### **Cardiovascular**

TEGRETOL should be used cautiously in patients with a history of coronary artery disease, organic heart disease, or congestive heart failure. Carbamazepine may suppress ventricular automaticity due to its membrane-depressant effect, similar to that of quinidine and procainamide, associated with suppression of phase 4 depolarization of the heart muscle fiber (see **PART II: SCIENTIFIC INFORMATION-CLINICAL TRIALS**).

If a defective conductive system is suspected, an ECG should be performed before administering TEGRETOL, in order to exclude patients with atrioventricular block.

### **Bone Disorders**

Long-term use of antiepileptics such as carbamazepine, phenobarbital, phenytoin, primidone, oxcarbazepine, lamotrigine and sodium valproate is associated with a risk of decreased bone mineral density that may lead to weakened or brittle bones.

## **Endocrine and Metabolism**

### **Patients with Fructose Intolerance**

TEGRETOL oral suspension contains sorbitol and, therefore, should not be administered to patients with rare hereditary problems of fructose intolerance.

### **Hyponatremia**

Hyponatremia is known to occur with carbamazepine. Although hyponatremia occurs in 10 to 15% of patients taking carbamazepine, it is seldom symptomatic or severe enough to cause fluid retention. In patients with pre-existing renal conditions associated with low sodium or in patients treated concomitantly with sodium-lowering medicinal products (*e.g.* diuretics, medicinal products associated with inappropriate ADH secretion), serum sodium levels should be measured prior to initiating carbamazepine therapy. Thereafter, serum sodium levels should be measured after approximately two weeks and then at monthly intervals for the first three months during therapy, or according to clinical need. These risk factors may apply especially to the elderly and renally-compromised patients. If hyponatremia is observed, water restriction is an important counter-measurement if clinically indicated.

### **Hypothyroidism**

Carbamazepine can reduce serum concentrations of thyroid hormones through enzyme induction requiring an increase in dose of thyroid replacement therapy in patients with hypothyroidism. In order to adjust the dosage of thyroid replacement therapy, evaluation of thyroid hormone status should be considered for patients treated with TEGRETOL, particularly for pediatric patients, due to the potential risk of hypothyroidism and long-term adverse effects on development that can occur in relation to undetected changes in thyroid hormone status.

## **Neurologic**

### **Increased Seizure Frequency**

Abrupt withdrawal of TEGRETOL may precipitate seizures. Therefore, if carbamazepine has to be discontinued, it should be withdrawn gradually over a 6-month period. In epileptic patients, the switch to the new antiepileptic compound should be made under cover of a suitable drug.

TEGRETOL should be used with caution in patients with mixed seizures which includes absences, either typical or atypical. In all these conditions, TEGRETOL may exacerbate seizures.

In the event of exacerbation of seizures, TEGRETOL should be discontinued.

The occurrence of CNS adverse reactions may be a manifestation of relative overdosage or significant fluctuation in plasma levels. In such cases, it is advisable to monitor the plasma levels.

A number of investigators have reported a deterioration of EEG abnormalities with regard to focal alterations and a higher incidence of records with nil beta-activity, during carbamazepine-combined treatment (see **PART II: SCIENTIFIC INFORMATION-CLINICAL TRIALS**).

### **Driving and using Hazardous Machines**

Patients' ability to react may be impaired by their medical condition resulting in seizures and adverse reactions reported with TEGRETOL, including dizziness, drowsiness, ataxia, diplopia, impaired accommodation and blurred vision. Patients should be advised not to drive or use complex machines, or engage in other hazardous activities, until they have gained sufficient experience on carbamazepine to gauge whether it affects their mental and/or motor performance adversely.

### **Psychiatric**

Because it is closely related to other tricyclic drugs, there is some possibility that carbamazepine might activate a latent psychosis, or, in elderly patients, produce agitation or confusion, especially when combined with other drugs. Caution should also be exercised in patients with alcohol dependence.

### **Suicidal ideation and behaviour**

Suicidal ideation and behaviour have been reported in patients treated with antiepileptic agents in several indications.

All patients treated with antiepileptic drugs, irrespective of indication, should be monitored for signs of suicidal ideation and behaviour and appropriate treatment should be considered. Patients (and caregivers of patients) should be advised to seek medical advice should signs of suicidal ideation or behaviour emerge.

An FDA meta-analysis of randomized placebo controlled trials, in which antiepileptic drugs were used for various indications, has shown a small increased risk of suicidal ideation and behaviour in patients treated with these drugs. The reason for this risk is not known.

There were 43892 patients treated in the placebo controlled clinical trials that were included in the meta-analysis. Approximately 75% of patients in these clinical trials were treated for indications other than epilepsy and, for the majority of non-epilepsy indications the treatment

(antiepileptic drug or placebo) was administered as monotherapy. Patients with epilepsy represented approximately 25% of the total number of patients treated in the placebo controlled clinical trials and, for the majority of epilepsy patients, treatment (antiepileptic drug or placebo) was administered as adjunct to other antiepileptic agents (i.e., patients in both treatment arms were being treated with one or more antiepileptic drug). Therefore, the small increased risk of suicidal ideation and behaviour reported from the meta-analysis (0.43% for patients on antiepileptic drugs compared to 0.24% for patients on placebo) is based largely on patients that received monotherapy treatment (antiepileptic drug or placebo) for non-epilepsy indications. The study design does not allow for an estimation of the risk of suicidal ideation and behaviour for patients with epilepsy that are taking antiepileptic drugs, due both to this population being the minority in the study, and the drug-placebo comparison in this population being confounded by the presence of adjunct antiepileptic drug treatment in both arms.

### ***Risk of Suicide in Patients with Bipolar Disorder***

Patients with bipolar disorder may experience worsening of their depressive symptoms and/or the emergence of suicidal ideation and behaviors (suicidality) whether or not they are taking medications for bipolar disorder. Patients should be closely monitored for clinical worsening (including development of new symptoms) and suicidality, especially at the beginning of a course of treatment, or at the time of dose changes.

In addition, patients with a history of suicidal behavior or thoughts, those patients exhibiting a significant degree of suicidal ideation prior to commencement of treatment, and young adults, are at an increased risk of suicidal thoughts or suicide attempts, and should receive careful monitoring during treatment.

Patients (and caregivers of patients) should be alerted about the need to monitor for any worsening of their condition (including development of new symptoms) and /or the emergence of suicidal ideation/behavior or thoughts of harming themselves and to seek medical advice immediately if these symptoms present.

Prescriptions for all medications, including TEGRETOL, should be written for the smallest quantity of tablets consistent with good patient management, in order to reduce the risk of overdose.

### **Sexual Function/Reproduction**

There have been very rare reports of impaired male fertility and/or abnormal spermatogenesis.

### **Skin**

Mild skin reactions, e.g., isolated macular or maculopapular exanthema, usually disappear within a few days or weeks, either during a continued course of treatment or following a decrease in dosage. However, the patient should be kept under close surveillance because of the rare possibility of Steven-Johnson Syndrome or Toxic Epidermal Necrolysis occurring (**see**

## **WARNINGS AND PRECAUTIONS, Serious Warnings and Precautions, DERMATOLOGIC).**

In addition to being associated with severe adverse cutaneous reactions (see **WARNINGS AND PRECAUTIONS**), the HLA-A\*3101 allele has been found to be associated with less severe adverse cutaneous reactions from carbamazepine, and may predict the risk of such reactions as anticonvulsant hypersensitivity syndrome or non-serious rash (maculopapular eruption). However, the HLA-B\*1502 allele has not been found to predict the risk of these aforementioned skin reactions (see **WARNINGS AND PRECAUTIONS, Ancestry and Allelic Variation in the HLA-A Gene**).

### **Special Populations**

#### **Pregnant Women**

##### *Pregnancy*

**Women with epilepsy who are, or intend to become pregnant, should be treated with special care.**

**In women of childbearing potential, TEGRETOL should, whenever possible, be prescribed as monotherapy, because the incidence of congenital abnormalities in the offspring of women treated with more than one antiepileptic drug is greater than in those of women receiving a single antiepileptic. The risk of malformations following exposure to carbamazepine as polytherapy may vary depending on the specific drugs used and may be higher in polytherapy combinations that include valproate.**

**If pregnancy occurs in a woman receiving TEGRETOL, or if the need to initiate TEGRETOL arises during pregnancy, the drug's expected benefits must be weighed against its hazards, particularly during the first 3 months of pregnancy. TEGRETOL should not be discontinued or withheld from patients if required to prevent major seizures because of the risks posed, to both mother and fetus, by status epilepticus with attendant hypoxia. During pregnancy, an effective antiepileptic treatment should not be interrupted, since the aggravation of the illness is detrimental to both the mother and the fetus.**

**The possibility that carbamazepine, like all major antiepileptic drugs, increases the risk of malformations has been reported. Developmental disorders and malformations, including spina bifida, and also other congenital anomalies, *e.g.* craniofacial defects, cardiovascular malformations, hypospadias, and anomalies involving various body systems, have been reported in association with carbamazepine.**

**Conclusive evidence from controlled studies with carbamazepine monotherapy is lacking. Patients should be counseled regarding the possibility of an increased risk of malformations and given the opportunity of antenatal screening.**

### *Monitoring and prevention*

**Folic acid deficiency is known to occur in pregnancy. Antiepileptic drugs have been reported to aggravate folic acid deficiency. This deficiency may contribute to the increased incidence of birth defects in the offspring of treated epileptic women. Folic acid supplementation has therefore been recommended before and during pregnancy.**

### *In the neonate*

**To prevent neonatal bleeding disorders, Vitamin K<sub>1</sub> administration to the mother during the last weeks of pregnancy, as well as to the newborn, has been recommended.**

Cholestatic hepatitis in neonates exposed to carbamazepine in the antenatal period has been reported. Infants of mothers treated with TEGRETOL should be carefully observed for adverse hepatobiliary effects. A few cases of neonatal seizures and respiratory depression have been associated with maternal TEGRETOL and other concomitant anticonvulsant drug use. A few cases of neonatal vomiting, diarrhea, and/or decreased feeding have also been associated with maternal TEGRETOL use. These reactions may represent a neonatal withdrawal syndrome.

### *Women of child-bearing potential and contraceptive measures*

Women of childbearing potential should use effective contraception during treatment with TEGRETOL and for 2 weeks after the last dose. Due to enzyme induction, TEGRETOL may result in a failure of the therapeutic effect of oral contraceptive drugs containing estrogen and/or progesterone. Therefore, women of child bearing potential should be advised to use alternative contraceptive methods while on treatment with TEGRETOL.

**It should be noted that the reliability of oral contraceptives may be adversely affected by carbamazepine (see DRUG INTERACTIONS).**

### **Nursing Women**

**Carbamazepine passes into breast milk in concentrations of about 25-60% of the plasma level. No reports are available on the long-term effect of breast feeding but there have been some reports of cholestatic hepatitis in neonates exposed to carbamazepine during breast feeding. The benefits of breast feeding should be weighed against the possible risks to the infant and a decision should be made whether to discontinue nursing or to discontinue TEGRETOL, taking into account the importance of the drug to the mother. Therefore breast-fed infants of mothers treated with carbamazepine should be carefully observed for adverse reactions such as somnolence, allergic skin reactions and adverse hepatobiliary effects.**

### **Geriatrics (> 65 years of age):**

Due to drug interactions and different antiepileptic drug pharmacokinetics, the dosage of TEGRETOL should be selected with caution in elderly patients. In general, dose selection for an elderly patient usually starts at the low end of the dosing range, reflecting the greater frequency of decreased hepatic, renal, or cardiac function, and of concomitant disease.

### **Monitoring and Laboratory Tests**

TEGRETOL should be prescribed only after a critical risk-benefit appraisal in patients with a history of cardiac, hepatic or renal damage, adverse hematological reactions to other drugs, or interrupted courses of therapy with TEGRETOL. **Careful clinical and laboratory supervision should be maintained throughout treatment.** Should any signs or symptoms or abnormal laboratory findings be suggestive of blood dyscrasia or liver disorder, TEGRETOL should be immediately discontinued until the case is carefully reassessed.

#### **Bone marrow function**

Complete blood counts, including platelets and possibly reticulocytes and serum iron, should be carried out before treatment is instituted, and periodically thereafter.

If definitely low or decreased white blood cell or platelet counts are observed during treatment, the patient and the complete blood count should be monitored closely. Non-progressive fluctuating asymptomatic leucopenia, which is encountered, does not generally call for the withdrawal of TEGRETOL. However, treatment with TEGRETOL should be discontinued if the patient develops leucopenia which is progressive or accompanied by clinical manifestations, e.g., fever or sore throat, as this could indicate the onset of significant bone marrow depression.

**Because the onset of potentially serious blood dyscrasias may be rapid, patients should be made aware of early toxic signs and symptoms of a potential hematological problem, as well as symptoms of dermatological or hepatic reactions.** If reactions such as fever, sore throat, rash, ulcers in the mouth, easy bruising, petechial or purpuric hemorrhage appear, the patient should be advised to consult his/her physician immediately.

#### **Hepatic function**

Baseline and periodic evaluations of hepatic function must be performed, particularly in elderly patients and patients with a history of liver disease. TEGRETOL should be withdrawn immediately in cases of aggravated liver dysfunction or active liver disease.

#### **Renal function**

Pre-treatment and periodic complete urinalysis and BUN determinations should be performed.

#### **Ophthalmic examinations**

Carbamazepine has been associated with pathological eye changes. Periodic eye examinations,

including slit-lamp funduscopy and tonometry are recommended.

### **Plasma levels**

Although correlations between dosage and plasma levels of carbamazepine, and between plasma levels and clinical efficacy or tolerability are rather tenuous, monitoring plasma levels may be useful in the following situations: dramatic increase in seizure frequency/verification of patient compliance; during pregnancy; when treating children or adolescents; in suspected absorption disorders; in suspected toxicity, especially where more than one drug is being used (**see DRUG INTERACTIONS**).

## **ADVERSE REACTIONS**

### **Adverse Drug Reaction Overview**

The reactions which have been most commonly reported with TEGRETOL (carbamazepine) are CNS disturbances (e.g., drowsiness, headache, unsteadiness on the feet, diplopia, dizziness), gastrointestinal disturbances (nausea, vomiting), and allergic skin reactions. These reactions usually occur only during the initial phase of therapy, if the initial dose is too high, or when treating elderly patients. They have rarely necessitated discontinuing TEGRETOL therapy, and can be minimized by initiating treatment at a low dosage.

The occurrence of CNS adverse reactions may be a manifestation of relative overdosage or significant fluctuation in plasma levels. In such cases it is advisable to monitor the plasma levels.

The more serious adverse reactions observed are the hematologic, hepatic, cardiovascular and dermatologic reactions, which require discontinuation of therapy.

The following adverse drug reactions from clinical and post-market experience are listed by MedDRA system organ class. The corresponding frequency category for each adverse drug reaction is based on the following convention (CIOMS III): very common ( $\geq 1/10$ ); common ( $\geq 1/100$  to  $< 1/10$ ); uncommon ( $\geq 1/1,000$  to  $< 1/100$ ); rare ( $\geq 1/10,000$  to  $< 1/1,000$ ); very rare ( $< 1/10,000$ ).

### **Blood and lymphatic system disorders**

*Very common:* leucopenia;

*Common:* eosinophilia, thrombocytopenia;

*Rare:* leucocytosis, lymphadenopathy,

*Very rare:* agranulocytosis, aplastic anemia, pancytopenia, pure red cell aplasia, anemia, macrocytic anemia, megaloblastic anemia, reticulocytosis, thrombocytopenic purpura and hemolytic anemia. In a few instances, deaths have occurred.



### **Hepatobiliary disorders**

*Rare:* hepatitis of a cholestatic, parenchymal (hepatocellular), or mixed type, vanishing bile duct syndrome, jaundice;

*Very rare:* hepatic failure, granulomatous liver disease.

### **Skin and subcutaneous tissue disorders**

*Very common:* erythematous rashes, urticaria which may be severe, allergic dermatitis and rashes;

*Uncommon:* exfoliative dermatitis;

*Rare:* systemic lupus erythematosus, pruritis;

*Very rare:* Steven Johnson syndrome<sup>‡</sup>, toxic epidermal necrolysis (Lyell's syndrome), photosensitivity reaction, erythema multiform, erythema nodosum, pigmentation disorder, purpura, acne, diaphoresis, alopecia, neurodermatitis, hirsutism.

### **Nervous system disorders**

*Very common:* ataxia, dizziness, somnolence;

*Common:* an increase in motor seizures (**see Indications**), diplopia, headache;

*Uncommon:* abnormal involuntary movements (e.g., tremor, asterixis, dystonia, tics), nystagmus;

*Rare:* dyskinesia, paresis, eye movement disorder, speech disorders (e.g., dysarthria, slurred speech), choreoathetosis, peripheral neuropathy, paraesthesia, muscle weakness;

*Very rare:* neuroleptic malignant syndrome, aseptic meningitis with myoclonus and peripheral eosinophilia, dysgeusia.

### **Cardiac disorders**

*Rare:* cardiac conduction disorders (including second and third degree atrioventricular heart block);

*Very rare:* arrhythmias, Stokes-Adams in patients with atrioventricular block, bradycardia, congestive cardiac failure, aggravated coronary artery disease. Some of these cardiovascular complications have had fatal outcomes. Myocardial infarction and arrhythmia have been associated with other tricyclic compounds.

### **Vascular disorders**

*Rare:* hypertension or hypotension;

*Very Rare:* circulatory collapse, thromboembolism (e.g. pulmonary embolism), thrombophlebitis.

### **Psychiatric disorders**

*Rare:* hallucinations (visual or auditory), depression, talkativeness, agitation, anorexia, restlessness, confusional state;

---

<sup>‡</sup> In some Asian countries also reported as rare. See Warnings.

*Very rare:* activation of psychosis. Very rare cases of suicide attempt and completed suicide have been reported, however a causal relationship has not been established.

### **Renal and urinary disorders**

*Very rare:* tubulointerstitial nephritis, renal failure, renal impairment (e.g., albuminuria, glycosuria, hematuria, oliguria sometimes associated with elevated blood pressure, and blood urea nitrogen increased/azotemia), urinary retention, urinary frequency.

### **Reproductive system**

*Very rare:* sexual dysfunction/erectile dysfunction, spermatogenesis abnormal (with decreased sperm count and/or motility).

### **Gastrointestinal disorders**

*Very common:* vomiting, nausea;

*Common:* dry mouth and throat;

*Uncommon:* diarrhea, constipation;

*Rare:* abdominal pain;

*Very rare:* pancreatitis, glossitis, stomatitis;

### **Eye disorders**

*Common:* accommodation disorders (e.g. blurred vision);

*Very rare:* lenticular opacities, conjunctivitis, retinal changes.

### **Ear and labyrinth disorders**

*Very rare:* hearing disorders (e.g. tinnitus, hyperacusis, hypoacusis), change in pitch perception.

### **Endocrine disorders**

*Common:* edema, fluid retention, weight increase, hyponatremia and blood osmolarity decreased due to antidiuretic hormone (ADH)-like effect occurs, leading in rare cases to water intoxication accompanied by lethargy, vomiting, headache, confusional state, neurological disorders;

*Very rare:* galactorrhea, gynecomastia.

### **Metabolism and nutrition disorders**

*Rare:* folate deficiency, decreased appetite;

*Very rare:* acute porphyria (acute intermittent porphyria and variegate porphyria), non-acute porphyria (porphyria cutanea tarda).

### **Musculoskeletal, connective tissue and bone disorders**

*Very rare:* bone metabolism disorders (decrease in plasma calcium and blood 25-hydroxy-cholecalciferol) leading to osteomalacia/osteoporosis, arthralgia, myalgia, muscle spasms.

### **Respiratory, thoracic and mediastinal system**

*Very rare:* pulmonary hypersensitivity characterized by fever, dyspnea, pneumonitis or pneumonia.

### **Immune system disorders**

*Rare:* delayed multi-organ hypersensitivity disorder with fever, rashes, vasculitis, lymphadenopathy, pseudo lymphoma, arthralgia, leucopenia, eosinophilia, hepatosplenomegaly, abnormal liver function tests and vanishing bile duct syndrome (destruction and disappearance of the intrahepatic bile ducts), occurring in various combinations. Other organs may also be affected (e.g., lungs, kidneys, pancreas, myocardium, colon);

*Very rare:* anaphylactic reaction, angioedema, hypogammaglobulinemia.

### **General disorders and administration site conditions**

*Very common:* fatigue.

### **Investigations**

*Very common:* increased gamma-glutamyltransferase (due to hepatic enzyme induction), usually not clinically relevant;

*Common:* increased blood alkaline phosphatase;

*Uncommon:* increased transaminases;

*Very rare:* increased intraocular pressure, increased blood cholesterol, increased high density lipoprotein, increased blood triglycerides. Abnormal thyroid function test: decreased L-Thyroxin (free thyroxine, thyroxine, tri-iodothyronine) and increased blood thyroid stimulating hormone, increased blood prolactin (usually without clinical manifestations).

### **Post-Market Adverse Drug Reactions**

The following adverse drug reactions have been derived from post-marketing experience with TEGRETOL via spontaneous case reports and literature cases. Because these reactions are reported voluntarily from a population of uncertain size, it is not possible to reliably estimate their frequency which is therefore categorized as not known. Adverse drug reactions are listed according to system organ classes in MedDRA. Within each system organ class, ADRs are presented in order of decreasing seriousness.

**Blood and lymphatic system disorders:** bone marrow failure.

**Gastrointestinal disorders:** colitis.

**Immune system disorders:** Drug Rash with Eosinophilia and Systemic Symptoms (DRESS).

**Infections and infestations:** reactivation of human herpesvirus 6 infection.

**Injury, poisoning and procedural complications:** Fall (associated with TEGRETOL treatment induced ataxia, dizziness, somnolence, hypotension, confusional state, sedation) (see **WARNINGS and PRECAUTIONS**).

**Investigations:** bone density decreased.

**Musculoskeletal, connective tissue and bone disorders:** fracture.

**Nervous system disorders:** sedation, memory impairment.

**Skin and subcutaneous tissue disorders:** Acute Generalized Exanthematous Pustulosis (AGEP), lichenoid keratosis, onychomadesis.

## **DRUG INTERACTIONS**

### **Overview**

Cytochrome P450 3A4 (CYP3A4) is the main enzyme responsible for metabolizing carbamazepine.

### **Enzyme Inhibition**

Co-administration of CYP3A4 inhibitors may increase carbamazepine plasma concentrations and induce adverse reactions. Drugs that have been shown, or would be expected, to increase plasma carbamazepine levels include:

cimetidine, danazol, diltiazem, macrolides, erythromycin, troleandomycin, clarithromycin, fluoxetine, fluvoxamine, nefazodone, loratadine, terfenadine, isoniazid, niacinamide, nicotinamide, propoxyphene, azoles (e.g., ketoconazole, itraconazole, fluconazole), acetazolamide, verapamil, grapefruit juice, protease inhibitors, valproate.<sup>§</sup>

Human microsomal epoxide hydrolase has been identified as the enzyme responsible for the formation of the 10,11-transdiol derivative from carbamazepine-10,11 epoxide. Co-administration of inhibitors of human microsomal epoxide hydrolase may result in increased carbamazepine-10,11 epoxide plasma concentrations. Drugs that have been shown, or are expected, to inhibit the Human microsomal epoxide hydrolase include: Valproate, Quetiapine, felbamate, loxapine.

### **Enzyme Induction**

Co-administration of CYP3A4 inducers may increase the rate of TEGRETOL metabolism leading to potential decreases in the carbamazepine serum levels and therapeutic effect. Alternatively, discontinuation of a CYP3A4 inducer may decrease the rate of metabolism of carbamazepine, leading to an increase in carbamazepine plasma levels. Drugs that have been shown, or that would be expected, to decrease plasma carbamazepine levels include:

cisplatin, doxorubicin HCl, felbamate<sup>†</sup>, rifampin, phenobarbital, phenytoin, primidone, methsuximide, theophylline.

---

<sup>§</sup> Increased levels of the active 10, 11-epoxide

<sup>†</sup> Decreased levels of carbamazepine and increased levels of the 10, 11-epoxide

Carbamazepine is a potent inducer of CYP3A4 and other phase I and phase II enzyme systems in the liver, and may therefore reduce plasma concentrations of co-medications mainly metabolized by CYP3A4 by induction of their metabolism.

Carbamazepine, like other psycho-active drugs, may reduce the patient's alcohol tolerance; it is therefore advisable to abstain from alcohol consumption during treatment.

## **Drug-Drug Interactions**

### **Effects of TEGRETOL on Plasma Levels of Concomitant Agents**

Carbamazepine may lower the plasma level, or diminish or even abolish the activity of certain drugs. The dosage of the following drugs may have to be adjusted to clinical requirements when administered with TEGRETOL:

Analgesics, anti-inflammatory agents: buprenorphine, methadone, paracetamol (long term administration of carbamazepine and paracetamol (acetaminophen) may be associated with hepatotoxicity), phenazone (antipyrine), tramadol.

Antibiotics: doxycycline, rifabutin.

Anticoagulants: oral anticoagulants (warfarin, phenprocoumon, dicoumarol, acenocoumarol, rivaroxaban, dabigatran, apixaban, edoxaban).

Antidepressants: bupropion, citalopram, mianserin, nefadozone, sertraline, trazodone, tricyclic antidepressants (e.g. imipramine, amitriptyline, nortriptyline, clomipramine).

Antiemetics: aprepitant.

Antiepileptics: oxcarbazepine, clobazam, clonazepam, ethosuximide, primidone, valproic acid, felbamate, lamotrigine, eslicarbazepine, zonisamide tiagabine, topiramate. Phenytoin plasma levels have been reported both to be raised and lowered by carbamazepine. Phenytoin has also been shown to decrease carbamazepine plasma levels. To avoid phenytoin intoxication and subtherapeutic concentrations of carbamazepine, it is recommended to monitor the plasma concentration of both drugs during titration and adjust dosage accordingly. Mephenytoin plasma levels have been reported in rare instances to increase.

Antifungals: caspofungin, itraconazole, voriconazole. TEGRETOL should not be used in combination with voriconazole or itraconazole (see **CONTRAINDICATIONS**).

Anthelmintics: praziquantel, albendazole.

Antineoplastics: imatinib, irinotecan, gefitinib, cyclophosphamide, lapatinib, temsirolimus.

Antipsychotics: clozapine, haloperidol and bromperidol, olanzapine, quetiapine, risperidone, zispraside, aripiprazole, paliperidone.

Antivirals: protease inhibitors for HIV treatment (e.g. indinavir, ritonavir, saquinavir), the antiretroviral agent delavirdine.

Anxiolytics: alprazolam, midazolam.

Bronchodilators or anti-asthma drugs: theophylline.

Contraceptives: hormonal contraceptives.

Cardiovascular drugs: calcium channel blockers (dihydropyridine group), e.g. felodipine, digoxin, disopyramide, quinidine, propranolol, simvastatin, atorvastatin, lovastatin, ivabradine.

Corticosteroids: corticosteroids (e.g., prednisolone, dexamethasone).

Drugs used in erectile dysfunction: tadalafil.

Immunosuppressants: cyclosporin, everolimus, tacrolimus, sirolimus.

Thyroid agents: levothyroxine.

Other drug interactions: products containing estrogens and/or progesterones.

### **Agents that may raise carbamazepine and/or carbamazepine-10,11-epoxide plasma levels**

Since an increase in carbamazepine and/or carbamazepine-10,11-epoxide plasma levels may result in adverse reactions (e.g., dizziness, drowsiness, ataxia, diplopia), the dosage of TEGRETOL should be adjusted accordingly and the blood levels monitored when used concomitantly with the substances described below:

Analgesics, anti-inflammatory drugs: dextropropoxyphene, ibuprofen.

Androgens: danazol.

Antibiotics: macrolide antibiotics (e.g. erythromycin, troleandomycin, josamycin, clarithromycin, telithromycin), ciprofloxacin.

Antidepressants: possibly desipramine, fluoxetine, fluvoxamine, nefazodone, paroxetine, trazodone, viloxazine.

Antiepileptics: stiripentol, vigabatrin.

Antifungals: azoles (itraconazole, ketoconazole, fluconazole, voriconazole). TEGRETOL should not be used in combination with voriconazole or itraconazole (**see CONTRAINDICATIONS**).

Antihistamines: terfenadine, loratadine.

Antipsychotics: loxapine, olanzapine, quetiapine.

Antituberculosis: isoniazid.

Antivirals: protease inhibitors for HIV treatment (e.g. ritonavir).

Carbonic anhydrase inhibitors: acetazolamide.

Cardiovascular drugs: verapamil, diltiazem.

Gastrointestinal drugs: cimetidine, omeprazole.

Muscle relaxants: oxybutynin, dantrolene.

Platelet aggregation inhibitors: ticlopidine.

Other interactions: nicotinamide.

Loxapine, felbamate, quetiapine, primidone, valproic acid and valpromide were reported to increase concentration of the active metabolite carbamazepine-10,11-epoxide.

### **Agents that may decrease carbamazepine plasma levels**

The dose of TEGRETOL may consequently have to be adjusted when used concomitantly with the substances described below:

Antiepileptics: felbamate (might decrease the carbamazepine serum concentration associated with an increase in carbamazepine epoxide levels, and might decrease the serum felbamate levels), methsuximide, oxcarbazepine, phenobarbital, phensuximide, phenytoin (to avoid phenytoin intoxication and subtherapeutic concentrations of carbamazepine, it is recommended to monitor the plasma concentration of both drugs during titration (see also **Effects of TEGRETOL on Plasma Levels of Concomitant Agents**)) and fosphenytoin, primidone, progabide, and possibly by clonazepam, valproic acid or valpromide.

Antineoplastics: cisplatin or doxorubicin.

Antituberculosis: rifampicin.

Bronchodilators or anti-asthma drugs: theophylline, aminophylline.

Dermatological drugs: isotretinoin.

### **Combinations that require specific consideration**

Concomitant use of carbamazepine and levetiracetam has been reported to increase carbamazepine-induced toxicity (e.g., nystagmus, nausea, vomiting).

Combined use of TEGRETOL with lithium, metoclopramide, or haloperidol, may increase the risk of neurotoxic side effects (even in the presence of "therapeutic plasma levels").

Concomitant use of TEGRETOL and isoniazid has been reported to increase isoniazid-induced hepatotoxicity.

TEGRETOL, like other anticonvulsants, may adversely affect the reliability of hormonal contraceptives; breakthrough bleeding may occur. Accordingly, patients should be advised to use some alternative, non-hormonal method of contraception while taking TEGRETOL. Due to enzyme induction, TEGRETOL may result in a failure of the therapeutic effect of oral contraceptive drugs containing estrogen and/or progesterone (e.g. failure of contraception).

Concomitant medication with TEGRETOL and some diuretics (hydrochlorothiazide, furosemide) may lead to symptomatic hyponatremia.

Carbamazepine may antagonize the effects of non-depolarising muscle relaxants (e.g., pancuronium); their dosage may need to be raised and patients should be monitored closely for more rapid recovery from neuromuscular blockade than expected.

Isotretinoin has been reported to alter the bioavailability and/or clearance of carbamazepine and carbamazepine 10,11-epoxide; carbamazepine plasma levels should be monitored.

The use of TEGRETOL in combination with MAO inhibitors (MAOIs) is contraindicated. Before administering TEGRETOL, MAOIs should be discontinued for a minimum of 2 weeks, or longer, if the clinical situation permits (see **CONTRAINDICATIONS**).

Concomitant use of carbamazepine with direct acting oral anti-coagulants (rivaroxaban, dabigatran, apixaban, and edoxaban) may lead to reduced plasma concentrations of direct acting oral anti-coagulants, which carries the risk of thrombosis. Therefore, if a concomitant use is necessary, close monitoring of signs and symptoms of thrombosis is recommended.

### **Drug-Food Interactions**

**Agents that may raise carbamazepine and/or carbamazepine-10,11-epoxide plasma levels:** grapefruit juice.

### **Drug-Herb Interactions**

**Agents that may decrease carbamazepine plasma levels:** herbal preparations containing St John's wort (*Hypericum perforatum*).

### **Drug-Laboratory Interactions**



## **Interference with serological testing**

Carbamazepine may result in false positive perphenazine concentrations in HPLC analysis due to interference.

Carbamazepine and the 10,11-epoxide metabolite may result in false positive tricyclic antidepressant concentration in fluorescence polarized immunoassay method.

## **DOSAGE AND ADMINISTRATION**

### **Dosing Considerations**

**Geriatrics:** Due to drug interactions and different antiepileptic drug pharmacokinetics, the dosage of TEGRETOL (carbamazepine) should be selected with caution in elderly patients. In general, dose selection for an elderly patient usually starts at the low end of the dosing range, reflecting the greater frequency of decreased hepatic, renal, or cardiac function, and of concomitant disease.

**Renal impairment/Hepatic impairment:** No data are available on the pharmacokinetics of carbamazepine in patients with any degree of hepatic or renal impairment.

### **Recommended Dose and Dosage Adjustment**

#### **Use in Epilepsy**

TEGRETOL may be used alone or with other anticonvulsants. A low initial daily dosage of TEGRETOL with a gradual increase in dosage is advised. To achieve adequate control of seizures, dosage should be adjusted to the needs of the individual patient. Determination of plasma levels may help in establishing the optimum dosage. In the treatment of epilepsy, the dose of carbamazepine should be adjusted to maintain steady state plasma concentration of about 4 - 10 µg/mL (see **ACTIONS AND CLINICAL PHARMACOLOGY**). TEGRETOL should be taken with meals whenever possible.

TEGRETOL Tablets, CHEWTABS and Suspension should be taken in 2 to 4 divided doses daily.

TEGRETOL CHEWTABS and the Suspension are particularly suitable for patients who have difficulty swallowing tablets or who need initial careful adjustment of dosage.

The controlled release characteristics of TEGRETOL CR reduce the daily fluctuations of plasma carbamazepine. TEGRETOL CR tablets (either whole or, if so prescribed, only half a tablet) should be swallowed unchewed with a little liquid during or after a meal. These controlled

release tablets should be prescribed as a twice-daily dosage. If necessary, three divided doses may be prescribed. Some patients have been reported to require a dosage increase when switching from tablets to CR tablets. Dosage adjustments should be individualized based on clinical response and, if necessary, plasma carbamazepine levels.

### ***Adults and Children Over 12 Years of Age***

Initially, 100 to 200 mg once or twice a day depending on the severity of the case and previous therapeutic history. The initial dosage is progressively increased, in divided doses, until the best response is obtained. The usual optimal dosage is 800 to 1200 mg daily. In rare instances some adult patients have received 1600 mg. As soon as disappearance of seizures has been obtained and maintained, dosage should be reduced very gradually until a minimum effective dose is reached.

### ***Children 6-12 Years of Age***

Initially, 100 mg in divided doses on the first day. Increase gradually by adding 100 mg per day until the best response is obtained. Dosage should generally not exceed 1000 mg daily. As soon as disappearance of seizures has been obtained and maintained, dosage should be reduced very gradually until a minimum effective dose is reached.

### ***Combination Therapy***

When added to existing anticonvulsant therapy, the drug should be added gradually while the other anticonvulsants are maintained or gradually decreased, except for phenytoin, which may be increased (see **WARNINGS AND PRECAUTIONS, Special Populations: Pregnant Women and DRUG INTERACTIONS**).

### ***Use in Trigeminal Neuralgia***

The initial daily dosage should be small; 200 mg taken in 2 doses of 100 mg each is recommended. The total daily dosage can be increased by 200 mg/day until relief of pain is obtained. This is usually achieved at dosage between 200 and 800 mg daily, but occasionally up to 1200 mg/day may be necessary. Maximum recommended dose is 1200 mg/day. As soon as relief of pain has been obtained and maintained, progressive reduction in dosage should be attempted until a minimal effective dosage is reached. Because trigeminal neuralgia is characterized by periods of remission, attempts should be made to reduce or discontinue the use of TEGRETOL at intervals of not more than 3 months, depending upon the individual clinical course.

Prophylactic use of the drug in trigeminal neuralgia is not recommended.

### ***Use in Mania and Bipolar (Manic-Depressive) Disorders***

The initial daily dosage should be low, 200 to 400 mg/day, administered in divided doses,

although higher starting doses of 400 to 600 mg/day may be used in acute mania. This dose may be gradually increased until patient symptomatology is controlled or a total daily dose of 1600 mg is achieved. Increments in dosage should be adjusted to ensure optimal patient tolerability. The usual dose range is 400 to 1200 mg/day administered in divided doses. Doses used to achieve optimal acute responses and tolerability should be continued during maintenance treatment. When given in combination with lithium and neuroleptics, the initial dosage should be low, 100 mg to 200 mg daily, and then increased gradually. A dose higher than 800 mg/day is rarely required when given in combination with neuroleptics and lithium, or with other psychotropic drugs such as benzodiazepines. Plasma levels are probably not helpful for guiding therapy in bipolar disorders.

### **Administration**

TEGRETOL Suspension should be well shaken before use since improper re-suspension may lead to administering an incorrect dose. Since a given dose of TEGRETOL Suspension produces higher peak carbamazepine levels than the same dose in tablet form, it is advisable to start with low doses and to increase slowly to avoid adverse reactions. When switching a patient from TEGRETOL Tablets to TEGRETOL Suspension, the same number of mg per day should be given in smaller, more frequent doses (i.e., BID Tablets to TID Suspension).

### **OVERDOSAGE**

Lowest known lethal dose: estimated 3.2 g (24 year old woman).  
Highest known doses survived: 80 g (34 year old man); 34 g (13 year old girl); 1.4 g (23 month old girl).

### **Symptoms of Overdosage**

The presenting signs and symptoms of overdosage usually involve the central nervous, cardiovascular, and respiratory systems, as well as the adverse drug reactions mentioned under the Adverse Reaction section.

Central Nervous System: CNS depression, disorientation, depressed level of consciousness, tremor, restlessness, somnolence, agitation, hallucination, coma, blurred vision, nystagmus, mydriasis, slurred speech, dysarthria, ataxia, dyskinesia, abnormal reflexes (slowed/hyperactive), convulsions, psychomotor disturbances, myoclonus, opisthotonia, hypothermia/ hyperthermia, flushed skin/cyanosis, EEG changes.

Respiratory System: respiratory depression, pulmonary edema.

Cardiovascular System: tachycardia, hypotension/hypertension, conduction disturbance with widening of QRS complex, syncope in association with cardiac arrest.

Gastrointestinal System: nausea, vomiting, delayed gastric emptying, reduced bowel motility.

Musculoskeletal system: There have been some cases which reported rhabdomyolysis in association with carbamazepine toxicity.

Renal Function: urinary retention, oliguria or anuria; fluid retention, and water intoxication.

Laboratory Findings: hyponatremia, hypokalemia, leukocytosis, reduced white cell count, metabolic acidosis, hyperglycemia, glycosuria, acetonuria, increased muscle creatine phosphokinase.

### **Treatment of Overdosage**

For up-to date information on the management of a suspected drug overdose, contact the regional Poison Control Center.

There is no known specific antidote to TEGRETOL (carbamazepine).

Evacuate the stomach, with an emetic or by gastric lavage and then administer activated charcoal. Delay in evacuating the stomach may result in delayed absorption, leading to relapse during recovery from intoxication.

Hemodialysis is the effective treatment modality in the management of the carbamazepine overdose.

Vital signs, including electrocardiogram to detect any cardiac arrhythmias or conduction defects, should be watched and symptomatic treatment should be administered as required. Hyperirritability or convulsions should be appropriately managed by standard medical care.

Hyponatremia should be appropriately managed by standard medical care.

Shock (circulatory collapse) should be treated with supportive measures, including intravenous fluids, oxygen, and corticosteroids.

Charcoal hemoperfusion has been recommended.

Relapse and aggravation of the symptomatology on the 2nd or 3rd day after overdose, due to delayed absorption, should be anticipated.

## **ACTION AND CLINICAL PHARMACOLOGY**

## **Pharmacodynamics**

TEGRETOL (carbamazepine) has anticonvulsant properties which have been found useful in the treatment of partial seizures (simple or complex) with and without secondary generalization, and generalized tonic-clonic seizures. A mild psychotropic effect has been observed in some patients, which seems related to the effect of carbamazepine in localization-related epilepsies and syndromes.

## **Pharmacokinetics**

**Absorption:** The absorption of carbamazepine in man is relatively slow. When taken in a single oral dose, TEGRETOL (carbamazepine tablets) and TEGRETOL CHEWTABS (carbamazepine chewable tablets) yield peak plasma concentrations of unchanged carbamazepine within 4-24 hours. With respect to the quantity of carbamazepine absorbed, there is no clinically relevant difference between the various dosage forms. However, TEGRETOL Suspension (carbamazepine suspension) is absorbed somewhat faster than the tablet; peak plasma levels are reached within 2 hours. Following BID dosage regimens, higher peak levels and lower trough levels are obtained with the suspension than with the tablets. Steady-state plasma levels are comparable for TEGRETOL Suspension given TID and TEGRETOL Tablets given BID, when administered at the same total daily dose.

Ingestion of food has no significant influence on the rate and extent of absorption regardless of the dosage form of TEGRETOL.

When TEGRETOL CR (carbamazepine controlled release tablets) are administered repeatedly, they yield a lower average maximal concentration of carbamazepine in the plasma, without a reduction in the average minimal concentration. This tends to result in a lower incidence of intermittent concentration-dependent adverse drug reactions. It also ensures that the plasma concentrations remain largely stable throughout the day, thereby making it possible to manage with a twice-daily dosage.

In patients with epilepsy, the therapeutic range for the steady-state plasma concentration of carbamazepine generally lies between 4-10 µg/mL.

**Distribution:** Carbamazepine becomes bound to serum proteins to the extent of 70-80%. The concentration of unchanged substance in the saliva reflects the non-protein-bound portion present in the serum (20-30%).

**Metabolism:** Carbamazepine is catabolized into its primary pharmacologically active metabolite, carbamazepine-10,11 epoxide, which is then further metabolized primarily into carbamazepine 10,11-transdiol. A small portion of the carbamazepine-10,11 epoxide is also converted into 9-hydroxymethyl-10-carbamoyl-acridan. Additional biotransformation products include various monohydroxylated compounds and the N-glucuronide of carbamazepine produced by UGT2B7.

The elimination half-life of unchanged carbamazepine in plasma averages approximately 36 hours following a single oral dose. Repeated administration leads to autoinduction of hepatic enzymes and an elimination half-life of only 16-24 hours, depending on the length of the treatment. In patients receiving concomitant treatment with other enzyme-inducing antiepileptic agents, half-life values averaging 9-10 hours have been found. The mean elimination half-life of carbamazepine-10,11 epoxide in the plasma is about 6 hours following single oral doses of the epoxide itself. One study in 39 children (aged 3-10 years) and 79 adults (aged 15-65 years), suggests that carbamazepine elimination may be slightly enhanced in children. This data suggests that children may require higher doses of carbamazepine (in mg/kg) than adults.

**Excretion:** Only 2-3% of carbamazepine, whether administered as a single or in repeated doses, is excreted in the urine in an unchanged form. Approximately 30% of carbamazepine is renally eliminated via the carbamazepine-10,11 epoxide pathway with carbamazepine 10,11-trans-diol as the main urinary metabolite.

### **Special Populations and Conditions**

**Geriatrics:** Due to drug interactions and different antiepileptic drug pharmacokinetics, the dosage of TEGRETOL should be selected with caution in elderly patients.

**Hepatic Impairment:** No data are available on the pharmacokinetics of carbamazepine in patients with any degree of hepatic impairment.

**Renal Impairment:** No data are available on the pharmacokinetics of carbamazepine in patients with any degree of renal impairment.

### **STORAGE AND STABILITY**

Tablets: Store at 15-25°C, protect from humidity.

CHEWTABS: Store below 30°C, protect from humidity and light.

CR: Store below 25°C, protect from humidity.

Suspension: Store below 30°C, protect from humidity and light.

**TEGRETOL (carbamazepine) must be kept out of the reach and sight of children.**

### **DOSAGE FORMS, COMPOSITION AND PACKAGING**

## **Availability of Dosage Forms**

TEGRETOL Tablets 200 mg are white, round, flat-faced and bevel-edged. One side bears the imprint “CG”, the other “G/K” and a score. Available in bottles of 100 & 500.

TEGRETOL CHEWTABS 100 mg are white with red specks, round, flat-faced, bevel-edged. GEIGY engraved on one side and M/R with bisect on the other. Available in bottles of 100.

TEGRETOL CHEWTABS 200 mg are white with red specks, oval and biconvex. GEIGY engraved on one side and P/U with bisect on the other. Available in bottles of 100.

TEGRETOL CR Tablets 200 mg are beige-orange, oval and slightly biconvex. C/G engraved on one side and H/C engraved on the other. Fully bisected on both sides. Available in bottles of 100.

TEGRETOL CR Tablets 400 mg are brown-orange, oval and slightly biconvex. CG/CG engraved on one side and ENE/ENE engraved on the other. Fully bisected on both sides. Available in bottles of 100.

TEGRETOL Suspension 100 mg/tsp is orange. Available in bottles of 450 mL.

## **Composition**

TEGRETOL tablets contain the following non-medicinal ingredients: cellulose compounds, magnesium stearate silicon dioxide.

TEGRETOL CHEWTABS contain the following non-medicinal ingredients: cherry-mint flavour, corn starch, erythrosine, gelatin, glycerin, magnesium stearate, silicon dioxide, sodium starch glycolate, stearic acid, sugar.

TEGRETOL CR contain the following non-medicinal ingredients: acrylic esters, cellulose compounds, iron oxides, magnesium stearate, silicon dioxide, talc, titanium dioxide, castor oil derivative.

TEGRETOL Suspension contain the following non-medicinal ingredients: citric acid, citrus-vanilla flavour, FD&C Yellow No. 6, pluronic polyol, potassium sorbate, propylene glycol, sucrose, sorbitol, water, xanthan gum.

## PART II: SCIENTIFIC INFORMATION

### PHARMACEUTICAL INFORMATION

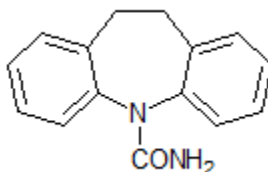
#### Drug Substance

Common name: carbamazepine

Chemical name: 5H-dibenzo(b,f)azepine-5carboxamide

Molecular formula and molecular mass:  $C_{15}H_{12}N_2O$  and 236.27

Structural formula:



Physicochemical properties: White to off-white powder

Solubility: Practically insoluble in water and in acetone

### CLINICAL TRIALS

Evidence supporting the efficacy of TEGRETOL (carbamazepine) as an anticonvulsant was derived from active drug-controlled studies that enrolled patients with the following seizure types:

1. Partial seizures with simple or complex symptomatology.
2. Generalized tonic-clonic seizures.
3. Mixed seizure patterns which include the above, or other partial or generalized seizures.

Carbamazepine relieves or diminishes the pain associated with trigeminal neuralgia often within 24 to 48 hours.

Carbamazepine given as a monotherapy or in combination with lithium or neuroleptics has been found useful in the treatment of acute mania and the prophylactic treatment of bipolar (manic-depressive) disorders.

A tolerance may develop to the action of carbamazepine after a few months of treatment and



should be watched for.

Carbamazepine may suppress ventricular automaticity due to its membrane-depressant effect, similar to that of quinidine and procainamide, associated with suppression of phase 4 depolarization of the heart muscle fiber.

A number of investigators have reported a deterioration of EEG abnormalities with regard to focal alterations and a higher incidence of records with nil  $\beta$ -activity, during carbamazepine-combined treatment.

## **DETAILED PHARMACOLOGY**

When administered to mice by the oral route at the dose level of 100 mg/kg, carbamazepine protected all animals against electroshock-induced convulsions (50 mA for 0.2 seconds) for up to 5 hours. In rats, at 50 mg/kg orally, the convulsive threshold was increased by 88%, and at the dosage of 100 mg/kg, carbamazepine increased the convulsive threshold by about 130%. On the other hand, very minimal effects were noted when carbamazepine was given to mice challenged with picrotoxin and it did not block pentylenetetrazol-induced convulsions.

Carbamazepine has slight sedative and tranquilizing effects in mice but no hypnotic effect except at almost toxic doses. Although intact and spinal animals are influenced in the same way as by muscle relaxants, carbamazepine has no clinically significant muscle relaxant action. In animals, carbamazepine has only a slight anticholinergic effect and no antiemetic activity. Carbamazepine did not inhibit monoamine oxidase in the guinea pig liver at the drug concentration of  $1 \times 10^{-3}$ M.

In rabbits, carbamazepine administered intravenously could not be given in a dosage sufficient to produce a Stage IV anesthesia (Magnus and Girndt) without toxic effects. Hence, the anesthetic potential is considered nil.

In experimental animals, carbamazepine depresses certain pain reflexes that are mediated by cranial nerves, such as the linguomandibular and infraorbital reflexes. There is no general analgesic effect and non-specific cutaneous pain is not modified by carbamazepine, except at very high doses. In humans, the effect of carbamazepine upon trigeminal or glossopharyngeal pain is probably largely due to blocking of bulbar, thalamic and higher synapses.

In experimental animals, carbamazepine is rapidly absorbed and rapidly equilibrated between the blood and tissues. It does not accumulate in tissues other than adipose tissue. In the rabbit, carbamazepine is rapidly metabolized and excreted so that blood and tissue levels are very low within 24 hours. Only about 2% is excreted unchanged in the urine.

## **TOXICOLOGY**

### **Acute Toxicity**

In mice, the oral LD<sub>50</sub> of carbamazepine is between 1100 and 3750 mg/kg; in rats, 3850-4025 mg/kg; in rabbits, 1500-2680 mg/kg; in guinea pigs, about 920 mg/kg; and in dogs, more than 5620 mg/kg.

The principal toxic effects in these species were laboured breathing, ataxia, clonic and tonic convulsions, and coma. In dogs, toxic doses of carbamazepine induced severe vomiting and defecation, in addition to disturbance of locomotor function.

### **Subacute and Chronic Toxicity**

Subacute and chronic toxicity studies have been carried out on carbamazepine for up to one year at dosage levels of 50, 100, 200 and 400 mg/kg in rats and 50, 100, 150 and 200 mg/kg in the dog. In rats, at 100 and 200 mg/kg/day and above, there was evidence of hepatotoxicity including a slight increase in ALT and histological changes in the liver. At a dosage of 400 mg/kg/day, 25 of 50 animals died, beginning at the 15th week. ALT and BUN levels were slightly increased. The relative organ/body weight ratios were increased for the heart, liver and kidneys.

### **Carcinogenicity and Genotoxicity**

Carbamazepine, when administered to Sprague-Dawley rats for 2 years in the diet at doses of 25, 75 and 250 mg/kg/day, resulted in a dose-related increase in the incidence of hepatocellular tumors in females and in benign interstitial cell adenomas in the testes of males. Carbamazepine must, therefore, be considered to be carcinogenic in Sprague-Dawley rats. Carbamazepine was not found to be genotoxic in various standard bacterial and mammalian mutagenicity studies. The carcinogenicity findings in rats are considered to be not relevant to the use of carbamazepine in humans.

Testicular atrophy and deficient spermatogenesis were observed in a four week oral study with carbamazepine in the rat at 100 mg/kg/day, but were not observed in animals dosed with 200, 500 and 1000 mg/kg/day. In a 24 week study in rats, evidence of testicular atrophy was observed in 3 of 10 animals at 50 mg/kg/day and in one of 10 at 100 mg/kg/day, but no testicular damage was observed at 200 mg/kg/day. In a one year study, inhibition of spermatogenesis and testicular atrophy were noted in 6 of 19 surviving male rats receiving 400 mg/kg/day.

In dogs, there were some macroscopic gray or brownish discolorations of urinary bladders at 100 and 200 mg/kg/day in a 3 month study and at all dose levels (50, 100 and 150 mg/kg/day) in a one year study. Histologically, the brownish pigment was found in the macrophages in the submucosa. The pigment is considered to be a non-toxic metabolite rather than melanin or argentaaffin. In one dog, there was minimal hepatic damage after 12 months.

### **Reproductive Toxicity**

In the course of reproductive studies with carbamazepine in rats and rabbits, approximately 1% of the offspring were listed as having some anomaly.

In the reproductive study in rats, two of the offspring showed kinked ribs bilaterally at doses of 250 mg/kg and 4 animals had cleft palates and talipes at 650 mg/kg. Two of the latter also had anophthalmos. In mice and rats, carbamazepine, when given parenterally, produced a low but nevertheless definite incidence of anomalies including anencephalia, anophthalmos, cleft palates and rudimentary or absent tails. In one study using mice, carbamazepine (40-240 mg/kg body weight daily, orally) caused defects (mainly dilatation of cerebral ventricles) in 4.7% of exposed fetuses as compared with 1.3% in controls).

In nursing rats, toxicity was demonstrated by lack of weight gains and unthrifty appearance at the dose level of 200 mg/kg.

## REFERENCES

### Clinical References - Epilepsy

- 1- AMA DRUG EVALUATIONS: Anticonvulsants. American Medical Assoc Chicago, Illinois 1983; 295-328
- 2- BEERMAN B, et al. Advanced heart block aggravated by carbamazepine. Br Heart J 1975; 37: 688-691
- 3- BESSER R, et al. Slow-Release Carbamazepine in the Treatment of Epilepsy. 2. A comparison of the 24-hour plasma levels in response to two different formulations. Akt Neurol 1985; 12: 75-77 (Translation)
- 4- BERTILSSON L. Clinical pharmacokinetics of carbamazepine. Clin Pharmacokinet 1978; 3: 128-143
- 5- BLOMBERG J-H, et al. Treatment of epilepsy with TEGRETOL. Lakartidningen 1970; 67(38): 4305-4311 (Translation)
- 6- FAIGLE JW, and FELDMANN KF. Carbamazepine: Biotransformation. IN: Woodbury DM et al (eds): Antiepileptic Drugs, (Raven Press, New York 1982): 2nd (ed): 483-495
- 7- GERARDIN A, et al. HENRIKSEN O, et al. How to Use Carbamazepine. In: Antiepileptic Drug Therapy in Pediatrics. Ed Morselli PL, et al. (Raven Press NY) 1983; 237-243
- 8- HÖPPENER RJ, et al. Correlation between daily fluctuations of carbamazepine serum levels and intermittent side effects. Epilepsia 1980; 21: 341-350
- 9- HOUBEN PFM, et al. Anticonvulsant drugs and folic acid in young mentally retarded epileptic patients. Epilepsia 1971; 12 (3): 235-247
- 10- HUNTER J, et al. Altered calcium metabolism in epileptic children on anticonvulsants. Br Med J 1971; 4: 202-204
- 11- HVIDBERG EF, and DAM M. Clinical pharmacokinetics of anticonvulsants. Clin Pharmacokinet 1976; 1: 161-188
- 12- JANZ D, and SCHMIDT D. Anti-epileptic drugs and failure of oral contraceptives. Lancet 1974; 1: 1113
- 13- KRÄMER G, et al. Slow-Release Carbamazepine in the Treatment of Epilepsy. 1. Comparisons of the 24-hour plasma levels during treatment with conventional and slow-release carbamazepine formulations. Akt Neurol 1985; 12: 70-74 (Translation)

- 14- KRÄMER G, et al. Slow-Release Carbamazepine: Kinetic and Therapeutic Aspects. *Psycho* 1985; 11: 441-442 (Translation)
- 15- KRÜGER HJ. Carbamazepine in the Treatment of Epilepsy - Follow-up studies over a period of 9 years. *Med Welt* 1972; 23 (24): 896 (Translation)
- 16- LAENGER H, and DETERING K. Anti-epileptic drugs and failure of oral contraceptives. *Lancet* 1974; 2: 600
- 17- LEVY RH, et al. Pharmacokinetics of Carbamazepine in normal man. *Clin Pharmacol Ther* 1975; 17: 657-668
- 18- LIVINGSTON SI. *Comprehensive Management of Epilepsy in Infancy, Childhood and Adolescence*. Charles C. Thomas, Publisher, 1972
- 19- MATTSON RH, et al. Comparison of carbamazepine, phenobarbital, phenytoin and primidone in partial and secondarily generalized tonic-clonic seizures. *N Engl J Med* 1985; 313 (3): 145-151
- 20- MIKATI MA, and BROWNE TR. Comparative efficacy of antiepileptic drugs. *Clin Neuropharmacol (USA)* 1988; 11 (2): 130-140
- 21- MIVILLE J. Le Tégrétol dans l'épilepsie. *Vie Médi Can Fr* 1972; 1: 1080-1083
- 22- MORSELLI PL, et al. Pharmacokinetic studies with carbamazepine in epileptic patients. IN: Birkmayer W. (ed.) "Epileptic seizures-behavior-pain", H. Huber Publisher Bern/Stuttgart/Vienna 1975; 141-150
- 23- MORSELLI PL, and FRIGERIO A. Metabolism and pharmacokinetics of carbamazepine. *Drug Metab Rev* 1975; 4 (1): 93-113
- 24- MORSELLI PL, et al. Bioavailability of two carbamazepine preparations during chronic administration to epileptic patients. *Epilepsia (USA)* 1975; 16: 759-764
- 25- MORSELLI PL, and FRANCO-MORSELLI R. Clinical pharmacokinetics of antiepileptic drugs in adults. *Pharmacol Ther* 1980; 10: 65-101
- 26- NAMOLI A. Prolonged Treatment with Carbamazepine (TEGRETOL) of the Convulsions and Mental Abnormalities of Epilepsy. *Riv Neurol* 1972; XLII fasc. 1 (Translation)
- 27- RAMSAY RE, et al. A double-blind study comparing carbamazepine with phenytoin as initial seizure therapy in adults. *N Engl J Med* 1983; 33: 904-910
- 28- RODIN EA, et al. The effects of carbamazepine on Patients with Psychomotor Epilepsy: Results of a double blind study. *Epilepsia* 1974; 15: 547-561

- 29- SILLANPÄÄ M. Carbamazepine. Pharmacology and Clinical Uses. Acta Neurol Scand 1981; 64: (Suppl. 88): 1-202
- 30- TOMSON T. Interdosage fluctuations in plasma carbamazepine concentration determine intermittent side effects. Arch Neurol 1984; 41: 830-834
- 31- TROUPIN AS, et al. Carbamazepine as an anticonvulsant: A Pilot Study. Neurology 1974; 24: 863-869
- 32- WADA JA, et al. Pharmacokinetic comparison of tablet and suspension dosage forms of carbamazepine. Epilepsia 1978; 19(3): 251-255
- 33- WULFSOHN M. Carbamazepine (TEGRETOL) in the Long-Term Treatment of Grand Mal Epilepsy. South Afr Med J 1972; 46: 1091

#### **Clinical References - Trigeminal Neuralgia**

- 34- ARIEFF AJ, et al. TEGRETOL in trigeminal neuralgia. Pilot study. Trans Am Neurol Assoc 1966; 91: 186
- 35- CARNAILLE H, et al. Etude statistique de près de 700 cas de facialgies traitées par le Tégrétol. Acta Neurol Belg 1966; 66: 175-196
- 36- GRAHAM JG, et al. Treatment of trigeminal neuralgia with carbamazepine, a follow-up study. Br Med J 1966; 1: 210-211
- 37- HEATHFIELD KWG, et al. Treatment of trigeminal neuralgia with TEGRETOL. Br Med J 1966; 1: 481
- 38- KILLIAN JM. TEGRETOL in trigeminal neuralgia with special reference to hematopoietic side effects. Headache 1969; 9: 58-63
- 39- LLOYD-SMITH DL, et al. A long-term low-dosage study of carbamazepine in trigeminal neuralgia. Headache 1969; 9: 64-72
- 40- MAROTTA JT. A long-term study in trigeminal neuralgia. Headache 1969; 9: 83
- 41- MURPHY JP. TEGRETOL (carbamazepine): A new and effective medical treatment of trigeminal neuralgia, with a note concerning its use in the syndrome of thalamic hyperpathia. Med Ann DC 1966; 35: 658
- 42- NICOL CF. A four year double blind study of TEGRETOL in Facial Pain. Headache 1969; 9: 54-57

- 43- RASKIND B. Trigeminal neuralgia. Definitive treatment of 46 patients. *Int Surg* 1966; 46: 5-11
- 44- RASMUSSEN P, et al. TEGRETOL in the treatment of trigeminal neuralgia. A controlled study of 48 patients. *Proc. III Int. Cong. Neurol. Surg., Copenhagen, 1965, Excerpta Med. Int. Cong, 1965; 110 (761): 93 (224)*
- 45- SACHDEV KK, and LLOYD-SMITH DL. The use and limitations of carbamazepine in trigeminal neuralgia. *Can Med Assoc J* 1967; 97: 235

#### **Clinical References - Mania**

- 46- BALLENGER JC, and POST RM. Carbamazepine in manic-depressive illness: A new treatment. *Am J Psychiatry* 1980; 137: 782-790
- 47- BROWN A, et al. Carbamazepine compared to haloperidol in acute mania. *Int Clin Psychopharmacol* 1989; 4: 229-238
- 48- CHOU JC-Y. Recent advances in treatment of acute mania. *J Clin Psychopharmacol* 1991; 11: 3-21
- 49- GROSSI E, et al. Carbamazepine vs chlorpromazine in mania: A double-blind trial. IN: Emrich HM, Okuma T. and Müller A.A. (eds). *Anticonvulsants in affective disorders. Excerpta medica Amsterdam* 1984; 177-187
- 50- KLEIN E, et al. Carbamazepine and haloperidol v placebo and haloperidol in excited psychoses. *Arch Gen Pschiatry* 1984; 41: 165-170
- 51- KRAMLINGER KG, and POST RM. Adding lithium carbonate to carbamazepine: antimanic efficacy in treatment-resistant mania. *Acta Psychiatr Scand* 1989; 79: 378-385
- 52- LENZI A, et al. Use of Carbamazepine in acute psychosis: A controlled study. *J Int Med Res* 1986; 14: 78-84
- 53- LERER B, et al. Carbamazepine versus lithium in mania: A double-blind study. *J Clin Psychiatry* 1987; 48 (3): 89-93
- 54- LUSZNAT RM, et al. Carbamazepine vs lithium in the treatment and prophylaxis of mania. *Br J Psychiatry* 1988; 153: 198-204
- 55- MÖLLER HJ, et al. Double-blind evaluation of the antimanic properties of carbamazepine as comedication to haloperidol. *Prog Neuropsychopharmacol Biol Psychiatry* 1989; 13: 127-136
- 56- OKUMA T, et al. Comparison of the antimanic efficacy of carbamazepine and chlorpromazine: A double-blind controlled study. *Psychopharmacology* 1979; 66: 211-217

- 57- PLACIDI GF, et al. The comparative efficacy and safety of carbamazepine versus lithium: A randomised, double-blind 3-year trial in 83 patients. *J Clin Psychiatry* 1986; 47: 490-494
- 58- POST RM, et al. Correlates of antimanic response to carbamazepine. *Psychiatry Res* 1987; 21: 71-83
- 59- POST RM. Non-lithium treatment for bipolar disorder. *J Clin Psychiatry* 1990; 51 (8) (Suppl 9-16)
- 60- STOLL KD, et al. Carbamazepine vs haloperidol in manic syndromes. IN: Shagass C (ed). *Biological Psychiatry* 1985. Elsevier Science, Amsterdam, 1986; 332-334

### **Other References**

- 61- CHUNG WH et al. Medical Genetics: a Marker for Stevens-Johnson Syndrome *Nature* 2004; 428 (6982): 486
- 62- HUNG SI et al. Genetic susceptibility to carbamazepine-induced cutaneous adverse drug reactions. *Pharmacogenetics and Genomics* 2006; 16 (4): 297-306
- 63- LONJOU C et al. A marker for Stevens-Johnson syndrome...: ethnicity matters. *The Pharmacogenomics Journal* 2006; 6 (4): 265-268
- 64- MAN CB et al. Association between HLA-B\*1502 allele and antiepileptic drug-induced cutaneous reactions in Han Chinese. *Epilepsia* 2007; 48 (5): 1015-1018.



## PART III: CONSUMER INFORMATION

Pr **TEGRETOL® Carbamazepine**

This leaflet is part III of a three-part "Product Monograph" published when TEGRETOL® was approved for sale in Canada and is designed specifically for Consumers. This leaflet is a summary and will not tell you everything about TEGRETOL. Contact your doctor or pharmacist if you have any questions about the drug.

**ABOUT THIS MEDICATION****What the medication is used for:**

TEGRETOL has been prescribed for you by your doctor:

- to reduce your number of seizures;
- to relieve the pain of trigeminal neuralgia;
- to treat your acute mania or bipolar disorder.

**What it does:**

TEGRETOL belongs to the family of medicines called anticonvulsants for treating epilepsy. TEGRETOL is also used for treating the pain of trigeminal neuralgia and for treating mania.

If you have any questions about how TEGRETOL works or why this medicine has been prescribed to you, ask your doctor.

**When it should not be used:**

You should not use TEGRETOL if:

- You are allergic (hypersensitive) to carbamazepine or to any of the other ingredients of TEGRETOL (See **What the non-medicinal ingredients are**) If you think you may be allergic, ask your doctor for advice. Do not take TEGRETOL if you are allergic to other tricyclic drugs such as amitriptyline, trimipramine, imipramine.
- You have severe heart disease (heart block).
- You have liver disease.
- You have a history of bone marrow depression.
- You have had serious blood illnesses in the past.
- You have a disturbance in the production of porphyrin, a pigment important for liver function and blood formation (also called hepatic porphyria).
- You are also taking medicines belonging to a special group of antidepressants called monoamine-oxidase inhibitors (MAOIs).
- You are also taking the drugs itraconazole or voriconazole (Vfend) for treatment of an infection.
- TEGRETOL should not be used to relieve trivial pain in the face or headaches.
- TEGRETOL suspension contains sorbitol which may cause stomach upset and diarrhea. Patients with rare hereditary problems of fructose intolerance should not take this medicine.

If any of the above applies to you, **tell your doctor before taking TEGRETOL.**

**What the medicinal ingredient is:**

Carbamazepine.

**What the important nonmedicinal ingredients are:**

TEGRETOL 200 mg Tablets: cellulose compounds, magnesium stearate, silicon dioxide.

TEGRETOL 100 mg and 200 mg CHEWTABS: cherry-mint flavour, cornstarch, erythrosine, gelatin, glycerin, magnesium stearate, silicon dioxide, sodium starch glycolate, stearic acid, sugar.

TEGRETOL CR 200 mg and 400 mg: acrylic esters, cellulose compounds, iron oxides, magnesium stearate, silicon dioxide, talc, titanium dioxide, castor oil derivative.

TEGRETOL 100 mg/tsp (5 mL) Suspension: citric acid, citrus-vanilla flavour, FD&C Yellow No. 6, pluronic polyol, potassium sorbate, propylene glycol, sucrose, sorbitol, water, xanthan gum.

**What dosage forms it comes in:**

TEGRETOL is available in the following forms:

- **Tablets** containing 200 mg carbamazepine.
- **CR tablets** (controlled-release tablets, which can be divided) containing 200 mg or 400 mg carbamazepine.
- **Chewable tablets** containing 100 mg or 200 mg carbamazepine.
- **Oral suspension:** 5 mL (1 measure) contain 100 mg carbamazepine.

**WARNINGS AND PRECAUTIONS****Serious Warnings and Precautions**

- **Blood:** Although infrequently reported and very rarely fatal, serious adverse effects affecting blood cell counts have been observed during the use of TEGRETOL. Other side effects include: low white blood cell count, bone marrow depression, hepatitis and signs of liver failure such as jaundice (yellowing of the skin or eyes). Contact your doctor immediately if you are experiencing any of these symptoms. Close clinical and frequent laboratory supervision with your doctor should be maintained throughout treatment with TEGRETOL in order to detect as early as possible any possible signs of a blood disorder. Your doctor should discontinue TEGRETOL, if there is significant evidence of a bone marrow depression.
- **Skin:** Serious and sometimes fatal skin reactions known as Toxic Epidermal Necrolysis (TEN) and Stevens-Johnson Syndrome (SJS), have been reported with TEGRETOL. Other serious skin reactions such as Drug Rash with Eosinophilia and

**Systemic Symptoms (DRESS), Acute Generalized Exanthematous Pustulosis (AGEP) and Maculopapular Rash have also been reported. Although very rare, serious forms of DRESS and AGEP may also lead to death. Some cases of these skin reactions have been genetically linked. Your doctor may recommend a blood test to determine if you belong to an at-risk population.**

- **Contact your doctor immediately if you are developing any combination of:**
  - a rash or any serious skin reactions such as red skin, blistering of the lips, eyes or mouth, and skin peeling accompanied by fever
  - swollen lymph nodes
  - joint pain
  - enlargement of the liver and/or the spleen
  - problems related to the lungs, kidneys, pancreas, heart, bone marrow, thymus, and colon

**Your doctor will determine if it is indeed drug-related, and discontinue TEGRETOL in this case.**

- **Cancer: Long-term toxicity studies in rats have indicated a possible cancer risk associated with carbamazepine. Before taking TEGRETOL, discuss with your doctor the potential benefits and possible risks of this treatment for you.**

**BEFORE you use TEGRETOL talk to your doctor or pharmacist:**

- About your medical conditions, especially if you have or have had any liver, kidney, heart or thyroid disease or blood disorders (including those caused by other drugs).
- If you have a history, or family history, of bone disease or have taken antiepileptics (such as phenobarbital, phenytoin, primidone, oxcarbazepine, lamotrigine, sodium valproate and/or carbamazepine) for a prolonged period of time.
- If you are taking delavirdine, a medicine used to treat HIV-1 infection.
- About any allergies you may have, especially if you have ever shown any unusual sensitivity (rash or other signs of allergy) to oxcarbazepine or other drugs used to treat your condition. It is important to note that if you are allergic to TEGRETOL (carbamazepine), there is an approximately 1 in 4 (25%) chance that you could also have an allergic reaction to oxcarbazepine (TRILEPTAL<sup>®</sup>).
- If you are pregnant. Your doctor may recommend that you take folic acid before and during your pregnancy and vitamin K during the last weeks of pregnancy. Your doctor may also recommend that the newborn receive vitamin K and be observed for liver and gall bladder problems.
- If you are pregnant or planning on becoming pregnant to discuss the potential risk of taking TEGRETOL during pregnancy since it may cause harm or abnormalities in the unborn child.
- If you are a female of childbearing age you should use an effective method of contraception throughout your treatment and for 2 weeks after your last dose. If you are taking

hormonal contraceptive (birth control medicine). TEGRETOL may render this contraceptive ineffective. Therefore, you should use a different or additional non-hormonal method of contraception while you are taking TEGRETOL. This should help to prevent an unwanted pregnancy.

- If you get irregular vaginal bleeding or spotting.
- If you are breast-feeding. TEGRETOL is known to pass into breast milk. You must discuss with your doctor the benefits of breastfeeding against any possible risks to the infant. If you decide to breastfeed, the baby must be observed for liver and gall bladder problems, drowsiness, and allergic skin reactions.
- About any other medicines (prescription and non-prescription) you are taking.
- About your usual alcohol consumption.
- If you have increased pressure in the eye (glaucoma).
- If you have difficulty passing urine (urinary retention).
- If you were told by your physician that you suffer from mental problems, a mental disorder called psychosis that may be accompanied by confusion or agitation, or have thoughts about suicide.

If any of the following apply to you, **tell your doctor.**

- If an allergic reaction happens such as fever with lymph nodes swelling, rash or skin blistering, tell your doctor immediately or go to the emergency department at your nearest hospital. (see **Side effects and what to do about them**).
- If you experience an increase in the number of seizures, tell your doctor immediately.
- If you experience any side effects such as drowsiness, headache, unsteadiness on the feet, double vision, dizziness, nausea or vomiting, consult your doctor.
- If, at any time, you have thoughts of harming or killing yourself. A small number of people being treated with antiepileptic drugs have reported having such thoughts or behavior. Should this happen to you, or to those in your care if you are a caregiver or guardian, talk to your doctor immediately. Close observation by a doctor is necessary in this situation. **Do not discontinue your medication on your own.**
- If you have kidney problems associated with low sodium blood level or if you have kidney problems and you are also taking certain medicines that lower sodium blood level (diuretics such as hydrochlorothiazide, furosemide).
- If you experience dizziness, drowsiness, decrease in blood pressure, confusion, due to TEGRETOL treatment, which may lead to falls.

TEGRETOL may affect male fertility or cause abnormal sperm.

Periodic eye examinations are recommended while taking TEGRETOL.

Do not drive a car or operate dangerous machinery until you are sure that TEGRETOL does not cause dizziness, drowsiness, sleepiness, blurred or double vision, affect your muscular coordination or affect your alertness.

## INTERACTIONS WITH THIS MEDICATION

Tell your doctor or pharmacist if you are taking or have recently taken any prescription, non-prescription medicines or natural health products. It is particularly important for TEGRETOL, since many other medicines interact with it.

You may need a change in your dose or, sometimes, to stop one of these other medicines.

Irregularity of the menstrual period may occur in women taking hormonal contraceptives (birth control medicines) and TEGRETOL. The hormonal contraceptive may become less effective and you should use another different or additional non-hormonal contraceptive method.

- Avoid alcohol consumption when taking TEGRETOL.
- Do not drink grapefruit juice or eat grapefruit since this can increase the effect of TEGRETOL. Other juices, like orange juice or apple juice, do not have this effect.

## PROPER USE OF THIS MEDICATION

### Usual dose:

Dosage should be individualised. It is very important that you take TEGRETOL exactly as your doctor instructed.

- Never increase or decrease the recommended dose of TEGRETOL you are taking unless your doctor tells you to.
- If you are taking TEGRETOL, **do not suddenly stop taking it** without first checking with your doctor. Your doctor will tell you if and when you can stop taking this medicine
- TEGRETOL Tablets, CHEWTABS and Suspension should be taken in 2-4 divided doses daily, with meals whenever possible.
- TEGRETOL CR tablets should be swallowed unchewed with a little liquid during or after a meal.
- Shake TEGRETOL Suspension well before you take it or else you may not receive the correct dose.

### **Adults and Children Over 12 Years of Age**

Initial dose 100 to 200 mg once or twice a day. Your doctor will decide the best dosage for you. Always follow your doctor's instructions.

For the treatment of trigeminal neuralgia, the maximum dose is 1200 mg a day.

### **Children 6-12 Years of Age**

Initial dose 100 mg in divided doses on the first day. Your doctor will decide the best dosage for you. Always follow your doctor's instructions.

### Overdose:

In case of drug overdose, contact a health care practitioner, hospital emergency department or regional Poison Control Centre immediately, even if there are no symptoms.

### Missed Dose:

If you miss a dose, take your TEGRETOL as soon as possible. However, if the time is close to the next dose, do not take the missed dose and return to your regular dosing schedule. Do not double the dose to make up for the forgotten dose.

## SIDE EFFECTS AND WHAT TO DO ABOUT THEM

Side effects may include:

- purple or reddish-purple bumps that may be itchy
- trembling, uncontrolled body movements, muscle spasm, loss of muscle coordination, weakness
- agitation or hostility (especially in the elderly), depression with restlessness, nervousness or other mood or mental changes, changes in behaviour, confusion, headache, memory loss
- blurred vision, double vision, itching with redness and swelling of the eye (conjunctivitis), uncontrolled eye movements
- difficulty speaking or slurred speech, taste disturbances, dry mouth, red and sore tongue, mouth sores
- ringing or other unexplained sounds in the ears, decreased hearing
- numbness, tingling in hands and feet
- unusual secretion of breast milk, breast enlargement in men, sexual disturbances (erectile dysfunction), male infertility
- increased sensitivity of the skin to sun, alterations in skin pigmentation, acne, increased sweating
- reactivation of herpes virus infection (can be serious when the immune system is depressed)
- complete loss of the nails, loss of hair, excessive body and facial hair
- vomiting, nausea, loss of appetite, constipation, diarrhea, abdominal pain
- dizziness, sleepiness, unsteadiness, drowsiness, fatigue
- weight gain
- aching joints or muscles

- experience a fall due to dizziness, drowsiness, decrease in blood pressure, confusion

Long-term use of antiepileptics such as carbamazepine, phenobarbital, phenytoin, primidone, oxcarbazepine, lamotrigine and sodium valproate is associated with a risk of decreased bone mineral density that may lead to weakened or brittle bones, or fracture.

**If any of these affects you severely, contact your doctor**

TEGRETOL can cause abnormal blood test results. Your doctor will decide when to perform blood tests and will interpret the results.

SERIOUS SIDE EFFECTS, HOW OFTEN THEY HAPPEN AND WHAT TO DO ABOUT THEM				
Symptom / effect		Talk with your doctor or pharmacist		Stop taking drug and seek immediate emergency medical treatment
		Only if severe	In all cases	
Very common	<b>Decreased White Blood Cells:</b> fever, sore throat, rash, ulcers in the mouth, swollen glands, or more easily getting infections.	√		
	<b>Suicidal Thoughts or Actions:</b> thoughts, plans and actions taken for the purpose of killing or harming yourself.		√	
Common	<b>Edema:</b> swelling of the ankles, feet or lower legs.	√		
Rare	<b>Systemic Lupus Erythematosus:</b> red blotchy rash mainly on the face which may be accompanied by fatigue, fever, nausea, loss of appetite.	√		
	<b>Hallucination:</b> see or hear things that are not there.	√		
	<b>High Blood Pressure Low Blood Pressure:</b> dizziness, fainting, light-headedness.	√		
Very rare	<b>Glaucoma:</b>			√

SERIOUS SIDE EFFECTS, HOW OFTEN THEY HAPPEN AND WHAT TO DO ABOUT THEM				
Symptom / effect		Talk with your doctor or pharmacist		Stop taking drug and seek immediate emergency medical treatment
		Only if severe	In all cases	
	pressure/pain in the eye.			
	<b>Thrombophlebitis</b> : swelling and redness along a vein which is extremely tender or painful when touched.		√	
	<b>Angioedema and Severe Allergic Reactions:</b> swelling of the face, eyes, or tongue, difficulty swallowing, wheezing, hives and generalized itching, rash, fever, abdominal cramps, chest discomfort or tightness, difficulty breathing, unconsciousness.			√
	<b>Serious Skin Reactions:</b> any combination of itchy skin rash, redness, blistering of the lips, eyes or mouth, skin peeling, accompanied by fever, chills, headache, cough, body aches or swollen lymph nodes, joint pain, enlargement of the liver and/or the spleen. Any problems related to the lungs, kidneys, pancreas, heart, bone marrow, thymus, and colon.			√
	<b>Hepatitis:</b> yellowing of the skin or eyes, dark urine, abdominal pain, nausea, vomiting, loss of appetite.		√	
	<b>Meningitis:</b> fever,			√

**SERIOUS SIDE EFFECTS, HOW OFTEN THEY HAPPEN AND WHAT TO DO ABOUT THEM**

Symptom / effect	Talk with your doctor or pharmacist		Stop taking drug and seek immediate emergency medical treatment
	Only if severe	In all cases	
nausea, vomiting, headache, stiff neck and extreme sensitivity to bright light.			
<b>Pancreatitis:</b> severe upper abdominal pain, vomiting, loss of appetite.	√		
Severe decreased urine output due to kidney disorders, blood in the urine. Frequent urination.	√		
<b>Porphyria:</b> darkening of urine, severe abdominal pain, excessive sweating, vomiting, and anxiety.		√	
<b>Lack of All Blood Cells:</b> tiredness, headache, being short of breath when exercising, dizziness; looking pale, frequent infections leading to fever, chills, sore throat or mouth ulcers; bleeding or bruising more easily than normal, nose bleeds.	√		
<b>Neuroleptic Malignant Syndrome:</b> muscular stiffness, high fever, altered consciousness, high blood pressure, excessive salivation.			√
Irregular heartbeat, chest pain, fast or unusually slow heartbeat, trouble breathing.	√		
<b>Thromboembolism (blood clot):</b> swelling, pain and			√

**SERIOUS SIDE EFFECTS, HOW OFTEN THEY HAPPEN AND WHAT TO DO ABOUT THEM**

Symptom / effect	Talk with your doctor or pharmacist		Stop taking drug and seek immediate emergency medical treatment
	Only if severe	In all cases	
redness in an arm or a leg that can be warm to touch. You may develop sudden chest pain, difficulty breathing and heart palpitations.			
<b>Circulatory Collapse:</b> the body is unable to circulate blood to the organs. This is very serious and can lead to death.			√
Disturbed consciousness, fainting.		√	
<b>Hyponatremia (low sodium in the blood):</b> lethargy, confusion, muscular twitching or significant worsening of convulsions.	√		
<b>Unknown</b>		√	
<b>Inflammation of the colon:</b> diarrhea, abdominal pain and fever.			

*This is not a complete list of side effects. For any unexpected effects while taking TEGRETOL, contact your doctor or pharmacist.*

**HOW TO STORE IT**

Store at room temperature (TEGRETOL tablets store at 15-25°C and TEGRETOL CR store below 25°C, TEGRETOL CHEWTABS and TEGRETOL Suspension store below 30°C).

- Protect from humidity, such as in bathrooms where you shower often.
- Protect TEGRETOL CHEWTABS and TEGRETOL Suspension from light.
- Keep out of reach and sight of children.

**REPORTING SUSPECTED SIDE EFFECTS**

You can report any suspected adverse reactions associated with the use of health products to the Canada Vigilance Program by one of the following 3 ways:

- Report online at [www.healthcanada.gc.ca/medeffect](http://www.healthcanada.gc.ca/medeffect)
- Call toll-free at 1-866-234-2345
- Complete a Canada Vigilance Reporting Form and:
  - Fax toll-free to 1-866-678-6789, or
  - Mail to: Canada Vigilance Program  
Health Canada  
Postal Locator 1908C  
Ottawa, Ontario  
K1A 0K9

Postage paid labels, Canada Vigilance Reporting Form and the adverse reaction reporting guidelines are available on the MedEffect™ Canada Web site at [www.healthcanada.gc.ca/medeffect](http://www.healthcanada.gc.ca/medeffect).

*NOTE: Should you require information related to the management of side effects, contact your health professional. The Canada Vigilance Program does not provide medical advice.*

**MORE INFORMATION**

Please consult your doctor or pharmacist with any questions or concerns you may have regarding your individual condition.

This document plus the full product monograph, prepared for health professionals can be found at:

<http://www.novartis.ca>

or by contacting the sponsor, Novartis Pharmaceuticals Canada Inc., at:  
1-800-363-8883

This leaflet was prepared by  
Novartis Pharmaceuticals Canada Inc.  
385 Bouchard Blvd.,  
Dorval, Quebec  
H9S 1A9

Last revised: May 4, 2018

TEGRETOL is a registered trademark.  
TRILEPTAL is a registered trademark.