

PRODUCT MONOGRAPH

Pr
NRA-ESCITALOPRAM
Escitalopram Tablets USP
10 mg and 20 mg
escitalopram (as escitalopram oxalate)

Antidepressant / Antiobsessional

Nora Pharma Inc.
205-2900 Boul Cote-Vertu
Saint-Laurent, Quebec
H4R 3E8

DATE OF REVISION:
June 4, 2018

Submission Control No: 215301

Table of Contents

PART I: HEALTH PROFESSIONAL INFORMATION	3
SUMMARY PRODUCT INFORMATION.....	3
INDICATIONS AND CLINICAL USE.....	3
CONTRAINDICATIONS.....	4
WARNINGS AND PRECAUTIONS.....	5
ADVERSE REACTIONS.....	11
DRUG INTERACTIONS.....	25
DOSAGE AND ADMINISTRATION.....	31
OVERDOSAGE.....	33
ACTION AND CLINICAL PHARMACOLOGY.....	34
STORAGE AND STABILITY.....	36
DOSAGE FORMS, COMPOSITION AND PACKAGING.....	36
PART II: SCIENTIFIC INFORMATION	37
PHARMACEUTICAL INFORMATION.....	37
CLINICAL TRIALS.....	388
DETAILED PHARMACOLOGY.....	411
TOXICOLOGY.....	466
REFERENCES.....	500
PART III: CONSUMER INFORMATION	533

Pr
NRA-Escitalopram

Escitalopram Tablets USP
10 mg and 20 mg escitalopram
(as escitalopram oxalate)

PART I: HEALTH PROFESSIONAL INFORMATION

SUMMARY PRODUCT INFORMATION

Route of administration	Dosage Form/ Strength	Non medicinal Ingredients
Oral	Tablets / 10 mg and 20 mg	Colloidal Anhydrous Silica, Croscarmellose Sodium, Hypromellose E5, Hypromellose E15, Magnesium Stearate, Microcrystalline cellulose (Avicel PH 101), Polyethylene Glycol 400, Purified Talc and Titanium dioxide (E171)

INDICATIONS AND CLINICAL USE

Adults

- NRA-Escitalopram (escitalopram oxalate) is indicated for the symptomatic relief of Major Depressive Disorder (MDD)
- The efficacy of escitalopram oxalate in maintaining an antidepressant response, in patients with major depressive disorder who responded during an 8-week, acute-treatment phase while taking escitalopram oxalate and were then observed for relapse during a period of up to 36 weeks, was demonstrated in a placebo-controlled trial (see CLINICAL TRIALS).
- NRA-Escitalopram is indicated for the symptomatic relief of obsessive-compulsive disorder (OCD). The obsessions and compulsions must be experienced as intrusive, markedly distressing, time consuming or interfering significantly with the person's social or occupational functioning.
- The efficacy of escitalopram oxalate in maintaining an anti-obsessive response for up to 6 months, in patients with obsessive-compulsive disorder, was demonstrated in a long-term placebo-controlled trial in patients who initially responded to 16 weeks of escitalopram oxalate open-label treatment (see CLINICAL TRIALS).
- Physicians who elect to use NRA-Escitalopram for extended periods should periodically re-evaluate the usefulness of the drug for individual patients.

Geriatrics (≥ 65 years of age):

Elderly patients should be administered lower doses and a lower maximum dose (see **DOSAGE AND ADMINISTRATION, Geriatrics** and **WARNINGS AND PRECAUTIONS, Special Populations, Geriatrics**).

Pediatrics (<18 years of age):

NRA-Escitalopram is not indicated for use in patients below the age of 18 (see **WARNINGS AND PRECAUTIONS, General, Potential Association with Behavioural and Emotional Changes, Including Self-Harm**).

CONTRAINDICATIONS

- NRA-Escitalopram is contraindicated in patients with known hypersensitivity to escitalopram or any of the excipients of the drug product. For a complete listing, see the Dosage Forms, Composition and Packaging section of the product monograph.
- NRA-Escitalopram is contraindicated in patients with known QT interval prolongation or congenital long QT syndrome. (See also sections Warnings and Precautions, Adverse Reactions/Post- Market Adverse Reactions/Cardiac Disorders, Drug Interactions/QT Interval Prolongation)

- **MONOAMINE OXIDASE INHIBITORS**

Cases of serious reactions have been reported in patients receiving selective serotonin reuptake inhibitors (SSRIs) in combination with a monoamine oxidase inhibitor (MAOI) or the reversible MAOI (RIMA), moclobemide, and in patients who have recently discontinued an SSRI and have been started on a MAOI (see **DRUG INTERACTIONS**). With the co-administration of an SSRI with MAOI, there have been reports of serious, sometimes fatal reactions including hyperthermia, rigidity, myoclonus, autonomic instability with possible fluctuations of vital signs, and mental status changes, including extreme agitation progressing to delirium and coma. Some cases presented with features resembling serotonin syndrome.

Therefore, NRA-Escitalopram should not be used in combination with a MAOI or within 14 days of discontinuing treatment with a MAOI, (including linezolid, an antibiotic which is a reversible non-selective MAO inhibitor, and methylene blue, which is a MAOI). Similarly, at least 14 days should elapse after discontinuing NRA-Escitalopram treatment before starting a MAOI.

- **PIMOZIDE**

NRA-Escitalopram should not be used in combination with the antipsychotic drug pimozide, as results from a controlled study with racemic citalopram indicate that concomitant use is associated with an increased risk of QTc prolongation compared to pimozide alone. This apparent pharmacodynamic interaction occurred in the absence of a clinically significant pharmacokinetic interaction; the mechanism is unknown (see **DRUG INTERACTIONS**).

WARNINGS AND PRECAUTIONS

GENERAL

POTENTIAL ASSOCIATION WITH BEHAVIOURAL AND EMOTIONAL CHANGES, INCLUDING SELF-HARM

Pediatrics: Placebo-Controlled Clinical Trial Data

- Recent analyses of placebo-controlled clinical trial safety databases from SSRIs and other newer antidepressants suggest that use of these drugs in patients under the age of 18 may be associated with behavioural and emotional changes, including an increased risk of suicidal ideation and behaviour over that of placebo.
- The small denominators in the clinical trial database, as well as the variability in placebo rates, preclude reliable conclusions on the relative safety profiles among these drugs.

Adults and Pediatrics: Additional data

- There are clinical trials and post-marketing reports with SSRIs and other newer antidepressants, in both pediatrics and adults, of severe agitation-type adverse events coupled with self-harm and harm to others. The agitation-type events include: akathisia, agitation, emotional lability, hostility, aggression, depersonalization. In some cases, the events occurred within several weeks of starting treatment.

Rigorous clinical monitoring for suicidal ideation or other indicators of potential for suicidal behaviour is advised in patients of all ages. This includes monitoring for agitation-type emotional and behavioural changes.

An FDA meta-analysis of placebo-controlled clinical trials of antidepressant drugs in adult patients aged 18 to 24 years with psychiatric disorders showed an increased risk of suicidal behaviours with antidepressants compared to placebo.

Discontinuation Symptoms

Patients currently taking NRA-Escitalopram should NOT be discontinued abruptly, due to risk of discontinuation symptoms. At the time that a medical decision is made to discontinue an SSRI or other newer antidepressant drug, a gradual reduction in the dose rather than an abrupt cessation is recommended.

DISCONTINUATION OF TREATMENT WITH NRA-ESCITALOPRAM

When discontinuing treatment, patients should be monitored for symptoms that may be associated with discontinuation (e.g. dizziness, abnormal dreams, sensory disturbances [including paraesthesias and electric shock sensations], agitation, anxiety, emotional indifference, impaired concentration, headache, migraine, tremor, nausea, vomiting and sweating) or other symptoms that may be of clinical significance (see **ADVERSE REACTIONS**). A gradual reduction in the dosage over several weeks, rather than abrupt cessation is recommended whenever possible. If intolerable symptoms occur following a decrease in the dose or upon discontinuation of treatment, dose titration should be managed on the basis of the patient's clinical response (see **ADVERSE REACTIONS** and **DOSAGE AND ADMINISTRATION**).

NRA-ESCITALOPRAM TREATMENT DURING PREGNANCY-EFFECTS ON NEWBORNS

In animal reproduction studies, escitalopram has been shown to have adverse effects on embryo/fetal and postnatal development, when administered at doses greater than human therapeutic doses. (see TOXICOLOGY, Reproduction Toxicity). There are no adequate and well-controlled studies in pregnant women; therefore, NRA-Escitalopram should be used during pregnancy only if the potential benefit to the patient justifies the potential risk to the fetus.

Post-marketing reports indicate that some neonates exposed to SSRIs such as NRA-Escitalopram and other antidepressants late in the third trimester have developed complications requiring prolonged hospitalization, respiratory support, and tube feeding. Such complications can arise immediately upon delivery. When treating a pregnant woman with NRA-Escitalopram during the third trimester, the physician should carefully consider the potential risks and benefits of treatment (see **WARNINGS AND PRECAUTIONS, Special Populations, Pregnant and Nursing Women; and DOSAGE AND ADMINISTRATION**).

INTERFERENCE WITH COGNITIVE AND MOTOR PERFORMANCE

In a study with healthy volunteers, racemic citalopram did not impair cognitive function or psychomotor performance. However, psychotropic medications may impair judgement, thinking or motor skills. Consequently, patients should be cautioned against driving a car or operating hazardous machinery until they are reasonably certain that NRA-Escitalopram does not affect them adversely.

Bone Fracture Risk:

Epidemiological studies show an increased risk of bone fractures following exposure to some antidepressants, including SSRIs / SNRIs. The risks appear to be greater at the initial stages of treatment, but significant increased risks were also observed at later stages of treatment. The possibility of fracture should be considered in the care of patients treated with NRA-Escitalopram. Elderly patients and patients with important risk factors for bone fractures should be advised of possible adverse events which increase the risk of falls, such as dizziness and orthostatic hypotension, especially at the early stages of treatment but also soon after withdrawal. Preliminary data from observational studies show association of SSRIs / SNRIs and low bone mineral density in older men and women. Until further information becomes available, a possible effect on bone mineral density with long term treatment with SSRIs / SNRIs, including NRA-Escitalopram, cannot be excluded, and may be a potential concern for patients with osteoporosis or major risk factors for bone fractures.

The following additional PRECAUTIONS are listed alphabetically.

CARCINO GENESIS AND MUTAGENESIS

For animal data, see Part II: TOXICOLOGY section.

CARDIOVASCULAR

PATIENTS WITH CARDIAC DISEASE

Neither escitalopram nor racemic citalopram has been systematically evaluated in patients with a recent history of myocardial infarction or unstable heart disease. Patients with these diagnoses were generally excluded from clinical trials during the drug's premarketing assessment. In line with other SSRIs, including racemic citalopram, escitalopram oxalate causes statistically significant, but clinically unimportant decrease in heart rate. In patients < 60 years old, the mean decrease with

escitalopram oxalate was approximately 2.3 bpm, while in patients \geq 60 years old, the mean decrease was approximately 0.6 bpm (see **ADVERSE REACTIONS, ECG**). Consequently, caution should be observed when NRA-Escitalopram is initiated in patients with pre-existing slow heart rate.

QT Interval prolongation

Escitalopram has been found to cause a dose-dependent prolongation of the QT interval. (See also sections Contraindications, Adverse Reactions / Post-Market Adverse Reactions, Cardiac Disorders, Drug Interactions / QT Interval Prolongation)

ENDOCRINE AND METABOLISM

DIABETIC PATIENTS

Neither escitalopram nor racemic citalopram has been systematically evaluated in diabetic patients; in the case of racemic citalopram, diabetes constituted an exclusion criterion. Rare events of hypoglycaemia were reported for racemic citalopram. Treatment with an SSRI in patients with diabetes may alter glycaemic control (hypoglycaemia and hyperglycaemia). NRA-Escitalopram should be used with caution in diabetic patients on insulin or oral hypoglycaemic drugs.

HEMATOLOGIC

ABNORMAL BLEEDING

SSRIs and SNRIs, including NRA-Escitalopram, may increase the risk of bleeding events by causing abnormal platelet aggregation. Concomitant use of acetylsalicylic acid (ASA), nonsteroidal anti-inflammatory drugs (NSAIDs), warfarin, and other anticoagulants may add to the risk. Case reports and epidemiological studies (case-control and cohort design) have demonstrated an association between use of drugs that interfere with serotonin reuptake and the occurrence of gastrointestinal bleeding. Bleeding events related to SSRIs and SNRIs use have ranged from ecchymoses, hematomas, epistaxis, and petechiae to life-threatening haemorrhages.

Patients should be cautioned about the risk of bleeding associated with the concomitant use of NRA-Escitalopram and NSAIDs, ASA, or other drugs that affect coagulation (see **DRUG INTERACTIONS**). Caution is advised in patients with a history of bleeding disorder or predisposing conditions (e.g. thrombocytopenia).

HEPATIC / BILIARY / PANCREATIC

HEPATIC IMPAIRMENT

Based on a study conducted with escitalopram oxalate in patients with mild to moderate hepatic impairment, the half-life was approximately doubled and the exposure was increased by approximately two thirds, compared to subjects with normal liver function. Consequently, the use of NRA-Escitalopram in hepatically impaired patients should be approached with caution and a lower dosage is recommended (see **DOSAGE AND ADMINISTRATION**). No information is available about the pharmacokinetics of escitalopram in patients with severe hepatic impairment (Child-Pugh Criteria C). NRA-Escitalopram should be used with additional caution in patients with severe hepatic impairment.

NEUROLOGIC

SEIZURES

Escitalopram has not been systematically evaluated in patients with a seizure disorder. These patients were excluded from the clinical studies. In clinical trials with escitalopram oxalate, convulsions have been reported very rarely (2 out of 3981 patients) in association with treatment with escitalopram. From post-marketing data, the reporting of seizures with escitalopram is comparable to that of other antidepressants. Like other antidepressants, NRA-Escitalopram should be used with caution in patients with a history of seizure disorder. NRA-Escitalopram should be discontinued if a patient develops seizures for the first time, or if there is an increase in seizure frequency (in patients with a previous diagnosis of epilepsy). SSRIs should be avoided in patients with unstable epilepsy, and patients with controlled epilepsy should be closely monitored.

SEROTONIN SYNDROME/NEUROLEPTIC MALIGNANT SYNDROME (NMS)-LIKE EVENTS

On rare occasions serotonin syndrome or neuroleptic malignant syndrome-like events have occurred in association with treatment with SSRIs, including NRA-Escitalopram, particularly when given in combination with other serotonergic and/or neuroleptic drugs. As these syndromes may result in potentially life-threatening conditions, treatment with NRA-Escitalopram should be discontinued if such events (characterized by clusters of symptoms such as hyperthermia, rigidity, myoclonus, autonomic instability with possible rapid fluctuations of vital signs, mental status changes including confusion, irritability, extreme agitation progressing to delirium and coma) occur and supportive symptomatic treatment should be initiated. NRA-Escitalopram should not be used in combination with MAO inhibitors or serotonin-precursors (such as L-tryptophan, oxitriptan) and should be used with caution in combination with other serotonergic drugs (triptans, certain tricyclic antidepressants, lithium, tramadol, St. John's Wort) due to the risk of serotonergic syndrome (see **CONTRAINDICATIONS** and **DRUG INTERACTIONS, Serotonergic Drugs, Triptans**).

OPHTHALMOLOGIC

ANGLE-CLOSURE GLAUCOMA

As with other antidepressants, NRA-Escitalopram can cause mydriasis which may trigger an angle-closure attack in a patient with anatomically narrow ocular angles. Healthcare providers should inform patients to seek immediate medical assistance if they experience eye pain, changes in vision or swelling or redness in or around the eye.

PSYCHIATRIC

SUICIDE / SUICIDAL THOUGHTS AND CLINICAL WORSENING

Depression is associated with an increased risk of suicidal thoughts, self-harm and suicide (suicide-related events). This risk persists until significant remission occurs. As improvement may not occur during the first few weeks or more of treatment, patients should be closely monitored until such improvement occurs. It is general clinical experience that the risk of suicide may increase in the early stages of recovery. Therefore, high-risk patients should be closely supervised throughout therapy with consideration to the possible need for hospitalization. In order to minimize the opportunity for overdose, prescription for escitalopram should be written for the smallest quantity of drug consistent with good patient management.

Other psychiatric conditions for which NRA-Escitalopram is prescribed can also be associated with an increased risk of suicide-related events. In addition, these conditions may be co-morbid with major depressive disorder. The same precautions observed when treating patients with major depressive disorder should therefore be observed when treating patients with other psychiatric disorders.

Patients with a history of suicide-related events, or those exhibiting a significant degree of suicidal ideation prior to commencement of treatment, are known to be at greater risk of suicidal thoughts or suicide attempts, and should receive careful monitoring during treatment. Close supervision of patients and in particular those at high risk should accompany drug therapy especially in early treatment and following dose changes.

Patients (and caregivers of patients) should be alerted about the need to monitor for any clinical worsening, suicidal behaviour or thoughts and unusual changes in behaviour and to seek medical advice immediately if these symptoms present (see **WARNINGS AND PRECAUTIONS, General, Potential Association with Behavioural and Emotional Changes, Including Self-Harm**).

ACTIVATION OF MANIA/HYPOMANIA

In placebo-controlled trials of escitalopram oxalate activation of mania/hypomania was reported in one patient of the n=715, treated with escitalopram oxalate and in none of the n=592 patients treated with placebo. Activation of mania / hypomania has also been reported in a small proportion of patients treated with racemic citalopram, and with other marketed antidepressants. As with other antidepressants, NRA-Escitalopram should be used with caution in patients with a history of mania/hypomania.

A major depressive episode may be the initial presentation of bipolar disorder. Patients with bipolar disorder may be at an increased risk of experiencing manic episodes when treated with antidepressants alone. Therefore, the decision to initiate symptomatic treatment of depression should only be made after patients have been adequately assessed to determine if they are at risk for bipolar disorder.

ELECTROCONVULSIVE THERAPY (ECT)

The safety and efficacy of the concurrent use of either escitalopram or racemic citalopram and ECT have not been studied, and therefore, caution is advisable.

RENAL

HYPONATRAEMIA

As with other antidepressants, cases of hyponatraemia and SIADH (syndrome of inappropriate antidiuretic hormone secretion) have been reported with escitalopram and racemic citalopram as a rare adverse event. The majority of these occurrences have been in elderly individuals, some in patients taking diuretics or who were otherwise volume-depleted. Elderly female patients in particular seem to be a group at risk. Caution should be exercised in patients at risk, such as the elderly, or patients with cirrhosis, or if used in combination with other medications which may cause hyponatraemia.

RENAL IMPAIRMENT

No information is available on the pharmacokinetic or pharmacodynamic effects of escitalopram on patients with renal impairment. Based on the information available for racemic citalopram, no dosage adjustment is needed in patients with mild to moderate renal impairment. Since no information is available on the pharmacokinetic or pharmacodynamic effects of either escitalopram or racemic citalopram in patients with severely reduced renal function (creatinine clearance < 30 mL / min), NRA-Escitalopram should be used with caution in these patients (see **DOSAGE AND ADMINISTRATION**).

SPECIAL POPULATIONS

Fertility, Pregnant Women and Newborns:

Male Fertility: Animal data have shown that some SSRIs, may affect sperm quality (see TOXICOLOGY, Reproduction Toxicity). Human case reports with some SSRIs have shown that an effect on sperm quality is reversible. Impact on human fertility has not been observed so far.

Pregnant Women and Newborns:

NRA-Escitalopram should not be used during pregnancy, unless the potential benefit to the patient outweighs the possible risk to the foetus.

Complications following late third trimester exposure to SSRIs:

Newborns should be observed if maternal use of NRA-Escitalopram continues into the later stages of pregnancy, particularly in the third trimester. If NRA-Escitalopram is used until or shortly before birth, discontinuation effects in the newborn are possible. Post-marketing reports indicate that some neonates exposed to SSRIs such as escitalopram and other antidepressants late in the third trimester have developed complications requiring prolonged hospitalization, respiratory support, and tube feeding. Such complications can arise immediately upon delivery. Reported clinical findings have included respiratory distress, cyanosis, apnoea, seizures, temperature instability, feeding difficulty, vomiting, hypoglycaemia, hypotonia, hypertonia, hyperreflexia, tremor, jitteriness, irritability, lethargy, constant crying, somnolence and difficulty sleeping. These symptoms could be due to either discontinuation effects or excess serotonergic activity. In a majority of instances, such complications begin immediately or soon (<24 hours) after delivery. It should be noted that, in some cases, the clinical picture is consistent with serotonin syndrome (see **WARNINGS AND PRECAUTIONS - Serotonin Syndrome/Neuroleptic Malignant Syndrome**). When treating a pregnant woman with NRA-Escitalopram during the third trimester, the physician should carefully consider the potential risks and benefits of treatment (see **DOSAGE AND ADMINISTRATION**).

Risk of PPHN and exposure to SSRIs:

Epidemiological studies on persistent pulmonary hypertension of the newborn (PPHN) have shown that the use of SSRIs (including escitalopram oxalate) in pregnancy, particularly use in late pregnancy, was associated with an increased risk of PPHN. PPHN occurs in 1-2 per 1,000 live births in the general population and is associated with substantial neonatal morbidity and mortality. In a retrospective case-control study of 377 women whose infants were born with PPHN and 836 women whose infants were born healthy, the risk for developing PPHN was approximately six-fold higher for infants exposed to SSRIs after the 20th week of gestation compared to infants who had not been exposed to antidepressants during pregnancy (Odds Ratio 6.1, 95% CI 2.2-16.8). A study using data from the Swedish Medical Birth Register for 831,324 infants born in 1997-2005 found an increased risk of PPHN of approximately 2-fold associated with patient-reported maternal use of SSRIs in the first trimester of pregnancy (Risk Ratio 2.4, 95% CI 1.2-4.3), and an increased risk of

PPHN of approximately 4-fold associated with a combination of patient-reported maternal use of SSRIs in the first trimester and an antenatal SSRI prescription in later pregnancy (Risk Ratio 3.6, 95% CI 1.2-8.3).

Nursing Women:

Studies with escitalopram have not been performed in nursing mothers, but it is known that racemic citalopram is excreted in human milk and it is expected that escitalopram is also excreted into breast milk. NRA-Escitalopram should not be administered to nursing mothers unless the expected benefits to the patient outweigh the possible risk to the child; in which case the infant should be closely monitored.

Pediatrics (<18 years of age):

NRA-Escitalopram is not indicated for use in patients below the age of 18 (see **WARNINGS AND PRECAUTIONS, General, Potential Association with Behavioural and Emotional Changes, Including Self-Harm**).

Geriatrics (≥65 years of age): Approximately 5% of the 715 patients treated with escitalopram oxalate in clinical trials of depressive disorder were 60 years of age or over; elderly patients in these trials received daily doses between 10 and 20 mg. No overall significant differences in safety or effectiveness were observed between the elderly and younger subjects, but the number of elderly patients treated was insufficient to adequately assess for differential responses. Greater sensitivity of some older individuals to effects of escitalopram cannot be ruled out. In a multiple-dose pharmacokinetic study, the area under the curve (AUC) and half-life of escitalopram were increased by approximately 50% at steady-state in elderly subjects as compared to young subjects. Consequently, elderly patients should be administered lower doses and a lower maximum dose (see **PHARMACOKINETICS** and **DOSAGE AND ADMINISTRATION**).

ADVERSE REACTIONS

ADVERSE DRUG REACTION OVERVIEW

Adverse events information for escitalopram oxalate was collected from 715 patients with major depressive disorder (MDD) who were exposed to escitalopram oxalate and from 592 patients who were exposed to placebo in double-blind, placebo-controlled trials. During clinical trials, all treatment groups were comparable with respect to gender, age and race. The mean age of patients was 41 years (18 to 76 years). Of these patients, approximately 66% were females and 34% were males.

The adverse event information for escitalopram oxalate in patients with obsessive-compulsive disorder (OCD) was collected from two studies with double-blind, placebo-controlled treatment periods of up to 24 weeks. In the first study, a total of 227 patients were exposed to escitalopram oxalate and 114 patients were exposed to placebo in a 24-week double-blind, placebo-controlled, fixed-dose trial with assessments at weeks 12 and 24. In the second study, 322 patients who initially responded to 16 weeks of open-label escitalopram oxalate treatment were subsequently randomized to double-blind treatment with escitalopram (n=164) or placebo (n=158) for up to 24 weeks. In total, 391 patients were exposed to escitalopram oxalate and 272 patients were exposed to placebo in these two long-term studies. The mean age of patients with OCD included in the trials was approximately 36 to 38 years (ranging from 18 to 67 years). One trial included similar proportions of males and females and the other trial had a slightly higher proportion of females than males (57% females and 43% males).

ADVERSE EVENTS OBSERVED IN CONTROLLED TRIALS

Adverse Events Associated with Discontinuation of Treatment

From the short-term (8-week) placebo-controlled, phase III studies in patients suffering from MDD, the incidence of discontinuation was: 17.3% (124 / 715) on escitalopram oxalate, 15.7% (64 / 408) on citalopram and 16.4% (97 / 592) on placebo. Discontinuation due to adverse events was more common in the active treatment groups (5.9% in escitalopram oxalate and 5.4% in citalopram) than in the placebo group (2.2%).

The events that were associated with discontinuation of escitalopram oxalate in 1% or more of patients at a rate of at least twice that of placebo were: nausea (1.5% vs. 0.2%) and ejaculation failure (1.8% vs. 0.0% of male patients).

During the first 12 weeks of treatment in the 24-week placebo controlled trial, discontinuation of treatment due to adverse events was reported for 9% and 11% of the 227 OCD patients who were treated with 10 mg / day or 20 mg / day escitalopram oxalate, respectively, compared to 5% of the 114 patients receiving placebo. All patients who discontinued treatment due to adverse events in the escitalopram oxalate groups did so in the first 12 weeks. Eight percent of patients receiving placebo discontinued treatment due to an adverse event during the 24-week period. Adverse events that were associated with discontinuation of at least 1% of patients treated with escitalopram oxalate, and for which the rate was higher than the placebo rate, were: nausea (1.8% vs. 0.0%), insomnia (1.8% vs. 0.9%), and erectile dysfunction (1.1% vs. 0.0%).

Most Frequent Adverse Events

Adverse events that occurred in escitalopram-treated patients in the course of the short-term, placebo-controlled trials with an incidence greater than, or equal to, 10% were: headache and nausea. The incidence of headache was higher in the placebo group, which suggests that this is a non-specific symptom related to the underlying condition or treatment administration. The point prevalence of nausea increased during the first week (as expected with an SSRI) and then decreased to approach placebo levels by the end of the studies.

CLINICAL TRIAL ADVERSE DRUG REACTION

Because clinical trials are conducted under very specific conditions the adverse reaction rates observed in the clinical trials may not reflect the rates observed in practice and should not be compared to the rates in the clinical trials of another drug. Adverse drug reaction information from clinical trials is useful for identifying drug-related adverse events and for approximating rates.

MAJOR DEPRESSIVE DISORDER

Table 1 enumerates the incidence of treatment emergent adverse events that occurred in 715 depressed patients who received escitalopram oxalate at doses ranging from 10 to 20 mg / day in placebo-controlled trials of up to 8 weeks in duration. Events included are those occurring in 1% or more of patients treated with escitalopram oxalate, and for which the incidence in patients treated with escitalopram oxalate was greater than the incidence in placebo-treated patients. Reported adverse events were classified using the Medical Dictionary for Regulatory Activities (MedDRA), version 9.1.

TABLE 1
TREATMENT-EMERGENT ADVERSE EVENTS*
INCIDENCE IN PLACEBO-CONTROLLED
CLINICAL TRIALS FOR MAJOR DEPRESSIVE
DISORDER

Body System / Adverse Event	Percentage of Patients Reporting	
	Escitalopram oxalate (n = 715)	Placebo (n = 592)
Cardiac Disorders Palpitations	1.4	1.2
Ear and Labyrinth Disorders Vertigo	1.4	0.8
Gastrointestinal Disorders Nausea Diarrhoea Dry mouth Constipation Dyspepsia Abdominal pain upper Stomach Discomfort	15.2 8.4 6.6 3.5 3.1 1.5 1.1	8.1 5.2 4.6 1.2 2.9 0.8 0.3
General Disorders and Administration Site Conditions Fatigue Pyrexia	4.9 1.1	2.7 0
Infections and Infestations Nasopharyngitis Influenza Sinusitis Gastroenteritis Herpes simplex	4.6 4.3 2.1 1.8 1.3	3.4 4.1 1.9 0.7 0.3
Investigations Weight increased	1.8	1.5
Metabolism and Nutrition Disorders Decreased appetite Increased appetite	2.4 1.7	0.7 1.4
Musculoskeletal and Connective Tissue Disorders Arthralgia Pain in extremity	1.4 1.4	0.5 0.8
Nervous System Dizziness Somnolence Sedation Migraine Tremor Lethargy Paraesthesia Sinus headache	6.3 4.1 2.4 1.5 1.5 1.0 1.0 1.0	3.6 1.2 0.7 1.5 0.7 0.2 0.7 0.3
Psychiatric Disorders		

Insomnia	8.2	3.6
Anxiety	2.2	2.0
Libido decreased	2.1	0.3
Anorgasmia	1.8	0.2
Abnormal dreams	1.3	0.8
Respiratory, Thoracic and Mediastinal Disorders		
Pharyngolaryngeal pain	2.1	1.0
Yawning	1.5	0.2
Skin and Subcutaneous Tissue Disorders		
Hyperhidrosis	3.4	1.4
Night sweats	1.7	0.3
Rash	1.0	0.8
Vascular Disorders		
Hot flush ²	2.2	0.0
Hot flush ¹	1.0	0.7
Reproductive System and Breast Disorders		
Ejaculation delayed ²	3.6	0.0
Ejaculation failure ²	2.7	0.0
Erectile dysfunction ²	2.7	0.0
Ejaculation disorder ²	1.3	0.0
*Events included are those occurring in 1% or more of patients treated with escitalopram, and for which the incidence in patients treated with escitalopram was greater than the incidence in placebo-treated patients.		
¹ Denominator used was for females only (n=490 for escitalopram; n=404 for Placebo).		
² Denominator used was for males only (n=225 for escitalopram; n=188 for Placebo).		

The following events had a higher incidence in the placebo group compared to the escitalopram oxalate group: vomiting, abdominal pain, flatulence, upper respiratory tract infection, bronchitis, back pain, neck pain, headache.

Adverse reactions observed with escitalopram oxalate are in general mild and transient. They are most frequent during the first and / or second week of treatment and usually decrease in intensity and frequency with continued treatment and do not generally lead to a cessation of therapy.

In a clinical trial involving patients with Major Depressive Disorder that compared fixed doses of escitalopram (10mg / day and 20 / mg / day) with placebo, the most common adverse events that occurred in patients treated with escitalopram are shown in Table 2.

TABLE 2
INCIDENCE OF COMMON ADVERSE EVENTS¹
FOR MAJOR DEPRESSIVE DISORDER, STUDY
MD-01

Adverse Event	Percentage of Patients Reporting		
	Placebo (n = 122)	Escitalopram oxalate 10 mg /day (n =119)	Escitalopram oxalate 20 mg /day (n =125)
Diarrhoea	7.4	10.1	14.4
Nausea	6.6	22.7	13.6
Insomnia	1.6	10.9	11.2
Mouth dry	7.4	10.9	9.6
Dizziness	3.3	10.1	9.6
Ejaculation failure	0.0	0.0	7.3
Nasopharyngitis	1.6	5.0	7.2
Constipation	1.6	2.5	5.6
Dyspepsia	1.6	5.9	4.0
Pharyngolaryngeal pain	0.0	5.9	1.6

¹Events included are those occurring in 5% or more of patients treated with escitalopram (10 mg / day or 20 mg / day), and for which the incidence was greater than the incidence in placebo-treated patients.

Male and Female Sexual Dysfunction with SSRIs

While sexual dysfunction is often part of depression and other psychiatric disorders, there is increasing evidence that treatment with selective serotonin reuptake inhibitors (SSRIs) may induce sexual side effects. This is a difficult area to study because patients may not spontaneously report symptoms of this nature, and therefore, it is thought that sexual side effects with SSRIs may be underestimated.

Table 3 shows the incidence rates of sexual side effects in patients with major depressive disorder in placebo-controlled short-term trials.

TABLE 3
INCIDENCE OF SEXUAL SIDE EFFECTS IN
PLACEBO-CONTROLLED CLINICAL TRIALS
FOR MAJOR DEPRESSIVE DISORDER

Adverse Event	Percentage of Patients Reporting	
	Escitalopram oxalate (n = 715)	Placebo (n = 592)
Libido decreased	2.1	0.3
Anorgasmia	1.8	0.2
<u>In Males only</u>		
Ejaculation delayed	3.6	0.0
Ejaculation failure	2.7	0.0
Erectile dysfunction	2.7	0.0
Ejaculation disorder	1.3	0.0

OBSESSIVE COMPULSIVE DISORDER

Table 4 enumerates the incidence of treatment emergent adverse events that occurred among 227 patients who received escitalopram oxalate in the first 12 weeks of a 24-week placebo-controlled trial. Events included are those occurring in 1% or more of patients treated with escitalopram oxalate, and for which the incidence in patients treated with escitalopram oxalate was greater than the incidence in placebo-treated patients. Reported adverse events were classified using the Medical Dictionary for Regulatory Activities (MedDRA), version 9.1.

The most frequent adverse events that occurred in escitalopram oxalate-treated patients in the course of the short-term, placebo-controlled trials with an incidence greater than, or equal to, 10% were: headache, nausea and fatigue.

TABLE 4
TREATMENT-EMERGENT ADVERSE EVENTS* INCIDENCE
IN A PLACEBO-CONTROLLED CLINICAL TRIAL FOR
OBSESSIVE COMPULSIVE DISORDER
(FIRST 12 WEEKS OF A 24-WEEK TRIAL)

Body System / Adverse Event	Percentage of Patients Reporting	
	Escitalopram oxalate (n = 227)	Placebo (n = 114)
Eye Disorder Visual disturbance	1.3	0.0
Gastrointestinal Disorders Nausea Diarrhoea Dry mouth Constipation Vomiting	23.3 6.6 6.2 2.6 2.6	12.3 4.4 4.4 2.6 0.9
General Disorders and Administration Site Conditions Fatigue Asthenia	14.1 1.3	5.3 0.9
Infections and Infestations Nasopharyngitis Sinusitis Rhinitis	6.6 2.2 1.3	3.5 0.9 0.0
Investigations Weight increased	1.3	0.0
Metabolism and Nutrition Disorders Decreased appetite	2.2	0.9
Musculoskeletal and Connective Tissue Disorders Neck pain Back pain	1.8 1.3	1.8 0.9
Nervous System Headache Dizziness Somnolence Tremor Migraine	19.4 7.9 8.4 3.5 1.3	16.7 5.3 5.3 1.8 0.0
Psychiatric Disorders Libido decreased Restlessness Sleep disorder Abnormal dreams	4.8 2.2 1.8 1.3	0.9 0.9 0.9 0.0

Reproductive system and breast disorders		
Ejaculation delayed ²	7.6	0.0
Menorrhagia ¹	1.5	0.0
Respiratory, Thoracic and Mediastinal Disorders		
Yawning	1.8	0.0
Skin and Subcutaneous Tissue Disorders		
Hyperhidrosis	5.7	1.8
Vascular Disorders		
Hot flush ¹	1.5	0.0

*Events included are those occurring in 1% or more of patients treated with escitalopram oxalate, and for which the incidence in patients treated with escitalopram oxalate was greater than the incidence in placebo-treated patients.

¹Denominator used was for females only (n=135 for escitalopram oxalate; n=63 for Placebo).

²Denominator used was for males only (n=92 for escitalopram oxalate; n=51 for Placebo).

The following events had a higher incidence in the placebo group compared to the escitalopram oxalate group: abdominal pain upper, irritability, influenza, anorexia, increased appetite, insomnia, anxiety, erectile dysfunction.

In general, the safety profile of the placebo-controlled study at 24 weeks was similar to the one observed in the first 12 weeks of the trial.

In both phases of the long-term study of patients who were randomized to receive 24 weeks of double-blind treatment with escitalopram oxalate or placebo, following response to an initial 16 weeks of open-label escitalopram oxalate treatment, the safety profile of escitalopram oxalate was similar to the safety profile in the above mentioned placebo controlled trial. Adverse events reported by at least 2% of patients after the open-label period and during the first 2 weeks after randomization were: dizziness (15.8% placebo vs 0.6% escitalopram oxalate); nausea (5.7% placebo vs 0.6% escitalopram oxalate); headache (4.4% placebo vs 1.8% escitalopram oxalate); and insomnia (3.2% placebo vs 0.6% escitalopram oxalate).

The most common AEs that occurred during treatment with 10 mg / day and 20 mg / day escitalopram oxalate in this clinical trial are shown in Table 5.

TABLE 5
INCIDENCE OF COMMON ADVERSE EVENTS¹
FOR OBSESSIVE COMPULSIVE DISORDER
(FIRST 12 WEEKS OF 24-WEEK TRIAL, STUDY 10205)

Adverse Event	Percentage of Patients Reporting		
	Placebo (n = 114)	Escitalopram oxalate 10 mg/day (n =113)	Escitalopram oxalate 20 mg/day (n =114)
Nausea	12.3	19.5	27.2
Fatigue	5.3	11.5	16.7
Somnolence	5.3	6.2	10.5
Ejaculation delayed	0.0	4.5	10.4
Diarrhoea	4.4	4.4	7.0
Dizziness	5.3	8.8	7.0
Nasopharyngitis	3.5	7.1	6.1
Libido decreased	0.9	2.7	7.0
Dry mouth	3.5	4.4	5.3
Hyperhidrosis	1.8	6.2	5.3

¹ Events included are those occurring in 5% or more of patients treated with escitalopram oxalate(10 mg / day or 20 mg / day), and for which the incidence was greater than the incidence in placebo- treated patients.

In general, the adverse event profile that occurred among the patients who received escitalopram oxalate during the 24 weeks of the trial was similar to the profile observed in the first 12 weeks of the trial.

Weight Changes

Patients treated with escitalopram oxalate in short-term controlled trials did not differ from placebo-treated patients with regards to clinically important change in body weight.

Cardiovascular parameters

Escitalopram oxalate and placebo groups in MDD were compared with respect to mean change from baseline in vital signs (pulse, systolic blood pressure, and diastolic blood pressure) and the incidence of patients meeting criteria for potentially clinically significant changes from baseline in these variables. The analyses did not reveal any clinically important changes in blood pressure associated with escitalopram oxalate treatment. In line with other SSRIs, including racemic citalopram, escitalopram oxalate causes statistically significant, but clinically unimportant decrease in heart rate. In MDD patients < 60 years old, the mean decrease with escitalopram oxalate was approximately 2.3 bpm, while in patients ≥ 60 years old, the mean decrease was approximately 0.6 bpm.

ADVERSE REACTIONS FOLLOWING DISCONTINUATION OF TREATMENT (OR DOSE REDUCTION)

There have been reports of adverse reactions upon the discontinuation of SSRIs such as escitalopram oxalate (particularly when abrupt), including but not limited to the following: dizziness, abnormal dreams, sensory disturbances (including paraesthesias and electric shock sensations), agitation, anxiety, emotional indifference, impaired concentration, headache, migraine, tremor, nausea, vomiting and sweating or other symptoms which may be of clinical significance (see **WARNINGS AND PRECAUTIONS** and **DOSAGE AND ADMINISTRATION**).

Patients should be monitored for these or any other symptoms. A gradual reduction in the dosage over several weeks, rather than abrupt cessation is recommended whenever possible. If intolerable symptoms occur following a decrease in the dose or upon discontinuation of treatment, dose titration should be managed on the basis of the patient's clinical response. These events are generally self-limiting. Symptoms associated with discontinuation have been reported for other selective serotonin reuptake inhibitors (see **WARNINGS AND PRECAUTIONS** and **DOSAGE AND ADMINISTRATION**).

ADVERSE REACTIONS DURING TREATMENT FOR UP TO 44 WEEKS

The Treatment-Emergent Adverse Event incidence profile of escitalopram oxalate in a longer term study in patients with major depressive disorder (MDD) consisting of a 36-week placebo- controlled relapse observation phase in responders of a preceding 8-week acute treatment phase was similar to that observed in short-term studies.

LESS COMMON CLINICAL TRIAL ADVERSE DRUG REACTIONS

Untoward events associated with the exposure were recorded by clinical investigators using terminology of their own choosing. Consequently, it is not possible to provide a meaningful estimate of the proportion of individuals experiencing adverse events without first grouping similar types of untoward events into a smaller number of standardized event categories. Reported adverse events were classified using the Medical Dictionary for Regulatory Activities, version 9.1.

The events listed below present treatment emergent adverse events reported during the clinical development program of escitalopram oxalate in depressed patients (n=896), which includes a long-term clinical trial and in OCD patients included in a long-term (24 weeks with assessments at 12 weeks and 24 weeks) trial (n=227). Excluded from this list are those already listed in Tables 1(MDD), or 4 (OCD first 12 weeks of a 24 week trial).

It is important to emphasise that, although the events reported occurred during treatment with escitalopram oxalate, they were not necessarily caused by it. The events are categorized by body system and listed according to the following criteria: *frequent*: adverse events that occurred on one or more occasions in at least 1 / 100 patients; *infrequent*: adverse events that occurred in less than 1 / 100 patients but at least in 1 / 1000 patients; *rare*: adverse events that occurred in less than 1 / 1000 but at least in 1 / 10000 patients.

Blood and Lymphatic System Disorders

Infrequent: Anaemia, lymphadenopathy. *Rare*: Lymphadenitis

Cardiac Disorders

Rare: Atrial fibrillation, atrial ventricular block first degree, bradycardia, extrasystoles, myocarditis, nodal rhythm, sinus bradycardia.

Congenital, Familial and Genetic Disorders

Rare: Epidermal naevus, Gilbert's syndrome.

Ear and Labyrinth Disorders

Infrequent: Ear disorder, ear pain, tinnitus. *Rare:* Cerumen impaction, deafness, Meniere's disease, motion sickness, tympanic membrane perforation.

Endocrine Disorders

Rare: Goitre, hyperthyroidism, thyroiditis.

Eye Disorders

Infrequent: Accommodation disorder, blepharospasm, conjunctivitis, dry eye, eye pain, eye pruritus, mydriasis, photopsia, vision blurred. *Rare:* Asthenopia, chromatopsia, eye haemorrhage, eye irritation, eye swelling, eyelid oedema, iritis, keratoconus, myopia, night blindness, retinal detachment, scotoma, vitreous detachment.

Gastrointestinal Disorders

Infrequent: Abdominal discomfort, abdominal distension, Crohn's disease, dysphagia, enteritis, epigastric discomfort, food poisoning, frequent bowel movements, gastrointestinal pain, gastrooesophageal reflux disease, gastritis, haemorrhoids, lip dry, rectal haemorrhage. *Rare:* Anal fissure, colitis ulcerative, colonic polyp, eructation, gingival pain, haematemesis, haematochezia, ileitis, oral pain, pruritus ani, reflux gastritis, stomatitis, tongue black hairy, tongue disorder, tooth disorder, tooth erosion.

General Disorders and Administration Site Conditions

Infrequent: Chest discomfort, chest pain, feeling abnormal, feeling jittery, influenza like illness, malaise, oedema, oedema peripheral, pain, respiratory sighs, sluggishness, thirst. *Rare:* Early satiety, face oedema, feeling hot, hunger, local swelling, performance status decreased, sensation of blood flow.

Immune System Disorders

Infrequent: Anaphylactic reaction, house dust allergy, hypersensitivity, seasonal allergy. *Rare:* Allergic oedema.

Infections and Infestations

Infrequent: Acute sinusitis, bronchitis acute, cystitis, ear infection, eye infection, folliculitis, fungal infection, gastrointestinal infection, laryngitis, lung infection, pelvic inflammatory disease (gs = Gender Specific), otitis media, pharyngitis, pharyngitis streptococcal, pneumonia, respiratory tract infection, skin infection, tooth abscess, tonsillitis, tooth infection, urinary tract infection, vaginal candidiasis (gs), viral infection, viral upper respiratory tract infection, vulvovaginal mycotic infection (gs). *Rare:* Appendicitis, bronchitis viral, carbuncle, cellulitis, dental caries, erysipelas, furuncle, genitourinary chlamydia infection, gingival infection, impetigo, infection parasitic, mastitis, onychomycosis, otitis externa, peritonsillar abscess, pyelonephritis acute, rash pustular, salmonellosis, staphylococcal infection, streptococcal infection, tracheitis, vaginal infection, varicella, wound infection.

Injury, Poisoning and Procedural Complications

Infrequent: Animal bite, ankle fracture, arthropod bite, contusion, excoriation, fall, injury, intentional overdose, joint dislocation, joint injury, joint sprain, limb injury, mouth injury, procedural pain, road traffic accident, skin laceration, sunburn, thermal burn. *Rare:* Arthropod sting, back injury, concussion, electric shock, eye injury, facial bones fracture, foot fracture, ligament injury, muscle rupture, neck injury, post-traumatic pain, radius fracture, rib fracture, sports injury, tooth injury, ulna fracture, whiplash injury.

Investigations

Infrequent: blood glucose increased, blood pressure increased, body temperature increased, heart rate increased, weight decreased. *Rare:* Arthroscopy, blood bilirubin increased, blood cholesterol increased, blood uric acid increased, blood urine present, electrocardiogram PR shortened, haemoglobin decreased, hepatic enzyme increased, pregnancy test positive (gs).

Metabolism and Nutrition Disorders

Infrequent: Food craving. *Rare:* Dehydration, gout, hypercholesterolaemia, hypermagnesaemia, hyperphagia, hyponatraemia, latent tetany.

Musculoskeletal and Connective Tissue Disorders

Infrequent: Arthritis, joint stiffness, muscle contracture, muscle spasms, muscle tightness, muscle twitching, muscular weakness, musculoskeletal chest pain, musculoskeletal discomfort, musculoskeletal stiffness, osteoarthritis, pain in jaw. *Rare:* Chest wall pain, costochondritis, exostosis, fibromyalgia, finger deformity, ganglion, intervertebral disc protrusion, musculoskeletal pain, plantar fasciitis, rheumatoid arthritis, sacroiliitis, sensation of heaviness, tendon disorder.

Neoplasms Benign, Malignant and Unspecified (incl. cysts and polyps)

Infrequent: Breast neoplasm. *Rare:* Benign breast neoplasm, lipoma, marrow hyperplasia, skin papilloma, uterine leiomyoma (gs).

Nervous System

Infrequent: Amnesia, balance disorder, burning sensation, carpal tunnel syndrome, coordination abnormal, dizziness postural, disturbance in attention, dysgeusia, hyperreflexia, hypersomnia, hypertonia, hypoaesthesia, memory impairment, muscle contractions involuntary, restless legs syndrome, sciatica, syncope, taste disturbance, tension headache. *Rare:* dysaesthesia, dysphasia, facial paresis, facial spasm, head discomfort, hypogeusia, myoclonus, paralysis, psychomotor hyperactivity, sensory disturbance, sleep talking, syncope vasovagal.

Pregnancy, Puerperium and Perinatal Conditions

Infrequent: Pregnancy (gs).

Psychiatric Disorders

Infrequent: Agitation, apathy, bruxism, confusional state, crying, depersonalization, depressed mood, derealisation, disorientation, early morning awakening, emotional disorder, hallucination auditory, initial insomnia, libido increased, mania, mental disorder, middle insomnia, mood swings, nervousness, obsessive-compulsive disorder, panic attack, suicidal ideation, suicide attempt, tension, thinking abnormal. *Rare:* Aggression, emotional distress, euphoric mood, flat affect, generalized anxiety disorder, hallucination, hypomania, indifference, major depression, paranoia, psychomotor retardation, tic.

Renal and Urinary Disorders

Infrequent: Dysuria, haematuria, micturition urgency, urinary hesitation. *Rare:* Bladder dilatation, bladder discomfort, chromaturia, nocturia, renal pain, urinary incontinence.

Reproductive System and Breast Disorders

Infrequent: Amenorrhoea (gs), epididymitis (gs), menstrual disorder (gs), menstruation irregular (gs), metrorrhagia (gs), orchitis noninfective (gs), painful erection (gs), pelvic pain, premenstrual syndrome (gs), postmenopausal haemorrhage (gs), sexual dysfunction, testicular pain (gs). *Rare:* Breast discharge, breast pain, breast tenderness, genital pain, menopausal symptoms (gs), uterine spasm (gs), vaginal discharge (gs), vaginal haemorrhage (gs).

Respiratory, Thoracic and Mediastinal Disorders

Infrequent: Asthma, cough, dyspnoea, epistaxis, nasal congestion, postnasal drip, rhinitis allergic, rhinorrhoea, throat irritation, wheezing. *Rare:* Allergic sinusitis, choking, dysphonia, nasal polyps, rhinitis perennial, throat tightness, tracheal disorder.

Skin and Subcutaneous Tissue Disorders

Infrequent: Acne, alopecia, dermatitis allergic, dermatitis contact, dry skin, eczema, increased tendency to bruise, rash, urticaria. *Rare:* Cold sweat, dermal cyst, dermatitis, dermatitis acneiform, dermatitis atopic, hand dermatitis, ingrowing nail, photosensitivity reaction, rash maculo-papular, skin irritation, skin nodule, skin odor abnormal, skin warm.

Social Circumstances

Infrequent: Drug abuser. *Rare:* Family stress, stress at work.

Surgical and Medical Procedures

Infrequent: Tooth extraction. *Rare:* Colon polypectomy, gingival operation, scar excision.

Vascular Disorders

Infrequent: Flushing, haematoma, hypertension, hypotension, orthostatic hypotension, peripheral coldness, varicose vein. *Rare:* Circulatory collapse, pallor, vein disorder.

LONG-TERM PLACEBO-CONTROLLED TRIAL IN ESCITALOPRAM RESPONDERS (OCD)

In general, the safety profile was similar in the long-term (24-week) placebo-controlled phase of the trial in which patients who initially responded to 16 weeks of open-label escitalopram oxalate treatment were randomized to treatment with escitalopram oxalate or placebo for up to 24 weeks. The following events (single or duplicate cases), which are not reported elsewhere, have been reported: abdominal pain lower, acute tonsillitis, blood pressure decreased, dental operation, depressive symptoms, dysarthria, dyspareunia, epicondylitis, facial pain, haematochezia, hordeolum, infrequent bowel movements, laceration, lacrimation increased, limb operation, negative thoughts, neuralgia, pain inflammation activated, subcutaneous abscess, tendon injury, wisdom teeth removal.

POST-MARKET ADVERSE DRUG REACTIONS

During the 9.5 years of post-marketing experience, it is estimated that more than 265 million patients have been treated with escitalopram, which corresponds to more than 66 million patient-years of treatment.

The following adverse events have been identified during post-approval use of escitalopram. These events are reported voluntarily from a population of uncertain size, and it is not possible to reliably estimate their frequency or establish a causal relationship to drug exposure.

Table 6: Spontaneous Adverse Events	
System Organ Class	Adverse Event
Blood and lymphatic disorders	Leukocytosis, Leukopenia, Thrombocytopenia
Cardiac disorders	Cardiac arrest, Electrocardiogram QT prolonged, Myocardial infarction, Myocardial ischaemia, Ventricular arrhythmia, Torsades de pointes, Ventricular tachycardia
Endocrine disorders	Alanine aminotransferase increased, Aspartate aminotransferase increased, Hyperprolactinemia, SIADH
Eye disorders	Amblyopia, Diplopia, Visual Disturbance
Gastrointestinal disorders	Gastrointestinal haemorrhage, Gingival bleeding, Pancreatitis
General disorders and administration site conditions	Death NOS, Feeling abnormal, Gait abnormal, Irritability, Pyrexia
Hepatobiliary disorders	Hepatitis
Investigations	Blood alkaline phosphatase increased, Drug level increased, Electrocardiogram QT prolonged, INR increased, Liver function tests abnormal, Neurotransmitter level altered, Platelet count decreased
Metabolism and nutrition Disorders	Fluid retention, Hypoglycaemia
Musculoskeletal and connective tissue disorders	Muscle cramps, Rhabdomyolysis, Trismus
Nervous system disorders	Akathisia, Cerebrovascular accident, Clonic convulsion, Coma, Dysarthria, Dyskinesia, Dysphasia, Extrapyrarnidal disorder, Facial palsy, Grand mal convulsion, Loss of consciousness, Neuroleptic malignant syndrome, Movement disorder, Petit mal, epilepsy, Serotonin syndrome, Speech disorder, Tardive dyskinesia, Vasovagal attack

Psychiatric disorders	Delirium, Hallucination visual, Panic reaction, Psychomotor restlessness, Restlessness, Suicidal behavior
Renal and urinary disorders	Renal failure acute, Urinary retention
Reproductive system and breast disorders	Galactorrhoea, Menometrorrhagia, Priapism
Respiratory, thoracic and mediastinal disorder	Hyperventilation, Pulmonary embolism, Rhinorrhoea
Skin and subcutaneous tissue Disorders	Angioedema, Ecchymosis, Epidermal necrolysis, Stevens-Johnson syndrome

Cardiac disorders

QT interval prolongation

Escitalopram has been found to cause a dose-dependent prolongation of the QT interval. Cases of QT interval prolongation and ventricular arrhythmia including torsade de pointes have been reported during the post-marketing period, predominantly in patients of female gender, with hypokalaemia, or with pre-existing QT interval prolongation or other cardiac diseases. In a double-blind, placebo-controlled ECG study in healthy subjects, the change from baseline in QTc (Fridericia-correction) was 4.3 ms (90% CI: 2.2, 6.4) at the 10 mg / day dose and 10.7 ms (90% CI: 8.6, 12.8) at the 30 mg / day dose. Based on the established exposure-response relationship, the predicted QTc (Fridericia-correction) change from placebo arm (95% confidence interval) under the C_{max} for the dose of 20 mg is 6.6 (7.9) msec. Statistically significant decreases in heart rate of mean 2-5 bpm were also observed during treatment with escitalopram oxalate at 10 mg and 30 mg in these healthy subjects. (See sections Contraindications, Warnings and Precautions / QT Interval Prolongation, Drug Interactions / QT Interval Prolongation)

DRUG INTERACTIONS

Serious Drug Interactions

- **Monoamine Oxidase Inhibitors: see CONTRAINDICATIONS.**
- **Pimozide: see CONTRAINDICATIONS.**

OVERVIEW

Escitalopram is the active enantiomer of racemic citalopram. The pharmacokinetic studies described in the following sections, whether using escitalopram oxalate or racemic citalopram, were carried out in young healthy, mostly male volunteers. In addition, many of the studies utilized single doses of the specific concomitant medication, with multiple dosing of escitalopram oxalate or citalopram. Thus, data are not available in patients who would be receiving the concomitant drugs on an ongoing basis at therapeutic doses.

DRUG-DRUG INTERACTIONS

Monoamine Oxidase Inhibitors (MAOIs)

Combined use of NRA-Escitalopram and MAO inhibitors is contraindicated due to the potential for serious reactions with features resembling serotonin syndrome or neuroleptic malignant syndrome (see **CONTRAINDICATIONS; WARNINGS AND PRECAUTIONS, Serotonin Syndrome / Neuroleptic Malignant Syndrome**). In patients receiving SSRIs in combination with a monoamine oxidase inhibitor (MAOI), there have been reports of serious, sometimes fatal, reactions including hyperthermia, rigidity, myoclonus, autonomic instability with possible rapid fluctuations of vital signs, and mental status changes, including extreme agitation progressing to delirium and coma. These reactions have also been reported in patients who have recently discontinued SSRI treatment and have been started on a MAOI. Some cases presented with features resembling serotonin syndrome or neuroleptic malignant syndrome. NRA-Escitalopram should not be used in combination with a MAOI, (including linezolid, an antibiotic which is a reversible non-selective MAO inhibitor, and methylene blue, which is a MAOI) or within 14 days of discontinuing treatment with a MAOI. Similarly, at least 14 days should elapse after discontinuing NRA-Escitalopram treatment before starting a MAOI (see **CONTRAINDICATIONS**).

Cytochrome P450 Isozymes

Citalopram: Based on the results of broad *in vitro* and *in vivo* testing, racemic citalopram is neither the source nor the cause of any clinically important pharmacokinetic drug-drug interactions. *In vitro* enzyme inhibition data did not reveal an inhibitory effect of citalopram on CYP3A4, -1A2, -2D6, -2C9, -2C19 and -2E1. Accordingly, escitalopram would be expected to have little inhibitory effect on *in vivo* drug metabolism mediated by the cytochrome P-450 isozymes. In addition, pharmacokinetic interaction studies with racemic citalopram have also demonstrated no clinically important interactions with carbamazepine (CYP3A4 substrate), triazolam (CYP3A4 substrate), theophylline (CYP1A2 substrate), warfarin (CYP2C9 substrate), levomepromazine (CYP2D6 inhibitor).

Escitalopram: Using *in vitro* models of human liver microsomes, the biotransformation of escitalopram to its demethylated metabolites was shown to depend on three parallel pathways (CYP2C19, CYP3A4 with a smaller contribution from CYP2D6) (see **DOSAGE AND ADMINISTRATION, CYP2C19 Poor metabolizers**).

Studies also indicate that escitalopram is a very weak or negligible inhibitor of human hepatic isoenzyme CYP1A2, 2C9, 2C19, 2E1, and 3A4, and a weak inhibitor of 2D6. Although escitalopram has a low potential for clinically significant drug interactions, caution is recommended, when escitalopram is co-administered with drugs that are mainly metabolized by CYP2D6, and that have a narrow therapeutic index.

The possibility that the clearance of escitalopram will be decreased when administered with the following drugs in a multiple-dose regimen should be considered:

- potent inhibitors of CYP3A4 (e.g., fluconazole, ketoconazole, itraconazole, erythromycin), or
- potent inhibitors of CYP2C19 (e.g., omeprazole, esomeprazole, fluvoxamine, lansoprazole, ticlopidine). Caution should be exercised at the upper end of the dosage range of escitalopram when it is co-administered with CYP2C19 inhibitors.

In addition, a single-dose study of escitalopram co-administered with a multiple-dose regimen of cimetidine, a non-specific CYP inhibitor, led to significant changes in most of the pharmacokinetic parameters of escitalopram.

The overall metabolic pathways for escitalopram and citalopram are qualitatively similar and the interaction potential for escitalopram is expected to closely resemble that of citalopram. Thus, this allows for extrapolation to previous studies with citalopram.

CNS drugs

Drug interactions have not been specifically studied between either escitalopram or racemic citalopram and other centrally acting drugs. Given the primary CNS effects of escitalopram, caution should be used as with other SSRIs when escitalopram is taken in combination with other centrally acting drugs.

Serotonergic Drugs:

Based on the mechanism of action of escitalopram and the potential for serotonin syndrome, caution is advised when NRA-Escitalopram is coadministered with other drugs or agents that may affect the serotonergic neurotransmitter systems, such as tryptophan, triptans, serotonin reuptake inhibitors, lithium, St. John's Wort, fentanyl and its analogues, dextrometorphan, tramadol, tapentadol, meperidine, methadone and pentazocine (see **WARNINGS AND PRECAUTIONS, Serotonin Syndrome / Neuroleptic Malignant Syndrome (NMS)-like events**). Concomitant use of NRA-Escitalopram and MAO inhibitors (including linezolid, an antibiotic which is a reversible non-selective MAO inhibitor) is contraindicated (see **CONTRAINDICATIONS**).

Triptans (5HT1 agonists):

Cases of life-threatening serotonin syndrome have been reported during combined use of selective serotonin reuptake inhibitors (SSRIs) / serotonin norepinephrine reuptake inhibitors (SNRIs) and triptans. If concomitant treatment with NRA-Escitalopram and a triptan is clinically warranted, careful observation of the patient is advised, particularly during treatment initiation and dose increases (see **WARNINGS AND PRECAUTIONS: Serotonin Syndrome / Neuroleptic Malignant Syndrome (NMS)-like events**).

Drugs Affecting Platelet Function (e.g. NSAIDs, ASA and other anticoagulants)

Serotonin release by platelets plays an important role in hemostasis. Epidemiological studies of the case-control and cohort design that have demonstrated an association between use of psychotropic drugs that interfere with serotonin reuptake and the occurrence of upper gastrointestinal bleeding have also shown that concurrent use of an NSAID, ASA or other anticoagulants may potentiate the risk of bleeding.

Altered anticoagulant effects, including increased bleeding, have been reported when SSRIs and SNRIs are co-administered with warfarin. Patients receiving warfarin therapy should be carefully monitored when NRA-Escitalopram is initiated or discontinued (see **WARNINGS AND PRECAUTIONS, Hematologic, Abnormal Bleeding**).

Racemic Citalopram

As escitalopram is the active isomer of racemic citalopram, the two drugs should not be taken together.

Alcohol use

The interaction between escitalopram and alcohol has not been studied. Although racemic citalopram did not potentiate the cognitive and psychomotor effects of alcohol in volunteers, the concomitant use of alcohol in depressed patients taking escitalopram is not recommended.

QT interval prolongation

Pharmacokinetic and pharmacodynamic studies of escitalopram combined with other medicinal products that prolong the QT interval have not been performed. An additive effect of escitalopram and these medicinal products cannot be excluded. Therefore, co-administration of escitalopram with medicinal products that have a clear QT interval prolonging effect, such as Class IA and III antiarrhythmics, certain antipsychotics (e.g. ziprasidone), tricyclic antidepressants, opioids (e.g. methadone), certain antimicrobial agents (e.g. moxifloxacin), is discouraged. The concomitant use of NRA-Escitalopram with drugs that can disrupt electrolyte levels is discouraged. Drugs that decrease electrolyte levels include, but are not limited to, the following: loop, thiazide, and related diuretics; laxatives and enemas; amphotericin B; high dose corticosteroids. The above lists of potentially interacting drugs are not comprehensive. (See also sections Contraindications, Adverse Reactions/Post-Market Adverse Reactions / Cardiac Disorders)

Polymorphism

It has been observed that poor metabolizers with respect to CYP2C19 have twice as high a plasma concentration of escitalopram as extensive metabolizers. (See **DOSAGE AND ADMINISTRATION, CYP2C19 Poor metabolizers**). Although no significant change in exposure was observed in poor metabolizers with respect to CYP2D6, caution is recommended when escitalopram is co-administered with medicinal products that are mainly metabolized by this enzyme, and that have a narrow therapeutic index.

Interaction data which include studies conducted with escitalopram oxalate

Table 7. Established or Predicted Drug-Drug Interactions with escitalopram

Escitalopram	Reference	Effect	Clinical Comment
Cimetidine	CT	Co-administration of cimetidine (400 mg twice daily for 5 days), a moderately potent CYP2D6, 3A4 and 1A2 inhibitor, with escitalopram oxalate (single dose of 20 mg on day 4) resulted in an increase in escitalopram AUC and C _{max} of approximately 70% and 20%, respectively.	Caution should be exercised when used concomitantly with cimetidine. A reduction in the dose of escitalopram may be necessary based on clinical judgement. A maximum dose of 10 mg/day escitalopram should not be exceeded.
Imipramine/ Desipramine: substrate for CYP2D6	CT	Co-administration of escitalopram oxalate (20 mg/day for 21 days) with the tricyclic antidepressant desipramine (single dose of 50 mg), a substrate for CYP2D6, resulted in a 50% increase in desipramine concentrations	The clinical significance of this finding is unknown. Consequently, concomitant treatment with escitalopram and imipramine/desipramine should be undertaken with caution
Metoprolol: substrate for CYP2D6	CT	Co-administration of 20 mg/day of escitalopram oxalate for 21 days with metoprolol (a CYP2D6 substrate)	

		resulted in a 50% increase in the peak plasma levels of the β -adrenergic blocker with no clinically significant effects on blood pressure or heart rate	
Omeprazole: CYP2C19 inhibitor	CT	Co-administration of omeprazole (30 mg once daily for 6 days), a CYP2C19 inhibitor, with escitalopram oxalate (single dose of 20 mg on day 5) resulted in an increase in escitalopram AUC and C_{max} of approximately 50% and 10%, respectively.	Caution should be exercised when used concomitantly with CYP2C19 inhibitors (e.g. omeprazole). A reduction in the dose of escitalopram may be necessary based on clinical judgement. A maximum dose of 10 mg/day escitalopram should not be exceeded.
Ritonavir: substrate for CYP3A4	CT	Combined administration of a single dose of ritonavir (600 mg), a CYP3A4 substrate and a potent inhibitor of CYP3A4, and escitalopram oxalate (20 mg) did not affect the pharmacokinetics of either ritonavir or escitalopram	

Legend: CT =Clinical Trial

Interaction studies conducted with racemic citalopram

Table 8. Established or Predicted Drug-Drug Interactions with racemic citalopram

Racemic citalopram	Reference	Effect	Clinical Comment
Carbamazepine	CT	Carbamazepine, titrated to 400 mg/day, was given for 21 days alone and then in combination with racemic citalopram (40 mg/day) for an additional 14 days. Citalopram did not affect the plasma levels of carbamazepine, a CYP3A4 substrate, or its metabolite, carbamazepine-epoxide	Since carbamazepine is a microsomal enzyme inducer, the possibility that carbamazepine may increase the clearance of escitalopram should be considered if the two drugs are given concomitantly
Digoxin	CT	Administration of racemic citalopram (40 mg/day for 21 days) did not affect the pharmacokinetics of digoxin (single dose of 1 mg). The serum levels of citalopram were slightly lower in the presence of digoxin but with no clinical relevance	
Ketoconazole	CT	Combined administration of racemic citalopram (40 mg single dose) and the potent CYP3A4 inhibitor ketoconazole (200 mg single dose) decreased the C _{max} of ketoconazole by 21% and did not affect the pharmacokinetics of racemic citalopram	
Levomepromazine	CT	Co-administration of racemic citalopram (40 mg/day for 10 days) and a CYP2D6 inhibitor, levomepromazine (single dose of 50 mg) did not affect the pharmacokinetics of either drug	
Lithium	CT	Co-administration of racemic citalopram (40 mg/day for 10 days) and lithium (30 mmol/day for 5 days) did not affect the pharmacokinetics of either drug	Since lithium may increase serotonergic neurotransmission, concomitant treatment with escitalopram should be undertaken with caution
Pimozide	CT	In a double-blind crossover study in healthy young adults, a single dose of pimozide 2 mg co-administered with racemic citalopram 40 mg given once daily for 11 days was associated with a mean increase in QTc values at T _{max} of approximately 12 msec compared to pimozide when given with placebo	The mechanism of this apparent pharmacodynamic interaction is not known. Concomitant use of citalopram or escitalopram and pimozide is contraindicated.

Theophylline	CT	Co-administration of racemic citalopram (40 mg/day for 21 days) with the CYP1A2 substrate theophylline (single dose of 300 mg) did not affect the pharmacokinetics of theophylline	
Triazolam	CT	Combined administration of racemic citalopram (titrated to 40 mg/day for 28 days) and the CYP3A4 substrate triazolam (single dose of 0.25 mg) did not significantly affect the pharmacokinetics of either drug	
Warfarin	CT	Administration of racemic citalopram (40 mg/day for 21 days) did not affect either the pharmacokinetics or the pharmacodynamics (prothrombin time) of a single 25 mg dose of warfarin, a CYP3A4 and CYP2C9 substrate	

Legend: CT = Clinical Trial

DRUG-FOOD INTERACTION

Various scientific publications have acknowledged that the main components in grapefruit juice may act as CYP3A4 inhibitors. Escitalopram is also metabolized by other isoenzymes not affected by grapefruit juice, namely CYP2C19 and CYP2D6. Although there is a theoretical possibility of pharmacokinetic drug interactions resulting from co-administration of escitalopram with grapefruit juice, the onset of an interaction is considered unlikely.

DRUG-HERB INTERACTIONS

St-John's Wort: In common with other SSRIs and newer antidepressants, pharmacodynamic interactions between escitalopram and the herbal remedy St-John's Wort may occur and may result in undesirable side effects.

DRUG-LABORATORY TEST INTERACTIONS

Interactions with laboratory test have not been established.

DOSAGE AND ADMINISTRATION

DOSING CONSIDERATION

- **General: NRA-Escitalopram should be administered as a single oral daily dose, with or without food.**
- **NRA-Escitalopram is not indicated for use in children under 18 years of age (see WARNINGS AND PRECAUTIONS, Potential Association with Behavioural and Emotional Changes, Including Self-Harm).**

RECOMMENDED DOSE AND DOSAGE ADJUSTMENT

ADULTS

MAJOR DEPRESSIVE DISORDER

NRA-Escitalopram should be administered as a single oral dose of 10 mg daily. Depending on individual patient response, an increase in the dose to a maximum of 20 mg daily should be considered. Where initial sensitivity to adverse events may be a concern, escitalopram could be started at 5 mg daily and titrated upwards as tolerated.

OBSESSIVE COMPULSIVE DISORDER

NRA-Escitalopram should be administered as a single oral dose of 10 mg daily. Depending on individual patient response, an increase in the dose to a maximum of 20 mg daily should be considered. Where initial sensitivity to adverse events may be a concern, escitalopram could be started at 5 mg daily and titrated upwards as tolerated. During long-term therapy, the dosage should be maintained at the lowest effective level and patients should be periodically reassessed to determine the need to continue treatment.

TREATMENT OF PREGNANT WOMEN

The safety of escitalopram during pregnancy has not been established. Therefore, NRA-Escitalopram should not be used during pregnancy, unless, in the opinion of the physician, the expected benefits to the patient markedly outweigh the possible risk to the foetus.

Post-marketing reports indicate that some neonates exposed to SSRIs such as escitalopram and other newer antidepressants late in the third trimester have developed complications requiring prolonged hospitalization, respiratory support, and tube feeding (see **WARNINGS AND PRECAUTIONS**). When treating pregnant women with NRA-Escitalopram during the third trimester, the physician should carefully consider the potential risks and benefits of treatment. The physician may consider tapering NRA-Escitalopram in the third trimester.

ELDERLY PATIENTS

A longer half-life and decreased clearance have been demonstrated in the elderly. Initial dosage is 5 mg once daily. Depending on individual response and tolerance the dose may be increased to 10 mg daily.

RENAL IMPAIRMENT

No dosage adjustment is necessary for patients with mild or moderate renal impairment. Since no information is available on the pharmacokinetic or pharmacodynamic effects of either escitalopram or racemic citalopram in patients with severely reduced renal function (creatinine clearance < 30mL / min), NRA-Escitalopram should be used with caution in these patients.

HEPATIC IMPAIRMENT

Dosages should be restricted to the lower end of the dose range in patients with mild to moderate hepatic insufficiency. Accordingly, an initial single oral dose of 5 mg daily is recommended. Subsequently, the dose may be increased based on the patient's response and clinical judgement. A daily dose of 10 mg is the recommended maximum dose for most patients with hepatic impairment. No information is available about the pharmacokinetics of escitalopram in patients with severe hepatic impairment (Child-Pugh Criteria C). NRA-Escitalopram should be used with additional caution in patients with severe hepatic impairment.

CYP2C19 POOR METABOLIZERS

The metabolism of escitalopram is mainly mediated by CYP2C19. For patients who are known to be poor metabolizers with respect to CYP2C19, an initial dose of 5 mg daily is recommended. Depending on the individual response, the dose may be increased to a maximum of 10 mg.

LONG-TERM TREATMENT

During long-term therapy, the dosage should be maintained at the lowest effective level and patients should be periodically reassessed to determine the need to continue treatment.

SWITCHING PATIENTS TO OR FROM A MONOAMINE OXIDASE INHIBITOR (MAOI)

At least 14 days should elapse between discontinuation of a MAOI and initiation of therapy with NRA-Escitalopram. Similarly, at least 14 days should be allowed after stopping NRA-Escitalopram before starting a MAOI (see **CONTRAINDICATIONS**).

DISCONTINUATION OF ESCITALOPRAM TREATMENT

Symptoms associated with the discontinuation or dosage reduction of escitalopram have been reported. Patients should be monitored for these and other symptoms when discontinuing treatment or during dosage reduction (see **WARNINGS AND PRECAUTIONS** and **ADVERSE REACTIONS**).

A gradual reduction in the dose over several weeks rather than abrupt cessation is recommended whenever possible. If intolerable symptoms occur following a decrease in the dose or upon discontinuation of treatment, dose titration should be managed on the basis of the patient's clinical response (see **WARNINGS AND PRECAUTIONS** and **ADVERSE REACTIONS**).

CHILDREN

See Potential Association with Behavioural and Emotional Changes, Including Self-Harm under **PRECAUTIONS AND WARNINGS**.

MISSED DOSE

In the event that a dose is missed, the patient should take the next dose when it is due.

OVERDOSAGE

Clinical data on escitalopram overdose are limited and many cases involve concomitant overdoses of other drugs. In the majority of cases mild or no symptoms have been reported. Fatal cases of escitalopram overdose have rarely been reported with escitalopram alone (doses unknown); the majority of cases have involved multiple drug overdose. Doses up to 800 mg of escitalopram alone have been taken without any severe symptoms.

In clinical trials with racemic citalopram, there were no reports of fatal citalopram overdoses of up to 2000 mg. Post-marketing reports of drug overdoses involving racemic citalopram have included fatalities with citalopram alone. In many cases, details regarding the precise dose of racemic citalopram or combination with other drugs and/or alcohol are often lacking. However, three fatalities with known overdoses of racemic citalopram alone have been reported in the literature (doses of 2800 mg, 2880 mg, and 3920 mg), although survival has also been reported with overdoses of up to 5200 mg.

In comparing the data from racemic citalopram with that of escitalopram, it is important to be aware that the latter product is expected to have similar pharmacodynamic effects at a lower dose of the racemic product.

Fatal cases of serotonin syndrome have been reported in patients who took overdoses of moclobemide (Manerix[®]) and racemic citalopram. The plasma concentrations of moclobemide were between 16 and 90 mg / L (therapeutic range: 1 to 3 mg / L) and those of racemic citalopram between 0.3 and 1.7 mg / mL (therapeutic concentration: 0.3 mg / L). This indicates that a relatively low dose of citalopram, given with an overdose of moclobemide represents a serious risk for the patient.

Symptoms most often accompanying overdose of racemic citalopram included dizziness, sweating, nausea, vomiting, tremor, seizure and somnolence. In more rare cases, observed symptoms included confusion, loss of consciousness, convulsions, coma, sinus tachycardia, cyanosis, hyperventilation and rhabdomyolysis and ECG changes (including QTc prolongation, nodal rhythm, ventricular arrhythmia, and one possible case of Torsades de pointes).

MANAGEMENT OF OVERDOSE

As with racemic citalopram, there is no specific antidote to escitalopram. Treatment is symptomatic and supportive. Establish and maintain an airway to ensure adequate ventilation and oxygenation. Gastric lavage and use of activated charcoal should be considered as soon as possible after oral ingestion. Electrocardiogram and vital sign monitoring are recommended, along with general symptomatic and supportive measures.

Due to the large volume of distribution of escitalopram, forced diuresis, dialysis, haemoperfusion and exchange transfusion are unlikely to be of benefit.

In managing overdosage, the possibility of multiple drug involvement must be considered.

For management of a suspected drug overdose, contact your regional Poison Control Centre.

ACTION AND CLINICAL PHARMACOLOGY

Escitalopram (S-citalopram) is the active enantiomer of the racemic drug citalopram. *In vitro* and *in vivo* studies have suggested that escitalopram is a highly potent and selective serotonin reuptake inhibitor (SSRI), which acts by specific competitive inhibition of the membrane transporter of serotonin (5-hydroxytryptophan, 5-HT). In addition to its high affinity to the primary binding site, escitalopram also binds with a 1000 fold lower affinity to a secondary binding site on the serotonin transporter. The clinical significance of this binding has not been established.

Escitalopram has no or very low affinity for a series of receptors including 5-HT_{1A}, 5-HT₂, dopamine D₁ and D₂ receptors, α_1 , α_2 , β -adrenoreceptors, histamine H₁, muscarinic cholinergic, benzodiazepine, gamma aminobutyric acid (GABA) and opioid receptors. Escitalopram does not bind to, or has low affinity for various ion channels including Na⁺, Cl⁻, K⁺ and Ca⁺⁺ channels.

PHARMACOKINETICS

The single and multiple-dose pharmacokinetics of escitalopram are linear and dose-proportional in a dose range of 10 to 30 mg / day. Biotransformation of escitalopram is mainly hepatic with a mean

terminal half-life of about 27-32 hours. With once daily dosing, steady-state plasma levels are achieved within approximately 1 week. At steady state, the plasma concentration of escitalopram in young healthy subjects was approximately 2.6 times that observed after a single dose.

ABSORPTION AND DISTRIBUTION: Following the administration of an oral dose (10 mg or 20 mg) of escitalopram to healthy volunteers, peak plasma levels occur at about 4 hours after dosing. Absorption of escitalopram is expected to be almost complete after oral administration and is not affected by food. After a single oral administration of escitalopram 10 mg, the apparent volume of distribution of ($V_d, \beta, / F$) is about 12 L / kg to 26 L / kg. The binding of escitalopram to human plasma proteins is independent of drug plasma levels and average 55 %.

METABOLISM AND ELIMINATION: The plasma clearance following oral administration is about 0,6 L / min with approximately 7% due to renal clearance. Escitalopram is metabolized in the liver to S-demethylcitalopram (S-DCT) and to S-didemethylcitalopram (S-DDCT). In humans, unchanged escitalopram is the predominant compound in plasma. After multiple-dose administration of escitalopram, the mean plasma concentrations of the metabolites S-DCT and S-DDCT are usually 28-31% and <5% of the parent compound concentration, respectively. Results from in vitro studies suggest that the metabolites (S-DCT and S-DDCT) do not contribute significantly to the clinical actions of escitalopram.

In vitro studies using human liver microsomes indicated that the biotransformation of escitalopram to its demethylated metabolites depends primarily on CYP2C19 and CYP3A4 with a smaller contribution from CYP2D6. The apparent hepatic clearance of drug amounts to approximately 90% of the administered dose. Following oral administration of escitalopram, the fraction of drug recovered as escitalopram and the metabolite S-DCT is about 8% and 10% respectively.

CARDIAC SAFETY: See Section Post-Market Adverse Drug Reactions / Cardiac Disorders.

SPECIAL POPULATIONS

Elderly patients: Escitalopram pharmacokinetics in subjects older than 65 years of age was compared to younger subjects in a single/multiple-dose study (n=18 subjects ≥ 65). After a single dose, plasma escitalopram levels were similar in young and elderly subjects. At steady state in elderly subjects, escitalopram C_{max} , AUC and half-life values were increased by approximately 35, 50 and 50%, respectively, while the clearance values were decreased. In this population, lower doses and a lower maximum dose of NRA-Escitalopram are recommended (see **WARNINGS AND PRECAUTIONS AND DOSAGE AND ADMINISTRATION**).

Gender: In a multiple dose study of escitalopram oxalate (10 mg / day for 3 weeks) in 18 male (9 elderly and 9 young) and 18 female (9 elderly and 9 young) subjects, there were no differences in the weight-adjusted values of the area under the curve (AUC), C_{max} , and half-life between the male and the female subjects. No adjustment in dosage is recommended on the basis of gender difference.

Reduced Hepatic Function: In patients with mild to moderate hepatic impairment (Child-Pugh Criteria A and B), the half-life of escitalopram was approximately doubled (66 hours vs. 36 hours), and the exposure was about two-third higher than in subjects with normal liver function. Consequently, the doses in the lower end of the recommended range of NRA-Escitalopram should be used for patients with hepatic dysfunction. No information is available about the pharmacokinetics of escitalopram in patients with severe hepatic impairment (Child-Pugh Criteria C). NRA-Escitalopram

should be used with additional caution in patients with severe hepatic impairment (see **WARNINGS AND PRECAUTIONS AND DOSAGE AND ADMINISTRATION**).

Reduced Renal Function: No information is available about the pharmacokinetics of escitalopram in patients with reduced renal function. In n=7 patients with mild to moderate renal function impairment, oral clearance of racemic citalopram was reduced by 17% compared to normal subjects, with no clinically significant effect on the kinetics. No adjustment of dosage is recommended for such patients. At present no information is available about the pharmacokinetics of either escitalopram or racemic citalopram for the chronic treatment of patients with severely reduced renal function (creatinine clearance <30 mL / min) (see **WARNINGS AND PRECAUTIONS AND DOSAGE AND ADMINISTRATION**).

STORAGE AND STABILITY

Store at room temperature between 15°C to 30°C in a dry place.

DOSAGE FORMS, COMPOSITION AND PACKAGING

NRA-Escitalopram: Escitalopram Tablets USP contain escitalopram oxalate USP corresponding to 10 mg or 20 mg escitalopram, and the following non medicinal ingredients: colloidal anhydrous silica, croscarmellose sodium, hypromellose E5, Hypromellose E15, magnesium stearate, microcrystalline cellulose (Avicel PH 101), polyethylene glycol 400, purified talc and titanium dioxide (E171).

AVAILABILITY OF DOSAGE FORMS

NRA-Escitalopram (Escitalopram Tablets USP):

Each film-coated, White to off-white, oval, biconvex, film coated tablets debossed with '1' and '0' on either side of break line and plain on other side contains: escitalopram 10 mg (as escitalopram oxalate). Blister packages of 10 and 14. Bottle of 30, Bottle of 100 and Bottle of 500.

Each film-coated, White to off-white, oval, biconvex, film coated tablets debossed with '2' and '0' on either side of break line and plain on other side contains: escitalopram 20 mg (as escitalopram oxalate). Blister packages of 10. Bottle of 30, Bottle of 100 and Bottle of 500.

PART II: SCIENTIFIC INFORMATION

PHARMACEUTICAL INFORMATION

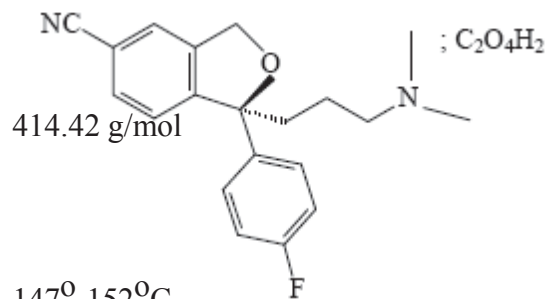
DRUG SUBSTANCE: ESCITALOPRAM OXALATE

Proper Name: Escitalopram oxalate

Chemical Name: S(+)-1-[3-(Dimethylamino)propyl]-1-(*p*-fluorophenyl)-1,3-dihydroisobenzofuran-5-carbonitrile, oxalate

Molecular Formulas: C₂₀H₂₁FN₂O, C₂H₂O₄

Structural Formula:



Molecular Weight:

Physical form: White material having no more

to off-white, crystalline than a slight odour.

Melting Point: 147^o-152^oC

pKa: 9.5 (microtitration)

Solubility: Water (sparingly soluble),
Ethanol (sparingly soluble),
Ethyl acetate (slightly soluble),
Methanol (freely soluble),
Dimethyl sulfoxide (freely soluble)
and Isotonic saline (soluble).

Partition Coefficient: Log P (octanol/phosphate buffer pH 7.4)-1.34

CLINICAL TRIALS

COMPARATIVE BIOAVAILABILITY STUDIES

Summary of studies establishing bioequivalence of Escitalopram Tablets USP 20 mg to ^{Pr}Ciprale^x® (escitalopram oxalate) Tablets 20 mg (Reference Listed Drug)

A double blind, balanced, randomized, two-treatment, two-period, two-sequence, single oral dose, crossover bioequivalence study of 1 x 20 mg Escitalopram USP Tablets of Nora Pharma Inc. and 1 x 20 mg ^{Pr}Ciprale^x® (escitalopram oxalate) Tablets 20 mg of Lundbeck Canada Inc., Canada in 25 healthy, adult, male subjects under fasting conditions.

Escitalopram (1 x 20 mg) tablets From measured data Geometric Mean** Arithmetic Mean (CV %)				
Parameter	Test*	Reference†	% Ratio of Geometric Means	90% Confidence Interval
AUC _{0-72h} (ng.h / mL)	970.217, 993.645 (23.3)	971.699, 1000.275 (25.0)	99.8	97.4 - 102.4
AUC _I (ng.h / mL)	1316.668, 1414.225 (40.6)	1333.611, 1424.517 (37.7)	98.7	95.5 - 102.0
C _{max} (ng / mL)	30.140, 30.462 (15.6)	30.846, 31.305 (19.0)	97.7	94.4 - 101.2
T _{max} (h) [§]	4.333 (2.500 - 8.000)	4.333 (2.000 - 7.000)		
T _½ (h) [€]	38.048 (40.8)	39.042 (34.4)		

**Expressed as Geometric Least Square Means

* Escitalopram Tablets USP 20 mg – Manufactured by: Nora Pharma Inc.

† Ciprale^x® Tablets 20 mg [Escitalopram oxalate] – by Lundbeck Canada Inc. Canada, were purchased in Canada

§ Expressed as the median (min - max) value

€ Expressed as the arithmetic mean (CV%) only

MAJOR DEPRESSIVE DISORDER (MDD)

The efficacy of escitalopram oxalate in the treatment of depression was established in three 8-week placebo-controlled, parallel groups, multi-centre studies in patients who met the DSM-IV criteria for major depression. Two of the studies included racemic citalopram as a treatment arm. The primary efficacy endpoint in all 3 studies was mean change from baseline to 8-week endpoint on the Montgomery Asberg Depression Rating Scale (MADRS), adjusted for effects of baseline score, treatment and centre. All three studies consisted of a 1-week single-blind placebo lead-in period, followed by an 8-week, double-blind treatment period.

ESCITALOPRAM FIXED-DOSE STUDIES

Study 1

A total of 377 primary care patients with major depressive disorder were treated with 10 mg / day escitalopram oxalate (N=188) or placebo (N=189). The 10 mg / day escitalopram oxalate treatment group showed significantly greater improvement than placebo on the adjusted MADRS mean change from baseline to 8-week end-point (-16.3 vs. -13.6, respectively).

Study 2

In another study, a total of 485 outpatients with major depressive disorder were treated with 10 mg escitalopram oxalate (N=118), 20 mg escitalopram oxalate (N=123), 40 mg racemic citalopram (N=125), or placebo (N=119) for 8 weeks. Both the 10 mg and 20 mg escitalopram oxalate treatment groups showed significantly greater improvement than placebo on the MADRS mean change from baseline to 8-week endpoint (-12.8 and -13.9 vs. -9.4, respectively).

ESCITALOPRAM FLEXIBLE-DOSE STUDY

Study 3

A total of 468 primary care patients with major depressive disorder were treated with 10-20 mg escitalopram oxalate (N=155), 20-40 mg racemic citalopram (N=159), or placebo (N=154) for 8 weeks. During the first four weeks of active treatment, all doses were fixed at 10 mg escitalopram oxalate or 20 mg racemic citalopram. A dose increase to 20 mg and 40 mg, respectively, was permitted from Week 4 onward. The escitalopram oxalate 10-20 mg treatment group showed significantly greater improvement than placebo on the adjusted MADRS mean change from baseline to 8-week end-point (-15.0 vs. -12.11, respectively).

ESCITALOPRAM LONGER TERM RELAPSE OBSERVATION STUDY

The efficacy of escitalopram oxalate in maintaining an antidepressant response in patients with major depressive disorder was demonstrated in a longer term study consisting of a 36-week placebo controlled relapse observation phase in responders of a preceding 8-week acute treatment phase. In a longer term trial, 274 patients meeting (DSM-IV) criteria for major depressive disorder, who had responded during an initial 8-week, open-label treatment phase with escitalopram oxalate 10 or 20 mg / day, were randomized to continuation of escitalopram oxalate at their same dose, or to placebo, for up to 36 weeks of observation for relapse. Response during the open-label phase was defined by having a decrease of the MADRS total score to ≤ 12 . Relapse during the double-blind phase was defined as an increase of the MADRS total score to ≥ 22 , or discontinuation due to insufficient clinical

response. Patients receiving continued escitalopram oxalate experienced a significantly longer time to relapse over the subsequent 36 weeks compared to those receiving placebo.

OBSESSIVE COMPULSIVE DISORDER (OCD)

Study 4

The efficacy of escitalopram oxalate in the treatment of Obsessive-Compulsive Disorder (OCD) was established in a multicenter 24-week placebo-controlled fixed-dose study (with efficacy assessments at Week 12 and Week 24) that compared the efficacy of 10 mg / day or 20 mg / day escitalopram oxalate with placebo in outpatients between 18 and 67 years of age who met the DSM-IV-TR criteria for OCD. An SSRI currently indicated for the treatment of OCD was included in the study as an active control. The primary efficacy endpoint was mean change from baseline to 12-week on the Yale-Brown Obsessive Compulsive Scale (Y-BOCS) total score.

A total of 455 outpatients with OCD were treated with 10 mg escitalopram oxalate (n=112), 20 mg escitalopram oxalate (n=114), SSRI (n=116) or placebo (n=113). At 12 weeks, escitalopram oxalate 20 mg / day and the active control SSRI showed significantly greater improvement than placebo (p=0.002 and p=0.014, respectively) on the mean change from baseline in the Y-BOCS total score (LOCF). Improvement in the 10 mg / day group was numerically, but not statistically, superior to the placebo group (p=0.052). The mean treatment differences relative to placebo were -1.97 and -3.21 for escitalopram oxalate 10 mg / day and 20 mg / day, respectively and -2.47 for the active control SSRI.

Secondary efficacy outcomes were supportive of the primary efficacy outcome. At Week 12 there were improvements in the CGI-Improvement (CGI-I) responder rate^a and the Sheehan Disability Scale functional impairment scores (social life, family life and work) with escitalopram oxalate and active SSRI control compared to placebo.

^a

For the CGI-Improvement, response in the OCD studies was defined as “much improved” or “very much improved”.

Study 5

The efficacy of escitalopram oxalate in maintaining an anti-obsessive response in patients with OCD was demonstrated in a long-term study in which 322 patients meeting the DSM-IV-TR criteria for OCD, who had responded during an initial 16-week, open-label treatment phase with escitalopram oxalate (10 or 20 mg / day), were randomized to continuation of escitalopram oxalate at their same dose, or to placebo, for 24 weeks.

Response during the open-label phase was defined by having a $\geq 25\%$ reduction from baseline in Y-BOCS total score. Non-responders left the study.

Relapse during the double-blind phase was defined as either an increase from randomization to any single visit in Y-BOCS total score of 5 points or more or an unsatisfactory treatment effect, as judged by the investigator. Patients who relapsed were withdrawn from the study. There were statistically significantly ($p \leq 0.001$) more relapses on placebo (52%) than on escitalopram oxalate (23%).

Secondary efficacy outcomes were supportive of the primary efficacy outcome. There were improvements in Clinical Global Impression of Improvement (CGI-I) total score and the Sheehan Disability Scale functional impairment scores (social life, family life and work) with escitalopram oxalate compared to placebo.

DETAILED PHARMACOLOGY

Escitalopram is the S (+) enantiomer of citalopram. At clinically relevant doses, the pharmacological activity of the racemic citalopram is mediated through the S (+) enantiomer. Tolerance to the inhibition of serotonin reuptake is not induced by long-term (up to 5 weeks) treatment of rats with escitalopram. No complete conventional battery of preclinical studies was performed with escitalopram since the bridging toxicokinetic and toxicological studies conducted on rats with escitalopram and racemic citalopram showed a similar profile. The pharmacodynamic and pharmacokinetic properties of escitalopram are shown to parallel those of the racemate citalopram.

ANIMAL DATA

IN VITRO EXPERIMENTS

Neuronal reuptake of serotonin, norepinephrine and dopamine

Escitalopram selectively blocks the reuptake of ^3H -5-HT in rat brain synaptosomes *in vitro* with an IC₅₀ value of 2.1 nM compared to 275 nM for the R-enantiomer and 3.9 nM for racemic citalopram. As suggested by these inhibitory potencies, escitalopram is expected to be two-fold more potent than racemic citalopram, the R-enantiomer being several fold less potent.

The effects of racemic citalopram, the S- and R-enantiomers and the corresponding demethylated metabolites (DCT, S-DCT and R-DCT, respectively) on accumulation of ^3H -5-HT into rat whole brain synaptosomes, ^3H -dopamine (DA) into rat striatal synaptosomes, and ^3H -norepinephrine (NE) into rat frontal and temporal cortices were compared.

The results show that escitalopram and racemic citalopram are both potent and selective 5-HT reuptake inhibitors with no effect on the reuptake of NE and DA. Although the N-demethylated DCT metabolites of escitalopram and racemic citalopram are also selective inhibitors of the 5-HT

reuptake, they are significantly less potent than the parent compounds. The didemethylated metabolites (DDCT) were devoid of 5-HT inhibitory potency.

Defining selectivity as the ration between NE and 5-HT reuptake inhibitory potency, escitalopram is considered to be the most selective serotonin reuptake inhibitor that has been developed for clinical use (NE/5-HT uptake of escitalopram vs. racemic citalopram = 1700 vs. 3400).

Effect of neurotransmitter receptors

Escitalopram has no or very low affinity for a series of receptors including 5-HT_{1A}, 5-HT₂, dopamine D₁ and D₂ receptors, α_1 -, α_2 -, β -adrenoreceptors, histamine H₁, muscarinic cholinergic, benzodiazepine, and opioid receptors; nor has it an action on MAO except at extremely high concentrations achievable only *in vitro*.

BEHAVIOURAL EFFECTS

Escitalopram has shown efficacy in several animal models predictive of antidepressant activities. Effects of escitalopram, racemic citalopram and R-citalopram in male mice were studied in the forced swim test. Escitalopram as well as citalopram dose-dependently reversed immobility induced by forced swimming, whereas R-citalopram was inactive.

A potent anxiolytic-like profile has been shown for escitalopram in animal models mimicking features of generalized anxiety (the two-compartment black and white box models in mice and rats) and panic anxiety (the foot shock-induced ultrasonic vocalisation model in adult rats).

The 5-HT precursors tryptophan, *d,l*-5-HTP and *l*-5HTP induce in mice a characteristic 5-HT syndrome (tremor, hyperactivity and abduction of the hind limbs). Individual behavioural changes are scored for each animal resulting in a total score that corresponds to a complete 5-HT syndrome. Concomitant acute treatment with a 5-HT reuptake inhibitor potentiates the behavioural response to the precursors. Table 9 below shows relative potencies (ED₅₀) of escitalopram, racemic citalopram and corresponding metabolites.

Table 9. Potentiation of 5-HTP-induced behavioural changes in mice. Effects of racemic citalopram and S- and R-enantiomers and the corresponding demethylated metabolites.

	<i>ESC</i>	<i>R-CIT</i>	<i>CIT</i>	<i>S-DCT</i>	<i>R-DCT</i>	<i>DCT</i>
5-HTP potentiation						
Mice, 30 min, SC	1.1	59	3.3	>50	>50	NT
<i>l</i>-5-htpp potentiation						
Mice, 30 min, SC	1.7	>48	1.8	NT	NT	NT
5-HT syndrome						
Mice, 30 min, SC	>6.0	>190	>49	>50	>50	NT
NT=not tested						

CARDIOVASCULAR STUDIES

Patch clamp experiments showed that escitalopram and racemic citalopram had some inhibitory effect on I_{Kr} and I_{Na} channels, and on cardiac L-type calcium currents, but only at concentrations in the micromolar range.

The electrophysiological effects of escitalopram, S-DDCT, R-DDCT, racemic citalopram, DDCT and other SSRIs have been examined in the Langendorff guinea pig heart model. From 0.5-2.5 μ M all SSRIs caused an increase in the PQ interval, accompanied by negative inotropic activity. None of the SSRIs tested nor S-DDCT had an effect on the QT interval, whereas R-DDCT and DDCT did prolong it at the highest concentrations of 2.5 μ M.

Doses of escitalopram of 1, 3 or 6 mg / kg were infused i.v. over 2 hours into conscious dogs. The serum levels reached at the end of the infusion did not induce convulsive attacks. Even the highest dose of escitalopram (corresponding to 15-21 times the C_{max} in human at a dose of 20 mg / day) was associated with a minor variation in the PR interval, which was considered to be within the physiological limits. The QT interval was not affected. There was no particular action on the ECG apart from some changes in the morphology of the precordial T waves, which has been seen with many other CNS drugs.

RESPIRATORY STUDIES

Escitalopram caused moderate acidosis (blood pH fell from about 7.34 to 7.21) in conscious dogs following intravenous administration. An intravenous dose of racemic citalopram decreases arterial blood pH by approximately 0.07. Escitalopram does not affect the respiratory rate in dogs.

PHARMACOKINETICS AND METABOLISM IN ANIMAL MODELS

Animal models have shown that the pharmacokinetics and metabolism of escitalopram does not depend on whether it is given on its own or together with the R-enantiomer in the racemate. In addition, results of studies carried out *in vitro* and *in vivo* show lack of inter-conversion between the two enantiomers. It is considered appropriate, therefore, to combine the kinetics and other information about escitalopram when given on its own with the other knowledge available of the body's handling and responses to the racemic citalopram.

ABSORPTION

Escitalopram appears to be readily absorbed. Similar to racemic citalopram, the kinetics of escitalopram in rats and dogs are characterized by rapid absorption, with T_{max} ranging from approximately 0.5-2 hours with difference due to species-specific first pass metabolism. Higher serum concentrations of R-citalopram were seen in both humans and rats after administration of racemic citalopram compared to escitalopram. Comparisons between studies indicate a high absolute bioavailability.

DISTRIBUTION

The lipophilicity of escitalopram is assumed to be a major determinant of its distribution pattern in tissues. Based on previous results on the distribution of racemic citalopram, it is assumed that escitalopram will follow two-compartment distribution characteristics. High levels of racemic citalopram and demethylated metabolites were generally found in the lungs, liver, and kidneys, and lower levels in the heart and brain. The apparent volume of distribution for racemic citalopram was approximately 10 to 25 L / kg. Similarly, the apparent volume of distribution ($V_{d\beta} / F$) of escitalopram after oral administration to human is about 12 to 26 L / kg. Racemic citalopram and the metabolites were shown to pass the placental barrier and were excreted in small amounts in milk of lactating mice.

The plasma protein binding of escitalopram is low with an average of 55%, compared to an average of 75% for racemic citalopram. Both in mice and dogs, tissue concentrations of parent racemic citalopram as well as those of the demethylated metabolites increased with increasing doses, although not necessarily in a dose-related manner. Levels of the didemethylated metabolites were higher in dogs than in mice in relation to the parent drug, resulting in smaller citalopram / didemethylcitalopram ratios in the dog, particularly in the heart and kidneys.

METABOLISM

As with racemic citalopram, the metabolism of escitalopram in animal species is assumed to be qualitatively the same as in humans. The demethylated metabolites of escitalopram (S-DCT, S-DDCT) have been measured in rats, dogs and humans. Escitalopram has been shown to be demethylated qualitatively by CYP3A4, 2C19 and 2D6. Escitalopram and S-DCT (main metabolite in humans and rats) are weak or negligible inhibitors of CYP1A2, 2C9, 2C19, 2E1, and 3A4. The metabolite S-DDCT (main metabolite in dogs) is a moderate inhibitor of CYP2C9 and 2C19. However, this is unlikely to be of clinical importance due to the low plasma levels of S-DDCT achieved clinically in humans. Alternatively, the nitrogen groups may be oxidised to form the N-oxide metabolite. The deamination leads to the propionic acid metabolite. Both parent and metabolites are partly excreted as glucuronides.

ELIMINATION

Following the administration of ^{14}C -labelled citalopram by oral gavage to rats, maximum excretion in urine occurred at 2-8 hours and in faeces at 8-24 hours. At a dose of 20 mg / kg, approximately equal amounts of the dose were excreted in the urine and feces, with total recovery being about 80% of the dose. In the 4- and 13-week toxicity studies the apparent serum elimination half-life of escitalopram was generally short: about 0.8-5.5 hours in rats and about 48 hours in dogs. The apparent increase of the elimination half-life in the dog with increasing doses is presumably due to the saturation of the first-pass metabolism. This is consistent with the results obtained with racemic citalopram. Of the three compounds (escitalopram, S-DCT, S-DDCT), S-DDCT appears to have the longest elimination half-life (about 8-36 hours) in animals.

TOXICOKINETICS

The pharmaco- / toxicokinetics of escitalopram observed in the 4- and 13-week studies performed in the rat appeared comparable after administration of either escitalopram or racemic citalopram. Plasma levels were also determined in several toxicity studies. The table below summarizes the toxicokinetic parameters from a 13-week study in rats relative to pharmacokinetic parameters in humans.

Study/ Species	Dose ESC (mg/kg/day) oral route	Gendre	C _{max} (nmol/l)	AUC _{0-t} (h·nmol/l)	Ration of AUC values animal/human			
					10 mg / day		20 mg / day	
					C _{max}	AUC _{0-t}	C _{max}	AUC _{0-t}
ESCITALOPRAM								
13-week rats (day 90)	10	M	181	643	2.9x	0.6x	1.4x	0.3x
	40		<i>1076</i>	<i>6552</i>	<i>17x</i>	<i>5.9x</i>	<i>8.2x</i>	<i>2.9x</i>
	120 ¹		n.d.	n.d.	n.d.	n.d.	n.d.	n.d.
	10	F	775	1199	12x	1.1x	5.9x	0.5x
	40		<i>1383</i>	<i>9165</i>	<i>22x</i>	<i>8.3x</i>	<i>11x</i>	<i>4.1x</i>
	120 ¹		2066	19609	33x	18x	16x	8.7x
multidose humans² (day 24)	10 mg / day	both	63	1109	-	-	-	-
	20 mg / day ³		131	2250				
S-DCT								
13-week rats (day 90)	10	M	305	1094	13x	2.2x	6.9x	1.2x
	40		<i>1383</i>	<i>17843</i>	<i>58x</i>	<i>36x</i>	<i>31x</i>	<i>20x</i>
	120 ¹		n.d.	n.d.	n.d.	n.d.	n.d.	n.d.
	10	F	302	739	13x	1.5x	6.9x	0.8x
	40		<i>734</i>	<i>10232</i>	<i>31x</i>	<i>21x</i>	<i>17x</i>	<i>12x</i>
	120 ¹		1585	28668	66x	59x	36x	32x
multidose humans²	10 mg / day	both	24	489	-	-	-	-
	20 mg / day ³		44	883				
S-DDCT								
13-week rats (day 90)	10	M	48	367	16x	6.1x	13x	5.0x
	40		<i>316</i>	<i>5123</i>	<i>105x</i>	<i>85x</i>	<i>85x</i>	<i>69x</i>
	120 ¹		n.d.	n.d.	n.d.	n.d.	n.d.	n.d.
	10	F	38	315	13x	5.3x	10x	4.3x
	40		<i>149</i>	<i>2510</i>	<i>50x</i>	<i>42x</i>	<i>40x</i>	<i>34x</i>
	120 ¹		395	8535	132x	142x	107x	115x
multidose humans² (day 24)	10 mg / day	both	3.0	60	-	-	-	-
	20 mg / day ³		3.7	74				
¹ The 120 mg / kg / day dose was reduced to 100 mg / kg / day for males on day 13 and further for both genders to 80 mg / kg / day during Week 6. ² n=17 (10 mg) or n=16 (30 mg) ³ The 20 mg / day dose is estimated from the mean of the 10 and 30 mg / day results. Numbers in <i>italics</i> refer to the NOEL (40 mg / kg / day) with respect to cardiac effects. n.d.: not determined								

Exposure margins of approximately up to 10 times the maximum therapeutic dose for the parent drug and up to about 30-140 times for the metabolites have been produced in the various toxicity tests of escitalopram. The data indicate that the rat resembles man most closely in its metabolism. The R / S ratio in rats for citalopram and the metabolites, DCT and DDCT, is comparable to that found in humans. However, there are some quantitative differences in the pharmacokinetics and metabolism of citalopram and escitalopram in man and animals. The most important is the lesser degree of first pass metabolism in humans relative to animals, which results in proportionately lower circulating levels of S-DCT and S-DDCT in humans.

TOXICOLOGY

The studies on escitalopram were performed in one species, the rat. This species was considered the most appropriate as it has a R / S ratio for citalopram and the metabolites, DCT and DDCT, that is comparable to that found in humans. In addition, the rat has been used as an animal model to demonstrate enantiomeric stereoselectivity for SSRI pharmacological action.

Significant findings from toxicological studies with racemic citalopram in rats, mice and dogs are also described in this section.

ACUTE TOXICITY

After gavage administration, escitalopram 500 mg / kg caused deaths, prostration and tremors, 250 mg / kg had no effect. Citalopram also had no effect at 250 mg / kg, but 500 and 1000 mg / kg were both associated with some deaths and similar clinical signs.

Bolus IV injection of escitalopram at 22 mg / kg led to breathing difficulties within 30 minutes and 30 mg / kg caused convulsions and deaths. Citalopram had similar effects at those dose levels.

SUBCHRONIC AND REPEATED DOSE TOXICITY

Comparative 4- and 13-week and bridging oral tests have been conducted with escitalopram and racemic citalopram in the rat. A separate 60-day test was also carried out using the rat as a model.

In the 4-week experiment, the highest dose of both drugs (60 mg / kg / day) led to small retardation in weight gain, slight changes in liver function and phospholipidosis in various tissues. At a dose of 60 mg / kg / day, the signs of phospholipidosis were more marked in animals given racemic citalopram.

In the 13-week toxicity experiments in the rat, it was demonstrated that the pattern of toxic actions of escitalopram was similar to that of citalopram. Toxic actions mainly comprised hepatic enlargement and inflammation of the myocardium at high dose levels, plus typical phospholipidosis seen with many cationic amphiphilic medicines. There were also clinical signs including reduced weight gain, sedation and trembling. The NOEL was about 5-10 mg / kg / day for both compounds.

Cardiotoxicity, Including Inflammation and Congestive Heart Failure

In the bridging study both escitalopram (80 mg / kg / day) and citalopram (160 mg / kg / day) were found to induce cardiotoxicity in the rat under the conditions of the study, although a higher incidence of changes was recorded in animals treated with escitalopram (2 out of 20 animals vs. 3 out of 40 animals, respectively).

The changes induced by both compounds were initially and mainly inflammatory (myocarditis) affecting the myocardium and atria in particular, and included congestive heart failure.

Male and female rats dosed with escitalopram at the high doses are affected to the same extent by myocarditis, although onset of lesions appears to be more rapid in males than in females.

The cardiotoxicity seemed to correlate with peak plasma concentrations rather than to systemic exposures (AUC). Peak plasma concentrations at no-effect-levels were approximately 8-fold greater than those achieved in clinical use, whereas AUC for escitalopram was only 3-4 fold higher than the exposure achieved in clinical use. The findings may be secondary to the effect on biogenic amines, which results in reduction in coronary flow and potential ischaemia. However, an exact mechanism of cardiotoxicity in rats is not clear. Clinical experience with racemic citalopram, and the clinical trials experience with escitalopram do not indicate that these findings have a clinical correlate.

Retinal Degeneration/Atrophy in Rats Given Racemic Citalopram

In the rat carcinogenicity study, a slight, dose-related increase in lens opacity was seen, affecting males only. In addition, increased incidence / severity of retinal degeneration / atrophy was seen in the high-dose group (80 mg / kg / day). The incidence was higher in females, however, more female than male rats survived the study. It was concluded by an independent pathologist that the retinal changes were most likely related to drug-induced pupillary dilatation (mydriasis), which increased the risk of retinal damage in the already light-sensitive albino rat.

Convulsions and Death in Dogs Given Racemic Citalopram

Toxicity studies in dogs revealed that citalopram administration led to fatal ventricular arrhythmias. Consequently, studies were undertaken to elucidate the mechanism of this effect and to determine its relevance to humans.

The studies have shown that (1) i.v. infusion of citalopram, at a dose of 20 mg / kg, led to convulsions. The blood levels of citalopram were 1950 ng / mL at this dose. In the presence of diazepam, also infused intravenously, higher doses of citalopram could be infused, namely up to 70 mg / kg (6800 ng / mL). (2) Intravenous infusion of the didemethyl metabolite of citalopram caused QT prolongation in a dose range of 5 to 22 mg / kg. The blood levels of the metabolite were 300 ng / mL at the 5 mg / kg dose. The QT prolongation was dose-dependent. (3) When citalopram, 20 mg / kg, and didemethylcitalopram, 5 mg / kg, were infused concomitantly (in the presence of diazepam in order to prevent convulsions), 5 out of 9 dogs died due to ventricular fibrillation. At these doses, the plasma levels of citalopram and didemethylcitalopram were 1950 ng / mL and 300 ng / mL, respectively.

As shown in the table below, there is a substantial difference in the plasma levels of citalopram and its metabolite in dogs and in humans at the recommended therapeutic doses.

Treatment	Dog ventricular fibrillation	Patients at steady state after a 60 mg/day dose of citalopram
citalopram, 20 mg/kg plus didemethylcitalopram, 5 mg/kg	1950 ng / mL 300 ng / mL	121 ng / mL 6.2 ng / mL

In summary the safety profile of escitalopram is similar to racemic citalopram, other than a higher incidence of cardiac inflammation at proportional doses. Further, the clinical use of escitalopram is supported by the extensive clinical safety experience with the SSRIs in general and racemic citalopram in particular.

The No Effect Level in rats is 40 mg / kg / day PO, excluding phospholipidosis as observed with many cationic amphiphilic medicines. At this dose level the C_{max} plasma levels of escitalopram in the rat during a 13-week study are 1076-1383 nM, i.e. approximately 8-11 fold the human exposure of 131 nM following repeated dosing at the maximum recommended dose of 20 mg / day.

REPRODUCTION TOXICITY

When racemic citalopram was administered orally to 16 male and 24 female rats prior to and throughout mating and gestation at doses of 16, 32, 48 and 72 mg / kg / day, mating was decreased at all doses and fertility was decreased at dose ≥ 32 mg / kg / day. Gestation duration was increased at 48 mg / kg / day.

Tests of the maternal and foetal toxicity and the peri- and post-natal toxicity of escitalopram were performed in rats. One high dose of racemic citalopram was included for comparison.

In an embryo-fetal developmental toxicity study with escitalopram (56, 112 or 150 mg / kg / day and racemic citalopram (70 mg / kg / day) in female rats during the period of organogenesis embryo-foetal effects (reduced foetal body weight and delays in ossification) were found only at doses ≥ 112 mg / kg / day (approximately ≥ 56 times the maximum recommended human dose of 20 mg / day escitalopram on a body surface area [mg / m²] basis). Similar effects were seen with racemic citalopram. These doses were also associated with maternal toxicity.

In a previous separate embryo-foetal developmental toxicity study with racemic citalopram embryo-foetal effects in terms of decreased foetal growth and survival, an increased incidence of foetal abnormalities (including cardiovascular and skeletal defects, and delays in ossification) were noted at 112 mg / kg / day (approximately 18 times the maximum recommended human dose of 60 mg / day citalopram on a body surface area [mg / m²] basis).

In an embryo-fetal developmental toxicity study with racemic citalopram (0.8, 3.2 or 12.8 mg / kg / day in female rabbits during the period of organogenesis no effects on embryo-foetal development were noted. The NOEL for maternal toxicity was 3.2 mg / kg / day and 12.8 mg / kg / day for developmental toxicity.

When female rats were orally treated with escitalopram (6, 12, 24, or 48 mg / kg / day) or racemic citalopram (12 or 48 mg / kg / day) during pregnancy and through weaning, the high doses were associated with increased offspring mortality in the first 4 days and persistent offspring growth retardation at 48 mg / kg / day for both compounds. The NOEL for maternal and reproductive toxicity of citalopram was 12 mg / kg / day. The corresponding NOEL and NOAEL for escitalopram for reproductive and maternal effects were 24 mg / kg / day, which is approximately 12 times the maximum recommended human dose on a mg / m² basis.

MALE FERTILITY

Animal data have shown that some SSRIs induce a reduction of fertility index and pregnancy index, reduction in number in implantation and abnormal sperm at exposure well in excess of human exposure. Citalopram was further shown to be genotoxic to mouse germ cells at the recommended human doses after 4 weeks of chronic exposure, resulting in increased sperm DNA strand breaks, aberrant primary spermatocytes and oxidative DNA damage. No animal data related to this aspect are available for escitalopram.

MUTAGENIC POTENTIAL

An extensive battery of *in vitro* and *in vivo* tests of racemic citalopram has been conducted. Racemic citalopram did not show mutagenic activity in most of the *in vitro* tests (Ames Salmonella assay; chromosome aberration assay in cultured human lymphocytes; gene mutation assay in cultured mouse lymphoma L5178Y) and *in vivo* tests (micronucleus test; unscheduled DNA synthesis). However, racemic citalopram was mutagenic in the *in vitro* bacterial reverse mutation assay (Ames test) in 2 of 5 bacterial strains (Salmonella TA98 and TA1537) in the absence of metabolic activation. Racemic citalopram was clastogenic in the *in vitro* Chinese hamster lung cell assay, in the presence and absence of metabolic activation.

CARCINOGENICITY

Comprehensive carcinogenicity tests of racemic citalopram were done in the mouse and rat. Racemic citalopram showed no evidence of carcinogenic potential in the NMRI / BOM strain of mice at daily doses of 40-240 mg / kg (1.5 years) and in the COBS WI strain of rats at 8-80 mg / kg (2 years) other than an increased incidence of small intestine carcinoma in rats treated with 8 and 24 mg / kg / day of racemic citalopram. The latter doses are approximately equivalent to a dose of escitalopram 2-6 times the maximum recommended human daily dose based on mg / m² basis. No such effects were observed in rats treated with a 80 mg / kg / day dose. On the same grounds as used previously, it can be concluded that escitalopram is not carcinogenic.

REFERENCES

1. Areberg J, Christophersen JS, Poulsen MN, *et al.* The pharmacokinetics of escitalopram in patients with hepatic impairment. *AAPS Journal* 2006; 8(1): E14-E19
2. Attia SM and Bakheet SA. Citalopram at the recommended human doses after long-term treatment is genotoxic for male germ cell. *Food and Chemical Toxicity*, 2013; 53: 281-285.
3. Burke WJ, Gergel I, Bose, A. Fixed-dose trial of the single isomer SSRI escitalopram in depressed outpatients. *J Clin Psychiatry* 2002; 63: 331-336.
4. Chen F, Larsen MB, Neubauer HA, Sánchez C, Plenge P, Wiborg O. Characterization of an allosteric citalopram-binding site at the serotonin transporter. *J Neurochem* 2005a; 92: 21-28.
5. Chen F, Larsen MB, Sánchez C, Wiborg O. The S-enantiomer of R,S-citalopram, increases inhibitor binding to the human serotonin transporter by an allosteric mechanism. Comparison with other serotonin transporter inhibitors. *Eur Neuropsychopharmacol* 2005b; 15: 193-198.
6. Dalgaard I, Larsen C. Metabolism and excretion of citalopram in man: identification of O-acyl and N-glucuronides. *Xenobiotica* 1999; 29:1033-1041.
7. Fineberg, N.A., *et al.*, Escitalopram prevents relapse of obsessive-compulsive disorder, *European Neuropsychopharmacology* (2007), 17: 430-439
8. Herrlin K, Yasui-Furukori N, Tybring G, Widén J, Gustafsson LL, Bertilsson L. Metabolism of citalopram enantiomers in CYP2C19/CYP2D6 phenotyped panels of healthy Swedes. *Br J Clin Pharmacol.* 2003; 56(4): 415-421.
9. Hindmarch I, Kimber S, Cockle SM. Abrupt and brief discontinuation of antidepressant treatment: effects on cognitive function and psychomotor performance. *Int Clin Psychopharmacol.* 2000; 15:305-318.
10. Hyttel J, Bogeso KP, Perregaard J, Sánchez C. The pharmacological effect of citalopram resides in the (S)-(+)-enantiomer. *J Neural Transm* 1992; 88(2):157-160.
11. Joffe P, Larsen FS, Pedersen V, Ring-Larsen H, Aaes-Jorgensen T, Sindhu J. Single-dose pharmacokinetics of citalopram in patients with moderate renal insufficiency or hepatic cirrhosis compared with healthy subjects. *Eur J Clin Pharmacol* 1998; 54:237-242.
12. Kerr JS, Hindmarch I. Citalopram and other antidepressants: comparative effects on cognitive function and psychomotor performance. *J Serotonin Res* 1996; 3:123-129.
13. Lader M, Melhuish A, Frcka G, Fredericson Overo K, Christensen V. The effects of citalopram in single and repeated doses and with alcohol on physiological and psychological measures in healthy subjects. *Eur J Clin Pharmacol* 1986; 31:183-190.

14. Lepola UM, Loft H, Reines EH. Escitalopram (10-20 mg/day) is effective and well tolerated in a placebo-controlled study in depression in primary care. *Int Clin Psychopharmacol* 2003;18:211-217.
15. Luchini D, Morabito G, Centini, F. Case report of a fatal intoxication by citalopram. *Am J Forensic Med Pathol* 2005 26(4) 352-354.\
16. Malling D, Poulsen MN, Søgaard B. The effect of cimetidine or omeprazole on the pharmacokinetics of escitalopram in healthy subjects. *Br J Clin Pharmacol* 2005; 60:287-290.
17. Olesen OV, Linnet K. Studies on the stereoselective metabolism of citalopram by human liver microsomes and cDNA-expressed cytochrome P450 enzymes. *Pharmacology* 1999;59:298-309.
18. Owens MJ, Knight DL, Nemeroff C. Second generation SSRIs: human monoamine transporter binding profile of escitalopram and r-fluoxetine. *Biol Psychiatry* 2001; 50(5): 345-350.
19. Patris M, Bouchard JM, Bougerol T, Charbonnier JF, Chevalier JF, Clerc G, Cyran C, Van Amerongen P, Lemming O, Hopfner Petersen HE. Citalopram versus fluoxetine: a double-blind, controlled, multicentre, phase III trial in patients with unipolar major depression treated in general practice. *Int Clin Psychopharmacol* 1996; 11:129-136.
20. Pirker W, Asenbaum S, Kasper S, Walter H, Angelberger P, Koch G, Pozzera A, Deecke L, Podreka I, Brücke T. β -Cit SPECT demonstrates blockade of 5HT-uptake sites by citalopram in the human brain *in vivo*. *J Neural Trans* 1995; 100:247-256.
21. Priskorn M, Sidhu JS, Larsen F, Davis JD, Khan AZ, Rolan PE. Investigation of multiple dose citalopram on the pharmacokinetics and pharmacodynamics of racemic warfarin. *Br J Clin Pharmacol* 1997; 44:199-202.
22. Rapaport M, Bose A, Zheng H. Escitalopram continuation treatment prevents relapse of depressive episodes. *J Clin Psychiatry* 2004; 65 (1): 44-49.
23. Rampono J, Kristensen JH, Hackett LP, Paech M, Kohan R, Ilett KF. Citalopram and demethylcitalopram in human milk; distribution, excretion and effects in breast fed infants. *Br J Clin Pharmacol* 2000; 50:263-268.
24. Rochat B, Amey M, Gillet M, Meyer UA, Baumann P. Identification of three cytochrome P450 isozymes involved in N-demethylation of citalopram in human liver microsomes. *Pharmacogenetics* 1997; 7:1-10.
25. Rochat B, Kosel M, Boss G, Testa B, Gillet M, Baumann P. Stereoselective biotransformation of the selective serotonin reuptake inhibitor citalopram and its demethylated metabolites by monoamine oxidases in human liver. *Biochem Pharmacol* 1998; 56:15-23.
26. Sanchez C. Serotonergic mechanisms involved in the exploratory behaviour of mice in a fully automated two-compartment black and white text box. *Pharmacol Toxicol* 1995; 77(1):71-78.

27. Sanchez C, Meier E. Behavioral profiles of SSRIs in animal models of depression, anxiety and aggression. Are they all alike? *Psychopharmacology* 1997; 129(3):197-205.
28. Sidhu J, Priskorn M, Poulsen M, Segonzac A, Grollier G, Larsen F. Steady-state pharmacokinetics of the enantiomers of citalopram and its metabolites in humans. *Chirality* 1997; 9:686-692.
29. Sindrup SH, Brosen K, Hansen MG, Aaes-Jorgensen T, Overo KF, Gram LF. Pharmacokinetics of Citalopram in relation to the sparteine and the mephenytoin oxidation polymorphisms. *Ther Drug Monit* 1993; 15:11-17.
30. Stein DJ, Andersen EW, Tonnoir B, Fineberg N. Escitalopram in obsessive-compulsive disorder: a randomized, placebo-controlled, paroxetine-referenced, fixed-dose, 24-week study. *Curr Med Res Opin* 2007; 23 (4): 701-711
31. Von Moltke LL, Greenblatt DJ, Grassi JM, Granda BW, Venkatakrishnan K, Duan SX, Fogelman SM, Harmatz JS, Shader RI. Citalopram and desmethylcitalopram in vitro: Human cytochromes mediating transformation, and cytochrome inhibitory effects. *Biol Psychiatry* 1999;46:839-849
32. Wade A, Michael Lemming O, Bang Hedegaard K. Escitalopram 10 mg/day is effective and well tolerated in a placebo-controlled study in depression in primary care. *Int Clin Psychopharmacol* 2002; 17: 95-102.
33. Product Monograph of CipraleX[®], Submission Control Number 192637, Date of revision: June 09, 2016

PART III: CONSUMER INFORMATION

**^{Pr}NRA-ESCITALOPRAM
Escitalopram Tablets USP**

10 mg and 20 mg escitalopram (as escitalopram oxalate)

This leaflet is part III of a three-part “Product Monograph” published when NRA-Escitalopram was approved for sale in Canada and is designed specifically for Consumers. Please read this information before you start to take your medicine. Keep the leaflet while you are taking NRA-Escitalopram as you may want to read it again. This leaflet is a summary and will not tell you everything about NRA-Escitalopram. Contact your doctor or pharmacist if you have any questions about the drug. Always keep medicines out of the reach of children.

ABOUT THIS MEDICATION

What is the medication used for:

NRA-Escitalopram has been prescribed to you by your doctor to relieve your symptoms of depression or obsessive compulsive disorder. **Treatment with these types of medications is most safe and effective when you and your doctor have good communication about how you are feeling.**

What it does:

NRA-Escitalopram belongs to a group of medicines known as antidepressants, more specifically to the family of medicines called SSRIs (Selective Serotonin Reuptake Inhibitors).

NRA-Escitalopram is thought to work by increasing the levels of a chemical in the brain called serotonin (5-hydroxytryptamine). Disturbances in the serotonin-system are considered an important factor in the development of depression and related diseases.

When it should not be used:

- Do not use NRA-Escitalopram at the same time as pimozone.
- Do not use NRA-Escitalopram if you are currently or have recently taken monoamine oxidase antidepressants (e.g. phenelzine sulphate, moclobemide).
- Do not take NRA-Escitalopram if you are allergic to it, or to any of the components of its formulation (for list of components see the section on “What NRA-Escitalopram contains”).
- Stop taking NRA-Escitalopram and contact your doctor immediately if you experience an allergic reaction or any severe side effect.

- Do not use NRA-Escitalopram if you have been diagnosed with a congenital long QT syndrome

What the medicinal ingredient is:

Escitalopram oxalate

What the non-medicinal ingredients are:

NRA-Escitalopram (Escitalopram Tablets USP): Colloidal Anhydrous Silica, Croscarmellose Sodium, Hypromellose E5, Hypromellose E15, Magnesium Stearate, Microcrystalline cellulose (Avicel PH 101), Polyethylene Glycol 400, Purified Talc & Titanium dioxide (E171)

What dosage forms it comes in:

NRA-Escitalopram 10 mg: Each film-coated, White to off-white, oval, biconvex, film coated tablets debossed with ‘1’ and ‘0’ on either side of break line and plain on other side contains: escitalopram 10 mg (as escitalopram oxalate) in blister packs or bottles.

NRA-Escitalopram 20 mg: Each film-coated, White to off-white, oval, biconvex, film coated tablets debossed with ‘2’ and ‘0’ on either side of break line and plain on other side contains: escitalopram 20 mg (as escitalopram oxalate) in blister packs or bottles.

WARNINGS AND PRECAUTIONS

Treatment with these types of medications is most safe and effective when you and your doctor have good communication about how you are feeling.

NRA-Escitalopram is not for use in children under 18 years of age.

New or Worsened Emotional or Behavioural Problems

Particularly in the first few weeks or when doses are adjusted, a small number of patients taking drugs of this type may feel worse instead of better, they may experience new or worsened feelings of agitation, hostility, anxiety, or thoughts about suicide, or harm to others. Suicidal thoughts and actions can occur in any age group but may be more likely in patients 18 to 24 years old. Should this happen to you, or to those in your care, **consult your doctor immediately**. Close observation by a doctor is necessary in this situation. **Do not discontinue your medication on your own.**

You may be more likely to think like this if you have previously had thoughts about harming yourself.

You may find it helpful to tell a relative or close friend that you are depressed, and ask them to read this leaflet. You might ask them to tell you if they think your depression is getting worse, or if they are worried about changes in your behaviour.

Effects on Pregnancy and Newborns

If you are already taking / using NRA-Escitalopram and have just found out that you are pregnant, you should talk to your doctor immediately. You should also talk to your doctor if you are planning to become pregnant.

Possible complications at birth (from taking any newer antidepressant, including NRA-Escitalopram):

Post-marketing reports indicate that some newborns whose mothers took an SSRI (Selective Serotonin Reuptake Inhibitor) such as NRA-Escitalopram or other newer antidepressant during pregnancy have developed complications at birth requiring prolonged hospitalisation, breathing support and tube feeding. Reported symptoms include: feeding and / or breathing difficulties, bluish skin, seizures, body temperature changes, vomiting, low blood sugar, tense or overly relaxed muscles, vivid reflexes, tremor, jitteriness, irritability, lethargy, sleepiness, sleeping difficulties and constant crying. In most cases, the newer antidepressant was taken during the third trimester of pregnancy. These symptoms are consistent with either a direct adverse effect of the antidepressant on the baby, or possibly a discontinuation syndrome caused by sudden withdrawal from the drug. These symptoms normally resolve over time. However, if your baby experiences any of these symptoms, contact your doctor as soon as you can.

Persistent Pulmonary Hypertension (PPHN) and newer antidepressants:

When taken during pregnancy, particularly in the last 3 months of pregnancy, medicines like NRA-Escitalopram may increase the risk of a serious lung condition in babies, called persistent pulmonary hypertension of the newborn (PPHN), that causes breathing difficulties in newborns soon after birth, making the baby breathe faster and appear bluish. These symptoms usually begin during the first 24 hours after the baby is born. If this happens to your baby you should contact your doctor immediately.

If you are pregnant and taking an SSRI, or other newer antidepressant, you should discuss the risks and benefits of the various treatment options with your doctor. It is very important that you do NOT stop taking these medications without first consulting your doctor.

Risk of Bone Fractures:

Taking NRA-Escitalopram may increase your risk of breaking a bone if you are elderly or have osteoporosis or have other major risk factors for breaking a bone. You should take extra care to avoid falls especially if you get dizzy or have low blood pressure.

Angle-closure Glaucoma:

NRA-Escitalopram can cause dilation of the pupil which may trigger an acute glaucoma attack in an individual with narrow ocular angles. Having your eyes examined before you take NRA-Escitalopram could help identify if you are

at risk of having angle-closure glaucoma, Seek immediate medical attention if you experience:

- eye pain
- changes in vision
- swelling or redness in or around the eye.

Before you use NRA-Escitalopram, tell your doctor:

- All your medical conditions, including heart problems, history of seizures, manic-depressive illness, liver or kidney disease, or diabetes
- You have a bleeding disorder or have been told that you have low platelets
- If you have QT / QTc prolongation or a family history of QT / QTc prolongation
- If you have a personal history of fainting spells
- If you have a family history of sudden cardiac death at < 50 years
- If you have electrolyte disturbances (e.g., low blood potassium, magnesium, or calcium levels) or conditions that could lead to electrolyte disturbances (e.g., vomiting, diarrhea, dehydration)
- If you have an eating disorder or are following a strict diet
- If you had a recent bone fracture or were told you have osteoporosis or risk factors for osteoporosis
- If you are pregnant or thinking about becoming pregnant, or if you are breast feeding
- If you are receiving electroconvulsive treatment
- Any medications (prescription or non-prescription) which you are taking or have taken within the last 14 days, especially monoamine oxidase inhibitors, pimozone, any other antidepressants, triptans used to treat migraines, lithium, tramadol or drugs containing tryptophan.
- If you ever had an allergic reaction to any medication or any of the ingredients mentioned in this leaflet.
- Your habits of alcohol and / or street drug consumption.
- Any natural or herbal products you are taking (e.g. St. John's Wort)

- If you drive a vehicle or perform hazardous tasks during your work.

INTERACTIONS WITH THIS MEDICATION

Serious Drug Interactions

Do not use NRA-Escitalopram if you are taking or have recently taken:

- Monoamine oxidase inhibitor (e.g., phenelzine, tranylcypromine, moclobemide or selegiline)
- Pimozide
- Linezolid (an antibiotic)
- Methylene blue (intravenous)

The following list includes some, but not all, of the drugs that may increase the risk of side-effects while receiving NRA-Escitalopram. You should check with your doctor or pharmacist before taking any other medication (prescription, non-prescription or natural/herbal) with NRA-Escitalopram. Other drugs that may interact with NRA-Escitalopram include:

- drugs to treat heart rhythm disturbances (antiarrhythmics)
- antipsychotics
- opioid painkillers
- drugs to treat infections
- Diuretics (water pills)
- Laxatives (including enemas)
- Other SSRIs (citalopram) or any other antidepressant (e.g., imipramine, desipramine)
- Lithium
- Tryptophan
- Cimetidine
- Triptans (e.g., sumatriptan, zolmitriptan, naratriptan)
- Fluconazole
- Ketoconazole
- Itraconazole
- Racemic Citalopram (Celexa)
- Warfarin
- Omeprazole
- Any herbal product such as St. John's Wort
- Certain medicines which may affect blood clotting and increase bleeding, such as oral anticoagulants (e.g., warfarin, dabigatran), acetylsalicylic acid (e.g., Aspirin) and other non-steroidal anti-inflammatory drugs (e.g., ibuprofen)
- Certain medicines used to treat pain, such as fentanyl (used in anaesthesia or to treat chronic pain), tramadol, tapentadol, meperidine, methadone, pentazocine.
- Certain medicines used to treat cough, such as dextromethorphan.

Avoid drinking alcohol while taking NRA-Escitalopram

Drugs from the class that NRA-Escitalopram belongs to may increase the chance of a bleeding event such as nose bleeds, bruising and even life threatening bleeding. This is more likely if you have a history of a bleeding disorder or are taking other drugs that are known to affect your platelets.

Treatment with an SSRI in patients with diabetes may alter glycaemic control (hypoglycaemia and hyperglycaemia).

Tell your doctor all the medicines (prescription or over the counter) and natural health products that you are using or thinking of taking.

PROPER USE OF THIS MEDICATION

Usual dose:

- It is important that you take NRA-Escitalopram exactly as your doctor has instructed.
- Usually your doctor will prescribe 10 mg per day, which you will take once daily preferably at the same time each day. If you are elderly, your doctor may prescribe a lower dose. This dose may be increased. Never change the dose of NRA-Escitalopram you are taking, or that someone in your care is taking unless your doctor tells you to.
- You should continue to take NRA-Escitalopram even if you do not feel better, as it may take several weeks for your medication to work. Improvement may be gradual.
- Continue to take NRA-Escitalopram for as long as your doctor recommends it. Do not stop taking your tablets abruptly even if you begin to feel better, unless you are told to do so by your doctor. Your doctor may tell you to continue to take NRA-Escitalopram for several months. Continue to follow your doctor's instructions.

Proper Handling Instructions

- Take everyday, as a single daily dose.
- Swallow the tablets whole with a drink of water. Do not chew them. NRA-Escitalopram can be taken with or without food.

Overdose:

If you have accidentally taken too much NRA-Escitalopram contact your doctor, the Regional Poison Control Centre or nearest hospital emergency department immediately, even if you do not feel sick. If you go to the doctor or the hospital, take the NRA-Escitalopram container with you. Some of the signs of an overdose could be dizziness, tremor, agitation, convulsion, coma,

nausea, vomiting, change in heart rhythm, decreased blood pressure and seizure.

If you think you have taken too much NRA-Escitalopram, contact your healthcare professional, hospital emergency department or regional Poison Control Centre immediately, even if there are no symptoms.

Missed dose:

If you forget a dose, take the next dose as planned. Do not take a double dose to make up for a forgotten dose.

SIDE EFFECTS AND WHAT TO DO ABOUT THEM

- NRA-Escitalopram may cause unwanted effects (side-effects). These may include nausea, increased sweating, diarrhoea, fatigue, fever, constipation, clogged or runny nose, sleep disturbance, loss of appetite, increased appetite, increased weight, decreased interest in sex, decreased ability to reach orgasm, erectile dysfunction, anxiety, restlessness, abnormal dreams, difficulties falling asleep, drowsiness, yawning, tremor (shakiness), prickling of the skin, dizziness, dry mouth, heartburn, pain in muscles and joints, stomach pain and changes in heart rate.
- Contact your doctor before stopping or reducing your dosage of NRA-Escitalopram. Symptoms such as dizziness, abnormal dreams, electric shock sensations, agitation, anxiety, emotional indifference, difficulty concentrating, headache, migraine, tremor (shakiness), nausea, vomiting, sweating or other symptoms may occur after stopping or reducing the dosage of escitalopram. Such symptoms may also occur if a dose is missed. These symptoms usually disappear without needing treatment. Tell your doctor immediately if you have these or any other symptoms. Your doctor may adjust the dosage of escitalopram to reduce the symptoms.
- Side-effects are often mild and may disappear after a few days. If they are troublesome or persistent, or if you develop any other unusual side-effects while taking NRA-Escitalopram, please consult your doctor.
- Usually NRA-Escitalopram does not affect your ability to carry out normal daily activities. However, you should not drive a car or operate machinery until you are reasonably certain that NRA-Escitalopram does not affect you adversely.

SERIOUS SIDE EFFECTS, HOW OFTEN THEY HAPPEN AND WHAT TO DO ABOUT THEM				
Symptom / effect		Talk with your doctor or pharmacist right away		Seek immediate emergency medical assistance
		Only if severe	In all cases	
Uncommon	Allergic reactions: red skin, hives, itching, swelling of the lips, face, tongue, throat, trouble breathing, wheezing, shortness of breath, skin rashes, blisters of the skin, sores or pain in the mouth or eyes			√
	Allergic reactions: skin rash alone, hives alone		√	

IMPORTANT PLEASE READ

SERIOUS SIDE EFFECTS, HOW OFTEN THEY HAPPEN AND WHAT TO DO ABOUT THEM

Symptom / effect	Talk with your doctor or pharmacist right away		Seek immediate emergency medical assistance
	Only if severe	In all cases	
Uncommon	Alteration of blood sugar control in patients with diabetes: Low blood sugar (symptoms of dizziness, lack of energy, drowsiness, headache, trembling, sweating) or High blood sugar (symptoms of increased thirst, increased urination, weakness, confusion, fruity breath odour)		√
	Low Platelets: Bruising or unusual bleeding from the skin or other areas		√
	Hallucinations: Strange visions or sounds		√
	Mania: Overactive behaviour and thoughts		√
	Uncontrollable movements of the body or face		√
	Inability to urinate		√
Rare	Serotonin syndrome: a combination of symptoms, possibly including: agitation, confusion, tremor, sudden jerking of muscles, high fever		√

	Low sodium level in blood: Symptoms of tiredness, weakness, confusion combined with achy, stiff or uncoordinated muscles		√
	Glaucoma: Increased pressure in the eye, eye pain, and blurred vision		√
Very Rare	Seizures: Loss of consciousness with uncontrollable shaking (“fit”)		√
	Liver disorder: symptoms include nausea, vomiting, loss of appetite combined with itching, yellowing of the skin or eyes, dark urine		√
	Gastrointestinal bleeding: Vomiting blood or passing blood in stools		√
See Warnings & Precautions	New or Worsened Emotional or Behavioural Problems		√
	Akathisia: Feeling restless and unable to sit or stand still		√
Unknown	Abnormal heart rate or rhythm, palpitations, fainting		√

This list is not a complete list of side effects. If you have any unexpected effects while taking this drug, contact your doctor or pharmacist.

HOW TO STORE NRA-ESCITALOPRAM

- As with all medicines, keep NRA-Escitalopram out of the reach and sight of children.
- Store your NRA-Escitalopram (Escitalopram tablets USP) at room temperature (15-30°C) in a dry place and keep the container tightly closed.
- There is an expiry date on the label. Do not use the medicine after this date.

- If your doctor tells you to stop taking your medicine you should return any leftover tablets to the pharmacist, unless the doctor tells you to keep them at home.

REMEMBER: This medicine is for YOU. Only a doctor can prescribe it, so never offer it to any other person, even if their symptoms seem to be the same as yours.

REPORTING SIDE EFFECTS

You can report any suspected side effects associated with the use of health products to Health Canada by:

- Visiting the Web page on Adverse Reaction Reporting (<https://www.canada.ca/en/health-canada/services/drugs-health-products/medeffect-canada.html>) for information on how to report online, by mail or by fax; or
- Calling toll-free at 1-866-234-2345.

NOTE: Contact your health professional if you need information about how to manage your side effects. The Canada Vigilance Program does not provide medical advice.

MORE INFORMATION

If you want more information about NRA-ESCITALOPRAM:

- Talk to your healthcare professional
Find the full product monograph that is prepared for healthcare professionals and includes this Patient Medication Information by visiting the Health Canada website (<https://www.canada.ca/en/health-canada/services/drugs-health-products/drug-products/drug-product-database.html>); or by calling the sponsor Nora Pharma Inc. at 1-877-352-7314

This leaflet was prepared by:

Nora Pharma Inc.
205-2900 Boul Cote-Vertu
Saint-Laurent, Quebec, H4R 3E8