

PRODUCT MONOGRAPH

PrEPIVAL[®]
divalproex sodium
Enteric-Coated Tablets (125 mg, 250 mg, 500 mg)
Abbott Standard

Antiepileptic

BGP Pharma ULC
85 Advance Road
Etobicoke, Ontario
M8Z 2S6

Date of Preparation:
December 22, 2014

Date of Previous Revision:
June 28, 2018

Date of Revision:
October 15, 2018

Submission Control No: 218169

Table of Contents

PART I: HEALTH PROFESSIONAL INFORMATION.....	3
SUMMARY PRODUCT INFORMATION	3
INDICATIONS AND CLINICAL USE	3
CONTRAINDICATIONS	5
WARNINGS AND PRECAUTIONS.....	5
ADVERSE REACTIONS.....	23
DRUG INTERACTIONS	31
DOSAGE AND ADMINISTRATION	40
OVERDOSAGE	43
ACTION AND CLINICAL PHARMACOLOGY	44
STORAGE AND STABILITY	47
DOSAGE FORMS, COMPOSITION AND PACKAGING	47
PART II: SCIENTIFIC INFORMATION	48
PHARMACEUTICAL INFORMATION.....	48
CLINICAL TRIALS.....	48
DETAILED PHARMACOLOGY	49
TOXICOLOGY	49
REFERENCES	53
PART III: CONSUMER INFORMATION.....	57
^{Pr} EPIVAL [®] enteric-coated tablets.....	57

EPIVAL[®]

divalproex sodium

PART I: HEALTH PROFESSIONAL INFORMATION

SUMMARY PRODUCT INFORMATION

Route of Administration	Dosage Form/Strength	Non-medicinal Ingredients
oral	enteric-coated tablets / 125 mg	diacetylated monoglycerides, FD&C Red No. 40, hydroxypropylmethyl cellulose phthalate, povidone, pregelatinized starch (contains corn starch), silicon dioxide, talc, titanium dioxide, and vanillin.
	250 mg	diacetylated monoglycerides, FD&C Yellow No. 6, hydroxypropylmethyl cellulose phthalate, povidone, pregelatinized starch (contains corn starch), silicon dioxide, talc, titanium dioxide and vanillin.
	500 mg	diacetylated monoglycerides, FD&C Blue No. 2, D&C Red No. 30, hydroxypropylmethyl cellulose phthalate, povidone, pregelatinized starch (contains corn starch), silicon dioxide, talc, titanium dioxide and vanillin.

INDICATIONS AND CLINICAL USE

EPIVAL[®] (divalproex sodium) enteric-coated tablets is indicated for:

Epilepsy

- use as sole or adjunctive therapy in the treatment of simple or complex absence seizures, including petit mal, and is useful in primary generalized seizures with tonic-clonic manifestations.
- use adjunctively in patients with multiple seizure types which include either absence or tonic clonic seizures.

In accordance with the International Classification of Seizures, simple absence is defined as a very brief clouding of the sensorium or loss of consciousness (lasting usually 2 to 15 seconds), accompanied by certain generalized epileptic discharges without other detectable clinical signs. Complex absence is the term used when other signs are also present.

Acute Mania

- the treatment of the manic episodes associated with bipolar disorder (DSM-III-R).

The safety and effectiveness of EPIVAL[®] for long-term use in mania, that is for more than 3 weeks, has not been evaluated in controlled trials.

EPIVAL[®] is not indicated for use as a mood stabilizer in patients under 18 years of age.

See **CONTRAINDICATIONS**, and **WARNINGS AND PRECAUTIONS**, **Hepatic/Biliary/Pancreatic**, **Serious or Fatal Hepatotoxicity** for statement regarding serious or fatal hepatic dysfunction.

Geriatrics (≥ 65 years of age):

The safety and efficacy of EPIVAL[®] in elderly patients with epilepsy or mania has not been evaluated in clinical trials. Caution should thus be exercised in dose selection for an elderly patient, recognizing the more frequent hepatic and renal dysfunctions, and limited experience with EPIVAL[®] in this population. For a brief discussion, see **WARNINGS AND PRECAUTIONS**, **Special Populations**, **Geriatrics (≥ 65 years of age)**, **DOSAGE AND ADMINISTRATION**, **Dosing in Elderly Patients** and **ACTION AND CLINICAL PHARMACOLOGY**, **Special Populations and Conditions**, **Geriatrics**.

Pediatrics (< 18 years of age):

When EPIVAL[®] is used in children under the age of 2 years, it should be used with extreme caution and as a sole agent. Above the age of 2 years, experience in epilepsy has indicated that the incidence of fatal hepatotoxicity decreases considerably in progressively older patient groups. For a brief discussion, see **WARNINGS AND PRECAUTIONS**, **Special Populations**, **Pediatrics (< 18 years of age)**. The safety and effectiveness of EPIVAL[®] for the treatment of acute mania has not been studied in individuals below the age of 18 years.

CONTRAINDICATIONS

EPIVAL[®] (divalproex sodium) enteric-coated tablets is contraindicated:

- in patients with hepatic disease or significant hepatic dysfunction (see **WARNINGS AND PRECAUTIONS, Serious Warnings and Precautions, Hepatotoxicity and WARNINGS AND PRECAUTIONS, Hepatic/Biliary/Pancreatic, Serious or Fatal Hepatotoxicity**).
- in patients known to have mitochondrial disorders caused by mutations in mitochondrial DNA polymerase γ (POLG; e.g., Alpers-Huttenlocher Syndrome) and children under two years of age who are suspected of having a POLG-related disorder (see **WARNINGS AND PRECAUTIONS, Hepatic/Biliary/Pancreatic**).
- in patients with known hypersensitivity to the drug, any ingredient in the formulation or component of the container. For a complete listing of ingredients, see **DOSAGE FORMS, COMPOSITION AND PACKAGING**.
- in patients with known urea cycle disorders (see **WARNINGS AND PRECAUTIONS, Endocrine and Metabolism, Urea Cycle Disorders**).
- in patients with known porphyria.

WARNINGS AND PRECAUTIONS

Serious Warnings and Precautions

- **Hepatotoxicity:** Hepatic failure resulting in fatalities has occurred in patients receiving EPIVAL[®] (divalproex sodium). These incidences usually occurred during the first 6 months of treatment with EPIVAL[®]. Caution should be observed when administering EPIVAL[®] to patients with a prior history of hepatic disease. Patients on multiple anticonvulsants, children, those with congenital metabolic disorders, those with severe seizure disorders accompanied by mental retardation, and those with organic brain disease may be at particular risk. Experience has indicated that children under the age of 2 years are at a considerably increased risk of developing fatal hepatotoxicity, especially those on multiple anticonvulsants (see **WARNINGS AND PRECAUTIONS, Hepatic/Biliary/Pancreatic, Serious or Fatal Hepatotoxicity**).
- **Female children/Female adolescents/Women of childbearing potential/Pregnancy (Teratogenicity):** EPIVAL[®] should not be used in female children, in female adolescents, in women of childbearing potential and pregnant women unless alternative treatments are ineffective or not tolerated because of its high teratogenic potential and risk of developmental disorders in infants exposed in utero to valproate. EPIVAL[®] can produce teratogenic effects such as neural tube defects (e.g., spina bifida) in a dose-

dependent manner. In addition, valproate can cause decreased IQ scores following in utero exposure. The benefit and risk should be carefully reconsidered at regular treatment reviews, at puberty and urgently when a woman of childbearing potential treated with EPIVAL[®] plans a pregnancy or if she becomes pregnant.

Women of childbearing potential must use effective contraception during treatment and be informed of the risks associated with the use of EPIVAL[®] during pregnancy. In women planning to become pregnant all efforts should be made to switch to appropriate alternative treatment prior to conception (see **WARNINGS AND PRECAUTIONS, Special Populations, Female children/Female adolescents/Women of childbearing potential/Pregnancy** and **WARNINGS AND PRECAUTIONS, Special Populations, Pregnancy Exposure Risk Related to Valproate** and **WARNINGS AND PRECAUTIONS, Special Populations, Risk in the neonate**).

- **Patients with Mitochondrial Disease:** There is an increased risk of valproate-induced acute liver failure and resultant deaths in patients with hereditary neurometabolic syndromes caused by DNA mutations of the mitochondrial DNA Polymerase γ (POLG) gene (e.g. Alpers Huttenlocher Syndrome). EPIVAL[®] is contraindicated in patients known to have mitochondrial disorders caused by POLG mutations and children under two years of age who are clinically suspected of having a mitochondrial disorder (see **CONTRAINDICATIONS**). In patients over two years of age who are clinically suspected of having a hereditary mitochondrial disease, EPIVAL[®] should only be used after other anticonvulsants have failed. This older group of patients should be closely monitored during treatment with EPIVAL[®] for the development of acute liver injury with regular clinical assessments and serum liver testing. POLG mutation screening should be performed in accordance with current clinical practice (see **WARNINGS AND PRECAUTIONS, Hepatic/Biliary/Pancreatic, Patients with Mitochondrial Disease**).
- **Pancreatitis:** Cases of life-threatening pancreatitis have been reported in both children and adults receiving EPIVAL[®]. Patients and guardians should be warned that abdominal pain, nausea, vomiting and/or anorexia can be symptoms of pancreatitis that require prompt medical attention. If pancreatitis is diagnosed, EPIVAL[®] should ordinarily be discontinued. Alternative treatment for the underlying medical condition should be initiated as clinically indicated. Some of the cases have been described as hemorrhagic with a rapid progression from initial symptoms to death. Some cases have occurred shortly after initial use as well as after several years of use (see **WARNINGS AND PRECAUTIONS, Hepatic/Biliary/Pancreatic, Pancreatitis**).

General

Antiepileptic drugs (AEDs), including EPIVAL[®] (divalproex sodium), should be withdrawn gradually to minimize the potential for seizures or increased seizure frequency (see **DOSAGE**

AND ADMINISTRATION, Recommended Dose and Dosage Adjustment).

Interaction with Carbapenem Antibiotics

Carbapenem antibiotics (ertapenem, imipenem, meropenem, doripenem) can reduce serum valproic acid concentrations to sub-therapeutic levels. This can result in loss of seizure control in epileptic patients or loss of efficacy in non-epileptics. In some cases of co-administration in epileptic patients, breakthrough seizures have occurred. Increasing valproic acid dose may not be sufficient to overcome this interaction. If co-administration is essential, serum valproic acid concentrations should be monitored daily after initiating carbapenem therapy. Alternative antibacterial or anticonvulsant therapy should be considered if serum valproic acid concentrations drop significantly or seizure control deteriorates (see **DRUG INTERACTIONS, Drug-Drug Interactions, Table 2**).

Effects of Valproate on HIV and CMV Viruses Replication

There are in vitro studies that suggest valproate stimulates the replication of the Human Immunodeficiency Virus and Cytomegalovirus (HIV and CMV) viruses under certain experimental conditions. The clinical relevance of these in vitro data is unknown. Additionally, the relevance of these in vitro findings is uncertain for patients receiving maximally suppressive antiretroviral therapy. Nevertheless, these data should be borne in mind when interpreting the results from regular monitoring of the viral load in HIV infected patients receiving valproate or when following CMV infected patients clinically.

Carcinogenesis and Mutagenesis

Long-term animal toxicity studies indicate that valproic acid is a weak carcinogen or promoter in rats and mice. The significance of these findings for humans is unknown at present (see **TOXICOLOGY, Mutagenicity and Carcinogenicity**).

Endocrine and Metabolism

Urea Cycle Disorders

EPIVAL[®] (divalproex sodium) enteric-coated tablet is contraindicated in patients with known urea cycle disorders. Hyperammonemic encephalopathy, sometimes fatal, has been reported following initiation of EPIVAL[®] in patients with urea cycle disorders, a group of uncommon genetic abnormalities, particularly ornithine transcarbamylase deficiency. Prior to initiation of EPIVAL[®], evaluation for urea cycle disorders (UCD) should be considered in the following patients:

- those with a history of unexplained encephalopathy or coma, encephalopathy associated with protein load, pregnancy-related or postpartum encephalopathy, unexplained mental retardation, or history of elevated plasma ammonia or glutamine;
- those with signs and symptoms of UCD, for example, cyclical vomiting and lethargy, episodic extreme irritability, ataxia, low blood urea nitrogen (BUN), protein avoidance;

- those with a family history of UCD or a family history of unexplained infant deaths (particularly males);
- those with other signs or symptoms of UCD. Patients receiving EPIVAL[®] who develop symptoms of unexplained hyperammonemic encephalopathy should receive prompt treatment (including discontinuation of EPIVAL[®]) and be evaluated for underlying urea cycle disorders (see **CONTRAINDICATIONS** and **WARNINGS AND PRECAUTIONS, Endocrine and Metabolism, Hyperammonemia and Hyperammonemia and Encephalopathy Associated with Concomitant Topiramate Use**).

Hyperammonemia

Hyperammonemia has been reported in association with EPIVAL[®] and may be present despite normal liver function tests. In patients who develop unexplained lethargy and vomiting or changes in mental status, hyperammonemic encephalopathy should be considered as a possible cause and serum ammonia level should be measured. Hyperammonemia should also be considered in patients who present with hypothermia (see **WARNINGS AND PRECAUTIONS, Endocrine and Metabolism, Hypothermia**). If serum ammonia is increased, EPIVAL[®] should be discontinued. Appropriate interventions for treatment of hyperammonemia should be initiated, and such patients should undergo investigation for underlying urea cycle disorders (see **CONTRAINDICATIONS** and **WARNINGS AND PRECAUTIONS, Endocrine and Metabolism, Urea Cycle Disorders and Hyperammonemia and Encephalopathy Associated with Concomitant Topiramate Use**).

Asymptomatic elevations of serum ammonia are more common and, when present, require close monitoring of serum ammonia levels. If the elevation persists, discontinuation of EPIVAL[®] should be considered.

Hyperammonemia and Encephalopathy Associated with Concomitant use of Topiramate, Acetazolamide, Phenobarbital or Phenytoin

Concomitant administration of topiramate, acetazolamide, phenobarbital or phenytoin and EPIVAL[®] has been associated with hyperammonemia with or without encephalopathy in patients who have tolerated either drug alone. Clinical symptoms of hyperammonemic encephalopathy often include acute alterations in level of consciousness and/or cognitive function with lethargy or vomiting. Hypothermia can also be a manifestation of hyperammonemia (see **WARNINGS AND PRECAUTIONS, Endocrine and Metabolism, Hypothermia**). In most cases, symptoms and signs abated with discontinuation of either drug. This adverse event is not due to a pharmacokinetic interaction.

It is not known if topiramate, acetazolamide, phenobarbital or phenytoin monotherapy is associated with hyperammonemia.

Patients with inborn errors of metabolism or reduced hepatic mitochondrial activity may be at an increased risk for hyperammonemia with or without encephalopathy. Although not studied, an interaction of topiramate, acetazolamide, phenobarbital or phenytoin and EPIVAL[®] may exacerbate existing defects or unmask deficiencies in susceptible persons (see CONTRAINDICATIONS and WARNINGS AND PRECAUTIONS, Endocrine and Metabolism, Urea Cycle Disorders and Hyperammonemia).

Hypothermia

Hypothermia, defined as an unintentional drop in core body temperature to < 35°C (95°F), has been reported in association with EPIVAL[®] therapy both in conjunction with and in the absence of hyperammonemia. This adverse reaction can also occur in patients using concomitant topiramate with EPIVAL[®] after starting topiramate treatment or after increasing the daily dose of topiramate (see **WARNINGS AND PRECAUTIONS, Endocrine and Metabolism, Hyperammonemia, Hyperammonemia and Encephalopathy Associated with Concomitant Topiramate Use and DRUG INTERACTIONS, Drug-Drug Interactions, Table 2).** Hypothermia may be manifested by a variety of clinical abnormalities including lethargy, confusion, coma and significant alterations in other major organ systems such as the cardiovascular and respiratory systems. Clinical management and assessment should include examination of blood ammonia levels. Consideration should be given to stopping EPIVAL[®] in patients who develop hypothermia (see **WARNINGS AND PRECAUTIONS, Endocrine and Metabolism, Hyperammonemia and Hyperammonemia and Encephalopathy Associated with Concomitant Topiramate Use).**

Hematologic

Thrombocytopenia

Because of reports of thrombocytopenia, inhibition of the second phase of platelet aggregation, and abnormal coagulation parameters (e.g., low fibrinogen), platelet counts and coagulation tests are recommended before initiating therapy and at periodic intervals. It is recommended that patients receiving EPIVAL[®] be monitored for platelet count and coagulation parameters prior to planned surgery. Clinical evidence of hemorrhage, bruising or a disorder of hemostasis/coagulation is an indication for reduction of the dosage or withdrawal of therapy (see also **WARNINGS AND PRECAUTIONS, Hematologic, Dosing-related Adverse Reactions: Thrombocytopenia).**

Dosing-related Adverse Reactions: Thrombocytopenia

The frequency of adverse effects (particularly elevated liver enzymes and thrombocytopenia) may be dose-related. In a clinical trial of EPIVAL[®] as monotherapy in patients with epilepsy, 34/126 patients (27%) receiving approximately 50 mg/kg/day on average, had at least one value of platelets $\leq 75 \times 10^9/L$. Approximately half of these patients had treatment discontinued with return of platelet counts to normal. In the remaining patients, platelet counts normalized with continued treatment. In this study, the probability of thrombocytopenia appeared to increase

significantly at total valproate concentrations of ≥ 110 mcg/mL (females) or ≥ 135 mcg/mL (males).

In addition, the findings from a crossover clinical trial conducted with EPIVAL[®] ER (divalproex sodium extended-release tablets), in 44 epilepsy patients, indicate that the frequency of treatment-emergent mild thrombocytopenia (platelet count between 100 to 150 x 10⁹/L) was significantly higher after 12 weeks of treatment with EPIVAL[®] ER than after 12 weeks of treatment with EPIVAL[®] (7 versus 3 low counts, respectively).

The therapeutic benefit which may accompany the higher doses should therefore be weighed against the possibility of a greater incidence of adverse events.

Hepatic/Biliary/Pancreatic

Serious or Fatal Hepatotoxicity

Hepatic failure resulting in fatalities has occurred in patients receiving EPIVAL[®] and its derivatives. These incidences usually occurred during the first 6 months of treatment with EPIVAL[®]. Caution should be observed when administering EPIVAL[®] to patients with a prior history of hepatic disease. Patients on multiple anticonvulsants, children, those with congenital metabolic disorders, those with severe seizure disorders accompanied by mental retardation, and those with organic brain disease may be at particular risk.

Experience has indicated that children under the age of 2 years are at a considerably increased risk of developing fatal hepatotoxicity, especially those on multiple anticonvulsants, those with congenital metabolic disorders, those with severe seizure disorders accompanied by mental retardation, and those with organic brain disease. The risk in this age group decreased considerably in patients receiving EPIVAL[®] as monotherapy. Similarly, patients aged 3 to 10 years were at somewhat greater risk if they received multiple anticonvulsants than those who received only EPIVAL[®]. Above the age of 2 years, experience in epilepsy has indicated that the incidence of fatal hepatotoxicity decreases considerably in progressively older patients. No deaths have been reported in patients over 10 years of age who received EPIVAL[®] alone.

If EPIVAL[®] is to be used for the control of seizures in children 2 years old or younger, it should be used with extreme caution and as a sole agent. The benefits of therapy should be weighed against the risks (see **WARNINGS AND PRECAUTIONS**, **Special Populations**, **Pediatrics** [**< 18 years of age**]).

Serious or fatal hepatotoxicity may be preceded by nonspecific symptoms such as, malaise, weakness, lethargy, facial edema, anorexia, and vomiting. In patients with epilepsy, a loss of seizure control may also occur. Patients should be monitored closely for appearance of these symptoms. Patients and parents should be instructed to report such symptoms. Because of the nonspecific nature of some of the early signs, hepatotoxicity should be suspected in patients who become unwell, other than through obvious cause, while taking EPIVAL[®].

Liver function tests should be performed prior to therapy and at frequent intervals thereafter especially during the first 6 months. However, physicians should not rely totally on serum biochemistry since these tests may not be abnormal in all instances, but should also consider the results of careful interim medical history and physical examination.

In high-risk patients, it might also be useful to monitor serum fibrinogen and albumin for decreases in concentration and serum ammonia for increases in concentration. If changes occur, EPIVAL[®] should be discontinued. Dosage should be titrated to and maintained at the lowest dose consistent with optimal seizure control.

The drug should be discontinued immediately in the presence of significant hepatic dysfunction, suspected or apparent. In some cases, hepatic dysfunction has progressed in spite of discontinuation of drug. The frequency of adverse hepatic effects (particularly elevated liver enzymes) may increase with increasing dose. The therapeutic benefit which may accompany the higher doses should therefore be weighed against the possibility of a greater incidence of adverse effects (see **CONTRAINDICATIONS**).

Patients with Mitochondrial Disease

Valproate induced acute liver failure and liver-related deaths have been reported in patients with hereditary neurometabolic syndromes caused by mutations in the gene for mitochondrial DNA polymerase γ (POLG) (e.g., Alpers-Huttenlocher Syndrome) at a higher rate than those without these syndromes (see **CONTRAINDICATIONS**).

POLG-related disorders should be suspected in patients with a family history or suggestive symptoms of a POLG-related disorder, including but not limited to unexplained encephalopathy, refractory epilepsy (focal, myoclonic), status epilepticus at presentation, developmental delays, psychomotor regression, axonal sensorimotor neuropathy, myopathy cerebellar ataxia, ophthalmoplegia, or complicated migraine with occipital aura. POLG mutation testing should be performed in accordance with current clinical practice for the diagnostic evaluation of such disorders. The A467T and W748S mutations are present in approximately 2/3 of patients with autosomal recessive POLG-related disorders.

In patients over two years of age who are clinically suspected of having a hereditary mitochondrial disease, EPIVAL[®] should only be used after other anticonvulsants have failed. This older group of patients should be closely monitored during treatment with EPIVAL[®] for the development of acute liver injury with regular clinical assessments and liver function test monitoring.

In the presence of significant hepatic dysfunction, suspected or apparent, EPIVAL[®] should be discontinued and alternative therapy initiated. In some cases, hepatic dysfunction has progressed in spite of discontinuation of the drug (see **CONTRAINDICATIONS** and **WARNINGS AND PRECAUTIONS**).

Pancreatitis

Cases of life-threatening pancreatitis have been reported in both children and adults receiving EPIVAL[®]. Some of the cases have been described as hemorrhagic with a rapid progression from initial symptoms to death. Some cases have occurred shortly after initial use as well as after several years of use. The rate based upon the reported cases exceeds that expected in the general population and there have been cases in which pancreatitis recurred after rechallenge with EPIVAL[®]. In clinical trials, there were 2 cases of pancreatitis without alternative etiology in 2,416 patients, representing 1,044 patient-years experience. Patients and guardians should be warned that abdominal pain, nausea, vomiting, and/or anorexia can be symptoms of pancreatitis that require prompt medical evaluation. If pancreatitis is diagnosed, EPIVAL[®] should ordinarily be discontinued. Alternative treatment for the underlying medical condition should be initiated as clinically indicated.

Muscle Effects /Rhabdomyolysis

Rare cases of rhabdomyolysis, independent of neuroleptic malignant syndrome, have been reported to occur in patients treated with EPIVAL. Cases have included renal failure and fatalities.

Patients should be carefully monitored for muscle pain, tenderness or weakness, particularly if accompanied by malaise or fever or tea-coloured urine. Blood creatine phosphokinase (CPK) levels should be assessed in patients experiencing these symptoms and EPIVAL therapy should be discontinued if markedly elevated CPK levels are measured or if the patient develops signs and symptoms indicative of rhabdomyolysis.

Caution should be exercised in prescribing EPIVAL to patients with predisposing/risk factors, including: prior history of muscular disorders such as CPT II deficiency (carnitine palmitoyltransferase type II); uncontrolled hypothyroidism; hepatic or renal impairment; concomitant medications that are known to be associated with rhabdomyolysis (eg statins, antipsychotics, diuretics, some antidepressants)

Neurologic

Brain Atrophy

There have been postmarketing reports of reversible and irreversible cerebral and cerebellar atrophy with neurological symptoms, in children, adults, and the elderly, receiving valproate therapy. A temporal relationship between valproate therapy and the development of cerebral atrophy and associated signs and symptoms was also demonstrated. In some cases, symptoms disappeared after valproate discontinuation but patients recovered with permanent sequelae (see **ADVERSE REACTIONS**). The motor and cognitive functions of patients on valproate should be routinely monitored and drug should be discontinued in the presence of suspected or apparent signs of brain atrophy.

Neurological Problems in Children after In-utero Exposure to Valproate

Reports of cerebral atrophy with various forms of neurological problems including developmental delays psychomotor impairment and decreased IQ scores have been reported in children who were exposed in-utero to valproate products (see **WARNINGS AND PRECAUTIONS, Special Populations, Female children/Female adolescents/Women of childbearing potential/Pregnancy** and **WARNINGS AND PRECAUTIONS, Special Populations, Pregnancy Exposure Risk Related to Valproate** and **WARNINGS AND PRECAUTIONS, Special Populations, Risk in the neonate**).

Driving and Hazardous Occupations

EPIVAL[®] may produce central nervous system (CNS) depression, especially when combined with another CNS depressant, such as alcohol. Therefore, patients should be advised not to engage in hazardous occupations, such as driving a car or operating dangerous machinery, until it is known that they do not become drowsy from the drug.

Aggravated convulsions

As with other antiepileptic drugs, some patients may experience a worsening of convulsion frequency and severity, or the onset of new types of convulsions with valproate. Postmarketing cases of serious aggravated seizures have been reported for valproic acid including status epilepticus and death. In case of aggravated convulsions, patients should be advised to consult their physician immediately.

Psychiatric

Suicidal Behaviour and Ideation

Suicidal ideation and behaviour have been reported in patients treated with antiepileptic agents in several indications.

All patients treated with antiepileptic drugs (AEDs), irrespective of indication, should be monitored for signs of suicidal ideation and behaviour and appropriate treatment should be considered. Patients (and caregivers of patients) should be advised to seek medical advice should signs of suicidal ideation or behaviour emerge.

An FDA meta-analysis of randomized placebo controlled trials, in which AEDs were used for various indications, has shown a small increased risk of suicidal ideation and behaviour in patients treated with these drugs. The mechanism of this risk is not known.

There were 43,892 patients treated in the placebo controlled clinical trials that were included in the meta-analysis. Approximately 75% of patients in these clinical trials were treated for indications other than epilepsy and, for the majority of non-epilepsy indication the treatment (AED or placebo) was administered as monotherapy. Patients with epilepsy represented approximately 25% of the total number of patients treated in the placebo controlled clinical trials and, for the majority of epilepsy patients, treatment (AED or placebo) was administered as

adjunct to other antiepileptic agents (i.e., patients in both treatment arms were being treated with one or more AED). Therefore, the small increased risk of suicidal ideation and behaviour reported from the meta-analysis (0.43% for patients on AEDs compared to 0.24% for patients on placebo) is based largely on patients that received monotherapy treatment (AED or placebo) for non-epilepsy indications. The study design does not allow an estimation of the risk of suicidal ideation and behaviour for patients with epilepsy that are taking AEDs, due both to this population being the minority in the study, and the drug-placebo comparison in this population being confounded by the presence of adjunct AED treatment in both arms.

Behavioural Disorders

There have been postmarketing reports of behavioural disorders, including aggression, agitation, abnormal behaviour, disturbance in attention, and learning disorders. Although patients of all ages were affected, including the elderly and those exposed to valproate products in-utero, a large number of cases were reported in children. There was no clear trend with respect to valproate dose. In some cases, patients improved or recovered following valproate discontinuation.

Renal

Renal Impairment

Renal impairment is associated with an increase in the unbound fraction of valproate. In several studies, the unbound fraction of valproate in plasma from renally impaired patients was approximately double that for subjects with normal renal function. Accordingly, monitoring of total concentrations in patients with renal impairment may be misleading since free concentrations may be substantially elevated whereas total concentrations may appear to be normal. Hemodialysis in renally impaired patients may remove up to 20% of the circulating valproate.

Sensitivity/Resistance

Multi-organ Hypersensitivity Reaction

Multi-organ hypersensitivity reactions have been rarely reported in close temporal association to the initiation of EPIVAL[®] therapy in adult and pediatric patients (median time to detection 21 days; range 1 to 40). Although there have been a limited number of reports, many of these cases resulted in hospitalization and at least one death has been reported. Signs and symptoms of this disorder were diverse; however, patients typically, although not exclusively, presented with fever and rash associated with other organ system involvement. Other associated manifestations may include lymphadenopathy, hepatitis, liver function test abnormalities, hematological abnormalities (e.g., eosinophilia, thrombocytopenia, neutropenia), pruritus, nephritis, oliguria, hepato-renal syndrome, arthralgia, and asthenia. Because the disorder is variable in its expression, other organ system symptoms and signs, not noted here may occur. If this reaction is suspected, EPIVAL[®] should be discontinued and an alternative treatment started. Although the existence of cross sensitivity with other drugs that produce this syndrome is unclear, the

experience amongst drugs associated with multi-organ hypersensitivity would indicate this to be a possibility.

Sexual Function/Reproduction

Fertility

The effect of EPIVAL[®] on testicular development and on sperm production and fertility in humans is unknown. See **TOXICOLOGY, Reproduction and Teratology, Fertility** for results in animal studies.

Amenorrhea, polycystic ovaries and increased testosterone levels have been reported in women using valproate. Valproate administration may also impair fertility in men. Case reports indicate that effects on fertility dysfunctions are reversible after treatment discontinuation.

Skin

Serious Skin Reactions

The dose of lamotrigine should be reduced when co-administered with EPIVAL[®]. Serious skin reactions (such as Stevens-Johnson syndrome and Toxic Epidermal Necrolysis) have been reported with concomitant lamotrigine and EPIVAL[®] administration (see Lamotrigine Product Monograph for details on lamotrigine dosing with concomitant EPIVAL[®] administration).

Special Populations

Female children/Female adolescents/Women of childbearing potential/Pregnancy

EPIVAL[®] can cause fetal harm when administered to pregnant women. In comparison with some other antiepileptics drugs (AEDs), EPIVAL[®] use during pregnancy is associated with an increased risk of severe birth defects such as neural tube defects (e.g., spina bifida), craniofacial defects, cleft palate, cardiovascular malformations, hypospadias, etc. (see **WARNINGS AND PRECAUTIONS, Special Populations, Risk in the neonate, Birth Defects).**

Divalproex sodium should not be used in female children, in female adolescents, in women of childbearing potential and pregnant women unless alternative treatments are ineffective or not tolerated because of its high teratogenic potential and risk of developmental disorders in infants exposed in utero to valproate. The benefit and risk should be carefully re-assessed at regular treatment reviews, at puberty and urgently when a woman of childbearing potential treated with divalproex sodium plans a pregnancy or becomes pregnant. This is especially important when EPIVAL[®] use is considered for an indication/a condition that is not usually associated with permanent injury or death.

Since some of the congenital malformations occur in the first trimester of pregnancy before many women know that they are pregnant, all women of childbearing potential should be informed of the potential hazard to the fetus from exposure to EPIVAL[®].

Women of childbearing potential must use an effective method of contraception while using EPIVAL[®].

Valproate does not reduce efficacy of hormonal contraceptives.

However, estrogen-containing products, including estrogen-containing hormonal contraceptives, may increase the clearance of valproate, which may result in decreased serum concentration of valproate and potentially decreased valproate efficacy. Patients taking EPIVAL should be advised not to start or stop estrogen-containing products (including oral contraceptives) without consulting their physician. Prescribers should monitor clinical response (seizure control or mood control) when initiating, or discontinuing estrogen-containing products. Consider monitoring of valproate serum levels (see **DRUG INTERACTIONS, Drug-Drug Interactions, Table 2**).

In women planning to become pregnant, every effort should be made to switch to appropriate alternative treatment prior to conception.

If a Woman wants to plan a Pregnancy

- During pregnancy, maternal tonic-clonic seizures and status epilepticus with hypoxia may carry a particular risk of death for the mother and the unborn child.
- In women planning to become pregnant or who are pregnant, valproate therapy should be reassessed.

Valproate therapy should not be discontinued without a reassessment of the benefits and risks of treatment by a physician who is experienced in the management of epilepsy or mania. Antiepileptic drugs should not be abruptly discontinued in patients to whom the drug is administered to prevent major seizures, because of the strong possibility of precipitating status epilepticus with attendant hypoxia and risks to both the mother and the unborn child.

If based on a careful evaluation of the risks and the benefits, valproate treatment is continued during pregnancy, the following are recommended:

- Use the lowest effective dose and divide the daily valproate dose into several small doses to be taken throughout the day.
- Folate supplementation before pregnancy may decrease the risk of neural tube defects common to all pregnancies. However, available evidence does not suggest that folate prevents birth defects or malformations due to valproate exposure.
- Institute specialized prenatal monitoring in order to detect the possible occurrence of neural tube defects or other malformations.

With regard to drugs given for minor seizures, the risks of discontinuing medication prior to or during pregnancy should be weighed against the risk of congenital defects in each particular case and with the particular family history. In individual cases where the severity and frequency of the

seizure disorder are such that the removal of medication does not pose a serious threat to the patient, discontinuation of the drug may be considered prior to and/or during pregnancy, and alternative therapy considered, although it cannot be said with any confidence that even minor seizures do not pose some hazard to the developing embryo or fetus.

Women of childbearing age should be encouraged to seek the counsel of their physician and should report a positive pregnancy test promptly. Where the necessity for continued use of antiepileptic medication is in doubt, appropriate consultation is indicated. Current best practice guidelines should be considered in order to provide the optimal counsel to patients regarding the teratogenic risks associated with EPIVAL[®].

Pregnancy Exposure Risk Related to Valproate

Both valproate monotherapy and polytherapy are associated with abnormal pregnancy outcomes. Available data suggest that antiepileptic polytherapy including valproate is associated with a greater risk of congenital malformations than valproate monotherapy.

Tests to detect neural tube and other defects using current accepted procedures should be considered a part of routine prenatal care in pregnant women receiving EPIVAL[®].

Pregnancy Registry

Pregnant patients taking EPIVAL[®] should be encouraged to enroll in the North American Antiepileptic Drug (NAAED) Pregnancy Registry. This can be done by calling the toll free number 1-888-233-2334, and must be done by patients themselves. Information on the registry can also be found at the following website: <http://www.aedpregnancyregistry.org/>.

Risk in the neonate

Cases of hemorrhagic syndrome have been reported very rarely in neonates whose mothers have taken valproate during pregnancy. This hemorrhagic syndrome is related to thrombocytopenia, hypofibrinogenemia and/or to a decrease in other coagulation factors.

Afibrinogenemia has also been reported and can be fatal. However, this syndrome must be distinguished from the decrease of vitamin-K factors induced by phenobarbital and other enzymes. Therefore, in neonates, platelet count, plasma level of fibrinogen, coagulation tests and coagulation factors should be investigated.

Cases of hypoglycemia have been reported in neonates whose mothers have taken valproate during the third trimester of pregnancy.

Cases of hypothyroidism have been reported in neonates whose mothers have taken valproate during pregnancy.

Withdrawal syndrome (symptoms include: agitation, irritability, hyperexcitability, jitteriness, hyperkinesia, tonic disorders, tremor, convulsions and feeding disorders) may occur, in the

days following birth, in neonates whose mothers have taken valproate during the last trimester of pregnancy.

Birth Defects

There are multiple reports in the clinical literature that indicate the use of antiepileptic drugs during pregnancy results in an increased incidence of birth defects in the offspring. The incidence of congenital malformations in the general population is regarded to be approximately 2%; in children of treated epileptic women, this incidence may be increased 2- to 3-fold. The increase is largely due to specific defects such as congenital malformations of the heart, cleft lip and/or palate, craniofacial abnormalities and neural tube defects. Nevertheless, the great majority of mothers receiving antiepileptic medications deliver normal infants.

The data described below were gained almost exclusively from women who received valproate to treat epilepsy. Data from Pregnancy Registries indicate an increased risk of congenital anomalies in infants exposed to EPIVAL[®] monotherapy during the first trimester of pregnancy as compared to other antiepileptic drugs. Based on Pregnancy Registry data and the United States Centers for Disease Control (CDC), the estimated risk of valproate-exposed women having children with spina bifida, oral clefts, neural tube defects, and hypospadias is approximately 1 to 2% as compared to the risk of spina bifida in the general population which is about 0.06 to 0.07%.

In a study using NAAED Pregnancy Registry data, 16 cases of major malformations following prenatal valproate exposure were reported among offspring of 149 enrolled women who used valproate during pregnancy. Three of the 16 cases were neural tube defects; the remaining cases included craniofacial defects, cardiovascular malformations and malformations of varying severity involving other body systems. The NAAED Pregnancy Registry has reported a major malformation rate of 10.7% in the offspring of women exposed to valproate monotherapy during pregnancy (average daily dose: 1000 mg; range: 500 – 2000 mg/day) as compared to major malformation rate of 2.9% among 1,048 epileptic women who received any other antiepileptic drug monotherapy during pregnancy. These data show a four-fold increased risk for any major malformation following valproate exposure in utero compared to the risk following exposure in utero to any other antiepileptic drug monotherapy.

Data derived from a meta-analysis (including registries and cohort studies) has shown that 10.73% of children of epileptic women exposed to valproate monotherapy during pregnancy suffer from congenital malformations (95% CI: 8.16-13.29). This is a greater risk of major malformations than for the general population, for whom the risk is about 2-3%. The risk is dose-dependent but a threshold dose below which no risk exists cannot be established.

Available data show an increased incidence of minor and major malformations. The most common types of malformations include neural tube defects, facial dysmorphism, cleft lip and palate, craniostenosis, cardiac, renal and urogenital defects, limb defects (including bilateral aplasia of the radius), and multiple anomalies involving various body systems.

Risk of Neurological Problems from In-Utero Exposure

Cerebral Atrophy

Exposure in-utero to valproate products has been associated with cerebral atrophy with varying degrees/manifestations of neurological compromise, including developmental delays and psychomotor impairment (see **ADVERSE REACTIONS** and **WARNINGS AND PRECAUTIONS, Neurologic, Brain Atrophy**).

Developmental Delay, Decreased IQ, Autism and/or Autism Spectrum Disorders

Available data to date show that exposure to valproate in utero can have adverse effects on mental and physical development of the exposed children. The risk seems to be dose-dependent but a threshold dose below which no risk exists, cannot be established. The exact gestational period for risk of these effects is uncertain and it is possible that the risk exists throughout the entire pregnancy.

Studies in preschool children exposed in utero to valproate show that up to 30-40% experience delays in their early development such as talking and walking later, lower intellectual abilities, poor language skills (speaking and understanding) and memory problems.

Intelligence quotient (IQ) measured in school aged children (age 6) with a history of valproate exposure in utero was on average 7-10 points lower than those children exposed to other antiepileptics. There is evidence in children exposed to valproate that the risk of intellectual impairment may be independent of maternal IQ.

There are limited data on long term outcomes. Available data show that children exposed to valproate in utero are at increased risk of autistic spectrum disorder (approximately three-fold) and childhood autism (approximately five-fold) compared to the general study population.

Limited data suggests that children exposed to valproate in utero may be more likely to develop symptoms of Attention Deficit/Hyperactivity Disorder (ADHD).

Coagulation Abnormalities

There have been reported postmarketing cases of coagulation abnormalities in patients of all ages receiving valproate therapy. These include thrombocytopenia, hypofibrinogenemia, and/or decrease in other coagulation factors, which can lead to bleeding and other complications, especially in the cases of decrease in factors VII, VIII and XIII. These abnormalities may not necessarily be dose-dependent. Some of the hemorrhage manifestations may include mucosal bleeding (e.g., menorrhagia, epistaxis, hematuria, melena), easy-bruising, soft-tissue hematoma, hemarthrosis, and intracranial hemorrhage. Caution should be taken in patients taking valproate and anticoagulants and in cases of injury or surgery to avoid life-threatening or fatal bleeding (see **WARNINGS AND PRECAUTIONS, Hematologic, Thrombocytopenia**).

Pregnant women taking EPIVAL[®] may also develop coagulation abnormalities, which may result in hemorrhagic complications in the neonate including death (see **WARNINGS AND**

PRECAUTIONS, Hematologic, Thrombocytopenia). If EPIVAL[®] is used in pregnancy, the coagulation parameters should be monitored carefully.

Hepatic Failure

Hepatic failure, resulting in the death of a newborn and of an infant has been reported following the use of valproate during pregnancy.

Hypoglycemia

Serious postmarketing reports of hypoglycemia have been received for neonates whose mothers received EPIVAL[®] treatment during pregnancy. In most cases, EPIVAL[®] was the only reported antiepileptic drug (AED). Most of these neonates also displayed other congenital anomalies including hypospadias, complex facial dysmorphism, limb anomalies, severe cardiac anomalies, etc. Therefore, if a decision has been made to use EPIVAL[®] during pregnancy, or if the patient becomes pregnant while taking this drug, the patient should be made aware of the potential hazard to the fetus.

Thyroid Gland Abnormalities

Cases of hypothyroidism have been reported in neonates whose mothers have taken valproate during pregnancy. There have also been reported cases of increased serum thyroid stimulating hormone or decreased serum thyroxine levels in children receiving valproate therapy. In addition, there have been reported cases of hypothyroidism and hyperthyroidism in adults and children receiving valproate monotherapy.

Teratogenicity in Animals

Animal studies have demonstrated valproic acid induced teratogenicity (see **TOXICOLOGY, Reproduction and Teratology**), and studies in human females have demonstrated placental transfer of the drug. Increased frequencies of malformations, as well as intrauterine growth retardation and death, have been observed in mice, rats, rabbits, and monkeys following prenatal exposure to valproate. Malformations of the skeletal system are the most common structural abnormalities produced in experimental animals, but neural tube closure defects have been seen in mice exposed to maternal plasma valproate concentrations exceeding 230 mcg/mL (2.3 times the upper limit of the human therapeutic range for epilepsy) during susceptible periods of embryonic development.

Administration of an oral dose of 200 mg/kg/day or greater (50% of the maximum human daily dose or greater on a mg/m² basis) to pregnant rats during organogenesis produced malformations (skeletal, cardiac and urogenital) and growth retardation in the offspring. These doses resulted in peak maternal plasma valproate levels of approximately 340 mcg/mL or greater (3.4 times the upper limit of the human therapeutic range for epilepsy or greater). Behavioural deficits have been reported in the offspring of rats given a dose of 200 mg/kg/day throughout most of pregnancy.

An oral dose of 350 mg/kg/day (approximately 2 times the maximum human daily dose on a mg/m² basis) produced skeletal and visceral malformations in rabbits exposed during organogenesis. Skeletal malformations, growth retardation, and death were observed in rhesus monkeys following administration of an oral dose of 200 mg/kg/day (equal to the maximum human daily dose on a mg/m² basis) during organogenesis. This dose resulted in peak maternal plasma valproate levels of approximately 280 mcg/mL (2.8 times the upper limit of the human therapeutic range for epilepsy).

Nursing Women

EPIVAL[®] is excreted in breast milk. Concentrations in breast milk have been reported to be 1 to 10% of maternal serum concentrations. As a general rule, nursing should not be undertaken while a patient is receiving EPIVAL[®]. Based on literature and clinical experience, hematological disorders have been shown in breastfed newborns/infants of treated women.

Pediatrics (< 18 years of age)

Experience has indicated that children under the age of 2 years are at a considerably increased risk of developing fatal hepatotoxicity, especially those with the aforementioned conditions (see **WARNINGS AND PRECAUTIONS, Hepatic/Biliary/Pancreatic, Serious or Fatal Hepatotoxicity**). When EPIVAL[®] is used in this patient group, it should be used with extreme caution and as a sole agent. The benefits of therapy should be weighed against the risks (see **CONTRAINDICATIONS**).

Above the age of 2 years, experience in epilepsy has indicated that the incidence of fatal hepatotoxicity decreases considerably in progressively older patient groups.

In patients over two years of age who are clinically suspected of having a hereditary mitochondrial disease, EPIVAL[®] should only be used after other anticonvulsants have failed. (see **WARNINGS AND PRECAUTIONS, Hepatic/Biliary/Pancreatic, Patients with Mitochondrial Disease**).

Younger children, especially those receiving enzyme-inducing drugs, will require larger maintenance doses to attain targeted total and unbound valproate concentrations. The variability in free fraction limits the clinical usefulness of monitoring total serum valproate concentrations. Interpretation of valproate concentrations in children should include consideration of factors that affect hepatic metabolism and protein binding.

The safety and effectiveness of EPIVAL[®] for the treatment of acute mania has not been studied in individuals below the age of 18 years.

Geriatrics (≥ 65 years of age)

Alterations in the kinetics of unbound valproate in the elderly indicate that the initial dosage should be reduced in this population (see **DOSAGE AND ADMINISTRATION and ACTION AND CLINICAL PHARMACOLOGY, Special Populations and Conditions, Geriatrics**).

The safety and efficacy of EPIVAL[®] in elderly patients with epilepsy and mania has not been evaluated in clinical trials. Caution should thus be exercised in dose selection for an elderly patient, recognizing the more frequent hepatic and renal dysfunctions, and limited experience with EPIVAL[®] in this population.

A study of elderly patients revealed valproate-related somnolence and discontinuation of EPIVAL[®] for this adverse event (see **WARNINGS AND PRECAUTIONS, Special Populations, Geriatrics, Somnolence in the Elderly**). The starting dose should be reduced in elderly patients, and dosage reductions or discontinuation should be considered in patients with excessive somnolence (see **DOSAGE AND ADMINISTRATION**).

Somnolence in the elderly

In a group of elderly patients (mean age 83 years old, n = 172), EPIVAL[®] doses were increased by 125 mg/day to a target dose of 20 mg/kg/day. Compared to placebo a significantly higher number of valproate-treated patients had somnolence, and although not statistically significant, a higher number of valproate-treated patients experienced dehydration. Discontinuations for somnolence were also significantly higher in valproate-treated patients compared to placebo. In approximately one-half of the patients with somnolence, there was also associated reduced nutritional intake and weight loss. In elderly patients, dosage should be increased more slowly and with regular monitoring for fluid intake, dehydration, somnolence, urinary tract infection and other adverse events. Dose reductions or discontinuation of EPIVAL[®] should be considered in patients with decreased food or fluid intake and in patients with excessive somnolence (see **DOSAGE AND ADMINISTRATION**).

Monitoring and Laboratory Tests

Since EPIVAL[®] may interact with concurrently administered drugs which are capable of enzyme induction, periodic plasma concentration determinations of valproate and concomitant drugs are recommended during the early course of therapy and whenever enzyme-inducing drugs are introduced or withdrawn (see **DRUG INTERACTIONS**).

Monitoring Valproate Concentrations

Protein binding of valproate is reduced in the elderly, in patients with renal impairment, and in the presence of other drugs (e.g., acetylsalicylic acid). Accordingly, measurements of plasma levels of valproate may be misleading in these patients, as actual drug exposure may be higher than measured values (see **WARNINGS AND PRECAUTIONS, Hepatic/Biliary/Pancreatic**, **WARNINGS AND PRECAUTIONS, Endocrine and Metabolism**, **Hyperammonemia**, **WARNINGS AND PRECAUTIONS, Hematologic**, **Thrombocytopenia** and **DRUG INTERACTIONS, Drug-Drug Interactions**, Table 2).

Medication Residue

There have been rare reports of medication residue in the stool, some of which have occurred in the context of transient diarrhea or those with anatomic or functional gastrointestinal disorders

with shortened transit time (e.g., ileostomy, colostomy, etc). It is recommended that patients with shortened gastrointestinal transit time be only given the immediate release formulation of valproate. Plasma valproate levels should be checked if a patient is experiencing uncontrolled and/or unexpected seizures. If clinically indicated, valproate should be gradually discontinued and alternative treatment considered.

ADVERSE REACTIONS

Adverse Drug Reaction Overview

Epilepsy

The most commonly reported adverse reactions are nausea, vomiting and indigestion. Since EPIVAL[®] (divalproex sodium) enteric-coated tablets has usually been used with other antiepileptics, it is not possible in most cases to determine whether the adverse reactions mentioned in this section are due to EPIVAL[®] alone or to the combination of drugs.

Adverse events that have been reported with EPIVAL[®] from epilepsy trials, spontaneous reports, and other sources are listed below by system organ class.

Blood and Lymphatic System Disorders:

Thrombocytopenia and inhibition of the secondary phase of platelet aggregation may be reflected in altered bleeding time, petechiae, bruising, hematoma formation, epistaxis, and hemorrhage (see **WARNINGS AND PRECAUTIONS, Hematologic, Thrombocytopenia**). Relative lymphocytosis, macrocytosis and hypofibrinogenemia have been noted. Leukopenia and eosinophilia have also been reported. Anemia, including macrocytic with or without folate deficiency, aplastic anemia, pancytopenia, bone marrow suppression, agranulocytosis and acute intermittent porphyria have been reported.

Cardiac Disorders:

Bradycardia

Ear and Labyrinth Disorders:

Hearing loss, either reversible or irreversible, has been reported; however, a cause and effect relationship has not been established. Ear pain has also been reported.

Gastrointestinal Disorders:	<p>Nausea, vomiting and indigestion are the most commonly reported side effects at the initiation of therapy. These effects are usually transient and rarely require discontinuation of therapy. Diarrhea, abdominal cramps, constipation, gingival disorder (mainly gingival hyperplasia) and parotid gland swelling have also been reported. The administration of delayed-release EPIVAL[®] may result in reduction of gastrointestinal side effects in some patients. In some patients, many of whom have functional or anatomic (including ileostomy or colostomy) gastrointestinal disorders with shortened gastrointestinal transit times, there have been postmarketing reports of EPIVAL[®] ER extended-release tablets in the stool.</p> <p>There have been reports of acute pancreatitis, including rare fatal cases, occurring in patients receiving EPIVAL[®] (see WARNINGS AND PRECAUTIONS, <u>Hepatic/Biliary/Pancreatic</u>, Pancreatitis).</p>
General Disorders and Administration Site Conditions:	Edema of extremities, fever and hypothermia
Hepatobiliary Disorders:	<p>Minor elevations of transaminases [e.g., serum glutamic-oxaloacetic transaminase (SGOT) and serum glutamic-pyruvic transaminase (SGPT)] and lactate dehydrogenase (LDH) are frequent and appear to be dose-related. Occasionally, laboratory tests also show increases in serum bilirubin and abnormal changes in other liver function tests. These results may reflect potentially serious hepatotoxicity (see WARNINGS AND PRECAUTIONS, <u>Hepatic/Biliary/Pancreatic</u>, Serious or Fatal Hepatotoxicity).</p>
Immune System Disorders:	Allergic reaction, anaphylaxis
Infections and Infestations:	Pneumonia and otitis media
Investigations:	<p>Abnormal thyroid function tests (including both hyperthyroidism and hypothyroidism) (see WARNINGS AND PRECAUTIONS, <u>Special Populations</u>, Risk in the neonate, Thyroid Gland Abnormalities and DRUG INTERACTIONS, <u>Drug-Laboratory Interactions</u>).</p>

Metabolism and Nutrition Disorders:

Hyperammonemia (see **WARNINGS AND PRECAUTIONS, Endocrine and Metabolism, Hyperammonemia**), hyponatremia, biotin deficiency/biotinidase deficiency and inappropriate antidiuretic hormone (ADH) secretion. There have been rare reports of Fanconi syndrome (proximal renal tubular dysfunction) occurring primarily in children. Decreased carnitine concentrations have been reported although the clinical relevance is undetermined. Hyperglycinemia (elevated plasma glycine concentration) has been reported and associated with a fatal outcome in a patient with pre-existing non-ketotic hyperglycinemia.

Anorexia with some weight loss and increased appetite with some weight gain have also been reported.

Obesity has been reported in post-marketing experience.

Musculoskeletal and Connective Tissue Disorders:

Weakness, rhabdomyolysis, and bone pain have been reported (see **WARNINGS AND PRECAUTIONS, Muscle Effects /Rhabdomyolysis**).

Reports have been received of decreased bone mass, potentially leading to osteoporosis and osteopenia, during long-term therapy with some anticonvulsant medications, including EPIVAL[®]. Some studies have indicated that supplemental calcium and vitamin D may be of benefit to patients who are on chronic EPIVAL[®] therapy.

A lupus erythematosus-like syndrome has been reported rarely.

Neoplasms Benign, Malignant and Unspecified (including cysts and polyps):

Myelodysplastic syndrome in both adults and children (all children were on valproate monotherapy). In some cases in adults and/or children, myelodysplastic syndrome was reversible upon valproate discontinuation.

Nervous System Disorders: Sedative effects have been noted in patients receiving EPIVAL[®] alone but occur most often in patients on combination therapy. Sedation usually disappears upon reduction of other antiepileptic medication.

Hallucination, ataxia, headache, nystagmus, diplopia, asterixis, "spots before the eyes", tremor (may be dose-related), confusion, dysarthria, dizziness, hypesthesia, vertigo, incoordination, memory impairment, cognitive disorder, and extrapyramidal disorders including parkinsonism have been reported with the use of valproate. Rare cases of coma have been reported in patients receiving EPIVAL[®] alone or in conjunction with phenobarbital.

Encephalopathy, with or without fever or hyperammonemia, has been reported without evidence of hepatic dysfunction or inappropriate valproate plasma levels. Most patients recovered, with noted improvement of symptoms, upon discontinuation of the drug.

There have been postmarketing reports of reversible and irreversible cerebral and cerebellar atrophy temporally associated with the use of valproate products. In some cases the patients recovered with permanent sequelae (see **WARNINGS AND PRECAUTIONS, Neurologic, Brain Atrophy**). Cerebral atrophy seen in children exposed to valproate in utero led to various forms of neurological events, including developmental delays and psychomotor impairment. Congenital malformations and developmental disorders have also been reported (see **WARNINGS AND PRECAUTIONS, Special Populations, Female children/Female adolescents/Women of childbearing potential/Pregnancy** and **WARNINGS AND PRECAUTIONS, Special Populations, Pregnancy Exposure Risk Related to Valproate** and **WARNINGS AND PRECAUTIONS, Special Populations, Risk in the neonate**).

Aggravated convulsions (increase in number of seizures or appearance of new seizure type or worsening of seizures) have been reported in patients with epilepsy treated with valproate monotherapy.

Psychiatric Disorders: Emotional upset, depression, psychosis, aggression, psychomotor hyperactivity, hostility, agitation, disturbance in attention, abnormal behaviour, learning disorder and behavioural deterioration.

See **WARNINGS AND PRECAUTIONS, Psychiatric**.

Renal and Urinary Disorders: Enuresis, urinary incontinence, acute renal failure, tubulointerstitial nephritis and urinary tract infection.

Reproductive System and Breast Disorders:

There have been reports of irregular menses, secondary amenorrhea, breast enlargement and galactorrhea in patients receiving EPIVAL[®]. Hyperandrogenism (hirsutism, virilism, acne, male pattern alopecia, and/or androgen increased).

There have been rare spontaneous reports of polycystic ovary disease. A cause and effect relationship has not been established.

Respiratory, Thoracic and Mediastinal Disorders:

Increased cough, pleural effusion

Skin and Subcutaneous Tissue Disorders:

Transient and/or dose related alopecia (hair loss) and hair disorders (such as hair texture abnormal, hair colour changes, hair growth abnormal), have been observed. Skin rash, photosensitivity, generalized pruritus, erythema multiforme, Stevens-Johnson syndrome (SJS), and petechiae have rarely been noted.

Rare cases of Toxic Epidermal Necrolysis (TEN) have been reported including a fatal case of a 6 month old infant taking EPIVAL[®] and several other concomitant medications. An additional case of Toxic Epidermal Necrolysis resulting in death was reported in a 35 year old patient with AIDS taking several concomitant medications and with a history of multiple cutaneous drug reactions.

Serious skin reactions have been reported with concomitant administration of lamotrigine and EPIVAL[®] (see **DRUG INTERACTIONS, Drug-Drug Interactions, Table 2**).

Cutaneous vasculitis has also been reported.

Nail and nail bed disorders have also been reported in post-marketing experience.

EPIVAL[®] versus EPIVAL[®] ER

A 24 week cross-over study compared the safety and efficacy of EPIVAL[®] ER (divalproex sodium extended-release tablets) administered once daily to that of equal doses of EPIVAL[®] (administered twice daily or three times daily) in the treatment of adolescent and adult epileptic patients with generalized seizures (n=44). Two adverse events occurred in significantly more patients on EPIVAL[®] ER than on EPIVAL[®]: asthenia (15.9% versus 6.8% respectively) and treatment-emergent mild thrombocytopenia (16.2% versus 6.8%, respectively).

Bipolar Disorder

The incidence of adverse events has been ascertained based on data from two short-term (21 day) placebo-controlled clinical trials of EPIVAL[®] in the treatment of acute mania, and from 2 long-term (up to 3 years) retrospective open trials.

Most Commonly Observed

During the short-term placebo-controlled trials, the six most commonly reported adverse events in patients (n = 89) exposed to EPIVAL[®] were nausea (22%), headache (21%), somnolence (19%), pain (15%), vomiting (12%), and dizziness (12%).

In the long-term retrospective trials (634 patients exposed to EPIVAL[®]), the six most commonly reported adverse events were somnolence (31%), tremor (29%), headache (24%), asthenia (23%), diarrhea (22%), and nausea (20%).

Associated With Discontinuation of Treatment

In the placebo-controlled trials, adverse events which resulted in EPIVAL[®] discontinuation in at least one percent of patients were nausea (4%), abdominal pain (3%), somnolence (2%), and rash (2%).

In the long-term retrospective trials, adverse events which resulted in EPIVAL[®] discontinuation in at least one percent of patients were alopecia (2.4%), somnolence (1.9%), nausea (1.7%), and tremor (1.4%). The time to onset of these events was generally within the first two months of initial exposure to EPIVAL[®]. A notable exception was alopecia, which was first experienced after 3 to 6 months of exposure by 8 of the 15 patients who discontinued EPIVAL[®] in response to the event.

Controlled Trials

Table 1 summarizes those treatment-emergent adverse events reported for patients in the placebo-controlled trials when the incidence rate in the EPIVAL[®] group was at least 5%. (Maximum treatment duration was 21 days; maximum dose in 83% of patients was between 1,000 to 2,500 mg per day).

Table 1. Treatment-Emergent Adverse Event Incidence ($\geq 5\%$) in Short-Term Placebo-Controlled Trials (Oral Administration)

System Organ Class/Event	EPIVAL[®] N = 89 (%)	placebo N = 97 (%)
Gastrointestinal Disorders		
Nausea	22.5	15.5
Vomiting	12.4*	3.1
Diarrhea	10.1	13.4
Abdominal Pain	9	8.2
Dyspepsia	9	8.2
Constipation	7.9	8.2
General Disorders and Administration Site Conditions		
Pain	14.6	15.5
Asthenia	10.1	7.2
Injury, Poisoning and Procedural Complications		
Accidental Injury	11.2	5.2
Musculoskeletal and Connective Tissue Disorders		
Back Pain	5.6	6.2
Nervous System Disorders		
Headache	21.3	30.9
Somnolence	19.1	12.4
Dizziness	12.4	4.1
Tremor	5.6	6.2
Respiratory, Thoracic and Mediastinal Disorders		
Pharyngitis	6.7	9.3
Skin and Subcutaneous Tissue Disorders		
Rash	5.6	3.1

* Statistically significant at $P < 0.05$ level.

The following adverse events not listed above were reported by at least 1%, but less than 5%, of the 89 patients from the two placebo-controlled clinical trials of EPIVAL[®] tablets.

Cardiac Disorders:	Palpitations, tachycardia.
Congenital, Familial and Genetic Disorders:	Vascular anomaly.
Ear and Labyrinth Disorders:	Deafness, ear disorder, ear pain, tinnitus, vertigo.
Eye Disorders:	Abnormal vision, amblyopia, conjunctivitis, diplopia, dry eyes, eye pain.
Gastrointestinal Disorders:	Fecal incontinence, flatulence, gastroenteritis, glossitis.
General Disorders and Administration Site Conditions:	Abnormal gait, chest pain, chills, chills and fever, cyst, edema, fever, furunculosis, periodontal abscess, peripheral edema.
Infections and Infestations:	Infection, rhinitis.
Metabolism and Nutrition Disorders:	Anorexia.
Musculoskeletal and Connective Tissue Disorders:	Arthralgia, arthrosis, leg cramps, neck pain, neck rigidity twitching.
Nervous System Disorders:	Ataxia, dysarthria, hypertonia, hypokinesia, paresthesia, reflexes increased, tardive dyskinesia.
Psychiatric Disorders:	Abnormal dreams, agitation, catatonic reaction, confusion, depression, hallucinations, insomnia, thinking abnormalities.
Renal and Urinary Disorders:	Dysurea, urinary incontinence.
Reproductive System and Breast Disorders:	Dysmenorrhea.
Respiratory, Thoracic and Mediastinal Disorders:	Dyspnea.
Skin and Subcutaneous Tissue Disorders:	Alopecia, discoid lupus erythematosus, dry skin, maculopapular rash, seborrhea.
Vascular Disorders:	Ecchymosis, hypertension, hypotension, postural hypotension, vasodilation.

Adverse Events in Elderly Patients

In elderly patients (above 65 years of age), there were more frequent reports of accidental injury, infection, pain, and to a lesser degree, somnolence and tremor, when compared to patients 18 to 65 years of age. Somnolence and tremor tended to be associated with the discontinuation of EPIVAL[®].

DRUG INTERACTIONS

Serious Drug Interactions

- Rare cases of coma have been reported in patients receiving EPIVAL[®] alone or in conjunction with phenobarbital (see **Drug-Drug Interactions, Table 2**).
- Serious skin reactions (such as Stevens-Johnson syndrome and Toxic Epidermal Necrolysis) have been reported with concomitant lamotrigine and EPIVAL[®] administration (see **Drug-Drug Interactions, Table 2**).

Overview

EPIVAL[®] has been found to be a weak inhibitor of some P₄₅₀ isozymes, epoxide hydrase, and glucuronyl transferases.

Drugs that affect the level of expression of hepatic enzymes, particularly those that elevate levels of glucuronyl transferases (such as ritonavir; see **Table 2** below), may increase the clearance of valproate. For example, phenytoin, carbamazepine, and phenobarbital (or primidone) can double the clearance of valproate. Thus, patients on EPIVAL[®] monotherapy will generally have longer half-lives and higher concentrations than patients receiving polytherapy with antiepilepsy drugs.

In contrast, drugs that are inhibitors of cytochrome P₄₅₀ isozymes, such as antidepressants, may be expected to have little effect on EPIVAL[®] clearance because cytochrome P₄₅₀ microsomal mediated oxidation is a relatively minor secondary metabolic pathway compared to glucuronidation and beta-oxidation.

The concomitant administration of EPIVAL[®] with drugs that exhibit extensive protein binding (e.g., acetylsalicylic acid, carbamazepine, dicumarol, warfarin, tolbutamide, and phenytoin) may result in alteration of serum drug levels.

Since EPIVAL[®] may interact with concurrently administered drugs which are capable of enzyme induction, periodic plasma concentration determinations of valproate and concomitant drugs are recommended during the early course of therapy and whenever enzyme-inducing drugs are introduced or withdrawn.

Drug-Drug Interactions

Table 2 provides information about the potential influence of several commonly prescribed medications on valproate pharmacokinetics as well as the potential influence of valproate on the pharmacokinetics and pharmacodynamics of several commonly prescribed medications. The list is not exhaustive nor could it be, since new interactions are continuously being reported. Please note that drugs may be listed under specific name, family or pharmacologic class. Reading the entire section is recommended.

Table 2. Summary of Drug-Drug Interactions Including Important Interaction, Non-clinically Important Interactions and No Observed Interactions

Concomitant Drug	Ref	Effect	Clinical comment
Acetaminophen	CT	↔ acetaminophen	EPIVAL [®] had no effect on any of the pharmacokinetic parameters of acetaminophen when it was concurrently administered to three epileptic patients.
Acetazolamide			Concomitant administration of valproate and acetazolamide has been associated with encephalopathy and/or hyperammonemia. Patients treated with those two drugs should be carefully monitored for signs and symptoms of hyperammonemic encephalopathy (see WARNINGS AND PRECAUTIONS, Endocrine and Metabolism)
Acetylsalicylic Acid	CT	↑ valproate	A study involving the co-administration of acetylsalicylic acid at antipyretic doses (11 to 16 mg/kg) with EPIVAL [®] to pediatric patients (n = 6) revealed a decrease in protein binding and an inhibition of metabolism of valproate. Valproate free fraction was increased 4-fold in the presence of acetylsalicylic acid compared to EPIVAL [®] alone. The beta-oxidation pathway consisting of 2-E-valproic acid, 3-OH-valproic acid, and 3-keto valproic acid was decreased from 25% of total metabolites excreted on EPIVAL [®] alone to 8.3% in the presence of acetylsalicylic acid. Caution should be observed when EPIVAL [®] is administered with drugs affecting coagulation, [e.g., acetylsalicylic acid and warfarin] (see ADVERSE REACTIONS).
Alcohol	T	No pharmacokinetic (PK) interaction	EPIVAL [®] may potentiate the CNS depressant action of alcohol.
Amitriptyline / Nortriptyline	CT	In general: ↓ amitriptyline ↓ nortriptyline Rarely: ↑ amitriptyline ↑ nortriptyline	Administration of a single oral 50 mg dose of amitriptyline to 15 normal volunteers (10 males and 5 females) who received EPIVAL [®] (500 mg twice daily) resulted in a 21% decrease in plasma clearance of amitriptyline and a 34% decrease in the net clearance of nortriptyline. Rare post-marketing reports of concurrent use of EPIVAL [®] and amitriptyline resulting in an increased amitriptyline and nortriptyline levels have been received. Concurrent use of EPIVAL [®] and amitriptyline has rarely been associated with toxicity. Monitoring of amitriptyline levels should be considered for patients taking EPIVAL [®] concomitantly with amitriptyline. Consideration should be given to lowering the dose of amitriptyline/nortriptyline in the presence of EPIVAL [®] .
Antacids	CT	↔ valproate	A study involving the co-administration of EPIVAL [®] 500 mg with commonly administered antacids (Maalox [®] , Trisogel, and Titalac [™] - 160 milliequivalent doses) did not reveal any effect on the extent of absorption of valproate.

Concomitant Drug	Ref	Effect	Clinical comment
Other - Antipsychotics, Monoamine Oxidase Inhibitors (MAOIs) and Tricyclic Antidepressants			In addition to enhancing CNS depression when used concurrently with EPIVAL [®] , antipsychotics, tricyclic antidepressants and MAOIs may lower the seizure threshold. Dosage adjustments may be necessary to control seizures.
Antiretroviral agents - Ritonavir - Lopinavir - Zidovudine - Lamivudine	C CT	↓ valproate ↑ zidovudine	Protease inhibitors such as lopinavir and ritonavir decrease valproate plasma level when co-administered with valproate. Reduction of therapeutic effect of valproate was observed in a patient with bipolar disorder with the initiation of HIV treatment with lopinavir/ritonavir, zidovudine, and lamivudine. In 6 patients who were seropositive for HIV, the clearance of zidovudine (100 mg every 8 hours) was decreased by 38% after administration of valproate (250 or 500 mg every 8 hours); the half-life of zidovudine was unaffected.
Benzodiazepines			EPIVAL [®] may decrease oxidative liver metabolism of some benzodiazepines, resulting in increased serum concentrations. See Table 1. Diazepam and Lorazepam.
Carbamazepine / carbamazepine- 10,11-epoxide	CT	↓ CBZ ↑ CBZ-E ↓ valproate	Concomitant use of carbamazepine (CBZ) with EPIVAL [®] may result in decreased serum concentrations and half-life of valproate due to increased metabolism induced by hepatic microsomal enzyme activity. Monitoring of serum concentrations is recommended when either medication is added to or withdrawn from an existing regimen. Changes in the serum concentration of the 10,11-epoxide (CBZ-E) metabolite of carbamazepine, however, will not be detected by routine serum carbamazepine assay. Serum levels of carbamazepine decreased 17% while that of carbamazepine-10,11-epoxide increased by 45% upon co-administration of EPIVAL [®] and CBZ to epileptic patients.
Carbapenem Antibiotics		↓ valproate	Carbapenem antibiotics (ertapenem, imipenem, meropenem, doripenem) can reduce serum valproic acid concentrations to sub-therapeutic levels. This can result in loss of seizure control in epileptic patients or loss of efficacy in non-epileptics. In some cases of co-administration in epileptic patients breakthrough seizures have occurred. Increasing valproic acid dose may not be sufficient to overcome this interaction. If co-administration is essential, serum valproic acid concentrations should be monitored daily. Alternative antibacterial or anticonvulsant therapy should be considered if serum valproic acid concentrations drop significantly or seizure control deteriorates (see WARNINGS AND PRECAUTIONS, General, Interaction with Carbapenem Antibiotics).

Concomitant Drug	Ref	Effect	Clinical comment
Chlorpromazine	CT	↑ valproate	A study involving the administration of 100 to 300 mg/day of chlorpromazine to schizophrenic patients already receiving EPIVAL [®] (200 mg twice daily) revealed a 15% increase in trough plasma levels of valproate. This increase is not considered clinically important.
Cholestyramine		↓ valproate	Cholestyramine may lead to a decrease in plasma level of valproate when co-administered.
Cimetidine	T	↑ valproate	Cimetidine may decrease the clearance and increase the half-life of EPIVAL [®] by altering its metabolism. In patients receiving EPIVAL [®] , serum valproic acid levels should be monitored when treatment with cimetidine is instituted, increased, decreased, or discontinued. The EPIVAL [®] dose should be adjusted accordingly.
Clonazepam	T	No PK interaction	The concomitant use of EPIVAL [®] and clonazepam may induce absence status in patients with a history of absence type seizures.
Clozapine	CT	No interaction	In psychotic patients (n = 11), no interaction was observed when EPIVAL [®] was co-administered with clozapine.
Diazepam	CT	↑ diazepam	Valproate displaces diazepam from its plasma albumin binding sites and inhibits its metabolism. Co-administration of EPIVAL [®] (1,500 mg daily) increased the free fraction of diazepam (10 mg) by 90% in healthy volunteers (n = 6). Plasma clearance and volume of distribution for free diazepam were reduced by 25% and 20%, respectively, in the presence of valproate. The elimination half-life of diazepam remained unchanged upon addition of valproate.
Ethosuximide	CT	↑ ethosuximide	Valproate inhibits the metabolism of ethosuximide. Administration of a single ethosuximide dose of 500 mg with EPIVAL [®] (800 to 1,600 mg/day) to healthy volunteers (n = 6) was accompanied by a 25% increase in elimination half-life of ethosuximide and a 15% decrease in its total clearance as compared to ethosuximide alone. Patients receiving EPIVAL [®] and ethosuximide, especially along with other anticonvulsants, should be monitored for alterations in serum concentrations of both drugs.

Concomitant Drug	Ref	Effect	Clinical comment
Estrogen-containing products	C CT T	↓ valproate	<p>Estrogen-containing products, including estrogen-containing hormonal contraceptives, may increase the clearance of valproate, which may result in decreased serum concentration of valproate and potentially decreased valproate efficacy. Prescribers should monitor clinical response (seizure control or mood control), when adding, or discontinuing estrogen-containing products. Consider monitoring of valproate plasma levels.</p> <p>Valproate usually has no enzyme inducing effect; as a consequence, valproate does not reduce efficacy of oestroprogestative agents in women receiving hormonal contraception.</p> <p>Based on limited data from literature, an approximate 20% increase in valproate clearance has been reported in some patients that were concomitantly treated with valproate and estrogen-containing products, which may result in a decrease in valproate serum levels. Inter-individual variability has been noted. There are insufficient data to establish a robust PK-PD relationship resulting from this PK interaction.</p>
Felbamate	CT	↑ valproate	<p>A study involving the co-administration of 1,200 mg/day of felbamate with EPIVAL[®] to patients with epilepsy (n = 10) revealed an increase in mean valproate peak concentration by 35% (from 86 to 115 mcg/mL) compared to EPIVAL[®] alone. Increasing the felbamate dose to 2,400 mg/day increased the mean valproate peak concentration to 133 mcg/mL (another 16% increase). A decrease in EPIVAL[®] dosage may be necessary when felbamate therapy is initiated. Lower doses of EPIVAL[®] may be necessary when used concomitantly with felbamate.</p>
Haloperidol	CT	↔ valproate	<p>A study involving the administration of 6 to 10 mg/day of haloperidol to schizophrenic patients already receiving EPIVAL[®] (200 mg twice daily) revealed no significant changes in valproate trough plasma levels.</p>

Concomitant Drug	Ref	Effect	Clinical comment
Lamotrigine	CT	↑ lamotrigine ↓ valproate	<p>The effects of EPIVAL[®] on lamotrigine were investigated in 6 healthy male subjects. Each subject received a single oral dose of lamotrigine alone and with EPIVAL[®] 200 mg every 8 hours for 6 doses starting 1 hour before the lamotrigine dose was given. EPIVAL[®] administration reduced the total clearance of lamotrigine by 21% and increased the plasma elimination half-life from 37.4 hours to 48.3 hours ($p < 0.005$). Renal clearance of lamotrigine was unchanged. In a steady-state study involving 10 healthy volunteers, the elimination half-life of lamotrigine increased from 26 to 70 hours with EPIVAL[®] co-administration (a 165% increase).</p> <p>In a study involving 16 epileptic patients, EPIVAL[®] doubled the elimination half-life of lamotrigine. In an open-labelled study, patients receiving enzyme inducing AEDs (e.g., carbamazepine, phenytoin, phenobarbital, or primidone) demonstrated a mean lamotrigine plasma elimination half-life of 14 hours while the elimination half-life was 30 hours in patients taking EPIVAL[®] plus an enzyme inducing antiepileptic agent. The latter value is similar to the lamotrigine half-life during monotherapy indicating that valproic acid may counteract the effect of the enzyme inducer. If EPIVAL[®] is discontinued in a patient receiving lamotrigine and an enzyme inducing antiepileptic serum lamotrigine concentrations may decrease. Patients receiving combined antiepileptic therapy require careful monitoring when another agent is started, stopped or when the dose is altered.</p> <p>Serious skin reactions (such as Stevens-Johnson syndrome and Toxic Epidermal Necrolysis) have been reported with concomitant lamotrigine and EPIVAL[®] administration.</p>
Lithium	CT	↔ lithium	<p>In a double-blind placebo-controlled multiple dose crossover study in 16 healthy male volunteers, pharmacokinetic parameters of lithium were not altered by the presence or absence of valproate. The presence of lithium, however, resulted in an 11 to 12% increase in the AUC and C_{max} of valproate. T_{max} was also reduced. Although these changes were statistically significant, they are not likely to have clinical importance.</p> <p>Co-administration of EPIVAL[®] (500 mg twice daily) and lithium carbonate (300 mg three times daily) to normal male volunteers ($n = 16$) had no effect on the steady-state kinetics of lithium.</p>
Lorazepam	CT	↑ lorazepam	<p>Concomitant administration of EPIVAL[®] (500 mg twice daily) and lorazepam (1 mg twice daily) in normal male volunteers ($n = 9$) was accompanied by a 17% decrease in the plasma clearance of lorazepam. This decrease is not considered clinically important.</p>

Concomitant Drug	Ref	Effect	Clinical comment
Nimodipine	CT	↑ nimodipine	Concomitant treatment of nimodipine with valproic acid may increase nimodipine plasma concentration by 50%.
Olanzapine	CT	↓ olanzapine	<p>Valproate may decrease the olanzapine plasma concentration.</p> <p>Administration of a single 5 mg dose of olanzapine to 10 healthy, non-epileptic volunteers with Depakote ER[®] (divalproex sodium extended-release tablets) 1000 mg QD did not affect olanzapine C_{max} and elimination half-life. However, olanzapine AUC was 35% lower in the presence of Depakote ER[®] (divalproex sodium extended-release tablets). The clinical significance of these observations is unknown.</p>
Oral contraceptive Steroids	CT	No PK interaction	<p>Evidence suggests that there is an association between the use of certain AEDs capable of enzyme induction and failure of oral contraceptives. One explanation for this interaction is that enzyme-inducing drugs effectively lower plasma concentrations of the relevant steroid hormones, resulting in unimpaired ovulation. However, other mechanisms, not related to enzyme induction, may contribute to the failure of oral contraceptives. EPIVAL[®] is not a significant enzyme inducer and would not be expected to decrease concentrations of steroid hormones. However, clinical data about the interaction of EPIVAL[®] with oral contraceptives are minimal.</p> <p>Administration of a single-dose of ethinyloestradiol (50 mcg)/levonorgestrel (250 mcg) to 6 women on EPIVAL[®] (200 mg twice daily) therapy for 2 months did not reveal any pharmacokinetic interaction.</p>
Phenobarbital	CT	↑ phenobarbital ↓ valproate	<p>Phenobarbital increases the metabolism of valproic acid and hence, increases valproic acid metabolite levels. Therefore patients treated with this drug should be carefully monitored for signs and symptoms of hyperammonemia.</p> <p>Valproate was found to inhibit the metabolism of phenobarbital. Co-administration of EPIVAL[®] (250 mg twice daily for 14 days) with phenobarbital to normal subjects (n = 6) resulted in a 50% increase in half-life and a 30% decrease in plasma clearance of phenobarbital (60 mg single-dose). The fraction of phenobarbital dose excreted unchanged increased by 50% in the presence of valproate.</p> <p>There is evidence for severe CNS depression, with or without significant elevations of barbiturate or valproate serum concentrations. All patients receiving concomitant barbiturate therapy should be closely monitored for neurological toxicity. Serum barbiturate concentrations should be obtained, if possible, and the barbiturate dosage decreased, if appropriate.</p>

Concomitant Drug	Ref	Effect	Clinical comment
Phenytoin	CT	↑ phenytoin	<p>Phenytoin increases the metabolism of valproic acid and hence, increases valproic acid metabolite levels. Therefore patients treated with this drug should be carefully monitored for signs and symptoms of hyperammonemia.</p> <p>Valproate displaces phenytoin from its plasma albumin binding sites and inhibits its hepatic metabolism.</p> <p>Co-administration of EPIVAL[®] (400 mg three times daily) with phenytoin (250 mg) in normal volunteers (n = 7) was associated with a 60% increase in the free fraction of phenytoin. Total plasma clearance and apparent volume of distribution of phenytoin increased 30% in the presence of valproate. Both the clearance and apparent volume of distribution of free phenytoin were reduced by 25%.</p> <p>In patients with epilepsy, there have been reports of breakthrough seizures occurring with the combination of EPIVAL[®] and phenytoin. The dosage of phenytoin should be adjusted as required by the clinical situation.</p>
Primidone	T	↑ phenobarbital	<p>Primidone is metabolized into a barbiturate (phenobarbital), and therefore, may also be involved in a similar or identical interaction with EPIVAL[®] as phenobarbital.</p>
Propofol		↑ propofol	<p>Valproate may inhibit the metabolism of propofol, thus increasing propofol exposure. Reductions in propofol dose of 26 – 35% have been observed when co-administered with valproate. The normal dose of propofol may be excessive for patients receiving oral valproate treatment and may induce complications or delay recovery from anesthesia in electroconvulsive therapy (ECT).</p>
Quetiapine			<p>Co-administration of valproate and quetiapine may increase the risk of neutropenia/leucopenia.</p>
Rifampin	CT	↓ valproate	<p>A study involving the administration of a single dose of EPIVAL[®] (7 mg/kg) 36 hours after 5 nights of daily dosing with rifampin (600 mg) revealed a 40% increase in the oral clearance of valproate. EPIVAL[®] dosage adjustment may be necessary when it is co-administered with rifampin.</p>
Rufinamide		↑ rufinamide	<p>Valproate may lead to an increase in plasma level of rufinamide in a dose-dependent manner. This increase is dependent on concentration of valproate. Caution should be exercised, particularly in children, as this effect is larger in pediatric population.</p>
Selective Serotonin Re-Uptake Inhibitors (SSRIs)	C	↑ valproate	<p>Some evidence suggests that SSRIs inhibit the metabolism of EPIVAL[®], resulting in higher than expected levels of valproate.</p>
Tolbutamide	T	↑ tolbutamide	<p>From in vitro experiments, the unbound fraction of tolbutamide was increased from 20 to 50% when added to plasma samples taken from patients treated with EPIVAL[®]. The clinical relevance of this displacement is unknown.</p>

Concomitant Drug	Ref	Effect	Clinical comment
Topiramate	CT	Effect unknown	<p><u>Hyperammonemia</u></p> <p>Concomitant administration of valproate and topiramate has been associated with encephalopathy and/or hyperammonemia. Patients treated with those two drugs should be carefully monitored for signs and symptoms of hyperammonemic encephalopathy (see CONTRAINDICATIONS, patients with known urea cycle disorders and WARNINGS AND PRECAUTIONS, <u>Endocrine and Metabolism</u>).</p> <p><u>Hypothermia</u></p> <p>Concomitant administration of topiramate with EPIVAL[®] has also been associated with hypothermia in patients who have tolerated either drug alone. Blood ammonia levels should be measured in patients with reported onset of hypothermia (see WARNINGS AND PRECAUTIONS, <u>Endocrine and Metabolism, Hypothermia</u>).</p>
Warfarin	T	Effect unknown	<p>In an in vitro study, valproate increased the unbound fraction of warfarin by up to 32.6%. The therapeutic relevance of this is unknown, however, coagulation tests should be monitored if EPIVAL[®] is instituted in patients taking anticoagulants.</p> <p>Caution is recommended when EPIVAL[®] is administered with drugs affecting coagulation (see ADVERSE REACTIONS).</p>

Legend: C = Case Study; CT = Clinical Trial; T = Theoretical

Drug-Food Interactions

Co-administration of EPIVAL[®] with food should cause no clinical problems in the management of patients with epilepsy.

Drug-Herb Interactions

Interactions with herbal products have not been established.

Drug-Laboratory Interactions

EPIVAL[®] is partially eliminated in the urine as a ketone-containing metabolite which may lead to a false interpretation of the urine ketone test.

There have been reports of altered thyroid function tests associated with EPIVAL[®]; the clinical significance of these is unknown (see WARNINGS AND PRECAUTIONS, Special Populations, Risk in the neonate, Thyroid Gland Abnormalities).

Drug-Lifestyle Interactions

Refer to **WARNINGS AND PRECAUTIONS, Neurologic, Driving and Hazardous Occupations** for details.

DOSAGE AND ADMINISTRATION

Dosing Considerations

Epilepsy

Patients receiving combined antiepileptic therapy require careful monitoring when another agent is started, stopped or when the dose is altered (see **DRUG INTERACTIONS**).

As the dosage of EPIVAL[®] (divalproex sodium) is titrated upward, blood concentrations of phenobarbital, carbamazepine and/or phenytoin may be affected (see **DRUG INTERACTIONS**).

AEDs should not be abruptly discontinued in patients in whom the drug is administered to prevent major seizures because of the strong possibility of precipitating status epilepticus with attendant hypoxia and threat to life.

Any changes in dosage and administration, or the addition or discontinuance of concomitant drugs, should ordinarily be accompanied by close monitoring of clinical status and valproate plasma concentrations.

When changing therapy involving drugs known to induce hepatic microsomal enzymes (e.g., carbamazepine) or other drugs with valproate interactions, (see **DRUG INTERACTIONS**), it is advisable to monitor serum valproate concentrations.

Dosing in Elderly Patients

Due to a decrease in unbound clearance of valproate and possibly a greater sensitivity to somnolence in the elderly, the starting dose should be reduced. Dosage should be increased more slowly and with regular monitoring for fluid and nutritional intake, dehydration, somnolence, urinary tract infection, and other adverse events. Dose reductions or discontinuation of EPIVAL[®] should be considered in patients with decreased food or fluid intake and in patients with excessive somnolence. The ultimate therapeutic dose should be achieved on the basis of clinical response (see **WARNINGS AND PRECAUTIONS, Special Populations, Geriatrics [≥ 65 years of age]**).

Dose-Related Adverse Events

The frequency of adverse events (particularly elevated liver enzymes and thrombocytopenia) may be dose related. The probability of thrombocytopenia appears to increase significantly at total valproate concentration of ≥ 110 mcg/mL (females) or ≥ 135 mcg/mL (males) (see **WARNINGS AND PRECAUTIONS, Hematologic, Dosing-related Adverse Reactions: Thrombocytopenia**). Therefore, the benefit of improved therapeutic effect with higher doses should be weighed against the possibility of a greater incidence of adverse effects.

Recommended Dose and Dosage Adjustment

Epilepsy

EPIVAL[®] (divalproex sodium) enteric-coated tablets are administered orally. The recommended initial dosage is 15 mg/kg/day, increasing at one-week intervals by 5 to 10 mg/kg/day until seizures are controlled or side effects preclude further increases.

The maximal recommended dosage is 60 mg/kg/day. When the total daily dose is 250 mg and over, it should be given in a divided regimen (**Table 3**).

Table 3. Initial Doses by Weight (based on 15 mg/kg/day)

Weight		Total Daily Dose (mg)	Dosage (mg) equivalent to valproic acid		
kg	lb		Dose 1	Dose 2	Dose 3
10 to 24.9	22 to 54.9	250	125	0	125
25 to 39.9	55 to 87.9	500	250	0	250
40 to 59.9	88 to 131.9	750	250	250	250
60 to 74.9	132 to 164.9	1,000	250	250	500
75 to 89.9	165 to 197.9	1,250	500	250	500

Therapeutic Blood Levels

A good correlation has not been established between daily dose, total serum valproate concentration and therapeutic effect. However, therapeutic valproate serum concentrations for most patients with epilepsy will range from 50 to 100 mcg/mL (350 to 700 micromole/L). Some patients may be controlled with lower or higher serum concentrations (see **WARNINGS AND PRECAUTIONS**).

Conversion from DEPAKENE[®] to EPIVAL[®]

EPIVAL[®] enteric-coated tablets dissociate to the valproate ion in the gastrointestinal tract. EPIVAL[®] tablets are uniformly and reliably absorbed, however, because of the enteric coating, absorption is delayed by an hour when compared to DEPAKENE[®] (valproic acid).

The bioavailability of both types of divalproex sodium tablets (EPIVAL[®] and EPIVAL[®] ER) is equivalent to that of DEPAKENE[®] capsules.

In patients previously receiving DEPAKENE[®] therapy, EPIVAL[®] should be initiated at the same daily dosing schedule. After the patient is stabilized on EPIVAL[®], a dosing schedule of two or three times a day may be elected in selected patients. Changes in dosage administration of EPIVAL[®] or concomitant medications should be accompanied by increased monitoring of plasma concentrations of valproate and other medications, as well as the patient's clinical status.

Female children, female adolescents, women of childbearing potential and pregnant women

Divalproex sodium treatment should be initiated and supervised by a specialist experienced in the management of epilepsy. Treatment should only be initiated if other treatments are ineffective or not tolerated and the benefit and risk should be carefully re-assessed at regular treatment reviews. Preferably, divalproex sodium should be prescribed at the lowest effective dose, if possible, as a prolonged release formulation to avoid high peak plasma concentrations. The daily dose should be divided into at least two single doses.

Available data suggest that antiepileptic polytherapy including valproate is associated with a greater risk of congenital malformations than valproate monotherapy. Therefore monotherapy should be favored when possible.

Acute Mania

EPIVAL[®] is not indicated for the treatment of the symptoms of mania in patients under 18 years of age.

The recommended initial dose is 250 mg three times a day. The dose should be increased as rapidly as possible to achieve the lowest therapeutic dose which produces the desired clinical effect or the desired range of plasma concentrations.

In placebo-controlled trials, 84% of patients received and tolerated maximum daily doses of between 1,000 to 2,500 mg/day. The maximum recommended dosage is 60 mg/kg/day.

The relationship of plasma concentration to clinical response has not been established for EPIVAL[®]. In controlled clinical studies, 79% of patients achieved and tolerated serum valproate concentrations between 50 and 125 mcg/mL.

Female children, female adolescents, women of childbearing potential and pregnant women

Divalproex sodium treatment should be initiated and supervised by a specialist experienced in the management of mania. Treatment should only be initiated if other treatments are ineffective or not tolerated and the benefit and risk should be carefully re-assessed at regular treatment reviews. Preferably divalproex sodium should be prescribed and at the lowest effective dose, if possible as a prolonged release formulation to avoid high peak plasma concentrations. The daily dose should be divided into at least two single doses.

Available data suggest that antiepileptic polytherapy including valproate is associated with a greater risk of congenital malformations than valproate monotherapy. Therefore monotherapy should be favored when possible.

Missed Dose

The patient should not abruptly stop taking their medication because of the risk of increasing their seizures.

If the patient misses a dose, they should not try to make up for it by doubling up on their next dose. They should take their next regularly scheduled dose and try not to miss any more doses.

Administration

EPIVAL[®] may be taken with or without food.

Patients who experience gastrointestinal irritation may benefit from administration of the drug with food or by a progressive increase of the dose from the initial low level. The tablets should be swallowed without chewing. Co-administration of EPIVAL[®] with food should cause no clinical problems in the management of patients with epilepsy.

OVERDOSAGE

For management of a suspected drug overdose, contact your regional Poison Control Centre.

Overdosage with EPIVAL[®] (divalproex sodium) may result in somnolence, muscular hypotonia, hyporeflexia, miosis, impaired respiratory function, hypotension, metabolic acidosis, heart block, deep coma and circulatory collapse/shock. Cases of intracranial hypertension related to cerebral oedema have been reported. Fatalities have been reported; however, patients have recovered from valproate levels as high as 2,120 mcg/mL.

The presence of sodium content in the valproate formulations may lead to hypernatremia when taken in overdose.

In a reported case of overdosage with EPIVAL[®] after ingesting 36 g in combination with phenobarbital and phenytoin, the patient presented in deep coma. An electroencephalogram (EEG) recorded diffuse slowing, compatible with the state of consciousness. The patient made an uneventful recovery.

In overdose situations, the fraction of drug not bound to protein is high and hemodialysis or tandem hemodialysis plus hemoperfusion may result in significant removal of drug. The benefit of gastric lavage or emesis will vary with the time since ingestion. General supportive measures should be applied with particular attention to the prevention of hypovolemia and the maintenance of adequate urinary output.

Naloxone has been reported to reverse the CNS depressant effects of EPIVAL[®] overdose. Because naloxone could theoretically also reverse the antiepileptic effects of EPIVAL[®], it should be used with caution in patients with epilepsy.

ACTION AND CLINICAL PHARMACOLOGY

Pharmacotherapeutic group: Anticonvulsant and mood-stabilizing drug; ATC-Code: N03AG01.

Mechanism of Action

EPIVAL[®] (divalproex sodium) has anticonvulsant properties, and is chemically related to valproic acid. EPIVAL[®] dissociates to the valproate ion in the gastrointestinal tract. Although its mechanism of action has not yet been established, it has been suggested that its activity in epilepsy is related to increased brain concentrations of gamma-aminobutyric acid (GABA). The effect on the neuronal membrane is unknown.

Pharmacodynamics

A good correlation has not been established between daily dose, serum level and therapeutic effect. In epilepsy, the therapeutic plasma concentration range is believed to be from 50 to 100 mcg/mL (350 to 700 micromole/L) of total valproate. Occasional patients may be controlled with serum levels lower or higher than this range (see **DOSAGE AND ADMINISTRATION**). In placebo-controlled clinical studies in acute mania, 79% of patients were dosed to a plasma concentration between 50 and 125 mcg/mL. Protein binding of valproate is saturable ranging from 90% at 50 mcg/mL to 82% at 125 mcg/mL.

Pharmacokinetics

Table 4. Summary of the Pharmacokinetic Parameters of EPIVAL[®] in Healthy, Fasting Subjects

Single Dose	Dosage	N	Mean (SD) Pharmacokinetic Parameters					
			C _{max} (mg/L)	T _{max} (h)	t _½ (h)	AUC _∞ (mg•h/L)	CL (l/h)	V _d (L)
EPIVAL [®]	2 x 500 mg once daily	28	93.9 (11.7)	4.0 (1.2)	15.2 (15.3)	1818 (345)	--	--

Absorption

Peak serum levels of valproic acid occur in 3 to 4 hours. A slight delay in absorption occurs when the drug is administered with meals but this does not affect the total absorption.

Distribution

Valproic acid is rapidly distributed throughout the body and the drug is strongly bound (90%) to human plasma proteins. Increases in doses may result in decreases in the extent of protein binding and variable changes in valproic acid clearance and elimination.

Protein Binding

The plasma protein binding of valproate is concentration dependent and the free fraction increases from approximately 10% at 40 mcg/mL to 18.5% at 130 mcg/mL. Protein binding of valproate is reduced in the elderly, in patients with chronic hepatic diseases, in patients with renal impairment, in hyperlipidemic patients, and in the presence of other drugs (e.g., acetylsalicylic acid). Conversely, valproate may displace certain protein-bound drugs [e.g., phenytoin, carbamazepine, warfarin, and tolbutamide] (see **DRUG INTERACTIONS** for more detailed information on the pharmacokinetic interactions of valproate with other drugs).

CNS Distribution

Valproate concentrations in cerebrospinal fluid (CSF) approximate unbound concentrations in plasma (ranging from 7 to 25% of total concentration).

Metabolism

Valproate is metabolized almost entirely by the liver. In adult patients on monotherapy, 30 to 50% of an administered dose appears in urine as a glucuronide conjugate. Mitochondrial (beta)-oxidation is the other major metabolic pathway, typically accounting for over 40% of the dose. Usually, less than 15 to 20% of the dose is eliminated by other oxidative mechanisms. Less than 3% of an administered dose is excreted unchanged in urine.

Due to the saturable plasma protein binding, the relationship between dose and total valproate concentration is nonlinear; concentration does not increase proportionally with the dose, but rather increases to a lesser extent. The kinetics of unbound drug are linear.

Excretion

Mean plasma clearance and volume of distribution for total valproate are 0.56 L/hr/1.73 m² and 11 L/1.73 m², respectively. Mean plasma clearance and volume of distribution for free valproate are 4.6 L/hr/1.73 m² and 92 L/1.73 m², respectively. These estimates cited apply primarily to patients who are not taking drugs that affect hepatic metabolizing enzyme systems. For example, patients taking enzyme-inducing AEDs (carbamazepine, phenytoin, and phenobarbital) will clear valproate more rapidly. Because of these changes in valproic acid clearance, monitoring of valproate and concomitant drug concentrations should be intensified whenever enzyme-inducing drugs are introduced or withdrawn.

Elimination of valproic acid and its metabolites occurs principally in the urine, with minor amounts in the feces and expired air. Very little unmetabolized parent drug is excreted in the urine.

The serum half-life ($t_{1/2}$) of valproic acid is typically in the range of 6 to 16 hours. Half-lives in the lower part of the above range are usually found in patients taking other drugs capable of hepatic enzyme induction.

Special Populations and Conditions

Neonates/Infants

Within the first 2 months of life, infants have a markedly decreased ability to eliminate valproate compared to children and adults. This is a result of reduced clearance (perhaps due to delay in development of glucuronosyltransferase and other enzyme systems involved in valproate elimination) as well as increased volume of distribution (in part due to decreased plasma protein binding). For example, in one study, the half-life in neonates under 10 days ranged from 10 to 67 hours, compared to a range of 7 to 13 hours in children greater than 2 months.

Pediatrics

Patients between 3 months and 10 years have 50% higher clearances expressed on weight (i.e., mL/min/kg) than do adults. Over the age of 10 years, children have pharmacokinetic parameters that approximate those of adults.

Geriatrics

The capacity of elderly patients (age range: 68 to 89 years) to eliminate valproate has been shown to be reduced compared to younger adults (age range: 22 to 26 years). Intrinsic clearance is reduced by 39%; the free fraction is increased by 44% (see **DOSAGE AND ADMINISTRATION**).

Gender

There are no differences in unbound clearance (adjusted for body surface area) between males and females (4.8 ± 0.17 and 4.7 ± 0.07 L/hr per 1.73 m^2 , respectively).

Race

The effects of race on the kinetics of valproate have not been studied.

Hepatic Insufficiency

See **CONTRAINDICATIONS** and **WARNINGS AND PRECAUTIONS**, **Hepatic/Biliary/Pancreatic**, **Serious or Fatal Hepatototoxicity** for statements regarding hepatic dysfunction and associated fatalities.

Renal Insufficiency

See **WARNINGS AND PRECAUTIONS**, **Renal**, **Renal Impairment**.

Genetic Polymorphism

No data available on genetic polymorphism.

STORAGE AND STABILITY

Store EPIVAL[®] (divalproex sodium) enteric-coated tablets between 15 and 25°C. Tablets should be protected from light.

DOSAGE FORMS, COMPOSITION AND PACKAGING

EPIVAL[®] enteric-coated tablets are formulated for oral administration containing divalproex sodium in three strengths: 125 mg, 250 mg and 500 mg.

EPIVAL[®] 125 mg enteric-coated tablets are supplied as salmon-pink, ovaloid, film-coated tablets, with the Mylan “M” logo printed on one side, and are available in bottles of 100 tablets.

EPIVAL[®] 250 mg enteric-coated tablets are supplied as peach, ovaloid, film-coated tablets, with the Mylan “M” logo printed on one side, and are available in bottles of 100 and 500 tablets.

EPIVAL[®] 500 mg enteric-coated tablets are supplied as pink, ovaloid, film-coated tablets, with the Mylan “M” logo printed on one side, and are available in bottles of 100 and 500 tablets.

Listing of Non-Medicinal Ingredients

Each EPIVAL[®] 125 mg enteric-coated tablet contains 125 mg of divalproex sodium with the following non-medicinal ingredients: diacetylated monoglycerides, FD&C Red No. 40, hydroxypropylmethyl cellulose phthalate, povidone, pregelatinized starch (contains corn starch), silicon dioxide, talc, titanium dioxide, and vanillin.

Each EPIVAL[®] 250 mg enteric-coated tablet contains 250 mg of divalproex sodium with the following non-medicinal ingredients: diacetylated monoglycerides, FD&C Yellow No. 6, hydroxypropylmethyl cellulose phthalate, povidone, pregelatinized starch (contains corn starch), silicon dioxide, talc, titanium dioxide, and vanillin.

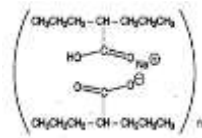
Each EPIVAL[®] 500 mg enteric-coated tablet contains 500 mg of divalproex sodium with the following non-medicinal ingredients: diacetylated monoglycerides, D&C Red No. 30, FD&C Blue No. 2, hydroxypropylmethyl cellulose phthalate, povidone, pregelatinized starch (contains corn starch), silicon dioxide, talc, titanium dioxide, and vanillin.

PART II: SCIENTIFIC INFORMATION

PHARMACEUTICAL INFORMATION

Proper name:	divalproex sodium	
USAN names:	INN: valproate semisodium BAN: semisodium valproate	
Chemical name:	sodium hydrogen bis (2-propylpentanoate) or sodium hydrogen bis (2-propylvalerate)	
Molecular formula and molecular mass:	$(C_{16}H_{31}NaO_4)_n$	$(310.14)_n$

Structural formula:



Physicochemical properties: Divalproex sodium is a stable co-ordination compound comprised of sodium valproate and valproic acid in a 1:1 molar relationship and formed during the partial neutralization of valproic acid with 0.5 equivalent of sodium hydroxide. It is a white powder with a characteristic odor, freely soluble in many organic solvents and in aqueous alkali solutions.

CLINICAL TRIALS

A 24 week cross-over study compared the safety and efficacy of a controlled-release formulation of divalproex sodium (EPIVAL[®] ER) administered once daily, to equal doses of an enteric-coated formulation of divalproex sodium (EPIVAL[®]) administered twice daily or three times daily, in the treatment of adolescent and adult epileptic patients with generalized seizures. The seizure control rate did not differ significantly between the two treatments. On EPIVAL[®], 41/43 patients, or 95.3%, were seizure-free while the seizure control rate on EPIVAL[®] ER was 40/43 or 93.0%. This does not appear to be clinically different from the estimated general seizure control rate during the year before the start of the study when 40/44 (90.9%) patients reported being seizure-free on EPIVAL[®].

DETAILED PHARMACOLOGY

Animal

Valproic acid has been shown to be effective against several types of chemically and electrically induced convulsions in a variety of animal species. These included maximal electroshock, low frequency electroshock, CO₂ withdrawal, pentylene tetrazole, cobalt, bemegride, bicuculline and l-glutamate. Many forms of photic and auditory induced seizures are also effectively blocked by valproic acid.

In animal studies, valproic acid at doses of 175 mg/kg or less had no effect on locomotor activity and conditioned responses to positive reinforcement.

Doses greater than 175 mg/kg inhibited spontaneous and conditioned behaviour in mice and rats and interfered with coordination of hind limbs in rats. Suppression of spontaneous and evoked brain potentials was also demonstrated at these higher dose levels.

Valproic acid at doses of 175 mg/kg or less had little or no effect on the autonomic nervous system, cardiovascular system, respiration, body temperature, inflammatory responses, smooth muscle contraction or renal activity. Intravenous doses of 22, 43 and 86 mg/kg in animals caused very transient decreases followed by compensatory increases in blood pressure.

Sodium valproate injectable caused decreased activity, ataxia, dyspnea, prostration and death in rats and mice acutely exposed to dosages exceeding 200 mg/kg.

Divalproex sodium produced plasma valproic acid concentrations comparable to those of valproic acid when the two compounds were administered orally at equimolar doses to mice, rats and a beagle dog.

TOXICOLOGY

The initial animal testing was done with sodium valproate, whereas most of the recent research has been with valproic acid. The conversion factor is such that 100 mg of the sodium salt is equivalent to 87 mg of the acid. References to dosage are in terms of valproic acid activity.

Acute Toxicity

Acute toxicity has been determined in several animal species using oral, intravenous, intraperitoneal and subcutaneous routes. The oral median lethal dose in adult rats and dogs was about 1 to 2 g/kg. Toxicity was similar for both sexes; however, it tended to be greater in newborn and 14-day old rats and in young adult rats. The signs of toxicity were those of central nervous system depression. Specific organ damage was limited to cellular debris in reticuloendothelial tissue and slight fatty degeneration of the liver.

Large oral doses (more than 500 mg/kg) produced irritation of the gastrointestinal tract of rats.

In adult male mice, the oral median lethal dose of divalproex sodium was 1.66 g/kg (equal to approximately 1.54 g/kg valproic acid).

Pulverized divalproex sodium enteric-coated tablets (equivalent to 250 mg valproic acid), suspended in 0.2% methylcellulose, were administered orally to mice and rats of both sexes (10/sex/species/group) in dosages ranging from 1.74 to 4.07 g/kg. The oral median lethal dose (LD₅₀) ranged from 2.06 to 2.71 g/kg. No consistent sex-related or species-related differences were observed.

Signs of central nervous system depression, such as decreased activity, ataxia, and sleep, were observed. At necropsy, discoloration and/or thickening of the glandular mucosa were observed in only 2 female rats treated with 2.71 g/kg that died acutely.

When mature rats and dogs were administered up to 240 mg/kg/day or 120 mg/kg/day, respectively, for at least four consecutive weeks, no significant toxicologic effects were reported. However, significant reductions in testicular weights and total white cell counts in rats given 240 mg/kg/day were considered as evidence of subtle toxicity from sodium valproate injectable. Therefore, 90 mg/kg/day in rats and 120 mg/kg/day in dogs were considered the highest non-toxic doses.

The acute intravenous toxicity of sodium valproate injectable formulation containing the equivalent of 100 mg valproic acid/mL was evaluated in both sexes of mice and rats. Groups of mice and rats (five/sex/species/group) were treated at dosages ranging from 0.5 to 9.0 mL/kg (50 to 900 mg valproate/kg). No overt signs of toxicity were present in rats and mice given 0.5 mL/kg (50 mg valproate/kg). LD₅₀ values for the test solution in mice and rats (data combined for both sexes) were 7.3 and 7.0 mL/mg (730 and 700 mg valproate/kg), respectively.

Subacute and Chronic Toxicity

Subacute and chronic toxicity studies consisted of 1, 3, 6 and 18 months studies in rats and 3, 6 and 12 months studies in dogs. Pathologic changes included suppression of the hematopoietic system, depletion of lymphocytes from lymphoid tissues and the loss of germinal epithelial cells from seminiferous tubules. Reduced spermatogenesis and testicular atrophy occurred in dogs at doses greater than 90 mg/kg/day and in rats at doses greater than 350 mg/kg/day. In rats, the first indication of toxicity at 350 mg/kg/day was decreased food consumption and growth.

Mutagenicity and Carcinogenicity

Mutagenicity

Valproate was not mutagenic in an in vitro bacterial assay (Ames test), did not produce dominant lethal effects in mice, and did not increase chromosome aberration frequency in an in vivo cytogenetic study in rats. Increased frequencies of sister chromatid exchange (SCE) have been reported in a study of epileptic children taking valproate, but this association was not observed in another study conducted in adults. There is some evidence that increased SCE frequencies may

be associated with epilepsy. The biological significance of increase in SCE frequency is not known.

Carcinogenicity

Two hundred rats were given valproic acid in the diet for 107 weeks. Mean doses consumed in the treatment period were: 81 mg/kg/day (males) and 85 mg/kg/day (females), in the low dose group; 161 mg/kg/day (males) and 172 mg/kg/day (females) in the high dose group (approximately 10 to 50% of the maximum human daily dose on a mg/m² basis). Control animals received corn oil in the diet. The chief finding in the study was an increased incidence of skin fibrosarcomas in treated males of the high-dose group. There were 2 such neoplasms in the low dose group, 5 in the high dose group and none in control males. Fibrosarcomas in rats are relatively infrequent, usually occurring in less than 3% of animals.

Valproic acid was also administered in the diet to female mice for nearly 19 months at doses of 81 and 163 mg/kg/day and to male mice for nearly 23 months at doses of 80 and 159 mg/kg/day. A significant dose related trend occurred in male mice in the incidence of bronchoalveolar adenomas, and when the data were adjusted for the times of death, the incidence in the high dose group was significantly increased.

Depending on the method of statistical analysis, the incidence of hepatocellular carcinomas and/or adenomas also showed significant or almost significant increases for the corresponding observations. The results of these two studies indicate that valproic acid in a weak carcinogen or promoter in rats and mice. The significance of these findings for humans is unknown at present.

Reproduction and Teratology

Studies in rats have shown placental transfer of the drug. Doses greater than 65 mg/kg/day given to rats, mice and rabbits produced an increased incidence of skeletal abnormalities of the ribs, vertebrae and palate.

Doses greater than 150 mg/kg/day given to pregnant rabbits produced fetal resorptions and (primarily) soft-tissue abnormalities in the offspring.

In rats, there was a dose related delay in onset of parturition. Post-natal growth and survival of the progeny were adversely affected, particularly when drug administration spanned the entire gestation and early lactation period. Embryoletality or major developmental abnormalities occurred in rats and rabbits at doses of 350 mg/kg/day.

Survival among pups born to the high dose females was very poor but was improved when pups were transferred to control dams shortly after birth.

Fertility

Chronic toxicity studies in juvenile and adult rats and dogs demonstrated reduced spermatogenesis and testicular atrophy at oral doses of valproic acid of 400 mg/kg/day or greater in rats (approximately equivalent to or greater than the maximum human daily dose on

a mg/m² basis) and 150 mg/kg/day or greater in dogs (approximately 1.4 times the maximum human daily dose or greater on a mg/m² basis). Segment I fertility studies in rats have shown that oral doses up to 350 mg/kg/day (approximately equal to the maximum human daily dose on a mg/m² basis) for 60 days have no effect on fertility.

The effect of valproate on testicular development and on sperm production and fertility in humans is unknown.

REFERENCES

1. Bartels H, Oldiss HD, Wallis S. Faecal Excretion of non-disintegrated retard-coated dragees of sodium valproate (ersenyl retard). *Neuropediatric* 1979;10:301-302.
2. Benoit JM, Besson JM, Bivot JB, Aleonard P. Effects of Na dipropylacetate (DPA) on dorsal root potentials induced by cortical seizures. *J Pharmacol* 1971;2:23.
3. Binnie CD, van Emde Boas W, Kasteleijn-Nolste-Trenite DGA et al. Acute effects of lamotrigine (BW430C) in persons with epilepsy. *Epilepsia* 1986;27(3):248-254.
4. Bowdle TA, Patel IH, Levy RH, Wilensky AJ. Valproic acid dosage and plasma protein binding and clearance. *Clin Pharmacol Ther* 1980;28(4):486-492.
5. Brennan MJW, Sandyk R, Borsook D. Efficacy of valproate in manic-depressive psychosis: mechanism of action and implications for pathophysiology. *Psychiatry: the state of the art* 1985;3:459-465.
6. Brodie MJ. Lamotrigine. *Lancet* 1992;339:1397-1400.
7. Bruni J, Wilder BJ, Perchalski RJ, Hammond EJ, Villarreal HJ. Valproic acid and plasma levels of phenobarbital. *Neurology* 1980; 30:94-97.
8. Brusilow SW, Maestri NE, Urea Cycle Disorders: Diagnosis, Pathophysiology, and Therapy: *Advances in Pediatrics* . 1996; 43: 127-170.
9. Cohen AF, Land GS, Breimer DD et al. Lamotrigine, a new anticonvulsant: Pharmacokinetics in normal humans. *Clin Pharmacol Ther* 1987;42:535-541.
10. Cramer JA, Mattson RH. Valproic acid: In vitro plasma protein binding and interaction with phenytoin. *Ther Drug Monit* 1979;1(1): 105-116.
11. Centers for Disease Control, valproate: a new cause of birth defects - report from Italy and follow-up from France. *Morbidity and Mortality Weekly Report*. 1983;32(33):438-439.
12. Dreifuss FE, Langer DH, Moline KA, Maxwell BA. Valproic acid hepatic fatalities. II. US experience since 1984. *Neurology* 1989;39:201-207.
13. Eadie MJ. Plasma level monitoring of anticonvulsants. *Clin Pharmacokinet* 1976;1:52-66.
14. Freeman TW. A double-blind comparison of valproate and lithium in the treatment of acute mania. *Am J Psychiatry* 1992;149:108-111.
15. Frey HH, Loscher W. Di-n-propylacetic acid - Profile of anticonvulsant activity in Mice. *Arzneimittelforschung* 1976;26:299-301.

16. Gidal B, et. al. Valproate-mediated disturbances of hemostatis. *Neurology* 1994;44:1418-1422.
17. Godin Y, Heiner L, Mark J, Mandel P. Effects of di-n-propylacetate, an anticonvulsive compound, on GABA metabolism, *J Neurochem* 1969;16:869-873.
18. Gram L, Wulff K, Rasmussen KE, Flachs H, Wurtz-Jorgensen A, Sommerbeck KW, Lohren V. Valproate sodium: A controlled clinical trial including monitoring of drug levels. *Epilepsia* 1977;18:141-148.
19. Gram L, Flachs H, Wurtz-Jorgensen A, Parnas J, Andersen B. Sodium valproate, serum level and clinical effect in epilepsy: A controlled study. *Epilepsia* 1979;20:303-311.
20. Gugler R, Von Unruh GE. Clinical pharmacokinetics of valproic acid. *Clin Pharmacokinet* 1980;5:67-83.
21. Hurst DL. Expanded therapeutic range of valproate. *Pediatr Neurol.* 1987;3:342-344.
22. Jaffe RL, Rives W, Dubin WR, Roemer RA, Siegal L. Problems in maintenance ECT in bipolar disorder: replacement of lithium and anticonvulsants. *Convulsive therapy* 1991;7:288-294.
23. Jawad S, Yuen WC, Peck AW et al. Lamotrigine: single-dose pharmacokinetics and initial 1-week experience in refractory epilepsy. *Epilepsy Res* 1987;1(3):194-201.
24. Johannessen SI, Henriksen O. Comparative steady state serum levels of valproic acid administered as two different formulations - Deprakine and Orfiril. *Acta Neurol Scand* 1979;60:371-374.
25. Jordan BJ, Orwin JM, Nichols JD, Henson R. The bioavailability of sodium valproate (2-PP) from three epilim formulations. *Pharm Weekly* 1977;112:347-349.
26. Kastner T, Friedman DL. Verapamil and valproic acid treatment of prolonged mania. *J Am Acad Child Psychiatry* 1992;31:271-275.
27. Kupferberg HJ, Lust WD, Penry JK. Anticonvulsant activity of dipropylacetic acid (DPA) in relation to GABA and CGMP brain levels in mice. *Fed Proc* 1975;34:283.
28. Kapetamovic IM, Kupferberg HJ. Inhibition of microsomal Phenobarbital metabolism by valproic acid. *Biochem Pharmacol* 1981;30(11): 1361-1363.
29. Levy RH, Cenraub B, Loiseau P, Akbaraly R, Brachet-Liermain A, Guyot M, Gomeni R, Morselli PL. Meal-dependent absorption of enteric-coated sodium valproate. *Epilepsia* 1980;21:273-280.
30. Lum M, Fontaine R, Elie R, Ontiveros A. Probable interaction of sodium divalproex with benzodiazepines. *Prog Neuropsychopharmacol Biol Psychiatry* 1991;15:269-273.

31. McFarland BH, Miller MR, Straumfjord AA. Valproate use in the older manic patient. *J Clin Psychiatry* 1990;51:479-481.
32. Mattson RH, et al. Use of oral contraceptives by women with epilepsy. *JAMA* 1986;256(2):238-240.
33. Millet Y, Sainty JM, Galland MC, Sidoine R, Jouglard J. Problèmes posés par l'association thérapeutique phénobarbital-dipropylacétate de sodium. A propos d'un cas. *Eur J Toxicol Environ Hyg* 1976;9(6): 381-383.
34. Misslin R, Ropartz P, Mandel P. The effects of n-dipropylacetate on the acquisition of conditioned behaviour with negative reinforcement in mice. *Psychopharmacologia* 1975;44:263-265.
35. Nicolle LE. Urinary tract infections in long-term-care facilities. *Infect Control Hosp Epidemiol.* 2001 Mar;22(3):167-75.
36. Patel IH, Levy RH, Cutler RE. Phenobarbital - valproic acid interaction. *Clin Pharmacol Ther* 1980;27(4):515-521.
37. Pinder PM, Brogden RN, Speight TM, Avery GS. Sodium valproate: A review of its pharmacological properties and therapeutic efficacy in epilepsy. *Drugs* 1977; 13: 81-123.
38. Pisani F, Primerano G, D'Agostino AA, et al. Valproic Acid-Amitriptyline Interaction in Man. *Therapeutic Drug Monitoring.* 1986; 8(3): 382-3.
39. Pope HG Jr, McElroy SL, Keck PE, Hudson JI. Valproate in the treatment of acute mania: a placebo-controlled study. *Arch Gen Psychiatry* 1991; 48: 62-68.
40. Rai PV. Acute intoxication during a combined treatment of sodium valproate and phenobarbitone. In: Meinardi H and Rowan AJ, editors. *Advances in epileptology*, Swets Zertlinger, Amsterdam, pp. 366-369, 1978.
41. Scheyer RD, Cramer JA, Totftness BR, Hochholzer JM, Mattson RH. In vivo determination of valproate binding constants during sole and multi-drug therapy. *The Drug Monitor* 1990;12:117-123.
42. Shakir RA, Johnson RH, Lambie DG, Melville ID, Nanda RN. Comparison of sodium valproate and phenytoin as single drug treatment in epilepsy. *Epilepsia* 1981;22:27-33.
43. Shakir RA, Nanda RN, Lambie DG, Johnson RH. Comparative trial of valproate sodium and clonazepam in chronic epilepsy. *Arch Neurol* 1979; 36:301-304.
44. Shearer DE, Fleming DE, Bigler ED, Wilson CE. Suppression of photically evoked after-discharge bursting following administration of anticonvulsants in waking rats. *Pharmacol Biochem Behav* 1974; 2:839-842.

45. Shuto K, Nishigaki T. The pharmacological studies on sodium dipropylacetate anticonvulsant activities and general pharmacological actions. *Oyo Yakuri (Pharmacometrics)* 1970;4:937.
46. Simler S, Ciesielski L, Maitre M, Randrianarisoa, Mandel P. Effects of sodium n-dipropylacetate on audiogenic seizures and brain aminobutyric acid level. *Biochem Pharmacol* 1973;22:1701-1708.
47. Simon D, Penry JK. Sodium di-n-propylacetate (DPA) in the treatment of epilepsy. A review, *Epilepsia* 1975;16(4):549-573.
48. Sovner R. A clinically significant interaction between carbamazepine and valproic acid. *J Clin Psychopharmacol* 1988;8:448-449.
49. Tatro DS, Editor. Drug interaction facts. The Mediphor Editorial Group, Division of Clinical Pharmacology, Stanford University School of Medicine. St. Louis, MO: Facts and Comparisons Division, J.B. Lippincott Co.; 1992.
50. Turnbull DM, Rawlins MD, Weightman D, Chadwick DW. A comparison of phenytoin and valproate in previously untreated adult epileptic patients. *J Neurol Neurosurg Psychiatry* 1982;45:55-59.
51. Van de Mortel I. Étude pharmacokinétique du di-npropylacétate de sodium sous ses formes ordinaire et retard. *Acta Neurol Belg* 1979; 76:165-172.
52. Van Valkenburg C, Kluznik J, Merrill R, Erickson W. Therapeutic levels of valproate for psychosis. *Psychopharmacol Bulletin* 1990;26:254-255.
53. Watanabe J. Plasma protein binding and interaction of valproic acid with acetazolamide and diazepam, both in vivo and in vitro studies. *Hirosaki Igaku (Hirosaki Med J)* 1985;37:611-625. (English translation of a Japanese article)
54. Wilder BJ, Karas BJ, Hammond EJ, Perchalski RJ. Twice-daily dosing of valproate with divalproex. *Clin Pharmacol Ther* 1983;34(4):501-504.
55. Wilder BJ, Karas BJ, Penry JK, Asconape J. Gastrointestinal tolerance of divalproex sodium. *Neurology* 1983;33:808-811.
56. Wong SL, Cavanaugh J, Shi H, et al. Effects of Divalproex Sodium on Amitriptyline and Nortriptyline Pharmacokinetics. *Clin Pharmacol Ther*. July 1996; 60(1): 48-53.
57. Yuen AWC, Land G, Weatherley BC, Peck AW. Sodium valproate acutely inhibits lamotrigine metabolism. *Br J Clin Pharmacol* 1992;33:511.

PART III: CONSUMER INFORMATION

PrEPIVAL[®]

divalproex sodium enteric-coated tablets

This leaflet is PART III of a three-part "Product Monograph" published when EPIVAL[®] was approved for sale in Canada and is designed specifically for consumers. This leaflet is a summary and will not tell you everything about EPIVAL[®]. Contact your doctor or pharmacist if you have any questions about the drug.

ABOUT THIS MEDICATION

What the medication is used for:

EPIVAL[®] has been prescribed to you to either:

- control your epilepsy
- treat symptoms of mania associated with bipolar disorder, such as aggressiveness, agitation, impulsive behaviour or excessively elevated mood.

EPIVAL[®] is not indicated for the treatment of the symptoms of mania in patients under 18 years of age.

Please follow your doctor's recommendations carefully.

What it does:

EPIVAL[®] has anticonvulsant properties. The mechanism of action has not yet been established. It has been suggested that its activity in epilepsy is related to increased brain concentrations of gamma-aminobutyric acid (GABA).

When it should not be used:

EPIVAL[®] should not be taken by:

- patients with liver disease or significant liver dysfunction
- patients with mitochondrial diseases (e.g., Alpers or Alpers-Huttenlocher disease)
- patients who are allergic to divalproex sodium or any of the other ingredients in EPIVAL[®]
- patients with known urea cycle disorders (a genetic disorder)
- patients with known porphyria (a genetic disorder)

What the medicinal ingredient is:

divalproex sodium

What the non-medicinal ingredients are:

EPIVAL[®] 125 mg tablets also contain diacetylated monoglycerides, FD&C Red No. 40, hydroxypropylmethyl

cellulose phthalate, povidone, pregelatinized starch (contains corn starch), silicon dioxide, talc, titanium dioxide, and vanillin.

EPIVAL[®] 250 mg tablets also contain diacetylated monoglycerides, FD&C Yellow No. 6, hydroxypropylmethyl cellulose phthalate, povidone, pregelatinized starch (contains corn starch), silicon dioxide, talc, titanium dioxide, and vanillin.

EPIVAL[®] 500 mg tablets also contain diacetylated monoglycerides, D&C Red No. 30, FD&C Blue No. 2, hydroxypropylmethyl cellulose phthalate, povidone, pregelatinized starch (contains corn starch), silicon dioxide, talc, titanium dioxide, and vanillin.

What dosage forms it comes in:

EPIVAL[®] is available as enteric-coated tablets in the following strengths: 125 mg, 250 mg, and 500 mg.

WARNINGS AND PRECAUTIONS

Serious Warnings and Precautions

- **Hepatotoxicity:** liver failure resulting in death has occurred in patients receiving EPIVAL[®]. These incidents usually occurred during the first 6 months of treatment with EPIVAL[®]. Patients taking several anticonvulsant drugs, children, those with a history of liver disease, metabolic disorders, severe seizure disorders accompanied by mental retardation, and those with brain disease may be at particular risk. Experience has indicated that children under the age of 2 years are at a considerably increased risk of developing fatal hepatotoxicity, especially those on multiple anticonvulsants.
- **Birth Defects:** EPIVAL[®] can cause birth defects and problems with early development of the child if it is taken during pregnancy. EPIVAL[®] should not be used in female children, in female adolescents, in women of childbearing potential and pregnant women unless other treatments do not work or are not tolerated. If you are a female of childbearing age you should use an effective method of birth control while you are taking EPIVAL[®]. Tell your doctor right away if you become pregnant or think you might be pregnant.
- **Pancreatitis:** cases of life threatening pancreas disorder have been reported in both children and adults receiving EPIVAL[®]. Some cases have occurred shortly after first use as well as after several years of use. Abdominal pain, nausea, vomiting and/or anorexia can be symptoms of pancreatitis that require immediate medical evaluation.

BEFORE you use EPIVAL[®] talk to your doctor or pharmacist if you:

- have a history of, or suffer from a liver disease, such as

- jaundice (yellowing of the skin and eyes);
- have ever had an unusual or allergic reaction to EPIVAL[®] (including fever or rash);
- are a female child or female adolescent, a woman of childbearing potential, or pregnant;
- are breast-feeding (nursing); EPIVAL[®] passes into breast milk. You must discuss with your doctor whether you should breastfeed or take EPIVAL[®]. You cannot do both;
- are male and thinking about fathering a child. EPIVAL[®] can make you less fertile;
- are taking any other prescription or over the counter medicine;
- have kidney disease;
- have other medical conditions including a history of unexplained coma, intellectual disability or any type of brain dysfunction;
- have a psychiatric disorder or have thoughts of suicide;
- consume alcohol on a regular basis.

Precautions while taking EPIVAL[®]:

- Your doctor will monitor your response to EPIVAL[®] on a regular basis. However, if your seizures get worse, you should tell your doctor immediately.
- Since EPIVAL[®] may cause poor coordination and/or drowsiness, you should not engage in hazardous activities, such as driving and operating machinery, until you know that you don't become drowsy from the drug.
- You should not stop taking your medication unless directed by your doctor. You should always check that you have an adequate supply of EPIVAL[®]. You should remember that this medicine was prescribed only for you; it should never be given to anyone else.
- As with other drugs used to treat epilepsy, some patients may experience an increase in the number of seizures and the severity (including status epilepticus), or the onset of new types of seizures with EPIVAL[®] instead of an improvement. If you start having more seizures, new types of seizures or your seizures get worse contact your doctor immediately.

Female Children, Female Adolescents and Women of Childbearing Potential

- All female children, female adolescents and women of childbearing age who are being treated with EPIVAL[®] should talk to their healthcare providers about using other possible treatments instead of EPIVAL[®]. If you are a female capable of becoming pregnant you should only take EPIVAL[®] if nothing else works for you.
- If the decision is made to use EPIVAL[®], you must use an effective method of birth control (contraception). You should talk to your doctor about the best kind of birth control to use while you are taking EPIVAL[®].
- No longer getting your period, fluid filled sacs (cysts) on the ovaries and increased testosterone levels have been reported in women taking EPIVAL[®].
- Before prescribing this medicine to you, your doctor will have explained what might happen to your baby if you become pregnant while taking EPIVAL[®]. If you decide later you want

to have a child you should not stop taking your medicine until you have discussed this with your doctor and agreed on a plan for switching to another medication if this is possible.

- Ask your doctor about taking folic acid when trying to get pregnant. Folic acid can lower the general risk of birth defects in the spine (spina bifida) and early miscarriage that exists with all pregnancies. However, it is unlikely that folic acid will reduce the risk of birth defects associated with EPIVAL[®] use.

Pregnant Women

- EPIVAL[®] carries a risk if taken during pregnancy. The higher the dose, the higher the risks, though all doses carry a risk.
- If you take EPIVAL[®] during pregnancy, your child has a serious risk of birth defects and problems with development which can be seriously debilitating such as lower IQ and problems with brain development. Birth defects which have been reported include spina bifida (where the bones of the spine are not properly developed); problems with the development of the bones of the face and skull; and problems with the development of the heart, kidney, urinary tract and sexual organs, arms and legs. These can begin early in the pregnancy, even before you know that you are pregnant.
- It is estimated that up to 30-40% of preschool children whose mothers took EPIVAL[®] during pregnancy may have problems with early childhood development. This means these children can be slow to walk and talk, have lower intelligence (lower IQ scores) than other children, and have difficulty with language and memory.
- Children born to mothers who took EPIVAL[®] during pregnancy are also more likely to have Autism spectrum disorders and more often likely to develop symptoms of Attention Deficit Hyperactivity Disorder (ADHD).
- There may be other medications to treat your condition that have a lower chance of birth defects.
- If you are planning to become pregnant, or if you become pregnant while taking EPIVAL[®], you should promptly inform your doctor. Do not suddenly stop taking the drug. Appropriate treatment options will need to be discussed with your physician to ensure the benefits outweigh the risks.
- Pregnancy Registry: If you become pregnant while taking EPIVAL[®], talk to your doctor about registering with the North American Antiepileptic Drug Pregnancy Registry. You can enroll in this registry by calling 1-888-233-2334. The purpose of this registry is to collect information about the safety of antiepileptic medicines during pregnancy. Information on the registry can also be found at the following website: <http://www.aedpregnancyregistry.org/>.

INTERACTIONS WITH THIS MEDICATION

Serious Drug Interactions

- Rare cases of coma have been reported in patients receiving EPIVAL[®] alone or when taken with phenobarbital.
- Serious skin reactions (such as conditions called Stevens-Johnson syndrome and Toxic Epidermal Necrolysis) have been reported when EPIVAL[®] and lamotrigine were taken together.

Drugs that may interact with EPIVAL[®] include:

- anticonvulsants such as carbamazepine, lamotrigine, primidone, topiramate, felbamate, phenytoin, ethosuximide, phenobarbital, olanzapine, rufinamide;
- anticoagulants such as acetylsalicylic acid, warfarin, dicumarol;
- benzodiazepines such as diazepam, lorazepam, clonazepam;
- some medicines used to treat infections such as rifampin;
- some medicines used to treat diabetes such as tolbutamide;
- some HIV-antiviral medication such as zidovudine, ritonavir, lopinavir, lamivudine;
- any of the group of antibiotics in the carbapenem class such as doripenem, ertapenem, imipenem, meropenem;
- some medicines used to treat heartburn and peptic ulcers such as cimetidine;
- medicines used to treat depression such as Selective Serotonin Re-Uptake Inhibitors (SSRIs), Monoamine Oxidase Inhibitors (MAOIs), Tricyclic antidepressants such as amitriptyline, nortriptyline;
- acetazolamide a medicine used to treat glaucoma and epilepsy;
- cholestyramine, a medicine used to lower cholesterol;
- propofol, a drug used to relax you before and after surgery;
- nimodipine;
- antipsychotics;
- estrogen-containing products (including contraceptives that contain estrogen).

PROPER USE OF THIS MEDICATION

EPIVAL[®] treatment must only be started and supervised by a doctor specialised in the treatment of epilepsy or mania (bipolar disorders). Please consult your doctor before taking any other medication, including over-the-counter medicines. Some drugs can produce various side effects when they are used in combination with EPIVAL[®].

It is important to keep your appointments for medical checkups.

The doctor may need to take blood tests to measure the amount of EPIVAL[®] in your blood when adjusting your medications.

Do not stop taking EPIVAL[®] suddenly as this can cause a serious increase in the number of seizures and their severity, including status epilepticus.

Usual dose:

It is very important to take EPIVAL[®] exactly as instructed by your doctor.

The recommended starting dose of EPIVAL[®] will be decided by your doctor based on your weight, your seizures or manic episodes and your concomitant medications. Be sure to tell your doctor all the prescription and over the counter medications that you are currently taking. Your doctor will gradually increase the dosage until your condition is well controlled without experiencing side effects. You should carefully follow the instructions that were given to you and not change your dose without consulting with your doctor.

EPIVAL[®] may be taken with or without food.

EPIVAL[®] is not indicated for the treatment of the symptoms of mania in patients under 18 years of age.

Overdose:

If you think you have taken too much EPIVAL[®], contact your healthcare professional, hospital emergency department or regional Poison Control Centre immediately, even if there are no symptoms.

Missed Dose:

If you miss a dose, you should not try to make up for it by doubling up on your next dose. You should take your next regularly scheduled dose and try not to miss any more doses.

SIDE EFFECTS AND WHAT TO DO ABOUT THEM

You should check with your doctor or pharmacist right away if you notice any bothersome or unusual effects while taking EPIVAL[®].

The most commonly reported adverse reactions include nausea, vomiting, indigestion, sleepiness, headache, diarrhea, weakness, tremor and dizziness. Changes in hair are also reported, such as hair loss or an increase in hair on face, chest and back. If any of these affect you severely, contact your doctor or pharmacist.

You should know that this does not mean that you will experience such effects, because people can react in different ways to the same medicine.

SERIOUS SIDE EFFECTS, HOW OFTEN THEY HAPPEN AND WHAT TO DO ABOUT THEM

Symptom/effect		Talk with your doctor or pharmacist right away		Seek emergency medical attention
		Only if severe	In all cases	
Common	Hallucinations: seeing or hearing something that is not there	√		
Uncommon	Brain dysfunction from high ammonia levels in the blood: tiredness, vomiting, abnormal walking, extreme irritability [†] , combative/bizarre behaviour ^{††} , refusal to eat meat or high protein products ^{††}		√	
	Decreased number of platelets in the blood: may result in easy bruising and bleeding from the skin or other areas		√	
	Liver disorder: weakness, tiredness, abdominal pain, diarrhea, facial swelling, loss of appetite, yellowing of the skin or eyes, dark urine, nausea, and vomiting		√	

SERIOUS SIDE EFFECTS, HOW OFTEN THEY HAPPEN AND WHAT TO DO ABOUT THEM

Symptom/effect		Talk with your doctor or pharmacist right away		Seek emergency medical attention
		Only if severe	In all cases	
	Pancreas disorder: abdominal pain, nausea, vomiting, and/or loss of appetite		√	
	Thoughts of suicide or hurting yourself: symptoms of depression or unusual changes in mood or behaviour		√	
Rare	Muscle disorder: unexplained muscle pain or tenderness, with a fever or “tea-coloured” urine, or reduced urination		√	
[†] In young children ^{††} In older children or adults				

This is not a complete list of side effects. For any unexpected effects while taking EPIVAL[®], contact your doctor or pharmacist.

HOW TO STORE IT

EPIVAL[®] tablets should be stored between 15 and 25°C. Tablets should be protected from light.

EPIVAL[®] should be kept out of reach of children.

REPORTING SUSPECTED SIDE EFFECTS

You can report any suspected adverse reactions associated with the use of health products to the Canada Vigilance Program by one of the following 3 ways:

- Report on line at:
<http://www.healthcanada.gc.ca/medeffect>
- Call toll-free at 1-866-234-2345
- Complete a Canada Vigilance Reporting Form and:
 - Fax toll-free to 1-866-678-6789
 - Mail to: Canada Vigilance Program
Health Canada
Postal Locator 0701E
Ottawa, ON K1A 0K9

Postage paid labels, Canada Vigilance Reporting Form and the adverse reaction reporting guidelines are available on the MedEffect™ Canada Web site at <http://www.healthcanada.gc.ca/medeffect>

NOTE: Should you require information related to the management of side effects, contact your health professional. The Canada Vigilance Program does not provide medical advice.

MORE INFORMATION

The most recent version of this document plus the full Product Monograph, prepared for health professionals can be found at

www.mylan.ca

or by contacting the sponsor, BGP Pharma ULC, Etobicoke, Ontario, M8Z 2S6 at:
1-844-596-9526

This leaflet was prepared by BGP Pharma ULC.

Last revised: October 15, 2018