

## PRODUCT MONOGRAPH

### <sup>Pr</sup>**SANDOZ EMTRICITABINE-TENOFOVIR**

Emtricitabine and Tenofovir Tablets

200 mg/300 mg  
(emtricitabine and tenofovir disoproxil fumarate)

Manufacturer's Standard

Antiretroviral Agent

Sandoz Canada Inc.  
110, de Lauzon Street  
Boucherville, QC, Canada  
J4B 1E6

Date of Preparation:  
April 24, 2019

Submission Control No: 211963

## TABLE OF CONTENTS

PART I. HEALTH PROFESSIONAL INFORMATION .....	3
SUMMARY PRODUCT INFORMATION .....	3
INDICATIONS AND CLINICAL USE .....	3
CONTRAINDICATIONS .....	5
WARNINGS AND PRECAUTIONS .....	5
ADVERSE REACTIONS .....	14
DRUG INTERACTIONS .....	21
DOSAGE AND ADMINISTRATION .....	34
OVERDOSAGE .....	36
ACTION AND CLINICAL PHARMACOLOGY .....	36
STORAGE AND STABILITY .....	39
SPECIAL HANDLING INSTRUCTIONS .....	39
DOSAGE FORMS, COMPOSITION AND PACKAGING .....	39
 PART II. SCIENTIFIC INFORMATION .....	 40
PHARMACEUTICAL INFORMATION .....	40
CLINICAL TRIALS .....	42
VIROLOGY (MICROBIOLOGY) .....	53
NON-CLINICAL TOXICOLOGY .....	57
REFERENCES .....	59
 PART III. CONSUMER INFORMATION .....	 60

# Pr **SANDOZ EMTRICITABINE-TENOFOVIR**

Emtricitabine and Tenofovir Tablets

## **PART I. HEALTH PROFESSIONAL INFORMATION**

### **SUMMARY PRODUCT INFORMATION**

<b>Route of Administration</b>	<b>Dosage Form / Strength</b>	<b>Clinically Relevant Nonmedicinal Ingredients</b>
Oral	Tablet emtricitabine 200 mg/ tenofovir disoproxil fumarate 300 mg	lactose monohydrate, pregelatinized starch (gluten free)

*For a complete listing, see **Dosage Forms, Composition and Packaging** section.*

Sandoz Emtricitabine-Tenofovir tablets are a fixed-dose combination containing emtricitabine and tenofovir disoproxil fumarate (DF).

### **INDICATIONS AND CLINICAL USE**

#### **Treatment of HIV-1 Infection**

Sandoz Emtricitabine-Tenofovir is indicated in combination with other antiretroviral agents (such as non-nucleoside reverse transcriptase inhibitors or protease inhibitors) for the treatment of HIV-1 infection in adults.

Additional important information regarding the use of Sandoz Emtricitabine-Tenofovir for the treatment of HIV-1 infection:

- It is not recommended that Sandoz Emtricitabine-Tenofovir be used as a component of a triple nucleoside regimen.
- Sandoz Emtricitabine-Tenofovir should not be coadministered with ATRIPLA® (efavirenz / emtricitabine / tenofovir disoproxil fumarate), COMPLERA® (emtricitabine / rilpivirine / tenofovir disoproxil fumarate), DESCOVY® (emtricitabine / tenofovir alafenamide), EMTRIVA (emtricitabine), GENVOYA® (elvitegravir / cobicistat / emtricitabine / tenofovir alafenamide), ODEFSEY™ (emtricitabine / rilpivirine / tenofovir alafenamide), STRIBILD® (elvitegravir / cobicistat / emtricitabine / tenofovir disoproxil fumarate), VEMLIDY™ (tenofovir alafenamide), VIREAD (tenofovir disoproxil fumarate) or lamivudine-containing products (see **WARNINGS AND PRECAUTIONS**).
- In treatment-experienced patients, the use of Sandoz Emtricitabine-Tenofovir should be guided by laboratory testing and treatment history (see **VIROLOGY**).

## Pre-Exposure Prophylaxis (PrEP) of HIV-1 Infection

Sandoz Emtricitabine-Tenofovir is indicated in combination with safer sex practices for PrEP to reduce the risk of sexually acquired HIV-1 infection in adults at high risk.

When considering Sandoz Emtricitabine-Tenofovir for PrEP, the following factors may help to identify individuals at high risk:

- has partner(s) known to be HIV-1 infected, or
- engages in sexual activity within a high prevalence area or social network and one or more of the following:
  - inconsistent or no condom use
  - diagnosis of sexually transmitted infections
  - exchange of sex for commodities (such as money, food, shelter, or drugs)
  - use of illicit drugs or alcohol dependence
  - incarceration
  - partner(s) of unknown HIV-1 status with any of the factors listed above

When prescribing Sandoz Emtricitabine-Tenofovir for PrEP, healthcare providers must:

- prescribe Sandoz Emtricitabine-Tenofovir as part of a comprehensive prevention strategy because Sandoz Emtricitabine-Tenofovir is not always effective in preventing the acquisition of HIV-1 infection (see **WARNINGS AND PRECAUTIONS**);
- counsel all uninfected individuals to strictly adhere to the recommended Sandoz Emtricitabine-Tenofovir dosing schedule because the effectiveness of Sandoz Emtricitabine-Tenofovir in reducing the risk of acquiring HIV-1 was strongly correlated with adherence as demonstrated by measurable drug levels in clinical trials (see **WARNINGS AND PRECAUTIONS**);
- confirm a negative HIV-1 test immediately prior to initiating Sandoz Emtricitabine-Tenofovir for a PrEP indication. If clinical symptoms consistent with acute viral infection are present and recent (<1 month) exposures are suspected, delay starting PrEP for at least one month and reconfirm HIV-1 status or use a test approved by Health Canada as an aid in the diagnosis of HIV-1 infection, including acute or primary HIV-1 infection (see **WARNINGS AND PRECAUTIONS**); and
- screen for HIV-1 infection at least once every 3 months while taking Sandoz Emtricitabine-Tenofovir for PrEP.

This indication is based on clinical trials in men who have sex with men (MSM) at high risk for HIV-1 infection and in heterosexual serodiscordant couples (see **CLINICAL TRIALS**).

### Geriatrics (> 65 years of age)

Clinical studies of emtricitabine-tenofovir disoproxil fumarate tablets, EMTRIVA or VIREAD did not include sufficient numbers of subjects aged 65 and over to determine

whether they respond differently from younger subjects.

### **Pediatrics (< 18 years of age)**

Safety and effectiveness in pediatric patients have not been established.

## **CONTRAINDICATIONS**

Sandoz Emtricitabine-Tenofovir is contraindicated in patients with previously demonstrated hypersensitivity to any of the components of the product. For a complete listing, see the **DOSAGE FORMS, COMPOSITION AND PACKAGING** section of the Product Monograph.

Sandoz Emtricitabine-Tenofovir is contraindicated for use as PrEP in individuals with unknown or positive HIV-1 status.

## **WARNINGS AND PRECAUTIONS**

### **Serious Warnings and Precautions**

- **Lactic Acidosis and Severe Hepatomegaly with Steatosis**

Lactic acidosis and severe hepatomegaly with steatosis, including fatal cases, have been reported with the use of nucleoside analogs, including tenofovir disoproxil fumarate (VIREAD), a component of Sandoz Emtricitabine-Tenofovir, alone or in combination with other antiretrovirals (see **WARNINGS AND PRECAUTIONS**).

- **Post-Treatment Exacerbation of Hepatitis B**

Sandoz Emtricitabine-Tenofovir is not approved for the treatment of chronic hepatitis B virus (HBV) infection and the safety and efficacy of emtricitabine-tenofovir disoproxil fumarate tablets have not been established in patients co-infected with HBV and HIV. Severe acute exacerbations of hepatitis B have been reported in patients who are co-infected with HBV and HIV and have discontinued emtricitabine-tenofovir disoproxil fumarate tablets. Hepatic function should be monitored closely with both clinical and laboratory follow-up for at least several months in patients who are infected with HBV and discontinue Sandoz Emtricitabine-Tenofovir. If appropriate, initiation of anti-hepatitis B therapy may be warranted (see **WARNINGS AND PRECAUTIONS**).

- **Nephrotoxicity**

Renal impairment, including cases of acute renal failure and Fanconi syndrome (renal tubular injury with severe hypophosphatemia) has been reported with the use of emtricitabine-tenofovir disoproxil fumarate tablets during clinical practice (see **WARNINGS AND PRECAUTIONS**).

- **Risk of Drug Resistance with Use of Sandoz Emtricitabine-Tenofovir for Pre-Exposure Prophylaxis (PrEP) in Undiagnosed Early HIV-1 Infection**

Sandoz Emtricitabine-Tenofovir used for a PrEP indication must only be prescribed to individuals confirmed to be HIV-negative immediately prior to initial use and periodically (at least every 3 months) during use. Drug-resistant HIV-1 variants have been identified with the use of emtricitabine-tenofovir disoproxil fumarate tablets for a PrEP indication following undetected acute HIV-1 infection. Do not initiate Sandoz Emtricitabine-Tenofovir for a PrEP indication if signs or symptoms of acute HIV infection are present unless negative infection status is confirmed (see **WARNINGS AND PRECAUTIONS**).

## **General**

Sandoz Emtricitabine-Tenofovir should be used in the treatment of HIV-1 infected patients only in combination with other antiretroviral agents.

Sandoz Emtricitabine-Tenofovir is a fixed-dose combination of emtricitabine and tenofovir DF. Sandoz Emtricitabine-Tenofovir should not be coadministered with other products containing tenofovir DF or emtricitabine (ATRIPLA, COMPLERA, DESCOVY, EMTRIVA, GENVOYA, ODEFSEY, STRIBILD, or VIREAD), or with medicinal products containing tenofovir alafenamide (DESCOVY<sup>®</sup>, GENVOYA<sup>®</sup>, ODEFSEY, and VEMLIDY). Due to similarities between emtricitabine and lamivudine, Sandoz Emtricitabine-Tenofovir should not be coadministered with other drugs containing lamivudine (Combivir<sup>®</sup>, 3TC<sup>®</sup>, Heptovir<sup>®</sup>, Kivexa<sup>®</sup>, Triumeq<sup>®</sup>, or Trizivir<sup>®</sup>).

Sandoz Emtricitabine-Tenofovir should not be administered with adefovir dipivoxil (HEPSERA<sup>®</sup>).

Clinical studies in HIV-infected patients have demonstrated that certain regimens that only contain three nucleoside reverse transcriptase inhibitors (NRTI) are generally less effective than triple drug regimens containing two NRTIs in combination with either a non-nucleoside reverse transcriptase inhibitor or a HIV-1 protease inhibitor. In particular, early virological failure and high rates of resistance mutations have been reported. Triple nucleoside regimens should therefore be used with caution. Patients on a therapy utilizing a triple nucleoside-only regimen should be carefully monitored and considered for treatment modification.

## **Carcinogenesis, Mutagenesis, Impairment of Fertility**

**Emtricitabine:** In long-term oral carcinogenicity studies of emtricitabine, no drug-related increase in tumor incidence was found in mice at doses up to 750 mg/kg/day (26 times the human systemic exposure at the therapeutic dose of 200 mg/day) or in rats at doses up to 600 mg/kg/day (31 times the human systemic exposure at the therapeutic dose).

Emtricitabine was not genotoxic in the reverse mutation bacterial test (Ames test), mouse lymphoma or mouse micronucleus assays.

Emtricitabine did not affect fertility in male rats at approximately 140-fold or in male and female mice at approximately 60-fold higher exposures (AUC) than in humans given the recommended 200 mg daily dose. Fertility was normal in the offspring of mice exposed daily from before birth (in utero) through sexual maturity at daily exposures (AUC) of approximately 60-fold higher than human exposures at the recommended 200 mg daily dose.

**Tenofovir DF:** Tenofovir DF did not show any carcinogenic potential in a long-term oral carcinogenicity study in rats. A long-term oral carcinogenicity study in mice showed a low incidence of duodenal tumors, considered likely related to high local concentrations in the gastrointestinal tract at the high dose of 600 mg/kg/day. Liver adenomas were also seen at the high dose in female mice. The mechanism of tumor formation in mice and potential relevance for humans is uncertain.

Tenofovir DF was mutagenic in the in vitro mouse lymphoma assay and negative in an in vitro bacterial mutagenicity test (Ames test). In an in vivo mouse micronucleus assay,

tenofovir DF was negative at doses up to 2000 mg/kg when administered orally to male mice.

There were no effects on fertility, mating performance or early embryonic development when tenofovir DF was administered at 600 mg/kg/day to male rats for 28 days prior to mating and to female rats for 15 days prior to mating through day seven of gestation. There was, however, an alteration of the estrous cycle in female rats. A dose of 600 mg/kg/day is equivalent to 19 times the human dose based on body surface area comparisons.

## **Drug Interactions**

### **Use with Certain HCV Regimens**

Tenofovir exposure is increased when Sandoz Emtricitabine-Tenofovir is coadministered with HARVONI<sup>®</sup> (ledipasvir/sofosbuvir), EPCLUSA<sup>®</sup> (sofosbuvir/velpatasvir), or VOSEVI<sup>™</sup> (sofosbuvir/velpatasvir/voxilaprevir). Patients receiving Sandoz Emtricitabine-Tenofovir concomitantly with HARVONI, EPCLUSA or VOSEVI, particularly those at increased risk for renal dysfunction, should be monitored for tenofovir DF-associated adverse reactions (see **DRUG INTERACTIONS**).

### **Use with Didanosine**

Pharmacokinetic studies have shown that coadministration of didanosine and tenofovir DF results in 40-60% increase in  $C_{max}$  and AUC of didanosine (see Table 8). The mechanism of this interaction is unknown. Increases in didanosine concentrations of this magnitude could potentiate didanosine-associated adverse events, including pancreatitis, lactic acidosis, and neuropathy. In addition, suppression of CD4 counts has been observed in patients receiving tenofovir DF with didanosine at a dose of 400 mg daily (see **DRUG INTERACTIONS**).

## **Endocrine and Metabolism**

### **Serum Lipids and Blood Glucose**

Serum lipid and blood glucose levels may increase during antiretroviral therapy. Disease control and life style changes may also be contributing factors. Consideration should be given to the measurement of serum lipids and blood glucose. Lipid disorders and blood glucose elevations should be managed as clinically appropriate.

## **Hepatic/Biliary/Pancreatic**

### **Lactic Acidosis/Severe Hepatomegaly with Steatosis**

Lactic acidosis and severe hepatomegaly with steatosis, including fatal cases, have been reported with the use of antiretroviral nucleoside analogs, including tenofovir DF, a component of Sandoz Emtricitabine-Tenofovir, alone or in combination with other antiretrovirals in the treatment of HIV infection. A majority of these cases have been in women. Obesity and prolonged nucleoside exposure may be risk factors. Particular caution should be exercised when administering nucleoside analogs to any patient with known risk factors for liver disease; however, cases have also been reported in patients with no known risk factors. Treatment with Sandoz Emtricitabine-Tenofovir should be suspended in any patient who develops clinical or laboratory findings suggestive of lactic acidosis or

pronounced hepatotoxicity (which may include hepatomegaly and steatosis even in the absence of marked transaminase elevations).

## **Hepatic Impairment**

Tenofovir and tenofovir disoproxil are not metabolized by liver enzymes. Clinically relevant pharmacokinetic changes in patients with hepatic impairment are not observed. Therefore, no dose adjustment is required in patients with hepatic impairment. Emtricitabine has not been evaluated in patients with hepatic impairment; however, emtricitabine has not been shown to be metabolized by liver enzymes, so the impact of liver impairment is likely to be limited. The safety and efficacy of emtricitabine-tenofovir disoproxil fumarate tablets have not been established or specifically studied in patients with underlying liver disorders.

Patients with chronic hepatitis B or C and treated with antiretroviral therapy are at increased risk for severe and potentially fatal hepatic adverse events. In case of concomitant antiviral therapy for hepatitis B or C, please refer also to the relevant product information for these medicinal products.

## **Hepatitis B Virus Infection**

It is recommended that all patients be tested for the presence of hepatitis B virus (HBV) before initiating Sandoz Emtricitabine-Tenofovir. Sandoz Emtricitabine-Tenofovir is not approved for the treatment of chronic HBV infection and the safety and efficacy of emtricitabine-tenofovir disoproxil fumarate tablets have not been established in patients infected with HBV. Severe acute exacerbations of hepatitis B have been reported in patients who are co-infected with HBV and HIV after the discontinuation of emtricitabine-tenofovir disoproxil fumarate tablets. In some patients infected with HBV and treated with EMTRIVA, the exacerbations of hepatitis B were associated with liver decompensation and liver failure. Hepatic function should be closely monitored with both clinical and laboratory follow up for at least several months in patients who are infected with HBV and discontinue Sandoz Emtricitabine-Tenofovir. If appropriate, initiation of anti-hepatitis B therapy may be warranted. In patients with advanced liver disease or cirrhosis, post-treatment exacerbation of hepatitis may lead to hepatic decompensation. Therefore, in these patients, discontinuation of treatment without initiation of alternative anti-hepatitis B therapy is not recommended.

## **Pancreatitis**

Pancreatitis has occurred during therapy with combination regimens that included tenofovir DF (VIREAD). Caution should be used when administering nucleoside analogues (including Sandoz Emtricitabine-Tenofovir) to patients with a history of pancreatitis or risk factors for the development of pancreatitis. Therapy should be suspended in patients with suspected pancreatitis.

## **Immune**

### **Immune Reconstitution Inflammatory Syndrome**

Immune reconstitution inflammatory syndrome has been reported in HIV-1 infected patients treated with combination antiretroviral therapy, including the components of Sandoz Emtricitabine-Tenofovir. During the initial phase of combination antiretroviral treatment,



patients responding to antiretroviral therapy may develop an inflammatory response to indolent or residual opportunistic infections (such as *Mycobacterium avium* infections, cytomegalovirus, *Pneumocystis jiroveci* pneumonia (PCP), and tuberculosis), which may necessitate further evaluation and treatment.

Autoimmune disorders (such as Graves' disease, polymyositis and Guillain-Barré syndrome) have also been reported to occur in the setting of immune reconstitution; however, the reported time to onset is more variable, and these events can occur many months after initiation of treatment.

## **Musculoskeletal**

### **Bone Effects**

#### ***Bone Mineral Density***

In a clinical trial in treatment-naïve HIV-1 infected adults through 144 weeks, decreases from baseline in bone mineral density (BMD) were seen at the lumbar spine and hip in both tenofovir DF and stavudine treatment arms of the study; significantly greater decreases were seen in the lumbar spine measurement in the tenofovir DF group relative to the stavudine group. Clinically relevant fractures were reported in both treatment groups. Increases in biochemical markers of bone metabolism (serum bone-specific alkaline phosphatase, serum osteocalcin, serum C-telopeptide, and urinary N-telopeptide) were observed, suggesting increased bone turnover. Except for bone specific alkaline phosphatase, these changes resulted in values that remained within the normal range. These decreases in BMD and increases in biochemical markers of bone metabolism were also seen in the PrEP trials in HIV-1 uninfected individuals. The effects of tenofovir DF-associated changes in BMD and biochemical markers on long-term bone health and future fracture risk are unknown.

Assessment of BMD should be considered for patients who have a history of pathologic bone fracture or are at risk for osteopenia or osteoporosis. Although the effect of supplementation with calcium and vitamin D was not studied, such supplementation may be beneficial. If bone abnormalities are suspected then appropriate consultation should be obtained.

#### ***Mineralization Defects***

Cases of hypophosphatemic osteomalacia associated with proximal renal tubulopathy, manifested as bone pain or pain in the extremities and which may contribute to fractures, have been reported in association with the use of tenofovir DF (see **ADVERSE REACTIONS, Post Market Adverse Drug Reactions**). Arthralgias and muscle pain or weakness have also been reported in cases of proximal renal tubulopathy.

Hypophosphatemia and osteomalacia secondary to proximal renal tubulopathy should be considered in patients at risk of renal dysfunction who present with persistent or worsening bone or muscle symptoms while receiving products containing tenofovir DF. Serum phosphate should be monitored in these patients.

## **Renal**

### **Nephrotoxicity**

Emtricitabine and tenofovir are principally eliminated by the kidney. Renal impairment, including cases of acute renal failure and Fanconi syndrome (renal tubular injury with severe hypophosphatemia) has been reported in association with the use of tenofovir DF in clinical practice. The majority of these cases occurred in patients with underlying systemic or renal disease, or in patients taking nephrotoxic agents; however, some cases occurred in patients without identified risk factors. Persistent or worsening bone pain, pain in extremities, fractures and/or muscular pain or weakness may be manifestations of proximal renal tubulopathy and should prompt an evaluation of renal function in at-risk patients. It is recommended that creatinine clearance be calculated in all patients prior to initiating therapy and as clinically appropriate during therapy with Sandoz Emtricitabine-Tenofovir. In patients at risk of renal dysfunction, including patients who have previously experienced renal events while receiving HEPSERA, it is recommended that calculated creatinine clearance, serum phosphorus, urine glucose, and urine protein be assessed prior to initiation of Sandoz Emtricitabine-Tenofovir, and periodically during Sandoz Emtricitabine-Tenofovir therapy (see **ADVERSE REACTIONS, Post Market Adverse Drug Reactions and DRUG INTERACTIONS**).

If serum phosphate is  $< 1.5$  mg/dL (0.48 mmol/L) or creatinine clearance is decreased to  $< 50$  ml/min in any patient receiving Sandoz Emtricitabine-Tenofovir, renal function should be re-evaluated within one week, including measurements of blood glucose, blood potassium and urine glucose concentrations. Consideration should also be given to interrupting treatment with Sandoz Emtricitabine-Tenofovir in patients with creatinine clearance decreased to  $< 50$  ml/min or decreases in serum phosphate to  $< 1.0$  mg/dL (0.32 mmol/l). Interrupting treatment with Sandoz Emtricitabine-Tenofovir should also be considered in case of progressive decline of renal function when no other cause has been identified (see **ADVERSE REACTIONS**).

Sandoz Emtricitabine-Tenofovir should be avoided with concurrent or recent use of a nephrotoxic agent [eg, cidofovir, acyclovir, valacyclovir, ganciclovir, valganciclovir, aminoglycosides, high-dose or multiple non-steroidal anti-inflammatory drugs (NSAIDs)]. Cases of acute renal failure after initiation of high dose or multiple NSAIDs have been reported in HIV-1 infected patients with risk factors for renal dysfunction who appeared stable on tenofovir DF. Some patients required hospitalization and renal replacement therapy. Alternatives to NSAIDs should be considered, if needed, in patients at risk for renal dysfunction (see **DRUG INTERACTIONS**).

### **Renal Impairment**

#### ***Treatment of HIV-1 infection***

Dosing interval adjustment of Sandoz Emtricitabine-Tenofovir and close monitoring of renal function are recommended in all patients with creatinine clearance 30–49 mL/min. No safety and efficacy data are available in patients with renal dysfunction who received emtricitabine-tenofovir disoproxil fumarate tablets using these guidelines, and so the potential benefit of Sandoz Emtricitabine-Tenofovir should be assessed against the potential risk of renal toxicity. Sandoz Emtricitabine-Tenofovir should not be administered to patients

with creatinine clearance < 30 mL/min or patients requiring hemodialysis (see **DOSAGE AND ADMINISTRATION**).

### ***Pre-exposure Prophylaxis of HIV-1 infection***

Sandoz Emtricitabine-Tenofovir for a PrEP indication should not be used in HIV-1 uninfected individuals with creatinine clearance below 60 mL/min.

If a decrease in creatinine clearance is observed in uninfected individuals while using Sandoz Emtricitabine-Tenofovir for PrEP, evaluate potential causes and re-assess potential risks and benefits of continued use (see **DOSAGE AND ADMINISTRATION**).

### **Special Populations**

#### **Pregnant Women**

**Antiretroviral Pregnancy Registry:** To monitor fetal outcomes of pregnant women exposed to ART (antiretroviral therapy) including Sandoz Emtricitabine-Tenofovir, an Antiretroviral Pregnancy Registry has been established. Healthcare providers are encouraged to register patients by calling 800-258-4263.

Emtricitabine-tenofovir disoproxil fumarate tablets have been evaluated in a limited number of women during pregnancy and postpartum. Available human and animal data suggest that emtricitabine-tenofovir disoproxil fumarate tablets does not increase the risk of major birth defects overall compared to the background rate. There are, however, no adequate and well-controlled studies in pregnant women. Because animal reproduction studies are not always predictive of human response, Sandoz Emtricitabine-Tenofovir should be used in pregnant women only if the potential benefits outweigh the potential risks to the fetus. If an uninfected individual becomes pregnant while taking Sandoz Emtricitabine-Tenofovir for a PrEP indication, careful consideration should be given to whether use of Sandoz Emtricitabine-Tenofovir should be continued, taking into account the potential increased risk of HIV-1 infection during pregnancy.

As of July 2015, the APR has received prospective reports of 1984 and 2608 exposures to emtricitabine- and tenofovir-containing regimens, respectively in the first trimester; and 949 and 1258 exposures, respectively, in second/third trimester, respectively. Birth defects occurred in 47 of 1984 (2.4%) live births for emtricitabine-containing regimens and 60 of 2608 (2.3%) live births for tenofovir-containing regimens (first trimester exposure); and 20 of 949 (2.1%) live births for emtricitabine-containing regimens and 26 of 1258 (2.1%) live births for tenofovir containing regimens (second/third trimester exposure). Among pregnant women in the U.S. reference population, the background rate of birth defects is 2.7%. There was no association between emtricitabine or tenofovir and overall birth defects observed in the APR.

***Emtricitabine:*** The incidence of fetal variations and malformations was not increased in embryo-fetal toxicity studies performed with emtricitabine in mice at exposures (AUC) approximately 60-fold higher and in rabbits at approximately 120-fold higher than human exposures at the recommended daily dose.

**Tenofovir DF:** Reproduction studies have been performed in rats and rabbits at doses up to 14 and 19 times the human dose based on body surface area comparisons and revealed no evidence of impaired fertility or harm to the fetus due to tenofovir. Reduced pup body weights, survival and delay in sexual maturation was observed in a peri- and postnatal toxicity study in rats at the maternally toxic doses of 450 and 600 mg/kg (approximately 14 and 19 times the human dose based on body surface area comparisons).

## **Nursing Women**

**HIV-infected mothers should not breastfeed their infants to avoid risking postnatal transmission of HIV to the infant.**

In humans, samples of breast milk obtained from five HIV-1 infected mothers show that tenofovir is secreted in human milk at low levels (estimated neonatal concentrations 128 to 266 times lower than the tenofovir IC<sub>50</sub>). Tenofovir-associated risks, including the risk of developing viral resistance to tenofovir, in infants breastfed by mothers being treated with tenofovir DF are unknown.

Samples of breast milk obtained from five HIV-1 infected mothers show that emtricitabine is secreted in human milk at estimated neonatal concentrations 3 to 12 times higher than the emtricitabine IC<sub>50</sub> but 3 to 12 times lower than the C<sub>min</sub> achieved from oral administration of emtricitabine. Breast-feeding infants whose mothers are being treated with emtricitabine may be at risk for developing viral resistance to emtricitabine. Other emtricitabine-associated risks in infants breastfed by mothers being treated with emtricitabine are unknown.

Because of both the potential for HIV transmission and the potential for serious adverse reactions in nursing infants, **mothers should be instructed not to breastfeed if they are receiving Sandoz Emtricitabine-Tenofovir**, whether they are taking Sandoz Emtricitabine-Tenofovir for treatment or to reduce the risk of acquiring HIV-1.

## **Pediatrics (<18 years of age)**

Safety and effectiveness in pediatric patients have not been established.

## **Geriatrics (>65 years of age)**

Clinical studies of EMTRIVA or VIREAD did not include sufficient numbers of subjects aged 65 and over to determine whether they respond differently than younger subjects. In general, dose selection for the elderly patient should be cautious, keeping in mind the greater frequency of decreased hepatic, renal, or cardiac function, and of concomitant disease or other drug therapy.

## **PrEP to Reduce the Risk of Acquiring HIV-1 Infection**

### **Comprehensive HIV-1 Infection Prevention Strategy**

Use Sandoz Emtricitabine-Tenofovir for PrEP only as part of a comprehensive prevention strategy that includes other prevention measures, such as safer sex practices, because Sandoz Emtricitabine-Tenofovir is not always effective in preventing the acquisition of HIV-1 (see **CLINICAL TRIALS**).

- Counsel uninfected individuals about safer sex practices that include consistent and correct use of condoms, knowledge of their HIV-1 status and that of their partner(s), and regular testing for other sexually transmitted infections that can facilitate HIV-1 transmission (such as syphilis and gonorrhea).
- Inform uninfected individuals about and support their efforts in reducing sexual risk behavior.

### **Risk of Resistance**

**Use Sandoz Emtricitabine-Tenofovir to reduce the risk of acquiring HIV-1 only in individuals confirmed to be HIV-negative prior to initiating PrEP and re-confirmed routinely while taking PrEP.** HIV-1 resistance substitutions may emerge in individuals with undetected HIV-1 infection who are taking only Sandoz Emtricitabine-Tenofovir, **because Sandoz Emtricitabine-Tenofovir alone does not constitute a complete treatment regimen for HIV-1 treatment**; therefore, care should be taken to minimize drug exposure in HIV-infected individuals (see **VIROLOGY: Resistance**).

- Many HIV-1 tests, such as rapid tests, detect anti-HIV antibodies and may not identify HIV-1 during the acute stage of infection. Prior to initiating Sandoz Emtricitabine-Tenofovir for a PrEP indication, evaluate seronegative individuals for current or recent signs or symptoms consistent with acute viral infections (e.g., fever, fatigue, myalgia, skin rash, etc.) and ask about potential exposure events (e.g., unprotected, or condom broke during sex with an HIV-1 infected partner) that may have occurred within the last month.
- If clinical symptoms consistent with acute viral infection are present and recent (<1 month) exposures are suspected, delay starting PrEP for at least one month and reconfirm HIV-1 negative status or use a test approved by Health Canada as an aid in the diagnosis of HIV-1 infection, including acute or primary HIV-1 infection.
- While using Sandoz Emtricitabine-Tenofovir for a PrEP indication, HIV-1 screening tests should be repeated at least every 3 months. If symptoms consistent with acute HIV-1 infection develop following a potential exposure event, PrEP should be discontinued until negative infection status is confirmed using a test approved by Health Canada as an aid in the diagnosis of HIV-1, including acute or primary HIV-1 infection.

**Counsel uninfected individuals to strictly adhere to the recommended Sandoz Emtricitabine-Tenofovir dosing schedule. The effectiveness of Sandoz Emtricitabine-**

**Tenofovir in reducing the risk of acquiring HIV-1 is strongly correlated with adherence as demonstrated by measurable drug levels in clinical trials (see CLINICAL TRIALS).**

## **ADVERSE REACTIONS**

### **Clinical Trial Adverse Drug Reactions**

*Because clinical trials are conducted under very specific conditions the adverse reaction rates observed in the clinical trials may not reflect the rates observed in practice and should not be compared to the rates in the clinical trials of another drug. Adverse drug reaction information from clinical trials is useful for identifying drug-related adverse events and for approximating rates.*

### **Adverse Reactions from Clinical Trials Experience in HIV-1 Infected Subjects**

**Emtricitabine-tenofovir disoproxil fumarate tablets:** Four hundred and forty-seven HIV-1 infected patients have received combination therapy with EMTRIVA or VIREAD with either a non- nucleoside reverse transcriptase inhibitor or protease inhibitor for 48 weeks in ongoing clinical studies. Study 934 - Treatment Emergent Adverse Events: Assessment of adverse reactions is based on data from Study 934 in which 511 antiretroviral-naïve patients received either EMTRIVA + VIREAD administered in combination with efavirenz (N=257) or Combivir® (lamivudine/zidovudine) administered in combination with efavirenz (N=254). Adverse events observed in this study were generally consistent with those seen in other studies in treatment experienced or treatment-naïve patients (Table 1).

**Table 1. Selected Treatment-Emergent Adverse Events (Grades 2–4) Reported in ≥3% in Any Treatment Group in Study 934 (0–48 Weeks)**

	EMTRIVA+VIREAD+EFV	AZT/3TC+EFV
	N=257	N=254
Blood and Lymphatic System Disorders		
Anemia	<1%	5%
Gastrointestinal Disorder		
Diarrhea	7%	4%
Nausea	8%	6%
Vomiting	1%	4%
General Disorders and Administration Site Condition		
Fatigue	7%	6%
Infections and Infestations		
Sinusitis	4%	2%
Upper respiratory tract infections	3%	3%

Nasopharyngitis	3%	1%
Nervous System Disorders		
Somnolence	3%	2%
Headache	5%	4%
Dizziness	8%	7%
Psychiatric Disorders		
Depression	4%	7%
Insomnia	4%	5%
Abnormal dreams	4%	3%
Skin and Subcutaneous Tissue Disorders		
Rash	5%	4%

Patients who received treatment up to 144 weeks in Study 934 reported adverse events similar in nature and severity to those reported in the first 48 weeks.

Through 48 weeks, 7 patients in the EMTRIVA + VIREAD group and 5 patients in the lamivudine/zidovudine group experienced a new CDC Class C event (10 and 6 patients, respectively, through 144 weeks). Renal safety assessed by laboratory abnormalities was similar in the two groups and no patient discontinued study drug due to renal events. At Weeks 48 and 144, total limb fat (as measured by dual-energy x-ray absorptiometry) was significantly less in a subgroup of patients in the lamivudine/zidovudine group compared to the tenofovir/emtricitabine subgroup (see Table 2).

**Table 2. Study 934 Total Limb Fat at Week 48 and 144 (Dual-Energy X-Ray Absorptiometry)**

	EMTRIVA + VIREAD + EFV	AZT/3TC +EFV
<b>Week 48<sup>1</sup></b>	<b>N=51</b>	<b>N=49</b>
Total Limb Fat (kg) (Mean ± S.D.)	8.9 ±5.4	6.9 ±3.9
<b>Week 144<sup>2</sup></b>	<b>N=145</b>	<b>N=124</b>
Total Limb Fat (kg) (Mean ± S.D.)	9.2 ±5.4	6.5 ±4.3

<sup>1</sup>P=0.03 for the comparison between arms

<sup>2</sup>P<0.001 for the comparison between arms

**Laboratory Abnormalities:** Laboratory Abnormalities observed in this study were generally consistent with those seen in other studies (Table 3).

**Table 3. Grade 3/4 Laboratory Abnormalities Reported in ≥1% in Any**

### Treatment Group in Study 934 (0–48 Weeks)

	EMTRIVA+VIREAD+EFV N=257	AZT/3TC+EFV N=254
Any ≥ Grade 3 Laboratory Abnormality	25%	22%
Fasting Cholesterol (>240 mg/dL)	15%	17%
Creatine Kinase (M: >990 U/L) (F: >845 U/L)	7%	6%
Serum Amylase (>175U/L)	7%	3%
Alkaline Phosphatase (>550 U/L)	1%	0%
AST (M: >180 U/L) (F: >170 U/L)	3%	2%
ALT (M: >215 U/L) (F: >170 U/L)	2%	2%
Hemoglobin (<8.0 mg/dL)	0%	3%
Hyperglycemia (>250 mg/dL)	1%	1%
Hematuria (>75 RBC/HPF)	2%	2%
Neutrophil (>750/mm <sup>3</sup> )	3%	4%
Fasting Triglycerides (>750 mg/dL)	4%	2%

Laboratory abnormalities in patients who received treatment up to 144 weeks in Study 934 were consistent with those observed in the first 48 weeks of treatment.

In addition to the events described above for Study 934, other adverse events that occurred in at least 3-5% of patients receiving EMTRIVA or VIREAD with other antiretroviral agents in clinical trials include: anorexia, anxiety, arthralgia, asthenia, increased cough, depressive disorders, dyspepsia, fever, flatulence, myalgia, pain, abdominal pain, back pain, chest pain, paresthesia, peripheral neuropathy (including peripheral neuritis and neuropathy), pneumonia, rhinitis and rash event (including rash, pruritus, maculopapular rash, urticaria, vesiculobullous rash, pustular rash and allergic reaction), sweating and weight loss.

Skin discoloration has been reported with higher frequency among EMTRIVA treated patients. Skin discoloration, mainly manifested by hyperpigmentation on the palms and/or soles was generally mild and asymptomatic and of little clinical significance. The mechanism is unknown.

In addition to the laboratory abnormalities described above for Study 934, Grade 3/4 elevations of bilirubin (>2.5 x ULN), pancreatic amylase (>2.0 x ULN), serum glucose (<40 or >250 mg/dL), serum lipase (>2.0 x ULN), and urine glucose (≥3+) occurred in up to 3%



of patients treated with EMTRIVA or VIREAD with other antiretroviral agents in clinical trials.

For more information, please consult the EMTRIVA and VIREAD Product Monographs.

In Study 903 through 144 weeks, decreases from baseline in bone mineral density (BMD) were seen at the lumbar spine and hip in both arms of the study. At Week 144, there was a significantly greater mean percentage decrease from baseline in BMD at the lumbar spine in patients in the tenofovir DF group compared with patients in the stavudine group (see Table 4). In both groups, the majority of the reduction in BMD occurred in the first 24–48 weeks of the study and this reduction was sustained through Week 144. Twenty-eight percent of tenofovir DF-treated patients vs. 21% of the stavudine-treated patients lost at least 5% of BMD at the spine or 7% of BMD at the hip. Clinically relevant fractures (excluding fingers and toes) were reported in 4 patients in the tenofovir DF group and 6 patients in the stavudine group. In addition, there were significant increases in biochemical markers of bone metabolism (serum bone-specific alkaline phosphatase, serum osteocalcin, serum C-telopeptide, and urinary N-telopeptide) in the tenofovir DF group relative to the stavudine group, suggesting increased bone turnover. Serum parathyroid hormone levels and 1,25 Vitamin D levels were also higher in the tenofovir DF group. Except for bone specific alkaline phosphatase, these changes resulted in values that remained within the normal range. The effects of tenofovir DF-associated changes in BMD and biochemical markers on long-term bone health and future fracture risk are unknown.

**Table 4** **Changes in Bone Mineral Density Study 903**

	Mean Percent Change (±SD) to Week 144 in BMD	
	VIREAD + 3TC+ EFV	d4T + 3TC +EFV
Lumbar Spine	-2.2% ± 3.9	-1.0% ± 4.6
Hip	-2.8% ± 3.5	-2.4% ± 4.5

#### **Adverse Reactions from Clinical Trials Experience in HIV-1 Uninfected Adult Subjects (PrEP)**

No new adverse reactions to emtricitabine-tenofovir disoproxil fumarate tablets were identified from two randomized placebo-controlled clinical trials (iPrEx, Partners PrEP) in which 2830 HIV-1 uninfected adults received emtricitabine-tenofovir disoproxil fumarate tablets once daily for pre-exposure prophylaxis. Subjects were followed for a median of 71 weeks and 87 weeks, respectively. These trials enrolled HIV-negative individuals ranging in age from 18 to 67 years. The iPrEx trial enrolled only men or transgender women of Hispanic/Latino (72%), White (18%), Black (9%) and Asian (5%) race. The Partners PrEP trial enrolled both men (61–64% across treatment groups) and women in Kenya and Uganda. Table 5 provides a list of all adverse events that occurred ≥2% of subjects in any treatment group in the iPrEx and Partners PrEP trials.

**Table 5**                      **Selected Adverse Events (All Grades) Reported in  $\geq 2\%$  of Uninfected Individuals in Any Treatment Group in the iPrEx Trial and Partners PrEP Trial**

	iPrEx Trial		Partners PrEP Trial	
	FTC/TDF N=1251	Placebo N=1248	FTC/TDF N=1579	Placebo N=1584
Gastrointestinal Disorder				
Diarrhea	7%	8%	2%	3%
Abdominal pain	4%	2%	- <sup>a</sup>	-
Infections and Infestations				
Pharyngitis	13%	16%	-	-
Urethritis	5%	7%	-	-
Urinary tract infection	2%	2%	5%	7%
Syphilis	6%	5%	-	-
Secondary syphilis	6%	4%	-	-
Anogenital warts	2%	3%	-	-
Musculoskeletal and Connective Tissue Disorders				
Back pain	5%	5%	-	-
Nervous System Disorders				
Headache	7%	6%	-	-
Psychiatric Disorders				
Depression	6%	7%	-	-
Anxiety	3%	3%	-	-
Reproductive System and Breast Disorders				
Genital ulceration	2%	2%	2%	2%
Investigations				
Weight decreased	3%	2%	-	-

a. Not reported or reported below 2%.

**Laboratory Abnormalities:** Table 6 provides a list of laboratory abnormalities observed in both PrEP trials. Six subjects in the TDF-containing arms of the Partners PrEP trial discontinued participation in the study due to an increase in blood creatinine compared with no discontinuations in the placebo group. One subject in the emtricitabine-tenofovir disoproxil fumarate tablets arm of the iPrEx trial discontinued from the study due to an increase in blood creatinine and another due to low phosphorus.

**Table 6 Laboratory Abnormalities (Highest Toxicity Grade) Reported for Each Subject in the iPrEx Trial and Partners PrEP Trial**

	Grade <sup>b</sup>	iPrEx Trial		Partners PrEP Trial	
		FTC/TDF N=1251	Placebo N=1248	FTC/TDF N=1579	Placebo N=1584
Creatinine	1 (1.1-1.3 X ULN)	27 (2%)	21 (2%)	18 (1%)	12 (<1%)
	2-4 (> 1.4 x ULN)	5 (<1%)	3 (<1%)	2 (<1%)	1 (<1%)
Phosphorus	1 (2.5 - <LLN mg/dL)	81 (7%)	110 (9%)	NR <sup>a</sup>	NR <sup>a</sup>
	2-4 (<2.0 mg/dL)	123 (10%)	101 (8%)	140 (9%)	136 (9%)
AST	1 (1.25-<2.5 x ULN)	175 (14%)	175 (14%)	20 (1%)	25 (2%)
	2-4 (> 2.6 x ULN)	57 (5%)	61 (5%)	10 (<1%)	4 (<1%)
ALT	1 (1.25-<2.5 x ULN)	178 (14%)	194 (16%)	21 (1%)	13 (<1%)
	2-4 (> 2.6 x ULN)	84 (7%)	82 (7%)	4 (<1%)	6 (<1%)
Hemoglobin	1 (8.5 - 10 mg/dL)	49 (4%)	62 (5%)	56 (4%)	39 (2%)
	2-4 (<9.4 mg/dL)	13 (1%)	19 (2%)	28 (2%)	39 (2%)
Neutrophils	1 (1000-1300/mm <sup>3</sup> )	23 (2%)	25 (2%)	208 (13%)	163 (10%)
	2-4 (<750/mm <sup>3</sup> )	7 (<1%)	7 (<1%)	73 (5%)	56 (3%)

a. Grade 1 phosphorus was not reported for the Partners PrEP trial.

b. Grading is per DAIDS criteria.

In addition to the laboratory abnormalities described above, Grade 1 proteinuria (1+) occurred in 6% of subjects receiving emtricitabine-tenofovir disoproxil fumarate tablets in the iPrEx trial. Grade 2-3 proteinuria (2-4+) and glycosuria (3+) occurred in less than 1% of subjects treated with emtricitabine-tenofovir disoproxil fumarate tablets in the iPrEx trial and Partners PrEP trial.

In clinical trials of HIV-1 uninfected individuals, decreases in BMD were observed. In the iPrEx trial, a substudy of 503 subjects found mean changes from baseline in BMD ranging from -0.4% to -1.0% across total hip, spine, femoral neck, and trochanter in the emtricitabine-tenofovir disoproxil fumarate tablets group compared with the placebo group, which returned toward baseline after discontinuation of treatment. Thirteen percent of subjects receiving emtricitabine-tenofovir disoproxil fumarate tablets vs. 6% of subjects receiving placebo lost at least 5% of BMD at the spine during treatment. Bone fractures were reported in 1.7% of the emtricitabine-tenofovir disoproxil fumarate tablets group compared with 1.4% in the placebo group. No correlation between BMD and fractures was noted. The Partners PrEP trial found similar fracture rates between treatment and placebo groups (0.8% and 0.6%, respectively). No BMD evaluations were conducted during this trial (see **CLINICAL TRIALS**).

## Post Market Adverse Drug Reactions

**Emtricitabine:** The following adverse experiences have been reported in post-marketing experience without regard to causality. Because these events are voluntarily reported from a population of unknown size, estimates of frequency cannot be made. These events have been considered possible adverse reactions due to a combination of their seriousness, frequency of reporting or potential causal relationship with treatment.

<i>Blood and lymphatic system disorders:</i>	Thrombocytopenia
<i>Gastrointestinal disorders:</i>	Pancreatitis
<i>General disorders and administrative site conditions:</i>	Pyrexia
<i>Metabolism and nutrition disorders:</i>	Lactic acidosis

**Tenofovir DF:** The following adverse reactions have been identified during post-approval use of VIREAD. Because these events have been reported voluntarily from a population of unknown size, estimates of frequency cannot be made. These events have been considered possible adverse reactions due to a combination of their seriousness, frequency of reporting or potential causal relationship with tenofovir DF.

<i>Immune system disorders:</i>	Allergic reaction (including angioedema)
<i>Metabolism and nutrition disorders:</i>	Lactic acidosis, hypokalemia, hypophosphatemia,
<i>Respiratory, thoracic and mediastinal disorders:</i>	Dyspnea
<i>Gastrointestinal disorders:</i>	Pancreatitis, increased amylase, abdominal pain
<i>Blood and lymphatic system disorders:</i>	Thrombocytopenia
<i>Hepatobiliary disorders:</i>	Hepatic steatosis, hepatitis, increased liver enzymes (most commonly AST, ALT, GGT)
<i>Skin and subcutaneous tissue disorders:</i>	Rash
<i>Musculoskeletal and Connective Tissue Disorders:</i>	Rhabdomyolysis, osteomalacia (manifested as bone pain and infrequently contributing to fractures), muscular weakness, myopathy

*Renal and urinary disorders:*

Acute renal failure, renal failure, acute tubular necrosis, Fanconi syndrome, proximal renal tubulopathy, interstitial nephritis (including acute cases), nephrogenic diabetes insipidus, renal insufficiency, increased creatinine, proteinuria, polyuria

*General Disorders and Administration Site Conditions*

Asthenia

The following adverse reactions, listed under the body system headings above, may occur as a consequence of proximal renal tubulopathy: rhabdomyolysis, osteomalacia (manifested as bone pain and infrequently contributing to fractures), hypokalemia, muscular weakness, myopathy and hypophosphatemia.

There have been three post marketing reports of acute renal failure in patients on concomitant NSAIDS therapy where a relationship to tenofovir DF could not be excluded. These events mostly occurred in medically complex patients, where underlying disease processes confound interpretation.

**Emtricitabine and Tenofovir DF:** In HIV-infected patients with severe immune deficiency at the time of initiation of antiretroviral therapy an inflammatory reaction to infectious pathogens (active or inactive) may arise (see **WARNINGS AND PRECAUTIONS**).

In HIV infected patients coinfecting with HBV, clinical and laboratory evidence of exacerbations of hepatitis has occurred after discontinuation of treatment (see **WARNINGS AND PRECAUTIONS**).

## **DRUG INTERACTIONS**

### **Overview**

Drug interaction studies have been conducted with either emtricitabine-tenofovir disoproxil fumarate tablets, or the components of emtricitabine-tenofovir disoproxil fumarate tablets as individual agents and/or in combination.

The steady state pharmacokinetics of emtricitabine and tenofovir were unaffected when emtricitabine and tenofovir DF were administered together versus each agent dosed alone (see Table 9 and Table 10).

*In vitro* and clinical pharmacokinetic drug-drug interaction studies have shown that the potential for CYP450 mediated interactions involving emtricitabine and tenofovir with other medicinal products is low.

### **Drug-Drug Interactions**

#### **Established and Other Potentially Significant Drug Interactions**

The drug interactions described are based on studies conducted with the individual agents of emtricitabine-tenofovir disoproxil fumarate tablets and/or in combination, or are potential drug interactions that may occur with Sandoz Emtricitabine-Tenofovir.

**Table 7. Established and Other Potentially Significant<sup>a</sup> Drug Interactions**

Concomitant Drug Class: Drug Name	Effect on Concentration <sup>b</sup>	Clinical Comment
<b>Antiretroviral Agents:</b>		
Didanosine	↑ didanosine	<p>Pharmacokinetic studies have shown that coadministration of didanosine and tenofovir DF results in 40-60% increase in C<sub>max</sub> and AUC of didanosine (see Table 8). The mechanism of this interaction is unknown. Increases in didanosine concentrations of this magnitude could potentiate didanosine-associated adverse events, including pancreatitis, lactic acidosis, and neuropathy. In addition, suppression of CD4 counts has been observed in patients receiving tenofovir DF with didanosine at a dose of 400 mg daily.</p> <p>A reduced dose of Videx EC® (ddI-EC) is recommended when coadministered with Sandoz Emtricitabine-Tenofovir. When coadministered with Sandoz Emtricitabine-Tenofovir, the Videx EC® Product Monograph recommends a reduced dose of 250 mg ddI-EC for HIV infected adults with body weight ≥60 kg and creatinine clearance ≥60 mL/min. For patients with body weight &lt;60 kg, and creatinine clearance ≥60 mL/min, the recommended dose of ddI-EC is 200 mg. Data are not available to recommend a dose adjustment for patients with creatinine clearance &lt;60mL/min or for the buffered tablet formulation of didanosine (Videx®).</p> <p>Caution should be used when coadministering reduced-dose didanosine, tenofovir, and an NNRTI in treatment-naïve patients with high viral loads at baseline since such use has been associated with reports of a high rate of virologic failure and emergence of resistance at an early stage. All patients receiving tenofovir DF and didanosine concomitantly should be closely monitored for didanosine-related adverse events and clinical response.</p>
Atazanavir/ritonavir Darunavir/ritonavir Lopinavir/ritonavir	↑ tenofovir	<p>Atazanavir/ritonavir, darunavir/ritonavir and lopinavir/ritonavir have been shown to increase tenofovir concentrations (see Table 11). The mechanism of this interaction is unknown. Higher tenofovir concentrations could potentiate tenofovir-associated adverse events, including renal disorders. Patients receiving atazanavir/ritonavir, darunavir/ritonavir or lopinavir/ritonavir and Sandoz Emtricitabine-Tenofovir should be monitored for emtricitabine-tenofovir disoproxil fumarate - associated adverse events.</p>

Atazanavir	↓ atazanavir	Tenofovir decreases atazanavir concentrations (see Table 12). Although safety and efficacy data are limited, it is recommended that atazanavir, without ritonavir, should not be coadministered with Sandoz Emtricitabine-Tenofovir. The recommended regimen is atazanavir 300 mg given with ritonavir 100 mg when used in combination with emtricitabine-tenofovir disoproxil fumarate (all as a single daily dose with food).
------------	--------------	---

#### Hepatitis C Virus Antiviral Agents:

Ledipasvir/sofosbuvir Sofosbuvir/velpatasvir Sofosbuvir/velpatasvir /voxilaprevir	↑ tenofovir	Coadministration of tenofovir DF and HARVONI (ledipasvir/sofosbuvir) or EPCLUSA (sofosbuvir/velpatasvir), or VOSEVI (sofosbuvir/velpatasvir/voxilaprevir) has been shown to increase tenofovir exposure (see Table 11). Patients receiving a regimen containing tenofovir DF concomitantly with HARVONI, EPCLUSA, or VOSEVI should be monitored for adverse reactions associated with tenofovir DF (see <b>WARNINGS AND PRECAUTIONS, Drug Interactions</b> ).
--	-------------	---

a This table is not all inclusive.

b ↑ = increase, ↓ = decrease

#### **Drugs Affecting Renal Function**

Emtricitabine and tenofovir are primarily excreted by the kidneys by a combination of glomerular filtration and active tubular secretion. No drug-drug interactions due to competition for renal excretion have been observed. Since emtricitabine and tenofovir are primarily eliminated by the kidneys, coadministration of Sandoz Emtricitabine-Tenofovir with drugs that reduce renal function or compete for active tubular secretion may increase serum concentrations of emtricitabine, tenofovir, and/or other renally eliminated drugs. Some examples include, but are not limited to, didanosine, acyclovir, valacyclovir, ganciclovir, valganciclovir, aminoglycosides and high-dose or multiple NSAIDs.

Sandoz Emtricitabine-Tenofovir should not be administered with HEPSERA (adefovir dipivoxil) (see **WARNINGS AND PRECAUTIONS, General**).

#### **Drugs without Clinically Significant Interactions with Sandoz Emtricitabine-Tenofovir**

No clinically significant drug interactions have been observed between emtricitabine and famciclovir, indinavir, zidovudine, stavudine, tenofovir DF, sofosbuvir, ledipasvir/sofosbuvir, sofosbuvir/velpatasvir, and sofosbuvir/velpatasvir/voxilaprevir (see Table 9 and Table 10). Similarly, no clinically significant drug interactions have been observed between tenofovir DF and abacavir, efavirenz, emtricitabine, entecavir, indinavir, lamivudine, methadone, nelfinavir, oral contraceptives, ribavirin, saquinavir/ritonavir, sofosbuvir and tacrolimus in studies conducted in healthy volunteers (see Table 11 and Table 12).

#### **Assessment of Drug Interactions**

Drug-drug interaction studies were conducted with either emtricitabine-tenofovir disoproxil fumarate tablets or the components of emtricitabine-tenofovir disoproxil fumarate tablets

(emtricitabine or tenofovir DF) as individual agents and/or in combination.

The effects of didanosine in the presence of tenofovir are shown in Table 8.

The effects of coadministered drugs on the exposure of emtricitabine are shown in Table 9.  
The effects of emtricitabine on the exposure of coadministered drugs are shown in Table 10.

The effects of coadministered drugs on the exposure of tenofovir DF are shown in Table 11.  
The effects of tenofovir DF on the exposure of coadministered drugs are shown in Table 12.

**Table 8 Drug Interactions: Pharmacokinetic Parameters for Didanosine in the Presence of Tenofovir**

Didanosine <sup>1</sup> Dose (mg)/ Method of Administration <sup>2</sup>	Tenofovir Method of Administration <sup>2</sup>	N	% Difference (90% CI) vs. Didanosine 400 mg Alone, Fasted <sup>3</sup>	
			C <sub>max</sub>	AUC
Buffered tablets				
400 once daily <sup>4</sup> × 7 days	Fasted 1 hour after didanosine	14	↑ 27 (↑ 8 to ↑ 46)	↑ 43 (↑ 30 to ↑ 57)
Enteric coated capsules				
400 once, fasted	With food, 2 hr after didanosine	26	↑ 48 (↑ 25 to ↑ 76)	↑ 48 (↑ 31 to ↑ 67)
400 once, with food	Simultaneously with didanosine	26	↑ 64 (↑ 41 to ↑ 89)	↑ 60 (↑ 44 to ↑ 79)
250 once, fasted	With food, 2 hr after didanosine	28	↓ 10 (↓ 22 to ↑ 3)	0 (↓ 11 to ↑ 12)
250 once, fasted	Simultaneously with didanosine	28	↓ 8 (↓ 19 to ↑ 5)	↑ 14 (0 to ↑ 31)
250 once, with food	Simultaneously with didanosine	28	↓ 29 (↓ 39 to ↓ 18)	↓ 11 (↓ 23 to ↑ 2)

1. See **PRECAUTIONS** regarding use of didanosine with VIREAD.
2. Administration with food was with a light meal (~373 kcal, 20% fat).
3. Increase = ↑; Decrease = ↓
4. Includes 4 subjects weighing <60 kg receiving ddl 250 mg



**Table 9 Drug Interactions: Changes in Pharmacokinetic Parameters for Emtricitabine in the Presence of the Coadministered Drug<sup>1</sup>**

Coadministered Drug	Dose of Coadministered Drug (mg)	Emtricitabine Dose (mg)	N	% Change of Emtricitabine Pharmacokinetic Parameters <sup>2</sup> (90% CI)		
				C <sub>max</sub>	AUC	C <sub>min</sub>
Tenofovir DF	300 once daily × 7 days	200 once daily × 7 days	17	↓ 4 (↓ 13 to ↑ 6)	↑ 7 (0 to ↑ 4)	↑ 20 (↑ 12 to ↑ 29)
Zidovudine	300 twice daily × 7 days	200 once daily × 7 days	27	↓ 3 (↓ 10 to ↑ 4)	↓ 3 (↓ 7 to ↑ 1)	↓ 4 (↓ 12 to ↑ 4)
Indinavir	800 × 1	200 × 1	12	↓ 8 (↓ 18 to ↑ 4)	↑ 1 (↓ 6 to ↑ 9)	NC
Famciclovir	500 × 1	200 × 1	12	↓ 10 (↓ 20 to ↑ 1)	↓ 8 (↓ 14 to ↓ 1)	NC
Stavudine	40 × 1	200 × 1	6	↑ 4 (↓ 6 to ↑ 16)	↑ 2 (↓ 6 to ↑ 11)	NC

1. All interaction studies conducted in healthy volunteers.

2. ↑ = Increase; ↓ = Decrease; NC= Not Calculated

**Table 10 Drug Interactions: Changes in Pharmacokinetic Parameters for Coadministered Drug in the Presence of Emtricitabine<sup>1</sup>.**

Coadministered Drug	Dose of Coadministered Drug (mg)	Emtricitabine Dose (mg)	N	% Change of Coadministered Drug Pharmacokinetic Parameters <sup>2</sup> (90% CI)		
				C <sub>max</sub>	AUC	C <sub>min</sub>
Tenofovir DF	300 once daily × 7 days	200 once daily × 7 days	17	↑ 3 (↓ 5 to ↑ 11)	0 (↓ 8 to ↑ 9)	↑ 2 (↓ 8 to ↑ 13)
Zidovudine	300 twice daily × 7 days	200 once daily × 7 days	27	↑ 17 (0 to ↑ 38)	↑ 13 (↑ 5 to ↑ 20)	↓ 2 (↓ 11 to ↑ 9)
Indinavir	800 × 1	200 × 1	12	↓ 2 (↓ 16 to ↑ 13)	↑ 2 (↓ 11 to ↑ 17)	NC
Famciclovir	500 × 1	200 × 1	12	↓ 7 (↓ 22 to ↑ 11)	↓ 9 (↓ 17 to ↓ 1)	NC
Stavudine	40 × 1	200 × 1	6	↑ 5 (↓ 5 to ↑ 16)	↑ 9 (↓ 17 to ↑ 44)	NC

1. All interaction studies conducted in healthy volunteers.

2. ↑ = Increase; ↓ = Decrease; NC=Not Calculated

**Table 11 Drug Interactions: Changes in Pharmacokinetic Parameters for Tenofovir<sup>1</sup> in the Presence of the Coadministered Drug**

Coadministered Drug	Dose of Coadministered Drug (mg)	N	% Change of Tenofovir Pharmacokinetic Parameters <sup>2</sup> (90% CI)		
			C <sub>max</sub>	AUC	C <sub>min</sub>
Abacavir	300 single dose	8	↓ 8 (↓ 24 to ↑ 12)	↑ 4 (↓ 14 to ↑ 26)	NC
Atazanavir <sup>3</sup>	400 once daily × 14 days	33	↑ 14 (↑ 8 to ↑ 20)	↑ 24 (↑ 21 to ↑ 28)	↑ 22 (↑ 15 to ↑ 30)
Atazanavir/ Ritonavir <sup>3</sup>	300/100 once daily	12	↑ 34 (↑ 20 to ↑ 51)	↑ 37 (↑ 30 to ↑ 45)	↑ 29 (↑ 21 to ↑ 36)
Darunavir/ Ritonavir <sup>4</sup>	300/100 twice daily	12	↑ 24 (↑ 8 to ↑ 42)	↑ 22 (↑ 10 to ↑ 35)	↑ 37 (↑ 19 to ↑ 57)
Didanosine (enteric-coated)	400 single dose	25	↓ 2 (↓ 7 to ↑ 4)	↑ 2 (↓ 2 to ↑ 5)	NC
Didanosine (buffered)	250 or 400 once daily × 7 days <sup>5</sup>	14	↑ 1 (↓ 12 to ↑ 14)	↓ 5 (↓ 14 to ↑ 4)	↓ 22 (↓ 36 to ↓ 7)
Efavirenz	600 once daily × 14 days	29	↑ 7 (↓ 4 to ↑ 17)	↓ 2 (↓ 8 to ↑ 3)	↑ 2 (↓ 9 to ↑ 12)
Emtricitabine	200 once daily × 7 days	17	↑ 3 (↓ 5 to ↑ 11)	0 (↓ 8 to ↑ 9)	↑ 2 (↓ 8 to ↑ 13)
Entecavir	1 mg once daily × 10 days	28	NA	NA	NA
Indinavir	800 three times daily × 7 days	13	↑ 14 (↓ 3 to ↑ 31)	↑ 7 (↓ 5 to ↑ 19)	↑ 8 (↓ 7 to ↑ 22)
Lamivudine	150 twice daily × 7 days	15	↑ 2 (↓ 4 to ↑ 9)	↓ 3 (↓ 15 to ↑ 10)	↓ 8 (↓ 33 to ↑ 18)

Ledipasvir/ Sofosbuvir <sup>6, 7</sup>	90/400 once daily x10 days	24	↑ 47 (↑ 37 to ↑ 58)	↑ 35 (↑ 29 to ↑ 42)	↑ 47 (↑ 38 to ↑ 57)
Ledipasvir/ Sofosbuvir <sup>6, 8</sup>		23	↑ 64 (↑ 54 to ↑ 74)	↑ 50 (↑ 42 to ↑ 59)	↑ 59 (↑ 49 to ↑ 70)
Ledipasvir/ Sofosbuvir <sup>9</sup>		15	↑ 79 (↑ 56 to ↑ 104)	↑ 98 (↑ 77 to ↑ 123)	↑ 163 (↑ 132 to ↑ 197)
Ledipasvir/ Sofosbuvir <sup>10</sup>		14	↑ 32 (↑ 25 to ↑ 39)	↑ 40 (↑ 31 to ↑ 50)	↑ 91 (↑ 74 to ↑ 110)
Ledipasvir/ Sofosbuvir <sup>11</sup>		29	↑ 61 (↑ 51 to ↑ 72)	↑ 65 (↑ 59 to ↑ 71)	↑ 115 (↑ 105 to ↑ 126)
Lopinavir/ Ritonavir	400/100 twice daily × 14 days	24	↓ 33 (↓ 17 to ↑ 49)	↑ 32 (↑ 25 to ↑ 40)	↑ 28 (↑ 7 to ↑ 49)
Nelfinavir	1250 twice daily × 14 days	29	↓ 2 (↓ 9 to ↑ 5)	↑ 1 (↓ 5 to ↑ 7)	↑ 9 (↑ 2 to ↑ 17)
Saquinavir/Ritonavir	1000/100 twice daily × 14 days	35	↑ 15 (↑ 7 to ↑ 22)	↑ 14 (↑ 9 to ↑ 19)	↑ 23 (↑ 16 to ↑ 30)
Sofosbuvir <sup>12</sup>	400 single dose	16	↑ 25 (↑ 8 to ↑ 45)	↓ 2 (↓ 9 to ↑ 5)	↓ 1 (↓ 9 to ↑ 7)
Sofosbuvir/ Velpatasvir <sup>13</sup>	400/100 once daily	24	↑ 55 (↑ 43 to ↑ 68)	↑ 30 (↑ 24 to ↑ 36)	↑ 39 (↑ 31 to ↑ 48)
Sofosbuvir/ Velpatasvir <sup>14</sup>		29	↑ 55 (↑ 45 to ↑ 66)	↑ 39 (↑ 33 to ↑ 44)	↑ 52 (↑ 45 to ↑ 59)
Sofosbuvir/ Velpatasvir <sup>15</sup>		15	↑ 77 (↑ 53 to ↑ 104)	↑ 81 (↑ 68 to ↑ 94)	↑ 121 (↑ 100 to ↑ 143)
Sofosbuvir/ Velpatasvir <sup>16</sup>		24	↑ 44 (↑ 33 to ↑ 55)	↑ 40 (↑ 34 to ↑ 46)	↑ 84 (↑ 76 to ↑ 92)
Sofosbuvir/ Velpatasvir <sup>17</sup>		24	↑ 36 (↑ 25 to ↑ 47)	↑ 35 (↑ 29 to ↑ 42)	↑ 45 (↑ 39 to ↑ 51)
Sofosbuvir/ Velpatasvir <sup>18</sup>		30	↑ 46 (↑ 39 to ↑ 54)	↑ 40 (↑ 34 to ↑ 45)	↑ 70 (↑ 61 to ↑ 79)

Sofosbuvir/ Velpatasvir/ Voxilaprevir <sup>19</sup>	400/100/100 + 100 voxilaprevir <sup>20</sup> once daily	29	↑ 48 (↑ 36 to ↑ 61)	↑ 39 (↑ 32 to ↑ 46)	↑ 47 (↑ 38 to ↑ 56)
Tacrolimus	0.05 mg/kg twice daily × 7 days	21	↑ 13 (↑ 1 to ↑ 27)	↑ 6 (↓ 1 to ↑ 13)	↑ 11 (↑ 4 to ↑ 18)
Tipranavir/Ritonavir <sup>19</sup>	500/100 twice daily	22	↓ 23 (↓ 32 to ↓ 13)	↓ 2 (↓ 9 to ↑ 5)	↑ 7 (↓ 2 to ↑ 17)
	750/200 twice daily (23 doses)	20	↓ 38 (↓ 46 to ↓ 29)	↑ 2 (↓ 6 to ↑ 10)	↑ 14 (↑ 1 to ↑ 27)

1. Patients received VIREAD 300 mg once daily.
2. Increase = ↑; Decrease = ↓; NC = Not Calculated; NA = Not Available
3. Reyataz® Prescribing Information (Bristol-Myers Squibb)
4. Prezista® Prescribing Information
5. weight <60kg: 250 mg, ≥60 kg more: 400 mg
6. Data generated from simultaneous dosing with HARVONI (ledipasvir/sofosbuvir). Staggered administration (12 hours apart) provided similar results.
7. Comparison based on exposures when administered as atazanavir/ritonavir + emtricitabine-tenofovir disoproxil fumarate tablets coadministered with HARVONI.
8. Comparison based on exposures when administered as darunavir/ritonavir + emtricitabine-tenofovir disoproxil fumarate tablets coadministered with HARVONI.
9. Study conducted with ATRIPLA (efavirenz/emtricitabine/tenofovir DF) coadministered with HARVONI.
10. Study conducted with COMPLERA (emtricitabine/rilpivirine/tenofovir DF) coadministered with HARVONI.
11. Study conducted with emtricitabine-tenofovir disoproxil fumarate tablets + dolutegravir coadministered with HARVONI.
12. Study conducted with ATRIPLA coadministered with SOVALDI® (sofosbuvir).
13. Comparison based on exposures when administered as atazanavir/ritonavir + emtricitabine-tenofovir disoproxil fumarate tablets coadministered with EPCLUSA (sofosbuvir/velpatasvir).
14. Comparison based on exposures when administered as darunavir/ritonavir + emtricitabine-tenofovir disoproxil fumarate tablets coadministered with EPCLUSA.
15. Study conducted with ATRIPLA (efavirenz/emtricitabine/tenofovir DF) coadministered with EPCLUSA.
16. Study conducted with COMPLERA (emtricitabine/rilpivirine/tenofovir DF) coadministered with EPCLUSA.
17. Study conducted with STRIBILD (elvitegravir/cobicistat/emtricitabine/tenofovir DF) coadministered with EPCLUSA.
18. Administered as raltegravir + emtricitabine-tenofovir disoproxil fumarate tablets coadministered with EPCLUSA.
19. Comparison based on exposures when administered as darunavir + ritonavir + Emtricitabine and Tenofovir DF tablets coadministered with VOSEVI
20. Study conducted with additional voxilaprevir 100 mg to achieve voxilaprevir exposures expected in HCV-infected patients
21. Aptivus® Prescribing Information.

**Table 12 Drug Interactions: Changes in Pharmacokinetic Parameters for Coadministered Drug in the Presence of Tenofovir**

Coadministered Drug	Dose of Coadministered Drug (mg)	N	% Change of Coadministered Drug Pharmacokinetic Parameters <sup>1</sup> (90% CI)		
			C <sub>max</sub>	AUC	C <sub>min</sub>
Abacavir <sup>2</sup>	300 single dose	8	↑ 12 (↓ 1 to ↑ 26)	↑ 11 (↑ 4 to ↑ 19)	NC
Atazanavir <sup>3</sup>	400 once daily × 14 days	34	↓ 21 (↓ 27 to ↓ 14)	↓ 25 (↓ 30 to ↓ 19)	↓ 40 (↓ 48 to ↓ 32)
Atazanavir <sup>3</sup>	Atazanavir/Ritonavir 300/100 once daily × 42 days	10	↓ 28 (↓ 50 to ↑ 5)	↓ 25 <sup>7</sup> (↓ 42 to ↓ 3)	↓ 23 <sup>7</sup> (↓ 46 to ↑ 10)
Darunavir <sup>4</sup>	Darunavir/Ritonavir 300/100 once daily	12	↑ 16 (↓ 6 to ↑ 42)	↑ 21 (↓ 5 to ↑ 54)	↑ 24 (↓ 10 to ↑ 69)
Didanosine <sup>2</sup> (enteric-coated)	250 once, simultaneously with tenofovir DF and a light meal <sup>5</sup>	33	↓ 29 <sup>6</sup> (↓ 39 to ↓ 18)	↓ 11 (↓ 23 to ↑ 2) <sup>6</sup>	NC
Efavirenz <sup>2</sup>	600 once daily × 14 days	30	↓ 4 (↓ 9 to ↑ 1)	↓ 3 (↓ 7 to 0)	↓ 7 (↓ 13 to ↓ 1)
Emtricitabine <sup>2</sup>	200 once daily × 7 days	17	↓ 4 (↓ 13 to ↑ 6)	↑ 7 (0 to ↑ 4)	↑ 20 (↑ 12 to ↑ 29)
Entecavir <sup>2</sup>	1 mg once daily × 10 days	28	NA	↑ 13 (↑ 11 to ↑ 15)	NA
Indinavir <sup>2</sup>	800 three times daily × 7 days	12	↓ 6 (↓ 23 to ↑ 10)	↓ 2 (↓ 12 to ↑ 8)	↑ 43 (↓ 45 to ↑ 130)
Lamivudine <sup>2</sup>	150 twice daily × 7 days	15	↓ 29 (↓ 39 to ↓ 19)	↓ 10 (↓ 17 to ↓ 3)	↑ 17 (↑ 3 to ↑ 32)
Lopinavir <sup>2</sup>	Lopinavir/Ritonavir 400/100 twice daily × 14 days	24	↓ 14 (↓ 23 to ↓ 4)	↓ 12 (↓ 20 to ↓ 5)	↓ 11 (↓ 22 to ↑ 1)
Ritonavir			↓ 24 (↓ 46 to ↓ 3)	↓ 22 (↓ 34 to ↓ 9)	↓ 15 (↓ 32 to ↑ 2)
Ledipasvir	Ledipasvir/Sofosbuvir 90/400 once daily <sup>13,14</sup>	24	↑ 68 (↑ 54 to ↑ 84)	↑ 96 (↑ 74 to ↑ 121)	↑ 118 (↑ 91 to ↑ 150)
Sofosbuvir			↑ 1 (↓ 12 to ↑ 15)	↑ 11 (↑ 2 to ↑ 21)	NC
GS-331007 <sup>12</sup>			↑ 17 (↑ 12 to ↑ 23)	↑ 31 (↑ 25 to ↑ 36)	↑ 42 (↑ 34 to ↑ 49)

Ledipasvir	Ledipasvir/Sofosbuvir 90/400 once daily <sup>13, 15</sup>	23	↑11 (↓ 1 to ↑ 24)	↑ 12 ( 0 to ↑ 25)	↑ 17 (↑ 4 to ↑ 31)
Sofosbuvir			↓ 37 (↓ 48 to ↓ 25)	↓ 27 (↓ 35 to ↓ 18)	NC
GS-331007 <sup>12</sup>			↑ 10 (↑ 4 to ↑ 16)	↑ 20 (↑ 16 to ↑ 24)	↑ 26 (↑ 20 to ↑ 32)
Ledipasvir	Ledipasvir/Sofosbuvir 90/400 once daily <sup>16</sup>	15	↓ 34 (↓ 41 to ↓ 25)	↓ 34 (↓ 41 to ↓ 25)	↓ 34 (↓ 43 to ↓ 24)
Sofosbuvir			↑ 3 (↓ 13 to ↑ 23)	↓ 6 (↓ 19 to ↑ 10)	NC
GS-331007 <sup>12</sup>			↓ 14 (↓ 24 to ↓ 4)	↓ 10 (↓ 17 to ↓ 3)	↑ 7 (↑ 2 to ↑ 13)
Ledipasvir	Ledipasvir/ Sofosbuvir 90/400 once daily <sup>17</sup>	14	↑ 1 (↓ 5 to ↑ 7)	↑ 8 (↑ 2 to ↑ 15)	↑ 16 (↑ 8 to ↑ 25)
Sofosbuvir			↑ 5 (↓ 7 to ↑ 20)	↑ 10 (↑ 1 to ↑ 21)	NC
GS-331007 <sup>12</sup>			↑ 6 (↑ 1 to ↑ 11)	↑ 15 (↑ 11 to ↑ 19)	↑ 18 (↑ 13 to ↑ 23)
Sofosbuvir	Sofosbuvir/ Velpatasvir 400/100 once daily <sup>18</sup>	24	↑ 12 (↓ 3 to ↑ 29)	↑ 22 (↑ 12 to ↑ 33)	NC
GS-331007 <sup>12</sup>			↑ 21 (↑ 12 to ↑ 29)	↑ 32 (↑ 27 to ↑ 36)	↑ 42 (↑ 37 to ↑ 49)
Velpatasvir			↑ 55 (↑ 41 to ↑ 71)	↑ 142 (↑ 123 to ↑ 164)	↑ 301 (↑ 257 to ↑ 350)
Sofosbuvir	Sofosbuvir/ Velpatasvir 400/100 once daily <sup>19</sup>	29	↓ 38 (↓ 46 to ↓ 29)	↓ 28 (↓ 34 to ↓ 20)	NC
GS-331007 <sup>12</sup>			↑ 4 (↓ 1 to ↑ 8)	↑ 13 (↑ 8 to ↑ 18)	↑ 13 (↑ 6 to ↑ 19)
Velpatasvir			↓ 24 (↓ 35 to ↓ 11)	↓ 16 (↓ 28 to ↓ 2)	↑ 1 (↓ 13 to ↑ 18)
Sofosbuvir	Sofosbuvir/ Velpatasvir 400/100 once daily <sup>20</sup>	14	↑ 38 (↑ 14 to ↑ 67)	↓ 3 (↓ 17 to ↑ 14)	NC
GS-331007 <sup>12</sup>			↓ 14 (↓ 20 to ↓ 7)	↓ 10 (↓ 15 to ↓ 4)	↑ 1 (↓ 5 to ↑ 7)
Velpatasvir			↓ 47 (↓ 57 to ↓ 36)	↓ 53 (↓ 61 to ↓ 43)	↓ 57 (↓ 64 to ↓ 48)
Sofosbuvir	Sofosbuvir/ Velpatasvir 400/100 once daily <sup>20</sup>	24	↑ 9 (↓ 5 to ↑ 25)	↑ 16 (↑ 9 to ↑ 24)	NC
GS-331007 <sup>12</sup>			↓ 4 (↓ 10 to ↑ 1)	↑ 4 (0 to ↑ 7)	↑ 12 (↑ 7 to ↑ 17)
Velpatasvir			↓ 4 (↓ 15 to ↑ 10)	↓ 1 (↓ 12 to ↑ 11)	↑ 2 (↓ 9 to ↑ 15)

Sofosbuvir	Sofosbuvir/ Velpatasvir 400/100 once daily <sup>22</sup>	24	↑ 1 (↓ 15 to ↑ 19)	↑ 24 (↑ 13 to ↑ 37)	NC
GS-331007 <sup>12</sup>			↑ 13 (↑ 7 to ↑ 18)	↑ 35 (↑ 30 to ↑ 40)	↑ 45 (↑ 38 to ↑ 52)
Velpatasvir			↑ 5 (↓ 7 to ↑ 19)	↑ 19 (↑ 7 to ↑ 34)	↑ 37 (↑ 22 to ↑ 54)
Sofosbuvir	Sofosbuvir/ Velpatasvir 400/100 once daily <sup>23</sup>	30	↑ 9 (↓ 3 to ↑ 23)	↑ 16 (↑ 7 to ↑ 25)	NC
GS-331007 <sup>12</sup>			↓ 5 (↓ 9 to ↓ 2)	↑ 3 (0 to ↑ 6)	↑ 8 (↑ 4 to ↑ 13)
Velpatasvir			↓ 3 (↓ 13 to ↑ 8)	↓ 2 (↓ 12 to ↑ 10)	↓ 3 (↓ 13 to ↑ 7)
Sofosbuvir	400/100/100 + 100 voxilaprevir <sup>24</sup> once daily	29	↓ 30 <sup>25</sup> (↓ 38 to ↓ 22)	↓ 22 <sup>25</sup> (↓ 27 to ↓ 17)	NA
GS-331007 <sup>12</sup>			↑ 6 <sup>25</sup> (↑ 1 to ↑ 10)	↑ 15 <sup>25</sup> (↑ 12 to ↑ 19)	NA
Velpatasvir			↓ 22 <sup>25</sup> (↓ 27 to ↓ 16)	↓ 5 <sup>24</sup> (↓ 12 to ↑ 2)	↑ 16 <sup>25</sup> (↑ 7 to ↑ 26)
Voxilaprevir			↑ 72 <sup>25</sup> (↑ 51 to ↑ 97)	↑ 143 <sup>25</sup> (↑ 115 to ↑ 175)	↑ 300 <sup>25</sup> (↑ 244 to ↑ 365)
Methadone <sup>8</sup>	40-110 once daily × 14 days <sup>9</sup>	13	↑ 5 (↓ 3 to ↑ 14)	↑ 5 (↓ 2 to ↑ 13)	↑ 6 (↓ 3 to ↑ 15)
Nelfinavir <sup>2</sup>	1250 twice daily × 14 days	29	↓ 8 (↓ 15 to ↓ 1)	↓ 7 (↓ 15 to ↑ 2)	↑ 1 (↓ 15 to ↑ 19)
M8 metabolite			↓ 8 (↓ 16 to 0)	↓ 7 (↓ 17 to ↑ 5)	↓ 2 (↓ 16 to ↑ 15)
Norgestimate	Ethinyl Estradiol/ Norgestimate (Ortho- Tricyclen <sup>®</sup> ) Once daily × 7 days	20	↓ 6 (↓ 13 to ↑ 1)	↓ 5 (↓ 9 to ↓ 1)	↓ 4 (↓ 8 to ↑ 1)
Ethinyl estradiol <sup>10</sup>			↓ 6 (↓ 12 to 0)	↓ 4 (↓ 9 to ↑ 1)	↓ 2 (↓ 9 to ↑ 6)
Ribavirin	600 single dose	22	↓ 5 (↓ 11 to ↑ 1)	↑ 12 (↑ 6 to ↑ 17)	NC
Saquinavir	1000/100 twice daily × 14 days	32	↑ 22 (↑ 6 to ↑ 41)	↑ 29 <sup>11</sup> (↑ 12 to ↑ 48)	↑ 47 <sup>11</sup> (↑ 23 to ↑ 76)
Ritonavir			↑ 10 (↓ 5 to ↑ 28)	↑ 11 (0 to ↑ 22)	↑ 23 (↑ 3 to ↑ 46)
Sofosbuvir	Sofosbuvir 400 single dose <sup>26</sup>	16	↓ 19 (↓ 40 to ↑ 10)	↓ 6 (↓ 24 to ↑ 16)	NC
GS-331007 <sup>12</sup>			↓ 23 (↓ 30 to ↓ 16)	↓ 16 (↓ 24 to ↓ 8)	NC
Tacrolimus	0.05 mg/kg twice daily × 7 days	21	↑ 3 (↓ 3 to ↑ 9)	↑ 4 (↓ 3 to ↑ 11)	↑ 10 (↑ 2 to ↑ 17)



Tipranavir <sup>27</sup>	Tipranavir/Ritonavir 500/100 twice daily	22	↓ 17 (↓ 26 to ↓ 6)	↓ 18 (↓ 25 to ↓ 9)	↓ 21 (↓ 30 to ↓ 10)
	Tipranavir/Ritonavir 750/200 twice daily (23 doses)	20	↓ 11 (↓ 16 to ↓ 4)	↓ 9 (↓ 15 to ↓ 3)	↓ 12 (↓ 22 to 0)

1. Increase = ↑; Decrease = ↓; NC = Not Calculated; NA = Not Available
2. Study conducted with VIREAD (tenofovir DF)
3. Reyataz Prescribing Information (Bristol-Myers Squibb)
4. Prezista Prescribing Information.
5. 373 kcal, 8.2 g fat
6. Compared with didanosine (enteric-coated) 400 mg administered alone under fasting conditions.
7. In HIV-infected patients, addition of tenofovir DF to atazanavir 300 mg plus ritonavir 100 mg, resulted in AUC and C<sub>min</sub> values of atazanavir that were 2.3 and 4-fold higher than the respective values observed for atazanavir 400 mg when given alone.
8. R-(active), S-and total methadone exposures were equivalent when dosed alone or with VIREAD.
9. Individual subjects were maintained on their stable methadone dose. No pharmacodynamic alterations (opiate toxicity or withdrawal signs or symptoms) were reported.
10. Ethinyl estradiol and 17-deacetyl norgestimate (pharmacologically active metabolite) exposures were equivalent when dosed alone or with VIREAD.
11. Increases in AUC and C<sub>min</sub> are not expected to be clinically relevant; hence no dose adjustments are required when tenofovir DF and ritonavir-boosted saquinavir are coadministered.
12. The predominant circulating nucleoside metabolite of sofosbuvir.
13. Data generated from simultaneous dosing with HARVONI (ledipasvir/sofosbuvir). Staggered administration (12 hours apart) provided similar results.
14. Comparison based on exposures when administered as atazanavir/ritonavir + emtricitabine-tenofovir disoproxil fumarate tablets coadministered with HARVONI.
15. Comparison based on exposures when administered as darunavir/ritonavir + emtricitabine-tenofovir disoproxil fumarate tablets coadministered with HARVONI.
16. Study conducted with ATRIPLA (efavirenz/emtricitabine/tenofovir DF) coadministered with HARVONI.
17. Study conducted with COMPLERA (emtricitabine/rilpivirine/tenofovir) coadministered with HARVONI.
18. Comparison based on exposures when administered as atazanavir/ritonavir + emtricitabine-tenofovir disoproxil fumarate tablets coadministered with EPCLUSA (sofosbuvir/velpatasvir).
19. Comparison based on exposures when administered as darunavir/ritonavir + emtricitabine-tenofovir disoproxil fumarate tablets coadministered with EPCLUSA.
20. Study conducted with ATRIPLA (efavirenz/emtricitabine/tenofovir DF) coadministered with EPCLUSA.
21. Study conducted with COMPLERA (emtricitabine/rilpivirine/tenofovir DF) coadministered with EPCLUSA.
22. Study conducted with STRIBILD (elvitegravir/cobicistat/emtricitabine/tenofovir DF) coadministered with EPCLUSA.
23. Comparison based on exposures when administered as raltegravir + emtricitabine-tenofovir disoproxil fumarate tablets coadministered with EPCLUSA.
24. Study conducted with additional voxilaprevir 100 mg to achieve voxilaprevir exposures expected in HCV-infected patients.
25. Comparison based on exposures when administered as darunavir+ritonavir+emtricitabine-tenofovir disoproxil fumarate tablets coadministered with VOSEVI
26. Study conducted with ATRIPLA coadministered with SOVALDI.
27. Aptivus Prescribing Information

### **Drug-Food Interactions**

Sandoz Emtricitabine-Tenofovir can be taken with or without food. Compared to fasted administration, dosing of emtricitabine-tenofovir disoproxil fumarate tablets following a either a high fat meal or a light meal increased the mean AUC and C<sub>max</sub> of tenofovir by 35% and 15%, respectively, without affecting emtricitabine exposures (see **ACTIONS AND CLINICAL PHARMACOLOGY, Effect of Food on Absorption**).

### **Drug-Herb Interactions**

Interactions of emtricitabine-tenofovir disoproxil fumarate tablets with herbs have not been

established.

### **Drug-Laboratory Interactions**

Interactions of emtricitabine-tenofovir disoproxil fumarate tablets with laboratory tests have not been established.

## **DOSAGE AND ADMINISTRATION**

### **Recommended Dose**

#### **Treatment of HIV-1 Infection**

The dose of Sandoz Emtricitabine-Tenofovir is one tablet (containing 200 mg of emtricitabine and 300 mg of tenofovir disoproxil fumarate) once daily taken orally with or without food.

#### **Pre-exposure Prophylaxis of HIV-1 Infection**

The dose of Sandoz Emtricitabine-Tenofovir is one tablet (containing 200 mg of emtricitabine and 300 mg of tenofovir disoproxil fumarate) once daily taken orally with or without food.

### **Special Populations**

#### **Dose Adjustment for Renal Impairment**

##### ***Treatment of HIV-1 Infection***

Significantly increased drug exposures occurred when EMTRIVA or VIREAD were administered to patients with moderate to severe renal impairment (see **ACTION AND CLINICAL PHARMACOLOGY, Special Populations and Conditions, Renal Insufficiency**). Therefore, the dosing interval of Sandoz Emtricitabine-Tenofovir should be adjusted in HIV-1 infected adult patients with baseline creatinine clearance 30–49 mL/min using the recommendations in Table 13. These dosing interval recommendations are based on modeling of single-dose pharmacokinetic data in non-HIV infected subjects with varying degrees of renal impairment, including end-stage renal disease requiring hemodialysis. The safety and effectiveness of these dosing interval adjustment recommendations have not been clinically evaluated in moderate to severe renal impairment, therefore, clinical response to treatment and renal function should be closely monitored in these patients.

No dose adjustment of Sandoz Emtricitabine-Tenofovir tablets is necessary with mild renal impairment patients (creatinine clearance 50–80 mL/min). Routine monitoring of calculated creatinine clearance, serum phosphorus, urine glucose, and urine protein should be performed for patients with mild renal impairment (creatinine clearance 50–80 mL/min) (see **WARNINGS AND PRECAUTIONS**).

**Table 13 Dosage Adjustment for HIV-1 Infected Adult Patients with Altered Creatinine Clearance**

	Creatinine Clearance (mL/min) <sup>1</sup>		
	≥50	30–49	<30 (Including Patients Requiring Hemodialysis)
Recommended Dosing Interval	Every 24 hours	Every 48 hours	Sandoz Emtricitabine-Tenofovir should not be administered.

1. Calculated using ideal (lean) body weight.

### ***Pre-exposure Prophylaxis of HIV-1 Infection***

Do not use Sandoz Emtricitabine-Tenofovir for PrEP in HIV-1 uninfected individuals with creatinine clearance below 60 mL/min (see **WARNINGS AND PRECAUTIONS**).

No dose adjustment of Sandoz Emtricitabine-Tenofovir tablets is necessary with mild renal impairment patients (creatinine clearance 50-80 mL/min). Routine monitoring of calculated creatinine clearance, serum phosphorus, urine glucose and urine protein should be performed in all individuals with mild renal impairment. If a decrease in calculated creatinine clearance is observed in uninfected individuals while using Sandoz Emtricitabine-Tenofovir for PrEP, evaluate potential causes and re- assess potential risks and benefits of continued use (see **WARNINGS AND PRECAUTIONS**).

### **Hepatic Impairment**

No dose adjustment is required in patients with hepatic impairment (see **WARNINGS AND PRECAUTIONS**).

### **Geriatrics (>65 years of age)**

Clinical studies of EMTRIVA or VIREAD did not include sufficient numbers of subjects aged 65 and over to determine whether they respond differently than younger subjects. In general, dose selection for the elderly patient should be cautious, keeping in mind the greater frequency of decreased hepatic, renal, or cardiac function, and of concomitant disease or other drug therapy.

### **Missed Dose**

If a patient misses a dose within 12 hours of the regularly scheduled time, but then remembers it that same day, the patient should take the missed dose with food as soon as possible and resume their normal dosing schedule. If a patient misses a dose of Sandoz Emtricitabine-Tenofovir by more than 12 hours and it is almost time for their next dose, the patient should not take the missed dose and simply resume the usual dosing schedule. The patient should not take more than 1 dose of Sandoz Emtricitabine-Tenofovir in a day, and should not take 2 doses of Sandoz Emtricitabine-Tenofovir at the same time to make up for missing a dose.

**Uninfected individuals who miss doses are at greater risk of acquiring HIV-1 than those who do not miss doses (see WARNINGS AND PRECAUTIONS).**

## OVERDOSAGE

For management of a suspected drug overdose, please contact your regional Poison Control Centre immediately.

If overdose occurs the patient must be monitored for evidence of toxicity, and standard supportive treatment applied as necessary.

**Emtricitabine:** Limited clinical experience is available at doses higher than the therapeutic dose of EMTRIVA. In one clinical pharmacology study single doses of emtricitabine 1200 mg were administered to 11 patients. No severe adverse reactions were reported. The effects of higher doses are not known.

Hemodialysis treatment removes approximately 30% of the emtricitabine dose over a 3-hour dialysis period starting within 1.5 hours of emtricitabine dosing (blood flow rate of 400 mL/min and a dialysate flow rate of 600 mL/min); however, a single treatment does not significantly affect emtricitabine  $C_{max}$  or AUC. It is not known whether emtricitabine can be removed by peritoneal dialysis.

**Tenofovir DF:** Limited clinical experience at doses higher than the therapeutic dose of VIREAD 300 mg is available. In one study, 600 mg tenofovir DF was administered to 8 patients orally for 28 days. No severe adverse reactions were reported. The effects of higher doses are not known.

Tenofovir is efficiently removed by hemodialysis with an extraction coefficient of approximately 54%. Following a single 300 mg dose of VIREAD, a four-hour hemodialysis session removed approximately 10% of the administered tenofovir dose.

## ACTION AND CLINICAL PHARMACOLOGY

### **Mechanism of Action**

Sandoz Emtricitabine-Tenofovir is a fixed-dose combination of antiviral drugs, emtricitabine and tenofovir DF (see **VIROLOGY**).

### **Pharmacokinetics**

**Emtricitabine-Tenofovir Disoproxil Fumarate Tablets:** One emtricitabine-tenofovir DF tablet was bioequivalent to one EMTRIVA Capsule (200 mg) plus one VIREAD Tablet (300 mg) following single-dose administration to fasting healthy subjects (N=39).

**Emtricitabine:** The pharmacokinetic properties of emtricitabine are summarized in Table 14. Following oral administration of EMTRIVA, emtricitabine is rapidly absorbed with peak

plasma concentrations occurring at 1–2 hours post-dose. In vitro binding of emtricitabine to human plasma proteins is <4% and is independent of concentration over the range of 0.02–200 mcg/mL. Following administration of radiolabelled emtricitabine, approximately 86% is recovered in the urine and 13% is recovered as metabolites. The metabolites of emtricitabine include 3'-sulfoxide diastereomers and their glucuronic acid conjugate. Emtricitabine is eliminated by a combination of glomerular filtration and active tubular secretion. Following a single oral dose of EMTRIVA, the plasma emtricitabine half-life is approximately 10 hours.

**Tenofovir DF:** The pharmacokinetic properties of tenofovir DF are summarized in Table 14. Following oral administration of VIREAD, maximum tenofovir serum concentrations are achieved in  $1.0 \pm 0.4$  hour. In vitro binding of tenofovir to human plasma proteins is <0.7% and is independent of concentration over the range of 0.01–25 mcg/mL. Approximately 70–80% of the intravenous dose of tenofovir is recovered as unchanged drug in the urine. Tenofovir is eliminated by a combination of glomerular filtration and active tubular secretion. Following a single oral dose of VIREAD, the terminal elimination half-life of tenofovir is approximately 17 hours.

**Table 14**                      **Single Dose Pharmacokinetic Parameters for Emtricitabine and Tenofovir in Adults**

	<b>Emtricitabine</b>	<b>Tenofovir</b>
Fasted Oral Bioavailability <sup>2</sup> (%)	92 (83.1–106.4)	25 (NC–45.0) <sup>1</sup>
Plasma Terminal Elimination Half-Life <sup>2</sup> (hr)	10 (7.4–18.0)	17 (12.0–25.7)
C <sub>max</sub> <sup>3</sup> (mcg/mL)	$1.8 \pm 0.72^4$	$0.30 \pm 0.09$
AUC <sup>3</sup> (mcg·hr/mL)	$10.0 \pm 3.12^4$	$2.29 \pm 0.69$
CL/F <sup>3</sup> (mL/min)	$302 \pm 94$	$1043 \pm 115$
CL <sub>renal</sub> <sup>3</sup> (mL/min)	$213 \pm 89$	$243 \pm 33$

1. NC = Not calculated
2. Median (range)
3. Mean  $\pm$  SD
4. Data presented as steady state values.

### Effects of Food on Oral Absorption

Sandoz Emtricitabine-Tenofovir may be administered with or without food. Administration of emtricitabine-tenofovir DF tablets following a high fat meal (784 kcal; 49 grams of fat) or a light meal (373 kcal; 8 grams of fat) delayed the time of tenofovir C<sub>max</sub> by approximately 0.75 hour. The mean increases in tenofovir AUC and C<sub>max</sub> were approximately 35% and 15%, respectively, when administered with a high fat or light meal, compared to administration in the fasted state. In previous safety and efficacy studies, VIREAD (tenofovir) was taken under fed conditions. Emtricitabine systemic exposures (AUC and C<sub>max</sub>) were unaffected when emtricitabine-tenofovir DF tablets were administered with either a high fat or a light meal.

## **Special Populations and Conditions**

### **Pediatrics and Geriatrics**

Pharmacokinetics of emtricitabine and tenofovir have not been fully evaluated in children (<18 years) or in the elderly (>65 years).

### **Race**

***Emtricitabine:*** No pharmacokinetic differences due to race have been identified following the administration of EMTRIVA.

***Tenofovir DF:*** There were insufficient numbers from racial and ethnic groups other than Caucasian to adequately determine potential pharmacokinetic differences among these populations.

### **Gender**

***Emtricitabine and tenofovir DF:*** Emtricitabine and tenofovir pharmacokinetics are similar in male and female patients.

### **Hepatic Insufficiency**

The pharmacokinetics of tenofovir following a 300 mg single dose of VIREAD have been studied in non-HIV infected subjects with moderate to severe hepatic impairment. There were no substantial alterations in tenofovir pharmacokinetics in subjects with hepatic impairment compared with unimpaired subjects. The pharmacokinetics of emtricitabine-tenofovir disoproxil fumarate tablets or emtricitabine have not been studied in patients with hepatic impairment; however, emtricitabine has not been shown to be significantly metabolized by liver enzymes, so the impact of liver impairment is likely to be limited.

### **Renal Insufficiency**

The pharmacokinetics of emtricitabine and tenofovir are altered in patients with renal insufficiency. In patients with creatinine clearance <50 mL/min,  $C_{max}$  and  $AUC_{0-\infty}$  of emtricitabine and tenofovir were increased (see **WARNINGS, Nephrotoxicity**).

It is recommended that the dosing interval for Sandoz Emtricitabine-Tenofovir be modified in HIV-1 infected patients with creatinine clearance 30–49 mL/min. Sandoz Emtricitabine-Tenofovir should not be used in HIV-1 infected patients with creatinine clearance <30 mL/min and in patients with end-stage renal disease requiring dialysis (see **DOSAGE AND ADMINISTRATION**).

Sandoz Emtricitabine-Tenofovir for PrEP has not been studied and should not be used in HIV-1 uninfected individuals with creatinine clearance below 60 mL/min. (see **DOSAGE AND ADMINISTRATION**).

## **STORAGE AND STABILITY**

Store at 15-30 °C (59-86 °F). Protect from moisture.

- Keep container tightly closed
- Dispense only in original container
- Do not use if seal over bottle opening is broken or missing.

## **SPECIAL HANDLING INSTRUCTIONS**

There are no special handling instructions.

## **DOSAGE FORMS, COMPOSITION AND PACKAGING**

Sandoz Emtricitabine-Tenofovir is available as tablets. Each tablet contains 200 mg of emtricitabine and 300 mg of tenofovir DF (which is equivalent to 245 mg of tenofovir disoproxil), as active ingredients. The tablets also include the following inactive ingredients: croscarmellose sodium, colloidal silicon dioxide, lactose monohydrate, magnesium stearate, microcrystalline cellulose, and pregelatinized starch (gluten free). The tablets are coated with Instacoat Universal Blue A05G32672, which contains FD&C Blue #2 aluminum lake, hydropropylmethylcellulose, lactose monohydrate, titanium dioxide, and triacetin. The tablets are blue coloured, capsule-shaped, biconvex, film-coated tablets debossed with “L24” on one side of the tablet and plain on the other surface. Each bottle contains 30 tablets and a desiccant (silica gel canister or sachet) and is closed with a child-resistant closure.

## PART II. SCIENTIFIC INFORMATION

### PHARMACEUTICAL INFORMATION

#### Drug Substance

**Emtricitabine:**

**Common Name:**

emtricitabine

**Chemical Name:**

4-amino-5-fluoro-1-[(2R,5S)-2-(hydroxymethyl)-1,3-oxathiolan-5-yl]-2(1H)-pyrimidinone

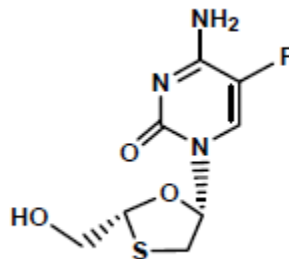
**Empirical Formula:**

C<sub>8</sub>H<sub>10</sub>FN<sub>3</sub>O<sub>3</sub>S

**Molecular Weight:**

247.25 g/mol

**Structural Formula:**



**Physicochemical Properties:**

Physical Description: Emtricitabine is a white to almost white crystalline powder.

Solubility: Freely soluble in methanol and water, practically insoluble in Dichloromethane at 25°C±2°C.. The partition coefficient (log p) for emtricitabine is –0.43 and the pK<sub>a</sub> is 2.65.



**Tenofovir DF****Common Name:**

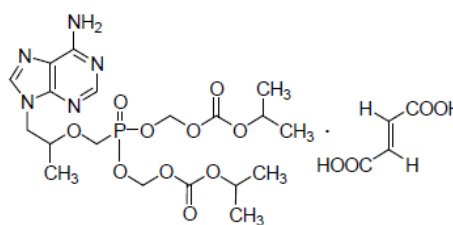
tenofovir disoproxil fumarate

**Chemical Name:**

9-[(R)-2[[bis[[(isopropoxycarbonyl)oxy]methoxy]phosphinyl]-methoxy]propyl]adenine fumarate (1:1)

**Empirical Formula:** $C_{19}H_{30}N_5O_{10}P \cdot C_4H_4O_4$ **Molecular Weight:**

635.5 g/mol

**Structural Formula:****Physicochemical Properties:**

Physical Description: Tenofovir disoproxil fumarate is a white to off-white crystalline powder.

Solubility: Freely Soluble in methanol, and in Dimethylformamide, at 25°C + 2°C.. The partition coefficient (log p) for tenofovir disoproxil is 1.25 and the pKa is 1.35 (strongest acidic) and 5.12 (strongest basic).

## CLINICAL TRIALS

### **Comparative Bioavailability Study**

A double blind, balanced, randomized, single-dose, two-treatment, two-sequence, two-period, crossover oral bioequivalence study of Sandoz Emtricitabine-Tenofovir (Emtricitabine and Tenofovir disoproxil fumarate Tablets 200 mg/300 mg of Sandoz Canada Inc. and <sup>Pr</sup>TRUVADA® (Emtricitabine and Tenofovir disoproxil fumarate) Tablet 200 mg/300 mg of Gilead Sciences Canada, Inc. in 30 healthy, adult, human male subjects under fasting condition. Bioavailability data was measured and the results are summarized in the following tables.

### **SUMMARY TABLES OF THE COMPARATIVE BIOAVAILABILITY DATA**

<b>Emtricitabine</b> <b>(1 x 200 mg)</b> From measured data  Geometric Mean <b>Arithmetic Mean (%CV)</b>				
Pharmacokinetic Parameter	TEST*	REFERENCE†	% Ratio of Geometric Means	90% Confidence Interval
AUC <sub>T</sub> (hr*ng/mL)	11424.1 11598.5 (17.8%)	11453.2 11732.3 (22.3%)	100.1	95.9% - 104.5%
AUC <sub>I</sub> (hr*ng/mL)	11719.1 11896.9 (17.77%)	11751.2 12023.0 (21.8%)	100.1	96.0% - 104.4%
C <sub>max</sub> (ng/mL)	2115.1 2171.6 (22.87%)	2167.1 2203.3 (18.01%)	97.6	92.0% - 103.6%
T <sub>max</sub> § (hr)	1.50 (1.00 - 2.50)	1.25 (0.75 - 3.50)		
t <sub>1/2</sub> € (hr)	7.2 (40.72%)	6.8 (36.18%)		

\* Sandoz Emtricitabine and Tenofovir disoproxil fumarate Tablets 200 mg / 300 mg (Sandoz Canada Inc.).

† <sup>Pr</sup>Truvada® (Emtricitabine and Tenofovir disoproxil fumarate) Tablets 200 mg/300 mg were purchased from Canada.

§ Expressed as the median (range) only

€ Arithmetic mean (%CV)

<b>Tenofovir</b> (1 x 300 mg) From measured data  Geometric Mean <b>Arithmetic Mean (%CV)</b>				
Pharmacokinetic Parameter	TEST*	REFERENCE†	% Ratio of Geometric Means	90% Confidence Interval
AUC <sub>T</sub> (hr*ng/mL)	2275.2 2331.1 (21.7%)	2259.3 2333.5 (25.9%)	101.3	97.1% - 105.7%
AUC <sub>I</sub> (hr*ng/mL)	2440.5 2492.7 (20.7%)	2435.1 2508.2 (25.5%)	100.7	96.9% - 104.7%
C <sub>max</sub> (ng/mL)	286.2 295.0 (25.0 %)	297.1 306.6 (26.1%)	97.3	90.5% - 104.7%
T <sub>max</sub> § (hr)	1.00 (0.50 - 2.25)	0.75 (0.50 - 2.25)		
@t <sub>1/2</sub> € (hr)	18.3 (9.5%)	18.6 (16.5%)		

\* Sandoz Emtricitabine and Tenofovir disoproxil fumarate Tablets 200 mg/300 mg (Sandoz Canada Inc.).

† PrTruvada® (Emtricitabine and Tenofovir disoproxil fumarate) Tablets 200 mg/300 mg were purchased from Canada.

§ Expressed as the median (range) only

€ Arithmetic mean (%CV)

## **Clinical Studies in Patients with HIV-1 Infection**

### **Study Demographics and Trial Design**

#### **Description of Clinical Studies**

For safety and efficacy studies using EMTRIVA or VIREAD in combination with other antiretroviral agents, also consult the Product Monograph for these products.

Clinical Study 934 supports the use of emtricitabine-tenofovir disoproxil fumarate tablets for the treatment of HIV-1 infection. Additional data in support of the use of emtricitabine-tenofovir disoproxil fumarate tablets are derived from Study 903, in which lamivudine and tenofovir DF were used in combination in treatment-naïve adults, and clinical Study 303 in which EMTRIVA and lamivudine demonstrated comparable efficacy, safety and resistance patterns as part of multidrug regimens (see Table 19 and Table 20).

**Table 15**

**Study 934 EMTRIVA + VIREAD + Efavirenz  
Compared with Lamivudine/Zidovudine+Efavirenz**

Study Number	Trial Design	Dosage, Route of Administration and Duration	Study Subjects (N=511)	Mean Age	Gender
GS-01-934	Randomized, open-label, parallel, multicenter, active controlled study.  <b>Arm 1:</b> emtricitabine+ tenofovir DF+ efavirenz  <b>Arm 2:</b> lamivudine/ zidovudine + efavirenz	<b>Arm 1</b> <sup>1</sup> : efavirenz 600 mg once daily for oral administration, emtricitabine 200 mg once and tenofovir DF 300 mg once daily  <b>Arm 2:</b> efavirenz 600 mg once daily for oral administration and Combivir (lamivudine/ zidovudine) 150/300 mg twice daily.  144 weeks	Antiretroviral naïve patients (HIV-1 RNA > 10,000 copies/mL)  (N=511)	Mean 38 years  (18–80)	Male : 86%  Female: 14%

<sup>1</sup>From weeks 96 to 144 of the study, patients received emtricitabine-tenofovir DF tablets with efavirenz in place of emtricitabine + VIREAD

Data through 144 weeks are reported for Study 934, a randomized, open-label, active controlled multicenter study comparing EMTRIVA + VIREAD administered in combination with efavirenz versus lamivudine/zidovudine administered in combination with efavirenz in 511 antiretroviral-naïve patients. From weeks 96 to 144 of the study, patients randomized to EMTRIVA + VIREAD received emtricitabine-tenofovir DF tablets with efavirenz in place of EMTRIVA + VIREAD. Patients had a mean age of 38 years (range 18–80), 86% were male, 59% were Caucasian and 23% were Black. The mean baseline CD4 cell count was 245 cells/mm<sup>3</sup> (range 2–1191) and median baseline plasma HIV-1RNA was 5.01 log<sub>10</sub> copies/mL (range 3.56–6.54). Patients were stratified by baseline CD4 count (< or ≥200 cells/mm<sup>3</sup>); 41% had CD4 cell counts <200 cells/mm<sup>3</sup> and 51% of patients had baseline viral loads >100,000 copies/mL.

## EMTRIVA:

Table 16

## Study 303: EMTRIVA QD + Stable Background Therapy (SBT)

### Compared to Lamivudine BID + SBT

Study No.	Trial Design	Dosage, Route of Administration and Duration	Study Subjects (N=440)	Mean Age (Range)	Gender
FTC-303	Randomized (2:1), open-label, active-controlled switch study.  <b>Arm 1:</b> emtricitabine + (d4T or ZDV + PI or NNRTI)  <b>Arm 2:</b> lamivudine + (d4T or ZDV + PI or NNRTI)	<b>Arm 1:</b> emtricitabine 200 mg capsules orally, QD + (d4T or ZDV + PI or NNRTI) for 48 weeks  <b>Arm 2:</b> lamivudine 150 mg tablet orally, BID + (d4T or ZDV + PI or NNRTI) for 48 weeks	Stable treatment-experienced (HIV-1 RNA <400 copies/mL) (N=440)	42 years (22–80)	Male: 86%  Female: 14%

Study 303 was a 48-week, open-label, active-controlled multicenter study comparing EMTRIVA (200 mg QD) to lamivudine, in combination with stavudine or zidovudine and a protease inhibitor or NNRTI in 440 patients who were on a lamivudine-containing triple-antiretroviral drug regimen for at least 12 weeks prior to study entry and had HIV-1 RNA ≤400 copies/mL.

Patients were randomized 1:2 to continue therapy with lamivudine (150 mg BID) or to switch to EMTRIVA (200 mg QD). All patients were maintained on their stable background regimen. Patients had a mean age of 42 years (range 22–80), 86% were male, 64% Caucasian, 21% African-American and 13% Hispanic. Patients had a mean baseline CD4 cell count of 527 cells/mm<sup>3</sup> (range 37–1909), and a median baseline plasma HIV RNA of 1.7 log<sub>10</sub> copies/mL (range 1.7–4.0). The median duration of prior antiretroviral therapy was 27.6 months.

**VIREAD:**

**Table 17 Study 903: VIREAD + Lamivudine + Efavirenz Compared with Stavudine + Lamivudine + Efavirenz**

Study No.	Trial Design	Dosage, Route of Administration and Duration	Study Subjects (N=600)	Mean Age (Range)	Gender
GS-99-903	Randomized (1:1), double-blind, active-controlled, equivalence study.  <b>Arm 1:</b> tenofovir DF + lamivudine + efavirenz  <b>Arm 2:</b> stavudine + lamivudine + efavirenz	<b>Arm 1:</b> tenofovir DF 300 mg tablets QD, stavudine placebo capsules BID, lamivudine 150 mg tablets BID, efavirenz 600 mg QD  <b>Arm 2:</b> tenofovir DF placebo tablets QD, stavudine <sup>1</sup> capsules 40/30 mg BID, lamivudine 150 mg tablets BID, efavirenz 600 mg QD  All for oral (PO) administration for 144 weeks double-blind phase followed by 192-week open-label phase.  (Nevirapine 200 mg BID could replace efavirenz in the event of efavirenz-associated central nervous system toxicity or rash.)	Treatment-naïve (HIV-1 RNA >5,000 copies/mL) (N=600)	36 years (18–64)	Male: 74% Female: 26%

1. Stavudine/placebo capsules 20/15 mg BID as need for dose reduction.

Study 903 is a double-blind, active-controlled multicenter study comparing VIREAD (300 mg QD) administered in combination with lamivudine and efavirenz versus stavudine, lamivudine, and efavirenz in 600 antiretroviral-naïve patients. Patients had a mean age of 36 years (range 18–64), 74% were male, 64% were Caucasian and 20% were Black. The mean baseline CD4 cell count was 279 cells/mm<sup>3</sup> (range 3–956) and median baseline plasma HIV-1 RNA was 77,600 copies/mL (range 417–5,130,000). Patients were stratified by baseline HIV-1 RNA and CD4 count. Forty-three percent of patients had baseline viral loads >100,000 copies/mL and 39% had CD4 cell counts <200 cells/mm<sup>3</sup>.

## Study Results

### EMTRIVA and VIREAD

#### Study 934: EMTRIVA + VIREAD + Efavirenz Compared with Lamivudine/Zidovudine + Efavirenz

Treatment outcomes through 48 and 144 weeks for those patients who did not have efavirenz resistance at baseline are presented in Table 18.

**Table 18 Outcomes of Randomized Treatment at Weeks 48 and 144 (Study 934)**

Outcome	At Week 48		At Week 144 <sup>1</sup>	
	EMTRIVA+ VIREAD +EFV	3TC+AZT +EFV	EMTRIVA+ VIREAD+ EFV	3TC/AZT +EFV
	(N=244)	(N=243)	(N=227)	(N=229)
Responder <sup>2</sup>	84%	73%	71%	58%
Virologic failure <sup>3</sup>	2%	4%	3%	6%
Rebound	1%	3%	2%	5%
Never suppressed	0%	0%	0%	0%
Change in antiretroviral regimen	1%	1%	1%	1%
Death	<1%	1%	1%	1%
Discontinued due to adverse event	4%	9%	5%	12%
Discontinued for other reasons <sup>4</sup>	10%	14%	20%	22%

1. Patients who were responders at Week 48 or Week 96 but did not consent to continue study after Week 48 or Week 96 were excluded from analysis.
2. Patients achieved and maintained confirmed HIV-1 RNA <400 copies/mL through Week 48.
3. Includes confirmed viral rebound and failure to achieve confirmed <400 copies/mL through Week 48.
4. Includes lost to follow-up, patient withdrawal, non-compliance, protocol violation and other reasons.

In this study, EMTRIVA + VIREAD in combination with efavirenz demonstrated statistically significant superiority to lamivudine/zidovudine in combination with efavirenz in achieving and maintaining HIV-1 RNA <400 copies/mL through 48 weeks and 144 weeks (Table 18). The difference in the percentages of responders, stratified by baseline CD4 cell count (< or ≥200 cells/mm<sup>3</sup>), between the EMTRIVA + VIREAD group and the lamivudine/zidovudine group was 11.4%, and the 95% CI was 4.3% to 18.6% (p=0.002) at Week 48 and was 13% at Week 144, 95% CI = 4% to 22% (p=0.004). Through 48 weeks of therapy, 80% and 70% of patients in the EMTRIVA + VIREAD and the lamivudine/zidovudine arms, respectively, achieved and maintained HIV-1 RNA <50 copies/mL (64% and 56%, respectively, through Week 144). The difference in the percentages of responders stratified by baseline CD4 cell count (< or ≥200 cells/mm<sup>3</sup>) between the EMTRIVA + VIREAD group and the lamivudine/zidovudine group was 9.1%,

and the 95% CI was 1.6% to 16.6% (p=0.021) at Week 48 and was 8% at Week 144, 95% CI = -1% to 17% (p=0.082). The mean increase from baseline in CD4 cell count was 190 cells/mm<sup>3</sup> for the EMTRIVA + VIREAD + efavirenz arm, and 158 cells/mm<sup>3</sup> for the lamivudine/zidovudine + efavirenz arm (p=0.002) at Week 48 (312 and 271 cells/mm<sup>3</sup>, respectively, at Week 144, p=0.089).

The difference in the proportion of patients who achieved and maintained HIV-1 RNA <400 copies/mL through 48 weeks largely results from the higher number of discontinuations due to adverse events and other reasons in the zidovudine/lamivudine group in this open label study.

## EMTRIVA:

### Study 303: EMTRIVA QD + Stable Background Therapy (SBT) Compared to Lamivudine BID + SBT

Treatment outcomes through 48 weeks are presented in Table 19.

**Table 19 Outcomes of Randomized Treatment at Week 48 (Study 303)**

Outcome at Week 48	EMTRIVA + ZDV/d4T + NNRTI/PI (N=294)	Lamivudine + ZDV/d4T + NNRTI/PI (N=146)
Responder <sup>1</sup>	77% (67%)	82% (72%)
Virologic Failure <sup>2</sup>	7%	8%
Death	0%	<1%
Study Discontinuation Due to Adverse Event	4%	0%
Study Discontinuation For Other Reasons <sup>3</sup>	12%	10%

1. Patients achieved and maintained confirmed HIV RNA <400 copies/mL (<50 copies/mL) through Week 48.
2. Includes patients who failed to achieve virologic suppression or rebounded after achieving virologic suppression.
3. Includes lost to follow-up, patient withdrawal, non-compliance, protocol violation and other reasons.

The mean increase from baseline in CD4 cell count was 29 cells/mm<sup>3</sup> for the EMTRIVA arm and 61 cells/mm<sup>3</sup> for the lamivudine arm. Through 48 weeks, in the EMTRIVA group 2 patients (0.7%) experienced a new CDC Class C event, compared to 2 patients (1.4%) in the lamivudine group.

## VIREAD:

### Study 903: VIREAD + Lamivudine + Efavirenz Compared with Stavudine + Lamivudine + Efavirenz

Treatment outcomes at Week 48 and Week 144 are presented in Table 20 below.



**Table 20 Outcomes of Randomized Treatment (Study 903)**

Outcomes	At Week 48		At Week 144	
	VIREAD + 3TC + EFV (N=299)	Stavudine + 3TC + EFV (N=301)	VIREAD + 3TC + EFV (N=299)	Stavudine + 3TC + EFV (N=301)
	%	%	%	%
Responder <sup>1</sup>	79% (76%)	82% (79%)	68% (62%)	62% (58%)
Virologic failure <sup>2</sup>	6%	4%	10%	8%
Rebound	5%	3%	8%	7%
Never suppressed	0%	1%	0%	0%
Added an antiretroviral agent	1%	1%	2%	1%
Death	<1%	1%	<1%	2%
Discontinued due to adverse event	6%	6%	8%	13%
Discontinued for other reasons <sup>3</sup>	8%	7%	14%	15%

1. Patients achieved and maintained confirmed HIV-1 RNA <400 copies/mL (<50 copies/mL) at Weeks 48 and 144.
2. Includes confirmed viral rebound and failure to achieve confirmed <400 copies/mL through Week 48 and 144.
3. Includes lost to follow-up, patient's withdrawal, noncompliance, protocol violation and other reasons.

Through 48 weeks, the mean increase from baseline in CD4 cell count was 169 cells/mm<sup>3</sup> for the VIREAD arm and 167 cells/mm<sup>3</sup> for the stavudine arm. Eight patients in the VIREAD group and six patients in the stavudine group experienced a new CDC Class C event.

Through 144 weeks, the mean increase from baseline in CD4 cell count was 263 cells/mm<sup>3</sup> for the VIREAD arm and 283 cells/mm<sup>3</sup> for the stavudine arm. Eleven patients in the VIREAD group and nine patients in the stavudine group experienced a new CDC Class C event.

### **Clinical Studies in HIV-1 Uninfected Subjects**

The iPrEx study and Partners PrEP study support the use of emtricitabine-tenofovir disoproxil fumarate tablets to help reduce the risk of acquiring HIV-1.

### **iPrEx Trial**

The study demographics and trial design for the iPrEx Trial are summarized in Table 21.

**Table 21 Study Demographics and Trial Design of iPrEx Trial**

Study No.	Trial Design	Dosage, Route of Administration and Duration	Study Subjects (N=2499)	Mean Age (Range)	Gender
CO-US-104-0288 (iPrEx)	Randomized, double-blind, placebo- controlled multinational study in men and transgender women who have sex with men and with evidence of high risk behavior for HIV-1 infection  Arm 1: emtricitabine-tenofovir DF tablet  Arm 2: placebo	Arm 1: emtricitabine-tenofovir DF tablet taken orally QD  Arm 2: Placebo tablet taken orally QD  Duration of treatment was variable. Subjects remained on treatment until the target number of seroconversion events was identified and the last enrolled study subject completed 48 weeks of treatment. Subjects were followed for at least 8 weeks follow up. HBsAg reactive subjects were followed for hepatic flares for 24 weeks after study drug discontinuation. Subjects who HIV-1 seroconverted during study were followed through at	Randomized: 1251 – emtricitabine-tenofovir DF tablet 1248 –placebo  Race: Asian – 5% Black – 9% White – 18% Hispanic/Latino – 72%	27 (18 to 67 years)	Male: 100% subjects born male  29 (1%) report current identity as female

Evidence of high risk behavior included any one of the following reported to have occurred up to six months prior to study screening: no condom use during anal intercourse with an HIV-1 positive partner or a partner of unknown HIV-1 status; anal intercourse with more than 3 sex partners; exchange of money, gifts, shelter or drugs for anal sex; sex with male partner and diagnosis of sexually transmitted infection; no consistent use of condoms with sex partner known to be HIV-1 positive.

All subjects received monthly HIV-1 testing, risk-reduction counseling, condoms and management of sexually transmitted infections.

### **Partners PrEP Study**

The demographics and trial design for the Partners PrEP study are summarized in Table 22.

**Table 22 Study Demographics and Trial Design of Partners PrEP Trial**

Study No.	Trial Design	Dosage, Route of Administration and Duration	Study Subjects (N=4758)	Mean Age (Range)	Gender
CO-US-104-0380 (Partners PrEP)	Randomized, double-blind, placebo-controlled 3-arm trial conducted in serodiscordant heterosexual couples in Kenya and Uganda	Arm 1: Viread tablet taken orally QD  Arm 2: emtricitabine-tenofovir DF tablet taken orally QD  Arm 3: Matched Placebo tablets, taken orally QD.  Duration of study drug treatment was variable. Subjects received the assigned study drugs once daily for a minimum of 24 months up to a maximum of 36 months.	Randomized: 1589 –TDF 1583 – emtricitabine -tenofovir DF tablet 1586 – placebo	33–34	Female: 38%  Male 62%

All subjects received monthly HIV-1 testing, evaluation of adherence, assessment of sexual behavior, and safety evaluations. Women were also tested monthly for pregnancy. Women who became pregnant during the trial had study drug interrupted for the duration of the pregnancy and while breastfeeding. The uninfected partner subjects were predominantly male (61–64% across study drug groups).

## Study Results

### iPrEx Study

Subjects were followed for 4237 person-years. The primary outcome measure for the study was the incidence of documented HIV-1 seroconversion. The results of the iPrEx study are summarized below in Table 23.

**Table 23****iPrEx Study: Relative Risk Reduction Through End-of-Treatment Cutoff (Primary Analysis; mITT Analysis<sup>a</sup>)**

	Placebo	Emtricitabine-tenofovir DF tablet	P-value <sup>b</sup>
End of Treatment <sup>c</sup>			
mITT Analysis	N=1217	N=1224	0.002
Person-Years follow-up <sup>d</sup>	2113	2124	
Number of HIV-1 Infections (Seroconversions)	83	48	
Relative Risk Reduction (2-sided 95% CI)	42% (18%, 60%)		

Abbreviation: CI = confidence interval

a Modified Intent-to-Treat (mITT) analysis excludes subjects who do not have follow-up HIV test and who were infected at enrollment

b p-values by log rank test

c End of treatment is defined as the next post-treatment visit after this date (approximately one month). This analysis excludes post-treatment stop

seroconversions. d Time to first evidence of seroconversion for those with event

Risk reduction was found to be higher (53%; 95% CI: 34% to 72%) among subjects who reported previous unprotected anal intercourse (URAI) at screening (732 and 753 subjects reported URAI within the last 12 weeks at screening in the emtricitabine-tenofovir DF tablets and placebo groups, respectively). In a post-hoc case control study of plasma and intracellular drug levels in about 10% of study subjects, risk reduction appeared to be the greatest in subjects with detectable intracellular tenofovir. Efficacy was therefore strongly correlated with adherence.

**Partners PrEP Study**

The efficacy analyses results of the Partner's PrEP study are summarized in Table 24 below.

**Table 24****Partners PrEP Study: Relative Risk Reduction and HIV-1 Seroincidence for Partner Subjects (Primary Analysis; mITT Analysis<sup>a</sup>)**

	Emtricitabine-tenofovir DF tablets	VIREAD	Placebo	Total
mITT Analysis	<b>N=1576</b>	<b>N=1579</b>	<b>N=1578</b>	<b>N=4733</b>
Person-years of follow-up <sup>b</sup>	2616	2604	2607	7827
Number of HIV-1 Infections (Seroconversions)	13	17	52	82
HIV-1 incidence, per 100 person-years	0.50	0.65	1.99	1.05
Relative Risk Reduction (2-sided 95% CI)	75% (55-87%)	67% (44-81%)		

p-value <sup>c</sup>	<0.0001	<0.0001		
a	Modified Intent-to-Treat (mITT) analysis excludes subjects who were infected at enrollment			
b	Time to first evidence of seroconversion for those with event			
c	p-values using Cox's proportional hazards model for the active study drug relative to placebo			

Two of the 13 seroconversions in the emtricitabine-tenofovir DF tablets arm and 3 of the 52 seroconversions in the placebo arm occurred in women during treatment interruptions for pregnancy. In a post-hoc case control study of plasma drug levels in about 10% of study subjects, risk reduction was most pronounced in subjects with detectable plasma tenofovir. Efficacy was therefore strongly correlated with adherence.

## VIROLOGY (MICROBIOLOGY)

### Mechanism of Action

**Emtricitabine:** Emtricitabine, a synthetic nucleoside analog of cytidine, is phosphorylated by cellular enzymes to form emtricitabine 5'-triphosphate. Emtricitabine 5'-triphosphate inhibits the activity of the HIV-1 reverse transcriptase (RT) by competing with the natural substrate deoxycytidine 5'-triphosphate and by being incorporated into nascent viral DNA which results in chain termination. Emtricitabine 5'-triphosphate is a weak inhibitor of mammalian DNA polymerases  $\alpha$ ,  $\beta$ ,  $\epsilon$  and mitochondrial DNA polymerase  $\gamma$ .

**Tenofovir DF:** Tenofovir DF is an acyclic nucleoside phosphonate diester analog of adenosine monophosphate. Tenofovir DF requires initial diester hydrolysis for conversion to tenofovir and subsequent phosphorylations by cellular enzymes to form tenofovir diphosphate. Tenofovir diphosphate inhibits the activity of HIV-1 RT by competing with the natural substrate deoxyadenosine 5'-triphosphate and, after incorporation into DNA, by DNA chain termination. Tenofovir diphosphate is a weak inhibitor of mammalian DNA polymerases  $\alpha$ ,  $\beta$ , and mitochondrial DNA polymerase  $\gamma$ .

### Antiviral Activity

**Emtricitabine and tenofovir DF:** In combination studies evaluating the in vitro antiviral activity of emtricitabine and tenofovir together, synergistic antiviral effects were observed. Additive to synergistic effects were observed in combination studies with protease inhibitors, integrase strand transfer inhibitors, and with nucleoside and non-nucleoside analogue inhibitors of HIV-1 reverse transcriptase.

**Emtricitabine:** The in vitro antiviral activity of emtricitabine against laboratory and clinical isolates of HIV was assessed in lymphoblastoid cell lines, the MAGI-CCR5 cell line, and peripheral blood mononuclear cells. The IC<sub>50</sub> values for emtricitabine were in the range of 0.0013–0.64 mcM (0.0003–0.158 mcg/mL). In drug combination studies of emtricitabine with nucleoside reverse transcriptase inhibitors (abacavir, lamivudine, stavudine, zalcitabine, or zidovudine), non-nucleoside reverse transcriptase inhibitors (delavirdine, efavirenz, or nevirapine), protease inhibitors (amprenavir, nelfinavir, ritonavir, or saquinavir), and with integrase strand transfer inhibitors, additive to synergistic effects were observed. Most of these drug combinations have not been studied in humans. Emtricitabine displayed antiviral activity in vitro against HIV-1 clades A, B, C, D, E, F, and G (IC<sub>50</sub> values ranged from 0.007–0.075 mcM) and showed strain specific activity against HIV-2 (IC<sub>50</sub> values ranged

from 0.007–1.5 mcM).

**Tenofovir DF:** The in vitro antiviral activity of tenofovir against laboratory and clinical isolates of HIV-1 was assessed in lymphoblastoid cell lines, primary monocyte/macrophage cells and peripheral blood lymphocytes. The IC<sub>50</sub> (50% inhibitory concentration) values for tenofovir were in the range of 0.04–8.5 mcM. In drug combination studies of tenofovir with integrase strand transfer inhibitors, nucleoside reverse transcriptase inhibitors (abacavir, didanosine, lamivudine, stavudine, zalcitabine, or zidovudine), non-nucleoside reverse transcriptase inhibitors (delavirdine, efavirenz, or nevirapine), and protease inhibitors (amprenavir, indinavir, nelfinavir, ritonavir, or saquinavir), additive to synergistic effects were observed. Most of these drug combinations have not been studied in humans. Tenofovir displayed antiviral activity in vitro against HIV-1 clades A, B, C, D, E, F, G, and O (IC<sub>50</sub> values ranged from 0.5–2.2 mcM).

### ***Prophylactic Activity in a Nonhuman Primate Model of HIV Transmission***

**Emtricitabine and tenofovir DF:** The prophylactic activity of the combination of daily oral emtricitabine and tenofovir DF was evaluated in a controlled study of macaques inoculated once weekly for 14 weeks with SIV/HIV-1 chimeric virus (SHIV) applied to the rectal surface. Of the 18 control animals, 17 became infected after a median of 2 weeks. In contrast, 4 of the 6 animals treated daily with oral emtricitabine and tenofovir DF remained uninfected and the two infections that did occur were significantly delayed until 9 and 12 weeks and exhibited reduced viremia. An M184I-expressing FTC-resistant variant emerged in 1 of the 2 macaques after 3 weeks of continued drug exposure.

### **Resistance**

**Emtricitabine and tenofovir DF:** HIV-1 isolates with reduced susceptibility to the combination of emtricitabine and tenofovir have been selected in vitro. Genotypic analysis of these isolates identified the M184V/I and/or K65R amino acid substitutions in the viral RT. In addition, a K70E substitution in HIV-1 reverse transcriptase has been selected by tenofovir and results in reduced susceptibility to tenofovir.

In Study 934 (EMTRIVA + VIREAD + efavirenz compared with lamivudine/zidovudine + efavirenz), resistance analysis was performed on HIV isolates from all patients with >400 copies/mL of HIV-1 RNA at Week 144 or early discontinuation. Genotypic resistance to efavirenz, predominantly the K103N mutation, was the most common form of resistance that developed. Resistance to efavirenz occurred in 13/19 (68%) analyzed patients in the EMTRIVA + VIREAD group and in 21/29 (72%) analyzed patients in the lamivudine/zidovudine group. The M184V mutation, associated with resistance to EMTRIVA and lamivudine, was observed in 2/19 (11%) analyzed patients in the EMTRIVA + VIREAD group and in 10/29 (34%) analyzed patients in the lamivudine/zidovudine group.

In treatment-naïve patients treated with EMTRIVA + VIREAD + efavirenz, none of the HIV isolates from 19 patients analyzed for resistance showed reduced susceptibility to tenofovir or the presence of the K65R or K70E mutation.

**Emtricitabine:** Emtricitabine-resistant isolates of HIV have been selected in vitro. Genotypic analysis of these isolates showed that the reduced susceptibility to emtricitabine was associated with a mutation in the HIV RT gene at codon 184 which resulted in an amino acid substitution of methionine by valine or isoleucine (M184V/I).

Emtricitabine-resistant isolates of HIV have been recovered from some patients treated with emtricitabine alone or in combination with other antiretroviral agents. In a clinical study, viral isolates from 6/16 (37.5%) treatment-naïve patients with virologic failure showed >20-fold reduced susceptibility to emtricitabine. Genotypic analysis of these isolates showed that the resistance was due to M184V/I mutations in the HIV RT gene.

**Tenofovir DF:** The K65R and K70E substitutions selected by tenofovir are also selected in some HIV-1-infected patients treated with abacavir or didanosine. HIV-1 isolates with the K65R and K70E substitutions also showed reduced susceptibility to emtricitabine and lamivudine. Therefore, cross-resistance among these NRTIs may occur in patients whose virus harbors the K65R or K70E substitutions. HIV-1 isolates with reduced susceptibility to tenofovir have been selected in vitro. These viruses expressed a K65R mutation in RT and showed a 2–4 fold reduction in susceptibility to tenofovir.

Tenofovir-resistant isolates of HIV-1 have also been recovered from some patients treated with VIREAD in combination with certain antiretroviral agents. In treatment-naïve patients, 7/29 (24%) isolates from patients failing VIREAD + lamivudine + efavirenz at 48 weeks showed >1.4 fold (median 3.4) reduced susceptibility in vitro to tenofovir.

In treatment-experienced patients, 14/304 (4.6%, studies 902 and 907) isolates from patients failing VIREAD at 96 weeks showed >1.4 fold (median 2.7) reduced susceptibility to tenofovir. Genotypic analysis of the resistant isolates showed a mutation in the HIV-1 RT gene resulting in the K65R amino acid substitution.

**iPrEx Trial:** In a clinical study of HIV-1 seronegative subjects (**iPrEx Trial**, see **CLINICAL TRIALS**), no mutations associated with resistance to emtricitabine or tenofovir were detected at the time of seroconversion among 48 subjects in the emtricitabine-tenofovir DF tablets group and 83 subjects in the placebo group who became infected with HIV-1 during the trial. Ten subjects were observed to be HIV-1 infected at time of enrollment. The M184V/I substitutions associated with resistance to emtricitabine were observed in 3 of the 10 subjects (2 of 2 in the emtricitabine-tenofovir DF tablets group and 1 of 8 in the placebo group). One of the two subjects in the emtricitabine-tenofovir DF tablets group harbored wild type virus at enrollment and developed the M184V substitution 4 weeks after enrollment. The other subject had indeterminate resistance at enrollment but was found to have the M184I substitution 4 weeks after enrollment.

**Partners PrEP Trial:** In a clinical study of HIV-1 seronegative subjects (**Partners PrEP Trial**, see **CLINICAL TRIALS**), no variants expressing amino acid substitutions associated with resistance to emtricitabine or tenofovir were detected at the time of seroconversion among 12 subjects in the emtricitabine-tenofovir DF tablets group, 15 subjects in the VIREAD group, and 51 subjects in the placebo group. Fourteen subjects were observed to be HIV-1 infected at the time of enrollment (3 in the emtricitabine-tenofovir DF tablets group, 5 in the VIREAD group, and 6 in the placebo group). One of the three subjects in the emtricitabine-tenofovir DF tablets

group who was infected with wild type virus at enrollment selected an M184V expressing virus by week 12. Two of the five subjects in the VIREAD group had tenofovir-resistant viruses at the time of seroconversion; one subject infected with wild type virus at enrollment developed a K65R substitution by week 16, while the second subject had virus expressing the combination of D67N and K70R substitutions upon seroconversion at week 60, although baseline virus was not genotyped and it is unclear if the resistance emerged or was transmitted. Following enrollment, 4 subjects (2 in the VIREAD group, 1 in the emtricitabine-tenofovir DF tablets group, and 1 in the placebo group) had virus expressing K103N or V106A substitutions, which confer high-level resistance to NNRTIs but have not been associated with tenofovir or emtricitabine and may have been present in the infecting virus.

### **Cross-resistance**

***Emtricitabine and tenofovir DF:*** Cross-resistance among certain nucleoside reverse transcriptase inhibitors (NRTIs) has been recognized. The M184V/I and/or K65R or K70E substitutions selected in vitro by the combination of emtricitabine and tenofovir are also observed in some HIV-1 isolates from subjects failing treatment with tenofovir in combination with either lamivudine or emtricitabine, and either abacavir or didanosine. Therefore, cross-resistance among these drugs may occur in patients whose virus harbors either or both of these amino acid substitutions.

***Emtricitabine:*** Emtricitabine-resistant isolates (M184V/I) were cross-resistant to lamivudine and zalcitabine but retained susceptibility in vitro to didanosine, stavudine, tenofovir, zidovudine, and NNRTIs (delavirdine, efavirenz, and nevirapine). Isolates from heavily treatment-experienced patients containing the M184V/I amino acid substitution in the context of other NRTI resistance-associated substitutions may retain susceptibility to tenofovir. HIV-1 isolates containing the K65R substitution, selected in vivo by abacavir, didanosine, tenofovir, and zalcitabine, demonstrated reduced susceptibility to inhibition by emtricitabine. Viruses harboring mutations conferring reduced susceptibility to stavudine and zidovudine (M41L, D67N, K70R, L210W, T215Y/F, K219Q/E) or didanosine (L74V) remained sensitive to emtricitabine. HIV-1 containing the K103N substitution associated with resistance to NNRTIs was susceptible to emtricitabine.

***Tenofovir DF:*** HIV-1 isolates from patients (N=20) whose HIV-1 expressed a mean of 3 zidovudine-associated RT amino acid substitutions (M41L, D67N, K70R, L210W, T215Y/F, or K219Q/E/N) showed a 3.1-fold decrease in the susceptibility to tenofovir. Multinucleoside resistant HIV-1 with a T69S double insertion mutation in the RT showed reduced susceptibility to tenofovir.



## NON-CLINICAL TOXICOLOGY

### Toxicology

Tenofovir and tenofovir DF administered in toxicology studies to rats, dogs and monkeys at exposures (based on AUCs) greater than or equal to 6-fold those observed in humans caused bone toxicity. In monkeys the bone toxicity was diagnosed as osteomalacia. Osteomalacia observed in monkeys appeared to be reversible upon dose reduction or discontinuation of tenofovir. In rats and dogs, the bone toxicity manifested as reduced bone mineral density. The mechanism(s) underlying bone toxicity is unknown.

Evidence of renal toxicity was noted in 4 animal species. Increases in serum creatinine, BUN, glycosuria, proteinuria, phosphaturia, and/or calciuria and decreases in serum phosphate were observed to varying degrees in these animals. These toxicities were noted at exposures (based on AUCs) 2–20 times higher than those observed in humans. The relationship of the renal abnormalities, particularly the phosphaturia, to the bone toxicity is not known.

### Carcinogenesis

***Emtricitabine:*** In long-term oral carcinogenicity studies of emtricitabine, no drug-related increase in tumor incidence was found in mice at doses up to 750 mg/kg/day (26 times the human systemic exposure at the therapeutic dose of 200 mg/day) or in rats at doses up to 600 mg/kg/day (31 times the human systemic exposure at the therapeutic dose).

***Tenofovir DF:*** Long-term oral carcinogenicity studies were conducted in mice and rats receiving tenofovir DF. At the high dose in female mice, liver adenomas were increased at exposures 16 times that in humans. In the mouse study, (60/sex/group), one male and two female mice in the 600 mg/kg/day group (15 times the human systemic exposure at the recommended human dose of 300 mg/day) developed duodenal tumors. The mechanism underlying this effect is uncertain but may relate to high local drug concentrations in the gastrointestinal tract. No treatment-related tumors were seen in mice in the 100 or 300 mg/kg/day groups. In the rat study (60/sex/group) at doses of 30, 100, and 300 mg/kg/day (approximately 5 times human exposure), no treatment-related increase in tumor incidence was observed.

### Mutagenesis

***Emtricitabine:*** Emtricitabine was not genotoxic in the reverse mutation bacterial test (Ames test), mouse lymphoma or mouse micronucleus assays.

***Tenofovir DF:*** Tenofovir DF was negative in the in vitro bacterial mutation (Ames) assay (*Salmonella-Escherichia coli*/Mammalian-Microsome Reverse Mutation Assay) but positive in the in vitro mouse lymphoma assay (L5178Y TK +/- Forward Mutation Assay), with and without metabolic activation. Tenofovir DF was negative in the in vivo mouse micronucleus assay at plasma exposure levels of more than 10× the human exposure.

## Impairment of Fertility

**Emtricitabine:** Emtricitabine did not affect fertility in male rats at approximately 140-fold or in male and female mice at approximately 60-fold higher exposures (AUC) than in humans given the recommended 200 mg daily dose. Fertility was normal in the offspring of mice exposed daily from before birth (in utero) through sexual maturity at daily exposures (AUC) of approximately 60-fold higher than human exposures at the recommended 200 mg daily dose.

**Tenofovir DF:** Reproductive toxicity was evaluated in rats and rabbits. Tenofovir DF had no adverse effects on fertility or general reproductive performance in rats at doses up to 600 mg/kg/day. Tenofovir DF had no adverse effects on embryo-fetal development in rats at doses 450 mg/kg/day and in rabbits at doses up to 300 mg/kg/day. In a study of effects on peri- and postnatal development in rats, effects considered due to maternal toxicity (450–600 mg/kg/day) were reduced survival and a slight delay in sexual maturation in the F1 generation. There were no adverse effects on growth, development, behavior, or reproductive parameters at non-maternally toxic doses (150 mg/kg/day).

## Pregnancy

**Emtricitabine:** The incidence of fetal variations and malformations was not increased in embryofetal toxicity studies performed with emtricitabine in mice at exposures (AUC) approximately 60-fold higher and in rabbits at approximately 120-fold higher than human exposures at the recommended daily dose.

**Tenofovir DF:** Reproduction studies have been performed in rats and rabbits at doses up to 14 and 19 times the human dose based on body surface area comparisons and revealed no evidence of impaired fertility or harm to the fetus due to tenofovir. Reduced pup body weights, survival and delay in sexual maturation was observed in a peri- and postnatal toxicity study in rats at the maternally toxic doses of 450 and 600 mg/kg (approximately 14 and 19 times the human dose based on body surface area comparisons).

## Antiretroviral Pregnancy Registry

To monitor fetal outcomes of pregnant women exposed to ART (antiretroviral therapy) including Sandoz Emtricitabine-Tenofovir, an Antiretroviral Pregnancy Registry has been established.

Healthcare providers are encouraged to register patients by calling 800–258–4263.

## REFERENCES

1. Deeks SG, Barditch-Crovo P, Lietman PS, Hwang F, Cundy KC, Rooney JF, et al. Safety, pharmacokinetics, and antiretroviral activity of intravenous 9-[2-(R)-(phosphonomethoxy)propyl]adenine, a novel anti-human immunodeficiency virus (HIV) therapy, in HIV-infected adults. *Antimicrob Agents Chemother* 1998 Sep;42 (9):2380-4.
2. Barditch-Crovo P, Deeks SG, Collier A, Safrin S, Coakley DF, Miller M, et al. Phase I/II trial of the pharmacokinetics, safety, and antiretroviral activity of tenofovir disoproxil fumarate in HIV-1 infected adults. *Antimicrob Agents Chemother* 2001 Oct;45 (10):2733-9.
3. Schooley RT, Ruane P, Myers RA, Beall G, Lampiris H, Berger D, et al. Tenofovir DF in antiretroviral-experienced patients: results from a 48-week, randomized, double-blind study. *AIDS* 2002 Jun 14;16 (9):1257-63.
4. Margot NA, Isaacson E, McGowan I, Cheng AK, Schooley RT, Miller MD. Genotypic and phenotypic analyses of HIV-1 in antiretroviral-experienced patients treated with tenofovir DF. *AIDS* 2002 Jun 14;16 (9):1227-35.
5. Gallant, J.E., DeJesus, E., Arribas, J.R., Pozniak, A.L., Gazzard, B., Campo, R.E. et al. Tenofovir DF, Emtricitabine and Efavirenz versus Zidovudine, Lamivudine and Efavirenz for HIV. *New Engl. J. Med.* 2006 (354): 251-260.
6. EMEA Public Statement, Efficacy and safety concerns regarding the co-administration of tenofovir disoproxil fumarate (TDF, Viread) and didanosine (ddI, Videx), 2005. <http://www.emea.eu.int/pdfs/human/press/pus/6233105en.pdf>.
7. Podzamczar D, Ferrer E, Gatell JM, Niubo J, Dalmau D, Leon A, Knobel H, Polo C, Iniguez D, Ruiz I. Early virological failure with a combination of tenofovir, didanosine and efavirenz. *Antiviral Therapy* 2005; 10: 171-177.
8. Benaboud, S., et al. 2011. Concentrations of Tenofovir and Emtricitabine in Breast Milk of HIV-1 Infected Women in Abidjan, Côte d'Ivoire, in the ANRS 12109 TEMAA Study, Step 2. *Antimicrob. Agents Chemother.* 55: 1315-1317.
9. Baeten J, Donnell D, Ndase P, Mugo N, Campbell J, Wangisi J, et al. Antiretroviral prophylaxis for HIV prevention in heterosexual men and women. *N Engl J Med* 2012;367 (5):399-410.
10. Grant RM, Lama JR, Anderson PL, McMahan V, Liu AY, Vargas L, et al. Preexposure Chemoprophylaxis for HIV Prevention in Men Who Have Sex with Men. *N Engl J Med* 2010;363 (27):2587-99
11. Product Monograph, <sup>Pr</sup>TRUVADA<sup>®</sup>, Gilead Sciences Canada, Inc., Control No.: 215258, Date of Revision: July 5, 2018.

## PART III: CONSUMER INFORMATION

### Pr**SANDOZ EMTRICITABINE-TENOFOVIR** **Emtricitabine and Tenofovir Tablets** **200 mg/300 mg**

This leaflet is Part III of a three part “Product Monograph” published when Sandoz Emtricitabine-Tenofovir was approved for sale in Canada and is designed specifically for consumers. This leaflet is a summary and will not tell you everything about Sandoz Emtricitabine-Tenofovir. Contact your healthcare professional if you have any questions about the drug.

#### ABOUT THIS MEDICATION

##### What the medication is used for:

Sandoz Emtricitabine-Tenofovir is a type of medicine called an HIV (human immunodeficiency virus) nucleoside analog reverse transcriptase inhibitor (NRTI). Sandoz Emtricitabine-Tenofovir contains 2 medicines, emtricitabine and tenofovir disoproxil fumarate, or tenofovir disoproxil fumarate) combined in one tablet.

Sandoz Emtricitabine-Tenofovir is used:

- **To treat HIV-1 Infection** when used with other anti-HIV medicines in adults.

OR

- **To help reduce the risk of getting HIV-1 infection** when used with safer sex practices in:
  - HIV-1 negative men who have sex with men, who are at high risk of getting infected with HIV-1 through sex.
  - Male-female sex partners when one partner has HIV-1 infection and the other does not.

This is sometimes called Pre-Exposure Prophylaxis or PrEP.

- Sandoz Emtricitabine-Tenofovir is for adults age 18 and older. Sandoz Emtricitabine-Tenofovir is not indicated in children under age 18 or adults over age 65.

##### What it does:

##### • **Use of Sandoz Emtricitabine-Tenofovir to treat HIV-1 infection:**

When used with other HIV-1 medicines to treat HIV-1 infection, Sandoz Emtricitabine-Tenofovir helps block HIV reverse transcriptase, a chemical in your body (enzyme) that is needed for HIV to multiply. Sandoz Emtricitabine-Tenofovir lowers the amount of HIV in the blood (viral load). Lowering the amount of HIV in the blood lowers the chance of infections that happen when your immune system is weak (opportunistic infections).

HIV infection destroys CD4+ (T) cells, which are important to the immune system. The immune system helps fight infection. After a large number of T cells are destroyed, acquired immune deficiency syndrome (AIDS) develops. Sandoz Emtricitabine-Tenofovir may also help to increase the number of T cells (CD4+ cells).

Sandoz Emtricitabine-Tenofovir does not cure HIV-1 infection or AIDS. If you have HIV-1 infection, you must stay on continuous HIV therapy to control HIV infection and decrease HIV-related illnesses.

People taking Sandoz Emtricitabine-Tenofovir may still get opportunistic infections or other conditions that happen with HIV infection. Opportunistic infections are infections that develop because the immune system is weak. Some of these conditions are pneumonia, herpes virus infections, and *Mycobacterium avium* complex (MAC) infections.

- **Use of Sandoz Emtricitabine-Tenofovir to reduce the risk of HIV-1 infection (PrEP indication):**

**When used with safer sex practices, Sandoz Emtricitabine-Tenofovir may help to reduce the risk of getting HIV-1 infection:**

- Sandoz Emtricitabine-Tenofovir works better to reduce the risk of getting HIV-1 when the medicines are in your bloodstream **before** you are exposed to HIV-1.

**It is very important that you see your healthcare professional regularly while taking Sandoz Emtricitabine-Tenofovir.**

##### Considerations when Sandoz Emtricitabine-Tenofovir is used for PrEP:

- Together with your healthcare professional, you need to decide whether Sandoz Emtricitabine-Tenofovir is right for you.
- Sandoz Emtricitabine-Tenofovir can only help reduce your risk of getting HIV-1 **before** you are infected.
- Do not take Sandoz Emtricitabine-Tenofovir to help reduce your risk of getting HIV-1 if:
  - you already have HIV-1 infection. If you are HIV-1 positive, you need to take other medicines with Sandoz Emtricitabine-Tenofovir to treat HIV-1. Sandoz Emtricitabine-Tenofovir by itself is not a complete treatment for HIV-1.
  - you do not know your HIV-1 infection status. You may already be HIV-1 positive. You need to take other HIV-1 medicines with Sandoz Emtricitabine-Tenofovir to treat HIV-1.
- Your healthcare professional will run tests to determine that you are HIV-negative before starting PrEP treatment.

##### When it should not be used:

Do not use Sandoz Emtricitabine-Tenofovir if:

- You are allergic (hypersensitive) to any of the ingredients in this formulation (see: **What the medicinal ingredients are; What the important nonmedicinal ingredients are**)
- Do not use Sandoz Emtricitabine-Tenofovir to reduce the risk of getting HIV if you already have HIV or do not know your HIV status.

##### What the medicinal ingredients are:

emtricitabine  
tenofovir disoproxil fumarate (tenofovir DF)

**What the important nonmedicinal ingredients are:**

croscarmellose sodium, colloidal silicone dioxide, lactose monohydrate, magnesium stearate, microcrystalline cellulose, pregelatinized starch, FD&C blue #2, hypromellose, titanium dioxide and triacetin.

**What dosage forms it comes in:**

Sandoz Emtricitabine-Tenofovir is available as tablets. Each tablet contains 200 mg of emtricitabine and 300 mg of tenofovir disoproxil fumarate (which is equivalent to 245 mg of tenofovir disoproxil), as active ingredients. The tablets are blue, capsule-shaped, film-coated, and debossed with “L24” on one side and plain on the other side. Each bottle contains 30 tablets and a desiccant (silica gel canister or sachet) and is closed with a child-resistant closure.

**WARNINGS AND PRECAUTIONS**

**Serious Warnings and Precautions**

- The most serious possible side effect is harm to the kidneys, including damage to kidney cells, kidney tissue inflammation and kidney failure. Your healthcare professional may monitor your kidney function before beginning and while receiving Sandoz Emtricitabine-Tenofovir. Some patients treated with tenofovir DF (a component of Sandoz Emtricitabine-Tenofovir) have had kidney problems. Your healthcare professional may need to perform additional blood tests if you have had kidney problems in the past or need to take another drug that can cause kidney problems.
- **If you are also infected with the Hepatitis B Virus, “flare-ups” of Hepatitis B Virus infection**, in which the disease suddenly returns in a worse way than before, can occur if you stop taking Sandoz Emtricitabine-Tenofovir. Do not stop taking Sandoz Emtricitabine-Tenofovir without your healthcare professional’s advice. If you stop taking Sandoz Emtricitabine-Tenofovir, tell your healthcare professional immediately about any new, unusual or worsening symptoms that you notice after stopping treatment. After you stop taking Sandoz Emtricitabine-Tenofovir, your healthcare professional will still need to check your health and take blood tests to check your liver for several months. Sandoz Emtricitabine-Tenofovir is not approved for the treatment of Hepatitis B Virus infection.

- The class of medicines to which Sandoz Emtricitabine-Tenofovir belongs (NRTIs) can cause a condition called lactic acidosis, together with an enlarged liver. Non-specific symptoms such as nausea, vomiting and stomach pain might indicate the development of lactic acidosis. This rare but serious side effect has occasionally been fatal. Lactic acidosis occurs more often in women, particularly if they are very overweight. You should consult your healthcare professional immediately if such symptoms occur while you are receiving Sandoz Emtricitabine-Tenofovir. The symptoms that may indicate lactic acidosis include: feeling very weak, tired or uncomfortable; unusual or unexpected stomach discomfort; feeling cold; feeling dizzy or lightheaded; suddenly developing a slow or irregular heartbeat. If you notice these symptoms, stop taking Sandoz Emtricitabine-Tenofovir and consult a healthcare professional immediately.
- Tenofovir DF caused harm to the bones of animals. Tenofovir DF reduced bone density in humans. If you notice bone pain, or suffer a bone fracture, or other bone problem, consult your healthcare professional. If you have bone problems, you may wish to discuss calcium and/or vitamin D supplements with your healthcare professionals.
- Sandoz Emtricitabine-Tenofovir should only be used for the PrEP indication if you are HIV-negative before and during treatment. Discuss with your healthcare professional if you have had a recent flu-like illness. Your healthcare professional will run tests to confirm that you are HIV negative before and during Sandoz Emtricitabine-Tenofovir treatment.

#### **Do NOT take Sandoz Emtricitabine-Tenofovir if:**

- you are on other medications that may affect your kidneys and have not discussed this with your healthcare professional.
- you have or are at known risk for any type of bone disease or bone related problems and have not discussed this with your healthcare professional.
- you are allergic to Sandoz Emtricitabine-Tenofovir or any of its ingredients. The medicinal ingredients are emtricitabine and tenofovir disoproxil fumarate (see: **What the important nonmedicinal ingredients are**).
- you are already taking 3TC® (lamivudine), ATRIPLA® (efavirenz / emtricitabine / tenofovir disoproxil fumarate), Combivir® (lamivudine / zidovudine), COMPLERA® (emtricitabine / rilpivirine / tenofovir disoproxil fumarate), DESCOVY® (emtricitabine / tenofovir alafenamide), EMTRIVA® (emtricitabine), GENVOYA® (elvitegravir / cobicistat / emtricitabine, tenofovir alafenamide), ODEFSEY™ (emtricitabine / rilpivirine, tenofovir alafenamide), Heptovir® (lamivudine), Kivexa® (abacavir / lamivudine),

STRIBILD® (elvitegravir / cobicistat / emtricitabine / tenofovir disoproxil fumarate), Triumeq® (dolutegravir / abacavir / lamivudine), Trizivir® (abacavir / lamivudine / zidovudine), VEMLIDY™ (tenofovir alafenamide) or VIREAD® (tenofovir disoproxil fumarate) because these medicines contain the same or similar active ingredients

- you are also taking HEPSERA® to treat your HBV infection

Changes in your immune system (Immune Reconstitution Inflammatory Syndrome) can happen when an HIV-1 infected person starts taking HIV medicines. Your immune system may get stronger and begin to fight infections that have been hidden in your body for a long time, or you could develop an autoimmune disease in which your immune system reacts against your own body [e.g. Grave's disease (which affects the thyroid gland), Guillain-Barré syndrome (which affects the nervous system) or polymyositis (which affects the muscles)] and it may develop at any time, sometimes months later after the start of HIV therapy. Sometimes symptoms can be severe, so if you develop high temperature (fever), joint or muscle pain, redness, rash, swelling or fatigue, or any new symptoms, contact your healthcare professional right away.

#### **Before taking Sandoz Emtricitabine-Tenofovir to reduce your risk of getting HIV-1 infection (PrEP indication):**

- **You must get tested to be sure you are HIV-negative.** It is important that you also get tested at least every 3 months as recommended by your healthcare provider while taking Sandoz Emtricitabine-Tenofovir. **Do not take Sandoz Emtricitabine-Tenofovir to reduce the risk of getting HIV (PrEP) unless you are confirmed to be HIV-negative.**
- Tell your healthcare provider if you have any of the following symptoms within the last month before you start taking Sandoz Emtricitabine-Tenofovir or at any time while taking Sandoz Emtricitabine-Tenofovir:
  - tiredness
  - fever
  - sweating a lot (especially at night)
  - rash
  - vomiting or diarrhea
  - joint or muscle aches
  - headache
  - sore throat
  - enlarged lymph nodes in the neck or groin

These may be signs of HIV infection and you may need to have a different kind of test to diagnose HIV. If you are already taking Sandoz Emtricitabine-Tenofovir to prevent HIV-1 infection (PrEP), your healthcare provider may tell you to stop taking Sandoz Emtricitabine-Tenofovir until an HIV test confirms that you do not have HIV-1 infection.

**Just taking Sandoz Emtricitabine-Tenofovir may not keep you from getting HIV. Sandoz Emtricitabine-Tenofovir does NOT always prevent HIV.**

**You must still practice safer sex at all times. Do not have any kind of sex without protection.** Always practice safer sex by using a latex or polyurethane condom to lower the chance of sexual contact with semen, vaginal secretions, or blood.

**You must also use other prevention methods to keep from getting HIV.**

- Know your HIV-1 status and the HIV-1 status of your partners.
- While taking Sandoz Emtricitabine-Tenofovir, get tested at least every 3 months for HIV, as recommended by your healthcare provider. Ask your partners to get tested.
- If you think you were exposed to HIV-1, tell your healthcare provider right away. They may want to do more tests to be sure you are still HIV-negative.
- Get tested for other sexually transmitted infections such as syphilis and gonorrhea. These infections make it easier for HIV to infect you.
- Get information and support to help reduce risky sexual behavior.
- Have fewer sex partners.
- Do not miss any doses of Sandoz Emtricitabine-Tenofovir. Missing doses may increase your risk of getting HIV-1 infection.

**BEFORE you use Sandoz Emtricitabine-Tenofovir (emtricitabine/tenofovir DF) talk to your healthcare professional:**

***If you are pregnant or planning to become pregnant:*** Pregnant mothers should not take Sandoz Emtricitabine-Tenofovir unless specifically directed by the healthcare professional.

If you are a female who is taking Sandoz Emtricitabine-Tenofovir to prevent HIV infection (PrEP) and you become pregnant while taking Sandoz Emtricitabine-Tenofovir, talk to your healthcare provider about whether you should continue taking Sandoz Emtricitabine-Tenofovir.

**Pregnancy Registry.** There is a pregnancy registry for women who take antiviral medicines during pregnancy. The purpose of this registry is to collect information about the health of you and your baby. Talk to your healthcare provider about how you can take part in this Antiretroviral Pregnancy Registry.

***If you are breastfeeding or planning to breastfeed:*** Do not breastfeed if you are taking Sandoz Emtricitabine-Tenofovir or have HIV. Emtricitabine and tenofovir DF, the two components of Sandoz Emtricitabine-Tenofovir, pass to your baby in your breast milk. You should not breastfeed because of the risk of passing HIV to your baby. Talk to your healthcare professional about the best way to feed your baby.

***If you have other medical conditions:*** Let your healthcare professional know if you have other medical conditions, especially liver, bone and kidney problems.

***If you are taking other medicines:*** Some medicines can interact when taken together, including prescription and non-prescription medicines and dietary supplements (see **INTERACTIONS WITH THIS MEDICATION**).

***If you are taking didanosine:*** Taking didanosine and Sandoz Emtricitabine-Tenofovir may cause serious reactions including lactic acidosis (too much acid in the blood), pancreatitis (inflamed pancreas) and nerve damage (neuropathy) (see **INTERACTIONS WITH THIS MEDICATION and SIDE EFFECTS AND WHAT TO DO ABOUT THEM**).

Sandoz Emtricitabine-Tenofovir should not be used with or soon after cidofovir, acyclovir, valacyclovir, ganciclovir, valganciclovir, aminoglycosides, or nonsteroidal anti-inflammatory drugs (NSAIDs), due to potential harm to the kidneys.

It is a good idea to keep a complete list of all the medicines that you take. Make a new list when medicines are added or stopped. Give copies of this list to all of your healthcare providers every time you visit your healthcare professional or fill a prescription.

### **Other Special Warnings:**

Your blood sugar levels (glucose) or levels of fats (lipids) in your blood may increase with HIV treatment. Your doctor may order blood tests for you.

## **INTERACTIONS WITH THIS MEDICATION**

Let your healthcare professional know if you are taking these or any other medications:

- Drugs that contain didanosine (Videx®, Videx EC®). Tenofovir DF (a component of Sandoz Emtricitabine-Tenofovir) may increase the amount of Videx in your blood. You may need to be followed more carefully if you are taking Sandoz Emtricitabine-Tenofovir and Videx together. Also, the dose of didanosine may need to be reduced.
- Reyataz® (atazanavir sulfate), Kaletra® (lopinavir/ritonavir), Prezista® (darunavir), HARVONI® (ledipasvir/sofosbuvir), EPCLUSA™ (sofosbuvir/velpatasvir) or VOSEVI™ (sofosbuvir/velpatasvir/voxilaprevir). These medicines may increase the amount of tenofovir DF (a component of Sandoz Emtricitabine-Tenofovir) in your blood, which could result in more side effects. You may need to be followed more carefully if you are taking Sandoz Emtricitabine-Tenofovir together with Reyataz, Kaletra, Prezista, HARVONI, EPCLUSA or VOSEVI. Sandoz Emtricitabine-Tenofovir may decrease the amount of Reyataz in your blood. If you are taking Sandoz Emtricitabine-Tenofovir and Reyataz together, you should also be taking Norvir® (ritonavir).
- Non-steroidal anti-inflammatory drugs.

## **PROPER USE OF THIS MEDICATION**

Stay under a healthcare professional's care when taking Sandoz Emtricitabine-Tenofovir. **Do not change your treatment or stop treatment without first talking with your healthcare professional.**

Take Sandoz Emtricitabine-Tenofovir exactly as your healthcare professional prescribed it. Follow the directions from your healthcare professional, exactly as written on the label. Set up a dosing schedule and follow it carefully.

When used to treat HIV-1 infection, Sandoz Emtricitabine-Tenofovir is always used with other HIV-1 medicines.

If you take Sandoz Emtricitabine-Tenofovir to reduce your risk of getting HIV-1:

- you must also use other methods to reduce your risk of getting HIV.
- **take Sandoz Emtricitabine-Tenofovir every day**, not just when you think you have been exposed to HIV-1.

**Avoid doing things that can increase your risk of getting HIV infection or spreading HIV infection to other people:**

- Do not re-use or share needles or other injection equipment.
- Do not share personal items that can have blood or body fluids on them, like toothbrushes and razor blades.
- Do not have any kind of sex without protection. Always practice safer sex by using a latex or polyurethane condom to lower the chance of sexual contact with semen, vagina secretions, or blood.

Ask your healthcare provider if you have any questions on how to prevent getting HIV infection or spreading HIV infection to other people.

When your Sandoz Emtricitabine-Tenofovir supply starts to run low, get more from your healthcare professional. This is very important because the amount of virus in your blood may increase if the medicine is stopped for even a short time. The virus may develop resistance to Sandoz Emtricitabine-Tenofovir and become harder to treat.

Only take medicine that has been prescribed specifically for you. Do not give Sandoz Emtricitabine-Tenofovir to others or take medicine prescribed for someone else.

Do not use if seal over bottle opening is broken or missing.

**Usual Adult Dose:**

**For the treatment of HIV-1 infection:**

- The usual dose of Sandoz Emtricitabine-Tenofovir is one tablet orally (by mouth) once a day, in combination with other anti-HIV medicines.
- Sandoz Emtricitabine-Tenofovir may be taken with or without a meal.

**For prevention of HIV-1 infection (PrEP):**

- The usual dose of Sandoz Emtricitabine-Tenofovir is one tablet orally (by mouth) once a day.
- Sandoz Emtricitabine-Tenofovir may be taken with or without a meal.

**Overdosage:**

If you think you have taken too much Sandoz Emtricitabine-Tenofovir, contact your healthcare professional, hospital emergency department or regional poison control centre immediately, even if there are no symptoms.

**Missed Dose:**

It is important that you do not miss any doses. If you miss a dose of Sandoz Emtricitabine-Tenofovir and it is less than 12 hours from the time you usually take Sandoz Emtricitabine-Tenofovir, then take the dose. If more than 12 hours has passed from the time you usually take Sandoz Emtricitabine-Tenofovir, then wait until the next scheduled daily dose. Do not take more than 1 dose of Sandoz Emtricitabine-Tenofovir in a day. Do not take 2 doses at the same time. Call your healthcare professional if you are not sure what to do.

**SIDE EFFECTS AND WHAT TO DO ABOUT THEM**

The most common side effects of Sandoz Emtricitabine-Tenofovir are:

- Diarrhea
- Nausea
- Vomiting
- Dizziness
- Headache

Other side effects include:

- Stomach pain
- Indigestion
- Inflammation of the pancreas
- Sleeping problems
- Abnormal dreams
- Weakness
- Pain
- Shortness of breath
- Allergic reaction (including swelling of the face, lips, tongue or throat)
- Rash
- Flatulence (intestinal gas)
- Skin discoloration (small spots or freckles) may also happen with Sandoz Emtricitabine-Tenofovir

**SERIOUS SIDE EFFECTS, HOW OFTEN THEY HAPPEN AND WHAT TO DO ABOUT THEM**

Symptom / effect	Talk with your healthcare professional		Stop taking drug and call your healthcare professional
	Only if severe	In all cases	



## SERIOUS SIDE EFFECTS, HOW OFTEN THEY HAPPEN AND WHAT TO DO ABOUT THEM

Symptom / effect		Talk with your healthcare professional		Stop taking drug and call your
Rare	<b>Effect: Kidney problems</b>			
	<b>Symptoms:</b>			
	You may have increased or decreased urination as well as increased thirst		✓	
	You may have swelling of your legs and feet		✓	
	You may feel listless and tired		✓	
Rare	<b>Effect: Lactic acidosis</b>			
	<b>Symptoms:</b>			
	Feeling very weak or tired		✓	
	Unusual muscle pain		✓	
	Stomach pain with nausea and vomiting		✓	
	Feeling cold, especially in arms and legs		✓	
	Feeling dizzy or lightheaded		✓	
	Fast or irregular heartbeat		✓	
Very Rare	<b>Effect: Hepatotoxicity (severe liver problems) with hepatomegaly (liver enlargement) and steatosis (fat in the liver)</b>			
	<b>Symptoms:</b>			
	Jaundice (skin or the white part of eyes turns yellow)		✓	
	Urine turns dark		✓	
	Bowel movements (stools) turn light in color		✓	
	Loss of appetite for several days or longer		✓	
	Feeling sick to your stomach (nausea)		✓	

## SERIOUS SIDE EFFECTS, HOW OFTEN THEY HAPPEN AND WHAT TO DO ABOUT THEM

Symptom / effect		Talk with your healthcare professional		Stop taking drug and call your
	Lower stomach pain		✓	
Very Rare	<b>Effect: Flare-ups of hepatitis B virus infection following drug discontinuation</b>			
	<b>Symptoms:</b>			
	Jaundice (skin or the white part of eyes turns yellow)		✓	
	Urine turns dark		✓	
	Bowel movements (stools) turn light in color		✓	
	Loss of appetite for several days or longer		✓	
	Feeling sick to your stomach (nausea)		✓	
	Lower stomach pain		✓	

Lactic acidosis is a medical emergency and must be treated in the hospital. You may be more likely to get lactic acidosis or serious liver problems if you are very overweight (obese) or have been taking nucleoside analog medicines, like Sandoz Emtricitabine-Tenofovir, for a long time.

Muscle pain, muscle weakness, bone pain and softening of the bone (infrequently contributing to fractures) have also been reported.

There have been other side effects in patients taking EMTRIVA or VIREAD. *This is not a complete list of side effects.* If you have questions about side effects, ask your healthcare professional. You should report any new or continuing symptoms to your healthcare professional right away. Your healthcare professional may be able to help you manage these side effects.

## HOW TO STORE IT

- Keep Sandoz Emtricitabine-Tenofovir and all other medications out of reach and sight of children.
- Sandoz Emtricitabine-Tenofovir should be stored at 15-30°C. Protect from moisture. It should remain stable until the expiration date printed on the label.
- Do not keep your medicine in places that are too hot or cold.
- Do not keep medicine that is out of date or that you no longer need. If you throw any medicines away, make sure that children will not find them.

- Keep Sandoz Emtricitabine-Tenofovir in its original container and keep the container tightly closed.

### Reporting Side Effects

You can report any suspected side effects associated with the use of health products to Health Canada by:

- Visiting the Web page on Adverse Reaction Reporting <https://www.canada.ca/en/health-canada/services/drugs-health-products/medeffect-canada/adverse-reaction-reporting.html> for information on how to report online, by mail or by fax; or
- Calling toll-free at 1-866-234-2345.

*NOTE: Contact your health professional if you need information about how to manage your side effects. The Canada Vigilance Program does not provide medical advice.*

### MORE INFORMATION

#### If you want more information about Sandoz Emtricitabine-Tenofovir:

- Talk to your healthcare professional
- Find the full Product Monograph that is prepared for healthcare professionals and includes this Consumer Information by visiting the Health Canada website (<https://www.canada.ca/en/health-canada.html>); or by contacting the sponsor, Sandoz Canada Inc., at:

1-800-361-3062

or by written request at:  
110 de Lauzon  
Boucherville QC  
J4B 1E6

Or by e-mail at :  
[medinfo@sandoz.com](mailto:medinfo@sandoz.com)

This leaflet was prepared by Sandoz Canada Inc.

**Last revised:** April 24, 2019

All trademarks referenced herein are the property of their owners.