

PRODUCT MONOGRAPH

Pr ACT TADALAFIL

Tadalafil Tablets USP

2.5 mg and 5 mg Tablets (for *Once-a-Day* use)
10 mg and 20 mg Tablets (for “*On-Demand*” dosing)

cGMP-Specific Phosphodiesterase Type 5 Inhibitor

TREATMENT OF ERECTILE DYSFUNCTION (ED)

TREATMENT OF BENIGN PROSTATIC HYPERPLASIA (BPH)

TREATMENT OF ERECTILE DYSFUNCTION AND
BENIGN PROSTATIC HYPERPLASIA (ED/BPH)

Teva Canada Limited
30 Novopharm Court
Toronto, Ontario
Canada M1B 2K9
www.tevacanada.com

Date of Preparation:
March 13, 2020

Submission Control Number: 236254

TABLE OF CONTENTS

| | |
|--|-----------|
| PART I: HEALTH PROFESSIONAL INFORMATION | 3 |
| SUMMARY PRODUCT INFORMATION | 3 |
| INDICATIONS AND CLINICAL USE..... | 3 |
| CONTRAINDICATIONS..... | 3 |
| WARNINGS AND PRECAUTIONS | 4 |
| ADVERSE REACTIONS | 8 |
| DRUG INTERACTIONS..... | 11 |
| DOSAGE AND ADMINISTRATION | 14 |
| OVERDOSAGE..... | 16 |
| ACTION AND CLINICAL PHARMACOLOGY..... | 17 |
| STORAGE AND STABILITY | 22 |
| DOSAGE FORMS, COMPOSITION AND PACKAGING..... | 22 |
| PART II: SCIENTIFIC INFORMATION..... | 24 |
| PHARMACEUTICAL INFORMATION | 24 |
| CLINICAL TRIALS | 25 |
| DETAILED PHARMACOLOGY..... | 36 |
| TOXICOLOGY | 37 |
| LONG-TERM TOXICITY | 39 |
| CARCINOGENICITY..... | 41 |
| MUTAGENICITY | 41 |
| REPRODUCTION AND TERATOLOGY | 42 |
| REFERENCES | 43 |
| PART III: CONSUMER INFORMATION | 47 |

Pr
ACT TADALAFIL

Tadalafil Tablets USP
2.5 mg, 5 mg, 10 mg and 20 mg

PART I: HEALTH PROFESSIONAL INFORMATION

SUMMARY PRODUCT INFORMATION

| Route of Administration | Dosage Form / Strength | Nonmedicinal Ingredients |
|--------------------------------|--|--|
| Oral | tablet - 2.5 mg , 5 mg, 10 mg, and 20 mg | hydroxylpropyl cellulose, lactose monohydrate, croscarmellose sodium, sodium lauryl sulphate, povidone, colloidal silicon dioxide and magnesium stearate. The film-coating contains hypromellose, titanium dioxide, macrogol, talc and iron oxide. |

INDICATIONS AND CLINICAL USE

ACT TADALAFIL (tadalafil) is indicated for the treatment of erectile dysfunction (ED) in men.

ACT TADALAFIL is indicated for the treatment of the signs and symptoms of benign prostatic hyperplasia (BPH).

ACT TADALAFIL is indicated for the treatment of ED and the signs and symptoms of benign prostatic hyperplasia (ED/BPH).

Geriatrics (> 65 years of age):

No dose adjustment is warranted based on age alone. However, a greater sensitivity to medications in some older individuals should be considered. (See WARNINGS AND PRECAUTIONS, Use in the Elderly, and DOSAGE AND ADMINISTRATION).

Pediatrics (< 18 years of age):

ACT TADALAFIL has not been evaluated in individuals less than 18 years old. ACT TADALAFIL is not indicated for use in pediatric patients.

CONTRAINDICATIONS

Nitrates

Tadalafil has been shown to potentiate the hypotensive effects of nitrates. This is thought to result

from the combined effects of nitrates and tadalafil on the nitric oxide/ cGMP pathway. **Therefore, administration of ACT TADALAFIL to patients who are using any form of organic nitrate (e.g., oral, sublingual, transdermal, by inhalation), either regularly and/or intermittently, is contraindicated, due to the risk of developing potentially life-threatening hypotension.**

ACT TADALAFIL should not be prescribed to patients for whom nitrates are prescribed, even though the patient may not have actually used the nitrate therapy.

In a patient prescribed ACT TADALAFIL, where nitrate administration is deemed medically necessary in a life-threatening situation, at least 48 hours should have elapsed after the last dose of ACT TADALAFIL before nitrate administration is considered. In such circumstances, nitrates should only be administered under close medical supervision with appropriate hemodynamic monitoring.

Hypersensitivity Reactions

ACT TADALAFIL should not be used in patients with a known hypersensitivity to tadalafil or any component of the tablet (see DOSAGE FORMS, COMPOSITION AND PACKAGING).

Non-Arteritic Anterior Ischaemic Optic Neuropathy

ACT TADALAFIL is contraindicated in patients with previous episode of non-arteritic anterior ischaemic optic neuropathy (NAION) (see WARNINGS AND PRECAUTIONS).

Co-administration with Guanylate Cyclase Stimulators

The co-administration of PDE5 inhibitors, including tadalafil, with guanylate cyclase stimulators, such as riociguat, is contraindicated because it could lead to potentially life-threatening episodes of symptomatic hypotension or syncope.

WARNINGS AND PRECAUTIONS

General

The evaluation of erectile dysfunction and lower urinary tract symptoms should include a determination of potential underlying causes and the identification of appropriate treatment following an appropriate medical assessment.

Counselling Patients About Sexually Transmitted Diseases

The use of ACT TADALAFIL offers no protection against sexually transmitted diseases. Counselling patients about the protective measures necessary to guard against sexually transmitted diseases, including Human Immunodeficiency Virus (HIV) should be considered.

Consideration of Other Urological Conditions Prior to Initiating Treatment for BPH

Prior to initiating treatment with ACT TADALAFIL for BPH, consideration should be given to other urological conditions that may cause similar symptoms. In addition, prostate cancer and BPH may coexist.

Cardiovascular

Sexual activity carries a potential cardiac risk for patients with pre-existing cardiovascular disease. Therefore, treatments for erectile dysfunction, including ACT TADALAFIL (tadalafil), should not be used in men with cardiac disease for whom sexual activity is inadvisable. The following groups of patients with cardiovascular disease were not included in clinical trials:

- patients with a myocardial infarction within the last 90 days
- patients with unstable angina or angina occurring during sexual intercourse
- patients with New York Heart Association Class 2 or greater heart failure in the last 6 months
- patients with uncontrolled arrhythmias, hypotension (< 90/50 mm Hg), or uncontrolled hypertension
- patients with a stroke within the last 6 months
- patients with left ventricular outflow obstruction, (e.g., aortic stenosis and idiopathic hypertrophic subaortic stenosis) can be sensitive to the action of vasodilators, including PDE5 inhibitors.

Potential for Drug Interaction when taking ACT TADALAFIL for *Once-a-Day* use:

Physicians should be aware that ACT TADALAFIL for once daily use provides continuous plasma tadalafil levels and should consider this when evaluating the potential for interactions with medications (e.g., nitrates, alpha-blockers, antihypertensives and potent inhibitors of CYP3A4).

Sexual Function/Prolonged Erection

Priapism was not reported in clinical trials with tadalafil. However, priapism has been reported rarely in post-marketing surveillance with PDE5 inhibitors, including tadalafil. The incidence of priapism may increase when PDE5 inhibitors are used in combination with intrapenile injections containing vasoactive agents. Patients who experience erections lasting 4 hours or more should be instructed to seek immediate medical assistance. If priapism is not treated immediately, penile tissue damage and permanent loss of potency may result.

Tadalafil should be used with caution in patients who have conditions that might predispose them to priapism (such as sickle cell anemia, multiple myeloma, or leukemia), or in patients with anatomical deformation of the penis (such as angulation, cavernosal fibrosis or Peyronie's disease).

Long-term human studies with subjects 45 years or older have shown that tadalafil therapy may decrease sperm concentration in some patients, but the clinical relevance of this to human fertility is unknown.

Ophthalmology/Eye

Postmarketing reports of sudden loss of vision have occurred rarely, in temporal association with the use of PDE5 inhibitors including tadalafil (see ADVERSE REACTIONS, Post-Market Experience). An approximate 2 to 4-fold increased risk of acute Non-Arteritic Ischemic Optic Neuropathy (NAION) has been suggested from analyses of observational data in men with ED within 1 to 4 days (5 half-lives) of episodic PDE5 inhibitor use, including tadalafil. There is an increased risk of NAION in patients who have already experienced NAION. The use of PDE5 inhibitors, including CIALIS, is contraindicated in patients with a previous episode of NAION (see CONTRAINDICATIONS). Physicians should instruct patients to stop taking ACT TADALAFIL and immediately seek medical attention if they experience changes in, sudden decrease or loss of

vision in one or both eyes.

Ear/Sudden Hearing Loss

Sudden decrease or loss of hearing has been reported in a few number of postmarketing and clinical trials with the use of PDE5 inhibitors, including tadalafil. These events, which may be accompanied by tinnitus and dizziness, have been reported in temporal association to the intake of PDE5 inhibitors, including tadalafil. It is not possible to determine whether these events are related directly to the use of PDE5 inhibitors or other factors (see ADVERSE REACTIONS – Post Market Experience). Physicians should advise patients to stop taking ACT TADALAFIL and seek prompt medical attention in case of sudden decrease or loss of hearing.

Alpha-blockers and Antihypertensives

Caution is advised when PDE5 inhibitors are coadministered with alpha blockers. PDE5 inhibitors, including ACT TADALAFIL, and alpha-adrenergic blocking agents are both vasodilators with blood pressure lowering effects. When vasodilators are used in combination, an additive effect on blood pressure may be anticipated. In some patients, concomitant use of these two drug classes can lower blood pressure significantly (see DRUG INTERACTIONS, and ACTION AND CLINICAL PHARMACOLOGY), which may lead to symptomatic hypotension (e.g., fainting). Consideration should be given to the following:

BPH:

- The efficacy of the co-administration of an alpha-blocker and tadalafil for the treatment of BPH has not been adequately studied; combination of ACT TADALAFIL and alpha-blockers is not recommended for the treatment of BPH (also see DOSAGE AND ADMINISTRATION, and DRUG INTERACTIONS).

ED:

- Patients should be stable on alpha-blocker therapy prior to initiating a PDE5 inhibitor. Patients who demonstrate hemodynamic instability on alpha-blocker therapy alone are at increased risk of symptomatic hypotension with concomitant use of PDE5 inhibitors.
- In those patients already taking an optimized dose of PDE5 inhibitor, alpha-blocker therapy should be initiated at the lowest dose. Stepwise increase in alpha-blocker dose may be associated with further lowering of blood pressure when taking a PDE5 inhibitor.
- Safety of combined use of PDE5 inhibitors and alpha blockers may be affected by other variables, including intravascular volume depletion and other antihypertensive drugs.

Concomitant Use of Potent Inhibitors of Cytochrome P450 3A4 (CYP3A4)

Daily use of ACT TADALAFIL 10 or 20 mg should be avoided in patients taking protease inhibitors (e.g., ritonavir) or other potent CYP3A4 inhibitors (e.g., ketoconazole). A starting dose of 10 mg prior to anticipated sexual activity should be considered for these patients, but no more frequently than on alternate days, and not exceeding 3 times a week. If the 10 mg dose is tolerated but insufficiently effective, the dose may be increased to 20 mg. If the 10 mg dose is not tolerated, ACT TADALAFIL *On -Demand* dosing for treatment of ED should be discontinued (see DOSAGE AND ADMINISTRATION).

ACT TADALAFIL 5 mg *Once-a-Day* for treatment of ED, BPH and ED/BPH may be considered for patients taking protease inhibitors or other potent CYP3A4 inhibitors. The dosage may be

decreased to 2.5 mg *Once-a-Day*, based on individual tolerability.

Combination With Other PDE5 Inhibitors or Erectile Dysfunction Therapies

The safety and efficacy of tadalafil in conjunction with other PDE5 inhibitors used for the treatment of ED or pulmonary arterial hypertension (PAH) has not been studied. Thus the use of such combinations is not recommended.

Effects on Bleeding

In humans, tadalafil has no effect on bleeding time when taken alone or with acetylsalicylic acid (ASA).

There is no safety information on the administration of tadalafil to patients with bleeding disorders or active peptic ulceration. Therefore, ACT TADALAFIL should be administered with caution to these patients.

Special Populations

Use in the Elderly

Of the total number of subjects in ED clinical studies of tadalafil, approximately 19 percent were 65 and over, while approximately 2 percent were 75 and over. Of the total number of subjects in BPH clinical studies of tadalafil (including the ED/BPH study), approximately 40 percent were over 65, while approximately 10 percent were 75 and over. In these clinical trials, no overall differences in efficacy or safety were observed between older (> 65 and ≥ 75 years of age) and younger subjects (≤ 65 years of age). However, in placebo-controlled studies with tadalafil for use as needed for ED, diarrhea was reported more frequently in patients 65 years of age and older who were treated with tadalafil (2.5% of patients).

Therefore no dose adjustment is warranted based on age alone. However, a greater sensitivity to medications in some older individuals should be considered.

Use in Patients with Renal Impairment

In a clinical pharmacology study, administration of tadalafil 10 mg to patients with moderate renal failure (creatinine clearance = 31 to 50 mL/min) was less well tolerated, with more back pain experienced, than in patients with mild renal failure (creatinine clearance = 51 to 80 mL/min) and healthy subjects. However, when tadalafil 20 mg was administered to patients undergoing hemodialysis there were no complaints of back pain. Hemodialysis contributed negligibly to tadalafil elimination. Daily use of ACT TADALAFIL 10 or 20 mg should be avoided in patients with renal impairment. A starting dose of 10 mg prior to anticipated sexual activity should be considered for these patients, but no more frequently than on alternate days, and not exceeding 3 times a week. If the 10 mg dose is tolerated but insufficiently effective, the dose may be increased to 20 mg. If the 10 mg dose is not tolerated, ACT TADALAFIL *On -Demand* dosing for treatment of ED should be discontinued (see DOSAGE AND ADMINISTRATION).

Additionally, there are no controlled clinical data on the safety or efficacy of tadalafil in patients with severe renal insufficiency (creatinine clearance < 30 mL/min); if prescribed, this should be done with caution.

ACT TADALAFIL 5 mg *Once-a-Day* for treatment of ED, BPH or ED/ BPH may be considered for patients with mild to moderate renal impairment. The dosage may be decreased to 2.5 mg *Once-a-Day*, based on individual tolerability. ACT TADALAFIL for *Once-a-Day* use is not recommended for patients with severe renal impairment.

Use in Patients with Hepatic Impairment

In a clinical pharmacology study, administration of tadalafil 10 mg to patients with mild and moderate hepatic impairment (Child-Pugh Class A and B) did not result in increased exposure (AUC) to tadalafil, in comparison to healthy subjects. Daily use of ACT TADALAFIL 10 or 20 mg should be avoided in patients with hepatic impairment. A starting dose of 10 mg prior to anticipated sexual activity should be considered for these patients, but no more frequently than on alternate days, and not exceeding 3 times a week. If the 10 mg dose is tolerated but insufficiently effective, the dose may be increased to 20 mg. If the 10 mg dose is not tolerated, ACT TADALAFIL *On-Demand* dosing should be discontinued (see DOSAGE AND ADMINISTRATION).

Additionally, there are no controlled clinical data on the safety or efficacy of tadalafil in patients with severe hepatic insufficiency (Child-Pugh Class C); if prescribed, this should be done with caution.

ACT TADALAFIL 5 mg *Once-a-Day* for treatment of ED, BPH and ED/BPH may be considered for patients with hepatic impairment. The dosage may be decreased to 2.5 mg *Once-a-Day*, based on individual tolerability. Use of ACT TADALAFIL *Once-a-Day* is not recommended in patients with severe hepatic impairment.

Pregnancy, Nursing Mothers

ACT TADALAFIL is not indicated for use in women. There are no studies of tadalafil in pregnant women.

Pediatrics (< 18 years of age)

ACT TADALAFIL is not indicated for use in individuals less than 18 years old.

ADVERSE REACTIONS

Tadalafil was administered to over 9000 subjects (aged 19 to 86 years) during clinical trials worldwide. In trials of tadalafil tablets for *Once-a-Day* use, a total of 1434, 905, and 115 subjects were treated for at least 6 months, 1 year, and 2 years, respectively. For tadalafil tablets *On-Demand*, over 1300 and 1000 subjects were treated for at least 6 months and 1 year, respectively.

In these studies, the adverse events reported with tadalafil were generally mild or moderate, transient, and decreased with continued dosing.

A. Patients with ED

In controlled Phase 2/3 clinical trials for *On-Demand* dosing, the discontinuation rate due to adverse events in tadalafil-treated patients (1.7%) was not significantly different from that in placebo-treated patients (1.1%). The discontinuation rate due to adverse events in clinical trials with tadalafil

for *Once-a-Day* use was also not significantly different between tadalafil - and placebo-treated patients (3.2% versus 2.8%).

In controlled Phase 2/3 clinical trials, the following adverse events were reported:

Table 1. Adverse Events Reported by $\geq 2\%$ of Patients with ED Treated with Tadalafil, and More Frequent on Drug than Placebo, in Phase 2/3 Clinical Trials.

| Event | Tadalafil Dosing Regimen (Patients with ED): | | | |
|------------------|--|--------------------|--|--------------------|
| | <u>On-Demand (10, 20 mg) % Patients</u> | | <u>Once-a-Day (2.5, 5 mg) % Patients</u> | |
| | Tadalafil (N=1561) | Placebo (N=758) | Tadalafil (N=500) | Placebo (N=248) |
| Headache | 11 | 4 | 4 | 5 |
| Dyspepsia | 7 | 1 | 4 | 2 |
| Back Pain | 4 | 3 | 3 | 1 |
| Myalgia | 4 | 1 | 2 | 1 |
| Nasal congestion | 4 | 2 | 2 | 0 |
| Flushing | 4 | 1 | 2 | 1 |

Additional reported adverse events where a causal relationship is uncertain (but plausible) and which occurred in $< 2\%$ of patients receiving tadalafil included dizziness (1.7%), swelling of eyelids (0.3%), sensations described as eye pain (0.3%), and conjunctival hyperemia (0.3%). Across all clinical studies, reports of changes in colour vision were rare ($< 0.1\%$). Sudden decrease or loss of hearing was reported rarely ($< 0.1\%$) in clinical trials.

Adverse events reported over a 24 week treatment duration in one placebo-controlled clinical study were generally similar to those reported in the 12 week clinical studies. Additional common ($\geq 2\%$) adverse events included nasopharyngitis, gastroenteritis, upper respiratory tract infection, gastroesophageal reflux disease and hypertension.

B. Patients with BPH

In two placebo-controlled Phase 3 clinical trials of 12 weeks duration, the discontinuation rate due to adverse events in patients treated with tadalafil *Once-a-Day* was 4.0% compared to 1.6% in placebo-treated patients. The following adverse events were reported in patients with BPH (Table 2):

Table 2: Adverse Events Reported by $\geq 2\%$ of Patients with BPH Treated with Tadalafil 5 mg *Once-a-Day*, and More Frequent on Drug than Placebo.

| Adverse Event | Tadalafil <i>Once-a-Day</i> (5 mg) (N=373) | Placebo (N=376) |
|---------------|---|--------------------|
| Headache | 3% | 2% |
| Dyspepsia | 3% | 0.3% |
| Back Pain | 2% | 1% |
| Hypertension | 2% | 1% |

In an additional 12-week, placebo-controlled trial in patients with BPH that included an active reference control (tamsulosin 0.4 mg/day), the discontinuation rates due to adverse events were

1.2%, 0.6% and 1.2% in patients treated with tadalafil tablets *Once-a-Day*, tamsulosin, and placebo, respectively. The following adverse events were reported (Table 3):

Table 3: Adverse Events Reported by $\geq 2\%$ of Patients with BPH Treated with Tadalafil 5 mg *Once-a-Day*, or Tamsulosin 0.4 mg/day, and More Frequent on Drug than Placebo.

| Adverse Event | Tadalafil <i>Once-a-Day</i> (5 mg) (N=171) | Tamsulosin (0.4 mg/day) (N=168) | Placebo (N=172) |
|---------------|---|------------------------------------|--------------------|
| Headache | 3% | 4% | 1% |
| Back Pain | 2% | 1% | 0.6% |
| Dizziness | 2% | 4% | 2% |
| Dyspepsia | 2% | 2% | 0% |

Patients with ED/BPH

In a placebo-controlled Phase 3 clinical trial of 12 weeks duration, the discontinuation rate due to adverse events in patients treated with tadalafil *Once-a-Day* was 2.2% compared to 1.5% in placebo-treated patients. The following adverse events were reported in patients with ED and BPH (Table 4):

Table 4: Adverse Events Reported by $\geq 2\%$ of patients with ED/BPH, Treated with Tadalafil 5 mg *Once-a-Day* and More Frequent on Drug than Placebo.

| Adverse Event | Tadalafil <i>Once-a-Day</i> (5 mg) (N=208) | Placebo (N=200) |
|-----------------|---|--------------------|
| Headache | 6% | 3% |
| Back Pain | 3% | 2% |
| Nasopharyngitis | 2% | 2% |

Additional reported adverse events which occurred in $< 2\%$ of patients receiving tadalafil *Once-a-Day* for treatment of BPH or ED/BPH included pain in extremity, myalgia, gastroesophageal reflux disease, upper abdominal pain, nausea, vomiting, arthralgia and muscle spasm.

The following section identifies additional, less frequent events ($< 2\%$) reported in controlled clinical trials of tadalafil for once daily use or use as needed. A causal relationship of these events to tadalafil is uncertain. Excluded from this list are those events that were minor, those with no plausible relation to drug use, and reports too imprecise to be meaningful:

Body as a Whole - asthenia, face edema, fatigue, pain, peripheral edema.

Cardiovascular - angina pectoris, chest pain, hypotension, myocardial infarction, postural hypotension, palpitations, syncope, tachycardia.

Digestive - abnormal liver function tests, dry mouth, dysphagia, esophagitis, gastritis, GGTP increased, loose stools, nausea, upper abdominal pain, vomiting, gastroesophageal reflux disease, hemorrhoidal hemorrhage, rectal hemorrhage.

Musculoskeletal - arthralgia, neck pain.

Nervous - dizziness, hypesthesia, insomnia, paresthesia, somnolence, vertigo.

Renal and Urinary - renal impairment.

Respiratory - dyspnea, epistaxis, pharyngitis.

Skin and Appendages - pruritus, rash, sweating.

Ophthalmologic - blurred vision, changes in color vision, conjunctivitis (including conjunctival

hyperemia), eye pain, lacrimation increase, swelling of eyelids.

Otologic - sudden decrease or loss of hearing, tinnitus.

Urogenital - erection increased, spontaneous penile erection.

Post-Market Experience

In postmarketing surveillance, adverse events that have been reported very rarely in temporal association in patients taking tadalafil include:

Body as a whole: hypersensitivity reactions including rash, urticaria, facial edema, Stevens-Johnson syndrome, and exfoliative dermatitis.

Cardiovascular and cerebrovascular: Serious cardiovascular events, including myocardial infarction, sudden cardiac death, unstable angina pectoris, ventricular arrhythmia, stroke, transient ischemic attacks, chest pain, palpitations, and tachycardia, have been reported either post marketing and/or in clinical trials. Most of the patients in whom these events have been reported had pre-existing cardiovascular risk factors. However, it is not possible to definitively determine whether these events are related directly to these risk factors, to tadalafil, to sexual activity, or to a combination of these or other factors.

Hypotension (more commonly reported when tadalafil is given to patients who are already taking antihypertensive agents), hypertension, and syncope.

Skin and subcutaneous tissues: hyperhidrosis (sweating).

Gastrointestinal: abdominal pain and gastroesophageal reflux.

Nervous system: migraine, transient global amnesia

Respiratory system: epistaxis (nose bleed)

Special senses: blurred vision, nonarteritic anterior ischemic optic neuropathy, retinal vein occlusion, visual field defect.

Otologic: Cases of sudden decrease or loss of hearing have been reported postmarketing in temporal association with the use of PDE5 inhibitors, including tadalafil. In some of the cases, medical conditions and other factors were reported that may have also played a role in the otologic adverse events. In many cases, medical follow-up information was limited. It is not possible to determine whether these reported events are related directly to the use of tadalafil, to the patient's underlying risk factors for hearing loss, a combination of these factors, or to other factors (see WARNINGS AND PRECAUTIONS).

Urogenital: priapism, prolonged erection, spontaneous penile erection.

DRUG INTERACTIONS

Potential for Pharmacodynamic Interactions with ACT TADALAFIL (Tadalafil)

Nitrates: Administration of ACT TADALAFIL to patients who are using any form of organic nitrate, is contraindicated. In clinical pharmacology studies, tadalafil was shown to potentiate the hypotensive effect of nitrates.

In a patient who has taken ACT TADALAFIL, where nitrate administration is deemed medically necessary in a life-threatening situation, at least 48 hours should elapse after the last dose of ACT TADALAFIL before nitrate administration is considered. In such circumstances, nitrates should still only be administered under close medical supervision with appropriate hemodynamic monitoring (see CONTRAINDICATIONS).

Alpha-Blockers: Consistent with the vasodilatory effects of alpha-blockers and PDE5 inhibitors, the concomitant use of ACT TADALAFIL with non-selective alpha-blockers may lead to symptomatic hypotension in some patients. Patients should be stable on alpha-blocker therapy prior to initiating a PDE5 inhibitor (see WARNINGS AND PRECAUTIONS, ACTION AND CLINICAL PHARMACOLOGY).

No significant decreases in blood pressure were observed when tadalafil 10 or 20 mg doses were administered to subjects taking the selective alpha[1]-adrenergic blocker, alfuzosin, or the selective alpha[1A]-adrenergic blocker, tamsulosin. ACT TADALAFIL may be administered with selective alpha[1 or 1A] blockers such as alfuzosin or tamsulosin.

When tadalafil 20 mg was administered to healthy subjects taking the recommended dose (4 mg or 8 mg daily) of the alpha[1]-adrenergic blocker, doxazosin, there was an augmentation of the blood-pressure-lowering effect of doxazosin. Caution should be exercised when prescribing ACT TADALAFIL to patients who are taking alpha[1] blockers such as doxazosin, as simultaneous administration may lead to symptomatic hypotension in some patients.

Antihypertensive Agents: In clinical pharmacology studies, the potential for tadalafil 10 or 20 mg to augment the hypotensive effects of antihypertensive agents was examined. Major classes of antihypertensive agents were studied, including calcium channel blockers (amlodipine), angiotensin converting enzyme (ACE) inhibitors (enalapril), beta-adrenergic receptor blockers (metoprolol), thiazide diuretics (bendrofluzide), and angiotensin II receptor blockers (various types and doses, alone or in combination with thiazides, calcium channel blockers, beta-blockers, and/or alpha-blockers). Tadalafil had no clinically significant interaction with any of these classes. Analysis of Phase 3 clinical trial data also showed no difference in adverse events in patients taking tadalafil tablets with or without antihypertensive medications.

Prior to prescribing ACT TADALAFIL, physicians should carefully consider whether their patients with certain underlying conditions could be adversely affected by vasodilatory effects, especially in combination with sexual activity. Patients with increased susceptibility to vasodilators include those with left ventricular outflow obstruction (e.g., aortic stenosis, hypertrophic obstructive cardiomyopathy), or those with the rare syndrome of multiple system atrophy, manifesting as severely impaired autonomic control of blood pressure.

Alcohol: Tadalafil did not affect alcohol concentrations, and alcohol did not affect tadalafil concentrations. At high doses of alcohol (0.7 g/kg, mean maximum blood concentration 0.08%), the addition of tadalafil 10 or 20 mg did not induce statistically significant mean blood pressure

decreases. In some subjects, postural dizziness and orthostatic hypotension were observed. When tadalafil was administered with lower doses of alcohol (0.6 g/kg), hypotension was not observed and dizziness occurred with similar frequency to alcohol alone.

Alcohol consumption may decrease the ability to attain an erection and may also temporarily decrease blood pressure. PDE5 inhibitors, including tadalafil, are vasodilators and may augment the blood-pressure-lowering effect of alcohol.

Potential for Other Drugs to Affect ACT TADALAFIL (Tadalafil)

Antacids: Simultaneous administration of an antacid (magnesium hydroxide/aluminum hydroxide) and tadalafil 10 mg reduced the apparent rate of absorption of tadalafil without altering exposure (AUC) to tadalafil.

H₂ Antagonists: An increase in gastric pH resulting from administration of H₂ antagonists, e.g., nizatidine, had no significant effect on the pharmacokinetics of tadalafil 10 mg dose.

Cytochrome P450 Inhibitors: Tadalafil is a substrate of and principally metabolized by CYP3A4. Studies have shown that drugs that inhibit or induce CYP3A4 can alter tadalafil exposure.

CYP3A4 inhibitor – Ketoconazole (400 mg daily), a selective and potent inhibitor of CYP3A4, increased tadalafil AUC by 312% and C_{max} by 22% following a tadalafil 20 mg dose. Ketoconazole (200 mg daily) increased tadalafil AUC by 107% and C_{max} by 15% following a tadalafil 10 mg dose.

HIV protease inhibitor – Ritonavir (200 mg twice daily), an inhibitor of CYP3A4, CYP2C9, CYP2C19, and CYP2D6, increased tadalafil AUC by 124%, with no change in C_{max}, following a tadalafil 20 mg dose.

Daily use of ACT TADALAFIL 10 or 20 mg should be avoided in patients taking protease inhibitors (e.g., ritonavir) or other potent CYP3A4 inhibitors (e.g., ketoconazole). A starting dose of 10 mg prior to anticipated sexual activity should be considered for these patients, but no more frequently than on alternate days, and not exceeding 3 times a week. If the 10 mg dose is tolerated but insufficiently effective, the dose may be increased to 20 mg. If the 10 mg dose is not tolerated, ACT TADALAFIL *On-Demand* dosing should be discontinued (see DOSAGE AND ADMINISTRATION).

ACT TADALAFIL 5 mg for *Once-a-Day* use may be considered for these patients. The dosage may be decreased to 2.5 mg *Once-a-Day*, based on individual tolerability.

Grapefruit juice being a weak inhibitor of CYP3A4 gut wall metabolism, may give rise to modest increases in plasma levels of tadalafil.

Cytochrome P450 Inducers: Studies have shown that drugs that induce CYP3A4 can decrease tadalafil exposure.

CYP3A4 inducer – Rifampin (600 mg daily), a selective CYP3A4 inducer, reduced tadalafil AUC by 88% and C_{max} by 46%, following a tadalafil 10 mg dose.

Although specific interactions have not been studied, other CYP3A4 inducers, such as carbamazepine, phenytoin, and phenobarbital, would likely decrease tadalafil exposure. No dose adjustment is warranted. The reduced exposure of tadalafil with the coadministration of rifampin or other CYP3A4 inducers can be anticipated to decrease the efficacy of tadalafil for once daily use; the magnitude of decreased efficacy is unknown.

Potential for ACT TADALAFIL (Tadalafil) to Affect Other Drugs

Acetylsalicylic Acid (ASA): Tadalafil 20 mg did not potentiate the increase in bleeding time caused by ASA.

Cytochrome P450 Substrates: Tadalafil is not expected to cause clinically significant inhibition or induction of the clearance of drugs metabolized by CYP450 isoforms. Studies have confirmed that tadalafil does not inhibit or induce CYP450 isoforms, including CYP1A2, CYP3A4, CYP2C9, CYP2C19, CYP2D6, and CYP2E1.

CYP1A2 substrate (e.g. Theophylline): Tadalafil 10 mg had no clinically significant effect on the pharmacokinetics of theophylline. When tadalafil 10 mg was administered to subjects taking theophylline, a small augmentation (3 beats per minute) of the increase in heart rate associated with theophylline was observed.

CYP2C9 substrate (e.g. Warfarin): Tadalafil 10 and 20 mg doses had no clinically significant effect on exposure (AUC) to S-warfarin or R-warfarin, nor did tadalafil affect changes in prothrombin time induced by warfarin.

CYP3A4 substrates (e.g. Midazolam or Lovastatin): Tadalafil 10 or 20 mg had no clinically significant effect on exposure (AUC) to midazolam or lovastatin.

DOSAGE AND ADMINISTRATION

Treatment of ED

Dosage Consideration:

The management of erectile dysfunction should be individualized. Dosage and regimen should be discussed between the physician and the patient based on effectiveness and tolerability. ACT TADALAFIL for treatment of ED works only in the presence of sexual stimulation.

ACT TADALAFIL On -Demand Dosing:

The recommended dose of ACT TADALAFIL *On-Demand* for treatment of ED is 20 mg taken prior to anticipated sexual activity, without regard to food. The dose may be adjusted based on individual tolerability and effectiveness. The maximum recommended dosing frequency is once per day. ACT TADALAFIL doses of 10 mg and 20 mg are intended for use prior to anticipated sexual activity and are not recommended for continuous daily use.

ACT TADALAFIL has been shown to be effective within 30 minutes of taking the tablet, and up to 36 hours later. Patients may initiate sexual activity at varying time points relative to dosing, in order to determine their own optimal window of responsiveness.

For *On-Demand* dosing, ACT TADALAFIL may be administered with selective alpha-[1 or 1A] blockers such as alfuzosin or tamsulosin, and no dosage adjustment of ACT TADALAFIL is required. However, when prescribing ACT TADALAFIL to patients who are taking non-selective alpha-blockers such as doxazosin, the recommended starting dose is 10 mg.

Daily use of ACT TADALAFIL 10 or 20 mg should be avoided in patients with renal or hepatic impairment and those taking protease inhibitors (e.g., ritonavir) or other potent CYP3A4 inhibitors (e.g., ketoconazole). A starting dose of 10 mg prior to anticipated sexual activity should be considered for these patients, but no more frequently than on alternate days, and not exceeding 3 times a week. If the 10 mg dose is tolerated but insufficiently effective, the dose may be increased to 20 mg. If the 10 mg dose is not tolerated, ACT TADALAFIL *On –Demand* dosing should be discontinued (see ACTION AND CLINICAL PHARMACOLOGY – Pharmacokinetics in Special Populations, WARNINGS AND PRECAUTIONS, and DRUG INTERACTIONS). See also CONTRAINDICATIONS – Nitrates, and WARNINGS AND PRECAUTIONS – Alpha-blockers and Antihypertensives.

There are no controlled clinical data on the safety or efficacy of tadalafil in the following groups; if prescribed, this should be done with caution:

- patients with severe renal insufficiency (creatinine clearance < 30 mL/min)
- patients with severe hepatic insufficiency (Child-Pugh Class C).

ACT TADALAFIL *Once-a-Day* Dosing:

The recommended dose of ACT TADALAFIL *Once-a-Day* for treatment of ED is 5 mg per day, taken at approximately the same time each day, without regard to food and without regard to timing of sexual activity. The dosage may be decreased to 2.5 mg once a day, based on individual tolerability.

No dose adjustment is required when ACT TADALAFIL *Once-a-Day* is used in combination with alpha blockers.

No dose adjustment is required in patients with mild to moderate renal or hepatic impairment, and those taking protease inhibitors (e.g., ritonavir) or other potent CYP3A4 inhibitors (e.g., ketoconazole).

ACT TADALAFIL for *Once-a-Day* use is not recommended for patients with severe renal or hepatic impairment. See also CONTRAINDICATIONS – Nitrates, and WARNINGS AND PRECAUTIONS – Alpha-blockers and Antihypertensives.

Treatment of BPH and ED/BPH:

The recommended dose of ACT TADALAFIL *Once-a-Day* for treatment of BPH and ED/BPH is 5 mg per day, taken at approximately the same time each day, without regard to food and in men

with ED, without regard to timing of sexual activity.

No dose adjustment is required when ACT TADALAFIL *Once-a-Day* is used in combination with alpha blockers. ACT TADALAFIL is not recommended for use in combination with alpha blockers for the treatment of BPH (see WARNINGS AND PRECAUTIONS – Alpha-blockers and Antihypertensives).

No dose adjustment is required in patients with mild to moderate renal or hepatic impairment, and those taking protease inhibitors (e.g., ritonavir) or other potent CYP3A4 inhibitors (e.g., ketoconazole). The dosage may be decreased to 2.5 mg/day in these patients, based on individual tolerability.

ACT TADALAFIL for *Once-a-Day* use is not recommended for patients with severe renal or hepatic impairment. See also CONTRAINDICATIONS – Nitrates, and WARNINGS AND PRECAUTIONS – Alpha-blockers and Antihypertensives.

OVERDOSAGE

| |
|---|
| For management of a suspected drug overdose, contact your regional Poison Control Centre. |
|---|

Symptoms And Treatment Of Overdosage

Single doses of up to 500 mg tadalafil have been given to healthy subjects, and multiple doses of 100 mg/day for 21 days have been given to patients. Adverse events (e.g., headache, dyspepsia) were similar to those seen at lower doses.

In cases of overdose, standard supportive measures should be adopted as required. Renal dialysis is not expected to accelerate clearance, as tadalafil is highly bound to plasma proteins.

Treatment Of Priapism

All patients should be counselled to contact a physician if they experience any erection persisting for more than 4 hours. Priapism should be treated according to established medical practice. One algorithm aimed primarily at treating priapism secondary to pharmacological agents is presented below:

Procedure 1 - External Perineal Compression: Although frequently unsuccessful, the use of prolonged external perineal compression, including ice, may be applied as a temporizing measure. If procedure 1 is unsuccessful, proceed to procedure 2.

Procedure 2 - Penile Aspiration: Place the patient in the supine position and assure local anesthesia of the penis. The penile shaft should be punctured at either the 2 o'clock or the 10 o'clock position, and 20-30 mL of blood aspirated from the corpus cavernosum. If detumescence has occurred, the penis should be dressed with an elasticized bandage to ensure continued emptying of the corpora and to compress the puncture site(s). If procedure 2 is unsuccessful, proceed to procedure 3.

Procedure 3 - Intracavernous Injection of an Alpha-Adrenergic Agonist: If aspiration alone fails to achieve detumescence, the corpus cavernosum can be injected with a solution of phenylephrine (10 mg in 19 mL of 0.9% saline = 500 mcg/mL, and inject 0.1-0.2 mL every 2-5 minutes, for up to 10 doses). Clinicians should refer to the prescribing information for phenylephrine prior to its use.

If the above algorithm fails to achieve detumescence in the patient, a urologist should be consulted immediately. Penile tissue damage and/or permanent loss of potency may result if priapism is not treated immediately.

ACTION AND CLINICAL PHARMACOLOGY

Tadalafil is a potent, selective, reversible inhibitor of cyclic guanosine monophosphate (cGMP)-specific phosphodiesterase type 5 (PDE5).

Mechanism of Action

When sexual stimulation causes the local release of nitric oxide in the corpus cavernosum, nitric oxide then activates the enzyme guanylyl cyclase, which results in increased levels of cGMP. The increased levels of cGMP in the corpus cavernosum produce smooth muscle relaxation and inflow of blood into the penile tissues, thereby producing an erection. PDE5 degrades cGMP in the corpus cavernosum, and the inhibition of PDE5 by tadalafil maintains increased levels of cGMP in the corpus cavernosum. Tadalafil has no effect on penile blood flow in the absence of sexual stimulation.

The mechanism for reducing BPH symptoms has not been fully established. The effect of PDE5 inhibition on cGMP concentration seen in the corpus cavernosum and pulmonary arteries is also observed in the smooth muscle of prostate, bladder and their vascular supply. The vascular relaxation results in increased blood perfusion and may reduce BPH symptoms. Relaxation of stromal smooth muscle of the prostate and bladder may complement these vascular effects without compromising bladder emptying.

Studies *in vitro* have shown that tadalafil is a potent inhibitor of PDE5. PDE5 is an enzyme found in smooth muscle of the corpus cavernosum, prostate and bladder, as well as in vascular and visceral smooth muscle, skeletal muscle, platelets, kidney, lung, and cerebellum. The effect of tadalafil is more selective on PDE5 than on other phosphodiesterases. Tadalafil is > 10,000- fold more selective for PDE5 than for PDE1, PDE2, PDE4, and PDE7 enzymes, which are found in the heart, brain, blood vessels, liver, and other organs. Tadalafil is > 10,000-fold more selective for PDE5 than for PDE3, an enzyme found in the heart and blood vessels. This selectivity for PDE5 over PDE3 is important because PDE3 is an enzyme involved in cardiac contractility. Additionally, tadalafil is approximately 700-fold more potent for PDE5 than for PDE6, an enzyme which is found in the retina and is responsible for phototransduction. Tadalafil is also > 9000-fold more potent for PDE5 than for PDE8 through PDE10. Tadalafil is 14-fold more potent for PDE5 than for PDE11A1 and 40-fold more potent for PDE5 than for PDE11A4, two of the four known forms of PDE11. PDE11 is an enzyme found in human prostate, testes, skeletal muscle and in other tissues. *In vitro*, tadalafil inhibits human recombinant PDE11A1 and, to a lesser degree, PDE11A4 activities at concentrations within the therapeutic range. The physiological role and clinical consequence of

PDE11 inhibition in humans have not been defined.

Pharmacodynamics

Studies of Tadalafil on Blood Pressure and Heart Rate

Tadalafil 10 or 20 mg doses administered to healthy subjects produced no significant difference compared to placebo in supine systolic and diastolic blood pressure (difference in the mean maximal decrease of 1.6/0.8 mm Hg, respectively), and in standing systolic and diastolic blood pressure (difference in the mean maximal decrease of 0.2/4.6 mm Hg, respectively). In addition, there was no significant effect on heart rate.

When tadalafil and certain oral antihypertensive medications (amlodipine, enalapril, metoprolol, bendrofluazide, angiotensin II receptor blockers) were assessed in drug interaction studies, tadalafil 10 or 20 mg doses did not result in clinically significant augmentation of the antihypertensive effects of those medications (see DRUG INTERACTIONS). Analysis of Phase 3 clinical trial data also showed no difference in adverse events in patients taking tadalafil with or without antihypertensive medications.

Larger effects were recorded among subjects receiving concomitant nitrates (see CONTRAINDICATIONS).

The potential hemodynamic interactions of tadalafil with a non-selective alpha-blocker (doxazosin 4, 8 mg), a selective [1A] alpha-blocker (tamsulosin 0.4 mg) and a selective [1] alpha-blocker (alfuzosin 10 mg) were investigated in randomized, double-blind, crossover design studies. Blood pressure (BP) and heart rate were recorded before dosing and for 24 hours after dosing.

Tadalafil 20 mg augmented the hypotensive effect of 8 mg doxazosin by producing a mean maximal decrease in standing systolic BP (SBP) that was significantly greater than placebo (a mean difference of 9.8 mm Hg). Analysis of BP outliers showed that the number of subjects with a standing SBP < 85 mm Hg was greater after doxazosin plus tadalafil (28%) versus doxazosin plus placebo (6%). A further clinical pharmacology study was performed in order to investigate the lower dose of 4 mg doxazosin. The changes produced in that study were comparable to those observed in the earlier study.

In subjects on tamsulosin, tadalafil 10 and 20 mg produced mean maximal decreases in standing SBP that were similar to placebo (mean difference of 1.7 and 2.3 mm Hg, respectively). No subject taking tamsulosin had a decrease in standing SBP < 85 mm Hg. In subjects receiving alfuzosin, tadalafil 20 mg also produced a maximal decrease in SBP that was not significantly different from that after placebo (mean difference of 4.35 mm Hg). One subject taking alfuzosin had an asymptomatic SBP < 85 mm Hg.

No vasodilatory adverse events were observed when tadalafil was administered with tamsulosin or alfuzosin. Two such events (dizziness, vertigo) were reported following administration of tadalafil with doxazosin. No syncope was reported in these studies.

Studies of Tadalafil on Other Cardiac/Hemodynamic Parameters

In patients with stable coronary artery disease (CAD) and demonstrable ischemia with exercise, tadalafil 10 mg was non-inferior to placebo with respect to effect on time to ischemia. In a separate double-blind, placebo-controlled study to evaluate the effects of tadalafil on myocardial perfusion in patients with CAD, tadalafil 20 mg had no significant effect on myocardial blood flow, both at rest and during pharmacological stress with dobutamine.

Tadalafil at doses up to 500 mg did not significantly change cardiac output and did not significantly impact patients' hemodynamic response to exercise. The effect of tadalafil has not been evaluated in cardiac catheterization studies.

No tadalafil-related changes in electrocardiographic measures, including QTc interval, were observed following administration of tadalafil single doses up to 500 mg and multiple doses of up to 100 mg once-daily for 21 days, to healthy subjects or patients. ECGs were obtained pre-and post-dose, spanning the period from the expected T_{max} of tadalafil (2 hours) to the expected T_{max} of the primary metabolite (methylecatechol glucuronide, 24 hours).

In clinical pharmacology studies, tadalafil 10 and 20 mg had no clinically significant effect on acetylsalicylic acid-induced prolongation of bleeding time or warfarin-induced changes in prothrombin time (See PRECAUTIONS, DRUG INTERACTIONS). Also, in clinical studies there was no evidence of bleeding-related adverse events associated with tadalafil treatment.

Studies of Tadalafil on Vision

In a study to assess the effects of a single dose of tadalafil 40 mg on vision, no impairment of colour discrimination (blue/green) was detected using the Farnsworth-Munsell 100-hue test. This finding is consistent with the low affinity of tadalafil for PDE6 compared to PDE5 (see CLINICAL PHARMACOLOGY, Mechanism of Action). In addition, no effects were observed on visual acuity, electroretinograms, intraocular pressure, or pupillometry. Across all clinical studies with tadalafil 10 or 20 mg, reports of changes in colour vision were rare (< 0.1% of patients).

Studies of Tadalafil on Sperm Characteristics

Three studies were conducted in men, ages 45-70 years, to assess the potential effect on spermatogenesis of tadalafil 10 mg (one 6-month study) and 20 mg (one 6-month and one 9-month study) administered once daily. In all 3 studies, there were no adverse effects on sperm morphology or sperm motility. There were also no significant changes in mean concentrations of the reproductive hormones, testosterone, luteinizing hormone or follicle-stimulating hormone with either 10 or 20 mg of tadalafil compared to placebo. No decrease in sperm concentration was observed in the study of 20 mg tadalafil taken for 6 months. In the study of 10 mg tadalafil for 6 months and the study of 20 mg tadalafil for 9 months, results showed a statistically significant decrease in mean sperm concentration relative to placebo. The clinical relevance of this to human fertility is unknown. In the 9-month study (n=125 [tadalafil 20 mg], n=128 [placebo]), decreases in sperm concentration were in a few patients (but not all) associated with higher ejaculatory frequency, which may have resulted from tadalafil-related improvement in sexual function.

The amount of tadalafil found in the ejaculate of most subjects on repeated tadalafil dosing was negligible; however, a few subjects showed unexplained higher levels of tadalafil in their ejaculate.

Studies of Tadalafil on Erectile Function

The efficacy and safety of tadalafil at doses of 2 to 100 mg have been evaluated in clinical trials up to 24 weeks duration, involving over 4000 patients. Tadalafil 10 mg or 20 mg *On-Demand* or tadalafil 2.5 mg or 5 mg for *Once-a-Day* use, is effective in improving erectile function in men with ED. Erectile function effects of tadalafil were dose-related. In clinical studies assessing patients' ability to engage in successful and satisfying sexual intercourse, tadalafil demonstrated highly statistically significant improvement compared with placebo. Additionally, partners of patients on tadalafil had statistically significant greater satisfaction with sexual intercourse compared with partners of patients on placebo.

Overall, tadalafil consistently showed efficacy in a broad and representative population that included patients with ED of various severities (Mild, Moderate, Severe), etiologies (including patients with diabetes), ages (21 to 86 years), and ethnicities. Patients on tadalafil therapy demonstrated consistent and statistically significant improvement in erectile function, compared to patients on placebo. The period of responsiveness to tadalafil was evaluated in an "at-home" setting and by office-based RIGISCAN™. These studies demonstrated that tadalafil 20 mg significantly improved patients' ability to have successful sexual intercourse as early as 16 minutes after dose administration and up to 36 hours after dose administration. The treatment effect did not diminish over time.

Studies of Tadalafil in Patients with Benign Prostatic Hyperplasia

A randomized, double-blind, placebo-controlled, 12 week study assessed the effect of tadalafil 20 mg administered once daily on detrusor pressure at peak urinary flow rate (pdet Q_{max}) in 200 men with BPH. Subjects had a mean age of 59 years and the majority of subjects (64%) had severe BPH (IPSS ≥ 20). Tadalafil 20 mg administered once daily showed no adverse effects on bladder function.

A randomized, double-blind, placebo controlled, 12 week study assessed the potential for adverse hemodynamic effects from the coadministration of tadalafil 5mg *Once-a-Day* in men on a stable dose of alpha blocker therapy for BPH (tamsulosin, alfuzosin, doxazosin, terazosin). Subjects had a mean age of 67 years; (25% ≥75 years).

When tadalafil tablets 5 mg *Once-a-Day* or placebo was added to stable alpha-blocker therapy in BPH patients, there was no statistically significant difference in treatment-emergent adverse events possibly related to hypotension or signs of orthostatic hypotension.

Pharmacokinetics

Absorption - Tadalafil is rapidly absorbed after oral administration and the mean maximum observed plasma concentration (C_{max} of 189 mcg/L at 10 mg and 378 mcg/L at 20 mg) is achieved at a median time of 2 hours after dosing. The absolute bioavailability of tadalafil has not been determined.

The rate and extent of absorption of tadalafil are not influenced by food, thus ACT TADALAFIL may be taken with or without food. The time of dosing (morning versus evening) had no clinically

relevant effects on the rate and extent of absorption.

Distribution - The mean volume of distribution is approximately 64 L at steady-state, indicating that tadalafil is distributed into tissues. At therapeutic concentrations, 94% of tadalafil in plasma is bound to proteins. Protein binding is not affected by impaired renal function.

Less than 0.0005% of the administered dose appeared in the semen of healthy subjects.

Metabolism - Tadalafil is predominantly metabolized by the cytochrome P450 (CYP) 3A4 isoform. The major circulating metabolite is the methylcatechol glucuronide. This metabolite is at least 13,000-fold less potent than tadalafil for PDE5. Consequently, it is not expected to be clinically active at observed metabolite concentrations.

Elimination - The mean oral clearance for tadalafil is 2.5 L/hr, and the mean half-life is 17.5 hours in healthy subjects. Tadalafil is excreted predominantly as inactive metabolites, mainly in the feces (approximately 61% of the dose) and to a lesser extent in the urine (approximately 36% of the dose).

Tadalafil pharmacokinetics in healthy subjects are linear with respect to time and dose. Over a dose range of 2.5 to 20 mg, exposure (AUC) increases proportionally with dose. Steady-state plasma concentrations are attained within 5 days of once-daily dosing.

Pharmacokinetics determined with a population approach in patients with erectile dysfunction are similar to pharmacokinetics in subjects without erectile dysfunction.

Special Populations and Conditions

Geriatric - Healthy male elderly subjects (65 years or over) had a lower oral clearance of tadalafil, resulting in 25% higher exposure (AUC) with no effect on C_{max} relative to that observed in healthy subjects 19 to 45 years of age. No dose adjustment is warranted based on age alone. However, greater sensitivity to medications in some older individuals should be considered. (See WARNINGS AND PRECAUTIONS, Use in the Elderly).

Children - Tadalafil has not been evaluated in individuals less than 18 years old.

Hepatic Insufficiency - In a clinical pharmacology study using tadalafil 10 mg, tadalafil exposure (AUC) in subjects with mild and moderate hepatic impairment (Child-Pugh Class A and B) was comparable to exposure in healthy subjects. Daily use of ACT TADALAFIL 10 or 20 mg should be avoided in patients with hepatic impairment. A starting dose of 10 mg prior to anticipated sexual activity should be considered for these patients, but no more frequently than on alternate days, and not exceeding 3 times a week. If the 10 mg dose is tolerated but insufficiently effective, the dose may be increased to 20 mg. If the 10 mg dose is not tolerated, ACT TADALAFIL *On -Demand* dosing should be discontinued (see PRECAUTIONS: Use in Patients with Hepatic Impairment, and DOSAGE AND ADMINISTRATION).

ACT TADALAFIL 5 mg *Once-a-Day* for treatment of ED, BPH and ED/BPH may be considered for patients with hepatic impairment. The dosage may be decreased to 2.5 mg *Once-a-Day*, based on individual tolerability. Use of ACT TADALAFIL *Once-a-Day* is not recommended in patients

with severe hepatic impairment.

Renal Insufficiency - In clinical pharmacology studies using single-dose tadalafil 5 to 20 mg, tadalafil exposure (AUC) approximately doubled in subjects with mild (creatinine clearance 51 to 80 mL/min) or moderate (creatinine clearance 31 to 50 mL/min) renal insufficiency, and in subjects with end-stage renal disease on dialysis. In dialysis patients, C_{max} was 41% higher than that observed in healthy subjects. Hemodialysis contributed negligibly to tadalafil elimination. Daily use of ACT TADALAFIL 10 or 20 mg should be avoided in patients with renal impairment. A starting dose of 10 mg prior to anticipated sexual activity should be considered for these patients, but no more frequently than on alternate days, and not exceeding 3 times a week. If the 10 mg dose is tolerated but insufficiently effective, the dose may be increased to 20 mg. If the 10 mg dose is not tolerated, ACT TADALAFIL *On -Demand* dosing for treatment of ED should be discontinued (see WARNINGS AND PRECAUTIONS: Use in Patients with Renal Impairment, and DOSAGE AND ADMINISTRATION).

ACT TADALAFIL 5 mg *Once-a-Day* for treatment of ED, BPH or ED/ BPH may be considered for patients with mild to moderate renal impairment. The dosage may be decreased to 2.5 mg *Once-a-Day*, based on individual tolerability. ACT TADALAFIL for *Once-a-Day* use is not recommended for patients with severe renal impairment.

Patients with Diabetes Mellitus - In male patients with diabetes mellitus after a 10 mg tadalafil dose, exposure (AUC) was reduced approximately 19% and C_{max} was 5% lower than that observed in healthy subjects. No dose adjustment is warranted.

Patients with BPH - In patients with BPH following single and multiple-doses of 20 mg tadalafil, no statistically significant differences in exposure (AUC and C_{max}) were observed between elderly (≥ 70 to 85 years) and younger (≤ 60 years) subjects. No clinically relevant differences in tadalafil exposure were observed between patients with BPH and healthy subjects. No dose adjustment is warranted.

STORAGE AND STABILITY

Store at controlled room temperature, 15-30° C.

DOSAGE FORMS, COMPOSITION AND PACKAGING

ACT TADALAFIL (tadalafil) is supplied as round (2.5 mg) and almond shaped (5 mg, 10 mg and 20 mg) film-coated tablets:

- 2.5 mg (for *Once-a-Day* use): Yellow to light yellow, round shaped, beveled edge, coated tablets debossed with "336" on one side and plain on other side
- 5 mg (for *Once-a-Day* use): Yellow color, almond shaped, beveled edge, coated tablets debossed with "L466" on one side and plain on other side.
- 10 mg (for *On-Demand* dosing): Yellow color, almond shaped, beveled edge, coated tablets debossed with "L467" on one side and plain on other side.
- 20 mg (for *On-Demand* dosing): Yellow color, almond shaped, beveled edge, coated tablets debossed with "L468" on one side and plain on other side.

Each tablet contains 2.5, 5, 10 or 20 mg of tadalafil and the following inactive ingredients: hydroxypropyl cellulose, lactose monohydrate, croscarmellose sodium, sodium lauryl sulphate, povidone, colloidal silicon dioxide and magnesium stearate. The film-coating contains hypromellose, titanium dioxide, macrogol, talc and iron oxide.

Availability:

- **2.5 mg tablets** (for *Once-a-Day* use): Blisters of 30 tablets.
- **5 mg tablets:** (for *Once-a-Day* use): Blisters of 30 tablets.
- **10 mg tablets:** (for *On -Demand* dosing): Blisters of 4 tablets.
- **20 mg tablets:** (for *On -Demand* dosing): Bottles of 30s and Blisters of 4 tablets.

PART II: SCIENTIFIC INFORMATION

PHARMACEUTICAL INFORMATION

Drug Substance

Proper name: Tadalafil
Chemical name: (6R-trans)-6-(1,3-benzodioxol-5-yl)-2,3,6,7,12,12a-hexahydro-2-methyl-pyrazino [1',2':1,6] pyrido [3,4-b]indole-1,4-dione

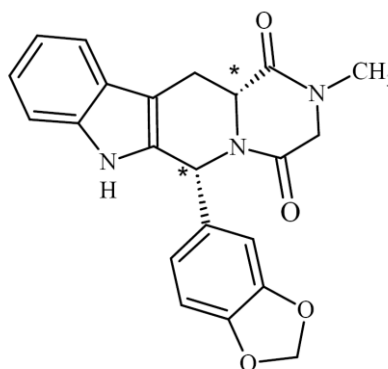
Or

Pyrazino[1',2':1,6]pyrido[3,4-b]indole-1,4-dione, 6-(1,3-benzodioxol-5-yl)-2,3,6,7,12,12a-hexahydro-2-methyl-, (6R-12aR)-.

Empirical formula: C₂₂H₁₉N₃O₄

Molecular weight: 389.40 g/mol

Structural formula:



* - *Two chiral carbon atoms*

Physicochemical properties:

Description: White to almost white powder.

Solubility: Freely soluble in dimethyl sulfoxide, slightly soluble in acetone and methylene chloride, very slightly soluble in ethanol, practically insoluble in water.

Melting point (By DSC): Single endotherm at about 300 °C

CLINICAL TRIALS

Comparative Bioavailability Studies

A double blinded, balanced, randomized, two treatment, two sequence, two period, single dose, crossover, bioequivalence study of ACT Tadalafil Tablets 20 mg of Teva Canada Limited and CIALIS® (Tadalafil) tablets 20 mg of Eli Lilly Canada Inc., was performed on 33 healthy human, adult male subjects under fasting conditions.

Comparative Bioavailability Data for ACT TADALAFIL (Tadalafil Tablets), 20 mg vs. PrCIALIS® (Tadalafil Tablets), 20 mg in Fasting Conditions

| Tadalafil (1 x 20 mg) From measured data Geometric Mean Arithmetic Mean (CV %) | | | | |
|--|------------------------------|------------------------------|----------------------------|-------------------------|
| Parameter | Test * | Reference † | % Ratio of Geometric Means | 90% Confidence Interval |
| AUC _T (ng.h/mL) | 9174.89 9449.94 (25.13) | 9629.03 9881.25 (23.54) | 95.24 | 89.79 to 101.02 |
| AUC _I (ng.h/ml) | 11208.27 11818.06 (33.33) | 11739.21 12395.19 (35.03) | 95.48 | 90.02 to 101.27 |
| C _{max} (ng/mL) | 348.03, 357.02 (23.10) | 369.90, 376.84 (19.88) | 93.97 | 87.48 to 100.95 |
| T _{max} [§] (h) | 3.33 (1.25, 5.00) | 3.00 (1.00, 5.00) | | |
| T _{1/2} [@] (hr) | 27.72 (37.78) | 28.14 (49.53) | | |

* ACT Tadalafil Tablets 20 mg of Teva Canada Limited

† CIALIS® (Tadalafil) Tablets 20 mg of Eli Lilly Canada Inc., purchased in Canada

§ Expressed as the median (range) only

@ Expressed as the Arithmetic mean (%CV) only

Tadalafil *On-Demand* for Treatment of ED – Pivotal Clinical Trials

Study Design - Tadalafil has been studied in the ED population in 5 randomized, double-blind, placebo-controlled, primary efficacy studies of 12 to 24 weeks duration (N=1112). Tadalafil was taken as needed, up to once daily. These studies included patients 21 to 82 years of age with ED of various severities (mild, moderate, severe), etiologies (organic, psychogenic, mixed) and with co-morbid conditions such as diabetes mellitus and cardiovascular disease, including hypertension. An additional primary efficacy study was performed in ED patients with diabetes mellitus.

Patients were required to have a history of erectile dysfunction (defined as a consistent change in the quality of erection that adversely affected the patient's satisfaction with sexual intercourse) of at least 3 months. Most (90%) patients reported ED of more than 1 year in duration. Patients had a clinical diagnosis of ED, as assessed by the investigator. About 5% of participants in the pivotal trials had pre-treatment IIEF-EF scores in the "No ED" range (defined as IIEF EF ≥ 26) distributed across all treatment arms: placebo: 5.3%, tadalafil 10 mg: 5.1%, and tadalafil 20 mg: 4.2%. See

WARNINGS, for patients with specific cardiovascular disease who were not included in the clinical trials. In addition, patients with significant renal insufficiency were excluded from these pivotal studies.

Several assessment tools were used to evaluate the effect of tadalafil on erectile function, including the International Index of Erectile Function (IIEF, including MAPI[®] version), Sexual Encounter Profile (SEP), and Global Assessment Question (GAQ). The primary endpoints of these studies included the Erectile Function Domain of the IIEF, and SEP Questions 2 and 3.

The IIEF is a recall questionnaire that was administered at the end of a treatment-free baseline period and subsequently at follow-up visits after randomization. The severity categories used in the studies of tadalafil were assigned based on an aggregated modification of the Cappelleri scale, i.e., No ED (26-30), mild ED (17-25), moderate ED (11-16), and severe ED (1-10). (See Bibliography: Cappelleri JC, Rosen RC, et al. 1999).

The Sexual Encounter Profile (SEP) is a diary in which patients recorded each sexual attempt made throughout the study. SEP Question 2 asked, “Were you able to insert your penis into your partner’s vagina?” SEP Question 3 asked, “Did your erection last long enough for you to have successful intercourse?”

The secondary outcome measures assessed the patient’s satisfaction with sexual intercourse and his satisfaction with his overall sex life/relationship. The measures included the Global Assessment Question (GAQ) and SEP Questions 4 and 5. GAQ asked “Has the treatment you have been taking during this study improved your erections?” SEP Question 4 asked “Were you satisfied with the hardness of your erection?” SEP Question 5 asked “Were you satisfied overall with this sexual experience?” In 3 of the 5 primary studies, partners completed a separate SEP diary that included a question assessing the partner’s satisfaction with the sexual experience.

Study Results - In an integrated analysis of 5 studies, the mean improvement from baseline in the IIEF EF domain score was statistically significantly greater for tadalafil 10 and 20 mg, compared to placebo. At completion of studies, patients receiving tadalafil 10 or 20 mg or placebo had mean IIEF EF domain endpoint scores of 21.1, 23.9, and 15.1, corresponding to mean changes from baseline of 6.5, 7.9, and 0.6, respectively (Table 5).

Table 5. Summary of Efficacy Variables in Tadalafil Pivotal Clinical Trials.

| Efficacy Variables | Placebo (N=308) | | Tadalafil 10 mg (N=321) | | Tadalafil 20 mg (N=258) | |
|---|--------------------|--------|----------------------------|--------|----------------------------|--------|
| | End Point | Change | End Point | Change | End Point | Change |
| <i>IIEF, mean</i> | | | | | | |
| Erectile Function domain score | 15.1 | 0.6 | 21.1 | 6.5* | 23.9 | 7.9* |
| Overall Satisfaction domain score | 5.2 | 0.5 | 6.7 | 1.8* | 7.4 | 2.4* |
| <i>SEP diary, mean per-patient % “yes” response</i> | | | | | | |
| Question 2 (Vaginal Penetration) | 48% | 2.0% | 73% | 24%* | 80% | 27%* |
| Question 3 (Successful Intercourse) | 31% | 6.0% | 58% | 34%* | 70% | 39%* |

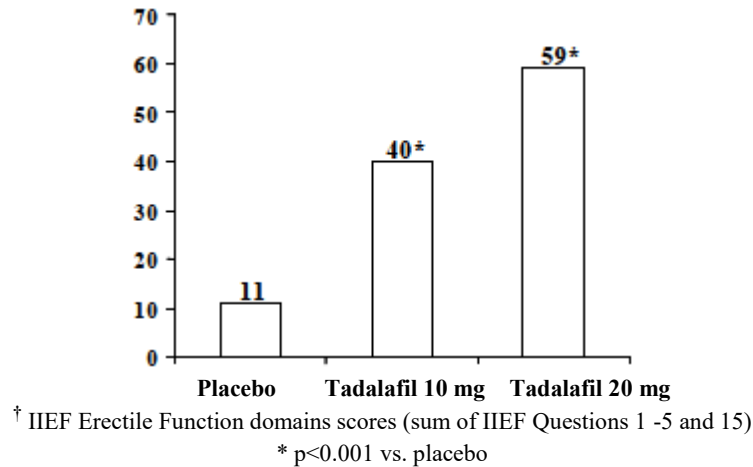
* p < 0.001 (Pairwise comparisons between placebo and each treatment were adjusted by the method of Dunnett).

IIEF: International Index of Erectile Function; SEP: Sexual Encounter Profile.

Maximum domain scores achievable for the Erectile Function and Overall Satisfaction domains of the IIEF are 30 and 10, respectively.

Tadalafil also demonstrated statistically significant improvement in erectile function as measured by the percentage of patients attaining a normal score ($EF \geq 26$) at endpoint on the IIEF EF domain. In the 5 primary efficacy studies in patients who had baseline IIEF EF domain scores of < 26 , a significantly greater percentage of patients taking tadalafil 10 or 20 mg attained normal erectile function during treatment, compared to patients on placebo (Figure 1).

Figure 1. Percent Patients Attaining Normal Erectile Function in Tadalafil Pivotal Clinical Trials.
Percentage of Patients Attaining IIEF[†] Scores of 26-30 (no ED while being treated)



Patient Confidence and Sexual Satisfaction - The IIEF also measures patients' confidence that they can attain and keep an erection sufficient for sexual intercourse (IIEF Question 15). In each study, tadalafil statistically significantly improved patient confidence. Analysis of the Intercourse Satisfaction and Overall Satisfaction domains of the IIEF showed that in each study tadalafil treatment provided statistically significant improvement in sexual satisfaction, as measured by both domains. Additionally, tadalafil improved the percentage of sexual encounters that were satisfying for the patient and his partner.

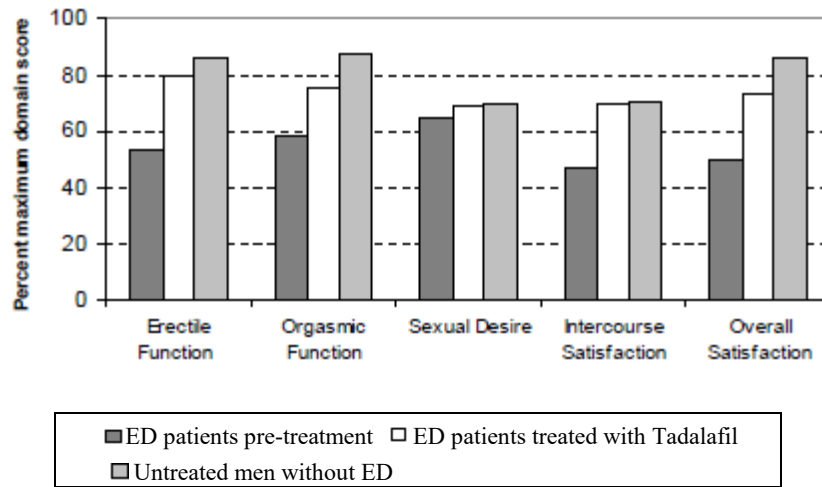
For each of the five domains of the IIEF, the mean scores at baseline and endpoint for patients treated with tadalafil 20 mg in the primary efficacy trials, along with the mean scores for a similarly aged control group without ED, are presented in Table 6 and Figure 2.

Table 6. Summary of IIEF Domain Scores in Tadalafil Placebo-Controlled Studies.

| IIEF Domain | Maximum Domain Score | Tadalafil 20 mg | | Mean Scores, Untreated Men Without ED* |
|--------------------------|----------------------|------------------------|------------------------|--|
| | | Mean Value at Baseline | Mean Value at Endpoint | |
| Erectile Function | 30 | 16.0 | 23.9 | 25.8 |
| Orgasmic Function | 10 | 5.8 | 7.6 | 8.8 |
| Sexual Desire | 10 | 6.5 | 6.9 | 7.0 |
| Intercourse Satisfaction | 15 | 7.1 | 10.5 | 10.6 |
| Overall Satisfaction | 10 | 5.0 | 7.4 | 8.6 |

* Source of control group data: Rosen RC, et al. *Urology* 1997;49(6):822-830.

Figure 2. Effect of Tadalafil 20 mg on Male Sexual Function Domains of the IIEF



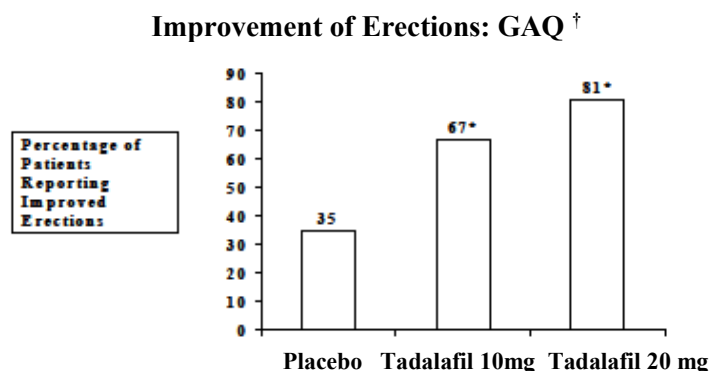
Source of control group data: Rosen, RC, et al. *Urology* 1997; 49(6):822-830.

A similar pattern of improvements over placebo was observed for the other 2 primary outcome measures (SEP Questions 2 and 3, see Table 5, above).

Tadalafil showed statistically significant improvement in patients' ability to achieve an erection sufficient for vaginal penetration and maintain the erection for successful intercourse as measured by the sexual encounter profile (SEP) diaries. In the primary efficacy studies, 75% of intercourse attempts were successful in tadalafil 20 mg-treated patients, and 61% in tadalafil 10 mg-treated patients, compared to 32% of intercourse attempts for patients on placebo ($p < 0.001$). This finding was confirmed by partner SEP responses. Tadalafil also significantly improved satisfaction with the hardness of erection, as measured by SEP-Q4 (mean change: placebo, 10%; tadalafil 10 mg, 37%; tadalafil 20 mg, 49%; $p < 0.001$ versus placebo for both tadalafil doses).

In the primary efficacy studies, patients taking tadalafil 10 or 20 mg reported improved erections based on the GAQ compared to patients taking placebo (Figure 3).

Figure 3. Percent Patients with Improvement of Erections, in Tadalafil Pivotal Clinical Trials.

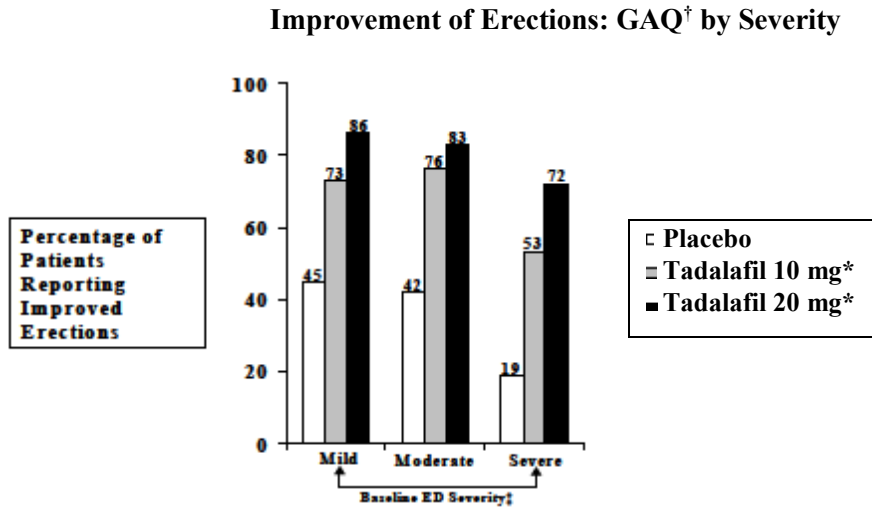


† GAQ: H as the treatment you have been taking during this study improved your erections?

* $p < 0.001$ v s. placebo

In addition, patients with ED of all degrees of disease severity reported improved erections while taking tadalafil 10 or 20 mg, compared to patients on placebo (Figure 4).

Figure 4. Percent Patients with Improvement of Erections, by Severity of ED at Baseline, in Tadalafil Pivotal Clinical Trials.



[†] GAQ: H as the treatment you have been taking during this study improved your erections?

[‡] Severity of ED determined by the IIEF EF domain score at baseline; severe (1-10), moderate (11-16), mild (17-30)

*p <0.001 for tadalafil 10 and 20 mg vs. placebo within each severity category

Efficacy in ED Patients with Diabetes Mellitus

Tadalafil is effective in treating ED in patients with diabetes mellitus. Patients with diabetes (N=451) were included in all 5 primary efficacy studies in patients with ED, and in one study that specifically assessed tadalafil in ED patients with type 1 or type 2 diabetes. Tadalafil produced statistically significant improvement in erectile function, ability to achieve successful intercourse, and sexual satisfaction. In these studies, 68% of 20-mg and 59% of 10-mg tadalafil-treated patients with diabetes reported improved erections based on the GAQ, compared to 29% of placebo-treated patients (p <0.001 for each dose versus placebo). The mean improvement from baseline in the IIEF EF domain score, and percentage of “Yes” responses to SEP Questions 2 and 3 were statistically significantly greater compared to placebo for tadalafil 10 and 20 mg (Table 7).

Table 7. Summary of Primary Efficacy Variables in Diabetic Patients - Tadalafil Pivotal Clinical Trials.

| Efficacy Variables | Placebo (N=141) | | Tadalafil 10 mg (N=142) | | Tadalafil 20 mg (N=119) | |
|---|-----------------|--------|-------------------------|--------|-------------------------|--------|
| | End Point | Change | End Point | Change | End Point | Change |
| <i>IIEF, mean</i> | | | | | | |
| Erectile Function domain score | 12.6 | 0.4 | 19.1 | 6.1* | 19.6 | 7.4* |
| Overall Satisfaction domain score | 4.9 | 0.3 | 6.2 | 1.6* | 6.2 | 1.8* |
| <i>SEP diary, mean per-patient % “yes” response</i> | | | | | | |
| Question 2 (Vaginal Penetration) | 30% | -3.0% | 60% | 23%* | 59% | 26%* |
| Question 3 (Successful Intercourse) | 19% | 1.0% | 48% | 30%* | 48% | 32%* |

* p < 0.001 (Pairwise comparisons between placebo and each treatment were adjusted by the method of Dunnett)

IIEF: International Index of Erectile Function; SEP: Sexual Encounter Profile.

Maximum domain scores achievable for the Erectile Function and Overall Satisfaction domains of the IIEF are 30 and 10, respectively.

Efficacy in ED Patients Following Radical Prostatectomy

Tadalafil was effective in treating patients who developed ED following bilateral nerve-sparing radical prostatectomy. In a double-blind, placebo-controlled study in this population (N=303), tadalafil 20 mg demonstrated clinically meaningful and statistically significant improvement in erectile function ($p < 0.001$), as measured by the EF domain of the IIEF questionnaire and Questions 2 and 3 of the SEP diary. The efficacy of doses lower than 20 mg were not evaluated in this population.

Period of Effectiveness

A study was conducted to evaluate the time of onset of effectiveness of tadalafil 10 or 20 mg. The primary endpoint of the study was the earliest time point after dosing at which there was a statistically significant difference in the percentage of successful intercourse attempts between tadalafil and placebo. For patients taking tadalafil 20 mg compared to placebo, a statistically significant difference was noted at 16 minutes.

In a clinical trial conducted to determine the duration of effectiveness of tadalafil, patients reported a statistically significantly greater percentage of successful intercourse attempts at approximately 24 hours (22 to 26 hours) following administration of tadalafil 10 or 20 mg when compared to placebo (56% and 67% vs. 42%, respectively). In addition, patients reported a statistically significantly greater percentage of successful intercourse attempts at approximately 36 hours (33 to 39 hours) following administration of tadalafil 10 or 20 mg when compared to placebo (56% and 62% vs. 33%, respectively). In this trial patients made up to four eligible attempts. Eighty-two percent of 20 mg tadalafil-treated patients who made at least one eligible attempt (from a maximum of four) at 24 hours post-dose, and 76% of 20 mg tadalafil-treated patients who made one or more eligible attempts at 36 hours post-dose, had at least one intercourse attempt that was successful.

Analyses of SEP Question 3 data from the placebo-controlled efficacy studies in patients with ED support the efficacy of tadalafil 10 and 20 mg from 30 minutes to 36 hours after dosing. During 12 weeks of treatment with tadalafil 10 or 20 mg, 50% of men attempted intercourse at 12–24 hours after dose on one or more occasions, and 33% of men attempted intercourse at 24–36 hours after dose. The mean percentage of ‘yes’ responses to SEP-Q3 for attempts made at both 12–24 and 24–36 hours after dosing was significantly greater ($p < 0.001$) for both tadalafil 10 and 20 mg groups than in the placebo group.

Further supportive data for onset and duration are provided by a placebo-controlled trial that employed penile plethysmography to evaluate the effectiveness of tadalafil 10 mg within 60 minutes of dosing and at 24 hours after dosing in men with erectile dysfunction. The proportion of patients who achieved $\geq 55\%$ rigidity (the rigidity required for vaginal penetration) for at least 3 consecutive minutes was evaluated at 15-minute increments up to 60 minutes following dosing (Table 8). The proportion of patients who achieved this endpoint was significantly greater than placebo at 45 minutes ($p=0.034$). Tadalafil 10 mg dose also significantly improved the proportion of responders 24 hours postdose (58.5% for tadalafil 10 mg versus 7.3% for placebo, $p < 0.001$).

Table 8. Penile Plethysmography Study with Tadalafil 10 mg: Subjects with Response \geq 55% Penile Rigidity for at least 3 Consecutive Minutes

| Time postdose (minutes) | Proportion of Responders | |
|-------------------------|--------------------------|---------------------------------|
| | Placebo (N=41) n (%) | 10 mg Tadalafil (N=41) n (%) |
| 15 | 4 (9.8) | 8 (19.5) |
| 30 | 6 (14.6) | 12 (29.3) |
| 45 | 8 (19.5) | 17 (41.5)* |
| 60 | 8 (19.5) | 20 (48.8)* |

* p value < 0.05 versus placebo

Cardiovascular Safety

An overview of the five phase 3 placebo-controlled studies that included an electrocardiogram at endpoint found no clinically important effects of tadalafil on the QT interval. Furthermore, morbidity and mortality rates from serious cardiovascular adverse events were no greater in patients with ED taking tadalafil than in the general population of men with ED. In a retrospective analysis of data from placebo-controlled and open-label clinical trials involving 12,487 patients treated with tadalafil (5771 patient-years of exposure) and 2047 patients on placebo (460 patient-years of exposure), the incidence rates of myocardial infarction and other cardiovascular treatment-emergent adverse events were no higher than expected in men treated with tadalafil than for a similar matched population of men. However, as with all PDE5 Inhibitors, tadalafil should not be used in combination with nitrates (See CONTRAINDICATIONS).

Efficacy of Tadalafil 2.5 mg and 5 mg *Once-a-Day* in Patients with ED

Tadalafil administered *Once-a-Day* was evaluated in 3 placebo-controlled clinical trials involving 853 patients of various ages (range 21-82 years) and ethnicities, with erectile dysfunction of various severities (mild, moderate, severe), etiologies, and with multiple comorbid conditions, including diabetes mellitus, hypertension, and other cardiovascular disease. Two of these studies were in the general ED population and one study was performed in ED patients with type 1 or type 2 diabetes.

In all 3 studies, tadalafil demonstrated clinically meaningful and statistically significant improvement in erectile function, as measured by the EF domain of the IIEF and Questions 2 and 3 of the SEP diary. In the two primary efficacy studies of general populations, 81% of patients reported that tadalafil 5 mg taken *Once-a-Day* improved their erections as compared to 29% with placebo. The percentage of successful intercourse attempts was 66% in tadalafil 5-mg treated patients as compared to 36% with placebo. Patients with ED in all severity categories reported improved erectile function with tadalafil for *Once-a-Day* use over the 24-hour period between doses. The treatment effect of tadalafil did not diminish over time.

Table 9. Primary Efficacy Variables in Tadalafil for *Once-a-Day* Use: General Population Trials.

| Efficacy Variables | Placebo (N=148) | | Tadalafil 2.5 mg (N=96) | | Tadalafil 5 mg (N=206) | |
|---|--------------------|--------|----------------------------|--------|---------------------------|--------|
| | End Point | Change | End Point | Change | End Point | Change |
| <i>IIEF, mean</i> | | | | | | |
| Erectile Function domain score | 14.9 | 1.3 | 19.2 | 6.2* | 21.9 | 8.6* |
| <i>SEP diary, mean per-patient % “yes” response</i> | | | | | | |
| Question 2 (Vaginal Penetration) | 50.4% | 6.5% | 64.9% | 23.9%* | 75.4% | 31.7%* |
| Question 3 (Successful Intercourse) | 32.9% | 10.5% | 50.2% | 31.4%* | 62.4% | 40.6%* |

* p <0.001 versus placebo by ANCOVA model. (Pairwise comparisons between placebo and each treatment were adjusted by the method of Dunnett).

IIEF: International Index of Erectile Function; SEP: Sexual Encounter Profile.

Maximum domain score achievable for the Erectile Function domain of the IIEF is 30.

Table 10. Primary Efficacy Variables in Tadalafil for *Once-a-Day* Use: Diabetic Trial.

| Efficacy Variables | Placebo (N=100) | | Tadalafil 2.5 mg (N=100) | | Tadalafil 5 mg (N=98) | |
|---|--------------------|--------|-----------------------------|--------|--------------------------|--------|
| | End Point | Change | End Point | Change | End Point | Change |
| <i>IIEF, mean</i> | | | | | | |
| Erectile Function domain score | 14.7 | 1.3 | 18.3 | 4.8* | 17.2 | 4.5* |
| <i>SEP diary, mean per-patient % “yes” response</i> | | | | | | |
| Question 2 (Vaginal Penetration) | 43.0% | 5.3% | 62.3% | 20.5%* | 61.1% | 28.9%* |
| Question 3 (Successful Intercourse) | 28.2% | 8.2% | 46.0% | 25.9%* | 41.1% | 25.0%* |

* p <0.001 versus placebo by ANCOVA model. (Pairwise comparisons between placebo and each treatment were adjusted by the method of Dunnett).

IIEF: International Index of Erectile Function; SEP: Sexual Encounter Profile.

Maximum domain score achievable for the Erectile Function domain of the IIEF is 30.

Tadalafil 5 mg *Once-a-Day* in Patients with BPH and ED/BPH

The efficacy and safety of tadalafil for *Once-a-Day* use for the treatment of the signs and symptoms of BPH was evaluated in 3 randomized, multinational, double-blinded, placebo- controlled, parallel-design, efficacy and safety studies of 12 weeks duration. Two of these studies were in men with BPH and one study was specific to men with both ED and BPH. An additional study in men with BPH included an active control therapy.

Efficacy Results in Patients with BPH

The first study (LVHG, Study 1) randomized 1058 patients to receive either tadalafil 2.5 mg, 5 mg, 10 mg or 20 mg for once daily use or placebo. The second study (LVHJ, Study 2) randomized 325 patients to receive either tadalafil 5 mg for once daily use or placebo. Patients with multiple co-morbid conditions such as diabetes mellitus, hypertension, and other cardiovascular disease were included. The full study population was 87% White, 2% Black, 11% other races; 15% was of Hispanic ethnicity.

The primary efficacy endpoint in the two studies that evaluated the effect of tadalafil for the signs and symptoms of BPH was the International Prostate Symptom Score (IPSS), a four week recall

questionnaire that was administered at the beginning and end of a placebo run-in period and subsequently at follow-up visits after randomization. The IPSS assesses the severity of irritative (frequency, urgency, nocturia) and obstructive symptoms (incomplete emptying, stopping and starting, weak stream, and pushing or straining), with scores ranging from 0 to 35; higher numeric scores representing greater severity. The BPH Impact Index (BII), which assesses the impact of urinary problems on overall health and activity, and maximum urinary flow rate (Q_{max}), an objective measure of urine flow, were also assessed in these trials.

The results for BPH patients with moderate to severe symptoms and a mean age of 63.2 years (range 44 to 87) who received either tadalafil 5 mg for once daily use or placebo (N=747) in Studies 1 and 2 are shown in Table 11 and Figures 5 and 6, respectively.

In each of these 2 trials, tadalafil 5 mg for once daily use resulted in statistically significant improvement in the total IPSS compared to placebo. Mean total IPSS showed improvement at the first scheduled observation and continued through the 12 week double-blind period. The treatment was safe and well-tolerated throughout an additional one-year open-label extension study.

Table 11. Mean IPSS Changes in BPH Patients in Two Tadalafil *Once-a-Day* Studies

| Total Symptom Score (IPSS) | Study 1 | | | Study 2 | | |
|---------------------------------|-----------------|-------------------------|---------|-----------------|------------------------|---------|
| | Placebo (N=210) | Tadalafil 5 mg (N= 212) | p-value | Placebo (N=164) | Tadalafil 5 mg (N=161) | p-value |
| Baseline | 17.1 | 17.3 | | 16.6 | 17.1 | |
| Change from Baseline to Week 12 | -2.1 | -4.7 | <0.001 | -3.6 | -5.6 | 0.004 |

Figure 5. Mean IPSS Changes in BPH Patients by Visit in Study 1

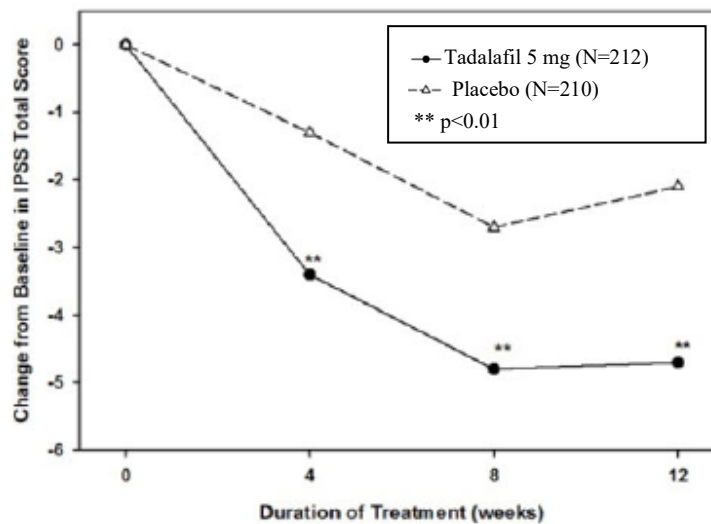
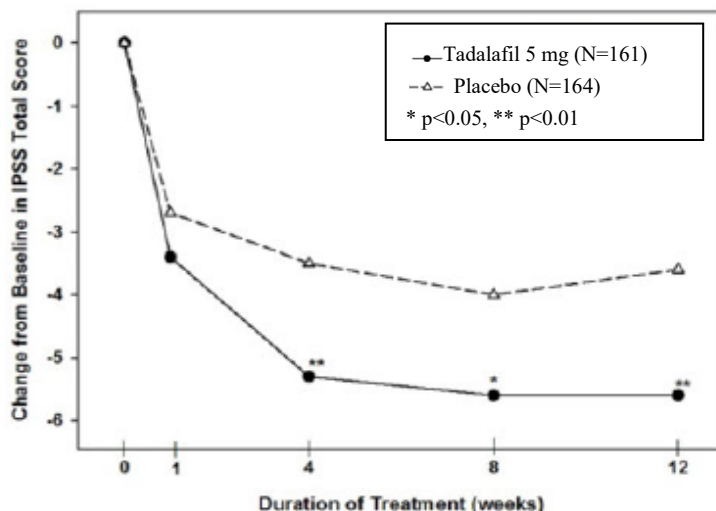


Figure 6. Mean IPSS Changes in BPH Patients by Visit in Study 2



In both Studies 1 and 2, mean Q_{\max} increased from baseline in both the treatment and placebo groups (*Study 1*: tadalafil 5 mg: 1.6 mL/sec, placebo: 1.2 mL/sec; *Study 2*: tadalafil 5 mg: 1.6 mL/sec, placebo: 1.1 mL/sec); however, these changes were not significantly different between groups. BII was evaluated as a secondary efficacy endpoint in Studies 1 and 2. In both studies, tadalafil 5 mg *Once-a-Day* improved BII from baseline to endpoint (*Study 1*: $p=.016$; *Study 2*: $p=.057$).

The results of Study 1 and Study 2 were further confirmed by a 12 week placebo-controlled study in men with BPH, in which tamsulosin 0.4 mg/day was included as an active control (LVID, *Study 3*). A total of 511 subjects were randomized (172 to placebo, 171 to tadalafil 5 mg, and 168 to tamsulosin 0.4 mg).

At the end of 12 weeks of treatment, patients on tadalafil *Once-a-Day* showed statistically significant improvement in total IPSS change from baseline when compared to placebo ($p=0.001$), as did patients on tamsulosin compared to placebo ($p=0.023$). There were statistically significant improvements in BII, a key secondary efficacy endpoint, compared with placebo in the tadalafil *Once-a-Day* group ($p=0.003$) and the tamsulosin group ($p=0.026$). Increases from baseline to endpoint were also observed for Q_{\max} in the tadalafil *Once-a-Day* group ($p=0.009$) and the tamsulosin group ($p=0.014$) compared with placebo.

Efficacy Results in Patients with ED and BPH

While patients with ED were not excluded from the BPH efficacy and safety studies (*Studies 1 and 2*), one study specifically assessed the efficacy and safety of tadalafil *Once-a-Day* in men with both conditions (LVHR, *Study 4*).

The efficacy and safety of tadalafil for once daily use for the treatment of ED, and the signs and symptoms of BPH, in patients with both conditions was evaluated in one placebo-controlled, multinational, double-blind, parallel-arm study which randomized 606 patients to receive either tadalafil 2.5 mg, 5 mg, for once daily use or placebo. ED severity ranged from mild to severe and BPH severity ranged from moderate to severe. Patients with multiple co-morbid conditions such as diabetes mellitus, hypertension, and other cardiovascular disease were included. The full study

population had a mean age of 63 years (range 45 to 83) and was 93% White, 4% Black, 3% other races; 16% were of Hispanic ethnicity.

In this study, the co-primary endpoints were total IPSS and the Erectile Function (EF) domain score of the International Index of Erectile Function (IIEF). The key secondary endpoints in this study were Question 3 of the Sexual Encounter Profile diary (SEP3) and BII scores. Timing of sexual activity was not restricted relative to when patients took tadalafil.

The efficacy results for patients with both ED and BPH, who received either tadalafil 5 mg *Once-a-Day* or placebo (N=408) are shown in Tables 12, 13 and Figure 7.

Tadalafil 5 mg *Once-a-Day* resulted in statistically significant improvements in the total IPSS and in the EF domain of the IIEF questionnaire, compared to placebo. Tadalafil 5 mg *Once-a-Day* also resulted in statistically significant improvement in the key secondary efficacy parameters SEP3 and BII. Tadalafil 2.5 mg did not result in statistically significant improvement in the total IPSS, compared to placebo.

Table 12. Mean IPSS and IIEF EF Domain Changes in the Tadalafil 5 mg *Once-a-Day* Study in Patients with ED and BPH.

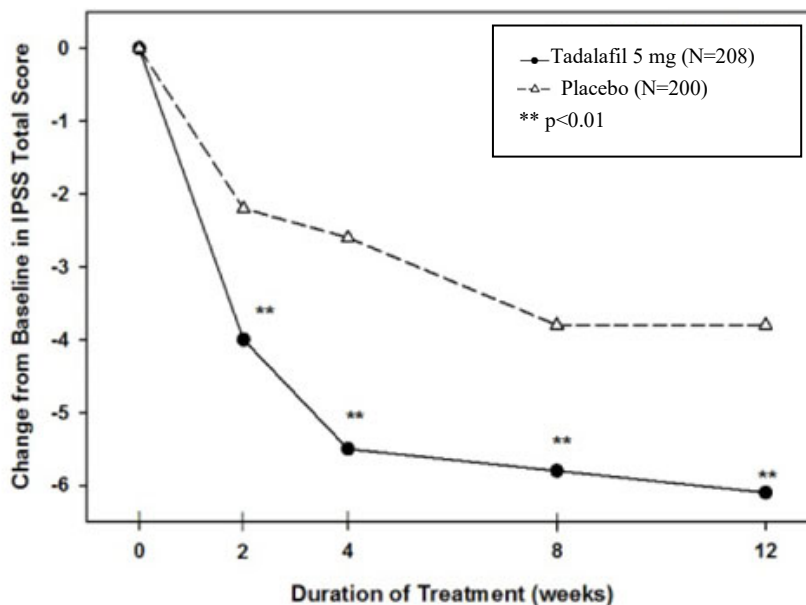
| | Placebo (N=200) | Tadalafil 5 mg (N=208) | p-value |
|-----------------------------------|-----------------|------------------------|---------|
| Total Symptom Score (IPSS) | | | |
| Baseline | 18.2 | 18.5 | |
| Change from Baseline to Week 12 | -3.8 | -6.1 | <0.001 |
| EF Domain Score (IIEF EF) | | | |
| Baseline | 15.7 | 16.5 | |
| Endpoint | 17.6 | 22.9 | |
| Change from Baseline to Week 12 | 1.8 | 6.3 | <0.001 |

Table 13. Mean BII and SEP Question 3 Changes in the Tadalafil 5 mg *Once-a-Day* Study in Patients with ED and BPH.

| | Placebo (N=200) | Tadalafil 5 mg (N=208) | p-value |
|--------------------------------------|-----------------|------------------------|---------|
| BPH Impact Index (BII) | | | |
| Baseline | 6.0 | 5.6 | |
| Change from Baseline to Week 12 | -1.2 | -2.1 | <0.001 |
| Successful Intercourse (SEP3) | | | |
| Baseline | 36% | 43% | |
| Endpoint | 48% | 72% | |
| Change from Baseline to Week 12 | 12% | 29% | <0.001 |

Tadalafil *Once-a-Day* resulted in improvement in the IPSS total score at the first scheduled observation (week 2) and throughout the 12 weeks of treatment (*see* Figure 7).

Figure 7: Mean IPSS Changes in ED/BPH Patients by Visit in Study 4



In this study, the effect of tadalafil 5 mg once daily on Q_{\max} was evaluated as a safety endpoint. Mean Q_{\max} increased from baseline in both the treatment and placebo groups (*Study 4*: tadalafil 5 mg: 1.6 mL/sec, placebo: 1.2 mL/sec); however, these changes were not significantly different between groups.

DETAILED PHARMACOLOGY

General

Phosphodiesterases (PDEs) are a diverse family of enzymes having different tissue distributions and functions, but which all ultimately act to hydrolyze cyclic nucleotides, thereby terminating their actions. There are eleven known phosphodiesterase classes, many with subtypes identified by structure and function. Phosphodiesterase type 5 (PDE5) is a major cGMP-hydrolyzing enzyme in vascular smooth muscle of the penis.

Pharmacokinetics

Tadalafil has a mean half-life of 17.5 hours and the mean maximum observed plasma concentration (C_{\max}) is achieved at a median time of 2 hours after dosing. Evaluation of elimination and metabolism radiotracer data in humans indicates tadalafil is well absorbed (approximately 36% based on urinary elimination data alone to an upper limit of approximately 81% based on urinary and biliary/fecal elimination of metabolites). The half-life of 17.5 hours provides an extended period of responsiveness to tadalafil for patients.

Pharmacokinetics of Tadalafil for Once-a-Day use: The absorption, distribution, metabolism and excretion of tadalafil are similar, irrespective of *On-Demand* or *Once-a-Day* use. Steady-state plasma concentrations are attained within 5 days of tadalafil for *Once-a-Day* use, and exposure (AUC) is approximately 1.6-fold greater than after a single dose.

TOXICOLOGY

Tadalafil has been evaluated in a comprehensive series of toxicology studies, including *in vitro* and *in vivo* genetic toxicology assays; single-dose studies in mice and rats using both oral and intravenous routes of administration; repeated-dose studies in mice, rats, and dogs; reproductive and developmental studies in rats and mice; and oncogenicity studies in rats and mice.

Tadalafil demonstrated low acute oral toxicity in both mice and rats, as doses up to 2000 mg/kg did not cause death and produced only minimal clinical observations (see Table 14). Daily oral administration of tadalafil to mice for 3 months at doses up to 800 mg/kg/day produced no deaths or treatment-related findings (see Table 15). In rats, oral toxicity studies of 1 and 6 months duration, with doses up to 400 mg/kg/day, and a 3 month study with doses up to 800 mg/kg/day, produced no treatment-related deaths or substantive clinical observations. These studies yielded no gross or histopathologic findings that were considered toxicologically important.

Tadalafil was not carcinogenic to rats or mice when administered for 24 months (see Table 16). Tadalafil was not mutagenic or genotoxic in *in-vitro* bacterial and mammalian cell assays, and *in vitro* human lymphocytes and *in vivo* rat micronucleus assays (see Table 17).

There was no evidence of teratogenicity, embryotoxicity or fetotoxicity in rats or mice that received tadalafil up to 1000 mg/kg/day (see Table 18). In a rat pre- and postnatal development study, the no-observed effect dose was 30 mg/kg/day. In the pregnant rat the AUC for calculated free drug at this dose was approximately 18 times the human AUC at a 20 mg dose.

There was no impairment of fertility in male and female rats (Table 18). In dogs given tadalafil daily for 6 to 12 months at doses of 25 mg/kg/day and above, there were alterations to the seminiferous tubular epithelium that resulted in a decrease in spermatogenesis in some dogs. However, in placebo-controlled studies in men who received tadalafil 10 or 20 mg daily for 6 months, there were no treatment-related effects on sperm concentration, sperm count, motility, or morphology.

ACUTE TOXICITY

Table 14. Results of Acute Single-Dose Toxicity Studies with Tadalafil

| Species, Strain Number/Sex/Group Age | Doses (mg/kg) Route Duration of Observations | Important Findings |
|--|--|--|
| Mouse, B6C3F1 3/sex 8 Weeks | 400, 650, 1000, 1600, 2000 Gavage 2 weeks | Males, 2000 mg/kg: failure to gain weight. Median lethal dose >2000 mg/kg. |
| Mouse, B6C3F1 10/sex 8-9 Weeks | 0, 2000 Gavage 2 weeks | No effects. Median lethal dose >2000 mg/kg. |
| Mouse, B6C3F1 3/sex 8 Weeks | 0, 37.5, 62.5, 100 Intravenous 2 weeks | <u>100 mg/kg</u> : mortality (2 males, 2 females), moribundity, low posture, extreme subdued behaviour, convulsions, laboured or shallow respiration, tremors, jerky movements, prostrate. <u>62.5 mg/kg</u> : low posture, subdued behaviour, laboured or rapid respiration, tremors, jerky movements. All mice were normal within 6 minutes after dosing. <u>Control</u> : mortality (1 male), prostrate, low posture, jerky movements. Median lethal dose >62.5 mg/kg, <100 mg/kg. |
| Mouse, B6C3F1 10/sex 8-9 Weeks | 0, 62.5 Intravenous 2 weeks | <u>62.5 mg/kg</u> : low posture, subdued behaviour, tremors, unsteady gait, laboured respiration (believed to be vehicle-related). Effects limited to the day of dosing. Median lethal dose >62.5 mg/kg. |
| Rat, Han Wistar 3/sex 8 Weeks | 400, 650, 1000, 1600, 2000 Gavage 2 weeks | <u>Females, 2000 mg/kg</u> : vocalization, tense behaviour. Effects were limited to the day of dosing. Median lethal dose >2000 mg/kg. |
| Rat, Han Wistar 10/sex 8-9 Weeks | 0, 2000 Gavage 2 weeks | No effects. Median lethal dose >2000 mg/kg. |
| Rat, Han Wistar 3/sex 8 Weeks | 0, 37.5, 62.5 Intravenous 2 weeks | <u>62.5 mg/kg</u> : convulsions, tremors, moribundity. All groups including control: unsteady gait and increased incidence of vehicle-related signs (subdued behaviour, laboured or rapid respiration, jerking movements, low posture, prostrate, and/or piloerection). Effects were limited to the day of dosing. Signs were more severe at 62.5 mg/kg. Median lethal dose >62.5 mg/kg. |
| Rat, Han Wistar 10/sex 8-9 Weeks | 0, 37.5 Intravenous 2 weeks | <u>37.5 mg/kg</u> : Death (1), low posture, subdued behaviour, tremors, piloerection, jerky movements, laboured respiration (believed to be vehicle-related). Effects were limited to the day of dosing. Median lethal dose >37.5 mg/kg. |

LONG-TERM TOXICITY

Table 15. Results of Long-Term Repeated-Dose Toxicity Studies with Tadalafil (Page 1 of 2)

| Species, Strain Number/Sex/Group Age | Doses (mg/kg) Route Duration of Treatment | Important Findings |
|---|---|---|
| Mouse, CD-1 12/sex (6 necropsied after 1.5 month) 7 Weeks | 0, 60, 200, 400 Gavage 1.5 months and 3 months | No-Observed-Effect-Level = 400 mg/kg/day. |
| Mouse, CD-1 20/sex (10 necropsied after 1 month) 6 Weeks | 0, 60, 200, 400, 800 Gavage 1 month and 3 months | <u>≥200 mg/kg</u> : increased benzphetamine N-demethylase activity and minimal increase in relative liver weight. <u>Males, 400 mg/kg</u> : decreased erythromycin N-demethylase activity. <u>Females, 800 mg/kg</u> : increased 7-ethoxyresorufin O-deethylase activity and total P450 content. No-Observed-Effect-Level = 800 mg/kg/day. |
| Rat Han Wistar 6/sex 7-10 Weeks | 100, 200, 400, 800, 1400, 2000 (dose escalation) 2000 (7 daily doses) Gavage | No-Observed-Effect-Level = 2000 mg/kg/day. Maximum systemic exposure achieved at 400 mg/kg. |
| Rat, Han Wistar 12/sex, with additional 8 in 0 and 400 groups, for reversibility 7-8 Weeks | 0, 10, 60, 400 Gavage 1 month and 3 week reversibility | <u>Males, females, 400 mg/kg</u> : minimal clinical chemistry changes, increased lung weight, and decreased kidney weight with no histopathologic correlates. <u>Males, 400 mg/kg</u> : increased heart weight with no histopathologic correlate. <u>Females, 400 mg/kg</u> : increased body weight. No-Observed-Effect-Level = 60 mg/kg/day. |
| Rat, Han Wistar 20/sex, with additional 12 in 0 and 400 groups, for reversibility 7-8 Weeks | 0, 10, 60, 400 Gavage 6 months and 1 month reversibility | <u>400 mg/kg</u> : increase in water consumption and urine volume (reversible). <u>Females, 400 mg/kg</u> : minimal to marked pigment deposition in the cytoplasm of periportal hepatocytes with focal accumulations of Kupffer cells containing brown pigments in 4 rats. At the end of the reversibility period 1 rat had minimal hepatocellular pigment deposition. No-Observed-Adverse-Effect-Level = 60 mg/kg/day. |
| Rat Fischer 344 20/sex (10 necropsied at 1 month) 7-8 Weeks | 0, 60, 100, 400, 800 Gavage 1 month and 3 months | <u>≥60 mg/kg</u> : increased 7-ethoxyresorufin O-deethylase and minimal increase in relative liver weight. <u>≥100 mg/kg</u> : increased food consumption. <u>Females, □ >100 mg/kg</u> : increased benzphetamine N-demethylase. <u>Males, 800 mg/kg</u> : increased benzphetamine N-demethylase. No-Observed-Effect-Level = 800 mg/kg/day. |
| Dog Beagle 2/sex 4-6 months | 50, 100, 200, 400, 800 (dose escalation) 200 (14 daily doses) Gavage | <u>200 mg/kg</u> : loose feces, subdued behaviour, thin appearance, decreased body weight, decreased thymus weight with slight atrophy. Maximum systemic exposure achieved at 200 mg/kg. |

Table 15. Results of Long-Term Repeated-Dose Toxicity Studies with Tadalafil (Page 2 of 2)

| Species, Strain Number/Sex/Group Age | Doses (mg/kg) Route Duration of Treatment | Important Findings |
|---|---|---|
| Dog Beagle 3/sex, with additional 2 in 0 and 200 groups, for reversibility 4-6 months | 0, 10, 45, 200 Gavage 1 month with 3 week reversibility | <u>>45 mg/kg</u> : thin appearance, subdued behaviour, loose feces. <u>200 mg/kg</u> : decreased body weight, decreased food consumption, hepatic clinical chemistry changes. Vascular inflammation consistent with Beagle Pain Syndrome occurred in control and 200 mg/kg dogs. No-Observed-Adverse-Effect-Level = 45 mg/kg/day. |
| Dog, Beagle 4/sex with additional 2 in 0 and 400 groups, for reversibility 3-5 months | 0, 10, 60, 400 Oral Gavage 6 month with 1 month reversibility | Study confounded by presence of Beagle Pain Syndrome (BPS) and the use of immature dogs. Effects related to BPS included euthanasia of 2 male and 2 female 400-mg/kg dogs, increased white blood cell counts, decreased plasma albumin and calcium, and vascular inflammation. <u>≥10 mg/kg</u> : decreased testes weight, testicular alterations. <u>≥60 mg/kg</u> : decreased body weight gain during the first 3 months of the study. No-Observed-Adverse-Effect-Level: Males <10 mg/kg/day; Females 10 mg/kg/day. |
| Dog, Beagle 4 Males with additional 2 Males in 0 and 200 groups, for reversibility 13-17 months | 0, 10, 60, 200 Oral Capsule 3 month with 3 month reversibility | <u>≥60 mg/kg</u> : pigment accumulation in the gallbladder (reversible). No vascular inflammation or testicular alterations occurred. No-Observed-Adverse-Effect-Level = 200 mg/kg/day. |
| Dog, Beagle 4/sex, with additional 2 in 0 and 400 groups, for reversibility 13-15 months | 0, 10, 60, 200, 400 Oral Capsule 6 month with 3 month reversibility | <u>≥60 mg/kg</u> : Oligo/azpermia in the epididymides and regression, vacuolation and atrophy of the testicular seminiferous epithelium. This appeared to partially reverse in the 1 male in the reversibility group. No-Observed-Effect-Level: Males: 10 mg/kg/day; Females: 400 mg/kg/day |
| Dog, Beagle 5/sex 14-15 months | 0, 25, 100, 400 Oral Capsule 1 year | <u>Males, >25 mg/kg</u> : bilateral degeneration and atrophy of the testicular seminiferous epithelium. <u>Females, ≥100 mg/kg</u> : decreased body weight. <u>Males, 400 mg/kg</u> : increased liver weight, decreased testes weight. Cytopenia occurred in one 100-mg/kg female and one 400-mg/kg female. These were considered idiosyncratic, reversible, and not due to a direct effect on bone marrow hematopoietic precursors. No-Observed-Adverse-Effect-Level: Males <25 mg/kg/day; Females 25 mg/kg/day. |

CARCINOGENICITY

Table 16. Results of Carcinogenicity Studies with Tadalafil

| Species, Strain Number/Sex/Group Age | Doses (mg/kg) Route Duration of Treatment | Important Findings |
|--|---|--|
| Mouse, CD-1 50/sex 6 Weeks | 0, 0, 10, 60, 400 Gavage 2 years | No-Observed-Effect-Level = 400 mg/kg/day. No statistically significant increase in neoplasms. |
| Rat, Han Wistar 50/sex 6 Weeks | 0, 0, 10, 60, 400 Gavage 2 years | No-Observed-Effect-Level = 400 mg/kg/day. No statistically significant increase in neoplasms. |

MUTAGENICITY

Table 17. Results of Mutagenicity/Genotoxicity Studies with Tadalafil

| Study Type | Species or Cell Type | Dose Levels | Important Findings |
|---------------------------------|---|---|--------------------|
| WHO Nitrosation Assay Procedure | <i>S. typhimurium</i> | 10 mM | Negative |
| Bacterial mutation | <i>S. typhimurium</i> <i>E. coli</i> | 15, 50, 150, 1500, 2500 mcg/plate | Negative |
| Mouse Lymphoma | L5178Y mouse lymphoma cells | Without activation: 25, 50, 75 mcg/mL With activation: 10, 25, 50, 75 mcg/mL | Negative |
| Chromosome aberration | Human Peripheral Lymphocytes | Without activation: 10, 20, 40 mcg/mL With activation: 1, 5, 10 mcg/mL | Negative |
| Micronucleus | Male Han Wistar rats | 0, 1000, 1500, 2000 mg/kg | Negative |

REPRODUCTION AND TERATOLOGY

Table 18. Results of Reproduction and Developmental Toxicity Studies with Tadalafil.

| Study Type | Species, Strain Number/Sex/Group Age | Doses (mg/kg/day) Route Duration of Treatment | Important Findings |
|---|--|---|--|
| Fertility and early embryonic development (Segment I) | Rat, CD 22/sex 12 Weeks at breeding | 0, 10, 60, 400 Gavage Male: 4 weeks prior to and during mating; Female: 2 weeks prior to mating through Gestation Day 7 | <u>Females, 400 mg/kg</u> : decreased body weight gain, decreased food consumption. Reproductive No-Observed-Effect-Level = 400 mg/kg. |
| Embryo-fetal development (Segment II) | Mouse, CD-1 30 Female 12 Weeks at breeding | 0, 60, 200, 1000 Gavage Gestation Days 6-15 | No effects. Maternal and embryo-fetal developmental No-Observed-Adverse-Effect-Level = 1000 mg/kg. |
| Embryo-fetal development (Segment II) | Rat, CD 25 Female 12 Weeks at breeding | 0, 60, 200, 1000 Gavage Gestation Days 6-17 | <u>1000 mg/kg</u> : decreased maternal body weight gain, decreased food consumption. Maternal No-Observed-Adverse-Effect-Level = 200 mg/kg. Embryo-fetal developmental No-Observed-Adverse-Effect-Level = 1000 mg/kg. |
| Pre- and postnatal development (Segment II/III) | Rat, CD 25 Female 12 Weeks at breeding | 0, 60, 200, 1000 0, 3, 10, 30, 200 Gavage Gestation Day 6-Postnatal Day 21 | <u>1000 mg/kg</u> : decreased maternal body weight gain, decreased food consumption. <u>≥200 mg/kg</u> : decreased pup survival birth to Postnatal Day 4. This effect was not repeated in the follow-up study. Maternal No-Observed-Effect-Level = 200 mg/kg. F1 Developmental No-Observed-Effect-Level = 30 mg/kg. |

REFERENCES

1. Althof S, Eid J, Talley D, Brock G, *et al.* Through the eyes of women: the partners' perspective on tadalafil. *Urology* 2006;68:631-635.
2. Andersson K, de Groat W, McVary K, *et al.* Tadalafil for the treatment of lower urinary tract symptoms secondary to benign prostatic hyperplasia: pathophysiology and mechanism(s) of action. *Neurourol Urodyn.* 2011.
3. Angalakuditi M, Seifert R, Hayes R, *et al.* Measurement properties of the benign prostatic hyperplasia impact index in tadalafil studies. *Health and Quality of Life Outcomes* 2010;8:131.
4. Brock G, Chan J, Carrier S, *et al.* The Treatment of Erectile Dysfunction study: focus on treatment satisfaction of patients and partners. *BJU Intl* 2007;99:376-382.
5. Brock G, McMahon C, Chen K, *et al.* Efficacy and safety of tadalafil in the treatment of erectile dysfunction: results of integrated analyses. *J Urol* 2002;168:1332B1336.
6. Broderick G, Brock G, Roehrborn C, *et al.* Effects of tadalafil on lower urinary tract symptoms secondary to benign prostatic hyperplasia in men with or without erectile dysfunction. *Urology* 2010;75:1452-1459.
7. Cappelleri J, Rosen R, Smith M, *et al.* Diagnostic evaluation of the erectile function domain of the International Index of Erectile Function. *Urology* 1999;54:346-351.
8. Carson C, Rajfer J, Eardley I, *et al.* The Efficacy and Safety of tadalafil: an update. *BJU International* 2004;93:1276-1281.
9. Dmochowski R, Roehrborn C, Klise S, *et al.* Urodynamic effects of once-daily tadalafil in men with lower urinary tract symptoms secondary to clinical benign prostatic hyperplasia: A randomized, placebo controlled 12-week clinical trial. *Journal of Urology* 2010;183:1092-1097.
10. Donatucci C, Brock G, Goldfischer E, *et al.* Tadalafil administered once-daily for lower urinary tract symptoms secondary to benign prostatic hyperplasia: A 1-year, open-label extension study. *BJU International* 2011;107:1110-1116.
11. Drory Y. Sexual activity and cardiovascular risk. *Eur Heart J Suppl* 2002;4(suppl H): 13-18.
12. Emmick J, Stuewe S, Mitchell M. Overview of the cardiovascular effects of tadalafil. *Eur Heart J Suppl* 2002;4(suppl H):32-47.
13. Eardley I, Montorsi F, Jackson G, *et al.* Factors associated with preference for sildenafil citrate and tadalafil for treating erectile dysfunction in men naïve to phosphodiesterase 5 inhibitor therapy: *post hoc* analysis of data from a multicentre, randomized, open-label, crossover study. *BJU International* 2007;100:122-129.
14. Eardley I, Mirone V, Montorsi F, *et al.* An open label, multicentre, randomized, crossover study comparing sildenafil citrate and tadalafil for treating erectile dysfunction in men naïve to phosphodiesterase 5 inhibitor therapy. *BJU Intl* 2005;96:1323-1332.
15. Egerdie R, Auerbach S, Roehrborn C, *et al.* Tadalafil 2.5 or 5 mg administered once daily for 12 weeks in men with both erectile dysfunction and signs and symptoms of benign prostatic hyperplasia: results of a randomized, placebo-controlled, double-blind study. *J Sex Med* 2012;9(1):271-281.
16. Fonseca V, Seftel A, Denne J, Fredlund P. Impact of diabetes mellitus on the severity of erectile dysfunction and response to treatment: Analysis of data from tadalafil clinical trials. *Diabetologia* 2004;47:1914-1923.
17. Goldfischer E, Kowalczyk J, Clark W, *et al.* Hemodynamic effects of once-daily tadalafil in men with signs and symptoms of benign prostatic hyperplasia on concomitant $\alpha(1)$ -

- adrenergic antagonist therapy: Results of a multicenter randomized, double-blind, placebo-controlled trial. *Urology* 2012;79(4):875-882.
18. Giuliano F, Kaplan S, Cabanis M, *et al.* Hemodynamic interaction study between the alpha1-blocker alfuzosin and the phosphodiesterase-5 inhibitor tadalafil in middle-aged healthy male subjects. *Urology* 2006;67:1199-1204.
 19. Hellstrom W, Overstreet J, Yu A, *et al.* Tadalafil has no detrimental effect on human spermatogenesis or reproductive hormones. *J Urol* 2003;170:887-891.
 20. Herschorn S, Mitchell M, Bedding A, Emmick J. Pharmacodynamic interactions between tadalafil and nitrates compared with sildenafil. *Can J Urol* 2002;9:1538.
 21. Jackson G, Kloner R, Costigan T, *et al.* Update on Clinical Trials of Tadalafil Demonstrates No Increased Risk of Cardiovascular Adverse Events. *Journal of Sexual Medicine* 2004;1:161-167.
 22. Kloner R, Jackson G, Emmick J, *et al.* Interaction between the phosphodiesterase 5 inhibitor, tadalafil and 2 α -blockers, doxazosin and tamsulosin in healthy normotensive men. *J Urology* 2004;172:1935-1940.
 23. Kloner R, Jackson G, Hutter A, *et al.* Cardiovascular safety update of tadalafil: Retrospective analysis of data from placebo-controlled and open-label clinical trials of tadalafil with as needed, three times-per-week, or Once a Day dosing. *Am J Cardiol* 2006;97:1778-1784.
 24. Kloner R, Mitchell M, Emmick J. Cardiovascular effects of tadalafil. *Amer J Cardiology* 2003;92:37-46.
 25. Kloner R, Mitchell M, Emmick J. Cardiovascular effects of tadalafil in patients on common antihypertensive therapies. *Amer J Cardiology* 2003;92:47-57.
 26. Kloner R, Hutter A, Emmick J, *et al.* Time course of the interaction between tadalafil and nitrates. *J Amer College Cardiology* 2003;42:1-6.
 27. Lee J, Pommerville P, Brock G, *et al.* Physician-rated patient preference and patient-and partner-rated preference for tadalafil or sildenafil citrate: results from the Canadian 'Treatment of Erectile Dysfunction' observational study. *BJU Intl* 2006;98:623-629.
 28. McVary K, Roehrborn C, Kaminetsky J, *et al.* Tadalafil relieves lower urinary tract symptoms secondary to benign prostatic hyperplasia. *Journal of Urology* 2007;177:1401-1407.
 29. Mitchell M, Sanderson B, Payne C, Bedding A. Pharmacodynamic interaction between alcohol and tadalafil in healthy volunteers. *Int J Impot Res* 2002;14(suppl 4):S64.
 30. Montorsi F, Verheyden B, Meuleman E, *et al.* Long-term safety and tolerability of tadalafil in the treatment of erectile dysfunction. *Eur Urol* 2004;45:339-345.
 31. Montorsi F, Brock G, *et al.* Tadalafil in the treatment of erectile dysfunction following bilateral nerve-sparing radical retropubic prostatectomy: A randomized, double-blind, placebo-controlled trial. *J Urol* 2004;172:1036-1041.
 32. Oelke M, Giuliano F, Mirone V, *et al.* Monotherapy with tadalafil or tamsulosin similarly improved lower urinary tract symptoms suggestive of benign prostatic hyperplasia in an international, randomised, parallel, placebo-controlled clinical trial. *Eur Urol* 2012;61(5):917-925.
 33. Padma-Nathan H, Brock G, McMahon C, *et al.* Efficacy and safety of tadalafil in men with erectile dysfunction with and without hypertension. *Am J Hypertens* 2002;15:143A.
 34. Patterson B, Bedding A, Jewell H, *et al.* Dose-normalized pharmacokinetics of tadalafil (IC351) administered as a single dose to healthy volunteers. *Int J Impot Res* 2001; 13(suppl 5):S62.

35. Patterson D, McDonald T, Effron M, *et al.* Tadalafil does not affect time to ischemia during exercise stress testing in patients with coronary artery disease. *Int J Impot Res* 2002;14(suppl 3):S102.
36. Porst H, Kim E, Casabé A, *et al.* Efficacy and safety of tadalafil once daily in the treatment of men with lower urinary tract symptoms suggestive of benign prostatic hyperplasia: results of an international randomized, double-blind, placebo-controlled trial. *Eur Urol* 2011;60(5):1105-1113.
37. Porst H, McVary K, Montorsi F, *et al.* Effects of once-daily tadalafil on erectile function in men with erectile dysfunction and signs and symptoms of benign prostatic hyperplasia. *European Urology* 2009;56:727-736.
38. Porst H, Giuliano F, Glina S, *et al.* Evaluation of the efficacy and safety of once-a-day dosing of tadalafil 5mg and 10 mg in the treatment of erectile dysfunction: results of a multicenter, randomized, double-blind, placebo-controlled trial. *European Urology* 2006;50:351-359.
39. Porst H, Padma-Nathan H, Giuliano F, *et al.* Efficacy of tadalafil for the treatment of erectile dysfunction at 24 and 36 hours after dosing: a randomized controlled trial. *Urology* 2003;62:121-126.
40. Rajfer J, Aliotta P, Steidle C, *et al.* Tadalafil dosed once a day in men with erectile dysfunction: a randomized, double-blind, placebo-controlled study in the US. *Intl J Impot Res* 2006;19:95-103.
41. Roehrborn C, Kaminetsky J, Auerbach S, *et al.* Changes in peak urinary flow and voiding efficiency in men with signs and symptoms of benign prostatic hyperplasia during once daily tadalafil treatment. *BJU International* 2009;105:502-507.
42. Roehrborn C, McVary K, Elion-Mboussa A, Viktrup L. Tadalafil administered once daily for lower urinary tract symptoms secondary to benign prostatic hyperplasia: A dose finding study. *Journal of Urology* 2008;180:1228-1234.
43. Rosen R, Riley A, Wagner G, *et al.* The international index of erectile function (IIEF): a multidimensional scale for assessment of erectile dysfunction. *Urology* 1997; 49(6):822-830.
44. Sáenz de Tejada I, Anglin G, Knight J, Emmick J. Effects of tadalafil on erectile dysfunction in men with diabetes. *Diabetes Care* 2002;25:2159-2164.
45. Sáenz de Tejada I, Angulo Frutos J, Gadau M, Fiorio V. Comparative selectivity profiles of tadalafil, sildenafil, and vardenafil using an in vitro phosphodiesterase activity assay. *Int J Impot Res* 2002;14(suppl 4):S20.
46. Shabsigh R, Seftel A, Rosen R, *et al.* A review of the time of onset and duration of clinical efficacy of phosphodiesterase type-5 inhibitors in the treatment of erectile dysfunction. *Urology* 2006;68:689-696.
47. Shabsigh R, Burnett A, Eardley I, *et al.* Time from dosing to sexual intercourse attempts in men taking tadalafil in clinical trials, *BJU Int* 2005; 96:857-863.
48. Stroberg P, Murphy A, Costigan T. Switching patients with erectile dysfunction from sildenafil citrate to tadalafil: Results of a European multicenter, open-label study of patient preference. *Clin Therapeutics* 2003;25:2724-2737.
49. Von Keitz A, Rajfer J, Segal S, *et al.* A multicenter, randomized, double-blind, crossover study to evaluate patient preference between tadalafil and sildenafil. *European Urol* 2004;45:499-509.
50. Wrishko R, Sorsaburu S, Wong D, *et al.* Safety, efficacy, and pharmacokinetic overview of low-dose daily administration of tadalafil. *J Sex Med* 2009;6:2039-2048.

51. Product Monograph for CIALIS[®] (Tadalafil Tablets, 2.5 mg, 5 mg, 10 mg and 20 mg)
Manufactured by: Eli Lilly Canada Inc., Control Number: 197461, Date of Revision:
November 22, 2016.

PART III: CONSUMER INFORMATION

PrACT TADALAFIL
Tadalafil Tablets USP
2.5 mg, 5 mg, 10 mg and 20 mg

This leaflet is part III of a three-part "Product Monograph" published when ACT TADALAFIL was approved for sale in Canada and is designed specifically for Consumers. This leaflet is a summary and will not tell you everything about ACT TADALAFIL. Contact your doctor or pharmacist if you have any questions about the drug.

Read all of this leaflet carefully before you start taking this medicine.

Keep this leaflet. You may need to read it again. If you have further questions, please ask your doctor or your pharmacist.

ABOUT THIS MEDICATION

What the medication is used for:

ACT TADALAFIL is used for treatment of

- erectile dysfunction (ED) in men (when a man cannot get, or keep a hard, erect penis suitable for sexual activity).
- the signs and symptoms of benign prostatic hyperplasia (BPH). These symptoms include a frequent need to urinate, a sensation of not emptying the bladder completely, or painful urination.
- both ED and the signs and symptoms of BPH.

What it does:

ACT TADALAFIL belongs to a group of medicines called phosphodiesterase type 5 inhibitors.

Treatment of ED: Following sexual stimulation ACT TADALAFIL works by helping the blood vessels in your penis to relax, allowing the flow of blood into your penis. This results in improved erectile function.

It is important to note that ACT TADALAFIL works only with sexual stimulation. ACT TADALAFIL alone does not increase sexual desire.

Treatment of BPH and ED/BPH: ACT TADALAFIL works by relaxing muscles in the prostate and bladder, which may reduce BPH symptoms.

When it should not be used:

Do not take ACT TADALAFIL:

- If you are taking any medicines that contain nitrates in any form (oral, sublingual [under the tongue], skin-patch, or by inhalation). Similarly, nitrates must never be used by men who take ACT TADALAFIL. Nitrates are found in many prescription medicines used in the treatment of angina pectoris (chest pain due to heart disease), such as nitroglycerin, isosorbide mononitrate, or isosorbide dinitrate. If nitrates have previously been prescribed to you, even though you may not have used them, or are unsure, tell your doctor.

If you take ACT TADALAFIL with any nitrate-containing medicines or any other nitrates (e.g., amyl nitrite "poppers"), your blood pressure could suddenly drop to a life-threatening level. You could get dizzy, faint, or even have a heart attack or stroke.

- Do not take ACT TADALAFIL if you have had an allergic reaction in the past to tadalafil or any of the other ingredients in ACT TADALAFIL listed below.
- If you have had a previous episode of an eye condition called NAION which causes a sudden decrease or loss of vision in one or both eyes.
- If you are taking **riociguat (ADEMPAS®)**.

What the medicinal ingredient is:

Tadalafil

What the nonmedicinal ingredients are:

The other ingredients are hydroxypropyl cellulose, lactose monohydrate, croscarmellose sodium, sodium lauryl sulphate, povidone, colloidal silicon dioxide and magnesium stearate. The film-coating contains hypromellose, titanium dioxide, macrogol, talc and iron oxide.

What dosage forms it comes in:

ACT TADALAFIL comes as yellow film-coated tablets. They are either round (2.5 mg) or almond shaped (5 mg, 10 mg and 20 mg) and have "336", "L466", "L467", or "L468" debossed on one side. The active substance is tadalafil. Each tablet of ACT TADALAFIL contains 2.5 mg, 5 mg, 10 mg or 20 mg of tadalafil.

WARNINGS AND PRECAUTIONS

Before taking ACT TADALAFIL talk to your doctor if you:

have or had any of the following conditions:

- Heart disease or previously had a heart attack: Sexual activity carries a possible risk to patients with heart disease because it puts extra strain on your heart.

Before you start any treatment for erectile dysfunction, ask your doctor if your heart is healthy enough to handle the extra strain of having sex. If you have chest pains, dizziness or nausea during sex, stop exerting yourself and tell your doctor you have had this problem.

- Stroke.
- Low blood pressure or uncontrolled high blood pressure.
- Liver or kidney problem.
- Sickle cell anemia (an abnormality of red blood cells), multiple myeloma (cancer of the bone marrow), or leukemia (cancer of the blood cells).
- Peptic ulcer or other bleeding disorders.
- Deformation of the penis.
- Ever had severe loss of vision, including a condition called Non-Arteritic Ischemic Optic Neuropathy (NAION). The specific type of vision decrease or loss known as NAION has been reported rarely after the intake of tadalafil or other PDE5 inhibitors. Vision decrease or loss may be partial or complete, in one or very occasionally in both eyes. While in some cases the condition may improve over time, it can also be irreversible. If you are taking ACT TADALAFIL and experience temporary or permanent loss or change in vision, stop taking ACT TADALAFIL immediately and call your doctor.
- Hearing problems: Sudden decrease or loss of hearing has been reported with the use of PDE5 inhibitors, including tadalafil, although it is not known if it is due to drug or other factors.
- Lactose or milk sugar intolerance. ACT TADALAFIL contains small amount of lactose (about 250 mg).

ACT TADALAFIL is not recommended to be used in combination with alpha blockers if you have symptoms of BPH.

ACT TADALAFIL does not protect against sexually transmitted diseases including HIV/ AIDS.

Long-term studies have shown that tadalafil therapy may decrease sperm concentration in some men. The effect on fertility in men is unknown.

ACT TADALAFIL is not intended for use by women or by children under 18 years of age.

When tadalafil is used for the treatment of erectile dysfunction, diarrhea was reported more frequently in patients 65 years of age and older (2.5% of patients).

Only your doctor can decide if ACT TADALAFIL is right for you. If you have ED, you will need to have a physical examination to diagnose your erectile dysfunction and to find out if you can take ACT TADALAFIL alone or with your other medicines. If you have urinary problems, you will need to have a physical examination to diagnose your BPH and not a more serious condition such as prostate cancer.

INTERACTIONS WITH THIS MEDICATION

Tell your doctor or pharmacist if you are taking or have recently taken any other medicine, including the medicine you can buy without prescription and natural health products.

Drugs that may interact with ACT TADALAFIL include:

- nitrates (see previous section)
- rifampin (an antibacterial product used against tuberculosis)
- ketoconazole or itraconazole (used against fungal infections)
- erythromycin (an antibacterial product)
- protease inhibitors such as ritonavir and saquinavir (HIV treatments)

You should not use ACT TADALAFIL together with any other treatments for erectile dysfunction or PDE5 inhibitors for treatment of pulmonary arterial hypertension (PAH), such as ADCIRCA® (tadalafil) or REVATIO® (sildenafil).

Tell your doctor if you are taking:

- medicines to treat high blood pressure
- alpha-blockers (such as doxazosin) for the treatment of prostate problems.

The combination of these medicines with ACT TADALAFIL may add to the blood-pressure-lowering effect of these drugs.

PROPER USE OF THIS MEDICATION

This medicine has been prescribed for you personally and you should not pass it on to others. It may harm them, even if their symptoms are the same as yours.

How To Take ACT TADALAFIL:

Always take ACT TADALAFIL exactly as your doctor has instructed you. You should check with your doctor or pharmacist if you are unsure. Do not take a higher dose than the one which your doctor prescribed for you.

ACT TADALAFIL tablets are for oral use. Swallow the tablet whole, with some water.

You may take ACT TADALAFIL with or without food.

Alcohol consumption may decrease the ability to attain an erection and may also temporarily decrease blood pressure.

There are two different ways of taking ACT TADALAFIL (tadalafil tablets) to treat ED: a 20 mg *On-Demand* dose taken as needed, or a lower 5 mg daily dose. It may take up to 5 days for ACT TADALAFIL *Once-a-Day* to reach steady blood levels.

For patients with ED:

- Try sex at different times to find out what works best for you and your partner.
- ACT TADALAFIL works only if you are sexually stimulated.
- If you don't get the results you expect — talk to your doctor or pharmacist.

ACT TADALAFIL for “On-Demand” Dosing: The recommended dose is one tablet (20 mg) before sexual activity, as needed. You should NOT take more than the prescribed dose of one ACT TADALAFIL 10 mg or 20 mg tablet per day. The 10 mg and 20 mg doses are not recommended for continuous daily use.

You can engage in sexual activity within 30 minutes of taking the tablet and up to 36 hours later. The amount of time ACT TADALAFIL takes to work varies from person to person.

ACT TADALAFIL for Once-a-Day Use:

Treatment of ED: Your doctor may recommend that you take one tablet of ACT TADALAFIL (5 mg or 2.5 mg) *Once-a-Day* every day, at approximately the same time each day, regardless of when you are planning to have sex.

Treatment of BPH and ED/BPH: Your doctor may recommend that you take one tablet of ACT TADALAFIL 5 mg *Once-a-Day* every day, at approximately the same time each day.

Overdose:

If you think you have taken too much ACT TADALAFIL, contact your healthcare professional, hospital emergency department or Regional Poison Control Centre immediately, even if there are no symptoms.

SIDE EFFECTS AND WHAT TO DO ABOUT THEM

Like all medicines, ACT TADALAFIL can have some side-effects. These effects are usually mild to moderate in nature.

The most common side effects are headache, indigestion, back pain, muscle aches, nasal congestion, facial flushing, dizziness and high blood pressure.

Uncommon side-effects: swelling of the eyelids, eye pain, conjunctival hyperemia (red eyes) and allergic reactions (including skin rashes).

Rarely, a prolonged and possibly painful erection may occur after taking ACT TADALAFIL. **If you have such an erection which lasts continuously for more than 4 hours, you should contact a doctor immediately. If this is not treated immediately, permanent penile tissue damage and erectile dysfunction may result.**

Sudden decrease or loss of vision has occurred rarely after the use of oral erectile dysfunction medications, including tadalafil. People who have previously experienced a type of vision loss called Non-Arteritic Anterior Ischemic Optic Neuropathy (NAION) are at an increased risk of reoccurrence of NAION. If you experience reduction or loss of vision in one or both eyes, stop taking ACT TADALAFIL and immediately call your doctor.

If you take ACT TADALAFIL and have chest pain during or after sexual activity, DO NOT use nitrates, and seek immediate medical assistance.

If you notice any side effects not mentioned in this leaflet, please inform your doctor or pharmacist.

| SERIOUS SIDE EFFECTS, HOW OFTEN THEY HAPPEN AND WHAT TO DO ABOUT THEM | | | |
|--|-------------------------------------|--------------|---|
| Symptom / effect | Talk with your doctor or pharmacist | | Stop taking drug and get immediate medical help |
| | Only if severe | In all cases | |
| <i>Common</i> headache indigestion back pain muscle aches nasal congestion facial flushing | √ √ √ √ √ √ | | |
| <i>Uncommon</i> Swelling of eyelids eye pain red eyes dizziness allergic reaction | √ √ √ √ | | |
| <i>Rare</i> prolonged erection chest pain vision loss hearing loss transient amnesia | | √ | √ √ √ √ √ |

This is not a complete list of side effects. For any unexpected effects while taking ACT TADALAFIL, contact your doctor or pharmacist.

HOW TO STORE IT

STORING ACT TADALAFIL TABLETS

Keep out of the reach and sight of children.

Store your tablets at 15 to 30 °C.

Store in the original package.

Do not use after the expiry date stated on the bottle, carton and blister.

Reporting Side Effects

You can report any suspected side effects associated with the use of health products to Health Canada by:

- Visiting the Web page on Adverse Reaction Reporting (<https://www.canada.ca/en/health-canada/services/drugs-health-products/medeffect-canada/adverse-reaction-reporting.html>) for information on how to report online, by mail or by fax; or
- Calling toll-free at 1-866-234-2345.

NOTE: Contact your health professional if you need information about how to manage your side effects. The Canada Vigilance Program does not provide medical advice.

MORE INFORMATION

You may obtain further information from your doctor or pharmacist.

This document plus the full product monograph, prepared for health professionals can be found by contacting the sponsor, Teva Canada Limited's website <http://www.tevacanada.com>; or by calling 1-800-268-4127 ext. 3; or email druginfo@tevacanada.com.

This leaflet was prepared by:
Teva Canada Limited,
30 Novopharm Court
Toronto, Ontario
Canada M1B 2K9

Date of Preparation: March 13, 2020