

PRODUCT MONOGRAPH

^{PR} **ACT CLOPIDOGREL**

Clopidogrel Tablets, USP

75 mg Clopidogrel
(as Clopidogrel Bisulfate)

Platelet Aggregation Inhibitor

Teva Canada Limited
30 Novopharm Court
Toronto, Ontario
Canada M1B 2K9
www.tevacanada.com

Date of revision:
March 24, 2020

Submission Control No.: 236498

Table of Contents

PART I: HEALTH PROFESSIONAL INFORMATION.....	3
SUMMARY PRODUCT INFORMATION	3
INDICATIONS AND CLINICAL USE.....	3
CONTRAINDICATIONS	4
WARNINGS AND PRECAUTIONS.....	4
ADVERSE REACTIONS.....	7
DRUG INTERACTIONS	15
DOSAGE AND ADMINISTRATION	20
OVERDOSAGE	20
ACTION AND CLINICAL PHARMACOLOGY	21
STORAGE AND STABILITY	25
DOSAGE FORMS, COMPOSITION AND PACKAGING	25
 PART II: SCIENTIFIC INFORMATION	 26
PHARMACEUTICAL INFORMATION.....	26
CLINICAL TRIALS	27
DETAILED PHARMACOLOGY	39
TOXICOLOGY	41
REFERENCES	43
 PART III: CONSUMER INFORMATION.....	 45

^{Pr}**ACT CLOPIDOGREL**

Clopidogrel Bisulfate Tablets, USP

PART I: HEALTH PROFESSIONAL INFORMATION

SUMMARY PRODUCT INFORMATION

Route of Administration	Dosage Form / Strength	All Nonmedicinal Ingredients	
		Tablet Core:	Coating:
oral	tablet / 75 mg clopidogrel	Hydrogenated vegetable oil, low substituted hydroxypropyl cellulose, mannitol, microcrystalline cellulose, red iron oxide, polyethylene glycol	Hypromellose, lactose, red iron oxide, polyethylene glycol and titanium dioxide

INDICATIONS AND CLINICAL USE

MI, Stroke or Established Peripheral Arterial Disease

- ACT CLOPIDOGREL (clopidogrel bisulfate) is indicated for the secondary prevention of atherothrombotic events (myocardial infarction, stroke and vascular death) in patients with atherosclerosis documented by stroke, myocardial infarction, or established peripheral arterial disease.

Acute Coronary Syndrome

- ACT CLOPIDOGREL, in combination with acetylsalicylic acid (ASA), is indicated for the early and long-term secondary prevention of atherothrombotic events (myocardial infarction, ischemic stroke, cardiovascular death and/or refractory ischemia) in patients with acute coronary syndromes - without ST segment elevation (i.e. unstable angina or non-Q-wave myocardial infarction). These benefits of clopidogrel have been shown only when these patients were concomitantly treated with ASA in addition to other standard therapies. These benefits were also seen in patients who were managed medically and those who were managed with percutaneous coronary intervention (with or without stent) or CABG (coronary artery bypass graft).
- For patients with ST-segment elevation acute myocardial infarction, clopidogrel has been shown to reduce the rate of an endpoint of all-cause mortality and the rate of a combined endpoint of death, re-infarction or stroke.

Pediatrics (< 18 years of age):

The safety and efficacy of clopidogrel in pediatric patients have not been established (see WARNINGS AND PRECAUTIONS, **Special Populations, Pediatrics (<18 years of age)**).

CONTRAINDICATIONS

ACT CLOPIDOGREL (clopidogrel bisulfate) is contraindicated in:

- Patients who are hypersensitive to this drug or to any ingredient in the formulation or component of the container. For a complete listing, see the Dosage Forms, Composition and Packaging section of the product monograph.
- Patients with active bleeding such as peptic ulcer and intracranial hemorrhage (ICH).
- Patients with significant liver impairment or cholestatic jaundice.
- Patients who are using repaglinide (see DRUG INTERACTIONS)

WARNINGS AND PRECAUTIONS

Cross-reactivity among thienopyridines

Patients should be evaluated for history of hypersensitivity to another thienopyridine (such as ticlopidine, prasugrel) since cross-reactivity among thienopyridines has been reported (see ADVERSE REACTIONS). Thienopyridines may cause mild to severe allergic reactions such as rash, angioedema, or hematological reactions such as thrombocytopaenia and neutropaenia. Patients who had developed a previous allergic reaction and/or hematological reaction to one thienopyridine may have an increased risk of developing the same or another reaction to another thienopyridine. Monitoring for cross-reactivity is advised.

Bleeding and hematological disorders

As with other antiplatelet agents, when considering prescribing ACT CLOPIDOGREL, physicians should inquire whether the patient has a history of bleeding. ACT CLOPIDOGREL should be used with caution in patients who may be at risk of increased bleeding from recent trauma, surgery or other pathological condition(s), and in patients receiving treatment with acetylsalicylic acid, heparin, glycoprotein IIb/IIIa inhibitors, non-steroidal anti-inflammatory drugs (NSAIDs), or selective serotonin reuptake inhibitors (SSRIs).

Because of the increased risk of bleeding, the concomitant administration of warfarin with ACT CLOPIDOGREL should be undertaken with caution (see DRUG INTERACTIONS).

Due to the risk of bleeding and hematological undesirable effects, blood cell count determination and/or other appropriate testing should be promptly considered whenever such suspected clinical symptoms arise during the course of treatment (see ADVERSE REACTIONS).

Patients should be told that it may take longer than usual to stop bleeding when they take clopidogrel alone or in combination with ASA, and that they should report any unusual bleeding (site or duration) to their physician. Patients should inform physicians and dentists that they are taking clopidogrel before any surgery is scheduled and before any new drug is taken.

In patients with recent transient ischemic attack (TIA) or stroke and who are at high risk of recurrent ischemic events, the combination of ASA and clopidogrel has not been shown to be more effective than clopidogrel alone, but the combination has been shown to increase major bleeding (see DRUG INTERACTIONS). Therefore, such addition should be undertaken with

caution outside of clinical situations where the combination has proven to be beneficial.

Platelet transfusion may be used to reverse the pharmacological effects of clopidogrel when quick reversal is required.

Thrombotic Thrombocytopenic Purpura (TTP) has been reported rarely following the use of clopidogrel, but it can occur anytime during the first year of exposure. Few cases have been reported after more than one year of exposure. TTP is a potentially fatal condition requiring prompt treatment with plasmapheresis. It is characterized by thrombocytopenia, microangiopathic hemolytic anemia, neurological findings, renal dysfunction, and fever.

Acquired hemophilia has been reported following use of clopidogrel, manifesting as a marked increase in bleeding or bruising. In cases of confirmed isolated activated partial thromboplastin time (aPTT) prolongation with or without bleeding, acquired hemophilia should be considered. Patients with a confirmed diagnosis of acquired hemophilia should be managed and treated by specialists, and clopidogrel should be discontinued.

Cytochrome P450 2C19 (CYP2C19)

ACT CLOPIDOGREL is a pro-drug, which requires metabolism by the hepatic cytochrome CYP2C19 to form the active thiol metabolite. The function of this enzyme can be compromised, either through direct drug inhibition or dysfunctional genetic variants that lower enzyme activity, thus the effectiveness of ACT CLOPIDOGREL could diminish correspondingly.

Pharmacogenetics – CYP2C19 Poor Metabolisers:

In patients who are CYP2C19 poor metabolisers, ACT CLOPIDOGREL at recommended doses forms less of the active metabolite of clopidogrel and has a smaller effect on platelet function. Poor metabolisers with acute coronary syndrome or undergoing percutaneous coronary intervention treated with ACT CLOPIDOGREL at recommended doses may exhibit higher cardiovascular event rates than do patients with normal CYP2C19 function. Consider alternative treatment or treatment strategies in patients identified as CYP2C19 poor metabolisers (see ACTION AND CLINICAL PHARMACOLOGY - Pharmacokinetics, Pharmacogenetics, and Dosage and Administration).

Use with Proton Pump Inhibitors (PPI):

Omeprazole, a moderate CYP2C19 inhibitor, reduces the pharmacological activity of clopidogrel. Avoid use of strong or moderate CYP2C19 inhibitors with ACT CLOPIDOGREL. Consider using another acid-reducing agent with less CYP2C19 inhibitory activity, or alternative treatment strategies. Pantoprazole, a weak CYP2C19 inhibitor, had less effect on the pharmacological activity of clopidogrel than omeprazole (see DRUG INTERACTIONS and ACTION AND CLINICAL PHARMACOLOGY).

Gastrointestinal

Active GI Lesions

ACT CLOPIDOGREL prolongs bleeding time. Although clopidogrel has shown a lower incidence of gastrointestinal bleeding compared to ASA in a large controlled clinical trial (CAPRIE – Clopidogrel versus ASA in Patients at Risk of Ischemic Events), ACT CLOPIDOGREL should not be used in patients who have lesions with a propensity to bleed. In

another large controlled clinical trial (CURE – Clopidogrel in Unstable Angina to Prevent Recurrent Ischemic Events), the incidence of major GI bleeding was 1.3% versus 0.7% (clopidogrel + ASA versus placebo + ASA, respectively).

In patients taking ACT CLOPIDOGREL, drugs that might induce GI lesions (such as acetylsalicylic acid and Non-Steroidal Anti-Inflammatory Drugs) should be used with caution.

Hepatic/Biliary/Pancreatic

Experience is limited in patients with moderate hepatic impairment who may have bleeding diatheses. As with any patient exhibiting hepatic impairment, liver function should be carefully monitored and ACT CLOPIDOGREL should be used with caution.

In the CAPRIE study, there were 344 hepatically impaired patients (Alkaline phosphatase > 300 U/L, or ALT > 120 U/L, or AST > 75 U/L) and 168 received clopidogrel for a mean duration of 18 months. The adverse events were more common in this population, compared to the rest of the CAPRIE population, and more common in the clopidogrel (N=168) than in the ASA (N=176) group (any bleeding disorders, N=17 vs N=14; any rash, N=11 vs N=6; diarrhea, N=8 vs N=3, respectively).

Peri-operative Considerations

If a patient is to undergo elective surgery, consideration should be given to discontinue ACT CLOPIDOGREL 5 to 7 days prior to surgery to allow for a reversal of its effect (see ACTION AND CLINICAL PHARMACOLOGY and CLINICAL TRIALS).

Renal

Therapeutic experience with clopidogrel is limited in patients with severe and moderate renal impairment. Therefore ACT CLOPIDOGREL should be used with caution in these patients.

Sensitivity to lactose

ACT CLOPIDOGREL contains lactose. Patients with rare hereditary problems of galactose intolerance, the Lapp lactase deficiency or glucose-galactose malabsorption should not take this medicine (see CONTRAINDICATIONS).

Special Populations

Pregnant Women: There are no adequate and well-controlled studies in pregnant women.

Reproduction studies have been performed in rats at doses ≤ 500 mg/kg per day and in rabbits at doses ≤ 300 mg/kg per day and have revealed no evidence of impaired fertility or harm to the fetus due to clopidogrel. Because animal reproduction studies are not always predictive of a human response, ACT CLOPIDOGREL should be used during pregnancy only if the potential benefits outweigh the potential risks to the fetus.

Nursing Women: When given to lactating rats, clopidogrel caused a slight delay in the development of the offspring. Studies in rats have also shown that clopidogrel and/or its metabolites are excreted in milk. Studies in rats have shown that clopidogrel and/or its metabolites are excreted in milk. It is not known whether this drug is excreted in human milk (see TOXICOLOGY, **Teratogenicity and impairment of fertility**). Because many drugs are

excreted in human milk and because of the potential for serious adverse reactions in nursing infants, a decision should be made whether to discontinue nursing or to discontinue the drug, taking into account the importance of the drug to a nursing woman.

Pediatrics (< 18 years of age): The safety and effectiveness of clopidogrel in pediatric patients have not been established. Therefore, ACT CLOPIDOGREL is not recommended in this patient population. In a randomized, placebo-controlled trial (CLARINET) involving 906 neonates and infants with cyanotic congenital heart disease palliated with a systemic-to-pulmonary arterial shunt, clopidogrel did not demonstrate a clinical benefit.

Driving a vehicle or performing other hazardous tasks

No impairment of driving or psychometric performance was observed following clopidogrel administration.

ADVERSE REACTIONS

Adverse Drug Reaction Overview

The safety profile of clopidogrel has been evaluated in clinical trials in more than 44,000 patients including over 1,200 patients treated for ≥ 1 year and further assessed during post-marketing experience.

Of the patients who participated in the CAPRIE, CURE and CLARITY double-blind international clinical trials, approximately 50% were elderly patients (> 65 years) and 15% were ≥ 75 years. In COMMIT (Clopidogrel and Metoprolol in Myocardial Infarction Trial) study, approximately 58% of the patients treated with clopidogrel were ≥ 60 years, 26% of whom were ≥ 70 years.

The most frequent adverse drug reactions ($\geq 1\%$) with clopidogrel (with or without associated ASA) in controlled clinical trials were hemorrhage and bleeding disorders including purpura, any rash, dyspepsia, abdominal pain and diarrhea (see “Clinical Trial Adverse Drug Reactions”).

The most serious adverse drug reactions from controlled clinical trials rarely reported ($< 1\%$) were bleeding and clotting disorders including gastrointestinal hemorrhage, hemorrhagic ulcer and hemothorax.

Blood disorders: agranulocytosis / granulocytopenia, aplastic anemia, neutropenia and thrombocytopenia.

Gastrointestinal system disorders: Duodenal, gastric or peptic ulcer, gastritis.

Skin disorders: Any rash and bullous eruption.

The overall incidence of study drug discontinuation because of adverse events was similar in both groups in CAPRIE (clopidogrel 11.9% and ASA 11.9%). In CURE, study drug discontinuation occurred in 5.8% of patients with clopidogrel plus ASA and 3.9% of patients

with placebo plus ASA. In CLARITY, study drug discontinuation was greater in the placebo group (8.6%) compared with the clopidogrel group (6.9%). In COMMIT, the overall incidence of discontinuations was similar between the two treatment groups (2.4% in the clopidogrel group versus 2.2% in the placebo group).

Clinical Trial Adverse Drug Reactions

Because clinical trials are conducted under very specific conditions the adverse reaction rates observed in the clinical trials may not reflect the rates observed in practice and should not be compared to the rates in the clinical trials of another drug. Adverse drug reaction information from clinical trials is useful for identifying drug-related adverse events and for approximating rates.

CAPRIE:

With few exceptions (see Table 1) the overall tolerability of clopidogrel was similar regardless of age, sex and race. However, in women there was a slightly higher incidence of bleeding disorders in the clopidogrel group (11.36% vs 9.88%).

Clinically Important Adverse Events

The clinically important adverse events observed in CAPRIE were the following.

Bleeding and clotting disorders: One case of Henoch-Schönlein purpura (acute visceral symptoms: vomiting, diarrhea, abdominal distension, hematuria, renal colic) was reported in a patient taking clopidogrel. The patient recovered without sequelae within one month. The incidence of severe thrombocytopenia (<80 G/L) was 0.2% on clopidogrel and 0.1% on ASA; very rare cases of platelet count $\leq 30,000/\text{mm}^3$ have been reported. The overall incidence of bleeding on clopidogrel and ASA was the same (9.3%). The incidence of severe cases was 1.4% and 1.6% in the clopidogrel and ASA groups respectively. The overall incidence of other bleeding disorders was higher in the clopidogrel group (7.3%) compared to ASA (6.5%). However, the incidence of severe events was similar in both treatment groups (0.6% vs 0.4%). Severe neutropenia ($<0.450\text{G/L}$) was observed in four patients (0.04%) on clopidogrel and two patients (0.02%) on ASA. Two of the 9,599 patients who received clopidogrel and none of the 9,586 patients who received ASA had a neutrophil count of zero. Although the risk of myelotoxicity with clopidogrel appears to be quite low, this possibility should be considered when a patient receiving clopidogrel has a fever or demonstrates other sign of infection. One case of aplastic anemia occurred on clopidogrel treatment.

Gastrointestinal: Overall, the incidence of gastrointestinal events (e.g. abdominal pain, dyspepsia, gastritis and constipation) in patients receiving clopidogrel was 27.1%, compared to 29.8% in those receiving ASA. The incidence of patients withdrawing from treatment because of gastrointestinal adverse reactions was 3.2% for clopidogrel and 4.0% for ASA.

Hepatic and biliary disorders: The overall incidence of hepatic and biliary disorders was similar in patients treated with clopidogrel (3.5%) compared to ASA (3.4%). The most frequent events were increased liver enzymes and bilirubinemia.

Skin disorders: The incidence of skin and appendage disorders in patients receiving clopidogrel was 15.8% (0.7% serious); the corresponding rate in ASA patients was 13.1% (0.5% serious). There was no notable difference between treatment groups in the incidence of bullous eruptions (0.23% clopidogrel versus 0.16% ASA). One case of a severe bullous eruption was reported in a patient taking clopidogrel. The overall incidence of patients withdrawing from treatment because of skin and appendage disorders adverse reactions was 1.5% for clopidogrel and 0.8% for ASA.

A summary of the clinically relevant adverse effects observed in CAPRIE are presented in Table 1 below. In CAPRIE, patients with a known intolerance to ASA were excluded from the study.

Table # 1 – Summary of Adverse Events occurring in $\geq 1\%$ of Clopidogrel patients in CAPRIE Trial

Adverse Event	Clopidogrel n= 9599 (%)	ASA n= 9586 (%)
Body as a Whole		
Accidental / Inflicted Injury	7.9	7.3
Chest Pain	8.3	8.3
Influenza-like symptoms	7.5	7
Fatigue	3.3	3.4
Pain	6.4	6.3
Cardiovascular		
Dependent Edema	1.2	1.3
Edema	1.0	1.2
Heart and rhythm disorder	4.3	5.0*
Hypertension	4.3	5.1
Peripheral edema	1.2	1.6
Central Nervous System		
Dizziness	6.2	6.7
Headache	7.6	7.2
Endocrine and Metabolism		
Hypercholesterolemia	4.0	4.4
Gastrointestinal		
Any Event	27.1	29.8
Abdominal pain	5.6	7.1*
Constipation	2.4	3.3*
Diarrhea	4.5*	3.4
- severe ⁽¹⁾	0.2	0.1
- leading to discontinuation ⁽¹⁾	0.4	0.3
Dyspepsia	5.2	6.1*
Flatulence	1.0	1.1
Nausea	3.4	3.8
Vomiting	1.3	1.4

Adverse Event	Clopidogrel n= 9599 (%)	ASA n= 9586 (%)
Genitourinary		
Urinary tract infection	3.1	3.5
Hemorrhages or bleeding		
Epistaxis	2.9	2.5
Hematoma	1.6	1.5
Gastrointestinal hemorrhage	2.0	2.7*
- requiring hospitalization	0.7	1.1
Purpura (primarily bruising and ecchymosis)	5.3*	3.7
Musculoskeletal		
Arthralgia	6.3	6.2
Back pain	5.8	5.3
Psychiatric Disorder		
Depression	3.6	3.9
Skin		
Any Event	15.8	13.1
Pruritus	3.3*	1.6
Rash	4.2*	3.5
- severe ⁽¹⁾	0.1	0.1
- leading to discontinuation ⁽¹⁾	0.5	0.2
Respiratory		
Bronchitis	3.7	3.7
Coughing	3.1	2.7
Dyspnea	4.5	4.7
Rhinitis	4.2	4.2
Upper respiratory tract infection	8.7	8.3

*: Statistically significant difference between treatments ($p \leq 0.05$).

(1): Patients may be included in more than one category.

No clinically relevant events other than those observed in CAPRIE have been reported with a frequency $\geq 2.5\%$ during the CURE, CLARITY and COMMIT controlled studies.

The number of patients discontinuing due to adverse reactions in CAPRIE are shown in Table 2.

Table # 2 - Patients Discontinued because of Adverse Experiences in CAPRIE (number and percentage of patients)

Adverse Experience	Study drug permanently discontinued	
	Clopidogrel n=9599 (%)	ASA n=9586 (%)
Rash	0.9	0.41*
Diarrhea	0.42	0.27
Indigestion / nausea / vomiting	1.9	2.41*

Any bleeding disorder	1.2	1.37
Intracranial hemorrhage	0.21	0.33
Gastrointestinal hemorrhage	0.52	0.93*
Abnormal liver function	0.23	0.29

* statistically significant, $p < 0.05$

CURE

In CURE, clopidogrel was given with ASA and was not associated with a significant increase in life-threatening or fatal bleeds compared to placebo given with ASA; the incidences of non-life threatening major bleeding and minor bleeding were significantly larger in the clopidogrel + ASA group. The incidence of intracranial hemorrhage was 0.1% in both groups. The principal sites for major bleeding were primarily gastrointestinal and at arterial puncture sites. In patients receiving both clopidogrel and ASA in CURE, the incidence of bleeding is described in Table 3 below:

Table # 3 – Incidence of Bleeding Complications (% patients) – CURE Trial

Event	CLOPIDOGREL+ ASA* (N=6259)	PLACEBO + ASA* (N=6303)	p-value
Life-threatening bleeding	2.2	1.8	0.13
Fatal	0.2	0.2	
5 g/dL hemoglobin drop	0.9	0.9	
Requiring surgical intervention	0.7	0.7	
Hemorrhagic strokes	0.1	0.1	
Requiring inotropes	0.5	0.5	
Requiring transfusions (≥ 4 units)	1.2	1	
Other major bleeding	1.6	1	0.005
Significantly disabling	0.4	0.3	
Intraocular bleeding with significant loss of vision	0.05	0.03	
Requiring 2-3 units of blood	1.3	0.9	
Major bleeding [†]	3.7 [‡]	2.7 [§]	0.001
Minor bleeding [¶]	5.1	2.4	<0.001
Total with bleeding complications	8.5	5	<0.001

* Other standard therapies were used as appropriate. All patients received ASA 75-325 mg daily (mean=160 mg)

[†] Life threatening and other major bleeding necessitating transfusion of ≥ 2 units of blood.

[‡] Major bleeding event rate for clopidogrel + ASA was dose-dependent on ASA:
 < 100 mg = 2.6%; 100-200 mg = 3.5%; > 200 mg = 4.9%.

[§] Major bleeding event rate for placebo + ASA was dose-dependent on ASA:
 < 100 mg = 2.0%; 100-200 mg = 2.3%; > 200 mg = 4.0%.

[¶] Led to interruption of study medication.

The number of patients with bleeding that met the criteria for major bleeding established by the Thrombolysis in Myocardial Infarction (TIMI) trial was 68 (1.09%) in the clopidogrel group and 73 (1.16%) in the placebo group (relative risk, 0.94; $p=0.70$). The number with bleeding that

met the criteria for life-threatening or severe bleeding established by the Global Utilization of Streptokinase and Tissue Plasminogen Activator for Occluded Coronary Arteries (GUST) trial was 78 in the clopidogrel group and 70 in the placebo group (relative risk, 1.12; p=0.48). Some patients had more than one bleeding episode.

Ninety-two percent (92%) of the patients in the CURE study received unfractionated or low molecular weight heparin, and the rate of bleeding in these patients was similar to the overall results.

There was no excess in major bleeds within seven days after coronary bypass graft surgery in patients who stopped therapy more than five days prior to surgery (event rate 4.4% clopidogrel + ASA; 5.3% placebo + ASA). In patients who remained on therapy within five days of bypass graft surgery, the event rate was 9.6% for clopidogrel + ASA, 6.3% for placebo + ASA, which was not significantly different.

Other potentially serious adverse events which may be of clinical interest but were rarely reported (<1%) in patients who received clopidogrel in the CAPRIE or CURE controlled clinical trials are listed below regardless of relationship to clopidogrel. In general, the incidence of these events was similar to that in patients receiving ASA (in CAPRIE) or placebo + ASA (in CURE).

Body as a whole: Allergic reaction and necrosis ischemic.

Cardiovascular disorders: Edema generalized.

Gastrointestinal system disorders: Gastric ulcer perforated, gastritis hemorrhagic and upper GI ulcer hemorrhagic.

Liver and biliary system disorders: Bilirubinemia, hepatitis infectious and liver fatty.

Platelet, bleeding and clotting disorders: Hemarthrosis, hematuria, hemoptysis, hemorrhage intracranial, hemorrhage retroperitoneal, hemorrhage of operative wound, ocular hemorrhage, pulmonary embolism, pulmonary hemorrhage, purpura allergic.

Red blood cell disorders: Anemia aplastic, anemia hypochromic.

Reproductive disorders, female: Menorrhagia.

Respiratory system disorders: Hemothorax.

Skin and appendage disorders: Bullous eruption, rash erythematous, rash maculopapular, urticaria.

Urinary system disorders: Abnormal renal function, acute renal failure.

White cell and reticuloendothelial system disorders: Agranulocytosis, granulocytopenia, leukemia.

Other clinically relevant adverse drug reactions pooled from CAPRIE and CURE studies, or observed in other studies, with an incidence > 0.1% as well as serious and relevant adverse drug reactions with an incidence < 0.1% are presented below:

Central and peripheral nervous system disorders:

Uncommon: Dizziness, paraesthesia

Rare: Vertigo

Gastrointestinal system disorder:

Common: Abdominal pain, diarrhea, dyspepsia

Uncommon: Constipation, duodenal ulcer, flatulence, gastric ulcer, gastritis, nausea, vomiting

Platelet bleeding and clotting disorders:

Uncommon: Bleeding time increased, platelets decreased

Very rare: Thrombotic thrombocytopenic purpura (TTP)

Skin and appendages disorders:

Uncommon: Rash, pruritus

White cell and RES disorders:

Uncommon: leucopenia, neutrophils decreased, eosinophilia

CLARITY:

In CLARITY, the incidence of major bleeding (defined as intracranial bleeding or bleeding associated with a fall in hemoglobin > 5g/dL) was similar between groups (1.3% versus 1.1% in the clopidogrel + ASA and in the placebo + ASA groups, respectively). This was consistent across subgroups of patients defined by baseline characteristics, and type of fibrinolytics or heparin therapy. The incidence of fatal bleeding (0.8% versus 0.6% in the clopidogrel + ASA and in the placebo + ASA groups, respectively) and intracranial hemorrhage (0.5% versus 0.7%, respectively) was low and similar in both groups.

COMMIT:

The overall rate of noncerebral major bleeding or cerebral bleeding in COMMIT was low and similar in both groups as shown in Table 4 below:

Table # 4 – Number (%) of Patients with Bleeding Events in COMMIT

Type of Bleeding	Clopidogrel (+ ASA) (N = 22961)	Placebo (+ ASA) (N = 22891)	P-value
Major* noncerebral or cerebral bleeding**	134 (0.6%)	125 (0.5%)	0.59
Major noncerebral	82 (0.4%)	73 (0.3%)	0.48
Fatal	36 (0.2%)	37 (0.2%)	0.90
Hemorrhagic stroke	55 (0.2%)	56 (0.2%)	0.91
Fatal	39 (0.2%)	41 (0.2%)	0.81
Other noncerebral bleeding (non-major)	831 (3.6%)	721 (3.1%)	0.005
Any noncerebral bleeding	896 (3.9%)	777 (3.4%)	0.004

* Major bleeds are cerebral bleeds or non-cerebral bleeds thought to have caused death or that required transfusion

** The relative rate of major noncerebral or cerebral bleeding was independent of age. Event rates for clopidogrel + ASA by age were <60 years = 0.3%, ≥ 60 to <70 years = 0.7%, ≥ 70 years 0.8%. Event rates for placebo + ASA by age were: <60 years = 0.4%, ≥ 60 to <70 years = 0.6%, ≥ 70 years 0.7%.

Post-Market Adverse Drug Reactions

The following additional adverse reactions were reported in marketed use, however a causal relationship with clopidogrel has not been clearly established.

Frequencies for the following adverse reactions are not known (cannot be estimated from available data).

Blood and lymphatic system disorders:

Agranulocytosis, acquired hemophilia A, aplastic anemia/pancytopenia; cases of bleeding with fatal outcome (especially gastrointestinal, intracranial and retroperitoneal hemorrhage); serious cases of bleeding, mainly eye (conjunctival, ocular, retinal), musculo-skeletal, respiratory tract and skin bleeding, epistaxis, hematuria and hemorrhage of operative wound, hematoma; acquired hemophilia, thrombotic thrombocytopenic purpura (TTP). Some cases of TTP resulted in fatal outcomes (see WARNINGS AND PRECAUTIONS).

Cardiovascular disorders:

- Hypotension, often related to bleeding or allergic reaction.
- Kounis syndrome (vasospastic allergic angina or allergic myocardial infarction) in the context of a hypersensitivity or anaphylactoid/anaphylactic or reaction due to clopidogrel

Gastro-intestinal disorders:

Colitis (including ulcerative or lymphocytic colitis), pancreatitis, stomatitis.

General disorders and administration site conditions:

Fever

Hepato-biliary disorders:

Hepatitis, abnormal liver function test, acute liver failure.

Immune System disorders:

Anaphylactoid reactions, serum sickness.

Cross-reactive drug hypersensitivity among thienopyridines (such as ticlopidine, prasugrel) (see WARNINGS AND PRECAUTIONS).

Insulin autoimmune syndrome, which can lead to severe hypoglycemia, particularly in patients with human leukocyte antigen (HLA) DRA4 subtype (more frequent in the Japanese population).

Musculo-skeletal, connective tissue and bone disorders:

Arthralgia, arthritis, myalgia.

Nervous System disorders:

Taste disturbances, ageusia.

Psychiatric disorders:

Confusion, hallucinations.

Renal and urinary disorders:

Glomerulopathy, elevated blood creatinine.

Respiratory, thoracic and mediastinal disorders:

Bronchospasm, interstitial pneumonitis, eosinophilic pneumonia.

Skin and subcutaneous tissue disorders:

Acute generalised exanthematous pustulosis [AGEP], angioedema, bullous dermatitis (erythema multiforme), drug-induced hypersensitivity syndrome, drug rash with eosinophilia and systemic symptoms (DRESS), eczema, lichen planus, maculopapular, erythematous or exfoliative rash, pruritus, Stevens-Johnson syndrome, toxic epidermal necrolysis, urticaria.

Vascular disorders:

Vasculitis.

Reproductive systems and breast disorders:

Gynecomastia.

DRUG INTERACTIONS

Overview

Drugs associated with bleeding risk

There is an increased risk of bleeding due to the potential additive effect. The concomitant administration of drugs associated with bleeding risk should be undertaken with caution.

CYP2C19 inhibitors

ACT CLOPIDOGREL is metabolized to its active metabolite mostly by CYP2C19. Concomitant use of drugs that inhibit the activity of this enzyme results in reduced plasma concentrations of the active metabolite of clopidogrel and a reduction in platelet inhibition. See Table 6 for drugs that inhibit CYP2C19 [see WARNINGS AND PRECAUTIONS].

Proton Pump Inhibitors (PPI):

In a crossover clinical study, clopidogrel (300-mg loading dose followed by 75 mg/day) alone and with omeprazole (80 mg at the same time as clopidogrel) were administered for 5 days. As shown in Table 5 below, with concomitant dosing of omeprazole, exposure (C_{max} and AUC) to the clopidogrel active metabolite and platelet inhibition were substantially reduced. Similar reductions in exposure to the clopidogrel active metabolite and platelet inhibition were observed when clopidogrel and omeprazole were administered 12 hours apart (data not shown).

There are no adequate studies of a lower dose of omeprazole or a higher dose of clopidogrel in comparison with the approved dose of clopidogrel.

A study was conducted using clopidogrel (300 mg loading dose followed by 75 mg/day) and a

high dose (80 mg/day) of pantoprazole, a weak CYP2C19 inhibitor. The plasma concentrations of the clopidogrel active metabolite and the degree of platelet inhibition were less than observed with clopidogrel alone but were greater than observed when omeprazole 80 mg was co-administered with 300 mg loading dose followed by 75 mg/day of clopidogrel (Table 5).

Table # 5 – Comparison of Clopidogrel Active Metabolite Exposure and Platelet Inhibition with and without Proton Pump Inhibitors, Omeprazole and Pantoprazole

	% Change from clopidogrel (300 mg/75 mg) alone					
	C _{max} (ng/mL)		AUC		Platelet Inhibition [†] (%)	
Clopidogrel Plus	Day 1	Day 5	Day 1	Day 5**	Day 1	Day 5
Omeprazole* 80 mg	↓ 46%	↓ 42%	↓ 45%	↓ 40%	↓ 39%	↓ 21%
Pantoprazole 80 mg	↓ 24%	↓ 28%	↓ 20%	↓ 14%	↓ 15%	↓ 11%

[†] Inhibition of platelet aggregation with 5 mcM ADP

* Similar results seen when clopidogrel and omeprazole were administered 12 hours apart.

** AUC at Day 5 is AUC₀₋₂₄

Some nonrandomized observational studies have shown that the combination of clopidogrel and PPI was associated with a higher incidence of adverse cardiovascular events, but sub-studies of randomized clinical trials showed no significant association. It is recommended to avoid use of strong or moderate CYP2C19 inhibitors with clopidogrel.

Anticoagulant drugs

In view of the possible increased risk of bleeding, anticoagulant drugs should be used with caution as tolerance and safety of simultaneous administration with clopidogrel has not been established. Risk factors should be assessed for individual patients before using clopidogrel.

Warfarin (CYP2C9 Substrates): At high concentrations *in vitro*, clopidogrel has been shown to inhibit CYP2C9. In patients receiving long-term warfarin therapy, the administration of clopidogrel 75 mg/day did not modify the pharmacokinetics of S-warfarin (a CYP2C9 substrate) or the INR; however coadministration of clopidogrel with warfarin increases the risk of bleeding because of independent effects on hemostasis.

Other concomitant therapy

Clinically significant adverse interactions were not detected in clinical trials with clopidogrel where patients received a variety of concomitant medications including ASA, diuretics, beta-blocking agents, angiotensin converting enzyme (ACE) inhibitors, calcium channel blockers, lipid-lowering agents, coronary vasodilators, antidiabetic agents (including insulin), thrombolytics, unfractionated and/or LMW heparin, glycoprotein IIb/IIIa inhibitors, antiepileptic agents, and hormone replacement therapy (however, see Table 6 regarding ASA and glycoprotein IIb/IIIa inhibitors). A review of the clinical trial data indicates that there is no evidence of an interaction between clopidogrel and atorvastatin. In CAPRIE, patients on HMG

CoA reductase inhibitors and clopidogrel experienced a higher incidence of bleeding events (primarily epistaxis). Patients on HMG CoA reductase inhibitors and ASA experienced a higher incidence of intracranial hemorrhage. There is no known pathophysiological or pharmacological explanation for this observation.

It is unlikely that clopidogrel may interfere with the metabolism of drugs such as phenytoin and tolbutamide and the NSAIDs, which are metabolised by cytochrome P450 2C9. Data from the CAPRIE study indicate that phenytoin and tolbutamide can be safely co-administered with clopidogrel.

No clinically significant pharmacodynamic interactions were observed when clopidogrel was coadministered in clinical studies to investigate drug interaction with atenolol, nifedipine, or both atenolol and nifedipine. The pharmacodynamic activity of clopidogrel was slightly enhanced by the coadministration of phenobarbital, however this was not considered to be clinically significant. Pharmacodynamic activity of clopidogrel was not significantly influenced by the coadministration of estrogen.

CYP2C8 substrate drugs: Clopidogrel has been shown to increase repaglinide exposure in healthy volunteers (see Tablet 6, below). In vitro studies have shown the increase in repaglinide exposure is due to strong inhibition of CYP2C8 by the glucuronide metabolite of clopidogrel. Concomitant use of clopidogrel with repaglinide is contraindicated (see CONTRAINDICATIONS). Due to the risk of increased plasma concentrations, concomitant administration of clopidogrel and other drugs primarily cleared by CYP2C8 metabolism (e.g. paclitaxel) should be undertaken with caution.

Drug-Drug Interactions

The drugs listed in this Table are based on either drug interaction case reports or studies, or potential interactions due to the expected magnitude and seriousness of the interaction (i.e., those identified as contraindicated).

Table # 6 – Established or Potential Drug-Drug Interactions

Agent	Ref	Effect	Clinical Comment
ASA	CT	Potentiates effect of ASA on collagen-induced platelet aggregation.	<p>ASA (2 x 500 mg once) did not modify clopidogrel-mediated inhibition of ADP-induced platelet aggregation. Potential increased risk of gastrointestinal bleeding with concomitant administration of ASA. Clopidogrel (75 mg) and ASA (75-325 mg) have been administered together for up to 1 year. As a pharmacodynamic interaction between clopidogrel and ASA is possible, concomitant use should be undertaken with caution.</p> <p>In patients with recent TIA or stroke who are at high risk of recurrent ischemic events, the combination of ASA and clopidogrel has not been shown to be more effective than clopidogrel alone, but the combination has been shown to increase major bleeding.</p>

Agent	Ref	Effect	Clinical Comment
Glycoprotein IIb/IIIa inhibitors	T		As a pharmacodynamic interaction is possible, concomitant use should be undertaken with caution.
Inhibitors of CYP2C19 (e.g. omeprazole)	CT	Reduced drug levels of the active metabolite of clopidogrel	<p>Since clopidogrel is metabolized to its active metabolite mostly by CYP2C19, use of drugs that inhibit the activity of this enzyme would be expected to result in reduced drug levels of the active metabolite of clopidogrel. The clinical relevance of this interaction is uncertain. The use of strong or moderate CYP2C19 inhibitors should be discouraged in patients taking clopidogrel. If a proton pump inhibitor is to be used concomitantly with clopidogrel, consider using one with less CYP2C19 inhibitory activity, such as pantoprazole.</p> <p>Inhibitors of CYP2C19 include but are not limited to omeprazole, esomeprazole, lansoprazole, cimetidine, ticlopidine, fluvoxamine, fluoxetine, moclobemide, felbamate, chloramphenicol, ketoconazole.</p>
Injectable Anticoagulants (Heparin)	CT	No effect	Clopidogrel at steady state did not modify effect of heparin on coagulation in healthy volunteers. Coadministration of heparin had no effect on platelet aggregation inhibition induced by clopidogrel. As a pharmacodynamic interaction between clopidogrel and heparin is possible, concomitant use should be undertaken with caution.
NSAIDs	T	↑ occult gastrointestinal blood loss (with naproxen coadministration)	Potential increased risk of gastrointestinal bleeding with concomitant administration of NSAIDs. NSAIDs and clopidogrel should be coadministered with caution.

Agent	Ref	Effect	Clinical Comment
Opioids (eg. morphine)	CT	In a published study, co-administration of 5 mg intravenous morphine with 600 mg loading dose of clopidogrel in healthy adults decreased the AUC and C _{max} of clopidogrel's thiol metabolites by 34%.	As with other oral P2Y ₁₂ inhibitors, co-administration of opioid agonists delays and reduces the absorption of clopidogrel, presumably because of slowed gastric emptying, resulting in reduced exposure to its metabolites. The clinical relevance is unknown. Consider the use of a parenteral antiplatelet agent in acute coronary syndrome patients requiring co-administration of morphine or other opioid agonists.
Oral Anticoagulants (Warfarin)	T		Because of the increased risk of bleeding, the concomitant administration of warfarin with clopidogrel should be undertaken with caution (See WARNINGS AND PRECAUTIONS).
Repaglinide (a substrate of CYP2C8)	CT	A single dose of 0.25 mg repaglinide, administered 1 hr following a loading dose of 300 mg clopidogrel, and then 1 hr after a dose of 75 mg clopidogrel at steady-state, resulted in ↑ in repaglinide AUC of 5.1-fold and 3.9-fold, respectively.	Concomitant administration of clopidogrel and repaglinide is contraindicated (see CONTRAINDICATIONS).
Selective Serotonin Reuptake Inhibitors (SSRIs)	CS	Affect platelet activation and increase the risk of bleeding. Also see above, effect on CYP2C19.	The concomitant administration of SSRIs with clopidogrel should be undertaken with caution.
Thrombolytics	CS		The safety of the concomitant administration of clopidogrel, rt-PA and heparin was assessed in patients with recent myocardial infarction. Based on historical data, the incidence of clinically significant bleeding was similar to that observed when rt-PA and heparin are co-administered with acetylsalicylic acid.

Legend: CS = Case Study; CT = Clinical Trial; T = Theoretical

No clinically significant pharmacodynamics interactions were observed when clopidogrel was co-administered with antacids, atenolol, cimetidine, digoxin, estrogens, nifedipine, phenobarbital and theophylline.

Antacids did not modify the extent of clopidogrel absorption.

Food or Herbal Product Interactions

There is no interaction of clopidogrel with food since administration of clopidogrel with meals did not significantly modify the bioavailability of clopidogrel. Interactions with herbal products have not been established.

Drug-Laboratory Interactions

None known.

DOSAGE AND ADMINISTRATION

Recommended Dose and Dosage Adjustment

MI, Stroke or Established Peripheral Arterial Disease

The recommended dose of ACT CLOPIDOGREL is 75 mg once daily long term with or without food.

Acute Coronary Syndrome

For patients with non-ST-segment elevation acute coronary syndrome (unstable angina/non-Q-wave MI), ACT CLOPIDOGREL should be initiated with a 300 mg loading dose and continued long term at 75 mg once a day with ASA (80 mg-325 mg daily) (see CLINICAL TRIALS).

For patients with ST-segment elevation acute myocardial infarction, the recommended dose of ACT CLOPIDOGREL is 75 mg once daily, administered in combination with ASA, with or without thrombolytics. ACT CLOPIDOGREL may be initiated with or without a loading dose (300 mg was used in CLARITY; see CLINICAL TRIALS).

No dosage adjustment is necessary for elderly patients or patients with renal impairment (see ACTION AND CLINICAL PHARMACOLOGY – Special Populations and Conditions).

Pharmacogenetics

CYP2C19 poor metaboliser status is associated with diminished antiplatelet response to clopidogrel. Although a higher dose regimen in poor metaboliser healthy subjects increases antiplatelet response, an appropriate dose regimen for this patient population has not been established in clinical outcome trials (see ACTION AND CLINICAL PHARMACOLOGY - Pharmacokinetics, Pharmacogenetics).

Missed Dose

If a dose of ACT CLOPIDOGREL is missed, it should be taken as soon as possible. However, if it is close to the time of the next dose, disregard the missed dose and return to the regular dosing schedule. Do not double doses.

OVERDOSAGE

Overdose following clopidogrel administration may lead to prolonged bleeding time and subsequent bleeding complications. Appropriate therapy should be considered if bleeding is observed or suspected.

A single oral dose of clopidogrel at 1500 or 2000 mg/kg was lethal to mice and rats, and at 3000 mg/kg to baboons.

Treatment:

No antidote to the pharmacological activity of clopidogrel has been found. Platelet transfusion may be used to reverse the pharmacological effects of clopidogrel when quick reversal is

required.

For management of a suspected drug overdose, contact your regional Poison Control Centre.

ACTION AND CLINICAL PHARMACOLOGY

Mechanism of Action

The role of platelets in the pathophysiology of atherosclerotic disease and atherothrombotic events has been established. Long-term prophylactic use of antiplatelet drugs has shown consistent benefit in the prevention of ischemic stroke, myocardial infarction, unstable angina, peripheral arterial disease, need for vascular bypass or angioplasty, and vascular death in patients at increased risk of such outcomes, including those with established atherosclerosis or a history of atherothrombosis. Clopidogrel is a specific inhibitor of adenosine-diphosphate (ADP)-induced platelet aggregation.

Pharmacodynamics

Clopidogrel is a prodrug, one of whose metabolites is an inhibitor of platelet aggregation. Clopidogrel must be metabolised by CYP450 enzymes to produce the active metabolite that inhibits platelet aggregation. The active metabolite of clopidogrel selectively inhibits the binding of adenosine diphosphate (ADP) to its platelet P2Y₁₂ receptor and the subsequent ADP-mediated activation of the glycoprotein GPIIb/IIIa complex, thereby inhibiting platelet aggregation. Platelet aggregation induced by agonists other than ADP is also inhibited by blocking the amplification of platelet activation by released ADP.

Because the active metabolite is formed by CYP450 enzymes, some of which are polymorphic or subject to inhibition by other drugs, not all patients will have adequate platelet inhibition.

Clopidogrel does not inhibit phosphodiesterase activity. Acetylsalicylic acid (ASA) inhibits the cyclooxygenase enzyme pathway preventing the production of prostaglandin and thus, the synthesis of thromboxane A₂ which induces platelet aggregation. Clopidogrel acts on the ADP receptor and ASA acts on a separate receptor thereby inhibiting different pathways of platelet activation and aggregation. Therefore, there is potential for synergy between the two agents.

Clopidogrel acts by modifying irreversibly the platelet ADP receptor. Consequently, platelets exposed to clopidogrel are affected for the remainder of their lifespan (approximately 7 – 10 days) and recovery of normal platelet function occurs at a rate consistent with platelet turnover. Single administration is not sufficient to reach a desired therapeutic effect. Statistically significant and dose-dependent inhibition of platelet aggregation was noted 2 hours after single oral doses of clopidogrel. Repeated doses of 75 mg per day produced inhibition of ADP-induced platelet aggregation from the first day. Steady state was reached between Day 3 and Day 7. At steady state, with a dose of 75 mg per day, the average inhibition level observed was between 40% and 60%. The aggregation level and bleeding time gradually returned to baseline values within 5-7 days after treatment was discontinued. The precise correlation between inhibition of platelet aggregation, prolongation of bleeding time and prevention of atherothrombotic events

has not been established. The effect of a loading dose has been clinically evaluated in the CURE study (Clopidogrel in Unstable Angina to Prevent Recurrent Ischemic Events). The benefits of clopidogrel with concomitant ASA were apparent within 24 hours after randomization in the CURE trial.

Pharmacokinetics

The main pharmacokinetic parameters for clopidogrel are presented in the table below.

	C_{max}	T_½ (h)	AUC_{0-∞}
Single Dose mean	2.2 – 2.5 ng/mL	6 h	2.7 ng·h/L

Absorption: After single and repeated oral doses of 75 mg/day, clopidogrel is rapidly absorbed. Mean peak plasma levels of unchanged clopidogrel (approximately 2.2-2.5 ng/mL after a single 75-mg oral dose) occurred approximately 45 minutes after dosing.

Absorption is at least 50%, based on urinary excretion of clopidogrel metabolites.

Administration of clopidogrel with meals did not significantly modify the bioavailability of clopidogrel as assessed by the pharmacokinetics of the main circulating metabolite.

Distribution: Clopidogrel and the main circulating (inactive) metabolite bind reversibly *in vitro* to human plasma proteins (98% and 94%, respectively). The binding is non saturable *in vitro* up to a concentration of 100 µg/mL.

Metabolism: Clopidogrel is extensively metabolized by the liver. *In vitro* and *in vivo*, clopidogrel is metabolised according to two main metabolic pathways: one mediated by esterases and leading to hydrolysis into its inactive carboxylic acid derivative (85% of circulating metabolites), and one mediated by multiple cytochromes P450. Clopidogrel is first metabolised to a 2-oxo-clopidogrel intermediate metabolite. Subsequent metabolism of the 2- oxo-clopidogrel intermediate metabolite results in formation of the active metabolite, a thiol derivative of clopidogrel. The active metabolite is formed mostly by CYP2C19 with contributions from several other CYP enzymes, including CYP1A2, CYP2B6 and CYP3A4. The active thiol metabolite which has been isolated *in vitro*, binds rapidly and irreversibly to platelet receptors, thus inhibiting platelet aggregation.

The C_{max} of the active metabolite is twice as high following a single 300 mg clopidogrel loading dose as it is after four days of 75 mg maintenance dose. C_{max} occurs approximately 30 to 60 minutes after dosing.

Excretion: Following an oral dose of ¹⁴C-labeled clopidogrel in humans, approximately 50% was excreted in the urine and approximately 46% in the feces in the 5 days after dosing. After a single, oral dose of 75 mg, clopidogrel has a half-life of approximately 6 hours. The elimination half-life of the main circulating (inactive) metabolite was 8 hours after single and repeated

administration. Covalent binding to platelets accounted for 2% of the radiolabel with a half-life of 11 days.

Pharmacogenetics

CYP2C19 is involved in the formation of both the active metabolite and the 2-oxo-clopidogrel intermediate metabolite. Clopidogrel active metabolite pharmacokinetics and antiplatelet effects, as measured by *ex vivo* platelet aggregation assays, differ according to CYP2C19 genotype. Genetic variants of other CYP450 enzymes may also affect the formation of clopidogrel's active metabolite.

The CYP2C19*1 allele corresponds to fully functional metabolism while the CYP2C19*2 and CYP2C19*3 alleles are nonfunctional. The CYP2C19*2 and CYP2C19*3 alleles account for the majority of reduced function alleles in white (85%) and Asian (99%) poor metabolisers. Other alleles associated with absent or reduced metabolism are less frequent and include, but are not limited to, CYP2C19*4, *5, *6, *7, and *8. A patient with poor metaboliser status will possess two loss-of-function alleles as defined above. Published frequencies for the poor CYP2C19 metaboliser genotypes are approximately 2% for whites, 4% for blacks and 14% for Chinese.

A crossover study in 40 healthy subjects, 10 each in the four CYP2C19 metaboliser groups (ultrarapid, extensive, intermediate and poor), evaluated pharmacokinetic and antiplatelet responses using 300 mg followed by 75 mg/day and 600 mg followed by 150 mg/day, each for a total of 5 days (steady state). Decreased active metabolite exposure and diminished inhibition of platelet aggregation were observed in the poor metabolizers as compared to the other groups. When poor metabolizers received the 600 mg/150 mg regimen, active metabolite exposure and antiplatelet response were greater than with the 300 mg/75 mg regimen (see Table 7). An appropriate dose regimen for this patient population has not been established in clinical outcome trials.

Table # 7 – Active Metabolite Pharmacokinetics and Antiplatelet Responses by CYP2C19 Metaboliser Status (healthy subjects)

	Dose	Ultrarapid (n=10)	Extensive (n=10)	Intermediate (n=10)	Poor (n=10)
AUClast (ng•h/mL)	300 mg (Day 1)	33 (11)	39 (24)	31 (14)	14 (6)
	600 mg (Day 1)	56 (22)	70 (46)	56 (27)	23 (7)
	75 mg (Day 5)	11 (5)	12 (6)	9.9 (4)	3.2 (1)
	150 mg (Day 5)	18 (8)	19 (8)	16 (7)	7 (2)
IPA (%)*	300 mg (24 h)	40 (21)	39 (28)	37 (21)	24 (26)
	600 mg (24 h)	51 (28)	49 (23)	56 (22)	32 (25)
	75 mg (Day 5)	56 (13)	58 (19)	60 (18)	37 (23)
	150 mg (Day 5)	68 (18)	73 (9)	74 (14)	61 (14)

Values are mean (SD), * inhibition of platelet aggregation with 5µm ADP; larger value indicates greater platelet inhibition

Consistent with the above results, in a meta-analysis including 6 studies of 335 clopidogrel-treated subjects at steady state, it was shown that active metabolite exposure was decreased by 28% for intermediate metabolisers, and 72% for poor metabolisers while platelet aggregation inhibition was decreased with differences in inhibition of platelet aggregation (IPA) of 6% for intermediate metabolizers and 21% for poor metabolisers, when compared to extensive metabolisers.

The influence of CYP2C19 genotype on clinical outcomes has been evaluated in several retrospective analyses. In TRITON-TIMI 38 (n=1477) and 3 of the cohort studies (total n = 3516), carriers of a reduced function CYP2C19 allele (intermediate or poor metaboliser) had a higher rate of cardiovascular events (death, myocardial infarction, and stroke) or stent thrombosis compared to extensive metabolizers. In another retrospective analysis (CHARISMA, n = 2428) and one cohort study (n=2208), an increased event rate was observed only in poor metabolisers when compared to extensive metabolisers.

Special Populations and Conditions

Geriatrics: In elderly (≥ 75 years) volunteers compared to young healthy subjects, there were no differences in platelet aggregation and bleeding time (See DOSAGE AND ADMINISTRATION). No dosage adjustment is needed for the elderly.

Sex: In a small study comparing men and women (N=10 males and 10 females), less inhibition of ADP-induced platelet aggregation was observed in women. In the CAPRIE study (Clopidogrel versus ASA in Patients at Risk of Ischemic Events; for details see below), the incidence of clinical outcome events was similar in men and women.

Pediatric Patients: No information available.

Renal Insufficiency: After repeat doses of 75 mg per day in subjects with moderate and severe renal impairment (creatinine clearance from 30 to 60 mL/min and from 5 to 15 mL/min, respectively), a 25% inhibition of ADP-induced platelet aggregation was observed. Although this effect was lower than that typically observed in healthy subjects, the prolongation in bleeding time was similar to healthy volunteers.

Since no differences in C_{max} for both clopidogrel and the main circulating metabolite were observed, a compensatory phenomenon i.e. biliary excretion, which has been observed in animals, may explain the lower values of AUC observed in subjects with severe chronic renal failure (see DOSAGE AND ADMINISTRATION).

Ethnicity: The prevalence of CYP2C19 alleles that result in intermediate and poor CYP2C19 metabolism differs according to ethnicity (see ACTION AND CLINICAL PHARMACOLOGY - Pharmacokinetics, Pharmacogenetics). From literature, limited data in Asian populations are available to assess the clinical implication of genotyping of this CYP on clinical outcome events.

Hepatic impairment: After repeated doses of clopidogrel 75 mg/day for 10 days in patients with

Class A or B hepatic cirrhosis (mild to moderate hepatic impairment), slightly higher main active circulating metabolite of clopidogrel was observed compared to healthy subjects. However, inhibition of ADP-induced platelet aggregation and mean bleeding time prolongation was similar in the two groups.

STORAGE AND STABILITY

ACT CLOPIDOGREL tablets should be stored at room temperature (15-30°C). Protect from moisture and light.

DOSAGE FORMS, COMPOSITION AND PACKAGING

Dosage Form

ACT CLOPIDOGREL tablets are available as pink, film-coated, round, biconvex tablets with “CP” on one side and “S” on the other side.

Composition

ACT CLOPIDOGREL tablets contain 97.9 mg of clopidogrel bisulfate which is the molar equivalent to 75 mg of clopidogrel base as the active medicinal ingredient. The tablets also contain the following non-medicinal ingredients: hydrogenated vegetable oil, hypromellose, lactose, low substituted hydroxypropyl cellulose, mannitol, microcrystalline cellulose, red iron oxide, polyethylene glycol and titanium dioxide.

Packaging

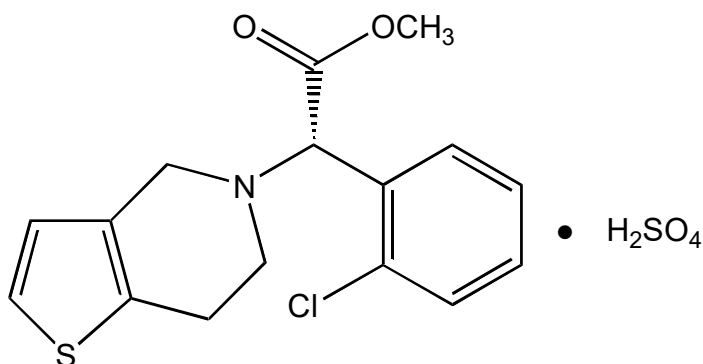
ACT CLOPIDOGREL tablets are available in HDPE bottles of 500 tablets.

PART II: SCIENTIFIC INFORMATION

PHARMACEUTICAL INFORMATION

Drug Substance

Proper name:	Clopidogrel bisulfate
Chemical name:	Methyl (+)-(S)- α -(o-chlorophenyl)-6,7-dihydrothieno [3,2-c] pyridine-5(4H)-acetate, sulphate (1:1)
Molecular formula:	C ₁₆ H ₁₆ Cl NO ₂ S•H ₂ SO ₄
Molecular mass:	419.9 g/mol
Structural formula:	



Physicochemical properties:

Description:	Clopidogrel bisulfate is a white to cream powder.
Solubility:	Clopidogrel bisulfate is soluble in water and methanol.
Optical Rotation:	55.08° (c = 1.890% in methanol)
pKa:	2.27 and 4.1
pH:	2.02 (1% solution in water)
UV Absorption Maxima:	203 nm (recorded in 0.001% w/v methanol)
Melting Range:	183-205°C (capillary method)

CLINICAL TRIALS

Comparative Bioavailability Trials

A blinded, single-dose, randomized, 2-period, 2-sequence, cross-over bioavailability study of ACT CLOPIDOGREL (clopidogrel bisulfate) 75 mg tablets and Plavix™ 75 mg tablets has been performed in 29 healthy volunteers (20 females and 9 males) under fasting conditions. The results of the study demonstrate that the two formulations are bioequivalent. A summary of the bioavailability data is presented below.

Comparative Bioavailability Data for ACT Clopidogrel 75 mg tablets vs. Plavix™ 75 mg tablets (Uncorrected for Potency)

Analyte: Clopidogrel (1 x 75 mg) From measured data Least Square Mean Arithmetic Mean (CV %)				
---	--	--	--	--

Parameter	ACT Clopidogrel Tablets, 75 mg	Plavix™, 75 mg[†]	% Ratio of Geometric Means	90 % Confidence Interval
AUC _T (pg•h/mL)	1007.67 1128.78 (48.91)	958.56 1159.09 (63.11)	105.12	94.40 - 117.07
AUC _I (pg•h/mL)	1022.20 1134.47 (47.10)	969.83 1155.65 (61.03)	105.40	94.64 - 117.38
C _{MAX} (pg/mL)	698.45 838.34 (58.48)	635.74 859.57 (85.11)	109.87	93.55 - 129.03
T _{MAX} § (h)	0.696 (27.87)	0.821 (47.95)		
T _½ § (h)	4.23 (34.71)	4.73 (41.65)		

[†] The reference product, Plavix™ (Sanofi-Synthelabo Canada Inc. / Bristol-Myers Squibb Canada Inc.) was purchased in Canada.

§ Expressed as the arithmetic mean (CV%) only.

Study demographics and trial design

The safety and efficacy of clopidogrel in preventing atherothrombotic events has been evaluated in four large double-blind trials involving 81,090 patients: the CAPRIE study (Clopidogrel vs. ASA in Patients at Risk of Ischemic Events), a comparison of clopidogrel to ASA, the CURE study (Clopidogrel in Unstable Angina to Prevent Recurrent Ischemic Events), the CLARITY-TIMI 28 (Clopidogrel as Adjunctive Reperfusion Therapy – Thrombolysis in Myocardial Infarction) and the COMMIT/CCS-2 (Clopidogrel and Metoprolol in Myocardial Infarction Trial / Second Chinese Cardiac Study) studies comparing clopidogrel to placebo, both given in combination with aspirin and other standard therapy.

MYOCARDIAL INFARCTION (MI), STROKE OR ESTABLISHED PERIPHERAL ARTERIAL DISEASE

CAPRIE:

The CAPRIE trial was a 19,185 patient, 304 centres, international, randomized, double-blind, parallel-group study comparing clopidogrel (75 mg daily) to ASA (325 mg daily). Patients ranged in age from 21 to 94 years (mean 62 years). The study was composed of 72.4% men and 27.6% women and included patients with established atherosclerosis or history of atherothrombosis as manifested by myocardial infarction, ischemic stroke or peripheral arterial disease. Patients received randomized treatment for up to 3 years (mean treatment period 1.6 years) and were followed to 3 years or study termination, irrespective of whether study drug had been discontinued (mean follow-up 1.9 years).

Table # 8 – Summary of patient demographics for CAPRIE trial in patients at risk of ischemic events

Study #	Trial design	Dosage, route of administration and duration	Study subjects (n=number)	Mean age (Range)	Gender
CAPRIE	international, randomized, double-blind, parallel-group study comparing clopidogrel to ASA	Dosage: Clopidogrel (75 mg daily) or ASA (325 mg daily); Administration: oral; Duration: up to 3 years	n=19,185 Clopidogrel: n=9599 ASA: n=9586	62 years (21-94 years)	72.4% male 27.6% female

Study results

The primary outcome of the trial was a composite outcome which included new ischemic stroke (fatal or non-fatal), new myocardial infarction (fatal or non-fatal), or other vascular death. Deaths not easily attributable to nonvascular causes were all classified as vascular.

As shown in the Table 9, clopidogrel was associated with a statistically significant reduction in the primary composite outcome (absolute risk reduction 0.86% and relative risk reduction 8.7%, p=0.045) and a lower incidence of IS and MI. The event curves continued to diverge over the 3-year follow-up period.

Table # 9 - Summary of the numbers of events of the primary outcome (composite and individual components) of the CAPRIE Study (intent-to-treat analysis)

Outcome Events of the Primary Analysis				
Patients	Clopidogrel N=9599	ASA N=9586	p	Relative Risk Reduction (95% CI)
Primary Composite Outcome	939 (9.78%)	1020 (10.64%)	0.045	8.7% (0.2, 16.4)
MI (fatal or not)	275 (2.86%)	333 (3.47%)		
Other vascular death	226 (2.35%)	226 (2.36%)		
IS (fatal or not)	438 (4.56%)	461 (4.81%)		

IS = ischemic stroke; MI = myocardial infarction

ACUTE CORONARY SYNDROME

CURE:

The CURE study included 12,562 patients with an acute coronary syndrome, defined as unstable angina or non Q-wave myocardial infarction without significant ST segment elevation and presenting within 24 hours of onset of the most recent episode of chest pain or symptoms consistent with ischemia.

Patients were required to have either ECG changes compatible with new ischemia (without significant ST segment elevation) or elevated cardiac enzymes or Troponin I or T to at least twice the upper limit of normal. Patients with contraindication to antithrombotic or antiplatelet therapy, at high risk for bleeding, severe heart failure, on oral anticoagulants, and those with recent revascularization or those having received IV glycoprotein IIb/IIIa inhibitors in the previous 3 days were excluded. During the trial, patients were allowed to receive other standard cardiovascular therapies such as heparin, glycoprotein IIb/IIIa inhibitors, lipid-lowering drugs, calcium channel blockers, nitrates, beta blockers, ACE-inhibitors, percutaneous coronary intervention (with or without stent) or CABG, as needed.

Patients were randomized to clopidogrel (300 mg loading dose followed by 75 mg/day) plus ASA (75-325 mg once daily; median 150 mg, mean 160 mg), or placebo plus ASA (75-325 mg once daily; median 150 mg, mean 160 mg). Patients were treated for 3 to 12 months (median 10.8 months; mean 9 months; 4806 patients were followed for entire 12 months). The baseline characteristics, medical history, electrocardiographic changes, and drug therapy were similar for both treatment groups.

Table # 10 – Summary of patient demographics for CURE trial in patients with acute coronary syndrome

Study	Trial design	Dosage, route of administration and duration	Study subjects (n=number)	Mean age (Range)	Sex
CURE	international, randomized, double-blind, parallel-group study comparing clopidogrel + ASA to placebo + ASA	Dosage: Clopidogrel (loading dose – 300 mg then 75 mg daily) or placebo in addition to ASA (75-325 mg daily); Administration: oral; Duration: 3-12 months	n=12,562 Clopidogrel: n=6259; ASA: n=6303	64.2 years (52.9-75.5)	62% male 38% female

The number of patients experiencing the primary outcome, a composite of cardiovascular (CV) death, non-fatal myocardial infarction (MI) and stroke was 582 (9.30%) in the clopidogrel-treated group and 719 (11.41%) in the placebo-treated group; an absolute risk reduction of 2.11%, and a relative risk reduction of 20% ($p=0.00009$) for the clopidogrel-treated group (see Table 11).

The number of patients experiencing the co-primary outcome (CV death, non-fatal MI, stroke or refractory ischemia) was 1035 (16.54%) in the clopidogrel-treated group and 1187 (18.83%) in the placebo-treated group; an absolute risk reduction of 2.29% and a relative risk reduction of 14% ($p=0.0005$) for the clopidogrel-treated group.

Events for each component of the composite outcome (CV death, non-fatal myocardial infarction, stroke, refractory ischemia) occurred less frequently with clopidogrel than in the placebo group but the differences did not reach statistical significance except for non-fatal MI. The results are summarized in Table 11.

Table # 11 – Incidence of the main study outcomes in the CURE study.

Outcome	Clopidogrel + ASA* (N=6259)	Placebo + ASA* (N=6303)	Absolute Risk Reduction %	Relative Risk (95 % CI)
Primary Outcome (Cardiovascular death, non-fatal MI, stroke)	582 (9.30%)	719 (11.41%)	2.11%	0.80 (0.72, 0.90) $p=0.00009$
Co-primary outcome (Cardiovascular death, non-fatal MI, Stroke, Refractory Ischemia)	1035 (16.54%)	1187 (18.83%)	2.29%	0.86 (0.79, 0.94) $p=0.00052$
All Individual Outcome Events:†				
CV Death	318 (5.08%)	345 (5.47%)	0.39%	0.93 (0.79, 1.08)
non-fatal MI**	324 (5.18%)	419 (6.65%)	1.47%	0.77 (0.67, 0.89)
Q-wave	116 (1.9%)	193 (3.1%)	1.20%	0.60 (0.48, 0.76)
Non-Q-wave	216 (3.5%)	242 (3.8%)	0.30%	0.89 (0.74, 1.07)
Stroke	75 (1.20%)	87 (1.38%)	0.18%	0.86 (0.63, 1.18)
Refractory ischemia‡	544 (8.69%)	587 (9.31%)	0.62%	0.93 (0.82, 1.04)
During initial hospitalization	85 (1.4%)	126 (2.0%)	0.60%	0.68 (0.52, 0.90)
After discharge	459 (7.6%)	461 (7.6%)	0%	0.99 (0.87, 1.13)

* Other standard therapies were used as appropriate. All patients received acetylsalicylic acid (ASA) 75-325 mg daily (mean=160 mg)

** Some patients had both a Q-wave and a non-Q-wave MI.

† The individual components do not represent a breakdown of the primary and co-primary outcomes, but rather the total number of subjects experiencing an event during the course of the study.

‡ Only the first ischemic event was counted for each patient.

CV death: excludes clear non-CV deaths;

MI: two of three usual criteria (chest pain, ECG or enzyme/cardiac marker changes);

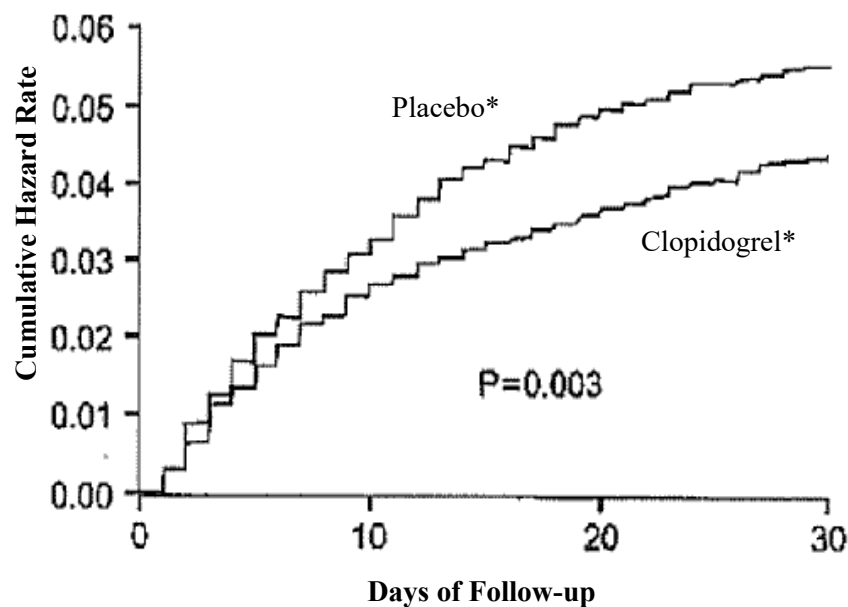
Stroke: neurological deficit ≥ 24 hours (CT/MRI encouraged)

Refractory ischemia (in-hospital): recurrent chest pain lasting more than 5 minutes with new ischemic ECG changes while patient on optimal medical therapy and leading to additional interventions ranging from thrombolytic therapy to coronary revascularization.

Refractory ischemia (after discharge): rehospitalization lasting at least 24 hours for unstable angina with ischemic ECG changes.

The event curves for CV death, non-fatal MI and stroke separated within the first 24 hours after initiation of therapy (Figure 1) and continued to diverge throughout the study follow-up (up to 12 months) (Figure 2). The rate of the first primary outcome was significantly lower in the clopidogrel group both within the first 30 days after randomization (relative risk, 0.79; 95% confidence interval, 0.67 to 0.92) and between days 30 and the end of the study (relative risk, 0.82; 95% confidence interval, 0.70 to 0.95).

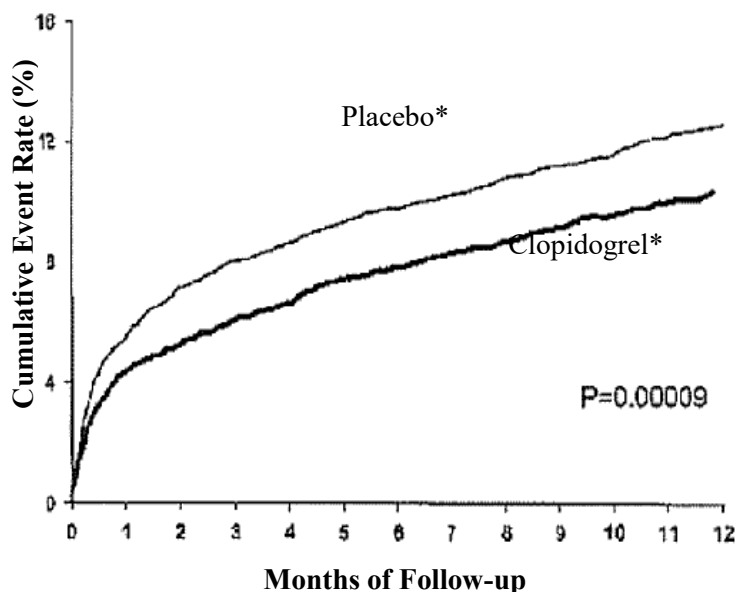
Figure 1: Cumulative Hazard Rates for First Primary Outcome (death from cardiovascular causes, non-fatal myocardial infarction, or stroke) During the First 30 days after Randomization in the CURE Study



No. AT RISK

Placebo	6303	6108	5998	5957
Clopidogrel	6259	6103	6035	5984

Figure 2: Cardiovascular Death, Myocardial Infarction or Stroke During 12 months follow-up in the CURE Study



No. AT RISK					
Placebo	6303	5780	4664	3600	2388
Clopidogrel	6259	5866	4779	3644	2418

The risk reduction of the secondary prospectively chosen outcomes (in-hospital severe ischemia without urgent intervention, need for revascularization and heart failure) were lower in the clopidogrel group than in the placebo group and the differences observed were statistically significant.

Table # 12 – Secondary In-Hospital Outcomes in the CURE Study

	Clopidogrel + ASA* (N=6259)	Placebo + ASA* (N=6303)	Absolute Risk Reduction %	Relative Risk (95% CI)
Severe ischemia	176 (2.81%)	237 (3.76%)	1.0%	0.74 (0.61, 0.90)
Revascularization procedure	1302 (20.8%)	1431 (22.7%)	1.9%	0.92 (0.69, 0.98)
Heart failure	229 (3.7%)	280 (4.4%)	0.7%	0.82 (0.69, 0.98)

Severe ischemia: chest pain lasting more than 5 minutes with new ischemic ECG changes while patient on optimal medical therapy and leading to additional interventions ranging from thrombolytic therapy to coronary revascularization but no urgent intervention performed.

* Other standard therapies were used as appropriate. All patients received ASA 75-325 mg daily (mean=160 mg; median 150 mg)

In general, the results obtained in populations with different characteristics, including patients with low to high risk and on other acute and long-term cardiovascular therapies were consistent with the results of the primary analyses irrespective of other treatments or interventions.

CLARITY

In patients with ST-segment elevation acute myocardial infarction, safety and efficacy of clopidogrel have been evaluated in two randomized, placebo-controlled, double-blind studies, CLARITY and COMMIT.

The randomized, double-blind, placebo-controlled CLARITY trial included 3,491 patients presenting within 12 hours of the onset of a ST elevation myocardial infarction and planned for thrombolytic therapy. Patients were randomized to receive clopidogrel (300 mg loading dose, followed by 75 mg/day) or placebo. Patients also received ASA (150 to 325 mg as a loading dose, followed by 75 to 162 mg/day), a fibrinolytic agent and, when appropriate, heparin for 48 hours. The patients were followed for 30 days.

Table # 13 – Summary of patient demographics for CLARITY trial in STEMI patients

Study #	Trial Design	Dosage, route of administration and duration	Study subjects (n=number)	Mean age (range)	Gender
CLARITY-TIMI 28	International, randomized, double-blind, placebo-controlled study comparing clopidogrel + ASA to placebo + ASA	Dosage: clopidogrel (loading dose-300 mg then 75 mg daily) or placebo in addition to ASA (150-325 mg on first day, and 75-162 mg daily thereafter to be taken simultaneously with the study drug) Administration: oral Duration: Up to and including day of angiography or Day 8 or by hospital discharge, whichever comes first	n = 3491 Clopidogrel: n=1752 ASA: n=1739	57.4 years (18-79 years)	80.3% males 19.7% females

STEMI = ST-elevation myocardial infarction

The primary endpoint was the occurrence of the composite of an occluded infarct-related artery (defined as TIMI Flow Grade 0 or 1) on the predischARGE angiogram, or death or recurrent myocardial infarction by the time of the start of coronary angiography. For patients who did not undergo angiography, the primary endpoint was death or recurrent myocardial infarction by day 8 or by hospital discharge, if prior to Day 8.

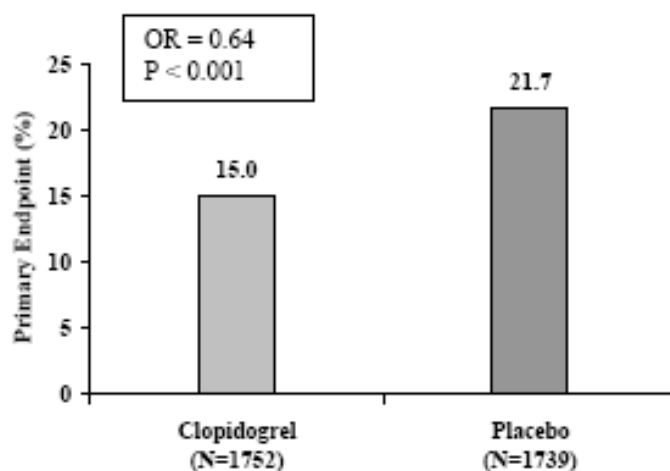
Secondary efficacy assessments were based on the following endpoints analyzed in a hierarchical order [established for interpretation of the 3 secondary endpoints: an early electrocardiographic endpoint (degree of ST segment resolution at 180 minutes after first dose of study drug); a late angiographic endpoint (occluded IRA on predischARGE angiogram); and a clinical endpoint [composite outcome of death, recurrent MI, or recurrent myocardial ischemia (severe or leading to revascularization) by the time of start of angiography or Day 8 or hospital discharge, whichever came first].

The patient population was mostly Caucasian (89.5%) and included 19.7% women and 29.2% patients ≥ 65 years. A total of 99.7% of patients received fibrinolytics (fibrin specific: 68.7%,

non-fibrin specific: 31.1%, 89.5% heparin), 78.7% beta-blockers, 54.7% ACE inhibitors and 63% statins.

The number of patients who reached the primary endpoint was 262 (15.0%) in the clopidogrel-treated group and 377 (21.7%) in the placebo group, representing an absolute reduction of 6.7% and a 36% reduction in the odds of the primary endpoint in favour of treatment with clopidogrel (95% CI: 0.53, 0.76; $p < 0.001$), as shown in Figure 3 below:

Figure 3: Event Rates for the Primary Composite Endpoint in the CLARITY Study



Based on odds of an occluded infarct-related artery (TFG 0/1), death or MI by angiography for clopidogrel versus placebo (OR: 0.64 [0.53 to 0.76]; $p < 0.001$)

The benefit of clopidogrel on the primary endpoint was consistent across all prespecified subgroups including patients' age and gender, infarct location, and type of fibrinolytic or heparin used.

Table # 14 – Components of the primary endpoint: occluded IRA on the predischage angiogram, or death or recurrent MI by the time of start of predischage angiography, or Day 8 or hospital discharge, whichever came first (ITT population) in the CLARITY Study

	Clopidogrel 300/75 mg ^a	Placebo ^a	Odds Ratio (95% CI)	p value
Occluded IRA				
N	1640	1634		
n (%) of patients reporting endpoint	192 (11.7%)	301 (18.4%)	0.59 (0.48, 0.72)	<0.001
Death				
N	1752	1739		
n (%) of patients reporting endpoint	45 (2.6%)	38 (2.2%)	1.17 (0.75, 1.82)	0.492
Recurrent MI				
N	1752	1739		
n (%) of patients reporting endpoint	44 (2.5%)	62 (3.6%)	0.70 (0.47, 1.04)	0.077

^a With background ASA and initial fibrinolytic therapy.

The secondary endpoints are listed in the table below:

Table # 15– Secondary efficacy endpoint analyses (ITT population) in the CLARITY Study

Secondary Efficacy Endpoint	Clopidogrel 300/75 mg ^a	Placebo ^a	p-value	Mean Difference	95% CI
Adjusted mean ST segment resolution of an ECG at 180 minutes after the first dose of study drug	N = 1068 53.0	N = 1021 55.1	0.223 ^b	-2.11	-5.50, 1.28
Secondary Efficacy Endpoint	Clopidogrel 300/75 mg	Placebo	p-value	Odds Ratio	95% CI
Number (%) of patients with occluded IRA on predischARGE angiogram	N = 1640 192 (11.7%)	N = 1634 301 (18.4%)	<0.001 ^b	0.59	0.48, 0.72
Number (%) of patients with death, recurrent MI, or recurrent myocardial ischemia (severe or leading to revascularization) by the time of the start of predischARGE angiography ^c	N = 1752 145 (8.3%)	N = 1739 162 (9.3%)	0.274 ^b	0.88	0.69, 1.11

^a: With background ASA and initial fibrinolytic therapy

^b: p-value to be interpreted following the hierarchical procedure described in the CLARITY Study

^c: For patients who did not undergo angiography, Day 8 or hospital discharge, whichever came first, was used.

COMMIT

The randomized, double-blind, placebo-controlled, 2x2 factorial design COMMIT trial included 45,852 patients presenting within 24 hours of the onset of the symptoms of suspected myocardial infarction with supporting ECG abnormalities (i.e., ST elevation, ST depression or left bundle-branch block). Patients were randomized to receive clopidogrel (75 mg/day) or placebo, in combination with ASA (162 mg/day), for 28 days or until hospital discharge whichever came first.

Table # 16 – Summary of patient demographics for COMMIT trial in STEMI patients

Study #	Trial Design	Dosage, route of administration and duration	Study subjects (n=number)	Mean age (range)	Gender
CCS-2/COMMIT	International, randomized, double-blind, placebo-controlled study comparing clopidogrel + ASA to placebo + ASA, 2 by 2 factorial design	Dosage: Clopidogrel (75 mg daily) or placebo in addition to ASA (162 mg daily to be taken simultaneously with the study drug) Administration: Oral Duration: Maximum 4 weeks (in hospital)	N = 45 852 Clopidogrel: n = 22961 ASA: n = 22891	61.3 years (15-100)	72.2% male 27.8% female

STEMI = ST-elevation myocardial infarction

The co-primary endpoints were death from any cause and the first occurrence of re-infarction, stroke or death.

The patient population included 27.8% women, 58.4% patients ≥ 60 years (26% patients ≥ 70 years) and 54.5% patients who received fibrinolytics. As shown in Table 17 and Figures 4 and 5 below, with clopidogrel the relative risk of death from any cause was reduced by a statistically significant 7% ($p = 0.029$) as was the relative risk of the combination of re-infarction, stroke or death (9%, $p = 0.002$).

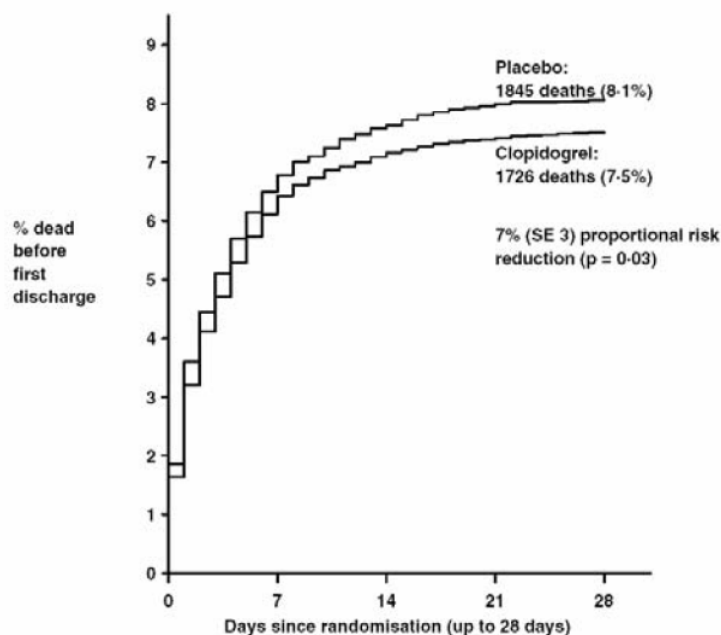
Table # 17 – Outcome Events in the COMMIT Analysis

Events	Clopidogrel (+ASA) (N=22961)	Placebo (+ASA) (N=22891)	Odds ratio (95% CI)	p-value
Composite endpoint: Death, MI or Stroke*	2121 (9.2%)	2310 (10.1%)	0.91 (0.86, 0.97)	0.002
Death	1726 (7.5%)	1845 (8.1%)	0.93 (0.87, 0.99)	0.029
Non-fatal MI**	270 (1.2%)	330 (1.4%)	0.81 (0.69, 0.95)	0.011
Non-fatal Stroke**	127 (0.6%)	142 (0.6%)	0.89 (0.70, 1.13)	0.33

* The difference between the composite endpoint and the sum of death+non-fatal MI+non-fatal stroke indicates that 9 patients (2 clopidogrel and 7 placebo) suffered both a non-fatal stroke and a non-fatal MI

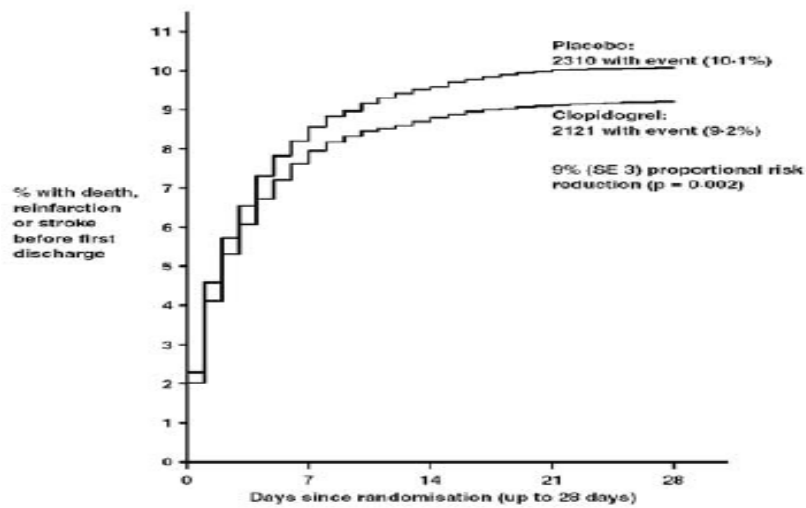
** Non-fatal MI and non-fatal stroke exclude patients who died (of any cause).

Figure 4: Cumulative Event rates for Death in the COMMIT Study*



*All treated patients received ASA

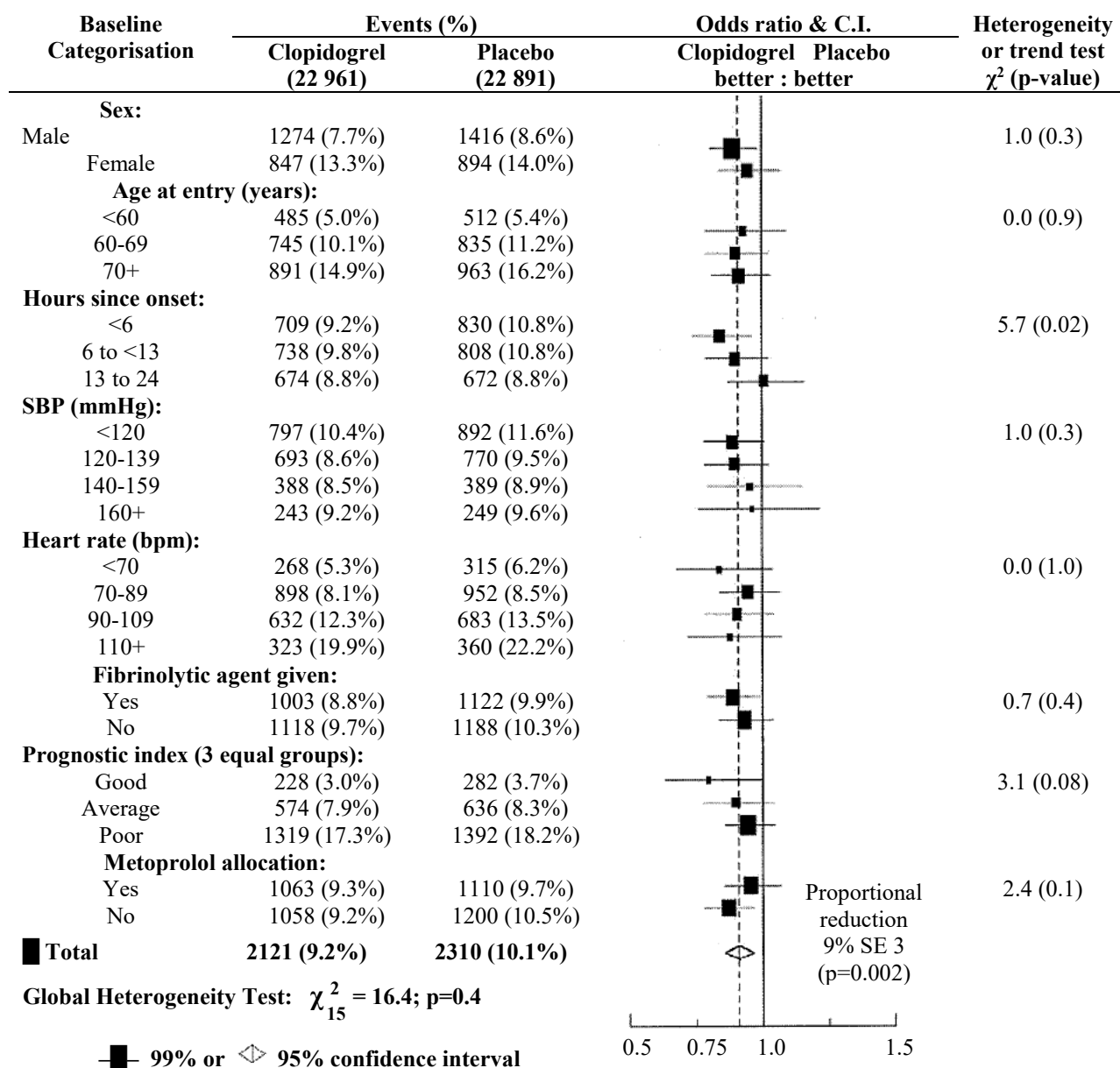
Figure 5: Cumulative Event Rates for the Combined Endpoint Re-Infarction, Stroke or Death in the COMMIT Study*



* All treated patients received ASA

The benefit associated with clopidogrel on the combined endpoint was consistent across age, gender and with or without fibrinolytics as shown in Figure 6, and was observed as early as 24 hours.

Figure 6: Proportional Effects of Adding Clopidogrel to ASA on the Combined Primary Endpoint across Baseline and Concomitant Medication Subgroups for the COMMIT Study



DETAILED PHARMACOLOGY

Pharmacodynamics:

Clopidogrel is a potent inhibitor of platelet aggregation, active *in vivo* against a large spectrum of inducers. Due to this antiaggregating effect, clopidogrel has a powerful antithrombotic activity in various models of thrombosis and prolongs bleeding time; it also inhibits the development of myointimal hyperplasia after injury of the vascular endothelium by preventing platelet adhesion.

The pharmacological profile of clopidogrel can be summarized as follows:

- *Antiaggregating effect:* after administration to various animal species, clopidogrel inhibits platelet aggregation induced by ADP and other agonists which release ADP from platelet storage. Clopidogrel is not active “*in vitro*”. The failure to identify an active metabolite in plasma and the long lasting effect on platelets indicate that after hepatic metabolism, the active entity formed (probably a labile and highly reactive derivative) interacts rapidly with platelets and induces an irreversible modification at the level of ADP receptor.
- *Hemostasis:* a dose dependent prolongation of bleeding time was observed after clopidogrel treatment. This effect is related to the antiaggregating activity, as clopidogrel has no anticoagulant or fibrinolytic activity.
- *Thrombosis:* clopidogrel inhibits thrombus formation in a large variety of models. This is consistent with the capacity of clopidogrel to reduce aggregation induced by various agonists. The onset of the antithrombotic effect of clopidogrel and its potency closely correlate with those described for its antiaggregating activity.
- *Atherogenesis:* Clopidogrel reduces the development of intimal hyperplasia after injury of the endothelium. This effect is mainly due to the inhibition of platelet adhesion and of the release of platelet-derived growth factors at the site of vascular injury.

Studies to determine the general pharmacological properties of clopidogrel were carried out on major systems including: the central nervous system (mouse, rat); autonomic nervous system (dog); cardiovascular system (rat, dog); respiratory system (dog, guinea pig); gastrointestinal system (mouse, rat); and urinary system (rat). The anti-inflammatory activity (rat) was also tested.

Minor side effects appeared only at high dose levels (≥ 62.5 mg/kg). (See table 18). The high ratio between these doses and the antiaggregating doses active against thrombosis (ED₅₀ ~ 1 to 5 mg/kg), indicates a wide margin of safety for clopidogrel.

Table # 18 – Summary of the main general pharmacodynamic effects of clopidogrel

SYSTEM	SPECIES	DOSE (mg/kg)		EFFECTS
Nervous	Mouse	oral	250	Slight analgesic effect of peripheral origin (20-30% ^a)
	Mouse	oral	62.5-250	Slight potentiation of barbiturate-induced narcosis (15-40% ^a)
	Rat	oral	125-250	Slight EEG changes (similar to those induced by a nootropic agent)
Cardiovascular	Dog	ID ^c	125-250	Decrease in cardiac output (-15 to 25% ^b)
Respiratory	Dog	ID ^c	62.5-250	Slight increase in respiratory frequency (5-7 cycles/min ^b)
	Guinea pig	ID ^c	250	Moderate and transient antagonistic effect on serotonin-induced bronchospasm
Gastrointestinal	Rat	oral	200	Decrease (-36% ^a) in gastric emptying

a : Modification versus mean value of control group

b : Modification versus values before administration

c : ID = intraduodenal route

Pharmacokinetics:

The pharmacokinetics of clopidogrel after single oral administration was studied in the rat and monkey. The oral absorption of clopidogrel in rats was complete while in monkeys it was estimated to be about 80%. The plasma concentration of clopidogrel was higher in female than in male rats. In the 20-400 mg/kg clopidogrel dose range, the rat plasma concentrations of clopidogrel increased proportionally with the dose administered, while in monkeys it increased more than proportionally with the dose. Following administration of ¹⁴C-labeled clopidogrel in rats, the excretion of radioactivity was mainly by feces (through the bile) while in monkeys radioactivity was roughly equally excreted in urine and feces. Distribution of ¹⁴C-labeled clopidogrel was studied in rats and radioactivity was found mainly in excretory organs and the pancreas. The transfer of radioactivity across the blood brain barrier was low. During gestation, low levels of radioactivity were found in the embryo or fetuses and placenta. There were three primary metabolic pathways of Clopidogrel in rats and monkeys: (i) hydrolysis of the ester group by carboxylesterases, (ii) sulfoxidation and (iii) oxidation of the tetrahydropyridine.

TOXICOLOGY

Preclinical toxicity studies were conducted with clopidogrel bisulfate which evaluated the systemic, carcinogenic, genotoxic, reproductive, immunogenic and ancillary effects of the compound.

Acute toxicity

At very high single doses by oral administration of clopidogrel (≥ 1500 mg/kg in rodents, and ≥ 500 mg/kg in baboons), lung congestion or labored breathing, and a poor gastric tolerability (gastric erosions and/or vomiting) were reported in rats, mice and baboons. In mice, the oral LD50 value was about 2603 mg/kg in males and 2379 mg/kg in females. The intravenous LD50 value was about 160 mg/kg in males and females. In rats, the oral LD50 value was about 2420 mg/kg in males and 1910 mg/kg in females. The intravenous LD50 value was about 110 mg/kg in males and females.

Chronic toxicity

During preclinical studies in rats and baboons, the most frequently observed effects at very high doses ($>300\times$ the therapeutic dose of 75 mg/day on a mg/kg basis) were acute gastritis, gastric erosions and/or vomiting. At lower doses, an increase in liver weight was observed in mice, rats and baboons associated with increases in cholesterol plasma levels in rats and baboons, and a slight hypertrophy of the smooth endoplasmic reticulum in centrilobular hepatocytes in rats. No histopathological changes were seen in mice or baboons. The liver findings were a consequence of an effect on hepatic metabolising enzymes observed at high doses, a phenomenon that is generally recognized as having no relevance to humans receiving lower therapeutic doses. After one year of treatment at doses representing between 7- 9x (rats) or between 10-23x (baboon), the exposure seen in humans receiving the clinical dose of 75 mg/day, none of these effects were observed.

Carcinogenicity

There was no evidence of tumorigenicity when clopidogrel was administered for 78 weeks to mice and 104 weeks to rats at dosages ≤ 77 mg/kg/day, which afforded plasma exposures $>25\times$ that in humans at the recommended daily dose of 75 mg/day.

Mutagenicity

Clopidogrel was not genotoxic in four *in vitro* tests (Ames test, DNA-repair test in rat hepatocytes, gene mutation assay in Chinese hamster fibroblasts, and chromosome aberration test in human lymphocytes). *In vivo*, clopidogrel had no clastogenic activity in the micronucleus test performed in mice by the oral route.

Teratogenicity and impairment of fertility

Clopidogrel was found to have no effect on the fertility of male and female rats and was not teratogenic in either rats or rabbits (at doses ≤ 52 x the recommended human dose on a mg/m² basis). When given to lactating rats, clopidogrel caused a slight delay in the development of the offspring. Specific pharmacokinetic studies performed with radiolabelled clopidogrel have shown that the parent compound or its metabolites are excreted in the milk. Consequently, a direct effect (slight toxicity), or an indirect effect (low palatability) cannot be excluded.

Other studies

Clopidogrel was not toxic to bone marrow pluripotent stem cells in mice and did not cause any immunotoxic effects in rats and baboons. In the guinea pig, clopidogrel has no antigenic activity and had no phototoxic or photoallergic activity.

Clopidogrel had no promoting activity using an *in vitro* assay for inhibition of intercellular communication of liver cells in culture.

REFERENCES

1. Boneu B, Destelle G. Platelet anti-aggregating activity and tolerance of clopidogrel in atherosclerotic patients. *Thromb Haemost.* 1996; 76:6:939-943.
2. CAPRIE Steering Committee. A randomized, blinded trial of clopidogrel versus aspirin in patients at risk of ischaemic events (CAPRIE). *Lancet.* 1996; 348:1329-1339.
3. Collet JP et al. Cytochrome P450 2C19 polymorphism in young patients treated with clopidogrel after myocardial infarction: a cohort study. *The Lancet* 2009; 373:309-317.
4. COMMIT (CLOpidogrel and Metoprolol in Myocardial Infarction Trial) Collaborative group. COMMIT: randomized placebo-controlled trial of adding clopidogrel to aspirin in 45 852 patients with acute myocardial infarction. *Lancet* 2005; 366: 1607-1621.
5. CURE Study Investigators. The Clopidogrel in Unstable angina to prevent Recurrent Events (CURE) trial programme: rationale, design and baseline characteristics including meta-analysis of the effects of thienopyridines in vascular disease. *Eur Heart J.* 2000;21:2033-2041.
6. Giusti B et al. Relation of cytochrome P450 2C19 loss-of-function polymorphism to occurrence of drug-eluting coronary stent thrombosis. *Am J Cardiol* 2009; 103:806-811.
7. Herbert J-M. Clopidogrel and antiplatelet therapy. *Expert Opin. Invest. Drugs.* 1994; 3:5: 449-455.
8. Herbert J-M, Bernat A, Savi P. Hypercholesterolemia does not affect the antiplatelet activity of clopidogrel. *Platelets (Edinb).* 1995; 6:6:412-413.
9. Mega JL et al. Cytochrome P-450 polymorphisms and response to clopidogrel. *N Engl J Med* 2009; 360:354-62.
10. Mills DC, Puri R, Hu CJ, et al. Clopidogrel inhibits the binding of ADP analogues to the receptor mediating inhibition of platelet adenylate cyclase. *Arterioscler Thromb.* 1992; 12: 4:430-6.
11. Sabatine et al. Addition of clopidogrel to aspirin and fibrinolytic therapy for myocardial infarction with ST-segment elevation. *NEJM.* 2005; 352: 1179-1189.
12. Savi P, Heilmann E, Nurden P, et al. Clopidogrel: An antithrombotic drug acting on the ADP-dependent activation pathway of human platelets. *Clin Appl Thromb Hemost.* 1996; 2: 1:35-42.

13. Sibbing D et al. Cytochrome P450 2C19 loss-of-function polymorphism and stent thrombosis following percutaneous coronary intervention. *Eur Heart J* 2009; 30:916-22.
14. Simon T et al. Genetic determinants of response to clopidogrel and cardiovascular events. *N Engl J Med* 2009; 360(4):363-75.
15. The Clopidogrel in Unstable angina to prevent Recurrent Events trial investigators. Effects of clopidogrel in addition to aspirin in patients with acute coronary syndromes without ST-segment elevation (CURE). *N Engl J Med*. 2001; 345:494-50217.
16. Trenk D et al. Cytochrome P450 2C19 681G> A polymorphism and high on-clopidogrel platelet reactivity associated with adverse 1-year clinical outcome of elective percutaneous coronary intervention with drug-eluting or bare-metal stents. *J Am Coll Cardiol* 2008; 51, 20:1925-34.
17. Product Monograph for Plavix™ (Clopidogrel Bisulfate) 75 mg Tablets, sanofi-aventis Canada Inc., Laval, Quebec. Submission Control No. 229510. Date of Revision: October 8, 2019.

PART III: CONSUMER INFORMATION

Pr ACT CLOPIDOGREL
Clonidogrel Tablets, USP
(as Clonidogrel Bisulfate)

Read this carefully before you start taking ACT CLOPIDOGREL and each time you get a refill. This leaflet is a summary and will not tell you everything about this drug. Talk to your healthcare professional about your medical condition and treatment and ask if there is any new information about ACT CLOPIDOGREL.

ABOUT THIS MEDICATION

What the medication is used for:

You have been prescribed ACT CLOPIDOGREL because you are at risk for experiencing unwanted blood clots (thrombi). These blood clots can lead to symptoms which present in different manners, such as strokes, unstable angina, heart attacks, or peripheral arterial disease (leg pain on walking or at rest). ACT CLOPIDOGREL is taken to prevent further blood clots from forming thereby reducing the risk of having unstable angina, a heart attack or another stroke.

Be sure to talk to your doctor before taking ACT CLOPIDOGREL if you have an elevated risk of bleeding.

This product has been prescribed for you personally and you should not pass it on to others.

What it does:

ACT CLOPIDOGREL tablets belong to a group of medicines called antiplatelet drugs. Platelets are very small structures in blood, smaller than red or white blood cells, which clump together during blood clotting. By preventing this clumping, antiplatelet drugs reduce the chances of blood clots forming (a process called thrombosis).

When it should not be used:

Do not take ACT CLOPIDOGREL if you:

- are allergic to clonidogrel bisulfate or any of the substances contained in the tablets (see below).
- are taking repaglinide, a drug used to lower blood glucose in diabetics
- have a medical condition that may cause bleeding, such as a stomach ulcer.
- have liver problems.

What the medicinal ingredient is:

Clonidogrel bisulfate.

What the nonmedicinal ingredients are:

Hydrogenated vegetable oil, low substituted hydroxypropyl cellulose, mannitol, microcrystalline cellulose, polyethylene glycol, red iron oxide. The film coating contains lactose, hypromellose, polyethylene glycol, red iron oxide and titanium dioxide.

What dosage forms it comes in:

ACT CLOPIDOGREL tablets are available as pink, film-coated,

round, biconvex tablets with “CP” on one side and “>” on the other side. Each tablet contains 75 mg of clonidogrel (as clonidogrel bisulfate).

WARNINGS AND PRECAUTIONS

BEFORE you use ACT CLOPIDOGREL talk to your doctor or pharmacist if you:

- have a medical condition that is causing bleeding, such as a stomach ulcer, or a blood disorder that causes you to bleed more easily or tend to bleed longer than 10 minutes without taking any drugs.
- are taking any other medication such as:
 - acetylsalicylic acid (ASA)
 - other drugs used to reduce blood clotting such as warfarin, heparin, abciximab, eptifibatide and tirofiban
 - oral antidepressants drugs [SSRIs – Selective Serotonin Reuptake Inhibitors] such as fluvoxamine, fluoxetine
 - Non-Steroidal Anti-Inflammatory Drugs (NSAIDs) used to treat painful and/or inflammatory conditions of muscles or joints
- are taking drugs used to treat stomach ulcers and stomach acidity (e.g. omeprazole).
- are pregnant or become pregnant on ACT CLOPIDOGREL, or you are breast-feeding.
- have recently undergone surgery (including dental surgery).
- will be having surgery. Your doctor may ask you to stop taking ACT CLOPIDOGREL for 5-7 days before your surgery.
- have allergies to medications including prasugrel or ticlopidine.

ACT CLOPIDOGREL is not recommended for children or adolescents below 18 years of age.

While you are on ACT CLOPIDOGREL if you experience any excessive bleeding, do not stop taking ACT CLOPIDOGREL but see or call your doctor right away.

If you should see another doctor or a dentist while you are using ACT CLOPIDOGREL, you should inform them that you are using ACT CLOPIDOGREL.

INTERACTIONS WITH THIS MEDICATION

Tell your healthcare professional about all the medicines you take, including any drugs, vitamins, minerals, natural supplements or alternative medicines.

Drugs that may interact with ACT CLOPIDOGREL include:

- Aspirin (ASA) used to treat pain, fever and inflammation,
- Non-Steroidal Anti-Inflammatory Drugs (NSAIDs) used to treat painful and/or inflammatory conditions of the muscles or joints,
- Opioids: while you are treated with ACT CLOPIDOGREL, you should inform your doctor before being prescribed any opioids (used to treat severe pain),

- Selective Serotonin Reuptake Inhibitors (SSRIs) such as fluvoxamine, fluoxetine, used to treat depression,
- Drugs use to reduce clotting such as; heparin, warfarin, abiciximab, eptifibatide, and tirofiban,
- Antacids (e.g. omeprazole) used for indigestion or heartburn.
- Repaglinide, a drug used to lower blood glucose in diabetics.
- Paclitaxel, used to treat many types of cancer.

PROPER USE OF THIS MEDICATION

Usual adult dose:

Adults (including the elderly):

You should take one 75 mg tablet of ACT CLOPIDOGREL per day, by mouth. ACT CLOPIDOGREL can be taken with or without food. You should take your medicine regularly and at the same time each day. If you have had unstable angina or a heart attack, a one-time 300 mg dose may be administered followed by one 75 mg tablet daily.

ACT CLOPIDOGREL should be taken long term under supervision of your doctor.

Overdose:

If you think you have taken too much ACT CLOPIDOGREL contact your healthcare professional, hospital emergency department or regional Poison Control Centre immediately, even if there are no symptoms.

A large dose of tablets could put you at risk of serious bleeding, requiring emergency treatment.

Missed Dose:

If you forget to take a dose of ACT CLOPIDOGREL, but remember within 12 hours of your usual time, take your tablet immediately and then take your next tablet at the normal time. If you forget for more than 12 hours simply take the next single dose at the usual time. Do not take a double dose to make up for the one you missed.

SIDE EFFECTS AND WHAT TO DO ABOUT THEM

Side effects may include:

- joint pain and/or muscle pain
- abdominal pain, diarrhea, indigestion (heartburn)
- nausea, vomiting, constipation, loss of taste, taste disturbance
- dizziness, headache
- tingling sensation in the arms and/or legs
- rash, itching
- bruising
- enlargement of breast tissue in men

If you cut or injure yourself, it may take slightly longer than usual for bleeding to stop. For minor cuts and injuries, e.g. cutting yourself shaving, this is of no concern. However, if you are in any doubt at all, you should contact your doctor immediately.

If any of these affects you severely, tell your doctor or pharmacist.

SERIOUS SIDE EFFECTS, HOW OFTEN THEY HAPPEN AND WHAT TO DO ABOUT THEM

Symptom / effect		Talk with your doctor or pharmacist		Stop taking drug and seek immediate medical help
		Only if severe	In all cases	
Common	Nose bleeds	✓		
	Bleeding disorders: blood in the stool, urine or eye, vomiting blood, coughing up blood, purple spotted rash			✓
	Allergic Reaction: rash, hives, swelling of the face, lips, tongue or throat, difficulty swallowing or breathing			✓
Uncommon	Fever, signs of infection, extreme tiredness			✓
	Liver disorder: yellowing of the skin or eyes, dark urine, abdominal pain, nausea, vomiting, loss of appetite			✓
	Bleeding in the brain: sudden, severe headache, weakness, loss of speech or vision, confusion, nausea, vomiting, seizures, loss of consciousness			✓
Very rare	Eosinophilic Pneumonia: cough, fever, difficulty breathing, and sweating at night		✓	

SERIOUS SIDE EFFECTS, HOW OFTEN THEY HAPPEN AND WHAT TO DO ABOUT THEM

Symptom / effect	Talk with your doctor or pharmacist		Stop taking drug and seek immediate medical help
	Only if severe	In all cases	
Kounis syndrome: a mixture of symptoms and signs of an allergic reaction and heart attack or unstable angina, with chest pain, shortness of breath, faintness, nausea, vomiting, syncope, pruritus, urticaria, sudden, heavy sweating, unusual paleness, palpitations, hypotension, slow heartbeat.			✓
Unknown	Persistent low blood sugar symptoms such as: sweating, shakiness, dizziness, headache, and blurred vision.		✓

This is not a complete list of side effects. The complete list can be found on the Product Monograph, which can be obtained through your doctor or pharmacist. For any unexpected effects while taking ACT CLOPIDOGREL, contact your doctor or pharmacist.

HOW TO STORE IT

ACT CLOPIDOGREL tablets should be stored at room temperature (15-30°C) in a safe place and be kept out of the reach and sight of children. Do not leave them near a radiator, on a window sill or in a humid place.

Do not remove tablets from the packaging until you are ready to take them.

Reporting Side Effects

You can report any suspected side effects associated with the use of health products to Health Canada by:

- Visiting the Web page on Adverse Reaction Reporting (<https://www.canada.ca/en/health-canada/services/drugs-health-products/medeffect-canada/adverse-reaction-reporting.html>) for information on how to report online, by mail or by fax; or
- Calling toll-free at 1-866-234-2345.

NOTE: Contact your health professional if you need information about how to manage your side effects. The Canada Vigilance Program does not provide medical advice.

MORE INFORMATION

If you want more information about ACT CLOPIDOGREL:

- Talk to your healthcare professional.
- Find the full product monograph that is prepared for healthcare professionals and includes this Consumer Information by visiting the Health Canada website (<http://www.canada.ca/en/health-canada.html>); the manufacturer's website <http://www.tevacanada.com> ; or by calling 1-800-268-4127 ext. 3; or email druginfo@tevacanada.com.

This leaflet was prepared by:

Teva Canada Limited
30 Novopharm Court
Toronto, Ontario
Canada M1B 2K9

Date of revision: March 24, 2020.