

PRODUCT MONOGRAPH

Pr LAMICTAL

lamotrigine

Lamotrigine Tablets USP
25, 100, 150 mg

Lamotrigine Dispersible Tablets
Manufacturer's Standard
2 and 5 mg

Antiepileptic

GlaxoSmithKline Inc.
7333 Mississauga Road
Mississauga, Ontario
L5N 6L4

Date of Revision:
May 27, 2020

Submission Control No: 237004

© 2020 GlaxoSmithKline Inc. All Rights Reserved
Trademarks are owned by or licensed to the GSK group of companies.

TABLE OF CONTENTS

PART I: HEALTH PROFESSIONAL INFORMATION	3
SUMMARY PRODUCT INFORMATION	3
INDICATIONS AND CLINICAL USE	3
CONTRAINDICATIONS	4
WARNINGS AND PRECAUTIONS	4
ADVERSE REACTIONS	14
DRUG INTERACTIONS	21
DOSAGE AND ADMINISTRATION	28
OVERDOSAGE	36
ACTION AND CLINICAL PHARMACOLOGY	36
STORAGE AND STABILITY	41
DOSAGE FORMS, COMPOSITION AND PACKAGING	41
PART II: SCIENTIFIC INFORMATION	42
PHARMACEUTICAL INFORMATION	42
CLINICAL TRIALS	42
DETAILED PHARMACOLOGY	43
TOXICOLOGY	45
REFERENCES	48
PART III: CONSUMER INFORMATION	51

PrLAMICTAL

lamotrigine

PART I: HEALTH PROFESSIONAL INFORMATION

SUMMARY PRODUCT INFORMATION

Route of Administration	Dosage Form / Strength	Nonmedicinal Ingredients
Oral	Tablets (25, 100 and 150 mg)	Tablets: cellulose, lactose, magnesium stearate, povidone, and sodium starch glycolate LAMICTAL 100 mg tablets also contain FD&C yellow No. 6 aluminium lake. LAMICTAL 150 mg tablets also contain yellow ferric oxide.
	Dispersible Tablets (2 and 5mg)	Dispersible Tablets: aluminum magnesium silicate, blackcurrant flavour, calcium carbonate, hydroxypropylcellulose, magnesium stearate, povidone, saccharin sodium and sodium starch glycolate

INDICATIONS AND CLINICAL USE

Adults (≥ 18 years of age)

LAMICTAL (lamotrigine) is indicated:

- as adjunctive therapy for the management of epilepsy who are not satisfactorily controlled by conventional therapy;
- for use as monotherapy following withdrawal of concomitant antiepileptic drugs;
- as adjunctive therapy for the management of the seizures associated with Lennox-Gastaut syndrome.

Geriatrics (> 65 years of age)

No dosage adjustment is required in patients over 65 years of age.

Pediatrics (<18 years of age)

LAMICTAL (lamotrigine) is indicated as adjunctive therapy for the management of the seizures associated with Lennox-Gastaut syndrome. LAMICTAL is not recommended in children weighing less than 9 kg (see DOSAGE AND ADMINISTRATION)

Safety and efficacy in patients below the age of 16 years, other than those with Lennox-Gastaut Syndrome, have not been established.

CONTRAINDICATIONS

- Patients who are hypersensitive to this drug or to any ingredient in the formulation or component of the container. For a complete listing, see DOSAGE FORMS, COMPOSITION AND PACKAGING, Composition.

WARNINGS AND PRECAUTIONS**SERIOUS WARNING AND PRECAUTION: SERIOUS SKIN RASHES**

Serious rashes associated with hospitalization have occurred with the use of LAMICTAL (lamotrigine). The incidence of these rashes in clinical trials was 1% (1/100) in pediatric patients (age < 16 years) and 0.3% (3/1000) in adults. The incidence of serious rash reported as Stevens-Johnson Syndrome (SJS) in clinical trials was 0.5% (1/200) in pediatric patients and 0.1% (1/1000) in adults. In worldwide postmarketing experience, rare cases of toxic epidermal necrolysis and/or death associated with rash have been reported, but their numbers are too few to permit a precise estimate of the rate.

In children, the initial presentation of a rash can be mistaken for an infection. Physicians should consider the possibility of a drug reaction in children that develop symptoms of rash and fever during the first eight weeks of therapy.

SERIOUS RASH ASSOCIATED WITH RAPID TITRATION

Do not exceed the recommended initial dose and subsequent dose escalations of LAMICTAL. A higher incidence of serious dermatologic events (see WARNINGS AND PRECAUTIONS, Skin-related Events, Table 1 and Table 2; see also DOSAGE AND ADMINISTRATION) has been associated with more rapid initial titration (exceeding the recommended initial dose or exceeding the recommended dose escalation), and use of concomitant valproic acid.

RASH ASSOCIATED WITH A HISTORY OF RASH TO OTHER ANTIEPILEPTIC DRUGS

In two studies (n = 767 and n = 988), the frequency of rash with lamotrigine treatment was approximately 3-4 times higher in patients with a history of allergy or rash to other anti-epileptics, compared to those without such history.

Nearly all cases of rash associated with LAMICTAL have occurred within 2 to 8 weeks of treatment initiation. However, isolated cases have been reported after prolonged treatment (e.g. 6 months). Accordingly, duration of therapy cannot be relied upon as a means to predict the potential risk signalled by the first appearance of a rash.

Although benign rashes also occur with LAMICTAL, it is not possible to predict reliably which rashes will prove to be life threatening. Accordingly, all patients who develop rash should be promptly evaluated and LAMICTAL withdrawn immediately, unless the rash is clearly not drug related.

General

Acute Multi-organ Failure

Multi-organ failure, which in some cases has been fatal or irreversible, has been observed in patients receiving LAMICTAL. Fatalities associated with multi-organ failure and various degrees of hepatic failure have been reported in 2 of 3,796 adult patients and 4 of 2,435 pediatric patients who received LAMICTAL in epilepsy clinical trials. No such fatalities have been reported in bipolar patients in clinical trials. Rare fatalities from multi-organ failure have also been reported in compassionate plea and postmarketing use. The majority of these deaths occurred in association with other serious medical events, including status epilepticus and overwhelming sepsis, and hantavirus, making it difficult to identify the initial cause.

Additionally, 3 patients (a 45-year-old woman, a 3.5-year-old boy, and an 11-year-old girl) developed multi-organ dysfunction and disseminated intravascular coagulation 9 to 14 days after LAMICTAL was added to their AED regimens. Rash and elevated transaminases were also present in all patients and rhabdomyolysis was noted in 2 patients. Both pediatric patients were receiving concomitant therapy with valproate, while the adult patient was being treated with carbamazepine and clonazepam. All patients subsequently recovered with supportive care after treatment with LAMICTAL was discontinued.

Drug Discontinuation

Abrupt discontinuation of any antiepileptic drug (AED) in a responsive patient with epilepsy may provoke rebound seizures. In general, withdrawal of an AED should be gradual to minimize this risk. Unless safety concerns (i.e. rash) require a more rapid withdrawal, the dose of LAMICTAL (lamotrigine) should be tapered over a period of at least two weeks (see DOSAGE AND ADMINISTRATION).

Hormonal Contraceptives

Patients taking LAMICTAL should be advised not to start or stop their oral contraceptives without consulting their physician. Significant adjustments in the maintenance dose of LAMICTAL may be required in some patients (see DRUG INTERACTIONS, Drug-Drug Interactions, *Oral Contraceptives*; ADVERSE REACTIONS, Post-Market Adverse Drug Reactions, Oral Contraceptives and DOSAGE AND ADMINISTRATION, *Women and Oral Contraceptives*).

Interactions with Antiepileptic Drugs

In a multidrug regiment, antiepileptic drugs may affect lamotrigine clearance, and dosage adjustment of LAMICTAL might be required (see DOSAGE AND ADMINISTRATION and DRUG INTERACTIONS).

Occupational Hazards

Patients with uncontrolled epilepsy should not drive or handle potentially dangerous machinery. During clinical trials common adverse effects included dizziness, ataxia, drowsiness, diplopia, and blurred vision. Patients should be advised to refrain from activities requiring mental alertness or physical coordination until they are sure that LAMICTAL does not affect them adversely.

Other Products Containing Lamotrigine

Lamotrigine tablets should not be administered to patients currently being treated with any other preparation containing lamotrigine without consulting a doctor.

Potential Medication Errors

Medication errors involving LAMICTAL have occurred. In particular, the names LAMICTAL or lamotrigine can be confused with the names of other commonly used medications. Medication errors may also occur between the different formulations of LAMICTAL. To reduce the potential of medication errors, write and say LAMICTAL clearly. To avoid the medication error of using the wrong drug or formulation, patients should be strongly advised to visually inspect their tablets to verify that they are LAMICTAL, as well as the correct formulation of LAMICTAL, each time they fill their prescription.

Cardiovascular**Brugada-type ECG**

Arrhythmogenic ST-T abnormality and typical Brugada ECG pattern has been reported in patients treated with lamotrigine. The use of lamotrigine should be carefully considered in patients with Brugada syndrome.

Hematologic**Blood Dyscrasias**

There have been reports of blood dyscrasias that may or may not be associated with the hypersensitivity syndrome. These have included neutropenia, leukopenia, anemia, thrombocytopenia, pancytopenia, and, rarely, aplastic anemia and pure red cell aplasia.

Hypersensitivity Reactions**Drug Reaction with Eosinophilia and Systemic Symptoms**

Multi-organ hypersensitivity reactions, also known as Drug Reaction with Eosinophilia and Systemic Symptoms (DRESS), have occurred with LAMICTAL. Some have been fatal or life threatening. DRESS typically, although not exclusively, presents with fever, rash, and/or lymphadenopathy in association with other organ system involvement, such as hepatitis, nephritis, hematologic abnormalities, aseptic meningitis, myocarditis, or myositis, sometimes

resembling an acute viral infection (see ADVERSE REACTIONS). Eosinophilia is often present. This disorder is variable in its expression and other organ systems not noted here may be involved. The syndrome shows a wide spectrum of clinical severity and may rarely lead to disseminated intravascular coagulation (DIC) and multi-organ failure.

It is important to note that early manifestations of hypersensitivity (e.g. fever, lymphadenopathy) may be present even though a rash is not evident. If such signs or symptoms are present, the patient should be evaluated immediately. LAMICTAL should be discontinued if an alternative etiology for the signs or symptoms cannot be established.

Prior to initiation of treatment with LAMICTAL, the patient should be instructed that a rash or other signs or symptoms of hypersensitivity (e.g. fever, lymphadenopathy) may herald a serious medical event and that the patient should report any such occurrence to a physician immediately.

Immune

Haemophagocytic lymphohistiocytosis (HLH) has occurred in pediatric and adult patients taking LAMICTAL for various indications (see ADVERSE REACTIONS, Post-Market Adverse Drug Reactions). It is a life-threatening syndrome of pathologic immune activation characterized by clinical signs and symptoms of extreme systemic inflammation and is associated with high mortality rates if not recognized early and treated. Common findings include fever, hepatosplenomegaly, rash, lymphadenopathy, neurologic symptoms, cytopenias, high serum ferritin, abnormal liver and renal function tests, and coagulation abnormalities. In cases of HLH reported with LAMICTAL, patients have presented with signs of systemic inflammation (e.g., fever, rash, hepatosplenomegaly, and organ system dysfunction) and blood dyscrasias (e.g., neutropenia, thrombocytopenia, anemia, etc). Symptoms have been reported to occur within approximately 1 to 4 weeks following lamotrigine initiation. Patients who develop these signs and symptoms should be immediately evaluated and a diagnosis of HLH should be considered. If an alternative etiology for the signs or symptoms of HLH cannot be established, LAMICTAL should be discontinued and other treatment options considered (See WARNINGS AND PRECAUTIONS, Drug Discontinuation). The recommended initial dose and subsequent dose escalations of LAMICTAL should not be exceeded.

Hypersensitivity: The 100 mg tablet coating contains an azo dye (FD&C Yellow No. 6 aluminium lake) which may cause allergic reactions.

Neurologic

Aseptic Meningitis

Therapy with LAMICTAL increases the risk of developing aseptic meningitis. Because of the potential for serious outcomes of untreated meningitis due to other causes, patients should also be evaluated for other causes of meningitis and treated as appropriate.

Postmarketing cases of aseptic meningitis have been reported in pediatric and adult patients taking LAMICTAL for various indications. Symptoms upon presentation have included headache, fever, nausea, vomiting, and nuchal rigidity. Rash photophobia, myalgia, chills,

altered consciousness, and somnolence were also noted in some cases. Symptoms have been reported to occur within 1 to 40 days following the initiation of treatment. In most cases, symptoms were reported to resolve after discontinuation of LAMICTAL. Re-exposure resulted in a rapid return of symptoms (from within 30 minutes to 1 day following re-initiation of treatment) that were frequently more severe. Some of the patients treated with LAMICTAL who developed aseptic meningitis had underlying diagnoses of systemic lupus erythematosus or other autoimmune diseases. Lamotrigine should not be restarted in patients who have discontinued due to aseptic meningitis associated with prior treatment of lamotrigine.

Cerebrospinal fluid (CSF) analysed at the time of clinical presentation in reported cases was characterized by a mild to moderate pleocytosis, normal glucose levels, and mild to moderate increase in protein. CSF white blood cell count differentials showed a predominance of neutrophils in a majority of the cases, although a predominance of lymphocytes was reported in approximately one third of the cases. Some patients also had new onset of signs and symptoms of involvement of other organs (predominantly hepatic and renal involvement) which may suggest that in these cases the aseptic meningitis observed was part of a hypersensitivity reaction.

Status Epilepticus

There are reports in the literature that severe convulsive seizures including status epilepticus may lead to rhabdomyolysis, multi-organ dysfunction and disseminated intravascular coagulation, sometimes with fatal outcome. Similar cases have occurred in association with the use of lamotrigine.

Psychiatric

Suicidal Behaviour and Ideation

Symptoms of depression and /or bipolar disorder may occur in patients with epilepsy, and there is evidence that patients with epilepsy and bipolar disorder have an elevated risk for suicidality.

25 to 50% of patients with bipolar disorder attempt suicide at least once, and may experience worsening of their depressive symptoms and/or the emergence of suicidal ideation and behaviours (suicidality) whether or not they are taking medications for bipolar disorder, including lamotrigine.

Suicidal ideation and behaviour have been reported in patients treated with antiepileptic agents in several indications.

All patients treated with antiepileptic drugs, irrespective of indication, should be monitored for signs of suicidal ideation and behaviour and appropriate treatment should be considered. Patients (and caregivers of patients) should be advised to seek medical advice should signs of suicidal ideation or behaviour emerge.

An FDA meta-analysis of randomized placebo controlled trials, in which antiepileptic drugs were used for various indications, has shown a small increased risk of suicidal ideation and behaviour in patients treated with these drugs. The mechanism of this risk is not known.

There were 43,892 patients treated in the placebo controlled clinical trials that were included in the meta-analysis. Approximately 75% of patients in these clinical trials were treated for indications other than epilepsy and, for the majority of non-epilepsy indications the treatment (antiepileptic drug or placebo) was administered as monotherapy. Patients with epilepsy represented approximately 25% of the total number of patients treated in the placebo controlled clinical trials and, for the majority of epilepsy patients, treatment (antiepileptic drug or placebo) was administered as adjunct to other antiepileptic agents (i.e. patients in both treatment arms were being treated with one or more antiepileptic drug). Therefore, the small increased risk of suicidal ideation and behaviour reported from the meta-analysis (0.43% for patients on antiepileptic drugs compared to 0.24% for patients on placebo) is based largely on patients that received monotherapy treatment (antiepileptic drug or placebo) for non-epilepsy indications. The study design does not allow an estimation of the risk of suicidal ideation and behaviour for patients with epilepsy that are taking antiepileptic drugs, due both to this population being the minority in the study, and the drug-placebo comparison in this population being confounded by the presence of adjunct antiepileptic drug treatment in both arms.

Skin

Skin-Related Events

In adult controlled studies of adjunctive lamotrigine therapy, the incidence of rash (usually maculopapular and/or erythematous) in patients receiving LAMICTAL was 10% compared with 5% in placebo patients. The rash usually occurred within the first six weeks of therapy and resolved during continued administration of LAMICTAL. LAMICTAL was discontinued because of rash in 1.1% of adult patients in controlled studies and 3.8% of all patients in all studies. The rate of rash-related withdrawal in clinical studies was higher with more rapid initial titration dosing, and in patients receiving concomitant valproic acid (VPA), particularly in the absence of AEDs that induce lamotrigine glucuronidation. See Table 1 and Table 2; see also DOSAGE AND ADMINISTRATION.

Table 1 Effect of Concomitant AEDs on Rash Associated with LAMICTAL in All Adult Controlled and Uncontrolled Clinical Trials Regardless of Dosing Escalation Scheme

AED Group	Total Patient Number	All Rashes	Withdrawal Due to Rash	Hospitalization in Association with Rash
AEDs that induce lamotrigine glucuronidation ¹	1788	9.2%	1.8%	0.1%
AEDs that induce lamotrigine glucuronidation ¹ + VPA	318	8.8%	3.5%	0.9%
VPA ± AEDs that neither inhibit nor induce lamotrigine glucuronidation ²	159	20.8%	11.9%	2.5%
AEDs that neither inhibit nor induce lamotrigine glucuronidation ²	27	18.5%	0.0%	0.0%

VPA = Valproic Acid

1 AEDs that induce lamotrigine glucuronidation include carbamazepine, phenobarbital, phenytoin, and primidone

2 AEDs that neither inhibit nor induce lamotrigine glucuronidation include clonazepam, clobazam, ethosuximide, methsuximide, vigabatrin, and gabapentin

Table 2 **Effect of the Initial Daily Dose¹ of LAMICTAL in the Presence of Concomitant AEDs, on the Incidence of Rash Leading to Withdrawal of Treatment in Adult Add-On Clinical Trials**

AED Group	AEDs that induce lamotrigine glucuronidation ²		AEDs that induce lamotrigine glucuronidation ² + VPA		VPA ± AEDs that neither inhibit nor induce lamotrigine glucuronidation ³	
	Total Patient Number	Percentage of Patients Withdrawn	Total Patient Number	Percentage of Patients Withdrawn	Total Patient Number	Percentage of Patients Withdrawn
LAMICTAL Average Daily Dose (mg)						
12.5	9	0.0	10	0.0	51	7.8
25	3	0.0	7	0.0	58	12.1
50	182	1.1	111	0.9	35	5.7
100	993	1.4	179	4.5	15	40.0
≥125	601	2.8	11	18.2	0	0.0

VPA = valproic acid

¹Average daily dose in week 1

²AEDs that induce lamotrigine glucuronidation include carbamazepine, phenobarbital, phenytoin, and primidone

³AEDs that neither inhibit nor induce lamotrigine glucuronidation include clonazepam, clobazam, ethosuximide, methsuximide, vigabatrin, and gabapentin

Increased incidence of rash-related withdrawal was seen when initial doses were higher and titration more rapid than recommended under DOSAGE AND ADMINISTRATION.

Patients with a history of allergy or rash to other antiepileptic drugs

Caution is also required when treating patients with a history of allergy or rash to other antiepileptic drugs, as it was found in two studies (n = 767 and n = 988) on the frequency of rash after treatment with lamotrigine that the rate of rash was approximately three to four times higher in patients with such a history than those without.

Restarting LAMICTAL Therapy

It is recommended that LAMICTAL not be restarted in patients who discontinued due to rash associated with prior treatment with LAMICTAL unless the potential benefits clearly outweigh the risks. If the decision is made to restart a patient who has discontinued LAMICTAL for any reason, the need to restart with the initial dosing recommendations should be assessed. The greater the interval of time since the previous dose, the greater consideration should be given to restarting with the initial dosing recommendations. If a patient has discontinued LAMICTAL for a period of more than 5 half-lives, it is recommended that initial dosing recommendations and guidelines be followed. The half-life of LAMICTAL is affected by other concomitant medications (see ACTION AND CLINICAL PHARMACOLOGY, Pharmacokinetics and DOSAGE AND ADMINISTRATION).

Special Populations

Pregnant Women: LAMICTAL should only be used during pregnancy if the expected benefits outweigh the potential risks. If therapy with LAMICTAL is considered necessary during pregnancy, the lowest possible therapeutic dose is recommended.

Physiological changes during pregnancy may affect lamotrigine levels and/or therapeutic effect. There have been reports of decreased lamotrigine levels during pregnancy. Appropriate clinical management of pregnant women during lamotrigine therapy should be ensured.

Studies in mice, rats and rabbits given lamotrigine orally or intravenously revealed no evidence of teratogenicity, however, maternal and secondary fetal toxicity producing reduced fetal weight and/or delayed ossification in mice and rats were observed.

In rats, enhanced fetal as well as post-natal mortality was observed when lamotrigine was administered during late gestation and through the early post-natal period. These effects were observed at the expected clinical exposure. Lamotrigine reduced fetal folic acid levels in rats. Folic acid deficiency is assumed to be associated with an enhanced risk of congenital malformations in animals as well as in humans. Intake of folic acid when planning pregnancy and during early pregnancy may be considered.

Studies in rats and rabbits indicate that lamotrigine crosses the placenta; placental and fetal plasma concentrations of lamotrigine are comparable to levels in maternal plasma. In studies where simultaneous maternal and umbilical cord samples were taken, the ratio of umbilical cord/maternal lamotrigine plasma concentrations were generally close to unity (range of 0.4 - 1.4).

Pregnancy Registries

Postmarketing data from six prospective pregnancy registries have documented outcomes in approximately 8700 women exposed to lamotrigine monotherapy during the first trimester of pregnancy. Two registries have reported an increase in the risk of isolated oral cleft (isolated malformations with exposure to lamotrigine in the first trimester, over both the study reference population and reported background rates from the literature. The observed risk of malformations following first trimester monotherapy exposure ranged from 2.0% in the North American Registry to 4.9% in the Swedish Registry as compared to unexposed groups.

North American Registry

The North American Anti-Epileptic Drug Registry reported rates of: 7.3/1000 for lamotrigine exposures in the registry with n = 684 vs. 0.70/1000 for the reference population and 0.50-2.16/1000 for the background rates.

Swedish Registry

The Swedish Medical Birth Register reported rates of 9.9/1000 for lamotrigine exposures in the registry with n=403 vs 2.0/1000 for the registry reference population and 0.50-2.16/1000 for the background rates. In the remaining registries with approximately 3000 women, 4 cases of

isolated oral cleft malformation were found (1.3/1000 vs. 0.50-2.16/1000 for the background rates).

EUROCAT

The European Network of Congenital Anomaly and Twin Registries (EUROCAT) is a network of 40 registries across 20 European countries. The results of a case control design using the EUROCAT dataset demonstrated that the risk of development of oral clefts in the newborn infants was similar to other malformations (e.g. club foot, limb, heart and respiratory defects) following exposure to lamotrigine in the first trimester. Within the EUROCAT network, rates of exposure to lamotrigine in the first trimester of pregnancy were similar among 4571 non chromosomal, isolated oral cleft cases and 80,052 non chromosomal, non oral cleft defect controls.

The data on use of lamotrigine in polytherapy combinations are insufficient to assess whether the risk of malformation associated with other agents is affected by concomitant lamotrigine use.

To provide information regarding the effects of *in utero* exposure to LAMICTAL, physicians are advised to recommend that pregnant patients taking LAMICTAL enroll in the North American Antiepileptic Drug (NAAED) Pregnancy Registry. This can be done by calling the toll-free number 1-888-233-2334, and must be done by patients themselves. Information on the registry can also be found at the website <http://www.aedpregnancyregistry.org/>.

Labour and Delivery: The effect of LAMICTAL on labour and delivery in humans is unknown.

Nursing Women: LAMICTAL has been reported to pass into breast milk resulting in total lamotrigine levels in infant's plasma, including neonates as well as older infants, of up to approximately 50% of the mother's plasma. Therefore, in some breast-fed infants, plasma concentrations of LAMICTAL may reach levels at which pharmacological effects do occur.

Because of the potential for adverse reactions from LAMICTAL in nursing infants, breast-feeding while taking this medication is not recommended. Should a woman breast-feed while on therapy with lamotrigine, the infant should be monitored for adverse effects, such as sedation, rash and poor weight gain. Events including apnea, drowsiness, and poor sucking have been reported in infants who have been human milk-fed by mothers using lamotrigine; whether or not these events were caused by lamotrigine is unknown.

Geriatrics: As the pharmacokinetics in this age group do not differ significantly from a non-elderly adult population, no dosage adjustment from the recommended adult schedule is required (see also DOSAGE AND ADMINISTRATION, ADVERSE REACTIONS, and ACTION AND CLINICAL PHARMACOLOGY).

Patients with Special Diseases and Conditions: Clinical experience with LAMICTAL in patients with concomitant illness is limited. Caution is advised when using LAMICTAL in patients with diseases or conditions that could affect the metabolism or elimination of the drug.

Renal Impairment: A study in individuals with chronic renal failure (not receiving other AEDs) indicated that the elimination half-life of unchanged lamotrigine is prolonged relative to

individuals with normal renal function (see ACTION AND CLINICAL PHARMACOLOGY). LAMICTAL should be used with caution in patients with severe renal impairment.

Hepatic Impairment: Results from a single dose pharmacokinetic study indicate that the apparent clearance of lamotrigine decreased in subjects with Grades A, B or C hepatic impairment. A reduced dosage should be used for all hepatically impaired patients, and LAMICTAL should be administered with caution particularly in those patients with severe hepatic impairment (see also DOSAGE AND ADMINISTRATION and ACTION AND CLINICAL PHARMACOLOGY).

Cardiac Conduction Abnormalities: One placebo-controlled trial that compared electrocardiograms at baseline and during treatment, demonstrated a mild prolongation of the P-R interval associated with LAMICTAL administration. The prolongation was statistically significant but clinically insignificant. Patients with significant cardiovascular disease or electrocardiographic abnormalities were, however, systematically excluded from clinical trials. Thus, LAMICTAL should be used with caution in patients with cardiac conduction abnormalities, and in patients taking concomitant medications which depress AV conduction.

Monitoring and Laboratory Tests

The relationship between clinical efficacy and plasma concentrations has not been clearly established. Based on the possible pharmacokinetic interactions between LAMICTAL and other drugs including AEDs, monitoring of the plasma levels of LAMICTAL and concomitant drugs may be indicated, particularly during dosage adjustments. In general, clinical judgment should be exercised regarding monitoring of plasma levels of LAMICTAL and other drugs and whether or not dosage adjustments are necessary.

ADVERSE REACTIONS

Adverse Drug Reaction Overview

Rarely, serious skin rashes, including Stevens Johnson Syndrome and Toxic Epidermal Necrolysis (Lyell Syndrome) have been reported. Although the majority recover following drug withdrawal, some patients experience irreversible scarring and there have been rare cases of associated death (see WARNINGS AND PRECAUTIONS).

Adverse experiences in patients receiving LAMICTAL (lamotrigine) were generally mild, occurred within the first two weeks of therapy, and resolved without discontinuation of the drug.

Clinical Trial Adverse Drug Reactions

Because clinical trials are conducted under very specific conditions the adverse reaction rates observed in the clinical trials may not reflect the rates observed in practice and should not be compared to the rates in the clinical trials of another drug. Adverse drug reaction information from clinical trials is useful for identifying drug-related adverse events and for approximating rates.

Commonly Observed

The most commonly observed adverse experiences associated with the use of adjunctive therapy with LAMICTAL (incidence of at least 10%) were dizziness, headache, diplopia, somnolence, ataxia, nausea, and asthenia.

Dizziness, diplopia, ataxia, and blurred vision were dose-related and occurred more commonly in patients receiving carbamazepine in combination with LAMICTAL than in patients receiving other AEDs that induce lamotrigine glucuronidation in combination with LAMICTAL.

Reduction of the daily dose and/or alteration of the timing of doses of concomitant antiepileptic drugs and/or LAMICTAL may reduce or eliminate these symptoms. Clinical data suggest a higher incidence of rash in patients who are receiving concomitant valproic acid, or non-inducing AEDs (see WARNINGS AND PRECAUTIONS, Skin-Related Events, Table 1).

Adverse Events Associated with Discontinuation of Treatment

Across all adult add-on studies, the most common adverse experiences associated with discontinuation of LAMICTAL were rash, dizziness, headache, ataxia, nausea, diplopia, somnolence, seizure exacerbation, asthenia, and blurred vision. In controlled clinical trials, 6.9% of the 711 patients receiving LAMICTAL discontinued therapy due to an adverse experience, versus 2.9% of the 419 patients receiving placebo. Of 3501 patients and volunteers who received LAMICTAL in premarketing clinical studies, 358 (10.2%) discontinued therapy due to an adverse experience.

Serious Adverse Events Associated with Discontinuation of Treatment

Discontinuation due to an adverse experience classified as serious occurred in 2.3% of adult patients and volunteers who received LAMICTAL in the pre-market studies. Rash accounted for almost half of the discontinuations due to serious adverse experiences. More rapid initial titration of LAMICTAL, and concomitant use of valproic acid were associated with higher incidences of rash-related withdrawal in clinical studies (see WARNINGS AND PRECAUTIONS, Skin-Related Events, Table 2).

Adult Controlled Add-on Clinical Studies

Table 3 enumerates adverse experiences that occurred with an incidence of 2% or greater among refractory patients with epilepsy treated with LAMICTAL.

Table 3 Percentage of Treatment - Emergent Adverse Experiences in Adult Placebo or Comparator-Controlled Clinical Studies¹

	ADULTS (ADJUNCTIVE THERAPY) ²		ELDERLY (MONOTHERAPY) ³
	LAMICTAL (and other AEDs)	Placebo (and other AEDs)	LAMICTAL
Total number of Patients	(n = 711)	(n = 419)	(n = 102)
Body System/Adverse Experience⁴			
BODY AS A WHOLE			
Headache	29.1	19.1	8.8

	ADULTS (ADJUNCTIVE THERAPY) ²		ELDERLY (MONOTHERAPY) ³
	LAMICTAL (and other AEDs)	Placebo (and other AEDs)	LAMICTAL
Total number of Patients	(n = 711)	(n = 419)	(n = 102)
Body System/Adverse Experience⁴			
BODY AS A WHOLE			
Accidental Injury	9.1	8.6	8.8
Asthenia	8.6	8.8	4.9
Flu Syndrome	7.0	5.5	4.9
Pain	6.2	2.9	5.9
Back Pain	5.8	6.2	3.9
Fever	5.5	3.6	0.9
Abdominal Pain	5.2	3.6	3.9
Infection	4.4	4.1	5.9
Neck Pain	2.4	1.2	0
Malaise	2.3	1.9	4.9
Seizure Exacerbation	2.3	0.5	n/a
CARDIOVASCULAR			
Chest pain	n/a	n/a	2.9
Syncope	n/a	n/a	2.9
Cerebrovascular accident	n/a	n/a	3.9
DIGESTIVE			
Nausea	18.6	9.5	8.8
Vomiting	9.4	4.3	8.8
Diarrhea	6.3	4.1	6.9
Dyspepsia	5.3	2.1	5.9
Constipation	4.1	3.1	8.9
Tooth Disorder	3.2	1.7	0
MUSCULOSKELETAL			
Myalgia	2.8	3.1	0.9
Arthralgia	2.0	0.2	2.9
NERVOUS			
Dizziness	38.4	13.4	9.8
Ataxia	21.7	5.5	0
Somnolence	14.2	6.9	11.8
Incoordination	6.0	2.1	12.7
Insomnia	5.6	1.9	3.9
Tremor	4.4	1.4	0.9
Depression	4.2	2.6	4.9
Anxiety	3.8	2.6	0.9
Convulsion	3.2	1.2	1.9
Irritability	3.0	1.9	0
Speech Disorder	2.5	0.2	0.9
Memory Decreased	2.4	1.9	n/a

	ADULTS (ADJUNCTIVE THERAPY)²		ELDERLY (MONOTHERAPY)³
	LAMICTAL (and other AEDs)	Placebo (and other AEDs)	LAMICTAL
Total number of Patients	(n = 711)	(n = 419)	(n = 102)
Body System/Adverse Experience⁴			
BODY AS A WHOLE			
Memory Decreased (Memory Rating Question)	n/a	n/a	19.6
RESPIRATORY			
Rhinitis	13.6	9.3	0.9
Pharyngitis	9.8	8.8	1.9
Cough Increased	7.5	5.7	2.9
Respiratory Disorder	5.3	5.5	0.9
Asthma			3.0
SKIN AND APPENDAGES			
Rash	10.0	5.0	8.8
Pruritus	3.1	1.7	5.9
Herpes Zoster	n/a	n/a	3.0
Eczema	n/a	n/a	2.0
Ulcer Skin	n/a	n/a	2.0
SPECIAL SENSES			
Diplopia	27.6	6.7	0
Blurred Vision	15.5	4.5	0
Vision Abnormality	3.4	1.0	0
UROGENITAL			
Female Patients	(n = 365)	(n = 207)	(n = 47)
Dysmenorrhea	6.6	6.3	n/a
Menstrual Disorder	5.2	5.8	n/a
Vaginitis	4.1	0.5	0

¹ Patients from the studies summarized in the first two columns were receiving 1 to 3 concomitant enzyme-inducing antiepileptic drugs in addition to LAMICTAL or placebo. Patients from the single study summarized in the last column were compared to n = 48 patients receiving carbamazepine. Patients may have reported multiple adverse experiences during the study or at discontinuation. Thus, patients may be included in more than one category.

² Studies 05, 06, 16 (US) & 16, 21, 35 & 37 (UK)

³ Study 105 - 124 - C93

⁴ All Adverse Experiences reported by at least 2% of patients treated with either LAMICTAL add-on or monotherapy are included.

Other Events Observed During Clinical Studies

During clinical testing, multiple doses of LAMICTAL were administered to 3501 patients and volunteers. The conditions and duration of exposure to LAMICTAL during these clinical studies varied greatly. Studies included monotherapy and pediatric trials. A substantial proportion of the exposure was gained in open, uncontrolled clinical studies. Adverse experiences associated with exposure to LAMICTAL were recorded by clinical investigators using terminology of their own choosing. Consequently, it is not possible to provide a meaningful estimate of the

proportion of individuals experiencing adverse events without first grouping similar types of adverse experiences into a smaller number of standardized event categories.

Since the adverse experiences reported occurred during treatment with LAMICTAL in combination with other antiepileptic drugs, they were not necessarily caused by LAMICTAL.

The following adverse events have been reported on one or more occasions by at least 1% of patients and volunteers exposed to LAMICTAL: anorexia, weight gain, amnesia, concentration disturbance, confusion, emotional lability, nervousness, nystagmus, paresthesia, thinking abnormality and vertigo (all types of events are included except those already listed in Table 3).

Adult Monotherapy Clinical Studies

Withdrawals due to adverse events were reported in 42 (9.5%) of newly diagnosed patients treated with LAMICTAL monotherapy. The most common adverse experiences associated with discontinuation of LAMICTAL were rash (6.1%), asthenia (1.1%), headache (1.1%), nausea (0.7%) and vomiting (0.7%).

Geriatric Monotherapy Clinical Studies

A study with elderly newly-diagnosed epilepsy patients yielded rates of adverse events which were generally similar to those reported in adults (see Table 3). The rate of withdrawal due to adverse events was 21.6 %, with rash (3%), nausea (3%) and coordination abnormalities (3%) representing the most common events associated with withdrawal, followed by somnolence (2%), depression (2%), accidental injury (2%) and malaise (2%) (see also DOSAGE AND ADMINISTRATION, and ACTION AND CLINICAL PHARMACOLOGY).

Adjunctive Therapy in Lennox-Gastaut Syndrome

In 169 adult and pediatric patients with Lennox Gastaut syndrome, 3.8% of patients on LAMICTAL and 7.8% of patients on placebo discontinued due to adverse experiences. The most commonly reported adverse experiences that led to discontinuation were rash for patients treated with LAMICTAL and deterioration of seizure control for patients treated with placebo. Fever and infection occurred at least 10% more frequently in patients \leq 12 years of age than in patients >12 years of age on LAMICTAL. Rash occurred at least 10% more frequently in female patients than male patients on LAMICTAL. Table 4 lists adverse events that occurred in at least 1% of 79 adult and pediatric patients who received LAMICTAL up to 15 mg/kg per day or a maximum of 400 mg per day.

Table 4 Treatment-Emergent Adverse Experience Incidence in Placebo-Controlled Add-On Trial in Adult and Pediatric Patients with Lennox Gastaut Syndrome¹

Body System/ Adverse Experience	Percent of Patients Receiving LAMICTAL (n = 79)	Percent of Patients Receiving Placebo (n = 90)
Body as a whole: Infection	13	8
Accidental injury	9	7
Flu Syndrome	5	0
Asthenia	3	1
Abdominal Pain	3	0
Back Pain	1	0
Edema of the face	1	0
Lab test abnormal	1	0
Pain	1	0
Cardiovascular: Hemorrhage	3	0
Digestive: Vomiting	9	7
Constipation	5	2
Diarrhea	4	2
Nausea	4	1
Anorexia	3	1
Stomatitis aphtha	1	0
Tooth disorder	1	0
Endocrine: Cushing's syndrome	1	0
Hypothyroidism	1	0
Hemic and lymphatic: Lymphadenopathy (enlarged cervical nodes)	1	0
Nervous system: Ataxia	4	1
Convulsions	4	1
Tremor	3	0
Agitation	1	0
Coordination	1	0
Dizziness	1	0
Emotional lability	1	0
Nervousness	1	0
Vertigo	1	0
Respiratory: Pharyngitis	14	10
Bronchitis	9	7
Pneumonia	3	0
Dyspnea	1	0
Skin: Rash	9	7
Eczema	4	0
Nail disorder	1	0
Special senses: Blepharitis	1	0
Conjunctivitis	1	0
Keratitis	1	0
Ear pain	1	0
Eye pain	1	0
Urogenital: Urinary tract infection	3	0
Balanitis	2	0
Penis disorder	2	0

¹ = the most frequently reported adverse reactions in children ≤ 12 years of age in both treatment groups were pharyngitis, fever and infection.

Less Common Clinical Trial Adverse Drug Reactions (≥1% and <2%)

Body as a Whole: chest pain, chills

Cardiovascular: cerebral infarction, hot flashes, palpitations

Gastrointestinal: dry mouth

Musculoskeletal: joint disorder, myasthenia

Nervous System: dream abnormality, dysarthria, grand mal convulsion, hostility, hypertension, hypesthesia, mind racing, muscle spasm, sleep disorder

Metabolic: hyperkalemia, peripheral edema

Skin: acne, alopecia

Special Senses: eye disorder

Urogenital: amenorrhea, dysuria

Post-Market Adverse Drug Reactions

In addition to the adverse experiences reported during clinical testing of LAMICTAL, the following adverse experiences have been reported in patients receiving marketed LAMICTAL and from worldwide investigational use. These adverse experiences have not been listed above, and data are insufficient to establish causation.

Body as a Whole: hypersensitivity reaction, multi-organ failure, progressive immunosuppression, tiredness

Gastrointestinal: Esophagitis

Hematologic and Lymphatic: Hematological abnormalities (anemia, agranulocytosis, aplastic anemia, disseminated intravascular coagulation, hemolytic anemia, leucopenia, neutropenia, pancytopenia, red cell aplasia thrombocytopenia), lymphadenopathy*, haemophagocytic lymphohistiocytosis (HLH) (see WARNINGS AND PRECAUTIONS, Immune).

*There have been reported cases of lymphadenopathy in the absence of hypersensitivity reactions, in patients with or without previous history, and taking LAMICTAL alone or in combination with other medications (including other AEDs). Discontinuation of LAMICTAL or, in some cases, dose reduction resolved the reaction.

Hepatobiliary Tract and Pancreas: elevations of liver function tests, hepatic dysfunction, including hepatic failure*, pancreatitis

*Hepatic dysfunction usually occurs in association with hypersensitivity reactions but isolated cases have been reported without overt signs of hypersensitivity.

Immunologic: hypogammaglobulinaemia*, lupus-like reaction, vasculitis

*There have been rare reports of reduced serum immunoglobulin levels in patients receiving LAMICTAL. In some cases, discontinuation of LAMICTAL with or without administration of intravenous immunoglobulin resolved the reaction. Serum immunoglobulin levels should be measured in LAMICTAL-treated patients who experience recurrent infections.

Lower Respiratory: apnea

Musculoskeletal: rhabdomyolysis (observed in patients experiencing hypersensitivity reactions)

Neurologic: aggression, aseptic meningitis*, exacerbation of parkinsonian symptoms**, extrapyramidal effects, choreoathetosis, hallucinations, movement disorders (such as tics and unsteadiness), nightmares

*There have been rare reports of aseptic meningitis in patients taking LAMICTAL alone or in combination with other AEDs. In some cases, discontinuation of LAMICTAL resolved this reaction (see WARNINGS AND PRECAUTIONS, Hypersensitivity Reactions).

**There have been reports that lamotrigine may worsen parkinsonian symptoms in patients with pre-existing Parkinson's disease, and isolated reports of extrapyramidal effects and choreoathetosis in patients without this underlying condition.

Oral Contraceptives: There have been post marketing reports of breakthrough seizures in patients taking lamotrigine and hormonal contraceptives. In some cases, reduced serum lamotrigine levels during co-administration with a hormonal contraceptive have been documented. Most cases have responded to lamotrigine dose increase (see DOSAGE AND ADMINISTRATION, Women and Oral Contraceptives and DRUG INTERACTIONS, Oral Contraceptives).

Renal and Urinary disorders: Tubulointerstitial nephritis* (may occur in association with uveitis)

*Tubulointerstitial nephritis usually occurs in association with hypersensitivity reactions but isolated cases have been reported without overt signs of hypersensitivity. In the absence of hypersensitivity, discontinuation of LAMICTAL and treatment with steroids resolved the reaction in some cases.

DRUG INTERACTIONS

Uridine 5'-diphospho (UDP)-glucuronyl transferases (UGTs) have been identified as the enzymes responsible for metabolism of lamotrigine. Drugs that induce or inhibit glucuronidation may, therefore, affect the apparent clearance of lamotrigine. Strong or moderate inducers of the cytochrome P450 3A4 (CYP3A4) enzyme, which are also known to induce UGTs, may also enhance the metabolism of lamotrigine.

The effects of lamotrigine on the induction of specific families of mixed-function oxidase isozymes have not been systematically evaluated. Lamotrigine may induce its own metabolism but the effect is modest and unlikely to have significant clinical consequences.

A number of drugs (see Antiepileptic Drugs (AEDs) and Other Drug Interactions sections below) have been shown to have little or no effect on the concentration of lamotrigine. Coadministration of such drugs would generally not be expected to result in any clinical impact. However, consideration should be given to patients whose epilepsy is especially sensitive to fluctuations in concentrations of lamotrigine.

Drug-Drug Interactions

Antiepileptic Drugs (AEDs)

The net effects of co-administration of LAMICTAL with other antiepileptic drugs are summarized in Table 5. Additional details of these drug interaction studies are provided below.

Table 5 Summary of AED Interactions with LAMICTAL

AED	AED Plasma Concentration with Adjunctive LAMICTAL¹	Lamotrigine Plasma Concentration with Adjunctive AEDs²
Carbamazepine (CBZ) CBZ epoxide ³	No significant effect Conflicting data	↓40%
Felbamate	Not evaluated	No significant effect
Gabapentin	Not evaluated	No significant effect
Lacosamide	Not evaluated	No significant effect
Levetiracetam	No significant effect	No significant effect
Oxcarbazepine 10-monohydroxy oxcarbazepine metabolite	No significant effect No significant effect	No significant effect Not evaluated
Perampanel	No significant effect ⁴	No significant effect
Phenobarbital	No significant effect	↓40%
Phenytoin (PHT)	No significant effect	↓40%
Pregabalin	No significant effect	No significant effect
Primidone	No significant effect	↓40%
Topiramate	No significant effect ⁴	No significant effect
Valproic Acid (VPA)	Decreased ⁵	↑200%
VPA + PHT and/or CBZ	Not evaluated	No significant effect
Zonisamide	Not evaluated	No significant effect

¹ From adjunctive clinical trials and volunteer studies.

² Net effects were estimated by comparing the mean clearance values obtained in adjunctive clinical trials and volunteer studies.

³ Not administered, but an active metabolite of carbamazepine.

⁴ Slight increase, not expected to be clinically relevant

⁵ Refer to Valproic Acid paragraph below for additional information

↓ Decreased (induces lamotrigine glucuronidation)

↑ Increased (inhibits lamotrigine glucuronidation)

Lamotrigine does not affect the plasma concentrations of concomitantly administered AEDs that induce lamotrigine glucuronidation. Antiepileptic drugs (such as phenytoin, carbamazepine, phenobarbital, and primidone) that induce cytochrome P450 enzymes also induce UGTs and therefore, enhance the metabolism of lamotrigine by increasing the plasma clearance and reducing the elimination half-life of lamotrigine (see ACTION AND CLINICAL PHARMACOLOGY).

Felbamate (not available in Canada)

In a cross-over study of 21 healthy male volunteers, coadministration of felbamate (1200 mg twice daily) with lamotrigine (100 mg twice daily for 10 days) appeared to have no clinically relevant effects on the pharmacokinetics of lamotrigine. Furthermore, felbamate had no significant effect on urinary excretion of total lamotrigine, unconjugated lamotrigine or N-glucuronide metabolite.

Gabapentin

Based on a retrospective analysis of plasma levels of 34 epileptic patients who received lamotrigine both with and without gabapentin, gabapentin did not appear to change the apparent clearance of lamotrigine. No information is available about the effects of gabapentin on C_{max} or AUC of lamotrigine.

Lacosamide

Plasma concentrations of lamotrigine were not affected by concomitant lacosamide (200, 400, or 600 mg/day) in three placebo-controlled clinical trials in patients with partial-onset seizures.

Levetiracetam

Potential drug interactions between levetiracetam and lamotrigine were assessed by evaluating serum concentrations of both agents during placebo-controlled clinical trials. In 48 refractory epileptic patients receiving stable doses of lamotrigine, concomitant levetiracetam (1000-4000 mg/day) did not influence mean steady serum concentrations of lamotrigine. Similarly, lamotrigine did not influence the pharmacokinetics of levetiracetam.

Oxcarbazepine

The AUC and C_{max} of oxcarbazepine and its active 10-monohydroxy oxcarbazepine metabolite were not significantly different following the addition of oxcarbazepine (600 mg twice daily) to LAMICTAL (200 mg once daily) in healthy male volunteers ($n = 13$) compared to healthy male volunteers receiving oxcarbazepine alone ($n = 13$). Limited clinical data suggest a higher incidence of headache, dizziness, nausea, and somnolence with co-administration of LAMICTAL and oxcarbazepine compared to LAMICTAL alone or oxcarbazepine alone.

Perampanel

In a population pharmacokinetic analysis of data from three placebo-controlled clinical trials investigating adjunctive perampanel in patients with partial-onset and primary generalised tonic-clonic seizures, the highest perampanel dose evaluated (12 mg/day) increased lamotrigine clearance by less than 10%. An effect of this magnitude is not considered to be clinically relevant.

Pregabalin

In 12 patients with partial-onset seizures receiving combination lamotrigine (mean lamotrigine dose 287.5 mg/day, range 100-600 mg/day) and pregabalin 600 mg/day (200 mg three times daily) therapy, steady-state trough plasma concentrations of lamotrigine were not affected by pregabalin. The pharmacokinetics of pregabalin when co-administered with lamotrigine in this study appeared similar to historical values for pregabalin in healthy volunteers.

Topiramate

In three studies in patients with epilepsy (n = 52), topiramate (dose range of topiramate in the 2 studies where this was recorded was 75-800 mg/day) resulted in no change in plasma concentrations of lamotrigine. Administration of lamotrigine resulted in a 15% increase in plasma concentrations of topiramate.

Valproic Acid

Valproic acid reduces the plasma clearance and prolongs the elimination half-life of lamotrigine (see ACTION AND CLINICAL PHARMACOLOGY). When LAMICTAL was administered to 18 healthy volunteers already receiving valproic acid, a modest decrease (25% on average) in the trough steady-state valproic acid plasma concentrations was observed over a 3-week period, followed by stabilization. However, the addition of LAMICTAL did not affect the plasma concentration of valproic acid in patients receiving AEDs that induce lamotrigine glucuronidation in combination with valproic acid. See also WARNINGS AND PRECAUTIONS, Skin-Related Events.

Zonisamide (not available in Canada)

In a study of 18 patients with epilepsy, coadministration of zonisamide (200 to 400 mg/day) with lamotrigine (150 to 500 mg/day) for 35 days had no significant effect on the pharmacokinetics of lamotrigine. Although the effects of lamotrigine on pharmacokinetics of zonisamide have not been studied, two post-marketing cases have reported zonisamide toxicity when lamotrigine was administered (zonisamide dose: 600-800 mg daily; lamotrigine dose: 400 mg daily). In both cases, positive dechallenge and rechallenge were observed.

Other Drug Interactions

Acetaminophen (Paracetamol)

In a study in healthy volunteers, paracetamol 1 g (four times daily for 4 days) reduced the plasma AUC and $C_{ss,min}$ of lamotrigine by an average of 20% and 25%, respectively. The formation clearance of lamotrigine glucuronides was increased by 45%. Rarely, cases of seizures / drug inefficiency have been reported.

Aripiprazole

In a study of 18 adult patients with bipolar I disorder, receiving an established regimen of lamotrigine (≥ 100 mg/day), doses of aripiprazole were increased from 10 mg/day to a target of 30 mg/day over a 7 day period and continued once daily for a further 7 days. An average reduction of approximately 10% in C_{max} and AUC of lamotrigine was observed. An effect of this magnitude is not expected to be of clinical consequence.

Atazanavir/ritonavir

In a study of 21 healthy adult volunteers, atazanavir/ritonavir combination (300 mg/100 mg) reduced the plasma AUC, C_{max} and elimination half-life of lamotrigine (single 100 mg dose) by an average of 32%, 6% and 27%, respectively. However, atazanavir alone did not induce lamotrigine glucuronidation (did not change pharmacokinetics of lamotrigine) to a clinically significant extent.

To initiate lamotrigine in patients already on the combination therapy of atazanavir/ritonavir, dose titration should follow the recommended guidelines based on whether lamotrigine is added to valproate (an inhibitor of lamotrigine glucuronidation), or to an inducer of lamotrigine glucuronidation, or whether lamotrigine is added in the absence of valproate or an inducer of lamotrigine glucuronidation (see DOSAGE AND ADMINISTRATION, Table 6).

To initiate atazanavir/ritonavir in patients already on maintenance doses of lamotrigine, the lamotrigine dose may need to be increased if another glucuronidation inducer is taken, but its dose may remain unchanged in the absence of another inducer. The lamotrigine dose needs to be decreased if atazanavir/ritonavir are discontinued.

Lopinavir/ritonavir

In a study in healthy volunteers, lopinavir/ritonavir approximately halved the plasma concentrations of lamotrigine. At least 14 out of 22 healthy adult volunteers reported diarrhea and 5 out of 22 subjects reported rash following the addition of lopinavir/ritonavir (400 mg/100 mg b.i.d.) to lamotrigine (up to 200 mg b.i.d.), compared to 1 out of 24 reporting diarrhea or rash, when lamotrigine was administered alone (up to 100 mg b.i.d.). Diarrhea is a common adverse event reported for lopinavir/ritonavir. The titration of lamotrigine in this study was rapid, which is a known risk factor for the development of a rash. The rashes necessitated the discontinuation of the medications. One subject also discontinued the medications due to elevated AST and ALT levels. Caution is advised for the co-administration of lopinavir/ritonavir with lamotrigine. In patients receiving concomitant therapy with lopinavir/ritonavir, the treatment regimen recommended for concomitant medications that induce lamotrigine

glucuronidation (without VPA) should be used (see DOSAGE AND ADMINISTRATION, Table 6).

Olanzapine

The AUC and C_{\max} of lamotrigine was reduced on average by 24% and 20%, respectively, following the addition of olanzapine (15 mg once daily) to LAMICTAL (200 mg once daily) in healthy male volunteers (n = 16) compared to healthy male volunteers receiving LAMICTAL alone (n = 12). This reduction in lamotrigine plasma concentrations is not expected to be clinically relevant.

Organic Cationic Transporter 2 (OCT 2)

Lamotrigine is an inhibitor of renal tubular secretion via OCT 2 proteins. This may result in increased plasma levels of certain drugs that are substantially excreted via this route. Co-administration of lamotrigine with OCT 2 substrates (i.e. procainamide and metformin) with a narrow therapeutic index is not recommended

In vitro assessment of the effect of lamotrigine at OCT 2 demonstrate that lamotrigine, but not the N(2)-glucuronide metabolite, is an inhibitor of OCT 2 at potentially clinically relevant concentrations, with an IC_{50} value of 53.8 μ M.

Oral Contraceptives

Effect of Oral Contraceptives on LAMICTAL

In a study in 16 female volunteers, an oral contraceptive preparation containing 30 μ g ethinylestradiol and 150 μ g levonorgestrel increased the apparent clearance of lamotrigine (300 mg/day) by approximately 2-fold with a mean decrease in AUC of 52% and in C_{\max} of 39%. In this study, trough serum lamotrigine concentrations gradually increased and were approximately 2-fold higher on average at the end of the week of the inactive preparation compared to trough lamotrigine concentrations at the end of the active hormone cycle.

Gradual transient increases in lamotrigine levels will occur during the week of no active hormone preparation (pill-free week) for women not also taking a drug that increases the clearance of lamotrigine (carbamazepine, phenytoin, phenobarbital, primidone, or rifampin). The increase in lamotrigine levels will be greater if the dose of LAMICTAL is increased in the few days before or during the pill-free week.

There have been post marketing reports of breakthrough seizures in women taking lamotrigine and hormonal contraceptives. Dosage adjustments will be necessary in most cases for women receiving oral contraceptive preparations (see DOSAGE AND ADMINISTRATION, Women and Oral Contraceptives and ADVERSE REACTIONS, Post-Market Adverse Drug Reactions).

Effect of LAMICTAL on Oral Contraceptives

Co-administration of LAMICTAL (300 mg/day) in 16 female volunteers did not affect the pharmacokinetics of the ethinylestradiol component of an oral contraceptive preparation containing 30 μ g ethinylestradiol and 150 μ g levonorgestrel. There was a mean decrease in the AUC and C_{\max} of the levonorgestrel component of 19% and 12%, respectively. Measurement of

serum progesterone indicated that there was no hormonal evidence of ovulation in any of the 16 volunteers, although measurement of serum FSH, LH, and estradiol indicated that there was some loss of suppression of the hypothalamic-pituitary-ovarian axis.

The effects of doses of LAMICTAL other than 300 mg/day have not been studied.

The clinical significance of the observed hormonal changes on ovulatory activity is unknown. However, the possibility of decreased contraceptive efficacy in some patients cannot be excluded. Therefore, patients should be instructed to promptly report changes in their menstrual pattern (e.g. break-through bleeding).

Interactions With Other Hormonal Contraceptives or Hormone Replacement Therapy

The effect of other hormonal contraceptive preparations or hormone replacement therapy on the pharmacokinetics of lamotrigine has not been evaluated, although the effect may be similar to oral contraceptive preparations. Therefore, as for oral contraceptives, dosage adjustments will be necessary in most cases (see DOSAGE AND ADMINISTRATION: Women and Oral Contraceptives and ADVERSE REACTIONS, Post-Market Adverse Drug Reactions).

Rifampin

In a study in 10 male volunteers, rifampin (600 mg/day for 5 days) significantly increased the apparent clearance of a single 25 mg dose of lamotrigine by approximately 2-fold (AUC decreased by approximately 40%). For patients taking rifampin with LAMICTAL, follow the titration schedule for concomitant medications that induce lamotrigine glucuronidation (without VPA) (see DOSAGE AND ADMINISTRATION, Table 6).

Risperidone

Following the co-administration of 2 mg risperidone with lamotrigine (up to 400 mg daily), 12 out of the 14 healthy adult volunteers reported somnolence compared to 1 out of 20 when risperidone was given alone, and 0 out of 20 when lamotrigine was administered alone.

Drugs Depressing Cardiac Conduction

See WARNINGS AND PRECAUTIONS, Special Populations, Patients with Special Diseases and Conditions, *Cardiac Conduction Abnormalities*.

Drug-Laboratory Interactions

LAMICTAL (lamotrigine) has been reported to interfere with the assay used in some rapid urine drug screens, which can result in false positive readings, particularly for phencyclidine (PCP). A more specific alternative chemical method should be used to confirm a positive result.

Drug-Lifestyle Interactions

Dependence Liability

No evidence of abuse potential has been associated with LAMICTAL, nor is there evidence of psychological or physical dependence in humans.

DOSAGE AND ADMINISTRATION

Dosing Considerations

Potential for Serious Dermatological Reactions

Do not exceed the recommended initial dose and subsequent dose escalations of LAMICTAL. More rapid initial titration has been associated with an increased incidence of serious dermatological reactions (see WARNINGS AND PRECAUTIONS), as has concomitant use of valproic acid, particularly in the absence of AEDs that induce lamotrigine glucuronidation (see DRUG INTERACTIONS). Patients with a history of rash or allergy to other AEDs are more at risk for LAMICTAL-associated rash than those without such history (see WARNINGS AND PRECAUTIONS).

Restarting LAMICTAL Therapy

It is recommended that LAMICTAL not be restarted in patients who discontinued due to rash associated with prior treatment with LAMICTAL, unless the potential benefits clearly outweigh the risks. If the decision is made to restart a patient who has discontinued LAMICTAL for any reason, the need to restart with the initial dosing recommendations should be assessed. The greater the interval of time since the previous dose, the greater consideration should be given to restarting with the initial dosing recommendations. If a patient has discontinued LAMICTAL for a period of more than 5 half-lives, it is recommended that initial dosing recommendations and guidelines be followed. The half-life of LAMICTAL is affected by other concomitant medications (see ACTIONS AND CLINICAL PHARMACOLOGY).

Withdrawal of Concomitant AEDs in Adults

Concomitant AEDs may be decreased over a 5-week period, by approximately 20% of the original dose every week. However, a slower taper may be used if clinically indicated. During this period, the dose of LAMICTAL administered will be dependent upon the effect of the drug being withdrawn on the pharmacokinetics of lamotrigine, together with the overall clinical response of the patient. The withdrawal of enzyme inducing AEDs (i.e. phenytoin, phenobarbital, primidone, and carbamazepine) will result in an approximate doubling of the $t_{1/2}$ of lamotrigine. Under these conditions, it may be necessary to reduce the dose of LAMICTAL. In contrast, the withdrawal of enzyme inhibiting AEDs (i.e. valproic acid) will result in a decrease in the $t_{1/2}$ of lamotrigine and may require an increase in the dose of LAMICTAL.

Recommended Dose and Dosage Adjustment

LAMICTAL should be added to the patient's current antiepileptic therapy.

Valproic acid more than doubles the elimination half-life of lamotrigine and reduces the plasma clearance by 50%; conversely, drugs that induce lamotrigine glucuronidation such as carbamazepine, phenytoin, phenobarbital, and primidone reduce the elimination half-life of lamotrigine by 50% and double the plasma clearance (see ACTION AND CLINICAL

PHARMACOLOGY). These clinically important interactions require dosage schedules of LAMICTAL as summarized in Table 6 through Table 8.

LAMICTAL does not alter plasma concentrations of concomitantly administered AEDs that induce lamotrigine glucuronidation and therefore they do not usually require dose adjustment to maintain therapeutic plasma concentrations. For patients receiving LAMICTAL in combination with other AEDs, an evaluation of all AEDs in the regimen should be considered if a change in seizure control or an appearance or worsening of adverse experiences is observed. If there is a need to discontinue therapy with LAMICTAL, a step-wise reduction of dose over at least two weeks (approximately 50% per week) is recommended unless safety concerns (i.e. rash) require a more rapid withdrawal (see WARNINGS AND PRECAUTIONS).

The relationship of plasma concentration to clinical response has not been established for lamotrigine. Dosing of LAMICTAL should be based on therapeutic response. In controlled clinical studies, doses of LAMICTAL that were efficacious generally produced steady-state trough plasma lamotrigine concentrations of 1 to 4 µg/mL in patients receiving one or more concomitant AEDs. Doses of LAMICTAL producing this plasma concentration range were well tolerated. As with any antiepileptic drug, the oral dose of LAMICTAL should be adjusted to the needs of the individual patient, taking into consideration the concomitant AED therapy the patient is receiving.

Adults and Children Over 12 Years of Age

For patients taking AEDs whose pharmacokinetic interactions with LAMICTAL are currently unknown, follow the titration schedule for concomitant VPA (regardless of any concomitant mediation).

Table 6 Escalation regimen for LAMICTAL in Patients over 12 Years of Age

	Patients Taking Medications that induce lamotrigine glucuronidation ¹		Patients Taking Medications that neither induce nor inhibit lamotrigine glucuronidation ²
	<i>with valproate</i> ³	<i>without valproate</i> ³	
Weeks 1 and 2	25 mg once a day	50 mg once a day	25 mg once a day
Weeks 3 and 4	25 mg twice a day	50 mg twice a day	25 mg twice a day
Weeks 5 onwards to maintenance	Increase by 25-50 mg every 1 to 2 weeks	Increase by 100 mg every 1 to 2 weeks	Increase by 25-50 mg every 1 to 2 weeks
Usual Maintenance Dose	50-100 mg twice a day	150-250 mg twice a day	50-100 mg twice a day

¹ Medications that induce lamotrigine glucuronidation include carbamazepine, phenobarbital, phenytoin, primidone, rifampin, lopinavir/ritonavir and atazanavir/ritonavir

² Medications that neither inhibit nor induce lamotrigine glucuronidation include olanzapine, oxcarbazepine, felbamate, gabapentin, levetiracetam, pregabalin, topiramate and zonisamide

³ Valproic acid is an inhibitor of lamotrigine glucuronidation

For patients taking valproic acid regardless of any concomitant medication, a more cautious titration schedule is available than that detailed in Table 6. During weeks 1 and 2, a dose of 25 mg every other day may be given instead of 25 mg once daily dose. During weeks 3 and 4, a dose of 25 mg once a day may be given instead of the 25 mg twice daily dose (total daily dose of 50 mg).

There have been no controlled studies to establish the effectiveness or optimal dosing regimen of add-on LAMICTAL therapy in patients receiving only AEDs that neither inhibit nor induce lamotrigine glucuronidation or valproic acid. However, available data from open clinical trials indicate that the addition of LAMICTAL under these conditions is associated with a higher incidence of serious rash or rash-related withdrawal, even at an initial titration dose of 12.5 mg daily (see WARNINGS AND PRECAUTIONS, Skin Related Events, Table 1 and Table 2).

The potential medical benefits of the addition of LAMICTAL under these conditions must be weighed against the increased risk of serious rash. If use of LAMICTAL under these conditions is considered clinically indicated, titration should proceed with extreme caution, especially during the first six weeks of treatment.

Starting LAMICTAL in Women Taking Oral Contraceptives:

Although oral contraceptives have been shown to increase the clearance of lamotrigine (see DRUG INTERACTIONS, Drug-Drug Interactions, Other Drug Interactions), no adjustments to the recommended dose escalation guidelines for LAMICTAL should be necessary solely based on the use of oral contraceptives. Therefore, dose escalation should follow the recommended guidelines based on whether LAMICTAL is added to valproate (an inhibitor of lamotrigine glucuronidation) or an inducer of lamotrigine glucuronidation, or whether LAMICTAL is added in the absence of valproate or an inducer of lamotrigine glucuronidation.

Adjustments to the Maintenance Dose of LAMICTAL:

Taking or Starting Oral Contraceptives: For women not taking inducers of lamotrigine glucuronidation, the maintenance dose of LAMICTAL will in most cases need to be increased, by as much as 2-fold over the recommended target maintenance dose (see DRUG INTERACTIONS, Drug-Drug Interactions, Other Drug Interactions). It is recommended that from the time that the hormonal contraceptive is started, the LAMICTAL dose is increased by 50 to 100 mg/day every week, according to the individual clinical response. Dose increases should not exceed this rate, unless the clinical response supports larger increases.

Stopping Oral Contraceptives: For women not taking inducers of lamotrigine glucuronidation (e.g., carbamazepine, phenytoin, phenobarbital, primidone, or rifampin), the maintenance dose of LAMICTAL will in most cases need to be decreased by as much as 50% of the maintenance dose with concurrent oral contraceptives, (see DRUG INTERACTIONS, Drug-Drug Interactions, Other Drug Interactions). It is recommended to gradually decrease the daily dose of LAMICTAL by 50 to 100 mg each week (at a rate not exceeding 25% of the total daily dose per week) over a period of 3 weeks, unless the clinical response indicates otherwise.

Women and Other Hormonal Contraceptive Preparations or Hormone:

Replacement Therapy: Although the effect of other hormonal contraceptive preparations or hormone replacement therapy on the pharmacokinetics of lamotrigine has not been evaluated, the effect may be similar to oral contraceptives (see DRUG INTERACTIONS, Drug-Drug Interactions, Other Drug Interactions). Therefore, similar adjustments to the dosage of LAMICTAL may be needed, based on clinical response.

Pediatrics

Safety and efficacy in patients below the age of 16 years, other than those with Lennox-Gastaut Syndrome, have not been established.

The starting doses and dose escalations listed below are different than those used in clinical trials, however the maintenance doses are the same as those used in clinical trials. Smaller starting doses and slower dose escalations than those used in clinical trials are recommended because of concern that the risk of serious rash may be greater with higher initial doses and more rapid dose escalation. Consequently, it may take several weeks to months to achieve an individualized maintenance dose.

To ensure a therapeutic dose is maintained, the weight of a child must be monitored and the dose reviewed as weight changes occur.

The smallest available strength of LAMICTAL Dispersible Tablets is 2 mg. Only whole tablets should be administered (scoreline on the 5 mg tablet is not intended for tablet splitting). Recommended doses have been determined based on the individual tablet strengths which most closely approximates, but does NOT exceed, the target dose calculated on the basis of patient weight. LAMICTAL should not be administered if the calculated daily dose is less than 1 mg (e.g. patients weighing less than 9 kg [20 lbs]). If the initial calculated daily dose of LAMICTAL is 1 to 2 mg or 2.5 to 5 mg, then 2 or 5 mg respectively of LAMICTAL should be taken on alternative days for the first 2 weeks.

For patients taking AEDs whose pharmacokinetic interactions with LAMICTAL are currently unknown, follow the titration schedule for concomitant VPA.

Table 7 Pediatric Dosing with LAMICTAL for Patients Receiving Valproic Acid, Regardless of any other Concomitant Medication

Weight Range		Weeks 1 + 2	Weeks 3 + 4	Weeks 5 and onwards to Usual Maintenance Dose ¹
		0.15 mg/kg once a day	0.3 mg/kg once a day	To achieve maintenance, doses may be increased by 0.3 mg/kg every 1-2 weeks, to a maximum of 200 mg/day. Usual maintenance dose is between 1-5 mg/kg once a day, as one dose or two divided doses
< 9 kg	< 20 lbs	Do not take LAMICTAL since there is insufficient experience in children weighing less than 9 kg		
9-13 kg	20-29 lbs	2 mg every other day	2 mg/day	Increase dose by no more than 2 mg/day every 1-2 weeks
14-16 kg	31-35 lbs	2 mg/day	4 mg/day	Increase dose by no more than 4 mg/day every 1-2 weeks
17-33 kg	37-73 lbs	5 mg every other day	5 mg/day	Increase dose by no more than 5 mg/day every 1-2 weeks
34-49 kg	75-108 lbs	5 mg/day	10 mg/day	Increase dose by no more than 10 mg/day every 1-2 weeks
≥ 50 kg ²	≥ 110 lbs	5 mg/day	15 mg/day	Increase dose by no more than 15 mg/day every 1-2 weeks

¹ It may take several weeks to months to achieve an individualized maintenance dose

² Insufficient data are available to be able to support the mg/kg dosing in patients weighing more than 50 kg

Table 8 Pediatric Dosing with LAMICTAL for Patients Receiving Medications that Induce Lamotrigine Glucuronidation^{1,2,*}, without Valproic-Acid

Weight Range		Weeks 1 + 2	Weeks 3 + 4	Week 5 and onwards to Usual Maintenance Dose ³
		0.3 mg/kg twice a day	0.6 mg/kg twice a day	To achieve maintenance, doses may be increased by 1.2 mg/kg every 1-2 weeks, to a maximum of 400 mg/day. Usual maintenance dose is between 2.5 - 7.5 mg/kg twice a day
< 9 kg	< 20 lbs	Do not take LAMICTAL since there is insufficient experience in children weighing less than 9 kg		
9-12 kg	20-26 lbs	5 mg/day	10 mg/day	Increase dose by no more than 10 mg/day every 1-2 weeks
13-16 kg	29-35 lbs	5 mg/day	15 mg/day	Increase dose by no more than 15 mg/day every 1-2 weeks
17-20 kg	37-44 lbs	10 mg/day	20 mg/day	Increase dose by no more than 20 mg/day every 1-2 weeks
21-24 kg	46-53 lbs	10 mg/day	25 mg/day	Increase dose by no more than 25 mg/day every 1-2 weeks
25-29 kg	55-64 lbs	15 mg/day	30 mg/day	Increase dose by no more than 30 mg/day every 1-2 weeks
30-33 kg	66-73 lbs	15 mg/day	35 mg/day	Increase dose by no more than 35 mg/day every 1-2 weeks
34-37 kg	75-81 lbs	20 mg/day	40 mg/day	Increase dose by no more than 40 mg/day every 1-2 weeks
38-41 kg	84-90 lbs	20 mg/day	45 mg/day	Increase dose by no more than 45 mg/day every 1-2 weeks
42-45 kg	92-99 lbs	25 mg/day	50 mg/day	Increase dose by no more than 50 mg/day every 1-2 weeks
46-49 kg	101-108 lbs	25 mg/day	55 mg/day	Increase dose by no more than 55 mg/day every 1-2 weeks
50-54 kg	110-119 lbs	30 mg/day	60 mg/day	Increase dose by no more than 60 mg/day every 1-2 weeks
55-58 kg	121-128 lbs	30 mg/day	65 mg/day	Increase dose by no more than 65 mg/day every 1-2 weeks
≥ 59 kg ³	≥ 130 lbs	35 mg/day	70 mg/day	Increase dose by no more than 70 mg/day every 1-2 weeks

¹ Medications that induce lamotrigine glucuronidation include carbamazepine, phenobarbital, phenytoin, primidone, rifampin, lopinavir/ritonavir and atazanavir/ritonavir

² Can be given as two divided doses

³ It may take several weeks to months to achieve an individualized maintenance dose

⁴ Insufficient data are available to be able to support the mg/kg dosing in patients weighing more than 59kg.

* Total daily dose can be divided

Geriatrics

No dosage adjustment from the recommended adult schedule is required. The pharmacokinetics of lamotrigine in this age group do not differ significantly from a non-elderly population (see also ACTION AND CLINICAL PHARMACOLOGY and ADVERSE REACTIONS).

Renal Impairment

The elimination half-life of lamotrigine is prolonged in patients with impaired renal function (see ACTION AND CLINICAL PHARMACOLOGY). Caution should be exercised in dose selection for patients with impaired renal function.

Hepatic Impairment

Mild and Moderate Hepatic Impairment: It is recommended that initial, escalation and maintenance doses be reduced by approximately 50% in patients with either mild or moderate (Child-Pugh Grade A or B) hepatic impairment; dosage schedules based on pharmacokinetic data are summarized in Table 9. Maintenance doses may be adjusted according to clinical response and tolerance (see also ACTION AND CLINICAL PHARMACOLOGY and WARNINGS AND PRECAUTIONS).

Table 9 **Dosing for Mild (Child-Pugh Grade A) and Moderate (Child-Pugh Grade B) Hepatic-Impaired Adult Patients (Based on pharmacokinetic data from 12 mild and 5 moderate hepatic-impaired subjects given a single 100 mg dose)**

	Weeks 1 + 2	Weeks 3 + 4 ³	Week 5 and onwards to Usual Maintenance Dose ²
LAMICTAL + EI AEDS ¹	25 mg/day	50 mg/day	To achieve maintenance, doses may be increased by 50 mg every 1 to 2 weeks.
LAMICTAL + EI AEDS + VPA	10 mg/day	20 mg/day	To achieve maintenance, doses may be increased by 10-20 mg every 1 to 2 weeks.
LAMICTAL + VPA* (± non-EI AEDS)	5 mg/day	10 mg/day	To achieve maintenance, doses may be increased by 10-20 mg every 1 to 2 weeks.

¹ AEDs that induce lamotrigine glucuronidation include carbamazepine, phenobarbital, phenytoin, and primidone

² It may take several weeks to months to achieve an individualized maintenance dose

³ Can be given as two divided doses

* Based on dosage recommendations from the United Kingdom

Severe Hepatic Impairment: Caution should be exercised with severe hepatic impaired patients with epilepsy, as there is no clinical experience with LAMICTAL in this group. It is recommended that initial, escalation and maintenance doses be reduced by approximately 75% in severe (Child-Pugh Grade C) hepatic impairment; dosage schedules based on pharmacokinetic data are summarized in Table 10. Maintenance doses may be adjusted according to clinical response and tolerance (see also ACTION AND CLINICAL PHARMACOLOGY and WARNINGS AND PRECAUTIONS).

Table 10 Dosing for Severe (Child-Pugh Grade C) Hepatic-Impaired Adult Patients (Based on pharmacokinetic data from 7 severe hepatic-impaired subjects given a single 100 mg dose)

	Weeks 1 + 2	Weeks 3 + 4³	Week 5 and onwards to Usual Maintenance Dose²
LAMICTAL + EI AEDS ¹	10 mg/day	20 mg/day	To achieve maintenance, doses may be increased by 20 mg every 1 to 2 weeks.
LAMICTAL + EI AEDS + VPA	5 mg/day	10 mg/day	To achieve maintenance, doses may be increased by 5-10 mg every 1 to 2 weeks.
LAMICTAL + VPA* (± non-EI AEDS)	5 mg every other day	5 mg/day	To achieve maintenance, doses may be increased by 5-10 mg every 1 to 2 weeks.

¹ AEDs that induce lamotrigine glucuronidation include carbamazepine, phenobarbital, phenytoin, and primidone

² It may take several weeks to months to achieve an individualized maintenance dose

³ Can be given as two divided doses

* Based on dosage recommendations from the United Kingdom

Missed Dose

If a dose is missed, the patient should be instructed to take the next dose as soon as they remember unless the next dose is due in less than 4 hours, in which case they should skip the missed dose and take the next dose when it is due. The patient should be instructed to not make up for a missed dose by taking a double dose next time.

Administration

LAMICTAL (lamotrigine) is intended for oral administration and may be taken with or without food. LAMICTAL tablets should be swallowed whole and should not be chewed or crushed.

LAMICTAL Dispersible Tablets may be swallowed whole, chewed, or dispersed in water or diluted fruit juice. The scoreline on the 5-mg tablet is not intended for tablet splitting. If the tablets are chewed, consume a small amount of water or diluted fruit juice to aid in swallowing. To disperse the tablets, add the tablets to a small amount of liquid (1 teaspoon, or enough to cover the medication). Approximately 1 minute later, when the tablets are completely dispersed, swirl the solution and consume the entire quantity immediately. No attempt should be made to administer partial quantities of the dispersed tablets.

OVERDOSAGE

Adults

Acute overdoses involving quantities up to 15 g have been reported for LAMICTAL, some of which have been fatal. In general, overdose has resulted in symptoms including nystagmus, ataxia, grand mal convulsions, impaired consciousness coma and intraventricular conduction delay (QRS broadening).

Pediatrics

Among patients ≤ 16 years of age, reports of single doses of LAMICTAL have included ingestion of 3 g by a 14 year old female and approximately 1 g by a 4 year old male. The 14 year old female was taking marketed LAMICTAL; after the dose, she lost consciousness and was admitted to the hospital for supportive therapy, where she recovered fully (time to recovery not reported). The 4 year old male was drowsy and agitated when found, and his condition worsened to coma level II after hospitalization. He was given supportive therapy, and his condition improved rapidly with full recovery in 3 days.

There are no specific antidotes for LAMICTAL. Following a suspected overdose, immediate hospitalization of the patient is advised. In the event of a very recent overdose/ingestion of a potentially life-threatening amount of the drug, emesis may be induced if indicated. General supportive care is indicated, including frequent monitoring of vital signs and close observation of the patient. It is uncertain whether hemodialysis is an effective means of removing lamotrigine from the blood. In six renal failure patients, about 20% of the amount of lamotrigine in the body was removed during 4 hours of hemodialysis.

For management of a suspected drug overdose, contact your regional Poison Control Centre.

ACTION AND CLINICAL PHARMACOLOGY

Mechanism of Action

LAMICTAL (lamotrigine) is a drug of the phenyltriazine class chemically unrelated to existing antiepileptic drugs (AEDs).

Lamotrigine is thought to act at voltage-sensitive sodium channels to stabilize neuronal membranes and inhibit the release of excitatory amino acid neurotransmitters (e.g. glutamate, aspartate) that are thought to play a role in the generation and spread of epileptic seizures.

Pharmacokinetics

Adults

Absorption: LAMICTAL is rapidly and completely absorbed following oral administration, reaching peak plasma concentrations 1.4 to 4.8 hours (T_{max}) post-dosing. When administered with food, the rate of absorption is slightly reduced, but the extent remains unchanged. Following single LAMICTAL doses of 50–400 mg, peak plasma concentration

(C_{\max} =0.6–4.6 $\mu\text{g/mL}$) and the area under the plasma concentration-versus-time curve (AUC =29.9–211 $\text{h}\cdot\mu\text{g/mL}$) increase linearly with dose. The time-to-peak concentration, elimination half-life ($t_{1/2}$) and volume of distribution (Vd/F) are independent of dose. The $t_{1/2}$ averages 33 hours after single doses and Vd/F ranges from 0.9 to 1.4 L/kg. Following repeated dosing in healthy volunteers for 14 days, the $t_{1/2}$ decreased by an average of 26% (mean steady state $t_{1/2}$ of 26.4 hours) and plasma clearance increased by an average of 33%. In a single-dose study where healthy volunteers were administered both oral and intravenous doses of lamotrigine, the absolute bioavailability of oral lamotrigine was 98%.

Distribution: Lamotrigine is approximately 55% bound to human plasma proteins. This binding is unaffected by therapeutic concentrations of phenytoin, phenobarbital or valproic acid. Lamotrigine does not displace other antiepileptic drugs (carbamazepine, phenytoin, phenobarbital) from protein binding sites.

Metabolism: Lamotrigine is metabolized predominantly in the liver by glucuronic acid conjugation. The major metabolite is an inactive 2-N-glucuronide conjugate that can be hydrolyzed by β -glucuronidase.

Elimination: Approximately 70% of an oral LAMICTAL dose is recovered in urine as this metabolite.

Special Populations and Conditions

Pediatrics: Lamotrigine was rapidly absorbed in children, with a T_{\max} ranging from 1 to 6 hours. The mean Vd/F of lamotrigine in children aged 5 to 11 years (1.3 to 1.4 L/kg) was similar to those seen in adults (0.9 to 1.4 L/kg) but was larger in younger children (1.8 to 2.3 L/kg). As with adults, the elimination of lamotrigine in pediatric patients was similarly affected by concomitant AEDs. While the CL/F was higher and $t_{1/2}$ was shorter in younger children than in older children, the mean CL/F was higher and mean $t_{1/2}$ was shorter in both pediatric groups than in adults. Population analysis results showed that the estimated apparent plasma clearances in patients aged 13 to 18 years were similar to those found in adult patients.

Geriatrics: Results of a population pharmacokinetic analysis, based on individual trials in which both adult ($n = 138$) and elderly ($n = 13$) patients with epilepsy were enrolled, indicated that the clearance of lamotrigine in elderly patients did not change to a clinically relevant extent. After single doses, apparent clearance was lower in the elderly by 12% (31 mL/min at age 70 vs 35 mL/min at age 20). After 48 weeks of treatment, the difference in clearance was 10% (37 mL/min at age 70 vs 41 mL/min at age 20). In addition, the pharmacokinetics of lamotrigine were studied in 12 healthy elderly volunteers who each received a single oral dose of 150 mg. The mean clearance in the elderly (0.39 mL/min) lies within the range of mean clearance values (0.31 to 0.65 mL/min) obtained in 9 studies with non-elderly adults after single doses of 30 to 450 mg (see also DOSAGE AND ADMINISTRATION and ADVERSE REACTIONS).

Renal Impairment: The pharmacokinetics of a single oral dose of LAMICTAL (100 mg) were evaluated in 12 individuals with chronic renal failure (with mean creatinine clearance of 13 mL/min) who were not receiving other antiepileptic drugs. In this study, the elimination half-life of unchanged lamotrigine was prolonged (by an average of 63%) relative to individuals with

normal renal function (see WARNINGS AND PRECAUTIONS, Renal Impairment and DOSAGE AND ADMINISTRATION).

Hemodialysis: In six hemodialysis patients, the elimination half-life of unchanged lamotrigine was doubled off dialysis, and reduced by 50% on dialysis, relative to individuals with normal renal function.

Hepatic Impairment: A single dose pharmacokinetic study was performed in 24 subjects with hepatic impairment (n = 12 mild/Grade A; n = 5 moderate/Grade B and n = 7 severe/Grade C), versus 12 healthy controls. For the moderate and severe subgroups, the mean values for AUC and plasma half-life were increased approximately 2-fold and 3-fold respectively over control values, with clearance decreased proportionately. For the mild group, while mean values were not statistically different from those of controls, a subgroup of 1-to 4 subjects (dependant on pharmacokinetic parameter examined) showed abnormal individual values which were in the range of the moderately impaired subjects (see also DOSAGE AND ADMINISTRATION and WARNINGS AND PRECAUTIONS).

Gilbert's Syndrome: Gilbert's syndrome (idiopathic unconjugated hyperbilirubinemia) does not appear to affect the pharmacokinetic profile of lamotrigine.

Concomitant Antiepileptic Drugs: In patients with epilepsy, concomitant administration of LAMICTAL and AEDs that induce lamotrigine glucuronidation (phenytoin, carbamazepine, primidone or phenobarbital) decreases the mean lamotrigine $t_{1/2}$ to 13 hours. Concomitant administration of LAMICTAL with valproic acid significantly increases $t_{1/2}$ and decreases the clearance of lamotrigine, whereas concomitant administration of LAMICTAL with valproic acid plus AEDs that induce lamotrigine glucuronidation can prolong $t_{1/2}$ up to approximately 27 hours. The key lamotrigine parameters for adult patients and healthy volunteers are summarized in Table 11, and for pediatric patients in Table 12.

Table 11 Mean Pharmacokinetic Parameters in Adult Patients with Epilepsy or Healthy Volunteers

LAMICTAL Administered		Healthy Young Volunteers		Patients with Epilepsy		
		LAMICTAL	LAMICTAL + Valproic Acid ²	LAMICTAL+ AEDs that induce lamotrigine glucuronidation	LAMICTAL + Valproic Acid	LAMICTAL+ AEDs that induce lamotrigine glucuronidation + Valproic Acid
T _{max} (hrs)	Single Dose	2.2 (0.25-12.0) ¹	1.8 (1.0-4.0)	2.3 (0.5-5.0)	4.8 (1.8-8.4)	3.8 (1.0-10.0)
	Multiple Dose	1.7 (0.5-4.0)	1.9 (0.5-3.5)	2.0 (0.75-5.93)	ND	ND
t _{1/2}	Single Dose	32.8 (14.0-103.0)	48.3 (31.5-88.6)	14.4 (6.4-30.4)	58.8 (30.5-88.8)	27.2 (11.2-51.6)
	Multiple Dose	25.4 (11.6-61.6)	70.3 (41.9-113.5)	12.6 (7.5-23.1)	ND	ND
Plasma Clearance (mL/min/kg)	Single Dose	0.44 (0.12-1.10)	0.30 (0.14-0.42)	1.10 (0.51-2.22)	0.28 (0.16-0.40)	0.53 (0.27-1.04)
	Multiple Dose	0.58 (0.25-1.15)	0.18 (0.12-0.33)	1.21 (0.66-1.82)	ND	ND

ND = Not done

1. Range of individual values across studies

2. Valproic Acid administered chronically (Multiple Dose Study) or for 2 days (Single Dose Study)

Table 12 Mean Pharmacokinetic Parameters in Pediatric Patients with Epilepsy

Pediatric Study Population	Number of Subjects	T _{max} (h)	t _{1/2} (h)	CL/F (mL/min/kg)
Ages 10 months-5.3 years				
Patients taking AEDs that induce lamotrigine glucuronidation	10	3.0 (1.0-5.9)	7.7 (5.7-11.4)	3.62 (2.44-5.28)
Patients taking AEDs with no known effect on drug-metabolizing enzymes	7	5.2 (2.9-6.1)	19.0 (12.9-27.1)	1.2 (0.75-2.42)
Patients taking VPA only	8	2.9 (1.0-6.0)	44.9 (29.5-52.5)	0.47 (0.23-0.77)
Ages 5 to 11 years				
Patients taking AEDs that induce lamotrigine glucuronidation	7	1.6 (1.0-3.0)	7.0 (3.8-9.8)	2.54 (1.35-5.58)
Patients taking AEDs that induce lamotrigine glucuronidation plus VPA	8	3.3 (1.0-6.4)	19.1 (7.0-31.2)	0.89 (0.39-1.93)
Patients taking VPA only*	3	4.5 (3.0-6.0)	55.4 (24.3-73.7)	0.31 (0.20-0.54)
Ages 13 to 18 years				
Patients taking AEDs that induce lamotrigine glucuronidation	11	†	†	1.3
Patients taking AEDs that induce lamotrigine glucuronidation plus VPA	8	†	†	0.5
Patients taking VPA only	4	†	†	0.3

VPA = valproic acid

*Two subjects were included in the calculation for mean t_{max}.

† Parameter not estimated.

Oxcarbazepine, gabapentin, lacosamide, levetiracetam, perampanel, pregabalin, felbamate, zonisamide and topiramate did not affect the plasma concentrations of lamotrigine (see DRUG INTERACTIONS, Drug-Drug Interactions, Antiepileptic Drugs (AEDs)).

Other Drug Interactions

Chronic administration of acetaminophen was shown to slightly decrease the t_{1/2} and increase the clearance of a single dose of lamotrigine. Oral contraceptives and rifampin have also been shown to increase the apparent clearance of lamotrigine (see DRUG INTERACTIONS). Co-administration of olanzapine did not have a clinically relevant effect on LAMICTAL pharmacokinetics (see DRUG INTERACTIONS).

STORAGE AND STABILITY

LAMICTAL Tablets should be stored at controlled room temperature (15°C to 30°C) in a dry place and protected from light.

DOSAGE FORMS, COMPOSITION AND PACKAGING

LAMICTAL Tablets (scored, shield-shaped, engraved “LAMICTAL”) are available in three different strengths in the following pack formats:

- 25 mg tablets (white) in bottles of 100;
- 100 mg tablets (peach) in bottles of 100;
- 150 mg tablets (cream) in bottles of 60.

LAMICTAL Dispersible Tablets are available in the following pack format:

- 2 mg tablets (white, round, engraved “LTG” over “2”) in bottles of 30
- 5 mg tablets (white to off-white, elongated, and biconvex, engraved “GS CL2” on one side and “5” on the other) (initiation dose only) in blisters of 28 or in bottles of 30.

Composition

LAMICTAL Tablets contain lamotrigine and the following non-medicinal ingredients: cellulose, lactose, magnesium stearate, povidone, sodium starch glycolate, and coloring agents:

- 25 mg (white tablets) - None
- 100 mg (peach tablets) - FD&C yellow No. 6 aluminium lake (Sunset Yellow)
- 150 mg (cream tablets) - Ferric Oxide, Yellow

LAMICTAL Dispersible Tablets (2 and 5 mg) contain lamotrigine and the following non-medicinal ingredients: aluminum magnesium silicate, blackcurrant flavour, calcium carbonate, hydroxypropylcellulose, magnesium stearate, povidone, saccharin sodium and sodium starch glycolate.

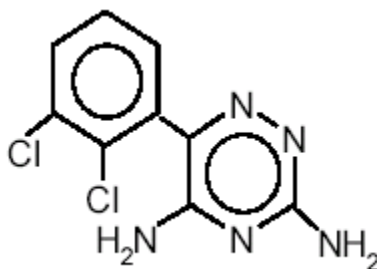
PART II: SCIENTIFIC INFORMATION

PHARMACEUTICAL INFORMATION

Drug Substance

Proper Name:	lamotrigine
Chemical Name:	1,2,4-Triazine-3,5-diamine,6-(2,3-dichlorophenyl)- [USAN]
Chemical Name:	6-(2,3-dichlorophenyl)-1,2,4-triazine-3,5-diamine [Chem. Abstr.]

Structural Formula



Molecular Formula:	C ₉ H ₇ Cl ₂ N ₅
Molecular weight:	256.09
Description:	Lamotrigine is a white to pale cream powder. The pK _a at 25°C is 5.7. It is practically insoluble in water (0.017% w/v); slightly soluble in ethanol (0.41% w/v), chloroform (0.11% w/v) and octanol (0.28% w/v).

CLINICAL TRIALS

In adult placebo-controlled clinical studies, LAMICTAL (lamotrigine) has been shown to be effective in reducing seizure frequency and the number of days with seizures when added to existing antiepileptic drug therapy in adult patients with partial seizures, with or without generalized tonic-clonic seizures, that are not satisfactorily controlled.

The effectiveness of lamotrigine adjunctive therapy has also been shown in pediatric and adult patients with Lennox-Gastaut syndrome. A significant reduction in major motor seizures, drop

attacks, and tonic-clonic seizures were seen following lamotrigine treatment compared with placebo treated patients. Improvements in cognitive skills (speech, nonverbal communication, alertness, attention, intellectual capacity), behaviour, and fine co-ordination have been seen with lamotrigine treatment in these patients.

Studies have also been conducted using lamotrigine monotherapy in adult patients (n = 443) newly diagnosed with epilepsy (partial seizures, with or without secondary generalization or primary generalized tonic clonic). Results have shown comparable efficacy (time to first seizure, seizure frequency, percentage of patients seizure-free) with fewer side effects than currently approved therapies.

Clinical trials have also demonstrated that adult patients (any seizure type) can be converted to lamotrigine monotherapy from polytherapy with significant numbers of patients maintaining or improving seizure control. Efficacy was maintained during long-term treatment (up to 152 weeks).

A 24 week monotherapy trial was conducted in elderly newly diagnosed patients (102 patients received lamotrigine and 48 received carbamazepine). The findings indicate comparable efficacy, and demonstrate that lamotrigine was well tolerated in the elderly. However, the small and unbalanced number of patients in the study precludes any firm conclusions on the relative safety of the two drugs.

DETAILED PHARMACOLOGY

Animal Pharmacology

In vivo studies

In *in vivo* studies in animal models, lamotrigine has an antiepileptic profile suggesting utility in the treatment of partial seizures and generalized tonic-clonic seizures. Lamotrigine was effective in the maximal electroshock (MES), maximum pentylenetetrazol, electrically evoked after discharge (EEAD) tests and in visually evoked after discharge (VEAD) tests. In mice and rats, lamotrigine has a longer duration of action than phenytoin, carbamazepine, diazepam or valproate. Lamotrigine's potency is similar to that of phenytoin (mouse), phenobarbital (rat), carbamazepine (rat) and diazepam (mouse) (see Table 13).

Table 13 Potency and Duration of Lamotrigine Following Maximal Electroshock-Induced Seizures

Drug	ED ₅₀ for Abolition of Hind Leg Extension (mg/kg p.o.)		Duration Maintenance of Peak Activity (hours)	
	<u>Mouse</u>	<u>Rat</u>	<u>Mouse</u>	<u>Rat</u>
Lamotrigine	2.6-3.8	1.9-3.3	1-8	1-8
Phenytoin	3.5	19.7	8	1
Phenobarbital	9.1	4.7	1	1
Carbamazepine	6.9	2.5	1	0.25
Valproate	332.4	238	0.25	1
Diazepam	3.2	16.9	1	1

In single-dose mouse and rat studies, the anticonvulsant ED₅₀s of orally administered lamotrigine ranged from 1.9 to 3.8 mg/kg. Signs of CNS toxicity did not occur until high multiples of the lamotrigine ED₅₀s were reached, and consisted of ataxia and tremors (at 140 mg/kg), and convulsions (at 300 and 675 mg/kg in mice and rats, respectively). In multiple-dose studies in mice and rats, the anticonvulsant ED₅₀s were unchanged. In mice, lamotrigine was well tolerated at chronic doses up to 30 mg/kg/day. In rats, convulsions possibly related to drug administration were rarely observed (in no more than 1 of 46 to 49 animals per dose group) and did not occur until week 24 of chronic oral dosing with 15 mg/kg/day.

Preclinical Pharmacokinetics

Lamotrigine was found to accumulate in the kidney of the male rat, bind to melanin-containing ocular tissue of the pigmented rat and cynomolgus monkey, and prolong gastric emptying time in rats. In dogs, lamotrigine was extensively metabolized to a 2-N-methyl metabolite which produced dose-dependent prolongations of the P-R interval and QRS duration in ECG tracings in this species. Only trace amounts of this metabolite (< 0.6% of lamotrigine dose) were found in human urine. Clinical studies showed no evidence in humans for manifestations of these preclinical observations regarding accumulation in the kidney, melanin binding, gastric emptying, or cardiac effects.

In vitro Studies

In vitro pharmacological studies suggest that lamotrigine acts at voltage-sensitive sodium channels to stabilize neuronal membranes and inhibit the release of excitatory amino acid neurotransmitters (e.g. glutamate, aspartate) that are thought to play a role in the generation and spread of epileptic seizures.

Lamotrigine was shown to be a weak inhibitor of dihydrofolate reductase *in vitro*, hence there is a possibility of interference with folate metabolism during long-term therapy (see WARNINGS AND PRECAUTIONS, Special Populations, Pregnant Women). In clinical studies, lamotrigine did not affect blood folate concentrations or associated hematologic parameters.

TOXICOLOGY

Acute Toxicity

Single-dose lethality values were calculated in male and female mice and rats receiving lamotrigine by the oral and intravenous routes of administration. The calculated LD₅₀ values are listed in Table 14.

Table 14 **Acute Toxicity Studies**

Route	LD ₅₀ Dose (mg/kg)			
	Mouse		Rat	
	Male	Female	Male	Female
Oral	245	292	205	163
I.V.	141	134	107	112

The lowest doses (mg/kg) at which any deaths occurred were 300 (oral) and 125 (I.V.) in mice and 140 (oral) and 100 (I.V.) in rats. Deaths were seen as early as 1 minute following I.V. dosing and 30 minutes following oral dosing. The most severe sign noted was clonic convulsions (rats only). Other signs, including tremors, ataxia, hypoactivity, decreased respiration, and hypothermia were also observed. Survivors generally recovered within 24 hours, but hypoactivity lasted for several days in some animals.

Long-Term Toxicity

Subacute to subchronic (14 – 30 days) studies were conducted in rats (oral and intravenous), marmosets (oral) and cynomolgus monkeys (intravenous).

Effects seen in rats which were considered to be consistently associated with oral lamotrigine administration included specific nephropathy (males, 1 mg/kg/day), increased weight of stomach contents (6.25 mg/kg/day), increased water consumption and urine output (10 mg/kg/day), reduced weight gain and food consumption (22.5 mg/kg/day), and convulsions (50 mg/kg/day).

Marmosets were given either single daily lamotrigine doses of 10 -100 mg/kg/day or 3 daily doses ranging from 10 to 50 mg/kg/dose. The following effects were observed at the following lowest doses given: slight decreases in WBC, RBC and related values (100 mg/kg/day or 22.5 mg/kg/dose t.i.d.); post-dose incoordination, slight body weight loss, decreased food consumption (50 mg/kg/day or 22.5 mg/kg/dose t.i.d.); post-dose salivation and vomiting (10 mg/kg/day or 22.5 mg/kg/dose t.i.d.). Blood, brain and liver folate levels were not affected.

In a 14-day intravenous study in cynomolgus monkeys, daily lamotrigine doses ranged from 5 to 20 mg/kg. The following effects were observed (shortly after dosing) at the following lowest doses given: ataxia, vomiting, and decreased food consumption (10 mg/kg); nystagmus (15 mg/kg); agitation, slight body weight loss (20 mg/kg).

In chronic oral toxicity studies, mice were given daily lamotrigine doses of up to 60 mg/kg for 90 days. Rats were given doses of up to 30 mg/kg/day for 90 days, up to 25 mg/kg/day for 6 months, and up to 15 mg/kg/day for one year. The only effect seen in mice was increased

stomach content weight, likely related to delayed gastric emptying (30 and 60 mg/kg/day). The most prominent drug-related effects in rats were renal histopathological changes, seen at all dose levels; other effects seen were similar to those documented in the subacute and subchronic rat studies. Other species were also evaluated by light microscopic examination of kidney sections from animals given lamotrigine and by *in vitro* studies of kidney cortex slice uptake of radiolabelled lamotrigine. The studies demonstrated that the renal effects seen are limited to male rats and represent exacerbation of spontaneous hyaline droplet changes related to the renal proximal tubular handling of α_2 U-globulin. This globulin is a specific protein synthesized by the liver in male rats only. The hyaline droplets are secondary lysosomes and contain α_2 U-globulin. Lamotrigine is also accumulated in the renal proximal tubular epithelium in the form of rectilinear and crystalline inclusions which likely contain both α_2 U-globulin and lamotrigine. Time-and-dose dependent loading of these cells leads to cellular degeneration and eventual regeneration. Changes are consistent with those seen in "light hydrocarbon nephropathy," a male-rat-specific condition, which is reversible following termination of treatment and has no human counterpart.

Cynomolgus monkeys were treated with daily oral lamotrigine doses of up to 20 mg/kg in 13-week, 26-week, and 52-week studies. Effects noted were limited to animals given 20 mg/kg/day and included postdose ataxia, lethargy, trembling, locomotor incoordination and convulsions in some animals in the 26-week study. A reduced rate of body weight gain and transient weight loss was seen at doses as low as 5 mg/kg/day, but only in the 52-week study.

Carcinogenicity

There was no evidence of carcinogenicity in mice treated orally with lamotrigine (10-30 mg/kg/day) for up to 106 weeks. Lamotrigine was not carcinogenic in two rat studies where animals received doses of 1–10 mg/kg/day for up to 104 weeks (females) or 112 weeks (males). In both studies, survival was not affected by treatment.

Mutagenicity

In vitro, lamotrigine was not mutagenic in microbial (Ames) or mammalian (mouse lymphoma) mutagenicity tests with or without metabolic activation. Lamotrigine had no effect on the incidence of chromosomal abnormalities in cultured human lymphocytes exposed to concentrations of up to 1000 μ g/mL in the presence or absence of S9 metabolic activation. Concentrations of 500 and 1000 μ g/mL without activation were cytotoxic.

In vivo, there was no increase in the incidence of chromosomal abnormalities in bone marrow cells of rats given doses of lamotrigine of up to 200 mg/kg.

Reproduction and Teratology

No evidence of teratogenicity was observed in mice, rats, and rabbits given oral doses of lamotrigine at up to 14, 4, and 4 times, respectively, the currently recommended upper human maintenance dose (500 mg/day or 7 mg/kg/day). This was true when lamotrigine was given during the period of major organogenesis or was started prior to and continued throughout the period of organogenesis. In these same oral dosing studies maternal toxicity and secondary fetal toxicity, resulting in reduced fetal weight and/or delayed ossification were seen. Teratology studies were also conducted using bolus intravenous (I.V.) administration of the isethionate salt of lamotrigine in multiples of the projected human oral dose. Intravenous lamotrigine resulted in convulsions or impaired coordination in rat and rabbit dams at 30 mg/kg and 15 mg/kg, respectively. The 30 mg/kg dose also produced an increased incidence of intrauterine death without signs of teratogenicity in rats only.

When rats were dosed prior to and during mating, and throughout gestation and lactation at daily oral doses of 5, 10, and 20 mg/kg, gestation was slightly longer in the dams allowed to deliver in the 20 mg/kg/group (22.0 ± 0.0 versus 21.5 ± 0.5 days in non-treated controls). These doses are approximately 1, 1.5, and 3 times the currently recommended upper human maintenance dose (500 mg/day or 7 mg/kg/day). In this same study, body weight gain and food consumption of the parent generation (F_0) dams dosed at 20 mg/kg/day were less than the control dams and were indicative of maternal toxicity. There was no evidence of teratogenic effects in the litters of the dams designated for cesarean section. Effects secondary to maternal toxicity consisted of a decrease in mean fetal weight and length of 20 mg/kg pups; the incidence of two skeletal variants was increased and the incidence of one skeletal variant was decreased. When pregnant rats of the same strain were dosed only on days 15–20 of gestation at the same daily doses of 5, 10, and 20 mg/kg, more pronounced maternal toxicity, than noted in the previously described study at the same doses, was seen in dams given 10 and 20 mg/kg doses and consisted of dehydration, hypothermia, and decreased weight gain and food consumption. A smaller decrease in body weight gain was seen in the 5 mg/kg group. Gestation was prolonged in the 20 mg/kg group (22.6 vs. 22.0 days in non-treated controls) and secondary to maternal toxicity there were increased numbers of stillborn pups (partial to entire litters) in the 10 and 20 mg/kg groups and increased early neonatal mortality.

Even at maternally toxic levels leading to fetal death, there was no evidence of teratogenicity. Because animal reproduction studies are not always predictive of human response, this drug should be used during pregnancy only if clearly needed. Clinical data indicate that lamotrigine has no effect on blood folate concentrations in adults; however, the effects of lamotrigine on fetal blood folate levels *in utero* are unknown.

REFERENCES

1. Anon. Lamotrigine. *Drugs Future* 1987;12(6):595-596.
2. Betts T, Goodwin G, Withers RM, Yuen AW. Human safety of lamotrigine. *Epilepsia* 1991; 32 Suppl 2:S17-S21.
3. Binnie CD, van Emde BW, Kasteleijn-Nolste-Trenite DG, de Korte RA, Meijer JW, Meinardi H et al. Acute effects of lamotrigine (BW430C) in persons with epilepsy. *Epilepsia* 1986; 27(3):248-254.
4. Binnie CD, Debets RM, Engelsman M, Meijer JW, Meinardi H, Overweg J et al. Double-blind crossover trial of lamotrigine (Lamictal) as add-on therapy in intractable epilepsy. *Epilepsy Res* 1989; 4(3):222-229.
5. Binnie CD, Van Wieringen A, Meijer JW, Peck AW, de Vries J. Comparison of the effects of lamotrigine and phenytoin on the EEG power spectrum and cortical and brainstem-evoked responses of normal human volunteers. *Neuropsychobiology* 1989; 21(3):157-169.
6. Binnie CD. Lamotrigine. *Comprehensive Epileptology* Ed M Dam and L Gram New York, Raven Press, 1991;665-670.
7. Brodie MJ, Richens A, Yuen AW. Double-blind comparison of lamotrigine and carbamazepine in newly diagnosed epilepsy. UK Lamotrigine/Carbamazepine Monotherapy Trial Group. *Lancet* 1995; 345(8948):476-479.
8. Brodie MJ. Lamotrigine monotherapy: An overview. *R Soc Med: Int Congr Symp Ser* 1996;(214):43-49.
9. Brodie MJ, Overstall PW, Giorgi L. Multicentre, double-blind, randomised comparison between lamotrigine and carbamazepine in elderly patients with newly diagnosed epilepsy. The UK Lamotrigine Elderly Study Group. *Epilepsy Res* 1999; 37(1):81-87.
10. Cohen AF, Ashby L, Crowley D, Land G, Peck AW, Miller AA. Lamotrigine (BW430C), a potential anticonvulsant. Effects on the central nervous system in comparison with phenytoin and diazepam. *Br J Clin Pharmacol* 1985; 20(6):619-629.
11. Cohen AF, Land GS, Breimer DD, Yuen WC, Winton C, Peck AW. Lamotrigine, a new anticonvulsant: pharmacokinetics in normal humans. *Clin Pharmacol Ther* 1987; 42(5):535-541.
12. Depot M, Powell JR, Messenheimer JA, Jr., Cloutier G, Dalton MJ. Kinetic effects of multiple oral doses of acetaminophen on a single oral dose of lamotrigine. *Clin Pharmacol Ther* 1990; 48(4):346-355.

13. Donaldson JA, Glauser TA, Olberding LS. Lamotrigine adjunctive therapy in childhood epileptic encephalopathy (the Lennox Gastaut syndrome). *Epilepsia* 1997; 38(1):68-73.
14. Dulac O, Kaminska A. Use of lamotrigine in Lennox-Gastaut and related epilepsy syndromes. *J Child Neurol* 1997; 12 Suppl 1:S23-S28.
15. Fitton A, Goa KL. Lamotrigine. An update of its pharmacology and therapeutic use in epilepsy. *Drugs* 1995; 50(4):691-713.
16. Goa KL, Ross SR, Chrisp P. Lamotrigine. A review of its pharmacological properties and clinical efficacy in epilepsy. *Drugs* 1993; 46(1):152-176.
17. Jawad S, Oxley J, Yuen WC, Richens A. The effect of lamotrigine, a novel anticonvulsant, on interictal spikes in patients with epilepsy. *Br J Clin Pharmacol* 1986; 22(2):191-193.
18. Jawad S, Richens A, Goodwin G, Yuen WC. Controlled trial of lamotrigine (Lamictal) for refractory partial seizures. *Epilepsia* 1989; 30(3):356-363.
19. Leach MJ, Baxter MG, Critchley MA. Neurochemical and behavioral aspects of lamotrigine. *Epilepsia* 1991; 32 Suppl 2:S4-S8.
20. Loiseau P, Yuen AW, Duche B, Menager T, Arne-Bes MC. A randomised double-blind placebo-controlled crossover add-on trial of lamotrigine in patients with treatment-resistant partial seizures. *Epilepsy Res* 1990; 7(2):136-145.
21. Matsuo F, Bergen D, Faught E, Messenheimer JA, Dren AT, Rudd GD et al. Placebo-controlled study of the efficacy and safety of lamotrigine in patients with partial seizures. U.S. Lamotrigine Protocol 0.5 Clinical Trial Group. *Neurology* 1993; 43(11):2284-2291.
22. Messenheimer J, Ramsay RE, Willmore LJ, Leroy RF, Zielinski JJ, Mattson R et al. Lamotrigine therapy for partial seizures: a multicenter, placebo-controlled, double-blind, cross-over trial. *Epilepsia* 1994; 35(1):113-121.
23. Mikati MA, Schachter SC, Schomer DL, Keally M, Osborne-Shafer P, Seaman CA et al. Long-term tolerability, pharmacokinetic and preliminary efficacy study of lamotrigine in patients with resistant partial seizures. *Clin Neuropharmacol* 1989; 12(4):312-321.
24. Miller AA, Sawyer DA, Roth B, Peck AW, Leach MJ, Wheatley PL et al. Lamotrigine. *New Anticonvulsant Drugs* Meldrum BS, Porter RJ, Eds London: Libbey, 1986;165-177.
25. Motte J, Trevathan E, Arvidsson JF, Barrera MN, Mullens EL, Manasco P. Lamotrigine for generalized seizures associated with the Lennox-Gastaut syndrome. Lamictal Lennox-Gastaut Study Group. *N Engl J Med* 1997; 337(25):1807-1812.
26. Peck AW. Clinical pharmacology of lamotrigine. *Epilepsia* 1991; 32 Suppl 2:S9-12.

27. Posner J, Cohen AF, Land G, Winton C, Peck AW. The pharmacokinetics of lamotrigine (BW430C) in healthy subjects with unconjugated hyperbilirubinaemia (Gilbert's syndrome). *Br J Clin Pharmacol* 1989; 28(1):117-120.
28. Posner J, Holdich T, Crome P. Comparison of lamotrigine pharmacokinetics in young and elderly healthy volunteers. *J Pharm Med* 1991; 1(3):121-128.
29. Richens A, Yuen AW. Overview of the clinical efficacy of lamotrigine. *Epilepsia* 1991; 32 Suppl 2:S13-S16.
30. Richens A. Pharmacokinetics of lamotrigine. In: Richens A., ed. *Clinical update on lamotrigine: a novel antiepileptic agent*. Wells Medical Limited, Kent, 1992;21-27.
31. Sander JW, Patsalos PN, Oxley JR, Hamilton MJ, Yuen WC. A randomised double-blind placebo-controlled add-on trial of lamotrigine in patients with severe epilepsy. *Epilepsy Res* 1990; 6(3):221-226.
32. Schlumberger E, Chavez F, Palacios L, Rey E, Pajot N, Dulac O. Lamotrigine in treatment of 120 children with epilepsy. *Epilepsia* 1994; 35(2):359-367.
33. Smith D, Baker G, Davies G, Dewey M, Chadwick DW. Outcomes of add-on treatment with lamotrigine in partial epilepsy. *Epilepsia* 1993; 34(2):312-322.
34. Timmings PL, Richens A. Lamotrigine as an add-on drug in the management of Lennox-Gastaut syndrome. *Eur Neurol* 1992; 32(6):305-307.
35. Uvebrant P, Bauziene R. Intractable epilepsy in children. The efficacy of lamotrigine treatment, including non-seizure-related benefits. *Neuropediatrics* 1994; 25(6):284-289.
36. Yuen AW. Lamotrigine: a review of antiepileptic efficacy. *Epilepsia* 1994; 35 Suppl 5:S33-S36.

PART III: CONSUMER INFORMATION

Pr LAMICTAL

(Lamotrigine Tablets USP and Lamotrigine Dispersible Tablets)

This leaflet is part III of a "Product Monograph" published when LAMICTAL was for sale in Canada and is designed specifically for Consumers. This leaflet is a summary and will not tell you everything about LAMICTAL. Contact your doctor or pharmacist if you have any questions about the drug.

The information provided below is for patients, or parents of patients, who will be receiving LAMICTAL. Please read the following information carefully before you start to take LAMICTAL, even if you have taken this drug before. Please do not discard this leaflet; you may need to read it again.

ABOUT THIS MEDICATION

What the medication is used for:

LAMICTAL has been prescribed to you/your child to control your/their epilepsy. Please follow your doctor's recommendations carefully.

What it does:

LAMICTAL affects chemicals in the brain that are involved in sending signals to the nerves. LAMICTAL helps to control epileptic seizures.

When it should not be used:

Do NOT take or use LAMICTAL if you are hypersensitive (allergic) to lamotrigine or any of the other ingredients of LAMICTAL tablets (see What the nonmedicinal ingredients are).

What the medicinal ingredient is:

lamotrigine

What the nonmedicinal ingredients are:

The tablets (25 mg, 100 mg and 150 mg) contain the following nonmedicinal ingredients: cellulose, lactose, magnesium stearate, povidone, sodium starch glycolate, and the following coloring agents: 25 mg (white tablets) - none, 100 mg (peach tablets) - FD&C yellow No. 6 aluminium lake, 150 mg (cream tablets) - Ferric Oxide, Yellow.

The Dispersible tablets (2 mg and 5 mg) contain the following non-medicinal ingredients: aluminum magnesium silicate, blackcurrant flavour, calcium carbonate, hydroxypropylcellulose, magnesium stearate, povidone, saccharin sodium and sodium starch glycolate.

What dosage forms it comes in:

Tablets: 25 mg, 100 mg, 150 mg

Dispersible Tablets: 2 mg, 5 mg

WARNINGS AND PRECAUTIONS

Serious Warnings and Precautions – Serious Skin Rashes

Serious skin rashes requiring hospitalization have occurred with the use of LAMICTAL. Symptoms include blistering, peeling of the lips, eyes, mouth or genitals, swelling of the face and/or tongue, hives, swollen lymph nodes and fever. If you or your child develops these symptoms seek immediate medical help.

In children serious skin rashes can be mistaken for an infection. If your child develops a rash and fever while taking LAMICTAL contact your doctor immediately.

Do NOT take more tablets than has been prescribed by your doctor. There is a higher chance of serious skin reactions occurring when more than the recommended number of tablets is taken.

There is a higher chance of developing a serious skin rash if you have a history of allergy or rash to other anti-epileptic drugs. If you or your child has had a serious skin reaction or allergy to another anti-epileptic drug you must tell your doctor.

BEFORE you use LAMICTAL talk to your doctor or pharmacist if you or your child:

- Ever had an unusual or allergic reaction to LAMICTAL.
- Are/is allergic to any component of LAMICTAL tablets.
- Have ever had a rash during previous treatment with lamotrigine or with any other antiepileptic drug.
- Have ever developed meningitis after taking lamotrigine.
- Are/is pregnant or are planning to become pregnant. There is a risk of malformations (e.g. cleft lip or cleft palate) associated with the use of LAMICTAL in the first few months of pregnancy. Taking folic acid when planning pregnancy and during early pregnancy may be considered. If you take LAMICTAL while pregnant, you may register yourself at the North American Antiepileptic Drug Pregnancy Registry (see contact number at the end of this information).
- Are/is breast-feeding (nursing). LAMICTAL passes into breast milk and may cause side-effects in a breast-fed baby. If the decision by you and your

healthcare provider is to breast-feed while taking LAMICTAL, watch your baby closely for symptoms such as trouble breathing, episodes of temporarily stopping breathing, sleepiness, rash, poor weight gain or poor sucking. Call your baby's healthcare provider right way if you see any of these problems.

- Are/is taking any other prescription or over-the-counter medicine, including birth control pills or other female hormonal products.
- Have/has liver, kidney disease, heart problems or other medical conditions.
- Have a family history of sudden cardiac death or suffer from a condition called Brugada syndrome (a genetic disease that affects the heart).
- Consume alcohol on a regular basis.
- Have/has repeated infections.
- Are/is allergic to a yellow dye called FD&C Yellow No. 6 aluminium lake.

A small number of people taking LAMICTAL get an allergic reaction or potentially serious skin reaction, which may develop into more serious problems such as organ failure if not treated. You need to know the symptoms to look out for while you are taking LAMICTAL. Please read the Serious Side Effects, How Often Do They Happen and What to do About Them section of this leaflet for more information.

A very small number of patients taking LAMICTAL may experience a serious condition (haemophagocytic lymphohistiocytosis or HLH), in which part of the body that fights disease is overactive. If you have any of the side effects, contact your doctor immediately because, if not recognized early, this condition can be life-threatening. Please read the Serious Side Effects, How Often Do They Happen and What to do About Them table in this leaflet for more information and list of side effects.

There have been a small number of reports of suicidal behaviour (including suicidal thoughts and suicide attempts) in patients being treated with anti-epileptic medicines such as LAMICTAL. If at any time you have these thoughts, contact your doctor immediately. **Do not discontinue LAMICTAL on your own.**

The seizures in some types of epilepsy may occasionally become worse or happen more often while you're taking LAMICTAL. Some patients may experience severe seizures, which may cause serious health problems. If your seizures happen more often or if you experience a more severe seizure while you're taking LAMICTAL, contact a doctor as soon as possible.

Do not stop taking/giving LAMICTAL unless directed by your doctor. Always check that you have an adequate supply of LAMICTAL. Remember that this medicine was

prescribed only for you/your child; never give it to anyone else.

Taking the wrong medication can cause serious health problems. When your healthcare provider gives you a prescription for LAMICTAL, make sure you can read it clearly and talk to your pharmacist to check that you are given the correct medicine.

Driving and using machines: Patients with uncontrolled epilepsy should not drive or operate machinery. Before doing tasks which require special attention, wait until you know how you respond to LAMICTAL. Dizziness, poor coordination, drowsiness, double vision and blurred vision have been reported in people taking LAMICTAL.

INTERACTIONS WITH THIS MEDICATION

Consult your doctor before taking/giving your child any other medication, including over-the-counter medicines, herbal and alternative medicines. Some drugs can produce various side effects when they are used in combination with LAMICTAL.

Do not start or stop using birth control pills or other female hormonal products, without consulting with your doctor.

Tell your doctor as soon as possible if you experience changes in your menstrual pattern (e.g. break-through bleeding) while taking LAMICTAL and birth control pills or other female hormonal products.

LAMICTAL may interfere with some laboratory tests to detect other drugs. If you require a laboratory test, tell your doctor or hospital that you are taking LAMICTAL.

Drug-Drug Interactions

Drugs that may interact with LAMICTAL include:

- Valproic acid (valproate)
- Carbamazepine
- Phenytoin
- Phenobarbital
- Primidone
- Risperidone
- Rifampin
- Procainamide
- Metformin
- Combination of lopinavir and ritonavir, or atazanavir and ritonavir
- Birth control pills or other female hormonal products.
- Acetaminophen (rarely, cases of seizure have been reported)

PROPER USE OF THIS MEDICATION

Usual dose:

It is very important that you/your child take LAMICTAL exactly as your doctor instructed.

Your doctor may increase or decrease your/your child's medication according to your/their specific needs. Carefully follow the instructions you were given. Do not change the dose yourself.

If you plan to start or stop taking hormonal contraceptives or other female hormonal products, your doctor will give you specific instructions on the dose of LAMICTAL.

Do not stop taking your medication abruptly, because your/your child's seizures may increase. Speak to your doctor before stopping LAMICTAL.

It is important to keep your/your child's appointments for medical checkups.

LAMICTAL may be taken with or without food.

LAMICTAL tablets should be swallowed whole and should not be chewed or crushed.

LAMICTAL Dispersible tablets may be chewed, dissolved in liquid or swallowed whole. Do not split the tablets. If you/your child chew the tablet, make sure that you/your child drinks a little bit of water or diluted fruit juice to help swallow the tablet. To dissolve the tablet(s), place in a glass and add a small amount of water or diluted fruit juice (about 1 teaspoon or just enough liquid to cover the tablet(s)). Wait until the tablet(s) are dissolved (takes about 1 minute), swirl the solution and drink the entire amount immediately. Add a little more water to the glass and drink that as well, to make sure no medicine is left in the glass.

Overdose:

In case of drug overdose, contact a health care practitioner, hospital emergency department or regional Poison Control Centre immediately, even if there are no symptoms.

Missed Dose:

If you/your child happens to miss a dose, take it as soon as you remember. If your next dose is less than 4 hours away, skip the missed dose and take the next dose at the normal time. Do not try to make up for it by doubling up on the next dose. Try not to miss any more doses. Ask your doctor for advice on how to start taking it again, even if you only stop for a few days.

SIDE EFFECTS AND WHAT TO DO ABOUT THEM

Side effects include:

- double vision, blurred vision
- headache
- tremor, poor coordination
- dizziness
- nausea, vomiting, stomach upset
- pain in your neck, abdomen, or joints
- feeling of weakness or tiredness (fatigue)
- sleepiness/drowsiness
- difficulty sleeping (insomnia)
- nasal congestion skin rash
- aggression, agitation or irritability

SERIOUS SIDE EFFECTS, HOW OFTEN THEY HAPPEN AND WHAT TO DO ABOUT THEM

Symptom / effect		Talk with your doctor or pharmacist right away		Seek immediate emergency medical help
		Only if severe	In all cases	
Very Common	Skin rashes or redness		✓	
Rare	Severe Skin Reactions: skin rashes or redness developing into widespread rash with blisters and peeling skin, particularly around the mouth, nose, eyes and genitals, sore mouth or eyes, a high temperature (fever), flu-like symptoms or drowsiness.			✓

Symptom / effect	Talk with your doctor or pharmacist right away		Seek immediate emergency medical help
	Only if severe	In all cases	
Choreoathetosis: abnormal uncontrollable muscle movements that may involve the face, eyes (nystagmus), neck, trunk, arms or legs	✓		
Conjunctivitis: itchy eyes with discharge and crusty eyelids		✓	
Aseptic meningitis: fever, nausea, vomiting, headache, stiff neck and extreme sensitivity to bright light			✓
Very Rare Hallucinations: seeing or hearing things that aren't really there		✓	
Nightmares	✓		
Liver and blood problems: yellowing of the skin, itching, abdominal pain and/or tenderness, feeling very tired, unexpected bleeding or bruising or the fingers turning blue, a sore throat or more infections (such as colds) than usual		✓	
Lymphadenopathy: swelling of the face or swollen glands in the neck, armpits or groin		✓	
Serious blood clotting disorder: unexpected or prolonged bleeding, including from your gums or nose; blood in your urine; and unexpected bruising, including in the form of small dots on the skin.			✓

Symptom / effect	Talk with your doctor or pharmacist right away		Seek immediate emergency medical help
	Only if severe	In all cases	
Serious immune system condition: (haemophagocytic lymphohistiocytosis or HLH): a high temperature (fever), skin rashes, trouble walking or seeing, and fits (seizures) for the first time or happening more often, enlarged liver and/or spleen with pain and/or tenderness in the region towards the top of the stomach, yellowing of the skin and/or eyes, swollen glands in the neck, armpit and/or groin, bleeding and/or bruising more easily; looking pale, feeling unusually tired			✓
Kidney problems: inflammation of the kidney felt as pain in the lower back and/or pain with urination (tubulointerstitial nephritis), which may occur with inflammation of the eye causing pain and/or visual disturbances (uveitis)		✓	
Not known Thoughts of suicide or hurting yourself		✓	
Seizures happening more often in people who already have epilepsy			✓

This is not a complete list of side effects. For any unexpected effects while taking LAMICTAL contact your doctor or pharmacist.

HOW TO STORE IT

Store your LAMICTAL tablets at room temperature (15° to 30°C) in a dry place and protected from light. Cap the bottle tightly immediately after use. **Keep out of sight and reach of children.**

Store your LAMICTAL dispersible tablets at room temperature (15° to 30°C) in a dry place and protected from light. **Keep out of sight and reach of children.**

REPORTING SUSPECTED SIDE EFFECTS

You can report any suspected side effects associated with the use of health products to Health Canada by:

- Visiting the Web page on Adverse Reaction Reporting (<https://www.canada.ca/en/health-canada/services/drugs-health-products/medeffect-canada/adverse-reaction-reporting.html>) for information on how to report online, by mail or by fax; or
- Calling toll-free at 1-866-234-2345.

NOTE: Contact your health professional if you need information about how to manage your side effects. The Canada Vigilance Program does not provide medical advice.

MORE INFORMATION

This document plus the full product monograph, prepared for health professionals can be found at:

<http://www.gsk.ca> or by contacting the sponsor,

GlaxoSmithKline Inc.
7333 Mississauga Road
Mississauga, Ontario
L5N 6L4
1-800-387-7374

This leaflet was prepared by GlaxoSmithKline Inc.

North American Antiepileptic Drug (NAAED) Pregnancy Registry contact number: 1-888-233-2334

Last revised: May 27, 2020

© 2020 GSK Inc. All Rights Reserved

Trademarks are owned by or licensed to the GSK group of companies.