

PRODUCT MONOGRAPH

^{Pr} JAMP Trazodone

Trazodone Hydrochloride Tablets

Manufacturer's Standard

50 mg, 100 mg and 150 mg

Antidepressant

**JAMP Pharma Corporation
1310 rue Nobel
Boucherville, Québec
J4B 5H3**

**DATE OF PREPARATION:
August 19, 2020**

Control number: 238095

PRODUCT MONOGRAPH

^{Pr}JAMP Trazodone

Trazodone Hydrochloride Tablets

50 mg, 100 mg and 150 mg

PHARMACOLOGICAL CLASSIFICATION

Antidepressant

ACTION

The mechanism of action of trazodone hydrochloride, a psychoactive compound with sedative and antidepressant properties, is unclear in humans.

After oral administration, trazodone hydrochloride is well absorbed, with mean peak plasma levels peaking within one-half to two hours after ingestion.

Food enhances, although delays somewhat, absorption. For the period from 3 to 10 hours after dosing, the mean plasma elimination half-life is 4.4 hours; and 10 to 34 hours after dosing it is 7 to 8 hours. Metabolism of the drug is extensively metabolized with 3 or 4 major metabolites having been identified in man.

Approximately 60 to 70% of ¹⁴C-labelled trazodone appeared in the urine within two days, whereas only 9 to 29% was excreted in the feces over 60 to 100 hours. At concentrations attained with therapeutic doses, trazodone is 89 to 95% protein bound.

INDICATIONS AND CLINICAL USE

JAMP Trazodone (trazodone hydrochloride) is of value in the symptomatic relief of depressive illness.

CONTRAINDICATIONS

JAMP Trazodone (trazodone hydrochloride) is contraindicated in patients with a known hypersensitivity to trazodone.

WARNINGS

Priapism has occurred with the use of trazodone. Surgical intervention was required in approximately 1/3 of the cases reported and permanent impairment of erectile function or impotence resulted in a portion of these cases. Male patients should immediately discontinue the drug and consult their physician if prolonged or inappropriate erections occur. It would be advisable for the treating physician to consult an urologist or appropriate specialist if the

condition persists for more than 24 hours in order to decide on a management approach.

Recent clinical studies have shown that trazodone hydrochloride may be arrhythmogenic in some patients with pre-existing cardiac disease. Isolated PVC's, ventricular couplets, and in two patients, short episodes (3 to 4 beats) of ventricular tachycardia are the identified arrhythmias.

Several post-marketing reports of arrhythmias exist in trazodone-treated patients; in both those patients with pre-existing cardiac disease and in some patients who did not have pre-existing cardiac disease. Therefore, patients with pre-existing cardiac disease should be closely monitored, particularly for cardiac arrhythmias until the results of prospective studies are available. JAMP Trazodone (trazodone hydrochloride) is not recommended for use during the initial recovery phase of myocardial infarction.

Angle-Closure Glaucoma

As with other antidepressants, JAMP Trazodone can cause mydriasis, which may trigger an angle closure attack in a patient with anatomically narrow ocular angles. Healthcare providers should inform patients to seek immediate medical assistance if they experience eye pain, changes in vision or swelling or redness in or around the eye.

PRECAUTIONS

General: As the possibility of suicide in depressed patients remains during treatment and until significant remission occurs, patients with suicide ideation should never have access to large quantities of trazodone; therefore, the number of tablets prescribed at any one time should take this possibility into account.

In a small number of patients, episodes of grand mal seizures have been reported. Most of these patients were already receiving anticonvulsant therapy for a previously diagnosed seizure disorder.

Safety of Driving: JAMP Trazodone (trazodone hydrochloride) may impair the mental and/or physical abilities required for performance of potentially hazardous tasks, such as operating automobile or dangerous machinery. Therefore, the patient should be cautioned against engaging in such activities while impaired.

Interactions: The response to alcohol and the effects of barbiturates and other CNS depressants may be enhanced by trazodone; patients should be cautioned accordingly.

Serum phenytoin and digoxin levels have been reportedly increased in patients receiving trazodone concurrently with either of these two drugs. JAMP Trazodone should be discontinued for as long as clinically feasible prior to elective surgery since little is known about the interaction between trazodone and general anesthetics.

Administration of JAMP Trazodone should be initiated very cautiously with gradual increase in dosage as required if a MAO inhibitor is given concomitantly or has been discontinued shortly before medication with JAMP Trazodone is instituted, because it is not known whether an interaction will occur between JAMP Trazodone and MAO inhibitors.

Caution is required if JAMP Trazodone is given to patients receiving antihypertensive drugs, and an adjustment in the dose of antihypertensive medication may be required since trazodone may cause hypotension, including orthostatic hypotension and syncope.

Concurrent administration of electroshock therapy should be avoided because of the absence of experience.

Use in Pregnancy and Nursing Mothers: JAMP Trazodone it should not be used in women of child-bearing potential unless, in the opinion of the physician, the expected benefits justify the potential risk to the fetus, because the safety and use of trazodone in pregnant women have not

been established.

Unless the potential benefits justify the possible risks to the child, JAMP Trazodone should not be administered to nursing mothers since trazodone and/or its metabolites have been detected in the milk of lactating animals.

Use in Children: In children below the age of 18, the safety and effectiveness of trazodone have not been established.

Laboratory Tests: In patients who develop sore throat, fever or other signs of infection or blood dyscrasia, it is recommended that white blood cell and differential count falls be performed. If the white blood cell or absolute neutrophil count falls below normal, JAMP Trazodone should be discontinued.

Hyperprolactinemia and Breast Tumours: Sufficient experimental evidence exists to conclude that the chronic administration of those psychotropic drugs, such as trazodone, which increase prolactin secretion has the potential to induce mammary neoplasms in rodents under appropriate conditions. It is indicated in tissue culture experiments that approximately one-third of human breast cancers are prolactin dependent in vitro, a factor of potential importance if the prescription of these drugs is contemplated in a patient with a previously detected breast cancer.

Disturbances such as galactorrhea, amenorrhea, gynecomastia and impotence have been reported, but the clinical significance of elevated serum prolactin levels or increased secretion and turnover are unknown for most patients. An association between the chronic administration of these drugs and mammary tumorigenesis has not been found in clinical studies or epidemiologic studies conducted to date. ; available evidence is considered too limited to be conclusive at this time (see TOXICOLOGY).

ADVERSE REACTIONS

Drowsiness, nausea/vomiting, headache and dry mouth are the most common adverse reactions encountered. Adverse reactions reported include the following:

Behavioural: drowsiness, fatigue, lethargy, retardation, lightheadedness, dizziness, difficulty in concentration, confusion, impaired memory, disorientation, excitement, agitation, anxiety, tension, nervousness, restlessness, insomnia, nightmares, anger, hostility, and, rarely, hypomania, visual distortions, hallucinations, delusions and paranoia.

Neurologic: tremor, headache, ataxia, akathisia, muscle stiffness, slurred speech, retarded speech, vertigo, tinnitus, tingling of extremities, paresthesia, weakness, grand mal seizures (see PRECAUTIONS) and, rarely, impaired speech, muscle twitching, numbness, dystonia and involuntary movements.

Autonomic: dry mouth, blurred vision, diplopia, miosis, nasal congestion, constipation, sweating, urinary retention, increased urinary frequency, and incontinence.

Cardiovascular: orthostatic hypotension, hypertension, tachycardia, palpitations, shortness of breath, apnea, syncope, arrhythmias, prolonged PR interval, atrial fibrillation, bradycardia, ventricular ectopic activity (including ventricular tachycardia), myocardial infarction, and cardiac arrest.

Gastrointestinal: nausea, vomiting, diarrhea, gastrointestinal discomfort, anorexia and increased appetite.

Endocrine: priapism (See WARNINGS), decrease and, more rarely, increase in libido, weight gain and loss, and, rarely, menstrual irregularities, retrograde ejaculation, and inhibition of ejaculation.

Allergic or Toxic: skin rash, itching, edema, and, rarely, hemolytic anemia, methemoglobinemia, liver enzyme alterations and obstructive jaundice, leukocytoclastic vasculitis, purpuric maculopapular eruptions, photosensitivity and fever.

Miscellaneous: aching joints and muscles, peculiar taste, hypersalivation, chest pain, hematuria, red, tired and itchy eyes.

SYMPTOMS AND TREATMENT OF OVERDOSAGE

JAMP Trazodone (trazodone hydrochloride) overdosage may cause an increase in the incidence or severity of any of the reported adverse reactions, e.g. hypotension and excessive sedation. In one known suicide attempt, symptoms of drowsiness and weakness were apparent three hours after the ingestion of 7.5 grams (12.5 times the maximum daily dose) of trazodone hydrochloride. This patient recovered uneventfully. To date, there have been no reports of death by deliberate or accidental overdosage with trazodone alone.

As no specific antidote for trazodone hydrochloride exists, management of overdosage should be symptomatic and supportive.

A patient should be admitted to the hospital as soon as possible and the stomach emptied by gastric lavage if ingestion of an overdosage is suspected. In facilitating elimination of the drug, forced diuresis may be useful.

DOSAGE AND ADMINISTRATION

Dosage should be initiated at a low level and increased gradually. The clinical response and any evidence of intolerability should be carefully noted. It should be kept in mind that there may be a lag in therapeutic response and that increasing the dosage rapidly does not normally shorten this latent period but may increase the incidence of side effects.

Usual Adult Dosage: The recommended initial dose is 150 to 200 mg a day, in two or three divided doses. In order to reduce the incidence of adverse reactions, JAMP Trazodone (trazodone hydrochloride) should be taken shortly after a meal or light snack. The initial dose may be increased by increments of 50 mg, usually up to 300 mg daily in divided doses, according to tolerance and response. Doses up to 400 mg daily and, rarely, up to 600 mg daily in hospitalized patients, may be required in some patients. The administration of a major portion of the daily dose at bedtime or a reduction of dosage may be required in the event that drowsiness occurs.

The dosage may be gradually reduced once an adequate response has been achieved with adjustment depending on therapeutic response. The dosage should be kept at the lowest effective level during prolonged maintenance therapy.

Use in the Elderly: Doses not exceeding half of the recommended adult dosage should be used in the elderly, with adjustments made depending on tolerance and response.

JAMP Trazodone is not recommended in the pediatric age group because safety and effectiveness in children have not been established. .

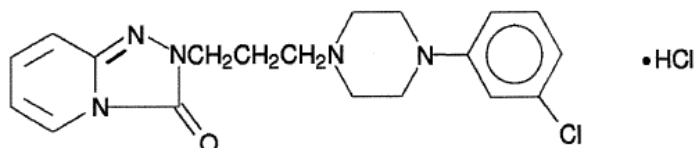
PHARMACEUTICAL INFORMATION

Drug Substance

Proper Name: trazodone hydrochloride

Chemical Name: 2-[3-[4-(m-chlorophenyl)-1-piperazinyl]-propyl]-s-triazolo-[4,3-a]-pyridin-3(2H)-one monohydrochloride

Structural Formula:



Molecular Formula: C₁₉H₂₂ClN₅O·HCl

Molecular Weight: 408.33 g/mol

Description: Trazodone hydrochloride is a white to off-white odourless crystalline powder which is sparingly soluble in chloroform and in water. It melts between 231° and 234° when the melting point determination is carried out in an evacuated capillary tube; otherwise, it melts with decomposition over a broad range below 230°.

Composition

In addition to trazodone hydrochloride, each tablet contains the non-medicinal ingredients cellulose microcrystalline, sodium starch glycolate Type A, pregelatinized starch, sodium lauryl sulphate, silica colloidal anhydrous, and magnesium stearate. In addition, 50mg and 150mg contain FD&C Yellow No. 6 Aluminum Lake.

Stability and Storage Recommendations

Store at controlled room temperature 15°C to 30°C. Protect from light.

AVAILABILITY OF DOSAGE FORMS

JAMP Trazodone 50 mg tablets are pale orange coloured, round shape, biconvex uncoated tablets, scored and debossed "TR" over "50" on one side and plain other side.

JAMP Trazodone 100 mg tablets are white to off-white round, biconvex uncoated tablets scored and debossed "TR" over "100" on one side and plain other side.

JAMP Trazodone 150 mg tablets are pale orange, rectangular, flat bevelled edged uncoated tablet with beveled edges, trisected with bisect score line and marked "50 25 25 50" on one side and "TR" on other side.

JAMP Trazodone tablets are available in HDPE bottles of 30's, 100's and 500's.

CLINICAL TRIALS**Comparative Bioavailability Studies**

A balanced, randomized, double blinded, two treatment, two period, two sequence, single dose crossover bioequivalence study of JAMP Trazodone (Trazodone hydrochloride) tablets USP, 100 mg against Apo-Trazodone (Trazodone hydrochloride) tablets, 100 mg in 32 healthy adult human subjects under fasting conditions.

SUMMARY TABLE OF THE COMPARATIVE BIOAVAILABILITY DATA

[Table for single dose studies]

Trazodone (1 x 100 mg) From measured data Geometric Mean Arithmetic Mean (CV %)				
Parameter	Test*	Reference†	% Ratio of Geometric Means	90% Confidence Interval
AUC _{0-t} [‡] (ng*hr/mL)	20344.42 21146.03 (28.88)	21281.53 22539.04 (35.09)	95.60	90.91 to 100.52
AUC _I (ng*hr/mL)	23107.67 24377.61 (34.43)	23991.03 25899.64 (41.87)	96.32	91.62 to 101.25
C _{max} (ng/mL)	2280.38 2360.28 (26.56)	2291.51 2352.95 (22.21)	99.51	92.82 to 106.69
T _{max} [§] (h)	0.94 (71.68)	1.19 (92.77)		
T _{1/2} [€] (h)	15.36 (32.08)	16.07 (29.97)		

* JAMP Trazodone, 100mg tablets by JAMP Pharma Corporation.

† Apo-Trazodone, 100mg tablets by Apotex Inc., Canada (purchased in Canada)

§ Expressed as the arithmetic mean (CV %) only

€ Expressed as the arithmetic mean (CV %) only

PHARMACOLOGY

Trazodone differs significantly from other known psychopharmacological agents in pharmacological profile.

Trazodone impedes the uptake of serotonin by the membrane. The depletion of brain serotonin by fenfluramine is impeded with small doses of the drug, but doses of 50 mg/kg do not affect the concentration of serotonin in the rat brain.

Trazodone is a weak inhibitor of noradrenaline re-uptake in experimental studies but is practically inactive against I-dopa, histamine and acetylcholine. It is not known to inhibit monoamine oxidase.

[8]

Trazodone exhibits CNS depressant activities, with motor activity being decreased in cats, rats and mice, and hexobarbital-induced sleeping time being increased in mice. At doses which do not influence the unconditioned response ($ED_{50} = 19.5 \text{ mg/kg p.o.}$) trazodone also inhibits conditioned avoidance responding in rats. Trazodone has very weak muscle relaxant activity, but anticonvulsant, anti-antireserpine or cataleptogenic effects.

In mice doses at which motor activity is unaffected (10 mg/kg p.o.) suppress responses to painful stimuli, and 12.5 mg/kg i.p significantly inhibits oxotremorine-, clonidine- and nicotine-induced tremors. Trazodone does not inhibit the stereotyped behaviour due to amphetamine or apomorphine, but does protect grouped mice against amphetamine-induced toxicity.

The infusion of trazodone in rats produces first a fall in mean blood pressure, followed by ECG changes only as a consequence of the hypotension produced. There was no effect on His bundle conduction nor evidence of heart block or rhythm disturbance other than the slowing of normal sinus rhythm when anesthetized dogs were administered graded doses of trazodone between 1 and 30 mg/kg i.v. Doses of 0.5 to 5 mg/kg imipramine, however, slowed impulse conduction as well as atrial transmission. Similar doses of trazodone and imipramine had comparable effects on the sleep-wakefulness cycle in rats; REM sleep was reduced with 10 mg/kg p.o. and completely suppressed with 160 mg/kg.

TOXICOLOGY

Acute Toxicity:

<u>Route</u>	LD50 in mg/kg (95% confidence limits)			
	<u>Mouse</u>	<u>Rat</u>	<u>Rabbit</u>	<u>Dog</u>
intravenous	91 (82-101)	91 (86-96)	52	40
intraperitoneal	210 (189-233)	178 (162-196)	-	-
oral	610 (540-689)	690 (616-733)	560	500

Signs of toxicity included dyspnea, salivation, ptosis, aggressivity, hypoactivity, prostration and clonic convulsions.

Subacute and Chronic Toxicity:

Several subacute studies were conducted in rats, using doses ranging from 100 to 450 mg/kg/day p.o. for one to four months. The main toxic effects observed were decreased body weight gain and slight liver enlargement in males. There were some deaths at the highest dose. Tremors, vomiting and clonic convulsions were produced in dogs given 50 and 100 mg/kg/day p.o. for one month.

Of two dogs receiving 100 mg/kg, one died after 3 weeks. Administration of approximately 250 mg/kg/day in the diet of rats for six months resulted in significantly greater liver weights than in control rats and slightly lower weight gain in males. No toxic effects were evident in dogs receiving 5 and 25 mg/kg/day for 6 months.

Rats were given doses of 0, 30, 100 and 300 mg/kg/day p.o for 18 months. All treated groups demonstrated decreased body weight gain, and males in the highest dose group showed significantly reduced food intake. Rats at the 100 mg/kg dose exhibited some lethargy and salivation immediately following dosing, but at the lowest dose level, no behavioral or pathologic effects were observed. There was excessive salivation and the animals became inactive, assuming a prone position for approximately 3 hours after dosing with the highest dose. There were occasional body tremors also. Within 30 weeks, tolerance developed to all these reactions.

Oral doses of 0, 10, 20 and 40 mg/kg/day were given to beagle for one year. Following the death of 3/10 animals in the highest dose group, the dose was reduced to 30 mg/kg/day after 8 weeks. There were no abnormal signs at the 10 mg/kg level. One animal in the 20 mg/kg group was found prostrate and panting on one occasion and another was unexpectedly found dead near the end of the study. Occasional transient ataxia, excessive salivation and convulsions were produced with 40 mg/kg. Upon reducing the dosage to 30 mg/kg following the three deaths, a fourth death occurred 16 weeks later, subsequent to convulsions. During the final 6 months of the study, a fifth animal became hypersensitive to touch and aggressive.

Apart from one case of transient anemia in the 20 mg/kg group and slightly elevated SGPT values in 2 of the high dose dogs during the final 3 months, hematological and biochemical analyses were normal.

Trazodone was administered in doses of 0, 20, 40 and 80 mg/kg/day by gavage for one year to groups of 6 rhesus monkeys. A slight, dose-related decrease in activity and tremors in 3 high dose monkeys were the only effects noted. Both of these effects decreased during the study.

Reproductive Studies: Fertility and general reproductive performance of male and female rats were unaffected by doses of up to 250 mg/kg/day. The birth weight of pups was significantly reduced at 300 mg/kg. Two rat studies were conducted: one in which rats were given 100 and 210 mg/kg/day p.o. during days 10 to 15 and 6 to 15 of gestation, respectively; and another in which doses of 150 to 450 mg/kg/day p.o. were given during days 9 to 14 of gestation. Only a sedative effect on dams was noted at 100 mg/kg. Increased sedation decreased maternal and fetal weights and retarded ossification were produced at doses of 150 mg/kg and higher. A significant increase in resorptions and stillborn fetuses, in addition to retarded fetal growth, occurred with 300 and 450 mg/kg. Isolated cases of branched rib, separated thoracic arch, umbilical hernia and exencephalia were also noted.

The only peri- and post-natal effects of up to 300 mg/kg/day of trazodone in rats were reduced birth and weaning weights of offspring in the highest dosage group.

Carcinogenicity Studies:

Rats were used to conduct a two year carcinogenicity study at doses of 0, 40 and 80 mg/kg/day. In both treatment groups, larger numbers of female rats died sooner than controls; most deaths were related to the presence of pituitary tumors.

In both treatment groups at 12, 13 and 14 months, the incidence of palpable masses (mammary tumours, cysts, etc.) was increased also. These observations may be related to trazodone's effects on prolactin secretion. (Acute administration caused an increase in prolactin blood levels whereas chronic administration did not. Turnover, however, was not studied. When a neuroleptic was used as a positive control, similar results were produced.) The relative incidences of male rats with pituitary tumours were reversed. These results may have been influenced by the early deaths due to nephritis and other causes, however.

BIBLIOGRAPHY

1. Baiocchi L, Frigerio A, Giannangeli M, Palazzo G. Basic metabolites of trazodone in humans. *Arzneim-Forsch* 1974; 24: 1699-1706.
2. Ban TA, Lehmann HE, Amin M, et al. Comprehensive clinical studies with trazodone. *Curr Ther Res* 1973; 15:540-51.
3. Barcelona PS. Investigations on the possible teratogenic effects of trazodone in rats and rabbits. *Boll Chim Farm* 1970; 109:323-32.
4. Bardin ED, Krieger JN. Pharmacological priapism: Comparison of trazodone- and papaverine associated cases. *Int Urol Nephrol* 1990; 22: 147-52.
5. Bayer AJ, Pathy MSJ, Cameron A, et al. A comparative study of conventional and controlled-release formulations of trazodone in elderly depressed patients. *Clin Neuropharmacol* 1989; 12 (Suppl. 1):S50-5.
6. Benkelfat C, Gay C, Renardet M. Use of interactive computer technology in open clinical trials. Study with trazodone in depressed patients. *Neuropsychobiology* 1986; 15 (Suppl. 1): 10--4.
7. Brogden RN, Heel RC, Speight TM, Avery GS. Trazodone: A review of its pharmacological properties and therapeutic use in depression and anxiety. *Drugs* 1981; 21:401-29.
8. Cole JO, Schatzberg AF, Sniffin C, et al. Trazodone in treatment resistant depression: An open study. *J Clin Psychopharmacol* 1981; 1 (SUPPL. 6):49S-54s.
9. Debbas NMG, Ankier SI, Warrington SJ. Trazodone conventional and controlled-release formulations: Pharmacodynamic effects after single and repeated administration. *Curr Med Res Opin* 1989; 11:501-9.
10. Feighner JP. Trazodone, a triazolopyridine derivative in primary depressive disorder. *J Clin Psychiatry* 1980; 41: 250-255.
11. Fernstrom JD, Van Itallie CM, Fernstrom MH. Effects of acute and chronic trazodone administration on serum prolactin levels in adult female rats. *Life Sci* 1983; 33:2559-65.
12. Gamble DE, Peterson LG. Trazodone overdose: Four years of experience from voluntary reports. *J Clin Psychiatry* 1986; 47:544-6.
13. Garattini S, De Gaetano G, Samanin R, et al. Effects of trazodone on serotonin in the brain and platelets of the rat. *Biochem Pharmacol* 1976; 25~13-6.
14. Gomoll AW, Byrne JE. Trazodone and imipramine: Comparative effects on canine cardiac conduction. *Eur J Pharmacol* 1979; 57:335-42.
15. Marcus AW, Ward AE, Ankier SI, Kimber GR. A comparative bioavailability study of molipaxin capsules and a trazodone liquid formulation in normal volunteers. *J Clin Hosp Pharm* 1983; 8:125- 32.
16. Hell K, Wernze H. Drug-induced changes in prolactin secretion. Clinical implications. *Med Toxicol* 1988; 3:463-98. Janowsky D, Curtis G, Zisook S, et al. Ventricular arrhythmias possibly aggravated by trazodone. *Am J Psychiatry* 1983; 140:796- 7
17. Jones SD. Ejaculatory inhibition with trazodone. *J Clin Psychopharmacol* 1984; 4:279-81.
18. Kraft TB. Psychosis following trazodone administration. *Am J Psychiatry* 1983; 140: 1383-4.

19. Krogh CME, Gillis MC, Bisson R, et al (eds). Compendium of pharmaceuticals and specialties 24th edition, Toronto, Canadian Pharmaceutical Association, 1985; 299-300.
20. Lefkowitz D, Kilgo G, Lee S. Seizures and trazodone therapy. *Arch Gen Psychiatry* 1985; 42:523.
21. Lesar T, Kingston R, Dahms R, Saxena K. Trazodone overdose. *Ann Emerg Med* 1983; 12:221-3.
22. Lippmann S, Bedford P, Manshadi M, Mather S. Trazodone cardiotoxicity. *Am J Psychiatry* 1983;140:1383.
23. Lisciani R, Campana A, Barcellona PS. Comparative cardiovascular toxicity of trazodone and imipramine in the rat. *Arch Toxicol* 1978; SUPPL. 1 :169-72.
24. Munday B, Kendall MJ, Mitchard M. A single dose study of trazodone with an assessment of its effect on mood and arousal. *Br J Clin Pharmacol* 1975; 2:19-24.
25. Newton R. The side effect profile of trazodone in comparison to an active control and placebo. *J Clin Psychopharmacol* 1981; 1 (Suppl. 6):89S-93s.
26. Rake1 RE. The greater safety of trazodone over tricyclic antidepressant agents: 5-year experience in the United States. *Psychopathology* 1987; 20 (Suppl. 1):57-63.
27. Rawls N. Trazodone. *Drug Intell Clin Pharm* 1982; 16:7-13.
28. Rivett KF, Barcellona PS. Toxicology of trazodone. *Trazodone. Mod Probl Pharmacopsychiat* 1974; 9:76-86.
29. Sacks M, Miller F, Gunn J, et al. Unusual erectile activity as a side effect of trazodone. *Hosp Community Psychiatry* '1985; 36:298.
30. Silvestrini B, Cioli V, Burberi S, Catanese B. Pharmacological properties of AF 1161 , a new psychotropic drug. *Int J Neuropharmacol*1968; 7: 587-599.
31. Silvestrini B, Lisciani R. Pharmacology of trazodone. *Curr Ther Res* 1973; 15 (Suppl. 10):749-53.
32. Silvestrini B, Vaieri P. Trazodone, a new avenue in the treatment of depression. *Psychopathology* 1984; 17 (Suppl. 2):3-14.
33. Suzuki Y. Teratogenicity and placental transfer of trazodone. *Trazodone. Mod Probl Pharmacopsychiat* 1974; 9:87-94. Van De Merwe TJ, Silverstone T, Ankier SI, et al. A double-blind, non-crossover placebo-controlled study between group comparison of trazodone and amitriptyline on cardiovascular function in major depressive disorder. *Psychopathology* 1984; 17 (Suppl. 2):64-76.
34. Warrington SJ, Ankier SI, Turner P. An evaluation of possible interactions between ethanol and trazodone or amitriptyline. *Br J Clin Pharmacol* 1984; 18:549-57.
35. Yamatsu K, Kaneko T, Yamanishi Y, et al. A possible mechanism of central action of trazodone in rats. *Trazodone. Mod Probl Pharmacopsychiat* 1974; 9:11-7.
36. Physician's Desk Reference 43rd edition, Edward R. Barnhurst (pub.), 1989; 1264-6.
37. Psychotherapeutic agents. Antidepressants. Trazodone hydrochloride. In: McEvoy GK, Litvak K, Mendham NA, et al (eds.). *AHFS Drug Information* 89, Bethesda, American Society of Hospital Pharmacists, 1989;1124-8.
38. A two-way, single-dose bioavailability study of trazodone HCl 150 mg tablets in normal healthy male volunteers. September 1991.
39. CPS. Ottawa (ON): Canadian Pharmacist Association; c2015 Accessed Date: November 16, 2015. Trazodone General Monograph. Available from: <http://e-therapeutics.ca>. Also available in paper copy from the publisher.

40. Product Monograph for WELLBUTRIN® SR 150 mg Sustained-Release Tablets. Valeant Canada LT. Laval, Canada. Revised: September 10, 2013.
41. Product Monograph for Desyrel 50 and 100 mg Tablets, manufactured by Bristol-Myers Squibb Canada, dated October 29, 2004 (Control # 094864).
42. Product Monograph for TEVA-TRAZODONE 50 mg, 100 mg and 150 mg Tablets, manufactured by Teva Canada Ltd., dated February 5, 2016 (Control # 187466).
43. APO-Trazodone, Control No. 193799. Apotex INC., product monograph Date of Revision November 21, 2017.

READ THIS FOR SAFE AND EFFECTIVE USE OF YOUR MEDICINE
PATIENT MEDICATION INFORMATION
Pr JAMP Trazodone

Trazodone hydrochloride tablets

Manufacturer's Standard

50 mg, 100 mg and 150 mg

Read this carefully before you start taking **JAMP Trazodone** and each time you get a refill. This leaflet is a summary and will not tell you everything about this drug. Talk to your healthcare professional about your medical condition and treatment and ask if there is any new information about **JAMP Trazodone**.

What is JAMP Trazodone used for?

JAMP Trazodone has been prescribed for you by your healthcare professional to relieve your symptoms of depression which may include:

- feeling sad;
- loss of interest in usual activities;
- significant change in weight or appetite;
- change in sleeping habits;
- having a hard time concentrating;
- feeling tired;
- having suicidal thoughts.

How does JAMP Trazodone work?

JAMP Trazodone is an antidepressant medication. It is thought to work by increasing the activity of serotonin in your brain. Serotonin is a brain chemical that helps to improve mood. It works at two different receptors in the brain.

What are the ingredients in JAMP Trazodone? Medicinal ingredients: trazodone hydrochloride

Non-medicinal ingredients: cellulose microcrystalline, sodium starch glycolate Type A, pregelatinized starch, sodium lauryl sulphate, silica colloidal anhydrous, and magnesium stearate. In addition, 50mg and 150mg contain FD&C Yellow No. 6 Aluminum Lake.

JAMP Trazodone comes in the following dosage forms:

Tablets: 50 mg, 100 mg and 150 mg

Do not use JAMP Trazodone if you:

- are allergic to any of the ingredients in JAMP Trazodone.
- take a Monoamine Oxidase Inhibitor (MAOI).
 - Ask your healthcare professional or pharmacist if you are not sure if you take a MAOI.
 - Examples of MAOIs include linezolid which is an antibiotic, methylene blue which is a dye used in certain surgeries.
 - If you stopped taking a MAOI within the last 14 days, only start JAMP Trazodone if your healthcare professional tells you to.
 - Do not take a MAOI within 14 days of stopping JAMP Trazodone unless directed to do so by your healthcare professional.

To help avoid side effects and ensure proper use, talk to your healthcare professional before you take JAMP Trazodone.

Talk about any health conditions or problems you may have, including if you:

- are taking or have recently taken a monoamine oxidase inhibitor (MAOI).
- have a history or a family history of heart problems, including: heart disease, heart attack, QT prolongation, and irregular heartbeats.
- have high blood pressure that is not controlled by your medication or any heart problems.
- have a history of drug abuse.
- have a bleeding disorder.
- take certain medicines which may affect blood clotting and increase bleeding, such as oral anticoagulants (e.g., warfarin, dabigatran), acetylsalicylic acid and other non-steroidal anti-inflammatory drugs (e.g., ibuprofen).
- have or had seizures or convulsions.

- take other medications that may increase your chance of a seizure, including drugs for depression and some antibiotics.
- have glaucoma or increased pressure in your eyes.
- have suicidal thoughts.
- have a family history of mania or bipolar disorder.
- have or have had an eating disorder, for example binge eating (bulimia) or anorexia nervosa.
- have liver problems.
- have kidney problems.
- have previous detected breast cancer.
- are pregnant or plan to become pregnant. It is not known if JAMP Trazodone will harm your unborn baby. Talk to your healthcare professional about the benefits and risks of treating depression during pregnancy.
- are breastfeeding or plan to breastfeed. It is not known if JAMP Trazodone passes into breast milk. You and your healthcare professional should decide if you should take JAMP Trazodone while breastfeeding.
- have any other medical conditions.

JAMP Trazodone is not for use in children under 18 years of age.

Other warnings you should know about:

It is important to talk to your healthcare professional about the risks of treating depression and also the risk of not treating it. You should discuss all treatment options with your healthcare professional.

New or worsened emotional or behaviour problems:

Treatment with these types of medications is most safe and effective when you and your healthcare professional have good communication about how you are feeling. You may find it helpful to tell a relative or close friend that you are depressed. You might ask them to tell you if they think you are getting worse or if they are worried about changes in your behavior.

Some patients may feel worse instead of better when they first start taking drugs like JAMP Trazodone or when changing the dose. You may have:

- new or worsened feelings of nervousness, tension, anger, agitation, or aggression.
- thoughts about suicide, hurting yourself or other people. Thoughts and actions about suicide can occur especially if you have had thoughts of hurting yourself in the past. Suicidal thoughts and actions can occur in any age group but may be more likely in patients 18 to 24 years old. **If this happens, seek immediate medical help.** Do NOT stop taking JAMP Trazodone on your own.

Effects on pregnancy and newborns:

If you are pregnant or are planning to become pregnant while taking JAMP Trazodone, talk to your healthcare professional about the risks and benefits of various treatment options. It is very important that you keep taking JAMP Trazodone until your healthcare professional tells you to stop.

When pregnant women took drugs in the same group of medications as JAMP Trazodone, some newborn babies had complications at birth. This happened especially when the medication was taken in the last three months of pregnancy. Some newborns:

- Required breathing support, tube feeding and a longer stay in the hospital.
- Had difficulty feeding or breathing, seizures, tense or overly relaxed muscles and were jittery and cried constantly.
- Had a serious condition called persistent pulmonary hypertension. This made the babies breathe faster and appear blue in color.

These symptoms normally go away over time. However, if your baby experiences any of these symptoms, consult your healthcare professional as soon as possible.

Angle-closure Glaucoma

JAMP Trazodone can cause an acute attack of glaucoma. Get immediate medical help if you experience eye pain, changes in vision or swelling or redness in or around the eye.

Risk of breaking a bone

You should tell your healthcare professional if you:

- are elderly and had a recent bone fracture, or
- were told you have osteoporosis or risk factors for osteoporosis.

Taking JAMP Trazodone may increase your risk of breaking a bone if you are elderly or have osteoporosis or have other major risk factors for breaking a bone. This is especially true when you first start taking JAMP Trazodone and soon after you stop taking it. Take extra care to avoid falling, especially if you get dizzy or have low blood pressure.

Effect on the hormones

In women, medicines of this type may cause changes in the regularity of their monthly period or leakage of milk from the breast even if they are not pregnant. In some men, after prolonged treatment, there may be some diminished sexual function and breast enlargement may be experienced. Tell your healthcare professional if you experience any of these symptoms.

Discontinuation symptoms:

If your healthcare professional recommends that you stop taking JAMP Trazodone, they will gradually lower the dose of JAMP Trazodone you are taking. This may help manage any symptoms of discontinuation, such as:

- dizziness, headache, ringing in the ears, seizures;
- nausea, diarrhea, vomiting;
- tingling, burning, or prickling sensation of your skin, excessive sweating;
- feeling nervous, confused, irritated, restless, or having an unstable mood;
- fatigue, insomnia (inability to sleep), nightmares.

These symptoms will usually disappear without needing treatment. Tell your healthcare professional immediately if you have these or any other symptoms. Your healthcare professional may adjust the dosage of JAMP Trazodone to alleviate the symptoms.

Driving and Using Machines:

JAMP Trazodone can make you feel sleepy or may affect your ability to think clearly, make decisions or react quickly. Wait until you know how you feel after you have taken JAMP Trazodone before you drive or use heavy machines.

Tell your healthcare professional about all the medicines you take, including any drugs, vitamins, minerals, natural supplements or alternative medicines, especially:

- other antidepressants;
- other drugs that affect serotonin such as lithium, linezolid, sibutramine, tryptophan, triptans, St. John's Wort;
- drugs used to treat schizophrenia (e.g. olanzapine, risperidone);
- medicines used to treat anxiety, such as clonazepam, alprazolam, lorazepam, diazepam or phenobarbital;
- certain medicines which may affect blood clotting and increase bleeding, such as oral anticoagulants (e.g., warfarin, dabigatran), acetylsalicylic acid and other non-steroidal anti-inflammatory drugs (e.g., ibuprofen);
- certain medicines used to treat pain, such as fentanyl (used in anaesthesia or to treat chronic pain), tramadol, tapentadol, meperidine, methadone, pentazocine;
- certain medicines used to treat cough, such as dextromethorphan;
- when taking certain medicines such as antifungals (e.g. ketoconazole); antibiotics (e.g. erythromycin) or medicines used to treat seizures (carbamazepine). Your healthcare professional may adjust your dose of JAMP Trazodone when taking these medicines.
- mephenytoin;
- diuretics

You should avoid drinking alcohol while taking JAMP Trazodone.

How to take JAMP Trazodone:

It is important to take JAMP Trazodone exactly as your healthcare professional has told you. Your healthcare professional may need to change the dose until it is right for you.

- Take your JAMP Trazodone tablet at the same time each day. If you have any problems with your dosing routine, contact your doctor or pharmacist.
- JAMP Trazodone should be taken shortly after a meal or light snack.
- Take only the recommended dose prescribed by your healthcare professional. Never increase the dose of JAMP Trazodone you or those in your care are taking, unless your healthcare professional tells you to.

- The effects of your medication may not be noticeable in the first few days of treatment, and significant improvement may take several weeks. If you are concerned that your medicine is not working, discuss this with your healthcare professional.
- Even if you feel better, do not stop taking JAMP Trazodone without talking to your healthcare professional.

Usual dose:

- The usual adult starting dose is 150 to 200 mg daily, in two or three divided doses.
- Your healthcare professional may increase your dose gradually by 50 mg each time up to 300 mg a day, in divided doses.

Elderly (65 years of age or older):

- The dose in elderly patients will be less than half the usual adult dose.

Remember: The medicine has been prescribed only for you. Do not give it to anybody else, as they may experience undesirable effects, which may be serious.

Overdose:

If you think you have taken too much JAMP TRAZODONE, contact your healthcare professional, hospital emergency department or regional Poison Control Centre immediately, even if there are no symptoms.

Missed dose:

If you miss a dose of JAMP Trazodone, take the missed dose as soon as you remember. If it is almost time for the next dose, skip the missed dose and take your next dose at the regular time. Do not take two doses of JAMP Trazodone at the same time.

What are possible side effects from using JAMP Trazodone?

These are not all the possible side effects you may feel when taking JAMP Trazodone. If you experience any side effects not listed here, contact your healthcare professional.

Common side effects in people who take trazodone include:

- headache
- dry mouth
- nausea/vomiting
- dizziness
- drowsiness, fatigue, weakness
- blurred vision

Serious side effects and what to do about them

Symptom / effect	Talk to your healthcare professional		Get immediate medical help
	Only if severe	In all cases	
UNCOMMON Mania/Hypomania: elevated or irritated mood, decreased need for sleep, racing thoughts		✓	
Seizures: loss of consciousness with uncontrollable shaking			✓
RARE Serotonin syndrome: a combination of most or all of the following: confusion, restlessness, sweating, shaking, shivering, hallucinations, sudden jerking of the muscles, fast heartbeat			✓
Glaucoma: increased pressure in the eyes, eye pain and blurred vision		✓	

Low sodium level in blood: tiredness, weakness, confusion, combined with achy, stiff or uncoordinated muscles		✓
Priapism: painful, longer than normal erection of the penis		✓
Bleeding in the gut: vomiting blood or passing blood in stool		✓
UNKNOWN Allergic reaction: red skin, hives, itching, swelling of the lips, face, tongue or throat, trouble breathing, wheezing, shortness of breath, skin rashes, blisters of the skin, sores or pain in the mouth or eyes		✓
Low platelets: bruising or unusual bleeding from the skin or other areas		✓
New or worsened emotional or behavioural problems: feeling angry, aggressive, worried, agitated, hostile or impulsive. Feeling violent or suicidal. Thoughts of hurting yourself or other people. Feeling like you are not yourself or that you are less inhibited.		✓

If you have a troublesome symptom or side effect that is not listed here or becomes bad enough to interfere with your daily activities, talk to your healthcare professional.

Reporting Side Effects

You can report any suspected side effects associated with the use of health products to Health Canada by:

- Visiting the Web page on Adverse Reaction Reporting (<https://www.canada.ca/en/health-canada/services/drugs-health-products/medeffect-canada/adverse-reaction-reporting.html>) for information on how to report online, by mail or by fax; or
- Calling toll-free at 1-866-234-2345.

NOTE: Contact your health professional if you need information about how to manage your side effects. The Canada Vigilance Program does not provide medical advice.

Storage:

Store JAMP Trazodone at controlled room temperature 15°C to 30°C. Protect from light. Keep out of reach and sight of children.

If you want more information about JAMP Trazodone:

- Talk to your healthcare professional
- Find the full product monograph that is prepared for healthcare professionals and include this Patient Medication Information by visiting the Health Canada website (<https://health-products.canada.ca/dpd-bdpp/index-eng.jsp>); or by calling at 1-866-399-9091.

This leaflet was prepared by JAMP Pharma Corporation

1310 rue Nobel
Boucherville, Québec
Canada, J4B 5H3

Date of preparation: August 19, 2020