

PRODUCT MONOGRAPH

PrNALOXONE HYDROCHLORIDE INJECTION, USP

Preservative Free

Naloxone Hydrochloride Dihydrate
0.4 mg / mL

Solution for Intravenous, Intramuscular and Subcutaneous use

Opioid Antagonist

Strides Pharma Canada Inc.
1565, Boul. Lionel-Boulet,
Varenes, QC J3X 1P7
Canada

Date of Preparation:
July 31, 2020

Submission Control No: 241159

PrNALOXONE HYDROCHLORIDE INJECTION, USP
Preservative Free

Naloxone Hydrochloride Dihydrate

0.4 mg / mL

THERAPEUTIC CLASSIFICATION

Opioid Antagonist

CLINICAL PHARMACOLOGY

Naloxone hydrochloride prevents or reverses the effects of opioids, including respiratory depression, sedation, and hypotension. Also, it can reverse the psychosomimetic and dysphoric effects of agonist-antagonists such as pentazocine. Naloxone hydrochloride is an essentially pure opioid antagonist, i.e. it does not possess the agonistic or morphine-like properties characteristic of other opioid antagonists; naloxone does not produce respiratory depression, psychosomimetic effects or pupillary constriction. In the absence of opioids or agonistic effects of other opioid antagonists it exhibits essentially no pharmacologic activity. Naloxone has not been shown to produce tolerance or to cause physical or psychological dependence. In the presence of physical dependence on opioids naloxone will produce withdrawal symptoms.

While the mechanism of action of naloxone is not fully understood, the preponderance of evidence suggests that naloxone antagonizes the opioid effects by competing for the same receptor sites.

Following parenteral administration naloxone is rapidly distributed in the body. It is metabolized in the liver, primarily by glucuronide conjugation, and excreted in urine.

INDICATIONS AND CLINICAL USE

Naloxone is indicated for the complete or partial reversal of opioid depression, including respiratory depression induced by opioids, including natural and synthetic opioids, propoxyphene, methadone and the agonist-antagonist analgesics nalbuphine, pentazocine and butorphanol. Naloxone is also indicated for the diagnosis of suspected acute opioid overdose.

Naloxone is not effective in counteracting depression due to barbiturates, tranquilizers or other non-opioid anesthetics or sedatives. It has been safely administered to patients who received both opioid and non-opioid drugs.

CONTRAINDICATION

Naloxone is contraindicated in patients known to be hypersensitive to it.

WARNINGS

Naloxone should be administered cautiously to persons, including newborns of dependent mothers, who are known or suspected to be physically dependent on opioids. In such cases an abrupt and complete reversal of opioid effects may precipitate an acute abstinence syndrome. The severity of such a syndrome will depend on the degree of physical dependence and the dose of antagonist administered. In the presence of serious respiratory depression in a physically dependent individual, the antagonist, when indicated, should be administered with extreme care, under close monitoring, by using appropriate titration with smaller doses than usual.

The patient who has satisfactorily responded to naloxone should be kept under continued surveillance and repeated doses of naloxone should be administered as necessary since the duration of action of some opioids may exceed that of naloxone.

Naloxone is not effective against respiratory depression due to non-opioid drugs (see **INDICATIONS AND CLINICAL USE**). It has been safely administered to patients who received both opioid and non-opioid drugs. Reversal of buprenorphine-induced respiratory depression may be incomplete. If an incomplete response occurs, respiration should be mechanically assisted.

Use in Pregnancy

Reproduction studies performed in mice and rats at doses up to 1,000 times the human dose revealed no evidence of impaired fertility or harm to the fetus due to naloxone. There are, however, no adequate and well-controlled studies in pregnant women. Because animal reproduction studies are not always predictive of human response, naloxone should be used during pregnancy only if clearly needed.

Nursing Mothers

It is not known whether naloxone is excreted in human milk. Because many drugs are excreted in human milk, caution should be exercised when naloxone is administered to a nursing woman.

PRECAUTIONS

In addition to naloxone other resuscitative measures such as maintenance of a free airway, artificial ventilation, cardiac massage, and vasopressor agents should be available and employed when necessary to counteract acute opioid poisoning.

Several instances of hypotension, hypertension, ventricular tachycardia and fibrillation, and pulmonary edema have been reported. These have occurred in postoperative patients in whom pre-existing cardiovascular disorders or other drugs may have contributed to the adverse cardiovascular effects.

Although a direct cause-and-effect relationship has not been established, naloxone should be used with caution in patients with preexisting cardiac disease or patients who have received potentially cardiotoxic drugs. The clinical course should be monitored by ECG.

ADVERSE REACTIONS

Abrupt reversal of opioid depression may result in nausea, vomiting, sweating, tachycardia, increased blood pressure, and tremulousness. In postoperative patients, larger than necessary dosages of naloxone may result in significant reversal of analgesia and in excitement. Hypotension, hypertension, ventricular tachycardia and fibrillation, and pulmonary edema have been associated with the use of naloxone postoperatively (see **PRECAUTIONS and USAGE IN ADULTS, Postoperative Opioid Depression**). Seizures have been reported to occur infrequently after the administration of naloxone; however, a causal relationship has not been established.

SYMPTOMS AND TREATMENT OF OVERDOSAGE

There is no clinical experience with naloxone overdosage in humans.

For management of a suspected drug overdose, contact your regional Poison Control Centre.

DOSAGE AND ADMINISTRATION

Naloxone hydrochloride may be administered intravenously (IV), intramuscularly (IM), or subcutaneously (SC). The most rapid onset of action is achieved by intravenous administration, and it is recommended in emergency situations.

Since the duration of action of some opioids may exceed that of naloxone, the patient should be kept under continued surveillance and repeated doses of naloxone should be administered, as necessary.

Intravenous Infusion

Infusion may be useful in cases of overdose with long-acting drugs such as methadone and propoxyphene. The infusion rate for adults is approximately 100 mL/hour (0.4 mg/hour). Infusion rate and concentration should be individually adjusted to obtain the desired antagonist effect without fluid overload or production of withdrawal.

Dilution for Intravenous Use

Naloxone may be diluted for intravenous infusion in Sodium Chloride Injection 0.9% or Dextrose Injection 5%. The addition of 2 mg of Naloxone Hydrochloride Injection in 500 mL of diluent provides a concentration of 4 mcg (0.004 mg)/mL. Mixtures should be used within 24 hours. After 24 hours, the remaining unused solution must be discarded. The rate of administration should be titrated in accordance with the patient's response.

Parenteral drug products should be inspected visually for particulate matter and discoloration prior to administration whenever solution and container permit. Naloxone should not be mixed with preparations containing bisulphite, metabisulphite, long-chain or high-molecular-weight anions, or any solution having an alkaline pH. No drug or chemical agent should be added to naloxone unless its effect on the chemical and physical stability of the solution has first been established.

USAGE IN ADULTS

Opioid Overdosage – Known or Suspected

An initial dose of 0.4 mg to 2 mg of naloxone may be administered intravenously. If the desired degree of counteraction and improvement in respiratory functions is not obtained, it may be repeated at two- to three-minute intervals. If no response is observed after 10 mg of naloxone has been administered, the diagnosis of opioid-induced or partial opioid-induced toxicity should be questioned. Intramuscular or subcutaneous administration may be necessary if the intravenous route is not available.

Postoperative Opioid Depression

For the partial reversal of opioid depression following the use of opioids during surgery, smaller doses of naloxone are usually sufficient. The dose of naloxone should be titrated according to the patient's response. Naloxone should be injected in increments of 0.1 to 0.2 mg intravenously at two- to three-minute intervals to the desired degree of reversal – i.e. adequate ventilation and alertness without significant pain or discomfort. Larger than necessary dosage of naloxone may result in significant reversal of analgesia and increase in blood pressure. Similarly, too rapid reversal may induce nausea, vomiting, sweating, or circulatory stress.

Repeat doses of naloxone may be required within one- to two-hour intervals depending upon the amount, type (i.e. short- or long-acting) and time interval since last administration of opioid. Supplemental intramuscular doses have been shown to produce a longer-lasting effect.

USAGE IN CHILDREN

Opioid Overdosage – Known or Suspected

The usual initial dose in children is 0.01 mg/kg body weight given IV. If this dose does not result in the desired degree of clinical improvement, a subsequent dose of 0.1 mg/kg body weight may be administered. If an IV route of administration is not available, naloxone may be administered IM or SC in divided doses. If necessary, naloxone can be diluted with sterile water for injection.

Postoperative Opioid Depression

Follow the recommendations and cautions under Adult Postoperative Opioid Depression. For the initial reversal of respiratory depression naloxone should be injected in increments of 0.005 mg to 0.01 mg intravenously at two- to three-minute intervals to the desired degree of reversal.

USAGE IN NEONATES

Opioid-Induced Depression

The usual dose is 10 mcg (0.01 mg)/kg body weight administered IV, IM or SC routes. This dose may be repeated in accordance with adult administration guidelines.

Summary of Dosages	
Adults	<p>Opioid Overdose 0.4 to 2 mg IV repeated if necessary at 2- to 3-minute intervals.</p> <p>Postoperative Opioid Depression 0.1 to 0.2 mg IV repeated if necessary at 2- to 3-minute intervals.</p> <p>IV, IM or SC.</p>
Children	<p>Opioid Overdose 0.01 mg/kg IV. If desired degree of improvement is not obtained, 0.1 mg/kg IV may be administered. Naloxone may be diluted with sterile water for injection.</p> <p>Postoperative Opioid Depression 0.005 to 0.01 mg IV repeated if necessary at 2- to 3-minute intervals.</p>
Neonates	<p>Opioid-Induced Depression 0.01 mg/kg IV, IM or SC repeated if necessary at 2- to 3-minute intervals. Naloxone may be diluted with sterile water for injection.</p>

PHARMACEUTICAL INFORMATION

DRUG SUBSTANCE

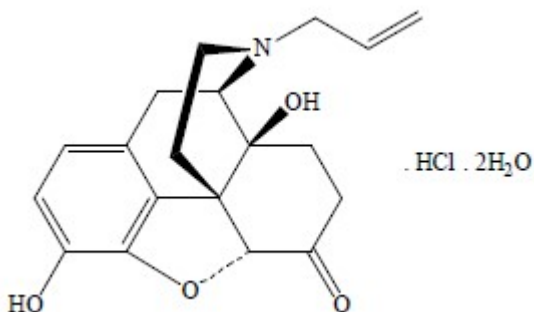
Common Name: Naloxone hydrochloride dihydrate

Chemical Name: 4,5 α -Epoxy-3,14-dihydroxy-17-(prop-2-enyl)morphinan-6-one hydrochloride dihydrate
17-Allyl-4,5 α -epoxy-3,14-dihydroxymorphinan-6-one hydrochloride dihydrate
(-)-17-Allyl-6-deoxy-7,8-dihydro-14-hydroxy-6-oxo-17-normorphine Hydrochloride dihydrate
(-)-(5*R*, 14*S*)-9 α -Allyl-4,5-epoxy-3,14-dihydroxymorphinan-6-one hydrochloride dihydrate
1-*N*-Allyl-14-hydroxynordihydromorphinone hydrochloride dihydrate
N-Allylnoroxymorphone hydrochloride dihydrate

Molecular Formula: C₁₉H₂₁NO₄, HCl, 2H₂O

Molecular mass: 399.9 g / mol

Structural Formula:



Physicochemical properties: Naloxone hydrochloride, an opioid antagonist, is a synthetic congener of oxymorphone. In structure it differs from oxymorphone in that the methyl group on the nitrogen atom is replaced by an allyl group. Naloxone is white, or almost white, crystalline powder, hygroscopic, soluble in water, in dilute acids, and in strong alkali; slightly soluble in alcohol; practically insoluble in ether and in chloroform. Melting point: 200-205°C.

COMPOSITION

Naloxone Hydrochloride Injection, USP (0.4 mg/mL): Each mL of aqueous injectable solution contains: naloxone hydrochloride dihydrate 400 mcg, sodium chloride 9.0 mg, hydrochloric acid to adjust pH and water for injection.

The vial contains latex free rubber stopper.

STABILITY AND STORAGE RECOMMENDATIONS

Naloxone Hydrochloride Injection, USP should be stored between 15°C and 30°C. Protect from light.

AVAILABILITY OF DOSAGE FORMS

Naloxone Hydrochloride Injection, USP is available in 0.4 mg/mL, 1 mL vial, boxes of 10. Single use. Discard unused portion.

PHARMACOLOGY

Single subcutaneous doses of naloxone as high as 24 mg/70 kg (0.343 mg/kg) and multiple doses of 90 mg daily, for two weeks, administered to normal volunteers produced no behavioural or physiological changes, yet its antagonistic activity to subsequent morphine challenge persisted.

Naloxone hydrochloride at doses of 0.7 to 10 mg administered intravenously to heroin addicts abolished the effects of 10 to 20 mg of heroin whether administered before or after the heroin. The effects of the heroin began to recur three hours after naloxone administration, indicating naloxone has a shorter duration of action than heroin.

Naloxone was able to reverse the respiratory depression induced by various anesthetics: morphine, fentanyl, cyclazocine, pentazocine, meperidine, alphaprodine, oxymorphone, nalorphine and levallorphan in patients, whether administered IV, IM or SC at 0.4 to 2 mg/mL. Naloxone caused no respiratory depression, psychotomimetic effects, clinically significant circulatory effects, nor analgesia when administered alone. Subjects did not develop tolerance to naloxone. Temporary nausea and vomiting were reported in two studies, but as other anesthetics/analgesics were being administered concurrently, these effects could not be causally related to naloxone.

When naloxone is administered intravenously the onset of action is generally apparent within two minutes; the onset of action is only slightly less rapid when it is administered

subcutaneously or intramuscularly. The duration of action is dependent upon the dose and route of administration. Intramuscular administration produces a more prolonged effect than intravenous administration. The requirement for repeat doses will also be dependent upon the amount, type, and route of administration of the opioid being antagonized.

Following parenteral administration naloxone is rapidly distributed in the body. It is metabolized in the liver, primarily by glucuronide conjugation, and excreted in urine. In one study the mean serum half-life in adults was 4.7 minutes for the distribution phase and 64 minutes for the elimination phase. In a neonatal study the mean plasma half-life was observed to be 3.1 ± 0.5 hours.

In a nine-week study of nine males (22 to 47 years of age) who were addicted to opioids, naloxone was administered in single daily oral doses in increments of 50 mg (3 subjects), 100 mg (4 subjects) and 300 mg (2 subjects). Up to 3,000 mg of naloxone hydrochloride daily was administered (1 subject). No significant toxic symptoms occurred over nine weeks of naloxone administration. Sporadic abnormal laboratory findings including elevated white blood cell counts occurred, but are common in cases of opioid addiction. One patient receiving 1,500 mg of naloxone daily reported psychic depression, apathy and decreased appetite, which were relieved when the dosage was decreased.

TOXICOLOGY

Acute Toxicity

The maximum nontoxic subcutaneous dose in rats was 50 mg/kg.

In acute SC toxicity studies in newborn rats, the LD₅₀ is 260 mg/kg. Naloxone was only twice as toxic in newborn as in six week old rats. At toxic doses naloxone produced excitation, hyperactivity, salivation, tremors, and tonic-clonic convulsions. Respiration was slightly stimulated in rabbits as shown by the minute-volume measurements.

Subacute Toxicity

Subacute SC toxicity experiments in rats and monkeys and a subacute IV toxicity experiment in dogs demonstrated very little cumulative toxicity and no organic pathological changes.

Reproduction and Teratology

Reproduction studies in mice and rats using naloxone hydrochloride dosages up to 1,000 times the usual human dosage have not revealed evidence of impaired fertility or harm to the fetus.

Mutagenicity and Carcinogenicity

Mutagenicity and carcinogenicity studies have not been conducted using naloxone.

REFERENCES

1. Jasinski DR, Martin WR, Haertzes CA. The human pharmacology and abuse potential of N-allylnoroxymorphone (Naloxone). *J Pharm. Exp Ther* 1967;157(2):420.
2. Smits SE, Takemori AE. Quantitative studies on the antagonism by naloxone of some narcotic and narcotic antagonist analgesics. *Br J Pharm* 1970;39:627.
3. Longnecker DE, Grazis PA, Eggers GWN. Naloxone for antagonism of morphine-induced respiratory depression. *Anesth Analg* 1973;52:447.
4. Foldes FF, Davidson GM, Duncalf D, Kuwabara S, Siker ES. The respiratory, circulatory and analgesic effects of naloxone-narcotic mixtures in anesthetized subjects. *Can Anæsth Soc J* 1965;12(6):608.
5. Anderson R, Dobloug I, Refstad S. Postanæsthetic use of naloxone hydrochloride after moderate doses of fentanyl. *Acta Anæsthesiol Scand* 1976;20:255.
6. Tigerstedt I. Naloxone as narcotic antagonist after balanced anaesthesia. *Acta Anæsthesiol Scand* 1977;21:481.
7. Jasinski DR, Martin WR, Sapira JD. Antagonism of the subjective behavioural pupillary and respiratory depressant effects of cyclazocine by naloxone. *Clin Pharm Ther* 1967;9(2):215.
8. Kallos T, Smith TC. Naloxone reversal of pentazocine-induced respiratory depression. *JAMA* 1968;204:932.
9. Foldes FF, Duncalf D, Kuwabara S. The respiratory, circulatory, and narcotic antagonistic effects of nalorphine, levallorphan and naloxone in anaesthetized subjects. *Can Anæsth Soc J* 1969;16(2):151.
10. Fink M, Zaks A, Sharoff R, Mora A, Bruner A, Levit S, Freedman AM. Naloxone in heroin dependence. *Clin Pharm Ther* 1968;9(5):568.
11. Fujimoto JM. Isolation of naloxone-3-glucuronide from human urine. *Proc Soc Exp Biol Med* 1970;133:317.
12. Ngai SH, Berkowitz BA, Yang JC, Hempstead J, Spector S. Pharmacokinetics of naloxone in rats and in man—basis for its potency and short duration of action. *Anesthesiology* 1976;44:398.
13. Moreland TA, Brice JEH, Walker CHM. Naloxone pharmacokinetics in the newborn. *Br J Clin Pharmac* 1980;9:609.

14. Zaks A, Jones T, Fink M, Freedman AM. Naloxone treatment of opiate dependence. JAMA 1971;215(13):2108.
15. AHFS Drug Information 90. American Pharmacist Society 1990;1111.
16. Blumberg H, Wernick T, Dayton HB, Hansen RE, Rapaport DN. Toxicologic studies on the narcotic antagonist naloxone. Tox Appl Pharm 1966;8:335.
17. NALOXONE HYDROCHLORIDE INJECTION SDZ, Preservative Free, Sandoz Canada Inc., Product Monograph dated March 27, 2012, Control No. 154041.

Strides Pharma Canada Inc.

1565, Boul. Lionel-Boulet,
Varenes, QC J3X 1P7
Canada

Date of Revision: July 31, 2020