

PRODUCT MONOGRAPH
INCLUDING PATIENT MEDICATION INFORMATION

PrUNIPHYL®

Theophylline Sustained Release

Tablets, 400 mg and 600 mg, Oral

Manufacturer's Standard

BRONCODILATOR

Elvium Life Sciences
575 Granite Court,
Pickering, Ontario
L1W 3W8

Date of Initial Approval:
February 19, 1987

Date of Revision:
September 30, 2020

Submission Control No.: 241455

UNIPHYL® is a trademark of Elvium Life Sciences

RECENT MAJOR LABEL CHANGES

Not applicable.

RECENT MAJOR LABEL CHANGES	2
PART I: HEALTH PROFESSIONAL INFORMATION	3
1 INDICATIONS	3
1.1 Pediatrics.....	3
1.2 Geriatrics.....	3
2 CONTRAINDICATIONS	3
3 DOSAGE AND ADMINISTRATION	3
3.1 Dosing Considerations	3
3.2 Recommended Dose and Dosage Adjustment.....	4
3.3 Missed Dose.....	5
4 OVERDOSAGE	5
5 DOSAGE FORMS, STRENGTHS, COMPOSITION AND PACKAGING	7
6 WARNINGS AND PRECAUTIONS	7
6.1 Special Populations.....	9
6.1.1 Pregnant Women.....	9
6.1.2 Breast-feeding	9
6.1.3 Pediatrics	9
6.1.4 Geriatrics	9
7 ADVERSE REACTIONS	9
7.1 Adverse Reaction Overview	9
8 DRUG INTERACTIONS	10
8.1 Drug-Drug Interactions.....	10
8.2 Drug-Food Interactions.....	13
8.3 Drug-Laboratory Test Interactions	13
9 ACTION AND CLINICAL PHARMACOLOGY	13
9.1 Mechanism of Action.....	13
9.2 Pharmacodynamics	14
9.3 Pharmacokinetics	14
10 STORAGE, STABILITY AND DISPOSAL	18
11 PHARMACEUTICAL INFORMATION	19
12 CLINICAL TRIALS	19
12.1 Comparative Bioavailability Trial Design and Study Demographics.....	19
12.2 Study Results.....	20
13 NON-CLINICAL TOXICOLOGY	23
PATIENT MEDICATION INFORMATION	25

PART I: HEALTH PROFESSIONAL INFORMATION

1 INDICATIONS

UNIPHYL (theophylline sustained release tablets) is indicated for:

Symptomatic treatment of reversible bronchoconstriction associated with asthma, emphysema, chronic bronchitis and related bronchospastic disorders in patients 12 years and older.

1.1 Pediatrics

Pediatrics (<12 years of age): UNIPHYL is not recommended for use in children under 12 years of age.

1.2 Geriatrics

Geriatrics (>65 years of age): Dose Reduction may be required in elderly patients (see DOSAGE AND ADMINISTRATION and WARNINGS AND PRECAUTIONS)

2 CONTRAINDICATIONS

UNIPHYL is contraindicated in patients who are hypersensitive to this drug or to any ingredient in the formulation, including any non-medicinal ingredient, or component of the container. For a complete listing, see Dosage Forms, Strengths, Composition and Packaging. UNIPHYL should not be administered in patients with:

- hypersensitivity to theophylline, xanthines derivative, or the excipients used in these drug products, or component of the container.
- coronary artery disease (where cardiac stimulation might prove harmful)
- peptic ulcers
- concomitant use with ephedrine in children

3 DOSAGE AND ADMINISTRATION

3.1 Dosing Considerations

Monitoring of plasma theophylline concentrations may be required when:

- higher doses are prescribed
- patients have co-morbidities resulting in impaired clearance (see WARNINGS AND PRECAUTIONS, Patients with Special Diseases and Conditions)
- theophylline is co-administered with medication that reduces theophylline clearance (see DRUG INTERACTIONS)

Elderly patients are at a greater risk of experiencing serious toxic effects from theophylline than younger patients. Careful attention to dose reduction and monitoring of serum theophylline concentrations are required in elderly patients due to pharmacokinetic and pharmacodynamic changes associated with aging, including the potential for decreased theophylline clearance.

UNIPHYL is not recommended for use in patients under 12 years of age.

3.2 Recommended Dose and Dosage Adjustment

Administration and dosing of theophylline should be individualized in respect of the patient's clinical response and serum theophylline levels. There is considerable patient-to-patient variation in the daily theophylline dose required to achieve therapeutic and safe levels. Ideally, all patients should have serum or plasma theophylline levels measured which would enable doses and dosing regimens to be tailored in order to maintain therapeutic levels, ensure optimal clinical response and avoid toxicity. Therapeutic serum levels are generally considered to be between 5 and 15 mcg/mL (27.5 and 82.5 µmol/L). Theophylline distributes poorly into body fat, therefore, mg/kg doses should be calculated on the basis of lean body mass (ideal body weight). A serum level of 5 mcg/mL (27.5 µmol/L) represents the lower level of clinical effectiveness. Whereas the serum level of 20 mcg/mL (110 µmol/L) is an important reference point in terms of toxicity (see WARNINGS AND PRECAUTIONS).

Initial Adult Dose: For patients not currently receiving oral theophylline, the recommended initial dose is 400-600 mg once daily.

In patients currently controlled on oral theophylline, UNIPHYL therapy should start at the same daily theophylline dosage (mg for mg basis), provided by the previous formulation. For example, a patient receiving 400 mg twice daily (800 mg daily dosage), would be given two 400 mg UNIPHYL tablets once daily. A minimum of 12 hours should elapse between a patient's last dose of the previous oral theophylline formulation and the first dose of UNIPHYL.

It is recommended that once-daily UNIPHYL be taken in the evening. Studies have demonstrated that while the bioavailability and the pharmacokinetics of UNIPHYL tablets were not significantly different between morning and evening dosing, a better clinical response was obtained with evening dosing. Subsequent studies indicate that the clinical advantages of evening dosing are likely a result of the maximum theophylline levels occurring in the early morning hours, a time of greatest bronchoconstriction and symptoms for many asthmatics.

It is advisable that UNIPHYL be taken with food, or within 1-2 hours of mealtime, as studies have suggested that absorption may be incomplete if taken under conditions of prolonged fasting. Overall, therefore, it is recommended that most patients should take once-daily UNIPHYL with, or shortly following, the evening meal.

Dose Titration: Dosage adjustments should be based on the patient's clinical response and/or serum theophylline levels, with increases of ½ tablet per day at 3 to 4 day intervals. Individual requirements vary considerably, therefore, the physician should be prepared to adjust each patient's dose. Do not attempt to maintain any dosage that is poorly tolerated.

It is not possible to ensure interchangeability between different sustained release theophylline products. Once titrated to an effective dose, patients should not be changed from UNIPHYL to another sustained release xanthine preparation without re-titration and careful clinical monitoring.

UNIPHYL tablets must be swallowed whole and should not be broken, chewed, dissolved or crushed as this may lead to a rapid release of theophylline with the potential for toxicity. Tablets may be halved.

3.3 Missed Dose

Monitoring serum theophylline levels is important, especially during initiation of therapy and dosage adjustment. For serum levels to be most useful, it is important that the patient not have missed or added any doses during the previous 3 days and that the dose intervals remained relatively constant. At steady-state, UNIPHYL tablets produce peak theophylline levels between 8 and 12 hours post-dose, and trough levels almost always occur at the time of dosing. During once-daily dosing, the mean fluctuation between peak and trough theophylline levels is 130% (See ACTION AND CLINICAL PHARMACOLOGY for further information on the time of peak theophylline levels, and the relationship between a single level obtained 12 hours post-dose and the actual peak level).

The generally accepted optimal therapeutic range is 5 to 15 mcg/mL (27.5 and 82.5 µmol/L), although some patients obtain a very good bronchodilator effect from serum levels less than 10 mcg/mL (55 µmol/L). In cases where it is not possible to monitor theophylline levels, patients should be closely observed for signs of toxicity and dosages greater than 13 mg/kg/day (or 900 mg/day, whichever is less) should not be given.

4 OVERDOSAGE

For management of a suspected drug overdose, contact your regional poison control centre immediately.

Overdoses of theophylline may cause serious side effects such as tachycardia, arrhythmias, seizures, vascular collapse and even death. These may occur without warning and may not be preceded by less severe side effects such as nausea or restlessness.

Symptoms of Acute Theophylline Toxicity

Theophylline has a low therapeutic index. Theophylline toxicity is most likely to occur when serum concentrations exceed 20 mcg/mL (110 µmol/L) and becomes progressively more severe at higher serum concentrations.

Alimentary symptoms: Nausea, vomiting, abdominal pain and hematemesis

Cardiovascular symptoms: Sinus tachycardia, ventricular arrhythmias and hypotension

Metabolic symptoms: Hyperglycemia, hypokalemia, acid/base disturbance and rhabdomyolysis

Neurological symptoms: Restlessness, convulsion, seizure and coma in severe cases

Treat symptoms on appearance, which may include hypokalemia, supraventricular and ventricular arrhythmias, convulsions and seizures. Sustained release tablets may release medication for hours, facilitated by formation of tablet aggregates, or bezoars, in the stomach. Insomnia, restlessness, mild excitement or irritability and rapid pulse are the early symptoms, which may progress to mild delirium. Sensory disturbances such as tinnitus or flashes of light are common. Anorexia, nausea and vomiting are also frequently early observations of theophylline overdose.

Fever, diuresis, dehydration and extreme thirst, acid/base disturbances, rhabdomyolysis, sinus tachycardia and ventricular arrhythmias may be seen. Severe overdose results in bloody,

syrup-like "coffee-ground" vomitus, tremors, tonic extensor spasm interrupted by clonic convulsions, extrasystoles, quickened respiration, stupor and finally coma.

Cardiovascular disorders and respiratory collapse, leading to shock, cyanosis and death follow gross overdosages.

Treatment of Acute Theophylline Toxicity

A. Monitoring serum theophylline levels:

It is important to note that, following the intake of UNIPHYL (theophylline sustained release tablets), the peak theophylline levels may not occur until eight to twelve hours post ingestion. Moreover, patients ingesting overdoses of sustained release theophylline formulations may also have, after the initial rise in the blood theophylline, a secondary increase in theophylline levels (one report on lethal self-poisoning has attributed this to compacted tablets in the gastrointestinal tract). Following initial treatment, longer careful clinical and laboratory monitoring, including electrocardiograms is advisable after the patient's stabilization.

B. If a potential oral overdose is established and a seizure has not occurred:

1. Administration of oral activated charcoal has been found to reduce high theophylline serum concentrations. Multiple doses of activated charcoal should be also considered. Seizure prophylaxis may be indicated for certain patients.
2. Administration of a cathartic can be considered in addition to oral activated charcoal. Repeated doses of cathartic are not recommended due to possible adverse effects.
3. In severe poisoning or cases where gastric decontamination is not feasible, extracorporeal removal (i.e., hemodialysis, charcoal-column hemoperfusion) can be employed.

C. If patient is having a seizure:

1. Establish an airway.
2. Administer oxygen.
3. Intravenous benzodiazepines are generally considered as first line therapy although some benzodiazepines may have reduced efficacy in theophylline overdose due to suspected pharmacodynamics interactions. Second line agents should be used if resistant, although phenytoin should be avoided.
4. Continue to provide full supportive care and monitoring.

D. Post-seizure coma:

1. Maintain airway and oxygenation.

2. Consider the recommendations (B above, steps 1 to 3) to prevent absorption of the drug. Note that an unprotected airway is a contraindication to activated charcoal administration due to concerns of aspiration.
3. Continue to provide full supportive care and monitoring.

The human oral lethal dose estimated to be from 50 to 500 mg/kg. Children are more susceptible to the toxic effects of theophylline than adults.

The incidence of adverse reactions increases at serum concentrations over 15 mg/L (82.5 µmol/L). Levels in excess of (20 mg/L) 110 µmol/L are usually quite toxic in most patients, although a few patients can tolerate higher levels without significant side-effects. Tolerance to some of the toxic effects of theophylline is known to occur.

5 DOSAGE FORMS, STRENGTHS, COMPOSITION AND PACKAGING

Table 1 – Dosage Forms, Strengths, Composition and Packaging

Route of Administration	Dosage Form / Strength/Composition	Non-medicinal Ingredients
Oral	Tablets / 400 mg, 600 mg	cetostearyl alcohol, hydroxyethyl cellulose, magnesium stearate, povidone, talc

UNIPHYL 400 mg tablets are round, flat-faced, white and scored. They are engraved U/400 on one side and PF on the reverse.

UNIPHYL 600 mg tablets are capsule shaped, concave face, white and scored. They are engraved U/600 on one side and PF on the reverse.

Supplied in opaque, plastic bottles of 50 tablets. Dispense in amber or opaque containers.

6 WARNINGS AND PRECAUTIONS

General

In clinical situations where immediate bronchodilation is required, such as status asthmaticus, UNIPHYL is not appropriate.

Theophylline has a narrow therapeutic index, the margin of safety above therapeutic doses is small.

Whenever signs of intolerance to theophylline develop, the therapy should be reassessed.

Theophylline clearance can be affected by various disease states, the age of the patient, concomitant use of other medication and lifestyle habits.

A dosage schedule in the pediatric population has not been established. Use of UNIPHYL tablets in children under 12 years of age is not recommended.

There is a marked variation in serum levels achieved in different patients given the same dose of theophylline. Therefore, high serum levels may occur in some patients receiving doses considered to be conventional. The possibility of theophylline overdose should always be considered.

The variability in serum levels is primarily due to differences in the rate of metabolism. Therefore, it is advisable to individualize the dosage regimen. Ideally, all patients should have serum theophylline levels measured which would enable doses and dosing regimens to be tailored for each patient in order to maintain therapeutic levels, ensure optimal clinical response and avoid toxicity. The incidence of adverse reactions increases at theophylline levels greater than 15 mcg/mL (82.5 µmol/L) and levels above 20 mcg/mL (110 µmol/L) are usually quite toxic in most adults.

Although UNIPHYL tablets have pharmacokinetic properties similar to other sustained release theophylline formulations, it is not possible to ensure interchangeability between different formulations. Careful clinical monitoring is required when changing from one formulation to another. The equivalent content of anhydrous theophylline is the active ingredient that determines the blood concentration and clinical response. If a change in theophylline product is made and it involves a change in anhydrous theophylline equivalence, the dose should be adjusted accordingly.

Use with caution in patients with severe cardiac disease, severe hypoxemia, hypertension, hyperthyroidism, acute myocardial injury, cor pulmonale, congestive heart failure, liver disease, porphyria, in elderly males with pre-existing partial urinary tract obstruction, such as prostatic enlargement, due to risk of urinary retention.

Patients with Special Diseases and Conditions

Due to potential decreased theophylline clearance, which may result in increased serum levels and significant adverse drug reactions in patients, dose reduction and monitoring of serum theophylline concentrations may be required in elderly patients and in patients:

- with impaired liver or kidney function
- over 55 years of age, particularly males and those with chronic lung disease
- with cardiac disease
- with active influenza or other viral disease or after influenza immunization
- with a high carbohydrate, low protein diet
- with hypothyroidism (and when starting acute treatment for hypothyroidism)
- with a sustained high fever

Cardiovascular

Theophylline may cause arrhythmia and/or worsen pre-existing arrhythmia. Any significant change in rate and/or rhythm warrants monitoring and further investigation.

Many patients who require theophylline may exhibit tachycardia due to their underlying disease process so that the cause/effect relationship to elevated serum theophylline concentrations may not be appreciated.

Endocrine and Metabolism

Due to potential increased theophylline clearance, dose increase and monitoring of serum theophylline concentrations may be required in patients with hyperthyroidism (and when starting acute hyperthyroidism treatment) and cystic fibrosis.

Patients who are rapid metabolizers of theophylline, peak to trough fluctuations in theophylline levels may be greater than desirable or result in side-effects at the time of maximum level and/or the recurrence of symptoms towards the end of the 24-hour dose interval when levels are lowest. In such patients, dividing the total daily theophylline dose into two equal doses may be indicated.

Gastrointestinal

Theophylline is known to stimulate gastric acid secretion and may also act as a local G.I. irritant. Therefore, the drug should only be used with caution in patients with a history of peptic ulcer disease.

Neurologic

Theophylline may exacerbate frequency and duration of seizures and therefore caution should be exercised in patients with history of seizures.

Respiratory

Particular care is advised in patients suffering from severe asthma who require acute theophylline administration. It is recommended that serum theophylline concentrations are monitored in such situations.

6.1 Special Populations

6.1.1 Pregnant Women

Theophylline crosses the placental barrier, where concentrations are similar to plasma levels. Safe use in pregnancy has not been established relative to possible adverse effects on fetal development. UNIPHYL should not be administered during pregnancy unless considered essential by the physician. Theophylline should be given to pregnant women only when the anticipated benefits outweigh the risk to the child.

6.1.2 Breast-feeding

Theophylline passes freely into breast milk, where concentrations are similar to plasma levels. Theophylline should be given to nursing mothers only when the anticipated benefits outweigh the risk to the child.

6.1.3 Pediatrics

Pediatrics (<12 years of age): UNIPHYL is not recommended for use in children under 12 years of age.

6.1.4 Geriatrics

Geriatrics (>65 years of age): Dose reduction may be required in elderly patients (see WARNINGS AND PRECAUTIONS, *Patients with Special Diseases and Conditions* section).

7 ADVERSE REACTIONS

7.1 Adverse Reaction Overview

The most common adverse reactions are gastric irritation, nausea, vomiting, epigastric pain, and tremor. These are usually early signs of toxicity, however with high doses ventricular arrhythmias or seizures may be the first signs to appear.

Adverse reactions classified by body system include:

<i>Gastrointestinal:</i>	Abdominal pain, anorexia, diarrhea, epigastric pain, gastroesophageal reflux, hematemesis, intestinal bleeding, nausea, reactivation of peptic ulcer and vomiting.
<i>Central Nervous System:</i>	Convulsions, dizziness, headache, irritability, reflex hyperexcitability, restlessness, twitching and tremors.
<i>Cardiovascular:</i>	Atrial tachycardia, circulatory failure, extrasystoles, flushing, hypotension, palpitations, sinus tachycardia and ventricular arrhythmias.
<i>Skin and Subcutaneous:</i>	Pruritus and rash.
<i>Immune:</i>	Anaphylactic reaction, anaphylactoid reaction and hypersensitivity.
<i>Metabolic and Nutritional:</i>	Hyperuricemia and hyperglycemia.
<i>Psychiatric:</i>	Agitation, anxiety, insomnia and sleep disorder.
<i>Renal:</i>	Albuminuria, diuresis, hematuria and urinary retention (see WARNINGS AND PRECAUTIONS, <i>Patients with Special Diseases and Conditions</i>).
<i>Others:</i>	Tachypnea and inappropriate ADH syndrome.

8 DRUG INTERACTIONS

8.1 Drug-Drug Interactions

The drugs listed in this table are based on either drug interaction case reports or studies, or potential interactions due to the expected magnitude and seriousness of the interaction (i.e., those identified as contraindicated).

Table 2 - Established or Potential Drug-Drug Interactions

Proper/Common Name	Effect	Clinical Comment
Acyclovir, allopurinol, carbimazole, cimetidine, diltiazem, disulfiram, fluconazole, interferon, isoniazid, quinolone antibiotics (e.g., ciprofloxacin), macrolide antibiotics (e.g., erythromycin, clarithromycin, troleandomycin), methotrexate, mexiletine, nizatidine, oral contraceptives, propafenone, propranolol, pentoxiphylline, selective serotonin re-uptake inhibitors (e.g., fluvoxamine), terbinafine*, thiabendazole, verapamil	↑ t _{1/2} , ↓ clearance	It may be necessary to reduce the dosage of theophylline to avoid adverse drug reactions. Monitoring of serum theophylline concentrations may be required. The concomitant use of theophylline and fluvoxamine should usually be avoided.
Alkalinizing agents	↑ t _{1/2} , ↓ clearance	It may be necessary to reduce the dosage of theophylline to avoid adverse drug reactions. Monitoring of serum theophylline concentrations may be required.
Treatments associated with hypothyroidism	↑ t _{1/2} , ↓ clearance	It may be necessary to reduce the dosage of theophylline to avoid adverse drug reactions. Monitoring of serum theophylline concentrations may be required.
Treatments associated with hyperthyroidism	↓ t _{1/2} , ↑ clearance	It may be necessary to increase the dosage of theophylline to ensure therapeutic effect. Monitoring of serum theophylline concentrations may be required.
Influenza vaccine	↑ t _{1/2} , clearance reported to be decreased or no change	
Aminoglutethimide, barbiturates, carbamazepine, hypericum perforatum (St. John's Wort), isoproterenol, phenytoin, rifampin, ritonavir, sulfipyrazone	↓ t _{1/2} , ↑ clearance	It may be necessary to increase the dosage of theophylline to ensure therapeutic effect. Monitoring of serum theophylline concentrations may be required.

Tobacco, alcohol	↓ t _{1/2} , ↑ clearance	
Acidifying agents	↓ t _{1/2} , ↑ clearance	

* Additional information provided in paragraphs below

Effect of Terbinafine on the Pharmacokinetics of Theophylline

Single dose terbinafine did not significantly alter the pharmacokinetics of theophylline in a randomized, open-label, single-dose, three-period crossover study, in healthy male and female adult subjects (n=18) treated orally with 250 mg terbinafine, 375 mg theophylline, and 250 mg terbinafine plus 375 mg theophylline.

Multiple dose terbinafine increased the AUC and half-life of theophylline by 16% and 24%, respectively, and decreased the oral clearance of theophylline by 14%, in a randomized, open-label, two-period crossover study in healthy male and female adult subjects (n=12) treated orally with a single dose of 5 mg/kg theophylline alone (mean 345 mg, range 307 to 397 mg) and 2 hours after the last of 4 daily doses of 250 mg terbinafine.

Effect of Theophylline on the Pharmacokinetics of Terbinafine

Theophylline increased the C_{max} and AUC of terbinafine by 25% each and decreased the oral clearance of terbinafine by 24% in a randomized, open-label, single-dose, three-period crossover study, in healthy male and female adult subjects (n=18) treated orally with 250 mg terbinafine, 375 mg theophylline, and 250 mg terbinafine plus 375 mg theophylline.

Table 3 - Concurrent Use of Theophylline Influences the Actions of Certain Drugs

Drug	Influence of Theophylline	Clinical Comment
Adenosine receptor agonists	Inhibits the effect of adenosine receptor agonists	Caution with concomitant use
Benzodiazepines	Opposes the sedatory effects	Caution with concomitant use
Digitalis glycosides	↑ cardiac effect	Caution with concomitant use
Halothane	Occurrence of arrhythmias	Caution with concomitant use
Thiazides	↑ diuresis	Caution with concomitant use
Nephrotoxic drugs	↑ nephrotoxicity	Caution with concomitant use
Lithium	↑ ratio of lithium/creatinine clearance, thus a decrease in serum lithium levels	Caution with concomitant use
Lomustine	Results in thrombocytopenia	Caution with concomitant use
Sympathomimetic amines	↑ toxicity, ↑ CNS stimulation	Caution with concomitant use
Coumarin anticoagulants	↓ anticoagulant activity ↑ prothrombin and fibrinogen blood concentrations	Caution with concomitant use

	↓ prothrombin time	
Allopurinol	↓ antihyperuricemic action	Caution with concomitant use
Probenecid and pyrazolone derivatives	↓ uricosuric action	Caution with concomitant use

For COPD patients, the concomitant use of theophylline and roflumilast should usually be avoided.

Care should be taken with concomitant use of β -adrenergic agonists, glucagon and other xanthine drugs, as these will potentiate the effects of theophylline. The incidence of toxic effects may be enhanced by the concomitant use of ephedrine.

Hypokalemia resulting from β_2 agonist therapy, steroids, diuretics and hypoxia may be potentiated by xanthines. Particular care is advised in patients suffering from severe asthma who require hospitalization. It is recommended that serum potassium concentrations are monitored in such situations. Theophylline may decrease steady-state phenytoin levels.

8.2 Drug-Food Interactions

When immediate release theophylline formulations are administered with food, the rate of absorption is reduced but absorption remains complete. Various sustained release formulations, because of differences in their release mechanisms. May be affected in different ways by concomitant food intake.

Studies have shown that UNIPHYL tablets are more completely absorbed when taken with food as opposed to under fasting conditions (see ACTION AND CLINICAL PHARMACOLOGY, Food Effect)

8.3 Drug-Laboratory Test Interactions

When plasma levels are measured by spectrophotometric methods, coffee, tea, cola beverages, chocolate and acetaminophen contribute to falsely high values.

When a high pressure liquid chromatography (HPLC) method is used, plasma theophylline concentrations may be falsely increased by caffeine, some cephalosporins and sulfa medications.

Theophylline may cause elevation of urine catecholamines, plasma uric acid and free fatty acids.

9 ACTION AND CLINICAL PHARMACOLOGY

9.1 Mechanism of Action

Theophylline relaxes bronchial smooth muscle (particularly when the muscles are constricted); produces vasodilation except in cerebral vessels; stimulates the CNS including the respiratory center; stimulates cardiac muscle; produces diuresis and increases gastric acid secretion. In

addition to its activity as a bronchodilator, theophylline may also stimulate mucociliary clearance, inhibit anaphylactic mediator release, suppress mediator-induced inflammation and improve contractility of the diaphragm.

UNIPHYL tablets are a sustained release formulation of theophylline. The release system consists of a homogeneous matrix of aliphatic alcohol, cellulose, and active drug. The proportion of these components in the formulation has been chosen to provide gradual, measured release of theophylline by diffusion through the tablet matrix and dissolution. The rate of release of active drug is dependent upon the drug's partition coefficients between the components of the tablet matrix and the aqueous phase within the gastrointestinal tract. The controlled release of theophylline from UNIPHYL tablets has been demonstrated by both dissolution and pharmacokinetic studies.

Theophylline's mechanism of action is not fully known and evidence exists indicating that phosphodiesterase inhibition, prostaglandin inhibition, effects on calcium flux and intracellular calcium distribution, and antagonism of endogenous adenosine may all contribute to its pharmacological effects.

Theophylline is usually well absorbed from the G.I. tract, although there are some differences in the pharmacokinetic behaviour of various sustained release formulations. Theophylline distributes to all body compartments and is approximately 60% protein bound. Elimination is primarily by hepatic biotransformation with approximately 50% excreted as 1,3-dimethyluric acid. Unchanged theophylline, 3-methylxanthine and 1-methyluric acid each account for 10% and 1-methylxanthine is excreted in smaller amounts.

The generally accepted optimal therapeutic serum theophylline concentrations are 5 to 15 mcg/mL (27.5 to 82.5 µmol/L). Levels above 20 mcg/mL (110 µmol/L) are usually associated with significant adverse drug reactions. The pharmacokinetics of theophylline are influenced by a number of variables such as age, body weight, diet, concomitant medications, disease state and smoking (see WARNINGS & PRECAUTIONS). Therefore, each patient's optimal therapeutic maintenance dosage should be determined by individual titration.

At steady-state, UNIPHYL tablets taken once-daily produce peak theophylline levels between 8 and 12 hours post-dose, and trough levels almost always occur at the time of dosing. During once-daily dosing, the mean fluctuation between peak and trough theophylline levels is 130%.

$$Fluctuation = \left(\frac{C_{max} - C_{min}}{C_{min}} \right) \times 100$$

9.2 Pharmacodynamics

The principal pharmacologic actions of theophylline are to stimulate the central nervous system, act on the kidney to produce diuresis, stimulate cardiac muscle and relax smooth muscle, notably the bronchial muscle. The main therapeutic use of theophylline is in the treatment of reversible airway obstruction.

9.3 Pharmacokinetics

Absorption: Theophylline is usually readily absorbed following oral administration. The drug is 60% bound to plasma proteins at the therapeutic plasma concentration range of 5 to 15 mcg/mL (27.5 and 82.5 µmol/L); it is not likely to be subject to pronounced displacement effect. In the

case of sustained-release products, steady-state plasma concentrations are achieved within 3 days in most patients.

Food Effect

Multi-Dose Study

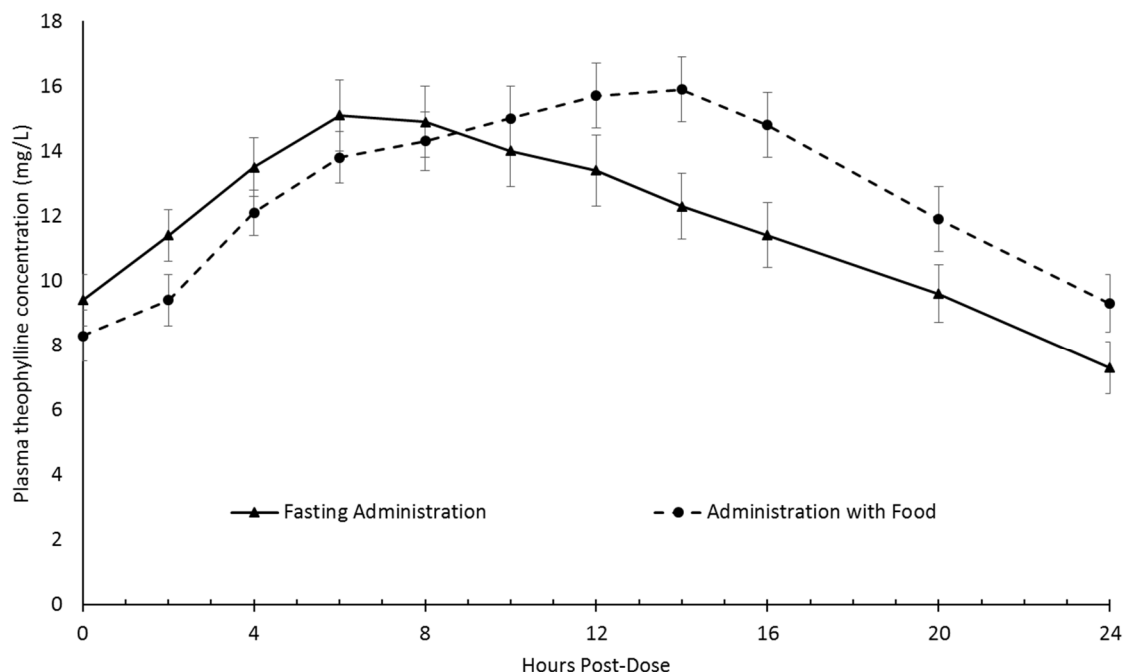
In a four-way crossover trial, the effect of a high-fat, high calorie meal on the bioavailability and pharmacokinetics of UNIPHYL was assessed in 20 adult asthmatics. After a minimum of 5 days continuous dosing (at 1800h), all patients received a UNIPHYL dose under specified fasting conditions and serum theophylline levels were measured every 2 hours for 24 hours. The patient's next UNIPHYL dose was given immediately following ingestion of a standardized high-calorie (2040), high fat (115 g) meal and theophylline levels were again measured over 24 hours. A week later the trial was repeated in the opposite sequence (i.e., dosing with food preceded fasting dosing). The mean \pm SD UNIPHYL dose was 890 ± 229.2 mg/day.

The pharmacokinetic data are presented in [Table 5](#) and [Figure 1](#). Results demonstrated that UNIPHYL is more completely absorbed when taken with food. Therefore, it is recommended at UNIPHYL be taken within 1 to 2 hours of mealtime.

Table 5 – Summary of Multidose Study

Parameters (Mean \pm SD)	Fasted	Fed	p-value
	UNIPHYL (dose) n=20	UNIPHYL (dose) n=20	
AUC _{0-t} (mg*hr/L)	284.0 \pm 93.2	312.9 \pm 85.5	<0.01
C _{max} (mg/L)	16.5 \pm 4.5	17.3 \pm 4.5	NS
T _{max} (h)	8.5 \pm 4.6	11.4 \pm 3.6	<0.01
C _{min} (mg/L)	7.0 \pm 3.0	8.0 \pm 3.1	<0.01

Figure 1 – Mean (SEM) Steady-State Serum Theophylline Levels in 20 Asthmatic Patients Following Administration of UNIPHYL While Fasting and With Food



Single-Dose Study

In a three-way, randomized crossover study, 12 subjects received single doses of:

- i) three 200 mg plain aminophylline tablets (total theophylline dose 480 mg) under fasting conditions;
- ii) two 400 mg UNIPHYL tablets under fasting conditions;
- iii) two 400 mg UNIPHYL tablets immediately following ingestion of a high-fat breakfast.

All doses were administered in the morning and, following dosing, serum theophylline levels were repeatedly measured up to 72 hours post-dose. The results from the plain aminophylline tablets were used to calculate each subjects theophylline disposition parameters and serve as a bioavailability reference. Marked difference in UNIPHYL's pharmacokinetics and bioavailability were observed between food and fasting administration as shown in [Table 6](#).

Table 6 – Summary of Single-Dose Study

Parameters (Mean ± SD)	Fasted	Fed	p-value
AUC (mg.hr/L)	100 ± 51	179 ± 67	<0.0001
C _{max} (mg/L)	4.5 ± 0.9	8.6 ± 2.7	<0.05
T _{max} (h)	5.5 ± 1.7	12.0 ± 4.0	<0.01
C _{min} (mg/L)	53 ± 23	96 ± 46	<0.05

Comparison between the Multi-Dose and Single-Dose Studies

The results of the two studies are not consistent in respect of the bioavailability of UNIPHYL when taken in the fasting state. In the multi-dose study, the mean fasting AUC was 91% of the food AUC whereas in the single dose study the fasting AUC was only 56% of the food AUC. The

reasons for these differences are not known but may relate to differences in the pre-dosing fasting periods between the two studies. In the single-dose study, subjects fasted overnight for a minimum of 10 hours whereas in the multi-dose study, the patients fasted for six hours, beginning at noon.

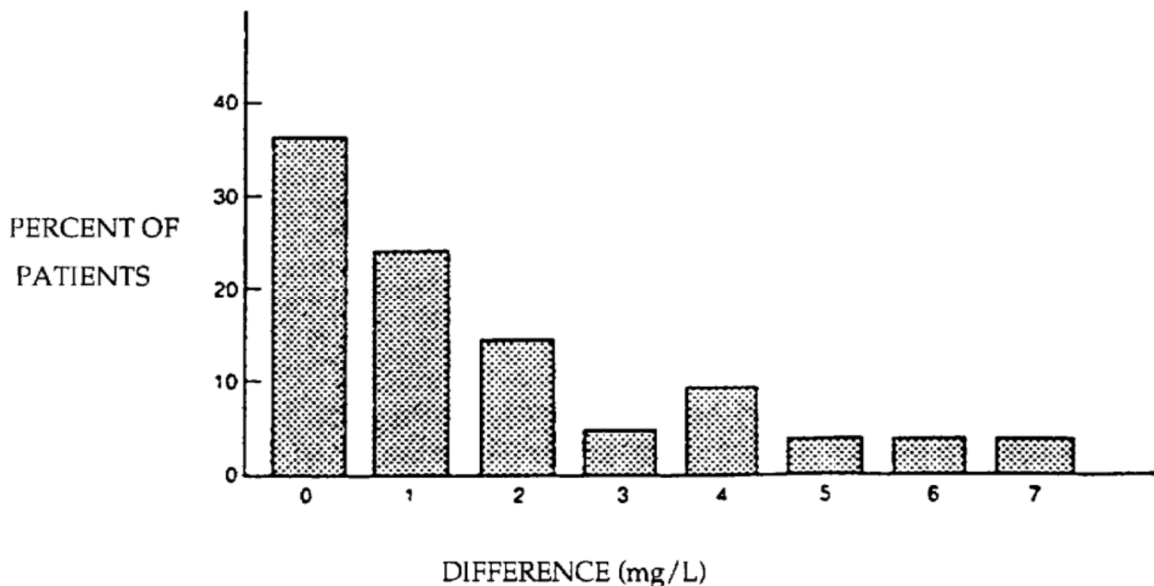
Both studies indicate that UNIPHYL is more completely absorbed when taken with food. Therefore, until further information concerning the effects of prolonged fasting on UNIPHYL bioavailability is known, it is recommended that UNIPHYL be taken within 1-2 hours of mealtime.

Monitoring Serum Theophylline Levels:

When UNIPHYL is taken in the evening with food, the time that peak levels most frequently occur (under steady-state conditions) is 12 hours post-dose. Therefore, under such dosing conditions, 12 hours post-dose is the optimal time to measure the theophylline level in order to estimate the actual peak level. However, for patients whose actual peak level occurs at times other than 12 hours post-dose, the 12-hour level will somewhat underestimate the actual peak.

[Figure 2](#) shows the distribution of the difference between the serum theophylline level measured at 12 hours post-dose and the actual peak level observed in a series of 91 steady-state serum theophylline vs. time profiles.

Figure 2 – 12 Hour Level vs. Actual Peak



Thus, while 90% of the 12-hour levels were within 4 mg/L of the actual peak level, the possibility that an isolated 12-hour post-dose level may significantly underestimate the patient's actual peak theophylline level should always be considered. When UNIPHYL tablets are taken in the morning, or in the evening under fasting conditions, the time that peak levels most frequently occur is 8 hours post-dose. Trough levels almost always occur at the time of dosing (i.e., 24 hours post-dose).

Distribution: Theophylline is distributed into all body compartments and crosses the placental barrier producing high fetal concentration. It is also excreted in human breast milk.

Volume of distribution (Vd) ranges from 0.3 to 0.7 L per kg (30-70% ideal body weight) and averages 0.45 L per kg among both children and adults. However, the mean Vd from premature neonates, adults with hepatic cirrhosis or uncorrected acidemia, and the elderly is slightly larger since protein binding is reduced in these patients.

Metabolism: Theophylline is metabolized by the liver to 3-methylxanthine, 1-methyluric acid and 1,3-dimethyluric acid. About 10% of a dose is excreted unchanged in the urine.

The enzymes responsible for theophylline metabolism are unknown but do not include xanthine oxidase.

Elimination: The mean elimination half-life associated with UNIPHYL is approximately 7 hours. The half-life of theophylline is influenced by a number of known variables. It is prolonged in patients suffering from chronic alcoholism, impaired hepatic or renal function, congestive heart failure, and in patients receiving macrolide antibiotics and cimetidine. Older adults (over age 55) and patients with chronic obstructive pulmonary disease (COPD), with or without cor pulmonale, may also have much slower clearance rates. For such patients, the theophylline half-life may exceed 24 hours. Newborn and neonates have extremely slow clearance rates compared to older infants (over 6 months) and children, and may also have a theophylline half-life of over 24 hours. High fever for prolonged period may also reduce the rate of theophylline elimination.

Administration of influenza vaccine and infection with influenza virus have been associated with the impaired rate of theophylline elimination and consequent increases in serum theophylline levels, sometimes with toxic symptoms.

The half-life of theophylline in smokers (one to two packs/day) averages four to five hours, much shorter than the half-life in non-smokers which averages seven to nine hours. The increase in theophylline clearance caused by smoking is probably the result of induction of drug-metabolizing enzymes that do not readily normalize after cessation of smoking. It appears that between three months and two years may be necessary for normalization of the effect of smoking on theophylline pharmacokinetics.

10 STORAGE, STABILITY AND DISPOSAL

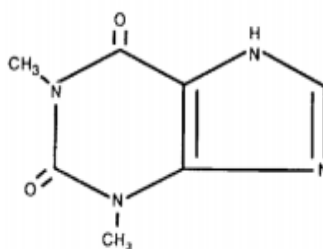
Store tablets at room temperature, below 30°C .

PART II: SCIENTIFIC INFORMATION

11 PHARMACEUTICAL INFORMATION

Drug Substance

Proper name: Theophylline
Chemical name: 1,3 Dimethylxanthine
Molecular formula and molecular mass: 180.2 (anhydrous) 198.2 (monohydrate)
Structural formula:



Physicochemical properties: Theophylline is a white, odorless, crystalline powder with a bitter taste. Theophylline is soluble 1:120 in water, 1:80 in alcohol and about 1:200 in chloroform.

12 CLINICAL TRIALS

12.1 Comparative Bioavailability Trial Design and Study Demographics

Table 7 - Summary of Patient Demographics for Clinical Trials in Bronchial Asthma

Study #	Trial design	Dosage, route of administration and duration	Study subjects (n)	Mean age (Range)	Sex
Study 1986	Two period crossover comparison of UNIPHYL and Theo-Dur	Mean dose: 783 ± 57 mg/day; Oral; 2 weeks per period	12	42 years (29 – 63)	6 male; 6 female
Study 4	Double-blind, two period, crossover comparison of UNIPHYL and Theo-Dur	Mean ± SD dose: 972.7 ± 241.4 mg/day; Oral :7 days per period	22	55.2 years	15 male; 7 female

Study 5	Double-blind, two-phase crossover comparison of morning vs. evening dosing in asthmatic patients receiving UNIPHYL	Mean \pm SE dose: 658 \pm 28mg/day; Oral ; 5 – 14 days per period	17	36.4 \pm 3.3* years	8 male; 9 female
---------	--	---	----	-----------------------	------------------

*age range reported as SEM

12.2 Study Results

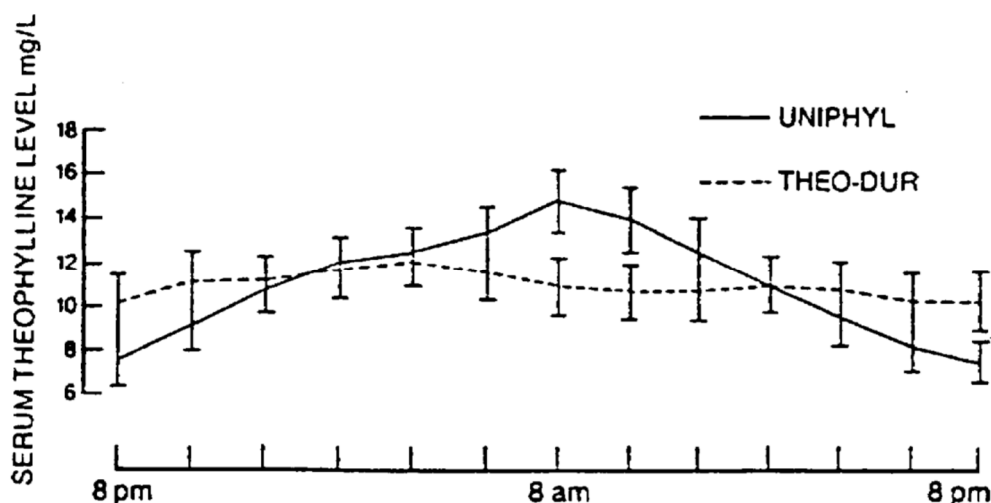
In a randomized, two-phase crossover trial, 12 asthmatic patients received two weeks therapy with once-daily UNIPHYL (theophylline sustained release tablets) dosed at 2000h, and a twice-daily reference theophylline (Theo-Dur[®], AstraZeneca, dosed at 0800h and 2000h). Asthma symptoms were recorded twice each day. At the end of each two week treatment, serum theophylline levels were measured every 2 hours over a 24 hour period and spirometry was performed at 2000h, 0600h, and 0800h.

The pharmacokinetic parameters (mean \pm SD) and serum theophylline vs. time profiles are shown below in Table 8.

Table 8 – Serum Theophylline vs. Time Profiles

	Daily Dose mg	Cmax mg/L	Cmin mg/L	Tmax hours	AUC mg.hr/L
UNIPHYL	783 \pm 57	15.9 \pm 4.5	6.5 \pm 3.1	11.3 \pm 3.3	271 \pm 98
Theo-Dur	766 \pm 115	13.4 \pm 4.8	8.7 \pm 4.4	6.8 \pm 3.8	263 \pm 105

Figure 3 – Serum Theophylline Levels from Once-daily UNIPHYL and Twice-daily Theo-Dur (mean \pm SE)



In comparing treatments, morning FEV₁ and peak expiratory flow rates were significantly higher during once-daily evening administration of UNIPHYL than during twice-daily Theo-Dur. There were no statistically significant difference in evening FEV₁ and PEF_R values between the two treatments.

Asthma symptom scores were significantly lower during UNIPHYL as shown in Table 9.

Table 9 - Mean \pm SEM Symptom Scores During Once-Daily UNIPHYL and Twice-Daily Theo-Dur

Symptom	UNIPHYL Treatment	Theo-Dur Treatment	p Value (between treatments)
<u>Dyspnea</u>			
Daytime	0.77 \pm 0.2	1.22 \pm 0.3	0.045
Nighttime	0.63 \pm 0.2	1.14 \pm 0.3	0.003
<u>Wheeze</u>			
Daytime	0.63 \pm 0.2	1.00 \pm 0.3	0.036
Nighttime	0.62 \pm 0.2	0.98 \pm 0.3	0.002
<u>Cough</u>			
Daytime	0.29 \pm 0.2	0.52 \pm 0.2	0.033
Nighttime	0.31 \pm 0.2	0.53 \pm 0.2	NS

The investigators concluded that once-daily UNIPHYL resulted in better control of nighttime symptoms without an increase in daytime symptoms or significant side effects and that optimal timing of theophylline dosing is an important consideration in the management of asthma.

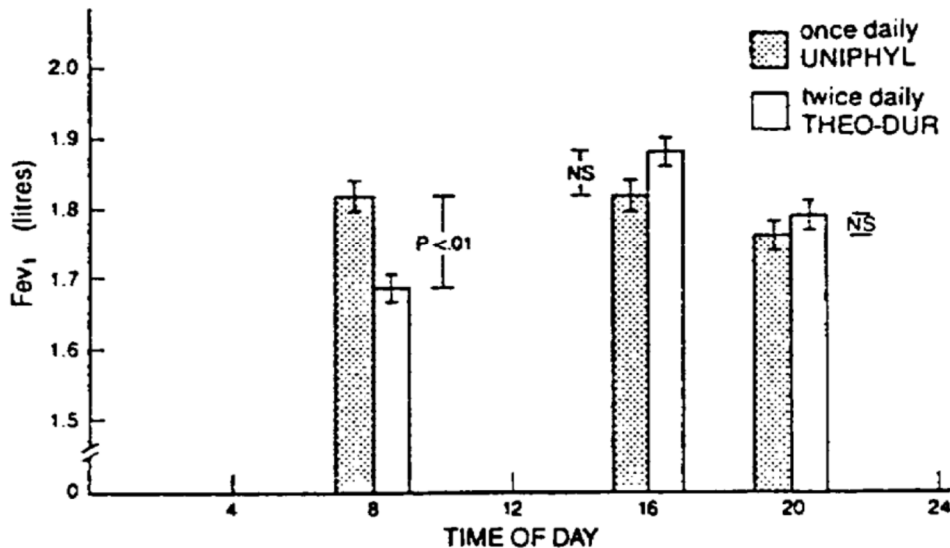
Clinical Comparison to Twice-Daily Theophylline

In a separate double-blind, two-phase, crossover trial, 22 adult asthmatics received 7 days therapy with once-daily UNIPHYL (dosing was at 2000h) and twice-daily Theo-Dur (dosing was at 0800h and 2000h). For each patient the total daily theophylline dose was the same during both treatments. Asthma symptoms, drug side effects and PEFR were recorded at 0800h, 1600h, and 2000h each day. On the last 3 days of each treatment, serum theophylline and spirometry were measured at 0800h, 1600h, and 2000h.

UNIPHYL produced greater "peak" and lower "trough" theophylline levels than did Theo-Dur, although both drugs maintained levels within an acceptable therapeutic range.

In contrast to the theophylline level results, UNIPHYL was associated with less fluctuation in pulmonary function throughout the day (see [Figure 4](#) below), and significantly lower symptom scores for wheeze. Both drugs were well tolerated and only minimal side effects were reported during the trial. The investigator concluded that once-daily UNIPHYL produced greater stabilization of the asthmatic patients' airway function than the twice-daily formulation.

Figure 4 - Mean \pm SEM FEV₁ Over Three Consecutive Days in 22 Adult Asthmatics During Once-Daily UNIPHYL and Twice-Daily Theo-Dur



Effect of Morning vs. Evening Dosing on UNIPHYL Bioavailability and Clinical Efficacy

A double-blind, two-phase crossover trial compared the pharmacokinetics and clinical efficacy of morning vs. evening dosing with once-daily UNIPHYL in 17 asthmatic patients. After a pre-study titration phase, patients were randomly allocated to receive active UNIPHYL at either 0800h or 2200h, with an identical placebo taken at the opposite dosing time. Symptoms and side effects were recorded in a daily diary and, after a minimum of 5 days dosing, blood samples for theophylline analyses were obtained every 2 hours for 40 consecutive hours. During the 40-hour period, spirometry was performed at 0800h, 1400h, 2200h, and 0400h of the subsequent day. Patients then crossed-over to the opposite dosing time and repeated the protocol.

There were no statistically significant differences in any of the pharmacologic parameters between morning and evening dosing.

Figure 5 - Mean \pm SEM Steady-State Serum Theophylline Profiles after Once-Daily UNIPHYL

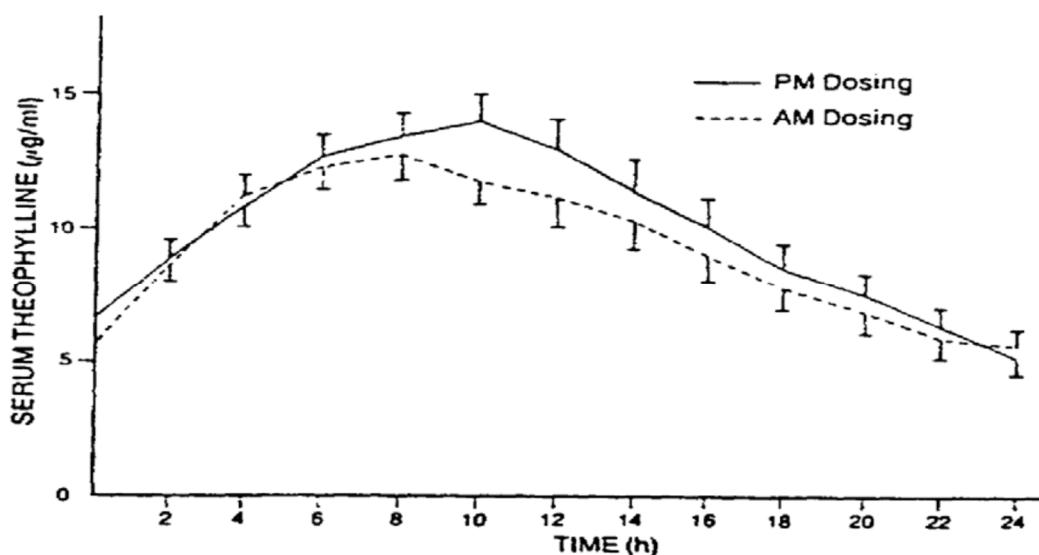


Table 10 - Mean \pm SEM Pharmaceuticals Parameters During Morning and Evening Dosing with Once-Daily UNIPHYL

	Morning Dosing	Evening Dosing
Cmax (mg/L)	14.5 \pm 1.0	16.3 \pm 1.1
Cmin	5.5 \pm 0.7	5.0 \pm 0.6
Tmax	8.1 \pm 0.9	10.1 \pm 1.0
AUC	235.5 \pm 18.7	256.0 \pm 19.6

Evening dosing, but not morning dosing, resulted in a significant attenuation of the early morning dip in pulmonary function. FEV₁ (expressed as percent of daily best) demonstrated that significantly better spirometric responses occurred at 0400h and 0800h during evening dosing. Also, the early morning symptoms of wheezing, chest tightness and shortness of breath were significantly lower during evening dosing. The spirometric and symptomatic benefits of evening dosing were clearly perceived by the patients, and all of the patients who continued UNIPHYL post-study selected evening dosing.

13 NON-CLINICAL TOXICOLOGY

Carcinogenicity

No evidence of carcinogenicity was observed in 2-year oral gavage studies carried out in mice (oral doses of 7.5 - 150 mg/kg) and rats (oral doses of 7.5 - 75 mg/kg). Therefore, it is unlikely that theophylline poses a carcinogenic risk in humans.

Genotoxicity

Theophylline has been studied using the bacterial Ames test and with *in vivo* and *in vitro* cytogenetic tests. Theophylline showed limited evidence of mutagenicity in these tests. Mammalian cells *in vitro* and *in vivo* showed increased sister chromatid exchanges, but negative results were observed in all other assays.

Reproductive and Developmental Toxicity

In 13-week oral gavage studies conducted with 37.5, 75, and 150 mg/kg/day theophylline administered to mice and rats, significant effects on body and testicular weights were observed. Male mouse terminal body and testicular weights were reduced, and male rats had reduced testicular weights. Parallel studies in mice and rats with 0.1, 0.2 and 0.4% theophylline administered in the feed produced reduced body weights in male and female mice, but not rats. In rats, the average cauda epididymis weight was reduced at the high dose compared to a control group, and there was an increase in abnormal sperm.

In 14-week continuous breeding assays in mice using 125, 265, and 530 mg/kg/day (0.075, 0.15, and 0.30%) theophylline administered in the feed, negative effects on reproduction were observed. These included a dose-dependent decrease in the number of live pups produced per litter, a decrease in the number of litters produced per pair and a decrease in the live pup weight (high dose), a decrease in the percentage of pups born alive (mid and high doses), and an increase in the number of days needed to produce each litter (high dose).

The observed changes in fertility indicated the likelihood of embryotoxicity. Other studies have indicated that high dose theophylline can also have teratogenic effects. In mice, theophylline administered intraperitoneally during gestation produced cleft palate, aberrant digit formation, micrognathia, and micromelia in the offspring. Therefore theophylline should be considered to have the potential for developmental toxicity in humans.

READ THIS FOR SAFE AND EFFECTIVE USE OF YOUR MEDICINE
PATIENT MEDICATION INFORMATION

PrUNIPHYL®
Theophylline Sustained Release Tablets

Read this carefully before you start taking UNIPHYL and each time you get a refill. This leaflet is a summary and will not tell you everything about this drug. Talk to your healthcare professional about your medical condition and treatment and ask if there is any new information about UNIPHYL.

What is UNIPHYL used for?

UNIPHYL is used in adults and children 12 years of age and older for the treatment of breathing problems such as asthma, emphysema, chronic bronchitis and other problems that cause spasms in the airways.

How does UNIPHYL work?

UNIPHYL contains the medicine theophylline. Theophylline opens the airways in your lungs so that you may breathe more easily.

What are the ingredients in UNIPHYL?

Medicinal ingredient: theophylline

Non-medicinal ingredients: cetostearyl alcohol, hydroxyethyl cellulose, magnesium stearate, povidone, talc.

UNIPHYL comes in the following dosage forms:

Tablets: 400 mg and 600 mg

Do not use UNIPHYL if you:

- are allergic (hypersensitive) to theophylline, xanthines derivatives, the excipients used in these medicines or any non-medicinal ingredient found in UNIPHYL
- have heart disease
- have ulcers in your stomach or small intestine (peptic ulcers)
- are giving this medicine to your child and they are also taking ephedrine

To help avoid side effects and ensure proper use, talk to your healthcare professional before you take UNIPHYL. Talk about any health conditions or problems you may have, including if you:

- start or stop smoking
- have liver or kidney problems
- are over 55 years of age, particularly male, and with chronic lung disease
- have heart problems
- have high blood pressure
- have low levels of oxygen in your blood (hypoxemia)
- have the flu (influenza) or another virus or have recently had a flu shot
- eat a high carbohydrate, low protein diet
- have thyroid problems
- suffered from seizures (fits or convulsions)
- have a continuous high fever
- have cystic fibrosis

- were born with a condition called porphyria that affects your blood cells
- have prostate problems or trouble passing urine
- have a history of ulcers in your stomach or small intestine (peptic ulcers)
- are pregnant or thinking of becoming pregnant. UNIPHYL should not be used during pregnancy.
- are breastfeeding or thinking of breastfeeding. UNIPHYL passes into breastmilk.
- are 65 years of age or older

Other warnings you should know about:

UNIPHYL is not to be used in an emergency where rapid relief of breathing problems (bronchospasm) is required.

UNIPHYL is not recommended for use in children under 12 years of age.

Tell your healthcare professional about all the medicines you take, including any drugs, vitamins, minerals, natural supplements or alternative medicines.

The following may interact with UNIPHYL:

- alcohol
- antibiotics, medicines used to treat bacterial infections
- medicines used to treat viral infections, such as acyclovir
- medicines used to treat fungal infections such as fluconazole, terbinafine
- oral birth control (“The Pill”)
- aminoglutethimide, medicines used to treat conditions where the body makes too much of a certain hormone, for example in Cushing’s Syndrome and breast cancer
- medicines used to treat breathing problems, such as adenosine receptor antagonists, ephedrine, xanthines
- glucagon, used to treat low blood sugar
- medicines used during surgery such as halothane
- medicines used to treat cancer such as interferons, lomustine, methotrexate
- lithium, used to treat mental health problems
- if you have had or you are going to have the flu shot
- medicines for alcoholism, asthma, epilepsy, gout, heart problems, insomnia (sleeping problems), stomach ulcers, thyroid problems, tuberculosis
- medicines used to thin the blood and prevent blood clots
- St. John’s Wort (*Hypericum perforatum*), a herbal medicine used to treat depression
- thiabendazole, a medicine used for killing worms, for example threadworm and roundworm
- medicines used to treat depression called selective serotonin re-uptake inhibitors (SSRIs), such as fluvoxamine
- ritonavir, a medicine used to treat HIV infection
- roflumilast, a medicine used to treat the breathing problem called COPD. This medicine should not be taken with UNIPHYL.

How to take UNIPHYL:

- Take UNIPHYL exactly as directed by your healthcare professional. Do NOT change your dose without speaking to your healthcare professional.
- Take UNIPHYL with, or shortly after, your evening meal.
- Swallow your UNIPHYL tablets with a full glass of water while standing or sitting upright to make sure they reach your stomach quickly.

- Do NOT break, crush, chew or dissolve the tablets. The tablets can be split in half only if you have been told to do so by your healthcare professional.
- Your healthcare professional will do blood tests to make sure you are taking the dose that is right for you.

Usual dose:

The usual starting dose for adults, not already taking another medicine that contains theophylline, is 400 – 600 mg once a day.

For children 12 and older, and patients who are currently taking another medicine that contains theophylline, your dose will be decided by your healthcare professional.

Overdose:

Overdose of UNIPHYL may cause serious side effects such as fast or irregular heartbeat, seizures shock and even death. These may occur without warning and may not be preceded by less severe side effects such as nausea or restlessness.

If you think you have taken too much UNIPHYL, contact your healthcare professional, hospital emergency department or regional poison control centre immediately, even if there are no symptoms.

Missed Dose:

Missed doses can cause your symptoms of asthma or bronchitis to reappear. If this happens, contact your healthcare professional. If your symptoms become more severe and you have been taking your medication regularly, you should also contact your healthcare professional.

If you have missed a dose, and less than 6 hours have passed since , the missed dose take your regular dose immediately. If between 6 and 18 hours have passed, take ½ your regular dose immediately then go back to taking your full regular dose at your next scheduled dosing time. If more than 18 hours have since your missed dose, wait for your next scheduled dosing time and then go back to your regular dosage schedule.

What are possible side effects from using UNIPHYL?

These are not all the possible side effects you may feel when taking UNIPHYL. If you experience any side effects not listed here, contact your healthcare professional.

Side effects may include:

- stomach pain, upset stomach
- nausea
- vomiting
- loss of appetite
- headache
- dizziness
- trouble sleeping
- feeling restless, irritable or shaky
- rash, itching

Taking more UNIPHYL than you need can lead to side effects such as headache, restlessness, nausea or vomiting. If these side effects occur at any time while you are taking UNIPHYL, you should contact your healthcare professional before taking any additional doses.

During a fever or viral infection (e.g. the flu), your dose of UNIPHYL may need to be adjusted. If you develop side effects during such an infection, do not take your next dose of UNIPHYL and call your healthcare professional.

Serious side effects and what to do about them			
Symptom / effect	Talk to your healthcare professional		Stop taking drug and get immediate medical help
	Only if severe	In all cases	
UNCOMMON Severe Allergic Reaction: rash, hives, swelling of the face, lips, tongue or throat, difficulty swallowing or breathing			✓
Tremors: involuntary shaking of the body or arms and legs		✓	
Heart Problems: fast, strong or irregular heartbeat, feeling like your heart is skipping a beat (palpitations)		✓	
Seizures: fits or convulsions			✓
Trouble passing urine		✓	

If you have a troublesome symptom or side effect that is not listed here or becomes bad enough to interfere with your daily activities, talk to your healthcare professional.

<p>Reporting Side Effects</p> <p>You can report any suspected side effects associated with the use of health products to Health Canada by:</p> <ul style="list-style-type: none"> • Visiting the Web page on Adverse Reaction Reporting (https://www.canada.ca/en/health-canada/services/drugs-health-products/medeffect-canada/adverse-reaction-reporting.html) for information on how to report online, by mail or by fax; or • Calling toll-free at 1-866-234-2345. <p><i>NOTE: Contact your health professional if you need information about how to manage your side effects. The Canada Vigilance Program does not provide medical advice.</i></p>
--

Storage:

Store tablets at room temperature, below 30°C

Keep out of reach and sight of children.

If you want more information about UNIPHYL:

- Talk to your healthcare professional
- Find the full product monograph that is prepared for healthcare professionals and includes this Patient Medication Information by visiting the Health Canada website (<https://www.canada.ca/en/health-canada.html>); the manufacturer's website www.elvium.ca, or by calling 1-833-744-0005

This leaflet was prepared by Elvium Life Sciences

Last Revised: September 30, 2020