

PRODUCT MONOGRAPH  
INCLUDING CONSUMER INFORMATION

<sup>Pr</sup>**CYCLOBENZAPRINE**

Cyclobenzaprine Hydrochloride Tablets USP

10 mg

**Skeletal Muscle Relaxant**

**APOTEX INC.  
150 Signet Drive  
Toronto, Ontario  
M9L 1T9**

**Date of Preparation:  
December 10, 2020**

Submission Control No: **242000**

## Table of Contents

<b><u>PART I: HEALTH PROFESSIONAL INFORMATION</u></b> .....	3
<u>SUMMARY PRODUCT INFORMATION</u> .....	3
<u>INDICATIONS AND CLINICAL USE</u> .....	3
<u>CONTRAINDICATIONS</u> .....	3
<u>WARNINGS AND PRECAUTIONS</u> .....	4
<u>ADVERSE REACTIONS</u> .....	5
<u>DRUG INTERACTIONS</u> .....	6
<u>DOSAGE AND ADMINISTRATION</u> .....	7
<u>OVERDOSAGE</u> .....	7
<u>ACTIONS AND CLINICAL PHARMACOLOGY</u> .....	9
<u>STORAGE AND STABILITY</u> .....	10
<u>DOSAGE FORMS, COMPOSITION AND PACKAGING</u> .....	10
<b><u>PART II: SCIENTIFIC INFORMATION</u></b> .....	11
<u>PHARMACEUTICAL INFORMATION</u> .....	11
<u>CLINICAL TRIALS</u> .....	112
<u>DETAILED PHARMACOLOGY</u> .....	12
<u>TOXICOLOGY</u> .....	13
<u>REFERENCES</u> .....	16
<b><u>PART III: CONSUMER INFORMATION</u></b> .....	17

<sup>Pr</sup>**CYCLOBENZAPRINE**

Cyclobenzprine Hydrochloride Tablets USP

10 mg

**PART I: HEALTH PROFESSIONAL INFORMATION**

**SUMMARY PRODUCT INFORMATION**

<b>Route of Administration</b>	<b>Dosage Form / Strength</b>	<b>All Nonmedicinal Ingredients</b>
Oral	Tablet, 10 mg	carnauba wax, colloidal silicon dioxide, ferric oxide yellow, hydroxypropyl methylcellulose, lactose anhydrous, magnesium stearate, microcrystalline cellulose, polyethylene glycol, starch and titanium dioxide.

**INDICATIONS AND CLINICAL USE**

CYCLOBENZAPRINE (cyclobenzaprine hydrochloride) is indicated as an adjunct to rest and physical therapy for relief of muscle spasm associated with acute, painful musculoskeletal conditions.

Cyclobenzaprine should be used only for short periods (up to two or three weeks), because adequate evidence of effectiveness for more prolonged use is not available, and because muscle spasm associated with acute, painful musculoskeletal conditions is generally of short duration and specific therapy for longer periods is seldom warranted.

Cyclobenzaprine hydrochloride has not been found effective in the treatment of spasticity associated with cerebral or spinal cord disease, or in children with cerebral palsy.

**Geriatrics (>65 years of age):**

Evidence from clinical studies suggests that use in the geriatric population is associated with differences in safety or effectiveness (see DOSAGE AND ADMINISTRATION and ACTION AND CLINICAL PHARMACOLOGY - Pharmacokinetics, Elderly).

**Pediatrics (< 15 years of age):**

The safety and effectiveness of cyclobenzaprine hydrochloride in children below 15 years of age have not been established.

**CONTRAINDICATIONS**

- Patients who are hypersensitive to this drug or to any ingredient in the formulation or component of the container. For a complete listing, see the Dosage Forms, Composition and Packaging section of the product monograph.

- Concomitant use of monoamine oxidase (MAO) inhibitors, or within 14 days after their discontinuation (see DRUG INTERACTIONS).
- Acute recovery phase of myocardial infarction, and patients with arrhythmias, heart block or conduction disturbances, or congestive heart failure.
- Hyperthyroidism.

## **WARNINGS AND PRECAUTIONS**

### **General**

#### **Tricyclic Antidepressant-like Effects**

Cyclobenzaprine is structurally related to the tricyclic antidepressants, e.g., amitriptyline and imipramine. Tricyclic antidepressants have been reported to produce arrhythmias, sinus tachycardia, prolongation of the conduction time leading to myocardial infarction and stroke (see CONTRAINDICATIONS). Some of the more serious central nervous system (CNS) reactions noted with the tricyclic antidepressants have occurred in short-term studies of cyclobenzaprine for indications other than muscle spasm associated with acute musculoskeletal conditions, and usually at doses somewhat greater than those recommended for skeletal muscle spasm (see also ADVERSE REACTIONS).

Because of its atropine-like action, cyclobenzaprine should be used with caution in patients with a history of urinary retention, angle-closure glaucoma, increased intraocular pressure, and in patients taking anticholinergic medication.

#### **Carcinogenesis and Mutagenesis**

See TOXICOLOGY – Carcinogenicity.

#### **Neurologic**

**Serotonin Syndrome:** The development of a potentially life-threatening serotonin syndrome has been reported with cyclobenzaprine when used in combination with other drugs, such as selective serotonin reuptake inhibitors (SSRIs), serotonin norepinephrine reuptake inhibitors (SNRIs), tricyclic antidepressants (TCAs), tramadol, bupropion, meperidine, verapamil, or MAO inhibitors. Serotonin syndrome symptoms may include mental status changes (e.g., confusion, agitation, hallucinations), autonomic instability (e.g., diaphoresis, tachycardia, labile blood pressure, hyperthermia), neuromuscular abnormalities (e.g., tremor, ataxia, hyperreflexia, clonus, muscle rigidity), and/or gastrointestinal symptoms (e.g., nausea, vomiting, diarrhea).

Treatment with cyclobenzaprine and any concomitant serotonergic agents should be discontinued immediately if the above reactions occur and supportive symptomatic treatment should be initiated. If concomitant treatment with cyclobenzaprine and other serotonergic drugs is clinically warranted, careful observation is advised, particularly during treatment initiation or dosage increases. The concomitant use of cyclobenzaprine with MAO inhibitors is contraindicated (see CONTRAINDICATIONS).

Patients should be cautioned about the risk of serotonin syndrome with the concomitant use of cyclobenzaprine and other serotonergic drugs. Patients should be advised of the signs and

symptoms of serotonin syndrome, and be instructed to seek medical care immediately if they experience these symptoms.

### **Ophthalmologic**

**Angle-Closure Glaucoma:** Due to their atropine-like action, tricyclic antidepressants and other antidepressants can cause mydriasis which may trigger an angle-closure attack in a patient with anatomically narrow ocular angles. Caution should be used when cyclobenzaprine is prescribed for patients with untreated narrow angles. Open-angle glaucoma is not a risk factor for angle-closure glaucoma. Patients should be advised to seek immediate medical assistance if they experience eye pain, changes in vision or swelling or redness in or around the eye.

Cyclobenzaprine may enhance the effects of alcohol, barbiturates, and other CNS depressants.

Cyclobenzaprine, especially when used with alcohol or other CNS depressants, may impair mental and/or physical abilities required for performance of hazardous tasks, such as operating machinery or driving a motor vehicle.

### **Special Populations**

**Pregnant Women:** The safety of cyclobenzaprine administration in pregnant women has yet to be established. A clinical report showed that cyclobenzaprine use during late pregnancy should be considered a potential cause of early ductal closure. Cyclobenzaprine should not be used in women who are, or may become pregnant, unless the possible risk to the fetus is outweighed by the expected benefits for the mother.

**Nursing Women:** Because it is likely that cyclobenzaprine is excreted in milk, cyclobenzaprine hydrochloride should not be given to nursing mothers.

**Pediatrics (< 18 years of age):** The safety and effectiveness of cyclobenzaprine in children below 15 years of age have not been established.

**Geriatrics (> 65 years of age):** The plasma concentration of cyclobenzaprine is increased in the elderly (see ACTION AND CLINICAL PHARMACOLOGY, Pharmacokinetics, Elderly). The elderly may also be more at risk for CNS adverse events such as hallucinations and confusion, cardiac events resulting in falls or other sequelae, drug-drug and drug-disease interactions. For these reasons, in the elderly, cyclobenzaprine should be used only if clearly needed. In such patients cyclobenzaprine should be initiated with a reduced dose (e.g. reduced dose frequency) and titrated slowly upward. (See DOSAGE AND ADMINISTRATION - Special Population, and ACTION AND CLINICAL PHARMACOLOGY – Pharmacokinetics, Elderly).

**Patients with Impaired Hepatic Function:** The plasma concentration of cyclobenzaprine is generally higher in patients with hepatic impairment (see ACTION AND CLINICAL PHARMACOLOGY, Pharmacokinetics). These patients are generally more susceptible to drugs with potentially sedating effects, including cyclobenzaprine. Cyclobenzaprine should be used with caution in patients with mild hepatic impairment and is not recommended in those with moderate to severe impairment (see DOSAGE AND ADMINISTRATION).

### **ADVERSE REACTIONS**

The following adverse reactions have been reported with cyclobenzaprine hydrochloride tablets:

**Most frequent:** Drowsiness (39%), dry mouth (27%), dizziness (11%).

**Less frequent:** Increased heart rate (and several cases of tachycardia), weakness, fatigue, dyspepsia, nausea, paresthesia, unpleasant taste, blurred vision, and insomnia, convulsions and abnormal liver function (hepatitis, jaundice and cholestasis).

**Rare:** Serotonin syndrome, sweating, myalgia, dyspnea, abdominal pain, constipation, coated tongue, tremors, dysarthria, euphoria, nervousness, disorientation, confusion, headache, urinary retention, decreased bladder tonus, ataxia, depressed mood, hallucinations, and allergic reaction including rash, urticaria, and edema of the face and tongue.

The listing which follows includes other adverse reactions which have been reported with tricyclic compounds, but not with cyclobenzaprine hydrochloride when used in short-term studies in muscle spasm of peripheral origin. Some of these reactions were noted, however, when cyclobenzaprine hydrochloride was studied for other indications, usually in higher dosage. Pharmacologic similarities among the tricyclic drugs require that each of the reactions be considered when cyclobenzaprine hydrochloride is administered.

**Cardiovascular:** Hypotension, hypertension, palpitation, myocardial infarction, arrhythmias, heart block, stroke.

**CNS and Neuromuscular:** Confusional states, disturbed concentration, delusions, excitement, anxiety, restlessness, nightmares, numbness and tingling of the extremities, peripheral neuropathy, incoordination, seizures, alteration in EEG patterns, extrapyramidal symptoms, tinnitus, syndrome of inappropriate ADH (antidiuretic hormone) secretion.

**Anticholinergic:** Disturbance of accommodation, paralytic ileus, dilatation of urinary tract.

**Allergic:** Skin rash, urticaria, photosensitization, edema of face and tongue.

**Hematologic:** Bone marrow depression including agranulocytosis, leukopenia, eosinophilia, purpura, thrombocytopenia.

**Gastrointestinal:** Epigastric distress, vomiting, anorexia, stomatitis, diarrhea, parotid swelling, black tongue. Rarely, hepatitis (including altered liver function and jaundice).

**Endocrine:** Testicular swelling and gynecomastia in the male, breast enlargement and galactorrhea in the female. Increased or decreased libido, elevation and lowering of blood sugar levels.

**Other:** Weight gain or loss, urinary frequency, mydriasis, jaundice, alopecia.

**Withdrawal symptoms:** Abrupt cessation of treatment after prolonged administration may produce nausea, headache and malaise. These are not indicative of addiction.

## **DRUG INTERACTIONS**

### **Serious Drug Interactions**

- Cyclobenzaprine may have life-threatening interactions with MAO inhibitors (see also CONTRAINDICATIONS).
- Postmarketing cases of serotonin syndrome have been reported during combined use of cyclobenzaprine and other serotonergic drugs (see also WARNINGS AND PRECAUTIONS).

### **Drug-Drug Interactions**

Postmarketing cases of serotonin syndrome have been reported during combined use of cyclobenzaprine and other drugs, such as SSRIs, SNRIs, TCAs, tramadol, bupropion, meperidine, verapamil, or MAO inhibitors. (See WARNINGS AND PRECAUTIONS)

Cyclobenzaprine should not be used concomitantly with MAO inhibitors, or within 14 days after their discontinuation (see CONTRAINDICATIONS). Hyperpyretic crisis, severe seizures and deaths have occurred in patients receiving cyclobenzaprine (or structurally similar tricyclic antidepressants) concomitantly with MAO inhibitor drugs.

Based on its structural similarity to tricyclic antidepressants, cyclobenzaprine hydrochloride may enhance the effects of alcohol, barbiturates, and other CNS depressants, may enhance the seizure risk in patients taking tramadol, or may block the antihypertensive action of guanethidine and similarly acting compounds.

### **Drug-Lifestyle Interactions**

Cyclobenzaprine, especially when used with alcohol or other CNS depressants, may impair mental and/or physical abilities required for performance of hazardous tasks, such as operating machinery or driving a motor vehicle.

## **DOSAGE AND ADMINISTRATION**

### **Dosing Considerations**

- Cyclobenzaprine hydrochloride is not recommended for periods longer than two or three weeks (see INDICATIONS AND CLINICAL USE).
- Reduced (e.g. less frequent) dosing should be considered for patients who are elderly (>65 years of age) or have mild hepatic impairment (see WARNINGS AND PRECAUTIONS - Special Populations, and ACTION AND CLINICAL PHARMACOLOGY – Pharmacokinetics – Special Populations and Conditions).

### **Recommended Dose**

The usual dosage of cyclobenzaprine hydrochloride is 10 mg three times a day with range of 20 to 40 mg a day in divided doses. Dosage should not exceed 60 mg a day.

### **OVERDOSAGE**

Signs and symptoms of toxicity may develop rapidly after cyclobenzaprine overdose; hospital monitoring is required as soon as possible. Monitor patients for an extended period after ingestion as delayed absorption may occur due to the anticholinergic effects of cyclobenzaprine.

**Manifestations:** Based on the known pharmacologic actions of the drug, overdosage may cause drowsiness, agitation, tachycardia and other cardiac rhythm abnormalities such as bundle branch block, ECG evidence of impaired conduction, and congestive heart failure. Other manifestations of high doses may be dilated pupils, severe hypotension, temporary confusion, disturbed concentration, transient visual hallucinations, stupor, coma, hyperactive reflexes, muscle rigidity, convulsions, vomiting, or hyperpyrexia, in addition to anything listed under ADVERSE REACTIONS.

Changes in the electrocardiogram, particularly in QRS axis or width, are clinically significant indicators of cyclobenzaprine toxicity.

**Treatment:** There are no specific antidotes. Treatment is symptomatic and supportive. Obtain an ECG, and initiate cardiac monitoring and observation for signs of hypotension, CNS or respiratory depression, or seizures.

Maintain an open airway, adequate fluid intake, and regulation of body temperature. Standard medical measures should be used to manage circulatory shock and metabolic acidosis.

*Gastrointestinal decontamination / Elimination:* If early in therapy, empty the stomach as quickly as possible. The suitability of emesis, gastric lavage and activated charcoal for gastric decontamination depends upon the time since ingestion and upon the patient being asymptomatic, conscious and cooperative. These processes should be considered early in therapy, before absorption is complete. Absorption may be delayed due to the anticholinergic effects of cyclobenzaprine. Gastric decontamination should not delay hospitalization.

Dialysis is probably of no value due to low plasma concentrations of the drug.

*Cardiovascular:* An ECG should be taken and cardiac function closely monitored if there is any evidence of dysrhythmia. Close monitoring of cardiac function for not less than five days is advisable.

Serum alkalization, to a pH of 7.45 to 7.55, using intravenous sodium bicarbonate therapy/hyperventilation should be instituted for patients with dysrhythmias and/or QRS widening. Many antiarrhythmics are contraindicated; consult a poison control centre for current approaches to refractory dysrhythmia.

*CNS:* In patients with CNS depression, early intubation is advised because of the potential for abrupt deterioration. Anticonvulsants (e.g. benzodiazepines) may be given to control seizures. Consult a poison control centre if considering the use of physostigmine to treat life-threatening symptoms of cyclobenzaprine overdose that have been unresponsive to other therapies.

*Psychiatric Follow-up:* Since overdosage is often deliberate, patients may attempt suicide by other means during the recovery phase. Deaths by deliberate or accidental overdosage have occurred with this class of drugs.



For management of a suspected drug overdose, contact your regional Poison Control Centre.

## **ACTIONS AND CLINICAL PHARMACOLOGY**

Controlled clinical studies show that cyclobenzaprine hydrochloride improves the signs and symptoms of skeletal muscle spasm.

### **Mechanism of Action**

Cyclobenzaprine relieves skeletal muscle spasm of local origin without interfering with muscle function. Cyclobenzaprine has not been shown to be effective in muscle spasm due to central nervous system disease.

### **Pharmacodynamics**

Pharmacological studies in animals demonstrated a similarity between the effects of cyclobenzaprine and the structurally related tricyclic antidepressants, including reserpine antagonism, norepinephrine potentiation, potent peripheral and central anticholinergic effects, and sedation. Cyclobenzaprine caused slight to moderate increase in heart rate in animals.

### **Pharmacokinetics**

Cyclobenzaprine hydrochloride is well absorbed in man after oral administration, but there is a large intersubject variation in plasma levels. After oral or intravenous doses (10 mg) of <sup>14</sup>C-labelled cyclobenzaprine hydrochloride to human subjects, plasma levels of radioactivity were comparable. In addition, the excretion of radioactivity was similar after both routes (38 to 51 % in the urine; 14 to 15 % in the feces), suggesting that oral absorption is almost complete. The half-life varies from one to three days. In 14 human subjects, the co-administration of cyclobenzaprine hydrochloride and multiple doses of acetylsalicylic acid had no effect on cyclobenzaprine plasma levels or bioavailability.

Cyclobenzaprine hydrochloride is extensively metabolized in man. In the study with <sup>14</sup>C-labelled drug, about 1 % of the dose was excreted in the urine as unchanged cyclobenzaprine hydrochloride. The metabolites (probably glucuronides) were excreted as water soluble conjugates. After oral or intravenous administration of 40 mg of unlabelled cyclobenzaprine hydrochloride to two subjects, only 0.2 to 1.5 % of the dose was excreted as unchanged drug in the urine within 24 hours.

Cytochromes P-450 3A4, 1A2, and, to a lesser extent, 2D6, mediate N-demethylation, one of the oxidative pathways for cyclobenzaprine. Cyclobenzaprine is eliminated quite slowly, with an effective half-life of 18 hours (range 8-37 hours; n=18); plasma clearance is 0.7 L/min.

The plasma concentration of cyclobenzaprine is generally higher in the elderly and in patients with hepatic impairment.

## Special Populations and Conditions

**Geriatrics:** In a pharmacokinetic study in elderly individuals ( $\geq 65$  yrs old), mean ( $n=10$ ) steady-state cyclobenzaprine AUC values were approximately 1.7 fold (171.0 ng•hr/mL, range 96.1-255.3) higher than those seen in a group of eighteen younger adults (101.4 ng•hr/mL, range 36.1-182.9) from another study. Elderly male subjects had the highest observed mean increase, approximately 2.4 fold (198.3 ng•hr/mL, range 155.6-255.3 versus 83.2 ng•hr/mL, range 41.1-142.5 for younger males) while levels in elderly females were increased to a much lesser extent, approximately 1.2 fold (143.8 ng•hr/mL, range 96.1-196.3 versus 115.9 ng•hr/mL, range 36.1-182.9 for younger females).

In light of these findings, cyclobenzaprine therapy in the elderly should be initiated with lower (e.g. less frequent) dosing and titrated slowly upward.

**Hepatic Insufficiency:** In a pharmacokinetic study of sixteen subjects with hepatic impairment (15 mild, 1 moderate per Child-Pugh score), both AUC and  $C_{max}$  were approximately double the values seen in the healthy control group. Based on the findings, cyclobenzaprine should be used with caution in subjects with mild hepatic impairment; reduced (e.g. less frequent) daily doses should be considered. Due to the lack of data in subjects with more severe hepatic insufficiency, the use of cyclobenzaprine in subjects with moderate to severe impairment is not recommended.

## STORAGE AND STABILITY

Preserve in well-closed containers at room temperature 15°C to 30°C.

## DOSAGE FORMS, COMPOSITION AND PACKAGING

<b>Dosage Forms</b>	Tablets
<b>Description</b>	Yellow, D-shaped, biconvex, film-coated tablets, engraved "APO" over "10" on one side, other side plain.
<b>Composition</b>	<b>Medicinal ingredient:</b> 10 mg cyclobenzaprine hydrochloride <b>Nonmedicinal ingredients:</b> carnauba wax, colloidal silicon dioxide, ferric oxide yellow, hydroxypropyl methylcellulose, lactose anhydrous, magnesium stearate, microcrystalline cellulose, polyethylene glycol, starch and titanium dioxide.
<b>Packaging</b>	Bottles of 100, 250, 500 and 1000 tablets

## PART II: SCIENTIFIC INFORMATION

### PHARMACEUTICAL INFORMATION

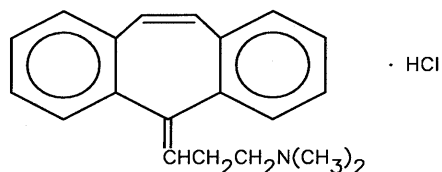
#### Drug Substance

**Common Name:** Cyclobenzaprine hydrochloride

**Chemical Name(s):**

- 1) 1-Propanamine, 3-5*H*-dibenzo-[*a,d*] cyclohepten-5-ylidene)-*N,N*-dimethyl-, hydrochloride
- 2) *N,N*-Dimethyl-5*H*-dibenzo [*a,d*]cycloheptene- $\Delta^5$ ,  $\Upsilon$ -propylamine hydrochloride

#### **Structural Formula:**



**Molecular Formula:** C<sub>20</sub>H<sub>21</sub>N•HCl

**Molecular Weight:** 311.85 g/mol

**Physicochemical properties:** Cyclobenzaprine hydrochloride is a white to off-white, odourless, crystalline powder. It is freely soluble in water, alcohol, and methanol; sparingly soluble in isopropyl alcohol; slightly soluble in chloroform and methylene chloride; practically insoluble in hydrocarbon solvents.

Cyclobenzaprine hydrochloride has a melting range between 215° and 219°, and a pKa of 8.47 at 25°C.

## CLINICAL TRIALS

### Comparative Bioavailability Study

A randomized, single dose (2 x 10 mg), two-way crossover comparative bioavailability study of Cyclobenzaprine 10 mg tablets (Apotex Inc.) and Flexeril® 10 mg tablets (Frosst, Division of Merck Frosst Canada Inc.) was conducted in healthy, adult, male subjects under fasting conditions. Comparative bioavailability data from 15 subjects that were included in the statistical analysis are presented in the following table.

**SUMMARY TABLE OF THE COMPARATIVE BIOAVAILABILITY DATA**

Cyclobenzaprine Hydrochloride (2 x 10 mg) Geometric Mean Arithmetic Mean (CV%)				
Parameter	Test <sup>1</sup>	Reference <sup>2</sup>	% Ratio of Geometric Means	90% Confidence Interval
AUC <sub>T</sub> (ng•hr/mL)	285 327 (54.3)	310 342 (42.9)	92.0	83.8 - 101.0
AUC <sub>i</sub> (ng•h/mL)	329 377 (54.3)	365 404 (43.1)	90.1	80.2 - 101.2
C <sub>max</sub> (ng/mL)	16.4 17.7 (43.2)	17.0 18.1 (34.0)	96.3	91.6 - 101.3
T <sub>max</sub> <sup>3</sup> (h)	4.07 (36.6)	4.47 (39.6)		
T <sub>1/2</sub> <sup>3</sup> (h)	21.6 (52.9)	29.2 (93.2)		

<sup>1</sup> CYCLOBENZAPRINE (cyclobenzaprine hydrochloride) tablets, 10 mg (Apotex Inc.)  
<sup>2</sup> Flexeril® (cyclobenzaprine hydrochloride) tablets, 10 mg (Frosst, Division of Merck Frosst Canada)  
<sup>3</sup> Expressed as arithmetic means (CV%) only.

## DETAILED PHARMACOLOGY

### Nonclinical

Pharmacological studies in animals showed a similarity between the effects of cyclobenzaprine and the structurally related tricyclic antidepressants, including reserpine antagonism, norepinephrine potentiation, potent peripheral and central anticholinergic effects, and sedation. Cyclobenzaprine caused slight to moderate increase in heart rate in animals.

Cyclobenzaprine hydrochloride has skeletal muscle spasmolytic activity in a number of experimental situations, including tetanus toxin hyperactivity in rabbits, supraspinal rigidity and ischemic cord (spinal) rigidity in cats, and muscle spasm in mice.

Animal studies indicate that cyclobenzaprine does not act at the neuromuscular junction or directly on skeletal muscle. Such studies show that cyclobenzaprine acts primarily within the

central nervous system at brain stem as opposed to spinal cord levels, although its action on the latter may contribute to its overall skeletal muscle relaxant activity. Evidence suggests that the net effect of cyclobenzaprine is a reduction of tonic somatic motor activity, influencing both gamma and alpha motor systems.

Studies in several species of laboratory test animals showed that cyclobenzaprine hydrochloride also possesses psychotropic activity (evidenced by tetrabenazine and reserpine antagonism in mice and rats, potentiation of norepinephrine pressor response in anesthetized dogs, typical ataraxic drug taming action in monkeys), significant anticholinergic and antihistaminic activity, weak adrenergic blocking and antiserotonin activity, and minor local anesthetic action. In dogs with Heidenhain gastric pouches, cyclobenzaprine did not stimulate gastric secretion.

Following either oral or intravenous doses of <sup>14</sup>C-labelled drug, peak plasma levels of radioactivity appeared in half an hour in rats, in two hours in dogs, and in two to four hours in monkeys. Radioactivity was excreted mainly in the feces in rats (59% of the dose vs 13% in the urine), mainly in the urine in dogs (55% vs 29% in the feces), and mostly in the urine in monkeys (75% vs 9% in the feces). Rats excreted 25% of an intravenous dose in the bile in six hours. Urinary radioactivity was present almost entirely as water-soluble conjugates, but some species differences were observed in preliminary extraction experiments. The excretion pattern was similar after oral and intravenous doses, suggesting that the drug is extensively absorbed. In rats, all tissues except red blood cells contained higher levels of radioactivity than did plasma two hours after an intravenous dose of labelled drug. Levels were particularly high in small intestine, lung, kidney, and liver. After 48 hours all levels had declined, but activity persisted in liver, kidney and red blood cells.

## TOXICOLOGY

### Nonclinical

**Acute Toxicity:** Oral LD<sub>50</sub> values were approximately 338 mg/kg in mice and 425 mg/kg in rats (27 and 68 times the MRHD on mg/m<sup>2</sup> basis, respectively). Signs of drug effects were similar in both species and included ataxia, decreased respiratory rate, sedation, flaccid hind legs, loss of the ear flick reflex, loss of righting reflex with swimming movements, and intermittent clonic convulsions. Death occurred 30 minutes to seven days following administration and was preceded by weight loss and lethargy. Dogs given single oral doses of 180 mg/kg (97 times the MRHD on mg/m<sup>2</sup> basis) or more by gavage developed ptialism, emesis, tremors, convulsions, and increased respiratory rate, and died within an hour. When the same dose was given in a capsule, dogs developed similar physical signs, followed by sedation, but recovered after three days, suggesting that the oral dosage form may influence the toxicity. The drug was more toxic to infant and weanling rats than to young adults.

**Subacute and Chronic Toxicity:** Signs of drug effect in subacute and chronic toxicity studies in rats, dogs, and monkeys were primarily related to the pharmacologic activity of the compound.

In a 67-week study with rats that received cyclobenzaprine at oral doses of 10 to 40 mg/kg/day (1.6 to 6.5 times the MRHD on mg/m<sup>2</sup> basis), there were findings in the liver consisting of midzonal vacuolation with lipidosis for males and midzonal and centrilobular hepatocytic enlargement for females. In addition, there were findings of centrilobular coagulative necrosis. In the higher dose groups, these microscopic changes were seen after 26 weeks and even earlier in rats that died prior to 26 weeks; at lower doses, these changes were not seen until after 26

weeks.

In a 26-week study with Cynomolgus monkeys that received cyclobenzaprine at oral of doses of 2.5, 5, 10, or 20 mg/kg/day, one monkey at 20 mg/kg/day (6.4 times the MRHD on mg/m<sup>2</sup> basis) was euthanized in week 17. Morbidity for this animal was attributed to findings of chronic pancreatitis, cholecystitis, cholangitis, and focal liver necrosis.

<b>Dose (mg/kg/day)*</b>	<b>Duration</b>	<b>Physical Signs</b>	<b>Postmortem Findings</b>
<b>RATS</b>			
5 mg	56 weeks	ptyalism	low incidence of midzonal hepatocytic vacuolation with lipidosis
10 mg	67 weeks	ptyalism, decreased activity, chromorhinorrhea, rales, frequent micturition, flaccidity, resistance to dosing, irritability	midzonal hepatocytic vacuolation with lipidosis, enlarged hepatocytes, centrilobular necrosis
20 or 40 mg	67 weeks	depressed body wt. gain, increased mortality	same as above. More frequent in males
60 mg	2 weeks	decreased physical activity and growth rate	no postmortem examinations
120 or 240 mg	2-8 doses	severe wt. loss, collapse, convulsions, death	no postmortem examinations
<b>DOGS</b>			
2 mg	53 weeks	minimal ptyalism, vomiting, dry nose, dry gums	no treatment-related changes
4 or 8 mg	53 weeks	same as above but more pronounced	small foci of gastric mucosal necrosis, hemorrhage, or inflammation in 3/16 dogs
10 mg	28 weeks	slight weight loss, slightly prominent P & T waves in ECG recordings	small focus of unilateral renal papillary edema in 1 of 4 dogs
60 or 120 mg	28 doses	tachycardia, sedation, ataxia, convulsions, death	no postmortem examination
<b>MONKEYS</b>			
2.5 mg	26 weeks	none observed	no treatment-related changes
5 or 10 mg	26 weeks	sleepiness (rare)	no treatment-related changes
20 mg	26 weeks	general debilitation (1/6 monkeys), sleepiness	chronic pancreatitis, cholecystitis, cholangitis, focal peritonitis (1/6 monkeys)

\* Based on a Maximum Recommended Human Dose of 60 mg/day (1.0 mg/kg/day), on a mg/m<sup>2</sup> basis:

- 10 mg/kg/day in mice is 0.8 times, and 20 mg/kg/day is 1.6 times the MRHD;
- 10 mg/kg/day in rats is 1.6 times, and 40 mg/kg/day is 6.4 times the MRHD;
- 10 mg/kg/day in dogs is 5.4 times, and 120 mg/kg/day is 65 times the MRHD;
- 10 mg/kg/day in monkeys and rabbits is 3.2 times, and 20 mg/kg/d is 6.4 times the MRHD.

**Carcinogenesis, Teratogenicity, Impairment of Fertility:** Cyclobenzaprine hydrochloride did not have any effect on the onset, incidence or distribution of neoplasms when given in oral doses of up to 10 mg/kg/day to mice for 81 weeks or to rats for 105 weeks (1 and 1.6 times the MRHD on a mg/m<sup>2</sup> basis, respectively).

Studies in mice and rabbits did not reveal any evidence of embryo lethality or teratogenicity at oral doses up to 20 mg/kg/day (respectively, 1.6 and 6.4 times the MRHD on a mg/m<sup>2</sup> basis).

In rats, doses of 5 mg or 10 mg/kg/day did not adversely affect the reproduction performance or fertility of males or females, or the growth and survival of their offspring. At doses of 20 mg/kg/day (3.2 times the MRHD on a mg/m<sup>2</sup> basis) there was decrease in litter size, decrease in size and survival of the pups, and reduced weight gain of mothers.

## REFERENCES

1. Product Monograph for FLEXERIL® (cyclobenzaprine hydrochloride tablets). Frosst Division of Merck Frosst Canada Inc. Kirkland, Quebec. March 8, 1988.
2. Product Monograph – TEVA-CYCLOBENZAPRINE (cyclobenzaprine hydrochloride tablets), 10 mg, Teva Canada Limited, Date of Revision: December 21, 2016, Submission Control No. 196055.



**PART III: CONSUMER INFORMATION**

**Pr**  
**CYCLOBENZAPRINE**  
(cyclobenzaprine hydrochloride)

**This leaflet is part III of a three-part "Product Monograph" and is a summary designed specifically for you to read. It will NOT tell you everything about CYCLOBENZAPRINE. Contact your doctor or pharmacist if you have any questions about the drug.**

**ABOUT THIS MEDICATION**

**What the medication is used for:**  
CYCLOBENZAPRINE (cyclobenzaprine hydrochloride) is a prescription medication used along with rest and physical therapy for relief of muscle spasm due to acute, painful musculoskeletal conditions.

**What it does:**  
CYCLOBENZAPRINE relieves skeletal muscle spasm without interfering with muscle function. Your doctor may choose to use this medication for other conditions not listed here. If you're unsure why you are taking this medication, contact your doctor.

**When it should not be used:**  
CYCLOBENZAPRINE should not be used by anyone who:

- is hypersensitive or allergic to the drug cyclobenzaprine or any ingredients of the medication (See section titled **What the nonmedicinal ingredients are**).
- is taking antidepressants known as monoamine oxidase (MAO) inhibitors, or has taken them in the past 14 days.
- recently had a heart attack.
- has heart rhythm problems (arrhythmias)
- has heart failure.
- has an overactive thyroid gland (hyperthyroidism).

CYCLOBENZAPRINE tablets should not be used for more than two or three weeks. It is not known if it is safe or effective in children below 15 years of age.

**What the medicinal ingredient is:**  
cyclobenzaprine hydrochloride.

**What the nonmedicinal ingredients are:**  
carnauba wax, colloidal silicon dioxide, ferric oxide yellow, hydroxypropyl methylcellulose, lactose anhydrous, magnesium stearate, microcrystalline cellulose, polyethylene glycol, starch and titanium dioxide.

**What dosage forms it comes in:**  
CYCLOBENZAPRINE comes as a tablet containing 10 mg of cyclobenzaprine hydrochloride.

**WARNINGS AND PRECAUTIONS**

BEFORE you use CYCLOBENZAPRINE talk to your doctor or pharmacist if you:

- have a history of eye problems including glaucoma
- have heart problems or have had a heart attack
- have liver problems
- have trouble emptying your bladder (urinary retention)
- are pregnant or plan to become pregnant. It is not known if this drug will harm your unborn baby.
- are breastfeeding or plan to breastfeed. It is not known if this drug passes into your breast milk. You and your healthcare provider should decide if you will take this drug or breastfeed.

Do not drive, operate machinery, or do other dangerous activities until you know how CYCLOBENZAPRINE affects you.

You should not drink alcohol until you know how CYCLOBENZAPRINE affects you. Taking this medication with alcohol or other medicines that depress your central nervous system can slow your thinking and physical response times.

CYCLOBENZAPRINE may affect the way other medicines work, and other medicines may affect how this drug works. **Tell your healthcare provider about all the medicines you take** including prescription and non-prescription medicines, vitamins, and herbal supplements. It is especially important to tell your doctor if you are

**IMPORTANT PLEASE READ**

taking a medication listed under Interactions with this Medication.

**INTERACTIONS WITH THIS MEDICATION**

Drugs that may interact with CYCLOBENZAPRINE include:

- alcohol, barbiturates and other medications that cause sedation
- MAO inhibitors (e.g., phenelzine, tranylcypromine)
- tricyclic antidepressants (e.g., amitriptyline, doxepin, imipramine, nortriptyline)
- medicines to treat depression, mood, anxiety, psychotic or thought disorders
- a pain medicine called tramadol or meperidine
- barbiturates or other medicines that depress your central nervous system (CNS depressants)
- a medicine that prevents nerve impulses (anticholinergic medicines)
- a medicine to help quit smoking called bupropion
- a blood pressure medicine called verapamil

If you are taking any of these drugs, speak with your doctor or pharmacist

**PROPER USE OF THIS MEDICATION**

Usual dose:

The usual dosage of CYCLOBENZAPRINE tablets is 10 mg three times a day; with a range of 20 to 40 mg a day in divided doses. Dosage should not exceed 60 mg a day.

Overdose:

High doses may cause temporary confusion, disturbed concentration, transient visual hallucinations, agitation, hyperactive reflexes, muscle rigidity, vomiting, or hyperpyrexia. Based on the known pharmacological actions of the drug, over dosage may cause drowsiness, hypothermia, tachycardia and other cardiac rhythm abnormalities such as bundle branch block, ECG evidence of impaired conduction, and congestive heart failure. Other manifestations may be dilated pupils, convulsions, severe hypotension, stupor, and coma.

If you think you have taken too much CYCLOBENZAPRINE, contact your healthcare professional, hospital emergency department or regional Poison Control Centre immediately, even if there are no symptoms.

Missed Dose:

Talk to your doctor if you miss a dose.

**SIDE EFFECTS AND WHAT TO DO ABOUT THEM**

These are not all the possible side effects you may feel when taking CYCLOBENZAPRINE. If you experience any side effects not listed here, contact your healthcare professional.

The most common side effects of CYCLOBENZAPRINE include:

- drowsiness
- dry mouth
- dizziness
- fatigue
- constipation
- nausea
- upset stomach

Serious side effects and what to do about them				
Symptom / effect		Talk to your healthcare professional		Stop taking drug and get immediate medical help
		Only if severe	In all cases	
<b>Less common</b>	Fast heartbeat (tachycardia), irregular or abnormal heartbeats (arrhythmias)			√
	Serotonin Syndrome - severe illness with some or all of: agitation, hallucinations, coma or other			

**IMPORTANT PLEASE READ**

**Serious side effects and what to do about them**

Symptom / effect		Talk to your healthcare professional		Stop taking drug and get immediate medical help
		Only if severe	In all cases	
<b>Rare or Uncommon</b>	changes in mental status; coordination problems or muscle twitching (overactive reflexes); fast heartbeat, high or low blood pressure; sweating or fever; nausea, vomiting, or diarrhea; muscle stiffness or tightness			√
<b>Rare or Uncommon</b>	Allergic reaction – including rash, hives, itching, and edema of the face and tongue, difficulty breathing.			√
<b>Rare</b>	Angle-closure Glaucoma [eye pain, changes in vision and swelling or redness in or around the eye]			√

If you have a troublesome symptom or side effect that is not listed here or becomes bad enough to interfere with your daily activities, talk to your healthcare professional.

**Reporting Side Effects**

You can report any suspected side effects associated with the use of health products to Health Canada by:

- Visiting the Web page on Adverse Reaction Reporting (<https://www.canada.ca/en/health-canada/services/drugs-health-products/medeffect-canada/adverse-reaction-reporting.html>) for information on how to report online, by mail or by fax; or
- Calling toll-free at 1-866-234-2345.

*NOTE: Contact your health professional if you need information about how to manage your side effects. The Canada Vigilance*

**HOW TO STORE IT**

Preserve in well-closed containers at room temperature 15°C to 30°C.

Keep out of reach and sight of children.

**MORE INFORMATION**

**If you want more information about CYCLOBENZAPRINE:**

- Talk to your healthcare professional
- Find the full product monograph that is prepared for healthcare professionals and includes this Consumer Information by visiting the Health Canada website (<https://health-products.canada.ca/dpd-bdpp/index-eng.jsp>). Find the Consumer Information on the manufacturer's website <http://www.apotex.ca/products>, or by calling 1-800-667-4708.

This leaflet was prepared by Apotex Inc., Toronto, Ontario, M9L 1T9.

Date prepared: December 10, 2020