

PRODUCT MONOGRAPH

PrDILTIAZEM-CD

Diltiazem hydrochloride
Once-a-day Controlled Delivery Capsules

Manufacturer's Standard

120 mg, 180 mg, 240 mg, and 300 mg

Antihypertensive Agent - Antianginal Agent

PRO DOC LTÉE
2925, boul. Industriel
Laval, Québec
H7L 3W9

Date of Revision:
December 17, 2020

Submission Control No. 246564

PrDILTIAZEM-CD
(Diltiazem hydrochloride)
120 mg, 180 mg, 240 mg, and 300 mg
Antihypertensive Agent/Antianginal Agent

ACTION AND CLINICAL PHARMACOLOGY

Diltiazem-CD capsules are formulations of diltiazem hydrochloride, which is a calcium ion influx inhibitor (calcium entry blocker or calcium ion antagonist).

Mechanism of Action

The therapeutic effect of this group of drugs is believed to be related to their specific cellular action of selectively inhibiting transmembrane influx of calcium ions into cardiac muscle and vascular smooth muscle. The contractile processes of these tissues are dependent upon the movement of extracellular calcium into the cells through specific ion channels. Diltiazem blocks transmembrane influx of calcium through the slow channel without affecting to any significant degree the transmembrane influx of sodium through the fast channel. This results in a reduction of free calcium ions available within cells of the above tissues. Diltiazem does not alter total serum calcium.

Angina:

The precise mechanism by which diltiazem relieves angina has not been fully determined but it is believed to be brought about largely by its vasodilator action.

In angina due to coronary spasm, diltiazem increases myocardial oxygen delivery by dilating both large and small coronary arteries and by inhibiting coronary spasm at drug levels which cause little negative inotropic effect. The resultant increases in coronary blood flow are accompanied by dose dependent decreases in systemic blood pressure and decreases in peripheral resistance.

In angina of effort it appears that the action of diltiazem is related to the reduction of myocardial oxygen demand. This is probably caused by a decrease in blood pressure brought about by the reduction of peripheral resistance and of heart rate.

Hypertension:

The antihypertensive effect of diltiazem is believed to be brought about largely by its vasodilatory action on peripheral blood vessels with resultant decrease in peripheral vascular resistance.

Hemodynamic and Electrophysiological Effects

Diltiazem produces antihypertensive effects both in the supine and standing positions. Resting heart rate is usually slightly reduced. During dynamic exercise, increases in diastolic pressure are inhibited while maximum achievable systolic pressure is usually unaffected. Heart rate at maximum exercise is reduced.

Studies to date, primarily in patients with normal ventricular function, have shown that cardiac output, ejection fraction and left ventricular end-diastolic pressure have not been affected.

Chronic therapy with diltiazem produces no change, or a decrease, in circulating plasma catecholamines. However, no increased activity of the renin-angiotensin-aldosterone axis has been observed. Diltiazem inhibits the renal and peripheral effects of angiotensin II.

In man intravenous diltiazem in doses of 20 mg prolongs AH conduction time and AV node functional and effective refractory periods by approximately 20%. Chronic oral administration of diltiazem in doses up to 540 mg per day has resulted in small increases in PR interval. Second degree and third degree AV block have been observed (see WARNINGS). In patients with sick sinus syndrome, diltiazem significantly prolongs sinus cycle length (up to 50% in some cases).

Pharmacokinetics

Diltiazem is well absorbed from the gastrointestinal tract and is subject to an extensive first-pass effect giving absolute bioavailability (compared to intravenous dosing) of about 40%.

Therapeutic blood levels appear to be in the 50-200 ng/mL range and the plasma elimination half-life (beta-phase) following single or multiple drug administration is approximately 3.5 to 6.0 hours. *In vitro* human serum binding studies revealed that 70 to 80% of diltiazem is bound to plasma proteins. Diltiazem undergoes extensive hepatic metabolism in which only 2-4% of the drug appears unchanged in the urine and 6-7% appears as metabolites. The metabolic pathways of diltiazem include N- and O-demethylation (via cytochrome P-450), deacetylation (via plasma and tissue esterases), in addition to conjugation (via sulfation and glucuronidation). *In vitro* studies have demonstrated that CYP 3A4 is the principal CYP isoenzyme involved in N-demethylation. The major metabolite, desacetyl diltiazem, is present in the plasma at levels 10-20% of the parent drug and is 25-50% as potent as diltiazem in terms of coronary vasodilation.

Diltiazem is considered to be a moderate inhibitor of CYP3A4, increasing the exposure of oral midazolam, a selective substrate of CYP3A4, by 3.8-fold. In an *in vitro* study, diltiazem was both a substrate and inhibitor of the efflux transporter, P-glycoprotein (P-gP). Co-administration of diltiazem with the P-gp probe substrate, digoxin, increased plasma concentrations and exposure of digoxin by approximately 20% and 40%, respectively.

Single oral doses of 30 to 120 mg of diltiazem hydrochloride immediate release tablets result in detectable plasma levels within 30 to 60 minutes and peak plasma levels 2 to 4 hours after drug administration. There is a departure from linearity of accumulation of diltiazem when diltiazem HCl tablets are administered to steady-state in normal subjects. A 240 mg daily dose (60 mg

QID) gave plasma levels 2.3 times higher than a 120 mg daily dose (30 mg QID) and a 360 mg daily dose (90 mg QID) had levels 1.7 times higher than the 240 mg daily dose.

Diltiazem Hydrochloride Controlled Delivery (Once-a-Day) Capsules: More than 95% of drug is absorbed from the diltiazem hydrochloride controlled delivery capsules formulation. A single 360 mg dose of the capsule results in detectable plasma levels within 2 hours and peak plasma levels between 10 and 14 hours. When diltiazem hydrochloride controlled delivery capsules was taken with a high fat content breakfast, the extent of diltiazem absorption was not affected but was delayed. Dose-dumping does not occur. The apparent elimination half-life after single or multiple dosing is 5 to 8 hours. A departure from linearity similar to that seen with diltiazem hydrochloride tablets is observed. As the dose of diltiazem hydrochloride controlled delivery capsules is increased from a daily dose of 120 mg to 240 mg, there is an increase in the area under the curve (AUC) of 2.7 times. When the dose is increased from 240 mg to 360 mg there is an increase in AUC of 1.6 times.

A study which compared patients with normal hepatic function to liver cirrhosis patients noted an increase in half-life and a 69% increase in bioavailability in the hepatically impaired patients. A single dose study in patients with severely impaired renal function showed no difference in the half-life of diltiazem as compared to patients with normal renal function. (See PRECAUTIONS and DOSAGE AND ADMINISTRATION).

Summary Tables of the Comparative Bioavailability Studies

Table 1: Pharmacokinetic Parameters for the Comparative Bioavailability Study of Pro Doc Ltée Diltiazem HCl Controlled Delivery (CD) Capsule and Valeant, formerly HMR Canada Inc., Cardizem® CD Following Administration of a Single, Oral 300 mg Dose Under Fasting Conditions.

Parameter	Geometric Mean and Arithmetic Mean (CV)		Ratio of Geometric Means (%) (CI)
	Test*	Reference†	
AUC_T (ng.h/mL)	2 374.7 2 676.0 (46%)	2 324.9 2 632.1 (44.8%)	102%
AUC_I (ng.h/mL)	2 456.5 2 761.6 (46.8%)	2417.3 2 734.3 (45.3%)	102%
C_{max} (ng/mL)	127.52 139.32 (39.2%)	102.33 132.54 (40.9%)	106%
T_{max}§ (h)	10.317 (50.1%)	8.850 (52.0%)	--
T_½ (h)	6.8295 (44.2%)	7.4600 (35.9%)	--

§ expressed as arithmetic mean (CV%) only

|| expressed as arithmetic mean (CV%) only

* Diltiazem-CD

† Cardizem CD (Valeant, formerly HMR Canada Inc.) purchased in Canada.

Table 2: Pharmacokinetic Parameters for the Comparative Bioavailability Study of Pro Doc Ltée Diltiazem HCl Controlled Delivery (CD) Capsule and Valeant, formerly HMR Canada Inc., Cardizem® CD Following Administration of a Single, Oral 300 mg Dose Under Fed Conditions.

Parameter	Geometric Mean and Arithmetic Mean (CV)		Ratio of Geometric Means (%) (CI)
	Test*	Reference†	
AUC_T (ng.h/mL)	2 519.6 2 690.7 (41.9%)	2 290.6 2 435.0 (34.4%)	110%
AUC_I (ng.h/mL)	2572.9 2 746.0 (41.5%)	2343.8 2 492.3 (34.3%)	110%
C_{max} (ng/mL)	136.17 143.93 (40.0%)	124.30 131.12 (36.3%)	110%
T_{max}§ (h)	12.417 (36.4%)	13.375 (53.8%)	--
T_½ (h)	5.3777 (14.7%)	5.2797 (17.3%)	--

§ expressed as arithmetic mean (CV%) only

|| expressed as arithmetic mean (CV%) only

* Diltiazem-CD

† Cardizem CD (Valeant, formerly HMR Canada Inc.) purchased in Canada.

Table 3: Pharmacokinetic Parameters for the Comparative Bioavailability Study of Pro Doc Ltée Diltiazem HCl Controlled Delivery (CD) Capsule and Valeant, formerly HMR Canada Inc., Cardizem® CD Following a Multiple Dose Administration of a 300 mg Dose Under Fasting Conditions.

Parameter	Geometric Mean and Arithmetic Mean (CV)		Ratio of Geometric Means (%) (CI)
	Test*	Reference†	
AUC_T (ng.h/mL)	3 176.7 3 393.8 (39.5%)	3 061.5 3 349.2 (40.6%)	104%
AUC_I (ng.h/mL)	--	--	--
C_{MAX} (ng/mL)	218.00 2 32.84 (40.5%)	218.24 236.18 (37.5%)	100%
T_{MAX}§ (h)	8.340 (52.4%)	6.720 (43.8%)	--
T_½ (h)	--	---	--
C_{MIN} (ng/ml)	71.11 83.77 (54.0%)	72.39 84.00 (54.7%)	98%
Fluctuation (%)	109.53 (28.1%)	113.78 (21.9%)	--

§ expressed as arithmetic mean (CV%) only

|| expressed as arithmetic mean (CV%) only

* Diltiazem-CD

† Cardizem CD (Valeant formerly, HMR Canada Inc.) purchased in Canada.

INDICATIONS AND CLINICAL USE

Angina

1. Diltiazem-CD is indicated for the management of chronic stable angina (effort-associated angina) without evidence of vasospasm in patients who remain symptomatic despite adequate doses of beta-blockers and/or organic nitrates or who cannot tolerate those agents.
2. Diltiazem-CD may be tried in combination with beta-blockers in chronic stable angina patients with normal ventricular function. When such concomitant therapy is introduced, patients must be monitored closely (see WARNINGS).
3. Since the safety and efficacy of diltiazem hydrochloride controlled delivery capsules in the management of unstable or vasospastic angina has not been substantiated, use of this formulation for these indications is not recommended.

Hypertension

Diltiazem-CD is indicated for the treatment of mild to moderate essential hypertension. Diltiazem-CD should normally be used in those patients in whom treatment with diuretics or beta-blockers has been ineffective, or has been associated with unacceptable adverse effects.

Diltiazem-CD capsule can be tried as an initial agent in those patients in whom the use of diuretics and/or beta-blockers is contraindicated, or in patients with medical conditions in which these drugs frequently cause serious adverse effects.

Safety of concurrent use of Diltiazem-CD with other antihypertensive agents has not been established.

CONTRAINDICATIONS

Diltiazem HCl is contraindicated:

- In patients with sick sinus syndrome except in the presence of a functioning ventricular pacemaker;
- In patients with second or third degree AV block;
- In patients with known hypersensitivity to diltiazem or to any of the excipients;
- In patients with hypotension (less than 90 mmHg systolic);
- In patients with severe bradycardia (below 40 beats per minute)
- In myocardial infarction patients, who have left ventricular failure manifested by pulmonary congestion;

- In pregnancy and in women of child-bearing potential. Fetal malformations and adverse effects on pregnancy have been reported in animals. In repeated dose studies a high incidence of vertebral column malformations was present in the offspring of mice receiving more than 50 mg/kg of diltiazem HCl orally. Nursing mothers: see PRECAUTIONS.

In the offspring of mice receiving a single oral dose of 50 or 100 mg/kg on day 12 of gestation, the incidence of cleft palate and malformed extremities was significantly higher. Vertebral malformations were most prevalent when they received the drug on day 9. In rats, a significantly higher fetal death rate was present when 200 and 400 mg/kg were given orally on days 9 to 14 of gestation. Single oral dose studies in rats resulted in a significant incidence of skeletal malformations in the offspring of the group receiving 400 mg/kg on day 11. In rabbits, all pregnant dams receiving 70 mg/kg orally from day 6-18 of gestation aborted; at 35 mg/kg, a significant increase in skeletal malformations was recorded in the offspring (see REPRODUCTION STUDIES).

- With concomitant use of dantrolene infusion.
- With concomitant use of ivabradine

WARNINGS

Cardiac Conduction

Diltiazem prolongs AV node refractory periods without significantly prolonging sinus node recovery time, except in patients with sick sinus syndrome. This effect may rarely result in abnormally slow heart rates (particularly in patients with sick sinus syndrome) or second- or third-degree AV block (6 of 1208 patients or 0.5%).

First degree AV block was observed in 5.8% of patients receiving diltiazem hydrochloride controlled delivery capsules (see ADVERSE REACTIONS).

Concomitant use of diltiazem with agents known to affect cardiac conduction (such as beta-blockers, digitalis or amiodarone) may result in additive effects on cardiac conduction (see PRECAUTIONS, Drug Interactions).

Prior to general anesthesia, the anesthetist must be informed of ongoing diltiazem treatment. Depression of cardiac contractility, conductivity and automaticity, as well as the vascular dilatation associated with anesthetics may be potentiated by calcium channel blockers (see Drug Interactions).

Congestive Heart Failure

Because diltiazem has a negative inotropic effect *in vitro* and it affects cardiac conduction, the drug should only be used with caution and under careful medical supervision in patients with congestive cardiac failure. (See also CONTRAINDICATIONS).

Use with Beta-blockers

The combination of diltiazem and beta-blockers warrants caution since in some patients additive effects on heart rate, AV conduction, blood pressure or left ventricular function have been observed. Close medical supervision is recommended.

Generally, diltiazem should not be given to patients with impaired left ventricular function while they receive beta-blockers. However, in exceptional cases when, in the opinion of the physician, concomitant use is considered essential, such use should be instituted gradually in a hospital setting.

Diltiazem gives no protection against the dangers of abrupt beta-blocker withdrawal and such withdrawal should be done by the gradual reduction of the dose of beta-blocker.

Acute Kidney Injury

Cases of acute renal failure have been reported in patients using diltiazem at therapeutic dosages. Patients at greater risk appear to have reduced left ventricular function, severe bradycardia or severe hypotension.

Hypotension

Since diltiazem lowers peripheral vascular resistance, decreases in blood pressure may occasionally result in symptomatic hypotension. In patients with angina or arrhythmias using antihypertensive drugs, the additional hypotensive effect of diltiazem should be taken into consideration.

Patients with Myocardial Infarction

Use of immediate release diltiazem at 240 mg per day started 3 to 15 days after a myocardial infarction was associated with an increase in cardiac events in patients with pulmonary congestion, and no overall effect on mortality. Although there has not been a study of diltiazem hydrochloride controlled delivery capsules in acute myocardial infarction reported, their use may have effects similar to those of immediate release diltiazem in acute myocardial infarction.

Acute Hepatic Injury

In rare instances, significant elevations in alkaline phosphatase, CPK, LDH, SGOT, SGPT and symptoms consistent with acute hepatic injury have been observed. These reactions have been reversible upon discontinuation of drug therapy. Although a causal relationship to diltiazem has not been established in all cases, a drug induced hypersensitivity reaction is suspected (see ADVERSE REACTIONS). As with any drug given over prolonged periods, laboratory parameters should be monitored at regular intervals.

PRECAUTIONS

Dermatological Events

Dermatological events (see ADVERSE REACTIONS) may be transient and may disappear despite continued use of diltiazem. However, skin eruptions progressing to erythema multiforme and/or exfoliative dermatitis have also been infrequently reported. Should a dermatologic reaction persist, the drug should be discontinued.

Impaired Hepatic or Renal Function

Diltiazem should be used with caution in patients with renal or hepatic impairment because diltiazem is extensively metabolized by the liver and excreted by the kidney and in bile, the monitoring of laboratory parameters of renal or hepatic function is recommended, and cautious dosage titration is recommended in patients with impaired hepatic or renal function. (see ADVERSE REACTIONS).

Gastrointestinal system

Diltiazem has an inhibitory effect on intestinal motility. Therefore, it should be used with caution in patients at risk of developing an intestinal obstruction.

Nervous System

Calcium channel blocking agents, such as diltiazem, may be associated with mood changes, including depression (see Drug Interactions and ADVERSE REACTIONS)

Respiratory System

The use of diltiazem may induce bronchospasm, including asthma aggravation, especially in patients with pre-existing bronchial hyper-activity. Cases have been reported after dose increase. Patients should be monitored for signs and symptoms of respiratory impairment during diltiazem therapy.

Nursing Mothers

Diltiazem has been reported to be excreted in human milk. One report with oral diltiazem suggests that concentrations in breast milk may approximate serum levels. Since diltiazem safety in newborns has not been established, it should not be given to nursing mothers.

Patients with Diabetes

Careful monitoring is necessary to detect new onset of diabetes or in patients with diabetes mellitus (type 1 or type 2) due to an increase in blood glucose.

Pediatric Use

The safety and effectiveness of diltiazem in children has not yet been established.

Use in the Elderly

Administration of diltiazem to elderly patients (over or equal to 65 years of age) requires caution. The incidence of adverse reactions is approximately 13% higher in this group. Those adverse reactions which occur more frequently include: peripheral edema, bradycardia, palpitation, dizziness, rash and polyuria. Therefore, particular care in titration is advisable (see DOSAGE AND ADMINISTRATION).

DRUG INTERACTIONS

Due to the potential for additive effects, caution and careful titration are warranted in patients receiving diltiazem hydrochloride controlled delivery capsules concomitantly with other agents known to affect cardiac contractility and/or conduction.

Cytochrome P450 System

As with all drugs, care should be exercised when treating patients with multiple medications. Diltiazem undergoes biotransformation mainly by the CYP3A4 isoenzyme of the cytochrome P450 system and is a substrate of the P-glycoprotein (P-gp). Diltiazem has also been shown to be an inhibitor of CYP3A4 (moderate) and P-gp.

Co-administration of diltiazem with other drugs which follow the same route of biotransformation or are inhibitors or inducers of these enzymes may result in altered bioavailability of diltiazem or these drugs. Dosages of similarly metabolized drugs, particularly those of low therapeutic ratio, and especially in patients with renal and/or hepatic impairment, may require adjustment when starting or stopping concomitantly administered diltiazem to maintain optimum therapeutic blood levels.

Drug-Drug Interactions

Table 1- Established or Potential Drug-Drug Interactions

Agent	Ref	Effect	Clinical Comment
Acetylsalicylic acid or antiplatelet drugs such as ticagrelor, cilostazol, clopidogrel, dipyridamole, ticlopidine	T	↑ bleeding	<p>Because of the increased risk of bleeding due to potential or observed additive effect on platelet aggregation combined with vasodilation or prevention of the normal vasoconstrictive response to bleeding, the concomitant administration of acetylsalicylic acid or antiplatelet drugs such as ticagrelor, cilostazol and clopidogrel with diltiazem should be undertaken with caution. Besides, a drug interaction is also plausible with dipyridamole and ticlopidine.</p> <p>Dosage adjustment and safety monitoring may be necessary when co-administration cannot be avoided.</p>
Alpha-antagonists	T	↑ antihypertensive	Concomitant treatment with α -antagonists may produce or aggravate hypotension. The combination of diltiazem with an α -antagonist should be considered only with the strict monitoring of blood pressure.
Amiodarone, Digoxin	CT	↑ bradycardia	Severe conduction system abnormalities including heart block of varying degree, sinus arrest and a low cardiac output state of life threatening severity have been reported following concomitant use of diltiazem and amiodarone. These drugs may also have additive effects on cardiac conduction and contractility. Increased risk of bradycardia is seen with amiodarone. Caution is required when these are combined with diltiazem, particularly in elderly subjects and when high doses are used.
Anaesthetics	T	↑ depression of cardiac contractility, conductivity, and automaticity	The depression of cardiac contractility, conductivity, and automaticity as well as the vascular dilation associated with anesthetics may be potentiated by calcium channel blockers. When used concomitantly, anesthetics and calcium channel blockers should be titrated carefully.
Benzodiazepines (midazolam, triazolam)	CT	↑ benzodiazepines plasma concentration	Diltiazem significantly increases peak plasma levels and the elimination half-life of triazolam and midazolam. Special care (close medical

Agent	Ref	Effect	Clinical Comment
			supervision and/or dose adjustment) should be taken when prescribing short-acting benzodiazepines metabolized by CYP3A4 in patients using diltiazem.
Beta-Blockers	T, CT	Arrhythmic effect ↑ propranolol exposure	<p>The concomitant administration of diltiazem with beta adrenergic blocking drugs warrants caution because of rhythm disturbances occurrence, and requires close medical supervision and ECG monitoring, particularly at the beginning of treatment. Such an association may have an additive effect on heart rate, on sino-atrial and AV conduction or on blood pressure (e.g. pronounced bradycardia, sinus arrest, and heart failure) (see WARNINGS and PRECAUTIONS). Appropriate dosage adjustments may be necessary. A study in five normal subjects showed that diltiazem increased propranolol bioavailability by 50%.</p> <p>An increased risk of depression has been reported when diltiazem is co-administered with beta-blockers (see ADVERSE REACTIONS)</p>
Carbamazepine	CT	↑ carbamazepine serum level	Concomitant administration of diltiazem with carbamazepine has been reported to result in elevated serum levels of carbamazepine (40% to 72% increase) resulting in toxicity in some cases. Patients receiving these drugs concurrently should be monitored for a potential drug interaction and dose adjustment of carbamazepine and/or diltiazem may be necessary.
Anti-H ₂ agents (cimetidine, ranitidine)	CT	↑ diltiazem exposure	A study in six healthy volunteers has shown a significant increase in peak diltiazem plasma levels C _{max} (58%) and area-under-the-curve AUC (53%) after a 1-week course of cimetidine at 1200 mg per day and a single dose of oral diltiazem 60 mg. Ranitidine produced smaller, nonsignificant increases. Patients currently receiving diltiazem therapy should be carefully monitored for a change in pharmacological effect when initiating and discontinuing therapy with cimetidine. An adjustment in the diltiazem dose may be warranted.

Agent	Ref	Effect	Clinical Comment
Corticosteroids (methylprednisolone)	T	↑ P-gp plasma concentration	Inhibition of methylprednisolone metabolism (CYP3A4) and inhibition of P-glycoprotein by diltiazem. Therefore, patients should be monitored when initiating methylprednisolone treatment and a dose adjustment may be necessary.
Cyclosporine	CT	↑ cyclosporine concentration in specific population	Concomitant administration of diltiazem and cyclosporine has resulted in an increase in cyclosporine concentrations. A pharmacokinetic interaction between diltiazem and cyclosporine has been observed during studies involving renal and cardiac transplant patients. In renal and cardiac transplant recipients, a reduction of cyclosporine dose ranging from 15% to 48% was necessary to maintain cyclosporine trough concentrations similar to those seen prior to the addition of diltiazem. If these agents are to be administered concurrently, cyclosporine concentrations should be monitored, especially when diltiazem therapy is initiated, adjusted or discontinued. Downward titration of the cyclosporine dose may be necessary. The effect of cyclosporine on diltiazem plasma concentrations has not been evaluated.
Dantrolene (infusion)	CT	Ventricular fibrillation effect in animals observed	Lethal ventricular fibrillation is regularly observed in animals when intravenous verapamil and dantrolene are administered concomitantly. The combination of calcium-channel antagonist and dantrolene is therefore potentially dangerous (see CONTRAINDICATIONS).
Digitalis	CT	↑ digoxin serum level	Diltiazem and digitalis glycosides may have an additive effect in prolonging AV conduction. In clinical trials, concurrent administration of diltiazem and digoxin has resulted in increases in serum digoxin levels with prolongation of AV conduction. This increase may result from a decrease in renal clearance of digoxin. Patients on concomitant therapy, especially those with renal impairment, should be carefully monitored. The dose of digoxin may need downward adjustment.

Agent	Ref	Effect	Clinical Comment
Inducers of CYP3A4 (e.g. avasimibe, carbamazepine, phenytoin, rifampin)	T	↓ diltiazem plasma concentration	Diltiazem should be used with caution together with CYP3A4 inducers and dose adjustment may be necessary to maintain efficacy. Hence, monitoring of therapy is required.
Lithium	T	↑ Lithium neurotoxicity	Risk of increased in lithium-induced neurotoxicity.
Other antiarrhythmic agents	T	↑ antiarrhythmic effect	Since diltiazem has antiarrhythmic properties, its concomitant prescription with other antiarrhythmic agents is not recommended (additive risk of increased cardiac adverse effects). This combination should only be used under close clinical and ECG monitoring.
Phenytoin	C	↑ phenytoin plasma concentration	When co-administered with phenytoin, diltiazem may increase phenytoin serum concentration, in some cases, two to three fold, as reported in spontaneous case reports. Signs and symptoms of phenytoin toxicity include nystagmus, ataxia, dysarthria, tremor, hyperreflexia, somnolence, drowsiness, lethargy, slurred speech, blurred vision, nausea and vomiting. Caution should be exercised when diltiazem and phenytoin are co-administered. It is recommended that the phenytoin serum concentration be monitored.
Rifampicin	CT	↓ diltiazem plasma concentration	Administration of diltiazem with rifampicin markedly reduced plasma diltiazem concentrations and the therapeutic effect of diltiazem. Patients should be carefully monitored when initiating or discontinuing rifampicin therapy.
Short and Long-Acting Nitrates	T	↑ vasodilating effect	Increased hypotensive effects and faintness (additive vasodilating effects) are observed when nitrates are co-administered with Calcium Channels Inhibitors. In patients treated with calcium antagonists, the prescription of nitrate derivatives should only be carried out gradually at increasing doses due to increased hypotensive effects.
Statins (lovastatin, pravastatin)	CT	↑ lovastatin exposure No effect on pravastatin	In a ten-subject study, co-administration of diltiazem with lovastatin resulted in a 3-4 times increase in mean lovastatin AUC and C _{max} versus lovastatin alone; no change in pravastatin AUC and C _{max} was observed during

Agent	Ref	Effect	Clinical Comment
			diltiazem co-administration. Diltiazem plasma levels were not significantly affected by lovastatin or pravastatin.
Strong inhibitors of CYP3A4 (e.g., ketoconazole, itraconazole, ritonavir, clarithromycin)	T	↑ diltiazem plasma concentration	Strong CYP3A4 inhibitors may significantly increase the plasma concentrations of diltiazem. Diltiazem should therefore be used with caution together with these agents and monitoring of therapy is required. Appropriate dosage adjustment of diltiazem may be necessary.
Moderate CYP3A4 inhibitors (ivabradine) (see CONTRAINDICATIONS, WARNINGS and PRECAUTIONS, CLINICAL PHARMACOLOGY)		Concomitant use with ivabradine is contraindicated due to the additional heart rate lowering effect of diltiazem to ivabradine	Avoid concomitant use of moderate CYP3A4 inhibitors when using ivabradine. Examples of moderate CYP3A4 inhibitors include diltiazem, verapamil, and grapefruit juice. Additive effects are caused by PK and PD interactions between diltiazem and ivabradine. Both diltiazem and ivabradine are heart rate lowering substances. Moreover, diltiazem increases ivabradine exposure (2 to 3-fold increase in AUC) through CYP 3A4 inhibition. This could lead to an exacerbated reduction in patient's heart rate (see CONTRAINDICATIONS).
Theophylline	T	↑ antihypertensive	Increased antihypertensive effects.
X-Ray Contrast Media	T	↑ hypotension ↑ bradycardia ↑ heart conduction disorder	Cardiovascular effects of an intravenous bolus of an X-ray contrast media, such as hypotension, bradycardia and heart conduction disorders, may be increased in patients treated with diltiazem. Special caution is required in patients receiving concomitantly diltiazem and X-ray contrast media.

Legend: C=Case Study, CT=Clinical Trial, T=Theoretical

Calcium Antagonists (verapamil, nifedipine): Limited clinical experience suggests that in certain severe conditions not responding adequately to verapamil or to nifedipine, using diltiazem in conjunction with either of these drugs may be beneficial.

Drug-Food Interactions

Alcohol

Alcohol can exhibit hypotensive effects. Co-administration with antihypertensive agents including diltiazem may result in additive effects on blood pressure and orthostasis. Patients should be advised that alcohol may potentiate the hypotensive effects of diltiazem, especially during the initiation of therapy and following a dosage increase. Caution should be exercised

when rising from a sitting or recumbent position, and patients should notify their physician if they experience dizziness, lightheadedness, syncope, orthostasis, or tachycardia.

Grapefruit Juice

Grapefruit juice may increase the plasma concentrations of orally administered diltiazem in some patients. The proposed mechanism is inhibition of CYP450 3A4-mediated first-pass metabolism in the gut wall by certain compounds present in grapefruit.

Patients who regularly consume grapefruit or grapefruit juice should be monitored for increased adverse effects of diltiazem such as headache, irregular heartbeat, edema, unexplained weight gain, and chest pain. Grapefruit and grapefruit juice should be avoided if an interaction is suspected.

Multivitamins with minerals

Calcium-containing products may decrease the effectiveness of calcium channel blockers by saturating calcium channels with calcium. Calcium chloride has been used to manage acute severe verapamil toxicity. Monitoring of the effectiveness of calcium channel blocker therapy is advised during co-administration with calcium products.

Drug-Herb Interactions

Interactions with herbal products have not been established.

Drug-Laboratory Interactions

Interactions with laboratory tests have not been established.

ADVERSE REACTIONS

(See also Overall Diltiazem HCl Safety Profile)

Angina

The safety of diltiazem hydrochloride controlled delivery capsules administered at doses up to 360 mg a day, was evaluated in 365 patients with chronic stable angina treated in controlled and open-label clinical trials. Adverse events were reported in 21.1% of patients, and required discontinuation in 2.2% of patients.

The most common adverse effects reported were: first degree AV block (5.8%), dizziness (3.0%), headache (3.0%), asthenia (2.7%), bradycardia (2.5%), and angina pectoris (1.6%).

The following percentage of adverse effects, divided by system, was reported:

Cardiovascular: First degree AV block (5.8%), bradycardia (2.5%), angina pectoris (1.6%), peripheral edema (1.4%), palpitations (1.1%), and ventricular extrasystoles (0.8%).

Central Nervous System: Dizziness (3.0%), headache (3.0%), asthenia (2.7%), insomnia (1.1%), nervousness (0.8%).

Dermatological: Rash (0.8%).

Gastrointestinal: Nausea (1.4%), diarrhea (0.5%).

Other: Amblyopia (0.5%).

The following additional adverse effects have occurred with an incidence of less than 0.5% in clinical trials: bundle branch block, ventricular tachycardia, ECG abnormality, supraventricular extrasystoles, chest pain, syncope, postural hypotension, paresthesia, tremor, depression, mental confusion, impotence, abdominal pain, constipation, GI disorder, epistaxis, nuchal rigidity, myalgia.

Hypertension

A safety evaluation was carried out in controlled studies in 378 hypertensive patients treated with diltiazem hydrochloride controlled delivery capsules at doses up to 360 mg a day. Adverse effects were reported in 30.7% of patients and required discontinuation of therapy in 2.1%.

The most common adverse effects were: headache (8.7%); edema (4.0%); bradycardia (3.7%); dizziness (3.4%), ECG abnormality (2.9%); asthenia (2.6%) and first degree AV block (2.1%).

The following percentage of adverse effects, divided by system, was reported:

Blood and Lymphatic System Disorders: Leukopenia (1.1%)

Cardiovascular: Edema peripheral (4.0%), bradycardia (3.7%), ECG abnormalities (2.9%), first degree AV block (2.1%), arrhythmia (1.6%), vasodilation (flushing) (1.6%), bundle branch block (0.8%), cardiomegaly (0.5%), hypotension (0.5%).

Gastrointestinal: Constipation (1.3%), dyspepsia (1.3%), diarrhea (0.6%).

Investigations: ALT increase (0.8%).

Nervous System and Psychiatric Disorders: Headache (8.7%), dizziness (3.4%), asthenia (2.6%), somnolence (1.3%), nervousness (1.1%).

Renal and Urinary Disorders: Nocturia (0.5%).

The following additional adverse effects have occurred with an incidence of less than 0.5% in clinical trials: systolic murmur, supraventricular extrasystoles, migraine, tachycardia, increased appetite, increase in weight, albuminuria, bilirubinemia, hyperuricemia, thirst, insomnia, vertigo, nausea, pruritus, rash, increased perspiration, polyuria, amblyopia, tinnitus, and elevations in creatine kinase, alkaline phosphatase, and AST.

Overall Diltiazem HCl Safety Profile

In clinical trials of diltiazem involving over 3300 patients, the most common adverse reactions were headache (4.6%), edema (4.6%), dizziness (3.5%), asthenia (2.7%), first degree AV block (2.4%), bradycardia (1.7%), flushing (1.5%), nausea (1.4%), rash (1.2%), and dyspepsia (1.0%).

The following events were reported with a frequency of less than 1.0%.

Cardiovascular: Angina, arrhythmia, bundle branch block, tachycardia, ventricular extrasystoles, congestive heart failure, syncope, palpitations, AV block (second- or third-degree), hypotension, ECG abnormalities.

Dermatological: Petechiae, pruritus, photosensitivity, urticarial.

Eye Disorders: Amblyopia, eye irritation.

Gastrointestinal Disorders: Anorexia, diarrhea, dysgeusia, dyspepsia, vomiting, weight increase, thirst, constipation.

General Disorders and Administration Site Conditions: Malaise (reported as common adverse reaction), osteoarticular pain.

Investigations: Elevations of AST, ALT, LDH, and alkaline phosphatase (see WARNINGS), CPK increase.

Metabolism and Nutrition Disorders: Hyperglycemia, hyperuricemia.

Nervous System and Psychiatric Disorders: Amnesia, depression, gait abnormality, nervousness, somnolence, hallucinations, paresthesia, personality change, tinnitus, tremor, abnormal dreams, insomnia.

Renal and Urinary Disorders: Nocturia, polyuria.

Respiratory, Thoracic and Mediastinal Disorders: Dyspnea, epistaxis, nasal congestion.

Sexual Dysfunction Disturbances and Gender Identity Disorders: Impotence, sexual difficulties.

Vascular Disorders: Orthostatic hypotension.

Post-Market Adverse Drug Reactions

Adverse reactions reported during post marketing experience are derived from spontaneous reports and therefore, the frequency of these adverse reactions is not known.

Blood and lymphatic system disorders: Thrombocytopenia, hemolytic anemia, increased bleeding time, leukopenia

Nervous system and psychiatric disorders: Mood changes including depression, extrapyramidal symptoms

Cardiac disorders: Sinoatrial block, congestive heart failure, sinus arrest, cardiac arrest (asystole)

Respiratory, thoracic and mediastinal disorders: Bronchospasm (including asthma aggravation)

Gastrointestinal disorders: Gingival hyperplasia

Metabolism and nutrition disorders: Hyperglycemia, diabetes (new onset), worsening of existing diabetes (type 1 or type 2)

Skin and subcutaneous tissue disorders: Photosensitivity (including lichenoid keratosis at sun exposed skin areas), angioneurotic oedema, erythema multiforme (including Stevens- Johnson syndrome, toxic epidermal necrolysis), sweating, exfoliative dermatitis (see PRECAUTIONS), acute generalized exanthematous pustulosis, occasionally desquamative erythema with or without fever, allergic reactions, alopecia, purpura

Vascular disorders: A number of well-documented cases of generalized rash, some characterized as leukocytoclastic vasculitis

Hepatobiliary disorders: Hepatitis

Renal disorders: Acute kidney injury/failure

Reproductive system and breast disorders: Gynecomastia

Eye disorders: Detached retina, retinopathy

Musculoskeletal and connective tissue disorders: Myopathy

Isolated cases of angioedema have been reported. Angioedema may be accompanied by breathing difficulty. In addition, events such as myocardial infarction have been observed which are not readily distinguishable from the natural history of the disease in these patients. However, a definitive cause and effect relationship between these events and diltiazem hydrochloride therapy is yet to be established.

OVERDOSAGE

For management of a suspected drug overdose, contact your regional Poison Control Centre.

There have been reports of diltiazem overdose in amounts ranging from <1 g to 18 g. In cases with a fatal outcome, the majority involved multiple drug ingestion.

Events observed following diltiazem overdose included sinus bradycardia with or without isorhythmic dissociation, pronounced hypotension possibly leading to collapse, and acute kidney injury, sinus arrest, heart block, atrioventricular conduction disturbance, cardiac arrest, and cardiac failure.

The effectiveness of intravenous calcium administration to reverse the pharmacological effects of diltiazem overdose has been inconsistent. In a few reported cases, overdose with calcium channel blockers associated with hypotension and bradycardia that was initially refractory to

atropine became more responsive to atropine after the patients received intravenous calcium. In some cases intravenous calcium has been administered (1 g calcium chloride or 3 g calcium gluconate) over 5 minutes, and repeated every 10-20 minutes as necessary. Calcium gluconate has also been administered as a continuous infusion at a rate of 2 g per hour for 10 hours. Infusions of calcium for 24 hours or more may be required. Patients should be monitored for signs of hypercalcemia.

In the event of overdosage or exaggerated response, appropriate supportive measures should be employed in addition to gastric lavage. Limited data suggest that plasmapheresis or charcoal hemoperfusion may hasten diltiazem elimination. The following measures may be considered:

- **Bradycardia:** Administer atropine. If there is no response to vagal blockade, administer isoproterenol cautiously.
- **High Degree AV Block:** Treat as for bradycardia above. Fixed high degree AV block should be treated with cardiac pacing.
- **Cardiac Failure:** Administer inotropic agents (isoproterenol, dopamine or dobutamine) and diuretics.
- **Hypotension:** Administer fluids and vasopressors (e.g., dopamine or noradrenaline). Actual treatment and dosage should depend on the severity of the clinical situation.

DOSAGE AND ADMINISTRATION

Angina

Dosages for the treatment of angina should be adjusted to each patient's needs, starting with a dose of 120 mg to 180 mg once daily. Individual patients may respond to higher doses of up to 360 mg once daily. When necessary, titration should be carried out over a 7 to 14 day period.

Patients controlled on diltiazem alone or in combination with other medications may be safely switched to Diltiazem-CD capsules at the nearest equivalent total daily dose. Subsequent titration to higher or lower doses may be necessary and should be initiated as clinically warranted.

There is limited experience with doses above 360 mg, however, the incidence of adverse reactions increases as the dose increases with first degree AV block, dizziness, and sinus bradycardia bearing the strongest relationship to dose. Therefore, doses greater than 360 mg are not recommended.

Hypertension

Dosage should be individualized depending on patient's tolerance and responsiveness to Diltiazem-CD. When used as monotherapy, usual starting doses are 180 to 240 mg once daily, although some patients may respond to 120 mg once daily. Maximum antihypertensive effect is usually observed after approximately 2 to 4 weeks of therapy; therefore, dosage adjustments

should be scheduled accordingly. The usual dosage range studied in clinical trials was 240 to 360 mg once daily.

A maximum daily dose of 360 mg once daily should not be exceeded.

The dosage of Diltiazem-CD or concomitant antihypertensive agents may need to be adjusted when adding one to the other. See WARNINGS and PRECAUTIONS regarding use with beta-blockers.

Use in the Elderly

Pharmacokinetics of diltiazem in elderly patients has not been fully elucidated. Preliminary results in elderly patients (over 65 years old) suggest that a lower dosage might be required in this age group (see PRECAUTIONS).

There are few available data concerning dosage requirements in patients with impaired renal or hepatic function. If diltiazem must be used in these patients, the dosage should be carefully and gradually adjusted depending on patient tolerance and response (see PRECAUTIONS).

Diltiazem-CD capsules should not be chewed or crushed.

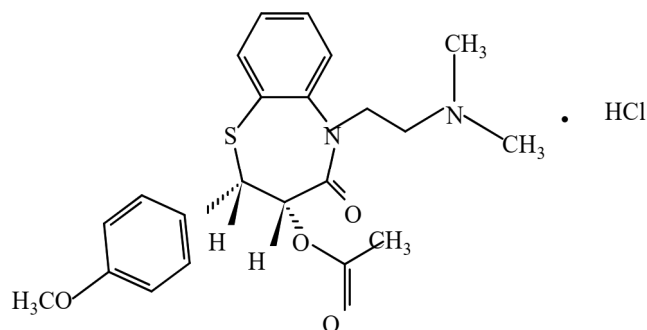
PHARMACEUTICAL INFORMATION

Drug Substance

Proper Name: Diltiazem Hydrochloride

Chemical Name: 1,5-benzothiazepin-4(5H)one, 3-(acetyloxy)-5-[2-(dimethylamino)ethyl]-2,3-dihydro-2-(4-methoxyphenyl)-, monohydrochloride, (+)-cis-

Structural Formula:



Molecular Formula: $C_{22}H_{26}N_2O_4S \cdot HCl$

Molecular Mass: 450.98 g/mol

Physicochemical properties:

Description: The compound is a white crystalline substance or powder having a bitter taste.

Solubility: Diltiazem is considered freely soluble in water, methanol or chloroform, slightly soluble in absolute ethanol and barely soluble in benzene.

STORAGE AND STABILITY

Store in tight containers between 15 and 30°C. Protect from light.

DOSAGE FORMS, COMPOSITION AND PACKAGING

Composition

Diltiazem-CD once-a-day controlled delivery capsules contain diltiazem hydrochloride and the following nonmedicinal ingredients: acetyl tributyl citrate, ethylcellulose, magnesium stearate, methylacrylic acid copolymer Type B, polysorbate, sugar spheres and talc. The gelatin capsules contain: black iron oxide (300 mg only), FD&C blue #1, gelatin and titanium dioxide.

Availability

Diltiazem-CD 120 mg gelatin capsules are light turquoise blue opaque, imprinted RXP 120 mg, containing off-white round pellets. Supplied in bottles of 100 and 500 capsules.

Diltiazem-CD 180 mg gelatin capsules are light turquoise blue opaque/light blue opaque, imprinted RXP 180 mg, containing off-white round pellets. Supplied in bottles of 100 and 500 capsules.

Diltiazem-CD 240 mg gelatin capsules are light blue opaque, imprinted RXP 240 mg, containing off-white round pellets. Supplied in bottles of 100 and 500 capsules.

Diltiazem-CD 300 mg gelatin capsules are light gray opaque/light blue opaque, imprinted RXP 300 mg, containing off-white round pellets. Supplied in bottles of 100 capsules.

DETAILED PHARMACOLOGY

In Vitro Observations

Initial experimental work revealed that diltiazem was a coronary and peripheral vasodilator. Subsequent work substantiated that diltiazem's smooth muscle relaxant effect, as well as negative inotropic effect, resulted from the drug's ability to block excitation-contraction coupling by inhibiting slow calcium channel conduction. In a muscle bath study with isolated human coronary artery segments obtained at the time of cardiac transplantation, diltiazem produced nearly complete relaxation of potassium-contracted segments.

Studies in various experimental models have confirmed the negative inotropic effect of diltiazem. At low doses (1.1×10^{-7} M) diltiazem caused a reduction in contractile force of guinea pig papillary muscle with no demonstrable effect on the action potential. However, at higher concentrations (1.1×10^{-5} M) both a decrease in contractile tension and a lowering of maximum dp/dt were seen.

Studies done in isolated perfused rat hearts showed that diltiazem (10^{-6} M) decreases contractility without affecting action potential duration or resting membrane potential. In several experimental models it has been shown that the concentration of diltiazem required to produce smooth muscle relaxation and vasodilation is significantly less than the concentration required to produce a negative inotropic effect.

***In Vivo* Observations**

Pharmacodynamics

Experiments in both open and closed chest dog models indicate that diltiazem increases coronary blood flow and reduces coronary vascular resistance. Intravenous diltiazem (100 mcg/kg) increased coronary blood flow by 90%, with a predominant effect on large coronary arteries and collaterals. Increase in coronary blood flow has also been shown following diltiazem administration in both the epicardial and subendocardial regions in ischemic and nonischemic models. There was also a dose-related decrease in mean aortic pressure and systemic vascular resistance with an increase in stroke volume and cardiac output. No significant change was noted in determinants of LV function such as LVEDP or LV dP/dT. The reduction in blood pressure that is seen with diltiazem is due to a direct vasodilatory effect on the blood vessels and is not mediated by sympathetic alpha-receptor blockade, beta-receptor stimulation, or ganglionic blockade. Diltiazem has been shown to inhibit the pressor responses induced by norepinephrine and angiotensin II.

In animal studies, the negative inotropic effect of diltiazem appears to be offset by its ability to decrease afterload and induce a mild reflex adrenergic response.

Pharmacokinetics

The effect of diltiazem on the pharmacokinetics of phenytoin was investigated in rats. Animals were given 20 mg/kg IP phenytoin alone or phenytoin together with 5 mg/kg IP diltiazem and the plasma samples were collected at different time intervals. The study showed that diltiazem significantly ($p < 0.05$) increased phenytoin AUC (4-fold), C_{max} (2-fold), and elimination half-life ($t_{1/2}$: from 1.1h to 2.0h), in the rat.

TOXICOLOGY

Acute Toxicity

Route	Animal	Sex	LD₅₀ mg/kg	LD₅₀ 95% Confidence Limits (mg/kg)
Oral	mice	M&F	415-700	(343-736)
	rats	M&F	560-810	(505-1004)
SC	mice	M&F	260-550	(220-672)
IP	mice	M&F	187	(165-211)
	rats	M&F	211	(155-287)
IV	mice	M&F	58-61	(52-69)
	rats	M&F	38-39	(34-44)

Toxic effects appeared rapidly and toxicity included reduction of spontaneous activity, ptosis, piloerection, ataxia, loss of muscle tone and loss of righting reflex. Gross autopsy of animals that died as well as the survivors revealed no abnormalities.

Tolerance was evaluated in rabbits and dogs. Dogs received oral doses of 12.5, 25, 50 or 100 mg/kg. Ataxia, disorientation, decreased activity, diuresis and mydriasis were noted at 25 mg/kg. In addition, heavy sedation and emesis were seen at 50 mg/kg. At 100 mg/kg, convulsions occurred and one of the two animals died. Rabbits received 100, 200, 300, 400 mg/kg. The major symptoms were decreased activity, increased respiration, salivation and opisthotonos. One of the two rabbits died at 300 mg/kg and the two rabbits in the 400 mg/kg group died.

Subacute Toxicity

In rats, oral doses of 10, 20, 50, 100, 250 or 500 mg/kg/day of diltiazem were administered for 28 or 30 days. The relative liver weights of animals receiving 250 mg/kg/day and 500 mg/kg/day were increased. Microscopic examination revealed drug related degeneration of hepatic and renal cells in the highest dose group.

When the drug was given to rats intraperitoneally at 25 mg/kg/day for 30 days, hepatic and renal cell degeneration was seen. Macular hyaloid degeneration of the heart also was seen in 50% of the rats in this study.

Thirty day subacute studies in dogs revealed hepatic and renal cell degeneration when diltiazem was given at doses of 25 mg/kg/day orally and 5 mg/kg/day intravenously. Two dogs out of 5 receiving 50 mg/kg/day orally, died.

Chronic Toxicity/Carcinogenicity

In mice, diltiazem was administered at doses of 5, 15 or 30 mg/kg/day for a period of 21 months in females. Because of a lower survival, males were terminated at 20 months. Gross and histopathological examination failed to reveal any treatment related increase in the incidence of either neoplastic or other toxic lesions.

Rats received 6.25, 25 or 100 mg/kg/day of diltiazem for 24 months. An additional group received 200 mg/kg for 12 months. Treatment was terminated at 23 months in females receiving 100 mg/kg because of the low survival. Females had increased weight gain at 100 and 200 mg/kg, food consumption was increased among both sexes at these dose levels. Organ weight data revealed a significant increase in liver weight for rats of both sexes given 200 mg/kg. Microscopic evaluation revealed some evidence of dose dependent hepatic cytoplasmic vacuolization in rats treated with doses of 100 and 200 mg/kg/day and killed at 12 months. At 24 months, there were similar findings in control and treated animals. There was no increase in the incidence of neoplastic or other toxic lesions in rats treated with diltiazem.

Diltiazem was administered orally to dogs for 12 months at doses of 5, 10, 20 mg/kg/day. A dose related suppression of body weight gain became noticeable after 6 months.

Mutagenicity

No mutagenic changes were observed in the recombination test and two Ames reverse mutagenicity assays.

Reproduction Studies

Results in Mice

Route	Doses mg/kg	Time of Administration During Gestation	Findings in the Offspring
Oral	10, 25, 50, 100, 200, 400	Day 7 to day 12	High incidence of vertebral column malformations when more than 50 mg/kg was administered
Oral	Single doses of 12.5, 25, 50, 100, 200	One of days 7 to 14	Cleft palate and malformation of extremities or trunk were significantly higher when 50 or 100 mg/kg was administered on day 12. Vertebral malformations were most prevalent when 50 or 100 mg/kg was administered on day 9.
Intra-peritoneal	0.2, 3.1, 6.3, 12.5, 25	Day 7 to day 12	Fetal mortality greatly increased when 12.5 mg/kg or more was administered. No teratogenic effect was demonstrated.
Intra-peritoneal	Single dose of 3.1, 6.3, 12.5, 25, 50	One of days 5 to 16	Brachydactyly and hematoma in the extremities when 50 mg/kg was administered on day 13. Vertebral column malformations from the thoracic to coccygeal level and malformations of the ribs were observed when a dose of 25 mg/kg or greater was administered on day 9.

Results in Rats

Route	Doses mg/kg	Time of Administration During Gestation	Findings in the Offspring
Oral	10, 50, 100, 200, 400	Day 9 to day 14	No teratogenic effect. High fetal death rate when 200 and 400 mg/kg was administered.
Oral	10, 30, 100	Day 6 to 15	No teratogenic effect.
Oral	Single doses of 300, 400, 600	On one of days 9 to 14	Significant incidence of skeletal malformations involving vertebrae and sternebrae when 400 mg/kg was administered on day 11. General edema, short or absent tail was observed when 600 mg/kg was administered on day 12.
Intra-peritoneal	0.2, 2.0, 20, 40, 80	Day 9 to 14	Brachydactyly and hematoma in the front paw and tail and a high fetal mortality rate were observed when 80 mg/kg was administered.
Intra-peritoneal	80	Day 9 to 11	Vertebral anomalies.
Intra-peritoneal	80	Day 12 to 14	Brachydactyly, hematoma of the front paw and tail deformities and high fetal mortality rate.
Intra-peritoneal	Single dose of 80	One of days 9 to 14	Fetal mortality increased on day 11 reached 100% on day 12 and decreased thereafter. Limb and tail deformities were induced when 80 mg/kg was administered on day 13 and 14. Vertebral column deformities were induced when 80 mg/kg was administered on day 11.
	Single doses of 40	One of days 11 to 14	No teratogenic effect.

Results in Rabbits

Route	Doses mg/kg	Time of Administration During Gestation	Findings in the Offspring
Oral	17.5, 35, 70	Day 6 to day 18	Significant increase in skeletal malformations occurred when 35 mg/kg was administered. All pregnant dams aborted between days 21 and 25 of gestation when 70 mg/kg was administered.
Intra-peritoneal	6.3, 12.5, 25	Day 7 to 16	Fetal mortality greatly increased at 12.5 mg/kg and reached 100% at 25 mg/kg. Skeletal defects and external malformations were induced when 12.5 mg/kg was administered. Their incidence was not statistically significant due to the low number of surviving fetuses.

In fertility studies female rats received doses of 12.5, 25, 50 and 100 mg/kg PO. In the 100 mg/kg group there was a reduction in the number showing a positive mating. However, the overall pregnancy rates and the average pre-coital time were comparable.

In peri- and postnatal studies, rats received diltiazem in doses of 10, 30 or 100 mg/kg/day from day 14 of gestation through day 21 post-partum. Diltiazem was associated with a reduction in early individual weights and survival rates of the pups. At 100 mg/kg/day dystocia was evident. Retinal and tongue malformations were more frequent in the offspring of the 30 and 100 mg/kg/day group.

REFERENCES

1. Anderson JL et al. Comparative effects of diltiazem, propranolol and placebo on exercise performance using radionuclide ventriculography in patients with symptomatic coronary artery disease: Results of a double-blind, randomized, crossover study. *Am Heart J* 1984;107(4):698-706.
2. André-Fouet X et al. Diltiazem vs propranolol: A randomized trial in unstable angina. *Circulation* 1981;64:IV-293.
3. Bourassa MG et al. Hemodynamics and coronary flow following diltiazem administration in anesthetized dogs and in humans. *Chest* 1980;78:224-230.
4. Cassagnes J et al. Traitement du syndrome de menace par le diltiazem. *Thérapie* 1980;35:465-473.
5. Eimer M and Carter BL. Elevated serum carbamazepine concentrations following diltiazem initiation. *Drug Intelligence and Clinical Pharmacy* 1987;21:340-342.
6. Feldman RL et al. Short and long-term responses to diltiazem in patients with variant angina, *Am J Cardiol* 1982;49:554-559.
7. Frishmen WH et al. Comparison of hydrochlorothiazide and sustained-release diltiazem for mild to moderate systemic hypertension. *Am J Cardiol* 1987;59(6):615-623.
8. Hossack KF et al. Divergent effects of diltiazem in patients with exertional angina. *Am J Cardiol* 1982;49:538-546.
9. Hossack KF et al. Efficacy of diltiazem in angina of effort: A multicenter trial. *Am J Cardiol* 1982;49:567-572.
10. Hung J et al. The effect of diltiazem and propranolol, alone and in combination, on exercise performance and left ventricular function in patients with stable effort angina: A double-blind, randomized, and placebo-controlled study. *Circulation* 1983;68:560-567.
11. Ishikawa T et al. Atrioventricular dissociation and sinus arrest induced by oral diltiazem. *N Engl J Med* 1983;309:1124-1125.
12. Jacobs MB. Diltiazem and akathisia. *Ann Int Med* 1983;99:794-795.
13. Josephson MA et al. Hemodynamic and metabolic effects of diltiazem during coronary sinus pacing with particular reference to left ventricular ejection fraction. *Am J Cardiol* 1985;55:286-290.
14. Massie B et al. Diltiazem and propranolol in mild to moderate essential hypertension as monotherapy or with hydrochlorothiazide. *Ann Intern Med* 1987;107:150-157.

15. Moser, M et al. Comparative effects of diltiazem and hydrochlorothiazide in blacks with systemic hypertension. *Am J Cardiol* 1985;56(16):101H-104H.
16. Moss AJ et al. The effect of diltiazem on mortality and reinfarction after myocardial infarction: The Multicenter Diltiazem Postinfarction Trial Research Group. *N Engl J Med* 1988;319:385-392.
17. Nicolas G et al. Le traitement de l'angor instable par le diltiazem. À propos de 61 observations. *Ann Cardiol Angeiol (Paris)* 1981;30:289-292.
18. Pool PE et al. Long-term efficacy of diltiazem in chronic stable angina associated with atherosclerosis: Effect on treadmill exercise. *Am J Cardiol* 1982;49:573-577.
19. Pool PE et al. Diltiazem as monotherapy for systemic hypertension: A multicenter, randomized, placebo-controlled trial. *Am J Cardiol* 1986;57:212-217.
20. Rameis H et al. The diltiazem-digoxin interaction. *Clin Pharmacol Ther* 1984;36:183-189.
21. Reboud JP. Accidents au cours de l'association diltiazem bêta-bloquants. *Presse médicale* 1984;13:1396.
22. Schroeder JS et al. Multiclinic controlled trial of diltiazem for Prinzmetal's angina. *Am J Med* 1982;72:227-232.
23. Schroeder JS et al. Diltiazem for long-term therapy of coronary arterial spasm. *Am J Cardiol* 1982;49:533-537.
24. Strauss WE et al. Safety and efficacy of diltiazem hydrochloride for the treatment of stable angina pectoris: Report of a cooperative clinical trial. *Am J Cardiol* 1982;49:560-566.
25. Swartz SL. Endocrine and vascular responses in hypertensive patients to long-term treatment with diltiazem. *J Cardiovasc Pharmacol* 1987;9(4):391-395.
26. Szlachcic J et al. Diltiazem versus propranolol in essential hypertension: Responses of rest and exercise blood pressure and effects on exercise capacity. *Am J Cardiol* 1987;59:393-399.
27. Taeymans Y et al. A prospective randomized study of propranolol vs diltiazem in patients with unstable angina. *Am J Cardiol* 1982;49:896 (Abstract).
28. Tilmant PY et al. Detrimental effect of propranolol in patients with coronary arterial spasm countered by combination with diltiazem. *Am J Cardiol*; 1983;52:230-233.

29. Valantine, H et al. Cost containment: coadministration of diltiazem with cyclosporine after heart transplantation. *J Heart Lung Transplantation* 1992;11:1-7.
30. Waters DD et al. Provocative testing with ergonovine to assess the efficacy of treatment with nifedipine, diltiazem and verapamil in variant angina. *Am J Cardiol* 1981;48:123-130.
31. Weir MR et al. Sustained-release diltiazem compared with atenolol monotherapy for mild to moderate systemic hypertension. *Am J Cardiol* 1987;60:361-411.
32. Winship LC et al. The effect of ranitidine and cimetidine on single-dose diltiazem pharmacokinetics. *Pharmacotherapy* 1985;5:16-19.
33. Zawada ET et al. Renal-metabolic consequences of antihypertensive therapy with diltiazem versus hydrochlorothiazide. *Miner Electrolyte Metab* 1987;13(2):72-77.
34. Zelis RR et al. The pharmacokinetics of diltiazem in healthy American men. *Am J Cardiol* 1982;49:529-532.
35. Valeant Canada LP, Product Monograph: Cardizem CD. Control No.:226443. Date of Revision: June 25, 2019.

PART III: CONSUMER INFORMATION**^{PR}DILTIAZEM-CD**

Diltiazem hydrochloride

Once-a-day Controlled Delivery Capsules

Read this carefully before you start taking Diltiazem-CD and each time you get a refill. This leaflet is a summary and will not tell you everything about Diltiazem-CD. Talk to your doctor, nurse, or pharmacist about your medical condition and treatment and ask if there is any new information about Diltiazem-CD.

ABOUT THIS MEDICATION**What the medication is used for:**

Diltiazem-CD is used for:

- the management of effort associated **angina** (chest pain)
- the treatment of mild to moderate **high blood pressure**.

Diltiazem-CD should normally be used in those patients in whom treatment with other blood pressure reduction medications has been ineffective or have been associated with unacceptable side effects.

What it does:

Diltiazem-CD belongs to the group of drugs called “calcium channel blockers” or “calcium antagonists”.

Diltiazem-CD relaxes the arteries, thereby lowering blood pressure.

Diltiazem-CD reduces the amount of oxygen that your heart muscle needs. This helps control chest pain.

When it should not be used:

Do not use Diltiazem-CD if:

- You are pregnant or plan to become pregnant.
- You are breastfeeding.
- You have a known allergy to diltiazem or to any of the non-medicinal ingredients.
- You have very low blood pressure (< 90 mmHg systolic).
- You have very slow heartbeat (40 beats/minute or less)
- You have heart rhythm disorders in the absence of a pacemaker.
- You have severe heart failure with fluid in the lungs.
- You are taking a medicine called dantrolene used for severe muscle spasms or severe fever.
- You are using ivabradine

What the medicinal ingredient is:

Diltiazem Hydrochloride

What the nonmedicinal ingredients are:

Acetyl tributyl citrate, ethylcellulose, magnesium stearate, methylacrylic acid copolymer Type B, polysorbate, sugar spheres and talc. The gelatin capsules contain: black iron oxide (300 mg only), FD&C blue #1, gelatin and titanium dioxide.

What dosage forms it comes in:

Capsules: 120 mg, 180 mg, 240 mg, and 300 mg.

WARNINGS AND PRECAUTIONS**BEFORE you use Diltiazem-CD talk to your doctor or pharmacist if:**

- You have very low blood pressure.
- You have ever had a bad or unusual reaction to any drug containing diltiazem in the past.
- You have heart, liver, or kidney disease.
- You have high blood sugar or diabetes.
- You are 65 years or older.
- You have a history of heart failure, new shortness of breath, slow heartbeat or low blood pressure. Cases of kidney injury in patients with such conditions have been reported.

INTERACTIONS WITH THIS MEDICATION

As with most medicines, interactions with other drugs are possible. Tell your doctor, nurse, or pharmacist about all the medicines you take, including drugs prescribed by other doctors, vitamins, minerals, natural supplements, or alternative medicines.

Additional monitoring of your dose or condition may be needed if you are taking other drugs.

The following may interact with Diltiazem-CD:

- Antifungal medications with a name ending inazole;
- Medications used to control the immune system such as cyclosporine;
- Certain antibiotics should not be taken with Diltiazem-CD such as erythromycin, rifampin. Check with your pharmacist if not sure;
- Sleeping pills such as benzodiazepines (midazolam, triazolam);
- Other blood pressure medications: alpha antagonists, beta-blockers;
- Heart medications: Amiodarone, digoxin, digitalis, flecainide, nifedipine, propafenone, quinidine, verapamil, ivabradine;
- Anaesthetics;
- Lithium and imipramine used for some types of mental illness;
- Drugs that dilate the blood vessels: short and long acting nitrates;
- Medications used to control seizures: carbamazepine, phenobarbital, phenytoin;
- Warfarin used as anticoagulant;
- Cholesterol lowering medications: statins;
- Theophylline used for breathing problems;
- Terfenadine or ranitidine used for allergies;
- Medications used to control stomach ulcers such as cimetidine will increase the effects of Diltiazem-CD;
- Multivitamins with minerals (calcium-containing products);
- Drugs to treat inflammation: corticosteroids, methylprednisolone;
- Dantrolene used for severe muscle spasms or severe fever.
- Acetylsalicylic acid (Aspirin) or antiplatelet drugs such as ticagrelor, cilostazol, clopidogrel, dipyridamole, ticlopidine.
- X-Ray contrast agents.

Alcohol may cause low blood pressure and dizziness when you go from lying or sitting to standing up. This can especially occur after the first dose and when the dose is increased. Tell your doctor if you experience dizziness, light-headedness, fainting, decreased blood pressure or increased heart rate.

Grapefruit juice when consumed too often while taking Diltiazem-CD may cause headache, irregular heartbeat, edema (swelling), unexplained weight gain, and chest pain. Tell your doctor if this happens to you. Your doctor may recommend that grapefruit juice be avoided if this happens to you.

PROPER USE OF THIS MEDICATION

- Do not miss doses or take extra doses, unless your doctor tells you. If you are not clear about the directions, ask your doctor or pharmacist.

Take Diltiazem-CD exactly as your doctor tells you.

- Diltiazem-CD is taken once a day
- Dosage should be individualized.

Swallow capsules whole. DO NOT chew or crush Diltiazem-CD capsules.

Usual Adult Dose:

Angina

Starting dose: 120 mg to 180 mg once a day.
Dose may be slowly (over 7 to 14 days) increased up to 360 mg a day. Always follow your doctor’s instructions.

High blood pressure

Usual starting doses: 180 to 240 mg once a day.
120 mg a day may be used in some patients.
Maximum dose: 360 mg a day.

Overdose:

In case of drug overdose, contact a health care practitioner, hospital emergency department or regional Poison Control Centre immediately, even if there are no symptoms.

Missed Dose:

If a dose of this medication has been missed, it should be taken as soon as possible. However, if it is almost time for the next dose, skip the missed dose and go back to the regular dosing schedule.

SIDE EFFECTS AND WHAT TO DO ABOUT THEM

Side effects may include:

- Headache, dizziness, malaise;
- Nausea (feeling like vomiting);
- Flushing (facial redness) or feeling unusually warm;
- Unusual tiredness and weakness;
- Upset stomach.

Diltiazem-CD can cause abnormal blood results. Your doctor will decide when to perform blood tests and will interpret the results.

SERIOUS SIDE EFFECTS, HOW OFTEN THEY HAPPEN AND WHAT TO DO ABOUT THEM				
Symptom / effect		Talk with your doctor, nurse or pharmacist		Stop taking drug and seek immediate medical help
		Only if severe	In all cases	
Rare	Liver Disorder: yellowing of the skin or eyes, dark urine, abdominal pain, nausea, vomiting, loss of appetite		✓	
Common	Low Blood Pressure: dizziness, fainting, light-headedness May occur when you go from lying or sitting to standing up.	✓		
	Fast, slow, or irregular heartbeat		✓	
	Peripheral edema: swelling of the ankles	✓		
	Respiratory tract infection: pharyngitis, rhinitis		✓	
	Allergic Reaction: rash, hives, swelling of the face, lips, tongue or throat, difficulty swallowing or breathing			✓
Uncommon	Depression: low mood, lack of interest in usual activities, change in sleep and appetite.	✓		
	Heart block: A disease in the electrical system of the heart causing lightheadedness, fainting and irregular heartbeat.			✓
	Heart Attack: shortness of breath, chest pain			✓

SERIOUS SIDE EFFECTS, HOW OFTEN THEY HAPPEN AND WHAT TO DO ABOUT THEM

Symptom / effect	Talk with your doctor, nurse or pharmacist		Stop taking drug and seek immediate medical help
	Only if severe	In all cases	
Angina: Chest pain		✓	
Heart Failure: shortness of breath, leg swelling, and exercise intolerance.		✓	
Eye Problems: decreased vision, irritation, sore red eyes	✓		
Increased blood sugar: frequent urination, thirst, and hunger	✓		
Unknown			✓
Serious Skin Reactions (Stevens-Johnson Syndrome, Toxic Epidermal Necrolysis, hypersensitivity Syndrome): any combination of itchy skin rash, redness, blistering and peeling of the skin and /or of the lips, eyes, mouth, nasal passages or genitals, accompanied by fever, chills, headache, cough, body aches or joint pain, yellowing of the skin or eyes, dark urine.			

This is not a complete list of side effects. For any unexpected effects while taking Diltiazem-CD, contact your doctor or pharmacist.

HOW TO STORE IT

Store Diltiazem-CD capsules in tight containers between 15 and 30°C. Protect from light. **Keep out of sight and reach of children.**

Reporting Side Effects

You can report any suspected side effects associated with the use of health products to Health Canada by:

- Visiting the Web page on Adverse Reaction Reporting (<https://www.canada.ca/en/health-canada/services/drugs-health-products/medeffect-canada/adverse-reaction-reporting.html>) for information on how to report online, by mail or by fax; or
- Calling toll-free at 1-866-234-2345.

NOTE: Contact your health professional if you need information about how to manage your side effects. The Canada Vigilance Program does not provide medical advice.

MORE INFORMATION

This document plus the full product monograph, prepared for health professionals can be found by contacting Pro Doc Ltée, at 1-800-361-8559, www.prodoc.qc.ca or info@prodoc.qc.ca.

This leaflet was prepared by
Pro Doc Ltée.
Laval, Québec
H7L 3W9

Last revised: December 17, 2020