

PRODUCT MONOGRAPH

^{Pr}AG-Quetiapine XR

Quetiapine Fumarate Extended-Release Tablets

50 mg, 150 mg, 200 mg, 300 mg and 400 mg quetiapine (as quetiapine fumarate)

House Standard

Antipsychotic / Antidepressant Agent

Angita Pharma Inc.
1310 rue Nobel
Boucherville, Québec
J4B 5H3, Canada

Date of Preparation:
September 20, 2021

Submission Control No: 255711

Table of Contents

PART I: HEALTH PROFESSIONAL INFORMATION.....	3
SUMMARY PRODUCT INFORMATION.....	3
INDICATIONS AND CLINICAL USE	3
CONTRAINDICATIONS.....	4
WARNINGS AND PRECAUTIONS	4
ADVERSE REACTIONS	17
DRUG INTERACTIONS	37
DOSAGE AND ADMINISTRATION	39
OVERDOSAGE.....	43
ACTION AND CLINICAL PHARMACOLOGY	44
STORAGE AND STABILITY	47
DOSAGE FORMS, COMPOSITION AND PACKAGING.....	47
PART II: SCIENTIFIC INFORMATION	48
PHARMACEUTICAL INFORMATION	48
CLINICAL TRIALS	49
DETAILED PHARMACOLOGY	61
TOXICOLOGY.....	62
REFERENCES.....	70
PART III: CONSUMER INFORMATION.....	73

Pr AG-Quetiapine XR

Quetiapine Fumarate Extended-Release Tablets

50 mg, 150 mg, 200 mg, 300 mg and 400 mg quetiapine (as quetiapine fumarate)

Antipsychotic / Antidepressant Agent

PART I: HEALTH PROFESSIONAL INFORMATION

SUMMARY PRODUCT INFORMATION

Route of Administration	Dosage Form / Strength	Nonmedicinal Ingredients
oral	extended-release tablet / 50 mg, 150 mg, 200 mg, 300 mg and 400 mg	The core of the tablet contains the excipients hydroxypropyl methylcellulose, lactose monohydrate, magnesium stearate, povidone K30, talc, microcrystalline cellulose, and sodium chloride. The coating of the tablet contains hydroxypropyl methylcellulose (200 mg, 300 mg, 400 mg), polyvinyl alcohol (50 mg, 150 mg), polyethylene glycol, talc (50 mg, 150 mg), titanium dioxide, iron oxide red (50 mg), iron oxide yellow (50 mg, 200 mg, 300 mg).

INDICATIONS AND CLINICAL USE

Adults:

Schizophrenia

AG-Quetiapine XR (quetiapine fumarate extended-release) is indicated for the management of the manifestations of schizophrenia.

Bipolar Disorder

AG-Quetiapine XR is indicated as monotherapy for the:

- Acute management of manic episodes associated with bipolar disorder.
- Acute management of depressive episodes associated with bipolar I and bipolar II disorder.

Major Depressive Disorder

AG-Quetiapine XR is indicated for the symptomatic relief of major depressive disorder (MDD) when currently available approved antidepressant drugs have failed either due to lack of efficacy and/or lack of tolerability. While there is no evidence that the efficacy of AG-Quetiapine XR is superior to other antidepressants, it provides a treatment option for patients who have failed on previous antidepressant treatments.

Clinicians must take into account the safety concerns associated with antipsychotic drugs, a class of drugs to which AG-Quetiapine XR belongs. Safety concerns of this class include: weight gain; hyperlipidemia; hyperglycaemia; Tardive Dyskinesia; and Neuroleptic Malignant Syndrome (see WARNINGS AND PRECAUTIONS). AG-Quetiapine XR should only be prescribed in patients with MDD by clinicians who are aware of the importance and are experienced in the early detection and management of the above-mentioned safety issues associated with this class.

Long-term safety of quetiapine fumarate extended-release in MDD has not been systematically evaluated. Thus, the physician who elects to use AG-Quetiapine XR in the treatment of MDD should use AG-Quetiapine XR for the shortest time that is clinically indicated. When lengthier treatment is indicated, the physician must periodically re-evaluate the long-term usefulness of the drug for the individual patient keeping in mind the long-term risks (see Part II: CLINICAL TRIALS).

Geriatrics (>65 years of age): AG-Quetiapine XR is not indicated in elderly patients with dementia. See WARNINGS AND PRECAUTIONS, Serious Warnings and Precautions Box and Special Populations.

Pediatrics (<18 years of age): The safety and efficacy of AG-Quetiapine XR in children under the age of 18 years have not been established and its use is not recommended (see WARNINGS AND PRECAUTIONS, Special Populations).

CONTRAINDICATIONS

AG-Quetiapine XR (quetiapine fumarate extended-release) is contraindicated in patients with a known hypersensitivity to this medication or any of its ingredients. For a complete listing, see DOSAGE FORMS, COMPOSITION AND PACKAGING.

WARNINGS AND PRECAUTIONS

Serious Warnings and Precautions

Increased Mortality in Elderly Patients with Dementia

Elderly patients with dementia treated with atypical antipsychotic drugs are at an increased risk of death compared to placebo. Analyses of thirteen placebo-controlled trials with various atypical antipsychotics (modal duration of 10 weeks) in these patients showed a mean 1.6 fold increase in death rate in the drug-related patients. Although the causes of death were varied, most of the deaths appeared to be either cardiovascular (e.g., heart failure, sudden death) or infectious (e.g., pneumonia) in nature (see WARNINGS AND PRECAUTIONS, Special Populations, Use in Geriatric Patients with Dementia).

General

Body Temperature Regulation: Disruption of the body's ability to reduce core body temperature has been attributed to antipsychotic agents (including quetiapine fumarate extended-release). Appropriate care is advised when prescribing AG-Quetiapine XR for patients who will be experiencing conditions which may contribute to an elevation of core temperature, e.g., exercising strenuously, exposure to extreme heat, receiving concomitant medication with anticholinergic activity or being subject to dehydration. See Adverse Reactions, Clinical Trial Adverse Drug Reactions, Other Adverse Events, Pyrexia.

Dependence / Tolerance: There have been reports of quetiapine misuse, abuse, tolerance, and/or physical dependence. These cases include adult and adolescent patients using quetiapine alone or with other substances of abuse. Caution is needed when prescribing quetiapine to patients with a history of alcohol or drug abuse. Patients should be observed closely for signs of AG-Quetiapine XR misuse or abuse (e.g. development of tolerance, increases in dose, drug-seeking behavior), particularly if they have a history of alcohol or drug abuse.

Acute Withdrawal (discontinuation) Symptoms: Acute discontinuation symptoms such as insomnia, nausea, headache, diarrhea, vomiting, dizziness and irritability have been described after abrupt cessation of antipsychotic drugs including quetiapine. Gradual withdrawal over a period of at least one to two weeks is advisable. Symptoms usually resolved after 1 week post-discontinuation. See ADVERSE REACTIONS.

Carcinogenesis and Mutagenesis

For animal data, see Part II: TOXICOLOGY.

Cardiovascular

Hypotension and Syncope: As with other drugs that have high $\alpha 1$ adrenergic receptor blocking activity, quetiapine may induce orthostatic hypotension, tachycardia, dizziness and sometimes syncope, especially during the initial dose titration period. These events may lead to falls (see ADVERSE REACTIONS).

In placebo-controlled quetiapine fumarate extended-release trials, there was little difference in the adverse reaction reporting rate of syncope in patients treated with quetiapine fumarate extended-release (0.5%, 11/2388) compared to patients on placebo (0.3%, 4/1267).

Syncope was reported in 1% (35/4083) of patients treated with quetiapine fumarate immediate-release formulation, compared with 0.3% (3/1006) on placebo and 0.4% (2/527) on active control drugs.

AG-Quetiapine XR should be used with caution in patients with known cardiovascular disease (e.g., history of myocardial infarction or ischemic heart disease, heart failure or conduction abnormalities), cerebrovascular disease or other conditions predisposing to hypotension (e.g., dehydration, hypovolemia and treatment with antihypertensive medications) (see OVERDOSAGE).

QT Prolongation: In clinical trials, quetiapine was not associated with a persistent increase in

absolute QT intervals. However, the QT effect was not systematically evaluated in a thorough QT study. In post-marketing experience, there have been cases reported of QT prolongation at therapeutic doses in patients with concomitant illness and in patients taking medicines known to cause electrolyte imbalance or increase QT interval, and with overdose (see OVERDOSAGE). As with other antipsychotics, caution should be exercised when quetiapine is prescribed in patients with cardiovascular disease or family history of QT prolongation.

Also caution should be exercised when quetiapine is prescribed either with medicines known to increase QT interval or with concomitant neuroleptics, especially for patients with increased risk of QT prolongation, i.e., the elderly, patients with congenital long QT syndrome, congestive heart failure, heart hypertrophy, hypokalemia, or hypomagnesemia (see DRUG INTERACTIONS).

Cardiomyopathy and Myocarditis: Cardiomyopathy and myocarditis have been reported in clinical trials and in post-marketing experience with quetiapine. These events were temporally related to quetiapine, however a causal relationship has not been established. Treatment should be reassessed in patients with suspected cardiomyopathy or myocarditis.

Endocrine and Metabolism

Worsening of More than one Metabolic Parameter (among Cholesterol and Triglyceride Elevations; Hyperglycaemia; Weight Gain): In some patients, a worsening of more than one of the metabolic factors of weight, blood glucose and lipids was observed in clinical studies. Changes in these parameters should be managed as clinically appropriate.

Cholesterol and Triglyceride Elevations: Very common ($\geq 10\%$) cases of elevations in serum triglyceride levels (≥ 2.258 mmol/L on at least one occasion), elevations in total cholesterol (predominantly LDL cholesterol) (≥ 6.2064 mmol/L on at least one occasion), and decreases in HDL cholesterol (< 1.025 mmol/L males; < 1.282 mmol/L females at any time) have been observed during treatment with quetiapine in clinical trials (see ADVERSE REACTIONS). Lipid changes should be managed as clinically appropriate.

In schizophrenia clinical trials, quetiapine fumarate extended-release-treated patients had increases from baseline in mean cholesterol and triglycerides of 4% and 14%, respectively, compared to decreases from baseline in mean cholesterol and triglycerides of 2% and 6% for placebo-treated patients. In a 3-week bipolar mania clinical trial, quetiapine fumarate extended-release-treated patients had increases from baseline in mean cholesterol and triglycerides of 2% and 20%, respectively, compared to decreases in mean cholesterol and triglycerides of 2% and 5% for placebo-treated patients. In a bipolar depression clinical trial, quetiapine fumarate extended-release-treated patients had decreases from baseline in mean cholesterol and increases from baseline in mean triglycerides of 2% and 11%, respectively, compared to decreases in mean cholesterol and triglycerides of 3% and 2% for placebo-treated patients. In 6-week MDD monotherapy clinical trials, quetiapine fumarate extended-release treated patients had increases from baseline in mean triglycerides of 8%, compared to a mean decrease of 1% for placebo-treated patients. In the same trials, both quetiapine fumarate extended-release- and placebo-treated patients had decreases from baseline in mean cholesterol of 1% and 3%, respectively. In a longer-term randomized withdrawal MDD trial (see Part II: CLINICAL TRIALS), patients who

completed at least 158 days of quetiapine fumarate extended-release treatment (n = 196), showed mean increases from baseline in triglycerides of approximately 5% and mean decreases from baseline in cholesterol of approximately 4%.

Hyperglycaemia: As with other antipsychotics, hyperglycaemia and diabetes mellitus (including exacerbation of pre-existing diabetes, diabetic ketoacidosis, and diabetic coma including some fatal cases) in the aggregate have been reported rarely ($\geq 0.01\%$ - $< 0.1\%$) during the use of quetiapine in post-marketing experience, sometimes in patients with no reported history of hyperglycaemia (see ADVERSE REACTIONS, Post-Market Adverse Drug Reactions).

Blood glucose increases to hyperglycaemic levels (fasting blood glucose ≥ 7.0 mmol/L or a non fasting blood glucose ≥ 11.1 mmol/L on at least one occasion) have been observed commonly ($\geq 1\%$ - $< 10\%$) with quetiapine in clinical trials. Occasional reports of diabetes, have also been observed in clinical trials with quetiapine (see ADVERSE REACTIONS, Abnormal Hematologic and Clinical Chemistry Findings).

Assessment of the relationship between atypical antipsychotic use and glucose abnormalities is complicated by the possibility of an increased background risk of diabetes mellitus in patients with schizophrenia and the increasing incidence of diabetes mellitus in the general population. Given these confounders, the relationship between atypical antipsychotic use and hyperglycaemia-related adverse events is not completely understood. However, epidemiological studies suggest an increased risk of treatment-emergent hyperglycaemia-related adverse events in patients treated with the atypical antipsychotics. Precise risk estimates for hyperglycaemia-related adverse events in patients treated with atypical antipsychotics are not available.

Patients should have baseline and periodic monitoring of blood glucose. Patients treated with atypical antipsychotics should be monitored for symptoms of hyperglycaemia including polydipsia, polyuria, polyphagia, and weakness. Patients who develop symptoms of hyperglycaemia during treatment with atypical antipsychotics should undergo fasting blood glucose testing. In some cases, hyperglycaemia has resolved when the atypical antipsychotic was discontinued; however, some patients required continuation of anti-diabetic treatment despite discontinuation of the suspect drug. Patients with an established diagnosis of diabetes mellitus who are started on atypical antipsychotics should be monitored regularly for worsening of glucose control.

Weight Gain: In 6-week placebo-controlled schizophrenia clinical trials, for patients treated with quetiapine fumarate extended-release mean weight gain was 1.77 kg (n = 951) compared to 2.19 kg (n = 414) in patients treated with quetiapine fumarate immediate-release. For patients treated with placebo the mean weight gain was 0.26 kg (n = 319). In a 3-week placebo-controlled bipolar mania clinical trial, for patients treated with quetiapine fumarate extended-release mean weight gain was 1.3 kg (n = 151) compared to 0.1 kg (n = 160) in patients treated with placebo. In an 8-week placebo-controlled bipolar depression clinical trial, for patients treated with quetiapine fumarate extended-release mean weight gain was 1.3 kg (n = 137) compared to -0.2 kg (n = 140) in patients treated with placebo. In 6-week placebo-controlled MDD acute monotherapy clinical trials, for patients treated with quetiapine fumarate extended-release mean weight gain was 0.87 kg (n = 1149) compared to 0.31 kg (n = 648) in patients treated with placebo. In a longer-term randomized withdrawal MDD trial (see Part II: CLINICAL TRIALS), patients who completed at least 158 days

of quetiapine fumarate extended-release treatment (n = 196), mean weight gain for patients in quetiapine fumarate extended-release 50, 150 and 300 mg/day groups was 1.0 kg, 2.5 kg, and 3.0 kg respectively. In these same patients the percentage of patients experiencing a weight increase of $\geq 7\%$ by 158 days in quetiapine fumarate extended-release 50, 150, and 300 mg/day groups was 13%, 24%, and 33% respectively.

Based on the cumulative acute placebo-controlled clinical trial database, weight gain (based on $\geq 7\%$ increase in body weight from baseline) was reported in 9.6% in quetiapine-treated patients and 3.8% in placebo-treated patients, which occurs predominantly during the early weeks of treatment in adults (see ADVERSE REACTIONS). Patients should have baseline and periodic monitoring of body weight.

Hyperprolactinemia: During clinical trials with quetiapine, elevation in prolactin levels occurred in 3.6% (158/4416) of patients treated with quetiapine compared to 2.6% (51/1968) on placebo (see ADVERSE REACTIONS).

Increased prolactin levels with quetiapine were observed in rat studies. As is common with compounds which stimulate prolactin release, the administration of quetiapine resulted in an increase in the incidence of mammary neoplasms in rats. The physiological differences between rats and humans with regard to prolactin make the clinical significance of these findings unclear. To date, neither clinical nor epidemiological studies have shown an association between chronic administration of drugs that stimulate prolactin release, and mammary tumourigenesis. Tissue culture experiments, however, indicate that approximately one third of human breast cancers are prolactin dependent in vitro; a factor of potential importance if prescription of these drugs is contemplated in a patient with previously detected breast cancer.

Possible manifestations associated with elevated prolactin levels are amenorrhea, galactorrhea, and menorrhagia. Long-standing hyperprolactinemia when associated with hypogonadism may lead to decreased bone mineral density in both female and male subjects.

In the multiple fixed-dose schizophrenia clinical trial there were no differences in prolactin levels at study completion for quetiapine fumarate immediate-release, across the recommended dose range, and placebo.

Hypothyroidism: In quetiapine fumarate extended-release clinical trials, 0.2% (4/1755) of patients on quetiapine fumarate extended-release compared to 0% (0/796) on placebo experienced decreased free thyroxine and 2.7% (46/1716) on quetiapine fumarate extended-release compared to 1.4% (11/785) on placebo experienced increased TSH; however, no patients experienced a combination of clinically significant decreased free thyroxine and increased TSH. In schizophrenia trials, no patients had events of hypothyroidism.

In clinical trials, on average quetiapine fumarate immediate-release was associated with about a 20% mean reduction in thyroid thyroxine levels (both total and free). Forty-two percent of quetiapine fumarate immediate-release-treated patients showed at least a 30% reduction in total T4 and 7% showed at least a 50% reduction. Maximum reduction of thyroxine levels generally occurred during the first two to four weeks of treatment with quetiapine fumarate immediate-release. These reductions were maintained without adaptation or progression during longer term

treatment. Decreases in T4 were not associated with systematic changes in TSH or clinical signs or symptoms of hypothyroidism. Approximately 0.4% (12/2595) of patients treated with quetiapine fumarate immediate-release experienced persistent increases in TSH, and 0.25% of patients were treated with thyroid replacement. See ADVERSE REACTIONS.

Gastrointestinal

Antiemetic Effect: Consistent with its dopamine antagonist effects, quetiapine may have an antiemetic effect. Such an effect may mask signs of toxicity due to overdosage of other drugs, or may mask symptoms of disease such as brain tumour or intestinal obstruction.

Dysphagia and Aspiration Pneumonia: Dysphagia and aspiration have been reported with quetiapine. Although a causal relationship with aspiration pneumonia has not been established, quetiapine should be used with caution in patients at risk for aspiration pneumonia. See WARNINGS AND PRECAUTIONS, Special Populations and ADVERSE REACTIONS.

Constipation and Intestinal Obstruction: Constipation represents a risk factor for intestinal obstruction. Constipation and intestinal obstruction have been reported with quetiapine. This includes fatal reports in patients who are at a higher risk of intestinal obstruction, including those that are receiving multiple concomitant medications that decrease intestinal motility and/or may not report symptoms of constipation. See ADVERSE REACTIONS, Post-Market Adverse Drug Reactions. Patients with known or suspected gastrointestinal obstruction (e.g., bowel obstruction, strictures) or any diseases/conditions that affect bowel transit (e.g., ileus of any type) may also be at higher risk of intestinal obstruction.

Genitourinary

Priapism: Rare cases of priapism have been reported with antipsychotic use, such as quetiapine fumarate extended-release. This adverse reaction, as with other psychotropic drugs, did not appear to be dose-dependent and did not correlate with the duration of treatment.

Hematologic

Leukopenia, Neutropenia and Agranulocytosis

In clinical trial and post-marketing experience, events of neutropenia, granulocytopenia and agranulocytosis (severe neutropenia with infection) have been reported during antipsychotic use, including quetiapine fumarate extended-release. It is recommended that patients have their complete blood count (CBC) tested prior to starting AG-Quetiapine XR and then periodically throughout treatment.

Severe neutropenia ($<0.5 \times 10^9/L$) has been uncommonly reported in short-term placebo controlled monotherapy clinical trials with quetiapine. Most of the cases of severe neutropenia have occurred within the first two months of starting therapy with quetiapine. There was no apparent dose relationship. Neutropenia should be considered in patients presenting with infection, particularly in the absence of obvious predisposing factors(s), or in patients with unexplained fever, and should be managed as clinically appropriate. There have been rare cases of agranulocytosis among all patients treated with quetiapine during clinical trials as well as post-

marketing reports (including fatal cases). There have also been cases of agranulocytosis in patients without pre-existing risk factors. Agranulocytosis has also been reported with other agents in the class (see ADVERSE REACTIONS, Other Adverse Events, Post-Market Adverse Drug Reactions).

Possible risk factors for leukopenia/neutropenia include pre-existing low white cell count (WBC) and history of drug induced leukopenia/neutropenia. Patients with a pre-existing low WBC or a history of drug induced leukopenia/neutropenia should have their complete blood count (CBC) monitored frequently during the first few months of therapy and should discontinue AG-Quetiapine XR at the first sign of a decline in WBC in absence of other causative factors. Patients with neutropenia should be carefully monitored for fever or other symptoms or signs of infection and treated promptly if such symptoms or signs occur. Patients with severe neutropenia (absolute neutrophil count $<1 \times 10^9/L$) should discontinue AG-Quetiapine XR and have their WBC followed until recovery (see ADVERSE REACTIONS, Abnormal Hematologic and Clinical Chemistry Findings and Post-Market Adverse Drug Reactions).

Venous Thromboembolism: Venous thromboembolism (VTE), including fatal pulmonary embolism, has been reported with antipsychotic drugs, including quetiapine fumarate extended-release, in case reports and/or observational studies. When prescribing AG-Quetiapine XR all potential risk factors for VTE should be identified and preventative measures undertaken.

Hepatic/Pancreatic

Hepatic Impairment: Decreased clearance of quetiapine fumarate immediate-release was observed in patients with mild hepatic impairment (see ACTIONS and CLINICAL PHARMACOLOGY, Special Populations and Conditions). No pharmacokinetic data are available for quetiapine in patients with moderate or severe hepatic impairment. However, should clinical judgement deem treatment with AG-Quetiapine XR necessary, the drug should be used with great caution in patients with moderate or severe hepatic impairment (see ACTIONS AND CLINICAL PHARMACOLOGY, Special Populations and Conditions and DOSAGE AND ADMINISTRATION).

Transaminase Elevations: Asymptomatic, transient and reversible elevations in serum transaminases (primarily ALT) associated with quetiapine fumarate extended-release have been reported. The proportions of patients with transaminase elevations of >3 times the upper limits of the normal reference range in a pool of placebo-controlled trials were approximately 1% for both quetiapine fumarate extended-release and placebo.

During premarketing clinical trials, therapy with quetiapine fumarate immediate-release was associated with elevation of hepatic transaminases, primarily ALT. Within a clinical trial database of 1892 quetiapine fumarate immediate-release-treated schizophrenia patients, with baseline ALT levels <60 IU/L, 5.3% (101/1892) had treatment-emergent ALT elevations to >120 IU/L, 1.5% (29/1892) had elevations to >200 IU/L, and 0.2% (3/1892) had elevations to >400 IU/L. No patients had values in excess of 800 IU/L. None of the quetiapine fumarate immediate-release-treated patients who had elevated transaminase values manifested clinical symptomatology associated with liver impairment. The majority of transaminase elevations were seen during the first two months of treatment.

Most elevations were transient (80%) while patients continued on quetiapine fumarate immediate-release therapy. Of the 101 quetiapine fumarate immediate-release-treated patients whose enzyme levels increased to >120 IU/L, 40 discontinued treatment while their ALT values were still raised. In 114 quetiapine fumarate immediate-release-treated patients whose baseline ALT was >90 IU/L, only 1 experienced an elevation to >400 IU/L.

Precautions should be exercised when using quetiapine in patients with pre-existing hepatic disorders, in patients who are being treated with potentially hepatotoxic drugs, or if treatment-emergent signs or symptoms of hepatic impairment appear.

Hepatic failure, including fatalities, has also been reported very rarely during the post-marketing period. There have been rare reports of hepatitis in clinical studies. Rare post-marketing reports of hepatitis (with or without jaundice), in patients with or without prior history, have been received. Very rare cases of hepatic steatosis, cholestatic or mixed liver injury have also been reported in the post-marketing period.

For patients who have known or suspected abnormal hepatic function prior to starting quetiapine, standard clinical assessment, including measurement of transaminase levels is recommended. Periodic clinical reassessment with transaminase levels is recommended for such patients, as well as for patients who develop any signs and symptoms suggestive of a new onset liver disorder during quetiapine therapy (see ADVERSE REACTIONS, Abnormal Hematologic and Clinical Chemistry Findings).

Pancreatitis: Pancreatitis has been reported in clinical trials and during post marketing experience. Among post marketing reports, while not all cases were confounded by risk factors, many patients had factors which are known to be associated with pancreatitis such as increased triglycerides (see WARNINGS and PRECAUTIONS, Endocrine and Metabolism), gallstones, and alcohol consumption.

Neurologic

Neuroleptic Malignant Syndrome (NMS): Neuroleptic Malignant Syndrome is a potentially fatal symptom complex that has been reported in association with antipsychotic drugs, including quetiapine.

The clinical manifestations of NMS are hyperthermia, muscle rigidity, altered mental status, and evidence of autonomic instability (irregular pulse or blood pressure, tachycardia, diaphoresis, and cardiac dysrhythmia). Additional signs may include elevated creatine phosphokinase, myoglobinuria (rhabdomyolysis) and acute renal failure.

In arriving at a diagnosis, it is important to identify cases where the clinical presentation includes both serious medical illness (e.g., pneumonia, systemic infection, etc.) and untreated or inadequately treated extrapyramidal signs and symptoms. Other important considerations in the differential diagnosis include central anticholinergic toxicity, heat stroke, drug fever and primary central nervous system pathology.

The management of NMS should include immediate discontinuation of antipsychotic drugs, including quetiapine, and other drugs not essential to concurrent therapy; intensive symptomatic

treatment and medical monitoring; and treatment of any concomitant serious medical problems for which specific treatments are available. There is no general agreement about specific pharmacological treatment regimens for uncomplicated NMS.

If a patient requires antipsychotic drug treatment after recovery from NMS, the potential reintroduction of drug therapy should be carefully considered. The patient should be carefully monitored since recurrences of NMS have been reported.

Tardive Dyskinesia (TD) and Extrapyrarnidal Symptoms (EPS): Tardive dyskinesia is a syndrome of potentially irreversible, involuntary, dyskinetic movements that may develop in patients treated with antipsychotic drugs including quetiapine. Although the prevalence of the syndrome appears to be highest among the elderly, especially elderly women, it is impossible to rely upon estimates to predict which patients are likely to develop the syndrome.

In placebo-controlled clinical trials for schizophrenia and bipolar mania the incidence of EPS was no different from that of placebo across the recommended therapeutic dose range. It has been hypothesized that agents with a lower EPS liability may also have a lower liability to produce TD. This relationship predicts that quetiapine should have less potential than typical antipsychotic agents to induce TD in schizophrenia and bipolar mania patients. In short-term, placebo-controlled clinical trials for bipolar depression and major depressive disorder, the incidence of EPS was higher in quetiapine treated patients than in placebo-treated patients. See ADVERSE REACTIONS.

The risk of developing TD and the likelihood that it will become irreversible are believed to increase as the duration of treatment and the total cumulative dose of antipsychotic drugs administered to the patient increase. However, the syndrome can develop, although much less commonly, after relatively brief treatment periods at low doses.

There is no known treatment for established cases of TD, although the syndrome may remit, partially or completely, if antipsychotic treatment is withdrawn. Antipsychotic treatment, itself, however, may suppress (or partially suppress) the signs and symptoms of the syndrome and thereby may possibly mask the underlying process. The effect that symptomatic suppression has upon the long-term course of the syndrome is unknown.

Given these considerations, quetiapine should be prescribed in a manner that is most likely to minimize the occurrence of TD. Chronic antipsychotic treatment should generally be reserved for patients who appear to suffer from a chronic illness that is known to respond to antipsychotic drugs, and for whom alternative, equally effective, but potentially less harmful treatments are not available or appropriate. In patients who do require chronic treatment, the smallest dose and the shortest duration of treatment producing a satisfactory clinical response should be sought. The need for continued treatment should be reassessed periodically.

If signs and symptoms of TD appear in a patient on quetiapine, dose reduction or drug discontinuation should be considered. Some patients may require treatment with AG-Quetiapine XR despite the presence of the syndrome. The symptoms of TD can worsen or even arise after discontinuation of treatment (see ADVERSE REACTIONS).

Seizures: In controlled clinical trials with quetiapine, there was no difference in the incidence of seizures in patients treated with quetiapine (0.04%, 1/2388) or placebo (0.2%, 3/1267).

Nevertheless, as with other antipsychotics, caution is recommended when treating patients with a history of seizures or with conditions associated with a lowered seizure threshold (see ADVERSE REACTIONS).

Sleep Apnea: There have been post-marketing reports of sleep apnea and related disorders in patients with or without prior history of sleep apnea. In some cases, events were reported to have resolved or improved upon quetiapine fumarate extended-release discontinuation or dose reduction. AG-Quetiapine XR should be used with caution in patients who have a history of or are at risk for sleep apnea, and/or are receiving concomitant central nervous system (CNS) depressants. In severe cases or if the events continue to persist, AG-Quetiapine XR dose reduction or gradual discontinuation and alternative therapeutic options should be considered (see ADVERSE REACTIONS, Post-Market Adverse Drug Reactions).

Anticholinergic (muscarinic) effects:

Urinary Hesitation and Retention

There have been post-marketing reports of urinary retention in quetiapine fumarate extended-release -treated patients with or without prior history. Some patients experiencing severe urinary retention were hospitalized and required catheterization. Quetiapine fumarate extended-release possesses anticholinergic properties which can lead to adverse drug reactions such as gastric or urinary retention when used alone, at recommended therapeutic doses, or concomitant with other medications with anticholinergic effects, and in the setting of overdose. Therefore, AG-Quetiapine XR should be prescribed with caution in patients with a current diagnosis or prior history of urinary retention, patients with other risk factors for urinary retention (e.g., benign prostatic hyperplasia [BPH]), conditions predisposing to intestinal obstruction (see WARNINGS AND PRECAUTIONS, Constipation and Intestinal Obstruction) or related gastrointestinal conditions, increased intraocular pressure or narrow angle glaucoma, and patients who are unable to communicate clinical symptoms (e.g., cognitively impaired patients). AG-Quetiapine XR should also be prescribed with caution in patients receiving medications with anticholinergic activity that can affect voiding. In patients with signs and symptoms of urinary retention, dose reduction or gradual discontinuation of AG-Quetiapine XR and alternative therapy should be considered (see ADVERSE REACTIONS, DRUG INTERACTIONS, OVERDOSAGE, ACTION AND CLINICAL PHARMACOLOGY and DETAILED PHARMACOLOGY).

Potential Effect on Cognitive and Motor Performance: Somnolence was a very commonly reported adverse event in patients treated with quetiapine, especially during the initial dose titration period. Since quetiapine may cause sedation and impair motor skill, patients should be cautioned about performing activities requiring mental alertness, such as operating a motor vehicle or hazardous machinery, until they are reasonably certain that therapy with quetiapine does not affect them adversely. Somnolence may lead to falls.

Ophthalmologic

Cataracts: The development of cataracts was observed in association with quetiapine treatment in chronic dog studies at 4 times the recommended human dose. Lens changes have also been observed in patients during long-term quetiapine fumarate immediate-release treatment, but a causal relationship to quetiapine fumarate immediate-release use

has not been established. The possibility of lenticular changes during long-term use of quetiapine fumarate extended-release in man, thus can not be excluded at this time. Eye examinations (e.g., slit lamp exam) prior to or shortly after initiation of treatment with AG-Quetiapine XR and at 6 month intervals thereafter, are recommended. If clinically significant lens changes associated with AG-Quetiapine XR use are observed, discontinuation of AG-Quetiapine XR should be considered.

Psychiatric

Suicide/ suicidal thoughts or clinical worsening: Depressive episodes are associated with an increased risk of suicidal thoughts, self-harm and suicide (suicide-related events). This risk persists until significant remission of depression occurs. As improvement may not occur during the first few weeks or more of treatment, patients should be closely monitored until such improvement occurs. It is general clinical experience that the risk of suicide may increase in the early stages of recovery. In addition to depressive episodes associated with bipolar disorder and MDD, depression may be co-morbid with schizophrenia.

Schizophrenia as well as manic episodes associated bipolar disorder, can also be associated with an increased risk of suicide-related events, and thus close supervision and appropriate clinical management of high risk patients should accompany drug therapy.

Patients with a history of suicide-related events are also known to be at a greater risk of suicidal thoughts or suicide attempts, and should receive careful monitoring during treatment.

In a bipolar mania clinical trial with quetiapine fumarate extended-release, the incidence of treatment emergent suicidal ideation or suicidal behaviour, as measured by the Columbia Analysis of Suicidal Behaviour, was 1.3% for quetiapine fumarate extended-release treated patients and 3.8% for placebo-treated patients.

In a bipolar depression clinical trial with quetiapine fumarate extended-release, the incidence of treatment emergent suicidal ideation or suicidal behaviour, as measured by the Columbia Analysis of Suicidal Behaviour, was 0.7% for quetiapine fumarate extended-release treated patients and 1.4% for placebo- treated patients.

In MDD acute clinical trials, the incidence of treatment emergent suicidal ideation or suicide attempt was 0.7% in quetiapine fumarate extended-release treated patients and 0.7% in placebo-treated patients. In a longer-term randomized withdrawal study in patients with MDD, the incidence during randomized treatment was 0.3% for quetiapine fumarate extended-release and 0.5% for placebo.

Renal

There is little experience with quetiapine fumarate extended-release in patients with renal impairment, except in a low (subclinical) single dose study with quetiapine fumarate immediate-release (see ACTIONS AND CLINICAL PHARMACOLOGY, Special Populations and Conditions). AG-Quetiapine XR should thus be used with caution in patients with known renal impairment, especially during the initial dosing period (see DOSAGE AND

ADMINISTRATION).

Skin

Severe cutaneous adverse reactions (SCARs), including Stevens-Johnson syndrome (SJS), toxic epidermal necrolysis (TEN) and drug reaction with eosinophilia and systemic symptoms (DRESS) are potentially life threatening adverse drug reactions that have been reported during quetiapine exposure. SCARs commonly present as a combination of the following symptoms: extensive cutaneous rash or exfoliative dermatitis, fever, lymphadenopathy and possible eosinophilia. Discontinue quetiapine if severe cutaneous adverse reactions occur.

Special Populations

Pregnant Women: Patients should be advised to notify their physician if they become pregnant or intend to become pregnant during treatment with quetiapine. The safety and efficacy of quetiapine during human pregnancy have not been established. Following some pregnancies in which quetiapine was used, neonatal withdrawal symptoms have been reported. Therefore, quetiapine should only be used during pregnancy if the expected benefits justify the potential risks.

Neonates: Neonates exposed to antipsychotic drugs including quetiapine fumarate extended-release during the third trimester of pregnancy are at risk for extrapyramidal and/or withdrawal symptoms following delivery. There have been reports of agitation, hypertonia, hypotonia, tremor, somnolence, respiratory distress and feeding disorder in these neonates. These complications have varied in severity; while in some cases symptoms have been self-limited, in other cases neonates have required intensive care unit support and prolonged hospitalization.

AG-Quetiapine XR should not be used during pregnancy unless the expected benefits to the mother markedly outweigh the potential risks to the fetus.

Nursing Women: There have been published reports of quetiapine excretion into human breast milk, however the degree of excretion was not consistent. Women who are breast-feeding should therefore be advised to avoid breast-feeding while taking quetiapine.

Pediatrics (<18 years of age): The safety and efficacy of quetiapine fumarate extended-release in children under the age of 18 years have not been established and its use is not recommended.

Weight gain has been observed with atypical antipsychotic use in pediatric and adolescent patient populations. Independent of any drug-specific effects, weight gain can be associated with adverse changes in other metabolic parameters (e.g., glucose and lipid metabolism).

Abnormal childhood weight and metabolic status can have adverse effects on cardiovascular outcomes in adulthood. Weight gain and adverse effects on other metabolic parameters associated with atypical antipsychotics can be more frequent or more severe in pediatric and adolescent patients than in the adult patients.

Increased blood pressure (not seen in adults) occurs more frequently in quetiapine treated patients than in placebo in patients under the age of 18 years. Additionally, frequency categories

for increased appetite, elevations in serum prolactin, vomiting, rhinitis and syncope were higher in patients under the age of 18 years treated with quetiapine than in adults. Increased appetite, elevations in serum prolactin, and vomiting were very common in children and adolescents, and common in adults. Rhinitis and syncope were common in children and adolescents, and uncommon in adults (see ADVERSE REACTIONS, Adverse Drug Reactions in Pediatrics).

Long-term safety data including cardiometabolic effects, growth, maturation and behavioural development in patients under 18 years of age has not been systematically evaluated.

Geriatrics (≥ 65 years of age): The number of patients 65 years of age or over exposed to quetiapine fumarate extended-release during clinical trials was limited (n = 68). When compared to younger patients the mean plasma clearance of quetiapine was reduced by 30% to 50% in elderly subjects. In addition, as this population has more frequent hepatic, renal, central nervous system, and cardiovascular dysfunctions, and more frequent use of concomitant medication, caution should be exercised with the use of quetiapine in the elderly patient (see DOSAGE AND ADMINISTRATION).

In a clinical trial that evaluated non-demented elderly patients (aged 66 to 89 years) with MDD, the tolerability of quetiapine fumarate extended-release once daily was comparable to that seen in adults (aged 18-65 years) other than the incidence of extrapyramidal symptoms. See WARNINGS AND PRECAUTIONS, Neurologic, Tardive Dyskinesia (TD) and Extrapyramidal Symptoms (EPS); ADVERSE REACTIONS; Part II: CLINICAL TRIALS.

Use in Geriatric Patients with Dementia:

Overall Mortality: Elderly patients with dementia treated with atypical antipsychotic drugs showed increased mortality compared to placebo in a meta-analysis of 13 controlled trials of various atypical antipsychotic drugs. In two placebo-controlled trials with oral quetiapine in this population, the incidence of mortality was 5.5% for quetiapine-treated patients compared to 3.2% for placebo-treated patients. AG-Quetiapine XR is not indicated in elderly patients with dementia.

Cerebrovascular adverse events: An increased risk of cerebrovascular adverse events has been seen in the dementia population with some atypical antipsychotics. The mechanism for this increased risk is not known. There is insufficient data with quetiapine to know if there is an increased risk of cerebrovascular events associated with quetiapine. An increased risk, however, cannot be excluded. AG-Quetiapine XR is not indicated in patients with dementia.

Vascular disease: Quetiapine should be used with caution in patients with risk factors for stroke or with a history of stroke.

Dysphagia: Esophageal dysmotility and aspiration have been associated with antipsychotic drug use. Aspiration pneumonia is a common cause of morbidity and mortality in elderly patients, in particular those with advanced Alzheimer's dementia. Quetiapine and other antipsychotic drugs should be used cautiously in patients at risk for aspiration pneumonia. See WARNINGS AND PRECAUTIONS, Gastrointestinal and ADVERSE REACTIONS.

ADVERSE REACTIONS

The stated frequencies of adverse events represent the proportion of individuals who experienced, at least once, a treatment-emergent adverse event of the type listed. An event was considered treatment-emergent if it occurred for the first time or worsened while receiving therapy following baseline evaluation.

Overview of Clinical Trial and Post Market Adverse Drug Reactions

The most commonly reported adverse drug reactions in both clinical trials and during post-marketing experience with quetiapine ($\geq 10\%$) are somnolence dizziness, dry mouth, withdrawal (discontinuation) symptoms, elevations in serum triglyceride levels, elevations in total cholesterol (predominantly LDL cholesterol), decreases in HDL cholesterol, weight gain, decreased haemoglobin and extrapyramidal symptoms.

Clinical Trial Adverse Drug Reactions

The prescriber should be aware that the figures in the tables and tabulations cannot be used to predict the incidence of side effects in the course of usual medical practice where patient characteristics and other factors differ from those that prevailed in the clinical trials.

Similarly, the cited frequencies cannot be compared with figures obtained from other clinical investigations involving different treatments, uses, and investigators. The figures cited, however, do provide the prescribing physician with some basis for estimating the relative contribution of drug and non-drug factors to the side effect incidence in the populations studied.

Adverse Events Associated with Discontinuation *Short-Term Placebo-Controlled Clinical Trials: Schizophrenia:*

In short-term, placebo-controlled schizophrenia trials, there was no difference in the incidence of adverse events associated with discontinuation of quetiapine fumarate extended-release or placebo. Overall, 6.4% of quetiapine fumarate extended-release-treated patients discontinued treatment due to adverse events compared to 7.5% of placebo-treated patients.

Bipolar Disorder:

Bipolar Mania: In a 3-week placebo-controlled bipolar mania trial, 4.6% of patients on quetiapine fumarate extended-release discontinued due to adverse events compared to 8.1% on placebo.

Bipolar Depression: In an 8-week placebo-controlled bipolar depression trial, 13.1% of patients on quetiapine fumarate extended-release discontinued due to adverse events compared to 3.6% on placebo. Sedation (6.6%) and somnolence (3.6%) were the most common adverse events leading to discontinuation in the quetiapine fumarate extended-release treatment group.

Major Depressive Disorder:

In placebo-controlled monotherapy MDD trials, 14.3% of patients on quetiapine fumarate extended-release discontinued due to adverse events compared to 4.5% on placebo. In a placebo-controlled monotherapy trial in elderly patients with MDD, 9.6% of patients on quetiapine

fumarate extended-release discontinued due to adverse events compared to 4.1% on placebo.

Commonly Observed Adverse Events in Short-Term Placebo-Controlled Clinical Trials

Schizophrenia:

During acute therapy with quetiapine fumarate extended-release, the most commonly observed adverse events associated with the use of quetiapine fumarate extended-release (incidence of at least 5%, and an incidence at least 5% higher than that observed with placebo) were sedation, dry mouth, somnolence, and dizziness.

Bipolar Disorder:

Bipolar Mania: During acute therapy with quetiapine fumarate extended-release, the most commonly observed adverse events associated with the use of quetiapine fumarate extended-release (incidence of at least 5%, and an incidence at least 5% higher than that observed with placebo) were sedation, dry mouth, somnolence, constipation, dizziness, weight gain and dysarthria.

Bipolar Depression: During acute therapy with quetiapine fumarate extended-release, the most commonly observed adverse events associated with the use of quetiapine fumarate extended-release (incidence of at least 5%, and an incidence at least 5% higher than that observed with placebo) were dry mouth, somnolence, sedation, increased appetite, weight gain and dyspepsia.

Major Depressive Disorder:

The most commonly observed adverse events associated with the use of quetiapine fumarate extended-release (incidence of at least 5%, and an incidence at least 5% higher than that observed with placebo) during acute monotherapy with quetiapine fumarate extended-release were dry mouth, sedation, somnolence, dizziness and fatigue.

Incidence of Adverse Events in Placebo-Controlled Clinical Trials

Table 1 enumerates the incidence, rounded to the nearest percent, of treatment-emergent adverse events that occurred during acute therapy (up to 6 weeks) of schizophrenia in $\geq 1\%$ of patients treated with quetiapine fumarate extended-release (doses ranging from 300 to 800 mg/day) where the incidence in patients treated with quetiapine fumarate extended-release was greater than the incidence in placebo- treated patients.

Table 1 Adverse Events Reported for at Least 1% of Quetiapine Fumarate Extended-Release-Treated Subjects (Doses Ranging from 300 to 800 mg/day) and for a Higher Percentage of Quetiapine Fumarate Extended-Release-Treated Subjects than Subjects Who Received Placebo in Short-Term, Placebo-Controlled Schizophrenia Phase III Trials

Body System and MedDRA Term ^a	Percentage of Subjects With Adverse Events*	
	Quetiapine fumarate extended-release (n = 951)	Placebo (n = 319)
Whole body		
Fatigue	3	2
Anxiety	2	1
Irritability	1	0
Pyrexia	1	0
Nervous system		
Sedation	13	7
Somnolence	12	4
Dizziness	10	4
Tremor	2	1
Restlessness	2	1
Gastrointestinal system		
Dry mouth	12	1
Constipation	6	5
Dyspepsia	5	2
Cardiovascular system		
Orthostatic hypotension	7	5
Hypotension	3	1
Tachycardia	3	1
Heart rate increased	4	1
Metabolic and nutritional disorders		
Increased appetite	2	0
Special senses		
Vision blurred	2	1

* Events for which quetiapine fumarate extended-release incidence was equal to or less than placebo are not listed in the table, but included the following: headache, insomnia, and nausea.

^a Patients with multiple events falling under the same preferred term are counted only once in that term.

Table 2 enumerates the incidence, rounded to the nearest percent, of treatment-emergent adverse events that occurred during acute therapy (3 weeks) of bipolar mania in $\geq 1\%$ of patients treated with quetiapine fumarate extended-release (300-800 mg/day) where the incidence in patients treated with quetiapine fumarate extended-release was greater than the incidence in placebo-treated patients.

Table 2 Adverse Events Reported for at Least 1% of Quetiapine Fumarate Extended-Release-Treated Subjects (Doses Ranging from 300 to 800 mg/day) and for a Higher Percentage of Quetiapine Fumarate Extended-Release-Treated Subjects Than Subjects Who Received Placebo in a Short-Term (3-Week), Placebo-Controlled Bipolar Mania Phase III Trial

Body System and MedDRA Term ^a	Percentage of Subjects With Adverse Events*	
	Quetiapine fumarate extended-release (n = 151)	Placebo (n = 160)
General disorders and administration site conditions		
Fatigue	7	4
Contusion	1	0
Pain	1	0
Nervous system disorders		
Sedation	34	8
Somnolence	17	4
Dizziness	10	4
Dysarthria	5	0
Lethargy	2	1
Sluggishness	2	1
Dizziness postural	1	0
Gastrointestinal disorders		
Dry mouth	34	7
Constipation	10	3
Dyspepsia	7	4
Toothache	3	1
Cardiovascular disorders		
Heart rate increased	3	0
Orthostatic hypotension	3	0
Tachycardia	2	1
Metabolic and nutritional disorders		
Weight increased	7	1
Increased appetite	4	2
Musculoskeletal and connective tissue disorders		
Back pain	3	2
Arthralgia	1	0
Psychiatric disorders		
Abnormal dreams	3	0
Bipolar I disorder	1	0
Respiratory disorders		
Nasal congestion	5	1
Dry throat	1	0
Special senses		
Vision blurred	2	1

* Events for which quetiapine fumarate extended-release incidence was equal to or less than placebo are not listed in the table.

Table reports percentage rounded to the nearest integer.

^a Patients with multiple events falling under the same preferred term are counted only once in that term.

Table 3 enumerates the incidence, rounded to the nearest percent, of treatment-emergent adverse events that occurred during acute therapy (8 weeks) of bipolar depression in $\geq 1\%$ of patients treated with quetiapine fumarate extended-release (300 mg/day) where the incidence in patients treated with quetiapine fumarate extended-release was greater than the incidence in placebo-treated patients.

Table 3 Adverse Events Reported for at Least 1% of Quetiapine Fumarate Extended-Release-Treated Subjects (Dose of 300 mg/day) and for a Higher Percentage of Quetiapine Fumarate Extended-Release-Treated Subjects Than Subjects Who Received Placebo in a Short-Term (8-Week), Placebo- Controlled Bipolar Depression Phase III Trial

Body System and MedDRA Term ^a	Percentage of Subjects With Adverse Events*	
	Quetiapine fumarate extended-release (n = 137)	Placebo (n = 140)
General disorders		
Fatigue	6	2
Irritability	4	3
Anxiety	2	1
Nervous system disorders		
Somnolence	29	6
Sedation	23	7
Dizziness	13	11
Paraesthesia	3	2
Dysarthria	2	0
Disturbance in attention	2	1
Hypersomnia	1	0
Akathisia	1	0
Mental impairment	1	0
Gastrointestinal disorders		
Dry mouth	37	7
Constipation	8	6
Dyspepsia	7	1
Toothache	3	0
Cardiovascular disorders		
Heart rate increased	1	0
Infection and Infestations		
Gastroenteritis viral	4	1
Urinary tract infection	2	0
Metabolic and nutritional disorders		
Increased appetite	12	6
Weight increased	7	1
Decreased appetite	2	1
Musculoskeletal and connective tissue disorders		
Arthralgia	4	1
Back pain	3	1
Muscle spasm	3	1
Neck pain	1	0
Psychiatric disorders		
Abnormal dreams	3	0

Body System and MedDRA Term ^a	Percentage of Subjects With Adverse Events*	
	Quetiapine fumarate extended-release (n = 137)	Placebo (n = 140)
Confusional state	1	0
Disorientation	1	0
Skin and subcutaneous tissue disorders		
Hyperhidrosis	2	1

* Events for which quetiapine fumarate extended-release incidence was equal to or less than placebo are not listed in the table.

Table reports percentage rounded to the nearest integer.

^a Patients with multiple events falling under the same preferred term are counted only once in that term.

Table 4 enumerates the incidence, rounded to the nearest percent, of treatment-emergent adverse events that occurred during acute monotherapy (up to 8 weeks) of MDD in $\geq 1\%$ of patients treated with quetiapine fumarate extended-release (50-300 mg/day) where the incidence in patients treated with quetiapine fumarate extended-release was greater than the incidence in placebo-treated patients.

Table 4 Adverse Events Reported for at Least 1% of Quetiapine Fumarate Extended-Release-Treated Subjects (Doses Ranging From 50 to 300 mg/day) and for a Higher Percentage of Quetiapine Fumarate Extended-Release-Treated Subjects Than Subjects Who Received Placebo in Short-Term, Placebo-Controlled MDD Monotherapy Phase III Trials

Body System and MedDRA Term ^{a, b}	Percentage of Subjects With Adverse Events*	
	Quetiapine fumarate extended-release (n = 1149)	Placebo (n = 648)
General disorders and administration site conditions		
Fatigue	7	2
Irritability	4	3
Nervous system disorders		
Sedation	28	4
Somnolence	24	7
Dizziness	14	8
Disturbance in attention	2	<1
Hypersomnia	2	<1
Lethargy	2	1
Gastrointestinal system disorders		
Dry mouth	35	8
Constipation	8	4
Vomiting	3	1
Dyspepsia	4	3
Metabolic and nutritional disorders		
Increased appetite	5	3
Weight increased	3	<1
Musculoskeletal and connective tissue disorders		
Back pain	3	2
Myalgia	3	2
Musculoskeletal stiffness	2	1
Psychiatric disorders		
Abnormal dreams	2	1

Body System and MedDRA Term ^{a, b}	Percentage of Subjects With Adverse Events*	
	Quetiapine fumarate extended-release (n = 1149)	Placebo (n = 648)
Respiratory disorders		
Nasal congestion	2	1
Special senses		
Vision blurred	3	2

* Events for which quetiapine fumarate extended-release incidence was equal to or less than placebo are not listed in the table.

Table reports percentage rounded to the nearest integer.

^a Patients with multiple events falling under the same preferred term are counted only once in that term.

^b The following adverse events occurred in 1% of patients treated with quetiapine fumarate extended-release compared to <1% in placebo: chills, dysarthria, dysgeusia, sluggishness, akathisia, dizziness postural, tachycardia, restless legs syndrome, gastroesophageal reflux disease, pharyngolaryngeal pain and restlessness.

Table 5 enumerates the incidence of treatment-emergent adverse events that are dose related that occurred during acute monotherapy fixed dose studies (6-weeks) in $\geq 1\%$ of patients treated with quetiapine fumarate extended-release (50-300 mg/day) where the incidence of the adverse events in patients treated with quetiapine fumarate extended-release 150 mg and/or 300 mg was greater than the incidence in quetiapine fumarate extended-release 50 mg and placebo-treated patients.

Table 5 Dose Related Adverse Events in $\geq 1\%$ of Patients Treated with Quetiapine Fumarate Extended-Release (Doses 50, 150 and 300 mg/day) Where the Incidence of the Adverse Events in Patients Treated with Quetiapine Fumarate Extended-Release 150 mg and/or 300 mg was Greater than the Incidence in Quetiapine Fumarate Extended-Release 50 mg and Placebo-Treated Patients in Short-Term Fixed Dose, Placebo-Controlled MDD Monotherapy Phase III Trials

Body System and MedDRA Term ^a	Percentage of Subjects with Adverse Events*			
	Placebo (n = 338)	quetiapine fumarate extended-release 50 mg (n = 181)	quetiapine fumarate extended-release 150 mg (n = 328)	quetiapine fumarate extended-release 300 mg (n = 331)
General disorders and administration site conditions				
Pain	0	1	1	2
Chills	0	1	0	2
Nervous system disorders				
Sedation	6	27	37	34
Somnolence	9	18	22	28
Dizziness	8	9	13	15
Dysarthria	0	1	1	3
Disturbance in attention	0	1	2	2
Hypoaesthesia	1	0	1	2
Akathisia	1	0	2	1

Body System and MedDRA Term ^a	Percentage of Subjects with Adverse Events*			
	Placebo (n = 338)	quetiapine fumarate extended-release 50 mg (n = 181)	quetiapine fumarate extended- release 150 mg (n = 328)	quetiapine fumarate extended-release 300 mg (n = 331)
Lethargy	1	2	3	1
Paraesthesia	1	1	2	1
Hypersomnia	0	1	2	1
Gastrointestinal system disorders				
Dry mouth	9	22	36	40
Constipation	4	7	7	9
Nausea	8	8	12	9
Vomiting	2	2	4	5
Dyspepsia	3	2	5	4
Gastroesophageal reflux disease	0	0	1	2
Abdominal distension	1	0	0	2
Abdominal pain	1	1	2	1
Cardiovascular disorders				
Tachycardia	0	1	2	1
Metabolic and nutritional disorders				
Increased appetite	3	4	5	4
Weight increased	1	1	2	3
Musculoskeletal and connective tissue disorders				
Back pain	2	2	5	5
Arthralgia	2	2	3	3
Myalgia	2	4	5	3
Muscle tightness	1	1	0	2
Psychiatric disorders				
Anxiety	2	1	2	3
Abnormal dreams	3	2	4	2
Restlessness	0	0	1	2
Nightmare	1	1	1	2
Infections and infestations				
Nasopharyngitis	3	2	4	3
Gastroenteritis	0	1	2	1
Respiratory disorders				
Nasal congestion	2	1	2	3
Sinus congestion	1	1	2	2
Dyspnoea	1	1	1	2
Epistaxis	0	1	0	2
Nasal dryness	0	0	1	1
Special senses				

Body System and MedDRA Term ^a	Percentage of Subjects with Adverse Events*			
	Placebo (n = 338)	quetiapine fumarate extended-release 50 mg (n = 181)	quetiapine fumarate extended- release 150 mg (n = 328)	quetiapine fumarate extended-release 300 mg (n = 331)
Vision blurred	1	2	3	5

* Events for which quetiapine fumarate extended-release incidence was equal to or less than placebo are not listed in the table.

^a Patients with multiple events falling under the same preferred term are counted only once in that term.

Table 6 enumerates the incidence, rounded to the nearest percent, of treatment-emergent adverse events that occurred during acute monotherapy (9 weeks) of elderly patients with MDD in $\geq 1\%$ of patients treated with quetiapine fumarate extended-release (50-300 mg/day) where the incidence in patients treated with quetiapine fumarate extended-release was greater than the incidence in placebo-treated patients.

Table 6 Adverse Events Reported for at Least 1% of Quetiapine Fumarate Extended-Release-Treated Subjects (Doses ranging from 50 to 300 mg/day) and for a Higher Percentage of Quetiapine Fumarate Extended-Release-Treated Subjects Than Subjects Who Received Placebo in a Short-Term, Placebo-Controlled Elderly MDD Monotherapy Phase III Trial

Body System and MedDRA Term ^{a,b}	Percentage of Subjects With Adverse Events*	
	Quetiapine fumarate extended-release (n = 166)	Placebo (n = 172)
General disorders and administration site conditions		
Fatigue	8	3
Asthenia	4	1
Nervous system disorders		
Somnolence	33	8
Headache	19	14
Dizziness	18	15
Sedation	5	1
Dysgeusia	2	1
Balance disorder	2	1
Dizziness postural	2	1
Akathisia	2	1
Gastrointestinal system disorders		
Dry mouth	20	10
Constipation	5	2
Abdominal pain upper	3	2
Dyspepsia	2	1
Cardiovascular system disorders		
Hypotension	2	0
Metabolic and nutritional disorders		
Weight increased	5	4

Weight decreased	2	1
Musculoskeletal and connective tissue disorders		
Back pain	2	1
Extrapyramidal disorder	4	1
Pain in extremity	2	1
Respiratory disorders		
Nasal congestion	2	0

* Events for which quetiapine fumarate extended-release incidence was equal to or less than placebo are not listed in the table.

Table reports percentage rounded to the nearest integer.

^a Patients with multiple events falling under the same preferred term are counted only once in that term.

^b The following adverse events occurred in 1% of patients treated with quetiapine fumarate extended-release compared to <1% in placebo: hypersomnia, restless legs syndrome, joint sprain, muscular weakness, pharyngolaryngeal pain and vision blurred.

Other Adverse Events

Frequencies are reported as follows:

Very common ($\geq 10\%$)

Common ($\geq 1\% - < 10\%$)

Uncommon ($\geq 0.1\% - < 1\%$)

Rare ($\geq 0.01\% - < 0.1\%$)

Weight Gain: In 6-week placebo-controlled schizophrenia clinical trials, for patients treated with quetiapine fumarate extended-release mean weight gain was 1.77 kg (n = 951) compared to 2.19 kg (n = 414) in patients treated with quetiapine fumarate immediate-release formulation. For patients treated with placebo the mean weight gain was 0.26 kg (n = 319). In a 3-week placebo- controlled bipolar mania clinical trial, for patients treated with quetiapine fumarate extended-release mean weight gain was 1.3 kg (n = 151) compared to 0.1 kg (n = 160) in patients treated with placebo. In an 8-week placebo-controlled bipolar depression clinical trial, for patients treated with quetiapine fumarate extended-release mean weight gain was 1.3 kg (n = 137) compared to -0.2 kg (n = 140) in patients treated with placebo. In placebo-controlled MDD acute monotherapy clinical trials, for patients treated with quetiapine fumarate extended-release mean weight gain was 0.87 kg (n = 1149) compared to 0.31 kg (n = 648) in patients treated with placebo. In a longer-term randomized withdrawal MDD trial (see Part II: CLINICAL TRIALS), patients who completed at least 158 days of quetiapine fumarate extended-release treatment (n = 196), mean weight gain for patients in quetiapine fumarate extended-release 50, 150 and 300mg/day groups was 1.0 kg, 2.5 kg, and 3.0 kg respectively. In these same patients the percentage of patients experiencing a weight increase of $\geq 7\%$ by 158 days in quetiapine fumarate extended-release 50, 150, and 300 mg/day groups was 13%, 24%, and 33% respectively. See WARNINGS AND PRECAUTIONS.

Based on the cumulative acute placebo-controlled clinical trial database, weight gain (based on $\geq 7\%$ increase in body weight from baseline) was reported in 9.6% in quetiapine-treated patients and 3.8% in placebo-treated patients, which occurs predominantly during the early weeks of

treatment in adults (see WARNINGS AND PRECAUTIONS).

Seizures: There have been uncommon reports ($\geq 0.1\%$ - $< 1\%$) of seizures in patients administered quetiapine, although the frequency was no greater than that observed in patients administered placebo in controlled clinical trials (see WARNINGS AND PRECAUTIONS, Neurologic).

Restless Legs Syndrome: There have been uncommon cases of restless legs syndrome in patients administered quetiapine.

Priapism: There have been rare reports of priapism in patients administered quetiapine.

Somnolence: Somnolence may occur, usually during the first two weeks of treatment, which generally resolves with the continued administration of quetiapine.

Somnambulism: In rare cases, somnambulism and other related events, such as sleep-related eating disorder, have been reported.

Neuroleptic Malignant Syndrome: As with other antipsychotics, rare cases of neuroleptic malignant syndrome have been reported in patients treated with quetiapine (see WARNINGS AND PRECAUTIONS, Neurologic).

Hypothermia: There have been rare cases of hypothermia in patients treated with quetiapine.

Vital Signs: As with other antipsychotics with $\alpha 1$ adrenergic blocking activity, quetiapine may induce postural hypotension, associated with very common cases of dizziness, common cases of tachycardia and, in uncommon cases, some patients may experience syncope, especially during the initial dose titration period (see WARNINGS AND PRECAUTIONS, Cardiovascular). In placebo-controlled clinical trials in schizophrenia, postural hypotension was reported with an incidence of 8% in quetiapine fumarate immediate-release formulation-treated patients compared to 2% in placebo-treated patients. Quetiapine fumarate immediate-release was associated with a mean baseline to endpoint increase in heart rate of 3.9 beats per minute, compared to 1.6 beats per minute among placebo-treated patients.

Bradycardia: Uncommon cases of bradycardia and related events have been reported in patients treated with quetiapine. It may occur at or near initiation of treatment and be associated with hypotension and/or syncope.

Pancreatitis: Rare cases of pancreatitis have been reported from a review of all clinical trials with quetiapine.

Dyspnea: Common cases of dyspnea often occurred in the setting of tachycardia, dizziness, orthostatic hypotension and/or underlying cardiac/respiratory disease.

Palpitations: Common cases of palpitations have occurred in the setting of tachycardia, dizziness, orthostatic hypotension and/or underlying cardiac/respiratory disease.

Peripheral Edema: As with other antipsychotics, common cases of peripheral edema have been reported in patients treated with quetiapine.

Pyrexia: There have been common cases of pyrexia in patients treated with quetiapine.

Vomiting: There have been common cases of vomiting in patients treated with quetiapine although this has been seen more often in elderly patients (>65 years of age).

Mild Asthenia: As with other antipsychotic agents, common cases of mild asthenia have been reported in patients treated with quetiapine.

Rhinitis There have been uncommon cases of rhinitis in patients administered quetiapine.

Hypersensitivity: Uncommon cases of hypersensitivity including angioedema have been reported.

ECG Changes: In schizophrenia trials, 0.8% of quetiapine fumarate extended-release patients, and no placebo patients, had tachycardia (>120 bpm) at any time during the trials. In MDD monotherapy trials, 0.2% of quetiapine fumarate extended-release patients, and no placebo patients, had tachycardia (>120 bpm) at any time during the trials. Quetiapine fumarate extended-release was associated with a mean increase in heart rate, assessed by ECG, of 7 beats per minute compared to a mean decrease of 1 beat per minute for placebo. This is consistent with the rates of quetiapine fumarate immediate-release.

This slight tendency to tachycardia may be related to the potential of quetiapine for inducing orthostatic changes (see WARNINGS AND PRECAUTIONS, Cardiovascular).

Tardive Dyskinesia: There have been uncommon cases of tardive dyskinesia reported in patients administered quetiapine (see WARNINGS AND PRECAUTIONS, Neurologic).

Extrapyramidal Symptoms (EPS): There have been very common cases of EPS reported. In three-arm, placebo-controlled clinical trials for the treatment of schizophrenia, utilizing doses between 300 mg and 800 mg of quetiapine fumarate extended-release, the incidence of any adverse events potentially related to EPS was 7.5% for quetiapine fumarate extended-release, 7.7% for quetiapine fumarate immediate-release, and 4.7% in the placebo group and without evidence of dose response. In these studies, the incidence rates of the individual adverse events (e.g., akathisia, extrapyramidal disorder, tremor, dyskinesia, dystonia, restlessness, and muscle rigidity) were generally low and did not exceed 3% for any treatment group.

At the end of treatment, the mean change from baseline in SAS total score and BARS Global Assessment score was similar across the treatment groups. The use of concomitant anticholinergic medications was infrequent and similar across the treatment groups.

The incidence of EPS was consistent with that seen with the profile of quetiapine fumarate immediate-release in schizophrenia patients. The incidence of EPS did not increase with the dose of quetiapine fumarate extended-release.

In short-term placebo-controlled clinical trials in schizophrenia and bipolar mania, the aggregated incidence of EPS-related adverse events was similar to placebo (schizophrenia: 7.8% for quetiapine and 8.0% for placebo; bipolar mania: 11.2% for quetiapine and 11.4% for

placebo). In short-term placebo-controlled clinical trials in bipolar depression, the aggregated incidence of EPS-related adverse events was 8.9% for quetiapine compared to 3.8% for placebo. The incidence of individual EPS-related adverse events (e.g., akathisia, extrapyramidal disorder, tremor, dyskinesia, dystonia, restlessness, muscle contractions involuntary, psychomotor hyperactivity and muscle rigidity), however was generally low and did not exceed 4% for any individual adverse event. In short-term, placebo-controlled monotherapy clinical trials in MDD the aggregated incidence of EPS was 5.4% for quetiapine fumarate extended-release and 3.2% for placebo. In a short-term placebo-controlled monotherapy trial in elderly patients with MDD, the aggregated incidence of EPS was 9.0% for quetiapine fumarate extended-release and 2.3% for placebo. In long-term studies of schizophrenia, bipolar disorder and MDD the aggregated exposure adjusted incidence of treatment-emergent EPS was similar between quetiapine and placebo (see WARNINGS AND PRECAUTIONS, Neurologic).

Blurred Vision: There have been common cases of blurred vision in patients administered quetiapine.

Dysphagia: There have been uncommon cases of dysphagia in patients administered quetiapine. In clinical trials, an increase in the rate of dysphagia with quetiapine versus placebo was only observed in bipolar depression (see WARNINGS AND PRECAUTIONS, Gastrointestinal and Special Populations).

Dysarthria: There have been common cases of dysarthria in patients administered quetiapine.

Acute Withdrawal (discontinuation) Symptoms: In acute placebo-controlled, monotherapy clinical trials, which evaluated discontinuation symptoms, the aggregated incidence of discontinuation symptoms after abrupt cessation was 12.1% for quetiapine and 6.7% for placebo. The aggregated incidence of the individual adverse events (e.g., insomnia, nausea, headache, diarrhea, vomiting, dizziness and irritability) did not exceed 5.3% in any treatment group and usually resolved 1 week after discontinuation (see WARNINGS AND PRECAUTIONS).

Abnormal dreams and nightmares: There have been common cases of abnormal dreams and nightmares in patients administered quetiapine.

Suicide-related events: In short-term placebo-controlled clinical trials across all indications and ages, the incidence of suicide-related events (suicidal thoughts, self-harm and suicide) was 0.8% for both quetiapine (76/9327) and for placebo (37/4845). In these trials of patients with schizophrenia the incidence of suicide-related events was 1.4% (3/212) for quetiapine and 1.6% (1/62) for placebo in patients 18-24 years of age, 0.8% (13/1663) for quetiapine and 1.1% (5/463) for placebo in patients ≥ 25 years of age.

In these trials of patients with bipolar mania the incidence of suicide-related events was 0% for both quetiapine (0/60) and placebo (0/58) in patients 18-24 years of age, 1.2% for both quetiapine (6/496) and placebo (6/503) in patients ≥ 25 years of age.

In these trials of patients with bipolar depression the incidence of suicide-related events was 3.0% (7/233) for quetiapine and 0% (0/120) for placebo in patients 18-24 and 1.2% for both quetiapine (19/1616) and placebo (11/622) in patients ≥ 25 years of age.

In these trials of patients with MDD the incidence of suicide related events was 2.1% (3/144) for quetiapine and 1.3% (1/75) for placebo in patients 18-24 and 0.6% (11/1798) for quetiapine and 0.7% for placebo (7/1054) in patients ≥ 25 years of age (see WARNINGS AND PRECAUTIONS).

Irritability: There have been common cases of irritability in patients administered quetiapine.

Increased appetite: There have been common cases of increased appetite in patients administered quetiapine.

Constipation: Patients should be advised of the risk of severe constipation during AG-Quetiapine XR treatment, and that they should tell their doctor if constipation occurs or worsens, as they may need laxatives.

Urinary retention: There have been uncommon cases of urinary retention in patients administered quetiapine.

Agranulocytosis: There have been rare cases of agranulocytosis based on the frequency of patients during all quetiapine clinical trials with severe neutropenia ($<0.5 \times 10^9/L$) and infection.

Abnormal Hematologic and Clinical Chemistry Findings

As with other antipsychotics, common cases of leucopenia and/or neutropenia have been observed in patients administered quetiapine. In clinical trial and post-marketing experience, events of severe neutropenia ($<0.5 \times 10^9/L$), granulocytopenia and agranulocytosis (severe neutropenia and infection) have been reported during antipsychotic use, including quetiapine fumarate extended-release (see ACTION AND CLINICAL PHARMACOLOGY). Leucopenia cases were based on shifts from normal baseline to potentially clinically important values at anytime post-baseline in all trials. Shifts in white blood cells were defined as $\leq 3 \times 10^9$ cells/L at any time (see WARNINGS AND PRECAUTIONS, Hematologic). Based on shifts (eosinophil shifts were defined as $\geq 1 \times 10^9$ cells/L at any time) from normal baseline to potentially clinically important values at anytime post-baseline in all trials, common cases of increased eosinophils have been observed. Uncommon cases of thrombocytopenia (platelet count decreased, $\leq 100 \times 10^9/L$ on at least one occasion) have been observed.

Decreased hemoglobin to ≤ 130 g/L males, ≤ 120 g/L females on at least one occasion occurred in 11% of quetiapine patients in all trials including open-label extensions. In short-term placebo-controlled trials, decreased hemoglobin to ≤ 130 g/L males, ≤ 120 g/L females on at least one occasion occurred in 8.3% of quetiapine patients compared to 6.2% of placebo patients.

Based on clinical trial adverse event reports not associated with neuroleptic malignant syndrome, rare cases of elevations in blood creatine phosphokinase have been reported in patients administered quetiapine.

Hyperprolactinemia: Common cases of elevations in serum prolactin levels have been observed (>20 mcg /L in males and >30 mcg/L in females) (see WARNINGS AND PRECAUTIONS,

Hyperprolactinemia).

Neutropenia: In three-arm, quetiapine fumarate extended-release placebo-controlled monotherapy clinical trials, among patients with a baseline neutrophil count $\geq 1.5 \times 10^9/L$, the incidence of at least one occurrence of neutrophil count $<1.5 \times 10^9/L$ was 1.5% in patients treated with quetiapine fumarate extended-release and 1.5% for quetiapine fumarate immediate-release, compared to 0.8% in placebo-treated patients.

In all short-term placebo-controlled monotherapy clinical trials among patients with a baseline neutrophil count $\geq 1.5 \times 10^9/L$, the incidence of at least one occurrence of neutrophil count $<1.5 \times 10^9/L$ was 1.9% in patients treated with quetiapine, compared to 1.5% in placebo-treated patients. The incidence $\geq 0.5 - <1.0 \times 10^9/L$ was 0.2% in patients treated with quetiapine and 0.2% in placebo-treated patients. In clinical trials conducted prior to a protocol amendment for discontinuation of patients with treatment-emergent neutrophil count $<1.0 \times 10^9/L$, among patients with a baseline neutrophil count $\geq 1.5 \times 10^9/L$, the incidence of at least one occurrence of neutrophil count $<0.5 \times 10^9/L$ was 0.21% in patients treated with quetiapine and 0% in placebo-treated patients (see WARNINGS AND PRECAUTIONS, Hematologic).

Transaminase Elevations: Common cases of asymptomatic elevations (shift from normal to >3 times the upper limits of normal at any time) in serum alanine aminotransferase (ALT) or gamma-GT levels have been observed in some patients administered quetiapine. Uncommon cases of asymptomatic elevations (shift from normal to >3 times the upper limits of normal at any time) in serum aspartate aminotransferase (AST) have been observed in some patients administered quetiapine. These elevations were usually reversible on continued quetiapine treatment (see WARNINGS AND PRECAUTIONS, Hepatic).

Thyroid: Quetiapine treatment was associated with dose-related decreases in thyroid hormone levels. Based on shifts (total T_4 , free T_4 , total T_3 and free T_3 $<0.8 \times LLN$ (pmol/L) and TSH $> 5mIU/L$ at anytime) from normal baseline to a potentially clinically important value at anytime post-baseline in all trials, uncommon cases of decreases in free T_3 and common cases of decreases in total T_4 , free T_4 and total T_3 as well as increases in TSH have been reported. The following table shows the incidence of these shifts in short-term placebo- controlled clinical trials:

Incidence of potentially clinically significant shifts in thyroid hormone levels and TSH in short term placebo-controlled clinical trials*									
Total T4		Free T4		Total T3		Free T3		TSH	
Quetiapine	Placebo	Quetiapine	Placebo	Quetiapine	Placebo	Quetiapine	Placebo	Quetiapine	Placebo
3.4 % (37/1097)	0.6% (4/651)	0.7% (52/7218)	0.1% (4/3668)	0.5% (2/369)	0.0% (0/113)	0.2% (11/5673)	0.0% (1/2679)	3.2% (240/7587)	2.7% (105/3912)
* Based on shifts from normal baseline to potentially clinically important value at anytime post-baseline. Shifts in total T_4 , free T_4 , total T_3 and free T_3 are defined as $<0.8 \times LLN$ (pmol/L) and shift in TSH is $> 5 mIU/L$ at any time.									

In short-term placebo-controlled monotherapy trials, the incidence of reciprocal, potentially clinically significant shifts in T_3 and TSH was 0.0% for both quetiapine and placebo and 0.1% for quetiapine versus 0.0% for placebo for shifts in T_4 and TSH. These changes in thyroid

hormone levels are generally not associated with clinically symptomatic hypothyroidism. The reduction in total and free T₄ was maximal within the first 6 weeks of quetiapine treatment, with no further reduction during long-term treatment. There was no evidence of clinically significant changes in TSH concentration over time. In nearly all cases, cessation of quetiapine treatment was associated with a reversal of the effects on total and free T₄, irrespective of the duration of treatment. In 8 patients, where TBG was measured, levels of TBG were unchanged (see WARNINGS AND PRECAUTIONS, Endocrine and Metabolism, Hyperglycaemia).

Hyperglycaemia: Blood glucose increases to hyperglycaemic levels (fasting blood glucose ≥ 7.0 mmol/L or a non fasting blood glucose ≥ 11.1 mmol/L on at least one occasion) have been observed commonly ($\geq 1\%$ - $< 10\%$) with quetiapine in clinical trials (see WARNINGS AND PRECAUTIONS, Endocrine and Metabolism, Hyperglycaemia).

In two long-term bipolar maintenance placebo-controlled adjunct clinical trials, mean exposure 213 days for quetiapine fumarate immediate-release (646 patients) and 152 days for placebo (680 patients), the exposure-adjusted rate of any increased blood glucose level (≥ 7.0 mmol/L) for patients more than 8 hours since a meal was 18.0 per 100 patient years for quetiapine fumarate immediate-release (10.7% of patients) and 9.5 for placebo per 100 patient-years (4.6% of patients).

In short-term (12 weeks duration or less) placebo-controlled clinical trials (3342 treated with quetiapine and 1490 treated with placebo), the percent of patients who had a fasting blood glucose ≥ 7.0 mmol/L or a non fasting blood glucose ≥ 11.1 mmol/L was 3.5% for quetiapine and 2.1% for placebo.

In a 24-week trial (active-controlled, 115 patients treated with quetiapine fumarate immediate-release) designed to evaluate glycemic status with oral glucose tolerance testing of all patients, at week 24 the incidence of a treatment-emergent post-glucose challenge glucose level ≥ 11.1 mmol/L was 1.7% and the incidence of a fasting treatment-emergent blood glucose level ≥ 7.0 mmol/L was 2.6% (see WARNINGS AND PRECAUTIONS, Endocrine and Metabolism).

Cholesterol and Triglyceride Elevations: Very common ($\geq 10\%$) cases of elevations in serum triglyceride levels (≥ 2.258 mmol/L on at least one occasion), elevations in total cholesterol (predominantly LDL cholesterol) (≥ 6.2064 mmol/L on at least one occasion), and decreases in HDL cholesterol levels (< 1.025 mmol/L males; < 1.282 mmol/L females at any time) have been observed during treatment with quetiapine in clinical trials (see WARNINGS AND PRECAUTIONS, Endocrine and Metabolism, Cholesterol and Triglyceride Elevations). Lipid changes should be managed as clinically appropriate.

In one 24-week clinical trial, where LDL cholesterol was directly measured as opposed to calculated, there was a slight mean increase in total cholesterol in patients administered quetiapine fumarate immediate-release, which was driven by increases in LDL cholesterol. The mean LDL level increased at Week 24 by 10% in patients administered quetiapine fumarate immediate-release, which was statistically significant. The total cholesterol/HDL ratio did not change significantly during therapy with quetiapine fumarate immediate-release. Furthermore, triglycerides did not increase significantly nor did HDL cholesterol decrease during therapy (see WARNINGS AND PRECAUTIONS, Endocrine and Metabolism, Cholesterol and Triglyceride

Elevations).

Adverse Drug Reactions in Pediatrics (< 18 years of age)

The safety and efficacy of quetiapine fumarate extended-release in children under the age of 18 years have not been established and its use is not recommended.

The same adverse drug reactions described above for adults should be considered for children and adolescents. The following table summarizes adverse drug reactions that occur in a higher frequency category in children and adolescents patients (ages 10-17 years) than in the adult population or adverse drug reactions that have not been identified in the adult population, based on data for formulations containing quetiapine (see WARNINGS AND PRECAUTIONS, Special Populations).

Table 7 Adverse Drug Reactions in Children and Adolescents

Body System and MedDRA Term	Percentage of Subjects With Adverse events			
	Quetiapine fumarate immediate-release (n=340) ^a	Placebo in quetiapine fumarate immediate-release studies (n=165) ^a	Quetiapine fumarate extended-release 150-300 mg/day (N=92) ^b	Placebo in quetiapine fumarate extended-release studies (N=100) ^b
Metabolic and nutritional disorders				
Increased appetite	7.6	2.4	3.3	3.0
Investigations				
Prolactin ^{c,d}	13.4 (Male) 8.7 (Female)	4.0 (Male) 0.0 (Female)	N/A	N/A
Increases in blood pressure	15.2 (Systolic) ^e 40.6 (Diastolic) ^e	5.5 (Systolic) ^e 24.5 (Diastolic) ^e	6.5 (Systolic) ^f 46.7 (Diastolic) ^f	6.0 (Systolic) ^f 36.0 (Diastolic) ^f
Gastrointestinal disorders				
Vomiting	6.5	5.5	3.3	3.0
Respiratory, thoracic, and mediastinal disorders				
Rhinitis	0.3	0.6	0.0	0.0
Nervous system disorders				
Syncope	1.5	0.0	1.1	0.0

a Based on pooled data from schizophrenia and mania paediatric placebo-controlled studies

b Based on data from Bipolar depression paediatric placebo-controlled study

c For quetiapine fumarate immediate-release, prolactin levels (patients <18 years of age): >20 µg/L males; >26 µg/L females at any time. Less than 1% of patients had an increase to a prolactin level of 100 µg/L

d For quetiapine fumarate extended-release, prolactin values are not provided for Study D144AC00001 as values for this parameter are confounded and difficult to interpret due to the time intervening between randomized treatment and the recall visit.

e For quetiapine fumarate immediate-release, based on shifts above clinically significant thresholds (adapted from the National Institute of Health criteria) or increases >20 mmHg for systolic or >10 mmHg for diastolic

blood pressure at any time in two acute weeks (3-6 weeks) placebo-controlled trials in children or adolescents. The "n" for the quetiapine fumarate immediate-release arm was 335 and for the Placebo arm was 163.

- f Based on increases >20 mmHg for systolic or >10 mmHg for diastolic blood pressure at any time. Subjects were in the supine position.

Weight Gain in Children and Adolescents:

In one 6-week, placebo-controlled trial in adolescent patients (13-17 years of age) with schizophrenia, the mean increase in body weight, was 2.0 kg in the quetiapine fumarate immediate-release group and -0.4 kg in the placebo group. Twenty one percent of quetiapine fumarate immediate-release treated patients and 7% of placebo-treated patients gained $\geq 7\%$ of their body weight.

In one 3-week, placebo-controlled trial in children and adolescent patients (10-17 years of age) with bipolar mania, the mean increase in body weight was 1.7 kg in the quetiapine fumarate immediate-release group and 0.4 kg in the placebo group. Twelve percent of quetiapine fumarate immediate-release treated patients and 0% of placebo-treated patients gained $\geq 7\%$ of their body weight.

In the open-label study that enrolled patients from the above two trials, 63% of patients (241/380) completed 26 weeks of therapy with quetiapine fumarate immediate-release. After 26 weeks of treatment, the mean increase in body weight was 4.4 kg. Forty five percent of the patients gained $\geq 7\%$ of their body weight, not adjusted for normal growth. In order to adjust for normal growth over 26 weeks an increase of at least 0.5 standard deviation from baseline in BMI was used as a measure of a clinically significant change; 18.3% of patients on quetiapine fumarate immediate-release met this criterion after 26 weeks of treatment.

In one 8-week, placebo-controlled trial in children and adolescent patients (10-17 years of age) with bipolar depression, the mean increase in body weight was 1.4 kg in the quetiapine fumarate extended-release group and 0.6 kg in the placebo group. 13.7 % of quetiapine fumarate extended-release-treated patients and 6.8% of placebo-treated patients gained $\geq 7\%$ of their body weight.

Cumulatively, 17% of quetiapine treated children and adolescents gained $\geq 7\%$ of their body weight versus 2.5% of placebo treated in these studies. In contrast, 9.6% of adults treated with quetiapine gained $\geq 7\%$ of their body weight versus 3.8% of placebo treated based on the cumulative acute placebo-controlled clinical trial database.

Extrapyramidal Symptoms in Children and Adolescent Population:

Across the placebo-controlled studies, the incidences of adverse events potentially related to extrapyramidal symptoms for adolescents and children in both schizophrenia and bipolar mania were higher in quetiapine treated patients, a finding that was not observed in trials of adults with these indications.

In a short-term placebo-controlled monotherapy trial in adolescent patients (13-17 years of age) with schizophrenia, the aggregated incidence of extrapyramidal symptoms was 12.9% for quetiapine fumarate immediate-release and 5.3% for placebo, though the incidence of the individual adverse events (e.g., akathisia, tremor, extrapyramidal disorder, hypokinesia, restlessness, psychomotor hyperactivity, muscle rigidity, dyskinesia) was generally low and did

not exceed 4.1% in any treatment group. In a short-term placebo-controlled monotherapy trial in children and adolescent patients (10-17 years of age) with bipolar mania, the aggregated incidence of extrapyramidal symptoms was 3.6% for quetiapine fumarate immediate-release and 1.1% for placebo.

In a short-term placebo-controlled monotherapy trial in children and adolescent patients (10-17 years of age) with bipolar depression, the aggregated incidence of extrapyramidal symptoms was 1.1% for quetiapine fumarate extended-release and 0.0% for placebo.

Cholesterol and Triglyceride Elevations:

Very common ($\geq 10\%$) cases of elevations in serum triglyceride levels (≥ 1.69 mmol/L on at least one occasion), elevations in total cholesterol (predominantly LDL cholesterol) (≥ 5.172 mmol/L on at least one occasion) have been observed during treatment with quetiapine in patients < 18 years of age in clinical trials.

Increased Blood Pressure:

In placebo-controlled trials in children and adolescents with schizophrenia (6-week duration) or bipolar mania (3-week duration), the incidence of increases at any time in systolic blood pressure (≥ 20 mmHg) was 15.2% (51/335) for quetiapine fumarate immediate-release and 5.5% (9/163) for placebo; the incidence of increases at any time in diastolic blood pressure (≥ 10 mmHg) was 40.6% (136/335) for quetiapine fumarate immediate-release and 24.5% (40/163) for placebo. In the 26 week open-label clinical trial, one child with a reported history of hypertension experienced a hypertensive crisis.

Suicide Related Events:

Although not indicated, in clinical trials in patients < 18 years of age with schizophrenia, the incidence of suicide-related events was 1.4% (2/147) for quetiapine and 1.3% (1/75) for placebo.

Although not indicated, in clinical trials in patients < 18 years of age with bipolar mania, the incidence of suicide-related events was 1.0% (2/193) for quetiapine and 0% (0/90) for placebo.

Although not indicated, there has been one trial conducted in patients 10-17 years of age with bipolar depression. The incidence of suicide related events was 1.0% (1/92) for quetiapine and 0% (0/100) for placebo. In this study there were two additional events in two patients that occurred during an extended post-treatment follow-up phase of the study; one of these patients was on quetiapine at the time of the event.

There have been no trials conducted in patients < 18 years of age with major depressive disorder.

Post-Market Adverse Drug Reactions

The following adverse reactions were identified during post approval use of quetiapine fumarate extended-release. Because these reactions are reported voluntarily from a population of uncertain size, it is not always possible to reliably estimate their frequency or establish a causal relationship to drug exposure.

During post-marketing experience, leucopenia and/or neutropenia have been reported during quetiapine fumarate immediate-release treatment. Resolution of leucopenia and/or neutropenia has followed cessation of therapy with quetiapine fumarate immediate-release. Possible risk factors for leucopenia and/or neutropenia include pre-existing low white cell count and history of drug-induced leucopenia and/or neutropenia. In post-marketing reports, there have been cases of agranulocytosis (including fatal cases) in patients administered quetiapine (see WARNINGS AND PRECAUTIONS, Hematologic).

Drug reaction with eosinophilia and systemic symptoms (DRESS) has been reported with unknown frequency. See WARNINGS AND PRECAUTIONS, Skin.

As with other antipsychotics, hyperglycaemia and diabetes mellitus (including exacerbation of pre-existing diabetes, diabetic ketoacidosis, and diabetic coma including some fatal cases) in the aggregate have been reported rarely ($\geq 0.01\%$ - $< 0.1\%$) during the use of quetiapine fumarate immediate-release, sometimes in patients with no reported history of hyperglycaemia (see WARNINGS AND PRECAUTIONS, Endocrine and Metabolism).

Anaphylactic reactions have been reported very rarely in post-marketing reports, including a case with a fatal outcome, possibly related to quetiapine fumarate immediate-release treatment. The reporting rate of anaphylaxis associated with quetiapine fumarate immediate-release use, which is generally accepted to be an underestimate due to underreporting, does not exceed the background incidence rate estimates. Estimates of the background incidence rate (all cause) of severe life-threatening anaphylaxis in the general population range between 80 and 210 cases per million person-years, and the incidence rate of drug-induced anaphylaxis is reported to be 16 cases per million person-years. In addition, the all cause fatal anaphylaxis rate is reported to be one case per million person-years while the drug-induced fatal anaphylaxis is estimated to be 0.3 cases per million person-years. If a patient develops anaphylaxis after treatment with quetiapine, the drug should be discontinued and an alternative treatment started.

In patients who have a history of or are at risk for sleep apnea, and are receiving concomitant central nervous system (CNS) depressants, quetiapine should be prescribed with caution.

Based on post-marketing reports, galactorrhea has been reported rarely.

During post-marketing experience, there have been cases of intestinal obstruction (ileus) in patients administered quetiapine (see WARNINGS AND PRECAUTIONS, Gastrointestinal).

Although there have been post-marketing cases of neonatal withdrawal in mothers administered quetiapine, the frequency is unknown (see WARNINGS AND PRECAUTIONS, Special Populations).

In post-marketing reports, there have been cases of urinary retention in patients administered quetiapine (see WARNINGS AND PRECAUTIONS, Neurologic, Anticholinergic (muscarinic) effects).

In post-marketing reports, there have been cases of gastric bezoar formation in association with overdose of quetiapine fumarate extended-release (see OVERDOSAGE).

Hepatic failure, including fatalities, has been reported very rarely during the post-marketing period. Rare post-marketing reports of hepatitis (with or without jaundice), in patients with or without prior history, have been received. Very rare cases of hepatic steatosis, cholestatic or mixed liver injury have also been reported in the post-marketing period (see WARNINGS AND PRECAUTIONS, Hepatic/Pancreatic).

Other adverse reactions reported since market introduction, which were temporally related to quetiapine therapy, but not necessarily causally related include the following: rhabdomyolysis, cardiomyopathy, myocarditis (see WARNINGS AND PRECAUTIONS, Cardiovascular) and syndrome of inappropriate secretion of antidiuretic hormone (SIADH).

DRUG INTERACTIONS

Drug-Drug Interactions

Given the primary central nervous system effects of quetiapine, quetiapine should be used with caution in combination with other centrally acting drugs.

Caution should be exercised when quetiapine is used concomitantly with drugs known to cause electrolyte imbalance or to increase QT interval (see WARNINGS AND PRECAUTIONS, Cardiovascular).

Urinary Hesitation and Retention

Caution should be exercised in prescribing AG-Quetiapine XR to patients who are receiving other medications that have anticholinergic (muscarinic) properties and may affect voiding (see WARNINGS AND PRECAUTIONS, Neurologic, Anticholinergic (muscarinic) effects).

The Effect of Quetiapine Fumarate Extended-Release on Other Drugs

Alcohol: Quetiapine fumarate immediate-release formulation potentiated the cognitive and motor effects of alcohol in a clinical trial in subjects with psychotic disorders. Alcoholic beverages should be avoided while taking quetiapine.

Antihypertensive Agents: Because of its potential for inducing hypotension, quetiapine may enhance the effects of certain antihypertensive agents.

Levodopa and Dopamine Agonists: As it exhibits *in vitro* dopamine antagonism, quetiapine may antagonize the effects of levodopa and dopamine agonists.

Lithium: The single dose pharmacokinetics of lithium were not altered when coadministered with quetiapine fumarate immediate-release.

Antipyrene: Quetiapine fumarate immediate-release did not induce the hepatic enzyme systems involved in the metabolism of antipyrene.

Lorazepam: Quetiapine fumarate immediate-release did not affect the single dose pharmacokinetics of lorazepam.

Divalproex: Co-administration of quetiapine fumarate immediate-release (150 mg bid) and divalproex (500 mg bid) increased the mean oral clearance and the mean maximum plasma concentration of total valproic acid (administered as divalproex) by 11%. These changes were not clinically relevant.

The Effect of Other Drugs on Quetiapine Fumarate Extended-Release

Hepatic Enzyme Inducers: Concomitant use of quetiapine with hepatic enzyme inducers such as carbamazepine may substantially decrease systemic exposure to quetiapine. In a multiple dose trial in patients to assess the pharmacokinetics of quetiapine fumarate immediate-release given before and during treatment with carbamazepine (a known hepatic enzyme inducer), co-administration of carbamazepine significantly increased the clearance of quetiapine. This increase in clearance reduced systemic quetiapine exposure (as measured by AUC) to an average of 13% of the exposure during administration of quetiapine alone; although a greater effect was seen in some patients. As a consequence of this interaction, lower plasma concentrations can occur, and hence, in each patient, consideration for a higher dose of quetiapine, depending on clinical response, should be considered. It should be noted that the recommended maximum daily dose of AG-Quetiapine XR is 800 mg/day and continued treatment at higher doses should only be considered as a result of careful consideration of the benefit risk assessment for an individual patient.

Co-administration of quetiapine and another microsomal enzyme inducer, phenytoin, caused five-fold increases in the clearance of quetiapine. Increased doses of quetiapine may be required to maintain control of psychotic symptoms in patients co-administered quetiapine and phenytoin and other hepatic enzyme inducers (e.g., barbiturates, rifampicin, etc.).

The dose of quetiapine may need to be reduced if phenytoin or carbamazepine or other hepatic enzyme inducers are withdrawn and replaced with a non-inducer (e.g., sodium valproate).

CYP 3A4 inhibitors: CYP3A4 is the primary enzyme responsible for cytochrome P450-mediated metabolism of quetiapine. Thus, coadministration of compounds (such as ketoconazole, erythromycin, clarithromycin, diltiazem, verapamil, or nefazodone), which inhibit CYP3A4, may increase the concentration of quetiapine. In a multiple-dose trial in healthy volunteers to assess the pharmacokinetics of quetiapine given before and during treatment with ketoconazole, co-administration of ketoconazole resulted in an increase in mean C_{max} and AUC of quetiapine of 235% and 522%, respectively, with a corresponding decrease in mean oral clearance of 84%. The mean half-life of quetiapine increased from 2.6 to 6.8 hours, but the mean t_{max} was unchanged. Due to the potential for an interaction of a similar magnitude in a clinical setting, the dosage of quetiapine should be reduced during concomitant use of quetiapine and potent CYP3A4 inhibitors (such asazole antifungals, macrolide antibiotics, and protease inhibitors). Special consideration should be given in elderly and debilitated patients. The risk-benefit ratio needs to be considered on an individual basis in all patients.

Divalproex: Co-administration of quetiapine fumarate immediate-release (150 mg bid) and divalproex (500 mg bid) increased the mean maximum plasma concentration of quetiapine by 17% without changing the mean oral clearance.

Cimetidine: In a clinical study examining the pharmacokinetics of quetiapine fumarate immediate-release following coadministration with cimetidine, (a non-specific P450 enzyme inhibitor), no clinically significant interaction was observed.

Thioridazine: Coadministration of thioridazine (200 mg bid) with quetiapine fumarate immediate-release (300 mg bid), increased the clearance of quetiapine fumarate immediate-release by 65%.

Fluoxetine, Imipramine, Haloperidol, and Risperidone: Fluoxetine (60 mg daily), imipramine (75 mg bid), haloperidol (7.5 mg bid), and risperidone (3 mg bid) did not significantly alter the steady state pharmacokinetics of quetiapine.

In patients taking the following antidepressants: amitriptyline, bupropion, citalopram, duloxetine, escitalopram, fluoxetine, paroxetine, sertraline and venlafaxine, addition of quetiapine fumarate extended-release (150 mg or 300 mg/day; for up to 4 weeks) did not appear to have a consistent overall effect on the trough or pre-dose plasma concentrations of the antidepressant.

Drug-Food Interactions

AG-Quetiapine XR can be taken with or without food (see ACTION AND CLINICAL PHARMACOLOGY, Pharmacokinetics).

Drug-Herb Interactions

Interactions with herbal products have not been established.

Drug-Laboratory Interactions

There have been reports of false positive results in enzyme immunoassays for methadone and tricyclic antidepressants in patients who have taken quetiapine. Confirmation of questionable immunoassay screening results by an appropriate chromatographic technique is recommended.

DOSAGE AND ADMINISTRATION

Recommended Dose and Dosage Adjustment

AG-Quetiapine XR (quetiapine fumarate extended-release) tablets should be swallowed whole and not split, chewed or crushed.

AG-Quetiapine XR can be administered with or without food (see ACTIONS AND CLINICAL PHARMACOLOGY, Pharmacokinetics).

AG-Quetiapine XR should be administered once daily, generally in the evening.

Schizophrenia

Usual Dose: The titration rate, based on the clinical trials (see Part II: CLINICAL TRIALS) is shown in the table below.

Day 1	Day 2	After Day 2
--------------	--------------	--------------------

Once daily dosing	300 mg	600 mg	Up to 800 mg
-------------------	--------	--------	--------------

The dose should be adjusted within the effective dose range of 400 mg to 800 mg per day, depending on the clinical response and tolerability of the patient. In a controlled clinical trial, the treatment effect size of 600 mg and 800 mg doses of quetiapine fumarate extended-release was greater than that of the 400 mg dose (see Part II: CLINICAL TRIALS).

In schizophrenia, the safety of doses above 800 mg/day has not been evaluated.

The need for continuing existing EPS medications should be re-evaluated periodically as quetiapine fumarate extended-release has not been associated with treatment-emergent EPS across the clinical dose range.

Bipolar Disorder

Bipolar Mania

Usual Dose: The titration rate, based on the clinical trial (see Part II: CLINICAL TRIALS) is shown in the table below.

	Day 1	Day 2	After Day 2
Once daily dosing	300 mg	600 mg	Up to 800 mg

The dose should be adjusted within the effective dose range of 400 mg to 800 mg per day, depending on the clinical response and tolerability of the patient.

In bipolar mania, the safety of doses above 800 mg/day has not been evaluated.

Bipolar Depression

Usual Dose: The titration rate, based on the clinical trial (see Part II: CLINICAL TRIALS) is shown in the table below.

	Day 1	Day 2	Day 3	Day 4 and thereafter
Once daily dosing	50 mg	100 mg	200 mg	300 mg

The usual target dose is 300 mg/day. The dose may be further increased depending on the response and tolerability of the patient. The maximum dose is 600 mg/day.

In quetiapine fumarate immediate-release clinical trials antidepressant efficacy was demonstrated with quetiapine fumarate immediate-release at both 300 mg/day and 600 mg/day, however no additional benefit was seen in the 600 mg group during short-term treatment.

In bipolar depression, the safety of doses of quetiapine above 600 mg/day has not been evaluated.

Major Depressive Disorder

AG-Quetiapine XR is indicated for the symptomatic relief of major depressive disorder (MDD) when currently available approved antidepressant drugs have failed either due to lack of efficacy and/or lack of tolerability. While there is no evidence that the efficacy AG-Quetiapine XR is

superior to other antidepressants, it provides a treatment option for patients who have failed on previous antidepressant treatments.

Clinicians must take into account the safety concerns associated with antipsychotic drugs, a class of drugs to which AG-Quetiapine XR belongs. Safety concerns of this class include: weight gain; hyperlipidemia; hyperglycaemia; Tardive Dyskinesia; and Neuroleptic Malignant Syndrome (see WARNINGS AND PRECAUTIONS). AG-Quetiapine XR should only be prescribed in patients with MDD by clinicians who are aware of the importance and are experienced in the early detection and management of the above-mentioned safety issues associated with this class.

Usual Dose: The titration rate, based on the clinical trials (see Part II: CLINICAL TRIALS) is shown in the table below.

	Day 1	Day 2	Day 3
Once daily dosing	50 mg	50 mg	150 mg

The usual target dose is 150 mg. Some patients may respond to doses as low as 50 mg/day and where clinically indicated dose may be increased to 300 mg/day after Day 4. In clinical trials, doses between 50-300 mg/day were shown to be efficacious, however, the incidence of certain adverse events increased with dose (see ADVERSE REACTIONS, Part II: CLINICAL TRIALS).

In MDD, the safety of doses above 300 mg/day has not been evaluated.

Some of the safety concerns associated with quetiapine fumarate extended-release and this class of agents (i.e., antipsychotics), may be dose-related (see WARNINGS AND PRECAUTIONS, ADVERSE REACTIONS). The AG-Quetiapine XR dose should thus be periodically reassessed to achieve and maintain the lowest effective dose. Furthermore, as the long-term safety of quetiapine fumarate extended-release in MDD has not been systematically evaluated, the physician who elects to use AG-Quetiapine XR in the treatment of MDD should use AG-Quetiapine XR for the shortest time that is clinically indicated. When long-term treatment is believed to be indicated, the physician must periodically re-evaluate the long-term usefulness of the drug for the individual patient keeping in mind the long-term risks.

Switching patients from Quetiapine Fumarate Immediate-Release Tablets to AG-Quetiapine XR Tablets

For more convenient dosing, patients who are currently being treated with divided doses of quetiapine fumarate immediate-release formulation may be switched to AG-Quetiapine XR at the equivalent total daily dose taken once daily. Individual dosage adjustments may be necessary.

Switching patients from other antidepressants

For many antidepressants a gradual taper is recommended prior to complete discontinuation of the drug (physicians should refer to the approved Product Monograph of the specific antidepressant). There are no systematically collected data to address switching patients from other antidepressants to AG-Quetiapine XR. Generally there should be no need for a wash-out period between stopping an antidepressant and starting AG-Quetiapine XR. The physician may elect to initiate AG-Quetiapine XR treatment while tapering the antidepressant, however patients

may experience additive side effects during the overlap period.

Switching patients from other antipsychotics

There are no systematically collected data to specifically address switching patients from other antipsychotics to AG-Quetiapine XR, or concerning concomitant administration with other antipsychotics. While immediate discontinuation of the previous antipsychotic treatment may be acceptable for some patients, more gradual discontinuation may be most appropriate for others. In all cases, the period of overlapping antipsychotic administration should be minimized. When switching patients from depot antipsychotics, if medically appropriate, initiate AG-Quetiapine XR therapy in place of next scheduled injection. The need for continuing existing EPS medication should be re-evaluated periodically.

The following cross-titration schedule has been used in clinical trials with schizophrenia:

	Day 1	Day 2	Day 3
AG-Quetiapine XR	300 mg	600 mg	Up to 800 mg
% Reduction of ongoing antipsychotic treatment	75%	50%	25%

Dosing Considerations in Special Populations

Elderly: As with other antipsychotics, AG-Quetiapine XR should be used with caution in the elderly, especially during the initial dosing period. The rate of dose titration of AG-Quetiapine XR may need to be slower, and the daily therapeutic target dose lower, than that used in younger patients. In clinical trials, 68 patients, 65 years of age or over, were treated with quetiapine fumarate extended-release (see WARNINGS AND PRECAUTIONS, Special Populations). Given the limited experience with quetiapine fumarate extended-release in the elderly, and the higher incidence of concomitant illness and concomitant medication in this population, AG-Quetiapine XR should be used with caution. The mean plasma clearance of quetiapine fumarate immediate-release was reduced by 30% to 50% in elderly subjects when compared to younger patients. Elderly patients should be started on the lowest available dose (i.e., 50 mg/day) of AG-Quetiapine XR. The dose can be increased in increments of 50 mg/day to an effective dose, depending on the clinical response and tolerance of the individual patient.

In elderly patients with MDD, initial dosing should begin at 50 mg on Days 1-3, the dose can be increased to 100 mg on Day 4, and 150 mg on Day 8 (see Part II: CLINICAL TRIALS).

Hepatic Impairment: Quetiapine is extensively metabolized by the liver (see ACTIONS AND PHARMACOLOGY, Special Populations and Conditions). Therefore, AG-Quetiapine XR should be used with caution in patients with mild hepatic impairment, especially during the initial dosing period. Patients with mild hepatic impairment should be started on the lowest available dose (i.e., 50 mg/day) of AG-Quetiapine XR. The dose should be increased daily in increments of 50 mg/day to an effective dose, depending on the clinical response and tolerance in the individual patient. No pharmacokinetic data are available for quetiapine in patients with moderate to severe hepatic impairment. However, should clinical judgement deem treatment with

AG-Quetiapine XR necessary, the drug should be used with great caution in patients with moderate or severe hepatic impairment (see WARNINGS AND PRECAUTIONS, Hepatic and ACTIONS AND CLINICAL PHARMACOLOGY, Special Populations and Conditions).

Renal Impairment: As clinical experience is lacking, caution is advised (see WARNINGS AND PRECAUTIONS, Renal).

Missed Dose

AG-Quetiapine XR should be taken at the same time each day. If a previous day's dose has been missed, administration should be resumed the next day at the normal administration time.

OVERDOSAGE

For management of suspected drug overdose, contact your regional Poison Control Centre.

Experience

Clinical Trials: One death has been reported in a clinical trial following an overdose of 13,600 mg of quetiapine alone, however, survival has also been reported in acute overdoses of up to 30,000 mg of quetiapine. Most patients who overdosed reported no adverse events or recovered fully from the reported events.

Post-Marketing: In post-marketing experience, there have been cases of coma and death in patients taking a quetiapine fumarate immediate-release formulation overdose. The lowest reported dose associated with coma has been in a patient who took 5,000 mg and had a full recovery within 3 days. The lowest reported dose associated with a death was in a patient who took 6,000 mg.

In post-marketing experience, there were cases reported of QT prolongation with overdose.

Patients with pre-existing severe cardiovascular disease may be at an increased risk of the effects of overdose (see WARNINGS AND PRECAUTIONS, Cardiovascular, Hypotension and Syncope).

Quetiapine fumarate extended-release overdose may lead to gastric bezoar formation and an appropriate diagnostic imaging is recommended to further guide patient management. Routine gastric lavage may not be effective in the removal of the bezoar due to gum like sticky consistency of the mass. Endoscopic pharmacobezoar removal has been performed successfully in many cases.

Symptoms

In general, reported signs and symptoms were those resulting from an exaggeration of the drug's known pharmacological effects (e.g., drowsiness and sedation, tachycardia, hypotension and anticholinergic effects).

Treatment

There is no specific antidote to quetiapine. In cases of severe intoxication, the possibility of multiple drug involvement should be considered, and intensive care procedures are recommended, including establishing and maintaining a patent airway, ensuring adequate oxygenation and ventilation, and monitoring and support of the cardiovascular system. In this context, published reports in the setting of anticholinergic symptoms describe a reversal of severe central nervous system effects, including coma and delirium, with administration of intravenous physostigmine (1-2 mg), under continuous ECG monitoring. If physostigmine salicylate is used, atropine sulfate should be available to reverse excessive cholinergic effects such as bradycardia, marked salivation, emesis and bronchospasm.

In cases of quetiapine overdose refractory hypotension should be treated with appropriate measures such as intravenous fluids and/or sympathomimetic agents (epinephrine and dopamine should be avoided, since beta stimulation may worsen hypotension in the setting of quetiapine-induced alpha blockade).

Close medical supervision and monitoring should be continued until the patient recovers.

ACTION AND CLINICAL PHARMACOLOGY

Mechanism of Action and Pharmacodynamics

Quetiapine fumarate extended-release, a dibenzothiazepine derivative, is a psychotropic agent. Quetiapine and the active plasma metabolite, norquetiapine interact with a broad range of neurotransmitter receptors. It is the direct and indirect effects of quetiapine and norquetiapine that contribute to the pharmacological activity of quetiapine fumarate extended-release.

Quetiapine: Quetiapine exhibits affinity for brain serotonin 5HT₂ and 5HT_{1A} receptors (*in vitro*, Ki = 288 and 557 nM, respectively), and dopamine D₁ and D₂ receptors (*in vitro*, Ki = 558 and 531 nM, respectively). It is this combination of receptor antagonism with a higher selectivity for 5HT₂ relative to D₂ receptors, which is believed to contribute to the clinical psychotropic properties and low extrapyramidal symptoms (EPS) liability of quetiapine compared to typical antipsychotics. Quetiapine also has high affinity for histamine H₁ receptors (*in vitro*, Ki = 10 nM) and adrenergic α₁ receptors (*in vitro*, Ki = 13 nM), with a lower affinity for adrenergic α₂ receptors (*in vitro*, Ki = 782 nM), but no appreciable affinity at cholinergic muscarinic and benzodiazepine receptors and at the norepinephrine reuptake transporter (NET).

Norquetiapine: Norquetiapine, similar to quetiapine, exhibits affinity for brain serotonin 5HT₂ and 5HT_{1A} (*in vitro*, Ki = 2.9 nM and 191 nM, respectively), and dopamine D₁ and D₂ receptors (*in vitro*, Ki = 42 nM and 191 nM respectively). Additionally, like quetiapine, norquetiapine also has high affinity at histaminergic and adrenergic α₁ receptors, with a lower affinity at adrenergic α₂ receptors. Contrary to quetiapine, norquetiapine exhibits high affinity for NET and has moderate to high affinity for several muscarinic receptor subtypes. This contributes to adverse drug reactions reflecting anticholinergic effects when quetiapine is used at therapeutic doses, when used concomitantly with other medications that possess anticholinergic effects, and in the setting of overdose (see WARNINGS AND PRECAUTIONS, Neurologic, Anticholinergic (muscarinic) effects).

Inhibition of NET and partial agonist action at 5HT_{1A} sites by norquetiapine may contribute to

the therapeutic efficacy of quetiapine as an antidepressant; however, the clinical relevance of these interactions has not been established. Although affinity at 5HT_{2B} has been observed for norquetiapine, norquetiapine is found to be an antagonist and not an agonist at the receptor.

Pharmacokinetics

The pharmacokinetics of quetiapine and norquetiapine are linear within the clinical dose range. The kinetics of quetiapine are similar in men and women, and smokers and non-smokers.

Absorption: Quetiapine is well absorbed following oral administration. Quetiapine fumarate extended-release achieves peak plasma concentrations at approximately 6 hours after administration (T_{max}). Quetiapine fumarate extended-release displays dose-proportional pharmacokinetics for doses of up to 800 mg administered once daily. The maximum plasma concentration (C_{max}) and the area under the plasma concentration-time curve (AUC) for quetiapine fumarate extended-release administered once daily are comparable to those achieved for the same total daily dose of quetiapine fumarate immediate-release formulation administered twice daily. The mean plasma concentrations for each dose of quetiapine fumarate extended-release versus 300 mg of quetiapine fumarate immediate-release over a 24-hour dosing interval under fasting conditions are shown in Figure 1. Steady-state peak molar concentrations of the active metabolite norquetiapine are 35% of that observed for quetiapine.

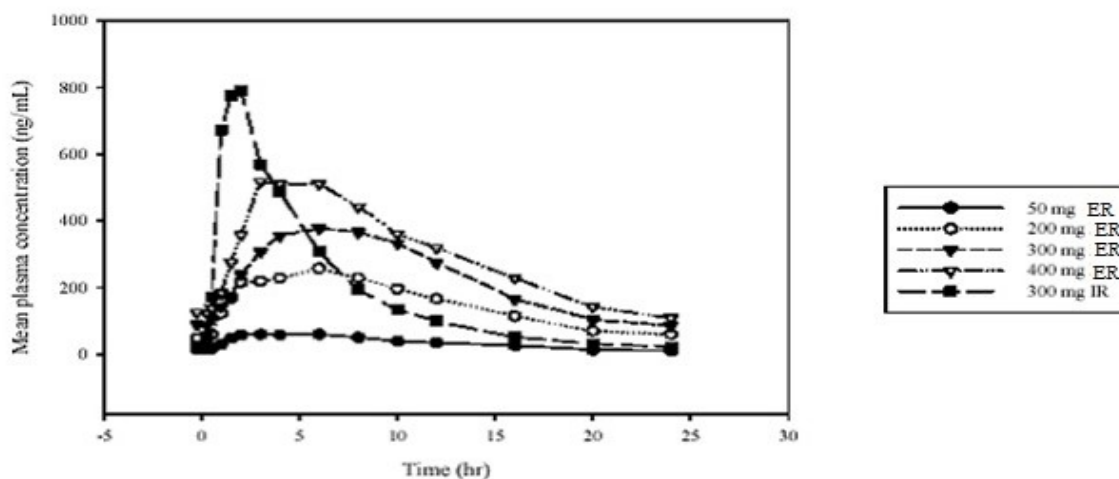


Figure 1: Mean quetiapine plasma concentrations (ng/mL) for each dose of quetiapine under fasted conditions versus time.

In a study (n=10) examining the effects of food on the bioavailability of quetiapine, a high-fat meal was found to produce statistically significant increases in the quetiapine fumarate extended-release C_{max} and AUC of 44% to 52% and 20% to 22%, respectively, for the 50-mg and 300-mg tablets. In comparison, a light meal had no significant effect on the C_{max} or AUC of quetiapine. This increase in exposure is not clinically significant, and therefore quetiapine fumarate extended-release can be taken with or without food.

Distribution: Quetiapine has a mean apparent volume of distribution of 10 ± 4 L/kg, and is

approximately 83% bound to plasma proteins.

Elimination and Metabolism: The elimination half-life of quetiapine is approximately 6-7 hours upon multiple dosing within the proposed clinical dosage range. Quetiapine is extensively metabolized by the liver, with the parent compound accounting for less than 5% of the dose in the urine and faeces, one week following the administration of radiolabelled quetiapine. Since quetiapine is extensively metabolized by the liver, higher plasma levels are expected in the hepatically impaired population, and dosage adjustment may be needed in these patients. The elimination half-life of norquetiapine is approximately 12 hours. The average molar dose fraction of free quetiapine and the active human plasma metabolite norquetiapine is <5% excreted in the urine.

Major routes of metabolism of quetiapine involve oxidation of the alkyl side chain, hydroxylation of the dibenzothiazepine ring, sulphoxidation, and phase 2 conjugation. The principal human plasma metabolites are the sulfoxide, and the parent acid metabolite, neither of which are pharmacologically active.

In vitro investigations established that CYP 3A4 is the primary enzyme responsible for cytochrome P450-mediated metabolism of quetiapine. Norquetiapine is primarily formed and eliminated via CYP3A4.

Quetiapine and several of its metabolites (including norquetiapine) were found to be weak inhibitors of human cytochrome P450 1A2, 2C9, 2C19, 2D6 and 3A4 activities *in vitro*. *In-vitro* CYP inhibition is observed only at concentrations approximately 5 to 50-fold higher than those observed at a dose range of 300 to 800 mg/day in humans.

Special Populations and Conditions

Geriatrics (≥65 years of age): The mean clearance of quetiapine in the elderly is approximately 30 to 50% of that seen in adults aged 18-65 years (see WARNINGS AND PRECAUTIONS, Special Populations and DOSAGE AND ADMINISTRATION).

Hepatic Impairment: In 8 cirrhotic subjects with mild hepatic impairment, administration of a single 25 mg (sub-clinical) oral dose of quetiapine fumarate immediate-release resulted in a 40% increase in both AUC and C_{max}. Clearance of the drug decreased by 25% whereas t_{1/2} was elevated by nearly 45%. Therefore, AG-Quetiapine XR should be used with caution in patients with mild hepatic impairment, especially during the initial dosing period. No pharmacokinetic data are available for quetiapine in patients with moderate or severe hepatic impairment (see WARNINGS AND PRECAUTIONS, Hepatic and DOSAGE AND ADMINISTRATION).

Renal Impairment: At single low (sub-clinical) doses, the mean plasma clearance of quetiapine was reduced by approximately 25% in subjects with severe renal impairment (creatinine clearance less than 30 mL/min/1.73 m²). However, the individual clearance values remained within the range observed for healthy subjects (see WARNINGS AND PRECAUTIONS, Renal and DOSAGE AND ADMINISTRATION).

STORAGE AND STABILITY

AG-Quetiapine XR (quetiapine fumarate extended-release) should be stored between 15 - 30°C.

DOSAGE FORMS, COMPOSITION AND PACKAGING

Dosage Forms and Packaging

AG-Quetiapine XR (quetiapine fumarate extended-release) is available as film-coated tablets containing quetiapine fumarate equivalent to 50 mg, 150 mg, 200 mg, 300 mg or 400 mg of quetiapine free base as follows:

50 mg quetiapine tablets are peach coloured, capsule shaped, biconvex, film coated tablets, debossed with 'AB1' on one side and plain on the other side, available in HDPE bottles of 60's, and 100's counts.

150 mg quetiapine tablets are white to off white, capsule shaped, biconvex, film coated tablets, debossed with 'AB2' on one side and plain on the other side, available in HDPE bottles of 60's, and 100's counts.

200 mg quetiapine tablets are yellow coloured, capsule shaped, biconvex, film coated tablets, debossed with 'FV3' on one side and plain on the other side, available in HDPE bottles of 60's, and 100's counts.

300 mg quetiapine tablets are light yellow coloured, capsule shaped, biconvex, film coated tablets, debossed with 'FV4' on one side and plain on the other side, available in HDPE bottles of 60's and 100's counts.

400 mg quetiapine tablets are white coloured, capsule shaped, biconvex, film coated tablets, debossed with 'FV5' on one side and plain on the other side, available in HDPE bottles of 60's and 100's counts.

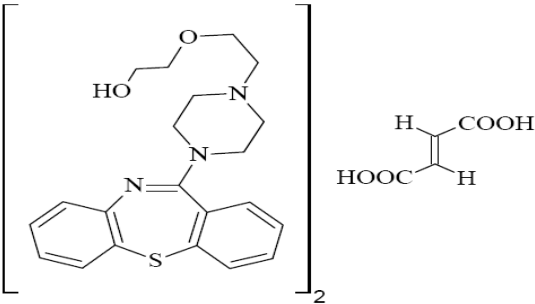
Composition

AG-Quetiapine XR (quetiapine fumarate extended-release) is available in 5 strengths containing 50 mg, 150 mg, 200 mg, 300 mg or 400 mg quetiapine per tablet (as quetiapine fumarate). The core of the tablet contains the excipients hydroxypropyl methylcellulose, lactose monohydrate, magnesium stearate, povidone K30, talc, microcrystalline cellulose, and sodium chloride. The coating of the tablet contains hydroxypropyl methylcellulose (200 mg, 300 mg and 400 mg), polyvinyl alcohol (50 mg and 150 mg), polyethylene glycol, talc (50 mg and 150 mg), titanium dioxide, iron oxide red (50 mg), iron oxide yellow (50 mg, 200 mg and 300 mg).

PART II: SCIENTIFIC INFORMATION

PHARMACEUTICAL INFORMATION

Drug Substance

Proper Name/Common Name:	quetiapine fumarate
Chemical Name:	Bis[2-(2-[4-(dibenzo[b,f][1,4]thiazepin-11-yl)piperazin-1-yl] ethoxy)ethanol] fumarate (IUPAC)
Code Name:	ICI 204, 636 fumarate
Molecular Formula and Molecular Mass:	$[C_{21}H_{25}N_3O_2S]_2 \cdot C_4H_4O_4$; 883.1 g/mol
Structural Formula:	

Physiochemical Properties:

Description:	Quetiapine fumarate is a white or almost white powder. It is slightly soluble in water, in anhydrous ethanol and in methanol
Ionization Constant:	pKa1 = 6.83 in phosphate buffer at 22°C pKa2 = 3.32 in formic buffer at 22°C
Partition Coefficient:	Log P = 0.45 (octanol/water)
Melting Point:	172.0 - 174°C

CLINICAL TRIALS

Comparative Bioavailability Studies

Summary of studies establishing bioequivalence of AG-Quetiapine XR 50 mg tablets to PrSeroquel XR® (quetiapine) extended release 50 mg.

A single dose, crossover comparative bioavailability study of 1 x 50 mg AG-Quetiapine XR 50 mg tablets (Angita Pharma Inc.) and 1 x 50 mg PrSeroquel XR® (quetiapine) (AstraZeneca Canada Inc.) extended release tablet in 70 healthy, adult, human subjects under fasting condition

The summary of results for quetiapine are presented in the following table

Quetiapine (1×50 mg) From measured data Geometric Mean Arithmetic Mean (CV %)				
Parameter	Test*	Reference†	% Ratio of Geometric Means	90% Confidence Interval
AUC _T (ng.h/mL)	862.411 956.665 (46.2)	916.173 995.087 (43.0)	94.1	88.6 - 100.0
AUC _I (ng.h/mL)	877.369 972.118 (45.9)	929.752 1008.940 (42.7)	94.4	88.9 - 100.2
C _{max} (ng/mL)	64.232 69.183 (37.6)	60.323 65.246 (42.2)	106.5	100.2 - 113.2
T _{max} § (h)	7.250 (1.500 - 13.000)	9.000 (1.500 - 18.000)		
T _{1/2} € (h)	6.686 (24.0)	6.712 (25.3)		

* Quetiapine Fumarate Extended-Release Tablets 50 mg (Angita Pharma Inc.).

† Seroquel XR® (quetiapine fumarate extended-release tablets) 50 mg (AstraZeneca Canada Inc.) were purchased in Canada.

§ expressed as Median (min-max).

€ Expressed as the arithmetic mean (CV %) only

A single dose, crossover comparative bioavailability study of 1 x 50 mg AG-Quetiapine XR 50 mg tablets (Angita Pharma Inc.) and 1 x 50 mg ^{Pr}Seroquel XR[®] (quetiapine) (AstraZeneca Canada Inc.) extended release tablet in 70 healthy, adult, human subjects under fed condition

The summary of results for quetiapine are presented in the following table

Quetiapine (1×50 mg) From measured data Geometric Mean Arithmetic Mean (CV %)				
Parameter	Test*	Reference [†]	% Ratio of Geometric Means	90% Confidence Interval
AUC _T (ng.h/mL)	845.721 934.112 (44.7)	879.387 973.912 (50.5)	96.2	91.4-101.2
AUC _I (ng.h/mL)	856.510 944.029 (44.4)	891.711 985.408 (50.0)	96.1	91.3-101.0
C _{max} (ng/mL)	108.098 118.513 (43.6)	102.331 111.237 (41.7)	105.6	99.3-112.4
T _{max} [§] (h)	5.500 (2.500 - 9.000)	5.500 (2.500 - 13.000)		
T _{1/2} [€] (h)	6.409 (25.8)	6.480 (18.2)		

* Quetiapine Fumarate Extended-Release Tablets 50 mg (Angita Pharma Inc.).

[†] Seroquel XR[®] (quetiapine fumarate extended-release tablets) 50 mg (AstraZeneca Canada Inc.) were purchased in Canada.

[§] expressed as Median (min-max).

[€] Expressed as the arithmetic mean (CV %) only

Summary of studies establishing bioequivalence of AG-Quetiapine XR 150 mg tablets to PrSeroquel XR® (quetiapine) extended release 150 mg.

A single dose, crossover comparative bioavailability study of 1 x 150 mg AG-Quetiapine XR 150 mg tablets (Angita Pharma Inc.) and 1 x 150 mg PrSeroquel XR® (quetiapine) (AstraZeneca Canada Inc.) extended release tablet in 64 healthy, adult, human subjects under fasting condition

The summary of results for quetiapine are presented in the following table

Quetiapine (1×150 mg) From measured data Geometric Mean Arithmetic Mean (CV %)				
Parameter	Test*	Reference†	% Ratio of Geometric Means	90% Confidence Interval
AUC _T (ng.h/mL)	3036.942 3403.755 (47.4)	3183.271 3585.445 (50.9)	95.4	85.7 – 106.3
AUC _I (ng.h/mL)	3072.757 3438.567 (47.1)	3224.228 3626.251 (50.6)	95.3	85.6 – 106.1
C _{max} (ng/mL)	200.916 221.120 (45.8)	216.244 241.038 (51.3)	92.9	84.0 – 102.8
T _{max} § (h)	5.000 (1.500 - 20.000)	9.000 (2.000 - 14.000)		
T _{1/2} € (h)	6.622 (30.2)	7.048 (25.5)		

* Quetiapine Fumarate Extended-Release Tablets 150 mg (Angita Pharma Inc.).

† Seroquel XR® (quetiapine fumarate extended-release tablets) 150 mg (AstraZeneca Canada Inc.) were purchased in Canada.

§ expressed as Median (min-max).

€ Expressed as the arithmetic mean (CV %) only

A single dose, crossover comparative bioavailability study of 1 x 150 mg AG-Quetiapine XR 150 mg tablets (Angita Pharma Inc.) and 1 x 150 mg ^{Pr}Seroquel XR[®] (quetiapine) (AstraZeneca Canada Inc.) extended release tablet in 63 healthy, adult, human subjects under fed condition

The summary of results for quetiapine are presented in the following table

Quetiapine (1×150 mg) From measured data Geometric Mean Arithmetic Mean (CV %)				
Parameter	Test*	Reference [†]	% Ratio of Geometric Means	90% Confidence Interval
AUC _T (ng.h/mL)	3105.938 3365.878 (39.7)	3106.521 3436.688 (46.3)	100.0	95.6 – 104.5
AUC _I (ng.h/mL)	3135.210 3394.784 (39.4)	3132.266 3462.849 (46.2)	100.1	95.7 – 104.7
C _{max} (ng/mL)	286.084 303.554 (33.3)	332.956 361.386 (41.4)	85.9	80.4 – 91.8
T _{max} [§] (h)	5.500 (2.500 - 13.000)	5.500 (2.500 - 13.000)		
T _{1/2} [€] (h)	6.848 (22.4)	6.713 (24.4)		

* Quetiapine Fumarate Extended-Release Tablets 150 mg (Angita Pharma Inc.).

[†] Seroquel XR[®] (quetiapine fumarate extended-release tablets) 150 mg (AstraZeneca Canada Inc.) were purchased in Canada.

[§] expressed as Median (min-max).

[€] Expressed as the arithmetic mean (CV %) only

Summary of studies establishing bioequivalence of AG-Quetiapine XR 200 mg tablets to PrSeroquel XR® (quetiapine) extended release 200 mg.

A single dose, crossover comparative bioavailability study of 1 x 200 mg AG-Quetiapine XR 200 mg tablets (Angita Pharma Inc.) and 1 x 200 mg PrSeroquel XR® (quetiapine) (AstraZeneca Canada Inc.) extended release tablet in 67 healthy, adult, human subjects under fasting condition

The summary of results for quetiapine are presented in the following table

Quetiapine (1×200 mg) From measured data Geometric Mean Arithmetic Mean (CV %)				
Parameter	Test*	Reference†	% Ratio of Geometric Means	90% Confidence Interval
AUC _T (ng.h/mL)	3599.301 3890.508 (39.3)	3550.401 3787.536 (35.9)	101.4	95.7-107.4
AUC _I (ng.h/mL)	3639.171 3944.391 (38.9)^	3587.413 3823.217 (35.7)	101.4	95.7-107.6
C _{max} (ng/mL)	254.436 275.423 (42.3)	221.531 235.925 (34.9)	114.9	106.9-123.4
T _{max} [§] (h)	9.000 (1.500 - 14.000)	11.000 (1.500 - 14.000)		
T _{1/2} [€] (h)	6.550 (23.7)^	6.545 (21.7)		

^N = 66

* Quetiapine Fumarate Extended-Release Tablets 200 mg (Angita Pharma Inc.).

† Seroquel XR® (quetiapine fumarate extended-release tablets) 200 mg (AstraZeneca Canada Inc.) were purchased in Canada.

§ expressed as Median (min-max).

€ Expressed as the arithmetic mean (CV %) only

A single dose, crossover comparative bioavailability study of 1 x 200 mg AG-Quetiapine XR 200 mg tablets (Angita Pharma Inc.) and 1 x 200 mg ^{Pr}Seroquel XR[®] (quetiapine) (AstraZeneca Canada Inc.) extended release tablet in 67 healthy, adult, human subjects under fed condition

The summary of results for quetiapine are presented in the following table

Quetiapine (1×200 mg) From measured data Geometric Mean Arithmetic Mean (CV %)				
Parameter	Test*	Reference [†]	% Ratio of Geometric Means	90% Confidence Interval
AUC _T (ng.h/mL)	3408.955 3767.072 (49.2)	3501.899 3811.782 (43.0)	97.3	93.0-101.9
AUC _I (ng.h/mL)	3436.637 3795.443 (49.0)	3533.636 3845.338 (42.8)	97.3	92.9-101.8
C _{max} (ng/mL)	404.151 437.941 (41.3)	348.432 374.486 (37.8)	116.0	108.2-124.4
T _{max} [§] (h)	6.000 (2.000 - 11.000)	5.500 (1.500 - 14.000)		
T _{1/2} [€] (h)	6.203 (20.8)	6.644 (23.5)		

* Quetiapine Fumarate Extended-Release Tablets 200 mg (Angita Pharma Inc.).

[†] Seroquel XR[®] (quetiapine fumarate extended-release tablets) 200 mg (AstraZeneca Canada Inc.) were purchased in Canada.

[§] expressed as Median (min-max).

[€] Expressed as the arithmetic mean (CV %) only

Schizophrenia

The efficacy of quetiapine fumarate extended-release in the management of the manifestations of schizophrenia was supported by three short-term (6 week) placebo- controlled trials with inpatients and outpatients, and by one longer-term placebo-controlled trial of outpatients with schizophrenia who were clinically stable on quetiapine fumarate extended-release, and were then randomized to placebo or to remain on quetiapine fumarate extended-release.

1. A 6-week, placebo-controlled trial (n = 573) compared 3 doses of quetiapine fumarate extended-release (400, 600 and 800 mg), 1 dose of quetiapine fumarate immediate-release formulation (400 mg), and placebo. Quetiapine fumarate extended-release administered once daily at doses of 400, 600 or 800 mg/day was statistically significantly superior to placebo on the Positive and Negative Syndrome Scale (PANSS) total score, PANSS response rate (at least 30 % reduction of PANSS total score from baseline), and the Clinical Global Impression Global Improvement (CGI-I) score at Day 42. The mean improvement on the PANSS total score compared to

placebo was greater for quetiapine fumarate extended-release 600 mg (-12.1) and quetiapine fumarate extended-release 800 mg (-12.5) than quetiapine fumarate extended-release 400 mg (-6.1) or quetiapine fumarate immediate-release 400 mg (-7.8).

The two highest doses of quetiapine fumarate extended-release (600 and 800 mg/day) were statistically significantly superior to placebo on the change in CGI Severity of Illness (CGI-S) score. All three quetiapine fumarate extended-release doses also demonstrated efficacy on a broad range of symptoms of schizophrenia as measured by the PANSS Positive and General Psychopathology subscale scores, and the PANSS aggression and hostility cluster score. The two highest doses of quetiapine fumarate extended-release also demonstrated statistically significant improvement compared to placebo on the PANSS Negative symptom subscale score and the PANSS depression cluster score.

2. In a longer-term study, clinically stable patients with schizophrenia who were being maintained on quetiapine fumarate extended-release (400 to 800 mg/day) for 16 weeks were randomized to either quetiapine fumarate extended-release (400 to 800 mg/day) or placebo. The mean dose of quetiapine fumarate extended-release was 669 mg. The primary endpoint was time to first psychiatric relapse. Patients treated with quetiapine fumarate extended-release experienced a significantly longer time to relapse following randomization compared to placebo. Significantly fewer patients treated with quetiapine fumarate extended-release experienced a relapse (11.7%) compared to patients treated with placebo (48.5%) during the study. The estimated risk of relapse at 6 months was significantly reduced for patients treated with quetiapine fumarate extended-release (14.3%) compared to patients treated with placebo (68.2%).
3. A 6-week, placebo-controlled trial (n = 498) compared 3 doses of quetiapine fumarate extended-release (300, 600 and 800 mg), 2 doses of quetiapine fumarate immediate-release (300 and 600 mg), and placebo. Quetiapine fumarate extended-release administered once daily at 600 mg was statistically significantly superior to placebo on PANSS total score. Quetiapine fumarate extended-release 800 mg produced a numerically greater improvement, though not statistically significant, compared to placebo, as shown by a 2-fold greater decrease from baseline in PANSS total score. Quetiapine fumarate extended-release 800 mg was statistically significantly superior to placebo on the CGI-I score.
4. A 6-week, placebo-controlled trial (n = 544) compared 3 doses of quetiapine fumarate extended-release (400, 600 and 800 mg), 1 dose of quetiapine fumarate immediate-release (800 mg), and placebo. The quetiapine fumarate immediate-release dose and all quetiapine fumarate extended-release doses produced a numerically greater improvement, though not statistically significant, compared to placebo on the PANSS total score.

A combined statistical analysis of two of the short-term placebo-controlled studies (1 and 4 above) (n = 889) showed that quetiapine fumarate extended-release 600 and 800 mg were statistically significantly superior to placebo on the PANSS total score, PANSS response rate,

CGI-I score and CGI-S score. Quetiapine fumarate extended-release 400 mg was statistically significantly superior to placebo on the PANSS total score, CGI-I score and CGI-S score, and was numerically greater, though not statistically significant, compared to placebo on the PANSS response rate.

Bipolar Disorder

Bipolar Mania

The efficacy of quetiapine fumarate extended-release in the management of manic episodes associated with bipolar disorder was established in one 3-week, placebo-controlled trial in bipolar patients with manic or mixed episodes with or without psychotic features (n = 316). Patients were hospitalized for a minimum of 4 days at randomization. Patients randomized to quetiapine fumarate extended-release received 300 mg on Day 1 and 600 mg on Day 2. Afterwards, the dose could be adjusted between 400 mg to 800 mg once daily.

The primary endpoint was the change from baseline in the Young Mania Rating Scale (YMRS) total score at Week 3. Quetiapine fumarate extended-release at a dose of 400 to 800 mg/day for 3 weeks of treatment in patients with bipolar mania (both manic and mixed at baseline) was demonstrated to be statistically significant to placebo in reducing the level of manic symptoms as early as Day 4 and throughout the 3 weeks of treatment ($p \leq 0.003$).

Secondary endpoints also supported the superiority of quetiapine fumarate extended-release 400 to 800 mg/day over placebo in the treatment of mania in patients with bipolar disorder. Quetiapine fumarate extended-release was statistically significant over placebo at Week 3 in the proportion of patients showing $\geq 50\%$ reduction in YMRS total score (responders) (55% vs 33%, $p < 0.001$) and the proportion of patients showing a YMRS total score ≤ 12 (remission) (42% vs 28%, $p = 0.006$). Quetiapine fumarate extended-release was also statistically significant over placebo on changes in Clinical Global Impression - Bipolar - Severity (CGI-BP-S) and Clinical Global Impression - Bipolar - Change (CGI-BP-C) overall illness scores at Week 3 ($p < 0.001$).

Quetiapine fumarate extended-release improved a range of symptoms at Week 3, including core symptoms of mania (including irritability, speech and thought content, $p \leq 0.011$), as assessed by the item analysis of the YMRS. The change in the MADRS score was statistically significant for quetiapine fumarate extended-release compared to placebo from Day 4 to Week 3 ($p \leq 0.042$).

For patients treated with quetiapine fumarate extended-release, the mean daily dose over the treatment period was 604 mg with 47% having a final dose level of 600 mg/day, and approximately 22% and 29% of patients had final dose levels of 400 and 800 mg/day, respectively.

Bipolar Depression

The efficacy of quetiapine fumarate extended-release in the management of depressive episodes associated with bipolar disorder was established in one 8-week placebo-controlled study (n = 280 outpatients). This study included patients with bipolar I and II disorder with or without a rapid cycling course. Patients randomized to quetiapine fumarate extended-release were administered 300 mg once daily.

The primary endpoint was the change from baseline in the Montgomery-Åsberg Depression Rating Scale (MADRS) total score at Week 8. Quetiapine fumarate extended-release was demonstrated to be statistically significant versus placebo in reducing the level of depressive symptoms as early as Week 1 and throughout 8 weeks of treatment ($p < 0.001$). Bipolar I and bipolar II patients and patients with a rapid or non-rapid cycling course treated with quetiapine fumarate extended-release showed statistically significant greater improvements in MADRS total score compared to patients treated with placebo.

The secondary endpoints supported the superiority of quetiapine fumarate extended-release over placebo. For most secondary endpoints the treatment advantage for quetiapine fumarate extended-release was apparent by Week 1 and continued through Week 8. For quetiapine fumarate extended-release, the proportion of patients showing a MADRS total score ≤ 12 (remitters) was statistically significant versus placebo by Week 1 and continued to end-of-treatment ($p < 0.05$) (54% for quetiapine fumarate extended-release versus 39% for placebo at Week 8). Likewise, the proportion of patients showing $\geq 50\%$ reduction in MADRS total score (responders) was statistically significant versus placebo by Week 2 and continued to end-of-treatment ($p \leq 0.007$) (65% for quetiapine fumarate extended-release versus 43% for placebo at Week 8). Quetiapine fumarate extended-release was also statistically significant over placebo on changes from baseline in CGI-BP-S for overall bipolar illness score (Week 8, $p < 0.001$) and in CGI-BP-C for overall illness score (Week 1 and throughout Week 8, $p < 0.001$).

Quetiapine fumarate extended-release significantly improved a broad range of symptoms (8 out of 10 items including core symptoms of depression) ($p < 0.05$), as assessed by an item analysis of the MADRS at Week 8.

There were fewer episodes of treatment-emergent mania with quetiapine fumarate extended-release (4.4%) than with placebo (6.4%).

In four 8-week bipolar depression trials, quetiapine fumarate immediate-release formulation at doses of both 300 and 600 mg/day, was demonstrated to be statistically significant versus placebo in reducing depressive symptoms as measured by the change from baseline in the MADRS total score at Week 8 (primary endpoint), although no additional benefit was seen in the 600 mg group.

Major Depressive Disorder

The efficacy of quetiapine fumarate extended-release as a monotherapy treatment was assessed in 6 clinical trials in patients with major depressive disorder (MDD). Of these, 4 were acute monotherapy trials, 1 was a monotherapy elderly trial and 1 was a randomized withdrawal of treatment trial. All trials included patients who met DSM-IV criteria for MDD, single or recurrent episodes, with and without psychotic features.

Acute Monotherapy

The efficacy of quetiapine fumarate extended-release as monotherapy in the treatment of MDD was assessed in two 6-week placebo-controlled fixed dose trials, and two 8-week placebo-

controlled modified fixed dose trials (optional one time dose increase). In addition, the efficacy of quetiapine fumarate extended-release was assessed in non-demented elderly patients (aged 66 to 89 years) in one 9-week placebo-controlled flexible dose trial (mean dose 160 mg/day). The study designs are summarized in Table 8.

Table 8 Study Design of Clinical Trials Supporting Efficacy of Quetiapine fumarate extended-release in the Monotherapy Treatment of MDD

Study #	Study Type	Treatment Arms (Once Daily)	Duration of Treatment	Study subjects (N) ^a	Baseline MADRS Score
1	Fixed Dose	Quetiapine fumarate extended-release 50 mg Quetiapine fumarate extended-release 150 mg Quetiapine fumarate extended-release 300 mg Placebo	6 weeks	700	30.7
2	Fixed Dose	Quetiapine fumarate extended-release 150 mg Quetiapine fumarate extended-release 300 mg Duloxetine 60 mg Placebo	6 weeks	587	30.1
3	Modified Fixed Dose	Quetiapine fumarate extended-release 150/300 mg Placebo	8 weeks	299	29.5
4	Modified Fixed Dose	Quetiapine fumarate extended-release 150/300 mg Escitalopram 10/20 mg Placebo	8 weeks	459	31.9
14	Flexible Dose (elderly)	Quetiapine fumarate extended-release 50-300 mg Placebo	9 weeks	335	27.9

^a Number of patients who took at least 1 dose of investigational product and had a randomization MADRS assessment and at least 1 valid MADRS assessment after randomization.

The primary endpoint in these trials was the change from baseline to week 6 (Study 1 and 2), or 8 (Study 3 and 4) or 9 (Study 14) in the Montgomery-Asberg Depression Rating Scale (MADRS), a 10 item clinician-rated scale used to assess the degree of depressive symptomatology. A Hamilton Rating Scale for Depression (HAM-D-17) total score of ≥ 22 was a requirement for study entry. The mean HAM-D total score at entry was 26.

Quetiapine fumarate extended-release was statistically superior to placebo in reduction of depressive symptoms as measured by change in MADRS total score (Table 9).

Secondary endpoints also supported the superiority of quetiapine fumarate extended-release 50 to 300 mg/day over placebo in the monotherapy treatment of MDD (Table 9).

In the fifth trial (Study 4), neither quetiapine fumarate extended-release nor the active comparator (escitalopram) were statistically significant compared to placebo on the MADRS total score as well as on the key secondary endpoints.

Table 9 Efficacy of Quetiapine Fumarate Extended-Release in the Acute Monotherapy Treatment of MDD

Treatment Arms (Once Daily)	MADRS Total Score (Primary Endpoint)	MADRS Response ($\geq 50\%$ Reduction)*	HAM-D Total Score	HAM-D Item 1	HAM-A Total Score	CGI-S Score	% Improved on CGI
Study 1							
Quetiapine fumarate extended-release 50 mg	-13.56 ^c	42.7% ^b	-12.35	-1.34	-8.11 ^c	-1.43 ^c	52.8% ^b
Quetiapine fumarate extended-release 150 mg	-14.50 ^b	51.2% ^a	-12.84 ^c	-1.45 ^c	-8.34 ^b	-1.50 ^b	54.2% ^b
Quetiapine fumarate extended-release 300 mg	-14.18 ^b	44.9% ^a	-12.65 ^c	-1.48 ^c	-8.20 ^c	-1.49 ^b	54.0% ^b
Placebo	-11.07	30.3%	-10.93	-1.18	-6.64	-1.11	39.3%
Study 2							
Quetiapine fumarate extended-release 150 mg	-14.81 ^a	54.4% ^b	-13.12 ^a	-1.49 ^a	-7.76 ^b	-1.43 ^b	54.1% ^c
Quetiapine fumarate extended-release 300 mg	-15.29 ^a	55.1% ^a	-14.02 ^a	-1.56 ^a	-7.38 ^b	-1.60 ^a	59.2% ^a
Duloxetine 60 mg	-14.64 ^a	49.6% ^c	-12.37 ^c	-1.53 ^a	-7.83 ^a	-1.53 ^a	56.7% ^b
Placebo	-11.18	36.2%	-10.26	-1.07	-5.55	-1.06	39.5%
Study 3							
Quetiapine fumarate extended-release 150/300 mg	-16.49 ^b	61.9% ^c	-14.75 ^c	-1.71 ^c	-9.14 ^c	-1.64 ^b	63.3% ^a
Placebo	-13.1	48.0%	-12.35	-1.40	-7.70	-1.24	52.0%
Study 14							
Quetiapine fumarate extended-release 50-300 mg	-16.33 ^a	64.0%	-15.66 ^a	-1.84 ^a	-10.51 ^a	-1.73 ^a	71.3% ^a
Placebo	-8.79	30.4%	-8.62	-1.13	-5.20	-0.77	39.2%

* Response is defined as $\geq 50\%$ reduction in the MADRS total score from baseline.

^a $p \leq 0.001$ comparison with placebo.

^b $p < 0.01$ comparison with placebo.

^c $p < 0.05$ comparison with placebo.

Longer-Term Randomized Withdrawal Study

The efficacy of quetiapine fumarate extended-release in maintaining treatment of MDD was assessed in a longer-term clinical trial, which consisted of open-label treatment with quetiapine fumarate extended-release followed by a double-blind randomized placebo-controlled treatment phase. Patients who had a HAM-D total score of ≥ 20 received quetiapine fumarate extended-release (flexibly dosed at 50 mg, 150 mg, or 300 mg once daily) for 4 to 8 weeks. Patients who responded (CGI-S ≤ 3 and a MADRS total score ≤ 12) received open-label quetiapine fumarate extended-release for an additional 12 to 18 weeks, within the same dose range.

Patients who responded during the additional open label treatment period and who met the criteria for randomization (CGI-S ≤ 3 and a MADRS total score ≤ 12) were randomized to placebo (n = 385) or to continue on quetiapine fumarate extended-release (n = 391) for up to 52 weeks (median duration of exposure to quetiapine fumarate extended-release was 158 days (mean 167 days); 15 patients completed the entire 52 weeks). Relapse or a depressed event during the double-blind phase was defined as: initiation of pharmacological treatment by the investigator, other than the allowed hypnotics, to treat depressive symptoms; initiation of pharmacological treatment by the patient for at least 1 week, other than the allowed hypnotics, to treat depressive symptoms; hospitalization for depressive symptoms; MADRS score ≥ 18 at 2 consecutive assessments 1 week apart, or at the final assessment if the patient discontinued; CGI-S score ≥ 5 ; suicide attempt or discontinuation from study due to imminent risk of suicide.

Quetiapine fumarate extended-release (mean dose 177 mg/day) significantly increased the time to a depressed event compared with placebo (primary endpoint) and significantly fewer patients treated with quetiapine fumarate extended-release experienced a relapse (14.2%) compared to patients treated with placebo (34.4%) during the study (Hazard ratio 0.34, i.e., the risk of recurrence of depressive event was reduced by 66%; 95% CI 0.25, 0.46; p-value < 0.001 versus placebo) (see Figure 2).

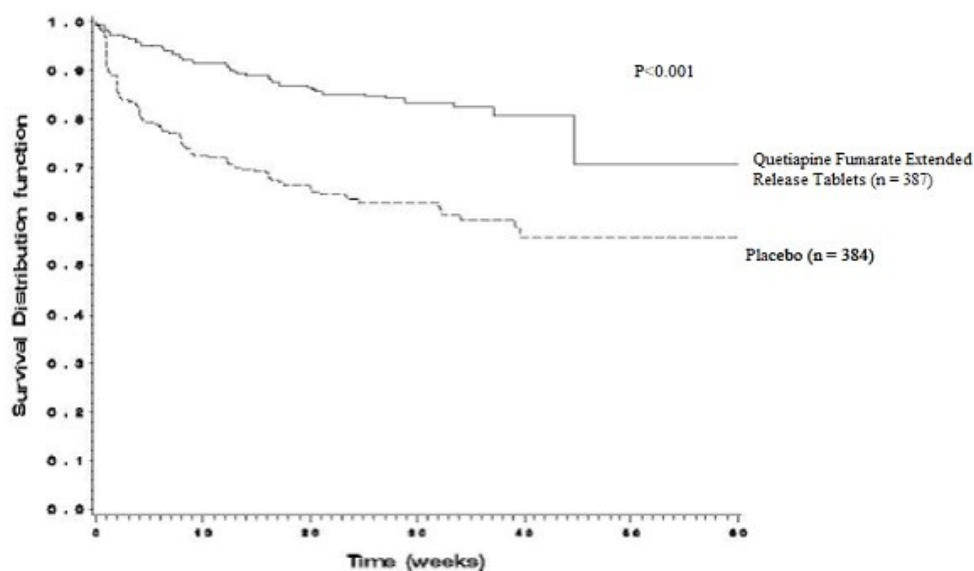


Figure 2: Time to a depressed event, Longer-Term Randomized Withdrawal Study, Kaplan Meier curves (ITT population)

DETAILED PHARMACOLOGY

Quetiapine is a multiple receptor antagonist. It exhibits affinity for brain serotonin 5HT_{1A} and 5HT₂ receptors (IC_{50s} = 717 and 148 nM, respectively), and dopamine D₁ and D₂ receptors (IC_{50s} = 1268 and 329 nM, respectively). Quetiapine has lower affinity for dopamine D₂ receptors, than serotonin 5HT₂ receptors. Quetiapine also has high affinity at histamine H₁ receptors (IC₅₀ = 30 nM) and adrenergic α_1 receptors (IC₅₀ = 94 nM), with a lower affinity at adrenergic α_2 receptors (IC₅₀ = 271 nM), but no appreciable affinity at cholinergic muscarinic and benzodiazepine receptors (IC_{50s} > 5000 nM). Norquetiapine is an active human plasma metabolite. Norquetiapine, similar to quetiapine, exhibits affinity for brain serotonin 5HT₂ and dopamine D₁ and D₂ receptors. Norquetiapine also has high affinity at histaminergic and adrenergic α_1 receptors, with a lower affinity at adrenergic α_2 and serotonin 5HT_{1A} receptors. Additionally, norquetiapine has high affinity for the norepinephrine transporter (NET). Quetiapine differs from norquetiapine in having low or no appreciable affinity for muscarinic receptors whereas norquetiapine has moderate to high affinity for several muscarinic receptor subtypes which may explain anticholinergic (muscarinic) effects (see WARNINGS AND PRECAUTIONS, Neurologic, Anticholinergic (muscarinic effects), DRUG INTERACTIONS and ACTION AND CLINICAL PHARMACOLOGY).

Quetiapine is active in pharmacologic tests for antipsychotic activity, such as conditioned avoidance in primates. It also reverses the actions of dopamine agonists measured either behaviourally or electrophysiologically in mice, rats, cats and monkeys. Quetiapine also elevates levels of the dopamine metabolites homovanillic acid (HVA) and 3,4 dihydroxyphenylalanine (DOPAC) in brain, which are considered to be neurochemical indices of dopamine D₂ receptor blockade.

In preclinical tests predictive of EPS, quetiapine is unlike typical antipsychotics and has an atypical profile. Quetiapine does not produce dopamine D₂ receptor supersensitivity after chronic administration. Quetiapine produces only weak catalepsy at effective dopamine D₂ receptor blocking doses. Quetiapine demonstrates selectivity for the limbic system by producing depolarization blockade of the A10 mesolimbic but not the A9 nigrostriatal dopamine-containing neurones following chronic administration. Quetiapine exhibits minimal dystonic liability in haloperidol-sensitized or drug-naive Cebus monkeys after acute and chronic administration.

Pharmacology of Metabolites

Quetiapine and several of its metabolites (including norquetiapine) have been tested *in vitro* for their affinity for 5HT₂, D₁ and D₂ receptors, and *in vivo* animal models. The major metabolites, parent acid and sulfoxide, are pharmacologically inactive in plasma. The 7-hydroxy and 7-hydroxy N-dealkylated metabolites are pharmacologically active with *in vitro* binding comparable to or greater than that for parent compound. The peak plasma concentrations for the 7-hydroxy and 7-hydroxy N-dealkylated metabolites account for approximately only 5% and 2% of that of quetiapine at steady state, respectively.

TOXICOLOGY

Thyroid

Quetiapine caused a dose-related increase in pigment deposition in thyroid gland in rat toxicity studies which were 4 weeks in duration or longer and in a mouse 2-year carcinogenicity study. Doses were 10-250 mg/kg in rats, 75-750 mg/kg in mice; these doses are 0.1-3.0, and 0.1-4.5 times the maximum recommended human dose (on a mg/m² basis), respectively. Pigment deposition was shown to be irreversible in rats. The identity of the pigment could not be determined, but was found to be co-localized with quetiapine in thyroid gland follicular epithelial cells. The functional effects and the relevance of this finding to human risk are unknown.

Cataracts

In dogs receiving quetiapine for 6 or 12 months, but not for 1 month, focal triangular cataracts occurred at the junction of posterior sutures in the outer cortex of the lens at a dose of 100 mg/kg, or 4 times the maximum recommended human dose on a mg/m² basis. This finding may be due to inhibition of cholesterol biosynthesis by quetiapine. Quetiapine caused a dose related reduction in plasma cholesterol levels in repeat-dose dog and monkey studies; however, there was no correlation between plasma cholesterol and the presence of cataracts in individual dogs. The appearance of delta-8-cholestanol in plasma is consistent with inhibition of a late stage in cholesterol biosynthesis in these species. There also was a 25% reduction in cholesterol content of the outer cortex of the lens observed in a special study in quetiapine treated female dogs. Drug-related cataracts have not been seen in any other species; however, in a 1-year study in monkeys, a striated appearance of the anterior lens surface was detected in 2/7 females at a dose of 225 mg/kg or 5.5 times the maximum recommended human dose on a mg/m² basis.

Acute Toxicity

Single dose studies were conducted in mice and rats by the oral and intraperitoneal routes and in dogs by the oral route. The principal clinical signs in mice, rats and dogs of decreased motor activity, ptosis, loss of righting reflex, tremors, ataxia, prostration and convulsions were consistent with the pharmacological activity of the drug. The lowest oral doses causing lethality were 250 mg/kg in mouse and 500 mg/kg in rat; no deaths occurred at the highest oral dose tested (750 mg/kg) in dogs. The highest parenteral non-lethal doses were 100 mg/kg in both mouse and rat.

Subacute/Chronic Toxicity

In multiple dose studies in rats, dogs and monkeys (refer to Table 10 for individual study details), anticipated central nervous system effects of an antipsychotic drug were observed with quetiapine (e.g., sedation at lower doses and tremor, convulsions or prostration at higher exposures).

Hyperprolactinaemia, induced through the dopamine D₂ receptor antagonist activity of quetiapine or its metabolites, varied between species, but was most marked in the rat. A range of effects consequent to this were seen in the 12-month study including mammary hyperplasia, increased pituitary weight, decreased uterine weight and enhanced growth of females.

Reversible morphological and functional effects on the liver, consistent with hepatic enzyme induction, were seen in mouse, rat and monkey.

Thyroid follicular cell hypertrophy and concomitant changes in plasma thyroid hormone levels occurred in rat and monkey.

Pigmentation of a number of tissues, particularly the thyroid, was not associated with any morphological or functional effects.

Transient increases in heart rate, unaccompanied by an effect on blood pressure, occurred in dogs.

Posterior triangular cataracts seen after 6 months in dogs at 100 mg/kg/day were consistent with inhibition of cholesterol biosynthesis in the lens. No cataracts were observed in cynomolgus monkeys dosed up to 225 mg/kg/day, or in rodents. Monitoring in clinical studies did not reveal drug-related corneal opacities in man.

No evidence of neutrophil reduction or agranulocytosis was seen in any of the toxicity studies.

Carcinogenicity

Results from the 2-year carcinogenicity studies performed in mice and rats (and mouse sighting studies) are summarized in Table 11.

In the rat study (doses 0, 20, 75 and 250 mg/kg/day) the incidence of mammary adenocarcinomas was increased at all doses in female rats, consequential to prolonged hyperprolactinaemia.

In male rat (250 mg/kg/day) and mouse (250 and 750 mg/kg/day), there was an increased incidence of thyroid follicular cell benign adenomas, consistent with known rodent-specific mechanisms resulting from enhanced hepatic thyroxine clearance.

Table 10 Principal Multiple-Dose Toxicity Studies With Quetiapine

Species/Strain	Route	Study Duration	Number/Group/Sex	Dose (mg/kg/day)	Salient Observations
Rat H1a:(SD)/BR	oral gavage	4 weeks dosing and 4 weeks withdrawal	14	0 25 50 150	Ptosis at all doses. Body weight gain decreased at 150 mg/kg/day. Liver weight was increased and uterus, spleen and pituitary weights were decreased in all dose groups. Epididymis and heart weight was decreased at 150 mg/kg/day. Deciduoma-metrial gland changes at 50 mg/kg/day.
Rat H1a:(SD)BR	oral gavage	6 months dosing and 4 weeks withdrawal	29	0 25 50 150	Ptosis at all doses. Reduced body weight gain at 50 mg/kg/day and 150 mg/kg/day. Plasma TSH increased and T ₃ reduced at 150 mg/kg/day. Pigment deposition and hypertrophy of thyroid follicular cells at 50 mg/kg/day and 150 mg/kg/day. In all dose groups, mammary gland hypertrophy/hyperplasia, atrophy and/or mucification of cervical/vaginal mucosa. Liver weight increased at all doses with hepatocellular vacuolation at 150 mg/kg/day. No adverse-effect dose level was 25 mg/kg.
Rat CrI:(WI)BR	oral gavage	12 months of dosing then 5 weeks withdrawal	20	0 10 25 75 250	Hypoactivity and hyperprolactinaemia and sequelae (all doses). 27% decrement in body weight gain (250 mg/kg/day). Liver enlargement (75 and 250 mg/kg/day), hepatocyte fat vacuolation (dose related) and centrilobular hypertrophy with increased expression of CYP2B1/2 and CYP3A at 250 mg/kg/day. Increased TSH and T ₄ and thyroid follicular cell hypertrophy (250 mg/kg/day). Thyroid pigmentation (all doses). Adrenal cortical vacuolation (75 mg/kg/day and above). Increased pancreatic glucagon secreting cells (75 mg/kg/day and above). Increased alveolar macrophages (75 mg/kg/day and above).
Dog Beagle	oral tablets	4 weeks	3	0 25 50 100	Decreased motor activity, ataxia, somnolence, miosis, increased heart rate and hypothermia were observed for animals in all compound-treated groups. In general the incidence was dose-related and decreased with time. All effects reversed on withdrawal.
Dog Beagle	oral tablets	6 months dosing and 8 weeks withdrawal	3 or 4	0 25 50 100	Up to 8 weeks transient sedation and increased heart rate. Dose-related decreases in body weight gain. At 100 mg/kg/day 13-26% decrease in plasma cholesterol and prominent posterior Y sutures, swelling of lens fiber tips and 3/8 females with cataracts; 1 epileptiform seizure, 4/8 muscular twitching. 50 mg/kg/day was the no adverse-effect dose level.

Table 10 Principal Multiple-Dose Toxicity Studies With Quetiapine

Species/Strain	Route	Study Duration	Number/Group/Sex	Dose (mg/kg/day)	Salient Observations
Dog Beagle	Oral Tablets	12 months dosing and 8 weeks withdrawal	4z	0 10 25 50 100	Sedation, miosis, abnormal gait and muscular tremors occurred at doses of 25 mg/kg/day and above, mainly in the first 10 weeks. Cataracts in animals given 100 mg/kg/day. Histopathological lenticular changes in 5/8 dogs given 50 mg/kg/day. At 100 mg/kg/day 13/14 dogs showed histological lenticular alterations, consistent with the ophthalmological observations. Fine brown granules in the epithelial cells of the lacrimal glands at all doses.
Cynomolgus monkey	oral gavage	13 months	4	0, rising dose for 4 weeks with one week at each dose level then 43.5 for 52 weeks	Signs of sedation from week 2, duration and severity increased with dose. 43.5 mg/kg/day was considered to be the maximum tolerated dose. Abnormal staring behaviour in 2 animals. Plasma prolactin reduced. No compound-related histopathological changes. No effect on plasma cholesterol. No ophthalmological changes were observed.
Cynomolgus monkey	oral gavage	14 weeks	3	6, 12, 24, 36, 48, 60, 84, 108, 132, 150, 180, 225, 285 and 350. Rising doses administered 3 doses/day. One week at each dose level	Sedation from 24 mg/kg/day, after which the duration and severity increased with dose, until at 225 mg/kg/day prostration occurred. Doses at 285 and 350 mg/kg/day caused reduction in body weight and food consumption, ataxia, increased incidence of prostration and one animal died at 350/mg/kg/day. Reductions in red blood cell parameters, plasma bilirubin, cholesterol (20-40% at 285 mg/kg) and ALP activity. No compound-related histopathological changes.
Cynomolgus monkey	oral gavage	56 weeks dosing 4 weeks withdrawal	4	0, rising dose for 4 weeks then 25, 100 and 225 mg/kg/day administered as 3 doses/day	Dose-related incidence and severity of behavioural changes. No abnormal signs on drug withdrawal. 40-60% reduction in plasma cholesterol at 225 mg/kg/day with delta-8-cholestanol present at 15% of cholesterol level at 100 and 225 mg/kg/day. No lens opacities. Minor lens changes at all doses with no lens pathology. Transient elevation of prolactin and mild mammary gland hyperplasia (in males) and T ₃ levels reduced and mild thyroid follicular cell hypertrophy at 100 and 225 mg/kg/day. Red cell indices reduced and liver enlargement with hepatocyte hypertrophy and fat deposition at 225 mg/kg/day.

Table 11 Carcinogenicity (and Mouse Sighting) Studies With Quetiapine

Species/Strain	Route	Study Duration	Number/Group/Sex	Dose (mg/kg/day)	Salient Observations
Mouse C57BL/10jfCD/1/Alpk	Oral in diet	90 days	25	0, 50, 100, 200, 300, 400	Reductions in body weight at 100 mg/kg or greater. Seminiferous tubular atrophy severity increased at 100 mg/kg and above. Centrilobular hepatocyte enlargement at 200 mg/kg and above. At 50 mg/kg the only effect was an increase in liver weight in females.
Mouse C57BL/10jfCD/1/Alpk	Oral in diet	90 days	15	0, 300-800, 400-1,100 (Rising dose maximal at 6 weeks)	Reduced body weight, liver weight increase and hepatocyte hypertrophy in both dose groups. Ovary weight decreased in high dose females and testicular weight decreased in low and high dose males. Low and high dose females had dose related decreases in number of corpora lutea. The parotid salivary gland had dose-related increased basophilia. Males had dose-related seminiferous tubular atrophy. Urinary bladder hyaline droplets and pigmentation in the epithelium in both groups.
Mouse C57BL/10jfCD/1/Alpk	Oral in diet	2 years	100, 50, 50, 50, 50	0, 20, 75, 250, 750 (Rising dose maximal at 6 weeks)	Thyroid follicular cell hypertrophy and pigmentation. Increased incidence of thyroid follicular cell benign adenomas (incidence of 0%, 0%, 0%, 8% and 58% in males only at 0, 20, 75, 250 and 750 mg/kg/day, respectively). No other increases in tumour incidence. Other non-neoplastic changes similar to sighting studies.
Rat/ Crl:(WI)BR	Oral by gavage	2 years	100 50 50 50 50	0 20 75 250	Increased incidence of mammary adenocarcinomas in all groups of females (incidence of 10%, 26%, 22% and 32% in females given 0, 20, 75 and 250 mg/kg/day respectively). Increased incidence of follicular adenoma of the thyroid gland in males, but not females, given 250 mg/kg/day (incidence of 6%, 6%, 0% and 32% in males given 0, 20, 75 and 250 mg/kg/day respectively). Significant reductions in subcutaneous fibromas, thyroid parafollicular cell adenomas, uterine stromal polyps and carcinoma of the oral cavity.

Reproduction and Teratology

Results from the individual reproduction and teratology studies, performed with quetiapine in rats and rabbits, are summarized in Table 12.

Effects related to elevated prolactin levels (marginal reduction in male fertility and pseudopregnancy, protracted periods of diestrus, increased precoital interval and reduced pregnancy rate) were seen in rats, although these are not directly relevant to humans because of species differences in hormonal control of reproduction.

Quetiapine had no teratogenic effects.

Mutagenicity

Genetic toxicity studies with quetiapine show that it is not a mutagen or a clastogen. There was no evidence of mutagenic potential in reverse (*Salmonella typhimurium* and *E. coli*) or forward point mutation (CHO-HGPRT) assays or in two assays for chromosomal aberrations (human peripheral blood lymphocyte clastogenesis assay and the rat bone marrow erythrocyte micronucleus assay).

Table 12 Reproduction and Teratology Studies With Quetiapine

Species/Strain	Route	Study Duration	Number/ Group	Dose (mg/kg/day)	Salient Observations
Rat Alpk:AP ₁ SD Segment I Male fertility	Oral	males dosed for a total of 14 weeks	F ₀ generation: 1st pairing: 100 M, 200 F, 25 M, 50 F/Gp 2nd pairing: 25 M, 50 F/Gp (Groups I & IV only)	0, 25, 50, 150 males only dosed, to the end of the first pairing period	First pairing: Reduced weight gain and marked clinical signs at all quetiapine dose levels. Reduced fertility in males dosed 150 mg/kg/day (longer pre-coital with second female). Second pairing: Effects on reduced fertility reversed, no difference between control and quetiapine dosed animals.
Rat Alpk:AP ₁ SD Segment I Female fertility	Oral	9 months F ₀ generation: dosed to d14 prior to pairing up to d24 pp in animals assigned to litter	F ₀ generation: 264 M/132 F 66 F/Gp 33 M/Gp - not dosed F ₁ generation: 239 F/120 M 50 F/Gp (49 Gp I) 25 M/Gp	0, 1, 10, 50 50 mg/kg/day dose reduced to 1 mg/kg/day from d17 gestation to d6 pp to avoid litter loss F ₁ generation not dosed	Inhibition of oestrus cyclicity during dosing at 50 mg/kg/day, females became pseudopregnant or with protracted periods of dioestrus, increased pre-coital interval and reduced pregnancy rate. Slight reduction in body weight gain during pregnancy and lactation at 50 mg/kg/day. No effects on fertility or reproduction in the F ₁ generation.
Rat Alpk:AP ₁ SD Segment II Teratology	Oral	21 days females dosed d6 to d15 gestation	F ₀ generation: 22 F 22 F 22 F 22 F		Reduced weight gain and adverse clinical signs at 50 and 200 mg/kg/day. No effects on fetal survival. Fetal weight reduced at 200 mg/kg/day. No major fetal abnormalities. Specific skeletal anomalies present associated with reduced fetal weight at 200 mg/kg/day.
Rat Crj: Wistar Segment II Teratology	Oral	21 days females dosed from d6 to d15 gestation	F ₀ generation: 13 F/group	0, 25, 50, 200	Adverse clinical signs at all dose levels. No effect on reproductive function of the dams or development of fetuses, behaviour or reproductive function of the offspring at any dose level.
Rabbit Dutch Belted Segment II Teratology	Oral	28 days females dosed d6 to d18 gestation	F ₀ generation: 20 F 20 F 20 F 20 F	0 25 50 100	Reduced weight gain and adverse clinical signs at all doses. No effects on fetal survival. Fetal weight reduced at 100 mg/kg/day. No major fetal abnormalities. Specific skeletal anomalies present associated with reduced fetal weight at 100 mg/kg/day.

Table 12 Reproduction and Teratology Studies With Quetiapine

Species/Strain	Route	Study Duration	Number/ Group	Dose (mg/kg/day)	Salient Observations
Rat/ Alpk:AP _i SD Segment III Peri- & Postnatal	Oral	44 days dosed d16 to d21 pp	F ₀ generation: 20 F 20 F 20 F 20 F	0 1 10 20	Reduced weight gain during first 2 weeks of lactation 20 mg/kg/day. No effects on survival or development of offspring.

M = Male, F = Female

d6 = day 6 gestation, day of sperm positive smear (rats)/day of mating (rabbits) = day 0 gestation

d16 = day 16 gestation, day of mating = day 1 gestation

d17 = day 17 gestation, day of sperm positive smear = day 1 gestation

d6 pp = day 6 post partum, day of parturition = day 1 post partum

d8 pp = day 8 post partum, day of littering = day 1 post partum

d21 pp = day 21 post partum, day of littering = day 1 post partum

d24 pp = day 24 post partum, day of littering = day 1 post partum

(pp = post partum)

REFERENCES

1. Arvanitis LA, Miller BG, Seroquel Trial 13 Study Group.
Multiple fixed doses of 'Seroquel' (quetiapine) in patients with acute exacerbation of schizophrenia: a comparison with haloperidol and placebo. *Biol Psychiatry* 1997;42:233-46.
2. Borison RL, Arvanitis LA, Miller BG, Study-Group.
ICI 204,636, an atypical antipsychotic: efficacy and safety in a multicenter, placebo-controlled trial in patients with schizophrenia. *J Clin Psychopharmacol* 1996;16(2):158-69.
3. Bowden CL, Grunze H, Mullen J, Brecher M, Paulsson B, Jones M, Vågerö M, Svensson K.
A randomized, double-blind, placebo-controlled efficacy and safety study of quetiapine or lithium as monotherapy for mania in bipolar disorder. *J Clin Psychiatry* 2005;66(1):111-21.
4. Calabrese JR, Keck PE, Macfadden W, Minkwitz M, Ketter TA, Weisler RH, Cutler AJ, McCoy R, Wilson E, Mullen J.
A randomized, double-blind, placebo-controlled trial of quetiapine in the treatment of bipolar I or II depression. *Am J Psychiatry* 2005;162(7):1351-1360.
5. Casey DE.
'Seroquel' (quetiapine): preclinical and clinical findings of a new atypical antipsychotic. *Exp Opin Invest Drugs* 1996;5(8):939-57.
6. Cutler AJ, Montgomery SA, Feifel D, Lazarus A, Astrom M, Brecher M.
Extended Release Quetiapine Fumarate Monotherapy in Major Depressive Disorder: A Placebo- and Duloxetine-Controlled Study. *J Clin Psychiatry* 2009 Apr;70(4):526-39.
7. Emsley RA, Raniwalla J, Bailey PJ, Jones AM.
A comparison of the effects of quetiapine ('Seroquel') and haloperidol in schizophrenic patients with a history of and a demonstrated partial response to conventional antipsychotic treatment. *International Clinical Pharmacology* 2000; 15(3):121-31.
8. Fabre LF, Arvanitis L, Pultz J, Jones VM, Malick JB, Slotnick VB.
ICI 204,636, a novel atypical antipsychotic: early indication of safety and efficacy in patients with chronic and subchronic schizophrenia. *Clin Ther* 1995;17(3):366-78.
9. Ganesan S, Agambaram V, Randeree F, Eggens I, Huizar K and Meulien D.
Switching from other antipsychotics to once-daily extended release quetiapine fumarate in patients with schizophrenia. *Curr Med Res Opin.* 2008;24(1):21-32.

10. Goldstein JM, Litwin LC, Sutton EB and Malick JB.
Seroquel: electrophysiological profile of a potential atypical antipsychotic.
Psychopharmacology 1993;112(2-3):293-8.
11. Hamner MB, Arvanitis LA, Miller BG, Link CGG, Hong WW.
Plasma prolactin in schizophrenia subjects treated with Seroquel™ (ICI 204,636).
Psychopharmacology Bull 1996;32(1):107-10.
12. Kahn RS, Schulz C, Palazov VD, Reyes EB, Brecher M, Svenson O, Andersson HM and Meulien D.
Efficacy and tolerability of once-daily extended release quetiapine fumarate in acute schizophrenia: A randomized, double-blind, placebo-controlled study. *J Clin Psychiatry* 2007;68:832-842.
13. McIntyre RS, Brecher M, Paulsson B, Huizar K, Mullen J.
Quetiapine or haloperidol as monotherapy for bipolar mania - A 12-week, double-blind, randomised, parallel-group, placebo-controlled trial. *European Neuropsychopharmacology* 2005;15(5):573-85.
14. Migler BM, Warawa EJ and Malick JB.
Seroquel: behavioural effects in conventional and novel tests for atypical antipsychotic drug. *Psychopharmacology* 1993;112(2-3):299-307.
15. Peuskens J, Link CGG.
A comparison of quetiapine and chlorpromazine in the treatment of schizophrenia. *Acta Psychiatr Scand* 1997;96:265-73.
16. Peuskens J, Trivedi J, Malyarov S, Brecher M, Svensson O, Miller F, Persson I and Meulien D.
Prevention of schizophrenia relapse with extended release quetiapine fumarate dosed once daily: a randomized, placebo-controlled trial in clinically stable patients. *Psychiatry* 2007;34-50.
17. Pinninti NR, Mago R, Townsend J, Doghramji K.
Periodic restless legs syndrome associated with quetiapine use: a case report. *J Clin Psychopharmacol.* 2005 Dec;25(6):617-8.
18. Pullen RH, Palermo KM and Curtis MA.
Determination of an antipsychotic agent (ICI 204,636) and its 7-hydroxy metabolite in human plasma by high-performance liquid chromatography and gas chromatography-mass spectrometry. *J Chromatogr Biomed Appl* 1992;573(1):49-57.
19. Saller CF, Salama AI.
Seroquel: biochemical profile of a potential atypical antipsychotic.
Psychopharmacology 1993;112(2-3):285-92.

20. Small JG, Hirsch SR, Arvanitis LA, Miller BG, Link CG.
Quetiapine in patients with schizophrenia. A high- and low-dose double-blind comparison with placebo. *Arch Gen Psychiatry* 1997;54:549-57.
21. Suppes T, Hirschfeld RM, Vieta E, Raines S, Paulsson B.
Quetiapine for the treatment of bipolar II depression: Analysis of data from two randomized, double-blind, placebo-controlled studies. *The World Journal of Biological Psychiatry* 2007; 1-14.
22. Swerdlow NR, Zisook D, Taaid N.
Seroquel (ICI 204,636) restores prepulse inhibition of acoustic startle in apomorphine-treated rats: similarities to clozapine. *Psychopharmacology* 1994;114(4):675-8.
23. Thase ME, Macfadden W, Weisler RH, Chang W, Paulsson B, Khan A, Calabrese JR.
Efficacy of Quetiapine Monotherapy in Bipolar I and II Depression: A Double-blind, Placebo-controlled Study (The BOLDER II Study). *J Clin Psychopharmacol* 2006;26(6):600-9.
24. Vieta E, Mullen J, Brecher M, Paulsson B, Jones M.
Quetiapine monotherapy for mania associated with bipolar disorder: combined analysis of two international, double-blind, randomised, placebo-controlled studies. *Current Medical Research and Opinion* 2005;21(6):923-34.
25. Weisler R, Joyce MJ, McGill L, Lazarus A, Szamosi J, Eriksson H.
Extended release quetiapine fumarate monotherapy for major depressive disorder: results of a double-blind, randomised, placebo-controlled study. *CNS Spectr* 2009;14(6):299-313.
26. Wetzel H, Szegedi A, Hain C, Weisner J, Schlegel S and Benkert O.
Seroquel (ICI 204,636), putative "atypical" antipsychotic, in schizophrenia with positive symptomatology: results of an open clinical trial and changes of neuroendocrinological and EEG parameters. *Psychopharmacology* 1995;119(2):231-8.
27. Product Monograph of ^{Pr} Seroquel XR; AstraZeneca Canada Inc., Control No.: 231524, Date of Revision: December 16, 2019.

IMPORTANT: PLEASE READ

PART III: CONSUMER INFORMATION

PrAG-Quetiapine XR

Quetiapine Fumarate Extended-Release Tablets

This leaflet is part III of a three-part "Product Monograph" published when AG-Quetiapine XR was approved for sale in Canada and is designed specifically for Consumers/Care givers. This leaflet is a summary and will not tell you everything about AG-Quetiapine XR. Contact your doctor or pharmacist if you have any questions about the drug.

Before taking AG-Quetiapine XR, read this leaflet carefully. Keep this leaflet until you have taken all of your AG-Quetiapine XR tablets.

ABOUT THIS MEDICATION

What the medication is used for:

AG-Quetiapine XR (quetiapine fumarate extended-release tablets) is used to:

- Treat the symptoms of schizophrenia, such as hallucinations (hearing or seeing things which are not there), fixed false beliefs, unusual suspiciousness or emotional withdrawal. Patients may also feel depressed, anxious or tense.
- Treat the symptoms of mania associated with bipolar disorder, such as racing thoughts, irritability, aggressiveness, agitation, impulsive behaviour or excessively elevated mood.
- Treat the symptoms of depression associated with bipolar disorder, such as sadness, feeling guilty, lack of energy, loss of appetite and/or sleep disturbance.
- Treat symptoms of patients with depression who have failed treatment with currently available antidepressant medications due to lack of appropriate response and/or due to side effect issues. AG-Quetiapine XR is a new treatment for depression and belongs to a class of drug known as 'atypical antipsychotic'. It is important to discuss with your doctor about your depressive symptoms and possible side effects.

You may find it helpful to tell a friend or relative that you are suffering from these symptoms, and ask them to read this leaflet. You might ask them to tell you if they think your symptoms are getting worse, or if they are worried about any other changes in your behaviour.

Your doctor may have prescribed AG-Quetiapine XR for another reason. Ask your doctor if you have any questions about why AG-Quetiapine XR has been prescribed for you. AG-Quetiapine XR is not a cure for your condition but it can help manage your symptoms and help you feel better.

Product Monograph of AG-Quetiapine XR

What it does:

AG-Quetiapine XR is a medication that belongs to a class of medicines called "atypical antipsychotics".

Illnesses that affect the brain, such as schizophrenia, bipolar disorder and major depressive disorder, may be due to certain chemicals in the brain being out of balance. These imbalances may cause some of the symptoms you may be experiencing. Doctors and scientists are not sure what causes these imbalances to occur. AG-Quetiapine XR is thought to work by regulating the imbalance of chemicals in the brain.

When it should not be used:

Do not take AG-Quetiapine XR if you have had an allergic reaction to AG-Quetiapine XR or any of the ingredients listed in the "nonmedicinal ingredients" section of this leaflet.

What the medicinal ingredient is:

AG-Quetiapine XR contains the active ingredient quetiapine (as quetiapine fumarate).

What the nonmedicinal ingredients are:

The inactive ingredients in AG-Quetiapine XR are: lactose monohydrate, hydroxypropyl methylcellulose, sodium chloride, povidone K30, Silicified microcrystalline cellulose, magnesium stearate, and purified talc. The coating of the tablet contains hydroxypropyl methylcellulose (200 mg, 300 mg, 400 mg), polyvinyl alcohol (50 mg, 150 mg), polyethylene glycol, talc (50 mg, 150 mg), titanium dioxide, iron oxide red (50 mg), iron oxide yellow (50 mg, 200 mg, 300 mg).

What dosage forms it comes in:

AG-Quetiapine XR comes in five tablet strengths: 50 mg (capsule shape, peach colour), 150 mg (capsule shape, white colour), 200 mg (capsule shape, yellow colour), 300 mg (capsule shape, light yellow colour) and 400 mg (capsule shape, white colour). The following letters are marked on each tablet "AB1" (50 mg), "AB2" (150 mg), "FV3" (200 mg), "FV4" (300 mg) and "FV5" (400 mg). These letters are easy to read on the tablets, and if you see them you know you are taking the right medicine.

WARNINGS AND PRECAUTIONS

Serious Warnings and Precautions

Studies with various medications of the group to which AG-Quetiapine XR belongs, including quetiapine fumarate immediate-release tablets, when used in elderly patients with dementia have been associated with an increased rate of death. AG-Quetiapine XR is not indicated in elderly patients with dementia.

Before starting AG-Quetiapine XR, be sure to tell your doctor:

- If you have had an allergic reaction to any medicine which you have taken previously to treat your

condition, or if you think you might be sensitive or allergic to any of the ingredients in AG-Quetiapine XR.

- About any other medications - prescription, non-prescription or alternative - that you are taking or plan to take. Certain medications can seriously affect the way other medications work.
- If you are pregnant or plan to become pregnant while taking AG-Quetiapine XR.
- If you are breast-feeding or are planning on breast-feeding while taking AG-Quetiapine XR. You should not breast-feed while taking AG-Quetiapine XR.
- If you drink alcohol or use street drugs.
- If you have a history of alcohol or drug abuse.
- If you have any health problems.
- If you have low or high blood pressure or have had a stroke.
- If you or a family member have a history of any problems with the way your heart beats or have a history of heart disease or heart problems or if you are taking any medicines that may have an impact on the way your heart beats.
- If you have a history of seizures (fit).
- If you have diabetes, a family history of diabetes or high blood sugar during pregnancy.
- If you have a history of liver or kidney problems.
- If you know that you had a low white blood cell count in the past which may or may not have been caused by other medicines.
- If you exercise vigorously or work in hot or sunny places.
- If you have risk factors for developing blood clots such as: a family history of blood clots, age over 65, smoking, obesity, recent major surgery (such as hip or knee replacement), immobility due to air travel or other reason, or take oral contraceptives (“The Pill”).
- If you suffer or have ever suffered from severe constipation, obstruction of the bowel or any other condition which has affected your large bowel.
- If you have or have had a condition where you stop breathing for short periods during your normal nightly sleep (called “sleep apnea”) and are taking medicines that slow down normal activity of the brain (“depressants”) or breathing.
- If you have or have had a condition where your bladder does not empty or does not empty completely (urinary retention), have an enlarged prostate, a blockage in your intestines, or increased pressure inside your eyes. These conditions are sometimes caused by medicines called “anticholinergics”.

Tell your doctor as soon as possible if you have:

- Fever, flu-like symptoms, sore throat, or any other infection, as this could be a result of a very low white blood cell count, which may require AG-Quetiapine

XR to be stopped and/or treatment to be given.

- Constipation along with persistent stomach pain, or constipation which has not responded to treatment, as this may lead to a more serious blockage of the bowel.

In clinical studies with quetiapine fumarate extended-release tablets and other drugs of this type, an increased risk of death has been reported in elderly patients with dementia and behavioural disturbances. AG-Quetiapine XR is not approved for this use.

Pancreatitis (inflammation of the pancreas) has been reported in some patients. Many of these patients also had factors which are known to be associated with pancreatitis such as increased triglyceride (a fatty substance in the blood) levels, gallstones and alcohol consumption.

Cardiomyopathy (weakening of the heart muscle) and myocarditis (inflammation of the heart) have been reported in some patients, however, it is not known if AG-Quetiapine XR treatment is related to these problems.

If you already have diabetes, you should be monitored for worsening of your diabetes.

Do not drive or operate machinery until you know your response to this medication, as AG-Quetiapine XR can cause drowsiness.

Thoughts of suicide and worsening of your depression or other mental illnesses:

If you are depressed and/or have other mental illnesses you may sometimes have thoughts of harming or killing yourself. These may be increased when first starting treatment, since these medicines all take time to work, usually about two weeks but sometimes longer.

If you have thoughts of harming or killing yourself at any time, contact your doctor or go to a hospital straight away.

You may find it helpful to tell a relative or close friend that you are depressed or have other mental illnesses, and ask them to read this leaflet. You might ask them to tell you if they think your depression or mental illness is getting worse, or if they are worried about changes in your behaviour.

Severe cutaneous adverse reactions (SCARs):

Serious skin rashes, which can be life threatening, have occurred with the use of quetiapine fumarate extended-release tablets. Symptoms include blistering, peeling of the lips, eyes, mouth or genitals, swelling of the face and/or tongue, and hives. These serious skin rashes may progress to widespread blistering or peeling of the skin and are often accompanied by flu like symptoms, blood abnormalities (increase in a type of white blood cells sometimes seen in allergic reactions) and swollen glands (enlarged lymph nodes).

Stop using AG-Quetiapine XR if you develop these symptoms and contact your doctor or seek medical attention immediately.

Effects on Newborns:

In some cases, babies born to a mother taking AG-Quetiapine XR during pregnancy have experienced symptoms of withdrawal that are severe and require the newborn to be hospitalized. Sometimes, the symptoms may resolve on their own. Be prepared to seek immediate emergency medical attention for your newborn if they have difficulty breathing, are overly sleepy, have muscle stiffness, or floppy muscles (like a rag doll), are shaking, or are having difficulty feeding.

INTERACTIONS WITH THIS MEDICATION

Because certain medications can seriously affect the way other medications work, it is important to tell all doctors, dentists, and pharmacists who are treating you that you are taking AG-Quetiapine XR. As well, be sure to tell them about any other medications - prescription, non-prescription or alternative - that you are taking or plan to take.

You should not drink alcohol while taking AG-Quetiapine XR, as the combination could increase the effects of the alcohol.

You should tell your doctor if you are taking or about to stop taking medications for anxiety, depression, epilepsy (such as phenytoin or carbamazepine), high blood pressure, or to help you sleep.

Dopamine agonists, e.g. levodopa (antiparkinsonian agent), may decrease the effect of AG-Quetiapine XR.

Medications known to interact with AG-Quetiapine XR include carbamazepine (anticonvulsant), phenytoin (anticonvulsant), ketoconazole (antifungal), and protease inhibitors (for treating Human Immunodeficiency Virus).

You should tell your doctor if you are taking erythromycin (antibiotic), clarithromycin (antibiotic), nefazodone, thioridazine (antipsychotic), diltiazem or verapamil (blood pressure medications), medications that can cause constipation or medicines called "anticholinergics" that may affect your ability to empty your bladder. You should also tell your doctor if you are taking medicines that have an impact on the way and how slow your heart beats, for example drugs that can cause an imbalance in electrolytes (low levels of potassium or magnesium) such as diuretics (water pills) or certain antibiotics (drugs to treat infections).

Effect on Urine Drug Screens:

AG-Quetiapine XR may cause positive results for methadone or certain drugs for depression called tricyclic antidepressants (TCAs) when some test methods are used, even though you may not be taking these drugs. Confirmation of the results by more specific tests is recommended.

Product Monograph of AG-Quetiapine XR

PROPER USE OF THIS MEDICATION

AG-Quetiapine XR is not recommended for use in patients under 18 years old.

USUAL DOSE:

Adult

In order for AG-Quetiapine XR to help you feel better, it is very important to take it every day exactly as your doctor tells you to. Take the exact number of tablets your doctor has prescribed at the right time every day.

Recommended Dose:

Schizophrenia and Bipolar Mania:

The usual titration schedule is day 1: 300 mg, day 2: 600 mg and up to 800 mg from day 3 onwards taken once daily. The maximum dose is 800 mg per day.

Bipolar Depression:

The usual titration schedule is day 1: 50 mg, day 2: 100 mg, day 3: 200 mg and day 4 and onwards: 300 mg taken once daily. Your doctor may further increase the dose depending on your response and tolerability. The maximum dose is 600 mg per day.

Major Depressive Disorder:

The usual titration schedule is 50 mg on days 1 and 2 and 150 mg on day 3. Your doctor may adjust the dose upwards or downwards within the recommended dose range of 50-300 mg per day during the course of your treatment depending on your response and tolerability.

It takes time to feel better and you should expect some symptoms to improve slowly over the first few weeks of treatment. Do not stop taking AG-Quetiapine XR, or change the times of day you take AG-Quetiapine XR without talking to your doctor first.

If you stop taking AG-Quetiapine XR abruptly you may experience withdrawal symptoms such as insomnia (inability to sleep), nausea and vomiting.

To make sure you are getting the most benefit from AG-Quetiapine XR, you must:

- Continue taking AG-Quetiapine XR everyday and
- Keep your doctor well informed of how you are feeling, both good and bad.

By doing these two things, you and your doctor together will be able to make sure that you are getting the best dose of AG-Quetiapine XR for you.

You may take AG-Quetiapine XR with or without food.

Tablets should be swallowed whole. Do not split, crush or chew.

Do not give AG-Quetiapine XR to anyone else. Your doctor has prescribed AG-Quetiapine XR for you only.

Switching from quetiapine fumarate immediate-release tablets to AG-Quetiapine XR:

If you are currently being treated with divided doses of quetiapine fumarate immediate-release tablets your doctor may switch you to AG-Quetiapine XR at an equal total daily dose taken once daily.

OVERDOSE:

If you think you have taken too much AG-Quetiapine XR, contact your healthcare professional, hospital emergency department or regional poison control centre immediately, even if there are no symptoms.

In case of AG-Quetiapine XR overdose or if you think you or anyone else are experiencing severe episodes of any of the side effects of AG-Quetiapine XR (especially drowsiness, including also rapid heart beat, lightheadedness and/or dizziness, especially when standing up quickly or getting out of bed), call your doctor or poison control centre or go to the nearest hospital emergency room right away. Make sure to bring your medication bottle with you.

MISSED DOSE:

AG-Quetiapine XR should be taken at the same time each day. If you miss a dose from the previous day, you should take your next regular dose of AG-Quetiapine XR the next day at the normal time.

Here are some tips that can help you remember to take each dose of AG-Quetiapine XR:

- Take your AG-Quetiapine XR at the same time every day.
- Take AG-Quetiapine XR during daily events which will help you remember to take your medicine as well, e.g., mealtime or bedtime.
- Use a pill container that will separate your AG-Quetiapine XR doses by the day of the week.
- Use a calendar to note the day and time after you have taken each dose to help you keep track of when you need to take your AG-Quetiapine XR.
- Keep a written reminder to take your AG-Quetiapine XR that can be easily seen, e.g., on a mirror or on the refrigerator.
- Have a family member or friend remind you to take your medication.

SIDE EFFECTS AND WHAT TO DO ABOUT THEM

Like any medication, AG-Quetiapine XR may produce side effects in some people.

Increases in blood glucose (sugar) and hyperglycaemia (high blood sugar) have been observed with AG-Quetiapine XR. Also, occasional cases of diabetes have been reported. Your doctor may take blood tests to check your blood sugar before starting AG-Quetiapine XR. They may continue to monitor your blood sugar for as long as you are being treated.

Light-headedness and dizziness (symptoms of postural hypotension) and drowsiness are among the most common side effects you may experience while taking AG-Quetiapine XR, particularly during the first week of treatment or after an increase in dose. The dizziness and drowsiness are usually mild and should go away with time. To help prevent these feelings, be careful to move slowly when you are getting up from a sitting or lying position. Dizziness and drowsiness may lead to falls.

Low blood pressure in standing position is common, which may result in dizziness or feeling faint (may lead to falls).

As feelings of drowsiness are also common at the start of treatment, or when your dose is increased, if you have to drive, operate machinery or do anything else that requires you to be fully alert, use extra caution until you are sure AG-Quetiapine XR does not cause you to be drowsy.

Dry mouth and weight gain have also been reported very commonly in patients taking AG-Quetiapine XR. Your doctor may take your body weight before starting AG-Quetiapine XR and continue to monitor it for as long as you are being treated.

Discontinuation symptoms which occur upon stopping AG-Quetiapine XR have been reported very commonly and include insomnia (inability to sleep), nausea, headache, diarrhea, vomiting, dizziness and irritability. Gradual withdrawal over a period of at least one to 2 weeks is advisable.

Other common side effects may include: headache, rapid heart beat, feeling like your heart is pounding, racing or has skipped beats, shortness of breath, constipation, indigestion, feeling weak, swelling of arms and legs, fever, upset stomach or abdominal pain, vomiting (mainly in the elderly), blurred vision, abnormal dreams and nightmares, irritability, feeling more hungry, disturbance in speech and language, and changes in laboratory tests for liver and thyroid functions.

There have been uncommon cases of difficulty swallowing, fainting (may lead to falls), stuffy nose, difficulty in passing urine, and a slower than normal heart rate which may occur when starting treatment and which may be associated with low blood pressure and fainting.

There have also been reports, in a small number of patients,

of changes to the lens of the eye. Although it is not known whether or not these changes are caused by AG-Quetiapine XR, your doctor may advise you that a specific type of eye exam is recommended in order to maximize safe use of this drug.

In rare cases, there have been reports of decreased body temperature (hypothermia), a combination of fever, flu-like symptoms, sore throat, or any other infection with very low white blood cell count (a condition called agranulocytosis), bowel obstruction, and walking, talking, eating or other activities while asleep.

In very rare cases, this type of medicine can interfere with your body’s ability to control body temperature. Therefore, take care to avoid becoming overheated or dehydrated (for example with vigorous exercise, or exposure to extreme heat) while taking AG-Quetiapine XR.

Side effects that are of unknown frequency (cannot be estimated from available data) include:

- Symptoms of withdrawal in newborn babies of mothers that have used AG-Quetiapine XR during their pregnancy.
- Formation of a gum like sticky mass of tablets in the stomach may occur when you take more AG-Quetiapine XR than you should. Please contact your doctor immediately as it may require endoscopy for removal of the sticky mass.

The following may also occur with AG-Quetiapine XR, and may be seen in routine blood testing:

- Decrease in the amount of white blood cells. These changes will normally disappear when stopping the treatment of AG-Quetiapine XR.
- Decrease in the amount of red blood cells. These are the cells that transport oxygen throughout the body.
- Increase in the amount of eosinophils. These are a type of white blood cell sometimes seen in allergic reactions.
- Decrease in platelets (thrombocytopenia), which are cells that help you stop bleeding if you get a cut.
- Increase in the amount of liver enzymes. These changes will normally disappear when continuing the treatment of AG-Quetiapine XR.
- Changes in the amount of fatty substances (lipid levels, such as triglycerides and cholesterol) in the blood.
- Increase in the amount of “creatin phosphokinase”, a substance in the muscles.
- Increase in the amount of sugar (glucose) in the blood.
- Increase in the amount of hormone prolactin in the blood. Rarely (<0.1% - ≥0.01%) this may lead to swelling of breasts and unexpected production of breast milk in women and in some men, and changes in the regularity of monthly period.

- Changes in the amount of thyroid hormones in your blood. These changes usually do not affect how you feel.
- If you have high levels of prolactin and a condition called hypogonadism you may be at an increased risk of breaking a bone due to osteoporosis. This may occur in both men and women.

One of the most important things for you to do to minimize the risks from side effects, while helping AG-Quetiapine XR work for you, is to contact your doctor or pharmacist if you notice any symptom that worries you, even if you think it is not connected with this medicine or is not listed here.

SERIOUS SIDE EFFECTS, HOW OFTEN THEY HAPPEN AND WHAT TO DO ABOUT THEM				
Symptom / effect		Talk to your healthcare professional		Stop taking drug and get immediate medical help
		Only if severe	In all cases	
Very Common	Abnormal muscle movements, including difficulty starting muscle movements, shaking, restlessness or muscle stiffness without pain		√	
	New or worsening constipation		√	
Uncommon	Involuntary movements, mainly of your face or tongue (Tardive dyskinesia)		√	
	Symptoms of Allergic reactions such as skin lumps, bumps or swelling			√
	Restless legs (unpleasant sensations in the legs)		√	
	Seizure (i.e., loss of consciousness with uncontrollable shaking “fit”)			√
	Not being able to pass urine (called “urinary retention”)			√
Rare	Long-lasting (greater than 4 hours in duration) and painful			√

SERIOUS SIDE EFFECTS, HOW OFTEN THEY HAPPEN AND WHAT TO DO ABOUT THEM				
Symptom / effect		Talk to your healthcare professional		Stop taking drug and get immediate medical help
		Only if severe	In all cases	
Very Rare	erection of the penis			
	Combination of high fever, muscle stiffness, marked increase in blood pressure and/or heartbeats, and reduced consciousness (called neuroleptic malignant syndrome)			√
	Blood clots: swelling, pain and redness in an arm or leg that can be warm to touch. You may develop sudden chest pain, difficulty breathing and heart palpitations		√	
	Liver Disorder, or inflammation of the liver with or without jaundice (a yellowish discoloration of the skin/ palms or whites of your eyes), dark urine, abdominal pain, nausea, vomiting, loss of appetite		√	
Very Rare	Anaphylaxis (severe form of allergic reaction; symptoms may include swelling of the mouth, face, lips or tongue, may include severe difficulty breathing and shock)			√
	Stop breathing for short periods during your			√

SERIOUS SIDE EFFECTS, HOW OFTEN THEY HAPPEN AND WHAT TO DO ABOUT THEM				
Symptom / effect		Talk to your healthcare professional		Stop taking drug and get immediate medical help
		Only if severe	In all cases	
Not Known	normal nightly sleep (called "sleep apnea")			
	Combination of widespread rash, high body temperature, abnormalities seen in a blood test (liver enzyme elevations, increase in a type of white blood cells sometimes seen in allergic reactions) and enlarged lymph nodes (a condition called "drug reaction with eosinophilia and systemic symptoms") may occur.		√	

This is not a complete list of side effects. For any unexpected effects while taking AG-Quetiapine XR, contact your doctor or pharmacist.

HOW TO STORE IT

Store AG-Quetiapine XR at room temperature (between 15 - 30°C) and well out of the reach and sight of children.

The expiry date of this medicine is printed on the package label. Do not use the medicine after this date.

If your doctor tells you to stop taking AG-Quetiapine XR or you find that it has passed its expiry date, please return any leftover medicine to your pharmacist.

REPORTING SIDE EFFECTS

You can report any suspected side effects associated with the use of health products to Health Canada by:

- Visiting the Web page on Adverse Reaction Reporting (<https://www.canada.ca/en/health-canada/services/drugs-health-products/medeffect-canada/adverse-reaction-reporting.html>) for information on how to report online, by mail or by fax; or

- Calling toll-free at 1-866-234-2345.

NOTE: Contact your health professional if you need information about how to manage your side effects. The Canada Vigilance Program does not provide medical advice.

MORE INFORMATION

Important Note: This leaflet alerts you to some of the times you should call your doctor while you are taking AG-Quetiapine XR. Other situations that cannot be predicted may arise. Nothing about this leaflet should stop you from calling your doctor or pharmacist with any questions or concerns you have about using AG-Quetiapine XR.

If you want more information about AG-Quetiapine XR:

- Talk to your healthcare professional
- Find the full product monograph that is prepared for healthcare professionals and includes this Consumer Information by visiting the Health Canada website (<https://health-products.canada.ca/dpd-bdpp/index-eng.jsp>); or the manufacturer's website (www.angitapharma.ca), or by calling 450-449-9272.

This leaflet was prepared by:
Angita Pharma Inc.
1310 rue Nobel
Boucherville, Québec
J4B 5H3, Canada

Last revised: September 20, 2021