

PRODUCT MONOGRAPH
INCLUDING PATIENT MEDICATION INFORMATION

Pr TREMFYA®
guselkumab injection
Solution for injection,
100 mg/1 mL
Pre-filled syringe

Pr TREMFYA One-Press™
guselkumab injection
Solution for injection,
100 mg/1 mL
Patient-controlled injector
Interleukin-23 (IL-23) inhibitor

TREMFYA®/TREMFYA One-Press™ (guselkumab injection) should be prescribed by physicians who have sufficient knowledge of plaque psoriasis or psoriatic arthritis and who have fully familiarized themselves with the efficacy/safety profile of the drug.

Janssen Inc.
19 Green Belt Drive
Toronto, Ontario
M3C 1L9

www.janssen.com/canada

Date of Initial Authorization:
November 10, 2017

Date of Revision:
September 17, 2021

Submission Control Number: 251984

All trademarks used under license

© 2021 JANSSEN Inc.

RECENT MAJOR LABEL CHANGES

1 Indications	09/2020
4 Dosage and Administration, 4.2 Recommended Dose and Dosage Adjustment	09/2020
7 Warnings and Precautions	09/2020

TABLE OF CONTENTS

Sections or subsections that are not applicable at the time of authorization are not listed.

RECENT MAJOR LABEL CHANGES	2
TABLE OF CONTENTS	2
PART I: HEALTH PROFESSIONAL INFORMATION	4
1 INDICATIONS	4
1.1 Pediatrics	4
1.2 Geriatrics.....	4
2 CONTRAINDICATIONS	4
4 DOSAGE AND ADMINISTRATION	4
4.1 Dosing Considerations.....	4
4.2 Recommended Dose and Dosage Adjustment	5
4.4 Administration.....	5
4.5 Missed Dose.....	6
5 OVERDOSAGE	6
6 DOSAGE FORMS, STRENGTHS, COMPOSITION AND PACKAGING	6
7 WARNINGS AND PRECAUTIONS	7
7.1 Special Populations	8
7.1.1 Pregnant Women	8
7.1.2 Breast-feeding.....	9
7.1.3 Pediatrics.....	9
7.1.4 Geriatrics	9
8 ADVERSE REACTIONS	9
8.1 Adverse Reaction Overview.....	9
8.2 Clinical Trial Adverse Reactions.....	9
8.3 Less Common Clinical Trial Adverse Reactions.....	13
8.5 Post-Market Adverse Reactions	13
9 DRUG INTERACTIONS	14
9.4 Drug-Drug Interactions.....	14

9.5	Drug-Food Interactions.....	14
9.6	Drug-Herb Interactions.....	14
9.7	Drug-Laboratory Test Interactions.....	14
10	CLINICAL PHARMACOLOGY.....	14
10.1	Mechanism of Action.....	14
10.2	Pharmacodynamics.....	14
10.3	Pharmacokinetics.....	15
11	STORAGE, STABILITY AND DISPOSAL	16
12	SPECIAL HANDLING INSTRUCTIONS	16
PART II: SCIENTIFIC INFORMATION		17
13	PHARMACEUTICAL INFORMATION	17
14	CLINICAL TRIALS	17
14.1	Clinical Trials by Indication	17
	Plaque Psoriasis	17
	Psoriatic Arthritis.....	21
16	NON-CLINICAL TOXICOLOGY	25
PATIENT MEDICATION INFORMATION		27
	INSTRUCTIONS FOR USE	33
	INSTRUCTIONS FOR USE	41

PART I: HEALTH PROFESSIONAL INFORMATION

1 INDICATIONS

Plaque Psoriasis

TREMFYA®/TREMFYA One-Press™ (guselkumab injection) is indicated for:

- the treatment of adult patients with moderate-to-severe plaque psoriasis who are candidates for systemic therapy or phototherapy.

Psoriatic Arthritis

TREMFYA®/TREMFYA One-Press™ (guselkumab injection) is indicated for:

- the treatment of adult patients with active psoriatic arthritis. TREMFYA®/TREMFYA One-Press™ can be used alone or in combination with a conventional disease-modifying antirheumatic drug (cDMARD) (e.g., methotrexate).

1.1 Pediatrics

The safety and efficacy of TREMFYA®/TREMFYA One-Press™ in pediatric patients have not been evaluated.

1.2 Geriatrics

Of the 3406 plaque psoriasis and psoriatic arthritis patients exposed to TREMFYA®/TREMFYA One-Press™ in Phase 2 and Phase 3 clinical trials, a limited number of patients were 65 years or older (n = 185, 5%) or 75 years and older (n=13, 0.4%). Thus, data in these age groups are limited (see [10 CLINICAL PHARMACOLOGY](#)).

2 CONTRAINDICATIONS

TREMFYA®/TREMFYA One-Press™ is contraindicated in patients with known serious hypersensitivity to guselkumab or any of the components. For a complete listing of components, see the [6 DOSAGE FORMS, STRENGTHS, COMPOSITION AND PACKAGING](#) section.

4 DOSAGE AND ADMINISTRATION

TREMFYA®/TREMFYA One-Press™ is administered by subcutaneous injection.

4.1 Dosing Considerations

TREMFYA®/TREMFYA One-Press™ is intended for use under the guidance and supervision of a physician.

TREMFYA®/TREMFYA One-Press™ may be administered by a healthcare professional, or a patient or caregiver may administer the injection after proper training in subcutaneous injection technique.

4.2 Recommended Dose and Dosage Adjustment

Plaque psoriasis

The recommended dose of TREMFYA®/TREMFYA One-Press™ is 100 mg to be given as subcutaneous injection at week 0 and week 4, followed by maintenance dosing every 8 weeks thereafter.

Psoriatic arthritis

The recommended dose of TREMFYA®/TREMFYA One-Press™ is 100 mg to be given as subcutaneous injection at week 0 and week 4, followed by maintenance dosing every 8 weeks thereafter.

TREMFYA®/TREMFYA One-Press™ can be used alone or in combination with a conventional disease-modifying antirheumatic drug (cDMARD) (e.g., methotrexate).

Special populations

Pediatrics (< 18 years of age)

The safety and efficacy of TREMFYA®/TREMFYA One-Press™ in pediatric patients have not been evaluated; therefore, no recommendations on dosing can be made.

Elderly (≥ 65 years of age)

Of the 3406 plaque psoriasis and psoriatic arthritis patients exposed to TREMFYA®/TREMFYA One-Press™ in Phase 2 and Phase 3 clinical trials, a limited number of patients were 65 years or older (n = 185, 5%) or 75 years and older (n=13, 0.4%). Thus, data in these age groups are limited (see [10 CLINICAL PHARMACOLOGY](#)).

Renal impairment

Specific studies of TREMFYA®/TREMFYA One-Press™ have not been conducted in patients with renal insufficiency.

Hepatic impairment

Specific studies of TREMFYA®/TREMFYA One-Press™ have not been conducted in patients with hepatic insufficiency.

4.4 Administration

TREMFYA®/TREMFYA One-Press™ is administered by subcutaneous injection. TREMFYA®/TREMFYA One-Press™ is intended for use under the guidance and supervision of a physician. TREMFYA®/TREMFYA One-Press™ may be administered by a healthcare professional or a patient or caregiver may administer the injection after proper training in subcutaneous injection technique.

The full amount of TREMFYA® /TREMFYA One-Press™ should be injected according to the directions provided in the “Instructions for Use” document.

Before injection, remove TREMFYA®/TREMFYA One-Press™ from the refrigerator and allow TREMFYA®/TREMFYA One-Press™ to reach room temperature (30 minutes) without removing the needle cap.

Inspect TREMFYA®/TREMFYA One-Press™ visually for particulate matter and discoloration prior to administration. TREMFYA®/TREMFYA One-Press™ is a clear and colourless to light yellow solution. Do not use if the liquid contains large particles, is discoloured or cloudy. Discard any unused product remaining after injection.

4.5 Missed Dose

Patients who miss a dose of TREMFYA®/TREMFYA One-Press™ should be advised to inject this missed dose as soon as they become aware of it, and then follow with their next scheduled dose.

5 OVERDOSAGE

Single intravenous doses of TREMFYA® up to 987 mg (10 mg/kg) have been administered in healthy volunteers and single subcutaneous doses of TREMFYA® up to 300 mg have been administered in patients with plaque psoriasis in clinical trials without dose-limiting toxicity. In the event of overdosage, monitor the patient for any signs or symptoms of adverse reactions and administer appropriate symptomatic treatment immediately.

For management of a suspected drug overdose, contact your regional Poison Control Centre.

6 DOSAGE FORMS, STRENGTHS, COMPOSITION AND PACKAGING

To help ensure the traceability of biologic products, including biosimilars, health professionals should recognize the importance of recording both the brand name and the non-proprietary (active ingredient) name as well as other product-specific identifiers such as the Drug Identification Number (DIN) and the batch/lot number of the product supplied.

Route of Administration	Dosage Form / Strength	Clinically Relevant Nonmedicinal Ingredients
Subcutaneous Injection (SC)	Sterile solution for injection in pre-filled syringe, (100 mg/ 1 mL)	L-histidine, L-histidine monohydrochloride monohydrate, polysorbate 80, sucrose and water for injection
Subcutaneous Injection (SC)	Sterile solution for injection in a patient-controlled injector, (100 mg/ 1 mL)	L-histidine, L-histidine monohydrochloride monohydrate, polysorbate 80, sucrose and water for injection

TREMFYA®/TREMFYA One-Press™ (guselkumab injection) is a fully human immunoglobulin G1 lambda (IgG1λ) monoclonal antibody (mAb) that binds selectively to the extracellular human interleukin 23 (IL-23) protein with high specificity and affinity. Guselkumab is produced in a mammalian cell line using recombinant DNA technology.

TREMFYA® is supplied as:

A sterile solution in a single-dose 1 mL glass syringe with a 27G, half inch fixed needle assembled in a passive needle guard delivery system, containing 100 mg guselkumab, (100 mg/1 mL in a 1 mL syringe volume) packaged in a carton.

TREMFYA One-Press™ is supplied as:

A sterile solution in a single-dose 1 mL glass syringe with a 27G, half inch fixed needle assembled in a patient-controlled injector containing 100 mg guselkumab, (100 mg/1 mL in a 1 mL volume) packaged in a carton.

TREMFYA®/TREMFYA One-Press™ does not contain preservatives.

The TREMFYA®/TREMFYA One-Press™ needle guard and plunger stopper are not made with natural rubber latex.

7 WARNINGS AND PRECAUTIONS

General

Infections

TREMFYA®/TREMFYA One-Press™ is a selective immunomodulatory agent which has the potential to increase the risk of infection. Infections have been observed in clinical trials in plaque psoriasis (23% vs 21% for placebo; ≤ 0.2% serious infections in both groups) and psoriatic arthritis (21% in both TREMFYA® and placebo groups; ≤ 0.8% serious infections in both groups). The most common type of infection reported was respiratory tract infection. (See [8 ADVERSE REACTIONS, Infections](#))

Treatment with TREMFYA®/TREMFYA One-Press™ should not be initiated in patients with any clinically important active infection until the infection resolves or is adequately treated.

Instruct patients treated with TREMFYA®/TREMFYA One-Press™ to seek medical advice if signs or symptoms of clinically important chronic or acute infection occur. If a patient develops a clinically important or serious infection or is not responding to standard therapy, monitor the patient closely and discontinue TREMFYA®/TREMFYA One-Press™ until the infection resolves.

In clinical studies, subjects with latent tuberculosis (TB) who were concurrently treated with TREMFYA® and appropriate TB prophylaxis did not develop TB. Evaluate patients for TB infection prior to initiating treatment with TREMFYA®/TREMFYA One-Press™. Initiate treatment of latent TB prior to administering TREMFYA®/TREMFYA One-Press™. Patients receiving TREMFYA®/TREMFYA One-Press™ should be monitored for signs and symptoms of active TB during and after treatment. Do not administer TREMFYA®/TREMFYA One-Press™ to patients with active TB infection. Consider anti-TB therapy prior to initiating TREMFYA®/TREMFYA One-Press™ in patients with a past history of latent or active TB in whom an adequate course of treatment cannot be confirmed.

Hypersensitivity

Serious hypersensitivity reactions, including anaphylaxis, have been reported in the postmarketing setting. Some serious hypersensitivity reactions occurred several days after treatment with TREMFYA®, including cases with urticaria and dyspnea. If a serious hypersensitivity reaction occurs, appropriate therapy should be instituted and administration of TREMFYA®/TREMFYA One-Press™ should be discontinued.

Immune

Vaccinations

Prior to initiating therapy with TREMFYA®/TREMFYA One-Press™, consider completion of all age appropriate immunizations according to current immunization guidelines. Avoid use of live vaccines in patients treated with TREMFYA®/TREMFYA One-Press™ (see [9 DRUG INTERACTIONS](#)). No data are available on the response to live or inactive vaccines.

Reproductive Health: Female and Male Potential

- **Fertility**

The effect of TREMFYA®/TREMFYA One-Press™ on human fertility has not been evaluated. No guselkumab-related effects on fertility parameters were identified in a female fertility study conducted in guinea pigs. In a male guinea pig fertility study, total litter loss was observed in a limited subset of untreated females following administration of males with guselkumab at a subcutaneous dose of 100 mg/kg twice weekly (24-fold the human exposure). This observation was not repeated in a second male fertility study. No effects were observed at 25 mg/kg (C_{max} and AUC_{last} values were 51- and 6-fold greater, respectively, than the human exposure) (see [16 NON-CLINICAL TOXICOLOGY](#)).

7.1 Special Populations

7.1.1 Pregnant Women

The use of TREMFYA®/TREMFYA One-Press™ in pregnant women has not been studied. The effect of TREMFYA®/TREMFYA One-Press™ on human pregnancy is unknown. Studies in cynomolgus monkeys showed that guselkumab crosses the placental barrier. Fetal losses and neonatal deaths occurred in the offspring of pregnant monkeys administered weekly subcutaneous injections of guselkumab from the beginning of organogenesis until parturition at C_{max} and AUC_{last} values that were 31- and 8-fold greater, respectively, than the human levels. A drug-related effect could not be ruled out. No adverse developmental effects were observed in surviving infants. Animal studies are not always predictive of human response, and therefore, the clinical significance of these findings is unknown (see [16 NON-CLINICAL TOXICOLOGY](#)).

Women of childbearing potential should use adequate contraception while using TREMFYA®/TREMFYA One-Press™ and for at least 12 weeks after the last TREMFYA®/TREMFYA One-Press™ dose. TREMFYA®/TREMFYA One-Press™ should be used during pregnancy only if the potential benefit justifies the potential risk to the fetus.

To monitor outcomes in women exposed to TREMFYA® during pregnancy, a pregnancy registry has been established. Healthcare professionals are encouraged to register patients and pregnant women are encouraged to enroll themselves by calling 1-877-311- 8972.

7.1.2 Breast-feeding

There are no data on the presence of guselkumab in human milk, the effects on the breastfed infant, or the effects on milk production. Guselkumab was not detected in the milk of lactating cynomolgus monkeys (see [16 NON-CLINICAL TOXICOLOGY](#)). The developmental and health benefits of breastfeeding should be considered, as well as any potential adverse effects on the breastfed infant.

7.1.3 Pediatrics

The safety and efficacy of TREMFYA®/TREMFYA One-Press™ in pediatric patients have not been evaluated.

7.1.4 Geriatrics

Of the 3406 plaque psoriasis and psoriatic arthritis patients exposed to TREMFYA®/TREMFYA One-Press™ in Phase 2 and Phase 3 clinical trials, a limited number of patients were 65 years or older (n = 185, 5%) or 75 years and older (n=13, 0.4%). Thus data in these age groups are limited (see [10 CLINICAL PHARMACOLOGY](#)).

8 ADVERSE REACTIONS

8.1 Adverse Reaction Overview

The most frequently reported adverse drug reaction (>10%) through the placebo-controlled period of the phase 3 plaque psoriasis and psoriatic arthritis clinical trials in TREMFYA®-treated patients was respiratory tract infections.

In the placebo-controlled period of the phase 3 studies in plaque psoriasis, the proportion of TREMFYA®-treated patients who discontinued treatment due to adverse events was 1.3% (11/823) compared to 0.9% (8/422) in placebo-treated patients. Serious adverse events were reported in 1.9% (16/823) of TREMFYA®-treated patients and 1.4% (6/422) of placebo-treated patients through 16 weeks.

In the placebo-controlled period of the phase 3 studies in psoriatic arthritis, the proportion of TREMFYA®-treated patients who discontinued treatment due to adverse events was 1.7% (13/748) compared to 1.9% (7/372) in placebo-treated patients. Serious adverse events were reported in 2.0% (15/748) of TREMFYA®-treated patients and 3.2% (12/372) of placebo-treated patients through 24 weeks.

Overall, the safety profile was generally similar across indications.

8.2 Clinical Trial Adverse Reactions

Because clinical trials are conducted under very specific conditions, the adverse reaction rates observed in the clinical trials may not reflect the rates observed in practice and should not be compared to the rates in the clinical trials of another drug. Adverse drug reaction information from clinical trials is useful for identifying drug-related adverse events and for approximating rates.

The safety profile of TREMFYA® and TREMFYA One-Press™ in patients with moderate to severe plaque psoriasis is based on data from the Phase 2 (PSO2001) and Phase 3 (VOYAGE 1, VOYAGE 2, NAVIGATE, and ORION) studies in plaque psoriasis and the Phase 2 (PSA2001) and the Phase 3 (DISCOVER 1 and DISCOVER 2) studies in psoriatic arthritis. Of the 3406 TREMFYA®- and TREMFYA One-Press™-treated patients, 2336 patients were exposed for at least 1 year, and 1516 and 692 patients were exposed for at least 2 and 3 years, respectively. Most patients (n=2516) received a dosage regimen of 100 mg TREMFYA®/TREMFYA One-Press™ as subcutaneous injection every 8 weeks. In the phase 3 psoriatic arthritis trials 725 patients (including placebo crossovers) received a dosage regimen of 100 mg TREMFYA® as subcutaneous injection every 4 weeks.

Adverse Drug Reactions in Plaque Psoriasis Trials

Table 1 provides a summary of adverse reactions that occurred at a rate of at least 1% and at a higher rate in the TREMFYA® group than in the placebo group during the 16-week, placebo-controlled period of the pooled clinical trials, VOYAGE 1 and VOYAGE 2.

Table 1: Adverse reactions reported by ≥1% of patients through Week 16 in VOYAGE 1 and VOYAGE 2

	Placebo N = 422 n (%)	TREMFYA® ^a N = 823 n (%)	Adalimumab ^b N = 581 n (%)
Gastrointestinal disorders			
Diarrhea	4 (0.9%)	13 (1.6%)	7 (1.2%)
General disorders and administration site conditions			
Injection site reactions ^c	12 (2.8%)	37 (4.5%)	42 (7.2%)
Infections and Infestations			
Upper respiratory infections ^d	54 (12.8%)	118 (14.3%)	80 (13.8%)
Gastroenteritis ^e	4 (0.9%)	11 (1.3%)	8 (1.4%)
Herpes simplex infections ^f	2 (0.5%)	9 (1.1%)	8 (1.4%)
Tinea infections ^g	0	9 (1.1%)	3 (0.5%)
Musculoskeletal and connective tissue disorders			
Arthralgia	9 (2.1%)	22 (2.7%)	11 (1.9%)
Nervous system disorders			
Headache ^h	14 (3.3%)	38 (4.6%)	18 (3.1%)

^a Subjects received 100 mg of TREMFYA® at Week 0, Week 4, and every 8 weeks thereafter;

^b Subjects received adalimumab at 80 mg Week 0, 40 mg week 1 then 40 mg q2w thereafter

^c Injection site reactions include injection site erythema, bruising, hematoma, hemorrhage, swelling, edema, pruritus, pain, discoloration, induration, inflammation, and urticaria.

^d Upper respiratory infections include nasopharyngitis, upper respiratory tract infection (URTI), pharyngitis, and viral URTI.

^e Gastroenteritis includes gastroenteritis and viral gastroenteritis

^f Herpes simplex infections include oral herpes, herpes simplex, genital herpes, genital herpes simplex, and nasal herpes simplex.

^g Tinea infections include tinea pedis, tinea cruris, tinea infection, and tinea manuum infections.

^h Headache includes headache and tension headache.

Safety profile through Week 156 in Plaque Psoriasis Trials

Through week 48 of VOYAGE 1 and VOYAGE 2, the types and the frequency of the adverse reactions in the TREMFYA[®]-treated patients were similar to those observed during the first 16 weeks of treatment.

Among 1221 patients who were initially randomized to TREMFYA[®] or who crossed over from placebo, 1119 patients received open-label TREMFYA[®] in the uncontrolled extension periods of VOYAGE 1 and VOYAGE 2. Through up to 3 years (N=1221; median duration of follow-up of 156 weeks [Range: 1-161]), the safety profile of TREMFYA[®] was consistent with that observed in the controlled periods of VOYAGE 1 and VOYAGE 2.

Adverse Drug Reactions in Psoriatic Arthritis Trials

Table 2 provides a summary of adverse reactions that occurred at a rate of at least 1% and at a higher rate in the TREMFYA[®] group than in the placebo group during the 24-week, placebo-controlled period of the pooled clinical trials, DISCOVER 1 and DISCOVER 2.

Table 2: Adverse reactions reported by ≥1% of patients through Week 24 in DISCOVER 1 and DISCOVER 2

	Placebo N = 372 n (%)	TREMFYA [®] Q8W ^a N = 375 n (%)	TREMFYA [®] Q4W ^b N = 373 n (%)
Gastrointestinal disorders			
Diarrhea	3 (0.8%)	6 (1.6%)	4 (1.1%)
General disorders and administration site conditions			
Injection site reactions ^c	1 (0.3%)	5 (1.3%)	3 (0.8%)
Infections and Infestations			
Respiratory tract infections ^d	45 (12.1%)	46 (12.3%)	52 (13.9%)
Investigations			
Transaminases increased ^e	17 (4.6%)	31 (8.3%)	32 (8.6%)
Neutrophil count decreased ^f	3 (0.8%)	7 (1.9%)	7 (1.9%)
Nervous system disorders			
Headache ^g	3 (0.8%)	8 (2.1%)	7 (1.9%)

^a Patients received 100 mg of TREMFYA[®] at Week 0, Week 4, and every 8 weeks thereafter

^b Patients received 100 mg of TREMFYA[®] at Week 0, Week 4, and every 4 weeks thereafter

^c Injection site reactions include injection site erythema, bruising, hematoma, hemorrhage, swelling, edema, pruritus, pain, discoloration, induration, inflammation, and urticaria.

^d Respiratory tract infections include nasopharyngitis, upper respiratory tract infection (URTI), bronchitis, pharyngitis, and viral URTI.

^e Transaminases increased includes alanine aminotransferase increased, aspartate aminotransferase increased, hepatic enzyme increased, transaminases increased, liver function test abnormal,

hypertransaminasaemia

^f Neutrophil count decreased includes neutrophil count decreased and neutropenia

^g Headache includes headache and tension headache.

Infections

Infections have been observed in clinical trials in plaque psoriasis (23% for TREMFYA[®] vs 21% for placebo; ≤ 0.2% serious infections in both groups) and psoriatic arthritis (21% in both TREMFYA[®] and placebo groups; ≤ 0.8% serious infections in both groups).

In plaque psoriasis or psoriatic arthritis trials, adverse events of infection reported in ≥ 1% of patients treated with TREMFYA[®] through the placebo-controlled period were respiratory tract infections, gastroenteritis, tinea infections, and herpes simplex infections.

Immunogenicity

As with all therapeutic proteins, there is the potential for immunogenicity with TREMFYA[®]. The immunogenicity of TREMFYA[®] was evaluated using a sensitive and drug-tolerant immunoassay. In subjects with psoriasis in clinical trials (PSO2001, VOYAGE 1, VOYAGE 2, and NAVIGATE), approximately 6% of patients treated with TREMFYA[®] developed antidrug antibodies in up to 52 weeks of treatment. Of the patients who developed antidrug antibodies, approximately 7% had antibodies that were classified as neutralizing which equates to 0.4% of all patients treated with TREMFYA[®]. Among the 46 subjects who developed antibodies to guselkumab and had evaluable data, 21 subjects exhibited lower trough levels of guselkumab, including one subject who experienced loss of efficacy after developing high antibody titers. However, antibodies to guselkumab were generally not associated with changes in clinical response or development of injection-site reactions.

In patients with psoriatic arthritis in clinical trials, 2% (n=15) of patients treated with TREMFYA[®] developed antidrug antibodies in up to 24 weeks of treatment. Of these patients, 1 (7%) had antibodies that were classified as neutralizing which equates to 0.1% of all psoriatic arthritis patients treated with TREMFYA[®]. None developed injection site reactions through Week 24. Overall, the small number of patients who were positive for antibodies to guselkumab limits definitive conclusion of the effect of immunogenicity on the pharmacokinetics, safety, and efficacy of guselkumab.

The detection of antibody formation is highly dependent on the sensitivity and specificity of the assay. Additionally, the observed incidence of antibody (including neutralizing antibody) positivity in an assay may be influenced by several factors including assay methodology, sample handling, timing of sample collection, concomitant medications, and underlying disease. For these reasons, comparison of incidence of antibodies to TREMFYA[®] with the incidences of antibodies to other products may be misleading.

Elevated Liver Enzymes

During the placebo-controlled period of the plaque psoriasis clinical trials, adverse events of increases in liver enzymes were reported in 2.6% of TREMFYA[®] treated patients and 1.9% of placebo-treated patients. None of these events led to discontinuation of TREMFYA[®] treatment.

During the placebo-controlled period of the two phase 3 psoriatic arthritis clinical trials, adverse events of transaminases increased (includes alanine aminotransferase (ALT)

increased, aspartate aminotransferase (AST) increased, hepatic enzyme increased, transaminases increased, liver function test abnormal, and hypertransaminasaemia) were reported more frequently in the TREMFYA®-treated patients (8.3% of q8w group, and 8.6% of q4w group) than in the placebo-treated patients (4.6%). Through 1-year, in most cases, the increase in transaminases was transient and did not lead to discontinuation of treatment.

Based on laboratory assessments, an increased incidence of liver enzyme elevations was observed in patients treated with TREMFYA® q4w compared to patients treated with TREMFYA® q8w or placebo. Most transaminase increases (ALT and AST) were ≤ 3 x upper limit of normal (ULN). Transaminase increases from > 3 to ≤ 5 x ULN and > 5 x ULN were low in frequency (Table 3).

Table 3: Frequency of patients with transaminase increases post-baseline in two Phase III psoriatic arthritis clinical studies

	Through Week 24 ^a			Through 1 Year ^b	
	Placebo N=370	TREMFYA® 100 mg Q8W N=373	TREMFYA® 100 mg Q4W ^c N=371	TREMFYA® 100 mg Q8W N=373	TREMFYA® 100 mg Q4W ^c N=371
ALT					
>1 to ≤3 x ULN	30.0%	28.2%	35.0%	33.5%	41.2%
>3 to ≤5 x ULN	1.4%	1.1%	2.7%	1.6%	4.6%
>5 x ULN	0.8%	0.8%	1.1%	1.1%	1.1%
AST					
>1 to ≤3 x ULN	20.0%	18.8%	21.6%	22.8%	27.8%
>3 to ≤5 x ULN	0.5%	1.6%	1.6%	2.9%	3.8%
>5 x ULN	1.1%	0.5%	1.6%	0.5%	1.6%

^a placebo-controlled period

^b patients randomized to TREMFYA® at baseline

^c Q4W dosing is not recommended in psoriatic arthritis patients

8.3 Less Common Clinical Trial Adverse Reactions

Adverse reactions that occurred at rates <1% in the TREMFYA® group during the placebo controlled- period of the pooled plaque psoriasis and psoriatic arthritis clinical trials.

Infections and Infestations: candida infections, gastroenteritis, herpes simplex infections, tinea infections

Nervous system disorders: migraine

Skin and subcutaneous tissue disorders: urticaria

8.5 Post-Market Adverse Reactions

The following adverse reactions have been reported during post-marketing experience. Because these reactions are reported voluntarily from a population of uncertain size, it is not always possible to estimate their frequency reliably or establish a causal relationship to drug exposure.

Immune System disorders: anaphylaxis, hypersensitivity

Skin and Subcutaneous Tissue Disorders: rash, urticaria

9 DRUG INTERACTIONS

9.4 Drug-Drug Interactions

Live vaccines

Live vaccines should not be given while a patient is undergoing therapy with TREMFYA®/TREMFYA One-Press™ (see [7 WARNINGS AND PRECAUTIONS, Immune](#)).

Immunosuppression Therapy

The safety and efficacy of TREMFYA®/TREMFYA One-Press™ in combination with immunosuppressant drugs, including biologics, or with phototherapy, have not been evaluated.

Interactions with CYP450 Substrates

The formation of cytochrome P450 (CYP) enzymes can be altered by increased levels of certain cytokines (e.g., interleukin [IL]-1 β , IL-6, tumor necrosis factor-alpha, and interferon) during chronic inflammation.

In a Phase 1 drug-drug interaction study in subjects (N=12) with moderate to severe plaque psoriasis, the results suggested a low potential for clinically relevant drug interactions between a single SC dose of guselkumab and substrates metabolized by CYP3A4, CYP2C9, CYP2C19, and CYP1A2. However, the results were highly variable and the interaction potential of guselkumab with drugs metabolized by CYP2D6 cannot be ruled out.

Upon initiation of TREMFYA® in patients who are receiving concomitant CYP450 substrates, particularly those with a narrow therapeutic index, consider monitoring for therapeutic effect or drug concentration and consider dosage adjustment as needed.

9.5 Drug-Food Interactions

Interactions with food have not been established.

9.6 Drug-Herb Interactions

Interactions with herbal products have not been established.

9.7 Drug-Laboratory Test Interactions

Interactions with laboratory tests have not been established.

10 CLINICAL PHARMACOLOGY

10.1 Mechanism of Action

Guselkumab is a human IgG1 λ monoclonal antibody (mAb) that binds selectively to the p19 subunit of interleukin 23 (IL-23) and inhibits its interaction with cell surface IL-23 receptor. IL-23 is a naturally-occurring cytokine that is involved in normal inflammatory and immune responses. Guselkumab inhibits the release of proinflammatory cytokines and chemokines (e.g. IL-17A, IL-17F and IL-22). Levels of IL-23 are elevated in the skin of patients with plaque psoriasis.

10.2 Pharmacodynamics

In clinical trials in patients with plaque psoriasis, guselkumab reduced serum levels of IL-17A,

IL-17F and IL-22 relative to pre-treatment levels based on exploratory analyses of these pharmacodynamic markers.

In Phase 3 studies in psoriatic arthritis, evaluated patients had elevated serum levels of the acute phase proteins C-reactive protein, serum amyloid A and IL-6, and the Th17 effector cytokines IL-17A, IL-17F and IL-22 at baseline. Exploratory analyses found serum levels of these proteins measured at Week 4 and Week 24 were decreased compared to baseline following guselkumab treatment.

The relationship between these pharmacodynamic markers and the mechanism(s) by which guselkumab exerts its clinical effects is unknown.

10.3 Pharmacokinetics

Guselkumab exhibited linear pharmacokinetics in healthy subjects or patients with psoriasis over a dose range from 10 mg to 300 mg following subcutaneous injections.

The pharmacokinetics of guselkumab in subjects with psoriatic arthritis was similar to that in subjects with plaque psoriasis.

Absorption:

Following a single 100 mg subcutaneous injection in healthy subjects, guselkumab reached a mean (\pm SD) maximum serum concentration (C_{max}) of 8.09 ± 3.68 mcg/mL by approximately 5.5 days post dose.

In subjects with psoriasis, steady-state serum guselkumab concentrations were achieved by Week 20 following subcutaneous administrations of 100 mg guselkumab at Weeks 0 and 4, and every 8 weeks thereafter. The mean (\pm SD) steady-state trough serum guselkumab concentrations in two Phase 3 studies were 1.15 ± 0.73 mcg/mL and 1.23 ± 0.84 mcg/mL.

In subjects with psoriatic arthritis, following subcutaneous administration of 100 mg of TREMFYA® at Weeks 0, 4, and every 8 weeks thereafter, mean (\pm SD) steady-state trough serum guselkumab concentration was approximately 1.18 ± 0.87 mcg/mL.

The absolute bioavailability of guselkumab following a single 100 mg subcutaneous injection was estimated to be approximately 49% in healthy subjects.

Distribution:

In subjects with plaque psoriasis, apparent volume of distribution was 13.5 L.

Metabolism:

The exact pathway through which guselkumab is metabolized has not been characterized. As a human IgG monoclonal antibody, guselkumab is expected to be degraded into small peptides and amino acids via catabolic pathways in the same manner as endogenous IgG.

Elimination:

Apparent clearance in subjects with plaque psoriasis was 0.516 L/day. Mean half-life ($T_{1/2}$) of guselkumab was approximately 17 days in healthy subjects and approximately 15 to 18 days in subjects with plaque psoriasis across studies.

Clearance and volume of distribution of guselkumab increase as body weight increases, based on population pharmacokinetic analyses. However, observed clinical trial data indicate that dose adjustment for body weight is not warranted.

Population pharmacokinetic analyses indicated that concomitant use of acetaminophen, NSAIDs, oral corticosteroids and conventional DMARDs such as methotrexate, did not affect the clearance of guselkumab.

Special Populations and Conditions

- **Pediatrics:** The safety and efficacy of guselkumab have not been established in pediatric patients.
- **Geriatrics:** Of the 1384 plaque psoriasis patients exposed to TREMFYA® in phase 3 clinical studies and included in the population pharmacokinetic analysis (pop PK), 70 subjects were 65 years of age or older, including 4 subjects who were 75 years of age or older. Population pharmacokinetic analyses indicated there were no apparent changes in clearance estimate in subjects \geq 65 years of age compared to subjects $<$ 65 years of age, suggesting no dose adjustment is needed for elderly patients. Of the 746 psoriatic arthritis patients exposed to TREMFYA® in phase III clinical studies and included in the pop PK analysis, a total of 38 patients were 65 years of age or older, and no patients were 75 years of age or older.
- **Gender, Race, Age:** The clearance of guselkumab was not impacted by sex, age, or race.
- **Hepatic Insufficiency:** No specific study has been conducted to determine the effect of hepatic impairment on the pharmacokinetics of guselkumab.
- **Renal Insufficiency:** No specific study has been conducted to determine the effect of renal impairment on the pharmacokinetics of guselkumab.

11 STORAGE, STABILITY AND DISPOSAL

TREMFYA®/TREMFYA One-Press™ is sterile and preservative-free. Discard any unused portion after injection.

Store in a refrigerator at 2°C to 8°C (36°F to 46°F). Do not freeze.

Store in original carton until time of use. Protect from light. Do not shake.

Keep out of sight and reach of children.

12 SPECIAL HANDLING INSTRUCTIONS

Following administration of TREMFYA®/TREMFYA One-Press™, discard any unused portion. The product should be disposed of in a puncture resistant container. Patients or caregivers should be instructed on how to properly dispose of the product, and told not to reuse these items.

PART II: SCIENTIFIC INFORMATION

13 PHARMACEUTICAL INFORMATION

Drug Substance

Proper name: guselkumab

Chemical name: guselkumab

Molecular formula and molecular mass: Guselkumab is a fully human immunoglobulin IgG1 λ mAb with an average molecular weight of 146,613 Daltons

Physicochemical properties: TREMFYA®/TREMFYA One-Press™ is a clear and colorless to light yellow solution and essentially free of visible particulate material with a pH of approximately 5.8

Product Characteristics:

TREMFYA® is supplied as a 100 mg/mL sterile solution in a single-dose 1 mL glass syringe with a fixed 27G, half inch needle assembled in a passive needle guard delivery system.

TREMFYA One-Press™ is supplied as a 100 mg/mL sterile solution in a single-dose 1 mL glass syringe with a fixed 27G, half inch needle assembled in a patient-controlled injector.

TREMFYA®/TREMFYA One-Press™ does not contain preservatives.

14 CLINICAL TRIALS

14.1 Clinical Trials by Indication

Plaque Psoriasis

Table 4: Summary of trial designs and patient demographics

Study #	Trial design	Dosage, route of administration and duration	Total number of subjects	Mean age (Range)	Gender
VOYAGE 1	A phase 3, multicenter, randomized, double-blind, placebo and active comparator controlled study	Guselkumab (n=329) 100 mg SC Weeks 0, 4 then q8w Placebo (n=174) SC Weeks 0, 4, 12 → guselkumab 100 mg SC Week 16, 20 then q8w ^a Adalimumab (n=334) SC 80 mg Week 0, 40 mg week 1 then 40 mg q2w. ^b	837	43.7 (18-87)	M=608 F=229

VOYAGE 2	A phase 3, multicenter, randomized, double-blind, placebo and active comparator controlled study	Guselkumab (n=496) 100 mg SC Weeks 0, 4, 12 and 20 ^c Placebo (n=248) SC Weeks 0, 4, 12 → guselkumab 100 mg SC Week 16, 20 ^a Adalimumab (n=248) 80 mg Week 0, 40 mg week 1 then 40 mg q2w. ^d	992	43.0 (18-74)	M=692 F=300
----------	--	--	-----	-----------------	----------------

^a The placebo group crossed over to receive guselkumab at Weeks 16 and 20 then q8w

^b All subjects, including those randomized to adalimumab at Week 0, received TREMFYA[®] 100 mg at Week 52 and every 8 weeks thereafter.

^c Subjects randomized to TREMFYA[®] at Week 0 who were PASI 90 responders at Week 28 were re-randomized to either continue treatment with TREMFYA[®] maintenance therapy or withdrawal of therapy.

^d PASI 90 non-responders at week 28 started to receive TREMFYA[®] at week 28 and then week 32 and every 8 weeks thereafter.

The efficacy and safety of TREMFYA[®] was assessed in two Phase 3, multicenter, randomized, double-blind studies (VOYAGE 1 and VOYAGE 2) in patients 18 years or older with moderate to severe plaque psoriasis (with or without PsA) defined by Investigator's Global Assessment (IGA) ≥ 3 , a Body Surface Area (BSA) involvement $\geq 10\%$, and Psoriasis Area and Severity Index (PASI) score ≥ 12 , and were candidates for systemic therapy or phototherapy for psoriasis. Patients with guttate, erythrodermic, or pustular psoriasis were excluded from the studies. No concomitant antipsoriatic therapies were allowed during the studies.

The two pivotal studies (VOYAGE 1 and 2) evaluated the efficacy and safety of guselkumab for the treatment of subjects with moderate to severe plaque-type psoriasis and enrolled a total of 1829 patients who were randomized to placebo, TREMFYA[®], or adalimumab.

The co-primary endpoints in VOYAGE 1 and VOYAGE 2 were the proportions of patients who achieved an IGA score of cleared (0) or minimal (1) and the proportions of patients who achieved a PASI 90 response at Week 16, comparing the TREMFYA[®] group and the placebo group.

The IGA is a 5-category scale: 0 = cleared, 1 = minimal, 2 = mild, 3 = moderate, 4 = severe, that indicates the physician's overall assessment of psoriasis focusing on plaque thickness/induration, erythema and scaling.

Other endpoints included the proportions of patients who achieved an IGA score of cleared (0), a PASI 100, PASI 75 response and regional disease as measured by scalp-specific IGA (ss-IGA). Patient-reported outcomes were assessed based on the Psoriasis Symptoms and Signs Diary (PSSD) and Dermatology Life Quality Index (DLQI).

Baseline disease characteristics were generally consistent across all treatment groups for the study populations in VOYAGE 1 and 2 with a median BSA of 22% and 24%, a median baseline PASI score of 19 for both studies, a baseline IGA score of severe for 25% and 23% of patients, and a history of psoriatic arthritis for 19% and 18% patient, respectively.

Of all patients who were included in the VOYAGE 1 and VOYAGE 2 studies, 32% and 29% were naïve to conventional systemic and biologic systemic therapy; 54% and 57% had received prior phototherapy, and 62% and 64% had received prior conventional systemic therapy, respectively. In both studies, 21% had received prior biologic systemic therapy, including 11% who had received at least one anti-tumour necrosis factor alpha (TNF α) agent, and approximately 10% who had received an anti-IL-12/IL-23 agent.

The results of VOYAGE 1 and VOYAGE 2 studies are presented in Table 5 and Table 6 below.

Table 5: Summary of Clinical Responses at Week 16 (NRI^a) in Psoriasis Studies (Co-Primary Endpoints)

	VOYAGE 1			VOYAGE 2		
	TREMFYA [®] (N=329) n (%)	Placebo (N=174) n (%)	Treatment difference ^b (95% CI)	TREMFYA [®] (N=496) n (%)	Placebo (N=248) n (%)	Treatment difference ^b (95% CI)
IGA response of 0/1	280 (85%) ^c	12 (7%)	78% (73%,83%)	417 (84%) ^c	21 (8%)	76% (71%,80%)
PASI 90 response	241 (73%) ^c	5 (3%)	70% (65%,76%)	347 (70%) ^c	6 (2%)	68% (64%,72%)

^a Non-responder imputation.

^b Treatment difference versus placebo adjusted by investigator site with Mantel-Haenszel weights.

^c p-value < 0.001; p-value is based on the Cochran-Mantel-Haenszel chi-square test stratified by investigator site.

Table 6: Summary of Clinical Responses (NRI^a) in Psoriasis Studies (Secondary Endpoints)

	VOYAGE 1			VOYAGE 2		
	TREMFYA [®] (N=329) n (%)	Adalimumab (N=334) n (%)	Treatment difference ^b (95% CI)	TREMFYA [®] (N=496) n (%)	Adalimumab (N=248) n (%)	Treatment difference ^b (95% CI)
IGA response of 0/1						
Week 16	280 (85%) ^c	220 (66%)	19% (13%,25%)	417 (84%) ^c	168 (68%)	16% (11%,22%)
Week 24	277 (84%) ^c	206 (62%)	23% (17%,29%)	414 (83%) ^c	161 (65%)	18% (12%,25%)
IGA response of 0						
Week 24	173 (53%) ^c	98 (29%)	25% (18%,31%)	257 (52%) ^c	78 (31%)	20% (13%,27%)
PASI 75 response						
Week 16	300 (91%) ^c	244 (73%)	18% (13%,23%)	428 (86%) ^c	170 (69%)	18% (12%,24%)
PASI 90 response						
Week 16	241 (73%) ^c	166 (50%)	24% (17%,31%)	347 (70%) ^c	116 (47%)	23% (17%,30%)
Week 24	264 (80%) ^c	177 (53%)	28% (22%,34%)	373 (75%) ^c	136 (55%)	20% (14%,27%)

^a Non-Responder Imputation.

^b Treatment difference versus adalimumab adjusted by investigator site with Mantel-Haenszel weights.

^c p-value < 0.001; p-value is based on the Cochran-Mantel-Haenszel chi-square test stratified by investigator site. Type 1 error rate is controlled based on a pre-defined hierarchical testing procedure.

TREMFYA® demonstrated superiority to placebo for the co-primary endpoints of IGA cleared (0) or minimal (1), and PASI 90 at week 16 (Table 5).

In addition, TREMFYA® demonstrated statistical superiority to adalimumab for IGA cleared or minimal (0 or 1), PASI 90 and PASI 75 at week 16 and IGA cleared (0), IGA cleared or minimal (0 or 1) and PASI 90 at week 24 (see Table 6). In VOYAGE 1, with continued treatment over 48 weeks, IGA cleared (0), IGA cleared or minimal (0 or 1) and PASI 90 responses in guselkumab treated patients were maintained and remained significantly greater than those achieved with adalimumab (IGA cleared (0), 50% vs 26%, IGA cleared or minimal (0 or 1), 81% vs 55%, PASI 90, 76% vs. 48%).

In the VOYAGE 1 study, at week 16, 37% of patients receiving TREMFYA® achieved PASI 100 compared to 17% of adalimumab treated patients, and 1% of placebo treated patients. In VOYAGE 2, at Week 16, 34% of patients receiving TREMFYA® achieved PASI 100 compared to 21% of adalimumab treated patients, and 1% of placebo-treated patients.

In TREMFYA® treated-patients, improvement was seen in psoriasis involving the scalp (as measured by the Scalp-specific Investigator Global Assessment [ss-IGA]). Specifically, in the subset of patients with a baseline ss-IGA score ≥ 2 , 83.4% and 80.6% in the TREMFYA® group in VOYAGE 1 and VOYAGE 2, respectively, achieved an ss-IGA score of 0 or 1 and at least a 2-grade improvement from baseline compared to 14.5% and 10.9% in the placebo group, respectively at week 16.

Maintenance and Durability of Response

To evaluate the maintenance and durability of response, patients originally randomized to TREMFYA® and who were PASI 90 responders at Week 28 in the VOYAGE 2 study were re-randomized to continue maintenance treatment with TREMFYA® or be withdrawn from therapy (i.e., placebo). At week 48, 88.6% of patients in the continuous maintenance treatment group were PASI 90 responders compared with 36.8% in the withdrawal group.

Patient-reported Outcomes

Significantly greater improvements in psoriasis symptoms (itch, pain, stinging, burning and skin tightness) at Week 16 were seen in TREMFYA® compared to placebo in both studies based on the Psoriasis Symptoms and Signs Diary (PSSD). Significantly greater proportions of patients on TREMFYA® compared to adalimumab achieved a PSSD symptom score of 0 (symptom-free) at Week 24 in both studies.

Improvements in the Dermatology Life Quality Index (DLQI) from baseline were observed in patients treated with TREMFYA® compared to placebo at Week 16.

Active-Controlled Study in Ustekinumab Inadequate Responders – NAVIGATE

The NAVIGATE study evaluated the efficacy of 24 weeks of treatment with TREMFYA® in patients (N=268) who had an inadequate response (defined as IGA ≥ 2) at Week 16 after initial treatment with ustekinumab (dosed at Week 0 and Week 4). These patients were randomized to

either continue ustekinumab treatment every 12 weeks or to switch to TREMFYA® 100 mg given at Weeks 16, 20, and every 8 weeks thereafter. Baseline characteristics for randomized subjects were similar to those observed in VOYAGE 1 and VOYAGE 2.

In patients with an inadequate response to ustekinumab, a greater proportion of patients who switched to TREMFYA® treatment achieved an IGA score of 0 or 1 and had a ≥ 2-grade improvement at Week 28 compared to patients who continued ustekinumab treatment (31% vs 14%, respectively).

TREMFYA One-Press™ - ORION

ORION evaluated the efficacy, safety, and PK of guselkumab administered with the patient-controlled One-Press injector. In this study, 78 subjects were randomized to receive either TREMFYA One-Press™ (100 mg at Weeks 0 and 4 and every 8 weeks thereafter, N= 62), or placebo (N= 16). Baseline characteristics for randomized subjects were comparable to those observed in VOYAGE 1 and VOYAGE 2. The co-primary endpoints were the same as those for VOYAGE 1 and VOYAGE 2. The secondary endpoints included the proportion of subjects who achieved an IGA score 0 at Week 16 and the proportion of subjects who achieved a PASI 100 response at Week 16.

A greater proportion of subjects in the guselkumab group achieved an IGA score of 0 or 1 or a PASI 90 response at Week 16 (81% and 76%, respectively) than in the placebo group (0% for both endpoints). The proportion of subjects who achieved an IGA score of 0 at Week 16 was higher in the guselkumab group compared to the placebo group (56.5% vs. 0%). The proportion of subjects who achieved a PASI 100 response at Week 16 was higher in the guselkumab group compared to the placebo group (50.0% vs. 0%).

Psoriatic Arthritis

Table 7: Summary of trial designs and patient demographics

Study #	Trial design	Dosage, route of administration and duration	Total number of subjects	Mean age (Range)	Gender
DISCOVER 1	A phase 3, multicenter, randomized, double-blind, placebo-controlled study	Guselkumab (n=127) 100 mg SC Weeks 0, 4 then q8w Guselkumab (n=128) 100 mg SC Weeks 0, then q4w Placebo (n=126) SC Weeks 0, then q4w to week 20 → guselkumab 100 mg SC Week 24, then q4w	381	48.4 (19-74)	M=195 F=186

DISCOVER 2	A phase 3, multicenter, randomized, double-blind, placebo-controlled study	Guselkumab (n=248) 100 mg SC Weeks 0, 4 then q8w Guselkumab (n=245) 100 mg SC Weeks 0, then q4w Placebo (n=246) SC Weeks 0, then q4w to week 20 → guselkumab 100 mg SC Week 24, then q4w	739	45.7 (19-75)	M=388 F=351
------------	--	--	-----	-----------------	----------------

The safety and efficacy of TREMFYA® were assessed in 1120 patients in 2 randomized, double-blind, placebo-controlled studies (DISCOVER 1 and DISCOVER 2) in adult patients with active PsA (≥3 swollen joints, ≥3 tender joints, and a C-reactive protein (CRP) level of ≥0.3 mg/dL in DISCOVER 1 and ≥5 swollen joints, ≥5 tender joints, and a CRP level of ≥0.6 mg/dL in DISCOVER 2) who had inadequate response to standard therapies (e.g. conventional DMARDs [cDMARDs]), apremilast, or nonsteroidal anti-inflammatory drugs [NSAIDs]). Patients in these studies had a diagnosis of PsA for at least 6 months based on the Classification criteria for Psoriatic Arthritis (CASPAR) and a median duration of PsA of 4 years at baseline.

In DISCOVER 1 approximately 30% of patients had been previously treated with up to 2 anti-tumor necrosis factor alpha (anti-TNFα) agents whereas in DISCOVER 2 all patients were biologic naïve. Approximately 58% of patients from both studies had concomitant methotrexate (MTX) use. Patients with different subtypes of PsA were enrolled in both studies, including polyarticular arthritis with the absence of rheumatoid nodules (40%), spondylitis with peripheral arthritis (30%), asymmetric peripheral arthritis (23%), distal interphalangeal involvement (7%) and arthritis mutilans (1%). At baseline, over 65% and 42% of the patients had enthesitis and dactylitis, respectively and over 75% had ≥3% body surface area (BSA) psoriasis skin involvement. The primary endpoint in both studies was the percentage of patients achieving an ACR20 response at Week 24.

Signs and Symptoms

The ACR responses at week 24 are presented in Table 8 below. Comparable response rates were observed regardless of prior anti-TNFα exposure in DISCOVER 1, and in both trials comparable response rates were observed regardless of concomitant cDMARD use or previous treatment with cDMARDs.

Table 8: Percent of Patients with ACR Responses^{a,b} at Week 24 in DISCOVER 1 and DISCOVER 2

	DISCOVER 1			DISCOVER 2		
	Placebo (N=126)	TREMFYA® 100 mg q8w (N=127)	Difference from Placebo (95% CI) p-value	Placebo (N=246)	TREMFYA® 100 mg q8w (N=248)	Difference from Placebo (95% CI) p-value
ACR 20 response	22.2%	52.0%	29.8% (18.6, 41.1) <0.001 ^c	32.9%	64.1%	31.2% (22.9, 39.5) <0.001 ^d

ACR 50 response	8.7%	29.9%		14.2%	31.5%	
ACR 70 response	5.6%	11.8%		4.1%	18.5%	

^a Patients with <5% improvement from baseline in both tender and swollen joint counts at Week 16 were qualified for early escape and were permitted to initiate or increase the dose of concomitant medications including NSAIDs, oral corticosteroid and cDMARD, and remained on the randomized study treatment. At Week 16, 19.0% and 3.1% (DISCOVER 1) and 15.4% and 5.2%, (DISCOVER 2) of the patients in the placebo and TREMFYA[®] 100mg q8w groups respectively met early escape criteria.

^b Patients with missing data at Week 24 were imputed as non-responders. Patients who initiated or increased the dose of cDMARD or oral corticosteroids over baseline, discontinued study or study medication, or initiated protocol prohibited medications/therapies for PsA prior to Week 24 were considered as treatment failures and non-responders. At Week 24, 16.7% and 5.5% (DISCOVER 1), and 6.9% and 4.8% (DISCOVER 2) of the patients in the placebo group and the TREMFYA[®] 100 mg q8w group met treatment failure criteria.

^c Treatment differences, 95% CIs and p-values were based on the Cochran-Mantel-Haenszel test stratified by baseline non-biologic cDMARD and prior anti-TNF α agents.

^d Treatment differences, 95% CIs and p-values were based on the Cochran-Mantel-Haenszel test stratified by baseline non-biologic cDMARD and prior CRP (<2.0, \geq 2.0 mg/dL).

Figure 1: Percent of Patients Achieving ACR 20 Response by Visit Through Week 24 in DISCOVER 2

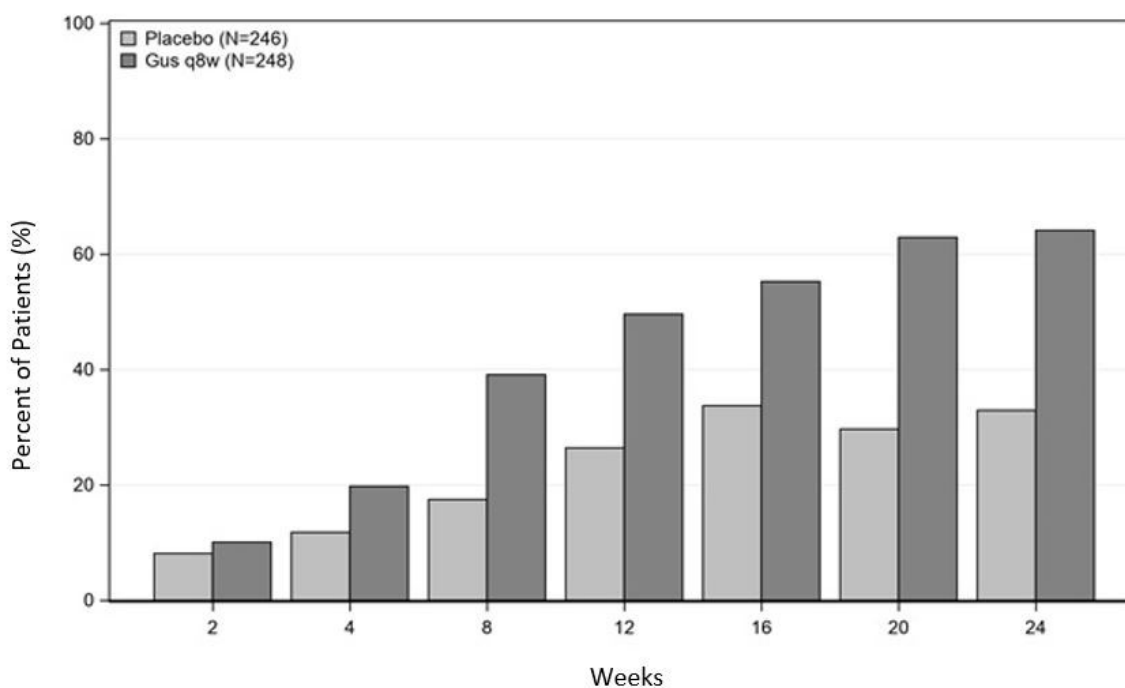


Table 9: Mean change from Baseline in ACR Component Scores at Week 24 Based on Observed Data

	DISCOVER 1		DISCOVER 2	
	Placebo (N=126)	TREMFYA® 100 mg q8w (N=127)	Placebo (N=246)	TREMFYA® 100 mg q8w (N=248)
No. of Swollen Joints				
Baseline	10.1	10.9	12.3	11.7
Mean change at Week 24	-5.1	-7.3	-6.4	-8.1
No. of Tender Joints				
Baseline	19.8	20.2	21.6	19.8
Mean change at Week 24	-6.8	-10.5	-7.3	-10.4
Patient's Assessment of Pain				
Baseline	5.8	6.0	6.3	6.3
Mean change at Week 24	-0.7	-2.2	-1.1	-2.5
Patient Global Assessment				
Baseline	6.1	6.5	6.5	6.5
Mean change at Week 24	-0.9	-2.5	-1.2	-2.5
Physician Global Assessment				
Baseline	6.3	6.2	6.7	6.6
Mean change at Week 24	-2.2	-3.5	-2.5	-3.8
Disability Index (HAQ-DI)				
Baseline	1.2	1.2	1.3	1.3
Mean change at Week 24	-0.1	-0.3	-0.2	-0.4
CRP (mg/dL)				
Baseline	1.4	1.6	2.1	2.0
Mean change at Week 24	-0.0	-0.7	-0.5	-1.1

In patients with $\geq 3\%$ BSA psoriasis skin involvement and an IGA score of ≥ 2 at baseline, the proportion of patients who achieved a psoriasis response at week 24, defined as an IGA of 0 (cleared) or 1 (minimal) and a ≥ 2 -grade reduction from baseline, was assessed. In DISCOVER 1, the proportions of patients achieving a psoriasis IGA response were 57.3% and 15.4% for the TREMFYA® 100mg q8w and placebo dose groups respectively. In DISCOVER 2, the proportions of these patients achieving a psoriasis IGA response were 70.5% and 19.1% for the TREMFYA® 100mg q8w and placebo dose groups respectively.

Treatment with TREMFYA® resulted in improvement in dactylitis and enthesitis in patients with pre-existing dactylitis or enthesitis at baseline.

Physical Function and Other Patient Reported Outcomes

At week 24, a greater mean improvement from baseline in physical function, as measured by the Health Assessment Questionnaire-Disability Index (HAQ-DI) was shown in both studies in

the TREMFYA® 100 mg q8w group compared to placebo. The mean change from baseline at week 24 was -0.32 and -0.073 (DISCOVER 1) and -0.37 and -0.13 (DISCOVER 2) for the TREMFYA® 100mg q8w and placebo dose groups respectively ($p < 0.001$ in both trials).

At Week 24, patients in the TREMFYA® group in both DISCOVER 1 and DISCOVER 2 showed greater improvement from baseline in the SF-36 PCS compared with placebo. At Week 24 there was numeric improvement in the physical functioning, role-physical, bodily-pain, general health, social-functioning and vitality domains but not in the role-emotional and mental health domains. Patients in the TREMFYA® group in both DISCOVER 1 and DISCOVER 2 showed improvement from baseline in fatigue measured with FACIT-fatigue at Week 24.

16 NON-CLINICAL TOXICOLOGY

General Toxicology: In repeat-dose toxicity studies in cynomolgus monkeys, guselkumab was well-tolerated at weekly doses up to 50 mg/kg intravenously for 5 weeks or 50 mg/kg subcutaneously for up to 24 weeks. Additionally, there were no effects on cardiovascular, respiratory, and nervous system function, clinical pathology, or anatomical pathology parameters. At the NOAEL (50 mg/kg once weekly), C_{max} and AUC_{last} values were approximately 206-fold and 50-fold higher, respectively, than those following a single administration of a 100 mg SC dose to psoriasis patients (4.81 $\mu\text{g/mL}$ and 108.48 $\mu\text{g}\cdot\text{h/mL}$, respectively).

Carcinogenicity and Genotoxicity: Studies have not been conducted to evaluate the carcinogenic or genotoxic potential of guselkumab.

Reproductive and Developmental Toxicology: In a combined embryo-fetal developmental and pre- and post-natal development toxicity study, pregnant cynomolgus monkeys (19, 20, and 20 in the 0, 10 and 50 mg/kg groups, respectively) were administered weekly subcutaneous doses of guselkumab from the beginning of organogenesis to parturition. Neonatal deaths occurred in the offspring of 1 of 16 control monkeys and of 3 of 14 monkeys in each of the guselkumab-administered groups (C_{max} and AUC_{last} values were 31- and 8-fold greater, respectively, than the human levels). These neonatal deaths were attributed to maternal neglect, trauma, and early or late delivery, although a drug-related effect could not be ruled out. Fetal losses (spontaneous abortions, including stillbirths) were also observed at all dose levels, all of which were within the historical control range for the testing facility, but for which a drug-related effect could also not be ruled out. The clinical significance of these findings is unknown. No guselkumab-related effects on functional or immunological development were observed in the infants from birth through 6 months of age.

No effects on fertility or early embryonic development were observed following administration of female guinea pigs with guselkumab at subcutaneous doses up to 100 mg/kg twice-weekly before mating, through mating, and during early gestation to implantation (C_{max} and AUC_{last} values were 106- and 12-fold greater, respectively, than the human levels).

In a male fertility and early embryonic development toxicity study conducted in guinea pigs, the incidence of total litter loss (5 of 22 untreated females) was increased following administration of males with guselkumab at a subcutaneous dose of 100 mg/kg twice weekly prior to mating and through mating for a total of 21 doses. In a second male fertility and early embryonic developmental toxicity study, there were no total litter losses in untreated females mated with treated males (100 mg/kg twice weekly). No effects on male fertility or early embryonic

development were observed at a dose of 25 mg/kg (C_{max} and AUC_{last} values were 51 - and 6-fold greater, respectively, than the human levels).

PATIENT MEDICATION INFORMATION

READ THIS FOR SAFE AND EFFECTIVE USE OF YOUR MEDICINE

PrTREMIFYA®
PrTREMIFYA One-Press™
(guselkumab injection)
Solution for injection
100 mg/ 1 mL

Read this carefully before you start taking **TREMIFYA®/TREMIFYA One-Press™** and each time you get a refill. This leaflet is a summary and will not tell you everything about this drug. Talk to your healthcare professional about your medical condition and treatment and ask if there is any new information about **TREMIFYA®/TREMIFYA One-Press™**.

What is TREMIFYA®/TREMIFYA One-Press™ used for?

- **Plaque Psoriasis**

TREMIFYA®/TREMIFYA One-Press™ is a prescription medicine used to treat adults with moderate to severe “plaque psoriasis”, an inflammatory condition affecting the skin and nails. Plaque psoriasis can cause raised, thick, red and scaly patches (“psoriatic lesions”) that can appear anywhere on your body. **TREMIFYA®/TREMIFYA One-Press™** reduces the inflammation and other symptoms of the disease.

- **Psoriatic Arthritis**

TREMIFYA®/TREMIFYA One-Press™ is used to treat adults with active psoriatic arthritis. Psoriatic arthritis is an inflammatory disease of the joints, usually accompanied by psoriasis. Psoriatic arthritis can cause pain, swelling and stiffness in the joints, in addition to a disruption in daily activities and fatigue. If you have active psoriatic arthritis, you will be given **TREMIFYA®/TREMIFYA One-Press™** alone or in combination with a conventional Disease Modifying Anti-Rheumatic Drug (DMARD) such as methotrexate. **TREMIFYA®/TREMIFYA One-Press™** reduces signs and symptoms of your arthritis and may improve symptoms in patients that have psoriasis.

How does TREMIFYA®/TREMIFYA One-Press™ work?

TREMIFYA®/TREMIFYA One-Press™ contains the active substance guselkumab. Guselkumab is a monoclonal antibody. Monoclonal antibodies are proteins that recognize and bind specifically to certain proteins in the body. This medicine works by neutralizing the activity of a protein called IL-23, which is present at increased levels in diseases such as plaque psoriasis.

Using **TREMIFYA®/TREMIFYA One-Press™** should improve your skin clearance and reduce your symptoms of psoriasis such as itching, pain, stinging, burning and skin tightness. In addition, **TREMIFYA®/TREMIFYA One-Press™** helps reduce the signs and symptoms of psoriatic arthritis.

What are the ingredients in TREMIFYA®/TREMIFYA One-Press™?

Medicinal ingredients: guselkumab

Non-medicinal ingredients: L-histidine, L-histidine monohydrochloride monohydrate, polysorbate 80, sucrose and water for injection.

TREMFYA® comes in the following dosage forms:

100mg/mL solution for injection in a single-dose pre-filled syringe

TREMFYA One-Press™ comes in the following dosage forms:

100mg/mL solution for injection in a single-dose patient-controlled injector

Do not use TREMFYA®/TREMFYA One-Press™ if:

- You are allergic to guselkumab or any of the ingredients in TREMFYA®/TREMFYA One-Press™. See **What are the ingredients in TREMFYA®/TREMFYA One-Press™**.

If you think you are allergic, ask your healthcare professional for advice before using TREMFYA®/TREMFYA One-Press™.

To help avoid side effects and ensure proper use, talk to your healthcare professional before you take TREMFYA®/TREMFYA One-Press™. Talk about any health conditions or problems you may have, including if you:

- are being treated for an infection or if you have an infection that does not go away or keeps coming back. TREMFYA®/TREMFYA One-Press™ may lower your ability to fight infections and may increase your risk of infections.
- have tuberculosis (TB) or have been in close contact with someone with TB.
- think you have an infection or have symptoms of an infection such as
 - fever or flu-like symptoms
 - muscle aches
 - cough
 - shortness of breath
 - burning when you urinate or urinating more often than normal
 - blood in your phlegm (mucus)
 - weight loss
 - warm, red or painful skin or sores on your body different from your psoriasis
 - diarrhea or stomach pain
- have recently had a vaccination or if you are due to have a vaccination during treatment with TREMFYA®/TREMFYA One-Press™. You should not be given certain types of vaccines (live vaccines) while using TREMFYA®/TREMFYA One-Press™.
- are pregnant, think that you may be pregnant or are planning to have baby. If you are a woman of childbearing potential, use adequate contraception while using TREMFYA®/TREMFYA One-Press™ and for at least 12 weeks after the last TREMFYA®/TREMFYA One-Press™ dose. Talk to your doctor about your contraception options.
- are breast-feeding or plan to breast-feed. You and your doctor should decide if you will breast-feed while using TREMFYA®/TREMFYA One-Press™.

Look out for infections and allergic reactions

- Do not use TREMFYA®/TREMFYA One-Press™ if you have any symptoms of infection unless you are instructed by your healthcare provider.

- **After starting TREMFYA®/TREMFYA One-Press™, call your healthcare provider right away, if you have any of the symptoms of an infection listed above.**
- **Serious allergic reactions, which can include symptoms of a swollen face, lips, mouth, tongue or throat, difficulty swallowing or breathing, hives and shortness of breath, have occurred with TREMFYA®/TREMFYA One-Press™. Tell your doctor or seek medical help immediately if you experience these symptoms.**

Children and adolescents (below the age of 18 years)

TREMFYA®/TREMFYA One-Press™ is not recommended for children and adolescents (under 18 years of age) because it has not been studied in this age group.

Tell your healthcare professional about all the medicines you take, including any drugs, vitamins, minerals, natural supplements or alternative medicines.

How to take TREMFYA®/TREMFYA One-Press™:

Always use this medicine exactly as your healthcare professional has told you. Check with your healthcare professional if you are not sure.

TREMFYA®/TREMFYA One-Press™ is given by injection under your skin (subcutaneous injection).

You and your healthcare professional should decide if you should inject TREMFYA®/TREMFYA One-Press™ yourself. It is important not to try to inject yourself until you have been trained by your healthcare professional. A caregiver may also give you your TREMFYA®/TREMFYA One-Press™ injection after proper training.

Before use, remove TREMFYA®/TREMFYA One-Press™ from the refrigerator. Keep TREMFYA®/TREMFYA One-Press™ inside the carton and allow it to reach room temperature by waiting for 30 minutes before injection.

Read the “Instructions for Use” document carefully before using TREMFYA®/TREMFYA One-Press™.

Usual dose:

Your doctor will decide how much TREMFYA®/TREMFYA One-Press™ you need and for how long.

Plaque Psoriasis

- The dose is 100 mg (the contents of 1 pre-filled syringe or the contents of 1 patient-controlled injector) by subcutaneous injection.
- The first dose may be given by your healthcare provider.
- After the first dose, you will have the next dose 4 weeks later, and then every 8 weeks.

Psoriatic Arthritis

- The dose is 100 mg (the contents of 1 pre-filled syringe or the contents of 1 patient-controlled injector) by subcutaneous injection.
- The first dose may be given by your healthcare provider.
- After the first dose, you will have the next dose 4 weeks later, and then every 8 weeks

TREMFYA®/TREMFYA One-Press™ is for long-term treatment. Your healthcare professional will regularly monitor your condition to check that the treatment is having the desired effect.

You should not stop using TREMFYA®/TREMFYA One-Press™ unless you think it is causing a severe side effect. Speak to your doctor as soon as possible if this happens.

Overdose:

If you accidentally inject more TREMFYA®/TREMFYA One-Press™ than you should or the dose has been given sooner than prescribed, inform your healthcare professional.

If you think you have taken too much TREMFYA®/TREMFYA One-Press™, contact your healthcare professional, hospital emergency department or regional Poison Control Centre immediately, even if there are no symptoms.

Missed dose:

If you forget to take your TREMFYA®/TREMFYA One-Press™ dose, inject a dose as soon as you remember. Then, take your next dose at your regular scheduled time. If you are not sure what to do, contact your healthcare professional.

What are possible side effects from using TREMFYA®/TREMFYA One-Press™?

As with all medicines, this medicine can cause side effects, although not everybody gets them.

Most of the following side effects are mild to moderate. If any of these side effects becomes severe, tell your healthcare professional.

Some side effects are very common (may affect more than 1 in 10 people)

- Infections of the nose, sinuses, or throat (e.g. common cold) or chest infections (bronchitis)

Some side effects are common (may affect up to 1 in 10 people):

- Redness, pain, irritation, swelling, bruising and/or itching at the injection site
- diarrhea
- headache
- joint pain
- increased level of liver enzymes in the blood

Some side effects are uncommon (may affect up to 1 in 100 people):

- stomach flu (gastroenteritis)
- herpes simplex infections (e.g. cold sores, genital herpes)
- fungal infections of the skin (e.g. athlete's foot)
- migraine
- yeast infections
- allergic reactions
- skin rash
- decreased number of a type of white blood cell called neutrophils

These are not all the possible side effects you may feel when taking TREMFYA®/TREMFYA One-Press™. If you experience any side effects not listed here, contact your healthcare professional.

If you have a troublesome symptom or side effect that is not listed here or becomes bad enough to interfere with your daily activities, talk to your healthcare professional.

Reporting Side Effects

You can report any suspected side effects associated with the use of health products to Health Canada by:

- Visiting the Web page on Adverse Reaction Reporting (<https://www.canada.ca/en/health-canada/services/drugs-health-products/medeffect-canada.html>) for information on how to report online, by mail or by fax; or
- Calling toll-free at 1-866-234-2345.

NOTE: Contact your health professional if you need information about how to manage your side effects. The Canada Vigilance Program does not provide medical advice.

Storage:

Store TREMFYA®/TREMFYA One-Press™ in the refrigerator between 2°C to 8°C (36°F to 46°F).

Do not freeze. Do not use if TREMFYA®/TREMFYA One-Press™ has been frozen.

Do not shake TREMFYA®/TREMFYA One-Press™.

Store in original packaging to protect from light until use.

Keep out of reach and sight of children.

Do not use TREMFYA®/TREMFYA One-Press™:

- if you notice that it is damaged or the seal is broken.
- if the liquid is discoloured, cloudy or you can see large particles floating in it.
- after the expiry date which is stated on the label and on the outer carton after “EXP.”

TREMFYA®/TREMFYA One-Press™ is for single use only. Ask your healthcare professional how to throw away medicines no longer required.

If you want more information about TREMFYA®/TREMFYA One-Press™:

- Talk to your healthcare professional
- For questions or concerns, contact the manufacturer, Janssen Inc.
(www.janssen.com/canada)

Find the full product monograph that is prepared for healthcare professionals and includes this Patient Medication Information by visiting the Health Canada website <https://health-products.canada.ca/dpd-bdpp/index-eng.jsp>; the manufacturer’s website www.janssen.com/canada, or by contacting the manufacturer at: 1-800-567-3331 or 1-800-387-8781.

This leaflet was prepared by Janssen Inc., Toronto, Ontario, M3C 1L9.

Last Revised: September 17, 2021

© 2021 JANSSEN Inc.

All trademarks used under license.

INSTRUCTIONS FOR USE

**PrTREMIFYA®
(guselkumab injection)
Pre-filled syringe**



SINGLE-DOSE

PLEASE READ THESE INSTRUCTIONS BEFORE USE

Important

TREMIFYA® comes as a single-dose pre-filled syringe containing one 100 mg dose. Each pre-filled syringe can be used only one time. Throw the used pre-filled syringe away (see Step 3) after each dose, even if there is medicine left in it. Do not reuse your pre-filled syringe.

If your doctor decides that you or a caregiver may be able to give your injections of TREMIFYA® at home, you should receive training on the right way to prepare and inject TREMIFYA® using the pre-filled syringe before attempting to inject.

Read this Instructions for Use document before using the TREMIFYA® pre-filled syringe and each time you get a refill. There may be new information. This instruction guide does not take the place of talking with your doctor about your medical condition or your treatment. Please also read the Package Insert carefully and discuss any questions you may have with your doctor or nurse.

The TREMIFYA® pre-filled syringe is intended for injection under the skin, not into the muscle or vein. After injection, the needle will retract into the body of the device and lock into place.



Storage information

Store in refrigerator at 2° to 8°C. Do not freeze.

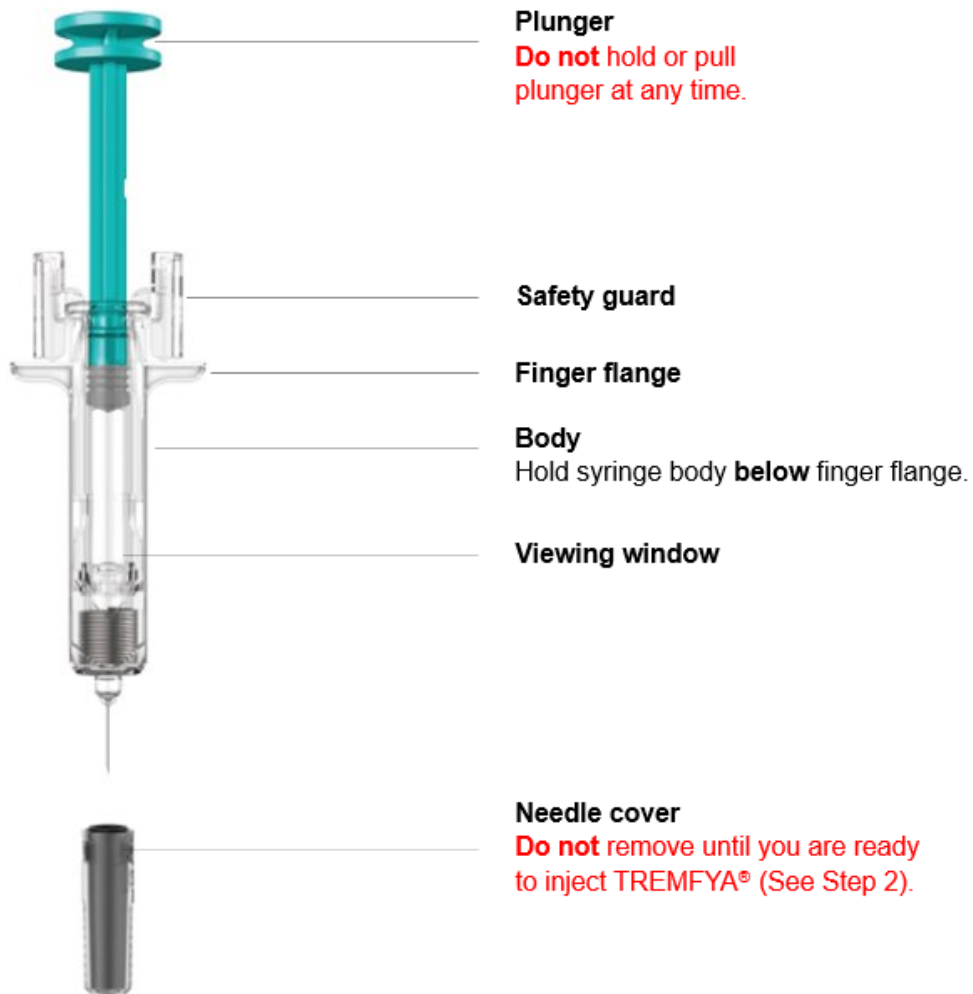
Keep TREMIFYA® and all medicines out of reach and sight of children.

Do not shake the pre-filled syringe.

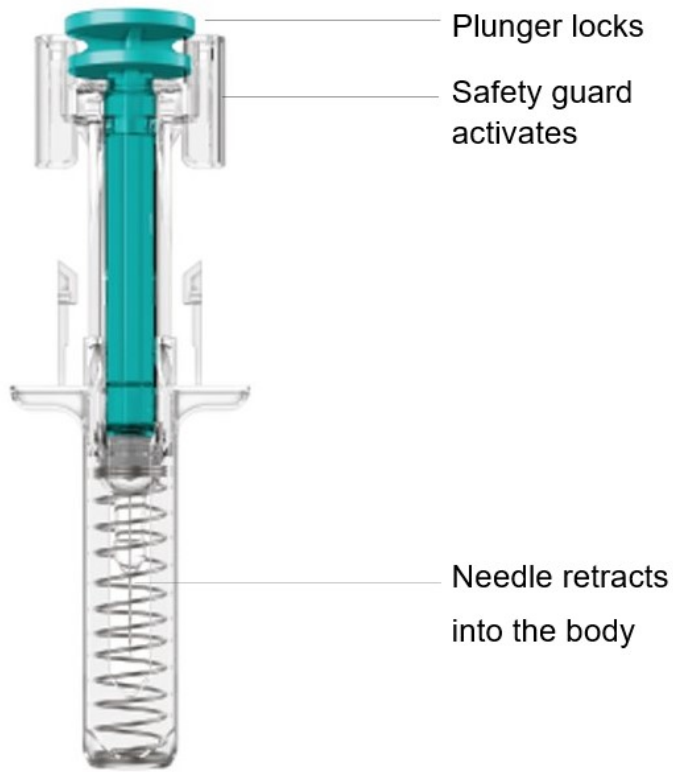
Keep TREMFYA® pre-filled syringe in the original carton to protect from light and physical damage.

Pre-filled syringe parts

Before injection

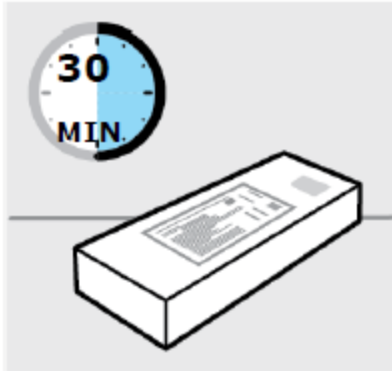


After injection



- **1 Alcohol swab**
- **1 Cotton ball or gauze pad**
- **1 Adhesive bandage**
- **1 Sharps container** (See Step 3)

1. Prepare for your injection



Inspect carton

Remove carton with the pre-filled syringe from the refrigerator.

Keep the pre-filled syringe in the carton and let it sit on a flat surface at room temperature for **at least 30 minutes** before use.

Do not warm any other way.

Check the expiration date ('EXP') on the back panel of the carton.

DO NOT use if the expiration date has passed.

Do not inject TREMFYA® if the perforations on the carton are broken.

Call your doctor or pharmacist for a refill.



Choose injection site

Select from the following areas for your injection:

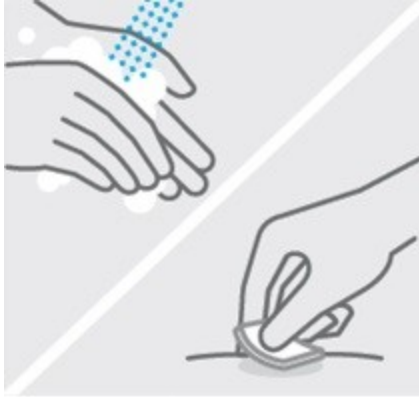
- **Front of thighs** (recommended)
- Lower abdomen

Do not use the 2-inch (5-centimetre) area around belly-button.

- Back of upper arms (if a caregiver is giving you the injection)

DO NOT inject into skin that is tender, bruised, red, scaly or hard.

Do not inject into areas with scars or stretch marks.

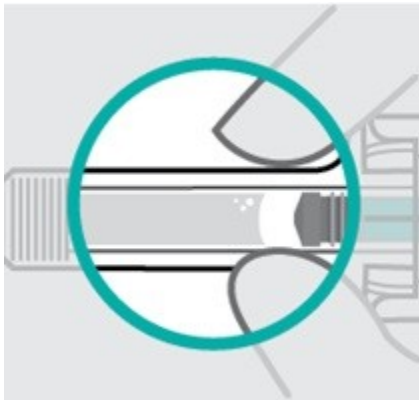


Clean injection site

Wash your hands well with soap and warm water.

Wipe your chosen injection site with an alcohol swab and allow it to dry.

Do not touch, fan or blow on the injection site after you have cleaned it.



Inspect liquid

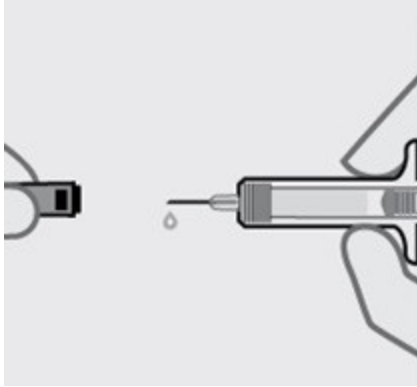
Take the pre-filled syringe out of the carton.

Check the liquid in the viewing window. It should be clear to slightly yellow and may contain tiny white or clear particles. You may also see one or more air bubbles.

This is normal.

Do not inject if the liquid is cloudy or discolored, or has large particles. Call your doctor or pharmacist for a refill.

2. Inject TREMFYA® using the pre-filled syringe



Remove needle cover

Hold syringe by the body and pull needle cover straight off.

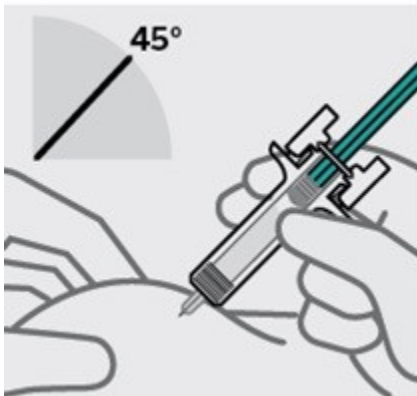
It is normal to see a drop of liquid.

Inject within 5 minutes of removing the needle cover.

DO NOT put needle cover back on, as this may damage the needle or cause a needle stick injury.

DO NOT touch needle or let it touch any surface.

DO NOT use the TREMFYA[®] pre-filled syringe if it is dropped. Call your doctor or pharmacist for a refill.



Position fingers and insert needle

Place your thumb, index and middle fingers **directly under the finger flange**, as shown.

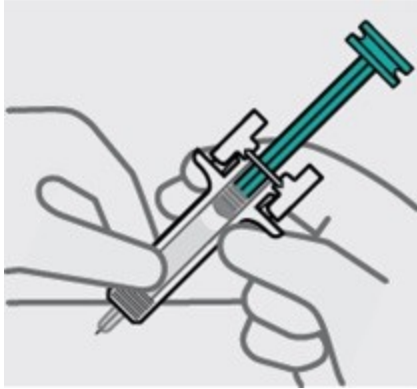
Do not touch plunger or area above finger flange as this may cause the needle safety device to activate.

Use your other hand to pinch skin at the injection site.

Position syringe at about a 45 degree angle to the skin.

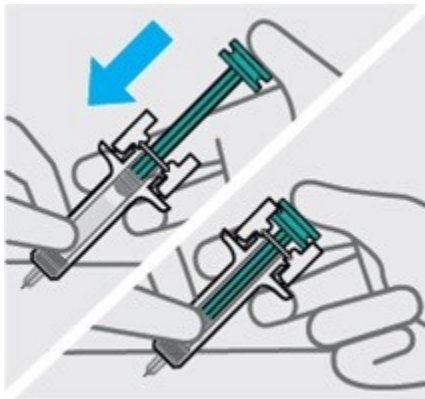
It is important to pinch enough skin to **inject under the skin** and not into the muscle.

Insert needle with a quick, dart-like motion.



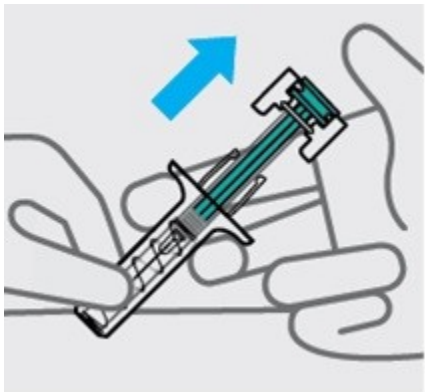
Release pinch and reposition hand

Use your free hand to grasp the body of the syringe.



Press plunger

Place thumb from the opposite hand on the plunger and press the plunger **all the way down until it stops**.



Release pressure from plunger

The safety guard will cover the needle and lock into place, removing the needle from your skin.

3. After your injection

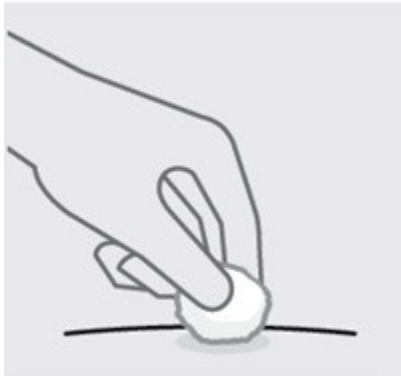


Throw the used pre-filled syringe away

Put your used syringe in a sharps disposal container right away after use.

Do not dispose in your household trash.

Make sure you dispose of the bin as instructed by your doctor or nurse when the container is full.



Check injection site

There may be a small amount of blood or liquid at the injection site. Hold pressure over your skin with a cotton ball or gauze pad until any bleeding stops.

Do not rub the injection site.

If needed, cover injection site with a bandage.



Need Help?

Call your doctor to talk about any questions you may have. For questions or concerns visit the manufacturer's website www.janssen.com/canada, or call 1-800-567-3331 or 1-800-387-8781.

This leaflet was prepared by Janssen Inc., Toronto, Ontario, M3C 1L9.

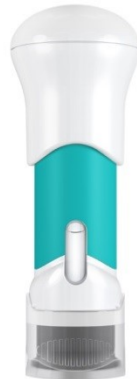
Last Revised: September 17, 2021

All trademarks used under license.

INSTRUCTIONS FOR USE

PrTREMIFYA One-Press™
(guselkumab injection)

patient-controlled injector



SINGLE-DOSE DEVICE

Important

TREMIFYA One-Press™ comes as a single-dose patient-controlled injector containing one 100 mg dose. Each One-Press injector can only be used one time. Throw away (see Step 3) after each dose, even if there is medicine left in it. Do not reuse your One-Press injector.

If your doctor decides that you or a caregiver may be able to give your injections of TREMFYA One-Press™ at home, you should receive training on the right way to prepare and inject TREMFYA One-Press™.

Please read these Instructions for use before using the TREMFYA One-Press™ and each time you fill your prescription. There may be new information. This instruction guide does not take the place of talking with your doctor about your medical condition or your treatment.

Please also read the Package Insert carefully before starting your injection and discuss any questions you may have with your doctor or nurse.



Storage information

Store in refrigerator at 2° to 8°C. **Do not freeze.**

Keep TREMFYA One-Press™ and all medicines out of reach and sight of children.

Do not shake at any time.

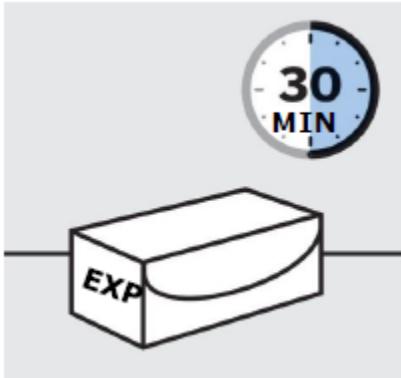
Keep TREMFYA One-Press™ in the original carton to protect from light and physical damage.

TREMFYA One-Press™ at-a-glance



- **1 Alcohol swab**
- **1 Cotton ball or gauze pad**
- **1 Adhesive bandage**
- **1 Sharps container (See Step 3)**

1. Prepare for your injection



Inspect carton

Remove carton with **TREMFYA One-Press™** from the refrigerator.

Keep **TREMFYA One-Press™** in the carton and let it sit on a flat surface at room temperature for **at least 30 minutes** before use.

Do not warm any other way.

Check the expiration date ('EXP') on the carton.

Do not use if the expiration date has passed.

Do not inject if perforations on the carton are broken.

Call your doctor or pharmacist for a new **TREMFYA One-Press™**.

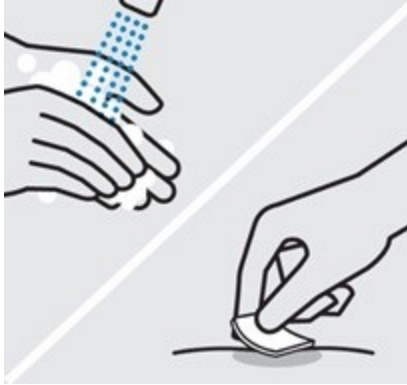


Choose injection site

Select from the following areas for your injection:

- **Front of thighs** (recommended)
- Lower abdomen
 - Do not** use the 2-inch (5-centimetre) area around your belly-button.
- Back of upper arms (if a caregiver is giving you the injection)

Do not inject into skin that is tender, bruised, red, scaly, hard or has scars or stretch marks.



Wash hands

Wash your hands well with soap and warm water.

Clean injection site

Wipe your chosen injection site with an alcohol swab and allow it to dry.

Do not touch, fan or blow on the injection site after you have cleaned it.



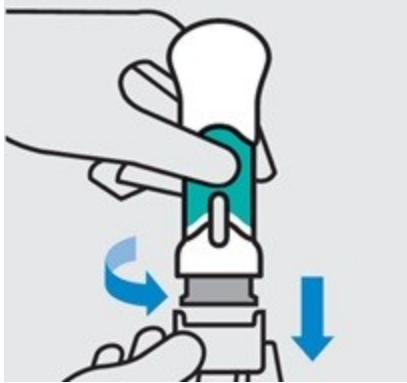
Inspect liquid in window

Take **TREMFYA One-Press™** out of the carton.

Check the liquid in the window. It should be clear to slightly yellow and may contain tiny white or clear particles. You may also see one or more air bubbles. This is normal.

Do not inject if the liquid is cloudy or discoloured, or has large particles. If you are uncertain, call your doctor or pharmacist for a new **TREMFYA One-Press™**.

2. Inject TREMFYA One-Press™ using the patient-controlled injector



Twist and pull off bottom cap

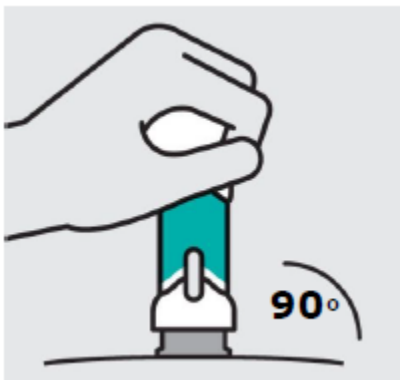
Keep hands away from the needle guard after the cap is removed.

Inject within 5 minutes of removing the cap.

Do not put the cap back on, this could damage the needle.

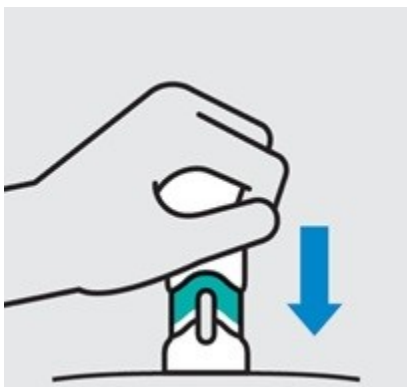
Do not use the product if it is dropped after removing the cap.

Call your doctor or pharmacist for a new **TREMFYA One-Press™**.



Place on skin

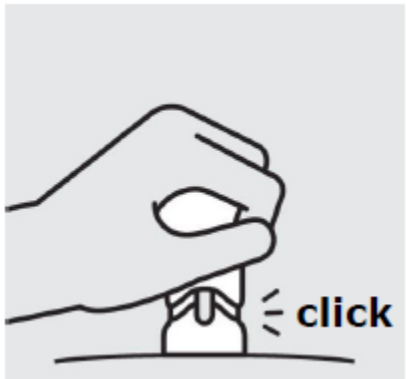
Position **TREMFYA One-Press™** straight onto the skin (about 90 degrees relative to injection site).



Push handle straight down

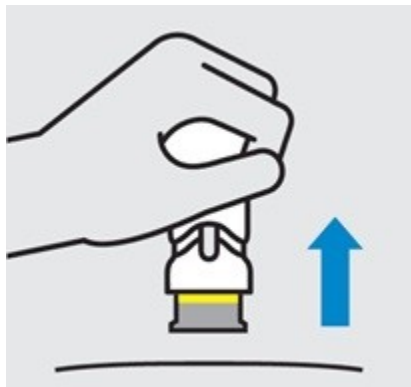
Medication injects as you push. Do this at a speed that is comfortable for you.

Do not lift **TREMFYA One-Press™** during the injection. The needle guard will lock and the full dose will not be delivered.



Complete injection

Injection is complete when the handle is pushed all the way down, you hear a click, and the teal body is no longer visible.



Lift straight up

The yellow band indicates that the needle guard is locked.

3. After your injection



Throw the used product away

Put your used product in a sharps disposal container right away after use.

Make sure you dispose of the bin as instructed by your doctor or nurse when the container is full.



Check injection site

There may be a small amount of blood or liquid at the injection site. Hold pressure over your skin with a cotton ball or gauze pad until any bleeding stops. **Do not** rub the injection site. If needed, cover injection site with a bandage.



Need Help?

Call your doctor to talk about any questions you may have. For questions or concerns visit the manufacturer's website www.janssen.com/canada, or call 1-800-567-3331 or 1-800-387-8781.

This leaflet was prepared by Janssen Inc., Toronto, Ontario, M3C 1L9.

Last Revised: September 17, 2021
All trademarks used under license.