

PRODUCT MONOGRAPH
INCLUDING PATIENT MEDICATION INFORMATION

Pr JAMP Olmesartan

Olmesartan Medoxomil Tablets USP

20 mg, and 40 mg Tablets

Oral

Angiotensin II AT₁ Receptor Blocker

JAMP Pharma Corporation

1310 rue Nobel
Boucherville, Quebec
J4B 5H3, Canada

Date of Initial Authorization: October 26, 2021

Submission Control Number: 247832

TABLE OF CONTENTS

TABLE OF CONTENTS.....	2
PART I: HEALTH PROFESSIONAL INFORMATION	4
1 INDICATIONS	4
1.1 Pediatrics	4
1.2 Geriatrics.....	4
2 CONTRAINDICATIONS	4
3 SERIOUS WARNINGS AND PRECAUTIONS BOX.....	5
4 DOSAGE AND ADMINISTRATION.....	5
4.1 Dosing Considerations	5
4.2 Recommended Dose and Dosage Adjustment	6
4.3 Reconstitution.....	6
4.4 Administration.....	6
4.5 Missed Dose.....	6
5 OVERDOSAGE	6
6 DOSAGE FORMS, STRENGTHS, COMPOSITION AND PACKAGING	7
7 WARNINGS AND PRECAUTIONS.....	7
7.1 Special Populations	9
7.1.1 Pregnant Women.....	9
7.1.2 Breast-feeding.....	10
7.1.3 Pediatrics (6–16 years of age).....	10
7.1.4 Geriatrics (≥65 years of age)	10
8 ADVERSE REACTIONS.....	11
8.1 Adverse Reaction Overview	11
8.2 Clinical Trial Adverse Reactions	11
8.3 Less Common Clinical Trial Adverse Reactions (<1%)	12
8.4 Abnormal Laboratory Findings: Hematologic, Clinical Chemistry and Other Quantitative Data	13
8.5 Clinical Trial Adverse Reactions (Pediatrics)	13
8.6 Post-Market Adverse Reactions	13
9 DRUG INTERACTIONS.....	14
9.1 Serious Drug Interactions Box.....	14
9.2 Overview	14

9.3	Drug-Drug Interactions	14
9.4	Drug-Food Interactions	16
9.5	Drug-Herb Interactions	16
9.6	Drug-Laboratory Test Interactions	16
9.7	Drug-Lifestyle Interactions	16
10	ACTION AND CLINICAL PHARMACOLOGY	16
10.1	Mechanism of Action	16
10.2	Pharmacodynamics	17
10.3	Pharmacokinetics	17
11	STORAGE, STABILITY AND DISPOSAL	18
12	SPECIAL HANDLING INSTRUCTIONS	18
PART II: SCIENTIFIC INFORMATION		19
13	PHARMACEUTICAL INFORMATION	19
14	CLINICAL TRIALS	19
14.1	Trial Design and Study Demographics	19
14.2	Study Results	20
14.3	Comparative Bioavailability Studies	21
15	MICROBIOLOGY	22
16	NON-CLINICAL TOXICOLOGY	22
17	SUPPORTING PRODUCT MONOGRAPHS	224
PATIENT MEDICATION INFORMATION		255

PART I: HEALTH PROFESSIONAL INFORMATION

1 INDICATIONS

JAMP Olmesartan (olmesartan medoxomil) is indicated for the treatment of mild to moderate essential hypertension.

JAMP Olmesartan may be used alone or in combination with thiazide diuretic.

1.1 Pediatrics

Pediatrics (6–16 years of age): Based on the data submitted and reviewed by Health Canada, the safety and efficacy of olmesartan medoxomil tablets in pediatric patients has been established; therefore, Health Canada has authorized an indication for pediatric use.

Antihypertensive effects of olmesartan medoxomil tablets have been demonstrated in hypertensive pediatric patients aged 6 to 16 years. Use of JAMP Olmesartan in this age group is supported by evidence from an adequate and well-controlled study of olmesartan medoxomil tablets in pediatric patients (see [CONTRAINDICATIONS](#), [WARNINGS AND PRECAUTIONS](#), [Special Populations](#), [ACTION AND CLINICAL PHARMACOLOGY](#), and [CLINICAL TRIALS](#)).

1.2 Geriatrics

Geriatrics (≥65 years of age): No overall differences in effectiveness or safety were observed between elderly patients and younger patients. Other reported clinical experience has not identified differences in responses between these subjects, however, greater sensitivity of some older individuals cannot be ruled out.

2 CONTRAINDICATIONS

JAMP Olmesartan is contraindicated in patients who are hypersensitive to this drug or to any ingredient in the formulation, including any non-medicinal ingredient, or component of the container. For a complete listing, see the [DOSAGE FORMS, COMPOSITION AND PACKAGING](#) section of the product monograph.

- Concomitant use of angiotensin receptor antagonists (ARBs) including olmesartan medoxomil tablets with aliskiren-containing drugs in patients with diabetes mellitus (type 1 or type 2) or moderate to severe renal impairment ($GFR < 60 \text{ mL/min/1.73 m}^2$) is contraindicated (see [WARNINGS AND PRECAUTIONS, Dual Blockade of the Renin-Angiotensin System \(RAS\) and Renal](#), and [DRUG INTERACTIONS, Dual Blockade of the Renin-Angiotensin-System \(RAS\) with ARBs, ACEIs or aliskiren-containing drugs](#)).
- Pregnant women (see [WARNINGS AND PRECAUTIONS, Special Populations, Pregnant Women](#))
- Breastfeeding women (see [WARNINGS AND PRECAUTIONS, Special Populations, Breastfeeding](#))

3 SERIOUS WARNINGS AND PRECAUTIONS BOX

Serious Warnings and Precautions

When used in pregnancy, angiotensin receptor (AT1) blockers (ARB) can cause injury or even death of the developing fetus. When pregnancy is detected, JAMP Olmesartan (olmesartan medoxomil tablets) should be discontinued as soon as possible (see [WARNINGS AND PRECAUTIONS, Special Populations](#)).

4 DOSAGE AND ADMINISTRATION

4.1 Dosing Considerations

- **Elderly:** no adjustment of dosage is generally required in elderly patients (see below for dose recommendations in patients with renal impairment). If up-titration to the maximum dose of 40 mg daily is required, blood pressure should be closely monitored (see [ACTION AND CLINICAL PHARMACOLOGY, Special Populations](#)).
- **Pediatrics (6–16 years of age):** Dosage must be individualized. The usual recommended starting dose of JAMP Olmesartan is 10 mg once daily for patients who weigh 20 to <35 kg, or 20 mg once daily for patients who weigh ≥35 kg. For patients requiring further reduction in blood pressure after 2 weeks of therapy, the dose of JAMP Olmesartan may be increased to a maximum of 20 mg once daily for patients who weigh 20 to <35 kg or 40 mg once daily for patients who weigh ≥35 kg.
- **Hepatic Impairment:**
Adults: No adjustment of dosage is required for patients with mild hepatic impairment. Data is lacking with respect to the use of 20 mg and 40 mg olmesartan medoxomil; therefore, a lower starting dose is recommended in patients with moderate liver disease, and the maximum dose of 20 mg olmesartan medoxomil daily should not be exceeded. Care should be exercised in patients with liver disease, especially in those patients with biliary obstructive disorders, as the majority of olmesartan is eliminated in the bile. No information is available in patients with severe liver disease; therefore, use of JAMP Olmesartan in this group of patients is not recommended (see [ACTION AND CLINICAL PHARMACOLOGY, Pharmacokinetics](#)).

Pediatrics (6–16 years of age): There are no data on the effect of olmesartan medoxomil tablets in pediatric patients with hepatic impairment; therefore, use of JAMP Olmesartan in this group of patients is not recommended.

- **Renal Impairment:**
Adults: Owing to limited experience of higher dosages in this patient group, the maximum dose in patients with mild to moderate renal impairment is 20 mg olmesartan medoxomil once daily. The use of olmesartan medoxomil in patients with severe renal impairment is not recommended, since there is only limited experience in this patient group.

Pediatrics (6–16 years of age): There are very limited data on the effect of olmesartan medoxomil tablets on blood pressure in pediatric patients with renal impairment; therefore,

use of JAMP Olmesartan in this group of patients is not recommended.

- **Volume Depletion:**

For patients with possible depletion of intravascular volume (e.g., patients treated with diuretics, particularly those with impaired renal function), JAMP Olmesartan should be initiated under close medical supervision and consideration should be given to use of a lower starting dose (see [WARNINGS AND PRECAUTIONS, Renal](#)).

4.2 Recommended Dose and Dosage Adjustment

Dosage must be individualized.

Adults:

The usual recommended starting dose of JAMP Olmesartan (olmesartan medoxomil tablets) is 20 mg once daily when used as monotherapy in patients who are not volume-contracted. For patients requiring further reduction in blood pressure after 2 weeks of therapy, the dose of JAMP Olmesartan may be increased to 40 mg. Doses above 40 mg do not appear to have greater effect. Twice-daily dosing offers no advantage over the same total dose given once daily.

Pediatrics (6–16 years of age):

See [DOSAGE AND ADMINISTRATION, Dosing Considerations, Pediatrics \(6–16 years of age\)](#).

Concomitant Diuretic Therapy

If blood pressure is not controlled by JAMP Olmesartan alone, a thiazide diuretic may be added.

4.3 Reconstitution

Not applicable

4.4 Administration

JAMP Olmesartan may be administered with or without food.

4.5 Missed Dose

If patients miss a dose, they should wait until their next scheduled dose. Patients should not double their dose.

5 OVERDOSAGE

Limited data are available in regard to overdosage in humans. The most likely manifestations of overdosage would be hypotension and tachycardia; bradycardia could be encountered if parasympathetic (vagal) stimulation occurs. If symptomatic hypotension should occur, supportive treatment should be initiated. The dialyzability of olmesartan is unknown.

For management of a suspected drug overdose, contact your regional poison control centre.

6 DOSAGE FORMS, STRENGTHS, COMPOSITION AND PACKAGING

Route of Administration	Dosage Form / Strength/Composition	Non-medicinal Ingredients
Oral	Film coated tablets, 20 mg and 40 mg	Colloidal silicon dioxide, hydroxy propyl cellulose, hypromellose, lactose monohydrate, magnesium stearate, microcrystalline cellulose, sodium starch glycolate, talc, titanium oxide.

COMPOSITION: JAMP Olmesartan contains 20 mg and 40 mg of olmesartan medoxomil.

JAMP Olmesartan 20 mg tablets are white round, biconvex, film coated tablets debossed with "2" on one side and plain on other side.

JAMP Olmesartan 40 mg tablets are white oval, biconvex, film coated tablets debossed with "4" on one side and plain on other side.

PACKAGING:

20 mg and 40 mg: Bottle of 90 tablets and Blister pack of 30 (3 x 10) tablets.

7 WARNINGS AND PRECAUTIONS

Please see the Serious Warnings and Precautions Box at the beginning of Part I: Health Professional Information.

Cardiovascular

Hypotension in Volume- or Salt-Depleted Patients: in patients with an activated renin-angiotensin system, such as volume- and/or salt-depleted patients (e.g., those being treated with high doses of diuretics), symptomatic hypotension may occur after initiation of treatment with JAMP Olmesartan. Treatment should start under close medical supervision. Similar considerations apply to patients with ischemic heart or cerebrovascular disease, in whom an excessive fall in blood pressure could result in myocardial infarction or cerebrovascular accident. If hypotension does occur, the patient should be placed in the supine position and, if necessary, given an intravenous infusion of normal saline (see [DOSAGE AND ADMINISTRATION](#)). A transient hypotensive response is not a contraindication to further treatment, which usually can be continued without difficulty once the blood pressure has stabilized.

Valvular Stenosis: there is concern on theoretical grounds that patients with aortic stenosis might be at a particular risk of decreased coronary perfusion, because they do not develop as much afterload reduction.

Dual blockade of the Renin-Angiotensin System (RAS)

There is evidence that co-administration of angiotensin receptor antagonists (ARBs), such as olmesartan medoxomil tablets, or of angiotensin-converting-enzyme inhibitors (ACE) inhibitors with aliskiren increases the risk of hypotension, syncope, stroke, hyperkalemia and deterioration of renal function, including renal failure, in patients with diabetes mellitus (type 1 or type 2) and/or moderate to severe renal impairment (GFR < 60 mL/min/1.73 m²). Therefore,

the use of olmesartan medoxomil tablets in combination with aliskiren-containing drugs is contraindicated in these patients (see [CONTRAINDICATIONS](#)). Further, co-administration of ARBs, including olmesartan medoxomil tablets, with other agents blocking the RAS, such as ACE inhibitors or aliskiren-containing drugs, is generally not recommended in other patients, since such treatment has been associated with an increased incidence of severe hypotension, renal failure and hyperkalemia.

Endocrine and Metabolism

Olmesartan medoxomil tablets contains olmesartan, a drug that inhibits the renin-angiotensin system (RAS). Drugs that inhibit the RAS can cause hyperkalaemia. Monitor serum electrolytes periodically.

Gastrointestinal

Sprue-like Enteropathy: Severe, chronic diarrhea with substantial weight loss has been reported in patients taking olmesartan months to years after drug initiation. Intestinal biopsies of patients often demonstrated villous atrophy. If a patient develops these symptoms during treatment with olmesartan and no other etiology is identified, discontinue JAMP Olmesartan.

Hepatic/Biliary/Pancreatic

No adjustment of dosage is required for patients with mild hepatic impairment. Data is lacking with respect to the use of 20 mg and 40 mg olmesartan medoxomil; therefore, a lower starting dose is recommended in patients with moderate liver disease, and the maximum dose of 20 mg olmesartan medoxomil daily should not be exceeded. Care should be exercised in patients with liver disease, especially in those patients with biliary obstructive disorders, as the majority of olmesartan is eliminated in the bile. No information is available in patients with severe liver disease; therefore, use of olmesartan medoxomil tablets in this group of patients is not recommended (see [ACTION AND CLINICAL PHARMACOLOGY, Pharmacokinetics](#)).

Renal

Impaired Renal Function: as a consequence of inhibiting the renin-angiotensin-aldosterone system, changes in renal function may be anticipated in susceptible individuals. In patients whose renal function may depend upon the activity of the renin-angiotensin-aldosterone system (e.g. patients with severe congestive heart failure), treatment with angiotensin converting enzyme inhibitors and angiotensin receptor antagonists has been associated with oliguria, progressive azotemia and (rarely) with acute renal failure and/or death. Similar results may be anticipated in patients treated with olmesartan medoxomil tablets (see [ACTION AND CLINICAL PHARMACOLOGY, Special Populations](#)).

The use of ARBs – including olmesartan medoxomil tablets or ACE inhibitors with aliskiren-containing drugs is contraindicated in patients with moderate to severe renal impairment (GFR<60 mL/min/1.73 m²) (see [CONTRAINDICATIONS](#) and [DRUG INTERACTIONS, Dual Blockade of the Renin-Angiotensin-System \(RAS\) with ARBs, ACE Inhibitors or aliskiren-containing drugs](#)).

In studies of ACE inhibitors in patients with unilateral or bilateral renal artery stenosis, increases in serum creatinine or blood urea nitrogen (BUN) have been reported. There has been no long-term use of olmesartan medoxomil in patients with unilateral or bilateral renal artery stenosis, but similar results may be expected.

Use of olmesartan medoxomil should include appropriate assessment of renal function.

Sensitivity/Resistance

Hypersensitivity: Anaphylactic reactions have been reported very rarely in patients treated with olmesartan.

7.1 Special Populations

JAMP Olmesartan is contraindicated for women who are pregnant, intend to become pregnant, or of childbearing potential who are not using adequate contraceptive measures (see boxed warning above and section 7.1.1).

7.1.1 Pregnant Women

Drugs that act directly on the renin-angiotensin-aldosterone-system (RAAS) can cause fetal and neonatal morbidity and death when administered to pregnant women. When pregnancy is detected, JAMP Olmesartan should be discontinued as soon as possible. If JAMP Olmesartan is used during pregnancy, or if the patient becomes pregnant while taking JAMP Olmesartan, the patient should be apprised of the potential hazard to a fetus.

The use of ARB is contraindicated during pregnancy. Patients planning pregnancy should be changed to alternative anti-hypertensive treatments which have an established safety profile for use in pregnancy. When pregnancy is diagnosed, treatment with angiotensin II antagonists should be stopped immediately, and, if appropriate, alternative therapy should be started.

The use of ARBs during the second and third trimesters is known to induce human fetotoxicity (decreased renal function, oligohydramnios, skull ossification retardation) and neonatal toxicity (renal failure, hypotension, hyperkalaemia). Should exposure to JAMP Olmesartan have occurred from the second trimester forward, ultrasound examinations of the renal function and of the skull are recommended.

Infants with a history of in utero exposure to ARBs should be closely observed for hypotension, oliguria, and hyperkalemia. If oliguria occurs, attention should be directed toward support of blood pressure and renal perfusion. Exchange transfusion or dialysis may be required as a means of reversing hypotension and/or substituting for impaired renal function; however, limited experience with those procedures has not been associated with significant clinical benefit.

Animal Data

No teratogenic effects were observed when olmesartan medoxomil was administered to pregnant rats at oral doses up to 1000 mg/kg/day (240 times the maximum recommended human dose [MRHD] of olmesartan medoxomil on a mg/m² basis) pregnant rabbits at oral doses up to 1 mg/kg/day (half the MRHD on a mg/m² basis; higher doses could not be evaluated for effects on fetal development as they were lethal to the does). In rats, significant decreases in pup birth weight and weight gain were observed at doses ≥ 1.6 mg/kg/day, and delays in developmental milestones and dose-dependent increases in the incidence of dilation of the renal pelvis were observed at doses ≥ 8 mg/kg/day. The no observed effect dose for developmental toxicity in rats is 1.3 mg/kg/day, about one-tenth the MRHD of 40 mg/day.

7.1.2 Breast-feeding

It is not known whether olmesartan is excreted in human milk, but olmesartan is secreted at low concentration in the milk of lactating rats. Because many drugs are excreted in human milk and because of their potential for affecting the nursing infant adversely, a decision should be made whether to discontinue nursing or discontinue the drug, taking into account the importance of the drug to the mother.

7.1.3 Pediatrics (6–16 years of age)

The antihypertensive effect of olmesartan medoxomil tablets was evaluated in one randomized, double-blind dose-response study of a limited duration of 3 weeks in pediatric patients 6 to 16 years of age. The clinical trial also included a 46-week open-label extension period that showed maintenance of the blood pressure lowering effects (see [CLINICAL TRIALS](#)). The pharmacokinetics of olmesartan medoxomil tablets were evaluated in pediatric patients 6 to 16 years of age (see [ACTION AND CLINICAL PHARMACOLOGY](#)). Olmesartan medoxomil tablets was generally well tolerated in pediatric patients, and the adverse experience profile was similar to that described for adults.

There are no data on the effect of olmesartan medoxomil tablets on blood pressure in neonates and pediatric patients with malignant hypertension.

Children <1 year of age must not receive olmesartan medoxomil tablets for hypertension. Drugs that act directly on the renin-angiotensin-aldosterone-system (RAAS) can affect the development of immature kidneys.

There are very limited data on the effect of olmesartan medoxomil tablets in pediatric patients 1–5 years of age.

Renal impairment: There are very limited data on the effect of olmesartan medoxomil tablets on blood pressure in pediatric patients with renal impairment.

Hepatic impairment: There are no data on the effect of olmesartan medoxomil tablets in pediatric patients with hepatic impairment.

7.1.4 Geriatrics (≥65 years of age)

No overall differences in effectiveness or safety were observed between elderly patients and younger patients. Other reported clinical experience has not identified differences in responses between these subjects, however, greater sensitivity of some older individuals cannot be ruled out (see [CLINICAL TRIALS](#)).

8 ADVERSE REACTIONS

8.1 Adverse Reaction Overview

Adults:

Olmesartan medoxomil tablets has been evaluated for safety in 3825 patients/subjects treated for essential hypertension, including 900 patients treated for at least 6 months and more than 525 for at least 1 year. Of these, 3275 patients were treated with olmesartan medoxomil monotherapy in controlled clinical trials.

In controlled clinical trials, discontinuation of therapy due to clinical adverse experiences occurred in 2.4% (79/3278) and 2.7% (i.e. 32/1179) of patients treated with olmesartan medoxomil tablets and placebo or active control, respectively.

Treatment with olmesartan medoxomil tablets was well tolerated, with an incidence of adverse events similar to placebo. Events generally were mild, transient and had no relationship to the dose of olmesartan medoxomil tablets. The following potentially serious adverse reactions have been reported with olmesartan medoxomil tablets in controlled trials: syncope, hypotension.

8.2 Clinical Trial Adverse Reactions

Because clinical trials are conducted under very specific conditions, the adverse reaction rates observed in the clinical trials may not reflect the rates observed in practice and should not be compared to the rates in the clinical trials of another drug. Adverse reaction information from clinical trials is useful for identifying drug-related adverse events and for approximating rates.

In double-blind placebo-controlled clinical trials, the following adverse events were reported with olmesartan medoxomil tablets occurring in >1% of patients, irrespective of relationship to study drug.

Table 1 - Adverse Events Occurring >1% in Placebo-controlled Monotherapy Studies^a

System Organ Class (SOC)	Placebo		Total Olmesartan Medoxomil	
	N=555		N=2540	
MedDRA Preferred term	N	%	N	%
Gastrointestinal disorders				
Diarrhea	4	(0.7)	27	(1.1)
General disorders and administration site conditions				
Influenza like illness	16	(2.9)	79	(3.1)
Infections and Infestations				
Upper respiratory tract infection	27	(4.9)	83	(3.3)
Bronchitis	10	(1.8)	51	(2.0)
Rhinitis	9	(1.6)	40	(1.6)
Pharyngitis	6	(1.1)	33	(1.3)
Sinusitis	11	(2.0)	29	(1.1)
Injury, poisoning and procedural complication				
Injury	7	(1.3)	34	(1.3)
Metabolism and nutrition disorders				
Hyperglycemia	15	(2.7)	32	(1.3)
Hypertriglyceridemia	6	(1.1)	29	(1.1)
Musculoskeletal and connective tissue disorders				
Back pain	8	(1.4)	41	(1.6)
Nervous system disorders				
Headache	40	(7.2)	141	(5.6)
Dizziness	5	(0.9)	70	(2.8)
Renal and urinary disorders				
Hematuria	10	(1.8)	49	(1.9)

^a Body systems in which patients in either treatment group experienced events and in which at least one event was reported in >1% of patients in either treatment group.

8.3 Less Common Clinical Trial Adverse Reactions (<1%)

Other (potentially important) adverse events that have been reported in controlled or open-label trials with an incidence of greater than 0.5%, regardless of causality:

Cardiac disorders: tachycardia.

Ear and labyrinth disorders: vertigo.

Gastrointestinal disorders: abdominal pain, dyspepsia, nausea.

General disorders and administration site conditions: chest pain, edema peripheral

Infections and infestations: gastroenteritis.

Metabolism and nutrition disorders: hypercholesterolemia, hyperlipidemia, hyperuricaemia.

Musculoskeletal and connective tissue disorders: arthralgia, arthritis, myalgia.

Renal and urinary disorders: albuminuria.
Respiratory, thoracic and mediastinal disorders: cough
Skin and subcutaneous tissue disorders: rash.

Facial edema was reported in 5 patients receiving olmesartan medoxomil. Angioedema has been reported with other angiotensin II antagonists.

8.4 Abnormal Laboratory Findings: Hematologic, Clinical Chemistry and Other Quantitative Data

In controlled clinical trials, clinically important changes in standard laboratory parameters were rarely associated with administration of olmesartan medoxomil.

Hemoglobin and Hematocrit: small decreases in hemoglobin and hematocrit (mean decreases of approximately 0.3 g/dL and 0.3 volume percent, respectively) were observed.

Liver Function Tests: elevations of liver enzymes and/or serum bilirubin were observed infrequently.

	<u>Placebo</u> (n=555)	<u>Total Olmesartan Medoxomil</u> (n=2450)
γGT increased	13 (2.3%)	57 (2.2%)
CPK increased	6 (1.1%)	40 (1.6%)
ALT increased	9 (1.6%)	33 (1.3%)
AST increased	6 (1.1%)	25 (1.0%)

8.5 Clinical Trial Adverse Reactions (Pediatrics)

Pediatrics (6–16 years of age): No relevant differences between the adverse experience profile for pediatric patients and that previously reported for adult patients were identified. The majority of treatment-emergent adverse events were mild or moderate in intensity and considered unrelated to study medication. Headache and dizziness were the most common AEs in children aged 6-16 years. There were no deaths.

8.6 Post-Market Adverse Reactions

Other adverse events reported rarely in post-marketing use include: asthenia, angioedema, vomiting, hyperkalemia, rhabdomyolysis, renal failure acute, blood creatinine increased, alopecia, pruritus, urticaria, palpitations, syncope, blood uric acid increased and sprue-like enteropathy.

Anaphylactic reactions have been reported very rarely in patients treated with olmesartan.

In the Randomised Olmesartan And Diabetes Microalbuminuria Prevention (ROADMAP) clinical study including 4447 patients with type 2 diabetes, normo-albuminuria and at least one additional cardiovascular risk factor, cardiovascular events occurred in 96 patients (4.3%) with olmesartan and in 94 patients (4.2%) with placebo. The incidence of cardiovascular mortality was higher with olmesartan compared to placebo treatment (15 patients (0.66%) vs.

3 patients (0.14%) [HR=4.94; 95% CI=1.43–17.06]). The patient population at increased risk had preexisting coronary artery disease.

9 DRUG INTERACTIONS

9.1 Serious Drug Interactions Box

Not applicable

9.2 Overview

Not applicable

9.3 Drug-Drug Interactions

The drugs listed in this table are based on either drug interaction case reports or studies, or potential interactions due to the expected magnitude and seriousness of the interaction (i.e., those identified as contraindicated).

Common name	Source of Evidence	Effect	Clinical comment
Agents Increasing Serum Potassium	T	JAMP Olmesartan decreases the production of aldosterone,	Frequent monitoring of serum potassium is recommended. potassium-sparing diuretics or potassium supplements should be given only for documented hypokalemia. Potassium-containing salt substitutes should be also used with caution.
Antacids	CT	The bioavailability of olmesartan was not significantly altered when co-administered with antacids [Al(OH) ₃ /Mg(OH) ₂].	
Cytochrome P450 Enzyme System	T	Unlike some other angiotensin II receptor blockers, olmesartan medoxomil is not metabolized by cytochrome P450 enzymes. Interactions with drugs that inhibit, induce or are metabolized by these enzymes are not expected	
Digoxin	CT	No pharmacokinetics or pharmacodynamics effects were reported when JAMP Olmesartan was co- administered with digoxin in healthy volunteers.	

Common name	Source of Evidence	Effect	Clinical comment
Diuretics	CT	Patients on diuretics, and especially those in whom diuretic therapy was recently instituted, may occasionally experience an excessive reduction in blood pressure after initiation of therapy with JAMP Olmesartan. No drug interaction of clinical significance has been identified with thiazide diuretics.	The possibility of symptomatic hypotension with the use of JAMP Olmesartan can be minimized by discontinuing the diuretic prior to initiation of treatment (see WARNINGS AND PRECAUTIONS, Cardiovascular, Hypotension in Volume-or Salt-Depleted Patients).
Dual Blockade of the Renin-Angiotensin-System (RAS) with ARBs, ACE inhibitors or aliskiren-containing drugs	T	The use of Dual Blockade of the Renin-Angiotensin-System (RAS) with ARBs, ACE inhibitors or aliskiren-containing drugs increases the risk of hypotension, syncope, stroke, hyperkalemia and deterioration of renal function, including renal failure, in patients with diabetes mellitus (type 1 or type 2) and/or moderate to severe renal impairment (GFR<60 mL/min/1.73 m ²).	Dual Blockade of the Renin-Angiotensin-System with ARBs, angiotensin converting enzyme (ACE) inhibitors or aliskiren-containing drugs is contraindicated in patients with diabetes and/or renal impairment, and is generally not recommended in any other patients, since such treatment has been associated with an increased incidence of severe hypotension, renal failure and hyperkalemia. See CONTRAINDICATIONS and WARNINGS AND PRECAUTIONS, Dual Blockade of the Renin-Angiotensin-System (RAS) .
Lithium salts	T	As with other drugs which eliminate sodium, lithium clearance may be reduced in the presence of olmesartan.	Serum lithium levels should be monitored carefully if lithium salts are to be administered with olmesartan medoxomil. Lithium generally should not be given with diuretics. Diuretic agents reduce the renal clearance of lithium and add a high risk of lithium toxicity.
Non-Steroidal Anti-Inflammatory Agents including	T	In patients who are elderly, volume-depleted (including those on diuretic therapy), or with compromised renal function, co-	Renal function should be monitored periodically in patients receiving olmesartan and NSAID therapy.

Common name	Source of Evidence	Effect	Clinical comment
Selective Cyclooxygenase-2 Inhibitors (COX-2 Inhibitors)		administration of NSAIDs, including selective COX-2 inhibitors, with angiotensin II receptor antagonists, including olmesartan, may result in deterioration of renal function, including possible acute renal failure. These effects are usually reversible. The antihypertensive effect of angiotensin II receptor antagonists, including olmesartan may be attenuated by NSAIDs including selective COX-2 inhibitors.	
Pravastatin	CT	Olmesartan medoxomil tablets decreased the C _{max} and AUC of pravastatin by approximately 25% and 21%, respectively.	Since there is a high degree of variability in the bioavailability of pravastatin, this finding is not considered to be clinically relevant.
Warfarin	CT	There was no effect on either the pharmacokinetics or pharmacodynamics of warfarin when co-administered with olmesartan medoxomil tablets in healthy volunteers.	

Legend: C = Case Study; CT = Clinical Trial; T = Theoretical

9.4 Drug-Food Interactions

JAMP Olmesartan may be administered with or without food.

9.5 Drug-Herb Interactions

Interactions with herbal products have not been established.

9.6 Drug-Laboratory Test Interactions

Interactions with laboratory tests have not been established.

9.7 Drug-Lifestyle Interactions

Not applicable

10 ACTION AND CLINICAL PHARMACOLOGY

10.1 Mechanism of Action

Olmesartan medoxomil, a prodrug, is hydrolyzed to olmesartan during absorption from the gastrointestinal tract. Olmesartan is a selective AT₁ subtype angiotensin II receptor antagonist.

Angiotensin II is formed from angiotensin I in a reaction catalyzed by angiotensin converting enzyme (ACE, kininase II). Angiotensin II is the principal pressor agent of the renin-angiotensin system, with effects that include vasoconstriction, stimulation of synthesis and release of aldosterone, cardiac stimulation and renal reabsorption of sodium. Olmesartan blocks the vasoconstrictor effects of angiotensin II by selectively blocking the binding of angiotensin II to the AT1 receptor in vascular smooth muscle. Its action is, therefore, independent of the pathways for angiotensin II synthesis. An AT2 receptor is found also in many tissues, but this receptor is not known to be associated with cardiovascular homeostasis. Olmesartan has more than a 12,500-fold greater affinity for the AT1 receptor than for the AT2 receptor.

Blockade of the renin-angiotensin system with ACE inhibitors, which inhibit the biosynthesis of angiotensin II from angiotensin I, is a mechanism of many drugs used to treat hypertension. ACE inhibitors also inhibit the degradation of bradykinin, a reaction also catalyzed by ACE. Because olmesartan does not inhibit ACE (kininase II), it does not affect the response to bradykinin. Whether this difference has clinical relevance is not yet known. Blockade of the angiotensin II receptor inhibits the negative regulatory feedback of angiotensin II on renin secretion, but the resulting increased plasma renin activity and circulating angiotensin II levels do not overcome the effect of olmesartan on blood pressure.

10.2 Pharmacodynamics

Olmesartan medoxomil inhibits the pressor effect of an angiotensin II infusion in a dose-dependent manner at doses of 2.5 to 40 mg. The inhibition was 90% at doses of olmesartan medoxomil >40 mg 24 hours post dose.

Plasma concentrations of angiotensin I and angiotensin II and plasma renin activity (PRA) increased after single and repeated administration of olmesartan medoxomil to healthy subjects and hypertensive patients. Repeated administration of up to 80 mg olmesartan medoxomil had minimal influence on aldosterone levels and no effect on serum potassium.

10.3 Pharmacokinetics

Absorption: Olmesartan medoxomil is rapidly and completely bioactivated by ester hydrolysis to olmesartan during absorption from the gastrointestinal tract. Olmesartan appears to be eliminated in a biphasic manner with a terminal elimination half-life of approximately 13 hours. Olmesartan shows linear pharmacokinetics following single oral doses of up to 320 mg and multiple oral doses of up to 80 mg. Steady-state levels of olmesartan are achieved within 3 to 5 days and no accumulation in plasma occurs with once-daily dosing.

The absolute bioavailability of olmesartan is approximately 26%. After oral administration, the peak plasma concentration (C_{max}) of olmesartan is reached after 1 to 2 hours. Food does not affect the bioavailability of olmesartan.

Distribution: The volume of distribution of olmesartan is approximately 17 L. Olmesartan is highly bound to plasma proteins (99%) and does not penetrate red blood cells. The protein binding is constant at plasma olmesartan concentrations well above the range achieved with recommended doses.

In rats, olmesartan crossed the blood-brain barrier poorly, if at all. Olmesartan passed across

the placental barrier in rats and was distributed to the fetus. Olmesartan was distributed to milk at low levels in rats.

Metabolism: following the rapid and complete conversion of olmesartan medoxomil to olmesartan during absorption, there is virtually no further metabolism of olmesartan.

Elimination: Total plasma clearance of olmesartan is 1.3 L/h with a renal clearance of 0.6 L/h. Approximately 35% to 50% of the absorbed dose is recovered in urine while the remainder is eliminated in feces via the bile.

Special Populations and Conditions

Pediatrics (6–16 years of age): The pharmacokinetics of olmesartan were studied in pediatric hypertensive patients aged 6 to 16 years. The clearance of olmesartan in pediatric patients was similar to that in adult patients when adjusted by the body weight.

Geriatrics (≥65 years of age): the pharmacokinetics of olmesartan was studied in the elderly (≥65 years). Overall, maximum plasma concentrations of olmesartan were similar in young adults and the elderly. Modest but statistically significant accumulation of olmesartan was observed in the elderly with repeated dosing; $AUC_{ss, \tau}$ was 33% higher in elderly patients, corresponding to an approximate 30% reduction in CLR. However, the clinical relevance is unknown.

Sex: minor differences were observed in the pharmacokinetics of olmesartan in women compared to men. AUC and C_{max} were 10–15% higher in women than in men.

Ethnic origin: the antihypertensive effect of olmesartan was smaller in Black adult and pediatric (6–16 years of age) patients (usually a low-renin population), as has been seen with other ACE inhibitors, angiotensin receptor blockers and beta-blockers.

Hepatic Insufficiency: increases in $AUC_{0-\infty}$ and C_{max} were observed in patients with moderate hepatic impairment compared to those in matched controls, with an increase in AUC of about 60%.

Renal Insufficiency: in patients with renal insufficiency, serum concentrations of olmesartan were elevated compared to subjects with normal renal function. After repeated dosing, the AUC was approximately tripled in patients with severe renal impairment (creatinine clearance <20 mL/min). The pharmacokinetics of olmesartan in patients undergoing hemodialysis has not been studied.

11 STORAGE, STABILITY AND DISPOSAL

Blister pack: The tablets should be stored at 15°C –30°C.

Bottle: The tablets should be stored at 15°C –30°C. Protect from moisture.

12 SPECIAL HANDLING INSTRUCTIONS

Not applicable

PART II: SCIENTIFIC INFORMATION

13 PHARMACEUTICAL INFORMATION

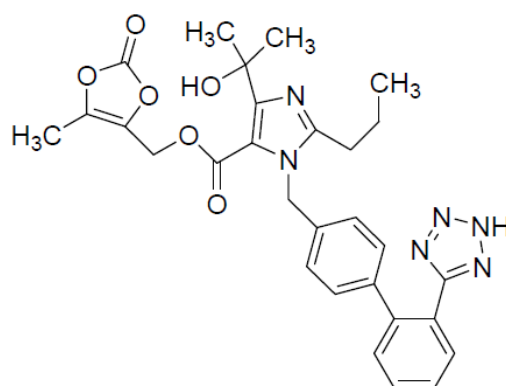
Drug Substance

Proper name: olmesartan medoxomil, Ph.Eur.

Chemical name: 1H-imidazole -5-carboxylic acid, 4-(1-Hydroxy-1-methylethyl)-2-propyl-1-[[2-(1H-tetrazol-5-yl)(1,1'-biphenyl]-4-yl] methyl]-(-5- methyl-2-oxo-1-3-dioxol-4-yl) methyl ester.

Molecular formula and molecular mass: C₂₉H₃₀N₆O₆ and 558.6 g/mol

Structural formula:



Physicochemical properties: Olmesartan medoxomil is a white or almost white crystalline powder. It is practically insoluble in water, slightly soluble in ethanol (96 per cent), practically insoluble in heptane.

pKa values: 4.96.

14 CLINICAL TRIALS

14.1 Trial Design and Study Demographics

Adults:

The antihypertensive effects of olmesartan medoxomil tablets have been demonstrated in seven double-blind, placebo-controlled, parallel-group studies at doses ranging from 2.5 to 80 mg for 6 to 12 weeks. A total of 548 patients received placebo and 2145 patients received olmesartan medoxomil tablets. The percent of patients treated with olmesartan medoxomil tablets in each of the dose groups were 13.1% (2.5 mg), 27.9% (5 mg), 20.8% (10 mg), 20.3% (20 mg), 9.1% (40 mg), and 8.8% (80 mg). In the placebo group, 56.8% were male and 43.2% were female, and in the combined olmesartan medoxomil tablets group, 51.9% were male and 48.1% were female. In the placebo and combined olmesartan medoxomil tablets groups 88.5% and 91.1% of patients respectively, were Caucasian. The mean age of the patients was 55.2 years in the placebo group and 55.7 years in the combined olmesartan medoxomil tablets group. Approximately 80% of patients were under 65 years of age and approximately 20% were 65 years of age or older.

14.2 Study Results

In the placebo-controlled studies, a total of 2693 patients with mild to moderate essential hypertension were studied. The primary efficacy parameter was the change from baseline in trough sitting DBP at the primary time points (week 6, week 8, or week 12). Olmesartan medoxomil tablets once daily (QD) was shown to lower systolic and diastolic blood pressure. The response was dose-related. An olmesartan medoxomil tablets dose of 20 mg daily produced a trough sitting placebo adjusted systolic and diastolic blood pressure reduction of about 10 and 6 mmHg, respectively ($P < 0.001$) and a dose of 40 mg daily produced a trough sitting BP reduction over placebo of about 12/7 mmHg ($P < 0.001$). Olmesartan medoxomil tablets doses greater than 40 mg had little additional effect. The onset of the antihypertensive effect occurred within 1 week and was largely manifested after 2 weeks. The blood pressure lowering effect was maintained throughout the 24-hour period with olmesartan medoxomil tablets once daily, with trough-to-peak ratios for systolic and diastolic response between 60 and 80%.

The blood pressure lowering effect of olmesartan medoxomil tablets, with and without hydrochlorothiazide, was maintained in patients treated for up to 1 year. There was no evidence of tachyphylaxis during long-term treatment with olmesartan medoxomil tablets or rebound effect following abrupt withdrawal of olmesartan medoxomil tablets after 1 year of treatment.

The antihypertensive effect and safety of olmesartan medoxomil tablets was similar in men and women and in patients older and younger than 65 years. The effect was smaller in Black patients (usually a low-renin population), as has been seen with other ACE inhibitors, angiotensin receptor blockers and beta-blockers.

When hydrochlorothiazide treatment was added, the resulting decrease in blood pressure was larger than the one induced by each component individually.

Pediatrics

The antihypertensive effects of olmesartan medoxomil tablets in the pediatric population were evaluated in a randomized, double-blind dose-response study involving 302 hypertensive patients aged 6 to 16 years. The study population consisted of an all Black cohort of 112 patients and a mixed racial cohort of 190 patients, including 38 Blacks. The etiology of the hypertension was predominantly essential hypertension (87% of the Black cohort and 67% of the mixed cohort). Patients who weighed 20 to <35 kg were randomized to 2.5 (low dose) or 20 (high dose) mg of olmesartan medoxomil tablets once daily and patients who weighed ≥ 35 kg were randomized to 5 (low dose) or 40 (high dose) mg of olmesartan medoxomil tablets once daily. At the end of 3 weeks, patients were re-randomized to continuing olmesartan medoxomil tablets or placebo for up to 2 weeks. During the initial 3-week dose-response phase, olmesartan medoxomil tablets significantly reduced both systolic and diastolic blood pressure in a weight-adjusted dose-dependent manner. Overall, the low and high dose levels of olmesartan medoxomil tablets significantly reduced systolic blood pressure by 6.6 and 11.9 mmHg from baseline, respectively, and diastolic blood pressure by 4.8 and 8.8 mmHg from baseline, respectively. These reductions in systolic and diastolic blood pressure included both drug and placebo effect. During the randomized withdrawal to placebo phase, mean systolic and diastolic blood pressure at trough were 3.2 and 2.8 mmHg lower, respectively, in patients continuing olmesartan medoxomil tablets than in patients withdrawn to placebo. These differences were

statistically different. As observed in adult populations, the blood pressure reductions were smaller in Black patients.

Detailed Pharmacology

The results of clinical and nonclinical pharmacology studies demonstrated that olmesartan, the active form of olmesartan medoxomil, is an angiotensin II receptor antagonist that binds selectively and competitively to the AT1 receptor, with negligible binding to the AT2 receptor. Olmesartan was shown to be both a potent and long-lasting angiotensin II antagonist in both humans and animals.

The antihypertensive effect of olmesartan depends on the activity of the renin angiotensin system, as demonstrated by its effectiveness in different animal models of hypertension. In rat models, olmesartan is most effective in renal hypertensive rats, followed by spontaneously hypertensive rats, normotensive rats, and DOCA-salt hypertensive rats. Olmesartan also significantly decreased blood pressure in Goldblatt hypertensive Beagle dogs. The antihypertensive effect is dose-dependent and has a long duration of action. From hemodynamic studies conducted with olmesartan medoxomil, it appears that the antihypertensive effect is due to dilation of blood vessels throughout the body; however, regional blood flow in major organs is unaffected except for the kidney, where blood flow is markedly increased. It was also demonstrated that olmesartan ameliorated hypertension- and diabetic induced nephropathy in different rat models.

General pharmacology studies demonstrated that olmesartan had little effect on a variety of physiological systems, except for those that would be expected based on its pharmacology activity. Therefore, it is expected that olmesartan would produce minimal adverse effects at pharmacological doses.

The inhibitory effect of olmesartan on the angiotensin II pressor response in rats is independent of cytochrome P450 metabolism.

14.3 Comparative Bioavailability Studies

A randomized, two-treatment, two-period, two-sequence, single 1 x 40 mg dose crossover bioequivalence study of JAMP Olmesartan (Olmesartan Medoxomil Tablets USP) 40 mg (JAMP Pharma Corporation) and ^{Pr}OLMETEC® (Olmesartan Medoxomil Tablets) 40 mg (Merck Canada Inc.) was conducted in 40 healthy adult Asian male subjects under fasting conditions. A summary of the bioavailability data from the 40 subjects that completed the study is presented in the following table:

SUMMARY TABLE OF THE COMPARATIVE BIOAVAILABILITY DATA

Olmesartan (1 x 40 mg) From measured data Geometric Mean Arithmetic Mean (CV %)				
Parameter	Test ¹	Reference ²	% Ratio of Geometric Means	90% Confidence Interval
AUC _T (ng•h/mL)	8615.60 9003.67 (29.43)	8134.80 8517.93 (30.61)	105.9	98.2 - 114.2
AUC _I (ng•h/mL)	8731.93 9128.14 (29.70)	8248.29 8641.06 (30.88)	105.9	98.2- 114.1
C _{max} (ng/mL)	1311.03 1361.26 (26.38)	1169.82 1225.55 (30.18)	112.1	103.8 - 121.0
T _{max} ³ (h)	2.00 (1.00-3.667)	2.00 (0.667-4.50)		
T _{1/2} ⁴ (h)	8.01 (15.68)	8.06 (17.95)		

¹ JAMP Olmesartan (Olmesartan Medoxomil Tablets USP) 40 mg (JAMP Pharma Corporation)

² PrOLMETEC® (Olmesartan Medoxomil Tablets) 40 mg (Merck Canada Inc.), currently marketed in Canada by Organon Canada Inc.

³ Expressed as the median (range) only

⁴ Expressed as the Arithmetic mean (%CV) only

15 MICROBIOLOGY

Not applicable

16 NON-CLINICAL TOXICOLOGY

Acute Toxicity

Olmesartan medoxomil has low oral acute toxicity in mice, rats and dogs. Doses up to 2000 mg/kg were administered to rats and mice and 1500 mg/kg to dogs with no clinical signs or mortality. Intravenous toxicity studies were conducted with olmesartan, the active metabolite, in mice and rats. Severe clinical signs occurred at all doses administered in mice (≥1700 mg/kg) and rats (≥1400 mg/kg) with lethality in mice at ≥1850 mg/kg and at ≥1550 mg/kg in rats.

Long Term Toxicity

Oral repeat dose toxicity studies were conducted in mice, rats and dogs with olmesartan medoxomil. Repeat dose (14-day) intravenous studies were conducted with olmesartan (the active metabolite) in rats and dogs. These studies demonstrated that olmesartan medoxomil was well tolerated at doses up to 4000 mg/kg/day in mice (90 days), 1000 mg/kg/day in rats (6 months) and 160 mg/kg/day in dogs (12 months). There were no treatment-related clinical findings at these dose levels. Severe clinicopathological effects associated with uremia necessitated the early necropsy of one dog administered 500 mg/kg (90-day study).

Hematological effects (decreased RBC count, hemoglobin, hematocrit, prothrombin time, activated partial thromboplastin time) in rodents, clinical chemistry changes (increase in BUN and creatinine) in rodents and dogs, and histopathological findings in kidneys of rodents and dogs were observed. In kidney, hypertrophy and hyperplasia of the juxtaglomerular apparatus, accompanied by an increase in cytoplasmic granularity are considered to be due to the pharmacological effects of olmesartan on the Renin-Angiotensin System. At high doses, renal tubular regeneration was observed in rats and dogs and progressive increase in chronic neuropathy was observed in rats.

Decreased heart weights, observed in mice and rats were attributed to a decrease in heart muscle load following a reduction in blood pressure.

Saline as a water source in rats treated with olmesartan medoxomil attenuated/eliminated the observed effect.

The findings from studies in rats and dogs where olmesartan was administered IV for 14 days were consistent with the above-mentioned findings observed after oral administration.

Mutagenicity

Both olmesartan medoxomil and olmesartan tested negative in the *in vitro* Syrian hamster embryo cell transformation assay and showed no evidence of genetic toxicity in the Ames (bacterial mutagenicity) test. However, both were shown to induce chromosomal aberrations in cultured cells *in vitro* (Chinese hamster lung) and both tested positive for thymidine kinase mutations in the *in vitro* mouse lymphoma assay. Olmesartan medoxomil tested negative *in vivo* for mutations in the MutaMouse intestine and kidney, for clastogenicity in mouse bone marrow (micronucleus test), DNA repair in the UDS assay and DNA fragmentation in the Comet assay at oral doses of up to 2000 mg/kg.

Carcinogenicity

Oncogenicity studies demonstrated that olmesartan medoxomil was not carcinogenic when administered at doses up to 2000 mg/kg/day in rats for up to 2 years (equivalent to about 480 times the maximum recommended human dose (MRHD) of 40 mg/day on a mg/m² basis).

A 26-week oncogenicity study conducted in the transgenic mouse strain C57BL/6 TacfBR-[KO] N5 p53(+/-) treated with up to 1000 mg/kg/day (about 120 times the MRHD) olmesartan medoxomil revealed no evidence of carcinogenic potential.

Reproduction Studies

There was no effect on fertility in rats at doses up to 1000 mg/kg/day (240 times the MRHD) of olmesartan medoxomil. No teratogenic effects and no significant effects on the number of corpora lutea, implants and dead/live fetuses were observed in rats at doses up to 1000 mg/kg/day and in rabbits at doses up to 1 mg/kg/day. Perinatal/postnatal toxicity studies in rats demonstrated that a NOAEL for developmental toxicity is 0.3 mg/kg/day of olmesartan medoxomil.

17. SUPPORTING PRODUCT MONOGRAPHS

1. Olmetec (Olmesartan Medoxomil Tablets, 5 mg, 20 mg and 40 mg), Submission control # 250401, Product Monograph, Organon Canada Inc., April 28, 2021.

READ THIS FOR SAFE AND EFFECTIVE USE OF YOUR MEDICINE

PATIENT MEDICATION INFORMATION

Pr JAMP Olmesartan

Olmesartan Medoxomil Tablets USP

Read this carefully before you start taking **JAMP Olmesartan** and each time you get a refill. This leaflet is a summary and will not tell you everything about this drug. Talk to your healthcare professional about your medical condition and treatment and ask if there is any new information about **JAMP Olmesartan**.

Serious Warnings and Precautions

JAMP Olmesartan should not be used during pregnancy. Taking JAMP Olmesartan during pregnancy can cause harm and even death to your baby. If you discover that you are pregnant while taking JAMP Olmesartan, stop the medication as soon as possible and contact your doctor.

What is JAMP Olmesartan used for?

JAMP Olmesartan is an angiotensin receptor blocker (ARB) used to lower blood pressure in adults and children above 6 years old.

High blood pressure increases the workload of the heart and arteries. If this condition continues for a long time, damage to the blood vessels of the brain, heart, and kidneys can occur, and may eventually result in a stroke, heart or kidney failure. High blood pressure also increases the risk of heart attacks. Reducing your blood pressure decreases your risk of developing these illnesses.

How does JAMP Olmesartan work?

JAMP Olmesartan contains a drug olmesartan medoxomil which is a drug that prevents the hormone in your body that causes the blood vessels to constrict. JAMP Olmesartan lowers blood pressure by relaxing your blood vessels.

JAMP Olmesartan does not cure your high blood pressure. It helps to control it. Therefore, it is important to continue taking JAMP Olmesartan regularly even if you feel fine.

What are the ingredients in JAMP Olmesartan?

Medicinal ingredients: Olmesartan medoxomil

Non-medicinal ingredients: Colloidal silicon dioxide, hydroxy propyl cellulose, hypromellose, lactose monohydrate, magnesium stearate, microcrystalline cellulose, sodium starch glycolate, talc, titanium oxide.

JAMP Olmesartan comes in the following dosage forms:

20 mg and 40 mg.

Do not use JAMP Olmesartan if:

- are allergic to Olmesartan medoxomil or to any of the other ingredients of JAMP Olmesartan.
- have experienced an allergic reaction with swelling of the hands, feet, or ankles, face, lips, tongue, throat, or sudden difficulty breathing or swallowing, to any ARB (You can recognize an ARB because its medicinal ingredient ends in “-**SARTAN**”). Be sure to tell your doctor, nurse, or pharmacist that this has happened to you.
- are pregnant or intend to become pregnant. If this is the case, talk to your doctor as soon as possible. Taking JAMP Olmesartan during pregnancy can cause harm and even death to your baby.
- are breastfeeding. It is possible that JAMP Olmesartan passes into breast milk.
- have diabetes or kidney disease and are already taking a medicine that contains aliskiren (such as Rasilez), used to lower high blood pressure.

JAMP Olmesartan is not recommended for use in children below the age of 6 years.

To help avoid side effects and ensure proper use, talk to your healthcare professional before you take JAMP Olmesartan. Talk about any health conditions or problems you may have, including if you:

- have experienced an allergic reaction to any drug used to lower blood pressure.
- have a narrow heart valve or arteries.
- had a heart attack or have heart or blood vessel disease.
- had a stroke or have a condition that affects the blood supply to the brain.
- have, liver or kidney disease.
- have blocked bile ducts.
- have diabetes.
- are dehydrated or suffer from excessive vomiting, diarrhea, or sweating.
- are on a low-salt diet.
- are taking a salt substitute that contains potassium, potassium supplements, or a potassium-sparing diuretic (a specific kind of “water pill” that makes your body keep potassium).
- are taking a medicine that contains aliskiren, such as Rasilez, used to lower high blood pressure.
- are taking an angiotensin converting enzyme inhibitor (ACE Inhibitors). You can recognize ACE Inhibitors because their medicinal ingredient ends in “-**PRIL**”.
- are less than 18 years old or the drug is for your child.

Other warnings you should know about:

JAMP Olmesartan can prevent the normal growth of your baby’s kidneys and skull if you take the drug during the second and third trimester. Your doctor may recommend an ultrasound.

JAMP Olmesartan can cause severe chronic diarrhea with substantial weight loss (sprue-like enteropathy). It can take months to years for symptoms to develop.

Driving and using machines: Before you perform tasks which may require special attention, wait until you know how you respond to JAMP Olmesartan. Dizziness, lightheadedness, or fainting can occur when you take the drug for the first time and when your dosage is increased.

Tell your healthcare professional about all the medicines you take, including any drugs, vitamins, minerals, natural supplements or alternative medicines.

The following may interact with JAMP Olmesartan:

- Agents increasing serum potassium, such as a salt substitute that contains potassium, potassium supplements, or a potassium-sparing diuretic (a specific kind of “water pill”).
- Blood pressure lowering drugs, including diuretics (“water pills”), aliskiren-containing products (e.g. Rasilez), or angiotensin converting enzyme inhibitors (ACE Inhibitors).
- Diuretics.
- Lithium used to treat bipolar disease.
- Nonsteroidal anti-inflammatory drugs (NSAIDs), used to reduce pain and swelling. Examples include ibuprofen, naproxen, and celecoxib (COX-2 Inhibitor).

How to take JAMP Olmesartan:

- JAMP Olmesartan may be taken with or without food.
- Take exactly as directed by your Doctor. Do NOT take more of it than prescribed.

Usual dose:

For adult patients:

- 20 mg tablet once daily.
- Can be increased to 40 mg by your doctor if your blood pressure is not well controlled after two weeks of treatment.

For pediatric patients age (6 to 16 years old):

Weight between 20 kg to less than 35 kg:

- 10 mg once daily.
- Can be increased to 20 mg once daily by the doctor if blood pressure is not well controlled after two weeks of treatment.

Weight of 35 kg or more:

- 20 mg once daily.
- Can be increased to 40 mg once daily if blood pressure is not well controlled after two weeks of treatment.

Overdose:

<p>If you think you, or a person you are caring for, have taken too much JAMP Olmesartan, contact your healthcare professional, hospital emergency department or regional poison control centre immediately, even if there are no symptoms.</p>
--

Missed Dose:

If you have forgotten to take your dose during the day, carry on with the next one at the usual time. Do not double dose.

What are possible side effects from using JAMP Olmesartan?

These are not all the possible side effects you may feel when taking JAMP Olmesartan. If you experience any side effects not listed here, contact your doctor.

Any medicine may have unintended or undesirable effects, so-called side effects.

Side effects may include:

- Back pain
- Decreased appetite
- Dizziness and headache
- Gastrointestinal problems
 - Constipation
 - Diarrhea
 - Nausea
 - Upset stomach
 - Vomiting
- Joint pain
- Muscle cramps, spasms and pain
- Rash, red itchy patches on skin
- Restlessness and weakness
- Upper respiratory infection
 - Congested and runny nose
 - Cough
 - Sore throat

JAMP Olmesartan can cause abnormal blood test results. Your doctor will decide when to perform blood tests and will interpret the results.

Serious side effects and what to do about them			
Symptom / effect	Talk to your healthcare professional		Stop taking drug and get immediate medical help
	Only if severe	In all cases	
COMMON			
Low Blood Pressure: dizziness, fainting, lightheadedness.	√		
Bronchitis: shortness of breath, weakness, high fever, coughing, fatigue, wheezing or whistling sound when breathing.		√	
Hematuria (blood in urine): pink, red or very dark urine.		√	
UNCOMMON			
Ear Disorder (Vertigo): a sense of dizziness, spinning.		√	
Tachycardia (abnormally fast heartbeat): dizziness, light headedness, shortness of breath, racing heart.	√		

Serious side effects and what to do about them			
Symptom / effect	Talk to your healthcare professional		Stop taking drug and get immediate medical help
	Only if severe	In all cases	
Hyperuricaemia (Increased levels of uric acid in the blood): swelling and redness in the joints.	√		
Chest Pain: Pressure or tightness in your chest	√		
Edema: unusual swelling of the arms, hands, legs, feet and ankles.	√		
Kidney Disorder: change in frequency of urination, nausea, vomiting, swelling of extremities, fatigue.		√	
Liver Disorder: yellowing of the skin or eyes, dark urine, abdominal pain, nausea, vomiting, loss of appetite.		√	
RARE			
Acute Kidney Failure: decrease or absence of urine, generalized swelling, weakness, shortness of breath, or irregular heartbeats, loss of appetite, lethargy and fatigue.			√
Allergic Reaction: rash, hives, swelling of the face, lips, tongue or throat, difficulty swallowing or breathing.			√
Rhabdomyolysis (breakdown of damaged muscles): muscle pain that you cannot explain, muscle tenderness or weakness, dark brown urine.		√	
Increased Levels of Potassium in the Blood: irregular heartbeats, muscle weakness and generally feeling unwell.		√	
UNKNOWN			
Sprue-like Enteropathy: severe chronic diarrhea with substantial weight loss.		√	

If you have a troublesome symptom or side effect that is not listed here or becomes bad enough to interfere with your daily activities, tell your healthcare professional.

Reporting Side Effects

You can report any suspected side effects associated with the use of health products to Health Canada by:

- Visiting the Web page on Adverse Reaction Reporting (<https://www.canada.ca/en/health-canada/services/drugs-health-products/medeffect-canada/adverse-reaction-reporting.html>) for information on how to report online, by mail or by fax; or
- Calling toll-free at 1-866-234-2345.

NOTE: Contact your health professional if you need information about how to manage your side effects. The Canada Vigilance Program does not provide medical advice.

Storage:

Blister pack: The tablets should be stored at 15°C –30°C.

Bottle: The tablets should be stored at 15°C –30°C. Protect from moisture.

Keep out of sight and reach of children and pets.

If you want more information about JAMP Olmesartan:

- Talk to your healthcare professional
- Find the full product monograph that is prepared for healthcare professionals and includes this Patient Medication Information by visiting the Health Canada website (<https://www.canada.ca/en/health-canada/services/drugs-health-products/drug-products/drug-product-database.html>) or the JAMP Pharma Corporation website (www.jamppharma.com) or by calling at 1-866-399-9091.

This leaflet was prepared by
JAMP Pharma Corporation
1310 rue Nobel
Boucherville, Quebec
J4B 5H3, Canada

Last revised: October 26, 2021