

**PRODUCT MONOGRAPH**

**Pr<sup>®</sup>MAR-DILTIAZEM CD**

Diltiazem Hydrochloride Controlled Delivery (Once-a-day) Capsules  
USP

120 mg, 180 mg, 240 mg and 300 mg  
Antihypertensive Agent / Antianginal Agent

Marcan Pharmaceuticals Inc.  
2 Gurdwara Road, Suite #112  
K2E1A2, Ottawa,  
Ontario, Canada

Date of Revision: November 16, 2021

**Control no. 250228**

## PRODUCT MONOGRAPH

### **Pr**MAR-DILTIAZEM CD

Diltiazem Hydrochloride Controlled Delivery (Once-a-day) Capsules USP  
120 mg, 180 mg, 240 mg and 300 mg

## ACTION AND CLINICAL PHARMACOLOGY

MAR-DILTIAZEM CD capsules is a formulation of diltiazem hydrochloride, which is a calcium ion influx inhibitor (calcium entry blocker or calcium ion antagonist).

### Mechanism of Action

The therapeutic effect of this group of drugs is believed to be related to their specific cellular action of selectively inhibiting transmembrane influx of calcium ions into cardiac muscle and vascular smooth muscle. The contractile processes of these tissues are dependent upon the movement of extracellular calcium into the cells through specific ion channels. Diltiazem blocks transmembrane influx of calcium through the slow channel without affecting to any significant degree the transmembrane influx of sodium through the fast channel. This results in a reduction of free calcium ions available within cells of the above tissues. Diltiazem does not alter total serum calcium.

**Angina:** The precise mechanism by which diltiazem relieves angina has not been fully determined but it is believed to be brought about largely by its vasodilator action.

In angina due to coronary spasm, diltiazem increases myocardial oxygen delivery by dilating both large and small coronary arteries and by inhibiting coronary spasm at drug levels which cause little negative inotropic effect. The resultant increases in coronary blood flow are accompanied by dose dependent decreases in systemic blood pressure and decreases in peripheral resistance.

In angina of effort it appears that the action of diltiazem is related to the reduction of myocardial oxygen demand. This is probably caused by a decrease in blood pressure brought about by the reduction of peripheral resistance and of heart rate.

**Hypertension:** The antihypertensive effect of diltiazem is believed to be brought about largely by its vasodilatory action on peripheral blood vessels with resultant decrease in peripheral vascular resistance.

### Hemodynamic and Electrophysiologic Effects

Diltiazem produces antihypertensive effects both in the supine and standing positions. Resting heart rate is usually slightly reduced. During dynamic exercise, increases in diastolic pressure are inhibited while maximum achievable systolic pressure is usually unaffected. Heart rate at

maximum exercise is reduced.

Studies to date, primarily in patients with normal ventricular function, have shown that cardiac output, ejection fraction and left ventricular end-diastolic pressure have not been affected.

Chronic therapy with diltiazem produces no change, or a decrease, in circulating plasma catecholamines. However, no increased activity of the renin-angiotensin-aldosterone axis has been observed. Diltiazem inhibits the renal and peripheral effects of angiotensin II.

In man, intravenous diltiazem in doses of 20 mg prolongs AH conduction time and AV node functional and effective refractory periods by approximately 20%. Chronic oral administration of diltiazem in doses up to 540 mg per day has resulted in small increases in PR interval. Second degree and third degree AV block have been observed (see WARNINGS). In patients with sick sinus syndrome, diltiazem significantly prolongs sinus cycle length (up to 50% in some cases).

### **Pharmacokinetics**

Diltiazem is well absorbed from the gastrointestinal tract and is subject to an extensive first-pass effect giving absolute bioavailability (compared to intravenous dosing) of about 40%. Therapeutic blood levels appear to be in the 50 to 200 ng/mL range and the plasma elimination half-life (beta-phase) following single or multiple drug administration is approximately 3.5 to 6.0 hours. In vitro human serum binding studies revealed that 70 to 80% of diltiazem is bound to plasma proteins. Diltiazem undergoes extensive hepatic metabolism in which only 2 to 4% of the drug appears unchanged in the urine and 6 to 7% appears as metabolites. The metabolic pathways of diltiazem include N- and O-demethylation (via cytochrome P450), deacetylation (via plasma and tissue esterases), in addition to conjugation (via sulfation and glucuronidation). *In vitro* studies have demonstrated that CYP 3A4 is the principal CYP isoenzyme involved in N-demethylation. The major metabolite, desacetyl diltiazem, is present in the plasma at levels 10 to 20% of the parent drug and is 25 to 50% as potent as diltiazem in terms of coronary vasodilation.

Diltiazem is considered to be a moderate inhibitor of CYP3A4, increasing the exposure of oral midazolam, a selective substrate of CYP3A4, by 3.8-fold. In an in vitro study, diltiazem was both a substrate and inhibitor of the efflux transporter, P-glycoprotein (P-gP). Co-administration of diltiazem with the P-gp probe substrate, digoxin, increased plasma concentrations and exposure of digoxin by approximately 20% and 40%, respectively.

Single oral doses of 30 to 120 mg of diltiazem immediate release tablets result in detectable plasma levels within 30 to 60 minutes and peak plasma levels 2 to 4 hours after drug administration. There is a departure from linearity of accumulation of diltiazem when diltiazem tablets are administered to steady-state in normal subjects. A 240 mg daily dose (60 mg QID) gave plasma levels 2.3 times higher than a 120 mg daily dose (30 mg QID) and a 360 mg daily dose (90 mg QID) had levels 1.7 times higher than the 240 mg daily dose.

**Diltiazem Hydrochloride Controlled Delivery Capsules:** More than 95% of drug is absorbed from the diltiazem hydrochloride controlled delivery (CD) formulation. A single 360 mg dose of the capsule results in detectable plasma levels within 2 hours and peak plasma levels between 10 and 14 hours. When diltiazem hydrochloride CD was taken with a high fat content breakfast, the

extent of diltiazem absorption was not affected but was delayed. Dose-dumping does not occur. The apparent elimination half-life after single or multiple dosing is 5 to 8 hours. A departure from linearity similar to that seen with diltiazem hydrochloride tablets is observed. As the dose of diltiazem hydrochloride is increased from a daily dose of 120 mg to 240 mg, there is an increase in the area under the curve (AUC) of 2.7 times. When the dose is increased from 240 mg to 360 mg there is an increase in AUC of 1.6 times.

A study which compared patients with normal hepatic function to liver cirrhosis patients noted an increase in half-life and a 69% increase in bioavailability in the hepatically impaired patients. A single dose study in patients with severely impaired renal function showed no difference in the half-life of diltiazem as compared to patients with normal renal function (see PRECAUTIONS and DOSAGE AND ADMINISTRATION).

### **Comparative Bioavailability**

A double blind, randomized, two-way, single dose, crossover comparative bioavailability study of MAR-DILTIAZEM CD 300 mg controlled delivery capsules (Marcan Pharmaceuticals Inc.) with PrApo-Diltiaz<sup>®</sup> CD 300 mg controlled delivery capsules (Apotex Inc.) was conducted in healthy, adult, male subjects under fasting conditions. Comparative bioavailability data from the 42 subjects that were included in the statistical analysis are presented in the following table:

**SUMMARY TABLE OF THE COMPARATIVE BIOAVAILABILITY DATA**

| Diltiazem<br>(1 x 300 mg)<br>Geometric mean<br>Arithmetic Mean (CV %) |                            |                            |                            |                         |
|---|----------------------------|----------------------------|----------------------------|-------------------------|
| Parameter   | Test <sup>1</sup>          | Reference <sup>2</sup>     | % Ratio of Geometric Means | 90% Confidence Interval |
| AUC <sub>T</sub><br>(ng·hr/mL)  | 4467.68<br>4743.15 (34.70) | 4333.50<br>4662.82 (35.44) | 103.1                      | 96.3 - 110.3            |
| AUC <sub>I</sub><br>(ng·hr/mL)  | 4551.77<br>4825.66 (34.21) | 4422.91<br>4747.58 (34.92) | 102.9                      | 96.3 - 110.0            |
| C <sub>max</sub><br>(ng/mL)   | 195.24<br>206.63 (36.09)   | 199.81<br>210.71 (34.58)   | 97.7                       | 92.3 - 103.5            |
| T <sub>max</sub> <sup>3</sup> (hr)                                    | 13.00 (2.00 -<br>20.00)    | 13.00 (4.00 -<br>24.00)    |                            |                         |
| T <sub>1/2</sub> <sup>4</sup> (hr)                                    | 8.13 (17.75)               | 8.40 (20.27)               |                            |                         |

<sup>1</sup> MAR-DILTIAZEM CD (diltiazem hydrochloride controlled delivery capsules), 300 mg (Marcan Pharmaceuticals Inc.)

<sup>2</sup> PrApo-Diltiaz<sup>®</sup> CD (diltiazem hydrochloride controlled delivery capsules), 300 mg (Apotex Inc.)

<sup>3</sup> Expressed as median (range) only

<sup>4</sup> Expressed as the arithmetic mean (CV%) only

A double blind, randomized, two-way, single dose, crossover comparative bioavailability study of MAR-DILTIAZEM CD 300 mg controlled delivery capsules (Marcan Pharmaceuticals Inc.) with <sup>Pr</sup>Apo-Diltiaz<sup>®</sup> CD 300 mg controlled delivery capsules (Apotex Inc.) was conducted in healthy, adult, male subjects under high-fat, high-calorie fed conditions. Comparative bioavailability data from the 43 subjects that were included in the statistical analysis are presented in the following table:

**SUMMARY TABLE OF THE COMPARATIVE BIOAVAILABILITY DATA**

| Diltiazem<br>(1 x 300 mg)<br>Geometric mean<br>Arithmetic Mean (CV %) |                            |                            |                            |                         |
|---|----------------------------|----------------------------|----------------------------|-------------------------|
| Parameter   | Test <sup>1</sup>          | Reference <sup>2</sup>     | % Ratio of Geometric Means | 90% Confidence Interval |
| AUC <sub>T</sub><br>(ng·hr/mL)  | 4740.71<br>4964.18 (32.30) | 4961.58<br>5242.38 (33.20) | 95.5                       | 90.0 - 101.4            |
| AUC <sub>I</sub><br>(ng·hr/mL)  | 4832.35<br>5052.40 (31.93) | 5063.74<br>5342.19 (32.72) | 95.4                       | 90.1 - 101.1            |
| C <sub>max</sub><br>(ng/mL)   | 207.58<br>212.91 (26.39)   | 214.95<br>224.31 (33.08)   | 96.6                       | 91.1 - 102.4            |
| T <sub>max</sub> <sup>3</sup> (hr)                                    | 8.00 (3.00 - 26.02)        | 10.00 (5.00 - 24.00)       |                            |                         |
| T <sub>1/2</sub> <sup>4</sup> (hr)                                    | 8.56 (21.12)               | 8.44 (20.84)               |                            |                         |

<sup>1</sup> MAR-DILTIAZEM CD (diltiazem hydrochloride controlled delivery capsules), 300 mg (Marcan Pharmaceuticals Inc.)

<sup>2</sup> <sup>Pr</sup>Apo-Diltiaz<sup>®</sup> CD (diltiazem hydrochloride controlled delivery capsules), 300 mg (Apotex Inc.)

<sup>3</sup> Expressed as median (range) only

<sup>4</sup> Expressed as the arithmetic mean (CV%) only

A single dose, double-blinded, 2-way crossover comparative bioavailability study, conducted under fed conditions, was performed on healthy male volunteers. The results obtained from 15 volunteers who completed the study are summarized in the following table. The rate and extent of absorption of diltiazem was measured and compared following a single oral dose (1 x 300 mg controlled delivery capsule) of APO-DILTIAZ CD (diltiazem hydrochloride) 300 mg controlled delivery capsules (Apotex Inc.) and Cardizem<sup>®</sup> CD (diltiazem hydrochloride) 300 mg controlled delivery capsules (Nordic Laboratories, Inc.).

| Diltiazem (1 x 300 mg)<br>From Measured Data<br>Geometric Mean<br>Arithmetic Mean<br>(CV %)  |                   |                        |   |  |
|--|-------------------|------------------------|---|--|
| Parameter  | Test*             | Reference <sup>†</sup> | Ratio of Geometric Means (%) <sup>#</sup> | 90% Confidence Interval (%) <sup>#</sup> |
| AUC <sub>t</sub> (ng•h/mL)   | 2428<br>2787 (59) | 2517<br>3001 (65)      | 96.4                                      | 83.6 – 111.1                             |
| AUC <sub>x</sub> (ng•h/mL)   | 1874<br>2121 (56) | 1722<br>1998 (59)      | 108.4                                     | 92.7 – 126.7                             |
| AUC <sub>l</sub> (ng•h/mL)   | 2487<br>2856 (59) | 2602<br>3097 (65)      | 95.6                                      | 83.2 – 109.8                             |
| C <sub>max</sub> (ng/mL)   | 136<br>155 (53)   | 122<br>141 (58)        | 110.8                                     | 93.6 – 131.3                             |
| T <sub>max</sub> <sup>§</sup> (h)  | 8.40 (49)         | 16.0 (50)              |   |  |
| t <sub>1/2</sub> <sup>§</sup> (h)  | 4.77 (28)         | 5.21 (28)              |   |  |
| * APO-DILTIAZ CD (diltiazem hydrochloride) 300 mg controlled delivery capsules (Apotex Inc.)<br><sup>†</sup> Cardizem <sup>®</sup> CD (diltiazem hydrochloride) 300 mg controlled delivery capsules (Nordic Laboratories, Inc.) were purchased in Canada.<br><sup>§</sup> Expressed as arithmetic means (CV %) only.<br><sup>#</sup> Based on least squares means. |                   |                        |   |  |

A single dose, double-blinded, 2-way crossover comparative bioavailability study, conducted under fasting conditions, was performed on healthy male volunteers. The results obtained from 16 volunteers who completed the study are summarized in the following table. The rate and extent of absorption of diltiazem was measured and compared following a single oral dose (1 x 300 mg controlled delivery capsule) of APO-DILTIAZ CD (diltiazem hydrochloride) 300 mg controlled delivery capsules (Apotex Inc.) and Cardizem<sup>®</sup> CD (diltiazem hydrochloride) 300 mg controlled delivery capsules (Nordic Laboratories, Inc.).

| Diltiazem (1 x 300 mg)<br>From Measured Data<br>Geometric Mean<br>Arithmetic Mean<br>(CV %)  |                   |                        |   |  |
|--|-------------------|------------------------|---|--|
| Parameter  | Test*             | Reference <sup>†</sup> | Ratio of Geometric Means (%) <sup>#</sup> | 90% Confidence Interval (%) <sup>#</sup> |
| AUC <sub>t</sub> (ng•h/mL)   | 2037<br>2133 (30) | 2026<br>2192 (38)      | 100.5                                     | 87.9 – 114.8                             |
| AUC <sub>x</sub> (ng•h/mL)   | 1616<br>1697 (31) | 1530<br>1659 (40)      | 105.6                                     | 92.3 – 120.8                             |
| AUC <sub>l</sub> (ng•h/mL)   | 2067<br>2158 (29) | 2059<br>2226 (39)      | 101.1                                     | 88.1 – 116.0                             |
| C <sub>max</sub> (ng/mL)   | 107<br>112 (29)   | 118<br>127 (39)        | 90.8                                      | 80.3 – 102.7                             |
| T <sub>max</sub> <sup>§</sup> (h)  | 10.6 (57)         | 11.2 (52)              |   |  |
| t <sub>1/2</sub> <sup>§</sup> (h)  | 5.58 (21)         | 6.05 (22)              |   |  |
| * APO DILTIAZ CD (diltiazem hydrochloride) 300 mg controlled delivery capsules (Apotex Inc.)<br><sup>†</sup> Cardizem <sup>®</sup> CD (diltiazem hydrochloride) 300 mg controlled delivery capsules (Nordic Laboratories, Inc.) were purchased in Canada.<br><sup>§</sup> Expressed as arithmetic means (CV %) only.<br><sup>#</sup> Based on least squares means. |                   |                        |   |  |

A multiple dose, 2-way crossover comparative bioavailability study, conducted under steady state conditions, was performed on healthy male volunteers. The results obtained from 16 volunteers who completed the study are summarized in the following table. The rate and extent of absorption of diltiazem was measured and compared following multiple oral doses (1 x 300 mg controlled delivery capsules administered once daily for 7 days) of APO-DILTIAZ CD (diltiazem hydrochloride) 300 mg controlled delivery capsules (Apotex Inc.) and Cardizem® CD (diltiazem hydrochloride) 300 mg controlled delivery capsules (Nordic Laboratories, Inc.)

| Diltiazem<br>(1 x 300 mg once daily for 7 days) From Measured Data<br>Geometric Mean<br>Arithmetic Mean<br>(CV %)   |                   |                   |                                |                               |
|---|-------------------|-------------------|--------------------------------|-------------------------------|
| Parameter   | Test*             | Reference†        | Ratio of Geometric Means (%) # | 90% Confidence Interval (%) # |
| AUC <sub>T</sub> (ng•h/mL)  | 3121<br>3345 (38) | 3100<br>3307 (36) | 100.7                          | 91.9 – 110.3                  |
| C <sub>max</sub> (ng/mL)  | 206<br>220 (38)   | 200<br>214 (36)   | 102.7                          | 92.8 – 113.8                  |
| C <sub>min</sub> (ng/mL)  | 73.8<br>82.7 (47) | 80.4<br>89.4 (46) | 91.7                           | 80.4 – 104.5                  |
| T <sub>max</sub> § (h)  | 7.25 (40)         | 7.00 (65)         |                                |                               |
| * APO-DILTIAZ CD (diltiazem hydrochloride) 300 mg controlled delivery capsules (Apotex Inc.)<br>† Cardizem® CD (diltiazem hydrochloride) 300 mg controlled delivery capsules (Nordic Laboratories, Inc.) were purchased in Canada.<br>§ Expressed as arithmetic means (CV %) only.<br># Based on least squares means. |                   |                   |                                |                               |



A multiple dose, 2-way crossover comparative bioavailability study, conducted under steady state conditions, was performed on healthy male volunteers. The results obtained from 16 volunteers who completed the study are summarized in the following table. The rate and extent of absorption of diltiazem was measured and compared following multiple oral doses (1 x 120 mg controlled delivery capsules administered once daily for 7 days) of APO-DILTIAZ CD (diltiazem hydrochloride) 120 mg controlled delivery capsules (Apotex Inc.) and Cardizem<sup>®</sup>CD (diltiazem hydrochloride) 120 mg controlled delivery capsules (Marion Merrell Dow (Canada) Inc.).

| Diltiazem<br>(1 x 120 mg once daily for 7 days)<br>From Measured Data<br>Geometric Mean<br>Arithmetic Mean<br>(CV %)  |                   |                        |   |  |
|---|-------------------|------------------------|---|--|
| Parameter   | Test*             | Reference <sup>†</sup> | Ratio of Geometric Means (%) <sup>#</sup> | 90% Confidence Interval (%) <sup>#</sup> |
| AUC <sub>T</sub> (ng•h/mL)  | 775<br>827 (34)   | 779<br>825 (33)        | 100                                       | 87.5 – 113.1                             |
| C <sub>max</sub> (ng/mL)  | 55.0<br>58.3 (33) | 55.8<br>58.4 (31)      | 99  | 85.4 – 113.8                             |
| C <sub>min</sub> (ng/mL)  | 16.7<br>17.2 (50) | 15.3<br>16.7 (42)      | 104                                       | 85.2 – 127.8                             |
| T <sub>max</sub> <sup>§</sup> (h)   | 7.94 (42)         | 8.00 (62)              |   |  |
| * APO-DILTIAZ CD (diltiazem hydrochloride) 120 mg controlled delivery capsules (Apotex Inc.)<br><sup>†</sup> Cardizem <sup>®</sup> CD (diltiazem hydrochloride) 120 mg controlled delivery capsules (Marion Merrell Dow (Canada) Inc.) were purchased in Canada.<br><sup>§</sup> Expressed as arithmetic means (CV %) only.<br><sup>#</sup> Based on least squares means. |                   |                        |   |  |

## **INDICATIONS AND CLINICAL USE**

### **Angina**

1. MAR-DILTIAZEM CD is indicated for the management of chronic stable angina (effort- associated angina) without evidence of vasospasm in patients who remain symptomatic despite adequate doses of beta-blockers and/or organic nitrates or who cannot tolerate those agents.
2. MAR-DILTIAZEM CD may be tried in combination with beta-blockers in chronic stable angina patients with normal ventricular function. When such concomitant therapy is introduced, patients must be monitored closely (See WARNINGS).
3. Since the safety and efficacy of MAR-DILTIAZEM CD capsules in the management of unstable or vasospastic angina has not been substantiated, use of this formulation for these indications is not recommended.

### **Hypertension**

MAR-DILTIAZEM CD is indicated for the treatment of mild to moderate essential hypertension. MAR-DILTIAZEM CD should normally be used in those patients in whom treatment with diuretics or beta-blockers has been ineffective, or has been associated with unacceptable adverse effects.

MAR-DILTIAZEM CD can be tried as an initial agent in those patients in whom the use of diuretics and/or beta-blockers is contraindicated, or in patients with medical conditions in which these drugs frequently cause serious adverse effects.

Safety of concurrent use of diltiazem hydrochloride CD with other antihypertensive agents has not been established.

## **CONTRAINDICATIONS**

Diltiazem Hydrochloride is contraindicated:

- In patients with sick sinus syndrome except in the presence of a functioning ventricular pacemaker;
- In patients with second or third degree AV block;
- In patients with known hypersensitivity to diltiazem or to any of the excipients;
- In patients with hypotension (less than 90 mm Hg systolic);
- In patients with severe bradycardia (below 40 beats per minute)
- In myocardial infarction patients, who have left ventricular failure manifested by pulmonary congestion;
- In pregnancy and in women of child-bearing potential. Fetal malformations and adverse effects on pregnancy have been reported in animals. In repeated dose studies a high incidence of vertebral column malformations was present in the offspring of mice

receiving more than 50 mg/kg of diltiazem hydrochloride orally. Nursing mothers: see PRECAUTIONS.

In the offspring of mice receiving a single oral dose of 50 or 100 mg/kg on day 12 of gestation, the incidence of cleft palate and malformed extremities was significantly higher. Vertebral malformations were most prevalent when they received the drug on day 9. In rats, a significantly higher fetal death rate was present when 200 and 400 mg/kg were given orally on days 9 to 14 of gestation. Single oral dose studies in rats resulted in a significant incidence of skeletal malformations in the offspring of the group receiving 400 mg/kg on day 11. In rabbits, all pregnant dams receiving 70 mg/kg orally from day 6 - 18 of gestation aborted; at 35 mg/kg, a significant increase in skeletal malformations was recorded in the offspring (see REPRODUCTION STUDIES).

- With Concomitant use of dantrolene infusion
- With Concomitant use of ivabradine

## **WARNINGS**

### **Cardiac Conduction**

Diltiazem prolongs AV node refractory periods without significantly prolonging sinus node recovery time, except in patients with sick sinus syndrome. This effect may rarely result in abnormally slow heart rates (particularly in patients with sick sinus syndrome) or second or third degree AV block (6 of 1208 patients or 0.5%).

First degree AV block was observed in 5.8% of patients receiving diltiazem hydrochloride CD (see ADVERSE REACTIONS).

Concomitant use of diltiazem with agents known to affect cardiac conduction (such as beta-blockers, digitalis or amiodarone) may result in additive effects on cardiac conduction (see PRECAUTIONS, Drug Interactions).

Prior to general anesthesia, the anesthetist must be informed of ongoing diltiazem treatment. Depression of cardiac contractility, conductivity and automaticity, as well as the vascular dilatation associated with anesthetics may be potentiated by calcium channel blockers (see Drug Interactions).

### **Congestive Heart Failure**

Because diltiazem has a negative inotropic effect in vitro and it affects cardiac conduction, the drug should only be used with caution and under careful medical supervision in patients with congestive cardiac failure (see also CONTRAINDICATIONS).

### **Use with Beta-blockers**

The combination of diltiazem and beta-blockers warrants caution since in some patients additive effects on heart rate, AV conduction, blood pressure or left ventricular function have been observed. Close medical supervision is recommended.

Generally, diltiazem should not be given to patients with impaired left ventricular function while they receive beta-blockers. However, in exceptional cases when, in the opinion of the physician, concomitant use is considered essential, such use should be instituted gradually in a hospital setting.

Diltiazem gives no protection against the dangers of abrupt beta-blocker withdrawal and such withdrawal should be done by the gradual reduction of the dose of beta-blocker.

### **Acute Kidney Injury**

Cases of acute renal failure have been reported in patients using diltiazem at therapeutic dosages. Patients at greater risk appear to have reduced left ventricular function, severe bradycardia or severe hypotension.

### **Hypotension**

Since diltiazem lowers peripheral vascular resistance, decreases in blood pressure may occasionally result in symptomatic hypotension. In patients with angina or arrhythmias using antihypertensive drugs, the additional hypotensive effect of diltiazem should be taken into consideration.

### **Patients with Myocardial Infarction**

Use of immediate-release diltiazem at 240 mg per day started 3 to 15 days after a myocardial infarction was associated with an increase in cardiac events in patients with pulmonary congestion, and no overall effect on mortality. Although there has not been a study of diltiazem hydrochloride CD in acute myocardial infarction reported, their may have effects similar to those of immediate-release diltiazem in acute myocardial infarction.

### **Acute Hepatic Injury**

In rare instances, significant elevations in alkaline phosphatase, CPK, LDH, SGOT, SGPT and symptoms consistent with acute hepatic injury have been observed. These reactions have been reversible upon discontinuation of drug therapy. Although a causal relationship to diltiazem has not been established in all cases, a drug induced hypersensitivity reaction is suspected (see ADVERSE REACTIONS). As with any drug given over prolonged periods, laboratory parameters should be monitored at regular intervals.

## **PRECAUTIONS**

### **Dermatological Events**

Dermatological events (see ADVERSE REACTIONS) may be transient and may disappear despite continued use of diltiazem. However, skin eruptions progressing to erythema multiforme and /or exfoliative dermatitis have also been infrequently reported. Should a dermatologic reaction persist, the drug should be discontinued.

### **Impaired Hepatic or Renal Function**

Diltiazem should be used with caution in patients with renal or hepatic impairment. Because diltiazem is extensively metabolized by the liver and excreted by the kidney and in bile, the monitoring of laboratory parameters of renal or hepatic function is recommended and cautious dosage titration are recommended in patients with impaired hepatic or renal function (See ADVERSE REACTIONS).

### **Gastrointestinal system**

Diltiazem has an inhibitory effect on intestinal motility. Therefore, it should be used with caution in patients at risk of developing an intestinal obstruction.

### **Nervous System**

Calcium channel blocking agents, such as diltiazem, may be associated with mood changes, including depression (see Drug Interactions and ADVERSE REACTIONS)

### **Respiratory System**

The use of diltiazem may induce bronchospasm, including asthma aggravation, especially in patients with pre-existing bronchial hyper-activity. Cases have been reported after dose increase. Patients should be monitored for signs and symptoms of respiratory impairment during diltiazem therapy.

### **Nursing Mothers**

Diltiazem has been reported to be excreted in human milk. One report with oral diltiazem suggests that concentrations in breast milk may approximate serum levels. Since diltiazem safety in newborns has not been established, it should not be given to nursing mothers.

### **Patients with Diabetes**

Careful monitoring is necessary to detect new onset of diabetes or in patients with diabetes mellitus (type 1 or type 2) due to an increase in blood glucose.

### **Pediatric Use**

The safety and effectiveness of diltiazem in children has not yet been established.

### **Use in the Elderly**

Administration of diltiazem to elderly patients (over or equal to 65 years of age) requires caution. The incidence of adverse reactions is approximately 13% higher in this group. Those adverse reactions which occur more frequently include: peripheral edema, bradycardia, palpitation, dizziness, rash and polyuria. Therefore, particular care in titration is advisable (see DOSAGE AND ADMINISTRATION).

### **Drug Interactions**

Due to the potential for additive effects, caution and careful titration are warranted in patients receiving MAR- DILTIAZEM CD concomitantly with other agents known to affect cardiac contractility and/or conduction.

### **Cytochrome P450 System**

As with all drugs, care should be exercised when treating patients with multiple medications. Diltiazem undergoes biotransformation mainly by the CYP3A4 isoenzyme of the cytochrome P450 system and is a substrate of the P-glycoprotein (P-gp). Diltiazem has also been shown to be an inhibitor of CYP3A4 (moderate) and P-gp.

Co-administration of diltiazem with other drugs which follow the same route of biotransformation or are inhibitors or inducers of these enzymes may result in altered bioavailability of diltiazem or these drugs. Dosages of similarly metabolized drugs, particularly those of low therapeutic ratio, and especially in patients with renal and/or hepatic impairment, may require adjustment when starting or stopping concomitantly administered diltiazem to maintain optimum therapeutic blood levels.

| <b>Table 1- Established or Potential Drug-Drug Interactions</b>   |            |                    |  |
|---|------------|--------------------|--|
| <b>Agent</b>  | <b>Ref</b> | <b>Effect</b>      | <b>Clinical Comment</b>  |
| Acetylsalicylic acid or antiplatelet drugs such as ticagrelor, cilostazol, clopidogrel, dipyridamole, ticlopidine | <b>T</b>   | ↑ bleeding         | Because of the increased risk of bleeding due to potential or observed additive effect on platelet aggregation combined with vasodilation or prevention of the normal vasoconstrictive response to bleeding, the concomitant administration of acetylsalicylic acid or antiplatelet drugs such as ticagrelor, cilostazol and clopidogrel with diltiazem should be undertaken with caution. Besides, a drug interaction is also plausible with dipyridamole and ticlopidine.<br><br>Dosage adjustment and safety monitoring may be necessary when coadministration cannot be avoided. |
| Alpha-antagonists   | <b>T</b>   | ↑ antihypertensive | Concomitant treatment with $\alpha$ -antagonists may produce or aggravate hypotension. The combination of diltiazem with an $\alpha$ -antagonist should be considered only with the strict monitoring of blood pressure.   |
| Amiodarone, digoxin   | <b>CT</b>  | ↑ bradycardia      | Severe conduction system abnormalities including heart block of varying degree, sinus arrest and a low cardiac output state  |

|  |              |  |  |
|--|--------------|--|--|
|  |              |  | <p>of life threatening severity have been reported following concomitant use of diltiazem and amiodarone. These drugs may also have additive effects on cardiac conduction and contractility.</p> <p>Increased risk of bradycardia is seen with amiodarone. Caution is required when these are combined with diltiazem, particularly in elderly subjects and when high doses are used.</p>   |
| Anaesthetics                           | <b>T</b>     | ↑depression of cardiac contractility, conductivity, and automaticity | The depression of cardiac contractility, conductivity, and automaticity as well as the vascular dilation associated with anesthetics may be potentiated by calcium channel blockers. When used concomitantly, anesthetics and calcium channel blockers should be titrated carefully.   |
| Benzodiazepines (midazolam, triazolam) | <b>CT</b>    | ↑ benzodiazepines plasma concentration                               | Diltiazem significantly increases peak plasma levels and the elimination half-life of triazolam and midazolam. Special care (close medical supervision and/or dose adjustment) should be taken when prescribing short-acting benzodiazepines metabolized by CYP3A4 in patients using diltiazem.  |
| Beta-Blockers                          | <b>T, CT</b> | Arrhythmic effect<br>↑ propranolol exposure                          | <p>The concomitant administration of diltiazem with beta-adrenergic blocking drugs warrants caution because of rhythm disturbances occurrence, and requires close medical supervision and ECG monitoring, particularly at the beginning of treatment. Such an association may have an additive effect on heart rate, on sino- atrial and AV conduction or on blood pressure (e.g. pronounced bradycardia, sinus arrest, and heart failure) (see WARNINGS and PRECAUTIONS). Appropriate dosage adjustments may be necessary. A study in five normal subjects showed that diltiazem increased propranolol bioavailability by 50%.</p> <p>An increased risk of depression has been reported when diltiazem is co-</p> |

|   |           |   |  |
|---|-----------|---|--|
|   |           |   | administered with beta-blockers (see ADVERSE REACTIONS).   |
| Carbamazepine                                       | <b>CT</b> | ↑ carbamazepine serum level                         | Concomitant administration of diltiazem with carbamazepine has been reported to result in elevated serum levels of carbamazepine (40% to 72% increase), resulting in toxicity in some cases. Patients receiving these drugs concurrently should be monitored for a potential drug interaction and dose adjustment of carbamazepine and/or diltiazem may be necessary.  |
| Anti-H <sub>2</sub> agents (Cimetidine, ranitidine) | <b>CT</b> | ↑ diltiazem exposure                                | A study in six healthy volunteers has shown a significant increase in peak diltiazem plasma levels C <sub>max</sub> (58%) and area-under-the-curve AUC (53%) after a 1-week course of cimetidine at 1200 mg per day and a single dose of oral diltiazem 60 mg. Ranitidine produced smaller, nonsignificant increases. Patients currently receiving diltiazem therapy should be carefully monitored for a change in pharmacological effect when initiating and discontinuing therapy with cimetidine. An adjustment in the diltiazem dose may be warranted. |
| Corticosteroids (methylprednisolone)                | <b>T</b>  | ↑ P-gp plasma concentration                         | Inhibition of methylprednisolone metabolism (CYP3A4) and inhibition of P-glycoprotein by diltiazem. Therefore, patients should be monitored when initiating methylprednisolone treatment and a dose adjustment may be necessary.   |
| Cyclosporine  | <b>CT</b> | ↓ cyclosporine concentration in specific population | Concomitant administration of diltiazem and cyclosporine has resulted in an increase in cyclosporine concentrations. A pharmacokinetic interaction between diltiazem and cyclosporine has been observed during studies involving renal and cardiac transplant patients. In renal and cardiac transplant recipients, a reduction of cyclosporine dose ranging from 15% to 48% was necessary to maintain cyclosporine trough concentrations similar to those seen prior to the addition of diltiazem. If these agents are to be administered                 |



|   |           |   |  |
|---|-----------|---|--|
|   |           |   | concurrently, cyclosporine concentrations should be monitored, especially when diltiazem therapy is initiated, adjusted or discontinued. Downward titration of the cyclosporine dose may be necessary. The effect of cyclosporine on diltiazem plasma concentrations has not been evaluated.   |
| Dantrolene (infusion)   | <b>CT</b> | Ventricular fibrillation effect in animals observed | Lethal ventricular fibrillation is regularly observed in animals when intravenous verapamil and dantrolene are administered concomitantly. The combination of calcium-channel antagonist and dantrolene is therefore potentially dangerous (see CONTRAINDICATIONS).  |
| Digitalis   | <b>CT</b> | ↑ digoxin serum level                               | Diltiazem and digitalis glycosides may have an additive effect in prolonging AV conduction. In clinical trials, concurrent administration of diltiazem and digoxin has resulted in increases in serum digoxin levels with prolongation of AV conduction. This increase may result from a decrease in renal clearance of digoxin. Patients on concomitant therapy, especially those with renal impairment, should be carefully monitored. The dose of digoxin may need downward adjustment. |
| Inducers of CYP3A4 (e.g. avasimibe, carbamazepine, phenytoin, rifampin) | <b>T</b>  | ↓ diltiazem plasma concentration                    | Diltiazem should be used with caution together with CYP3A4 inducers and dose adjustment may be necessary to maintain efficacy. Hence, monitoring of therapy is required.   |
| Lithium   | <b>T</b>  | ↑ Lithium neurotoxicity                             | Risk of increased in lithium-induced neurotoxicity.  |
| Other antiarrhythmic agents   | <b>T</b>  | ↑ antiarrhythmic effect                             | Since diltiazem has antiarrhythmic properties, its concomitant prescription with other antiarrhythmic agents is not recommended (additive risk of increased cardiac adverse effects). This combination should only be used under close clinical and ECG monitoring.  |

|   |           |  |  |
|---|-----------|--|--|
| Phenytoin   | <b>C</b>  | ↑ phenytoin plasma concentration                   | When co-administered with phenytoin, diltiazem may increase phenytoin serum concentration, in some cases, two to three fold, as reported in spontaneous case reports. Signs and symptoms of phenytoin toxicity include nystagmus, ataxia, dysarthria, tremor, hyperreflexia, somnolence, drowsiness, lethargy, slurred speech, blurred vision, nausea and vomiting. Caution should be exercised when diltiazem and phenytoin are co-administered. It is recommended that the phenytoin serum concentration be monitored. |
| Rifampicin  | <b>CT</b> | ↓ diltiazem plasma concentration                   | Administration of diltiazem with rifampicin markedly reduced plasma diltiazem concentrations and the therapeutic effect of diltiazem. Patients should be carefully monitored when initiating or discontinuing rifampicin therapy.  |
| Short and Long Acting Nitrates  | <b>T</b>  | ↑ vasodilating effect                              | Increased hypotensive effects and faintness (additive vasodilating effects) are observed when nitrates are coadministered with Calcium Channels Inhibitors. In patients treated with calcium antagonists, the prescription of nitrate derivatives should only be carried out gradually at increasing doses due to increased hypotensive effects.   |
| Statins (lovastatin, pravastatin)   | <b>CT</b> | ↑ lovastatin exposure<br>No effect on pravastatin. | In a ten-subject study, coadministration of diltiazem with lovastatin resulted in a 3-4 times increase in mean lovastatin AUC and Cmax versus lovastatin alone; no change in pravastatin AUC and Cmax was observed during diltiazem coadministration. Diltiazem plasma levels were not significantly affected by lovastatin or pravastatin.  |
| Strong inhibitors of CYP3A4 (e.g., ketoconazole, itraconazole, ritonavir, clarithromycin) | <b>T</b>  | ↑ diltiazem plasma concentration                   | Strong CYP3A4 inhibitors may significantly increase the plasma concentrations of diltiazem. Diltiazem should therefore be used with caution together with these agents and monitoring of therapy is required. Appropriate dosage adjustment of   |

|   |          |  |   |
|---|----------|--|---|
|   |          |  | diltiazem may be necessary.   |
| Moderate CYP3A4 inhibitors (ivabradine) (see CONTRAINDICATIONS, WARNINGS and PRECAUTIONS, CLINICAL PHARMACOLOGY ) |          | Concomitant use with ivabradine is contraindicated due to the additional heart rate lowering effect of diltiazem to ivabradine | Avoid concomitant use of moderate CYP3A4 inhibitors when using ivabradine. Examples of moderate CYP3A4 inhibitors include diltiazem, verapamil, and grapefruit juice.<br><br>Additive effects are caused by PK and PD interactions between diltiazem and ivabradine. Both diltiazem and ivabradine are heart rate lowering substances. Moreover, diltiazem increases ivabradine exposure (2 to 3 fold increase in AUC) through CYP 3A4 inhibition. This could lead to an exacerbated reduction in patient's heart rate (see CONTRAINDICATIONS). |
| Theophylline  | <b>T</b> | ↑ antihypertensive   | Increased antihypertensive effects.   |
| X-Ray Contrast Media Agent  | <b>T</b> | ↑ hypotension<br>↑ bradycardia<br>↑ heart conduction disorder  | Cardiovascular effects of an intravenous bolus of an X-ray contrast media, such as hypotension, bradycardia and heart conduction disorders, may be increased in patients treated with diltiazem. Special caution is required in patients receiving concomitantly diltiazem and X-ray contrast media.  |

Legend: C=Case Study, CT=Clinical Trial, T=Theoretical

### **Calcium Antagonists (verapamil, nifedipine)**

Limited clinical experience suggests that in certain severe conditions not responding adequately to verapamil or to nifedipine, using diltiazem in conjunction with either of these drugs may be beneficial.

### **Drug-Food Interactions**

#### **Alcohol:**

Alcohol can exhibit hypotensive effects. Co-administration with antihypertensive agents including diltiazem may result in additive effects on blood pressure and orthostasis. Patients should be advised that alcohol may potentiate the hypotensive effects of diltiazem, especially during the initiation of therapy and following a dosage increase. Caution should be exercised when rising from a sitting or recumbent position, and patients should notify their physician if they experience dizziness, light-headedness, syncope, orthostasis, or tachycardia.

#### **Grapefruit Juice:**

Grapefruit Juice may increase the plasma concentrations of orally administered diltiazem in some patients. The proposed mechanism is inhibition of CYP450 3A4-mediated first-pass metabolism in the gut wall by certain compounds present in grapefruit.

Patients who regularly consume grapefruit or grapefruit juice should be monitored for increased adverse effects of diltiazem such as such as headache, irregular heartbeat, edema, unexplained weight gain, and chest pain. Grapefruit and grapefruit juice should be avoided if an interaction is suspected.

**Multivitamins with minerals:**

Calcium-containing products may decrease the effectiveness of calcium channel blockers by saturating calcium channels with calcium. Calcium chloride has been used to manage acute severe verapamil toxicity. Monitoring of the effectiveness of calcium channel blocker therapy is advised during co-administration with calcium products.

**Drug-Herb Interactions**

Interactions with herbal products have not been established.

**Drug-Laboratory Interactions**

Interactions with laboratory tests have not been established.

**ADVERSE REACTIONS**

(See also OVERALL DILTIAZEM HYDROCHLORIDE SAFETY PROFILE)

**Angina**

The safety of diltiazem hydrochloride CD, administered at doses up to 360 mg a day, was evaluated in 365 patients with chronic stable angina treated in controlled and open-label clinical trials. Adverse events were reported in 21.1% of patients, and required discontinuation in 2.2% of patients.

The most common adverse effects reported were: first degree AV block (5.8%), dizziness (3.0%), headache (3.0%), asthenia (2.7%), bradycardia (2.5%), and angina pectoris (1.6%).

The following percentage of adverse effects, divided by system, was reported:

**Cardiovascular:** First degree AV block (5.8%), bradycardia (2.5%), angina pectoris (1.6%), peripheral edema (1.4%), palpitations (1.1%), and ventricular extrasystoles (0.8%).

**Central Nervous System:** Dizziness (3.0%), headache (3.0%), asthenia (2.7%), insomnia (1.1 %), nervousness (0.8%).

**Dermatological:** Rash (0.8%).

**Gastrointestinal:** Nausea (1.4%), diarrhea (0.5%).

**Other:** Amblyopia (0.5%).

The following additional adverse effects have occurred with an incidence of less than 0.5% in clinical trials: bundle branch block, ventricular tachycardia, ECG abnormality, supraventricular extrasystoles, chest pain, syncope, postural hypotension, paresthesia, tremor, depression, mental confusion, impotence, abdominal pain, constipation, GI disorder, epistaxis, nuchal rigidity, myalgia.

### **Hypertension**

A safety evaluation was carried out in controlled studies in 378 hypertensive patients treated with diltiazem hydrochloride CD at doses up to 360 mg a day. Adverse effects were reported in 30.7% of patients and required discontinuation of therapy in 2.1%.

The most common adverse effects were: headache (8.7%), edema (4.0%), bradycardia (3.7%), dizziness (3.4%), ECG abnormality (2.9%), asthenia (2.6%) and first degree AV block (2.1%).

The following percentage of adverse effects, divided by system, was reported:

**Blood and lymphatic system disorders:** Leukopenia (1.1%)

**Cardiovascular:** Edema peripheral (4.0%), bradycardia (3.7%), ECG abnormalities (2.9%), first degree AV block (2.1%), arrhythmia (1.6%), vasodilation (flushing) (1.6%), bundle branch block (0.8%), cardiomegaly (0.5%), hypotension (0.5%).

**Gastrointestinal:** Constipation (1.3%), dyspepsia (1.3%), diarrhea (0.6%).

**Investigations:** ALT increase (0.8%).

**Nervous System and psychiatric disorders:** Headache (8.7%), dizziness (3.4%), asthenia (2.6%), somnolence (1.3%), nervousness (1.1%).

**Renal and urinary disorders:** Nocturia (0.5%).

The following additional adverse effects have occurred with an incidence of less than 0.5% in clinical trials: systolic murmur, supraventricular extrasystoles, migraine, tachycardia, increased appetite, increase in weight, albuminuria, bilirubinemia, hyperuricemia, thirst, insomnia, vertigo, nausea, pruritus, rash, increased perspiration, polyuria, amblyopia, tinnitus, and elevations in creatine kinase, alkaline phosphatase, and AST.

## **OVERALL DILTIAZEM SAFETY PROFILE**

In clinical trials of diltiazem involving over 3300 patients, the most common adverse reactions were headache (4.6%), edema (4.6%), dizziness (3.5%), asthenia (2.7%), first-degree AV block (2.4%), bradycardia (1.7%), flushing (1.5%), nausea (1.4%), rash (1.2%), and dyspepsia (1.0%).

The following events were reported with a frequency of less than 1.0%.

**Cardiovascular:** Angina, arrhythmia, bundle branch block, tachycardia, ventricular extrasystoles, congestive heart failure, syncope, palpitations, AV block (second- or third- degree), hypotension, ECG abnormalities.

**Dermatological:** Petechiae, pruritus, photosensitivity, urticarial.

**Eye disorders:** Amblyopia, eye irritation.

**Gastrointestinal disorders:** Anorexia, diarrhea, dysgeusia, dyspepsia, vomiting, weight increase, thirst, constipation.

**General disorders and administration site conditions:** Malaise (reported as common adverse reaction), osteoarticular pain.

**Investigations:** Elevations of AST, ALT, LDH, and alkaline phosphatase (see WARNINGS), CPK increase.

**Metabolism and nutrition disorders:** hyperglycemia, hyperuricemia.

**Nervous System and psychiatric disorders:** Amnesia, depression, gait abnormality, nervousness, somnolence, hallucinations, paresthesia, personality change, tinnitus, tremor, abnormal dreams, insomnia.

**Renal and urinary disorders:** Nocturia, polyuria.

**Respiratory, thoracic and mediastinal disorders:** Dyspnea, epistaxis, nasal congestion.

**Sexual dysfunction disturbances and gender identity disorders:** Impotence, sexual difficulties.

**Vascular disorders:** Orthostatic hypotension

### **Post-Marketing Surveillance:**

Adverse reactions reported during post-marketing experience are derived from spontaneous reports and therefore, the frequency of these adverse reactions is not known.

***Blood and lymphatic system disorders:*** Thrombocytopenia, hemolytic anemia, increased bleeding time, leukopenia

***Nervous system and psychiatric disorders:*** Mood changes including depression, extrapyramidal symptoms

***Cardiac disorders:*** Sinoatrial block, congestive heart failure, sinus arrest, cardiac arrest

(asystole)

***Respiratory, thoracic and mediastinal disorders:*** Bronchospasm (including asthma aggravation)

***Gastrointestinal disorders:*** Gingival hyperplasia

***Metabolism and nutrition disorders:*** Hyperglycaemia, diabetes (new onset), worsening of existing diabetes (type 1 or type 2)

***Skin and subcutaneous tissue disorders:*** Photosensitivity (including lichenoid keratosis at sun exposed skin areas), angioneurotic oedema, erythema multiforme (including Stevens-Johnson syndrome, toxic epidermal necrolysis), sweating, exfoliative dermatitis (see PRECAUTIONS), acute generalized exanthematous pustulosis, occasionally desquamative erythema with or without fever, allergic reactions, alopecia, purpura

***Vascular disorders:*** A number of well-documented cases of generalized rash, some characterized as leukocytoclastic vasculitis

***Hepatobiliary disorders:*** Hepatitis

***Renal disorders:*** Acute kidney injury/failure

***Reproductive system and breast disorders:*** Gynecomastia

***Eye disorders:*** Detached retina, retinopathy

***Musculoskeletal and connective tissue disorders:*** Myopathy

Isolated cases of angioedema have been reported. Angioedema may be accompanied by breathing difficulty. In addition, events such as myocardial infarction have been observed which are not readily distinguishable from the natural history of the disease in these patients. However, a definitive cause and effect relationship between these events and diltiazem therapy is yet to be established.

## **SYMPTOMS AND TREATMENT OF OVERDOSAGE**

There have been reports of diltiazem overdose in amounts ranging from < 1 g to 18 g. In cases with a fatal outcome, the majority involved multiple drug ingestion.

Events observed following diltiazem overdose included sinus bradycardia with or without isorhythmic dissociation, pronounced hypotension possibly leading to collapse, and acute kidney injury, sinus arrest, heart block, atrioventricular conduction disturbance, cardiac arrest, and cardiac failure.

The effectiveness of intravenous calcium administration to reverse the pharmacological effects of diltiazem overdose has been inconsistent. In a few reported cases, overdose with calcium channel

blockers associated with hypotension and bradycardia that was initially refractory to atropine became more responsive to atropine after the patients received intravenous calcium. In some cases intravenous calcium has been administered (1 g calcium chloride or 3 g calcium gluconate) over 5 minutes, and repeated every 10 to 20 minutes as necessary. Calcium gluconate has also been administered as a continuous infusion at a rate of 2 g per hour for 10 hours. Infusions of calcium for 24 hours or more may be required. Patients should be monitored for signs of hypercalcemia.

In the event of overdosage or exaggerated response, appropriate supportive measures should be employed in addition to gastric lavage. Limited data suggest that plasmapheresis or charcoal hemoperfusion may hasten diltiazem elimination. The following measures may be considered:

### **Bradycardia**

Administer atropine. If there is no response to vagal blockade, administer isoproterenol cautiously.

### **High Degree AV Block**

Treat as for bradycardia above. Fixed high degree AV block should be treated with cardiac pacing.

### **Cardiac Failure**

Administer inotropic agents (isoproterenol, dopamine or dobutamine) and diuretics.

### **Hypotension**

Administer fluids and vasopressors (e.g., dopamine or noradrenaline).

Actual treatment and dosage should depend on the severity of the clinical situation.

|   |
|---|
| For the management of a suspected drug overdose, contact your regional Poison Control Centre. |
|---|

## **DOSAGE AND ADMINISTRATION**

### **Angina**

Dosages for the treatment of angina should be adjusted to each patient's needs, starting with a dose of 120 mg to 180 mg once daily. Individual patients may respond to higher doses of up to 360 mg once daily. When necessary, titration should be carried out over a 7 to 14 day period. Patients controlled on diltiazem alone or in combination with other medications may be safely switched to MAR-DILTIAZEM CD capsules at the nearest equivalent total daily dose. Subsequent titration to higher or lower doses may be necessary and should be initiated as clinically warranted.

There is limited experience with doses above 360 mg, however, the incidence of adverse



reactions increases as the dose increases with first degree AV block, dizziness, and sinus bradycardia bearing the strongest relationship to dose. Therefore, doses greater than 360 mg are not recommended.

### **Hypertension**

Dosage should be individualized depending on patient's tolerance and responsiveness to MAR-DILTIAZEM CD capsules. When used as monotherapy, usual starting doses are 180 to 240 mg once daily, although some patients may respond to 120 mg once daily. Maximum antihypertensive effect is usually observed after approximately 2 to 4 weeks of therapy; therefore, dosage adjustments should be scheduled accordingly. The usual dosage range studied in clinical trials was 240 to 360 mg once daily.

A maximum daily dose of 360 mg once daily should not be exceeded.

The dosage of MAR-DILTIAZEM CD or concomitant antihypertensive agents may need to be adjusted when adding one to the other. See WARNINGS and PRECAUTIONS regarding use with beta-blockers.

### **Use in the Elderly**

Pharmacokinetics of diltiazem in elderly patients has not been fully elucidated. Preliminary results in elderly patients (over 65 years old) suggest that a lower dosage might be required in this age group (see PRECAUTIONS).

There are few available data concerning dosage requirements in patients with impaired renal or hepatic function. If diltiazem must be used in these patients, the dosage should be carefully and gradually adjusted depending on patient tolerance and response (see PRECAUTIONS).

MAR-DILTIAZEM CD capsules should not be chewed or crushed.

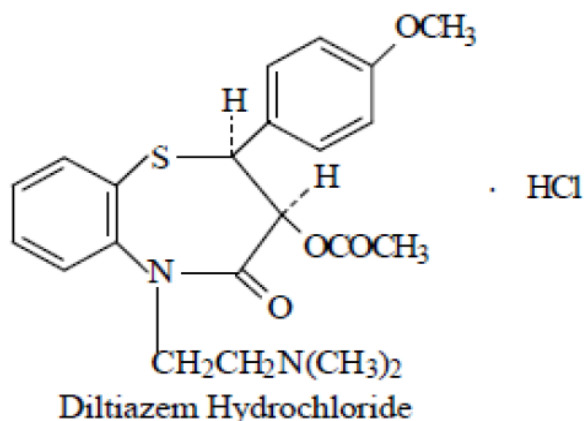
## PHARMACEUTICAL INFORMATION

### Drug Substance

**Common Name:** Diltiazem Hydrochloride

**Chemical Name:** 1,5-benzothiazepin-4 (5H)-one,3-(acetyloxy)-5-[2- (dimethylamino) ethyl]-2,3-dihydro-2-(4-methoxyphenyl)-, monohydrochloride, (+)-cis

### Chemical Structure



**Empirical Formula:** C<sub>22</sub>H<sub>26</sub>N<sub>2</sub>O<sub>4</sub>S. HCl

**Molecular Weight:** 450.98 g/mol

### Physicochemical Properties:

#### **Description:**

White odorless crystalline powder or small crystals

#### **Solubility**

Freely soluble in chloroform, formic acid, in methanol and in water, sparingly soluble in dehydrated ethanol, insoluble in ether.

#### **Composition:**

**MAR-DILTIAZEM CD:** In addition to diltiazem hydrochloride, each capsule contains the non-medicinal ingredients amino methacrylate copolymer dispersion, hypromellose, ethyl cellulose, talc, triethyl citrate, acetyl tributyl citrate, polysorbate 80, magnesium stearate and sugar spheres. The capsule shell contains the non-medicinal ingredients gelatin, titanium dioxide, FD&C blue #1, sodium lauryl sulphate and black iron oxide (180 mg, 240 mg and 300 mg). The imprinting ink contains shellac, propylene glycol, black iron oxide and potassium hydroxide.

### **Storage Recommendations:**

Store at 15°C to 30°C. Protect from moisture. Keep out of sight and reach of children.

### **AVAILABILITY OF DOSAGE FORMS**

MAR-DILTIAZEM CD 120 mg are white to off white pellets filled in size 2 hard gelatin capsule having opaque light turquoise blue colored cap and opaque light turquoise blue colored body imprinted with HP 446 on cap and on body with black ink. Each capsule contains 120 mg of diltiazem hydrochloride. Available in bottles of 100's count.

MAR-DILTIAZEM CD 180 mg are white to off white pellets filled in size 1 hard gelatin capsule having opaque blue colored cap and opaque light turquoise blue colored body imprinted with HP 447 on cap and on body with black ink. Each capsule contains 180 mg of diltiazem hydrochloride. Available in bottles of 100's count.

MAR-DILTIAZEM CD 240 mg are white to off white pellets filled in size 0 hard gelatin capsule having opaque blue colored cap and opaque blue colored body imprinted with HP 448 on cap and on body with black ink. Each capsule contains 240 mg of diltiazem hydrochloride. Available in bottles of 100's count.

MAR-DILTIAZEM CD 300 mg are white to off white pellets filled in size 0el hard gelatin capsule having opaque blue cap and opaque light grey colored body imprinted with HP 449 on cap and on body with black ink. Each capsule contains 300 mg of diltiazem hydrochloride. Available in bottles of 100's count.

### **PHARMACOLOGY**

#### ***In Vitro Observations***

Initial experimental work revealed that diltiazem was a coronary and peripheral vasodilator. Subsequent work substantiated that diltiazem's smooth muscle relaxant effect, as well as negative inotropic effect, resulted from the drug's ability to block excitation-contraction coupling by inhibiting slow calcium channel conduction. In a muscle bath study with isolated human coronary artery segments obtained at the time of cardiac transplantation, diltiazem produced nearly complete relaxation of potassium-contracted segments.

Studies in various experimental models have confirmed the negative inotropic effect of diltiazem. At low doses ( $1.1 \times 10^{-7}M$ ) diltiazem caused a reduction in contractile force of guinea pig papillary muscle with no demonstrable effect on the action potential. However, at higher concentrations ( $1.1 \times 10^{-5}M$ ) both a decrease in contractile tension and a lowering of maximum dp/dt were seen.

Studies done in isolated perfused rat hearts showed that diltiazem ( $10^{-6}M$ ) decreases contractility without affecting action potential duration or resting membrane potential. In several experimental models it has been shown that the concentration of diltiazem required to produce

smooth muscle relaxation and vasodilation is significantly less than the concentration required to produce a negative inotropic effect.

### **In Vivo Observations**

#### Pharmacodynamics

Experiments in both open and closed-chest dog models indicate that diltiazem increases coronary blood flow and reduces coronary vascular resistance. Intravenous diltiazem (100 mcg/kg) increased coronary blood flow by 90%, with a predominant effect on large coronary arteries and collaterals. Increase in coronary blood flow has also been shown following diltiazem administration in both the epicardial and subendocardial regions in ischemic and non-ischemic models. There was also a dose-related decrease in mean aortic pressure and systemic vascular resistance with an increase in stroke volume and cardiac output. No significant change was noted in determinants of LV function such as LVEDP or LV dP/dT. The reduction in blood pressure that is seen with diltiazem is due to a direct vasodilatory effect on the blood vessels and is not mediated by sympathetic alpha receptor blockade, beta receptor stimulation, or ganglionic blockade. Diltiazem has been shown to inhibit the pressor responses induced by norepinephrine and angiotensin II.

In animal studies, the negative inotropic effect of diltiazem appears to be offset by its ability to decrease afterload and induce a mild reflex adrenergic response.

#### Pharmacokinetics

The effect of diltiazem on the pharmacokinetics of phenytoin was investigated in rats. Animals were given 20 mg/kg i.p. phenytoin alone or phenytoin together with 5 mg/kg i.p. diltiazem and the plasma samples were collected at different time intervals. The study showed that diltiazem significantly ( $p < 0.05$ ) increased phenytoin AUC (4-fold),  $C_{max}$  (2-fold), and elimination half-life ( $t_{1/2}$ : from 1.1h to 2.0h), in the rat.

### **TOXICOLOGY**

#### Acute Toxicity

| Route | Animal | Sex | LD <sub>50</sub> (mg/kg) | LD <sub>50</sub> 95% Confidence Limits (mg/kg) |
|-------|--------|-----|--------------------------|--|
| oral  | Mice   | M&F | 415 – 700                | (343 – 736)                                    |
|       | Rats   | M&F | 560 – 810                | (505 – 1004)                                   |
| s.c   | Mice   | M&F | 260 – 550                | (220 – 672)                                    |
| i.p.  | Mice   | M&F | 187                      | (165 – 211)                                    |
|       | Rats   | M&F | 211                      | (155 – 287)                                    |
| i.v.  | Mice   | M&F | 58 - 61                  | (52 – 69)                                      |
|       | Rats   | M&F | 38 – 39                  | (34 – 44)                                      |

Toxic effects appeared rapidly and toxicity included reduction of spontaneous activity, ptosis,

piloerection, ataxia, loss of muscle tone, and loss of righting reflex. Gross autopsy of animals that died as well as the survivors revealed no abnormalities.

Tolerance was evaluated in rabbits and dogs. Dogs received oral doses of 12.5, 25, 50 or 100 mg/kg. Ataxia, disorientation, decreased activity, diuresis and mydriasis were noted at 25 mg/kg. In addition, heavy sedation and emesis were seen at 50 mg/kg. At 100 mg/kg, convulsions occurred and one of the two animals died. Rabbits received 100, 200, 300, 400 mg/kg. The major symptoms were decreased activity, increased respiration, salivation and opisthotonos. One of the two rabbits died at 300 mg/kg and the two rabbits in the 400 mg/kg group died.

### Subacute Toxicity

In rats, oral doses of 10, 20, 50, 100, 250 or 500 mg/kg/day of diltiazem were administered for 28 or 30 days. The relative liver weights of animals receiving 250 mg/kg/day and 500 mg/kg/day were increased. Microscopic examination revealed drug related degeneration of hepatic and renal cells in the highest dose group.

When the drug was given to rats intraperitoneally at 25 mg/kg/day for 30 days, hepatic and renal cell degeneration was seen. Macular hyaloid degeneration of the heart also was seen in 50% of the rats in this study.

Thirty day subacute studies in dogs revealed hepatic and renal cell degeneration when diltiazem was given at doses of 25 mg/kg/day orally and 5 mg/kg/day intravenously. Two dogs out of 5 receiving 50 mg/kg/day orally, died.

### Chronic Toxicity/Carcinogenicity

In mice, diltiazem was administered at doses of 5, 15 or 30 mg/kg/day for a period of 21 months in females. Because of a lower survival, males were terminated at 20 months. Gross and histopathological examination failed to reveal any treatment related increase in the incidence of either neoplastic or other toxic lesions.

Rats received 6.25, 25 or 100 mg/kg/day of diltiazem for 24 months. An additional group received 200 mg/kg for 12 months. Treatment was terminated at 23 months in females receiving 100 mg/kg because of the low survival. Females had increased weight gain at 100 and 200 mg/kg; food consumption was increased among both sexes at these dose levels. Organ weight data revealed a significant increase in liver weight for rats of both sexes given 200 mg/kg. Microscopic evaluation revealed some evidence of dose dependent hepatic cytoplasmic vacuolization in rats treated with doses of 100 and 200 mg/kg/day and killed at 12 months. At 24 months, there were similar findings in control and treated animals. There was no increase in the incidence of neoplastic or other toxic lesions in rats treated with diltiazem.

Diltiazem was administered orally to dogs for 12 months at doses of 5, 10, 20 mg/kg/day. A dose related suppression of body weight gain became noticeable after 6 months.

### Mutagenicity

No mutagenic changes were observed in the recombination test and two Ames reverse mutagenicity assays.

**Reproduction Studies**

**Results in mice**

| <b>Route</b>    | <b>Doses (mg/kg)</b>                   | <b>Time of administration during gestation</b> | <b>Findings in the offspring</b>   |
|-----------------|--|--|--|
| Oral            | 10, 25, 50, 100, 200, 400              | Day 7 to day 12                                | High incidence of vertebral column malformations when more than 50 mg/kg was administered.   |
| Oral            | Single doses of 12.5, 25, 50, 100, 200 | One of days 7 to 14                            | Cleft palate and malformation of extremities or trunk were significantly higher when 50 or 100 mg/kg was administered on day 12.<br><br>Vertebral malformations were most prevalent when 50 or 100 mg/kg was administered on day 9.  |
| Intraperitoneal | 0.2, 3.1, 6.3, 12.5, 25                | Day 7 to day 12                                | Fetal mortality greatly increased when 12.5 mg/kg or more was administered.<br><br>No teratogenic effect was demonstrated.   |
| Intraperitoneal | Single Doses of 3.1, 6.3, 12.5, 25, 50 | One of days 5 to 16                            | Brachydactyly and hematoma in the extremities when 50 mg/kg was administered on day 13.<br><br>Vertebral column malformations from the thoracic to coccygeal level and malformations of the ribs were observed when a dose of 25 mg/kg or greater was administered on day 9. |

## Results in Rats

| <b>Route</b>    | <b>Doses (mg/kg)</b>          | <b>Time of administration during gestation</b> | <b>Findings in the offspring</b>   |
|-----------------|-------------------------------|--|--|
| Oral            | 10, 50, 100, 200, 400         | Day 9 to 14                                    | No teratogenic effect. High fetal death rate when 200 & 400 mg/kg was administered.  |
| Oral            | 10, 30, 100                   | Day 6 to 15                                    | No teratogenic effect.   |
| Oral            | Single doses of 300, 400, 600 | On one of days 9 to 14                         | Significant incidence of skeletal malformations involving vertebrae & sternbrae when 400 mg/kg was administered on day 11. General edema, short or absent tail was observed when 600 mg/kg was administered on day 12.   |
| Intraperitoneal | 0.2, 2.0, 20, 40, 80          | Day 9 to 14                                    | Brachydactyly & hematoma in the front paw and tail and a high fetal mortality rate were observed when 80 mg/kg was administered.   |
| Intraperitoneal | 80                            | Day 9 to 11                                    | Vertebral anomalies  |
| Intraperitoneal | 80                            | Day 12 to 14                                   | Brachydactyly, hematoma of the front paw and tail deformities and high fetal mortality rate.   |
| Intraperitoneal | Single dose of 80             | One of days 9 to 14                            | Fetal mortality increased on day 11 reached 100% on day 12 and decreased thereafter. Limb & tail deformities were induced when 80 mg/kg was administered on days 13 & 14.<br>Vertebral column deformities were induced when 80 mg/kg was administered on day 11. |
|                 | Single dose of 40             | One of days 11 to 14                           | No teratogenic effect  |

## Results in rabbits

| Route           | Doses (mg/kg) | Time of administration during gestation | Findings in the offspring  |
|-----------------|---------------|---|--|
| Oral            | 17.5, 35, 70  | Day 6 to 18                             | Significant increase in skeletal malformations occurred when 35 mg/kg was administered.<br><br>All pregnant dams aborted between days 21 and 25 of gestation when 70 mg/kg was administered.   |
| Intraperitoneal | 6.3, 12.5, 25 | Day 7 to 16                             | Fetal mortality greatly increased at 12.5 mg/kg and reached 100% at 25 mg/kg. Skeletal defects and external malformations were induced when 12.5 mg/kg was administered. Their incidence was not statistically significant due to the low number of surviving fetuses. |

In fertility studies, female rats received doses of 12.5, 25, 50 and 100 mg/kg p.o. In the 100 mg/kg group, there was a reduction in the number showing a positive mating. However, the overall pregnancy rates and the average pre-coital time were comparable.

In peri- and post-natal studies, rats received diltiazem in doses of 10, 30 or 100 mg/kg/day from day 14 of gestation through day 21 postpartum. Diltiazem was associated with a reduction in early individual weights and survival rates of the pups. At 100 mg/kg/day, dystocia was evident. Retinal and tongue malformations were more frequent in the offspring of the 30 and 100 mg/kg/day group.



## **SELECTED BIBLIOGRAPHY**

1. Anderson JL, et al: Comparative effects of diltiazem, propranolol and placebo on exercise performance using radionuclide ventriculography in patients with symptomatic coronary artery disease: Results of a double-blind, randomized, crossover study. *Am Heart J* 1984;107(4):698-706.
2. Andre-Fouet X, Viallet M, Gayet C, et al. Diltiazem vs propranolol: a randomized trial in unstable angina. *Circulation* 1981; 64 (Suppl): IV-293.
3. Bourassa MG, et al. Hemodynamic and coronary flow following diltiazem administration in anesthetized dogs and in humans. *Chest* 1980; 78 224- 230.
4. Cassagnes J, et al. Traitement du syndrome de menace par le diltiazem. *Therapie* 1980; 35: 465-473.
5. Eimer, M and Carter, BL: Elevated serum carbamazepine concentrations following diltiazem initiation. *Drug Intelligence and Clinical Pharmacy* 1987; 21:340-342.
6. Feldman RL, et al: Short- and long-term responses to diltiazem in patients with variant angina. *Am J. Cardiol* 1982; 49: 554-559.
7. Frishman WH, et al. Comparison of hydrochlorothiazide and sustained-release diltiazem for mild-to-moderate systemic hypertension. *Am J Cardiol* 1987; 59:615-623.
8. Hossack KF, et al. Divergent effects of diltiazem in patients with exertional angina. *Am J Cardiol* 1982; 49: 538-546.
9. Hossack KF, et al. Efficacy of diltiazem in angina of effort: a multicenter trial. *Am J Cardiol* 1982; 49: 567-572.
10. Hung J, et al: The effect of diltiazem and propranolol, alone and in combination, on exercise performance and left ventricular function in patients with stable effort angina: A double-blind, randomized, and placebo-controlled study. *Circulation* 1983;68:560-567.
11. Ishikawa T, et al: Atrioventricular dissociation and sinus arrest induced by oral diltiazem. *N Engl J Med* 1983;309:1124-1125.
12. Jacobs MB: Diltiazem and akathisia. *Ann Int Med* 1983;99:794-795.

13. Josephson MA, et al: Hemodynamic and metabolic effects of diltiazem during coronary sinus pacing with particular reference to left ventricular ejection fraction. *Am J Cardiol* 1985;55:286-290.
14. Massie B, et al. Diltiazem and propranolol in mild to moderate essential hypertension as monotherapy or with hydrochlorothiazide. *Ann Intern Med* 1987; 107: 150-157.
15. Moser, M et al: Comparative effects of diltiazem and hydrochlorothiazide in blacks with systemic hypertension. *Am J Cardiol* 1985;56(16):101H-104H.
16. Moss AJ, et al: The effect of diltiazem on mortality and reinfarction after myocardial infarction: The Multicenter Diltiazem Postinfarction Trial Research Group. *N Engl J Med* 1988;319:385-392.
17. Nicolas G, et al: Le traitement de l'angor instable par le diltiazem. À propos de 61 observations. *Ann Cardiol Angeiol (Paris)* 1981;30:289-292.
18. Pool PE, et al. Long-term efficacy of diltiazem in chronic stable angina associated with atherosclerosis: effect on treadmill exercise. *Am J Cardiol* 1982; 49: 573-577.
19. Pool PE, et al. Diltiazem as monotherapy for systemic hypertension: a multicenter, randomized, placebo-controlled trial. *Am J Cardiol* 1986; 57: 212-217.
20. Rameis H, et al. The diltiazem-digoxin interaction. *Clin Pharmacol Ther* 1984;36: 183-189.
21. Reboud JP: Accidents au cours de l'association diltiazem bêta-bloquants. *Presse médicale* 1984;13:1396.
22. Schroeder JS, et al: Multiclinic controlled trial of diltiazem for Prinzmetal's angina. *Am J Med* 1982;72:227-232.
23. Schroeder JS, et al: Diltiazem for long-term therapy of coronary arterial spasm. *Am J Cardiol* 1982;49:533-537.
24. Strauss WE, et al. Safety and efficacy of diltiazem hydrochloride for the treatment of stable angina pectoris: report of a cooperative clinical trial. *Am J Cardiol* 1982; 49: 560-566.
25. Swartz SL: Endocrine and vascular responses in hypertensive patients to long-term treatment with diltiazem. *J Cardiovasc Pharmacol* 1987;9(4):391-395.
26. Szlachcic J, et al: Diltiazem versus propranolol in essential hypertension: Responses of rest and exercise blood pressure and effects on exercise capacity. *Am J Cardiol* 1987;59:393-399.

27. Taeymans Y, et al. A prospective randomized study of propranolol versus diltiazem in patients with unstable angina. *Am J Cardiol* 1982; 49: 896.
28. Tilmant PY et al: Detrimental effect of propranolol in patients with coronary arterial spasm countered by combination with diltiazem. *Am J Cardiol*; 1983;52:230-233.
29. Valantine, H, et al: Cost containment: coadministration of diltiazem with cyclosporine after heart transplantation. *J Heart Lung Transplantation* 1992; 11: 1-7.
30. Waters DD, et al. Provocative testing with ergonovine to assess efficacy of treatment with nifedipine, diltiazem, and verapamil in variant angina. *Am J Cardiol* 1981; 48: 123-130.
31. Weir MR, et al. Sustained-release diltiazem compared with atenolol monotherapy for mild to moderate systemic hypertension. *Am J Cardiol* 1987; 60: 361-411.
32. Winship, LC et al; The effect of ranitidine and cimetidine on single-dose diltiazem pharmacokinetics. *Pharmacotherapy* 1985; 5: 16-19.
33. Zawada ET, et al: Renal-metabolic consequences of antihypertensive therapy with diltiazem versus hydrochlorothiazide. *Miner Electrolyte Metab* 1987;13(2):72-77.
34. Zelis RF, et al. The pharmacokinetics of diltiazem in healthy American men. *Am J Cardiol* 1982; 49: 529-532.
35. Product Monograph CARDIZEM<sup>®</sup> CD (diltiazem hydrochloride) Once-a-day Controlled Delivery Capsules, Bausch Health, Canada Inc. Control #243363, Date of Revision: October 1, 2020.
36. <sup>Pr</sup>APO-DILTIAZ CD (Diltiazem hydrochloride Controlled Delivery (Once-a-day) Capsules), 120 mg, 180 mg, 240 mg, 300 mg , Submission Control #242760, Product Monograph Apotex Inc. Date of Revision: January 25, 2021.

**PART III: CONSUMER INFORMATION**

Pr **MAR-DILTIAZEM CD**

**Diltiazem Hydrochloride Controlled Delivery (Once-a-day)  
Capsules USP**

**120 mg, 180 mg, 240 mg and 300 mg**

Read this carefully before you start taking MAR-DILTIAZEM CD and each time you get a refill. This leaflet is a summary and will not tell you everything about MAR-DILTIAZEM CD. Talk to your doctor, nurse, or pharmacist about your medical condition and treatment and ask if there is any new information about MAR-DILTIAZEM CD.

**ABOUT THIS MEDICATION**

**What the medication is used for:**

MAR-DILTIAZEM CD is used for:

- the management of effort associated **angina** (chest pain)
- the treatment of mild to moderate **high blood pressure**.

MAR-DILTIAZEM CD should normally be used in those patients in whom treatment with other blood pressure reduction medications has been ineffective, or have been associated with unacceptable side effects.

**What it does:**

MAR-DILTIAZEM CD belongs to the group of drugs called “calcium channel blockers” or “calcium antagonists”.

MAR-DILTIAZEM CD relaxes the arteries, thereby lowering blood pressure.

MAR-DILTIAZEM CD reduces the amount of oxygen that your heart muscle needs. This helps control chest pain.

**When it should not be used:**

Do not use MAR-DILTIAZEM CD if:

- You are pregnant or plan to become pregnant.
- You are breastfeeding.
- You have a known allergy to diltiazem or to any of the non-medicinal ingredients.
- You have very low blood pressure (< 90 mmHg systolic).
- You have very slow heartbeat (40 beats/minute or less)
- You have heart rhythm disorders in the absence of a pacemaker.
- You have severe heart failure with fluid in the lungs.
- You are taking a medicine called dantrolene used for severe muscle spasms or severe fever.
- You are using ivabradine

**What the medicinal ingredient is:**

Diltiazem Hydrochloride

**What the non-medicinal ingredients are:**

amino methacrylate copolymer dispersion, hypromellose, ethyl cellulose, talc, triethyl citrate, acetyl tributyl citrate, polysorbate 80, magnesium stearate and sugar spheres. The capsule shell contains the non-medicinal ingredients gelatin, titanium dioxide, FD&C blue #1, sodium lauryl sulphate and black iron oxide (180 mg, 240 mg and 300 mg). The imprinting ink contains shellac, propyleng glycol, black iron oxide and potassium hydroxide.

**What dosage forms it comes in:**

Capsules: 120 mg, 180 mg, 240 mg, and 300 mg

**WARNINGS AND PRECAUTIONS**

BEFORE you use MAR-DILTIAZEM CD talk to your doctor or pharmacist if:

- You have very low blood pressure.
- You have ever had a bad or unusual reaction to any drug containing diltiazem in the past.
- You have heart, liver, or kidney disease.
- You have high blood sugar or diabetes.
- You are 65 years or older.
- You have a history of heart failure, new shortness of breath, slow heartbeat or low blood pressure. Cases of kidney injury in patients with such conditions have been reported.

**INTERACTIONS WITH THIS MEDICATION**

As with most medicines, interactions with other drugs are possible. Tell your doctor, nurse, or pharmacist about all the medicines you take, including drugs prescribed by other doctors, vitamins, minerals, natural supplements, or alternative medicines.

Additional monitoring of your dose or condition may be needed if you are taking other drugs.

The following may interact with MAR-DILTIAZEM CD:

- Antifungal medications with a name ending inazole;
- Medications used to control the immune system such as cyclosporine;
- Certain antibiotics should not be taken with MAR-DILTIAZEM CD such as erythromycin, rifampin. Check with your pharmacist if not sure;
- Sleeping pills such as benzodiazepines (midazolam, triazolam);
- Other blood pressure medications: alpha antagonists, beta-blockers;
- Heart medications: Amiodarone, digoxin, digitalis, flecainide, nifedipine, propafenone, quinidine, verapamil; ivabradine
- Anaesthetics;

## IMPORTANT: PLEASE READ

- Lithium and imipramine used for some types of mental illness;
- Drugs that dilate the blood vessels: short and long acting nitrates;
- Medications used to control seizures:
  - carbamazepine, phenobarbital, phenytoin;
- Warfarin used as anticoagulant;
- Cholesterol lowering medications: statins;
- Theophylline used for breathing problems;
- Terfenadine or ranitidine used for allergies;
- Medications used to control stomach ulcers such as cimetidine will increase the effects of MAR-DILTIAZEM CD;
- Multivitamins with minerals (calcium-containing products);
- Drugs to treat inflammation: corticosteroids, methylprednisolone;
- Dantrolene used for severe muscle spasms or severe fever.
- Acetylsalicylic acid (ASPIRIN) or antiplatelet drugs such as ticagrelor, cilostazol, clopidogrel, dipyridamole, ticlopidine.
- X-Ray contrast agents.

**Alcohol** may cause low blood pressure and dizziness when you go from lying or sitting to standing up. This can especially occur after the first dose and when the dose is increased. Tell your doctor if you experience dizziness, light-headedness, fainting, decreased blood pressure or increased heart rate.

**Grapefruit juice** when consumed too often while taking MAR-DILTIAZEM CD may cause headache, irregular heartbeat, edema (swelling), unexplained weight gain, and chest pain. Tell your doctor if this happens to you. Your doctor may recommend that grapefruit juice be avoided if this happens to you.

### PROPER USE OF THIS MEDICATION

Do not miss doses or take extra doses, unless your doctor tells you. If you are not clear about the directions, ask your doctor or pharmacist.

Take MAR-DILTIAZEM CD exactly as your doctor tells you.

- MAR-DILTIAZEM CD is taken once a day.
- Dosage should be individualised.

**Swallow capsules whole.** DO NOT chew or crush MAR-DILTIAZEM CD capsules.

### Usual Adult Dose:

#### **Angina**

**Starting dose:** 120 mg to 180 mg once a day. Dose may be slowly (over 7 to 14 days) increased up to 360 mg a day. Always follow your doctor's instructions.

#### **High blood pressure**

**Usual starting doses:** 180 to 240 mg once a day. 120 mg a day may be used in some patients.

**Maximum dose:** 360 mg a day.

#### **Overdose:**

If you think you, or a person you are caring for, have taken too much MAR-DILTIAZEM CD, contact a healthcare professional, hospital emergency department, or regional poison control centre immediately, even if there are no symptoms.

#### **Missed Dose:**

If a dose of this medication has been missed, it should be taken as soon as possible. However, if it is almost time for the next dose, skip the missed dose and go back to the regular dosing schedule.

### SIDE EFFECTS AND WHAT TO DO ABOUT THEM

Side effects may include:

- Headache, dizziness, malaise;
- Nausea (feeling like vomiting);
- Flushing (facial redness) or feeling unusually warm;
- Unusual tiredness and weakness;
- Upset stomach.

MAR-DILTIAZEM CD can cause abnormal blood results. Your doctor will decide when to perform blood tests and will interpret the results.

**IMPORTANT: PLEASE READ**

| <b>SERIOUS SIDE EFFECTS, HOW OFTEN THEY HAPPEN AND WHAT TO DO ABOUT THEM</b> |   |              |  |   |
|--|---|--------------|--|---|
| Symptom / effect   | Talk to your healthcare professional  |              | Stop taking drug and seek immediate medical help |   |
|  | Only if severe  | In all cases |  |   |
| <b>Common</b>  | <b>Low Blood Pressure:</b> dizziness, fainting, light-headedness may occur when you go from lying or sitting to standing up     |              | √  |   |
|  | <b>Fast, slow, or irregular heartbeat</b>   |              | √  |   |
|  | <b>Peripheral edema:</b> swelling of the ankles   | √            |  |   |
|  | <b>Respiratory tract infection:</b> pharyngitis, rhinitis   |              | √  |   |
|  | <b>Allergic Reaction:</b> rash, hives, swelling of the face, lips, tongue or throat, difficulty swallowing or breathing         |              |  | √ |
| <b>Uncommon</b>  | <b>Depression:</b> low mood, lack of interest in usual activities, change in sleep and appetite.                                | √            |  |   |
|  | <b>Heart block:</b> A disease in the electrical system of the heart causing lightheaded ness, fainting and irregular heartbeat. |              |  | √ |
|  | <b>Heart Attack:</b> shortness of breath, chest pain  |              |  | √ |
|  | <b>Angina:</b> Chest pain   |              | √  |   |
|  | <b>Heart Failure:</b> shortness of breath, leg swelling, and exercise intolerance   |              | √  |   |

| <b>SERIOUS SIDE EFFECTS, HOW OFTEN THEY HAPPEN AND WHAT TO DO ABOUT THEM</b> |  |              |  |   |
|--|--|--------------|--|---|
| Symptom / effect   | Talk to your healthcare professional   |              | Stop taking drug and seek immediate medical help |   |
|  | Only if severe   | In all cases |  |   |
| <b>Uncommon</b>  | <b>Eye Problems:</b> decreased vision, irritation, sore red eyes   | √            |  |   |
|  | <b>Increased blood sugar:</b> frequent urination, thirst, and hunger   | √            |  |   |
| <b>Rare</b>  | <b>Liver Disorder:</b> yellowing of the skin or eyes, dark urine, abdominal pain, nausea, vomiting, loss of appetite   |              | √  |   |
| <b>Unknown</b>   | <b>Serious Skin Reactions (Stevens-Johnson Syndrome, Toxic Epidermal Necrolysis, hypersensitivity Syndrome):</b> any combination of itchy skin rash, redness, blistering and peeling of the skin and /or of the lips, eyes, mouth, nasal passages or genitals, accompanied by fever, chills, headache, cough, body aches or joint pain, yellowing of the skin or eyes, dark urine. |              |  | √ |

*This is not a complete list of side effects. For any unexpected effects while taking MAR-DILTIAZEM CD, contact your doctor or pharmacist.*

## HOW TO STORE IT

Store at 15°C to 30°C. **Protect from moisture. Keep out of the reach and sight of children.**

### Reporting Side Effects

You can report any suspected side effects associated with the use of health products to Health Canada by:

- Visiting the Web page on Adverse Reaction Reporting (<https://www.canada.ca/en/health-canada/services/drugs-health-products/medeffect-canada/adverse-reaction-reporting.html>) for information on how to report online, by mail or by fax; or
- Calling toll-free at 1-866-234-2345.

*NOTE: Contact your health professional if you need information about how to manage your side effects. The Canada Vigilance Program does not provide medical advice.*

## MORE INFORMATION

### If you want more information about MAR-DILTIAZEM CD:

- Talk to your healthcare professional
- Find the full product monograph that is prepared for healthcare professionals and includes this Patient Medication Information by visiting the Health Canada website (<https://www.canada.ca/en/health-canada/services/drugs-health-products/drug-products/drug-product-database.html>); Marcan Pharmaceuticals Inc.'s website [www.marcanpharma.com](http://www.marcanpharma.com), or by calling 1-855-627-2261.

The leaflet was prepared by Marcan Pharmaceuticals Inc. 2 Gurdwara Road, Suite #112, Ottawa, Ontario, K2E 1A2.

**Last Revised:** November 16, 2021.