

## **PRODUCT MONOGRAPH**

**PrBL LATANOPROST**  
Latanoprost Ophthalmic Solution  
50 mcg/mL

**Prostaglandin F<sub>2α</sub> analogue**

**Bausch & Lomb Incorporated**  
1400 North Goodman Street  
Rochester NY, USA  
14609

**Date of Revision:**  
June 30, 2022

Imported and Distributed by:  
**Bausch + Lomb Corporation**  
520 Applewood Crescent  
Vaughan, Ontario  
L4K 4B4

Control #: 260462

**Table of Contents**

**PART I: HEALTH PROFESSIONAL INFORMATION ..... 3**  
SUMMARY PRODUCT INFORMATION..... 3  
INDICATIONS AND CLINICAL USE..... 3  
CONTRAINDICATIONS..... 3  
WARNINGS AND PRECAUTIONS ..... 4  
ADVERSE REACTIONS ..... 6  
DRUG INTERACTIONS ..... 7  
DOSAGE AND ADMINISTRATION..... 7  
OVERDOSAGE..... 8  
ACTION AND CLINICAL PHARMACOLOGY ..... 9  
STORAGE AND STABILITY .....10  
DOSAGE FORMS, COMPOSITION AND PACKAGING .....10

**PART II: SCIENTIFIC INFORMATION..... 11**  
PHARMACEUTICAL INFORMATION.....11  
CLINICAL TRIALS.....12  
DETAILED PHARMACOLOGY .....13  
TOXICOLOGY .....16

**PART III: CONSUMER INFORMATION ..... 26**

**PrBL LATANOPROST**  
Latanoprost Ophthalmic Solution  
50 mcg/mL

**PART I: HEALTH PROFESSIONAL INFORMATION**

**SUMMARY PRODUCT INFORMATION**

<b>Route of Administration</b>	<b>Dosage Form / Strength</b>	<b>All Nonmedicinal Ingredients</b>
Ophthalmic	Latanoprost ophthalmic solution / 50 mcg/mL	Sodium Dihydrogen Phosphate Monohydrate, Disodium Phosphate Anhydrous, Sodium Chloride, Water for Injection and Benzalkonium Chloride as a preservative  BL LATANOPROST is buffered to a pH of approximately 6.7 and is isotonic with lacrimal fluid.

**INDICATIONS AND CLINICAL USE**

BL LATANOPROST (latanoprost) is indicated for the reduction of intraocular pressure in patients with open-angle glaucoma or ocular hypertension. BL LATANOPROST may be used for the reduction of intraocular pressure in patients with chronic angle-closure glaucoma who underwent peripheral iridotomy or laser iridoplasty.

See information in sections of ACTION AND CLINICAL PHARMACOLOGY, WARNINGS AND PRECAUTIONS and ADVERSE REACTIONS.

**CONTRAINDICATIONS**

Known hypersensitivity to benzalkonium chloride or any other ingredient in this product.

For a complete listing, see the DOSAGE FORMS, COMPOSITION and PACKAGING sections of the product monograph.

## WARNINGS AND PRECAUTIONS

### General

Latanoprost has been reported to cause changes to pigmented tissues. The most frequently reported changes have been increased pigmentation of the iris, periorbital tissue (eyelid) and eyelashes, and growth of eyelashes. Pigmentation is expected to increase as long as BL LATANOPROST is administered. After discontinuation of latanoprost, pigmentation of the iris is likely to be permanent while pigmentation of the periorbital tissue and eyelash changes have been reported to be reversible in some patients. Patients who receive treatment should be informed of the possibility of increased pigmentation. **The effects of increased pigmentation beyond 5 years are not known.** Patients who are expected to receive treatment in only one eye should be informed about the potential for increased pigmentation in the treatment eye and thus, heterochromia between the eyes.

BL LATANOPROST may gradually increase the pigmentation of the iris. This effect has predominantly been seen in patients with mixed coloured irides, i.e., blue-brown, grey-brown, green-brown or yellow-brown. The eye colour change is due to increased melanin content in the stromal melanocytes rather than to an increase in the number of melanocytes. This change may not be noticeable for several months to years. Typically, the brown pigmentation around the pupil spreads concentrically towards the periphery of the iris and the entire iris or parts of the iris become more brownish. Neither nevi nor freckles of the iris appear to be affected by treatment. While treatment with BL LATANOPROST can be continued in patients who develop noticeably increased pigmentation, these patients should be examined regularly.

During clinical trials, the increase in brown iris pigment has not been shown to progress further upon discontinuation of treatment, but the resultant colour change may be permanent.

### Hepatic/Biliary/Pancreatic

Latanoprost has not been studied in patients with hepatic impairment and should, therefore, be used with caution in such patients.

### Ophthalmologic

Macular edema, including cystoid macular edema, has been reported during treatment with latanoprost. These reports have mainly occurred in aphakic patients, in pseudophakic patients with torn posterior lens capsule, or in patients with known risk factors for macular edema. BL LATANOPROST should be used with caution in patients who do not have an intact posterior capsule or who have known risk factors for macular edema.

There is no experience with latanoprost in patients with inflammatory ocular conditions, inflammatory glaucoma, neovascular glaucoma or congenital glaucoma, and only limited experience with pseudophakic patients and in patients with pigmentary glaucoma.

BL LATANOPROST should be used with caution in patients with a history of intraocular inflammation (iritis/uveitis) and should generally not be used in patients with active intraocular inflammation.

BL LATANOPROST should be used with caution in patients with a history of herpetic keratitis.

BL LATANOPROST should be avoided in cases of active herpes simplex keratitis and in patients with a history of recurrent herpetic keratitis specifically associated with prostaglandin analogues. There have been reports of bacterial keratitis associated with the use of multiple-dose containers of topical ophthalmic products. These containers had been inadvertently contaminated by patients who, in most cases, had a concurrent corneal disease or a disruption of ocular epithelial surface (see INFORMATION FOR THE CONSUMER).

This product contains benzalkonium chloride as a preservative, which may be absorbed by soft contact lenses. Remove contact lenses before administration of BL LATANOPROST. Contact lenses may be reinstalled 15 minutes after administering BL LATANOPROST.

### **Renal**

Latanoprost has not been studied in patients with renal impairment and should, therefore, be used with caution in such patients.

### **Respiratory**

There is no experience in patients with severe or uncontrolled asthma. Such patients should therefore be treated with caution until there is sufficient experience (see ADVERSE REACTIONS and DETAILED PHARMACOLOGY - Human Pharmacodynamics for experience in patients with mild to moderate asthma).

### **Sexual Function/Reproduction**

**Fertility:** Latanoprost has not been found to have any effect on male or female fertility in animal studies.

### **Skin**

Eyelid skin darkening, which may be reversible, has been reported in association with the use of latanoprost (see WARNINGS AND PRECAUTIONS).

BL LATANOPROST may gradually change eyelashes and vellus hair in the treated eye; these changes include increased length, thickness, pigmentation, the number of lashes or hairs, and misdirected growth of eyelashes. Eyelash changes are usually reversible upon discontinuation of treatment.

## **Special Populations**

**Pregnant Women:** Reproduction studies have been performed in rats and rabbits. In rabbits an incidence of 4 of 16 dams had no viable fetuses at a dose that was approximately 80 times the maximum human dose, and the highest non-embryocidal dose in rabbits was approximately 15 times the maximum human dose (see TOXICOLOGY). BL LATANOPROST should be used during pregnancy only if the potential benefit justifies the potential risk to the fetus.

**Nursing Women:** The active substance in BL LATANOPROST and its metabolites may pass into breast milk and BL LATANOPROST should therefore be used with caution in nursing women (see TOXICOLOGY).

**Pediatrics:** The safety and efficacy of the use of latanoprost in children has not been established.

## **ADVERSE REACTIONS**

### **Clinical Trial Adverse Drug Reactions**

*Because clinical trials are conducted under very specific conditions the adverse reaction rates observed in the clinical trials may not reflect the rates observed in practice and should not be compared to the rates in the clinical trials of another drug. Adverse drug reaction information from clinical trials is useful for identifying drug-related adverse events and for approximating rates.*

The ocular adverse events and ocular signs and symptoms reported in 5 to 15% of the patients on latanoprost in the three 6-month, multi-centre, double-masked, active controlled trials were blurred vision, burning and stinging, conjunctival hyperemia, foreign body sensation, itching, increased iris pigmentation and punctate epithelial keratopathy.

Local conjunctival hyperemia was observed: however, less than 1% of the latanoprost treated patients required discontinuation of therapy because of intolerance to conjunctival hyperemia.

In addition to the above listed ocular events/signs and symptoms, the following were reported in 1 to 4% of the patients: dry eye, excessive tearing, eye pain, lid crusting, lid edema, lid erythema, lid discomfort/pain and photophobia.

The most common systemic adverse events seen with latanoprost were upper respiratory tract infection/cold/flu which occurred at a rate of approximately 4%. Pain in muscle/joint/back, chest pain/angina pectoris and rash/allergic skin reaction each occurred at a rate of 1 to 2%.

### **Less Common Clinical Trial Adverse Drug Reactions (<1%)**

The following events were reported in less than 1% of the patients: conjunctivitis, diplopia and discharge from the eye.

During clinical studies, there were extremely rare reports of the following: retinal artery embolus, retinal detachment, and vitreous hemorrhage from diabetic retinopathy.

### **Post-Market Adverse Drug Reactions**

Macular edema, including cystoid macular edema, has been reported during treatment with latanoprost. These reports have mainly occurred in aphakic patients, in pseudophakic patients with a torn posterior lens capsule, or in patients with known risk factors for macular edema.

BL LATANOPROST should be used with caution in these patients. Upon discontinuation of latanoprost treatment, visual acuity has improved, in some cases with concurrent treatment with topical steroidal and non-steroidal anti-inflammatory drugs.

Latanoprost has been reported to cause darkening, thickening and lengthening of eye lashes.

Based on spontaneous reports, rare cases of iritis/uveitis and very rare cases of darkening of the palpebral skin have been reported.

The following events, which have been chosen for inclusion due to either their seriousness, frequency of reporting, possible causal connection to latanoprost, or a combination of these factors, have been reported during post marketing use of latanoprost in clinical practice and in the literature: eyelash changes (increased length, thickness, pigmentation of eyelashes, increased number of eyelashes and vellus hairs on the eyelid, curling of eyelashes, misdirected eyelashes sometimes resulting in eye irritation); eyelid skin darkening: periorbital and lid changes resulting in deepening of the eyelid sulcus; intraocular inflammation (iritis/uveitis); macular edema, including cystoid macular edema; corneal edema and erosions; iris cyst; pseudo-pemphigoid of ocular conjunctiva; localized skin reaction on the eyelid; photophobia; toxic epidermal necrolysis; infections and infestations: herpetic keratitis; nervous system disorders: dizziness and headache. Those events are reported voluntarily from a population of unknown size; therefore, estimates of frequency cannot be made. Rare cases of asthma, asthma aggravation, acute asthma attack and dyspnoea have been reported. There is limited experience from patients with asthma but latanoprost neither was found to affect pulmonary function when studied in a small number of steroid treated patients suffering from moderate asthma nor was it found to affect the pulmonary function, airway reactivity or  $\beta$ 2-responsiveness when studied in a small number of non-steroid treated asthma patients.

Cases of corneal calcification have been reported very rarely in association with the use of phosphate-containing eye drops in some patients with significantly damaged corneas.

## **DRUG INTERACTIONS**

### **Drug-Drug Interactions**

*In vitro* studies have shown that precipitation occurs when eye drops containing thimerosal are mixed with latanoprost. If such drugs are used, they should be administered with an interval of at least 5 minutes between applications.

There have been reports of paradoxical elevations in IOP following the concomitant ophthalmic administration of two prostaglandin analogs. Therefore, the use of two or more prostaglandins, prostaglandin analogs, or prostaglandin derivatives is not recommended.

## **DOSAGE AND ADMINISTRATION**

### **Dosing Considerations**

Optimal effect is obtained if BL LATANOPROST is administered in the evening.

### **Recommended Dose and Dosage Adjustment**

The recommended dose for adults, including the elderly (over 60 years of age), is one drop in the affected eye(s) once daily. The dose of BL LATANOPROST should not exceed once daily as it has been shown that more frequent administration decreases the IOP lowering effect. Reduction of IOP in humans starts about 3 to 4 hours after treatment and maximum effect is reached after 8 to 12 hours. Pressure reduction is maintained for at least 24 hours.

### **Missed Dose**

If one dose is missed, treatment should continue with the next dose the following day.

### **Administration**

Contact lenses should be removed prior to the administration of BL LATANOPROST and may be reinserted 15 minutes after administration (see INFORMATION FOR THE CONSUMER).

#### *Use in combination with other drugs*

BL LATANOPROST may be used concomitantly with other topical ophthalmic products to further lower intraocular pressure. If more than one topical ophthalmic drug is being used, the drugs should be administered at least 5 minutes apart.

## **OVERDOSAGE**

Apart from ocular irritation and conjunctival or episcleral hyperemia, no other ocular side effects of latanoprost administered at high doses are known. Intravenous infusion of up to 3 mcg/kg in healthy volunteers produced mean plasma concentrations 200 times higher than during clinical treatment and no adverse reactions were observed. Intravenous doses of 5.5 to 10 mcg/kg caused abdominal pain, dizziness, fatigue, hot flushes, nausea and sweating.

In monkeys, latanoprost has been infused i.v. in doses of up to 500 mcg/kg without major effects on the cardiovascular system. Intravenous administration in monkeys has been associated with transient bronchoconstriction. However, in patients with bronchial asthma, bronchoconstriction



was not induced by latanoprost when administered topically to the eyes at a dose 7 times the recommended clinical dose. If overdosage with BL LATANOPROST occurs, treatment should be symptomatic.

For management of a suspected drug overdose, contact your regional poison control centre.

## **ACTION AND CLINICAL PHARMACOLOGY**

### **Mechanism of Action**

Latanoprost, a prostaglandin F<sub>2α</sub> (13,14-dihydro-17-phenyl-18,19,20-trinor-PGF<sub>2α</sub> isopropyl ester) analogue, is a selective prostanoid FP receptor agonist which reduces the intraocular pressure by increasing the outflow of aqueous humour. Studies in animals and man indicate that the main mechanism of action is increased uveoscleral outflow.

Glaucoma is a disease with characteristic optic nerve damage and a corresponding visual field defect. Increased intraocular pressure (IOP) is one of the main risk factors. However, disturbances in blood flow may also play a role in some cases. In ocular hypertension, patients may have increased IOP but without changes in the visual field or corresponding optic nerve damage.

### **Pharmacokinetics**

BL LATANOPROST is a sterile, isotonic, buffered aqueous solution with a pH of approximately 6.7.

Each mL contains 50 mcg of latanoprost, a colourless to slightly yellow oil. Latanoprost is an isopropyl ester prodrug which is well absorbed through the cornea and upon entering the aqueous humour is rapidly and completely hydrolysed to the biologically active acid. Studies in humans indicate that the peak concentration in the aqueous humour is reached about two hours after topical administration.

Following topical administration in monkeys, latanoprost is primarily distributed in the anterior segment, conjunctiva and eyelids with only minute quantities reaching the posterior segment. Reduction of IOP following a single dose in humans starts about 3 to 4 hours following topical administration, and the maximum effect is reached after 8 to 12 hours. Pressure reduction is maintained for at least 24 hours.

There is practically no metabolism of the acid of latanoprost in the eye. The plasma clearance is rapid and occurs in the liver. In humans, the half-life of the biologically active acid in plasma is approximately 17 minutes. In animal studies, the main metabolites were the 1,2-dinor and the 1,2,3,4-tetranor metabolites which exerted only weak or no biologic activity and were excreted primarily in urine.

## **STORAGE AND STABILITY**

Store unopened bottle under refrigeration (2 to 8° C). Protect from light. During shipment, the bottle may be maintained at temperatures up to 40°C (104°F) for a period not exceeding 8 days. Once opened, bottle may be stored at room temperature up to 25°C, for up to six weeks. Keep the product in the box.

## **DOSAGE FORMS, COMPOSITION AND PACKAGING**

BL LATANOPROST (latanoprost) is a sterile, isotonic, buffered aqueous solution of latanoprost 50 mcg/mL. One drop contains approximately 1.5 mcg of latanoprost. BL LATANOPROST is intended for topical administration on the eye.

BL LATANOPROST is supplied in a 4 mL plastic ophthalmic dispenser bottle with a dropper tip and screw cap.

Each bottle contains 2.5 mL of BL LATANOPROST corresponding to approximately 80 drops of solution.

Each mL of BL LATANOPROST contains 50 mcg latanoprost, including the following non-medicinal ingredients: Sodium Dihydrogen Phosphate Monohydrate, Disodium Phosphate Anhydrous, Sodium Chloride, Water for Injection and Benzalkonium Chloride as a preservative. BL LATANOPROST is buffered to a pH of approximately 6.7 and is isotonic with lacrimal fluid.

## PART II: SCIENTIFIC INFORMATION

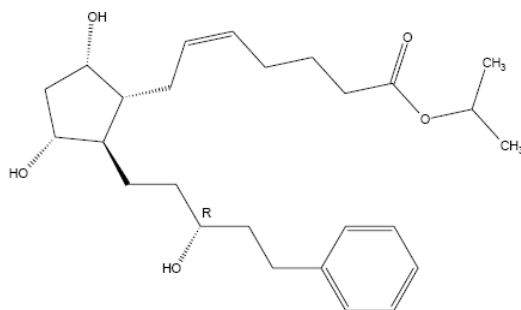
### PHARMACEUTICAL INFORMATION

#### Drug Substance

Proper name: Latanoprost

Chemical name: 1) Isopropyl-(Z)-7 [(1R,2R,3R,5S)-3,5-dihydroxy-2-[(3R)-3-hydroxy-5-phenylpentyl]cyclopentyl]-5-heptenoate  
2) 13,14-dihydro-17-phenyl-18,19,20-trinor-PGF<sub>2</sub> α-isopropyl ester

Structural formula:



Molecular formula: C<sub>26</sub>H<sub>40</sub>O<sub>5</sub>

Molecular mass: 432.52 g/mol

#### Physicochemical properties

Description: Colourless to slightly yellow oil.

Solubility: Very soluble in acetonitrile and freely soluble in acetone, ethanol, ethyl acetate, isopropanol, methanol and octanol, and practically insoluble in water.

## CLINICAL TRIALS

In five controlled clinical trials of up to 6 months duration, reduction of IOP was evaluated in patients with open-angle glaucoma or ocular hypertension treated with either latanoprost ophthalmic solution dosed once a day or timolol dosed twice a day. The mean baseline IOP (mmHg) in these studies ranged from 23.1 to 29.9 and 23.1 to 28.7 for the groups treated with latanoprost ophthalmic solution and timolol, respectively. The results are shown below.

### Reduction of IOP (mmHg) in Patients Treated with Latanoprost as Compared to Timolol\*

Study (ref. #)	No. of Patients		Baseline IOP mmHg		Change from Baseline mmHg (%)**		Between Group Comparison (p-Value)
	Latanoprost	Timolol	Latanoprost	Timolol	Latanoprost	Timolol	
Study 1 (24)	128	140	24.4	24.1	-6.2 (25.4)	-4.5 (17.8)	<0.001
Study 2 (26)	149	145	25.2	25.4	-7.9 (30.9)	-7.4 (29.1)	0.2
Study 3 (2)	183	84	25.1	24.6	-7.8 (30.7)	-6.6 (26.0)	0.002
Study 4 (34)	30	30	29.9	28.7	-11.7 (39.1)	-8.5 (29.6)	0.045
Study 5 (35)	76	78	23.1	23.1	-6.2 (26.8)	-4.4 (19.0)	<0.001

\* Intent-to-treat (ITT) analysis, except for Study 5, which evaluated data for patients who completed the study

\*\* Mean diurnal IOPs (mean of 3 different daytime readings) used in Studies 1-4. Mean morning IOPs, representing trough values for both treatments, used in Study 5.

In latanoprost studies of up to 24 months duration, there was no evidence of long-term drift in IOP reduction; the mean diurnal IOP reduction remained constant in patients treated up to 24 months.

Similar results were obtained from a 3-month phase III clinical trial in Asian patients with chronic angle closure glaucoma. In this study, 137 patients received latanoprost once daily and 138 patients received timolol twice daily. Latanoprost reduced IOP by 30% from the untreated baseline of 25.2 mmHg. Timolol reduced IOP by 20% from a baseline of 25.9 mmHg. The p-value for the difference between the IOP reduction by latanoprost versus timolol was  $p < 0.001$ . The benefit to patients from latanoprost was irrespective of their degree of angle closure.

A 3-year open-label prospective safety study with a 2-year extension phase was conducted to evaluate the progression of increased iris pigmentation with continuous use of latanoprost once-daily as adjunctive therapy in 519 patients with open-angle glaucoma. The analysis was based on observed-cases population of the 380 patients who continued in the extension phase.

Results showed that the onset of noticeable increased iris pigmentation occurred within the first year of treatment for the majority of the patients who developed noticeable increased iris pigmentation. Patients continued to show signs of increasing iris pigmentation throughout the five years of the study. Observation of increased iris pigmentation did not affect the incidence, nature or severity of adverse events (other than increased iris pigmentation) recorded in the study. In the study, IOP reduction was similar regardless of the development of increased iris pigmentation during the study.

Clinical trials have shown that latanoprost has no significant effect on production of aqueous humour and no effect on the blood-aqueous barrier. At clinical dose levels, latanoprost has negligible or no effects on intraocular blood circulation when studied in monkeys. However, mild to moderate conjunctival or episcleral hyperemia may occur as a result of topical administration.

Latanoprost has not induced fluorescein leakage in the posterior segment of pseudophakic human eyes during short term treatment.

Phase II clinical trials have also demonstrated that latanoprost is effective in combination with other drugs used for treatment of glaucoma. The IOP reducing effect of latanoprost is additive to that of beta-adrenergic antagonists (timolol), adrenergic agonists (dipivefrin, epinephrine), cholinergic agonists (pilocarpine) and carbonic anhydrase inhibitors (acetazolamide).

## **DETAILED PHARMACOLOGY**

### **Animal Pharmacodynamics**

Latanoprost has been shown to lower IOP in primates, with minimal acute irritation of the eye. Results from studies show large species differences in pharmacologic responses which probably depend on the variation in prostaglandin receptor distribution between species.

### **Reduction of IOP**

Topical administration of doses of 0.3-3 mcg/eye in the cat had very little IOP reducing effect. In the cynomolgus monkey, topical doses of 1-9.5 mcg caused dose-related reduction in IOP. The onset of effect was slow, giving a maximum reduction 4 to 6 hours after the dosing. Repeated administration of 1-3 mcg latanoprost daily for 5 days, lowered IOP effectively.

### **Aqueous Humour dynamics: mode of action**

The effect of topical treatment of latanoprost on aqueous humour dynamics was studied in cynomolgus monkeys. Latanoprost (3 mcg) was applied once daily for five days, and on the fifth day of treatment the aqueous humour dynamics was determined using iodine labelled albumin as tracer. In the same experiments outflow facility was measured using a two-level constant pressure infusion. Latanoprost increased the uveoscleral outflow by about 50% whereas the trabecular outflow and the outflow facility were unchanged. The total outflow tended to increase. The main mechanism for pressure reduction after treatment with latanoprost thus seems to be an increased uveoscleral outflow of aqueous humour. These results are in agreement with earlier studies with PGF<sub>2</sub> $\alpha$ -IE demonstrating the same main mechanism to lower IOP.

### **Other pharmacologic effects in the eye**

In cats latanoprost had a marked pupillary constrictive effect. Topical application of 0.3-3 mcg gave a dose dependent reduction of the pupillary diameter with a maximum response 2-3 hours after treatment. The miotic effect observed in cats and dogs is most probably a result of a direct effect on prostaglandin receptors in the iris sphincter muscle. In cynomolgus monkeys no miosis or a slight dilation of the pupil was seen after latanoprost treatment, and in clinical studies no change in pupil diameter has been observed during latanoprost treatment. The difference between species is probably due to different distribution of prostaglandin receptors.

### **Effects on airway resistance**

Airway resistance was estimated from the intrathoracic inspiration/expiration pressure difference. At the two highest doses (2 mcg/kg and 6 mcg/kg, 50 times and 150 times the clinical dose, respectively), there was an increase in pressure difference and in respiration rate. The blood flow to the lungs also decreased after the two highest doses. This indicates most likely some degree of constriction of the bronchial tree although studies in unanesthetized animals described below showed little effect.

### **Cardiovascular and pulmonary effects**

The effects of intravenously administered latanoprost on the cardiovascular and pulmonary system in unanesthetized cynomolgus monkeys have also been evaluated. Two male and two female cynomolgus monkeys received intravenous injections of vehicle (0.9% saline) or latanoprost at doses of 1, 10, 100 and 500 mcg/kg b.w. Treatment with latanoprost was in general without consistent effects on the arterial blood pressure, but dose related increases in heart rate were recorded in 2 out of 4 animals. Dose related increases in respiration rate were recorded in all four animals following latanoprost treatment. With the highest dose the respiration rate approximately doubled, but the animals showed no signs of dyspnea. No consistent dose related changes in ECG could be detected, but minor changes in ECG waveform were recorded in 3 of the 4 animals following doses of 100 and 500 mcg/kg (2,500-12,500 times the clinical dose). Minor changes in ECG were also seen after vehicle administration.

The cardiovascular effects after intravenous injection of latanoprost have been studied in cynomolgus monkeys under pentobarbital anaesthesia. Latanoprost was given in escalating doses (0.6, 2 and 6 mcg/kg body weight), the lowest dose corresponding to about 15 times the clinical dose in the eye (~0.04 mcg/kg b.w.). At the highest dose level (150 times the clinical dose) latanoprost induced a transient increase in blood pressure and a 30% increase in cardiac output. Regional blood flow was determined with radioactive microspheres, and in most organs only minor changes in blood flow were detected. Marked increases in blood flow were detected in the temporal, parietal and frontal lobes of the brain but only with the highest dose of latanoprost. The effect on the coronary blood flow of the heart was a dose related increase. Latanoprost had no significant effect on renal blood flow. It can be concluded that any systemic effect of latanoprost on the cardiovascular system after topical application in the eye is unlikely.

### **Human Pharmacodynamics**

A double-masked study was performed which included 20 normal volunteers and 20 patients with ocular hypertension who were treated with 60 mcg/mL latanoprost in one eye and placebo in the other eye twice daily for five days. Drug effects were evaluated by comparing the two eyes.

Latanoprost caused no significant effect on aqueous flow. Outflow facility was determined on the fifth day of treatment and was increased, compared to the fellow eye, from 0.33 to 0.41 mL/min/mmHg in normal eyes and from 0.20 to 0.26 mL/min/mmHg in ocular hypertensive eyes. These increases were statistically significant but they are not large enough to explain the reduction of IOP. Clinical tonography can not be used to differentiate between outflow through the trabecular meshwork or the uveoscleral route, and the increase observed in outflow facility may well be explained at least partly by increased facility of the uveoscleral outflow routes.

Toris et al. (1993) have reported an attempt to determine uveoscleral flow by an indirect technique in the human eye, and they concluded that increased uveoscleral flow was the main mechanism of action also in the human eye.

The effect of latanoprost on the nocturnal IOP has been addressed in one study. Patients were hospitalized and the nocturnal IOP was constructed from several measurements at different times of different nights. Once daily administration of latanoprost 50 mcg/mL in the morning reduced the nocturnal IOP to about the same extent as daytime IOP, although the IOP-reduction of 2.3 mmHg (corrected for change in fellow eye) from a baseline IOP of 23.0 mmHg in patients also treated with timolol, and of 3.5 mmHg from a baseline of 22.0 mmHg in patients with no other IOP reducing therapy, can be considered moderate.

In one study, 12 healthy volunteers and 11 asthmatic patients, 6 males and 5 females in each group, received three doses of escalating concentration 35, 115 and 350 mcg/mL of latanoprost in each eye. No negative effect was observed on any of the respiratory parameters measured in either test group (one female was excluded from the study). In addition, latanoprost has not been found to affect pulmonary function when studied in a small number of steroid treated patients suffering from moderate asthma.

### **Human Pharmacokinetics**

The main study providing basic pharmacokinetic data included four male volunteers between 63 and 67 years of age receiving either 3 mcg labelled latanoprost topically as an eye drop or 210 mcg labelled latanoprost during a 15 min i.v. infusion. From this study the fate of an ocular dose can be summarized as follows: 77 to 88% is absorbed systemically, 90% is bound to plasma proteins within 3 min. A maximum plasma concentration of 64 pg/mL is reached within 40 min, and the drug and/or its metabolites is rapidly eliminated with a half-life in the  $\beta$ -phase of 1.84 hrs in plasma. 88% is eliminated by the kidneys, essentially all of it within 24 hrs, and 15% through faeces with a more prolonged elimination time indicating some biliary excretion of drug or metabolites (< 0.09% 144-168 hrs post-dose). Relevant corresponding figures for i.v. infusion are similar. This study is based on radio labelled latanoprost and gives no information concerning metabolism of the drug. Thus, the figures should be regarded as maximal figures for active drug before correction for protein binding. The study was performed on individuals of an age group that corresponds to glaucoma patients but included only males.

In another study it was found that the plasma levels 5-60 min post-dose in patients treated with latanoprost for at least one year were very low. Ten patients were examined, 8 treated in both eyes, two in one eye only, all of them with a concentration of 50 mcg/mL corresponding to a dose of

about 1.5 mcg or 3 mcg latanoprost assuming total absorption of one eye drop in each eye. There were 5 males and 5 females between 64 and 81 years of age. A total of 49 blood samples were taken, five from each patient (the final 60 min sample was lacking in one patient) trough and 5-, 15-, 30- and 60-min values post-dose. In 30 of those 49 samples there was no measurable activity of the acid of latanoprost (< 20 pg/mL). This included all ten trough samples and the remaining four samples of three patients (two on 3 and one on 1.5 mcg). In another 7 samples the detected activity was below the accepted detection limit for the technique, 30 pg/mL. The highest values observed were 5 min: 67 pg/mL, 15 min: 54 pg/mL, 30 min: 55 pg/mL, and 60 min: 42 pg/mL. Thus, these data are similar to those found in the study on healthy volunteers with radio labelled latanoprost concerning maximal plasma levels.

## **TOXICOLOGY**

Toxicological studies performed in mice, rats, rabbits, dogs and monkeys indicate that there is a high therapeutic index with latanoprost with respect to systemic side effects. The maximum clinical daily dose is expected to be 1.5 mcg/eye/day.

### **Single Dose Toxicity**

Oral and intravenous (i.v.) single dose toxicity was studied in mice and rats. Because of low solubility in water, the maximum concentration of latanoprost in saline was 40 mcg/mL and the maximum injected dose was 2 mg/kg, approximately 50,000 times the clinical dose. No mortality was observed. For oral single dose toxicity, a solution of latanoprost in oil was used to achieve a higher concentration. The highest dose employed, 50 mg/kg (approx. 1 million times the clinical dose), did not induce any toxic symptoms. In an i.v. toxicity study in dogs, no mortality occurred at doses of 170, 340 or 680 mcg/kg. Clinical signs observed were similar to those reported after PGF<sub>2α</sub>.

### **Repeated Dose Toxicity**

#### **Topical administration on the eye**

The effect of daily administration of the latanoprost formulation topically on the eye has been investigated in a subacute study in rabbits (4 weeks) and chronic studies in rabbits and cynomolgus monkeys (12 months) and rhesus monkeys (24 months).

#### **Studies in rabbits**

In the rabbit study, eye drops containing latanoprost were administered twice daily for a total of four consecutive weeks to Fauve de Bourgogne (pigmented) rabbits, the doses being 0, 1, 5 and 25 mcg per administration. The total daily dose was 0, 2, 10 and 50 mcg/eye. One eye was treated and the other served as control. No local ocular irritation and no effects of treatment on the pupillary or corneal reflexes were observed. No clinical changes were observed during the ophthalmological examination and no effects of treatment of toxicological significance were observed when clinical pathology parameters were examined. No treatment-related macroscopic or microscopic changes were observed.



In a 52-week study in Dutch belted rabbits, 4 groups of 10 rabbits of each sex received 0, 10, 30 and 100 mcg/day of latanoprost by two daily ocular administrations. Latanoprost eye drops or vehicle was instilled into the conjunctival sac. Control animals received vehicle in the right eye only. Treated groups received the test formulation in the right eye and the same quantity of vehicle in the left eye. Ophthalmoscopy, tonometry and pachymetry examinations were performed on all animals pre-dose and at weeks 14, 25 and 51. No evidence of local irritancy, ocular or systemic toxicity, or change in the pigmentation of iris were observed. A mild transient erythema and equivocal variations in intraocular pressure were observed. No treatment-related macroscopic or microscopic changes were seen.

### **Studies in monkeys**

Two 12-month topical ocular studies were completed in cynomolgus monkeys. In the first study wild caught cynomolgus monkeys were divided into 4 groups receiving 0, 20, 50 and 100 mcg/day by two topical administrations. Treated animals received latanoprost solution in the right eye and the corresponding vehicle in the left eye. During the study some animals developed an increase in the iris pigmentation and an increase of the palpebral fissure and the study was therefore slightly modified. These changes started to appear in some animals after 2-3 months treatment. At the end of the treatment period, two treated males and one treated female were kept for a treatment-free period of 183 days (26 weeks); in one female the treatment was stopped on day 156 to evaluate the recovery of the ocular changes (iris pigmentation and eyelid effects) until the end of the treatment period for the other animals (week 53). No treatment-related signs of toxicity were seen at any dose level. The only treatment-related findings were reversible changes in the aspect of the palpebral fissure and a non-reversible increase in the iris pigmentation. These changes were attributed to the pharmacological action of latanoprost and were without a clear dose-relationship in frequency or intensity. No pathological changes were observed in any of the intra- or extraocular tissues at microscopic examination. The iridial stroma exhibited a more intense pigmentation of the melanocytes but remained morphologically normal. These findings were further confirmed in extended morphological studies of the treated and control cynomolgus monkey eyes.

In a 52-week study in domestic bred cynomolgus monkeys, lower doses compared with the above-mentioned study were used since clinical studies had indicated that the maximum human dose would be 1-2 mcg/eye/day. The same experimental procedure as in the above-mentioned study was employed. Two groups of five animals of each sex were treated with 2 and 6 mcg/day by twice daily applications. Six monkeys served as control and received the vehicle only. Also, in this study no treatment-related signs of toxicity were observed at any dose level. The only treatment-related findings were the same local ophthalmological changes in the treated eye as described above. These consisted of a change in the aspect of the palpebral fissure (one male at 6 mcg/eye/day) and a slight increase in the iris pigmentation in the majority of animals. With the lower doses the changes appeared later, usually between 6-12 months of treatment.

Another chronic study was conducted in domestic bred rhesus monkeys to investigate the toxicity of latanoprost following two daily ocular administrations for 104 consecutive weeks with an intermediate sacrifice after 52 weeks of treatment. To evaluate the regression of any toxic signs, some animals treated for 52 weeks were left for a two-year treatment-free period. The monkeys were divided into 4 groups receiving 0, 1, 3 or 10 mcg, by twice daily applications (i.e., 0, 2, 6 or 20 mcg/day). No treatment related signs of toxicity were observed at any dose level. The only

treatment related findings were local ophthalmologic changes in the treated eye confirming observations made in the cynomolgus monkey: a dose-dependent reversible slight increase of the palpebral fissure (6 and 20 mcg/day), and a slight increase in iris pigmentation in some animals from all dose groups without a dose-relationship in frequency and intensity, but with a trend regarding time of appearance. During the second year of treatment, new cases of pigmentation were observed only in the high dose group. Microscopic examination revealed a slight increase in frequency and intensity in animals receiving 6 and 20 mcg/day. The iridial stroma exhibited a more intense pigmentation of the pigmented cells but remained morphologically normal. There were no signs of increased number of pigmented cells of the iris stroma. These changes were attributed to the pharmacological action of latanoprost, as no pathological changes were observed in any of the intra- or extraocular tissues.

### **Iris pigmentation**

A number of studies have been performed to investigate the mechanism of latanoprost induced iris pigmentation. It is of particular interest that naturally occurring prostaglandins such as PGF<sub>2</sub> $\alpha$  and PGE<sub>2</sub> also cause increased pigmentation of the iris. The effect is a class effect of prostaglandins. It has been shown that the human iridial melanocytes express FP receptors in their cell membrane, and since latanoprost is a very selective FP receptor agonist, it implies that the effect is mediated by FP receptors in the melanocytes. Latanoprost binds only to a very small extent to melanin. Morphometrical analysis of irides from monkeys in the chronic toxicity studies has demonstrated that there was no increase in the number of iridial melanocytes in the treated eyes compared to controls nor was latanoprost-induced increased iris pigmentation in sympathectomized rabbits associated with any increase in the number of stromal melanocytes or other cells in the iris. No proliferative effect of latanoprost acid has been demonstrated in *in vitro* studies on cultured human melanocytes and epidermal melanocytes and there was no uptake of 5-bromodeoxyuridine (5-BrU) or tritiated thymidine into melanocytes incubated with latanoprost acid, which strongly indicate that DNA synthesis has not been initiated during exposure to latanoprost. Additionally, latanoprost had no proliferative effect on human cultured uveal and cutaneous melanoma cell lines, implying that latanoprost does not enhance proliferation of malignant melanoma cells. The results of these *in vivo* and *in vitro* studies on monkey and human melanocytes clearly show that latanoprost has no proliferative effect on ocular melanocytes.

The melanogenic effect of latanoprost has been investigated in several studies. It has been shown that the eumelanin (physiological brown melanin) content of the iris stroma increased significantly during latanoprost treatment in cynomolgus monkeys, whereas the normally predominant pheomelanin (cysteine-containing yellowish melanin) was unaffected by treatment. Since pheomelanin cannot be converted to eumelanin, the only possibility is the new syntheses of eumelanin.

A morphometrical analysis of iridial melanocytes from rhesus monkeys treated for two years with latanoprost demonstrated that there was an increase in the number of melanosomes and the area covered by melanosomes of the cytoplasm in the treated eye compared to the contralateral control eye.

Latanoprost has been shown to increase the transcription of tyrosinase, the rate-limiting enzyme in the biosynthesis of melanin, in iridial melanocytes *in vivo* in monkeys and also in cultured human melanocytes from mixed colour (hazel) and brown irides. These results also suggest that the basal

transcription of tyrosinase may be of importance whether latanoprost treatment leads to an increase in tyrosinase expression and that latanoprost probably contributes to the variability of the latanoprost-induced iris pigmentation change. This may explain why increased pigmentation in blue eyed persons during latanoprost treatment only rarely is seen or is very slow.

Latanoprost has no melanogenic effect on melanocytes in the iridial and retinal pigment epithelium of the monkey eye.

The available data demonstrate that latanoprost induces melanogenesis thereby increasing the melanin content of the iridial melanocytes and exclude that proliferative changes occur during pigmentation. Decreased catabolism of melanin in the iridial melanocytes is considered an unlikely mechanism behind the latanoprost-induced increased iridial pigmentation, since there seems to be no or minimal catabolism of melanin in iridial melanocytes.

Light microscopical and ultrastructural examinations of human iridectomy and trabeculectomy specimens have demonstrated that the latanoprost-induced pigmentation change is not associated with any proliferative, inflammatory or degenerative changes in latanoprost-treated irides or hyperpigmentation in the trabecular meshwork.

### **Oral repeated dose administration**

Subchronic oral administration of latanoprost was performed in mice and rats with latanoprost dissolved in saline and oil (neutral oil TG/10). Due to low solubility the maximum dose of latanoprost in saline was 200 mcg/kg/day, approximately 5000 times the clinical dose, and the maximum dose in oil solutions was 10 mg/kg/day, approx. 250,000 times the clinical dose. The studies in mice and rats were 28 days and 13 weeks, respectively. No toxic effects were seen.

### **Intravenous repeated dose administration**

The studies were performed in rats and dogs, the duration of treatment being 4 and 13 weeks in each species. Latanoprost was dissolved in saline and in the 4-week study in rats injected in doses of 1, 10, 100 and 340 mcg/kg/day. In the 13-week study in rats the doses were 5, 35 and 250 mcg/kg/day. In the intravenous studies some mortalities occurred in rats given 250 mcg/kg/day (> 5000 times the clinical dose per body weight). The mortalities were most likely due to acute cardiovascular effects.

In the 4-week dose-finding study in the dog in which doses of 1, 10, 100 and 340 mcg/kg/day were tested, doses of 100 and 340 mcg/kg caused vomiting, hypersalivation and miosis. The doses selected for the 13-week study were 1, 10 and 100 mcg/kg/day. Hypersalivation and miosis were seen at the dose of 10 and 100 mcg/kg/day and vomiting at the dose of 100 mcg/kg. No pathological changes were observed. It is evident that a doses of 250 mcg/kg/day causes some deaths due to cardiovascular effects in rats. The high doses employed are considerably higher (5000 - 10,000 times) than the clinical dose.

### **Reproduction And Teratology**

In order to reveal potential adverse effects on reproduction, latanoprost has been administered i.v. to male and female rats before and during pregnancy to study its effect on fertility, teratology and peri- and postnatal development. All studies were performed with intravenous injection of

latanoprost since this route of administration was considered to give the highest systemic exposure. The duration of administration of latanoprost was selected to cover the periods where reproductive performance/fertility, embryogenesis and peri/postnatal development are known to be sensitive to drug effects in the respective species. The doses were selected based on dose-range finding studies in rats and rabbits and on the results from preliminary systemic toxicity studies in rats.

The fertility and the general reproductive performance were not affected in female or male rats. In the dose range study for peri- and postnatal toxicity, pup mortality was increased in the groups given 10 mcg/kg or more and this effect was particularly marked in the 100 mcg/kg/day group. The high dose selected was 10 mcg/kg in the main peri- and postnatal study in the rat. This study showed no treatment-related effects on peri- and postnatal development at the selected dose levels (1-10 mcg/kg/day) of latanoprost.

In the embryotoxicity study in rats, no embryotoxicity was observed at the doses (5, 50 and 250 mcg/kg/day) of latanoprost used. However, latanoprost induced embryo-lethal effects in rabbits in doses above 5 mcg/kg/day. The dose level of 5 mcg/kg/day caused a slight increase in foetal resorption and was selected as the high dose in the main study. This dose caused significant embryo-foetal toxicity characterized by increased incidence of late resorption and abortion and by reduced foetal weight. No consistent indications of embryo fetal toxicity were observed with the low and intermediate doses of 0.2 and 1 mcg/kg/day. The effects on the foetal development are probably due to a pronounced luteolytic effect in the rabbit which has been described as a pharmacologic property of prostaglandin F<sub>2α</sub> and its analogues and has been reported in several research and review papers.

The fetoplacental transfer and lacteal secretion of latanoprost was investigated in rats. The concentrations of radioactivity of latanoprost and PhXA85 (acid of latanoprost) were measured in plasma and milk. The concentration of radioactivity was analysed in tissues after single intravenous administration of tritium labelled latanoprost at a dose of 200 mcg/kg to pregnant or lactating rats. On the 12th-gestation day, the concentration of radioactive latanoprost in the fetus was 0.00006% of the dose at 1 hour. The value of radioactivity in the fetus at 24 hours was below the limit of detection. On the 18th gestation day, the concentration of radioactive latanoprost in the fetus was 0.018% (at 1 hour) and 0.005% (at 4 hour). Again, at 24 hours there was no radioactivity measured. In the milk the concentration of radioactive latanoprost was shown to be eliminated more slowly than for plasma. Of the low levels remaining in milk at 2 hours and 8 hours, only 5.5% and 15% respectively was the acid of latanoprost. The more polar metabolites formed the rest of the radioactivity in the milk.

### **Mutagenicity**

Studies on the mutagenic potential of latanoprost have been performed by using *in vitro* and *in vivo* methods.

The *in vitro* mutagenic potential was tested in bacteria (*Salmonella typhimurium* and *Escherichia coli*) and in the mouse lymphoma cells. No mutagenic effect was observed in these systems. *In vitro* chromosome aberration studies in human lymphocytes showed an increase in numbers of aberrant cells at concentrations of 130 and 160 mcg/mL in the absence of S9. Treatment of cultures with latanoprost in the presence of S9 were negative. Normal frequencies of cells with

aberrations were seen at a concentration of 100 mcg/mL. The cytotoxic effects of latanoprost were clearly reflected by the poor yield of cells from cultures receiving 160 mcg/mL in the absence of S9.

The *in vivo* micronucleus test in mice showed no signs of chromosome aberrations. As the aberrations in the mouse lymphoma occur predominantly in the absence of S9, the performed micronucleus test constitutes an appropriate *in vivo* assessment.

In order to further elucidate a potential genotoxic effect, an *in vitro/in vivo* unscheduled DNA test (UDS) was performed. This study did not indicate any mutagenic potential of latanoprost and as the test is a validated method it can be concluded that latanoprost has no mutagenic potential.

### **Carcinogenicity**

For the evaluation of the carcinogenic potential, latanoprost dissolved in physiological saline was administered by gavage route to mice and rats. The duration of the study in mice was intended to be 80 weeks. However, owing to the good survival rate of the animals, the duration of the study was extended until survival had reached approximately 50% for each sex. The males were necropsied week 88, and the females week 92. The dose levels (2, 20 and 200 mcg/kg/day) were chosen based on the human therapeutic dose level and previous toxicity and pharmacokinetic studies. The highest dose is approx. 5000 times the human therapeutic dose when normalized for body weight and approaches the limit of solubility of latanoprost in water. In a toxicokinetic study in the same strain of mouse, latanoprost administered at 200 mcg/kg/day once daily by oral gavage resulted in a mean maximal plasma concentration of the acid of latanoprost 5 min after the last dose about 50 times higher than the maximal human plasma concentration after a clinical dose in both eyes.

There were no clinical signs attributable to treatment and no evidence to suggest that treatment had any effect on the incidence of palpable masses. Survival was not affected by treatment with the test article. The incidence and causes of morbidity and mortality in all groups were consistent with the expected profile in this strain of mouse. Body weight for high dose females tended to be slightly lower than for those of the control throughout the study. There was no indication that red or white blood cell counts were affected by treatment. The spectrum of necropsy findings in treated animals was generally similar to that in controls. There were no non-neoplastic findings of unusual nature or incidence attributable to the test article. There were no unusual tumour types or increased incidence of tumours attributable to the test article. It is therefore evident that the latanoprost has no carcinogenic potential in the mouse.

The design of the carcinogenicity study in rats was the same as in mice but with longer duration of the study. The dose levels were based on the human therapeutic dose level and previous toxicity and pharmacokinetic studies. The high dose, 200 mcg/kg/day, was approximately 5000 times the human therapeutic dose and approaches the limit of latanoprost solubility in water. In a toxicokinetic study in the same strain of rats, latanoprost was administered at 200 mcg/kg/day once daily by oral gavage route, the maximal plasma concentration of the acid of latanoprost was about 13-17 times higher than the maximal human plasma concentration after a clinical dose on both eyes. Therefore, in the rat a sufficient dose level was used.

There were no clinical signs attributable to treatment and no evidence to suggest that treatment had any effect on the incidence of palpable masses. There was no indication that survival had been adversely affected by treatment. The incidence and causes of morbidity and mortality in all groups were consistent with the expected profile in this strain of rat. Body weight and food consumption were not affected by treatment. There was no indication that red or white blood cell counts were affected by treatment. The spectrum of necropsy findings in treated animals was generally similar to that in controls. There were no unusual non-neoplastic findings or increased incidence of tumours attributable to the test article. It can therefore be concluded that the oral administration of latanoprost to the rat, for a major part of its life span, at dose levels up to 200 mcg/kg/day was well tolerated and produced no evidence of toxicity. There were no unusual tumour types attributable to the test article. Therefore, in the rat no carcinogenic potential was observed.

### **Special Toxicity**

An eye irritation test was conducted in rabbits in order to study whether changes in the formulation of the eye drops resulted in any local irritating effect. The two formulations tested were non-irritant. It can be stated that the formulations have been well tolerated in all the topical eye studies.

The anaphylactic and sensitization studies in the guinea pig demonstrated that latanoprost did not have any sensitization properties.

## REFERENCES

1. Alm A., Villumsen J. A study on dose-response relationship and on aqueous humour dynamics in healthy volunteers. *Arch ophthalmol* 109:1564-1568, 1991.
2. Alm A, Stjernschantz J, the Scandinavian Latanoprost Study Group. Effects on intraocular pressure and side effects of 0.005% latanoprost applied once daily, evening or morning. A comparison with timolol. *Ophthalmology* 1995; 102: 1743-1752.
3. Alm A., Widengård I., Söderström M., Friström B., Heijl A., Stjernschantz J. Latanoprost administered once daily caused a maintained reduction of intraocular pressure in glaucoma patients treated concomitantly with timolol. *Br J Ophthalmol* 79(1): 12-16, 1995.
4. Bitó L.Z., Racz P., Ruzsonyi M.R., Gagyí Z., Carino O.B. The prostaglandin analogue PhXA41 significantly reduces daytime and nighttime intraocular pressure by itself and in timolol treated glaucomatous eyes. Paper presented at ARVO, Florida, May 1994.
5. Friström B., Nilsson S.E.G. Interaction of PhXA41, a new prostaglandin analogue, with pilocarpine. A study in patients with elevated intraocular pressure. *Arch Ophthalmol* 11: 662-665, 1993.
6. Hedner J., Parkhede U., Karlsson M., Kaponen T. Evaluation of the respiratory and cardiovascular responses to topical ocular administration of PhXA41. (Data on file).
7. Hotehama Y., Mishima H.K. Clinical efficacy of PhXA34 and PhXA41, two novel prostaglandin F<sub>2</sub>α-isopropyl ester analogues for glaucoma treatment. *Jpn J Ophthalmol* 37: 259-269, 1993.
8. Hotehama Y., Mishima H.K., Kitazawa Y., Masuda K. Ocular hypotensive effect of PhXA41 in patients with ocular hypertension or primary open-angle glaucoma. *Jpn J Ophthalmol* 37: 270-274, 1993.
9. Karlsson M., Selén G. Effects of intravenous administration of PhXA41 on airway resistance and regional blood flow in vital organs of the cynomolgus monkey. (Data on file).
10. Nagasubramanian S, Sheth G., Hitchings R.A., Stjernschantz J. Intraocular pressure reducing effect of PhXA41 in ocular hypertension. *Ophthalmol* 100(9): 1305-1311, 1993.
11. Nilsson S., Samuelsson M., Bill, A., Stjernschantz J. Increased uveoscleral outflow as a possible mechanism of ocular hypotension caused by prostaglandin F<sub>2</sub>α-1-isopropyl ester in the cynomolgus monkey. *Exp Eye Res* 48: 707-716, 1989.
12. Racz P., Ruzsonyi M.R., Nagy Z.T., Bitó L.Z. Maintained intraocular pressure reduction with once-a-day application of new prostaglandin F<sub>2</sub>α analogue (PhXA41). *Arch Ophthalmol* 111: 657-661, 1993.

13. Selén G., Stjernschantz J., Resul B. Prostaglandin-induced iridial pigmentation in primates. *Surv Ophthalmol Suppl* 2; 41: S125, 1997.
14. Resul B., Stjernschantz J., Hiyo N., Liljebris C., Selén G., Astin M., Karlsson M., Bito L. Phenyl-substituted prostaglandins: potent and selective antiglaucoma agents. *J Med Chem* 36: 243-248, 1993.
15. Rulo A.H., Greve E.L., Hoyng P.F. Additive effect of latanoprost, a prostaglandin F-2 alpha analogue, and timolol in patients with elevated intraocular pressure. *Br J Ophthalmol* 78: 899-902, 1994.
16. Sjöquist B., Ryding P., Stjernschantz J. The systemic pharmacokinetics of latanoprost in man after intravenous and topical administration. Paper presented at ARVO, Florida, May 1994.
17. Spritz, R. Experiments to determine the effect of PhXA85 on melanogenesis in human iridial, choroidal and cutaneous melanocytes. Department of Medical Genetics and Pediatrics, University of Wisconsin, 1994.
18. Stjernschantz, J. Prostaglandins as ocular hypotensive agents; development of an analogue for glaucoma treatment. *Advances in Prostaglandin, Thromboxane, and Leukotriene Research*. Samuelson B. et al, eds. Vol. 23. Raven Press, Ltd., New York, 1995; 63-68.
19. Stjernschantz J, Resul B. Phenyl substituted prostaglandin analogues for glaucoma treatment. *Drugs of the Future* 17(8): 691-704, 1992.
20. Stjernschantz J., Selén G., Sjöquist B., Resul B. Preclinical Pharmacology of latanoprost, a phenyl-substituted PGF<sub>2</sub> $\alpha$  analogue. *Advances in Prostaglandin, Thromboxane, and Leukotriene Research*. Samuelson B. et al, eds. Vol. 23. Raven Press, Ltd., New York, 1995; 513-518.
21. Toris C., Camras C.B., Yablonski M.E. Effects of PhXA41, a new prostaglandin F<sub>2</sub> $\alpha$  analogue, on aqueous humor dynamics in human eyes. *Ophthalmol* 100: 1297-1304, 1993.
22. Villumsen J., Alm A. PhXA34 - a prostaglandin F<sub>2</sub> $\alpha$  analogue. Effect on intraocular pressure in patients with ocular hypertension. *Br J Ophthalmol* 76(4): 214-217, 1992.
23. Ziai N., Dolan J.W., Kacere R.D., Brubaker, R.F. The effects on aqueous dynamics of PhXA41, a new prostaglandin F<sub>2</sub> $\alpha$  analogue, after topical application in normal and ocular hypertensive human eyes. *Arch Ophthalmol* 111: 1351-1358, 1993.
24. Camras C.B., the United States Latanoprost Study Group. Comparison of Latanoprost and Timolol in Patients with Ocular Hypertension and Glaucoma. A Six-month, Masked Multicentre Trial in the United States. *Ophthalmology* 103: 138-147, 1996.



25. Camras C.B., Alm A., Watson P., Stjernschantz J. The Latanoprost Study Groups. Latanoprost, a Prostaglandin Analog, for Glaucoma Therapy. Efficacy and Safety after 1 Year of Treatment in 198 Patients. *Ophthalmology* 103: 1916-1924, 1996.
26. Watson P., Stjernschantz J. The Latanoprost Study Group. A Six-month, Randomized, Double-masked Study Comparing Latanoprost with Timolol in Open-angle Glaucoma and Ocular Hypertension. *Ophthalmology* 103: 126-137, 1996.
27. Watson PG, the latanoprost study group. Latanoprost-two years experience of its use in the United Kingdom. *Ophthalmol* 105: 82-87, 1998.
28. Wistrand P.J., Stjernschantz J., Olsson K. The incidence and time-course of latanoprost induced iridial pigmentation as a function of eye colour. *Surv Ophthalmol* [Suppl 2] 41:S129, 1997.
29. Hedman K, Alm A. A pooled data analysis in 3 randomized, double-masked, 6-month clinical studies comparing the intraocular-pressure reducing effect of latanoprost and timolol. *Eur J Ophthalmol* 10 (2):95-104, 2000.
30. Grierson I. Expert Statement on the morphological effects of XALATAN® on the iris. October 15, 2001.
31. Lindsey JD, Kashiwagi K, Boyle D, Kashiwagi F, Firestein GS, Weinreb RN. Prostaglandins increase pre-MMP-1 and pro-MMP-3 secretion by human ciliary smooth muscle cells. *Corr Eye Res* 15: 869-875, 1996.
32. Wang N, Lindsey J, Jones H, Weinreb R. Latanoprost does not induce mitosis in melanocytes within human iris organ cultures. *Invest Ophthalmol Vis Sci* 40: ARVO Suppl A3560, 1999.
33. Stjernschantz J. Significance and time-course of prostaglandin-induced increase iridial pigmentation in primates and man. In: Diestelhorst M (editor). *Prostaglandins in Ophthalmology*. Kaden Verlag, Heidelberg, Germany 111-116, 1998.
34. Aquino MV. A three-month, randomized, double-masked, parallel-group comparison of latanoprost 50 mcg/mL to timolol 5 mg/mL in patients with open angle glaucoma or ocular hypertension. (Data on file).
35. Masuda K, Mishima H. A three-month, randomized double-masked, comparison of latanoprost (50 mcg/mL) with timolol (5 mg/mL) in patients with primary open angle glaucoma and ocular hypertension. A multicenter study in Japan. (Data on file).
36. XALATAN® Product Monograph (Control number: 237364). Date of revision: May 1, 2020 (Upjohn Canada ULC)

**PART III : CONSUMER INFORMATION**

**Pr BL LATANOPROST**  
Latanoprost Ophthalmic Solution

**This leaflet is part III of a three-part "Product Monograph" published when BL LATANOPROST was approved for sale in Canada and is designed specifically for Consumers. This leaflet is a summary and will not tell you everything about BL LATANOPROST. Contact your doctor or pharmacist if you have any questions about the drug.**

**ABOUT THIS MEDICATION**

**What the medication is used for:**

BL LATANOPROST is used to treat ocular hypertension (high pressure in the eye) in patients with open-angle glaucoma or ocular hypertension. These conditions may eventually affect your eyesight.

**What it does:**

BL LATANOPROST is a solution for use only in the eyes. The active ingredient in BL LATANOPROST is one of a group of medications known as prostaglandins. It helps to lower the pressure within the eye by increasing the natural outflow of fluid from inside the eye.

**When it should not be used:**

Do not use BL LATANOPROST if you have a known hypersensitivity to benzalkonium chloride or any other ingredient in this product (see What the medicinal ingredient is and What the important nonmedicinal ingredients are).

**What the medicinal ingredient is:**

Latanoprost

**What the important nonmedicinal ingredients are:**

Benzalkonium Chloride, Sodium Chloride, Sodium Dihydrogen Phosphate Monohydrate, Disodium Phosphate Anhydrous, Water for Injection

**What dosage forms it comes in:**

BL LATANOPROST is supplied in a 5 mL plastic ophthalmic dispenser bottle. Each bottle contains 2.5 mL of solution, approximately 80 drops. Each millilitre (mL) contains 50 micrograms of latanoprost.

**WARNINGS AND PRECAUTIONS**

**BEFORE you use BL LATANOPROST talk to your doctor, or pharmacist if:**

- You are allergic to any of the ingredients in BL LATANOPROST.
- You are using any other eye drops or taking any other medication.
- You are pregnant, think you might be pregnant or you are

planning a pregnancy.

- You are breast feeding or planning to breastfeed.
- You have or have had herpes simplex keratitis. (inflammation of the cornea caused by the herpes simplex virus).
- You eyes are sensitive to light.
- You have liver or kidney problems.
- You have or have had eye inflammation (e.g., uveitis, iritis).

BL LATANOPROST contains a preservative that may be absorbed by contact lenses and stains them a brown colour. Contact lenses can be reinserted 15 minutes after applying the eye drops.

If you are using more than one type of eye drop medication, wait at least 5 minutes between each different eye drop.

**INTERACTIONS WITH THIS MEDICATION**

Studies have shown that precipitation occurs when eye drops containing thimerosal are mixed with BL LATANOPROST. If such drugs are used, they should be administered with an interval of at least 5 minutes between applications.

Only on your doctor's advice, BL LATANOPROST may be used concomitantly with other topical ophthalmic products to further lower intraocular pressure. If more than one topical ophthalmic drug is being used, the drugs should be administered at least 5 minutes apart.

**PROPER USE OF THIS MEDICATION**

**Usual adult dose:**

One drop of BL LATANOPROST should be dropped into the affected eye(s) once daily. The best time to do this is in the evening.

*Do not allow the dropper tip of the bottle to touch the eye or other surrounding structures, because this could contaminate the tip with common bacteria known to cause eye infections. Serious damage to the eye with subsequent loss of vision may result if you use eye drop solutions that have become contaminated. If you experience any type of eye condition or have surgery, immediately seek your doctor's advice concerning the continued use of the bottle you are using.*

*If you forget to use your eye drops at the usual time, wait until it is time for your next dose. If you put too many drops in your eye(s), you may feel some slight irritation.*

**BL LATANOPROST is not recommended for use in children.**

Follow these steps to help you use BL LATANOPROST properly:

1. Wash your hands and sit or stand comfortably. If you wear contact lenses, remove them before using your eye drops.
2. Once the bottle is opened, hold it in one hand and steady your thumb against your brow or the bridge of your nose.
3. Use your index finger to gently pull down the lower eyelid of the affected eye(s) to create a pocket for the drop.
4. Gently press the side of the bottle to allow only a single drop to fall into the pocket. Do not let the tip of the bottle touch your eye.
5. Close your eye for 2 to 3 minutes.
6. If your doctor has told you to use drops in both eyes, repeat the process for the other eye. BL LATANOPROST should be used until your doctor tells you to stop.

**Overdose:**

In case of drug overdose, contact a health care practitioner, hospital emergency department or regional Poison Control Centre immediately, even if there are no symptoms.

**Missed Dose:**

If one dose is missed, treatment should continue with the next dose the following day.

**SIDE EFFECTS AND WHAT TO DO ABOUT THEM**

BL LATANOPROST may change the colour of your eye. It may make your iris (the coloured part of your eye) more brown. This happens most commonly if your iris has mixed colours, i.e., blue-brown, grey, brown, green-brown or yellow-brown. If you use BL LATANOPROST in one eye only, colour changes in the iris may appear only in the treated eye. These changes may be permanent.

BL LATANOPROST may also cause your eye lashes to darken, appear thicker and longer than they usually do and increase in number.

BL LATANOPROST might cause eye irritation due to the growth of misdirected eyelashes; tell your doctor if this happens. A very small number of people may notice their eyelids look darker after using BL LATANOPROST for some time. These changes may be more noticeable if you are only treating one eye. Eyelash changes are reversible after treatment with BL LATANOPROST is stopped. Eyelid skin darkening may be permanent.

When using BL LATANOPROST, you might feel as if there is something in your eye(s). Your eye(s) might water and

become red. You may also develop a small cyst in your iris. As with other eye drops, if your vision is blurred when you first put your drops in, wait until this wears off before you drive or operate machinery. A few people using BL LATANOPROST have developed a skin rash.

A few people may experience changes in their vision, sometimes in combination with a red and sore/painful eye. These changes do not always occur right after administering the drops, and if they occur, you may find that reading and seeing fine details is more difficult. Although unlikely, if you experience any of these changes, stop using BL LATANOPROST and contact your doctor immediately.

Dizziness and headache have also been reported.

BL LATANOPROST may cause the following side effects as well.

*Common Ocular Side Effects: burning and stinging, blurred vision, red eyes, foreign body sensation, itching, increased iris pigmentation, damage of the cornea in a pinpoint pattern, dry eyes, excessive tearing, eye pain, eye lid crusting, red and swollen eyelid, eyelid discomfort/pain, photophobia (visual sensitivity to light).*

*Uncommon Ocular Side Effects: discharge from the eye, diplopia (doubled vision), conjunctivitis, iritis/uveitis (inflammation of the interior of the eye), darkening of the palpebral skin (skin related to the eyelid), iris cyst (small cyst appearing in the colored part of the eye), disorder of the conjunctiva.*

*Common Systemic Side Effects: upper respiratory tract infection/cold/flu, pain in muscle/joint/ back, chest pain/angina pectoris, rash/ allergic skin reaction*

**Be sure to tell your doctor (or pharmacist) if you notice any other unwanted side effects.**

**SERIOUS SIDE EFFECTS, HOW OFTEN THEY HAPPEN AND WHAT TO DO ABOUT THEM**

Symptom/effect		Talk with your doctor, or pharmacist		Stop taking drug and call your doctor or pharmacist
		Only if severe	In all cases	
Uncommon ocular adverse events	Macular edema: blurred or wavy vision in the middle of the eye and colors perception changes		√	
	Herpetic keratitis: Infection and infestations of the eyes (blurred vision, pain, redness, tearing, discharge, sensitivity to lights)		√	
Uncommon Systemic Adverse Events	Asthma/ Asthma aggravation/ Acute asthma attack/ Difficulty to breath			√
	Severe skin reactions including rash and skin degradation in different parts of the body		√	

*This is not a complete list of side effects. For any unexpected effects while taking BL LATANOPROST, contact your doctor, or pharmacist.*

**HOW TO STORE IT**

Before BL LATANOPROST is first opened, keep it in a fridge (between 2°C and 8°C/36°F and 46°F), out of direct light. Once the bottle has been opened, BL LATANOPROST may be kept at room temperature up to 25°C. BL LATANOPROST must be used within 6 weeks after opening the bottle. Discard the bottle and/or unused contents after 6 weeks. BL LATANOPROST should not be used after the expiry date on the bottle.

**Keep all medicines in a safe place, out of the reach and sight of children.**

**Reporting Side Effects**

You can report any suspected side effects associated with the use of health products to Health Canada by:

- Visiting the Web page on Adverse Reaction Reporting (<https://www.canada.ca/en/health-canada/services/drugs-health-products/medeffect-canada/adverse-reaction-reporting.html>) for information on how to report online, by mail or by fax; or
- Calling toll-free at 1-866-234-2345

*NOTE: Contact your health professional if you need information about how to manage your side effects. The Canada Vigilance Program does not provide medical advice.*

**MORE INFORMATION**

This document plus the full product monograph, prepared for health professionals can be obtained by visiting the Health Canada website (<https://www.canada.ca/en/health-canada/services/drugs-health-products/drug-products/drug-product-database.html>) or by contacting Bausch Health, Canada Inc., at: 1-800-361-4261

This leaflet was prepared by Bausch & Lomb Inc.

**Bausch & Lomb Incorporated**  
1400 North Goodman Street  
Rochester NY, USA 14609

Imported and Distributed by:  
**Bausch + Lomb Corporation**  
520 Applewood Crescent  
Vaughan, Ontario  
L4K 4B4

Last Revised: June 30, 2022