

PRODUCT MONOGRAPH
INCLUDING PATIENT MEDICATION INFORMATION

PrACT CITALOPRAM

Citalopram Tablets USP

Tablet, 30 mg Citalopram as Citalopram Hydrobromide, Oral

USP

Antidepressant

Sunovion Pharmaceuticals Canada Inc.

7025 Langer Drive, Suite 301

Mississauga, ON L5N 0E8

Date of Initial Authorization:
May 16, 2007

Date of Revision:
October 3, 2022

Submission Control Number: 261419

RECENT MAJOR LABEL CHANGES

1 Indications, 1.2 Geriatrics	10/2022
4 Dosage and administration	10/2022
7 Warnings and Precautions	10/2022
7 Warnings and precautions, 7.1.1 Pregnant women	10/2022
7 Warnings and precautions, 7.1.4 Geriatrics	10/2022

TABLE OF CONTENTS

RECENT MAJOR LABEL CHANGES	2
TABLE OF CONTENTS	2
PART I: HEALTH PROFESSIONAL INFORMATION	5
1 INDICATIONS	5
1.1 Pediatrics	5
1.2 Geriatrics.....	5
2 CONTRAINDICATIONS	5
3 SERIOUS WARNINGS AND PRECAUTIONS	6
4 DOSAGE AND ADMINISTRATION	6
4.1 Dosing Considerations	7
4.2 Recommended Dose and Dosage Adjustment.....	7
4.4 Administration.....	10
4.5 Missed Dose	10
5 OVERDOSAGE	10
6 DOSAGE FORMS, STRENGTHS, COMPOSITION AND PACKAGING	11
7 WARNINGS AND PRECAUTIONS	11
7.1 Special Populations.....	19
7.1.1 Pregnant Women.....	19
7.1.2 Breast-feeding.....	20

7.1.3	Pediatrics.....	20
7.1.4	Geriatrics.....	20
8	ADVERSE REACTIONS	20
8.1	Adverse Reaction Overview.....	20
8.2	Clinical Trial Adverse Reactions.....	21
8.2.1	Clinical Trial Adverse Reactions – Pediatrics	27
8.3	Less Common Clinical Trial Adverse Reactions	27
8.3.1	Less Common Clinical Trial Adverse Reactions – Pediatrics	27
8.4	Abnormal Laboratory Findings: Hematologic, Clinical Chemistry and Other Quantitative Data.....	27
8.5	Post-Market Adverse Reactions.....	27
9	DRUG INTERACTIONS	29
9.1	Serious Drug Interactions.....	29
9.2	Drug Interactions Overview.....	29
9.3	Drug-Behavioural Interactions.....	32
9.4	Drug-Drug Interactions	32
9.5	Drug-Food Interactions.....	36
9.6	Drug-Herb Interactions	36
9.7	Drug-Laboratory Test Interactions	37
10	CLINICAL PHARMACOLOGY	37
10.1	Mechanism of Action.....	37
10.2	Pharmacodynamics	37
10.3	Pharmacokinetics.....	37
11	STORAGE, STABILITY AND DISPOSAL	39
12	SPECIAL HANDLING INSTRUCTIONS	39
PART II: SCIENTIFIC INFORMATION		40
13	PHARMACEUTICAL INFORMATION.....	40
14	CLINICAL TRIALS.....	41
14.1	Clinical Trial by Indication.....	41
14.2	Comparative Bioavailability Studies	43
15	MICROBIOLOGY	43

16	NON-CLINICAL TOXICOLOGY	43
17	Supporting Product Monographs	48
	PATIENT MEDICATION INFORMATION	49

PART I: HEALTH PROFESSIONAL INFORMATION

1 INDICATIONS

ACT CITALOPRAM (citalopram hydrobromide) is indicated for:

- the symptomatic relief of depressive illness in adults

The relapse rate was significantly lower in citalopram-treated patients than in placebo-treated patients in two placebo-controlled studies that were conducted over a 24-week period in patients who responded to 6 or 8 weeks of acute treatment with citalopram ([see 14.1 Clinical Trial by Indication](#)). Nevertheless, the physician who elects to use ACT CITALOPRAM for extended periods should periodically re-evaluate the long-term usefulness of the drug for the individual patient.

1.1 Pediatrics

Pediatrics (<18 years of age): ACT CITALOPRAM is not indicated for use in patients below the age of 18 (see 7 WARNINGS AND PRECAUTIONS, Psychiatric, [Potential Association with Behavioral and Emotional Changes, Including Self-Harm](#)).

1.2 Geriatrics

Geriatrics (≥65 years of age): ACT CITALOPRAM should not be used in geriatric patients because the only available dose strength is 30 mg and this patient population should be administered citalopram at lower initial and maximal doses (see 4.2 Recommended Dose and Dosage Adjustment, [Geriatrics](#) and [7.1.4 Geriatrics](#)).

2 CONTRAINDICATIONS

- ACT CITALOPRAM is contraindicated in patients who are hypersensitive to citalopram hydrobromide or to any ingredient in the formulation, including any non-medicinal ingredient, or component of the container. For a complete listing, see [6 DOSAGE FORMS, STRENGTHS, COMPOSITION AND PACKAGING](#).
- **Monoamine Oxidase Inhibitors**
Cases of serious reactions have been reported in patients receiving selective serotonin reuptake inhibitors (SSRIs) in combination with a monoamine oxidase inhibitor (MAOI) or the reversible MAOI (RIMA), moclobemide, and in patients who have recently discontinued an SSRI and have been started on a MAOI (see 9.2 Drug Interactions Overview, [Monoamine Oxidase Inhibitors](#)). With the co-administration of an SSRI with MAOI, there have been reports of serious, sometimes fatal reactions including hyperthermia, rigidity, myoclonus, autonomic instability with possible fluctuations of vital signs, and mental status changes, including extreme agitation progressing to delirium and coma. Some cases presented with features resembling serotonin syndrome.

Therefore, citalopram should not be used in combination with a MAOI or within 14 days of discontinuing treatment with a MAOI, (including linezolid, an antibiotic which is a

reversible non-selective MAO inhibitor and methylene blue, which is a MAOI). Similarly, at least 14 days should elapse after discontinuing citalopram treatment before starting a MAOI.

- **Pimozide**

Citalopram should not be used in combination with the antipsychotic drug pimozide, as results from a controlled study indicate that concomitant use is associated with an increased risk of QTc prolongation compared to pimozide alone. This apparent pharmacodynamic interaction occurred in the absence of a clinically significant pharmacokinetic interaction; the mechanism is unknown (see 9.2 Drug Interactions Overview, [Drugs That Prolong the QT Interval](#)).

- **QT Prolongation**

Citalopram is contraindicated in patients with known QT interval prolongation or with congenital long QT syndrome (see 7 WARNINGS AND PRECAUTIONS, Cardiovascular, [QT Prolongation and Torsades de Pointes](#); 8.5 Post-Market Adverse Reactions; 9.2 Drug Interactions Overview, [Drugs That Prolong the QT Interval](#); 4 [DOSAGE AND ADMINISTRATION](#); 5 [OVERDOSAGE](#)).

3 SERIOUS WARNINGS AND PRECAUTIONS

Serious Warnings and Precautions

Increased risk of self-harm, harm to others, suicidal thinking and behavior with antidepressants use. Closely monitor all antidepressant-treated patients for clinical worsening and for emergence of agitation-type and/or suicidal thoughts and behaviors (see 7 WARNINGS AND PRECAUTIONS, Psychiatric, [Potential association with behavioural and emotional changes, including self-harm](#)).

4 DOSAGE AND ADMINISTRATION

As ACT CITALOPRAM is only available at 30 mg, it should not be used for treatment initiation, discontinuation or in the following populations:

- Elderly patients
- Patients with hepatic impairment
- CYP2C19 poor metabolisers
- Patients concomitantly taking cimetidine or CYP2C19 inhibitors, such as omeprazole, due to the risk of QT interval prolongation

4.1 Dosing Considerations

- **Pediatrics:** ACT CITALOPRAM is not indicated for use in children under 18 years of age (See 7 WARNINGS AND PRECAUTIONS, Psychiatric, [Potential Association with Behavioral and Emotional Changes, Including Self-Harm](#)).
- **Pregnant Women:** ACT CITALOPRAM should not be used during pregnancy unless the benefits markedly outweigh the risks, particularly during the third trimester as there are implications for neonatal health. [See 7.1.1 Pregnant Women](#).
- **Proceed with caution in patients with:**
 - o severe renal impairment.
 - o a pre-existing slow heart rate.
- **Interactions** (See [9. DRUG INTERACTIONS](#))
 - o Do not co-administer with Monoamine Oxidase Inhibitors (contraindicated). Allow at least 14 days to elapse when switching to or from a MAOI.
 - o Do not co-administer with pimozide (contraindicated), or escitalopram.
 - o Avoid or use caution if patient is concomitantly using:
 - other CNS medications,
 - other serotonergic agents,
 - drugs that prolong QT interval,
 - drugs that affect platelet function, or
 - drugs that cause hyponatraemia, or
 - alcohol.
- **Reduce dosage gradually.** Do not abruptly discontinue citalopram. Taper gradually when reducing dose or ending SSRI treatment, and monitor for discontinuation symptoms. Considering that 30 mg is the only available dosage strength of ACT CITALOPRAM, gradual dosage reduction will require use of another citalopram product.

4.2 Recommended Dose and Dosage Adjustment

Adults (<65 years of age)

ACT CITALOPRAM is only available at 30 mg.

Citalopram should be administered once daily, in the morning or evening, with or without food:

- Usual adult dose: 20 mg/day, orally.
- Titration: Dose increases should usually occur at least a week apart.
- Maximum dose: 40 mg/day (if needed, and tolerated), due to the risk of QT prolongation.
- Use lowest effective dose and reassess periodically.

Maintenance Treatment

Evaluation of citalopram in two placebo-controlled studies has shown that its antidepressant efficacy was maintained for periods of up to 24 weeks, following 6 or 8 weeks of initial treatment (total of 32 weeks) (see [14.1 Clinical Trial by Indication](#)). In the flexible dose study, the great majority of patients were receiving 20 or 40 mg/day doses both at 12 and 24 weeks. During maintenance therapy, the dosage should be kept at the lowest effective level and patients should be periodically reassessed to determine the need for continued treatment.

Switching Patients To or From a MAOI

At least 14 days should elapse between discontinuation of a MAOI and initiation of therapy with citalopram. Similarly, at least 14 days should be allowed after stopping citalopram before starting a MAOI (see 2 CONTRAINDICATIONS, [Monoamine Oxidase Inhibitors](#)).

Discontinuation of Citalopram Treatment

Adverse events are common within the first few days of SSRI treatment discontinuation and have also been reported following a missed dose or dose reduction.

- Do not discontinue treatment with citalopram abruptly. A gradual dose reduction over a period of at least one to two weeks, and possibly months (as needed, based on patient response), is recommended to reduce the risk of discontinuation symptoms.
- Patients should be monitored for discontinuation symptoms when stopping treatment or during dosage reduction.
- If intolerable symptoms occur following a decrease in the dose or upon discontinuation of treatment, dose titration should be managed on the basis of the patient's clinical response.

See 7 WARNINGS AND PRECAUTIONS, General, - Discontinuation Symptoms; - [Discontinuation of Treatment with Citalopram](#); and 8.2 Clinical Trial Adverse Reactions, [Adverse Reactions following Discontinuation of Treatment \(or Dose Reduction\)](#).

Special Populations

- **Pediatrics (<18 years of age):**
Health Canada has not authorized an indication for pediatric use.
- **Geriatrics (≥ 65 years of age)**
| ACT CITALOPRAM should not be used in geriatric patients because the only available dose strength is 30 mg.

A longer half-life and decreased clearance have been demonstrated for citalopram in the elderly, therefore lower doses and a lower maximum dose should be considered. It may be desirable to start citalopram at 10 mg daily and titrate upwards as needed and

tolerated. A single oral dose of 20 mg/day is the recommended citalopram dose for most elderly patients. Some patients may respond to a 10 mg/day citalopram dose (see [7.1.4 Geriatrics](#)). The dose of citalopram may be titrated to a maximum of 20 mg/day if needed and tolerated. As with other SSRIs, caution should be exercised in treating elderly female patients who may be more susceptible to adverse events such as hyponatremia and SIADH (syndrome of inappropriate antidiuretic hormone secretion). See 7 WARNINGS AND PRECAUTIONS, Renal, [Hyponatremia](#). Also 10.3 Pharmacokinetics, Special Populations and Conditions, [Geriatrics](#).

- **Hepatic Impairment**

ACT CITALOPRAM should not be used in patients with hepatic impairment because the only available dose strength is 30 mg.

Dosages of citalopram should be restricted to the lower end of the dose range in patients with mild to moderate hepatic insufficiency. Accordingly, an initial single oral citalopram dose of 10 mg daily is recommended. Subsequently, the dose of citalopram may be increased based on the patient's response and clinical judgement. Patients with reduced hepatic function should receive citalopram dosages of no more than 20 mg/day (see 7 WARNINGS AND PRECAUTIONS, Hepatic/Biliary/Pancreatic, [Hepatic Impairment](#)). Citalopram should be used with additional caution in patients with severe hepatic impairment.

- **Renal Impairment**

No dosage adjustment is necessary for patients with mild to moderate renal impairment. Since there is no information available on the pharmacokinetic or pharmacodynamic effects of citalopram in patients with severe renal impairment, ACT CITALOPRAM should be used with caution in these patients.

- **CYP2C19 Poor Metabolisers**

ACT CITALOPRAM should not be used in CYP2C19 poor metabolisers or in patients concomitantly taking cimetidine or CYP2C19 inhibitors because the only available dose strength is 30 mg.

An initial dose of citalopram 10 mg daily during the first two weeks of treatment is recommended for patients who are known to be poor metabolisers of CYP2C19. The dose of citalopram may be increased to a maximum of 20 mg daily depending on individual patient response (see 10.3 Pharmacokinetics, [Metabolism](#)). Citalopram 20mg/day is also the maximum recommended dose for patients taking concomitant cimetidine or CYP2C19 inhibitors (e.g. omeprazole) because of the risk of QT prolongation.

4.4 Administration

ACT CITALOPRAM should be administered once daily, in the morning or evening, with or without food.

4.5 Missed Dose

In the event that a dose is missed, the patient should take the next dose when it is due.

5 OVERDOSAGE

In clinical trials with racemic citalopram, there were no reports of fatal citalopram overdoses of up to 2000 mg. All patients recovered. Events of torsade de pointes have been reported during overdose with citalopram during post-market use (see [2 CONTRAINDICATIONS](#); 7 WARNINGS AND PRECAUTIONS, Cardiovascular, [QT Prolongation and Torsades de Pointes](#); [8.5 Post Market Adverse Reactions](#); 9.2 Drug Interactions Overview, [Drugs That Prolong the QT Interval](#); [4 DOSAGE AND ADMINISTRATION](#)). When specified, these overdoses were in the range of 800 –1000 mg.

Comprehensive clinical data on citalopram overdose are limited and many cases involve concomitant overdoses of other drugs and/or alcohol. Fatal cases of citalopram overdose have been reported with citalopram alone; however, the majority of fatal cases have involved overdose with concomitant medications. Post-marketing reports of drug overdoses involving citalopram have included fatalities with citalopram alone as well as non-fatal overdoses of up to 5200 mg.

Although most patients recovered without sequelae, 3 fatalities with known overdoses of racemic citalopram alone have been reported in the literature (doses of 2800 mg, 2880 mg, and 3920 mg).

Fatal cases of serotonin syndrome have been reported in patients who took overdoses of moclobemide and citalopram (see 7 WARNINGS AND PRECAUTIONS: [Neurologic, Serotonin Toxicity/Neuroleptic Malignant Syndrome \(NMS\)](#)). The plasma concentrations of moclobemide were between 16 and 90 mg/L (therapeutic range: 1 to 3 mg/L) and those of citalopram between 0.3 and 1.7 mg (therapeutic concentration: 0.3 mg/L). This indicates that a relatively low dose of citalopram, given with an overdose of moclobemide represents a serious risk for the patient.

The following symptoms have been seen in reported overdose of citalopram: agitation, atrial and ventricular arrhythmia, bradycardia, bundle branch block, cardiac arrest, confusion, convulsion, coma, cyanosis, dizziness, ECG changes, hyperventilation, hypotension, hypertension, loss of consciousness, mydriasis, nausea, QRS prolongation, QT prolongation, rhabdomyolysis, seizure, serotonin syndrome, somnolence, stupor, sweating, tachycardia, torsade de pointes, tremor, and vomiting.

Management of Overdose

Establish and maintain an airway to ensure adequate ventilation and oxygenation. Gastric lavage and use of activated charcoal should be considered. Gastric lavage should be carried

out as soon as possible after oral ingestion. Cardiac and vital sign monitoring are recommended, along with general symptomatic and supportive measures. There are no specific antidotes for citalopram.

ECG monitoring is advisable in case of overdose.

Due to the large volume of distribution of citalopram, forced diuresis, dialysis, hemoperfusion and exchange transfusion are unlikely to be of benefit.

In managing overdosage, the possibility of multiple drug involvement must be considered.

For management of a suspected drug overdose, contact your regional poison control centre.

6 DOSAGE FORMS, STRENGTHS, COMPOSITION AND PACKAGING

Table 1 – Dosage Forms, Strengths, Composition and Packaging

Route of Administration	Dosage Form / Strength/Composition	Non-medicinal Ingredients
Oral	Tablet / 30 mg, as citalopram	corn starch, crospovidone, hypromellose, lactose monohydrate, magnesium stearate, microcrystalline cellulose, polyethylene glycol, povidone, titanium dioxide and water.

Dosage Forms

30 mg tablets: White to off-white, film-coated, round, biconvex tablet with “^C 30” on one side and “blank” on the other side contains 30 mg citalopram (as citalopram hydrobromide).

Packaging

30 mg: HDPE bottles of 100's.

7 WARNINGS AND PRECAUTIONS

Please see [3 SERIOUS WARNINGS AND PRECAUTIONS BOX](#)

General

Discontinuation Symptoms

Adverse events are common when an SSRI dose is reduced and treatment discontinued, particularly if discontinuation is abrupt. Dizziness, sensory disturbances (including

paraesthesia, e.g. electric shock sensations), sleep disturbances (including insomnia and intense dreams), agitation or anxiety, nausea and/or vomiting, tremor and headache are the most commonly reported discontinuation reactions. See a more complete list under 8.2 Clinical Trial Adverse Reactions, Adverse Reactions following Discontinuation of Treatment (or Dose Reduction).

Discontinuation symptoms usually occur within the first few days of discontinuing treatment, but there have been very rare reports of such symptoms in patients who have inadvertently missed a dose.

The risk of discontinuation symptoms may be dependent on several factors, including the duration and dose of therapy and the rate of dose reduction.

Generally, these discontinuation symptoms are mild to moderate; however, in some patients they may be severe in intensity.

Generally, these symptoms are self-limiting and usually resolve within 2 weeks, though in some individuals they may be prolonged (2-3 months or more).

Discontinuation of Treatment with Citalopram

Treatment with SSRIs including citalopram, or other newer antidepressant drugs, should NOT be discontinued abruptly, due to the risk of discontinuation symptoms.

Whenever possible, citalopram treatment should be discontinued gradually over a period of several weeks or months. Because ACT CITALOPRAM is only available at a dose strength of 30 mg, gradual dosage reduction will require use of another citalopram product.

Patients should be monitored for symptoms which may be associated with discontinuation. If intolerable symptoms occur following a decrease in the dose or upon discontinuation of treatment, dose titration should be managed on the basis of the patient's clinical response (See 8.2 Clinical Trial Adverse Reactions, [Adverse Reactions following Discontinuation of Treatment \(or Dose Reduction\)](#); and 4.2 Recommended Dose and Dosage Adjustment, [Discontinuation of Citalopram Treatment](#)).

Citalopram Treatment during Pregnancy-Effects on Newborns

In animal reproduction studies, citalopram has been shown to have adverse effects on embryo/fetal and postnatal development, including teratogenic effects, when administered at doses greater than human therapeutic doses (See 16 NON-CLINICAL TOXICOLOGY, [Reproductive and Developmental Toxicology](#)). There are no adequate and well-controlled studies in pregnant women; therefore, citalopram should be used during pregnancy only if the potential benefit to the patient justifies the potential risk to the fetus.

Post-marketing reports indicate that some neonates exposed to SSRIs and other antidepressants late in the third trimester have developed complications requiring prolonged hospitalization, respiratory support, and tube feeding. Such complications can arise

immediately upon delivery. When treating a pregnant woman with citalopram during the third trimester, the physician should carefully consider the potential risks and benefits of treatment (see [7.1.1 Pregnant Women](#); and [7.1.2 Breast-feeding](#)).

Carcinogenesis and Mutagenesis

For animal data, see 16 NON-CLINICAL TOXICOLOGY, [Genotoxicity and Carcinogenicity](#)

Cardiovascular

Patients with Cardiac Disease

Citalopram has not been systematically evaluated in patients with a recent history of myocardial infarction or unstable heart disease. Patients with these diagnoses were generally excluded from clinical trials during the drug's premarketing assessment.

In clinical trials, citalopram caused small but statistically significant decreases in heart rate (see 8.2 Clinical Trial Adverse Reactions, [Decreased Heart Rate](#)). Consequently, caution should be observed when citalopram is initiated in patients with pre-existing slow heart rate.

QT Prolongation and Torsades de Pointes

Citalopram can cause a dose-dependent increase in the QT interval (see 2 CONTRAINDICATIONS; [QT Prolongation](#); [8.5 Post-Market Adverse Reactions](#); 9.2 Drug Interactions Overview, [Drugs That Prolong the QT Interval](#); [4 DOSAGE AND ADMINISTRATION](#); [5 OVERDOSAGE](#)).

Events of torsade de pointes, ventricular fibrillation, cardiac arrest, and sudden death have been reported during post-marketing use of citalopram. Torsade de pointes is a polymorphic ventricular tachyarrhythmia. Generally, the risk of torsade de pointes increases with the magnitude of QT/QTc prolongation produced by the drug. Torsade de pointes may be asymptomatic or experienced by the patient as dizziness, palpitations, syncope, or seizures. If sustained, torsade de pointes can progress to ventricular fibrillation and sudden cardiac death.

A randomized, double-blind, placebo- and positive-controlled, crossover study was performed in healthy subjects (N=119) to examine the effects of citalopram 20 mg/day and 60 mg/day on ECG intervals (individually corrected QTcNI interval) when administered according to an escalating multiple dose regimen (9 days at 20 mg/day, 4 days at 40 mg/day, 9 days at 60 mg/day). The maximum mean (upper bound of the 95% one-sided confidence interval) differences from placebo were 8.5 (10.8) and 18.5 (21.0) msec for 20 mg and 60 mg citalopram, respectively. The effects of the 40 mg/day dose were not studied, but are predicted to be approximately 13 ms (estimate value on QTcNI).

- Citalopram should not be dosed above 40 mg/day.
- In patients who are CYP2C19 poor metabolizers or patients taking concomitant omeprazole or another CYP2C19 inhibitor, citalopram should not be dosed over 20 mg/day. Therefore, ACT CITALOPRAM should not be used because the only available dose strength is 30 mg.
- In patients taking concomitant cimetidine, citalopram should not be dosed over 20 mg/day. Therefore, ACT CITALOPRAM should not be used because the only available dose

strength is 30 mg.

- Hypokalemia and hypomagnesemia should be corrected prior to initiation of citalopram treatment and periodically monitored.
- ECG monitoring is recommended when administering citalopram to patients with risk factors for torsades de pointes, such as congestive heart failure, recent myocardial infarction, bradyarrhythmias, or patients on concomitant medications that prolong the QT interval or in patients with altered metabolism (e.g. liver impairment).

Driving and Operating Machinery

Interference with Cognitive and Motor Performance

In studies in normal volunteers, citalopram in doses of 40 mg/day did not impair cognitive function or psychomotor performance. However, psychotropic medications may impair judgement, thinking or motor skills. Consequently, patients should be cautioned against driving a car or operating hazardous machinery until they are reasonably certain that ACT CITALOPRAM does not affect them adversely.

Endocrine and Metabolism

Diabetic Patients

Citalopram has not been systematically evaluated in diabetic patients since diabetes constituted an exclusion criterion. Although 13 patients did receive insulin during the studies, this number is too small to determine whether citalopram affects the response to insulin. Rare events of hypoglycemia were reported. Treatment with an SSRI in patients with diabetes may alter glycaemic control (hypoglycaemia and hyperglycaemia). ACT CITALOPRAM should be used with caution in diabetic patients on insulin or other anti-diabetic drugs.

Hematologic

Abnormal Bleeding

SSRIs and SNRIs, including ACT CITALOPRAM, may increase the risk of bleeding events by causing abnormal platelet aggregation. Concomitant use of acetylsalicylic acid (ASA), nonsteroidal anti-inflammatory drugs (NSAIDs), warfarin and other anticoagulants may add to the risk. Case reports and epidemiological studies (case-control and cohort design) have demonstrated an association between use of drugs that interfere with serotonin reuptake and the occurrence of gastrointestinal bleeding. Bleeding events related to SSRIs and SNRIs use have ranged from ecchymoses, hematomas, epistaxis, and petechiae to life-threatening [haemorrhages](#).

SSRIs/SNRIs, including ACT CITALOPRAM, may increase the risk of postpartum haemorrhage (see 7.1 Special Populations, 7.1.1 Pregnant Women, [Complications following late third trimester exposure to SSRIs](#)).

Patients should be cautioned about the risk of bleeding associated with the concomitant use of citalopram and NSAIDs, ASA, or other drugs that affect coagulation (see 9.2 Drug Interactions Overview, [Drugs Affecting Platelet Function \(e.g., NSAIDs, ASA and other anticoagulants\)](#)).

Caution is advised in patients with a history of bleeding disorder or predisposing conditions (e.g. thrombocytopenia).

Hepatic/Biliary/Pancreatic

Hepatic Impairment

ACT CITALOPRAM should not be used in patients with hepatic impairment because the only available dose strength is 30 mg.

In subjects with hepatic impairment, citalopram clearance was significantly decreased and plasma concentrations, as well as elimination half-life significantly increased (See 10.3 Pharmacokinetics, Special Populations and Conditions, [Hepatic Insufficiency](#)). Consequently, the use of citalopram in hepatically impaired patients should be approached with caution and a lower maximum dosage is recommended (see 4.2 Recommended Dose and Dosage Adjustment, [Hepatic Impairment](#)).

Musculoskeletal

Bone Fracture Risk

Epidemiological studies show an increased risk of bone fractures following exposure to some antidepressants, including SSRIs/SNRIs. The risks appear to be greater at the initial stages of treatment, but significant increased risks were also observed at later stages of treatment. The possibility of fracture should be considered in the care of patients treated with ACT CITALOPRAM. Elderly patients and patients with important risk factors for bone fractures should be advised of possible adverse events which increase the risk of falls, such as dizziness and orthostatic hypotension, especially at the early stages of treatment but also soon after withdrawal. Preliminary data from observational studies show association of SSRIs/SNRIs and low bone mineral density in older men and women. Until further information becomes available, a possible effect on bone mineral density with long term treatment with SSRIs/SNRIs, including citalopram, cannot be excluded, and may be a potential concern for patients with osteoporosis or major risk factors for bone fractures.

Neurologic

Seizures

Citalopram has not been systematically evaluated in patients with a seizure disorder. These patients were excluded from clinical studies during the premarketing testing of citalopram. In clinical trials, seizures occurred in 0.25% of patients treated with citalopram and in 0.23% patients treated with placebo. Like other antidepressants, ACT CITALOPRAM should be used with caution in patients with a history of seizure disorder. The drug should be discontinued in any patient who develops seizures.

Serotonin Toxicity/Neuroleptic Malignant Syndrome (NMS)

On rare occasions, serotonin toxicity, also known as serotonin syndrome, has been reported with citalopram, particularly during combined use with other serotonergic drugs (see 9.2 Drug

Interactions Overview, [Serotonergic Drugs](#) and [Tryptans \(5HT1 agonists\)](#)).

Serotonin toxicity is characterized by neuromuscular excitation, autonomic stimulation (e.g. tachycardia, flushing) and altered mental state (e.g. anxiety, agitation, hypomania). In accordance with the Hunter criteria, serotonin toxicity diagnosis is likely when, in the presence of at least one serotonergic agent, one of the following is observed:

- Spontaneous clonus
- Inducible clonus or ocular clonus with agitation or diaphoresis
- Tremor and hyperreflexia
- Hypertonia and body temperature > 38°C and ocular clonus or inducible clonus

Neuroleptic malignant syndrome has also been rarely reported with citalopram, particularly during combined use with neuroleptic/antipsychotic drugs. The clinical manifestations of neuroleptic malignant syndrome often overlap with those of serotonin toxicity, including hyperthermia, hypertonia, altered mental status, and autonomic instability. In contrast to serotonin toxicity, patients with neuroleptic malignant syndrome may present with “lead pipe” muscle rigidity as well as hyporeflexia.

The concomitant use of ACT CITALOPRAM with monoamine oxidase inhibitors, including linezolid and methylthionium chloride (methylene blue), is contraindicated (see 2 CONTRAINDICATIONS, [Monoamine Oxidase Inhibitors](#)). ACT CITALOPRAM should be used with caution in patients receiving other serotonergic drugs or antipsychotics/neuroleptics. If concomitant treatment with ACT CITALOPRAM and other serotonergic drugs and/or antipsychotics/neuroleptics is clinically warranted, careful observation of the patient is advised, particularly during treatment initiation and dose increases (see 9.2 Drug Interactions Overview, [Serotonergic Drugs](#) and [Tryptans \(5HT1 agonists\)](#)). Serotonin toxicity and neuroleptic malignant syndrome may result in potentially life-threatening conditions. If serotonin toxicity or neuroleptic malignant syndrome is suspected, discontinuation of ACT CITALOPRAM should be considered.

Ophthalmologic

Angle-Closure Glaucoma

As with other antidepressants, ACT CITALOPRAM can cause mydriasis which may trigger an angle-closure attack in a patient with anatomically narrow ocular angles. Healthcare providers should inform patients to seek immediate medical assistance if they experience eye pain, changes in vision or swelling or redness in or around the eye.

Psychiatric

Potential Association with Behavioral and Emotional Changes, Including Self-Harm

- **Pediatrics: Placebo-Controlled Clinical Trial Data**

Recent analyses of placebo-controlled clinical trial safety databases from SSRIs and other newer anti-depressants suggest that use of these drugs in patients under the age of 18 may be

associated with behavioral and emotional changes, including an increased risk of suicidal ideation and behavior over that of placebo.

The small denominators in the clinical trial database, as well as the variability in placebo rates preclude reliable conclusions on the relative safety profiles among these drugs.

- **Adults and Pediatrics: Additional data**

There are clinical trial and post marketing reports with SSRIs and other newer anti-depressants, in both pediatrics and adults, of severe agitation type adverse events coupled with self-harm and harm to others. The agitation-type events include: akathisia, agitation, disinhibition, emotional lability, hostility, aggression and depersonalization. In some cases, the events occurred within several weeks of starting treatment.

Rigorous clinical monitoring for suicidal ideation or other indicators of potential for suicidal behavior is advised in patients of all ages. This includes monitoring for agitation-type emotional and behavioral changes.

An FDA meta-analysis of placebo-controlled clinical trials of antidepressant drugs in adult patients aged 18 to 24 years with psychiatric disorders showed an increased risk of suicidal behaviours with antidepressants compared to placebo.

Suicide

Depression is associated with an increased risk of suicidal thoughts, self harm and suicide (suicide-related events). This risk persists until significant remission occurs. As improvement may not occur during the first few weeks or more of treatment, patients should be closely monitored until such improvement occurs. It is general clinical experience that the risk of suicide may increase in the early stages of recovery. Therefore, high risk patients should be closely supervised throughout therapy with ACT CITALOPRAM and consideration should be given to the possible need for hospitalization. In order to minimize the opportunity for overdose, prescription for ACT CITALOPRAM should be written for the smallest quantity of drug consistent with good patient management.

Other psychiatric conditions for which citalopram is prescribed can also be associated with an increased risk of suicide-related events. In addition, these conditions may be co-morbid with major depressive disorder. The same precautions observed when treating patients with major depressive disorder should therefore be observed when treating patients with other psychiatric disorders.

Patients with a history of suicide-related events, or those exhibiting a significant degree of suicidal ideation prior to commencement of treatment, are at greater risk of suicidal thoughts or suicide attempts and should receive careful monitoring during treatment. In addition, there is a possibility of an increased risk of suicidal behaviour in young adults.

Patients (and caregivers of patients) should be alerted about the need to monitor for the emergence of such events and to seek medical advice immediately if these symptoms present.

(See 7 WARNINGS AND PRECAUTIONS, Psychiatric, [Potential Association with Behavioral and Emotional Changes, Including Self-Harm](#)).

Activation of Mania/Hypomania

In placebo-controlled trials with citalopram, some of which included patients with bipolar disorder, mania/hypomania was reported in 0.1% of 1027 patients treated with citalopram versus none of the 426 patients treated with placebo. Activation of mania/hypomania has also been reported in a small proportion of patients with major affective disorders treated with other marketed antidepressants. If a patient enters a manic phase, ACT CITALOPRAM should be discontinued.

As with all drugs effective in the treatment of depression, ACT CITALOPRAM should be used with caution in patients with a history of mania. A major depressive episode may be the initial presentation of bipolar disorder. Patients with bipolar disorder may be at an increased risk of experiencing manic episodes when treated with antidepressants alone. Therefore, the decision to initiate symptomatic treatment of depression should only be made after patients have been adequately assessed to determine if they are at risk for bipolar disorder.

Electroconvulsive Therapy (ECT)

The safety and efficacy of the concurrent use of citalopram and ECT have not been studied and therefore, caution is advisable.

Renal

Hyponatremia

Hyponatremia and SIADH (syndrome of inappropriate antidiuretic hormone secretion) have been reported as a rare adverse event with use of citalopram as with other SSRIs. The majority of these occurrences have been in elderly individuals, some in patients taking diuretics or who were otherwise volume-depleted. Elderly female patients in particular seem to be a group at risk.

Renal Impairment

No dosage adjustment is needed in patients with mild to moderate renal impairment. Since, no information is available on the pharmacokinetic or pharmacodynamic effects of citalopram in patients with severely reduced renal function (creatinine clearance <30 mL/min), ACT CITALOPRAM should be used with caution in these patients.

Reproductive Health: Female and Male Potential

- **Fertility**

Male Fertility

Animal data have shown that citalopram may affect sperm quality (See 16 NON-CLINICAL TOXICOLOGY, Reproductive and Developmental Toxicology, [Fertility](#)). Human case reports with some SSRIs have shown that an effect on sperm quality is reversible. Impact on human fertility has not been observed.

- **Function**

Selective serotonin reuptake inhibitors (SSRIs) may cause symptoms of sexual dysfunction. Patients should be informed that there have been reports of long-lasting sexual dysfunction where the symptoms have continued despite discontinuation of SSRIs. See 8.2 Clinical Trial Adverse Reactions, [Male and Female Sexual Dysfunction with SSRIs](#).

- **Teratogenic Risk**

See 16 NON-CLINICAL TOXICOLOGY, [Reproductive and Developmental Toxicology](#).

7.1 Special Populations

7.1.1 Pregnant Women

The safety of citalopram during pregnancy has not been established. Therefore, ACT CITALOPRAM should not be used during pregnancy, unless, in the opinion of the physician, the expected benefits to the patient markedly outweigh the possible risk to the fetus.

Complications following late third trimester exposure to SSRIs:

Post-marketing reports indicate that some neonates exposed to SSRIs such as citalopram and other antidepressants late in the third trimester have developed complications requiring prolonged hospitalization, respiratory support, and tube feeding. Such complications can arise immediately upon delivery. Reported clinical findings have included respiratory distress, cyanosis, apnea, seizures, temperature instability, feeding difficulty, vomiting, hypoglycemia, hypotonia, hypertonia, hyperreflexia, tremor, jitteriness, irritability, and constant crying. These features are consistent with either a direct toxic effect of SSRIs and other newer antidepressants, or, possibly, a drug discontinuation syndrome. It should be noted that, in some cases, the clinical picture is consistent with serotonin syndrome (see 7 WARNINGS AND PRECAUTIONS, [Neurologic, Serotonin Toxicity/Neuroleptic Malignant Syndrome \(NMS\)](#)).

Observational data indicate an increased risk (less than 2-fold) of postpartum hemorrhage following SSRI/SNRI exposure within the month prior to birth (see 7 WARNINGS AND PRECAUTIONS, Hematologic, [Abnormal Bleeding](#)).

When treating a pregnant woman with ACT CITALOPRAM during the third trimester, the physician should carefully consider the potential risks and benefits of treatment.

Risk of PPHN and exposure to SSRIs (including citalopram):

Epidemiological studies on persistent pulmonary hypertension of the newborn (PPHN) have shown that the use of SSRIs (including citalopram) in pregnancy, particularly use in late pregnancy, was associated with an increased risk of PPHN. PPHN occurs in 1-2 per 1,000 live births in the general population and is associated with substantial neonatal morbidity and mortality. In a retrospective case-control study of 377 women whose infants were born with PPHN and 836 women whose infants were born healthy, the risk for developing PPHN was approximately six-fold higher for infants exposed to SSRIs after the 20th week of gestation compared to infants who had not been exposed to antidepressants during pregnancy (Odds

Ratio 6.1, 95% CI 2.2-16.8). A study using data from the Swedish Medical Birth Register for 831,324 infants born in 1997-2005 found an increased risk of PPHN of approximately 2-fold associated with patient-reported maternal use of SSRIs in the first trimester of pregnancy (Risk Ratio 2.4, 95% CI 1.2-4.3), and an increased risk of PPHN of approximately 4-fold associated with a combination of patient-reported maternal use of SSRIs in the first trimester and an antenatal SSRI prescription in later pregnancy (Risk Ratio 3.6, 95% CI 1.2-8.3).

7.1.2 Breast-feeding

The safety of citalopram during lactation has not been established. Citalopram is excreted in human milk. ACT CITALOPRAM should not be administered to nursing mothers unless, in the opinion of the treating physician, the expected benefits to the patient markedly outweigh the possible risks to the child; in which case the infant should be closely monitored.

7.1.3 Pediatrics

Pediatrics (<18 years of age): ACT CITALOPRAM is not indicated for use in patients below the age of 18 years (see 7 WARNINGS AND PRECAUTIONS, Psychiatric, [Potential Association with Behavioural and Emotional Changes, Including Self-Harm](#)).

7.1.4 Geriatrics

Geriatrics (≥65 years of age):

ACT CITALOPRAM should not be used in geriatric patients because the only available dose strength is 30 mg.

Elderly patients should be administered lower initial and maximal citalopram doses (see 4.2 Recommended Dose and Dosage Adjustment, [Geriatrics](#)). In premarketing clinical trials, 800 elderly patients (≥65 years of age) have been treated with citalopram. Of these patients 298 were ≥75 years old. In a pharmacokinetic study (N=11, age 73 to 90 years), citalopram clearance was substantially decreased and half-life prolonged. In a multiple-dose pharmacokinetic study, the area under the curve (AUC) and half-life of S-citalopram were increased by approximately 50% at steady-state in elderly subjects as compared to young subjects. (see 10.3 Pharmacokinetics, Special Populations and Conditions, [Geriatrics](#)). In a 6-week placebo-controlled study, approximately equal numbers of patients received citalopram at 20 or 30 mg per day, as the final dose. In about 5% of patients, the final citalopram dose was 10 mg per day (see [14.1 Clinical Trial by Indication](#)).

8 ADVERSE REACTIONS

8.1 Adverse Reaction Overview

During the premarketing clinical development, 3652 patients received citalopram for the treatment of depression. Of these patients, 66% were females and 34% were males. The mean age of the patients was 50 years, with 70% being <60 years old (30% < 40 years old, 40%

40 to 59 years old) and 30% being \geq 60 years old. Adverse events observed with citalopram are in general mild and transient. They usually attenuate during the first one or two weeks of treatment.

8.2 Clinical Trial Adverse Reactions

Clinical trials are conducted under very specific conditions. The adverse reaction rates observed in the clinical trials, therefore, may not reflect the rates observed in practice and should not be compared to the rates in the clinical trials of another drug. Adverse reaction information from clinical trials may be useful in identifying and approximating rates of adverse drug reactions in real-world use.

Adverse Findings Observed in Short-term, Placebo-Controlled Trials

Adverse Reactions Leading to Discontinuation of Treatment

From the short-term (4 to 6 weeks) placebo-controlled, Phase III clinical trials, 15.9% (163/1027) of the citalopram-treated patients discontinued treatment due to an adverse event. The discontinuation rate in the placebo-treated patients was 7.7% (33/426).

The events associated with discontinuation of citalopram in 1% or more of patients at a rate of at least twice that of placebo, were as follows: nausea (4.1% vs. 0.0%), insomnia (2.4% vs. 1.2%), somnolence (2.4% vs. 1.2%), dizziness (2.3% vs. 0.7%), vomiting (1.3% vs. 0.0%), agitation (1.2% vs. 0.0%), asthenia (1.1% vs. 0.5%), and dry mouth (1.1% vs. 0.2%).

Incidence of Adverse Events in Placebo-Controlled Studies

Table 2 enumerates the incidence of treatment emergent adverse events that occurred in 1027 depressed patients who received citalopram at doses ranging from 10 to 80 mg/day in placebo-controlled trials of up to 6 weeks in duration. Events included are those occurring in 2% or more of patients treated with citalopram, and for which the incidence in patients treated with citalopram was greater than the incidence in placebo-treated patients. Reported adverse events were classified using the standard World Health Organization (WHO)-based dictionary terminology.

The prescriber should be aware that these figures cannot be used to predict the incidence of adverse events in the course of usual medical practice where patient characteristics and other factors differ from those which prevailed in the clinical trials. Similarly, the cited frequencies cannot be compared with figures obtained from other clinical investigations involving different treatments, uses, and investigators. The cited figures, however, do provide the prescribing physician with some basis for estimating the relative contribution of drug and non-drug factors to the adverse event incidence rate in the population studied.

Table 2 - Treatment-Emergent Adverse Events*Incidence in Placebo-Controlled Clinical Trials

Body System/Adverse Event	Percentage of Patients Reporting	
	Citalopram (N = 1027)	Placebo (N = 426)
Body as a Whole		
Fatigue	5.2	3.1

Body System/Adverse Event	Percentage of Patients Reporting	
	Citalopram (N = 1027)	Placebo (N = 426)
Fever ¹	2.4	0.2
Autonomic Nervous System		
Dry mouth ¹	19.4	12.2
Sweating increased	10.5	8.0
Central and Peripheral Nervous System		
Tremor	8.4	6.3
Gastrointestinal System		
Nausea ¹	20.6	13.4
Diarrhea	8.1	5.4
Dyspepsia	4.3	3.5
Vomiting	3.9	2.6
Abdominal pain	3.1	2.1
Psychiatric		
Somnolence ¹	17.3	9.9
Anorexia ¹	4.2	1.6
Nervousness	3.6	3.5
Anxiety	3.3	2.1
Agitation ¹	2.4	0.7
Libido decreased ¹	2.2	0.2
Yawning ¹	2.1	0
Reproductive, Female²		
Dysmenorrhea (<50 years)	2.7	1.6
Reproductive, Male³		
Ejaculation disorder ¹	6.2	1.1
Impotence ³	3.2	0.6
Respiratory System		
Upper respiratory tract infection	5.1	4.7
Rhinitis	4.9	3.3
Pharyngitis	3.4	2.8
Sinusitis ¹	2.4	0.2
Urinary System		
Micturition disorder	2.3	2.1

¹Events included are those occurring in 2% or more of patients treated with citalopram, and for which the incidence in patients treated with citalopram was greater than the incidence in placebo-treated patients.

²Statistically significantly higher incidence in the citalopram group (p <0.05).

³Denominator used was for females only (N=623 for citalopram; N=245 for Placebo).

⁴Denominator used was for males only (N=404 for citalopram; N=181 for Placebo).

The following events had a higher incidence in the placebo group compared to the citalopram

group: asthenia, back pain, headache, dizziness, constipation, palpitation, insomnia, abnormal vision.

Most Frequent Adverse Events

Adverse events that occurred in citalopram-treated patients in the course of the short-term, placebo-controlled trials with an incidence greater than, or equal to, 10% were: nausea, dry mouth, somnolence, and increased sweating (Table 2).

Dose Dependency of Adverse Events

The potential relationship between the dose of citalopram and the incidence of an adverse event was examined in a fixed dose short-term, placebo-controlled study in which patients received citalopram at doses of 10, 20, 40 or 60 mg per day. The incidence of diarrhea, dry mouth, fatigue, insomnia, increased sweating, nausea and somnolence was dose-related.

Male and Female Sexual Dysfunction with SSRIs

While sexual dysfunction is often part of depression and other psychiatric disorders, there is increasing evidence that treatment with SSRIs may induce sexual side effects. Furthermore, there have been reports of long-lasting sexual dysfunction where these symptoms have continued despite discontinuation of SSRIs. This is a difficult area to study because patients may not spontaneously report symptoms of this nature, and therefore, it is thought that sexual side effects with SSRIs may be underestimated.

In placebo-controlled, short-term clinical trials, the reported incidence of decreased libido, ejaculation disorders (primarily ejaculation delay and ejaculation failure), and impotence in male depressed patients receiving citalopram (N=404) was 3.7%, 6.2%, and 3.2%, respectively. In female depressed patients receiving citalopram (N=623), the reported incidence of decreased libido and anorgasmia was 1.3% and 1.1%, respectively. The reported incidence of each of these adverse events was $\leq 1\%$ among male and female depressed patients receiving placebo.

Weight Changes

Patients treated with citalopram in controlled trials experienced a weight loss of about 0.5 kg compared to no change for placebo patients.

Decreased Heart Rate

Retrospective analyses of electrocardiograms in citalopram-treated (N=779 <60 years and N=313 ≥ 60 years) and placebo-treated (N=74 <60 years and N=43 ≥ 60 years) patients indicated that citalopram decreases heart rate. In patients <60 years old, the mean decrease was approximately 5 bpm, while in patients ≥ 60 years old, mean decreases ranged between 5 to 10 bpm. Following the initial drop, heart rate remained decreased but stable over prolonged periods of time (up to one year in over 100 younger and over 50 elderly patients). The effect was reversible within approximately a week after stopping treatment.

In the 6-week, fixed dose, dose-response study, the mean decreases in heart rate ranged

between 2-6 bpm in the 20-60 mg/day dose range, but the effect did not seem to be dose-related and was independent of gender. In placebo-treated patients heart rates remained unaffected. The differences in heart rates between citalopram- and placebo-treated patients were statistically significant. ECG parameters, including QT interval, remained unaffected.

Adverse Reactions following Discontinuation of Treatment (or Dose Reduction)

There have been reports of adverse reactions upon the discontinuation of citalopram (particularly when abrupt), including but not limited to the following: dizziness, abnormal dreams, sensory disturbances (including paresthesias and electric shock sensations), agitation or anxiety, emotional indifference, impaired concentration, headache, migraine, tremor, nausea and/or vomiting, sleep disturbances (including insomnia and intense dreams), confusion, diarrhoea, palpitations, irritability, visual disturbances and sweating or other symptoms which may be of clinical significance.

Patients should be monitored for these or any other symptoms. A gradual reduction in the dosage over a period of at least one to two weeks, rather than abrupt cessation is recommended to reduce the risk of withdrawal reactions. Generally, these events are mild to moderate and are self-limiting, however, in some patients they may be severe and/or prolonged. It is therefore advised that when citalopram treatment is no longer required, gradual discontinuation by dose tapering should be carried out. If intolerable symptoms occur following a decrease in the dose or upon discontinuation of treatment, dose titration should be managed on the basis of the patient's clinical response. Symptoms associated with discontinuation have been reported for other selective serotonin reuptake inhibitors.

Additional Adverse Events Observed During the Premarketing Evaluation of Citalopram

The events listed below include all adverse events that were reported in the overall development program of citalopram (N=3652). All reported events are included except those already listed in Table 1 and those events which occurred in only one patient. It is important to emphasize that, although the events reported occurred during treatment with citalopram, they were not necessarily caused by it. The events are enumerated using the following criteria:

- *frequent*: adverse events that occurred on one or more occasions in at least 1/100 patients
- *infrequent*: adverse events that occurred in less than 1/100 patients but at least in 1/1000 patients
- *rare*: adverse events that occurred in fewer than 1/1000 patients.

Body as a Whole – General Disorders

Frequent: influenza-like symptoms, non-pathological trauma, pain.

Infrequent: alcohol intolerance, allergic reaction, allergy, chest pain, edema, hot flushes, leg pain, malaise, rigors, syncope.

Rare: peripheral edema, sudden death, traumatic injury.

Cardiovascular Disorders

Frequent: postural hypotension, tachycardia.

Infrequent: angina pectoris, arrhythmia, bradycardia, cardiac failure, cerebrovascular disorders, edema dependent, extrasystoles, flushing, hypertension, hypotension, myocardial infarction, myocardial ischemia, peripheral ischemia.

Rare: aggravated hypertension, bundle branch block, cardiac arrest, coronary artery disorder, ECG abnormal, heart disorder, phlebitis, supraventricular extrasystoles.

Central and Peripheral Nervous System Disorders

Frequent: migraine, paraesthesia.

Infrequent: abnormal gait, ataxia, convulsions, dysphonia, dystonia, extrapyramidal disorder, hyperkinesia, hypertonia, hypoesthesia, hypokinesia, involuntary muscle contractions, leg cramps, neuralgia, speech disorder, vertigo.

Rare: abnormal coordination, convulsions grand mal, hyperesthesia, ptosis, sensory disturbance, stupor.

Collagen Disorders

Rare: rheumatoid arthritis.

Endocrine Disorders

Rare: goiter, gynecomastia, hypothyroidism.

Gastrointestinal System Disorders

Frequent: flatulence.

Infrequent: colitis, dental abscess, dysphagia, eructation, gastritis, gastroenteritis, gastrointestinal disorder (not specified), hemorrhoids, increased saliva, teeth-grinding, toothache.

Rare: appendicitis, esophagitis, gastric ulcer, gastroesophageal reflux, gingivitis, stomatitis, tooth disorder, ulcerative stomatitis.

Hematopoietic and Lymphatic Disorders

Infrequent: anemia, epistaxis, leukocytosis, purpura.

Rare: coagulation disorder, gingival bleeding, granulocytopenia, hematoma, leukopenia, lymphadenopathy, lymphocytosis, pulmonary embolism.

Liver and Biliary System Disorders

Infrequent: cholecystitis, cholelithiasis, increased gamma-GT, increased ALT.

Rare: bilirubinemia, increased AST, jaundice.

Metabolic and Nutritional Disorders

Frequent: appetite decreased, weight decrease, weight increase.

Infrequent: leg edema, xerophthalmia.

Rare: dehydration, edema, hypoglycemia, hypokalemia, increased alkaline phosphatase, obesity, thirst.

Musculo-Skeletal System Disorders

Infrequent: arthralgia, arthritis, arthrosis, dystonia, muscle weakness, myalgia.

Rare: bone disorder, bursitis, osteoporosis, tendon disorder.

Neoplasm

Rare: breast neoplasm malignant female.

Psychiatric Disorders

Frequent: abnormal dreaming, aggravated depression, amnesia, apathy, confusion, depression, impaired concentration, increased appetite, sleep disorder, suicide attempt.

Infrequent: abnormal thinking, aggressive reaction, delusion, depersonalization, drug abuse, drug dependence, emotional lability, euphoria, hallucination, increased libido, manic reaction, neurosis, paranoid reaction, paroniria, psychosis, psychotic depression.

Rare: catatonic reaction, hysteria, personality disorder.

Reproductive Disorders, Female

Frequent: abnormal orgasm

Infrequent: amenorrhea, breast pain, lactation nonpuerperal, menorrhagia, menstrual disorder, premenstrual syndrome, salpingitis, unintended pregnancy, vaginal dryness, vaginitis.

Rare: breast enlargement, vaginal hemorrhage.

Reproductive Disorders, Male

Infrequent: penis disorder, prostatic disorder, testis disorder.

Resistance Mechanism Disorders

Infrequent: abscess, fungal infection, herpes simplex infection, otitis media, viral infection.

Rare: bacterial infection, moniliasis, sepsis.

Respiratory System Disorders

Infrequent: bronchitis, coughing, dyspnea, pneumonia.

Rare: asthma, bronchospasm, increased sputum, laryngitis, pneumonitis, respiratory disorder.

Skin and Appendage Disorders

Frequent: pruritus, rash.

Infrequent: acne, alopecia, dermatitis, dry skin, eczema, photosensitivity reaction, psoriasis, rash erythematous, rash maculo-papular, skin discoloration, urticaria.

Rare: cellulitis, decreased sweating, hypertrichosis, melanosis, pruritus ani.

Special Senses, Vision, Hearing and Vestibular Disorders

Frequent: abnormal accommodation.

Infrequent: conjunctivitis, earache, eye pain, mydriasis, taste perversion, tinnitus.

Rare: eye abnormality, keratitis, photophobia.

Urinary System Disorders

Frequent: polyuria.

Infrequent: abnormal urine, cystitis, hematuria, micturition frequency, urinary incontinence, urinary retention, urinary tract infection.

Rare: dysuria, facial edema, oliguria, renal calculus, renal pain

8.2.1 Clinical Trial Adverse Reactions – Pediatrics

Not applicable.

8.3 Less Common Clinical Trial Adverse Reactions

See 8.2 Clinical Trial Adverse Reactions, Additional Adverse Events Observed During the Premarketing Evaluation of citalopram.

8.3.1 Less Common Clinical Trial Adverse Reactions – Pediatrics

Not applicable.

8.4 Abnormal Laboratory Findings: Hematologic, Clinical Chemistry and Other Quantitative Data

Clinical Trial Findings

Not applicable.

8.5 Post-Market Adverse Reactions

The following adverse events have been identified during post-approval use of citalopram. These events are reported voluntarily from a population of uncertain size, and it is not possible to reliably estimate their frequency or establish a causal relationship to drug exposure.

Table 3- Spontaneous Adverse Events

System Organ Class	Adverse Event
Blood and lymphatic disorders	Eosinophilia, Hemolytic anemia, Pancytopenia, Thrombocytopenia
Cardiac disorders	Torsade de pointes, Ventricular arrhythmia, cardiac arrest, Cardio-respiratory arrest, electrocardiogram QT interval prolonged, long QT syndrome, ventricular fibrillation, ventricular tachycardia, sudden death
Endocrine disorders	Hyperprolactinemia, Inappropriate ADH secretion
Eye disorders	Visual disturbance

Gastrointestinal disorders	Gastrointestinal haemorrhage (including rectal haemorrhage), Pancreatitis, constipation
General disorders and administration site conditions	Fatigue, Condition aggravated, pyrexia
Hepatobiliary disorders	Hepatitis, Liver function test abnormal
Immune system disorders	Anaphylactic reaction , Hypersensitivity
Investigations	Decreased drug level, Decreased prothrombin time, Increased drug level, Increased prothrombin time,
Metabolism and nutrition disorders	Hyponatremia, hypokalaemia
Musculoskeletal and connective tissue disorders	Rhabdomyolysis
Nervous system disorders	Akathisia, Choreoathetosis, Dyskinesia, Extrapyrarnidal disorder, Movement disorder, Myoclonus, Neuroleptic malignant syndrome, Neuropathy, Nystagmus, Serotonin syndrome, Syncope, dizziness, disturbance in attention, taste disturbance
Pregnancy, puerperium and perinatal conditions	Spontaneous abortion/fetal death
Psychiatric disorders	Abnormal orgasm (female), Bruxism, Confusional state, Delirium, Hypomania, Panic attack, Restlessness, Withdrawal syndrome, abnormal dreams
Renal and urinary disorders	Acute renal failure
Reproductive system and breast disorders	Female: menometrorrhagia, postpartum haemorrhage* Male: Priapism, Galactorrhoea
Skin and subcutaneous tissue disorders	Angioedemas, Ecchymosis, Epidermal necrolysis, Erythema multiforme, Stevens-Johnson syndrome, photosensitivity
Vascular disorders	Orthostatic hypotension, Vasodilatation

**This event has been reported for the therapeutic class of SSRIs/SNRIs*

9 DRUG INTERACTIONS

9.1 Serious Drug Interactions

Serious Drug Interactions

- Monoamine Oxidase Inhibitors: see [2 CONTRAINDICATIONS](#).
- Pimozide: see [2 CONTRAINDICATIONS](#).

9.2 Drug Interactions Overview

Alcohol

Although citalopram did not potentiate the cognitive and psychomotor effects of alcohol in volunteers, the concomitant use of alcohol and ACT CITALOPRAM should be avoided.

Cimetidine

Citalopram should not be dosed above 20 mg/day in patients receiving cimetidine. Therefore, ACT CITALOPRAM should not be used with cimetidine because the only available dose strength is 30 mg.

Central Nervous System (CNS) drugs

Drug interactions have not been specifically studied between citalopram and other centrally acting drugs. Given the primary CNS effects of citalopram, caution should be used as with other SSRIs when citalopram is taken in combination with other centrally acting drugs.

Cytochrome P450 Isozymes

Using *in vitro* models of human liver microsomes, the biotransformation of citalopram to its demethyl metabolites was shown to depend on both CYP2C19 and CYP3A4, with a small contribution from CYP2D6. Studies have also indicated that citalopram is a weak inhibitor of CYP2D6 and CYP2C19 and a weak or negligible inhibitor of CYP3A4, CYP1A2, CYP2C9 and CYP2E1. Although citalopram has a low potential for clinically significant drug interactions, caution is recommended when citalopram is co-administered with drugs that are mainly metabolized by CYP2D6, and that have a narrow therapeutic index.

One *in vitro* study using human liver microsomes has shown that ketoconazole and omeprazole reduced the rate of formation of the demethylcitalopram metabolite of citalopram to 45-60% and 75-85% of control, respectively. As data are not available from multi-dose pharmacokinetic studies, the possibility that the clearance of citalopram will be decreased when ACT CITALOPRAM is administered with a potent inhibitor of CYP3A4 (e.g., ketoconazole, itraconazole, fluconazole or erythromycin), or a potent inhibitor of CYP2C19 (e.g., omeprazole, esomeprazole, fluvoxamine, lansoprazole, ticlopidine), should be considered.

Citalopram 20 mg/day is the maximum recommended dose for patients taking concomitant CYP2C19 inhibitors because of the risk of QT prolongation. Therefore, ACT CITALOPRAM

should not be used with CYP2C19 inhibitors because the only available dose strength is 30 mg. In addition, a single-dose study of escitalopram co-administered with a multiple-dose regimen of cimetidine, a non-specific CYP inhibitor, led to significant changes in most of the pharmacokinetic parameters of escitalopram. The overall metabolic pathways for escitalopram and citalopram are qualitatively similar and the interaction potential for escitalopram is expected to closely resemble that of citalopram. Thus, this allows for extrapolation to previous studies with escitalopram.

Various scientific publications have acknowledged that the main components in grapefruit juice may act as a CYP3A4 inhibitor. Citalopram is also metabolized by other isoenzymes not affected by grapefruit juice, namely CYP2C19 and CYP2D6.

Drugs Affecting Platelet Function (e.g. NSAIDs, ASA and other anticoagulants)

Serotonin release by platelets plays an important role in hemostasis. Epidemiological studies of the case-control and cohort design that have demonstrated an association between use of psychotropic drugs that interfere with serotonin reuptake and the occurrence of upper gastrointestinal bleeding have also shown that concurrent use of an NSAID, ASA or other anticoagulants may potentiate the risk of bleeding.

Altered anticoagulant effects, including increased bleeding, have been reported when SSRIs and SNRIs are co-administered with warfarin. Patients receiving warfarin therapy should be carefully monitored when citalopram is initiated or discontinued. (See 7 WARNINGS AND PRECAUTIONS, Hematologic, [Abnormal Bleeding](#).)

Drugs That Prolong the QT Interval

ECG monitoring is recommended if citalopram is administered with concomitant medications that have demonstrated prolongation of the QT interval. (See 2 CONTRAINDICATIONS, [QT Prolongation](#); 7 WARNINGS AND PRECAUTIONS, Cardiovascular, [QT Prolongation and Torsades de Pointes](#); 8.5 Post-Market Adverse Reactions; 9.2 Drug Interactions Overview, [Cimetidine](#) and [Cytochrome P450 Isozymes](#); 4 DOSAGE AND ADMINISTRATION).

Drugs known to prolong the QT/QTc:

The concomitant use of citalopram with another drug known to prolong the QT/QTc interval should be carefully considered to determine that the therapeutic benefit outweighs the potential risk. Drugs that have been associated with QT/QTc interval prolongation and/or torsade de pointes include, but are not limited to, the examples in the following list. Chemical/pharmacological classes are listed if some, although not necessarily all, class members have been implicated in QT/QTc prolongation and/or torsade de pointes:

- Class IA antiarrhythmics (e.g., procainamide, disopyramide);
- Class III antiarrhythmics (e.g., amiodarone, sotalol, ibutilide);
- Class 1C antiarrhythmics (e.g., propafenone);
- antipsychotics (e.g., chlorpromazine, pimozide, haloperidol, droperidol, ziprasidone);
- antidepressants (e.g., fluoxetine, venlafaxine, tricyclic/tetracyclic antidepressants e.g., amitriptyline, imipramine, maprotiline);

- opioids (e.g., methadone);
- macrolide antibiotics and analogues (e.g., erythromycin, clarithromycin, telithromycin, tacrolimus);
- quinolone antibiotics (e.g., moxifloxacin, levofloxacin, ciprofloxacin);
- antimalarials (e.g., quinine, chloroquine);
- azole antifungals (e.g., ketoconazole, fluconazole, voriconazole);
- domperidone; 5- hydroxytryptamine (5-HT)₃ receptor antagonists (e.g., ondansetron);
- tyrosine kinase inhibitors (e.g., sunitinib, nilotinib, lapatinib);
- histone deacetylase inhibitors (e.g., vorinostat);
- beta-2 adrenoceptor agonists (e.g., salmeterol, formoterol).

The use of citalopram should be carefully considered with drugs that can disrupt electrolyte levels (see WARNINGS AND PRECAUTIONS, Renal, [Hyponatraemia](#)), including, but not limited to, the following:

- loop, thiazide, and related diuretics;
- laxatives and enemas;
- amphotericin B;
- high dose corticosteroids.

Monoamine Oxidase Inhibitors

In patients receiving SSRIs in combination with a monoamine oxidase inhibitor (MAOI), there have been reports of serious, sometimes fatal, reactions including hyperthermia, rigidity, myoclonus, autonomic instability with possible rapid fluctuations of vital signs, and mental status changes, including extreme agitation progressing to delirium and coma. These reactions have also been reported in patients who have recently discontinued SSRI treatment and have been started on a MAOI. Some cases presented with features resembling serotonin syndrome or neuroleptic malignant syndrome. Citalopram should not be used in combination with a MAOI, (including linezolid, an antibiotic which is a reversible non-selective MAO inhibitor and methylene blue, which is a MAOIs) or within 14 days of discontinuing treatment with a MAOI. Similarly, at least 14 days should elapse after discontinuing citalopram treatment before starting a MAOI (see 2 CONTRAINDICATIONS, [Monoamine Oxidase Inhibitors](#)).

Serotonergic Drugs

Based on the mechanism of action of citalopram and the potential for serotonin syndrome, caution is advised when citalopram is co-administered with other drugs or agents that may affect the serotonergic neurotransmitter systems, such as tryptophan, triptans, serotonin reuptake inhibitors, lithium, St. John's Wort, fentanyl and its analogues, dextromethorphan, tramadol, tapentadol, meperidine, methadone and pentazocine. (see 7 WARNINGS AND PRECAUTIONS, [Neurologic, Serotonin Toxicity/Neuroleptic Malignant Syndrome \(NMS\)](#)). Concomitant use of citalopram and MAO inhibitors (including linezolid and methylene blue) is contraindicated (see 2 CONTRAINDICATIONS, [Monoamine Oxidase Inhibitors](#)).

Triptans (5HT₁ agonists)

Cases of life-threatening serotonin syndrome have been reported during combined use of

selective serotonin reuptake inhibitors (SSRIs)/serotonin norepinephrine reuptake inhibitors (SNRIs) and triptans. If concomitant treatment with citalopram and a triptan is clinically warranted, careful observation of the patient is advised, particularly during treatment initiation and dose increases (see 7 WARNINGS AND PRECAUTIONS, [Neurologic, Serotonin Toxicity/Neuroleptic Malignant Syndrome \(NMS\)](#)).

Escitalopram

ACT CITALOPRAM is a racemic mixture of R-citalopram and S-citalopram, the later being the active isomer. As escitalopram is the active isomer of racemic citalopram (ACT CITALOPRAM), the two drugs should not be taken together.

Other Drugs

No pharmacodynamic interactions have been noted in clinical trials where citalopram has been given concomitantly with benzodiazepines (anxiolytics/hypnotics), analgesics (NSAIDs, non-NSAIDs), antihistamines, antihypertensives or other cardiovascular drugs. Pharmacokinetic interactions between citalopram and these drugs were not specifically studied.

9.3 Drug-Behavioural Interactions

See 7 WARNINGS AND PRECAUTIONS, Psychiatric, [Potential Association with Behavioural and Emotional Changes, Including Self-Harm](#).

9.4 Drug-Drug Interactions

Where studies are described in this section, they were carried out in young, healthy, mostly male volunteers. In addition, some of the studies, namely interactions with metoprolol, warfarin, digoxin, imipramine, and levomepromazine, utilized only single doses of these drugs, although citalopram was given repeatedly to attain steady state. Thus, data are not available in patients who would be receiving these drugs on an ongoing basis at therapeutic doses

The drugs listed in this table are based on either drug interaction case reports or studies, or potential interactions due to the expected magnitude and seriousness of the interaction.

Table 4- Established or Potential Drug-Drug Interactions

Drug (proper/common name)	Source of Evidence	Effect	Clinical Recommendations
Carbamazepine	CT	Carbamazepine, titrated to 400 mg/day, was given for 21 days alone and then in combination with citalopram (40 mg/day) for an additional 14 days. Citalopram did not affect the plasma levels of either carbamazepine, a CYP3A4 substrate, or its metabolite, carbamazepine-epoxide.	Since carbamazepine is a microsomal enzyme inducer, the possibility that carbamazepine may increase the clearance of citalopram should be considered if the two drugs are given concomitantly.
Cimetidine	CT	Citalopram 40 mg/day was administered for 29 days. During the last 8 days of treatment, cimetidine (400 mg bid) was added to the treatment regimen. In the presence of cimetidine, a potent inhibitor of hepatic cytochrome P450 enzymes (CYP2D6, 3A4 and 1A2 inhibitor), the C _{max} and AUC of citalopram was increased by 39% and 41%, respectively.	Caution should be exercised at the upper end of the dose range of citalopram when it is used concomitantly with high doses of cimetidine. Citalopram 20 mg/day is the maximum recommended dose when taken with cimetidine. Therefore, ACT CITALOPRAM should not be used in patients receiving cimetidine because the only available dose strength is 30 mg.
Escitalopram	T	Escitalopram is the active isomer of racemic citalopram.	The two drugs should not be taken together.
Digoxin	CT	Administration of citalopram (40 mg/day for 21 days) did not affect the pharmacokinetics of digoxin (single dose of 1 mg), although the serum levels of citalopram were slightly lower in the presence of digoxin.	

Drug (proper/common name)	Source of Evidence	Effect	Clinical Recommendations
Imipramine/ Desipramine	CT	Co-administration of citalopram (40 mg/day for 10 days) and the tricyclic antidepressant, imipramine (single dose of 100 mg), did not affect the pharmacokinetics of either drug. However, in the presence of citalopram, the concentration of desipramine, the metabolite of imipramine, increased by approximately 50% and its half-life was prolonged. The results indicate that citalopram does not interfere with the demethylation of imipramine to desipramine but does inhibit the metabolism of desipramine to its 2-hydroxy metabolite. Both Imipramine and Desipramine are substrate for CYP2D6.	The clinical significance of this finding is unknown. Concomitant treatment with ACT CITALOPRAM and imipramine/desipramine should be undertaken with caution.
Ketoconazole	CT	Combined administration of citalopram (40 mg single dose) and the potent CYP3A4 inhibitor ketoconazole (200 mg single dose) decreased the C _{max} of ketoconazole by 21% and did not affect the pharmacokinetics of citalopram.	
Levomepromazine	CT	Co-administration of citalopram (40 mg/day for 10 days) and levomepromazine (single dose of 50 mg), a CYP2D6 inhibitor, did not affect the pharmacokinetics of either drug.	
Lithium	CT	Co-administration of citalopram (40 mg/day for 10 days) and lithium (30 mmol/day for 5 days), did not affect the pharmacokinetics of either drug.	Since lithium may increase serotonergic neurotransmission, concomitant treatment with these two drugs should be undertaken with caution.

Drug (proper/common name)	Source of Evidence	Effect	Clinical Recommendations
Metoprolol	CT	Co-administration of citalopram (40 mg/day for 22 days) and the β -adrenergic blocking agent metoprolol (single dose of 150 mg), resulted in a twofold increase in the plasma levels of metoprolol. However, the effect of metoprolol, a CYP2D6 substrate, on blood pressure and heart rate was not affected.	
Omeprazole (CYP2C19 inhibitor)	CT	Co-administration of omeprazole (30 mg once daily for 6 days), a CYP2C19 inhibitor, with escitalopram (single dose of 20 mg on day 5) resulted in an increase in escitalopram AUC and C_{max} of approximately 50% and 10%, respectively.	Citalopram 20 mg/day is the maximum recommended dose for patients taking concomitant CYP2C19 inhibitors because of the risk of QT prolongation. Therefore, ACT CITALOPRAM should not be used in patients concomitantly taking CYP2C19 inhibitors because the only available dose strength is 30 mg.
Pimozide	CT	In a double-blind crossover study in healthy young adults, a single dose of the anti-psychotic drug, pimozide 2 mg co-administered with citalopram 40 mg given once daily for 11 days was associated with a mean increase in QTc values at T_{max} of approximately 12 msec compared to pimozide when given with placebo. This apparent pharmacodynamic interaction occurred in the absence of a clinically significant pharmacokinetic interaction; the mechanism is unknown.	Concomitant use of citalopram and pimozide is contraindicated (see 2 CONTRAINDICATIONS, Pimozide).

Drug (proper/common name)	Source of Evidence	Effect	Clinical Recommendations
Ritonavir (substrate for CYP3A4)	CT	Combined administration of a single dose of ritonavir (600 mg), a CYP3A4 substrate and a potent inhibitor of CYP3A4, and escitalopram (20 mg) did not affect the pharmacokinetics of either ritonavir or escitalopram.	
Theophylline	CT	Co-administration of citalopram (40 mg/day for 21 days) with the CYP1A2 substrate theophylline (single dose of 300 mg) did not affect the pharmacokinetics of theophylline.	
Triazolam	CT	Combined administration of citalopram (titrated to 40 mg/day for 28 days) and the CYP3A4 substrate triazolam (single dose of 0.25 mg) did not significantly affect the pharmacokinetics of either drug.	
Warfarin	CT	Administration of citalopram (40 mg/day for 21 days), did not affect either the pharmacokinetics or the pharmacodynamics (prothrombin time) of a single, 25 mg dose of warfarin, a CYP3A4 and CYP2C9 substrate.	

CT = Clinical Trial; T = Theoretical

9.5 Drug-Food Interactions

Although there is a theoretical possibility of pharmacokinetic drug product interactions resulting from co-administration of citalopram with grapefruit juice, the onset of an interaction is considered unlikely (see 9.2 Drug Interactions Overview, [Cytochrome P450 Isozymes](#)).

9.6 Drug-Herb Interactions

St-John's Wort: In common with other SSRIs, pharmacodynamic interactions between citalopram and the herbal remedy St-John's Wort may occur and may result in undesirable effects

9.7 Drug-Laboratory Test Interactions

Interactions with laboratory tests have not been established.

10 CLINICAL PHARMACOLOGY

10.1 Mechanism of Action

Citalopram is a highly selective and potent serotonin (5 hydroxytryptamine, 5-HT) reuptake inhibitor with minimal effects on the neuronal reuptake of norepinephrine (NE) and dopamine (DA). The ability of citalopram to potentiate serotonergic activity in the central nervous system via inhibition of the neuronal reuptake of serotonin is thought to be responsible for its antidepressant action. Tolerance to the inhibition of serotonin reuptake is not induced by long-term (14 days) treatment of rats with citalopram.

Citalopram is a racemic mixture with the S (+) enantiomer mediating the pharmacological effects. The R (-) enantiomer contributes little to the activity of citalopram.

10.2 Pharmacodynamics

Citalopram has no or very low affinity for a series of receptors including serotonin 5-HT_{1A}, 5-HT₂, dopamine D₁ and D₂, α ₁-, α ₂-, β -adrenergic, histamine H₁, muscarinic cholinergic, benzodiazepine, gamma aminobutyric acid (GABA) and opioid receptors.

10.3 Pharmacokinetics

Absorption:

Following the administration of a single oral dose of citalopram (40 mg) to healthy male volunteers, peak blood levels occurred at about 4 hours (range 1 to 6 hours). The absolute bioavailability of citalopram was about 80% (range 52 to 93%) relative to an intravenous dose. Absorption was not affected by food.

Distribution:

After intravenous infusion in healthy male volunteers, the apparent volume of distribution (V_d) β was about 12 L/kg (range 9-17 L/kg), indicating a pronounced tissue distribution; (V_d) β oral was about 17 L/kg (range 14-21 L/kg). The binding of citalopram and its demethylated metabolites to human plasma proteins is about 80%.

The single- and multiple-dose pharmacokinetics of citalopram are linear and dose-proportional in a dose range of 10 to 60 mg/day. Steady-state plasma levels are achieved in patients in 1-2 weeks. At a daily dose of 40 mg, the average plasma concentration is about 83 ng/mL (n=114) with a range from 30 to 200 ng/mL. Citalopram does not accumulate during long-term treatment. A clear relationship between citalopram plasma levels and therapeutic response or side effects has not been established.

Metabolism:

Citalopram is metabolized in the liver to demethylcitalopram (DCT), didemethylcitalopram

(DDCT), citalopram-N-oxide, and a deaminated propionic acid derivative. In vitro studies show that DCT, DDCT and citalopram-N-oxide also inhibit the neuronal reuptake of serotonin but are less selective and less potent than the parent compound and are of minor clinical importance. Unchanged citalopram is the predominant compound in plasma.

In vitro studies indicated that the biotransformation of citalopram to its demethyl metabolites depends on both CYP2C19 and CYP3A4, with a small contribution from CYP2D6. An initial citalopram dose of 10 mg is recommended for known poor metabolisers of CYP2C19. ACT CITALOPRAM should not be used in patients who are poor metabolizers of CYP2C19 because the only available dose strength is 30 mg (see [4.2 Recommended Dose and Dosage Adjustment](#)).

Elimination:

The elimination half-life of citalopram ($t_{2\beta}$) is approximately 37 hours (range: 30-42 hours) which allows recommendation of once-daily dosing. The systemic citalopram plasma clearance (CL) is 0.33 L/min. Citalopram is eliminated primarily via the liver (85%) and the remainder via the kidneys; approximately 12% (range 6-21%) of the daily dose is excreted in urine as unchanged citalopram.

Special Populations and Conditions

- **Pediatrics:** Citalopram is not indicated for use in patients below the age of 18 (see [1.1 Pediatrics](#)).
- **Geriatrics:** Elderly patients (4 males and 7 females aged 73-90 years), received a 20 mg/day dose of citalopram for 3-4 weeks. In the elderly, steady state plasma levels were elevated (106 ng/mL), half-life prolonged (1.5-3.75 days) and clearance decreased (0.08-0.3 L/min). Elevation of citalopram plasma levels occurred at an earlier age in females than in males. In this population, lower initial and maximal doses of citalopram are recommended. Therefore, ACT CITALOPRAM should not be used in geriatric patients ([7.1.4 Geriatrics](#) and [4.2 Recommended Dose and Dosage Adjustment, Geriatrics](#)).
- **Hepatic Insufficiency:** The pharmacokinetics of citalopram were compared in patients with reduced hepatic function (3 female and 6 male patients aged 41-60 years) to those seen in 12 healthy male volunteers (aged 21-43 years). In patients with reduced hepatic function the half-life of citalopram was approximately doubled (83 hours vs. 37 hours), steady state citalopram concentrations increased by 61% and oral clearance decreased by 37%. Consequently, the use of citalopram in patients with reduced hepatic function should be approached with caution and lower maximal doses should be prescribed. Therefore, ACT CITALOPRAM should not be used in patients with hepatic insufficiency (see **7 WARNINGS AND PRECAUTIONS, Hepatic/Biliary/Pancreatic, Hepatic Impairment** and [4.2 Recommended Dose and Dosage Adjustment, Hepatic Impairment](#)).

- **Renal Insufficiency:** In patients with mild to moderate reduction of the renal function (4 female and 3 male patients aged 30-55 years), citalopram was being eliminated more slowly than in 12 healthy male volunteers (aged 21-43 years); half-lives being 49 hours vs. 37 hours. However, mild to moderate renal impairment had no major influence on the kinetics of citalopram. At present, no information is available for chronic treatment of patients with severely reduced renal function (creatinine clearance <20 mL/min).

11 STORAGE, STABILITY AND DISPOSAL

ACT CITALOPRAM tablets should be stored in a dry place at room temperature between 15°C and 30°C.

12 SPECIAL HANDLING INSTRUCTIONS

Not applicable.

PART II: SCIENTIFIC INFORMATION

13 PHARMACEUTICAL INFORMATION

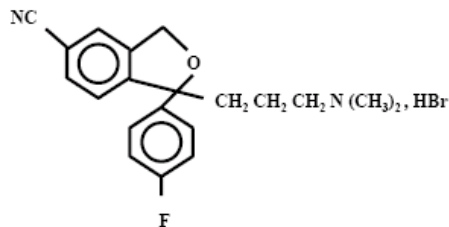
Drug Substance

Proper name: Citalopram hydrobromide

Chemical name: (RS)-1-[3-(Dimethylamino)propyl]-1-(p-fluorophenyl)-5-phthalanecarbonitrile, hydrobromide

Molecular formula and molecular mass: $C_{20}H_{22}BrFN_2O$
405.35 g/mol

Structural formula:



Physicochemical properties:

Description: white to off-white, crystalline material having no more than a slight odour.

Melting Point: 185°C-188°C

pH: 5.5 – 6.5 (0.5% w/v in water)

pKa: 9.5 (microtitration)

Solubility: water (sparingly soluble)
ethanol (soluble)
chloroform (freely soluble)
diethylether (very slightly soluble)

Partition Coefficient: $\log P$ (octanol/phosphate buffer pH 7.4) - 1.57

The molecular formula and molecular mass of citalopram (base) is: $C_{20}H_{21}FN_2O$
324.44 g/mol

Citalopram is a racemic (50/50) mixture of the S (+) and R (-) enantiomers.

14 CLINICAL TRIALS

14.1 Clinical Trial by Indication

Symptomatic relief of depressive illness

The efficacy of citalopram in the treatment of depression was established in five placebo controlled studies in patients who met the DSM-III or DSM-III-R criteria for major depression. Response to treatment was evaluated by the Hamilton Depression Rating Scale (HAMD) and/or the Montgomery Asberg Depression Rating Scale (MADRS), as well as the Clinical Global Impression (CGI) Severity Scale. On the HAMD and MADRS, total scores, selected single items, and percentage of responders (defined as patients whose HAMD/MADRS total score decreased by at least 50% versus baseline) were assessed.

In a 6-week fixed-dose, dose-response study, patients received citalopram, at doses of 10, 20, 40, or 60 mg/day or placebo (n=129 to 131 per group). The 40 and 60 mg/day doses were titrated, with patients reaching these designated doses within 4 and 8 days, respectively. The study showed that the 40 and 60 mg/day doses were significantly more effective than placebo, although the 60 mg/day dose was not more effective than the 40 mg/day dose. The lower doses did not show statistically significant superiority over placebo, except on the MADRS; on this scale the percent of >responders' was significantly higher in all the citalopram-treated groups than in the placebo-treated group.

The second study was a 4-week flexible-dose study in which 85% of the depressed patients met the criteria for melancholia. At entry, 89 and 91 patients were randomized to the citalopram and placebo groups, respectively. This was the only study in which more male than female patients participated (64% vs. 36%). The initial dose of citalopram, 20 mg/day, could be titrated to the maximal tolerated dose or a maximum dose of 80 mg/day. Patients treated with citalopram showed significantly greater improvement than patients treated with placebo. At week 4, the average daily dose was 63 mg, with 52% of patients receiving the 80 mg/day dose.

In a 6-week fixed-dose study, patients received citalopram, 20 or 40 mg/day, or placebo (n=64 to 70 per group). Patients treated with citalopram, 40 mg/day, showed significantly greater improvement than placebo-treated patients. The difference between the lower dose of citalopram and placebo was not significant.

In another 6-week fixed-dose study, patients received citalopram, 20 or 40 mg/day or placebo (n=88 to 97 per group). Although citalopram-treated patients improved to a somewhat greater degree than the placebo-treated patients, the differences between drug and control groups did not reach statistical significance due to a high placebo response, i.e., substantial improvement in the placebo group.

A 6-week, flexible-dose study was conducted in elderly, depressed patients (the mean age of male and female patients was 75 and 77 years, respectively) to determine the antidepressant effect and safety of citalopram in this subpopulation. The number of patients who received citalopram and placebo was 98 and 51, respectively. The study allowed patients to enter with lower baseline HAMD scores than are usually acceptable (≥ 18 in clinical trials). However, only a small percentage of patients had HAMD scores of less than 18 at entry. The dose of citalopram was titrated from a starting dose of 10 mg/day to a maximum dose of 30 mg/day. Patients treated with citalopram showed significantly greater improvement than patients treated with placebo. The final dose of citalopram was 10, 20 and 30 mg/day in 5%, 51% and 44% of patients, respectively.

The effectiveness of citalopram in preventing relapse was assessed in two long-term studies. Depressed patients who responded to citalopram during an initial 6 or 8 weeks of acute treatment (fixed doses of 20 or 40 mg/day in one study and flexible doses of 20-60 mg/day in the second study) were randomized to continue on citalopram or receive placebo. The number of patients who received citalopram and placebo was 257 and 116, respectively. In both studies, patients who continued on citalopram experienced significantly lower relapse rates over the subsequent 6 months compared to those receiving placebo. In the fixed-dose study, the relapse rates were similar at the 20 and 40 mg/day doses, namely 10% and 12%, respectively. Of the placebo-treated patients, 31% experienced relapse. In the flexible-dose study, the relapse rates were 14% and 24% in the citalopram- and placebo-treated patients, respectively. While the majority of patients (76%) were maintained on 20 or 40 mg/day of citalopram during most of the study, some patients received 60 mg/day, while a few patients were maintained on less than 20 mg/day.

14.2 Comparative Bioavailability Studies

Pivotal Comparative Bioavailability Studies

A randomized, single-dose, cross-over comparative bioavailability study of ACT CITALOPRAM tablets 40 mg (no longer marketed; ACT CITALOPRAM is only available at 30 mg) and Celexa 40 mg tablets has been performed in the fasting state. A summary of the bioavailability data is tabulated below.

**Table 5: Summary Table of the Comparative Bioavailability Data
Fasted Study (1 x 40 mg)
(Potency uncorrected)**

Parameter	Geometric Mean Arithmetic Mean (%CV)		% Ratio of Geometric Means	90% Confidence Intervals
	Test [†]	Reference*		
AUC ₀₋₇₂ (ng.h/mL)	1647.62 1673.57 (21.11)	1640.18 1676.32 (25.13)	100.5	98.33-102.62
AUC _T (ng.h/mL)	1964.48 1994.56 (20.00)	1950.66 2003.31 (27.25)	100.7	97.06-104.49
AUC ₀₋₄ (ng.h/mL)	2272.94 2335.24 (26.19)	2257.19 2327.95 (28.71)	100.7	97.77-103.71
C _{max} (ng/mL)	55.12 56.37 (22.96)	55.20 56.55 (25.83)	99.85	n/a
T _{max} ** (h)	2.74 (43.29)	2.65 (56.68)	n/a	n/a
T _½ ** (h)	41.72 (23.98)	41.92 (17.26)	n/a	n/a

[†] Citalopram Tablets 40 mg (Sunovion Pharmaceuticals Canada Inc.)

* The reference product, Celexa 40 mg manufactured by Lundbeck Canada Inc. was purchased in Canada.

** The T_{max} and T_½ parameters are expressed as the arithmetic means (% CV).

15 MICROBIOLOGY

No microbiological information is required for this drug product.

16 NON-CLINICAL TOXICOLOGY

General Toxicology

Acute Toxicity

The LD₅₀ values of citalopram ranged between 900-1700 mg/kg after oral administration and 38-74 mg/kg after intravenous administration. However, some mortality was also seen in the 400-600 mg/kg dose range, indicating a very flat dose-response curve regarding mortality.

Signs of toxicity were sedation and tremor, while convulsions occurred at doses close to or above the LD₅₀ values.

**Table 6 - LD₅₀ Values in the Mouse and Rat
(mg/kg body weight)**

Species	Sex	Route of Administration				
		i.v.	p.o.	i.p.	s.c.	i.m.
Mouse	Male	72 ± 9	1140 ± 190	220 ± 9	534 ± 71	>400
	Female	74 ± 10	900 ± 120	207 ± 20	-	-
Rat	Male	40 ± 4	1710 ± 292	157 ± 27	1950 ± 364	>400
	Female	38 ± 7	1426 ± 554	133 ± 17	-	-

A number of single dose toxicity studies have been carried out in dogs to investigate the potential cardiovascular toxicity of citalopram. In these studies, cardiotoxicity was not observed, but tonic-clonic convulsions were seen after oral administration of 20-40 mg/kg, as well as after slow intravenous infusion of 20-24 mg/kg. The critical plasma concentration for convulsions was about 1950 ng/mL.

Cardiovascular Effects

Citalopram blocked heterologous HERG-mediated currents in transfected Chinese hamster ovary cells with an IC₅₀ of 4 µM.

In conscious dogs, single oral doses of 5 mg/kg of citalopram caused pronounced fluctuation of the blood pressure and heart rate. A 10 mg/kg dose caused tachycardia and elevated blood pressure. The ECG was unchanged.

In anaesthetized cats, single oral doses of 35 mg/kg decreased the following parameters: mean arterial blood pressure, left ventricular end diastolic pressure, contractility, cardiac performance, stroke volume, and cardiac output. Peripheral resistance was increased. ECG abnormalities included alterations in conduction, changes in rhythm and T-wave inversion in 2 of 6 cats.

Convulsions, Arrhythmia and Death in Dogs

Toxicity studies in dogs revealed that citalopram administration led to fatal ventricular arrhythmias. Consequently, studies were undertaken to elucidate the mechanism of this effect and to determine its relevance to humans.

The studies have shown that, in dogs:

- i.v. infusion of citalopram, at a dose of 20 mg/kg, led to convulsions. The blood levels of citalopram were 1950 ng/mL at this dose. In the presence of diazepam, also infused intravenously, higher doses of citalopram could be infused, namely up to 70 mg/kg (6800 ng/mL). Convulsions and death also occurred when plasma citalopram levels exceeded 1950 ng/mL after oral administration.

- Intravenous infusion of the didemethyl metabolite of citalopram caused QT prolongation in a dose range of 5 to 22 mg/kg. The blood levels of the metabolite were 300 ng/mL at the 5 mg/kg dose. The QT prolongation was dose-dependent.
- When citalopram, 20 mg/kg, and didemethylcitalopram, 5 mg/kg, were infused concomitantly (in the presence of diazepam in order to prevent convulsions), 5 out of 9 dogs died due to ventricular fibrillation. At these doses, the plasma levels of citalopram and didemethylcitalopram were 1950 ng/mL and 300 ng/mL, respectively.

As shown in the table below, there is a substantial difference in the plasma levels of citalopram and its metabolite in dogs and in humans at the recommended therapeutic doses.

Treatment	Dog ventricular fibrillation	Patients at steady state after a 40 mg/day dose of citalopram
citalopram, 20 mg/kg plus didemethylcitalopram, 5 mg/kg	1950 ng mL	83 ng/mL
	300 ng/mL	5.2 ng/mL

Long-Term Toxicity

Toxicological studies, including daily dosing for periods up to 26 weeks in mice and 52 weeks in rats and dogs, have been carried out. Plasma drug monitoring in the long-term safety studies documented that animals have been exposed to average citalopram levels of up to about 1200 ng/mL (dogs and rats) and 2900 ng/mL (mice), as well as substantial levels of demethylcitalopram [up to about 1800 ng/mL (rats), 600 ng/mL (dogs), 1150 ng/mL (mice)] and didemethylcitalopram [up to about 650 ng/mL (rats), 600 ng/mL (dogs), 300 ng/mL (mice)]. Apart from behavioral and functional characteristics of exaggerated 5-HT stimulation (e.g., hyperactivity, tremor, tail rigidity, mydriasis, reduced food consumption, and reduced body weight gain), two treatment-related findings have been demonstrated in rodents, namely fatty infiltration of the liver and lipidosis (vacuolization of lymphocytes). Both of the findings were reversible. In addition, retinal degeneration and testicular atrophy were also observed in rats.

Toxicokinetics

Plasma levels were determined in several long-term toxicity studies. The table below summarizes the results seen in some of these studies.

Species	Study	Dose mg/kg	CT ^a ng/mL	DCT ^b ng/mL	DDCT ^c ng/mL
Rat ^d	12-month tox po (diet)	32	male 330	474	246
			female 334	391	204
		60	male 690	989	497
			female 826	862	290
		120	male 1163	1947	758
			female 1286	1655	577
Dog ^e	12-month tox po (in capsules)	1	19	22	95
		3	350	170	314
		8	1218	586	574
		Man	multiple dose po 6 weeks	0.3	39
0.6	83	28		5.2	
0.9	121	41		6.3	

a: citalopram; b: demethylcitalopram; c: didemethylcitalopram; d: average value at Week 52; e: 2 hours postdose - Week 52 (1 and 3 mg/kg dose groups), Week 57 (8 mg/kg dose group).

The data indicate that the plasma levels of citalopram, as well as those of the demethylated metabolites, are considerably higher in animals than in man. The approximate 0.9 mg/kg dose in man corresponds a dose of 60 mg/day, and the 0.6 mg/kg dose corresponds to the highest clinical dose currently recommended (40 mg/kg). The plasma levels of the parent drug, seen in rats and dogs at the highest doses, are approximately 10 times higher in animals than in man, while the levels of the didemethyl metabolites are almost 100 fold higher. In the rat, a NOEL (no observable effect level) could not be established in this study; at the low dose minimal vacuolization of hepatocytes with fatty infiltration, and foam cell accumulation in lungs were noted. The changes were reversible. In dogs, the NOEL was 3 mg/kg.

Hepatic Fatty Infiltration in Rodents

Fatty infiltration in the liver was first observed in a 3-month gavage study in rats given 8-32 mg/kg/day of citalopram. This administration resulted in dose-related hepatic fatty infiltration in all male rats but not in female rats at any of the doses. The fatty infiltration in male rats was also observed in a 4-week study, however, only at considerably higher doses (>160 mg/kg). In female rats only minimal fatty infiltration was seen at a 200 mg/kg/day dose.

Lipidosis (phospholipids) in Rodents

Phospholipidosis, which has been seen in rodents, is an abnormal accumulation of phospholipids in phagocytic cells and cells which catabolize biomembranes, such as pulmonary alveolar macrophages and circulating leucocytes (especially lymphocytes).

Phospholipidosis developed in rats receiving citalopram at daily doses of 120 mg/kg and slight vacuolization of peripheral lymphocytes was observed in mice at daily doses of 100 mg/kg, in the 52-week and 26-week studies, respectively. Both conditions were reversible within 3-4

weeks.

Retinal Degeneration/Atrophy in Rats

In the rat carcinogenicity study, a slight, dose-related increase in lens opacity was seen, affecting males only. In addition, increased incidence/severity of retinal degeneration/atrophy was seen in the high-dose group (80 mg/kg/day). The incidence was higher in females, however, more female than male rats survived the study. It was concluded by an independent pathologist that the retinal changes were most likely related to drug-induced pupillary dilatation (mydriasis) which increased the risk of retinal damage in the already light-sensitive albino rat.

Testicular Atrophy in Rats

In the 52-week rat toxicity study, testicular atrophy was seen at the 60 and 120 mg/kg/day doses of citalopram.

Carcinogenicity: Citalopram did not show any carcinogenic potential in mice at daily doses of 40-240 mg/kg (1.5 years) and in rats at 8-80 mg/kg (2 years). There was an increased incidence of small intestine carcinoma in rats treated with 8 and 24 mg/kg/day of citalopram but not in rats treated with an 80 mg/kg/day dose.

Genotoxicity: Citalopram did not have mutagenic activity in most of the in vitro tests (Ames Salmonella assay; chromosome aberration assay in cultured human lymphocytes; gene mutation assay in cultured mouse lymphoma L5178Y) and in vivo tests (micronucleus test; unscheduled DNA synthesis). However, citalopram was mutagenic in some in vitro studies (Ames Salmonella assay and Chinese hamster lung cell assay).

Reproductive and Developmental Toxicology: Citalopram did not affect the reproductive performance of rats at dosages up to 16 mg/kg/day (males) and 32 mg/kg/day (females).

In the teratology studies in rats, effects were observed in the conceptuses at dosages that were toxic to the dams. Minimal developmental toxicity was evident at 32 mg/kg/day: manifested as low incidences of resorptions, slightly reduced fetal and pup weights, and small reversible delays in ossification and postnatal development.

In rabbits, dosages of 4.8 mg/kg/day and above were toxic to the dams, and 16 mg/kg/day and above caused deaths. There were no effects on embryo-fetal development at the highest dose that could be assessed (16 mg/kg/day).

In a rat embryo-fetal development study, oral administration of citalopram (32, 56, or 112 mg/kg/day) to pregnant animals during the period of organogenesis resulted in decreased embryo-fetal growth and survival and an increased incidence of fetal abnormalities (including cardiovascular and skeletal defects) at the high dose, which is approximately 27 times the maximum recommended human dose (MRHD) of 40 mg/day on a body surface area (mg/m²) basis. This dose was also associated with maternal toxicity (clinical signs, decreased body weight gain). The developmental, no-effect dose of 56 mg/kg/day is approximately 9 times the MRHD on a mg/m² basis. In a second embryo-fetal developmental study in rats conducted at similar dose levels, no increase in fetal abnormalities were observed.

In a rabbit study, no adverse effects on embryo-fetal development were observed at doses of up to 16 mg/kg/day, or approximately 5 times the MRHD on a mg/m² basis. Thus, teratogenic effects were observed at a maternally toxic dose in one embryo-foetal developmental study in the rats, but were not confirmed in a second rat study or in the rabbit.

When female rats were treated with citalopram (4.8, 12.8, or 32 mg/kg/day) from late gestation through weaning, increased offspring mortality during the first 4 days after birth and persistent offspring growth retardation were observed at the highest dose, which is approximately 5 times the MRHD on an mg/m² basis. The no-effect dose of 12.8 mg/kg/day is approximately 2 times the MRHD on an mg/m² basis. Similar effects on offspring mortality and growth were seen when dams were treated throughout gestation and early lactation at doses \geq 24 mg/kg/day, approximately 4 times the MRHD on an mg/m² basis. A no-effect dose was not determined in that study.

Fertility

Animal data have shown that citalopram induces a reduction of fertility index and pregnancy index, reduction in number in implantation and abnormal sperm at exposure well in excess of human exposure.

17 SUPPORTING PRODUCT MONOGRAPHS

Celexa (tablet, 10, 20 and 40 mg), submission control number 253406, Product Monograph, Lundbeck Canada Inc. (December 30, 2021)

PATIENT MEDICATION INFORMATION

READ THIS FOR SAFE AND EFFECTIVE USE OF YOUR MEDICINE

PrACT CITALOPRAM

Citalopram Tablets USP

Read this carefully before you start taking **ACT CITALOPRAM** and each time you get a refill. This leaflet is a summary and will not tell you everything about this drug. Talk to your healthcare professional about your medical condition and treatment and ask if there is any new information about **ACT CITALOPRAM**.

Serious Warnings and Precautions

New or worsened emotional or behaviour problems:

- When you first start taking ACT CITALOPRAM or when your dose is adjusted, you may feel worse instead of better. You may feel new or worsened feelings of agitation, hostility, anxiety, or impulsivity.
- During your treatment with ACT CITALOPRAM, it is important that you and your healthcare professional talk regularly about how you are feeling. They will closely monitor you for signs of new or worsened emotions or behaviours while you are taking ACT CITALOPRAM.
- You may find it helpful to tell a relative or close friend that you are depressed. Ask them to read this leaflet. You might ask them to tell you if they:
 - think your depression is getting worse, or
 - are worried about changes in your behaviour.
- If your depression worsens or you experience changes in your behaviour, tell your healthcare professional right away. Do not stop taking your medicine as it takes time for ACT CITALOPRAM to work.

Self-harm or Suicide

- Antidepressants, such as ACT CITALOPRAM, can increase the risk of suicidal thoughts or actions.
- If you have thoughts of harming or killing yourself at any time, tell your healthcare professional or go to a hospital right away. You will be closely observed by your healthcare professional in this situation.

What is ACT CITALOPRAM used for?

ACT CITALOPRAM is used to relieve the symptoms of depression in adults. Your healthcare professional will keep evaluating if ACT CITALOPRAM is still safe and effective for you if you take it for a long time.

How does ACT CITALOPRAM work?

ACT CITALOPRAM is known as an antidepressant and belongs to a group of medicines called selective serotonin reuptake inhibitors (SSRIs).

ACT CITALOPRAM works by increasing the levels of a chemical in the brain called serotonin.

What are the ingredients in ACT CITALOPRAM?

Medicinal ingredients: Citalopram hydrobromide.

Non-medicinal ingredients: Corn starch, crospovidone, hypromellose, lactose monohydrate, magnesium stearate, microcrystalline cellulose, polyethylene glycol, povidone, titanium dioxide, water.

ACT CITALOPRAM comes in the following dosage forms:

- 30 mg tablets

Do not use ACT CITALOPRAM if:

- you are allergic to citalopram hydrobromide.
- you are allergic to any of the other ingredients in ACT CITALOPRAM or to a component of the container.
- you are also taking the medicine pimozide, used to treat schizophrenia.
- you are currently taking or have taken within 14 days medicines called monoamine oxidase antidepressants such as phenelzine sulphate, tranylcypromine or moclobemide, or other monoamine oxidase inhibitors such as linezolid, methylene blue, selegiline.
- you have been told that you have QT interval prolongation (abnormal electrical activity of the heart) or have been diagnosed with a condition called a congenital long QT syndrome.

To help avoid side effects and ensure proper use, talk to your healthcare professional before you take ACT CITALOPRAM. Talk about any health conditions or problems you may have, including if you:

- have heart problems.
- have diabetes. ACT CITALOPRAM may make it more difficult to control your blood sugar.
- have liver or kidney problems.
- have or have had a seizure disorder.
- have or have had manic episodes or have been diagnosed with bipolar disorder.
- are receiving electroconvulsive therapy.
- have a bleeding disorder or have been told that you have low platelets.
- have a family history of QT/QTc prolongation (abnormal electrical activity of the heart).
- have electrolyte disturbances like low blood potassium, magnesium, or calcium levels or conditions that could lead to this such as vomiting, diarrhea, dehydration.
- had a recent bone fracture or were told you have osteoporosis or risk factors for osteoporosis.

- are taking other antidepressants, triptans used to treat migraines, lithium, opioids (including to treat pain, or drug dependence), or drugs containing tryptophan.
- have habits of alcohol and /or street drug consumption.
- are taking St. John's Wort, an herbal product used to treat depression.

Other warnings you should know about:

- It is important that you and your healthcare professional talk regularly about how you are feeling while you are taking ACT CITALOPRAM.
- ACT CITALOPRAM should not be used in children and adolescents under 18 years of age or in patients aged 65 or older.

Activation of Mania: Tell your healthcare professional if you have or have had manic episodes in the past or if you have been diagnosed with bipolar disorder. ACT CITALOPRAM should be used with caution if you have a history of manic episodes. Some patients with bipolar disorder (also known as manic depression) may enter into a manic phase when they start taking ACT CITALOPRAM. Tell your healthcare professional if you experience symptoms of mania such as excessive physical activity, overactive behaviour or thoughts, increased energy, trouble sleeping, racing thoughts, reckless behaviour, excessive happiness or irritability, talking more or faster than usual.

Bleeding Problems: Before taking ACT CITALOPRAM tell your healthcare professional if you have a bleeding disorder including low blood platelets. Drugs from the class that ACT CITALOPRAM belongs to may increase the chance of a bleeding event such as nose bleeds, bruising and even life threatening bleeding. This is more likely if you have a history of a bleeding disorder or are taking other drugs that are known to affect blood clotting. Talk to your healthcare professional about drugs that might increase bleeding.

Pregnancy: Before taking ACT CITALOPRAM, tell your healthcare professional if you are pregnant, think you might be pregnant or are planning to become pregnant. You should not take ACT CITALOPRAM if you are pregnant unless you and your healthcare professional have discussed the risks and decided that you should. Tell your healthcare professional right away if you become pregnant while taking ACT CITALOPRAM. If you take ACT CITALOPRAM near the end of your pregnancy, you could have heavy vaginal bleeding shortly after giving birth.

Effects on Newborns: Some newborn babies whose mothers took medications such as ACT CITALOPRAM during pregnancy have developed problems at birth. These problems include prolonged hospitalisation, breathing support and tube feeding. Symptoms can include:

- feeding and/or breathing difficulties
- bluish skin
- seizures
- body temperature changes
- vomiting
- low blood sugar

- tense or overly relaxed muscles
- vivid reflexes
- tremor
- jitteriness
- irritability
- sleeping difficulties and constant crying.

In most cases, these medications were taken during the third trimester of pregnancy. These symptoms are caused by the medication itself or from the effects of suddenly stopping the medication. These symptoms normally go away over time. However, if your baby experiences any of these symptoms, contact your healthcare professional as soon as you can.

Persistent Pulmonary Hypertension of the Newborn (PPHN): If you take ACT CITALOPRAM towards the end of your pregnancy, your newborn may be at risk of having a serious lung condition called Persistent Pulmonary Hypertension of the Newborn (PPHN). This causes breathing problems in newborns soon after birth. Newborn babies may breathe faster and appear bluish. These symptoms usually begin during the first 24 hours after the baby is born. If this happens to your newborn baby, get immediate medical help for them.

Breastfeeding: Tell your healthcare professional if you are breastfeeding or planning to breastfeed. ACT CITALOPRAM is released into breast milk. It is not known if this is safe for your baby. You should not breastfeed a baby if you are taking ACT CITALOPRAM unless you and your healthcare professional have discussed the risks and decided that you should.

Effect on the electrical activity of the heart: ACT CITALOPRAM has an effect on the electrical activity of the heart known as QT/QTc prolongation (abnormal electrical activity of the heart). This can lead to disturbances in heart rhythm (arrhythmias/dysrhythmias) that could result in dizziness, palpitations (sensation of rapid, pounding, or irregular heart beat), fainting or cardiac arrest and death. This is more likely in patients with risk factors, such as heart disease, heart attack, or in the presence of certain drugs that could interact with the activity of the heart. If you experience any symptoms of a possible heart rhythm disturbance (abnormal heart rate or rhythm), such as dizziness, palpitations (sensation of rapid, pounding, or irregular heart beat), fainting, or seizures, you should seek immediate medical attention.

Serotonin toxicity (also known as Serotonin syndrome) or Neuroleptic malignant syndrome: ACT CITALOPRAM can cause Serotonin toxicity or Neuroleptic malignant syndrome, rare but potentially life-threatening conditions. They can cause serious changes in how your brain, muscles and digestive system work. You may develop Serotonin toxicity or Neuroleptic malignant syndrome if you take ACT CITALOPRAM with certain medications used to treat depression, migraine or other mental health problems such as schizophrenia. Serotonin toxicity or Neuroleptic malignant syndrome symptoms include:

- fever, sweating, shivering, diarrhea, nausea, vomiting;
- muscle shakes, jerks, twitches or stiffness, changes in reflexes, loss of coordination

- fast heartbeat, changes in blood pressure;
- confusion, agitation, restlessness, hallucinations, mood changes, unconsciousness, and coma

Effects on Sexual Function: Taking medicines like ACT CITALOPRAM may cause symptoms of sexual dysfunction. In some cases these symptoms have continued after stopping ACT CITALOPRAM treatment. Talk to your healthcare professional if you experience symptoms such as a decrease in sexual desire, performance or satisfaction.

Risk of Bone Fractures: Taking ACT CITALOPRAM may increase your risk of breaking a bone if you are elderly, have osteoporosis or other risk factors for breaking a bone. You should take extra care to avoid falls especially if you get dizzy or have low blood pressure.

Angle-closure Glaucoma: ACT CITALOPRAM can cause dilation of the pupil. This may cause an acute glaucoma attack in an individual with narrow ocular angles. Having your eyes examined before you take ACT CITALOPRAM could help identify if you are at risk of having angle-closure glaucoma. Get immediate medical help if you experience:

- eye pain
- changes in vision
- swelling or redness in or around the eye.

Driving and using machines: ACT CITALOPRAM may impair your ability to drive or to use machines. Wait until you know how ACT CITALOPRAM affects you before driving or using machines. Do not drive or use machines if ACT CITALOPRAM impairs your ability to do so safely.

Discontinuation Symptoms: Contact your healthcare professional before stopping ACT CITALOPRAM. If you stop ACT CITALOPRAM abruptly, or if you miss a dose, you may experience symptoms such as dizziness, sleep disturbances, abnormal dreams, sensory disturbance like electric shock sensations, agitation, anxiety, headache, tremor (shakiness), nausea, vomiting. Tell your healthcare professional immediately if you have these or any other symptoms. Your healthcare professional may adjust the dosage of citalopram by prescribing you another citalopram product to reduce the symptoms.

Tell your healthcare professional about all the medicines you take, including any drugs, vitamins, minerals, natural supplements or alternative medicines.

Serious Drug Interactions

Do not use ACT CITALOPRAM if you:

- are taking or have recently taken monoamine oxidase inhibitor such as phenelzine, tranylcypromine, moclobemide or selegiline, linezolid (an antibiotic) or Methylene blue (intravenous)
- are taking pimozide

The following may interact with ACT CITALOPRAM:

- drugs to treat heart rhythm disturbances (antiarrhythmics)

- antipsychotics, used to treat schizophrenia
- opioids (including for pain, drug dependence or anesthesia) such as methadone, buprenorphine, tramadol, fentanyl, tapentadol, meperidine or pentazocine
- drugs to treat infections
- drugs to treat nausea and vomiting
- cancer drugs
- asthma drugs
- diuretics (water pills)
- carbamazepine, used to treat seizures
- other SSRIs (e.g., escitalopram) or any other antidepressant (e.g., imipramine, desipramine)
- lithium, used to treat mood disorder
- tryptophan, for sleep aid or treating anxiety
- cimetidine, for acidity problems
- triptans (e.g., sumatriptan, zolmitriptan, naratriptan), for Migraine
- fluconazole, Ketoconazole, Itraconazole, for treating fungal infection
- erythromycin, used to treat infections
- warfarin, used to prevent clot of blood
- omeprazole, used to treat stomach problems
- any herbal product such as St. John's Wort
- certain medicines which may affect blood clotting and increase bleeding, such as oral anticoagulants (e.g., warfarin, dabigatran), acetylsalicylic acid (e.g., Aspirin®) and other non-steroidal anti-inflammatory drugs (ibuprofen)
- certain medicines used to treat cough, such as dextromethorphan.

Avoid drinking alcohol while taking ACT CITALOPRAM.

How to take ACT CITALOPRAM:

- Take ACT CITALOPRAM exactly as your healthcare professional has told you.
- Swallow tablets whole with water. Do not chew them.
- You can take ACT CITALOPRAM with or without food.
- Take ACT CITALOPRAM once a day at the same time every day.
- Continue taking ACT CITALOPRAM even if you do not feel better. It may take several weeks for it to work and improvement may be gradual.
- Keep taking ACT CITALOPRAM for as long as your healthcare professional recommends. Do not stop taking ACT CITALOPRAM abruptly even if you feel better unless your healthcare professional has told you to.
- Never take more ACT CITALOPRAM than your healthcare professional has prescribed for you.
- Follow all instructions given to you by your healthcare professional.

Usual dose:

It is important that you take ACT-CITALOPRAM exactly as directed by your healthcare professional. ACT CITALOPRAM is only available at 30 mg and your healthcare professional might prescribe another citalopram product if you are elderly, have liver problems or in other situations.

Overdose:

If you think you, or a person you are caring for, have taken too much ACT CITALOPRAM, contact a healthcare professional, hospital emergency department, or regional poison control centre immediately, even if there are no symptoms.

Missed Dose:

If you forget a dose, take the next dose as planned. Do not take a double dose to make up for a forgotten dose.

What are possible side effects from using ACT CITALOPRAM?

These are not all the possible side effects you may have when taking ACT Citalopram. If you experience any side effects not listed here, tell your healthcare professional.

Side effects may include:

- Fatigue
- Dry mouth
- Increased sweating
- Tremor (shakiness)
- Nausea
- Diarrhea
- Somnolence (sleepiness)
- Ejaculation disorder

Serious side effects and what to do about them			
Symptom / effect	Talk to your healthcare professional		Stop taking drug and get immediate medical help
	Only if severe	In all cases	
UNCOMMON			
Bleeding problems: Bruising or bleeding from the skin, nose or other areas for longer than usual.		✓	
Mania: Excessive physical activity, overactive behaviour or thoughts, increased energy,		✓	

Serious side effects and what to do about them			
Symptom / effect	Talk to your healthcare professional		Stop taking drug and get immediate medical help
	Only if severe	In all cases	
trouble sleeping, racing thoughts, reckless behaviour, excessive happiness or irritability, talking more or faster than usual.			
RARE			
Gastrointestinal bleeding: Vomiting blood or passing blood in stools		✓	
Angle-closure Glaucoma (Increased pressure in eyes, change in vision such as hazy or blurred vision): Eye pain, change in vision, swelling or redness in or around the eye			✓
Low sodium level in blood: tiredness, weakness, confusion combined with achy, stiff or uncoordinated muscles		✓	
Serotonin Toxicity and Neuroleptic Malignant Syndrome: Reactions which may cause feelings of agitation or restlessness, muscle twitching, involuntary eye movements, flushing, heavy sweating, high body temperature (>38°C), or rigid muscles			✓
Hypoglycemia (Low sugar level in blood): Feeling shaky, sweating, chills and clamminess, irritability or impatience, confusion, fast heartbeat, feeling lightheaded or dizzy, nausea, seizure.		✓	
VERY RARE			
Liver disorder: nausea, vomiting, loss of appetite,		✓	

Serious side effects and what to do about them			
Symptom / effect	Talk to your healthcare professional		Stop taking drug and get immediate medical help
	Only if severe	In all cases	
itching, yellowing of the skin or eyes, dark urine			
Seizures (fits): Loss of consciousness with uncontrollable shaking			✓
New or Worsened Emotional or Behavioural Problems: Anxiety, hostility or impulsivity		✓	
Akathisia: Feeling restless and unable to sit or stand still		✓	
Self-harm and suicide: Have thoughts of harming or killing yourself			✓
UNKNOWN			
Heart rhythm disturbance (abnormal heart rate or rhythm): dizziness, palpitations (sensation of rapid, pounding or irregular heart beat), fainting, seizures			✓
Postpartum haemorrhage (Heavy vaginal bleeding shortly after birth): Excessive vaginal bleeding after child birth		✓	
Serious skin reactions: Skin rash, redness of the skin, blistering of the lips, eyes or mouth, skin peeling, fever, chills, headache, cough, body aches			✓
Symptoms after discontinuation or dose reduction: Dizziness, sleep disturbances, abnormal dreams, sensory disturbance like electric shock sensations, agitation, anxiety, headache, tremor (shakiness), nausea, vomiting		✓	

If you have a troublesome symptom or side effect that is not listed here or becomes bad enough to interfere with your daily activities, tell your healthcare professional.

Reporting Side Effects

You can report any suspected side effects associated with the use of health products to Health Canada by:

- Visiting the Web page on Adverse Reaction Reporting <https://www.canada.ca/en/health-canada/services/drugs-health-products/medeffect-canada/adverse-reaction-reporting.html>) for information on how to report online, by mail or by fax; or
- Calling toll-free at 1-866-234-2345.

NOTE: Contact your health professional if you need information about how to manage your side effects. The Canada Vigilance Program does not provide medical advice.

Storage:

Keep ACT CITALOPRAM out of the reach and sight of children. Store ACT CITALOPRAM at room temperature (15-30° C), in a dry place.

If you want more information about ACT CITALOPRAM:

- Talk to your healthcare professional
- Find the full product monograph that is prepared for healthcare professionals and includes this Patient Medication Information by visiting the Health Canada website: <https://health-products.canada.ca/dpd-bdpp/index-eng.jsp>; the manufacturer's website www.sunovion.ca, or by calling 1-866-260-6291.

This leaflet was prepared by Sunovion Pharmaceuticals Canada Inc.

Last Revised: October 3, 2022