

PRODUCT MONOGRAPH
INCLUDING PATIENT MEDICATION INFORMATION

Pr JAMP Allopurinol Tablets

Allopurinol Tablets

100, 200 and 300 mg, oral

House Standard

ATC Code: M04AA01

Xanthine Oxidase Inhibitor

JAMP Pharma Corporation
1310 rue Nobel
Boucherville, Quebec
J4B 5H3, Canada

Date of Initial Authorization:
December 22, 2022

Submission Control Number: 264325

RECENT MAJOR LABEL CHANGES

None at time of authorization.

TABLE OF CONTENTS

Sections or subsections that are not applicable at the time of authorization are not listed.

RECENT MAJOR LABEL CHANGES	2
TABLE OF CONTENTS	2
PART I: HEALTH PROFESSIONAL INFORMATION	4
1 INDICATIONS	4
1.1 Pediatrics	4
1.2 Geriatrics	4
2 CONTRAINDICATIONS	4
3 SERIOUS WARNINGS AND PRECAUTIONS BOX	5
4 DOSAGE AND ADMINISTRATION	5
4.2 Recommended Dose and Dosage Adjustment.....	5
4.5 Missed Dose.....	6
5 OVERDOSAGE	6
6 DOSAGE FORMS, STRENGTHS, COMPOSITION AND PACKAGING	7
7 WARNINGS AND PRECAUTIONS	7
7.1 Special Populations.....	9
7.1.1 Pregnant Women.....	9
7.1.2 Breast-feeding.....	9
7.1.3 Pediatrics	10
7.1.4 Geriatrics	10
8 ADVERSE REACTIONS	10
8.1 Adverse Reaction Overview	10
9 DRUG INTERACTIONS	11
9.2 Drug Interactions Overview.....	11
9.4 Drug-Drug Interactions.....	11
9.5 Drug-Food Interactions.....	14

9.6	Drug-Herb Interactions	14
9.7	Drug-Laboratory Test Interactions.....	14
10	CLINICAL PHARMACOLOGY	14
10.1	Mechanism of Action.....	14
10.2	Pharmacodynamics	14
10.3	Pharmacokinetics	15
11	STORAGE, STABILITY AND DISPOSAL.....	16
12	SPECIAL HANDLING INSTRUCTIONS	16
	PART II: SCIENTIFIC INFORMATION	17
13	PHARMACEUTICAL INFORMATION	17
14	CLINICAL TRIALS	17
14.2	Comparative Bioavailability Study.....	17
15	MICROBIOLOGY	18
16	NON-CLINICAL TOXICOLOGY	18
17	SUPPORTING PRODUCT MONOGRAPHS	19
	PATIENT MEDICATION INFORMATION	20

PART I: HEALTH PROFESSIONAL INFORMATION

1 INDICATIONS

JAMP Allopurinol Tablets (allopurinol) is indicated for:

- Treatment of gout, either primary, or secondary to hyperuricemia which occurs in blood dyscrasias and their therapy.
- Treatment of primary or secondary uric acid nephropathy, with or without accompanying signs or symptoms of gout.
- Prophylactically, to prevent tissue urate deposition or renal calculi in patients with leukemias, lymphomas or other malignancies, receiving antineoplastic treatment (radiation or cytotoxic drugs) which might induce increased uricemia levels. Also in the therapy and prophylaxis of acute urate nephropathy and resultant renal failure in patients with neoplastic disease who are particularly susceptible to hyperuricemia and uric acid stone formation (especially after radiation therapy or use of antineoplastic drugs).
- Prevention of the occurrence and recurrence of uric acid stones or gravel and renal calcium lithiasis in patients with hyperuricemia and/or hyperuricosuria.

1.1 Pediatrics

Pediatrics (<18 years of age): JAMP Allopurinol Tablets is contraindicated in children with the exception of those with hyperuricemia secondary to malignancy or with Lesch-Nyhan syndrome, because safety and effectiveness have not been established in other conditions. See [2 CONTRAINDICATIONS](#), [4 DOSAGE AND ADMINISTRATION](#) and [7.1.3 Pediatrics](#)

1.2 Geriatrics

Geriatrics (>65 years of age): Evidence from clinical experience suggests that use in the geriatric population is associated with differences in safety or effectiveness. See [4 DOSAGE AND ADMINISTRATION](#) and [7.1.4 Geriatrics](#)

2 CONTRAINDICATIONS

JAMP Allopurinol Tablets is contraindicated in:

- Patients who are hypersensitive to this drug or to any ingredient in the formulation, including any non-medicinal ingredient, or component of the container. For a complete listing, see [6 DOSAGE FORMS, STRENGTHS, COMPOSITION AND PACKAGING](#).
- Breast-feeding women.
- Children (except in those with hyperuricemia secondary to malignancy or with Lesch-Nyhan syndrome).

3 SERIOUS WARNINGS AND PRECAUTIONS BOX

Serious Warnings and Precautions

- JAMP Allopurinol Tablets should be discontinued **immediately** at the appearance of a skin rash, as the rash may be, in some instances, followed by dermatological reactions/hypersensitivity syndrome including Stevens Johnson Syndrome (SJS), toxic epidermal necrolysis (TEN) and drug rash with eosinophilia and systemic symptoms (DRESS). See [7 WARNINGS AND PRECAUTIONS](#) and [8 ADVERSE REACTIONS](#)

4 DOSAGE AND ADMINISTRATION

4.2 Recommended Dose and Dosage Adjustment

Adults: JAMP Allopurinol Tablets is administered orally. The total daily requirement should be divided into 1 to 3 doses. Daily doses up to and including 300 mg of JAMP Allopurinol Tablets may be taken once a-day after a meal. Larger doses should be administered as divided doses of not more than 300 mg. It should be noted that JAMP Allopurinol Tablets is generally better tolerated if taken following meals.

Treatment of Gout: The dose of JAMP Allopurinol Tablets varies with the severity of the disease. The minimum effective dose is 100 to 200 mg. The average is 200 to 300 mg/day for patients with mild gout, 400 to 600 mg/day for patients with moderately severe tophaceous gout, and 700 to 800 mg in severe conditions. The maximal recommended dose is 800 mg/day in patients with normal renal function.

As no simple method of measuring the blood concentrations of JAMP Allopurinol Tablets is available, the correct size and frequency of dosage for maintaining the serum uric acid just within the normal range is best determined by using the serum uric acid level as an index.

Once the daily dose of JAMP Allopurinol Tablets necessary to produce the desired serum uric acid level has been determined, this dose should be continued until the serum uric acid level indicates a need for dosage adjustment.

Normal serum urate levels are achieved in 1 to 3 weeks. The upper limit of normal is about 6 mg/dL for men and postmenopausal women and 5 mg/dL for premenopausal women. By the selection of the appropriate dose, together with the use of uricosuric agents in certain patients, it is possible to reduce the serum uric level to normal and, if desired, to hold it as low as 2 to 3 mg/dL. Combined therapy of JAMP Allopurinol Tablets and uricosurics will often result in a reduction in dosage of both agents.

To reduce the possibility of an increase in acute attacks of gout during the early stages of JAMP Allopurinol Tablets administration, it is recommended that the patient start with a low dose of JAMP Allopurinol Tablets (100 to 200 mg daily) and increase at weekly intervals by 100 mg until a serum uric acid level of about 6 mg/dL or less is attained. Also, a maintenance dose of colchicine should be given prophylactically when allopurinol is begun, and a high fluid intake is advisable.

In patients who are being treated with uricosuric agents, colchicine and/or anti-inflammatory agents, it is wise to continue this therapy while adjusting the dosage of allopurinol until a normal serum uric acid level and freedom from acute attacks have been maintained for several months. If desired, the patient may then be transferred to allopurinol therapy exclusively.

For the Prevention of Uric Acid Nephropathy During the Vigorous Therapy of Neoplastic Disease:

Treatment with 600 to 800 mg daily for 2 or 3 days prior to chemotherapy or X-irradiation is advisable. Treatment should be continued at a dosage adjusted to the serum uric acid level until there is no longer a threat of hyperuricemia and hyperuricosuria.

JAMP Allopurinol Tablets treatment can be maintained during the antimitotic therapy for prophylaxis of the hyperuricemia which may arise during the natural crises of the disease. In prolonged treatment, 300 to 400 mg of JAMP Allopurinol Tablets daily is usually enough to control the serum uric acid level.

It is essential that a daily urinary output of 2 L or more be maintained during allopurinol therapy, and neutral or alkaline urine is desirable.

Prophylaxis of Renal Calcium Lithiasis: The recommended starting dose of JAMP Allopurinol Tablets for the prevention of recurrent calcium stones is 200 to 300 mg daily as one dose or individual doses. Therapy should be continued indefinitely. Some patients have received maintenance dosages of 200 to 300 mg daily for more than 7 years. In some patients, the maintenance dosage may be reduced to 100 to 200 mg daily.

Pediatrics (<18 years of age): JAMP Allopurinol Tablets is contraindicated in children except for the treatment of secondary hyperuricemia associated with malignancies and in the Lesch-Nyhan syndrome. JAMP Allopurinol Tablets should be given in doses of 10 mg/kg/day. The response should be evaluated after approximately 48 hours by monitoring serum uric acid and/or urinary uric acid levels and adjusting the dose if necessary. See [2 CONTRAINDICATIONS](#)

Geriatrics (>65 years of age): In the absence of specific data, the lowest dosage of JAMP Allopurinol Tablets which produces satisfactory urate reduction should be used.

Renal Impairment: Since JAMP Allopurinol Tablets and its metabolites are excreted only by the kidney, accumulation of the drug can occur in renal failure and the dose of JAMP Allopurinol Tablets should consequently be reduced. With a creatinine clearance of 20 to 10 mL/min, a daily dosage of 200 mg of JAMP Allopurinol Tablets is suitable. When the creatinine clearance is less than 10 mL/min, the daily dosage should not exceed 100 mg. With extreme renal impairment (creatinine clearance less than 3 mL/min), the interval between doses may also need to be lengthened. See [7 WARNINGS AND PRECAUTIONS](#)

Hepatic Impairment: Reduced doses should be administered to patients with hepatic impairment. Periodic liver function tests are recommended during the early stages of therapy. The drug should be withdrawn if increased abnormalities in hepatic functions appear. See [7 WARNINGS AND PRECAUTIONS](#)

4.5 Missed Dose

If the patient misses a dose, instruct the patient to take the dose as soon as they remember. If it is almost time for the next dose, inform the patient to skip the missed dose and continue the regular dosing schedule.

5 OVERDOSAGE

Ingestion of up to 22.5 g allopurinol without adverse effect has been reported. Symptoms and signs including nausea, vomiting, diarrhea, and dizziness have been reported in a patient who ingested 20 g allopurinol. Recovery followed general supportive measures.

Massive absorption of allopurinol may lead to considerable inhibition of xanthine oxidase activity, which should have no untoward effects unless affecting concomitant medication, especially with

mercaptopurine and/or azathioprine. No treatment is normally required provided the drug is withdrawn and adequate hydration is maintained to facilitate excretion of the drug. If considered necessary hemodialysis may be used. If, however, other forms of acute distress are observed, gastric lavage should be considered, otherwise the treatment is symptomatic.

For management of a suspected drug overdose, contact your regional poison control centre.

6 DOSAGE FORMS, STRENGTHS, COMPOSITION AND PACKAGING

Table 1 – Dosage Forms, Strengths, Composition and Packaging

Route of Administration	Dosage Form/Strength/Composition	Non-medicinal Ingredients
oral	tablet 100 mg, 200 mg, 300 mg of allopurinol	Colloidal silicon dioxide, croscarmellose sodium, magnesium stearate, povidone K-30, lactose monohydrate and FD&C Yellow No. 6 (in 200 mg and 300 mg tablets only)

JAMP Allopurinol Tablets 100 mg: white colored, round, biconvex tablets debossed with “AL” and “100” separated by score line on one side and plain on the other. Available in bottles of 100 and 1000 tablets.

JAMP Allopurinol Tablets 200 mg: Peach colored, round, biconvex tablets debossed with “AL” and “200” separated by score line on one side and plain on the other. Available in bottles of 100 and 500 tablets.

JAMP Allopurinol Tablets 300 mg: Peach colored, round, biconvex tablets debossed with “AL” and “300” separated by score line on one side and plain on the other. Available in bottles of 100 tablets.

7 WARNINGS AND PRECAUTIONS

Please see [3 SERIOUS WARNINGS AND PRECAUTIONS BOX](#).

General

Asymptomatic hyperuricemia per se is generally not considered an indication for use of allopurinol. Fluid and dietary modification with management of the underlying cause may correct the condition.

Driving and Operating Machinery

Occupational hazards: Due to occasional occurrence of drowsiness, patients should be alerted to the need for precautions when engaging in activities where alertness is mandatory.

Exercise caution when driving or operating a vehicle or potentially dangerous machinery.

Endocrine and Metabolism

Thyroid disorders: Increased TSH values (>5.5 mIU/mL) were observed in patients on long-term treatment with allopurinol (5.8%) in a long-term open label extension study. Caution is required when allopurinol is used in patients with alteration of thyroid function and increased monitoring of thyroid parameters is recommended during treatment with allopurinol.

Hepatic/Biliary/Pancreatic

Reduced doses should be administered to patients with hepatic impairment. The drug should be withdrawn if increased abnormalities in hepatic functions appear.

The incidence of adverse reactions in association with allopurinol is higher in the presence of hepatic disorder. See [4 DOSAGE AND ADMINISTRATION](#)

Monitoring and Laboratory Tests

Urate/uric acid levels: The dose of JAMP Allopurinol Tablets should be adjusted by monitoring serum urate concentrations and urinary urate/uric acid levels at appropriate intervals. See [4 DOSAGE AND ADMINISTRATION](#)

Hepatic function: Periodic liver function tests should be performed in all patients on JAMP Allopurinol Tablets therapy.

Renal function: For patients with renal impairment, if facilities are available to monitor plasma oxipurinol concentrations, the dose of JAMP Allopurinol Tablets should be adjusted to maintain plasma oxipurinol levels below 100 micromol/litre (15.2 mg/litre).

In patients with decreased renal function or who have concurrent illnesses which can affect renal function such as hypertension and diabetes mellitus, periodic laboratory parameters of renal function, particularly BUN and serum creatinine or creatinine clearance, should be performed and the patient's dosage of JAMP Allopurinol Tablets reassessed.

Musculoskeletal

JAMP Allopurinol Tablets treatment should not be started until an acute attack of gout has completely subsided, as further attacks may be precipitated.

Acute gout attacks may be precipitated at the start of treatment with allopurinol in new patients, and these may continue even after serum uric acid levels begin to fall. Prophylactic administration of colchicine is advisable, particularly in new patients and in those where the previous attack rate has been high. In addition, it is recommended that the patient start with a low dose of allopurinol (100 and 200 mg daily) and the dose be built up slowly until a serum uric acid level of 6 mg/100 mL or less is attained. See [4 DOSAGE AND ADMINISTRATION](#)

If acute gouty attacks develop in patients receiving allopurinol, treatment should continue at the same dosage while the acute attack is treated with a suitable anti-inflammatory agent.

In conditions where the rate of urate formation is greatly increased (e.g., malignant disease and its treatment; Lesch-Nyhan syndrome), the absolute concentration of xanthine in urine could, in rare cases, rise sufficiently to allow deposition in the urinary tract. This risk may be minimized by adequate hydration to achieve optimal urine dilution.

Renal

Reduced doses should be administered to patients with renal impairment. The drug should be withdrawn if increased abnormalities in renal functions appear. Patients under treatment for hypertension or cardiac insufficiency, for example with diuretics or ACE inhibitors, may have some concomitant impairment of renal function and allopurinol should be used with care in this group.

Patients with chronic renal impairment and concomitant diuretic use, in particular thiazides, may be at increased risk of developing hypersensitivity reactions including SJS/TEN associated with allopurinol.

Extra vigilance for the signs of hypersensitivity syndrome or SJS/TEN is required and the patient should be informed of the need to stop treatment immediately and permanently at the first appearance of symptoms

The incidence of adverse reactions in association with allopurinol is higher in the presence of renal disorder.

Adequate therapy with allopurinol will lead to dissolution of large uric acid renal pelvic stones, with the remote possibility of impaction in the ureter.

Skin

JAMP Allopurinol Tablets should be discontinued **immediately** at the appearance of a skin rash, as the rash may be, in some instances, followed by dermatological reactions/hypersensitivity syndrome [including Stevens Johnson Syndrome (SJS), toxic epidermal necrolysis (TEN) and drug rash with eosinophilia and systemic symptoms (DRESS)]:

Serious and life-threatening allopurinol hypersensitivity reactions have been observed and can manifest in many different ways, including maculopapular exanthema, hypersensitivity syndrome (also known as DRESS) and SJS/TEN. If such reactions occur at any time during treatment, allopurinol should be discontinued immediately. Rechallenge should not be undertaken in patients with hypersensitivity syndrome and SJS/TEN. Extra vigilance for signs of hypersensitivity syndrome or SJS/TEN/DRESS is required and the patient should be informed of the need to stop treatment immediately at the first appearance of symptoms.

The HLA-B*5801 allele has been shown to be associated with an increased risk of developing allopurinol related serious hypersensitivity syndromes, including SJS and TEN. The frequency of the HLA-B*5801 allele varies widely between ethnic populations: up to 20% in Han Chinese population, 8- 15% in the Thai, about 12% in the Korean population and 1-2% in individuals of Japanese or European origin. Screening for HLA-B*5801 should be considered before starting treatment with allopurinol in patient subgroups where the prevalence of this allele is known to be high. Chronic kidney disease may increase the risk in these patients additionally. In case that no HLA-B*5801 genotyping is available for patients with Han Chinese, Thai or Korean descent, the benefits should be thoroughly assessed and considered to outweigh the possible higher risks before starting therapy. The use of genotyping has not been established in other patient populations. If the patient is a known carrier of HLA-B*5801 (especially in those who are from Han Chinese, Thai or Korean descent), allopurinol should not be started unless there are no other reasonable therapeutic options and the benefits are thought to exceed risks. SJS/TEN can still occur in patients who are found to be negative for HLA-B*5801 irrespective of their ethnic origin.

7.1 Special Populations

7.1.1 Pregnant Women

JAMP Allopurinol Tablets is not recommended for use during pregnancy or in women of childbearing potential unless in the judgment of the physician, the potential benefits outweigh the possible risk to the fetus.

7.1.2 Breast-feeding

JAMP Allopurinol Tablets is contraindicated in breast-feeding women. Reports indicate that allopurinol and oxipurinol are excreted in human breast milk. Concentrations of 1.4 mg/L allopurinol and 53.7 mg/L oxipurinol have been demonstrated in breast milk from woman taking allopurinol 300 mg/day.

However, there are no data concerning the effects of allopurinol or its metabolites on breast-fed babies. See [2 CONTRAINDICATIONS](#).

7.1.3 Pediatrics

Pediatrics (<18 years of age): JAMP Allopurinol Tablets is contraindicated in children with the exception of those with hyperuricemia secondary to malignancy or with Lesch-Nyhan syndrome, because safety and effectiveness have not been established in other conditions. See [2 CONTRAINDICATIONS](#)

7.1.4 Geriatrics

Geriatrics (>65 years of age): In the absence of specific data, the lowest dosage of JAMP Allopurinol Tablets which produces satisfactory urate reduction should be used. In general, dose selection for an elderly patient should be cautious reflecting the greater frequency of decreased hepatic, renal, or cardiac function, and of concomitant disease or other drug therapy.

8 ADVERSE REACTIONS

8.1 Adverse Reaction Overview

Adverse reactions in association with allopurinol are rare in the overall treated population. The incidence is higher in the presence of renal and/or hepatic disorder. See [7 WARNINGS AND PRECAUTIONS](#)

Blood and Lymphatic System: There have been occasional reports of reduction in the number of circulating formed elements of the blood, including agranulocytosis, thrombocytopenia and aplastic anemia, usually in association with renal and/or hepatic disorders or when concomitant drugs have been administered which have a potential for causing these reactions.

Body as a Whole: General malaise, asthenia, vertigo, rise in Blood Urea Nitrogen (BUN), hyperlipemia, edema, and angioedema.

Fever has been reported to occur with and without signs/symptoms of a more generalized hypersensitivity reaction.

Cardiac Disorders: Angina, bradycardia

Ear and Labyrinth Disorders: Vertigo

Eye Disorders: Cataract, visual disorder, macular changes

Gastrointestinal Disorders: Stomatitis, changed bowel habit. Diarrhea, intermittent abdominal pain, nausea and vomiting were reported. Gastrointestinal disorders diminish if JAMP Allopurinol Tablets is taken after meals. Recurrent hematemesis has been reported as an extremely rare event, as has steatorrhea.

Hepatic Function: Rare reports of hepatic dysfunction ranging from asymptomatic rises in liver function tests to hepatitis (including hepatic necrosis and granulomatous hepatitis) have been reported without overt incidence of more generalized hypersensitivity.

Immune System Disorders: Hypersensitivity reactions. See [7 WARNINGS AND PRECAUTIONS](#)
Angioimmunoblastic lymphadenopathy has been described rarely following biopsy of a generalized lymphadenopathy. It appears to be reversible on withdrawal of allopurinol.

Infections and Infestations: Furunculosis

Metabolism and Nutrition Disorders: Diabetes mellitus, hyperlipidaemia

Psychiatric Disorders: Depression

Nervous System Disorders: Coma, paralysis, ataxia, neuropathy, paraesthesia, somnolence, headache, taste perversion, drowsiness, peripheral neuritis

Renal and Urinary Disorders: Haematuria, uraemia

Reproductive System and Breast Disorders: Infertility, impotence, gynaecomastia

Skin: Skin Reactions (rash) are the most common reactions and may occur at any time during treatment. They may be pruritic, maculopapular, sometimes scaly, sometimes purpuric and rarely exfoliative. JAMP Allopurinol Tablets should be withdrawn **immediately** should such reactions occur. After recovery from mild reactions allopurinol may, if desired, be cautiously reintroduced at a small dose (e.g., 50 mg/day) and gradually increased. If the rash recurs, allopurinol should be **permanently** withdrawn. Skin reactions associated with exfoliation, fever, chills, nausea and vomiting, lymphadenopathy, arthralgia and/or eosinophilia including Stevens-Johnson Syndrome, DRESS, and Toxic Epidermal Necrolysis have occurred. Associated vasculitis and tissue response may be manifested in various ways including hepatitis, interstitial nephritis and very rarely, epilepsy. If they do occur, it may be at any time during treatment. Allopurinol should be discontinued **immediately** and **permanently**. Rechallenge should not be undertaken in patients with hypersensitivity syndrome and SJS/TEN. Extra vigilance for signs of hypersensitivity syndrome or SJS/TEN/DRESS is required and the patient should be informed of the need to stop treatment immediately at the first appearance of symptoms.

Corticosteroids may be beneficial in overcoming such reactions. When generalized hypersensitivity reactions have occurred, renal and/or hepatic disorders have usually been present particularly when the outcome has been fatal.

Angioedema has been reported to occur with and without signs and symptoms of a more generalized allopurinol hypersensitivity reaction.

Very rarely acute anaphylactic shock, fixed drug eruptions, alopecia and discolored hair have been reported.

Thyroid Disorders: The occurrence of increased thyroid stimulating hormone (TSH) was reported.

Vascular Disorders: Hypertension

9 DRUG INTERACTIONS

9.2 Drug Interactions Overview

Allopurinol is in a class of medications called xanthine oxidase inhibitors. It works by reducing the production of uric acid in the body. Allopurinol is unlikely to inhibit or induce CYP450 enzymes at clinically relevant concentrations and therefore, has low potential to be involved in drug-drug interactions with drugs that are substrates of CYP450. However, JAMP Allopurinol Tablets is a xanthine oxidase (XO) inhibitor, and therefore, may cause increased plasma concentrations of drugs metabolized by XO when co-administered, potentially leading to toxicity by these other drugs.

9.4 Drug-Drug Interactions

The drugs listed in this table are based on either drug interaction case reports or studies, or potential interactions due to the expected magnitude and seriousness of the interaction (i.e., those identified as contraindicated).

Table 2 – Established or Potential Drug-Drug Interactions

Common name	Source of Evidence	Effect	Clinical comment
Mercaptopurine or Azathioprine	CT	In patients receiving mercaptopurine or azathioprine, the concomitant administration of 300 to 600 mg of allopurinol/day will require a reduction in dose to approximately one-third or one-fourth of the usual dose of mercaptopurine or azathioprine.	Subsequent adjustment of doses of mercaptopurine or azathioprine should be made on the basis of therapeutic response and any toxic effects.
Uricosurics and Salicylates	T	Renal clearance of oxypurinol, the major therapeutically active metabolite of allopurinol, is increased by uricosuric agents such as probenecid or large doses of salicylate and as a consequence the addition of a uricosuric agent may reduce the extent of inhibition of xanthine oxidase by oxypurinol.	However, such combined therapy may be useful in achieving minimum serum uric acid levels provided that total urinary uric acid load does not exceed the competence of the patient's renal function.
Coumarin Anticoagulants	CT	It has been reported that under experimental conditions allopurinol prolongs the half-life of the anticoagulant, dicumarol.	There have been rare reports of increased effect of warfarin and other coumarin anticoagulants when co-administered with allopurinol, therefore, all patients receiving anticoagulants must be carefully monitored.
Chlorpropamide	T	In the presence of allopurinol, there may be competition in the renal tubule for the excretion of chlorpropamide.	When renal function is poor, the recognized risk of prolonged hypoglycemic activity of chlorpropamide may be increased if allopurinol is given concomitantly.
Vidarabine	CT	Evidence suggests that the plasma half-life of vidarabine is increased in the presence of allopurinol.	When the two products are used concomitantly extra vigilance is necessary to recognize enhanced toxic effects.
Phenytoin	T	Allopurinol may inhibit hepatic oxidation of phenytoin but the clinical significance has not been demonstrated	The clinical significance has not been demonstrated.

Theophylline	CT	Inhibition of the metabolism of theophylline has been reported in normal subjects given relatively high doses of allopurinol (300 mg b.i.d.) under experimental conditions. The mechanism of the interaction may be explained by xanthine oxidase being involved in the biotransformation of theophylline in man.	Although there have been no clinical reports of interaction, theophylline levels should be monitored inpatients starting or increasing allopurinol therapy.
Ampicillin/Amoxicillin	CT	An increase in the frequency of skin rash has been reported among patients receiving ampicillin or amoxicillin concurrently with allopurinol compared to patients who are not receiving both drugs. The cause of the reported association has not been established.	However, it is recommended that in patients receiving allopurinol an alternative to ampicillin or amoxicillin is used where available.
Cyclophosphamide, Doxorubicin, Bleomycin, Procarbazine and Mechloethamine	CT	Enhanced bone marrow suppression reported among patients with neoplastic disease, (other than leukemia), in the presence of allopurinol.	However, in a well-controlled study of patients treated with cyclophosphamide, doxorubicin, bleomycin, procarbazine and/or mechloethamine (mustine HCl) allopurinol did not appear to increase the toxic reaction of the cytotoxic agents.
Cyclosporin	C	Reports suggest that the plasma Concentration of cyclosporin may be increased during concomitant treatment with allopurinol.	The possibility of enhanced cyclosporin toxicity should be considered if the drugs are coadministered.
Diuretics	C	An interaction between allopurinol and furosemide that results in increased serum urate and plasma oxypurinol concentrations has been reported.	The occurrence of hypersensitivity reactions to JAMP Allopurinol Tablets may be increased in patients with decreased renal function receiving thiazides and JAMP Allopurinol Tablets concurrently. For this reason, in this clinical setting, such combinations should be administered with caution and patients should be observed closely.
ACE inhibitors	C	An increased risk of hypersensitivity has been reported when allopurinol is given with ACE inhibitors especially in renal impairment.	Such combinations should be administered with caution and patients should be observed closely.

<u>Didanosine</u>	CT	In healthy volunteers and HIV patients receiving didanosine, plasma didanosine C _{max} and AUC values were approximately doubled with concomitant allopurinol treatment (300 mg daily) without affecting terminal half-life.	Co-administration of these 2 drugs is generally not recommended. If concomitant use is unavoidable, a dose reduction of didanosine maybe required, and patients should be closely monitored.
Aluminium Hydroxide	T	If aluminium hydroxide is taken concomitantly, allopurinol may have an attenuated effect.	There should be an interval of at least 3 hours between taking both medicines.

Legend: C = Case Study; CT = Clinical Trial; T = Theoretical

9.5 Drug-Food Interactions

Interactions with food have not been established.

9.6 Drug-Herb Interactions

Interactions with herbal products have not been established.

9.7 Drug-Laboratory Test Interactions

Interactions with laboratory tests have not been established.

10 CLINICAL PHARMACOLOGY

10.1 Mechanism of Action

Allopurinol is a structural analogue of hypoxanthine. Reduction in both the serum and urinary uric acid levels is brought about by allopurinol inhibiting the action of xanthine oxidase, the enzyme responsible for the conversion of hypoxanthine to xanthine and xanthine to uric acid. Allopurinol is metabolized to the corresponding xanthine analogue, oxypurinol, which is also an inhibitor of xanthine oxidase. The action of allopurinol in blocking formation of urate differs from that of uricosuric agents which lower the serum uric acid level by increasing urinary excretion of uric acid.

10.2 Pharmacodynamics

Administration of allopurinol generally results in a fall in both serum and urinary uric acid within 2 to 3 days. The magnitude of the decrease can be adjusted to a certain extent by varying the dose of allopurinol. The serum uric acid levels fall gradually and therefore a week or more of allopurinol treatment may be necessary before the full effect is obtained. Uric acid returns to pre-treatment levels slowly, usually after a cessation of therapy. This is due primarily to the accumulation and slow clearance of oxypurinol. In some patients, particularly those with tophaceous gout, a significant fall in urinary uric acid excretion may not occur, possibly due to the mobilization of urate from tissue deposits as the serum uric acid levels begins to fall.

The combined increase in hypoxanthine and xanthine excreted in the urine is usually, but not always, considerably less than the accompanying decline in urinary uric acid. This may be due to pseudo feedback inhibition of purine biosynthesis by allopurinol ribotide.

It has been shown that reutilization of both hypoxanthine and xanthine for nucleotide and nucleic acid synthesis is markedly enhanced when their oxidations are inhibited by allopurinol. This reutilization and the normal feedback inhibition which would result from an increase in available purine nucleotides serve to regulate purine biosynthesis, and, in essence, the defect of the over-producer of uric acid is thereby compensated.

Innate deficiency of xanthine oxidase, which occurs in patients with xanthinuria, as in inborn error of metabolism has been shown to be compatible with comparative wellbeing. While urinary levels of oxypurines attained with full doses of allopurinol may in exceptional cases equal those (250-600 mg/day) which in xanthinuric subjects have caused formation of urinary calculi, they usually fall in the range of 50-200 mg and no evidence of renal damage has been clinically observed. Xanthine crystalluria has been reported in a few exceptional cases. The serum concentration of oxypurines in patients receiving allopurinol is usually in the range of 0.3 to 0.4 mg/dL compared to a normal level of approximately 0.15 mg/dL. A maximum of 0.9 mg/dL was observed when the serum urate was lowered to less than 2 mg/dL by high doses of the drug. In one exceptional case, a value of 2.7 mg/dL was reached. These are far below the saturation level at which precipitation of xanthine or hypoxanthine would be expected to occur so that tissue deposition is unlikely and has not been observed to date. The solubilities of uric acid and xanthine in the serum are similar (about 7 mg/dL) while hypoxanthine is much more soluble. The finding that the renal clearance of oxypurines is at least ten times greater than that of uric acid explains the relatively low serum oxypurine concentration at a time when the serum uric acid level has decreased markedly. At serum oxypurine levels of 0.3 to 0.9 mg/dL, oxypurine: inulin clearance ratios were between 0.7 and 1.9. The glomerular filtration rate and urate clearance in patients receiving allopurinol do not differ significantly from those obtained prior to therapy. The rapid renal clearance of oxypurines suggests that allopurinol therapy should be of value in allowing a patient with gout to increase his total purine excretion.

10.3 Pharmacokinetics

When taken orally, allopurinol is rapidly absorbed and rapidly metabolized. The main metabolite is oxipurinol, which is itself a xanthine oxidase inhibitor. Allopurinol and its metabolites are excreted by the kidney. The renal handling is such that allopurinol has a plasma half-life of about one hour, whereas that of oxipurinol exceeds 18 hours.

Absorption: Allopurinol is active when given orally and is rapidly absorbed. Estimates of bioavailability vary from 67% to 90%.

Peak plasma levels of allopurinol generally occur approximately 1.5 hours after oral administration of allopurinol. Peak levels of oxipurinol generally occur after 3 to 5 hours after oral administration of allopurinol.

Distribution: Allopurinol is negligibly bound by plasma proteins and therefore variations in protein binding are not expected to significantly alter clearance. The volume of distribution of allopurinol is approximately 1.6 litre/kg.

Metabolism: The main metabolite of allopurinol is oxipurinol, which is also an inhibitor of xanthine oxidase. Other metabolites of allopurinol are allopurinol riboside and oxipurinol-7-riboside.

Elimination: Approximately 20% of the ingested allopurinol is excreted in faeces. Elimination of allopurinol is mainly by metabolic conversion to oxipurinol by xanthine oxidase and aldehyde oxidase, with approximately 10% excreted in the urine in unchanged form. Allopurinol has a plasma half-life of about 1 to 2 hours.

Oxipurinol is a less potent inhibitor of xanthine oxidase than allopurinol, but the plasma half-life of oxipurinol is much longer. The estimate is between 13 and 30 hours in man. Therefore effective inhibition of xanthine oxidase is maintained over a 24-hour period with a single daily dose of allopurinol. Patients with normal renal function taking 300 mg of allopurinol per day will generally have plasma oxipurinol concentrations of 5 to 10 mg/litre.

Special Populations and Conditions

- **Geriatrics**

The kinetics of the medicinal product are not expected to change except in cases with impaired renal function. See [7 WARNINGS AND PRECAUTIONS](#)

- **Renal Insufficiency**

Allopurinol and oxipurinol clearance is greatly reduced in patients with impaired renal function resulting in higher plasma levels in long-term treatment. Patients with renal impairment, creatinine clearance values between 10 and 20 mL/min had plasma oxipurinol concentrations of approximately 30 mg/litre after prolonged treatment with 300 mg allopurinol per day. This is approximately the concentration which would be achieved by doses of 600 mg/day in those with normal renal function. A reduction in the dose of allopurinol is therefore required in patients with renal impairment.

11 STORAGE, STABILITY AND DISPOSAL

Store at room temperature 15-30°C. Preserve in well-closed containers.

12 SPECIAL HANDLING INSTRUCTIONS

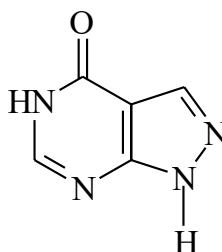
None

PART II: SCIENTIFIC INFORMATION

13 PHARMACEUTICAL INFORMATION

Drug Substance

Proper name:	Allopurinol
Chemical name:	4 <i>H</i> -Pyrazolo [3,4- <i>d</i>]pyrimidin-4-one
Molecular formula and molecular mass:	C ₅ H ₄ N ₄ O and 136.11 g/mol
Structural formula:	



Physicochemical properties:

Allopurinol is a position isomer of the natural purine base hypoxanthine in which the carbon and nitrogen at the number 7 and number 8 positions in the purine nucleus are transferred. It is a white or almost white powder, very slightly soluble in water and in ethanol (96%). It dissolves in dilute solutions of alkali hydroxides.

Product Characteristics: In addition to allopurinol, each tablet also contains the non-medical ingredients colloidal silicon dioxide, croscarmellose sodium, lactose monohydrate, povidone K-30, and magnesium stearate.

JAMP Allopurinol Tablets 200 & 300 mg: In addition to the non-medical ingredients listed under composition, JAMP Allopurinol Tablets 200 and 300 mg tablets also contain FD&C Yellow No. 6.

14 CLINICAL TRIALS

The clinical trial data on which the original indication was authorized is not available.

14.2 Comparative Bioavailability Study

A randomized, double blind, two-treatment, two-period, two-sequence, single-dose, crossover, comparative bioavailability study of ^{Pr}JAMP Allopurinol Tablets 300 mg tablets (JAMP Pharma Corporation) with ^{Pr}ZYLOPRIM® 300 mg tablets (AA Pharma Inc.) was conducted in 42 healthy, adult, male human subjects under fasting conditions. The comparative bioavailability data from the 42 subjects included in the statistical analysis are presented in the following table:

SUMMARY TABLE OF THE COMPARATIVE BIOAVAILABILITY DATA

Allopurinol (1 x 300 mg) Geometric Mean Arithmetic Mean (CV %)				
Parameter	Test ¹	Reference ²	% Ratio of Geometric Means	90% Confidence Interval
AUC _T (ng·h/mL)	6330.30 7478.71 (67.06)	6065.16 7301.32 (68.08)	104.4	95.7 - 113.8
AUC _I (ng·h/mL)	6628.83 7754.28 (65.71)	6332.47 7545.97 (66.95)	104.7	96.3 - 113.8
C _{max} (ng/mL)	1955.59 2142.95 (45.04)	1743.25 1922.90 (44.18)	112.2	103.0 - 122.2
T _{max} ³ (h)	1.88 (0.50- 4.00)	1.75 (0.50 - 4.50)		
T _{1/2} ⁴ (h)	1.23 (19.62)	1.22 (25.00)		

¹ PrJAMP Allopurinol Tablets (allopurinol) tablets, 300 mg (JAMP Pharma Corporation)

² PrZYLOPRIM® (allopurinol) tablets, 300 mg (AA Pharma Inc., Canada).

³ Expressed as the median (range) only

⁴ Expressed as the arithmetic mean (CV %) only

15 MICROBIOLOGY

No microbiological information is required for this drug product.

16 NON-CLINICAL TOXICOLOGY

General Toxicology:

ACUTE ORAL TOXICITY (LD₅₀)

Rats: greater than 1100 mg/kg

Mice: greater than 953 mg/kg

SUBACUTE TOXICITY

In a 13-week feeding experiment in rats at a drug level of 72 mg/kg/day, 2 of 10 rats died; at 225 mg/kg/day, 4 to 10 died before the completion of the experiment. Both groups exhibited renal tubular damage due to the deposition of xanthine that was more extensive at the higher dose. In chronic feeding experiments, rats showed no toxic effects at a level of 14 mg/kg/day after one year. At a level of 24 mg/kg/day for one year, the rats showed very slight depression of weight gain and food intake, and five out of ten of the animals showed minor changes in the kidney tubules of the type exhibited by the rat on the higher dose described above.

Dogs survived oral dosing at 30 mg/kg/day for one year with nil to minor changes in the kidney and no other significant abnormalities. At 90 mg/kg/day for one year, there was some accumulation of xanthine in the kidneys with resultant chronic irritation and slight tubular changes. Occasional hemosiderin-like deposits were seen in the reticuloendothelial system. A higher dose (270 mg/kg/day)

resulted in large concentrations in the renal pelvis, with severe destructive changes in the kidney secondary to xanthine accumulation. The deposit of xanthine appears to be a function of both the metabolic turnover of purines (which is proportionately larger in the smaller animals) and the degree of inhibition of xanthine oxidase.

Carcinogenicity: No evidence of carcinogenicity has been found in mice and rats treated with allopurinol for up to 2 years.

Genotoxicity: Cytogenetic studies show that allopurinol does not induce chromosome aberrations in human blood cells *in vitro* at concentrations up to 100 mcg/mL and *in vivo* at doses up to 600 mg/day for a mean period of 40 months.

Allopurinol does not produce nitroso compounds *in vitro* or affect lymphocyte transformation *in vitro*.

Evidence from biochemical and other cytological investigations strongly suggests that allopurinol had no deleterious effects on DNA at any stage of the cell cycle and is not mutagenic.

Reproductive and Developmental Toxicology: Reproductive studies in rats and rabbits indicated that allopurinol did not affect litter size, the mean weight of the progeny at birth or at three weeks postpartum, nor did it cause an increase in animals born dead or with malformations.

One study in mice receiving intraperitoneal doses of 50 or 100 mg/kg on days 10 or 13 of gestation resulted in fetal abnormalities, however in a similar study in rats at 120 mg/kg on day 12 of gestation no abnormalities were observed. Extensive studies of high oral doses of allopurinol in mice up to 150 mg/kg/day during days 8 to 16 of gestation produced no teratogenic effects.

An *in vitro* study using fetal mouse salivary glands in culture to detect embryotoxicity indicated that allopurinol would not be expected to cause embryotoxicity without also causing maternal toxicity.

17 SUPPORTING PRODUCT MONOGRAPHS

1. PrZYLOPRIM® Tablets, 100 mg, 200 mg, and 300 mg, submission control 248178, Product Monograph, AA PHARMA INC. SEP 02, 2021.

PATIENT MEDICATION INFORMATION

READ THIS FOR SAFE AND EFFECTIVE USE OF YOUR MEDICINE

Pr JAMP Allopurinol Tablets

Allopurinol Tablets, House Standard

Read this carefully before you start taking **JAMP Allopurinol Tablets** and each time you get a refill. This leaflet is a summary and will not tell you everything about this drug. Talk to your healthcare professional about your medical condition and treatment and ask if there is any new information about **JAMP Allopurinol Tablets**.

Serious Warnings and Precautions

Serious skin and allergic reactions: JAMP Allopurinol Tablets might cause serious **skin and allergic reactions, including:**

1. **Drug reaction with eosinophilia and systemic symptoms (DRESS)** (serious skin reaction that may affect more than one or more organs),
2. **Stevens-Johnson syndrome (SJS)** (severe skin rash), and
3. **Toxic Epidermal Necrolysis (TEN)** (severe skin reaction)

If you have skin reactions of any kind (e.g., skin rash), stop taking JAMP Allopurinol Tablets **right away** and contact your healthcare professional. Some skin reactions could lead to deadly allergic reactions. These reactions are more common in people of Han Chinese, Thai or Korean descent. Your healthcare professional may perform a test before you start treatment. This test will reveal if you are at increased risk of developing such a reaction. See the Serious side effects and what to do about them table, below, for more information on these and other serious side effects.

What is JAMP Allopurinol Tablets used for?

JAMP Allopurinol Tablets is used for the:

- treatment of gout, a painful form of arthritis caused by high levels of uric acid in the blood;
- treatment of kidney problems due to high uric acid levels;
- treatment or prevention of uric acid build-up in tissues or kidneys in patients receiving certain cancer treatments (which may cause high levels of uric acid in the blood);
- prevention of kidney stones in patients with high levels of uric acid in the blood or urine.

How does JAMP Allopurinol Tablets work?

JAMP Allopurinol Tablets works by reducing the production of uric acid in the body.

What are the ingredients in JAMP Allopurinol Tablets?

Medicinal ingredient: allopurinol

Non-medicinal ingredients: colloidal silicon dioxide, croscarmellose sodium, FD&C Yellow No. 6 (in 200 mg and 300 mg tablets only), lactose monohydrate, magnesium stearate and povidone K-30

JAMP Allopurinol Tablets comes in the following dosage forms:

Tablets: 100 mg, 200 mg and 300 mg

Do not use JAMP Allopurinol Tablets if:

- you are allergic to allopurinol or any other ingredients in JAMP Allopurinol Tablets.
- you are breastfeeding.
- you are under the age of 18 (except in children with a high level of uric acid in the blood due to cancer or Lesch-Nyhan syndrome).

To help avoid side effects and ensure proper use, talk to your healthcare professional before you take JAMP Allopurinol Tablets. Talk about any health conditions or problems you may have, including if you:

- have thyroid problems.
- have kidney problems.
- have liver problems.
- have heart disease.
- have diabetes.
- have high blood pressure (hypertension).
- are pregnant or plan to become pregnant.

Other warnings you should know about:

- JAMP Allopurinol Tablets should not be started until a gout attack has completely settled down.
- In new patients, JAMP Allopurinol Tablets may cause gout attacks at the start of treatment.

Driving and using machines

- JAMP Allopurinol Tablets may cause drowsiness. Do NOT drive or use machines until you know how JAMP Allopurinol Tablets affects you.

Tell your healthcare professional about all the medicines you take, including any drugs, vitamins, minerals, natural supplements or alternative medicines.

The following may interact with JAMP Allopurinol Tablets:

- mercaptopurine - a drug used to treat leukemia.
- azathioprine - a drug that reduces the strength of the immune system (immunosuppressant).
- uricosurics (e.g., probenecid) - drugs that help remove uric acid from the body through the urine.
- salicylates (e.g., Aspirin) - anti-inflammatory drugs used to treat fever, pain and swelling.
- coumarin anticoagulants (e.g., dicumarol) - a type of blood-thinner.
- chlorpropamide - a drug used to control blood-sugar levels.
- vidarabine - an anti-viral drug.
- phenytoin - a drug used to control seizures.

- theophylline - a drug used to treat certain breathing problems.
- ampicillin/amoxicillin - types of antibiotics used to treat bacterial infections.
- cyclophosphamide, doxorubicin, bleomycin, procarbazine and mechloroethamine - drugs used to treat cancer.
- cyclosporine - a drug used to treat autoimmune conditions or to prevent organ rejection after transplantation.
- didanosine - a drug used to treat HIV infection.
- Angiotensin-Converting Enzyme (ACE) inhibitors - drugs used to treat heart problems or high blood pressure.
- diuretics (water tablets) - drugs used to treat high blood pressure.

Aluminum hydroxide (a type of antacid) may reduce the effectiveness of JAMP Allopurinol Tablets. If you need to use aluminum hydroxide, take it 3 hours before or 3 hours after taking JAMP Allopurinol Tablets.

How to take JAMP Allopurinol Tablets:

- Follow the directions given to you by your healthcare professional.
- Take JAMP Allopurinol Tablets by mouth.
- Take after a meal.
- Drink plenty of fluids to stay hydrated during treatment with JAMP Allopurinol Tablets.

Usual dose:

Your dose will depend on your medical condition and the recommendations of your healthcare professional. Your healthcare professional may change or stop your dose depending on how well JAMP Allopurinol Tablets is working for you. Continue taking JAMP Allopurinol Tablets for as long as your healthcare professional tells you to.

If you take **300 mg or less** of JAMP Allopurinol Tablets each day, you may take it as a single dose, once a day.

If you take **more than 300 mg** of JAMP Allopurinol Tablets each day, it should be divided in 2 or 3 doses per day (of not more than 300 mg per dose).

Overdose:

If you think you, or a person you are caring for, have taken too much JAMP Allopurinol Tablets, contact a healthcare professional, hospital emergency department, or regional poison control centre immediately, even if there are no symptoms.

Missed Dose:

If you miss a dose, take it as soon as you remember. If it is almost time for the next dose, skip the missed dose and continue your regular dosing schedule. Do NOT take a double dose to make up for a missed dose.

What are possible side effects from using JAMP Allopurinol Tablets?

These are not all the possible side effects you may have when taking JAMP Allopurinol Tablets. If you experience any side effects not listed here, tell your healthcare professional.

Side effects may include:

- diarrhea
- abdominal pain
- nausea
- vomiting
- change in normal bowel habits
- changes in taste sensation
- mouth ulcers
- headache
- dizziness
- drowsiness
- unsteadiness when walking
- feeling of weakness, pain, numbness, prickling or tingling in hands or feet
- boils (red, swollen, painful bumps under the skin)
- hair loss
- discoloration of hair
- impotence (not able to have an erection)
- infertility in men
- enlarged breasts in men

Your doctor will perform regular kidney, liver and thyroid function tests when you are taking JAMP Allopurinol Tablets.

JAMP Allopurinol Tablets may cause abnormal blood test results. Your doctor will decide when to perform blood tests and will interpret the results.

Serious side effects and what to do about them			
Symptom / effect	Talk to your healthcare professional		Stop taking drug and seek immediate medical help
	Only if severe	In all cases	
COMMON			
Skin reactions: itchy or flaky skin, reddening of skin, raised skin rash			√
RARE			
Allergic reactions (including Angioedema): sudden difficulty in breathing or swallowing, swelling of face, eyes, lips, tongue and/or throat, hands or feet, rash, skin reddening, pain, hives, skin peeling, flu-like symptoms			√
Lymphadenopathy (swollen glands): swollen glands in the neck, armpit or groin			√
Drug reaction with eosinophilia and systemic symptoms (DRESS)			√

Serious side effects and what to do about them			
Symptom / effect	Talk to your healthcare professional		Stop taking drug and seek immediate medical help
	Only if severe	In all cases	
(serious skin reaction that may affect more than one or more organs): fever, severe rash, swollen lymph glands, flu-like feeling, yellow skin or eyes, shortness of breath, dry cough, chest pain or discomfort, feel thirsty, urinate less often, less urine			
Stevens-Johnson syndrome (SJS) (severe skin rash): redness, blistering and/or peeling of the skin and/or inside of the lips, eyes, mouth, nasal passages or genitals, accompanied by fever, chills, headache, cough, body aches or swollen glands			√
Toxic Epidermal Necrolysis (TEN) (severe skin reaction): redness, blistering and/or peeling of large areas of the skin			√
VERY RARE			
Hematemesis (vomiting blood)			√
Liver problems: yellowing of the skin and the whites of eyes, nausea and vomiting, a general sense of feeling unwell, abdominal pain and swelling, a tendency to bruise and bleed easily and mental disorientation or confusion		√	
Kidney problems: any change in the amount, frequency or colour of urine		√	
Steatorrhea (excessive fat in stool): pale, bulky, foul-smelling stool	√		
UNKNOWN			
Depression: sad mood, lack of interest in usual activities, change in sleep and appetite		√	
Changes in vision: sudden blurry vision		√	
Diabetes (too much sugar in the blood): increased thirst, frequent		√	

Serious side effects and what to do about them			
Symptom / effect	Talk to your healthcare professional		Stop taking drug and seek immediate medical help
	Only if severe	In all cases	
urination, extreme fatigue or lack of energy, dry skin, headache, blurred vision, tingling or numbness in the hands or feet			
Angina (chest pain)		√	
Hypertension (high blood pressure): shortness of breath, fatigue, severe headache, dizziness or fainting, lightheaded, chest pain or pressure, swelling in your ankles and legs, bluish colour to your lips and skin, racing pulse or palpitations		√	
Bradycardia (slow heartbeat): dizziness, light-headedness, or fainting		√	

If you have a troublesome symptom or side effect that is not listed here or becomes bad enough to interfere with your daily activities, tell your healthcare professional.

Reporting Side Effects

You can report any suspected side effects associated with the use of health products to Health Canada by:

- Visiting the Web page on Adverse Reaction Reporting (<https://www.canada.ca/en/health-canada/services/drugs-health-products/medeffect-canada/adverse-reaction-reporting.html>) for information on how to report online, by mail or by fax; or
- Calling toll-free at 1-866-234-2345.

NOTE: Contact your health professional if you need information about how to manage your side effects. The Canada Vigilance Program does not provide medical advice.

Storage:

Store at room temperature 15-30°C. Keep in tightly-closed containers.

Keep out of reach and sight of children.

If you want more information about JAMP Allopurinol Tablets:

- Talk to your healthcare professional
- Find the full Product Monograph that is prepared for healthcare professionals and includes this Patient Medication Information by visiting the Health Canada website: (<https://www.canada.ca/en/health-canada/services/drugs-health-products/drug-products/drug-product-database.html>); the manufacturer's website (www.jamppharma.com), or by calling 1-866-399-9091.

This leaflet was prepared by:

JAMP Pharma Corporation
1310 rue Nobel
Boucherville, Quebec
J4B 5H3, Canada

Last Authorized: December 22, 2022