

# **PRODUCT MONOGRAPH**

<sup>Pr</sup> **NRA-ROSUVASTATIN TABLETS**

**Rosuvastatin Tablets**

**5 mg, 10 mg, 20 mg and 40 mg rosuvastatin  
(as rosuvastatin calcium)**

Manufacturer Standard

**LIPID METABOLISM REGULATOR**

Nora Pharma Inc.  
1565, boul. Lionel-Boulet  
Varenes, Quebec  
J3X 1P7  
Control # 272335

Date of Preparation:  
MAR 28, 2023

**TABLE OF CONTENTS**

PART I: HEALTH PROFESSIONAL INFORMATION ..... 3

    SUMMARY PRODUCT INFORMATION ..... 3

    INDICATIONS AND CLINICAL USE ..... 3

    CONTRAINDICATIONS ..... 4

    WARNINGS AND PRECAUTIONS ..... 5

    ADVERSE REACTIONS ..... 10

    DRUG INTERACTIONS ..... 15

    DOSAGE AND ADMINISTRATION ..... 21

    OVERDOSAGE ..... 24

    ACTION AND CLINICAL PHARMACOLOGY ..... 24

    STORAGE AND STABILITY ..... 26

    DOSAGE FORMS, COMPOSITION AND PACKAGING ..... 26

PART II: SCIENTIFIC INFORMATION ..... 27

    PHARMACEUTICAL INFORMATION ..... 27

    CLINICAL TRIALS ..... 27

    DETAILED PHARMACOLOGY ..... 34

    TOXICOLOGY ..... 36

    REFERENCES ..... 41

PART III CONSUMER INFORMATION ..... 43

# **PrNRA-ROSUVASTATIN TABLETS**

Rosuvastatin Tablets

## **PART I: HEALTH PROFESSIONAL INFORMATION**

### **SUMMARY PRODUCT INFORMATION**

<b>Route of Administration</b>	<b>Dosage Form / Strength</b>	<b>All Nonmedicinal Ingredients</b>
Oral	Tablets: 5, 10, 20 and 40 mg	Lactose monohydrate, Microcrystalline cellulose, Crospovidone, Magnesium oxide, Colloidal silicon dioxide, Magnesium stearate, Hydroxypropyl methylcellulose, Triacetin, Lactose, Titanium dioxide, FD&C Red lake, FD&C Yellow Lake

### **INDICATIONS AND CLINICAL USE**

#### **Hypercholesterolemia**

##### **Adults**

NRA-ROSUVASTATIN TABLETS (rosuvastatin calcium) is indicated as an adjunct to diet, at least equivalent to the Adult Treatment Panel III (ATP III TLC diet), for the reduction of elevated total cholesterol (Total-C), LDL-C, ApoB, the Total-C/HDL-C ratio and triglycerides (TG) and for increasing HDL-C; in hyperlipidemic and dyslipidemic conditions, when response to diet and exercise alone has been inadequate including:

- Primary hypercholesterolemia (Type IIa including heterozygous familial hypercholesterolemia and severe non-familial hypercholesterolemia)
- Combined (mixed) dyslipidemia (Type IIb)
- Homozygous familial hypercholesterolemia where rosuvastatin is used either alone or as an adjunct to diet and other lipid lowering treatments such as apheresis.

##### **Pediatrics (10 – 17 years of age)**

Rosuvastatin is indicated as an adjunct to diet for the reduction of elevated total cholesterol (Total-C), LDL-C and ApoB in boys and girls who are at least one year post-menarche, 10 to 17 years of age with heterozygous familial hypercholesterolemia (see CLINICAL TRIALS), when response to diet alone has been inadequate.

#### **Prevention of Major Cardiovascular Events**

In adult patients without documented history of cardiovascular or cerebrovascular events, but with at least two conventional risk factors for cardiovascular disease (see CLINICAL TRIALS), Rosuvastatin is indicated to:

- Reduce the risk of nonfatal myocardial infarction
- Reduce the risk of nonfatal stroke
- Reduce the risk of coronary artery revascularization

## CONTRAINDICATIONS

NRA-ROSUVASTATIN TABLETS (rosuvastatin calcium) is contraindicated:

- In patients who are hypersensitive to any component of this medication (see DOSAGE FORMS, COMPOSITION AND PACKAGING).
- In patients with active liver disease or unexplained persistent elevations of serum transaminases exceeding 3 times the upper limit of normal (see WARNINGS AND PRECAUTIONS).
- In pregnant and nursing women.

Cholesterol and other products of cholesterol biosynthesis are essential components for fetal development (including synthesis of steroids and cell membranes). NRA-ROSUVASTATIN TABLETS should be administered to women of childbearing age only when such patients are highly unlikely to conceive and have been informed of the possible harm. If the patient becomes pregnant while taking NRA-ROSUVASTATIN TABLETS, the drug should be discontinued immediately and the patient apprised of the potential harm to the fetus. Atherosclerosis being a chronic process, discontinuation of lipid metabolism regulating drugs during pregnancy should have little impact on the outcome of long-term therapy of primary hypercholesterolemia (see WARNINGS AND PRECAUTIONS, Special Populations, Pregnant Women, Nursing Women).

- In patients using concomitant cyclosporine (see DRUG INTERACTIONS).
- In patients using concomitant sofosbuvir/velpatasvir/voxilaprevir (see DRUG INTERACTIONS).
- 

Rosuvastatin **40 mg** is contraindicated in:

- Asian patients
- Patients with pre-disposing factors for myopathy/rhabdomyolysis such as:
  - Personal or family history of hereditary muscular disorders
  - Previous history of muscle toxicity with another 3-Hydroxyl-3-Methylglutaryl Coenzyme A (HMG-CoA) reductase inhibitor
  - Concomitant use of a fibrate or niacin

- Severe hepatic impairment
- Severe renal impairment ( $\text{CrCl} < 30 \text{ mL/min/1.73 m}^2$ ) (see DOSAGE AND ADMINISTRATION, Patients with Renal Impairment)
- Hypothyroidism
- Alcohol abuse
- Situations where an increase in rosuvastatin plasma levels may occur (see WARNINGS AND PRECAUTIONS, DRUG INTERACTIONS, DOSAGE AND ADMINISTRATION and ACTION AND CLINICAL PHARMACOLOGY, Pharmacokinetics, Special Populations and Conditions).

## **WARNINGS AND PRECAUTIONS**

### **General**

Before instituting therapy with NRA-ROSUVASTATIN TABLETS (rosuvastatin calcium), an attempt should be made to control hypercholesterolemia with appropriate diet, exercise, weight reduction in overweight patients and to treat other underlying medical problems and associated cardiovascular risk factors. The patient should be advised to inform subsequent physicians of the prior use of rosuvastatin or any other lipid-lowering agent.

### **Cardiovascular**

#### **Co-enzyme Q<sub>10</sub> (ubiquinone)**

Ubiquinone levels were not measured in rosuvastatin clinical trials. Significant decreases in circulating ubiquinone levels in patients treated with other statins have been observed. The clinical significance of a potential long-term statin-induced deficiency of ubiquinone has not been established. It has been reported that a decrease in myocardial ubiquinone levels could lead to impaired cardiac function in patients with borderline congestive heart failure (see REFERENCES).

### **Endocrine and Metabolism**

#### **Endocrine Function**

HMG -CoA reductase inhibitors interfere with cholesterol synthesis and lower cholesterol levels and, as such, might theoretically blunt adrenal or gonadal steroid hormone production. Rosuvastatin demonstrated no effect upon nonstimulated cortisol levels and no effect on thyroid metabolism as assessed by TSH plasma concentration. In rosuvastatin-treated patients, there was no impairment of adrenocortical reserve and no reduction in plasma cortisol concentrations. Clinical studies with other HMG-CoA reductase inhibitors have suggested that these agents do not reduce plasma testosterone concentration. The effects of HMG-CoA reductase inhibitors on male fertility have not been studied. The effects, if any, on the pituitary-gonadal axis in premenopausal women are unknown.

Patients treated with rosuvastatin who develop clinical evidence of endocrine dysfunction should be evaluated appropriately. Caution should be exercised if an HMG-CoA reductase inhibitor or other agent used to lower cholesterol levels is administered to patients receiving other drugs (e.g. ketoconazole, spironolactone or cimetidine) that may decrease the levels of endogenous steroid hormones.

### **Plasma Glucose**

Increases in fasting glucose and HbA1c levels have been reported with inhibitors of HMGCoA reductase as a class. For some patients, at high risk of diabetes mellitus, hyperglycemia was sufficient to shift them to the diabetes status. The benefit of treatment continues to outweigh the small increased risk. Periodic monitoring of these patients is recommended.

In the JUPITER trial, rosuvastatin 20 mg was observed to increase plasma glucose levels, which were sufficient to shift some prediabetic subjects to the diabetes mellitus status (see ADVERSE REACTIONS).

### **Lipoprotein(a)**

In some patients, the beneficial effect of lowered total cholesterol and LDL-C levels may be partly blunted by a concomitant increase in the Lipoprotein(a) [Lp(a)] concentrations. Present knowledge suggests the importance of high Lp(a) levels as an emerging risk factor for coronary heart disease. It is thus desirable to maintain and reinforce lifestyle changes in high risk patients placed on rosuvastatin therapy.

### **Hepatic/Biliary/Pancreatic Hepatic Effects**

**Rosuvastatin is contraindicated in patients with active liver disease or unexplained persistent elevations of serum transaminases exceeding 3 times the upper limit of normal.**

As with other HMG-CoA reductase inhibitors, it is recommended that a liver function test be carried out prior to, and 3 months following, the initiation of rosuvastatin or if the patient is titrated to the dose of 40 mg. Rosuvastatin should be discontinued or the dose reduced if the level of transaminases is greater than 3 times the upper limit of normal.

**Rosuvastatin, as well as other HMG-CoA reductase inhibitors should be used with caution in patients who consume substantial quantities of alcohol and/or have a past history of liver disease.**

As with other HMG-CoA reductase inhibitors, a dose-related increase in transaminases has been observed in a small number of patients taking rosuvastatin (< 0.5%); the majority of cases were mild, asymptomatic and transient.

There have been rare post-marketing reports of fatal and non-fatal hepatic failure in patients taking statins, including rosuvastatin (see ADVERSE REACTIONS, Post-Market Adverse Drug Reactions). If serious liver injury with clinical symptoms and/or hyperbilirubinemia or

jaundice occurs during treatment with NRA-ROSUVASTATIN TABLETS, promptly interrupt therapy. If an alternate etiology is not found, do not restart NRA-ROSUVASTATIN TABLETS.

### **Hepatic Impairment**

In subjects with varying degrees of hepatic impairment there was no evidence of increased exposure to rosuvastatin other than in 2 subjects with the most severe liver disease (Child-Pugh scores of 8 and 9). In these subjects, systemic exposure was increased by at least 2-fold compared to subjects with lower Child-Pugh scores (see DOSAGE AND ADMINISTRATION, Patients with Hepatic Impairment).

### **Muscle Effects**

**Rare cases of rhabdomyolysis with acute renal failure secondary to myoglobinuria have been reported with rosuvastatin and with other HMG-CoA reductase inhibitors.**

Effects on skeletal muscle such as myalgia, myopathy and, rarely, rhabdomyolysis have been reported in patients treated with rosuvastatin at all doses and in particular with the 40 mg dose.

Myopathy, defined as muscle pain or muscle weakness in conjunction with increases in creatine kinase (CK) values to greater than ten times the upper limit of normal, should be considered in any patient with diffuse myalgias, muscle tenderness or weakness and/or marked elevation of CK. Patients should be advised to report promptly any unexplained muscle pain, tenderness or weakness, particularly if associated with malaise or fever. Patients who develop any signs or symptoms suggestive of myopathy should have their CK levels measured. Rosuvastatin therapy should be discontinued if markedly elevated CK levels ( $> 10 \times \text{ULN}$ ) are measured or myopathy is diagnosed or suspected.

There have been rare reports of immune-mediated necrotizing myopathy (IMNM), an autoimmune myopathy associated with statin use. IMNM is characterized by:

- proximal muscle weakness and elevated creatine kinase, which persist despite discontinuation of statin treatment
- muscle biopsy showing necrotizing myopathy without significant inflammation
- improvement with immunosuppressive agents.

### Pre-disposing Factors for Myopathy/Rhabdomyolysis

Rosuvastatin, as with other HMG-CoA reductase inhibitors, should be prescribed with caution in patients with pre-disposing factors for myopathy/rhabdomyolysis. Such factors include:

- Personal or family history of hereditary muscular disorders
- Previous history of muscle toxicity with another HMG-CoA reductase inhibitor
- Concomitant use of a fibrate or niacin
- Hypothyroidism

- Alcohol abuse
- Excessive physical exercise
- Age > 70 years
- Renal impairment
- Hepatic impairment
- Diabetes with hepatic fatty change
- Surgery and trauma
- Frailty
- Situations where an increase in plasma levels of rosuvastatin may occur (see CONTRAINDICATIONS, DRUG INTERACTIONS, DOSAGE AND ADMINISTRATION and ACTION AND CLINICAL PHARMACOLOGY, Pharmacokinetics, Special Populations and Conditions).

In rosuvastatin trials there was no evidence of increased skeletal muscle effects when rosuvastatin was dosed with concomitant therapy such as fibric acid derivatives (including fenofibrate and gemfibrozil), nicotinic acid, azole antifungals and macrolide antibiotics. However, an increase in the incidence of myositis and myopathy has been seen in patients receiving other HMG-CoA reductase inhibitors together with these medicines.

Rosuvastatin therapy should be temporarily withheld or discontinued in any patient with an acute serious condition suggestive of myopathy or predisposing to the development of rhabdomyolysis (e.g. sepsis, hypotension, major surgery, trauma, severe metabolic endocrine and electrolyte disorders, or uncontrolled seizures).

## **Renal**

### **Renal Impairment**

Subjects with severe renal impairment ( $\text{CrCl} < 30 \text{ mL/min/1.73m}^2$ ) had a 3-fold increase in plasma concentration of rosuvastatin compared to healthy volunteers and, therefore, rosuvastatin 40 mg is contraindicated in these patients (see CONTRAINDICATIONS and DOSAGE AND ADMINISTRATION, Patients with Renal Impairment).

In subjects with varying degrees of renal impairment, mild to moderate renal disease had little influence on plasma concentrations of rosuvastatin.

During the clinical development program, dipstick-positive proteinuria and microscopic hematuria were observed among rosuvastatin-treated patients, predominantly in patients dosed above the



recommended dose range (i.e. 80 mg). Abnormal urinalysis testing (dipstick-positive proteinuria) has been seen in patients taking rosuvastatin and other HMG-CoA reductase inhibitors. This finding was more frequent in patients taking 40 mg when compared to lower doses of rosuvastatin or comparator statins. Shifts in urine protein from none or trace to ++ (dipstick) or more were seen in < 1% of patients at some time during treatment with 10 and 20 mg, and in approximately 3% of patients treated with 40 mg. The protein detected was mostly tubular in origin. In most cases, proteinuria was generally transient and it decreased or disappeared spontaneously on continued therapy. It has not been shown to be predictive of acute or progressive renal disease.

Nevertheless, a dose reduction may be considered for patients with unexplained persistent proteinuria during routine testing.

### **Sensitivity/Resistance**

#### **Hypersensitivity**

An apparent hypersensitivity syndrome has been reported rarely with other HMG-CoA reductase inhibitors. This has included one or more of the following features: anaphylaxis, angioedema, lupus erythematosus-like syndrome, polymyalgia rheumatica, vasculitis, purpura, thrombocytopenia, leukopenia, hemolytic anemia, positive antinuclear antibody (ANA), erythrocyte sedimentation rate (ESR) increase, eosinophilia, arthritis, arthralgia, urticaria, asthenia, photosensitivity, fever, chills, flushing, malaise, dyspnea, toxic epidermal necrolysis and erythema multiforme including Stevens-Johnson syndrome. Treatment should be discontinued if hypersensitivity is suspected (see CONTRAINDICATIONS).

### **Special Populations**

#### **Pregnant Women:**

**Rosuvastatin is contraindicated during pregnancy (see CONTRAINDICATIONS).**

#### **Nursing Women:**

It is not known whether rosuvastatin is excreted in human milk. Because of the potential for adverse reactions in nursing infants, women taking rosuvastatin should not breast-feed (see CONTRAINDICATIONS).

#### **Pediatrics (10 – 17 years of age):**

Elevations in serum creatine phosphokinase (CK) > 10 x ULN were observed more frequently in pediatric patients treated with rosuvastatin compared with placebo. CK elevation > 10 x ULN (with or without muscle symptoms) was more frequent with increasing rosuvastatin dose (see ADVERSE REACTIONS, Pediatrics).

The evaluation of linear growth (height), weight, BMI (body mass index), and secondary characteristics of sexual maturation by Tanner staging in boys and girls who are at least one year post-menarche (10 to 17 years of age) with heterozygous familial hypercholesterolemia treated with rosuvastatin was limited to a one-year period. Although endocrinology function, such as hormone disturbances, was not assessed, rosuvastatin had no detectable effect on growth or sexual maturation. The effects on menstrual cycle were not assessed. Rosuvastatin doses greater than 20

mg have not been studied in this patient population (see ADVERSE REACTIONS, Pediatrics, CLINICAL TRIALS, Pediatrics and DOSAGE AND ADMINISTRATION, Pediatrics).

Adolescent females should be counselled on appropriate contraceptive methods while on Rosuvastatin therapy (see CONTRAINDICATIONS and WARNINGS AND PRECAUTIONS, Special Populations, Pregnant Women).

Treatment experience with rosuvastatin in pediatric patients (aged 8 years and above) with homozygous familial hypercholesterolemia is limited to 8 patients.

**Geriatrics (≥ 65 years of age):**

There were no clinically significant pharmacokinetic differences between young and elderly patients (≥ 65 years) (see DOSAGE AND ADMINISTRATION, Use in Elderly). However, elderly patients may be more susceptible to myopathy (see WARNINGS AND PRECAUTIONS, Muscle Effects, Pre-disposing Factors for Myopathy/Rhabdomyolysis).

**Race:**

Results of pharmacokinetic studies, including a large study conducted in North America, have demonstrated an approximate 2-fold elevation in median exposure in Asian subjects (having either Filipino, Chinese, Japanese, Korean, Vietnamese or Asian-Indian origin) when compared with a Caucasian control group. This increase should be considered when making rosuvastatin dosing decisions for Asian patients and the dose of 40 mg is contraindicated in these patients (see ACTION AND CLINICAL PHARMACOLOGY, Pharmacokinetics, Special Populations and Conditions, CONTRAINDICATIONS and DOSAGE AND ADMINISTRATION, Race).

**ADVERSE REACTIONS**

**Adverse Drug Reaction Overview**

Rosuvastatin (rosuvastatin calcium) is generally well tolerated. The adverse events seen with rosuvastatin are generally mild and transient.

Rosuvastatin clinical trial experience is extensive, involving 9800 patients treated with rosuvastatin in placebo controlled trials and 9855 patients treated with rosuvastatin in active controlled clinical trials. Discontinuation of therapy due to adverse events occurred in 2.6% of patients receiving rosuvastatin and 1.8% of patients receiving placebo. The most frequently reported adverse events at an incidence ≥ 1% and at a rate greater than placebo were arthralgia, upper abdominal pain and ALT increase. Adverse events observed or reported in short- and long-term trials are as follows.

**Clinical Trial Adverse Drug Reactions**

*Because clinical trials are conducted under very specific conditions the adverse drug reaction rates observed in the clinical trials may not reflect the rates observed in practice and should not be compared to the rates in the clinical trials of another drug. Adverse drug reaction information from clinical trials is useful for identifying drug-related adverse events and for approximating rates.*

**Adults**

### Short-term Controlled Trials

Short-term controlled trials involved 1290 patients within placebo-controlled trials of 6 to 16 weeks' duration (768 of which were treated with rosuvastatin) and 11641 patients within placebo and active controlled clinical trials of 6 to 52 weeks duration (5319 of which were treated with rosuvastatin). In all controlled clinical trials, 3.2% of patients were withdrawn from rosuvastatin therapy due to adverse events. This withdrawal rate was comparable to that reported in placebo-controlled studies.

Associated adverse events occurring at an incidence  $\geq 1\%$  in patients participating in placebo-controlled clinical studies of rosuvastatin, are shown in Table 1.

**Table 1** Number (%) of Subjects with Associated Adverse Events Occurring with  $\geq 1\%$  Incidence in any Treatment Group: Placebo Controlled Pool

Body System/ Adverse Event	Placebo (%) (N=367)	Total rosuvastatin (%) (N=768)
<b>Whole Body</b>		
Abdominal pain	2.2	1.7
Asthenia	0.5	1.3
Headache	2.2	1.4
<b>Digestive</b>		
Constipation	1.4	1.0
Diarrhea	1.6	1.3
Dyspepsia	1.9	0.7
Flatulence	2.7	1.8
Nausea	1.6	2.2
<b>Musculoskeletal</b>		
Myalgia	0.5	1.6
<b>Nervous System</b>		
Dizziness	1.6	0.5
Insomnia	1.9	0.4

### Long-term Controlled Morbidity and Mortality Trials

In the **Justification for the Use of Statins in Primary Prevention: An Intervention Trial Evaluating Rosuvastatin (JUPITER)** study (see Part II: CLINICAL TRIALS) involving 17,802 participants treated with rosuvastatin 20 mg once daily (n=8901) or placebo (n=8901), rosuvastatin 20 mg was generally well tolerated. Subjects were followed for a mean duration of 2 years.

Discontinuation of therapy due to an adverse event occurred in 5.6% of subjects treated with rosuvastatin and 5.5% of subjects treated with placebo. The most common adverse events that led to discontinuation from the study were: myalgia, arthralgia, abdominal pain and constipation. The associated adverse reaction reported in  $\geq 1\%$  of patients and at a rate greater than or equal to placebo was myalgia (2.4 % rosuvastatin, 2.0 % placebo).

Treatment emergent adverse events regardless of causality occurring at an incidence  $\geq 1\%$  and at a rate greater than placebo in patients participating in the JUPITER trial are shown in Table 2.

**Table 2** Number (%) of Subjects with Treatment Emergent Adverse Events Regardless of Causality Occurring with  $\geq 1\%$  Incidence and  $>$  than Placebo: JUPITER

Body System/ Adverse Event	Placebo (%) (N=8901)	Total rosuvastatin 20 mg (%) (N=8901)
<b>Blood</b>		
Anemia	2.1	2.2
<b>Cardiac</b>		
Palpitations	0.9	1.0
<b>Gastrointestinal</b>		
Diarrhea	4.6	4.7
Constipation	3.0	3.3
Nausea	2.3	2.4
<b>General disorders</b>		
Edema peripheral	3.0	3.7
Fatigue	3.5	3.7
<b>Hepatobiliary</b>		
Cholelithiasis	0.9	1.0
<b>Infections</b>		
Urinary tract	8.6	8.7
Nasopharyngitis	7.2	7.6
Bronchitis	7.1	7.2
Sinusitis	3.7	4.0
Influenza	3.6	4.0
Lower Respiratory tract	2.7	2.9
Gastroenteritis	1.7	1.9
Herpes zoster	1.4	1.6
<b>Injury</b>		
Contusion	1.4	1.7
<b>Investigation</b>		
ALT increased	1.0	1.4
Blood glucose increased	0.7	1.0
<b>Metabolism</b>		
Diabetes mellitus	2.5	3.0
<b>Musculoskeletal</b>		
Back pain	6.9	7.6
Myalgia	6.6	7.6
Arthritis	5.6	5.8
Arthralgia	3.2	3.8
Muscle spasms	3.2	3.6
Osteoarthritis	1.4	1.8
Bursitis	1.3	1.5
Neck pain	1.0	1.1
Osteoporosis	0.8	1.0
<b>Neoplasms</b>		
Basal cell carcinoma	0.9	1.0
<b>Psychiatric</b>		
Insomnia	2.3	2.5
<b>Renal</b>		
Hematuria	2.0	2.4
Proteinuria	1.3	1.4
<b>Respiratory</b>		
Epistaxis	0.8	1.0

**Less Common Clinical Trial Adverse Drug Reactions (< 1%)**

The frequency of adverse events in all clinical trials and considered possibly, probably or definitely drug related are as follows:

Uncommon ( $\geq 0.1\%$  and  $< 1\%$ ): Pruritus, rash, urticaria, arthralgia, muscle weakness, arthritis, constipation, nausea, dyspepsia, gastroesophageal reflux disease, ALT increase, creatine phosphokinase increase, hepatic enzyme increase, creatinine increase, paraesthesia, tremor, general pain, proteinuria, sinusitis, insomnia, abnormal hepatic function, vertigo, diabetes mellitus.

Rare ( $\geq 0.01\%$  and  $< 0.1\%$ ): Myopathy (including myositis), rhabdomyolysis and hypersensitivity reactions including angioedema.

The following additional adverse events were reported in controlled clinical trials, regardless of causality:

Accidental injury, back and chest pain, flu syndrome, infection, urinary tract infection, diarrhea, flatulence, gastroenteritis, hypertonia, bronchitis, increased cough, rhinitis and pharyngitis.

In long-term controlled clinical trials rosuvastatin was shown to have no harmful effect on the ocular lens.

#### **Abnormal Hematologic and Clinical Chemistry Findings**

As with other HMG-CoA reductase inhibitors, a dose-related increase in liver transaminases and CK has been observed in a small number of patients taking rosuvastatin (see WARNINGS AND PRECAUTIONS, Hepatic/Biliary/Pancreatic).

Abnormal urinalysis testing (dipstick-positive proteinuria) has been seen in a small number of patients taking rosuvastatin and other HMG-CoA reductase inhibitors. The protein detected was mostly tubular in origin. In most cases, proteinuria decreases or disappears spontaneously on continued therapy and is not predictive of acute or progressive renal disease (see WARNINGS AND PRECAUTIONS, Renal).

In the JUPITER trial, occurrences of diabetes mellitus as a pre-specified secondary outcome were reported more frequently in the rosuvastatin-treated patients (2.8%) than in placebo (2.3%) and a slight increase in the number of subjects whose fasting glucose levels increased to  $\geq 7.0$  mmol/L (126 mg/dL) was observed in subjects treated with Rosuvastatin who were primarily already at high risk for developing diabetes. There was a 0.1% increase in mean HbA1c with rosuvastatin compared to placebo. A causal relationship with statins and diabetes mellitus has not been definitely established.

#### **Pediatrics (10 - 17 years of age)**

The safety profile of rosuvastatin in pediatric patients (boys and girls who are at least one year post-menarche, 10 -17 years of age with heterozygous familial hypercholesterolemia) is similar to adults although CK elevations  $> 10$  x ULN (with or without muscle symptoms) were observed more frequently in a clinical trial of pediatric patients.

Rosuvastatin was evaluated in a multicentre double-blind, placebo-controlled study of pediatric patients with heterozygous familial hypercholesterolemia. During the 12-week double-blind phase (n=176), patients were randomized to rosuvastatin 5 mg, 10 mg or 20 mg or placebo.

Four of 130 (3.0%) pediatric patients treated with rosuvastatin (2 treated with 10 mg and 2 treated with 20 mg) had increased CK > 10 x ULN compared to 0 of 46 patients on placebo.

Myopathy was reported in 2 patients receiving rosuvastatin, one on 10 mg and one on 20 mg.

During the 40-week open label titration-to-goal phase of the study (n=173), 122 of 173 patients were titrated to rosuvastatin 20 mg; 4 of the 173 (2.3%) pediatric patients treated with rosuvastatin 20 mg had increased CK > 10 x ULN (with or without muscle symptoms). All patients with CK elevations either continued treatment or resumed treatment after an interruption.

Myalgia was reported in 4 of the 130 (3.0%) pediatric patients treated with rosuvastatin (1 treated with 5 mg, 1 treated with 10 mg and 2 treated with 20 mg) compared with 0 of 46 on placebo in the 12-week double-blind phase. In the 40-week open label titration-to-goal phase, myalgia was reported in 5 of 173 (2.9%) pediatric patients treated with rosuvastatin.

Mean change in ALT and AST values from baseline were slightly higher in the rosuvastatin group versus placebo; however, were not considered to be clinically significant. One patient, experienced an ALT elevation > 3 x ULN which returned to normal subsequent to an interruption in treatment.

Two adverse events of depression were reported in pediatric patients treated with rosuvastatin 20 mg, one of which was determined to be causally related to treatment by the investigator.

Not all adverse reactions that have been identified in the adult populations have been observed in the clinical trials of pediatric patients. However, the same warnings and precautions for use and adverse events in adults also apply to pediatric patients (see WARNINGS AND PRECAUTIONS and ADVERSE REACTIONS).

#### **Post-Market Adverse Drug Reactions**

Because post-market reactions are reported voluntarily from a population of uncertain size, it is not always possible to estimate reliably their frequency or establish a causal relationship to drug exposure. In addition to the events reported above, the following adverse events have been reported during post-marketing experience with rosuvastatin, regardless of causality assessment.

Skeletal muscle effects: Very rare: arthralgia, immune-mediated necrotizing myopathy

It has been observed that as with other HMG-CoA reductase inhibitors, the reporting rate for rhabdomyolysis in post-marketing use is higher at the highest marketed dose (see WARNINGS AND PRECAUTIONS, Muscle Effects).

Hematological disorders: Thrombocytopenia has been reported with rosuvastatin

Hepatobiliary disorders: Very rare: jaundice, hepatitis

Nervous system disorders: Very rare: memory loss; frequency unknown: peripheral neuropathy

Endocrine disorders: Increases in fasting glucose and HbA1c levels have been reported with rosuvastatin.

Other: Rare: pancreatitis; Very rare: gynecomastia

The following adverse events have been reported with some statins:

Sleep Disturbances, including insomnia and nightmares.

Mood related disorders including depression.

Fatal and non-fatal hepatic failure

Cases of erectile dysfunction have been reported in association with the use of statins.

Interstitial lung disease: very rare cases of interstitial lung disease, especially with long term therapy. If it is suspected a patient has developed interstitial lung disease, statin therapy should be discontinued.

There have been rare post-marketing reports of cognitive impairment (e.g., memory loss, forgetfulness, amnesia, memory impairment, confusion) associated with statin use. These cognitive issues have been reported for all statins. The reports are generally non-serious and reversible upon statin discontinuation, with variable times to symptom onset (1 day to years) and symptom resolution (median of 3 weeks).

## **DRUG INTERACTIONS**

### **Overview**

In rosuvastatin (rosuvastatin calcium) clinical trials there was no evidence of increased skeletal muscle effects when rosuvastatin was dosed with any concomitant therapy. However, rosuvastatin and other HMG-CoA reductase inhibitors may cause dose-related increases in serum transaminases and CK levels. An increase in the incidence of myositis and myopathy has been seen in patients receiving other HMG -CoA reductase inhibitors with cyclosporine, fibric acid derivatives (including gemfibrozil), nicotinic acid, azole antifungals and macrolide antibiotics.

### **Cytochrome P450 Inhibitors**

*In vitro* and *in vivo* data indicate that rosuvastatin has no clinically significant cytochrome P450 interactions (as substrate, inhibitor or inducer). Consequently, there is little potential for drug-drug interactions upon coadministration with agents that are metabolised by cytochrome P450. Rosuvastatin clearance is not dependent on metabolism by cytochrome P450 3A4 to a clinically significant extent. This has been confirmed in studies with known cytochrome P450 2C9, 2C19 and 3A inhibitors (ketoconazole, fluconazole).

### **Protease Inhibitors**

Coadministration of rosuvastatin with certain protease inhibitors may increase the rosuvastatin exposure, (AUC) up to 7-fold (see Table 3). Stop using rosuvastatin or dose adjust depending on the

level of effect on rosuvastatin exposure (see CONTRAINDICATIONS, WARNINGS AND PRECAUTIONS and DOSAGE AND ADMINISTRATION).

### **Transporter Protein Inhibitors**

Rosuvastatin is a substrate for certain transporter proteins including the hepatic uptake transporter OATP1B1 and efflux transporter BCRP. Concomitant administration of rosuvastatin with medicines that are inhibitors of these transporter proteins may result in increased rosuvastatin plasma concentrations and an increased risk of myopathy (see WARNINGS AND PRECAUTIONS, DOSAGE AND ADMINISTRATION, Dosing Considerations in Special Populations and DRUG INTERACTIONS, Drug-Drug Interactions (Table 3)).

### **Concomitant Therapy with Other Lipid Metabolism Regulators**

Coadministration of fenofibrate and rosuvastatin 10 mg did not lead to a clinically significant change in the plasma concentrations of either drug. In addition, neither myopathy nor marked CK elevations ( $>10 \times$  ULN) were observed in a study of 128 patients who received rosuvastatin 10, 20 and 40 mg plus extended-release niacin or in a second study of 103 patients who received rosuvastatin 5 and 10 mg plus fenofibrate. Based on the above data, no pharmacokinetic or pharmacodynamic interaction was observed. No data is available with other fibrates.

Based on post-marketing surveillance, gemfibrozil, fenofibrate, other fibrates and lipid lowering doses of niacin (nicotinic acid) may increase the risk of myopathy when given concomitantly with HMG-CoA reductase inhibitors, probably because they can produce myopathy when given alone (see WARNINGS AND PRECAUTIONS, Muscle Effects, Pre-disposing Factors for Myopathy/Rhabdomyolysis). Therefore, combined drug therapy should be approached with caution.

### **Concomitant Therapies Without Clinically Significant Interactions**

**Bile Acid Sequestrants:** Rosuvastatin can be used in combination with bile acid sequestrant (e.g. cholestyramine).

**Ezetimibe:** Coadministration of ezetimibe with rosuvastatin resulted in a 19% increase in the AUC of rosuvastatin. This small increase is not considered clinically significant.

**Ketoconazole:** Coadministration of ketoconazole with rosuvastatin resulted in no change in plasma concentrations of rosuvastatin.

**Erythromycin:** Coadministration of erythromycin with rosuvastatin resulted in small decreases in plasma concentrations of rosuvastatin. These reductions were not considered clinically significant.

**Fluconazole:** Coadministration of fluconazole with rosuvastatin resulted in a 14% increase in the AUC of rosuvastatin. This small increase is not considered clinically significant.

**Fosamprenavir:** Coadministration of fosamprenavir 700 mg /ritonavir 100 mg (BID, 8 days) with rosuvastatin 10 mg (single dose) resulted in no clinically significant effect on the AUC of rosuvastatin.



**Digoxin:** Coadministration of digoxin and rosuvastatin did not lead to any clinically significant interactions.

**Rifampin:** Coadministration of rifampin with rosuvastatin resulted in no change in plasma concentrations of rosuvastatin.

**Other Drugs:** Although specific interaction studies were not performed, rosuvastatin has been studied in over 5300 patients in clinical trials. Many patients were receiving a variety of medications including antihypertensive agents (beta-adrenergic blocking agents, calcium channel blockers, angiotensin-converting enzyme inhibitors, angiotensin receptor blockers and diuretics), antidiabetic agents (biguanides, sulfonylureas, alpha glucosidase inhibitors and thiazolidinediones) and hormone replacement therapy without evidence of clinically significant adverse interactions.

**Drug-Drug Interactions**

The drugs listed in Table 3 are based on either drug interaction case reports or studies or potential interactions due to the expected magnitude and seriousness of the interaction (i.e. those identified as contraindicated).

<b>Table 3</b>		
<b>Established or Potential Drug-Drug Interactions</b>		
<b>Proper Name</b>	<b>Effect</b>	<b>Clinical Comment</b>
Immunosuppressants (including Cyclosporine)	Rosuvastatin 10 and 20 mg were administered to cardiac transplant patients (at least 6 months post-transplant) whose concomitant medication included cyclosporine, prednisone and azathioprine. Results showed that cyclosporine pharmacokinetics were not affected by rosuvastatin. However, cyclosporine did increase the systemic exposure of rosuvastatin by 11-fold ( $C_{max}$ ) and 7.1 fold ( $AUC_{0-24}$ ) compared with historical data in healthy individuals.	The concomitant use of rosuvastatin and cyclosporine is contraindicated (see CONTRAINDICATIONS).
Darolutamide	Coadministration of rosuvastatin 5 mg (single dose) with darolutamide 600 mg BID, 5 days; approximately a 5.2-fold increase in rosuvastatin AUC and 5-fold increase in rosuvastatin $C_{max}$ .	For coadministration, the dose of rosuvastatin should not exceed 5 mg once daily.
Regorafenib	Coadministration of rosuvastatin 5 mg (single dose) with regorafenib 160 mg OD, 14 days; approximately a 3.8-fold increase in rosuvastatin AUC and 4.6-fold increase in rosuvastatin $C_{max}$ .	For coadministration, the dose of rosuvastatin should not exceed 10 mg daily.
Protease Inhibitors	Coadministration of rosuvastatin with various protease inhibitors, including several in combination with ritonavir to healthy volunteers resulted in the following changes to rosuvastatin plasma levels:  Atazanavir 300 mg /ritonavir 100 mg (OD, 8 days), rosuvastatin 10 mg (single dose);	For co-administration with atazanavir/ritonavir, or simeprevir the dose of rosuvastatin should not exceed 10 mg daily.

Table 3	Established or Potential Drug-Drug Interactions	
Proper Name	Effect	Clinical Comment
	<p>approximately a 3.1-fold increase in rosuvastatin mean AUC<sub>(0-24)</sub>.</p> <p>Lopinavir 400 mg /ritonavir 100 mg (BID, 17 days), rosuvastatin 20 mg (OD, 7 days); approximately a 2.1-fold increase in rosuvastatin mean AUC<sub>(0-24)</sub>.</p> <p>Ombitasvir 25 mg/paritaprevir 150 mg/ritonavir 100 mg/dasabuvir 400 mg BID, rosuvastatin 5 mg (single dose); approximately 7.13-fold and 2.59-fold respective increases for C<sub>max</sub> and AUC in three direct-acting antiviral agents (3D) and 2.61-fold and 1.32-fold increases for C<sub>max</sub> and AUC in two direct-acting antiviral agents (2D) treatment.</p> <p>Simeprevir 150 mg (OD, 7 days), rosuvastatin 10 mg (single dose); approximately a 3.2-fold increase in rosuvastatin C<sub>max</sub> and 2.8-fold increase in rosuvastatin AUC.</p> <p>Sofosbuvir 400 mg/velpatasvir 100 mg/voxilaprevir 100 mg + voxilaprevir 100 mg (OD, 15 days), rosuvastatin 10 mg (single dose); approximately a 7.39-fold increase in rosuvastatin AUC.</p> <p>Velpatasvir 100 mg OD, rosuvastatin 10 mg (single dose); approximately 2.69-fold increase in rosuvastatin AUC.</p> <p>Grazoprevir 200 mg OD, rosuvastatin 10 mg (single dose); approximately 1.85-fold increase in rosuvastatin AUC; Grazoprevir 200 mg/elbasvir 50 mg OD, rosuvastatin 10 mg (single dose); approximately 2.26-fold increase in rosuvastatin AUC.</p> <p>Glecaprevir 400 mg/pibrentasvir 120 mg (OD, 7 days), rosuvastatin 5 mg OD; approximately 2.2-fold increase in rosuvastatin AUC.</p>	<p>For co-administration with lopinavir/ritonavir, the dose of rosuvastatin should not exceed 20 mg daily.</p> <p>For coadministration, the dose of rosuvastatin should not exceed 10 mg daily in combination with 3D treatment and 20 mg daily for combination with 2D treatment.</p> <p>For coadministration, the dose of rosuvastatin should not exceed 10 mg daily.</p> <p>The concomitant use of rosuvastatin with sofosbuvir/velpatasvir/voxilaprevir is contraindicated (see CONTRAINDICATIONS).</p> <p>For coadministration, the dose of rosuvastatin should not exceed 10 mg daily.</p> <p>For coadministration, the dose of rosuvastatin should not exceed 10 mg daily with grazoprevir/elbasvir and 20 mg daily with grazoprevir alone.</p> <p>For coadministration, the dose of Rosuvastatin should not exceed 10 mg daily.</p>

<b>Table 3</b>		
<b>Established or Potential Drug-Drug Interactions</b>		
<b>Proper Name</b>	<b>Effect</b>	<b>Clinical Comment</b>
Clopidogrel	Co-administration of rosuvastatin 20 mg (single dose) with clopidogrel 300 mg loading, followed by 75 mg at 24 hours resulted in approximately a 2-fold increase in the mean AUC of Rosuvastatin.	The dose of rosuvastatin should not exceed 20 mg daily when used concomitantly with eltrombopag.
Protease Inhibitors	Darunavir 600 mg /ritonavir 100 mg (BID, 7 days), rosuvastatin 10 mg (OD, 7 days); approximately a 1.5-fold increase in rosuvastatin mean AUC(0-24).  Tipranavir 500 mg /ritonavir 200 mg (BID, 11 days), rosuvastatin 10 mg (single dose); approximately a 1.4-fold increase in rosuvastatin mean AUC(0-24).	For coadministration with darunavir/ritonavir or tipranavir/ritonavir the dose of rosuvastatin should not exceed 20 mg daily.
Gemfibrozil	Coadministration of a single rosuvastatin dose (10 mg) to healthy volunteers on gemfibrozil (600 mg bid) resulted in a 2.2- and 1.9-fold increase in mean C <sub>max</sub> and mean AUC of rosuvastatin respectively.	Due to an observed increased risk of myopathy/rhabdomyolysis, combination therapy with rosuvastatin and gemfibrozil should be avoided. If used together, the dose of rosuvastatin should not exceed 20 mg once daily.
Eltrombopag	Coadministration of rosuvastatin 10 mg (single dose) and eltrombopag 75 mg (OD, 5 days) to healthy volunteers resulted in approximately a 1.6-fold increase in the mean AUC of rosuvastatin.	The dose of rosuvastatin should not exceed 20 mg daily when used concomitantly with eltrombopag.
Dronedarone	Coadministration of rosuvastatin and dronedarone 400 mg (bid) resulted in approximately a 1.4-fold increase in mean AUC of rosuvastatin.	The dose of rosuvastatin should not exceed 20 mg daily when used concomitantly with dronedarone.
Itraconazole	Coadministration of rosuvastatin 10 mg (single dose) with itraconazole 200 mg (OD, 5 days) to healthy volunteers resulted in a 1.4-fold increase in the mean AUC of rosuvastatin.	The dose of rosuvastatin should not exceed 20 mg daily when used concomitantly with itraconazole.

<b>Table 3</b>		
<b>Established or Potential Drug-Drug Interactions</b>		
<b>Proper Name</b>	<b>Effect</b>	<b>Clinical Comment</b>
Coumarin Anticoagulants	As with other HMG-CoA reductase inhibitors, coadministration of 20rosuvastatin and coumarin (e.g. warfarin) may result in a rise in International Normalized Ratio (INR) compared to coumarin alone. In healthy subjects, the coadministration of 20rosuvastatin 40 mg (10 days) and warfarin 25 mg (single dose) produced a higher mean $_{max}$ INR and AUC-INR than achieved with warfarin alone. Coadministration of 20rosuvastatin 10 and 80 mg to patients on stable warfarin therapy resulted in clinically significant rises in INR (> 4, baseline 2-3). The mechanism for this effect is unknown, but is likely due to a pharmacodynamic interaction with warfarin rather than a pharmacokinetic interaction as no relevant differences in the pharmacokinetics of either drug were observed.	In patients taking coumarin, monitoring of INR is recommended at initiation or cessation of therapy with rosuvastatin or following dose adjustment. Rosuvastatin therapy has not been associated with bleeding or changes in INR in patients not taking anticoagulants.
Antacids	Simultaneous dosing of rosuvastatin with an antacid suspension containing aluminium and magnesium hydroxide resulted in a decrease of rosuvastatin plasma concentration by approximately 50%.	The clinical relevance of this interaction has not been studied. However, the effect was mitigated when the antacid was dosed 2 hours after rosuvastatin. This interaction should not be clinically relevant in patients using this type of antacid infrequently. A frequent antacid user should be instructed to take rosuvastatin at a time of day when they are less likely to need the antacid.
Fusidic Acid	Interaction studies with rosuvastatin and fusidic acid have not been conducted. As with other statins, muscle related events, including rhabdomyolysis, have been reported in post-marketing experience with rosuvastatin and fusidic acid given concurrently.	Co-administration of rosuvastatin with fusidic acid should be avoided. Temporary suspension of rosuvastatin treatment may be appropriate when the use of fusidic acid is necessary.
Oral Contraceptives	When rosuvastatin 40 mg was coadministered with a representative oral contraceptive (ethinyl estradiol [35µg] and norgestrel [180 µg on days 1 to 7, 215µg on days 8 to 15, and 250µg on days 16 to 21]) no reduction in contraceptive efficacy was observed. An increase in plasma concentrations (AUC) of ethinyl estradiol (26%) and norgestrel (34%) occurred.	These increased plasma levels should be considered when selecting oral contraceptive doses.

<b>Table 3</b>		<b>Established or Potential Drug-Drug Interactions</b>
<b>Proper Name</b>	<b>Effect</b>	<b>Clinical Comment</b>

When it is necessary to coadminister NRA-ROSUVASTATIN TABLETS with other medicines known to increase exposure to rosuvastatin, doses of NRA-ROSUVASTATIN TABLETS should be adjusted. It is recommended that prescribers consult the relevant product information when considering administration of such products together with NRA-ROSUVASTATIN TABLETS.

If the expected increase in rosuvastatin exposure (AUC) is approximately 2 fold or higher. The starting dose of NRA-ROSUVASTATIN TABLETS should not exceed 5 mg once daily. The maximum daily dose of NRA-ROSUVASTATIN TABLETS should be adjusted so that the expected rosuvastatin exposure would not likely exceed that of a 40 mg daily dose of NRA-ROSUVASTATIN TABLETS taken without interacting medicines (see CONTRAINDICATIONS and DRUG INTERACTIONS, Drug-Drug Interactions (Table 3)).

Drug-drug interaction studies have not been performed in pediatric patients (boys and girls who are at least one year post-menarche, 10 to 17 years of age) with heterozygous familial hypercholesterolemia.

### **Drug-Food Interactions**

Rosuvastatin can be taken with or without food (see DOSAGE AND ADMINISTRATION).

### **Drug-Herb Interactions**

**Baicalin:** Coadministration of baicalin (50 mg TID, 14 days) with rosuvastatin (20 mg, single dose) resulted in a 47% decrease in the AUC of rosuvastatin.

**Silymarin (from milk thistle):** Coadministration of silymarin (140 mg TID, 5 days) with rosuvastatin (10 mg, single dose) resulted in no change in plasma concentrations of rosuvastatin.

## **DOSAGE AND ADMINISTRATION**

Patients should be placed on a standard cholesterol-lowering diet (at least equivalent to the Adult Treatment Panel III (ATP III TLC diet)) before receiving NRA-ROSUVASTATIN TABLETS (rosuvastatin calcium), and should continue on this diet during treatment with NRA-ROSUVASTATIN TABLETS. If appropriate, a program of weight control and physical exercise should be implemented.

Prior to initiating therapy with NRA-ROSUVASTATIN TABLETS, secondary causes for elevations in plasma lipid levels should be excluded. A lipid profile should also be performed.

NRA-ROSUVASTATIN TABLETS may be taken in the morning or evening, with or without food.

### **Recommended Dose and Dosage Adjustment**

#### **Adults**

##### **Hypercholesterolemia**

The dose range of NRA-ROSUVASTATIN TABLETS is 5 to 40 mg orally once a day. The recommended starting dose of NRA-ROSUVASTATIN TABLETS in most patients is 10 mg orally once daily. The majority of patients are controlled at the 10 mg dose. If necessary, dose adjustment can be made at 2-4 week intervals. The maximum response is usually achieved within 2-4 weeks and is maintained during chronic therapy.

Initiation of therapy with NRA-ROSUVASTATIN TABLETS 5 mg once daily may be considered for patients requiring less aggressive LDL-C reductions or who have predisposing factors for myopathy (see WARNINGS AND PRECAUTIONS, Muscle Effects).

Patients who are switched to NRA-ROSUVASTATIN TABLETS from treatment with another HMG-CoA reductase inhibitor should be started on 10 mg even if they were on a high dose of the previous HMG-CoA reductase inhibitor. A switch dose of 20 mg may be considered for patients with severe hypercholesterolemia.

For patients with severe hypercholesterolemia (including those with familial hypercholesterolemia), a 20 mg start dose may be considered. These patients should be carefully followed.

A dose of 40 mg once daily should only be used in patients with severe hypercholesterolemia who do not achieve the desired effect on 20 mg and have no predisposing factors for myopathy/rhabdomyolysis (see CONTRAINDICATIONS). Consultation with a specialist is recommended when initiating NRA-ROSUVASTATIN TABLETS 40 mg dose.

The dosage of NRA-ROSUVASTATIN TABLETS should be individualized according to baseline LDL-C, total C/HDL-C ratio and/or TG levels to achieve the recommended desired lipid values at the lowest possible dose.

##### **Prevention of Major Cardiovascular Events**

A dose of 20 mg once daily has been found to reduce the risk of major cardiovascular events (see CLINICAL TRIALS).

### **Dosing Considerations in Special Populations**

#### **Patients with Hepatic Impairment:**

The usual dose range applies in patients with mild to moderate hepatic impairment. Increased systemic exposure has been observed in patients with severe hepatic impairment and, therefore, in these patients the dose of NRA-ROSUVASTATIN TABLETS should not exceed 20 mg once daily (see CONTRAINDICATIONS and WARNINGS AND PRECAUTIONS,

Hepatic/Biliary/Pancreatic, Hepatic Impairment).

**Patients with Renal Impairment:**

The usual dose range applies in patients with mild to moderate renal impairment. Increased systemic exposure to rosuvastatin has been observed in patients with severe renal impairment. For patients with severe renal impairment (creatinine clearance < 30 mL/min/1.73 m<sup>2</sup>) the starting dose of NRA-ROSUVASTATIN TABLETS should be 5 mg and not exceed 10 mg once daily (see CONTRAINDICATIONS and WARNINGS AND PRECAUTIONS, Renal, Renal Impairment).

**Race:**

The initial dose of NRA-ROSUVASTATIN TABLETS, in Asian patients, should be 5 mg once daily. The potential for increases in systemic exposure must be considered when making treatment decisions. The maximum dose should not exceed NRA-ROSUVASTATIN TABLETS 20 mg once daily (see CONTRAINDICATIONS and WARNINGS AND PRECAUTIONS, Special Populations, Race).

**Pediatrics (10 – 17 years of age):**

In pediatric patients with heterozygous familial hypercholesterolemia the recommended starting dose of NRA-ROSUVASTATIN TABLETS is 5 mg taken orally once daily. The NRA-ROSUVASTATIN TABLETS dose should be individualized according to baseline LDL-C levels and the recommended goal of therapy. The maximum daily dose in this patient population is 10 mg.

The safety and efficacy of rosuvastatin doses greater than 20 mg have not been studied in this population.

Treatment experience with rosuvastatin in pediatric patients (aged 8 years and above) with homozygous familial hypercholesterolemia is limited to 8 patients. Use in this patient population should be supervised by specialists (see WARNINGS AND PRECAUTIONS, Special Populations, Pediatrics).

**Use in Elderly:**

No dose adjustment is necessary in the elderly (see WARNINGS AND PRECAUTIONS, Special Populations, Geriatrics).

**Genetic polymorphisms:**

Genotypes of SLCO1B1 (OATP1B1) c.521CC and ABCG2 (BCRP) c.421AA have been shown to be associated with an increase in rosuvastatin exposure (AUC) compared to SLCO1B1 c.521TT and ABCG2 c.421CC. For patients known to have the c.521CC or c.421AA genotype, a maximum once daily dose of 20 mg of NRA-ROSUVASTATIN TABLETS is recommended (see WARNINGS AND PRECAUTIONS, DRUG INTERACTIONS and ACTION AND CLINICAL PHARMACOLOGY, Pharmacokinetics, Special Populations and Conditions).

**Concomitant Therapy:**

Rosuvastatin is a substrate of various transporter proteins (e.g. OATP1B1 and BCRP). The risk of myopathy (including rhabdomyolysis) is increased when NRA-ROSUVASTATIN TABLETS is administered concomitantly with certain medicines that may increase the plasma concentration of rosuvastatin due to interactions with these transporter proteins (see DRUG INTERACTIONS, Table

3). Whenever possible, alternative medications should be considered, and if necessary, consider temporarily discontinuing rosuvastatin therapy. In situations where coadministration of these medicines with NRA-ROSUVASTATIN TABLETS is unavoidable, the benefit and the risk of concurrent treatment and NRA-ROSUVASTATIN TABLETS dosing adjustments should be carefully considered (see WARNINGS AND PRECAUTIONS and ACTION AND CLINICAL PHARMACOLOGY, Pharmacokinetics, Special Populations and Conditions).

## **OVERDOSAGE**

There is no specific treatment in the event of overdosage. Should an overdose occur, the patient should be treated symptomatically and supportive measures instituted as required. Hemodialysis does not significantly enhance clearance of rosuvastatin.

For the management of a suspected drug overdose, contact your regional Poison Control Centre.

## **ACTION AND CLINICAL PHARMACOLOGY**

### **Mechanism of Action**

Rosuvastatin (rosuvastatin calcium) is a synthetic, enantiomerically pure lipid-lowering agent. It is a selective, potent and competitive inhibitor of 3-hydroxy- 3-methylglutaryl- coenzyme A (HMG-CoA) reductase. This enzyme catalyses the conversion of HMG-CoA to mevalonate, which is an early and rate-limiting step in cholesterol biosynthesis.

Studies have shown that rosuvastatin lowers plasma cholesterol and lipoprotein levels by inhibiting HMG-CoA reductase and cholesterol synthesis in the liver by increasing the number of hepatic Low Density Lipoprotein (LDL) receptors on the cell-surface for enhanced uptake and catabolism of LDL. Additionally, Rosuvastatin inhibits the hepatic synthesis of Very Low Density Lipoprotein (VLDL), thereby reducing the total number of VLDL and LDL particles.

### **Pharmacodynamics**

Epidemiologic, clinical and experimental studies have established that high LDL-C, low HDL-C and high plasma TG promote human atherosclerosis and are risk factors for developing cardiovascular disease. Some studies have also shown that the total-C/HDL-C ratio is the best predictor of coronary artery disease. In contrast, increased levels of HDL-C are associated with decreased cardiovascular risk. Drug therapies that reduce levels of LDL-C or decrease TG while simultaneously increasing HDL-C have demonstrated reductions in rates of cardiovascular mortality and morbidity.

See also **DETAILED PHARMACOLOGY** - Human Pharmacology.

### **Pharmacokinetics**

#### **Absorption:**

Rosuvastatin is administered orally following which rosuvastatin, the active moiety, is rapidly absorbed, reaching peak plasma concentration 3 to 5 hours after dosing.

Both peak concentration ( $C_{max}$ ) and area under the plasma concentration -time curve (AUC) increase in proportion to rosuvastatin dose. The absolute bioavailability of rosuvastatin is approximately 20% and there is no accumulation on repeated dosing. Rosuvastatin may be given



with or without food. Administration in the morning or evening did not affect the rate and extent of absorption nor the ability of rosuvastatin to reduce LDL-C.

**Distribution:**

Rosuvastatin undergoes first pass extraction in the liver, which is the primary site of cholesterol synthesis and LDL-C clearance. The mean volume of distribution at steady state of rosuvastatin is approximately 134 litres. Rosuvastatin is approximately 90% bound to plasma proteins, mostly albumin. This binding is reversible and independent of plasma concentrations.

**Metabolism:**

Rosuvastatin is not extensively metabolised with approximately 10% of a radiolabeled dose recovered as metabolite. The major metabolite is N- desmethyl rosuvastatin, which is formed principally by cytochrome P450 2C9, and in *in vitro* studies has demonstrated to have approximately one-half the HMG-CoA reductase inhibitory activity of rosuvastatin. The parent compound accounts for greater than 87% of the circulating active HMG-CoA reductase inhibitor activity.

**Excretion:**

Following an oral dose, rosuvastatin and its metabolites are primarily excreted in the faeces (90%) with the remainder being excreted in the urine. Fecal recovery represents absorbed drug, metabolites in the bile and unabsorbed drug. The elimination half-life ( $t_{1/2}$ ) of rosuvastatin is approximately 19 hours and does not increase with increasing doses.

**Special Populations and Conditions:**

**Pediatrics (10 – 17 years of age):**

There was no clinically relevant effect of age or sex on the pharmacokinetics of rosuvastatin in adults. The pharmacokinetics of rosuvastatin in pediatric patients 10 to 17 years of age with heterozygous familial hypercholesterolemia was similar to that of adult volunteers. Following single dose administration of rosuvastatin 10 mg, the  $C_{max}$  values in two studies of healthy adult volunteers were 5.8 ng/mL (n=12) and 3.8 ng/mL (n=18) compared to 6.3 ng/mL (n=6) in pediatric patients with heterozygous familial hypercholesterolemia. The  $AUC_{(0-t)}$  values in healthy adult volunteers were 45.9 ng·h/mL (n=12) and 31.6 ng·h/mL (n=18) compared to 52.2 ng·h/mL in pediatric patients with heterozygous familial hypercholesterolemia.

**Race:**

A population pharmacokinetic analysis revealed no clinically relevant differences in pharmacokinetics among Caucasian, Hispanic and Black or Afro-Caribbean groups. However, pharmacokinetic studies with rosuvastatin, including one conducted in North America, have demonstrated an approximate 2-fold elevation in median exposure ( $AUC$  and  $C_{max}$ ) in Asian subjects when compared with a Caucasian control group (see CONTRAINDICATIONS and WARNINGS AND PRECAUTIONS, Special Populations, Race and DOSAGE AND ADMINISTRATION, Race).

**Genetic polymorphisms:**

Disposition of HMG-CoA reductase inhibitors, including rosuvastatin, involves OATP1B1 and BCRP transporter proteins. In patients with SLCO1B1 (OATP1B1) and/or ABCG2 (BCRP) genetic polymorphisms there is a risk of increased rosuvastatin exposure. Individual polymorphisms of

SLCO1B1 c.521CC and ABCG2 c.421AA are associated with an approximate 1.7-fold higher rosuvastatin exposure (AUC) or 2.4-fold higher exposure, respectively, compared to the SLCO1B1 c.521TT or ABCG2 c.421CC genotypes.

**Primary dysbetalipoproteinemia (Fredrickson Type III hyperlipoproteinemia):**

In a randomized, multicenter, double-blind crossover study, 32 patients (27 with  $\epsilon 2/\epsilon 2$  genotype and 4 with apo E mutation [Arg145Cys]) with dysbetalipoproteinemia (Fredrickson Type III) received rosuvastatin 10 or 20 mg daily for 6 weeks. Rosuvastatin 10 and 20 mg reduced non-HDL-C (primary end point) by 48% (95% CI: 45.6, 56.7) and 56% (95% CI: 48.5, 61.4), respectively. Rosuvastatin 10 and 20 mg respectively, also reduced Total-C (43% and 48%), TG (40% and 43%), VLDL-C + IDL-C (47% and 56%), LDL-C (54% and 57%), Remnant Lipoprotein Cholesterol (56% and 65%), Apo E (43% and 43%) and increased HDL-C (10% and 11%). The effect of rosuvastatin on morbidity and mortality in this patient population has not been studied.

**STORAGE AND STABILITY**

Store between 15°C and 30°C, protect from moisture and light.

**DOSAGE FORMS, COMPOSITION AND PACKAGING**

**Dosage Forms and Packaging**

NRA-ROSUVASTATIN TABLETS (rosuvastatin calcium) is available in tablets of 5 mg, 10 mg, 20 mg and 40 mg rosuvastatin (as rosuvastatin calcium).

NRA-ROSUVASTATIN TABLETS 5 mg tablets are yellow coloured, circular shaped, biconvex, film coated tablets debossed with 'IR' on one side and '5' on other side. Available in blister packs of 30 tablets (3 blister strips of 10 tablets each) and HDPE bottles of 100 and 500 tablets each.

NRA-ROSUVASTATIN TABLETS 10 mg tablets are peach coloured, circular shaped, biconvex, film coated tablets debossed with 'IR' on one side and '10' on other side. Available in blister packs of 30 tablets (3 blister strips of 10 tablets each) and HDPE bottles of 100 and 500 tablets each.

NRA-ROSUVASTATIN TABLETS 20 mg tablets are peach coloured, circular shaped, biconvex, film coated tablets debossed with 'IR' on one side and '20' on other side. Available in blister packs of 30 tablets (3 blister strips of 10 tablets each) and HDPE bottles of 100 and 500 tablets each.

NRA-ROSUVASTATIN TABLETS 40 mg tablets are peach coloured, oval shaped, biconvex, film coated tablets debossed with 'IR' on one side and '40' on other side. Available in blister packs of 30 tablets (3 blister strips of 10 tablets each) and HDPE bottles of 100 and 500 tablets each.

**Composition**

Lactose monohydrate, Microcrystalline cellulose, Crospovidone, Magnesium oxide, Colloidal silicon dioxide, Magnesium stearate, Hydroxypropyl methylcellulose, Triacetin, Lactose, Titanium dioxide, FD&C Red Lake, FD&C Yellow Lake.

## PART II: SCIENTIFIC INFORMATION

### PHARMACEUTICAL INFORMATION

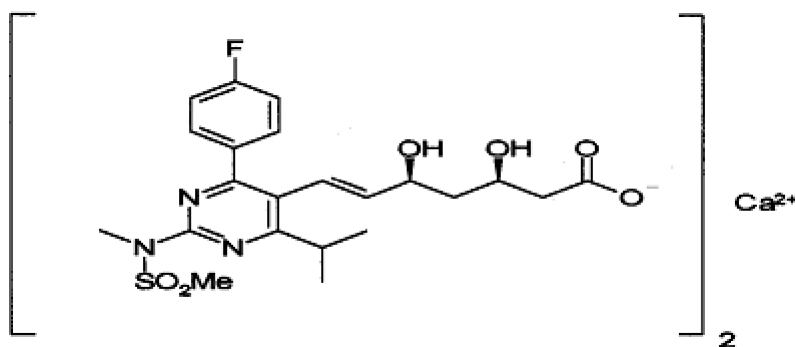
#### Drug Substance

**Proper name:** rosuvastatin calcium

**Chemical name:** bis [(E)-7-[4-(4-fluorophenyl)-6-isopropyl-2-[methyl(methylsulfonyl)amino]pyrimidin-5-yl](3R,5S)-3,5-dihydroxyhept-6-enoic acid] calcium salt

**Molecular formula and molecular mass:**  $(C_{22}H_{27}FN_3O_6S)_2Ca$  and 1001.14

#### Structural formula:



#### Physicochemical properties:

Rosuvastatin calcium is a white amorphous powder that is sparingly soluble in water and methanol, and slightly soluble in ethanol.

### CLINICAL TRIALS

A double blinded, balanced, randomized, single-dose, two-treatment, two-period, two-sequence, crossover, bioequivalence study of NRA-ROSUVASTATIN TABLETS Tablets 40 mg of Nora Pharma Inc. and <sup>Pr</sup>CRESTOR<sup>®</sup> (Rosuvastatin Calcium) Tablets 40 mg of AstraZeneca Canada Inc. in 34 healthy, adult, Asian male subjects under fasting conditions.

**SUMMARY TABLE OF THE COMPARATIVE BIOAVAILABILITY DATA**

Rosuvastatin (1 tablet x 40 mg) From measured data Geometric Mean Arithmetic Mean (CV%)				
Parameter	Test*	Reference†	% Ratio of Geometric Means	90% Confidence Interval
AUC <sub>0-∞</sub> (ng*h/mL)	776.05 815.70 (32.93)	781.75 818.37 (31.02)	99.27	93.2 - 105.73
AUC <sub>0-t</sub> (ng*h/mL)	761.75 801.99 (33.55)	768.02 805.31 (31.63)	99.18	92.93 - 105.85
C <sub>max</sub> (ng/mL)	89.58 97.35 (44.13)	91.84 99.43 (41.67)	97.54	88.91 - 107.01
T <sub>max</sub> § (h)	4.50 (0.50-5.00)	4.50 (0.50-5.00)		
T <sub>1/2</sub> € (h)	14.51 (21.45)	14.45 (18.70)		

\* Rosuvastatin Calcium 40 mg of Nora Pharma Inc.

† PrCRESTOR® (Rosuvastatin Calcium) Tablets 40 mg of AstraZeneca Canada Inc., and purchased in Canada

§ Expressed as the median (range) only

€ Expressed as the arithmetic mean (CV %) only

A double blinded, balanced, randomized single-dose, two-treatment, two-period, two-sequence, crossover, bioequivalence study of NRA-ROSUVASTATIN TABLETS Tablets 20 mg of Nora Pharma Inc. and <sup>Pr</sup>CRESTOR<sup>®</sup> (Rosuvastatin Calcium) Tablets 20 mg of AstraZeneca Canada Inc. in 35 healthy, adult, Asian, male subjects under fasting conditions.

**SUMMARY TABLE OF THE COMPARATIVE BIOAVAILABILITY DATA**

Rosuvastatin (1 tablet x 20 mg) From measured data Geometric Mean Arithmetic Mean (CV%)				
Parameter	Test*	Reference†	% Ratio of Geometric Means	90% Confidence Interval
AUC <sub>0-∞</sub> (ng*h / mL)	274.70 294.02 (39.31)	283.99 301.84 (34.62)	96.64	90.65 - 103.03
AUC <sub>0-t</sub> (ng*h / mL)	269.28 289.12(40.21)	279.67 297.45(34.64)	96.19	90.15 - 102.64
C <sub>max</sub> (ng/mL)	28.58 30.65 (41.12)	30.45 32.91 (37.62)	93.64	85.82 -102.17
T <sub>max</sub> <sup>§</sup> (h)	4.50 (2.00-4.50)	4.50 (1.00-4.50)		
T <sub>1/2</sub> <sup>€</sup> (h)	15.74 (23.01)	15.28 (14.59)		

\* Rosuvastatin Calcium 20 mg of Nora Pharma Inc.

† <sup>Pr</sup>CRESTOR<sup>®</sup> (Rosuvastatin Calcium) Tablets 20 mg of AstraZeneca Canada Inc., and purchased in Canada

§ Expressed as the median (range) only

€ Expressed as the arithmetic mean (CV %) only

## **Hypercholesterolemia**

### **Adults**

The lowering of total cholesterol, LDL-C, Total-C/HDL-C ratio and ApoB has been shown to reduce the risk of cardiovascular events and mortality.

Rosuvastatin (rosuvastatin calcium) has been shown to significantly improve lipid profiles in patients with a variety of dyslipidemic conditions. Rosuvastatin is highly effective in reducing total-C and LDL-C, TG and ApoB and increasing HDL-C in patients with primary hypercholesterolemia (with and without hypertriglyceridemia), familial and non-familial hypercholesterolemia, mixed hyperlipidemia, and in patients with non-insulin dependent diabetes mellitus (NIDDM). Rosuvastatin also lowers the LDL-C/HDL-C, Total-C/HDL-C, nonHDL-C/HDL-C and the ApoB/ApoA-I ratios.

The following reductions in total cholesterol, LDL-C, TG, Total-C/HDL-C and increases in HDL-C have been observed in a dose-response study and may serve as a guide to treatment of patients with mild to moderate hypercholesterolemia:

**Table 4 Dose-Response in Patients with Mild to Moderate Hypercholesterolemia (Mean Percent Change from Baseline)**

Rosuvastatin Dose (mg/day)	N	Total-C	LDL-C	TG	HDL-C	Total-C/HDL-C	Apo-B
Placebo	13	-5	-7	-3	3	-8	-3
5	17	-33	-45	-35	13	-41	-38
10	17	-36	-52	-10	14	-43	-42
20	17	-40	-55	-23	8	-44	-46
40	18	-46	-63	-28	10	-51	-54

### **Dose-Ranging Studies**

In clinical trials, Rosuvastatin (5 to 40 mg/day) corrected lipid abnormalities in a wide variety of hyperlipidemic and dyslipidemic conditions.

In one multicenter, double-blind, placebo-controlled, dose range study in patients with mild to moderate hypercholesterolemia (Fredrickson Types IIa and IIb), rosuvastatin (given as a single daily dose for 6 weeks) significantly reduced the levels of Total-C (33-46%), LDL-C (45-63%), Total-C/HDL-C (41-51%), ApoB (38-54%), TG (10-35%) and increased HDL-C levels (8-14%) across the dose range. Approximately 60% of the LDL-C reduction at 6 weeks was attained within 1 week and 90% of the LDL-C reduction was attained within the first 2 weeks after the beginning of therapy.

### **Pediatrics (10 – 17 years of age)**

In a multicenter, double-blind, placebo-controlled, 12-week study (n=176, 97 male and 79 female) followed by a 40-week (n=173, 96 male and 77 female), open label, titration-to-goal phase, patients 10-17 years of age (Tanner stage II-V, females at least 1 year post-menarche)

with heterozygous familial hypercholesterolemia<sup>1</sup> received rosuvastatin 5, 10 or 20 mg or placebo daily for 12 weeks and then all received rosuvastatin daily for 40 weeks. At study entry, approximately 30% of the patients were 10-13 years and approximately 17%, 18%, 40%, and 25% were Tanner stage II, III, IV, and V respectively.

The majority of pediatric patients, who met the study inclusion criteria, had a baseline LDL-C  $\geq$  4.9 mmol/L or LDL-C  $>$  4.1 mmol/L and a positive family history of premature cardiovascular disease.

Rosuvastatin significantly reduced LDL -C, total cholesterol and ApoB levels during the 12-week double-blind phase. Results are shown in Table 5.

**Table 5 Lipid-modifying effects of rosuvastatin in pediatric patients with heterozygous familial hypercholesterolemia (least-squares mean percent change from baseline to week 12)**

<b>Rosuvastatin Dose (mg/day)</b>	<b>N</b>	<b>LDL-C *</b>	<b>HDL-C</b>	<b>Total-C *</b>	<b>TG</b>	<b>Non-HDL-C *</b>	<b>ApoB *</b>	<b>ApoA-1</b>
<b>Placebo</b>	46	-0.7	6.9	-0.0	5.1	-0.9	-1.7	2.8
<b>5</b>	42	-38.3	4.2	-29.9	0.3	-36.1	-31.7	1.8
<b>10</b>	44	-44.6	11.2	-34.2	-13.6	-43.0	-38.1	5.4
<b>20</b>	44	-50.0	8.9	-38.7	-8.1	-47.5	-40.7	4.0

\* p < 0.001 vs. placebo for all rosuvastatin doses.

At the end of the 12-week double-blind phase, 12%, 41% and 41% of patients treated with rosuvastatin 5, 10 and 20 mg, respectively, achieved an LDL-C of less than 2.8 mmol/L (110 mg/dL).

<sup>1</sup> Defined as documented genetic defect in LDL receptor or ApoB by DNA analysis or documented evidence of familial hypercholesterolemia in a first-degree relative (i.e. LDL-C  $>$  4.9 mmol/L in an adult not receiving a statin or LDL-C  $>$  2.5 mmol/L in an adult receiving a statin; LDL-C  $>$  4.1 mmol/L in a child  $<$  18 years of age not receiving a statin or LDL  $>$  2.1 mmol/L in a child  $<$  18 years of age receiving a statin).

At the end of the 40-week, open label, titration to goal phase, dosing up to a maximum of 20 mg once daily, 70 of 173 patients (40.5%) had achieved an LDL-C of less than 2.8 mmol/L (110 mg/dL).

The long term efficacy of rosuvastatin therapy in the treatment of pediatric patients has not been studied and has therefore not been demonstrated to reduce mortality or morbidity in adulthood.

During the 12-week double-blind phase, 4 of 130 (3.0%) pediatric patients treated with rosuvastatin (2 treated with 10 mg and 2 treated with 20 mg) had increased CK > 10 x ULN compared to 0 of 46 patients on placebo. Myopathy was reported in 2 patients receiving rosuvastatin, one on 10 mg and one on 20 mg. During the 40-week open label titration-to-goal phase of the study, 122 of 173 patients were titrated to rosuvastatin 20 mg; 4 of the 173 (2.3%) pediatric patients treated with rosuvastatin 20 mg had increased CK > 10 x ULN (with or without muscle symptoms). All patients with CK elevations either continued treatment or resumed treatment after an interruption.

Myalgia was reported in 4 of the 130 (3.0%) pediatric patients treated with rosuvastatin (1 treated with 5 mg, 1 treated with 10 mg and 2 treated with 20 mg) compared with 0 of 46 on placebo in the 12-week placebo-controlled phase. In the 40-week open label titration-to-goal phase, myalgia was reported in 5 of 173 (2.9%) pediatric patients treated with rosuvastatin.

After 52 weeks of study treatment, although endocrinology function, such as hormone disturbances, was not assessed, no effect on growth or sexual maturation was detected (see WARNINGS AND PRECAUTIONS, Special Populations, Pediatrics).

### **Prevention of Major Cardiovascular Events**

In the JUPITER study (Justification for the Use of Statins in Primary Prevention: An Intervention Trial Evaluating Rosuvastatin) 89,846 people with no pre-existing cardiovascular disease were screened and 17,802 (19.8%) were double-blindly randomized to rosuvastatin 20 mg once daily (n=8901) or placebo (n=8901). Patients were followed for a median duration of 1.9 years. The main reasons for exclusion of patients were due to LDL-C  $\geq$  3.3 mmol/L (52%) or high sensitivity C-reactive protein (hsCRP) < 2 mg/L (36%). The study population consisted of 11,001 men ( $\geq$  50 years) and 6801 women ( $\geq$  60 years) without history of cardiovascular disease, LDL-C levels < 3.3 mmol/L and hsCRP levels  $\geq$  2 mg/L. Approximately 50% of the patients had an intermediate (10-20%) Framingham risk category and less than 10% were in the Framingham high (> 20%) risk category. It also included a high percentage of patients with additional risk factors such as hypertension (58%), low HDL-C levels (23%), cigarette smoking (16%), a family history of premature coronary heart disease (CHD) (12%) or prediabetes (31%). Most had two (49%) or three (22%) coronary risk factors at baseline. The JUPITER study was stopped early by the Data Safety Monitoring Board due to meeting predefined stopping rules for efficacy in rosuvastatin-treated subjects.

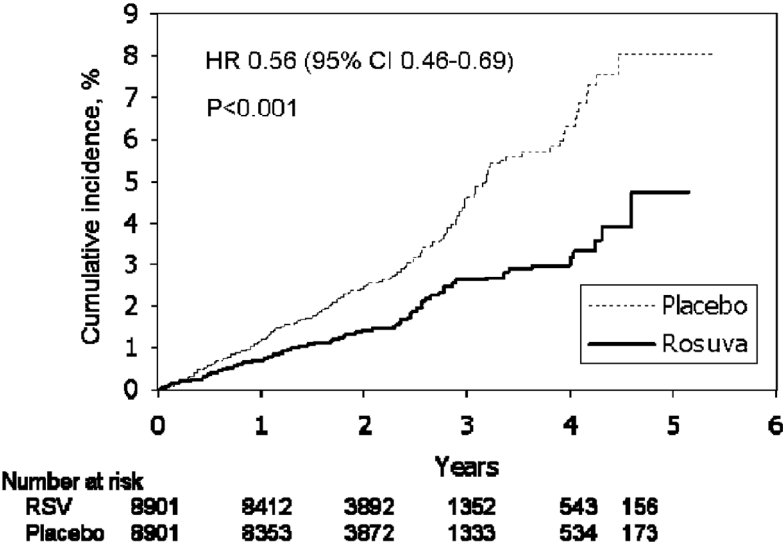
The primary endpoint was a composite consisting of the time-to-first occurrence of any of the following cardiovascular events: cardiovascular death, nonfatal myocardial infarction, nonfatal stroke, unstable angina or an arterial revascularization procedure.

Treatment with rosuvastatin significantly reduced the risk of cardiovascular events ( $p < 0.001$ ).



When the study was prematurely terminated (median follow-up of 1.9 years and maximal follow-up of 5 years), 142 events in the rosuvastatin group and 252 events in the placebo group had occurred for a relative risk reduction of 44% and absolute risk reduction of 1.23% (see Figure 1). The benefit was apparent within the first 6 months of treatment ( $p=0.029$ ).

**Figure 1 Time to First Occurrence of Major Cardiovascular Events**



The results of the primary composite endpoint and the individual components are presented in Table 6. Rosuvastatin significantly reduced the risk of nonfatal myocardial infarction ( $p < 0.0001$ ), nonfatal stroke ( $p=0.004$ ) and arterial revascularization procedures ( $p=0.034$ ). There were no statistically significant treatment differences between the Rosuvastatin and placebo groups for death due to cardiovascular causes or hospitalizations for unstable angina.

**Table 6** Number of First Events by Treatment Group for the Composite Primary Endpoint (ITT population)

	Rosuvastatin N= 8901 n (%)	Placebo N= 8901 n (%)	Relative risk reduction <sup>£</sup> (95% CI)	Absolute Risk Reduction (%)	1.9 year NNT <sup>†</sup>
PRIMARY (composite) ENDPOINT	142 (1.6)	252 (2.83)	44% (31, 54)	1.23	81
COMPONENTS OF PRIMARY ENDPOINT					
Cardiovascular death <sup>∞</sup>	29 (0.33)	37 (0.42)	22% (-27, 52)	0.09	1112
Nonfatal stroke	30 (0.34)	57 (0.64)	48% (18, 66)	0.30	329
Nonfatal MI	21 (0.24)	61 (0.69)	66% (44, 79)	0.45	222
Unstable angina	15 (0.17)	27 (0.30)	45% (-4, 71)	0.13	741
Arterial revascularization	47 (0.53)	70 (0.79)	33% (3, 54)	0.26	387

<sup>∞</sup> Cardiovascular death included fatal MI, fatal stroke, sudden death, and other adjudicated causes of CV death,

<sup>£</sup> Negative numbers imply a risk increase,

<sup>†</sup> CI Confidence interval, ITT Intent-to-treat, MI myocardial infarction, NNT number needed to treat.

Rosuvastatin significantly reduced the risk of the combined secondary endpoint of fatal and nonfatal myocardial infarction (HR 0.46, 95% CI 0.30-0.70, p<0.0002) (6 fatal events and 62 nonfatal events in placebo treated subjects versus 9 fatal events and 22 nonfatal events in rosuvastatin-treated subjects) and the risk of the combined secondary endpoint of fatal and nonfatal stroke (HR 0.52, 95% CI 0.34-0.79, p=0.002) (6 fatal events and 58 nonfatal events in placebo-treated subjects versus 3 fatal events and 30 nonfatal events in rosuvastatin-treated subjects).

Risk reduction observed was as a rule similar across multiple predefined population subsets based on age, gender, race, smoking status, family history of premature CHD, body mass index, LDL-C, HDL-C, serum triglyceride, fasting glucose level (< 5.6 mM and ≥ 5.6 mM), metabolic syndrome, or hsCRP levels (above and below the median 4.2 mg/L) at the time of entry into the study.

## DETAILED PHARMACOLOGY

### Human Pharmacology

Rosuvastatin (rosuvastatin calcium) decreases elevated total cholesterol (Total-C), LDL-C, TG and increases HDL-C in patients with homozygous and heterozygous familial hypercholesterolemia (FH), nonfamilial forms of hypercholesterolemia and mixed dyslipidemia. In these patients rosuvastatin also lowers Apolipoprotein B, nonHDL-C, VLDL-C, VLDL-TG, the LDL-C/HDL-C, Total-C/HDL-C, nonHDL-C/HDL-C, ApoB/ApoA-I ratios and increases ApoA-I.

A therapeutic response to rosuvastatin is evident within 1 week after initiation of therapy and

90% of the maximum response is usually obtained after 2 weeks. The maximum response is generally attained in 4 weeks and has been maintained in clinical trial patients followed-up for up to 1 year.

### **Animal Pharmacology**

Rosuvastatin was shown to be an inhibitor of HMG-CoA reductase in microsomes isolated from rat and human liver. Like other statins, the inhibition was competitive with HMG-CoA and non-competitive with NADPH. Using a cloned fragment of human HMG-CoA reductase, representing the catalytic domain, the estimated inhibition constant ( $K_i$ ) for rosuvastatin was 0.1 nM. Inhibition of the catalytic domain was also found to be competitive with HMG-CoA and non-competitive with NADPH. Of the metabolites of rosuvastatin that have been detected in humans and animal species, only N-desmethyl rosuvastatin demonstrated notable inhibition of HMG-CoA reductase and was found to be 2- to 7-fold less potent than the parent compound.

Using primary preparations of hepatocytes, rosuvastatin was found to inhibit cholesterol synthesis from acetate, with an  $IC_{50}$  about 7-fold lower than the nearest comparator, atorvastatin and 40-fold lower than pravastatin. Rosuvastatin did not inhibit synthesis of cholesterol from mevalonate (the product of HMG-CoA reductase), indicating no effect on the enzymes of the sterol pathway downstream from HMG-CoA reductase. Compared to a variety of non-hepatic cells including human myoblasts, rosuvastatin was found to be highly selective for action in hepatocytes. Studies of the initial uptake rates of rosuvastatin into rat hepatocytes defined a high affinity component of uptake with a  $K_m$  of 9 mM. In addition, compared to other statins, rosuvastatin exhibited low rates of metabolism by cytochrome P450-dependent enzymes. The comparatively high potency of effect of rosuvastatin in hepatocytes may result from a combination of high affinity for the enzyme active site, active transport, and low rates of metabolism. The high degree of selectivity for action of the compound in liver cells is consistent with its octanol:water partition and with evidence of active transport into hepatocytes.

Rosuvastatin was shown to inhibit hepatic cholesterol synthesis after oral administration to the rat, with 50 to 80% inhibition of liver HMG-CoA reductase achieved at doses between 1 and 5 mg/kg. The uptake of rosuvastatin from plasma was higher into liver than any other tissue and the peak of inhibition in liver after oral dosing coincided with the peak of plasma rosuvastatin levels. There was evidence of a relatively long duration of action on liver cholesterol synthesis by rosuvastatin compared with other statins.

In the dog, plasma mevalonate levels were rapidly reduced after oral administration of rosuvastatin. The dose required for half maximal reduction of mevalonate measured at 4 hours post-dose, was similar to the dose required to inhibit hepatic cholesterol by 50% in the rat. When 3 mg/kg was administered to dogs once daily for 14 days, rosuvastatin progressively reduced total cholesterol levels by up to 26%. Stable cholesterol-lowering effects were also observed on oral administration of doses of 0.03 to 0.1 mg/kg of rosuvastatin to the dog for three months. In addition, rosuvastatin has been shown to reduce serum cholesterol and lipoprotein levels in the Cynomolgus monkey. Rosuvastatin dose-dependently reduced VLDL and LDL in two strains of hyperlipidemic transgenic mice and reduced VLDL production rates. In the genetically hyperlipidemic WHHL rabbit, rosuvastatin reduced Total and LDL-cholesterol and reduced the extent and degree of atherosclerotic lesions in the aorta.

The effects of rosuvastatin observed *in vitro* and in the animal models are consistent with inhibition of hepatic HMG-CoA reductase as the primary mode of action.

## TOXICOLOGY

### Acute Toxicity

Rosuvastatin was shown to be of low acute toxicity following administration of single doses to rats and dogs by oral and intravenous routes. There were no mortalities in rats given an oral dose of 1000 mg/kg or 2000 mg/kg, and other than depression of bodyweight at 2000 mg/kg, there were no treatment-related effects at either dose level. Dogs received oral doses of 1000 mg/kg or 2000 mg/kg with vomiting on the day of dosing observed as the major clinical finding in both sexes. Biochemical changes (increased plasma enzymes, decreased lipids) and hematological change (increased white blood cells) were found in dogs given an oral dose of up to and including 2000 mg/kg. Lethality was observed immediately after dosing in 1/1 of rats given an intravenous dose of 500 mg/kg but two rats given 250 mg/kg intravenously showed slight hypopnea and weakness soon after dosing with no subsequent effects. The results are summarized below:

**Table 7 Acute Oral and Intravenous Toxicity Studies with Rosuvastatin**

Species	Route	Dose Levels for One or Both Sexes (mg/kg)	Mortalities
Rat	Oral	1000 and 2000	0/1 at 1000 mg/kg; 0/2 at 2000 mg/kg
Rat	Intravenous	250 and 500	1/1 died at 500 mg/kg; 0/2 at 250 mg/kg
Rat	Oral	1000 and 2000	0/12 at 1000 mg/kg; 0/12 at 2000 mg/kg
Dog	Oral	1000 and 2000	0/2 at 1000 mg/kg; 0/2 at 2000 mg/kg

### Subacute and Chronic Toxicity

The significant target organs affected by rosuvastatin in multiple dose toxicity studies in rats (14 days to 6 months), mice (2 weeks to 13 weeks), Cynomolgus monkeys (30 days to 6 months), dogs (14 days to 12 months) and rabbits (developmental toxicity study) are summarized in Table 8 below.

**Table 8 Rosuvastatin: Target Organs Affected in Animal Studies**

Mouse	Rat	Cynomolgus Monkey	Dog	Rabbit
Liver - increased weight and centrilobular hypertrophy	Liver - increased weight, eosinophilia, periportal necrosis and intralobular bile duct hypertrophy, increased liver-related plasma enzymes	Testis - reduced spermatogenic epithelium with vacuolation	Liver – increased liver-related plasma enzymes	Skeletal Muscle - focal degeneration and necrosis of perivascular myocardium and other skeletal muscle tissue
Stomach (non-glandular)** - hyperplasia of squamous epithelium and hyperkeratosis of forestomach mucosa	Stomach (non-glandular)** - hyperplasia of squamous epithelium and hyperkeratosis of forestomach mucosa	Kidney - cortical tubular epithelial cell necrosis with regeneration	Gallbladder - hemorrhage, edema and/or inflammatory cell infiltrate in lamina propria mucosa	
Gall bladder* - hemorrhage, edema and/or inflammatory cell infiltration in lamina propria mucosa			Lens*** - punctate or striate opacities in anterior portion of the lens	
			Brain* - edema, hemorrhage and partial necrosis in choroid plexus	
			Testis - tubular degeneration and atrophy	

\* Occurred after administration of high, intolerable doses (250 mg/kg/day [mouse gall bladder], 90 mg/kg/day [dog brain])

\*\* Unique anatomical structure not relevant to human

\*\*\* Not a consequence of prolonged dosing

Table 9 summarizes the significant adverse changes observed during chronic toxicology studies in the mouse (104 weeks), rat (6 months), dog (12 months), Cynomolgus monkey (6 months) and rabbit (developmental toxicity study).

**Table 9 Rosuvastatin: Significant Adverse Changes in Subacute and Chronic Studies**

<b>Margin vs. NOAEL: 40 mg</b>				
<b>Species/Finding</b>	<b>No-Effect Dose (mg/kg/day)</b>	<b>Minimal Toxic Dose (mg/kg/day)</b>	<b>C<sub>max</sub> (adjusted for protein binding) (ng/mL)</b>	<b>AUC (adjusted for protein binding) (ng•h/mL)</b>
<u>Mouse</u>				
Liver carcinoma	60	200	19	4.9
<u>Rat</u>				
Forestomach hyperkeratosis	>20	>20	12	4
Plasma liver enzymes	>20	>20	12	4
Hepatocellular necrosis	2	6	0.44	0.3
Muscle necrosis	80 (2 yr study)	80 (13 wk study)	26	6.5
Uterine polyps	60	80	23	5
<u>Dog</u>				
Plasma liver enzymes	3	6	3.9	4
Hepatocellular atrophy	3	6	3.9	4
Gall bladder edema and hemorrhage	3	6	3.9	4
Ocular opacity	15	30	19	2.4
Testicular tubular degeneration	30	90	33	20
<u>Monkey</u>				
Testicular tubular degeneration	10	30	2.3	4
Renal tubular necrosis	10	30	2.3	4

<b>Margin vs. NOAEL: 40 mg</b>				
<b>Species/Finding</b>	<b>No-Effect Dose (mg/kg/day)</b>	<b>Minimal Toxic Dose (mg/kg/day)</b>	<b>C<sub>max</sub> (adjusted for protein binding) (ng/mL)</b>	<b>AUC (adjusted for protein binding) (ng•h/mL)</b>
<u>Rabbit</u>				
Muscle necrosis	1*	3*	0.2**	Not available

\* rabbit teratology study \*\* exposure determined in a separate toxicokinetic study

The toxicology profile of rosuvastatin appears similar to that observed with other statins and is a consequence of its primary pharmacology action (i.e. inhibition of the enzyme, HMG-CoA reductase) which leads to reduced cholesterol synthesis.

### **Carcinogenicity/Mutagenicity**

In a 104-week carcinogenicity study in rats at dose levels of 2, 20, 60 or 80 mg/kg/day, the incidence of uterine polyps was statistically significantly increased only in females at the dose of 80 mg/kg/day. This dose produced a plasma AUC<sub>(0-24)</sub> value approximately 8 times higher (after correction for interspecies differences in protein binding) than the human plasma drug exposure after a 40 mg dose at steady-state. Increased incidences of polyps observed at 2, 20 and 60 mg/kg/day were not statistically different from the control group not exposed to rosuvastatin. The 60 mg/kg/day dose produced a plasma AUC<sub>(0-24)</sub> value approximately 5 times higher (after correction for interspecies differences in protein binding) than the mean human exposure after a 40 mg dose at steady-state. The occurrence of uterine polyps in old female rats is well-known and is considered benign tumors and lesions termed non-neoplastic in humans.

In a 107-week carcinogenicity study in mice given 10, 60, 200 or 400 mg/kg/day, the 400 mg/kg/day dose was poorly tolerated, resulting in early termination of this dose group. An increased incidence of hepatocellular carcinomas was observed at 200 mg/kg/day and an increase in hepatocellular adenomas was seen at 60 and 200 mg/kg/day. The dose of 200 mg/kg/day produced a plasma AUC<sub>(0-24)</sub> value approximately 37 times higher (after correction for interspecies differences in protein binding) than the mean human plasma drug exposure after a 40 mg dose at steady state. An increased incidence of hepatocellular tumors was not seen at 10 mg/kg/day. The 60 mg/kg/day dose produced a plasma AUC<sub>(0-24)</sub> value approximately 4.9 times higher (after correction for interspecies differences in protein binding) than the mean human plasma drug exposure after a 40 mg dose at steady state. These hepatocellular effects are known to occur in rodents treated with statins without evidence of similar effects in humans.

*In vitro*, rosuvastatin was not mutagenic or clastogenic with or without metabolic activation in the Ames test with *Salmonella typhimurium* and *Escherichia coli*, L-5178 y ± mouse lymphomas and the chromosomal aberration assay in Chinese hamster lung cells. Rosuvastatin was negative in the *in vivo* mouse micronucleus test.

### **Teratology and Reproductive Studies**

The reproductive toxicity of rosuvastatin has been evaluated in fertility and pre- and post-natal developmental studies, at doses up to 50 mg/kg/day. Slight reductions in maternal body weight gain and food consumption were observed at 50 mg/kg/day. Rosuvastatin had no adverse effects on mating, fertility in both sexes, implantation and maintenance of pregnancy, pup morphology or survival at 50 mg/kg/day in the fertility study. In a pre- and post-natal sighting study in rats given  $\geq 75$  mg/kg/day there was reduced pup survival at birth at 125 and 150 mg/kg/day and during early lactation at 75 and 100 mg/kg/day. In the main pre- and post-natal developmental study, rosuvastatin showed no adverse effects on the duration of pregnancy, delivery and lactation in the dams in either generation at the high dose of 50 mg/kg/day. In the absence of plasma AUC exposure data in pregnant rats, comparisons with human data have been made on a received dose basis. The dose of 50 mg/kg/day equates to 90 times the human dose of 40 mg given to a 70 kg human.

The potential of rosuvastatin to cause developmental toxicity has been examined in the pregnant rat at doses up to 100 mg/kg/day and in the pregnant rabbit at doses up to 3 mg/kg/day. Rosuvastatin was shown to be neither embryo -fetoletal nor teratogenic in rats. At a maternally toxic dose of 3 mg/kg/day in rabbits, fetal examination showed no evidence of fetolethality or teratogenicity.

Overall, rosuvastatin has shown no reproductive or developmental toxicity.



## REFERENCES

1. Cooper KJ, Martin PD, Dane AL et al. The effect of fluconazole on the pharmacokinetics of rosuvastatin. *Eur J Clin Pharmacol* 2002;58:527-31.
2. Cooper KJ, Martin PD, Dane AL, Warwick MJ, Schneck DW, Cantarini MV. Effect of itraconazole on the pharmacokinetics of rosuvastatin. *Clin Pharmacol Ther* 2003;73:322-9.
3. Davidson M, Ma P, Stein EA, Gotto A, Raza A, Chitra R, Hutchinson H. Comparison of effects on low-density lipoprotein cholesterol and high-density lipoprotein cholesterol with rosuvastatin versus atorvastatin in patients with Type IIa or IIb hypercholesterolemia. *Am J Cardiol* 2002;89:268-75.
4. Després JP, Lemieux I, Dagenais GR et al. HDL-cholesterol as a marker of coronary heart disease risk: the Québec cardiovascular study. *Atherosclerosis* 2000;153:263-72.
5. Kannel W. The Framingham Study: ITS 50 Year Legacy and Future Promise. *J Atheroscler Thromb* 2000;6:60-6.
6. Kinosian B, Glick H, Garland G. Cholesterol and Coronary Heart Disease: Predicting Risks by Levels and Ratios. *Ann Intern Med* 1994;121:641-47.
7. Laaskonen R, Ojala JP, Tikanen MJ, Himberg JJ. Serum ubiquinone concentrations after short- and long-term treatment with HMG-CoA reductase inhibitors. *Eur J Clin Pharmacol* 1994;46:313-7.
8. Martin PD, Dane AL, Nwose OM, et al. No effect of age or gender on the pharmacokinetics of rosuvastatin: A new HMG-CoA reductase inhibitor. *J Clin Pharmacol* 2002;42(10):1116-21.
9. Martin PD, Kemp J, Dane AL, et al. No effect of rosuvastatin on the pharmacokinetics of digoxin in healthy volunteers. *J Clin Pharmacol* 2002; 42(12):1352-7.
10. Martin PD, Mitchell PD, Schneck DW. Pharmacodynamic effects and pharmacokinetics of a new HMG-CoA reductase inhibitor, rosuvastatin, after morning or evening administration in healthy volunteers. *Br J Clin Pharmacol* 2002;54(5):472-7.
11. Martin PD, Warwick MJ, Dane AL, Cantarini MV. A double-blind, randomized, incomplete crossover trial to assess the dose proportionality of rosuvastatin in healthy volunteers. *Clin Ther* 2003;25:2215-24.
12. McTaggart F, Buckett L, Davidson R, et al. Preclinical and clinical pharmacology of rosuvastatin, a new 3-Hydroxy-3-Methylglutaryl Coenzyme A reductase inhibitor. *Am J Cardiol* 2001;87(Suppl):28B-32B.

13. Olsson AG, Pears J, McKellar J, Mizan J, Raza A. Effect of rosuvastatin on low-density lipoprotein cholesterol in patients with hypercholesterolemia. *Am J Cardiol* 2001;88(5):504-8.
14. Pasternak RC et al. ACC/AHA/NHLBI clinical advisory on the use and safety of statins. *J Am Coll Cardiol* 2002;40(3):564-72.
15. Ridker PM, Danielson ED, Fonseca FAH, Genest J, Gotto AM, Kastelein JJP, et al. Rosuvastatin to prevent vascular events in men and women with elevated C-reactive protein. *N Engl J Med* 2008;359(21):2195-207.
16. Rubins H, Robins SS, Collins D et al. Gemfibrozil for the secondary prevention of coronary heart disease in men with low levels of high-density lipoprotein cholesterol. *N Engl J Med* 1999;341:410-8.
17. Product Monograph, <sup>Pr</sup>Crestor, AstraZeneca Canada Inc., Control No. 235939, Date of Revision: May 14, 2020.

**PART III CONSUMER INFORMATION**

**NRA-ROSUVASTATIN TABLETS**  
Rosuvastatin Tablets

**This leaflet is part of a "Product Monograph" published when NRA-ROSUVASTATIN TABLETS was approved for sale in Canada and is designed specifically for Consumers. This leaflet is a summary and will not tell you everything about NRA-ROSUVASTATIN TABLETS. Contact your doctor or pharmacist if you have any questions about the drug.**

**ABOUT THIS MEDICATION**

**What NRA-ROSUVASTATIN TABLETS is used for:**

Your doctor has prescribed these pills to help lower your cholesterol or other fats in the blood (such as triglycerides) and lower the risk of heart attacks and strokes.

NRA-ROSUVASTATIN TABLETS may be prescribed in children 10 to 17 years of age with heterozygous familial hypercholesterolemia (an inherited condition causing high cholesterol levels in the blood) to lower cholesterol levels. Children require supervision from adult care givers during treatment with NRA-ROSUVASTATIN TABLETS (adult care givers should read the information provided below before their child begins treatment with NRA-ROSUVASTATIN TABLETS).

**What NRA-ROSUVASTATIN TABLETS does:**

NRA-ROSUVASTATIN TABLETS<sup>®</sup> is the brand name for rosuvastatin that belongs to the class of medications known as "statins", more specifically called HMG-CoA reductase inhibitors. HMG-CoA reductase is an enzyme involved in regulating cholesterol levels in your body. Statins are used along with changes to diet and exercise to help control the amount of cholesterol produced by the body.

NRA-ROSUVASTATIN TABLETS can help your body:

- decrease LDL (bad) cholesterol and triglyceride levels.
- increase HDL (good) cholesterol levels.
- decrease the Total Cholesterol/HDL-Cholesterol Ratio (TC: HDL-C Ratio). The ratio represents the balance between good and bad cholesterol.

***What is cholesterol?***

Cholesterol is one of several fatty substances in the blood that the body needs to function. And it is important to our health. Our bodies use cholesterol in a number of ways; for example, to produce bile acids that help you digest fat. High cholesterol levels may not make you feel or look sick. However, too much cholesterol in your blood can be unhealthy; it builds up on the artery walls and can lead to the signs and symptoms of cardiovascular disease (heart disease).

There are two very different types of cholesterol.

***LDL cholesterol***

If levels of LDL cholesterol are too high, they can cause the gradual build-up of cholesterol called plaque on the walls of the blood vessels. Over time, this plaque can build up so much that it narrows the arteries. Narrow arteries can slow or block blood flow to vital organs like the heart and brain. Blocked blood flow can result in a heart attack or stroke.

***HDL cholesterol***

HDL carries the LDL cholesterol away from the blood vessel walls to the liver, where it can be removed from the body. A higher level of HDL cholesterol is good.

***Important cholesterol targets***

There are a few important measures that relate to your cholesterol. In addition to your HDL and LDL cholesterol, your doctor may also track your TC:HDL-C Ratio.

***Lowering LDL cholesterol and Ratio***

There are many things you can do, depending on your health and lifestyle, to help lower LDL cholesterol, increase HDL cholesterol and lower your TC: HDL-C Ratio. Your doctor may recommend:

- A change in your diet to control your weight and/or lower your cholesterol.
- Exercise that is right for you.
- Quitting smoking and avoiding smoky places.
- Giving up alcohol or drinking less.

Follow your doctor's instructions carefully.

**When NRA-ROSUVASTATIN TABLETS should not be used:**

Do not take NRA-ROSUVASTATIN TABLETS if you:

- Currently have liver disease.
- Are pregnant or think you might be pregnant. If you become pregnant while taking NRA-ROSUVASTATIN TABLETS, discontinue use immediately and discuss with your doctor, as NRA-ROSUVASTATIN TABLETS should not be used by pregnant women.
- Are breast-feeding.
- Have ever had an allergic reaction to the active ingredient or any of the other ingredients in NRA-ROSUVASTATIN TABLETS. (see **What the nonmedicinal ingredients are:**)
- Are taking a drug called cyclosporine (used, for example, after organ transplant).
- Are taking sofosbuvir/velpatasvir/voxilaprevir, used to treat chronic hepatitis C virus infection.

## IMPORTANT: PLEASE READ

### What the medicinal ingredient is:

Rosuvastatin calcium.

### What the nonmedicinal ingredients are:

Lactose monohydrate, Microcrystalline cellulose, Crospovidone, Magnesium oxide, Colloidal silicon dioxide, Magnesium stearate, Hydroxypropyl methylcellulose, Triacetin, Lactose, Titanium dioxide, FD&C Red lake, FD&C Yellow Lake.

NRA-ROSUVASTATIN TABLETS contains lactose and colouring agents but does not contain gluten.

### What dosage form it comes in:

NRA-ROSUVASTATIN TABLETS film-coated tablets are available in 4 tablet strengths: 5 mg, 10 mg, 20 mg and 40 mg rosuvastatin (as rosuvastatin calcium)

## WARNINGS AND PRECAUTIONS

### Pregnancy

NRA-ROSUVASTATIN TABLETS should not be used by pregnant women. Cholesterol compounds are essential elements for the development of a fetus. Cholesterol-lowering drugs can harm the fetus. If you become pregnant, discontinue use immediately and tell your doctor.

If you are of childbearing age, discuss with your doctor the potential risks and the importance of birth control methods. Before taking your NRA-ROSUVASTATIN TABLETS tablets, tell your doctor or pharmacist if you:

- Have thyroid problems.
- Regularly drink *three or more* alcoholic drinks daily.
- Have a family history of muscular disorders.
- Had any past problems with your muscles (pain, tenderness), after using an HMG-CoA reductase inhibitor (statin) such as atorvastatin (LIPITOR®), fluvastatin (LESCOL®), lovastatin (MEVACOR®), pravastatin (PRAVACHOL®), rosuvastatin (CRESTOR®) or simvastatin (ZOCOR®), or have developed an allergy or intolerance to them.
- Have kidney or liver problems.
- Have diabetes.
- Have undergone surgery or other tissue injury.
- Do excessive physical exercise.

Slightly increased blood sugar can occur when you take NRA-ROSUVASTATIN TABLETS. You are likely to be at risk of developing diabetes if you have high levels of sugar and fats in your blood, are overweight and have high blood pressure. Discuss with the doctor your risk of developing diabetes.

## INTERACTIONS WITH THIS MEDICATION

Sometimes drugs can interact with other drugs, so tell your doctor or pharmacist if you are taking any other medications, including prescription, non-prescription and natural health products. In particular, tell your doctor if you are taking any of the following:

- Any other cholesterol-lowering medications such as fibrates (gemfibrozil, fenofibrate), niacin or ezetimibe.
- Warfarin, clopidogrel (or any other drug for thinning the blood).

- Antiviral medications alone or in combination such as atazanavir, dasabuvir, elbasvir, glecaprevir, grazoprevir, lopinavir, ritonavir ombitasvir, paritaprevir, pibrentasvir, simeprevir, sofosbuvir, velpatasvir, and voxilaprevir (used to fight infections, including the HIV infection or Hepatitis C infection).
- Regorafenib and darolutamide (used to treat cancer).

- Antacids (frequent use) and NRA-ROSUVASTATIN TABLETS should be taken 2 hours apart.
- Cyclosporin (used after organ transplant).
- Fusidic acid (an antibiotic agent). Your doctor may temporarily stop your treatment of NRA-ROSUVASTATIN TABLETS until the treatment with fusidic acid is complete.

## PROPER USE OF THIS MEDICATION

Your doctor prescribed this medicine only for you. Do not give your medicine to anyone else because it may harm them, even if their symptoms are the same as yours.

Always follow your doctor's instructions carefully and keep taking your medicine even if you feel well.

- Swallow each tablet whole with a drink of water. Take NRA-ROSUVASTATIN TABLETS as a single dose.
- Remember to take NRA-ROSUVASTATIN TABLETS at the same time every day. It does not matter if you take NRA-ROSUVASTATIN TABLETS with or without food, or in the morning or evening.
- Do not change the dose or stop taking the medicine without first talking to your doctor.
- If you get sick, have an operation, or need medical treatment while you are taking NRA-ROSUVASTATIN TABLETS, let the doctor or pharmacist know that you are taking NRA-ROSUVASTATIN TABLETS.
- If you have to see a different doctor, for any reason, be sure to tell him/her of any medicines you might be taking, including NRA-ROSUVASTATIN TABLETS.

To help you keep track of your doses, NRA-ROSUVASTATIN TABLETS comes in a blister pack with days of the week printed on the back of the blister. Start with the tablet that matches the day of the week and continue taking them in order until they are all finished.

There are 14 days of labeled tablets in each blister, with one extra to make 15. All 15 tablets, including the one labeled "Take this tablet last", are exactly the same. Once you have finished the 14 labeled tablets, take the one marked "Take this tablet last" before starting your next blister pack.

NRA-ROSUVASTATIN TABLETS is also available in bottles.

Remember to get a new prescription from your doctor or a refill from your pharmacy a few days before all your tablets are taken.

**Usual dose:**

**Adults**

Treatment with NRA-ROSUVASTATIN TABLETS is usually started with one 10 mg tablet taken once daily. Some people may be asked to start treatment with one 5 mg tablet taken once a day while others may be asked to start with one 20 mg tablet taken once a day.

After checking the amount of lipids in your blood your doctor may decide to adjust your dose until you are taking the amount of NRA-ROSUVASTATIN TABLETS that is right for you. The maximum daily dose is 40 mg.

**Children 10 to 17 years of age with heterozygous familial hypercholesterolemia**

Treatment with NRA-ROSUVASTATIN TABLETS is usually started at a dose of 5 mg once daily. After checking the amount of lipids in your blood, your doctor may decide to adjust your dose until you are taking the amount of NRA-ROSUVASTATIN TABLETS that is right for you. The maximum daily dose is 10 mg.

**Overdose:**

There is no specific treatment in the event of an overdose.

In case of drug overdose, contact a health care practitioner, hospital emergency department or regional Poison Control Centre immediately, even if there are no symptoms.

**Missed dose:**

**Do not take a double dose.** If you miss taking a tablet, take it as soon as you can. But if it is almost time for your next dose, skip the missed dose and just take the next dose.

**SIDE EFFECTS AND WHAT TO DO ABOUT THEM**

Most people do not have side effects when taking NRA-ROSUVASTATIN TABLETS. However, all medicines can cause unwanted side effects. These effects are usually mild and disappear after a short time.

Check with your doctor or pharmacist promptly if any of the following persist or become troublesome:

- Stomach pain
- Headache
- Constipation
- Dizziness
- Feeling sick

Less commonly, some people may have other side effects such as a skin rash, itching and hives.

NRA-ROSUVASTATIN TABLETS can cause abnormal blood test results. Your doctor will decide when to perform blood tests and will interpret the results.

Possible side effects reported with some statins: breathing problems including persistent cough and/or shortness of breath or fever; confusion, poor memory, mood problems including depression; problems sleeping including insomnia and nightmares; erectile dysfunction; numbness, tingling, weakness or pain, usually in your hands or feet, but this may also occur in other areas of your body (peripheral neuropathy).

<b>SERIOUS SIDE EFFECTS, HOW OFTEN THEY HAPPEN AND WHAT TO DO ABOUT THEM</b>				
Symptom / Effect		Talk with your doctor or pharmacist		Stop taking drug and seek immediate emergency medical attention
		Only if severe	In all cases	
<b>Rare</b>	Muscle pain that you cannot explain		✓	
	Muscle tenderness or weakness, or joint pain		✓	
	Breast enlargement in women and men (gynecomastia)		✓	
	Generalized weakness, especially if you do not feel well		✓	
	Jaundice or hepatitis symptoms like brownish or discoloured urine		✓	
	Difficulty in breathing or swallowing			✓
	Allergic reaction (symptoms include swelling in the mouth, tongue, face and throat, severe itching, rash, raised lumps (hives), blistering of the skin and mucous			✓

	membranes of the lips, eyes, mouth nasal passages or genitals)			
	Liver damage: yellowing of the skin or the skin or eyes, flu-like symptoms			✓
Very rare	Inflamed pancreas (pancreatitis) symptoms, such as severe stomach pain		✓	
	Memory loss		✓	
Unknown	Increased blood sugar: frequent urination, thirst and hunger	✓		
	Decrease of platelets in the blood (characterized by easy or excessive bleeding such as bruising easily, nosebleed and bleeding gums)		✓	

**This is not a complete list of side effects. For any unexpected effects while taking NRA-ROSUVASTATIN TABLETS, contact your doctor or pharmacist.**

### HOW TO STORE IT

- KEEP YOUR TABLETS IN A SAFE PLACE where children cannot see or reach them. Your tablets could harm them.
- Keep your medicine at room temperature (15°C-30°C), protect from moisture and light. Away from warm or damp places like bathrooms or kitchens.
- Keep your tablets in the package they came in.
- If your doctor decides to stop your treatment, return your tablets to your pharmacist for disposal.
- Do not take your tablets after the expiry date on the package.

### REPORTING SUSPECTED SIDE EFFECTS

**You can report any suspected side effects associated with the use of health products to Health Canada by:**

- **Visiting the Web page on Adverse Reaction Reporting (<http://www.hc-sc.gc.ca/dhp-mps/medeff/report-declaration/index-eng.php>) for information on how to report online, by mail or by fax; or**
- **Calling toll-free at 1-866-234-2345**

**Note: Contact your health professional if you need information about how to manage your side effects. The Canada Vigilance Program does not provide medical advice.**

### MORE INFORMATION

This leaflet is prepared by

Nora Pharma Inc.  
1565, boul. Lionel-Boulet  
Varenes, Québec  
J3X 1P7  
1-888-270-9874

Last revised: MAR 28, 2023