

PRODUCT MONOGRAPH
INCLUDING PATIENT MEDICATION INFORMATION

^{Pr}**APO-CLARITHROMYCIN**

Clarithromycin Tablets
Tablets, 250 mg and 500 mg, Oral
USP

^{Pr}**APO-CLARITHROMYCIN XL**

Clarithromycin Prolonged-release Tablets
Prolonged-release tablets, 500 mg, Oral
BP
Antibiotic

NOTE: WHEN USED IN COMBINATION WITH ACID ANTISECRETORY DRUGS AND OTHER ANTIMICROBIALS FOR THE ERADICATION OF HELICOBACTER PYLORI, THE PRODUCT MONOGRAPH FOR THOSE AGENTS SHOULD BE CONSULTED.

APOTEX INC.
150 Signet Drive
Toronto, Ontario
M9L 1T9

Date of Initial Authorization:
July 26, 2007

Date of Revision:
April 13, 2023

Submission Control Number: 269152

RECENT MAJOR LABEL CHANGES

| | |
|--|---------|
| 2 CONTRAINDICATIONS | 04/2023 |
| 7 WARNINGS AND PRECAUTIONS; 7.1.1 Pregnant Women; 7.1.2 Breast-Feeding | 04/2023 |
| 7 WARNINGS AND PRECAUTIONS, Oral Anticoagulants | 04/2023 |
| 7 WARNINGS AND PRECAUTIONS, Cardiovascular, Cardiovascular Events | 04/2023 |

TABLE OF CONTENTS

Sections or subsections that are not applicable at the time of authorization are not listed.

| | |
|---|-----------|
| TABLE OF CONTENTS | 2 |
| PART I: HEALTH PROFESSIONAL INFORMATION | 4 |
| 1 INDICATIONS | 4 |
| 1.1 Pediatrics | 6 |
| 1.2 Geriatrics | 6 |
| 2 CONTRAINDICATIONS | 6 |
| 3 SERIOUS WARNINGS AND PRECAUTIONS BOX | 7 |
| 4 DOSAGE AND ADMINISTRATION | 8 |
| 4.1 Dosing Considerations | 8 |
| 4.2 Recommended Dose and Dosage Adjustment | 8 |
| 4.4 Administration..... | 11 |
| 4.5 Missed Dose | 11 |
| 5 OVERDOSAGE | 12 |
| 6 DOSAGE FORMS, STRENGTHS, COMPOSITION AND PACKAGING | 12 |
| 7 WARNINGS AND PRECAUTIONS | 13 |
| 7.1 Special Populations..... | 19 |
| 7.1.1 Pregnant Women | 19 |
| 7.1.2 Breast-Feeding..... | 19 |
| 7.1.3 Pediatrics..... | 20 |
| 7.1.4 Geriatrics | 20 |
| 8 ADVERSE REACTIONS | 20 |
| 8.1 Adverse Reaction Overview..... | 20 |
| 8.2 Clinical Trial Adverse Reactions | 21 |
| 8.3 Less Common Clinical Trial Adverse Reactions | 28 |
| 8.4 Abnormal Laboratory Findings: Hematologic, Clinical Chemistry and Other Quantitative Data..... | 29 |

| | | |
|--|---|------------|
| 8.5 | Post-Market Adverse Reactions..... | 31 |
| 9 | DRUG INTERACTIONS | 33 |
| 9.1 | Serious Drug Interactions | 33 |
| 9.2 | Drug Interactions Overview | 33 |
| 9.3 | Drug-Behavioural Interactions..... | 35 |
| 9.4 | Drug-Drug Interactions | 35 |
| 9.5 | Drug-Food Interactions..... | 51 |
| 9.6 | Drug-Herb Interactions..... | 52 |
| 9.7 | Drug-Laboratory Test Interactions..... | 52 |
| 10 | CLINICAL PHARMACOLOGY | 52 |
| 10.1 | Mechanism of Action..... | 52 |
| 10.2 | Pharmacodynamics | 52 |
| 10.3 | Pharmacokinetics | 52 |
| 11 | STORAGE, STABILITY AND DISPOSAL..... | 63 |
| 12 | SPECIAL HANDLING INSTRUCTIONS..... | 63 |
| PART II: SCIENTIFIC INFORMATION | | 64 |
| 13 | PHARMACEUTICAL INFORMATION..... | 64 |
| 14 | CLINICAL TRIALS | 65 |
| 14.1 | Trial Design and Study Demographics | 65 |
| 14.2 | Study Results | 65 |
| 14.3 | Comparative Bioavailability Studies..... | 80 |
| 15 | MICROBIOLOGY | 85 |
| 16 | NON-CLINICAL TOXICOLOGY | 94 |
| 17 | SUPPORTING PRODUCT MONOGRAPHS..... | 99 |
| PATIENT MEDICATION INFORMATION..... | | 108 |

PART I: HEALTH PROFESSIONAL INFORMATION

1 INDICATIONS

APO-CLARITHROMYCIN (clarithromycin tablets)

APO-CLARITHROMYCIN (clarithromycin tablets) may be indicated in the treatment of mild to moderate infections caused by susceptible strains of the designated microorganisms in the diseases listed below:

- Upper Respiratory Tract
 - Pharyngitis/tonsillitis, caused by *Streptococcus pyogenes* (Group A beta-hemolytic streptococci).
 - Acute maxillary sinusitis caused by *Streptococcus pneumoniae* (*S. pneumoniae*), *Haemophilus influenzae* (*H. influenzae*), and *Moraxella (Branhamella) catarrhalis* [*M. (Branhamella) catarrhalis*].
- Lower Respiratory Tract
 - Acute bacterial exacerbation of chronic bronchitis caused by *S. pneumoniae*, *H. influenzae* (including beta-lactamase producing strains), *M. (Branhamella) catarrhalis* (including beta-lactamase producing strains).
 - Pneumonia caused by *S. pneumoniae* and *Mycoplasma pneumoniae* (*M. pneumoniae*). See [7 WARNINGS AND PRECAUTIONS, Sensitivity/Resistance](#).
- Uncomplicated Skin and Skin Structure Infections
 - Uncomplicated Skin and Skin Structure Infections caused by *Streptococcus pyogenes* (*S. pyogenes*), *Staphylococcus aureus* (*S. aureus*). See [7 WARNINGS AND PRECAUTIONS, Sensitivity/Resistance](#).
- Mycobacterial Infections
 - APO-CLARITHROMYCIN (clarithromycin tablets) is indicated for the prevention of disseminated *Mycobacterium avium* complex (MAC) disease in patients with advanced HIV infection, and for the treatment of disseminated mycobacterial infections due to *Mycobacterium avium* (*M. avium*) and *Mycobacterium intracellulare* (*M. intracellulare*). See [14 CLINICAL TRIALS, Mycobacterial Infections](#).

- Eradication of *Helicobacter pylori*
 - APO-CLARITHROMYCIN (clarithromycin tablets) in the presence of acid suppression (with omeprazole) with another antibiotic (amoxicillin) is indicated for the eradication of *Helicobacter pylori* (*H. pylori*) that may result in decreased recurrence of duodenal ulcer in patients with active duodenal ulcers and who are *H. pylori* positive. See [14 CLINICAL TRIALS, Eradication of *Helicobacter pylori*, Triple Therapy: APO-CLARITHROMYCIN/Omeprazole/Amoxicillin.](#)

(For additional information on the use of APO-CLARITHROMYCIN in triple therapy for the treatment of *H. pylori* infection and active duodenal ulcer recurrence, refer to the Hp-PAC® Product Monograph.)

APO-CLARITHROMYCIN XL (clarithromycin prolonged-release tablets)

APO-CLARITHROMYCIN XL (clarithromycin prolonged-release tablets) may be indicated in the treatment of mild to moderate infections caused by susceptible strains of the designated microorganisms in the diseases listed below:

- Upper Respiratory Tract
 - Acute maxillary sinusitis due to *H. influenzae*, *M. catarrhalis*, or *S. pneumoniae*.
- Lower respiratory tract
 - Acute bacterial exacerbation of chronic bronchitis due to *Haemophilus parainfluenzae* (*H. parainfluenzae*), *H. influenzae*, *M. catarrhalis*, *S. aureus*, or *S. pneumoniae*.
 - Community-acquired pneumonia due to *H. influenzae*, *H. parainfluenzae*, *M. catarrhalis*, *S. pneumoniae*, *Chlamydia pneumoniae* (TWAR), or *M. pneumoniae*. See [7 WARNINGS AND PRECAUTIONS, Sensitivity/Resistance.](#)

The efficacy and safety of APO-CLARITHROMYCIN XL (clarithromycin prolonged-release tablets) in treating other infections for which other dosage forms of clarithromycin are approved have not been established.

- Mycobacterial Infections
 - Disseminated mycobacterial infections due to *M. avium* and *M. intracellulare*

To reduce the development of drug-resistant bacteria and maintain the effectiveness of APO-CLARITHROMYCIN and APO-CLARITHROMYCIN XL and other antibacterial drugs, APO-CLARITHROMYCIN and APO-CLARITHROMYCIN XL should be used only to treat infections that are proven or strongly suspected to be caused by susceptible bacteria. When culture and

susceptibility information are available, they should be considered in selecting or modifying antibacterial therapy. In the absence of such data, local epidemiology and susceptibility patterns may contribute to the empiric selection of therapy.

1.1 Pediatrics

Pediatrics (< 12 years of age): Based on the data submitted and reviewed by Health Canada, the safety and efficacy of APO-CLARITHROMYCIN and APO-CLARITHROMYCIN XL in pediatric patients has not been established; therefore, Health Canada has not authorized an indication for pediatric use.

1.2 Geriatrics

Geriatrics (> 65 years of age): Dosage adjustment should be considered in elderly patients with severe renal impairment. See [7 WARNINGS AND PRECAUTIONS, 7.1 Special Populations, 7.1.4 Geriatrics](#).

2 CONTRAINDICATIONS

APO-CLARITHROMYCIN (clarithromycin tablets) and APO-CLARITHROMYCIN XL (clarithromycin prolonged-release tablets) are contraindicated in:

- Patients with a known hypersensitivity to clarithromycin, erythromycin, other macrolide antibacterial agents or to any ingredient in the formulation, including any non-medical ingredient, or component of the container. See [6 DOSAGE, STRENGTHS, FORMS, COMPOSITION AND PACKAGING](#).
- Patients with a history of cholestatic jaundice/hepatic dysfunction associated with prior use of clarithromycin.
- Patients who suffer from severe hepatic failure in combination with renal impairment. See [7 WARNINGS AND PRECAUTIONS, Hepatic/Biliary/Pancreatic, 7 WARNINGS AND PRECAUTIONS, Renal, 4 DOSAGE AND ADMINISTRATION, Dosing Considerations and 4 DOSAGE AND ADMINISTRATION, 4.2 Recommended Dose and Dosage Adjustment](#).
- Patients with history of QT prolongation (congenital or documented acquired QT prolongation) or ventricular cardiac arrhythmia, including torsades de pointes. See [7 WARNINGS AND PRECAUTIONS](#) and [9 DRUG INTERACTIONS, 9.4 Drug-Drug Interactions](#).
- Patients with electrolyte disturbances (hypokalaemia or hypomagnesaemia, due to the risk of prolongation of the QT interval and torsades de pointes).
- Concomitant therapy with astemizole, cisapride, domperidone, pimozone, terfenadine.

There have been post-marketing reports of drug interactions when clarithromycin and/or erythromycin are co-administered with astemizole, cisapride, pimozide, or terfenadine resulting in cardiac arrhythmias (QT prolongation, ventricular tachycardia, ventricular fibrillation, and torsades de pointes) most likely due to inhibition of hepatic metabolism of these drugs by erythromycin and clarithromycin. Fatalities have been reported. See [9 DRUG INTERACTIONS, 9.4 Drug-Drug Interactions, Table 13.](#)

- Concomitant therapy with saquinavir due to potentially life-threatening cardiac arrhythmia.
- Concomitant therapy with HMG-CoA reductase inhibitors (statins) that are extensively metabolized by CYP3A4 (lovastatin or simvastatin), due to an increased risk of myopathy, including rhabdomyolysis. See [9 DRUG INTERACTIONS, 9.4 Drug-Drug Interactions, Table 13.](#)
- Concomitant therapy with ergot alkaloids (e.g., ergotamine or dihydroergotamine) as this may result in ergot toxicity. See [9 DRUG INTERACTIONS, 9.4 Drug-Drug Interactions, Table 13.](#)
- Concomitant administration with **oral** midazolam. See [9 DRUG INTERACTIONS, 9.4 Drug-Drug Interactions, Table 13.](#)
- Concomitant administration with lomitapide. See [9 DRUG INTERACTIONS.](#)
- Concomitant therapy with colchicine due to the risk of life threatening and fatal colchicine toxicity. This risk may be further increased with concomitant medications metabolized by P-glycoprotein or strong CYP3A inhibitors. See [9 DRUG INTERACTIONS, 9.4 Drug-Drug Interactions, Table 13.](#)
- Concomitant therapy with ticagrelor or ranolazine*.

* Not marketed in Canada.

3 SERIOUS WARNINGS AND PRECAUTIONS BOX

Serious Warnings and Precautions

- Clarithromycin should not be used in **pregnancy**, particularly during the first 3 months of pregnancy. See [7 WARNINGS AND PRECAUTIONS, 7.1 Special Populations, 7.1.1 Pregnant Women](#).
- The concomitant administration of clarithromycin and drugs metabolized by CYP3A and/or transported by P-gp may result in significant safety concerns. See [7 WARNINGS AND PRECAUTIONS](#) and [9 DRUG INTERACTIONS 9.2 Drug Interactions, Overview](#).

4 DOSAGE AND ADMINISTRATION

4.1 Dosing Considerations

- APO-CLARITHROMYCIN (clarithromycin tablets) may be given with or without meals. APO-CLARITHROMYCIN XL (clarithromycin prolonged-release tablets) must be taken with food.
- In patients with a combination of hepatic (mild to moderate) and renal impairments or in the presence of severe renal impairment, decreased dosage of clarithromycin or prolonged dosing intervals might be appropriate. See [4 DOSAGE AND ADMINISTRATION, 4.2 Recommended Dose and Dosage Adjustment](#).
- Clarithromycin is contraindicated in patients with severe hepatic failure in combination with renal impairment. [See 2 CONTRAINDICATIONS](#).
- In children with renal impairment and a creatinine clearance < 30 mL/min, the dosage of clarithromycin tablets should be reduced by one-half, i.e., up to 250 mg once daily, or 250 mg twice daily in more severe infections. Dosage should not be continued beyond 14 days in these patients.

4.2 Recommended Dose and Dosage Adjustment

APO-CLARITHROMYCIN (clarithromycin tablets)

- Adults with Respiratory Tract or Skin Infections
 - The adult dosage of APO-CLARITHROMYCIN is 250 mg to 500 mg every 12 hours (Table 1) for 7 to 14 days. For infections caused by less susceptible organisms, the upper dosage should be used.

Table 1 – Adult Dosage Guidelines

| Infection | Dosage (b.i.d.) | Duration |
|---|--|-------------------------|
| Upper Respiratory Tract Pharyngitis/tonsillitis Acute maxillary sinusitis | 250 to 500 mg 250 mg 500 mg | 10 days 7 to 14 days |
| Lower Respiratory Tract Acute exacerbation of chronic bronchitis and pneumonia | 250 to 500 mg 250 to 500 mg | 7 to 14 days |
| Uncomplicated Skin and Skin Structure Infections | 250 mg | 7 to 14 days |
| Legend: b.i.d. = twice daily | | |

- In the treatment of Group A streptococcus infections, therapy should be continued for 10 days. The usual drug of choice in the treatment of streptococcal infections and the prophylaxis of rheumatic fever is penicillin administered by either the intramuscular or the oral route.
- Clarithromycin is generally effective in the eradication of *S. pyogenes* from the nasopharynx; however, data establishing the efficacy of clarithromycin in the subsequent prevention of rheumatic fever are not presently available.
- Renal Impairment
 - In patients with severe renal impairment (creatinine clearance < 30 mL/min), the dosage of APO-CLARITHROMYCIN should be reduced by one-half, i.e., 250 mg once daily, or 250 mg twice daily in more severe infections. Dosage should not be continued beyond 14 days in these patients. The safety and efficacy of 500 mg clarithromycin in patients with severe renal impairment has not been established.
- Hepatic Impairment
 - In patients with a combination of hepatic (mild to moderate) and renal impairments, decreased dosage of clarithromycin or prolonged dosing intervals may be appropriate. Clarithromycin may be administered without dosage adjustment in the presence of hepatic impairment if there is normal renal function.
 - Clarithromycin is contraindicated in patients with severe hepatic failure in combination with renal impairment. [See 2 CONTRAINDICATIONS.](#)
- Eradication of *Helicobacter Pylori*

- Triple Therapy: APO-CLARITHROMYCIN /omeprazole/amoxicillin: The recommended dose is clarithromycin 500 mg twice daily in conjunction with omeprazole 20 mg daily and amoxicillin 1000 mg twice daily for 10 days. See [14 CLINICAL TRIALS, Eradication of Helicobacter pylori, Triple Therapy: Clarithromycin tablets/omeprazole/ amoxicillin.](#)

For more information on omeprazole or amoxicillin, refer to their respective Product Monographs, under [4 DOSAGE AND ADMINISTRATION](#).

(For additional information on the use of APO-CLARITHROMYCIN in triple therapy for the treatment of *H. pylori* infection and active duodenal ulcer recurrence, refer to the Hp-PAC® Product Monograph.)

- Adults with Mycobacterial Infections
 - Prophylaxis: The recommended dose of APO-CLARITHROMYCIN for the prevention of disseminated *M. avium* disease is 500 mg twice daily.
 - Treatment: Clarithromycin is recommended as the primary agent for the treatment of disseminated infection due to MAC. Clarithromycin should be used in combination with other antimycobacterial drugs which have shown *in vitro* activity against MAC, including ethambutol and rifampin. Although no controlled clinical trial information is available for combination therapy with clarithromycin, the U.S. Public Health Service Task Force has provided recommendations for the treatment of MAC.

The recommended dose for mycobacterial infections in adults is 500 mg twice daily.

Treatment of disseminated MAC infections in AIDS patients should continue for life if clinical and mycobacterial improvement are observed.

APO-CLARITHROMYCIN XL (clarithromycin prolonged-release tablets)

Adults with Respiratory Tract Infection

The adult dosage is 2 x 500 mg tablets (1000 mg) every 24 hours for 5, 7 or 14 days. APO-CLARITHROMYCIN XL must be taken with food. APO-CLARITHROMYCIN XL should be swallowed whole and not chewed, broken or crushed. **Table 2** provides dosage guidelines.

| Table 2 Adult Dosage Guidelines | | |
|--|--------------------------------|----------------------------|
| Infection | Dosage (Once daily) | Duration (days) |
| Acute maxillary sinusitis | 1000 mg | 14 |
| Acute bacterial exacerbation of chronic bronchitis | 1000 mg | 5 or 7 |

| Table 2 Adult Dosage Guidelines | | |
|--|--------------------------------|----------------------------|
| Infection | Dosage (Once daily) | Duration (days) |
| Community-acquired pneumonia | 1000 mg | 7 |

Renal Impairment

Based on a study done with clarithromycin tablets, patients with severe renal impairment (creatinine clearance < 30 mL/min) have greater clarithromycin exposure than patients with normal renal function (creatinine clearance \geq 80 mL/min). Clarithromycin C_{max} was about 3.3 times higher and AUC was about 4.2 times higher in the patients with severe renal impairment. The maximum daily clarithromycin dose for patients with severe renal impairment is 500 mg. The safety and efficacy of 500 mg clarithromycin in patients with severe renal impairment has not been established.

In the same study, patients with moderate renal impairment (creatinine clearance 30 to 79 mL/min) had greater clarithromycin exposure than patients with normal renal function, but the elevations were much less than those observed in severe renal impairment. Compared to the subjects with normal renal function, the clarithromycin C_{max} was about 52% higher and the AUC was about 74% higher in the patients with moderate renal impairment. No clarithromycin dose adjustment is required for patients with moderate renal impairment.

Hepatic Impairment

Based on studies done with clarithromycin tablets, no adjustment of dosage is necessary for subjects with moderate or severe hepatic impairment but with normal renal function. In patients with a combination of hepatic (mild to moderate) and renal impairments, decreased dosage of clarithromycin or prolonged dosing intervals might be appropriate.

Clarithromycin is contraindicated in patients with severe hepatic failure in combination with renal impairment. See [2 CONTRAINDICATIONS](#).

4.4 Administration

APO-CLARITHROMYCIN (clarithromycin tablets) may be taken with or without food.

APO-CLARITHROMYCIN XL (clarithromycin prolonged-release tablets) must be taken with food. The tablets should be swallowed whole and not chewed, broken or crushed.

4.5 Missed Dose

If a dose of clarithromycin is missed, the patient should take the dose as soon as possible and then return to their normal scheduled dose. However, if a dose is skipped, the patient should not double the next dose.

5 OVERDOSAGE

Activated charcoal may be administered to aid in the removal of unabsorbed drug. General supportive measures are recommended.

Reports indicate that the ingestion of large amounts of clarithromycin can be expected to produce gastrointestinal symptoms. Adverse reactions accompanying overdose should be treated by the prompt elimination of unabsorbed drug and supportive measures.

Clarithromycin is protein bound (70%). No data are available on the elimination of clarithromycin by hemodialysis or peritoneal dialysis.

For management of a suspected drug overdose, contact your regional poison control centre.

6 DOSAGE FORMS, STRENGTHS, COMPOSITION AND PACKAGING

Table - Dosage Forms, Strengths, Composition and Packaging

| Route of Administration | Dosage Form / Strength /Composition | Non-medicinal Ingredients |
|-------------------------|-------------------------------------|---|
| Oral | Tablets, 250 mg | Colloidal silicon dioxide, crospovidone, D & C yellow #10, hydroxyethyl cellulose, magnesium stearate, polyethylene glycol, stearic acid, sunset yellow and titanium dioxide. |
| Oral | Tablets, 500 mg | Colloidal silicon dioxide, crospovidone, D & C yellow #10, hydroxyethyl cellulose, magnesium stearate, polyethylene glycol, stearic acid and titanium dioxide. |
| Oral | Prolonged-release tablets, 500 mg | Hydroxyethyl cellulose, magnesium stearate, polyethylene glycol, potassium bitartrate, sorbitol, titanium dioxide and D & C yellow #10 aluminum lake. |

APO-CLARITHROMYCIN (clarithromycin tablets)

APO-CLARITHROMYCIN 250 mg tablets are supplied as bright yellow, oval, biconvex, film-coated tablet engraved "CLA250" on one side, "APO" on the other side contains 250 mg of clarithromycin. Available in HDPE bottles of 100's, 250's and 500's.

APO-CLARITHROMYCIN 500 mg tablets are supplied as light yellow, capsule shaped, biconvex, film-coated tablet engraved "CLA500" on one side, "APO" on the other side contains 500 mg of clarithromycin. Available in HDPE bottles of 100's and 250's.

APO-CLARITHROMYCIN XL (clarithromycin prolonged-release tablets)

APO-CLARITHROMYCIN XL 500 mg tablets are supplied as light yellow, oval biconvex coated tablets engraved “APO” on one side and “CXL500” on the other side. Available in HDPE bottles of 100’s and blister packs of 20 tablets (2x10).

7 WARNINGS AND PRECAUTIONS

Please [see 3 SERIOUS WARNINGS AND PRECAUTIONS BOX.](#)

General

Clarithromycin should be administered with caution to any patient who has demonstrated some form of drug allergy, particularly to structurally related-drugs. If an allergic reaction to clarithromycin occurs, administration of the drug should be discontinued. Serious hypersensitivity reactions may require epinephrine, antihistamines, or corticosteroids. See [7 WARNINGS AND PRECAUTIONS, Immune, Hypersensitivity Reactions.](#)

Long-term use may, as with other antibiotics, result in colonization with increased numbers of non-susceptible bacteria and fungi. If superinfections occur, appropriate therapy should be instituted.

Patients Infected with Human Immunodeficiency Virus

Several studies of Human Immunodeficiency Virus (HIV)-positive patients receiving clarithromycin for treatment of MAC infection have shown poorer survival in those patients randomized to receive doses higher than 500 mg twice daily. The explanation for the poorer survival associated with doses higher than 500 mg twice daily has not been determined. Treatment or prophylaxis of MAC infection with clarithromycin should not exceed the approved dose of 500 mg twice daily.

Myasthenia Gravis

Exacerbation of symptoms of myasthenia gravis and new onset of symptoms of myasthenic syndrome has been reported in patients receiving clarithromycin therapy.

Atypical Antipsychotics (quetiapine)

Due to inhibition of CYP3A by clarithromycin, co-administration of clarithromycin with quetiapine results in increased quetiapine concentrations. Serious and life-threatening quetiapine-related adverse reactions, including malignant neuroleptic syndrome, have been reported. Clarithromycin should not be used in combination with quetiapine unless clinically necessary. See [9 DRUG INTERACTIONS.](#) Monitoring and dose reductions may be required.

Oral Hypoglycemic Agents/Insulin

The concomitant use of clarithromycin and oral hypoglycaemic agents (such as sulphonylurias) and/or insulin can result in significant hypoglycaemia. Careful monitoring of glucose is recommended. See [9 DRUG INTERACTIONS, 9.4 Drug-Drug Interactions, Table 13](#).

Oral Anticoagulants

There is a risk of serious hemorrhage and significant elevations in International Normalized Ratio (INR) and prothrombin time when clarithromycin is co-administered with warfarin. INR and prothrombin times should be frequently monitored while patients are receiving clarithromycin and oral anticoagulants concurrently. See [9 DRUG INTERACTIONS, 9.4 Drug-Drug Interactions, Table 13](#).

Caution should be exercised when clarithromycin is co-administered with direct acting oral anticoagulants such as dabigatran, rivaroxaban and apixaban, particularly to patients at high risk of bleeding. See [9 Drug Interactions, 9.4 Drug-Drug Interactions](#).

HMG-CoA Reductase Inhibitors

Concomitant use of clarithromycin with lovastatin or simvastatin is contraindicated. See [2 CONTRAINDICATIONS](#). Caution should be exercised when prescribing clarithromycin with other statins. Rhabdomyolysis has been reported in patients taking clarithromycin and statins. Patients should be monitored for signs and symptoms of myopathy. In situations where the concomitant use of clarithromycin with statins cannot be avoided, it is recommended to prescribe the lowest registered dose of the statin. Use of a statin that is not dependent on CYP3A metabolism (e.g., fluvastatin) can be considered. See [9 DRUG INTERACTIONS, 9.4 Drug-Drug Interactions, Table 13](#).

Triazolobenzodiazepines and Related Benzodiazepines

Caution is advised regarding the concomitant administration of clarithromycin with triazolobenzodiazepines (such as triazolam and alprazolam), or with other benzodiazepines (such as intravenous midazolam) due to the serious risk of central nervous system (CNS) effects (e.g., somnolence and confusion). See [9 DRUG INTERACTIONS, 9.4 Drug-Drug Interactions, Table 13](#).

Concomitant administration with oral midazolam is contraindicated. [See 2 CONTRAINDICATIONS](#).

Calcium Channel Blockers

Caution is advised regarding the concomitant administration of clarithromycin and calcium channel blockers metabolized by CYP3A4 (e.g., verapamil, amlodipine, diltiazem) due to the risk of hypotension. [See 9 DRUG INTERACTIONS, 9.4 Drug-Drug Interactions, Table 13.](#)

Hypotension, bradyarrhythmias, and lactic acidosis have been observed in patients receiving concurrent verapamil, belonging to the calcium channel blockers drug class. See [9 DRUG INTERACTIONS, 9.4 Drug-Drug Interactions, Table 13.](#)

Other Drugs

Use of clarithromycin with other drugs may lead to drug-drug interactions, see [2 CONTRAINDICATIONS](#) and [9 DRUG INTERACTIONS, 9.4 Drug-Drug Interactions.](#)

Carcinogenesis and Mutagenesis

See [16 NON-CLINICAL TOXICOLOGY.](#)

Cardiovascular

Cardiovascular Events

Prolonged cardiac repolarisation and QT interval, imparting a risk of developing cardiac arrhythmia and torsades de pointes, have been seen in treatment with macrolides, including clarithromycin. See [8 ADVERSE REACTIONS.](#) Fatalities have been reported. Elderly patients may be more susceptible to drug-associated effects on the QT interval.

As the following situations may lead to an increased risk for ventricular arrhythmias (including torsades de pointes), clarithromycin should be used with caution in patients with coronary artery disease, cardiac insufficiency, conduction disturbances, clinically significant bradycardia (e.g., < 50 bpm), or when concomitantly taking with other medicinal products associated with QT prolongation, due to the risk for QT prolongation and torsades de pointes. See [9 DRUG INTERACTIONS.](#) Clarithromycin must not be given to patients with electrolyte disturbances such as hypomagnesaemia or hypokalemia. See [2 CONTRAINDICATIONS.](#)

Clarithromycin is contraindicated in patients with congenital or documented acquired QT prolongation or history of ventricular arrhythmia, including *torsades de pointes*. Clarithromycin is also contraindicated in patients with hypokalaemia due to the risk of QT prolongation and torsades de pointes. Concomitant administration of clarithromycin with astemizole, cisapride, domperidone, pimozide, terfenadine and saquinavir is also contraindicated. See [2 CONTRAINDICATIONS.](#)

Epidemiological studies investigating the risk of adverse cardiovascular outcomes with macrolides have shown variable results. Studies have identified risks of arrhythmia, myocardial infarction and cardiovascular mortality associated with macrolides including clarithromycin. Consideration of these findings should be balanced with treatment benefits when prescribing clarithromycin.

Driving and Operating Machinery

There are no data on the effect of clarithromycin on the ability to drive or use machines. The potential for dizziness, vertigo, confusion and disorientation, which may occur with the medication, should be taken into account before patients drive or use machines.

Gastrointestinal

Clostridioides difficile-Associated Disease

Clostridioides difficile-associated disease (CDAD) has been reported with use of many antibacterial agents, including clarithromycin. CDAD may range in severity from mild diarrhea to fatal colitis. It is important to consider this diagnosis in patients who present with diarrhea, or symptoms of colitis, pseudomembranous colitis, toxic megacolon, or perforation of colon subsequent to the administration of any antibacterial agent. CDAD has been reported to occur over 2 months after the administration of antibacterial agents.

Treatment with antibacterial agents may alter the normal flora of the colon and may permit overgrowth of *Clostridioides difficile*. *Clostridioides difficile* produces toxins A and B, which contribute to the development of CDAD. CDAD may cause significant morbidity and mortality. CDAD can be refractory to antimicrobial therapy.

If the diagnosis of CDAD is suspected or confirmed, appropriate therapeutic measures should be initiated. Mild cases of CDAD usually respond to discontinuation of antibacterial agents not directed against *Clostridioides difficile*. In moderate to severe cases, consideration should be given to management with fluids and electrolytes, protein supplementation, and treatment with an antibacterial drug clinically effective against *Clostridioides difficile*. Surgical evaluation should be instituted as clinically indicated, as surgical intervention may be required in certain severe cases. See [8 ADVERSE REACTIONS](#).

Hepatic/Biliary/Pancreatic

Caution is advised in patients with impaired hepatic function.

Clarithromycin is principally excreted by the liver and kidney. In patients with a combination of hepatic (mild to moderate) and renal impairments, decreased dosage of clarithromycin or prolonged dosing intervals might be appropriate. See [4 DOSAGE AND ADMINISTRATION, 4.2 Recommended Dose and Dosage Adjustment](#).

Clarithromycin is contraindicated in patients with severe hepatic failure in combination with renal impairment. [See 2 CONTRAINDICATIONS.](#)

Hepatic dysfunction, including increased liver enzymes, and hepatocellular and/or cholestatic hepatitis, with or without jaundice, has been reported with clarithromycin. This hepatic dysfunction may be severe and is usually reversible. In some instances, hepatic failure with fatal outcomes has been reported and generally has been associated with serious underlying diseases and/or concomitant medications. Discontinue clarithromycin immediately if signs and symptoms of hepatitis occur, such as anorexia, jaundice, dark urine, pruritus, or tender abdomen.

Immune

Hypersensitivity Reactions

In the event of severe acute hypersensitivity reactions, such as anaphylaxis, severe cutaneous adverse reactions (SCAR) (e.g., acute generalized exanthematous pustulosis (AGEP), Stevens-Johnson syndrome (SJS), toxic epidermal necrolysis (TEN) and drug rash with eosinophilia and systemic symptoms (DRESS)), clarithromycin therapy should be discontinued immediately, and appropriate treatment should be urgently initiated.

Renal

Caution should be exercised when administering clarithromycin to patients with moderate to severe renal impairment.

Clarithromycin is principally excreted by the liver and kidney. In patients with a combination of hepatic (mild to moderate) and renal impairments or in the presence of severe renal impairment, decreased dosage of clarithromycin or prolonged dosing intervals might be appropriate. See [4 DOSAGE AND ADMINISTRATION, 4.2 Recommended Dose and Dosage Adjustment.](#)

Clarithromycin is contraindicated in patients with severe hepatic failure in combination with renal impairment. [See 2 CONTRAINDICATIONS.](#)

For the eradication of *H. pylori*, amoxicillin and clarithromycin should not be administered to patients with renal impairment since the appropriate dosage in this patient population has not yet been established.

Reproductive Health: Female and Male Potential

- **Fertility**

See [16 NON-CLINICAL TOXICOLOGY; Reproductive and Developmental Toxicology](#). Please See [3 SERIOUS WARNINGS AND PRECAUTIONS BOX](#). See [7 WARNINGS AND PRECAUTIONS, 7.1.1 Pregnant Women](#).

- **Teratogenic risk**

Please See [3 SERIOUS WARNINGS AND PRECAUTIONS BOX](#). See [7 WARNINGS AND PRECAUTIONS, 7.1.1 Pregnant Women](#).

Sensitivity/Resistance

The development of resistance (11 out of 19 breakthrough isolates in 1 study) has been seen in HIV positive patients receiving clarithromycin for prophylaxis and treatment of MAC infection.

In view of the emerging resistance of *Streptococcus pneumoniae*, *Staphylococcus aureus* and *Streptococcus pyogenes* to macrolides, it is important that susceptibility testing be performed when prescribing clarithromycin for community-acquired pneumonia and uncomplicated skin and skin structure infections.

To avoid failure of the eradication treatment with a potential for developing antimicrobial resistance and a risk of failure with subsequent therapy, patients should be instructed to follow closely the prescribed regimen.

Development of Drug-Resistant Bacteria

Prescribing APO-CLARITHROMYCIN and APO-CLARITHROMYCIN XL in the absence of a proven or strongly suspected bacterial infection is unlikely to provide benefit to the patient and risks the development of drug-resistant bacteria.

Antibiotic Resistance in Relation to *Helicobacter pylori* Eradication

Use of any antimicrobial therapy, such as clarithromycin, to treat *H. pylori* infection may select for drug-resistant organisms.

Triple Therapy with Omeprazole

Among the 113 triple therapy recipients with pretreatment *H. pylori* isolates susceptible to clarithromycin, 2/102 patients (2%) developed resistance after treatment with omeprazole, clarithromycin, and amoxicillin. Among patients who received triple therapy, 6/108 (5.6%) patients had pretreatment *H. pylori* isolates resistant to clarithromycin. Of these 6 patients, 3 (50%) had *H. pylori* eradicated at follow-up, and 3 (50%) remained positive after treatment. In 5/113 (4.4%) patients, no susceptibility data for clarithromycin pretreatment were available. Development of clarithromycin resistance should be considered as a possible risk especially when less efficient treatment regimens are used.

7.1 Special Populations

7.1.1 Pregnant Women

There are no adequate and well-controlled studies in pregnant women. The benefits against risk, particularly during the first 3 months of pregnancy should be carefully weighed by a physician. Based on variable results obtained from animal studies and experience in humans, the possibility of adverse effects on embryofetal development cannot be excluded. Some observational studies evaluating exposure to clarithromycin during the first and second trimester have reported an increased risk of miscarriage compared to no antibiotic use or other antibiotic use during the same period. The available epidemiological studies on the risk of major congenital malformations with use of macrolides including clarithromycin during pregnancy provide conflicting results. Therefore, use during pregnancy is not advised without carefully weighing the benefits against risks. Clarithromycin should not be used in pregnancy except where no alternative therapy is appropriate, particularly during the first 3 months of pregnancy. If pregnancy occurs while taking the drug, the patient should be apprised of the potential hazard to the fetus. See [3 SERIOUS WARNINGS AND PRECAUTIONS BOX](#).

Four teratogenicity studies in rats (3 with oral doses and 1 with intravenous doses up to 160 mg/kg/day administered during the period of major organogenesis) and 2 in rabbits (at oral doses up to 125 mg/kg/day or intravenous doses of 30 mg/kg/day administered during gestation days 6 to 18) failed to demonstrate any teratogenicity from clarithromycin. Two additional oral studies in a different rat strain at similar doses and similar conditions demonstrated a low incidence of cardiovascular anomalies at doses of 150 mg/kg/day administered during gestation days 6 to 15. Plasma levels after 150 mg/kg/day were 2 times the human serum levels.

Four studies in mice revealed a variable incidence of cleft palate following oral doses of 1000 mg/kg/day during gestation days 6 to 15. Cleft palate was also seen at 500 mg/kg/day. The 1000 mg/kg/day exposure resulted in plasma levels 17 times the human serum levels. In monkeys, an oral dose of 70 mg/kg/day produced fetal growth retardation at plasma levels that were 2 times the human serum levels.

Embryonic loss has been seen in monkeys and rabbits. See [16 NON-CLINICAL TOXICOLOGY, Reproduction and Developmental Toxicology](#).

7.1.2 Breast-Feeding

The safety of clarithromycin for use during breast-feeding of infants has not been established. Clarithromycin is excreted in human breast milk in small amounts. It has been estimated that an exclusively breastfed infant would receive about 1.7% of the maternal weight-adjusted dose of clarithromycin.

Preweaned rats, exposed indirectly via consumption of milk from dams treated with 150 mg/kg/day for 3 weeks, were not adversely affected, despite data indicating higher drug levels in milk than in plasma.

7.1.3 Pediatrics

Pediatrics (6 months to 12 years of age): Use of clarithromycin tablets and clarithromycin prolonged-release tablets in children under 12 years of age has not been studied.

The safety of clarithromycin has not been studied in MAC patients under the age of 20 months.

Neonatal and juvenile animals tolerated clarithromycin in a manner similar to adult animals. Young animals were slightly more intolerant to acute overdosage and to subtle reductions in erythrocytes, platelets and leukocytes, but were less sensitive to toxicity in the liver, kidney, thymus and genitalia.

Increased valproate and phenobarbital concentrations and extreme sedation were noted in a 3 year old patient coincident with clarithromycin therapy. Cause and effect relationship cannot be established. However, monitoring of valproate and phenobarbital concentrations may be considered.

7.1.4 Geriatrics

Geriatrics (> 65 years of age): Dosage adjustment should be considered in elderly patients with severe renal impairment. In a steady-state study in which healthy elderly subjects (age 65 to 81 years old) were given 500 mg every 12 hours, the maximum concentrations of clarithromycin and 14-OH-clarithromycin were increased. The AUC was also increased. These changes in pharmacokinetics parallel known age-related decreases in renal function. In clinical trials, elderly patients did not have an increased incidence of adverse events when compared to younger patients.

8 ADVERSE REACTIONS

8.1 Adverse Reaction Overview

The majority of side effects observed in clinical trials involving 3563 patients treated with clarithromycin tablets were of a mild and transient nature. Fewer than 3% of adult patients without mycobacterial infections discontinued therapy because of drug-related side-effects. The most common drug-related adverse reactions in adults taking clarithromycin tablets were nausea, diarrhea, abdominal pain, dyspepsia, headache, dysgeusia (taste perversion) and vomiting. The most frequently reported events in adults taking clarithromycin prolonged-release tablets were diarrhea, abnormal taste and nausea.

8.2 Clinical Trial Adverse Reactions

Clinical trials are conducted under very specific conditions. The adverse reaction rates observed in the clinical trials; therefore, may not reflect the rates observed in practice and should not be compared to the rates in the clinical trials of another drug. Adverse reaction information from clinical trials may be useful in identifying and approximating rates of adverse drug reactions in real-world use.

Clarithromycin tablets:

Patients with Respiratory Tract or Skin Infections

TABLE 3 provides a listing of adverse reactions from clinical trials or post-marketing surveillance as well as adverse events reported during post-marketing surveillance. Adverse events reported during post-marketing surveillance may include patients treated for various infections and are not limited to patients with respiratory tract or skin infections.

Table 3 Adverse Events/Adverse Drug Reactions in Patients with Respiratory Tract or Skin Infections or Other Infections Treated with Clarithromycin Tablets

| System Organ Class | Adverse Reaction/Adverse Event |
|--------------------------------------|--|
| Blood and lymphatic system disorders | Eosinophilia Anemia Leukopenia Thrombocythemia Thrombocytopenia |
| Cardiac disorders* | Electrocardiogram QT prolonged Ventricular tachycardia Torsades de pointes |
| Ear and labyrinth disorders | Vertigo Tinnitus Ear disorder Deafness**** |
| Eye disorders | Visual disturbance Conjunctivitis |

| System Organ Class | Adverse Reaction/Adverse Event |
|--|--|
| Gastrointestinal disorders | Constipation Flatulence Dry mouth Glossitis Stomatitis Gastrointestinal disorder Tongue discolouration Tooth discolouration Pancreatitis |
| General disorders and administration site conditions | Asthenia Pain Chest pain |
| Hepatobiliary disorders | Hepatomegaly Hepatic function abnormal Hepatitis Hepatitis cholestatic Jaundice (cholestatic and hepatocellular) Hepatic failure*** |
| Immune system disorders | Anaphylactic reaction Myasthenia gravis |
| Infections and infestations | Infection Colitis pseudomembranous Candidiasis Rhinitis Pharyngitis Vaginal candidiasis Vaginal infection |
| Investigations | Increased liver enzymes |
| Metabolism and nutrition disorders | Anorexia Hypoglycemia** |
| Musculoskeletal and connective tissue disorders | Back pain Myalgia |
| Nervous system disorders | Dizziness Somnolence Convulsion Parosmia Dysgeusia Ageusia |

| System Organ Class | Adverse Reaction/Adverse Event |
|---|---|
| Psychiatric disorders | Nervousness Anxiety Insomnia Nightmare Depression Confusional state Disorientation Depersonalisation Hallucination Psychotic disorder |
| Renal and urinary disorders | Hematuria Nephritis interstitial |
| Reproductive system and breast disorders | Dysmenorrhea |
| Respiratory, thoracic and mediastinal disorders | Cough Dyspnea Asthma |
| Skin and subcutaneous tissue disorders | Severe cutaneous adverse reactions (SCAR) (e.g., Acute generalized exanthematous pustulosis (AGEP) Stevens-Johnson syndrome (SJS) Toxic epidermal necrosis (TEN) Drug rash with eosinophilia and systemic symptoms (DRESS) Pruritus Rash Hyperhidrosis Urticaria |
| <p>* As with other macrolides, QT prolongation, ventricular tachycardia, and torsades de pointes have been reported with clarithromycin.</p> <p>** There have been reports of hypoglycemia, some of which have occurred in patients on concomitant oral hypoglycemic agents or insulin.</p> <p>*** Hepatic dysfunction may be severe and is usually reversible. Hepatic failure with fatal outcome has been reported and generally has been associated with serious underlying diseases and/or concomitant medications.</p> <p>**** There have been reports of hearing loss with clarithromycin which is usually reversible upon withdrawal of therapy.</p> | |

In studies of adults with pneumonia comparing clarithromycin to erythromycin base or erythromycin stearate, there were significantly fewer adverse events involving the digestive system in patients treated with clarithromycin.

Patients with Mycobacterial Infections

In patients with acquired immune deficiency syndrome (AIDS) and other immunocompromised patients treated with the higher doses of clarithromycin over long periods of time for prevention or treatment of mycobacterial infections, it was often difficult to distinguish adverse events possibly associated with clarithromycin administration from underlying signs of HIV disease or intercurrent illness.

Prophylaxis

Discontinuation due to adverse events was required in 18% of AIDS patients receiving clarithromycin 500 mg twice daily, compared to 17% of patients receiving placebo in a randomized, double-blind study. Primary reasons for discontinuation in the clarithromycin-treated patients include headache, nausea, vomiting, depression and taste perversion. The most frequently reported adverse events with an incidence of 2% or greater, excluding those due to the patient's concurrent condition, are listed in Table 4. Among these events, taste perversion was the only event that had significantly higher incidence in the clarithromycin-treated compared to the placebo-treated group.

Table 4 Percentage of Adverse Events* in Immunocompromised Adult Patients Receiving Prophylaxis Against *M. avium* Complex

| System Organ Class ‡ | Adverse Reaction | Clarithromycin (n = 339) % | Placebo (n = 339) % |
|--|------------------|----------------------------------|---------------------------|
| Gastrointestinal disorders | Abdominal pain | 5.0% | 3.5% |
| | Nausea | 11.2% | 7.1% |
| | Diarrhea | 7.7% | 4.1% |
| | Vomiting | 5.9% | 3.2% |
| | Dyspepsia | 3.8% | 2.7% |
| | Flatulence | 2.4% | 0.9% |
| Nervous system disorders | Dysgeusia | 8.0% | 0.3% |
| | Headache | 2.7% | 0.9% |
| Skin and subcutaneous tissue disorders | Rash | 3.2% | 3.5% |
| * Includes those events possibly or probably related to study drug and excludes concurrent conditions. | | | |
| ‡ ≥ 2% Adverse Event Incidence Rates for either treatment group. | | | |

Treatment of Patients with Mycobacterial Infections

Excluding those patients who discontinued therapy due to complications of their underlying non-mycobacterial diseases (including death), approximately 14% of the patients discontinued therapy due to drug-related adverse events.

In adult patients, the most frequently reported adverse events with an incidence of 3% or greater, excluding those due to the patient's concurrent condition, are listed in Table 5 by the total daily dose the patient was receiving at the time of the event. A total of 867 patients were treated with clarithromycin for mycobacterial infections. Of these, 43% reported one or more adverse events. Most of these events were described as mild to moderate in severity, although 14% were described as severe.

Incidence of adverse events was higher in patients taking 4000 mg total daily doses compared to lower doses (Table 5).

Table 5 Percentage of Adverse Events* in Immunocompromised Adult Patients Treated with Clarithromycin for Mycobacterial Infections Presented by Total Daily Dose at Time of the Event

| System Organ Class | Adverse Reaction | 1000 mg (n = 463) | 2000 mg (n = 516) | 4000 mg (n = 87) |
|---|--------------------------------------|----------------------|----------------------|---------------------|
| Ear and labyrinth disorders | Hearing impaired** | 3% | 2% | 5% |
| Gastrointestinal disorders | Nausea | 11% | 16% | 40% |
| | Vomiting | 7% | 9% | 24% |
| | Abdominal Pain | 5% | 7% | 20% |
| | Diarrhea | 4% | 6% | 17% |
| | Flatulence | 1% | 2% | 7% |
| | Constipation | 1% | < 1% | 5% |
| | Dry Mouth | < 1% | 0% | 5% |
| Investigations | Aspartate aminotransferase increased | 2% | 2% | 11% |
| | Alanine aminotransferase increased | 1% | 1% | 9% |
| Nervous system disorders | Dysgeusia | 6% | 7% | 29% |
| | Headache | 2% | 2% | 7% |
| Psychiatric disorders | Insomnia | < 1% | < 1% | 6% |
| Respiratory, thoracic and mediastinal disorders | Dyspnea | < 1% | < 1% | 7% |
| Skin and subcutaneous tissue disorders | Rash | 4% | 3% | 2% |
| * Related adverse events considered to be definitely, probably, possibly or remotely related to | | | | |

| System Organ Class | Adverse Reaction | 1000 mg (n = 463) | 2000 mg (n = 516) | 4000 mg (n = 87) |
|---|------------------|----------------------|----------------------|---------------------|
| study events. | | | | |
| ** Sum of patients with deafness, ear disorder, partial transitory deafness, and/or tinnitus. | | | | |
| n = Number of adverse events. | | | | |

A limited number of pediatric AIDS patients have been treated with clarithromycin suspension for mycobacterial infections. The most frequently reported adverse events, excluding those due to the patient's concurrent condition, are listed in Table 6 by the total daily dose of clarithromycin the patient received.

Table 6 Number of Pediatric AIDS Patients Treated with Clarithromycin for Mycobacterial Infections Who Experienced Adverse Events Presented by Total Daily Dose at Time of the Event

| System Organ Class | Adverse Event | < 15 mg/kg/day (n=19) | 15 to < 25 mg/kg/day (n=13) | ≥ 25 mg/kg/day (n=12) |
|--|-------------------|-----------------------------|-----------------------------------|-----------------------------|
| Ear and labyrinth disorders | Tinnitus | 2 | 0 | 0 |
| | Deafness | 1 | 1 | 0 |
| Gastrointestinal disorders | Vomiting | 1 | 0 | 0 |
| | Nausea | 1 | 0 | 0 |
| | Abdominal Pain | 1 | 0 | 0 |
| | Pancreatitis | 1 | 0 | 0 |
| Investigations | Amylase Increased | 0 | 0 | 1 |
| Skin and subcutaneous tissue disorders | Purpuric Rash | 1 | 0 | 0 |

Patients with *Helicobacter pylori* Infection

Triple Therapy: clarithromycin/omeprazole/amoxicillin

A summary of drug-related adverse event incidence rates is presented in Table 7.

Table 7 Summary of Drug-Related Adverse Event Incidence Rates by System Organ Class

| System Organ Class | Patients with Drug-Related Adverse Events (% of Patients Treated)* | |
|---|---|---|
| | Omeprazole + Clarithromycin + Amoxicillin (n=137) | Omeprazole + Clarithromycin (n=130) |
| Cardiac disorders | 0 (0%) | 1 (1%) |
| Ear and labyrinth disorders | 1 (1%) | 2 (2%) |
| Eye disorders | 0 (0%) | 1 (1%) |
| Gastrointestinal disorders | 24 (18%) | 21 (16%) |
| General disorders and administration site conditions | 5 (4%) | 0 (0%) |
| Hepatobiliary disorders | 2 (1%) | 0 (0%) |
| Infections and infestations | 1 (1%) | 1 (1%) |
| Investigations | 9 (7%) | 0 (0%) |
| Nervous system disorders | 15 (11%) | 30 (23%) |
| Psychiatric disorders | 1 (1%) | 1 (1%) |
| Reproductive system and breast disorders | 1 (1%) | 0 (0%) |
| Respiratory, thoracic and mediastinal disorders | 1(1%) | 0 (0%) |
| Skin and subcutaneous tissue disorders | 3 (2%) | 1 (1%) |
| * Patients with more than 1 event within a system organ class are counted only once in the total for that system organ class | | |
| Note: There is a statistical difference (Fisher's exact two-sided, p-value = 0.009) between omeprazole + clarithromycin + amoxicillin (11%) versus omeprazole + clarithromycin (23%) in regard to nervous system disorders. | | |

Clarithromycin Prolonged-Release Tablets:

Fewer than 2% of adult patients taking clarithromycin prolonged-release tablets discontinued therapy because of drug-related side effects. The most frequently reported adverse events in adults taking clarithromycin prolonged-release tablets were diarrhea (6%), abnormal taste (7%), and nausea (3%). Most of these events were described as mild or moderate in severity. Of the reported adverse events, less than 1% were described as severe.

There have been rare reports of clarithromycin prolonged-release tablets in the stool, many of which have occurred in patients with anatomic (including ileostomy or colostomy) or functional gastrointestinal disorders with shortened GI transit times. In several reports, tablet residues have occurred in the context of diarrhea. It is recommended that patients who experience

tablet residue in the stool and no improvement in their condition should be switched to a different clarithromycin formulation (e.g., suspension) or another antibiotic.

8.3 Less Common Clinical Trial Adverse Reactions

Clarithromycin Tablets:

The following adverse drug reactions are applicable to all indications approved for this formulation.

| | |
|---|--|
| Blood and Lymphatic System Disorders: | eosinophilia and neutropenia |
| Gastrointestinal Disorders: | abdominal distension |
| General Disorders and Administration Site Conditions: | chest pain, chills, fatigue, influenza and malaise |
| Hepatobiliary Disorders: | cholestasis, gamma-glutamyltransferase increased and hepatitis |
| Investigations: | blood alkaline phosphatase increased and blood lactate dehydrogenase increased |

Clarithromycin Prolonged-Release Tablets

Less Common Clinical Trial Adverse Drug Reactions (<1%) for Clarithromycin Prolonged-Release Tablets

The following adverse drug reactions are applicable to all indications approved for this formulation.

| | |
|--|--|
| Gastrointestinal Disorders: | gastroesophageal reflux disease and proctalgia |
| Infections and Infestations: | Gastroenteritis |
| Musculoskeletal and Connective Tissue Disorders: | myalgia |
| Respiratory, Thoracic and Mediastinal Disorders: | epistaxis |

Other adverse reactions have been observed in different patient populations and during post-marketing surveillance. [See 8 ADVERSE REACTIONS, Clinical Trial Adverse Drug Reactions, Table 3.](#)

8.4 Abnormal Laboratory Findings: Hematologic, Clinical Chemistry and Other Quantitative Data

Clinical Trial Findings

Clarithromycin Tablets:

Patients with Respiratory Tract or Skin Infections

Changes in laboratory values with possible clinical significance reported during clinical studies or during post-marketing surveillance are displayed in Table 8.

Table 8 - Abnormal Hematologic and Clinical Chemistry Findings in Patients with Respiratory Tract or Skin Infections Treated with Clarithromycin Tablets

| System Organ Class | Laboratory Values | Frequency |
|--------------------|---------------------------------------|----------------------------|
| Investigations | Alanine aminotransferase increased | Uncommon (Less than 1%) |
| | Aspartate aminotransferase increased | |
| | Gamma-glutamyltransferase increased | |
| | Blood alkaline phosphatase increased | |
| | Blood lactate dehydrogenase increased | |
| | Blood bilirubin increased | |
| | Blood creatinine increased | |
| | White blood cell count decreased | |
| | Prothrombin time prolonged | |
| | Blood urea increased | 4% |

Patients with Mycobacterial Infections

In immunocompromised patients receiving prophylaxis against *M. avium*, those laboratory values outside the extreme high or low limit for the specified test were analyzed (Table 9).

Table 9 - Percentage of Patients* Exceeding Extreme Laboratory Value in Immunocompromised Patients Receiving Prophylaxis Against *M. avium* Complex

| System Organ Class | Laboratory Values | Clarithromycin 500 mg b.i.d. | | Placebo | |
|--------------------|----------------------|---------------------------------|----|---------|----|
| | | | | | |
| Investigations | Hemoglobin decreased | 4/118 | 3% | 5/103 | 5% |
| | < 8 g/dL | | | | |

| System Organ Class | Laboratory Values | Clarithromycin 500 mg b.i.d. | | Placebo | |
|---|---|---------------------------------|----|---------|----|
| | | | | | |
| | Platelet count decreased < 50 x 10 ⁹ /L | 11/249 | 4% | 12/250 | 5% |
| | White blood cell count decreased < 1 x 10 ⁹ /L | 2/103 | 4% | 0/95 | 0% |
| | Aspartate aminotransferase increased > 5 x ULN | 7/196 | 4% | 5/208 | 2% |
| | Alanine aminotransferase increased > 5 x ULN | 6/217 | 3% | 4/232 | 2% |
| | Blood alkaline phosphatase increased > 5 x ULN | 5/220 | 2% | 5/218 | 2% |
| <p>* Includes only patients with baseline values within the normal range or borderline high (hematology variables) and within the normal range or borderline low (chemistry variables). Legend: b.i.d. = twice daily; ULN = Upper Limit of Normal</p> | | | | | |

Treatment of Patients with Mycobacterial Infections

In immunocompromised patients treated with clarithromycin for mycobacterial infections, evaluations of laboratory values were made by analysing those values outside the seriously abnormal level (i.e., the extreme high or low limit) for the specified test (Table 10 and Table 11).

Table 10 - Percentage of Immunocompromised Adult Patients Treated with Clarithromycin for Mycobacterial Infections who had On-Treatment Laboratory Values that Were Outside the Seriously Abnormal Level Presented by Total Daily Dose

| System Organ Class | Laboratory Values | Seriously Abnormal Level | 1000 mg | 2000 mg | 4000 mg |
|--------------------------------------|--------------------------------------|---------------------------|---------|---------|---------|
| Investigations | Aspartate aminotransferase increased | > 5 x ULN | 3% | 2% | 4% |
| | Alanine aminotransferase increased | > 5 x ULN | 2% | 2% | 7% |
| | Platelet count decreased | < 50 x 10 ⁹ /L | 2% | 2% | 4% |
| | White blood cell count decreased | < 1 x 10 ⁹ /L | 0% | 2% | 0% |
| | Blood urea increased | > 50 mg/dL | <1% | <1% | 4% |
| Legend: ULN = Upper Limit of Normal. | | | | | |

Table 11 Number of Pediatric AIDS Patients Treated with Clarithromycin for Mycobacterial Infections who had On-Treatment Laboratory Values that Were Outside the Seriously Abnormal Level Presented by Total Daily Dose

| System Organ Class | Laboratory Values | Seriously Abnormal Level | < 15 mg/kg/day | 15 to < 25 mg/kg/day | ≥ 25 mg/kg/day |
|--------------------|------------------------------------|---------------------------|----------------|----------------------|----------------|
| Investigations | Alanine aminotransferase increased | > 5 x ULN | 0 | 1 | 0 |
| | Blood bilirubin increased | > 12 mg/dL | 1 | 0 | 0 |
| | Platelet count decreased | < 50 x 10 ⁹ /L | 0 | 1 | 0 |
| | Blood urea increased | > 50 mg/dL | 0 | 1 | 0 |

Legend: ULN = Upper Limit of Normal.

8.5 Post-Market Adverse Reactions

The following list of adverse events is a compilation of adverse reactions from Post-marketing Surveillance and Post-marketing Clinical Studies for all clarithromycin formulations.

Table 12 Post-Market Adverse Drug Reactions

| System Organ Class | Adverse Event |
|--------------------------------------|--|
| Blood and lymphatic system disorders | Agranulocytosis, leukopenia, thrombocytopenia |
| Cardiac disorders ¹ | Atrial fibrillation, cardiac arrest, electrocardiogram QT prolonged, extrasystoles, palpitations, <i>Torsades de pointes</i> , ventricular fibrillation, ventricular tachycardia. |
| Ear and labyrinth disorders | Deafness, hearing impaired, hearing loss ² , tinnitus, vertigo |
| Gastrointestinal disorders | Abdominal pain, constipation, dry mouth, dyspepsia, eructation, esophagitis, flatulence, gastritis, glossitis, pancreatitis, stomatitis, tongue discolouration, tooth discolouration, vomiting |

| System Organ Class | Adverse Event |
|--|---|
| General disorders and administration site conditions | Asthenia |
| Hepatobiliary disorders | Hepatic failure ³ , hepatitis, hepatitis cholestatic, jaundice (cholestatic and hepatocellular) |
| Immune system disorders | Angioedema, anaphylactic reaction, anaphylactoid reaction, anaphylaxis, hypersensitivity, myasthenia gravis |
| Infections and infestations | Candidiasis, cellulitis, pseudomembranous colitis, vaginal infection |
| Investigations | Albumin globulin ratio abnormal, alanine aminotransferase increased, aspartate aminotransferase increased, blood creatinine increased, blood urea increased, international normalized ratio (INR) increased ⁴ , liver enzymes increased, liver function test abnormal, prothrombin time prolonged ⁴ , urine color abnormal ⁵ |
| Metabolism and nutrition disorders | Anorexia, decreased appetite |
| Musculoskeletal and connective tissue disorders | Musculoskeletal stiffness, myalgia, myopathy, rhabdomyolysis ⁶ |
| Nervous system disorders | Ageusia, alteration of sense of smell, anosmia, convulsions, dizziness, dysgeusia, dyskinesia, headache, loss of consciousness, paraesthesia, parosmia, tremor, somnolence |
| Psychiatric disorders | Abnormal dreams, anxiety, confusion, depersonalization, depression, disorientation, hallucination, insomnia, mania, psychosis |
| Renal and urinary disorders | Interstitial nephritis, renal failure |
| Respiratory, thoracic and mediastinal disorders | Asthma, pulmonary embolism |
| Skin and subcutaneous tissue disorders | Severe cutaneous adverse reactions (SCAR) (e.g., acute generalized exanthematous pustulosis (AGEP), Stevens-Johnson syndrome (SJS), toxic epidermal necrolysis (TEN), drug rash with eosinophilia and systemic symptoms (DRESS)), acne, dermatitis bullous, Henoch-Schonlein purpura, hyperhidrosis, pruritus, rash, urticaria |
| Vascular disorders | Hemorrhage ⁴ , vasodilation |

| System Organ Class | Adverse Event |
|--------------------|--|
| 1 | As with other macrolides, QT prolongation, ventricular tachycardia, and torsades de pointes have been reported with clarithromycin. |
| 2 | There have been reports of hearing loss with clarithromycin which is usually reversible upon withdrawal of therapy. |
| 3 | Hepatic dysfunction may be severe and is usually reversible. Hepatic failure with fatal outcome has been reported and generally has been associated with serious underlying diseases and/or concomitant medications. |
| 4 | When clarithromycin is co-administered with warfarin. |
| 5 | Symptom of hepatic failure. |
| 6 | In some of the reports of rhabdomyolysis, clarithromycin was administered concomitantly with other drugs known to be associated with rhabdomyolysis (such as statins, fibrates, colchicine or allopurinol). |

Colchicine

There have been post-marketing reports of colchicine toxicity with concomitant use of clarithromycin and colchicine, especially in the elderly, some of which occurred in patients with renal insufficiency. Deaths have been reported in some patients. [See 2 CONTRAINDICATIONS.](#)

9 DRUG INTERACTIONS

9.1 Serious Drug Interactions

| Serious Drug Interactions |
|---|
| <ul style="list-style-type: none"> Concomitant administration of clarithromycin with astemizole, cisapride, domperidone, colchicine, pimozide, terfenadine, lovastatin, simvastatin, ergot alkaloids (e.g., ergotamine, dihydroergotamine) is contraindicated. See 2 CONTRAINDICATIONS and 9 DRUG INTERACTIONS, 9.4 Drug-Drug Interactions. Clarithromycin is an inhibitor of the cytochrome P450 3A isoform subfamily (CYP3A) and the P-glycoprotein transporter (P-gp). The concomitant administration of clarithromycin and drugs metabolized by CYP3A and/or transported by P-gp may lead to an increase in the plasma concentrations of the co-administered drug which could result in clinically significant safety concerns. |

9.2 Drug Interactions Overview

Many categories of drugs are metabolized by CYP3A and/or transported by P-gp located in the liver and in the intestine. Some drugs may inhibit or induce the activities of CYP3A and/or P-gp. Administration of such inhibitors or inducers may impact upon the metabolism. In some cases, serum concentrations may be increased and in others decreased. Care must therefore be exercised when co-administering such drugs.

Effects of Clarithromycin on Other Drugs

Clarithromycin is an inhibitor of CYP3A and P-gp. This inhibition may lead to increased or prolonged serum levels of those drugs also metabolized by CYP3A or transported by P-gp when co-administered with clarithromycin. For such drugs the monitoring of their serum concentrations may be necessary.

Clarithromycin should be used with caution in patients receiving treatment with other drugs known to be CYP3A and/or P-gp substrates, especially if the CYP3A/P-gp substrate has a narrow safety margin (e.g., carbamazepine) and/or the substrate is extensively metabolized by CYP3A or transported by P-gp. Dosage adjustments may be considered, and when possible, serum concentrations of these drugs should be monitored closely in patients concurrently receiving clarithromycin.

The following drugs or drug classes are known or suspected to be metabolized by the same CYP3A isozyme: alprazolam, astemizole, carbamazepine, cilostazol, cisapride, cyclosporine, disopyramide, domperidone, ergot alkaloids, ibrutinib, lomitapide, lovastatin, methylprednisolone, midazolam, omeprazole, oral anticoagulants (e.g. warfarin, rivaroxaban, apixaban), atypical antipsychotics (e.g. quetiapine), pimozone, quinidine, rifabutin, sildenafil, simvastatin, tacrolimus, terfenadine, triazolam and vinblastine, but this list is not comprehensive. [See 9 DRUG INTERACTIONS, 9.4 Drug-Drug Interactions.](#)

Direct acting oral anticoagulants (DOACs): The DOAC dabigatran is a substrate for the efflux transporter P-gp. Rivaroxaban and apixaban are metabolised via CYP3A4 and are also substrates for P-gp. Caution should be exercised when clarithromycin is co-administered with these agents particularly to patients at high risk of bleeding. [See 7 WARNINGS AND PRECAUTIONS, General.](#)

With certain drugs, co-administration of clarithromycin is contraindicated or should be avoided (see Table 11).

Effects of Other Drugs on Clarithromycin

Clarithromycin is a substrate of CYP3A. Co-administration of strong inducers of the cytochrome P450 metabolism system may accelerate the metabolism of clarithromycin and thus lower exposure to clarithromycin while increasing exposure to its metabolite 14-OH-clarithromycin which could impair the intended therapeutic effect. Furthermore, it might be necessary to monitor the plasma levels of the CYP3A inducer, which could be increased owing to the inhibition of CYP3A by clarithromycin (see also the relevant product information for the CYP3A4 inducer administered). Co-administration of potent CYP3A inhibitors may lead to increased exposure to clarithromycin and decreased exposure to its metabolite 14-OH-clarithromycin. Clarithromycin dosage adjustment or consideration of alternative treatments may be required.

Bi-Directional Drug Interactions

Bi-directional drug interactions are complex and may occur if both of the interacting drugs are substrates and inhibitors/inducers of CYP3A.

Additional Mechanisms

Interactions with clarithromycin have been reported with drugs metabolized by cytochrome P450 isoforms other than CYP3A system. Additional mechanisms, such as effects upon absorption, may also be responsible for interaction between drugs, including zidovudine and clarithromycin.

9.3 Drug-Behavioural Interactions

This information is not available for this drug product.

9.4 Drug-Drug Interactions

Some of the drug-drug interactions which have been reported between clarithromycin-macrolides and other drugs or drug categories are listed in Table 13.

The drugs listed in this table are based on either drug interaction case reports or studies, or potential interactions due to the expected magnitude and seriousness of the interaction (i.e., those identified as contraindicated).

Table 13 - Established or Potential Drug-Drug Interactions with Clarithromycin

| Concomitant Medication | Ref | Effect | Clinical Comments |
|---------------------------|-----|--|---|
| Astemizole* / Terfenadine | CT | terfenadine-acid metabolite concentrations increase ↑ QT interval | <p>Macrolides have been reported to alter the metabolism of terfenadine resulting in increased serum levels of terfenadine which has occasionally been associated with cardiac arrhythmias such as QT prolongation, ventricular tachycardia, ventricular fibrillation and <i>torsades de pointes</i>. See 2 CONTRAINDICATIONS.</p> <p>In a study involving 14 healthy volunteers, the concomitant administration of clarithromycin tablets and terfenadine resulted in a 2- to 3-fold increase in the serum levels of the acid metabolite of terfenadine, MDL 16, 455, and in prolongation of the QT interval. Similar effects have been observed with concomitant administration of astemizole and other macrolides.</p> |
| Atazanavir | CT | ↑ clarithromycin levels ↑ atazanavir AUC | <p>Both clarithromycin and atazanavir are substrates and inhibitors of CYP3A, and there is evidence of a bi-directional drug interaction. Co-administration of clarithromycin (500 mg twice daily) with atazanavir (400 mg once daily) resulted in a 2-fold increase in exposure to clarithromycin and a 70% decrease in exposure to 14-OH-clarithromycin, with a 28% increase in the AUC of atazanavir.</p> <p>Because of the large therapeutic window for clarithromycin, no dosage reduction should be necessary in patients with normal renal function.</p> |

| Concomitant Medication | Ref | Effect | Clinical Comments |
|---|-----|--|--|
| | | | <p>For patients with moderate renal function (creatinine clearance 30 to 60 mL/min), the dose of clarithromycin should be decreased by 50%. For patients with creatinine clearance < 30 mL/min, the dose of clarithromycin should be decreased by 75% using an appropriate clarithromycin formulation. Doses of clarithromycin greater than 1000 mg per day should not be co-administered with protease inhibitors.</p> |
| <p><u>Atypical Antipsychotics</u> (e.g., quetiapine)</p> | | <p>Potential ↑ in concentrations of quetiapine and other atypical antipsychotics</p> | <p>Clarithromycin should not be used in combination with quetiapine unless clinically necessary. Due to CYP3A inhibition by clarithromycin, concentrations of quetiapine are expected to increase, which can result in serious and/or life-threatening adverse reactions, including malignant neuroleptic syndrome.</p> <p>For other atypical antipsychotic drugs (aripiprazole and risperidone) metabolized by CYP3A4, it is also recommended that concomitant administration with clarithromycin be avoided due to potential pharmacokinetic interactions.</p> |
| <p><u>Calcium Channel Blockers</u> (e.g., verapamil, amlodipine, diltiazem)</p> | C | <p>Potential ↑ in verapamil concentrations</p> | <p>Caution is advised regarding the concomitant administration of clarithromycin and calcium channel blockers metabolized by CYP3A4 (e.g., verapamil, amlodipine, diltiazem) due to the risk of hypotension. Plasma concentrations of clarithromycin as well as calcium channel blockers may increase due to the interaction. Hypotension, bradyarrhythmias, and lactic acidosis have been observed in</p> |

| Concomitant Medication | Ref | Effect | Clinical Comments |
|------------------------|-----|---|--|
| | | | patients receiving concurrent verapamil, belonging to the calcium channel blockers drug class. |
| Carbamazepine | C | ↑ levels of carbamazepine | Clarithromycin administration in patients receiving carbamazepine has been reported to cause increased levels of carbamazepine. Blood level monitoring of carbamazepine should be considered. |
| Cisapride* / Pimozide | C | ↑ levels of cisapride ↑ levels of pimozide | Elevated cisapride levels have been reported in patients receiving clarithromycin and cisapride concomitantly. This may result in QT prolongation and cardiac arrhythmias including ventricular tachycardia, ventricular fibrillation and torsade de pointes. Similar effects have been observed in patients taking clarithromycin and pimozide concomitantly. See 2 CONTRAINDICATIONS . |
| Colchicine | C | Potential colchicine toxicity | Colchicine is a substrate for both CYP3A and the efflux transporter, P-gp. Clarithromycin and other macrolides are known to inhibit CYP3A and P-gp. When clarithromycin and colchicine are administered together, inhibition of P-gp and/or CYP3A by clarithromycin may lead to increased exposure to colchicine. This risk may be further increased with concomitant medications metabolized by P-glycoprotein or strong CYP3A inhibitors. Concomitant use of clarithromycin and colchicine is contraindicated. See 2 CONTRAINDICATIONS . |

| Concomitant Medication | Ref | Effect | Clinical Comments |
|-------------------------------|------------|--|---|
| Cyclosporine | C | ↑ levels of cyclosporine | There have been reports of elevated cyclosporine serum concentrations when clarithromycin and cyclosporine are used concurrently. Cyclosporine levels should be monitored and the dosage should be adjusted as necessary. Patients should also be monitored for increased cyclosporine toxicity. |
| Didanosine | CT | No change in didanosine pharmacokinetics in HIV-infected patients (n=12) | Simultaneous administration of clarithromycin tablets and didanosine to 12 HIV-infected adult patients resulted in no statistically significant change in didanosine pharmacokinetics. |
| Digoxin | C | ↑ levels of digoxin | <p>Digoxin is thought to be a substrate for the efflux transporter, P-gp. Clarithromycin is known to inhibit P-gp. When clarithromycin and digoxin are administered together, inhibition of P-gp by clarithromycin may lead to increased exposure to digoxin.</p> <p>Elevated digoxin serum concentrations have been reported in patients receiving clarithromycin tablets and digoxin concomitantly.</p> <p>In post-marketing surveillance some patients have shown clinical signs consistent with digoxin toxicity, including potentially fatal arrhythmias. Serum digoxin levels should be carefully monitored while patients are receiving digoxin and clarithromycin simultaneously.</p> |
| Disopyramide / Quinidine | C | ↑ levels of disopyramide, resulting in ventricular fibrillation | Increased disopyramide plasma levels, resulting in ventricular fibrillation and QT prolongation, coincident with the co-administration of disopyramide and |

| Concomitant Medication | Ref | Effect | Clinical Comments |
|------------------------|------|---|---|
| | | <p data-bbox="594 321 875 426">& QT prolongation (rarely reported)</p> <p data-bbox="594 474 857 506">Torsades de pointes</p> | <p data-bbox="907 321 1321 390">clarithromycin have rarely been reported.</p> <p data-bbox="907 438 1403 856">There have been post-marketed reports of torsades de pointes occurring with concurrent use of clarithromycin and quinidine or disopyramide. Electrocardiograms should be monitored for QTc prolongation during co-administration of clarithromycin with these drugs. Serum levels of these medications should be monitored during clarithromycin therapy.</p> <p data-bbox="907 905 1403 1205">There have been post-marketing reports of hypoglycemia with the concomitant administration of clarithromycin and disopyramide. Therefore, blood glucose levels should be monitored during concomitant administration of clarithromycin and disopyramide.</p> |
| Domperidone | C, T | <p data-bbox="594 1230 857 1415">↑ levels of domperidone, resulting in QT prolongation and cardiac arrhythmias</p> | <p data-bbox="907 1230 1403 1724">Elevated domperidone levels have been reported in patients receiving a potent CYP3A4 inhibitor and domperidone concomitantly. This may result in QT prolongation and cardiac arrhythmias including ventricular tachycardia, ventricular fibrillation and torsades de pointes. Hence, co-administration of domperidone with QT-prolonging medicines and/or potent CYP3A4 inhibitors such as clarithromycin is contraindicated. See 2 CONTRAINDICATIONS.</p> |

| Concomitant Medication | Ref | Effect | Clinical Comments |
|---|-----|--|---|
| <u>Ergot alkaloids</u> Ergotamine / Dihydroergotamine | C | Potential ischemic reactions Potential ergot toxicity | Post-marketing reports indicate that co-administration of clarithromycin with ergotamine or dihydroergotamine has been associated with acute ergot toxicity characterized by severe peripheral vasospasm, dysesthesia, and ischemia of the extremities and other tissues including the central nervous system. Concomitant administration of clarithromycin and ergot alkaloids is contraindicated. See 2 CONTRAINDICATIONS . |
| Etravirine | CT | ↓ clarithromycin ↑14-OH-clarithromycin | Clarithromycin exposure was decreased by etravirine; however, concentrations of the active metabolite, 14-OH-clarithromycin, were increased. Because 14-OH-clarithromycin has reduced activity against Mycobacterium avium complex (MAC), overall activity against this pathogen may be altered; therefore alternatives to clarithromycin should be considered for the treatment of MAC. |
| Fluconazole | CT | ↑ clarithromycin C _{min} & AUC | Concomitant administration of fluconazole 200 mg daily and clarithromycin 500 mg twice daily to 21 healthy volunteers led to increases in the mean steady-state clarithromycin C _{min} and AUC of 33% and 18%, respectively. Steady-state concentrations of 14-OH-clarithromycin were not significantly affected by concomitant administration of fluconazole. No clarithromycin dose adjustment is necessary. |

| Concomitant Medication | Ref | Effect | Clinical Comments |
|---|-----|----------------------------------|--|
| <u>HMG-CoA Reductase Inhibitors</u> Lovastatin / Simvastatin | C | Rhabdomyolysis (rarely reported) | Concomitant use of clarithromycin with lovastatin or simvastatin is contraindicated. (See 2 CONTRAINDICATIONS) as these statins are extensively metabolized by CYP3A4 and concomitant treatment with clarithromycin increases their plasma concentration, which increases the risk of myopathy, including rhabdomyolysis. Reports of rhabdomyolysis have been received for patients taking clarithromycin concomitantly with these statins. If treatment with clarithromycin cannot be avoided, therapy with lovastatin or simvastatin must be suspended during the course of treatment. See 7 WARNINGS AND PRECAUTIONS, HMG-CoA Reductase Inhibitors . |
| Atorvastatin Rosuvastatin | C | | Rare reports of rhabdomyolysis have also been reported in patients taking atorvastatin or rosuvastatin concomitantly with clarithromycin. Concurrent use of atorvastatin and clarithromycin may result in increased atorvastatin exposure. Caution should be exercised when prescribing clarithromycin with statins. In situations where the concomitant use of clarithromycin with statins cannot be avoided, it is recommended to prescribe the lowest registered dose of the statin. Use of a statin that is not dependent on CYP3A metabolism (e.g., fluvastatin) can be considered. Patients should be monitored for signs and symptoms of myopathy. |

| Concomitant Medication | Ref | Effect | Clinical Comments |
|------------------------------|----------|---|---|
| Itraconazole | CT, T | <p>↑ levels of clarithromycin</p> <p>↑ levels of itraconazole</p> | <p>Both clarithromycin and itraconazole are substrates and inhibitors of CYP3A, leading to a bi-directional drug interaction. Clarithromycin may increase the plasma levels of itraconazole, while itraconazole may increase the plasma levels of clarithromycin. Patients taking itraconazole and clarithromycin concomitantly should be monitored closely for signs or symptoms of increased or prolonged pharmacologic effect.</p> |
| Lansoprazole / Omeprazole | CT | <p>Mild change of lansoprazole and 14-OH-clarithromycin concentrations</p> <p>↑ omeprazole C_{max} & AUC₀₋₂₄</p> <p>↑ levels of clarithromycin</p> | <p>One study demonstrated that concomitant administration of clarithromycin and lansoprazole resulted in mild changes of serum concentrations of lansoprazole and 14-OH-clarithromycin. However, no dosage adjustment is considered necessary based on these data.</p> <p>Clarithromycin 500 mg three times daily was given in combination with omeprazole 40 mg once daily to healthy subjects. The steady-state plasma concentrations of omeprazole were increased (i.e., C_{max}, AUC₀₋₂₄, and t_{1/2} increased by 30%, 89%, and 34%, respectively), by concomitant administration of clarithromycin. The mean 24-hour gastric pH value was 5.2 when omeprazole was administered alone and 5.7 when co-administered with clarithromycin.</p> <p>To a lesser extent, omeprazole administration increases the serum concentrations of clarithromycin. Omeprazole administration also</p> |

| Concomitant Medication | Ref | Effect | Clinical Comments |
|---|--------|------------------------|---|
| | | | increases tissue and mucus concentrations of clarithromycin. |
| <u>Oral Anticoagulants</u> Warfarin / Acenocoumarol | C | ↑ anticoagulant effect | <p>There have been reports of increased anticoagulant effect when clarithromycin and oral anticoagulants are used concurrently. Anticoagulant parameters should be closely monitored. Adjustment of the anticoagulant dose may be necessary.</p> <p>Clarithromycin has also been reported to increase the anticoagulant effect of acenocoumarol.</p> <p>There is a risk of serious hemorrhage and significant elevations in International Normalized Ratio (INR) and prothrombin time when clarithromycin is co-administered with warfarin. INR and prothrombin times should be frequently monitored while patients are receiving clarithromycin and oral anticoagulants concurrently. See 7 WARNINGS AND PRECAUTIONS, Use with Other Drugs, Oral Anticoagulants.</p> |
| <u>Oral Hypoglycemic Agents</u> (e.g., Insulin) | C T | Hypoglycemia | <p>The concomitant use of clarithromycin and oral hypoglycaemic agents (such as sulphonylurias) and/or insulin can result in significant hypoglycaemia. With certain hypoglycaemic drugs such as nateglinide, pioglitazone, repaglinide and rosiglitazone, inhibition of CYP3A enzyme by clarithromycin may be involved and could cause hypoglycaemia when used concomitantly. Careful monitoring of glucose is recommended.</p> |

| Concomitant Medication | Ref | Effect | Clinical Comments |
|--|-----|---|--|
| <p><u>Phosphodiesterase inhibitors</u> (e.g., sildenafil, tadalafil, vardenafil)</p> | T | <p>↑ Phosphodiesterase inhibitor exposure</p> | <p>Sildenafil, tadalafil, and vardenafil are metabolized, at least in part, by CYP3A, and CYP3A may be inhibited by concomitantly administered clarithromycin. Co-administration of clarithromycin with sildenafil, tadalafil or vardenafil would likely result in increased phosphodiesterase inhibitor exposure. Reduction of sildenafil, tadalafil and vardenafil dosages should be considered when these drugs are co-administered with clarithromycin.</p> |
| Rifabutin | C | <p>↓ clarithromycin ↑ rifabutin</p> | <p>Clarithromycin has been reported to increase serum and tissue concentration of rifabutin and thus may increase the risk of toxicity. Clarithromycin levels decrease when co-administered with rifabutin.</p> <p>Concomitant administration of clarithromycin and rifabutin in the treatment of <i>Mycobacterial Avium</i> complex infections resulted in rifabutin-associated uveitis.</p> <p>A case control study in AIDS patients showed that concomitant administration of rifabutin and clarithromycin resulted in an approximately 50% reduction in serum clarithromycin concentration, approximately 77% increase in the area under the plasma concentration-time curve of rifabutin, and a 236% increase in the area under the plasma concentration-time curve of rifabutin's active metabolite. The increase in rifabutin and/or its metabolite contributed to the development of uveitis (the incidence of uveitis was</p> |

| Concomitant Medication | Ref | Effect | Clinical Comments |
|------------------------|-----|--|---|
| | | | 14% in patients weighing >65 kg, 45% in patients between 55 and 65 kg, and 64% in patients <55 kg). |
| Ritonavir / Indinavir | CT | ↑ clarithromycin C _{max} , C _{min} , & AUC | <p>A pharmacokinetic study demonstrated that the concomitant administration of ritonavir 200 mg every 8 hours and clarithromycin 500 mg every 12 hours resulted in a marked inhibition of the metabolism of clarithromycin. The clarithromycin C_{max} increased by 31%, C_{min} increased 182% and AUC increased by 77% with concomitant administration of ritonavir. An essentially complete inhibition of the formation of 14-[R]-hydroxy-clarithromycin was noted. Because of the large therapeutic window for clarithromycin, no dosage reduction should be necessary in patients with normal renal function. However, for patients with renal impairment, the following dosage adjustments should be considered: For patients with creatinine clearance 30 to 60 mL/min the dose of clarithromycin should be reduced by 50%. For patients with creatinine clearance < 30 mL/min the dose of clarithromycin should be decreased by 75%. Doses of clarithromycin greater than 1g/day should not be co-administered with ritonavir.</p> <p>Similar dose adjustments should be considered in patients with reduced renal function when ritonavir is used as a pharmacokinetic enhancer with other HIV protease inhibitors including atazanavir and saquinavir.</p> |

| Concomitant Medication | Ref | Effect | Clinical Comments |
|------------------------|-----|---|---|
| | | ↑ indinavir AUC ↑ clarithromycin AUC | One study demonstrated that the concomitant administration of clarithromycin and indinavir resulted in a metabolic interaction; the clarithromycin AUC increased by 53% and the indinavir AUC was increased by 20%, but the individual variation was large. No dose adjustment is necessary with normal renal function. |
| Saquinavir | CT | ↑ saquinavir AUC and C _{max} ↑ clarithromycin AUC | <p>Both clarithromycin and saquinavir are substrates and inhibitors of CYP3A, and there is evidence of a bidirectional drug interaction.</p> <p>Concomitant administration of clarithromycin (500 mg twice daily) and saquinavir (soft gelatin capsules, 1200 mg three times daily) for 7 days to 12 healthy volunteers resulted in steady-state AUC and C_{max} values of saquinavir which were 177% (108 to 269%) and 187% (105 to 300%) higher than those seen with saquinavir alone. Clarithromycin AUC and C_{max} values were approximately 40% higher than those seen with clarithromycin alone. [Clarithromycin AUC ↑ 45% (17 to 81%) and C_{max} ↑ 39% (10 to 76%); 14-OH clarithromycin metabolite AUC ↓ 24% (5 to 40%) and C_{max} ↓ 34% (14 to 50%)].</p> <p>QTc prolongation has been reported in patients taking saquinavir along with ritonavir and also in patients taking clarithromycin. Concurrent administration of saquinavir and clarithromycin is contraindicated (see 2).</p> |

| Concomitant Medication | Ref | Effect | Clinical Comments |
|------------------------|-----|--|---|
| | | | CONTRAINDICATIONS). |
| Tacrolimus | T | Potential ↑ in tacrolimus concentrations | Concomitant administration of tacrolimus and clarithromycin may result in increased plasma levels of tacrolimus and increased risk of toxicity. |
| Theophylline | T | Potential ↑ in theophylline concentrations | Clarithromycin use in patients who are receiving theophylline may be associated with an increase of serum theophylline concentrations. Monitoring of serum theophylline concentrations should be considered for patients receiving high doses of theophylline or with baseline concentrations in the upper therapeutic range. |
| Tolterodine | T | ↑ serum tolterodine concentrations | The primary route of metabolism for tolterodine is via the 2D6 isoform of cytochrome P450 (CYP2D6). However, in a subset of the population devoid of CYP2D6, the identified pathway of metabolism is via CYP3A. In this population subset, inhibition of CYP3A results in significantly higher serum concentrations of tolterodine. A reduction of tolterodine dosage may be necessary in the presence of CYP3A inhibitors, such as clarithromycin in the CYP2D6 poor metabolizer population. |

| Concomitant Medication | Ref | Effect | Clinical Comments |
|---|----------|-----------------|---|
| <p><u>Triazolobenzodiazepines</u> (e.g., triazolam, alprazolam)</p> <p><u>Other related benzodiazepines</u> (e.g., midazolam)</p> | CT, C, T | ↑ midazolam AUC | <p>When midazolam was co-administered with clarithromycin tablets (500 mg twice daily), midazolam AUC was increased 2.7-fold after intravenous administration of midazolam and 7-fold after oral administration. Concomitant administration of oral midazolam and clarithromycin is contraindicated. See 2 CONTRAINDICATIONS. If intravenous midazolam is co-administered with clarithromycin, the patient must be closely monitored to allow dose adjustment of midazolam. A drug-drug interaction study between oromucosal midazolam and clarithromycin has not been conducted.</p> <p>The same precautions should also apply to other benzodiazepines that are metabolized by CYP3A, including triazolam and alprazolam. For benzodiazepines which are not dependent on CYP3A for their elimination (temazepam, nitrazepam, lorazepam), a clinically important interaction with clarithromycin is unlikely.</p> <p>There have been post-marketing reports of drug interactions and central nervous system (CNS) effects (e.g., somnolence and confusion) with the concomitant use of clarithromycin and triazolam.</p> <p>Monitoring the patient for increased CNS pharmacological effects is suggested.</p> |

| Concomitant Medication | Ref | Effect | Clinical Comments |
|---|------|---|---|
| Zidovudine | C | Potential ↓ in zidovudine concentrations | <p>Simultaneous oral administration of clarithromycin tablets and zidovudine to HIV-infected adult patients may result in decreased steady-state zidovudine concentrations.</p> <p>Clarithromycin appears to interfere with the absorption of simultaneously administered oral zidovudine, and therefore, this interaction can be largely avoided by staggering the doses of clarithromycin and zidovudine. This interaction does not appear to occur in pediatric HIV-infected patients taking clarithromycin suspension with zidovudine or dideoxyinosine. Similar interaction studies have not been conducted with clarithromycin prolonged-release (ER) and zidovudine.</p> |
| <u>Other drugs metabolized by CYP3A</u> (e.g., alfentanil, bromocriptine, cilostazol, methylprednisolone, vinblastine) | C, T | Potential increase in serum concentration | <p>Interactions with erythromycin and/or clarithromycin have been reported with a number of other drugs metabolized by CYP3A, such as alfentanil, bromocriptine, cilostazol, ibrutinib, methylprednisolone, or vinblastine.</p> <p>Serum concentrations of drugs metabolized by CYP3A should be monitored closely in patients concurrently receiving erythromycin or clarithromycin.</p> |
| <u>Other drugs metabolized by cytochrome P450 isoforms other than CYP3A</u> (e.g., hexobarbital, phenytoin, and valproate) | C, T | Potential change in serum concentration | <p>Interactions with erythromycin and/or clarithromycin have been reported with drugs metabolized by other cytochrome P450 isoforms (i.e., not CYP3A), such as hexobarbital, phenytoin, and valproate.</p> <p>Serum concentrations of these drugs should be monitored closely in patients concurrently receiving</p> |

| Concomitant Medication | Ref | Effect | Clinical Comments |
|---|-------|----------------------------|--|
| | | | erythromycin or clarithromycin. |
| <u>Other drug inducers of the cytochrome P450 system</u> (e.g, efavirenz, nevirapine, rifampin, rifabutin, rifampicin, phenobarbital, rifapentine) | CT, T | ↓ levels of clarithromycin | Strong inducers of the cytochrome P450 metabolism system such as efavirenz, nevirapine, rifampin, rifabutin, rifampicin, phenobarbital and rifapentine* may accelerate the metabolism of clarithromycin and thus lower the plasma levels of clarithromycin, while increasing those of 14-OH-clarithromycin, a metabolite that is also microbiologically active. Since the microbiological activities of clarithromycin and 14-OH-clarithromycin are different for different bacteria, the intended therapeutic effect could be impaired during concomitant administration of clarithromycin and enzyme inducers. |
| Legend: C = Case Study; CT = Clinical Trial; T = Theoretical Interactions with other drugs have not been established. * not marketed in Canada. | | | |

Combination Therapy with Omeprazole and/or Amoxicillin

For more information on drug interactions for omeprazole and amoxicillin, refer to their respective Product Monographs, under DRUG INTERACTIONS.

9.5 Drug-Food Interactions

APO-CLARITHROMYCIN (clarithromycin tablets) may be given with or without meals. Interactions with food have not been established.

APO-CLARITHROMYCIN XL (clarithromycin prolonged-release tablets) must be taken with food.

9.6 Drug-Herb Interactions

St. John's Wort (*Hypericum perforatum*) is an inducer of CYP3A and may induce the metabolism of clarithromycin. This may result in sub-therapeutic levels of clarithromycin leading to reduced efficacy.

9.7 Drug-Laboratory Test Interactions

Interactions with laboratory tests have not been established.

10 CLINICAL PHARMACOLOGY

10.1 Mechanism of Action

General

Clarithromycin exerts its antibacterial action by binding to the 50S ribosomal subunit of susceptible bacteria and suppressing protein synthesis.

10.2 Pharmacodynamics

Eradication of *Helicobacter pylori*

H. pylori is now established as a major etiological factor in duodenal ulcer disease. The presence of *H. pylori* may damage the mucosal integrity due to the production of enzymes (catalase, lipases, phospholipases, proteases, and urease), adhesins and toxins; the generated inflammatory response contributes to mucosal damage.

The concomitant administration of an antimicrobial(s) such as clarithromycin and an antisecretory agent, improves the eradication of *H. pylori* as compared to individual drug administration. The higher pH resulting from antisecretory treatment optimizes the environment for the pharmacologic action of the antimicrobial agent(s) against *H. pylori*.

10.3 Pharmacokinetics

Clarithromycin Tablets

A summary of clarithromycin pharmacokinetic parameters following the administration of clarithromycin film-coated tablets is provided in Table 14. See [10 CLINICAL PHARMACOLOGY, DETAILED PHARMACOLOGY](#).

Table 14 Clarithromycin Pharmacokinetic Parameters following the Administration of Clarithromycin Film-coated Tablets

| Single dose* | C _{max} (mg/L) | t _{max} (hr) | t _½ (hr) | AUC _{0-t} (mg•hr/L) |
|---|----------------------------|--------------------------|------------------------|---------------------------------|
| 250 mg Mean | 1 | 1.5 | 2.7 | 5.47 |
| 500 mg Mean | 1.77 | 2.2 | – | 11.66 |
| Multiple Doses** | | | | |
| 250 mg b.i.d. Mean | 1 | – | 3 to 4 | 6.34 |
| 500 mg b.i.d. Mean | 3.38 | 2.1 | 5 to 7 | 44.19 |
| * Single doses (from Table 19 and Table 20) | | | | |
| ** Multiple doses (from Table 20) | | | | |
| Legend: b.i.d. = twice daily | | | | |

Clarithromycin Prolonged-Release Tablets

A summary of clarithromycin pharmacokinetic parameters following the administration of clarithromycin prolonged-release tablets is provided in Table 15. See [DETAILED PHARMACOLOGY, Pharmacokinetics](#).

Table 15 Clarithromycin Pharmacokinetic Parameters following the Administration of Clarithromycin Prolonged-Release Tablets

| | C _{max} (mg/L) | t _{max} (hr) | AUC _{0-t} (mg•hr/L) |
|--|----------------------------|--------------------------|---------------------------------|
| 2 x 500 mg once daily Mean* (fasting conditions) | 2.21 | 5.5 | 33.72 |
| 2 x 500 mg once daily Mean* (fed conditions) | 3.77 | 5.6 | 48.09 |

*from Table 40

Absorption

Clarithromycin Tablets

The absolute bioavailability of 250 mg and 500 mg clarithromycin tablets is approximately 50%. Food slightly delays the onset of clarithromycin absorption but does not affect the extent of bioavailability. Therefore, APO-CLARITHROMYCIN may be given without regard to meals.

In fasting healthy human subjects, peak serum concentrations are attained within 2 hours after oral dosing. Steady-state peak serum clarithromycin concentrations, which are attained within 2 to 3 days, are approximately 1 mg/L with a 250 mg dose twice daily and 2 to 3 mg/L with a 500 mg dose twice daily. The elimination half-life of clarithromycin is about 3 to 4 hours with 250 mg twice daily dosing but increases to about 5 to 7 hours with 500 mg administered twice daily.

Clarithromycin displays non-linear pharmacokinetics at clinically relevant doses, producing greater than proportional increases in AUC with increasing dose. The degree of non-linearity is reduced on chronic clarithromycin administration (i.e., at steady-state). The non-linearity of the pharmacokinetics of the principle metabolite, 14-OH-clarithromycin, is slight at the recommended doses of 250 mg and 500 mg administered twice daily. With 250 mg twice daily, 14-OH-clarithromycin attains a peak steady-state concentration of about 0.6 mg/L and has an elimination half-life of 5 to 6 hours. With a 500 mg twice daily dose, the peak steady-state of 14-OH-concentrations of clarithromycin are slightly higher (up to 1 mg/L) and its elimination half-life is about 7 hours. With either dose, the steady-state concentration of this metabolite is generally attained within 2 to 3 days.

Adult Patients with HIV

Steady-state concentrations of clarithromycin and 14-OH-clarithromycin observed following administration of 500 mg doses of clarithromycin twice a day to adult patients with HIV infection were similar to those observed in healthy volunteers. However, at the higher clarithromycin doses which may be required to treat mycobacterial infections, clarithromycin concentrations can be much higher than those observed at 500 mg clarithromycin doses. In adult HIV-infected patients taking 2000 mg/day in two divided doses, steady-state clarithromycin C_{max} values ranged from 5 to 10 mg/L. C_{max} values as high as 27 mg/L have been observed in HIV-infected adult patients taking 4000 mg/day in two divided doses of clarithromycin tablets.

Elimination half-lives appeared to be lengthened at these higher doses as well. The higher clarithromycin concentrations and longer elimination half-lives observed at these doses are consistent with the known non-linearity in clarithromycin pharmacokinetics.

Clarithromycin and omeprazole

Clarithromycin 500 mg three times daily and omeprazole 40 mg once daily were studied in fasting healthy adult subjects. When clarithromycin was given alone as 500 mg every 8 hours, the mean steady-state C_{max} value was approximately 3.8 mcg/mL and the mean C_{min} value was approximately 1.8 mcg/mL. The mean AUC_{0-8} for clarithromycin was 22.9 mcg•hr/mL. The T_{max} and half-life were 2.1 hours and 5.3 hours, respectively, when clarithromycin was dosed at 500 mg three times daily. When clarithromycin was administered with omeprazole, increases in omeprazole half-life and AUC_{0-24} were observed. For all subjects combined, the mean

omeprazole AUC₀₋₂₄ was 89% greater and the harmonic mean for omeprazole t_{1/2} was 34% greater when omeprazole was administered with clarithromycin than when omeprazole was administered alone. When clarithromycin was administered with omeprazole, the steady-state C_{max}, C_{min}, and AUC₀₋₈ of clarithromycin were increased by 10%, 27%, and 15%, respectively over values achieved when clarithromycin was administered with placebo.

Clarithromycin Prolonged-Release Tablets

Clarithromycin prolonged-release tablets provided extended absorption of clarithromycin from the gastrointestinal tract after oral administration. Relative to an equal dose of immediate-release clarithromycin film-coated tablets, clarithromycin prolonged-release tablets provide lower and later steady-state peak plasma concentrations, but equivalent 24-hour AUCs for both clarithromycin and its microbiologically-active metabolite, 14-OH-clarithromycin.

While the extent of formation of 14-OH-clarithromycin following administration of clarithromycin prolonged-release tablets (2 x 500 mg once daily) under steady-state conditions is not affected by food, administration under fasting conditions is associated with approximately 30% lower clarithromycin AUC relative to administration with food. Similarly, single-dose administration of clarithromycin prolonged-release (500 mg once daily) is associated with a 25% lower clarithromycin AUC relative to administration of clarithromycin immediate-release film-coated tablets (250 mg twice daily). Therefore, it is recommended that clarithromycin prolonged-release tablets be given with food.

Figure 1 illustrates the steady-state clarithromycin plasma concentration-time profile for clarithromycin prolonged-release tablets (2 x 500 mg once daily) relative to clarithromycin tablets (500 mg twice daily).

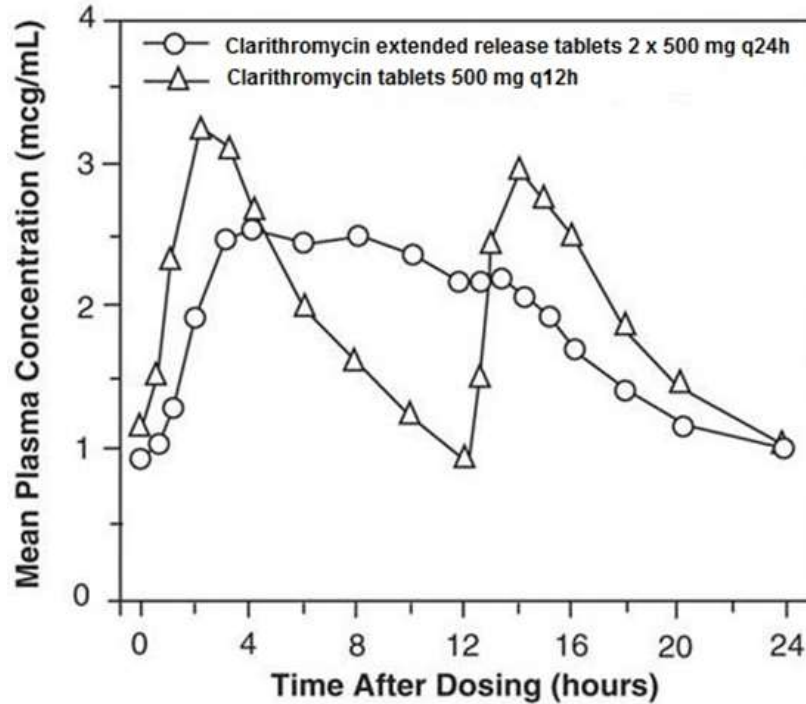


Figure 1: Steady-State Clarithromycin Plasma Concentration-Time Profiles for Clarithromycin Prolonged-Release Tablets (2 x 500 mg once daily) Relative to Clarithromycin Tablets (500 mg twice daily)

In healthy human subjects, steady-state peak plasma clarithromycin concentrations of approximately 2 to 3 mg/L were achieved about 5 to 8 hours after oral administration of 2 x 500 mg clarithromycin prolonged-release tablets once daily; for 14-OH-clarithromycin, steady-state peak plasma concentrations of approximately 0.8 mg/L were attained 6 to 9 hours after dosing. Steady-state peak plasma concentrations of approximately 1 to 2 mg/L were achieved about 5 to 6 hours after oral administration of a single 500 mg clarithromycin prolonged-release tablet once daily; for 14-OH-clarithromycin, steady-state peak plasma concentrations of approximately 0.6 mg/L were attained about 6 hours after dosing.

Distribution:

Clarithromycin distributes readily into body tissues and fluids, and provides tissue concentrations that are higher than serum concentrations. Examples from tissue and serum concentrations are presented in Table 16.

Table 16 - Representative Clarithromycin Tissue and Serum Concentrations Following the Administration of 250 mg b.i.d of Clarithromycin Tablets

| Tissue Type | Concentrations | |
|---|----------------|--------------|
| | Tissue (mcg/g) | Serum (mg/L) |
| Tonsil | 1.6 | 0.8 |
| Lung | 8.8 | 1.7 |
| Leukocytes* | 9.2 | 1.0 |
| * <i>in vitro</i> data. Legend: b.i.d. = twice daily | | |

Metabolism

Clarithromycin is principally excreted by the liver and kidney. The major metabolite found in urine is 14-OH-clarithromycin.

Elimination

At 250 mg twice daily, approximately 20% of an orally administered dose of clarithromycin film-coated tablet is excreted in the urine as the unchanged parent drug. The urinary excretion of unchanged clarithromycin is somewhat greater (approximately 30%) with 500 mg twice daily dosing. The renal clearance of clarithromycin is, however, relatively independent of the dose size and approximates the normal glomerular filtration rate. The major metabolite found in urine is 14-OH-clarithromycin which accounts for an additional 10 to 15% of the dose with twice daily dosing at either 250 mg or 500 mg. Most of the remainder of the dose is eliminated in the feces, primarily via the bile. About 5 to 10% of the parent drug is recovered from the feces. Fecal metabolites are largely products of N-demethylation, 14-hydroxylation or both.

Special Populations and Conditions

- **Pediatrics**

Use of clarithromycin tablets in children under 12 years of age has not been studied. See [10 CLINICAL PHARMACOLOGY, 10.3 Pharmacokinetics, Absorption](#).

- **Geriatrics**

Dosage adjustment should be considered in elderly with severe renal impairment. In a steady-state study in which healthy elderly subjects (age 65 to 81 years old) were given 500 mg of clarithromycin every 12 hours, the maximum concentrations of clarithromycin and 14-OH-clarithromycin were increased. The AUC was also increased. These changes in pharmacokinetics parallel known age-related decreases in renal function. In clinical trials, elderly patients did not have an increased incidence of adverse events when compared to younger patients.

- **Hepatic Insufficiency**

The steady-state concentrations of clarithromycin in subjects with impaired hepatic function did not differ from those in normal subjects; however, the 14-OH-clarithromycin concentrations were lower in the hepatically impaired subjects. The decreased formation of 14-OH-clarithromycin was at least partially offset by an increase in renal clearance of clarithromycin in subjects with impaired hepatic function when compared to healthy subjects. See [7 WARNINGS AND PRECAUTIONS, Hepatic/Biliary/Pancreatic](#) and [4 DOSAGE AND ADMINISTRATION, 4.2 Recommended Dose and Dosage Adjustment](#).

- **Renal Insufficiency**

The elimination of clarithromycin was impaired in patients with impaired renal function. The daily dose of clarithromycin should be limited to 500 mg in patients with severe renal impairment (creatinine clearance < 30 mL/min). See [7 WARNINGS AND PRECAUTIONS, Renal](#) and [4 DOSAGE AND ADMINISTRATION, 4.2 Recommended Dose and Dosage Adjustment](#).

DETAILED PHARMACOLOGY

General

Helicobacter pylori

The presence of *H. pylori* may damage the mucosal integrity and defenses so that exposure to acid/pepsin, even in normal concentrations, produces ulceration.

H. pylori displays potent urease activity which may produce an alkaline environment around the organism. Excess ammonia produced by urea hydrolysis is toxic to mucosal cells and may lead to parietal cell failure and/or to a disturbance of the normal negative feedback of acid to the antral G-cells which secrete gastrin. In addition, *H. pylori* produces catalases, lipases, phospholipases, proteases, adhesins and toxins. These enzymes may further degrade the mucous layer and damage the epithelial cell membrane. Also, the presence of *H. pylori* stimulates an active inflammatory response which contributes to mucosal damage.

Gustavson *et al.* (1995) showed that concentrations of 39.3, 23.1 and 25.2 mcg/g clarithromycin were achieved in the gastric mucosa 2, 4, and 6 hours respectively after administering 500 mg clarithromycin three times daily and that corresponding concentrations of the 14-OH metabolite were 3.2, 1.1, and 4.1 mcg/g respectively. Similar results were obtained whether or not clarithromycin was given alone or together with 40 mg omeprazole once daily (Logan *et al.*, 1995). Although the activity of the 14-OH metabolite is about half of the parent drug and its concentrations are lower, it may still contribute antibacterial activity.

Pharmacokinetics

Pharmacokinetics for clarithromycin and 14-OH-clarithromycin metabolite following the oral administration of a single dose or multiple doses of clarithromycin are outlined below.

Clarithromycin Tablets, Film-Coated

Pharmacokinetics for clarithromycin and 14-OH-clarithromycin metabolite was first studied following the oral administration of a single dose of 250 mg or 500 mg or multiple doses of clarithromycin 250 mg tablet.

Single Dose

Plasma levels were determined in 20 subjects following oral administration of a single-dose of 250 mg or 500 mg of clarithromycin under fasting conditions. C_{max} occurred at 1.00 and 1.77 (mg/L) and T_{max} were 1.5 and 2.2 hours, respectively for the 250 mg and 500 mg (Table 17, **Figure 2** and **Figure 3**).

Table 17 Mean (\pm SD) Pharmacokinetic Parameters for Clarithromycin Administered as a Single Dose in the Absence of Food

| Variable | Clarithromycin Dose | |
|--|---------------------|-------------------|
| | 250 mg | 500 mg |
| Number of male evaluable patients | 20 | 20 |
| C_{max} (mg/L) | 1.00 \pm 0.34 | 1.77 \pm 0.65 |
| $C_{max}/100 \text{ mg}^1$ | 0.40 | 0.35 |
| T_{max} (hr) | 1.5 \pm 0.8 | 2.2 \pm 0.7 |
| AUC (mg.hr/L) | 5.47 \pm 1.932 | 11.66 \pm 3.673 |
| AUC/100 mg ¹ | 2.19 | 2.33 |
| ¹ $C_{max}/100 \text{ mg} = C_{max} \times \frac{100 \text{ mg}}{\text{dose}}$; $AUC/100 \text{ mg} = AUC \times \frac{100 \text{ mg}}{\text{dose}}$ | | |
| ² AUC _{0-12 hr} | | |
| ³ AUC _{0-14 hr} | | |

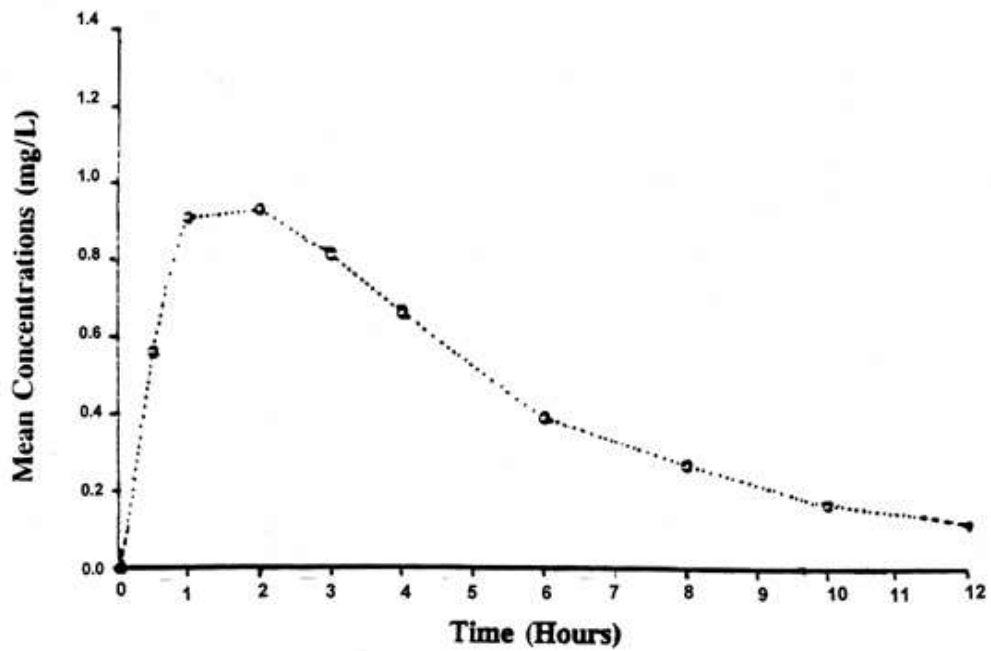


Figure 2 : Plasma Clarithromycin Concentration (mg/mL) vs Time Following Oral Administration of a Single Dose of Clarithromycin 250 mg

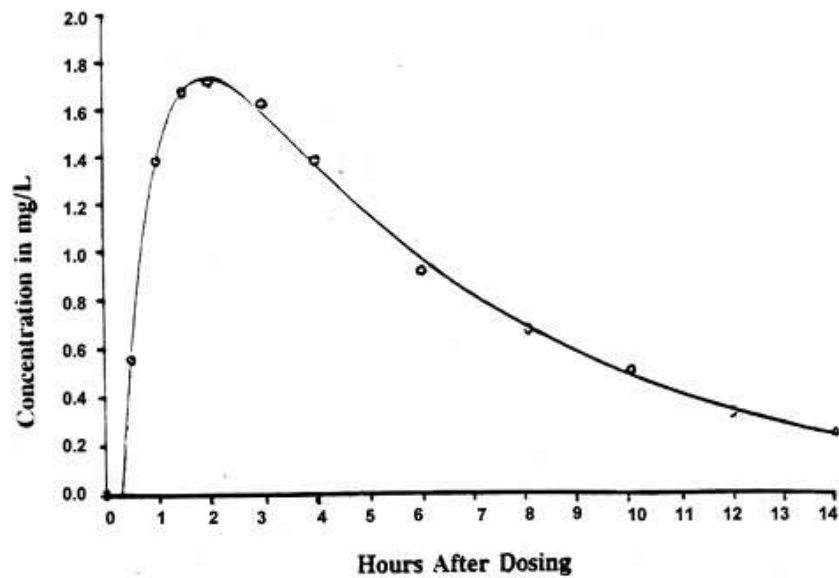


Figure 3: Plasma Clarithromycin Concentration (mg/L) vs Time Following Oral Administration of a Single Dose of Clarithromycin 500 mg

Multiple Dose

Representative estimated pharmacokinetic parameters for clarithromycin and 14-OH-clarithromycin metabolite after a single oral 250 mg dose and after the 5th dose of clarithromycin administered orally at 250 mg twice daily are listed in **Table 18**.

Table 18 Representative Estimated Single and Multiple-Dose Pharmacokinetic Parameters for Clarithromycin and 14-OH-Clarithromycin

| Variables | Single Dose (250 mg) | | Multiple Dose after 5th Dose (250 mg b.i.d.) | |
|------------------------------|----------------------|-------------|--|-------------|
| | Clari. | 14-OH | Clari. | 14-OH |
| C _{max} (mg/L) | 0.74 ± 0.24 | 0.61 ± 0.17 | 1.00 ± 0.29 | 0.63 ± 0.19 |
| t _½ (hr) | 2.7 | 4.2 | 3.5 | 4.7 |
| AUC ₀₋₁₂ (mg·h/L) | 4.27 ± 1.52 | 4.91 ± 1.12 | 6.34 ± 1.82 | 4.72 ± 1.29 |

Legend: Clari. = clarithromycin; 14-OH = 14-OH-clarithromycin; b.i.d. = twice daily

The pharmacokinetics of clarithromycin and its 14-OH metabolite indicate that the steady-state concentration is achieved by the 5th dose using 250 mg of clarithromycin twice daily.

The mean plasma concentration-time along the predicted curves for clarithromycin and 14-OH-clarithromycin metabolite are shown in **Figure 4**.

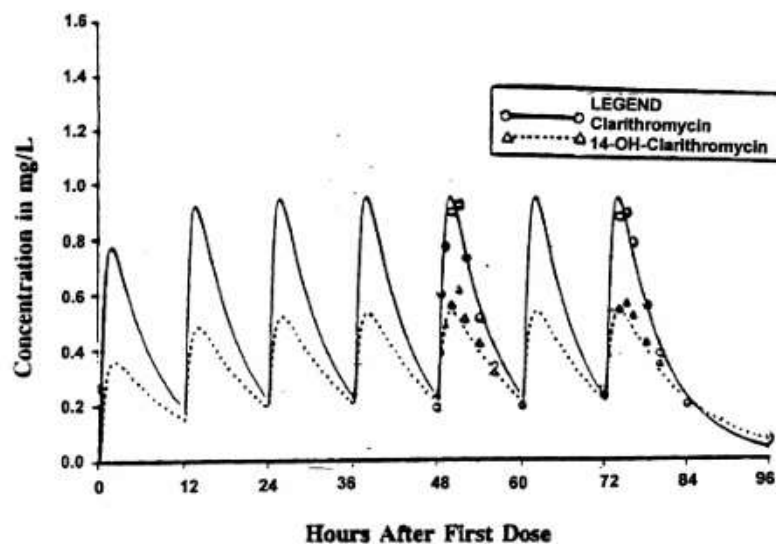


Figure 4: Mean Plasma Concentrations of Clarithromycin and 14-OH-Clarithromycin vs Time Following Seven 250 mg B.I.D. Oral Doses of Clarithromycin

At 250 mg twice daily, approximately 20% of an orally administered dose is excreted in the urine as the unchanged parent drug. The urinary excretion of unchanged clarithromycin is somewhat greater (approximately 30%) with 500 mg twice daily dosing. The renal clearance of

clarithromycin is, however, relatively independent of the dose size and approximates the normal glomerular filtration rate. The major metabolite found in urine is 14-OH-clarithromycin which accounts for an additional 10 to 15% of the dose with twice daily dosing at either 250 mg or 500 mg.

Most of the remainder of the dose is eliminated in the feces, primarily via the bile. About 5 to 10% of the parent drug is recovered from the feces. Fecal metabolites are largely products of N-demethylation, 14-hydroxylation or both.

The steady-state concentrations of clarithromycin in subjects with impaired hepatic function did not differ from those in normal subjects; however, the 14-OH-clarithromycin concentrations were lower in the hepatically impaired subjects. The decreased formation of 14-OH-clarithromycin was at least partially offset by an increase in renal clearance of clarithromycin in the subjects with impaired hepatic function when compared to healthy subjects.

The pharmacokinetics of clarithromycin were also altered in subjects with impaired renal function. See [7 WARNINGS AND PRECAUTIONS, Renal](#) and [4 DOSAGE AND ADMINISTRATION, 4.2 Recommended Dose and Dosage Adjustment](#).

Clarithromycin and Omeprazole

A pharmacokinetic study was conducted with clarithromycin 500 mg three times daily and omeprazole 40 mg once daily. When clarithromycin was given alone at 500 mg every 8 hours, the mean steady-state C_{max} value was approximately 31% higher and the mean C_{min} value was approximately 119% higher than when clarithromycin is compared with a previous study at 500 mg every 12 hours. The mean AUC_{0-24} for clarithromycin was 65% greater when 500 mg clarithromycin was given every 8 hours rather than every 12 hours. Neither T_{max} nor half-life values appeared substantially different between the every-8-hour and every-12-hour regimens.

When clarithromycin was administered with omeprazole, increases in omeprazole half-life and AUC_{0-24} were observed. For all subjects combined, the mean omeprazole AUC_{0-24} was 89% greater and the harmonic mean for omeprazole $t_{1/2}$ was 34% greater when omeprazole was administered with clarithromycin than when omeprazole was administered alone. When clarithromycin was administered with omeprazole, the steady-state C_{max} , C_{min} , and AUC_{0-8} of clarithromycin were increased by 10%, 27%, and 15%, respectively over values achieved when clarithromycin was administered with placebo.

At steady-state, clarithromycin gastric mucus concentrations 6 hours post dosing were approximately 25-fold higher in the clarithromycin/omeprazole group compared with the clarithromycin alone group. Six hours post-dosing, mean clarithromycin gastric tissue concentrations were approximately 2-fold higher when clarithromycin was given with omeprazole than when clarithromycin was given with placebo.

Clarithromycin distributes readily into body tissues and fluids, and provides tissue concentrations that are higher than serum concentrations. Examples from tissue and serum concentrations are presented in Table 19.

Table 19 - Representative Clarithromycin Tissue and Serum Concentrations

| Tissue Type | Concentrations (after 250 mg b.i.d.) | |
|-------------|---|----------------|
| | Tissue (mcg/g) | Serum (mcg/mL) |
| Tonsil | 1.6 | 0.8 |
| Lung | 8.8 | 1.7 |
| Leukocytes* | 9.2 | 1.0 |

* *in vitro* data.
Legend: b.i.d. = twice daily

11 STORAGE, STABILITY AND DISPOSAL

APO-CLARITHROMYCIN (clarithromycin tablets):

Store tablets between 15°C to 30°C in a tightly closed container. Protect from light.

APO-CLARITHROMYCIN XL (clarithromycin prolonged-release tablets):

Store prolonged-release tablets between 15°C to 30°C in a tightly closed container. Protect from light.

12 SPECIAL HANDLING INSTRUCTIONS

There are no further special handling instructions for this product ([see 11 STORAGE, STABILITY AND DISPOSAL](#))

PART II: SCIENTIFIC INFORMATION

13 PHARMACEUTICAL INFORMATION

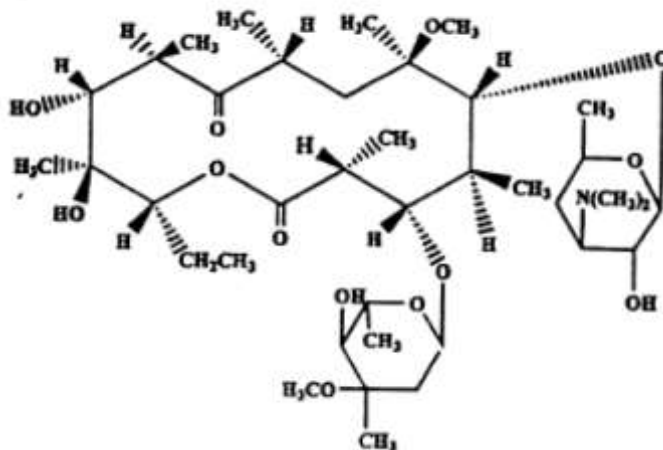
Drug Substance

Proper name: Clarithromycin

Chemical name: (3R*, 4S*, 5S*, 6R*, 7R*, 9R*, 11R*, 12R*, 13S*, 14R*)-4-[(2,6-ideoxy-3-C-methyl-3-O-methyl-alpha-L-ribo-hexopyranosyl)oxy]-14-ethyl-12,13-dihydroxy-7-methoxy-3,5,7,9,11,13-hexamethyl-6-[[[3,4,6-trideoxy-3-(dimethylamino)-beta-D-xylo-hexopyranosyl]oxy]oxacyclotetradecane-2-10-dione.

Molecular formula and Molecular mass: C₃₈H₆₉NO₁₃, 747.96 g/mol

Structural Formula:



Physicochemical properties: Clarithromycin is a white to off-white crystalline powder. It is slightly soluble in methanol, ethanol and acetonitrile, and practically insoluble in water. The pKa of clarithromycin is 8.48; the pH of a 0.2% (Methanol: Water, 5:95) slurry is 8.8.

The partition coefficient of clarithromycin is influenced by the pH of the water phase and polarity of the organic phase. For octanol (dipole moment = 0.25): water, the partition co-efficient varies from 5.63 to 46.0 for pH water increases from 2 to 8. The melting point of clarithromycin is approximately 225°C.

14 CLINICAL TRIALS

14.1 Trial Design and Study Demographics

See [14 CLINICAL TRIALS, 14.2 Study Results - for trial design and study demographics by product and indication.](#)

14.2 Study Results

Clarithromycin Tablets:

Mycobacterial Infections Prophylaxis

Table 20 Summary of Demographics and Trial Design Prophylaxis Against *M. avium* Complex

| Study # | Trial design | Dosage, route of administration and duration | Study subjects Immunocompromised patients with CD4 counts < 100 cells/mcl | Mean age (Range) |
|---------|--------------|--|---|------------------|
| 561 | Double-blind | clarithromycin 500 mg b.i.d. (≈10.6 months) | 341 | Adult |
| | | Placebo b.i.d. (8.2 months) | 341 | |

Legend: b.i.d – twice daily

More patients in the placebo arm than the clarithromycin arm discontinued prematurely from the study (75.6% and 67.4%, respectively). However, if premature discontinuations due to *Mycobacterium avium* complex (MAC) or death are excluded, approximately equal percentages of patients on each arm (54.8% on clarithromycin and 52.5% on placebo) discontinued study drug early for other reasons.

Table 21 Summary of Efficacy Results in Immunocompromised Adult Patients Receiving Prophylaxis Against *M. avium* Complex

| | Clarithromycin | Placebo | Hazard Ratio (95% CI) | p-value | Risk reduction |
|--------------------------|-----------------|-----------------|-----------------------|----------|----------------|
| MAC bacteremia | | | | | |
| # patients developed MAC | 19/333 (5.7%) | 53/334 (15.9%) | 0.307 (0.177, 0.533) | < 0.001* | - 69.3% |
| Survival | | | | | |
| # patients died | 106/341 (31.1%) | 136/341 (39.9%) | 0.710 (0.533, 0.934) | 0.014* | 28.2% |

| | Clarithromycin | Placebo | Hazard Ratio (95% CI) | p- value | Risk reduction |
|--|------------------------------|------------------------------|--------------------------|-------------|-------------------|
| Emergence of MAC Signs/Symptoms | | | | | |
| | # meeting criterion/total | # meeting criterion/total | | | |
| Wt. loss >10% | 5/333 (2%) | 23/322 (7%) | 0.179 (0.067, 0.481) | 0.001* | 82.1% |
| Moderate/severe pyrexia | 2/332 (<1%) | 10/329 (3%) | 0.191 (0.041, 0.883) | 0.034* | 80.9% |
| Moderate/severe night sweats | 1/325 (<1%) | 7/327 (2%) | 0.130 (0.016, 1.081) | 0.059 | 87.0% |
| Mod./severe night sweats or pyrexia | 2/325 (<1%) | 13/326 (4%) | 0.140 (0.031, 0.632) | 0.011* | 86.0% |
| Moderate/severe anemia | 0/319 (0%) | | 0 | | |
| Grade 3 or 4 LFT | 3/325 (<1%) | | 0.739 (0.118, 4.649) | 0.747 | |
| Quality of Life Subscores (time to first decrease of ≥ 10 points) | | | | | |
| | # meeting criterion/total | # meeting criterion/total | | | |
| Overall health | 180/317 (57%) | 184/318 (58%) | 0.809 (0.645, 1.015) | 0.068 | |
| Physical function | 210/299 (70%) | 236/306 (77%) | 0.781 (0.637, 0.956) | 0.017* | - 21.9% |
| Role function | 111/189 (59%) | 131/211 (62%) | 0.922 (0.690, 1.233) | 0.585 | |
| Social function | 187/327 (57%) | 197/331 (60%) | 0.823 (0.662, 1.024) | 0.08 | |
| Cognitive function | 174/336 (52%) | 170/339 (50%) | 0.990 (0.790, 1.240) | 0.929 | |
| Pain | 201/331 (61%) | 217/336 (65%) | 0.902 (0.731, 1.113) | 0.355 | |
| Mental Health | 179/336 (53%) | 184/338 (54%) | 0.842 (0.672, 1.055) | 0.134 | |
| Energy/fatigue | 208/328 (63%) | 217/335 (65%) | 0.784 (0.636, 0.966) | 0.022* | - 21.6% |
| Health distress | 170/335 (51%) | 191/335 (57%) | 0.807 (0.647, 1.007) | 0.057 | |
| Quality of life | 199/330 (60%) | 199/333 (60%) | 0.902 (0.727, 1.120) | 0.352 | |
| Hospitalization | | | | | |

| | Clarithromycin | Placebo | Hazard Ratio (95% CI) | p-value | Risk reduction |
|-------------------------|----------------|---------------|-----------------------|---------|----------------|
| # patients hospitalized | 166/339 (49%) | 189/330 (57%) | 0.764 (0.610, 0.955) | 0.018* | - 23.6% |

On an intent-to-treat basis, the 1-year cumulative incidence of MAC bacteremia was 5.0% for patients randomized to clarithromycin and 19.4% for patients randomized to placebo (Table 21). While only 19 of the 341 patients randomized to clarithromycin developed MAC, 11 of these cases were resistant to clarithromycin. The patients with resistant MAC bacteremia had a median baseline CD₄ count of 10 cells/mm³ (range 2 to 25 cells/mm³). Information regarding the clinical course and response to treatment of the patients with resistant MAC bacteremia is limited. The 8 patients who received clarithromycin and developed susceptible MAC bacteremia had a median baseline CD₄ count of 25 cells/mm³ (range 10 to 80 cells/mm³). Comparatively, 53 of the 341 placebo patients developed MAC; none of these isolates were resistant to clarithromycin. The median baseline CD₄ count was 15 cells/mm³ for placebo patients that developed MAC.

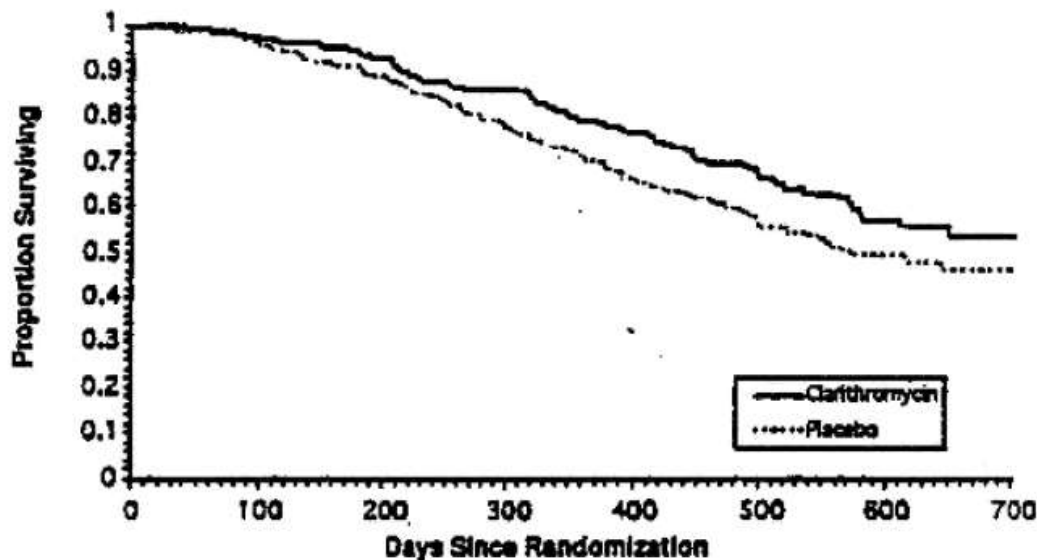


Figure 5: Survival of All Randomized Immunocompromised Adult Patients Receiving Clarithromycin in Prophylaxis Against *M. avium* Complex or Placebo

Table 22 Cumulative Incidence of MAC Bacteremia and Mortality in Immunocompromised Adult Patients Receiving Prophylaxis Against *M. avium* Complex

| | Cumulative Incidence of MAC Bacteremia* | | Cumulative Mortality | |
|---------|---|---------|----------------------|---------|
| | Clarithromycin | Placebo | Clarithromycin | Placebo |
| 6 month | 1.0 % | 9.5 % | 6.4 % | 9.3 % |

| | | | | |
|--------------------------------|--------|--------|--------|--------|
| 12 month | 5.0 % | 19.4 % | 20.8 % | 29.7 % |
| 18 month | 10.1 % | 26.8 % | 36.8 % | 46.8 % |
| * from Kaplan-Meier estimates. | | | | |

Since the analysis at 18 months includes patients no longer receiving prophylaxis the survival benefit of clarithromycin may be underestimated.

Treatment of Mycobacterial Infections:

Three studies summarized in Table 23 were designed to evaluate the following end points:

- Change in MAC bacteremia or blood cultures negative for *M. avium*.
- Change in clinical signs and symptoms of MAC infection including one or more of the following: fever, night sweats, weight loss, diarrhea, splenomegaly, and hepatomegaly.

Table 23 Summary of Demographics and Trial Design Efficacy of Clarithromycin in the Treatment of Mycobacterial Infections

| Study # | Trial design | Dosage, route of administration and duration | Study subjects (n=number) | Mean age (Range) |
|--|--------------------------|--|---|------------------|
| 500 | Randomized, double-blind | 500 mg b.i.d 1000 mg b.i.d 2000 mg b.i.d. | CDC-defined AIDS and CD ₄ counts < 100 cells/mcL (n=154) | Adult |
| 577 | Open -label* | 500 mg b.i.d 1000 mg b.i.d | CDC-defined AIDS and CD ₄ counts < 100 cells/mcL (n=469) | Adult |
| 521 | Pediatric Study | 3.75 mg/kg b.i.d. 7.5 mg/kg b.i.d. 15 mg/kg b.i.d. | CDC-defined AIDS and CD ₄ counts < 100 cells/mcL (n=25) | 1-20 mo |
| * compassionate use. Legend: b.i.d. = twice daily | | | | |

The results of the Study 500 are described below. The Study 577 results were similar to the results of the Study 500. Results with the 7.5 mg/kg twice daily dose in the pediatric study were comparable to those for the 500 mg twice daily regimen in the adult studies.

MAC Bacteremia:

Decreases in MAC bacteremia or negative blood cultures were seen in the majority of patients in all dose groups. Mean reductions in colony forming units (CFU) are shown below. Included in the table are results from a separate study with a 4-drug regimen (ciprofloxacin, ethambutol, rifampicin, and clofazimine). Since patient populations and study procedures may vary between

these 2 studies, comparisons between the clarithromycin results and the combination therapy results should be interpreted cautiously

Table 24 Mean Reductions in Log CFU from Baseline (After 4 Weeks of Therapy)

| 500 mg b.i.d. | 1000 mg b.i.d. | 2000 mg b.i.d. | Four Drug Regimen |
|------------------------------|-----------------------|-----------------------|--------------------------|
| (N=35) | (N=32) | (N=26) | (N=24) |
| 1.5 | 2.3 | 2.3 | 1.4 |
| Legend: b.i.d. = twice daily | | | |

Although the 1000 mg and 2000 mg twice daily doses showed significantly better control of bacteremia during the first 4 weeks during therapy, no significant differences were seen beyond that point. The percent of patients whose blood was sterilized as shown by 1 or more negative cultures at any time during acute therapy was 61% (30/49) for the 500 mg twice daily group and 59% (29/49) and 52% (25/28) for the 1000 and 2000 mg twice daily groups, respectively. The percent of patients who had 2 or more negative cultures during acute therapy that were sustained through study Day 84 was 25% (12/49) in both the 500 and 1000 mg twice daily groups and 8% (4/48) for the 2000 mg twice daily group. By Day 84, 23% (11/49), 37% (18/49), and 56% (27/48) of patients had died or discontinued from the study, and 14% (7/49), 12% (6/49), and 13% (6/48) of patients had relapsed in the 500, 1000, and 2000 mg twice daily dose groups, respectively. All of the isolates had a minimum inhibitory concentration (MIC) < 8 mcg/mL at pretreatment. Relapse was almost always accompanied by an increase in MIC. The median time to first negative culture was 54, 41, and 29 days for the 500, 1000, and 2000 mg twice daily groups, respectively.

Clinically Significant Disseminated MAC Disease:

Among patients experiencing night sweats prior to therapy, 84% showed resolution or improvement at some point during the 12 weeks of clarithromycin at 500 to 2000 mg twice daily doses. Similarly, 77% of patients reported resolution or improvement in fevers at some point. Response rates for clinical signs of MAC are given in Table 25.

Table 25 Response Rates for Clinical Signs of MAC

| Resolution of Fever | | | Resolution of Night Sweats | | |
|----------------------------|-----------------|----------------------|-------------------------------------|-------------------|------------------------|
| b.i.d. dose (mg) | % ever afebrile | % afebrile ≥ 6 weeks | b.i.d. dose (mg) | % ever resolving | % resolving ≥ 6 weeks |
| 500 | 67 | 23 | 500 | 85 | 42 |
| 1000 | 67 | 12 | 1000 | 70 | 33 |
| 2000 | 62 | 22 | 2000 | 72 | 36 |
| Weight Gain > 3% | | | Hemoglobin Increase > 1 g | | |
| b.i.d. dose (mg) | % ever gaining | % gaining ≥ 6 weeks | b.i.d. dose (mg) | % ever increasing | % increasing ≥ 6 weeks |

| | | | | | |
|------------------------------|----|----|------|----|----|
| 500 | 33 | 14 | 500 | 58 | 26 |
| 1000 | 26 | 17 | 1000 | 37 | 6 |
| 2000 | 26 | 12 | 2000 | 62 | 18 |
| Legend: b.i.d. = twice daily | | | | | |

The median duration of response, defined as improvement of resolution of clinical signs and symptoms, was 2 to 6 weeks.

Since the study was not designed to determine the benefit of monotherapy beyond 12 weeks, the duration of response may be underestimated for the 25 to 33% of patients who continued to show clinical response after 12 weeks.

Survival:

Median survival time from study entry (Study 500) was 249 days at the 500 mg twice daily dose compared to 215 days with the 1000 mg twice daily dose. However, during the first 12 weeks of therapy, there were 2 deaths in 53 patients in the 500 mg twice daily group *versus* 13 deaths in 51 patients in the 1000 mg twice daily group. The reason for this apparent mortality difference is not known. Survival in the 2 groups was similar beyond 12 weeks. The median survival times for these dosages were similar to recent historical controls with MAC when treated with combination therapies.

Median survival time from study entry in Study 577 was 199 days for the 500 mg twice daily dose and 179 days for the 1000 mg twice daily dose. During the first 4 weeks of therapy, while patients were maintained on their originally assigned dose, there were 11 deaths in 255 patients taking 500 mg twice daily and 18 deaths in 214 patients taking 1000 mg twice daily.

Otitis Media:

In a controlled clinical study (317) of acute otitis media performed in the United States, where significant rates of beta-lactamase producing organisms were found, clarithromycin was compared to an oral cephalosporin. In a small number of patients, microbiologic determinations were made at the pre-treatment visit. Table 27 summarizes the presumptive bacterial eradications/clinical cure outcomes (i.e., clinical success). A summary of the study demographics and trial design is presented below.

Table 26 - Summary of Demographics and Trial Design U.S. Acute Otitis Media Study Clarithromycin *versus* Oral Cephalosporin

| Study # | Trial design | Dosage, route of administration and duration | Study subjects (n=number) | Mean age (Range) |
|--|---|--|---------------------------|---|
| 317 | Phase III, single-blind (investigator-blind), randomized, multicenter | clarithromycin suspension 7.5 mg/kg/dose (max 500 mg) b.i.d. cefaclor suspension 20 mg/kg (max 100 mg q.d.) b.i.d. | 379 patients | Clarithromycin: 3.8 (0 to 13 years) Cefaclor: 4.0 (0 to 12 years) |
| | | oral | | |
| | | 10 days | | |
| 497 | Phase III, single-blind (investigator-blind), randomized, multicenter | clarithromycin suspension 7.5 mg/kg/dose (max 500 mg) b.i.d. Augmentin suspension 13.3 mg/ kg/ dose of the amoxicillin component (max 500 mg) q8h | 433 | Clarithromycin: 3.5 (0 to 12 years) Augmentin: 3.3 (0 to 12 years) |
| | | oral | | |
| | | 10 days | | |
| 649 | Phase III, single-blind (investigator-blind), randomized, multicenter | clarithromycin suspension 7.5 mg/kg/dose (max 500 mg) b.i.d. Augmentin suspension 13.3 mg/kg/dose of the amoxicillin component (max 500 mg) | 312 | Clarithromycin: 3.1 (6 months to 12 years) Augmentin: 3.5 (6 months to 12 years) |
| | | oral | | |
| | | 10 days | | |
| Legend: b.i.d. = twice daily; q8h = every 8 hours; q.d. = once daily | | | | |

Table 27 - U.S. Acute Otitis Media Study Clarithromycin versus Oral Cephalosporin

| Pathogen | Efficacy Results Outcome |
|---|--|
| <i>S. pneumoniae</i> | clarithromycin success rate, 13/15 (87%), control 4/5 |
| <i>H. influenzae</i> * | clarithromycin success rate, 10/14 (71%), control 3/4 |
| <i>M. catarrhalis</i> | clarithromycin success rate, 4/5, control 1/1 |
| <i>S. pyogenes</i> | clarithromycin success rate, 3/3, control 0/1 |
| Overall | clarithromycin success rate, 30/37 (81%), control 8/11 (73%) |
| * None of the <i>H. influenzae</i> isolated pre-treatment were resistant to clarithromycin; 6% were resistant to the control agent. | |

The incidence of adverse events in all patients treated, primarily diarrhea (15% vs. 38%) and diaper rash (3% vs. 11%) in young children, was clinically or statistically lower in the clarithromycin arm versus the control arm.

In 2 other controlled clinical trials of acute otitis media performed in the United States, where

significant rates of beta-lactamase producing organisms were found, clarithromycin was compared to an oral antimicrobial agent that contained a specific beta-lactamase inhibitor.

For the patients who had microbiologic determinations at the pre-treatment visit, Table 28 summarizes the presumptive bacterial eradication/clinical cure outcomes (i.e., clinical success).

Table 28 Two U.S. Acute Otitis Media Studies Clarithromycin versus Antimicrobial/Beta-Lactamase Inhibitor

| Pathogen | Efficacy Results Outcome |
|--|---|
| <i>S. pneumoniae</i> | clarithromycin success rate, 43/51 (84%), control 55/56 (98%) |
| <i>H. influenzae</i> * | clarithromycin success rate, 36/45 (80%), control 31/33 (94%) |
| <i>M. catarrhalis</i> | clarithromycin success rate, 9/10 (90%), control 6/6 |
| <i>S. pyogenes</i> | clarithromycin success rate, 3/3, control 5/5 |
| Overall | clarithromycin success rate, 91/109 (83%), control 97/100 (97%) |
| * Of the <i>H. influenzae</i> isolated pre-treatment, 3% were resistant to clarithromycin and 10% were resistant to the control agent. | |

The incidence of adverse events in all patients treated, primarily diarrhea and vomiting, did not differ clinically or statistically for the 2 agents.

Appropriate culture and susceptibility tests should be performed prior to initiating treatment in order to isolate and identify organisms causing the infection and to determine their susceptibilities to clarithromycin. Therapy with clarithromycin may be initiated before results of these tests are known. However, modification of this treatment may be required once results become available or if there is no clinical improvement.

Eradication of *Helicobacter pylori*

Triple Therapy: clarithromycin tablets/omeprazole/amoxicillin

In a well controlled double-blind study, *Helicobacter pylori* (*H. pylori*) infected duodenal ulcer patients received triple therapy with clarithromycin 500 mg twice daily, omeprazole 20 mg daily and amoxicillin 1000 mg twice daily for 10 days or dual therapy with clarithromycin 500 mg three times daily and omeprazole 40 mg daily for 14 days. *H. pylori* was eradicated in 90% of the patients receiving clarithromycin triple therapy and in 60% of the patients receiving dual therapy.

A summary of the Trial Design is presented in Table 29.

Table 29 Summary of the Trial Design Efficacy of Clarithromycin in the Eradication of *Helicobacter pylori* - Triple Therapy

| Study # | Trial design | Dosage, route of administration and duration | Study subjects (n=number) | Mean age (Range) |
|---|--|--|---------------------------|------------------|
| 183 | Phase III, randomized, double-blind, multicenter | <p><u>Treatment 1</u> Clarithromycin 500 mg b.i.d. with Omeprazole 20 mg q.d. and Amoxicillin 1000 mg b.i.d.</p> <p><u>Treatment 2</u> Clarithromycin 500 mg b.i.d. with Omeprazole 40 mg q.d.</p> | 267 patients | 18 to 75 years |
| | | oral | | |
| | | <p><i>Treatment 1</i>: 10 days <i>Treatment 2</i>: 14 days</p> | | |
| Legend: b.i.d. = twice daily; q.d. = once daily | | | | |

The ulcer healing rates and corresponding 95% confidence intervals are presented in Table 30.

Table 30 Ulcer Healing [95% C.I.] at 4- to 6-Week Follow-up

| Patient Subset | Clarithromycin + Omeprazole + Amoxicillin | Clarithromycin + Omeprazole | p-value |
|--|---|-------------------------------|---------|
| Clinically Evaluable | 93% (118/127) [87.0, 96.7] | 91% (104/114) [84.5, 95.7] | 0.641 |
| Intent-to-Treat #1 | 93% (122/131) [87.4, 96.8] | 92% (111/121) [85.3, 96.0] | 0.812 |
| Intent-to-Treat #2 | 90% (122/136) [83.3, 94.3] | 85% (111/130) [78.1, 91.0] | 0.353 |
| <ul style="list-style-type: none"> An ulcer was defined as a circumscribed break in the duodenal mucosa that measured 5 to 25 mm in the longest diameter with apparent depth and was covered with an exudate. Duodenal ulcer was identified by endoscopy and <i>H. pylori</i> infection at baseline was defined as at least two of three positive tests from ¹³C UBT, CLOtest®, histology and culture. <i>H. pylori</i> eradication at 4 to 6 weeks posttreatment was defined as at least two of three negative tests from ¹³C UBT gastric biopsy for culture, histology and CLOtest®. <p>Intent-to-Treat #1: excluded patients with no confirmed evidence of <i>H. pylori</i> pretreatment, patients who had no duodenal ulcer pretreatment, and patients who did not return for a particular visit or did not have a particular procedure performed (e.g., endoscopy).</p> <p>Intent-to-Treat #2: excluded patients with no confirmed evidence of <i>H. pylori</i> pretreatment and patients with no duodenal ulcer pretreatment, but included as failures patients who did not return for a particular visit or did not have a particular procedure performed (e.g., endoscopy).</p> | | | |

The *H. pylori* eradication rates and corresponding 95% confidence intervals are summarized in Table 31.

For all patient subsets, triple therapy with clarithromycin, omeprazole, and amoxicillin achieved a statistically higher eradication rate than dual therapy ($p < 0.001$). These differences were also observed when the eradication rates were adjusted for potentially influential factors such as ulcer characteristics, age, and smoking. In addition, the eradication rates within each treatment group were similar for smokers and non-smokers.

Table 31 - Global Eradication [95% C.I.] at 4- to 6-Week Follow-up

| | Clarithromycin + Omeprazole + | Clarithromycin + Omeprazole | p-value |
|--------------------------------|--|--|----------------|
| Bacteriologically Evaluable | 91% (115/127) [84.1, 95.0] | 59% (68/115) [49.6, 68.2] | < 0.001 |
| Intent-to-Treat #1 | 90% (120/133) [83.9, 94.7] | 60% (72/120) [50.7, 68.8] | < 0.001 |
| Intent-to-Treat #2 | 88% (120/136) [81.6, 93.1] | 55% (72/130) [46.4, 64.1] | < 0.001 |

- An ulcer was defined as a circumscribed break in the duodenal mucosa that measured 5 to 25 mm in the longest diameter with apparent depth and was covered with an exudate.
- Duodenal ulcer was identified by endoscopy and *H. pylori* infection at baseline was defined as at least two of three positive tests from ¹³C UBT, CLOtest[®], histology and culture.
- *H. pylori* eradication at 4 to 6 weeks post-treatment was defined as at least two of three negative tests from ¹³C UBT gastric biopsy for culture, histology and CLOtest[®].

Intent-to-Treat #1: excluded patients with no confirmed evidence of *H. pylori* pretreatment, patients who had no duodenal ulcer pretreatment, and patients who did not return for a particular visit or did not have a particular procedure performed (e.g., endoscopy).

Intent-to-Treat #2: excluded patients with no confirmed evidence of *H. pylori* pretreatment and patients with no duodenal ulcer pretreatment, but included as failures patients who did not return for a particular visit or did not have a particular procedure performed (e.g., endoscopy).

International, Randomized, Double-Blind, Placebo-Controlled Study

In an international, randomized, double-blind, placebo-controlled study involving more than 100 patients in each of 6 treatment groups, patients with proven duodenal ulcer disease were randomized to treatment twice daily for 1 week with omeprazole, 20 mg (O), plus either placebo (P) or combinations of 2 of the following antimicrobials: amoxicillin, 1g (A), clarithromycin, 250 mg or 500 mg (C250, C500), or metronidazole, 400 mg (M). *H. pylori*

eradication rates for the “all-patients-treated” analysis were 96% (OAC500), 95% (OMC250), 90% (OMC500), 84% (OAC250), 79% (OAM), and 1% (OP).

Independent, Open and Non-Randomized Study

In an independent, open, and non-randomized study, *H. pylori* infected patients received eradication therapy with clarithromycin 500 mg twice daily in conjunction with amoxicillin 1000 mg twice daily and omeprazole 20 mg once daily (Group A) or omeprazole 20 mg twice daily (Group B) for 7 days. In those patients not previously treated with anti-*H. pylori* therapy, *H. pylori* was eradicated in 86% (95% CI=69-95) of patients in Group A and 75% (95% CI=62-85) of patients in Group B, the difference was not statistically significant.

(For additional information on the use of APO-CLARITHROMYCIN in triple therapy for the treatment of *H. pylori* infection and active duodenal ulcer recurrence, refer to the Hp-PAC® Product Monograph).

Clarithromycin Prolonged-Release Tablets

The clinical and the bacteriological cure rates for all Clinically and Bacteriologically Evaluable Subjects treated with clarithromycin prolonged-release in the Community-Acquired Pneumonia (CAP) pivotal study were 87% and 86%, respectively.

Clinical and bacteriological cure rates with the corresponding confidence intervals for Clinically and Bacteriologically Evaluable Subjects in 2 Studies are presented in Table 33.

A summary of the study demographics and trial design is presented below.

| Table 32 Summary of Demographics and Trial Design | | | | |
|--|--|---|----------------------------------|---|
| Study # | Trial design | Dosage, route of administration and duration | Study subjects (n=number) | Mean age (Range) |
| Pivotal Study: M99-077 | Phase III, double-blind, randomized, parallel-group, multicenter | clarithromycin prolonged-release tablets 2 x 500 mg q.d. | 299 | clarithromycin: 49 (19 to 89 years) levofloxacin: 51.2 (18 to 91 years) |
| levofloxacin tablets 2 x 250 mg q.d. | | | | |
| oral 7 days | | | | |
| Non-Pivotal Study: M98-927 | Phase III, double-blind, randomized, parallel- | clarithromycin IR tablets 1 x 250 mg b.i.d. /clarithromycin prolonged-release tablets 2 x 500 mg q.d. | 176 | clarithromycin prolonged-release: 47.6 (19 to 81 years) clarithromycin IR: 49.1 (18 to 76 years) |

| | | | | |
|--|-----------------------|---|--|--|
| | group, multicenter | trovafloxacin mesylate tablets (placed in capsules) 1 x 200 mg q.d. | | trovafloxacin : 47.3 (19 to 80 years) |
| | | oral | | |
| | | 7 days | | |

Legend: ; q.d. = once daily

| Table 33 | | |
|---|--|--|
| Clinical Cure Rates and Bacteriological Cure Rate at the Test-of-Cure Visit* | | |
| | Pivotal Study | Non Pivotal Study |
| | Clarithromycin Prolonged-Release n/N (%) [95% CI] ^a | Clarithromycin Prolonged-Release n/N (%) [95% CI] ^a |
| Clinical Cure Rate ^b | 81/93 (87%) [78.5, 93.2] | 52/58 (90%) [78.8, 96.1] |
| P-value ^c ; [95% CI] ^d | > 0.999, [-10.0, 8.9] | 0.292, [-15.8, 3.6] |
| Bacteriological Cure Rate ^b | 80/93 (86%) [77.3, 92.3] | 52/58 (90%) [78.8, 96.1] |
| P-value ^c ; [95% CI] ^d | 0.831, [-11.2, 8.0] ^e | 0.728, [-14.5, 6.5] ^f |

^a Exact binomial confidence interval.
^b Assessment was made after 7 days posttreatment in pivotal study and between 7-28 days posttreatment in non-pivotal study unless the subject was a prior clinical failure.
^c P-value is from Fisher's exact test comparing treatment groups.
^d Binomial confidence interval based on normal approximation.
^e comparator is levofloxacin
^f comparator is trovafloxacin mesylate
* Clinically and Bacteriologically Evaluable Subjects in the CAP Studies

Acute Bacterial Exacerbation of Chronic Bronchitis

TARO-CLARITHROMYCIN XL (clarithromycin prolonged-release tablets)

5-Day Treatment Regimen

One double-blind, controlled study was conducted to evaluate efficacy and safety of clarithromycin prolonged-release 1000 mg once daily for 5 days treatment of ABECB, as presented in Table 34.

| Table 34 Summary of Demographics and Trial Design Efficacy of Clarithromycin Prolonged-Release in Acute Bacterial Exacerbation of Chronic Bronchitis – 5-day treatment | | | | |
|---|--|---|-------------------------------|---|
| Study # | Trial design | Dosage, route of administration and duration | Study subjects (n=number) | Mean age (Range) |
| 472 | Phase III, Double-blind, randomized, parallel-group, multicenter | Clarithromycin prolonged-release 2 x 500 mg q.d for 5 days Clarithromycin IR 500 mg b.i.d for 7 days Oral | Patients with ABECB (n = 485) | Clarithromycin prolonged-release 62.1 (18-93) Clarithromycin IR 61.6 (34-88) |
| Legend: b.i.d. = twice daily; q.d. = once daily; IR = immediate-release | | | | |

The bacteriological cure rate for all Clinically and Bacteriologically Evaluable Subjects treated with clarithromycin prolonged-release in the Acute Bacterial Exacerbation of Chronic Bronchitis (ABECB) pivotal study was 87%.

Bacteriological cure rates with the corresponding confidence intervals for Clinically and Bacteriologically Evaluable Subjects are presented in Table 35.

| Table 35 Bacteriological Cure Rates at the Test-of-Cure Visit* | | |
|---|--|---------------------------|
| | Clarithromycin Prolonged-Release n/N (%) | Clarithromycin IR n/N (%) |
| Bacteriological Cure Rate ^b | 82/94 (87%) | 91/102 (89%) |
| 95% CI ^a | [78.8, 93.2] | [81.5, 94.5] |
| Comparison of Cure Rates | | |
| P-value ^c ; | p = 0.825 | |
| 95% CI for Difference in Cure Rate ^d | [-11.6, 7.6] | |
| ^a Exact binomial confidence interval. ^b Bacteriological assessment was made at Evaluation 4 (between Study Days 14 and 40), unless the subject was a bacteriological failure. ^c P-value is from Fisher's exact test comparing treatment groups. ^d Binomial confidence interval based on normal distribution approximation with a continuity correction * Clinically and Bacteriologically Evaluable Subjects in the ABECB Study Legend: ; IR = immediate-release | | |

The clinical cure rates for all Clinically and Bacteriologically Evaluable Subjects treated with clarithromycin prolonged-release in the Acute Bacterial Exacerbation of Chronic Bronchitis (ABECB) pivotal study are presented in Table 36.

| Table 36 | | | |
|---|---|--------------------------|----------------------------|
| Clinical Cure Rates for Target Pathogens | | | |
| Pretreatment Target Pathogen | Clarithromycin Prolonged-Release | Clarithromycin IR | p-value^a |
| <i>H. influenzae</i> | 34/40 (85%) | 34/38 (89%) | 0.738 |
| <i>H. parainfluenzae</i> | 23/28 (82%) | 39/43 (91%) | 0.304 |
| <i>M. catarrhalis</i> | 24/26 (92%) | 14/18 (78%) | 0.208 |
| <i>S. pneumoniae</i> | 14/19 (74%) | 15/20 (75%) | > 0.999 |
| <i>S. aureus</i> | 7/9 (78%) | 10/12 (83%) | > 0.999 |

a p-value from Fisher's exact test comparing treatment groups
Legend: IR = immediate-release

Long-term (3 months) recurrence rates of ABECB after 5-day treatment with clarithromycin prolonged-release has not been investigated in the pivotal trial.

7-Day Treatment Regimen

One double-blind controlled clinical trial was conducted to evaluate the efficacy and safety of clarithromycin 500 mg two tablets once daily for 7 days treatment of ABECB, as presented in Table 37.

| Table 37 | | | | |
|--|--|---|----------------------------------|--------------------------|
| Summary of Demographics and Trial Design | | | | |
| Efficacy of Clarithromycin Prolonged-Release in Acute Bacterial Exacerbation of Chronic Bronchitis-7 days treatment | | | | |
| Study # | Trial design | Dosage, route of administration and duration | Study subjects (n=number) | Mean age (Range) |
| 756 | Phase III, Double-blind, randomized, parallel-group, multicenter | Clarithromycin prolonged-release 2 x 500 mg q.d for 7 days Clarithromycin IR 500 mg b.i.d for 7 days | Patients with ABECB (n = 627) | 54.4 years (14 to 89) |

Legend: b.i.d. = twice daily; q.d. = once daily; ; IR = immediate-release

The primary efficacy parameters evaluated in Study 756 were the bacteriological cure rates, target pathogen eradication and clinical cure rates. Bacteriological and clinical cure rates with the corresponding confidence intervals for Clinically and Bacteriologically Evaluable Subjects are presented in Table 38.

| Table 38 | | | |
|--|--|---|---|
| Bacteriological and Clinical Cure Rates at Test-of-Cure Visit - Study 756 | | | |
| | Clarithromycin Prolonged-Release n/N (%) [95% CI] ^b | Clarithromycin IR n/N (%) [95% CI] ^b | P-value ^a [95% CI] ^c |
| Bacteriological Cure Rate ^d | 85/99* (86%) [77.4, 92.0] | 70/82 (85%) [75.8, 92.2] | > 0.999 [-9.8, 10.8] |
| Clinical Cure Rate | 83/100 (83 %) [74.2, 89.8] | 67/82 (82%) [71.6, 89.4] | 0.847 [-9.9, 12.4] |

*One subject with indeterminate bacteriological response was not included in calculating the rate.

^a P-value is from Fisher's exact test comparing treatment groups.

^b Exact binomial confidence interval.

^c Binomial confidence interval based on normal approximation.

^d Assessment was made at Evaluation 3 (7 to 23 days post-treatment) unless the subject was a bacteriological failure before Evaluation 3.

Legend: IR = immediate-release

Overall eradication rates and corresponding confidence intervals, as well as target pathogen eradication rates, for clinically and bacteriologically evaluable subjects are presented in Table 39.

| Table 39 | | | |
|--|--|---|---|
| Target Pathogen Eradication Rates at Test-of-Cure Visit - Study 756 | | | |
| | Clarithromycin Prolonged-Release n/N (%) [95% CI] ^b | Clarithromycin IR n/N (%) [95% CI] ^b | P-value ^a [95% CI] ^c |
| Overall Pathogen Eradication Rate ^d | 100/116 (86 %) [78.6, 91.9] | 86/98 (88%) [79.6, 93.5] | 0.840 [-10.6, 7.5] |
| Eradication Rate ^d | | | |
| <i>H. influenzae</i> | 22/28 (79%) | 17/22 (77%) | 0.840 [-10.6, 7.5] |
| <i>M. catarrhalis</i> | 22/25* (88%) | 25/26* (96%) | |
| <i>S. pneumoniae</i> | 22/25 (88%) | 9/11 (82%) | |
| <i>H. parainfluenzae</i> | 24/26 (92%) | 25/28 (89%) | |
| <i>S. aureus</i> | 10/12 (83%) | 10/11 (91%) | |

*One subject with indeterminate bacteriological response was not included in calculating the rate.

^a P-value is from Fisher's exact test comparing treatment groups.

^b Exact binomial confidence interval.

^c Binomial confidence interval based on normal approximation.

^d Assessment was made at Evaluation 3 (7 to 23 days post-treatment) unless the subject was a bacteriological failure before Evaluation 3.

14.3 Comparative Bioavailability Studies

APO-CLARITHROMYCIN (clarithromycin tablets)

A single-dose, 2-way, comparative crossover bioavailability study of APO-CLARITHROMYCIN Tablets, 500 mg (APOTEX INC.) and ^{Pr}BIAXIN® BID Tablets, 500 mg (Abbott Laboratories Ltd.) was conducted in 21 healthy, adult, male subjects under fasting conditions. Comparative bioavailability data from 21 subjects that were included in the statistical analysis are presented in the following table

SUMMARY TABLES OF THE COMPARATIVE BIOAVAILABILITY DATA

| CLARITHROMYCIN (1 X 500 MG CLARITHROMYCIN) GEOMETRIC MEAN ARITHMETIC MEAN (CV%) | | | | |
|--|---------------------|------------------------|------------------------------------|-------------------------------|
| Parameter | Test ¹ | Reference ² | RATIO OF GEOMETRIC MEANS (%) | 90% Confidence Interval |
| AUC _T (ng·h/mL) | 11743 12193 (29) | 12259 13168 (39) | 95.9 | 86.5 – 106.3 |
| AUC _I (ng·h/mL) | 12382 12852 (29) | 12823 13745 (39) | 96.5 | 88.0 - 105.9 |
| C _{max} (ng/mL) | 1676 1762 (34) | 1638 1800 (45) | 102.6 | 86.2 – 122.2 |
| T _{max} ³ (h) | 2.33 (0.50-8.00) | 2.33 (1.00-8.00) | | |
| T _{1/2} ⁴ (h) | 4.85 (37) | 4.97 (28) | | |
| ¹ APO-CLARITHROMYCIN (clarithromycin) Tablets, 500 mg (APOTEX INC.) ² ^{Pr} BIAXIN® BID (clarithromycin) Tablets, 500 mg (Abbott Laboratories, Ltd., Canada) ³ Expressed as median (range) only ⁴ Expressed as arithmetic mean (CV %) only | | | | |

APO-CLARITHROMYCIN XL (clarithromycin prolonged-release tablets)

Fasting conditions

A randomized, single-dose, double-blinded, 2-way crossover comparative bioavailability study of APO-CLARITHROMYCIN XL Prolonged-Release Tablets, 500 mg (APOTEX INC.) and ^{Pr}BIAXIN® XL Extended-Release Tablets, 500 mg (Abbott Laboratories Ltd.) was conducted in 28 healthy, adult, Asian male subjects under fasting conditions. Comparative bioavailability data from 26 subjects that were included in the statistical analysis are presented in the following table:

SUMMARY TABLES OF THE COMPARATIVE BIOAVAILABILITY DATA

| CLARITHROMYCIN (1 X 500 MG CLARITHROMYCIN) GEOMETRIC MEAN ARITHMETIC MEAN (CV%) | | | | |
|--|-------------------------|-------------------------|------------------------------|-------------------------|
| Parameter | TEST ¹ | REFERENCE ² | Ratio of Geometric Means (%) | 90% Confidence Interval |
| AUC _T (ng·h/mL) | 17300.9 18855.3 (39) | 17996.5 19547.5 (37) | 96.1 | 83.3 – 111.0 |
| AUC _I (ng·h/mL) | 17603.6 19136.5 (38) | 18365.9 19937.5 (37) | 95.8 | 83.2 – 110.5 |
| C _{max} (ng/mL) | 1053.6 1127.6 (39) | 1055.7 1112.8 (32) | 99.8 | 88.8 – 112.1 |
| T _{max} ³ (h) | 5.50 (1.00 – 16.00) | 9.50 (4.00 – 15.00) | | |
| T _{1/2} ⁴ (h) | 4.64 (15) | 4.70 (14) | | |
| ¹ APO-CLARITHROMYCIN XL (clarithromycin) Prolonged-Release Tablets, 500 mg (APOTEX INC.) ² PrBIAXIN [®] XL (clarithromycin) Extended-Release Tablets, 500 mg (Abbott Laboratories, Ltd., Canada) ³ Expressed as median (range) only ⁴ Expressed as arithmetic mean (CV %) only | | | | |

High-fat, high-calorie fed conditions

A randomized, single-dose, double-blinded, 2-way crossover comparative bioavailability study of APO-CLARITHROMYCIN XL Prolonged-Release Tablets, 500 mg (APOTEX INC.) and PrBIAXIN[®] XL Extended-Release Tablets, 500 mg (Abbott Laboratories Ltd.) was conducted in 26 healthy, adult, Asian, male subjects under high-fat, high calorie fed conditions. Comparative bioavailability data from 25 subjects that were included in the statistical analysis are presented in the following table

SUMMARY TABLES OF THE COMPARATIVE BIOAVAILABILITY DATA

| CLARITHROMYCIN (1 X 500 MG CLARITHROMYCIN) GEOMETRIC MEAN ARITHMETIC MEAN (CV%) | | | | |
|--|-------------------------|-------------------------|------------------------------|-------------------------|
| Parameter | TEST ¹ | REFERENCE ² | Ratio of Geometric Means (%) | 90% Confidence Interval |
| AUC _T (ng·h/mL) | 23675.0 24391.4 (24) | 23641.9 24344.0 (26) | 100.1 | 94.8 – 105.8 |
| AUC _I (ng·h/mL) | 24051.2 24772.3 (24) | 24028.3 24762.4 (26) | 100.1 | 94.7 – 105.8 |
| C _{max} (ng/mL) | 2184.5 2285.7 (31) | 1974.6 2025.4 (24) | 110.6 | 101.3 – 120.8 |
| T _{max} ³ (h) | 4.50 (2.00 – 7.00) | 4.50 (3.00 – 8.00) | | |
| T _{1/2} ⁴ (h) | 4.76 (22) | 4.81 (26) | | |
| ¹ APO-CLARITHROMYCIN XL (clarithromycin) Prolonged-Release Tablets, 500 mg (APOTEX INC.) ² PrBIAXIN [®] XL (clarithromycin) Extended-Release Tablets, 500 mg (Abbott Laboratories, Ltd., Canada) ³ Expressed as median (range) only ⁴ Expressed as arithmetic mean (CV %) only | | | | |

Relative Bioavailability of Clarithromycin Prolonged-Release Tablet and Clarithromycin Tablet Formulations

Steady-state pharmacokinetic studies compared the new clarithromycin prolonged-release 500 mg tablet dosage form to the standard 250 mg and 500 mg clarithromycin immediate-release film-coated tablets.

In the first study, the steady-state pharmacokinetics of clarithromycin and 14-OH-clarithromycin were studied in 30 healthy subjects under non-fasting (moderate-fat meal) conditions. The subjects received clarithromycin prolonged-release tablets (2 x 500 mg once daily) or clarithromycin immediate-release film-coated tablets (500 mg twice daily). The pharmacokinetic and bioavailability parameters for clarithromycin are summarized in Table 40

Table 40 Comparative Steady-State Bioavailability Data for Clarithromycin – Three Lots of Clarithromycin 500 mg Prolonged-Release Tablets versus Clarithromycin 500 mg Immediate Release Tablets (IR Tablets) under Non-Fasting (Moderate-Fat Meal) Conditions

| Parameter | Arithmetic Mean (CV%) | | | | Relative Bioavailability | |
|--|------------------------------------|------------------------------------|------------------------------------|---------------------|---|---|
| | Prolonged-Release Tablet Regimen A | Prolonged-Release Tablet Regimen B | Prolonged-Release Tablet Regimen C | IR Tablet Regimen D | Point Estimate (%) ⁺ | Confidence Interval* |
| AUC _T (mcg·h/mL) | 42.2 (30) | 44.9 (34) | 42.1 (31) | 46.1 (30) | A vs. D: 92.1 B vs. D: 96.2 C vs. D: 90.3 | 85.4 – 99.4 89.1 – 103.8 83.7 – 97.5 |
| C _{max} (mcg/mL) | 2.81 (37) | 2.78 (34) | 2.59 (27) | 3.51 (28) | A vs. D: 79.2 B vs. D: 77.2 C vs. D: 72.9 | 71.8 – 87.3 70.0 – 85.1 66.1 – 80.4 |
| C _{min} (mcg/mL) | 0.83 (41) | 0.83 (53) | 0.76 (49) | 0.91 (43) | A vs. D: 94.3 B vs. D: 86.0 C vs. D: 79.0 | 75.9 – 117.3 69.1 – 106.9 63.5 – 98.2 |
| T _{max} (hr) | 6.5 (61) | 5.5 (63) | 7.8 (51) | 2.1 (28) | - | - |
| FI (%) | 113 (26) | 107 (27) | 108 (26) | 138 (18) | - | - |
| Regimen A = 2 x 500 mg clarithromycin ER tablet lot 1, every morning for 5 days. Regimen B = 2 x 500 mg clarithromycin ER tablet lot 2, every morning for 5 days. Regimen C = 2 x 500 mg clarithromycin ER tablet lot 3, every morning for 5 days. Regimen D = 1 x 500 mg clarithromycin immediate-release film-coated (IR) tablet, every 12 hours for 5 days. ⁺ Antilogarithm of the difference (test minus reference) of the least squares means for logarithms. [*] 90% confidence intervals for AUC _T ; 95% confidence intervals for C _{max} and C _{min} . Legend: ; FI = Fluctuation Index; IR = immediate release | | | | | | |

The results from this multiple-dose study showed that at steady-state under non-fasting conditions, all 3 lots of the test prolonged-release formulation met the requirements for demonstrating bioavailability with respect to AUC_T. The significantly lower clarithromycin C_{max} values and the longer T_{max} values suggested that the test formulation provided prolonged-release of clarithromycin *in vivo*. The significantly lower fluctuation index (FI) values indicated that clarithromycin plasma concentrations fluctuated less for the prolonged-release tablet regimens than for the immediate-release tablet regimen.

In the second study, the steady-state pharmacokinetics of clarithromycin and 14-OH-clarithromycin were studied in 32 healthy subjects under non-fasting (moderate-fat meal) conditions. The subjects received a clarithromycin prolonged-release 500 mg tablet once daily or clarithromycin 250 mg immediate-release film-coated tablet twice daily.

The pharmacokinetic and bioavailability parameters for clarithromycin are summarized in **Table 41**.

Table 41 Comparative Steady-State Bioavailability Data for Clarithromycin – Clarithromycin 500 mg Prolonged-Release Tablets versus Clarithromycin 250 mg Immediate Release Tablets (IR Tablets) under Non-Fasting (Moderate-Fat Meal) Conditions

| Parameter | Arithmetic Mean (CV%) | | Relative Bioavailability | |
|-----------------------------|------------------------------------|---------------------|---------------------------------|----------------------------------|
| | Prolonged-Release Tablet Regimen A | IR Tablet Regimen B | Point Estimate (%) ⁺ | Confidence Interval [*] |
| AUC _τ (mcg·h/mL) | 20.4 (43) | 21.0 (33) | 94.6 | 84.8 – 105.5 |
| C _{max} (mcg/mL) | 1.45 (30) | 1.94 (35) | 75.8 | 67.7 – 84.9 |
| C _{min} (mcg/mL) | 0.31 (73) | 0.34 (45) | 75.1 | 59.2 – 102.8 |
| T _{max} (hr) | 5.6 (38) | 2.4 (59) | - | - |
| FI (%) | 148 (36) | 184 (22) | - | - |

Regimen A = 1 x 500 mg clarithromycin ER tablet, every morning for five days.
 Regimen B = 1 x 250 mg clarithromycin immediate-release film-coated (IR) tablet, every 12 hours for five days.
⁺ Antilogarithm of the difference (test minus reference) of the least squares means for logarithms.
^{*} 90% confidence intervals for AUC_τ; 95% confidence intervals for C_{max} and C_{min}.
 Legend:; FI = Fluctuation Index; IR = immediate release

The results from this multiple-dose study showed that the prolonged-release tablet was not significantly different from the 250 mg film-coated tablet in terms of AUC_τ. The significantly lower clarithromycin C_{max} values and longer T_{max} values suggested that the test formulation provided prolonged-release of clarithromycin *in vivo*. The significantly lower FI values indicated that clarithromycin plasma concentrations fluctuated less for the prolonged-release tablet regimen than for the immediate-release regimen.

In the third study, the steady-state pharmacokinetics of clarithromycin and 14-OH-clarithromycin were studied in 32 healthy subjects. The subjects received clarithromycin prolonged-release tablets (2 x 500 mg) once daily under fasting or non-fasting (high-fat meal) conditions. The pharmacokinetic and bioavailability parameters for clarithromycin are summarized in **Table 42**.

Table 42 Effect of Food on the Steady-State Bioavailability of Clarithromycin – Clarithromycin

500 mg Prolonged-Release Tablets – Fasting *versus* Non-Fasting (High-Fat Meal) Conditions

| Parameter | Arithmetic Mean (CV%) | | Relative Bioavailability | |
|---|--|--|---------------------------------|----------------------------------|
| | Prolonged-Release Tablet Fasting Regimen A | Prolonged-Release Tablet Non-Fasting Regimen B | Point Estimate (%) ⁺ | Confidence Interval [*] |
| AUC _T (mcg·h/mL) | 35.9 (35) | 49.2 (21) | 70.1 | 62.4 – 78.7 |
| C _{max} (mcg/mL) | 2.33 (30) | 3.91 (27) | 58.7 | 51.4 – 67.0 |
| C _{min} (mcg/mL) | 0.76 (58) | 0.80 (48) | 95.9 | 72.0 – 125.8 |
| T _{max} (hr) | 5.5 (57) | 5.6 (35) | -- | -- |
| FI (%) | 113 (40) | 153 (29) | -- | -- |
| Regimen A = 2 x 500 mg clarithromycin prolonged-release tablets under fasting conditions, every morning for 5 days. Regimen B = 2 x 500 mg clarithromycin prolonged-release tablets under non-fasting conditions, every morning for 5 days. + Antilogarithm of the difference (test minus reference) of the least squares means for logarithms. * 90% confidence intervals for AUC _T ; 95% confidence intervals for C _{max} and C _{min} . Legend: ER = prolonged-release; FI = Fluctuation Index | | | | |

The results from this multiple-dose study showed that the clarithromycin C_{max} and AUC_T central values for the prolonged-release clarithromycin tablet formulation administered under fasting conditions were approximately 41% and 30% lower, respectively than the central values for the same formulation administered with high-fat meal. The clarithromycin C_{min} values were similar when the prolonged-release formulation was given under fasting *versus* non-fasting conditions.

15 MICROBIOLOGY

Clarithromycin exerts its antimicrobial action by binding to the 50S ribosomal subunit of susceptible microorganisms resulting in inhibition of protein synthesis.

Clarithromycin is active *in vitro* against various aerobic and anaerobic gram-positive and gram-negative organisms as well as most MAC microorganisms. The *in vitro* activity of clarithromycin is presented in Table 35.

Additionally, the 14-OH-clarithromycin metabolite also has significant antimicrobial activity which may be additive to the activity of the parent compound. Against *Haemophilus influenzae*, 14-OH clarithromycin is twice as active as the parent compound *in vitro*. However, for MAC isolates, the 14-OH metabolite was 4 to 7 times less active than clarithromycin. The clinical significance of this activity against MAC is unknown.

Clarithromycin is bactericidal to *H. pylori*; this activity is greater at neutral pH than at acid pH.

The ranges of MICs of clarithromycin, 14-OH-clarithromycin metabolite and the MICs required to inhibit 50% (MIC50) and 90% (MIC90) of bacteria are presented in Table 36 and Table 37. Beta-lactamase production should not have any effect on clarithromycin activity.

Cross-resistance to azithromycin has been documented. Attention should be paid to the possibility of cross resistance between clarithromycin and other macrolide drugs, as well as lincomycin and clindamycin.

The *in vitro* data indicate enterobacteriaceae, pseudomonas species and other non-lactose fermenting gram negative bacilli are not sensitive to clarithromycin.

Clarithromycin has been shown to be active against most strains of the following microorganisms both *in vitro* and in clinical infections (see [1 INDICATIONS](#))

| Aerobic Gram-Positive microorganisms | Aerobic Gram-negative microorganisms | Other microorganisms | Mycobacteria |
|---|---|------------------------------------|---|
| <i>Staphylococcus aureus</i> | <i>Haemophilus influenzae</i> | <i>Mycoplasma pneumoniae</i> | <i>Mycobacterium avium complex (MAC) consisting of:</i> |
| <i>Streptococcus pneumoniae</i> | <i>Haemophilus parainfluenzae</i> | <i>Chlamydia pneumoniae (TWAR)</i> | <i>Mycobacterium avium</i> |
| <i>Streptococcus pyogenes</i> | <i>Moraxella catarrhalis</i> | | <i>Mycobacterium Intracellulare</i> |

The following *in vitro* data are available, but their clinical significance is unknown. Clarithromycin exhibits *in vitro* activity against most strains of the following microorganisms; however, the safety and effectiveness of clarithromycin in treating clinical infections due to these microorganisms have not been established in adequate and well-controlled clinical trials (See [15 MICROBIOLOGY](#), Tables 43-45 below):

| Aerobic Gram-positive microorganisms | Aerobic Gram-negative microorganisms | Anaerobic Gram-positive microorganisms | Anaerobic Gram-negative microorganisms | Campylobacter |
|---|---|---|---|-----------------------------|
| <i>Streptococcus agalactiae</i> | <i>Bordetella pertussis</i> | <i>Clostridium perfringens</i> | <i>Bacteroides melaninogenicus</i> | <i>Campylobacter jejuni</i> |
| <i>Viridans group streptococci</i> | <i>Pasteurella multocida</i> | <i>Propionibacterium acnes</i> | | |

Table 43
In Vitro Susceptibility* of Strains
Of Gram-Positive and Gram-Negative Bacteria to Clarithromycin

| Microorganisms | Number of Strains | Cumulative % of Strains Inhibited at MIC (mg/L) | | | | | | | | | | | |
|--|-------------------|---|------|------|------|------|------|------|------|------|------|------|------|
| | | .031 | .062 | .125 | .250 | .500 | 1.00 | 2.00 | 4.00 | 8.00 | 16.0 | 32.0 | 64.0 |
| Gram Positive | | | | | | | | | | | | | |
| <i>Staphylococcus aureus</i> methicillin resistant | 25 | - | 4 | 4 | 8 | 8 | 12 | 12 | 12 | 12 | 12 | 12 | 100 |
| <i>Staphylococcus aureus</i> methicillin susceptible | 126 | - | 20 | 75 | 84 | 86 | 87 | 87 | 87 | 88 | 88 | 88 | 100 |
| All <i>Staphylococcus aureus</i> | 151 | - | 17 | 63 | 72 | 73 | 74 | 74 | 74 | 75 | 75 | 75 | 100 |
| <i>Staphylococcus epidermidis</i> | 59 | - | 18 | 37 | 42 | 44 | 45 | 47 | 50 | 50 | 54 | 54 | 100 |
| Other coagulase negative staphylococcus | 27 | - | 14 | 44 | 44 | 48 | 48 | 48 | 55 | 55 | 59 | 59 | 100 |
| <i>Streptococcus pyogenes</i> (GrA) | 48 | 89 | 91 | 93 | 97 | 97 | 97 | 100 | - | - | - | - | - |
| <i>Enterococcus</i> | 97 | 1 | 4 | 8 | 25 | 59 | 61 | 63 | 63 | 64 | 64 | 68 | 100 |
| <i>Streptococcus pneumoniae</i> | 26 | 38 | 84 | 84 | 84 | 100 | - | - | - | - | - | - | - |
| <i>Streptococcus agalactiae</i> | 41 | 95 | 95 | 95 | 95 | 95 | 97 | 100 | - | - | - | - | - |
| <i>Streptococcus viridans</i> | 15 | 86 | 86 | 86 | 93 | 93 | 93 | 93 | 93 | 93 | 93 | 93 | 100 |
| Other β - hemolytic | 19 | 78 | 78 | 78 | 84 | 84 | 84 | 89 | 89 | 94 | 94 | 94 | 100 |
| <i>Corynebacterium species</i> | 11 | 27 | 45 | 54 | 63 | 63 | 63 | 81 | 81 | 90 | 100 | - | - |
| <i>Listeria monocytogenes</i> | 7 | 28 | 100 | - | - | - | - | - | - | - | - | - | - |
| Gram Negative | | | | | | | | | | | | | |
| <i>Neisseria gonorrhoeae</i> | 39 | 23 | 35 | 64 | 100 | - | - | - | - | - | - | - | - |
| <i>Haemophilus influenzae</i> | 56 | 3 | 3 | 3 | 7 | 16 | 37 | 80 | 100 | - | - | - | - |
| <i>Neisseria meningitidis</i> | 6 | - | 33 | 50 | 83 | 100 | - | - | - | - | - | - | - |
| <i>Campylobacter species</i> | 30 | - | 10 | 10 | 43 | 80 | 93 | 100 | - | - | - | - | - |

* MICs do not take into account the antimicrobial activity of the 14-OH-clarithromycin metabolite.

Table 44 - In vitro Susceptibility of Different Bacteria to Clarithromycin

| Microorganisms | Number of strains | MIC (mg/L) | | |
|--|-------------------|------------------|---------|---------|
| | | Range | 50% | 90% |
| <i>Mycoplasma pneumoniae</i> | 30 | ≤ 0.004 to 0.125 | ≤ 0.004 | ≤ 0.031 |
| <i>Bordetella pertussis</i> | 18 | ≤ 0.008 to 0.06 | ≤ 0.008 | 0.03 |
| <i>Legionella pneumophila</i> | 14 | 0.12 to 0.25 | 0.12 | 0.25 |
| <i>Haemophilus influenzae</i> | 22 | 2 to 8 | 4 | 8 |
| <i>Moraxella catarrhalis</i> | 17 | 0.03 to 0.25 | 0.06 | 0.25 |
| <i>Chlamydia trachomatis</i> | 11 | 0.002 to 0.008 | 0.004 | 0.008 |
| <i>Neisseria gonorrhoea</i> | 26 | 0.0625 to 4 | 0.125 | 0.5 |
| <i>Mycobacterium avium</i> | 30 | 4 to 32 | 8 | 16 |
| <i>Mycobacterium avium-intracellulare</i> | 124 | < 0.25 to 4 | 1 | 2 |
| <i>Mycobacterium chelonae</i> | 137 | - | - | 0.25 |
| <i>Mycobacterium fortuitum</i> | 86 | - | 2.0 | > 8.0 |
| <i>Mycobacterium kansasii</i> | 24 | ≤ 0.125 to 0.125 | ≤ 0.125 | 0.25 |
| <i>Pasteurella multocida</i> | 10 | 1.0 to 4 | 1.0 | 2.0 |
| <i>Bacteriodes melaninogenicus</i> | 12 | ≤ 0.125 to 0.2 | ≤ 0.125 | ≤ 0.125 |
| <i>Clostridium perfringens</i> | 10 | 0.25 to 0.5 | 0.5 | 0.5 |
| <i>Staphylococcus aureus</i> (methicillin sensitive) | 20 | 0.06 to 0.25 | 0.17 | 0.24 |
| <i>Streptococcus pyogenes</i> | 10 | ≤ 0.06 | ≤ 0.06 | ≤ 0.06 |
| <i>Chlamydia pneumoniae</i> | 49 | 0.004 to 0.025 | 0.016 | 0.031 |
| <i>Helicobacter pylori</i> † | 13 | 0.03 to 0.06 | 0.03 | 0.03 |

† Hardy DJ, Hanson CW, Hensey DM, Beyer JM, Fernandes PB. Susceptibility of *Campylobacter pylori* to macrolides and fluoroquinolones. *J Antimicrob Chemother* 1988;22:631-636.

Table 45 - In vitro Susceptibility of Different Bacteria to 14-OH-Clarithromycin

| Microorganisms | Number of strains | MIC (mg/L) | | |
|---------------------------------|-------------------|------------------|-------|-------|
| | | Range | 50% | 90% |
| <i>Streptococcus pyogenes</i> | 15 | 0.015 to 0.03 | 0.015 | 0.03 |
| <i>Streptococcus pneumoniae</i> | 13 | ≤ 0.004 to 0.015 | 0.008 | 0.015 |
| <i>Streptococcus agalactiae</i> | 15 | 0.03 to 0.06 | 0.06 | 0.06 |
| <i>Listeria monocytogenes</i> | 14 | 0.25 to 0.5 | 0.5 | 0.5 |
| <i>Moraxella catarrhalis</i> | 17 | 0.03 to 0.12 | 0.06 | 0.12 |
| <i>Neisseria gonorrhoeae</i> | 15 | 0.06 to 1 | 0.25 | 0.5 |
| <i>Campylobacter jejuni</i> | 12 | 0.25 to 2 | 0.5 | 2 |
| <i>Legionella pneumophila</i> | 14 | 0.12 to 0.5 | 0.25 | 0.5 |
| <i>Haemophilus influenzae</i> | 22 | 1 to 4 | 2 | 4 |
| <i>Bordetella pertussis</i> | 18 | ≤ 0.008 to 0.06 | 0.015 | 0.06 |
| <i>Bacteroides fragilis</i> | 10 | 0.5- >128 | 1 | 1 |
| <i>Clostridium perfringens</i> | 10 | 0.5 to 0.5 | 0.5 | 0.5 |
| <i>Propionibacterium acnes</i> | 12 | 0.03- >128 | 0.03 | 0.06 |

Clarithromycin Kill Kinetics Against *Helicobacter pylori*

Figure 6 illustrates the kill kinetics of clarithromycin and 14-OH-clarithromycin against *H. pylori* at 8 x MIC and at pH 8.0; and Figure 7 illustrates the kill kinetics of clarithromycin and amoxicillin against *H. pylori* at pH 6.5.

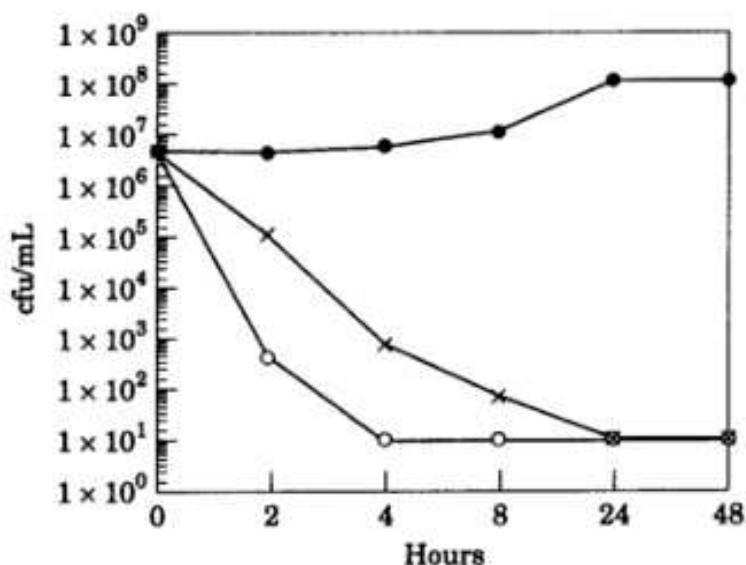


Figure 6: Kill kinetics of clarithromycin and 14-OH-clarithromycin against *H. pylori* strain 2597 at 8 x MIC and at pH 8.0. A flask was inoculated to produce a starting inoculum of approximately 10^{6.5} cfu/mL. The flask was then incubated in an anaerobe jar with CampyPak[®] and shaken gently at 37 °C. Counts were done at 0, 2, 4, 8, 24, and 48 h in physiological saline after 72 h incubation. ●, No antimicrobial; ○, clarithromycin (0.12 mg/L); x, 14-OH-clarithromycin (0.24 mg/L).

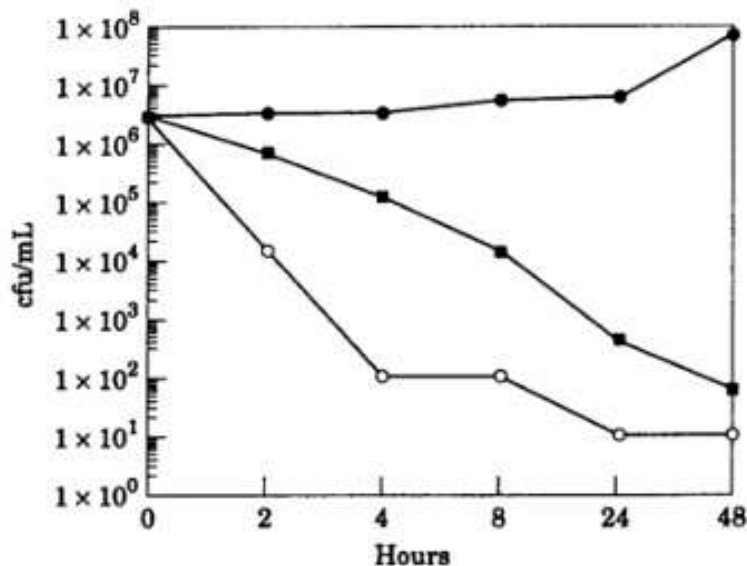


Figure 7: Kill kinetics of clarithromycin and amoxicillin against *H. pylori* strain 2597 at pH 6.5. Counts were done at 0, 2, 4, 8, 24, and 48 h in physiological saline after 72 h incubation. ●, No antimicrobial; ○, clarithromycin (3 mg/L); ■, amoxicillin (3 mg/L)

Susceptibility Testing excluding *Mycobacteria* and *Helicobacter*

Dilution Techniques

Quantitative methods are used to determine antimicrobial minimal inhibitory concentrations (MICs). These MICs provide estimates of the susceptibility of bacteria to antimicrobial compounds. The MICs should be determined using a standardized procedure. Standardized procedures are based on a dilution method⁴³ (broth or agar) or equivalent with standardized inoculum concentrations and standardized concentrations of clarithromycin powder.

The standard single disc susceptibility test (using the 15 mcg clarithromycin disc) and the dilution susceptibility test should be interpreted according to the criteria in Table 46.

Table 46 Criteria for the Interpretation of Standard Single Disc and Dilution Susceptibility Tests except for *H. influenzae* and *H. pylori*

| | Zone Diameter (mm) | Appropriate MIC Correlate (mg/L) |
|---------------|--------------------|----------------------------------|
| Susceptible | ≥ 18 | ≤ 2 |
| Intermediate* | 14 to 17 | 4 |
| Resistant | ≤ 13 | ≥ 8 |

* Indicates that the test results are equivocal; therefore, dilution tests may be indicated.
 N.B. These criteria and the definition are in agreement with NCCLS Documents M2-A644 and M100-S845.

The standard single disc susceptibility test (using the 15 mcg clarithromycin disc) for *H. Influenzae* should be interpreted according to the criteria in Table 47.

Table 47 Criteria for the Interpretation of Standard Single Disc and Dilution Susceptibility Tests for *H. influenzae*

| | Zone Diameter (mm) | Appropriate MIC Correlate (mg/L) |
|---|---------------------------|---|
| Susceptible | ≥ 13 | ≤ 8 |
| Intermediate* | 11 to 12 | 16 |
| Resistant | ≤ 10 | ≥ 32 |
| * Indicates that the test results are equivocal; therefore, dilution tests may be indicated. N.B. According to the revised NCCLS 1997 and 1998 Guidelines, the zone diameter and MIC values reflect both the activities of the parent compound and 14-OH metabolite. | | |

A report of "Susceptible" indicates that the pathogen is likely to respond to monotherapy with clarithromycin.

A report of "Intermediate" indicates that the result be considered equivocal, and if the microorganism is not fully susceptible to alternative clinically feasible drugs, the test should be repeated. This category implies possible clinical applicability in body sites where clarithromycin is physiologically concentrated or in situations where high clarithromycin dosages can be used. This category provides a buffer zone which prevents small uncontrolled technical factors from causing major discrepancies in interpretations.

A report of "Resistant" indicates that achievable drug concentrations are unlikely to be inhibitory, and other therapy should be selected.

Diffusion Techniques

Quantitative methods that require measurement of zone diameters also provide reproducible estimates of the susceptibility of bacteria to antimicrobial compounds. One such standardized procedure⁴⁴ requires the use of standardized inoculum concentrations. This procedure uses paper disks impregnated with 15-mcg clarithromycin to test the susceptibility of microorganisms to clarithromycin.

Reports from the laboratory providing results of the standard single-disk susceptibility test with a 15-mcg clarithromycin disk should be interpreted according to the criteria in Table 38.

Standardized Dilution Techniques

Standardized susceptibility test procedures require the use of laboratory control microorganisms to control the technical aspects of the laboratory procedures. Standard

clarithromycin powder should provide the following MIC values for *S. aureus* and *H. influenzae* (Table 48).

Table 48 Standard Clarithromycin Powder MIC values

| Microorganisms | | MIC (mcg/mL) |
|----------------------|------------|--------------|
| <i>S. aureus</i> | ATCC 29213 | 0.12 to 0.5 |
| <i>H. influenzae</i> | ATCC 49247 | 4 to 16 |

Standardized Diffusion Techniques

As with standardized dilution techniques, diffusion methods require the use of laboratory control microorganisms that are used to control the technical aspects of the laboratory procedures. For the diffusion technique, the 15-mcg clarithromycin disk should provide the following zone diameters for *S. aureus* and *H. influenzae* (Table 49).

Table 49 - Zone Diameter for the 15 mcg Clarithromycin Disc

| Microorganisms | | Zone Diameter (mm) |
|----------------------|------------|--------------------|
| <i>S. aureus</i> | ATCC 25923 | 26 to 32 |
| <i>H. influenzae</i> | ATCC 49247 | 11 to 17 |

In vitro Activity of Clarithromycin against Mycobacteria

Clarithromycin has demonstrated *in vitro* activity against MAC microorganisms isolated from both AIDS and non-AIDS patients. While gene probe techniques may be used to distinguish *M. avium* species from *M. intracellulare*, many studies only reported results on MAC isolates.

Various *in vitro* methodologies employing broth or solid media at different pH's, with and without oleic acid-albumin-dextrose-catalase (OADC), have been used to determine clarithromycin MIC values for mycobacterial species. In general, MIC values decrease more than 16-fold as the pH of Middlebrook 7H12 broth increases from 5.0 to 7.4. At pH 7.4, MIC values determined with Mueller-Hinton agar were 4 to 8 fold higher than those observed with Middlebrook 7H12 media. Utilization of OADC in these assays has been shown to further alter MIC values.

Clarithromycin activity against 80 MAC isolates from AIDS patients and 211 MAC isolates from non-AIDS patients was evaluated using a microdilution method with Middlebrook 7H9 broth. Results showed MIC values of ≤ 4.0 mcg/mL in 81% and 89% of the AIDS and non-AIDS MAC isolates, respectively. Twelve percent of the non-AIDS isolates had an MIC value ≤ 0.5 mcg/mL. Clarithromycin activity was evaluated against phagocytized MAC in mouse and human macrophage cell cultures as well as in the beige mouse infection model.

Clarithromycin activity was evaluated against *Mycobacterium tuberculosis* microorganisms. In 1 study utilizing the agar dilution method with Middlebrook 7H10 media, 3 of 30 clinical isolates had an MIC of 2.5 mcg/mL. Clarithromycin inhibited all isolates at > 10.0 mcg/mL.

Susceptibility Testing for *Mycobacterium avium* Complex

The disk diffusion and dilution techniques for susceptibility testing against gram-positive and gram-negative bacteria should not be used for determining clarithromycin MIC values against mycobacteria. *In vitro* susceptibility testing methods and diagnostic products currently available for determining MIC values against MAC organisms have not been standardized nor validated. Clarithromycin MIC values will vary depending on the susceptibility testing method employed, composition and pH of the media, and the utilization of nutritional supplements. Breakpoints to determine whether clinical isolates of *M. avium* or *M. intracellulare* are susceptible or resistant to clarithromycin have not been established.

In vitro Activity of Clarithromycin against *Helicobacter pylori*

Clarithromycin has demonstrated *in vitro* activity against *H. pylori* isolated from patients with duodenal ulcers. *In vitro* susceptibility testing methods (broth microdilution, agar dilution, E-test, and disk diffusion) and diagnostic products currently available for determining MICs and zone sizes have not been standardized, validated, or approved for testing *H. pylori*. The clarithromycin MIC values and zone sizes will vary depending on the susceptibility testing methodology employed, media, growth additives, pH, inoculum concentration tested, growth phase, incubation atmosphere, and time.

Susceptibility Test for *Helicobacter pylori*

In vitro susceptibility testing methods and diagnostic products currently available for determining MICs and zone sizes have not been standardized, validated, or approved for testing *H. pylori* microorganisms. MIC values for *H. pylori* isolates collected during 2 U.S. clinical trials evaluating clarithromycin plus omeprazole were determined by broth microdilution MIC methodology (Hachem CY *et al.*, 1996). Results obtained during the clarithromycin plus omeprazole clinical trials fell into a distinct bimodal distribution of susceptible and resistant clarithromycin MICs.

If the broth microdilution MIC methodology published in Hachem CY *et al.*, 1996 is used and the following tentative breakpoints are employed, there should be reasonable correlation between MIC results and clinical and microbiological outcomes for patients treated with clarithromycin plus omeprazole (Table 50).

Table 50 Susceptibility Testing for *Helicobacter pylori* in Patients Treated with Clarithromycin and Omeprazole

| MIC (mcg/mL) | Interpretation |
|--------------|------------------|
| ≤ 0.06 | Susceptible (S) |
| 0.12 to 2.0 | Intermediate (I) |
| ≥ 4 | Resistant (R) |

These breakpoints should not be used to interpret results obtained using alternative methods.

16 NON-CLINICAL TOXICOLOGY

General Toxicology:

Acute Toxicity

Clarithromycin Tablets

The acute toxicity of clarithromycin administered by a variety of routes, was studied in mice and rats. The median lethal dose by the oral route ranged from 2.7 to > 5.0 g/kg. Acute toxicity did not differ markedly between sexes (Table 51).

Table 51 Acute LD50 values of Clarithromycin

| Species | Sex | Route | LD ₅₀ value (g/kg) |
|---------|-----|-------|-------------------------------|
| Mice | M | p.o. | 2.74 |
| | F | p.o. | 2.7 |
| | M | s.c. | > 5.0 |
| | F | s.c. | > 5.0 |
| | M | i.p. | 1.03 |
| | F | i.p. | 0.85 |
| | M | i.v. | 0.17 |
| | F | i.v. | 0.2 |
| Rats | M | p.o. | 3.47 |
| | F | p.o. | 2.7 |
| | M | s.c. | > 5.0 |
| | F | s.c. | > 5.0 |
| | M | i.p. | 6.69 |
| | F | i.p. | 7.58 |

Legend: i.p. = intraperitoneal; i.v. = intravenous; p.o. = oral; s.c. = subcutaneous

The primary signs of toxicity included reduction in activities, behaviours, weight gains, respiration rates and sedation. The emetic activity of clarithromycin prevented the determination of the lethal dose in dog.

The acute oral toxicity of clarithromycin in very young mice and rats was determined. The median lethal dose (1.2 g/kg) was about 2-fold that seen in the older rodents.

Subchronic Toxicity

Clarithromycin Tablets

Studies were conducted in rats, dogs and monkeys with clarithromycin administered orally. The duration of administration ranged from 14 days to 42 days.

Rats

One study in rats (with oral doses up to 800 mg/kg/day) failed to show adverse effects in rats exposed to 50 mg/kg/day for 4 weeks. The clinical signs observed at toxic doses were reduced motility, piloerection, hypothermia and perineal urine staining. Changes occurred in biochemical parameters at 200 and 800 mg/kg/day indicative of hepatotoxicity which was confirmed by histopathologic findings of hepatocyte necrosis.

Other pathologic findings at the top 2 dose levels included swelling of the renal cortical tubular epithelia and atrophic changes to the lymphatic and genital systems. The same toxicity profile was observed in immature rats following the daily administration of oral doses up to 150 mg/kg/day of clarithromycin for 6 weeks. At 150 mg/kg/day, there was an increase in relative weights of liver and kidneys.

Dogs

Dogs were dosed orally with 0, 6.25, 25, 100 or 400 mg/kg/day of clarithromycin daily for 28 days. Emesis occurred sporadically in the treated dogs. No other adverse effects were seen in dogs exposed to 6.25 mg/kg/day. The clinical signs at higher dosages included loose stools, lacrimation and conjunctivitis.

Slight anorexia was noted in dogs receiving 100 mg/kg/day or more. Dogs at 400 mg/kg/day exhibited reduced red blood cell count, hematocrit, hemoglobin concentration, serum albumin, and mean urine pH and specific gravity. Increases were seen in serum transaminase, alkaline phosphatase, and total bilirubin concentrations.

Bilirubin was detected in the urine. Other pathologic changes at 400 mg/kg/day included biliary hyperplasia, gastric glandular atrophy, renal tubule epithelial atrophy, edema of the iris, ciliary body and choroid, capillary proliferation in the cornea, suppression of spermatogenesis, and adrenal medullary degeneration.

Monkeys

Monkeys were treated daily for 1 month with oral doses of 0, 25, 100 or 400 mg/kg/day. Two

animals out of 10 receiving 400 mg/kg/day died. Salivation was recorded at all dosage levels. No other adverse effects were seen in animals treated daily with 25 mg/kg/day.

The clinical signs observed at higher doses and most frequently at 400 mg/kg/day were vomiting, emesis, sunken eyes, dehydration, emaciation, low rectal temperature, body weight loss, reduced food consumption, cloudiness of the cornea and reduction in intra-ocular pressure. Yellow discoloured feces were passed on a few isolated occasions by some animals given a dose of 400 mg/kg/day. As with the other species, the liver was the primary target at toxic doses as shown by early elevation of serum concentration of glucose, BUN, creatinine, ALT, AST, LDH, amylase and/or triglyceride; an electrolyte imbalance and low levels of protein, cholesterol, phospholipid; elevated leucine aminopeptidase (LAP).

Principal histopathologic changes were seen mainly in high dose monkeys, but some mid-dose monkeys exhibited similar alterations. Changes included necrosis and vacuolation of hepatocytes, vacuolation of renal cortical tubules, no spermatogenesis, thymic regression and single cell necrosis of the stomach. In man the recommended dose is 500 to 1000 mg/day or 7.1 to 14.3 mg/kg/day (70 kg person).

Chronic Toxicity

Clarithromycin Tablets

Rats (20/sex/group) were treated daily with oral doses of 0, 15, 37.5, 75 or 150 mg/kg/day for 3 months. There were 8 incidental deaths, but none of them were considered treatment related. Clinical signs included increased salivation, dehydration, hyperactivity and were observed in a dose-related manner. The only toxic effect noted, was some variation in body weight gain. No toxicologically significant changes occurred in hematology, biochemistry or urinalysis results.

Post mortem, there was an increase in mean relative liver and kidney weights at the top dose level. No microscopic changes were detected in the kidneys, but in the liver, there was a sex/dose-related increase in multinucleated hepatocytes. Effects were only seen in females at 150 mg/kg/day but in males occurred as low as 37.5 mg/kg/day.

A 6-month oral study was performed in rats (20 to 27/sex/group) at dosages of 0, 1 to 6, 8, 40 or 200 mg/kg/day. Seven male and female rats from the control group and the 40 and 200 mg/kg/day groups were allowed a 63-day non-dosed recovery period. No mortalities occurred. Body weight and food intake were reduced at high doses during the dosing phase but normalized during recovery.

Water intake and urine volume increased in males and females of the 40 and 200 mg/kg/day groups. Dose-related hematological changes included reduced erythrocytes and HCT with increased MCV, MCH and MCHC and relative eosinophil counts. Biochemical changes were mainly restricted to the high dose group and included increased ALP and decreased

phospholipids; decreased total cholesterol and triglycerides, and increased AST and ALT in males only and decreased albumin in females only.

Organ weight increases were found to include cecum, adrenals, liver, and spleen. Histopathological examinations showed drug-related, recovery-reversible increases in multinucleated hepatocytes associated with minimal and focal necrosis in livers of both sexes at the top 2 dose levels. No relevant pathology was found in the cecum, adrenals or spleen to account for the increased weights. After recovery only the 200 mg/kg/day group had increased multinucleated hepatocytes.

Dogs (7/sex/group) were administered daily with oral doses of 0, 10, 30, or 100 mg/kg/day of clarithromycin for 3 months. Emesis occurred at levels of 30 mg/kg and above. One male high dose dog was killed *in extremis* on day 69. Drug-related lesions were seen in the liver, gall bladder, thymus and stomach.

Hematological and biochemical changes at the high dose level included, decreased RBC and HCT, increased ALT, ALP, GGT, and decreased total protein and albumin. No significant organ weight changes were recorded, but treatment-related microscopic alterations in the liver and stomach of mild- and high dose dogs were seen, as well as changes in gall bladder, spleen and thymus of high-dose animals.

A 6-month oral study was also performed in dogs (4 to 5/sex/group) at dosages of 0, 0.8, 4, 20 or 100 mg/kg/day. At the 0 and 100 mg/kg levels, 1 male and 1 female dog were allowed a 1 month, non-dosed, recovery period. One male high dose dog died on day 174. This death was considered to be as a direct result of clarithromycin administration. Histopathologic examination revealed hepatic parenchymal damage, identifying the cause of clinical jaundice. Clinical signs during the dosing phase of the study were restricted to the top 2 dose levels and included emesis and ocular signs. Food consumption and water intake were reduced at 20 and 100 mg/kg/day.

Hematologic changes at 100 mg/kg were indicative of subclinical anemia. Biochemical alterations at the same level were associated with liver damage. Ocular changes were only apparent at the top dose level.

Increase in the weights of lung, liver, spleen, adrenals and kidneys were found at 100 mg/kg/day. Histopathologic examination of these organs showed degeneration of liver parenchyma, and toxic effects in adrenals. The thymus weight was reduced at 100 mg/kg/day. At the end of the recovery period all findings had regressed or reduced.

Monkeys (5 to 6/sex/group) were similarly administered clarithromycin at levels of 0, 25, 50 or 100 mg/kg/day for 6 months. At the 0 and 100 mg/kg levels, 1 male and 1 female monkey were allowed a one-month recovery period. One high dose female died in week 25. Inhalation of vomit was considered to be the cause of death. Clinical signs were restricted to a dose-related incidence of emesis and salivation. No treatment-related effects were found in food

consumption, ophthalmoscopy or hematology. Weight loss was restricted to 1 high-dose female. Minor serum chemistry changes were seen at the 100 mg/kg level, particularly in plasma proteins. Urinalysis revealed a dose-related lowering of pH and SG at 13 weeks only. Organ weight increases in liver, adrenal and kidneys were seen at high doses, but pathology was restricted to minimal liver changes consisting of cytoplasmic rarefaction of centrilobular hepatocytes. All changes were reversed during the recovery period.

Carcinogenicity:

Long-term studies in animals have not been performed to evaluate the carcinogenic potential of clarithromycin.

Mutagenicity

The following *in vitro* mutagenicity tests have been conducted with clarithromycin: *Salmonella*/mammalian microsome test, bacterial induced mutation frequency test, *in vitro* chromosome aberration test, rat hepatocyte DNA synthesis assay, mouse lymphoma assay, mouse dominant lethal study, mouse micronucleus test.

All tests had negative results except the *in vitro* chromosome aberration test which was weakly positive in one test and negative in another. In addition, a Bacterial Reverse-Mutation Test (Ames Test) has been performed on clarithromycin metabolites with negative results.

Reproductive and Developmental Toxicology:

Fertility and reproduction studies have shown that daily doses of 150 to 160 mg/kg/day to male and female rats caused no adverse effects on the estrous cycle, fertility, parturition, or number and viability of offspring. Plasma levels in rats after 150 mg/kg/day were 2 times the human serum levels.

In the 150 mg/kg/day monkey studies, plasma levels were 3 times the human serum levels. When given orally after 150 mg/kg/day, clarithromycin was shown to produce embryonic loss in monkeys. This effect has been attributed to marked maternal toxicity of the drug at this high dose.

In rabbits, *in utero* fetal loss occurred at an intravenous dose of 33 mg/m², which is 17 times less than the maximum proposed human oral daily dose of 618 mg/m².

Special Toxicology:

Acute Renal Toxicity

There was no evidence of nephrotoxicity of clarithromycin in the rat at doses up to 500 mg/kg/day.

Hepatotoxicity

In the *in vitro* and *in vivo* hepatotoxicity studies comparing clarithromycin with erythromycin, it was found that clarithromycin caused no greater cytotoxicity than erythromycin stearate and much less toxicity than erythromycin estolate. Hepatic enzyme induction was not found in doses below 500 mg/kg/day. In cynomolgus monkeys, the closest metabolic model for humans, elevations of ALT and LDH were identified at 200 mg/kg/day.

In dogs, a rise of ALT has been seen at 100 mg/kg/day, and in Wistar rats, a similar elevation of enzymes was seen at 200 mg/kg/day. Morphologic lesions related to prolonged exposure to clarithromycin (up to 6 months) have been consistent with reportedly reversible changes in rat, dog and monkey studies. Such doses are many times beyond the therapeutic range in humans, which is within 8 to 10 mg/kg/day.

Ocular Toxicity

Ocular lesions appear confined to dogs and monkeys receiving lethal doses, which were large multiples of the human therapeutic dose. Radiolabelled clarithromycin studies indicate the eye is not selectively burdened by drug deposits and that clearance from this tissue follows that seen in other tissues. Opacities occur in the cornea following widespread extraocular tissue changes which are detectable via numerous diagnostic methods. Reduced intraocular pressure precedes corneal opacity in a relatively predictive manner. Some evidence for transient opacity and at least partial resolution was noted in animal studies, but most animals succumbed to other organ dysfunctions shortly after opacities were observed.

Animals given doses close to the therapeutic dose had no ocular changes. No ophthalmologic effects were noted in rabbits treated at doses of 40 and 160 mg/kg/day for 28 days.

Ototoxicity

No effects on pinna reflex were seen in guinea pigs at a dose of 400 mg/kg/day but inner and outer hair cells disappeared suggesting toxic damage. No evidence of damage was reported at 200 mg/kg/day.

17 SUPPORTING PRODUCT MONOGRAPHS

1. ^{Pr}BIAXIN BID® (Film-coated tablets, 250 mg and 500 mg), BIAXIN® (Oral suspension, 125 mg / 5 mL and 250 mg / 5 mL when reconstituted), Submission Control # 253289, Product Monograph, BGP Pharma ULC. (OCT 25, 2021)

PATIENT MEDICATION INFORMATION

READ THIS FOR SAFE AND EFFECTIVE USE OF YOUR MEDICINE

^{Pr}APO-CLARITHROMYCIN

Clarithromycin Tablets

Read this carefully before you start taking **APO-CLARITHROMYCIN** and each time you get a refill. This leaflet is a summary and will not tell you everything about this drug. Talk to your healthcare professional about your medical condition and treatment and ask if there is any new information about **APO-CLARITHROMYCIN**.

Serious Warnings and Precautions

- APO-CLARITHROMYCIN should not be used in pregnancy, especially during the first 3 months. If there are no other medicines you can take for your infection, your healthcare professional may give you APO-CLARITHROMYCIN. If this happens, they will discuss the risks to your baby with you. Talk to your healthcare professional before taking APO-CLARITHROMYCIN if you are pregnant or think you might be pregnant.
- Taking APO-CLARITHROMYCIN along with certain other drugs may lead to serious safety issues. Talk to your healthcare professional about all the medicines you take.

What is APO-CLARITHROMYCIN used for?

- APO-CLARITHROMYCIN is used to treat certain infections like pneumonia, bronchitis and infections of the sinuses, skin, and throat that are caused by bacteria.
- It is used with other medicines to kill bacteria called *Helicobacter pylori* (*H. pylori*). This may prevent duodenal ulcers from coming back. Duodenal ulcers are sores on the upper part of the small intestine.
- It is used to prevent and to treat MAC disease in patients with HIV. MAC is a short word for *Mycobacterium avium* complex, the bacteria that cause MAC disease.

Antibacterial drugs like APO-CLARITHROMYCIN treat only bacterial infections. They do not treat viral infections such as the common cold. Although you may feel better early in treatment, APO-CLARITHROMYCIN should be taken exactly as directed. Misuse or overuse of APO-CLARITHROMYCIN could lead to the growth of bacteria that will not be killed by APO-CLARITHROMYCIN (resistance). This means that APO-CLARITHROMYCIN may not work for you in the future. Do not share your medicine.

How does APO-CLARITHROMYCIN work?

APO-CLARITHROMYCIN is an antibiotic that kills bacteria in your body.

What are the ingredients in APO-CLARITHROMYCIN?

Medicinal ingredients: Clarithromycin

Non-medicinal ingredients: colloidal silicon dioxide, crospovidone, D & C yellow #10, hydroxyethyl cellulose, magnesium stearate, polyethylene glycol, stearic acid, sunset yellow (250 mg only) and titanium dioxide.

APO-CLARITHROMYCIN comes in the following dosage forms:

250 mg and 500 mg tablets.

Do not use APO-CLARITHROMYCIN if:

- You are allergic to clarithromycin or any of the other ingredients in APO-CLARITHROMYCIN.
- You are allergic to another medicine called erythromycin or any other medicines from a class of antibiotics called macrolides (such as azithromycin or telithromycin).
- You are taking any of the following medications:
 - Ergotamine, dihydroergotamine (for migraine); Lovastatin, simvastatin, lomitapide (for high cholesterol); Ticagrelor (for cardiovascular disease); Saquinavir (treatment for HIV); Oral midazolam (for trouble sleeping or agitation); Pimozide (for schizophrenia); Colchicine (for gout); Domperidone (for gastrointestinal disorders).
 - Pimozide, ergotamine, dihydroergotamine and colchicine can interact with APO-CLARITHROMYCIN, possibly leading to an irregular heartbeat. Deaths have occurred.
- You had liver problems after taking APO-CLARITHROMYCIN, or any other medicine containing clarithromycin, in the past.
- You have severe liver failure in combination with kidney problems.
- You have a history of heart disturbance or irregular heartbeat such as arrhythmias, QT prolongation or torsades de pointes.
- You have low levels of potassium in the blood (hypokalemia) or low levels of magnesium in the blood (hypomagnesaemia).

To help avoid side effects and ensure proper use, talk to your healthcare professional before you take APO-CLARITHROMYCIN. Talk about any health conditions or problems you may have, including if you:

- Have now or have had health problems in the past.

- Have or develop severe diarrhea as this may be a sign of a more serious condition.
- Have kidney problems.
- Have liver problems.
- Are taking medicines called digoxin (for heart failure); atorvastatin or pravastatin (for high cholesterol); or midazolam (a sedative).
- Are taking a medicine called quetiapine (for schizophrenia, bipolar depression). Serious and life-threatening side effects have occurred in people taking clarithromycin and quetiapine, including malignant neuroleptic syndrome (fever, rigid muscles, dizziness, fainting, and altered mental state). Your healthcare professional will decide if you should take this medication.
- Are allergic to other medicines, foods, dyes, or preservatives.
- Are pregnant, trying to get pregnant or think you might be pregnant.
- Are breastfeeding or planning to breastfeed. APO-CLARITHROMYCIN passes into your breastmilk and can harm your baby.
- Have a condition called myasthenia gravis which is a chronic disease that causes muscle weakness. APO-CLARITHROMYCIN may make your myasthenia gravis worse.
- Are taking APO-CLARITHROMYCIN and oral medicines for diabetes (such as gliclazide, glyburide) and / or with insulin as this can result in serious low blood sugar levels (hypoglycemia). Discuss with your healthcare professional how you should monitor your blood sugar levels.
- Are taking warfarin, as there is a risk of serious bleeding with APO-CLARITHROMYCIN.
- Are taking triazolam, alprazolam or other benzodiazepines (midazolam). These should be used cautiously with APO-CLARITHROMYCIN due to the serious risk of effects on your brain and spinal cord.
- Are taking APO-CLARITHROMYCIN and medicines used to prevent blood clots such as dabigatran, rivaroxaban and apixaban, particularly if your healthcare professional has told you that you are at high risk of bleeding.

Other warnings you should know about:

Serious heart problems:

Use of antibiotics like APO-CLARITHROMYCIN have resulted in heart problems such as irregular heartbeat, torsades de pointes and QT prolongation sometimes leading to death. Talk to your healthcare professional if you are elderly or have risk factors such as:

- Heart disease, heart problems, or slow heartbeat.
- If you are taking other medicines which are known to cause serious disturbances in heart rhythm.
- If you have disturbances in the levels of salts (electrolytes) in your blood, such as low levels of magnesium (hypomagnesemia).

Antibiotic resistance and HIV:

Development of antibiotic resistance (where the medicine no longer works to kill bacteria) has been seen in patients with HIV taking clarithromycin. To avoid this, you should always take your medicine as advised by your healthcare professional.

Driving and using machines:

If you feel dizzy, confused or disorientated while taking APO-CLARITHROMYCIN, do not drive or operate machines.

Tell your healthcare professional about all the medicines you take, including any drugs, vitamins, minerals, natural supplements or alternative medicines.

The following may interact with APO-CLARITHROMYCIN:

- Alfentanil (used during surgery).
- Alprazolam, hexobarbital, phenobarbital, midazolam, triazolam (sedative medications).
- Amlodipine, diltiazem, verapamil (calcium channel blockers often used for high blood pressure).
- Aripiprazole, pimozide, quetiapine, risperidone (for schizophrenia, bipolar depression).
- Atazanavir, indinavir, ritonavir, saquinavir, nevirapine, efavirenz, etravirine, zidovudine (treatments for HIV).
- Atorvastatin, lovastatin, pravastatin, rosuvastatin, simvastatin, lomitapide (for high cholesterol).
- Bromocriptine (used for problems with your pituitary gland and Parkinson's disease).
- Carbamazepine (for seizures, nerve pain or bipolar depression).
- Cilostazol, digoxin, quinidine, disopyramide, warfarin/acenocoumarol, ticagrelor (diseases of your blood vessels and heart).
- Colchicine (treatment for gout).
- Cyclosporine (used for psoriasis, rheumatoid arthritis and after organ transplant).
- Domperidone (used for gastrointestinal disorders).
- Ergotamine, dihydroergotamine (often used for migraine headaches).
- Fluconazole, itraconazole (for fungal infections).
- Insulin, nateglinide, pioglitazone, repaglinide, rosiglitazone (for diabetes).
- Lansoprazole, omeprazole (proton pump inhibitors for heart burn and reflux).
- Methylprednisolone (an anti-inflammatory).
- Phenytoin, valproic acid (treatment of seizures and epilepsy).
- Rifabutin, rifampin (treatments for infections).
- Rivaroxaban, apixaban (to prevent blood clots).
- Sildenafil, tadalafil, vardenafil (treatments for erectile dysfunction).
- St. John's Wort (for depression).
- Tacrolimus (used after organ transplant).

- Theophylline (asthma and other lung problems).
- Tolterodine (treatment for overactive bladder).
- Vinblastine, ibrutinib (cancer treatment).

How to take APO-CLARITHROMYCIN:

- Always take it exactly how your healthcare professional has told you.
- Your healthcare professional will tell you how much APO-CLARITHROMYCIN to take and when to take it.
- How much you are prescribed will depend on the condition you have.
- You can take APO-CLARITHROMYCIN with or without meals.

Usual dose:

For respiratory tract infections (like pneumonia, bronchitis and infections of the sinuses and throat) and skin infections:

The usual dose of APO-CLARITHROMYCIN is 250 mg to 500 mg every 12 hours for 7 to 14 days.

For infections with *H. pylori* and treatment of duodenal ulcers (a sore in your intestine):

The usual dose of APO-CLARITHROMYCIN is 500 mg every 12 hours for 10 days. You will take APO-CLARITHROMYCIN together with omeprazole (20 mg once a day) and amoxicillin (1 g every 12 hours).

For prevention and treatment of MAC disease in patients with HIV:

The usual dose of APO-CLARITHROMYCIN is 500 mg every 12 hours. Your healthcare professional will tell you how long you should continue taking APO-CLARITHROMYCIN for.

Overdose:

Symptoms of APO-CLARITHROMYCIN overdose are abdominal pain, vomiting, nausea and diarrhea.

If you think you, or a person you are caring for, have taken too much APO-CLARITHROMYCIN, contact a healthcare professional, hospital emergency department, or regional poison control centre immediately, even if there are no symptoms.

Missed Dose:

- If you miss a dose, take it as soon as you remember.
- If it is almost time for your next dose, do not take the missed dose.

- Take your next dose when you would normally take it.
- Never take a double dose to make up for a missed dose.

What are possible side effects from using APO-CLARITHROMYCIN?

These are not all the possible side effects you may have when taking APO-CLARITHROMYCIN. If you experience any side effects not listed here, tell your healthcare professional.

Side effects may include:

- abdominal pain
- abnormal taste
- diarrhea
- ear disorder (trouble hearing and ringing in your ears)
- flatulence
- indigestion
- headache
- nausea
- rash
- vomiting

| Serious side effects and what to do about them | | | |
|---|--------------------------------------|--------------|---|
| Symptom / effect | Talk to your healthcare professional | | Stop taking drug and get immediate medical help |
| | Only if severe | In all cases | |
| UNCOMMON Allergic reactions: itching, hives, rash, sore throat, fever, swelling, difficulty breathing, lightheadedness/dizziness, swelling of your tongue or throat, warm red skin or wheezing. | | | ✓ |
| Clostridium difficile colitis (bowel inflammation): severe diarrhea (bloody or watery) with or without fever, abdominal pain, or tenderness. | | ✓ | |
| Irregular heartbeat | | | ✓ |

| Serious side effects and what to do about them | | | |
|---|--------------------------------------|--------------|---|
| Symptom / effect | Talk to your healthcare professional | | Stop taking drug and get immediate medical help |
| | Only if severe | In all cases | |
| Myasthenia gravis: muscle weakness, drooping eyelid, vision changes, difficulty chewing and swallowing, trouble breathing | | | ✓ |
| Hepatitis (liver inflammation): abdominal pain, nausea, vomiting, yellowing of skin and eyes, dark urine. | | | ✓ |

If you have a troublesome symptom or side effect that is not listed here or becomes bad enough to interfere with your daily activities, tell your healthcare professional.

Reporting Side Effects

You can report any suspected side effects associated with the use of health products to Health Canada by:

- Visiting the Web page on Adverse Reaction Reporting (<https://www.canada.ca/en/health-canada/services/drugs-health-products/medeffect-canada/adverse-reaction-reporting.html>) for information on how to report online, by mail or by fax; or
- Calling toll-free at 1-866-234-2345

NOTE: Contact your health professional if you need information about how to manage your side effects. The Canada Vigilance Program does not provide medical advice.

Storage:

Store between 15°C to 30°C in a tightly closed container. Protect from light. Do not use beyond the expiration date.

Keep out of reach and sight of children.

If you want more information about APO-CLARITHROMYCIN:

- Talk to your healthcare professional
- Find the full product monograph that is prepared for healthcare professionals and includes this Patient Medication Information by visiting the Health Canada website: (<https://www.canada.ca/en/health-canada/services/drugs-health-products/drug->

[products/drug-product-database.html](#)); Find the Patient Medication Information on the manufacturer's website (<http://www.apotex.ca/products>), or by calling 1-800-667-4708.

This leaflet was prepared by Apotex Inc., Toronto, Ontario, M9L 1T9.

Date of revision: APR 10, 2023

PATIENT MEDICATION INFORMATION

READ THIS FOR SAFE AND EFFECTIVE USE OF YOUR MEDICINE

^{Pr}APO-CLARITHROMYCIN XL

Clarithromycin Prolonged-release Tablets

Read this carefully before you start taking **APO-CLARITHROMYCIN XL** and each time you get a refill. This leaflet is a summary and will not tell you everything about this drug. Talk to your healthcare professional about your medical condition and treatment and ask if there is any new information about **APO-CLARITHROMYCIN XL**.

Serious Warnings and Precautions

- APO-CLARITHROMYCIN XL should not be used in pregnancy, especially during the first 3 months. If there are no other medicines you can take for your infection, your healthcare professional may give you APO-CLARITHROMYCIN XL. If this happens, they will discuss the risks to your baby with you. Talk to your healthcare professional before taking APO-CLARITHROMYCIN XL if you are pregnant or think you might be pregnant.
- Taking APO-CLARITHROMYCIN XL along with certain other drugs may lead to serious safety issues. Talk to your healthcare professional about all the medicines you take.

What is APO-CLARITHROMYCIN XL used for?

APO-CLARITHROMYCIN XL is used to treat certain infections like pneumonia, bronchitis and infections of the sinuses and throat that are caused by bacteria.

The efficacy and safety of APO-CLARITHROMYCIN XL in treating other infections for which APO-CLARITHROMYCIN are approved have not been established.

Antibacterial drugs like APO-CLARITHROMYCIN XL treat only bacterial infections. They do not treat viral infections such as the common cold. Although you may feel better early in treatment, APO-CLARITHROMYCIN XL should be taken exactly as directed. Misuse or overuse of APO-CLARITHROMYCIN XL could lead to the growth of bacteria that will not be killed by APO-CLARITHROMYCIN XL (resistance). This means that APO-CLARITHROMYCIN XL may not work for you in the future. Do not share your medicine.

How does APO-CLARITHROMYCIN XL work?

APO-CLARITHROMYCIN XL is an antibiotic that kills bacteria in your body.

What are the ingredients in APO-CLARITHROMYCIN XL?

Medicinal ingredients: Clarithromycin.

Non-medicinal ingredients: D & C yellow #10 aluminum lake, hydroxyethyl cellulose, magnesium stearate, polyethylene glycol, potassium bitartrate, sorbitol crystalline and titanium dioxide.

APO-CLARITHROMYCIN XL comes in the following dosage forms:

500 mg prolonged-release tablets

Do not use APO-CLARITHROMYCIN XL if:

- You are allergic to clarithromycin or any of the other ingredients in APO-CLARITHROMYCIN XL.
- You are allergic to another medicine called erythromycin or any other medicines from a class of antibiotics called macrolides (such as azithromycin or telithromycin).
- You are taking any of the following medications:
 - Ergotamine, dihydroergotamine (for migraine); Lovastatin, simvastatin, lomitapide (for high cholesterol); Ticagrelor (for cardiovascular disease); Saquinavir (treatment for HIV); Oral midazolam (for trouble sleeping or agitation); Pimozide (for schizophrenia); Colchicine (for gout); Domperidone (for gastrointestinal disorders).
 - Pimozide, ergotamine, dihydroergotamine and colchicine can interact with APO-CLARITHROMYCIN XL, possibly leading to an irregular heartbeat. Deaths have occurred.
- You had liver problems after taking APO-CLARITHROMYCIN XL, or any other medicine containing clarithromycin, in the past.
- You have severe liver failure in combination with kidney problems.
- You have a history of heart disturbance or irregular heartbeat such as arrhythmias, QT prolongation or torsades de pointes.
- You have low levels of potassium in the blood (hypokalemia) or low levels of magnesium in the blood (hypomagnesaemia).

To help avoid side effects and ensure proper use, talk to your healthcare professional before you take APO-CLARITHROMYCIN XL. Talk about any health conditions or problems you may have, including if you:

- Have now or have had health problems in the past.

- Have or develop severe diarrhea as this may be a sign of a more serious condition.
- Have kidney problems.
- Have liver problems.
- Are taking medicines called digoxin (for heart failure); atorvastatin or pravastatin (for high cholesterol); or midazolam (a sedative).
- Are taking a medicine called quetiapine (for schizophrenia, bipolar depression). Serious and life-threatening side effects have occurred in people taking clarithromycin and quetiapine, including malignant neuroleptic syndrome (fever, rigid muscles, dizziness, fainting, and altered mental state). Your healthcare professional will decide if you should take this medication.
- Are allergic to other medicines, foods, dyes, or preservatives.
- Are pregnant, trying to get pregnant or think you might be pregnant.
- Are breastfeeding or planning to breastfeed. APO-CLARITHROMYCIN XL passes into your breastmilk and can harm your baby.
- Have a condition called myasthenia gravis which is a chronic disease that causes muscle weakness. APO-CLARITHROMYCIN XL may make your myasthenia gravis worse.
- Are taking APO-CLARITHROMYCIN XL and oral medicines for diabetes (such as gliclazide, glyburide) and / or with insulin as this can result in serious low blood sugar levels (hypoglycemia). Discuss with your healthcare professional how you should monitor your blood sugar levels.
- Are taking warfarin, as there is a risk of serious bleeding with APO-CLARITHROMYCIN XL.
- Are taking triazolam, alprazolam or other benzodiazepines (midazolam). These should be used cautiously with APO-CLARITHROMYCIN XL due to the serious risk of effects on your brain and spinal cord.
- Are taking APO-CLARITHROMYCIN XL and medicines used to prevent blood clots such as dabigatran, rivaroxaban and apixaban, particularly if your healthcare professional has told you that you are at high risk of bleeding.

Other warnings you should know about:

Serious heart problems:

Use of antibiotics like APO-CLARITHROMYCIN XL have resulted in heart problems such as irregular heartbeat, torsades de pointes and QT prolongation sometimes leading to death. Talk to your healthcare professional if you are elderly or have risk factors such as:

- Heart disease, heart problems or slow heartbeat.
- If you are taking other medicines which are known to cause serious disturbances in heart rhythm.
- If you have disturbances in the levels of salts (electrolytes) in your blood, such as low levels of magnesium (hypomagnesemia).

Antibiotic resistance and HIV:

Development of antibiotic resistance (where the medicine no longer works to kill bacteria) has been seen in patients with HIV taking clarithromycin. To avoid this, you should always take your medicine as advised by your healthcare professional.

Driving and using machines:

If you feel dizzy, confused or disorientated while taking APO-CLARITHROMYCIN XL, do not drive or operate machines.

Tell your healthcare professional about all the medicines you take, including any drugs, vitamins, minerals, natural supplements or alternative medicines.

The following may interact with APO-CLARITHROMYCIN XL:

- Alfentanil (used during surgery).
- Alprazolam, hexobarbital, phenobarbital, midazolam, triazolam (sedative medications).
- Amlodipine, diltiazem, verapamil (calcium channel blockers often used for high blood pressure).
- Aripiprazole, pimozide, quetiapine, risperidone (for schizophrenia, bipolar depression).
- Atazanavir, indinavir, ritonavir, saquinavir, nevirapine, efavirenz, etravirine, zidovudine (treatments for HIV).
- Atorvastatin, lovastatin, pravastatin, rosuvastatin, simvastatin, lomitapide (for high cholesterol).
- Bromocriptine (used for problems with your pituitary gland and Parkinson's disease).
- Carbamazepine (for seizures, nerve pain or bipolar depression).
- Cilostazol, digoxin, quinidine, disopyramide, warfarin/acenocoumarol, ticagrelor (diseases of your blood vessels and heart).
- Colchicine (treatment for gout).
- Cyclosporine (used for psoriasis, rheumatoid arthritis and after organ transplant).
- Domperidone (used for gastrointestinal disorders).
- Ergotamine, dihydroergotamine (often used for migraine headaches).
- Fluconazole, itraconazole (for fungal infections).
- Insulin, nateglinide, pioglitazone, repaglinide, rosiglitazone (for diabetes).
- Lansoprazole, omeprazole (proton pump inhibitors for heart burn and reflux).
- Methylprednisolone (an anti-inflammatory).
- Phenytoin, valproic acid (treatment of seizures and epilepsy).
- Rifabutin, rifampin (treatments for infections).
- Rivaroxaban, apixaban (to prevent blood clots).
- Sildenafil, tadalafil, vardenafil (treatments for erectile dysfunction).
- St. John's Wort (for depression).
- Tacrolimus (used after organ transplant).

- Theophylline (asthma and other lung problems).
- Tolterodine (treatment for overactive bladder).
- Vinblastine, ibrutinib (cancer treatment).

How to take APO-CLARITHROMYCIN XL:

- Take APO-CLARITHROMYCIN XL with food.
- Swallow APO-CLARITHROMYCIN XL whole with a glass of water.
- Do not break, chew or crush the tablets.

Usual dose:

The usual adult dose is 2 x 500 mg tablets (1000 mg) every 24 hours for 5, 7 or 14 days.

Overdose:

Symptoms of APO-CLARITHROMYCIN XL overdose are abdominal pain, vomiting, nausea and diarrhea.

If you think you, or a person you are caring for, have taken too much APO-CLARITHROMYCIN XL, contact a healthcare professional, hospital emergency department, or regional poison control centre immediately, even if there are no symptoms.

Missed Dose:

- If you miss a dose, take it as soon as you remember.
- If it is almost time for your next dose, do not take the missed dose.
- Take your next dose when you would normally take it.
- Never take a double dose to make up for a missed dose.

What are possible side effects from using APO-CLARITHROMYCIN XL?

These are not all the possible side effects you may have when taking APO-CLARITHROMYCIN XL. If you experience any side effects not listed here, tell your healthcare professional.

Side effects may include:

- abdominal pain
- abnormal taste
- diarrhea
- ear disorder (trouble hearing and ringing in your ears)
- flatulence
- indigestion
- headache

- nausea
- rash
- vomiting

If you see tablet residue in your stool, contact your doctor as your doctor may recommend a different clarithromycin formulation, especially if you have certain bowel conditions.

| Serious side effects and what to do about them | | | |
|--|---|---------------------|--|
| Symptom / effect | Talk to your healthcare professional | | Stop taking drug and get immediate medical help |
| | Only if severe | In all cases | |
| UNCOMMON Allergic reactions: itching, hives, rash, sore throat, fever, swelling, difficulty breathing, lightheadedness/ dizziness, swelling of your tongue or throat, warm red skin or wheezing. | | | √ |
| Clostridium difficile colitis (bowel inflammation): severe diarrhea (bloody or watery) with or without fever, abdominal pain, or tenderness. | | √ | |
| Irregular heartbeat | | | √ |
| Myasthenia gravis: muscle weakness, drooping eyelid, vision changes, difficulty chewing and swallowing, trouble breathing. | | | √ |
| Hepatitis (liver inflammation): abdominal pain, nausea, vomiting, yellowing of skin and eyes, dark urine. | | | √ |

If you have a troublesome symptom or side effect that is not listed here or becomes bad enough to interfere with your daily activities, tell your healthcare professional.

Reporting Side Effects

You can report any suspected side effects associated with the use of health products to Health Canada by:

- Visiting the Web page on Adverse Reaction Reporting (<https://www.canada.ca/en/health-canada/services/drugs-health-products/medeffect-canada/adverse-reaction-reporting.html>) for information on how to report online, by mail or by fax; or
- Calling toll-free at 1-866-234-2345

NOTE: Contact your health professional if you need information about how to manage your side effects. The Canada Vigilance Program does not provide medical advice.

Storage:

Store between 15°C to 30°C in a tightly closed container. Protect from light. Do not use beyond expiration date.

Keep out of reach and sight of children.

If you want more information about APO-CLARITHROMYCIN XL:

- Talk to your healthcare professional
- Find the full product monograph that is prepared for healthcare professionals and includes this Patient Medication Information by visiting the Health Canada website (<https://www.canada.ca/en/health-canada/services/drugs-health-products/drug-products/drug-product-database.html>); Find the Patient Medication Information on the manufacturer's website (<http://www.apotex.ca/products>), or by calling 1-800-667-4708.

This leaflet was prepared by Apotex Inc., Toronto, Ontario, M9L 1T9.

Last Revised: April 13, 2023