

PRODUCT MONOGRAPH
INCLUDING PATIENT MEDICATION INFORMATION

PrAPO-ZIDOVUDINE

Zidovudine Capsules
Capsules, 100 mg, Oral
USP
Antiretroviral Agent

APOTEX INC.
150 Signet Drive
Toronto, Ontario
M9L 1T9

Date of Initial Authorization:
MAY 25, 1992

Date of Revision:
JUN 16, 2023

Submission Control Number: 271013

RECENT MAJOR LABEL CHANGES

1 INDICATIONS, 1.2 Geriatrics	06/2023
3 SERIOUS WARNINGS AND PRECAUTIONS BOX	06/2023
4 DOSAGE AND ADMINISTRATION, 4.1 Dosing Considerations	06/2023
4 DOSAGE AND ADMINISTRATION, 4.2 Recommended Dose and Dosage Adjustment	06/2023
7 WARNINGS AND PRECAUTIONS, General	06/2023
7 WARNINGS AND PRECAUTIONS, Hepatic/Biliary/Pancreatic	06/2023

TABLE OF CONTENTS

Sections or subsections that are not applicable at the time of authorization are not listed.

RECENT MAJOR LABEL CHANGES	2
TABLE OF CONTENTS	2
PART I: HEALTH PROFESSIONAL INFORMATION	4
1 INDICATIONS	4
1.1 Pediatrics	4
1.2 Geriatrics	4
2 CONTRAINDICATIONS	4
3 SERIOUS WARNINGS AND PRECAUTIONS BOX	5
4 DOSAGE AND ADMINISTRATION	5
4.1 Dosing Considerations.....	5
4.2 Recommended Dose and Dosage Adjustment.....	6
5 OVERDOSAGE	6
6 DOSAGE FORMS, STRENGTHS, COMPOSITION AND PACKAGING	7
7 WARNINGS AND PRECAUTIONS	7
7.1 Special Populations	11
7.1.1 Pregnant Women	11
7.1.2 Breast-feeding.....	12
7.1.3 Pediatrics	13
7.1.4 Geriatrics.....	13

8	ADVERSE REACTIONS	13
8.1	Adverse Reaction Overview	13
8.2	Clinical Trial Adverse Reactions.....	13
8.2.1	Clinical Trial Adverse Reactions - Pediatrics	18
8.3	Less Common Clinical Trial Adverse Reactions	21
8.4	Abnormal Laboratory Findings: Hematologic, Clinical Chemistry and Other Quantitative Data	22
8.5	Post-Market Adverse Reactions	22
9	DRUG INTERACTIONS	23
9.2	Drug Interactions Overview	23
9.4	Drug-Drug Interactions.....	24
9.5	Drug-Food Interactions	29
9.6	Drug-Herb Interactions.....	29
9.7	Drug-Laboratory Test Interactions	29
10	CLINICAL PHARMACOLOGY	29
10.1	Mechanism of Action	29
10.3	Pharmacokinetics	29
11	STORAGE, STABILITY AND DISPOSAL	31
12	SPECIAL HANDLING INSTRUCTIONS	31
PART II: SCIENTIFIC INFORMATION		32
13	PHARMACEUTICAL INFORMATION	32
14	CLINICAL TRIALS	32
14.1	Trial Design and Study Demographics.....	32
14.2	Study Results	33
14.3	Comparative Bioavailability Studies	33
15	MICROBIOLOGY	34
16	NON-CLINICAL TOXICOLOGY	38
17	SUPPORTING PRODUCT MONOGRAPHS	43
PATIENT MEDICATION INFORMATION		44

PART I: HEALTH PROFESSIONAL INFORMATION

1 INDICATIONS

APO-ZIDOVUDINE (zidovudine) is indicated for the treatment of HIV infection in adults and adolescents aged 12 years and older and weighing > 30 kg when antiretroviral therapy is warranted.

Therapy with APO-ZIDOVUDINE has been shown to prolong survival and decrease the incidence of opportunistic infections in patients with advanced HIV disease at the initiation of therapy and to delay disease progression in asymptomatic HIV-infected patients.

APO-ZIDOVUDINE in combination with certain antiretroviral agents has been shown to be superior to monotherapy in one or more of the following: delaying death, delaying development of AIDS, increasing CD4 cell counts, and decreasing plasma HIV RNA. Use of APO-ZIDOVUDINE in some combinations is based on surrogate marker data. The complete prescribing information for each drug should be consulted before initiating combination therapy with APO-ZIDOVUDINE.

The duration of clinical benefit from antiretroviral therapy may be limited. Alterations in antiretroviral therapy should be considered if disease progression occurs during treatment.

1.1 Pediatrics

Pediatrics (12 to < 18 years of age): Based on the data submitted and reviewed by Health Canada, the safety and efficacy of APO-ZIDOVUDINE in pediatric patients aged 12 to < 18 years of age and weighing > 30 kg has been established; therefore, Health Canada has authorized an indication for the treatment of HIV infection.

1.2 Geriatrics

Geriatrics (>65 years of age): Zidovudine pharmacokinetics have not been studied in patients over 65 years of age and no specific data are available. However, since special care is advised in this age group due to age-associated changes such as the decrease in renal function and alterations in hematological parameters, appropriate monitoring of patients before and during use of zidovudine is advised.

2 CONTRAINDICATIONS

- APO-ZIDOVUDINE is contraindicated for patients who have potentially life-threatening allergic reactions to any of the components of the formulations (see [6 DOSAGE FORMS, COMPOSITION AND PACKAGING](#)).
- Due to the active ingredient zidovudine, APO-ZIDOVUDINE is contraindicated in patients with abnormally low neutrophil counts ($< 0.75 \times 10^9/L$) or abnormally low hemoglobin levels ($< 7.5 \text{ g/dL}$ or 4.65 mmol/L).

3 SERIOUS WARNINGS AND PRECAUTIONS BOX

Serious Warnings and Precautions

WARNING: RISK OF HEMATOLOGICAL TOXICITY, MYOPATHY, LACTIC ACIDOSIS

Hematologic Toxicity

Zidovudine has been associated with hematologic toxicity including neutropenia and severe anemia, particularly in patients with advanced HIV-1 disease (see [7 WARNINGS AND PRECAUTIONS](#)).

Myopathy

Prolonged use of zidovudine has been associated with symptomatic myopathy (see [7 WARNINGS AND PRECAUTIONS](#)).

Lactic Acidosis and Severe Hepatomegaly

Lactic acidosis and severe hepatomegaly with steatosis, including fatal cases, have been reported with the use of nucleoside analogues alone or in combination, including zidovudine and other antiretrovirals. Suspend treatment if clinical or laboratory findings suggestive of lactic acidosis or pronounced hepatotoxicity occur (see [7 WARNINGS AND PRECAUTIONS](#)).

4 DOSAGE AND ADMINISTRATION

4.1 Dosing Considerations

Monitoring of Patients

Hematologic toxicities appear to be related to pre-treatment bone marrow reserve and to dose and duration of therapy. In patients with poor bone marrow reserve, particularly in patients with advanced symptomatic HIV disease, frequent monitoring of hematologic indices is recommended to detect serious anemia or granulocytopenia (see [8 ADVERSE REACTIONS](#)). In patients who experience hematologic toxicity, reduction in hemoglobin may occur as early as 2 to 4 weeks, and granulocytopenia usually occurs after 6 to 8 weeks.

Patients treated with zidovudine should be under close clinical observation to manage potential opportunistic infections associated with HIV disease. Prompt recognition of infection or toxicities and appropriate management is required.

4.2 Recommended Dose and Dosage Adjustment

Treatment of HIV-1 Infection

Oral Administration

Adults and Adolescents weighing at least 30 kg

The recommended total oral daily dose of APO-ZIDOVUDINE is 600 mg per day in divided doses in combination with other antiretroviral agents.

Suggested dosing regimens are listed in the following [Table 1](#).

Table 1 Suggested Dosing Regimens for Adults and Adolescents (weighing at least 30 kg)

Formulation	Dosing Regimen	
	Twice daily (every 12 hours)	Three times daily (every 8 hours)
Capsules	Three 100 mg Capsules	Two 100 mg Capsules

Dose Adjustment

Significant anemia (hemoglobin of < 7.5 g/dL or reduction of > 25% of baseline) and/or significant granulocytopenia (granulocyte count of < 750 cells/mm³ or reduction of > 50% from baseline) may require a dose interruption until evidence of marrow recovery is observed (see [8 ADVERSE REACTIONS](#)). In patients who develop significant anemia, dose modification does not necessarily eliminate the need for transfusion.

For less severe anemia or granulocytopenia, a reduction in daily dose may be adequate. If marrow recovery occurs following dose modification, gradual increases in dose may be appropriate depending on hematologic indices and patient tolerance.

In end-stage renal disease patients maintained on hemodialysis or peritoneal dialysis, recommended dosing is 100 mg every 6 to 8 hours (see [10.3 Pharmacokinetics](#) and [10 CLINICAL PHARMACOLOGY](#)).

There are insufficient data to recommend dose adjustment of zidovudine in patients with impaired hepatic function. Careful monitoring for hematologic toxicities is advised (see [7 WARNINGS AND PRECAUTIONS- Hepatic/Biliary/Pancreatic](#)).

5 OVERDOSAGE

No specific symptoms or signs have been identified following acute overdose with zidovudine, apart from those listed as adverse reactions (see [8 ADVERSE REACTIONS](#)).

Activated charcoal should be administered to aid in the removal of unabsorbed drug. General supportive measures are recommended.

Patients should be observed closely for evidence of toxicity (see [8 ADVERSE REACTIONS](#)) and given the necessary supportive therapy.

Hemodialysis and peritoneal dialysis appear to have a limited effect on elimination of zidovudine but enhance the elimination of the glucuronide metabolite.

For management of a suspected drug overdose, contact your regional poison control centre.

6 DOSAGE FORMS, STRENGTHS, COMPOSITION AND PACKAGING

Table 2 Dosage Forms, Strengths, Composition and Packaging.

Route of Administration	Dosage Form / Strength / Composition	Non-medicinal Ingredients
Oral	Capsules, 100 mg	Colloidal silicon dioxide, corn starch microcrystalline cellulose, stearic acid and talc. The capsule, imprinted with edible black ink, contains gelatin and titanium dioxide. The edible black ink contains black iron oxide, potassium hydroxide, propylene glycol, shellac, and strong ammonia solution.

APO-ZIDOVUDINE capsules 100 mg are hard gelatin capsules with a white opaque body, and a white opaque cap imprinted "APO Z100", with white to off-white powder fill, containing 100 mg of zidovudine.

Available in bottles of 100, 500 and 1000, and in unit dose packages of 100.

7 WARNINGS AND PRECAUTIONS

General

While effective viral suppression with antiretroviral therapy has been proven to substantially reduce the risk of sexual transmission, a residual risk cannot be excluded. Precautions to prevent transmission should be taken in accordance with national guidelines.

Anemia (usually not observed before six weeks of zidovudine therapy but occasionally occurring earlier), neutropenia (usually not observed before four weeks therapy but sometimes occurring

earlier) and leucopenia (usually secondary to neutropenia) can be expected to occur in patients with advanced symptomatic HIV disease receiving zidovudine. These occurred more frequently at higher dosages (1200 to 1500 mg/day) and in patients with poor bone marrow reserve prior to treatment, particularly with advanced HIV disease.

Hematological parameters should be carefully monitored. For patients with advanced symptomatic HIV disease it is generally recommended that blood tests are performed at least every two weeks for the first three months of therapy and at least monthly thereafter.

Dosage reduction or interruption of zidovudine therapy may be necessary in patients whose hemoglobin level falls to between 7.5 g/dL (4.65 mmol/L) and 9 g/dL (5.59 mmol/L) or whose neutrophil count falls to between $0.75 \times 10^9/L$ and $1.0 \times 10^9/L$.

Serious Adverse Reactions

Several serious adverse events have been reported with use of zidovudine in clinical practice. Reports of pancreatitis, sensitization reactions (including anaphylaxis in one patient), vasculitis, and seizures have been rare. These adverse events, except for sensitization, have also been associated with HIV disease. Changes in skin and nail pigmentation have been associated with the use of zidovudine.

Before combination therapy with APO-ZIDOVUDINE is initiated, consult the complete prescribing information for each drug. The safety profile of APO-ZIDOVUDINE plus other antiretroviral agents reflects the individual safety profiles of each component.

The incidence of adverse reactions appears to increase with disease progression, and patients should be monitored carefully, especially as disease progression occurs.

Endocrine and Metabolism

- **Lipoatrophy**

Treatment with zidovudine has been associated with loss of subcutaneous fat. The incidence and severity of lipoatrophy are related to cumulative exposure. This fat loss, which is most evident in the face, limbs and buttocks, may be only partially reversible and improvement may take several months when switching to a zidovudine-free regimen. Patients should be regularly assessed for signs of lipoatrophy during therapy with zidovudine and other zidovudine containing products (COMBIVIR), and if feasible, therapy should be switched to an alternative regimen if there is suspicion of lipoatrophy development.

- **Serum lipids and blood glucose**

Serum lipid and blood glucose levels may increase during antiretroviral therapy. Disease control and lifestyle changes may also be contributing factors. Consideration should be given to the measurement of serum lipids and blood glucose. Lipid disorders and blood glucose elevations should be managed as clinically appropriate.

Hematologic

- **Bone Marrow Suppression**

APO-ZIDOVUDINE should be used with extreme caution in patients who have bone marrow compromise evidenced by granulocyte count <1000 cells/mm³ or hemoglobin < 9.5 g/dL. In all of the placebo-controlled studies, but most frequently in patients with advanced symptomatic disease, anemia and granulocytopenia were the most significant adverse events observed (see [8 ADVERSE REACTIONS](#)). There have been reports of pancytopenia associated with the use of zidovudine, which was reversible in most instances after discontinuation of the drug.

Hepatic/Biliary/Pancreatic

- **Lactic Acidosis/Severe Hepatomegaly with Steatosis**

Rare occurrences of lactic acidosis in the absence of hypoxemia, and severe hepatomegaly with steatosis, (even in the absence of marked transaminase elevations) have been reported with the use of antiretroviral nucleoside analogues either alone or in combination, including zidovudine, and are potentially fatal; it is not known whether these events are causally related to the use of these drugs. Lactic acidosis should be considered whenever a patient receiving therapy with zidovudine develops unexplained tachypnea, dyspnea, or a fall in serum bicarbonate level. Under these circumstances, therapy with APO-ZIDOVUDINE should be suspended until the diagnosis of lactic acidosis has been excluded.

Clinical features which may be indicative of the development of lactic acidosis include generalized weakness, anorexia and sudden unexplained weight loss, gastrointestinal symptoms and respiratory symptoms (dyspnea and tachypnea).

Caution should be exercised when administering zidovudine to any patient, particularly to those with known risk factors for liver disease (obese women, hepatomegaly, hepatitis, or other known risk factors). These patients should be followed closely while on therapy with zidovudine. The significance of elevated aminotransferase levels (suggesting hepatic injury) in HIV-infected patients prior to starting zidovudine or while on zidovudine is unclear. Treatment with zidovudine should be suspended in any patient who develops clinical or laboratory findings suggestive of lactic acidosis with or without hepatitis which may include hepatomegaly and steatosis even in the absence of marked transaminase elevations.

Coadministration of zidovudine with other drugs metabolized by glucuronidation should be avoided because the toxicity of either drug may be potentiated (see [9 DRUG INTERACTIONS](#)).

Data in patients with cirrhosis suggest that accumulation of zidovudine may occur in patients with hepatic impairment because of decreased glucuronidation. Dosage adjustments may be necessary, but as there is only limited data available precise recommendations cannot be made. If monitoring of plasma zidovudine levels is not feasible, physicians will need to monitor for signs of intolerance and adjust the dose and/or increase the interval between doses as appropriate.

- **Hepatic Impairment**

APO-ZIDOVUDINE is primarily eliminated by hepatic metabolism and zidovudine concentrations appear to be increased in patients with impaired hepatic function, which may increase the risk of hematologic toxicity. Careful monitoring for hematologic toxicities is advised. There are insufficient data to recommend dose adjustment of zidovudine in patients with impaired hepatic function or liver cirrhosis.

- **Patients co-infected with hepatitis C virus**

Exacerbation of anemia due to ribavirin has been reported when zidovudine is part of the regimen used to treat HIV although the exact mechanism remains to be elucidated. Therefore, the co-administration of ribavirin and zidovudine is not advised and consideration should be given to replacing zidovudine in a combination ART regimen if this is already established. This is particularly important in patients with a known history of zidovudine induced anemia.

- **Use With Interferon- and Ribavirin- Based Regimens**

In vitro studies have shown ribavirin can reduce the phosphorylation of pyrimidine nucleoside analogues such as zidovudine. Although no evidence of a pharmacokinetic or pharmacodynamic interaction (e.g. loss of HIV/HCV virologic suppression) was seen when ribavirin was coadministered with zidovudine in HIV/HCV co-infected patients, hepatic decompensation (some fatal) has occurred in HIV/HCV co-infected patients receiving combination antiretroviral therapy for HIV and interferon alfa with or without ribavirin. Patients receiving interferon alfa with or without ribavirin and APO-ZIDOVUDINE should be closely monitored for treatment-associated toxicities, especially hepatic decompensation, neutropenia, and anemia. Discontinuation of APO-ZIDOVUDINE should be considered as medically appropriate. Dose reduction or discontinuation of interferon alfa, ribavirin, or both should also be considered if worsening clinical toxicities are observed, including hepatic decompensation (e.g. Child Pugh >6) (see the complete prescribing information for interferon and ribavirin).

Immune

- **Immune Reconstitution Inflammatory Syndrome**

During the initial phase of treatment, patients responding to antiretroviral therapy may develop an inflammatory response to indolent or residual opportunistic infections [such as *Mycobacterium avium-complex* (MAC), *cytomegalovirus* (CMV), *Pneumocystis jirovecii pneumonia* (PCP), and *tuberculosis* (TB)], which may necessitate further evaluation and treatment.

Autoimmune disorders (such as Graves' disease, polymyositis, autoimmune hepatitis and Guillain-Barre syndrome) have also been reported to occur in the setting of immune reconstitution, however, the time to onset is more variable, and can occur many months after initiation of treatment and sometimes can be an atypical presentation.

Musculoskeletal

- **Myopathy**

Myopathy and myositis with pathological changes similar to that produced by HIV disease have been associated with prolonged use of zidovudine.

Renal

Zidovudine is eliminated from the body primarily by renal excretion following metabolism in the liver (glucuronidation). In patients with severely impaired renal function, dosage reduction is recommended (see [10 CLINICAL PHARMACOLOGY](#) and [4 DOSAGE AND ADMINISTRATION](#)). Although very little data are available, patients with severely impaired hepatic function may be at greater risk of toxicity.

Very rare occurrences of pure red cell aplasia have been reported with zidovudine use. Discontinuation of zidovudine has resulted in normalization of hematological parameters in patients with suspected zidovudine-induced pure red cell aplasia.

Hemodialysis and peritoneal dialysis have no significant effect on zidovudine elimination whereas elimination of the glucuronide metabolite is increased. For patients with end-stage renal disease maintained on hemodialysis or peritoneal dialysis, the recommended dose is 100 mg every 6 to 8 h (see [10.3 Pharmacokinetics](#)).

7.1 Special Populations

7.1.1 Pregnant Women

The safe use of zidovudine in human pregnancy has not been established in adequate and well-controlled trials investigating congenital abnormalities. Therefore, administration of APO-ZIDOVUDINE in pregnancy should be considered only if the expected benefit outweighs the possible risk to the fetus.

There are no data on the effect of zidovudine on human female fertility. In men, zidovudine has been shown to have no effect on sperm count, morphology, or motility.

Zidovudine has been associated with findings in animal reproductive studies (see [16 NON-CLINICAL TOXICOLOGY](#)). Pregnant women considering using APO-ZIDOVUDINE during pregnancy should be made aware of these findings.

There have been reports of mild, transient elevations in serum lactate levels, which may be due to mitochondrial dysfunction, in neonates and infants exposed in utero or peripartum to nucleoside reverse transcriptase inhibitors (NRTIs). The clinical relevance of transient elevations

in serum lactate is unknown. There have also been very rare reports of developmental delay, seizures and other neurological disease. However, a causal relationship between these events and NRTI exposure in utero or peripartum has not been established. These findings do not affect current recommendations to use antiretroviral therapy in pregnant women to prevent vertical transmission of HIV.

Antiretroviral Pregnancy Registry

To monitor maternal-fetal outcomes of pregnant women exposed to ART (antiretroviral therapy), including APO-ZIDOVUDINE, an Antiretroviral Pregnancy Registry has been established. Healthcare providers are encouraged to register patients:

<http://www.apregistry.com>

Telephone: (800) 258-4263

Fax: (800) 800-1052

Zidovudine has been evaluated in the Antiretroviral Pregnancy Registry in over 13,000 women during pregnancy and postpartum. Available human data from the Antiretroviral Pregnancy Registry do not show an increased risk of major birth defects for Zidovudine compared to the background rate.

The Antiretroviral Pregnancy Registry has received reports of over 13,000 exposures to zidovudine during pregnancy resulting in live birth. These consist of over 4,100 exposures during the first trimester, over 9,300 exposures during the second/third trimester and included 133 and 264 birth defects respectively. The prevalence (95% CI) of defects in the first trimester was 3.2% (2.7, 3.8%) and in the second/third trimester, 2.8% (2.5, 3.2%). This proportion is not significantly higher than those reported in the two population based surveillance systems (2.72 per 100 live births and 4.17 per 100 live births respectively). The Antiretroviral Pregnancy Registry does not show an increased risk of major birth defects for zidovudine compared to the background rate.

7.1.2 Breast-feeding

HIV-1 infected mothers should not breastfeed their infants to avoid risking postnatal transmission of HIV. Zidovudine is excreted in human milk at similar concentrations to those found in serum. Because of both the potential for HIV transmission and the potential for serious adverse reactions in nursing infants, **mothers should be instructed not to breastfeed if they are receiving APO-ZIDOVUDINE.**

Lactating mice administered zidovudine (200 mg/kg intraperitoneally) were found to have milk concentrations of zidovudine five times the corresponding serum zidovudine concentration. Milk concentrations of zidovudine declined at a slower rate than serum zidovudine concentrations.

7.1.3 Pediatrics

The drug has been authorized for use in adolescents aged 12 years and older, and weighing > 30 kg. Health Canada has not authorized an indication for patients < 12 years of age and < 30 kg.

7.1.4 Geriatrics

Zidovudine pharmacokinetics have not been studied in patients over 65 years of age and no specific data are available. However, since special care is advised in this age group due to age-associated changes such as the decrease in renal function and alterations in hematological parameters, appropriate monitoring of patients before and during use of zidovudine is advised.

8 ADVERSE REACTIONS

8.1 Adverse Reaction Overview

Adults

The frequency and severity of adverse events associated with the use of zidovudine in adults are greater in patients with more advanced infection at the time of initiation of therapy.

8.2 Clinical Trial Adverse Reactions

Clinical trials are conducted under very specific conditions. The adverse reaction rates observed in the clinical trials; therefore, may not reflect the rates observed in practice and should not be compared to the rates in the clinical trials of another drug. Adverse reaction information from clinical trials may be useful in identifying and approximating rates of adverse drug reactions in real-world use.

Adults

Anemia and Granulocytopenia

In all of the placebo-controlled studies, but most frequently in patients with advanced symptomatic HIV disease, anemia and granulocytopenia were the most significant adverse events observed.

Significant anemia most commonly occurred after 4 to 6 weeks of therapy and in many cases required dose adjustment, discontinuation of zidovudine, and/or blood transfusions. Frequent blood counts are strongly recommended in patients with advanced HIV disease taking APO-ZIDOVUDINE. For asymptomatic HIV-infected individuals and patients with early HIV disease, most of whom have better marrow reserve, blood counts may be obtained less frequently,

depending upon the patient's overall status. If anemia or granulocytopenia develops, dosage adjustments may be necessary (see [4 DOSAGE AND ADMINISTRATION](#)).

The following [Table 3](#) summarizes the relative incidence of hematologic adverse events observed in clinical studies by severity of HIV disease present at the start of treatment:

Table 3 Relative Incidence of Hematologic Adverse Events Observed in Clinical Studies by Severity of HIV Disease Present at the Start of Treatment.

Asymptomatic HIV Infection Study (n=1338)	Granulocytopenia (<750 cells/mm ³)			Anemia (Hgb <8.0 g/dL)		
	Zidovudine		Placebo	Zidovudine		Placebo
	1500 mg/day *	500 mg/day		1500 mg/day *	500 mg/day	
CD4 ≤ 500	6.4% (n=457)	1.8% ** (n=453)	1.6% (n=428)	6.4% (n=457)	1.1% ** (n=453)	0.2% (n=428)
Early Symptomatic HIV Disease Study (n=713)	Granulocytopenia (<750 cells/mm ³)			Anemia (Hgb <8.0 g/dL)		
	Zidovudine 1200 mg/day *		Placebo	Zidovudine 1200 mg/day *		Placebo
CD4 > 200	4% (n=361)		1% (n=352)	4% (n=361)		0% (n=352)
Advanced Symptomatic HIV Disease Study (n=281)	Granulocytopenia (<750 cells/mm ³)			Anemia (Hgb <7.5 g/dL)		
	Zidovudine 1500 mg/day *		Placebo	Zidovudine 1500 mg/day *		Placebo
CD4 > 200	10% (n=30) **		3% (n=30)	3% (n=30) **		0% (n=30)
CD4 ≤ 200	47% (n=114)		10% (n=107)	29% (n=114)		5% (n=107)
Advanced Symptomatic	Granulocytopenia (<750 cells/mm ³)			Anemia (Hgb <8.0 g/dL)		

HIV Disease Dose Comparison Study (n=524)	Zidovudine 1200 mg/day *	Zidovudine 600 mg/day	Zidovudine 1200 mg/day *	Zidovudine 600 mg/day
CD4 ≤ 200	51% (n=262)	37% (n=262)	39% (n=262)	29% (n=262)

* The currently recommended dose is 600 mg/day

** Not statistically significant compared to placebo

Other Adverse Events (Advanced HIV Disease)

The anemia reported in patients with advanced HIV disease receiving zidovudine appeared to be the result of impaired erythrocyte maturation as evidenced by macrocytosis while on drug. Although mean platelet counts in patients receiving zidovudine were significantly increased compared to mean baseline values, thrombocytopenia did occur in some of these patients with advanced disease. Twelve percent of patients receiving zidovudine, compared to 5% of patients receiving placebo had >50% decreases from baseline platelet count. Mild drug-associated elevations in total bilirubin levels have been reported as an uncommon occurrence in patients treated for asymptomatic HIV infection. The HIV-infected adults participating in these clinical trials often had baseline symptoms and signs of HIV disease and/or experienced adverse events at some time during the study. It was often difficult to distinguish adverse events possibly associated with administration of zidovudine from underlying signs of HIV disease or intercurrent illnesses.

The following [Table 4](#) summarizes clinical adverse events or symptoms which occurred in at least 5% of all patients with advanced HIV disease treated with 1500 mg/day of zidovudine in the original placebo-controlled study. Of the items listed in the table, only severe headache, nausea, insomnia and myalgia were reported at a significantly greater rate in patients receiving zidovudine.

Table 4 Percentage (%) of Patients with Clinical Events in Advanced HIV Disease

Adverse Event	Zidovudine 1500 mg/day * (n=144) %	Placebo (n=137) %
BODY AS A WHOLE		
Asthenia	19	18
Diaphoresis	5	4
Fever	16	12
Headache	42	37
Malaise	8	7

Adverse Event	Zidovudine 1500 mg/day * (n=144) %	Placebo (n=137) %
GASTROINTESTINAL		
Anorexia	11	8
Diarrhea	12	18
Dyspepsia	5	4
GI pain	20	19
Nausea	46	18
Vomiting	6	3
MUSCULOSKELETAL		
Myalgia	8	2
NERVOUS		
Dizziness	6	4
Insomnia	5	1
Paresthesia	6	3
Somnolence	8	9
RESPIRATORY		
Dyspnea	5	3
SKIN		
Rash	17	15
SPECIAL SENSES		
Taste Perversion	5	8

* The currently recommended dose is 600 mg daily.

Other Adverse Events (Early Symptomatic/Asymptomatic HIV Disease)

All events of a severe or life-threatening nature were monitored for adults in the placebo-controlled studies in early HIV disease and asymptomatic HIV infection. Data concerning the occurrence of additional signs or symptoms were also collected. No distinction was made between events possibly associated with the administration of the study medication and those due to the underlying disease. The following [Table 5](#) and [Table 6](#) summarize all those events reported significantly more frequently by patients receiving zidovudine in these studies:

Table 5 Percentage (%) of Patients with Clinical Events in Early Symptomatic HIV Disease Study

Adverse Event	Zidovudine 1200 mg/day * (n=361) %	Placebo (n=352) %
BODY AS A WHOLE		
Asthenia	69	62
GASTROINTESTINAL		
Dyspepsia	6	1
Nausea	61	41
Vomiting	25	13

*The currently recommended dose is 600 mg daily

Table 6 Percentage (%) of Patients with Clinical Events[†] in an Asymptomatic HIV Infection Study

Adverse Event	Zidovudine 1500 mg/day* (n=457) %	Zidovudine 500 mg/day* (n=453) %	Placebo (n=428) %
BODY AS A WHOLE			
Asthenia	10.1	8.6 [♦]	5.8
Headache	58.0 [♦]	62.5	52.6
Malaise	55.6	53.2	44.9
GASTROINTESTINAL			
Anorexia	19.3	20.1	10.5
Constipation	8.1	6.4 [♦]	3.5
Nausea	57.3	51.4	29.9
Vomiting	16.4	17.2	9.8

Adverse Event	Zidovudine 1500 mg/day* (n=457) %	Zidovudine 500 mg/day* (n=453) %	Placebo (n=428) %
NERVOUS Dizziness	20.8	17.9 [♦]	15.2

+ Reported in ≥5% of study population

* The currently recommended dose is 600 mg/day

♦ Not statistically significant versus placebo.

Several serious adverse events have been reported with the use of zidovudine in clinical practice. Myopathy and myositis with pathological changes similar to that produced by HIV disease have been associated with prolonged use of zidovudine. Reports of hepatomegaly with steatosis, hepatitis, pancreatitis, lactic acidosis, sensitization reactions (including anaphylaxis in one patient), hyperbilirubinemia, vasculitis, and seizures have been rare. These adverse events, except for sensitization, have also been associated with HIV disease. A single case of macular edema has been reported with the use of zidovudine. Changes in skin and nail pigmentation have been associated with the use of zidovudine (see [7 WARNINGS AND PRECAUTIONS](#)).

8.2.1 Clinical Trial Adverse Reactions - Pediatrics

Anemia and Granulocytopenia

The incidences of anemia and granulocytopenia among children with advanced HIV disease receiving zidovudine occurred with similar incidence to that reported for adults with AIDS or advanced ARC (see above). The following [Table 7](#) summarizes the occurrence of anemia (Hgb < 7.5 g/dL) and granulocytopenia (<750 cells/mm³) among 124 children receiving zidovudine for a mean of 267 days (range 3 to 855 days):

Table 7 The Occurrence of Anemia (Hgb < 7.5 g/dL) and Granulocytopenia (< 750 cells/mm³) Among 124 Children Receiving Zidovudine for a Mean of 267 days

Advanced Pediatric HIV disease (n=124)	Granulocytopenia (<750 cells/mm ³)		Anemia (Hgb<7.5 g/dL)	
	n	%	n	%
	48	39	28*	23

* Twenty-two children received one or more transfusions due to a decline in hemoglobin to <7.5 g/dL; an additional 15 children were transfused for hemoglobin levels >7.5 g/dL. Fifty-

nine percent of the patients transfused had a pre-study history of anemia or transfusion requirement.

Management of neutropenia and anemia included, in some cases, dose modification and/or blood product transfusions. In the open-label studies, 17% had their dose modified (generally a reduction in dose by 30%) due to anemia, and 25% had their dose modified (temporary discontinuation or reduction by 30%) for neutropenia. Four children had zidovudine permanently discontinued because of neutropenia.

Macrocytosis was observed among the majority of children enrolled in the studies.

Other Adverse Events

The clinical adverse events reported among adult recipients of zidovudine may also occur in children.

In the open-label studies involving 124 children, 16 different clinical adverse events were reported by 24 children. No event was reported by more than 5.6% of the study populations. Due to the open-label design of the studies, it was difficult to determine possible events related to the use of zidovudine versus disease-related events. Therefore, all clinical events reported as associated with therapy with zidovudine or of unknown relationship to therapy with zidovudine are presented in the following [Table 8](#):

Table 8 Percentage (%) of Pediatric Patients with Clinical Events in Open- Label Studies

Adverse Event	n	%
BODY AS A WHOLE		
Fever	4	3.2
Phlebitis*/Bacteremia	2	1.6
Headache	2	1.6
GASTROINTESTINAL		
Nausea	1	0.8
Vomiting	6	4.8
Abdominal Pain	4	3.2
Diarrhea	1	0.8
Weight Loss	1	0.8
NERVOUS		
Insomnia	3	2.4
Nervousness/Irritability	2	1.6
Decreased Reflexes	7	5.6
Seizure	1	0.8
CARDIOVASCULAR		
Left Ventricular Dilation	1	0.8
Cardiomyopathy	1	0.8
S ₃ Gallop	1	0.8
Congestive Heart Failure	1	0.8
Generalized Edema	1	0.8
ECG Abnormality	3	2.4
UROGENITAL		
Hematuria/Viral Cystitis	1	0.8

* Peripheral vein I.V. catheter site

Combination Therapy with Zidovudine and 3TC (Lamivudine)

Pediatric Patients

Selected clinical adverse events and physical findings with a $\geq 5\%$ frequency during therapy with lamivudine 4 mg/kg twice daily plus zidovudine 160 mg/m² three times daily compared with didanosine in patients without, or with, minimal (≤ 56 days) prior antiretroviral therapy are listed in [Table 9](#).

Table 9 Selected Clinical Adverse Events and Physical Findings ($\geq 5\%$ Frequency) in Pediatric Patients in Study ACTG300

Adverse Event	Lamivudine plus Zidovudine (n = 236)	Didanosine (n = 235)
Body as a whole		
Fever	25%	32%
Digestive		
Hepatomegaly	11%	11%
Nausea & vomiting	8%	7%
Diarrhea	8%	6%
Stomatitis	6%	12%
Splenomegaly	5%	8%
Respiratory		
Cough	15%	18%
Abnormal breath sounds/wheezing	7%	9%
Ear, Nose and Throat		
Signs or symptoms of ears*	7%	6%
Nasal discharge or congestion	8%	11%
Other		
Skin rashes	12%	14%
Lymphadenopathy	9%	11%

*Includes pain, discharge, erythema, or swelling of an ear.

8.3 Less Common Clinical Trial Adverse Reactions

Clinical adverse events which occurred in less than 5% of all adult patients treated with 1500 mg/day of zidovudine in the advanced HIV study are listed below. Since many of these adverse events were seen in placebo-treated patients as well as patients treated with zidovudine, their possible relationship to the drug is unknown.

- Body as a whole:** Back pain, body odour, chest pain, chills, edema of the lip, flu syndrome, hyperalgesia, lymphadenopathy
- Cardiovascular:** Vasodilation
- Gastrointestinal:** Bleeding gums, constipation, dysphagia, edema of the tongue, eructation, flatulence, mouth ulcer, rectal hemorrhage
- Musculoskeletal:** Arthralgia, muscle spasm, tremor, twitch

Nervous:	Anxiety, confusion, depression, emotional lability, loss of mental acuity, nervousness, syncope, vertigo
Respiratory:	Cough, epistaxis, hoarseness, pharyngitis, rhinitis, sinusitis
Skin:	Acne, pruritus, urticaria
Special senses:	Amblyopia, hearing loss, photophobia
Urogenital:	Dysuria, polyuria, urinary frequency, urinary hesitancy

8.4 Abnormal Laboratory Findings: Hematologic, Clinical Chemistry and Other Quantitative Data

Clinical Trial Findings

Selected laboratory abnormalities experienced by patients without or minimal (≤ 56 days) prior antiretroviral therapy are listed in [Table 10](#).

Table 10 Frequencies of Selected Laboratory Abnormalities in Pediatric Patients in Study ACTG300

Test (Abnormal Level)	Lamivudine plus Zidovudine	Didanosine
Neutropenia (ANC < 400/mm ³)	8%	3%
Anemia (Hgb < 7.0 g/dL)	4%	2%
Thrombocytopenia (platelets < 50,000/mm ³)	1%	3%
ALT (> 10 x ULN)	1%	3%
AST (> 10 x ULN)	2%	4%
Lipase (> 2.5 x ULN)	3%	3%
Total Amylase (> 2.5 x ULN)	3%	3%

ULN = Upper limit of normal.
ANC = Absolute neutrophil count.

8.5 Post-Market Adverse Reactions

The following events have been reported in patients treated with zidovudine without regard to causality. Because they are reported voluntarily from a population of unknown size, estimates of frequency cannot be made. A reduction in dose or suspension of zidovudine therapy may be warranted in the management of these conditions.

Hematological: Anemia (which may require transfusions), neutropenia, leucopenia, aplastic anemia, thrombocytopenia, pancytopenia (with marrow hypoplasia) and pure red cell aplasia.

Anemia, neutropenia, leucopenia and aplastic anemia occur more frequently at higher dosages (1200 to 1500 mg/day) and in patients with advanced HIV disease (especially when there is poor bone marrow reserve prior to treatment), and particularly in patients with CD₄ cell counts less than 100/mm³. Dosage reduction or cessation of therapy may become necessary ([see 4 DOSAGE AND ADMINISTRATION](#)). The incidence of neutropenia was also increased in those patients whose neutrophil counts, hemoglobin levels and serum vitamin B₁₂ levels were low at the start of zidovudine therapy.

Body as a Whole:	Loss of subcutaneous fat (see 7 WARNINGS AND PRECAUTIONS : Endocrine and Metabolism, Lipoatrophy). Convulsions, cardiomyopathy (thrombocytopenia, pancytopenia).
Gastrointestinal:	Oral mucosa pigmentation.
Immune System:	Immune Reconstitution Inflammatory Syndrome (see 7 WARNINGS AND PRECAUTIONS: Immune)
Liver/pancreas:	Raised blood levels of liver enzymes and bilirubin.
Metabolism & Nutrition disorders:	Anorexia, hyperlactatemia, lactic acidosis (see 7 WARNINGS AND PRECAUTIONS: Hepatic/Biliary/Pancreatic, Lactic Acidosis/Severe Hepatomegaly with Steatosis).
Miscellaneous:	Gynecomastia. Myopathy, hyperlactatemia.
Skin:	Sweating. Nail and skin discoloration.

9 DRUG INTERACTIONS

9.2 Drug Interactions Overview

Coadministration of APO-ZIDOVUDINE with other drugs metabolized by glucuronidation should be avoided because the toxicity of either drug may be potentiated.

Nucleoside Analogues Affecting DNA Replication

Some nucleoside analogues affecting DNA replication, such as ribavirin, antagonize the *in vitro* antiviral activity of zidovudine against HIV-1; concomitant use of such drugs should be avoided.

Doxorubicin

Concomitant use of zidovudine with doxorubicin should be avoided since an antagonistic relationship has been demonstrated *in vitro*.

9.4 Drug-Drug Interactions

The drugs listed in this table are based on either drug interaction case reports or studies, or potential interactions due to the expected magnitude and seriousness of the interaction (i.e., those identified as contraindicated).

Table 11 Established or Potential Drug-Drug Interactions

Proper name	Effect	Clinical comment
Atovaquone	Zidovudine does not appear to affect the pharmacokinetics of atovaquone.	Pharmacokinetic data have shown that atovaquone appears to decrease the rate of metabolism of zidovudine to its glucuronide metabolite (steady state AUC of zidovudine was increased by 33% and peak plasma concentration of the glucuronide was decreased by 19%). At zidovudine dosages of 500 or 600 mg/day it would seem unlikely that a three week, concomitant course of atovaquone for the treatment of acute PCP would result in an increased incidence of adverse reactions attributable to higher plasma concentrations of zidovudine. Extra care should be taken in monitoring patients receiving prolonged atovaquone therapy.
Bone marrow suppressive agents/cytotoxic agents	Coadministration may increase risk of hematologic toxicity.	Coadministration of APO-ZIDOVUDINE with drugs that are cytotoxic or which interfere with RBC/WBC number or function (e.g. dapsone, flucytosine, vincristine, vinblastine, or adriamycin) may increase the risk of hematologic toxicity.
Clarithromycin	Clarithromycin tablets reduce the absorption of zidovudine.	This can be avoided by separating the administration of zidovudine and clarithromycin by at least two hours.
Fluconazole	Fluconazole interferes with the oral clearance and metabolism of zidovudine	Preliminary data suggests that fluconazole interferes with the oral clearance and metabolism of zidovudine. In a pharmacokinetic interaction study in which 12 HIV-positive men received zidovudine alone and in combination with fluconazole, increases in the mean peak serum concentration (79%), AUC (70%) and half-life (38%) were observed at steady state. The clinical significance of this interaction is unknown.

Proper name	Effect	Clinical comment
Ganciclovir	Coadministration increases the risk of hematologic toxicities in some patients with advanced HIV disease.	Use of zidovudine in combination with ganciclovir increases the risk of hematologic toxicities in some patients with advanced HIV disease. Should the use of this combination become necessary in the treatment of patients with HIV disease, dose reduction or interruption of one or both agents may be necessary to minimize hematologic toxicity. Hematologic parameters, including hemoglobin, hematocrit, and white blood cell count with differential, should be monitored frequently in all patients receiving this combination.
Interferon-alpha	Hematologic toxicities have been seen when zidovudine is used concomitantly with interferon-alpha.	As with the concomitant use of zidovudine and ganciclovir, dose reduction or interruption of one or both agents may be necessary, and hematologic parameters should be monitored frequently.
Lamivudine	Coadministration resulted in an increase in C_{max} of zidovudine.	Zidovudine and lamivudine were coadministered to 12 asymptomatic HIV- positive patients in a single-centre, open- label, randomized, crossover study. No significant differences were observed in AUC_{∞} or total clearance for lamivudine or zidovudine when the two drugs were administered together. Coadministration of zidovudine with lamivudine resulted in an increase of $39\% \pm 62\%$ (mean \pm SD) in C_{max} of zidovudine.
Methadone	Plasma levels of zidovudine can be elevated in some patients while remaining unchanged in others.	In a pharmacokinetic study of 9 HIV- positive patients receiving methadone maintenance (30 to 90 mg daily) concurrent with 200 mg of zidovudine every 4 hours, no changes were observed in the pharmacokinetics of methadone upon initiation of therapy with zidovudine and after 14 days of treatment with zidovudine. No adjustments in methadone-maintenance requirements were reported. However, plasma levels of zidovudine were elevated in some patients while remaining unchanged in others. The exact mechanism and clinical significance of these data are unknown.

Proper name	Effect	Clinical comment
Phenytoin	A decrease in oral zidovudine clearance.	Phenytoin plasma levels have been reported to be low in some patients receiving zidovudine, while in one case a high level was documented. These observations suggest that phenytoin levels should be carefully monitored in patients receiving both medicinal products. However, in a pharmacokinetic interaction study in which 12 HIV-positive volunteers received a single 300 mg phenytoin dose alone and during steady-state zidovudine conditions (200 mg every 4 hours), no change in phenytoin kinetics was observed. Although not designed to optimally assess the effect of phenytoin on zidovudine kinetics, a 30% decrease in oral zidovudine clearance was observed.
Probenecid	May increase zidovudine levels.	Limited data suggest that probenecid may increase zidovudine levels by inhibiting glucuronidation and/or reducing renal excretion of zidovudine. Some patients who have used zidovudine concomitantly with probenecid have developed flu-like symptoms consisting of myalgia, malaise, and/or fever and maculopapular rash.
Ribavirin	Coadministration of ribavirin and zidovudine may lead to increased ribavirin levels and increased risk of anemia.	Preliminary data suggest that the use of ribavirin and zidovudine lead to increased ribavirin levels and increased risk of anemia. The use of ribavirin concomitantly with zidovudine in the treatment of HIV / Hep C co-infected patients is not advised. Consideration should be given to replacing zidovudine in a combination ART regimen if this is already established.
Stavudine	Zidovudine may inhibit intracellular phosphorylation of stavudine	Zidovudine may inhibit the intracellular phosphorylation of stavudine when the two medicinal products are used concurrently. Stavudine is therefore not recommended to be used in combination with zidovudine.

Proper name	Effect	Clinical comment
Valproic acid	Increase in zidovudine AUC and a decrease in the plasma GZDV AUC.	The concomitant administration of valproic acid 250 mg (n=5) or 500 mg (n=1) every 8 hours and zidovudine 100 mg orally every 8 hours for 4 days to 6 HIV-infected, asymptomatic male volunteers resulted in a 79% ± 61% (mean ± SD) increase in the plasma zidovudine AUC and a 22% ± 10% decrease in the plasma GZDV AUC as compared to the administration of zidovudine in the absence of valproic acid. The GZDV/zidovudine urinary excretion ratio decreased 58% ± 12%. Because no change in the zidovudine plasma half-life occurred, these results suggest that valproic acid may increase the oral bioavailability of zidovudine through inhibition of first-pass metabolism. Although the clinical signification of this interaction is unknown, patients should be monitored more closely for a possible increase in zidovudine-related adverse effects. The effect of zidovudine on the pharmacokinetics of valproic acid was not evaluated.

Proper name	Effect	Clinical comment
Other agents		<p>Some drugs such as trimethoprim-sulfamethoxazole, pyrimethamine, and acyclovir may be necessary for the management or prevention of opportunistic infections. In the placebo-controlled trial in patients with advanced HIV disease, increased toxicity was not detected with limited exposure to these drugs. However, there is one published report of neurotoxicity (profound lethargy) associated with concomitant use of zidovudine and acyclovir.</p> <p>Preliminary data from a drug interaction study (n=10) suggest that coadministration of 200 mg zidovudine and 600 mg rifampin decreases the area under the zidovudine plasma concentration curve by an average of 48% ± 34%. However, the effect of once-daily dosing of rifampin on multiple daily doses of zidovudine is unknown.</p> <p>Other active substances including but not limited to acetylsalicylic acid, codeine, morphine, methadone, indomethacin, ketoprofen, naproxen, oxazepam, lorazepam, cimetidine, clofibrate, dapson and isoprinosine may alter the metabolism of zidovudine by competitively inhibiting glucuronidation or directly inhibiting hepatic microsomal metabolism. Careful thought should be given to the possibilities of interactions before using such medicinal products, particularly for chronic therapy, in combination with zidovudine.</p> <p>Concomitant treatment, especially acute therapy, with potentially nephrotoxic or myelosuppressive medicinal products (for example systemic pentamidine, dapson, pyrimethamine, co-trimoxazole, amphotericin, flucytosine, ganciclovir, interferon, vincristine, vinblastine and doxorubicin) may also increase the risk of adverse reactions to zidovudine.</p> <p>If concomitant therapy with any of these medicinal products is necessary then extra care should be taken in monitoring renal function and hematological parameters and, if required, the dosage of one or more agents should be adjusted.</p>

9.5 Drug-Food Interactions

Pharmacological interactions with specific foods have not been established. When taken with food, zidovudine exposure may be reduced (see [10.3 Pharmacokinetics](#)).

9.6 Drug-Herb Interactions

Interactions with herbal products have not been established.

9.7 Drug-Laboratory Test Interactions

Interactions with laboratory tests have not been established.

10 CLINICAL PHARMACOLOGY

10.1 Mechanism of Action

Zidovudine is a potent inhibitor of the *in vitro* replication of some retroviruses including human immunodeficiency virus, HIV. Zidovudine is a thymidine analogue in which the 3-hydroxy (-OH) group is replaced by an azido (-N₃) group. Cellular thymidine kinase converts zidovudine into zidovudine monophosphate. The monophosphate is further converted into the diphosphate by cellular thymidylate kinase and to the triphosphate derivative by other cellular enzymes. Zidovudine triphosphate interferes with the HIV viral RNA dependent DNA polymerase (reverse transcriptase) and thus inhibits viral replication. Zidovudine triphosphate also inhibits cellular α -DNA polymerase, but at concentrations 100-fold higher than those required to inhibit reverse transcriptase. *In vitro*, zidovudine triphosphate has been shown to be incorporated into growing chains of DNA by viral reverse transcriptase.

When incorporation by the viral enzyme occurs, the DNA chain is terminated. Studies in cell culture suggest that zidovudine incorporation by cellular α -DNA polymerase may occur, but only to a very small extent and not in all test systems. Cellular γ -DNA polymerase shows some sensitivity to inhibition by the zidovudine triphosphate with 50% inhibitory concentration (IC₅₀) values 400 to 900 times greater than that for HIV reverse transcriptase.

10.3 Pharmacokinetics

Adults

After oral dosing in adults, zidovudine is rapidly absorbed from the gastrointestinal tract with peak serum concentrations occurring within 0.5 to 1.5 hours, with an average oral bioavailability of 65%. In pediatric patients older than 3 months, the pharmacokinetics of zidovudine are similar to those in adult patients.

The zidovudine cerebrospinal fluid (CSF)/plasma concentration ratio was determined in 39 patients receiving chronic therapy with zidovudine. The median ratio measured in 50 paired samples drawn 1 to 8 hours after the last dose of zidovudine was 0.6.

Zidovudine is rapidly metabolized to 3'-azido-3'-deoxy-5'-0-β-D- glucopyranuronosyl thymidine (GZDV) which has an apparent elimination half-life of 1 hour (range 0.61 to 1.73 hours). Following oral administration, urinary recovery of zidovudine and GZDV accounted for 14% and 74% of the dose, respectively, and the total urinary recovery averaged 90% (range 63% to 95%), indicating a high degree of absorption. However, as a result of first-pass metabolism, the average oral capsule bioavailability of zidovudine is 65% (range 52% to 75%). A second metabolite, 3'-amino-3'-deoxythymidine (AMT) has been identified in the plasma following single-dose intravenous administration of zidovudine. AMT area-under-the-curve (AUC) was one-fifth of the AUC of zidovudine and had a half-life of 2.7 ± 0.7 hours. In comparison, GZDV AUC was about 3-fold greater than the AUC of zidovudine.

Steady-state serum concentrations of zidovudine following chronic oral administration of 250 mg every 4 hours were determined in 21 adult patients in a controlled trial. Mean steady-state predose and 1.5 hours post-dose zidovudine concentrations were 0.16 mcg/mL (range 0 to 0.84 mcg/mL) and 0.62 mcg/mL (range 0.05 to 1.46 mcg/mL), respectively.

Effect of Food on Absorption

Administration of zidovudine with food decreased peak plasma concentrations by greater than 50%. However, bioavailability as determined by AUC may not be affected.

Special Populations and Conditions

- **Pregnancy**

The pharmacokinetics of zidovudine has been studied in a Phase 1 study of eight women during the last trimester of pregnancy. As pregnancy progressed, there was no evidence of drug accumulation. The pharmacokinetics of zidovudine was similar to that of nonpregnant adults. Consistent with passive transmission of the drug across the placenta, zidovudine concentrations in neonatal plasma at birth were essentially equal to those in maternal plasma at delivery. Although data are limited, methadone maintenance therapy in five pregnant women did not appear to alter zidovudine pharmacokinetics. However, in another patient population, a potential for interaction has been identified (see [7 WARNINGS AND PRECAUTIONS](#)).

- **Hepatic Insufficiency**

Data describing the effect of hepatic impairment on the pharmacokinetics of zidovudine are limited. However, because zidovudine is eliminated primarily by hepatic metabolism, it is expected that zidovudine clearance would be decreased, and plasma concentrations would be increased in subjects with hepatic impairment. Data in patients with cirrhosis suggest that accumulation of zidovudine may occur in patients with hepatic impairment because of decreased glucuronidation. Dosage adjustment of APO-ZIDOVUDINE may be necessary in

patients with impaired hepatic function or liver cirrhosis, but the available data are insufficient to propose specific dosing recommendations (see [4 DOSAGE AND ADMINISTRATION](#)).

- **Renal Insufficiency**

Adults with Impaired Renal Function

The pharmacokinetics of zidovudine has been evaluated in patients with impaired renal function following a single 200 mg oral dose. In 14 patients (mean creatinine clearance 18 ± 2 mL/min), the half-life of zidovudine was 1.4 hours compared to 1.0 hour for control subjects with normal renal function; AUC values were approximately twice those of controls. Additionally, GZDV half-life in these patients was 8.0 hours (vs 0.9 hours for control) and AUC was 17 times higher than for control subjects. The pharmacokinetics and tolerance were evaluated in a multiple-dose study in patients undergoing hemodialysis (n=5) or peritoneal dialysis (n=6). Patients received escalating doses of zidovudine up to 200 mg 5 times daily for 8 weeks. Daily doses of 500 mg or less were well tolerated despite significantly elevated plasma levels of GZDV. Total body clearance after oral administration of zidovudine was approximately 50% of that reported in patients with normal renal function. The plasma concentrations of AMT are not known in patients with renal insufficiency. Daily doses of 300 to 400 mg should be appropriate in HIV-infected patients with severe renal dysfunction. Hemodialysis and peritoneal dialysis appear to have a negligible effect on the removal of zidovudine, whereas GZDV elimination is enhanced.

11 STORAGE, STABILITY AND DISPOSAL

APO-ZIDOVUDINE capsules should be stored between 15°C to 25°C and protected from light and moisture.

Keep out of reach and sight of children.

12 SPECIAL HANDLING INSTRUCTIONS

Not applicable.

PART II: SCIENTIFIC INFORMATION

13 PHARMACEUTICAL INFORMATION

Drug Substance

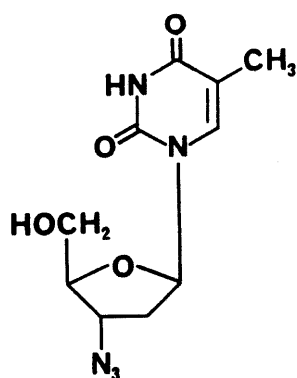
Proper name: Zidovudine

Chemical name: 3'-azido-3'-deoxythymidine

Other names: erythro-3'-azidothymidine, BW A509U, 509U81, azidothymidine (AZT)

Molecular formula and molecular mass: C₁₀H₁₃N₅O₄; 267.24 g/mol

Structural formula:



Zidovudine

Physicochemical properties: zidovudine is a white to beige, odourless, crystalline solid. It has a melting point of 122°C to 124°C and solubility in water of 20 mg/mL at 25°C.

14 CLINICAL TRIALS

14.1 Trial Design and Study Demographics

Clinical Endpoint Study in Children

ACTG300 was a multicentre, randomized, double-blind study that provided for comparison of 3TC [4 mg/kg every 12 hours (max 150 mg every 12 hours)] plus zidovudine [160 mg/m² TID (max 200 mg/dose)] to didanosine monotherapy. A total of 471 symptomatic, HIV-infected pediatric patients, without, or with, minimal (56 days) prior antiretroviral therapy, were enrolled in these two treatment arms. The median age was 2.7 years (range 6 weeks to 14 years), 58% were female, and 86% were non-Caucasian. The mean baseline CD4 cell count was 868 cells/mm³ (mean: 1060 cells/mm³ and range: 0 to 4650 cells/mm³ for patients 5 years of age; mean: 419 cells/mm³ and range: 0 to 1555 cells/mm³ for patients > 5 years of age) and the mean baseline plasma HIV RNA was 5.0 log₁₀ copies/mL. The median duration on study was

10.1 months for the patients receiving 3TC plus zidovudine and 9.2 months for patients receiving didanosine monotherapy. Results are summarized in [Table 12](#).

14.2 Study Results

Table 12 Number of Patients (%) Reaching a Primary Clinical Endpoint (Disease Progression or Death)

Endpoint	3TC plus APO-ZIDOVUDINE (n = 236)	Didanosine (n = 235)
HIV disease progression or death (total)	15 (6.4%)	37 (15.7%)
Physical growth failure	7 (3.0%)	6 (2.6%)
Central nervous system deterioration	4 (1.7%)	12 (5.1%)
CDC Clinical Category C	2 (0.8%)	8 (3.4%)
Death	2 (0.8%)	11 (4.7%)

14.3 Comparative Bioavailability Studies

A single dose, 2-way crossover relative bioavailability study, conducted under fasting conditions, was performed on healthy male volunteers. The results obtained from 31 volunteers who completed the study are summarized in the following table. The rate and extent of absorption of zidovudine was measured and compared following a single oral dose (1 x 100 mg capsule) of APO-ZIDOVUDINE (zidovudine) 100 mg capsule (Apotex Inc.) and RETROVIR® (zidovudine) 100 mg capsule (Burroughs Wellcome (Canada)).

Zidovudine (1 x 100 mg) From Measured Data Geometric Mean Arithmetic Mean (CV%)				
Parameter	Test*	Reference [†]	Ratio of Geometric Means (%)	90% Confidence Interval (%)
AUC _T (ng•h/mL)	528 544 (24)	528 542 (22)	100	94.2 - 106
AUC _I (ng•h/mL)	550 565 (23)	550 563 (21)	100.0	94.2 – 106.0
C _{max} (ng/mL)	433	403	106.9	89.5 – 127.6

Zidovudine (1 x 100 mg) From Measured Data Geometric Mean Arithmetic Mean (CV%)				
Parameter	Test*	Reference [†]	Ratio of Geometric Means (%)	90% Confidence Interval (%)
	478 (44)	430 (37)		
T _{max} [§] (h)	0.70 (0.46)	0.70 (0.29)		
T _½ [§] (h)	1.02 (0.15)	1.02 (0.16)		
* APO-ZIDOVUDINE (zidovudine) 100 mg capsules (Apotex Inc.) [†] RETROVIR® (zidovudine) 100 mg capsules (Burroughs Wellcome (Canada)) were purchased in Canada. [§] Expressed as arithmetic means (standard deviation) only.				

15 MICROBIOLOGY

Virology

Zidovudine is an inhibitor of the *in vitro* replication of some retroviruses including HIV. This drug is a thymidine analogue in which the 3'-hydroxyl (-OH) group is replaced by an azido (-N₃) group. Cellular thymidine kinase converts zidovudine into zidovudine monophosphate. The monophosphate is further converted into the diphosphate by cellular thymidylate kinase and to the triphosphate derivative by other cellular enzymes. Zidovudine triphosphate interferes with the HIV viral RNA dependent DNA polymerase (reverse transcriptase) and thus inhibits viral replication. Zidovudine triphosphate also inhibits cellular α -DNA polymerase, but at concentrations 100-fold higher than those required to inhibit reverse transcriptase. *In vitro*, zidovudine triphosphate has been shown to be incorporated into growing chains of DNA by viral reverse transcriptase. When incorporation by the viral enzyme occurs, the DNA chain is terminated. Studies in cell culture suggest that zidovudine incorporation by cellular α -DNA polymerase may occur, but only to a very small extent and not in all test systems. Cellular γ -DNA polymerase shows some sensitivity to inhibition by the zidovudine triphosphate with 50% inhibitory concentration (IC₅₀) values 400 to 900 times greater than that for HIV reverse transcriptase.

In Vitro Activity

The relationship between *in vitro* susceptibility of HIV to zidovudine and the inhibition of HIV replication in humans, or clinical response to therapy, has not been established. *In vitro*

sensitivity results vary greatly depending upon the time between virus infection and zidovudine treatment of cell cultures, the particular assay used, the cell type employed, and the laboratory performing the test.

Zidovudine blocked 90% of detectable HIV replication *in vitro* at concentrations of ≤ 0.13 mcg/mL (ID₉₀) when added shortly after laboratory infection of susceptible cells. This level of antiviral effect was observed in experiments measuring reverse transcriptase activity in HIV-infected H9 cells, PHA-stimulated peripheral blood lymphocytes, and unstimulated peripheral blood lymphocytes. The concentration of drug required to produce a 50% decrease in supernatant reverse transcriptase was 0.013 mcg/mL (ID₅₀) in both HIV-infected H9 cells and peripheral blood lymphocytes. Zidovudine at concentrations of 0.13 mcg /mL also provided >90% protection from a strain of HIV (HTLV IIIB)-induced cytopathic effects in two tetanus-specific T₄ cell lines. HIV-p24 antigen expression was also undetectable at the same concentration in these cells. Partial inhibition of viral activity in cells with chronic HIV infection (presumed to carry integrated HIV DNA) required concentrations of zidovudine (8.8 mcg/mL in one laboratory to 13.3 mcg/mL in another) which are approximately 100 times as high as those necessary to block HIV replication in acutely infected cells. HIV isolates from 18 untreated individuals with AIDS or ARC had ID₅₀ sensitivity values between 0.003 to 0.013 mcg /mL and ID₉₅ sensitivity values between 0.03 to 0.3 mcg/mL.

Zidovudine, in its nonphosphorylated form, does not inhibit the reverse transcriptase activity associated with purified HIV virions. Zidovudine was equally active against American, Haitian, and African isolates of HIV.

No antagonistic effects were seen *in vitro* with zidovudine and other antiretrovirals (tested agents: abacavir, didanosine, lamivudine and interferon-alpha). The major metabolite of zidovudine, 3'-azido-3'-deoxy-5'-O- β -D-glucopyranuronosyl-thymidine (GZDV), does not inhibit HIV replication *in vitro*. GZDV does not antagonize the antiviral effect of zidovudine *in vitro* nor does GZDV compete with zidovudine triphosphate as an inhibitor of HIV reverse transcriptase.

The cytotoxicity of zidovudine for various cell lines was determined using a cell growth inhibition assay. ID₅₀ values for several human cell lines showed little growth inhibition by zidovudine except at concentrations > 50 mcg/mL. However, one human T-lymphocyte cell line was sensitive to the cytotoxic effect of zidovudine with an ID₅₀ of 5 mcg/mL. Moreover, in a colony-forming unit assay designed to assess the toxicity of zidovudine for human bone marrow, an ID₅₀ value of <1.25 mcg/mL was estimated. Two of 10 human lymphocyte cultures tested were found to be sensitive to zidovudine at 5 mcg/mL or less.

Acyclovir (ACV) has been shown to potentiate zidovudine protection of T4 cells from HTLV IIIB-induced cytopathic effects. Zidovudine alone provided 50% protection from cytopathic effects (ED₅₀) at a concentration of 0.49 mcg/mL. The ED₅₀ decreased to 0.40 mcg/mL in the presence of 0.5 mcg/mL ACV and was further decreased to 0.22 mcg/mL when the ACV concentration was increased to 1.0 mcg/mL. The ED₅₀ was less than 0.13 mcg/mL at ACV concentrations above 2.0 mcg/mL. 100% protection was observed with 0.13 mcg/mL zidovudine plus 8 mcg/mL ACV.

The sum of fractional inhibitory concentrations is 0.14, indicating synergism. No potentiation of bone marrow cytotoxicity was observed.

Resistance

The development of resistance to zidovudine has been studied extensively. The emergence of resistance is a function of both duration of zidovudine therapy and stage of disease. Asymptomatic patients developed resistance at significantly slower rates than patients with advanced disease. In contrast, virus isolates from patients with AIDS who received a year or more of zidovudine may show more than 100-fold increases in ID₅₀ compared to isolates pre-therapy.

In vitro resistance to zidovudine is due to the accumulation of specific mutations in the HIV reverse transcriptase coding region. Six amino acid substitutions (Met41→Leu, A67→Asn, Lys70→Arg, Leu210→Trp, Thr215→Tyr or Phe, and Lys219→Gln) have been described in viruses with decreased *in vitro* susceptibility to zidovudine inhibition. Viruses acquire phenotypic resistance to thymidine analogues through the combination of mutations at codons 41 and 215 or by the accumulation of at least four to six mutations. These thymidine analogue mutations alone do not cause high-level cross-resistance to any of the other nucleosides, allowing for the subsequent use of other approved reverse transcriptase inhibitors.

A significant correlation between zidovudine resistance and poor clinical outcome in children with advanced disease has been reported; in addition, a correlation between reduced sensitivity to zidovudine and lower CD4 cell counts in symptom-free adults treated with zidovudine for up to three years has also been reported. However, the specific relationship between emergence of zidovudine resistance and clinical progression of disease in adults has not yet been defined.

Cross-Resistance

The potential for cross-resistance between HIV reverse transcriptase inhibitors and protease inhibitors is low because of the different enzyme targets involved. Combination therapy with zidovudine plus didanosine does not appear to prevent the emergence of zidovudine-resistant isolates. *In vitro* studies with zidovudine-resistant virus isolates indicate zidovudine-resistant strains are usually sensitive to didanosine. Combination therapy with zidovudine plus lamivudine delayed the emergence of mutations conferring resistance to zidovudine. In some patients (4/34) harbouring zidovudine-resistant virus, combination therapy with zidovudine plus lamivudine restored phenotypic sensitivity to zidovudine by 12 weeks of treatment. HIV isolates with multidrug resistance to zidovudine, didanosine, stavudine, and lamivudine were recovered from a small number of patients treated for ≥ 1 year with the combination of zidovudine and didanosine. The pattern of resistant mutations in the combination therapy was different (Ala62→Val, Val75→Ile, Phe77→Leu, Phe116→Tyr and Gln151→Met) from monotherapy, with mutation 151 being most significant for multidrug resistance. Site-directed mutagenesis studies showed that these mutations could also result in resistance to lamivudine,

and stavudine. A second pattern, typically involving a Thr69Ser mutation plus a 6 base-pair inserted at the same position, results in a phenotypic resistance to zidovudine as well as to the other approved nucleoside reverse transcriptase inhibitors. Either of these two patterns of multinucleoside resistance mutations severely limits future therapeutic options.

Other Retroviruses

Zidovudine has antiviral activity against some other mammalian retroviruses in addition to HIV. Human immunodeficiency Virus-2 (HIV-2) replication *in vitro* is inhibited by zidovudine with an ID₅₀ of 0.015 mcg/mL, while HTLV-1 transmission to susceptible cells is inhibited by 1 to 3 mcg/mL concentrations of drug. Several strains of simian immunodeficiency virus (SIV) are also inhibited by zidovudine with ID₅₀ values ranging from 0.13 to 6.5 mcg/mL, depending upon species of origin and assay method used.

Non-Retroviruses

Zidovudine has been tested and found to be inactive *in vitro* as an inhibitor of Herpes Simplex Virus type 1, Adenovirus type 5, Coronavirus, Influenza A virus, Respiratory Syncytial virus, Measles virus, Rhinovirus IB, Bovine Rotavirus and Yellow Fever virus. Zidovudine had significant inhibitory activity against the Epstein-Barr virus with an ID₅₀ of 1.4 to 2.7 mcg/mL, but the clinical significance of this is unknown.

Other Microbiological Activities

The following microbiological activities of zidovudine have been observed *in vitro* but the clinical significance is unknown. Many Enterobacteriaceae, including strains of *Shigella*, *Salmonella*, *Klebsiella*, *Enterobacter*, *Citrobacter* and *Escherichia coli* are inhibited *in vitro* by low concentrations of zidovudine (0.005 to 0.5 mcg/mL). Synergy of zidovudine with trimethoprim has been observed against some of these bacteria *in vitro*. Limited data suggest that bacterial resistance to zidovudine develops rapidly. Zidovudine has no activity against gram- positive organisms, anaerobes, mycobacteria, or fungal pathogens including *Candida albicans* and *Cryptococcus neoformans*. Although *Giardia lamblia* is inhibited by 1.9 mcg/mL of zidovudine, no activity was observed against other protozoal pathogens.

In Vivo Antiviral Activity

The antiviral efficacy of zidovudine was assessed in BALB/c mice infected with Rauscher murine leukemia virus. Treatment with 15 mg/kg/day led to significant prolongation of life. No deaths occurred within 24 weeks in infected zidovudine-treated mice, whereas control animals given the same inoculum had a median survival of 36 days ($p < 0.001$). Bone marrow depression did not occur, but these doses of zidovudine did not prevent significant splenomegaly. At a dose of 145 mg/kg/day, drug toxicity was observed (3 of the 4 mice developed > 20% weight loss, severe white and red cell depression, and corneal opacities) although a significant survival advantage was shown for zidovudine-treated animals compared to control infected mice ($p =$

0.03). These mice also had no evidence of viral replication after treatment and splenomegaly did not develop.

Efficacy of zidovudine therapy was assessed in healthy cats infected with feline leukemia virus. Eight of the 10 treated cats had some reduction in the number of FeLV antigen positive white blood cells and bone marrow cells.

16 NON-CLINICAL TOXICOLOGY

Acute Toxicity Studies

Acute toxicity studies in mice and rats at doses up to 750 mg/kg produced only one death, in a mouse given 487 mg/kg of zidovudine. Death was preceded by chronic convulsions. Decreased activity, ptosis and laboured breathing were noted in other animals for up to 35 minutes post-dose. No effects were seen during the 14-day post-dose observation period.

In a second set of acute toxicity studies at higher doses, the median lethal doses for mice were 3568 mg/kg and 3062 mg/kg for male and female, respectively. In rats, the median lethal doses were 3084 mg/kg for males and 3683 mg/kg for females.

Clinical signs noted prior to death included ptosis, decreased activity, ataxia, body tremors, urine stains and prostration in mice. In rats, decreased activity and salivation occurred in most animals; the males receiving 5000 mg/kg also exhibited rough coats and lacrimation.

Long-Term Toxicity Studies

Oral

The results of long-term toxicity studies in rats, dogs and monkeys are presented in [Table 13](#) below.

Rats and monkeys received zidovudine by gavage, dogs were administered zidovudine capsules.

Table 13 Long – Term Toxicity Studies with Zidovudine in Rats, Dogs and Monkeys

Species	No. per Group		Dose Levels (mg/kg/day)	Duration (weeks)	Effects
	M	F			
CD Rat	5	5	0, 60, 125, 250, 500	2	Post-dose salivation. Weight loss in mid-dose (1/5) and high-dose (1/5) males.
CD Rat	12	12	0, 56, 167, 500	13	Anogenital staining in high-dose rats. Increased blood

Species	No. per Group		Dose Levels (mg/kg/day)	Duration (weeks)	Effects
	M	F			
					glucose levels in high-dose females at term. Occasional decreases in SGOT in both sexes at high dose.
CD Rat	25	25	0, 50, 150, 450	52	Salivation at high dose for the first 4 weeks. Moderate, reversible macrocytic anemia, with reticulocytosis, in the high-dose animals. Increased urine output in some high-dose animals.
Dog	1	1	0, 125, 250, 500	2	High-dose female sacrificed day 14, following 2 emesis. High-dose male had bloody vomitus on days 11, 14, 16. Marked leucopenia and thrombocytopenia in all treated dogs, most severe in high-dose. Alk. Phos., BUN and creatinine increased in high-dose female. Slight increase in kidney weight in both high-dose dogs and in mid-dose male. Focal to diffuse hemorrhage in GI tract and mesentery of both high-dose dogs and mid-dose female. Moderate hypoactivity in the lymph nodes, involution of the thymus (mid- and high-dose females, high-dose male) and splenic lymphoid atrophy (high-dose male only). Dose-related mild to marked hypocellularity of the bone marrow at all dose levels.

Species	No. per Group		Dose Levels (mg/kg/day)	Duration (weeks)	Effects
	M	F			
Monkey (Cynomolgus)	1	1	0, 125, 250, 500	2	Emesis in high-dose male. Decreased RBC, hematocrit and hemoglobin in all groups (all values within normal range). Increased SGPT in mid- and high-dose males, more marked in high-dose females.
Monkey (Cynomolgus)	4	4	0, 34, 100, 300	13	Emesis in one high-dose male. Mild to moderate decrease in RBC, HCT and HB; slight to mild increase in MCV in mid- and high-dose groups. Slight decrease in WBC in high-dose males.
Monkey (Cynomolgus)	5	5	0, 35, 100, 300	26	Decreased RBC, HCT and HB in all groups, generally dose-related. Increase in MCV and MCH more prominent in males. Dose related retardation of bone marrow cell maturation, particularly in erythroid elements. Slight inconsistent increase in platelets in mid- and high-dose group.
Monkey (Cynomolgus)	6	6	Males - 35, 100, 300 Females - 35, 100, 300	52	Dose-related macrocytic anemia (i.e., decreased RBC, HCT and HB, increased MCV and MCH) maximized by week 26 at latest. After 4 weeks recovery, the bone marrow smears were similar in control and treated animals. The severity of anemia was similar to that in the 3-month and 6-month study.

Carcinogenesis

Zidovudine was administered orally at three dosage levels to separate groups of mice and rats (60 females and 60 males in each group). Initial single daily doses were 30, 60 and 120 mg/kg/day in mice and 80, 220 and 600 mg/kg/day in rats. The doses in mice were reduced to 20, 30 and 40 mg/kg/day after day 90 because of treatment-related anemia, whereas in rats only the high dose was reduced to 450 mg/kg/day on day 91, and then 300 mg/kg/day on day 279.

In mice, seven late-appearing (after 19 months) vaginal neoplasms (5 non-metastasizing squamous cell carcinomas, one squamous cell papilloma and one squamous polyp) occurred in animals given the highest dose. One late-appearing squamous cell papilloma occurred in the vagina of a middle-dose animal. No vaginal tumours were found at the lowest dose.

In rats, two late-appearing (after 20 months), non-metastasizing vaginal squamous cell carcinomas occurred in animals given the highest dose. No vaginal tumours occurred at the low or middle doses in rats.

No other drug-related tumours were observed in either sex of either species.

Two transplacental carcinogenicity studies were conducted in mice. One study administered zidovudine at doses of 20 mg/kg per day or 40 mg/kg per day from gestation day 10 through parturition and lactation with dosing continuing in offspring for 24 months postnatally. The doses of zidovudine employed in this study produced zidovudine exposures approximately three times the estimated human exposure at recommended doses. After 24 months, an increase in incidence of vaginal tumours was noted with no increase in tumours in the liver or lung or any other organ in either gender. These findings are consistent with results of the standard oral carcinogenicity study in mice, as described earlier. A second study administered zidovudine at maximum tolerated doses of 12.5 mg/day or 25 mg/day (~1000 mg/kg nonpregnant body weight or ~450 mg/kg of term body weight) to pregnant mice from days 12 through 18 of gestation. There was an increase in the number of tumours in the lung, liver, and female reproductive tracts in the offspring of mice receiving the higher dose level of zidovudine.

It is not known how predictive the results of rodent carcinogenicity studies may be for humans. At doses that produced tumours in mice and rats, the estimated drug exposure (as measured by AUC) was approximately 3 times (mouse) and 24 times (rat) the estimated human exposure at the recommended therapeutic dose of 100 mg every 4 hours.

Mutagenesis

No evidence of mutagenicity (with or without metabolic activation) was observed in the Ames *Salmonella* mutagenicity assay at concentrations up to 10 mcg per plate, which was the maximum concentration that could be tested because of the antimicrobial activity of zidovudine against the *Salmonella* species. In a mutagenicity assay conducted in L5178Y/TK+/-

mouse lymphoma cells, zidovudine was weakly mutagenic in the absence of metabolic activation only at the highest concentrations tested (4000 and 5000 mcg/mL). In the presence of metabolic activation, the drug was weakly mutagenic at concentrations of 1000 mcg/mL and higher. In an *in vitro* mammalian cell transformation assay, zidovudine was positive at concentrations of 0.5 mcg/mL and higher.

In an *in vitro* cytogenetic study performed in cultured human lymphocytes, zidovudine induced dose-related structural chromosomal abnormalities at concentrations of 3 mcg/mL and higher. No such effects were noted at the two lowest concentrations tested, 0.3 and 1.0 mcg/mL. In an *in vivo* cytogenetic study in rats given a single intravenous injection of zidovudine at doses of 37.5 to 300 mg/kg, there were no treatment-related structural or numerical chromosomal alterations in spite of plasma levels that were as high as 453 mcg/mL five minutes after dosing.

In two *in vivo* micronucleus studies (designed to measure chromosome breakage or mitotic spindle apparatus damage) in male mice, oral doses of zidovudine of 100 to 1000 mg/kg/day administered once daily for approximately 4 weeks induced dose-related increases in micronucleated erythrocytes. Similar results were also seen after 4 or 7 days of dosing at 500 mg/kg/day in rats and mice.

In a study involving 11 AIDS patients, it was reported that the seven patients who were receiving zidovudine (1200 mg/day) as their only medication for 4 weeks to 7 months showed a chromosome breakage frequency of 8.29 ± 2.65 breaks per 100 peripheral lymphocytes. This was significantly ($p < 0.05$) higher than the incidence of 0.5 ± 0.29 breaks per 100 cells that was observed in the four AIDS patients who had not received zidovudine. A pilot study has demonstrated that zidovudine is incorporated into leukocyte nuclear DNA of adults, including pregnant women, taking zidovudine as treatment for HIV-1 infection, or for the prevention of mother-to-child viral transmission. Zidovudine was also incorporated into DNA from cord blood leukocytes of infants from zidovudine-treated mothers. The clinical significance of these findings is unknown.

Reproduction and Teratology

In an *in vitro* experiment with fertilized mouse oocytes, zidovudine exposure resulted in a dose-dependent reduction in blastocyst formation.

No effect on male or female fertility (judged by conception rates) was seen in rats given zidovudine orally at doses up to 450 mg/kg/day.

In a fertility and reproduction study, male rats were dosed for 85 days prior to mating and females for 26 days prior to mating and throughout gestation and lactation. No fetal malformations or variations occurred, but the mid- and high-doses were both embryotoxic, increasing the number of early resorptions and decreasing litter sizes. No embryotoxic effects occurred in untreated females mated with treated males.

No evidence of teratogenicity was found in rats given oral doses of zidovudine of up to 500 mg/kg/day on days 6 through 15 of gestation. The doses used in the teratology studies resulted in peak zidovudine plasma concentrations (after one half of the daily dose) in rats of 66 to 226 times the peak human plasma concentrations.

In a second teratology study in rats, an oral dose of 3000 mg/kg/day (very near the oral median lethal dose in rats of 3683 mg/kg/day) caused marked maternal toxicity and an increase in the incidence of fetal malformations including absent tail, anal atresia, fetal edema, situs inversus, diaphragmatic hernia, bent limb bones, atlas occipital defect and vertebral and/or rib anomalies. There was also a significant increase in the number of litters with bent ribs, reduced ossification of the vertebral arches, and presacral vertebrae. This dose resulted in peak zidovudine plasma concentrations 350 times peak human plasma concentrations. (Estimated area-under-the-curve AUC in rats at this dose level was 300 times the daily AUC in humans given 600 mg per day.) No evidence of teratogenicity was seen in the experiment at doses of 600 mg/kg/day or less.

In one of two studies in pregnant rabbits, the incidence of fetal resorptions was increased in rabbits given 500 mg/kg/day. There was no evidence of a teratogenic effect at any dose level. The doses used in these studies resulted in peak zidovudine plasma concentrations in rabbits of 12 to 87 times mean steady-state peak human plasma concentrations (after one sixth of the daily dose) achieved with the recommended daily dose (100 mg every 4 hours).

Peri- and Postnatal Studies

A separate peri- and postnatal study was conducted in pregnant rats given doses of 0, 50, 150 and 400 mg/kg/day from day 17 of gestation through to day 21 of lactation. There were no adverse effects noted in either generation. The reproductive capacity of those F1 generation pups which were raised to sexual maturity was not affected.

Neonatal animals were given 0, 80, 250 or 750 mg/kg/day for two months, starting on lactation day 8. Treatment-related alterations occurred only in the high-dose group and were reversible macrocytic anemia and increased urine output in both sexes, and decreased body weight gain in males. Mild to moderate increases in spleen weights were also noted.

17 SUPPORTING PRODUCT MONOGRAPHS

1. RETROVIR® (AZT) Capsules, 100 mg, Syrup, 50 mg/5mL and Injection, 10 mg/mL, submission control 249459, Product Monograph, ViiV Healthcare ULC. (June 9, 2021).

PATIENT MEDICATION INFORMATION

READ THIS FOR SAFE AND EFFECTIVE USE OF YOUR MEDICINE

Pr APO-ZIDOVUDINE

Zidovudine Capsules

Read this carefully before you start taking **APO-ZIDOVUDINE** and each time you get a refill. This leaflet is a summary and will not tell you everything about this drug. Talk to your healthcare professional about your medical condition and treatment and ask if there is any new information about **APO-ZIDOVUDINE**.

Serious Warnings and Precautions

WARNING: RISK OF HEMATOLOGICAL TOXICITY, MYOPATHY, LACTIC ACIDOSIS

Hematologic Toxicity (decrease in bone marrow and blood cells)

Zidovudine has been associated with hematologic toxicity including neutropenia (low neutrophils - type of white blood cell) and severe anemia (lowered red blood cell count). This is more common in patients with advanced HIV-1 disease.

Myopathy (disease of the muscle)

Long term use of zidovudine has been associated with myopathy (muscle pain, aching or weakness).

Lactic Acidosis (high level of acid in the blood) and Severe Hepatomegaly (swollen and enlarged liver)

Lactic acidosis and severe hepatomegaly with steatosis (buildup of fat in the liver), including fatal cases, have been reported with the use zidovudine and other antiretrovirals. Your Healthcare Professional will stop your treatment if clinical or laboratory findings are suggestive of lactic acidosis or pronounced hepatotoxicity (liver damage).

What is APO-ZIDOVUDINE used for?

APO-ZIDOVUDINE is used to treat Human Immunodeficiency Virus (HIV) infection. It is used in combination with other antiretroviral drugs.

How does APO-ZIDOVUDINE work?

APO-ZIDOVUDINE contains the medicinal ingredient zidovudine. This belongs to a group of antiretroviral medicines called nucleoside analogue reverse transcriptase inhibitors (NRTIs), which are used to treat HIV infection.

HIV is a retrovirus (a type of virus). Infection with HIV damages the immune system and can lead to Acquired Immune Deficiency Syndrome (AIDS) and other related illnesses.

APO-ZIDOVUDINE does not cure HIV infection, it reduces the amount of virus in your body, and keeps it at a low level. It also increases the CD4 cell count in your blood. CD4 cells are a type of white blood cells that are important in helping your body to fight infection.

What are the ingredients in APO-ZIDOVUDINE?

Medicinal Ingredients: zidovudine.

Non-medicinal Ingredients: colloidal silicon dioxide, corn starch, microcrystalline cellulose, stearic acid and talc. The capsule, imprinted with edible black ink, contains gelatin and titanium dioxide. The edible black ink contains black iron oxide, potassium hydroxide, propylene glycol, shellac, and strong ammonia solution.

APO-ZIDOVUDINE comes in the following dosage forms:

Capsules: 100 mg

Do not use APO-ZIDOVUDINE if:

- You have, or have ever had life-threatening allergic reactions to this drug or to any ingredient in the formulation, including any non-medicinal ingredients, or component of the container.
- You have neutropenia (low neutrophil counts - type of white blood cell) or low hemoglobin levels (blood component which carries oxygen in the blood).

To help avoid side effects and ensure proper use, talk to your healthcare professional before you take APO-ZIDOVUDINE. Talk about any health conditions or problems you may have, including if:

- you are allergic to any ingredient in this medicine.
- you have bone marrow problems (low blood cell counts).
- you have hepatomegaly (enlarged liver) with steatosis (buildup of fat in the liver), hepatitis (inflamed liver), other hepatic impairments (liver problems) or other known risk factors for liver disease. Your healthcare professional may periodically do blood tests to check your liver function while you are taking APO-ZIDOVUDINE.
- you have kidney disease.
- you are taking other drugs (see The following may interact with APO-ZIDOVUDINE).
- you are pregnant or breastfeeding.
- your baby or infant was exposed to Nucleoside Reverse Transcriptase Inhibitors (NRTIs) during pregnancy or labour.
- you are taking ribavirin as it could cause or worsen anemia (symptoms of tiredness, shortness of breath). Your healthcare professional will advise whether you should stop taking APO-ZIDOVUDINE.

Other warnings you should know about:

APO-ZIDOVUDINE can cause serious side effects, including:

- **Lactic Acidosis and Severe Liver Problems:** The class of medicines to which APO-ZIDOVUDINE belongs (NRTIs) can cause a condition called lactic acidosis (excess of lactic acid in your blood), together with an enlarged liver. Symptoms of lactic acidosis include feeling of weakness, loss of appetite, sudden unexplained weight loss, upset stomach and difficulty breathing or rapid breathing. This rare, but serious side effect occurs more often in women. If you have liver problems you may also be more at risk of getting this condition. If you experience any of these symptoms, stop taking APO-ZIDOVUDINE and talk to your healthcare professional.
- **Lipoatrophy:** You may experience lipoatrophy (loss of fat) in your face, limbs and buttocks while taking APO-ZIDOVUDINE. Your healthcare professional will assess you regularly for signs of lipoatrophy.
- **Blood Disorders** such as anemia (low red blood cells count), leucopenia (low white blood cells count), neutropenia (low levels of neutrophils – a type of white blood cell) and rarely red cell aplasia (reduction in number of red blood cells).

If your hemoglobin or neutrophil (type of white blood cell) levels become too low, your healthcare professional may lower your dose of APO-ZIDOVUDINE. Your healthcare professional may also stop your treatment of APO-ZIDOVUDINE.

- **Immune Reconstitution Inflammatory Syndrome:** Changes to your immune system can happen when you start taking HIV-1 medicines. Your immune system may get stronger and begin to fight infections that have been hidden in your body for a long time.

Autoimmune disorders happen when the immune system attacks healthy body tissue. This may happen after you start taking medicines for HIV infection. Examples of this include: Grave's disease (which affects the thyroid gland), Guillain-Barré syndrome (which affects the nervous system), polymyositis (which affects the muscles), or autoimmune hepatitis (which affects the liver). Autoimmune disorders may occur many months after the start of treatment.

- **Risk of Infections:** You may continue to develop other infections and other illnesses associated with HIV while you are taking APO-ZIDOVUDINE. You should therefore keep in regular contact with your healthcare professional.

See the Serious side effects and what to do about them table, below, for more information on these and other serious side effects.

Blood Tests: Your blood sugar levels (glucose) or level of fats (lipids) in your blood may increase with HIV treatment. Your healthcare professional will decide when to do blood tests, to check for these and other side effects, and will interpret the results.

Myopathy: If you use APO-ZIDOVUDINE for a long time, you may develop myopathy or myositis. These are muscle diseases.

Pregnancy and Newborns:

If you are pregnant, planning to become pregnant, or become pregnant while taking APO-ZIDOVUDINE, talk to your healthcare professional before taking APO-ZIDOVUDINE. It is not known if APO-ZIDOVUDINE can harm your unborn child. You and your healthcare professional will need to decide if taking APO-ZIDOVUDINE is right for you. If you take APO-ZIDOVUDINE while you are pregnant, talk to your healthcare professional about how you can be included in the Antiretroviral Pregnancy Registry.

Babies exposed to Nucleoside Reverse Transcriptase Inhibitors (NRTIs) during pregnancy or labour show minor temporary increases in blood levels of lactate. There have been very rare reports of diseases that affect the nervous system such as delayed development and seizures.

Talk to your healthcare professional to determine if APO-ZIDOVUDINE is right for you.

Breastfeeding: HIV-infected women should not breastfeed in order to prevent transmission of HIV to a child who may not yet be infected. The ingredients in APO-ZIDOVUDINE can also pass into your breast- milk. If you are breastfeeding or planning to breastfeed, talk with your healthcare professional about the best way to feed your baby.

Infecting Others with HIV: APO-ZIDOVUDINE will not stop you from passing HIV to others. The risk is lower if you take your HIV medicine as instructed by your healthcare professional. However, you should still take steps to avoid infecting others by:

- Using condoms when you have oral or penetrative sex.
- Not reusing or sharing needles, syringes, or other injection equipment.

Tell your healthcare professional about all the medicines you take, including any drugs, vitamins, minerals, natural supplements or alternative medicines.

The following may interact with APO-ZIDOVUDINE:

- atovaquone, used to treat parasitic infections such as PCP
- one marrow suppressive agents/cytotoxic agents (such as doxorubicin), used to treat cancer
- clarithromycin or rifampin or trimethoprim-sulfamethoxazole, used as an antibiotics
- fluconazole, used to treat fungal infections
- ganciclovir or interferon-alpha or acyclovir or ribavirin , used to treat virus infections
- lamivudine or stavudine, used to treat HIV infection
- methadone, used as a heroin substitute

- phenytoin, used for treating epilepsy
- probenecid, used to treat gout and similar conditions, and given with some antibiotics to make them more effective
- valproic acid, used to treat seizure disorders
- pyrimethamine, used to treat malaria

How to take APO-ZIDOVUDINE:

- Take APO-ZIDOVUDINE exactly as directed by your healthcare professional. If you are unsure about how to take it, ask your doctor or pharmacist.

Usual dose:**Oral Administration**

Adults and Adolescents 30 kg and Over: 600 mg daily in combination with other antiretroviral agents.

- three 100 mg APO-ZIDOVUDINE capsules every 12 hours; OR two 100 mg APO-ZIDOVUDINE capsules every 8 hours.

Overdose:

If you think you, or a person you are caring for, have taken too much APO-ZIDOVUDINE, contact a healthcare professional, hospital emergency department, or regional poison control centre immediately, even if there are no symptoms.

Missed Dose:

It is important to take this medicine as prescribed to ensure you get maximum benefit. If you forget to take a dose, take it as soon as you remember, and then continue as before. Do not take a double dose to make up for forgotten individual doses.

What are possible side effects from using APO-ZIDOVUDINE?

These are not all the possible side effects you may have when taking APO-ZIDOVUDINE. If you experience any side effects not listed here, tell your healthcare professional.

Like all medicines, APO-ZIDOVUDINE can have side effects. When treating HIV infection, it is not always possible to tell whether some of the side effects that occur are caused by APO-ZIDOVUDINE, by other medicines you are taking at the same time or by the HIV infection. For this reason it is very important that you inform your healthcare professional about any changes in your health.

Side effects may include:

- Nausea (feeling sick)
- Vomiting.

- Fever.
- Headache.
- Stomach pain.
- Loss of appetite.
- Muscle pain.
- Decrease in the number of cells involved in blood clotting (thrombocytopenia) or in all kinds of blood cells (pancytopenia), reduction in the number of red blood cells (pure red cell aplasia).
- Failure of the bone marrow to produce new blood cells (aplastic anemia).
- An increase in lactic acid.
- Feeling depressed or anxious.
- Dizziness.
- Not being able to sleep.
- Tingly feelings in the skin (pins and needles).
- Not being able to concentrate.
- Feeling drowsy.
- Seizures.
- Disease of the heart muscle.
- Cough.
- Intestinal gas.
- Changes in the colour of the nails, skin, or the skin inside the mouth.
- Taste disturbance.
- Indigestion.
- Skin rash (red, raised or itchy skin).
- Sweating.
- Passing urine more often.
- Enlarged breasts in men.
- General aches and pain.
- Chills.
- Chest pain.
- Flu-like feeling.

If these become bothersome, consult your healthcare professional.

An important but reversible side effect of APO-ZIDOVUDINE, particularly in patients with more severe disease, can be a decrease in certain types of blood counts (including red blood cells, white blood cells and platelets) and increase in certain liver enzymes. Since a reduction in these cells can directly affect your health, it is important to have your blood tested as often as your doctor requests it. In some cases, it may be necessary to adjust the dose of the drug, temporarily discontinue the drug, give a blood transfusion, or stop the drug altogether.

It is important to understand that although these blood effects can occur at any stage, they are

much more common in advanced disease and in patients who start APO-ZIDOVUDINE therapy late in their illness.

Serious side effects and what to do about them			
Symptom / effect	Talk to your healthcare professional		Stop taking drug and get immediate medical help
	Only if severe	In all cases	
COMMON			
Anemia (Lowered red blood cell count): fatigue, breathlessness. Neutropenia (Low white blood cell count): making you more prone to infections.			✓
RARE			
Pancreatitis (inflammation of the pancreas) and hepatitis (inflammation of the liver): nausea, vomiting, and severe stomach cramps.			✓
Lactic acidosis (high level of acid in the blood): weight loss, fatigue, malaise, abdominal pain, shortness of breath.			✓
Severe hepatomegaly (swollen and enlarged liver): with symptoms of liver problems such as nausea, vomiting, abdominal pain, weakness and diarrhea.			✓
FREQUENCY NOT KNOWN			
Lipoatrophy (loss of fat from legs, arms and face): loss of fat from your legs, arms, and face.		✓	
Immune Reconstitution Inflammatory Syndrome and Autoimmune Disorders: fever, redness, rash or swelling, fatigue, joint or muscle pain, numbness or weakness beginning in the hands and feet and moving up towards the trunk of the body, palpitations,		✓	

Serious side effects and what to do about them			
Symptom / effect	Talk to your healthcare professional		Stop taking drug and get immediate medical help
	Only if severe	In all cases	
chest pain or rapid heart rate, yellowing of the eyes and skin.			

If you have a troublesome symptom or side effect that is not listed here or becomes bad enough to interfere with your daily activities, tell your healthcare professional.

Reporting Side Effects

You can report any suspected side effects associated with the use of health products to Health Canada by:

- Visiting the Web page on Adverse Reaction Reporting (<https://www.canada.ca/en/health-canada/services/drugs-health-products/medeffect-canada/adverse-reaction-reporting.html>) for information on how to report online, by mail or by fax; or
- Calling toll-free at 1-866-234-2345.

NOTE: Contact your health professional if you need information about how to manage your side effects. The Canada Vigilance Program does not provide medical advice.

Storage:

APO-ZIDOVUDINE capsules should be stored at room temperature between 15°C to 25°C and protected from light and moisture.

Do not take your medicine after the expiry date shown on the bottle and/or the carton.

Keep out of reach and sight of children.

If you want more information about APO-ZIDOVUDINE:

- Talk to your healthcare professional
- Find the full product monograph that is prepared for healthcare professionals and includes this Patient Medication Information by visiting the Health Canada website: (<https://www.canada.ca/en/health-canada/services/drugs-health-products/drug-products/drug-product-database.html>); the manufacturer's website (<http://www.apotex.ca/products>), or by calling 1-800-667-4708.

This leaflet was prepared by Apotex Inc., Toronto, Ontario, M9L 1T9.

Last Revised: JUN 16, 2023