

PRODUCT MONOGRAPH

INCLUDING PATIENT MEDICATION INFORMATION

**Pr JAMP-Letrozole**

Letrozole Tablets

Tablets, 2.5 mg, for oral use

House standard

Aromatase inhibitor

JAMP Pharma Corporation  
1310 rue Nobel  
Boucherville, Quebec  
J4B 5H3, Canada

Date of Initial Authorization:  
SEP 29, 2011

Date of Revision:  
NOV 15, 2023

Submission Control Number: 280259

## RECENT MAJOR LABEL CHANGES

<a href="#">7 WARNINGS AND PRECAUTIONS, Musculoskeletal</a>	11/2023
---	---------

## TABLE OF CONTENTS

Sections or subsections that are not applicable at the time of authorization are not listed.

<b>RECENT MAJOR LABEL CHANGES</b> .....	<b>2</b>
<b>PART I: HEALTH PROFESSIONAL INFORMATION</b> .....	<b>4</b>
<b>1 INDICATIONS</b> .....	<b>4</b>
1.1 Pediatrics.....	4
1.2 Geriatrics.....	4
<b>2 CONTRAINDICATIONS</b> .....	<b>5</b>
<b>3 SERIOUS WARNINGS AND PRECAUTIONS BOX</b> .....	<b>5</b>
<b>4 DOSAGE AND ADMINISTRATION</b> .....	<b>5</b>
4.1 Dosing Considerations .....	5
4.2 Recommended Dose and Dosage Adjustment.....	5
4.4 Administration.....	6
4.5 Missed Dose .....	6
<b>5 OVERDOSAGE</b> .....	<b>6</b>
<b>6 DOSAGE FORMS, STRENGTHS, COMPOSITION AND PACKAGING</b> .....	<b>7</b>
<b>7 WARNINGS AND PRECAUTIONS</b> .....	<b>7</b>
7.1 Special Populations .....	11
7.1.1 Pregnant Women.....	11
7.1.2 Breast-feeding.....	11
7.1.3 Pediatrics (< 18 years of age) .....	11
7.1.4 Geriatrics(≥ 65 years of age) .....	11
<b>8 ADVERSE REACTIONS</b> .....	<b>12</b>
8.1 Adverse Reaction Overview .....	12
8.2 Clinical Trial Adverse Reactions .....	15
8.5 Post-Market Adverse Reactions .....	28
<b>9 DRUG INTERACTIONS</b> .....	<b>30</b>

	9.2 Drug Interactions Overview .....	30
	9.4 Drug-Drug Interactions .....	30
	9.5 Drug-Food Interactions .....	31
	9.7 Drug-Laboratory Test Interactions.....	31
<b>10</b>	<b>CLINICAL PHARMACOLOGY .....</b>	<b>31</b>
	10.1 Mechanism of Action .....	31
	10.2 Pharmacodynamics .....	31
	10.3 Pharmacokinetics .....	36
<b>11</b>	<b>STORAGE, STABILITY AND DISPOSAL .....</b>	<b>38</b>
<b>12</b>	<b>SPECIAL HANDLING INSTRUCTIONS .....</b>	<b>38</b>
	<b>PART II: SCIENTIFIC INFORMATION.....</b>	<b>39</b>
<b>13</b>	<b>PHARMACEUTICAL INFORMATION.....</b>	<b>39</b>
<b>14</b>	<b>CLINICAL TRIALS .....</b>	<b>40</b>
	14.1 Clinical Trials by Indication.....	40
	14.2 Comparative Bioavailability Studies.....	57
<b>15</b>	<b>MICROBIOLOGY .....</b>	<b>57</b>
<b>16</b>	<b>NON-CLINICAL TOXICOLOGY .....</b>	<b>57</b>
<b>17</b>	<b>SUPPORTING PRODUCT MONOGRAPHS.....</b>	<b>59</b>
	<b>PATIENT MEDICATION INFORMATION.....</b>	<b>60</b>

## **PART I: HEALTH PROFESSIONAL INFORMATION**

### **1 INDICATIONS**

JAMP-Letrozole (letrozole) film-coated tablets is indicated for:

- The adjuvant treatment of postmenopausal women with hormone receptor-positive invasive early breast cancer.

Clinical effectiveness is based on superior Disease-Free Survival (DFS) compared to tamoxifen. Overall survival was not significantly different between the two treatments (see [14 CLINICAL TRIALS](#)).

- The extended adjuvant treatment of hormone receptor positive invasive early breast cancer in postmenopausal women who have received approximately 5 years of prior standard adjuvant tamoxifen therapy.

Clinical effectiveness is based on superior Disease-Free Survival (DFS) compared to placebo in the overall study population, at a median follow-up of 28 months. However, overall survival was not significantly different between the two treatments for the overall population and an increase in deaths was seen in node-negative patients in the letrozole arm versus the placebo arm (see [7 WARNINGS AND PRECAUTIONS](#) and [14 CLINICAL TRIALS](#)).

- First-line therapy in postmenopausal women with advanced breast cancer.
- The hormonal treatment of advanced/metastatic breast cancer after relapse or disease progression, in women with natural or artificially-induced postmenopausal endocrine status, who have previously been treated with anti-estrogens.

JAMP-Letrozole is not indicated in hormone-receptor negative disease.

#### **Men**

Use of letrozole in men with breast cancer has not been studied (See [7 WARNINGS AND PRECAUTIONS: Reproductive Health: Female and Male Potential](#)).

#### **1.1 Pediatrics**

Pediatrics (< 18 years of age): JAMP-Letrozole is contraindicated in children and adolescents. The safety and efficacy of letrozole in children and adolescents (under 18 years of age) have not been established.

#### **1.2 Geriatrics**

Geriatrics (≥ 65 years of age): No age-related pharmacokinetic effects were observed with the use

of letrozole. No major differences in efficacy and general safety were observed in patients aged < 65 years versus ≥ 65 years (see [7.1.4 Geriatrics](#)).

## 2 CONTRAINDICATIONS

JAMP-Letrozole is contraindicated in:

- Patients who are hypersensitive to letrozole, other aromatase inhibitors, or to any ingredient in the formulation or component of the container. For a complete listing, see [6 DOSAGE FORMS, STRENGTHS, COMPOSITION AND PACKAGING](#).
- Premenopausal women (see [7 WARNINGS AND PRECAUTIONS](#)).
- Pregnant women (see [7.1.1 Pregnant Women](#)).
- Breast-feeding women (see [7.1.2 Breast-feeding](#)).
- Children or adolescents under 18 years of age.

## 3 SERIOUS WARNINGS AND PRECAUTIONS BOX

### Serious Warnings and Precautions

JAMP-Letrozole should be prescribed and managed by a qualified physician who is experienced in the use of anti-cancer agents.

**JAMP-Letrozole increases the risk of osteoporosis and bone fractures (see [7 WARNINGS AND PRECAUTIONS, Musculoskeletal](#)).**

## 4 DOSAGE AND ADMINISTRATION

### 4.1 Dosing Considerations

### 4.2 Recommended Dose and Dosage Adjustment

**Adults:** The recommended dose is one 2.5 mg tablet once daily.

In the adjuvant setting, the intended duration of treatment is 5 years.

In the extended adjuvant setting, treatment with JAMP-Letrozole is intended for 5 years and should be initiated within 3 months of completion of approximately 5 years of prior standard adjuvant tamoxifen therapy.

In the first- and second-line advanced breast cancer settings, JAMP-Letrozole treatment should continue until further tumour progression is evident.

### **Special populations**

**Hepatic impairment:** No dose adjustment of JAMP-Letrozole is required for patients with mild to moderate hepatic impairment (Child-Pugh score A or B). Insufficient data are available to recommend

a dose adjustment in breast cancer patients with severe hepatic impairment (Child-Pugh C). However, since letrozole elimination depends mainly on intrinsic metabolic clearance, caution is recommended. Therefore, patients with severe hepatic impairment should be kept under close supervision for adverse events (see [10.3 Pharmacokinetics](#)).

**Renal impairment:** No dosage adjustment is required for patients with renal impairment with a creatinine clearance (CLcr)  $\geq 10$  mL/min. Insufficient data are available in cases of renal impairment with CLcr  $< 10$  mL/min (see [10.3 Pharmacokinetics](#)).

**Pediatrics (< 18 years of age):** Letrozole is contraindicated in children and adolescents. The safety and efficacy of letrozole in children and adolescents (under 18 years of age) have not been established.

**Geriatrics ( $\geq 65$  years of age):** No dose adjustment is required for elderly patients.

#### 4.4 Administration

JAMP-Letrozole should be taken orally with or without food (see [9.5 Drug-Food Interactions](#) and [10.3 Pharmacokinetics, Absorption](#)).

#### 4.5 Missed Dose

The missed dose should be taken as soon as the patient remembers. However, if it is almost time for the next dose, the missed dose should be skipped, and the patient should go back to the regular dosage schedule. Doses should not be doubled because with daily doses at 2.5 mg or above over-proportionality in systemic exposure was observed (see [10.3 Pharmacokinetics](#)).

### 5 OVERDOSAGE

Isolated cases of letrozole overdose have been reported. In these instances, the highest single dose ingested was 125 mg or 50 tablets. While no serious adverse events were reported in these cases, because of the limited data available, no firm recommendations for treatment can be made. In single dose studies the highest dose used was 30 mg, which was well tolerated; in multiple dose trials, the largest dose of 10 mg was well tolerated.

In general, treatment of overdose with letrozole should be supportive and symptomatic. Vital signs should be monitored in all patients. Complete blood count (CBC) and liver function tests should be monitored in symptomatic patients. Fluid and electrolyte status should be monitored in patients with significant vomiting and/or diarrhea. Administration of activated charcoal may be appropriate in some cases.

For management of a suspected drug overdose, contact your regional poison control centre.
---

## 6 DOSAGE FORMS, STRENGTHS, COMPOSITION AND PACKAGING

Table 1 – Dosage Forms, Strengths, Composition and Packaging

Route of Administration	Dosage Form / Strength/Composition	Non-medicinal Ingredients
Oral	Tablets / 2.5 mg letrozole	Colloidal Anhydrous Silica, Hypromellose (HPMC 6CPS), Lactose Monohydrate, Magnesium Stearate, Microcrystalline Cellulose PH102, Sodium Starch Glycolate (Type A).  Film coating contains: ferric oxide red, ferric oxide yellow, hypromellose, polyethylene glycol 6000, tartrazine and titanium dioxide.

### Description

Each yellow, circular, biconvex film coated tablets plain on both sides. Available in HDPE bottles of 100 tablets and blister packages containing 30 tablets.

## 7 WARNINGS AND PRECAUTIONS

Please see [3 SERIOUS WARNINGS AND PRECAUTIONS BOX](#).

### General

Co-administration of JAMP-Letrozole with tamoxifen, other anti-estrogens or estrogen-containing therapies should be avoided as these substances may diminish the efficacy of letrozole (see [9.4 Drug-Drug Interactions](#)).

The benefit risk assessment should be carefully considered prior to prescribing JAMP-Letrozole as extended adjuvant treatment for early breast cancer patients with low risk of recurrence. The risk of death in the node-negative subgroup was increased by ~35% in patients treated with letrozole compared to patients receiving placebo at median follow-up of 28 months (HR: 1.36; 95% CI: 0.68, 1.81) and 62 months (HR 1.34; 95% CI: 0.99, 1.81) in the MA-17 study (see [14 CLINICAL TRIALS](#)).

### Cardiovascular

The use of aromatase inhibitors, including JAMP-Letrozole, may increase the risk of cardiovascular events (see [8 ADVERSE REACTIONS](#)).

The overall incidence of cardiovascular events in the BIG 1-98 study at a median treatment duration of 25 months for letrozole and tamoxifen was 10.1% vs. 11.4%, respectively. A significantly higher incidence of events was seen for letrozole vs. tamoxifen in cardiac failure

(0.8% vs. 0.3%), and a significantly lower incidence in thromboembolic events (1.2% vs. 3.0%). Numerically (but not significantly) more cases of myocardial infarction were seen with letrozole (20, 0.5%) than with tamoxifen (15, 0.4%), as well as hypertension (151, 3.8% vs. 137, 3.4%, respectively), ischemic cardiovascular events (60, 1.5% vs. 55, 1.4%, respectively), and cerebrovascular events (55, 1.4% vs. 50, 1.3%, respectively); and, reported any time after randomization (irrespective of treatment and irrespective of a cancer event) at a median follow up of 30 months, fatal cardiac events (18, 0.4% vs. 7, 0.2% respectively) and fatal stroke (7, 0.2% vs. 5, 0.2% respectively).

The overall incidence of cardiovascular events (including cerebrovascular and thromboembolic events) in the BIG 1-98 study for letrozole and tamoxifen at a median treatment duration of 60 months and a median follow-up of 96 months was 15.3 % vs. 16.3%, respectively (a non-significant difference). During treatment, or within 30 days of stopping treatment, a significantly higher risk of myocardial infarction was observed for letrozole (1.0%) than for tamoxifen (0.5%) (Risk Ratio, RR: 2.00; 95% CI 1.00, 3.99) while a significantly lower risk of thromboembolic events was seen for letrozole (2.1%) than for tamoxifen (3.6%) (RR: 0.57; 95% CI 0.41, 0.80). Numerically (but not significantly) more cases of cardiac failure were seen with letrozole (1.1%) than with tamoxifen (0.6%) (RR 1.80; 95% CI 0.96, 3.37).

In the extended adjuvant setting, in the updated analysis of MA-17, the overall incidence of cardiovascular events (including cerebrovascular and thromboembolic events) during treatment or within 30 days of stopping treatment (median duration of treatment of 60 months) was significantly higher for letrozole (9.8%) than for placebo (7.0%) (RR: 1.39; 95% CI 1.16, 1.67). There was a higher risk of stroke/transient ischemic attack with letrozole (1.5%) than with placebo (0.8%) (RR 1.86; 95% CI 1.10, 3.16) and of thromboembolic events with letrozole (0.9%) than with placebo (0.3%) (RR 2.57; 95% CI 1.19, 5.53) (see [8 ADVERSE REACTIONS](#)).

At a median treatment period of 60 months, the number of deaths during treatment or within 30 days of stopping treatment was slightly higher in the placebo arm [82/2577 (3.2%)] than in the letrozole arm [77/2567 (3.0%)], but the difference was not statistically significant. Of the 19 deaths attributed to a cardiovascular cause in the placebo arm, 12 occurred in the group of 1026 patients who did not switch to letrozole after study unblinding, and 7 occurred in the group of 1551 patients who switched to letrozole. A total of 7 patients died from a stroke – 6 in the letrozole arm and 1 after switching from placebo to letrozole after study unblinding.

### **Driving and operating machinery**

No studies on the effects of letrozole on the ability to drive and use machines have been performed. However, since fatigue, dizziness, and uncommonly somnolence have been observed with the use of letrozole, caution is advised when driving or operating machinery while such symptoms persist.



## Endocrine and Metabolism

**Hyperlipidemia:** The use of aromatase inhibitors, including JAMP-Letrozole, may increase lipid levels. In the adjuvant therapy trial (BIG 1-98), at a median treatment duration of 60 months, hypercholesterolemia was reported in 52.3% of patients treated with letrozole compared to 28.6% of patients treated with tamoxifen. In a smaller study (D2407) comparing 2 years of adjuvant treatment with letrozole or tamoxifen, significant differences were observed between treatments at all time-points in total cholesterol, LDL cholesterol and the HDL: LDL ratio in favour of tamoxifen. Clinically relevant changes in total cholesterol at 2 years occurred significantly more often for patients treated with letrozole (17%) than with tamoxifen (5%).

Monitoring of serum cholesterol is advised for patients treated with JAMP-Letrozole. (see also [8 ADVERSE REACTIONS](#), [10 CLINICAL PHARMACOLOGY](#), [14 CLINICAL TRIALS](#)).

## Monitoring and Laboratory Tests

**Plasma Lipids:** Women should have their cholesterol levels assessed and managed according to current clinical practice and guidelines (see [7 WARNINGS & PRECAUTIONS- Endocrine and Metabolism](#)).

**Bone Mineral Density:** Monitoring of overall bone health is recommended during treatment with JAMP-Letrozole. (See [7 WARNINGS & PRECAUTIONS- Musculoskeletal](#)). In patients whose menopausal status is unclear or who become amenorrheic after chemotherapy, luteinising hormone (LH), follicle-stimulating hormone (FSH) and/or estradiol levels should be measured before initiating treatment with JAMP-Letrozole and regularly during the first 6 months of treatment.

## Musculoskeletal

**Bone Mineral Density:** The use of estrogen lowering agents, including JAMP-Letrozole, may cause a reduction in bone mineral density (BMD) with a possible consequent increased risk of osteoporosis and fracture.

During study treatment or within 30 days of stopping treatment in study BIG 1-98 (median treatment duration of 60 months and a median follow-up of 96 months), there was a significantly higher incidence of osteoporosis in patients treated with letrozole (5.1%) than with tamoxifen (2.7%). Similarly, significantly more patients receiving letrozole experienced bone fractures (10.2%) than those receiving tamoxifen (7.2%). During treatment or within 30 days of stopping treatment (median duration of treatment of 60 months) in study MA-17, there was a significantly higher incidence of osteoporosis in patients treated with letrozole (12.2%) than with placebo (6.4%). Similarly, significantly more patients receiving letrozole experienced bone fractures (10.4%) than those receiving placebo (5.8%). Therefore, monitoring of overall bone health is recommended during treatment with JAMP-Letrozole. Women should have their osteoporosis risk assessed and managed according to local clinical practice and guidelines (see also [7.1.4 Geriatrics](#), [8 ADVERSE REACTIONS](#), [10 CLINICAL PHARMACOLOGY](#), [14 CLINICAL TRIALS](#) and [16 NON-CLINICAL TOXICOLOGY](#)).

**Arthralgia/arthritis:** In the adjuvant setting, a significantly increased risk of arthralgia/arthritis was reported with letrozole (25.4%) compared to tamoxifen (20.6%) at a median treatment duration of 60 months. In a smaller study (D2407) which reported two years adjuvant treatment, arthralgia/arthritis was reported in 26% of patients who received letrozole compared with 15% who received tamoxifen (significant difference).

In the extended adjuvant setting, in the original analysis of the double-blind study, significantly more patients treated with letrozole (28%) than with placebo (22%) experienced arthralgia/arthritis (median duration of treatment 24 months).

**Myalgia:** In the adjuvant setting, the risk of myalgia was not significantly higher for letrozole (9.0%) than for tamoxifen (8.7%) (study BIG 1-98). In a smaller study (D2407) after two years of adjuvant therapy, myalgia was reported for 3.8% of patients with letrozole and for 0.8% of patients with tamoxifen (difference not statistically significant).

In the extended adjuvant setting, myalgia was reported significantly more often for letrozole, (9.5%) than for placebo (6.7%) (median duration of treatment 24 months).

**Tendon Disorders:** The use of third generation aromatase inhibitors, including letrozole, was found to be associated with tendonitis and tenosynovitis as reported in randomized controlled trials. Tendon rupture was found to be a potential risk. Tendonitis and tenosynovitis were estimated to be of uncommon occurrence, and tendon rupture of rare occurrence. Treating physicians should monitor patients for these adverse drug reactions.

#### **Reproductive Health: Female and Male potential**

**Fertility:** The pharmacological action of letrozole is to reduce estrogen production by aromatase inhibition. In premenopausal women, the inhibition of estrogen synthesis leads to feedback increases in gonadotropin (LH, FSH) levels, stimulation of follicular growth, and ovulation induction (see [7 WARNINGS & PRECAUTIONS-Monitoring and Laboratory Tests](#)). In premenopausal women, these feedback mechanisms increase the risk of inducing ovarian hyperstimulation syndrome.

Based on animal studies, letrozole may impair fertility in males of reproductive potential (See [16 NON-CLINICAL TOXICOLOGY- Reproductive and Developmental Toxicity](#)).

**Teratogenic Risk:** Spontaneous abortions and congenital anomalies have been reported in infants born to women exposed to letrozole while pregnant.

In animal reproductive toxicology studies letrozole resulted in maternal toxicity embryotoxicity, fetotoxicity and teratogenicity (See [16 NON-CLINICAL TOXICOLOGY: REPRODUCTIVE AND DEVELOPMENTAL TOXICOLOGY](#)).

## 7.1 Special Populations

### 7.1.1 Pregnant Women

JAMP-Letrozole is contraindicated in pregnant women (see [2 CONTRAINDICATIONS](#)).

Isolated cases of birth defects (labial fusion, ambiguous genitalia) have been reported in infants born to women exposed to letrozole during pregnancy.

JAMP-Letrozole is contraindicated in premenopausal women (see [2 CONTRAINDICATIONS](#)).

Women who are not premenopausal but have the potential to become pregnant, including women who are perimenopausal or who recently became postmenopausal, should use appropriate contraception (methods that result in less than 1 % pregnancy rates) while being treated with JAMP-Letrozole and for 20 days after stopping treatment with JAMP-Letrozole (see also [7 WARNINGS & PRECAUTIONS: Reproductive health: Female and Male Potential](#)).

**Women of Unclear Menopausal status:** Women treated with JAMP-Letrozole whose menopausal status has not been confirmed are at an increased risk of becoming pregnant and experiencing spontaneous abortions or congenital anomalies in their infants (see also [7 WARNINGS & PRECAUTIONS: Reproductive health: Female and Male Potential](#)). In patients whose menopausal status is unclear or who become amenorrheic after chemotherapy, luteinising hormone (LH), follicle-stimulating hormone (FSH) and/or estradiol levels should be measured before initiating treatment with JAMP-Letrozole and regularly during the first 6 months of treatment. Appropriate contraception should be used to avoid pregnancy. Only women of confirmed postmenopausal endocrine status should receive JAMP-Letrozole.

### 7.1.2 Breast-feeding

**Nursing Women:** JAMP-Letrozole is contraindicated in breast feeding women (see [2 CONTRAINDICATIONS](#)). It is not known if letrozole is excreted in human milk. There are no data on the effects of letrozole on the breastfed child or the effects of letrozole on milk production, however, exposure of letrozole in lactating rats led to impaired fertility of male offspring (See [16 NON-CLINICAL TOXICOLOGY: Reproductive and Developmental Toxicology](#)).

### 7.1.3 Pediatrics (< 18 years of age):

JAMP-Letrozole is contraindicated in children and adolescents. The safety and efficacy of letrozole in children and adolescents (under 18 years of age) have not been established.

### 7.1.4 Geriatrics (≥ 65 years of age):

There have been no age-related effects observed on the pharmacokinetics of letrozole. No major difference in general safety was observed in patients aged < 65 years versus ≥ 65 years; however, patients ≥ 65 years experienced more bone fractures and more osteoporosis, irrespective of

treatment.

In the adjuvant setting, more than 8000 postmenopausal women were enrolled in the clinical study (see [14 CLINICAL TRIALS](#)). In total, 36% of patients were aged 65 years or older at enrolment, while 12% were 75 or older. Although more adverse events were generally reported in elderly patients irrespective of study treatment allocation, the differences between the two treatment groups were similar to those of younger patients.

In the extended adjuvant study, more than 5000 postmenopausal women were enrolled in the study; 41% of the patients were aged 65 years or older at enrolment, while 12% were 75 or older.

In the extended adjuvant study, after a median follow-up of 28 months, fracture rates recorded any time after randomization in patients 65 years and older at study enrolment were 7.1% (77/1090) in the letrozole arm compared to 7.5 % (77/1033) in the placebo arm; the difference is not statistically significant (P=0.74). These results were obtained prior to study unblinding.

In the extended adjuvant study, after a median treatment of 60 months for letrozole, fracture rates reported during treatment or within 30 days of stopping treatment in patients aged 65 years or older at enrollment were 11.4% (124/1091) for letrozole compared to 7.7% (79/1032) for placebo until switch, and 11.2% (59/528) for patients switching from placebo to letrozole. After a median follow-up of 62 months for letrozole, fracture rates reported any time after randomization in patients aged 65 years or older at enrollment were 15.7% (171/1091) for letrozole compared to 11.5% (119/1032) for placebo, and 11.9% (63/528) for letrozole after switch.

## **8 ADVERSE REACTIONS**

### **8.1 Adverse Reaction Overview**

Letrozole was generally well tolerated across all studies as first-line and second-line treatment for advanced breast cancer, as adjuvant treatment of early breast cancer and as extended adjuvant treatment in women who had completed prior standard adjuvant therapy with tamoxifen. Approximately one third of the patients treated with letrozole in the metastatic setting, and approximately 80% of the patients in the adjuvant setting (both letrozole and tamoxifen arms, at a median treatment duration of 60 months), and extended adjuvant setting (both letrozole and placebo arms, at a median treatment duration of 60 months) experienced adverse reactions (“Adverse reactions” defined as adverse events (AEs) suspected of being related to study treatment (including AEs with missing relationship)). The observed adverse reactions are mainly mild or moderate in nature, and many are associated with estrogen deprivation. The updated safety profile of letrozole in both the adjuvant (96 months median follow-up, median treatment duration 60 months) and the extended adjuvant (62 months median follow-up, median treatment duration 60 months) settings did not reveal any new adverse reaction and was consistent with the profile reported at earlier analyses.

## Adverse Events in Adjuvant Study BIG 1-98

After reviewing the results of the Primary Core Analysis, at a median treatment duration of 25 months, the independent Data and Safety Monitoring Committee, observed a difference in incidence in grade 5 myocardial infarctions (9 vs 2 in the letrozole and tamoxifen arms, respectively) and recommended that cardiac events and certain other safety data be reviewed. Consequently, a blinded medical review of more than 2000 patients with pre-specified adverse events (Common Toxicity Criteria, CTC grade 3-5 cardiovascular events, fractures, arthritis/arthralgia, myalgia, any adverse event leading to discontinuation) or death without a prior cancer event was conducted. This medical review resulted in a change in the cause of death for 25 patients, 19 of which were reclassified from a cardiac cause to either “sudden death, cause unknown” (9 cases in letrozole arm, 7 cases in tamoxifen arm) or to “other” (3 cases in letrozole arm). Some adverse events (such as arthritis/arthralgia and edema) reported in the primary analysis did not meet the definition of a treatment-emergent adverse event as they were present at baseline and did not worsen in severity during treatment. Patients in the BIG 1-98 study continued to be monitored by blinded medical review for cardiovascular, skeletal and endometrial events, survival status and breast cancer status as well as for events leading to discontinuation of trial treatment, throughout the trial for median treatment duration of 60 months and a median follow-up of 96 months.

Patients with other non-malignant systemic diseases (cardiovascular, renal, hepatic, lung embolism, etc.) which would prevent prolonged follow-up were ineligible for enrolment in the BIG 1-98 trial. Patients with previous DVT (deep vein thrombosis) were only included if medically suitable.

Letrozole was generally well tolerated as adjuvant treatment of early breast cancer. At the primary analysis (25 months median treatment) approximately 92% vs. 87% of the patients allocated letrozole or tamoxifen, respectively, experienced adverse events, irrespective of suspected relationship to study drug. The most frequently reported adverse events in the adjuvant setting were hot flushes (letrozole: 34%, tamoxifen: 38%), arthralgia/arthritis (letrozole: 21%, tamoxifen 13%), night sweats (letrozole: 14%, tamoxifen: 16%) and weight increased (letrozole: 11%, tamoxifen: 13%). Most adverse events reported (81%) were grade 1 and grade 2 applying the Common Toxicity Criteria Version 2.0.

At a median treatment duration of 60 months and a median follow-up of 96 months, more than 90% of the patients in each treatment arm experienced adverse events, irrespective of suspected relationship to study drug. The observed adverse events were mainly mild or moderate in nature (a quarter of the patients in each treatment arm reported CTC grade 3 or 4 adverse events), and many events were associated with estrogen deprivation (see [8.2 Clinical Trial Adverse Drug Reactions](#), Table 2).

At a median treatment duration of 60 months, there was a significantly lower risk of endometrial hyperplasia or cancer with letrozole (0.2%) than with tamoxifen (2.3%) (RR 0.11; 95% CI 0.05, 0.24). At a median follow-up of 96 months, there remained a significantly lower risk of endometrial hyperplasia or cancer with letrozole (0.4%) than with tamoxifen (2.9%) (RR 0.15; 95% CI 0.08, 0.29). Apart from the occurrence of endometrial cancer, no major differences in the frequency of second

non-breast primary malignancies were observed (see [14 CLINICAL TRIALS](#)).

### **Adverse Events in Extended Adjuvant Study MA-17**

Adverse events discussed below were analyzed irrespective of relationship to study treatment.

Letrozole was generally well tolerated as extended adjuvant treatment in women who had received prior standard adjuvant tamoxifen treatment. After a median treatment duration of 24 months for letrozole, 87% vs. 84% of the patients on letrozole vs. placebo experienced adverse events.

The most frequent adverse events (CTC grades 1-4), irrespective of suspected relationship to study treatment, reported during treatment by at least 2% of the patients in any treatment arm are presented in Table 3. The initial safety results, reported after a median treatment duration of 24 months, were hot flashes (letrozole 50% vs. placebo 43%), fatigue (lethargy, asthenia, malaise) (letrozole 34% vs. placebo 32%), arthralgia/arthritis (letrozole 28% vs. placebo 22%), and sweating (diaphoresis) (letrozole 24% vs. placebo 22%). Most adverse events reported were grade 1 or grade 2 based on the Common Toxicity Criteria version 2.0. At a median treatment duration of 60 months for letrozole, adverse events were reported for more than 90% of the patients in each treatment arm.

When the study was unblinded (at a median follow-up of 28 months), patients randomized placebo were offered to switch to letrozole. The placebo results beyond 28 months median follow-up are confounded by the fact that 60% of patients in the placebo arm opted to switch to letrozole, resulting in different median exposure to treatment (60 months for letrozole, 28 months for placebo generally and 40 months for letrozole after switch); cardiovascular and skeletal events had a median exposure of 37 months to placebo/standard care. Dates of onset were recorded for targeted adverse events of fracture, osteoporosis and cardiovascular events (including cerebrovascular and thromboembolic events). Many general adverse events were collected by checklists without dates of onset. In most cases it cannot be determined if the adverse events in the placebo group occurred before switch to letrozole or after switch to letrozole. General adverse event data after unblinding of the study should be interpreted with caution. The majority of these general adverse events, however, were observed during the first year of treatment (see [8.2 Clinical Trial Adverse Drug Reactions](#), Table 3, updated results). In the updated results, hot flashes were reported significantly more often with letrozole (61%) than with placebo (58%). Arthralgia/arthritis and myalgia tended to be reported more often with letrozole (including in patients who switched to letrozole) than with placebo (see also [7 WARNINGS AND PRECAUTIONS](#)).

The risk of osteoporosis during treatment or within 30 days of stopping treatment was significantly higher for letrozole (12.2%) than for placebo until switch (6.4%) (RR 1.90; 95% CI 1.59, 2.27). Clinical fractures were reported more often for letrozole (10.4%) than for placebo until switch (5.8%) (RR 1.79; 95% CI 1.48, 2.17). In patients who switched to letrozole, osteoporosis was reported in 5.4% of patients and fractures in 7.7% of patients.

Irrespective of treatment, patients  $\geq 65$  years at study entry experienced more bone fractures and more osteoporosis.

Updated results (median follow-up of 61 months) from the bone mineral density (BMD) sub-study conducted in a subset of 219 patients (117 on letrozole and 102 on placebo, including 77 who switched from placebo to letrozole) showed that, at 2 years, patients receiving letrozole had a median decrease of 3.8% compared to baseline in hip BMD compared to 2.0% for patients receiving placebo until switch ( $P=0.02$ ). There was no significant difference between treatments in changes in lumbar spine BMD (see Table 8). All patients should have received vitamin D and calcium supplementation. Vitamin D was not recorded. Calcium supplementation was reported for 44-66% of patients. Bisphosphonates were received by approximately a third of the patients treated with letrozole, compared with a quarter or fewer patients in the placebo arm.

Updated results (median follow-up of 62 months) from the lipid sub-study showed no significant differences between treatments in changes in total cholesterol or in any lipid fraction. The lipid sub-study included 309 patients: 168 allocated letrozole and 141 allocated placebo. In total, 94 (67%) of the patients in the placebo arm switched to letrozole after the study was unblinded. None of the patients received lipid-lowering agents at enrolment to the sub-study. Lipid-lowering agents were introduced during treatment for 22% (37/168 patients) of the patients in the randomized letrozole arm, 21% (29/141 patients) of the patients in the placebo until switch group, and 15% (14/94 patients) of patients after switching to letrozole (see Table 10).

In the updated analysis of cardiovascular events (including cerebrovascular and thromboembolic events) the overall incidence of events during treatment or within 30 days of stopping treatment was significantly higher for letrozole (9.8%) than for placebo until switch (7.8%). The reported frequency of thromboembolic events was significantly higher for letrozole (0.9%) than for placebo until switch (0.3%). The reported frequency of stroke/transient ischemic attack was also significantly higher for letrozole (1.5%) than for placebo until switch (0.8%).

### **Adverse Events in First-Line and Second-Line Treatment of Advanced Breast Cancer**

Letrozole was generally well tolerated across all studies as first-line and second-line treatment for advanced breast cancer. Approximately one third of patients treated with letrozole in the metastatic setting experienced adverse reactions. The most frequently reported adverse reactions in the clinical trials were hot flushes, nausea and fatigue. The adverse drug reactions reported from clinical trials are summarized in Tables 5 and 6 for first- line and second-line treatment with letrozole.

## **8.2 Clinical Trial Adverse Reactions**

### **Adverse Events in Adjuvant Treatment of Early Breast Cancer in Postmenopausal Women, Median Treatment Duration 25 Months**

At a median duration of treatment of 25 months, serious adverse events (SAEs) suspected to be related to study treatment were significantly less frequent with letrozole (204/3975 patients, 5.1%)

than with tamoxifen (319/3988 patients, 8.0%). Table 2 summarizes adverse events during study treatment (median duration of treatment 25 months; median follow-up 28 months). The most frequent SAEs were thromboembolic event (letrozole 0.6%, tamoxifen 1.7%); fracture (letrozole 1.2%, tamoxifen 0.9%); transient ischemic attack (letrozole 0.6%, tamoxifen 0.8%); uterine polyp (letrozole % <0.1%, tamoxifen 0.8%); vaginal hemorrhage (letrozole 0.1%, tamoxifen 0.7%); myocardial infarction (letrozole 0.3%, tamoxifen 0.3%); endometrial hyperplasia (letrozole 0%, tamoxifen 0.6%) and angina pectoris (letrozole 0.3%, tamoxifen 0.3%).

Hypercholesterolemia determined from non-fasting laboratory evaluations was defined as an increase in total serum cholesterol in patients who had baseline values of total serum cholesterol within the normal range, and then subsequently, had an increase in total serum cholesterol of  $\geq 1.5^*$  ULN at least once. The incidence of laboratory evaluated hypercholesterolemia was more frequent in patients treated with letrozole (5.6%) compared to tamoxifen (1.1%) (see Table 2).

Letrozole treatment was associated with a significantly higher risk of osteoporosis (2.2 vs. 1.2% with tamoxifen). Bone fractures were significantly higher in the letrozole arm than the tamoxifen arm (6.3 vs. 4.7%, respectively) (see Table 2).

#### **Adverse Events in Adjuvant Treatment of Early Breast Cancer in Postmenopausal Women, Median Treatment Duration 60 Months**

In study BIG 1-98, at a median treatment duration of 60 months and a median follow-up of 96 months for reporting cardiovascular, skeletal and urogenital/endometrial events for patients receiving letrozole and tamoxifen, the side effects seen were consistent with the safety profile of the drug.

Certain adverse events were prospectively specified for analysis, based on the known pharmacologic properties and side effect profiles of the two drugs.

Most adverse events reported (75%) were grade 1 and grade 2 applying the Common Toxicity Criteria (CTC) Version 2.0 / Common Terminology Criteria for Adverse Events (CTCAE), version 3.0. Table 2 summarizes adverse events during study treatment (median duration of treatment 60 months; median follow-up 96 months).

At a median duration of follow-up of 96 months, the following adverse events were reported for letrozole and tamoxifen, respectively: bone fracture (14.7% vs 11.4%), osteoporosis (5.1% vs 2.7%), thromboembolic events (3.2% vs 4.6%), myocardial infarction (1.7% vs 1.1%), endometrial hyperplasia/endometrial cancer (0.4% vs 2.9%).

At a median duration of follow-up of 96 months, serious adverse events suspected of being related to study treatment were significantly less frequent with letrozole (199/2448 patients, 8.1%) than with tamoxifen (270/2447 patients, 11%). The most frequent SAEs were fracture (letrozole 2.2%, tamoxifen group (1.6%); thromboembolic event (letrozole 0.8%, tamoxifen 1.6%); transient ischemic attack (letrozole 1.0%, tamoxifen 1.0%); uterine polyp (letrozole <0.1%, tamoxifen 1.2%); myocardial infarction (letrozole 0.6%, tamoxifen 0.4%); angina pectoris



(letrozole 0.5%, tamoxifen 0.4%); endometrial hyperplasia (letrozole 0%, tamoxifen 0.9%); vaginal hemorrhage (letrozole 0.2%, tamoxifen 0.9%); cataract (letrozole 0.4%, tamoxifen 0.3%); ovarian cyst (letrozole 0.1%, tamoxifen 0.4%) and endometrial hypertrophy (letrozole 0%, tamoxifen 0.3%).

**Table 2 Adverse events, irrespective of relationship to study treatment, reported in the adjuvant study, BIG 1-98, in 2% or more patients in any treatment arm (Safety population)**

<b>Median duration of treatment</b>	<b>25 months (PCA) <sup>1</sup></b>		<b>60 months (MAA)</b>	
<b>Median duration of follow-up</b>	<b>26 months (PCA)</b>		<b>96 months (MAA)</b>	
	<b>Letrozole</b>	<b>Tamoxifen</b>	<b>Letrozole</b>	<b>Tamoxifen</b>
	<b>N=3975</b>	<b>N=3988</b>	<b>N=2448</b>	<b>N=2447</b>
<b>Preferred term</b>	<b>(%)</b>	<b>(%)</b>	<b>(%)</b>	<b>(%)</b>
No. of patients with ≥ 1 AE gr 1-5	92.1 %	86.8 %	94.4 %	90.5 %
No. of patients with ≥ 1 AE gr 1-4	92.0 %	86.8 %	94.3 %	90.4 %
No. of patients with ≥ 1 AE gr 3-4	18.9 %	18.9 %	26.0 %	24.8 %
<b>Vascular disorders</b>				
Hot flashes *	34.4 %	38.5 %	33.5 %	38.0 %
Hypertension* <sup>2</sup>	3.3 %	3.0 %	5.6 %	5.7 %
Hypertension* <sup>3</sup>	3.8 %	3.4 %	6.5 %	7.2 %
Thromboembolic event * <sup>2</sup>	1.2 %	3.0 %	2.1 %	3.6 %
Thromboembolic event * <sup>3</sup>	1.5 %	3.2%	3.2 %	4.6 %
<b>General disorders</b>				
Fatigue (lethargy, malaise, asthenia) *	8.8 %	8.8 %	9.6 %	10.2 %
Edema *	5.9 %	5.8 %	6.7 %	6.5 %
<b>Investigations</b>				
Weight increased	11.2 %	13.5 %	12.9 %	15.4 %

<b>Median duration of treatment</b>	<b>25 months (PCA) <sup>1</sup></b>		<b>60 months (MAA)</b>	
<b>Median duration of follow-up</b>	<b>26 months (PCA)</b>		<b>96 months (MAA)</b>	
	<b>Letrozole</b>	<b>Tamoxifen</b>	<b>Letrozole</b>	<b>Tamoxifen</b>
	<b>N=3975</b>	<b>N=3988</b>	<b>N=2448</b>	<b>N=2447</b>
<b>Preferred term</b>	<b>(%)</b>	<b>(%)</b>	<b>(%)</b>	<b>(%)</b>
Weight decreased	4.7 %	4.2 %	5.7 %	5.3 %
<b>Musculoskeletal and connective tissue disorders</b>				
Arthralgia/arthritis*	20.2 %	13.0 %	25.4 %	20.6 %
Myalgia *	6.7 %	5.9 %	9.0 %	8.7 %
Back pain	3.4 %	3.7 %	5.1 %	5.6 %
Bone pain	4.2 %	3.2 %	5.0 %	4.5 %
Pain in extremity	3.8 %	2.9 %	4.2 %	3.2 %
Osteopenia	1.0 %	0.7 %	3.6 %	3.1 %
Osteoporosis * 2,3	2.2 %	1.2 %	5.1 %	2.7 %
<b>Skin &amp; subcutaneous tissue disorders</b>				
Night sweats *	14.5 %	16.6 %	14.5 %	17.4 %
Alopecia	3.0 %	2.8 %	3.4 %	3.4 %
<b>Nervous system disorders</b>				
Headache *	3.7 %	3.5 %	4.3 %	3.8 %
Dizziness/light-headedness *	2.5 %	3.0 %	3.4 %	3.4 %
Cerebrovascular accident/ transient ischemic attack* 2	1.2 %	1.2 %	2.1 %	1.9 %
Cerebrovascular accident/ transient ischemic attack* 3	1.4 %	1.4 %	3.4 %	2.8 %
<b>Metabolism &amp; nutritional disorders</b>				
Hypercholesterolemia *	45.9 %	19.9 %	52.3 %	28.6 %
Total cholesterol > 1.5*ULN 5	5.6 %	1.1 %	8.4 %	3.9 %
<b>Gastrointestinal disorders</b>				
Nausea *	9.9 %	10.6 %	11.6 %	11.3 %
Constipation *	1.6 %	2.6 %	2.0 %	2.9 %
Diarrhea NOS	2.1	1.4 %	2.6 %	1.6 %
Vomiting *	2.8	2.7 %	3.3 %	3.3 %
Abdominal pain upper	1.5	1.3 %	2.4 %	1.8 %
<b>Respiratory, thoracic &amp; mediastinal disorders</b>				
Dyspnea	2.2	2.3 %	2.8 %	3.1 %
Cough	1.6 %	2.1 %	2.0 %	2.5 %
Endometrial hyperplasia/cancer <sup>2,4</sup>	0.3 %	2.0 %	0.3 %	2.9 %
Endometrial hyperplasia/cancer <sup>3,4</sup>	0.4 %	2.2 %	0.6 %	3.6 %

Median duration of treatment	25 months (PCA) <sup>1</sup>		60 months (MAA)	
Median duration of follow-up	26 months (PCA)		96 months (MAA)	
	Letrozole	Tamoxifen	Letrozole	Tamoxifen
	N=3975	N=3988	N=2448	N=2447
Preferred term	(%)	(%)	(%)	(%)
<b>Psychiatric disorders</b>				
Insomnia	1.8 %	1.5 %	2.2 %	1.9 %
Depression	3.9 %	4.1 %	4.9 %	4.7 %
<b>Reproductive system&amp; breast disorders</b>				
Endometrial proliferative disorders			0.6 %	3.5 %
Vaginal haemorrhage *	4.8 %	10.9 %	5.3 %	13.1 %
Vaginal irritation	3.6 %	3.1 %	4.6 %	3.1 %
Vulvovaginal dryness	2.8 %	1.8 %	3.6 %	1.7 %
<b>Eye disorders</b>				
Cataract	1.2 %	1.0 %	2.0 %	2.2 %
<b>Injury, poisoning &amp; procedural complications</b>				
Bone fracture * <sup>2</sup>	6.3 %	4.7 %	10.2 %	7.2 %
Bone fracture * <sup>3</sup>	7.1 %	5.7 %	14.7 %	11.4 %
<b>Neoplasms benign, malignant&amp; unspecified (including cysts &amp; polyps)</b>				
Second malignancies* <sup>2</sup>	--	--	2.2 %	3.2 %
Second malignancies* <sup>3,6</sup>	1.9 %	2.4 %	5.3 %	6.1 %

PCA = Primary Core Analysis; MAA = Monotherapy Arms Analysis NOS = Not otherwise specified; ULN = Upper limit of normal

AEs marked \* are specific target events consisting of multiple MedDRA terms

Note: Cardiovascular, skeletal, endometrial events and second malignancies were collected life-long.

<sup>1</sup> Based on PCA 120-day safety update

<sup>2</sup> During study treatment + 30 days. Median duration of treatment for PCA 120-day safety update 25 months; for MAA median is 60 months

<sup>3</sup> Any time after randomization. Median follow-up 28 months for PCA 120-day safety update; median 96months for MAA

<sup>4</sup> Excluding women who had undergone hysterectomy prior to study enrollment

<sup>5</sup> Denominator is patients who had baseline total cholesterol  $\leq 1.5$ \*ULN

<sup>6</sup> Second malignancies included as DFS events – based on original PCA analysis, median duration of follow-up 26 months; no breakdown of DFS events conducted in 120-day safety update analysis

Deaths during study treatment or within 30 days of stopping treatment due to any cause were reported for 2.2% patients in each treatment arm. Deaths due to cardiac cause were infrequent in both treatment arms (9 patients in the letrozole arm versus 7 patients in the tamoxifen arm). Myocardial infarction was reported as cause of death for 4 patients (0.2%) treated with letrozole compared to 1 patient (<0.1%) in the tamoxifen arm. Death from cardiac failure was reported for 3 patients treated with letrozole and for 3 patients treated with tamoxifen. Deaths related to stroke/CVA were observed in 9 patients (5 for letrozole, 4 for tamoxifen). There were no major differences regarding fatal thromboembolic events and deaths related to second non-breast malignancy.

In the adjuvant setting, total cholesterol levels remained relatively stable over 6 years (median 0 to 5.5% decrease) in the letrozole arm whereas there was an expected decrease (median 10- 14% decrease) over 5 years observed in the tamoxifen arm, Hypercholesterolemia recorded at least once as a check-listed adverse event was more frequent in patients treated with letrozole (52%) compared with tamoxifen (29%). Hypercholesterolemia determined from non-fasting laboratory evaluations was defined as an increase in total serum cholesterol in patients who had baseline values of total serum cholesterol within the normal range, and then subsequently, had an increase in total serum cholesterol of  $\geq 1.5^*$  ULN at least once. The incidence of laboratory evaluated hypercholesterolemia was more frequent in patients treated with letrozole (8.4%) than with tamoxifen (3.9%) (see Table 2).

See **Adverse Events in Extended Adjuvant Treatment** below for data with respect to placebo.

#### **Adverse Events in Extended Adjuvant Treatment of Early Breast Cancer in Postmenopausal Women, Median Treatment Duration 24 Months**

At a median follow-up of 28 months, the incidence of cardiovascular events from the MA-17 core study was not significantly different between patients who received letrozole 6.8% (175) and those who received placebo 6.5% (167). The most frequent cardiovascular events were: new or worsening angina (1.4% in the letrozole arm vs. 1.0% in the placebo arm), myocardial infarction (0.6% in the letrozole arm vs. 0.7% in the placebo arm), and stroke/transient ischemic attack (0.9% in the letrozole arm vs. 0.9% in the placebo arm). These results were obtained prior to unblinding the study.

At a median follow-up of 28 months, the incidence of osteoporosis any time after randomization was higher in patients who received letrozole (6.9%) than in patients who received placebo (5.5%) (P=0.04). The incidence of clinical fractures any time after randomization was slightly (non-significantly) higher in patients who received letrozole than in those who received placebo (5.9% vs. 5.5% respectively). Fracture rates any time after randomization in patients with a history of osteoporosis were 10.6% in the letrozole arm compared to 7.3% in the placebo arm; the difference is not statistically significant. In patients with a previous history of fractures, fracture rates were 12.2% in the letrozole arm compared to 8.7% in the placebo arm; the difference is not statistically significant. These results were obtained prior to study unblinding.

## Adverse Events in Extended Adjuvant Treatment of Early Breast Cancer in Postmenopausal Women, Median Treatment Duration 60 Months

Table 3 summarizes general adverse events reported in at least 2% of the patients in either treatment arm (collected during treatment) (median treatment duration 24 months for letrozole and placebo and 60 months for letrozole); table 4 summarizes cardiovascular and skeletal events collected life-long (including after discontinuation or completion of study treatment) in the study of letrozole versus placebo as extended adjuvant therapy.

The median duration of extended adjuvant treatment was 60 months for patients receiving letrozole and 28 months for placebo. The median duration of letrozole treatment was 60 months (median follow-up 62 months) and the median duration of placebo/standard care until switch was 37 months (same median follow-up). The median duration of letrozole treatment after switch was 40 months (median follow-up 42 months). Most adverse events reported were grade 1 or grade 2 based on the Common Toxicity Criteria Version 2.0.

**Table 3 Adverse events, irrespective of relationship to study treatment, reported at a frequency of 2% or greater in any treatment arm in study MA-17 (Safety population)**

Median treatment duration	24 months <sup>1</sup>		60 months
	Letrozole	Placebo	Letrozole
	N=2563	N=2573	N=2567 <sup>2</sup>
Preferred term	(%)	(%)	(%)
No. of patients with ≥ 1 grade 1-5 AE	87.2 %	84.5 %	93.7 %
No. of patients with ≥ 1 grade 1-4 AE	87.0 %	84.3 %	94.6 %
No. of patients with ≥ 1 grade 3-4 AE	16.3 %	15.1 %	26.2 %
<b>Vascular disorders</b>			
Hot flashes *	49.7 %	43.3 %	60.9 %
Hypertension NOS	4.8 %	4.3 %	8.0 %
<b>General disorders</b>			
Fatigue (lethargy, malaise, asthenia) *	33.8 %	32.3 %	46.8 %
Edema *	20.9 %	18.9 %	27.9 %
Chest pain	2.3 %	2.7 %	3.4 %
<b>Investigations</b>			
Weight decreased	2.0 %	1.5 %	3.3 %
Weight increased	2.1 %	2.0 %	2.9 %
<b>Musculoskeletal and connective tissue disorders</b>			
Arthralgia/arthritis*	27.7 %	22.2 %	41.5 %
Myalgia *	9.5 %	6.7 %	17.7 %
Bone pain	2.7 %	3.1 %	7.7 %
Back pain	5.0 %	4.4 %	6.6 %
Pain in extremity	2.7 %	2.4 %	3.6 %
Osteopenia	0.5 %	0.3 %	2.1 %

Median treatment duration	24 months <sup>1</sup>		60 months
	Letrozole	Placebo	Letrozole
	N=2563	N=2573	N=2567 <sup>2</sup>
Preferred term	(%)	(%)	(%)
<b>Skin &amp; subcutaneous tissue disorders</b>			
Sweating (diaphoresis) *	24.3 %	22.5 %	34.7 %
Alopecia	4.4 %	3.2 %	6.3 %
Dermatitis exfoliative NOS	1.3 %	1.7 %	2.3 %
Rash NOS	1.6 %	2.1 %	2.3 %
Dry skin	1.6 %	1.9	2.4 %
<b>Nervous system disorders</b>			
Headache *	20.5 %	19.9	31.6 %
Dizziness/light-headedness *	14.2 %	13.4	22.1 %
Memory impairment	1.4 %	1.3	2.2 %
<b>Metabolism and nutrition disorders</b>			
Hypercholesterolemia *	15.6 %	15.5	23.3 %
Hyperglycemia NOS	1.9 %	1.6	3.3 %
<b>Gastrointestinal disorders</b>			
Nausea *	10.7 %	10.8 %	18.1 %
Constipation *	11.3 %	11.8 %	17.5 %
Diarrhea NOS	5.0 %	5.3 %	8.1 %
Anorexia *	4.6 %	3.7 %	7.6 %
Dyspepsia	2.8 %	3.2 %	5.3%
Vomiting *	2.9 %	3.2 %	4.9 %
Abdominal pain NOS	2.9 %	3.3 %	4.5 %
Flatulence	1.8 %	1.9 %	2.2 %
<b>Respiratory, thoracic and mediastinal disorders</b>			
Dyspnea	5.5 %	5.3 %	8.9 %
Cough	3.7 %	3.7 %	6.1 %
<b>Psychiatric disorders</b>			
Insomnia	5.8 %	4.7 %	9.0 %
Depression	4.5 %	4.0 %	6.8 %
Anxiety	3.0 %	2.8 %	4.3 %
<b>Reproductive system and breast disorders</b>			
Vaginal haemorrhage *	5.7 %	7.9 %	7.6 %
Vulvovaginal dryness	5.3 %	4.9 %	7.8 %
<b>Renal and urinary disorders</b>			
Pollakiuria	1.8 %	1.5 %	2.7 %
Incontinence NOS	1.8 %	1.2 %	2.4 %
<b>Infections and infestations</b>			
Infection NOS	1.6 %	1.2 %	2.4 %

Median treatment duration	24 months <sup>1</sup>		60 months
	Letrozole	Placebo	Letrozole
	N=2563	N=2573	N=2567 <sup>2</sup>
Preferred term	(%)	(%)	(%)
<sup>1</sup> AEs after the first month of treatment			
<sup>2</sup> Additional patients documented as having taken treatment for at least 1 day			
NOS = Not otherwise specified			
* Specific events that may include multiple MedDRA preferred terms			

**Table 4 Cardiovascular and skeletal events in the extended adjuvant study, MA-17 (Safety population)**

Reporting period / event	Initial analysis		Update
	Letrozole	Placebo	Letrozole
	N=2563	N=2573	N=2567 <sup>1</sup>
	(%)	(%)	(%)
<b>During treatment or within 30 days of stopping treatment</b>			
Median duration of treatment	24 months	24 months	60 months
Cardiovascular events	5.6 %	5.4 %	9.8 %
Myocardial infarction	0.4 %	0.5 %	1.0 %
New or worsening angina	1.2 %	0.9 %	1.4 %
Angina requiring surgery	0.2 %	0.5 %	0.8 %
Thromboembolic event	0.4 %	0.2 %	0.9 %
Stroke/transient ischemic attack	0.7 %	0.6 %	1.5 %
Other	3.7 %	3.2 %	6.1 %
CNS/Cerebrovascular	0.1 %	0.1 %	0.3 %
Cardiac	0.9 %	0.8 %	2.1 %
Arrhythmia	1.6 %	1.9 %	2.7 %
Vascular	0.5 %	0.2 %	0.9 %
Valvular	0.2 %	0.1 %	0.3 %
Other	0.6 %	0.4 %	0.3 %
<b>Skeletal events</b>			
Fracture (clinical)	5.2 %	4.5 %	10.4 %
Patients with 1 fracture	4.5 %	4.0 %	8.6 %
Patients with > 1 fracture	0.7 %	0.5 %	1.7 %
Osteoporosis	6.4 %	4.9 %	12.2 %
<b>Any time after randomization</b>			
Median duration of follow-up	28 months	28 months	62 months
Cardiovascular events	6.8 %	6.5 %	14.4 %

	Initial analysis		Update
	Letrozole	Placebo	Letrozole
	N=2563	N=2573	N=2567 <sup>1</sup>
Reporting period / event	(%)	(%)	(%)
Myocardial infarction	0.6 %	0.7 %	1.7 %
New or worsening angina	1.4 %	1.0 %	2.0 %
Angina requiring surgery	0.5 %	0.7 %	1.2 %
Thromboembolic event	0.5 %	0.4 %	1.3 %
Stroke/transient ischemic attack	0.9 %	0.9 %	2.6 %
Other	4.3 %	4.1 %	8.8 %
CNS/Cerebrovascular	0.1 %	0.1 %	0.4 %
Cardiac	1.2 %	1.0 %	3.0 %
Arrhythmia	2.0 %	2.3 %	4.1 %
Vascular	0.5 %	0.3 %	1.2 %
Valvular	0.2 %	0.1 %	0.4 %
Other	0.6%	0.5 %	0.8 %
<b>Skeletal events</b>			
Fracture (clinical)	5.9 %	5.5 %	13.3 %
Patients with 1 fracture	5.0 %	4.7 %	10.8 %
Patients with > 1 fracture	0.9 %	0.8 %	2.5 %
Osteoporosis	6.9 %	5.5 %	14.5 %
<sup>1</sup> Additional patients documented as having taken study treatment Note: Patients are counted once in each row but may have multiple events, so that numbers are not additive			

The most frequent adverse events irrespective of drug relationship (cut-off frequency of at least 2%) reported in the 1251/2567 (49%) patients randomized letrozole who completed 5 years of treatment were: hot flashes (823, 66%), asthenia (610, 49%), arthralgia (514, 41%), increased sweating (490, 39%), headache (425, 34%), hypercholesterolemia (367, 29%), edema NOS (337, 27%), dizziness (294, 23%) and myalgia (236, 19%).

The incidence of reported osteoporosis in the extended adjuvant study was significantly higher in patients who received letrozole (during treatment: 12.2%; any time after randomization: 14.5%) than in those who received placebo/no treatment (during treatment: 6.4%; any time after randomization: 7.8%). Amongst women who switched from placebo to letrozole, osteoporosis was reported by 5.4% during treatment (median duration of treatment after switching was 40 months) and 5.9% any time after randomization. During treatment, the incidence of clinical fractures was 10.4% for letrozole compared to 5.8% for placebo. Any time after randomization, the incidence increased to 13.3% for patients in the letrozole arm and to 7.8% for patients in the placebo arm. Amongst patients who switched from placebo to letrozole, clinical fractures were reported for 7.7% during treatment (median duration of letrozole after switching was 40 months), rising to 8.3% if the post treatment follow-up was included.



Irrespective of treatment, patients with a history of osteoporosis reported fractures at a higher rate than patients without such a history, as did patients with a history of bone fractures – e.g. during treatment or within 30 days of stopping treatment, fractures were reported for letrozole in 16% of patients with a history of osteoporosis and 17% with a history of previous fractures compared with 9.5% (history of osteoporosis) and 9.9% (history of fractures) for placebo; letrozole 9.6%, placebo 5.3% (no history of osteoporosis); letrozole 9.5%, placebo 5.2% (no previous fractures). Amongst patients who switched from placebo to letrozole, fractures were reported by 10% of patients with a history of osteoporosis, 7.4% for patients with no such history, and by 14.7% of patients who had previously experienced bone fractures compared with 6.8% for those without a history of fractures.

Results (median duration of letrozole treatment was 60 months) from the MA-17 bone sub-study demonstrated that, at 2 years, compared to baseline, patients receiving letrozole had a median decrease (versus baseline) of 3.8% versus 2.0% ( $P=0.022$ ) for placebo in total hip bone mineral density. Although there was a similar reduction in lumbar spine (L2-L4) bone mineral density at 2 years (letrozole median 3.8% decrease versus 2.0% for placebo), this difference was not statistically significant.

During study treatment or within 30 days of stopping treatment (median duration of treatment 60 months for letrozole and 28 months for placebo), the incidence of cardiovascular events overall in study MA-17 was significantly higher for letrozole (9.8%) than for placebo (7.0%). Most of the difference was accounted for by cerebrovascular events (letrozole 1.5% vs. placebo 0.8%), thromboembolic events (letrozole 0.9% vs. placebo 0.3%) and “other” cardiovascular events (letrozole 6.1% vs. placebo 4.2%). At any time after randomization (i.e. including the post-treatment follow-up period, median duration of follow-up 62 months for letrozole, 37 months for placebo), the overall incidence of cardiovascular events was higher in the letrozole arm (14.4%) than in the placebo arm (9.8%). In the letrozole arm, there was a significantly higher reported incidence of myocardial infarction (letrozole 1.7% vs. placebo 1.0%), thromboembolic events (letrozole 1.3% vs. placebo 0.7%), stroke/transient ischemic attack (letrozole 8.8% vs. placebo 6.3%) (see Table 4).

There was no significant difference between treatments in the overall number of patients dying during treatment or within 30 days of stopping treatment (letrozole 3.0% vs. placebo 3.2%; placebo not switching 4.5%; letrozole after switching 2.3%). There were, however, differences in cause of death: approximately twice as many patients who had received placebo died of the underlying breast cancer (placebo not switching 1.3% vs. letrozole 0.7% and letrozole after switching 0.6%); fatal strokes occurred in 6 cases (0.2%) in the letrozole randomized arm and in 1 case (0.1%) after switching to letrozole (0 cases for placebo).

During treatment or within 30 days of stopping treatment (median duration of treatment 60 months), in the randomized letrozole arm, 1.7% of patients experienced more than one fracture, compared with 1.3% in the placebo until switch group and 2.3% in the letrozole after switch from placebo group. Of the 120/1551 patients who experienced a fracture after switching to letrozole from placebo, 76 patients had previously experienced a fracture on placebo (and 7 of these patients had experienced more than one fracture on placebo).

In the 77 patients who switched from placebo to letrozole, BMD in the hip and lumbar spine showed a median decrease from baseline of approximately 1-3% at each of the first, second,

third and fourth annual visits after switching to letrozole. The median treatment duration in each group was 60 months for letrozole, 22 months for placebo until switch and 43 months for letrozole after switch from placebo respectively.

Results from the MA-17 lipid sub-study (median duration of letrozole was 60 months) did not show significant differences between the letrozole and placebo groups. Patients in the sub-study had no prior history of hyperlipidemia. As per normal clinical practice and guidelines for postmenopausal women, physicians should continue their routine monitoring of lipid levels on a regular basis.

### Adverse Events in First-Line Treatment

Overall, 455 postmenopausal women with locally advanced or metastatic breast cancer were treated with letrozole in a well-controlled clinical trial and the median time of exposure was 11 months. The incidence of adverse events was similar for letrozole and tamoxifen. The most frequently reported adverse events were bone pain, hot flushes, back pain, nausea, arthralgia and dyspnea. Discontinuations for adverse events other than progression of tumour occurred in 10/455 (2%) of patients on letrozole and in 15/455 (3%) of patients on tamoxifen.

Table 5 below shows the frequency of adverse reactions considered possibly related to trial drug that have been reported with an incidence of more than 2.0% (whether for letrozole or for tamoxifen) in a well-controlled clinical study with letrozole (2.5 mg daily) and tamoxifen (20 mg daily).

**Table 5**

<b>Adverse Reaction</b>	<b>Letrozole</b>	<b>Tamoxifen</b>
<b>System Organ Class / Preferred term</b>	<b>N= 455</b>	<b>N=455</b>
	<b>(%)</b>	<b>(%)</b>
<b>Gastrointestinal Disorders</b>		
Nausea	6.6	6.4
Constipation	2.4	1.3
Vomiting	2.2	1.5
<b>General Disorders and Administration Site Conditions</b>		
Fatigue	2.6	2.4
<b>Metabolism and Nutrition Disorders</b>		
Decreased Appetite	1.6	3.3

**Table 5**

<b>Adverse Reaction</b>	<b>Letrozole</b>	<b>Tamoxifen</b>
<b>System Organ Class / Preferred term</b>	<b>N= 455</b>	<b>N=455</b>
	<b>(%)</b>	<b>(%)</b>
Increased Appetite	1.8	2.0
<b>Nervous System Disorders</b>		
Headache	2.2	2.4
<b>Skin and Subcutaneous Tissue Disorders</b>		
Alopecia	5.5	3.3
Hyperhidrosis	2.0	2.9
<b>Vascular Disorders</b>		
Hot Flush	16.7	14.3
Thromboembolic Events	1.5	1.9

**Adverse Events in Second-Line Treatment**

Table 6 below shows in decreasing order of frequency the adverse reactions - considered possibly related to trial drug according to the investigator - that have been reported with an incidence of more than 1.0% for letrozole in a controlled clinical trial with letrozole (2.5 mg daily) and megestrol acetate (160 mg daily) for up to 33 months.

**Table 6**

<b>Adverse Reaction</b>	<b>Letrozole</b>	<b>Megestrol Acetate</b>
	<b>N=174</b>	<b>N=189</b>
	<b>%</b>	<b>%</b>
<b>Nervous system disorders</b>		
Headache	6.9	4.8
Dizziness	1.1	3.7
<b>Gastrointestinal disorders</b>		
Nausea	6.3	4.2
Vomiting	2.9	1.6
Dyspepsia	2.9	1.6
Constipation	1.7	2.1
<b>General disorders and administration site conditions</b>		
Peripheral edema	6.3	3.7

<b>Adverse Reaction</b>	<b>Letrozole</b>	<b>Megestrol Acetate</b>
	<b>N=174</b>	<b>N=189</b>
	<b>%</b>	<b>%</b>
Fatigue	5.2	6.3
Anorexia	2.3	1.1
<b>Vascular disorders</b>		
Hot flush	5.2	3.7
<b>Skin and subcutaneous tissue disorders</b>		
Hair thinning	3.4	1.1
Rash <sup>1</sup>	3.4	0.5
Hyperhidrosis	1.1	2.1
<b>Investigations</b>		
Weight increase	2.3	8.5
<b>Musculoskeletal and connective tissue disorders</b>		
Musculoskeletal pain <sup>2</sup>	2.3	1.1
<b>Reproductive system and breast disorders</b>		
Vaginal haemorrhage	1.7	3.2
Leukorrhea	1.7	2.6
<b>Metabolism and nutrition disorders</b>		
Increased appetite	1.1	3.7

<sup>1</sup> Including: erythematous rash, maculopapular rash.

<sup>2</sup> Including: arm pain, back pain, leg pain, skeletal pain.

There were no differences in the incidence and severity of adverse reactions in patients <55 years, 55-69 years and ≥70 years.

### 8.5 Post-Market Adverse Reactions

Other adverse drug reactions are presented below (Table 7); some of them are reported spontaneously. Because spontaneous events are reported voluntarily from a population of uncertain size, it is not always possible to reliably estimate their frequency or clearly establish a causal relationship to letrozole exposure.

**Table 7 Other adverse drug reactions reported post-marketing in patients receiving letrozole**

<b>Blood and lymphatic system disorders</b>	Leukopenia
<b>Cardiac disorders</b>	Palpitations, tachycardia, ischemic cardiac events (including new or worsening angina, angina requiring surgery, myocardial infarction and myocardial ischemia), atrial fibrillation, atrial flutter, cardiac failure
<b>Eye disorders</b>	Cataract, eye irritation, blurred vision
<b>Gastrointestinal disorders</b>	Dyspepsia, abdominal pain, stomatitis, dry mouth
<b>General disorders and administration site conditions</b>	Pyrexia, mucosal dryness, thirst
<b>Hepato-biliary disorders</b>	Increased hepatic enzymes, hyperbilirubinaemia, jaundice, hepatitis
<b>Immune system disorders</b>	Anaphylactic reaction
<b>Infections and infestations</b>	Urinary tract infection
<b>Injury, poisoning and procedural complications</b>	Fall <sup>1</sup>
<b>Investigations</b>	Weight increased, weight decreased, increase in aminotransferases
<b>Musculoskeletal and connective tissue disorders</b>	Myalgia, osteoporosis, bone fractures, trigger finger, tendonitis and tendon rupture
<b>Neoplasms benign, malignant and unspecified (incl. cysts and polyps)</b>	Tumour pain <sup>2</sup>
<b>Nervous system disorders</b>	Somnolence, memory impairment, dysaesthesia (including paresthesia, hypoesthesia), dysgeusia, cerebrovascular accident, carpal tunnel syndrome
<b>Psychiatric disorders</b>	Anxiety (including nervousness), irritability
<b>Renal and urinary disorders</b>	Pollakiuria
<b>Reproductive system and breast disorders</b>	Vaginal discharge, breast pain
<b>Respiratory, thoracic and mediastinal disorders</b>	Cough
<b>Skin and subcutaneous tissue disorders</b>	Rash (including erythematous, maculopapular, psoriaform and vesicular rash), pruritis, dry skin, urticaria, angioedema, erythema multiforme, toxic epidermal necrolysis
<b>Vascular disorders</b>	Thrombophlebitis (including superficial and deep vein thrombophlebitis), hypertension, pulmonary embolism, arterial thrombosis, cerebral infarction

<sup>1</sup>In some post-marketing cases, fall was reported as a consequence of other adverse events such as dizziness and vertigo

<sup>2</sup>Tumour pain was reported only in the metastatic setting

## 9 DRUG INTERACTIONS

### 9.2 Drug Interactions Overview

Letrozole is mainly metabolized in the liver and the cytochrome P450 enzymes CYP3A4 and CYP2A6 mediate the metabolic clearance of letrozole. Therefore, the systemic elimination of letrozole may be influenced by drugs known to affect the CYP3A4 and CYP2A6 (see [10 CLINICAL PHARMACOLOGY](#)).

### 9.4 Drug-Drug Interactions

#### Drugs that may alter letrozole serum concentrations

A clinical interaction study with cimetidine (a non-specific inhibitor of CYP2C19 and CYP3A4) indicated that co-administration with letrozole does not result in a clinically significant drug interaction.

#### Drugs that may increase letrozole serum concentrations

Inhibitors of CYP3A4 and CYP2A6 activities could decrease the metabolism of letrozole and thereby increase plasma concentrations of letrozole. The concomitant administration of strong CYP3A4 inhibitors (e.g. ketoconazole, itraconazole, voriconazole, ritonavir, clarithromycin, and telithromycin) or strong CYP2A6 inhibitors (e.g. methoxsalen) may increase exposure to letrozole. Therefore, caution is recommended for patients administered strong CYP3A4 and CYP2A6 inhibitors.

#### Drugs that may decrease letrozole serum concentrations

Inducers of CYP3A4 activity could increase the metabolism of letrozole and thereby decrease plasma concentrations of letrozole. The concomitant administration of medications that induce CYP3A4 (e.g. phenytoin, rifampicin, carbamazepine, phenobarbital, and St. John's Wort) may reduce exposure to letrozole. Therefore, caution is recommended in patients for whom strong CYP3A4 inducers are administered. No drug inducer is known for CYP2A6.

Co-administration of letrozole and tamoxifen 20 mg daily resulted in a mean reduction of letrozole plasma levels of 37.6%. The mechanism of this interaction is unknown. (see [Use with Other Anticancer Agents](#)).

**Drugs that may have their systemic serum concentrations altered by letrozole:** *In vitro*, letrozole inhibits the cytochrome P450 isoenzymes CYP2A6 and, moderately, CYP2C19, but the clinical relevance is unknown. Medicinal products with a narrow therapeutic index that are substrates for CYP2C19 (e.g. phenytoin, clopidogrel) should be used with caution when administered concomitantly with letrozole. No substrate with a narrow therapeutic index is known for CYP2A6.

A clinical interaction study with warfarin (a CYP2C9 substrate) indicated that co-administration with letrozole does not result in a clinically significant drug interaction.

A review of the clinical trial database indicated no evidence of other clinically relevant interactions with other commonly prescribed drugs.

**Use with Other Anticancer Agents:** Co-administration of letrozole and tamoxifen 20 mg daily resulted in a reduction of letrozole plasma levels by 38% on average. The clinical significance of this finding has not been explored in prospective clinical trials.

There is no clinical experience to date on the use of letrozole in combination with other anti-cancer agents.

### 9.5 Drug-Food Interactions

Food consumption slightly decreases the absorption of letrozole (see [4 DOSAGE AND ADMINISTRATION](#) and [10 CLINICAL PHARMACOLOGY](#)).

### 9.7 Drug-Laboratory Test Interactions

No clinically significant changes in the results of clinical laboratory tests have been observed.

## 10 CLINICAL PHARMACOLOGY

### 10.1 Mechanism of Action

Letrozole is a potent and highly specific non-steroidal aromatase inhibitor. It inhibits the aromatase enzyme by competitively binding to the heme of the cytochrome P450 subunit of the enzyme, resulting in a reduction of estrogen biosynthesis in all tissues.

### 10.2 Pharmacodynamics

Letrozole exerts its anti-tumour effect by depriving estrogen-dependent breast cancer cells of one of their growth stimuli. In postmenopausal women, estrogens are derived mainly from the action of the aromatase enzyme, which converts adrenal androgens - primarily androstenedione and testosterone - to estrone (E1) and estradiol (E2). The suppression of estrogen biosynthesis in peripheral tissues and the malignant tissue can be achieved by specifically inhibiting the aromatase enzyme.

In healthy postmenopausal women, single oral doses of 0.1, 0.5 and 2.5 mg letrozole suppressed serum estrone by 75-78% and estradiol by 78% from baseline. Maximum suppression is achieved in 48-78 hours.

In postmenopausal women with advanced breast cancer, daily letrozole doses of 0.1 to 5 mg suppress estradiol, estrone and estrone sulphate plasma levels by 75-95% from baseline in all

patients treated. With 0.5 mg doses and higher, many plasma levels of estrone and estrone sulphate are below the limit of detection of the assays, indicating that higher estrogen suppression is achieved with these doses. Estrogen suppression was maintained throughout treatment in all patients.

Letrozole is highly specific in inhibiting aromatase activity. Impairment of adrenal steroidogenesis has not been observed. No clinically relevant changes in the plasma levels of cortisol, aldosterone, 11-deoxycortisol, 17-hydroxy-progesterone, ACTH (adrenocorticotrophic hormone) or in plasma renin activity were found in postmenopausal patients treated with 0.1 to 5 mg letrozole daily. The ACTH stimulation test performed after 6 and 12 weeks of treatment with daily doses of 0.1 to 5 mg letrozole did not indicate any attenuation of aldosterone or cortisol production. Thus, glucocorticoid or mineralocorticoid supplementation is not required.

Letrozole had no effect on plasma androgen concentrations (androstenedione and testosterone) among healthy postmenopausal women after single doses of 0.1, 0.5 and 2.5 mg, or on plasma androstenedione concentrations among postmenopausal patients treated with daily doses of 0.1 to 5 mg. These results indicate that accumulation of androgenic precursors does not occur. Plasma levels of LH and FSH are not affected by letrozole in patients, nor is thyroid function as evaluated by TSH, T<sub>4</sub> and T<sub>3</sub> uptake.

The effect of aromatase inhibitors, including JAMP-Letrozole, on estrogen suppression may consequently decrease bone mineral density (BMD) and increase the rate of bone fractures and of osteoporosis. In both the adjuvant setting and extended adjuvant setting, at a median treatment duration of 60 months, a significantly higher risk of osteoporosis as well as of clinical bone fractures was seen with letrozole compared with tamoxifen (adjuvant treatment) or placebo (extended adjuvant treatment) (see also [10 CLINICAL PHARMACOLOGY](#)).

In a bone sub-study (median follow-up of 61 months) in the extended adjuvant setting, a significantly greater decrease in median total hip BMD change from baseline was seen at 2 years for letrozole compared with placebo, but no significant changes were observed in lumbar spine BMD (see also [10 CLINICAL PHARMACOLOGY](#)).

In a study comparing 2 years of adjuvant treatment with letrozole or tamoxifen (D2407), significant differences in favour of tamoxifen were observed over the 2 years in BMD changes from baseline (see also [14 CLINICAL TRIALS](#) and [10 CLINICAL PHARMACOLOGY](#)).

In a lipid sub-study (median follow-up of 62 months) in the extended adjuvant setting, no significant differences between letrozole and placebo were observed in total cholesterol or in any lipid fraction (see also [14 CLINICAL TRIALS](#) and [10 CLINICAL PHARMACOLOGY](#)).

In the adjuvant setting study comparing 2 years of treatment with letrozole or tamoxifen, median levels of total cholesterol and LDL cholesterol remained stable with letrozole, but decreased with tamoxifen. Consequently, total cholesterol, LDL cholesterol and the HDL:LDL ratio differed significantly between treatments in favour of tamoxifen (see also 10 Clinical Pharmacology).



## Adjuvant and extended adjuvant setting

Updated results from the extended adjuvant study bone sub-study (median follow-up of 61 months) indicated a significantly greater decrease in BMD from baseline for hip BMD at 24 months (Table 8).

**Table 8 Percentage change from baseline in bone mineral density (BMD) of total hip and lumbar spine in extended adjuvant bone sub-study (Per protocol bone sub-study population)**

MA-17 bone sub-study		Lumbar spine (L2-L4) <sup>1</sup>		Total hip <sup>2</sup>	
Month	Statistic	Letrozole	Placebo <sup>3</sup>	Letrozole	Placebo <sup>3</sup>
12	N	99	87	98	88
	Median	-2.4	-2.4	-2.2	-2.3
24	N	94	44	94	45
	Median	-3.7	-2.0	-3.8 <sup>4</sup>	-2.0
36	N	81	12	80	11
	Median	-2.9	-0.4	-3.7	-1.7
48	N	78	2	76	2
	Median	-2.8	-4.0	-4.2	-5.0
60	N	73	2	71	2
	Median	-3.0	-5.3	-3.6	-6.7

<sup>1</sup> Primary endpoint in bone sub-study  
<sup>2</sup> Secondary endpoint  
<sup>3</sup> Placebo until switch (if a switch occurred)  
<sup>4</sup> Statistically significant difference from placebo on Wilcoxon signed rank test (adjusted for bisphosphonate use)

Note: All patients should have received vitamin D and calcium supplementation. Vitamin D was not recorded. Calcium supplementation was reported for 44-66% of patients. Bisphosphonates were received by approximately a third of the patients treated with letrozole, compared with a quarter or fewer patients in the placebo arm.

Table 9 summarizes clinically relevant changes in study D2407 after adjuvant treatment with letrozole or tamoxifen for 2 years.

**Table 9 Clinically relevant changes in lumbar spine and total hip BMD in adjuvant study after 2 years treatment (Per protocol population)**

D2407 study	Lumbar spine (L2-L4)		Total hip	
	Letrozole	Tamoxifen	Letrozole	Tamoxifen
<b>Clinically relevant change from baseline</b>	<b>N=103</b>	<b>N=97</b>	<b>N=103</b>	<b>N=97</b>
	n (%)	n (%)	n (%)	n (%)
No. of pts with ≥ 1 change	34 (33.0)	22 (22.7)	25 (24.3)	25 (25.8)
6% reduction in 1 year	21 (20.4)	2 ( 2.1)	9 ( 8.7)	4 ( 4.1)
8% cumulative reduction	16 (15.5)	1 ( 1.0)	8 ( 7.8)	3 ( 3.1)
T-score -2.5 or lower	1 ( 1.0)	-	-	-
Clinical fracture	4 ( 3.9)	6 ( 6.2)	4 ( 3.9)	6 ( 6.2)
Impending fracture	11 (10.7)	15 (15.5)	11 (10.7)	15 (15.5)

There was no significant difference between treatments in the number of patients who had 1 or more clinically relevant change in BMD over 2 years (odds ratio).

Note: All patients should have received vitamin D and calcium supplementation. Post baseline bisphosphonates were given in 14% of patients treated with letrozole, 5% of those treated with tamoxifen.

Table 10 summarizes clinically relevant changes in study D2407 after adjuvant treatment with letrozole at 5 years.

**Table 10 Clinically relevant changes in lumbar spine (L2-L4) and total hip BMD at 5 years by central assessment (Safety population)**

	Letrozole	
	Lumbar spine	Total hip
	N=133	N=130
	n (%)	n (%)
Number of patients with one or more of following changes:	68 (51.1)	60 (45.1)
6% reduction over a year	32 (24.1)	14 (10.5)
8% reduction at any time up to 5 years	33 (24.8)	26 (19.5)
T-score ≤ -2.5 at any time up to 5 years <sup>1</sup>	9 ( 6.8)	
Fracture at or before 5 years <sup>2</sup>	17 (12.8)	
Impending fracture at or before 5 years <sup>3</sup>	19 (14.3)	

<sup>1</sup> Based on DXA readings centrally assessed, all 9 patients had either a lumbar spine or a total hip T-score below -2.5 at baseline.

<sup>2</sup> Clinical fractures evaluated centrally on DXA scans and/or on X-ray. Clinical fractures include fractures at any site.

<sup>3</sup> Impending fractures evaluated centrally only, seen on X-ray.

Table 11 summarizes updated results from the extended adjuvant lipid sub-study (median follow-up of 62 months). There were no significant differences between letrozole and placebo in changes from baseline in total cholesterol or any lipid fraction.

**Table 11 Percentage change in total cholesterol and LDL cholesterol in the extended adjuvant lipid sub-study (Per protocol lipid population)**

MA-17 lipid sub-study		Total cholesterol		LDL cholesterol	
Month	Statistic	Letrozole	Placebo <sup>1</sup>	Letrozole	Placebo <sup>1</sup>
6	N	140	115	140	114
	Median	13.70	11.79	21.31	21.28
12	N	137	114	136	113
	Median	16.81	11.71	28.14	23.13
24	N	128	84	128	84
	Median	14.40	12.18	22.11	24.94
36	N	120	50	120	49
	Median	9.69	11.06	19.18	21.60
48	N	12	19	102	19
	Median	6.16	7.92	13.02	12.21
60	N	85	8	85	8
	Median	9.29	11.40	15.74	9.93

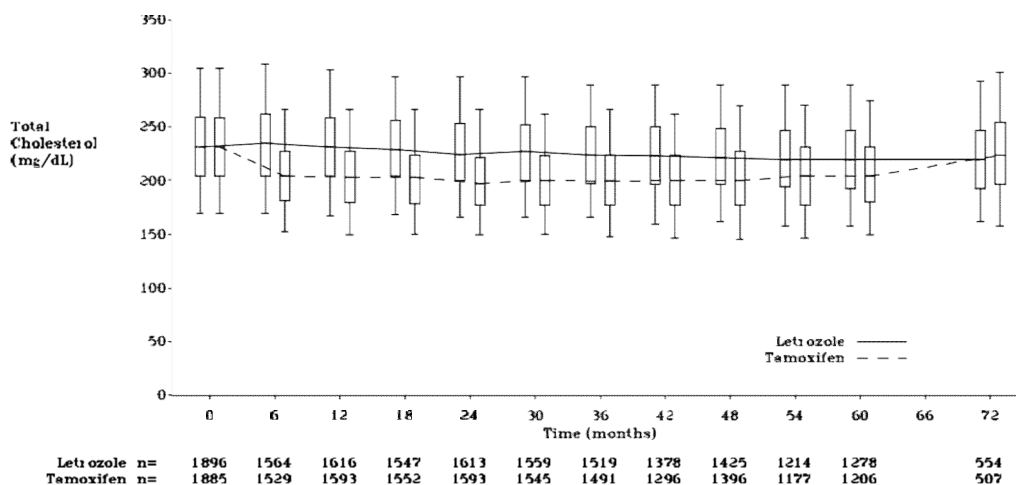
<sup>1</sup> Placebo until switch (if switch occurred)

In the adjuvant study, D2407, although total cholesterol and LDL cholesterol values remained stable over 2 years in the letrozole arm, a median decrease of around 16% in total cholesterol and around 20% in LDL cholesterol was observed at 6 months in the tamoxifen arm, with subsequent values remaining around the same decreased levels, leading to significant differences between treatments at all time-points in total cholesterol, LDL cholesterol and the HDL:LDL ratio. No significant treatment differences were observed over the 2 years in triglyceride levels.

In the large adjuvant study BIG 1-98, total cholesterol levels (generally measured under non-fasting conditions) remained stable over 5 years of treatment in the letrozole arm. In the

tamoxifen arm, there was an immediate decrease of around 14% observed at 6 months with subsequent median decreases of 10-14% over 5 years of treatment, returning to baseline levels 1 year after treatment completion (Figure 1).

**Figure 1 Total cholesterol values over time in adjuvant study, BIG 1-98 (Safety population)**



Overall, in the large adjuvant study BIG 1-98, there was a significantly higher risk of hypercholesterolemia for letrozole relative to tamoxifen (RR 1.83; 95% CI 1.70, 1.97), albeit at low CTC grades (0.4% of patients receiving letrozole had CTC grade 3-4 hypercholesterolemia). Lipid-lowering agents were given post baseline in approximately 25 % of patients treated with letrozole, compared with approximately 16% treated with tamoxifen.

### 10.3 Pharmacokinetics

**Absorption:** Letrozole is rapidly and completely absorbed from the gastrointestinal tract (absolute bioavailability = 99.9%).

**Table 12 - Summary of LETROZOLE Pharmacokinetic Parameters**

	<b>C<sub>max</sub></b>	<b>T<sub>max</sub></b>	<b>t<sub>½</sub> (h)</b>	<b>CL</b>	<b>Vd</b>
<b>Single dose mean</b>	129±20.3 nmol/L fasted vs. 98.7±18.6 nmol/L fed	1 hour fasted vs. 2 hours fed	2 to 5 days	2.1 L/h	1.87 ± 0.47 L/kg

#### Food Effect

Food slightly decreases the rate of absorption (median  $t_{max}$  1 hour fasted vs. 2 hours fed and mean  $C_{max}$  129±20.3 nmol/L fasted vs. 98.7±18.6 nmol/L fed), but the extent of absorption (area under the curve (AUC)) remains unchanged. This minor effect on absorption rate is not considered to be of clinical relevance and therefore letrozole may be taken with or without food.

**Distribution:** Letrozole is rapidly and extensively distributed into tissues ( $V_{d_{ss}} = 1.87 \pm 0.47$  L/kg). Plasma protein binding is approximately 60%, mainly to albumin. The letrozole concentration in erythrocytes is about 80% of that in plasma. After administration of 2.5 mg  $^{14}\text{C}$ -labelled letrozole, approximately 82% of the radioactivity in plasma was unchanged compound. Systemic exposure to metabolites is therefore low.

**Metabolism:** Metabolic clearance to a pharmacologically inactive carbinol metabolite, CGP 44645, is the major elimination pathway of letrozole ( $Cl_m = 2.1$  L/h), but it is relatively slow when compared to hepatic blood flow (about 90 L/h). The cytochrome P450 isoenzymes 3A4 and 2A6 were found to be capable of converting letrozole to this metabolite. With CYP3A4, the metabolism of letrozole was not saturable up to concentrations of 100  $\mu\text{mol/L}$ , while with CYP 2A6 apparent saturation was observed at concentrations above 12.5  $\mu\text{mol/L}$ . Formation of minor unidentified metabolites and direct renal and fecal excretion play only a minor role in the overall elimination of letrozole. Within 2 weeks after administration of 2.5 mg  $^{14}\text{C}$ -labelled letrozole to healthy postmenopausal volunteers,  $88.2 \pm 7.6\%$  of the radioactivity was recovered in urine and  $3.8 \pm 0.9\%$  in feces. At least 75% of the radioactivity recovered in urine up to 216 hours ( $84.7 \pm 7.8\%$  of the dose) was attributed to the glucuronide of the carbinol metabolite, about 9% to two unidentified metabolites, and 6% to unchanged letrozole.

**Elimination:** The apparent mean terminal elimination half-life in plasma ranges from approximately 2 to 5 days. After daily administration of 2.5 mg steady-state levels are reached within 2 to 6 weeks. Plasma concentrations at steady-state are approximately 7 times higher than concentrations measured after a single dose of 2.5 mg, while they are 1.5 to 2 times higher than steady-state values predicted from the concentrations measured after a single dose, indicating a slight non-linearity in the pharmacokinetics of letrozole upon daily administration of 2.5 mg. Since steady state levels are maintained over time, it can be concluded that no continuous accumulation of letrozole occurs.

### Linearity/non-linearity

The pharmacokinetics of letrozole were dose proportional after single oral doses up to 10 mg (dose range: 0.01 to 30 mg) and after daily doses up to 1.0 mg (dose range: 0.1 to 5 mg). After a 30 mg single oral dose there was up to a 7.5-fold dose over-proportional increase in AUC value. With daily doses of 2.5 and 5 mg the AUC values increased about 3.8 and 12 fold instead of 2.5 and 5 fold, respectively, when compared to the 1.0 mg/day dose. The recommended dose of 2.5 mg/day may thus be a borderline dose at which an onset of over-proportionality becomes apparent, whereas at 5 mg/day the over-proportionality is more pronounced. The dose over-proportionality may be the result of a saturation of metabolic elimination processes.

### Special Populations and Conditions

**Hepatic Insufficiency:** In a single dose trial with 2.5 mg letrozole in volunteers with impairment of hepatic function, mean AUC values of the volunteers with moderate hepatic impairment (Child Pugh score B) was 37% higher than in normal volunteers, but still within the range seen in volunteers with normal hepatic function. In a study comparing the pharmacokinetics of

letrozole after a single oral dose of 2.5 mg in eight volunteers with liver cirrhosis and severe non metastatic hepatic impairment (Child Pugh score C) to those in healthy volunteers (N=8), AUC and  $t_{1/2}$  increased by 95% and 187%, respectively. Breast cancer patients with severe hepatic impairment are thus expected to be exposed to higher levels of letrozole than patients without severe hepatic dysfunction. Long term effects of this increased exposure have not been studied.

**Renal Insufficiency:** Pharmacokinetics of a single 2.5 mg letrozole dose were unchanged in a study in postmenopausal women with varying degrees of renal function (24-hour creatinine clearance = 9 - 116 mL/min). In a study in 364 patients with advanced breast cancer there was no significant association between letrozole plasma levels and calculated  $CL_{cr}$  (range 22.9 - 211.9 mL/min).

**Geriatrics:** Age had no effect on the pharmacokinetics of letrozole.

**Pediatrics:** Letrozole is contraindicated in children and adolescents. No studies have been conducted to investigate the pharmacokinetics in pediatric patients below the age of 18 years.

## 11 STORAGE, STABILITY AND DISPOSAL

Store at room temperature 15 to 30 °C. Protect from light and moisture.  
Keep out of reach and sight of children and pets.

## 12 SPECIAL HANDLING INSTRUCTIONS

Not applicable

## PART II: SCIENTIFIC INFORMATION

### 13 PHARMACEUTICAL INFORMATION

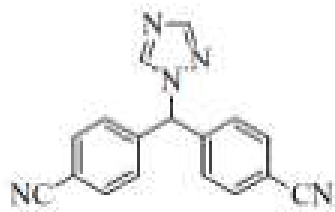
#### Drug Substance

Proper name: Letrozole

Chemical name: USP: 4,4'-(1H-1,2,4-triazol-1-yl methylene) dibenzonitrile  
Ph. Eur: Benzonitrile 4,4'-(1H-1,2,4-triazol-1-ylmethylene) bis-

Molecular formula and molecular mass:  $C_{17}H_{11}N_5$  and 285.31 g/mol

Structural formula:



Physicochemical properties:

Solubility:

Amount of Drug in mg	Volume of Aqueous pH solution (ml)	Distilled water	0.1 N HCl	Aqueous pH (1.2) solution	Aqueous pH (4.5) solution	Aqueous pH (5.5) solution	Aqueous pH (6.8) solution	Aqueous pH (7.5) solution
5	500	94.6	96.3	96.3	98.9	95.4	96.2	95.8
5	500	94.1	97.4	97.4	98.5	94.6	97.4	96.6
5	500	94.1	96.0	96.0	87.9	87.7	91.2	93.4

From the above findings, Letrozole shows its highest dose strength i.e. 2.5mg is soluble in  $\leq 250$ ml of aqueous medium over a pH range of 1-7.5 as per Biopharmaceutics classification system.

Melting range: 181.5-184.3 °C

pK value: 3.6

## 14 CLINICAL TRIALS

### 14.1 Clinical Trials by Indication

#### Adjuvant Treatment of Early Breast Cancer in Postmenopausal Women, Study BIG 1-98

**Table 13 Summary of patient demographics for clinical trials in Adjuvant Treatment of Early Breast Cancer in Postmenopausal Women**

Study #	Study design	Dosage, route of administration and duration	Study subjects (n)	Mean age (Range)	Sex
BIG 1-98	Multi-centre, randomised, double-blind study (BIG 1-98) in the adjuvant setting	A. tamoxifen for 5 years B. letrozole for 5 years C. tamoxifen for 2 years followed by letrozole for 3 years D. letrozole for 2 years followed by tamoxifen for 3 years	8,000 postmenopausal women with resected, receptor-positive early breast cancer	---	Female

In a multi-centre, double-blind study (BIG 1-98) in the adjuvant setting, enrolling over 8,000 postmenopausal women with resected, receptor-positive early breast cancer, patients were randomly allocated one of the following treatments:

- A. tamoxifen for 5 years
- B. letrozole for 5 years
- C. tamoxifen for 2 years followed by letrozole for 3 years
- D. letrozole for 2 years followed by tamoxifen for 3 years

The primary endpoint of this trial was disease-free survival (DFS) (i.e. interval between randomization and earliest occurrence of a local, regional, or distant recurrence, or invasive contralateral breast cancer, second primary cancer, or death from any cause). The secondary endpoints were overall survival (OS), systemic disease-free survival (SDFS), invasive contralateral breast cancer, distant disease-free survival (DDFS), time to breast cancer recurrence (TBR) and time to distant metastasis (TDM).

The Primary Core Analysis (PCA) included patients in all treatment arms, but follow-up in the two sequencing arms was truncated to 30 days after the switch in treatments. The original PCA analysis



was conducted at a median treatment duration of 24 months and a median follow-up of 26 months (Table 13 and Figures 2 and 3). In 2005, based on the original PCA data showing a significant advantage in DFS with letrozole compared with tamoxifen (HR 0.81; 95% CI 0.70, 0.93;  $P=0.003$ ) (Table13) and on the recommendations of the independent Data Monitoring Committee, the protocol was amended, the tamoxifen arms were unblinded and patients were allowed to cross over to letrozole to complete their adjuvant therapy if tamoxifen had been given for 2 to 4.5 years, or to start extended adjuvant therapy if tamoxifen had been given for at least 4.5 years. In total, 632 (26%) patients opted to cross to letrozole, 448 patients to complete adjuvant therapy and 184 to start extended adjuvant therapy. (These 184 patients include 12 women who crossed to another aromatase inhibitor.)

The design of the PCA is not optimal to evaluate the effect of letrozole after a longer time because follow-up was truncated in two arms at around 25 months. The Monotherapy Arms Analysis (MAA), despite the confounding of the tamoxifen reference arm by a selective crossover to letrozole, provides the comparison of 5 years of letrozole monotherapy compared to tamoxifen monotherapy (Table 14). Approximately 7% of the total patient-years follow-up time in the tamoxifen-alone arms was affected by the selective crossover in the MAA.

Selected baseline characteristics for the study population are shown in Table 14.

**Table 14 Selected Study Population Demographics for Adjuvant Study (ITT population)**

Characteristic	Primary Core Ana/lysis (PCA)		Monotherapy Arms Analysis (MAA)	
	Letrozole N=4003 (%)	Tamoxifen N=4007 (%)	Letrozole N=2463 (%)	Tamoxifen N=2459 (%)
Age (median, years)	61	61	61	61
Age range (years)	38-89	39-90	38-88	39-90
Hormone receptor status (%)				
ER+ and/or PgR+	99.7	99.7	99.7	99.7
Both unknown	0.3	0.3	0.3	0.3
Nodal status (%)				
Node negative	52	52	50	52
Node positive	41	41	43	41
Nodal status unknown	7	7	7	7
Prior adjuvant chemotherapy	24	24	24	24

Characteristic	Primary Core Ana/lysis (PCA)		Monotherapy Arms Analysis (MAA)	
	Letrozole N=4003 (%)	Tamoxifen N=4007 (%)	Letrozole N=2463 (%)	Tamoxifen N=2459 (%)
Race				
White / Caucasian	97.4	97.6	97.6	98.2
Black	0.3	0.1	0.2	<0.1
Asian	0.4	0.4	0.5	0.4
Other / Missing	1.9	1.8	1.6	1.3

### PCA Efficacy Results

Data in Table 15 and Figures 2 and 3 reflect results of the Primary Core Analysis (PCA) including data from non-switching arms (arms A and B) together with data truncated 30 days after the switch in the two switching arms (arms C and D). Data in Table 15 report results of the PCA at both 26 months and 60 months median follow-up, respectively.

In the initial analysis, conducted after a median follow-up of 26 months, the estimated 5-year DFS rates were 84.0% for letrozole and 81.4% for tamoxifen.

**Table 15 Disease-free and overall survival (PCA ITT population) at a median follow-up of 26 months and of 60 months**

Endpoint	Original PCA	Updated PCA
	Median follow-up 26 months Median treatment 24 months	Median follow-up 60months* Median treatment 32 months
	Hazard ratio (95% CI);	Hazard ratio (95% CI);
DFS <sup>1</sup>	0.81 (0.70, 0.93); P=0.003	0.86 (0.77, 0.96); P=0.008
DFS excluding second primaries	0.79 (0.68, 0.92); P=0.002	0.85 (0.76, 0.96); P=0.008
Time to distant metastases <sup>2</sup>	0.73 (0.60, 0.88)	0.79 (0.68, 0.92)
DDFS <sup>3</sup>	0.82 (0.70, 0.97)	0.84 (0.74, 0.95)
SDFS <sup>4</sup>	0.83 (0.72, 0.97)	0.87 (0.77, 0.98)
Contralateral breast cancer (invasive)	0.61 (0.35, 1.08)	0.76 (0.50, 1.15)
OS	0.86 (0.70, 1.06)	0.87 (0.75, 1.01)

<sup>1</sup> DFS events: Loco-regional recurrence, distant metastasis, invasive contralateral breast cancer, second non-breast primary cancer or death without prior cancer event, from any cause

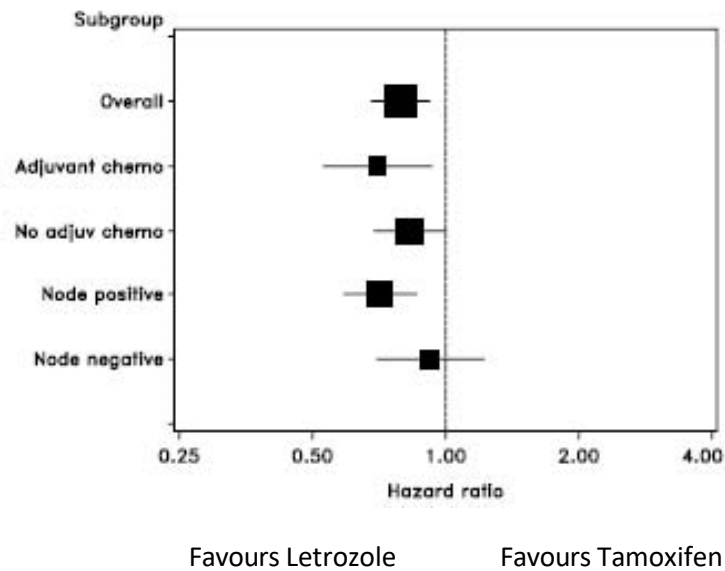
<sup>2</sup> Risk of distant metastases only.

<sup>3</sup> Distant disease-free survival events: Earlier event of either distant metastasis or death from any cause

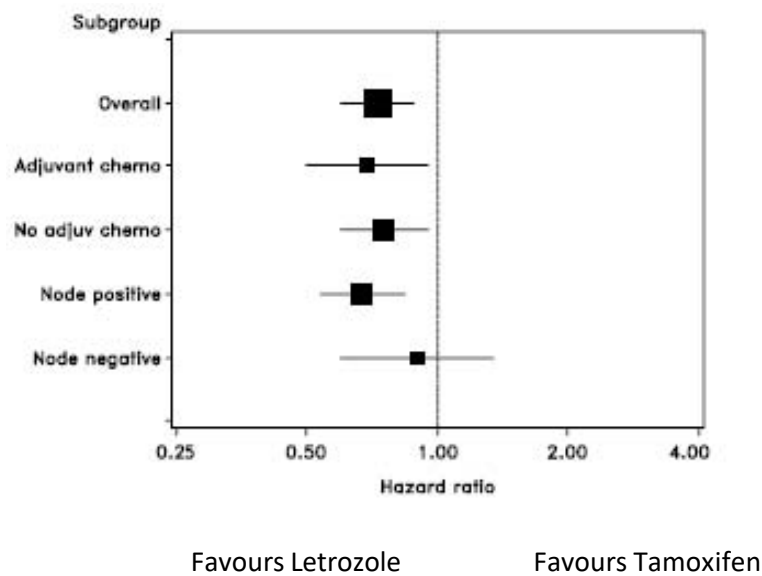
<sup>4</sup> Systemic disease-free survival events: Same as protocol definition, but excluding all breast events

\*Note: At original analysis, median duration of treatment was 24 months. In the updated analysis, the two sequencing treatment arms were truncated 30 days after the switch (at approximately 2 years), while in the monotherapy arms, median treatment duration was 60 months. Overall, the truncation in two arms brought the median duration of treatment to approximately 32 months.

**Figure 2 Forest plot for DFS by subgroup (median follow-up of 26 months)**



**Figure 3 Forest plot for time to distant metastasis by subgroup (median follow-up of 26 months)**



Boxes show hazard ratios and whiskers show 95% confidence intervals. Size of boxes is proportional to number of events.

### MAA Efficacy Results

The Monotherapy Arms Analysis (MAA) comparing the efficacy of letrozole monotherapy to tamoxifen monotherapy at a median duration of treatment of 5 years and a median follow-up of 96 months is presented in Table 16.

Table 16 Key efficacy results at a median duration of 60 months and a median follow up of 96 months (MAA ITT population)

	<b>Letrozole N=2463</b>	<b>Tamoxifen N=2459</b>	<b>Hazard ratio (95% CI)</b>	<b>P value <sup>1</sup></b>
<b>Disease-free survival (primary)</b>				
Events (protocol definition) <sup>2</sup>	626	698	0.87 (0.78, 0.97)	0.01
5-year DFS rate (%)	85.5	82.5		
Events (excluding second non-breast primary malignancies)	552	619	0.87 (0.77, 0.97)	0.01
5-year DFS rate (%)	87.4	84.7		
<b>Overall survival (secondary)</b>				
Number of deaths	393	436	0.89 (0.77, 1.02)	
<b>Distant metastasis (secondary)</b>	301	342	0.86 (0.74, 1.01)	
<b>Distant disease-free survival (secondary)</b>	477	525	0.89 (0.78, 1.01)	
<b>Systemic disease-free survival (secondary)</b>				
Protocol definition	571	625	0.89 (0.80, 1.00)	
Excluding second non-breast primary malignancies	496	544	0.89 (0.79, 1.01)	
<b>Contralateral breast cancer (invasive) (secondary)</b>	45	71	0.62 (0.43, 0.90)	
<sup>1</sup> Logrank test, stratified by randomization option and use of chemotherapy (yes/no)				
<sup>2</sup> DFS events: loco-regional recurrence, distant metastasis, invasive contralateral breast cancer, second (non-breast) primary malignancy, death from any cause without a prior cancer event				

**Adjuvant Treatment of Early Breast Cancer in Postmenopausal Women, Study D2407 (see also [10.2 Pharmacodynamics](#))**

**Table 17 - Summary of patient demographics for clinical trials in Adjuvant Treatment of Early Breast Cancer in Postmenopausal Women**

Study #	Study design	Dosage, route of administration and duration	Study subjects (n)	Mean age (Range)	Sex
D2407	Phase III, open-label, randomized, multi-centre study designed to compare the effects of adjuvant treatment with letrozole to tamoxifen on bone mineral density (BMD), bone markers and fasting serum lipid profiles.	Subjects were randomly assigned either letrozole 2.5 mg daily for 5 years or tamoxifen 20 mg daily for 2 years followed by 3 years of letrozole daily.	263 postmenopausal women with hormone sensitive resected primary breast cancer	--	Female

Study D2407 was a phase III, open-label, randomized, multi-centre study designed to compare the effects of adjuvant treatment with letrozole to tamoxifen on bone mineral density (BMD), bone markers and fasting serum lipid profiles. In total, 263 postmenopausal women with hormone sensitive resected primary breast cancer were randomly assigned either letrozole 2.5 mg daily for 5 years or tamoxifen 20 mg daily for 2 years followed by 3 years of letrozole daily.

The primary objective was to compare the effects on lumbar spine (L2-L4) BMD of letrozole versus tamoxifen, evaluated as percent change from baseline lumbar spine BMD at 2 years (assessment by central review, based on dual X-ray absorptiometry, DXA).

At 24 months, the lumbar spine (L2-L4) BMD showed a median decrease of 4.1% in the letrozole arm compared to a median increase of 0.3% in the tamoxifen arm (difference = 4.4%) a statistically significant difference in favour of tamoxifen ( $P < 0.0001$ ). Significant differences in favour of tamoxifen were noted irrespective of category of initial T-score.

At 24 months, total hip BMD showed a median decrease of 3.0% from baseline with letrozole compared to a median increase of 1.2% for tamoxifen (difference = 4.2%, a significant difference). Significant differences in favour of tamoxifen were noted irrespective of category of initial T-score.

Significantly more patients receiving letrozole than tamoxifen were found by central review to have had a decrease of 8% or greater from baseline over 2 years in lumbar spine BMD (letrozole, 15.5%; tamoxifen, 1.0%) or in total hip BMD (letrozole, 7.8%; tamoxifen, 3.1%).

During the 2 year period, fractures were reported (central review, treatment-blinded) for 20 patients (15%) in the letrozole arm, and 22 patients (17%) in the tamoxifen arm. Of these, 7 patients (5%) in each treatment arm had clinical fractures. There was no significant difference between treatments in fracture rate. All patients should have received vitamin D and calcium supplementation. Post baseline

bisphosphonates were given in 14% of patients treated with letrozole, 5% of those treated with tamoxifen.

At 5 years, in the letrozole arm, there was a median decrease of 5.66% from baseline in the lumbar spine BMD (n=56) and a median decrease of 5.77% in total hip (n=62). There was a general shift downwards in T-score over the 5 years. Amongst patients whose DXA readings were centrally evaluated and who had received bisphosphonate therapy, for lumbar spine and total hip normal T-scores ( $> 1.0$ ), there were 51 patients each at baseline and 39 and 47, respectively, at 5 years. For lumbar spine and total hip osteopenic T-scores ( $\leq -1.0$  and  $> -2.5$ ), there were 5 and 11 patients, respectively, at baseline and 17 and 15, respectively, at 5 years. No patient with a normal BMD (normal T score) at baseline became osteoporotic during 5 years as evaluated by central review. One patient evaluated as having osteopenia at baseline (T score of -1.9) was diagnosed with osteoporosis during the treatment period by central review, despite unevaluable T-scores in L2-L4 (due to severe degenerative disk disease) and hip T-scores that remained higher than -2.5 at all times. Over the 5-year study, 37% of patients treated with letrozole received bisphosphonate therapy, including 18% of patients who started bisphosphonate therapy after initiating treatment with letrozole.

Tamoxifen is known to decrease total cholesterol and particularly, LDL cholesterol. Over the first 2 years of the study, median LDL cholesterol levels remained stable for letrozole, but decreased by up to 28% for tamoxifen. Median HDL cholesterol levels remained relatively stable over the 2 years in both treatment arms, giving rise to significant differences in favour of tamoxifen in the HDL: LDL ratio. No significant treatment differences were observed in triglyceride levels. Clinically relevant changes in total cholesterol at 2 years occurred significantly more often for patients treated with letrozole (17%) than with tamoxifen (5%). Significantly more patients receiving letrozole received lipid lowering agents (20%) than receiving tamoxifen (8%). Dietary measures for reducing lipids were reported for 4% of patients in each treatment arm. At 5 years, on the letrozole arm, 23% of patients experienced clinically relevant changes in total cholesterol.

At 2 years, significantly more patients treated with letrozole received lipid-lowering drugs (20%) than patients treated with tamoxifen (8%). Dietary control of lipids occurred equally often in both treatment arms (4%). Lipid-lowering agents were generally introduced when total cholesterol values rose above 6 mmol/L. At 5 years, on the letrozole arm, 32% of patients received lipid lowering drugs.

### **Extended Adjuvant Treatment of Early Breast Cancer in Postmenopausal Women**

**Table 18 - Summary of patient demographics for clinical trials in locally advanced or metastatic breast cancer**

Study #	Study design	Dosage, route of administration and duration	Study subjects (n)	Mean age (Range)	Sex
MA 17 (CFEM345G MA-17)	Multi-center, double-blind, randomized, placebo-controlled phase III clinical trial	Patients who had remained disease-free after completion of adjuvant treatment with tamoxifen (4.5-6 years) were randomly assigned either letrozole 2.5 mg daily or placebo for 5 years	5100 postmenopausal women with receptor positive (or unknown) primary breast cancer	--	Female

The MA-17 (CFEM345G MA-17) trial was a multi-centre, double-blind, randomized, placebo-controlled phase III trial, performed in over 5100 postmenopausal women with receptor-positive (or unknown) primary breast cancer. Patients who had remained disease-free after completion of adjuvant treatment with tamoxifen (4.5-6 years) were randomly assigned either letrozole 2.5 mg daily or placebo for 5 years.

Disease-free survival (DFS) was the primary endpoint, defined according to the study protocol as the time from randomization to the earliest event of time to recurrence of the primary disease (i.e. loco-regional recurrence or distant metastasis) or development of contralateral breast cancer (i.e. breast cancer recurrence). (The protocol definition excluded deaths.) Secondary endpoints included: overall survival (OS), time to distant metastasis, contralateral breast cancer, and other clinical and laboratory safety parameters.

Following review of the results of the first planned interim analysis, conducted after a median follow-up of 28 months and a median treatment duration of 24 months, in light of the statistically significant benefit in DFS in favour of letrozole, the study was unblinded and women who were disease-free in the placebo arm were allowed to switch to letrozole for up to 5 years. MA-17 transformed into an open-label, observational, non-randomized study, with a substantial impact on the subsequent safety and efficacy results.

Updated analyses were conducted at a median overall follow-up of 62 months and median duration of treatment in the randomized letrozole arm of 60 months. 48.7% of the patients in the original randomized letrozole arm have completed 5 years of extended adjuvant treatment with letrozole. Following study unblinding, 1551 women (60% of those eligible to switch) switched from placebo to letrozole at a median 31 months after completion of adjuvant tamoxifen therapy (range 12-106 months). Subsequent patient-years of follow-up under letrozole after switch account for 64% of the total years of follow-up in the randomized placebo arm. Median duration

of follow-up in the letrozole after switch group was 42 months and median duration of letrozole treatment after switch was 40 months. Following study unblinding, open-label letrozole was continued in the randomized letrozole arm and was given to those women who opted to switch from placebo to letrozole. In patients who opted not to switch, placebo was no longer dispensed – these women received standard care (i.e. observation). Median duration of placebo/standard care (up until any switch to letrozole that may have occurred) was 37 months.

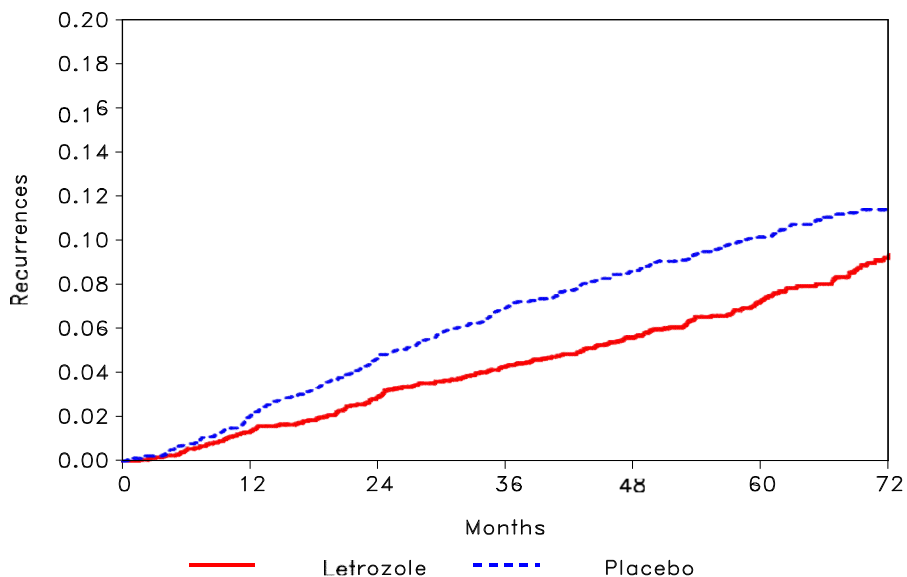
Selected baseline characteristics for the study population are shown in Table 19.

**Table 19 Selected study population demographics (ITT population)**

Baseline status	Letrozole	Placebo
	N=2583	N=2587
<b>Age: Median (years) at enrolment</b>	<b>62</b>	<b>62</b>
Minimum-maximum (years)	32-90	34-94
< 65 years at enrolment (%)	58	60
≥ 65 years at enrolment (%)	42	40
<b>Race (%)</b>		
Caucasian	88	90
Black	3.2	3.5
Oriental	1.8	0.9
Other	6.5	5.2
<b>Hormone receptor status (%)</b>		
Node negative	50	50
Node positive	46	46
Nodal status unknown	4	4
Chemotherapy (%)	46	46
Note: Prior treatment with tamoxifen in both arms ranged from 4.5 to 6 years, with a median duration of 5 years		



**Figure 4 Time to breast cancer recurrence (MA-17 protocol definition of DFS event) in updated analysis**



Note: Switches in the placebo arm to letrozole are ignored.

Tables 20 and 21 show disease-free and overall survival with subset analysis by receptor status, nodal status and previous chemotherapy at median follow-up of 28 months and 62 months.

In the primary analysis (conducted at a median follow-up of 28 months), letrozole was shown to reduce the risk of breast cancer recurrence (protocol definition of DFS) by 42% compared with placebo (hazard ratio 0.58; 95% CI 0.45, 0.76;  $P=0.00003$ ). Subgroup sensitivity analysis confirmed the robustness of the data. The statistically significant benefit in DFS in favour of letrozole was observed regardless of nodal status (node negative, hazard ratio 0.48; 95% CI 0.30, 0.78;  $P=0.002$ ; node positive, hazard ratio 0.61; 95% CI 0.44, 0.83;  $P=0.002$ ).

The risk of distant metastases was significantly lower with letrozole than with placebo (hazard ratio 0.61; 95% CI 0.44, 0.83;  $P=0.003$ ).

The risk of developing contralateral breast cancer was also substantially reduced with letrozole compared with placebo (40% reduction in the risk) although the difference between treatments was not statistically significant ( $P=0.12$ ).

Overall survival did not show significant differences between treatments; relatively few deaths had occurred at the time of the analysis. Subgroup analysis indicated a more pronounced benefit in node positive patients (hazard ratio 0.61, 95% CI 0.38, 0.97). In node-negative patients, there was an increase in the number of deaths in the letrozole arm (19/1298 patients, 1.5%) compared with the placebo arm (14/1301 patients, 1.1%) (hazard ratio 1.36; 95% CI 0.68, 2.71).

The updated final analysis, conducted at a median follow-up of 62 months, confirmed the significant reduction in the risk of recurrence of the primary disease with letrozole compared with

placebo. For time to distant metastases and overall survival, however, there was no significant difference between treatments. In addition, in the subgroup of patients with node negative disease, an increase in the number of deaths was observed in the letrozole arm (90/1298 patients, 6.9%) compared with the placebo arm (79/1301 patients, 6.1%) (hazard ratio 1.34; 95% CI 0.99, 1.81). There was no difference between treatments in the risk of death in patients with node-positive disease (letrozole 128/1184 patients, 10.8%; placebo 145/1187 patients, 12.2%; hazard ratio 0.96; 95% CI 0.75, 1.29). Figures 5 and 6 show Kaplan-Meier curves for the overall population for the node-negative and node-positive subgroups. All updated analyses were affected by the confounding effects of around 60% of the patients in the placebo arm switching to letrozole when the study was unblinded.

**Table 20 Disease-free survival, time to distant metastases, contralateral breast cancer and overall survival (Modified ITT population)**

	2004 primary analysis – median follow-up 28 months			2008 updated analysis <sup>1</sup> – median follow-up 62 months		
	Letrozole	Placebo	HR (95% CI) <sup>2</sup>	Letrozole	Placebo	HR (95% CI) <sup>2</sup>
	N=2582	N=2586	P value	N=2582	N=2586	P value
<b>Disease-free survival (protocol definition)<sup>3</sup></b>						
Events	92 (3.6%)	155 (6.0%)	0.58 (0.45, 0.76) 0.00003	209 (8.1%)	286 (11.1%)	0.75 (0.63, 0.89) 0.001
4-year DFS rate	94.4%	89.8%		94.4%	91.4%	
<b>Disease-free survival including deaths from any cause</b>						
Events	122 (4.7%)	193 (7.5%)	0.62 (0.49, 0.78) 0.00003	344 (13.3%)	402 (15.5%)	0.89 (0.77, 1.03) 0.120
5-year DFS rate	90.5%	80.8%		88.8%	86.7%	
<b>Time to distant metastases</b>						
Events	57 (2.2%)	93 (3.6%)	0.61 (0.44, 0.84) -	142 (5.5%)	169 (6.5%)	0.88 (0.70, 1.10) -
<b>Overall survival</b>						
Deaths	51 (2.0%)	62 (2.4%)	0.82 (0.56, 1.19) -	236 (9.1%)	232 (9.0%)	1.13 (0.95, 1.36) -
<b>Contralateral breast cancer</b>						
Invasive	15 (0.6%)	25 (1.0%)	0.60 (0.31, 1.14) -	33 (1.3%)	51 (2.0%)	0.644 (0.41, 1.00) -

HR = Hazards ratio; CI = Confidence Interval

<sup>1</sup> When the study was unblinded in 2003, 1551 patients in the randomized placebo arm (60% of those eligible to switch – i.e. who were disease-free) switched to letrozole at a median 31 months after randomization. The analyses presented here ignore the switching under the ITT principle.

<sup>2</sup> Stratified by receptor status, nodal status and prior adjuvant chemotherapy.

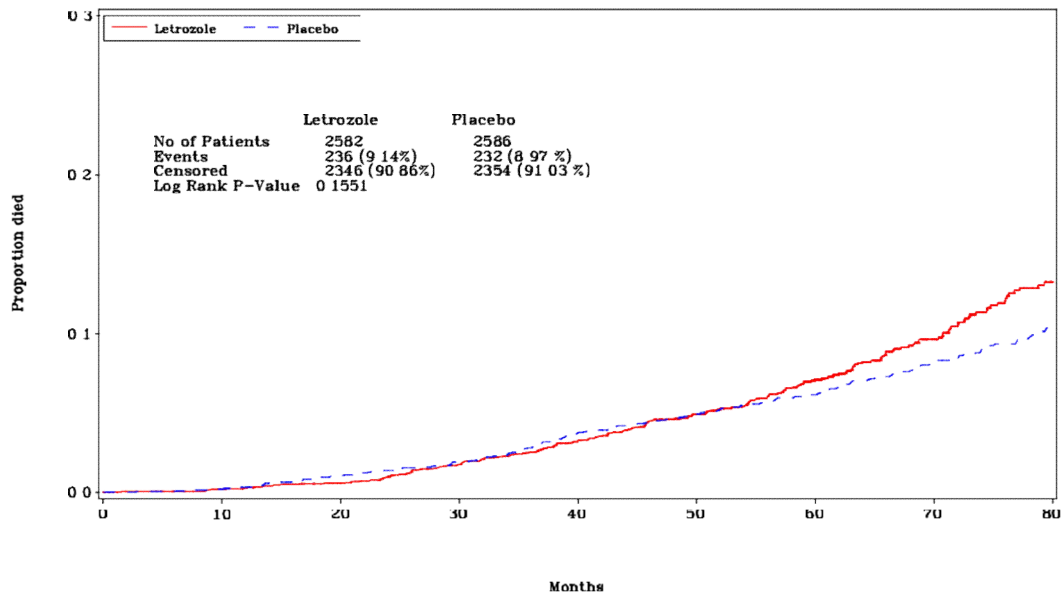
<sup>3</sup> Protocol definition of disease-free survival events: loco-regional recurrence, distant metastasis or contralateral breast cancer.

<sup>4</sup> Odds ratio and 95% CI for the odds ratio.

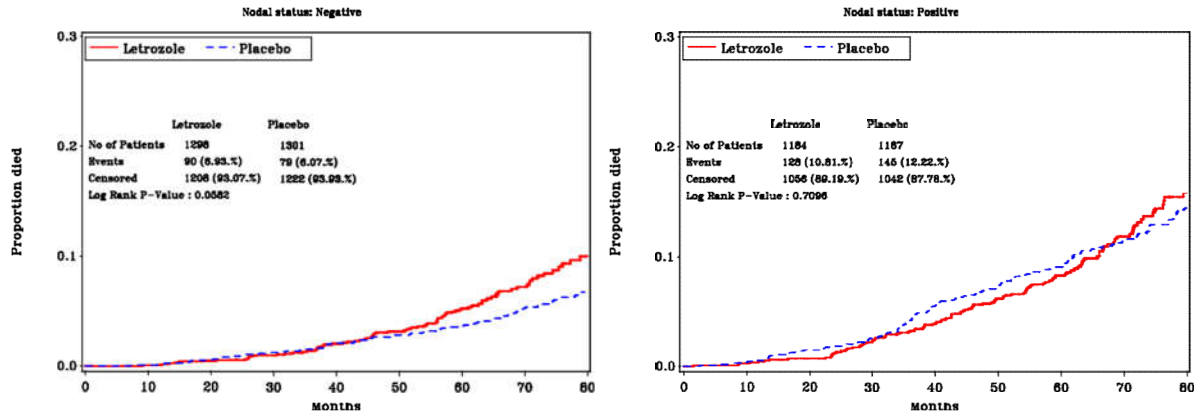
**Table 21 Disease-free and overall survival by receptor status, nodal status and previous chemotherapy (Modified ITT population)**

	2004 analysis – median follow-up 28 months		2008 analysis – median follow-up 62 months <sup>1</sup>	
	HR (95% CI) <sup>2</sup>	P value	HR (95% CI) <sup>2</sup>	P value
<b>Disease-free survival (protocol definition)</b>				
Receptor status positive	0.57 (0.44, 0.75)	0.00003	0.74 (0.62, 0.89)	0.001
Nodal status				
Negative	0.48 (0.30, 0.78)	0.002	0.67 (0.49, 0.93)	0.015
Positive	0.61 (0.44, 0.83)	0.002	0.78 (0.62, 0.97)	0.027
Chemotherapy				
None	0.58 (0.40, 0.84)	0.003	0.71 (0.54, 0.92)	0.010
Received	0.59 (0.41, 0.84)	0.003	0.79 (0.62, 1.01)	0.055
<b>Overall survival</b>				
Nodal status				
Negative	1.36 (0.68, 2.71)	-	1.34 (0.99, 1.81)	-
Positive	0.61 (0.38, 0.97)	-	0.96 (0.75, 1.21)	-
HR = Hazards ratio; CI = Confidence Interval				
<sup>1</sup> Including 60% of eligible patients who switched from placebo to letrozole after the study was unblinded in 2003				
<sup>2</sup> From Cox regression models				

**Figure 5 Overall survival (Time to death) - Randomised treatment group regardless of switch (Modified ITT population)**



**Figure 6 Overall survival (Time to death) by nodal status - Randomised treatment group regardless of switch (Modified ITT population)**



Health related quality of life was also assessed in the MA-17 study using the SF-36 Health Survey Questionnaire as well as the MENQOL, a quality of life scale specifically addressing menopausal symptoms. The SF-36 instrument has 36 questions, which yield two summary scores: physical and mental health summary measures. In the initial analysis, no significant differences were observed in global physical or mental summary scores. Treatment differences in favour of placebo were observed in assessments by patients particularly in the measures of physical functioning, bodily pain, vitality, sexual and vasomotor items.

In the updated analysis of quality of life, restricting the analysis to women who had received letrozole or placebo/no treatment for at least 3 years, there were no significant differences between treatments in physical component summary score or mental component summary score,

or in any domain score (physical health; role function-physical; bodily pain; general health; vitality; social function; role function-emotional; or mental health – all SF-36 scale). There was no significant difference from baseline between treatments in any domain on the specific menopausal symptoms scale (MENQOL) (vasomotor; psychological; physical or sexual).

Considering all women in the sub-study and looking at the individual symptoms of the MENQOL scale, significantly more women who received letrozole than who received placebo/no treatment were most bothered (generally in the first year of treatment) by those symptoms deriving from estrogen deprivation – hot flashes and vaginal dryness. The symptom that bothered most patients in both arms (but significantly more in the letrozole arm than in the placebo arm) was aching muscles.

### First-Line Treatment - Advanced Breast Cancer

**Table 22 - Summary of patient demographics for clinical trials in locally advanced or metastatic breast cancer**

Study #	Study design	Dosage, route of administration and duration	Study subjects (n)	Mean age (Range)	Sex
CFEM345C P025	Randomized, well-Controlled double-blind phase III clinical trial	Letrozole 2.5 mg daily or tamoxifen 20 mg daily	907 postmenopausal patients	--	Female

One large, randomized, well-controlled, multinational, double-blind Phase III trial (CFEM345C P025) was conducted in 907 postmenopausal patients with locally advanced or metastatic breast cancer. Patients were randomized to letrozole 2.5 mg daily or tamoxifen 20 mg daily.

Time to progression (TTP) was the primary endpoint of the trial. In 907 women, letrozole was superior to tamoxifen in TTP ( $P < 0.0001$ ). Median TTP was 9.4 months for letrozole versus 6.0 months for tamoxifen. Letrozole was also superior to tamoxifen in secondary endpoints consisting of overall objective tumour response [Complete Response (CR) + Partial Response (PR)], time to treatment failure (TTF) and clinical benefit (CR+PR+NC  $\geq$  24 weeks). Objective response rate (ORR) was statistically significant ( $P = 0.0002$ ) for letrozole as compared to tamoxifen: 32% of patients in the letrozole arm achieved a confirmed response (CR, 9%; PR, 23%; 95% CI for ORR 28 to 36 %), compared with 21% (CR, 3%; PR, 18%; CI for ORR 17 to 25%) in the tamoxifen arm. Median duration of objective tumour response was 25 months for letrozole (95% CI 21 to 36 months) compared with a median 23 months for tamoxifen (95% CI 20 to 26 months). Although the difference was not statistically significant ( $P = 0.0578$ ), the difference favoured letrozole. The hazard ratio comparing the subsequent risk of progression in responding patients treated with letrozole to the risk in responding patients treated with tamoxifen was 0.74 (95% CI 0.54 to 1.01),  $P = 0.0578$ . In addition to a significantly higher response rate with letrozole, where response occurred, the subsequent risk of progression was

reduced by 26% with letrozole compared to the risk with tamoxifen (hazard ratio 0.74; 95% CI for the hazard ratio: 46% reduction in the subsequent risk of progression with letrozole to 1% increase in the subsequent risk of progression with letrozole compared with tamoxifen in responding patients).

TTF was statistically significant for letrozole as compared to tamoxifen ( $P < 0.0001$ ). Median TTF was 9.0 months for letrozole versus 5.7 months for tamoxifen. Clinical benefit was statistically significant for letrozole when compared to tamoxifen (50% vs. 38%,  $P = 0.0004$ ).

Data from this trial were further analyzed to determine the impact of prior adjuvant tamoxifen therapy on TTP. The superiority of letrozole was observed in the sub-group of patients who received no prior adjuvant tamoxifen therapy. Patients treated with letrozole had a median TTP of 9.5 months ( $n = 369$ ) vs. 6.0 months for tamoxifen-treated patients ( $n = 371$ ),  $P = 0.0003$ .

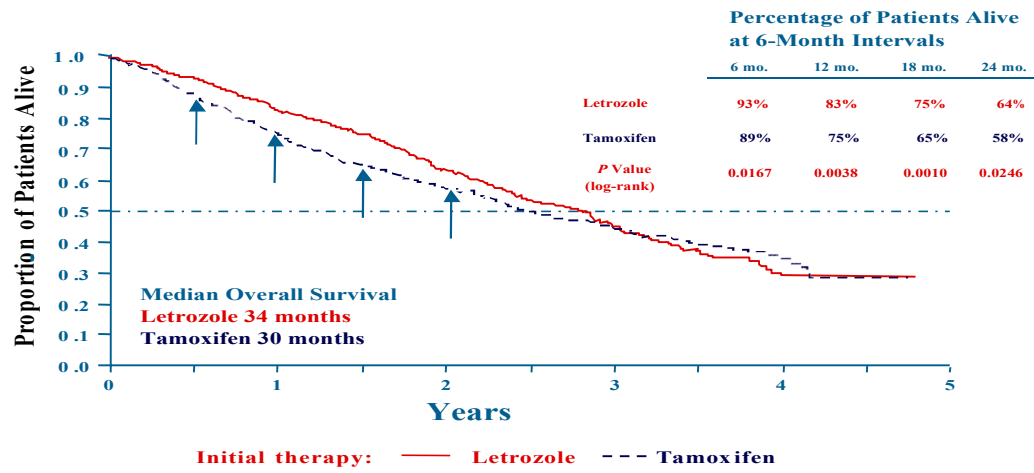
Similar results were seen in those patients who had received prior adjuvant tamoxifen. The median TTP for letrozole-treated patients was significantly longer at 8.9 months ( $n = 84$ ), vs. the tamoxifen-treated group at 5.9 months ( $n = 83$ ),  $P = 0.0033$ . Treatment with letrozole led to a significantly longer TTP compared with tamoxifen, irrespective of whether patients had received prior adjuvant therapy.

Sub-group analysis was also performed on the Objective Response Rate (CR+PR). Patients who received no prior adjuvant tamoxifen had an objective response rate of 33% in the letrozole arm ( $n = 369$ ) vs. 24% in the tamoxifen arm ( $n = 371$ ),  $P = 0.0039$ . In patients who had received prior adjuvant tamoxifen, significantly more patients achieved an objective response rate with letrozole (26%) vs. tamoxifen (8%),  $P = 0.0038$ . These data demonstrate that the Objective Response Rate with letrozole is superior to tamoxifen regardless of whether prior adjuvant therapy was initiated.

Letrozole treatment in first-line therapy of advanced breast cancer patients is associated with an early survival advantage over tamoxifen. The median overall survival was 34 months for letrozole and 30 months for tamoxifen. Although this difference in overall survival was not statistically significant (logrank  $P = 0.53$ ), there was a statistically significant early survival advantage for patients in the randomized letrozole arm compared to the randomized tamoxifen arm over the first 2 years, as shown in the primary analysis (Kolmogorov-Smirnov-type test,  $P = 0.005$ ). Supportive analyses (repeated logrank tests) confirmed the early survival advantage (see Figure 7). The total duration of endocrine therapy (time to chemotherapy) was significantly longer for letrozole (median 16 months, 95% CI 15 to 18 months) than for tamoxifen [(median 9 months, 95% CI 8 to 12 months) (logrank  $P = 0.0047$ )].

Figure 7

## Letrozole vs. Tamoxifen Survival Analysis



## Second-Line Treatment- Advanced Breast Cancer

**Table 23 - Summary of patient demographics for clinical trials in second line treatment of Advanced Breast Cancer – Study AR/BC2**

Study #	Study design	Dosage, route of administration and duration	Study subjects (n)	Mean age (Range)	Sex
Study AR/BC2	Controlled double-blind clinical trial	Letrozole 2.5 mg or 0.5 mg once daily, or megestrol acetate 160 mg once daily	Letrozole 2.5 mg (n=174) Letrozole 0.5 mg (n=188) Megestrol acetate (n=189)	Letrozole 2.5 mg (63.6 years [± 9.1]) Letrozole 0.5 mg (64.6 years [± 10.5]) Megestrol acetate (64 years [± 9.5])	Female

In a controlled double-blind clinical trial, the overall objective tumour response rate (complete and partial response) was 23.6% in letrozole -treated patients compared to 16.4% in patients on 160 mg megestrol acetate. Treatment comparison of the response rate showed a statistically significant difference in favour of 2.5 mg letrozole (p=0.04).

**Table 24 - Summary of patient demographics for clinical trials in second line treatment of Advanced Breast Cancer – Study AR/BC3**

Study #	Study design	Dosage, route of administration and duration	Study subjects (n)	Median age	Sex
Study AR/BC3	Open-label, randomized clinical trial	Letrozole 2.5 mg or 0.5 mg once daily, or aminoglutethimide 250 mg twice daily	Letrozole 2.5 mg (n=185) Letrozole 0.5 mg (n=192) Aminoglutethimide (n=178)	Letrozole 2.5 mg (66 years) Letrozole 0.5 mg (64 years) Aminoglutethimide (n=65 years)	Female

In an open-label, randomized clinical trial, survival at 2 years was 55.1% for patients treated with letrozole compared to 38.8% for patients treated with 500 mg aminoglutethimide. Treatment comparison showed a statistically significantly prolonged overall survival with letrozole (adjusted Cox regression hazard ratio 0.68, 95% CI 0.52-0.87, p=0.003).



## 14.2 Comparative Bioavailability Studies

A randomized, blinded, balanced, two-treatment, two-sequence, two-period, single-dose, oral crossover comparative bioavailability study of JAMP-Letrozole 2.5 mg tablets (JAMP Pharma Corporation) and FEMARA 2.5 mg tablets (Novartis Pharmaceuticals Canada Inc.) was conducted in healthy, adult, postmenopausal female subjects under fasting conditions. Comparative bioavailability data from 24 subjects that were included in the statistical analysis are presented in the following table:

SUMMARY TABLE OF THE COMPARATIVE BIOAVAILABILITY DATA

Letrozole (1 x 2.5 mg) Geometric Mean Arithmetic Mean (CV%)				
Parameter	Test <sup>1</sup>	Reference <sup>2</sup>	% Ratio of Geometric Means	90% Confidence Interval
AUC <sub>0-72h</sub> (ng·h/mL)	979.98 993.52 (16.85)	1027.92 1042.75 (17.27)	95.3	93.2 - 97.5
C <sub>max</sub> (ng/mL)	32.10 32.83 (21.66)	35.85 36.60 (20.03)	89.5	83.6 - 95.9
T <sub>max</sub> <sup>3</sup> (h)	1.50 (0.50 - 4.00)	1.38 (0.75 - 3.00)		

<sup>1</sup>JAMP-Letrozole (letrozole) tablets, 2.5 mg (JAMP Pharma Corporation)

<sup>2</sup>FEMARA (letrozole) tablets, 2.5 mg (Novartis Pharmaceuticals Canada Inc.)

<sup>3</sup>Expressed as the median (range) only

Due to the long elimination half-life of letrozole, AUC<sub>i</sub> and T<sub>1/2</sub> could not be accurately calculated from the data obtained in this study.

## 15 MICROBIOLOGY

No microbiological information is required for this drug product.

## 16 NON-CLINICAL TOXICOLOGY

### General Toxicology:

In a variety of preclinical safety studies conducted in standard animal species, there was no evidence of systemic or target organ toxicity.

### Acute Toxicity Studies

Letrozole showed a low degree of acute toxicity in rodents exposed up to 2000 mg/kg. In dogs, letrozole caused signs of moderate toxicity at 100 mg/kg.

### **Long Term Toxicity Studies**

In repeated dose toxicity studies of up to 12 months duration in rats treated with 0.3, 3 and 30 mg/kg and dogs treated with 0.03, 0.3 and 3 mg/kg, the main findings can be attributed to the pharmacological action of the compound. Effects on the liver (increased weight, hepatocellular hypertrophy, fatty changes) were observed, mainly at the high dose level. The no-adverse effect level was 0.3 mg/kg in both species. Increased incidences of hepatic vacuolation (both sexes, high dose) and necrosis (intermediate and high dose females) were also noted in rats treated for 104 weeks in a carcinogenicity study. They may have been associated with the endocrine effects and hepatic enzyme-inducing properties of letrozole. However, a direct drug effect cannot be ruled out.

The pharmacological effects of letrozole resulted in skeletal, neuroendocrine and reproductive findings in a juvenile rat study at doses between 0.003 mg/kg/day and 0.3 mg/kg/day. Bone growth and maturation were decreased from the lowest dose (0.003 mg/kg/day) in males and increased from the lowest dose (0.003 mg/kg) in females. Bone mineral density (BMD) was also decreased at that dose in females. In the same study, decreased fertility at all doses was accompanied by hypertrophy of the hypophysis, testicular changes which included a degeneration of the seminiferous tubular epithelium, ovarian edema, ovarian cysts and atrophy of the female reproductive tract. Effects on bone size in females at 0.3 mg/kg/day and males at 0.03 mg/kg/day and morphological changes in the testes were not reversible. All other effects were at least partially reversible at 0.003 mg/kg/day and 0.03 mg/kg/day.

### **Carcinogenicity:**

Two 104-week carcinogenicity studies have been conducted. In one study, rats were treated with letrozole, administered orally, in doses of 0.1, 1.0 and 10 mg/kg/day; in the second study, mice were treated with letrozole orally at doses of 0.6, 6 and 60 mg/kg/day. No treatment related tumours were noted in male animals. In female animals, treatment related changes in genital tract tumours (a reduced incidence of benign and malignant mammary tumours at all doses in rats and an increased incidence of benign ovarian granulosa theca cell tumours at all doses in mice) were secondary to the pharmacological effect of the compound. In the mouse carcinogenicity study, dermal and systemic inflammations were also noted, particularly in the high dose group, leading to increased mortality at this dose level. It is not known whether these findings were an indirect consequence of the pharmacological activity of letrozole (i.e. linked to long-term estrogen deprivation) or a direct drug effect.

### **Genotoxicity:**

*In vitro* and *in vivo* investigations on Letrozole's genotoxic potential revealed no indications of mutagenicity, aneugenicity and/or clastogenicity.

### **Reproductive and Developmental Toxicology:**

Letrozole was evaluated for maternal toxicity as well as embryotoxic, fetotoxic and teratogenic potential in female rats and rabbits. Oral administration of letrozole to pregnant Sprague-Dawley

rats resulted in teratogenicity and maternal toxicity at 0.03 mg/kg (about 1/10 the daily maximum recommended human dose (MRHD)), and embryotoxicity and fetotoxicity at doses  $\geq 0.003$  mg/kg (about 1/100 the daily MRHD). Teratogenic effects included fetal domed head and cervical/centrum vertebral fusion. Embryotoxic and fetotoxic effects included intrauterine mortality, increased resorption, increased post-implantation loss, decreased numbers of live fetuses and fetal anomalies including absence and shortening of renal papilla, dilation of ureter, edema and incomplete ossification of frontal skull and metatarsals. In New Zealand White rabbits, letrozole was embryotoxic at doses  $\geq 0.002$  mg/kg, and fetotoxic when administered at 0.02 mg/kg (about 1/100,000 and 1/10,000 the daily MRHD). Fetal anomalies included incomplete ossification of the skull, sternbrae, and forelegs and hind legs. It is not known whether these effects are an indirect consequence of the pharmacological activity of letrozole (inhibition of estrogen biosynthesis) or a direct drug effect.

Oral administration of letrozole to female rats resulted in a decrease in mating ratio at 0.03 mg/kg. No animals mated at 0.3 mg/kg. Decreases in pregnancy ratios were noted at doses as low as 0.003 mg/kg and increases in pre-implantation loss at doses of 0.003 and 0.03 mg/kg.

Oral administration of letrozole to male rats at doses of 0, 0.03, 0.3 or 3 mg/kg/day resulted in adverse effects on male fertility at all doses, and included alterations in sperm parameters (decreased counts and motility) as well as testicular changes (decreased weights, pallor, tubular atrophy). Secondary to these effects, severe reductions in the number of sperm-positive and pregnant females were evident in all treatment groups.

Exposure of lactating rats to letrozole was associated with an impaired reproductive performance of the male offspring at a letrozole dose as low as 0.003 mg/kg/day. There were no effects on the reproductive performance of female offspring.

## **17 SUPPORTING PRODUCT MONOGRAPHS**

1. <sup>Pr</sup>FEMARA® (letrozole) Tablets, 2.5 mg, Submission Control 263091, Product Monograph, Novartis Pharmaceuticals Canada Inc. November 18, 2022

## PATIENT MEDICATION INFORMATION

### READ THIS FOR SAFE AND EFFECTIVE USE OF YOUR MEDICINE

#### PrJAMP-Letrozole

#### Letrozole Tablets

Read this carefully before you start taking **JAMP-Letrozole** and each time you get a refill. This leaflet is a summary and will not tell you everything about this drug. Talk to your healthcare professional about your medical condition and treatment and ask if there is any new information about **JAMP-Letrozole**.

#### Serious Warnings and Precautions

- JAMP-Letrozole should be used under the supervision of a doctor experienced in the use of anticancer drugs.
- JAMP-Letrozole may cause osteoporosis (weakened bones) and / or broken bones.

#### What is JAMP-Letrozole used for?

JAMP-Letrozole is used to treat breast cancer in women who have gone through menopause (cessation of periods). It is used to treat:

- hormone receptor-positive invasive early breast cancer after surgery, or
- hormone receptor-positive invasive early breast cancer after 5 years of tamoxifen therapy, or
- advanced breast cancer as a first treatment, or
- breast cancer that has spread to other sites in the body (metastatic) after:
  - disease progression (means that previous treatments did not work well enough and the cancer got worse); or
  - relapse (means that the cancer comes back after previous treatment), previously treated with antiestrogens.

#### How does JAMP-Letrozole work?

Estrogen is a normally occurring female sex hormone. It stimulates normal breast tissue and the growth of some types of breast cancer.

JAMP-Letrozole is an aromatase inhibitor. It acts by binding to aromatase, which is a substance needed to make estrogen. As a result, this lowers the levels of estrogen in the body. It also reduces the growth of some types of breast cancer.

### **What are the ingredients in JAMP-Letrozole?**

Medicinal ingredient: Letrozole

Non-medicinal ingredients: Colloidal Anhydrous Silica, Hypromellose (HPMC 6CPS), Lactose Monohydrate, Magnesium Stearate, Microcrystalline Cellulose PH102, Sodium Starch Glycolate (Type A).

Film-coating contains ferric oxide red, ferric oxide yellow, hypromellose, polyethylene glycol 6000, tartrazine and titanium dioxide.

### **JAMP-Letrozole comes in the following dosage forms:**

Tablets, 2.5 mg

### **Do not use JAMP-Letrozole if:**

- you have ever had an unusual or allergic reaction to letrozole or any other ingredient in JAMP-Letrozole.
- you still have menstrual periods.
- you can still become pregnant, or are pregnant. It may harm you and the baby or make you lose the pregnancy.
- you are breastfeeding
- you are under 18 years of age.
- you have hormone-receptor negative breast cancer

**To help avoid side effects and ensure proper use, talk to your healthcare professional before you take JAMP-Letrozole. Talk about any health conditions or problems you may have, including if you:**

- have or have had any disorder or disease which affects your liver or kidneys.
- have taken or are taking hormone replacement therapy.
- have taken or are taking other medication to treat your cancer.
- have a personal or family history of osteoporosis or have ever been diagnosed with low bone density or have a recent history of fractures (in order for your doctor to assess your bone health on a regular basis).
- have a personal or family history of high blood cholesterol or lipid levels.
- have or have had cardiovascular or heart disease including any of the following: heart attack, stroke or uncontrolled blood pressure.

### **Other warnings you should know about:**

#### **Pregnancy:**

- If you are perimenopausal or have recently entered menopause, you may still be able to get pregnant. If this applies to you, you will need to use effective birth control while you are taking JAMP-Letrozole for at least 20 days after stopping your treatment. Ask your doctor about options for effective birth control.

- If you get pregnant while taking JAMP-Letrozole contact your healthcare professional right away.

**Fertility:** JAMP-Letrozole may reduce fertility in males. This means it may be harder for you to father a child in the future.

**Check-ups and testing:** You will have blood tests done during your treatment to check your cholesterol and hormones levels. Your hormone levels may be checked before you start taking JAMP-Letrozole and regularly during the first 6 months of treatment. Your healthcare professional will also monitor your bone health during your treatment.

**Driving a vehicle or using machinery:** JAMP-Letrozole may make you feel tired, dizzy or sleepy. If this happens, you should not drive or operate any tools or machinery until you feel normal again.

**Tell your healthcare professional about all the medicines you take, including any drugs, vitamins, minerals, natural supplements or alternative medicines.**

**The following may interact with JAMP-Letrozole:**

- medicines used to treat bacterial, fungal, yeast or viral infections (including HIV) such as clarithromycin, rifampicin, telithromycin, ketoconazole, itraconazole, voriconazole and ritonavir.
- a medicine used to treat lymphoma called methoxsalen
- a medicine used in the treatment of breast cancer called tamoxifen
- a medicine used to prevent blood clots called clopidogrel
- medicines used to treat seizures such as phenytoin, carbamazepine and phenobarbital
- an herbal remedy used to treat depression called St. John's Wort
- other antiestrogens or therapies that contain estrogen

**How to take JAMP-Letrozole:**

- Take 1 tablet once per day with or without food, at about the same time each day.
- Swallow tablet whole with a small glass of water.

**Usual dose:** 1 tablet (2.5 mg) per day

**Overdose:**

If you think you, or a person you are caring for, have taken too much JAMP-Letrozole, contact a healthcare professional, hospital emergency department, or regional poison control centre immediately, even if there are no symptoms.

**Missed Dose:**

If you forget to take a dose of JAMP-Letrozole, take it as soon as you remember. If it is almost time

for your next dose (e.g., within 2 or 3 hours), skip it and continue with your regular dosage schedule. Do not take two doses at once to make up for the one that you missed.

**What are possible side effects from using JAMP-Letrozole?**

These are not all the possible side effects you may have when taking JAMP-Letrozole. If you experience any side effects not listed here, tell your healthcare professional.

Some side effects, such as hot flushes, hair loss or vaginal bleeding may be due to the lack of estrogen in your body.

- hot flushes
- increased sweating
- night sweats
- fatigue (including weakness and generally feeling unwell)
- headache
- rash
- dizziness, vertigo
- nausea, vomiting, indigestion, constipation, diarrhea
- increase in or loss of appetite
- leaking urine by accident (urinary incontinence)
- weight increase
- anxiety
- insomnia
- hair loss
- vaginal bleeding
- dry skin
- abdominal pain
- back pain
- fall
- palpitations (rapid heart rate)
- nervous disorders (such as nervousness, irritability, drowsiness)
- pain or burning sensation in the hands or wrists (carpal tunnel syndrome)
- reduced sense of touch
- eye irritation
- vaginal disorders (such as discharge or dryness)
- breast pain
- fever
- thirst, taste disorder, dry mouth
- dryness of mucous membranes
- weight decrease
- cough
- trigger finger, a condition in which your finger or thumb catches in a bent position.

Serious side effects and what to do about them			
Symptom / effect	Talk to your healthcare professional		Stop taking drug and get immediate medical help
	Only if severe	In all cases	
<b>Very Common</b>			
<b>Hypercholesterolemia:</b> increased levels of cholesterol		✓	
<b>Common</b>			
<b>Myalgia:</b> muscle pain and <b>Arthralgia:</b> bone and joint pain	✓		
<b>Arthritis:</b> joint stiffness	✓		
<b>Depression:</b> persistent sad mood		✓	
<b>Hyperglycemia:</b> increased blood sugar		✓	
<b>Hypertension:</b> increased blood pressure		✓	
<b>Osteoporosis</b> (bone loss) and <b>Bone fractures</b>		✓	
<b>Uncommon</b>			
<b>Angina</b> (chest pain when your heart muscle doesn't get enough oxygen) or <b>Myocardial Infarction</b> (heart attack): tightness or feeling of heaviness in the chest, pain radiating from your chest to your arms or shoulders, neck, teeth or jaw, abdomen or back			✓
<b>Stroke</b> (lack of blood to the brain): numbness or weakness in arm or leg or any part of the body, vision changes, sudden headache, nausea, loss of coordination, difficulty in speaking or breathing			✓
<b>Thrombophlebitis</b> (inflammation of a vein due to a blood clot): swelling and redness along a vein which is extremely tender and possibly painful when touched			✓



Serious side effects and what to do about them			
Symptom / effect	Talk to your healthcare professional		Stop taking drug and get immediate medical help
	Only if severe	In all cases	
<b>Pulmonary embolism</b> (blood clot in the lung): difficulty breathing, chest pain, fainting, rapid heart rate, bluish skin discolouration			✓
<b>Edema:</b> swelling of arms, hands, feet, ankles or other parts of the body			✓
<b>Angioedema:</b> severe swelling of face, lips, tongue and throat		✓	✓
<b>Allergic reaction:</b> swelling mainly of the face and throat			✓
<b>Anaphylaxis:</b> severe allergic reaction		✓	✓
<b>Neutropenia</b> (low white blood cells): severe fever, chills or mouth ulcers due to infections			✓
<b>Cataract</b> (clouding of the lens of the eye): blurred vision			✓
<b>Liver problems including hepatitis</b> (inflammation of the liver): yellow skin and eyes (jaundice), nausea, loss of appetite, dark-coloured urine (increased bilirubin level)			✓
<b>Blood test disorders:</b> abnormal liver function tests			✓
<b>Urinary tract infection:</b> increased frequency of urination			✓
<b>Skin disorder:</b> rash, red skin, blistering of the lips, eyes or mouth, skin peeling, fever			✓
<b>Tendon disorders including tendonitis</b> (inflammation of the tendon) <b>and tenosynovitis</b> (inflammation of the tissue surrounding the tendon): pain,		✓	

Serious side effects and what to do about them			
Symptom / effect	Talk to your healthcare professional		Stop taking drug and get immediate medical help
	Only if severe	In all cases	
swelling and tenderness near a joint			
<b>RARE</b>			
<b>Tendon tears:</b> feel a snap or pop when the tear happens, severe pain, swelling		✓	

If you have a troublesome symptom or side effect that is not listed here or becomes bad enough to interfere with your daily activities, tell your healthcare professional.

### Reporting Side Effects

You can report any suspected side effects associated with the use of health products to Health Canada by:

- Visiting the Web page on Adverse Reaction Reporting (<https://www.canada.ca/en/health-canada/services/drugs-health-products/medeffect-canada/adverse-reaction-reporting.html>) for information on how to report online, by mail or by fax; or
- Calling toll-free at 1-866-234-2345.

*NOTE: Contact your health professional if you need information about how to manage your side effects. The Canada Vigilance Program does not provide medical advice.*

### Storage:

Store at room temperature, 15-30 °C. Protect from light and moisture.

Keep out of reach and sight of children and pets.

### Expiry date:

Do not take JAMP-Letrozole after the expiry date which is stated on the carton after EXP. The expiry date refers to the last day of the month. Remember to take any unused medication back to your pharmacist.

### If you want more information about JAMP-Letrozole:

- Talk to your healthcare professional
- Find the full Product Monograph that is prepared for healthcare professionals and includes this Patient Medication Information by visiting the Health Canada website: (<https://www.canada.ca/en/health-canada/services/drugs-health-products/drug-products/drug-product-database.html>); or by calling 1-866-399-9091.

This leaflet was prepared by:

JAMP Pharma Corporation  
1310 rue Nobel  
Boucherville, Quebec  
J4B 5H3, Canada

Last revised: NOV 15, 2023