

PRODUCT MONOGRAPH  
INCLUDING PATIENT MEDICATION INFORMATION

**<sup>P</sup>Oxaliplatin Injection**

Solution, 5 mg / mL (50 mg / 10 mL, 100 mg / 20 mL, 200 mg / 40 mL), intravenous

House Standard

ATC code: L01X A03

Antineoplastic Agent

**Auro Pharma Inc.**

3700 Steeles Avenue West, Suite # 402  
Woodbridge, Ontario, L4L 8K8,  
Canada.

Date of Initial Authorization:

October 21, 2022

Date of Revision:

December 12, 2023

Submission Control Number: 277387

## RECENT MAJOR LABEL CHANGES

<a href="#">7 WARNINGS AND PRECAUTIONS, Reproductive Health: Female and Male Potential</a>	12/2023
<a href="#">7 WARNINGS AND PRECAUTIONS, 7.1.2 Breast-feeding</a>	12/2023

## TABLE OF CONTENTS

Sections or subsections that are not applicable at the time of authorization are not listed.

<b>RECENT MAJOR LABEL CHANGES</b> .....	<b>2</b>
<b>TABLE OF CONTENTS</b> .....	<b>2</b>
<b>PART I: HEALTH PROFESSIONAL INFORMATION</b> .....	<b>5</b>
<b>1 INDICATIONS</b> .....	<b>5</b>
1.1 Pediatrics .....	5
1.2 Geriatrics .....	5
<b>2 CONTRAINDICATIONS</b> .....	<b>5</b>
<b>3 SERIOUS WARNINGS AND PRECAUTIONS BOX</b> .....	<b>6</b>
<b>4 DOSAGE AND ADMINISTRATION</b> .....	<b>6</b>
4.1 Dosing Considerations .....	6
4.2 Recommended Dose and Dosage Adjustment.....	6
4.3 Reconstitution .....	9
4.4 Administration.....	10
<b>5 OVERDOSAGE</b> .....	<b>11</b>
<b>6 DOSAGE FORMS, STRENGTHS, COMPOSITION AND PACKAGING</b> .....	<b>12</b>
<b>7 WARNINGS AND PRECAUTIONS</b> .....	<b>13</b>
7.1 Special Populations.....	21
7.1.1 Pregnant Women .....	21
7.1.2 Breast-feeding.....	21
7.1.3 Pediatrics .....	22
7.1.4 Geriatrics.....	22
<b>8 ADVERSE REACTIONS</b> .....	<b>22</b>
8.1 Adverse Reaction Overview .....	22

8.2 Clinical Trial Adverse Reactions .....	25
8.3 Less Common Clinical Trial Adverse Reactions .....	34
8.4 Abnormal Laboratory Findings: Hematologic, Clinical Chemistry and Other Quantitative Data .....	36
8.5 Post-Market Adverse Reactions.....	38
<b>9 DRUG INTERACTIONS.....</b>	<b>39</b>
9.1 Drug Interactions Overview .....	39
9.2 Drug-Drug Interactions .....	40
9.5 Drug-Food Interactions.....	40
9.6 Drug-Herb Interactions.....	40
9.7 Drug-Laboratory Test Interactions.....	40
<b>10 CLINICAL PHARMACOLOGY .....</b>	<b>40</b>
10.1 Mechanism of Action.....	40
10.2 Pharmacodynamics .....	41
<b>10.3 Pharmacokinetics.....</b>	<b>41</b>
<b>11 STORAGE, STABILITY AND DISPOSAL.....</b>	<b>43</b>
<b>12 SPECIAL HANDLING INSTRUCTIONS.....</b>	<b>43</b>
<b>PART II: SCIENTIFIC INFORMATION .....</b>	<b>44</b>
<b>13 PHARMACEUTICAL INFORMATION.....</b>	<b>44</b>
<b>14 CLINICAL TRIALS.....</b>	<b>44</b>
14.1 Clinical Trials by Indication .....	44
Combination Adjuvant Therapy With Oxaliplatin And Infusional 5-Fu/Lv In Patients With Colon Cancer.....	44
Combination Therapy With Oxaliplatin And 5-Fu/Lv In Patients Previously Untreated For Metastatic Colorectal Cancer .....	48
Combination Therapy With Oxaliplatin And 5-Fu/Lv In Previously Treated Patients With Metastatic Colorectal Cancer .....	52
<b>15 MICROBIOLOGY .....</b>	<b>55</b>
<b>16 NON-CLINICAL TOXICOLOGY .....</b>	<b>55</b>

**17 SUPPORTING PRODUCT MONOGRAPHS..... 60**  
**PATIENT MEDICATION INFORMATION..... 61**

## PART I: HEALTH PROFESSIONAL INFORMATION

### 1 INDICATIONS

Oxaliplatin Injection, in combination with infusional 5-fluorouracil/leucovorin (5-FU/LV) is indicated for:

- Adjuvant treatment of patients with stage III (Dukes' C) colon cancer after complete resection of primary tumor. The indication is based on a demonstrated improvement in disease-free survival. Survival data at 6 years show a numerical improvement in overall survival.
- Treatment of patients with metastatic colorectal cancer.

#### 1.1 Pediatrics

**Pediatrics (≤ 22 years of age):** Health Canada has not authorized an indication for pediatric use. The effectiveness of oxaliplatin single agent in the pediatric populations with solid tumors has not been established (see **7.1.3 Pediatrics**).

#### 1.2 Geriatrics

**Geriatrics (≥ 65 years of age):** In patients previously untreated for metastatic colorectal cancer, patients ≥ 65 years (99 of 279 patients) receiving oxaliplatin in combination with 5-FU/LV experienced more fatigue, dehydration, diarrhea, leukopenia, and syncope than patients < 65 years, although the difference was not statistically significant. Starting doses were the same in both age groups. In the adjuvant trial, patients ≥ 65 years receiving the oxaliplatin combination therapy (393 of 1108 patients) experienced more grade 3-4 granulocytopenia and diarrhea than patients < 65 years, although the difference was not statistically significant. The efficacy of oxaliplatin on disease free survival benefit in patients ≥ 65 years of age was not conclusive in the adjuvant trial (see **4 DOSAGE AND ADMINISTRATION**).

### 2 CONTRAINDICATIONS

Oxaliplatin Injection should not be administered to patients:

- with a history of known allergy to oxaliplatin or other platinum compounds or to any ingredient in the formulation or component of the container. For a complete listing, see **6 DOSAGE FORMS, STRENGTHS, COMPOSITION AND PACKAGING**.
- who have a pre-existing peripheral sensitive neuropathy with functional impairment.
- who are breast-feeding.
- who are pregnant.
- with severe renal impairment (creatinine clearance  $Cl_{Cr} < 30$  mL/min).

### 3 SERIOUS WARNINGS AND PRECAUTIONS BOX

#### Serious Warnings and Precautions

- Oxaliplatin Injection should be administered under the supervision of a qualified physician experienced in the use of cancer chemotherapeutic agents.
- Anaphylactic Reactions – See 7 WARNINGS AND PRECAUTIONS, Immune and Cardiovascular sections.
- Cardiovascular – QT prolongation and Torsade de Pointes (including fatalities) – See 7 WARNINGS AND PRECAUTIONS, Cardiovascular section.
- Gastrointestinal - duodenal ulcer, duodenal hemorrhage, duodenal perforation and intestinal ischemia (including fatalities) – See 7 WARNINGS AND PRECAUTIONS, Gastrointestinal section.
- Hepatotoxicity – See 7 WARNINGS AND PRECAUTIONS, Hepatic/Biliary/Pancreatic section.
- Musculoskeletal – rhabdomyolysis (including fatalities) – See 7 WARNINGS AND PRECAUTIONS, Musculoskeletal section.
- Myelosuppression – Neutropenia/febrile neutropenia and Thrombocytopenia. See 7 WARNINGS AND PRECAUTIONS, Hematologic section.
- Sepsis (including fatalities). See 7 WARNINGS AND PRECAUTIONS, General, Infections and Infestations.
- Neuropathy – Sensory and Motor - See 7 WARNINGS AND PRECAUTIONS, Neurologic section; 8.1 Adverse Drug Reactions Overview, 8.2 Clinical Trial Adverse Drug Reactions and 8.5 Post- Market Adverse Drug Reactions, Nervous System Disorders.
- Respiratory – Interstitial lung disease (including fatalities) has been reported with oxaliplatin use. See 7 WARNINGS AND PRECAUTIONS, Respiratory section; and 8.3 Clinical Trial Adverse Drug Reactions, Respiratory, Thoracic and Mediastinal Disorders.

### 4 DOSAGE AND ADMINISTRATION

#### 4.1 Dosing Considerations

- Dosage given should be adjusted according to tolerability.
- If severe/life-threatening diarrhea, neurotoxicity or hematological toxicity occurs, a dose adjustment may be required (see 7 WARNINGS AND PRECAUTIONS and 4.2 Recommended Dose and Dosage Adjustment).

#### 4.2 Recommended Dose and Dosage Adjustment

Administer Oxaliplatin Injection in combination with 5-FU/LV every 2 weeks. For metastatic disease, treatment is recommended until disease progression or unacceptable toxicity. For adjuvant use, treatment is recommended for a total of 12 cycles (6 months). The recommended dose schedule given every 2 weeks is as follows:

### Day 1:

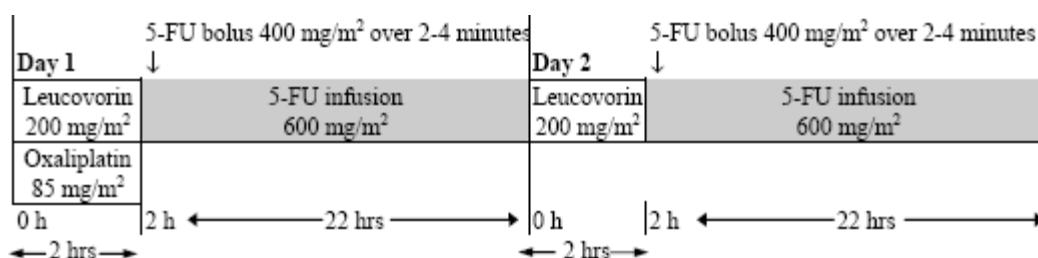
Oxaliplatin Injection 85 mg/m<sup>2</sup> IV infusion in 250 to 500 mL of 5% (50 mg/mL) glucose solution (D5W) is given at the same time as leucovorin 200 mg/m<sup>2</sup> IV infusion in 5% glucose solution (D5W), over 2 to 6 hours in separate bags using a Y-line.

Followed by 5-FU 400 mg/m<sup>2</sup> IV bolus given over 2-4 minutes, followed by 5-FU 600 mg/m<sup>2</sup> IV infusion in 500 mL of 5% glucose solution (D5W) (recommended) as a 22-hour continuous infusion.

### Day 2:

Leucovorin 200 mg/m<sup>2</sup> IV infusion over 2 hours.

Followed by 5-FU 400 mg/m<sup>2</sup> IV bolus given over 2-4 minutes, followed by 5-FU 600 mg/m<sup>2</sup> IV infusion in 500 mL of 5% glucose solution (D5W) (recommended) as a 22-hour continuous infusion.



### **Special Populations**

**Pediatrics (≤ 22 years of age):** Health Canada has not authorized an indication for pediatric use (see 7.1.3 Pediatrics).

**Geriatrics (≥ 65 years of age):** Starting dose in this age group is the same. In studies of patients with metastatic colorectal cancer, patients ≥ 65 years receiving oxaliplatin in combination with 5-FU/LV experienced more fatigue, dehydration, diarrhea, leukopenia, and syncope than patients < 65 years, although the difference was not statistically significant. In the adjuvant trial, patients ≥ 65 years receiving the oxaliplatin combination therapy experienced more grade 3/4 granulocytopenia and diarrhea than patients < 65 years, although the difference was not statistically significant.

### **Gastrointestinal:**

**Adjuvant Stage III colon cancer:** If severe/life-threatening gastrointestinal toxicity (NCI CTC grade 3-4) occurs despite prophylactic treatment, Oxaliplatin Injection must be discontinued until resolution. A dose reduction of Oxaliplatin Injection to 75 mg/m<sup>2</sup> and bolus 5-FU to 300 mg/m<sup>2</sup> and infusional 5-FU to 500 mg/m<sup>2</sup> over 22 hours is recommended at subsequent cycles.

Metastatic colorectal cancer: After recovery from grade 3 or 4 gastrointestinal toxicity (despite prophylactic treatment), a dose reduction of Oxaliplatin Injection to 65 mg/m<sup>2</sup> and 5-FU by 20% (300 mg/m<sup>2</sup> bolus and 500 mg/m<sup>2</sup> 22-hour infusion) is recommended.

### **Hematologic:**

Adjuvant Stage III colon cancer: After recovery from grade 3-4 neutropenia (ANC < 1.0 x 10<sup>9</sup>/L), febrile neutropenia (fever of unknown origin without clinically or microbiologically documented infection with an absolute neutrophil count < 1.0 x 10<sup>9</sup>/L, a single temperature of > 38.3°C or a sustained temperature of > 38°C for more than one hour) or grade 3-4 thrombocytopenia (platelets < 50 x 10<sup>9</sup>/L), a dose reduction of Oxaliplatin Injection to 75 mg/m<sup>2</sup> and bolus 5-FU to 300 mg/m<sup>2</sup> and infusional 5-FU to 500 mg/m<sup>2</sup> over 22 hours is recommended. The next dose should be delayed until neutrophils ≥1.5 x 10<sup>9</sup>/L and platelets ≥75 x 10<sup>9</sup>/L.

Metastatic colorectal cancer: After recovery from grade 3/4 neutropenia (ANC < 1.0 x 10<sup>9</sup>/L), febrile neutropenia (fever of unknown origin without clinically or microbiologically documented infection with an absolute neutrophil count < 1.0 x 10<sup>9</sup>/L, a single temperature of > 38.3°C or a sustained temperature of > 38°C for more than one hour) or grade 3/4 thrombocytopenia (platelets < 50 x 10<sup>9</sup>/L), a dose reduction of Oxaliplatin Injection to 65 mg/m<sup>2</sup> and 5-FU by 20% (300 mg/m<sup>2</sup> bolus and 500 mg/m<sup>2</sup> 22-hour infusion) is recommended. The next dose should be delayed until: neutrophils ≥1.5 x 10<sup>9</sup>/L and platelets ≥75 x 10<sup>9</sup>/L.

### **Neurologic:**

For patients (any indication) who develop acute laryngo-pharyngeal dysesthesia (see **8 ADVERSE REACTIONS**), during or within the hours following the 2-hour infusion, the next Oxaliplatin Injection infusion should be administered over 6 hours. To prevent such dysesthesia, inform the patient to avoid exposure to cold and to avoid ingesting fresh/cold food or/and beverages during or within the hours following Oxaliplatin Injection administration.

No dose adjustment is required to the 5-FU/LV regimen for neurotoxicity.

Adjuvant Stage III colon cancer: Neurotoxicity was graded using the NCI CTC grading system (see **7 WARNINGS AND PRECAUTIONS**). For patients who experience persistent grade 2 neurotoxicity (mild or moderate objective sensory loss, moderate paresthesias), the Oxaliplatin Injection dose should be reduced to 75 mg/m<sup>2</sup>. For patients with persistent grade 3 neurotoxicity, therapy should be discontinued.

Metastatic colorectal cancer: In the metastatic colorectal cancer trials, neurotoxicity was graded using a study-specific neurotoxicity scale, and dose adjustments for oxaliplatin were recommended, as follows:



**Table 1 - Neurologic toxicity scale for oxaliplatin dose adjustments**

Toxicity (grade)	Duration of Toxicity		Persistent <sup>a</sup> Between Cycles
	1 – 7 Days	> 7 Days	
Paresthesias/dysesthesias <sup>b</sup> that do not interfere with function (grade 1)	No change	No change	No change
Paresthesias/dysesthesias <sup>b</sup> interfering with function, but not activities of daily living (ADL) (grade 2)	No change	No change	65 mg/m <sup>2</sup>
Paresthesias/dysesthesias <sup>b</sup> with pain or with functional impairment that also interfere with ADL (grade 3)	No change	65 mg/m <sup>2</sup>	Stop
Persistent paresthesias/dysesthesias that are disabling or life-threatening (grade 4)	Stop	Stop	Stop
Acute (during or after the 2 hour infusion) laryngopharyngeal dysesthesias <sup>b</sup>	↑ duration of next infusion to 6 hours <sup>c</sup>	↑ duration of next infusion to 6 hours <sup>c</sup>	↑ duration of next infusion to 6 hours <sup>c</sup>

<sup>a</sup> Not resolved by the beginning of the next cycle.

<sup>b</sup> May have been cold-induced.

<sup>c</sup> May also have been pre-treated with benzodiazepines.

**Renal Insufficiency:** Oxaliplatin has not been studied in patients with severe renal impairment. In patients with moderate renal impairment, treatment may be initiated at the normally recommended dose and renal function should be closely monitored. Dose should be adjusted according to toxicity (see **2 CONTRAINDICATIONS** and **7 WARNINGS AND PRECAUTIONS, Renal**).

**Hepatic Insufficiency:** No increase in oxaliplatin acute toxicities was observed in the subset of patients with abnormal liver function tests at baseline. No specific dose adjustment for patients with abnormal liver function tests was performed during clinical development.

### 4.3 Reconstitution

#### Dilution Before Infusion

**Only 5% glucose infusion** solution is to be used to dilute the product.

**NEVER** use sodium chloride or chloride containing solutions for dilution.

Inspect visually for clarity, particulate matter, precipitate, discoloration and leakage prior to use. Only clear solutions without particles, precipitate, discoloration or leakage should be used.

The medicinal product is for single-use only. Any unused solution should be discarded.

Needles or intravenous administration sets containing aluminum parts that may come in

contact with Oxaliplatin Injection **should not** be used for the preparation or mixing of the drug. Aluminum has been reported to cause degradation of platinum compounds.

The compatibility of Oxaliplatin Injection solution for infusion has been tested with representative, PVC-based, administration sets.

Withdraw the required amount of concentrate from the vial(s) and then dilute with 250 mL to 500 mL of a 5% glucose solution to give an Oxaliplatin Injection concentration between not less than 0.2 mg/mL and 0.7 mg/mL (0.70 mg/mL is the highest concentration in clinical practice for an oxaliplatin dose of 85 mg/m<sup>2</sup>).

The concentration range over which the physico-chemical stability of Oxaliplatin Injection has been demonstrated is 0.2 mg/mL to 2.0 mg/mL. After dilution in 5% glucose solution, chemical and physical in-use stability has been demonstrated for 24 hours at 25°C and 48 hours at 2°C to 8°C. From a microbiological point of view, this infusion preparation should be used immediately. If not used immediately, in-use storage times and conditions prior to use are the responsibility of the user and would normally not be longer than 24 hours at 2°C to 8°C unless dilution has taken place in controlled and validated aseptic conditions.

#### **Incompatibilities**

- DO NOT administer undiluted.
- Only 5% glucose infusion solution is to be used to dilute the product.
- DO NOT reconstitute or dilute Oxaliplatin Injection with saline or other solutions containing chloride ions (including calcium, potassium or sodium chloride).
- The diluted medicinal product should not be mixed with other medicinal products in the same infusion bag or infusion line. Oxaliplatin Injection can be co-administered with leucovorin via a Y-line (see **4.4 Administration, Instructions for use with leucovorin**).
- DO NOT mix with alkaline medicinal products or solutions, in particular 5-FU, leucovorin preparations containing trometamol as an excipient and trometamol salts of others active substances. Alkaline medicinal products or solutions will adversely affect the stability of Oxaliplatin Injection.
- DO NOT use injection equipment containing aluminium.

#### **Disposal**

Remnants of the medicinal product as well as all materials that have been used for reconstitution, for dilution and administration must be destroyed according to hospital standard procedures applicable to cytotoxic agents in accordance with local requirements related to the disposal of hazardous waste.

#### **4.4 Administration**

Oxaliplatin Injection is considered moderately emetogenic. Premedication with antiemetics, including 5-HT<sub>3</sub> blockers with or without dexamethasone, is recommended.

The administration of Oxaliplatin Injection does not require prehydration.

Oxaliplatin Injection is administered by intravenous infusion.

Oxaliplatin Injection (aqueous solution) must be diluted before use (see **4.3 Reconstitution, Dilution Before Infusion**).

Oxaliplatin Injection diluted in 250 to 500 mL of 5% glucose solution to give a concentration not less than 0.2 mg/mL must be infused via a central venous line or peripheral vein over 2 to 6 hours.

In the event of extravasation, administration must be discontinued immediately.

***Instruction for use with leucovorin (as calcium folinate or disodium folinate):***

Oxaliplatin Injection 85 mg/m<sup>2</sup> IV infusion in 250 to 500 mL of 5% glucose solution is given at the same time as leucovorin IV infusion in 5% glucose solution, over 2 to 6 hours, using a Y-line placed immediately before infusion.

These two drugs should not be combined in the same infusion bag.

Leucovorin must not contain trometamol as an excipient and must only be diluted using isotonic 5% glucose solution, never in alkaline solutions or sodium chloride or chloride containing solutions.

For information on leucovorin, see the Product Monograph and package insert.

***Instruction for use with 5-FU:***

**Oxaliplatin Injection should always be administered before fluoropyrimidines – i.e. 5-FU.**

After Oxaliplatin Injection administration, flush the line and then administer 5-FU.

For information on 5-FU, see the Product Monograph and package insert.

Oxaliplatin Injection aqueous solution does not need to be reconstituted. The aqueous solution **must be diluted** with 5% glucose solution before use (see **4.3 Reconstitution, Dilution Before Infusion**).

## **5 OVERDOSAGE**

The approved dose of Oxaliplatin Injection is 85 mg/m<sup>2</sup> every 2 weeks in combination with 5-FU/LV (see **4 DOSAGE AND ADMINISTRATION**).

In cases of overdose, exacerbation of adverse events can be expected.

In addition to thrombocytopenia, the anticipated complications of an Oxaliplatin Injection overdose include hypersensitivity reaction, myelosuppression, nausea and vomiting, diarrhea, neurotoxicity and cardiotoxicity.

Several cases of overdoses have been reported with oxaliplatin. Adverse events observed were grade 4 thrombocytopenia ( $<25,000/\text{mm}^3$ ) without any bleeding, anemia, blood creatinine increased, sensory neuropathy such as paresthesia, dysesthesia, laryngospasm and facial muscle spasms, asthenia, fatigue, anxiety, dizziness, gastrointestinal disorders such as diarrhea, nausea, vomiting, stomatitis, flatulence, abdomen enlarged and grade 4 intestinal obstruction, grade 4 dehydration, dyspnea, wheezing, hypotension, chest pain, respiratory failure and severe bradycardia.

Among overdose cases, one patient was mistakenly administered oxaliplatin instead of carboplatin. The patient received a total oxaliplatin dose of 500 mg and experienced dyspnea, wheezing, paresthesia, profuse vomiting and chest pain on the day of administration. The patient developed respiratory failure and severe bradycardia, and subsequent resuscitation efforts failed.

Another patient who was mistakenly administered a 700 mg dose experienced rapid onset of dysesthesia. Inpatient supportive care was given, including hydration, electrolyte support and platelet transfusion. Recovery occurred 15 days after the overdose. The maximum dose of oxaliplatin that has been administered in a single infusion is 825 mg. The patient who received this oxaliplatin dose experienced intestinal obstruction, dehydration, nausea, flatulence and an enlarged abdomen. The treatment was discontinued and the patient recovered.

There is no known antidote for oxaliplatin overdose. Patients suspected of receiving an overdose should be monitored and supportive treatment should be administered.

For management of a suspected drug overdose, contact your regional poison control centre.

## 6 DOSAGE FORMS, STRENGTHS, COMPOSITION AND PACKAGING

**Table 2 – Dosage Forms, Strengths, Composition and Packaging**

Route of Administration	Dosage Form / Strength/Composition	Non-medical Ingredients
Intravenous infusion	Aqueous solution 50 mg / 10 mL, 100 mg / 20 mL and 200 mg / 40 mL	Water for injection

Oxaliplatin Injection is supplied in a clear, glass, single-use vial containing 50 mg, 100 mg or 200 mg of oxaliplatin as a sterile, preservative-free, aqueous solution at a concentration of 5 mg /

mL. Water for Injection is present as a non-medicinal ingredient.

Oxaliplatin Injection 5 mg / mL, concentrate for solution for infusion, is a sterile, aqueous solution intended for infusion after dilution.

Oxaliplatin Injection is supplied in the following formats: 50 mg / 10 mL, 100 mg / 20 mL, and 200 mg / 40 mL one vial per carton.

**Oxaliplatin Injection 50 mg/10 mL:**

20 mL clear Type I Moulded glass vial with 20 mm neck stoppered with gray Bromobutyl rubber stopper sealed with Al seal having 20 mm of Sky Blue Colour pp disk.

**Oxaliplatin Injection 100 mg/20 mL:**

20 mL clear Type I Moulded glass vial with 20 mm neck stoppered with gray Bromobutyl rubber stopper sealed with Al seal having 20 mm of Grey Colour pp disk.

**Oxaliplatin Injection 200 mg/40 mL:**

50 mL clear Type I Moulded glass vial with 20 mm neck stoppered with gray Bromobutyl rubber stopper sealed with Al seal having 20 mm of Parrot Green Colour pp disk.

## **7 WARNINGS AND PRECAUTIONS**

Please see **3 SERIOUS WARNINGS AND PRECAUTIONS BOX**.

### **General**

Do not use Oxaliplatin Injection intraperitoneally. Peritoneal hemorrhage may occur when Oxaliplatin Injection is administered by intraperitoneal route (not an approved route of administration) (see **6 DOSAGE FORMS, STRENGTHS, COMPOSITION AND PACKAGING, Route of Administration**).

No studies on the effects on the ability to drive and operate machinery have been performed. However oxaliplatin treatment resulting in an increased risk of dizziness, nausea and vomiting, and neurologic gait and balance disorders may have influence on the ability to drive and operate machinery.

Vision abnormalities, in particular transient vision loss (reversible following therapy discontinuation), were reported with oxaliplatin administration (see **8.2 Clinical Trial Adverse Reactions, Other Clinical Trial Adverse Drug Reactions and 8.5 Post-Market Adverse Reactions, Eye Disorders**). Transient blindness episodes lasting for periods of seconds or minutes may recur repeatedly during the event duration (usually hours to days). Therefore, patients should be warned of the potential effect of these events on the ability to drive or operate machinery.

## **Infections and infestations**

Sepsis, neutropenic sepsis and septic shock have been reported in patients treated with oxaliplatin, including fatal outcomes. If any of these events occurs, Oxaliplatin Injection should be discontinued.

Administration of live or live attenuated vaccines in patients immunocompromised by chemotherapeutic agents, may result in serious or fatal infections. Vaccination with a live vaccine should be avoided in patients receiving oxaliplatin. Killed or inactivated vaccines may be administered; however, the response to such vaccines may be diminished.

## **Carcinogenesis and Mutagenesis**

Oxaliplatin was shown to be mutagenic and clastogenic in mammalian test systems *in vitro* and *in vivo*. The teratogenic potential of oxaliplatin was manifested by the embryonic mortality, decreased fetal weight and delayed ossifications in rats at doses up to 12 mg/m<sup>2</sup>/day. This daily dose is approximately one-sixth of the recommended human dose. Related compounds with similar mechanism of action and genotoxicity profiles have been reported to be teratogenic. Oxaliplatin may increase the risk of genetic defects or fetal malformations. Oxaliplatin is contraindicated in pregnancy. (see **7 WARNINGS AND PRECAUTION Reproductive Health: Female and Male Potential** and **16 NON-CLINICAL TOXICOLOGY**).

Carcinogenicity studies have not been performed with oxaliplatin. However given that oxaliplatin is genotoxic, it should be considered a human carcinogen, which should be taken into consideration for the overall risk/benefit in the adjuvant setting.

## **Cardiovascular**

Cases of QT prolongation and Torsade de Pointes have been reported. QT prolongation may lead to an increased risk for ventricular arrhythmias including Torsade de Pointes, which can be fatal. Caution should be exercised in patients with a history or a predisposition for prolongation of QT, those who are taking medicinal products known to prolong QT interval, and those with electrolyte disturbances such as hypokalemia, hypocalcaemia, or hypomagnesaemia. In case of QT prolongation, oxaliplatin treatment should be discontinued (see **8.5 Post-Market Adverse Reactions** and **9 DRUG INTERACTIONS**).

No formal clinical cardiac safety studies have been carried out. Preclinical data are limited. No standard hERG or Purkinje fibre tests have been done. Cardiotoxicity was observed in dogs (see **16 NON-CLINICAL TOXICOLOGY**). No formal clinical QT studies with oxaliplatin were done. The effect of oxaliplatin in combination with 5-HT<sub>3</sub> blocker antiemetics (given as pre-medication in clinical studies) on QTc has not been formally studied. In case of grade 3 or grade 4 hypersensitivity reaction associated with hemodynamic instability (eg. bradycardia, tachycardia, hypotension, hypertension) ECG monitoring should be done.

## Gastrointestinal

Gastrointestinal toxicity, which manifests as nausea and vomiting, warrants prophylactic and/or therapeutic antiemetic therapy (see **8 ADVERSE REACTIONS**).

Dehydration, ileus, intestinal obstruction, hypokalemia, metabolic acidosis, and even renal disorders, may be associated with severe diarrhea/emesis, particularly when combining oxaliplatin with 5-FU. In rare cases, colitis, including *Clostridium difficile* diarrhea, have occurred (see **8.2 Clinical Trial Adverse Reactions, Other Clinical Trial Adverse Drug Reactions**).

Patients must be adequately informed of the risk of diarrhea/emesis after oxaliplatin/5-FU administration in order to contact urgently their treating physician for appropriate management (see subsection **Monitoring and Laboratory Tests** below).

Cases of intestinal ischaemia, including fatal outcomes, have been reported with oxaliplatin treatment. In case of intestinal ischaemia, Oxaliplatin Injection treatment should be discontinued and appropriate measures initiated (see **8.5 Post-Market Adverse Reactions**).

Oxaliplatin treatment can cause duodenal ulcer (DU) and potential complications, such as duodenal ulcer haemorrhage and perforation, which can be fatal. In case of duodenal ulcer, Oxaliplatin Injection treatment should be discontinued and appropriate measures taken (see **8.5 Post-Market Adverse Reactions**).

## Hematologic

Patients must be adequately informed of the risk of neutropenia after oxaliplatin/5-FU administration in order to contact urgently their treating physician for appropriate management (see subsection **Monitoring and Laboratory Tests** below). Cases of febrile neutropenia (including fatal cases) have been reported (see **8.1 Adverse Reactions Overview – Blood and Lymphatic System Disorders**). If neutropenia or febrile neutropenia (fever of unknown origin without clinically or microbiologically documented infection with an absolute neutrophil count  $< 1.0 \times 10^9/L$ , a single temperature of  $> 38.3^\circ C$  or a sustained temperature of  $> 38^\circ C$  for more than one hour) occurs, Oxaliplatin Injection must be discontinued until improvement or resolution, and the dose of Oxaliplatin Injection should be reduced at subsequent cycles, in addition to any 5-FU dose reductions required (see **4 DOSAGE AND ADMINISTRATION**).

Thrombocytopenia is commonly seen with oxaliplatin combination therapy, although the risk of grade 3 or 4 bleeding is low (see **8.2 Clinical Trial Adverse Reactions**).

Anemia (rarely presenting as Hemolytic Uremic Syndrome) can also occur.

Hemolytic Uremic Syndrome (HUS) is a life-threatening side effect. Oxaliplatin Injection should be discontinued at the first signs of any evidence of microangiopathic hemolytic anemia, such

as rapidly falling hemoglobin with concomitant thrombocytopenia, elevation of serum bilirubin, serum creatinine, blood urea nitrogen, or lactate dehydrogenase (LDH). Renal failure may not be reversible with discontinuation of therapy and dialysis may be required.

Disseminated intravascular coagulation (DIC), including fatal outcomes, has been reported in association with oxaliplatin treatment. If DIC is present, Oxaliplatin Injection treatment should be discontinued and appropriate treatment should be administered (see **8.5 Post-Market Adverse Drugs Reactions**).

### **Hepatic/Biliary/Pancreatic**

Routine monitoring of liver function should be performed on all patients receiving Oxaliplatin Injection. Hepatotoxicity with the use of oxaliplatin plus 5-FU/LV has been noted in clinical studies (see **8.2 Clinical Trial Adverse Reactions**, “Hepatic Adverse Events” tables 4, 6 and 9). In adjuvant setting, elevation in hepatic enzymes (all grades: 57% vs. 34%) and alkaline phosphatase levels (all grades: 42% vs. 20%) was observed more frequently in FOLFOX4 arm than in the 5-FU/LV arm. Hepatic vascular disorders should be considered, and if appropriate, should be investigated in cases of abnormal liver function test results or portal hypertension, which cannot be explained by liver metastases. There is evidence that oxaliplatin causes liver sinusoidal obstruction syndrome, also known as veno-occlusive disease of the liver, which, on liver biopsy is manifested as peliosis, nodular regenerative hyperplasia, and perisinusoidal fibrosis. In the literature, there is a case report of fatal hepatic failure following liver metastasis resection in a patient treated pre-operatively with oxaliplatin. Very rare cases of hepatic failure, hepatitis and rare cases of pancreatitis have been reported (see **8.2 Clinical Trial Adverse Reactions – Other Clinical Trial Adverse Drug Reactions**).

**Hepatic Insufficiency:** No increase in oxaliplatin acute toxicities was observed in the subset of patients with abnormal liver function tests at baseline. No specific dose adjustment for patients with abnormal liver function tests was performed during clinical development.

### **Immune**

Hypersensitivity, anaphylactic reactions, and/or allergic reactions are reported with the use of oxaliplatin. The incidence of grade 3 or 4 events was 2-3% across clinical studies. In the post-marketing experience, some cases of anaphylaxis have been fatal. These allergic reactions can occur within minutes of oxaliplatin administration, and can include rash, urticaria, erythema, pruritus, laryngospasm and, rarely, bronchospasm and hypotension. Allergic reactions can occur during any cycle. Patients with a history of allergic reaction to platinum compounds should be monitored for allergic symptoms. In case of an anaphylactic-like reaction to oxaliplatin, the infusion should be immediately discontinued and appropriate symptomatic treatment initiated. These reactions are usually managed with epinephrine, corticosteroid, and antihistamine therapy. Oxaliplatin Injection rechallenge is contraindicated (see **3 SERIOUS WARNINGS AND PRECAUTIONS BOX**).



## Monitoring and Laboratory Tests

Complete blood count with differential, hemoglobin, platelets, and blood chemistries, including ALT, AST, bilirubin, creatinine, magnesium and electrolytes should be performed prior to the start of therapy and before each subsequent course (see **4.2 Recommended Dose and Dosage Adjustment**).

There have been reports while on study and from post-marketing surveillance of prolonged prothrombin time and INR occasionally associated with hemorrhage in patients who received oxaliplatin plus 5-FU/LV while on anticoagulants. Patients receiving oxaliplatin plus 5-FU/LV and requiring oral anticoagulants may require closer monitoring (see **9 DRUG INTERACTIONS**).

Patients receiving oxaliplatin combination therapy should be monitored for diarrhea, vomiting, and mucositis, which can lead to severe/life-threatening dehydration. If this occurs, discontinue Oxaliplatin Injection until improvement or resolution (see **4.2 Recommended Dose and Dosage Adjustment**).

A neurological examination should be performed before each administration and periodically thereafter. See **4.2 Recommended Dose and Dosage Adjustment** for guidance if neurological symptoms occur.

## Musculoskeletal

Rhabdomyolysis has been reported in patients treated with oxaliplatin, including fatal outcomes. In case of muscle pain and swelling, in combination with weakness, fever or darkened urine, Oxaliplatin Injection treatment should be discontinued. If rhabdomyolysis is confirmed, appropriate measures should be taken. Caution is recommended if medicinal products associated with rhabdomyolysis are administered concomitantly with Oxaliplatin Injection (see **8.5 Post-Market Adverse Reactions, 9 DRUG INTERACTIONS**).

## Neurologic

Oxaliplatin is consistently associated with two types of neuropathy:

**(1) An acute, reversible, sensory peripheral neuropathy can develop (reported in 85 to 95% of patients) at the end of the 2-hour oxaliplatin infusion, or within 1 to 2 days of dosing. It usually resolves between cycles, but frequently recurs with further cycles.** Symptoms may be precipitated or exacerbated by exposure to cold temperatures or objects. The symptoms usually present as transient paresthesias, dysesthesias and hypoesthesias in the hands, feet, perioral area, or throat. Other symptoms occasionally observed include, abnormal tongue sensation, dysarthria, eye pain, and throat or chest tightness. In addition, acute motor symptoms, including jaw spasms, muscle spasms, involuntary muscle contractions, ptosis, vocal cord paralysis and cranial nerve dysfunction have been reported. Acute neuropathy (all grades) occurred in 58% of patients with metastatic colorectal cancer receiving oxaliplatin plus 5-FU/LV

but grade 3/4 events occurred in only 4% of patients. In any individual cycle, acute neurotoxicity was observed in about one third of patients.

An acute syndrome of pharyngolaryngeal dysesthesia (grades 3/4) characterized by subjective sensations of dysphagia or dyspnea, feeling of suffocation, without any evidence of respiratory distress (no cyanosis or hypoxia) or of laryngospasm or bronchospasm (no stridor or wheezing) occurs in 1-2% of the patients. All grades of pharyngo-laryngeal dysesthesia were reported in up to 38% of the patients. Because cold temperatures can precipitate or exacerbate acute neurological symptoms, ice (mucositis prophylaxis) should be avoided during oxaliplatin infusion (see **4.2 Recommended Dose and Dosage Adjustment**).

**(2) A persistent peripheral sensory neuropathy can develop. It is characterized by paresthesias, dysesthesias and/or hypoesthesias, and may include deficits in proprioception, thus resulting in difficulties performing activities of daily living (ADLs). This can result in difficulty with delicate movements such as writing or buttoning, as well as difficulty walking due to impaired proprioception.**

In another clinical trial in patients with metastatic colorectal cancer, activities of daily living were evaluated. The most frequent abnormal abilities (up to 23% of the patients) were in relation with difficulties in fine movement/activities such as buttoning or zipping, writing and sewing, recognizing coins or keys, filling up a glass. Other activities were affected, such as going up or down stairs, walking in the dark, using car pedals. Abnormal ability was observed at 3 months after last treatment.

In the adjuvant colon cancer trial, neuropathy was graded using a prelisted module derived from the Neuro-Sensory section of the National Cancer Institute Common Toxicity Criteria (NCI CTC) as follows:

Grade	Definition
Grade 0	No change or none
Grade 1	Mild paresthesias, loss of deep tendon reflexes
Grade 2	Mild or moderate objective sensory loss, moderate paresthesias
Grade 3	Severe objective sensory loss or paresthesias that interfere with function

In adjuvant patients, sensory neuropathy was reported in 92% (all grades) and 13% (grade 3) of patients. The median cycle of onset for grade 3 neuropathy was cycle 9. At the 28-day follow-up after the last treatment cycle, 60% of all patients had neuropathy of any grade (grade 1 – 40%; grade 2 – 16%; grade 3 – 5%) decreasing to 21% at 18 months (grade 1 – 17%; grade 2 – 3%; grade 3 – 1%). At the 48-month follow-up, neuropathy status was as follows: grade 0 – 62%; grade 1 – 9%; grade 2 – 2%; grade 3 – 0.5%; not evaluable – 26.5%. This suggests that there can be partial or complete recovery of sensory neuropathy over time after cessation of therapy. However, in some cases, an increase in severity of the sensory neuropathy was reported years after completion of adjuvant therapy.

The long term impact of the neuropathy is difficult to measure, and needs to be considered carefully in the overall risk/benefit ratio during therapy with Oxaliplatin Injection.

In the metastatic colorectal cancer studies, neuropathy was graded using a study-specific neurotoxicity scale, which was different from the NCI CTC scale as follows:

Grade	Definition
Grade 1	Resolved and did not interfere with functioning
Grade 2	Interfered with function but not daily activities
Grade 3	Pain or functional impairment that interfered with daily activities
Grade 4	Persistent impairment that is disabling or life-threatening

In patients previously untreated for metastatic colorectal cancer, neuropathy was reported in 82% (all grades) and 19% (grade 3/4), and in the previously treated patients in 79% (all grades) and 11% (grade 3/4). The probability of developing peripheral sensory neuropathy is dependent upon the cumulative dose of oxaliplatin administered. These symptoms may improve in some patients upon discontinuation of Oxaliplatin Injection.

Sensory peripheral neurotoxicity of oxaliplatin should be carefully monitored, especially if co-administered with other medications with specific neurological toxicity (see **3 SERIOUS WARNINGS AND PRECAUTIONS BOX; 8 ADVERSE REACTIONS, Monitoring and Laboratory Tests below**). The risk factors that make a patient more likely to develop neuropathy have not been identified.

Cases of reversible posterior leucoencephalopathy syndrome (RPLS, also known as PRES, posterior reversible encephalopathy syndrome) have been reported with platinum agents and in combination regimens that include oxaliplatin. Signs and symptoms of RPLS could be headache, altered mental functioning, seizures, abnormal vision from blurriness to blindness, associated or not with hypertension (see **8 ADVERSE REACTIONS**). Diagnosis of RPLS is based upon confirmation by brain imaging.

Discontinuation of Oxaliplatin Injection and initiation of treatment of hypertension if present is recommended in patients developing RPLS. The safety of reinitiating oxaliplatin therapy in patients that previously experienced RPLS is unknown.

In a clinical trial, nerve conduction studies were performed at baseline and after 12 cycles of oxaliplatin 85 mg/m<sup>2</sup> every 2 weeks (or at end of treatment for patient that have discontinued earlier). Results showed decrease mostly in the sensory action potential amplitude (SAP) and slightly in the compound muscle action potential amplitude. The magnitude of the change in SAP amplitude increased in relation with the severity of the PSN, as clinically evaluated using the oxaliplatin neurological specific scale for evaluation of PSN.

## Renal

**Renal Insufficiency:** The primary route of platinum elimination is renal. Clearance of ultrafilterable platinum is decreased in patients with mild, moderate and severe renal impairment. A pharmacodynamic relationship between platinum ultrafiltrate levels and clinical safety and effectiveness has not been established (see **10 CLINICAL PHARMACOLOGY**).

Oxaliplatin has not been studied in patients with severe renal impairment (see **2 CONTRAINDICATIONS**).

Due to limited information on safety in patients with moderately impaired renal function, administration should be considered after suitable appraisal of the benefit/risk for the patient. In this situation, treatment may be initiated at the normally recommended dose and renal function should be closely monitored and dose adjusted according to toxicity.

## Reproductive Health: Female and Male Potential

See **2 CONTRAINDICATIONS, 7.1.1 Pregnant Women**.

- **Contraception in males and females**

Based on reproductive toxicity and genetic toxicity findings, women of childbearing potential should be advised to use effective contraception during treatment with oxaliplatin and for at least 9 months after the last dose.

Based on genetic toxicity findings, male patients with female partners of childbearing potential should be advised to use effective contraception during treatment with oxaliplatin and for at least 6 months after the last dose.

- **Fertility**

Testicular damage, characterized by degeneration, hypoplasia and atrophy, was observed in dogs administered oxaliplatin at 0.75 mg/kg/day (approximately one-sixth of the recommended human dose on a body surface area basis) for 5 days every 28 days for three cycles. A no effect level was not identified.

Male patients treated with oxaliplatin are advised to seek guidance on conservation of sperm prior to treatment because oxaliplatin may have an anti-fertility effect which could be irreversible.

- **Teratogenic Risk**

Oxaliplatin Injection may increase the risk of genetic defects or fetal malformations. Oxaliplatin Injection is contraindicated in pregnancy.

## Respiratory

Oxaliplatin has been uncommonly associated with pulmonary fibrosis/interstitial lung disease (< 1% of study patients). In the adjuvant trial, the combined incidence of cough and dyspnea in patients receiving oxaliplatin plus 5-FU/LV compared to patients receiving infusional 5-FU/LV alone was 7% vs. 5% (all grades) and 0.8% vs. 0.1% (grade 3-4), respectively. In previously untreated patients with metastatic colorectal cancer, the combined incidence of cough, dyspnea and hypoxia in patients receiving oxaliplatin plus 5-FU/LV vs. irinotecan plus 5-FU/LV was 43% vs. 32% (all grades) and 7% vs. 5% (grade 3-4). In previously treated patients, the combined incidence of cough, dyspnea and hypoxia in patients receiving oxaliplatin plus 5-FU/LV vs. 5-FU/LV alone was 30% vs. 21% (all grades) and 5% vs. 2% (grade 3-4). One fatal case of eosinophilic pneumonia was reported in a patient receiving combination oxaliplatin therapy on study.

In case of unexplained respiratory symptoms such as non-productive cough, dyspnea, crackles, or radiological pulmonary infiltrates, Oxaliplatin Injection should be discontinued until further pulmonary investigation excludes interstitial lung disease (see **3 SERIOUS WARNINGS AND PRECAUTIONS BOX** and **8 ADVERSE REACTIONS**). Fatal cases of interstitial lung disease have been reported in the post-market setting.

## Skin

In case of oxaliplatin extravasation, the infusion must be stopped immediately and usual local symptomatic treatment initiated. Extravasation of oxaliplatin may result in local pain and inflammation that may be severe and lead to complications, including necrosis and injection site reaction, including redness, swelling, and pain. In the literature, tissue necrosis has been reported with oxaliplatin extravasation.

## 7.1 Special Populations

### 7.1.1 Pregnant Women

To date, there is no available information on safety of use in pregnant women. Based on preclinical findings, oxaliplatin is likely to be lethal and/or teratogenic to the human foetus at the recommended therapeutic doses. Therefore, Oxaliplatin Injection is contraindicated in pregnancy.

As with other cytotoxic agents, effective contraceptive measures should be taken in potentially fertile patients (male and female) prior to initiating chemotherapy with Oxaliplatin Injection (see **2 CONTRAINDICATIONS**).

### 7.1.2 Breast-feeding

Excretion in breast milk has not been studied. Breast-feeding is contraindicated during Oxaliplatin Injection therapy and for 3 months after the last dose (see **2 CONTRAINDICATIONS**).

### 7.1.3 Pediatrics

**Pediatrics (≤ 22 years of age):** Health Canada has not authorized an indication for pediatric use. Oxaliplatin as a single agent has been evaluated in pediatric population in 2 Phase I (69 patients) and 2 Phase II (166 patients) studies. A total of 235 pediatric patients (7 months-22 years of age) with solid tumors have been treated. The effectiveness of oxaliplatin as a single agent in the pediatric populations treated has not been established. Accrual in both Phase II studies was stopped for lack of tumor response (see **1 INDICATIONS**).

### 7.1.4 Geriatrics

**Geriatrics (≥ 65 years of age):** In patients previously untreated for metastatic colorectal cancer, patients ≥ 65 years (99 of 279 patients) receiving oxaliplatin in combination with 5-FU/LV experienced more fatigue, dehydration, diarrhea, leukopenia, and syncope than patients < 65 years, although the difference was not statistically significant. Starting doses were the same in both age groups. In the adjuvant trial, patients ≥ 65 years receiving the oxaliplatin combination therapy (393 of 1108) experienced more grade 3-4 granulocytopenia and diarrhea than patients <65 years although the difference was not statistically significant.

## 8 ADVERSE REACTIONS

### 8.1 Adverse Reaction Overview

Both 5-FU and oxaliplatin are associated with gastrointestinal and hematologic adverse events. When oxaliplatin is administered in combination with 5-FU, the incidence of these events is increased.

The most common adverse reactions in patients treated with oxaliplatin in combination with 5-FU in the adjuvant colon and metastatic colorectal cancer trials were peripheral sensory neuropathies, fatigue, thrombocytopenia, anemia, neutropenia, nausea, vomiting, diarrhea, stomatitis and increase in hepatic enzymes and alkaline phosphatase (see **7 WARNINGS AND PRECAUTIONS**).

#### **Blood and Lymphatic System Disorders:**

Anemia, neutropenia and thrombocytopenia were reported with the combination of oxaliplatin and infusional 5-FU/LV (see **8.2 Clinical Trial Adverse Reactions**).

In adjuvant patients the incidence of febrile neutropenia was 0.1% in the 5-FU/LV infusion arm and 0.7% in the oxaliplatin plus 5-FU/LV arm. The incidence of febrile neutropenia in the patients previously untreated for metastatic colorectal cancer was 15% (3% of cycles) in the irinotecan plus 5-FU/LV arm and 4% (less than 1% of cycles) in the oxaliplatin plus 5-FU/LV arm.

The incidence of febrile neutropenia in the previously treated patients was 1% in the 5-FU/LV arm and 5% (less than 1% of cycles) in the oxaliplatin plus 5-FU/LV combination arm.

In adjuvant patients the incidence of thrombocytopenia (all grades) was 77% vs. 19% (oxaliplatin plus 5-FU/LV vs. 5-FU/LV) while grade 3-4 thrombocytopenia incidence was 1.7% vs. 0.4%. There were more bleeding events in the oxaliplatin plus 5-FU/LV arm (gastrointestinal hemorrhage 0.5%; hematemesis 0.3%; rectal hemorrhage 1.3%). The incidence of thrombocytopenia in patients previously untreated for metastatic colorectal cancer was higher in the oxaliplatin plus 5-FU/LV arm vs irinotecan plus 5-FU/LV arm (all grade thrombocytopenia: 70% vs. 26%; grade 3 and 4: 5% vs 2%). However, bleeding events in the oxaliplatin plus 5-FU/LV arm were infrequent and included: epistaxis, rectal bleeding, melena, vaginal bleeding, hematuria, and hemoptysis. The incidence of thrombocytopenia in patients previously treated for metastatic colorectal cancer was higher in the oxaliplatin plus 5-FU/LV arm vs. the 5-FU/LV arm (all grade thrombocytopenia: 67% vs 21%; grade 3 and 4: 6% vs. 0%).

Hemolytic Uremic Syndrome has been rarely reported with the use of oxaliplatin.

#### **Gastrointestinal Disorders:**

Anorexia, nausea, vomiting, diarrhea, stomatitis/mucositis and abdominal pain were commonly reported in the adjuvant treatment of patients with colon cancer and the previously untreated and treated patients for metastatic colorectal cancer (see **8.2 Clinical Trial Adverse Reactions**).

Dehydration, hypokalemia, metabolic acidosis, ileus, intestinal obstruction and renal disorders may be associated with severe diarrhea or vomiting, particularly when oxaliplatin is combined with 5-FU (see **7 WARNINGS AND PRECAUTIONS** and **8.2 Clinical Trial Adverse Reactions, Other Clinical Trial Adverse Drug Reactions**).

#### **General Disorders and Administration Site Conditions:**

Fever and rigors (tremors) either from infection (with or without febrile neutropenia) or possibly from immunological mechanism were reported in the adjuvant treatment of patients with colon cancer and in the previously untreated and treated patients for metastatic colorectal cancer (see **8.2 Clinical Trial Adverse Reactions**).

#### *Injection Site*

Injection site reactions, including local pain, redness, swelling and thrombosis have been reported (see **8.2 Clinical Trial Adverse Reactions**). In the literature, tissue necrosis has been reported with oxaliplatin extravasation.

#### **Immune System Disorders:**

Allergic reactions such as: skin rash (particularly urticaria), conjunctivitis, rhinitis and

anaphylactic reactions were reported (see **7 WARNINGS AND PRECAUTIONS** and **8.2 Clinical Trial Adverse Reactions**).

#### **Musculoskeletal and Connective Tissue Disorders:**

Back pain was reported in patients receiving oxaliplatin plus 5-FU/LV as adjuvant therapy and in the previously treated patients for metastatic colorectal cancer. In case of such adverse reaction, hemolysis (as part of Hemolytic Uremic Syndrome), which has been rarely reported, should be investigated (see **8.2 Clinical Trial Adverse Reactions**).

Arthralgia was also reported (see **8.2 Clinical Trial Adverse Reactions**).

#### **Nervous System Disorders:**

Oxaliplatin is frequently associated with acute and chronic sensory peripheral neuropathy. There have been very rare reports of symptoms compatible with a diagnosis of Guillain-Barre Syndrome, for which a causal relationship has not been established (see **8.2 Clinical Trial Adverse Reactions, Other Clinical Trial Adverse Drug Reactions**).

Peripheral sensory neuropathy was reported in adjuvant patients treated with the oxaliplatin combination with a frequency of 92% (all grades) and 13% (grade 3). In patients previously untreated for metastatic colorectal cancer, neuropathy was reported in 82% (all grades) and 19% (grade 3/4), and in the previously treated patients in 79% (all grades) and 11% (grade 3/4) events.

#### ***Peripheral Sensory Neuropathy***

##### *Acute sensory neuropathy*

These symptoms usually develop at the end of the 2-hour oxaliplatin infusion or within a few hours, abate spontaneously within the next hours or days, and frequently recur with further cycles. They may be precipitated or exacerbated by exposure to cold temperatures or objects. They usually present as transient paresthesia, dysesthesia and hypoesthesia. An acute syndrome of pharyngolaryngeal dysesthesia (grades 3/4) characterized by subjective sensations of dysphagia or dyspnea, feeling of suffocation, without any evidence of respiratory distress (no cyanosis or hypoxia) or of laryngospasm or bronchospasm (no stridor or wheezing) occurs in 1-2% of the patients. All grades of pharyngo- laryngeal dysesthesia were reported in up to 38% of the patients.

##### *Dysesthesia/ paresthesia of extremities and peripheral neuropathy*

The dose limiting toxicity of oxaliplatin is neurological. It involves a sensory peripheral neuropathy characterised by peripheral dysesthesia and/or paresthesia with or without cramps, often triggered by the cold (85 to 95% of patients).



The duration of these symptoms, which usually recede between the cycles of treatment, increases with the number of treatment cycles. The onset of pain and/or a functional disorder and their duration are indications for dose adjustment, or even treatment discontinuation (see **7 WARNINGS AND PRECAUTIONS; 4 DOSAGE AND ADMINISTRATION**). This functional disorder, including difficulties in executing delicate movements, is a possible consequence of sensory impairment. The risk of occurrence of a functional disorder for a cumulative dose of approximately 800 mg/m<sup>2</sup> (i.e. 10 cycles) is 15% or less. The neurological signs and symptoms improve when treatment is discontinued in the majority of cases.

#### Other neurologic manifestations

Other symptoms occasionally observed include cranial nerve dysfunction which may be either associated with above mentioned events, occur as a single, isolated event or several events may occur in combination. These include: ptosis, diplopia, aphonia, dysphonia, hoarseness, sometimes described as vocal cord paralysis, abnormal tongue sensation or dysarthria, sometimes described as aphasia, trigeminal neuralgia, facial pain, fasciculations, eye pain, decrease of visual acuity, visual field disorders, transient blindness (reversible following therapy discontinuation), amaurosis and amaurosis fugax. In addition, the following have been observed: jaw spasm, muscle spasms, involuntary muscle contractions, muscle twitching, myoclonus, abnormal coordination, abnormal gait, ataxia, balance disorders and throat or chest tightness/pressure/ discomfort/pain (see **7 WARNINGS AND PRECAUTIONS, General**).

Dysgeusia (taste perversion) was also reported (see **8.2 Clinical Trial Adverse Reactions**).

#### **Skin and Subcutaneous Tissue Disorders:**

Alopecia in patients receiving oxaliplatin has been reported across clinical studies with an incidence of approximately one third (all grades), most cases being mild hair loss only.

### **8.2 Clinical Trial Adverse Reactions**

Clinical trials are conducted under very specific conditions. The adverse reaction rates observed in the clinical trials; therefore, may not reflect the rates observed in practice and should not be compared to the rates in the clinical trials of another drug. Adverse reaction information from clinical trials may be useful in identifying and approximating rates of adverse drug reactions in real-world use.

#### ***PATIENTS TREATED IN THE ADJUVANT SETTING FOR COLON CANCER***

One thousand one hundred and eight (1108) patients with colon cancer were treated adjuvantly in a clinical study with oxaliplatin in combination with infusional 5-FU/LV (see **14 CLINICAL TRIALS**).

Treatment was discontinued due to an adverse event in 15% of patients on the oxaliplatin plus infusional 5-FU/LV arm compared to 6% of patients on the 5-FU/LV only arm.

The incidence of death within 28 days of last treatment, regardless of causality, was 0.5% (n = 6) in both the oxaliplatin combination (primarily septic deaths) and infusional 5-FU/LV arms, respectively.

Deaths within 60 days from initiation of therapy were 0.3% (n = 3) in both the oxaliplatin combination and infusional 5-FU/LV arms, respectively.

Although specific events can vary, the overall frequency of adverse events was similar in men and women and in patients <65 and ≥ 65 years. However, the following grade 3/4 events were more common in females regardless of treatment arm: diarrhea, fatigue, granulocytopenia, nausea and vomiting. In patients ≥ 65 years old, the incidence of grade 3/4 granulocytopenia and diarrhea was higher than in younger patients, although the difference was not statistically significant.

The following table provides adverse events reported in the adjuvant treatment of patients with colon cancer pivotal study (see **14 CLINICAL TRIALS**) for events with overall incidences ≥ 5 % in the arm combining oxaliplatin and 5-FU/LV.

**Table 3 Adverse Events Reported in the Adjuvant Treatment of Patients with Colon Cancer Pivotal Clinical Trial (≥ 5% of all patients in the oxaliplatin + 5-FU/LV arm) – by Body System**

Adverse Event (WHO/Pref)	Oxaliplatin+ 5-FU/LV N=1108		5-FU/LV N=1111	
	All Grades (%)	Grade 3/4 (%)	All Grades (%)	Grade 3/4 (%)
Any Event	100	70	99	31
<b>Application Site Disorders</b>				
Injection Site Reaction	11	3	10	3
<b>Body as a Whole – General Disorders</b>				
Allergic Reaction	10	3	2	<1
Fatigue	44	4	38	1
Fever	27	1	12	1
Pain	5	<1	5	<1
Weight Increase	10	<1	10	<1
<b>Central and Peripheral Nervous System Disorders</b>				
Headache	7	<1	5	<1
Overall Peripheral Sensory Neuropathy <sup>2</sup>	92	12	16	<1
Sensory Disturbance	8	<1	1	0
<b>Gastrointestinal System Disorders</b>				
Abdominal Pain	18	1	17	2
Anorexia	13	1	8	<1
Constipation	22	1	19	<1
Diarrhea	56	11	48	7

Dyspepsia	8	<1	5	0
Nausea	74	5	61	2
Stomatitis	42	3	40	2
Vomiting	47	6	24	1
<b>Liver and Biliary System Disorders</b>				
Bilirubinemia	20	4	20	5
Hepatic Enzyme Increased	57	2	34	1
<b>Metabolic and Nutritional Disorders</b>				
Phosphatase Alkaline Increased	42	<1	20	<1
<b>Platelet, Bleeding and Clotting Disorders</b>				
Epistaxis	16	<1	12	0
Thrombocytopenia	77	2	19	<1
<b>Red Blood Cell Disorders</b>				
Anemia	76	1	67	<1
<b>Resistance Mechanism Disorders</b>				
Infection	25	4	25	3
<b>Respiratory System Disorders</b>				
Dyspnea	5	1	3	<1
Rhinitis	6	0	8	<1
<b>Skin and Appendage Disorders</b>				
Alopecia <sup>1</sup>	30	0	28	0
Skin Disorders	32	2	36	2
<b>Special Senses Disorders</b>				
Taste Perversion	12	<1	8	0
<b>Vision Disorders</b>				
Conjunctivitis	9	1	15	1
<b>White Cell and Res Disorders</b>				
Granulocytopenia	79	41	40	5

<sup>1</sup> Alopecia: only grades 1 and 2 according to the NCI grading scale used

<sup>2</sup> Overall Peripheral Sensory Neuropathy: only grades 1, 2 and 3 according to the NCI grading scale used RES: reticulo-endothelial system

The following additional most common and potentially important adverse events regardless of treatment causality were reported in less than 5% of the patients in the oxaliplatin combined with 5-FU/LV arm in the pivotal study in the adjuvant treatment of patients with colon cancer.

**Body as a whole – General Disorders:** chest pain

**Central & Peripheral Nervous System Disorders:** dizziness

**Metabolic/laboratory:** magnesium levels were not prospectively tested

**Psychiatric Disorders:** insomnia

**Respiratory System Disorders:** coughing

**Vision Disorders:** abnormal lacrimation

**White Cell and Reticulo-endothelial System Disorders:** leukopenia

***PATIENTS PREVIOUSLY UNTREATED FOR METASTATIC COLORECTAL CANCER***

Two hundred and fifty-nine (259) patients were treated in the oxaliplatin plus 5-FU/LV combination arm of the randomized trial in patients previously untreated for metastatic colorectal cancer (see **14 CLINICAL TRIALS**).

Twenty-six percent (26 %) of patients in the oxaliplatin plus 5-FU/LV combination arm and 8 % in the irinotecan plus 5-FU/LV arm had to discontinue treatment because of adverse effects related most commonly to gastrointestinal, hematologic or neurologic adverse events.

The incidence of death within 30 days of treatment in the previously untreated for metastatic colorectal cancer study, regardless of causality, was 3% with the oxaliplatin plus 5-FU/LV, 5% with irinotecan plus 5-FU/LV and 3% with oxaliplatin plus irinotecan. Deaths within 60 days from initiation of therapy were 2% with oxaliplatin plus 5-FU/LV, 5% with irinotecan plus 5-FU/LV and 3% with oxaliplatin plus irinotecan. Deaths within 60 days from initiation of therapy on the oxaliplatin plus 5-FU/LV arm were attributed to disease progression, sepsis, dehydration/electrolyte imbalance, and liver failure.

The following adverse events were reported more frequently in patients  $\geq$  65 years old on the oxaliplatin and 5-FU/LV combination arm: constitutional symptoms, fatigue, anorexia, dehydration, leukopenia, musculoskeletal events, syncope and pulmonary events.

For any class of adverse event (all inclusive), the overall reported cases were similar across arms and populations. When grade 3 or 4 events were evaluated, the female patient population reported a higher number of events independent of treatment arm.

The following table provides adverse events reported in the previously untreated for metastatic colorectal cancer pivotal study (see **14 CLINICAL TRIALS**) for events with overall incidences  $\geq$  5% in the oxaliplatin and 5-FU/LV combination arm.

**Table 4 - Adverse Events Reported in Patients Previously Untreated for Metastatic Colorectal Cancer Clinical Trial ( $\geq$  5% of all patients in the oxaliplatin + 5-FU/LV arm) – by Body System**

Adverse Event (WHO/Pref)	Oxaliplatin + 5-FU/LV N =259		irinotecan + 5-FU/LV N=256		Oxaliplatin + Irinotecan N=258	
	All Grades (%)	Grade 3/4 (%)	All Grades (%)	Grade 3/4 (%)	All Grades (%)	Grade $\geq$ 4 (%)
Any Event	99	82	98	70	99	76
<b>Allergy/Immunology</b>						

Allergic rhinitis	10	0	6	0	6	0
Hypersensitivity	12	2	5	0	6	1
<b>Cardiovascular</b>						
Oedema	15	0	13	<1	10	1
Thrombosis	6	5	6	6	3	3
<b>Constitutional Symptoms</b>						
Fatigue	70	7	58	11	66	16
Fever - no ANC*	16	1	9	<1	9	0
Rigors	8	<1	2	0	7	0
Sweating	5	0	6	0	12	0
Weight loss	11	0	9	<1	11	<1
<b>Dermatology/Skin</b>						
Alopecia	38	0	44	0	67	0
Dermatology NOS*	6	0	1	0	2	0
Dry skin	6	0	2	0	5	0
Flushing	7	0	2	0	5	0
Injection site reaction	6	0	1	0	4	1
Pruritus	6	0	4	0	2	0
Rash	11	<1	4	0	7	1
Skin reaction – hand/foot syndrome	7	1	2	<1	1	0
<b>Gastrointestinal</b>						
Anorexia	35	2	25	4	27	5
Constipation	32	4	27	2	21	2
Dehydration	9	5	16	11	14	7
Diarrhea - colostomy	13	2	16	7	16	3
Diarrhea - no colostomy	56	12	65	29	76	25
Dyspepsia	12	0	7	0	5	<1
Dysphagia	5	0	3	0	3	<1
Flatulence	9	0	6	0	5	<1
Mouth dryness	5	0	2	0	3	0
Nausea	71	6	67	15	83	19
Stomatitis	38	0	25	1	19	<1
Taste	14	0	6	0	8	<1
Vomiting	41	4	43	13	64	23
<b>Hemorrhage</b>						
Epistaxis	10	0	2	0	2	<1
<b>Infection/Febrile Neutropenia</b>						
Infection – ANC*	8	8	12	11	9	8
Infection - no ANC*	10	4	5	1	7	2
<b>Neurology</b>						
Anxiety	5	0	2	0	6	<1
Depression	9	1	5	<1	7	1
Dizziness	8	<1	6	0	10	1

Insomnia	13	0	9	0	11	0
Neuro-sensory	12	1	2	0	9	1
Paresthesias	77	18	16	2	62	7
Pharyngo-laryngeal dysesthesias	38	2	1	0	28	1
<b>Ocular/Visual</b>						
Abnormal vision	5	0	2	<1	6	1
Tearing	9	0	1	0	2	<1
<b>Pain</b>						
Abdominal pain	29	8	31	7	39	10
Arthralgia	5	<1	5	0	8	<1
Headache	13	<1	6	<1	9	<1
Myalgia	14	2	6	0	9	2
Pain	7	1	5	1	6	1
<b>Pulmonary</b>						
Cough	35	1	25	2	17	<1
Dyspnea	18	7	14	3	11	2
<b>Renal/Genitourinary</b>						
Urinary frequency	5	1	2	<1	3	1

\* ANC: absolute neutrophil count; NOS: Not otherwise specified

The following additional most common and potentially important adverse events regardless of treatment causality were reported in less than 5% of the patients in the oxaliplatin and 5-FU/LV combination arm in the previously untreated for metastatic colorectal cancer pivotal study.

**Cardiovascular:** hypertension, hypotension, prothrombin time

**Dermatology/skin:** nail changes, pigmentation changes, urticaria

**Gastrointestinal:** gastrointestinal not otherwise specified (NOS)

**Hemorrhage:** rectal bleeding

**Infection/febrile neutropenia:** catheter infection, febrile neutropenia, unknown infection

**Metabolic/laboratory:** magnesium levels were not prospectively tested

**Neurology:** syncope, vertigo

**Pain:** bone pain, chest pain, neuralgia, rectal pain

**Pulmonary:** hiccups, hypoxia, pneumonitis, pulmonary NOS

**Renal/Genitourinary:** creatinine, dysuria

**PATIENTS PREVIOUSLY TREATED FOR METASTATIC COLORECTAL CANCER**

Seven hundred and ninety one (791) patients were studied in a randomized trial in patients with refractory and relapsed colorectal cancer in which 268 patients received the combination of oxaliplatin and 5-FU/LV (see **14 CLINICAL TRIALS**).

Fourteen percent (14 %) of patients in the oxaliplatin and 5-FU/LV combination arm and 7 % in the 5- FU/LV arm of the previously treated study had to discontinue treatment because of adverse effects related to allergy, fatigue, gastrointestinal events, hematological events or neuropathies.

The incidence of death within 30 days of treatment in the previously treated study, regardless of causality, was 6 % with the oxaliplatin and 5-FU/LV combination, 6 % with oxaliplatin alone and 5 % with 5-FU/LV.

The following adverse events were reported more frequently in patients ≥ 65 years old on the oxaliplatin and 5-FU/LV combination arm: cellulitis, general cardiovascular disorders, anorexia, dehydration, platelet, bleeding and clotting disorders and secondary terms.

For any class of adverse event (all inclusive), the proportion of patients reporting adverse events (all grade) was similar across arms and patient populations (male, female). When grade 3 or 4 events were evaluated, the female patient population reported a higher number of events independent of treatment arm.

The following table provides adverse events reported in the previously treated pivotal study (see **14 CLINICAL TRIALS**) for events with overall incidences ≥ 5 % in the oxaliplatin and 5-FU/LV combination arm.

**Table 5 - Adverse Events Reported in Patients Previously Treated for Metastatic Colorectal Cancer Clinical Trial (≥ 5 % of all patients in the oxaliplatin + 5-FU/LV arm) – by Body System**

Adverse Event (WHO/Pref)	Oxaliplatin + 5-FU/LV (N = 268)		Oxaliplatin (N = 266)		5-FU/LV (N = 257)	
	All Grades (%)	Grade 3/4 (%)	All Grades (%)	Grade 3/4 (%)	All Grades (%)	Grade 3/4 (%)
Any event	100	81	100	46	98	44
<b>Application Site Disorders</b>						
Injection site reaction	13	3	7	0	7	1
<b>Autonomic Nervous System Disorders</b>						
Flushing	10	0	3	0	2	0
<b>Body as a Whole</b>						
Accidental injury	7	0	2	0	4	0

Allergic reaction	8	1	3	1	2	1
Chest pain	8	1	4	<1	5	1
Fatigue	75	10	59	10	57	6
Fever	31	0	20	1	19	1
Pain	16	2	13	3	12	3
Rigors	11	0	7	0	5	0
Weight decrease	9	<1	8	0	6	0
<b>Cardiovascular Disorders, General</b>						
Oedema legs	8	<1	5	1	6	1
Peripheral oedema	6	0	3	<1	5	1
<b>Central &amp; Peripheral Nervous System Disorders</b>						
Dizziness	15	1	7	<1	9	<1
Headache	16	<1	14	0	10	1
Neuropathy	6	<1	9	0	2	<1
Paresthesia	54	7	49	2	13	0
Sensory disturbance	58	4	58	4	2	0
<b>Gastrointestinal System Disorders</b>						
Abdominal pain	35	4	32	6	33	5
Anorexia	33	3	25	2	22	2
Constipation	33	1	32	2	24	1
Diarrhea	65	11	40	3	42	2
Dyspepsia	13	0	7	0	9	0
Flatulence	9	0	5	<1	8	0
Hiccup	5	<1	2	0	1	<1
Intestinal obstruction	5	5	4	3	2	2
Mucositis NOS*	8	1	2	0	9	1
Nausea	68	10	58	4	53	2
Stomatitis	28	2	8	0	22	1
Vomiting	44	9	38	5	27	2
<b>Metabolic and Nutritional Disorders</b>						
Dehydration	9	4	5	3	4	2
<b>Musculo-skeletal System Disorders</b>						
Arthralgia	10	1	8	<1	11	3
Back pain	16	2	11	<1	17	4
Myalgia	6	<1	4	0	2	0
<b>Neoplasms</b>						
Aggravated neoplasm malignant	13	12	10	9	13	13
<b>Platelet, Bleeding &amp; Clotting Disorders</b>						
Epistaxis	11	0	3	0	3	0
Hematuria	6	2	1	0	3	1
Thrombocytopenia	15	5	5	1	0	0
<b>Psychiatric Disorders</b>						
Anxiety	7	<1	6	0	5	0
Depression	7	<1	5	0	5	<1



Insomnia	16	0	9	<1	5	0
<b>Red Blood Cell Disorders</b>						
Anemia	20	5	7	1	11	2
<b>Respiratory System Disorders</b>						
Coughing	19	2	10	<1	13	0
Dyspnea	20	3	13	4	13	2
Pharyngitis	10	0	2	0	7	0
Rhinitis	13	0	6	0	7	0
Sinusitis	6	0	3	0	4	0
Upper respi. tract infection	12	1	7	0	9	0
<b>Skin and Appendage Disorders</b>						
Alopecia	8	0	3	<1	4	0
Rash	14	0	4	0	5	0
Skin exfoliation	9	1	2	0	11	1
Sweating increased	7	0	8	0	4	0
<b>Special Senses Other, Disorders</b>						
Taste perversion	12	0	3	0	4	0
<b>Urinary System Disorders</b>						
Dysuria	6	<1	1	0	2	<1
Urinary tract infection	5	<1	5	2	4	1
<b>Vision Disorders-</b>						
Abnormal lacrimation	8	0	1	0	8	0
<b>White Cell and RES Disorders*</b>						
Decreased neutrophils	5	2	0	0	<1	<1
Granulocytopenia	52	41	1	0	9	3
Leukopenia	9	4	0	0	1	<1

\* NOS: Not otherwise specified; RES: Reticulo-Endothelial System

The following additional most common and potentially important adverse events regardless of treatment causality were reported in less than 5% of the patients in the oxaliplatin and 5-FU/LV combination arm in the previously treated for metastatic colorectal cancer pivotal study.

**Body as a whole – General Disorders:** ascites

**Cardiovascular Disorders, General:** oedema

**Central and Peripheral Nervous System Disorders:** ataxia

**Gastro-intestinal System Disorders:** dry mouth, gastroesophageal reflux, tenesmus

**Heart Rate and Rhythm Disorders:** tachycardia

**Metabolic/laboratory:** magnesium levels were not prospectively tested

**Musculo-Skeletal System Disorders:** bone pain

**Platelet, Bleeding and Clotting Disorders:** bruise, deep thrombophlebitis, melena, rectal hemorrhage

**Respiratory System Disorders:** pneumonia

**Skin and Appendage Disorders:** dry skin, erythematous rash, pruritus, skin disorder

**Vision Disorders:** abnormal vision, conjunctivitis

**White Cell and Reticulo-Endothelial System Disorders:** febrile neutropenia

### **Other Clinical Trial Adverse Drug Reactions**

Frequencies are defined using the following convention: very common ( $\geq 10\%$ ); common ( $\geq 1\%$ ,  $< 10\%$ ).

#### **Gastrointestinal Disorders:**

*Very common:* Dehydration, hypokalemia, metabolic acidosis, ileus, intestinal obstruction, renal disorders may be associated with severe diarrhea/vomiting, particularly when oxaliplatin is combined with 5-FU.

*Common:* gastrointestinal hemorrhage

#### **General Disorders and Administration Site Conditions:**

*Very common:* asthenia.

Extravasation may also result in local pain and inflammation, which may be severe and lead to complications including necrosis, especially when oxaliplatin is infused through a peripheral vein.

#### **Immune System Disorders:**

*Common:* anaphylactic reactions including bronchospasm, angioedema, hypotension, sensation of chest pain and anaphylactic shock.

#### **Nervous System Disorders:**

*Very common:* acute neuro-sensory manifestations, dysesthesia, paresthesia of extremities, peripheral neuropathy and neuritis.

#### **Vascular Disorders:**

*Common:* hypertension, thromboembolic events, including deep vein thrombosis.

### **8.3 Less Common Clinical Trial Adverse Reactions**

Frequencies are defined using the following convention: uncommon ( $\geq 0.1\%$ ,  $< 1\%$ ); rare ( $\geq 0.01\%$ ,  $< 0.1\%$ ); very rare ( $< 0.01\%$ ), not known (cannot be estimated from the available data).

**Blood and Lymphatic System Disorders:**

*Rare:* hemolysis

**Ear and Labyrinth Disorders:**

*Rare:* deafness.

**Eye Disorders:**

*Rare:* visual acuity reduced transiently, optic neuritis, transient vision loss reversible following therapy discontinuation, visual field disturbances. Several cases of positive rechallenge associated with subsequent cycles of chemotherapy were reported indicating probable causal relationship to oxaliplatin.

**Gastrointestinal Disorders:**

*Rare:* colitis, including *Clostridium difficile* diarrhea

**General Disorders and Administration Site Conditions:**

Extravasation may also result in local pain and inflammation, which may be severe and lead to complications including necrosis, especially when oxaliplatin is infused through a peripheral vein.

**Hepatobiliary Disorders:**

*Rare:* pancreatitis

*Very rare:* hepatic failure, hepatitis, liver sinusoidal obstruction syndrome, also known as veno-occlusive disease of liver, or pathological manifestations related to such liver disorder, including nodular regenerative hyperplasia, peliosis hepatis, perisinusoidal fibrosis. Clinical manifestations of this syndrome may be portal hypertension and/or increased transaminases.

**Immune System Disorders:**

*Rare:* immuno-allergic hemolytic anemia, immuno-allergic thrombocytopenia.

**Nervous System Disorders:**

*Rare:* dysarthria, Lhermitte's sign, loss of deep tendon reflexes, reversible posterior leucoencephalopathy syndrome (RPLS, also known as PRES) (see **7 WARNINGS AND PRECAUTIONS, Neurologic**).

*Very rare:* Reports of symptoms compatible with a diagnosis of Guillain-Barre Syndrome. Causal relationship has not been established.

**Renal and Urinary Disorders:**

*Very rare:* acute tubular necrosis, acute interstitial nephritis and acute renal failure were reported.

**Respiratory, Thoracic and Mediastinal Disorders:**

*Rare:* acute interstitial lung diseases (including fatalities), pulmonary fibrosis (see **7 WARNINGS AND PRECAUTIONS**).

**8.4 Abnormal Laboratory Findings: Hematologic, Clinical Chemistry and Other Quantitative Data****Clinical Trial Findings*****PATIENTS TREATED IN THE ADJUVANT SETTING FOR COLON CANCER*****Table 6 – Hepatic Adverse Events in Patients with Colon Cancer Receiving Adjuvant Therapy (≥ 5% of patients)**

Hepatic Parameter	Oxaliplatin + 5-FU/LV (N=1108)		5-FU/LV (N=1111)	
	All Grades (%)	Grade 3/4 (%)	All Grades (%)	Grade 3/4 (%)
Hepatic enzymes elevation	57	2	34	1
Phosphatase alkaline increased	42	<1	20	<1
Bilirubinemia	20	4	20	5

**Table 7 – Hematologic Adverse Events in Patients with Colon Cancer Receiving Adjuvant Therapy (≥ 5% of patients)**

Adverse Event* (WHO/Pref)	Oxaliplatin + 5-FU/LV (N = 1108)		5-FU/LV (N = 1111)	
	All Grades (%)	Grade 3/4 (%)	All Grades (%)	Grade 3/4 (%)
Anemia	76	1	67	0.3
Neutropenia	79	41	40	5
Thrombocytopenia	77	2	19	<1

\*The hematology data were collected by NCI grade; no laboratory values were collected. The worst grade observed during each cycle period was reported.

***PATIENTS PREVIOUSLY UNTREATED FOR METASTATIC COLORECTAL CANCER*****Table 8 - Hepatic Adverse Events in Patients Previously Untreated for Metastatic Colorectal Cancer (≥ 5% of patients).**

	Oxaliplatin + 5-FU/LV N =259	Irinotecan + 5-FU/LV N=256	Oxaliplatin + irinotecan N=258

Adverse Event (WHO/Pref)	All Grades (%)	Grade 3/4 (%)	All Grades (%)	Grade 3/4 (%)	All Grades (%)	Grade 3/4 (%)
Alkaline phosphatase	16	0	7	0	16	2
ALT (SGPT)*	6	1	2	0	5	2
AST (SGOT)*	17	1	2	<1	11	1
Bilirubin Total	6	<1	3	1	3	2
Hypoalbuminemia	8	0	5	2	9	<1

\* AST/SGOT: aspartate aminotransferase; ALT/SGPT: alanine aminotransferase

**Table 9 - Hematologic Adverse Events in Patients Previously Untreated for Metastatic Colorectal Cancer (≥ 5% of patients).**

Adverse Event (WHO/Pref)	Oxaliplatin + 5-FU/LV N =259		Irinotecan + 5-FU/LV N=256		Oxaliplatin + irinotecan N= 258	
	All Grades (%)	Grade 3/4 (%)	All Grades (%)	Grade 3/4 (%)	All Grades (%)	Grade 3/4 (%)
Anemia	27	3	28	4	25	3
Leukopenia	87	20	84	23	78	25
Lymphopenia	6	2	4	1	5	2
Neutropenia	81	54	77	46	73	39
Thrombocytopenia	71	5	26	3	45	4

**Table 10 – Metabolic Adverse Events in Patients Previously Untreated for Metastatic Colorectal Cancer (≥ 5% of patients).**

Adverse Event (WHO/Pref)	Oxaliplatin + 5-FU/LV N =259		Irinotecan + 5-FU/LV N=256		Oxaliplatin + irinotecan N= 258	
	All Grades (%)	Grade 3/4 (%)	All Grades (%)	Grade 3/4 (%)	All Grades (%)	Grade 3/4 (%)
Hyperglycemia	14	2	11	3	12	3
Hypocalcemia	7	0	5	1	4	0
Hypokalemia	11	3	7	4	6	2
Hyponatremia	8	2	7	4	4	1

**PATIENTS PREVIOUSLY TREATED FOR METASTATIC COLORECTAL CANCER**

**Table 11 – Hepatic Clinical Chemistry Abnormalities in Patients Previously Treated for Metastatic Colorectal Cancer (≥ 5% of patients).**

	Oxaliplatin + 5-FU/LV (N = 268)		Oxaliplatin (N=266)		5-FU/LV (N = 257)	
	All Grades (%)	Grade 3/4 (%)	All Grades (%)	Grade 3/4 (%)	All Grades (%)	Grade 3/4 (%)
<b>Clinical Chemistry</b>						
Alkaline phosphatase	60	4	60	7	50	5
ALT (SGPT)*	36	0	39	1	27	1
AST (SGOT)*	53	0	57	4	42	2
Bilirubin Total	13	1	15	4	20	6
Lactate dehydrogenase	53	22	53	23	46	24

\*AST/SGOT: aspartate aminotransferase; ALT/SGPT: alanine aminotransferase

**Table 12 - Clinically Significant Hematologic Abnormalities by Preferred Term and Body System in Patients Previously Treated for Metastatic Colorectal Cancer (≥ 5% of patients).**

Adverse Event (WHO/Pref)	Oxaliplatin + 5-FU/LV (N = 268)		Oxaliplatin (N = 266)		5-FU/LV (N = 257)	
	All Grades (%)	Grade 3/4 (%)	All Grades (%)	Grade 3/4 (%)	All Grades (%)	Grade 3/4 (%)
Anemia	84	5	61	2	67	2
Leukopenia	81	27	13	<1	35	2
Neutropenia	77	52	7	0	25	6
Thrombocytopenia	67	6	28	2	21	0

**Table 13 – Metabolic Adverse Event by Preferred Term and Body System in Patients Previously Treated for Metastatic Colorectal Cancer (≥ 5 % of patients).**

Adverse Event (WHO/Pref)	Oxaliplatin + 5-FU/LV (N = 268)		Oxaliplatin (N = 266)		5-FU/LV (N = 257)	
	All Grades (%)	Grade 3/4 (%)	All Grades (%)	Grade 3/4 (%)	All Grades (%)	Grade 3/4 (%)
Hypokalemia	9	6	3	2	3	1

### 8.5 Post-Market Adverse Reactions

The following events have been reported from worldwide post-marketing experience.

**Blood and Lymphatic System Disorders:** hemolytic uremic syndrome; febrile neutropenia;

disseminated intravascular coagulation (DIC), including fatalities (see **7 WARNINGS AND PRECAUTIONS, Hematologic**), autoimmune pancytopenia, pancytopenia, secondary leukemia.

**Cardiac Disorders:** QT prolongation, which may lead to ventricular arrhythmias including Torsade de Pointes, which may be fatal (see **7 WARNINGS AND PRECAUTIONS, Cardiovascular**).

**Eye Disorders:** amaurosis, amaurosis fugax. Cases of positive rechallenge associated with subsequent cycles of chemotherapy were reported indicating probable causal relationship to oxaliplatin.

Few cases of optic ischemic neuropathy were reported without established causal relationship.

**Gastrointestinal disorders:** intestinal ischaemia (including fatalities); duodenal ulcer, and complications, such as duodenal ulcer haemorrhage or perforation, which can be fatal (see **7 WARNINGS AND PRECAUTIONS, Gastrointestinal**).

**Hepatobiliary Disorders:** increased bilirubin, focal nodular hyperplasia.

**Immune System Disorders:** delayed hypersensitivity.

**Infections and Infestations:** sepsis, neutropenic sepsis, septic shock, including fatal outcome (see **7 WARNINGS AND PRECAUTIONS, General, Infections and Infestations**).

**Metabolism and Nutrition Disorders:** Hypomagnesemia.

**Musculoskeletal and Connective Tissue Disorders:** Rhabdomyolysis (including fatalities) (see **7 WARNINGS AND PRECAUTIONS, Musculoskeletal**).

**Nervous System Disorders:** convulsion, hyperammonaemic encephalopathy, ischemic and hemorrhagic cerebrovascular disorder.

**Respiratory, Thoracic and Mediastinal Disorders:** laryngospasm, pneumonia and bronchopneumonia, including fatal outcomes.

**Skin and Subcutaneous Tissue Disorders:** hypersensitivity vasculitis.

## **9 DRUG INTERACTIONS**

### **9.1 Drug Interactions Overview**

No specific cytochrome P-450-based drug interaction studies have been conducted.

*In vitro*, oxaliplatin is not metabolized by, nor does it inhibit, human cytochrome P450

isoenzymes. No P450-mediated drug-drug interactions are therefore anticipated in patients.

Since platinum-containing species are eliminated primarily through the kidney, clearance of these products may be decreased by coadministration of potentially nephrotoxic compounds; although, this has not been specifically studied (see **10 CLINICAL PHARMACOLOGY**).

## **9.2 Drug-Drug Interactions**

In patients who have received a single dose of 85 mg/m<sup>2</sup> of oxaliplatin immediately before administration of 5-FU, no change in the level of exposure to 5-FU has been observed. No pharmacokinetic interaction between 85 mg/m<sup>2</sup> oxaliplatin and 5-FU/LV has been observed in patients treated every 2 weeks. Increases of 5-FU plasma concentrations by approximately 20% have been observed with doses of 130 mg/m<sup>2</sup> oxaliplatin administered every 3 weeks. The approved dose of Oxaliplatin Injection is 85 mg/m<sup>2</sup> every 2 weeks in combination with 5-FU/LV (see **4 DOSAGE AND ADMINISTRATION**).

*In vitro*, platinum was not displaced from plasma proteins by the following medications: erythromycin, salicylate, sodium valproate, granisetron and paclitaxel.

There have been reports while on study and from post-marketing surveillance of prolonged prothrombin time and INR occasionally associated with hemorrhage in patients who received oxaliplatin plus 5-FU/LV while on anticoagulants. Patients receiving Oxaliplatin Injection plus 5-FU/LV and requiring oral anticoagulants may require closer monitoring.

Caution is advised when Oxaliplatin Injection treatment is co-administered with other medicinal products known to cause QT interval prolongation. In case of combination with such medicinal products, the QT interval should be closely monitored (see **7 WARNINGS AND PRECAUTIONS, Cardiovascular**).

Caution is advised when Oxaliplatin Injection treatment is administered concomitantly with other medicinal products known to be associated with rhabdomyolysis (see **7 WARNINGS AND PRECAUTIONS, Musculoskeletal**).

## **9.5 Drug-Food Interactions**

Interactions with food have not been established.

## **9.6 Drug-Herb Interactions**

Interactions with herbal products have not been established.

## **9.7 Drug-Laboratory Test Interactions**

Interactions with laboratory tests have not been established.

# **10 CLINICAL PHARMACOLOGY**

## **10.1 Mechanism of Action**



Oxaliplatin is a platinum-type alkylating agent. It undergoes nonenzymatic conversion in physiologic solutions to active derivatives via displacement of the labile oxalate ligand. Several transient reactive species are formed, including monoquo and diaquo 1,2-diaminocyclohexane (DACH) platinum, which covalently bind with macromolecules. Both inter- and intrastrand Pt-DNA crosslinks are formed.

Crosslinks are formed between the N7 positions of two adjacent guanines (GG), adjacent adenine- guanines (AG), and guanines separated by an intervening nucleotide (GNG). These crosslinks inhibit DNA replication and transcription leading to cytotoxic and antitumor effects.

## 10.2 Pharmacodynamics

The antitumor activity of oxaliplatin relevant to the proposed indication is confirmed both *in vitro* and *in vivo* in human colorectal cancer models. Oxaliplatin demonstrates *in vitro* cytotoxicity against HT-29, CaCo2 and HEC59 colon cancer cells. Oxaliplatin as a single agent displays only modest *in vivo* antitumor activity in HT-29 and DLD2 human colon cancer xenografts. Oxaliplatin is additively effective with 5-FU against human colonic tumor xenograft *in vivo*.

## 10.3 Pharmacokinetics

### Absorption:

Maximum platinum concentrations in blood, plasma and plasma ultrafiltrate were reached at the end of 2-hour infusion of oxaliplatin at 85 mg/m<sup>2</sup>. Low interpatient variability in C<sub>max</sub> values was observed in plasma and whole blood (CV 19% and 16%, respectively). Variability in C<sub>max</sub> in ultrafiltrate was higher (CV 45%). Following biotransformation *in vivo*, the reactive products from oxaliplatin bind plasma proteins, cellular proteins and DNA. The reactive oxaliplatin derivatives are present as a fraction of the unbound platinum in plasma ultrafiltrate.

The C<sub>max</sub> obtained after a single 2-hour IV infusion of oxaliplatin at a dose of 85 mg/m<sup>2</sup> expressed as ultrafilterable platinum was 0.814 mcg/mL.

Interpatient and inpatient variability in ultrafilterable platinum exposure (AUC<sub>0-48</sub>) assessed over 3 cycles was moderate to low (23% and 6%, respectively). A pharmacodynamic relationship between platinum ultrafiltrate levels and clinical safety and effectiveness has not been established.

**Table 14 - Summary of Pharmacokinetic Parameters in Patients Following Single Dosing of Oxaliplatin at 85 mg/m<sup>2</sup> q2w (every two weeks)**

	C <sub>max</sub> (mcg/mL)	t <sub>½α</sub> (h)	t <sub>½β</sub> (h)	t <sub>½γ</sub> (h)	AUC <sub>0-inf</sub> (mcg.h/mL)	Clearance (L/h)	Volume of distribution (L)
Mean	0.814	0.43	16.8	391	4.68	17.4	440
SD	0.193	0.35	5.74	406	1.4	6.35	199

**Distribution:**

The volume of distribution obtained after a single 2-hour IV infusion of oxaliplatin at a dose of 85 mg/m<sup>2</sup> expressed as ultrafilterable platinum was 440 L.

At the end of a 2-hour infusion of oxaliplatin, approximately 15% of the administered platinum is present in the systemic circulation. The remaining 85% is rapidly distributed into tissues or eliminated in the urine. The relative distribution ratio of platinum between blood cells, plasma, and plasma ultrafiltrate is approximately 3.1:3.7:1.0.

In patients, plasma protein binding of platinum is irreversible and is greater than 90%. The main binding proteins are albumin and gamma-globulins. Platinum also binds irreversibly and accumulates (approximately 2-fold) in erythrocytes. Based on AUC values, statistically significant accumulation of platinum was observed in blood cells with a mean terminal-phase half-life of 589 ± 89.8 hrs.

No platinum accumulation was observed in plasma ultrafiltrate following 85 mg/m<sup>2</sup> every two weeks.

**Metabolism:**

Oxaliplatin undergoes extensive nonenzymatic biotransformation in patients and no intact drug was detectable in plasma ultrafiltrate at the end of a 2-hour infusion. There is no evidence of cytochrome P450-mediated metabolism *in vitro*.

Up to 17 platinum-containing derivatives have been observed in plasma ultrafiltrate samples from patients, including several cytotoxic species (monochloro DACH platinum, dichloro DACH platinum, and monoquo and diaquo DACH platinum) and a number of noncytotoxic, conjugated species.

**Elimination:**

The decline of ultrafilterable platinum levels following oxaliplatin administration is triphasic, characterized by two relatively short distribution phases ( $t_{1/2\alpha}$ : 0.43 hours and  $t_{1/2\beta}$ : 16.8 hours) and a long terminal elimination phase ( $t_{1/2\gamma}$ : 391 hours).

The major route of platinum elimination is renal excretion. At five days after a single 2-hour infusion of oxaliplatin, urinary elimination accounted for about 54% of the platinum eliminated, with fecal excretion accounting for only about 2%. Platinum was cleared from plasma at a rate (9 – 19 L/h) that was similar to or exceeded the average human glomerular filtration rate (GFR: 7.5 L/h). The volume of distribution was high with interpatient variability of 33-45%. A significant decrease in clearance of ultrafilterable platinum from 17.6 ± 2.18 L/h to 9.95 ± 1.91 L/h in renal impairment (creatinine clearance 12 - 57 mL/min) was observed together with a statistically significant decrease in distribution volume from 330 ± 40.9 to 241 ± 36.1 L. The

renal clearance of ultrafilterable platinum is significantly correlated with GFR (see **ADVERSE REACTIONS**).

### Special Populations and Conditions

- **Pediatrics:** Health Canada has not authorized an indication for pediatric use. See **1 INDICATIONS** and **7.1.3 Pediatrics**.
- **Geriatrics:** There was no significant effect of age (26-72 years) on the clearance of ultrafilterable platinum.
- **Sex:** There was no significant effect of gender on the clearance of ultrafilterable platinum.
- **Hepatic Insufficiency:** Mild to moderate hepatic impairment did not affect the clearance of platinum in a clinically significant manner. No increase in oxaliplatin acute toxicities was observed in the subset of patients with abnormal liver function tests at baseline. No specific dose adjustment for patients with abnormal liver function tests was performed during clinical development (see **7 WARNINGS AND PRECAUTIONS** and **4 DOSAGE AND ADMINISTRATION**).
- **Renal Insufficiency:** The primary route of platinum elimination is renal. The AUC<sub>0-48</sub> of platinum in the plasma ultrafiltrate increases as renal function decreases. The AUC<sub>0-48</sub> of platinum in patients with mild (creatinine clearance, CL<sub>cr</sub> 50 to 80 mL/min), moderate (CL<sub>cr</sub> 30 to < 50 mL/min) and severe (CL<sub>cr</sub> < 30 mL/min) renal impairment is increased by about 60, 140 and 190%, respectively, compared to patients with normal renal function (CL<sub>cr</sub> > 80 mL/min) (see **7 WARNINGS AND PRECAUTIONS** and **4 DOSAGE AND ADMINISTRATION**).

### 11 STORAGE, STABILITY AND DISPOSAL

Store between 15°C and 30 °C. Do not freeze. Protect product from light.

### 12 SPECIAL HANDLING INSTRUCTIONS

As with other potentially toxic compounds, care should be exercised in the handling and preparation of Oxaliplatin Injection solutions.

The handling of this cytotoxic agent by healthcare personnel requires every precaution to guarantee the protection of the handler and his surroundings. If Oxaliplatin Injection concentrate or solution for infusion contacts the skin or the mucous membranes, wash immediately and thoroughly with water.

Procedures for the handling and disposal of anticancer drugs should be considered. Several guidelines on this subject have been published. There is no general agreement that all of the procedures recommended in the guidelines are necessary or appropriate.

## PART II: SCIENTIFIC INFORMATION

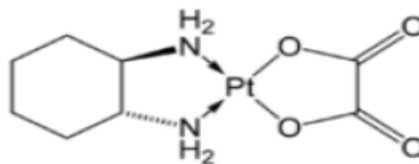
### 13 PHARMACEUTICAL INFORMATION

#### Drug Substance

Proper name: Oxaliplatin

Chemical name: (SP-4-2)-[(1R,2R)-Cyclohexane-1,2-diamine-κN,κN']  
[etanedioato(2-)-κO<sup>1</sup>, κO<sup>2</sup>] platinum

Structural formula:



Molecular formula and molecular mass: C<sub>8</sub>H<sub>14</sub>N<sub>2</sub>O<sub>4</sub>Pt (397.3 g/mol)

Physicochemical properties: Slightly soluble in water, very slightly soluble in methanol and practically insoluble in anhydrous ethanol.

### 14 CLINICAL TRIALS

#### 14.1 Clinical Trials by Indication

##### Indication 1: COMBINATION ADJUVANT THERAPY WITH OXALIPLATIN AND INFUSIONAL 5-FU/LV IN PATIENTS WITH COLON CANCER.

An international, multicenter, open-label, randomized study compared the efficacy and evaluated the safety of oxaliplatin in combination with an infusional schedule of 5-FU/LV to infusional 5-FU/LV alone, in patients with stage II (Dukes' B2) or III (Dukes' C) colon cancer who had undergone complete resection of the primary tumor. The primary objective of the study was to compare the 3-year disease-free survival (DFS) in patients receiving oxaliplatin and infusional 5-FU/LV to those receiving 5-FU/LV alone. The secondary efficacy endpoint was overall survival (OS). Patients were to be treated for a total of 6 months (i.e., 12 cycles).

A total of 2246 patients were randomized; 1123 patients per study arm. Patients in the study had to be between 18 and 75 years of age, have histologically proven stage II (T3-T4 N0 M0; Dukes' B2) or III (any T N1-2 M0; Dukes' C) colon carcinoma (with the inferior pole of the tumor above the peritoneal reflection, i.e., ≥ 15 cm from the anal margin) and undergone (within 7 weeks prior to randomization) complete resection of the primary tumor without gross or microscopic evidence of residual disease. Patients had to have had no prior chemotherapy, immunotherapy or radiotherapy, and have an ECOG performance status of 0, 1 or 2 (KPS ≥ 60%), absolute neutrophil count (ANC) > 1.5 x 10<sup>9</sup>/L, platelets ≥ 100 x 10<sup>9</sup>/L, serum creatinine ≥

1.25 x upper limit of normal (ULN) total bilirubin < 2 x ULN, AST/ALT < 2 x ULN and carcino-embryogenic antigen (CEA) < 10 ng/mL. Patients with preexisting peripheral neuropathy (NCI grade ≥ 1) were ineligible for this trial.

The following table shows the dosing regimens for the two arms of the study.

**Table 15 - Dosing Regimens in Adjuvant Therapy Study**

Treatment Arm	Dose	Regimen
<b>OXALIPLATIN + 5-FU/LV</b>  <b>FOLFOX4</b>  <b>(N = 1123)</b>	<u>Day 1:</u> Oxaliplatin 85 mg/m <sup>2</sup> (2-hour infusion) + LV: 200 mg/m <sup>2</sup> (2-hour infusion), followed by 5-FU: 400 mg/m <sup>2</sup> (bolus), 600 mg/m <sup>2</sup> (22-hour infusion)	q2w  12 cycles
	<u>Day 2:</u> LV: 200 mg/m <sup>2</sup> (2-hour infusion), followed by 5-FU: 400 mg/m <sup>2</sup> (bolus), 600 mg/m <sup>2</sup> (22-hour infusion)	
<b>5-FU/LV</b>  <b>(N = 1123)</b>	<u>Day 1:</u> LV: 200 mg/m <sup>2</sup> (2-hour infusion), followed by 5-FU: 400 mg/m <sup>2</sup> (bolus), 600 mg/m <sup>2</sup> (22-hour infusion)	q2w  12 cycles
	<u>Day 2:</u> LV: 200 mg/m <sup>2</sup> (2-hour infusion), followed by 5-FU: 400 mg/m <sup>2</sup> (bolus), 600 mg/m <sup>2</sup> (22-hour infusion)	

q2w: every 2 weeks

The following tables show the baseline characteristics and dosing of the patient population entered into this study. The baseline characteristics were well balanced between arms.

**Table 16 - Patient Characteristics in Adjuvant Therapy Study**

	Oxaliplatin + 5-FU/LV N=1123	5-FU/LV N=1123
Sex: Male (%)	56.1	52.4
Female (%)	43.9	47.6
Median age (years)	61.0	60.0
< 65 years of age (%)	64.4	66.2
≥ 65 years of age (%)	35.6	33.8
<b>Karnofsky Performance Status (KPS) (%)</b>		
100	29.7	30.5
90	52.2	53.9
80	4.4	3.3
70	13.2	11.9
≤ 60	0.6	0.4
<b>Primary site (%)</b>		
Colon including cecum	54.6	54.4
Sigmoid	31.9	33.8
Recto sigmoid	12.9	10.9
Other including rectum	0.6	0.9
Bowel obstruction (%)	17.9	19.3
Perforation (%)	6.9	6.9
<b>Stage at Randomization (%)</b>		

II (T=3,4 N=0, M=0)	40.2	39.9
III (T=any, N=1,2, M=0)	59.8	60.1
IV (T=any, N=any, M=1)	0	0
<b>Staging – T(%)</b>		
T1	0.5	0.7
T2	4.5	4.8
T3	76.0	75.9
T4	19.0	18.5
<b>Staging – N (%)</b>		
N0	40.2	39.9
N1	39.4	39.4
N2	20.4	20.7
<b>Staging – M (%)</b>		
M1	0.4	0.8

**Table 17 - Dosing in Adjuvant Therapy Study**

	<b>Oxaliplatin + 5-FU/LV N=1108</b>	<b>5-FU/LV N=1111</b>
Median Relative Dose Intensity (%)		
5-FU	84.4	97.7
Oxaliplatin	80.5	N/A
Median Number of Cycles	12	12
Median Number of cycles with oxaliplatin	11	N/A

The following tables and figures summarize the disease-free survival (DFS) and overall survival (OS) results in the overall randomized population and in patients with stage II and III disease based on an ITT analysis.

**Table 18 - Summary of DFS and OS analysis**

<b>Endpoint (Median follow-up)</b>	<b>Overall (FOLFOX4 vs. LV5FU2)</b>	<b>Stage II (FOLFOX4 vs. LV5FU2)</b>	<b>Stage III (FOLFOX4 vs. LV5FU2)</b>
<b>3-yr DFS* (35.7 months)</b>	78.2% vs. 72.9% HR 0.77 [0.65-0.91] p = 0.002	87.0% vs. 84.3% HR 0.80 [0.56-1.15] p = 0.23	72.2% vs. 65.3% HR 0.76 [0.62-0.92] p = 0.005
<b>5-yr DFS (61.3 months)</b>	73.5% vs. 67.3% HR 0.78 [0.67-0.91]	84.0% vs. 80.4% HR 0.84 [0.61-1.14]	66.4% vs. 58.5% HR 0.76 [0.64-0.91]
<b>5-yr OS** (61.3 months)</b>	81.8% vs. 79.4% HR 0.91 [0.75-1.10]	89.8% vs. 90.3% HR 1.10 [0.74-1.65]	76.3% vs. 72.1% HR 0.86 [0.69-1.06]
<b>6-yr DFS (73.4 months)</b>	73.3% vs. 67.4%	83.7% vs. 79.9%	66.4% vs. 58.9%

	HR 0.80 [0.68-0.93]	HR 0.84 [0.62-1.14]	HR 0.78 [0.65-0.93]
<b>6yr OS*** (81.9 months)</b>	78.5% vs. 75.8%	86.8% vs. 86.8%	72.9% vs. 68.3%
	HR 0.85 [0.71-1.01]	HR 1.00 [0.70-1.43]	HR 0.80 [0.66-0.98]

HR: Hazard Ratio; p value based on log rank

\* Protocol-planned primary efficacy endpoint

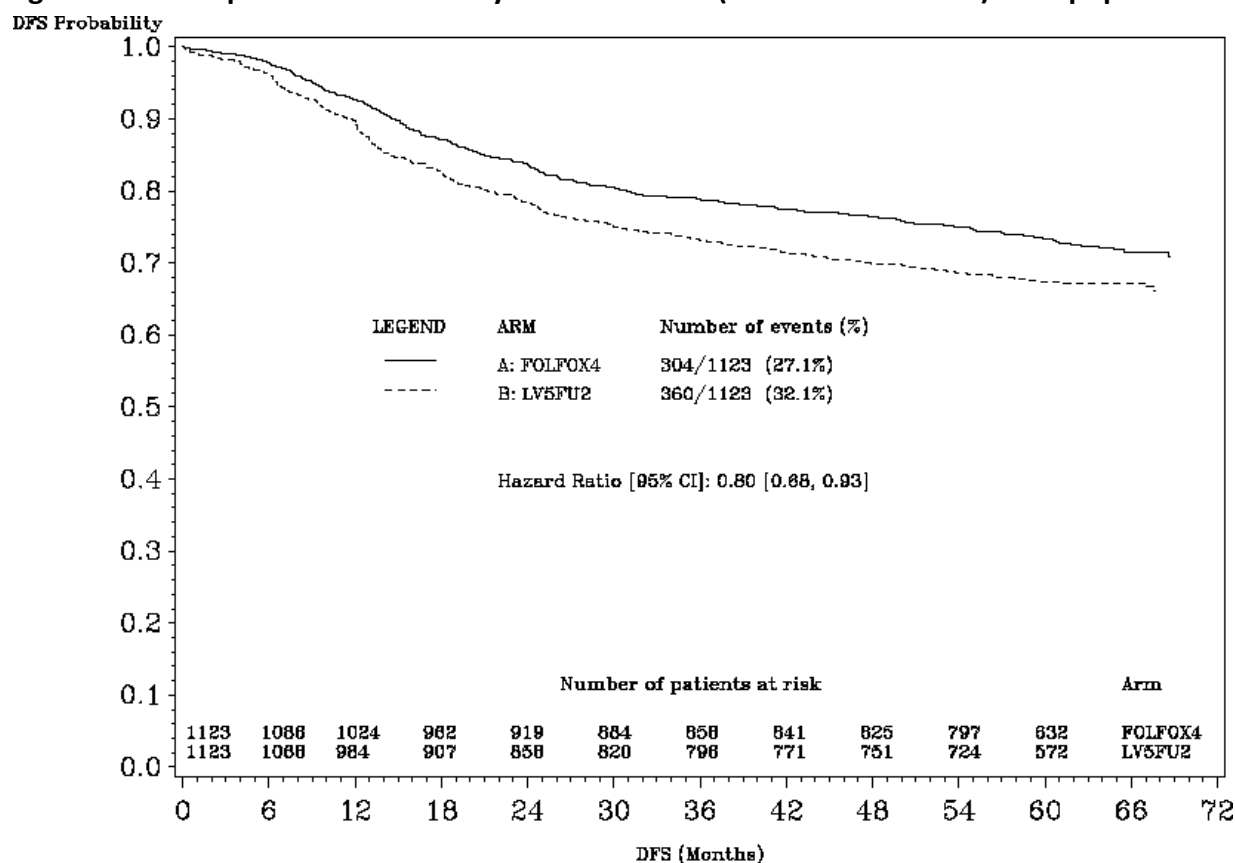
\*\* The original protocol specified a 5-year follow-up

\*\*\* This analysis was planned after the 5-year OS analysis and shows a numerical improvement in the overall survival for stage III patients only

The 3-year DFS (protocol-planned primary efficacy endpoint) was statistically significantly improved in the oxaliplatin combination arm compared to infusional 5-FU/LV alone arm for the overall study population and stage III patients, but not in stage II patients. The DFS benefit was maintained at 5 years and 6 years (median follow-up 73.4 months). In this trial, 723 patients treated with oxaliplatin and infusional 5-FU/LV were < 65 years and 400 patients were ≥ 65 years. The effect of oxaliplatin on DFS benefit in patients ≥ 65 years of age was not conclusive.

Figure 1 shows the Kaplan-Meier DFS curves for the comparison of oxaliplatin and infusional 5-FU/LV combination and infusional 5-FU/LV alone for the overall population (ITT analysis).

**Figure 1 - DFS Kaplan-Meier curves by treatment arm (Cutoff = 1 Jun 2006) – ITT population**

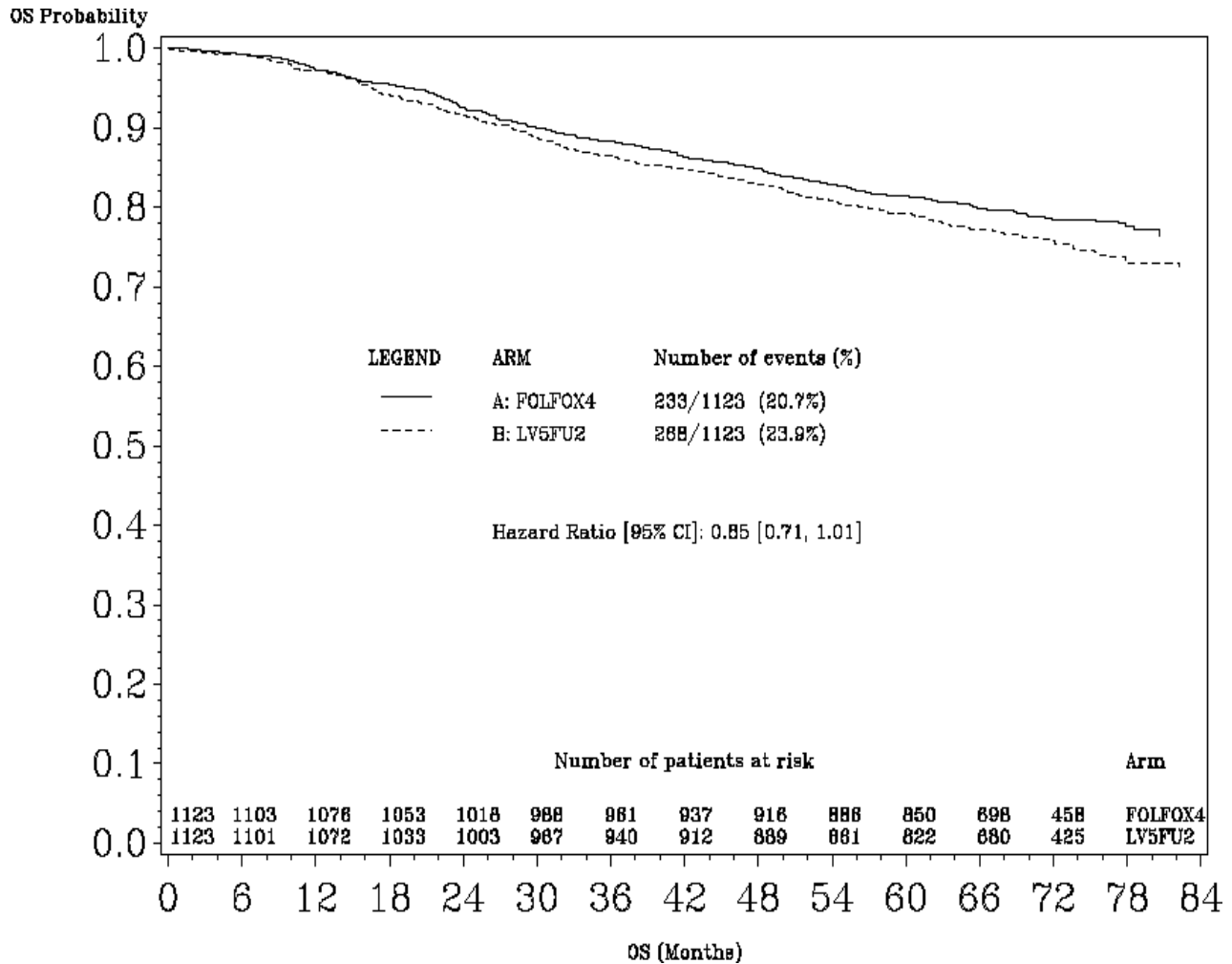


At the median follow-up 81.9 months, a numerically improved OS (secondary efficacy endpoint)

was noted in stage III patients, but not in the overall study population nor in stage II patients.

Figure 2 shows the Kaplan-Meier OS curves for the comparison of oxaliplatin and infusional 5-FU/LV combination and infusional 5-FU/LV alone for the overall population (ITT analysis).

**Figure 2 - Kaplan-Meier OS curves for the comparison of Oxaliplatin and infusional 5-FU/LV combination and infusional 5-FU/LV alone for the ITT population.**



**Indication 2: COMBINATION THERAPY WITH OXALIPLATIN AND 5-FU/LV IN PATIENTS PREVIOUSLY UNTREATED FOR METASTATIC COLORECTAL CANCER**

A North American, multicenter, open-label, randomized controlled study was sponsored by the National Cancer Institute (NCI) as an intergroup study led by the North Central Cancer Treatment Group (NCCTG). The study had 7 arms at different times during its conduct, four of which were closed due to either changes in the standard of care, toxicity, or simplification. During the study, the control arm was changed to irinotecan plus 5-FU/LV.

The results reported below compared the efficacy and safety of two experimental regimens,



oxaliplatin in combination with infusional 5-FU/LV and a combination of oxaliplatin plus irinotecan, to an approved control regimen of irinotecan plus 5-FU/LV in 795 concurrently randomized patients previously untreated for metastatic colorectal cancer.

After completion of enrollment, the dose of irinotecan plus 5-FU/LV was decreased due to toxicity. Patients had to be at least 18 years of age, have known locally advanced, locally recurrent, or metastatic colorectal adenocarcinoma not curable by surgery or amenable to radiation therapy with curative intent, histologically proven colorectal adenocarcinoma, measurable or evaluable disease, with an Eastern Cooperative Oncology Group (ECOG) performance status 0, 1 or 2. Patients had to have granulocyte count  $\geq 1.5 \times 10^9/L$ , platelets  $\geq 100 \times 10^9/L$ , hemoglobin  $\geq 9.0$  g/dL (90 g/L), creatinine  $\leq 1.5$  x Upper Limit of Normal (ULN), total bilirubin  $\leq 1.5$  mg/dL (25  $\mu$ mol/L), AST  $\leq 5$  x ULN and alkaline phosphatase  $\leq 5$  x ULN. Patients may have received adjuvant therapy for resected Stage II or III disease without recurrence within 12 months. The patients were stratified for ECOG performance status (0, 1 vs. 2), prior adjuvant chemotherapy (yes vs. no), prior immunotherapy (yes vs. no) and age ( $< 65$  vs.  $\geq 65$  years).

Although no post study treatment was specified in the protocol, 65 to 72% of patients received additional post study chemotherapy after study treatment discontinuation on all arms. Fifty-eight percent of patients on the oxaliplatin plus 5-FU/LV arm received an irinotecan-containing regimen and 23% of patients on the irinotecan plus 5-FU/LV arm received oxaliplatin-containing regimens. Oxaliplatin was not commercially available during the trial.

The following table presents the dosing regimens of the three arms of the study.

**Table 19 – Dosing Regimens in Patients Previously Untreated for Metastatic Colorectal Cancer Clinical Trial**

Treatment Arm	Dose	Regimen
<b>Oxaliplatin + 5-FU/LV</b>  <b>FOLFOX4</b>  <b>(N = 267)</b>	<u>Day 1:</u> Oxaliplatin 85 mg/m <sup>2</sup> (2-hour infusion) + LV 200 mg/m <sup>2</sup> (2-hour infusion), followed by 5-FU: 400 mg/m <sup>2</sup> (bolus), 600 mg/m <sup>2</sup> (22-hour infusion)  <u>Day 2:</u> LV 200 mg/m <sup>2</sup> (2-hour infusion), followed by 5-FU: 400 mg/m <sup>2</sup> (bolus), 600 mg/m <sup>2</sup> (22-hour infusion)	q2w
<b>Irinotecan + 5-FU/LV</b>  <b>IFL</b>  <b>(N = 264)</b>	<u>Day 1:</u> irinotecan 125 mg/m <sup>2</sup> as a 90–min infusion + LV 20 mg/m <sup>2</sup> as a 15-min infusion or IV push, followed by 5-FU 500 mg/m <sup>2</sup> IV bolus weekly x 4	q6w
<b>Oxaliplatin + Irinotecan</b>  <b>IROX</b>  <b>(N = 264)</b>	<u>Day 1:</u> Oxaliplatin 85 mg/m <sup>2</sup> IV (2-hour infusion) + irinotecan 200 mg/m <sup>2</sup> IV over 30 minutes	q3w

LV: leucovorin, q2w: every 2 weeks; q3w: every 3 weeks; q6w: every 6 weeks

The following table presents the demographics and dosing of the patient population entered into this study.

**Table 20 – Patient Demographics and Dosing in Patients Previously Untreated for Metastatic Colorectal Cancer Clinical Trial**

	<b>Oxaliplatin + 5-FU/LV</b>	<b>Irinotecan + 5-FU/LV</b>	<b>Oxaliplatin + irinotecan</b>
	<b>N = 267</b>	<b>N = 264</b>	<b>N = 264</b>
Sex: Male (%)	58.8	65.2	61.0
Female (%)	41.2	34.8	39.0
Median age (years)	61.0	61.0	61.0
< 65 years of age (%)	61.0	62.1	62.5
≥ 65 years of age (%)	39.0	37.9	37.5
ECOG (%)			
0.1	94.4	95.5	94.7
2	5.6	4.5	5.3
Involved organs (%)			
Colon only	0.7	0.8	0.4
Liver only	39.3	44.3	39.0
Liver + other	41.2	38.6	40.9
Lung only	6.4	3.8	5.3
Other (including lymph nodes)	11.6	11.0	12.9
Not reported	0.7	1.5	1.5
Prior radiation (%)	3.0	1.5	3.0
Prior surgery (%)	74.5	79.2	81.8
Prior adjuvant (%)	15.7	14.8	15.2

The length of a treatment cycle was 2 weeks for the oxaliplatin and 5-FU/LV regimen; 6 weeks for the irinotecan plus 5-FU/LV regimen; and 3 weeks for the oxaliplatin plus irinotecan regimen. The median number of cycles administered per patient was 10 (23.9 weeks) for the oxaliplatin and 5-FU/LV regimen, 4 (23.6 weeks) for the irinotecan plus 5-FU/LV regimen, and 7 (21.0 weeks) for the oxaliplatin plus irinotecan regimen.

The primary efficacy endpoint was time to tumor progression (TTP); the secondary efficacy endpoints were overall survival (OS) and response rate (RR).

Patients treated with the oxaliplatin and 5-FU/LV combination had a significantly longer time to tumor progression (TTP) based on investigator assessment, longer overall survival (OS), and a significantly higher confirmed response rate (RR) based on investigator assessment compared to patients given irinotecan plus 5-FU/LV. The following table summarizes the efficacy results.

**Table 21 – Summary of Efficacy**

	Oxaliplatin + 5-FU/LV N=267	irinotecan + 5-FU/LV N=264	Oxaliplatin + Irinotecan N=264
<b>Overall Survival (ITT)</b>			
Number of deaths N (%)	155 (58.1)	192 (72.7)	175 (66.3)
Median survival (months)	19.4	14.6	17.6
Hazard Ratio and (95% confidence interval)	0.65 (0.53-0.80)*		
P-value	<0.0001*	-	-
<b>TTP (ITT, investigator assessment)</b>			
Percentage of progressors	82.8	81.8	89.4
Median TTP (months)	8.7	6.9	6.5
Hazard Ratio and (95% confidence interval)	0.74 (0.61-0.89)*		
P-value	0.0014*	-	-
<b>Response Rate (investigator assessment)**</b>			
Patients with measurable disease	210	212	215
Complete response N (%)	13 (6.2)	5 (2.4)	7 (3.3)
Partial response N (%)	82 (39.0)	64 (30.2)	67 (31.2)
Complete and partial response N (%)	95 (45.2)	69 (32.5)	74 (34.4)
95% confidence interval	(38.5 – 52.0)	(26.2 – 38.9)	(28.1 – 40.8)
P-value	0.0075*	-	-

ITT: Intention-To-Treat

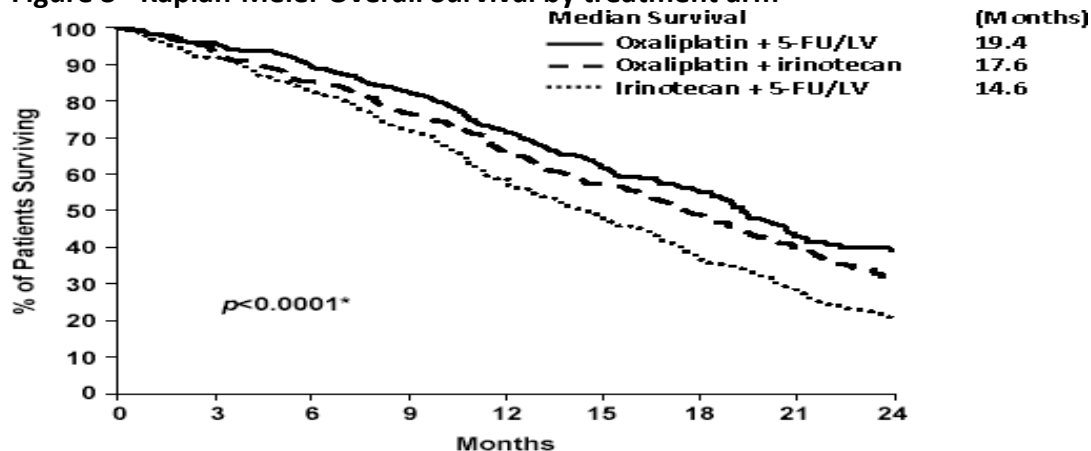
\*Compared to irinotecan plus 5-FU/LV (IFL) arm

\*\*Based on all patients with measurable disease at baseline

The numbers in the response rate and TTP analysis are based on unblinded investigator assessment.

Figure 3 illustrates the Kaplan-Meier survival curves for the comparison of oxaliplatin and 5-FU/LV combination and oxaliplatin plus irinotecan to irinotecan plus 5-FU/LV.

**Figure 3– Kaplan-Meier Overall Survival by treatment arm**



\*Log rank test comparing oxaliplatin plus 5-fu/LV to irinotecan plus 5-FU/LV.

A pre-planned subgroup analysis demonstrated that the improvement in survival for oxaliplatin plus 5-FU/LV compared to irinotecan plus 5-FU/LV appeared to be maintained across age groups, prior adjuvant therapy, and number of organs involved.

The supportive study (EFC2962) in previously untreated patients (oxaliplatin plus 5-FU/LV vs. 5-FU/LV) demonstrated improvement in progression free survival (PFS) and response rate (RR), while overall survival (OS), based on unadjusted analysis, was not significantly improved with the addition of oxaliplatin. Patients treated with oxaliplatin plus 5-FU/LV experienced higher grade 3/4 events of: vomiting (5% vs. 2%); diarrhea (12% vs. 5%); and stomatitis (6% vs. 1%) compared to patients treated with 5-FU/LV.

### **Indication 3: COMBINATION THERAPY WITH OXALIPLATIN AND 5-FU/LV IN PREVIOUSLY TREATED PATIENTS WITH METASTATIC COLORECTAL CANCER**

A multicenter, open-label, randomized, three-arm controlled superiority study was conducted in the US and Canada comparing the efficacy and safety of oxaliplatin in combination with an infusional schedule of 5-FU/LV to the same dose and schedule of 5-FU/LV alone and to single agent oxaliplatin in patients with metastatic colorectal cancer. Patients had all relapsed/progressed during or within 6 months of first-line therapy with bolus 5-FU/LV and irinotecan.

The primary efficacy endpoint was overall survival. Secondary efficacy endpoints were time to tumor progression (TTP) and response rate (RR).

In total, 821 patients were enrolled. Patients in the study had to be at least 18 years of age, have unresectable, measurable, histologically proven colorectal adenocarcinoma, with a Karnofsky performance status  $\geq 50\%$ . Patients had to have SGOT (AST) and SGPT (ALT) as well as alkaline phosphatase  $\leq 2 \times$  the institution's ULN, unless liver metastases were present and documented at baseline by computed tomography (CT) or magnetic resonance imaging (MRI) scan, in which case  $\leq 5 \times$  ULN was permitted. Prior radiotherapy was permitted if it had been completed at least 3 weeks before randomization.

The dosing regimens of the three arms of the study are presented in the table below.

**Table 22 – Dosing Regimens in Refractory and Relapsed Colorectal Cancer Clinical Trial**

<b>Treatment Arm</b>	<b>Dose</b>	<b>Regimen</b>
<b>Oxaliplatin + 5-FU/LV (N =270)</b>	<u>Day 1:</u> Oxaliplatin 85 mg/m <sup>2</sup> (2-hour infusion) + LV 200 mg/m <sup>2</sup> (2-hour infusion), followed by 5-FU: 400 mg/m <sup>2</sup> (bolus), 600 mg/m <sup>2</sup> (22-hour infusion)  <u>Day 2:</u> LV 200 mg/m <sup>2</sup> (2-hour infusion), followed by 5-FU: 400 mg/m <sup>2</sup> (bolus), 600 mg/m <sup>2</sup> (22-hour infusion)	q2w
<b>5 - FU/LV (N=272)</b>	<u>Day 1:</u> LV 200 mg/m <sup>2</sup> (2-hour infusion), followed by 5-FU: 400 mg/m <sup>2</sup> (bolus), 600 mg/m <sup>2</sup> (22-hour infusion)	q2w

	Day 2: LV 200 mg/m <sup>2</sup> (2-hour infusion), followed by 5-FU: 400 mg/m <sup>2</sup> (bolus), 600 mg/m <sup>2</sup> (22-hour infusion)	
<b>Oxaliplatin (N=274)</b>	Day 1: Oxaliplatin 85 mg/m <sup>2</sup> (2-hour infusion)	q2w

q2w: every 2 weeks

Patients entered into the study for evaluation of response must have had at least one unidimensional lesion measuring  $\geq 20$  mm using conventional CT or MRI scans, or  $\geq 10$  mm using a spiral CT scan. Tumor response and progression were assessed every 3 cycles (6 weeks) using the Response Evaluation Criteria in Solid Tumors (RECIST) until radiological documentation of progression or for 13 months following the first dose of study drug(s), whichever came first. Confirmed responses were based on two tumor assessments separated by at least 4 weeks.

The demographics of the patient population entered into this study are shown in the table below.

**Table 23 – Patient Demographics in Refractory and Relapsed Colorectal Cancer Clinical Trial**

	5-FU/LV (N = 272)	Oxaliplatin (N = 274)	Oxaliplatin + 5-FU/LV (N = 270)
Sex: Male (%)	55.9	59.9	56.7
Female (%)	44.1	40.1	43.3
Median age (years)	59.0	59.0	59.0
<b>Race (%)</b>			
Caucasian	86.4	85.0	87.4
Black	7.0	8.0	7.0
Asian	1.8	1.5	2.2
Other	4.8	5.5	3.3
<b>KPS (%)</b>			
70 – 100	95.6	96.5	97.4
50 – 60	3.0	3.3	2.6
Not reported	1.5	0.4	0.0
Prior adjuvant chemotherapy (%)	29.4	33.2	33.0
If yes (%)			
Adj. Saltz	0.7	3.3	1.5
5-FU only	4.0	4.0	7.4
5-FU + LV	21.3	21.5	20.7
5-FU + LV + other	1.8	1.5	0.0
5-FU + other	1.1	1.8	2.2
Other	0.4	1.1	1.1
Prior radiotherapy (%)	24.6	20.8	23.7
Prior surgery for colon/rectal cancer (%)	96.0	89.8	91.9
<b>Number of metastatic sites (%)</b>			
1	36.0	34.7	34.8
$\geq 2$	64.0	65.3	65.2

<b>Liver involvement (%)</b>			
Liver only	22.1	24.8	19.3
Liver + other	60.7	57.3	55.6

The median number of cycles administered per patient was 7 for the oxaliplatin and 5-FU/LV combination, 3 for 5-FU/LV alone and 4 for oxaliplatin alone.

At final analysis, when 90% of events had occurred in the ITT population, there was no statistically significant difference in the primary efficacy endpoint of overall survival between the oxaliplatin plus 5-FU/LV and the 5-FU/LV arms. Median overall survival was 9.9 months in the oxaliplatin plus 5-FU/LV arm (95% CI: 9.1-10.5) and 8.8 months in the 5-FU/LV arm (95% CI: 7.3-9.3, stratified log-rank test p = 0.09, not statistically significant). Thus, the study failed to show a statistically significant improvement in overall survival with the addition of oxaliplatin to 5-FU/LV.

Analysis of secondary efficacy endpoints demonstrated a higher response rate and longer time to tumor progression for patients treated with the combination of oxaliplatin and 5-FU/LV compared to patients treated with 5-FU/LV or oxaliplatin alone. The efficacy results are summarized in the tables below.

**Table 24 - Summary of Overall Survival – ITT Population (updated analysis)**

	<b>5-FU/LV (N = 272)</b>	<b>Oxaliplatin (N = 274)</b>	<b>Oxaliplatin + 5-FU/LV (N = 270)</b>
Number of deaths	252 (92.6)	251 (91.6)	246 (91.1)
Median survival (months)	8.8	8.1	9.9
(95% confidence limits)	(7.3, 9.3)	(7.2, 8.7)	(9.1, 10.5)

**Table 25 - Response Rates (ITT Analysis)**

	<b>5-FU/LV (N=272)</b>	<b>Oxaliplatin (N = 274)</b>	<b>Oxaliplatin + 5-FU/LV (N = 270)</b>
RR*	2 (0.7)	3 (1.1)	30 (11.1)
95% CI	0-2.7%	0.2-3.2%	7.6-15.5%
p-value <sup>a</sup>	0.001 for <b>Oxaliplatin + 5-FU/LV vs. 5-FU/LV</b>		
CR + PR + SD, n (%)	132 (48.5)	127 (46.4)	198 (73.3)
95% CI	42.4-54.7	40.3-52.5	67.6-78.6

\*All responses were confirmed PRs by an independent radiologic review

<sup>a</sup> P value from Fisher's exact test.

CR: complete response; PR: partial response; SD: disease stabilization;

CI: confidence interval; RR: response rate

**Table 26: Summary of Time to Progression\***

	<b>5-FU/LV</b>	<b>Oxaliplatin</b>	<b>Oxaliplatin +</b>
--	----------------	--------------------	----------------------

Arm	(N = 272)	(N = 274)	5-FU/LV (N = 270)
No. of Progressors, n (%)	173 (63.6)	195 (71.2)	164 (60.7)
Median TTP (months)	2.6	2.1	5.3
95% CI	1.8-2.9	1.6-2.7	4.7-6.1
p-value <sup>b</sup>	0.001 for <b>Oxaliplatin + 5-FU/LV vs. 5-FU/LV</b>		

\*Confirmed by an independent radiologic review

<sup>b</sup> P value from stratified log-rank test.

TTP: time to progression

## 15 MICROBIOLOGY

No microbiological information is required for this drug product.

## 16 NON-CLINICAL TOXICOLOGY

### General Toxicology

#### Single dose studies

#### Rodents

The lethal dose 10% (LD<sub>10</sub>) values for oxaliplatin given as a single IV administration were in the range of 14.4 to 20 mg/kg (43.2 to 60 mg/m<sup>2</sup>) for mice and 14 mg/kg (84 mg/m<sup>2</sup>) for rats. The LD<sub>10</sub> of the solution for which approval is being sought was estimated at 17 mg/kg (51 mg/m<sup>2</sup>). A summary of the LD<sub>10</sub> values determined for different formulations of oxaliplatin is presented in Table 27.

**Table 27 - LD<sub>10</sub> Values across studies using different formulations**

Study	Oxaliplatin Formulation	Vehicle	Route	LD <sub>10</sub> mg/kg	LD <sub>10</sub> mg/m <sup>2</sup>
<b>Mouse</b>					
TXA0551	Lactose-containing lyophilisate	5% glucose	IV	16.5	49.5
	Aqueous <sup>a</sup>	5% glucose	IV	17.0	51.0
TXA0427	Lactose-containing lyophilisate	5% glucose	IV	14.4	43.2
	Mannitol-containing lyophilisate	5% glucose	IV	14.8	44.4
	Aqueous (bulk drug substance)	5% glucose	IV	16.7	50.1
TXA0428	Aqueous	Sterile water	IV	20.0	60.0
	Aqueous	Sterile water	IP	17.5	52.5
<b>Rat</b>					
TXA0428	Aqueous	Sterile water	IP	14.0	84.0
TXA0429	Aqueous	Sterile water	IV	18.9 <sup>b</sup>	113.4 <sup>b</sup>

<sup>a</sup> The solution formulation for which approval is being sought.

<sup>b</sup> LD<sub>05</sub> rather than LD<sub>10</sub> estimated.

The nephrotoxicity of oxaliplatin was studied in rats given single IP doses of 0, 5.73 or 11.2

mg/kg (0, 34.4 or 67.2 mg/m<sup>2</sup>). Oxaliplatin did not increase in blood urea or relative kidney weight.

## Dogs

Toxicity was evaluated in dogs administered single (IV) doses 2.5, 7.5 or 15 mg/kg (50, 150 or 300 mg/m<sup>2</sup>) oxaliplatin. Oxaliplatin caused emesis, diarrhea, and decreased food consumption, body weight gain, WBCs and RBCs. Cardiac effects were evaluated at dosages of 4, 10 or 15 mg/kg (80, 200 or 300 mg/m<sup>2</sup>). Oxaliplatin caused decreased heart rate, arrhythmias, and ECG changes, such as tachycardia, bradycardia, extrasystoles, ectopic beats, abnormal T waves and decreased ST segment. One oxaliplatin treated dog died due to ventricular fibrillation (300 mg/m<sup>2</sup>).

Cardiac and respiratory effects were investigated in anesthetized dogs administered a single dose of oxaliplatin 2.6, 13.6, or 15 mg/kg (52, 272 or 300 mg/m<sup>2</sup>). Low- and mid-dose dogs received a second dose of 6.4 mg/kg (128 mg/m<sup>2</sup>) oxaliplatin. The high dose of oxaliplatin lowered blood pH levels (acidosis). One dog experienced pulmonary and systemic arterial hypertension and respiratory arrest.

### Summary single dose toxicity

- LD<sub>10</sub> = 51 mg/m<sup>2</sup> in mice
- LD<sub>10</sub> = 84 mg/m<sup>2</sup> (IP) ; LD<sub>05</sub>=113 mg/m<sup>2</sup> (IV) in rats
- The doses of 70 mg/m<sup>2</sup> and 150 mg/m<sup>2</sup> were lethal to the monkey
- The doses ≥ 150 mg/m<sup>2</sup> were lethal to the dog
- Cardiotoxicity: ECG changes, QT prolongation, arrhythmias (dogs, monkeys), ventricular extrasystoles, ventricular fibrillation, dose-related increase in blood pressure (dogs), ventricular fibrillation and death (dogs)
- Pulmonary and systemic arterial hypertension and respiratory arrest (dogs)
- Dyspnea
- Acidosis (dogs)
- Cachexia (monkeys)
- Hepatotoxicity: decreased relative liver weight (rats), increased AST, ALT (rats, dogs, monkeys)
- Neurotoxicity: coordination, motor activity
- Gastrointestinal system: emesis (dog) and diarrhea
- Lymphohematopoietic system: decreased WBC and RBC

### Repeated dose studies

Repeated dose toxicology studies were conducted in rats and dogs using a number of different of dose schedules, cycles and doses. A summary of the studies and the main findings are presented in the Table 28 below.



**Table 28 - Repeat dose studies**

Species of Animal/ Strain	Number Animals / Dose Group	Route and Period of Administration	Admin. Dose or Treatment (mg/kg/day)	Results
Rat/SD	25 M 25 F	i.v. Rate: 2 mL/min; Cycle: 5-day treatment followed by 16 days with no treatment; 3 cycles; Total: 63 days	0, 0.5, 1.0 and 2.0	Target organs included the bone marrow (decreased cellularity and decreases in WBC and RBCs) and kidney (increased blood urea nitrogen, creatinine, necrosis and degeneration of tubules). Most effects occurred at 2.0 mg/kg (12 mg/m <sup>2</sup> ).
Dog/Beagle	1 M 1 F	i.v. slow infusion Rate: 2 mL/min 5 daily doses	0.75, 1.5, 2.25 and 3.0	Significant findings included emesis and decreases in body weight and WBCs. Mortality occurred in the high dose groups. ECGs from oxaliplatin-treated dogs revealed only minor modifications (ectopic beats and decreased heart rates) except in the high dose. The high dose caused mortality after the fourth dose; ECGs showed decreased heart rate and increased ectopic beats. There was no indication of renal impairment.
Dog/Beagle	1-2 M 1-2 F	i.v. Rate: 2 mL/min Cycle: single dose or 5 daily sequential doses per week followed by 3 weeks with no treatment; 1 to 6 cycles	Single dose: 0, 5, 7.5, 8.75, 10.0 and 15.0 5 daily doses: 0, 1.5 and 2.0	Significant findings included emesis and diarrhea and decreases in WBCs and RBCs, (with recovery between cycles) and testicular weights. ECGs revealed ventricular extrasystoles and ventricular fibrillation in at least one of the dogs that died after a single dose (300 mg/m <sup>2</sup> ). There was no indication of renal impairment.
Dog/Beagle	3 M 3 F	i.v. Rate: 2 mL/min Cycle: 5-day treatment every 28 days; 3 cycles; Total: 84 days	0, 0.75, 1.25 and 1.75	Significant findings included decreases in body weights and WBCs (partial or complete recovery), testicular hypoplasia and atrophy, slight to moderate degeneration in the kidney proximal tubules, and pancreatitis.
Dog/Beagle	3 M 3 F	i.v. 2-hr infusion Rate: 1 mL/min Cycle: 1-day treatment	0, 2.5, 5.0 and 7.5	Significant findings included emesis, myelosuppression (with recovery), testicular hypoplasia, kidney effects, and death at the dose of 150 mg/m <sup>2</sup> .

		every 21 days; 3 cycles; Total: 63 days		ECGs appeared normal. Dogs that died had firm, rigid hearts.
--	--	---	--	--

### Summary of repeat dose toxicity

- Anorexia
- Gastrointestinal system: pancreatitis, emesis, and diarrhea
- Hematological toxicity: myelosuppression
- Heart: increase in heart weight, tachycardia, bradycardia, extrasystoles, ventricular fibrillation and death
- Kidney: necrosis and regeneration of proximal tubules, interstitial inflammatory reaction, increased blood urea, creatinine, proteins and blood in the urine
- Liver: elevated AST, ALT, inflammatory lesions, periportal sclerosis, stasis, periportal infiltration, bilirubin in the urine
- Local tolerance: R41 (risk of serious damage) eye irritation, focal edema and lesion
- Mammary gland hypertrophy
- Respiratory system: respiratory arrhythmia, dyspnea, moderate emphysema
- Reproductive system: decreased weight of testes and prostate, testicular hypoplasia, granulomatous interstitial prostatitis

### Genotoxicity

Oxaliplatin was mutagenic and clastogenic in mammalian test systems (*in vitro* and *in vivo*) and negative in the bacterial test system (Ames assay).

### Reproductive and Developmental Toxicology

Oxaliplatin did not affect fertility in rats. Study findings in oxaliplatin-treated rats included a dose-related increase in embryonic deaths, decrease of foetal weight and delayed ossifications. Fetotoxicity in rats was dose-dependent and reached up to 100% at a dose of 12 mg/m<sup>2</sup>. Thus, possible risks of miscarriage and congenital malformations exist. It is very likely that oxaliplatin is toxic to the human fetus and should be contraindicated during pregnancy.

In the male dogs administered oxaliplatin at 15 mg/m<sup>2</sup>/day x 5 days every 28 days for 3 cycles, testicular degeneration, hypoplasia and atrophy were observed. A no-effect level was not identified. This daily dose is approximately one-sixth of the recommended human dose. These findings indicate the possible reproductive and developmental toxicities of oxaliplatin in humans.

### Carcinogenicity

Carcinogenicity studies have not been performed with oxaliplatin. However given that oxaliplatin is genotoxic, it should be considered a human carcinogen.

### Local Tolerance

R41 (risk of serious damage) eye irritation, focal edema and irritation.

## Other Toxicity Studies

### Cardiac Toxicity

In cultured neonatal rat cardiac myocytes, oxaliplatin produced double beats (1 mcg/mL) and reduced beats (10 mcg/mL).

In dogs administered  $\geq 150$  mg/m<sup>2</sup> via 2-hour IV infusion, oxaliplatin caused emesis, ventricular fibrillation, ventricular ectopic beats, increases in blood pressure and heart rate, and death. Studies with ondansetron, an antiemetic, showed that reducing emesis did not prevent ventricular fibrillation and death (150 mg/m<sup>2</sup>). The cardiotoxicity of oxaliplatin resulted in the death of 2 out of the 3 dogs after 4.5 and 9 hours post 2-hour infusion. The dose of 150 mg/m<sup>2</sup> produced delayed ventricular repolarization (QT interval prolongation) and changes in cardiovascular safety parameters such as RR interval, PR interval, QRS duration, and heart rhythm disorders: ventricular extrasystoles and ventricular fibrillation. Thus, oxaliplatin's cardiac toxicity threshold appeared to be lower than 150 mg/m<sup>2</sup> in dogs.

The ECG changes of animals that died at a dose of 10 mg/kg (200 mg/m<sup>2</sup>) are described as ventricular premature depolarizations with fixed coupling preceding and evolving into ventricular fibrillation. The onset of arrhythmic activity was closely associated with death. Repolarization and conductance abnormalities were not evaluated in the *in vitro* cardiotoxicity (i.e., hERG and Purkinje fiber) tests. To - date, the mechanism of dose-dependent cardiotoxicity of oxaliplatin remains unknown.

In cynomologous monkeys given oxaliplatin at 6.4, 13.6, or 18.2 mg/kg (70, 150, or 200 mg/m<sup>2</sup>) via 2- hour IV infusion, the ECG abnormalities included: decrease in heart rate and increase in QT prolongation (not corrected for heart rate) 7 hours post-dose in one male and on Day 8 in one female in the 200 mg/m<sup>2</sup> dose group; decrease in heart rate, increase in QT interval (not corrected for heart rate) on Day 7 (male) and on Day 8 (female) in the 150 mg/m<sup>2</sup> dose group. The post-dose ECG examinations were not performed in the 70 mg/m<sup>2</sup> dose group. This dose is very close to the approved human dose of 85 mg/m<sup>2</sup>. Two out of six animals (dosed 70 and 150 mg/m<sup>2</sup>) died, and 3/6 sacrificed in morbid condition. Mortality was attributed to severe diarrhea and cachexia.

### Summary of Cardiac Toxicity

Based on preclinical studies, oxaliplatin is cardiotoxic. In the dog, a single dose of  $\geq 150$  mg/m<sup>2</sup> oxaliplatin caused serious cardiovascular reactions such as increased blood pressure, arrhythmia, ventricular ectopic events, followed by fatal ventricular fibrillation. Oxaliplatin cardiac toxicity was the most frequent cause of lethal events observed in dogs. Based on the similarities in the drug biotransformation and exposure in dogs and humans, there is a safety concern for patients treated with oxaliplatin at a dose  $\geq 130$  mg/m<sup>2</sup>. It should be anticipated that, if overdosed, oxaliplatin may possibly cause cardiac dysfunction that may lead to the death of the patient. The approved dose of oxaliplatin in humans is 85 mg/m<sup>2</sup> every 2 weeks in combination with 5-FU/LV (see **4 DOSAGE AND ADMINISTRATION**).

### **Nephrotoxicity**

In rats administered single IP doses of oxaliplatin (6.6 mg/kg; 39.6 mg/m<sup>2</sup>), only a slight increase in urinary enzyme excretion was observed. In rats administered IV oxaliplatin 0, 1.5, 3, and 6 mg/kg/day (0, 9, 18, and 36 mg/m<sup>2</sup>) for five consecutive days, there were decreased kidney weights and proximal tubule cell necrosis.

### **Myelotoxicity**

The myelotoxicity of oxaliplatin was compared to cisplatin and carboplatin, in an *in vitro* human bone marrow stem cell assay. Myelotoxicity was ranked as follows: cisplatin > oxaliplatin > carboplatin.

### **Oxaliplatin combination studies**

Acute mouse toxicity (lethality) studies were conducted with oxaliplatin in combination with other antineoplastic agents or antiemetics. Mice were administered oxaliplatin IV at the approximate LD<sub>10</sub> dose of 20 mg/kg (60 mg/m<sup>2</sup>), followed by an antiemetic (metoclopramide, ondansetron, or granisetron) or an antineoplastic agent (cyclophosphamide, 5-FU, methotrexate, adriamycin, or cisplatin). In general, the combinations produced a slight increase in mortality compared to oxaliplatin alone. Exceptions to this were oxaliplatin in combination with cyclophosphamide or 5-FU, which appeared to be similar or less toxic than oxaliplatin alone. In addition, the combination of oxaliplatin plus cisplatin produced a significant increase in mortality.

## **17 SUPPORTING PRODUCT MONOGRAPHS**

1. <sup>Pr</sup>OXALIPLATIN Oxaliplatin Injection, 5 mg/mL, submission control 270750, Product Monograph, Pfizer Canada ULC, Date of Revision: MAY 10, 2023.

## PATIENT MEDICATION INFORMATION

### READ THIS FOR SAFE AND EFFECTIVE USE OF YOUR MEDICINE

#### **Pf Oxaliplatin Injection**

Read this carefully before you start taking **Oxaliplatin Injection** and each time you get an infusion. This leaflet is a summary and will not tell you everything about this drug. Talk to your healthcare professional about your medical condition and treatment and ask if there is any new information about **Oxaliplatin Injection**.

#### **Serious Warnings and Precautions**

- Oxaliplatin Injection should be given by a healthcare professional experienced in the use of anti-cancer drugs.
- Oxaliplatin Injection can cause serious and possible fatal side effects including:
  - **Severe allergic reactions** that may happen within minutes of receiving Oxaliplatin Injection
  - **Severe Liver problems.** This may include issues with function, damage or death of liver cells.
  - **Myelosuppression:** This is when your blood counts are low. It can affect red blood cells (anemia), white blood cells (neutropenia), or platelets (thrombocytopenia). Myelosuppression can be severe and may increase your risk for infection or bleeding. It may be worse as the number of doses you receive increases.
  - **Serious and fatal infections** after receiving some vaccines.
  - **Neuropathy:** This is when the nerve is damaged and may result in changes to your nerves.
  - **Interstitial Lung Disease:** This is a condition that results in respiratory problems that may result in death.
  - **Arrhythmia:** This is a condition that results in irregular heartbeats
  - **Intestinal ulcers:** This is a condition in which there are open sores on the inside of the lining of the stomach.
  - **Bleeding, perforation** (a hole in the intestine wall) or a lower blood flow to the intestines
  - **Rhabdomyolysis:** A condition where your muscles breakdown and in which there are muscular adverse effects

#### **What is Oxaliplatin Injection used for?**

Oxaliplatin Injection is a medication used in combination with two other medications (5-fluorouracil (5-FU) and leucovorin) to treat:

- patients with colon cancer, after surgery to remove the tumor.

- patients with a kind of cancer called metastatic colorectal cancer.

### **How does Oxaliplatin Injection work?**

Every cell in your body contains genetic material. This genetic material provides “information” for organs, tissue growth and tissue functioning.

Oxaliplatin Injection links to the genetic material in the cancer cell and stops the replication process of the cancer cell. This causes the death of the cancer cell.

### **What are the ingredients in Oxaliplatin Injection?**

Medicinal ingredients: oxaliplatin

Non-medicinal ingredients: Water for injection

### **Oxaliplatin Injection comes in the following dosage forms:**

Oxaliplatin solution for injection (5 mg/mL)

Available in vials containing 50 mg / 10 mL, 100 mg / 20 mL and 200 mg / 40 mL.

### **Do not use Oxaliplatin Injection if:**

- You are allergic to oxaliplatin or other platinum containing ingredients or to any of the ingredients in the product or any part of the container (see the section “**What are the ingredients in Oxaliplatin Injection**”)
- You have numbness, weakness, prickling or tingling in your feet, hands, legs and/or arms
- You have a severe kidney disease.
- You are or are planning to become pregnant.
  - Use effective birth control to keep from getting pregnant. If you think you have become pregnant while using the medicine, tell your healthcare professional right away.
  - Men should not father a child while receiving Oxaliplatin Injection and up to 6 months after.
- You are breast-feeding or plan to breastfeed.

**To help avoid side effects and ensure proper use, talk to your healthcare professional before you take Oxaliplatin Injection. Talk about any health conditions or problems you may have, including if you:**

- Have not taken your premedication as directed.
- Have kidney disease or are taking medication that can damage the kidney. Your healthcare professional will check on you regularly.
- Have heart disease called “QT prolongation.”
- Have recently received or plan to receive any vaccines.

## **Other warnings you should know about:**

### **Pregnancy Information for Females and Males**

#### **Female Patients**

- If you are able to become pregnant, use effective birth control.
  - Use effective birth control during treatment with oxaliplatin and for at least 9 months after the last dose.

Do not breast-feed while taking Oxaliplatin Injection and for 3 months after the last dose.

#### **Male Patients**

- Avoid fathering a child while you are taking Oxaliplatin Injection.
- If you have a female partner that can become pregnant, use effective birth control.
  - Use effective birth control during treatment with oxaliplatin and for at least 6 months after the last dose.
- Talk to your healthcare professional about conserving your sperm before treatment. Oxaliplatin Injection may have an impact on your ability to have children and this effect could be permanent.

### **Check-ups and Testing:**

Your healthcare professional will check your blood at regular visits while you are using this medicine. Your healthcare professional will let you know if your platelets, white or red blood cells are low.

### **Nerve Changes (Neuropathy):**

- Nerves changes (neuropathy) can occur with Oxaliplatin Injection (see the section **“What are possible side effects from using Oxaliplatin Injection”**).
- Being exposed to the cold is one of the most common triggers of neuropathy and may cause unpleasant sensations. To avoid these sensations:
  - Avoid cold drinks and the use of ice cubes in drinks.
  - Avoid cold temperatures and cold objects.
  - Cover your skin if you must go outside in cold temperatures. Do not put ice or ice packs on your body.
  - Do not breathe deeply when exposed to cold air.
  - Do not take things from the freezer or refrigerator without wearing gloves.
  - Do not run the air conditioner at high levels in the house or in the car in hot weather.
- A less common symptom of neuropathy is a condition called pharyngolaryngeal dysesthesia. This is the feeling of tightness or discomfort in the throat, making it seem difficult to breathe or swallow.
- Some people may experience more debilitating symptoms of neuropathy, which may

interfere with daily activities such as the following:

- Writing
- Buttoning clothes
- Swallowing
- Difficulty walking
- Picking up things

### **Driving and Using Machines**

Oxaliplatin Injection may cause dizziness, other conditions that affect balance, and cause vision problems (including reversible short-term loss of vision). Do not drive or operate machines until you know how you respond to Oxaliplatin Injection.

**Tell your healthcare professional about all the medicines you take, including any drugs, vitamins, minerals, natural supplements or alternative medicines.**

### **The following may interact with Oxaliplatin Injection:**

- Oxaliplatin Injection may interact with anticoagulants (medicine used to prevent blood clots).

### **How to take Oxaliplatin Injection:**

#### **Usual dose:**

Your healthcare professional will decide how much Oxaliplatin Injection is right for you and how often you should receive it.

Oxaliplatin Injection is an injectable medication that is given by intravenous infusion (injected slowly in a vein) every 2 weeks. It is given to you together with two other medicines called leucovorin and 5-fluorouracil (5-FU).

You may have to take medication before each treatment begins. This is called premedication. The purpose of this is to help lessen the nausea you may experience. Your healthcare professional will tell you exactly what premedication you need to take and for how long.

If you forget to take your premedication as directed, make sure to tell your healthcare professional before you get your Oxaliplatin Injection treatment. Be sure to keep all appointments.

#### **Overdose:**

This medicine will be given to you in a hospital, under the supervision of a healthcare professional. It is unlikely that you will be given too much or too little, however, tell your healthcare professional if you have any concerns. Too much Oxaliplatin Injection may affect



your blood count, heart, kidneys, liver, lungs, or nerves.

Tell your healthcare professional if you have extreme fatigue, diarrhea, hair loss, heart problems, difficulty breathing, or abnormal vision.

If you think you, or a person you are caring for, have taken too much Oxaliplatin Injection, contact a healthcare professional, hospital emergency department, or regional poison control centre immediately, even if there are no symptoms.

**Missed Dose:**

This medicine needs to be given on a fixed schedule. If you miss an infusion, call your healthcare professional.

**What are possible side effects from using Oxaliplatin Injection?**

These are not all the possible side effects you may have when taking Oxaliplatin Injection. If you experience any side effects not listed here, tell your healthcare professional.

- Nausea.
- Diarrhea.
- Vomiting.
- Fatigue.
- Sores in the mouth (stomatitis).
- Change in taste.
- Pain at the injection site.
- Pain in a joint.
- Nose bleeding.
- Hiccups.
- High blood pressure.
- Constipation.
- Stomach pain.
- Loss of appetite.
- Hair loss.
- Reversible short-term loss of vision.

<b>Serious side effects and what to do about them</b>			
<b>Symptom / effect</b>	<b>Talk to your healthcare professional</b>		<b>Stop taking drug and get immediate medical help</b>
	<b>Only if severe</b>	<b>In all cases</b>	
<b>UNKNOWN FREQUENCY</b>			
<b>Persistent vomiting or diarrhea</b>		√	
<b>Persistent cough</b>		√	

Serious side effects and what to do about them			
Symptom / effect	Talk to your healthcare professional		Stop taking drug and get immediate medical help
	Only if severe	In all cases	
<b>Fever or signs of infection:</b> high temperature, redness or swelling at the injection site, a cough that brings up mucous, or sore throat		√	
<b>Severe allergic reaction</b> (anaphylaxis / anaphylactic reactions): Allergic reactions such as trouble breathing, difficulty speaking, tightness of the chest or wheezing, tightness in the throat, rash, hives, or swelling of the lips or tongue		√	
<b>Neuropathy:</b> symptoms include tingling or numbness in the extremities, muscle weakness, tightness or discomfort in the throat or other altered sensations. May interfere with daily activities.		√	
<b>Nervous System Problems:</b> Symptoms such as headache, altered mental functioning, seizures and abnormal vision from blurriness to vision loss		√	
<b>Kidney failure:</b> symptoms include difficulty breathing, weakness, fatigue, decreased urine output), small purple-red marks on the skin or other parts of the body. Kidney failure may be not reversible with discontinuation of therapy and dialysis may be required.		√	
<b>Heart Failure</b> (heart does not pump blood as well as it should): Irregular heartbeat, feeling dizzy, fatigue and weakness or fainting, fluid retention.		√	
<b>Muscle Problems:</b> Muscle pain and swelling, with weakness, fever and darkened urine		√	
<b>Gastrointestinal Problems:</b> Stomach pain, nausea, vomiting, black or red-coloured stools		√	
<b>Disseminated intravascular coagulation:</b> (Could be life-			

Serious side effects and what to do about them			
Symptom / effect	Talk to your healthcare professional		Stop taking drug and get immediate medical help
	Only if severe	In all cases	
threatening). Symptoms such as: bleeding in urine or stools, small red or brown bruises that happen easily, pain and swelling in the lower leg, or chest pain and shortness of breath.		√	
<b>Neuritis</b> (inflammation of nerves)		√	
<b>Focal nodular hyperplasia</b> (non-cancerous tumor of the liver): symptoms include recent or chronic abdominal pain or discomfort, noticeable mass, weight loss, weakness, and fever)		√	
<b>Myelosuppression</b> including:  <b>Anemia</b> (low red blood cells): fatigue, loss of energy, pale skin, shortness of breath, weakness  <b>Neutropenia</b> (low white blood cells): signs of infection such as a sore throat and high temperature  <b>Thrombocytopenia</b> (low platelets): abnormal bruising, bleeding		√	
<b>Interstitial lung disease:</b> symptoms such as rapid breathing and shortness of breath		√	
<b>Deep vein thrombosis:</b> (Could be life threatening). Symptoms can include leg swelling, leg pain, cramping or soreness that often starts in the calf, change in skin color on the leg, a feeling of warmth on the affected leg.,		√	
<b>Severe liver problems:</b> This may include issues with liver function, damage or death of liver cells. Increase in liver enzymes and alkaline phosphatase [alkaline phosphatase is an enzyme found in many parts of the body].		√	

If you have a troublesome symptom or side effect that is not listed here or becomes bad enough to interfere with your daily activities, tell your healthcare professional.

### **Reporting Side Effects**

You can report any suspected side effects associated with the use of health products to Health Canada by:

- Visiting the Web page on Adverse Reaction Reporting (<https://www.canada.ca/en/health-canada/services/drugs-health-products/medeffect-canada/adverse-reaction-reporting.html>) for information on how to report online, by mail or by fax; or
- Calling toll-free at 1-866-234-2345.

*NOTE: Contact your health professional if you need information about how to manage your side effects. The Canada Vigilance Program does not provide medical advice.*

### **Storage:**

Store between 15°C and 30 °C. Do not freeze. Protect product from light.

Keep out of reach and sight of children.

### **If you want more information about Oxaliplatin Injection:**

- Talk to your healthcare professional
- Find the full product monograph that is prepared for healthcare professionals and includes this Patient Medication Information by visiting the Health Canada website: (<https://www.canada.ca/en/health-canada/services/drugs-health-products/drug-products/drug-product-database.html>); [the manufacturer's website http://www.auropharma.ca](http://www.auropharma.ca), or by calling 1-855-648-6681.

This leaflet was prepared by Auro Pharma Inc.

Last Revised December 12, 2023