

PRODUCT MONOGRAPH  
INCLUDING PATIENT MEDICATION INFORMATION

<sup>Pr</sup>**BRAFTOVI**<sup>®</sup>

Encorafenib Capsules

Capsules, 75 mg, oral

Protein kinase inhibitor

Pfizer Canada ULC  
17,300 Trans-Canada Highway  
Kirkland, Quebec  
H9J 2M5

Date of Initial Authorization:  
March 2, 2021

Date of Revision:  
February 23, 2024

® Array Biopharma Inc.  
Pfizer Canada ULC, Licensee

Submission Control Number: 276870

## RECENT MAJOR LABEL CHANGES

Not applicable.

## TABLE OF CONTENTS

Sections or subsections that are not applicable at the time of authorization are not listed.

<b>RECENT MAJOR LABEL CHANGES</b> .....	<b>2</b>
<b>TABLE OF CONTENTS</b> .....	<b>2</b>
<b>PART I: HEALTH PROFESSIONAL INFORMATION</b> .....	<b>4</b>
<b>1 INDICATIONS</b> .....	<b>4</b>
1.1 Pediatrics.....	4
1.2 Geriatrics.....	4
<b>2 CONTRAINDICATIONS</b> .....	<b>4</b>
<b>3 SERIOUS WARNINGS AND PRECAUTIONS BOX</b> .....	<b>4</b>
<b>4 DOSAGE AND ADMINISTRATION</b> .....	<b>5</b>
4.1 Dosing Considerations .....	5
4.2 Recommended Dose and Dosage Adjustment .....	5
4.4 Administration.....	8
4.5 Missed Dose .....	8
<b>5 OVERDOSAGE</b> .....	<b>8</b>
<b>6 DOSAGE FORMS, STRENGTHS, COMPOSITION AND PACKAGING</b> .....	<b>9</b>
<b>7 WARNINGS AND PRECAUTIONS</b> .....	<b>9</b>
7.1 Special Populations.....	14
7.1.1 Pregnant Women .....	14
7.1.2 Breast-feeding .....	14
7.1.3 Pediatrics.....	14
7.1.4 Geriatrics .....	14
<b>8 ADVERSE REACTIONS</b> .....	<b>14</b>
8.1 Adverse Reaction Overview.....	14
8.2 Clinical Trial Adverse Reactions .....	15
8.3 Less Common Clinical Trial Adverse Reactions .....	19

8.4	Abnormal Laboratory Findings: Hematologic, Clinical Chemistry and Other Quantitative Data .....	19
8.5	Post-Market Adverse Reactions .....	20
<b>9</b>	<b>DRUG INTERACTIONS .....</b>	<b>20</b>
9.2	Drug Interactions Overview .....	20
9.4	Drug-Drug Interactions .....	21
9.5	Drug-Food Interactions.....	24
9.6	Drug-Herb Interactions.....	24
9.7	Drug-Laboratory Test Interactions.....	24
<b>10</b>	<b>CLINICAL PHARMACOLOGY .....</b>	<b>25</b>
10.1	Mechanism of Action.....	25
10.2	Pharmacodynamics .....	25
10.3	Pharmacokinetics .....	25
<b>11</b>	<b>STORAGE, STABILITY AND DISPOSAL .....</b>	<b>26</b>
<b>12</b>	<b>SPECIAL HANDLING INSTRUCTIONS.....</b>	<b>27</b>
<b>PART II: SCIENTIFIC INFORMATION .....</b>		<b>28</b>
<b>13</b>	<b>PHARMACEUTICAL INFORMATION .....</b>	<b>28</b>
<b>14</b>	<b>CLINICAL TRIALS .....</b>	<b>29</b>
14.1	Trial Design and Study Demographics .....	29
14.2	Study Results .....	32
<b>15</b>	<b>MICROBIOLOGY .....</b>	<b>36</b>
<b>16</b>	<b>NON-CLINICAL TOXICOLOGY .....</b>	<b>36</b>
<b>PATIENT MEDICATION INFORMATION.....</b>		<b>38</b>

## PART I: HEALTH PROFESSIONAL INFORMATION

### 1 INDICATIONS

BRAFTOVI (encorafenib) is indicated, in combination with binimetinib, for the treatment of patients with unresectable or metastatic melanoma with a BRAF V600 mutation, as detected by a validated test.

Clinical data supporting the use of BRAFTOVI in the treatment of patients with BRAF V600 mutations are limited to patients with V600E or V600K mutations.

BRAFTOVI (encorafenib) is indicated, in combination with cetuximab, for the treatment of patients with metastatic colorectal cancer (mCRC) with a BRAF V600E mutation, as detected by a validated test, after prior therapy.

#### 1.1 Pediatrics

**Pediatrics (< 18 years of age):** The safety and effectiveness of BRAFTOVI have not been established in pediatric patients; therefore, Health Canada has not authorized an indication for pediatric use.

#### 1.2 Geriatrics

##### Melanoma

No overall differences in the safety or effectiveness of BRAFTOVI used in combination with binimetinib were observed in patients aged 65 years and older, compared to younger patients (see 7.1.4 WARNINGS AND PRECAUTIONS, Special Populations - Geriatrics).

##### mCRC

There are insufficient data regarding use of BRAFTOVI in combination with cetuximab in patients aged 65 years and older to assess any difference in efficacy or safety compared to younger patients (see 7.1.4 WARNINGS AND PRECAUTIONS, Special Populations - Geriatrics).

### 2 CONTRAINDICATIONS

BRAFTOVI (encorafenib) is contraindicated in patients who are hypersensitive to this drug or to any ingredient in the formulation, including any non-medicinal ingredient, or component of the container. For a complete listing, see 6 DOSAGE FORMS, STRENGTHS, COMPOSITION AND PACKAGING.

### 3 SERIOUS WARNINGS AND PRECAUTIONS BOX

#### Serious Warnings and Precautions

The following are significant adverse drug reactions identified in clinical trials conducted with BRAFTOVI (encorafenib) in combination with binimetinib and/or with BRAFTOVI in combination with cetuximab:

- **New Primary Cutaneous Malignancies** (see 7 WARNINGS AND PRECAUTIONS, Carcinogenesis and Mutagenesis)
- **Major Hemorrhagic Events** (see 7 WARNINGS AND PRECAUTIONS, Hematologic)
- **Uveitis** (see 7 WARNINGS AND PRECAUTIONS, Ophthalmologic)
- **Venous Thromboembolism** (See 7 WARNINGS AND PRECAUTIONS, Cardiovascular)

- **QT Prolongation** (See 7 WARNINGS AND PRECAUTIONS, Cardiovascular)

## 4 DOSAGE AND ADMINISTRATION

### 4.1 Dosing Considerations

Before taking BRAFTOVI (encorafenib) in combination with binimetinib or cetuximab, patients must have unresectable or metastatic melanoma with a BRAF V600 mutation or metastatic colorectal cancer with BRAF V600E mutation, confirmed by a validated test (see 7 WARNINGS AND PRECAUTIONS, General, Tumour promotion in BRAF wild-type tumours).

### 4.2 Recommended Dose and Dosage Adjustment

#### Melanoma

The recommended dose of BRAFTOVI is 450 mg (six 75 mg capsules) orally taken once daily in combination with binimetinib until disease progression or unacceptable toxicity. BRAFTOVI may be taken with or without food.

Consult the binimetinib Product Monograph for recommended binimetinib dosing information.

#### mCRC

The recommended dose of BRAFTOVI is 300 mg (four 75 mg capsules) orally taken once daily in combination with cetuximab until disease progression or unacceptable toxicity. BRAFTOVI may be taken with or without food.

Consult the cetuximab Product Monograph for recommended cetuximab dosing information.

#### Dose modifications

The management of adverse reactions may require dose reduction, temporary interruption or treatment discontinuation (see Table 1, Table 2 and Table 3).

#### Melanoma:

If binimetinib is withheld, reduce BRAFTOVI to a maximum dose of 300 mg once daily until binimetinib is resumed. If binimetinib is permanently discontinued, BRAFTOVI should be discontinued.

Dose reduction recommendations for BRAFTOVI are presented in Table 1.

**Table 1 - Recommended dose reductions for BRAFTOVI (Melanoma indication)**

Action	Recommended Dose
First dose reduction	300 mg (four 75 mg capsules) orally once daily
Second dose reduction	225 mg (three 75 mg capsules) orally once daily
Subsequent modification	Permanently discontinue if unable to tolerate BRAFTOVI 225 mg (three 75 mg capsules) orally once daily

For information on the posology and recommended dose modifications of binimetinib, see the binimetinib Product Monograph.

### mCRC

If cetuximab is discontinued, discontinue BRAFTOVI. Dose reductions for adverse reactions associated with BRAFTOVI are presented in Table 2.

**Table 2 - Recommended dose reductions for BRAFTOVI (mCRC indication)**

Action	Recommended Dose
First Dose Reduction	225 mg (three 75 mg capsules) orally once daily
Second Dose Reduction	150 mg (two 75 mg capsules) orally once daily
Subsequent Modification	Permanently discontinue if unable to tolerate BRAFTOVI 150 mg (two 75 mg capsules) once daily

For information on the posology and recommended dose modifications of cetuximab, see the cetuximab Product Monograph.

### Melanoma and mCRC

Dose modifications for adverse reactions associated with BRAFTOVI are presented in Table 3.

**Table 3 - Recommended dose modifications for BRAFTOVI for adverse reactions**

Severity of Adverse Reaction	Dose Modification for BRAFTOVI
<i>New Primary Malignancies (See 7 WARNINGS AND PRECAUTIONS, Carcinogenesis and Mutagenesis)</i>	
Non-Cutaneous RAS Mutation-positive Malignancies	Permanently discontinue BRAFTOVI.
<i>Uveitis (See 7 WARNINGS AND PRECAUTIONS, Ophthalmologic)</i>	
<ul style="list-style-type: none"><li>Grade 1-3</li></ul>	<ul style="list-style-type: none"><li>If Grade 1 or 2 does not respond to specific ocular therapy, or for Grade 3 uveitis, withhold BRAFTOVI for up to 6 weeks.</li><li>If uveitis is Grade 1 and it improves to Grade 0, then resume at the same dose.</li><li>If uveitis is Grade 2 or Grade 3 and it improves to Grade 0 or 1, then resume at a reduced dose.</li><li>If not improved, permanently discontinue BRAFTOVI plus binimetinib.</li></ul>
<ul style="list-style-type: none"><li>Grade 4</li></ul>	Permanently discontinue BRAFTOVI.
<i>QTc Prolongation (See 7 WARNINGS AND PRECAUTIONS, Cardiovascular)</i>	
<ul style="list-style-type: none"><li>QTcF greater than 500 ms and less than or equal to 60 ms increase from baseline</li></ul>	Withhold BRAFTOVI until QTcF less than or equal to 500 ms. Resume at reduced dose. <ul style="list-style-type: none"><li>If more than one recurrence, permanently discontinue BRAFTOVI.</li></ul>
<ul style="list-style-type: none"><li>QTcF greater than 500 ms and greater than 60 ms increase from baseline</li></ul>	Permanently discontinue BRAFTOVI.
<i>Hepatotoxicity</i>	

<ul style="list-style-type: none"> <li>Grade 2 AST or ALT increased</li> </ul>	Maintain BRAFTOVI dose. <ul style="list-style-type: none"> <li>If no improvement within 2 weeks, withhold BRAFTOVI until improves to Grade 0-1 or to pretreatment/baseline levels and then resume at same dose.</li> </ul>
<ul style="list-style-type: none"> <li>Grade 3 or 4 AST or ALT increased</li> </ul>	See <i>Other Adverse Reactions</i> .
<i>Dermatologic</i>	
<ul style="list-style-type: none"> <li>Grade 2</li> </ul>	If no improvement within 2 weeks, withhold BRAFTOVI until Grade 0-1. Resume at same dose.
<ul style="list-style-type: none"> <li>Grade 3</li> </ul>	Withhold BRAFTOVI until Grade 0-1. Resume at same dose if first occurrence or reduce dose if recurrent.
<ul style="list-style-type: none"> <li>Grade 4</li> </ul>	Permanently discontinue BRAFTOVI.
<i>Other Adverse Reactions (including Hemorrhage) (See 7 WARNINGS AND PRECAUTIONS, Hematologic)</i>	
<ul style="list-style-type: none"> <li>Recurrent Grade 2 or</li> <li>First occurrence of any Grade 3</li> </ul>	Withhold BRAFTOVI for up to 4 weeks. <ul style="list-style-type: none"> <li>If improves to Grade 0-1 or to pretreatment/baseline level, resume at reduced dose.</li> <li>If no improvement, permanently discontinue BRAFTOVI.</li> </ul>
<ul style="list-style-type: none"> <li>First occurrence of any Grade 4</li> </ul>	Permanently discontinue BRAFTOVI, or  Withhold BRAFTOVI for up to 4 weeks. <ul style="list-style-type: none"> <li>If improves to Grade 0-1 or to pretreatment/baseline level, then resume at reduced dose.</li> <li>If no improvement, permanently discontinue BRAFTOVI.</li> </ul>
<ul style="list-style-type: none"> <li>Recurrent Grade 3</li> </ul>	Consider permanently discontinuing BRAFTOVI.
<ul style="list-style-type: none"> <li>Recurrent Grade 4</li> </ul>	Permanently discontinue BRAFTOVI.

<sup>a</sup> National Cancer Institute Common Terminology Criteria for Adverse Events (NCI CTCAE) version 4.03.

Dose modification of BRAFTOVI when administered with binimetinib or with cetuximab is not recommended for new primary cutaneous malignancies; ocular events other than uveitis, iritis, and iridocyclitis; interstitial lung disease/pneumonitis; cardiac dysfunction; creatine phosphokinase (CPK) elevation; rhabdomyolysis; and venous thromboembolism.

Refer to the binimetinib and cetuximab Product Monographs for dose modifications for adverse reactions associated with binimetinib and cetuximab.

Dose modifications for coadministration with strong or moderate CYP3A4 inhibitors

Avoid coadministration with strong or moderate CYP3A4 inhibitors during treatment with BRAFTOVI. If coadministration with a strong or moderate CYP3A4 inhibitor is unavoidable, reduce the BRAFTOVI dose according to the recommendations in Table 4. After the inhibitor has been discontinued for 3 to 5 elimination half-lives, resume the BRAFTOVI dose that was taken prior to initiating the CYP3A4 inhibitor (see 9 DRUG INTERACTIONS).

**Table 4 - Recommended dose reductions for BRAFTOVI for coadministration with strong or moderate CYP3A4 inhibitors**

Planned Dose	Dose for Co-administration with Moderate CYP3A4	Dose for Co-administration with Strong CYP3A4
450 mg	225 mg	150 mg

300 mg <sup>a</sup>	150 mg	75 mg
225 mg <sup>a</sup>	75 mg	75 mg
150 mg	75 mg	75 mg <sup>b</sup>

<sup>a</sup> Planned dose refers to recommended dose reductions for BRAFTOVI for adverse reactions based on dosing recommendations in Table 1(melanoma) and Table 2 (mCRC).

<sup>b</sup> Encorafenib exposure at the 75 mg QD BRAFTOVI dosage when co-administered with a strong CYP3A4 inhibitor is expected to be higher than at the 150 mg QD dosage in the absence of a CYP3A4 inhibitor and similar to exposure at the 225 mg QD dosage in the absence of a CYP3A4 inhibitor. Monitor patients closely for adverse reactions and use clinical judgement when using BRAFTOVI with strong CYP3A4 inhibitors at the 150 mg dose level.

## Special Populations

### *Geriatrics*

No dose adjustment is required for patients aged 65 years and older (see 10.3 CLINICAL PHARMACOLOGY, Pharmacokinetics).

### *Hepatic impairment*

The recommended dose of BRAFTOVI for patients with mild hepatic impairment (Child-Pugh Class A) is 300 mg orally once daily (see 10.3 CLINICAL PHARMACOLOGY, Pharmacokinetics). A recommended dose has not been established for patients with moderate (Child-Pugh Class B) or severe (Child-Pugh Class C) hepatic impairment.

### *Renal impairment*

No dose adjustment is recommended for patients with mild to moderate renal impairment (CLcr 30 to < 90 mL/min) (see 10.3 CLINICAL PHARMACOLOGY, Pharmacokinetics). A recommended dose has not been established for patients with severe renal impairment (CLcr < 30 mL/min).

### *Pediatric population*

Health Canada has not authorized an indication for pediatric use (see 1.1 INDICATIONS, Pediatrics).

## **4.4 Administration**

BRAFTOVI (encorafenib) capsules should be swallowed whole with water, and may be taken with or without food. The concomitant administration of encorafenib with grapefruit juice should be avoided (see 9 DRUG INTERACTIONS).

## **4.5 Missed Dose**

If a dose of BRAFTOVI is missed, it should not be taken if it is less than 12 hours until the next dose. Do not take an additional dose if vomiting occurs after BRAFTOVI administration but continue with the next scheduled dose.

## **5 OVERDOSAGE**

There is no specific treatment in the event of BRAFTOVI (encorafenib) overdose. Since encorafenib is 86% bound to plasma proteins, hemodialysis is likely to be ineffective in the treatment of overdose with BRAFTOVI.



For management of a suspected drug overdose, contact your regional poison control centre.

## 6 DOSAGE FORMS, STRENGTHS, COMPOSITION AND PACKAGING

Table 5 - Dosage Forms, Strengths, Composition and Packaging

Route of Administration	Dosage Form / Strength/Composition	Non-medicinal Ingredients
oral	Capsule / 75 mg	Colloidal silicon dioxide, copovidone, crospovidone, ferrosferric oxide, gelatin, iron oxide red, iron oxide yellow, magnesium stearate of vegetable origin, microcrystalline cellulose, pharmaceutical glaze, poloxamer 188, propylene glycol, succinic acid and titanium dioxide.

### BRAFTOVI 75 mg hard capsules:

Stylized “A” on beige cap and “LGX 75mg” on white body. BRAFTOVI capsules are supplied in bottles of 60 count and bottles of 90 count.

## 7 WARNINGS AND PRECAUTIONS

See 3 SERIOUS WARNINGS AND PRECAUTIONS BOX.

### **General**

BRAFTOVI (encorafenib) is indicated for use in combination with binimetinib for the treatment of unresectable or metastatic melanoma, or cetuximab for the treatment of mCRC. For additional information on warnings and precautions associated with binimetinib or cetuximab treatment, consult the binimetinib or the cetuximab Product Monograph.

Confirmation of BRAF V600 mutation using a validated test is required for selection of patients appropriate for treatment with BRAFTOVI.

### Tumour promotion in BRAF wild-type tumours

In vitro experiments have demonstrated paradoxical activation of MAP-kinase signaling and increased cell proliferation in BRAF wild-type cells, which are exposed to BRAF inhibitors. Confirm evidence of BRAF V600 mutation prior to initiating BRAFTOVI.

### Risks associated with BRAFTOVI as a single agent

#### Melanoma

BRAFTOVI when used as a single agent is associated with an increased risk of certain adverse reactions compared to when BRAFTOVI is used in combination with binimetinib. In the COLUMBUS trial, Grades 3 or 4 dermatologic reactions occurred in 21% of patients treated with BRAFTOVI as a single agent compared to 2% of patients treated with BRAFTOVI in combination with binimetinib (see 7 WARNINGS AND PRECAUTIONS, Carcinogenesis and Mutagenesis and 8 ADVERSE REACTIONS).

If binimetinib is temporarily interrupted or permanently discontinued, reduce or discontinue the dose of BRAF TOVI as recommended (see 4.2 DOSAGE AND ADMINISTRATION, Recommended Dose and Dosage Adjustment).

#### mCRC

In the BEACON CRC trial, no patients were treated with BRAF TOVI as a single agent.

### **Carcinogenesis and Mutagenesis**

#### New Primary Malignancies

New primary malignancies, cutaneous and non-cutaneous, have been observed in patients treated with BRAF inhibitors and can occur with BRAF TOVI.

#### *Cutaneous malignancies*

In the COLUMBUS trial, cutaneous squamous cell carcinoma (cuSCC), including keratoacanthoma (KA), occurred in 2.6%, and basal cell carcinoma occurred in 1.6% of patients who received BRAF TOVI in combination with binimetinib. The median time to first occurrence of cuSCC/KA was 5.8 months (range 1 to 9 months) (see 8 ADVERSE REACTIONS).

For patients who received BRAF TOVI as a single agent, cuSCC/KA was reported in 8%, basal cell carcinoma in 1%, and new primary melanoma in 5% of patients.

In BEACON CRC, cuSCC/KA occurred in 1.4%, and a new primary melanoma occurred in 1.4% of patients who received BRAF TOVI in combination with cetuximab.

Perform dermatologic evaluations prior to initiating treatment, every 2 months during treatment, and for up to 6 months following discontinuation of treatment. Manage suspicious skin lesions with excision and dermatopathologic evaluation. Instruct patients to inform their physician immediately if new skin lesions develop. Dose modification is not recommended for new primary cutaneous malignancies.

#### *Non-cutaneous malignancies*

Based on its mechanism of action, BRAF TOVI may promote malignancies associated with activation of RAS through mutation or other mechanisms. Monitor patients receiving BRAF TOVI for signs and symptoms of non-cutaneous malignancies. Permanently discontinue BRAF TOVI in patients who develop RAS mutation-positive non-cutaneous malignancies (see 4.2 DOSAGE AND ADMINISTRATION, Recommended Dose and Dosage Adjustment).

### **Cardiovascular**

#### QT Prolongation

BRAF TOVI is associated with dose-dependent QTc interval prolongation in some patients (see 10.2 CLINICAL PHARMACOLOGY, Pharmacodynamics, Cardiac Electrophysiology). In the safety analysis of pooled studies, an increase in QTcF to > 500 ms was measured in 0.7% (2/268) of patients who received

BRAFTOVI in combination with binimetinib.

In BEACON CRC, an increase in QTcF was measured in 3.2% (7/216) patients who received BRAFTOVI in combination with cetuximab.

Monitor patients who already have or who are at significant risk of developing QTc prolongation, including patients with known long QT syndromes, clinically significant bradyarrhythmias, severe or uncontrolled heart failure and those taking other medicinal products associated with QT prolongation. Correct hypokalemia and hypomagnesemia prior to and during BRAFTOVI administration. Withhold, reduce dose, or permanently discontinue for QTc > 500 ms (see 4.2 DOSAGE and ADMINISTRATION, Recommended Dose and Dosage Adjustment).

#### Venous Thromboembolism (VTE)

In COLUMBUS, venous thromboembolism (VTE) occurred in 6% of patients receiving binimetinib in combination with BRAFTOVI, including 3.1% of patients who developed pulmonary embolism. Consult binimetinib Product Monograph.

In BEACON CRC, VTE occurred in 3.2% of patients receiving BRAFTOVI in combination with cetuximab, including 1.4% of patients who developed pulmonary embolism.

### **Driving and Operating Machinery**

No studies on the effects of BRAFTOVI on the ability to drive or operate machinery have been performed. BRAFTOVI may have a minor influence on the ability to drive and use machines. Fatigue and vision problems have been reported, and patients taking BRAFTOVI should observe caution when driving or operating a vehicle or potentially dangerous machinery.

### **Endocrine and Metabolism**

#### *Hyperglycaemia*

Hyperglycaemia can occur in some patients taking BRAFTOVI. In COLUMBUS, clinically notable increased glucose serum fasting was reported in 12.9% of patients taking BRAFTOVI in combination with binimetinib; Grade 3 or 4 increased glucose serum fasting values were reported in 5.2%.

In BEACON CRC, Grade 3 or 4 elevations of hyperglycaemia based on laboratory values were reported in 5.6% of patients taking BRAFTOVI in combination with cetuximab.

Monitor glucose regularly in patients with diabetes or hyperglycaemia and adjust anti-diabetic treatments accordingly. Advise patients to report symptoms of severe hyperglycaemia such as excessive thirst or any increase in the volume or frequency of urination.

### **Hematologic**

#### *Hemorrhage*

Hemorrhage can occur in some patients taking BRAFTOVI. In COLUMBUS, hemorrhage occurred in 19% of patients receiving BRAFTOVI in combination with binimetinib; Grade 3 or greater hemorrhage occurred in 3.2% of patients. The most frequent hemorrhagic events were gastrointestinal, including

rectal hemorrhage (4.2%), hematochezia (3.1%), and hemorrhoidal hemorrhage (1%). Events of hematuria occurred in 2.6%. Fatal cerebral hemorrhage in the setting of new or progressive brain metastases occurred in 1.6% of patients.

In BEACON CRC, hemorrhage occurred in 19% of patients receiving BRAFTOVI in combination with cetuximab; Grade 3 or higher hemorrhage occurred in 1.9% of patients, including fatal gastrointestinal hemorrhage in 0.5% of patients. The most frequent hemorrhagic events were epistaxis (6.9%), hematochezia (2.3%) and rectal hemorrhage (2.3%).

Withhold, reduce dose, or permanently discontinue BRAFTOVI based on the severity of the adverse reaction (see 4.2 DOSAGE AND ADMINISTRATION, Recommended Dose and Dosage Adjustment and 8 ADVERSE REACTIONS).

## **Hepatic/Biliary/Pancreatic**

### *Hepatotoxicity*

Hepatotoxicity can occur in some patients taking BRAFTOVI. In COLUMBUS, the incidence of Grade 3 or 4 increases in serum liver function laboratory tests (LFT) in patients receiving BRAFTOVI in combination with binimetinib was 6% for alanine aminotransferase (ALT), 2.6% for aspartate aminotransferase (AST), and 0.5% for alkaline phosphatase. No patient experienced Grade 3 or 4 bilirubin elevation.

In BEACON CRC, the incidence of Grade 3 or 4 increases in LFT in patients receiving BRAFTOVI in combination with cetuximab was 1.4% for AST, 4.2% for alkaline phosphatase, and 2.3% for bilirubin. No patient experienced Grade 3 or 4 ALT elevation.

Monitor liver laboratory tests before initiation of BRAFTOVI, monthly during treatment, and as clinically indicated. Withhold, reduce dose, or permanently discontinue based on severity of adverse reaction (see 4.2 DOSAGE AND ADMINISTRATION, Recommended Dose and Dosage Adjustment and 8 ADVERSE REACTIONS).

## **Ophthalmologic**

### *Uveitis*

Uveitis, including iritis and iridocyclitis, has been reported in patients treated with BRAFTOVI in combination with binimetinib. In COLUMBUS, the incidence of uveitis among patients treated with BRAFTOVI in combination with binimetinib was 4%.

Uveitis was not observed in patients receiving BRAFTOVI in combination with cetuximab in the BEACON CRC study.

Patients should be assessed at each visit for symptoms of new or worsening visual disturbances. If symptoms of new or worsening visual disturbances including diminished central vision, blurred vision or loss of vision are identified, a prompt ophthalmologic examination is recommended. Withhold, reduce dose, or permanently discontinue based on severity of adverse reaction (see 4.2 DOSAGE AND ADMINISTRATION, Recommended Dose and Dosage Adjustment and 8 ADVERSE REACTIONS).

## Reproductive Health: Female and Male Potential

### *Pregnancy testing*

Verify the pregnancy status of females of reproductive potential prior to initiating BRAFTOVI.

- **Fertility**

There are no human data on the effect of BRAFTOVI on fertility. Based on findings in male rats at doses approximately 13 times the human exposure at the 450 mg clinical dose, use of BRAFTOVI may impact fertility in males (see 16 NON-CLINICAL TOXICOLOGY).

- **Teratogenic Risk**

#### *Contraception*

BRAFTOVI can cause fetal harm when administered to a pregnant woman (see 7.1.1 WARNINGS AND PRECAUTIONS, Pregnant Women). Advise females of reproductive potential to use effective contraception during treatment with BRAFTOVI and for 2 weeks after the final dose. Counsel patients to use a non-hormonal method of contraception since BRAFTOVI has the potential to render hormonal contraceptives ineffective (see 9 DRUG INTERACTIONS).

Advise male patients with female partners who are pregnant, possibly pregnant, or who could become pregnant to use effective barrier contraception during treatment with BRAFTOVI and for at least 1 week after the last dose of BRAFTOVI.

## Skin

### *New primary cutaneous malignancies*

New primary cutaneous malignancies have been observed in patients treated with BRAF inhibitors and can occur with BRAFTOVI (see 7 WARNINGS AND PRECAUTIONS, Carcinogenesis and Mutagenesis).

### *Rash*

Rash can occur in some patients taking BRAFTOVI. In COLUMBUS, the incidence of rash among patients treated with BRAFTOVI in combination with binimetinib was 25.9%; Grade 3 or 4 rash occurred in 1.0% of patients.

In BEACON CRC, the incidence of rash among patients treated with BRAFTOVI in combination with cetuximab was 11.6%; no patient experienced Grade 3 or 4 rash.

Perform a dermatologic evaluation prior to initiation of BRAFTOVI and monitor patients routinely while on therapy. Withhold, reduce dose, or permanently discontinue BRAFTOVI based on the severity of the adverse reaction (see 4.2 DOSAGE AND ADMINISTRATION, Recommended Dose and Dosage Adjustment and 8 ADVERSE REACTIONS).

## 7.1 Special Populations

### 7.1.1 Pregnant Women

There is no information on the effect of BRAFTOVI (encorafenib) on pregnancy in humans. Based on its mechanism of action and animal reproduction studies, BRAFTOVI can cause fetal harm when administered to a pregnant woman (see 10.1 CLINICAL PHARMACOLOGY, Mechanism of Action and 16 NON-CLINICAL TOXICOLOGY). BRAFTOVI should not be used in pregnant women. If the patient becomes pregnant while taking BRAFTOVI, the patient should be apprised of potential hazard to the fetus.

### 7.1.2 Breast-feeding

There are no data on the presence of encorafenib or its metabolites in human milk or the effects of encorafenib on the breastfed infant, or on milk production. Because many drugs are excreted in human milk, a risk to the nursing infant cannot be excluded. Advise women not to breastfeed during treatment with BRAFTOVI and for 2 weeks after the final dose.

### 7.1.3 Pediatrics

**Pediatrics (<18 years):** The safety and effectiveness of BRAFTOVI have not been established in pediatric patients; therefore, Health Canada has not authorized an indication for pediatric use.

### 7.1.4 Geriatrics

Of the 690 patients with BRAF mutation-positive melanoma who received BRAFTOVI at doses between 300 mg and 600 mg once daily in combination with binimetinib (45 mg twice daily) across multiple clinical trials, 20% were aged 65 to 74 years and 8% were aged 75 years and older. No overall differences in the safety or effectiveness of BRAFTOVI in combination with binimetinib were observed in patients over 65 years of age compared to younger patients. The most common adverse events reported with a higher incidence in patients aged  $\geq$  65 years compared to patients aged < 65 years included diarrhea, pruritis, GGT and blood phosphatase alkaline elevation.

Of the 216 patients with BRAF V600E mutation-positive metastatic CRC who received BRAFTOVI 300 mg once daily in combination with cetuximab, 29% were 65 years of age to up to 75 years of age, while 9% were 75 years of age and over.

The BEACON CRC study did not include a sufficient number of patients aged 65 and older to assess differences in efficacy or safety compared to patients younger than 65 years of age.

## 8 ADVERSE REACTIONS

### 8.1 Adverse Reaction Overview

#### BRAF V600 Mutation-Positive Unresectable or Metastatic Melanoma

The safety of BRAFTOVI (encorafenib) in combination with binimetinib is described in 192 patients with BRAF V600 mutation-positive unresectable or metastatic melanoma who received BRAFTOVI (450 mg

once daily) in combination with binimetinib (45 mg twice daily) in a randomized open-label, active-controlled trial (COLUMBUS).

The most common ( $\geq 20\%$ ) adverse events in patients receiving BRAFTOVI in combination with binimetinib were fatigue, nausea, diarrhea, vomiting, constipation, abdominal pain, headache, rash, hyperkeratosis, blood CK increased, arthralgia, myopathy, and visual impairment.

Grade 3/4 adverse events were reported in 57.8% of patients receiving BRAFTOVI in combination with binimetinib, and in 63.4% of patients receiving vemurafenib. Adverse reactions leading to dose interruptions of BRAFTOVI occurred in 30% of patients receiving BRAFTOVI in combination with binimetinib; the most common were nausea (7%), vomiting (7%) and pyrexia (4%). Adverse reactions leading to dose reductions of BRAFTOVI occurred in 14% of patients receiving BRAFTOVI in combination with binimetinib; the most common were arthralgia (2%), fatigue (2%) and nausea (2%). Five percent (5%) of patients receiving BRAFTOVI in combination with binimetinib experienced an adverse reaction that resulted in permanent discontinuation of BRAFTOVI; the most common were hemorrhage in 2% and headache in 1% of patients.

#### BRAF V600E Mutation-Positive Metastatic Colorectal Cancer (mCRC)

The safety of BRAFTOVI (300 mg once daily) in combination with cetuximab (400 mg/m<sup>2</sup> initial dose, followed by 250 mg/m<sup>2</sup> weekly) was evaluated in 216 patients with BRAF V600E mutation-positive mCRC in a randomized, open-label, active-controlled trial (BEACON CRC).

The most common ( $\geq 20\%$ ) adverse events in patients receiving BRAFTOVI in combination with cetuximab were nausea, diarrhea, fatigue, dermatitis acneiform, vomiting, decreased appetite, abdominal pain, and asthenia.

Grade 3/4 adverse events were reported in 50% of patients receiving BRAFTOVI in combination with cetuximab, and in 61% of patients receiving irinotecan/cetuximab or Infusional 5-fluorouracil (5-FU)/Folinic acid (FA)/irinotecan (FOLFIRI)/cetuximab (Control). Adverse reactions leading to dose interruptions of BRAFTOVI occurred in 14.8% of patients receiving BRAFTOVI in combination with cetuximab; the most common were vomiting, fatigue and pyrexia. Adverse reactions leading to dose reductions of BRAFTOVI occurred in 5.1% of patients receiving BRAFTOVI in combination with cetuximab; the most common were fatigue, peripheral neuropathy and arthralgia. One patient receiving BRAFTOVI in combination with cetuximab experienced an adverse reaction that resulted in permanent discontinuation of BRAFTOVI: peripheral neuropathy (0.5%).

## **8.2 Clinical Trial Adverse Reactions**

Clinical trials are conducted under very specific conditions. The adverse reaction rates observed in the clinical trials; therefore, may not reflect the rates observed in practice and should not be compared to the rates in the clinical trials of another drug. Adverse reaction information from clinical trials may be useful in identifying and approximating rates of adverse drug reactions in real-world use.

The COLUMBUS trial (see 14 CLINICAL TRIALS) excluded patients with a history of Gilbert's syndrome, abnormal left ventricular ejection fraction, prolonged QTc ( $>480$  ms), uncontrolled hypertension, and history or current evidence of retinal vein occlusion. The median duration of exposure was 11.8 months for patients treated with BRAFTOVI in combination with binimetinib and 6.2 months for patients treated with vemurafenib.

Table 6 presents adverse drug reactions identified in COLUMBUS.

**Table 6 - Adverse Reactions Occurring in ≥10% of Patients Receiving BRAFTOVI in Combination with Binimetinib in COLUMBUS<sup>a</sup>**

Adverse Reaction		BRAFTOVI with binimetinib N=192		Vemurafenib N=186	
		All Grades (%)	Grades 3 and 4 <sup>b</sup> (%)	All Grades (%)	Grades 3 and 4 (%)
<b>Blood and Lymphatic System Disorders</b>					
Anemia		15	4	8	2
<b>Eye Disorders</b>					
Retinal pigment epithelial detachment		20	3	2	0
Visual impairment		20	0	2	0
<b>Gastrointestinal Disorders</b>					
Nausea		41	2	34	2
Diarrhea		37	3	34	2
Vomiting <sup>c</sup>		30	2	16	1
Abdominal pain <sup>c</sup>		28	4	16	1
Constipation		22	0	7	<1
<b>General Disorders and Administration Site Conditions</b>					
Fatigue <sup>c</sup>		43	3	46	7
Pyrexia <sup>c</sup>		18	4	30	0
Peripheral oedema		13	1	15	1
<b>Musculoskeletal and Connective Tissue Disorders</b>					
Arthralgia <sup>c</sup>		26	<1	46	6
Myopathy <sup>c</sup>		23	0	22	<1
Pain in extremity		11	1	13	1
<b>Nervous System Disorders</b>					
Headache <sup>c</sup>		22	2	20	<1
Dizziness <sup>c</sup>		15	3	4	0
Peripheral neuropathy <sup>c</sup>		12	1	13	2
<b>Skin and Subcutaneous Tissue Disorders</b>					
Hyperkeratosis <sup>c</sup>		23	<1	50	1
Rash <sup>c</sup>		22	1	53	13
Dry skin <sup>c</sup>		16	0	26	0



Adverse Reaction		BRAFTOVI with binimetinib N=192		Vemurafenib N=186	
		All Grades (%)	Grades 3 and 4 <sup>b</sup> (%)	All Grades (%)	Grades 3 and 4 (%)
Alopecia <sup>c</sup>		14	0	38	0
Pruritus <sup>c</sup>		13	<1	21	1
<b>Vascular Disorders</b>					
Hemorrhage <sup>c</sup>		19	3	9	2
Hypertension		12	6	11	3

<sup>a</sup> Grades per National Cancer Institute CTCAE v4.03.

<sup>b</sup> Grade 4 adverse reactions limited to fatigue (n=1), pruritus (n=1) and rash (n=1) in the BRAFTOVI with binimetinib arm.

<sup>c</sup> Represents a composite of multiple, related preferred terms.

BRAFTOVI when used as a single agent increases the risk of certain adverse reactions compared to BRAFTOVI in combination with binimetinib. In patients receiving BRAFTOVI 300 mg orally once daily as a single agent, the following adverse reactions were observed at a higher rate ( $\geq 5\%$ ) compared to patients receiving BRAFTOVI in combination with binimetinib: palmar-plantar erythrodysesthesia syndrome (51% vs. 7%), hyperkeratosis (57% vs. 23%), dry skin (38% vs. 16%), erythema (16% vs. 7%), rash (41% vs. 22%), alopecia (56% vs. 14%), pruritus (31% vs. 13%), arthralgia (44% vs. 26%), myopathy (33% vs. 23%), back pain (15% vs. 9%), dysgeusia (13% vs. 6%), and acneiform dermatitis (8% vs. 3%).

The BEACON CRC trial excluded patients with a history of Gilbert's syndrome, abnormal left ventricular ejection fraction, prolonged QTc ( $> 480$  msec), uncontrolled hypertension, and history or current evidence of retinal vein occlusion. The median duration of exposure was 4.4 months for patients treated with BRAFTOVI in combination with cetuximab and 1.6 months for patients treated with irinotecan/cetuximab or infusional 5-fluorouracil (5-FU)/folinic acid (FA)/irinotecan (FOLFIRI)/cetuximab (Control).

Table 7 presents adverse drug reactions identified in BEACON CRC.

**Table 7 - Adverse Reactions Occurring in  $\geq 10\%$  of Patients Receiving BRAFTOVI in Combination with Cetuximab in BEACON CRC<sup>a</sup>**

Adverse Reaction	BRAFTOVI with cetuximab N=216		Irinotecan with cetuximab or FOLFIRI with cetuximab N=193	
	All Grades (%)	$\geq$ Grade 3 <sup>b</sup> (%)	All Grades (%)	$\geq$ Grade 3 (%)
<b>Gastrointestinal Disorders</b>				
Nausea	34	<1	42	1
Diarrhea	33	2	48	10
Abdominal pain <sup>c</sup>	30	4	32	5

**Table 7 - Adverse Reactions Occurring in ≥ 10% of Patients Receiving BRAFTOVI in Combination with Cetuximab in BEACON CRC<sup>a</sup>**

Adverse Reaction	BRAFTOVI with cetuximab N=216		Irinotecan with cetuximab or FOLFIRI with cetuximab N=193	
	All Grades (%)	≥ Grade 3 <sup>b</sup> (%)	All Grades (%)	≥ Grade 3 (%)
Vomiting	21	1	29	3
Constipation	15	0	18	1
<b>General Disorders and Administration Site Conditions</b>				
Fatigue <sup>c</sup>	51	7	50	8
Pyrexia <sup>c</sup>	17	1	15	1
<b>Metabolism and Nutrition Disorders</b>				
Decreased appetite	27	1	27	3
<b>Musculoskeletal and Connective Tissue Disorders</b>				
Arthralgia <sup>c</sup>	27	<1	3	0
Myopathy <sup>c</sup>	15	<1	4	0
Pain in extremity	10	0	<1	0
Back Pain	10	<1	12	1
<b>Nervous System Disorders</b>				
Headache <sup>c</sup>	20	0	3	0
Peripheral neuropathy <sup>c</sup>	12	1	6	0
<b>Psychiatric Disorders</b>				
Insomnia <sup>c</sup>	13	0	6	0
<b>Respiratory, Thoracic and Mediastinal Disorders</b>				
Dyspnea	11	<1	9	3
<b>Skin and Subcutaneous Tissue Disorders</b>				
Dermatitis acneiform	29	<1	39	3
Rash <sup>c</sup>	26	0	26	2
Pruritus <sup>c</sup>	14	0	6	0
Melanocytic nevus	14	0	0	0
Dry skin <sup>c</sup>	13	0	12	<1
<b>Vascular Disorders</b>				
Hemorrhage <sup>c</sup>	19	2	9	0

<sup>a</sup> Grades per National Cancer Institute CTCAE v4.03.

<sup>b</sup> Grade 4 adverse reactions limited to drug hypersensitivity (n=1). Grade 5 adverse reactions limited to hemorrhage (n=1).

<sup>c</sup> Represents a composite of multiple, related preferred terms.

### 8.3 Less Common Clinical Trial Adverse Reactions

#### Melanoma

Other clinically important adverse reactions occurring in <10% of patients who received BRAFTOVI in combination with binimetinib in the COLUMBUS trial were:

Gastrointestinal disorders: *Pancreatitis (1.0%)*

Immune system disorders: *Drug hypersensitivity (3.6%)*

Nervous system disorders: *Facial paresis (1.0%)*

Skin and subcutaneous tissue disorders: *Panniculitis (1.6%), Photosensitivity (4.2%)*

#### mCRC

Other clinically important adverse reactions occurring in < 10% of patients who received BRAFTOVI in combination with cetuximab in the BEACON CRC trial were:

Cardiac disorders: *Tachycardia (5.6%)*

Eye disorders: *Vision blurred (3.7%)*

Gastrointestinal disorders: *Pancreatitis (0.5%)*

Immune system disorders: *Drug hypersensitivity (1.4%)*

Renal and urinary disorders: *Acute kidney injury (1.9%)*

### 8.4 Abnormal Laboratory Findings: Hematologic, Clinical Chemistry and Other Quantitative Data

#### Clinical Trial Findings

Table 8 and Table 9 present laboratory abnormalities identified in the COLUMBUS and BEACON CRC, respectively.

**Table 8 - Laboratory Abnormalities Occurring in ≥10% (All Grades) of Patients Receiving BRAFTOVI in Combination with Binimetinib in COLUMBUS<sup>a</sup>**

Laboratory Abnormality	BRAFTOVI with binimetinib N=192		Vemurafenib N=186	
	All Grades (%)	Grades 3 and 4 (%)	All Grades (%)	Grades 3 and 4 (%)
<b>Hematology</b>				
Decreased Hemoglobin	37	4	34	2
Decreased Leukocytes	13	0	10	<1
Decreased Lymphocytes	13	2	30	7
Decreased Neutrophils	13	3	5	<1
<b>Chemistry</b>				
Increased Creatinine	93	4	92	1
Increased Gamma Glutamyl Transferase	45	12	34	5
Increased ALT	29	6	27	2
Increased AST	27	3	24	2

Increased Glucose	28	5	20	3
Increased Alkaline Phosphatase	21	<1	36	2
Decreased Sodium	18	4	15	<1
Increased Magnesium	10	1	26	<1

<sup>a</sup> Grades per National Cancer Institute CTCAE v4.03.

**Table 9 - Laboratory Abnormalities Occurring in ≥ 10% (All Grades) of Patients Receiving BRAFTOVI in Combination with Cetuximab in BEACON mCRC<sup>a</sup>**

Laboratory Abnormality	BRAFTOVI with cetuximab N=216		Irinotecan with cetuximab or FOLFIRI with cetuximab N=193	
	All Grades (%)	Grades 3 and 4 (%)	All Grades (%)	Grades 3 and 4 (%)
<b>Hematology</b>				
Decreased Hemoglobin	32	4	44	4
Decreased Lymphocytes	23	7	31	5
APTT increased	12	<1	7	<1
<b>Chemistry</b>				
Increased Creatinine	51	2	34	1
Decreased Magnesium	19	0	20	<1
Increased Alkaline Phosphatase	17	4	26	6
Increased ALT	17	0	26	3
Decreased albumin	16	0	23	0
Increased AST	14	1	20	2
Decreased Potassium	12	3	29	5
Decreased Sodium	10	2	11	2

<sup>d</sup> Grades per National Cancer Institute CTCAE v4.03.

## 8.5 Post-Market Adverse Reactions

Not applicable.

## 9 DRUG INTERACTIONS

### 9.2 Drug Interactions Overview

#### Effects of other drugs on BRAFTOVI (encorafenib)

##### *Strong or Moderate CYP3A4 Inhibitors*

Concomitant administration of BRAFTOVI with a strong or moderate CYP3A4 inhibitor increased encorafenib plasma concentrations and may increase encorafenib adverse reactions. Avoid coadministration of BRAFTOVI with strong or moderate CYP3A4 inhibitors. If coadministration of strong

or moderate CYP3A4 inhibitors cannot be avoided, modify BRAFTOVI dose as recommended (see 4.2 DOSAGE AND ADMINISTRATION, Recommended Dose and Dosage Adjustment).

*Strong or Moderate CYP3A4 Inducers*

Concomitant administration of BRAFTOVI with a strong or moderate CYP3A4 inducer may decrease encorafenib plasma concentrations and may decrease encorafenib efficacy. Avoid concomitant administration of strong or moderate CYP3A4 inducers with BRAFTOVI.

Effect of BRAFTOVI on other drugs

*Sensitive CYP3A4 Substrates*

BRAFTOVI is a strong CYP3A4 inducer at steady-state. Concomitant use of BRAFTOVI may decrease the concentrations of CYP3A4 substrates (including hormonal contraceptives), which may reduce the efficacy of these substrates. Avoid the coadministration of BRAFTOVI with CYP3A4 substrates for which a minimal decrease in concentration may lead to therapeutic failure of the substrate. If the coadministration cannot be avoided, adjust the dosage of these substrates per their respective Product Monographs (see 7 WARNINGS AND PRECAUTIONS, Reproductive Health: Female and Male Potential, Teratogenic Risk).

*Sensitive OATP1B1, OATP1B3 or BCRP Substrates*

Concomitant administration of BRAFTOVI with sensitive OATP1B1, OATP1B3 or BCRP substrates may increase their concentrations and result in increased toxicity of these agents. Closely monitor patients and consider dose adjustment of OATP1B1, OATP1B3 or BCRP substrates as per their respective Product Monographs.

Drugs that prolong QT Interval

BRAFTOVI is associated with dose-dependent QTc interval prolongation. Avoid coadministration of BRAFTOVI with medicinal products with a known potential to prolong QT/QTc interval (see 7 WARNINGS AND PRECAUTIONS, Cardiovascular).

**9.4 Drug-Drug Interactions**

**Table 10 - Established or Potential Drug-Drug Interactions**

Category / Common name	Source of Evidence	Effect	Clinical comment
Strong CYP3A inhibitors (e.g., itraconazole, posaconazole, clarithromycin, telithromycin, ritonavir, cobicistat, indinavir, saquinavir, nelfinavir, boceprevir, telaprevir);  Moderate CYP3A inhibitors (e.g., ciprofloxacin,	CT	Coadministration of a strong (posaconazole) or moderate (diltiazem) CYP3A4 inhibitor with BRAFTOVI increased the AUC of encorafenib by 3- and 2-fold, respectively, and increased the C <sub>max</sub> by 68% and 45%, respectively, after a single BRAFTOVI dose of 50 mg (0.1 times the recommended dose).	Avoid coadministration of BRAFTOVI with strong or moderate CYP3A4 inhibitors. If coadministration of strong or moderate CYP3A4 inhibitors cannot be avoided, modify BRAFTOVI dose as recommended (see 4.2 DOSAGE AND ADMINISTRATION, Recommended Dose and Dosage Adjustment).

Category / Common name	Source of Evidence	Effect	Clinical comment
erythromycin, diltiazem, fluconazole, verapamil, amprenavir)			
Strong CYP3A inducers (e.g., carbamazepine, phenobarbital, phenytoin, rifabutin, rifampicin, St. John's Wort)	T	The effect of coadministration of a strong CYP3A4 inducer on encorafenib exposure has not been studied. In clinical trials, steady-state encorafenib exposures were lower than encorafenib exposures after the first dose, suggesting CYP3A4 auto-induction.	Avoid concomitant administration of strong CYP3A4 inducers with BRAFTOVI.
Moderate CYP3A inducers (e.g., bosentan, efavirenz, etravirine, modafinil, nafcillin)	CT	Repeat dose administration of BRAFTOVI 450 mg once daily and binimetinib 45 mg twice daily with modafinil, a moderate CYP3A4 inducer, decreased encorafenib steady-state AUC by 24% and C <sub>max</sub> by 20%, compared to BRAFTOVI alone.	Avoid concomitant administration of moderate CYP3A4 inducers with BRAFTOVI. If the coadministration cannot be avoided, no change in encorafenib dosing is recommended when coadministered with a moderate CYP3A4 inducer.
Sensitive CYP3A4 substrates (e.g., hormonal contraceptives, atorvastatin, midazolam)	CT	Concomitant administration of BRAFTOVI with sensitive CYP3A4 substrates may result in increased toxicity or decreased efficacy of these agents. Repeat dose administration of BRAFTOVI 450 mg once daily and binimetinib 45 mg twice daily decreased AUC by 82% and C <sub>max</sub> by 74% of a single oral 2 mg dose of midazolam.	Avoid the coadministration of BRAFTOVI with CYP3A4 substrates for which a minimal decrease in concentration may lead to therapeutic failure of the substrate. If the coadministration cannot be avoided, adjust the dosage of these substrates per their respective Product Monographs (see 7 WARNINGS AND PRECAUTIONS, Reproductive Health: Female and Male Potential, Teratogenic Risk).
Sensitive CYP1A2 substrates (e.g., caffeine)	CT	Repeat dose administration of BRAFTOVI 450 mg once daily and binimetinib 45 mg twice daily increased AUC by	Coadministration of BRAFTOVI with CYP1A2 substrates should be undertaken with caution.

Category / Common name	Source of Evidence	Effect	Clinical comment
		27% and C <sub>max</sub> by 13% of a single 50 mg dose of caffeine.	Closely monitor patients for adverse reactions.
Sensitive CYP2C19 substrates (e.g., omeprazole)	CT	Repeat dose administration of BRAFTOVI 450 mg once daily and binimetinib 45 mg twice daily decreased AUC by 17% and did not change the C <sub>max</sub> of a single oral 20 mg dose of omeprazole.	Concomitant administration of BRAFTOVI with sensitive CYP2C19 substrates may result in increased toxicity or decreased efficacy of these agents.
Sensitive CYP2B6 substrates (e.g., bupropion)	CT	Repeat dose administration of BRAFTOVI 450 mg once daily and binimetinib 45 mg twice daily decreased AUC by 26% and C <sub>max</sub> by 25% of a single 75 mg dose of bupropion.	Concomitant administration of BRAFTOVI with sensitive CYP2B6 substrates may result in increased toxicity or decreased efficacy of these agents.
Sensitive CYP2C9 substrates (e.g., losartan)	CT	Repeat dose administration of BRAFTOVI 450 mg once daily and binimetinib 45 mg twice daily decreased the ratio of metabolite E3174 to losartan concentrations in the urine by 28% after a single oral 25 mg dose of losartan.	Concomitant administration of BRAFTOVI with sensitive CYP2C9 substrates may result in increased toxicity or decreased efficacy of these agents.
Drugs that prolong QT Interval (e.g., amiodarone, furosemide)	CT	BRAFTOVI is associated with dose-dependent QTc interval prolongation.	Avoid coadministration of BRAFTOVI with medicinal products with a known potential to prolong QT/QTc interval (see 7 WARNINGS AND PRECAUTIONS, Cardiovascular).
OATP1B1, OATP1B3 or BCRP substrates (e.g., rosuvastatin)	CT	Repeat-dose administration of encorafenib 450 mg once daily and binimetinib 45 mg twice daily with a single dose of rosuvastatin (a sensitive OATP1B1, OATP1B3 and BCRP substrate) increased rosuvastatin C <sub>max</sub> by 2.7-fold and AUC by 1.6-fold.	Coadministration of BRAFTOVI with OATP1B1, OATP1B3 or BCRP substrates should be undertaken with caution. Closely monitor patients for adverse reactions and consider a dose adjustment of these substrates.

Legend: C = Case Study; CT = Clinical Trial; T = Theoretical

### *Clinical Studies*

Effect of Acid Reducing Agents on encorafenib: Coadministration of a proton pump inhibitor, rabeprazole, had no effect on AUC and C<sub>max</sub> of encorafenib.

Effects of various agents co-administered with encorafenib and binimetinib in patients with BRAF V600-mutant Unresectable or Metastatic Melanoma or Other Advanced Solid Tumors were studied in an open-label Phase 1 drug-drug interaction study, the results of which are presented in Table 10. Repeat dose administration of BRAFTOVI 450 mg once daily and binimetinib 45 mg twice daily did not change the ratio of metabolite dextrorphan to dextromethorphan concentrations in the urine after a single oral 30 mg dose of dextromethorphan (a sensitive CYP2D6 substrate).

Combination Treatment: Coadministration of BRAFTOVI (UGT1A1 inhibitor) with binimetinib (UGT1A1 substrate) had no effect on binimetinib exposure.

No clinically relevant differences in pharmacokinetics exist with coadministration of BRAFTOVI in combination with cetuximab at the recommended doses.

### *In Vitro Studies*

Effect of encorafenib on CYP/UGT Substrates: Encorafenib is a reversible inhibitor of UGT1A1, CYP1A2, CYP2B6, CYP2C8/9, CYP2D6, and CYP3A, and a time-dependent inhibitor of CYP3A4 at clinically relevant plasma concentrations. Encorafenib induced CYP1A2, CYP2B6, CYP2C9, and CYP3A4 at clinically relevant plasma concentrations.

Effect of Transporters on encorafenib: Encorafenib is a substrate of P-glycoprotein (P-gp). Encorafenib is not a substrate of breast cancer resistance protein (BCRP), multidrug resistance-associated protein 2 (MRP2), organic anion transporting polypeptide (OATP1B1, OATP1B3) or organic cation transporter (OCT1) at clinically relevant plasma concentrations.

Effect of encorafenib on Transporters: encorafenib inhibited P-gp, OCT1, OCT2, and organic anion transporters (OAT1, OAT3), but not MRP2 at clinically relevant plasma concentrations.

## **9.5 Drug-Food Interactions**

Avoid grapefruit and grapefruit juice during treatment with BRAFTOVI, as they contain inhibitors of CYP3A4 and may increase encorafenib plasma concentrations.

BRAFTOVI can be administered with or without food (see 10.3 CLINICAL PHARMACOLOGY, Pharmacokinetics).

## **9.6 Drug-Herb Interactions**

Interactions with herbal products have not been studied. Avoid concomitant use of St. John's Wort with BRAFTOVI, as this herb is a strong inducer of CYP3A4 and may decrease encorafenib plasma concentrations.

## **9.7 Drug-Laboratory Test Interactions**

Interactions with laboratory tests have not been established.



## 10 CLINICAL PHARMACOLOGY

### 10.1 Mechanism of Action

Encorafenib is a kinase inhibitor that targets BRAF V600E, as well as wild-type BRAF and CRAF in in vitro cell-free assays with IC<sub>50</sub> values of 0.35, 0.47, and 0.3 nM, respectively. Mutations in the BRAF gene, such as BRAF V600E, can result in constitutively activated BRAF kinases that may stimulate tumour cell growth. Encorafenib was also able to bind to other kinases in vitro including JNK1, JNK2, JNK3, LIMK1, LIMK2, MEK4, and STK36 and reduce ligand binding to these kinases at clinically achievable concentrations ( $\leq 0.9 \mu\text{M}$ ).

Encorafenib inhibited in vitro growth of tumour cell lines expressing BRAF V600 E, D, and K mutations. In mice implanted with tumour cells expressing BRAF V600E, encorafenib induced tumour regressions associated with RAF/MEK/ERK pathway suppression.

#### Melanoma: Encorafenib, binimetinib models

Encorafenib and binimetinib target two different kinases in the RAS/RAF/MEK/ERK pathway. Compared with either drug alone, co-administration of encorafenib and binimetinib resulted in greater anti-proliferative activity in vitro in BRAF mutation-positive cell lines and greater anti-tumour activity with respect to tumour growth inhibition in BRAF V600E mutant human melanoma xenograft studies in mice. Additionally, the combination of encorafenib and binimetinib delayed the emergence of resistance in BRAF V600E mutant human melanoma xenografts in mice compared to either drug alone.

#### mCRC: Encorafenib, cetuximab models

In the setting of BRAF-V600E mutant CRC, induction of EGFR-mediated MAPK pathway activation has been identified as a mechanism of resistance to BRAF inhibitors. Combinations of a BRAF inhibitor and agents targeting EGFR have been shown to overcome this resistance mechanism in nonclinical models. In vitro, the combination of encorafenib with either EGFR or c-MET inhibitors had greater ability to block BRAF-mutant CRC proliferation compared to encorafenib alone.

### 10.2 Pharmacodynamics

#### *Cardiac Electrophysiology*

A dedicated study to evaluate the QT prolongation potential of BRAF TOVI (encorafenib) has not been conducted. BRAF TOVI is associated with dose-dependent QTc interval prolongation. Following administration of the recommended dose of BRAF TOVI in combination with binimetinib, based on a central tendency analysis of QTc in a study of adult patients with melanoma, the largest mean (90% CI) QTcF change from baseline ( $\Delta\text{QTcF}$ ) was 18 (14 to 22) ms (see 7 WARNINGS AND PRECAUTIONS, Cardiovascular).

### 10.3 Pharmacokinetics

The pharmacokinetics of encorafenib were studied in healthy subjects and patients with solid tumours, including advanced and unresectable or metastatic cutaneous melanoma harboring a BRAF V600E or V600K mutation. After a single dose, systemic exposure of encorafenib was dose proportional over the dose range of 50 mg to 700 mg. After once-daily dosing, systemic exposure of encorafenib was less than dose proportional over the dose range of 50 mg to 800 mg. Steady-state was reached within 15 days, with exposure being 50% lower compared to Day 1; intersubject variability (CV%) of AUC ranged from 12% to 69%.

**Absorption:** After oral administration, the median  $T_{max}$  of encorafenib is 2 hours. At least 86% of the dose is absorbed.

*Effect of food:*

Administration of a single dose of BRAFTOVI 100 mg (0.2 times the recommended dose) with a high-fat, high-calorie meal (comprised of approximately 150 calories from protein, 350 calories from carbohydrates, and 500 calories from fat) decreased the mean maximum encorafenib concentration ( $C_{max}$ ) by 36% with no effect on AUC.

**Distribution:** Encorafenib is 86% bound to human plasma proteins in vitro. The blood-to-plasma concentration ratio is 0.58. The geometric mean (CV%) of apparent volume of distribution is 164 L (70%).

**Metabolism:** The primary metabolic pathway is N-dealkylation, with CYP3A4 as the main contributor (83%) to total oxidative clearance of encorafenib in human liver microsomes, followed by CYP2C19 (16%) and CYP2D6 (1%).

**Elimination:** The mean (CV%) terminal half-life ( $t_{1/2}$ ) of encorafenib is 3.5 hours (17%), and the apparent clearance is 14 L/h (54%) at day 1, increasing to 32 L/h (59%) at steady-state suggesting auto-induction. Following a single oral dose of 100 mg radiolabeled encorafenib, 47% (5% unchanged) of the administered dose was recovered in the feces and 47% (2% unchanged) was recovered in the urine.

**Special Populations and Conditions**

Age (19 to 89 years), sex, and body weight (42 to 168 kg) do not have a clinically meaningful effect on the pharmacokinetics of encorafenib. The effect of race or ethnicity on encorafenib pharmacokinetics has not been studied.

*Hepatic Insufficiency:* Results from a dedicated clinical study indicate a 25% higher total encorafenib exposure in patients with mild hepatic impairment (Child-Pugh Class A) compared with subjects with normal liver function. This translates into a 55% increase of the unbound encorafenib exposure.

The pharmacokinetics of encorafenib has not been evaluated clinically in patients with moderate (Child-Pugh Class B) or severe (Child-Pugh Class C) hepatic impairment. As encorafenib is primarily metabolised and eliminated via the liver, patients with moderate to severe hepatic impairment may have greater increases in exposure than patients with mild hepatic impairment.

*Renal Insufficiency:* Encorafenib undergoes minimal renal elimination. No formal clinical study has been conducted to evaluate the effect of renal impairment on the pharmacokinetics of encorafenib. In a population pharmacokinetic analysis, no clear trend in encorafenib CL/F was observed in patients with mild (eGFR 60 to 90 mL/min/1.73 m<sup>2</sup>) or moderate (eGFR 30 to 59 mL/min/1.73 m<sup>2</sup>) renal impairment compared with subjects with normal renal function (eGFR ≥90 mL/min/1.73 m<sup>2</sup>). A small decrease in CL/F (≤5%) was predicted for patients with mild and moderate renal impairment, which is unlikely to be clinically relevant. The pharmacokinetics of encorafenib have not been studied in patients with severe renal impairment.

**11 STORAGE, STABILITY AND DISPOSAL**

Store between 15-30°C. Do not use if safety seal under cap is broken or missing. Dispense in original bottle. Do not remove desiccant. Protect from moisture. Keep container tightly closed.

## **12 SPECIAL HANDLING INSTRUCTIONS**

Any unused medicinal product or waste material should be disposed of in accordance with local requirements.

## PART II: SCIENTIFIC INFORMATION

### 13 PHARMACEUTICAL INFORMATION

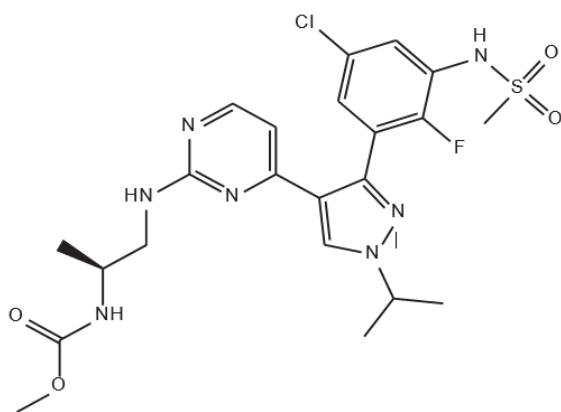
#### Drug Substance

Proper name: encorafenib

Chemical name: methyl N-((2S)-1-[(4-{3-[5-chloro-2-fluoro-3-(methanesulfonamido)phenyl]-1-(propan-2-yl)-1H-pyrazol-4-yl]pyrimidin-2-yl)amino]propan-2-yl)carbamate

Molecular formula and molecular mass: Molecular formula is  $C_{22}H_{27}ClFN_7O_4S$  with a molecular mass of 540 daltons.

Structural formula:



Physicochemical properties: Encorafenib is a white to almost white powder. In aqueous media, encorafenib is slightly soluble at pH 1, very slightly soluble at pH 2 and pH 3, and practically insoluble at pH 4 and above.

## 14 CLINICAL TRIALS

### 14.1 Trial Design and Study Demographics

#### COLUMBUS Study – BRAF V600 Mutation-Positive Unresectable or Metastatic Melanoma

Table 11 - Summary of COLUMBUS trial design

Study	Trial design	Dosage; route of administration	Study subjects (n)
COLUMBUS	Randomized, active-controlled	BRAFTOVI (450 mg QD) + binimetinib (45 mg BID); oral	n=192
	Open-label, multicentre	BRAFTOVI (300 mg QD); oral	n=194
		Vemurafenib (960 mg BID); oral	n=191

The efficacy and safety of BRAFTOVI (encorafenib) in combination with binimetinib was evaluated in a Phase III randomized, active-controlled, open-label, international multicentre trial (COLUMBUS) comparing treatment with BRAFTOVI in combination with binimetinib to treatment with vemurafenib. Eligible patients were required to have BRAF V600E or V600K mutation-positive unresectable or metastatic melanoma, as detected using a BRAF mutation assay. Patients were permitted to have received immunotherapy in the adjuvant setting and one prior line of immunotherapy for unresectable locally advanced or metastatic disease. Prior use of BRAF inhibitors or MEK inhibitors was prohibited. Randomization was stratified by American Joint Committee on Cancer (AJCC) Stage (IIIB, IIIC, IVM1a or IVM1b, versus IVM1c), Eastern Cooperative Oncology Group (ECOG) performance status (0 versus 1), and prior immunotherapy for unresectable or metastatic disease (yes versus no). The Intent to Treat (ITT) population included all randomized patients.

Patients were randomized (1:1:1) to receive BRAFTOVI 450 mg once daily in combination with binimetinib 45 mg twice daily (BRAFTOVI in combination with binimetinib), BRAFTOVI 300 mg once daily, or vemurafenib 960 mg twice daily. Treatment continued until disease progression or unacceptable toxicity. Only the results of the approved dosing regimen (BRAFTOVI 450 mg in combination with binimetinib 45 mg) are described.

The major efficacy outcome measure was progression-free survival (PFS), as assessed by a blinded independent central review, to compare treatment with BRAFTOVI in combination with binimetinib to treatment with vemurafenib. Additional efficacy outcome measures included overall survival (OS), objective response rate (ORR) and duration of response (DoR), which were assessed by central review.

**Table 12 - Patient Demographics and Baseline Characteristics for COLUMBUS**

	<b>BRAFTOVI (450 mg QD) + binimetinib (45 mg BID) N=192</b>	<b>Vemurafenib (960 mg BID) N=191</b>
<b>Age (years)</b> Median (Min-Max)	57.0 (20-89)	56.0 (21-82)
<b>Age Category, n (%)</b>		
< 65	132 (68.8)	140 (73.3)
≥ 65	60 (31.3)	51 (26.7)
<b>Sex, n (%)</b>		
Female	77 (40.1)	80 (41.9)
Male	115 (59.9)	111 (58.1)
<b>Race, n (%)</b>		
Caucasian	181 (94.3)	166 (86.9)
Asian	5 (2.6)	8 (4.2)
Native American	0	2 (1.0)
Other / Unknown / Missing	6 (3.1)	15 (7.8)
<b>BRAF Mutation Status, n (%)</b>		
V600E	170 (88.5)	168 (88.0)
V600K	22 (11.5)	22 (11.5)
V600E&K	0	1 (0.5)
<b>ECOG PS at Baseline, n (%)</b>		
ECOG PS = 0	136 (70.8)	140 (73.3)
ECOG PS = 1	56 (29.2)	51 (26.7)
<b>Prior Antineoplastic Therapy, n (%)</b>		
Medication	62 (32.3)	59 (30.9)
Surgery	146 (76.0)	157 (82.2)
Radiotherapy	30 (15.6)	25 (13.1)
<b>Any Prior Immunotherapy<sup>a</sup>, n (%)</b>		
Yes	57 (29.7)	57 (29.8)
No	43 (70.3)	43 (70.2)
<b>Stage at time of study entry, n (%)</b>		
Stage IIIB / IIIC	9 (4.7)	11 (5.7)
Stage IV M1A / M1B	60 (31.2)	55 (28.8)
Stage IV M1C with elevated LDH	50 (26.0)	36 (18.8)
Stage IV M1C with normal LDH	73 (38.0)	89 (46.6)
<b>Number of organs involved at Baseline<sup>b</sup>, n (%)</b>		
1	47 (24.5)	45 (23.6)
2	58 (30.2)	59 (30.9)
3	45 (23.4)	42 (22.0)
>3	42 (21.9)	45 (23.6)
<b>LDH at Baseline<sup>c</sup>, n (%)</b>		
Low	0	0
Normal	137 (71.4)	139 (72.8)
High	55 (28.6)	52 (27.2)

<sup>a</sup> Treatment included use in both metastatic and adjuvant settings. Prior use of Interferons/Interleukins was most common; seven patients used Ipilimumab and one patient used Anti-PD1/PDL1 inhibitors. <sup>b</sup> For patients with Stage IIIB and IIIC at study

entry, the number of organs involved at baseline is equal to one and presented as skin. <sup>c</sup> Low and high categories defined by normal ranges.

### BEACON Study - BRAF V600E Mutation-Positive Metastatic Colorectal Cancer (mCRC)

**Table 13 - Summary of BEACON trial design**

Study	Trial design	Dosage; route of administration	Study subjects (n)
BEACON CRC	Randomized, active-controlled	BRAFTOVI (300 mg QD) + cetuximab; oral	n=220
	Open-label, multicentre	Irinotecan + cetuximab or FOLFIRI + cetuximab; IV	n=221
		BRAFTOVI (300 mg QD); oral + cetuximab; IV + binimetinib (45 mg BID); oral	n=224

The efficacy and safety of BRAFTOVI in combination with cetuximab was evaluated in a randomized, active-controlled, open-label, international multicentre trial (BEACON CRC) comparing BRAFTOVI in combination with cetuximab to treatment with irinotecan/cetuximab or FOLFIRI/cetuximab. Eligible patients were required to have BRAF V600E mutation-positive metastatic colorectal cancer (mCRC), as detected using a BRAF mutation assay. Eligible patients were required to have mCRC that had progressed after 1 or 2 prior regimens in the metastatic setting. Key inclusion criteria included eligibility to receive cetuximab per local labeling with respect to tumour RAS status, ECOG PS 0-1, and the absence of prior treatment with RAF, MEK, or EGFR inhibitors. The ITT population included all randomized patients.

A total of 665 patients were randomized (1:1:1) to receive BRAFTOVI 300 mg daily in combination with cetuximab dosed as per its approved label; BRAFTOVI 300 mg daily in combination with binimetinib 45 mg twice daily and cetuximab dosed as per its approved label; or Control (irinotecan in combination with cetuximab or FOLFIRI in combination with cetuximab). Treatment continued until disease progression or unacceptable toxicity. Only the results of the approved regimen (BRAFTOVI in combination with cetuximab) are described below.

The major efficacy outcome measures were overall survival (OS) and overall response rate (ORR) as assessed by a blinded independent central review, comparing BRAFTOVI 300 mg in combination with cetuximab versus Control. Other efficacy outcome measures included duration of response (DoR) and progression-free survival (PFS). The OS and PFS were assessed in all randomized patients (Full Analysis Set). The ORR and DoR were assessed in the first 220 patients randomized to either the BRAFTOVI in combination with cetuximab arm or the Control arm of the study.

**Table 14 - Patient Demographics and Baseline Characteristics for BEACON**

	<b>BRAFTOVI (300 mg QD) + cetuximab N=220</b>	<b>Irinotecan with cetuximab or FOLFIRI with cetuximab N=221</b>
<b>Age (years)</b> Median (Min-Max)	61 (30-91)	60 (27-91)
<b>Age Category, n (%)</b> < 65	137 (62.3)	149 (67.4)
≥ 65	83 (37.7)	72 (32.6)
<b>Sex, n (%)</b> Female	105 (47.7)	127 (57.5)
Male	115 (52.3)	94 (42.5)
<b>Race, n (%)</b> Caucasian	183 (83.2)	172 (77.8)
Asian	25 (11.4)	39 (17.6)
Black/African American	0	0
Other / Unknown / Missing	12 (5.4)	10 (4.6)
<b>BRAF Mutation Status, n (%)</b> V600E	201 (91.4)	201 (91.0)
Indeterminate	11 (5.0)	9 (4.1)
<b>ECOG PS at Baseline, n (%)<sup>a</sup></b> ECOG PS = 0	112 (50.9)	108 (48.9)
ECOG PS = 1	104 (47.3)	113 (51.1)
ECOG PS = 2	4 (1.8) <sup>b</sup>	0
<b>Prior Antineoplastic Therapy, n (%)</b> Number of Prior Systemic Regimens for Metastatic Disease <sup>c</sup> 1	146 (66.4)	145 (65.6)
2	74 (33.6)	75 (33.9)
>2	0	1 (0.5)
Prior Irinotecan	114 (51.8)	117 (52.9)
Prior Oxaliplatin	210 (95.5)	201 (91.0)
<b>Stage at time of study entry, n (%)</b> Stage IV	220 (100)	221 (100)
<b>Number of organs involved at Baseline, n (%)</b> ≤2	117 (53.2)	123 (55.7)
≥3	103 (46.8)	98 (44.3)

<sup>a</sup> ECOG PS as per eCRF at Baseline.

<sup>b</sup> All 4 patients were ECOG PS 1 at randomization

<sup>c</sup> Based on Sponsor assessment

## 14.2 Study Results

### **COLUMBUS Study - BRAF V600 Mutation-Positive Unresectable or Metastatic Melanoma**

Treatment with BRAFTOVI in combination with binimetinib demonstrated a statistically significant improvement in the primary endpoint of PFS compared to treatment with vemurafenib. Efficacy results are summarized in Table 15 and Figure 1.



**Table 15 - Efficacy Results for COLUMBUS**

	<b>BRAFTOVI with binimetinib N=192</b>	<b>Vemurafenib N=191</b>
<b>Progression-Free Survival</b>		
Number of events (%)	98 (51)	106 (55)
Progressive disease	88 (46)	104 (54)
Death	10 (5)	2 (1)
Median PFS, months (95% CI)	14.9 (11, 18.5)	7.3 (5.6, 8.2)
HR (95% CI) <sup>a</sup>	0.54 (0.41, 0.71)	
P-value <sup>b</sup>	<0.0001	
<b>Overall Survival<sup>c</sup></b>		
Number of events (%)	105 (55)	127 (67)
Median OS, months (95% CI)	33.6 (24.4, 39.2)	16.9 (14.0, 24.5)
HR (95% CI) <sup>a</sup>	0.61 (0.47, 0.79)	
<b>Overall Response Rate</b>		
Responders (ORR%)	121 (63%)	77 (40%)
(95% CI)	(56%, 70%)	(33%, 48%)
CR	8%	6%
PR	55%	35%
<b>Duration of Response</b>		
Median DoR, months (95% CI)	16.6 (12.2, 20.4)	12.3 (6.9, 16.9)

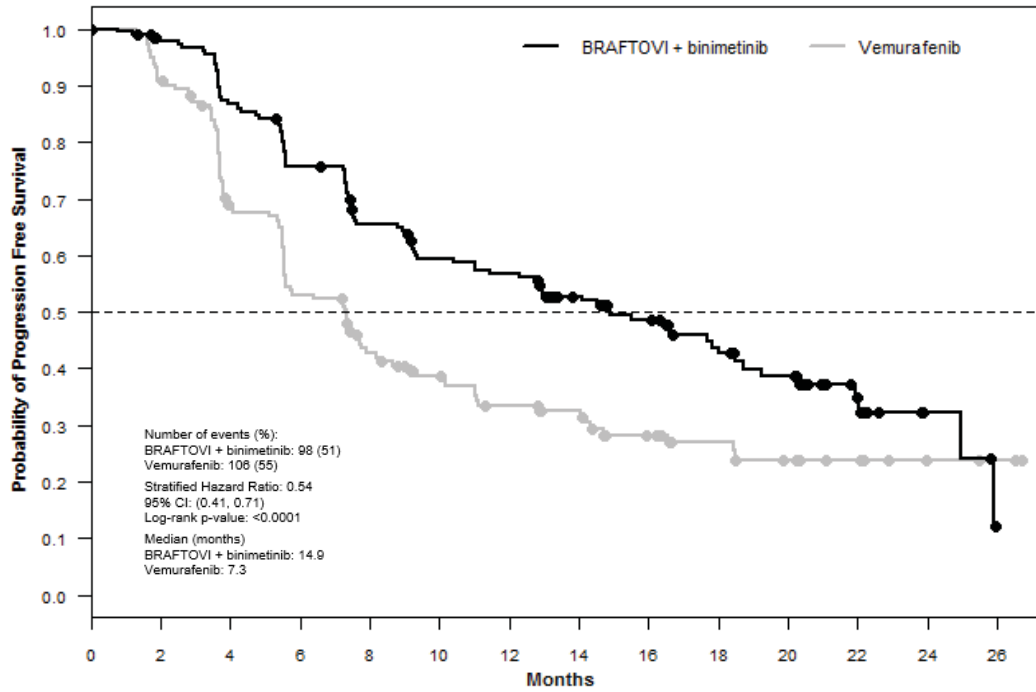
CI = Confidence interval; CR = Complete response; DoR = Duration of response; HR = Hazard ratio; NE = Not estimable; ORR = Overall response rate; OS = Overall survival; PFS = Progression-free survival; PR = Partial response.

<sup>a</sup> Estimated with Cox proportional hazard model adjusted by the following stratification factors: American Joint Committee on Cancer (AJCC) Stage (IIIB, IIIC, IVM1a or IVM1b, versus IVM1c) and Eastern Cooperative Oncology Group (ECOG) performance status (0 versus 1).

<sup>b</sup> Log-rank test adjusted by the same stratification factors.

<sup>c</sup> Interim analysis based on a cutoff date 17.6 months after the date of PFS analysis.

**Figure 1 - Kaplan-Meier Curves for Progression-Free Survival in COLUMBUS**



Number of Patients at Risk

BRAFTOVI + binimetinib	192	171	151	128	107	92	87	70	57	41	28	14	4	0
vemurafenib	191	149	101	75	56	45	36	32	23	18	13	10	4	3

**BEACON Study - BRAF V600E Mutation-Positive Metastatic Colorectal Cancer (mCRC)**

Treatment with BRAFTOVI in combination with cetuximab demonstrated a statistically significant improvement in the primary endpoints of OS and ORR compared to treatment with the control regimens. Efficacy results are summarized in Table 16 and Figure 2.

**Table 16 - Efficacy Results for BEACON CRC**

	<b>BRAFTOVI with cetuximab</b>	<b>Irinotecan with cetuximab or FOLFIRI with cetuximab</b>
<b>Overall Survival</b>		
Number of Patients <sup>a</sup>	220	221
Number of Events (%)	93 (42.3)	114 (51.6)
Median OS, months (95% CI)	8.4 (7.5, 11.0)	5.4 (4.8, 6.6)
HR (95% CI) <sup>b,h</sup>	0.60 (0.45, 0.79)	
P-value <sup>b,g</sup>	0.0002	

	<b>BRAFTOVI with cetuximab</b>	<b>Irinotecan with cetuximab or FOLFIRI with cetuximab</b>
<b>Overall Response Rate (per Blinded Independent Central Review)</b>		
Number of Patients <sup>c</sup>	113	107
ORR n (%)	23 (20.4)	2 (1.9)
(95% CI) <sup>d</sup>	(13.4, 29.0)	(0.2, 6.6)
CR, n (%)	6 (5.3)	0
PR, n (%)	17 (15.0)	2 (1.9)
<i>P</i> -value <sup>b,e,g</sup>	<0.0001	
<b>Progression Free Survival (per Blinded Independent Central Review)</b>		
Number of Patients <sup>a</sup>	220	221
Number of events (%)	133 (60.5)	128 (57.9)
Progressive disease	110 (50.0)	101 (45.7)
Death	23 (10.5)	27 (12.2)
Median PFS, months (95% CI)	4.2 (3.7, 5.4)	1.5 (1.5, 1.7)
HR (95% CI) <sup>b,h</sup>	0.40 (0.31, 0.52)	
<i>P</i> -value <sup>b,g</sup>	< 0.0001	

CI = Confidence interval; CR = Complete response; DoR = Duration of response; HR = Hazard ratio; NR = Not reached; ORR = Overall response rate; OS = Overall survival; PFS = Progression-free survival; PR = Partial response.

<sup>a</sup> Randomized Phase 3, Full Analysis Set.

<sup>b</sup> Stratified by ECOG PS, source of cetuximab, and prior irinotecan use at randomization.

<sup>c</sup> ORR was assessed in the first 331 patients randomized to the study, including 113 and 107 patients randomized to the BRAFTOVI in combination with cetuximab arm and the Control arm, respectively).

<sup>d</sup> Clopper-Pearson method.

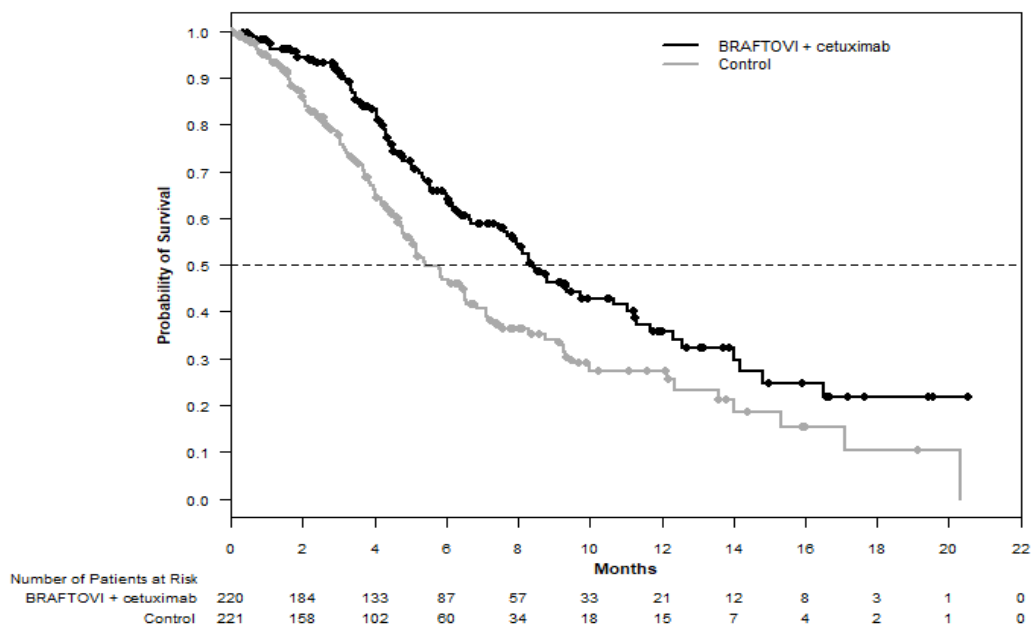
<sup>e</sup> Cochran-Mantel-Haenszel test.

<sup>f</sup> In the metastatic setting.

<sup>g</sup> *P*-values are one-sided.

<sup>h</sup> Stratified Cox proportional hazard model.

**Figure 2: Kaplan-Meier Curves for Overall Survival in BEACON CRC**



## 15 MICROBIOLOGY

Not applicable.

## 16 NON-CLINICAL TOXICOLOGY

### General Toxicology

In the subacute 28-day toxicity study in rats, encorafenib was well tolerated at plasma exposures at which tumour regression was observed in mouse xenograft studies. Notable findings included hyperplasia and hyperkeratosis in the skin and non-glandular stomach; adverse effects in the testes/seminiferous tubules and epididymides, which included decreased organ weights and an absence of the later stages of spermatid maturation. The male reproductive organ findings did not appear to be reversible. Exposures (mean  $AUC_{0-24h}$ ) achieved at the no-observable-adverse-effect level (NOAEL; 20 mg/kg/day) in this study were approximately 14-fold of that achieved at steady-state in cancer patients receiving the 450 mg QD dose level of encorafenib. In 4-week toxicity studies in monkeys, encorafenib was well tolerated up to 100 mg/kg/day. Primary in-life observations were diarrhea, slight decreases in body weight and in food consumption and were reversible; the NOAEL was 100 mg/kg/day with an exposure (mean  $AUC_{0-24h}$ ) approximately 5-fold of that achieved at steady-state in cancer patients receiving the 450 mg QD dose level of encorafenib.

In the 13-week toxicity studies in rats and monkeys, encorafenib was clinically well tolerated at doses up to 60 mg/kg/day. The  $AUC_{0-24h}$  exposure margins versus the relevant human exposure at the NOAEL of 20 mg/kg/day are 14-fold for rat and 0.5-fold for monkey. In the rats, the primary findings were reduced body weight parameters, as well as changes in organ weights (epididymides), macroscopic and microscopic pathology (testes, epididymides, stomach, skin) similar to what was observed in the 4-week study. In the monkey, abnormal retinal findings in two animals at the high dose of 60 mg/kg/day were the only notable findings.

**Carcinogenicity**

Carcinogenicity studies with encorafenib have not been conducted.

**Genotoxicity**

Encorafenib was not genotoxic in studies evaluating reverse mutations in bacteria, chromosomal aberrations in mammalian cells, or micronuclei in bone marrow of rats.

**Reproductive and Developmental Toxicology**

No dedicated fertility studies were performed with encorafenib in animals. In 4- and 13-week repeat-dose toxicology studies in rats, decreased testes and epididymis weights, tubular degeneration in testes, and oligospermia in epididymides were observed at doses approximately 13 times the human exposure at the 450 mg clinical dose based on AUC. No effects on reproductive organs were observed in either sex in any of the non-human primate toxicity studies.

In reproductive toxicity studies, administration of encorafenib to rats during the period of organogenesis resulted in maternal toxicity, decreased fetal weights, and increased incidence of total skeletal variations at a dose of 20 mg/kg/day (approximately 26 times the human exposure based on AUC at the recommended clinical dose of 450 mg once daily). In an embryo-fetal development study conducted in pregnant rabbits, administration of encorafenib during the period of organogenesis resulted in maternal toxicity, decreased fetal body weights, increased incidence of total skeletal variations and increased post-implantation loss, including total loss of pregnancy at a dose of 75 mg/kg/day (approximately 178 times the human exposure based on AUC at the recommended clinical dose of 450 mg once daily). While formal placental transfer studies have not been performed, encorafenib exposure in the fetal plasma of both rats and rabbits was up to 1.7% and 0.8%, respectively, of maternal exposure.

## PATIENT MEDICATION INFORMATION

### READ THIS FOR SAFE AND EFFECTIVE USE OF YOUR MEDICINE

Pr **BRAFTOVI**<sup>®</sup>

#### Encorafenib capsules

Read this carefully before you start taking **BRAFTOVI** and each time you get a refill. This leaflet is a summary and will not tell you everything about this drug. Talk to your healthcare professional about your medical condition and treatment and ask if there is any new information about **BRAFTOVI**.

Your cancer will be treated with **BRAFTOVI** in combination with another medication called binimetinib or cetuximab. Read the Patient Medication Information leaflet for the other medication as well as this one.

#### Serious Warnings and Precautions

**BRAFTOVI** can cause serious side effects including:

- **New skin cancers** such as squamous cell carcinoma of the skin, keratoacanthoma, basal cell carcinoma and other melanomas.
- **Hemorrhage (bleeding problems):** These are serious bleeding problems. Bleeding problems can happen in the stomach, intestinal tract or brain, that could lead to death.
- **Uveitis:** This **eye problem** happens when part of the eye wall becomes inflamed. It can include **iritis** (inflammation of the coloured part of your eye) and **iridocyclitis** (inflammation of the coloured part of your eye and the muscles and tissue that help the eye to focus).
- **QTc Interval Prolongation:** This condition happens when there are changes in electrical activity of your heart. **Braftovi** can also worsen any other heart problems you have. Your healthcare professional will check that your heart is working properly before and during your treatment.
- **Blood clots: Venous thromboembolism** (blood clots in a vein of your arms or legs) or **pulmonary embolism** (blood clot in the lung) have happened in patients taking **BRAFTOVI**.

#### What is **BRAFTOVI** used for?

**BRAFTOVI** is used with a drug called binimetinib to treat adults with a type of skin cancer called melanoma. This type of skin cancer must have:

- a change (mutation) in the BRAF gene, and
- spread to other parts of the body, or cannot be removed by surgery.

**BRAFTOVI** is also used with a drug called cetuximab to treat adults with a type of large intestine cancer called metastatic colorectal cancer (mCRC). This type of intestine cancer must have:

- a change (mutation) in the BRAF gene, and
- spread to other parts of the body and has already been treated with other cancer drugs.

Before taking **BRAFTOVI**, a test will be performed. This test is to confirm that **BRAFTOVI** is right for you.

**BRAFTOVI** is not approved for use in children and adolescents under 18 years of age.

### How does BRAFTOVI work?

Mutations in the BRAF gene can produce proteins that cause cancer cells to grow. BRAFTOVI targets these proteins.

Binimetinib acts on a different protein that causes melanoma cells to grow. When BRAFTOVI and binimetinib are used together, they may help to slow down or stop the growth of melanoma.

Mutations in the BRAF gene for metastatic colorectal cancer work in a similar way. When BRAFTOVI and cetuximab are used together, they may help to slow down or stop the growth of metastatic colorectal cancer.

### What are the ingredients in BRAFTOVI?

Medicinal ingredients: encorafenib

Non-medicinal ingredients: colloidal silicon dioxide, copovidone, crospovidone, ferrousferrous oxide, gelatin, iron oxide red, iron oxide yellow, magnesium stearate of vegetable origin, microcrystalline cellulose, pharmaceutical glaze, poloxamer 188, propylene glycol, succinic acid and titanium dioxide.

### BRAFTOVI comes in the following dosage forms:

Capsules: 75 mg

### Do not use BRAFTOVI if:

- You are allergic to encorafenib or any of the other ingredients in this medicine.

**To help avoid side effects and ensure proper use, talk to your healthcare professional before you take BRAFTOVI. Talk about any health conditions or problems you may have, including if you:**

- have or have had heart problems including:
  - long QT syndrome. This is a condition that affects the rhythm of the heart where heartbeats can be fast or irregular.
  - bradyarrhythmia, which is a slow heart rate.
  - heart failure
- have or have had **eye problems**, including **uveitis, iritis, iridocyclitis**
- are taking certain medications that might affect your heart rate.
- have or have had **liver problems**.
- have diabetes or high blood sugar (**hyperglycaemia**)

### Other warnings you should know about:

**Skin changes (rash and skin cancer):** Treatment with BRAFTOVI can cause skin changes including rash and skin cancer. Throughout your treatment, your healthcare professional will check your skin. They will look for any new skin cancers before treatment, every 2 months during your treatment, and for up to 6 months after you stop taking BRAFTOVI. Tell your healthcare professional immediately if you notice any changes in your skin both during and after treatment.

**Other non-skin cancers:** Treatment with BRAFTOVI can cause cancer in other parts of your body. Your healthcare professional will monitor you for signs and symptoms of cancer.

**Liver problems:** Treatment with BRAFTOVI can cause liver problems. You will have regular blood tests done before starting your treatment and then every month while you are taking BRAFTOVI. These blood tests will tell your healthcare professional how your liver is working.

**High blood sugar (hyperglycaemia):** Treatment with BRAFTOVI can cause high blood sugar. Your healthcare professional will monitor your blood sugar levels.

See the “**Serious side effects and what to do about them**” table, below, for more information on these and other serious side effects.

**Check-ups and testing:** You will have regular visits with your healthcare professional, before, during and at the end of your treatment. In addition to checking your skin, they will also:

- Check your eyes for new or worsening eye problems. You may be sent to see an eye specialist.
- Check that your heart is working properly.
- Do a physical exam and blood tests.

**Pregnancy and breastfeeding:**

**Female patients**

- If you are pregnant, able to get pregnant or think you are pregnant, there are specific risks you should discuss with your healthcare professional.
- You should not take BRAFTOVI if you are pregnant. It may harm your unborn baby.
- If you are able to become pregnant:
  - Your healthcare professional will do a pregnancy test before you start taking BRAFTOVI. This test must show that you are not pregnant.
  - Avoid becoming pregnant while you are taking BRAFTOVI. Use effective birth control during your treatment and for at least 2 weeks after your last dose. The birth control methods you use must not contain hormones. This is because BRAFTOVI may cause these types of birth control to not work as well as they should. Ask your healthcare professional about methods of birth control available to you.
  - Tell your healthcare professional right away if you become pregnant or think you may be pregnant during your treatment with BRAFTOVI.
- Do not breastfeed while you are taking BRAFTOVI and for at least 2 weeks after your last dose.

**Male patients**

- Avoid fathering a child while you are taking BRAFTOVI.
- During your treatment with BRAFTOVI, use a condom each time you have sex with a woman who is pregnant, may be pregnant or could get pregnant. Continue using condoms until 1 week after your last dose.
- If, during your treatment with BRAFTOVI, your sexual partner becomes pregnant or thinks she may be pregnant, tell your healthcare professional right away.

**Male patients – fertility:**

- Treatment with BRAFTOVI may affect your ability to father a child. If you have questions about this, talk to your healthcare professional.



**Driving and using machines:** BRAFTOVI can cause fatigue and vision problems. Before you drive or do tasks that require special attention, wait until you know how you respond to BRAFTOVI.

**Tell your healthcare professional about all the medicines you take, including any drugs, vitamins, minerals, natural supplements or alternative medicines.**

**The following may interact with BRAFTOVI:**

- medicines to treat fungal infections such as itraconazole, posaconazole, fluconazole;
- medicines to treat bacterial infections such as rifampicin, clarithromycin, telithromycin, erythromycin, ciprofloxacin, rifabutin, nafcillin;
- medicines typically used to treat epilepsy (seizures) such as phenytoin, carbamazepine, phenobarbital;
- medicines typically used to treat high cholesterol such as rosuvastatin, atorvastatin;
- a medicine used to treat angina called verapamil;
- an herbal treatment for depression called St. John's wort;
- medicines for HIV treatment such as ritonavir, amprenavir, cobicistat, indinavir, saquinavir, nelfinavir, boceprevir, telaprevir, efavirenz, etravirine;
- medicines used to treat hepatitis C such as boceprevir and telaprevir;
- birth control medicines containing hormones;
- medicines typically used to treat high blood pressure including diltiazem, bosentan, furosemide, losartan;
- a medicine used to treat sleep disorders called modafinil;
- a medicine used to treat an uneven heartbeat called amiodarone;
- a medicine used to produce sleepiness or drowsiness called midazolam;
- medicines, supplements or any other products containing caffeine;
- a medicine used to treat excess stomach acid called omeprazole;
- a medicine used to treat depression called bupropion.

Do NOT eat grapefruit or drink grapefruit juice during your treatment with BRAFTOVI. This is because it could affect the way the medicine works and may lead to side effects.

**How to take BRAFTOVI:**

- Take exactly as your healthcare professional has told you. Check with your healthcare professional if you are not sure.
- Swallow capsules whole, with water.
- Take with or without food.
- Take BRAFTOVI for as long as your healthcare professional prescribes it. Do not stop taking this medicine unless your healthcare professional tells you to.

**Usual dose:**

**Melanoma:**

**Recommended total daily adult dose:** 450 mg per day. To make this dose, take six 75 mg capsules once per day.

You will also receive treatment with another medicine, binimetinib. Your healthcare professional will tell you how much of this medicine you will take and how to take it.

**Metastatic Colorectal Cancer (mCRC):**

**Recommended total daily adult dose:** 300 mg per day. To make this dose, take four 75 mg capsules once per day.

You will also receive treatment with another medicine, cetuximab. Cetuximab is given through your veins (intravenously). Your healthcare professional will determine your dose and schedule.

Your healthcare professional may lower your dose, stop your treatment for a period of time or recommend that you stop treatment completely. This may happen if you:

- experience serious side effects, or
- your disease gets worse, or
- your binimetinib or cetuximab dose is stopped.

If you have liver problems or are taking certain medications that may interact with BRAFTOVI, your healthcare professional may start you on a lower dose.

**Overdose:**

If you think you, or a person you are caring for, have taken too much BRAFTOVI, contact a healthcare professional, hospital emergency department, or regional poison control centre immediately, even if there are no symptoms.

**Missed Dose:**

If you miss a dose of BRAFTOVI and,

- there are less than 12 hours until your next scheduled dose, skip the missed dose. Take your next dose at the usual time.
- there are more than 12 hours until your next scheduled dose, take your dose as soon as you remember.
- Continue taking your capsules according to your usual schedule.

Do not take two doses at the same time to make up for a forgotten dose.

If you vomit at any time after taking BRAFTOVI, do not take another dose. Take the next dose at your usual time.

**What are possible side effects from using BRAFTOVI?**

These are not all the possible side effects you may have when taking BRAFTOVI. If you experience any side effects not listed here, tell your healthcare professional.

BRAFTOVI is taken with binimetinib or cetuximab. Please also read the leaflets for binimetinib or cetuximab to learn about possible specific side effects caused by them.

- pain, loss of sensation or tingling in hands and feet
- difficulty sleeping
- headache
- dizziness
- fever
- fatigue
- changes in the way things taste
- decreased appetite
- stomach pain
- diarrhea
- vomiting
- nausea
- constipation
- itching
- redness, chapping or cracking of the skin
- dry skin
- hair loss or thinning
- skin rash
- thickening of the outer layers of the skin
- increased skin sensitivity to sunlight
- joint pain
- muscle pain, weakness or spasm
- back pain
- pain in the extremities
- swelling including in the hands or feet

BRAFTOVI can cause abnormal blood test results. Your healthcare professional will do blood tests during your treatment. These will tell your healthcare professional how BRAFTOVI is affecting your blood, heart, liver, pancreas, kidneys and muscles.

<b>Serious side effects and what to do about them</b>			
<b>Symptom / effect</b>	<b>Talk to your healthcare professional</b>		<b>Stop taking drug and get immediate medical help</b>
	<b>Only if severe</b>	<b>In all cases</b>	
<b>VERY COMMON</b>			
<b>Anemia</b> (decreased number of red blood cells): fatigue, loss of energy, irregular heartbeats, pale complexion, shortness of breath, weakness	<b>X</b>		
<b>Bleeding problems:</b> headaches, dizziness or weakness, coughing up of blood or blood clots, vomit containing blood or that looks like “coffee grounds”, red or black stools that look like tar, passing			<b>X</b>

Serious side effects and what to do about them			
Symptom / effect	Talk to your healthcare professional		Stop taking drug and get immediate medical help
	Only if severe	In all cases	
blood in the urine, stomach (abdominal) pain, nosebleeds, unusual vaginal bleeding.			
<b>Dermatitis acneiform</b> (Skin / Acne condition): small, raised acne-like red bumps on the face, scalp, chest, upper back; bumps may be filled with pus	X		
<p><b>Eye problems</b>, including:</p> <ul style="list-style-type: none"> <li>• <b>uveitis</b> (inflammation of part of the eye wall),</li> <li>• <b>Iritis</b> (inflammation of the coloured part of the eye),</li> <li>• <b>Iridocyclitis</b> (inflammation of the coloured part of the eye and the muscles and tissues that help the eye to focus)</li> <li>• <b>retinal pigment epithelial detachment</b> (detachment of the inner layer of the eye)</li> </ul> <p>Symptoms include: blurred vision, loss of vision, inflammation or other vision changes (such as coloured dots in your vision), halo (seeing blurred outline around objects), eye pain, swelling or redness. Symptoms can appear suddenly and worsen quickly.</p>			X
<b>Heart problems including QTc prolongation</b> (changes in the electrical activity of the heart): feeling dizzy, tired or lightheaded, shortness of breath, feeling like your heart is pounding, racing or beating irregularly, swelling in the legs.			X
<b>Kidney problems:</b> confusion, itchiness or rash, puffiness in face and hands, swelling in feet or ankles, urinating less or not at all; weight gain		X	
<b>Liver problems:</b> yellowing of your skin and eyes (jaundice), right		X	

Serious side effects and what to do about them			
Symptom / effect	Talk to your healthcare professional		Stop taking drug and get immediate medical help
	Only if severe	In all cases	
upper stomach area pain or swelling, nausea or vomiting, unusual dark urine, unusual tiredness			
<b>Skin Changes:</b> new wart, skin sore or reddish bump that bleeds or does not heal, a new mole or change in size or colour of a mole.		X	
<b>COMMON</b>			
<b>Allergic reaction:</b> difficulty swallowing or breathing, wheezing; drop in blood pressure; feeling sick to your stomach and throwing up; hives or rash; swelling of the face, lips, tongue or throat			X
<b>Bowel problems [including colitis (inflammation of the bowel)]:</b> severe or persistent diarrhea, abdominal pain or cramping, pain in the rectum, bleeding from the rectum	X		
<b>Cerebral hemorrhage</b> (bleeding in the brain): sudden, severe headache; confusion; nausea and vomiting; seizures; loss of consciousness.			X
<b>Facial paresis</b> (weakness and paralysis of face muscles): loss of movement of the face; face muscles may appear to droop			X
<b>Hyperglycaemia</b> (high blood sugar): increased thirst, frequent urination, dry skin, headache, blurred vision and fatigue		X	
<b>Hypertension</b> (high blood pressure): shortness of breath, fatigue, severe headache, dizziness or fainting, lightheaded, chest pain or pressure, swelling in your ankles and legs, bluish colour to your lips and skin, racing pulse or palpitations		X	

Serious side effects and what to do about them			
Symptom / effect	Talk to your healthcare professional		Stop taking drug and get immediate medical help
	Only if severe	In all cases	
<b>Palmar-plantar erythrodysesthesia</b> (Hand and foot syndrome): redness, tingling and loss of feeling, skin peeling or blisters on hand and feet	X		
<b>Pancreatitis</b> (inflammation of the pancreas): upper abdominal pain, fever, rapid heart rate, nausea, vomiting, tenderness when touching the abdomen		X	
<b>Panniculitis</b> (inflammation of the fatty layer under the skin): tender, red bumps on the arms and legs, abdomen, breasts face or buttocks	X		
<b>Pulmonary embolism</b> (blood clot in the lung): chest pain that may increase with deep breathing, sudden shortness of breath, trouble breathing, cough, coughing up bloody sputum			X
<b>Skin cancer including cutaneous squamous cell cancer, keratoacanthomas, basal cell carcinoma and melanoma:</b> skin sore, wart, or reddish bump that bleeds or does not heal		X	
<b>Venous thromboembolism</b> (blood clot in a deep vein of the arm or leg): pain in your legs with or without swelling, swelling in your arms and legs, or a cool, pale arm or leg, arm or leg may also be warm to the touch and may appear red			X

If you have a troublesome symptom or side effect that is not listed here or becomes bad enough to interfere with your daily activities, tell your healthcare professional.

### Reporting Side Effects

You can report any suspected side effects associated with the use of health products to Health Canada by:

- Visiting the Web page on Adverse Reaction Reporting (<https://www.canada.ca/en/health-canada/services/drugs-health-products/medeffect-canada.html>) for information on how to report online, by mail or by fax; or
- Calling toll-free at 1-866-234-2345.

*NOTE: Contact your health professional if you need information about how to manage your side effects. The Canada Vigilance Program does not provide medical advice.*

### Storage:

Store at 15 to 30°C.

Keep BRAFTOVI in the original bottle. Keep bottle tightly closed to protect from moisture. Do not remove the desiccant from the bottle. Keep out of reach and sight of children.

### If you want more information about BRAFTOVI:

- Talk to your healthcare professional
- Find the full product monograph that is prepared for healthcare professionals and includes this Patient Medication Information by visiting the Health Canada website: <https://www.canada.ca/en/health-canada/services/drugs-health-products/drug-products/drug-product-database.html>; the manufacturer's website [www.Pfizer.ca](http://www.Pfizer.ca), or by calling 1-800-463-6001.

This leaflet was prepared by Pfizer Canada ULC.

Last Revised: February 23, 2024