

PRODUCT MONOGRAPH
INCLUDING PATIENT MEDICATION INFORMATION

IBUPROFEN 200 mg

Ibuprofen Tablets

Tablets, 200 mg, Oral

USP

IBUPROFEN 400 mg

Ibuprofen Tablets

Tablets, 400 mg, Oral

USP

Non-Steroidal Anti-inflammatory Drug

Analgesic, Antipyretic Agent

JAMP Pharma Corporation
1310 rue Nobel
Boucherville, Quebec
J4B 5H3, Canada

Date of Initial Authorization:
September 27, 2019

Date of Revision:
May 16, 2024

Submission Control Number: 278922

RECENT MAJOR LABEL CHANGES

3 SERIOUS WARNINGS AND PRECAUTIONS BOX		[06/2023]
7 WARNINGS AND PRECAUTIONS	Monitoring and Laboratory Tests	[06/2023]
7 WARNINGS AND PRECAUTIONS	7.1.1 Pregnant Women	[06/2023]

TABLE OF CONTENTS

Sections or subsections that are not applicable at the time of authorization are not listed.

RECENT MAJOR LABEL CHANGES	2
TABLE OF CONTENTS	2
PART I: HEALTH PROFESSIONAL INFORMATION	4
1 INDICATIONS	4
1.1 Pediatrics.....	4
1.2 Geriatrics.....	4
2 CONTRAINDICATIONS	4
3 SERIOUS WARNINGS AND PRECAUTIONS BOX	5
4 DOSAGE AND ADMINISTRATION	6
4.1 Dosing Considerations.....	6
4.2 Recommended Dose and Dosage Adjustment	6
4.5 Missed Dose.....	6
5 OVERDOSAGE	7
6 DOSAGE FORMS, STRENGTHS, COMPOSITION AND PACKAGING	8
7 WARNINGS AND PRECAUTIONS	8
7.1 Special Populations	13
7.1.1 Pregnant Women	14
7.1.2 Pediatrics.....	14
7.1.3 Geriatrics.....	14
8 ADVERSE REACTIONS	15
8.1 Adverse Reaction Overview	15
9 DRUG INTERACTIONS	19

9.1	Serious Drug Interactions	19
9.2	Drug Interactions Overview	20
9.3	Drug-Behavioural Interactions	20
9.4	Drug-Drug Interactions	20
9.5	Drug-Food Interactions	22
9.6	Drug-Herb Interactions	22
9.7	Drug-Laboratory Test Interactions	22
10	CLINICAL PHARMACOLOGY	22
10.1	Mechanism of Action.....	22
10.2	Pharmacodynamics	22
10.3	Pharmacokinetics	23
11	STORAGE, STABILITY AND DISPOSAL	23
12	SPECIAL HANDLING INSTRUCTIONS.....	23
	PART II: SCIENTIFIC INFORMATION.....	24
13	PHARMACEUTICAL INFORMATION.....	24
14	CLINICAL TRIALS.....	24
14.1	Trial Design and Study Demographics	24
14.2	Study Results.....	24
14.3	Comparative Bioavailability Studies	28
15	MICROBIOLOGY	30
16	NON-CLINICAL TOXICOLOGY.....	30
17	SUPPORTING PRODUCT MONOGRAPHS.....	33
	PATIENT MEDICATION INFORMATION.....	34

PART I: HEALTH PROFESSIONAL INFORMATION

1 INDICATIONS

IBUPROFEN (Ibuprofen Tablets, USP) is indicated for fast and effective relief of:

- headache pain (including mild to moderate migraine and tension headache)
- menstrual pain
- toothache (dental pain)
- pain from inflammation associated with arthritis
- pain from inflammation associated with physical or athletic overexertion, (e.g. sprains or strains)
- minor aches and pains in muscles, bones and joints
- backache
- the aches and pain due to the common cold and flu
- reduction of fever

1.1 Pediatrics

Pediatrics (<12 years of age): Based on the data submitted and reviewed by Health Canada, the safety and efficacy of ibuprofen in pediatric patients has been established. Therefore Health Canada has authorized an indication for pediatric use. Children's ibuprofen formulations are available to treat children under 12 years of age.

1.2 Geriatrics

Geriatrics (>65 years of age): Evidence from clinical studies and experience suggest that use in the geriatric population is associated with differences in safety or effectiveness and a brief discussion can be found in the appropriate sections (e.g., Warnings and Precautions).

2 CONTRAINDICATIONS

The following are contraindications to the use of ibuprofen tablets:

- Patients who are hypersensitive to ibuprofen, other non-steroidal anti-inflammatory drugs (NSAIDs), or to any of the ingredients in the formulation, including any non-medicinal ingredient or component of the container, For a complete listing see [6 DOSAGE FORMS, STRENGTHS, COMPOSITION AND PACKAGING](#). The potential for cross-reactivity between different NSAIDs must be kept in mind. Ibuprofen should not be used in patients with the complete or

partial syndrome of acetylsalicylic acid (ASA) intolerance (rhinosinusitis, urticaria/angioedema, nasal polyps, asthma) in whom asthma, anaphylaxis, urticaria/angioedema, rhinitis or other allergic manifestations are precipitated by ASA or other nonsteroidal anti-inflammatory agents. Fatal anaphylactoid reactions have occurred in such individuals. As well, individuals with the above medical problems are at risk of a severe reaction even if they have taken NSAIDs in the past without any adverse effects.

- Active gastric or duodenal ulcer, a history of recurrent ulceration, gastrointestinal bleeding, or active inflammatory disease of the gastrointestinal system.
- Significant hepatic impairment or active liver disease.
- Severely impaired or deteriorating renal function (creatinine clearance <30 mL/min).
- Ibuprofen should not be used in the presence of known hyperkalemia (also see Warnings and Precautions – Renal section).
- Children with kidney disease and/or who have suffered significant fluid loss.
- Ibuprofen is contraindicated in patients with systemic lupus erythematosus as an anaphylaxis-like reaction with fever may occur, particularly when ibuprofen has been administered previously.
- The third trimester of pregnancy, because of risk of premature closure of the ductus arteriosus and prolonged parturition.
- Do not use right before or after heart surgery (see Peri-Operative Considerations). See [7 WARNINGS AND PRECAUTIONS](#) and [9 DRUG INTERACTIONS](#).

3 **SERIOUS WARNINGS AND PRECAUTIONS BOX**

Serious Warnings and Precautions

- Caution in patients prone to gastrointestinal tract irritation, including those with a history of peptic ulcer. The chance of stomach bleeding is higher if you are: age 60 or older, have had stomach ulcers, bleeding problems, diverticulosis or other inflammatory disease of the gastrointestinal tract such as ulcerative colitis and Crohn's disease, take a blood thinner or steroid drug, take with other drugs containing an NSAID like acetylsalicylic acid (ASA), ibuprofen, naproxen, or prescription anti-inflammatory drugs, have 3 or more alcoholic drinks every day while using this product.
- The elderly and patients with impaired renal function, heart failure, liver dysfunction, and those taking diuretics are at increased risk of renal toxicity.
- Risk in Pregnancy: Caution should be exercised in prescribing ibuprofen tablets if trying to conceive, during the first and second trimesters of pregnancy, or nursing. Use of NSAIDs at approximately 20 weeks of gestation or later may cause oligohydramnios, and renal dysfunction including renal failure (see [WARNINGS AND PRECAUTIONS- Special Populations](#)). Ibuprofen tablets are CONTRAINDICATED for use during the third trimester because of risk of

premature closure of the ductus arteriosus and uterine inertia (prolonged parturition) (see [CONTRAINDICATIONS](#)).

- high blood pressure,
- heart disease,
- If persistent urinary symptoms (bladder pain, dysuria, urinary frequency), hematuria and cystitis occur, the drug should be stopped immediately.

4 DOSAGE AND ADMINISTRATION

4.1 Dosing Considerations

- Do not take for pain for more than 5 consecutive days or fever for more than 3 days unless directed by a physician.
- If your condition deteriorates or new symptoms occur (such as the painful area becomes unusually red, swollen or tender), consult a physician.
- Individuals older than 65 years who are frail or debilitated should be given a starting dose lower than the one usually recommended, with individual adjustments when necessary.
- Use the lowest effective dose for the shortest duration.

4.2 Recommended Dose and Dosage Adjustment

Mild to moderate pain or fever.

Adults: Single oral dose may be taken every 4–6 hours, as required, not to exceed the maximum daily dose (1200 mg) in 24 hours unless directed by a physician.

Product	Strength (ibuprofen mg/tablet)	Single Oral Dose	Maximum Daily Dose (1200 mg)
(Regular Strength) IBUPROFEN 200 mg	200 mg	1 or 2 tablets	6 tablets
(Super Strength) IBUPROFEN 400 mg	400 mg	1 tablet	3 tablets

The administration of ibuprofen with food or milk is recommended since occasional and mild heartburn, upset stomach or stomach pain may occur with its use.

4.5 Missed Dose

If you miss a dose, take the missed dose as soon as you remember. If it is almost time for your

next dose, wait until then to take your medicine and skip the missed dose. Do not take two doses at the same time.

5 OVERDOSAGE

Clinical Features

A clear pattern of clinical features associated with accidental or intentional overdose of ibuprofen has not been established. Reported cases of overdose have often been complicated by co ingestions or additional suicidal gestures. The range of symptoms observed has included nausea, vomiting, abdominal pain, drowsiness, nystagmus, diplopia, headache, tinnitus, impaired renal function, renal tubular acidosis, coma and hypotension lethargy, central nervous system depression, seizures, metabolic acidosis, coma, rhabdomyolysis, hypothermia, fulminant hepatic failure, apnea (primarily in very young children), cardiovascular toxicity including bradycardia, tachycardia and atrial fibrillation. A review of four fatalities associated with ibuprofen overdose indicates other contributing factors co existed so it would be difficult to identify the toxicity of ibuprofen as a specific cause of death.

Post-ingestion blood levels may be useful to confirm a diagnosis and to quantify the degree of exposure but otherwise have not been helpful in predicting clinical outcome. Generally, full recovery can be expected with appropriate symptomatic management.

The following cases of overdose have been reported. A 19-month-old child, 1-1/2 hours after the ingestion of seven to ten 400 mg tablets of ibuprofen presented apnea, cyanosis and responded only to painful stimuli. After treatment with O₂, NaHCO₃, infusion of dextrose and normal saline, the child was responsive and 12 hours after ingestion appeared completely recovered. Blood levels of ibuprofen reached 102.9 mcg/mL, 8-1/2 hours after the accident. Two other children weighing approximately 10 kg had taken an estimated 120 mg/kg. There were no signs of acute intoxication or late sequelae. In one child the ibuprofen blood level at 90 minutes after ingestion was approximately 700 mcg/mL. A nineteen-year-old male who ingested 8000 mg of ibuprofen reported dizziness and nystagmus was noted. He recovered with no reported sequelae after parenteral hydration and 3 days of bed rest.

For perspective, a single 200 mg oral dose study in 6 fasting healthy men produced a peak plasma concentration of 15.0 mcg/mL at 0.75 hr. Another study using a single oral 400 mg dose in humans produced a peak serum level of 31.9 ± 8.8 mcg/mL 0.5 hour after ingestion, and at 16 hours serum concentrations had dropped to 1 mcg/mL (See [14.2 Detailed Pharmacology – Human Studies – Pharmacokinetics - Absorption](#)).

Management of Overdose

Appropriate interventions to decontaminate the gastrointestinal tract may be beneficial within the first four hours after ingestion. Routine symptomatic and supportive treatment is then recommended. Physicians should contact the Regional Poison Control Centre for additional guidance about ibuprofen overdose management.

For management of a suspected drug overdose, contact your regional poison control

centre.

6 DOSAGE FORMS, STRENGTHS, COMPOSITION AND PACKAGING

Table – Dosage Forms, Strengths, Composition and Packaging

Route of Administration	Dosage Form / Strength/Composition	Non-medicinal Ingredients
Oral	Tablet 200 mg and 400 mg	carnauba wax, croscarmellose sodium, hypromellose, iron oxides, polydextrose, polyethylene glycol, pregelatinized starch, silicon dioxide, stearic acid, titanium dioxide.

Description:

IBUPROFEN 200 mg tablets are available as a brown, film-coated, biconvex round shaped tablets embossed with “IBU” and “200”; and also as a brown, film-coated, biconvex capsule shaped tablets embossed with “IBU” and “200”.

IBUPROFEN 400 mg tablets are available as brown, film-coated, biconvex capsule shaped tablets embossed with “IBU” and “400”.

Available formats:

200 mg Tablets: 24, 30, 50, 60, 100, 120, 200, 500 or 1000 tablets per bottle.

400 mg Tablets: 32, 72, 144, 300, 500 or 1000 tablets per bottle.

7 WARNINGS AND PRECAUTIONS

Please see [3 SERIOUS WARNINGS AND PRECAUTIONS BOX](#).

General

Several medical conditions that can predispose patients to the adverse effects of non-steroidal anti-inflammatory drugs in general may be applicable to ibuprofen.

Patients with any serious medical condition should consult a physician before using ibuprofen as an analgesic or antipyretic.

In common with other anti-inflammatory drugs, ibuprofen may mask the usual signs of infection.

If symptoms persist or get worse, or if new symptoms occur, patients should stop use and consult a physician.

Cardiovascular

Some patients with pre-existing hypertension may develop worsening of blood pressure control when placed on an NSAID and regular monitoring of blood pressure should be performed under such circumstances. NSAIDs may exacerbate congestive heart failure.

Patients who are taking low-dose ASA as cardio protective therapy should consult with a health professional prior to taking ibuprofen (see also Drug Interactions - Acetylsalicylic Acid).

NSAIDs may cause an increased risk of serious cardiovascular thrombotic events, myocardial infarction, and stroke. This risk may increase with dose and duration of use. Patients with cardiovascular disease or risk factors for cardiovascular disease may be at greater risk.

Gastrointestinal

Serious GI toxicity, such as ulceration, perforation, obstruction and gastrointestinal bleeding, sometimes severe and occasionally fatal, can occur at any time, with or without symptoms in patients treated with nonsteroidal anti-inflammatory drugs (NSAIDs) including ibuprofen. The risk may increase with dose and duration of use.

GI symptoms, such as dyspepsia, are common, usually developing early in therapy. Health providers should remain alert for ulceration and bleeding in patients treated with non-steroidal anti-inflammatory drugs, even in the absence of previous GI tract symptoms.

In patients observed in clinical trials of such agents, symptomatic upper GI ulcers, gross bleeding, or perforation occur in approximately 1% of patients treated for 3-6 months and in about 2-4% of patients treated for one year. The risk continues beyond one year. The incidence of these complications is related to dose, past history of known ulcer disease, and advanced age (see Special Populations). Studies have shown that the use of oral corticosteroids increases the risk of upper gastrointestinal complications associated with NSAIDs.

Ibuprofen should be given under close medical supervision to patients with a history of ulcer of the upper gastrointestinal tract or inflammatory disease of the gastrointestinal tract such as ulcerative colitis and Crohn's disease. In these cases the health provider must weigh the benefits of treatment against the possible hazards.

Health providers should inform patients about the signs and symptoms of serious GI toxicity and instruct them to contact a health provider immediately if they experience persistent dyspepsia or other symptoms or signs suggestive of gastrointestinal ulceration or bleeding.

Because serious GI tract ulceration and bleeding can occur without warning symptoms, health providers should follow chronically treated patients and watch for the signs and symptoms of ulceration and bleeding and should inform the patients of the importance of this follow-up.

If ulceration is suspected or confirmed, or if GI bleeding occurs ibuprofen should be discontinued immediately, appropriate treatment instituted and the patient monitored closely.

No studies, to date, have identified any group of patients *not* at risk of developing ulceration and bleeding. The major risk factors are a prior history of serious GI events and increasing age. Possible risk factors include *Helicobacter pylori* infection, excess alcohol intake, smoking, and

concomitant oral steroids, anti-coagulants, anti-platelet agents (including ASA), other NSAIDs, or selective serotonin reuptake inhibitors (SSRIs).

The administration of ibuprofen with food or milk is recommended since occasional and mild heartburn, upset stomach or stomach pain may occur with its use. Patients should be advised to seek the consultation of a physician if gastrointestinal side effects occur consistently, persist, or appear to worsen.

Genitourinary

Some NSAIDs are associated with persistent urinary symptoms (bladder pain, dysuria, urinary frequency), hematuria or cystitis. The onset of these symptoms may occur at any time after the initiation of therapy with an NSAID. Should urinary symptoms occur, in the absence of an alternate explanation, treatment with ibuprofen should be stopped to ascertain if symptoms disappear. This should be done before urological investigations or treatments are considered.

Hematologic

Ibuprofen, like other non-steroidal anti-inflammatory agents, can inhibit platelet aggregation but the effect is quantitatively less than that seen with acetylsalicylic acid. Ibuprofen has been shown to prolong bleeding time (but within the normal range) in normal subjects. Because this prolonged bleeding effect may be exaggerated in patients with underlying hemostatic defects, ibuprofen should be avoided by persons with intrinsic coagulation defects and by those on anticoagulant therapy. Concurrent therapy of ibuprofen with warfarin requires close monitoring of INR (see Drug Interactions).

Also, patients with underlying medical or pharmacologically - induced hemostatic defects could experience further prolongation of bleeding time through the inhibition of platelet aggregation induced to varying degrees by this class of drugs.

Blood dyscrasias (such as neutropenia, leukopenia, thrombocytopenia, aplastic anemia and agranulocytosis) associated with the use of non-steroidal anti-inflammatory drugs are rare, but could occur with severe consequences.

Hepatic/Biliary/Pancreatic

As with other nonsteroidal anti-inflammatory drugs, borderline elevations of one or more liver enzyme tests (AST, ALT, ALP) may occur in up to 15% of patients. These abnormalities may progress, may remain essentially unchanged, or may be transient with continued therapy.

A patient with symptoms and/or signs suggesting liver dysfunction, or in whom an abnormal liver test has occurred, should be evaluated for evidence of the development of a more severe hepatic reaction while on therapy with this drug. Severe hepatic reactions including jaundice and cases of fatal hepatitis have been reported with nonsteroidal anti-inflammatory drugs. Very rarely, ibuprofen has been reported to cause vanishing bile duct syndrome. Patients should seek medical advice if they develop sudden onset abdominal pain or chronic abdominal pain associated with loss of appetite and/or jaundice and/or new onset itching.

Although such reactions are rare, if abnormal liver tests persist or worsen, if clinical signs and

symptoms consistent with liver disease develop (e.g. jaundice), or if systemic manifestations occur (e.g. eosinophilia, associated with rash, etc.), this drug should be discontinued.

If there is a need to prescribe this drug in the presence of impaired liver function, it must be done under strict observation.

Immune

Patients sensitive to any one of the nonsteroidal anti-inflammatory drugs may be sensitive to any of the other NSAIDs also.

As with NSAIDs in general, some patients may experience urticaria and angioedema upon exposure to ibuprofen. Ibuprofen should not be given to patients with the complete or partial syndrome of ASA-intolerance (See Contraindications).

Monitoring and Laboratory Tests

Pregnancy: If ibuprofen tablets 200mg, 400mg are administered in the middle (approximately 20 weeks) to the end of the second trimester, it is recommended that pregnant women on ibuprofen tablets 200mg, 400mg be closely monitored for amniotic fluid volume since IBUPROFEN 200mg, 400mg may result in reduction of amniotic fluid volume and even oligohydramnios (see Special Populations). IBUPROFEN 200mg, 400mg is CONTRAINDICATED for use in the third trimester of pregnancy.

Neurologic

Some patients may experience drowsiness, dizziness, vertigo, tinnitus or hearing loss with the use of ibuprofen. If patients experience these side effects, they should exercise caution in carrying out activities that require alertness.

In occasional rare cases, with some NSAIDs, the symptoms of aseptic meningitis (stiff neck, severe headaches, nausea and vomiting, fever or clouding of consciousness) have been observed. Patients with autoimmune disorders (systemic lupus erythematosus, mixed connective tissues diseases, etc.) seem to be pre-disposed. Therefore, in such patients, the health provider must be vigilant to the development of this complication.

Ophthalmologic

Blurred and/or diminished vision, scotoma, and/or changes in colour vision have been reported. If a patient develops such complaints while taking ibuprofen, the drug should be discontinued. Patients with any visual disturbances should have an ophthalmologic examination.

Peri-Operative Considerations

In general, NSAIDs should be discontinued prior to surgeries to decrease the risk of post-operative bleeding.

Renal

Long-term administration of nonsteroidal anti-inflammatory drugs to animals has resulted in renal papillary necrosis and other abnormal renal pathology. In humans, there have been reports of acute interstitial nephritis with hematuria, proteinuria, and occasionally nephrotic syndrome.

A second form of renal toxicity has been seen in patients with pre-renal conditions leading to reduction in renal blood flow or blood volume, where the renal prostaglandins have a supportive role in the maintenance of renal perfusion. In these patients, administration of a non-steroidal anti-inflammatory drug may cause a dose dependent reduction in prostaglandin formation and may precipitate overt renal decompensation. Patients at greatest risk of this reaction are those with impaired renal function (Glomerular Filtration Rate (GFR) < 60 ml/min or 1 ml/sec), patients on salt restricted diets, those with congestive heart failure, cirrhosis, liver dysfunction, those taking diuretics, angiotensin-converting enzyme inhibitors, angiotensin-II receptor blockers, cyclosporin, ASA and the elderly. Serious or life-threatening renal failure has been reported in patients with normal or impaired renal function after short-term therapy with NSAIDs. Even patients at risk who demonstrate the ability to tolerate an NSAID under stable conditions may decompensate during periods of added stress, for example during states of fluid restriction as can occur during gastroenteritis. Discontinuation of nonsteroidal anti-inflammatory therapy is usually followed by recovery to the pretreatment state.

NSAIDs can increase the risk of hyperkalemia. In patients on dialysis, NSAIDs should be used with caution.

Fluid retention and edema have been observed in patients treated with ibuprofen. Therefore, as with many other NSAIDs, the possibility of precipitating congestive heart failure in elderly patients or those with compromised cardiac function should be borne in mind. Ibuprofen should be used with caution in patients with heart failure, hypertension or other conditions predisposing to fluid retention. Ask patients who are on chronic therapy and at risk for fluid retention to weigh themselves at regular intervals to assist in monitoring for fluid accumulation.

With nonsteroidal anti-inflammatory treatment there is a potential risk of hyperkalemia, particularly in patients with conditions such as diabetes mellitus or renal failure; elderly patients; or in patients receiving concomitant therapy with angiotensin-II receptor antagonists, adrenergic blockers, angiotensin-converting enzyme inhibitors or some diuretics. Patients at risk should be monitored periodically during long-term therapy.

Respiratory

ASA-induced asthma is an uncommon but very important indication of ASA and NSAID sensitivity. It occurs more frequently in patients with asthma who have nasal polyps.

Skin

Ibuprofen may cause a severe allergic reaction, especially in patients allergic to acetylsalicylic acid. Symptoms may include hives, facial swelling, asthma (wheezing), shock, skin reddening, rash or blisters with or without pyrexia or erythema. If any of these symptoms occur, patients should stop use and seek medical help right away.

In rare cases, serious skin reactions such as Stevens-Johnson syndrome (SJS), toxic epidermal necrolysis (TEN), exfoliative dermatitis and erythema multiforme (EM), drug reaction with eosinophilia and systemic symptoms (DRESS) and acute generalized exanthematous pustulosis (AGEP) have been associated with the use of some NSAIDs and have been reported very rarely in patients receiving ibuprofen. Because the rate of these reactions is low, they have usually been noted during post-marketing surveillance in patients taking other medications also associated with the potential development of these serious skin reactions. Thus, causality is not clear. These reactions are potentially life threatening but may be reversible if the causative agent is discontinued and appropriate treatment instituted. Patients should be advised that if they experience a skin rash they should discontinue their NSAID and contact their physician for assessment and advice, including which additional therapies to discontinue.

7.1 Special Populations

Oligohydramnios/Neonatal Renal Impairment:

Use of NSAIDs, including ibuprofen tablets 200mg, 400mg, at approximately 20 weeks gestation or later in pregnancy may cause fetal renal dysfunction leading to oligohydramnios and, in some more severe cases, neonatal respiratory, musculoskeletal and renal problems (see Non-Clinical Toxicology).

Published studies and post-marketing reports describe maternal NSAID use at approximately 20 weeks gestation or later in pregnancy associated with fetal renal dysfunction leading to oligohydramnios, and in some cases, neonatal renal impairment, or failure. NSAIDs were shown to cause significant reduction in fetal urine production prior to reduction of amniotic fluid volume. There have also been a limited number of case reports of maternal NSAID use and neonatal renal dysfunction without oligohydramnios, some of which were irreversible, even after treatment discontinuation.

These adverse outcomes are seen, on average, after days to weeks of treatment, although oligohydramnios has been infrequently reported as soon as 48 hours after NSAID initiation. Oligohydramnios is often, but not always, reversible with treatment discontinuation. Complications of prolonged oligohydramnios may, for example, include limb contractures and delayed lung maturation. In some post-marketing cases of impaired neonatal renal function, invasive procedures such as exchange transfusion or dialysis were required.

If, after careful consideration of alternative treatment options for pain management, NSAID treatment is necessary anywhere from the middle (onset approximately 20 weeks) to the end of the second trimester of pregnancy, it is recommended that the use be limited to the lowest effective dose and shortest duration possible.

Consider ultrasound monitoring of fetal well-being, including of amniotic fluid volume assessment if ibuprofen tablets 200mg, 400mg treatment extends beyond 48 hours. It is recommended that NSAIDs treatment be discontinued if oligohydramnios occurs, followed by appropriate medical follow up.

Inform pregnant women not to use ibuprofen tablets 200mg, 400mg and other NSAIDs from the third trimester of pregnancy because of the risk of the premature closing of the fetal ductus

arteriosus [see Contraindications]. If treatment with ibuprofen tablets 200mg, 400mg is needed for a pregnant woman anywhere from the middle (onset approximately 20 weeks gestation to the end of the second trimester of pregnancy), advise her that she may need to be monitored for oligohydramnios, if treatment continues for longer than 48 hours.

7.1.1 Pregnant Women

No evidence specifically identifies exposure to analgesic doses of ibuprofen as a cause of harm to either mother or fetus during pregnancy. Non-steroidal anti-inflammatory drugs in general, however, are known to affect the action of prostaglandin synthetase which could alter a variety of the physiological functions of prostaglandins or platelets during delivery such as facilitating uterine contraction in the mother, premature closure of the fetal ductus arteriosus which may result in persistent pulmonary hypertension in the newborn infant, and platelet-related haemostasis. Patients should therefore be advised not to use ibuprofen during pregnancy without the advice of a physician, particularly during the last trimester. The use of nonsteroidal anti-inflammatory drugs at 20 weeks gestation or later in pregnancy is associated with fetal renal dysfunction leading to oligohydramnios.

Inhibition of prostaglandin synthesis may adversely affect pregnancy and/or embryo-fetal development. Data from epidemiological studies suggest an increased risk of miscarriage and of cardiac malformation after use of a prostaglandin synthesis inhibitor in early pregnancy.

In animals, administration of a prostaglandin synthesis inhibitor has been shown to result in increased pre- and post-implantation loss and embryo-fetal lethality. In addition, increased incidences of various malformations, including cardiovascular, have been reported in animals given a prostaglandin synthesis inhibitor during the organogenetic period.

Breast-feeding

Pharmacokinetic studies indicated that following oral administration of ibuprofen 400 mg the level of drug that appeared in breast milk was below detection levels of 1 mcg/mL. The amount of ibuprofen to which an infant would be exposed through this source was considered negligible. However, since the absolute safety of ibuprofen ingested under these circumstances has not been determined, nursing mothers should be advised to consult a physician before using ibuprofen.

7.1.2 Pediatrics

Caregivers should ask a physician before use if they believe that the child maybe dehydrated. Not drinking fluids, excessive fluid loss due to vomiting, diarrhea and high fevers may contribute to the risk of dehydration.

7.1.3 Geriatrics

Patients older than 65 years and frail or debilitated patients are most susceptible to a variety of adverse reactions from nonsteroidal anti-inflammatory drugs (NSAIDs); the incidence of these adverse reactions increases with dose and duration of treatment. In addition, these patients are

less tolerant to ulceration and bleeding. Most reports of fatal GI events are in this population, especially those with cardiovascular disease. Older patients are also at risk of lower esophageal ulceration and bleeding. Elderly patients appear to be more susceptible to the central nervous system reactions; cognitive dysfunction (forgetfulness, inability to concentrate, a feeling of separation from the surroundings) in such patients has been reported.

For such patients, consideration should be given to a starting dose lower than the one usually recommended, with individual adjustment when necessary and under close supervision.

8 ADVERSE REACTIONS

8.1 Adverse Reaction Overview

The most common adverse reactions encountered with nonsteroidal anti-inflammatory drugs are gastrointestinal, of which gastric or duodenal ulcer, with or without bleeding, is the most severe. Fatalities have occurred, particularly in the elderly.

Clinical Trial & Post-Market Adverse Drug Reactions

Clinical trials are conducted under very specific conditions. The adverse reaction rates observed in the clinical trials; therefore, may not reflect the rates observed in practice and should not be compared to the rates in the clinical trials of another drug. Adverse reaction information from clinical trials may be useful in identifying and approximating rates of adverse drug reactions in real-world use.

Experience reported with prescription use of ibuprofen has included the following adverse reactions. Note: Reactions listed below under Causal Relationship Unknown are those where a causal relationship could not be established; however, in these rarely reported events, the possibility of a relationship to ibuprofen also cannot be excluded.

Adverse Effect	Common (>1% but <10%)		Less Common (<1%)
	Incidence 3-9%	Incidence 1-3%	
Allergic			<ul style="list-style-type: none"> • anaphylaxis (See Contraindications)
	Also reported but with unknown causal relationship, rarely: <ul style="list-style-type: none"> • fever • serum sickness • lupus erythematosus syndrome 		

Adverse Effect	Common (>1% but <10%)		Less Common (<1%)
	Incidence 3-9%	Incidence 1-3%	
Cardiovascular			<ul style="list-style-type: none"> • congestive heart failure in patients with marginal cardiac function • elevated blood pressure • Conditions such as congestive heart failure and hypertension may be aggravated by sodium retention and edema caused by ibuprofen in such patients • myocardial infarction • stroke (cerebrovascular accident)
	<p>Also reported but with unknown causal relationship, rare cases of:</p> <ul style="list-style-type: none"> • arrhythmias (sinus tachycardia, sinus bradycardia, palpitations) • hemorrhage (non-GI) • Kounis syndrome 		
Central Nervous System	<ul style="list-style-type: none"> • dizziness 	<ul style="list-style-type: none"> • headache • nervousness • drowsiness/somnolence 	<ul style="list-style-type: none"> • depression • insomnia
	<p>Also reported but with unknown causal relationship:</p> <ul style="list-style-type: none"> • paresthesias • hallucinations • dream abnormalities • aseptic meningitis has been reported in patients with systemic lupus erythematosus or other connective tissue disease • aseptic meningitis and meningoencephalitis, in one case accompanied by eosinophilia in the cerebrospinal fluids, has been reported in patients who took ibuprofen intermittently and did not have any connective tissue disease • cognitive dysfunction has been observed in elderly patients who took ibuprofen • psychomotor hyperactivity 		
Immune System Disorders	<p>Rare:</p> <ul style="list-style-type: none"> • hypersensitivity 		

Adverse Effect	Common (>1% but <10%)		Less Common (<1%)
	Incidence 3-9%	Incidence 1-3%	
Dermatologic	<ul style="list-style-type: none"> rash (including maculopapular type) 	<ul style="list-style-type: none"> pruritis 	<ul style="list-style-type: none"> vesiculobullous eruptions urticaria erythema erythema multiforme angioedema fixed eruption
	Also reported but with unknown causal relationship: <ul style="list-style-type: none"> alopecia Stevens-Johnson Syndrome toxic epidermal necrolysis Drug reaction with eosinophilia and systemic symptoms (DRESS) Acute generalized exanthematous pustulosis (AGEP) 		
Endocrine	Also reported but with unknown causal relationship, rare cases of: <ul style="list-style-type: none"> gynecomastia hypoglycemic reaction menstrual delays of up to two weeks and dysfunctional uterine bleeding occurred in nine patients taking ibuprofen 400 mg three times a day for three days before menses 		
Gastrointestinal	<ul style="list-style-type: none"> nausea epigastric pain heartburn 	<ul style="list-style-type: none"> diarrhea abdominal distress nausea and vomiting indigestion (dyspepsia) constipation abdominal cramps and pain gastrointestinal tract fullness (bloating or flatulence) 	<ul style="list-style-type: none"> gastric or duodenal ulcer with bleeding and/or perforation gastrointestinal hemorrhage melena hepatitis jaundice abnormal liver function (SGOT, serum bilirubin and alkaline phosphatase) pancreatitis oral discomfort (local burning, sensation, irritation)
	The generally modest elevations of serum transaminase activity that has been observed are usually without clinical sequelae but severe, potentially fatal toxic hepatitis can occur.		

Adverse Effect	Common (>1% but <10%)		Less Common (<1%)
	Incidence 3-9%	Incidence 1-3%	
Hematologic			<ul style="list-style-type: none"> leukopenia and decreases in hemoglobin and hematocrit
	<p>Also reported but with unknown causal relationship, rare cases of:</p> <ul style="list-style-type: none"> anemia hemolytic anemia thrombocytopenia granulocytopenia bleeding episodes (e.g. purpura, epistaxis, hematuria, menorrhagia) auto-immune hematological anemia occurred in one patient taking 400 mg of ibuprofen three times a day for ten days fatal aplastic anemia was reported in one patient who took 600 mg per day for eight months bone marrow toxicity eosinophilia 		
Metabolic		<ul style="list-style-type: none"> decreased appetite edema fluid retention. 	
	Fluid retention generally responds promptly to drug discontinuation.		
Renal	<p>Also reported but with unknown causal relationship:</p> <ul style="list-style-type: none"> decreased creatinine clearance polyuria azotemia nephritis nephrotic syndrome renal failure <p>Like other non-steroidal anti-inflammatory agents, ibuprofen inhibits renal prostaglandin synthesis that may decrease renal function and cause sodium retention. Renal blood flow glomerular filtration rate decreased in patients with mild impairment of renal functions who took 1200 mg/day of ibuprofen for one week.</p> <ul style="list-style-type: none"> Renal papillary necrosis has been reported. A number of factors appear to increase the risk of renal toxicity (See Warnings and Precautions) 		

Adverse Effect	Common (>1% but <10%)		Less Common (<1%)
	Incidence 3-9%	Incidence 1-3%	
Special Senses		<ul style="list-style-type: none"> tinnitus asthenia 	<ul style="list-style-type: none"> amblyopia (blurred and/or diminished vision, scotomata and/or changes in colour vision) Any patient with eye complaints during ibuprofen therapy should have an ophthalmological examination
	Also reported but with unknown causal relationship: <ul style="list-style-type: none"> conjunctivitis diplopia optic neuritis 		
General		<ul style="list-style-type: none"> hypothermia 	
Hepatobiliary			<ul style="list-style-type: none"> hepatotoxicity (hepatic function abnormal, hepatitis, transaminases increased) vanishing bile duct syndrome
Respiratory			<ul style="list-style-type: none"> asthma, bronchospasms

9 DRUG INTERACTIONS

9.1 Serious Drug Interactions

Serious Drug Interactions
<ul style="list-style-type: none"> Use with acetylsalicylic acid (ASA) or other NSAIDs, including ibuprofen, may result in possible additive adverse side effects. Use with acetaminophen, may increase the risk of adverse renal effect. Use with anticoagulants may increase the risk of GI adverse events (e.g., bleeding). Use with hypoglycemic agents (oral agents and insulin) may increase the risk of hypoglycaemia. Use with antihypertensives may interfere with circulatory control. Use with diuretics may reduce the diuretic effect. Use with methotrexate may increase the risk of methotrexate toxicity.

- Use with lithium may increase the risk of lithium toxicity.

See detailed information in [9.4 Drug-Drug Interactions](#).

9.2 Drug Interactions Overview

Drugs that may interact with IBUPROFEN include: acetylsalicylic acid (ASA) or other NSAIDs, blood thinning medications (anticoagulants), blood pressure medication (anti-hypertensives), diuretics (water pills), oral steroids (glucocorticoids), lithium, diabetes medications (hypoglycemics), methotrexate, phenytoin, acetaminophen and digoxin.

9.3 Drug-Behavioural Interactions

9.4 Drug-Drug Interactions

Acetylsalicylic Acid (ASA) or other NSAIDs

The use of ibuprofen in addition to any other NSAID is not recommended because of the absence of any evidence demonstrating synergistic benefits and the potential for additive side effects.

Animal studies show that ASA given with NSAID agents, including ibuprofen, yield a net decrease in anti-inflammatory activity with lowered blood levels of the non-ASA drug. Single dose bioavailability studies in normal volunteers have failed to show an effect of ASA on ibuprofen blood levels. Correlative clinical studies have not been done.

Also, some NSAIDs may interfere with the anti-platelet effects of low dose ASA (81-325 mg per day), possibly by competing with ASA for access to the active site of cyclooxygenase-I.

The concomitant administration of ibuprofen but not acetaminophen has been shown to antagonize the irreversible platelet inhibition induced by ASA. Regular use of ibuprofen in patients with increased cardiovascular risk may limit the cardio protective effects of ASA. To minimize this interaction, regular users of ibuprofen and low-dose, immediate-release ASA should take the ibuprofen at least one hour after or 11 hours before the daily low-dose ASA. The use of delayed-release (e.g. enteric coated) ASA is not recommended when using ibuprofen regularly. Healthcare professionals should advise consumers and patients regarding the appropriate concomitant use of ibuprofen and ASA.

Anti-Platelet Agents (including ASA): See Warnings and Precautions - Hematologic section.

Anticoagulants: See Warnings and Precautions -Hematologic section.

Coumarin Type Anticoagulants:

Several short-term controlled studies failed to show that ibuprofen significantly affected prothrombin time or a variety of other clotting factors when administered to individuals on coumarin-type anticoagulants. However, bleeding has been reported when ibuprofen and other NSAID agents have been administered to patients on coumarin-type anticoagulants. The use of

ibuprofen in patients who are taking anticoagulants should therefore be avoided because of the possibility of enhanced GI bleeding or an additive effect due to ibuprofen's reversible anti-platelet actions.

Oral hypoglycemics

Ibuprofen may increase the hypoglycemic effects of oral sulfonylurea hypoglycemic agents.

Anti-hypertensives

NSAIDs may diminish the antihypertensive effect of Angiotensin Converting Enzyme (ACE) inhibitors.

Combinations of ACE inhibitors, diuretics and NSAIDs might have an increased risk for acute renal failure and hyperkalemia. In longer term therapy blood pressure and kidney function should be monitored more closely, as occasionally there can be a substantial increase in blood pressure.

Diuretics

Ibuprofen, because of its fluid retention properties, can decrease the diuretic and anti-hypertensive effects of diuretics, and increased diuretic dosage may be needed. Patients with impaired renal function taking potassium-sparing diuretics who develop ibuprofen-induced renal insufficiency might be in serious danger of fatal hyperkalemia.

Glucocorticoids

Some studies have shown that the concomitant use of NSAIDs and oral glucocorticoids increases the risk of GI side effects such as ulceration and bleeding. This is especially the case in older (>65 years of age) individuals.

Lithium

Monitoring of plasma lithium concentrations is advised when stopping or starting an NSAID, as increased lithium concentrations can occur.

Other Drug Interactions

Although ibuprofen binds to a significant extent to plasma proteins, interactions with other protein-bound drugs occur uncommonly. Nevertheless, caution should be observed when other drugs also having a high affinity for protein binding sites are used concurrently. Some observations have suggested a potential for ibuprofen to interact with digoxin, methotrexate, and phenytoin. However, the mechanisms and clinical significance of these observations are presently not known.

Patients taking other prescribed medications should consult a physician before using ibuprofen to assure its compatibility with the other medications.

9.5 Drug-Food Interactions

Interactions with food have not been established.

9.6 Drug-Herb Interactions

Interactions with herbal products have not been established.

9.7 Drug-Laboratory Test Interactions

Interactions with laboratory tests have not been established.

10 CLINICAL PHARMACOLOGY

10.1 Mechanism of Action

Ibuprofen is a member of the class of agents commonly known as non-steroidal anti-inflammatory drugs (NSAID). Like all NSAIDs, ibuprofen is an analgesic, antipyretic, and anti-inflammatory medication.

It is generally accepted that the basic mechanism of pharmacological action of ibuprofen, and other NSAIDs, is the inhibition of prostaglandin synthesis.

Nonselective NSAIDs (such as ibuprofen) and ASA act by inhibiting systemic (peripheral and central) prostaglandin G/H synthase isoenzymes, also known as cyclooxygenase-1 (COX-1) and cyclooxygenase-2 (COX-2). These isoenzymes are responsible for the conversion of arachidonic acid to various tissue specific prostaglandins and thromboxanes. COX-1 is constitutively expressed in all tissues and is responsible for generating prostaglandins that maintain organ function, protect the integrity of the gastric mucosa and generate platelet- derived thromboxane responsible for platelet aggregation and vasoconstriction. During the inflammatory process COX-2 is induced, generating prostaglandins that mediate pain and inflammation. COX-2 is also present constitutively in the kidneys and vascular endothelium. Reported adverse experiences with ASA and other NSAIDs can be understood on the basis of this mechanism of action.

10.2 Pharmacodynamics

Consistent with the NSAID classification, ibuprofen exhibits anti-inflammatory activity at higher dosage ranges. At lower adult single doses relevant to a nonprescription dosage (200 mg to 400 mg) ibuprofen relieves pain of mild to moderate intensity and reduces fever. Analogous to acetylsalicylic acid, the prototype of this class, this analgesic/antipyretic activity of ibuprofen occurs at lower doses than necessary for anti-inflammatory effects, which are thought to require sustained administration of higher individual doses.

Clinical studies indicate a duration of clinical effect for up to 8 hours for fever and up to 6 hours for pain.

10.3 Pharmacokinetics

Absorption

Ibuprofen is rapidly absorbed after oral administration, with peak serum or plasma levels generally appearing within 1 to 2 hours. Oral absorption is estimated to be 80% of the dose. Both the rate of absorption and peak plasma concentrations are reduced when the drug is taken with food, but bioavailability as measured by total area under the concentration-time curve is minimally altered.

Distribution:

Ibuprofen, like most drugs of its class, is highly protein bound (>99% bound at 20 mcg/mL). Tissue distribution of ibuprofen is also extensive in humans. Studies comparing synovial fluid levels with serum concentrations indicated that equilibration time post-ingestion occurred within approximately 3 to 5 hours.

Metabolism:

It is rapidly metabolized through oxidation and glucuronic acid conjugation with urinary excretion of the inactive metabolites usually complete within 24 hours. Less than 10% is excreted unchanged in the urine.

Elimination

Ibuprofen has an elimination half-life of approximately two hours.

Special Populations and Conditions

- **Geriatrics:** Studies demonstrate no apparent clinically significant alterations in ibuprofen pharmacokinetics in the elderly.
- **Hepatic Insufficiency:** Ibuprofen pharmacokinetics have also been studied in patients with alcoholic liver disease who have been assessed to have fair to poor hepatic function. Results suggest that, despite the liver being the primary organ of metabolism of ibuprofen, its kinetic parameters are not substantially altered by this condition.

11 STORAGE, STABILITY AND DISPOSAL

Store at 15-30°C.

12 SPECIAL HANDLING INSTRUCTIONS

Not applicable.

PART II: SCIENTIFIC INFORMATION

13 PHARMACEUTICAL INFORMATION

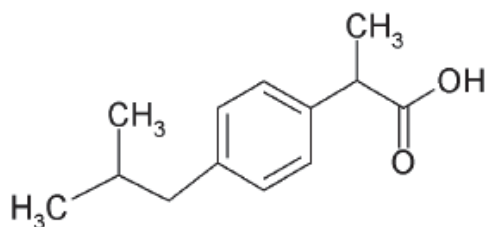
Drug Substance

Proper name: Ibuprofen

Chemical name: Ibuprofen is described chemically as 2 - (p-isobutylphenyl) propionic acid

Molecular formula and molecular mass: $C_{13}H_{18}O_2$ 206.28 g/mol

Structural formula:



Physicochemical properties:

- Ibuprofen is white or almost white, crystalline powder or colourless crystals.
- It is practically insoluble in water, freely soluble in acetone, methanol and methylene chloride. It dissolves in dilute solution of alkali hydroxides and carbonates.
- The pKa is 4.9.
- The melting point is 75 °C to 78 °C.

14 CLINICAL TRIALS

14.1 Trial Design and Study Demographics

The efficacy of ibuprofen as an analgesic and antipyretic has been demonstrated by a variety of clinical studies and pain models.

14.2 Study Results

Dental Pain

In adults, the effects of a drug on post-surgical dental extraction pain serves as a standard model for relief of pain of mild to moderate intensity. Ibuprofen 200 mg and 400 mg has been clearly demonstrated to provide pain relief significantly superior to placebo. When compared to the standard non-prescription analgesics, ibuprofen 200 mg is found to be comparable to ASA 650 mg.

Sore Throat or Ear Pain (Pediatric Models)

In children 6 - 12 years, ibuprofen 10 mg/kg was found to be effective for the relief of pain using a sore throat model, both post-op sore throat (tonsillectomy) and pharyngitis due to upper respiratory infection.

Controlled clinical trials comparing doses of 5 and 10 mg/kg ibuprofen and 12.5 mg/kg acetaminophen have been conducted in children 5 to 12 years of age with sore throat pain believed due to an infectious agent or ear pain believed due to acute otitis media. All three active treatments provided significant pain relief versus placebo within 1 to 2 hours of administration and had a duration of action of up to 6 hours. There were no statistically significant differences among the three active treatments in the degree of maximum pain relief, although the trends favored ibuprofen 10 mg/kg. Ibuprofen 5 mg/kg demonstrated pain relief comparable to acetaminophen 12.5 mg/kg. Ibuprofen 10 mg/kg demonstrated greater pain relief than acetaminophen 12.5 mg/kg from 3 to 6 hours after administration. A pediatric dosage schedule has been developed for Children's ibuprofen based on an ibuprofen dose of approximately 7.5 mg/kg body weight.

Dysmenorrhea

Nonsteroidal anti-inflammatory drugs, which inhibit prostaglandin synthesis such as ibuprofen, are particularly suitable for management of primary dysmenorrhea. Menstrual pain is now thought to result from abnormal uterine activity, which is secondary to increased production and release of endometrial prostaglandins at the time of menstruation.

Several adequate and well-controlled clinical trials provide substantial evidence of the safety and efficacy of ibuprofen at doses of 200 to 400 mg in relieving the pain of menstrual cramps.

A summary of trials of ibuprofen in the treatment of dysmenorrhea indicates the usual dose administered to be 400 mg. The few studies, which are available at a 200 mg dosage, indicate superiority of both ibuprofen 200 mg and 400 mg compared with ASA 650 mg.

Pain of Osteoarthritis

Several controlled clinical studies in adults provide substantial evidence of the safety and efficacy of ibuprofen at doses of 1200 mg or less per day in relieving the pain of osteoarthritis. Collectively, these studies support an indication for the temporary relief of minor pains of arthritis and, in conjunction with single dose analgesia studies, support the broader indication: for the temporary relief of minor aches and pains.

Headache

Ibuprofen has also been used satisfactorily in the management of headache. The efficacy of 200 mg of ibuprofen has been reported to be significantly superior to placebo and ASA 650 mg in the treatment of muscle contraction headaches. No differences in the frequency of side effects were found in the treatment groups. Similar results were reported in a study with patients referred to a Headache Clinic with frequent muscle contraction headache.

Soft Tissue Injury

Several studies also document the efficacy of analgesic doses of ibuprofen in the treatment of soft tissue injuries such as muscular aches or athletic injuries.

Fever

Studies of its efficacy in the management of fever in adults and children demonstrate ibuprofen to be an effective antipyretic, with a duration of action of up to eight hours when administered at a dose of 7.5 mg/kg.

Controlled clinical trials comparing doses between 5 and 10 mg/kg of ibuprofen and 10-15 mg/kg of acetaminophen have been conducted in children 6 months to 12 years of age with fever primarily due to viral illnesses. In these studies, there were few differences between treatments in fever reduction in the first hour and maximum fever reduction occurred between 2 and 4 hours. There was some evidence that the higher dosage range of ibuprofen (10 mg/kg) resulted in a prolonged duration of effect (from six to eight hours) and that it was more effective for children with higher baseline temperatures (above 102.5°F/39.1°C) but the numbers of patients were not adequate to draw definitive conclusions. In children with baseline temperatures at or below 102.5°F (39.1°C) both ibuprofen doses and acetaminophen were equally effective in their maximum effect.

One controlled clinical trial comparing a single dose of ibuprofen 7.5 mg/kg with acetaminophen 12.5 mg/kg demonstrated the superiority of ibuprofen over an eight-hour period.

DETAILED PHARMACOLOGY

Animal Studies Pharmacodynamics

While the mechanism of action of ibuprofen is not definitely known, the generally accepted mechanism is the inhibition of prostaglandin synthesis. Inhibition of prostaglandin biosynthesis prevents sensitization of tissues by prostaglandins to other inflammatory, pain and thermoregulatory mediators, hence accounting for the activity of ibuprofen and other nonsteroidal anti-inflammatory drugs against pain, inflammation and fever.

Inhibition of prostaglandin synthesis by ibuprofen has been demonstrated in several different experimental models: bull seminal vesicle microsomes, stomach, duodenum, kidney and brain of the rat, microsomal preparations from rabbit brain and kidney medulla.

The analgesic efficacy of ibuprofen has been demonstrated in several animal models: phenylbenzoquinone-induced writhing in the mouse, acetylcholine-induced writhing in the mouse, the Randall-Selitto inflamed paw model in the rat, the mouse hot plate and adjuvant-induced arthritis model in the rat.

The antipyretic activity of ibuprofen has been demonstrated in yeast-induced fever in rats.

Pharmacokinetics

Several aspects of the pharmacokinetics of ibuprofen have been studied *in vivo* in rats, rabbits, dogs and baboons.

Studies in rats indicate that while limited absorption of ibuprofen occurs in the stomach, the principal site of absorption is the intestine. Single dose studies using C¹⁴ labelled ibuprofen in rats, rabbits and dogs show rapid absorption rates.

Tissue distribution studies performed in rats after both single and repeated doses of 20 mg/kg of C¹⁴ labelled ibuprofen demonstrate broad distribution with accumulation of radioactivity in the thyroid, adrenals, ovaries, fat and skin. Transplacental passage of ibuprofen was also noted with similar plasma levels measured in both the pregnant rats and fetuses.

Protein binding studies with plasma levels of 20 mcg/mL indicate the percent bound in rats 96%, dogs 99%, baboons 95% and man 99%.

Four metabolites of ibuprofen have been found in the plasma of rabbits, three in rats, none in dogs, two in baboons and two in man, with the liver suggested as the principal organ of metabolism.

Excretion of metabolites was noted to varying degrees through both urine and feces indicating species variability in the bile and kidney excretion ratios.

Human Studies

Pharmacodynamics

Effect of Ibuprofen on Platelet Aggregation, Bleeding and Clotting Times in Normal

Volunteers: Experimental data suggest that ibuprofen may inhibit the effect of low dose ASA (81-325 mg per day) on platelet aggregation when they are dosed concomitantly. In one study, when a single dose of ibuprofen 400 mg was taken within 8 hours before or within 30 minutes after immediate-release ASA dosing, a decreased effect of ASA on the formation of thromboxane or platelet aggregation occurred. However, the limitations of these data and the uncertainties regarding extrapolation of *ex vivo* data to the clinical situation imply that no firm conclusions can be made for regular ibuprofen use, and no clinically relevant effect is considered to be likely for occasional ibuprofen use.

Pharmacokinetics

The pharmacokinetics of ibuprofen has also been studied in humans. Although there is little evidence of clinically significant age dependent kinetics in febrile children ages 3 months to 12 years, some differences in the pharmacokinetic parameters of volume of distribution and clearance have been observed between adults and children.

Absorption: *In-vivo* studies indicate that ibuprofen is well absorbed orally with peak plasma levels usually occurring within 1 to 2 hours. A single 200 mg oral dose study in 6 fasting healthy men produced a peak plasma concentration of 15.0 mcg/mL at 0.75 hr. Another study using a single oral 400 mg dose in humans produced a peak serum level of 31.9 ± 8.8 mcg/MI 0.5 hour after ingestion, and at 16 hours serum concentrations had dropped to 1 mcg/mL. Comparable serum levels and time to peak within 1-2 hours were confirmed by other investigations with 200 mg and 400 mg solid doses. A multiple dose study of administration of a 200 mg ibuprofen tablet three times a day for 2 weeks showed no evidence of accumulation of ibuprofen. As is true with most tablet and suspension formulations, Children's ibuprofen suspension is absorbed somewhat faster than a tablet with a time to peak generally within one hour.

Distribution: Ibuprofen, like most drugs of its class, is highly protein bound (>99% bound at 20 mcg/mL. Based on oral dosing data there is an age-or fever-related change in volume of distribution for ibuprofen. Febrile children <11 years old have a volume of approximately 0.2 L/kg while adults have a volume of approximately 0.12 L/kg. The clinical significance of these findings is unknown. Tissue distribution of ibuprofen is also extensive in humans. Studies comparing synovial fluid levels with serum concentrations indicated that equilibration time post-ingestion occurred within approximately 3 to 5 hours.

Metabolism: Ibuprofen is extensively metabolized in humans with approximately 84% recoverable in the urine, primarily as conjugated hydroxy- and carboxy- metabolites, with only approximately 1% excreted unchanged. The two major metabolites of ibuprofen in humans have been found to have no activity in the ultraviolet erythema test in guinea pigs and in the acetylcholine-induced mouse writhing test at doses of 10 mg/kg and 15 mg/kg respectively.

Elimination: Ibuprofen is rapidly metabolized and eliminated in the urine. The excretion of ibuprofen is virtually complete 24 hours after the last dose. It has a biphasic plasma elimination time curve with a half-life of approximately 2.0 hours. There is no difference in the observed terminal elimination rate or half-life between children and adults, however, there is an age-or fever-related change in total clearance. This suggests that the observed difference in clearance is due to differences in the volume of distribution of ibuprofen, as described above. The clinical relevance of these differences in clearance is unknown, although extensive clinical experience with ibuprofen in children at the pertinent dosage range (5 - 10 mg/kg) indicates a wide margin of safety.

14.3 Comparative Bioavailability Studies

Following a single 200 mg dose of ibuprofen in humans, blood levels were demonstrable in 45 minutes and still present in six hours but at barely detectable levels. Peak serum ibuprofen levels are generally attained 1-15 hours administration of an ibuprofen tablet.

When ibuprofen is administered immediately after a meal, there is a reduction in the rate of absorption but no appreciable decrease in the extent of absorption. Ibuprofen is extensively bound (99%) to human serum albumin. Approximately 15% of the primary binding sites were estimated to be occupied at therapeutic drug concentrations. Studies suggest that ibuprofen binds to a single binding site on the albumin molecule.

Ibuprofen is rapidly metabolized and eliminated in the urine. The excretion of ibuprofen is virtually complete 24 hours after the last dose. The serum half-life of ibuprofen is 1.8 to 2.0 hours. There is no evidence of drug accumulation or enzyme induction.

Comparative Bioavailability Evaluation of Ibuprofen 200 mg with Motrin IB using a selective analysis of (R) and (S) isomers *in vivo* is tabled below:

**Summary Table of the Comparative Bioavailability Data of Ibuprofen 200 mg
Tablets (R) Isomers (RJ-92-588)**

**Ibuprofen
(2 x 200 mg)**

**Geometric Mean Arithmetic
Mean (C.V.%)**

(R) Ibuprofen	Test Ibuprofen	Reference Motrin IB *	Ratio of Means
AUC _r (mcg.h/mL)	40.85 42.87 (30.4)	38.47 40.15 (28.1)	106.43
AUC ₄ (mcg.h/mL)	41.68 43.53 (30.2)	39.25 40.86 (27.3)	106.06
C _{max} (mcg.h/mL)	12.43 12.75 (25.9)	13.20 14.01 (33.5)	94.07
T _{max} (h)	1.72 (1.02)	1.51 (0.69)	-
T _{1/2 el} (h)	2.49 (0.55)	2.47 (0.80)	-

* Motrin IB manufactured by McNeil, purchased in Canada

For the T_{max} and T_{1/2el} parameters these are the arithmetic means with standard deviation in parenthesis.

**Summary Table of the Comparative Bioavailability Data of Ibuprofen 200 mg
Tablets (S) Isomers (RJ-92-588)**

**Ibuprofen
(2 x 200 mg)**

**Geometric Mean Arithmetic
Mean (C.V.%)**

(S) Ibuprofen	Test Ibuprofen	Reference Motrin IB *	Ratio of Means (%)
AUC _r (mcg.h/mL)	61.56 63.84 (27.1)	57.97 60.63 (29.3)	106.06
AUC ₄ (mcg.h/mL)	63.43 65.78 (25.6)	60.34 62.90 (28.4)	104.87
C _{max} (mcg.h/mL)	13.46 13.83 (25.6)	13.67 14.70 (32.7)	96.90
T _{max} (h)	1.99 (0.99)	1.86 (1.23)	-
T _{1/2 el} (h)	2.93 (0.76)	3.09 (2.17)	-

For the T_{max} and T_{1/2el} parameters these are the arithmetic means with standard deviation in parenthesis.

15 MICROBIOLOGY

No microbiological information is required for this drug product.

16 NON-CLINICAL TOXICOLOGY

General Toxicology:

Toxicity studies have been conducted using a variety of species, including: mice, rats, rabbits, guinea pigs and beagle dogs.

Acute Toxicity Studies

Single-dose acute toxicity studies indicate that ibuprofen in lethal doses depresses the central nervous system of rodents and that large doses are ulcerogenic in both rodents and nonrodents. Ulcerogenesis may occur with both parenteral and oral administration indicating that the mechanism may have both a systemic as well as topical component.

Acute toxicity of ibuprofen in the rodent was studied in a number of models.

Single graded doses of ibuprofen were administered by oral intubation or by intraperitoneal or subcutaneous injection to groups of 10 male albino mice and male albino rats. Gross reactions were observed and mortalities recorded over a period of 14 days. The LD₅₀ values determined by this method were 800 mg/kg orally and 320 mg/kg intraperitoneally in the mouse and 1600 mg/kg orally and 1300 mg/kg subcutaneously in the rat. Acute signs of poisoning were prostration in mice, and sedation, prostration, loss of righting reflex and labored respiration in rats. Death occurred within 3 days from perforated gastric ulcers in mice and intestinal ulceration in rats, irrespective of the route of administration.

Similar LD₅₀ determinations in other strains of rats and mice are summarized in the following [Table 1](#).

Table 1 - Acute Toxicity in Rodents (LD₅₀)

Species	Route	LD ₅₀ Range (mg/kg)
Albino Mice	Oral	800-1000
	Intraperitoneal	320
Albino Rats	Oral	1600
	Subcutaneous	1300
Sprague Dawley Rat		1050
Long Evans Rat		1000

In a comparison of several non-steroidal anti-inflammatory drugs (NSAID) including ibuprofen, male rats were sacrificed and the stomachs removed and examined for ulceration either 3 or 24 hours after oral administration of various single doses of ibuprofen. Using a standard scoring technique a mean score for each dosage group was calculated and the ulcerogenic potential was expressed as a minimum ulcerogenic dose. The minimum oral ulcerogenic dose for ibuprofen in rats was calculated to be 6-13 mg/kg.

Another group studied the production of gastrointestinal lesions in the rat comparing ulcerogenic doses of ibuprofen and other NSAIDs after oral or intravenous administration. Both male and female Long Evans rats were used in all experiments. Prior to drug administration the animals were fasted for 8 hours. After treatment they were fed a normal diet and sacrificed after 17 hours. Gastric and intestinal mucosa was examined for presence of ulcers. The ulcerogenic dose in 50% of treated animals (UD₅₀) was calculated. The UD₅₀ following oral administration of ibuprofen was determined to be 70 mg/kg while for intravenous ibuprofen it was 210 mg/kg. The intestinal UD₅₀ was 88 mg/kg following oral and 172 mg/kg with intravenous administrations. A calculated "severity index" of gastric lesions was higher by the oral than the IV route at all doses tested.

Studies of the ulcerogenic potential of ibuprofen are summarized in the following [Table 2](#).

Table 2 - Single Dose Ulcerogenicity Studies in Rodents

Species	Route	UD ₅₀ *(mg/kg)	MUD**(mg/kg)
Long Evans Rat	Oral	70	50
	IV	210	-
Sprague Dawley Rat	Oral	-	6-13

* UD₅₀ = ulcerogenic dose in 50% treated animals

** MUD = minimum ulcerogenic dose Acute toxicity has also been studied in dogs.

Various single oral doses of ibuprofen were administered to dogs with subsequent hematologic examination and biochemical analyses of blood and urine, and examination of feces for occult blood. Gross examination of the major organs occurred after the animals were sacrificed. No ill effects were seen following doses of 20 or 50 mg/kg. Oral doses of 125 mg/kg or greater produced emesis, scouring, albuminuria, fecal blood loss and erosions in the gastric antrum and pylorus.

Multiple Dose Toxicity Studies

Multiple dose ulcerogenicity studies of ibuprofen have also been conducted.

Rats were dosed by the oral route for a specific number of consecutive days, then sacrificed for examination. The ulcerogenic effect of oral ibuprofen was graded and reported by various scoring systems such as percent of animals in which ulcers were produced by a specific dose, or

the UD₅₀.

In one typical such study, Long Evans rats were administered comparative NSAIDs orally once a day for 5 days. The gastric and small intestinal mucosa were then examined for ulceration. The UD₅₀, MUD and potency ratio of the drugs tested were calculated. The minimal ulcerogenic doses of ibuprofen were 25 mg/kg for the stomach and 50 mg/kg for the intestine.

Similar studies of multiple dose ulcerogenic potential of ibuprofen are summarized in the following [Table 3](#).

Table 3 - Multiple Oral Dose Toxicity Studies

Species	Daily Dose	Duration	Ulcerogenic Factor
Albino Rat	400 mg/kg	30 hours	Ulcers in 100%
Albino Rat		4 days	UD ₅₀ = 455 mg/kg/day UD ₂₈ = 240 mg/kg/day
Long Evans Rat		5 days	MUD = 25 - 50 mg/kg/day
Sprague Dawley Rat	5.8-225 mg/kg	10 days	None
Albino Rat	7.5 mg/kg 180 mg/kg	26 weeks 26 weeks	None Ulcers in 20%
Dog	4 mg/kg 8 mg/kg 16 mg/kg	30 days 30 days 30 days	None 100% 100%

No other organ systems were generally noted to be significantly affected by these chronic administration studies. In one 30-day study, Wistar rats receiving 157 mg/kg/day ibuprofen had serum transaminase levels approximately double of those of a control, untreated group. Lower doses of ibuprofen in the same study had no significant effect on the activity of these enzymes.

Chronic toxicity studies in dogs demonstrated no gross or clinical signs of toxicity at 4, 8 or 16 mg/kg/day for 30 days. However, in all dogs given 8 or 16 mg/kg/day, postmortem examination revealed gastric ulcers or erosions. No lesions were observed in dogs given 4 mg/kg/day.

A more complete assessment of chronic toxicity of ibuprofen in dogs studied the effects of administration of oral doses of 0, 2, 4 or 26 mg/kg/day over 26 weeks. Periodic blood, urine and fecal sample analyses were performed. Histologic examination of selected organs and tissues was performed at the completion of the study. During the 26 week period, some reversible signs of gastrointestinal disturbance characterized by frequent vomiting, diarrhea, occasional passage of fresh blood and weight loss occurred in the 2 female dogs but not the males receiving 16 mg/kg ibuprofen. Occult blood was irregularly detected in fecal samples but

urinalysis, liver function tests and other hematologic and blood biochemical values were not altered significantly. Gross examination of organs was normal except for ulcerative lesions in the gastrointestinal tract of organs of all dogs receiving 16 mg/kg/day. Dogs given 2 and 4 mg/kg/day suffered no adverse reactions or gastrointestinal damage.

Carcinogenicity: A study to evaluate the potential carcinogenic activity of ibuprofen involved administration of a minimum of 100 mg/kg/day to mice for 80 weeks and 60 mg/kg/day to rats for 2 years. The proportion of animals with tumors of all types examined did not differ from those in the control group. The studies confirm that in the rat and mouse, ibuprofen does not induce tumors of the liver or other organs. Further, despite prolonged treatment, no other drug-induced hepatic lesions were seen in either species.

Reproductive and Developmental Toxicology: Teratogenicity studies of ibuprofen have been conducted in rabbits and rats. Results of the experiments indicate that ibuprofen is not teratogenic when given in toxic doses to rabbits nor is there embryotoxic or teratogenic activity in pregnant rats even when administered in ulcerogenic doses.

Effects of ibuprofen on circular strips of fetal lamb ductus arteriosus indicate that exposure may produced contraction of the ductus. Such an effect might be anticipated because of the known prostaglandin inhibiting properties of ibuprofen.

17 SUPPORTING PRODUCT MONOGRAPHS

1. Motrin (Ibuprofen Tablets 200 mg and 400 mg) submission control 265403, Product Monograph, McNeil Consumer Healthcare (April 04, 2023).

PATIENT MEDICATION INFORMATION

READ THIS FOR SAFE AND EFFECTIVE USE OF YOUR MEDICINE

IBUPROFEN 200 mg
Ibuprofen Tablets USP

IBUPROFEN 400 mg
Ibuprofen Tablets USP

Read this carefully before you start taking **IBUPROFEN** and each time you get a refill. This leaflet is a summary and will not tell you everything about this drug. Talk to your healthcare professional about your medical condition and treatment and ask if there is any new information about **IBUPROFEN**.

Serious Warnings and Precautions

- Caution in those with heart failure, high blood pressure or other conditions that may cause excess fluid collecting in tissues.
- Caution in patients prone to gastrointestinal tract irritation, including those with a history of peptic ulcer. The chance of stomach bleeding is higher if you are: age 60 or older, have had stomach ulcers or bleeding problems, take a blood thinner or steroid drug, take with other drugs containing an NSAID like acetylsalicylic acid (ASA), ibuprofen, naproxen, or prescription anti-inflammatory drugs, have 3 or more alcoholic drinks every day while using this product.
- Caution in patients at risk of kidney problems, including the elderly or those using diuretics.
- Stop use immediately if you have difficulty or pain when urinating.
- Talk to your doctor if you are trying to conceive, in your first or second trimester of pregnancy or if breastfeeding.

What is IBUPROFEN used for?

Since everyone's pain is different, IBUPROFEN offers 2 levels of pain relief to suit your needs. So you can choose your relief, IBUPROFEN products are available in three strengths, including: IBUPROFEN 200 mg (Regular Strength) and IBUPROFEN 400 mg (Super Strength) Tablets.

IBUPROFEN products provide fast and effective relief of PAIN from:

- headache, including mild to moderate migraine and tension headache
- menstrual cramps
- toothache (dental pain), including dental extraction
- inflammation from arthritis, muscle strain and sprains, muscles, bones and joints, including back pain

IBUPROFEN is also an effective fever reducer and will provide relief from the aches and pain due to the common cold and flu.

Clinical studies show long lasting relief for up to 8 hours for fever and up to 6 hours for pain.

How does IBUPROFEN work?

IBUPROFEN (ibuprofen) starts to work fast and treats pain where it starts.

Ibuprofen is a member of a class of drugs called non-steroidal anti-inflammatory drugs (NSAIDs). NSAIDs work within the body by blocking the production of substances called prostaglandins, which are involved in the development of pain and inflammation.

What are the ingredients in IBUPROFEN?

Medicinal ingredients: Ibuprofen

Non-medicinal ingredients: Carnauba wax, croscarmellose sodium, hypromellose, iron oxides, polydextrose, polyethylene glycol, pregelatinized starch, silicon dioxide, stearic acid, titanium dioxide.

IBUPROFEN comes in the following dosage forms:

Tablets: 200 mg and 400 mg

Do not use IBUPROFEN if:

- You are:
 - taking acetylsalicylic acid (ASA) or any other non-steroidal anti-inflammatory medication including any other ibuprofen product.
 - allergic or have had a reaction to ibuprofen, acetylsalicylic acid (ASA), other non-steroidal anti-inflammatory drugs (NSAIDs) or salicylates, or to any ingredient in the formulation (see Non-medicinal ingredients above). Allergic reactions may appear as hives, difficulty breathing, shock, skin reddening, rash or blisters, swelling of the face or throat, or sudden collapse.
 - dehydrated (significant fluid loss) due to vomiting, diarrhea or lack of fluid intake.
 - in your third trimester of pregnancy.
- You have:

- nasal polyps (growth inside your nose), or allergic manifestations such as asthma, anaphylaxis (sudden severe life-threatening anaphylactic reactions), urticaria/hives, rhinitis (stuffed or runny nose that may be due to allergies), skin rash or other allergic symptoms.
 - active or recurrent stomach ulcer, gastrointestinal (GI) bleeding, or active inflammatory bowel disease (e.g. Crohn's, colitis).
 - serious liver or kidney disease.
 - systemic lupus erythematosus.
 - high potassium in the blood.
- You recently had or are about to have heart surgery.

To help avoid side effects and ensure proper use, talk to your healthcare professional before you take IBUPROFEN. Talk about any health conditions or problems you may have, including if you:

- have stomach ulcers, high blood pressure, asthma, heart failure or thyroid disease, kidney or liver disease, glaucoma, diabetes, alcoholism, a history of stomach bleeding, or any other serious disease or condition.
- are taking an anticoagulant (blood thinning medication), oral corticosteroid or any other drug.
- are pregnant or breastfeeding.
- are over 65 years of age.
- are taking low-dose ASA.
- have a blood-clotting disorder (e.g. hemophilia, sickle cell anemia, etc.).
- have a heart disease.
- have any unusual urinary symptoms (e.g. bladder problems).
- are on a special diet (e.g. low-sodium).

They may recommend an alternative analgesic such as acetaminophen.

Other warnings you should know about:

- Long-term continuous use may increase the risk of heart attack or stroke.
- The use of NSAIDs, like IBUPROFEN, in the second trimester of pregnancy should be restricted to the lowest dose necessary for shortest possible duration.
- At 20 weeks or later in pregnancy, your use of NSAIDs may need to be monitored by a doctor due to the rare risk of kidney problems in the unborn baby which may result in decreased amniotic fluid volume and other complications.

Stop use and ask a doctor if

- you show signs of stomach bleeding
- pain worsens or lasts more than 5 days
- fever worsens or lasts more than 3 days
- any new symptoms appear

Driving and using machines: If you become drowsy, dizzy or lightheaded, do not drive or operate machinery and contact your doctor or pharmacist.

Tell your healthcare professional about all the medicines you take, including any drugs, vitamins, minerals, natural supplements or alternative medicines.

The following may interact with IBUPROFEN:

- acetaminophen
- anticoagulants (blood thinners)
- ASA or other NSAIDs
- digoxin
- diuretics (water pills)
- lithium
- medications for high blood pressure
- methotrexate
- oral antidiabetic agents and insulin
- oral steroid (glucocorticoids)
- phenytoin

Do not use this product if you are taking daily low dose ASA (81-325 mg) without talking to a doctor or pharmacist. Ibuprofen may interfere with the preventative benefits of ASA.

How to take IBUPROFEN

Take with food or milk if mild stomach upset occurs with use.

Usual dose:

For accurate dosing of each product strength, refer to the dosage table and follow the instructions carefully.

PRODUCT	STRENGTH (IBUPROFEN MG/TABLET)	SINGLE ORAL DOSE	MAXIMUM DAILY DOSE (1200 MG)
(Regular Strength) IBUPROFEN 200 mg	200 mg	1 or 2 tablets	6 tablets
(Super Strength) IBUPROFEN 400 mg	400 mg	1 tablet	3 tablets

The single oral dose may be taken every 4-6 hours as needed. Do not take more than the maximum daily dose (1200 mg in 24 hours) unless advised by a doctor.

Use the lowest effective dose for the shortest duration.

For effective use of this medicine, unless recommended by your doctor or dentist, DO NOT take:

- more than the recommended number of tablets in each single dose
- this product longer than the recommended period of time

Overdose:

If you think you, or a person you are caring for, have taken too much IBUPROFEN, contact a healthcare professional, hospital emergency department, or regional poison control centre immediately, even if there are no symptoms.

Missed Dose:

Take the missed dose as soon as you remember. If it is almost time for your next dose, wait until then to take your medicine and skip the missed dose. Do not take two doses at the same time.

What are possible side effects from using IBUPROFEN?

These are not all the possible side effects you may have when taking IBUPROFEN. If you experience any side effects not listed here, tell your healthcare professional.

The most common side effects with this medication are indigestion, nausea, vomiting, heartburn, dizziness, and skin rashes.

The other side effects, which might be seen, are sudden abdominal pain or long-term abdominal pain with the loss of appetite and/or jaundice and/or new onset of itching, diarrhoea, bloating, constipation, abdominal cramp, headache, nervousness, drowsiness, itching, decreased appetite, sleeplessness and fluid retention.

If unusual symptoms or any of the following reactions develop during treatment, stop use and see a doctor immediately.

Serious side effects and what to do about them			
Symptom / effect	Talk to your healthcare professional		Stop taking drug and get immediate medical help
	Only if severe	In all cases	
UNCOMMON			
Chills, fever, muscle aches or pains, or other flu-like symptoms shortly before or together with a skin rash		√	
Bloody or black tarry stools		√	
Hives or itching, skin reddening, blisters		√	
Blurred vision		√	
Swelling of feet or lower legs		√	
Hearing problems (ringing or buzzing in the ears)		√	
Mental confusion or depression		√	
Shortness of breath, chest pain, trouble breathing, asthma, sinusitis (nasal congestion), wheezing, or tightness in the chest		√	
Vomiting blood		√	
Yellow discoloration of the skin or eyes, with or without fatigue		√	
Any changes in the amount or colour of your urine (such as dark; red or brown), any pain or difficulty experienced in urination, loss of appetite, dizziness, or light headedness		√	
Stomach pain	√		
Heart Failure			√

If you have a troublesome symptom or side effect that is not listed here or becomes bad enough to interfere with your daily activities, tell your healthcare professional.

Reporting Side Effects

You can report any suspected side effects associated with the use of health products to Health Canada by:

- Visiting the Web page on Adverse Reaction Reporting (<https://www.canada.ca/en/health-canada/services/drugs-health-products/medeffect-canada/adverse-reaction-reporting.html>) for information on how to report online, by mail or by fax; or
- Calling toll-free at 1-866-234-2345.

NOTE: Contact your health professional if you need information about how to manage your side effects. The Canada Vigilance Program does not provide medical advice.

Storage:

Store at 15-30°C.

Keep out of reach and sight of children.

If you want more information about IBUPROFEN:

- Talk to your healthcare professional
- Find the full product monograph that is prepared for healthcare professionals and includes this Patient Medication Information by visiting the Health Canada website: (<https://www.canada.ca/en/health-canada/services/drugs-health-products/drug-products/drug-product-database.html>) or by calling 1-866-399-9091.

This leaflet was prepared by
JAMP Pharma Corporation
1310 rue Nobel
Boucherville, Quebec
J4B 5H3, Canada.

Last Revised: May 16, 2024