

PRODUCT MONOGRAPH
INCLUDING PATIENT MEDICATION INFORMATION

P^rDESVENLAFAXINE

Desvenlafaxine Extended-Release Tablets
Extended-release Tablets, 50 mg and 100 mg Desvenlafaxine, Oral
Antidepressant

Sanis Health Inc.
1 President's Choice Circle
Brampton, Ontario
L6Y 5S5

Date of Initial Authorization:
FEB 06, 2023

Date of Revision:
JUN 03, 2024

Submission Control Number: 286478

RECENT MAJOR LABEL CHANGES

[7 WARNINGS AND PRECAUTIONS, General, Neurologic](#)

06/2024

TABLE OF CONTENTS

Sections or subsections that are not applicable at the time of authorization are not listed.

RECENT MAJOR LABEL CHANGES	2
TABLE OF CONTENTS	2
PART I: HEALTH PROFESSIONAL INFORMATION	4
1 INDICATIONS	4
1.1 Pediatrics	4
1.2 Geriatrics	4
2 CONTRAINDICATIONS	4
3 SERIOUS WARNINGS AND PRECAUTIONS BOX	5
4 DOSAGE AND ADMINISTRATION	5
4.1 Dosing Considerations	5
4.2 Recommended Dose and Dosage Adjustment	6
4.3 Administration	8
4.4 Missed Dose	9
5 OVERDOSAGE	9
6 DOSAGE FORMS, STRENGTHS, COMPOSITION AND PACKAGING	10
7 WARNINGS AND PRECAUTIONS	11
7.1 Special Populations	19
7.1.1 Pregnant Women	19
7.1.2 Breast-feeding.....	20
7.1.3 Pediatrics.....	20
7.1.4 Geriatrics	20
8 ADVERSE REACTIONS	21
8.1 Adverse Reaction Overview	21
8.2 Clinical Trial Adverse Reactions	21
8.2.1 Clinical Trial Adverse Reactions - Pediatrics	29

8.5	Post-Market Adverse Reactions.....	31
9	DRUG INTERACTIONS.....	31
9.1	Serious Drug Interactions.....	31
9.2	Drug Interactions Overview	32
9.3	Drug-Behavioural Interactions.....	32
9.4	Drug-Drug Interactions	33
9.5	Drug-Food Interactions	37
9.6	Drug-Herb Interactions	38
9.7	Drug-Laboratory Test Interactions.....	38
10	CLINICAL PHARMACOLOGY	38
10.1	Mechanism of Action	38
10.2	Pharmacodynamics	38
10.3	Pharmacokinetics.....	38
11	STORAGE, STABILITY AND DISPOSAL	42
12	SPECIAL HANDLING INSTRUCTIONS	42
PART II: SCIENTIFIC INFORMATION		43
13	PHARMACEUTICAL INFORMATION	43
14	CLINICAL TRIALS.....	43
14.1	Trial Design and Study Demographics	43
14.2	Study results.....	44
14.3	Comparative Bioavailability Studies.....	45
15	MICROBIOLOGY	49
16	NON-CLINICAL TOXICOLOGY	49
17	SUPPORTING PRODUCT MONOGRAPHS	52
PATIENT MEDICATION INFORMATION		53

PART I: HEALTH PROFESSIONAL INFORMATION

1 INDICATIONS

DESVENLAFAXINE (desvenlafaxine extended-release tablets (as base)) is indicated for:

- symptomatic relief of major depressive disorder in adults.

The short-term efficacy of desvenlafaxine has been demonstrated in placebo-controlled trials of up to 8 weeks.

The efficacy of desvenlafaxine in maintaining an antidepressant response for up to 26 weeks, following response during 20 weeks of acute, open-label treatment, was demonstrated in a placebo-controlled trial.

Physicians who elect to use DESVENLAFAXINE for extended periods should periodically re-evaluate the usefulness of the drug for individual patients.

1.1 Pediatrics

Pediatrics (< 18 years of age): Based on the data submitted and reviewed by Health Canada, the safety and efficacy of desvenlafaxine in pediatric patients have not been established; therefore, Health Canada has not authorized an indication for pediatric use.

Two placebo-controlled studies in 587 pediatric patients 7 to 17 years of age with MDD failed to demonstrate efficacy; neither short term, placebo-controlled study demonstrated statistically or clinically significant differences between desvenlafaxine and placebo. See [7 WARNINGS AND PRECAUTIONS, Potential Association with Behavioural and Emotional Changes, Including Self-Harm](#); also [7.1.3 Pediatrics](#); [8.2.1 Clinical Trial Adverse Reactions – Pediatrics](#); [10.3 Pharmacokinetics, Pediatrics](#)).

1.2 Geriatrics

Geriatrics (≥ 65 years of age): No overall differences in safety or efficacy were detected between geriatric subjects and younger subjects. See [4.2 Recommended Dose and Dosage Adjustment, Geriatrics](#); [7.1.4 Geriatrics](#), [10.3 Pharmacokinetics, Geriatrics](#).

2 CONTRAINDICATIONS

- **Monoamine Oxidase Inhibitors (MAOIs)**

DESVENLAFAXINE must not be used concomitantly in patients taking monoamine oxidase inhibitors (MAOIs), or in patients who have taken MAOIs within the preceding 14 days.

There is a risk of serious, sometimes fatal, drug interactions with selective serotonin reuptake inhibitor (SSRI) or serotonin norepinephrine reuptake inhibitor (SNRI) treatments, or with other serotonergic drugs when they are used concomitantly or within 14 days after an MAOI. For reversible MAOIs such as linezolid (an antibiotic), and methylene blue (a surgical dye), please refer to [4.2 Recommended Dose and Dosage Adjustment, Use of Reversible MAOIs, such as Linezolid or Methylene Blue](#).

These interactions have been associated with symptoms that include tremor, myoclonus, diaphoresis, nausea, vomiting, flushing, dizziness, hyperthermia with features resembling neuroleptic malignant syndrome, seizures, rigidity, autonomic instability with possible rapid fluctuations of vital signs, and mental status changes that include extreme agitation progressing to delirium and coma.

Based on the half-life of desvenlafaxine, at least 7 days should be allowed after stopping desvenlafaxine and before starting an MAOI. See [7 WARNINGS AND PRECAUTIONS, Neurologic, Serotonin Syndrome or Neuroleptic Malignant Syndrome \(NMS\)-Like Reactions](#) and [9.4 Drug-Drug Interactions, Serotonergic Agents](#).

- **Hypersensitivity**

DESVENLAFAXINE is contraindicated in patients who are hypersensitive to venlafaxine, or to this drug (desvenlafaxine), or to any ingredient in the DESVENLAFAXINE formulation, including any non-medicinal ingredient, or component of the container. For a complete listing, see [6 DOSAGE FORMS, STRENGTHS, COMPOSITION AND PACKAGING](#).

3 SERIOUS WARNINGS AND PRECAUTIONS BOX

Serious Warnings and Precautions

Increased risk of self-harm, harm to others, suicidal thinking and behavior with antidepressant use. Closely monitor all antidepressant-treated patients for clinical worsening and for emergence of agitation-type and/or suicidal thoughts and behaviors (see [7 WARNINGS AND PRECAUTIONS - Psychiatric - Potential association with behavioural and emotional changes, including self-harm](#)).

4 DOSAGE AND ADMINISTRATION

4.1 Dosing Considerations

- **General** (See [4.2 Recommended Dose and Dosage Adjustment](#) for details, unless otherwise indicated.)
 - DESVENLAFAXINE is not indicated for use in children under the age of 18.
 - Desvenlafaxine should only be used during pregnancy if the benefits markedly outweigh the risks, particularly during the third trimester as there are implications for neonatal health (see [7.1.1 Pregnant Women](#)).
 - Due to the potential for life-threatening serotonin toxicity:
 - Concurrent use with MAOIs is contraindicated.
 - Washout periods are necessary if switching between desvenlafaxine and MAOIs.
 - Use with other serotonergic agents is not recommended (see [7 WARNINGS AND PRECAUTIONS, Neurologic, Serotonin Syndrome or Neuroleptic Malignant Syndrome \(NMS\)-Like Reactions](#)).
 - Dose tapering is recommended when switching between antidepressants, including venlafaxine.
 - Dosing:
 - Reduced doses may be needed for the elderly, and those with renal impairment.
 - All dose changes should be gradual, including discontinuation.
 - Monitor for discontinuation symptoms when decreasing or stopping treatment.
 - Periodically reassess the need for ongoing therapy.
- **Monitor for agitation, suicidal tendencies.**

Rigorous clinical monitoring for suicidal ideation or other indicators of potential for suicidal behaviour is advised in patients of all ages, especially when initiating therapy or during any change in dose or dosage regimen. This includes monitoring for agitation-type emotional and behavioural changes. See [7 WARNINGS AND PRECAUTIONS, Psychiatric, Potential Association with Behavioural and Emotional Changes, Including Self-Harm](#).

4.2 Recommended Dose and Dosage Adjustment

- **Initial Treatment**

The recommended starting dose of DESVENLAFAXINE (desvenlafaxine (as base) extended-release tablets) is 50 mg once daily, with or without food.

In clinical studies, no additional benefit was demonstrated at doses greater than 50 mg/day. If the physician, based on clinical judgment, decides a dose increase above 50 mg/day is warranted for an individual patient, the maximum recommended dose should not exceed 100 mg/day. In clinical studies, doses of 50 to 400 mg/day were shown to be effective, although no additional benefit was demonstrated at doses greater than 50 mg/day, and adverse events and discontinuations were more frequent at higher doses.

Patients should be periodically reassessed to determine the need for continued treatment.

- **Maintenance/Continuation/Extended Treatment**

It is generally agreed that acute episodes of major depression require several months or longer of sustained pharmacologic therapy beyond response to the acute episode. Long-term efficacy of desvenlafaxine (50 mg daily) for up to 26 weeks, following response during 20 weeks of acute, open-label treatment, was established in a placebo-controlled trial.

Patients should be periodically reassessed to determine the need for maintenance treatment.

- **Discontinuation**

Do not discontinue DESVENLAFAXINE abruptly, due to the risk of discontinuation symptoms. Monitor for symptoms while tapering the dose gradually. If intolerable symptoms occur following a decrease in the dose or upon discontinuation of treatment, consider resuming the previously prescribed dose and tapering more gradually. Discontinuation regimens should take into account the individual circumstances of the patient, such as duration of treatment and dose at discontinuation. In some patients, discontinuation may need to occur over periods of months or longer. See [7 WARNINGS AND PRECAUTIONS, General, Discontinuation](#) and [8.2 Clinical Trial Adverse Reactions, Discontinuation Symptoms](#).

- **Switching Patients from Other Antidepressants to DESVENLAFAXINE**

Discontinuation symptoms have been reported when switching patients from other antidepressants, including venlafaxine, to desvenlafaxine. Tapering of the initial antidepressant may be necessary to minimize discontinuation symptoms (see [2 CONTRAINDICATIONS](#)).

- **Switching Patients to or from a Monoamine Oxidase Inhibitor**

At least 14 days should elapse between discontinuation of an MAOI and initiation of therapy with DESVENLAFAXINE. In addition, based on the half-life of desvenlafaxine, at least 7 days should be allowed after stopping desvenlafaxine before starting an MAOI.

- **Use of Reversible MAOIs, such as Linezolid or Methylene Blue**

Do not start DESVENLAFAXINE in a patient who is being treated with a reversible MAOI such as linezolid or in whom intravenous methylene blue has been administered because there is increased risk of serotonin syndrome (see [2 CONTRAINDICATIONS](#)). In a patient who requires more urgent treatment of a psychiatric condition, non-pharmacological interventions, including hospitalization, should be considered.

In some cases, a patient already receiving DESVENLAFAXINE therapy may require urgent treatment with linezolid or intravenous methylene blue. If acceptable alternatives to linezolid or intravenous methylene blue treatment are not available and the potential benefits of linezolid or intravenous methylene blue are judged to outweigh the risks of serotonin syndrome in a particular patient, DESVENLAFAXINE should be stopped promptly, and linezolid or intravenous methylene blue can be administered. The patient should be monitored for symptoms of serotonin syndrome for two weeks or until 24 hours after the last dose of linezolid or intravenous methylene blue, whichever comes first (see [7 WARNINGS AND PRECAUTIONS](#)). Therapy with DESVENLAFAXINE may be resumed 24 hours after the last dose of linezolid or intravenous methylene blue.

Special Populations

- **Severe renal impairment and end-stage renal disease**

The recommended dose in patients with severe renal impairment (24-hr CrCl < 30 mL/min) or end-stage renal disease (ESRD) is 50 mg every other day. Because of individual variability in clearance in these patients, individualization of dosage may be desirable. Supplemental doses should not be given to patients after dialysis (see [10.3 Pharmacokinetics, Renal Insufficiency](#)).

- **Hepatic impairment**

No dosage adjustment is necessary for patients with hepatic impairment (see [10.3 Pharmacokinetics, Hepatic Insufficiency](#)).

- **Geriatrics (≥ 65 years of age)**

No dosage adjustment is required solely on the basis of age; however, possible reduced renal clearance of desvenlafaxine should be considered when determining dose (see [10.3 Pharmacokinetics, Geriatrics](#)).

- **Pediatrics**

DESVENLAFAXINE is not indicated for use in children under the age of 18 (see [7 WARNINGS AND PRECAUTIONS, Potential Association with Behavioural and Emotional Changes, Including Self-Harm 7.1.3 Pediatrics](#); and [10.3 Pharmacokinetics, Pediatrics](#)).

4.3 Administration

DESVENLAFAXINE tablets must be swallowed whole with liquids, and must not be chewed, divided or crushed. The medication is contained within a non-absorbable shell designed to release the drug at a controlled rate. The tablet shell, along with insoluble core components, is

eliminated from the body; patients should not be concerned if they occasionally notice something that looks like a tablet in their stool. Due to the controlled-release design, DESVENLAFAXINE tablets should only be used in patients who are able to swallow the tablets whole.

It is recommended that DESVENLAFAXINE be taken at approximately the same time each day.

4.4 Missed Dose

A patient missing a dose should take it as soon as they remember to. If it is almost time for the next dose, the missed dose should be skipped. The patient should be cautioned against taking two doses concomitantly to “make up” for the missed dose.

5 OVERDOSAGE

- **Human Experience**

There is limited clinical experience with desvenlafaxine overdose in humans. In pre-marketing clinical trials, no cases of fatal acute overdose of desvenlafaxine were reported.

Among the patients included in the pre-marketing major depressive disorder trials of desvenlafaxine, there were four adults who ingested doses over 800 mg of desvenlafaxine (4000 mg [desvenlafaxine alone], 900, 1800 and 5200 mg [in combination with other drugs]); all patients recovered. In addition, a patient’s 11-month-old child accidentally ingested 600 mg of desvenlafaxine, was treated and recovered.

The adverse reactions reported within 5 days of an overdose > 600 mg that were possibly related to desvenlafaxine included: headache, vomiting, agitation, dizziness, nausea, constipation, diarrhea, dry mouth, paresthesia, and tachycardia.

Desvenlafaxine is the major active metabolite of venlafaxine. Overdose experience reported with venlafaxine (the parent drug of desvenlafaxine) is presented below; the identical information can be found in the *Overdosage* section of the venlafaxine Product Monograph.

- **Postmarketing Experience with EFFEXOR**

In postmarketing experience, overdose with venlafaxine was reported predominantly in combination with alcohol and/or other drugs. The most commonly reported events in overdose include tachycardia, changes in level of consciousness (ranging from somnolence to coma), mydriasis, convulsion, and vomiting. Electrocardiographic changes (e.g., prolongation of QT interval, bundle branch block, QRS prolongation), ventricular tachycardia, bradycardia, hypotension, delayed rise in plasma creatine kinase levels, rhabdomyolysis, liver necrosis, serotonin syndrome, vertigo, and death have been reported. Muscle enzymes should be monitored in patients with venlafaxine overdose to detect development of rhabdomyolysis at

an early stage and to initiate appropriate treatment. According to post-marketing overdose reports with venlafaxine (where overdose amounts were provided) fatal acute overdoses have been reported with venlafaxine alone at doses as low as approximately 1 gram.

Published retrospective studies report that venlafaxine overdosage may be associated with an increased risk of fatal outcomes compared to that observed with SSRI antidepressant products, but lower than that for tricyclic antidepressants. Epidemiological studies have shown that venlafaxine-treated patients have a higher burden of suicide risk factors than SSRI patients. The extent to which the finding of an increased risk of fatal outcomes can be attributed to the toxicity of venlafaxine in overdosage as opposed to some characteristics of venlafaxine-treated patients is not clear.

Prescriptions for DESVENLAFAXINE should be written for the smallest quantity of drug consistent with good patient management, in order to reduce the risk of overdose.

- **Management of Overdosage**

Treatment should consist of those general measures employed in the management of overdosage with any SSRI/SNRI.

Induction of emesis is not recommended. Because of the moderate volume of distribution of this drug, forced diuresis, dialysis, hemoperfusion, and exchange transfusion are unlikely to be of benefit. No specific antidotes for desvenlafaxine are known.

Ensure an adequate airway, oxygenation, and ventilation. Monitor cardiac rhythm and vital signs. General supportive and symptomatic measures are also recommended. Gastric lavage with a large-bore orogastric tube with appropriate airway protection, if needed, may be indicated if performed soon after ingestion or in symptomatic patients. Activated charcoal should be administered.

In managing an overdose, consider the possibility of multiple drug involvement. The physician should consider contacting a poison control center for additional information on the treatment of any overdose.

For management of a suspected drug overdose, contact your regional poison control centre.

6 DOSAGE FORMS, STRENGTHS, COMPOSITION AND PACKAGING

Table 1: Dosage Forms, Strengths, Composition and Packaging

Route of Administration	Dosage Form / Strength/Composition	Non-medicinal Ingredients
Oral	Extended-release tablet /	Anhydrous citric acid, colloidal silicon dioxide, euroxide red

Route of Administration	Dosage Form / Strength/Composition	Non-medicinal Ingredients
	50 mg and 100 mg desvenlafaxine (as base)	iron oxide, hypromellose, magnesium stearate, microcrystalline cellulose, polyethylene glycol, polyvinyl alcohol, red iron oxide (for 100 mg), talc, titanium dioxide, yellow iron oxide (for 50 mg).

Description

50 mg Tablet

Light pink colored, rounded square shaped, biconvex film-coated tablets, engraved with “APO” on one side and “DV” over “50” on the other side.

100 mg Tablet

Reddish orange colored, rounded square shaped, biconvex film-coated tablets, engraved with “APO” on one side and “DV” over “100” on the other side.

DESVENLAFAXINE 50 mg and 100 mg tablets are available in:

HDPE Bottles of 30, 100, and 500 tablets

Unit Dose Blisters of 100 (10 X 10) tablets

7 WARNINGS AND PRECAUTIONS

General

See [3 SERIOUS WARNINGS AND PRECAUTIONS BOX](#).

- Suicidality

See [9.1 Serious Drug-drug Interactions](#) box.

- Serotonergic agents: MAOIs; Venlafaxine

Carcinogenesis and Mutagenesis

For animal data see [16 NON-CLINICAL TOXICOLOGY](#).

- Discontinuation

Discontinuation effects are known to occur with antidepressants. There have been post-market reports of adverse events occurring upon discontinuation of SSRIs and SNRIs, including desvenlafaxine, particularly when discontinuation was abrupt. In clinical trials, discontinuation effects generally occurred more frequently with longer duration of therapy.

Discontinuation symptoms reported post-market include dysphoric mood, irritability, agitation, dizziness, sensory disturbances (e.g., paraesthesias, such as electric shock sensations), anxiety, confusion, headache, lethargy, emotional lability, insomnia, hypomania, tinnitus, seizures, visual impairment and hypertension. See also [8.2 Clinical Trial Adverse Reactions, Discontinuation Symptoms](#)). While these events are generally self-limiting, discontinuation symptoms can be serious, severe and protracted. Suicide/suicidal thoughts and aggression have been observed in patients during changes in desvenlafaxine dosing regimen, including during discontinuation.

It is therefore recommended that the dosage of desvenlafaxine be tapered gradually and individually and the patients be closely monitored during discontinuation. In some patients, discontinuation could take months or longer (see [4.2 Recommended Dose and Dosage Adjustment, Discontinuation](#)).

Cardiovascular

Caution is advised in administering DESVENLAFAXINE to patients with cardiovascular, cerebrovascular, or lipid metabolism disorders (see [8.2 Clinical Trial Adverse Reactions](#)). Increases in blood pressure and heart rate were observed in clinical trials with desvenlafaxine. Desvenlafaxine has not been evaluated systematically in patients with a recent history of myocardial infarction, unstable heart disease, uncontrolled hypertension, or cerebrovascular disease. Patients with these diagnoses, except for cerebrovascular disease, were excluded from clinical trials.

- **Effects on blood pressure**

Cases of elevated blood pressure requiring immediate treatment have been reported with desvenlafaxine in postmarketing experience, including reports of hypertensive crisis and malignant hypertension. Increases in blood pressure were observed in some patients in clinical trials, particularly with higher doses. Caution should be exercised in treating patients with underlying conditions that might be compromised by increases in blood pressure (see [8.2 Clinical Trial Adverse Reactions](#)). Pre-existing hypertension should be controlled before treatment with DESVENLAFAXINE. Patients receiving DESVENLAFAXINE should have regular monitoring of blood pressure. Sustained blood pressure increases could have adverse consequences. For patients who experience a sustained increase in blood pressure while receiving DESVENLAFAXINE, either dose reduction or discontinuation should be considered.

Treatment with desvenlafaxine at all doses from 50 mg/day to 400 mg/day in controlled studies was associated with sustained hypertension (defined as treatment-emergent supine diastolic blood pressure ≥ 90 mm Hg and ≥ 10 mm Hg above baseline for 3 consecutive visits). [Table 2](#) provides the incidence of patients meeting criteria for sustained hypertension.

Table 2: Incidence (%) of Patients with Sustained Hypertension for All Short-Term Fixed-Dose Clinical Trials

	Placebo	----- Desvenlafaxine -----			
		50 mg	100 mg	200 mg	400 mg
Sustained hypertension	0.5	1.3	0.7	1.1	2.3

Dependence/Tolerance

Although desvenlafaxine has not been systematically studied in preclinical or clinical trials for its potential for abuse, no indication of drug-seeking behavior was seen in the clinical trials.

Driving and Operating Machinery

A clinical study that assessed the effects of desvenlafaxine on behavioral performance of healthy individuals did not reveal clinically significant impairment of psychomotor, cognitive, or complex behavior performance. However, since any CNS-active drug may impair judgment, thinking, or motor skills, patients should be cautioned about operating hazardous machinery, including automobiles, until they are reasonably certain that DESVENLAFAXINE therapy does not adversely affect their ability to engage in such activities.

Endocrine and Metabolism

- **Serum Cholesterol Elevation**

Increases in cholesterol (total and LDL) and triglycerides were observed in some patients treated with desvenlafaxine in placebo-controlled pre-marketing clinical trials, particularly with higher doses. Measurement of serum lipid levels should be considered during treatment.

- **Hyponatremia**

Cases of hyponatremia and/or the Syndrome of Inappropriate Antidiuretic Hormone (SIADH) secretion have been described with SNRIs and SSRIs, usually in volume-depleted or dehydrated patients, including elderly patients and patients taking diuretics.

Gastrointestinal

- **Potential for Gastrointestinal Obstruction**

Because the DESVENLAFAXINE tablet does not appreciably change in shape in the gastrointestinal tract, DESVENLAFAXINE should not be administered to patients with pre-existing gastrointestinal narrowing (pathologic or iatrogenic, such as small bowel inflammatory disease, “short gut” syndrome due to adhesions or decreased transit time, past history of peritonitis, cystic fibrosis, chronic intestinal pseudo-obstruction, or Meckel’s diverticulum). There have been rare reports of obstructive symptoms in patients with known strictures in association with the ingestion of other drugs in nondeformable controlled-release formulations, and very rare reports of obstructive symptoms associated with the use of nondeformable controlled-release formulations in patients without known gastrointestinal stricture. Due to the controlled-release design, DESVENLAFAXINE tablets should only be used in patients who are able to swallow the tablets whole. (See [4 DOSAGE AND ADMINISTRATION; 4.2 Recommended Dose and Dosage Adjustment](#)).

Hematologic

- **Abnormal Bleeding**

SSRIs and SNRIs, including DESVENLAFAXINE, may increase the risk of bleeding events by causing abnormal platelet aggregation. Concomitant use of acetylsalicylic acid (ASA), nonsteroidal anti-inflammatory drugs (NSAIDs), warfarin and other anticoagulants may add to the risk. Case reports and epidemiological studies (case-control and cohort design) have demonstrated an association between use of drugs that interfere with serotonin reuptake and the occurrence of gastrointestinal bleeding. Bleeding events related to SSRIs and SNRIs use have ranged from ecchymoses, hematomas, epistaxis, and petechiae to life-threatening hemorrhages.

Patients should be cautioned about the risk of bleeding associated with the concomitant use of DESVENLAFAXINE and NSAIDs, ASA, or other drugs that affect coagulation (see [9.4 Drug-Drug Interactions, Drugs Affecting Platelet Function](#)). Caution is advised in patients with a history of bleeding disorder or predisposing conditions (e.g, thrombocytopenia).

- **Interstitial Lung Disease and Eosinophilic Pneumonia**

Interstitial lung disease and eosinophilic pneumonia associated with venlafaxine (the parent drug of desvenlafaxine) therapy have been rarely reported. The possibility of these adverse events should be considered in patients treated with DESVENLAFAXINE who present with progressive dyspnea, cough, or chest discomfort. Such patients should undergo a prompt medical evaluation, and discontinuation of DESVENLAFAXINE should be considered.

Immune

Patients should be advised to notify their physician if they develop a rash, hives or a related allergic phenomenon.

Monitoring and Laboratory Tests

- **Heart Rate and Blood Pressure**

Increases in heart rate and blood pressure were observed in some patients in clinical trials, particularly with higher doses. Measurement of blood pressure is recommended prior to initiating treatment and regularly during treatment with desvenlafaxine (see [8 ADVERSE REACTIONS, Vital Sign Changes](#)).

- **Serum Lipids**

Increases in cholesterol (total and LDL) and triglycerides were observed in some patients treated with desvenlafaxine in placebo-controlled pre-marketing clinical trials, particularly with higher doses. Measurement of serum lipid levels should be considered during treatment.

Musculoskeletal

Epidemiological studies show an increased risk of bone fractures following exposure to some antidepressants, including SSRIs/SNRIs. The risks appear to be greater at the initial stages of treatment, but significant increased risks were also observed at later stages of treatment. The possibility of fracture should be considered in the care of patients treated with DESVENLAFAXINE. Elderly patients and patients with important risk factors for bone fractures should be advised of possible adverse events which increase the risk of falls, such as dizziness and orthostatic hypotension, especially at the early stages of treatment but also soon after withdrawal. Preliminary data from observational studies show association of SSRIs/SNRIs and low bone mineral density in older men and women. Until further information becomes available, a possible effect on bone mineral density with long term treatment with SSRIs/SNRIs, including DESVENLAFAXINE, cannot be excluded, and may be a potential concern for patients with osteoporosis or major risk factors for bone fractures.

Neurologic

- **Seizures**

Cases of seizures have been reported in trials with desvenlafaxine. DESVENLAFAXINE should be prescribed with caution in patients with a seizure disorder. Desvenlafaxine has not been systematically evaluated in patients with a seizure disorder.

- **Serotonin Syndrome or Neuroleptic Malignant Syndrome (NMS)-Like Reactions**

Serotonin toxicity (also known as serotonin syndrome) is a potentially life-threatening condition that has been reported with SSRIs and SNRIs, including desvenlafaxine, particularly during

combined use with other serotonergic drugs (see [9.4 Drug-Drug Interactions, Serotonergic Agents](#)).

Serotonin toxicity is characterised by neuromuscular excitation, autonomic stimulation (e.g. tachycardia, flushing) and altered mental state (e.g. anxiety, agitation, hypomania). In accordance with the Hunter Criteria, serotonin toxicity diagnosis is likely when, in the presence of at least one serotonergic agent, one of the following is observed:

- Spontaneous clonus
- Inducible clonus or ocular clonus with agitation or diaphoresis
- Tremor and hyperreflexia
- Hypertonia and body temperature > 38°C and ocular clonus or inducible clonus.

Neuroleptic malignant syndrome has also been rarely reported with desvenlafaxine, particularly during combined use with neuroleptic/antipsychotic drugs. The clinical manifestations of neuroleptic malignant syndrome often overlap with those of serotonin toxicity, including hyperthermia, hypertonia, altered mental status, and autonomic instability. In contrast to serotonin toxicity, patients with neuroleptic malignant syndrome may present with “lead pipe” muscle rigidity as well as hyporeflexia.

The concomitant use of DESVENLAFAXINE with MAOIs, including linezolid and methylthioninium chloride (methylene blue) is contraindicated (see [2 CONTRAINDICATIONS](#)). DESVENLAFAXINE should be used with caution in patients receiving other serotonergic drugs, neuroleptics/antipsychotics or dopamine antagonists, or serotonin precursors (see [9.4 Drug-Drug Interactions, Serotonergic Agents](#)). If concomitant treatment with DESVENLAFAXINE and other serotonergic agents is clinically warranted, careful observation of the patient is advised, particularly during treatment initiation and dose increases. If serotonin toxicity is suspected, discontinuation of the serotonergic agents should be considered.

Ophthalmologic

- **Angle-Closure Glaucoma**

As with other antidepressants, DESVENLAFAXINE can cause mydriasis, which may trigger an angle-closure attack in a patient with anatomically narrow ocular angles. Healthcare providers should inform patients to seek immediate medical assistance if they experience eye pain, changes in vision or swelling or redness in or around the eye.

Psychiatric

- **POTENTIAL ASSOCIATION WITH BEHAVIOURAL AND EMOTIONAL CHANGES, INCLUDING SELF-HARM.**

- **Pediatrics: Placebo-Controlled Clinical Trial Data**

Recent analyses of placebo-controlled clinical trial safety databases from Selective Serotonin Reuptake Inhibitors (SSRIs) and other newer anti-depressants suggest that use of these drugs in patients under the age of 18 may be associated with behavioural and emotional changes, including an increased risk of suicidal ideation and behaviour over that of placebo.

The small denominators in the clinical trial database, as well as the variability in placebo rates, preclude reliable conclusions on the relative safety profiles among the drugs in the class.

DESVENLAFAXINE is not indicated for use in pediatric patients (see [1 INDICATIONS](#)).

- **Adults and Pediatrics: Additional data**

There are clinical trial and post-marketing reports with SSRIs and other newer antidepressants in both pediatrics and adults of severe agitation-type adverse events coupled with self-harm or harm to others. The agitation-type events include: akathisia, agitation, disinhibition, emotional lability, hostility, aggression, depersonalization. In some cases, the events occurred within several weeks of starting treatment.

An FDA meta-analysis of placebo-controlled clinical trials of antidepressant drugs in adult patients ages 18 to 24 years with psychiatric disorders showed an increased risk of suicidal behaviour with antidepressants compared to placebo.

Rigorous clinical monitoring for suicidal ideation or other indicators of potential for suicidal behaviour is advised in patients of all ages especially when initiating therapy or during any change in dose or dosage regimen. This includes monitoring for agitation-type emotional and behavioural changes.

Patients, their families, and their caregivers should be encouraged to be alert to the emergence of anxiety, agitation, panic attacks, insomnia, irritability, hostility, aggressiveness, impulsivity, akathisia (psychomotor restlessness), hypomania, mania, other unusual changes in behaviour, worsening of depression, and suicidal ideation, especially when initiating therapy or during any change in dose or dosage regimen. The risk of suicide attempt must be considered, especially in depressed patients.

- **Mania/hypomania**

Mania/hypomania may occur in a small proportion of patients with mood disorders who have received medication to treat depression, including DESVENLAFAXINE. During clinical studies, mania and hypomania were reported in approximately 0.15% (12/8,453) of patients treated with desvenlafaxine. Activation of mania/hypomania has also been reported in a small proportion of patients with major affective disorder who were treated with other marketed antidepressants. As with all antidepressants, DESVENLAFAXINE should be used cautiously in patients with a history or family history of mania or hypomania.

A major depressive episode may be the initial presentation of bipolar disorder. Patients with bipolar disorder may be at an increased risk of experiencing manic episodes when treated with antidepressants alone. Therefore, the decision to initiate symptomatic treatment of depression should only be made after patients have been adequately assessed to determine if they are at risk for bipolar disorder.

- **Self-Harm**

Rigorous clinical monitoring for suicidal ideation or other indicators of potential for suicidal behaviour is advised in patients of all ages. Patients, their families, and their caregivers should be encouraged to be alert to the emergence of anxiety, agitation, panic attacks, insomnia, irritability, hostility, aggressiveness, impulsivity, akathisia (psychomotor restlessness), hypomania, mania, other unusual changes in behavior, worsening of depression, and suicidal ideation, especially when initiating therapy or during any change in dose or dosage regimen.

- **Aggression**

Aggression may occur in some patients who have received antidepressants, including desvenlafaxine treatment, dose reduction, or discontinuation. As with other antidepressants, desvenlafaxine should be used cautiously in patients with a history of aggression.

Reproductive Health: Female and Male Potential

- **Fertility**

Reduced fertility was observed in a study in which both male and female rats received desvenlafaxine.

The human relevance of this finding is unknown (see [16 NON-CLINICAL TOXICOLOGY](#)).

- **Function**

Sexual Dysfunction: Serotonin-norepinephrine reuptake inhibitors (SNRIs), including DESVENLAFAXINE, may cause symptoms of sexual dysfunction. Patients should be informed that there have been reports of long-lasting sexual dysfunction where the symptoms have continued despite discontinuation of SNRIs. See [8.2 Clinical Trial Adverse Reactions, Sexual Dysfunction Treatment Emergent Adverse Events](#).

7.1 Special Populations

7.1.1 Pregnant Women

The safety of desvenlafaxine in human pregnancy has not been established. Studies have demonstrated that desvenlafaxine crosses the human placenta. The extent of exposure to desvenlafaxine in pregnancy during clinical trials was very limited. There are no adequate and well-controlled studies in pregnant women. Therefore, desvenlafaxine should be used during pregnancy only if the potential benefits justify the potential risks. If desvenlafaxine is used until or shortly before birth, discontinuation effects in the newborn should be considered.

Complications following late third trimester exposure

Post-marketing reports indicate that some neonates exposed to SNRIs, SSRIs, or other newer antidepressants late in the third trimester have developed complications requiring prolonged hospitalization, respiratory support, and tube feeding. Such complications can arise immediately upon delivery. Reported clinical findings have included respiratory distress, cyanosis, apnea, seizures, temperature instability, feeding difficulty, vomiting, hypoglycemia, hypotonia, hypertonia, hyper-reflexia, tremor, jitteriness, irritability, and constant crying. These features are consistent with either a direct toxic effect of SNRIs, SSRIs and other newer antidepressants, or, possibly a drug discontinuation syndrome. It should be noted that, in some cases, the clinical picture is consistent with serotonin syndrome (see [9.4 Drug-Drug Interactions, Serotonergic Agents](#)). When treating a pregnant woman with DESVENLAFAXINE during the third trimester, the physician should carefully consider the potential risks and benefits of treatment.

Any change in antidepressant medication (including dosage) during pregnancy should be discussed with the attending physician beforehand to discuss the benefits/risks with the patient.

Exposure to SNRIs in mid to late pregnancy may increase the risk for preeclampsia, and exposure to SNRIs near delivery may increase the risk for postpartum hemorrhage.

Patients should be advised to notify their physician if they become pregnant or intend to become pregnant during therapy.

Labour and Delivery

The effect of desvenlafaxine on labour and delivery in humans is unknown. DESVENLAFAXINE should be used during labour and delivery only if the potential benefits justify the potential risks.

7.1.2 Breast-feeding

Desvenlafaxine (O-desmethylvenlafaxine, a metabolite of desvenlafaxine) is excreted in human milk. The effects in infants have not been established. DESVENLAFAXINE should only be taken by breastfeeding women if the expected benefits outweigh any possible risk.

7.1.3 Pediatrics

Based on the data submitted and reviewed by Health Canada, the safety and efficacy of desvenlafaxine in pediatric patients has not been established; therefore, Health Canada has not authorized an indication for pediatric use

Two placebo controlled studies in 587 pediatric patients 7 to 17 years of age with MDD failed to demonstrate efficacy; neither short term, placebo-controlled study demonstrated statistically or clinically significant differences between desvenlafaxine and placebo (see [10.3 Pharmacokinetics, Pediatrics](#)).

There are clinical trial and post-marketing reports with SSRIs and other newer antidepressants in pediatrics of severe agitation-type adverse events coupled with self-harm or harm to others. See [7 WARNINGS AND PRECAUTIONS, Psychiatric, Potential Association with Behavioural and Emotional Changes, Including Self-Harm](#). The long-term safety, including effects on growth, maturation, and behavioural development, in patients under 18 years of age has not been systematically evaluated. See [8 ADVERSE REACTIONS, Adverse Drug Reactions in Pediatrics](#).

7.1.4 Geriatrics

Of the 4,158 patients in clinical trials with desvenlafaxine, 6% were 65 years of age or older. No overall differences in safety or efficacy were detected between these subjects and younger subjects. However, there was a higher incidence of increases in systolic blood pressure in patients ≥ 65 years of age compared to patients < 65 years of age treated with desvenlafaxine. In addition, there was a higher incidence of systolic orthostatic hypotension in patients ≥ 65 years of age compared to all adults treated with desvenlafaxine. For elderly patients, possible reduced renal clearance of desvenlafaxine should be considered when determining dose (see [4.2 Recommended Dose and Dosage Adjustment, Geriatrics](#) and [10.3 Pharmacokinetics, Geriatrics](#)). Greater sensitivity of some older individuals cannot be ruled out.

Rigorous clinical monitoring for suicidal ideation or other indicators of potential for suicidal behaviour is advised in patients of all ages especially when initiating therapy or during any change in dose or dosage regimen. This includes monitoring for agitation-type emotional and

behavioural changes. See [7 WARNINGS AND PRECAUTIONS, Potential Association with Behavioural and Emotional Changes, Including Self-Harm.](#)

8 ADVERSE REACTIONS

8.1 Adverse Reaction Overview

The safety of desvenlafaxine in major depressive disorder was evaluated in 8,453 patients exposed to at least one dose of desvenlafaxine.

The most commonly observed treatment emergent adverse events (all-causality) (incidence of 5% or greater for the desvenlafaxine pooled 50- to 400-mg doses, and incidence higher than placebo) in desvenlafaxine treated MDD patients in clinical trials were: nausea, headache, dry mouth, dizziness, insomnia, hyperhidrosis, constipation, diarrhea, somnolence, fatigue, decreased appetite, vomiting, and blood pressure increased, and, in men, and erectile dysfunction.

- **Adverse Events Reported as Reasons for Discontinuation of Treatment in MDD Clinical Trials**

In the 8-week placebo-controlled, pre-marketing trials for MDD, 12% of the 1,834 patients who received desvenlafaxine (50 to 400 mg/day) discontinued treatment due to an adverse experience, compared with 3% of the 1,116 placebo-treated patients in those trials.

At the recommended dose of 50 mg, the discontinuation rate due to an adverse experience for desvenlafaxine (4.1%) was similar to the rate for placebo (3.8%) and only 1% of patients discontinued due to nausea.

The most common adverse reactions leading to discontinuation (i.e., leading to discontinuation in at least 2% and incidence higher than placebo) of the desvenlafaxine-treated patients in short-term trials of up to 8 weeks were: nausea (4%); dizziness, headache and vomiting (2% each).

8.2 Clinical Trial Adverse Reactions

Clinical trials are conducted under very specific conditions. The adverse reaction rates observed in the clinical trials; therefore, may not reflect the rates observed in practice and should not be compared to the rates in the clinical trials of another drug. Adverse reaction information from clinical trials may be useful in identifying and approximating rates of adverse drug reactions in real-world use.

Desvenlafaxine was evaluated for safety in 8,453 patients diagnosed with major depressive disorder who participated in multiple-dose trials, representing 2,807 patient-years of exposure. Among these 8,453 desvenlafaxine-treated patients, 2,495 patients participated in 8-week, placebo-controlled trials at doses ranging from 50 to 400 mg/day. Of the total 8,453 subjects

exposed to at least 1 dose of desvenlafaxine, 2,140 were exposed to desvenlafaxine for greater than 6 months and 521 were exposed for 1 year.

Treatment-Emergent Adverse Events in Short-Term Premarket Trials [Table 3](#) lists alphabetically by body system, the treatment-emergent adverse events (TEAEs) that occurred among desvenlafaxine-treated patients with an incidence $\geq 2\%$ and greater than placebo (pooled 8-week placebo-controlled, premarket clinical trials) in short-term placebo-controlled trials.

Reported treatment emergent adverse events were classified using a standard MedDRA-based Dictionary terminology.

Table 3: Treatment Emergent Adverse Events ($\geq 2\%$ in Any Desvenlafaxine Group and More Frequent than Placebo): Percentage of Subjects in Short-Term, Placebo-Controlled MDD Studies

System Organ Class Preferred Term	Percentage of Patients Reporting Reaction				
	Placebo (n = 636)	Desvenlafaxine			
		50 mg (n = 317)	100 mg (n = 424)	200 mg (n = 307)	400 mg (n = 317)
Cardiac disorders					
Palpitations	2	1	3	2	3
Tachycardia	1	1	<1	1	2
Ear and labyrinth disorders					
Tinnitus	1	2	1	1	2
Vertigo	1	2	1	5	3
Eye disorders					
Eye pain	<1	1	2	<1	<1
Mydriasis	<1	2	2	6	6
Vision blurred	1	3	4	4	4
Gastrointestinal disorders					
Abdominal pain	2	4	3	1	3
Constipation	4	9	9	10	14
Diarrhea	9	11	9	7	5
Dry mouth	9	11	17	21	25
Dyspepsia	4	2	3	3	5
Flatulence	1	2	2	2	2
Nausea	10	22	26	36	41
Stomach discomfort	1	2	1	1	1
Vomiting	3	3	4	6	9
General disorders and administration site conditions					
Chest pain	0	0	1	1	2
Chills	1	1	<1	3	4
Fatigue	4	7	7	10	11

Percentage of Patients Reporting Reaction

System Organ Class Preferred Term	Placebo (n = 636)	Desvenlafaxine			
		50 mg (n = 317)	100 mg (n = 424)	200 mg (n = 307)	400 mg (n = 317)
Feeling jittery	1	1	2	3	3
Irritability	1	2	2	2	2
Infections and infestations					
Gastroenteritis viral	1	0	1	2	<1
Influenza	1	1	1	2	4
Sinusitis	1	2	1	2	2
Urinary tract infection	<1	1	1	1	2
Injury, poisoning and procedural complications					
Accidental overdose	1	0	1	1	2
Investigations					
Blood pressure increased	1	1	1	2	2
Weight decreased	1	2	1	1	2
Metabolism and nutrition disorders					
Decreased appetite	2	5	8	10	10
Increased appetite	1	2	1	0	1
Musculoskeletal and connective tissue disorders					
Muscle spasms	1	2	3	2	2
Muscle tightness	1	1	2	1	<1
Nervous system disorders					
Disturbance in attention	<1	<1	1	2	1
Dizziness	5	13	10	15	16
Dysgeusia	1	1	1	1	2
Headache	23	20	22	29	25
Migraine	1	1	<1	1	2
Paresthesia	1	2	2	1	3
Sedation	1	2	4	3	4
Somnolence	4	4	9	12	12
Tremor	2	2	3	9	9
Psychiatric disorders					
Abnormal dreams	1	2	3	2	4
Agitation	1	0	1	1	3
Anorgasmia	0	<1	2	2	6
Anxiety	2	3	5	4	4
Initial insomnia	1	2	2	0	2
Insomnia	6	9	12	14	15
Libido decreased	1	2	3	3	2
Middle insomnia	1	1	1	3	3
Nervousness	1	<1	1	2	2
Orgasm abnormal	<1	1	1	1	2

System Organ Class Preferred Term	Percentage of Patients Reporting Reaction				
	Placebo (n = 636)	Desvenlafaxine			
		50 mg (n = 317)	100 mg (n = 424)	200 mg (n = 307)	400 mg (n = 317)
Sleep disorder	<1	1	<1	2	1
Renal and urinary disorders					
Dysuria	<1	<1	0	3	2
Urinary hesitation	0	<1	1	2	2
Reproductive system and breast disorder					
Dysmenorrhea	1	0	1	2	<1
Ejaculation delayed	<1	<1	2	3	3
Ejaculation disorder	0	0	1	1	2
Erectile dysfunction	1	1	2	3	5
Respiratory, thoracic and mediastinal disorders					
Yawning	<1	1	1	4	3
Skin and subcutaneous tissue disorders					
Hyperhidrosis	4	10	11	18	21
Night sweats	1	2	1	1	1
Rash	<1	1	1	2	<1
Vascular disorders					
Hot flush	<1	1	1	2	2
Hypertension	1	1	1	2	1

Sexual Dysfunction Treatment Emergent Adverse Events

[Table 4](#) shows the incidence of sexual dysfunction treatment emergent adverse events that occurred in $\geq 1\%$ desvenlafaxine-treated MDD patients in any fixed dose group (8-week, placebo-controlled, fixed and flexible-dose, pre-marketing clinical trials).

Table 4: Sexual Dysfunction Treatment Emergent Adverse Events ($\geq 1\%$ in Men or Women in any Desvenlafaxine Group) During the On-Therapy Period: Percentage of Subjects in Short-Term, Placebo-Controlled MDD Studies

	Placebo (n = 239)	Desvenlafaxine			
		50 mg (n = 108)	100 mg (n = 157)	200 mg (n = 131)	400 mg (n = 154)
Men only					
Anorgasmia	0	0	3	5	8
Libido decreased	1	4	5	6	3
Orgasm abnormal	0	0	1	2	3
Ejaculation delayed	<1	1	5	7	6
Erectile dysfunction	1	3	6	8	11
Ejaculation disorder	0	0	1	2	5
Ejaculation failure	0	1	0	2	2

	Placebo (n = 239)	Desvenlafaxine			
		50 mg (n = 108)	100 mg (n = 157)	200 mg (n = 131)	400 mg (n = 154)
Sexual dysfunction	0	1	0	0	2
		Desvenlafaxine			
	Placebo (n=397)	50 mg (n=209)	100 mg (n=267)	200 mg (n=176)	400 mg (n=163)
Women only					
Anorgasmia	0	1	1	0	3

Other Treatment Emergent Adverse Events (All MDD Trials) The following is a list of MedDRA preferred terms that reflect treatment-emergent adverse events observed during premarket and post-market clinical trials (all MDD trials). These TEAEs were reported by patients treated with desvenlafaxine throughout the dose ranges studied (10 to 400 mg) during both short-term and long-term clinical trials. In general, the adverse events were most frequent in the first week of treatment.

Treatment Emergent Adverse Events are categorized by system organ class and listed in order of decreasing frequency using the following definitions:

Very common: $\geq 10\%$ of patients

Common: $\geq 1\%$ and $< 10\%$ of patients

Uncommon: $\geq 0.1\%$ and $< 1\%$ of patients

Rare: $\geq 0.01\%$ and $< 0.1\%$ of patients

Very rare: $< 0.01\%$ of patients

System Organ Class	Treatment Emergent Adverse Events
Immune System Disorders	
Uncommon	Hypersensitivity
Metabolism and Nutrition Disorders	
Common	Decreased appetite
Rare	Hyponatraemia
Psychiatric Disorders	
Very common	Insomnia
Common	Withdrawal syndrome, anxiety, nervousness, abnormal dreams, irritability, libido decreased, anorgasmia
Uncommon	Depersonalisation, orgasm abnormal
Rare	Mania, hypomania, hallucination
Nervous System Disorders	
Very common	Headache, dizziness, somnolence

System Organ Class	Treatment Emergent Adverse Events
Common	Tremor, paraesthesia, disturbance in attention, dysgeusia
Uncommon	Syncope, dyskinesia
Rare	Convulsion, dystonia
Eye Disorders	
Common	Vision blurred, mydriasis
Ear and Labyrinth Disorders	
Common	Vertigo, tinnitus
Cardiac Disorders	
Common	Palpitations, tachycardia
Vascular Disorders	
Common	Blood pressure increased, hot flush
Uncommon	Orthostatic hypotension, peripheral coldness
Respiratory, Thoracic and Mediastinal Disorders	
Common	Yawning
Uncommon	Epistaxis
Gastrointestinal Disorders	
Very common	Nausea, dry mouth
Common	Constipation, diarrhea, vomiting
Skin and Subcutaneous Tissue Disorders	
Very common	Hyperhidrosis
Common	Rash
Uncommon	Alopecia
Rare	Angioedema, photosensitivity reaction
Musculoskeletal and Connective Tissue and Bone Disorders	
Common	Musculoskeletal stiffness
Renal and Urinary Disorders	
Uncommon	Urinary retention, urinary hesitation, proteinuria
Reproductive System and Breast Disorders	
Common	Erectile dysfunction, ejaculation delayed
Uncommon	Ejaculation disorder, ejaculation failure, sexual dysfunction
General Disorders and Administration Site Conditions	
Common	Fatigue, asthenia, chills, feeling jittery
Investigations	
Common	Liver function test abnormal, weight increased, weight decreased
Uncommon	Blood cholesterol increased, blood triglycerides increased, blood prolactin increased

ADR = adverse drug reaction; MDD = major depressive disorder.

- **Ischemic cardiac adverse events**

In clinical trials, there were uncommon reports of ischemic cardiac adverse events, including myocardial ischemia, myocardial infarction, and coronary occlusion requiring revascularization; these patients had multiple underlying cardiac risk factors. More patients experienced these events during desvenlafaxine treatment as compared to placebo (see [7 WARNINGS AND PRECAUTIONS, Cardiovascular](#)).

- **Discontinuation Symptoms**

Adverse drug reactions reported in association with abrupt discontinuation, dose reduction or tapering of treatment in MDD pre-market clinical trials at a rate of $\geq 5\%$ include: dizziness, nausea, headache, irritability, diarrhea, anxiety, abnormal dreams, fatigue, and hyperhidrosis. In general, discontinuation events occurred more frequently with longer duration of therapy. See [4.2 Recommended Dose and Dosage Adjustment, Discontinuation](#) and [7 WARNINGS AND PRECAUTIONS, General, Discontinuation](#).

- **Orthostatic Hypotension**

Of the 4,158 patients in pre-market clinical trials with desvenlafaxine, 6% were 65 years of age or older. No overall differences in safety or efficacy were detected between these subjects and younger subjects. However, there was a higher incidence of orthostatic hypotension in patients ≥ 65 years of age compared to patients < 65 years of age treated with desvenlafaxine. Greater sensitivity of some older individuals cannot be ruled out. For elderly patients, possible reduced renal clearance of desvenlafaxine should be considered when determining dose (see [4.2 Recommended Dose and Dosage Adjustment, Geriatrics](#) and [10.3 Pharmacokinetics, Geriatrics](#)).

- **ECG Changes**

Electrocardiograms were obtained from 1,492 desvenlafaxine-treated patients with major depressive disorder and 984 placebo-treated patients in pre-market clinical trials lasting up to 8 weeks. No clinically relevant differences were observed between desvenlafaxine-treated and placebo-treated patients for QT, QTc, PR, and QRS intervals. In a thorough QTc study with prospectively determined criteria, desvenlafaxine did not cause QT prolongation. No difference was observed between placebo and desvenlafaxine treatments for the QRS interval (see [10 CLINICAL PHARMACOLOGY](#)).

A thorough QTc study was designed to assess the potential effect of 200 and 600 mg of desvenlafaxine on QT interval prolongation ([Table 5](#)).

Table 5: Estimated and 90% Confidence Interval for QTc Changes from Time-Matched Baseline Relative to Placebo at Hour 8 after Dose with Different Heart Rate Corrections^a

Treatment	Fridericia's QT Correction (ms)	Population QT Correction (ms)
Desvenlafaxine 200 mg ^b	1.5 (-0.88, 3.88)	3.18 (0.87, 5.50)
Desvenlafaxine 600 mg ^b	-2.43 (-4.90, 0.04)	0.98 (-1.42, 3.38)
Moxifloxacin 400 mg (Active control)	10.80 (8.44, 13.16)	10.92 (8.62, 13.22)

a. Mean (90% confidence intervals)

b. The desvenlafaxine doses of 200 and 600 mg were 2 and 6 times the maximum recommended dose, respectively.

Abnormal Hematologic and Clinical Chemistry Findings

- **Serum Lipids**

Elevations in fasting serum total cholesterol, LDL cholesterol, and triglycerides occurred in the controlled trials. Some of these abnormalities were considered potentially clinically significant (see [7 WARNINGS AND PRECAUTIONS, Serum Cholesterol Elevation](#) and [Monitoring and Laboratory Tests, Serum Lipids](#)).

The percentage of subjects who exceeded a predetermined threshold for values of outliers is represented in [Table 6](#).

Table 6: Proportion (%) of Subjects With Lipid Abnormalities of Potential Clinical Significance for All Short-Term, Placebo-Controlled Clinical Trials

	Placebo ^a	-----Desvenlafaxine-----				
		50 mg	100 mg	200 mg	400 mg	50-400 mg ^a
Total Cholesterol						
Increase \geq 1.29 mmol/L and absolute value \geq 6.75 mmol/L	2	3	4	4	10	5
LDL Cholesterol						
Increase \geq 1.29 mmol/L and absolute value \geq 4.91 mmol/L	<1	1	0	1	2	1
Triglycerides						
\geq 3.7 mmol/L	3	2	1	4	6	3

a. Includes data from all short-term, placebo-controlled studies including fixed-dose and flexible-dose studies.

- **Proteinuria**

In pre-market placebo-controlled studies 6.4% of subjects treated with desvenlafaxine had treatment-emergent proteinuria. Proteinuria was usually of trace amounts and was not associated with increases in BUN or creatinine or adverse events. The mechanism of the enhanced protein excretion is not clear but may be related to noradrenergic stimulation.

- **Vital Sign Changes**

[Tables 7](#) and [8](#) summarize the changes that were observed in pre-market placebo-controlled, short-term trials with desvenlafaxine in patients with MDD.

Table 7: Mean Changes, Vital Signs, at Final On-Therapy for All Short-term, Fixed-dose Controlled Trials

	Placebo	-----Desvenlafaxine-----			
		50 mg	100 mg	200 mg	400 mg
Blood Pressure					
Supine systolic bp (mm Hg)	-1.4	1.2	2.0	2.5	2.1
Supine diastolic bp (mm Hg)	- 0.6	0.7	0.8	1.8	2.3
Pulse rate					
Supine pulse (bpm)	- 0.3	1.3	1.3	0.9	4.1
Weight (kg)	0.0	- 0.4	- 0.6	- 0.9	- 1.1

At the final on-therapy assessment in the 6-month, double-blind, placebo-controlled phase of a long-term trial in patients who had responded to desvenlafaxine during the initial 12-week, open-label phase, there was no statistical difference in mean weight change between desvenlafaxine- and placebo-treated patients.

[Table 8](#) provides the incidence of patients meeting criteria for sustained hypertension (defined as treatment-emergent supine diastolic blood pressure ≥ 90 mm Hg and ≥ 10 mm Hg above baseline for 3 consecutive visits).

Table 8: Incidence (%) of Patients with Sustained Hypertension for All Short-Term Fixed-Dose Clinical Trials

	Placebo	-----Desvenlafaxine-----			
		50 mg	100 mg	200 mg	400 mg
Sustained hypertension	0.5	1.3	0.7	1.1	2.3

8.2.1 Clinical Trial Adverse Reactions - Pediatrics

The safety and efficacy of desvenlafaxine in children under the age of 18 years have not been established, and it is not indicated for this population. (see [7.1.3 Pediatrics](#)).

All of the adverse events described above for adults with MDD should be considered in the case of children and adolescents taking DESVENLAFAXINE. Additional adverse events of note (including laboratory values and vitals) are summarized below ([Table 9](#)).

The listed events are those identified as worse in children compared to adults at the recommended therapeutic dose, due to greater frequency rates and/or greater differential from placebo.

Table 9: Adverse Events during short-term (8 weeks) treatment of children and adolescents with Major Depressive Disorder that were identified as worse in pediatrics compared to adults, or unique to pediatrics and greater than placebo

Age Group	Desvenlafaxine		Placebo	
	Frequency	n/N	Frequency	n/N
Pooled (Ages 7-11 and 12-17)				
Weight loss ¹ (≥3.5% of baseline weight)	17%	60/356*	7%	16/231*
Upper abdominal pain ²	10%	34/358	7%	16/232
Ages 7-11				
Diarrhea ²	7%	8/116	1%	1/78
Triglycerides ¹ (increase > 2.258 mmol/L)	19%	19/102*	7%	5/72*
Hemoglobin in urine ¹	6%	6/102*	3%	2/72*
Orthostatic Systolic Blood Pressure ¹ (decrease ≥ 20 mg Hg from supine to standing)	8%	9/116	1%	1/78
Ages 12-17				
Back/Flank pain ²	3%	8/242	0%	0/154

* Number of subjects with non-missing test result

¹ Laboratory test or clinical measurement result

² Reported MedDRA term

The risks associated with longer term desvenlafaxine use were assessed in 6-month, open-label extension studies in pediatric patients (7 to 17 years of age) with MDD. In the total desvenlafaxine - exposed population, the frequency of weight loss ≥ 3.5% was 23% (156 /684), with persistence of weight loss at study end in approximately 22% of these cases (35/156).

The long-term safety, including effects on growth, maturation and behavioural development in patients under 18 years of age has not been systematically evaluated.

- **Suicidality-Related Events**

In the desvenlafaxine pediatric studies, the totality of suicidality-related behaviours and ideation are captured by the Columbia Suicide Severity Rating Scale (C-SSRS), performed at all scheduled visits. The incidence rates below exclude events classified as “self-injurious behavior, no suicidal intent”.

In the two pooled, placebo-controlled 8 week studies, the incidence of suicidality-related events is 12.1% (28 /231) for placebo and 12.6% (45 /356) for desvenlafaxine. In the 26-week, open-label extension studies that included the above trials, the incidence of suicidality-related events is 15.4% (105 /680).

The safety and efficacy of desvenlafaxine in children under the age of 18 years have not been established and its use is not recommended.

8.5 Post-Market Adverse Reactions

The following adverse events have been identified during post-approval use of desvenlafaxine. Because post-approval reactions are reported voluntarily from a population of uncertain size, it is not always possible to reliably estimate their frequency:

Cardiac Disorders: stress cardiomyopathy (Takotsubo cardiomyopathy)

Gastrointestinal: gastrointestinal bleeding, pancreatitis acute

Nervous System Disorder: serotonin syndrome

Skin and subcutaneous tissue disorders: Stevens-Johnson Syndrome, toxic epidermal necrolysis, erythema multiforme

9 DRUG INTERACTIONS

9.1 Serious Drug Interactions

Serious Drug Interactions

- Serious and life-threatening serotonin toxicity can occur due to the concomitant use of desvenlafaxine with other serotonergic agents. See [9.4 Drug-Drug Interactions - Serotonergic Agents](#).
- **Monoamine Oxidase Inhibitors (MAOIs):** See [2 CONTRAINDICATIONS](#), and [9.4 Drug-Drug Interactions, Serotonergic Agents](#).
 - **Concomitant Use of DESVENLAFAXINE with VENLAFAXINE:** Since desvenlafaxine is the major active metabolite of venlafaxine, concomitant use of

DESVENLAFAXINE with products containing venlafaxine will lead to additive desvenlafaxine exposure.
--

9.2 Drug Interactions Overview

Selected drug interaction studies were performed. The combination of linear pharmacokinetics, a simple metabolic profile without the potential for CYP polymorphism factors, weak interactions with selected probe substrates, and low protein binding results in a low potential for the interaction of desvenlafaxine with other prescribed medications.

9.3 Drug-Behavioural Interactions

- **Ethanol**

As with all CNS-active drugs, patients should be advised to avoid alcohol consumption while taking DESVENLAFAXINE.

- **Interference with Cognitive and Motor Performance**

A clinical study that assessed the effects of desvenlafaxine on behavioral performance of healthy individuals did not reveal clinically significant impairment of psychomotor, cognitive, or complex behavior performance. However, since any CNS-active drug may impair judgment, thinking, or motor skills, patients should be cautioned about operating hazardous machinery, including automobiles, until they are reasonably certain that DESVENLAFAXINE therapy does not adversely affect their ability to engage in such activities.

9.4 Drug-Drug Interactions

The drugs listed in this section are based on either drug interaction case reports or studies, or potential interactions due to the expected magnitude and seriousness of the interaction (i.e. those identified as contraindicated).

Table 10: Established or Potential Drug-Drug Interactions

Proper/Common name	Source of Evidence	Effect	Clinical comment
Central Nervous System Active Agents	T	Potential additive effect	The risk of using desvenlafaxine in combination with other CNS-active drugs has not been systematically evaluated. Consequently, caution is advised when desvenlafaxine is taken in combination with other CNS-active drugs.
Drugs Affecting Platelet Function: <ul style="list-style-type: none"> • NSAIDs • ASA • Other anticoagulants 	C	Altered anticoagulant effects, including increased bleeding	<p>Epidemiological studies of the case-control and cohort design that have demonstrated an association between use of psychotropic drugs that interfere with serotonin reuptake and the occurrence of upper gastrointestinal bleeding have also shown that concurrent use of an NSAID, ASA or other anticoagulants may potentiate this risk of bleeding.</p> <p>Altered anticoagulant effects, including increased bleeding, have been reported when SSRIs or SNRIs are co-administered with warfarin. Patients receiving warfarin therapy should be carefully monitored when DESVENLAFAXINE is initiated or discontinued (see 7 WARNINGS AND PRECAUTIONS).</p>

Proper/Common name	Source of Evidence	Effect	Clinical comment
			Hematologic, Abnormal Bleeding).
<p>Serotonergic Agents</p> <ul style="list-style-type: none"> • SSRIs; • Other SNRIs; • Lithium; • Amphetamines; • Opioids (such as methadone, tramadol, buprenorphine, fentanyl and its analogues, dextromethorphan, tapentadol, meperidine and pentazocine • Agents that impair serotonin metabolism, such as MAOIs (including the antibiotic, linezolid, and the surgical dye, methylene blue • Serotonin precursors, such as triptans (e.g., almotriptan, sumatriptan, rizatriptan, naratriptan, zolmitriptan); and tryptophan supplements. • St John’s Wort. 	T	Rare postmarketing reports describe patients with symptoms suggestive or diagnostic of serotonin toxicity, following the combined use of a SSRI with 5HT1-agonists (triptans) or lithium.	Based on the mechanism of action of desvenlafaxine and the potential for serotonin syndrome, caution is advised when DESVENLAFAXINE is co-administered with other drugs or agents that may affect the serotonergic neurotransmitter systems. If concomitant treatment with DESVENLAFAXINE and a serotonergic agent is clinically warranted, appropriate observation of the patient for acute and long-term adverse events is advised (see 7 WARNINGS AND PRECAUTIONS, Neurologic, Serotonin Syndrome)

Proper/Common name	Source of Evidence	Effect	Clinical comment
Inhibitors of CYP3A4	CT	Concomitant use of DESVENLAFAXINE with potent inhibitors of CYP3A4 may result in higher concentrations of desvenlafaxine.	CYP3A4 is a minor pathway for the metabolism of desvenlafaxine. In a clinical study, ketoconazole (200 mg BID) increased the area under the concentration vs. time curve AUC of desvenlafaxine (400 mg single dose) by about 43% and C _{max} by about 8%.
Inhibitors of other CYP enzymes	T	No effect	Based on <i>in vitro</i> data, drugs that inhibit CYP isozymes 1A1, 1A2, 2A6, 2D6, 2C8, 2C9, 2C19, and 2E1 are not expected to have significant impact on the pharmacokinetic profile of desvenlafaxine.
Drugs metabolized by CYP2D6	CT	Concomitant use of desvenlafaxine with a drug metabolized by CYP2D6 may result in increased concentrations of that drug and decreased concentrations of its CYP2D6 metabolites.	Clinical studies have shown that desvenlafaxine does not have a clinically relevant effect on CYP2D6 metabolism at the dose of 100 mg daily. When desvenlafaxine was administered at a dose of 100 mg daily in conjunction with a single 50 mg dose of desipramine, a CYP2D6 substrate, the AUC of desipramine increased approximately 17%. When 400 mg of desvenlafaxine was administered (8 times the recommended 50 mg dose), the AUC of desipramine increased approximately 90%. When desvenlafaxine was administered at a dose of 100 mg daily in conjunction with a single 60 mg dose of codeine, a CYP2D6 substrate metabolized to morphine, the

Proper/Common name	Source of Evidence	Effect	Clinical comment
			AUC of codeine was unchanged, the AUC of morphine decreased approximately 8%.
Drugs metabolized by CYP3A4	CT	Concomitant use of desvenlafaxine with a drug metabolized by CYP3A4 may result in lower exposure to that drug.	<i>In vitro</i> , desvenlafaxine does not inhibit or induce the CYP3A4 isozyme. In a clinical study, desvenlafaxine (400 mg daily) was co-administered with a single 4 mg dose of midazolam (a CYP3A4 substrate). The AUC and C _{max} of midazolam decreased by approximately 31% and 16%, respectively. In a second study, desvenlafaxine 50 mg daily was co-administered with a single 4 mg dose of midazolam. The AUC and C _{max} of midazolam decreased by approximately 29% and 14%, respectively.
Drugs metabolized by a combination of both CYP2D6 and CYP3A4	CT	No effect	Clinical studies with aripiprazole and tamoxifen suggest that desvenlafaxine at twice the recommended dose (100 mg daily) does not have a clinically relevant effect on drugs metabolized by a combination of both CYP2D6 and CYP3A4 enzymes. Desvenlafaxine was studied at a dose of 100 mg daily in conjunction with a single 5 mg dose of aripiprazole, a CYP2D6 and CYP3A4 substrate metabolized to the active metabolite dehydroaripiprazole.

Proper/Common name	Source of Evidence	Effect	Clinical comment
			A single 40 mg dose of tamoxifen, which is metabolized to active metabolites 4-hydroxy-tamoxifen and endoxifen by CYP2D6 and CYP3A4, was also studied in conjunction with desvenlafaxine (100 mg daily).
Drugs metabolized by CYP1A2, 2A6, 2C8, 2C9 and 2C19	T	No effect	<i>In vitro</i> , desvenlafaxine does not inhibit CYP1A2, 2A6, 2C8, 2C9, and 2C19 isozymes and would not be expected to affect the pharmacokinetics of drugs that are metabolized by these CYP isozymes.
P-glycoprotein transporter	T	No effect	<i>In vitro</i> , desvenlafaxine is not a substrate or an inhibitor for the P-glycoprotein transporter. The pharmacokinetics of desvenlafaxine are unlikely to be affected by drugs that inhibit the P-glycoprotein transporter and desvenlafaxine is not likely to affect the pharmacokinetics of drugs that are substrates of the P-glycoprotein transporter.

Legend: C = Case Study; CT = Clinical Trial; T = Theoretical

Potential for other drugs to affect desvenlafaxine (see also [10 CLINICAL PHARMACOLOGY](#))

See also [10.3 Pharmacokinetics](#).

- **Electroconvulsive Therapy**

There are no clinical data establishing the risks and/or benefits of electroconvulsive therapy combined with desvenlafaxine treatment for MDD.

9.5 Drug-Food Interactions

Food does not alter the bioavailability of desvenlafaxine.

Concomitant use of tryptophan supplements increases the risk of serotonin toxicity, as tryptophan is a serotonin precursor. See [9.4 Drug-Drug Interactions, Serotonergic Agents](#).

9.6 Drug-Herb Interactions

St. John's Wort

In common with SSRI's, pharmacodynamic interactions between desvenlafaxine and the herbal remedy St. John's Wort (*Hypericum perforatum*) may occur and may result in an increase in undesirable effects (see [9.4 Drug-Drug Interactions, Serotonergic Agents](#)).

9.7 Drug-Laboratory Test Interactions

False positive urine immunoassay screening tests for phencyclidine (PCP) and amphetamine have been reported in patients taking desvenlafaxine. This is due to lack of specificity of the screening tests. False positive test results may be expected for several days following discontinuation of DESVENLAFAXINE therapy. Confirmatory tests, such as gas chromatography/mass spectrometry, will distinguish desvenlafaxine from PCP and amphetamine.

10 CLINICAL PHARMACOLOGY

10.1 Mechanism of Action

Desvenlafaxine is the major active metabolite of venlafaxine which is also approved for treatment of depression. Preclinical studies have shown that desvenlafaxine is a selective serotonin and norepinephrine reuptake inhibitor. The clinical efficacy of desvenlafaxine is thought to be related to the potentiation of these neurotransmitters in the central nervous system.

10.2 Pharmacodynamics

Desvenlafaxine lacked significant affinity for numerous receptors, including muscarinic-cholinergic, H₁-histaminergic, or α_1 -adrenergic receptors *in vitro*. Desvenlafaxine also lacked significant affinity for various ion channels, including calcium, chloride, potassium and sodium ion channels and also lacked monoamine oxidase (MAO) inhibitory activity. Desvenlafaxine lacked significant activity in the *in vitro* cardiac potassium channel (hERG) assay.

10.3 Pharmacokinetics

Absorption

The absolute oral bioavailability of desvenlafaxine after oral administration is about 80%. Mean time to peak plasma concentrations (t_{max}) is about 7.5 hours after oral administration.

A food-effect study involving administration of desvenlafaxine to healthy volunteers under fasting and fed conditions (high-fat meal) indicated that the C_{max} was increased about 16% in the fed state, while the AUCs were similar. This difference is not clinically significant; therefore, DESVENLAFAXINE can be taken without regard to meals.

Distribution

The plasma protein binding of desvenlafaxine is low (30%) and is independent of drug concentration. Desvenlafaxine's volume of distribution at steady-state following intravenous administration is 3.4 L/kg, indicating distribution into nonvascular compartments.

Metabolism

Desvenlafaxine is primarily metabolized by conjugation (mediated by UGT isoforms) and, to a minor extent, through oxidative metabolism. CYP3A4 is the cytochrome P450 isozyme mediating the oxidative metabolism (N-demethylation) of desvenlafaxine.

Elimination

Approximately 45% of desvenlafaxine is excreted unchanged in urine at 72 hours after oral administration. Approximately 19% of the administered dose is excreted as the glucuronide metabolite and <5% as the oxidative metabolite (N, O-didesmethylvenlafaxine) in urine.

Residual Inert Matrix Tablet: Patients receiving DESVENLAFAXINE may notice an inert matrix tablet passing in the stool or via colostomy. Patients should be informed that the active medication has already been absorbed by the time the patient sees the inert matrix tablet.

Special Populations and Conditions

- **Pediatrics**

DESVENLAFAXINE is not indicated for use in children and adolescents. Two placebo controlled phase 3 studies in 587 pediatric patients 7 to 17 years of age with MDD failed to demonstrate efficacy; neither short term, placebo-controlled study demonstrated statistically or clinically significant differences between desvenlafaxine and placebo (see also [8 ADVERSE REACTIONS, Adverse Drug Reactions in Pediatrics \(<18 years of age\)](#)).

Phase 2 Pharmacokinetic Study

In a phase 2, 8-week open-label pharmacokinetic, safety, and tolerability study in 59 pediatric patients with MDD, desvenlafaxine 10, 25, 50, and 100 mg was administered to 29 children (7 to 11 years old) and desvenlafaxine 25, 50, 100, and 200 mg was administered to 30 adolescents (12 to 17 years old). Mean CL/F (apparent oral dose clearance) values were higher in children (range: 0.441 to 0.540 L/h/kg) than values obtained in 397 adults (mean \pm SD: [0.31 \pm 0.15 L/h/kg]). Mean CL/F values for adolescents (range: 0.282 to 0.441 L/hr/kg) were more

comparable to CL/F values in adults. The effect of body weight on dose normalized AUC could be described by an exponential equation for each age group. Comparison of the predictions for AUC (normalized by dose) based on age and body weight or based only on body weight showed that body weight alone provides an adequate prediction for AUC. Mean urinary recovery of total desvenlafaxine and total N, O-didesmethylvenlafaxine ranged from 40% to 61% in children and 55 to 69% in adolescents. The pharmacokinetic results in pediatric patients from this study and the comparison with adults should be considered preliminary.

Twenty children and 20 adolescents who completed the pharmacokinetics study entered a 6-month, open-label, phase 2 extension safety study. The total daily dose of desvenlafaxine was flexible between 10, 25, 50, and 100 mg for children, and between 25, 50, 100, and 200 mg for adolescents. Eighteen subjects (45%) completed the extension study.

In both studies combined, 28 subjects (70%) reported 1 or more treatment-emergent adverse event (TEAE). Four (20.0%) children and 3 (15.0%) adolescents reported adverse events that led to discontinuation of treatment: aggression (by 2 children), disturbance in attention and psychomotor hyperactivity (by 1 child), negativism (by 1 child) and nausea (by 1 adolescent), nausea and headache (by 1 adolescent), and pregnancy (by 1 adolescent). For children, the most common TEAEs during the on-therapy period of both studies combined were headache and abdominal pain reported by 3 (15.0%) and 3 (15.0%) of patients, respectively. For adolescents, the most common TEAEs during the on-therapy period of both studies combined were: somnolence, nausea, headache, and abdominal pain upper, reported by 6 (30.0%), 4 (20.0%), 3 (15.0%) and 3 (15.0%) of subjects, respectively. In addition, for child and adolescent subjects in the combined study population, post-baseline suicidal ideation occurred in 3 adolescents, as assessed via the Columbia Suicide Severity Rating Scale (C-SSRS). Suicidal ideation was reported in 1 adolescent subject who did not report suicidal ideation at the baseline C-SSRS assessment (the baseline C-SSRS assessment was the screening visit of the pharmacokinetic study) (see [7 WARNINGS AND PRECAUTIONS, Psychiatric, Potential Association with Behavioural and Emotional Changes, Including Self-Harm](#)).

- **Geriatrics**

In a trial of healthy subjects administered doses of up to 300 mg, there was an approximate 32% increase in C_{max} and a 55% increase in AUC in subjects older than 75 years of age (n =17), compared with subjects 18 to 45 years of age (n = 16). Subjects 65 to 75 years of age (n =15) had no change in C_{max} but an approximately 32% increase in AUC, compared to subjects 18 to 45 years of age. No dosage adjustment is required solely on the basis of age; however, possible reduced renal clearance of desvenlafaxine should be considered when determining dose.

- **Sex**

In a trial of healthy subjects administered doses up to of 300 mg, women had an approximately 25% higher C_{max} and an approximately 10% higher AUC than age-matched men. No adjustment of dosage on the basis of sex is needed.

- **Ethnic Origin**

Pharmacokinetic analysis on the basis of race (White, N = 466; Black, N = 97; Hispanic, N = 39; Other, N =33) did not demonstrate an effect on the pharmacokinetics of desvenlafaxine. No adjustment of dosage on the basis of ethnic origin is needed.

- **Hepatic Insufficiency**

The disposition of desvenlafaxine after administration of 100 mg was studied in subjects with mild (Child-Pugh A, n = 8), moderate (Child-Pugh B, n = 8), and severe (Child-Pugh C, n = 8) hepatic impairment and to healthy subjects (n = 12). Average AUC was increased by approximately 31% and 35% in patients with moderate and severe hepatic impairment, respectively, as compared to healthy subjects. Average AUC values were similar in subjects with mild hepatic impairment and healthy subjects (<5% difference).

Systemic clearance (CL/F) was decreased by approximately 20% and 36% in patients with moderate and severe hepatic impairment, respectively, as compared to healthy subjects. CL/F values were comparable in mild hepatic impairment and healthy subjects (<5% difference).

The mean $t_{1/2}$ changed from approximately 10 hours in healthy subjects and subjects with mild hepatic impairment to 13 and 14 hours in moderate and severe hepatic impairment, respectively. No dosage adjustment is necessary for patients with hepatic impairment.

- **Renal Insufficiency**

The disposition of desvenlafaxine after administration of 100 mg was studied in subjects with mild (n = 9), moderate (n = 8), severe (n = 7) and end-stage renal disease (ESRD) requiring dialysis (n = 9) and in healthy, age-matched control subjects (n = 8). Elimination was significantly correlated with creatinine clearance. Increases in AUCs of about 42% in mild renal impairment, about 56% in moderate renal impairment, about 108% in severe renal impairment, and about 116% in ESRD subjects were observed, compared with healthy, age-matched, control subjects.

The mean terminal half-life ($t_{1/2}$) was prolonged from 11.1 hours in the control subjects to approximately 13.5, 15.5, 17.6, and 22.8 hours in mild, moderate, severe renal impairment and ESRD subjects, respectively. Less than 5% of the drug in the body was cleared during a standard 4-hour hemodialysis procedure. Therefore, supplemental doses should not be given to patients after dialysis.

Dosage adjustment is recommended in patients with significant impairment of renal function (see [4.2 Recommended Dose and Dosage Adjustment Severe renal impairment and end-stage renal disease](#)).

11 STORAGE, STABILITY AND DISPOSAL

Store at 15°C to 30°C. Keep in original pack and protect from light.

12 SPECIAL HANDLING INSTRUCTIONS

None.

PART II: SCIENTIFIC INFORMATION

13 PHARMACEUTICAL INFORMATION

Drug Substance

Common name: Desvenlafaxine

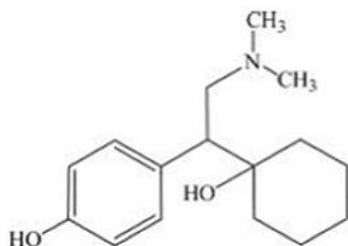
Chemical name: 1-[(1RS)-2-(Dimethylamino)-1-(4-hydroxyphenyl)ethyl]cyclohexanol

N,N-dimethyl-2-(1-hydroxycyclohexyl)-2-(4-hydroxyphenyl)ethylamine;

4-[2-(dimethylamino)-1-(1-hydroxycyclohexyl)ethyl]phenol
(IUPAC)

Molecular formula and molecular mass: $C_{16}H_{25}NO_2$ [Desvenlafaxine] and 263.38 g/mol [Desvenlafaxine]

Structural formula:



Physicochemical properties:

Desvenlafaxine is a white to off-white powder.

pH and pKa values

pH

pH, 1% suspension in deionized water: 8.75

pKa

pKa_{1,2} = 8.34, 10.11

Solubility

Slightly soluble in methanol and ethanol, and practically insoluble in unbuffered water.

Highly soluble under physiological pH conditions (pH: 1.2-7.4).

14 CLINICAL TRIALS

14.1 Trial Design and Study Demographics

The information on the trial design and study demographics on which the original indication was authorized is not available, other than as follows.

The efficacy of desvenlafaxine for treatment of depression was established in four 8-week, randomized, double-blind, placebo-controlled, fixed-dose studies (at doses of 50 mg/day to 400 mg/day) in adult outpatients who met the Diagnostic and Statistical Manual of Mental Disorders (DSM-IV) criteria for major depressive disorder.

- In the first study, patients received 100 mg (n = 114), 200 mg (n = 116), or 400 mg (n = 113) of desvenlafaxine once daily, or placebo (n = 118).
- In a second study, patients received either 200 mg (n = 121) or 400 mg (n = 124) of desvenlafaxine once daily, or placebo (n = 124).
- In two additional studies, patients received 50 mg (n = 150 and n = 164) or 100 mg (n = 147 and n = 158) of desvenlafaxine once daily, or placebo (n = 150 and n = 161).

The primary outcome measure in all studies was change in the 17-item Hamilton Rating Scale for Depression (HAM-D₁₇) total score (LOCF Final). The main secondary outcome measure was overall improvement, as measured by the Clinical Global Impressions Scale – Improvement (CGI-I) (LOCF Final).

Other secondary outcome measures included change in HAM-D₁₇ total score (Observed Case and MMRM) and CGI-I (Observed Case) at week 8, as well as change in the Montgomery Asberg Depression Rating Scale (MADRS) score, change in the Sheehan Disability Scale (SDS) score, and the percentage of CGI-I responders, HAM-D₁₇ responders, and HAM-D₁₇ remissions. CGI-I responder was defined as a score of 1 (very much improved) or 2 (much improved), HAM-D₁₇ responder was defined as $\geq 50\%$ decrease from baseline HAM-D₁₇ total score, and remission was defined as HAM-D₁₇ ≤ 7 .

14.2 Study results

The data on which the original indication was authorized are not available, other than as follows.

- **Short-term Placebo-controlled MDD Studies**

In these studies, the efficacy of desvenlafaxine for treatment of depression was demonstrated by its superiority over placebo as measured by improvement on the primary outcome measure (HAM-D₁₇) total score (LOCF) and the main secondary outcome measure (CGI-I) (LOCF). The results on the other secondary outcome measures were supportive of the positive primary and main secondary outcomes.

In studies directly comparing desvenlafaxine doses of 50 mg/day and 100 mg/day, there was no suggestion of greater efficacy with the higher dose. Similarly in studies directly comparing

desvenlafaxine doses of 100 mg/day and 200 mg/day or 400 mg/day there was no suggestion of a greater efficacy with the higher doses [see [4 DOSAGE AND ADMINISTRATION](#)]. In contrast adverse events and discontinuations tended to be more frequent at higher doses (see [Tables 2 through 6](#)), although no severe toxicity was observed.

- **Long-Term Maintenance of Effect Studies**

The efficacy of desvenlafaxine in maintaining antidepressant effect was assessed in a long-term study.

In the long-term trial, adult outpatients meeting DSM-IV criteria for major depressive disorder, who responded to 8 weeks of open-label acute treatment with 50 mg/day desvenlafaxine and subsequently remained stable for 12 weeks on desvenlafaxine, were assigned randomly in a double-blind manner to remain on active treatment or switched to placebo for up to 26 weeks of observation for relapse. Response during the open phase was defined as a HAM-D₁₇ total score of ≤ 11 and CGI-I ≤ 2 at the day 56 evaluation; stability was defined as not having a HAM-D₁₇ total score of ≥ 16 at any office visit. Relapse during the double-blind phase was defined as follows: (1) a HAM-D₁₇ total score of ≥ 16 at any office visit; (2) discontinuation for unsatisfactory efficacy response; (3) hospitalized for depression; (4) suicide attempt; or (5) suicide. Patients receiving continued desvenlafaxine treatment experienced statistically significantly longer time to relapse compared with placebo. At 26 weeks, the Kaplan-Meier estimated probability of relapse was 14% with desvenlafaxine treatment versus 30% with placebo.

Secondary efficacy measures that supported the primary outcome included: HAM-D₁₇ total score, remission based on HAM-D₁₇, HAM-D₆, and CGI-S scores.

14.3 Comparative Bioavailability Studies

Two randomized, single-dose, two treatment, two-way crossover comparative bioavailability studies of DESVENLAFAXINE Extended-Release Tablets, 100 mg (Sanis Health Inc.) and PRISTIQ® Extended-Release Tablets, 100 mg (Pfizer Canada Inc., Canada.) were conducted in healthy adult male subjects under fasting and fed conditions. Comparative bioavailability data from the 45 subjects (fasted study) and 24 subjects (fed study) that were included in the pharmacokinetic and statistical analyses are presented in the following tables.

Summary Table of the Fasting study Comparative Bioavailability Data

Desvenlafaxine (1 x 100 mg) Geometric Mean Arithmetic Mean (CV%)				
Parameter	Test ¹	Reference ²	% Ratio of Geometric Means	90% Confidence Interval
AUC _T (ng•h/mL)	8278.17 8972.89 (36.66)	7841.22 8507.46 (39.49)	105.6	95.5 – 116.7
AUC _I (ng•h/mL)	8366.33 9079.97 (37.01)	7912.25 8594.57 (39.89)	105.7	95.6 - 116.9
C _{MAX} (ng/mL)	356.00 369.04 (28.37)	362.41 376.49 (27.55)	98.2	92.1 – 104.8
T _{MAX} ³ (h)	6.00 (2.00 - 18.00)	6.00 (2.00 - 18.00)		
T _{1/2} ⁴ (h)	9.49 (13.43)	9.36 (13.51)		
¹ DESVENLAFAXINE (desvenlafaxine (base)) Extended-Release Tablets, 100 mg (Sanis Health Inc.) ² PRISTIQ® (desvenlafaxine succinate) Extended Release Tablets, 100 mg (Pfizer Canada Inc.) (Canada) ³ Expressed as the median (range) only ⁴ Expressed as the arithmetic mean (CV %) only				

Summary Table of the Fed study Comparative Bioavailability Data

Desvenlafaxine (1 x 100 mg) Geometric Mean Arithmetic Mean (CV%)				
Parameter	Test ¹	Reference ²	% Ratio of Geometric Means	90% Confidence Interval
AUC _T (ng•h/mL)	10836.69 11144.92 (23.86)	10224.80 10583.92 (26.20)	106.0	100.0-112.4
AUC _I (ng•h/mL)	10936.76 11253.90 (24.14)	10324.82 10698.28 (26.64)	105.9	99.9-112.3
C _{MAX} (ng/mL)	518.79 529.43 (20.16)	474.41 480.73 (16.72)	109.4	103.2-115.9
T _{MAX} ³ (h)	6.50 (4.00 - 12.00)	6.50 (4.00 - 14.00)		
T _{1/2} ⁴ (h)	9.16 (12.70)	9.32 (12.14)		
¹ DESVENLAFAXINE (desvenlafaxine (base)) Extended-Release Tablets, 100 mg (Sanis Health Inc.) ² PRISTIQ ^{®/MD} (desvenlafaxine succinate) Extended-Release Tablets, 100 mg (Pfizer Canada Inc.) (Canada) ³ Expressed as the median (range) only ⁴ Expressed as the arithmetic mean (CV %) only				

Two randomized, single-dose, two treatment, two-way crossover comparative bioavailability studies of DESVENLAFAXINE Extended-Release Tablets, 50 mg (Sanis Health Inc.) and PRISTIQ[®] Extended-Release Tablets, 50 mg (Pfizer Canada Inc., Canada.) were conducted in healthy adult male subjects under fasting and fed conditions. Comparative bioavailability data from the 48 subjects (fasted study) and 22 subjects (fed study) that were included in the pharmacokinetic and statistical analyses are presented in the following tables.

Summary Table of the Fasting study Comparative Bioavailability Data

Desvenlafaxine (1 x 50 mg) Geometric Mean Arithmetic Mean (CV%)				
Parameter	Test ¹	Reference ²	% Ratio of Geometric Means	90% Confidence Interval
AUC _T (ng•h/mL)	4211.68 4457.85 (31.87)	4065.93 4274.09 (31.28)	103.6	95.9-111.9
AUC _I (ng•h/mL)	4261.98 4515.81 (32.29)	4120.10 4337.90 (31.94)	103.4	95.7-111.8
C _{MAX} (ng/mL)	170.30 176.51 (27.91)	158.05 162.48 (23.90)	107.8	102.0-113.9
T _{MAX} ³ (h)	7.00 (2.00 - 18.00)	7.00 (2.00 - 18.00)		
T _{1/2} ⁴ (h)	9.89 (11.40)	9.99 (12.75)		
¹ DESVENLAFAXINE (desvenlafaxine (base)) Extended-Release Tablets, 50 mg (Sanis Health Inc.) ² PRISTIQ® (desvenlafaxine succinate) Extended-Release Tablets, 50 mg (Pfizer Canada Inc.) (Canada) ³ Expressed as the median (range) only ⁴ Expressed as the arithmetic mean (CV %) only				

Summary Table of the Fed study Comparative Bioavailability Data

Desvenlafaxine (1 x 50 mg) Geometric Mean Arithmetic Mean (CV%)				
Parameter	Test ¹	Reference ²	% Ratio of Geometric Means	90% Confidence Interval
AUC _T (ng•h/mL)	5055.93 5156.84 (24.09)	4767.37 4933.76 (30.26)	106.1	97.3-115.6
AUC _I (ng•h/mL)	5102.71 5209.19 (24.62)	4813.54 4988.26 (30.91)	106.0	97.3-115.6
C _{MAX} (ng/mL)	232.30 234.43 (16.30)	218.35 219.62 (16.13)	106.4	102.9-110.0
T _{MAX} ³ (h)	9.00 (5.00 - 14.00)	8.00 (5.00 - 12.00)		
T _{1/2} ⁴ (h)	9.55 (17.31)	9.47 (14.10)		
¹ DESVENLAFAXINE (desvenlafaxine (base)) Extended-Release Tablets, 50 mg (Sanis Health Inc.) ² PRISTIQ® (desvenlafaxine succinate) Extended-Release Tablets, 50 mg (Pfizer Canada Inc.) (Canada) ³ Expressed as the median (range) only ⁴ Expressed as the arithmetic mean (CV %) only				

15 MICROBIOLOGY

No microbiological information is required for this drug product.

16 NON-CLINICAL TOXICOLOGY

General Toxicology: The principal toxicology studies included single-dose and repeat-dose studies in rats and dogs; genetic toxicology studies; 2-year carcinogenicity studies in mice and rats; and reproductive and developmental studies in rats and rabbits. Special studies were conducted to define target organ toxicity, to evaluate the gastrointestinal tolerability of the

sustained release (SR) tablets that were used in clinical trials, and to further evaluate the effects of desvenlafaxine on fertility in male and female rats.

- **Single-Dose**

A single oral dosage of desvenlafaxine (salt form) resulted in death at ≥ 1800 mg/kg in mice and ≥ 2500 mg/kg in rats. A single IP dosage of desvenlafaxine (salt form) resulted in death at ≥ 250 mg/kg in mice. A single IP dosage of DVS resulted in death at ≥ 700 mg/kg in rats. There was no mortality in dogs given a single oral dosage of desvenlafaxine (salt form) at up to 500 mg/kg.

- **Repeat-Dose**

Rats: In the 1-month toxicity study in rats, the no-observed-adverse-effect level (NOAEL) was 675 mg/kg/day (the highest dosage), based on no toxicologically significant effects at any dosage. In the 3-month toxicity study in rats, the NOAEL was 100 mg/kg/day, based on mortality and decreased food consumption at 1000 mg/kg/day, and increased salivation and decreased body weights and body-weight gains at ≥ 500 mg/kg/day.

In the 6-month toxicity study in rats, the NOAEL was 100 mg/kg/day in males (based on decreases in body weight in males at 300 mg/kg/day) and 300 mg/kg/day in females (the highest dosage administered).

Dogs: In the 1-month toxicity study in dogs, the NOAEL was 175 mg/kg/day (the highest dosage), based on no toxicologically significant effects at any dosage. In the 3-month toxicity study in dogs, the NOAEL was 100 mg/kg/day, based on mortality and decreased body weights at 300 mg/kg/day and central nervous system (CNS)-related clinical observations (chorea-like movements, stereotypy, and convulsions as early as week 1) at 200 and 300 mg/kg/day. Because the target organ toxicity was not identified in this 3-month study, two (2) additional 3-month studies were conducted at higher dosages (oral gavage, up to 500 mg/kg/day; SR tablets up to 400 mg/kg/day). These 2 additional 3-month studies demonstrated the CNS to be the target organ based on clinical signs and the NOAEL was 100 mg/kg/day and 200 mg/kg/day in the oral gavage and SR tablet studies, respectively. In the 9-month toxicity study in dogs, the NOAEL was 50 mg/kg/day (the highest dosage), based on no adverse effects at any dosage.

Carcinogenicity: Desvenlafaxine succinate administered by oral gavage to mice and rats for 2 years did not increase the incidence of tumors in either study.

Mice: Mice received desvenlafaxine at dosages up to 500/300 mg/kg/day (dosage lowered after 45 weeks of dosing). The 300 mg/kg/day dose was 180 times on a mg/kg basis, the maximum recommended human dose (MRHD) of 100 mg/day, and 15 times the MRHD on a mg/m² basis.

Rats: Rats received desvenlafaxine at dosages up to 300 mg/kg/day (males) or 500 mg/kg/day (females). The highest dose was 180 (males) or 300 (females) times, on a mg/kg basis the MRHD of 100 mg/day, and 29 (males) or 48 (females) times the MRHD of 100 mg/day, on a mg/m² basis.

Genotoxicity: Desvenlafaxine was not genotoxic in the *in vitro* bacterial mutation assay (Ames test) and was not clastogenic in an *in vitro* chromosome aberration assay in cultured CHO cells, an *in vivo* mouse micronucleus assay, or an *in vivo* chromosome aberration assay in rats. Additionally, desvenlafaxine was not genotoxic in the *in vitro* CHO mammalian cell forward mutation assay and was negative in the *in vitro* BALB/c-3T3 mouse embryo cell transformation assay.

Reproductive and Developmental Toxicology:

See also [Juvenile Toxicity](#), below.

- **Reproductive Toxicology**

When administered orally to pregnant rats throughout gestation and lactation and continued through weaning, desvenlafaxine has been shown to cause decrease in fetal weights, decrease in pup weights and increase in pup deaths when given in doses 180 times the human dose of 100 mg/day on a mg/kg basis, and 29 times on a mg/m² basis. Post-weaning growth and reproductive performance of the progeny were not affected by maternal treatment with desvenlafaxine.

- **Impairment of Fertility**

Reduced fertility was observed in a study in which both male and female rats received desvenlafaxine. This effect was noted at oral doses approximately 60 times, on a mg/kg basis, and 10 times the maximum human dose (MRHD) of 100 mg/day on a mg/m² basis. There was no effect on fertility at oral doses approximately 18 times the MRHD on a mg/kg basis and 3 times the MRHD on a mg/m² basis. The human relevance of this finding is unknown.

- **Teratogenicity**

When desvenlafaxine was administered orally to pregnant rats and rabbits during the period of organogenesis, there was no evidence of teratogenicity in rats at any doses tested, up to 60 times on a mg/kg basis and up to 10 times the maximum recommended human dose (MRHD) of 100 mg/day (on a mg/m² basis) in rats. In rabbits, there was no evidence of teratogenicity at doses up to 45 times (on a mg/kg basis) the MRHD of 100 mg/day, or 15 times the MRHD (on a mg/m² basis). However, fetal weights were decreased in rats with a no effect dose 60 times the MRHD (on a mg/kg basis) and 10 times the MRHD (on a mg/m² basis).

Juvenile Toxicity: In a juvenile animal study, male and female rats were treated with desvenlafaxine (75, 225 and 675 mg/kg/day) starting on postnatal day (PND) 22 through 112. Behavioral deficits (longer time immobile in a motor activity test, longer time swimming in a straight channel test, and lack of habituation in an acoustic startle test) were observed in males and females but were reversed after a recovery period. A No Adverse Effect Level (NOAEL) was not identified for these deficits. The Low Adverse Effect Level (LOAEL) was 75 mg/kg/day which was associated with plasma exposure (AUC) twice the levels measured with a pediatric dose of 100 mg/day.

In a second juvenile animal study, male and female rats were administered desvenlafaxine (75, 225 or 675 mg/kg/day) for 8 to 9 weeks starting on PND 22 and were mated with naïve counterparts. Delays in sexual maturation and decreased fertility, number of implantation sites and total live embryos were observed in treated females at all doses. The LOAEL for these findings is 75 mg/kg/day which was associated with an AUC twice the levels measured with a pediatric dose of 100 mg/day. These findings were reversed at the end of a 4-week recovery period.

The relevance of these findings to humans is not known.

17 SUPPORTING PRODUCT MONOGRAPHS

1. PRISTIQ® (desvenlafaxine succinate extended-release tablets, 50 mg and 100 mg), submission control 260474, Product Monograph, Pfizer Canada ULC, Licensee. (JUN 26, 2023)

PATIENT MEDICATION INFORMATION

READ THIS FOR SAFE AND EFFECTIVE USE OF YOUR MEDICINE

Pr[®]DESVENLAFAXINE

Desvenlafaxine Extended-Release Tablets

Read this carefully before you start taking **DESVENLAFAXINE** and each time you get a refill. This leaflet is a summary and will not tell you everything about this drug. Talk to your healthcare professional about your medical condition and treatment and ask if there is any new information about **DESVENLAFAXINE**.

Serious Warnings and Precautions

New or worsened emotional or behavioural problems:

- When you first start taking DESVENLAFAXINE or when your dose is adjusted, you may feel worse instead of better. You may feel new or worsened feelings of agitation, hostility, anxiety, or impulsivity.
- During your treatment with DESVENLAFAXINE, it is important that you and your healthcare professional talk regularly about how you are feeling. They will closely monitor you for signs of new or worsened emotions or behaviours while you are taking DESVENLAFAXINE.
- You may find it helpful to tell a relative or close friend that you are depressed. Ask them to read this leaflet. You might ask them to tell you if they:
 - think your depression is getting worse, or
 - are worried about changes in your behaviour.
- If your depression worsens or you experience changes in your behaviour, tell your healthcare professional **right away**. Do not stop taking your medicine as it takes time for DESVENLAFAXINE to work.

Self-harm or Suicide:

- Antidepressants, such as DESVENLAFAXINE, may increase the risk of suicidal thoughts and actions for some patients.
- If you have thoughts of harming or killing yourself at any time, contact your healthcare professional or go to a hospital **right away**. Close observation by a healthcare professional is necessary in this situation.

What is DESVENLAFAXINE used for?

DESVENLAFAXINE is used in adults to relieve the symptoms of:

- Major depressive disorder (feeling sad, a change in appetite or weight, difficulty concentrating or sleeping, feeling tired, headaches, unexplained aches and pain)

How does DESVENLAFAXINE work?

DESVENLAFAXINE belongs to a group of medicines called serotonin and norepinephrine reuptake inhibitors (SNRIs). DESVENLAFAXINE is thought to work by increasing the levels of two chemicals in the brain, serotonin and norepinephrine. This helps to relieve your symptoms of major depressive disorder.

What are the ingredients in DESVENLAFAXINE?

Medicinal ingredients: Desvenlafaxine

Non-medicinal ingredients: Anhydrous citric acid, colloidal silicon dioxide, euroxide red iron oxide, hypromellose, magnesium stearate, microcrystalline cellulose, polyethylene glycol, polyvinyl alcohol, red iron oxide (for 100 mg), talc, titanium dioxide, yellow iron oxide (for 50 mg).

DESVENLAFAXINE comes in the following dosage forms:

Extended-release tablets: 50 mg and 100 mg desvenlafaxine (as base).

Do not use DESVENLAFAXINE if:

- you are allergic to venlafaxine, desvenlafaxine or to any other ingredients in DESVENLAFAXINE.
- you are taking, or have taken in the last 14 days, a monoamine oxidase inhibitor (MAOI) such as phenelzine, tranylcypromine, moclobemide, selegiline, linezolid and methylene blue. You must wait at least 7 days after you stop taking DESVENLAFAXINE before taking any MAOI.

To help avoid side effects and ensure proper use, talk to your healthcare professional before you take DESVENLAFAXINE. Talk about any health conditions or problems you may have, including if you:

- have or have a history of:
 - kidney problems
 - seizures (sudden and uncontrolled burst of electrical activity in the brain)
 - stroke

- heart problems
- aggression
- abnormal levels of lipids (fats) in your blood
- low sodium levels in your blood
- bowel blockage or narrowing of the stomach or intestines
- have difficulty swallowing tablets whole.
- have a history or family history of mania or bipolar disorder.
- have a bleeding disorder or have been told that you have low blood platelets.
- have blood pressure problems.
- are taking any medicines, especially:
 - other medicines used to treat depression
 - medicines used to treat psychiatric disorders
 - opioids (including those used to treat pain or drug dependence)
 - medicines used to treat anxiety
 - medicines used to prevent blood clots (e.g., acetylsalicylic acid (ASA), blood thinners)
 - non-steroidal anti-inflammatory drugs (NSAIDs), used to relieve pain and reduce inflammation (e.g., ibuprofen, naproxen, diclofenac, celecoxib)
 - medicines used to treat migraines (e.g., triptans)
 - lithium, used to treat manic episodes of bipolar disorder
- are taking any nutritional or herbal supplements, including St. John’s Wort.
- had a recent bone fracture or were told you have osteoporosis or risk factors for osteoporosis.
- are pregnant or thinking about becoming pregnant, or if you are breast-feeding.

Other warnings you should know about:

Do NOT stop taking DESVENLAFAXINE without talking to your healthcare professional first, as it may cause unwanted side effects. These include irritability, agitation, aggression, dizziness, intense feelings of depression, numbness, tingling, burning or prickling sensations, anxiety, confusion, headache, low or high energy level, ringing in the ears, seizures (sudden and uncontrolled burst of electrical activity in the brain), vision changes and high blood pressure.

Activation of mania: Some patients with bipolar disorder (also known as manic depression) may enter into a manic phase when they start taking DESVENLAFAXINE. Tell your healthcare professional if you experience symptoms of mania such as excessive physical activity, overactive behaviour or thoughts, increased energy, trouble sleeping, racing thoughts, reckless behaviour, excessive happiness or irritability, talking more or faster than usual.

Angle-closure glaucoma: DESVENLAFAXINE can cause an acute attack of glaucoma. Having your eyes examined before you take DESVENLAFAXINE could help identify if you are at risk of having angle-closure glaucoma. Seek immediate medical attention if you experience:

- eye pain;
- changes in vision;

- swelling or redness in or around the eye.

Serotonin toxicity (also known as serotonin syndrome): DESVENLAFAXINE can cause serotonin toxicity, a rare but potentially life-threatening condition. It can cause serious changes in how your brain, muscles and digestive system work. You may develop serotonin toxicity if you take DESVENLAFAXINE with certain antidepressants or migraine medications. Serotonin toxicity symptoms include:

- fever, sweating, shivering, diarrhea, nausea, vomiting;
- muscle shakes, jerks, twitches or stiffness, overactive reflexes, loss of coordination;
- fast heartbeat, changes in blood pressure;
- confusion, agitation, restlessness, hallucinations, mood changes, unconsciousness, and coma.

Falls and fractures: Taking DESVENLAFAXINE may increase your risk of breaking a bone if you are elderly, have osteoporosis or have other major risk factors for breaking a bone. You should take extra care to avoid falls, especially if you get dizzy or have low blood pressure.

Effects on sexual function: Taking medicines like DESVENLAFAXINE may cause symptoms of sexual dysfunction. In some cases these symptoms have continued after stopping DESVENLAFAXINE treatment. Talk to your healthcare professional if you experience symptoms such as a decrease in sexual desire, performance or satisfaction.

Pregnancy: Only take DESVENLAFAXINE during pregnancy if you and your healthcare professional have discussed the risks and have decided that you should. If you take DESVENLAFAXINE near the end of your pregnancy, you may be at a higher risk of heavy vaginal bleeding shortly after birth. If you become pregnant while taking DESVENLAFAXINE, tell your healthcare professional **right away**.

Effects on newborns: In some cases, babies born to a mother taking DESVENLAFAXINE during pregnancy may require hospitalization, breathing support and tube feeding. Be ready to seek medical help for your newborn if they:

- have trouble breathing or feeding;
- have muscle stiffness, or floppy muscles (like a rag doll);
- have seizures (sudden and uncontrolled burst of electrical activity in the brain);
- are shaking (jitteriness);
- are constantly crying

Breast-feeding: DESVENLAFAXINE can pass into breast milk and may harm a breastfed baby. Only take DESVENLAFAXINE while you are breast-feeding if you and your healthcare professional have discussed the risks and have decided that you should.

Driving and using machines: Until you know how DESVENLAFAXINE affects you, do not drive or operate a vehicle or potentially dangerous machinery.

Monitoring and tests: Your healthcare professional may do tests, including blood tests, before you take DESVENLAFAXINE and regularly during your treatment. These tests will monitor:

- your blood pressure;
- your levels of cholesterol and triglycerides (types of fat) in your blood.

Tell your healthcare professional about all the medicines you take, including any drugs, vitamins, minerals, natural supplements or alternative medicines.

Serious Drug Interactions

Do not take DESVENLAFAXINE if you:

- are taking, or have taken in the last 14 days, any MAOIs such as phenelzine, tranylcypromine, moclobemide, selegiline, linezolid and methylene blue. You must wait at least 7 days after you stop taking DESVENLAFAXINE before taking any MAOI.

Before taking DESVENLAFAXINE, tell your healthcare professional if you take the following medicines:

- other medicines that contain desvenlafaxine, or venlafaxine
- other antidepressants, such as other SNRIs, selective serotonin reuptake inhibitors (SSRIs) and certain tricyclic antidepressants
- medicines used to treat psychiatric disorders (antipsychotics)
- amphetamines, used to treat conditions such as narcolepsy (uncontrollable urge to sleep), and attention deficit hyperactivity disorder (ADHD)
- lithium, used to treat manic episodes of bipolar disorder
- opioid medicines, used to treat pain or drug dependence, such as methadone, tramadol, buprenorphine, fentanyl, tapentadol, meperidine, pentazocine
- dextromethorphan, used to relieve coughs
- triptans, used to treat migraines
- tryptophan supplements
- St. John's Wort, a herbal remedy

Taking DESVENLAFAXINE with any of these medicines may cause serious drug interactions (e.g., serotonin toxicity). Ask your healthcare professional if you are unsure.

The following may also interact with DESVENLAFAXINE:

- medicines used to treat anxiety
- medicines to treat fungal infections such as ketoconazole
- benzodiazepines (used to treat anxiety, seizures and insomnia) such as midazolam
- medicines that affect your electrolyte levels such as diuretics (“water pills”)
- medicines that can affect how your blood clots such as warfarin, acetylsalicylic acid (ASA), and non-steroidal anti-inflammatory drugs (NSAIDs)
- nutritional or herbal supplements
- alcohol. It is recommended to avoid drinking alcohol while taking DESVENLAFAXINE.

How to take DESVENLAFAXINE:

- It is very important that you take DESVENLAFAXINE exactly as your healthcare professional has instructed.
- Do not change your dose without talking to your healthcare professional.
- Your healthcare professional will tell you when to stop taking DESVENLAFAXINE. Always follow your healthcare professional’s instructions on how to lower your dose carefully and safely to avoid experiencing withdrawal symptoms.
- Continue to take DESVENLAFAXINE even if you do not feel better as it may take several weeks for your medicine to start working.
- Take DESVENLAFAXINE:
 - once a day,
 - at the same time each day,
 - with or without food.
- Swallow tablets whole with a glass of water. Do not chew, divide or crush tablets.
- The medication in DESVENLAFAXINE is packed within a non-absorbable shell. This shell has been specially designed to slowly release the medicine at a constant rate over time so that the body can absorb it. The shell does not dissolve completely after all the medicine has been released, and you may sometimes notice it in your stool. Do not be concerned, this is normal.

Usual dose:

The usual dose is 50 mg once daily. Your healthcare professional may increase your dose if you need it.

Overdose:

If you think you, or a person you are caring for, have taken too much DESVENLAFAXINE, contact a healthcare professional, hospital emergency department, or regional poison control centre immediately, even if there are no symptoms.

Missed Dose:

If you miss a dose, take it as soon as you remember. If it is almost time for your next dose, skip the missed dose and continue with your next scheduled dose. Do not take two doses at the same time.

What are possible side effects from using DESVENLAFAXINE?

These are not all the possible side effects you may have when taking DESVENLAFAXINE. If you experience any side effects not listed here, tell your healthcare professional.

Side effects of DESVENLAFAXINE may include:

- nausea, vomiting, diarrhea, constipation, abdominal discomfort or pain, feeling bloated (gas), dry mouth
- headache, dizziness, vertigo (feeling like you are spinning)
- chills
- lack of energy
- flu (fever, body aches, cough), stuffy nose, nosebleeds
- poor appetite, change in tastes, changes in weight
- burning or prickling sensation in the hands, arms, legs, or feet
- coldness in hands and feet
- difficulty to fall or stay asleep, sleepiness
- excessive sweating, skin rash, sensitivity to light
- abnormal dreams
- yawning
- hot flashes
- hair loss

Serious side effects and what to do about them			
Symptom / effect	Talk to your healthcare professional		Stop taking drug and get immediate medical help
	Only if severe	In all cases	
COMMON			

Serious side effects and what to do about them			
Symptom / effect	Talk to your healthcare professional		Stop taking drug and get immediate medical help
	Only if severe	In all cases	
Hypertension (high blood pressure): headache, stronger and possibly faster heartbeat, chest pain, dizziness, excessive tiredness, and blurred vision. Sometimes, the increase in blood pressure could be severe enough to require urgent medical attention		✓	
Sexual problems: abnormal ejaculation or impotence in men, decreases in sexual desire, performance and satisfaction		✓	
Symptoms after discontinuation or dose reduction: loss of appetite or weight, anxiety, restlessness, aggression, confusion, convulsions, coordination problems, diarrhea, dizziness, dry mouth, fatigue, headache, rapid mood swings, nausea, nightmares, tingling of the skin, sleep disturbances, sweating, ringing in the ears or vomiting	✓		
Tachycardia (abnormally fast heartbeat): dizziness, light headedness, shortness of breath, racing heart		✓	
UNCOMMON			
Hypotension (low blood pressure): dizziness, fainting, light-headedness, blurred vision, nausea, vomiting, fatigue, (hypotension may occur when you go from lying or sitting to standing up)		✓	

Serious side effects and what to do about them			
Symptom / effect	Talk to your healthcare professional		Stop taking drug and get immediate medical help
	Only if severe	In all cases	
Myocardial infarction (heart attack): pressure or squeezing pain between the shoulder blades, in the chest, jaw, left arm or upper abdomen, shortness of breath, dizziness, fatigue, light-headedness, clammy skin, sweating, indigestion, anxiety, feeling faint and possible irregular heartbeat			✓
Myocardial ischemia (lack of blood flow to the heart which can lead to heart attack): sudden chest pain, pressure or discomfort, feeling faint, feeling anxious, shortness of breath, irregular heartbeat, nausea, sudden heavy sweating			✓
Severe skin reactions: raised red or purple skin patches, possibly with blister or crust in the center, possibly swollen lips, mild itching or burning; skin redness, blistering and/or peeling of the skin and/or inside of the lips, eyes, mouth, nasal passages or genitals, can be accompanied with fever, chills, headache, cough, body aches or swollen glands			✓
Urinary retention (inability to urinate or empty or loss of control of the bladder): pain		✓	
RARE			

Serious side effects and what to do about them			
Symptom / effect	Talk to your healthcare professional		Stop taking drug and get immediate medical help
	Only if severe	In all cases	
Angle-closure glaucoma: blurred vision, halos around lights, eye pain and redness, nausea and vomiting, severe headache			✓
Hallucinations (seeing or hearing things that are not there)		✓	
Hyponatremia (low sodium in the blood): lack of energy, confusion, muscular twitching, achy, stiff or uncoordinated muscles, seizure, coma		✓	
New or worsened emotional or behavioural problems: agitation, feeling detached from one's self, anger, aggression, anxiety, violent thoughts		✓	
Mania: elevated or irritable mood, decreased need for sleep, racing thoughts		✓	
Pancreatitis (inflammation of the pancreas): upper abdominal pain, fever, rapid heartbeat, nausea, vomiting, tenderness when touching the abdomen		✓	
Seizures (sudden and uncontrolled burst of electrical activity in the brain): confusion, staring, changes in behaviour and emotions, can occur with or without loss of consciousness, muscle twitching or other movements			✓
Serotonin toxicity (also known as serotonin syndrome): mental changes such as agitation, hallucinations, confusion, or other changes in mental status;			✓

Serious side effects and what to do about them			
Symptom / effect	Talk to your healthcare professional		Stop taking drug and get immediate medical help
	Only if severe	In all cases	
coordination problems, uncontrolled muscle spasms, or muscle twitching (overactive reflexes); restlessness, shaking, shivering, racing or fast heartbeat, high or low blood pressure, sweating or fever, nausea, vomiting, or diarrhea, muscle rigidity (stiff muscles), tremor, loss of muscle control			
Uncontrollable movements of the body or face		✓	
UNKNOWN FREQUENCY			
Low Platelets: Bruising or unusual bleeding from the skin or other areas			✓
Akathisia (a type of movement disorder): a feeling of inner restlessness accompanied by mental distress and an inability to sit or stand still.		✓	
Allergic reaction: difficulty swallowing or breathing, wheezing, drop in blood pressure, feeling sick to your stomach and throwing up, hives or rash, swelling of the face, lips, tongue or throat			✓
Gastrointestinal bleeding (bleeding in the stomach or bowels): black, tarry stool, blood in the stool, vomiting blood			✓
Self-harm or Suicide: thoughts or actions about hurting or killing yourself			✓

Serious side effects and what to do about them			
Symptom / effect	Talk to your healthcare professional		Stop taking drug and get immediate medical help
	Only if severe	In all cases	
Syndrome of inappropriate antidiuretic hormone secretion (SIADH): concentrated urine (dark in colour), feel or are sick, muscle cramps, confusion and fits (seizures) which may be due to inappropriate secretion of ADH (antidiuretic hormone)			✓
Urinary tract infection (infection of the urinary system, including kidneys, ureters, bladder and urethra): pain or burning sensation while urinating, frequent urination, blood in urine, pain in the lower abdomen, strong smelling urine, cloudy urine		✓	

If you have a troublesome symptom or side effect that is not listed here or becomes bad enough to interfere with your daily activities, tell your healthcare professional.

Reporting Side Effects

You can report any suspected side effects associated with the use of health products to Health Canada by:

- Visiting the Web page on Adverse Reaction Reporting (<https://www.canada.ca/en/health-canada/services/drugs-health-products/medeffect-canada/adverse-reaction-reporting.html>) for information on how to report online, by mail or by fax; or
- Calling toll-free at 1-866-234-2345.

NOTE: Contact your health professional if you need information about how to manage your side effects. The Canada Vigilance Program does not provide medical advice.

Storage:

- Store at 15°C to 30°C. Keep in original pack and protect from light.
- Keep out of reach and sight of children.
- Do not use DESVENLAFAXINE after the expiration date (EXP), which is stated on the package. The expiration date refers to the last day of that month.
- Medicines should not be disposed of in wastewater or in household waste. Ask your pharmacist how to dispose of medicines no longer required. These measures will help to protect the environment.

If you want more information about DESVENLAFAXINE:

- Talk to your healthcare professional
- Find the full product monograph that is prepared for healthcare professionals and includes this Patient Medication Information by visiting the Health Canada website: (<https://www.canada.ca/en/health-canada/services/drugs-health-products/drug-products/drug-product-database.html>); the manufacturer's website (<https://www.sanis.com/products/>), or by calling 1-866-236-4076.

This leaflet was prepared by Sanis Health Inc.
1 President's Choice Circle
Brampton, Ontario
L6Y 5S5

Last Revised: JUN 03, 2024