

PRODUCT MONOGRAPH

INCLUDING PATIENT MEDICATION INFORMATION

Pr ANASTROZOLE

Anastrozole tablets

Tablet, 1 mg, Oral

Manufacturer's Standard

Non-Steroidal Aromatase Inhibitor

Sivem Pharmaceuticals ULC
4705 Dobrin Street
Saint-Laurent, Quebec, Canada
H4R 2P7

www.sivem.ca

Date of Initial Authorization:
AUG 19, 2022

Date of Revision:
OCT 15, 2024

Submission Control Number: 290484

RECENT MAJOR LABEL CHANGES

7 WARNINGS AND PRECAUTIONS, MUSCULOSKELETAL	06/2023
---	---------

TABLE OF CONTENTS

Sections or subsections that are not applicable at the time of authorization are not listed.

RECENT MAJOR LABEL CHANGES	2
TABLE OF CONTENTS	2
PART I: HEALTH PROFESSIONAL INFORMATION	4
1 INDICATIONS	4
1.1 Pediatrics.....	4
1.2 Geriatrics.....	4
2 CONTRAINDICATIONS	4
3 SERIOUS WARNINGS AND PRECAUTIONS BOX	4
4 DOSAGE AND ADMINISTRATION	5
4.2 Recommended Dose and Dosage Adjustment.....	5
4.4 Administration.....	5
4.5 Missed Dose.....	5
5 OVERDOSAGE	5
6 DOSAGE FORMS, STRENGTHS, COMPOSITION AND PACKAGING	6
7 WARNINGS AND PRECAUTIONS	6
7.1 Special Populations.....	7
7.1.1 Pregnant Women.....	7
7.1.2 Breast-feeding.....	8
7.1.3 Pediatrics.....	8
7.1.4 Geriatrics.....	8
8 ADVERSE REACTIONS	8
8.1 Adverse Reaction Overview.....	8
8.2 Clinical Trial Adverse Reactions.....	9
8.3 Less Common Clinical Trial Adverse Reactions.....	19
8.4 Abnormal Laboratory Findings: Hematologic, Clinical Chemistry and Other Quantitative Data.....	20
8.5 Post-Market Adverse Reactions.....	21
9 DRUG INTERACTIONS	21
9.2 Drug Interactions Overview.....	21
9.4 Drug-Drug Interactions.....	22
9.5 Drug-Food Interactions.....	22
9.6 Drug-Herb Interactions.....	23

9.7 Drug-Laboratory Test Interactions	23
10 CLINICAL PHARMACOLOGY	23
10.1 Mechanism of Action	23
10.2 Pharmacodynamics	23
10.3 Pharmacokinetics	24
11 STORAGE, STABILITY AND DISPOSAL	26
12 SPECIAL HANDLING INSTRUCTIONS	26
PART II: SCIENTIFIC INFORMATION	27
13 PHARMACEUTICAL INFORMATION	27
14 CLINICAL TRIALS	28
14.1 Clinical Trials by Indication	28
Adjuvant Treatment of Postmenopausal Women with Hormone Receptor Positive Early Breast Cancer	28
Hormonal Treatment of Advanced Breast Cancer in Postmenopausal Women	44
14.3 Comparative Bioavailability Studies	49
15 MICROBIOLOGY	49
16 NON-CLINICAL TOXICOLOGY	49
17 SUPPORTING PRODUCT MONOGRAPHS	53
PATIENT MEDICATION INFORMATION	54

PART I: HEALTH PROFESSIONAL INFORMATION

1 INDICATIONS

ANASTROZOLE (anastrozole) is indicated for:

- the adjuvant treatment of postmenopausal women with hormone receptor positive early breast cancer.

Approval is based on superior disease-free survival for ANASTROZOLE in comparison to tamoxifen. However, overall survival was not significantly different between the two treatments (see [14 CLINICAL TRIALS](#)).

- hormonal treatment of advanced breast cancer in postmenopausal women.

1.1 Pediatrics

Pediatrics (< 18 years of age): Health Canada has not authorized an indication for pediatric use for ANASTROZOLE as safety and efficacy have not been established in this group of patients.

1.2 Geriatrics

Geriatrics (> 65 years of age): Evidence from clinical studies and experience suggests that use in the geriatric population is not associated with differences in safety or effectiveness.

2 CONTRAINDICATIONS

- Patients who are hypersensitive to ANASTROZOLE (anastrozole) or to any ingredient in the formulation, including any non-medicinal ingredient, or component of the container. For a complete listing, see [6 DOSAGE FORMS, STRENGTHS, COMPOSITION AND PACKAGING](#).
- Pregnant or lactating women.

3 SERIOUS WARNINGS AND PRECAUTIONS BOX

Serious Warnings and Precautions

- Not recommended for use in pre-menopausal women as safety and efficacy have not been established in these patients (see [10 CLINICAL PHARMACOLOGY](#)).
- Potential risk/benefit should be carefully assessed in patients with severe hepatic and severe renal impairment (see [10.3 Pharmacokinetics](#)).
- Potential risk/benefit should be carefully assessed in patients with osteoporosis or risk factors for osteoporosis (see [Musculoskeletal](#)).

4 DOSAGE AND ADMINISTRATION

4.2 Recommended Dose and Dosage Adjustment

ANASTROZOLE (anastrozole) should be administered 1 mg orally, once a day.

In the adjuvant setting, it is currently recommended that treatment be given for 5 years.

Pediatrics (< 18 years of age): Health Canada has not authorized an indication for pediatric use for ANASTROZOLE.

Geriatrics (> 65 years of age): No changes in dose are necessary for elderly patients (see [1 INDICATIONS](#)).

Dose modification for Patients with Hepatic Impairment: Although the apparent oral clearance of anastrozole was decreased in subjects with cirrhosis due to alcohol abuse, plasma anastrozole concentrations remained within the range seen across all clinical trials in subjects without liver disease. Therefore, no changes in dose are recommended for patients with mild-to-moderate hepatic impairment, although patients should be monitored for side effects. Anastrozole has not been studied in patients with severe hepatic impairment. The potential risk/benefit to such patients should be carefully considered before administration of ANASTROZOLE ([10.3 Pharmacokinetics](#)).

Dose modification for Patients with Renal Impairment: No changes in dose are necessary for patients with renal impairment. The potential risk/benefit to patients with severe renal impairment should still be considered prior to the administration of ANASTROZOLE in these patients ([10.3 Pharmacokinetics](#)).

4.4 Administration

Patients should swallow ANASTROZOLE with fluids.

Patients should try to take ANASTROZOLE at the same time each day.

4.5 Missed Dose

A missed dose should be taken as soon as possible, as long as it is taken at least 12 hours before the next dose is due. A missed dose should not be taken within 12 hours of the next dose.

5 OVERDOSAGE

There is limited clinical experience of accidental overdosage. Acute toxicity was seen in animals at a dose greater than 45 mg/kg (equivalent to 2.7 g). Clinical trials have been conducted with various dosages of anastrozole, up to 60 mg in a single dose given to healthy male volunteers and up to 10 mg daily given to postmenopausal women with advanced breast cancer; these

dosages were well tolerated. A single dose of anastrozole that results in life-threatening symptoms has not been established.

There is no specific antidote to overdose and treatment must be symptomatic. In the management of an overdose, consideration should be given to the possibility that multiple agents may have been taken. Vomiting may be induced if the patient is alert. Dialysis may be helpful because anastrozole is not highly protein bound. General supportive care, including frequent monitoring of vital signs and close observation of the patient, is indicated.

For management of a suspected drug overdose, contact your regional poison control centre.

6 DOSAGE FORMS, STRENGTHS, COMPOSITION AND PACKAGING

Table 1 – Dosage Forms, Strengths, Composition and Packaging

Route of Administration	Dosage Form/ Strength / Composition	Non-medicinal Ingredients
Oral	Tablet 1 mg	cellulose microcrystalline, hydroxypropyl cellulose, hydroxypropyl methylcellulose, lactose monohydrate, macrogol 4000, magnesium stearate, silica colloidal anhydrous, sodium starch glycolate, and titanium dioxide.

ANASTROZOLE (anastrozole) is a 1 mg, white, round tablet engraved with “A1” on one side.

ANASTROZOLE is available in blister packs of 30 tablets.

7 WARNINGS AND PRECAUTIONS

Please see [3 SERIOUS WARNINGS AND PRECAUTIONS BOX](#).

General

Anastrozole has not been investigated in patients with any degree of brain or leptomeningeal involvement or with pulmonary lymphangitic disseminated disease.

Cardiovascular

In the ATAC trial, ischemic cardiovascular events were reported more frequently in patients treated with anastrozole compared to those treated with tamoxifen, although the difference was not statistically significant. A retrospective evaluation has shown that this numerical difference was associated with a subgroup of patients with pre-existing ischemic heart disease. A statistical analysis could not be performed on this subgroup evaluation. Serious adverse events continued to be collected during the off-treatment follow-up and the incidence of cardiovascular events reported was similar in the anastrozole and tamoxifen arms (3.9% vs. 3.7%, respectively).

Driving and Operating Machinery

ANASTROZOLE is unlikely to impair the ability of patients to drive and operate machinery. However, asthenia and somnolence have been reported with the use of anastrozole and caution should be observed when driving or operating machinery while such symptoms persist.

Monitoring and Laboratory Tests

Anastrozole has not been observed to interfere with routine clinical laboratory test results.

Bone assessment: Women should have their osteoporosis risk assessed and managed according to local clinical practice and guidelines.

Musculoskeletal

Arthralgia/Arthritis: The use of Aromatase Inhibitors, including anastrozole, may cause arthralgia/arthritis, which may impact on treatment compliance and quality of life. In the ATAC study, 35.6% of patients on the anastrozole arm reported joint pain/stiffness (includes arthralgia, arthrosis, arthritis and joint disorder) versus 29.4% of patients on the tamoxifen arm. Arthritis alone was reported in 16.6% of patients on the anastrozole arm versus 14.4% of patients on the tamoxifen arm.

Bone Mineral Density: The use of estrogen lowering agents, including anastrozole, may cause a reduction in bone mineral density with a possible consequent increased risk of fracture. In the SABRE study, postmenopausal women with hormone receptor positive early breast cancer with existing moderate or high risk of fragility fracture, bone mineral density (BMD) loss could be inhibited by using anastrozole together with a bisphosphonate (risedronate) (see [Assessment of Bone](#)).

Myalgia: Myalgia has been associated with both anti-estrogens and estrogen-lowering agents. In the adjuvant setting, muscle pain was reported in the ATAC study at a higher incidence for anastrozole (5.8%) compared to tamoxifen (5.2%).

Tendon disorders: The use of third generation aromatase inhibitors, including anastrozole, was found to be associated with tendonitis and tenosynovitis as reported in randomized controlled trials. Tendon rupture was found to be a potential risk. Tendonitis and tenosynovitis were estimated to be of uncommon occurrence, and tendon rupture of rare occurrence. Treating physicians should monitor patients for these adverse drug reactions.

7.1 Special Populations

7.1.1 Pregnant Women

ANASTROZOLE is contraindicated in pregnant women.

The extent of exposure in pregnancy to anastrozole during clinical trials and postmarketing is very limited to individual cases only. If a patient becomes pregnant while receiving this drug, the

patient should be apprised of the potential hazard to the fetus or potential risk for loss of the pregnancy.

Anastrozole has been found to cross the placenta following oral administration of 0.1 mg/kg in rats and rabbits. Studies in both rats and rabbits showed that anastrozole increased pregnancy loss. Evidence of fetotoxicity, including delayed fetal development was observed in rats. In rabbits, anastrozole caused pregnancy failure. There was no evidence of teratogenicity in rats and rabbits. See [16 NON-CLINICAL TOXICOLOGY](#).

7.1.2 Breast-feeding

ANASTROZOLE is contraindicated in lactating women.

7.1.3 Pediatrics

Pediatrics (< 18 years of age): Health Canada has not authorized an indication for use in pediatric patients as safety and efficacy have not been established.

7.1.4 Geriatrics

Geriatrics (> 65 years of age): Anastrozole pharmacokinetics have been investigated in postmenopausal female volunteers and patients with breast cancer. The pharmacokinetics were similar in volunteers and in patients, and no age related effects were seen.

8 ADVERSE REACTIONS

8.1 Adverse Reaction Overview

Adverse events have usually been mild to moderate with few withdrawals from treatment due to undesirable events.

The pharmacological action of anastrozole may give rise to certain expected effects. Arthritis/arthralgia, joint pain/stiffness and hot flushes were reported very commonly ($\geq 10\%$). Common adverse reactions ($\geq 1\%$ - $< 10\%$) are: asthenia, bone pain, myalgia, carpal tunnel syndrome, sensory disturbances (including paraesthesia, taste loss and taste perversion), vaginal dryness, hair thinning (alopecia), rash, nausea, diarrhea, headache and increases in alkaline phosphatase, alanine aminotransferase and aspartate aminotransferase.

In the ATAC trial, ischemic cardiovascular events were reported more frequently in patients treated with anastrozole compared to those treated with tamoxifen, although the difference was not statistically significant. A retrospective evaluation has shown that this numerical difference was associated with a subgroup of patients with pre-existing ischemic heart disease. A statistical analysis could not be performed on this subgroup evaluation. Serious adverse events continued to be collected during the off-treatment follow-up and the incidence of cardiovascular events reported was similar in the anastrozole and tamoxifen arms (3.9% vs. 3.7%, respectively).

Events of carpal tunnel syndrome have been reported in patients receiving anastrozole treatment in clinical trials in greater numbers than those receiving treatment with tamoxifen. The majority of these events occurred in patients with identifiable risk factors for the development of the condition. In the ATAC adjuvant trial, 83 events of carpal tunnel syndrome occurred in 78 patients in the anastrozole monotherapy arm, and 22 events occurred in 22 patients in the tamoxifen arm.

Vaginal bleeding has been reported infrequently, mainly in patients during the first few weeks after changing from existing hormonal therapy to treatment with anastrozole. If bleeding persists, further evaluation should be considered.

8.2 Clinical Trial Adverse Reactions

Clinical trials are conducted under very specific conditions. The adverse reaction rates observed in the clinical trials; therefore, may not reflect the rates observed in practice and should not be compared to the rates in the clinical trials of another drug. Adverse reaction information from clinical trials may be useful in identifying and approximating rates of adverse drug reactions in real-world use.

Adjuvant Treatment of Postmenopausal Women with Hormone Receptor Early Breast Cancer

At the time of the 5-year treatment completion analysis, the median duration of adjuvant treatment was 59.8 months and 59.6 months for patients receiving anastrozole 1 mg and tamoxifen 20 mg, respectively. The combination of anastrozole and tamoxifen did not demonstrate any safety benefits in comparison to tamoxifen alone after the results from the first analysis (median duration of treatment was approximately 33 months).

Anastrozole was associated with statistically significant fewer discontinuations from treatment as a result of an adverse event compared to tamoxifen (11.1% vs. 14.3%) and fewer adverse drug reactions leading to discontinuation (6.5% vs. 8.9%). The incidence of on-treatment serious adverse events is significantly lower in patients receiving anastrozole 1 mg relative to tamoxifen 20 mg (33.3% versus 36.0%).

Adverse events occurring with an incidence of at least 5% in either treatment group during treatment or within 14 days of the end of treatment are presented below in [Table 2](#).

Table 2 Adverse events occurring with an incidence of at least 5% in any treatment group during or within 14 days of the end of treatment from the ATAC trial

Body System and Adverse Event by COSTART-Preferred Term	Number (%) of Patients ^a	
	33-month analysis (data cut-off 29 June 2001)	5-year treatment completion analysis (data cut-off 31 March 2004)

	Anastrozole 1 mg (N=3092)	Tamoxifen 20 mg (N=3094)	Anastrozole 1 mg (N=3092)	Tamoxifen 20 mg (N=3094)
Body as a Whole				
Asthenia	483 (15.6)	466 (15.1)	575 (18.6)	544 (17.6)
Pain	432 (14.0)	413 (13.3)	533 (17.2)	485 (15.7)
Back Pain	238 (7.7)	234 (7.6)	321 (10.4)	309 (10.0)
Headache	253 (8.2)	197 (6.4)	314 (10.2)	249 (8.0)
Accidental Injury	195 (6.3)	189 (6.1)	311 (10.1)	303 (9.8)
Infection	197 (6.4)	205 (6.6)	285 (9.2)	276 (8.9)
Abdominal Pain	202 (6.5)	211 (6.8)	271 (8.8)	276 (8.9)
Chest Pain	145 (4.7)	115 (3.7)	200 (6.5)	150 (4.8)
Flu Syndrome	146 (4.7)	164 (5.3)	175 (5.7)	195 (6.3)
Neoplasm	101 (3.3)	99 (3.2)	162 (5.2)	144 (4.7)
Cyst	96 (3.1)	110 (3.6)	138 (4.5)	162 (5.2)
Cardiovascular				
Vasodilation	1060 (34.3)	1229 (39.7)	1104 (35.7)	1264 (40.9)
Hypertension	255 (8.2)	218 (7.0)	402 (13.0)	349 (11.3)
Digestive				
Nausea	287 (9.3)	281 (9.1)	343 (11.1)	335 (10.8)
Diarrhea	206 (6.7)	168 (5.4)	265 (8.6)	216 (7.0)
Constipation	183 (5.9)	203 (6.6)	249 (8.1)	252 (8.1)
Gastrointestinal Disorder	126 (4.1)	104 (3.4)	210 (6.8)	158 (5.1)
Dyspepsia	150 (4.9)	124 (4.0)	206 (6.7)	169 (5.5)
Haemic and Lymphatic				
Lymphoedema	247 (8.0)	277 (9.0)	304 (9.8)	341 (11.0)
Anemia	73 (2.4)	102 (3.3)	113 (3.7)	159 (5.1)
Metabolic and Nutritional				
Peripheral Edema	236 (7.6)	246 (8.0)	311 (10.1)	343 (11.1)
Weight Gain	234 (7.6)	236 (7.6)	285 (9.2)	274 (8.9)
Hypercholesterolemia	186 (6.0)	68 (2.2)	278 (9.0)	108 (3.5)
Musculoskeletal Disorders				
Arthritis	380 (12.3)	296 (9.6)	512 (16.6)	445 (14.4)
Arthralgia	386 (12.5)	252 (8.1)	467 (15.1)	344 (11.1)
Osteoporosis	192 (6.2)	134 (4.3)	325 (10.5)	226 (7.3)
Fracture	183 (5.9)	115 (3.7)	315 (10.2)	209 (6.8)
Arthrosis	161 (5.2)	112 (3.6)	207 (6.7)	156 (5.0)
Bone Pain	158 (5.1)	139 (4.5)	201 (6.5)	185 (6.0)
Joint Disorder	102 (3.3)	95 (3.1)	184 (6.0)	160 (5.2)
Myalgia	114 (3.7)	103 (3.3)	179 (5.8)	160 (5.2)
Nervous System				
Depression	323 (10.4)	315 (10.2)	413 (13.4)	382 (12.3)
Insomnia	253 (8.2)	226 (7.3)	309 (10.0)	281 (9.1)
Dizziness	180 (5.8)	191 (6.2)	236 (7.6)	234 (7.6)

Body System and Adverse Event by COSTART-Preferred Term	Number (%) of Patients ^a			
	33-month analysis		5-year treatment completion analysis	
	(data cut-off 29 June 2001)		(data cut-off 31 March 2004)	
	Anastrozole 1 mg (N=3092)	Tamoxifen 20 mg (N=3094)	Anastrozole 1 mg (N=3092)	Tamoxifen 20 mg (N=3094)
Paresthesia	181 (5.9)	106 (3.4)	215 (7.0)	145 (4.7)
Anxiety	147 (4.8)	147 (4.8)	195 (6.3)	180 (5.8)
Respiratory				
Pharyngitis	335 (10.8)	327 (10.6)	443 (14.3)	422 (13.6)
Cough Increased	194 (6.3)	216 (7.0)	261 (8.4)	287 (9.3)
Dyspnea	173 (5.6)	164 (5.3)	234 (7.6)	237 (7.7)
Sinusitis	137 (4.4)	118 (3.8)	184 (6.0)	159 (5.1)
Bronchitis	126 (4.1)	107 (3.5)	167 (5.4)	153 (4.9)
Skin and Appendages				
Rash	281 (9.1)	314 (10.1)	333 (10.8)	387 (12.5)
Sweating	112 (3.6)	158 (5.1)	145 (4.7)	177 (5.7)
Special Senses				
Cataract Specified	107 (3.5)	116 (3.7)	182 (5.9)	213 (6.9)
Urogenital				
Breast Pain	176 (5.7)	121 (3.9)	251 (8.1)	169 (5.5)
Urinary Tract Infection	169 (5.5)	224 (7.2)	244 (7.9)	313 (10.1)
Vulvovaginitis	169 (5.5)	119 (3.8)	194 (6.3)	150 (4.8)
Breast Neoplasm	94 (3.0)	89 (2.9)	164 (5.3)	139 (4.5)
Vaginitis	79 (2.6)	122 (3.9)	125 (4.0)	158 (5.1)
Vaginal Hemorrhage ^b	100 (3.2)	151 (4.9)	122 (3.9)	180 (5.8)
Leucorrhea	68 (2.2)	264 (8.5)	86 (2.8)	286 (9.2)

^a Patients with multiple events in the same category are counted only once in that category. Patients with events in more than 1 category are counted once in each of those categories.

^b Vaginal hemorrhage without further diagnosis.

COSTART Coding Symbols for Thesaurus of Adverse Reaction Terms.

N Number of patients treated.

Certain adverse events (irrespective of drug causality) and combinations of adverse events were prospectively specified for analysis, based on the known pharmacological properties and side effect profiles of anastrozole and tamoxifen. Tamoxifen was statistically superior to anastrozole for the adverse events of joint disorders and fractures (including fractures of spine, hip and wrist) while anastrozole was statistically superior to tamoxifen for the adverse events of hot flushes, vaginal bleeding, vaginal discharge, endometrial cancer, venous thromboembolic events (including deep thromboembolic events) and ischemic cerebrovascular events.

A fracture rate of 22 per 1000 patient years was observed on anastrozole and 15 per 1000 patient years with the tamoxifen group with a median follow-up of 68 months. The rate of hip fractures was similar for anastrozole and tamoxifen in the ATAC trial. After a median follow-up of 100 months, fractures were reported more frequently in patients treated with anastrozole in comparison to tamoxifen, both during and off-treatment (13.7% vs 10.1%; see [Table 3](#)), but the rate of fracture remained stable between the two groups. During the post-treatment follow-up period, the annual fracture rates were similar in the anastrozole and tamoxifen arms and the increased fracture episode rate seen during treatment was not observed following treatment completion as shown in [Figure 1](#).

Table 3 Incidence of fractures (during or off-trial treatment)

Category	Number (%) of patients ^a	
	2007 update analysis (data cut-off 31 March 2007)	
	Anastrozole 1 mg (N=3092)	Tamoxifen 20 mg (N=3094)
Non-serious or serious		
All Fractures	425 (13.7)	313 (10.1)
Wrist/Colles	95 (3.1)	84 (2.7)
Spine	61 (2.0)	38 (1.2)
Hip	49 (1.6)	42 (1.4)
Serious		
All Fractures	212 (6.9)	170 (5.5)
Wrist/Colles	49 (1.6)	45 (1.5)
Spine	23 (0.7)	18 (0.6)
Hip	46 (1.5)	40 (1.3)

^a Patients with multiple events in the same category are counted only once in that category. Patients with events in more than 1 category are counted once in each of those categories.

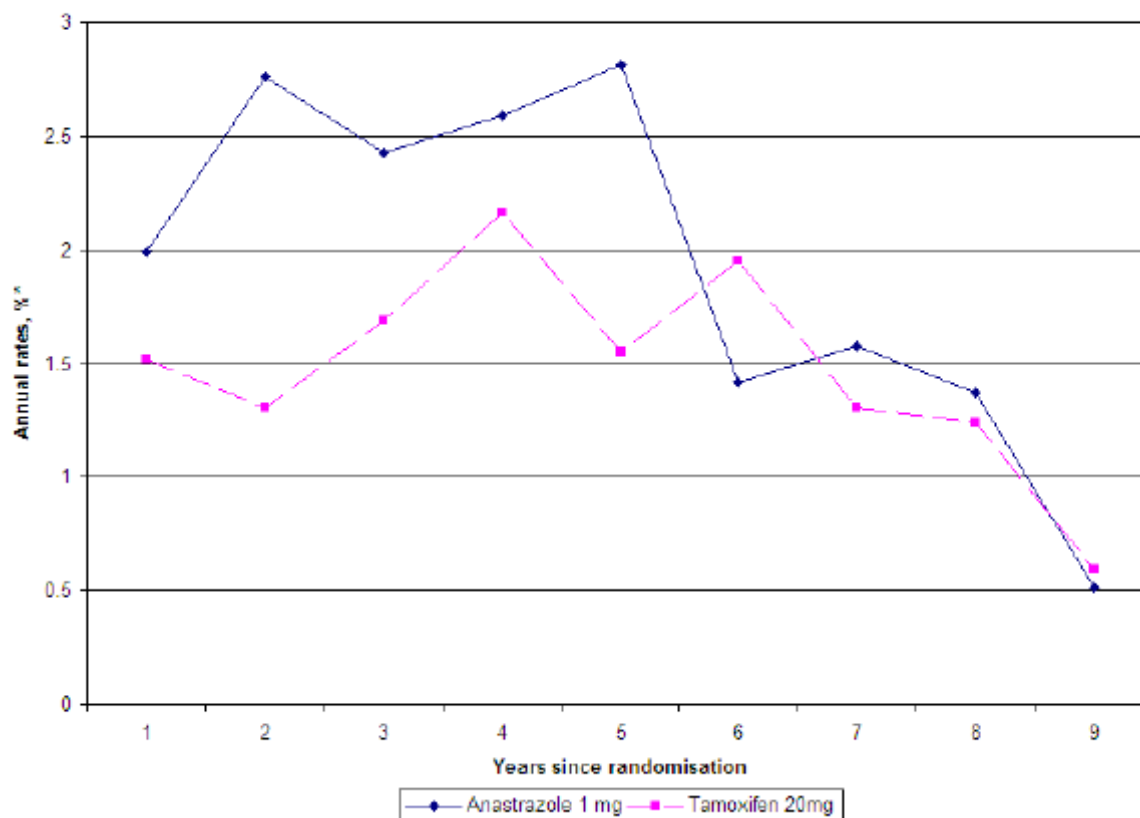
Note: Off-trial treatment AEs were SAEs and any fracture event reported as being serious or non-serious that occurred more than 14 days after stopping study treatment (but within 10 years of starting study treatment).

AEs starting after the patients first recurrence visit were not reported.

Note: Off-trial treatment AEs included all off-treatment reports regardless of whether a patient had had a similar report on treatment.

N Number of patients treated.

Figure 1 Annual first event rates of all fractures on or off study therapy



In the ATAC trial, ischemic cardiovascular events were reported more frequently in patients treated with anastrozole compared to those treated with tamoxifen, although the difference was not statistically significant (see [Table 4](#)). A retrospective evaluation has shown that this numerical difference was associated with a subgroup of patients with pre-existing ischemic heart disease. A statistical analysis could not be performed on this subgroup evaluation. From the 33 month analysis to the 68 month analysis, the incidence of cardiovascular events also remains stable over time between the two treatment groups. The incidence of myocardial infarctions increased by 0.1% in the anastrozole treatment group and 0.2% in the tamoxifen treatment group; the incidence of cerebrovascular accidents increased by 0.3% in each treatment group. During the off-treatment follow-up, when serious adverse events continued to be collected, the incidence of myocardial infarctions and cerebrovascular accidents was similar in both treatment groups.

[Table 4](#) provides a summary of the pre-specified adverse events that occurred in either treatment group during treatment and after cessation of trial therapy.

Table 4 Incidence of pre-specified adverse events occurring in either treatment group during treatment and after cessation of trial therapy from the ATAC Trial*

Adverse Event	Number (%) of Patients ^a			
	5 year treatment completion analysis (data cut-off 31 March 2004)			
	Anastrozole 1 mg (N=3092)	Tamoxifen 20 mg (N=3094)	Odds ratio ^b	p-value
Hot Flashes	1104 (35.7)	1264 (40.9)	0.80	<0.0001
Mood Disturbances	600 (19.4)	557 (18.0)	1.10	0.2
Fatigue/Asthenia	577 (18.7)	544 (17.6)	1.08	0.3
Nausea and Vomiting	396 (12.8)	385 (12.4)	1.03	0.7
Vaginal Discharge	111 (3.6)	407 (13.2)	0.25	<0.0001
Vaginal Bleeding	171 (5.5)	323 (10.4)	0.50	<0.0001
Joint Pain/Stiffness	1111 (35.9)	922 (29.8)	1.32	<0.0001
Fractures	340 (11.0)	238 (7.7)	1.48	<0.0001
Fractures of the Spine, Hip, or Wrist/Colles	148 (4.8)	112 (3.6)	1.34	0.02
Hip ^c	37 (1.2)	31 (1.0)	NC	NC
Spine ^c	45 (1.5)	27 (0.9)	NC	NC
Wrist/Colles ^c	72 (2.3)	63 (2.0)	NC	NC
Cataracts	191 (6.2)	219 (7.1)	0.86	0.2
Ischemic Cardiovascular Disease	137 (4.4)	119 (3.8)	1.16	0.2
Angina Pectoris ^c	75 (2.4)	56 (1.8)	NC	NC
Myocardial Infarct ^c	42 (1.4)	40 (1.3)	NC	NC
Coronary Artery Disorder ^c	26 (0.7)	27 (0.9)	NC	NC
Myocardial Ischemia ^c	24 (0.8)	16 (0.5)	NC	NC
Venous Thromboembolic Events	95 (3.1)	151 (4.9)	0.62	0.0003
Deep Venous Thromboembolic Events	57 (1.8)	83 (2.7)	0.68	0.03
Ischemic Cerebrovascular Events	67 (2.2)	94 (3.0)	0.71	0.03
Endometrial Cancer ^d	5 (0.2)	17 (0.8)	0.29	0.02

* All adverse events occurring during treatment or within 14 days of the end of treatment; all serious adverse events and all non-serious fractures occurring after 14 days from the end of treatment and prior to the confirmation of recurrence of breast cancer.

^a Patients with multiple events in the same category are counted only once in that category. Patients with events in more than 1 category are counted once in each of those categories.

^b Odds ratios of <1.00 indicate that treatment with anastrozole 1 mg is associated with a lower incidence of a specific event than tamoxifen 20 mg.

^c Individual COSTART-preferred terms for a particular category of event – the broader category was the ‘pre-specified adverse event’.

^d Percentages calculated based upon the numbers of patients with an intact uterus at baseline (N=2229 for anastrozole and N=2236 for tamoxifen).

N Number of patients treated.

NC Not calculated.

Hormonal Treatment of Advanced Breast Cancer in Postmenopausal Women

Two controlled clinical trials involving postmenopausal women with advanced breast cancer, compared treatment with tamoxifen (20 mg daily) versus treatment with anastrozole (1 mg daily). [Table 5](#) presents adverse events reported in these trials with an incidence of greater than 5% in either treatment group, regardless of causality.

Table 5 Number (%) of Patients with Adverse Events from Trials 0027 and 0030*

Adverse Event by Body System	Anastrozole 1 mg (n=506)	Tamoxifen 20 mg (n=511)
Body as a Whole		
Asthenia	83 (16.4)	81 (15.9)
Pain	70 (13.8)	73 (14.3)
Back Pain	60 (11.9)	68 (13.3)
Headache	47 (9.3)	40 (7.8)
Chest Pain	37 (7.3)	37 (7.2)
Flu Syndrome	35 (6.9)	30 (5.9)
Pelvic Pain	23 (4.5)	30 (5.9)
Cardiovascular		
Vasodilation	128 (25.3)	106 (20.7)
Hypertension	25 (4.9)	36 (7.0)
Digestive		
Nausea	94 (18.6)	106 (20.7)
Constipation	47 (9.3)	66 (12.9)
Abdominal Pain	40 (7.9)	38 (7.4)
Diarrhea	40 (7.9)	33 (6.5)
Vomiting	38 (7.5)	36 (7.0)
Anorexia	26 (5.1)	46 (9.0)
Metabolic and Nutritional		
Peripheral Edema	51 (10.1)	41 (8.0)
Musculoskeletal Disorders		
Bone Pain	54 (10.7)	52 (10.2)
Nervous System		
Insomnia	30 (5.9)	28 (5.5)
Dizziness	30 (5.9)	22 (4.3)
Depression	23 (4.5)	32 (6.3)
Hypertonia	16 (3.2)	26 (5.1)
Respiratory		
Cough Increased	55 (10.9)	52 (10.2)
Dyspnea	51 (10.1)	47 (9.2)

Adverse Event by Body System	Anastrozole 1 mg (n=506)	Tamoxifen 20 mg (n=511)
Pharyngitis	49 (9.7)	68 (13.3)
Skin and Appendages		
Rash	38 (7.5)	34 (6.7)
Urogenital		
Leucorrhea	9 (1.8)	31 (6.1)

* A patient may have more than one adverse event.

Based on results from the established safety profiles of anastrozole and tamoxifen, the incidences of nine pre-specified adverse event categories, potentially causally related to one or both therapies because of their pharmacology, were statistically analyzed. No statistically significant differences were seen between treatment groups. The results are shown in [Table 6](#).

Table 6 Number (%) of Patients from Trials 0027 and 0030*

Adverse Event by Body System	Anastrozole 1 mg n=506 (%)	Tamoxifen 20 mg n=511 (%)
Body as a Whole		
Tumour Flare	15 (3.0)	18 (3.5)
Cardiovascular		
Hot Flushes	134 (26.5)	118 (23.1)
Thromboembolic Disease	23 (4.5)	39 (7.6)
Digestive		
Gastrointestinal Disturbances	170 (33.6)	196 (38.4)
Metabolic and Nutritional		
Weight Gain		
Nervous System		
Depression	11 (2.2)	8 (1.6)
Lethargy	23 (4.5)	32 (6.3)
Urogenital		
Vaginal Dryness	6 (1.2)	15 (2.9)
Vaginal Bleeding	15 (3.0)	13 (2.5)
	5 (1.0)	11 (2.2)

* Patients may appear in more than one row.

The low incidence of vaginal bleeding and vaginal discharge was consistent with the known pharmacology of anastrozole, which would be predicted to have no estrogenic effect, and no effect on the endometrium. Despite the lack of estrogenic activity, there was no increase in myocardial infarction or pathological fracture when compared with tamoxifen. There was a low incidence of thromboembolic disease.

Treatment of Postmenopausal Women with Advanced Breast Cancer who had Disease Progression following Tamoxifen Therapy

For two controlled clinical trials comparing anastrozole (1 mg and 10 mg) versus megestrol acetate (160 mg), adverse events reported in greater than 5% of the patients in any of the treatment groups, regardless of causality, are presented in [Table 7](#).

Table 7 Number (n) and Percentage of Patients with Adverse Events from Trials 0004 and 0005*

Adverse Event by Body System	Anastrozole 1 mg (n=262) n (%)	Anastrozole 10 mg (n=246) n (%)	Megestrol Acetate (160 mg) n=253
Body as a Whole			
Asthenia	42 (16.0)	33 (13.4)	47 (18.6)
Headache	34 (13.0)	44 (17.9)	24 (9.5)
Pain	28 (10.7)	38 (15.4)	29 (11.5)
Back Pain	28 (10.7)	26 (10.6)	19 (7.5)
Pelvic Pain	14 (5.3)	17 (6.9)	13 (5.1)
Chest Pain	13 (5.0)	18 (7.3)	13 (5.1)
Cardiovascular			
Hot Flashes	32 (12.2)	29 (10.6)	21 (8.3)
Digestive			
Nausea	41(15.6)	48 (19.5)	28 (11.1)
Vomiting	24 (9.2)	26 (10.6)	16 (6.3)
Diarrhea	22 (8.4)	18 (7.3)	7 (2.8)
Constipation	18 (6.9)	18 (7.3)	21 (8.3)
Abdominal Pain	18 (6.9)	14 (5.7)	18 (7.1)
Anorexia	18 (6.9)	19 (7.7)	11 (4.3)
Dry Mouth	15 (5.7)	11 (4.5)	13 (5.1)
Metabolic and Nutritional			
Peripheral Edema	14 (5.3)	21 (8.5)	28 (11.1)
Weight Gain	4 (1.5)	9 (3.7)	30 (11.9)
Increased Appetite	0 (0)	1 (0.4)	13 (5.1)
Musculoskeletal Disorders			
Bone Pain			
Nervous System	17 (6.5)	26 (11.8)	19 (7.5)
Dizziness			
Depression	16 (6.1)	12 (4.9)	15 (5.9)
Paresthesia	14 (5.3)	6 (2.4)	5 (2.0)
Respiratory	12 (4.6)	15 (6.1)	9 (3.6)
Dyspnea			
Cough Increased	24 (9.2)	27 (11.0)	53 (20.9)
Pharyngitis	22 (8.4)	18 (7.3)	19 (7.5)
Skin and Appendages	16 (6.1)	23 (9.3)	15 (5.9)
Rash			
Sweating	15 (5.7)	15 (6.1)	19 (7.5)
Urogenital	4 (1.5)	3 (1.2)	16 (6.3)
Vaginal Hemorrhage			
	6 (2.3)	4 (1.6)	13 (5.1)

* A patient may have more than one adverse event.

The incidence of the following adverse event groups, potentially causally related to one or both of the therapies because of their pharmacology, were statistically analyzed: weight gain, edema, thromboembolic disease, gastrointestinal disturbance, hot flushes, and vaginal dryness. These six groups, and the adverse events captured in the groups, were prospectively defined. The results are shown in [Table 8](#).

Table 8 Number (n) and Percentage of Patients from Trials 0004 and 0005

Adverse Event by Body System	Anastrozole 1 mg (n=262) n (%)	Anastrozole 10 mg (n=246) n (%)	Megestrol Acetate 160 mg n=253 n (%)
Cardiovascular			
Hot Flushes	33 (12.6)	29 (11.8)	35 (13.8)
Thromboembolic Disease	9 (3.4)	4 (1.6)	12 (4.7)
Digestive			
Gastrointestinal Disturbance	77 (29.4)	81 (32.9)	54 (21.3)
Metabolic and Nutritional			
Edema	19 (7.3)	28 (11.4)	35 (13.8)
Weight Gain	4 (1.5)	10 (4.1)	30 (11.9)
Urogenital			
Vaginal Dryness	5 (1.9)	3 (1.2)	2 (0.8)

More patients treated with megestrol acetate reported weight gain as an adverse event compared to patients treated with anastrozole 1 mg ($p < 0.0001$). Other differences were not statistically significant.

An examination of the magnitude of change in weight in all patients was also conducted. Thirty-four percent (87/253) of the patients treated with megestrol acetate experienced weight gain of 5% or more and 11% (27/253) of the patients treated with megestrol acetate experienced weight gain of 10% or more. Among patients treated with anastrozole 1 mg, 13% (33/262) experienced weight gain of 5% or more and 3% (6/262) experienced weight gain of 10% or more. On average, this 5 to 10% weight gain represented between 6 and 12 pounds.

No patients receiving anastrozole or megestrol acetate discontinued treatment due to drug-related weight gain.

8.3 Less Common Clinical Trial Adverse Reactions

Uncommonly reported adverse reactions ($\geq 0.1\%$ - 1%) are: vaginal bleeding, trigger finger, anorexia, hypercholesterolaemia, hypercalcaemia, vomiting, and somnolence, hepatitis and increases in gamma-GT and bilirubin. Rare cases ($\geq 0.01\%$ - 0.1%) of cutaneous vasculitis have been observed. Very rare cases ($< 0.01\%$) of erythema multiforme, Stevens-Johnson syndrome and allergic reactions including angioedema, urticaria and anaphylaxis have also been reported.

These reported frequencies are generated from a number of anastrozole studies as well as post-marketing reports.

Patients with Advanced Breast Cancer Who had Disease Progression Following Tamoxifen Therapy

Other less frequent (2% to 5%) adverse experiences reported in patients receiving anastrozole 1 mg in the two pivotal clinical trials are listed below. These adverse experiences are listed by body system and are in order of decreasing frequency within each body system regardless of assessed causality.

Body as a Whole: Flu syndrome; fever; neck pain; malaise; accidental injury; infection

Cardiovascular: Hypertension; thrombophlebitis

Hepatic: Gamma GT increased; SGOT increased; SGPT increased

Hematologic: Anemia; leukopenia

Metabolic and Nutritional: Alkaline phosphatase increased; weight loss

Mean serum total cholesterol levels increased by 0.5 mmol/L among patients receiving anastrozole. Increases in LDL cholesterol have been shown to contribute to these changes.

Musculoskeletal: Myalgia; arthralgia; pathological fracture

Nervous: Somnolence; confusion; insomnia; anxiety; nervousness

Respiratory: Sinusitis; bronchitis; rhinitis

Skin and Appendages: Hair thinning; pruritus

Urogenital: Urinary tract infection; breast pain

8.4 Abnormal Laboratory Findings: Hematologic, Clinical Chemistry and Other Quantitative Data

Clinical Trial Findings

Systematic collection of laboratory results (including total cholesterol) was not performed as specific endpoints in the ATAC trial. Abnormal laboratory results in ATAC are reported as an adverse event. During the ATAC trial, more patients receiving anastrozole were reported to have elevated serum cholesterol levels compared to patients receiving tamoxifen (9% versus 3.5%, respectively). In the SABRE trial, which was designed to specifically evaluate lipid levels in patients on anastrozole, no difference was observed in levels of low density lipoprotein - cholesterol (LDL-C), total cholesterol or triglycerides in patients taking anastrozole for 12 months compared to levels prior to commencing anastrozole treatment. There was a

statistically significant increase in high density lipoprotein-cholesterol (HDL-C) in patients taking anastrozole for 12 months compared to levels prior to commencing anastrozole treatment (see [Assessment of Lipids](#)). On the basis of the SABRE data, no specific requirements for lipid monitoring due to anastrozole therapy are recommended.

8.5 Post-Market Adverse Reactions

A case of severe acute hepatitis has been reported. Although late onset hepatotoxicity due to previous chemotherapy could not be ruled out, the temporal evidence suggested anastrozole as a possible cause. Cases of toxic hepatitis have been reported in association with anastrozole administration.

Cases of cutaneous vasculitis (including some reports of Henoch-Schönlein purpura) have been associated with anastrozole administration and symptoms have been reported to resolve within 10 - 30 days of discontinuing the drug, either spontaneously or with additional treatments. Severe hypercalcaemia with high serum parathyroid hormone (PTH) levels was reported in a 65-year old woman on anastrozole. All parathyroid glands were considered normal and the hypercalcaemia and high PTH levels resolved within one month of anastrozole withdrawal. Calcium and PTH values increased to high levels again within 6 weeks of resumption of anastrozole.

Cases of paraesthesia (pain, numbness, and tingling of skin) and dysgeusia (taste loss and perversion) have been associated with anastrozole administration.

Depression was reported as very common adverse event in the ATAC trial (see [8.2 Clinical Trial Adverse Reactions](#)). Post-market pharmacovigilance assessment established a causal relation between the use of anastrozole and depression.

Musculoskeletal and connective tissue disorders: Tendonitis and tendon rupture

9 DRUG INTERACTIONS

9.2 Drug Interactions Overview

Anastrozole inhibits reactions catalyzed by cytochrome P450 1A2, 2C8/9, and 3A4 in vitro with K_i values which are approximately 30 times higher than the mean plasma steady-state C_{max} values observed following a 1 mg daily dose. Anastrozole has no inhibitory effect on reactions catalyzed by cytochrome P450 2A6 or 2D6 in vitro. Administration of a single 30 mg or multiple 10 mg doses of anastrozole to subjects had no effect on the clearance of antipyrine or urinary recovery of antipyrine metabolites. Based on these in vitro and in vivo results, it is unlikely that the administration of anastrozole 1 mg will result in clinically significant inhibition of cytochrome P450-mediated metabolism of co-administered drugs.

Antipyrine, cimetidine, tamoxifen and warfarin clinical interaction studies indicate that the co-administration of anastrozole with other drugs is unlikely to result in clinically significant drug interactions mediated by cytochrome P450.

A review of innovator's global clinical trial safety database did not reveal evidence of clinically significant interactions in patients treated with anastrozole who also received other commonly prescribed drugs.

Estrogen-containing therapies should not be used with ANASTROZOLE as they may counteract the goal of achieving estrogen suppression.

9.4 Drug-Drug Interactions

Warfarin

The pharmacokinetics and anticoagulant activity of warfarin (25 mg) co-administered with anastrozole (1 mg daily) have been studied in healthy male volunteers. The mean plasma concentrations of anastrozole achieved throughout the warfarin dosing and sampling period were within the range seen in postmenopausal women with advanced breast cancer taking the clinically recommended dose of the drug. Overall, there was no evidence to suggest that anastrozole has any clinically relevant effects on the pharmacokinetics or anti-coagulant activity of warfarin.

Bisphosphonates

A review of innovator's global clinical trial safety database showed that there are no clinically significant interactions with bisphosphonates. Results from the SABRE trial demonstrate that anastrozole in combination with the bisphosphonate, risedronate, was well tolerated.

Tamoxifen

The effect of anastrozole on tamoxifen (20 mg daily) pharmacokinetics has been studied in postmenopausal women with early breast cancer, who were already receiving tamoxifen as adjuvant therapy. There was no evidence of anastrozole having any significant effect on blood levels of tamoxifen compared to placebo ($p=0.919$).

Co-administration of anastrozole and tamoxifen did not affect tamoxifen or N-desmethyltamoxifen plasma concentrations, however, anastrozole plasma concentrations were reduced by 27% compared to those achieved with anastrozole alone. Combination treatment of anastrozole with tamoxifen has shown that anastrozole does not have a significant effect on blood levels of tamoxifen; estradiol suppression is consistent with that seen in patients treated with anastrozole alone.

Results from the ATAC trial (median follow-up of 33 months) suggest that tamoxifen should not be co-administered with anastrozole. The combination did not demonstrate any efficacy or safety benefit when compared to anastrozole or tamoxifen treatment alone, subsequently resulting in the discontinuation of the combination arm from the ATAC trial.

9.5 Drug-Food Interactions

Interactions with particular food have not been established.

9.6 Drug-Herb Interactions

Interactions with herbal products have not been established. Estrogen-containing herb therapies should not be used with ANASTROZOLE as they may counteract the goal of achieving estrogen suppression.

9.7 Drug-Laboratory Test Interactions

Anastrozole has not been observed to interfere with routine clinical laboratory tests results.

10 CLINICAL PHARMACOLOGY

10.1 Mechanism of Action

Many breast cancers have estrogen receptors and growth of these tumours can be stimulated by estrogens. In postmenopausal women, the principal source of circulating estrogen (primarily estrone) is conversion of adrenally-generated androstenedione to estrone by aromatase in peripheral tissues, such as adipose tissue, with further conversion of estrone to estradiol. Many breast cancers also contain aromatase; the importance of tumour-generated estrogens is uncertain.

Treatment of breast cancer has included efforts to decrease estrogen levels by ovariectomy pre-menopausally and by use of anti-estrogens and progestational agents both pre- and post-menopausally, and these interventions lead to decreased tumour mass or delayed progression of tumour growth in some women.

Anastrozole is a potent and selective non-steroidal aromatase inhibitor. It significantly lowers serum estradiol concentrations and has no detectable effect on formation of adrenal corticosteroids or aldosterone.

10.2 Pharmacodynamics

Inhibition of aromatase activity is primarily due to anastrozole, the parent drug.

The relationship between dose and response, measured as suppression of serum estradiol, was studied in postmenopausal women. Daily doses of anastrozole at 1 mg for 14 days produced estradiol suppression of greater than 80%. Suppression of serum estradiol was maintained for up to 6 days after cessation of daily dosing with 1 mg anastrozole.

In a study of 14 postmenopausal women diagnosed with locally advanced (Stage T3 -T4) breast cancer with non-inflammatory, estrogen-receptor positive tumours, anastrozole was shown to be a potent suppressor of intra-tumoural estrogen levels. Following use as a 15-week primary systemic treatment (prior to any local surgery and/or radiotherapy), anastrozole suppressed intra-tumoural concentrations of estradiol (E2), estrone (E1) and estrone sulfate (E1S) to mean values of 11.1%, 16.7% and 26.6%, respectively, of baseline levels. Three patients had intra-tumoural levels of E2, E1 and E1S suppressed below assay detection limits.

The selectivity of anastrozole to the aromatase enzyme, rather than other cytochrome P450 enzymes controlling glucocorticoid and mineralocorticoid synthesis in the adrenal gland, has been established. Furthermore, provocative stimulation of the adrenal glands by ACTH in subjects under treatment with anastrozole up to 10 mg, produced a normal response in terms of cortisol and aldosterone secretion. Therefore, patients treated with anastrozole do not require glucocorticoid or mineralocorticoid replacement therapy.

Anastrozole does not possess direct progestogenic, androgenic or estrogenic activity and does not interfere with secretion of thyroid stimulating hormone (TSH).

Effects on Bone Mineral Density

In the phase III/IV SABRE trial, the 12- and 24-month main analyses have shown that patients already at moderate- to high-risk of fragility had their bone health (assessed by bone mineral density and bone formation and resorption markers) successfully managed by using anastrozole in combination with a bisphosphonate (risedronate). These findings were mirrored in the secondary efficacy variable of change from baseline in total hip BMD at 12 and 24 months (see [Table 15](#)). In addition, no changes in lumbar spine BMD were seen in the low-risk group following 12 months of treatment with anastrozole alone and given vitamin D and calcium but were seen following 24 months of treatment. No change in total hip BMD was seen at 12 and 24 months in the low-risk group.

This study provides evidence that postmenopausal women with early breast cancer scheduled to be treated with anastrozole should have their bone status managed according to treatment guidelines already available for postmenopausal women at similar risk of fragility fracture (see [14 CLINICAL TRIALS](#)).

Effects on Lipids

In the SABRE trial there was a neutral effect on plasma lipids both in those patients treated with anastrozole alone and in those treated with anastrozole plus a bisphosphonate (see [14 CLINICAL TRIALS](#)).

Because of its pharmacological action, patients with estrogen and/or progesterone receptor-positive disease are the most appropriate population for ANASTROZOLE therapy.

10.3 Pharmacokinetics

Absorption: Absorption of anastrozole is rapid and maximum plasma concentrations typically occur within 2 hours of dosing under fasted conditions. Studies with radiolabeled drug have demonstrated that orally administered anastrozole is well absorbed into the systemic circulation. Food reduces the rate, but not the overall extent of anastrozole absorption.

Distribution: The pharmacokinetics of anastrozole are linear over the dose range of 1 to 20 mg and do not change with repeated dosing. Consistent with the 50 -hour plasma elimination half-life, plasma concentrations of anastrozole approach steady-state concentrations after 7 days of once daily dosing and are approximately three- to four-fold higher than the concentrations

observed after a single dose of anastrozole. The protein binding of anastrozole to plasma proteins is about 40% and independent of concentration over a range, which includes therapeutic concentrations.

Metabolism: Metabolism of anastrozole occurs by N-dealkylation, hydroxylation and glucuronidation. Three metabolites of anastrozole (triazole, a glucuronide conjugate of hydroxy - anastrozole, and a glucuronide conjugate of anastrozole itself) have been identified in human plasma or urine. Several minor (less than 5% of the radioactive dose) metabolites excreted in the urine have not been identified. The major metabolite of anastrozole in the circulation, triazole, lacks pharmacologic activity.

Elimination: Studies in postmenopausal women with radiolabeled anastrozole demonstrated that elimination occurs primarily via metabolism (approximately 85%) and to a lesser extent renal excretion of unchanged anastrozole (approximately 11%). Anastrozole is eliminated slowly with a plasma elimination half-life of approximately 50 hours in postmenopausal women.

Special Populations and Conditions

- **Pediatrics:** No studies have been conducted to investigate the pharmacokinetics in pediatric patients below the age of 18 years.
- **Geriatrics:** Anastrozole pharmacokinetics have been investigated in postmenopausal female volunteers and patients with breast cancer. The pharmacokinetics were similar in volunteers and in patients and no age related effects were seen.
- **Ethnic Origin:** Anastrozole pharmacodynamics and pharmacokinetics have been studied in healthy, postmenopausal women in Japan, dosed for 16 days. The pharmacodynamic effect and pharmacokinetics of anastrozole 1 mg daily were similar in Japanese and Caucasian volunteers, and there was no indication that there would be any clinically significant differences in therapeutic responses to anastrozole between Japanese and Caucasian patients with breast cancer.
- **Hepatic Insufficiency:** Anastrozole pharmacokinetics have been investigated in subjects with stable hepatic cirrhosis related to alcohol abuse. The apparent oral clearance of anastrozole was approximately 30% lower in subjects with hepatic cirrhosis than in control subjects with normal liver function. However, plasma anastrozole concentrations in the subjects with hepatic cirrhosis are within the range of concentrations seen in normal subjects across all clinical trials. Dosage adjustment in patients with mild to moderate hepatic impairment is not necessary. Anastrozole has not been studied in patients with severe hepatic impairment. The potential risk/benefit to such patients should be carefully considered before administration of ANASTROZOLE.

- **Renal Insufficiency:** Anastrozole pharmacokinetics have been investigated in subjects with renal insufficiency. Anastrozole renal clearance decreased proportionately with creatinine clearance and was approximately 50% lower in volunteers with severe renal impairment (creatinine clearance less than 30 mL/min/1.73m² or 0.5 mL/sec/1.73m²) compared to controls. Because renal clearance is not a significant pathway of elimination, the apparent oral clearance of anastrozole is unchanged even in severe renal impairment. Dosage adjustment in patients with renal dysfunction is not necessary. The potential risk/benefit to patients with severe renal impairment should still be considered prior to the administration of ANASTROZOLE in these patients.

11 STORAGE, STABILITY AND DISPOSAL

ANASTROZOLE (anastrozole) should be stored at room temperature (15°C to 30°C). Keep out of the reach and sight of children.

12 SPECIAL HANDLING INSTRUCTIONS

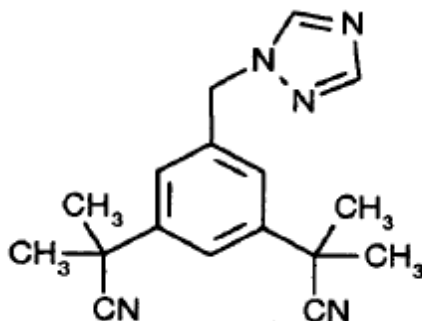
No special instructions for handling are required.

PART II: SCIENTIFIC INFORMATION

13 PHARMACEUTICAL INFORMATION

Drug Substance

Proper name:	Anastrozole
Chemical name:	2, 2'-[5-(1H-1,2,4-triazol-1-ylmethyl)-1,3-phenylene] bis (2 methylpropionitrile) (IUPAC)
Molecular formula and molecular mass:	C ₁₇ H ₁₉ N ₅ ; 293.4 g / mol
Structural formula:	



Physicochemical properties:

Anastrozole is a fine white to off-white powder, which has moderate aqueous solubility (0.53 mg/mL at 25°C) which is dependent on pH, from pH 1 to 4, but independent of pH thereafter. The molecule has a pK_a of 1.4 (base) and is therefore only ionized at low pH. The log P (octanol/water) is 1.58, indicating that it is a moderately lipophilic compound.

Recrystallization of anastrozole from various solvents/solvent mixtures has to date yielded only one morphological form, which has been characterized using Differential Scanning Calorimetry (DSC), X-Ray Powder Diffraction (XRPD) and Fourier Transform Infra-Red Spectroscopy (FTIR).

14 CLINICAL TRIALS

14.1 Clinical Trials by Indication

Adjuvant Treatment of Postmenopausal Women with Hormone Receptor Positive Early Breast Cancer

Table 9 Summary of Patient Demographics for Clinical Trial in Adjuvant Treatment of Postmenopausal Women with Hormone Receptor Positive Early Breast Cancer

Study #	Study design	Dosage, route of administration and duration	Study subjects (n)	Mean age (Range) in years	Sex
D5392C00029 (ATAC)	Phase III, randomized, double-blind, multicentre study	Anastrozole 1 mg tablet/matching Tamoxifen placebo once daily Tamoxifen 20 mg tablet/matching anastrozole placebo once daily Anastrozole 1 mg tablet/Tamoxifen 20 mg tablet once daily Duration: at least 5 years or until disease recurrence, or discontinuation of trial therapy	Total: N= 9366 Anastrozole: (n=3125) Tamoxifen: (n=3116) Combination: (n=3125)	Anastrozole: 64.1(38.1 to 92.8) Tamoxifen: 64.1(32.8 to 94.9)	Female

A multicentre phase III trial entitled "A Randomized, Double-Blind Trial Comparing Anastrozole Alone with Tamoxifen Alone, with Anastrozole and Tamoxifen in Combination, as Adjuvant Treatment in Postmenopausal Women with Breast Cancer" (ATAC) was conducted in 9,366 postmenopausal patients with operable breast cancer. The patients were randomized to receive anastrozole 1 mg daily, tamoxifen 20 mg daily, or a combination of the two treatments for five years or until recurrence of the disease. However, at the time of the primary analysis (at a median of 33 months follow-up), the combination of anastrozole and tamoxifen did not demonstrate any efficacy benefit when compared with tamoxifen, and this treatment arm was subsequently discontinued from the trial, leaving the 6,241 patients who had been randomized to the anastrozole and tamoxifen monotherapy arms of the study. These patients will be followed to 10 years post-randomization.

The primary endpoints were disease-free survival and safety. Disease-free survival includes loco-regional (including new primary ipsilateral breast cancer) and distant recurrences, new contralateral primaries and death from any cause as a first event. The secondary endpoints were distant disease-free survival (time to a first event of distant recurrence or death from any cause), the incidence of new contralateral breast primaries and overall survival. The primary analysis for disease-free survival was to be carried out after 352 events per treatment arm and occurred after a median of 33 months of follow-up; the major analysis for survival was to be carried out after a total of 352 events per treatment arm and occurred after a median follow-up of 68 months.

Demographics and other baseline characteristics were similar between the two treatment groups and are summarized in [Table 10](#).

Table 10 Summary of Demographic and Baseline Characteristics for the ATAC Trial

Demographic Characteristic	Anastrozole 1 mg (N=3125)	Tamoxifen 20 mg (N=3116)
Mean Age (yrs)	64.1	64.1
Age Range (yrs)	38.1-92.8	32.8-94.9
<45 yrs	0.7	0.4
45-60 yrs	34.6	35.1
>60<70 yrs	38.0	37.1
>70 yrs	26.7	27.4
Mean Weight (kg)	70.8	71.1
Receptor Status (%)		
Positive ¹	83.8	83.4
Negative ²	7.5	8.0
Other ³	8.8	8.6
Other Treatment Prior to Randomisation (%)		
Mastectomy	47.8	47.3
Breast Conservation ⁴	52.2	52.7
Axillary Surgery	95.5	95.7
Radiotherapy	63.4	62.5
Chemotherapy	22.3	20.8
Neoadjuvant Tamoxifen	1.6	1.6
Primary Tumour Size (%)		
T1 (≤ 2 cm)	63.9	62.9
T2 (>2 cm and ≤ 5 cm)	32.5	34.2
T3 (>5 cm)	2.7	2.2
Nodal Status (%)		
Node Positive	34.9	33.6
1-3 (# of nodes)	24.5	24.5

Demographic Characteristic	Anastrozole 1 mg (N=3125)	Tamoxifen 20 mg (N=3116)
4-9	7.5	6.4
>9	2.9	2.7
Tumour Grade (%)		
Well-differentiated	20.8	20.5
Moderately Differentiated	46.8	47.8
Poorly/Undifferentiated	23.6	23.3
Not Assessed/Recorded	8.7	8.4

¹ includes patients who were estrogen receptor (ER) positive or progesterone receptor (PgR) positive, or both positive.

² includes patients with both ER negative and PgR negative receptor status.

³ includes all other combinations of ER and PgR receptor status unknown.

⁴ among the patients who had breast conservation, radiotherapy was administered to 95.0% of patients in the anastrozole arm and 94.1% in the tamoxifen arm.

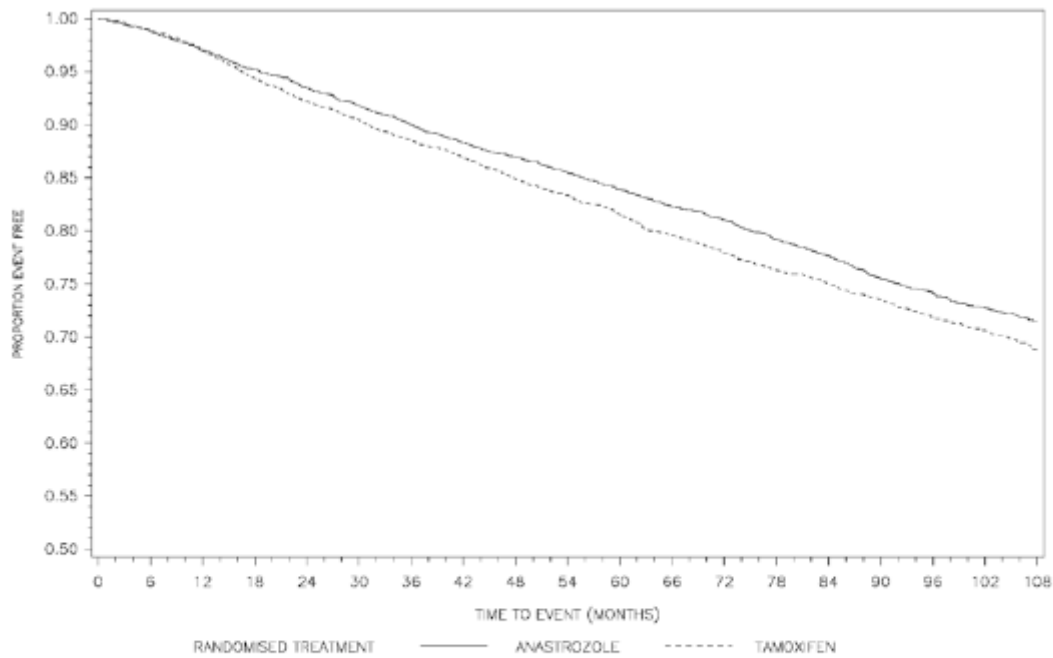
N Number of patients randomized to the treatment.

Study Results: Patients in the ATAC trial have now been treated for a median of 60 months (5 years) and followed for a median of 100 months. The primary analysis was carried out after a median follow-up of 33 months; the most recent analyses were carried out after a median follow-up of 68 and 100 months.

In the assessment of disease-free survival, anastrozole was superior to tamoxifen in the intent-to-treat population with a statistically significant 17% reduction in the risk of disease recurrence or death from any cause ($p=0.01$) at the primary analysis (median follow-up of 33 months) and a 13% reduction in risk after a median follow-up of 68 months ($p=0.01$). At a median follow-up of 100 months, anastrozole maintained statistical superiority with a 10% reduction in the risk of disease recurrence or death from any cause ($p=0.0252$). In the hormone receptor positive subgroup (representing about 84% of trial patients), there was a significant 22% reduction in the risk of disease recurrence or death from any cause ($p=0.006$) at the primary analysis, a 17% reduction ($p=0.005$) at the 68 month analysis and a 15% reduction ($p=0.0027$) at the 100 month analysis. These results demonstrate a carryover effect of the efficacy benefit of anastrozole following treatment completion in both the ITT and the HR+ populations. The absolute difference in disease-free survival continues to increase from 2.4% at 68 months to 2.8% at 100 months in the intent-to-treat population and from 2.5% in the hormone receptor positive subgroup at 68 months to 4.1% at 100 months.

[Figure 2](#) and [Figure 3](#) presents the Kaplan-Meier probability of the protocol-defined disease-free survival for the intent to treat population and the hormone receptor positive subgroup.

Figure 2 Kaplan-Meier probability of Disease-free Survival for the Intention-To-Treat (ITT) Population.

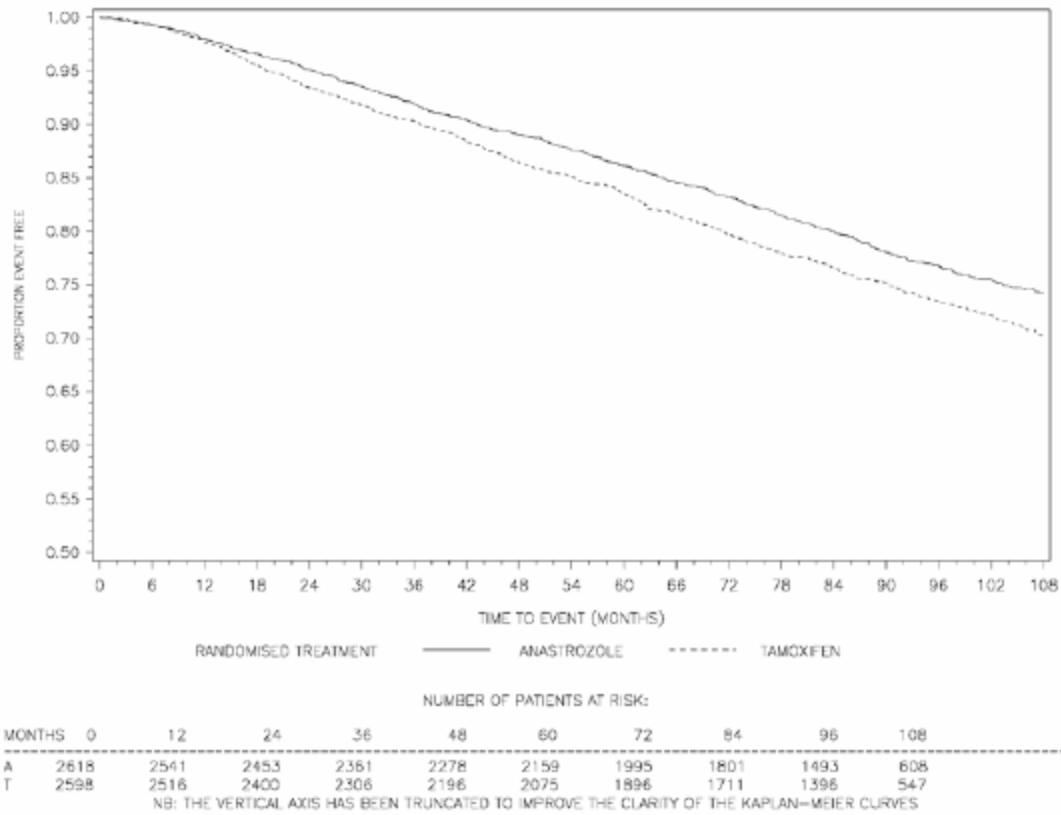


NUMBER OF PATIENTS AT RISK:

MONTHS	0	12	24	36	48	60	72	84	96	108
A	3125	3005	2879	2763	2656	2511	2318	2087	1722	708
T	3116	2992	2838	2713	2585	2426	2215	2005	1648	661

NB: THE VERTICAL AXIS HAS BEEN TRUNCATED TO IMPROVE THE CLARITY OF THE KAPLAN-MEIER CURVES

Figure 3 Kaplan-Meier Probability of Disease-Free Survival for the Hormone-Receptor Positive Subgroup.



The post-treatment follow-up analysis continues to demonstrate a significant advantage of anastrozole over tamoxifen in time to recurrence in both the intent-to-treat population (HR 0.81, 95% CI 0.73 to 0.91, $p=0.0004$) and the hormone receptor positive subgroup (HR 0.76, 95% CI 0.67 to 0.87, $p=0.0001$), as well as in the time to distant recurrence in both the intent-to-treat population (HR 0.86, 95% CI 0.75 to 0.98, $p=0.022$) and the hormone receptor positive subgroup (HR 0.84, 95% CI 0.72 to 0.97, $p=0.022$). Additionally, there is a significant advantage of anastrozole over tamoxifen in risk of invasive contralateral breast cancer in both the intent-to-treat population (HR 0.68, 95% CI 0.49 to 0.94, $p=0.02$) and the hormone receptor positive subgroup (HR 0.60, 95% CI 0.42 to 0.85, $p=0.004$).

Anastrozole 1 mg did not show a survival advantage over tamoxifen 20 mg in the primary analysis of survival, which was carried out after a median follow-up of 68 months. Overall survival was similar in the two arms of the trial for both the intent-to-treat population (HR 0.97, 95% CI 0.85 to 1.12, $p=0.71$) and the hormone receptor positive subgroup (HR 0.97, 95% CI 0.83 to 1.14, $p=0.73$). After a median follow-up of 100 months, overall survival continued to be similar in the two arms of the trial for both the intent-to-treat population (HR 1.00, 95% CI

0.89 to 1.12, p=0.99) and the hormone receptor positive subgroup (HR 0.97, 95% CI 0.86 to 1.11, p=0.68).

Overall, a similar number of deaths occurred in the tamoxifen group and the anastrozole arm although there were fewer deaths following breast cancer recurrence in the anastrozole arm (HR=0.91; A=11.2%, T=12.3%). There were more deaths due to causes other than breast cancer and fewer deaths related to breast cancer among patients receiving anastrozole therapy. The difference in the numbers of non-breast cancer deaths before recurrence in the intention to treat population between the two treatment groups is small (absolute difference of 1.1%; A =8.9%, T=7.8%). The largest imbalance is seen among deaths from secondary cancers (A=2.8%, T=2.1%) and, in particular, deaths from lung and colorectal cancer compared with tamoxifen.

The incidence of ovarian cancer, endometrial cancer and melanoma was lower with anastrozole than in the tamoxifen group (see [Table 11](#)).

Table 11 Incidences of new primary cancers in either treatment group prior to recurrence (during or off-trial treatment)

Body system and adverse event by COSTART-preferred term	Number (%) of patients	
	2007 update analysis (data cut-off 31 March 2007)	
	Anastrozole 1 mg (N=3092)	Tamoxifen 20 mg (N=3094)
Skin – non melanoma ^{a, b}	94 (3.0)	100 (3.2)
Contralateral breast cancer ^c	62 (2.0)	87 (2.8)
Colorectal	56 (1.8)	36 (1.2)
Lung	42 (1.4)	24 (0.8)
Ovary	12 (0.4)	26 (0.8)
Head and neck	12 (0.4)	5 (0.2)
Kidney	11 (0.4)	6 (0.2)
Lymphoma (non-Hodgkins)	10 (0.3)	8 (0.3)
Gastric ^d	10 (0.3)	6 (0.2)
Melanoma	8 (0.3)	18 (0.6)
Leukaemia	7 (0.2)	9 (0.3)
Bladder	6 (0.2)	9 (0.3)

Body system and adverse event by COSTART-preferred term	Number (%) of patients	
	2007 update analysis (data cut-off 31 March 2007)	
	Anastrozole 1 mg (N=3092)	Tamoxifen 20 mg (N=3094)
Brain	4 (0.1)	6 (0.2)
Endometrium ^a	4 (0.1)	23 (0.7)
Cervix ^a	2 (0.1)	5 (0.2)
Pancreas	2 (0.1)	6 (0.2)
Other	34 (1.1)	21 (0.7)
TOTAL	351 (11.4)	365 (11.8)

^a In addition to the new primary cancers tabulated here, the following new primary cancers were reported as SAEs: 4 skin cancers and 1 endometrial cancer in the anastrozole 1 mg group and 8 skin cancers, 1 cervix cancer and 1 endometrial cancer in the tamoxifen 20 mg group.

^b These totals include 2 patients in the anastrozole 1 mg group and 1 patient in the tamoxifen 20 mg group with new primary skin cancers that were categorised as skin (non-Hodgkin's).

^c Excludes any new primary (contralateral) breast cancer occurring after recurrence.

^d These totals include 2 patients in the anastrozole 1 mg group with new primary gastric cancers that were categorised as stomach cancers.

COSTART Coding Symbols for Thesaurus of Adverse Reaction Terms.

N Number of patients treated.

Deaths (both during and off-trial treatment) resulting from ischaemic cardiovascular events (A=1.3%, T=1.2%) or other cardiovascular events (A=0.9%, T=0.9%) occurred with similar frequency for both treatment groups.

The analyses of the study endpoints in the intent-to-treat population and hormone receptor positive subgroup at the time of the primary, the 5-year treatment completion and the 100 month analyses are summarized in [Table 12](#). The frequency of individual events in the intent-to-treat population and the hormone receptor positive subgroup at the 100 month analyses are described in [Table 13](#).

Table 12 ATAC Endpoint Summary

	33-month Analysis (data cut-off 29 June 2001)				68-month Analysis (data cut-off 31 March 2004)				100-month Analysis (data cut-off 31 March 2007)			
	Intent-to-treat Population		Hormone Receptor Positive Population		Intent-to-treat Population		Hormone Receptor Positive Population		Intent-to-treat Population		Hormone Receptor Positive Population	
	Anastrozole 1 mg (N=3125)	Tamoxifen 20 mg (N=3116)	Anastrozole 1 mg (N=2618)	Tamoxifen 20 mg (N=2598)	Anastrozole 1 mg (N=3125)	Tamoxifen 20 mg (N=3116)	Anastrozole 1 mg (N=2618)	Tamoxifen 20 mg (N=2598)	Anastrozole 1 mg (N=3125)	Tamoxifen 20 mg (N=3116)	Anastrozole 1 mg (N=2618)	Tamoxifen 20 mg (N=2598)
Disease-free survival (# of events)	318	379	217	272	575	651	424	497	817	887	619	702
Hazard ratio (2-sided 95% CI)	0.83 (0.71 to 0.96)		0.78 (0.65 to 0.93)		0.87 (0.78 to 0.97)		0.83 (0.73 to 0.94)		0.90 (0.82 to 0.99)		0.85 (0.76 to 0.94)	
p-value	0.01		0.005		0.01		0.005		0.0252		0.0027	
Time to recurrence (# of events)	240	298	153	204	402	498	282	370	538	645	391	494
Hazard ratio (2-sided 95% CI)	0.80 (0.67 to 0.94)		0.73 (0.59 to 0.90)		0.79 (0.70 to 0.90)		0.74 (0.64 to 0.87)		0.81 (0.73 to 0.91)		0.76 (0.67 to 0.87)	
p-value	0.009		0.004		0.0005		0.0002		0.0004		0.0001	
Distant disease-free survival (# of events)	267	299	185	212	500	530	370	394	N/A	N/A	N/A	N/A
Hazard ratio (2-sided 95% CI)	0.89 (0.74 to 1.07)		0.86 (0.69 to 1.08)		0.94 (0.83 to 1.06)		0.93 (0.80 to 1.07)		N/A		N/A	
p-value	0.2		0.1		0.3		0.3		N/A		N/A	

	33-month Analysis (data cut-off 29 June 2001)				68-month Analysis (data cut-off 31 March 2004)				100-month Analysis (data cut-off 31 March 2007)			
	Intent-to-treat Population		Hormone Receptor Positive Population		Intent-to-treat Population		Hormone Receptor Positive Population		Intent-to-treat Population		Hormone Receptor Positive Population	
	Anastrozole 1 mg (N=3125)	Tamoxifen 20 mg (N=3116)	Anastrozole 1 mg (N=2618)	Tamoxifen 20 mg (N=2598)	Anastrozole 1 mg (N=3125)	Tamoxifen 20 mg (N=3116)	Anastrozole 1 mg (N=2618)	Tamoxifen 20 mg (N=2598)	Anastrozole 1 mg (N=3125)	Tamoxifen 20 mg (N=3116)	Anastrozole 1 mg (N=2618)	Tamoxifen 20 mg (N=2598)
Contralateral breast primary (# of events)	14	33	11	30	35	59	26	54	61	87	50	80
Odds Ratio (2-sided 95% CI)	0.42 (0.22 to 0.79)		0.36 (0.18 to 0.72)		0.59 (0.39 to 0.89)		0.47 (0.30 to 0.76)		0.68 (0.49 to 0.94)		0.60 (0.42 to 0.85)	
p-value	0.007		0.004		0.01		0.002		0.02		0.004	
Overall survival (# of events)	202	203	131	136	411	420	296	301	629	624	472	477
Hazard ratio (2-sided 95% CI)	Not calculated (not enough events at cut-off to conduct analysis)				0.97 (0.85 to 1.12)		0.97 (0.83 to 1.14)		1.00 (0.89 to 1.12)		0.97 (0.86 to 1.11)	
p-value					0.7		0.7		0.99		0.68	
Time to distant recurrence (# of events)	Not analyzed at the 33 month analysis				324	375	226	265	424	487	305	357
Hazard ratio (2-sided 95% CI)					0.86 (0.74 to 0.99)		0.84 (0.74 to 0.99)		0.86 (0.75 to 0.98)		0.84 (0.72 to 0.97)	

	33-month Analysis (data cut-off 29 June 2001)				68-month Analysis (data cut-off 31 March 2004)				100-month Analysis (data cut-off 31 March 2007)			
	Intent-to-treat Population		Hormone Receptor Positive Population		Intent-to-treat Population		Hormone Receptor Positive Population		Intent-to-treat Population		Hormone Receptor Positive Population	
	Anastrozole 1 mg (N=3125)	Tamoxifen 20 mg (N=3116)	Anastrozole 1 mg (N=2618)	Tamoxifen 20 mg (N=2598)	Anastrozole 1 mg (N=3125)	Tamoxifen 20 mg (N=3116)	Anastrozole 1 mg (N=2618)	Tamoxifen 20 mg (N=2598)	Anastrozole 1 mg (N=3125)	Tamoxifen 20 mg (N=3116)	Anastrozole 1 mg (N=2618)	Tamoxifen 20 mg (N=2598)
p-value					0.0427		0.0559		0.022		0.022	

N Number of patients randomized to the treatment.

N/A Not available

Table 13 All Recurrence and Death Events (Data cut-off 31 March 2007; median follow-up 100 months)

	Number (%) of Patients			
	Intention-to-treat Population		Hormone Receptor Positive Population	
	Anastrozole 1 mg (N=3125)	Tamoxifen 20 mg (N=3116)	Anastrozole 1 mg (N=2618)	Tamoxifen 20 mg (N=2598)
Loco-regional Recurrence^{a,b}	155 (5.0)	184 (5.9)	102 (3.9)	130 (5.0)
Chest Wall	56 (1.8)	66 (2.1)	37 (1.4)	47 (1.8)
Ipsilateral Breast ^c	56 (1.8)	73 (2.3)	38 (1.5)	56 (2.2)
Axillary Lymph Nodes	27 (0.9)	39 (1.3)	20 (0.8)	28 (1.1)
Other Regional Nodes ^d	31 (1.0)	43 (1.4)	16 (0.6)	28 (1.1)
Contralateral Recurrence^e	61 (2.0)	87 (2.8)	50 (1.9)	80 (3.1)
Invasive	42 (1.3)	68 (2.2)	36 (1.4)	63 (2.4)
Ductal Carcinoma in situ	15 (0.5)	9 (0.3)	10 (0.4)	8 (0.3)
Unknown	4 (0.1)	10 (0.3)	4 (0.2)	9 (0.3)
Distant Recurrence^a	333 (10.7)	389 (12.5)	250 (9.5)	294 (11.3)
Bone/Soft Tissue	213 (6.8)	226 (7.3)	170 (6.5)	182 (7.0)
Bone	208 (6.7)	223 (7.2)	166 (6.3)	180 (6.9)
Soft Tissue	8 (0.3)	8 (0.3)	6 (0.2)	6 (0.2)
Visceral	239 (7.6)	290 (9.3)	165 (6.3)	215 (8.3)
Pulmonary	110 (3.5)	140 (4.5)	78 (3.0)	95 (3.7)
Hepatic	82 (2.6)	144 (4.6)	61 (2.3)	113 (4.3)
Other	74 (2.4)	81 (2.6)	49 (1.9)	63 (2.4)
Death from Any Cause	629 (20.1)	624 (20.0)	472 (18.0)	477 (18.4)
Deaths Following Recurrence	350 (11.2)	382 (12.3)	245 (9.4)	269 (10.4)
Deaths Without Recurrence	279 (8.9)	242 (7.8)	227 (8.7)	208 (8.0)

a Patients may fall into more than one category.

b Patients who presented with distant recurrence or new primary (contralateral) breast cancer on the same day as loco-regional recurrence are included in this table but were counted either as distant recurrence or new primary (contralateral) breast cancer, respectively, in the summary of DFS (protocol-specified definition).

c Includes ductal carcinoma in situ and ipsilateral new breast primaries.

d Includes supraclavicular and internal mammary.

e Any new primary breast cancers occurring after loco-regional recurrence or distant recurrence were not included in this variable.

N Number of patients randomized to the treatment.

Assessment of Bone: In the phase III/IV trial entitled “Study of Anastrozole with the Bisphosphonate Risedronate” (SABRE), 234 postmenopausal women with hormone receptor positive early breast cancer scheduled for treatment with anastrozole were stratified to low (T-score in both lumbar spine and total hip of -1.0 or higher and with no personal history of fragility fracture), moderate (T-score <-1.0 in either lumbar spine or total hip, provided neither of these was less than -2.0, and with no personal history of a fragility fracture) and high-risk (T-score < -2.0 in either lumbar spine, or total hip, or with a personal history of fragility fracture) groups. All patients received treatment with vitamin D and calcium. Patients in the low-risk group received anastrozole alone, those in the moderate group were randomised to anastrozole plus bisphosphonate (risedronate) or anastrozole plus placebo and those in the high-risk group received anastrozole plus bisphosphonate (risedronate). The primary variable of the SABRE trial was the change from baseline in lumbar spine (L1-L4) bone mineral density (BMD) following 12 months of treatment. Secondary variables were changes in total hip BMD at 12 and 24 months as well as lumbar spine BMD at 24 months.

Treatment with anastrozole and risedronate was associated with a statistically significant increase from baseline in lumbar spine BMD at 12 months (estimated percentage change 3.36%; 95% CI: 2.05, 4.69; p< 0.0001) and 24 months (estimated percentage change 3.02%; 95% CI: 1.40, 4.67; p=0.0006).

In postmenopausal breast cancer patients with a moderate -risk of fragility fracture, treatment with anastrozole and risedronate resulted in a statistically significant increase in lumbar spine BMD at 12 months compared with anastrozole and placebo treatment (estimated percentage change 1.20% versus -1.22%; treatment ratio 1.02; 95% CI: 1.01, 1.04; p< 0.0001) and at 24 months (estimated percentage change 2.24% versus -1.76%; treatment ratio 1.04; 95% CI: 1.02, 1.06; p<0.0001).

In postmenopausal breast cancer patients with a low-risk of fragility fracture, treatment with anastrozole monotherapy was associated with no statistically significant change in lumbar spine BMD at 12 months (estimated percentage change -0.62%; 95% CI: -1.93, 0.71; p=0.3511). The change in lumbar spine BMD at 24 months was statistically significant (estimated percentage change -2.07%; 95% CI: -3.60, -0.53; p=0.0109).

Table 14 Analysis of lumbar spine BMD (g/cm²) at 12 & 24 months in the high-risk, moderate-risk and low-risk strata (PAP)

High-risk stratum: analysis of change from baseline Anastrozole +Risedronate					
N ^a	Baseline gmean (g/cm ²)	gmean at time point (g/cm ²)	Estimated % change ^b (95% CI)	Time effect ^c (95% CI)	p-value
12 months					
36	0.84	0.87	3.36 (2.05, 4.69)	1.03 (1.02, 1.05)	< 0.0001
24 months					

High-risk stratum: analysis of change from baseline Anastrozole +Risedronate					
N ^a	Baseline gmean (g/cm ²)	gmean at time point (g/cm ²)	Estimated % change ^b (95% CI)	Time effect ^c (95% CI)	p-value
33	0.83	0.86	3.02 (1.40, 4.67)	1.03 (1.01, 1.05)	0.0006

Moderate-risk stratum: randomized comparison							
	N ^a	Baseline gmean (g/cm ²)	gmean at time point (g/cm ²)	Estimated % change ^{b,d} (95% CI)	glsmean ^d (g/cm ²)	Treatment ratio ^e (95% CI)	p-value ^d
12 months							
Anastrozole + placebo	65	0.98	0.97	-1.22 (-2.19, -0.24)	0.99	1.02 (1.01, 1.04)	<0.0001
Anastrozole+risedronate	73	0.98	1.00	1.20 (0.22, 2.19)	1.01		
24 months							
Anastrozole + placebo	54	0.96	0.95	-1.76 (-3.25, -0.25)	0.98	1.04 (1.02, 1.06)	<0.0001
Anastrozole+risedronate	60	0.98	1.00	2.24 (0.73, 3.76)	1.02		

Low-risk stratum: analysis of change from baseline Anastrozole monotherapy					
N ^a	Baseline gmean (g/cm ²)	gmean at time point (g/cm ²)	Estimated % change ^b (95% CI)	Time effect ^c (95% CI)	p-value
12 months					
35	1.15	1.14	-0.62 (-1.93, 0.71)	0.99 (0.98, 1.01)	0.3511
24 months					
26	1.15	1.12	-2.07 (-3.60,-0.53)	0.98 (0.96, 0.99)	0.0109

^a Patients with values at baseline and 12 month visit.

^b 100*((time effect)-1).

^c Ratio of post baseline value/baseline value.

^d Covariance analysis.

^e Anastrozole+risedronate/anastrozole+placebo.

BMD Bone mineral density; CI Confidence interval; glsmean Geometric least squares mean; gmean Geometric mean; PAP Primary analysis population.

In summary, the 12- and 24-month main analyses have shown that patients already at moderate- to high-risk of fragility had their bone health (assessed by bone mineral density and bone formation and resorption markers) successfully managed by using anastrozole in combination with a bisphosphonate (risedronate). These findings were mirrored in the secondary efficacy variable of change from baseline in total hip BMD at 12 and 24 months (see [Table 15](#)). In addition, no changes in lumbar spine BMD were seen in the low-risk group following 12 months of treatment with anastrozole alone and given vitamin D and calcium but were seen following 24 months of treatment. No change in total hip BMD was seen at 12 and 24 months in the low-risk group.

This study provides evidence that postmenopausal women with early breast cancer scheduled to be treated with anastrozole should have their bone status managed according to treatment guidelines already available for postmenopausal women at similar risk of fragility fracture.

Table 15 Analysis of total hip BMD (g/cm²) at 12 & 24 months in the high-risk, moderate-risk and low-risk strata (PAP)

High-risk stratum: analysis of change from baseline Anastrozole +Risedronate					
N ^a	Baseline gmean (g/cm ²)	gmean at time point (g/cm ²)	Estimated % change ^b (95% CI)	Time effect ^c (95% CI)	p-value
12 months					
37	0.79	0.81	1.53 (0.37, 2.71)	1.02 (1.00, 1.03)	0.0112
24 months					
33	0.80	0.81	1.96 (0.49, 3.44)	1.02 (1.00, 1.03)	0.0104

Moderate-risk stratum: randomized comparison							
	N ^a	Baseline gmean (g/cm ²)	gmean at time point (g/cm ²)	Estimated % change ^{b,d} (95% CI)	glsmean ^d (g/cm ²)	Treatment ratio ^e (95% CI)	p-value ^d
12 months							
Anastrozole + placebo	65	0.87	0.87	-0.44 (-1.17, 0.31)	1.00		
Anastrozole+risedronate	73	0.89	0.90	0.86 (0.12, 1.61)	1.01	1.01 (1.00, 1.02)	0.0023
24 months							

Moderate-risk stratum: randomized comparison							
	N ^a	Baseline gmean (g/cm ²)	gmean at time point (g/cm ²)	Estimated % change ^{b,d} (95% CI)	glsmean ^d (g/cm ²)	Treatment ratio ^e (95% CI)	p-value ^d
Anastrozole + placebo	54	0.87	0.86	-1.12 (-2.14, -0.10)	0.99	1.03 (1.02, 1.04)	<0.0001
Anastrozole+risedronate	60	0.90	0.92	1.81 (0.78, 2.86)	1.02		

Low-risk stratum: analysis of change from baseline Anastrozole monotherapy					
N ^a	Baseline gmean (g/cm ²)	gmean at time point (g/cm ²)	Estimated % change ^b (95% CI)	Time effect ^c (95% CI)	p-value
12 months					
35	1.00	1.01	-0.35 (-1.37, 0.68)	1.00 (0.99, 1.01)	0.4918
24 months					
26	1.01	1.00	-0.44 (-2.10, 1.26)	1.00 (0.98, 1.01)	0.5988

^a Patients with values at baseline and 12 month visit.

^b 100*((time effect)-1).

^c Ratio of post baseline value/baseline value.

^d Covariance analysis.

^e Anastrozole+risedronate/anastrozole+placebo.

BMD Bone mineral density; CI Confidence interval; glsmean Geometric least squares mean; gmean Geometric mean; PAP Primary analysis population.

Assessment of Lipids: In postmenopausal women with early breast cancer in the SABRE trial who received anastrozole alone (the primary analysis population), there was no statistically significant change in low-density lipoprotein-cholesterol (LDL-C) from baseline to 12 months (mean percent change -2.25% (95% CI: -7.64, 3.13) p-value 0.2859), a statistically significant increase in high-density lipoprotein-cholesterol (HDL-C) from baseline to 12 months (mean percent change 6.85% (95% CI: 2.79, 10.91) p-value 0.0016) and no statistically significant changes in total cholesterol or triglycerides (see [Table 16](#)).

In addition, no statistically significant changes from baseline to 12 months were seen in LDL -C [(mean percent change (-2.91% (95% CI: -7.20, 1.38) p-value 0.0770)], HDL-C [(mean percent change (4.00% (95% CI: 0.21, 7.79) p-value 0.1070)], total cholesterol or triglycerides in patients who received anastrozole in combination with the bisphosphonate, risedronate (the secondary analysis population).

The mean TC:HDL-C ratio decreased from baseline to 12 months in both populations for lipids. In the primary analysis population, the TC:HDL-C ratio decreased from a mean of 3.30 mmol/L (SD=0.82) at baseline to 3.11 mmol/L (SD=0.86) at 12 months while the secondary analysis population decreased from a mean of 3.48 mmol/L (SD=0.90) at baseline to 3.28 mmol/L (SD=0.85) at 12 months.

Table 16 Summary of lipid profile changes from baseline in LDL-C, HDL-C, total cholesterol and serum triglycerides (mmol/L) at 12 months

	Anastrozole 1 mg Population (PAPL) (N=66)	Anastrozole 1 mg + risedronate 35 mg Population (SP) (N=65)
LDL-C		
N ^a	54	59
Mean (baseline)	2.97	2.99
Mean (12 months)	2.88	2.89
Differences in means	-0.09	-0.11
Mean % change (95% CI)	-2.25 (-7.64, 3.13)	-2.91 (-7.20, 1.38)
p-value ^b	0.2859	0.0770
HDL-C		
N ^a	54	60
Mean (baseline)	1.68	1.62
Mean (12 months)	1.79	1.67
Differences in means	0.11	0.05
Mean % change (95% CI)	6.85 (2.79, 10.91)	4.00 (0.21, 7.79)
p-value ^b	0.0016	0.1070
Total cholesterol (TC)		
N ^a	54	60
Mean (baseline)	5.25	5.24
Mean (12 months)	5.27	5.19
Differences in means	0.02	-0.05
Mean % change (95% CI)	0.76 (-3.08, 4.60)	-0.44 (-3.27, 2.39)
p-value ^b	0.8647	0.4840
Serum triglycerides (TG)		
N ^a	54	60
Mean (baseline)	1.31	1.40
Mean (12 months)	1.31	1.50
Differences in means	0.00	0.11

	Anastrozole 1 mg Population (PAPL) (N=66)	Anastrozole 1 mg + risedronate 35 mg Population (SP) (N=65)
Mean % change (95% CI)	-0.60 (-7.15, 5.94)	7.03 (-5.02, 19.09)
p-value ^b	0.9881	0.4313

^a Patients with values at baseline and 6 or 12 months.

^b Paired t-test comparing the means at baseline and 12 months.

CI Confidence interval; ITT Intent-to-treat; LDL-C Low-density lipoprotein-cholesterol; PAPL

Primary analysis population for lipids; SP Secondary analysis population for lipids.

LDL-C, HDL-C, TC, TG and TC:HDL-C ratio were analysed independently of strata in patients who did not have elevated cholesterol at baseline, according to the ATP [Adult Treatment Panel] III criteria.

Treatment for 12 months with anastrozole alone or combination treatment with anastrozole and risedronate had a neutral effect on lipid profile. Therefore, no specific requirements for lipid monitoring due to anastrozole therapy are recommended.

Hormonal Treatment of Advanced Breast Cancer in Postmenopausal Women

Anastrozole was studied in two, double-blind, controlled trials of similar design (0030, a North American study; 0027, a predominantly European study) in 1021 postmenopausal women with advanced breast cancer. Eligible patients were randomized to receive a single daily dose of either anastrozole 1 mg, or tamoxifen 20 mg. The trials were designed to allow data to be pooled.

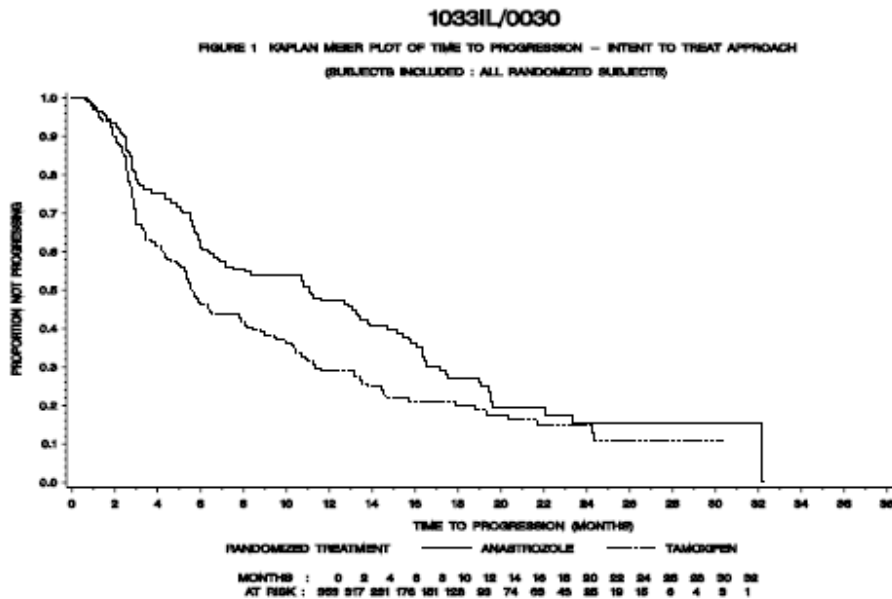
Demographics and other baseline characteristics were similar for the two treatment groups, however there were differences in hormone receptor status between the two trials. In Trial 0030, 88.3% of anastrozole-treated patients and 89.0% of tamoxifen-treated patients were known to be estrogen and/or progesterone receptor positive, compared to 45.3% and 43.9% (respectively) of patients in Trial 0027.

Study Results: Anastrozole was shown to be at least as effective as tamoxifen for the primary endpoints of time to progression and objective response rate. In Trial 0030, a non-protocolled analysis indicated that anastrozole had a statistically significant advantage over tamoxifen ($p=0.005$) for time to progression (11.1 months versus 5.6 months, respectively) (see [Figure 4a](#)). Trial 0027 showed anastrozole to be at least as effective as tamoxifen for time to progression (8.2 months versus 8.3 months, respectively) (see [Figure 4b](#)) and objective response rate. The combined data from the two trials showed anastrozole to be numerically superior to tamoxifen for time to progression (8.5 months versus 7.0 months, respectively) (see [Figure 4c](#)). In a retrospective data analysis, patients from Trial 0027 who were known to be estrogen and/or progesterone receptor positive were shown to have longer median times to progression (271 days) when treated with anastrozole, than those treated with tamoxifen (237 days) (see [Figure](#)

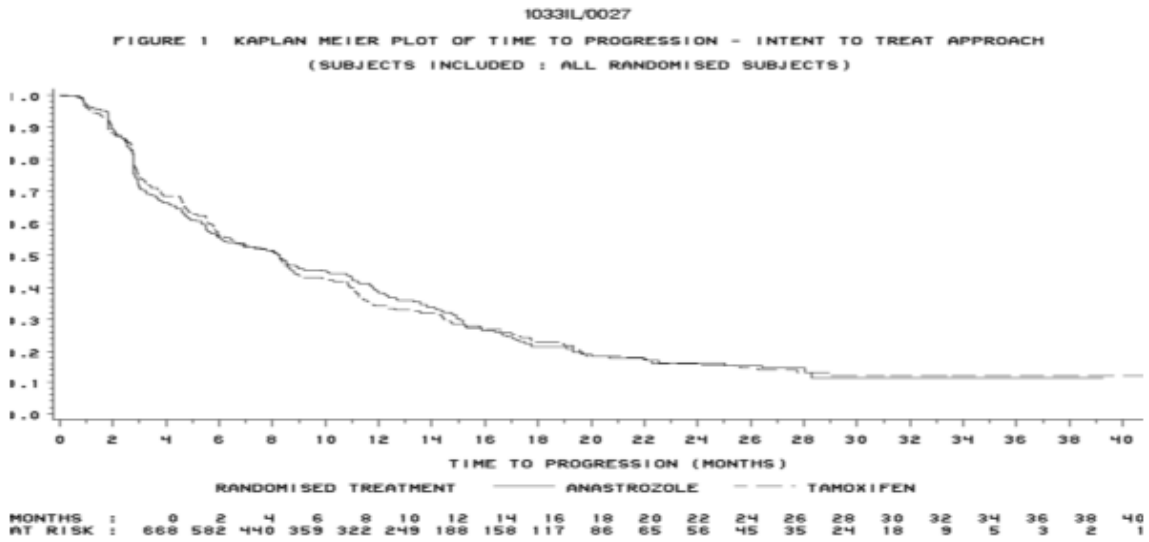
4d). In addition, combined data from both trials, for patients who were estrogen and/or progesterone receptor positive, showed median times to progression of 10.7 months versus 6.4 months for anastrozole versus tamoxifen treated patients (two sided, $p=0.022$, retrospective analysis). These subgroup analyses support the results of Trial 0030 in suggesting numerical superiority for anastrozole over tamoxifen in patients known to be estrogen and/or progesterone receptor positive. Furthermore, these analyses demonstrate that patients with estrogen and/or progesterone receptor positive tumours are clearly the most appropriate population for anastrozole therapy.

Figure 4 Kaplan-Meier plots of time to progression (intention-to-treat population).
 a) Trial 0030 all patients; b) Trial 0027 all patients; c) Trials 0030 and 0027 combined; d) Trial 0027 estrogen/progesterone receptor positive patients only.

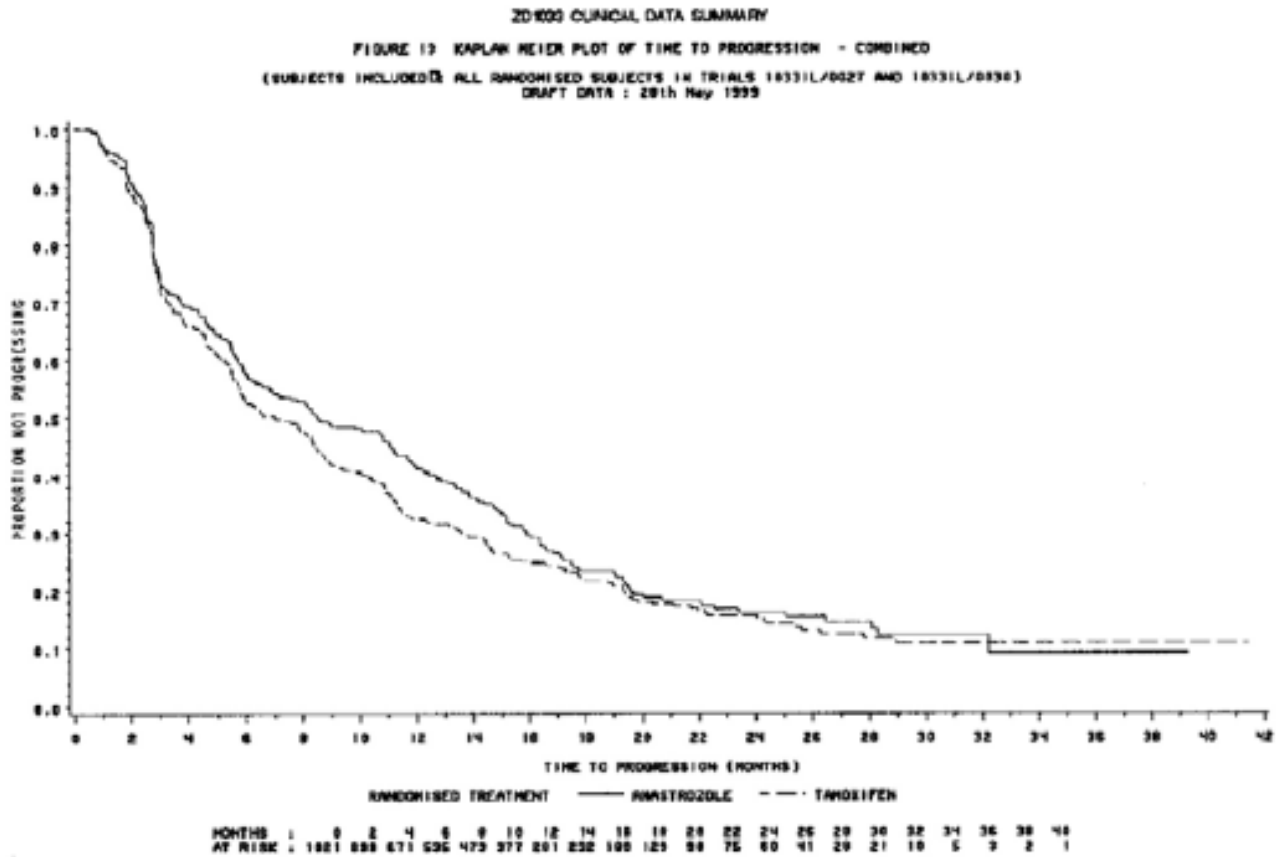
a)



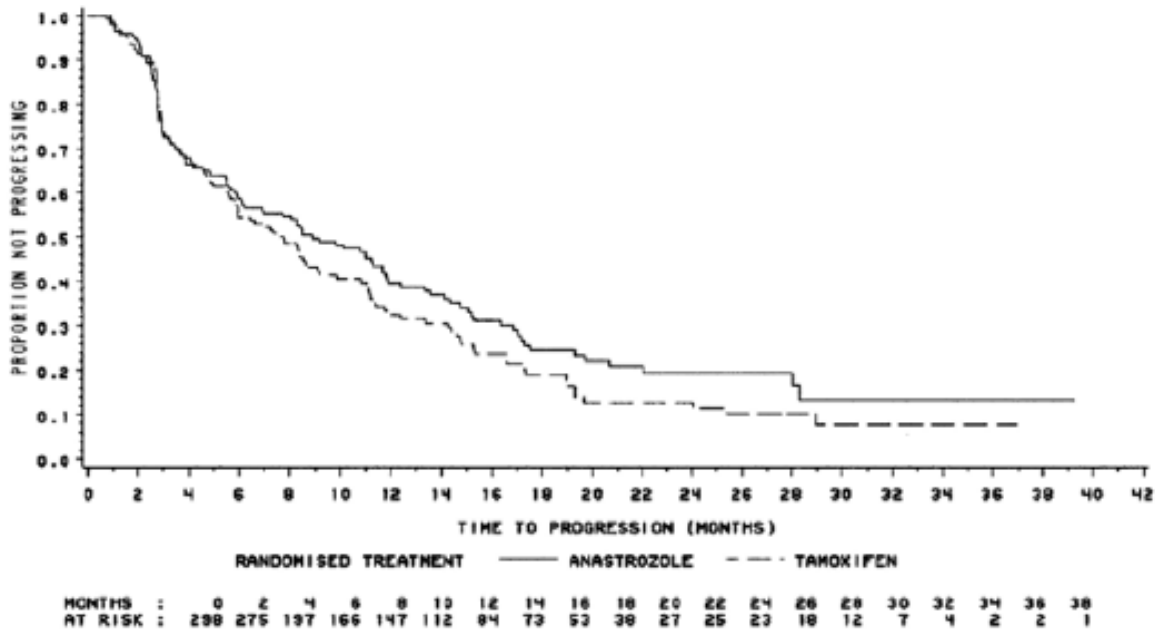
b)



c)



d)



Results from the secondary endpoints of time to treatment failure, duration of response, and duration of clinical benefit were supportive of the results of the primary efficacy endpoints. The number of patients who experienced clinical benefit (best objective response of complete response [CR], partial response [PR] or stable disease [SD] \geq 24 weeks is shown in [Table 17](#).

Table 17 Analysis of Secondary Endpoints in Trials 0030, 0027 and Combined

Clinical Benefit	Number (%) of Patients					
	Trial 0030		Trial 0027		Combined Trials	
	Anastrozole 1 mg (n=171)	Tamoxifen 20 mg (n=182)	Anastrozole 1 mg (n=340)	Tamoxifen 20 mg (n=328)	Anastrozole 1 mg (n=511)	Tamoxifen 20 mg (n=510)
CR	5 (2.9)	5 (2.7)	19 (5.6)	16 (4.9)	24 (4.7)	21 (4.1)
PR	31 (18.1)	26 (14.3)	93 (27.4)	91 (27.7)	124 (24.3)	117 (22.9)
SD \geq 24 weeks	65 (38.0)	52 (28.6)	79 (23.2)	75 (22.9)	144 (28.2)	127 (24.9)
Total	101 (59.1)*	83 (45.6)*	191 (56.2)	182 (55.5)	292 (57.1)	265 (52.0)

CR complete response

PR partial response

SD stable disease

* two-sided p=0.0098, retrospective analysis

There were too few deaths occurring across treatment groups of both trials to assess overall

survival differences at the time of data analysis.

Treatment of Postmenopausal Women with Advanced Breast Cancer who had Disease Progression following Tamoxifen Therapy: Anastrozole was studied in two well-controlled clinical trials (0004, a North American study; 0005, a predominantly European study) in postmenopausal women with advanced breast cancer who had disease progression following tamoxifen therapy. Most patients were estrogen receptor - positive; a smaller fraction was estrogen receptor-unknown or estrogen receptor-negative. Eligible patients were randomized to receive either a single daily dose of 1 mg or 10 mg of anastrozole, or megestrol acetate 40 mg four times a day. The studies were double -blinded with respect to anastrozole.

Approximately 1/3 of the patients in each treatment group in both studies had either an objective response or stabilization of their disease for greater than 24 weeks. Hazard ratios for time to progression and odds ratios for response rates were calculated for the pooled studies were shown to be similar. After analysis of mature data involving 473 patients among 764 randomized participants, the hazard ratios for survival demonstrated a significant prolongation of survival in the 1 mg anastrozole group compared to hormonal treatment with megestrol acetate.

Table 18 Analysis of Time to Death for Patients in Trials 0004 and 0005 Combined

Time of death	Trial Treatment			Hazard Ratio*, (97.5% CI), and p-values#	
	Anastrozole 1 mg	Anastrozole 10 mg	MA	Anastrozole 1 mg vs MA	Anastrozole 10 mg vs MA
Number of patients who died (%)	151 of 263 (57.4)	151 of 248 (60.9)	171 of 253 (67.6)		
2-year survival rate	56.1%	54.6%	46.3%		
Median time to death (months)	26.7	25.5	22.5	0.78 (0.6040 to 0.9996) p=0.0248+	0.83 (0.6452 to 1.0662) p=0.0951+

* Hazard ratio greater than 1.00 indicated that the first treatment is associated with shorter time to death than is the second treatment

The critical p-value for statistical significance is 0.025

+ Calculated using Cox's regression model

CI Confidence interval

MA Megestrol acetate

Patients with estrogen receptor-negative disease rarely responded to anastrozole, but there were too few patients in this group for a meaningful analysis.

14.3 Comparative Bioavailability Studies

A randomized, two-treatment, two-period, crossover, single dose, oral comparative bioavailability study of ^{Pr}ANASTROZOLE 1 mg tablets (Sivem Pharmaceuticals ULC) and ^{Pr}ARIMIDEX® 1 mg tablets (AstraZeneca UK Ltd.) was conducted in 18 healthy, adult, male volunteers under fasting conditions. Comparative bioavailability data from 17 subjects that were included in the statistical analysis are presented in the following table:

SUMMARY TABLE OF THE COMPARATIVE BIOAVAILABILITY DATA

Anastrozole (1 x 1 mg) Geometric Mean Arithmetic Mean (CV%)				
Parameter	Test ¹	Reference ²	% Ratio of Geometric Means	90% Confidence Interval
AUC ₀₋₇₂ (ng·h/mL)	487.1 494.3 (17.1)	486.3 491.7 (15.9)	100.4	96.7 – 104.1
C _{max} (ng/mL)	14.7 14.8 (11.0)	14.7 14.7 (12.1)	100.9	98.2 – 103.7
T _{max} ³ (h)	3.5 (1.0 – 4.0)	3.5 (0.7 – 4.1)		

¹ ^{Pr}ANASTROZOLE (anastrozole) tablets, 1 mg (Sivem Pharmaceuticals ULC).

² ^{Pr}ARIMIDEX® (anastrozole) tablets, 1 mg (AstraZeneca UK Ltd.).

³ Expressed as the median (range) only.

Due to the long elimination half-life of anastrozole, AUC_i and T_{1/2} could not be accurately calculated from the data obtained in this study.

15 MICROBIOLOGY

No microbiological information is required for this drug product.

16 NON-CLINICAL TOXICOLOGY

General Toxicology

The preclinical safety evaluation of anastrozole has included acute studies, 1 and 6 -month toxicity studies in rats and dogs, teratology, genetic toxicology, antigenicity and irritancy studies. Additional toxicology studies include a 2-year oncogenicity study in rats and a 2-year oncogenicity study in mice. Two additional investigative studies have also been completed to assist interpretation of the neoplastic changes observed in the rat oncogenicity study.

Acute Toxicity: The majority of mice dosed orally with 250 mg/kg anastrozole and all mice dosed intraperitoneally with 50 mg/kg showed signs of non-specific toxicity following dosing, but all recovered by day 2 and appeared normal for the remainder of the 14 day observation periods. Rats did not tolerate doses of 250 mg/kg and above by either route. No atypical signs were seen in rats following 100 mg/kg orally. However, there were signs of non-specific toxicity, but no deaths, following 50 mg/kg intraperitoneally. Non-specific toxicity in the rodent comprised the following: subdued behaviour, hunched posture, trembling, decreased respiration rate, fully or partially closed eyes, pilo-erection, salivation, lacrimation, convulsions, loss of skin tone, and lying prone.

In dogs treated orally with 45 mg/kg anastrozole, only minimally toxic effects were observed consisting of emesis, loose stools, body weight loss and reduced food consumption.

Multiple Dose Toxicity Studies: Anastrozole was well tolerated at up to 50 mg/kg/day in multiple dosing studies in rats, but 12 mg/kg/day was not tolerated in dogs in the 1 month study. Consequently, the top dose in the 6 month dog study was set at 8 mg/kg/day.

Anastrozole is a potent inhibitor of the aromatase enzyme and as such may be expected to induce a variety of effects resulting from the long-term inhibition of estrogen production in multiple dosing studies. Such pharmacological effects were observed in the reproductive tract and endocrine organs at all dose levels in rat and dog in both 1 month and 6 month toxicity studies. These effects included increased ovarian weight with increased numbers of Graafian follicles and/or corpora lutea together with mammary gland/uterine/vaginal changes in rats and dogs and testicular Leydig cell changes in dogs. Other pharmacologically induced changes in rats were reduced pituitary and adrenal gland weights, while in dogs, thymic involution was seen in both sexes in all dose groups. Changes in blood parameters included reversible increases in platelet numbers in both species, a reversible increase in erythrocyte parameters in female rats at 1 month, with a reversible decrease in male rats and dogs at 6 months, and increased white blood cells in rats of both sexes.

Non-pharmacologically induced changes in rats included an increased incidence of chronic progressive glomerular nephropathy at high dose (50 mg/kg/day) in the 6 month study. This was of minimal to mild severity and is thought to represent an exacerbation of the spontaneously occurring condition, possibly due to a slightly increased protein load in these animals. In addition, liver enlargement (reversible on withdrawal) accompanied by centrilobular hypertrophy and reduced glycogen at doses of 5 mg/kg/day and above in both the 1 month and 6 month studies, was considered indicative of induction of mixed function oxidases by anastrozole.

In the dog, liver enlargement (reversible on withdrawal), generally accompanied by centrilobular hypertrophy and increased plasma alkaline phosphatase, was seen at mid and high dose levels in both multiple dose toxicity studies. This finding was consistent with induction of mixed function oxidase enzymes. Reversible hepatotoxicity, characterised by multifocal

degeneration/necrosis and accompanied by elevated plasma alanine aminotransferase, was seen at the high dose (8 mg/kg/day) in the 6 month dog study. No degenerative changes were seen at the mid dose (3 mg/kg/day) in dogs, implying at least a 150 fold margin for hepatotoxicity in the dog based on a human dosage of 1 mg/day (approximately 0.02 mg/kg and approximately a 40 fold margin based on comparable AUC data).

Changes in clinical chemistry parameters in the toxicology studies included a reduction in triglycerides (all doses) and an increase in cholesterol (5 and 25 mg/kg/day) in male rats after 1 month dosing, and changes in potassium levels at 25 mg/kg/day. In dogs, plasma cholesterol and urinary creatine were reduced after 1 month at 12 mg/kg/day. Cholesterol was increased in female dogs (no change in males) after 6 months at 8 mg/kg/day. However, no ocular effects were seen in either species.

A reversible reduction in R-wave amplitude was seen in the dog studies at the high doses of 12 and 8 mg/kg/day in the 1 and 6 month studies respectively. This effect was not accompanied by any waveform interval or histopathological changes and is of unknown etiology.

Carcinogenicity

The oncogenicity study in rats at doses of 1.0 to 25 mg/kg/day, administered by oral gavage for up to 2 years, revealed increases in the incidence of hepatocellular adenoma and carcinoma in high dose females, uterine stromal polyps in the high dose females and thyroid adenoma in the high dose males. Dose related increases were observed in the incidences of ovarian and uterine hyperplasia in females. At 25 mg/kg/day, plasma AUC(0-24hr) levels in rats were about 100 times higher than the level exhibited in postmenopausal volunteers at the recommended dose.

A separate oncogenicity study in mice at oral doses of 5 to 50 mg/kg/day for up to 2 years, produced increases in the incidence of benign ovarian epithelial and sex cord stromal granulosa cell tumours, at all dose levels. A dose related increase in the incidence of ovarian stromal hyperplasia was also observed in female mice. These ovarian changes are considered to be rodent-specific effects of aromatase inhibition and are of no significance to postmenopausal breast cancer patients. The incidence of lymphosarcoma was marginally increased in males and females at the high dose. At 50 mg/kg/day, plasma AUC(0-t) levels in mice were about 30 times higher than the level exhibited in postmenopausal volunteers at the recommended dose.

Genotoxicity

There were no significant findings in genetic toxicology studies.

Reproductive and Developmental Toxicology

Anastrozole has been found to cross the placenta following oral administration of 0.1 mg/kg in rats and rabbits. Studies in both rats and rabbits at doses equal to or greater than 0.1 and 0.02 mg/kg/day (about 1 and 1/3, respectively, the recommended human dose on a mg/m² basis), respectively, administered during the period of organogenesis showed that anastrozole increased pregnancy loss (increased pre- and/or post-implantation loss, increased resorption

and decreased numbers of live fetuses). Effects were dose related in rats. Placental weights were significantly increased in rats at doses of 0.1 mg/kg/day or more.

Evidence of fetotoxicity, including delayed fetal development (i.e. incomplete ossification and depressed fetal body weights), was observed in rats administered doses of 1 mg/kg/day (about 8 times the recommended human dose on a mg/m² basis). There was no evidence of teratogenicity in rats administered doses up to 1 mg/kg/day. In rabbits, anastrozole caused pregnancy failure at doses equal to or greater than 1 mg/kg/day (about 16 times the recommended human dose on a mg/m² basis). There was no evidence of teratogenicity in rabbits administered 0.2 mg/kg/day (about 3 times the recommended human dose on a mg/m² basis).

Oral administration of anastrozole to female rats produced a high incidence of infertility at 1 mg/kg/day and increased pre-implantation loss at 0.02 mg/kg/day. These effects were related to the pharmacology of the compound and were completely reversed after a 5 -week compound withdrawal period.

Special Toxicology

There were no significant findings in special toxicity studies designed to assess the irritant or antigenic potential of anastrozole.

Additional studies to provide further reassurance of the mechanisms underlying the formation of liver and thyroid tumours in rats have been completed.

In the first study, female rats dosed with anastrozole at 25 mg/kg/day for up to 28 days showed a 27% increase in relative liver weight, an increase in hepatocyte replication, and centrilobular hepatocyte hypertrophy. It was concluded that anastrozole, a known hepatic cytochrome P450 enzyme inducer in rats, elicited a spectrum of biological changes in the rat liver similar to those observed with the non-genotoxic hepatocarcinogen, phenobarbitone. The hepatic changes in this study, and the tumours seen in female rats at 25 mg/kg/day after two-years, are considered a result of this non-genotoxic process.

In the second study, male rats were dosed at 25 mg/kg/day for 30 days. Thyroid follicular epithelial cell hypertrophy, increased TSH activity and increased plasma clearance of 125I-T₄, in association with liver enlargement, centrilobular hepatocyte hypertrophy, increase in CYP2B (predominantly) activity and increase in T₄ UDP-glucuronyltransferase activity, are consistent with anastrozole being a liver enzyme inducer of the phenobarbitone type. Thus, the thyroid tumours that occurred in male rats dosed with 25 mg/kg/day anastrozole over two -years can be considered to be mechanistically related to an increased clearance of thyroid hormone resulting from an induction of specific liver enzymes resulting in a TSH-mediated non-genotoxic response.

The spectrum of biological changes in the rat liver and thyroid are similar to those reported in the literature following the administration of the non-genotoxic carcinogen, phenobarbitone. It

is, therefore, concluded that the hepatic and thyroid changes seen in these investigative studies confirm the non-genotoxic mechanism responsible for the formation of tumours in the two-year rat oncogenicity study. The results do not alter the risk benefit assessment for the clinical use of anastrozole.

17 SUPPORTING PRODUCT MONOGRAPHS

ARIMIDEX® tablets, 1 mg, submission control number: 263092, Product Monograph, AstraZeneca Canada Inc. (NOV 08, 2022)

PATIENT MEDICATION INFORMATION

READ THIS FOR SAFE AND EFFECTIVE USE OF YOUR MEDICINE

Pr **ANASTROZOLE** **Anastrozole Tablets**

Read this carefully before you start taking **ANASTROZOLE** and each time you get a refill. This leaflet is a summary and will not tell you everything about this drug. Talk to your healthcare professional about your medical condition and treatment and ask if there is any new information about **ANASTROZOLE**.

Serious Warnings and Precautions

- ANASTROZOLE should not be taken by premenopausal women.
- You will be carefully monitored by a healthcare professional while taking ANASTROZOLE if you have:
 - Liver and/or kidney problems;
 - Osteoporosis (bone thinning) or risk factors for osteoporosis.

What is ANASTROZOLE used for?

ANASTROZOLE is used for the treatment of postmenopausal women with hormone receptor positive breast cancer in the following conditions:

- Adjuvant treatment for early breast cancer.
- Advanced breast cancer.

How does ANASTROZOLE work?

In hormone sensitive breast cancer, estrogens stimulate tumour growth. Following menopause, estrogens continue to be produced in small amounts in other body tissues such as the breasts, muscle and fat.

ANASTROZOLE belongs to a group of medicines called aromatase inhibitors. It blocks the action of aromatase, an enzyme needed in the production of estrogens. This may help reduce the growth of breast cancer and delay the breast cancer from recurring.

Adjuvant therapy: Adjuvant means "in addition to." In early breast cancer, this means that additional treatment is required after primary treatment. The reason for this is that after surgery, a small number of cancer cells may remain in the body.

Adjuvant therapy is given to prevent or delay these cells from multiplying and spreading. The purpose of adjuvant therapy with ANASTROZOLE is to help to delay the breast cancer from recurring.

What are the ingredients in ANASTROZOLE?

Medicinal ingredients: anastrozole

Non-medicinal ingredients: cellulose microcrystalline, hydroxypropylcellulose, hydroxypropyl

methylcellulose, lactose monohydrate, magnesium stearate, macrogol 4000, sodium starch glycolate, silica colloidal anhydrous and titanium dioxide.

ANASTROZOLE comes in the following dosage forms:

Tablets: 1 mg

Do not use ANASTROZOLE if:

- You are allergic to anastrozole or any other ingredients of ANASTROZOLE. If you think you may be allergic, ask your healthcare professional for advice.
- You are pregnant or breast-feeding.

To help avoid side effects and ensure proper use, talk to your healthcare professional before you take ANASTROZOLE. Talk about any health conditions or problems you may have, including if you:

- Have any disorder or disease which affects your heart, liver or kidneys.
- Have a disorder or a disease which affects bone density. ANASTROZOLE lowers the level of female hormones which may cause a loss of mineral content of bones. This might make the bones weaker and lead to a broken bone. You should talk to your healthcare professional about your osteoporosis risk before using ANASTROZOLE.

Other warnings you should know about:

Muscle and bone problems: ANASTROZOLE may cause joint stiffness, arthritis or muscle pain.

Driving and using machines: ANASTROZOLE is unlikely to affect your ability to drive a car or use machines. However, some patients may feel weak or sleepy. If this happens, avoid driving or using machinery.

Tell your healthcare professional about all the medicines you take, including any drugs, vitamins, minerals, natural supplements or alternative medicines.

The following may interact with ANASTROZOLE:

- Medicine containing estrogen (a female sex hormone). It may oppose the effect of ANASTROZOLE. Some herbal products contain estrogen.
- Tamoxifen, used to treat patients with early-stage, locally advanced or metastatic breast cancer.

Please note that these statements may also apply to medicine used some time ago.

How to take ANASTROZOLE:

- Take ANASTROZOLE exactly as your healthcare professional has told you.
- Swallow the tablet with fluids.
- Try to take your tablet at the same time each day.

To help you keep track of your doses, ANASTROZOLE comes in a blister pack with days of the week printed on the back of the blister. To start, take the tablet that matches the day of the week and continue taking them in order until they are all finished.

There are 14 days of labeled tablets in each blister, with one extra to make 15. All 15 tablets, including the one labeled "Take this tablet last", are exactly the same. Once you have finished the 14 labeled tablets, take the one marked "Take this tablet last" before starting your next blister pack.

Usual dose:

The usual dose is 1 mg (one tablet) once a day.

Take ANASTROZOLE for as long as your healthcare professional tells you to.

Overdose:

If you think you, or a person you are caring for, have taken too much ANASTROZOLE, contact a healthcare professional, hospital emergency department, or regional poison control centre immediately, even if there are no symptoms.

Missed Dose:

If you forget to take ANASTROZOLE, and your next dose is in:

- Less than 12 hours, skip the dose you have missed.
- 12 hours or more, take the last missed dose as soon as you remember.

What are possible side effects from using ANASTROZOLE?

These are not all the possible side effects you may have when taking ANASTROZOLE. If you experience any side effects not listed here, tell your healthcare professional.

- Hot flushes
- Joint pain, joint stiffness or broken bones
- Weakness
- Carpal tunnel syndrome (tingling, pain, coldness, weakness in parts of the hand)
- Tickling, tingling or numbness of skin, loss/lack of taste
- Vaginal dryness
- Hair thinning (alopecia)
- Rash
- Nausea
- Diarrhea
- Headache
- Changes in liver function (shown in blood tests)
- Bone pain
- Muscle pain
- Loss of appetite
- Vomiting
- Sleepiness/tiredness
- Trigger finger
- High blood cholesterol (shown in blood tests)

Serious side effects and what to do about them			
Symptom / effect	Talk to your healthcare professional		Stop taking drug and get immediate medical help
	Only if severe	In all cases	
VERY COMMON			
Depression: feeling sad, sleeping a lot more or a lot less than usual, changes in weight, withdrawal from social situations, family gatherings and activities with friends, reduced sex drive, and thoughts of death or suicide.		✓	
Osteoporosis (bone loss, thin and fragile bones): broken bones, pain, back pain that is worse with standing or walking.		✓	
COMMON			
Ischemic heart disease (reduced blood flow in the vessels of the heart): chest pain.		✓	✓
UNCOMMON			
Hepatitis (Inflammation of the liver): general feeling of being unwell, with or without yellowing of the skin and eyes, and pain in the upper abdomen on the right side.		✓	✓
Tendon disorders including tendonitis (inflammation of the tendon) and tenosynovitis (inflammation of the tissue around the tendon): pain, swelling and tenderness near a joint.		✓	
Vaginal bleeding (usually in the first weeks of treatment).	✓		
RARE			
Tendon tears: feel a snap or pop when the tear happens, severe pain, swelling.		✓	
VERY RARE			
Stevens-Johnson syndrome (Severe skin reactions): lesions, ulcers, blisters.		✓	✓

Allergic reactions: swelling of the face, lips, tongue and/or throat, with or without difficulty in swallowing and/or breathing.		✓	✓
---	--	---	---

If you have a troublesome symptom or side effect that is not listed here or becomes bad enough to interfere with your daily activities, tell your healthcare professional.

Reporting Side Effects

You can report any suspected side effects associated with the use of health products to Health Canada by:

- Visiting the Web page on Adverse Reaction Reporting (<https://www.canada.ca/en/health-canada/services/drugs-health-products/medeffect-canada/adverse-reaction-reporting.html>) for information on how to report online, by mail or by fax; or
- Calling toll-free at 1-866-234-2345.

NOTE: Contact your health professional if you need information about how to manage your side effects. The Canada Vigilance Program does not provide medical advice.

Storage:

- Store at room temperature, 15°C to 30°C.
- Keep your ANASTROZOLE tablets in the original container.
- Do not use ANASTROZOLE after the expiry date on the blister package.
- Keep out of reach and sight of children.

If you want more information about ANASTROZOLE:

- Talk to your healthcare professional.
- Find the full product monograph that is prepared for healthcare professionals and includes this Patient Medication Information by visiting the Health Canada website: <https://www.canada.ca/en/health-canada/services/drugs-health-products/drug-products/drug-product-database.html>; the manufacturer's website www.sivem.ca or by calling 1 855-788-3153.

This leaflet was prepared by Sivem Pharmaceuticals ULC

Last Revised: OCT 15, 2024