

PRODUCT MONOGRAPH
INCLUDING PATIENT MEDICATION INFORMATION

^{Pr} DOXOrubicin Hydrochloride for Injection USP

Doxorubicin Hydrochloride for Injection

sterile powder for solution, 50 mg / vial and 150 mg / vial, for intravenous and intravesical use

Antineoplastic agent

Pfizer Canada ULC
17300 Trans-Canada Highway
Kirkland, Québec
H9J 2M5

Date of Initial Authorization:
NOV 17, 1995

Date of Revision:
JAN 09, 2025

Submission Control Number: 288794

RECENT MAJOR LABEL CHANGES

7 WARNINGS AND PRECAUTIONS, Reproductive Health: Female and Male Potential	03/2023
7 WARNINGS AND PRECAUTIONS, 7.1 Special Populations	03/2023

TABLE OF CONTENTS

Sections or subsections that are not applicable at the time of authorization are not listed.

RECENT MAJOR LABEL CHANGES	2
TABLE OF CONTENTS	2
PART I: HEALTH PROFESSIONAL INFORMATION	4
1 INDICATIONS	4
1.1 Pediatrics	4
1.2 Geriatrics	4
2 CONTRAINDICATIONS	4
3 SERIOUS WARNINGS AND PRECAUTIONS BOX	5
4 DOSAGE AND ADMINISTRATION	6
4.2 Recommended Dose and Dosage Adjustment.....	6
4.3 Reconstitution	7
4.4 Administration	8
4.5 Missed Dose	9
5 OVERDOSAGE	9
6 DOSAGE FORMS, STRENGTHS, COMPOSITION AND PACKAGING	9
7 WARNINGS AND PRECAUTIONS	10
7.1 Special Populations	14
7.1.1 Pregnant Women.....	14
7.1.2 Breast-feeding.....	15
7.1.3 Pediatrics	15
8 ADVERSE REACTIONS	15
8.1 Adverse Reaction Overview.....	15
9 DRUG INTERACTIONS	16
9.2 Drug Interactions Overview	16
9.3 Drug-Behavioural Interactions	16

9.4	Drug-Drug Interactions	16
9.5	Drug-Food Interactions	17
9.6	Drug-Herb Interactions.....	17
9.7	Drug-Laboratory Test Interactions	17
10	CLINICAL PHARMACOLOGY	17
10.1	Mechanism of Action	17
10.2	Pharmacodynamics	17
10.3	Pharmacokinetics.....	18
11	STORAGE, STABILITY AND DISPOSAL	18
12	SPECIAL HANDLING INSTRUCTIONS	18
	PART II: SCIENTIFIC INFORMATION	20
13	PHARMACEUTICAL INFORMATION.....	20
14	CLINICAL TRIALS.....	20
15	MICROBIOLOGY	21
16	NON-CLINICAL TOXICOLOGY	21
17	SUPPORTING PRODUCT MONOGRAPHS.....	21
	PATIENT MEDICATION INFORMATION	22

PART I: HEALTH PROFESSIONAL INFORMATION

CAUTION:

DOXORUBICIN HYDROCHLORIDE FOR INJECTION USP (DOXORUBICIN HYDROCHLORIDE) IS A POTENT DRUG AND SHOULD BE USED ONLY BY PHYSICIANS EXPERIENCED WITH CANCER CHEMOTHERAPY DRUGS (SEE [7 WARNINGS AND PRECAUTIONS](#)). BLOOD COUNTS AND HEPATIC FUNCTION TESTS SHOULD BE PERFORMED REGULARLY. BECAUSE OF THE EXPERIENCE WITH CARDIAC TOXICITY, IT IS NOT RECOMMENDED TO EXCEED A TOTAL DOSE OF DOXORUBICIN HYDROCHLORIDE 550 MG/M² WITH THE 21-DAY REGIMEN AND 700 MG/M² WITH THE WEEKLY REGIMEN. CARDIAC MONITORING IS ADVISED IN THOSE PATIENTS WHO HAVE RECEIVED MEDIASTINAL RADIOTHERAPY, OTHER ANTHRACYCLINE OR ANTHRACENE THERAPY, WITH PRE-EXISTING CARDIAC DISEASE, OR WHO HAVE RECEIVED PRIOR DOXORUBICIN HYDROCHLORIDE CUMULATIVE DOSES EXCEEDING 400 MG/M² WITH THE 21-DAY REGIMEN AND 550 MG/M² UTILIZING THE WEEKLY REGIMEN.

1 INDICATIONS

Doxorubicin Hydrochloride for Injection USP (doxorubicin hydrochloride) has been used successfully both as a single-agent and also in combination with other approved cancer chemotherapeutic agents to produce regression in neoplastic conditions such as acute lymphoblastic leukemia, acute myeloblastic leukemia, Wilms' tumor, neuroblastomas, soft tissue sarcomas, bone sarcomas, breast carcinoma, gynecologic carcinomas, testicular carcinomas, bronchogenic carcinoma, Hodgkin's disease, non-Hodgkin's lymphoma, thyroid carcinoma, bladder carcinomas, squamous cell carcinoma of the head and neck, and gastric carcinoma.

Doxorubicin Hydrochloride for Injection USP has also been used by instillation into the bladder for the topical treatment of superficial bladder tumors.

A number of other solid tumors have also shown some responsiveness to doxorubicin hydrochloride alone or in combination with other drugs (see [4 DOSAGE AND ADMINISTRATION](#)). Studies to date have shown malignant melanoma, kidney carcinoma, large bowel carcinomas, brain tumors and metastases to the central nervous system not to be significantly responsive to doxorubicin hydrochloride therapy.

1.1 Pediatrics

Pediatrics (0-18 years): Based on the data submitted and reviewed by Health Canada, the safety and efficacy of doxorubicin hydrochloride in pediatric patients has not been established; therefore, Health Canada has not authorized an indication for pediatric use (see [7.1.3 Pediatrics](#)).

1.2 Geriatrics

Geriatrics (≥ 60 years): No data are available to Health Canada; therefore, Health Canada has not authorized an indication for geriatric use.

2 CONTRAINDICATIONS

- Patients who are hypersensitive to this drug or to any ingredient in the formulation or component of the container. For a complete listing, see the [6 DOSAGE FORMS, STRENGTHS, COMPOSITION AND PACKAGING](#) section of the product monograph.

- Hypersensitivity to doxorubicin or any other component of the product, other anthracyclines or anthracenediones such as PHARMORUBICIN (epirubicin hydrochloride), daunorubicin hydrochloride, mitoxantrone or mitomycin C.
- Marked persistent myelosuppression induced by prior treatment with other antitumor agents or by radiotherapy;
- Severe hepatic impairment;
- Severe myocardial insufficiency;
- Recent myocardial infarction;
- Severe arrhythmias;
- History of severe cardiac disease;
- Previous treatment with maximum cumulative doses of doxorubicin, daunorubicin, epirubicin, idarubicin and/or other anthracyclines and anthracenediones (see [7 WARNINGS AND PRECAUTIONS](#)).

Contraindication for intravesical use:

- Hematuria;
- Urinary tract infections;
- Inflammation of the bladder.

3 SERIOUS WARNINGS AND PRECAUTIONS BOX

Serious Warnings and Precautions
<ul style="list-style-type: none"> • Doxorubicin should be administered only under the supervision of physicians experienced in the use of cytotoxic therapy (see 4 DOSAGE AND ADMINISTRATION). • Cardiomyopathy may develop during treatment or up to several years after completion of treatment and can include decrease in LVEF and signs and symptoms of congestive heart failure (CHF). (see 7 WARNINGS AND PRECAUTIONS, Cardiovascular). • Secondary Malignancies: Secondary leukemia has been reported in patients treated with anthracyclines, including doxorubicin. The risk of developing secondary acute myelogenous leukemia (AML) and myelodysplastic syndrome (MDS) is increased following treatment with doxorubicin HCl. (see 7 WARNINGS AND PRECAUTIONS, Carcinogenesis and Mutagenesis, Secondary Malignancies). • Extravasation and Tissue Necrosis: Extravasation of doxorubicin during intravenous injection may produce local pain, severe tissue lesions (blistering, ulceration, vesication, severe cellulitis), and necrosis requiring wide excision of the affected area and skin grafting. Should signs or symptoms of extravasation occur, the drug infusion should be immediately stopped (see 7 WARNINGS AND PRECAUTIONS, Skin, Extravasation). • Myelosuppression and Sequelae: Doxorubicin can cause severe myelosuppression. Clinical consequences of severe myelosuppression include fever, infections (of bacterial, fungal or viral origin, e.g., sepsis/septicemia, lung infection, urinary tract infection), septic shock, hemorrhage, tissue hypoxia, or death (see 7 WARNINGS AND PRECAUTIONS, Hematologic). • Hepatic Impairment: The major route of elimination of doxorubicin is the hepatobiliary system. Patients with severe hepatic impairment should not receive doxorubicin. (see 7 WARNINGS AND PRECAUTIONS, Hepatic/Biliary/Pancreatic).

4 DOSAGE AND ADMINISTRATION

4.2 Recommended Dose and Dosage Adjustment

A variety of dose schedules has been used. The following recommendations are for use as a single agent only.

Intravenous (IV) Administration

The total Doxorubicin Hydrochloride for Injection USP (doxorubicin hydrochloride) dose per cycle may differ according to its use within a specific treatment regimen (e.g., given as a single agent or in combination with other cytotoxic drugs) and according to the indication.

The most commonly used dosage schedule is 60-75 mg/m² as a single intravenous injection administered at 21-day intervals. An alternative dose schedule is weekly doses of 20 mg/m², which has been reported to produce a lower incidence of congestive heart failure. A dose of 30 mg/m² on each of 3 successive days repeated every 4 weeks has also been used.

- *Hepatic Dysfunction:* Doxorubicin Hydrochloride for Injection USP dosage must be reduced if the bilirubin is elevated as follows: Serum Bilirubin 1.2-3.0 mg/dL – give ½ (half) of recommended starting dose, > 3 mg/dL – give ¼ (a fourth) of recommended starting dose. Doxorubicin should not be administered to patients with severe hepatic impairment (see [2 CONTRAINDICATIONS](#)).
- *Other Special Populations:* Lower starting doses or longer intervals between cycles may need to be considered for heavily pretreated patients, children, elderly patients, obese patients, or patients with neoplastic bone marrow infiltration (see [7 WARNINGS AND PRECAUTIONS](#)).
- *Drug Incompatibility:* Doxorubicin should not be mixed with fluorouracil (eg, in the same IV infusion bag or at the Y-site of an IV infusion line) since it has been reported that these drugs are incompatible to the extent that a precipitate might form. If concomitant therapy with doxorubicin and fluorouracil is required, it is recommended that the IV line be flushed between the administration of these drugs.

Intravesical Administration

Intravesical administration is not suitable for the treatment of invasive tumors that have penetrated the muscular layer of the bladder wall. When Doxorubicin Hydrochloride for Injection USP is instilled intravesically for the treatment of superficial bladder carcinomas, the usual dose employed ranges from 50 - 80 mg in a total volume of 50 - 100 mL of 0.9% Sodium Chloride Solution USP with a contact time of 1 - 2 hours. Care should be taken to ensure that the tip of the catheter is in the bladder cavity before instilling the Doxorubicin Hydrochloride for Injection USP solution. Instillation is repeated weekly for 4 weeks, and subsequently at monthly intervals. Therapy may continue for 1 year or longer as no significant systemic toxicity has been reported. Care should be exercised in the handling and disposal of the voided urine. (Refer to [12 SPECIAL HANDLING INSTRUCTIONS](#)). PVC gloves should be worn and the urine should be inactivated by decolorizing it with 10 mL or more of sodium hypochlorite solution (household bleach).

Other methods of administration have been investigated, including intra-arterial administration and also continuous or long-term intravenous infusion utilizing appropriate infusion pumps.

Clinical studies support the efficacy of doxorubicin hydrochloride used concurrently with other chemotherapeutic agents. Listed below are tumor types and drugs used concurrently with doxorubicin hydrochloride:

- Acute lymphocytic leukemia in adults: Doxorubicin hydrochloride with vincristine and prednisone or with cytosine arabinoside, vincristine and prednisone.
- Acute lymphocytic leukemia in children: Doxorubicin hydrochloride with L-asparaginase, vincristine and prednisone.
- Acute non-lymphocytic leukemia: Doxorubicin hydrochloride with cytosine arabinosyl or with arabinosyl cytosine, vincristine and prednisone.
- Carcinoma of the breast: Doxorubicin hydrochloride in treating early or advanced breast cancer in combination with 5-fluorouracil and/or cyclophosphamide or with vincristine with or without cyclophosphamide, or with taxane therapy.
- Bronchogenic carcinoma, non-small cell: Doxorubicin hydrochloride with cyclophosphamide, methotrexate and procarbazine or with cyclophosphamide and cisplatin.
- Bronchogenic carcinoma, small cell: Doxorubicin hydrochloride with vincristine or etoposide (VP-16) and cyclophosphamide.
- Hodgkin's disease: Doxorubicin hydrochloride with bleomycin, vincristine, and dacarbazine.
- Non-Hodgkin's lymphoma: Doxorubicin hydrochloride with cyclophosphamide, vincristine and prednisone, or bleomycin, cyclophosphamide, vincristine, and prednisone.
- Carcinoma of the ovary: Doxorubicin hydrochloride with cisplatin.
- Soft tissue sarcoma: Doxorubicin hydrochloride with dacarbazine, or with dacarbazine, cyclophosphamide and vincristine.
- Carcinoma of the bladder: Doxorubicin hydrochloride with methotrexate, vinblastine and cisplatin or cisplatin and cyclophosphamide or with 5-fluorouracil.
- Carcinoma of the stomach: Doxorubicin hydrochloride with 5-fluorouracil and mitomycin-C.

4.3 Reconstitution

Parenteral Products:

Vial Size	Volume of Diluent to be Added to Vial	Approximate Available Volume	Nominal Concentration per mL
50 mg	25 mL	25 mL	2 mg/mL
150 mg	75 mL	75 mL	2 mg/mL

Reconstitute Doxorubicin Hydrochloride for Injection USP to approximately 2 mg/mL doxorubicin hydrochloride with Sterile Water for Injection, 5% Dextrose Injection or 0.9% Sodium Chloride Injection, as follows:

Note: Reconstitution with 0.9% Sodium Chloride Injection will take considerably longer than is seen with other reconstituting solutions.

The reconstituted solutions remain chemically stable for up to 24 hours when stored at room temperature or for 72 hours when stored refrigerated, in glass containers or in plastic disposable syringes, under fluorescent light.

Further diluted solutions of doxorubicin hydrochloride prepared for bladder instillation at a concentration of 0.8 mg/mL in 0.9% Sodium Chloride in plastic bags, have been determined to be chemically stable for 24 hours when kept at room temperature in the presence of light, or for 72 hours when refrigerated.

Unpreserved reconstituted solutions should not be stored for more than 24 hours at room temperature or 72 hours under refrigeration, due to the possibility of microbial contamination during preparation. Discard unused portion.

Warning: As with all parenteral drug products, intravenous admixtures should be inspected visually for clarity, particulate matter, precipitate, discoloration and leakage prior to administration, whenever solution and container permit. Solutions showing haziness, particulate matter, precipitate, discoloration or leakage should not be used.

4.4 Administration

Intravenous (IV) Administration

Care in the administration of Doxorubicin Hydrochloride for Injection USP will reduce the chance of perivenous infiltration. It may also decrease the chance of local reactions such as urticaria and erythematous streaking. On intravenous administration of Doxorubicin, Hydrochloride for Injection USP extravasation may occur with or without an accompanying stinging or burning sensation even if the blood returns well on aspiration of the infusion needle. If any signs or symptoms of extravasation have occurred, the injection or infusion should be immediately terminated and restarted in another vein.

If it is known or suspected that subcutaneous extravasation has occurred, the following steps are recommended:

1. Attempt aspiration of the infiltrated Doxorubicin Hydrochloride for Injection USP solution.
2. Local intermittent application of ice for up to 3 days
3. Elevation of the affected limb
4. Close observation of the lesion
5. Consultation with a plastic surgeon familiar with drug extravasations if local pain persists or skin changes progress after 3 to 4 days. If ulceration begins, early wide excision of the involved area should be considered.

Doxorubicin Hydrochloride for Injection USP should be slowly administered into the tubing of a freely running intravenous infusion of Sodium Chloride Solution USP (0.9%) or 5% Dextrose Solution USP. The tubing should be attached to a Butterfly needle, or other suitable device and inserted preferably into a large vein. If possible, avoid veins over joints or in extremities with compromised venous or lymphatic drainage. The rate of administration is dependent on the size of the vein and the dosage, however, the dosage should be administered for not less than 3 minutes and not more than 10 minutes to minimize the risk of thrombosis or perivenous extravasation. Local erythematous streaking along the vein as well as facial flushing may be indicative of too rapid administration. A direct push injection is not recommended due to the risk of extravasation, which may occur even in the presence of adequate blood return upon needle aspiration (see [7 WARNINGS AND PRECAUTIONS](#)).

Unless specific compatibility data are available, the mixing of Doxorubicin Hydrochloride for Injection USP solutions with other drugs is not recommended. Precipitation occurs with 5-fluorouracil and heparin.

Intravesical Administration

Doxorubicin Hydrochloride for Injection USP should be instilled using a catheter and retained intravesically for 1 to 2 hours. Care should be taken to ensure that the tip of the catheter is in the bladder cavity before instilling the Doxorubicin Hydrochloride for Injection USP solution. During instillation, the patient should be rotated to ensure that the vesical mucosa of the pelvis receives the most extensive contact with the solution. To avoid dilution with urine, the patient should be instructed not to drink any fluid in the 12 hours prior to instillation. The patient should be instructed to void at the end of the instillation.

4.5 Missed Dose

If you miss your scheduled treatment with the drug, contact your doctor as soon as possible to schedule your next treatment.

5 OVERDOSAGE

Acute overdosage with doxorubicin hydrochloride enhances the toxic effects of mucositis, leukopenia and thrombocytopenia. Treatment of acute overdosage consists of treatment of the severely myelosuppressed patient with hospitalization, antibiotics, platelet and granulocyte transfusions and symptomatic treatment of mucositis.

Chronic overdosage with cumulative doses exceeding 550 mg/m² increases the risk of cardiomyopathy and resultant congestive heart failure. Treatment consists of vigorous management of congestive heart failure with digitalis preparations and diuretics. The use of peripheral vasodilators has been recommended.

For the most recent information in the management of a suspected drug overdose, contact your regional poison control centre or Health Canada's toll-free number, 1-844 POISON-X (1-844-764-7669).

6 DOSAGE FORMS, STRENGTHS, COMPOSITION AND PACKAGING

Table – Dosage Forms, Strengths, Composition and Packaging

Route of Administration	Dosage Form / Strength/Composition	Non-medicinal Ingredients
Parenteral and intravesical	Lyophilized powder/ 50 mg, 150 mg doxorubicin hydrochloride	Lactose

Doxorubicin Hydrochloride for Injection USP is a sterile lyophilized red powder or plug, containing 50 mg or 150 mg of doxorubicin hydrochloride, with lactose (263.1 mg and 789.4 mg respectively) in each vial.

Doxorubicin Hydrochloride for Injection USP is supplied as 50 mg or 150 mg of doxorubicin hydrochloride per single-use vial, available in cartons of 1.

Incompatibility:

Unless specific compatibility data are available, Doxorubicin Hydrochloride for Injection USP should not

be mixed with other drugs. Contact with alkaline solutions should be avoided since this can lead to hydrolysis of doxorubicin. Doxorubicin should not be mixed with heparin due to chemical incompatibility that may lead to precipitation. Precipitation also occurs with 5-fluorouracil.

7 WARNINGS AND PRECAUTIONS

Please see [3 SERIOUS WARNINGS AND PRECAUTIONS BOX](#).

General

Intravesical Route of Administration

Administration of doxorubicin by the intravesical route may produce symptoms of chemical cystitis (such as dysuria, polyuria, nocturia, stranguria, hematuria, bladder discomfort, necrosis of the bladder wall) and bladder constriction. Special attention is required for catheterization problems (e.g., urethral obstruction due to massive intravesical tumors).

Carcinogenesis and Mutagenesis

Doxorubicin was genotoxic in a battery of *in vitro* or *in vivo* tests. An increase in the incidence of mammary tumors was reported in rats, and a trend for delay or arrest of follicular maturation was seen in female dogs (see [16 NON-CLINICAL TOXICOLOGY](#)).

Doxorubicin is mutagenic and can induce chromosomal damage in human spermatozoa.

Oligospermia or azospermia may be permanent; however, sperm counts have been reported to return to normospermic levels in some instances. This may occur several years after the end of therapy (see [7 WARNINGS AND PRECAUTIONS, Reproductive Health: Female and Male Potential, Fertility](#)).

Secondary Malignancies

Secondary leukemia, with or without a preleukemic phase, has been reported in patients treated with topoisomerase-II inhibitors including the anthracyclines such as doxorubicin. Secondary leukemia is more common when anthracyclines are given in combination with DNA-damaging antineoplastic agents (0.5 %), or when patients have been heavily pretreated with cytotoxic drugs, or when doses of the anthracyclines have been escalated and/or in combination with radiotherapy (2.5 %). Cumulative incidences ranged from 0.2 % at five years to 1.5 % at 10 years in two separate trials involving the adjuvant treatment of women with breast cancer. Secondary leukemia can have a 1-3 year latency period, and can occur as late as 10 years following treatment.

Pediatric patients are also at risk of developing secondary AML.

Cardiovascular

Acute life-threatening arrhythmias have been reported to occur during or within a few hours after doxorubicin hydrochloride administration (see [8 ADVERSE REACTIONS](#)).

Cardiac Function

Cardiotoxicity is a risk of anthracycline treatment that may be manifested by early (i.e., acute) or late (i.e., delayed) events.

Early (i.e., Acute) Events

Early cardiotoxicity of doxorubicin consists mainly of sinus tachycardia and/ or ECG abnormalities such as non-specific ST-T wave changes.

Tachyarrhythmias, including premature ventricular contractions and ventricular tachycardia, bradycardia, and atrioventricular and bundle-branch block also have been reported. Those effects usually do not predict subsequent development of delayed cardiotoxicity, are rarely of clinical importance and generally do not necessitate discontinuation of doxorubicin treatment.

Late (i.e., Delayed) Events

Delayed cardiotoxicity usually develops late in the course of therapy with doxorubicin or within 2 to 3 months after treatment termination, but later events, several months to years after completion of treatment, have also been reported. Delayed cardiomyopathy is manifested by reduced left ventricular ejection fraction (LVEF) and/or signs and symptoms of congestive heart failure (CHF) such as dyspnea, pulmonary edema, dependent edema, cardiomegaly and hepatomegaly, oliguria, ascites, pleural effusion and gallop rhythm. Subacute effects such as pericarditis/myocarditis also have been reported. Life-threatening CHF is the most severe form of anthracycline-induced cardiomyopathy and is the cumulative dose-limiting toxicity of anthracycline drugs.

The probability of developing CHF is estimated to be 1 to 2% at a total cumulative dose of 300 mg/m² of doxorubicin HCl. Thereafter, the risk of developing CHF increases steeply; 3 to 5% at a dose of 400 mg/m², 5 to 8% at a dose of 450 mg/m², and 6 to 20% at a dose of 500 mg/m², when doxorubicin HCl is administered every 3 weeks. **IT IS RECOMMENDED NOT TO EXCEED A MAXIMUM CUMULATIVE DOSE OF 550 MG/M² OF DOXORUBICIN HYDROCHLORIDE FOR INJECTION USP.**

The total dose of Doxorubicin Hydrochloride for Injection USP administered to a patient should take into account: prior therapy with related compounds such as epirubicin and daunorubicin or anthracene derivatives; and/or radiotherapy to the mediastinal area.

Risk factors for cardiac toxicity include active or dormant cardiovascular disease, prior or concomitant radiotherapy to the mediastinal/pericardial area, previous therapy with other anthracyclines or anthracenediones and concomitant use of drugs with the ability to suppress cardiac contractility or cardiotoxic drugs. Anthracyclines including doxorubicin should not be administered in combination with other cardiotoxic agents unless the patient's cardiac function is closely monitored.

Patients receiving anthracyclines after stopping treatment with other cardiotoxic agents, especially those with long half-lives such as trastuzumab, may also be at an increased risk of developing cardiotoxicity. The reported half-life of trastuzumab is approximately 28 - 38 days. Trastuzumab may persist in the circulation for up to 7 months. Therefore, physicians should avoid anthracycline-based therapy for up to 7 months after stopping trastuzumab when possible. If anthracyclines are used before this time, careful monitoring of cardiac function is recommended.

Cardiac function must be carefully monitored in patients receiving high cumulative doses and in those with risk factors. While cardiotoxicity with doxorubicin may occur at lower cumulative doses whether or not cardiac risk factors are present, it may be more likely to occur at lower cumulative doses in patients with these risk factors.

New studies show that children and adolescents are at an increased risk for developing delayed cardiotoxicity following doxorubicin administration (up to 15 years). Females may be at greater risk than males. Follow-up cardiac evaluations such as ECHO LVEF/MUGA are recommended periodically to monitor for this effect (see [7 WARNINGS AND PRECAUTIONS, Monitoring and Laboratory Tests](#)).

Vascular Effects

Phleboscrosis may result from an injection into a small vessel or from repeated injections into the same vein. Following the recommended administration procedures may minimize the risk of

phlebitis/thrombophlebitis at the injection site (see [4 DOSAGE AND ADMINISTRATION](#)). As with other cytotoxic agents, thrombophlebitis and thromboembolic phenomena, including pulmonary embolism (in some cases fatal), have been coincidentally reported with the use of doxorubicin.

Contamination

Toxicities With Co-Administration of Antineoplastic Agents

Doxorubicin hydrochloride may potentiate the toxicity of other anticancer therapies. Exacerbation of cyclophosphamide-induced hemorrhagic cystitis and enhancement of the hepatotoxicity of 6-mercaptopurine have been reported. Radiation-induced toxicity to the myocardium, mucosae, skin and liver has been reported to be increased by the administration of doxorubicin hydrochloride.

Patients should recover from acute toxicities of prior cytotoxic treatment (such as stomatitis, neutropenia, thrombocytopenia, and generalized infections) before beginning treatment with doxorubicin.

Endocrine and Metabolism

Tumor-Lysis Syndrome

Doxorubicin may induce hyperuricemia as a consequence of the extensive purine catabolism that accompanies drug-induced rapid lysis of neoplastic cells (tumor-lysis syndrome). Blood uric acid levels, potassium, calcium, phosphate and creatinine should be evaluated after initial treatment. Hydration, urine alkalinization, and prophylaxis with allopurinol to prevent hyperuricemia may minimize potential complications of tumor-lysis syndrome.

Gastrointestinal

Doxorubicin is emetogenic. Mucositis/stomatitis generally appears early after drug administration and, if severe, may progress over a few days to mucosal ulcerations. Most patients recover from this adverse event by the third week of therapy.

Necrotizing colitis manifested by typhlitis (cecal inflammation), bloody stools and severe and sometimes fatal infections have been associated with a combination of doxorubicin hydrochloride given by IV push daily for 3 days and cytarabine given by continuous infusion daily for 7 or more days.

Genitourinary

Doxorubicin hydrochloride may impart a red colouration to the urine for 1 to 2 days after administration and patients should be advised to expect this during active therapy.

Hematologic

As with other cytotoxic agents, doxorubicin can cause severe myelosuppression. Hematologic profiles should be assessed before and during each cycle of therapy with doxorubicin, including differential white blood cell (WBC) counts. A dose-dependent, reversible leukopenia and/or granulocytopenia (neutropenia) is the predominant manifestation of doxorubicin hematologic toxicity and is the most common acute dose-limiting toxicity of this drug. Leukopenia and neutropenia generally reach the nadir between days 10 and 14 after drug administration; the WBC/neutrophil counts return to normal values in most cases by Day 21. Thrombocytopenia and anemia may also occur. Clinical consequences of severe myelosuppression include fever, infections, sepsis/septicemia, septic shock, hemorrhage, tissue hypoxia, or death. Hematologic toxicity may require dose reduction or suspension or delay of doxorubicin hydrochloride therapy. Persistent severe myelosuppression may result in superinfection or hemorrhage.

In early breast cancer patient study (National Surgical Adjuvant Breast and Bowel Project B-15), the incidence of severe myelosuppression was: grade 4 leukopenia (0.3%), grade 3 leukopenia (3%), and grade 4 thrombocytopenia (0.1%). A dose-dependent, reversible neutropenia is the predominant manifestation of hematologic toxicity from doxorubicin HCl. When doxorubicin HCl is administered every 21-days, the neutrophil count reaches its nadir 10 to 14 days after administration with recovery usually occurring by the 21st day. Anemia may also occur.

Hepatic/Biliary/Pancreatic

Doxorubicin is extensively metabolized by the liver and its major route of elimination is the hepatobiliary system. Toxicity to recommended doses of doxorubicin hydrochloride is enhanced by hepatic impairment, therefore, prior to the individual dosing and during treatment, evaluation of hepatic function is recommended using conventional clinical laboratory tests such as AST, ALT, alkaline phosphatase and bilirubin. Patients with elevated bilirubin may experience slower clearance of doxorubicin with an increase in overall toxicity. Lower doses of doxorubicin are recommended in these patients (see [4 DOSAGE AND ADMINISTRATION](#)). Patients with severe hepatic impairment should not receive doxorubicin (see [2 CONTRAINDICATIONS](#)).

Immune

Immunosuppressant Effects/Increased Susceptibility to Infections

Administration of live or live-attenuated vaccines in patients immunocompromised by chemotherapeutic agents including doxorubicin, may result in serious or fatal infections. Vaccination with a live vaccine should be avoided in patients receiving doxorubicin. Killed or inactivated vaccines may be administered; however, the response to such vaccines may be diminished.

Monitoring and Laboratory Tests

Initial treatment with Doxorubicin Hydrochloride for Injection USP requires close observation of the patient and extensive laboratory monitoring.

Like other cytotoxic drugs, Doxorubicin Hydrochloride for Injection USP may induce hyperuricemia secondary to rapid lysis of neoplastic cells, particularly in patients with leukemia. The clinician should monitor the patient's serum chemistry and blood uric acid level and be prepared to use such supportive and pharmacologic measures as might be necessary to control this problem. Hydration, urine alkalinization and allopurinol administration will help to prevent or minimize potential complications of tumor-lysis syndrome.

Hematologic profiles should be assessed before and during each cycle of therapy with doxorubicin, including differential white blood cell (WBC) counts.

Evaluation of hepatic function is recommended using conventional clinical laboratory tests such as AST, ALT, alkaline phosphatase and bilirubin.

The systemic clearance of doxorubicin has been found to be reduced in obese patients (i.e., > 130% ideal body weight; see [4.2 Recommended Dose and Dosage Adjustment, Other Special Populations](#)).

Cardiac function should be assessed before patients undergo treatment with doxorubicin and must be monitored throughout therapy to minimize the risk of incurring severe cardiac impairment. The risk may be decreased through regular monitoring of LVEF during the course of treatment with prompt discontinuation of doxorubicin at the first sign of impaired function.

The appropriate quantitative method for repeated assessment of cardiac function (evaluation of LVEF) includes multi-gated radionuclide angiography (MUGA) or echocardiography (ECHO).

A baseline cardiac evaluation with an ECG and either a MUGA scan or an ECHO is recommended, especially in patients with risk factors for increased cardiotoxicity. Repeated MUGA or ECHO determinations of LVEF should be performed, particularly with higher cumulative anthracycline doses (e.g. ≥ 450 mg/m²). The technique used for assessment should be consistent throughout follow-up.

Doxorubicin Hydrochloride for Injection USP is not an anti-microbial agent.

Reproductive Health: Female and Male Potential

- **Fertility**

In women, doxorubicin may cause infertility during the time of drug administration. Doxorubicin may cause amenorrhea. Ovulation and menstruation appear to return after termination of therapy, although premature menopause can occur.

Doxorubicin was toxic to male reproductive organs in animal studies, producing testicular atrophy, diffuse degeneration of the seminiferous tubules, and hypospermia.

Doxorubicin is mutagenic and can induce chromosomal damage in human spermatozoa. Oligospermia or azoospermia may be permanent; however, sperm counts have been reported to return to normospermic levels in some instances. This may occur several years after the end of therapy (see [7 WARNINGS AND PRECAUTIONS, Carcinogenesis and Mutagenesis](#)). Men undergoing doxorubicin treatment should use effective contraceptive methods.

Both men and women should seek advice on fertility preservation before treatment.

- **Embryo-fetal Toxicity**

Doxorubicin can cause genotoxicity. An effective method of contraception is required for both male and female patients during and for a period after treatment with doxorubicin (see [7 WARNINGS AND PRECAUTIONS, Reproductive Health: Female and Male Potential, Women of Childbearing Potential/Contraception in Males and Females](#)). Patients desiring to have children after completion of therapy should be advised to obtain genetic counselling if appropriate and available.

- **Women of Childbearing Potential/Contraception in Males and Females**

Women of childbearing potential should be advised to avoid becoming pregnant during treatment and to use effective contraceptive methods during treatment and for at least 6 months and 10 days after last dose. Men with female partners of childbearing potential should be advised to use effective contraception during treatment with doxorubicin and for at least 3 months and 10 days after last dose.

Skin

Extravasation

Extravasation of doxorubicin during intravenous injection may produce local pain, severe tissue lesions (vesication, severe cellulitis) and necrosis. If any signs or symptoms of extravasation have occurred, the injection or infusion should be immediately stopped.

7.1 Special Populations

7.1.1 Pregnant Women

The embryotoxic potential of doxorubicin was confirmed *in vitro* and *in vivo*. When given to female rats before and during mating, pregnancy, and lactation, doxorubicin was toxic to both dams and fetuses.

Doxorubicin has been implicated in causing fetal harm when administered to a pregnant woman. If a woman receives doxorubicin during pregnancy or becomes pregnant while taking the drug, she should be informed of the potential hazard to the fetus.

7.1.2 Breast-feeding

Doxorubicin is secreted into breast milk. Because of the potential for serious reactions in nursing infants from doxorubicin mothers should not breast-feed while undergoing chemotherapy with Doxorubicin Hydrochloride for Injection USP and for at least 10 days after last dose.

7.1.3 Pediatrics

Pediatric population is at a higher risk of Secondary Leukemia (AML included). Early and delayed cardiotoxicities have been described in children. On long-term follow-up, subclinical cardiac dysfunction may occur in over 20% of pediatric patients and 5% may develop congestive heart failure. This long-term cardiotoxicity may be related to the dose of doxorubicin.

8 ADVERSE REACTIONS

8.1 Adverse Reaction Overview

The following adverse events have been reported in association with doxorubicin hydrochloride therapy:

- Cardiovascular:* sinus tachycardia, ECG abnormalities, tachyarrhythmias, atrioventricular and bundle branch block, asymptomatic reductions in left ventricular ejection fraction (LVEF), congestive heart failure, acute life-threatening arrhythmias during or within few hours after doxorubicin hydrochloride administration [see [7 WARNINGS AND PRECAUTIONS, Cardiovascular](#)].
- Hematologic:* leukopenia, neutropenia, anemia, thrombocytopenia, hemorrhage.
- Gastrointestinal:* anorexia, nausea/vomiting, dehydration, mucositis/stomatitis, hyperpigmentation of the oral mucosa, esophagitis, abdominal pain, gastric erosions, gastrointestinal tract bleeding, diarrhea, colitis.
- Liver:* changes in transaminase levels, hyperuricemia.
- Endocrine:* amenorrhea, hot flashes, oligospermia, azoospermia, weight gain.
- Ocular:* conjunctivitis/keratitis, lacrimation.
- Skin:* alopecia, local toxicity, rash/itch, skin changes, severe local tissue necrosis with intravenous injection, extravasation may occur, skin and nail hyperpigmentation, photosensitivity, hypersensitivity to irradiated skin ('radiation recall reaction'), urticaria, acral erythema, palmar plantar erythrodysesthesia.
- Vascular:* phlebitis, thrombophlebitis, thromboembolism.
- Urological:* red colouration of urine for 1 to 2 days after administration.
- Bladder, local:* pain, hemorrhage, and occasionally decreased bladder capacity upon instillation.

- Local:* severe cellulitis, vesication, tissue necrosis upon extravasation, erythematous streaking along the vein proximal to the site of the injection (see [4 DOSAGE AND ADMINISTRATION](#)).
- Other:* anaphylaxis, infection, sepsis/septicemia, acute lymphocytic leukemia, acute myelogenous leukemia, malaise/asthenia, fever, chills, shock, cross-sensitivity to lincomycin.

9 DRUG INTERACTIONS

9.2 Drug Interactions Overview

Doxorubicin Hydrochloride for Injection USP (doxorubicin hydrochloride) is mainly used in combination with other cytotoxic drugs. Additive toxicity may occur especially with regard to bone marrow/hematologic and gastrointestinal effects (see [7 WARNINGS AND PRECAUTIONS](#)). The use of doxorubicin in combination chemotherapy with other potentially cardiotoxic drugs, as well as the concomitant use of other cardioactive compounds (e.g., calcium channel blockers), requires monitoring of cardiac function throughout treatment. Changes in hepatic function induced by concomitant therapies may affect doxorubicin metabolism, pharmacokinetics, therapeutic efficacy and/or toxicity.

9.3 Drug-Behavioural Interactions

No drug-behavioural interactions have been established.

9.4 Drug-Drug Interactions

Literature reports have described the following drug interactions:

- Paclitaxel can cause increased plasma-concentrations of doxorubicin and/or its metabolites when given prior to doxorubicin. The pharmacokinetic drug interaction is dependent on the administration schedule, dose, sequence, infusion duration and time interval between administration. Certain data indicate that this effect is minor when this anthracycline is administered prior to paclitaxel;
- Phenobarbital increases elimination of doxorubicin;
- Phenytoin levels may be decreased by doxorubicin;
- Streptozocin may inhibit hepatic metabolism of doxorubicin;
- Exacerbation of cyclophosphamide induced hemorrhagic cystitis;
- Enhancement of the hepatotoxicity of 6-mercaptopurine;
- Concomitant actinomycin-D therapy produces “recall” acute pneumonitis at variable times after local radiation therapy, in pediatric populations.
- Increases in the AUC of doxorubicin as high as 47% were observed in concomitant treatments with sorafenib 400 mg twice daily. The clinical significance of these findings is unknown. Doxorubicin Hydrochloride for Injection USP and sorafenib are not indicated for use in combination.
- Doxorubicin is a substrate of P-glycoprotein (P-gp). Clinically significant interactions have been reported with inhibitors of P-gp (eg. verapamil), resulting in up to 2-fold higher doxorubicin plasma concentration and higher myelosuppression.
- Cyclosporine can cause an increased plasma concentration of doxorubicin and its active metabolite doxorubicinol by up to 55% and 443%, respectively possibly due to a decrease in clearance of the parent drug and a decrease in metabolism of doxorubicinol. Literature reports suggest that adding cyclosporine to doxorubicin results in more profound and prolonged hematologic toxicity than that

observed with doxorubicin alone. Coma and seizures with fatal outcome have also been described with concomitant administration of cyclosporine and doxorubicin.

9.5 Drug-Food Interactions

Interactions with food have not been established.

9.6 Drug-Herb Interactions

Interactions with herbal products have not been established.

9.7 Drug-Laboratory Test Interactions

Interactions with laboratory tests have not been established.

10 CLINICAL PHARMACOLOGY

Doxorubicin, when administered IV, is rapidly cleared from the plasma of rodents, with concentration of the drug being seen in the liver, spleen, kidney, lung and heart. Drug excretion is prolonged and occurs predominantly via the liver.

In man, doxorubicin has also been shown to have a rapid plasma clearance and a large volume of distribution that suggests an extensive drug distribution into the tissues. Urinary excretion is minimal, with only 5% of the drug excreted during the first 5 days as measured by fluorimetric methods, suggesting prolonged tissue binding. After an injection of 1.5 mg/kg of tritium-labelled doxorubicin, approximately 50% of the administered radioactivity was detected in the feces in 7-days, while in patients with impaired liver function, the fecal excretion accounted for only 20%. Doxorubicin is metabolized predominantly by the liver to adriamycinol and several aglycone derivatives; approximately half of the drug excreted in bile was unchanged doxorubicin and 30% conjugates. Biliary excretion of doxorubicin was measured in 1 patient. A total of 40% of the administered dose was recovered as fluorescent material in the bile over a 1-week period.

The predominant fluorescent material in both urine and bile was doxorubicin followed by adriamycinol. Pharmacokinetic studies in patients with hepatic dysfunction show significant and prolonged plasma levels of doxorubicin metabolites associated with exaggerated clinical cytotoxicity. These observations are the basis of a requirement for dose de-escalation in patients with impaired hepatic function.

Neither doxorubicin nor any of its fluorescent metabolites were detectable in human cerebrospinal fluid obtained at varying intervals after drug administration in a variety of patients, including some with meningeal leukemia and cerebral metastasis, situations in which the blood brain barrier might be expected to be altered.

10.1 Mechanism of Action

Though not completely elucidated, the mechanism of action of doxorubicin is related to its ability to bind to DNA and inhibit nucleic acid synthesis.

10.2 Pharmacodynamics

Cell culture studies have demonstrated rapid cell penetration and perinucleolar chromatin binding, rapid inhibition of mitotic activity and nucleic acid synthesis, mutagenesis and chromosomal aberrations. Animal studies have shown activity in a wide spectrum of experimental tumors, immunosuppression, carcinogenic properties in rodents, induction of a variety of toxic effects,

including delayed and progressive cardiac toxicity, myelosuppression in all species and atrophy of testes in rats and dogs.

10.3 Pharmacokinetics

Pharmacokinetic studies show that the intravenous administration of normal or radiolabelled doxorubicin hydrochloride for injection is followed by rapid plasma clearance and significant tissue binding. Urinary excretion, as determined by fluorimetric methods, accounts for approximately 4-5% of the administered dose in 5 days. Biliary excretion represents the major excretion route, 40-50% of the administered dose being recovered in the bile or the feces in 7 days. Impairment of liver function results in slower excretion, and, consequently, increased retention and accumulation in plasma and tissues. Doxorubicin does not cross the blood brain barrier.

11 STORAGE, STABILITY AND DISPOSAL

Store intact vials of Doxorubicin Hydrochloride for Injection USP between 15°C and 25°C, protected from light.

12 SPECIAL HANDLING INSTRUCTIONS

Preparation and Handling

1. Personnel should be trained in good techniques for reconstitution and handling. Pregnant staff should be excluded from working with this drug.
2. Preparation of antineoplastic solutions should be done in a vertical laminar flow hood (Biological Safety Cabinet - Class II). The work surface should be protected by disposable, plastic-backed absorbent paper.
3. Personnel handling Doxorubicin Hydrochloride for Injection USP (doxorubicin hydrochloride) solutions should wear PVC gloves, safety glasses and protective clothing such as disposable gowns and masks. If Doxorubicin Hydrochloride for Injection USP contacts the skin or mucosa, the area should be washed with soap and water or sodium bicarbonate immediately. Do not abrade the skin by using a scrub brush and always wash hands after removing gloves.
4. In case of contact with the eye(s), hold back the eyelid of the affected eye(s) and flush with copious amounts of water for at least 15 minutes; proceed to a physician for medical evaluation.
5. Personnel regularly involved in the preparation and handling of antineoplastics should have blood examinations on a regular basis.

Disposal

1. Avoid contact with skin and inhalation of airborne particles by use of PVC gloves and disposable gowns and masks.
2. All needles, syringes, vials and other materials which have come in contact with doxorubicin should be segregated in plastic bags, sealed, and marked as hazardous waste. Incinerate at 1000°C or higher. Sealed containers may explode if a tight seal exists.
3. If incineration is not available, Doxorubicin Hydrochloride for Injection USP may be detoxified by adding sodium hypochlorite solution (household bleach) to the vial, in sufficient quantity to decolorize the doxorubicin, care being taken to vent the vial to avoid a pressure build-up of the chlorine gas which is generated. Dispose of detoxified vials in a safe manner.

Needles, Syringes, Disposable and Non-disposable Equipment:

Rinse equipment with an appropriate quantity of sodium hypochlorite solution. Discard the solution and disposable equipment in a safe manner. Thoroughly wash non-disposable equipment in soap and water.

Spillage/Contamination:

Wear gloves, mask, protective clothing. Treat spilled powder or liquid with dilute sodium hypochlorite solution (1% available chlorine). Carefully absorb solution with gauze pads or towels, wash area with water and absorb with gauze or towels again and place in polyethylene bag; seal, double bag and mark as hazardous waste. Dispose of waste by incineration or by other methods approved for hazardous materials. Personnel involved in clean-up should wash with soap and water.

PART II: SCIENTIFIC INFORMATION

13 PHARMACEUTICAL INFORMATION

Drug Substance

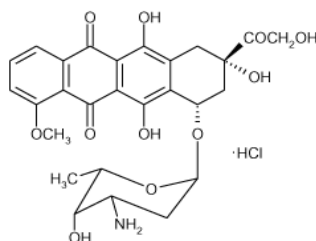
Proper name: Doxorubicin hydrochloride

Chemical name: (1) 5,12-naphthacenedione,10-[(3-amino-2,3,6-trideoxy- α -L-lyxo-hexopyranosyl)oxy]-7,8,9,10-tetrahydro-6,8,11-trihydroxy-8-(hydroxyacetyl)-1-methoxy-hydrochloride (8S-cis)-;

(8S,10S)-10-[(3-amino-2,3,6-trideoxy- α -L-lyxo-hexopyranosyl)oxy]-8-glycoloyl-7,8,9,10-tetrahydro-6,8,11-trihydroxy-1-methoxy-5,12-naphthacenedione hydrochloride.

Molecular formula and molecular mass: $C_{27}H_{29}NO_{11} \cdot HCl$; 579.99 g/mol

Structural formula:



Physicochemical properties: Doxorubicin hydrochloride is the hydrochloric acid salt of a glycoside antibiotic produced by *S.peugetius* var. *caesius*. It is a red-orange, almost odourless, hygroscopic powder, m.p. 205°C (dec.), soluble in water and dilute alcohols. The pH of a 5 mg/mL solution is between 4.0 and 5.5.

14 CLINICAL TRIALS

Clinical studies have shown a wide spectrum of antitumor activity in solid tumor and hematologic malignancies in adults and children when used as a single cytotoxic agent or in polydrug regimens. The most important therapeutic results achieved with doxorubicin hydrochloride in the treatment of various malignancies are briefly summarized below:

Complete remission rates (CR), have been reported with doxorubicin when administered as single cytotoxic agent: 38% in sarcomas, about 40% in endometrial cancer, only poor results (15- 20%) in lung cancer depending on cell type, 5-8% in oesophageal cancer, 22-25% in cancer of the stomach, 25% in hepatocellular carcinoma, less than 5% in colo-rectal cancer and 8-10% in cancer of the pancreas. In thyroid carcinomas, doxorubicin alone gives an overall objective response rate of approximately 30%, in squamous cancers of the head and neck an overall response rate of about 20%.

In general, doxorubicin hydrochloride gave higher CR and objective response rates in anthracycline-sensitive carcinomas when used in combination with other antitumor agents such as cyclophosphamide, corticosteroids (prednisone and dexamethasone), bleomycin, vinblastine, dacarbazine, methotrexate, vincristine, fluorouracil, platinum, etoposide, taxanes, actinomycin d, nitrosoures derivatives, mitomycin C and hydroxyurae.

Doxorubicin hydrochloride -containing regimen have drastically improved the CR rate up to about 75% in Hodgkin's disease, 60-82% in acute myeloblastic leukemia, and 70-80% in breast cancer.

To minimize cardiac toxicity of doxorubicin hydrochloride, it is reported that equal low-dose (20 mg/m²) weekly therapy is less cardiotoxic than high-dose (60-75 mg/m²) therapy given every 3-weeks. These findings have also been confirmed when doxorubicin hydrochloride is given in combination with other drugs. The total dose of doxorubicin hydrochloride administered to a patient should take into account: prior therapy with related compounds such as epirubicin and daunorubicin or anthracene derivatives; and/or radiotherapy to the mediastinal area. Most important, it is recommended not to exceed a maximum cumulative dose of 550 mg/m² of doxorubicin hydrochloride, with close monitoring of cardiac function in patients receiving a cumulative dose greater than 450 mg/m² (see [7 WARNINGS AND PRECAUTIONS, Monitoring and Laboratory Tests](#)).

15 MICROBIOLOGY

No microbiological information is required for this drug product.

16 NON-CLINICAL TOXICOLOGY

General Toxicology: The acute toxicity of doxorubicin in Swiss mice varies greatly according to the route of administration. The LD₅₀ is 8.5 mg/kg by the intra-peritoneal route, 21.1 mg/kg by the intravenous route, and greater than 750 mg/kg by the oral route.

Chronic toxicity was studied in the rabbit and in the dog. Doxorubicin when administered IV for three months at a daily dose of 0.125 mg/kg of body weight did not cause mortality or any measurable morphologic and functional changes in either species. At a dose of 0.25 mg/kg/day a few lesions were observed in the rabbit and more serious lesions in the dog, where the mortality rate reached 30%. The 0.5 mg/kg/day dose produced death in 40% of the treated rabbits within 2 months, and in 100% of the treated dogs within 10 days. Organs affected were gastrointestinal mucosa, hemopoietic tissues, and testes in both species, kidneys in the rabbit and skin (alopecia and melanosis) in the dog.

Carcinogenicity: Doxorubicin has been shown to be carcinogenic in the rat. The drug caused the appearance of breast fibroadenomas after a single IV dose of 8.0 mg/kg at an average of 33 weeks in 6 of 25 animals. Another animal developed a breast adenocarcinoma.

Reproductive and Developmental Toxicology: Doxorubicin, when administered intravenously to rats at doses of 0.8 mg/kg/day during the period of organogenesis, resulted in an increased incidence of fetal resorption and fetal skeletal and soft tissue malformations. Rats treated intraperitoneally with doses of 1 mg/kg/day or greater also demonstrated skeletal and soft tissue malformations. The intravenous administration of doxorubicin to rabbits at doses of 0.1 mg/kg/day interfered with implantation and caused fetal resorption and at doses of 0.6 mg/kg/day was abortifacient. In addition, high single doses of 2 or 4 mg/kg in rabbits were shown to block implantation when administered on Day 3 of pregnancy, to be embryotoxic when administered on Day 7 of pregnancy, and to be abortifacient when administered on Days 11, 15 or 20 of pregnancy.

17 SUPPORTING PRODUCT MONOGRAPHS

1. ADRIAMYCIN® PFS, solution, 2 mg/mL, Submission control number 259714, Product Monograph, Pfizer Canada ULC, MAY 09, 2022.

PATIENT MEDICATION INFORMATION

READ THIS FOR SAFE AND EFFECTIVE USE OF YOUR MEDICINE

Pr DOXORUBICIN HYDROCHLORIDE FOR INJECTION USP

Doxorubicin hydrochloride injection

Read this carefully before you start taking **Doxorubicin Hydrochloride for Injection USP** and each time it is administered to you. This leaflet is a summary and will not tell you everything about this drug. Talk to your healthcare professional about your medical condition and treatment and ask if there is any new information about **Doxorubicin Hydrochloride for Injection USP**.

Serious Warnings and Precautions

Doxorubicin Hydrochloride for Injection USP will only be given to you by healthcare professionals experienced in giving chemotherapy.

If you take Doxorubicin Hydrochloride for Injection USP, you may get:

- **cardiomyopathy** (damage to the heart muscle), which makes it harder for your heart to pump properly. This can lead to shortness of breath, swelling of the legs, irregular heartbeat and sudden death. You are more likely to develop this as your dose is increased. It may happen during treatment or up to several years later.
- certain **blood cancers** such as acute myelogenous leukemia (AML) and myelodysplastic syndrome (MDS). This can happen 1 to 3 years after treatment with Doxorubicin Hydrochloride for Injection USP. It is more common if you take it at higher doses or with other cancer treatments. This risk also applies to children.
- tissue damage after Doxorubicin Hydrochloride Injection USP is given through a vein in your arm (intravenous administration). This might happen if Doxorubicin Hydrochloride Injection USP leaks out of your vein into the surrounding tissue and is called **extravasation**. You may get blisters or sores that require skin grafts. If it hurts, burns or stings in or around the vein into which the drug is being injected, tell the doctor or nurse IMMEDIATELY.
- severe **myelosuppression** including a severe decrease in the number of white blood cells, red blood cells, and platelets. This means that you may bruise or bleed more easily, go into shock and need blood transfusions. You may get fever, serious infection, and need treatment in a hospital. Low blood cell counts can lead to death. Your doctor will check your blood cell counts during your treatment and after you stop it. Call your doctor right away if you get severe bleeding, fever or chills with shivering.

Your liver is important to processing Doxorubicin Hydrochloride Injection USP in your body. You should not use it if you have a severe liver disease.

What is Doxorubicin Hydrochloride for Injection USP used for?

Doxorubicin Hydrochloride for Injection USP is used:

- alone or with other anti-cancer medications to treat several different types of cancer.
- to treat superficial bladder tumors. For these tumors, Doxorubicin Hydrochloride for Injection USP is given directly in the bladder (intravesical administration).

How does Doxorubicin Hydrochloride for Injection USP work?

Doxorubicin Hydrochloride for Injection USP is a chemotherapy drug, often used in combination with other drugs, to kill fast dividing cells, such as cancer cells. This action can affect normal cells as well.

What are the ingredients in Doxorubicin Hydrochloride for Injection USP?

Medicinal ingredients: Doxorubicin hydrochloride

Non-medicinal ingredients: Lactose

Doxorubicin Hydrochloride for Injection USP comes in the following dosage forms:

Sterile powder for solution: 50 mg / vial and 150 mg / vial

Do not use Doxorubicin Hydrochloride for Injection USP if:

- you are allergic to doxorubicin hydrochloride or to any other ingredient in this medicine or part of the container;
- you are allergic to other anthracycline or anthracenedione medicines such as epirubicin hydrochloride, daunorubicin hydrochloride, mitoxantrone or mitomycin C;
- you have persistent low blood cell count (myelosuppression);
- you have severe liver disease;
- you have severe heart disease;
- you had a recent heart attack;
- you have severe irregular heartbeat;
- you have history of severe heart disease;
- you have had treatment before with high doses of doxorubicin, daunorubicin, epirubicin, idarubicin and/or other anthracycline and anthracenedione medicines. Taking too much of these medicines may be harmful for your heart.

If Doxorubicin Hydrochloride for Injection USP is to be given directly into your bladder (intravesical administration), you should not use it if you have:

- blood in your urine;
- urinary tract infections;
- inflammation of the bladder.

To help avoid side effects and ensure proper use, talk to your healthcare professional before you take Doxorubicin Hydrochloride for Injection USP. Talk about any health conditions or problems you may have, including if you:

- have low blood cell counts;
- have liver problems;
- have higher than normal levels of bilirubin in your blood;
- have or have a history of heart disease, recent heart attack or irregular heartbeat;
- are taking other medicines that affect your heart (including calcium channel blockers);

- have been previously treated with Doxorubicin Hydrochloride for Injection USP or other anti-cancer drugs, including anthracycline medicines;
- are taking trastuzumab or have had it within the last 7 months;
- have previously received radiation treatment to the chest.

Other warnings you should know about:

Vaccines: Receiving certain vaccines during your treatment might lead to serious or life-threatening infections. Tell your healthcare professional if you need a vaccine during your treatment. Certain vaccines should be avoided.

Pregnancy and breastfeeding – female patients:

- If you are pregnant, able to get pregnant or think you are pregnant, there are specific risks you should discuss with your healthcare professional.
- You should not take Doxorubicin Hydrochloride for Injection USP if you are pregnant. It may harm your unborn baby.
- If you are able to get pregnant:
 - avoid becoming pregnant while you are being treated with Doxorubicin Hydrochloride for Injection USP. Use effective birth control during treatment and for at least 6 months and 10 days after your last dose.
 - Tell your healthcare professional right away if you become pregnant, or think you may be pregnant during your treatment.
- Doxorubicin passes into breastmilk. You should not breastfeed during your treatment and for 10 days after your last dose. Talk to your healthcare professional about how to feed your baby during this time.

Pregnancy – male patients:

- Avoid fathering a child while you are being treated with Doxorubicin Hydrochloride for Injection USP.
- During your treatment, use effective birth control each time you have sex with a woman who is pregnant, may be pregnant or can get pregnant. Continue to use this birth control until 3 months and 10 days after your last dose.
- If, during your treatment with Doxorubicin Hydrochloride for Injection USP, your sexual partner becomes pregnant, or thinks she may be pregnant, tell your healthcare professional right away.

Fertility: Doxorubicin Hydrochloride for Injection USP may affect your ability to have a child during and after your treatment. If you want to have children, you may want to preserve your fertility.

- **Female patients:** You may stop getting a period and may not ovulate while you are receiving Doxorubicin Hydrochloride for Injection USP. Your menstrual cycle may return to normal after your last dose; however, you could also go into menopause early.
- **Male patients:** Doxorubicin Hydrochloride for Injection USP can affect your sperm. This may be permanent, but could return to normal after treatment is completed, even years later.

Check-ups and tests: You will have blood tests done regularly. These will be done before and during each treatment cycle. The results of these tests will tell your healthcare professional how Doxorubicin Hydrochloride for Injection USP is affecting your blood, liver and kidneys. You may also need to have tests to measure how well your heart is working. These tests might include MUGA and ECHO scans.

Tell your healthcare professional about all the medicines you take, including any drugs, vitamins, minerals, natural supplements or alternative medicines.

The following may interact with Doxorubicin Hydrochloride for Injection USP:

- medicines used to lower blood pressure including calcium channel blockers such as verapamil;
- medicines used to treat cancer including paclitaxel, 6-mercaptopurine, streptozocin, cyclophosphamide, actinomycin-D and sorafenib;
- medicines used to treat seizures such as phenobarbital and phenytoin;
- a medicine used to prevent rejection after an organ transplant called cyclosporine

Taking Doxorubicin Hydrochloride for Injection USP with other chemotherapy drugs that have a similar action may lead to more side effects especially low blood cell counts, gastrointestinal and heart problems.

How Doxorubicin Hydrochloride for Injection USP is given:

You will be given Doxorubicin Hydrochloride for Injection USP by a healthcare professional. It will be given in one of two ways:

Intravenous (IV) administration: Doxorubicin Hydrochloride for Injection USP is given through a vein in your arm.

- It usually takes about 3-10 minutes to inject Doxorubicin Hydrochloride for Injection USP. However, you may get other medicines before or after Doxorubicin Hydrochloride for Injection USP, so your entire treatment may last an hour or longer.
- Doxorubicin Hydrochloride for Injection USP will be given to you in treatment cycles that include rest periods between treatments. The rest periods give your body a chance to build healthy new cells and regain your strength before your next treatment. Doxorubicin Hydrochloride for Injection USP is usually given in treatment cycles of 21-days or 28-days. Your healthcare professional will tell you the schedule for your treatments and how often you will receive Doxorubicin Hydrochloride for Injection USP.
- Your healthcare professional will also decide for how long you will need Doxorubicin Hydrochloride Injection USP. It will depend on your medical condition, the medicines you receive, and how your body responds to these medicines.

Intravesical administration: Doxorubicin Hydrochloride for Injection USP is given through a catheter inserted through your urinary tract directly into your bladder.

- Doxorubicin Hydrochloride for Injection USP should generally be held in your bladder for 1-2 hours before urinating.
- Avoid drinking for 12 hours before your treatment.
- You will receive Doxorubicin Hydrochloride for Injection USP every 4-weeks.
- Your treatment may last more than 1 year. This will depend on how you respond and if you experience side effects.

Your healthcare professional will use specific techniques to prepare your dose. They will wear gloves, goggles and protective clothing.

If Doxorubicin Hydrochloride for Injection USP touches skin, the area should be washed with soap and water or sodium bicarbonate right away. If it gets into the eye, the eye should be flushed with a lot of water.

Usual dose: Your healthcare professional will decide the dose of Doxorubicin Hydrochloride for Injection USP that you will receive. It will be different for each patient and will depend on:

- your height, weight and age,
- the condition being treated,
- whether you have liver problems,
- whether you are taking other medicines
- if you will receive Doxorubicin Hydrochloride for Injection USP alone or with other anti-cancer medicines
- how often you will receive Doxorubicin Hydrochloride for Injection USP

Overdose:

Receiving a dose of Doxorubicin Hydrochloride for Injection USP that is too high can make side effects (like sores in the mouth) worse. It can also lower the number of white blood cells and platelets in the blood. If you receive too much Doxorubicin Hydrochloride for Injection USP over a long period of time, you are more likely to experience damage to the heart.

If you receive too much Doxorubicin Hydrochloride for Injection USP, your healthcare professional may give you platelet transfusions or other medicines. These medicines may be used to:

- treat infections or mouth sores
- help your body make white blood cells
- make your heart stronger and remove fluid from your body

If you think you, or a person you are caring for, have taken too much Doxorubicin Hydrochloride for Injection USP, contact a healthcare professional, hospital emergency department, regional poison control centre or Health Canada's toll-free number, 1-844 POISON-X (1-844-764-7669) immediately, even if there are no signs or symptoms.

Missed Dose:

If you miss your scheduled treatment, contact your healthcare professional as soon as possible to schedule your next treatment.

What are possible side effects from using Doxorubicin Hydrochloride for Injection USP?

These are not all the possible side effects you may have when taking Doxorubicin Hydrochloride for Injection USP. If you experience any side effects not listed here, tell your healthcare professional.

- temporary hair loss

- nausea
- vomiting
- fatigue, or feeling tired
- mouth sores
- red coloration of your urine for 1 to 2 days after receiving Doxorubicin Hydrochloride for Injection USP.
- stomach pain
- eye redness, swelling or infection (pink eye)

Doxorubicin Hydrochloride for Injection USP can cause abnormal blood test results. Your doctor will decide when to perform blood tests and will interpret the results.

Serious side effects and what to do about them			
Symptom / effect	Talk to your healthcare professional		Stop taking drug and get immediate medical help
	Only if severe	In all cases	
COMMON			
Anorexia: decreased appetite		√	
Diarrhea		√	
Infection: fever over 38°C , chills, sweating, nausea, vomiting, diarrhea, generally feeling unwell, sore throat or coughing, redness or swelling around a cut, wound or a catheter site, a burning feeling when you urinate, unusual vaginal itching or discharge		√	
Hemorrhage (bleeding)		√	
Heart problems: irregular heartbeat, chest pain, swelling of the ankles, shortness of breath		√	
Allergic skin reaction: pain at the site of the injection, rash, itch, redness		√	
RARE			
Colitis (inflammation of the bowel): diarrhea may have blood or pus, abdominal pain and cramping, pain in the rectum, fever, weight loss, fatigue		√	
Amenorrhea (loss of monthly periods): early menopause can occur leading to night sweats and hot flashes		√	
Dehydration (your body does not have sufficient water): dry mouth, excessive thirst, headache, loss of		√	

Serious side effects and what to do about them			
Symptom / effect	Talk to your healthcare professional		Stop taking drug and get immediate medical help
	Only if severe	In all cases	
appetite, feeling tired and weak, lack of sweating, decreased blood pressure and urine, dark yellow urine			
Anaphylaxis (serious allergic reaction): difficulty swallowing or breathing, wheezing, drop in blood pressure, feeling sick to your stomach and throwing up, hives or rash, swelling of the face, lips, tongue or throat		√	
Thrombophlebitis (inflammation that causes a blood clot to form): swelling and redness along a vein which is extremely tender or painful when touched		√	
Pulmonary embolism (blood clot in the lung): chest pain that may increase with deep breathing, cough, coughing up bloody sputum, shortness of breath		√	
Phlebosclerosis (thickening and hardening of the wall of a vein): pain, blood clots, swelling of the legs or ankles		√	
Pericarditis and myocarditis (swelling of the sac around the heart or the heart muscle): sharp or piercing chest pain that can be more intense when breathing, shortness of breath, cough, rapid heartbeat		√	
Tumor-Lysis Syndrome (large number of cancer cells releasing their contents into the blood): feeling sick to your stomach, weak or tired, throwing up, diarrhea, muscle twitching or numbness, changes in urine, joint pain, confusion		√	
Mucositis (inflammation and ulcers of the lining of the digestive tract): mouth sores with pain,		√	

Serious side effects and what to do about them			
Symptom / effect	Talk to your healthcare professional		Stop taking drug and get immediate medical help
	Only if severe	In all cases	
trouble swallowing, eating or talking, diarrhea, bloody stools, bloody vomit			
Hyperpigmentation of the oral mucosa: change in colour of the skin inside the mouth		√	
Shock (lack of blood flow): cool clammy skin, blue coloring of the lips or fingernails, fast heartbeat, weakness		√	
Chromonychia: changes in nail coloring, skin and nail changes, tingling sensation, urticaria (itchiness)		√	
Photosensitivity (sensitivity of the skin to UV rays in sunlight or other source): itchy, red skin when exposed to sunlight, tingling sensation		√	
Extravasation (leakage of Doxorubicin Hydrochloride for Injection USP from your vein to the tissue around it): blisters or sores, pain, tenderness, itchiness or burning at the site		√	
Cardiomyopathy (damage to the heart muscle): shortness of breath, swelling in the ankles, and fluid retention		√	
Myelosuppression (severe decrease in the number of white blood cells, red blood cells, and platelets): fever, serious infection, severe bleeding, fever or chills with shivering		√	
Blood cancers: swelling of the neck or armpits, bone pain, night sweats, feeling weak, quickly losing a lot of weight, bleeding or bruising more easily, fever or chills		√	

If you have a troublesome symptom or side effect that is not listed here or becomes bad enough to

interfere with your daily activities, tell your healthcare professional.

Reporting Side Effects

You can report any suspected side effects associated with the use of health products to Health Canada by:

- Visiting the Web page on Adverse Reaction Reporting (canada.ca/drug-device-reporting) for information on how to report online, by mail or by fax; or
- Calling toll-free at 1-866-234-2345.

NOTE: Contact your health professional if you need information about how to manage your side effects. The Canada Vigilance Program does not provide medical advice.

Storage:

Your healthcare professional will store Doxorubicin Hydrochloride for Injection USP between 15°C and 25°C. They will protect it from light.

If you want more information about Doxorubicin Hydrochloride for Injection USP:

- Talk to your healthcare professional
- Find the full product monograph that is prepared for healthcare professionals and includes this Patient Medication Information by visiting the Health Canada website: (<https://www.canada.ca/en/health-canada/services/drugs-health-products/drug-products/drug-product-database.html>); the manufacturer's website <https://www.pfizer.ca/>, or by calling 1-800-463-6001.

This leaflet was prepared by Pfizer Canada ULC.

Last Revised : JAN 09, 2025