

PRODUCT MONOGRAPH  
INCLUDING PATIENT MEDICATION INFORMATION

**Pr Aripiprazole Oral Solution**

Aripiprazole oral solution

Solution, 1 mg / mL, Oral

Antipsychotic agent

Orimed Pharma Inc.  
1310 rue Nobel  
Boucherville, Quebec  
J4B 5H3, Canada

Date of Initial Approval:

JAN 15, 2025

Submission Control No: 286599

## RECENT MAJOR LABEL CHANGES

N/A

## TABLE OF CONTENTS

<b>RECENT MAJOR LABEL CHANGES</b> .....	<b>2</b>
<b>TABLE OF CONTENTS</b> .....	<b>2</b>
<b>PART I: HEALTH PROFESSIONAL INFORMATION</b> .....	<b>4</b>
<b>1 INDICATIONS</b> .....	<b>4</b>
1.1 Pediatrics .....	4
1.2 Geriatrics .....	5
<b>2 CONTRAINDICATIONS</b> .....	<b>5</b>
<b>3 SERIOUS WARNINGS AND PRECAUTIONS BOX</b> .....	<b>6</b>
<b>4 DOSAGE AND ADMINISTRATION</b> .....	<b>6</b>
4.1 Dosing Considerations .....	6
4.3 Administration .....	9
4.4 Reconstitution .....	9
4.5 Missed Dose .....	9
<b>5 OVERDOSAGE</b> .....	<b>9</b>
<b>6 DOSAGE FORMS, STRENGTHS, COMPOSITION AND PACKAGING</b> .....	<b>10</b>
<b>7 WARNINGS AND PRECAUTIONS</b> .....	<b>11</b>
7.1 Special Populations .....	17
7.1.1 Pregnant Women.....	17
7.1.2 Breast-feeding .....	17
7.1.3 Pediatrics .....	18
7.1.4 Geriatrics .....	18
7.1.5 Use in Patients with Renal Impairment .....	20
7.1.6 Use in Patients with Hepatic Impairment .....	20
7.1.7 Use in Patients with Concomitant Illness .....	20
7.1.8 Gender.....	20
7.1.9 Race .....	20
<b>8 ADVERSE REACTIONS</b> .....	<b>20</b>
8.1 Adverse Reaction Overview.....	20
8.2 Clinical Trial Adverse Reactions .....	21
8.3 Less Common Clinical Trial Adverse Reactions .....	43
8.4 Abnormal Laboratory Findings: Hematologic, Clinical Chemistry and Other Quantitative Data .....	43
8.5 Clinical Trial Adverse Reactions (Pediatrics) .....	44
8.6 Post-Market Adverse Reactions .....	44
<b>9 DRUG INTERACTIONS</b> .....	<b>45</b>
9.1 Serious Drug Interactions Box .....	45
9.2 Overview.....	45
9.3 Drug-Drug Interactions.....	45

9.4	Drug-Food Interactions .....	48
9.5	Drug-Herb Interactions.....	48
9.6	Drug-Laboratory Test Interactions .....	48
9.7	Drug-Lifestyle Interactions .....	48
<b>10</b>	<b>ACTION AND CLINICAL PHARMACOLOGY .....</b>	<b>49</b>
10.1	Mechanism of Action .....	49
10.2	Pharmacodynamics .....	49
<b>11</b>	<b>STORAGE, STABILITY AND DISPOSAL .....</b>	<b>51</b>
<b>12</b>	<b>SPECIAL HANDLING INSTRUCTIONS .....</b>	<b>51</b>
<b>13</b>	<b>PHARMACEUTICAL INFORMATION .....</b>	<b>52</b>
<b>14</b>	<b>CLINICAL TRIALS.....</b>	<b>52</b>
14.3	Comparative Bioavailability Studies .....	57
<b>15</b>	<b>MICROBIOLOGY .....</b>	<b>58</b>
<b>16</b>	<b>NON-CLINICAL TOXICOLOGY .....</b>	<b>58</b>
<b>17</b>	<b>SUPPORTING PRODUCT MONOGRAPHS.....</b>	<b>67</b>
	<b>PATIENT MEDICATION INFORMATION .....</b>	<b>68</b>

## PART I: HEALTH PROFESSIONAL INFORMATION

### 1 INDICATIONS

Aripiprazole Oral Solution (aripiprazole oral solution) is indicated for:

- the treatment of schizophrenia and related psychotic disorders in adults. In controlled clinical trials, aripiprazole was found to improve both positive and negative symptoms. Aripiprazole has been shown to be more effective than placebo in maintaining clinical improvement for up to 26 weeks in adults.
- the treatment of manic or mixed episodes in bipolar I disorder in adults. Aripiprazole Oral Solution may be used as acute monotherapy or cotherapy with lithium or divalproex sodium when there is an insufficient acute response to these agents alone. Aripiprazole as cotherapy with lithium or divalproex sodium has been shown to be more effective than placebo plus mood stabilizer in maintaining clinical improvement for up to 1 year in adult patients with manic or mixed episodes associated with bipolar I disorder (see [14 CLINICAL TRIALS, Trial Design and Study Demographics, Bipolar Disorder](#)). The physician who elects to use Aripiprazole Oral Solution for extended periods should periodically re-evaluate the long-term usefulness of the drug for the individual patient.
- use as an adjunct to antidepressants for the treatment of Major Depressive Disorder (MDD) in adult patients who had an inadequate response to prior antidepressant treatments during the current episode (see [14 CLINICAL TRIALS, Trial Design and Study Demographics, Adjunctive Treatment of Major Depressive Disorder-Adults](#)). When considering the use of Aripiprazole Oral Solution as adjunctive treatment in MDD, clinicians must take into account the safety concerns associated with antipsychotic drugs, a class of drugs to which Aripiprazole Oral Solution belongs. Safety concerns of this class include: weight gain; hyperlipidemia; hyperglycaemia; Tardive Dyskinesia; and Neuroleptic Malignant Syndrome (see [7 WARNINGS AND PRECAUTIONS, 8 ADVERSE REACTIONS](#)). Aripiprazole Oral Solution should only be prescribed in patients with MDD by clinicians who are aware of the importance and are experienced in the early detection and management of the safety issues associated with this class of drugs. The safety and efficacy of aripiprazole as adjunctive treatment in MDD have not been systematically evaluated beyond 6 weeks. Therefore, the required length of adjunctive treatment with Aripiprazole Oral Solution is unknown. When prescribed as an adjunct to antidepressants in the treatment of MDD, Aripiprazole Oral Solution should be used for the shortest period of time that is clinically indicated. Clinical trials evaluating aripiprazole in MDD did not include aripiprazole monotherapy treatment arms. It is therefore unknown whether efficacy in adjunct treatment is due to aripiprazole alone or from combined treatment with an antidepressant.

#### 1.1 Pediatrics

**Pediatrics (< 18 years of age):** When prescribing to adolescents with schizophrenia (15-17 years of age) or with a manic or mixed episode of bipolar I disorder (13-17 years of age), clinicians must take into account the safety concerns associated with all antipsychotic drugs which include: weight gain; hyperlipidemia; hyperglycemia; and, extrapyramidal effects which can be more frequent or more severe in this patient population than in adults (see [7 WARNINGS AND PRECAUTIONS; 8 ADVERSE REACTIONS](#)). Aripiprazole Oral Solution should only be prescribed to adolescents with schizophrenia or bipolar I disorder by clinicians who are experienced in the diagnosis and treatment of adolescents with psychiatric illness and who are experienced in the early detection and management of the above-mentioned safety issues associated with

**this class of drugs.**

### ***Schizophrenia***

Aripiprazole Oral Solution is indicated for the treatment of schizophrenia in adolescents 15 – 17 years of age.

Safety and efficacy were evaluated in one 6-week clinical trial in adolescents (13-17 years of age) with schizophrenia. Aripiprazole is not indicated for the treatment of schizophrenia in adolescents less than 15 years of age due to insufficient safety and efficacy data (see [8 ADVERSE REACTIONS](#), [14 CLINICAL TRIALS, Trial Design and Study Demographics](#), [14 CLINICAL TRIALS, Schizophrenia-Adolescents](#)).

The safety and efficacy of aripiprazole during long term treatment have not been systematically evaluated in adolescents with schizophrenia. The physician who elects to use Aripiprazole Oral Solution for extended periods in adolescents with schizophrenia should periodically re-evaluate the long-term usefulness of the drug for the individual patient.

### ***Bipolar disorder***

Aripiprazole Oral Solution is indicated for the acute treatment of manic or mixed episodes in bipolar I disorder as monotherapy in adolescent patients 13 - 17 years of age.

Safety and efficacy were evaluated in one 4-week clinical trial in pediatric and adolescent patients (10-17 years of age) in a current manic or mixed episode as part of bipolar I disorder. Aripiprazole is not indicated for the treatment of manic or mixed episodes in bipolar I disorder in adolescents less than 13 years of age due to insufficient safety and efficacy data (see [8 ADVERSE REACTIONS](#), [14 CLINICAL TRIALS, Trial Design and Study Demographics](#), [14 CLINICAL TRIALS, Bipolar Disorder-Pediatric and Adolescent](#)).

The efficacy and safety of aripiprazole for the maintenance treatment of bipolar I disorder in the pediatric and adolescent populations have not been systematically evaluated.

### ***Adjunctive Treatment of Major Depressive Disorder (MDD)***

The safety and efficacy of aripiprazole for the treatment of MDD in patients under the age of 18 years have not been established and its use is not recommended (see [7 WARNINGS AND PRECAUTIONS, Special Populations, Pediatrics](#)).

## **1.2 Geriatrics**

**Geriatrics (≥ 65 years of age): Aripiprazole Oral Solution is not indicated in elderly patients with dementia.**

(See [3 SERIOUS WARNINGS AND PRECAUTIONS BOX](#) and [7 WARNINGS AND PRECAUTIONS, Special populations, Use in Elderly Patients with Dementia](#)). The safety and efficacy of aripiprazole in patients 65 years of age or older has not been established. Caution should be used when treating geriatric patients. (See [7 WARNINGS AND PRECAUTIONS, Special Populations, Geriatrics](#) and [10 ACTION AND CLINICAL PHARMACOLOGY](#)).

## **2 CONTRAINDICATIONS**

Aripiprazole Oral Solution (aripiprazole) is contraindicated in patients who are hypersensitive to this drug or to any ingredient in the formulation, including any non-medicinal ingredient, or component of the container. For a complete listing, see [6 DOSAGE FORMS, STRENGTHS, COMPOSITION AND PACKAGING](#).

### 3 SERIOUS WARNINGS AND PRECAUTIONS BOX

#### Serious Warnings and Precautions

##### Increased Mortality in Elderly Patients with Dementia

Elderly patients with dementia treated with atypical antipsychotic drugs are at an increased risk of death compared to placebo. Analyses of thirteen placebo-controlled trials with various atypical antipsychotics (modal duration of 10 weeks) in these patients showed a mean 1.6-fold increase in the death rate in the drug-treated patients. Although the causes of death were varied, most of the deaths appeared to be either cardiovascular (e.g., heart failure, sudden death) or infectious (e.g., pneumonia) in nature (see [7 WARNINGS AND PRECAUTIONS - Special Populations, Use in Elderly Patients with Dementia](#)).

### 4 DOSAGE AND ADMINISTRATION

#### 4.1 Dosing Considerations

- The oral solution and tablets can be interchanged on a mg-per-mg basis.
- Enhanced monitoring is recommended when switching formulations for patients stable at the highest dose as other aripiprazole oral solution drug products have shown higher exposure at the 30 mg dose. The comparative bioavailability of doses other than 10 mg was not tested for Aripiprazole Oral Solution ([10.3 Pharmacokinetics, Absorption](#); [14.3 Comparative Bioavailability Studies](#)).
- The efficacy and safety of aripiprazole, at doses greater than 30 mg / day, have not been established.
- Refer to [9 DRUG INTERACTIONS](#) section for dosage adjustment in patients taking aripiprazole concomitantly with strong CYP3A4 inhibitors (such as ketoconazole or clarithromycin), with potential CYP2D6 inhibitors (such as quinidine, fluoxetine, or paroxetine) or with potential CYP3A4 inducers (such as carbamazepine).

#### Dosing Considerations in Special Populations

Pediatrics (< 18 years of age): Safety and efficacy were evaluated in adolescent (13-17 years of age) patients with schizophrenia in one 6-week clinical trial. Aripiprazole is not indicated for the treatment of schizophrenia in adolescent patients under 15 years of age due to insufficient safety and efficacy data (see [8 ADVERSE REACTIONS](#), [14 CLINICAL TRIALS, Trial Design and Study Demographics, Schizophrenia-Adolescents](#)).

Safety and efficacy in pediatric and adolescent patients (10-17 years of age) with bipolar I disorder have been evaluated in one 4-week clinical trial. Aripiprazole is not indicated for the treatment of bipolar I disorder in patients under 13 years of age due to insufficient safety and efficacy data (see [8 ADVERSE REACTIONS](#), [14 CLINICAL TRIALS, Trial Design and Study Demographics, Bipolar–Pediatric and Adolescent](#)).

The safety and efficacy of aripiprazole in patients with major depressive disorder (MDD) under the age of 18 years have not been established and its use is not recommended (see [7 WARNINGS AND PRECAUTIONS, Special Populations, Pediatrics](#)).

Geriatric (≥ 65 years of age): Safety and efficacy of aripiprazole in the treatment of schizophrenia and bipolar I disorder in patients 65 years of age or older have not been

established. Given the greater sensitivity of this population, a lower starting dose may be considered when clinical factors warrant (see [7 WARNINGS AND PRECAUTIONS, Special Populations, Geriatrics](#)).

Aripiprazole Oral Solution is not indicated in elderly patients with dementia (see [3 SERIOUS WARNINGS AND PRECAUTIONS BOX](#)).

Patients with hepatic impairment: No dosage adjustment is required for patients with hepatic impairment.

Patients with renal impairment: No dosage adjustment is required in patients with renal impairment.

Gender: No dosage adjustment is required for female patients as compared to male patients.

Smoking status: No dosage adjustment is required for smokers (see [9 DRUG INTERACTIONS, Drug-Lifestyle Interaction](#)).

CYP2D6 poor metabolizers: Approximately 8% of Caucasians lack the capacity to metabolize CYP2D6 substrates and are classified as poor metabolizers (PM), whereas the rest are extensive metabolizers (EM). CYP2D6 metabolizing capacity should be considered when aripiprazole is co-administered with drugs that inhibit CYP2D6 (see [9 DRUG INTERACTIONS, Drug-Drug Interactions](#)).

## 4.2 Recommended Dose and Dosage Adjustment

### Schizophrenia

#### Adults

Usual Dose: The recommended starting and target dose for aripiprazole is 10 or 15 mg/day (i.e., 10 to 15 mL/day) administered on a once-a-day schedule. Doses in the range of 10 to 30 mg/day have been established as effective in clinical trials. However, greater efficacy has not been demonstrated at doses higher than 10 mg/day. Dosage increases, if needed, should only be made after 2 weeks, the time needed to achieve steady state. The maximum daily dose should not exceed 30 mg/day (i.e., 30 mL/day).

Patients should be maintained on the lowest effective dose that provides optimal clinical response and tolerability and should be periodically reassessed to determine the need for maintenance treatment.

#### Adolescents (15 -17 years of age)

Usual dose: The recommended target dose of aripiprazole is 10 mg/day administered on a once-a-day schedule. The recommended starting daily dose is 2 mg/day (i.e., 2 mL/day), titrated to 5 mg/day after 2 days and to the target dose of 10 mg/day after 2 additional days. Subsequent dose increases should be administered, if needed and as tolerated, in 5 mg/day (i.e., 5 mL/day) increments. Both the 10 mg/day and 30 mg/day doses have been shown to be effective in a double-blind, placebo-controlled clinical trial; however, the 30 mg/day dose was not shown to be more efficacious than the 10 mg/day dose.

The maximum daily dose should not exceed 30 mg/day. Patients should be maintained on the lowest effective dose that provides optimal clinical response and tolerability.

The safety and efficacy of aripiprazole during long term treatment have not been systematically

evaluated in adolescent patients with schizophrenia. The physician who elects to use Aripiprazole Oral Solution for extended periods in adolescent patients with schizophrenia should periodically re-evaluate the long-term usefulness of the drug for the individual patient.

## **Bipolar Disorder**

### **Adults:**

#### *Monotherapy*

The recommended starting dose for aripiprazole as acute monotherapy is 15 mg given once a day.

#### *Cotherapy with lithium or valproate*

The recommended starting dose for aripiprazole as acute and/or maintenance cotherapy with lithium or valproate at therapeutic serum levels is 10 to 15 mg given once daily.

The dose can be increased to 30 mg/day based on clinical response. Aripiprazole Oral Solution can be administered without regard to meals.

Patients should be treated with the lowest effective dose that provides optimal clinical response and tolerability. The maximum daily dose should not exceed 30 mg/day.

### **Adolescents (13 - 17 years of age)**

#### *Monotherapy*

The recommended target dose is 10 mg/day, as acute monotherapy, administered on a once-a-day schedule. The recommended starting daily dose is 2 mg/day, titrated to 5 mg/day after 2 days and to the target dose of 10 mg/day after 2 additional days. Subsequent dose increases should be administered in 5 mg increments. The maximum daily dose should not exceed 30 mg/day.

The efficacy and safety of aripiprazole for the maintenance treatment of bipolar I disorder in the adolescent population have not been systematically evaluated.

## **Adjunctive Treatment of Major Depressive Disorder (MDD)**

### **Adults:**

**Usual Dose in Adults:** The recommended starting dose for aripiprazole as adjunctive treatment for patients already taking an antidepressant is 2 mg/day to 5 mg/day. The efficacy of aripiprazole as an adjunctive therapy for the treatment of major depressive disorder was established within a dose range of 2 mg/day to 15 mg/day. Dose adjustments of up to 5 mg/day should occur gradually, at intervals of no less than 1 week.

The short-term trials of adjunctive aripiprazole in MDD patients used a flexible dose regimen. Therefore, the minimum effective dose for this indication has not been established. Also, dose-relationship was not evaluated; however, some of the adverse events associated with aripiprazole showed dose-response in trials for other indications (see [7 WARNINGS AND PRECAUTIONS; 8 ADVERSE REACTIONS, Clinical Trial Adverse Reactions](#)). Patients should be treated with the lowest effective dose that provides optimal clinical response and tolerability.

The safety and efficacy of aripiprazole as an adjunct to antidepressant therapy have not been systematically evaluated in controlled trials beyond 6 weeks. Therefore, the required length of adjunctive treatment with Aripiprazole Oral Solution is unknown. Thus, the physician who elects to use Aripiprazole Oral Solution as an adjunct to an antidepressant in the treatment of MDD should use Aripiprazole Oral Solution for the shortest period of time that is clinically indicated.

When considering the use of Aripiprazole Oral Solution as adjunctive treatment in MDD, clinicians must take into account the safety concerns associated with antipsychotic drugs, a



class of drugs to which Aripiprazole Oral Solution belongs. Safety concerns of this class include: weight gain; hyperlipidemia; hyperglycaemia; Tardive Dyskinesia; and Neuroleptic Malignant Syndrome (see [7 WARNINGS AND PRECAUTIONS](#)). Aripiprazole Oral Solution should only be prescribed in patients with MDD by clinicians who are aware of the importance and are experienced in the early detection and management of the safety issues associated with this class of drugs.

### **4.3 Administration**

Aripiprazole Oral Solution can be taken without regard to meals. A calibrated measuring cup and a 2 mL calibrated dropper are included in the carton.

### **Switching from Other Antipsychotics**

There are no systematically collected data to specifically address switching patients with schizophrenia from other antipsychotics to Aripiprazole Oral Solution or concerning concomitant administration with other antipsychotics. While immediate discontinuation of the previous antipsychotic treatment may be acceptable for some patients with schizophrenia, more gradual discontinuation may be most appropriate for others. In all cases, the period of overlapping antipsychotic administration should be minimized.

### **4.4 Reconstitution**

Not Applicable

### **4.5 Missed Dose**

If a patient misses a dose by a few hours, the patient should be advised to take their dose as soon as he/she remembers. If most of the day has passed, he/she should be advised to wait until the next scheduled dose. Patients should be advised to not take 2 doses of Aripiprazole Oral Solution at once.

## **5 OVERDOSAGE**

### **Human Experience**

In clinical studies, no deaths were associated with accidental or intentional acute overdose of aripiprazole alone. In clinical trials, in the patient taking the largest confirmed amount of aripiprazole, 1080 mg, ingested with alcohol, the only symptom reported was vomiting.

In post-marketing experience, there is a single case of death that was possibly associated with accidental or intentional acute overdose of aripiprazole alone. The patient ingested 900 mg of aripiprazole, was hospitalized in the intensive care unit for 10 to 14 days and died. The patient's medical history included excessive alcohol use, although it is unclear whether alcohol was present at the time of overdose. In the patient taking the largest confirmed amount of aripiprazole, 1680 mg, the only symptoms reported were vomiting, fatigue, and dizziness. In addition, a report of non-fatal accidental overdose with aripiprazole alone (up to 195 mg) in a 2.5 years old child has been received. Vomiting, somnolence, lethargy, transient loss of consciousness and CNS depression were reported for this patient. Other potentially medically important signs and symptoms that have been observed during overdose included blood pressure increased and tachycardia. In the patients who were evaluated in hospital settings, there were no reported observations indicating clinically important adverse change in vital signs, laboratory assessments, or electrocardiogram.

## Management of Overdosage

No specific information is available on the treatment of overdose with aripiprazole. Management of overdose should concentrate on supportive therapy, maintaining an adequate airway, oxygenation and ventilation, and management of symptoms. The possibility of multiple drug involvement should be considered. Therefore, cardiovascular monitoring should commence immediately and should include continuous electrocardiographic monitoring to detect possible arrhythmias. Following any confirmed or suspected overdose with aripiprazole, close medical supervision and monitoring should continue until the patient recovers.

**Charcoal:** In the event of an overdose of Aripiprazole Oral Solution, an early charcoal administration may be useful in partially preventing the absorption of aripiprazole. Administration of 50 g of activated charcoal, one hour after a single 15-mg oral dose of aripiprazole, decreased the mean AUC and  $C_{max}$  of aripiprazole by 50%.

**Hemodialysis:** Although there is no information on the effect of hemodialysis in treating an overdose with aripiprazole, hemodialysis is unlikely to be useful in overdose management since aripiprazole is highly bound to plasma proteins.

For the most recent information in the management of a suspected drug overdose, contact your regional poison control centre or Health Canada's toll-free number, 1-844 POISON-X (1-844-764-7669).

## 6 DOSAGE FORMS, STRENGTHS, COMPOSITION AND PACKAGING

**Table 1: Dosage Forms, Strengths, Composition and Packaging.**

<b>Route of Administration</b>	<b>Dosage Form / Strength/Composition</b>	<b>Non-medicinal Ingredients</b>
Oral	Solution, 1 mg/mL	Disodium edetate, fructose, glycerin, lactic acid, methylparaben, orange flavour, propylene glycol, propylparaben, purified water, sodium hydroxide, sucrose

Aripiprazole Oral Solution is available in a 150 mL amber glass bottle with a child-resistant screw cap.

## 7 WARNINGS AND PRECAUTIONS

Please see the [3 SERIOUS WARNINGS AND PRECAUTIONS BOX](#) at the beginning of Part I: Health Professional Information.

### **General**

#### **Body Temperature Regulation**

Disruption of the body's ability to reduce core body temperature has been attributed to antipsychotic agents. Appropriate care is advised when prescribing Aripiprazole Oral Solution for patients who will be experiencing conditions which may contribute to an elevation in core body temperature, (e.g., exercising strenuously, exposure to extreme heat, receiving concomitant medication with anticholinergic activity, or being subject to dehydration) (see [8 ADVERSE REACTIONS](#)).

#### **Carcinogenesis and Mutagenesis**

For animal data, see [16 NON-CLINICAL TOXICOLOGY](#) section.

### **Cardiovascular**

#### **Orthostatic Hypotension**

Aripiprazole may be associated with orthostatic hypotension, perhaps due to its  $\alpha$ 1-adrenergic receptor antagonism. Aripiprazole Oral Solution may induce orthostatic hypotension, tachycardia, dizziness, and sometimes syncope, especially at the initiation of treatment. The incidence of orthostatic hypotension-associated events from short-term, placebo-controlled trials of adult patients on oral aripiprazole (n=2643) included (aripiprazole incidence, placebo incidence): orthostatic hypotension (1.0%, 0.3%), postural dizziness (0.5%, 0.3%), and syncope (0.5%, 0.3%); of adolescent patients (13-17 years of age) with schizophrenia on oral aripiprazole (n=202) included (aripiprazole 10 mg/day incidence, aripiprazole 30 mg/day incidence, placebo incidence): orthostatic hypotension (0%, 2.9%, 0%), postural dizziness (0%, 2%, 0%), and syncope (1%, 0%, 0%); of pediatric and adolescent patients (10-17 years of age) with bipolar I disorder on oral aripiprazole (n=197) included (aripiprazole 10 mg/day incidence, aripiprazole 30 mg/day incidence, placebo incidence): orthostatic hypotension (1%, 0%, 0%), postural dizziness (0%, 0%, 0%), and syncope (0%, 0%, 0%). The risk of orthostatic hypotension may be reduced by more gradual titration to the target dose.

The incidence of a significant orthostatic change in blood pressure (defined as a decrease in systolic blood pressure  $\geq$ 20 mmHg accompanied by an increase in heart rate  $\geq$ 25 bpm when comparing standing to supine values) for oral aripiprazole was (aripiprazole incidence, placebo incidence): 3.7%, 2.3% in adults; 0% (0/202), 0% (0/100) in adolescent patients (13-17 years of age) with schizophrenia and 0%, 1.1% in pediatric and adolescent patients (10 - 17 years of age) with bipolar I disorder, manic or mixed episode.

Aripiprazole should be used with caution in patients with known cardiovascular disease (e.g., history of myocardial infarction or ischemic heart disease, heart failure or conduction abnormalities), cerebrovascular disease, or conditions which would predispose patients to hypotension (e.g., dehydration, hypovolemia, and treatment with antihypertensive medications). Patients with a history of clinically significant cardiovascular disorders were excluded from clinical trials.

## **QT Interval**

In clinical trials with aripiprazole involving patients with schizophrenia or bipolar mania, the incidence of QT prolongation was comparable to placebo. In post-marketing experience, QT prolongation has been reported very rarely with aripiprazole treatment. As with other antipsychotics, caution should be exercised when Aripiprazole Oral Solution is prescribed in patients with a history of cardiac arrhythmias, in patients with congenital or family history of long QT syndrome, and in concomitant use with drugs known to prolong the QT interval (See [8 ADVERSE REACTIONS, Clinical Trial Adverse Reactions-ECG Changes](#); [8 ADVERSE REACTIONS, Post- Market Adverse Reactions](#)).

## **Dependence / Tolerance**

Aripiprazole has not been systematically studied in humans for its potential for abuse, tolerance, or physical dependence. In physical dependence studies in monkeys, withdrawal symptoms were observed upon abrupt cessation of dosing. While the clinical trials did not reveal any tendency for any drug-seeking behavior, these observations were not systematic and it is not possible to predict on the basis of this limited experience the extent to which a CNS-active drug will be misused, diverted, or abused once marketed. Consequently, patients should be evaluated carefully for a history of drug abuse, and such patients should be observed closely for signs of Aripiprazole Oral Solution misuse or abuse (e.g., development of tolerance, increases in dose, drug- seeking behavior).

## **Endocrine and Metabolism**

### **Hyperglycemia and Diabetes Mellitus**

Diabetic ketoacidosis has occurred in patients with no reported history of hyperglycemia. As with some other antipsychotics, exacerbation of pre-existing diabetes and hyperglycemia have been reported rarely and diabetic ketoacidosis and diabetic coma including some fatal cases, have been reported very rarely during the use of aripiprazole (see [8 ADVERSE REACTIONS](#)).

Assessment of the relationship between atypical antipsychotic use and glucose abnormalities is complicated by the possibility of an increased background risk of diabetes mellitus in patients with schizophrenia and the increasing incidence of diabetes mellitus in the general population. Given these confounders, the relationship between atypical antipsychotic use and hyperglycemia-related adverse events is not completely understood. However, epidemiological studies which did not include aripiprazole suggest an increased risk of treatment-emergent hyperglycemia-related adverse events in patients treated with the atypical antipsychotics. Because aripiprazole was not marketed at the time these studies were performed, it is not known if aripiprazole is associated with this increased risk. Precise risk estimates for hyperglycemia-related adverse events in patients treated with atypical antipsychotics are not available.

Patients should have baseline and periodic monitoring of blood glucose and body weight. Any patient treated with atypical antipsychotics should also be monitored for symptoms of hyperglycemia including polydipsia, polyuria, polyphagia, and weakness. Patients who develop symptoms of hyperglycemia during treatment with atypical antipsychotics should undergo fasting blood glucose testing. In some cases, hyperglycemia has resolved when the atypical antipsychotic was discontinued; however, some patients required continuation of anti-diabetic treatment despite discontinuation of the suspect drug. Patients with risk factors for diabetes

mellitus (e.g., obesity, family history of diabetes) who are starting treatment with atypical antipsychotics should undergo fasting blood glucose testing at the beginning of treatment and periodically during treatment. Patients with an established diagnosis of diabetes mellitus who are started on atypical antipsychotics should be monitored regularly for worsening of glucose control.

### **Weight, glucose and lipid changes in adolescents with schizophrenia or pediatric and adolescent patients with bipolar I disorder**

There are limited data for aripiprazole in adolescents with schizophrenia (13-17 years of age) or pediatric and adolescent patients with bipolar I disorder (10-17 years of age) from acute placebo controlled, fixed dose clinical trials (4 to 6 weeks, 10 mg/day and 30 mg/day) and from extension studies (up to 26 weeks of treatment) to assess the effects of aripiprazole on weight, glucose, and lipid metabolism. Data for these parameters from the acute placebo controlled clinical trials were from approximately 50 to 100 patients per treatment group, and in the adolescent schizophrenia trial the majority of patients had received treatment with other antipsychotic medications prior to inclusion in this study. Therefore, these data cannot be considered entirely predictive of the effects of aripiprazole on weight, glucose and lipid metabolism during use in adolescents with schizophrenia (see [8 ADVERSE REACTIONS, Clinical Trial Adverse Reactions- Weight Gain, Glucose, and Lipids](#)). Published studies have demonstrated that the adverse effects of atypical antipsychotic drugs on weight, glucose and lipid metabolism can be greater in antipsychotic-naïve pediatric and adolescent patients than in patients who have been treated previously with antipsychotic drugs.

Clinical monitoring of weight, glucose and lipids at baseline and at regular intervals is recommended for adolescents with schizophrenia or bipolar disorder who are treated with antipsychotics including Aripiprazole Oral Solution.

#### *Weight Gain*

During acute placebo controlled and extension phase studies in pediatric and adolescent patients with either schizophrenia or bipolar I disorder, the proportion of patients with potentially clinically significant weight gain ( $\geq 7\%$  increase from baseline weight) was greater among those treated with aripiprazole compared to those that received placebo (see [8 ADVERSE REACTIONS, Clinical Trial Adverse Reactions-Weight gain](#)).

#### *Glucose*

See [8 ADVERSE REACTIONS, Clinical Trial Adverse Reactions-Glucose](#).

#### *Lipids*

See [8 ADVERSE REACTIONS, Clinical Trial Adverse Reactions-Lipids](#).

### **Genitourinary**

#### **Priapism**

Rare cases of priapism have been reported with antipsychotic use such as aripiprazole. As with other psychotropic drugs, this adverse reaction did not appear to be dose-dependent and did not correlate with the duration of treatment.

## **Hematologic**

In clinical trial and/or post-marketing experience, events of leukopenia/neutropenia have been reported temporally related to antipsychotic agents, including aripiprazole. Agranulocytosis has also been reported (see [8 ADVERSE REACTIONS, Post-Market Adverse Reactions](#)).

Therefore, it is recommended that patients have their complete blood count (CBC) tested prior to starting Aripiprazole Oral Solution and then periodically throughout treatment.

Possible risk factors for leukopenia/neutropenia include pre-existing low white blood cell count (WBC) and history of drug-induced leukopenia/neutropenia. Patients with a history of a clinically significant low WBC or drug-induced leukopenia/neutropenia should have their complete blood count (CBC) monitored frequently during the first few months of therapy and discontinuation of Aripiprazole Oral Solution should be considered at the first sign of a clinically significant decline in WBC in the absence of other causative factors.

Patients with clinically significant neutropenia should be carefully monitored for fever or other symptoms or signs of infection and treated promptly if such symptoms or signs occur. Patients with severe neutropenia (absolute neutrophil count  $<1000/\text{mm}^3$ ) should discontinue Aripiprazole Oral Solution and have their WBC followed until recovery.

## **Venous Thromboembolism**

Venous thromboembolism (VTE), including fatal pulmonary embolism, has been reported with antipsychotic drugs, including aripiprazole in case reports and/or observational studies. When prescribing Aripiprazole Oral Solution all potential risk factors for VTE should be identified and preventative measures undertaken.

## **Neurologic**

### **Neuroleptic Malignant Syndrome (NMS)**

Neuroleptic malignant syndrome is a potentially fatal symptom complex that has been reported in association with antipsychotic drugs, including aripiprazole.

Clinical manifestations of NMS are hyperpyrexia, muscle rigidity, altered mental status, and evidence of autonomic instability (irregular pulse or blood pressure, tachycardia, diaphoresis, and cardiac dysrhythmia). Additional signs may include elevated creatine phosphokinase, myoglobinuria (rhabdomyolysis), and acute renal failure.

In arriving at a diagnosis, it is important to identify cases where the clinical presentation includes both serious medical illness (e.g., pneumonia, systemic infection, etc.), and untreated or inadequately treated extrapyramidal signs and symptoms (EPS). Other important considerations in the differential diagnosis include central anticholinergic toxicity, heat stroke, drug fever, and primary central nervous system pathology.

The management of NMS should include 1) immediate discontinuation of all antipsychotic drugs including Aripiprazole Oral Solution and other drugs not essential to therapy; 2) intensive symptomatic treatment and medical monitoring; and 3) treatment of any concomitant serious medical problems for which specific treatments are available. There is no general agreement about specific pharmacological treatment for uncomplicated NMS.

If a patient requires antipsychotic drug treatment after recovery from NMS, the potential re-introduction of therapy should be very carefully considered. The patient should be carefully monitored, since recurrence of NMS has been reported.

## **Falls**

Antipsychotics, including aripiprazole, may cause somnolence, postural hypotension, motor and sensory instability, which may lead to falls and, consequently, fractures or other injuries. For patients with diseases, conditions, or medications that could exacerbate these effects, complete fall risk assessments when initiating antipsychotic treatment and recurrently for patients on long-term antipsychotic therapy.

## **Tardive Dyskinesia**

A syndrome of potentially irreversible, involuntary, dyskinetic movements may develop in patients treated with antipsychotic drugs. Although the prevalence of the syndrome is highest among the elderly, especially elderly women, it is impossible to rely upon prevalence estimates to predict, at the inception of antipsychotic treatment, which patients are likely to develop the syndrome. Whether antipsychotic drug products differ in their potential to cause tardive dyskinesia is unknown.

The risk of developing tardive dyskinesia and the likelihood that it will become irreversible increase as the duration of treatment and the total cumulative dose of antipsychotic drugs administered to the patient increase. However, the syndrome can develop, although much less commonly, after relatively brief treatment periods at low doses.

There is no known treatment for established cases of tardive dyskinesia, although the syndrome may remit, partially or completely, if antipsychotic treatment is withdrawn. Antipsychotic treatment, itself, however, may suppress (or partially suppress) the signs and symptoms of the syndrome and, thereby, may possibly mask the underlying process. The effect that symptomatic suppression has upon the long-term course of the syndrome is unknown.

Given these considerations, Aripiprazole Oral Solution should be prescribed in a manner that is most likely to minimize the occurrence of tardive dyskinesia. Chronic antipsychotic treatment should generally be reserved for patients who suffer from a chronic illness that (1) is known to respond to antipsychotic drugs and (2) for whom alternative, equally effective, but potentially less harmful treatments are not available or appropriate. In patients who do require chronic treatment, the smallest dose and the shortest duration of treatment producing a satisfactory clinical response should be sought. The need for continued treatment should be reassessed periodically.

If signs and symptoms of tardive dyskinesia appear in a patient on Aripiprazole Oral Solution, drug discontinuation should be considered. However, some patients may require treatment with Aripiprazole Oral Solution despite the presence of the syndrome.

In an open-label longer-term (up to 1 year) trial of aripiprazole adjunctive to antidepressants in patients with MDD, the incidence of tardive dyskinesia was 4/994 or 0.4%.

## **Extrapyramidal Symptoms**

The rate of extrapyramidal-related adverse events in adolescents (13- 17 years of age) with schizophrenia and in pediatric and adolescent (10 – 17 years) patients in a manic or mixed episode of bipolar I disorder was greater than the rate reported in adult patients (see 8



[ADVERSE REACTIONS](#), [Clinical Trial Adverse Reactions-Extrapyramidal Symptoms](#), [Dose-Related Adverse Events](#), and [Additional Findings Observed in Clinical Trials](#)).

Pediatric and adolescent patients are known to be at greater risk of experiencing certain adverse events related to the use of atypical antipsychotics, including extrapyramidal symptoms (see [8 ADVERSE REACTIONS](#)).

### **Seizure / Convulsion**

In short-term, placebo-controlled trials of patients treated with oral aripiprazole, seizures/convulsions occurred in 0.1% (3/2643) of adult patients; in 0% (0/202) of adolescent (13-17 years of age) patients with schizophrenia and in 0.5% (1/197) of pediatric and adolescent patients with bipolar I disorder (10-17 years of age). There were confounding factors that may have contributed to the occurrence of seizures in some of these patients.

As with other antipsychotic drugs, aripiprazole should be used cautiously in patients with a history of seizures or with conditions that lower the seizure threshold. Conditions that lower the seizure threshold may be more prevalent in a population of 65 years or older.

### **Potential for Cognitive and Motor Impairment**

Like other antipsychotics drugs, Aripiprazole Oral Solution has the potential to impair judgment, thinking, or motor skills. Somnolence was a commonly reported adverse event in patients treated with aripiprazole in clinical trials. Somnolence (including sedation) adverse events were reported more frequently in adolescents with schizophrenia (13 – 17 years of age) or pediatric and adolescent patients with bipolar I disorder (10 – 17 years of age) than in adult patients (see [8 ADVERSE REACTIONS](#), [Clinical Trial Adverse Reactions-Somnolence](#)).

Because Aripiprazole Oral Solution may cause somnolence, and impair motor skills, patients should be cautioned about performing activities requiring mental alertness, such as operating hazardous machinery, including motor vehicles, until they are reasonably certain that Aripiprazole Oral Solution therapy does not affect them adversely.

### **Psychiatric**

#### **Suicide**

The possibility of a suicide attempt is inherent in psychotic illnesses, bipolar disorder and major depressive disorder (MDD). Also, in addition to depressive episodes associated with bipolar disorder and MDD, depression may be co-morbid with schizophrenia. The risk of suicide-related events during a depressive episode may persist until remission occurs. It is general clinical experience that the risk of suicide may increase in the early stages of recovery. Close supervision and appropriate clinical management of high-risk patients should accompany drug therapy. Prescription of Aripiprazole Oral Solution should be written for the smallest quantity consistent with good patient management, in order to reduce the risk of overdose.

#### **Pathological Gambling and Other Impulse-Control Disorders**

Post-marketing reports of pathological gambling have been reported in patients treated with aripiprazole. These reports suggest that patients can experience increased urges, particularly for gambling, and the inability to control these urges while taking aripiprazole. With regards to pathological gambling, patients with a prior history of gambling disorder may be at increased risk and should be monitored carefully. Other urges, reported very rarely, include: increased sexual urges, compulsive spending, binge or compulsive eating, and other impulsive and



compulsive behaviors. Because patients may not recognize these behaviors as abnormal, it is important for prescribers to ask patients or their caregivers specifically about the development of new or increased gambling urges, sexual urges, compulsive spending, binge or compulsive eating, or other urges while being treated with aripiprazole. It should be noted that impulse-control symptoms can be associated with the underlying disorder; however, in some cases, although not all, urges were reported to have stopped when the dose was reduced or the medication was discontinued. Although impulse-control disorders have been reported very rarely, impulse-control disorders may result in harm to the patient and others if not recognized. Consider dose reduction or stopping the medication if a patient develops such urges while taking aripiprazole.

## **Skin**

### **Severe Cutaneous Adverse Reactions (SCARs)**

Severe cutaneous adverse reactions (SCARs), including Stevens-Johnson syndrome (SJS), toxic epidermal necrolysis (TEN), drug reaction with eosinophilia and systemic symptoms (DRESS), and acute generalized exanthematous pustulosis (AGEP) are potentially life-threatening adverse drug reactions that have been reported with atypical antipsychotic exposure (see [8 ADVERSE REACTIONS, Post-Market Adverse Reactions](#)). SCARs commonly present as a combination of the following symptoms: extensive cutaneous rash or exfoliative dermatitis, fever, lymphadenopathy and possible eosinophilia. Discontinue Aripiprazole Oral Solution if severe cutaneous adverse reactions occur.

### **7.1 Special Populations**

#### **7.1.1 Pregnant Women**

##### *Teratogenic effects*

There are no adequate and well-controlled studies in pregnant women. It is not known whether aripiprazole can cause fetal harm when administered to a pregnant woman or can affect reproductive capacity. In animal studies, aripiprazole demonstrated developmental toxicity, including possible teratogenic effects in rats and rabbits (see [16 NON-CLINICAL TOXICOLOGY](#)).

##### *Non-teratogenic effects*

Neonates exposed to antipsychotic drugs, including Aripiprazole Oral Solution, during the third trimester of pregnancy are at risk for extrapyramidal and/or withdrawal symptoms following delivery. There have been reports of agitation, hypertonia, hypotonia, tremor, somnolence, respiratory distress and feeding disorder in these neonates. These complications have varied in severity; while in some cases symptoms have been self-limited, in other cases neonates have required intensive care unit support and prolonged hospitalization.

Aripiprazole Oral Solution should not be used during pregnancy unless the expected benefits to the mother markedly outweigh the potential risks to the fetus.

#### **Labor and Delivery**

The effect of aripiprazole on labor and delivery in humans is unknown.

#### **7.1.2 Breast-feeding**

Aripiprazole is excreted in human breast milk. It is recommended that women receiving aripiprazole should not breast-feed.

### 7.1.3 Pediatrics

**Pediatrics (< 18 years of age):** When prescribing to adolescents with schizophrenia (15 – 17 years of age) or adolescents in a manic or mixed episode of bipolar I disorder (13 – 17 years of age), clinicians must take into account the safety concerns associated with all antipsychotic drugs which include: weight gain; hyperlipidemia; hyperglycemia; and, extrapyramidal effects which can be more frequent or more severe in this patient population than in adults (see [8 ADVERSE REACTIONS](#)). Aripiprazole Oral Solution should only be prescribed to adolescents with schizophrenia or bipolar I disorder by clinicians who are experienced in the diagnosis and treatment of adolescents with psychiatric illness and who are experienced in the early detection and management of the above-mentioned safety issues associated with this class of drugs.

Weight gain has been observed with atypical antipsychotic use in pediatric and adolescent patient populations. Independent of any drug-specific effects, weight gain can be associated with adverse changes in other metabolic parameters (e.g., glucose and lipid metabolism). Abnormal childhood weight and metabolic status can have adverse effects on cardiovascular outcomes in adulthood. Weight gain and adverse effects on other metabolic parameters associated with atypical antipsychotics can be more frequent or severe in pediatric and adolescent patients than in the adult patients.

The long-term safety, including cardiometabolic effects and effects on growth, maturation and behavioural development in patients under 18 years of age has not been systematically evaluated.

Safety and efficacy have been evaluated in one 6-week placebo-controlled clinical trial in adolescents (13-17 years of age) with schizophrenia. Aripiprazole Oral Solution is not indicated for the treatment of schizophrenia in adolescents under 15 years of age due to insufficient safety and efficacy data (see [8 ADVERSE REACTIONS](#), [14 CLINICAL TRIALS, Trial Design and Study Demographics- Schizophrenia, Adolescents](#)).

Safety and efficacy have been evaluated in one 4-week placebo controlled clinical trial in pediatric and adolescent patients (10-17 years of age) in a current manic or mixed episode as part of a bipolar I disorder. Aripiprazole Oral Solution is not indicated for treatment of manic or mixed episodes of bipolar I disorder in patients less than 13 years of age due to insufficient safety and efficacy data (see [8 ADVERSE REACTIONS](#), [14 CLINICAL TRIALS, Trial Design and Study Demographics- Bipolar Disorder, Pediatric and Adolescent](#)).

The safety and efficacy of aripiprazole in patients with major depressive disorder (MDD) under the age of 18 years have not been established and its use is not recommended.

### 7.1.4 Geriatrics

In formal single-dose pharmacokinetic studies (with aripiprazole given in a single dose of 15 mg), aripiprazole clearance was 20% lower in elderly (≥65 years) subjects compared to younger adult subjects (18 to 64 years). There was no detectable age effect, however, in the population pharmacokinetic analysis in schizophrenia patients. Also, the pharmacokinetics of aripiprazole after multiple doses in elderly patients appeared similar to that observed in young, healthy subjects (see [3 SERIOUS WARNINGS AND PRECAUTIONS BOX](#) and [4 DOSAGE AND ADMINISTRATION, Dosing Considerations, Dosing Considerations in Special Populations-](#)

## Geriatric).

Placebo-controlled studies of oral aripiprazole in schizophrenia, bipolar mania or major depressive disorder did not include sufficient numbers of subjects aged 65 and over to determine whether they respond differently from younger subjects.

Nevertheless, geriatric patients generally have decreased cardiac, hepatic and renal function, and more frequent use of concomitant medication. The presence of multiple factors that might increase the pharmacodynamic response to aripiprazole, or cause poorer tolerance or orthostasis, should lead to consideration of a lower starting dose, slower titration, and careful monitoring during the initial dosing period for elderly patients. The safety and efficacy of aripiprazole in patients 65 years of age or older have not been established. Caution should be used when treating geriatric patients.

## **Use in Elderly Patients with Dementia**

### ***Overall Mortality***

**Elderly patients with dementia treated with atypical antipsychotic drugs showed increased mortality compared to placebo in a meta-analysis of 13 placebo-controlled trials of various atypical antipsychotic drugs. In three placebo-controlled studies of aripiprazole in elderly patients with Alzheimer's disease (n=938; mean age: 82.4 years; range: 56-99 years), the rate of death in aripiprazole-treated patients was 3.5%, compared to a rate of 1.7% in the placebo group during or within 30 days after termination from the double-blind phase of the studies. Although the causes of death were varied, most of the deaths appeared to be either cardiovascular (e.g., heart failure, sudden death) or infectious (e.g., pneumonia) in nature. Aripiprazole Oral Solution is not indicated for the treatment of patients with dementia (see [3 SERIOUS WARNINGS AND PRECAUTIONS BOX](#)).**

### ***Cerebrovascular Adverse Events, Including Stroke in Elderly Patients with Dementia***

In placebo-controlled clinical studies (two flexible dose and one fixed dose study) of elderly patients with dementia, there was an increased incidence of cerebrovascular adverse events (e.g., stroke, transient ischemic attack), including fatalities, in aripiprazole-treated patients. In the fixed-dose study, there was a statistically significant dose response relationship for cerebrovascular adverse events in patients treated with aripiprazole. Aripiprazole is not indicated for the treatment of patients with dementia (see [3 SERIOUS WARNINGS AND PRECAUTIONS BOX](#)).

### ***Frequent Treatment Emergent Adverse Events in Elderly Patients with Dementia***

In the placebo-controlled studies of elderly patients with dementia (n=595 treated with aripiprazole, n=343 treated with placebo), the following treatment-emergent adverse events were reported at an incidence of  $\geq 3\%$  and aripiprazole incidence at least twice that for placebo: lethargy [placebo 2%, aripiprazole 5%], somnolence (including sedation) [placebo 3%, aripiprazole 8%], and incontinence (primarily, urinary incontinence) [placebo 1%, aripiprazole 5%], excessive salivation (placebo 0%, aripiprazole 4%), and lightheadedness (placebo 1%, aripiprazole 4%).

### ***Dysphagia***

Esophageal dysmotility and aspiration have been associated with antipsychotic drug use, including aripiprazole. Aspiration pneumonia is a common cause of morbidity and mortality in elderly patients, in particular those with advanced Alzheimer's dementia. Aripiprazole and other antipsychotic drugs should be used cautiously in patients at risk for aspiration pneumonia (see

## [8 ADVERSE REACTIONS](#)).

The emergence of difficulty swallowing or excessive somnolence, could predispose patients to accidental injury or aspiration (see [3 SERIOUS WARNINGS AND PRECAUTIONS BOX](#)).

### **7.1.5 Use in Patients with Renal Impairment**

No dosage adjustment is required in subjects with renal impairment (see [10 ACTION AND CLINICAL PHARMACOLOGY, Pharmacokinetics, Special Populations and Conditions, Renal Insufficiency](#)).

### **7.1.6 Use in Patients with Hepatic Impairment**

No dosage adjustment is required in subjects with hepatic impairment (see [10 ACTION AND CLINICAL PHARMACOLOGY, Pharmacokinetics, Special Populations and Conditions, Hepatic Insufficiency](#)).

### **7.1.7 Use in Patients with Concomitant Illness**

Clinical experience with aripiprazole in patients with certain concomitant systemic illnesses is limited. Aripiprazole has not been evaluated or used to any appreciable extent in patients with a recent history of myocardial infarction or unstable heart disease. Patients with these diagnoses were excluded from pre-marketing clinical studies (see [7 WARNINGS AND PRECAUTIONS, Cardiovascular, Orthostatic Hypotension](#)).

### **7.1.8 Gender**

$C_{max}$  and AUC of aripiprazole and its active metabolite, dehydro-aripiprazole, are 30 to 40% higher in women than in men, and correspondingly, the apparent oral clearance of aripiprazole is lower in women. These differences, however, are largely explained by differences in body weight (25%) between men and women. No dosage adjustment is recommended based on gender.

### **7.1.9 Race**

Although no specific pharmacokinetic study was conducted to investigate the effects of race on the disposition of aripiprazole, population pharmacokinetic evaluation did not demonstrate important race-related differences in the pharmacokinetics of aripiprazole. No dosage adjustment is recommended based on race.

## **8 ADVERSE REACTIONS**

### **8.1 Adverse Reaction Overview**

Aripiprazole was evaluated for safety in 13,543 adult patients who participated in multiple-dose, clinical trials in schizophrenia, bipolar disorder, major depressive disorder, dementia of the Alzheimer's type, Parkinson's disease, and alcoholism, and who had approximately 7619 patient-years of exposure to oral aripiprazole and 749 patients with exposure to aripiprazole injection. A total of 3390 patients were treated with oral aripiprazole for at least 180 days and 1933 patients treated with oral aripiprazole had at least 1 year of exposure.

The conditions and duration of treatment with aripiprazole (monotherapy or adjunctive therapy with antidepressants or mood stabilizers) included (in overlapping categories) double-blind,

comparative and noncomparative open-label studies, inpatient and outpatient studies, fixed- and flexible-dose studies, and short- and longer-term exposure.

Aripiprazole was evaluated for safety in 202 adolescent patients (13 - 17 years of age) with schizophrenia in a 6-week placebo controlled clinical trial. Adolescent patients from this study were also treated with oral aripiprazole in uncontrolled, open label studies for more than 26 weeks (n=178) and more than 52 weeks (n=79). Treatment emergent adverse event frequencies are reported for adolescent patients, 13 - 17 years of age, with schizophrenia that were included in these studies, but the majority of patients were 15 - 17 years of age.

Aripiprazole was evaluated for safety in 233 pediatric and adolescent patients (10 -17 years) who participated in multiple-dose, clinical trials in bipolar I disorder. A total of 103 pediatric and adolescent patients with bipolar I disorder were treated with oral aripiprazole for more than 26 weeks. Treatment emergent adverse frequencies are reported for pediatric and adolescent patients, 10 - 17 years of age in a manic or mixed episode of bipolar I disorder, but the majority of patients were 13 - 17 years of age.

**Aripiprazole Oral Solution is not indicated for the treatment of schizophrenia in adolescent patients under 15 years or for the treatment of manic or mixed episodes of bipolar I disorder in patients under 13 years of age due to insufficient safety and efficacy data (see [8 ADVERSE REACTIONS](#), [14 CLINICAL TRIALS, Trial Design and Study Demographics](#), [14 CLINICAL TRIALS, Schizophrenia- Adolescents](#) and [14 CLINICAL TRIALS, Bipolar Disorder-Pediatric and Adolescent](#)).**

Adverse events during exposure were obtained by collecting volunteered adverse events, as well as results of physical examinations, vital signs, weights, laboratory analyses, and ECG. Adverse events were recorded by clinical investigators using terminology of their own choosing. In the tables and tabulations that follow, MedDRA dictionary terminology has been used to classify reported adverse events into a smaller number of standardized event categories, in order to provide a meaningful estimate of the proportion of individuals reporting adverse events.

The stated frequencies of adverse events represent the proportion of individuals who reported at least once, a treatment-emergent adverse event of the type listed. An event was considered treatment emergent if it occurred for the first time or worsened while receiving therapy following baseline evaluation. There was no attempt to use investigator causality assessments; i.e. all events meeting the defined criteria, regardless of investigator causality are included.

## 8.2 Clinical Trial Adverse Reactions

Because clinical trials are conducted under very specific conditions, the adverse reaction rates observed in the clinical trials may not reflect the rates observed in practice and should not be compared to the rates in the clinical trials of another drug. Adverse reaction information from clinical trials is useful for identifying drug-related adverse events and for approximating rates.

### Short-Term, Placebo-Controlled Trials of Adult Patients with Schizophrenia

The following findings are based on a pool of five placebo-controlled trials (four 4-week and one 6-week) in which aripiprazole was administered orally in doses ranging from 2 to 30 mg/day.

#### *Adverse Events Associated with Discontinuation of Treatment*

Overall, there was little difference in the incidence of discontinuation due to adverse events between aripiprazole-treated (7%) and placebo-treated (9%) patients. The types of adverse events that led to discontinuation were similar between the aripiprazole and placebo-treated patients.

### *Commonly Reported Adverse Events*

The only commonly observed adverse event associated with the use of aripiprazole in patients with schizophrenia (incidence of 5% or greater and aripiprazole incidence at least twice that for placebo) was akathisia (placebo 4%; aripiprazole 8%).

### Short-Term, Placebo-Controlled Trials of Aripiprazole in Adult Patients with Bipolar Mania

The following findings are based on a pool of 3-week, placebo-controlled, bipolar mania trials in which aripiprazole was administered orally at doses of 15 or 30 mg/day.

### *Adverse Events Associated with Discontinuation of Treatment*

Overall, in patients with bipolar mania, there was little difference in the incidence of discontinuation due to adverse events between aripiprazole-treated (11%) and placebo-treated (10%) patients. The types of adverse events that led to discontinuation were similar between the aripiprazole and placebo-treated patients. Akathisia, the most common adverse event leading to discontinuation in the aripiprazole group, led to withdrawal of 2% of aripiprazole-treated patients and 0.3% of patients on placebo.

### *Commonly Reported Adverse Events*

Commonly reported adverse events associated with the use of aripiprazole in patients with bipolar mania (incidence of 5% or greater and aripiprazole incidence at least twice that for placebo) are shown in Table 2.

**Table 2: Commonly Reported Adverse Events in Short-Term, Placebo- Controlled Trials of Adult Patients with Bipolar Mania Treated with Aripiprazole**

Preferred Term	Percentage of Patients Reporting Event	
	Aripiprazole (n=917)	Placebo (n=753)
Akathisia	13	4
Sedation	8	3
Restlessness	6	2
Extrapyramidal Disorder	5	2

### Adverse Events Reported at an Incidence of 2% or More Among Adult Aripiprazole-Treated Patients and Greater than Placebo in Short-Term, Schizophrenia and Bipolar Mania Placebo-Controlled Trials

Table 3 enumerates the pooled incidence, rounded to the nearest percent, of treatment-emergent adverse events that were reported during acute therapy (up to 6 weeks in schizophrenia and up to 3 weeks in bipolar mania), including only those events that were reported in 2% or more of patients treated with aripiprazole (doses  $\geq 2$  mg/day) and for which the incidence in patients treated with aripiprazole was greater than the incidence in patients treated with placebo in the combined dataset.

**Table 3: Treatment-Emergent Adverse Events in Short-Term, Placebo- Controlled Trials in Adult Patients with Schizophrenia<sup>a</sup> or Bipolar Mania<sup>b</sup> Treated with Oral Aripiprazole**

System Organ Class Preferred Term	Percentage of Patients Reporting Event <sup>c</sup>	
	Aripiprazole (n=1843)	Placebo (n=1166)
<b>Eye Disorders</b>		
Blurred Vision	3	1
<b>Gastrointestinal Disorders</b>		
Nausea	15	11
Constipation	11	7
Vomiting	11	6
Dyspepsia	9	7
Dry Mouth	5	4
Toothache	4	3
Abdominal Discomfort	3	2
Stomach Discomfort	3	2
<b>General Disorders and Administration Site Conditions</b>		
Fatigue	6	4
Pain	3	2
<b>Musculoskeletal and Connective Tissue Disorders</b>		
Musculoskeletal Stiffness	4	3
Pain in Extremity	4	2
Myalgia	2	1
Muscle Spasms	2	1
<b>Nervous System Disorders</b>		
Headache	27	23
Dizziness	10	7
Akathisia	10	4
Sedation	7	4
Extrapyramidal Disorder	5	3
Tremor	5	3
Somnolence	5	3
<b>Psychiatric Disorders</b>		
Agitation	19	17
Insomnia	18	13
Anxiety	17	13
Restlessness	5	3
<b>Respiratory, Thoracic, and Mediastinal Disorders</b>		
Pharyngolaryngeal Pain	3	2
Cough	3	2

<sup>a</sup> 926 aripiprazole-treated patients and 413 placebo treated patients

<sup>b</sup> 917 aripiprazole-treated patients and 753 placebo-treated patients

<sup>c</sup> Events reported by at least 2% of patients treated with oral aripiprazole, except events which had an incidence equal to or less than placebo.

adverse events based on age, gender, or race.

Patients should be advised of the risk of severe constipation during Aripiprazole Oral Solution treatment and that they should tell their doctor if constipation occurs or worsens as they may need laxatives.

#### Short-Term, Placebo-Controlled Trial of Adjunctive Therapy in Adult Patients with Bipolar Mania

In a placebo-controlled trial of patients with bipolar mania who were already tolerating either lithium or valproate as monotherapy, aripiprazole was administered orally for 6 weeks at doses of 15 or 30 mg/day as adjunctive therapy with lithium or valproate. The adverse events reported in that study were generally similar to the adverse events listed in Table 2 from clinical trials in which aripiprazole was used as monotherapy. Akathisia and tremor were reported more frequently when aripiprazole was used as adjunctive therapy. Akathisia was reported in 19% of patients treated with aripiprazole as adjunctive therapy compared to 5% of patients who received placebo as adjunctive therapy. In the lithium subgroup, the incidence of akathisia was 28% in patients treated with aripiprazole as adjunct and 4% in patients treated with placebo. In the valproate subgroup akathisia was reported in 12% of patients treated with aripiprazole as adjunctive therapy compared to 6% treated with placebo as adjunctive therapy. The incidence of tremor was 9% for patients treated with aripiprazole as adjunctive therapy and 6% for patients who received placebo as adjunctive therapy. Other commonly reported adverse events in this trial were insomnia 8% vs 4% and extrapyramidal disorder 5% vs 1%, in aripiprazole-treated patients and placebo-treated patients, respectively.

Discontinuation rates due to adverse events were 12% for patients treated with adjunctive aripiprazole compared to 6% for patients treated with adjunctive placebo. Akathisia, the most common adverse event leading to discontinuation in the aripiprazole group, led to withdrawal of 5% of aripiprazole-treated patients and 1% of patients on placebo.

#### Short-Term, Placebo-Controlled Trial of Adolescent Patients (13-17 years of age) with Schizophrenia

The following findings are based on one 6-week placebo-controlled trial in which oral aripiprazole was administered in doses ranging from 2 mg/day to 30 mg/day. Doses were titrated to fixed doses of 10 mg/day or 30 mg/day aripiprazole.

##### *Adverse Events Associated with Discontinuation of Treatment*

The incidence of discontinuation due to adverse events was 7% for patients treated with 10 mg/day aripiprazole, 3.9% for patients treated with 30 mg/day aripiprazole and 2% for patients treated with placebo.

##### *Commonly Observed Adverse Events*

Commonly observed adverse events associated with the use of aripiprazole in adolescent patients with schizophrenia (incidence of 5% or greater and aripiprazole incidence at least twice that for placebo) were extrapyramidal disorder, somnolence, and tremor.

#### Adverse Events Reported at an Incidence of 1% or More Among Aripiprazole-Treated Patients and Greater than Placebo in a Short-Term, Schizophrenia Placebo-Controlled Trial in Adolescents (13-17 years of age)

Table 4 enumerates the incidence, rounded to the nearest percent, of treatment-emergent adverse events that were reported during acute therapy (up to 6 weeks in schizophrenia) with 10 mg/day and 30 mg/day aripiprazole compared to placebo. Only adverse events that were reported in 1% or more of adolescent patients treated with aripiprazole (doses  $\geq$  2 mg/day) and for which the incidence in patients treated with aripiprazole was greater than the incidence in



patients treated with placebo are included in Table 4.

**Table 4: Treatment-Emergent Adverse Events in a 6-week, Placebo-Controlled Trial in Adolescent Patients<sup>a</sup> with Schizophrenia Treated with Oral Aripiprazole**

System Organ Class Preferred Term	Percentage of Patients Reporting Event <sup>b</sup>		
	Aripiprazole 10 mg (n=100)	Aripiprazole 30 mg (n=102)	Placebo (n=100)
<b>Cardiac Disorders</b>			
Tachycardia	2	0	0
Sinus bradycardia	1	1	0
<b>Eye Disorders</b>			
Vision blurred	2	0	0
<b>Gastrointestinal Disorders</b>			
Nausea	9	10	
Constipation	3	2	1
Diarrhea	2	3	0
Dry Mouth	1	3	1
Salivary Hypersecretion	1	3	1
Stomach discomfort	1	1	0
<b>General Disorders and Administration Site Conditions</b>			
Fatigue	4	3	1
Pain	1	1	0
<b>Infections and Infestations</b>			
Nasopharyngitis	5	5	4
Upper Respiratory Tract Infection	1	2	0
Influenza	1	1	0
Viral Infection	1	1	0
<b>Investigations</b>			
Blood Glucose Increased	3	0	0
Blood insulin increased	2	0	0
Weight Increased	1	2	0
<b>Metabolism and Nutrition Disorders</b>			
Increased Appetite	4	2	0
<b>Musculoskeletal and Connective Tissue Disorders</b>			
Arthralgia	1	1	0
Muscle rigidity	1	1	0
Muscle weakness	1	1	0
Pain in Extremity	0	3	1
<b>Nervous System Disorders</b>			
Extrapyramidal Disorder	13	22	5
Somnolence <sup>c</sup>	11	22	6
Headache	16	11	10
Akathisia	5	12	5
Tremor	2	12	2
Dizziness	7	4	3
Dystonia	3	1	0
Dizziness postural	0	2	0
Drooling	0	3	0
Dysarthria	2	0	0

**Table 4: Treatment-Emergent Adverse Events in a 6-week, Placebo-Controlled Trial in Adolescent Patients<sup>a</sup> with Schizophrenia Treated with Oral Aripiprazole**

System Organ Class	Percentage of Patients Reporting Event <sup>b</sup>		
	Aripiprazole 10 mg (n=100)	Aripiprazole 30 mg (n=102)	Placebo (n=100)
<b>Preferred Term</b>			
Dyskinesia	1	2	0
<b>Psychiatric Disorders</b>			
Hallucination, auditory	2	0	0
<b>Respiratory, Thoracic and Mediastinal Disorders</b>			
Hiccups	0	2	0
<b>Skin and Subcutaneous Tissue Disorders</b>			
Rash	3	1	0
Ecchymosis	1	1	0
<b>Vascular Disorders</b>			
Orthostatic Hypotension	0	3	0

<sup>a</sup> Treatment emergent adverse event incidences are based on the safety population that included patients 13 - 17 years of age, but 75% patients were 15 - 17 years of age. Aripiprazole is not indicated for patients with schizophrenia < 15 years of age due to insufficient safety and efficacy data.

<sup>b</sup> Events reported by at least 1% of 202 adolescent patients treated with oral aripiprazole, except events which had an incidence equal to or less than placebo.

Incidence of somnolence does not include sedation. Sedation was reported in one patient receiving 10 mg/day aripiprazole.

**Short-Term (4-week), Placebo-Controlled Trial of Pediatric and Adolescent Patients (10-17 years of age) with a manic or mixed episode of Bipolar I Disorder**

The following findings are based on one 4-week placebo-controlled trial in which oral aripiprazole was administered in doses of 10 mg/day or 30 mg/day.

***Adverse Events Associated with Discontinuation of Treatment***

The incidence of discontinuation due to adverse events between aripiprazole-treated and placebo-treated pediatric and adolescent patients (10 - 17 years) was 6% (10 mg/day), 8% (30 mg/day) and 2%, respectively.

***Commonly Observed Adverse Events***

Commonly observed adverse events associated with the use of aripiprazole in pediatric and adolescent patients with bipolar I disorder (incidence of 5% or greater and aripiprazole incidence at least twice that for placebo) were somnolence, extrapyramidal disorder, fatigue, nausea, akathisia, blurred vision, salivary hypersecretion, and dizziness.

**Adverse Events Reported at an Incidence of 1% or More Among Aripiprazole-Treated Patients and Greater than Placebo in a Short-Term, Bipolar I Disorder Placebo-Controlled Trial in Pediatric and Adolescent Patients (10-17 years of age).**

Table 5 enumerates the pooled incidence, rounded to the nearest percent, of treatment-emergent adverse events that were reported during acute therapy (up to 4 weeks in bipolar I disorder), including only those events that were reported in 1% or more of pediatric and adolescent patients (10-17 years of age) treated with aripiprazole (doses  $\geq$  2 mg/day) and for which the incidence in patients treated with aripiprazole was greater than the incidence in patients treated with placebo.

**Table 5: Treatment-Emergent Adverse Events in a Short-Term, Placebo-Controlled Trial in Pediatric and Adolescent<sup>a</sup> Patients (10-17 yrs) with Bipolar I Disorder Treated with Oral Aripiprazole**

System Organ Class Preferred Term	Percentage of Patients Reporting Event <sup>b</sup>		
	Aripiprazole 10 mg (n=98)	Aripiprazole 30 mg (n=99)	Placebo (n=97)
<b>Blood and Lymphatic System Disorders</b>			
Anemia	1	1	0
<b>Eye Disorders</b>			
Vision blurred	8	8	0
<b>Gastrointestinal Disorders</b>			
Nausea	9	12	4
Diarrhea	4	4	0
Dry Mouth	1	1	0
Salivary Hypersecretion	3	8	0
Abdominal Pain Upper	4	5	3
Abdominal Pain	1	1	0
Stomach discomfort	2	4	2
<b>General Disorders and Administration Site Conditions</b>			
Fatigue	13	9	4
Irritability	1	1	0
Pyrexia	3	4	0
Asthenia	0	2	0
<b>Infections and Infestations</b>			
Nasopharyngitis	4	3	1
Pharyngitis Streptococcal	2	0	0
Gastroenteritis Viral	1	3	1
<b>Injury, Poisoning and Procedural Complications</b>			
Joint Sprain	2	1	0
Muscle Strain	2	0	0
Self Mutilation	1	1	0
<b>Investigations</b>			
Weight Increased	4	3	1
Blood Creatinine	1	3	0
Phosphokinase Increased			
Heart Rate Increased	0	2	0
<b>Metabolism and Nutrition Disorders</b>			
Decreased Appetite	6	3	3
Increased Appetite	2	5	3
<b>Musculoskeletal and Connective Tissue Disorders</b>			
Back Pain	2	2	1
Neck Pain	2	0	0
Muscle Twitching	1	1	0
Arthralgia	1	3	0
Pain in Extremity	1	1	0
<b>Nervous System Disorders</b>			
Somnolence	19	26	3

**Table 5: Treatment-Emergent Adverse Events in a Short-Term, Placebo-Controlled Trial in Pediatric and Adolescent<sup>a</sup> Patients (10-17 yrs) with Bipolar I Disorder Treated with Oral Aripiprazole**

System Organ Class  Preferred Term	Percentage of Patients Reporting Event <sup>b</sup>		
	Aripiprazole 10 mg (n=98)	Aripiprazole 30 mg (n=99)	Placebo (n=97)
Headache	17	19	17
Extrapyramidal Disorder	12	27	3
Akathisia	8	11	2
Dizziness	5	5	1
Sedation	2	2	0
Dyskinesia	2	0	0
Tremor	1	3	1
Lethargy	1	2	0
Dystonia	0	5	0
Hypersomnia	0	2	0
Disturbance in Attention	0	2	0
<b>Psychiatric Disorders</b>			
Insomnia	4	1	1
Aggression	2	0	0
Oppositional Defiant Disorder	2	0	0
Restlessness	2	1	0
Suicidal Ideation	1	1	0
<b>Reproductive System and Breast Disorders</b>			
Dysmenorrhea	2	0	0
<b>Respiratory, Thoracic and Mediastinal Disorders</b>			
Epistaxis	1	2	1
Tonsillar Hypertrophy	1	1	0
<b>Skin and Subcutaneous Tissue Disorders</b>			
Rash	1	2	1
Acne	0	2	0

<sup>a</sup> Treatment emergent adverse event incidences are based on the safety population that included patients 10 - 17 years of age, but 63% patients were 13 - 17 years of age. Aripiprazole is not indicated for patients with bipolar I disorder < 13 years of age due to insufficient safety and efficacy data.

<sup>b</sup> Events reported by at least 1% of 197 pediatric and adolescent patients treated with oral aripiprazole, except events which had an incidence equal to or less than placebo.

### Short-Term Placebo-controlled Trials in Patients Receiving Aripiprazole as Adjunctive Treatment for Major Depressive Disorder (MDD)

The following findings are based on a pool of three placebo-controlled trials of adjunctive aripiprazole in patients with MDD who had an inadequate response to at least two treatments with antidepressants in the current episode, one of them demonstrated prospectively, in which aripiprazole was administered at doses of 2 mg to 20 mg as adjunctive treatment to continued antidepressant therapy for up to 6 weeks.

#### *Adverse Events Associated with Discontinuation of Treatment*

The incidence of discontinuation due to adverse events was 6% for adjunctive aripiprazole-treated patients and 2% for adjunctive placebo-treated patients. Akathisia, the most common adverse event leading to discontinuation in the aripiprazole group, led to withdrawal of 1.3% of aripiprazole-treated patients and 0% of patients on placebo.

#### *Commonly Reported Adverse Events*

Commonly reported adverse events associated with the use of adjunctive aripiprazole in patients with MDD (incidence of 5% or greater and aripiprazole incidence at least twice that for placebo) were: akathisia, restlessness, fatigue, insomnia, blurred vision, somnolence, and constipation.

#### *Adverse Events Reported at an Incidence of 2% or More in Adult Patients with Major Depressive Disorder*

Table 6 enumerates the pooled incidence, rounded to the nearest percent, of treatment-emergent adverse events that were reported during acute therapy (up to 6 weeks), including only those adverse events that occurred in 2% or more of patients treated with adjunctive aripiprazole (doses  $\geq 2$  mg/day) and for which the incidence in patients treated with adjunctive aripiprazole was greater than the incidence in patients treated with adjunctive placebo in the combined dataset.

**Table 6: Treatment Emergent Adverse Events in Short-Term, Placebo-Controlled Adjunctive Trials of Adult Patients with Major Depressive Disorder (flexible doses of 2 to 20 mg/day)**

System Organ Class Preferred Term	Percentage of Patients Reporting Event <sup>a</sup>	
	Aripiprazole+ADT* (n=547)	Placebo+ADT* (n=538)
<b>Eye Disorders</b>		
Blurred Vision	6	2
<b>Gastrointestinal Disorders</b>		
Constipation	5	2
Dyspepsia	2	1
<b>General Disorders and Administration Site Conditions</b>		
Fatigue	9	4
Feeling Jittery	2	1
Irritability	2	1
<b>Infections and Infestations</b>		
Upper Respiratory Tract Infection	6	5
Nasopharyngitis	3	2
<b>Investigations</b>		

**Table 6: Treatment Emergent Adverse Events in Short-Term, Placebo-Controlled Adjunctive Trials of Adult Patients with Major Depressive Disorder (flexible doses of 2 to 20 mg/day)**

System Organ Class Preferred Term	Percentage of Patients Reporting Event <sup>a</sup>	
	Aripiprazole+ADT* (n=547)	Placebo+ADT* (n=538)
Weight Increased	3	2
<b>Metabolism and Nutrition Disorders</b>		
Increased Appetite	3	2
<b>Musculoskeletal and Connective Tissue Disorders</b>		
Arthralgia	4	2
Myalgia	3	1
<b>Nervous System Disorders</b>		
Akathisia	23	4
Somnolence	6	3
Dizziness	4	2
Sedation	4	2
Disturbance in Attention	2	1
<b>Psychiatric Disorders</b>		
Restlessness	12	2
Insomnia	8	3

<sup>a</sup> Adverse events reported by at least 2% of patients treated with adjunctive aripiprazole, except adverse reactions which had an incidence equal to or less than placebo.

\* Antidepressant Therapy

## **Dose-Related Adverse Events**

### *Schizophrenia*

Dose response relationships for the incidence of treatment-emergent adverse events were evaluated from four trials in adult patients with schizophrenia comparing various fixed oral doses (2, 5, 10, 15, 20, or 30 mg/day) of aripiprazole to placebo. This analysis, stratified by study, indicated that the only adverse event to have a possible dose response relationship, and then most prominent only with 30 mg/day, was somnolence [including sedation]; (incidences were placebo, 7.4%; 10 mg/day, 8.5%; 15 mg/day, 8.7%; 20 mg/day, 7.5%; 30 mg/day, 12.6%).

In the study of adolescent patients with schizophrenia, four adverse events appeared to have a possible dose response relationship: extrapyramidal disorder (incidences were placebo, 5.0%; 10 mg/day, 13.0%; 30 mg/day, 21.6%); somnolence (incidences were placebo, 6.0%; 10 mg/day, 11.0%; 30 mg/day, 21.6%); akathisia (incidences were placebo, 5.0%; 10 mg/day, 5.0%; 30 mg/day, 11.8%); and tremor (incidences were placebo, 2.0%; 10 mg/day, 2.0%; 30 mg/day, 11.8%). Orthostatic hypotension adverse events also appeared to have a possible dose response relationship (see [7 WARNINGS AND PRECAUTIONS, Cardiovascular](#)).

### *Bipolar I Disorder*

In two clinical trials in adult patients with bipolar mania comparing flexible doses of 15 or 30 mg/day of oral aripiprazole to placebo, no dose response relationship for treatment-emergent adverse events was found. In the study of pediatric and adolescent patients (10- 17 years of age) with bipolar I disorder, four common adverse events had a possible dose response relationship at 4 weeks : extrapyramidal disorder (incidences were placebo, 3.1%; 10 mg/day, 12.2%; 30 mg/day, 27.3%); somnolence (incidences were placebo, 3.1%; 10 mg/day, 19.4%; 30 mg/day, 26.3%); akathisia (incidences were placebo, 2.1%; 10 mg/day, 8.2%; 30 mg/day,

11.1%); and salivary hypersecretion (incidences were placebo, 0%; 10 mg/day, 3.1%; 30 mg/day, 8.1%).

### Major Depressive Disorder (MDD)

The safety of aripiprazole as adjunct treatment in patients with MDD who had inadequate response to prior antidepressant treatment was evaluated in 3 short-term (6-weeks) trials. Those trials used a flexible-dose regimen, with an aripiprazole starting dose of 5 mg/day, and allowable doses in the 2-20 mg/day range afterwards. Therefore, in these trials dose-response was not evaluated.

### Extrapyramidal Symptoms

Table 7 and Table 8 provide the percentage of patients reporting treatment-emergent extrapyramidal symptoms in short-term placebo-controlled trials in adults and pediatrics, respectively.

**Table 7: Percentage of Adult Patients Reporting Treatment-Emergent Extrapyramidal Symptoms in Short-Term Placebo-Controlled Trials**

	Percentage of Patients Reporting Event							
	Schizophrenia (dose range 2-30 mg/day)		Bipolar Mania Monotherapy (dose range 15-30 mg/day)		Bipolar Mania Cootherapy (dose range 15-30 mg/day)		Adjunctive in MDD (dose range 2-20 mg/day)	
	Aripiprazole	Placebo	Aripiprazole	Placebo	Aripiprazole	Placebo	Aripiprazole	Placebo
EPS-related AEs <sup>a</sup> (excluding akathisia)	14	14	16	8	15	8	8	5
Akathisia-related events	8	4	13	4	19	5	23	4

<sup>a</sup> EPS-related AEs included Parkinsonism events, dystonic events, dysknetic events and residual events such as muscle twitching and myoclonus.

The incidence of reported EPS-related events in the placebo controlled trial in adolescent patients with schizophrenia and in pediatric and adolescent patients with bipolar I disorder was greater than the incidence reported for adult schizophrenia and bipolar patients (Table 7 and Table 8).

**Table 8: Percentage of Children and Adolescent Patients Reporting Treatment-Emergent Extrapyramidal Symptoms in Short-Term Placebo-Controlled Trials**

	Percentage of Patients Reporting Event					
	Schizophrenia <sup>a</sup>			Bipolar Disorder <sup>b</sup>		
	Aripiprazole		Placebo	Aripiprazole		Placebo
	10 mg	30 mg		10 mg	30 mg	
EPS-related AEs <sup>c</sup> (excluding akathisia)	18	32	7	17	34	5
Akathisia-related events	6	12	6	8	12	2

- <sup>a</sup> Six-week schizophrenia trial of adolescent patients age 13-17
- <sup>b</sup> Four-week bipolar disorder trial of pediatric and adolescent patients age 10-17
- <sup>c</sup> EPS-related AEs included Parkinsonism events, dystonic events, dyskinesic events and residual events such as muscle twitching and myoclonus.

Commonly reported treatment emergent extrapyramidal symptoms in adolescent schizophrenia patients and pediatric and adolescent patients with bipolar I disorder were generally dose-related (see [8 ADVERSE REACTIONS](#), [8 ADVERSE REACTIONS](#), [8.2 Clinical Trial Adverse Reactions](#), [8 ADVERSE REACTION](#), [Dose-Related Adverse Events](#)).

Table 9 and Table 10 provide the mean change from baseline to endpoint score on the Simpson Angus Rating Scale (for EPS) (SAS), Barnes Akathisia Scale (for akathisia), and the Assessments of Involuntary Movement Scales (for dyskinesia) (AIMS) from short-term, placebo-controlled trials in adults and pediatrics, respectively.

**Table 9: Mean change from baseline to endpoint score on the SAS, Barnes Akathisia Scale, and AIMS from short-term placebo-controlled trials in adults**

	Mean Change from Baseline to Endpoint Score							
	Schizophrenia (dose range 2-30 mg/day)		Bipolar Mania Monotherapy (dose range 15-30 mg/day)		Bipolar Mania Cootherapy (dose range 15-30 mg/day)		Adjunctive in MDD (dose range 2-20 mg/day)	
	Aripiprazole	Placebo	Aripiprazole	Placebo	Aripiprazole	Placebo	Aripiprazole	Placebo
SAS	-0.06	-0.08	0.50 <sup>3</sup>	-0.01	0.73 <sup>1</sup>	0.07	0.27 <sup>3</sup>	0.01
Barnes	0.08	-0.05	0.21 <sup>3</sup>	-0.05	0.30 <sup>2</sup>	0.11	0.23 <sup>3</sup>	0.03
AIMS	-0.44 <sup>1</sup>	-0.02	-0.02	-0.06	0.08	-0.10	0.03	0.02

\* A negative score indicates improvement.

<sup>1</sup> p ≤ 0.01

<sup>2</sup> p ≤ 0.05

<sup>3</sup> p ≤ 0.001

**Table 10: Mean change from baseline to endpoint score on the SAS, Barnes Akathisia Scale, and AIMS from short-term placebo-controlled trials in children and adolescents**

	Mean Change from Baseline to Endpoint Score					
	Schizophrenia <sup>a</sup>			Bipolar Disorder <sup>b</sup>		
	Aripiprazole		Placebo	Aripiprazole		Placebo
	10 mg n=99	30 mg n=97	n=98	10 mg n=96	30 mg n=99	n=94
SAS	0.5 <sup>1</sup>	0.3 <sup>2</sup>	-0.3	0.6 <sup>2</sup>	1.2 <sup>3</sup>	-0.1
Barnes	0.1	0.1	0.0	-0.1	0.1	0.0
AIMS	-0.2	-0.1	-0.1	0.0	0.0	0.0

<sup>a</sup> Six-week schizophrenia trial of adolescent patients age 13-17

<sup>b</sup> Four-week bipolar disorder trial of pediatric and adolescent patients age 10-17. SAS mean change for aripiprazole 10 mg/day treatment arm, N=95).

\* A negative score indicates improvement.

<sup>1</sup> p ≤ 0.01

<sup>2</sup> p ≤ 0.05

<sup>3</sup> p < 0.0001



In a long-term (26-week), placebo-controlled trial in adult patients with schizophrenia, data from the Simpson Angus Rating Scale, the Barnes Akathisia Scale, and the Assessments of Involuntary Movement Scales did not show a difference between aripiprazole and placebo.

### Dystonia

Symptoms of dystonia, prolonged abnormal contractions of muscle groups, may occur in susceptible individuals during the first few days of treatment. Dystonic symptoms include: spasm of the neck muscles, sometimes progressing to tightness of the throat, swallowing difficulty, difficulty breathing, and/or protrusion of the tongue. While these symptoms can occur at low doses, they occur more frequently and with greater severity with high potency and at higher doses of first generation antipsychotic drugs. An elevated risk of acute dystonia is observed in males and younger age groups.

### Somnolence

Somnolence (including sedation) was a commonly reported adverse event in patients treated with aripiprazole in clinical trials and was reported more frequently in children and adolescents than in adults.

**Table 11: Percentage of Adult Patients Reporting Somnolence Adverse Events (including sedation) in Short-Term Placebo-Controlled Trials**

	Percentage of Patients Reporting Event							
	Schizophrenia (dose range 2-30 mg/day)		Bipolar Mania Monotherapy (dose range 15-30 mg/day)		Bipolar Mania Cotherapy (dose range 15-30 mg/day)		Adjunctive in MDD (dose range 2-20 mg/day)	
	Aripiprazole	Placebo	Aripiprazole	Placebo	Aripiprazole	Placebo	Aripiprazole	Placebo
Somnolence (including sedation)	9.6 (89/926)	7.7 (32/413)	12.8 (117/917)	6.0 (45/753)	6.3 (16/253)	3.8 (5/130)	9.9 (54/547)	4.6 (25/538)

Somnolence (including sedation) led to discontinuation of treatment for (aripiprazole-treated, placebo-treated) 0.1% and 0.2% of adult schizophrenia patients, 0.1% and 0% of adult monotherapy patients with bipolar I disorder, 1.2% and 0% of adjunctive aripiprazole and adjunctive placebo-treated adult patients with bipolar I disorder, and 0.6% and 0% of adjunctive aripiprazole and adjunctive placebo-treated adult patients with major depressive disorder, respectively.

**Table 12: Percentage of Children and Adolescent Patients Reporting Somnolence Adverse Events (including sedation) in Short-Term Placebo-Controlled Trials**

	Percentage of Patients Reporting Event					
	Schizophrenia <sup>a</sup>			Bipolar Disorder <sup>b</sup>		
	Aripiprazole		Placebo	Aripiprazole		Placebo
	10 mg	30 mg		10 mg	30 mg	
Somnolence (including sedation)	12 (12/100)	22 (22/102)	6 (6/100)	21 (21/98)	27 (27/99)	3 (3/97)

<sup>a</sup> Six-week schizophrenia trial of adolescent patients age 13-17

Somnolence (including sedation) led to discontinuation of treatment for (aripiprazole-treated, placebo-treated) 0.5% and 0% of adolescent patients with schizophrenia and 1.5% and 0% of pediatric and adolescent patients with bipolar I disorder, respectively.

### *Weight Gain*

#### Adults

In 4- to 6- week trials in adults with schizophrenia, there was a slight difference in mean weight gain between aripiprazole and placebo patients (+0.7 kg vs. 0.05 kg, respectively) and also a statistically significant difference in the proportion of patients meeting a weight gain criterion of  $\geq 7\%$  of body weight [aripiprazole (8%) compared to placebo (3%)].

In 3-week trials in adults with bipolar mania, the mean weight gain for aripiprazole and placebo patients was 0.1 kg vs. 0.0 kg, respectively. The proportion of patients meeting a weight gain criterion of  $\geq 7\%$  of body weight was aripiprazole 2% compared to placebo 3%. In the 6-week trial in mania in which aripiprazole or placebo was used as adjunctive therapy with either lithium or valproate, the mean weight gain for aripiprazole and placebo patients was 0.6 kg vs. 0.2 kg, respectively. The proportion of patients meeting a weight gain criterion of  $\geq 7\%$  of body weight with adjunctive aripiprazole was 3% compared to adjunctive placebo 4%.

In the 6-week trials of aripiprazole adjunctive to antidepressants in patients with MDD, the mean weight gain with adjunctive aripiprazole was 1.6 kg vs. 0.5 kg with adjunctive placebo. The proportion of patients meeting a weight gain criterion of  $\geq 7\%$  of body weight during the 6-week randomization period was 5% with adjunctive aripiprazole compared to 1% with adjunctive placebo.

In a long-term (26-week) placebo-controlled study of aripiprazole in adults with schizophrenia, a categorization of patients with schizophrenia at baseline on the basis of body mass index [BMI < 23 (“low”); 23-27 (“normal”); > 27 (“high”)] revealed mean weight losses in patients treated with aripiprazole and patients on placebo (“low” BMI, 0.5 kg weight loss in both treatment groups; “normal” BMI, mean weight loss of 1.3 kg in aripiprazole-treated patients and 0.6 kg in placebo-treated patients; “high” BMI, mean weight loss of 2.1 kg in aripiprazole-treated patients and 1.5 kg in placebo-treated patients).

In a long-term (52-week) study of aripiprazole and haloperidol in adults, a categorization of patients with schizophrenia at baseline on the basis of BMI revealed the greatest mean weight gain in patients with low BMI compared to normal or overweight patients in both groups (patients with “low” BMI, mean weight gain 2.6 kg in aripiprazole-treated patients and 1.5 kg in haloperidol-treated patients; “normal” BMI, a mean weight gain of 1.4 kg in aripiprazole-treated patients and 0.2 kg in haloperidol-treated patients; “high” BMI, weight loss of 1.2 kg in aripiprazole-treated patients and 0.8 kg in haloperidol-treated patients).

In both long-term schizophrenia studies, the highest incidence of clinically significant weight gain ( $> 7\%$  of body weight) was in patients with a low BMI (<23) compared to normal (23-27) or overweight patients ( $> 27$ ).

In an open-label longer-term (up to 1 year) trial of aripiprazole adjunctive to antidepressants in patients with MDD, the mean change in body weight from baseline to endpoint (LOCF) was 2.9 kg; at Week 52 (completers), the mean change in weight was 4.0 kg. The proportion of patients

with clinically relevant weight gain ( $\geq 7\%$  increase from baseline) was 23.3% at endpoint LOCF and 34.3% at Week 52 (completers). The mean BMI at baseline was 31 kg/m<sup>2</sup>.

### Adolescents

Changes in weight in the 6-week, placebo controlled clinical trial in adolescent patients with schizophrenia and the 4-week placebo controlled clinical trial in pediatric and adolescent patients with bipolar I disorder are summarized in **Table 13**.

**Table 13: Change in weight (kg) and proportion of patients with  $\geq 7\%$  increase in body weight in acute placebo controlled trials in children and adolescent patients**

Schizophrenia <sup>a</sup>	Placebo	Aripiprazole	
	N=100	10 mg N=100	30 mg N=102
<b>Weight (kg)</b>	n=98	n=99	n=97
<b>Change from baseline to Last Visit</b>	-0.8	0.0	0.2
<b>Proportion of patients with <math>\geq 7\%</math> increase from baseline weight at Last Visit</b>	1% (1/98)	4% (4/99)	5.2% (5/97)
Bipolar Disorder <sup>b</sup>	Placebo	Aripiprazole	
	N=97	10 mg N=98	30 mg N=99
<b>Weight (kg)</b>	n=92	n=95	n=96
<b>Change from baseline to Last Visit</b>	0.5	0.6	0.9
<b>Proportion of patients with <math>\geq 7\%</math> increase from baseline weight at Last Visit</b>	3.3% (3/92)	3.2% (3/95)	9.4% (9/96)

<sup>a</sup> Six-week schizophrenia trial of adolescent patients age 13-17

<sup>b</sup> Four-week bipolar disorder trial of pediatric and adolescent patients age 10-17

There was a mean increase in weight of +2.03 kg from baseline to Week 26 during an uncontrolled, 26-week, flexible dose, open label extension study of adolescent patients with schizophrenia that completed the 6-week placebo controlled clinical trial. At Week 26, 26% (47/181) of adolescent patients with schizophrenia had a  $\geq 7\%$  increase in weight from baseline, not adjusted for normal growth (see [7 WARNINGS AND PRECAUTIONS, Endocrine and Metabolism, Weight, glucose and lipid changes in adolescents with schizophrenia or pediatric and adolescent patients with bipolar I disorder](#)).

In a 26-week placebo controlled extension study that included adolescent patients with bipolar I disorder (manic or mixed episode) who completed the acute phase 4-week placebo controlled study, the mean increase in weight at the last study visit was +3.20, +2.85 and +0.98 kg for aripiprazole 10 mg/day aripiprazole, 30 mg/day aripiprazole and placebo, respectively. At the last study visit 35.8% (34/95) and 29.2% (28/96) of patients treated with 10 mg/day aripiprazole or 30 mg/day aripiprazole, respectively, had a  $\geq 7\%$  increase in weight from baseline, compared to 9.8% (9/92) of patients receiving placebo (see [7 WARNINGS AND PRECAUTIONS, Endocrine and Metabolism, Weight, glucose and lipid changes in adolescents with schizophrenia or pediatric and adolescent patients with bipolar I disorder](#)).

### Glucose

In the 4- and 6 –week placebo controlled clinical trials with pediatric and adolescent patients

with bipolar I disorder and adolescent schizophrenia patients, respectively, there were no patients with fasting serum glucose levels that shifted from normal baseline to clinically significant high values (<5.55 mmol/L to ≥6.99 mmol/L) at endpoint in any treatment group. In these studies, fasting glucose data were from approximately 50 patients per treatment group. Therefore, these data cannot be considered entirely predictive of the effects of aripiprazole on glucose metabolism during use in adolescent patients with schizophrenia and pediatric and adolescent patients with bipolar I disorder. In a 26-week open label extension trial that included adolescent patients with schizophrenia and pediatric and adolescent patients with bipolar I disorder treated with aripiprazole, a shift from normal to high fasting glucose at Week 26 was reported for 1.9% (3/155) of the adolescent schizophrenia patients none (0/42) of the pediatric and adolescent patients with bipolar I disorder.

There was a mean increase of +0.12 mmol/L in fasting glucose at Week 26 during the 26-week uncontrolled, open label extension study in adolescent schizophrenia patients (n=166, mean baseline 4.87 mmol/L) and in pediatric and adolescent patients with bipolar I disorder (n=44, mean baseline 4.75 mmol/L) (see [7 WARNINGS AND PRECAUTIONS, Endocrine and Metabolism, Weight, glucose and lipid changes in adolescents with schizophrenia or pediatric and adolescent patients with bipolar I disorder](#)).

### Lipids

Table 14 shows the proportion of pediatric and adolescent patients with changes in total cholesterol, fasting triglycerides and fasting HDL cholesterol in 4- and 6-week placebo-controlled trials pediatric and adolescent patients (10-17 years) with bipolar I disorder and in adolescent patients (13-17 years) with schizophrenia, respectively, and the 26-week uncontrolled, open-label extension trial that included both patient populations. In the 4- and 6-week placebo controlled clinical trials lipid data were from approximately 30 to 50 patients per treatment group. Therefore, these data cannot be considered entirely predictive of the effects of aripiprazole on lipid metabolism during use in adolescent patients with schizophrenia and pediatric and adolescent patients with bipolar I disorder.

**Table 14: Changes in Blood Lipid Parameters in Pediatric and Adolescent Patients<sup>a</sup>**

Adolescent Patients with Schizophrenia				
Category Change (at least once) from Baseline	Trial Type and Duration	Treatment Arm	n/N	%
<b>Total Cholesterol</b> Normal to High (<4.40 mmol/L to ≥5.17 mmol/L)	6-week placebo-controlled trial	10 mg Aripiprazole	2/52	3.8
		30 mg Aripiprazole	1/52	1.9
		Placebo	0/55	0.0
	26-week open-label trial	Aripiprazole	4/139	3
<b>Fasting Triglycerides</b> Normal to High (<1.70 mmol/L to ≥ 2.26 mmol/L)	6-week placebo-controlled trial	10 mg Aripiprazole	0/33	0.0
		30 mg Aripiprazole	0/27	0.0
		Placebo	0/28	0.0
	26-week open-label trial	Aripiprazole	0/80	0.0

**Table 14: Changes in Blood Lipid Parameters in Pediatric and Adolescent Patients<sup>a</sup>**

<b>Fasting HDL</b> Normal to low (>1.03 mmol/L ≤1.03 mmol/L)	6-week placebo-controlled trial	10 mg Aripiprazole	5/34	14.7
		30 mg Aripiprazole	2/28	7.1
	26-week open-label trial	Placebo	9/27	33.3
		Aripiprazole	5/69	7.2
<b>Pediatric and Adolescent Patients with Bipolar I Disorder</b>				
<b>Category Change (at least once) from Baseline</b>	<b>Trial Type and Duration</b>	<b>Treatment Arm</b>	<b>n/N</b>	<b>%</b>
<b>Total Cholesterol</b> Normal to High (<4.40 mmol/L to ≥5.17 mmol/L)	4-week placebo-controlled trial	10 mg Aripiprazole	0/43	0.0
		30 mg Aripiprazole	0/41	0.0
	26-week open-label trial	Placebo	0/47	0.0
		Aripiprazole	0/36	0.0
<b>Fasting Triglycerides</b> Normal to High (<1.70 mmol/L to ≥ 2.26 mmol/L)	4-week placebo-controlled trial	10 mg Aripiprazole	1/49	2.0
		30 mg Aripiprazole	2/50	4.0
	26-week open-label trial	Placebo	3/43	7.0
		Aripiprazole	0/25	0.0
<b>Fasting HDL</b> Normal to low (>1.03 mmol/L ≤1.03 mmol/L)	4-week placebo-controlled trial	10 mg Aripiprazole	2/49	4.1
		30 mg Aripiprazole	3/54	5.6
	26-week open-label trial	Placebo	3/40	7.5
		Aripiprazole	3/29	10.3

<sup>a</sup> Incidence rates are the number of patients with baseline values within the specified range and evaluated for the given lab test at Week 6 for adolescent schizophrenia patients, Week 4 for pediatric and adolescent patients with bipolar I disorder.

During the, 26-week, uncontrolled, open label extension study, there were mean decreases in total cholesterol (fasting and nonfasting) at Week 26 in adolescent schizophrenia patients (n=176, mean baseline 3.81 mmol/L; mean decrease -0.0013 mmol/L) and in pediatric and adolescent patients with bipolar I disorder (n= 56, mean baseline 4.21 mmol/L; mean decrease - 0.0088 mmol/L). There were mean decreases in fasting triglycerides at Week 26 in adolescent schizophrenia patients (n=97, mean baseline 1.19 mmol/L; mean decrease -0.12 mmol/L) and in pediatric and adolescent patients with bipolar I disorder (n= 31, mean baseline 1.13 mmol/L; mean decrease -0.04 mmol/L). There was a mean increase in fasting HDL cholesterol at Week 26 in adolescent schizophrenia patients (n=97, mean baseline 1.23 mmol/L; mean increase +0.015 mmol/L), and a mean decrease at Week 26 in pediatric and adolescent patients with bipolar I disorder (n= 31, mean baseline 1.44 mmol/L; mean decrease - 0.06 mmol/L) (see [7 WARNINGS AND PRECAUTIONS, Endocrine and Metabolism, Weight, glucose and lipid changes in adolescents with schizophrenia or pediatric and adolescent patients with bipolar I disorder](#)).

### ECG Changes

Between-group comparisons for a pooled analysis of placebo-controlled trials in adult patients with schizophrenia or bipolar mania, in the acute (4-6 week) placebo controlled trials in adolescent patients with schizophrenia or bipolar I disorder, or in the 6-week placebo-controlled trials of adjunctive aripiprazole in patients with MDD, revealed no significant differences between oral aripiprazole and placebo in the proportion of patients experiencing potentially important changes in ECG parameters. In adults aripiprazole was associated with a median increase in heart rate of 2 beats per minute compared to no increase among placebo patients.

In a long-term (52-week) placebo-controlled cotherapy study with lithium and valproate in adult patients with bipolar mania, a change from baseline in QTcF interval > 30 msec was reported for a greater proportion of patients on aripiprazole than on placebo (**Table 15**). The proportion of patients with QTc intervals >450 msec was similar between both treatment groups (**Table 15**).

**Table 15: Percentage of Adult Patients With Bipolar Mania Reporting a Change from Baseline in QTc Interval 52-Week Cotherapy Study with Lithium and Valproate**

	Aripiprazole	Placebo
<b>Change &gt; 30 msec</b>		
QTcF	13	7
QTcB	17	14
<b>Change &gt; 60 msec</b>		
QTcF	2	1
QTcB	3	2
<b>&gt; 450 msec</b>		
QTcF	3	3
QTcB	10	8

### Prolactin

In the 6-week placebo controlled clinical trial in adolescents (13 - 17 years of age) with schizophrenia, there was a greater incidence of low serum prolactin levels in males (< 86.96 pmol/L) and females (< 130.434 pmol/L) treated with aripiprazole compared to placebo. Low serum prolactin levels were reported for 38.6% (17/44), 31.7% (19/60) and 7% (4/57) of males that received 10 mg/day aripiprazole, 30 mg/day aripiprazole or placebo, respectively. Low serum prolactin levels were reported for 29.6% (16/54), 17.1% (6/35) and 10.3% (4/39) of females that received 10 mg/day aripiprazole, 30 mg/day aripiprazole or placebo, respectively.

In the acute phase 4-week double blind placebo controlled trial of aripiprazole in pediatric and adolescent patients (10-17 years of age) in a manic or mixed episode of bipolar I disorder, the incidence of low prolactin levels for males (<86.96 pmol/L) was 40.0%, 45.5% and 4.3% for patients treated with 10 mg/day aripiprazole, 30 mg/day aripiprazole or placebo, respectively. In females, the incidence of low prolactin levels (<130.43 pmol/L) was 9.5%, 33.3% and 0% for patients treated with 10 mg/day aripiprazole, 30 mg/day aripiprazole or placebo, respectively.

During a 26-week open label study of aripiprazole in adolescent schizophrenic and pediatric and adolescent bipolar I patients manic or mixed phase, there was a mean decrease in prolactin levels (-27.83 pmol/L) relative to baseline (274.78 pmol/L). The overall incidence of low prolactin (as defined above) was greater for patients with bipolar I disorder (45.8%) compared to patients with schizophrenia (34.8%).

The clinical significance of low prolactin levels in adolescence is not known. However, animal studies and case reports suggest a possible association between significantly low prolactin levels and failure to lactate, menstrual cycle disruption, and pubertal development.

### **Additional Findings Observed in Clinical Trials**

#### **Adverse Events in Long-Term, Double-Blind, Placebo-Controlled Trials in Adults**

The adverse events reported in a 26-week, double-blind trial comparing oral aripiprazole and placebo in adult patients with schizophrenia were generally consistent with those reported in the short-term, placebo-controlled trials, except for a higher incidence of tremor [8% (12/153) for aripiprazole vs. 2% (3/153) for placebo]. In this study, the majority of the cases of tremor were of mild intensity (8/12 mild and 4/12 moderate), occurred early in therapy (9/12  $\leq$ 49 days), and were of limited duration (7/12  $\leq$ 10 days). Tremor infrequently led to discontinuation (<1%) of aripiprazole. In addition, in a long-term (52-week), active-controlled study, the incidence of tremor for aripiprazole was 5% (40/859).

The adverse event profile for aripiprazole in a long-term (52-week) placebo-controlled cotherapy study with lithium and valproate in adult patients with bipolar mania was generally consistent with what was observed in the short-term bipolar mania studies. Although akathisia was the most common adverse event that led to discontinuation of aripiprazole treatment in the short-term bipolar mania studies, in the long-term cotherapy study depression was the most common adverse event leading to discontinuation of treatment with aripiprazole. Depression adverse events led to withdrawal of 4% of patients in the aripiprazole group and 2% of patients on placebo.

#### **Adverse Events in a 26-Week Open Label Extension Trial in Adolescent Patients with Schizophrenia**

The safety profile in adolescent patients (13-17 years of age) with schizophrenia in a 26-week, uncontrolled, open-label extension trial, which included patients that completed the 6-week placebo controlled trial, was generally similar to that observed in the 6-week, placebo-controlled trial.

Adverse events such as extrapyramidal disorder, somnolence, and tremor were reported at similar frequencies in both the 6-week placebo-controlled trial and during the 26-week open label extension trial (19.2% extrapyramidal disorder; 13.8% somnolence; 6.3% tremor). The majority of these adverse events observed in the open-label 26-week study had a first onset during that study.

#### **Adverse Events in a 26-Week Extension Trial in Pediatric and Adolescent Patients with Bipolar I Disorder**

The safety profile in pediatric and adolescent patients (10-17 years of age) with bipolar I disorder in a 26-week placebo-controlled extension of the four-week acute trial was similar to the safety profile in the acute phase, with the exception of weight gain. In the 4-week acute phase, clinically significant weight gain ( $\geq$  7% increase from baseline) was 6% in patients receiving aripiprazole and 3% in patients receiving placebo. In the acute plus extension phase, clinically significant weight gain was 33% in patients receiving aripiprazole and 10% in patients receiving placebo (see [7 WARNINGS AND PRECAUTIONS, Endocrine and Metabolism, Weight, glucose and lipid changes in adolescents with schizophrenia or pediatric and adolescent patients with bipolar I disorder](#)).

#### **Other Adverse Events Observed During the Pre-marketing Evaluation of Oral Aripiprazole**

Following is a list of MedDRA terms that reflect treatment-emergent adverse events as defined

in the introduction to the [8 ADVERSE REACTIONS](#) section reported by patients treated with oral aripiprazole at multiple doses  $\geq 2$  mg/day during any phase of a trial within the database of 13,543 adult patients. All events assessed as possible adverse drug reactions have been included. In addition, medically/clinically meaningful events particularly those that are likely to be useful to the prescriber or that have pharmacologic plausibility, have been included. Events already listed in Tables 2 to 6 or other parts of the [8 ADVERSE REACTIONS](#) section have been excluded. Although the events reported occurred during treatment with aripiprazole, they were not necessarily caused by it.

Events are further categorized by MedDRA system organ class and listed in order of decreasing frequency according to the following definitions:

frequent adverse events are defined as those occurring on 1 or more occasions in at least 1/100 patients (only those not already listed in the tabulated results from placebo-controlled trials appear in this listing); infrequent adverse events are those occurring in less than 1/100 but at least 1/1,000 patients; rare events are those occurring in less than 1/1,000.

### **Adults – Oral Administration**

#### *Blood and Lymphatic System Disorders:*

*Infrequent:* leukopenia, neutropenia, thrombocytopenia

#### *Cardiac Disorders:*

*Infrequent:* bradycardia, palpitations, cardiopulmonary failure, myocardial infarction, cardio-respiratory arrest, atrioventricular block, extrasystoles, sinus tachycardia, atrial fibrillation, angina pectoris, myocardial ischemia;

*Rare:* atrial flutter, supraventricular tachycardia, ventricular tachycardia

#### *Endocrine Disorders:*

*Infrequent:* diabetes mellitus (including blood insulin increased, carbohydrate tolerance decreased, diabetes mellitus non-insulin-dependent, glucose tolerance impaired, glycosuria, glucose urine, glucose urine present), hyperglycemia, hypoglycemia, polydipsia;

*Rare:* - diabetic ketoacidosis, diabetic hyperosmolar coma

#### *Eye Disorders:*

*Infrequent:* photophobia, diplopia, eyelid edema, photopsia

#### *Gastrointestinal Disorders:*

*Infrequent:* gastroesophageal reflux disease, dysphagia, swollen tongue, esophagitis;

*Rare:* pancreatitis

#### *General Disorders and Administration Site Conditions:*

*Frequent:* asthenia, peripheral edema, irritability, chest pain;

*Infrequent:* feeling jittery, face edema, thirst, angioedema;

*Rare:* hypothermia

#### *Hepatobiliary Disorders:*

*Rare:* hepatitis, jaundice

#### *Immune System Disorders:*

*Infrequent:* hypersensitivity



*Injury, Poisoning, and Procedural Complications:*

*Frequent:* fall;

*Infrequent:* self mutilation;

*Rare:* heat stroke

*Investigations:*

*Frequent:* weight decreased;

*Infrequent:* hepatic enzyme increased (increased ALT, increased AST), blood glucose increased, blood prolactin increased, blood urea increased, electrocardiogram QT prolonged, blood creatinine increased, blood bilirubin increased;

*Rare:* blood lactate dehydrogenase increased, glycosylated hemoglobin increased, gamma-glutamyl transferase (GGT) increased

*Metabolism and Nutrition Disorders:*

*Infrequent:* hyperlipidemia, anorexia, hypokalemia, hyponatremia

*Musculoskeletal and Connective Tissue Disorders:*

*Infrequent:* muscle rigidity, muscular weakness, muscle tightness, mobility decreased;

*Rare:* rhabdomyolysis

*Nervous System Disorders:*

*Frequent:* coordination abnormal;

*Infrequent:* speech disorder, dyskinesia, parkinsonism, memory impairment, cogwheel rigidity, cerebrovascular accident, convulsion, hypokinesia, tardive dyskinesia, hypotonia, myoclonus, hypertonia, akinesia, bradykinesia;

*Rare:* Grand Mal convulsion, choreoathetosis, neuroleptic malignant syndrome

*Psychiatric Disorders:*

*Frequent:* suicidal ideation;

*Infrequent:* aggression, loss of libido, suicide attempt, hostility, libido increased, anger, anorgasmia, delirium, intentional self injury, completed suicide, tic, homicidal ideation;

*Rare:* catatonia, sleep walking

*Renal and Urinary Disorders:*

*Infrequent:* urinary incontinence, urinary retention, polyuria, nocturia

*Reproductive System and Breast Disorders:*

*Infrequent:* menstruation irregular, erectile dysfunction, amenorrhea, breast pain;

*Rare:* gynaecomastia, priapism

*Respiratory, Thoracic, and Mediastinal Disorders:*

*Frequent:* nasal congestion, dyspnea, pneumonia aspiration

*Skin and Subcutaneous Tissue Disorders:*

*Frequent:* rash (including erythematous, exfoliative, generalized, macular, maculopapular, papular rash; acneiform, allergic, contact, exfoliative, seborrheic dermatitis, neurodermatitis, and drug eruption), hyperhidrosis;

*Infrequent:* pruritus, photosensitivity reaction, alopecia, urticaria

*Vascular Disorders:*

*Frequent:* hypertension;  
*Infrequent:* hypotension, syncope

### **Adolescent schizophrenia patients (13-17 years of age) - Oral Administration**

Most adverse reactions observed in the pooled database of 281 adolescent patients aged 13 - 17 years were also observed in the adult population (see Tables 3 and 4; [8 ADVERSE REACTIONS, Clinical Trial Adverse Reactions, Other Adverse Events Observed During the Pre-marketing Evaluation of Oral Aripiprazole, Adults-Oral Administration](#)). Additional adverse reactions observed in the adolescent population are listed below.

#### *General Disorders and Administration Site Conditions:*

*Infrequent:* feeling abnormal

#### *Metabolism and Nutrition Disorders:*

*Infrequent:* hypertriglyceridemia

#### *Nervous System Disorders:*

*Infrequent:* sleep talking

#### *Respiratory, Thoracic, and Mediastinal Disorders:*

*Frequent:* rhinorrhea

#### *Skin and Subcutaneous Tissue Disorders:*

*Infrequent:* hirsutism

### **Pediatric and adolescent patients (10-17 years of age) with bipolar I disorder- Oral Administration**

Most adverse reactions observed in the pooled database of 233 pediatric and adolescent patients with bipolar I disorder aged 10 - 17 years were also observed in the adult population. Additional adverse reactions observed in the pediatric and adolescent population are listed below.

#### *Gastrointestinal Disorders:*

*Infrequent:* tongue dry, tongue spasm

#### *Infections and Infestations:*

*Frequent:* upper respiratory tract infection

#### *Investigations:*

*Frequent:* blood insulin increased

#### *Nervous System Disorders:*

*Infrequent:* drooling

#### *Respiratory, Thoracic, and Mediastinal Disorders:*

*Frequent:* rhinorrhea

Most adverse events observed in the pooled short-term trials of aripiprazole adjunctive to antidepressants in MDD patients were also observed in the aripiprazole trials in schizophrenia and bipolar disorder. Additional adverse events observed in the adult MDD population with higher incidence in adjunctive aripiprazole-treated patients compared to adjunctive placebo-

treated patients are listed below.

*Psychiatric Disorders:*

*Frequent:* bruxism

*Gastrointestinal Disorders:*

*Infrequent:* abdominal distension

*Skin and Subcutaneous Tissue Disorders:*

*Infrequent:* increased tendency to bruise

*Ear and Labyrinth Disorders:*

*Infrequent:* vertigo

### **8.3 Less Common Clinical Trial Adverse Reactions**

See [8 ADVERSE REACTIONS, Clinical Trial Adverse Reactions, Other Adverse Events Observed During the Pre-marketing Evaluation of Oral Aripiprazole](#).

### **8.4 Abnormal Laboratory Findings: Hematologic, Clinical Chemistry and Other Quantitative Data**

Between-group comparisons for 3- to 6-week, placebo-controlled trials in adult patients with bipolar mania or schizophrenia, a 6-week placebo-controlled trial in adolescent patients with schizophrenia (13-17 years of age) and a 4-week placebo-controlled trial in pediatric and adolescent patients with bipolar I disorder (10-17 years of age) revealed no differences between the aripiprazole and placebo groups in the proportions of patients experiencing clinically important changes in most routine serum chemistry, hematology, or urinalysis parameters (including changes in fasting glucose, triglyceride, HDL, LDL and total cholesterol measurements) with the exception of prolactin. Low prolactin levels were reported more frequently in adolescents treated with aripiprazole than with placebo (see [8 ADVERSE REACTIONS, Clinical Trial Adverse Reactions-Prolactin](#)).

Similarly, there were no differences in the incidence of discontinuations for changes in serum chemistry, hematology, or urinalysis.

In the 6-week trials of aripiprazole as adjunctive therapy for major depressive disorder, there were no clinically important differences between the adjunctive aripiprazole-treated and adjunctive placebo-treated patients in the median change from baseline in fasting glucose, HDL, LDL, or total cholesterol measurements. The median % change from baseline in fasting triglycerides was 6% for adjunctive aripiprazole-treated patients vs. 0% for adjunctive placebo-treated patients. The incidence of treatment-emergent results of potential clinical relevance during the 6-week randomization period in the pooled studies was similar between the treatment groups except for non-fasting triglycerides (20% adjunctive aripiprazole vs. 13% adjunctive placebo). The median % change from baseline in prolactin was a -12.5% decrease for adjunctive aripiprazole-treated patients and 0% for adjunctive placebo-treated patients. The incidences of treatment-emergent potentially clinically significant abnormally high prolactin (>ULN) were 6.6% on adjunctive aripiprazole and 5.3% on adjunctive placebo.

In a long-term (26-week), placebo-controlled trial in adult patients with schizophrenia and in a 52-week placebo-controlled trial in adult patients with bipolar I disorder who received

aripiprazole as cotherapy with lithium or valproate there were no clinically important differences between the aripiprazole and placebo patients in the mean change from baseline in prolactin, fasting glucose, triglyceride, HDL, LDL, and total cholesterol measurements. A similar profile, with the exception of prolactin, was observed in a 26-week placebo-controlled extension phase in pediatric and adolescent patients (10-17 years) with bipolar I disorder (see [7 WARNINGS AND PRECAUTIONS, Endocrine and Metabolism](#); [8 ADVERSE REACTIONS, Clinical Trial Adverse Reactions-Prolactin](#)).

In an open-label longer-term (up to 1 year) trial of aripiprazole adjunctive to antidepressants in patients with MDD, the most frequently (>10% of patients) reported potentially clinically relevant laboratory abnormalities were high prolactin (14%), fasting glucose (14%), fasting total cholesterol (35%), fasting LDL cholesterol (24%), fasting triglycerides (64%), and hemoglobin A1c (8%). For these laboratory parameters, a shift analysis was conducted. The shifts from normal to high were 114/1106 (10.3%) for prolactin, 44/906 (4.9%) for fasting glucose, 135/697 (19.4%) for fasting total cholesterol, 103/784 (13.1%) for fasting LDL cholesterol, 142/741 (19.2%) for fasting triglycerides, and 85/1079 (7.9%) for hemoglobin A1c.

Higher percentages of elevated creatine phosphokinase were observed in aripiprazole-treated adult patients compared to placebo-treated patients in short-term and long-term clinical trials. The most common AEs that were temporally associated with elevated CPK levels were musculoskeletal stiffness, myalgia, chest pain, fall, and muscle rigidity.

### 8.5 Clinical Trial Adverse Reactions (Pediatrics)

See [8 ADVERSE REACTIONS, Clinical Trial Adverse Reactions](#).

### 8.6 Post-Market Adverse Reactions

The adverse events presented in Table 16 were reported during the post-marketing use of aripiprazole. Because these events are reported voluntarily from a population of uncertain size, it is not always possible to reliably estimate their frequency or establish a causal relationship to drug exposure.

**Table 16- Post-Introduction Treatment-Emergent Adverse Events**

<i>Investigations:</i>	<i>Rare:</i> Blood glucose fluctuation
<i>Skin and Subcutaneous Tissue Disorders:</i>	<i>Rare:</i> Allergic reaction (e.g., anaphylactic reaction, angioedema, laryngospasm, oropharyngeal spasm), Drug reaction with eosinophilia and systemic symptoms (DRESS)
<i>Psychiatric Disorders:</i>	<i>Unknown:</i> Pathological gambling, Hypersexuality, Impulse Control disorders
<i>Hepatobiliary Disorders:</i>	<i>Unknown:</i> Hepatic failure
<i>Eye Disorders:</i>	<i>Unknown:</i> Oculogyric crisis
<i>Nervous System Disorders</i>	<i>Very rare:</i> Restless legs syndrome

Isolated cases of Serotonin Syndrome have been reported with the concomitant use of aripiprazole and serotonergic drugs such as Serotonin-Norepinephrine Reuptake Inhibitor (SNRI) and Selective Serotonin Reuptake Inhibitor (SSRI).

As with other antipsychotics, sudden death, torsades de pointes, ventricular tachycardia, arrhythmia, cardiopulmonary arrest and QT prolongation have been reported during treatment with aripiprazole. These events during aripiprazole treatment have been very rare or isolated. Many of the patients had pre-existing cardiovascular disease, were on concomitant medications known to prolong the QT interval, had risk factors for QT prolongation, took an overdose of aripiprazole, and/or were morbidly obese. Very rarely, QT prolongation has been reported in the absence of confounding factors.

Complex sleep-related behaviours such as somnambulism and sleep-related eating disorder have been associated with the use of atypical antipsychotic drugs, including aripiprazole.

In clinical trial and/or post-marketing experience, events of leukopenia/neutropenia have been reported temporally related to antipsychotic agents, including aripiprazole. Agranulocytosis has also been reported. Therefore, it is recommended that patients have their complete blood count (CBC) tested prior to starting Aripiprazole Oral Solution and then periodically throughout treatment (see [7 WARNINGS AND PRECAUTIONS, Hematologic](#)).

Atypical antipsychotic drugs, including aripiprazole, have been associated with cases of sleep apnea, with or without concomitant weight gain. In patients who have a history of or are at risk for sleep apnea, aripiprazole should be prescribed with caution.

## **9 DRUG INTERACTIONS**

### **9.1 Serious Drug Interactions Box**

Not Applicable

### **9.2 Overview**

Not Applicable

### **9.3 Drug-Drug Interactions**

#### **Potential for Other Drugs to Affect Aripiprazole Oral Solution**

Aripiprazole is not a substrate of CYP1A1, CYP1A2, CYP2A6, CYP2B6, CYP2C8, CYP2C9, CYP2C19, or CYP2E1 enzymes. Aripiprazole also does not undergo direct glucuronidation. This suggests that an interaction of aripiprazole with inhibitors or inducers of these enzymes, or other factors, like smoking, is unlikely.

Both CYP3A4 and CYP2D6 are responsible for aripiprazole metabolism (see [10 ACTION AND CLINICAL PHARMACOLOGY](#)).

Agents that induce CYP3A4 (e.g., carbamazepine) could cause an increase in aripiprazole clearance and lower blood levels. Inhibitors of CYP3A4 (e.g. ketoconazole) or CYP2D6 (e.g. quinidine, fluoxetine, or paroxetine) can inhibit aripiprazole elimination and cause increased blood levels.

Approximately 8% of Caucasians lack the capacity to metabolize CYP2D6 substrates and are classified as poor metabolizers (PM), whereas the rest are extensive metabolizers (EM). CYP2D6 metabolizing capacity should be considered when aripiprazole is co-administered with drugs that inhibit CYP2D6.

#### *Ketoconazole and Other CYP3A4 Inhibitors*

Co-administration of ketoconazole (200 mg/day for 14 days) with a 15-mg single dose of aripiprazole increased the AUC of aripiprazole and its active metabolite by 63% and 77%, respectively. The effect of a higher ketoconazole dose (400 mg/day) has not been studied. When ketoconazole is administered concomitantly with aripiprazole, aripiprazole dose should be reduced to one-half of its normal dose. Other strong inhibitors of CYP3A4 (itraconazole) would be expected to have similar effects and require similar dose reductions; weaker inhibitors (erythromycin, grapefruit juice) have not been studied. When the CYP3A4 inhibitor is withdrawn from the combination therapy, the aripiprazole dose should be increased.

#### *Quinidine and Other CYP2D6 Inhibitors*

Co-administration of quinidine (166 mg/day for 13 days), a potent inhibitor of CYP2D6, with a 10-mg single dose of aripiprazole increased the AUC of aripiprazole by 107% but decreased the AUC of its active metabolite, dehydro-aripiprazole, by 32%. The dose of aripiprazole should be reduced to one-half of its normal dose when quinidine is administered concomitantly with aripiprazole.

Concomitant administration of other significant inhibitors of CYP2D6, such as fluoxetine or paroxetine, would be expected to have similar effects and, therefore, should be accompanied by similar dose reductions. When the CYP2D6 inhibitor is withdrawn from the combination therapy, the aripiprazole dose should be increased. When adjunctive aripiprazole was administered to patients with major depressive disorder, the maximum aripiprazole dose used with CYP2D6 inhibitors paroxetine and fluoxetine was 15 mg/day.

#### *Carbamazepine*

Co-administration of carbamazepine (200 mg BID), a potent CYP3A4 inducer, with aripiprazole (30 mg QD) resulted in an approximate 70% decrease in  $C_{max}$  and AUC values of both aripiprazole and its active metabolite, dehydro-aripiprazole. When carbamazepine is added to aripiprazole therapy, the dose of aripiprazole should be doubled. Additional dose increases should be based on clinical evaluation. When carbamazepine is withdrawn from the combination therapy, the aripiprazole dose should be reduced.

### **Potential for Aripiprazole Oral Solution to Affect Other Drugs**

Aripiprazole is unlikely to cause clinically important pharmacokinetic interactions with drugs metabolized by cytochrome P450 enzymes. In *in vivo* studies, 10-mg/day to 30-mg/day doses of aripiprazole had no significant effect on metabolism by CYP2D6 (dextromethorphan), CYP2C9 (warfarin), CYP2C19 (omeprazole, warfarin), and CYP3A4 (dextromethorphan) substrates. Additionally, aripiprazole and dehydro-aripiprazole did not show potential for altering CYP1A2-mediated metabolism *in vitro*.

Due to its alpha-1 adrenergic receptor antagonist activity, aripiprazole has the potential to enhance the effect of certain antihypertensive agents.

### **Drugs having no clinically important interactions with Aripiprazole Oral Solution**

#### *Famotidine*

Co-administration of aripiprazole (given in a single dose of 15 mg) with a 40-mg single dose of the H2 antagonist famotidine, a potent gastric acid blocker, decreased the solubility of aripiprazole and, hence, its rate of absorption. The  $C_{max}$  of aripiprazole and dehydro-aripiprazole, was reduced by 37% and 21%, respectively. The extent of absorption (AUC) of aripiprazole and dehydro-aripiprazole, was reduced by 13% and 15%, respectively. No dosage

adjustment of aripiprazole is required when administered concomitantly with famotidine.

#### *Valproate*

When valproate (500-1500 mg/day) and aripiprazole (30 mg/day) were co-administered, at steady state the  $C_{max}$  and AUC of aripiprazole were decreased by 25%. No dosage adjustment of aripiprazole is required when administered concomitantly with valproate.

When aripiprazole (30 mg/day) and valproate (1000 mg/day) were co-administered, at steady state there were no clinically important changes in the  $C_{max}$  or AUC of valproate. No dosage adjustment of valproate is required when administered concomitantly with aripiprazole.

#### *Lithium*

A pharmacokinetic interaction of aripiprazole with lithium is unlikely because lithium is not bound to plasma proteins, is not metabolized, and is almost entirely excreted unchanged in urine. Co-administration of therapeutic doses of lithium (1200-1800 mg/day) for 21 days with aripiprazole (30 mg/day) did not result in clinically important changes in the pharmacokinetics of aripiprazole or its active metabolite, dehydro-aripiprazole ( $C_{max}$  and AUC increased by less than 20%). No dosage adjustment of aripiprazole is required when administered concomitantly with lithium.

Co-administration of aripiprazole (30 mg/day) with lithium (900 mg/day) did not result in clinically important changes in the pharmacokinetics of lithium. No dosage adjustment of lithium is required when administered concomitantly with aripiprazole.

#### *Lamotrigine*

Co-administration of 10 to 30 mg daily oral doses of aripiprazole for 14 days to subjects with bipolar I disorder had no effect on the steady-state pharmacokinetics 100 to 400 mg once daily lamotrigine, a UDP-glucuronosyltransferase 1A4 substrate. No dosage adjustment of lamotrigine is required if aripiprazole and lamotrigine are administered concomitantly. Dosing recommendations for lamotrigine should be followed closely if valproate is also to be administered.

#### *Venlafaxine*

Co-administration of 10 to 20 mg daily oral doses of aripiprazole for 14 days to healthy subjects had no effect on the steady-state pharmacokinetics of venlafaxine and O-desmethylvenlafaxine following 75 mg once daily venlafaxine XR, a CYP2D6 substrate. No dosage adjustment of venlafaxine is required if aripiprazole is administered concomitantly with venlafaxine.

#### *Escitalopram*

Co-administration of 10 mg daily oral doses of aripiprazole for 14 days to healthy subjects had no effect on the steady-state pharmacokinetics of 10 mg once daily escitalopram, a substrate of CYP2C19 and CYP3A4. No dosage adjustment of escitalopram is required if aripiprazole and escitalopram are administered concomitantly.

#### *Dextromethorphan*

Aripiprazole at doses of 10 to 30 mg per day for 14 days had no effect on dextromethorphan's O-dealkylation to its major metabolite, dextrorphan, a pathway dependent on CYP2D6 activity. Aripiprazole also had no effect on dextromethorphan's N-demethylation to its metabolite 3-methoxymorphan, a pathway dependent on CYP3A4 activity. No dosage adjustment of dextromethorphan is required when administered concomitantly with aripiprazole.

### *Warfarin*

Aripiprazole 10 mg per day for 14 days had no effect on the pharmacokinetics of R- and S-warfarin or on the pharmacodynamic end point of International Normalized Ratio, indicating the lack of a clinically relevant effect of aripiprazole on CYP2C9 and CYP2C19 metabolism or the binding of highly protein-bound warfarin. No dosage adjustment of warfarin is required when administered concomitantly with aripiprazole.

### *Omeprazole*

Co-administration of aripiprazole (10 mg per day for 15 days) and a single 20-mg dose of omeprazole, a CYP2C19 substrate, had no effect on the pharmacokinetics of omeprazole in healthy subjects. No dosage adjustment of omeprazole is required when administered concomitantly with aripiprazole.

### *Lorazepam*

Co-administration of oral lorazepam (2 mg) and oral aripiprazole (15 mg) to healthy subjects (n=24 males; ages 18-43 years old) did not result in clinically important changes in the pharmacokinetics of either drug. No dosage adjustment of either drug is required when they are administered concomitantly. However, the intensity of sedation was greater with the combination as compared to that observed with aripiprazole alone and the incidence of orthostatic hypotension observed was greater with the combination as compared to that observed with lorazepam alone (see [7 WARNINGS AND PRECAUTIONS](#)).

### *Fluoxetine, Paroxetine, and Sertraline*

A population pharmacokinetic analysis in patients with major depressive disorder showed no substantial change in plasma concentrations of fluoxetine (20 mg/day or 40 mg/day), paroxetine CR (37.5 mg/day or 50 mg/day), or sertraline (100 mg/day or 150 mg/day) dosed to steady-state. The steady-state plasma concentrations of fluoxetine and norfluoxetine increased by about 18% and 36%, respectively and concentrations of paroxetine decreased by about 27%. The steady-state plasma concentrations of sertraline and desmethylsertraline were not substantially changed when these antidepressant therapies were co-administered with aripiprazole. Aripiprazole dosing was 2 mg/day to 15 mg/day (when given with fluoxetine or paroxetine) or 2 mg/day to 20 mg/day (when given with sertraline).

## **9.4 Drug-Food Interactions**

Aripiprazole Oral Solution can be administered with or without food (see [10 ACTION AND CLINICAL PHARMACOLOGY, Pharmacokinetics](#)).

## **9.5 Drug-Herb Interactions**

Interactions with herbal products have not been studied.

## **9.6 Drug-Laboratory Test Interactions**

Interactions with laboratory tests have not been identified.

## **9.7 Drug-Lifestyle Interactions**

### *Alcohol / CNS Drugs*

Given the primary CNS effects of aripiprazole, as with most psychoactive medications, combination use of aripiprazole with alcohol or other CNS drugs with overlapping undesirable effects such as sedation, should be avoided.



### Smoking

Aripiprazole is metabolised by multiple pathways involving the CYP2D6 and CYP3A4 enzymes but not CYP1A enzymes. Thus, no dosage adjustment is required for smokers.

## 10 ACTION AND CLINICAL PHARMACOLOGY

### 10.1 Mechanism of Action

The mechanism of action of aripiprazole, as with other drugs having efficacy in schizophrenia, bipolar disorder and as adjunctive to antidepressants in patients with MDD is unknown. However, it has been proposed that the efficacy of aripiprazole may be mediated through a combination of partial agonist activity at D<sub>2</sub> and 5-HT<sub>1A</sub> receptors and antagonist activity at 5-HT<sub>2A</sub> receptors; however, the clinical relevance of these interactions has not been established. Actions at receptors other than D<sub>2</sub>, 5-HT<sub>1A</sub>, and 5-HT<sub>2A</sub> may explain some of the other clinical effects of aripiprazole (e.g., the orthostatic hypotension observed with aripiprazole may be explained by its antagonist activity at adrenergic alpha1 receptors). The clinical relevance of these receptor interactions with aripiprazole is unknown.

### 10.2 Pharmacodynamics

Aripiprazole exhibits high affinity for dopamine D<sub>2</sub> and D<sub>3</sub>, serotonin 5-HT<sub>1A</sub> and 5-HT<sub>2A</sub> receptors (K<sub>i</sub> values of 0.34, 0.8, 1.7, and 3.4 nM, respectively), moderate affinity for dopamine D<sub>4</sub>, serotonin 5-HT<sub>2C</sub> and 5-HT<sub>7</sub>, alpha1-adrenergic and histamine H<sub>1</sub> receptors (K<sub>i</sub> values of 44, 15, 39, 57, and 61 nM, respectively), and moderate affinity for the serotonin reuptake site (K<sub>i</sub>=98 nM). Aripiprazole has no appreciable affinity for cholinergic muscarinic receptors (IC<sub>50</sub>>1000 nM). Aripiprazole functions as a partial agonist at the dopamine D<sub>2</sub> and the serotonin 5-HT<sub>1A</sub> receptors, and as an antagonist at serotonin 5-HT<sub>2A</sub> receptor. The clinical relevance of these receptor interactions with aripiprazole is unknown.

### 10.3 Pharmacokinetics

#### Preclinical Pharmacokinetics

In rats, concentrations of unchanged aripiprazole in the brain were up to 5-times higher than plasma concentrations. Following [<sup>14</sup>C]-aripiprazole administration to pregnant rats, radioactivity in the fetus was low and only a trace amount was detected in the amniotic fluid. After [<sup>14</sup>C]-aripiprazole administration to lactating rats, milk vs blood concentration ratios were greater than one for up to 24 hours. *In vitro*, aripiprazole bound extensively (99.4 to 99.8%) to proteins in mouse, rat, rabbit, dog, monkey, and human sera.

#### Clinical Pharmacokinetics

Aripiprazole Oral Solution activity is presumably primarily due to the parent drug, aripiprazole, and to a lesser extent, to its major metabolite, dehydro-aripiprazole, which has affinities for D<sub>2</sub> receptors similar to the parent drug and represents 40% of the parent drug exposure in plasma. The mean elimination half-lives are about 75 hours and 94 hours for aripiprazole and dehydro-aripiprazole, respectively. Steady-state concentrations are attained within 14 days of dosing for both active moieties. Aripiprazole accumulation is predictable from single-dose pharmacokinetics. At steady state, the pharmacokinetics of aripiprazole are dose-proportional. Elimination of aripiprazole is mainly through hepatic metabolism involving two P450 isozymes, CYP2D6 and CYP3A4.

**Absorption:** Aripiprazole Oral Solution can be administered with or without food. Administration of a 15- mg aripiprazole tablet with a standard high-fat meal did not significantly affect the  $C_{max}$  or AUC of aripiprazole or its active metabolite, dehydro-aripiprazole, but delayed  $T_{max}$  by 3 hours for aripiprazole and 12 hours for dehydro-aripiprazole.

#### Aripiprazole oral solution:

Aripiprazole is well absorbed when administered orally as the solution. At equivalent doses of 10 mg, the plasma concentrations of aripiprazole from the solution were slightly higher than that from the tablet formulation ([14.3 Comparative Bioavailability Studies](#)). For a different aripiprazole oral solution, in a relative bioavailability study comparing the pharmacokinetics of 30 mg aripiprazole as the oral solution to 30 mg aripiprazole tablets in healthy subjects, the solution to tablet ratios of geometric mean  $C_{max}$  and AUC values were 122% and 114%, respectively ([4.1 Dosing Considerations](#)). The single-dose pharmacokinetics of aripiprazole were linear and dose-proportional between the doses of 5 mg to 30 mg.

**Distribution:** The steady-state volume of distribution of aripiprazole following intravenous administration is high (404 L or 4.9 L/kg), indicating extensive extravascular distribution. At therapeutic concentrations, aripiprazole and its major metabolite are greater than 99% bound to serum proteins, primarily to albumin. In healthy human volunteers administered 0.5 to 30 mg/day aripiprazole for 14 days, there was dose-dependent  $D_2$  receptor occupancy. The clinical relevance of this receptor occupancy by aripiprazole is unknown.

**Metabolism:** Aripiprazole is metabolized primarily by three biotransformation pathways: dehydrogenation, hydroxylation, and N-dealkylation. Based on in vitro studies, CYP3A4 and CYP2D6 enzymes are responsible for dehydrogenation and hydroxylation of aripiprazole, and N-dealkylation is catalyzed by CYP3A4. Aripiprazole is the predominant drug moiety in the systemic circulation. At steady state, dehydro-aripiprazole, the active metabolite, represents about 40% of aripiprazole AUC in plasma.

Approximately 8% of Caucasians lack the capacity to metabolize CYP2D6 substrates and are classified as poor metabolizers (PM), whereas the rest are extensive metabolizers (EM). PMs have about an 80% increase in aripiprazole exposure and about a 30% decrease in exposure to the active metabolite compared to EMs, resulting in about a 60% higher exposure to the total active moieties from a given dose of aripiprazole compared to EMs. Co-administration of aripiprazole with known inhibitors of CYP2D6, like quinidine in EMs, results in a 112% increase in aripiprazole plasma exposure, and dose adjustment is needed (see [9 DRUG INTERACTIONS, Drug-Drug Interactions](#)). The mean elimination half-life for aripiprazole is about 75 hours in EMs and 146 hours in PMs. Aripiprazole does not inhibit or induce the CYP2D6 pathway.

**Elimination:** Following a single oral dose of [ $^{14}C$ ]-labeled aripiprazole, approximately 25% and 55% of the administered radioactivity was recovered in the urine and feces, respectively. Less than 1% of unchanged aripiprazole was excreted in the urine and approximately 18% of the oral dose was recovered unchanged in the feces.

#### **Special Populations and Conditions**

**Geriatrics:** In formal single-dose pharmacokinetic studies (with aripiprazole given in a single dose of 15 mg), clearance of aripiprazole was 20% lower in elderly ( $\geq 65$  years) subjects compared to younger adult subjects (18 to 64 years). However, there was no effect of age in the population pharmacokinetic analysis in schizophrenia patients. Also, the pharmacokinetics of

aripiprazole after multiple doses in elderly patients appeared similar to that observed in young, healthy subjects. (see [7 WARNINGS AND PRECAUTIONS, Special Populations, Geriatrics](#) and [4 DOSAGE AND ADMINISTRATION](#)).

**Sex:**  $C_{max}$  and AUC of aripiprazole and its active metabolite, dehydro-aripiprazole, are 30 to 40% higher in women than in men, and correspondingly, the apparent oral clearance of aripiprazole is lower in women. However, these differences are largely explained by differences in body weight (25%) between men and women. No dosage adjustment is recommended based on gender.

**Ethnic origin:** Although no specific pharmacokinetic study was conducted to investigate the effects of race on the disposition of aripiprazole, population pharmacokinetic evaluation did not demonstrate clinically important race-related differences in the pharmacokinetics of aripiprazole. No dosage adjustment is recommended based on race.

**Hepatic Insufficiency:** In a single-dose study (15 mg of aripiprazole) in subjects with varying degrees of liver cirrhosis (Child-Pugh Classes A, B, and C), the AUC of aripiprazole, compared to healthy subjects, increased 31% in mild HI, increased 8% in moderate HI, and decreased 20% in severe HI. None of these differences would require dose adjustment.

**Renal Insufficiency:** In patients with severe renal impairment (creatinine clearance <30 mL/min),  $C_{max}$  of aripiprazole (given in a single dose of 15 mg) and dehydro-aripiprazole increased by 36% and 53%, respectively, but AUC was 15% lower for aripiprazole and 7% higher for dehydro-aripiprazole. Renal excretion of both unchanged aripiprazole and dehydro-aripiprazole is less than 1% of the dose. No dosage adjustment is required in subjects with renal impairment.

**Smoking:** Based on studies utilizing human liver enzymes in vitro, aripiprazole is not a substrate for CYP1A2 and also does not undergo direct glucuronidation. Smoking should, therefore, not have an effect on the pharmacokinetics of aripiprazole. Consistent with these in vitro results, population pharmacokinetic evaluation did not demonstrate any significant pharmacokinetic differences between smokers and nonsmokers. No dosage adjustment is recommended based on smoking status.

## 11 STORAGE, STABILITY AND DISPOSAL

Store between 15-30° C. Solution must be used within 6 months of opening the bottle.

## 12 SPECIAL HANDLING INSTRUCTIONS

Not Applicable

## PART II: SCIENTIFIC INFORMATION

### 13 PHARMACEUTICAL INFORMATION

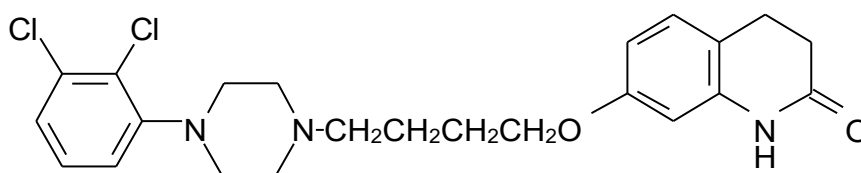
#### Drug Substance

Proper name: aripiprazole

Chemical name: 7-[4-[4-(2,3-dichlorophenyl)-1-piperazinyl]butoxy]-3,4-dihydrocarbostyryl.

Molecular formula and molecular mass:  $C_{23}H_{27}Cl_2N_3O_2$   
448.38 g/mol

Structural formula:



Physicochemical properties: Aripiprazole is a white or almost white crystal or crystalline powder. Aripiprazole is practically insoluble in water, soluble in methylene dichloride and, very slightly soluble in ethanol.

### 14 CLINICAL TRIALS

#### 14.1 Trial Design and Study Demographics

##### Schizophrenia

###### Adults

The efficacy of aripiprazole in the treatment of schizophrenia was evaluated in five short-term (4- and 6-week), placebo-controlled trials of acutely relapsed inpatients who predominantly met DSM-III/IV criteria for schizophrenia. Four of the five trials were able to distinguish aripiprazole from placebo, but one study, the smallest, did not. Three of these studies also included an active control group consisting of either risperidone (one trial) or haloperidol (two trials), but they were not designed to allow for a comparison of aripiprazole and the active comparators.

###### Adolescents (13-17 years of age)

The efficacy of aripiprazole in the treatment of schizophrenia was evaluated in one 6-week, placebo-controlled trial that included outpatients, 13 - 17 years of age, who met DSM-IV criteria for schizophrenia and had a PANSS score  $\geq 70$  at baseline. The majority of patients included in this trial (75%) were 15 - 17 years of age. Seventy-four percent of patients had received antipsychotic treatment for previous episodes. In this trial comparing two fixed doses of aripiprazole (10 mg/day, n=100 or 30 mg/day, n=102) to placebo (n=100), aripiprazole was titrated starting from 2 mg/day to the target dose in 5 days in the 10 mg/day treatment arm and in 11 days in the 30 mg/day treatment arm.

##### Bipolar Disorder

###### Adults

### *Acute treatment of manic and mixed episodes*

#### *Monotherapy*

The efficacy of aripiprazole in the treatment of acute manic episodes was established in four 3-week, placebo-controlled studies in hospitalized patients who met the DSM-IV criteria for bipolar I disorder with manic or mixed episodes. These studies included patients with or without psychotic features and two of the studies also included patients with or without a rapid-cycling course (approximately 20% with rapid cycling course in both studies). Two of these studies included an active control group for assay sensitivity. In the studies that included active control groups, patients were allowed to continue on aripiprazole or active control for up to 12 weeks.

#### *Adjunctive Therapy with Lithium or Valproate*

The efficacy of adjunctive aripiprazole with concomitant lithium or valproate in the treatment of manic or mixed episodes was established in a 6-week, placebo-controlled study (n=384) with a 2-week lead-in mood stabilizer monotherapy phase in patients who met DSM-IV criteria for bipolar I disorder. This study included patients with manic or mixed episodes and with or without psychotic features.

#### *Maintenance treatment*

##### *Adjunctive Therapy with Lithium or Valproate*

A longer-term trial was conducted in patients meeting DSM-IV criteria for bipolar I disorder with a recent manic or mixed episode. Patients were initiated on open-label lithium (0.6 mEq/L to 1.0 mEq/L) or valproate (50 mcg/mL to 125 mcg/mL) at therapeutic serum levels, and remained on stable doses for 2 weeks. At the end of 2 weeks, patients demonstrating partial non-response (Y-MRS total score  $\geq 16$  and  $\leq 35\%$  improvement on the Y-MRS total score) to lithium or valproate while at therapeutic serum levels, received aripiprazole as adjunctive therapy with open-label lithium or valproate. The starting dose of aripiprazole during the stabilization period was 15 mg/day and the dose could be increased to 30 mg/day or decreased to 10 mg/day beginning on Day 4. Lithium and valproate doses could only be adjusted to maintain therapeutic serum levels or to manage tolerability issues (within therapeutic serum level ranges). Patients on the combination of single-blind aripiprazole and lithium or valproate were required to maintain stability (Y-MRS and MADRS total scores  $\leq 12$ ) for 12 consecutive weeks to be eligible for randomization in the placebo-controlled, double-blind phase of the study.

### *Pediatric and Adolescent (10-17 years of age)*

#### *Acute treatment of manic and mixed episodes*

##### *Monotherapy*

The efficacy of aripiprazole in the acute treatment of manic or mixed episodes in bipolar I disorder in patients 10-17 years of age was evaluated in one four-week placebo-controlled trial (n=296) of outpatients who met DSM-IV criteria for a manic or mixed episode in bipolar I disorder and had a Y-MRS score  $\geq 20$  at baseline. The majority (63%) of patients were 13 years of age or older. This double-blind, placebo-controlled trial compared two fixed doses of aripiprazole (10 mg/day or 30 mg/day) to placebo. The aripiprazole dose was started at 2 mg/day, which was titrated to 5 mg/day after 2 days, and to the target dose in 5 days in the 10 mg/day treatment arm and in 13 days in the 30 mg/day treatment arm.

### **Adjunctive Treatment of Major Depressive Disorder (MDD)**

#### *Adults*

The efficacy of aripiprazole in the adjunctive treatment of major depressive disorder was demonstrated in three short-term (6-week), placebo-controlled trials in adult patients meeting DSM-IV criteria for MDD who had an inadequate response to prior antidepressant therapy (1 to 3 courses) in the current episode and who had also demonstrated an inadequate response to 8 weeks of prospective antidepressant therapy (paroxetine controlled-release, venlafaxine

extended-release, fluoxetine, escitalopram, or sertraline). Inadequate response for prospective treatment was defined as less than 50% improvement on the 17-item version of the Hamilton Depression Rating Scale (HAMD-17), minimal HAMD-17 score of 14, and a Clinical Global Impressions Improvement rating of no better than minimal improvement. Inadequate response to prior treatment was defined as less than 50% improvement as perceived by the patient after a minimum of 6 weeks of antidepressant therapy at or above the minimal effective dose.

The primary instrument used for assessing depressive symptoms was the Montgomery-Asberg Depression Rating Scale (MADRS), a 10-item clinician-rated scale used to assess the degree of depressive symptomatology (apparent sadness, reported sadness, inner tension, reduced sleep, reduced appetite, concentration difficulties, lassitude, inability to feel, pessimistic thoughts, and suicidal thoughts).

The key secondary instrument was the Sheehan Disability Scale (SDS), a 3-item self-rated instrument used to assess three domains of functioning (work/school, social life, and family life) with each item scored from 0 (not at all) to 10 (extreme).

The mean MADRS total score at baseline was between 25 and 27. SDS total score at baseline was between 5.1 and 5.9.

## **14.2 Study Results**

### **Schizophrenia**

#### *Adults*

In the four positive trials for aripiprazole, four primary measures were used for assessing psychiatric signs and symptoms. The Positive and Negative Syndrome Scale (PANSS) is a multi-item inventory of general psychopathology used to evaluate the effects of drug treatment in schizophrenia. The PANSS positive subscale is a subset of items in the PANSS that rates seven positive symptoms of schizophrenia (delusions, conceptual disorganization, hallucinatory behavior, excitement, grandiosity, suspiciousness/persecution, and hostility). The PANSS negative subscale is a subset of items in the PANSS that rates seven negative symptoms of schizophrenia (blunted affect, emotional withdrawal, poor rapport, passive apathetic withdrawal, difficulty in abstract thinking, lack of spontaneity/flow of conversation, stereotyped thinking). The Clinical Global Impression (CGI) assessment reflects the impression of a skilled observer, fully familiar with the manifestations of schizophrenia, about the overall clinical state of the patient.

In a 4-week trial (n=414) comparing two fixed doses of aripiprazole (15 or 30 mg/day) and haloperidol (10 mg/day) to placebo, both doses of aripiprazole were superior to placebo in the PANSS total score, PANSS positive subscale, and CGI-severity score. In addition, the 15-mg dose was superior to placebo in the PANSS negative subscale.

In a 4-week trial (n=404) comparing two fixed doses of aripiprazole (20 or 30 mg/day) and risperidone (6 mg/day) to placebo, both doses of aripiprazole were superior to placebo in the PANSS total score, PANSS positive subscale, PANSS negative subscale, and CGI-severity score.

In a 6-week trial (n=420) comparing three fixed doses of aripiprazole (10, 15, or 20 mg/day) to placebo, all three doses of aripiprazole were superior to placebo in the PANSS total score, PANSS positive subscale, and the PANSS negative subscale.

In a 6-week trial (n=367) comparing three fixed doses of aripiprazole (2, 5, or 10 mg/day) to placebo, the 10-mg dose of aripiprazole was superior to placebo in the PANSS total score, the primary outcome measure of the study. The 2-mg and 5-mg doses did not demonstrate superiority to placebo on the primary outcome measure.

In a fifth study, a 4-week trial (n=103) comparing aripiprazole in a range of 5 to 30 mg/day or haloperidol 5 to 20 mg/day to placebo, haloperidol was superior to placebo, in the Brief Psychiatric Rating Scale (BPRS), a multi-item inventory of general psychopathology traditionally used to evaluate the effects of drug treatment in psychosis, and in a responder analysis based on the CGI-severity score, the primary outcomes for that trial. Aripiprazole was only significantly different compared to placebo in a responder analysis based on the CGI-severity score.

Thus, the efficacy of 10-mg, 15-mg, 20-mg, and 30-mg daily doses was established in two studies for each dose. Among these doses, there was no evidence that the higher dose groups offered any advantage over the lowest dose group of these studies.

An examination of population subgroups did not demonstrate any clear evidence of differential responsiveness on the basis of age, gender, or race.

A longer-term trial enrolled 310 inpatients or outpatients meeting DSM-IV criteria for schizophrenia who were, by history, symptomatically stable on other antipsychotic medications for periods of 3 months or longer. These patients were discontinued from their antipsychotic medications and randomized to aripiprazole 15 mg/day or placebo for up to 26 weeks of observation for relapse. Relapse during the double-blind phase was defined as CGI-Improvement score of  $\geq 5$  (minimally worse), scores  $\geq 5$  (moderately severe) on the hostility or uncooperativeness items of the PANSS, or  $\geq 20\%$  increase in the PANSS total score. Patients receiving aripiprazole 15 mg/day experienced a significantly longer time to relapse over the subsequent 26 weeks compared to those receiving placebo.

#### *Adolescents (13-17 years of age)*

Both doses of aripiprazole were superior to placebo in the PANSS total score, the primary outcome measure of the study. The 30 mg/day dose was not shown to be more efficacious than the 10 mg/day dose. Maintenance of efficacy has not been systematically evaluated in adolescent patients.

Aripiprazole is not indicated for the treatment of schizophrenia in adolescents less than 15 years of age due to insufficient safety and efficacy data (see [1 INDICATIONS, Pediatrics](#), [7 WARNINGS AND PRECAUTIONS, Special Populations, Pediatrics](#) and [8 ADVERSE REACTIONS](#)).

## **Bipolar Disorder**

### *Adults*

#### *Acute treatment of manic and mixed episodes*

##### *Monotherapy*

The primary instrument used for assessing manic symptoms in all four studies was the Young Mania Rating Scale (Y-MRS) an 11-item clinician-rated scale traditionally used to assess the degree of manic symptomatology (irritability, disruptive/aggressive behavior, sleep, elevated mood, speech, increased activity, sexual interest, language/thought disorder, thought content, appearance, and insight) in a range from 0 (no manic features) to 60 (maximum score). The primary efficacy endpoint was the mean change from baseline in total Y-MRS score at the Week 3 endpoint (Last Observation Carried Forward, LOCF). A key secondary endpoint was the

Severity of Illness score (mania) from the Clinical Global Impression - Bipolar (CGI-BP) Scale.

In the four studies, patients were randomized to placebo (n=132, n=135, n=165, n=152) or aripiprazole (n=130, n=137, n=155, n=167). Studies with an active control group included a group of patients randomized to haloperidol (n=160) in one study, and a group of patients randomized to lithium (n=165) in the other study.

All four studies evaluated flexible doses of aripiprazole 15 or 30 mg/day, administered once daily (with a starting dose of 15 mg/day in two studies and 30 mg/day in two studies). In all four studies the majority of patients were treated with the 30 mg/day dose.

In all four studies, aripiprazole was superior to placebo in the reduction of manic symptoms, as measured by the mean change from baseline to Week 3 (LOCF) in Y-MRS total score (primary endpoint) and CGI-BP Severity of Illness score (mania) (key secondary endpoint).

#### *Adjunctive Therapy with Lithium or Valproate*

Patients were initiated on open-label treatment with lithium or valproate, and remained on stable doses at therapeutic serum levels (lithium 0.6 mEq/L to 1.0 mEq/L; valproate 50 µg/mL to 125 µg/mL) for 2 weeks. At the end of 2 weeks, patients demonstrating partial non-response (Y-MRS ≥16) to lithium or valproate were randomized to receive either aripiprazole (n=253) or placebo (n=131) as adjunctive therapy with open-label lithium or valproate. In the 6-week placebo-controlled phase, adjunctive aripiprazole (15 or 30 mg/day, starting dose 15 mg/day) was superior to adjunctive placebo, when each was administered concomitantly with lithium or valproate (at therapeutic serum levels), in the reduction of the Y-MRS total score (primary endpoint) and CGI-BP Severity of Illness score (mania) (key secondary endpoint).

#### *Maintenance treatment*

##### *Adjunctive Therapy with Lithium or Valproate*

Three hundred and thirty-seven patients meeting the criteria for maintained stability were randomized to double-blind treatment with either the same dose of aripiprazole they were on at the end of the stabilization period or placebo plus lithium or valproate. Patients were monitored for manic, mixed or depressive relapse for up to 52 weeks. The primary endpoint was the time from randomization to relapse to any mood event, with mood event defined as hospitalization for a manic, mixed or depressive episode, study discontinuation due to lack of efficacy accompanied by Y-MRS score >16 and/or a MADRS >16, or a serious adverse event of worsening disease accompanied by Y-MRS score >16 and/or a MADRS >16. Aripiprazole was superior to placebo on the primary endpoint.

#### *Pediatric and Adolescent (10-17 years of age)*

##### *Acute treatment of manic and mixed episodes*

##### *Monotherapy*

Both doses of aripiprazole were superior to placebo in change from baseline to week 4 on the Y-MRS total score, the primary outcome measure of the study. Maintenance of efficacy has not been systematically evaluated in adolescent patients.

Aripiprazole is not indicated for the treatment of manic or mixed episodes in bipolar I disorder in adolescents less than 13 years of age due to insufficient safety and efficacy data (see [1 INDICATIONS, Pediatrics, 7 WARNINGS AND PRECAUTIONS, Special Populations, Pediatrics](#) and [8 ADVERSE REACTIONS](#)).



## Adjunctive Treatment of Major Depressive Disorder (MDD)

### Adults

In all three trials (n=381, n=362, n=349), aripiprazole was superior to placebo in reducing mean MADRS total scores. In one study, aripiprazole was also superior to placebo in reducing the mean SDS score.

In these trials, patients received aripiprazole adjunctive to antidepressants at a starting dose of 5 mg / day. Based on tolerability and efficacy, doses could be adjusted by 5 mg increments, one week apart. Allowable doses were: 2 mg/day, 5 mg/day, 10 mg / day, 15 mg / day, and for patients who were not on potent CYP2D6 inhibitors fluoxetine and paroxetine, 20 mg / day. All patients who tolerated the initial dose were titrated to at least 10 mg / day. The mean final dose at the end point for the three trials was 10.7 mg/day, 11.4 mg / day, and 10.7 mg / day.

An examination of population subgroups did not reveal evidence of differential response based on age, choice of prospective antidepressant, or race. With regard to gender, a smaller mean reduction on the MADRS total score was seen in males than in females. The statistical significance of the treatment-by-gender effect in the combined analysis is primarily due to the results of one of 3 studies. Consistent results between males and females were reported in 2 of the 3 studies. The clinical relevance of this apparent treatment-by-gender is unknown.

Clinical trials evaluating aripiprazole in MDD did not include aripiprazole monotherapy treatment arms. It is therefore unknown whether efficacy in adjunct treatment is due to aripiprazole alone or from combined treatment with an ADT.

### 14.3 Comparative Bioavailability Studies

A randomized, balanced, open label, two-treatment, two-period, two-sequence, single-dose, crossover, bioequivalence study of <sup>Pr</sup>Aripiprazole Oral Solution, 1 mg / ml solution (JAMP Pharma Corporation) and <sup>Pr</sup>ABILIFY<sup>®</sup>, 10 mg tablets (Otsuka Canada Pharmaceutical Inc.) was conducted in healthy, adult male subjects under fasting conditions. Comparative bioavailability data from 29 subjects that were included in the statistical analysis are presented in the following table:

**SUMMARY TABLE OF THE COMPARATIVE BIOAVAILABILITY DATA**

Aripiprazole (10 mL x 1mg / ml) Geometric Mean Arithmetic Mean (CV %)				
Parameter	Test <sup>1</sup>	Reference <sup>2</sup>	% Ratio of Geometric Means	90% Confidence Interval
AUC <sub>72</sub> <sup>3</sup> (ng·h / mL)	1845.32 1875.83 (19.29)	1718.38 1747.64 (19.58)	107.4	102.4 - 112.6
C <sub>max</sub> (ng / mL)	52.17 53.51 (22.12)	46.21 47.65 (26.33)	112.9	104.9 - 121.5
T <sub>max</sub> <sup>4</sup> (hr)	2.50 (1.00 - 8.00)	3.05 (1.00 - 8.00)		

<sup>1</sup>Pr Aripiprazole Oral Solution, 1 mg / ml, solution (JAMP Pharma Corporation.)

<sup>2</sup>Pr ABILIFY® aripiprazole tablets, 10 mg tablets (Otsuka Canada Pharmaceutical Inc.)

<sup>3</sup> n=29

<sup>4</sup>Expressed as the median (range) only.

Due to the long elimination half-life of Aripiprazole, AUC<sub>i</sub> and T<sub>1/2</sub> could not be accurately calculated from the data obtained in this study.

## 15 MICROBIOLOGY

Not Applicable

## 16 NON-CLINICAL TOXICOLOGY

### Acute Toxicity

The acute oral toxicity of aripiprazole was determined in rats and monkeys. The estimated median lethal oral dose in male and female rats was 953 and 705 mg / kg, respectively, and in monkeys was greater than 2000 mg/kg for both sexes. Clinical signs consistent with pharmacologically mediated central nervous (CNS) depression and extrapyramidal side effects were noted in both species. In rats, clinical signs included decreased spontaneous motor activity, crouching, prone position, ataxia, tremors, convulsions, straub tail, catalepsy, ptosis, and coldness to touch. In monkeys, principal drug-related effects included impaired motor activity, hyporeactivity to external stimuli, tremors, catalepsy, closed eyes, crouching, and prone and/or lateral position.

### Short- and Long-Term Toxicity

The short- and long-term toxicity of aripiprazole was determined in 4- to 52-week oral toxicity studies in rats and monkeys. The results from these studies are summarized in the following table.

**Short- and Long-Term Toxicity**

Species/ Strain	Route of Administration	Duration of Dosing	Dose (mg/kg)	Number/ Sex	Noteworthy Findings
Rat/SD	Oral gavage	4 weeks	0, 60, 100	10 or 15 M 10 or 15 F	<p><u>60 and 100 mg/kg/day</u>: Sedation (primarily in Week 1) and dose-related decreases in body weight, body weight gain, and food consumption; dose-related minimal or mild increases in serum glutamic pyruvic transaminase, glutamic oxaloacetic transaminase, and <math>\gamma</math>-glutamyltranspeptidase; and microscopically, dose-related minimal to moderate adrenocortical hypertrophy, mild atrophy of the pars intermedia in the pituitary gland, minimal to mild bone marrow hypocellularity, increased incidence and severity of pulmonary alveolar foam cell accumulation in the lung, minimal salivary gland acinar cell hypertrophy, minimal mammary gland lobular hyperplasia with minimal to mild milk secretion, minimally decreased numbers of ovarian corpora lutea, and low incidences of minimal uterine atrophy.</p> <p><u>100 mg/kg/day</u>: Emaciation, transient hypothermia, lacrimation, tremors, and unkempt appearance and microscopically, minimal mucification of the vaginal epithelium.</p> <p>All mammary gland and reproductive tract changes in females were considered to be secondary to aripiprazole-related increases in serum prolactin. Additionally, all changes were reversible or partially reversible after a 4-week post-dose period for the 100 mg/kg/day animals.</p>
Rat/SD	Oral gavage	13 weeks	0, 2, 6, 20	10 or 16 M 10 or 16 F	<p><u>2 and 6 (M) mg/kg/day</u>: No drug-related changes.</p> <p><u>6 (F) and 20 mg/kg/day</u>: In females, minimal increases in body weight gain and food consumption (6 mg/kg/day only) and microscopically, mucification of vaginal epithelium and lobular hyperplasia of the mammary glands.</p> <p><u>20 mg/kg/day</u>: Minimal decreases in body weight gain and food consumption in males; decreased liver and uterus weights; and microscopically, mammary milk secretion in females. Anatomic changes in the mammary gland and reproductive tract of females were considered to be secondary to aripiprazole-related increases in serum prolactin. At the end of the 4-week post-dose period, all findings were reversible except for minimal decreases in body weight gain and food consumption.</p>

Species/ Strain	Route of Administration	Duration of Dosing	Dose (mg/kg)	Number/ Sex	Noteworthy Findings
Rats/SD	Oral gavage	26 weeks	0, 10, 30, 60	20 or 25 M 20 or 25 F	<p><u>10 mg/kg/day</u>: Minimal or mild increases in body weight and food consumption in females.</p> <p><u>10, 30, and 60 mg/kg/day</u>: Dose-related minimal to moderate decreases in body weight (10 mg/kg/day only in males), including initial weight loss at 60 mg/kg/day; minimal or mild decreases in serum total protein and albumin; pale discoloration of the lungs; and microscopically, dose-related minimal to moderate atrophy of pituitary pars intermedia, increased incidence of minimal to moderate pulmonary histiocytosis, and changes in the mammary gland (atrophy in males <math>\geq</math> 30 mg/kg/day; hyperplasia in females) and female reproductive tract (ie, persistent diestrus) that were considered secondary to drug-related hyperprolactinemia.</p> <p><u>30 and 60 mg/kg/day</u>: Dose-related increased incidences of transient post-dose hypoactivity and ptosis and predose hyperactivity; minimal to moderate decreases in food consumption; and microscopically, minimally increased adrenocortical lipofuscin pigment and minimal to mild adrenocortical hypertrophy in females.</p> <p><u>60 mg/kg/day</u>: Minimal decreases in hematocrit, reticulocytes, and hemoglobin (females); increased adrenal (females) and lung weights; decreased testicular size and weight; dark discoloration of the adrenals and ovaries; and, microscopically, minimal to moderate bilateral testicular atrophy and minimally increased ovarian lipofuscin pigment.</p> <p>Except for remnants of the adrenal and ovarian pigment, all aripiprazole-related effects were reversible or partially reversible (hyperactivity and pulmonary histiocytosis with associated increases in lung weight) after a 13-week post-dose period.</p>

Species/ Strain	Route of Administration	Duration of Dosing	Dose (mg/kg)	Number/ Sex	Noteworthy Findings
Rat/SD	Oral gavage	52 weeks	0, 1, 3, 10	20 M 20 F	<p><u>1, 3, and 10 mg/kg/day</u>: Mild to moderate uterine atrophy and slight increase in corpora lutea.</p> <p><u>3 and 10 mg/kg/day</u>: Minimal to mild increases (transient at 10 mg/kg/day) in body weights; minimal, sporadic increases in food consumption; decreases in adrenal, liver, kidney, and uterus weights and increases in ovarian weights; and microscopically, increased severity of lobular hyperplasia of mammary gland and increased incidence and severity of vaginal epithelial mucification in females (changes considered secondary to aripiprazole-related increases in prolactin).</p> <p><u>10 mg/kg/day</u>: Decreased liver weight; macroscopic evidence of mammary gland development in females; and microscopically, karyomegaly of hepatocytes, renal proximal tubular epithelium, and Harderian gland acinar cells.</p>
Monkey/ Cynomolgus	Oral Gavage	4 weeks	1, 5, 25, 125	1 M 1 F	<p><u>1, 5, 25, and 125 mg/kg/day</u>: Impairment of motor activity characterized by ataxic gait, reduced motor activity, and/or absence of motion (1 mg/kg/day only in Week 1).</p> <p><u>5, 25, and 125 mg/kg/day</u>: Closed eyes, catalepsy, tremors, and slight decreases in food consumption (Weeks 1 and 2).</p> <p><u>25 and 125 mg/kg/day</u>: Abnormal posture (crouching, lateral, or prone position) and hyporeactivity; minimal dose-related body weight loss (Weeks 1 and 2); and at necropsy, retention of gallsand (granular material) in the gallbladder.</p> <p><u>125 mg/kg/day</u>: At necropsy, a stone (calculus) in the gallbladder of 1 animal.</p>
Monkey/ Cynomolgus	Oral Gavage	13 weeks	0, 0.5, 1, 5, 25	3 to 5 M 3 to 5 F	<p><u>0.5 and 1 mg/kg/day</u>: No drug-related findings.</p> <p><u>5 and 25 mg/kg/day</u>: Dose-related impairment of motor activity, hyporeactivity, tremors, catalepsy, and abnormal posture. These clinical signs generally were mild at 5 mg/kg/day and severe at 25 mg/kg/day early in the study, but improved with continued dosing at 25 mg/kg/day.</p> <p><u>25 mg/kg/day</u>: Minimal decreases in body weight, moderate decreases in food consumption, and sporadic absence of feces in Weeks 1 and 2 and moderate to severe muddy substance in the bile at necropsy.</p> <p>All drug-related alterations disappeared or improved during the 4-week</p>

Species/ Strain	Route of Administration	Duration of Dosing	Dose (mg/kg)	Number/ Sex	Noteworthy Findings
					post-dose period.
Species/ Strain	Route of Administration	Duration of Dosing	Dose (mg/kg)	Number/ Sex	Noteworthy Findings
Monkey/ Cynomolgus	Oral Gavage	39 weeks	0, 25, 50, 75/100	4 M 4 F	<p>Due to pronounced clinical signs at 100 mg/kg/day on Day 1, high-dose animals were not treated on Days 2 to 4. Starting on Day 5 through remainder of the study, high-dose animals were treated at 75 mg/kg/day.</p> <p><u>25 mg/kg/day</u>: Low incidence of impaired motor activity in 1 male.</p> <p><u>25, 50, and 75 mg/kg/day</u>: Dose-related tremors and mild to moderate hypoactivity (transient at 25 mg/kg/day), vomitus (emesis), qualitatively reduced food consumption, low incidences of hunched or unusual posture, and mucus-like and granular (gallsand) materials in the gallbladder.</p> <p><u>50 and 75 mg/kg/day</u>: Low incidences of excessive salivation, sternal recumbency, and gallbladder calculi (gallstones); and, microscopically, low incidence of generally minimal liver alterations consistent with hepatolithiasis in the subcapsular parenchyma of the right median lobe proximal to the gallbladder.</p> <p><u>75 mg/kg/day</u>: One female euthanatized moribund in Week 3 due to severe clinical toxicity characterized by mild to severe hypoactivity, tremors, excessive salivation, lateral or sternal recumbency, hunched or unusual posture, impaired motor activity, and reduced food consumption (low or none). This female was the only high-dose animal that had not recovered when dosing resumed at 75 mg/kg/day on Day 5. Minimal decreases in body weight in males and low incidence of ataxia in 1 female.</p> <p>Analyses of gallsand and gallstones indicated that sulfate conjugates of hydroxy metabolites of aripiprazole were the major drug-related constituents; and bile acids, principally taurodeoxycholic acid, were the primary nondrug-related constituents. Analyses of intrahepatic concretions (hepatoliths) demonstrated morphologic features and elemental composition that were similar to gallsand and gallstones.</p>

Species/ Strain	Route of Administration	Duration of Dosing	Dose (mg/kg)	Number/ Sex	Noteworthy Findings
Monkey/ Cynomolgus	Oral Gavage	52 weeks	0, 0.5, 5, 25	4 M 4 F	<p><u>0.5 mg/kg/day</u>: No drug-related changes.</p> <p><u>5 and 25 mg/kg/day</u>: Dose-related incidences and/or severity of impaired motor activity, hyporeactivity, tremors, catalepsy, and abnormal posture (crouching, lateral, and/or prone position) that were most evident during Weeks 1 and 2. At 25 mg/kg/day, impaired motor activity was severe in Week 1 and generally mild during the remainder of the study. Hyporeactivity disappeared by Week 3 and catalepsy and abnormal posture were observed sporadically throughout the dosing period.</p> <p><u>25 mg/kg/day</u>: Minimal decreases in body weight and mild to moderate decreases in food consumption during Weeks 1 and 2. At necropsy, slight to generally moderate gallsand in 3 animals and gallstones in 1 animal. In comparison, slight gallsand noted in 2 controls.</p>

### Juvenile Toxicity

In repeat-dose studies in juvenile rats and dogs, the toxicity profile of aripiprazole was comparable to that observed in adult animals, and there was no evidence of neurotoxicity or adverse effects on development.

### Mutagenesis

The mutagenic potential of aripiprazole was tested in the in vitro bacterial reverse-mutation assay, the in vitro bacterial DNA repair assay, the in vitro forward gene mutation assay in mouse lymphoma cells, the in vitro chromosomal aberration assay in Chinese hamster lung (CHL) cells, the in vivo micronucleus assay in mice, and the unscheduled DNA synthesis assay in rats. Aripiprazole was clastogenic in the in vitro chromosomal aberration assay in CHL cells with and without metabolic activation. A positive response was obtained in the in vivo micronucleus assay in mice; however, the response was due to a mechanism considered not relevant to humans.

### Reproductive Toxicity

In animal studies, aripiprazole demonstrated developmental toxicity, including possible teratogenic effects in rats and rabbits.

Pregnant rats were treated with oral doses of 3, 10, and 30 mg/kg/day (1, 3, and 10 times the maximum recommended human dose [MRHD] on a mg/m<sup>2</sup> basis) of aripiprazole during the period of organogenesis. Gestation was slightly prolonged at 30 mg/kg. Treatment caused a slight delay in fetal development, as evidenced by decreased fetal weight (30 mg/kg), undescended testes (30 mg/kg), and delayed skeletal ossification (10 and 30 mg/kg). There were no adverse effects on embryofetal or pup survival. Delivered offspring had decreased bodyweights (10 and 30 mg/kg), and increased incidences of hepatodiaphragmatic nodules and diaphragmatic hernia at 30 mg/kg (the other dose groups were not examined for these findings). A low incidence of diaphragmatic hernia was also seen in the fetuses exposed to 30 mg/kg. Postnatally, delayed vaginal opening was seen at 10 and 30 mg/kg and impaired reproductive performance (decreased fertility rate, corpora lutea, implants, and live fetuses and increased post-implantation loss, likely mediated through effects on female offspring) was seen at 30 mg/kg. Some maternal toxicity was seen at 30 mg/kg; however, there was no evidence to suggest that these developmental effects were secondary to maternal toxicity.

In pregnant rats receiving aripiprazole injection intravenously (3, 9, and 27 mg/kg/day) during the period of organogenesis, decreased fetal weight and delayed skeletal ossification were seen at the highest dose, which also caused maternal toxicity.

Pregnant rabbits were treated with oral doses of 10, 30, and 100 mg/kg/day (2, 3, and 11 times human exposure at MRHD based on AUC) of aripiprazole during the period of organogenesis. Decreased maternal food consumption and increased abortions were seen at 100 mg/kg. Treatment caused increased fetal mortality (100 mg/kg), decreased fetal weight (30 and 100 mg/kg), increased incidence of a skeletal abnormality (fused sternebrae at 30 and 100 mg/kg), and minor skeletal variations (100 mg/kg).

In pregnant rabbits receiving aripiprazole injection intravenously (3, 10, and 30 mg/kg/day) during the period of organogenesis, the highest dose, which caused pronounced maternal toxicity, resulted in decreased fetal weight, increased fetal abnormalities (primarily skeletal), and decreased fetal skeletal ossification. The fetal no-effect dose was 10 mg/kg, which produced 5 times the human exposure at the MRHD based on AUC.



In a study in which rats were treated with oral doses of 3, 10, and 30 mg/kg/day (1, 3, and 10 times the MRHD on a mg/m<sup>2</sup> basis) of aripiprazole perinatally and postnatally (from day 17 of gestation through day 21 postpartum), slight maternal toxicity and slightly prolonged gestation were seen at 30 mg/kg. An increase in stillbirths and decreases in pup weight (persisting into adulthood) and survival were seen at this dose.

In rats receiving aripiprazole injection intravenously (3, 8, and 20 mg/kg/day) from day 6 of gestation through day 20 postpartum, an increase in stillbirths was seen at 8 and 20 mg/kg, and decreases in early postnatal pup weights and survival were seen at 20 mg/kg. These doses produced some maternal toxicity. There were no effects on postnatal behavioral and reproductive development.

### **Impairment of fertility**

Female rats were treated with oral doses of 2, 6, and 20 mg/kg/day (0.6, 2, and 6 times the MRHD on a mg/m<sup>2</sup> basis) of aripiprazole from 2 weeks prior to mating through day 7 of gestation. Estrus cycle irregularities and increased corpora lutea were seen at all doses, but no impairment of fertility was seen. Increased pre-implantation loss was seen at 6 and 20 mg/kg and decreased fetal weight was seen at 20 mg/kg.

Male rats were treated with oral doses of 20, 40, and 60 mg/kg/day (6, 13, and 19 times the MRHD on a mg/m<sup>2</sup> basis) of aripiprazole from 9 weeks prior to mating through mating. Disturbances in spermatogenesis were seen at 60 mg/kg and prostate atrophy was seen at 40 and 60 mg/kg, but no impairment of fertility was seen.

### **Carcinogenicity**

Lifetime carcinogenicity studies were conducted in ICR mice and in Sprague-Dawley (SD) and F344 rats. Aripiprazole was administered for 2 years in the diet at doses of 1, 3, 10, and 30 mg/kg/day to ICR mice and 1, 3, and 10 mg/kg/day to F344 rats (0.2 to 5 and 0.3 to 3 times the MRHD based on mg/m<sup>2</sup>, respectively). In addition, SD rats were dosed orally for 2 years at 10, 20, 40, and 60 mg/kg/day (3 to 19 times the MRHD based on mg/m<sup>2</sup>). Aripiprazole did not induce tumors in male mice or rats. In female mice, the incidences of pituitary gland adenomas and mammary gland adenocarcinomas and adenoacanthomas were increased at dietary doses of 3 to 30 mg/kg/day (0.1 to 0.9 times human exposure at MRHD based on AUC and 0.5 to 5 times the MRHD based on mg/m<sup>2</sup>). In female rats, the incidence of mammary gland fibroadenomas was increased at a dietary dose of 10 mg/kg/day (0.1 times human exposure at MRHD based on AUC); and the incidences of adrenocortical carcinomas and combined adrenocortical adenomas/carcinomas were increased at an oral dose of 60 mg/kg/day (10 times human exposure at MRHD based on AUC).

Proliferative changes in the pituitary and mammary gland of rodents have been observed following chronic administration of other antipsychotic agents and are considered prolactin-mediated. Serum prolactin was not measured in the aripiprazole carcinogenicity studies. However, increases in serum prolactin levels were observed in female mice in a 13-week dietary study at the doses associated with mammary gland and pituitary tumors. Serum prolactin was not increased in female rats in 4- and 13-week dietary studies at the dose associated with mammary gland tumors. The relevance for human risk of the findings of prolactin-mediated endocrine tumors in rodents is unknown.

### **Other Toxicity Studies**

#### ***Adrenocortical Changes in Rats***

A series of investigative studies were conducted in rats to determine the mechanism for the aripiprazole-related adrenocortical changes after subchronic and chronic dosing. The data from these studies supported the conclusion that the female rat-specific adrenocortical tumorigenic response at 60 mg/kg/day in the oral carcinogenicity study was secondary to aripiprazole-related adrenocortical cytotoxicity and consequent increased cell proliferation. The female specificity of the adrenocortical tumorigenic response was considered a consequence of the earlier onset and greater severity of the adrenocortical cytotoxic changes. The adrenocortical cytotoxic and tumorigenic effects have no established clinical relevance since they occurred at a dose 10 times human exposure at the MRHD based on AUC.

### ***Retinal Degeneration in Rats***

Aripiprazole produced retinal degeneration in albino Sprague-Dawley (SD) rats in a 26-week chronic toxicity study at a dose of 60 mg/kg and in a 2-year carcinogenicity study at doses of 40 and 60 mg/kg. The 40 and 60 mg/kg doses are 7 to 10 times human exposure at the MRHD based on AUC. In a subsequent 18-month investigative study in albino SD and pigmented Long-Evans (LE) rats administered 60 mg/kg/day aripiprazole, pharmacologically mediated hyperactivity occurred in both rat strains early in the study predisposing the animals to increased light exposure. Time-dependent retinal degeneration with electroretinographic and morphologic features consistent with spontaneous light-induced retinal degeneration was observed in albino SD rats, whereas there was no evidence of light-induced retinal injury in pigmented LE rats at any timepoint despite comparable systemic exposures to aripiprazole. This was due to the photoprotective effect of ocular melanin pigment in LE rats. Therefore, the retinal degeneration observed in albino SD rats after chronic dosing at high doses of aripiprazole was considered to be a consequence of drug-related, pharmacologically mediated hyperactivity during the animal room light phase, resulting in increased light exposure rather than a direct drug effect on the retina. Light-induced retinal degeneration in albino SD rats has no established clinical relevance.

### ***Dermal Sensitization and Dermal and Ocular Irritation***

Aripiprazole was not a dermal sensitizer in mice and was nonirritating to rabbit skin and eye.

### ***Phototoxicity***

Aripiprazole was nonphototoxic in Balb/c 3T3 mouse fibroblast cultures.

### ***Antigenicity***

Aripiprazole produced no evidence of active systemic anaphylaxis or passive cutaneous reactions in guinea pigs.

### ***Immunotoxicity***

Aripiprazole did not adversely affect the T-cell-dependent humoral immune response to sheep red blood cells in rats.

### ***Dependence***

In a battery of studies conducted to evaluate physical dependence and abuse potential, aripiprazole demonstrated no abuse liability in rats; mild, transient physical dependence in monkeys (rebound arousal) considered to be of little clinical significance; and no positive reinforcing effects in monkeys. Overall, the results support that aripiprazole has no abuse liability.

### ***Metabolites***

In single-dose intravenous studies in rats, OPC-14857 produced clinical effects similar to those

observed at high single oral doses of parent drug, whereas OPC-3373 produced no drug-related toxicity. In a 28-day oral toxicity study in rats, 2,3-DCPP produced CNS-related clinical signs with deaths at the high dose (30 mg/kg/day) but no evidence of target organ toxicity. All 3 metabolites were not mutagenic in bacterial reverse-mutation tests. In an in vitro cytogenetics assay in CHL cells, 2,3 DCPP increased chromosome aberrations in the presence and absence of metabolic activation; however, the increases were considered secondary to excessive cytotoxicity rather than direct DNA reactivity.

## **17 SUPPORTING PRODUCT MONOGRAPHS**

1. PrABILIFY® (aripiprazole tablets, 2 mg, 5 mg, 10 mg, 15 mg, 20 mg and 30 mg), submission control number 242200, Product Monograph, Otsuka Pharmaceuticals Co., Ltd. (February 11, 2021)

## PATIENT MEDICATION INFORMATION

### READ THIS FOR SAFE AND EFFECTIVE USE OF YOUR MEDICINE

#### Pr Aripiprazole Oral Solution

Read this carefully before you start taking **Aripiprazole Oral Solution** and each time you get a refill. This leaflet is a summary and will not tell you everything about this drug. Talk to your healthcare professional about your medical condition and treatment and ask if there is any new information about **Aripiprazole Oral Solution**.

#### Serious Warnings and Precautions

Aripiprazole Oral Solution belongs to a group of medicines called atypical antipsychotics. These medicines have been linked to a higher rate of death when used in elderly patients with dementia (which is the loss of memory and other mental abilities).

Aripiprazole Oral Solution is not to be used if you are elderly and have dementia.

#### What is Aripiprazole Oral Solution used for?

Aripiprazole Oral Solution is used for the treatment of schizophrenia in adults and in adolescents (15-17 years of age). Not all people with this disorder have the same symptoms. Some of the most common symptoms of schizophrenia may include:

- hallucinations (seeing, feeling, hearing or smelling things that are not there)
- delusions (believing things that are not true)
- paranoia (not trusting others or feeling very suspicious)
- avoiding family members and friends and wanting to be alone
- feeling depressed, anxious or tense

Aripiprazole Oral Solution is also used to treat adults and adolescent patients (13-17 years of age) who suffer from manic or mixed episodes in bipolar I disorder. Bipolar disorder is a condition with symptoms such as:

- feeling invincible or an all powerful inflated self-esteem
- having racing thoughts, easily losing train of thought
- overreacting to what you see or hear
- misinterpreting events
- speeding up your activities, talking very quickly, too loudly, or more than usual
- needing less sleep
- having poor judgment
- severe irritability

Aripiprazole Oral Solution is also used to treat symptoms of depression in adults when administered with your current antidepressant medicine. It is prescribed when you do not respond adequately to an antidepressant alone and after you have tried different antidepressant treatments during your current depressive episode.

Some of the common symptoms of depression may include:

- feeling sad or hopeless
- loss of interest and enjoyment

- a change in appetite or weight
- difficulty concentrating or sleeping
- feeling tired
- headaches
- unexplained aches and pain

Aripiprazole Oral Solution is not a cure, but it can help manage your symptoms and in adult patients may reduce the risk of relapse.

### **How does Aripiprazole Oral Solution work?**

Antipsychotic medications affect the chemicals that allow communication between nerve cells (neurotransmitters). Illnesses that affect the brain may be due to certain chemicals (dopamine and serotonin) in the brain being out of balance. These imbalances may cause some of the symptoms you may be experiencing. Exactly how Aripiprazole Oral Solution works is unknown. However, it seems to correct the balance of these chemicals.

### **What are the ingredients in Aripiprazole Oral Solution?**

Medicinal ingredient: aripiprazole

Non-medicinal ingredients: disodium edetate, fructose, glycerin, lactic acid, methylparaben, orange flavour, propylene glycol, propylparaben, purified water, sodium hydroxide, sucrose.

### **Aripiprazole Oral Solution comes in the following dosage forms:**

Solution; 1 mg / mL

### **Do not use Aripiprazole Oral Solution if:**

- You are allergic to aripiprazole or to any of the ingredients in Aripiprazole Oral Solution (see list of Non-medicinal ingredients). Aripiprazole Oral Solution contains fructose and sucrose.

### **To help avoid side effects and ensure proper use, talk to your healthcare professional before you take Aripiprazole Oral Solution. Talk about any health conditions or problems you may have, including if you:**

- have or have a family history of diabetes or high blood sugar. Your healthcare professional should check your blood sugar before you start taking Aripiprazole Oral Solution and during your treatment.
- have or have had blackouts or seizures (convulsions).
- have or have had high blood pressure.
- suffer from high blood pressure or have rapid heartbeat and a drop in blood pressure when getting up.
- have a history of:
  - stroke
  - mini-stroke
  - high blood pressure

### **Medicines like Aripiprazole Oral Solution can raise the risk of stroke / mini-stroke in elderly people who have dementia.**

- have or have a family history of:
  - heart problems

- a condition called “congenital long QT syndrome” or “acquired long QT syndrome”
  - any problems with the way your heart beats
  - heart disease
- are taking any medication that affects how your heart beats.
- are an elderly patient and suffer from dementia (loss of memory and other mental abilities).
- are at risk for developing blood clots. Risk factors include:
  - having a family history of blood clots
  - being over the age of 65
  - smoking
  - being overweight
  - having a recent major surgery (such as hip or knee replacement)
  - not being able to move due to air travel or other reasons
  - taking oral birth control (“The Pill”)
- have or have had a low white blood cell count.
- have or have had involuntary, irregular muscle movements, especially in the face (tardive dyskinesia).
- drink alcoholic beverages or use recreational drugs
- have a history of drug abuse or addiction.
- have a history of gambling or impulse-control disorders (urge to gamble, spend money, eat or other urges).
- have a history of or are at risk of sleep apnea (a sleep disorder where your breathing is interrupted during sleep).
- have been told you are a “CYP2D6 poor metabolizer”.
- are pregnant, think you are pregnant or plan to become pregnant. It is not known if Aripiprazole Oral Solution may harm your unborn baby.
- are breastfeeding or plan to breastfeed. Aripiprazole Oral Solution can pass into your milk and harm your baby. Talk to your healthcare professional about the best way to feed your baby if you take Aripiprazole Oral Solution.

**Other warnings you should know about:**

**Self-harm:** If you have thoughts of harming or killing yourself at any time, contact your healthcare professional or go to a hospital **right away**. You may find it helpful to tell a relative or close friend that you are depressed or have other mental illnesses. Ask them to read this leaflet. You might ask them to tell you if they:

- think your depression or mental illness is getting worse, or
- are worried about changes in your behaviour

**Impulse Behaviours:** The following behaviours may occur in some people who take Aripiprazole Oral Solution:

- hypersexuality (uncontrollable and / or inappropriate sexual behaviour)
- an urge to gamble, spend money, binge eat, other urges or the development of new or increased urge.

Tell your healthcare professional **right away** if you or those close to you notice these behaviours.

**Complex Sleep-Related Behaviours:** While taking medicines such as Aripiprazole Oral Solution, you may get out of bed while not being fully awake and do activities that you do not know you are doing, such as:

- sleepwalking
- eating

The next morning you may not remember what you did during the night.

**Effects in Newborns:** In some cases, babies born to a mother taking Aripiprazole Oral Solution during pregnancy have symptoms that are severe that require the newborn to be hospitalized. Sometimes, the symptoms may resolve on their own. You should be ready to get emergency medical help for your newborn, if he / she:

- has trouble breathing
- is overly sleepy
- has muscle stiffness or floppy muscles (like a rag doll)
- is shaking, or
- is having trouble feeding

**Falls:** The following symptoms have been reported with the use of antipsychotic drugs:

- feeling sleepy,
- a fall in blood pressure when you stand up from sitting or lying down,
- vision or speech problems

This can lead to falls that may cause fractures or other fall-related injuries. Certain medications, diseases or conditions can make this worse.

**Severe Skin Reactions:** In very rare cases, Drug Reaction with Eosinophilia and Systemic Symptoms (DRESS) has been reported with Aripiprazole Oral Solution. Other skin reactions such as Stevens-Johnson Syndrome (SJS), Toxic Epidermal Necrolysis (TEN), and Acute Generalized Exanthematous Pustulosis (AGEP) that can be serious or life-threatening have been reported in very rare cases with atypical antipsychotics.

These skin reactions can spread to your mouth, lips, face, hands, trunk (torso), arms and legs. Talk to your healthcare professional **right away** if you experience:

- fever
- severe rash
- peeling skin
- swelling of the face
- swollen lymph glands
- flu-like feeling
- yellow skin or eyes
- shortness of breath
- swelling of the legs
- dry cough
- chest pain or discomfort
- feeling thirsty
- urinating less often, less urine or dark urine

**Dehydration and Overheating:** It is important not to become too hot or dehydrated while you are taking Aripiprazole Oral Solution.

- Do not exercise too much
- In hot weather, stay inside in a cool place if possible
- Stay out of the sun
- Do not wear too much clothing or heavy clothing

- Drink plenty of water.

**Neuroleptic Malignant Syndrome (NMS):** NMS is potentially a life-threatening condition that has been reported with the use of antipsychotic drugs like Aripiprazole Oral Solution. Symptoms include:

- severe muscle stiffness or inflexibility with high fever,
- rapid or irregular heartbeat,
- sweating,
- state of confusion or reduced consciousness

**Weight Gain:** Your healthcare professional should check your body weight before starting Aripiprazole Oral Solution. They should continue to monitor it for as long as you are being treated with Aripiprazole Oral Solution.

**Driving and Using Machines:** You should avoid driving a car or using machinery until you know how Aripiprazole Oral Solution affects you. Some people experience:

- a change (reduced) judgment, thinking and motor skills
- feeling sleepy
- feeling lightheaded (especially when going from sitting to standing) and
- possible fainting

**Blood Tests:** Your healthcare professional should do blood tests before starting treatment with Aripiprazole Oral Solution and while you are taking it. These tests will monitor:

- blood sugar
- cholesterol
- triglycerides and
- white blood cell count.

**Tell your healthcare professional about all the medicines you take, including any drugs, vitamins, minerals, natural supplements or alternative medicines.**

**The following may interact with Aripiprazole Oral Solution:**

- ketoconazole or itraconazole, used to treat fungal infections
- quinidine, used to treat abnormal heartbeats
- paroxetine or fluoxetine, used to treat depression
- carbamazepine, used to treat seizures
- medicines used to lower your blood pressure
- alcohol. The effects of alcohol can be made worse if you drink alcohol while taking Aripiprazole Oral Solution.

**Do NOT** drink alcohol while taking Aripiprazole Oral Solution.

While on Aripiprazole Oral Solution, only take other medicines if your healthcare professional tells you to.

**How to take Aripiprazole Oral Solution:**

- Take Aripiprazole Oral Solution exactly as your healthcare professional tells you to take it.
- Your healthcare professional has decided on the best dosage for you based on your individual situation, but may change your dose depending on how you respond.
- Even if you feel better, do NOT change your dose or stop taking Aripiprazole Oral Solution without speaking to your healthcare professional.
- Aripiprazole Oral Solution can be taken with or without food.



- Try to take Aripiprazole Oral Solution at the same time each day.
- Use the measuring cup or dropper included with Aripiprazole Oral Solution to make sure you measure the right amount.

**Usual dose:**

**Schizophrenia**

**Usual adult dose:** 10 mg (10 mL) or 15 mg (15 mL) once a day. However, your healthcare professional may prescribe a lower or higher dose to a maximum of 30 mg (30 mL) once a day.

**Usual adolescent (15-17 years of age) dose:** 10 mg (10 mL) once a day. At the start of treatment, your healthcare professional will prescribe a lower daily dose (2 mg (2 mL)) and will increase the dose to 5 mg (5 mL) once a day after 2 days and to the target dose of 10 mg (10 mL) once a day after 2 additional days. Depending on how well you respond and tolerate the 10 mg dose, your healthcare professional may prescribe a lower or higher dose, to a maximum of 30 mg (30 mL) once a day.

**Manic or Mixed Episodes in Bipolar I Disorder**

**Usual adult dose:** 15 mg (15 mL) once a day. However, your healthcare professional ~~doctor~~ may prescribe a lower or higher dose to a maximum of 30 mg (30 mL) once a day.

**Usual adolescent (13-17 years of age) dose:** 10 mg (10 mL) once a day. At the start of treatment, your healthcare professional may prescribe a lower daily dose (2 mg (2 mL) once a day) and may increase the dose to 5 mg (5 mL) once a day after 2 days and to the target dose of 10 mg (10 mL) once a day after at least 2 additional days. Depending on how well you respond and tolerate the 10 mg dose, your healthcare professional may prescribe a lower or higher dose, to a maximum of 30 (30 mL) mg once a day.

**Depression:**

**Usual adult dose:** 2-5 mg (2-5 mL) once a day administered with the antidepressant you are already taking. Depending on how well you respond and tolerate the initial dose, your healthcare professional may prescribe a lower or higher dose, to a maximum of 15 mg (15 mL) once a day.

Aripiprazole Oral Solution is not for use in children under 13 years of age for the treatment of manic or mixed episodes in bipolar I disorder, or for use in children under the age of 15 years for the treatment of schizophrenia.

**Overdose:**

If you think you, or a person you are caring for, have taken too much Aripiprazole Oral Solution, contact a healthcare professional, hospital emergency department, regional poison control centre or Health Canada's toll-free number, 1-844 POISON-X (1-844-764-7669) immediately, even if there are no signs or symptoms.

**Missed Dose:**

If you miss a dose, take the missed dose as soon as you remember. If most of the day has passed, wait until your next scheduled dose. **Do not take two doses at the same time.**

**What are possible side effects from using Aripiprazole Oral Solution?**

These are not all the possible side effects you may feel when taking Aripiprazole Oral Solution. If you experience any side effects not listed here, tell your healthcare professional.

You should tell the healthcare professional if you notice any symptoms that worry you, even if you think it is not connected with the medicine. **If any of these effects are severe, tell the doctor, nurse or pharmacist.**

Side effects may include:

- insomnia
- changes in weight (gain or loss)
- feeling restless
- headache
- anxiety
- drowsiness
- diarrhea, nausea and vomiting
- constipation
- an urge to gamble, to spend money, to eat (binge eating) or other urges (development of a new or increased urge)
- hypersexuality (uncontrollable and / or inappropriate sexual behaviour of severity or duration that causes distress)
- shaking (tremors)
- abnormal movements
- dizziness
- sleep apnea (a sleep disorder where your breathing is interrupted during sleep)
- sleepwalking and eating while asleep (sleep-related eating disorders)

<b>Serious side effects and what to do about them</b>			
<b>Symptom / effect</b>	<b>Talk to your healthcare professional</b>		<b>Stop taking drug and get immediate medical help</b>
	<b>Only if severe</b>	<b>In all cases</b>	
<b>COMMON</b>			
Constipation	<b>X</b>		
Skin rash on its own	<b>X</b>		
<b>UNCOMMON</b>			
<b>Allergic Reaction:</b> difficulty swallowing or breathing, wheezing; feeling sick to your stomach and throwing up; hives or rash; swelling of the face, lips, tongue or throat			<b>X</b>
<b>Blood Clots:</b> swelling, pain and redness in an arm or leg that is warm to touch. You may develop sudden chest pain, difficulty breathing and heart palpitations		<b>X</b>	
<b>Hyperglycemia</b> (high blood sugar): increased thirst,			

frequent urination, dry skin, headache, blurred vision and fatigue	X		
<b>Hypotension</b> (low blood pressure): dizziness, fainting, lightheadedness, blurred vision, nausea, vomiting, fatigue (may occur when you go from lying or sitting to standing up).	X		
<b>Leukopenia</b> (decreased white blood cells): infections, fatigue, fever, aches, pains, and flu-like symptoms		X	
<b>Neuroleptic Malignant Syndrome:</b> severe muscle stiffness or inflexibility with high fever, rapid or irregular heartbeat, sweating, state of confusion or reduced consciousness			X
<b>Priapism:</b> long-lasting (greater than 4 hours in duration) and painful erection of the penis			X
<b>Restless Legs Syndrome:</b> unpleasant sensations in the legs; uncontrollable urge to move your legs that typically occurs in evening or during the night when sitting or lying down		X	
<b>Seizure</b> (fits): loss of consciousness with uncontrollable shaking			X
<b>Severe Skin Reactions:</b> fever, severe rash, swollen lymph glands, flu-like feeling, blisters and peeling skin that may start in and around the mouth, nose, eyes and genitals and spread to other areas of the body, yellow skin or eyes, shortness of breath, dry cough, chest pain or discomfort, feeling thirsty, urinating less often, less urine			X
<b>Stroke and Transient Ischemic Attacks:</b> sudden numbness or weakness of your arm, leg or face, especially if only on one side of the body; sudden confusion, difficulty speaking or understanding others; sudden difficulty in walking or loss of balance or coordination; suddenly feeling			X

dizzy or sudden severe headache with no known cause			
<b>Tardive Dyskinesia:</b> muscle twitching or unusual / abnormal movement of your face or tongue or other parts of your body		X	

If you have a troublesome symptom or side effect that is not listed here or becomes bad enough to interfere with your daily activities, tell your healthcare professional.

### Reporting Side Effects

You can report any suspected side effects associated with the use of health products to Health Canada by:

- Visiting the Web page on Adverse Reaction Reporting (<https://www.canada.ca/en/health-canada/services/drugs-health-products/medeffect-canada/adverse-reaction-reporting.html>) for information on how to report online, by mail or by fax; or
- Calling toll-free at 1-866-234-2345.

*NOTE: Contact your health professional if you need information about how to manage your side effects. The Canada Vigilance Program does not provide medical advice.*

### Storage:

Store Aripiprazole Oral Solution at room temperature, 15-30°C. Aripiprazole Oral Solution must be used within 6 months of opening the bottle and before the expiry date, whichever comes first. The expiry date is stated on the carton and bottle label after EXP. Keep out of reach and sight of children.

### If you want more information about Aripiprazole Oral Solution:

- Talk to your healthcare professional.
- Find the full Product Monograph that is prepared for healthcare professionals and includes this Patient Medication Information by visiting the Health Canada website (<https://www.canada.ca/en/health-canada/services/drugs-health-products/drug-products/drug-product-database.html>); or by calling 1-866-399-9092.

This leaflet was prepared by:

Orimed Pharma Inc.  
1310 rue Nobel  
Boucherville, Québec  
J4B 5H3, Canada

Last Revised: JAN 15, 2025