

PRODUCT MONOGRAPH
INCLUDING PATIENT MEDICATION INFORMATION

ADVIL COLD & SINUS NIGHTTIME

ADVIL COLD & SINUS PLUS

Ibuprofen, Pseudoephedrine Hydrochloride and Chlorpheniramine Maleate Caplets,
200 mg/30 mg/2 mg, for Oral use

ADVIL COLD, SINUS & FLU EXTRA STRENGTH

Ibuprofen, Pseudoephedrine Hydrochloride and Chlorpheniramine Maleate Caplets,
400 mg/60 mg/4 mg, for Oral use

CHILDREN'S ADVIL COLD & FLU MULTI-SYMP TOM

Ibuprofen, Pseudoephedrine Hydrochloride and Chlorpheniramine Maleate Suspension
100 mg/15 mg/1 mg per 5 mL, for Oral use

ATC Code: M01AE51 Ibuprofen, Combinations

Haleon Canada ULC
55 Standish Court, Suite 450
Mississauga, Ontario, Canada
LSR 4B2

Date of Authorization:
MAY 16, 2025

Submission Control Number: 296430

RECENT MAJOR LABEL CHANGES

<p>2 CONTRAINDICATIONS</p> <p>3 SERIOUS WARNINGS AND PRECAUTIONS BOX</p> <p>7 WARNINGS AND PRECAUTIONS, Cardiovascular, Gastrointestinal, Monitoring and Laboratory Tests, Special Populations – Oligohydramnios/Neonatal Renal Impairment, Pregnant Women and Breastfeeding</p>	<p>01/2025</p>
--	----------------

TABLE OF CONTENTS

Sections or subsections that are not applicable at the time of authorization are not listed.

RECENT MAJOR LABEL CHANGES 2

TABLE OF CONTENTS 2

PART I: HEALTH PROFESSIONAL INFORMATION..... 5

1 INDICATIONS..... 5

 1.1 Pediatrics..... 5

 1.2 Geriatrics 5

2 CONTRAINDICATIONS 6

3 SERIOUS WARNINGS AND PRECAUTIONS BOX 7

4 DOSAGE AND ADMINISTRATION 7

 4.1 Dosing Considerations 7

 4.2 Recommended Dose and Dosage Adjustment 7

 4.4 Administration..... 8

 4.5 Missed Dose 8

5 OVERDOSAGE..... 8

6 DOSAGE FORMS, STRENGTHS, COMPOSITION AND PACKAGING 11

7 WARNINGS AND PRECAUTIONS 13

 7.1 Special Populations..... 19

 7.1.1 Pregnant Women 20

 7.1.2 Breastfeeding 20

 7.1.3 Pediatrics 21

7.1.4	Geriatrics (> 65 years of age)	21
8	ADVERSE REACTIONS	21
8.1	Adverse Reaction Overview	21
8.2	Clinical Trial Adverse Reactions	21
8.2.1	Clinical Trial Adverse Reactions – Pediatrics	26
8.5	Post-Market Adverse Reactions	29
9	DRUG INTERACTIONS	32
9.1	Serious Drug Interactions	32
9.2	Drug Interactions Overview	32
9.3	Drug-Behavioural Interactions.....	32
9.4	Drug-Drug Interactions	33
9.5	Drug-Food Interactions.....	37
9.6	Drug-Herb Interactions.....	37
9.7	Drug-Laboratory Test Interactions.....	37
10	CLINICAL PHARMACOLOGY	37
10.1	Mechanism of Action.....	37
10.2	Pharmacodynamics	38
10.3	Pharmacokinetics	41
11	STORAGE, STABILITY AND DISPOSAL	45
12	SPECIAL HANDLING INSTRUCTIONS.....	45
PART II: SCIENTIFIC INFORMATION		46
13	PHARMACEUTICAL INFORMATION	46
14	CLINICAL TRIALS	48
14.1	Clinical Trials by Indication	48
14.2	Comparative Bioavailability Studies.....	53
15	MICROBIOLOGY	60
16	NON-CLINICAL TOXICOLOGY	60
PATIENT MEDICATION INFORMATION.....		64
PATIENT MEDICATION INFORMATION.....		71

ADVIL COLD & SINUS NIGHTTIME

ADVIL COLD & SINUS PLUS

ADVIL COLD, SINUS & FLU EXTRA STRENGTH

Ibuprofen, Pseudoephedrine Hydrochloride and Chlorpheniramine Maleate Caplets

CHILDREN'S ADVIL COLD & FLU MULTI-SYMPTOM

Ibuprofen, Pseudoephedrine Hydrochloride and Chlorpheniramine Maleate Suspension

PATIENT MEDICATION INFORMATION..... 78
PATIENT MEDICATION INFORMATION..... 85

PART I: HEALTH PROFESSIONAL INFORMATION

1 INDICATIONS

Advil Cold & Sinus Nighttime and Advil Cold & Sinus Plus (Ibuprofen, Pseudoephedrine Hydrochloride and Chlorpheniramine Maleate Caplets) is indicated for:

- the temporary relief of symptoms associated with the common cold, including nasal congestion, sore throat, headache, fever, minor body aches and pains, rhinorrhea, sneezing, itching of the eyes, excessive tearing and sinus pain.

Advil Cold, Sinus & Flu Extra Strength (Ibuprofen, Pseudoephedrine Hydrochloride and Chlorpheniramine Maleate Caplets) is indicated for:

- the temporary relief of combined symptoms associated with the common cold and flu, including nasal congestion, sore throat, headache, fever, minor body aches and pains, rhinorrhea, sneezing, itching of the eyes, excessive tearing and sinus pain.

Children's Advil Cold & Flu Multi-symptom (Ibuprofen, Pseudoephedrine Hydrochloride and Chlorpheniramine Maleate Suspension) is indicated for:

- the temporary relief of combined symptoms of cold and flu: stuffy nose, fever, minor body aches, sore throat, headache, runny nose, sneezing, itchy, watery eyes and sinus pain.

1.1 Pediatrics

Pediatrics (<12 years of age): No data for Advil Cold & Sinus Nighttime, Advil Cold & Sinus Plus and Advil Cold, Sinus & Flu Extra Strength are available to Health Canada; therefore, Health Canada has not authorized an indication for pediatric use for these products.

Pediatrics (6 – 12 years of age): Based on the data submitted and reviewed by Health Canada, the safety and efficacy of Children's Advil Cold & Flu Multi-Symptom in pediatric patients has been established. Therefore, Health Canada has authorized an indication for pediatric use.

Pediatrics (<6 years of age): No data are available to Health Canada; therefore, Health Canada has not authorized an indication for Children's Advil Cold & Flu Multi-Symptom for children under 6 years of age.

1.2 Geriatrics

Geriatrics (>65 years of age): Evidence from clinical studies and experience suggests that use in the geriatric population is associated with differences in safety or effectiveness. Therefore, the use of Advil Cold & Sinus Nighttime, Advil Cold & Sinus Plus and Advil Cold, Sinus & Flu Extra Strength in this population is not recommended. (See [7 WARNINGS AND PRECAUTIONS](#) and [4 DOSAGE AND ADMINISTRATION](#)).

ADVIL COLD & SINUS NIGHTTIME

ADVIL COLD & SINUS PLUS

ADVIL COLD, SINUS & FLU EXTRA STRENGTH

Ibuprofen, Pseudoephedrine Hydrochloride and Chlorpheniramine Maleate Caplets

CHILDREN'S ADVIL COLD & FLU MULTI-SYMPOM

Ibuprofen, Pseudoephedrine Hydrochloride and Chlorpheniramine Maleate Suspension

2 CONTRAINDICATIONS

- Active peptic ulcer, a history of recurrent ulceration or active inflammatory disease of the gastrointestinal system, such as ulcerative colitis and Crohn's disease.
- Known or suspected hypersensitivity to ibuprofen or other non-steroidal anti-inflammatory (NSAID) drugs. Patients who are hypersensitive to this drug or any ingredient in the formulation or component of the container. For a complete listing, see [6 DOSAGE FORMS, STRENGTHS, COMPOSITION AND PACKAGING](#). The potential for cross-reactivity between different NSAIDs must be kept in mind.
- Advil Cold & Sinus Nighttime, Advil Cold & Sinus Plus and Advil Cold, Sinus & Flu Extra Strength or Children's Advil Cold & Flu Multi-Symptom should not be used in patients with the complete or partial syndrome of nasal polyps, or in whom angioedema syndrome, asthma, anaphylaxis, bronchospastic reaction, urticaria, rhinitis or other allergic manifestations are precipitated by acetylsalicylic acid (ASA) or other nonsteroidal anti-inflammatory agents. Fatal anaphylactoid reactions have occurred in such individuals. As well, individuals with the above medical problems are at risk of a severe reaction even if they have taken NSAIDs in the past without any adverse effects.
- Significant hepatic impairment or active liver disease.
- Severely impaired or deteriorating renal function (creatinine clearance <30 mL/min). Individuals with lesser degrees of renal impairment are at risk of deterioration of their renal function when prescribed NSAIDs and must be monitored.
- Ibuprofen is not recommended for use with other NSAIDs because of the absence of any evidence demonstrating synergistic benefits and the potential for additive side effects (See [9 DRUG INTERACTIONS](#)).
- Children (i.e. 18 years of age and younger) with kidney disease and children who have suffered significant fluid loss due to vomiting, diarrhea or lack of fluid intake, should not be given ibuprofen.
- These products should not be used by patients who have known or suspected hypersensitivity to pseudoephedrine or other sympathomimetic amines, are taking or have taken monoamine oxidase inhibitor (MAOI) drugs within the last 14 days, have been diagnosed with severe hypertension, or have severe coronary artery disease (See [9 DRUG INTERACTIONS](#)).
- Hypersensitivity to chlorpheniramine maleate.
- Ibuprofen should not be used during the third trimester of pregnancy because of risk of premature closure of the ductus arteriosus, and prolonged parturition.
- Ibuprofen is contraindicated in patients with systemic lupus erythematosus, as an anaphylaxis-like reaction with fever may occur, particularly when ibuprofen has been administered previously.
- Known hyperkalemia (see [Fluid and Electrolyte Balance](#))
- Immediately before or following heart surgery.
- In patients with thyroid disease.

ADVIL COLD & SINUS NIGHTTIME

ADVIL COLD & SINUS PLUS

ADVIL COLD, SINUS & FLU EXTRA STRENGTH

Ibuprofen, Pseudoephedrine Hydrochloride and Chlorpheniramine Maleate Caplets

CHILDREN'S ADVIL COLD & FLU MULTI-SYMPTOM

Ibuprofen, Pseudoephedrine Hydrochloride and Chlorpheniramine Maleate Suspension

- In patients with Raynaud’s Syndrome.

3 SERIOUS WARNINGS AND PRECAUTIONS BOX

Serious Warnings and Precautions

- Patients with diabetes, glaucoma or difficulty in urination due to enlargement of the prostate gland should not take this drug unless directed by a physician (See [General](#)).
- Use with caution in patients with heart failure, hypertension or other conditions predisposing to fluid retention (See [Cardiovascular](#) and [Fluid and Electrolyte Balance](#) and [Antihypertensives](#)).
- Use with caution in patients who might be prone to gastrointestinal tract irritation, particularly those with a history of peptic ulcer, diverticulosis, or other inflammatory disease of the gastrointestinal tract such as ulcerative colitis and Crohn’s disease (See [Gastrointestinal](#) and [Anticoagulants](#)).
- Use with caution in patients at greatest risk of renal toxicity, such as those with impaired renal function, heart failure, liver dysfunction, those taking diuretics and the elderly (See [Renal](#)).
- If urinary symptoms (bladder pain, dysuria, urinary frequency), hematuria and cystitis occur, the drug should be stopped immediately (See [Genitourinary](#)).
- Ibuprofen is contraindicated for use during the third trimester of pregnancy because of risk of premature closure of the ductus arteriosus and uterine inertia (prolonged parturition) (see [2 CONTRAINDICATIONS](#)).
- Caution should be exercised in prescribing Advil products if trying to conceive, during the first and second trimesters of pregnancy or breastfeeding. Use of NSAIDS at approximately 20 weeks of gestation or later may cause oligohydramnios, and renal dysfunction including renal failure (See [Special Populations](#)).

4 DOSAGE AND ADMINISTRATION

4.1 Dosing Considerations

- Do not take for fever for more than 3 days or for more than 5 days for cold symptoms/pain.
- Patients older than 65 years should not use these products.
- The lowest effective dose should be used for the shortest possible duration.

4.2 Recommended Dose and Dosage Adjustment

Advil Cold & Sinus Nighttime and Advil Cold & Sinus Plus

- Adults under 65 years of age and children over 12 years of age: Take 1 or 2 caplets every 4 to 6 hours as needed. No more than 6 caplets are to be taken in 24 hours, unless directed by a physician.

ADVIL COLD & SINUS NIGHTTIME

ADVIL COLD & SINUS PLUS

ADVIL COLD, SINUS & FLU EXTRA STRENGTH

Ibuprofen, Pseudoephedrine Hydrochloride and Chlorpheniramine Maleate Caplets

CHILDREN’S ADVIL COLD & FLU MULTI-SYMPTOM

Ibuprofen, Pseudoephedrine Hydrochloride and Chlorpheniramine Maleate Suspension

Advil Cold, Sinus & Flu Extra Strength

- Adults under 65 years of age and children over 12 years of age: Take 1 caplet every 4 to 6 hours as needed. No more than 3 caplets are to be taken in 24 hours, unless directed by a physician.

Children's Advil Cold & Flu Multi-Symptom

- The appropriate dose can be determined by using either the child's age or weight. If possible, use weight to dose, otherwise use age. Use only the measuring device provided.
- The dosages are as follows:

Weight	Age	Dosage
--	Under 6 years	DO NOT USE
21.4 – 43.0 kg / 48 – 95 lbs	6 – 12 years	10 mL = 2 teaspoons

- The suspension should be shaken well before pouring the dose.
- Doses may be repeated every 6 hours while symptoms persist, up to 4 doses a day, or as directed by a physician.

4.4 Administration

See [4.2 Recommended Dose and Dosage Adjustment](#).

4.5 Missed Dose

Take the missed dose as soon as you remember. If it is almost time for your next dose, wait until then to take your medicine and skip the missed dose. Do not take two doses at the same time.

5 OVERDOSAGE

Symptoms of Overdosage

Advil Cold & Sinus Nighttime, Advil Cold & Sinus Plus, Advil Cold, Sinus & Flu Extra Strength and Children's Advil Cold & Flu Multi-symptom contain ibuprofen, pseudoephedrine hydrochloride and chlorpheniramine maleate. The toxicity of overdose is dependent upon the amount of the product ingested, and the time elapsed since ingestion; individual responses may vary, thus making it necessary to evaluate each case separately. The most frequently reported symptoms of the three combination drugs in situations of overdose include abdominal pain, nausea, vomiting, lethargy and drowsiness, headache, tinnitus, CNS depression or stimulation (especially in young children), seizures, anxiety, hyper-excitability, irritability, delirium, convulsions, dilated pupils, tachycardia, bradycardia, hypertension or hypotension, hyperkalemia, respiratory depression, atrial fibrillation, abnormal speech, visual and tactile hallucinations, ataxia, and hyper-reflexia. Metabolic acidosis, electrolyte disturbances,

ADVIL COLD & SINUS NIGHTTIME

ADVIL COLD & SINUS PLUS

ADVIL COLD, SINUS & FLU EXTRA STRENGTH

Ibuprofen, Pseudoephedrine Hydrochloride and Chlorpheniramine Maleate Caplets

CHILDREN'S ADVIL COLD & FLU MULTI-SYMPTOM

Ibuprofen, Pseudoephedrine Hydrochloride and Chlorpheniramine Maleate Suspension

coma, acute renal failure, and apnoea (primarily in very young children) may rarely occur.

Treatment of Overdosage

In cases of acute overdose, the stomach should be emptied through induction of emesis (in alert patients only) or gastric lavage. Due to the rapid absorption of pseudoephedrine and ibuprofen from the gut, emesis is most effective if initiated within 30 minutes of ingestion. Orally administered activated charcoal may help in reducing the absorption of drugs when given less than 2 hours following ingestion. There is some evidence that repeated administration of activated charcoal may bind the medication that has diffused from the circulation. Inducing diuresis may be helpful. The treatment of acute overdose is primarily supportive. Cardiac status should be monitored, and the serum electrolytes measured. If there are signs of cardiac toxicity, propranolol may be administered intravenously. A slow infusion of a dilute solution of potassium chloride should be initiated in the event of a drop in the serum potassium level. Despite hypokalemia, the patient is unlikely to be potassium depleted; therefore, overload must be avoided. Monitoring of the serum potassium is advisable for several hours after administration of the salt. For delirium or convulsions, intravenous administration of diazepam is indicated.

Hypotension may be treated with vasopressors, although epinephrine should not be used because it may further lower blood pressure. Stimulants (analeptic agents) should be avoided because they may cause seizures.

In pediatric patients, the estimated amount of ibuprofen ingested per body weight may be helpful to predict the potential for development of toxicity although each case must be evaluated. Ingestion of less than 100 mg/kg is unlikely to produce toxicity. Pediatric patients ingesting 100 to 200 mg/kg may be managed with induced emesis and a minimal observation time of at least four hours. Pediatric patients ingesting 200 to 400 mg/kg of ibuprofen should have immediate gastric emptying and at least four hours observation. Pediatric patients ingesting greater than 400 mg/kg require immediate medical referral, careful observation and appropriate supportive therapy. Induced emesis is not recommended in overdoses greater than 400 mg/kg because of the risk for convulsions and the potential for aspiration of gastric contents.

In adult patients, the dose reportedly ingested does not appear to be predictive of toxicity. The need for referral and follow-up must be judged by the circumstances at the time of the overdose ingestion. Symptomatic adults should be carefully evaluated, observed and supported.

For management of a suspected drug overdose, contact your regional poison control centre.

Examples of Ibuprofen Overdose

A 41-year-old man with multiple medical problems, including long-term renal insufficiency, developed near-fatal acute renal failure after ingestion of a massive dose (36 g) of ibuprofen. He required dialysis for several months, at which point his renal function improved.

In children, ibuprofen overdoses less than 100 mg/kg are unlikely to produce toxicity. In adults, the dose of ibuprofen reportedly ingested does not appear to be predictive of toxicity.

With electrolyte replacement and other intensive measures, a 21-month-old child recovered within 5

ADVIL COLD & SINUS NIGHTTIME

ADVIL COLD & SINUS PLUS

ADVIL COLD, SINUS & FLU EXTRA STRENGTH

Ibuprofen, Pseudoephedrine Hydrochloride and Chlorpheniramine Maleate Caplets

CHILDREN'S ADVIL COLD & FLU MULTI-SYMP TOM

Ibuprofen, Pseudoephedrine Hydrochloride and Chlorpheniramine Maleate Suspension

days after accidental ingestion of 8 g of ibuprofen. A 2-year-old child who ingested approximately 8 g of ibuprofen was treated with activated charcoal, developed metabolic acidosis and acute renal insufficiency, and recovered within 72 hours. A 6-year-old child became comatose after ingesting 6 g of ibuprofen. He was treated with gastric lavage, charcoal, and various supportive measures and recovered within 24 hours.

Examples of Pseudoephedrine Overdose

Hypertensive crisis (blood pressure 200/160 mmHg) was reported in a 23-year-old man after ingestion of 840 mg pseudoephedrine (in Trinalin tablets; also containing azatadine). The patient presented with severe headache, dizziness, diaphoresis, and epigastric pain. His hypertension was treated effectively with intravenous labetalol.

In a study to determine the toxicity of pseudoephedrine in children 2 to 6 years of age, 22% of 101 exposures to doses ranging from 30 to 180 mg were associated with drowsiness, and 7% were associated with mild hyperactivity. The symptoms were mild, and the children were treated with fluids and observation. Of 39 exposures to doses above 180 mg, 15% were associated with drowsiness and 13% were associated with mild hyperactivity.

Hypertension was reported in an 8-week-old infant after administration of pseudoephedrine 7.5 mg four times daily orally and phenylephrine 1/4% intranasally four times daily for 7 days. The infant's blood pressure normalized after discontinuation of the decongestants and remained normal at follow-up.

A 2-year-old boy was overdosed with a non-prescription cough and cold preparation containing 7.5 mg dextromethorphan and 15 mg pseudoephedrine per 5 mL. After receiving three doses of 1.5 teaspoonfuls spaced 6 hours apart, he developed hyperexcitability, hyperirritability, agitation, incoherent babbling, and difficulty maintaining his balance. On examination, the patient exhibited hyperactivity, ataxia, dilated pupils, and tachycardia (180 beats per minute). His status normalized over a period of 4 hours.

A 3-year-old girl experienced visual hallucinations after administration of a non-prescription decongestant containing pseudoephedrine. The child had inadvertently been given 20 mg/kg of pseudoephedrine administered in two doses over the previous 12 hours. A 5-year-old boy suffered from severe hallucinations beginning 5 hours after drinking 60 mL of syrup containing pseudoephedrine and triprolidine (Actifed).

Pseudoephedrine overdose may precipitate psychosis in individuals with underlying psychiatric disorders.

A 27-year-old man with a history of bipolar affective disorders experienced an episode of acute paranoid psychosis after chronic abuse of Actifed syrup (pseudoephedrine and triprolidine). The patient had abused Actifed for several years, taking one to two bottles on weekends. Approximately 4 days prior to onset of visual and auditory hallucinations and paranoia, he had increased the amount to two bottles per day. His hallucinations disappeared within 1 day after discontinuation of Actifed.

A mixed bipolar psychotic disorder was precipitated by a large dose of pseudoephedrine in a 13-year-old girl with a familial predisposition to psychotic disorders. The patient took 8 tablets of 60 mg pseudoephedrine in one afternoon. She was hospitalized for psychiatric treatment and was discharged

ADVIL COLD & SINUS NIGHTTIME

ADVIL COLD & SINUS PLUS

ADVIL COLD, SINUS & FLU EXTRA STRENGTH

Ibuprofen, Pseudoephedrine Hydrochloride and Chlorpheniramine Maleate Caplets

CHILDREN'S ADVIL COLD & FLU MULTI-SYMPTOM

Ibuprofen, Pseudoephedrine Hydrochloride and Chlorpheniramine Maleate Suspension

after 2 weeks. She had another psychotic episode 7 months later, without exposure to pseudoephedrine.

A 19-month-old girl who ingested approximately 600 mg of pseudoephedrine experienced a generalized tonic clonic seizure.

Examples of Ibuprofen/Pseudoephedrine Hydrochloride Combination Products Overdose

In seven of eight reports of overdose with an ibuprofen/pseudoephedrine hydrochloride combination, the patients recovered without hospitalisation. A 17-year-old woman ingested eight tablets of ibuprofen/pseudoephedrine hydrochloride combination plus 24 to 30 tablets of extra-strength Tylenol. She was treated with acetylcysteine solution (Mucomyst) and charcoal and was discharged from the hospital after a 2-day stay.

Examples of Chlorpheniramine Overdose

Adult overdosage usually causes CNS depression with drowsiness or coma followed by excitement and seizures. Severe toxicity in children and adults may result in deep coma, cardiorespiratory collapse, or death. The onset of symptoms may occur within 30 minutes to 2 hours after ingestion; death may occur several days after the onset of toxic symptoms.

The probable oral lethal dose of chlorpheniramine is approximately 5 to 50 mg/kg. Postmortem analysis of the blood of a young man who apparently died of pulmonary oedema revealed the following drug concentrations: chlorpheniramine, 1.1 mg/L; ethanol, 0.12%; diazepam, 0.2 mg/L; desmethyldiazepam, 0.2 mg/L.

Data from poison control centres for the period 1988 to 1992 indicated that accidental exposure to paediatric cough and cold preparations containing chlorpheniramine, in comparison with preparations that did not contain chlorpheniramine, did not increase the risk of an adverse outcome in children under 6 years of age. A total of 10,289 cases of accidental exposure were evaluated.

Of 3.8 million exposures involving children under 6 years of age reported to U.S. poison control centres in 1985 to 1989, 38 thousand involved antihistamines, and of those, 20 children had major effects (life-threatening symptoms or residual disability) and four children died.

6 DOSAGE FORMS, STRENGTHS, COMPOSITION AND PACKAGING

Advil Cold & Sinus Nighttime and Advil Cold & Sinus Plus

Route of Administration	Dosage Form / Strength/Composition	Non-medicinal Ingredients
Oral	Caplet / 200 mg Ibuprofen, 30 mg Pseudoephedrine	carnauba wax, corn starch, croscarmellose sodium, FD&C red no. 40, FD&C yellow no. 6, glyceryl behenate, hypromellose,

ADVIL COLD & SINUS NIGHTTIME

ADVIL COLD & SINUS PLUS

ADVIL COLD, SINUS & FLU EXTRA STRENGTH

Ibuprofen, Pseudoephedrine Hydrochloride and Chlorpheniramine Maleate Caplets

CHILDREN'S ADVIL COLD & FLU MULTI-SYMPTOM

Ibuprofen, Pseudoephedrine Hydrochloride and Chlorpheniramine Maleate Suspension

	Hydrochloride and 2 mg Chlorpheniramine Maleate	microcrystalline cellulose, pharmaceutical ink, polydextrose, polyethylene glycol, pregelatinized starch, silicon dioxide, titanium dioxide.
--	---	--

The caplets are bright orange printed on one side in black ink.

Advil Cold & Sinus Nighttime Caplets are available in blister packages of 20 caplets and bottles of 40 caplets.

Advil Cold & Sinus Plus Caplets are available in blister packages of 20 caplets and bottles of 40, 72 and 92 caplets.

Advil Cold, Sinus & Flu Extra Strength

Route of Administration	Dosage Form / Strength/Composition	Non-medicinal Ingredients
Oral	Caplets / Ibuprofen 400 mg, Pseudoephedrine Hydrochloride 60 mg and Chlorpheniramine Maleate 4 mg	carnauba wax, cornstarch, croscarmellose sodium, glyceryl behenate, hypromellose, iron oxide black, iron oxide yellow, microcrystalline cellulose, polyethylene glycol, polydextrose, pre-gelatinized starch, propylene glycol, silicon dioxide, titanium dioxide.

The caplets are yellow film-coated, printed "ACS PLUS XS" in black ink on one side and are available in blister packages 16 and bottles of 32.

Children's Advil Cold & Flu Multi-Symptom

Route of Administration	Dosage Form / Strength/Composition	Non-medicinal Ingredients
Oral	Suspension/100 mg ibuprofen, 15 mg pseudoephedrine	carboxymethylcellulose sodium, citric acid, edetate disodium, FD&C blue no. 1, FD&C red no. 40, flavour, glycerin, microcrystalline cellulose, polysorbate 80, sodium citrate, sodium benzoate,

ADVIL COLD & SINUS NIGHTTIME

ADVIL COLD & SINUS PLUS

ADVIL COLD, SINUS & FLU EXTRA STRENGTH

Ibuprofen, Pseudoephedrine Hydrochloride and Chlorpheniramine Maleate Caplets

CHILDREN'S ADVIL COLD & FLU MULTI-SYMP TOM

Ibuprofen, Pseudoephedrine Hydrochloride and Chlorpheniramine Maleate Suspension

	hydrochloride and 1 mg chlorpheniramine maleate per 5 mL	sorbitol, sucralose, water, xanthan gum.
--	--	--

Children’s Advil Cold & Flu Multi-symptom is a translucent deep red (berry flavour). Available in plastic bottles of 100 mL.

7 WARNINGS AND PRECAUTIONS

Please see [3 SERIOUS WARNINGS AND PRECAUTIONS BOX](#).

General

To minimize the potential risk for an adverse event, the lowest effective dose should be used for the shortest possible duration.

As with other anti-inflammatory drugs, ibuprofen may mask the usual signs of infection.

Ibuprofen is NOT recommended for use with other NSAIDs because of the absence of any evidence demonstrating synergistic benefits and the potential for additive adverse reactions. (See [Acetylsalicylic acid \(ASA\) or other NSAIDs](#))

If nervousness, dizziness, or sleeplessness occurs, use of Advil products should be discontinued and a physician should be consulted. Advil products should not be used for more than 3 days for fever or 5 days for cold symptoms/pain.

These products may cause drowsiness. Alcohol may increase this effect. Alcoholic beverages should be avoided while taking this drug. This drug should not be taken along with sedatives or tranquilizers without first consulting a physician.

In case of an overdose, medical help or a poison control centre should be contacted immediately. Prompt medical attention is critical, even in the absence of signs or symptoms.

Carcinogenesis and Mutagenesis

Not applicable.

Cardiovascular

These products should be used with caution in patients with heart failure, marginal cardiac function, palpitations, hypertension, peripheral arterial disease or other conditions predisposing to fluid retention. Fluid retention and oedema have been observed in patients treated with ibuprofen. As with many other nonsteroidal anti-inflammatory drugs, the possibility of precipitating congestive heart failure in elderly patients or those with compromised cardiac function should be borne in mind.

Use of ibuprofen may precipitate congestive heart failure in patients with marginal cardiac function, elevated blood pressure and palpitations.

Long term continuous use may increase the risk of heart attack or stroke.

These products should be used with caution in hypertensive patients because of the possible pressor

effect of pseudoephedrine. Pseudoephedrine has been shown to increase blood pressure in normotensive adults and in patients with hypertension.

Pseudoephedrine treatment may increase heart rate and can cause arrhythmia. Asymptomatic, multifocal premature ventricular contractions (PVCs) were reported with the use of Actifed (a combination of pseudoephedrine with an antihistamine, triprolidine), two tablets every 4 hours around the clock, for several days to treat nasal congestion. The PVCs disappeared within a few days after discontinuation of the medication.

There have been reports of acute systemic vasoconstrictive events with pseudoephedrine.

Significant examples include:

- Acute Coronary Syndrome (ACS): Symptoms include sudden chest pain, tightness, heavy sweating and dyspnoea at rest.
- Posterior reversible encephalopathy (PRES)/reversible cerebral vasoconstriction syndrome (RCVS): Symptoms included sudden onset of severe headache, nausea, vomiting, confusion, seizures and visual disturbances. Most cases improved or resolved within a few days following appropriate treatment.

Pseudoephedrine should be discontinued immediately and medical advice sought if any signs/symptoms of vasoconstrictive events develop.

Dependence/Tolerance

Pseudoephedrine has the potential to cause drug dependency and withdrawal effects. Reportedly, a woman with a history of depression experienced a stimulatory effect from the use of 50 to 300 mL of Actifed (pseudoephedrine and triprolidine) daily (the recommended dose is 30 mL per day). A 37-year-old woman admitted to taking 100 to 150 30-mg pseudoephedrine tablets daily. She had gradually increased the daily dose over the previous 5 years to counteract chronic fatigue, apathy, and depression. A previous attempt to discontinue use of the drug had produced visual hallucinations, severe fatigue, and depression. Slow withdrawal by 200 to 300 mg/day resulted in a return of depressive symptoms; thereafter, the dose was decreased more slowly, by 90 mg/day. The patient was later diagnosed as having a mixed character disorder and reactive depression.

Ear/Nose/Throat

See [2 CONTRAINDICATIONS](#).

Endocrine and Metabolism

Patients with thyroid disease or diabetes should not take this drug. See [2 CONTRAINDICATIONS](#).

Fluid and Electrolyte Balance

Fluid retention and oedema have been observed in patients treated with ibuprofen. Therefore, as with many other nonsteroidal anti-inflammatory drugs, the possibility of precipitating congestive heart failure in elderly patients or those with compromised cardiac function should be borne in mind. Advil products should be used with caution in patients with heart failure, hypertension or other conditions predisposing to fluid retention.

With nonsteroidal anti-inflammatory treatment there is a potential risk of hyperkalemia, particularly in

ADVIL COLD & SINUS NIGHTTIME

ADVIL COLD & SINUS PLUS

ADVIL COLD, SINUS & FLU EXTRA STRENGTH

Ibuprofen, Pseudoephedrine Hydrochloride and Chlorpheniramine Maleate Caplets

CHILDREN'S ADVIL COLD & FLU MULTI-SYMPTOM

Ibuprofen, Pseudoephedrine Hydrochloride and Chlorpheniramine Maleate Suspension

patients with conditions such as diabetes mellitus or renal failure; elderly patients; or in patients receiving concomitant therapy with B-adrenergic blockers, angiotensin converting enzyme inhibitors or some diuretics. Serum electrolytes should be monitored periodically during long-term therapy, especially in those patients who are at risk.

Gastrointestinal

See [2 CONTRAINDICATIONS](#). Serious GI toxicity, such as peptic ulceration, perforation and gastrointestinal bleeding, sometimes severe and occasionally fatal, can occur at any time, with or without symptoms in patients treated with NSAIDs including ibuprofen.

Minor upper GI problems, such as dyspepsia, are common, usually developing early in therapy. Physicians should remain alert for ulceration and bleeding in patients treated with non-steroidal anti-inflammatory drugs, even in the absence of previous GI tract symptoms.

In patients observed in clinical trials of such agents, symptomatic upper GI ulcers, gross bleeding, or perforation appear to occur in approximately 1% of patients treated for 3-6 months and in about 2-4% of patients treated for one year. The risk continues beyond one year and possibly increases. The incidence of these complications increases with increasing dose.

These products should be given under close medical supervision to patients prone to gastrointestinal tract irritation, particularly those with a history of peptic ulcer, diverticulosis or other inflammatory disease of the gastrointestinal tract such as ulcerative colitis and Crohn's disease. In these cases, the physician must weigh the benefits of treatment against the possible hazards.

Physicians should inform patients about the signs and/or symptoms of serious GI toxicity and instruct them to contact a physician immediately if they experience persistent dyspepsia or other symptoms or signs suggestive of gastrointestinal ulceration or bleeding. Because serious GI tract ulceration and bleeding can occur without warning symptoms, physicians should follow chronically treated patients by checking their haemoglobin periodically and by being vigilant for the signs and symptoms of ulceration and bleeding and should inform the patients of the importance of this follow-up.

If ulceration is suspected or confirmed, or if GI bleeding occurs, Advil products should be discontinued immediately, appropriate treatment instituted, and the patient monitored closely.

No studies, to date, have identified any group of patients not at risk of developing ulceration and bleeding. The major risk factors are a prior history of serious GI events and increasing age. Possible risk factors include other factors such as *Helicobacter pylori* infection excess alcohol intake, smoking, female gender and concomitant oral steroid and anticoagulant use. Anti-coagulants, anti-platelet agents (including ASA) or selective serotonin reuptake inhibitors (SSRI's) have been associated with increased risk. Studies to date show that all NSAIDs can cause GI tract adverse events. Although existing data does not clearly identify differences in risk between various NSAIDs, this may be shown in the future.

There is no definitive evidence that the concomitant administration of histamine H2-receptor antagonists and/or antacids will either prevent the occurrence of gastrointestinal side effects or allow the continuation of Advil therapy when and if these adverse reactions appear.

Ischemic colitis has been reported in association with the use of pseudoephedrine. In four separate cases, perimenopausal women had ingested varying quantities of pseudoephedrine (60 mg or more daily) for treatment of upper respiratory disorders. All patients had taken pseudoephedrine within the

ADVIL COLD & SINUS NIGHTTIME

ADVIL COLD & SINUS PLUS

ADVIL COLD, SINUS & FLU EXTRA STRENGTH

Ibuprofen, Pseudoephedrine Hydrochloride and Chlorpheniramine Maleate Caplets

CHILDREN'S ADVIL COLD & FLU MULTI-SYMPTOM

Ibuprofen, Pseudoephedrine Hydrochloride and Chlorpheniramine Maleate Suspension

week preceding symptom onset, and all patients presented with complaints of acute onset abdominal pain associated with fresh blood in the stool. Colonoscopy revealed in each case a segmental colitis characterized by oedematous, hyperaemic colonic mucosa, most often in the region of the splenic flexure, yet also extending upward to involve the transverse colon. Several occurrences of frank mucosal haemorrhage were observed. Biopsy samples of mucosa revealed acute inflammatory changes consistent with ischemic colitis. In each case, the patient recovered without further incident or recurrence after pseudoephedrine was discontinued. Pseudoephedrine should be discontinued immediately and medical advice sought if any signs/symptoms of ischemic colitis develop.

Genitourinary

Some NSAIDs are known to cause persistent urinary symptoms (bladder pain, dysuria, urinary frequency), hematuria or cystitis. The onset of these symptoms may occur at any time after the initiation of therapy with an NSAID. Some cases have become severe on continued treatment. Should urinary symptoms occur, treatment with these products must be stopped immediately to obtain recovery. This should be done before any urological investigations or treatments are carried out.

Hematologic

NSAIDs inhibiting prostaglandin biosynthesis do interfere with platelet function to varying degrees; therefore, patients who may be adversely affected by such an action, such as those on anticoagulants or suffering from haemophilia or platelet disorders, should be carefully observed when ibuprofen is administered. Numerous studies have shown that the concomitant use of NSAIDs and anti-coagulants increases the risk of bleeding. Concurrent therapy with warfarin requires close monitoring of the international normalized ratio (INR). Even with therapeutic INR monitoring, increased bleeding may occur. (See [9 DRUG INTERACTIONS](#)).

Blood dyscrasias (such as neutropenia, leukopenia, thrombocytopenia, aplastic anaemia and agranulocytosis) associated with the use of non-steroidal anti-inflammatory drugs are rare but could occur with severe consequences.

Hepatic/Biliary/Pancreatic

As with other nonsteroidal anti-inflammatory drugs, borderline elevations of one or more liver function tests (AST, ALT, alkaline phosphatase) may occur in up to 15% of patients. These abnormalities may progress, may remain essentially unchanged, or may be transient with continued therapy. A patient with symptoms and/or signs suggesting liver dysfunction, or in whom an abnormal liver test has occurred, should be evaluated for evidence of the development of more severe hepatic reaction while on therapy with this drug. Severe hepatic reactions including jaundice and cases of fatal hepatitis and liver necrosis have been reported with nonsteroidal anti-inflammatory drugs.

Although such reactions are rare, if abnormal liver tests persist or worsen, if clinical signs and symptoms consistent with liver disease develop, or if systemic manifestations occur (e.g., eosinophilia, rash, etc.), this drug should be discontinued.

During long-term therapy, liver function tests should be monitored periodically. If there is a need to prescribe this drug in the presence of impaired liver function, it must be done under strict observation.

The frequency of acute liver injury among 625,307 people who received NSAIDs in England and Wales between 1987 and 1991, was examined. There were 311,716 patients who were prescribed ibuprofen.

ADVIL COLD & SINUS NIGHTTIME

ADVIL COLD & SINUS PLUS

ADVIL COLD, SINUS & FLU EXTRA STRENGTH

Ibuprofen, Pseudoephedrine Hydrochloride and Chlorpheniramine Maleate Caplets

CHILDREN'S ADVIL COLD & FLU MULTI-SYMP TOM

Ibuprofen, Pseudoephedrine Hydrochloride and Chlorpheniramine Maleate Suspension

The incidence of acute liver injury among ibuprofen users was 1.6/100,000; this was the lowest incidence among the 8 NSAIDs studied and was significantly lower than the incidence among users of ketoprofen, piroxicam, fenbrufen, or sulindac. For NSAID users as a group, the only factors that had an independent effect on the occurrence of acute liver injury were the simultaneous use of hepatotoxic medication or the presence of rheumatoid arthritis. Based on these data, the short-term use of ibuprofen as an analgesic/antipyretic should not be of concern regarding the development of liver disease.

Immune

Patients with complete or partial syndrome of nasal polyps, rhinitis or other allergic manifestations should not use ASA or other anti-inflammatory agents. Fatal anaphylactoid reactions have occurred in such individuals even if they have taken NSAIDs in the past without any adverse effects (See [2 CONTRAINDICATIONS](#)).

In occasional cases, with some NSAIDs, the symptoms of aseptic meningitis (stiff neck, severe headaches, nausea and vomiting, fever or clouding of consciousness) have been observed. Patients with autoimmune disorders (systemic lupus erythematosus, mixed connective tissue diseases, etc.) seem to be pre-disposed. Therefore, in such patients, the physician must be vigilant to the development of this complication.

Monitoring and Laboratory Tests

General: For other Warnings and Precautions related to the use of Advil products and Monitoring and Laboratory Tests see [Fluid and Electrolyte Balance](#), [Gastrointestinal](#), [Hematologic](#), [Hepatic/Biliary/Pancreatic](#), [Renal](#) and [Subpopulations - Geriatrics](#).

Pregnancy: If Advil products are administered in the middle (approximately 20 weeks) to the end of the second trimester, it is recommended that pregnant women be closely monitored for amniotic fluid volume since these products may result in reduction of amniotic fluid volume and even oligohydramnios (see [Special Populations](#)). Advil products are contraindicated for use in the third trimester of pregnancy.

Neurologic

Some patients may experience drowsiness, dizziness, vertigo, insomnia or depression with the use of ibuprofen. If patients experience these side effects, they should exercise caution in carrying out activities that require alertness.

Psychosis has occurred after overdose with pseudoephedrine in individuals with underlying psychiatric disorders.

High plasma concentrations of phenylalanine in individuals with phenylketonuria may exacerbate the CNS effects of pseudoephedrine.

Ophthalmologic

Blurred and/or diminished vision has been reported with the use of ibuprofen and other non-steroidal anti-inflammatory drugs. If such symptoms develop this drug should be discontinued and an ophthalmologic examination performed; ophthalmic examination should be carried out at periodic intervals in any patient receiving this drug for an extended period of time.

Chlorpheniramine has an anticholinergic mydriatic effect that may result in increased intraocular pressure, possibly precipitating an attack of angle-closure glaucoma in patients who are predisposed to the condition. Intraocular pressure may increase slightly in patients who have open-angle glaucoma. Patients with glaucoma should be closely monitored.

Peri-Operative Considerations

See [2 CONTRAINDICATIONS](#). In general, NSAIDs are discontinued prior to surgeries to decrease the risk of post-operative bleeding.

Psychiatric

See [Neurologic](#).

Renal

Long term administration of nonsteroidal anti-inflammatory drugs to animals has resulted in renal papillary necrosis and other abnormal renal pathology. In humans, there have been reports of acute interstitial nephritis with hematuria, proteinuria, and occasionally nephrotic syndrome.

A second form of renal toxicity has been seen in patients with prerenal conditions leading to the reduction in renal blood flow or blood volume, where the renal prostaglandins have a supportive role in the maintenance of renal perfusion. In these patients, administration of a nonsteroidal anti-inflammatory drug may cause a dose dependent reduction in prostaglandin formation and may precipitate overt renal decompensation. Patients at greatest risk of this reaction are those with impaired renal function, heart failure, liver dysfunction, those taking diuretics, and the elderly. Discontinuation of nonsteroidal anti-inflammatory therapy is usually followed by recovery to the pre-treatment state.

Ibuprofen and its metabolites are eliminated primarily by the kidneys; therefore, the drug should be used with great caution in patients with impaired renal function. In these cases, utilisation of lower doses should be considered, and patients carefully monitored.

During long-term therapy kidney function should be monitored periodically.

Pseudoephedrine and its active metabolite are excreted chiefly via the kidneys. Therefore, dosage should be adjusted in patients with impaired renal function. Myoclonic jerking and bizarre behaviour were reported in a haemodialysis patient with end-stage renal failure after taking 60 mg of pseudoephedrine four times daily for 12 days to treat nasal congestion.

Respiratory

ASA-induced asthma is an uncommon but very important indication of ASA and NSAID sensitivity. It occurs more frequently in patients with asthma who have nasal polyps.

Patients with asthma or other allergic manifestations should not use ASA or other nonsteroidal anti-inflammatory agents. Fatal anaphylactoid reactions have occurred in such individuals even if they have taken NSAIDs in the past without any adverse effects (See [2 CONTRAINDICATIONS](#)).

Sensitivity/Resistance

Patients sensitive to any one of the nonsteroidal anti-inflammatory drugs may be sensitive to any of the other NSAIDs also. Patients with anaphylaxis, urticaria or other allergic manifestations precipitated by ASA or other nonsteroidal anti-inflammatory agents should not take Advil products (See [2 CONTRAINDICATIONS](#)).

Skin

Pseudoephedrine may induce non-pigmenting, fixed-type skin eruptions, which are typically indurated, erythematous, pruritic, tender, and oedematous. The reaction tends to occur within 24 hours after administration of pseudoephedrine and to resolve 2 to 3 days after discontinuation.

In rare cases, serious skin reactions such as Stevens-Johnson syndrome, toxic epidermal necrolysis, exfoliative dermatitis and erythema multiforme have been associated with the use of some NSAIDs. Because the rate of these reactions is low, they have usually been noted during post-marketing surveillance in patients taking other medications also associated with the potential development of these serious skin reactions. Thus, causality is NOT clear. These reactions are potentially life threatening but may be reversible if the causative agent is discontinued and appropriate treatment instituted. Patients should be advised that if they experience a skin rash, they should discontinue their NSAID and contact their physician for assessment and advice, including which additional therapies to discontinue.

7.1 Special Populations

Oligohydramnios/Neonatal Renal Impairment

Use of NSAIDs, including Advil products, at approximately 20 weeks gestation or later in pregnancy may cause fetal renal dysfunction leading to oligohydramnios and, in some more severe cases, neonatal respiratory, musculoskeletal and renal problems (see [16 NON-CLINICAL TOXICOLOGY](#)).

Published studies and post-marketing reports describe maternal NSAID use at approximately 20 weeks gestation or later in pregnancy associated with fetal renal dysfunction leading to oligohydramnios, and in some cases, neonatal renal impairment, or failure. NSAIDs were shown to cause significant reduction in fetal urine production prior to reduction of amniotic fluid volume. There have also been a limited number of case reports of maternal NSAID use and neonatal renal dysfunction without oligohydramnios, some of which were irreversible, even after treatment discontinuation.

These adverse outcomes are seen, on average, after days to weeks of treatment, although oligohydramnios has been infrequently reported as soon as 48 hours after NSAID initiation. Oligohydramnios is often, but not always, reversible with treatment discontinuation. Complications of prolonged oligohydramnios may, for example, include limb contractures and delayed lung maturation.

ADVIL COLD & SINUS NIGHTTIME

ADVIL COLD & SINUS PLUS

ADVIL COLD, SINUS & FLU EXTRA STRENGTH

Ibuprofen, Pseudoephedrine Hydrochloride and Chlorpheniramine Maleate Caplets

CHILDREN'S ADVIL COLD & FLU MULTI-SYMPTOM

Ibuprofen, Pseudoephedrine Hydrochloride and Chlorpheniramine Maleate Suspension

In some post-marketing cases of impaired neonatal renal function, invasive procedures such as exchange transfusion or dialysis were required.

If, after careful consideration of alternative treatment options for pain management, NSAID treatment is necessary anywhere from the middle (onset approximately 20 weeks) to the end of the second trimester of pregnancy, it is recommended that the use be limited to the lowest effective dose and shortest duration possible.

Consider ultrasound monitoring of fetal well-being, including of amniotic fluid volume assessment if treatment with Advil products extends beyond 48 hours. It is recommended that NSAIDs treatment be discontinued if oligohydramnios occurs, followed by appropriate medical follow up.

Inform pregnant women not to use Advil products and other NSAIDs from the third trimester of pregnancy because of the risk of the premature closing of the fetal ductus arteriosus (see [2 CONTRAINDICATIONS](#)). If treatment with Advil products is needed for a pregnant woman anywhere from the middle (onset approximately 20 weeks gestation) to the end of the second trimester of pregnancy, advise her that she may need to be monitored for oligohydramnios, if treatment continues for longer than 48 hours.

7.1.1 Pregnant Women

Ibuprofen is contraindicated for use during the third trimester of pregnancy because of the risk of premature closure of the fetal ductus arteriosus with possible persistent pulmonary hypertension and also a risk of fetal renal impairment with subsequent oligohydramnios. The onset of labour may be delayed and its duration increased with an increased risk of bleeding tendency in both mother and child (see [2 CONTRAINDICATIONS](#)).

Caution should be exercised in prescribing Advil products to women who are trying to conceive. Ibuprofen should not be used during the first two trimesters of pregnancy unless the expected benefits to the mother outweigh the potential risks to the fetus. (see [16 NON-CLINICAL TOXICOLOGY](#)).

Inhibition of prostaglandin synthesis may adversely affect pregnancy and/or embryo-fetal development. Data from epidemiological studies suggest an increased risk of miscarriage and of cardiac malformation after use of a prostaglandin synthesis inhibitor in early pregnancy.

In animals, administration of a prostaglandin synthesis inhibitor has been shown to result in increased pre- and post-implantation loss and embryo-fetal lethality. In addition, increased incidences of various malformations, including cardiovascular, have been reported in animals given a prostaglandin synthesis inhibitor during the organogenetic period.

7.1.2 Breastfeeding

Caution should be exercised in prescribing ADVIL products during breastfeeding. Ibuprofen is excreted in breast milk in very low concentrations and is considered unlikely to affect the breast-fed infant adversely. (see [Pharmacokinetics – Elimination](#)).

7.1.3 Pediatrics

Pediatrics (<12 years of age): No data for Advil Cold & Sinus Nighttime, Advil Cold & Sinus Plus or Advil Cold, Sinus & Flu Extra Strength are available to Health Canada; therefore, Health Canada has not authorized an indication for pediatric use for these products.

Pediatrics (6 – 12 years of age): Based on the data submitted and reviewed by Health Canada, the safety and efficacy of Children’s Advil Cold & Flu Multi-Symptom in pediatric patients has been established. Therefore, Health Canada has authorized an indication for pediatric use.

Pediatrics (<6 years of age): No data are available to Health Canada; therefore, Health Canada has not authorized an indication for Children’s Advil Cold & Flu Multi-Symptom for children under 6 years of age.

7.1.4 Geriatrics (> 65 years of age)

Patients older than 65 years and frail or debilitated patients are most susceptible to a variety of adverse reactions from nonsteroidal anti-inflammatory drugs (NSAIDs): the incidence of these adverse reactions increases with dose and duration of treatment. In addition, these patients are less tolerant to ulceration and bleeding. The chance of stomach bleeding is higher if you are: age 60 or older, have had stomach ulcers or bleeding problems, take a blood thinner or steroid drug, take with other drugs containing an NSAID like acetylsalicylic acid (ASA), ibuprofen, naproxen, or prescription anti-inflammatory drugs, have 3 or more alcoholic drinks every day while using this product. Most reports of fatal GI events are in this population. Older patients are also at risk of lower oesophageal ulceration and bleeding. There is also increased susceptibility to effects of sympathomimetic amines observed in elderly patients.

Elderly patients are especially susceptible to the anticholinergic side effects of chlorpheniramine, such as dryness of the mouth and urinary retention (in males).

For elderly patients, consideration should be given to the use of a starting dose that is lower than the one usually recommended, with individual adjustment when necessary and under close supervision.

Advil Cold & Sinus Nighttime, Advil Cold & Sinus Plus and Advil Cold, Sinus & Flu Extra Strength or Children’s Advil Cold & Flu Multi-Symptom are not indicated for use in patients over 65 years of age.

8 ADVERSE REACTIONS

8.1 Adverse Reaction Overview

Advil products may occasionally produce side effects such as heartburn, constipation, nausea, bloating, dry mouth, nervousness or sleeplessness.

8.2 Clinical Trial Adverse Reactions

Clinical trials are conducted under very specific conditions. The adverse reaction rates observed in the clinical trials; therefore, may not reflect the rates observed in practice and should not be compared to the rates in the clinical trials of another drug. Adverse reaction information from clinical trials may be useful in identifying and approximating rates of adverse drug reactions in real-world use.

ADVIL COLD & SINUS NIGHTTIME

ADVIL COLD & SINUS PLUS

ADVIL COLD, SINUS & FLU EXTRA STRENGTH

Ibuprofen, Pseudoephedrine Hydrochloride and Chlorpheniramine Maleate Caplets

CHILDREN’S ADVIL COLD & FLU MULTI-SYMP TOM

Ibuprofen, Pseudoephedrine Hydrochloride and Chlorpheniramine Maleate Suspension

Adverse Events in Studies of Ibuprofen, Pseudoephedrine hydrochloride and Chlorpheniramine maleate caplets

One 7-day study of the efficacy and safety of ibuprofen, pseudoephedrine hydrochloride and chlorpheniramine maleate caplets in 1070 subjects with seasonal allergic rhinitis, as well as two single-dose bioavailability studies in a total of 41 healthy subjects was conducted. Adverse events were infrequent in the two bioavailability studies, with no specific adverse event occurring in more than two subjects after any one treatment. None of the adverse events was severe, and no subjects withdrew from the studies because of adverse events.

The design of the 7-day study is described in [Clinical Trials](#). Subjects were treated with one of the following regimens three times daily for 7 days: (1) placebo, (2) two caplets, each containing 200 mg ibuprofen, 30 mg pseudoephedrine, and 2 mg chlorpheniramine, (3) one caplet containing 200 mg ibuprofen, 30 mg pseudoephedrine, and 2 mg chlorpheniramine, or (4) one tablet containing 30 mg pseudoephedrine and 2 mg chlorpheniramine.

Of 299 subjects in the 7-day study, 27.9% reported at least one adverse event: 20.0% in the placebo group, 42.4% in the group taking two caplets of ibuprofen/pseudoephedrine/ chlorpheniramine (2 x I/P/C), 24.0% in the group taking one caplet of ibuprofen/pseudoephedrine/chlorpheniramine (1 x I/P/C), and 25.3% in the group taking one tablet of pseudoephedrine/chlorpheniramine (1 x P/C). The 2 x I/P/C group had a significantly higher percentage of subjects reporting adverse events than in any other group, whereas the percentages were similar in the other three groups (Table 1).

For the three active treatment groups, the percentages of subjects with adverse events classified to the nervous system were significantly higher than in the placebo group. In comparison with the other two active treatment groups, the percentage with nervous system adverse events was significantly higher in the 2 x I/P/C group. Also contributing to the higher overall percentage of subjects with adverse events in the 2 x I/P/C group was a higher percentage with adverse events classified to body as a whole (Table 1). In contrast, for the body system skin and appendages, adverse events were less frequent in the three active treatment groups than in the placebo group.

For adverse events classified to the digestive system, the rate was lowest in the 1 x I/P/C group and similar among the other three groups (Table 1). That result indicates that the addition of ibuprofen to the combination P/C did not increase the incidence of digestive adverse events.

Table 1. Adverse Events in a 7-Day Study in Subjects with Seasonal Allergic Rhinitis: Comparisons by Body System (Study AD-99-02)

Body System	Number (%) of Subjects with Adverse Events				p-value ⁺
	Placebo (N = 265)	2 x I/P/C (N = 269)	1 x I/P/C (N = 263)	1 x P/C (N = 273)	
Any Adverse Event	53 (20.0)	114 (42.4)	63 (24.0)	69 (25.3)	<0.001*
Body as a Whole	15 (5.7)	24 (8.9)	11 (4.2)	10 (3.7)	0.045*
Cardiovascular	1 (0.4)	4 (1.5)	1 (0.4)	5 (1.8)	0.280
Digestive	17 (6.4)	27 (10.0)	12 (4.6)	23 (8.4)	0.081
Metabolic & Nutritional	0 (0.0)	0 (0.0)	1 (0.4)	0 (0.0)	0.246
Musculoskeletal	1 (0.4)	0 (0.0)	0 (0.0)	0 (0.0)	0.493
Nervous	11 (4.2)	76 (28.3)	42 (16.0)	37 (13.6)	<0.001*

ADVIL COLD & SINUS NIGHTTIME

ADVIL COLD & SINUS PLUS

ADVIL COLD, SINUS & FLU EXTRA STRENGTH

Ibuprofen, Pseudoephedrine Hydrochloride and Chlorpheniramine Maleate Caplets

CHILDREN'S ADVIL COLD & FLU MULTI-SYMPTOM

Ibuprofen, Pseudoephedrine Hydrochloride and Chlorpheniramine Maleate Suspension

Respiratory	9 (3.4)	13 (4.8)	6 (2.3)	8 (2.9)	0.440
Skin & Appendages	10 (3.8)	5 (1.9)	2 (0.8)	0 (0.0)	0.002*
Special Senses	1 (0.4)	4 (1.5)	4 (1.5)	2 (0.7)	0.478
Urogenital	2 (0.8)	4 (1.5)	0 (0.0)	3 (1.1)	0.263

+ Fisher's exact test

* Statistically significant at p #0.05.

Four of the nine most frequent adverse events were associated with the nervous system (Table 2). The most frequent adverse event was somnolence. Somnolence and dry mouth were significantly more frequent in the three active treatment groups than in the placebo group. The 2 x I/P/C group had a significantly higher frequency of somnolence than in the other two active treatment groups, which were similar in frequency of somnolence. That finding indicates that the frequency of somnolence was affected by the twofold increase in the dose of chlorpheniramine between the 1 x I/P/C and 2 x I/P/C groups and not by the addition of ibuprofen to the P/C combination.

The second most frequent adverse event was dry mouth (Table 2). The frequency of dry mouth was significantly higher in the three active treatment groups than in the placebo group. The 2 x I/P/C group had a significantly higher frequency of dizziness (5.9%) than in the other three groups (2.3%, 1.9%, and 1.5%), as well as a significantly higher frequency of insomnia (3.3%) than in the placebo group (0.4%). Asthenia was more frequent in the 2 x I/P/C group (4.1%) than in the placebo and 1 x P/C groups (0%). Other differences in frequency of the adverse events listed in Table 2 among treatment groups were not statistically significant.

Table 2. Most Frequent Adverse Events in a 7-Day Study in Subjects with Seasonal Allergic Rhinitis (Study AD-99-02)

Adverse Experiences Body System/ COSTART Term	Number (%) of Subjects with Specified Adverse Event				p-value⁺
	Placebo (N = 265)	2 x I/P/C (N = 269)	1 x I/P/C (N = 263)	1 x P/C (N = 273)	
Nervous System					
Somnolence	5 (1.9)	44 (16.4)	24 (9.1)	23 (8.4)	<0.001*
Dry mouth	2 (0.8)	15 (5.6)	9 (3.4)	10 (3.7)	0.011*
Dizziness	6 (2.3)	16 (5.9)	5 (1.9)	4 (1.5)	0.015*
Insomnia	1 (0.4)	9 (3.3)	4 (1.5)	4 (1.5)	0.062
Body as a Whole					
Headache	3 (1.1)	8 (3.0)	2 (0.8)	2 (0.7)	0.138
Asthenia	0 (0.0)	11 (4.1)	3 (1.1)	0 (0.0)	< 0.001*
Digestive System					
Dyspepsia	9 (3.4)	14 (5.2)	5 (1.9)	6 (2.2)	0.138
Nausea	5 (1.9)	6 (2.2)	2 (0.8)	8 (2.9)	0.320
Respiratory System					
Pharyngitis	6 (2.3)	9 (3.3)	2 (0.8)	3 (1.1)	0.123

+ Fisher's exact test

* Statistically significant at p < 0.05.

ADVIL COLD & SINUS NIGHTTIME

ADVIL COLD & SINUS PLUS

ADVIL COLD, SINUS & FLU EXTRA STRENGTH

Ibuprofen, Pseudoephedrine Hydrochloride and Chlorpheniramine Maleate Caplets

CHILDREN'S ADVIL COLD & FLU MULTI-SYMPTOM

Ibuprofen, Pseudoephedrine Hydrochloride and Chlorpheniramine Maleate Suspension

Note: Most frequent = reported by at least 2% of subjects in any treatment group. I/P/C = 200 mg ibuprofen, 30 mg pseudoephedrine, 2 mg chlorpheniramine, P/C = 30 mg pseudoephedrine, 2 mg chlorpheniramine.

Safety Studies of Ibuprofen

The results of a double-blind, placebo-controlled study in healthy subjects (N = 1246) representative of a nonprescription analgesic user population indicates that ibuprofen at a dosage of 1200 mg/day for 10 consecutive days is well tolerated. The frequency of gastrointestinal adverse experiences was similar in the placebo and ibuprofen groups (16% with placebo vs. 19% with ibuprofen). The most frequent gastrointestinal adverse experiences (those reported by >1% of the subjects) were dyspepsia, abdominal pain, nausea, diarrhoea, flatulence, and constipation. There was no difference between the two groups in the proportion discontinuing treatment because of gastrointestinal adverse events. Seventeen subjects (1.4%) had positive occult blood tests: the frequency was comparable for the two treatments.

In two multi-trial analyses, a meta-analysis, and a literature review, ibuprofen had a low incidence of gastrointestinal drug reactions, comparable with that of acetaminophen and placebo. In epidemiological studies, ibuprofen has consistently exhibited the lowest relative risk of severe gastrointestinal complications compared with other NSAIDs and acetylsalicylic acid. No symptom or syndrome emerged in the trials that was not predicted from the drug's pharmacology or could not have been anticipated based on ibuprofen's extensive use as an analgesic/antipyretic in adults.

Garcia-Rodriguez reported on the frequency of acute liver injury among 625,307 people who received NSAIDs in England and Wales between 1987 and 1991, of whom 311,716 were prescribed ibuprofen. The incidence of acute liver injury among ibuprofen users was 1.6/100,000. This was the lowest incidence among the eight NSAIDs studied and was significantly lower than the incidence among users of ketoprofen, piroxicam, fenbrufen, or sulindac. For NSAID users as a group, the only factors that had an independent effect on the occurrence of acute liver injury were simultaneous use of hepatotoxic medication and the presence of rheumatoid arthritis.

Adverse Events with Doses of Ibuprofen \geq 1200 mg/day

Gastrointestinal

In clinical trials of NSAIDs, symptomatic upper GI ulcers, gross bleeding, or perforation occurred in approximately 1% of patients treated for 3-6 months and in about 2-4% of patients treated for 1 year. The risk continues beyond 1 year. The incidence of GI complications increases with increasing dose.

Incidence 3-9%: nausea, epigastric pain, heartburn. Incidence 1-3%: diarrhoea, abdominal distress, nausea and vomiting, indigestion, constipation, abdominal cramps or pain, fullness of the gastrointestinal tract (bloating or flatulence). Incidence <1%: gastric or duodenal ulcer with bleeding and/or perforation, intestinal diaphragm disease, gastrointestinal haemorrhage sometimes fatal, particularly in the elderly, exacerbation of ulcerative colitis and Crohn's disease, melena, hepatitis, jaundice, abnormal liver function (SGOT, serum bilirubin and alkaline phosphatase).

Allergic

Incidence <1%: anaphylaxis (see [2 CONTRAINDICATIONS](#)), exacerbation of asthma and bronchospasm. Causal relationship unknown: fever, serum sickness, lupus erythematosus.

ADVIL COLD & SINUS NIGHTTIME

ADVIL COLD & SINUS PLUS

ADVIL COLD, SINUS & FLU EXTRA STRENGTH

Ibuprofen, Pseudoephedrine Hydrochloride and Chlorpheniramine Maleate Caplets

CHILDREN'S ADVIL COLD & FLU MULTI-SYMPOM

Ibuprofen, Pseudoephedrine Hydrochloride and Chlorpheniramine Maleate Suspension

Central Nervous System

Incidence 3-9%: dizziness. Incidence 1-3%: headache, nervousness. Incidence <1%: depression, insomnia. Causal relationship unknown: paraesthesias, hallucinations, abnormal dreams.

Aseptic meningitis and meningoencephalitis, in one case accompanied by eosinophilia in the cerebrospinal fluid, have been reported in patients who took ibuprofen intermittently and did not have any connective tissue disease.

Dermatologic

Incidence 3-9%: rash (including maculopapular type). Incidence 1-3%: pruritus. Incidence <1%: vesiculobullous eruptions, urticaria, erythema multiforme. Causal relationship unknown: alopecia, Stevens-Johnson syndrome, Toxic Epidermal Necrolysis, Drug Reaction with Eosinophilia and Systemic Symptoms (DRESS).

Cardiovascular

Incidence <1%: congestive heart failure in patients with marginal cardiac function, elevated blood pressure, palpitations, myocardial infarction. Causal relationship unknown: arrhythmias (sinus tachycardia, sinus bradycardia, palpitations).

Special Senses

Incidence 1-3%: tinnitus. Incidence <1%: amblyopia (blurred and/or diminished vision, scotomata, and/or changes in colour vision). Any patient with eye complaints during ibuprofen therapy should have an ophthalmological examination.

Causal relationship unknown: conjunctivitis, diplopia, optic neuritis.

Hematologic

Incidence <1%: leukopenia, decreases in hemoglobin and hematocrit. Causal relationship unknown: hemolytic anaemia, thrombocytopenia, granulocytopenia, bleeding episodes (e.g., purpura, epistaxis, hematuria, menorrhagia), pancytopenia.

Hepatic

Liver enzyme elevations may occur in up to 15% of patients treated with ibuprofen.

Incidence <1%: hepatic failure.

Renal

Acute interstitial nephritis with hematuria, proteinuria, and occasionally nephrotic syndrome have been reported. Renal papillary necrosis has been reported. Incidence <1%: acute renal failure. Causal relationship unknown: decreased creatinine clearance, polyuria, azotemia.

Endocrine

Causal relationship unknown: gynecomastia, hypoglycaemic reaction. Menstrual delays of up to 2 weeks and dysfunctional uterine bleeding occurred in nine patients taking ibuprofen, 400 mg t.i.d., for three days before menses.

Metabolic

ADVIL COLD & SINUS NIGHTTIME

ADVIL COLD & SINUS PLUS

ADVIL COLD, SINUS & FLU EXTRA STRENGTH

Ibuprofen, Pseudoephedrine Hydrochloride and Chlorpheniramine Maleate Caplets

CHILDREN'S ADVIL COLD & FLU MULTI-SYMP TOM

Ibuprofen, Pseudoephedrine Hydrochloride and Chlorpheniramine Maleate Suspension

Incidence 1-3%: decreased appetite, oedema, fluid retention.

Safety Studies of Chlorpheniramine

At therapeutic doses, the most frequent side effect of first-generation H1-receptor antagonists such as chlorpheniramine is sedation. Other adverse CNS effects include dizziness, tinnitus, lassitude, lack of coordination, fatigue, blurred vision, diplopia, euphoria, nervousness, insomnia, and tremors. Concurrent use of alcohol or other CNS depressants produces an additive effect that impairs motor skills.

In a randomized, double-blind study, patients with allergic rhinitis were asked to record symptoms of drowsiness, dizziness, jitteriness, nausea, and headache. Of 29 patients treated with chlorpheniramine (4 mg four times daily) 86% reported drowsiness, versus 61% of 33 patients in the placebo group. Dizziness was reported by 38% of those in the chlorpheniramine group, versus 15% of those in the placebo group. Jitteriness was reported by 45% in the chlorpheniramine group and 24% in the placebo group. Nausea and headache showed no change in frequency during treatment, in comparison with the frequency of those adverse events during a run-in period. Two patients in the chlorpheniramine group and none in the placebo group reported altered taste perception.

Seventeen of 42 patients (40%) with seasonal allergic rhinitis reported somnolence during 2 weeks of treatment with 4 mg chlorpheniramine three to four times daily in a randomized study. Somnolence was significantly less frequent in patients treated with cetirizine (12%) or terfenadine (7%). Other frequently reported adverse events in all three treatment groups were headache, asthenia, and dry mouth.

Studies of the sedative effect of chlorpheniramine in healthy subjects are summarised in [Examples of Chlorpheniramine Overdose](#).

Antihistamines frequently cause side effects involving the digestive tract, including loss of appetite, nausea, vomiting, epigastric distress, and constipation or diarrhoea. The incidence of gastrointestinal side effects may be reduced by taking the drug with meals.

Chlorpheniramine may produce anticholinergic effects including dryness of the mouth and respiratory passages, urinary retention or frequency, and dysuria.

In three crossover studies, patients with asthma tolerated chlorpheniramine without untoward effects on pulmonary function. The evaluations included a single-dose study in 10 non-steroid-dependent patients with mild asthma and allergic rhinitis and two studies (one in 18 patients with mild, non-steroid-dependent asthma and the other in 10 patients with steroid-dependent asthma) in which chlorpheniramine was given twice daily for 1 week.

8.2.1 Clinical Trial Adverse Reactions – Pediatrics

Adverse Events in Studies of Children's Advil Cold & Flu Multi-symptom

Two single-dose bioavailability studies were conducted, one in healthy adults and the other in children 6 to <12 years of age with symptoms of allergic rhinitis as well as one multiple-dose, maximum use and safety tolerance study in subject's representative of a typical pediatric population with allergic rhinitis (6 to <12 years of age).

ADVIL COLD & SINUS NIGHTTIME

ADVIL COLD & SINUS PLUS

ADVIL COLD, SINUS & FLU EXTRA STRENGTH

Ibuprofen, Pseudoephedrine Hydrochloride and Chlorpheniramine Maleate Caplets

CHILDREN'S ADVIL COLD & FLU MULTI-SYMPTOM

Ibuprofen, Pseudoephedrine Hydrochloride and Chlorpheniramine Maleate Suspension

In a single-dose bioavailability study, 27 healthy adult male and female subjects received in a randomized manner and on separate periods a single total dose of ibuprofen 400 mg, pseudoephedrine 60 mg and chlorpheniramine 4 mg in combination in one of three treatment groups: suspension under fasted conditions, suspension under fed conditions and caplet under fasted conditions. Thirteen subjects (48.1%) reported AEs; one subject had at least 1 AE during each study period (i.e., for each treatment). Three subjects (11.1%) reported five AEs during the suspension-fasted period, five (19.2%) reported 5 AEs during the suspension-fed period, and seven (26.9%) reported 12 AEs during the caplet-fasted period. Nineteen of the 22 reported AEs were rated mild; no severe AEs were reported. No AE was considered probably or definitely related to study drug, and only 5 were considered possibly related. "Body as a Whole" was the system with the most AEs reported (7) and ecchymosis was the most frequently reported specific AE (5 subjects). There were no serious AEs, deaths or discontinuations due to AE. Eleven (40.7%) subjects had hematocrit values below normal range; none were clinically significant.

In an open-label single-dose bioavailability study, 32 male and female children 6 to <12 years of age with allergic rhinitis were treated with a single 10-mL oral dose of Children's Advil Cold & Flu Multi-symptom Suspension containing a total dose of ibuprofen 200 mg, pseudoephedrine 30 mg and chlorpheniramine 1 mg and were monitored for 48 hours. Among the 32 enrolled children, nine (28.1%) reported a total of 10 AEs. Of the 10 reported AEs, seven were rated mild and three, moderate (pain, n=1 and somnolence, n=2). Seven of the AEs were classified as having no relationship to study drug, while one (vasodilation) was classified as possibly related, and two as probably related (both were somnolence). The only AEs reported in more than one subject were pain and somnolence (two subjects each).

The multiple-dose, maximum use and safety tolerance study was a multi-centre, randomized, open-label design in 111 outpatients 6 to <12 years of age with symptoms of allergic rhinitis. Subjects were treated with 10 mL of Children's Advil Cold & Flu Multi-symptom Suspension (total dose 200 mg ibuprofen, 30 mg pseudoephedrine and 2 mg chlorpheniramine) every 6 hours, three times a day for 7 days. Overall, there were a total of 66 AEs reported by 39 (35%) subjects. The majority (54, 82%) of AEs were of mild (22) or moderate (32) intensity. Similarly, most (47, 71%) AEs were either not related (19) or remotely related (28) to study medication. Table 3 displays the AEs reported by >2% of subjects.

Table 3. Adverse Events in a Maximum Use and Safety Tolerance 7-Day Study in Children with Allergic Rhinitis: Comparisons by Body System (Study AR-00-04)

AE	AEs Reported by >2% of Subjects	
	Incidence of AEs n ^a ; N ^b =111	Incidence of Drug-Related ^c AEs n (%)
BODY SYSTEM		
ANY BODY SYSTEM	39 (35.1)	
NERVOUS SYSTEM		
Somnolence	13 (11.7)	6 (5.4)
BODY AS AWHOLE		
Asthenia	9 (8.1)	3 (2.7)
Headache	6 (5.4)	1 (0.9)
DIGESTIVE SYSTEM		
Abdominal Pain	5 (4.5)	2 (1.8)
Mouth Ulceration	3 (2.7)	0 (0.0)

ADVIL COLD & SINUS NIGHTTIME

ADVIL COLD & SINUS PLUS

ADVIL COLD, SINUS & FLU EXTRA STRENGTH

Ibuprofen, Pseudoephedrine Hydrochloride and Chlorpheniramine Maleate Caplets

CHILDREN'S ADVIL COLD & FLU MULTI-SYMPTOM

Ibuprofen, Pseudoephedrine Hydrochloride and Chlorpheniramine Maleate Suspension

SKIN AND APPENDAGES

	Rash	4 (3.6)	0 (0.0)
a	n=number of subjects reporting an AE.		
b	N=number of subjects included in the safety analysis.		
c	Definitely, probably or possibly related to study medication.		

The AE with the highest incidence rate was somnolence (n = 13, 12%). All somnolence events were first experienced within a day after receiving the first dose of study medication and most events resolved within two days after study drug was first taken. Only two subjects reported experiencing somnolence for longer than two days after receiving the first dose of study medication: one subject experienced somnolence for six days, which was classified as unrelated to study drug and was resolved the day the last dose of study medication was taken; another subject experienced somnolence for seven days after receiving the first dose of study medication, which was classified as remotely related to study drug and resolved the day after the last dose of study medication was taken. Other frequently occurring AEs included: asthenia (n = 9, 8%), headache (n = 6, 5%), and abdominal pain (n = 5, 5%). The majority (8, 73%) of the AEs associated with the digestive system were either mild or moderate in intensity.

Twelve AEs were reported as severe by 11 subjects: somnolence (n = 3), asthenia, headache and mouth ulceration (n = 2, each), fever, abdominal pain and rash (n = 1, each). Only three severe AEs were judged to be definitely, probably or possibly related to study drug: somnolence (n = 1) and asthenia (n = 2). For each of the two subjects who experienced asthenia, the parent reported that the subject experienced fatigue starting 30 minutes after receiving a dose of study medication, which persisted for the remaining of the day. The other nine severe adverse experiences were either remotely related or unrelated to study drug. Most (8, 67%) severe AEs resolved spontaneously without treatment. Three subjects required treatment for their severe AEs: mouth ulceration (n = 2), rash and fever (n = 1, each).

The AE most frequently associated with the use of study medication (*i.e.*, AE is either definitely, probably or possibly related to study drug) was somnolence (n = 6), followed by asthenia (n = 3) and abdominal pain (n = 2). Other drug-related AEs (excluding remotely related to study drug) included: headache, anorexia, dyspepsia, nausea, dizziness, hostility, voice alteration, and impaired urination (n = 1, each).

Safety Studies of Ibuprofen - children

Two large-scale safety studies of ibuprofen examined the potential risk in children of several rare events that are related to the pharmacological action of NSAIDs: GI bleeding, acute renal failure, and anaphylaxis.

The Children's Analgesic Medicine Project (CAMP) was a multicenter, all-comers, open-label, nonrandomized, prospective study comparing the safety of ibuprofen suspension with acetaminophen suspension in children with fever and/or pain. A total of 424 paediatricians enrolled children at 69 US clinics; 14,281 were <2 years of age and 15,863 were 2 to <12 years of age. Among children <2 years of age, fever, vomiting, diarrhoea, rhinitis, rash, and otitis media were the only adverse events with frequency >1% in either treatment group (ibuprofen or acetaminophen). Among children 2 years of age, the only adverse events with frequency >1% in either treatment group were rhinitis, pharyngitis, and otitis media. Adverse events were generally mild to moderate for both treatments within the two age

ADVIL COLD & SINUS NIGHTTIME

ADVIL COLD & SINUS PLUS

ADVIL COLD, SINUS & FLU EXTRA STRENGTH

Ibuprofen, Pseudoephedrine Hydrochloride and Chlorpheniramine Maleate Caplets

CHILDREN'S ADVIL COLD & FLU MULTI-SYMPTOM

Ibuprofen, Pseudoephedrine Hydrochloride and Chlorpheniramine Maleate Suspension

groups. There were no serious adverse events, (no anaphylaxis, Reye syndrome, renal failure, or GI bleeding/perforation). The percentage of younger children with adverse events was slightly higher in the ibuprofen group (17.6% vs. 15.0%); similar results were seen in the older children (11.9% vs. 10.7%). The difference may have been due to the preference of physicians to treat the sicker children with ibuprofen. Overall, ibuprofen exhibited an adverse event profile similar to that of acetaminophen.

The Boston Fever Study was a randomized, double-blind study that assessed the risk of rare but serious adverse events after the use of ibuprofen suspension in febrile children between 6 months and 12 years of age. The study evaluated a total of 83,915 children enrolled by 1735 paediatricians, family physicians, and general practitioners in the United States. Children were randomly assigned to receive ibuprofen suspension 5 mg/kg (N = 27,948), ibuprofen suspension 10 mg/kg (N = 27,837), or acetaminophen suspension 12 mg/kg (N = 28,130). Medications were given every 4 to 6 hours, as needed, for a total of up to five doses per day. The study recorded hospitalisations for acute GI bleeding, acute renal failure, and anaphylaxis and monitored for the occurrence of Reye syndrome. In the entire population, the authors found no significant difference between ibuprofen- and acetaminophen-treated children in the observed risk of GI bleeding, acute renal failure, or anaphylaxis. No cases of Reye syndrome were seen.

8.5 Post-Market Adverse Reactions

Safety Data on Pseudoephedrine From Case Reports

Hyperthermia

A 21-year-old man who was taking pseudoephedrine for weight loss died suddenly after receiving heat-phenol-inactivated typhoid vaccine and Japanese encephalitis vaccine. While on a 3-mile run 75 minutes after the inoculation, he collapsed and was found pulseless and apnoeic. He was in asystole, with a rectal temperature of 42.2°C. External pacing, cooling, and resuscitation efforts were unsuccessful. There was no evidence of urticaria, angioedema, heart failure, thrombosis, cerebral oedema, or petechial haemorrhage. The sympathomimetic effects of pseudoephedrine may have decreased the cooling ability of the body and increased susceptibility to heat-related adverse effects. The combined pyrogenic effects of the vaccines, exercise, mild obesity, and an impaired thermoregulatory system may have contributed to the patient's death.

Cardiovascular Adverse Reactions

Hypertension and loss of consciousness were reported in a 17-year-old man within 30 minutes after ingestion of one tablet of pseudoephedrine 60 mg. Blood pressure on admission was 170/110 mmHg, pulse was 124 beats per minute, and the patient was unresponsive to painful stimuli. Approximately 1 hour after ingestion of pseudoephedrine, the patient awoke spontaneously. Blood pressure was 124/80 mmHg; pulse was 96 beats per minute. Pseudoephedrine may have induced a state of relative cerebral ischemia secondary to carotid vasoconstriction.

Postural hypotension was reported in a 28-year-old male airplane pilot after administration of pseudoephedrine 60 mg three times daily for 2 days. Physical examination revealed a supine blood pressure of 115/74 mmHg, which fell to 96/60 upon standing and was associated with dizziness lasting 10 to 15 seconds. Symptoms disappeared after discontinuation of pseudoephedrine and recurred upon rechallenge.

Pseudoephedrine was reported to cause coronary artery spasm and myocardial infarction in a 28-year-old man. The patient took 30 mg pseudoephedrine for rhinitis and experienced chest pressure. The next night he took an additional 60 mg and had crushing chest pressure. An electrocardiogram showed ST-segment elevation consistent with a myocardial infarction, and cardiac enzymes were elevated. The pain and electrocardiographic changes resolved after administration of sublingual nitroglycerin.

Dermatologic Adverse Reactions

Brownstein reported two cases of fixed-type skin eruptions after use of Actifed, a combination of pseudoephedrine with an antihistamine, triprolidine. The rashes subsided within a few days after the medication was discontinued but reappeared after the patients again ingested Actifed. One of the two patients was challenged three times with 50-mg doses of pseudoephedrine. Each time, the rash recurred at the same sites. A fixed drug eruption was described in a 48-year-old woman on two occasions after administration of pseudoephedrine. Indurated erythematous plaques developed on the right upper eyelid, elbows, antecubital fossae, axillae, and lower legs. The lesions were mildly pruritic. Discontinuance of pseudoephedrine and corticosteroid therapy resulted in clearing of the eruption on both occasions. Two similar cases of pseudoephedrine-induced fixed drug eruptions have been reported.

In multiple separate episodes over the course of 19 years, a man developed intense pruritus of the fingers about 12 hours after ingesting pseudoephedrine-containing products. This was followed by severe redness, swelling, heat, and white papules on the fingers. The swelling subsided after 7 days and was followed by desquamation lasting about 2 weeks.

After ingesting medication containing triprolidine plus 60 mg pseudoephedrine, a 10-year-old boy developed an oedematous, erythematous plaque. The lesion cleared within 2 weeks and reappeared at the same site after rechallenge with 30 mg pseudoephedrine.

Pseudoephedrine was associated with pseudo-scarlatina in a 32-year-old woman. The reaction recurred after rechallenge with pseudoephedrine.

Other Types of Adverse Reactions

Severe agitation, screaming, and confusion occurred in a 10-month-old infant with phenylketonuria after administration of pseudoephedrine 15 mg every 6 hours for treatment of acute otitis media. Symptoms were noted within 1 hour after the first dose and recurred after each dose for two subsequent doses. After discontinuation of pseudoephedrine, no further episodes occurred. The patient's plasma concentration of phenylalanine, which had previously ranged from 2 to 7 mg/dL, increased to 12 mg/dL during the illness.

An 18-year-old woman developed symptoms presenting as recurrent toxic shock syndrome after ingesting pseudoephedrine-containing cold preparations and after a challenge with 60 mg pseudoephedrine. She remained symptom-free for 1 year, during which she avoided pseudoephedrine-containing medications. When she inadvertently used a cough syrup containing pseudoephedrine, she again developed toxic shock symptoms.

Safety Data on Chlorpheniramine from Case Reports

Neurologic Adverse Reactions Other Than Sedation

ADVIL COLD & SINUS NIGHTTIME

ADVIL COLD & SINUS PLUS

ADVIL COLD, SINUS & FLU EXTRA STRENGTH

Ibuprofen, Pseudoephedrine Hydrochloride and Chlorpheniramine Maleate Caplets

CHILDREN'S ADVIL COLD & FLU MULTI-SYMPTOM

Ibuprofen, Pseudoephedrine Hydrochloride and Chlorpheniramine Maleate Suspension

A 36-year-old man developed extreme lethargy, a throbbing headache, premature ventricular contractions, and loss of touch sensation after treatment of sinusitis with chlorpheniramine (twice daily for 10 days), phenylephrine, and tetracycline. The patients' symptoms resolved shortly after withdrawal of all medications.

A 57-year-old man had developed progressive left-sided facial dyskinesia beginning 8 years previously. At that time, he had taken antihistamines daily for allergic rhinitis for 20 years. The dyskinesia began as left-sided blepharospasm, progressed to involve the entire left side of the face and mouth, and was unresponsive to diphenylhydantoin, phenobarbital, or chlordiazepoxide. The patient discontinued his antihistamine medication and improved dramatically within 6 weeks.

Hematologic Adverse Reactions

Hematologic complications from the use of chlorpheniramine, including agranulocytosis, thrombocytopenia, and hemolytic anaemia, are very rare.

Two cases of agranulocytosis during use of chlorpheniramine have been reported. A 76-year-old woman developed agranulocytosis after parenteral and oral treatment with chlorpheniramine for a wasp sting. Upon discontinuation of the antihistamine and after supportive therapy, the patient's white cell count returned to normal. A 48-year-old woman with a history of stroke, hypertension, diabetes, and chronic renal failure died of agranulocytosis 1 week after taking nonprescription cold medications containing chlorpheniramine, acetaminophen, pseudoephedrine, dextromethorphan, phenylpropanolamine, and acetylsalicylic acid. The role of chlorpheniramine in this case is unclear because of the patient's exposure to the other nonprescription drugs.

Two cases of thrombocytopenia during use of chlorpheniramine have been reported. A 32-year-old woman developed thrombocytopenia and was hospitalised after taking chlorpheniramine for 1 month. She was hospitalised and successfully treated with prednisone. One year later she again developed thrombocytopenia, after taking three chlorpheniramine tablets per day for 3 days. Her platelet count returned to normal after discontinuation of the drug. A 53-year-old man developed severe thrombocytopenia after taking a combination of chlorpheniramine, acetylsalicylic acid, and phenylephrine hydrochloride for 3-4 days to treat an upper respiratory tract infection. The patient's platelet count returned to normal after prednisone treatment.

A 51-year-old man developed aplastic anaemia after long-term use of chlorpheniramine (6 mg per day for three to four days per week for several months) to treat allergic rhinitis. The patient recovered after treatment with steroids. A definite cause-effect relationship could not be established, and the patient was not re-challenged.

A 47-year-old woman developed progressive haemolytic anaemia and was hospitalised 3 weeks after taking 4 mg of chlorpheniramine daily for 3 days. Immune complexes were detected in the patient's serum. She was successfully treated with prednisone and transfusion.

Hypersensitivity to Antihistamines

Hypersensitivity reactions to H1-antihistamines are rare. A 57-year-old woman developed generalized urticaria 4 hours after taking 4 mg chlorpheniramine to treat scalp itching and rash apparently caused by hair dye. The urticaria was successfully treated with methylprednisolone. In separate episodes, she

ADVIL COLD & SINUS NIGHTTIME

ADVIL COLD & SINUS PLUS

ADVIL COLD, SINUS & FLU EXTRA STRENGTH

Ibuprofen, Pseudoephedrine Hydrochloride and Chlorpheniramine Maleate Caplets

CHILDREN'S ADVIL COLD & FLU MULTI-SYMP TOM

Ibuprofen, Pseudoephedrine Hydrochloride and Chlorpheniramine Maleate Suspension

developed skin reactions to other antihistamines (cetirizine, triprolidine, loratadine, fexofenadine, and mequitazine).

9 DRUG INTERACTIONS

9.1 Serious Drug Interactions

Serious Drug Interactions

- With acetaminophen may increase the risk of adverse renal effect.
- With acetylsalicylic acid (ASA), other NSAIDs including ibuprofen may result in possible additive side effects (See [2 CONTRAINDICATIONS](#)).
- With anticoagulants may increase the risk of GI adverse events (e.g., ulceration and bleeding).
- With antihypertensives the benefit and risk must be weighed individually.
- With CNS depressants may increase CNS depressant effects.
- With digoxin may increase serum digoxin concentration and the risk of digoxin toxicity.
- With diuretics may reduce the diuretic effect.
- With selective serotonin reuptake inhibitors (SSRIs) may increase the risk of GI adverse events (e.g., ulceration and bleeding).
- With glucocorticoids may increase the risk of GI adverse events (e.g., ulceration and bleeding).
- With hypoglycaemic agents (insulin and oral agents) may increase the risk of hypoglycaemia.
- With lithium may elevate plasma lithium levels, reduce renal lithium clearance and increase the risk of lithium toxicity.
- With methotrexate may increase the risk of methotrexate toxicity.
- With monoamine oxidase inhibitors may result in hypertensive crisis and other serious adverse reactions (See [2 CONTRAINDICATIONS](#)).
- With phenytoin may delay hepatic metabolism of phenytoin and increase the risk of phenytoin toxicity.

9.2 Drug Interactions Overview

Advil Cold & Sinus Nighttime, Advil Cold & Sinus Plus, Advil Cold, Sinus & Flu Extra Strength or Children's Advil Cold & Flu Multi-symptom is not recommended for concomitant use with any other NSAIDs, including ASA and other ibuprofen-containing products. Documented or possible drug interactions with these products include acetaminophen, digoxin, anticoagulants, oral antidiabetic agents and insulin, antihypertensives, diuretics, methotrexate, lithium, alcohol, and other CNS depressant drugs, phenytoin and other protein-bound drugs.

9.3 Drug-Behavioural Interactions

Avoid drinking alcohol while taking Advil products, as this may increase the risk of serious stomach bleeding and increase the possibility of additive CNS depressant effects. Avoid smoking while taking Advil products or other NSAIDs.

ADVIL COLD & SINUS NIGHTTIME

ADVIL COLD & SINUS PLUS

ADVIL COLD, SINUS & FLU EXTRA STRENGTH

Ibuprofen, Pseudoephedrine Hydrochloride and Chlorpheniramine Maleate Caplets

CHILDREN'S ADVIL COLD & FLU MULTI-SYMP TOM

Ibuprofen, Pseudoephedrine Hydrochloride and Chlorpheniramine Maleate Suspension

9.4 Drug-Drug Interactions

The drugs listed in this section are based on either drug interaction case reports or studies, or potential interactions due to the expected magnitude and seriousness of the interaction (i.e., those identified as contraindicated).

Acetaminophen

Although interactions have not been reported, concurrent use with Advil products is not advisable: it may increase the risk of adverse renal effect.

Acetylsalicylic acid (ASA) or other NSAIDs

The use of these products in addition to any other NSAID, including ASA, is not recommended due to the possibility of additive side effects. Animal studies show that acetylsalicylic acid given with NSAIDs, including ibuprofen, yields a net decrease in anti-inflammatory activity with lowered blood levels of the non-acetylsalicylic acid drug. Single-dose bioavailability studies in normal volunteers have failed to show an effect of acetylsalicylic acid on ibuprofen blood levels. Correlative clinical studies have not been conducted (See [2 CONTRAINDICATIONS](#)).

No clinically meaningful loss of cardio-protection was observed, when patients on low dose ASA (81 mg) were administered 400 mg ibuprofen T.I.D., keeping in mind that combination NSAID therapy is associated with additive adverse reactions.

Acetylsalicylic acid (ASA) Low Dose

Ibuprofen can interfere with the anti-platelet effect of low-dose ASA (81 - 325 mg per day). Long-term daily use of ibuprofen may render ASA less effective when used for cardio-protection and stroke prevention. To minimize this interaction, regular users of ibuprofen and low-dose, immediate-release ASA should take the ibuprofen at least one hour after or 11 hours before the daily low-dose ASA. The use of delayed-release (e.g. enteric coated) ASA is not recommended when using ibuprofen regularly. Healthcare professionals should advise consumers and patients regarding the appropriate concomitant use of ibuprofen and ASA.

Aminoglycosides

Reduction in renal function in susceptible individuals, decreased elimination of aminoglycoside and increased plasma concentrations.

Antacids

A bioavailability study has shown that there was no interference with the absorption of ibuprofen when given in conjunction with an antacid containing aluminium hydroxide and magnesium hydroxide.

Anticoagulants

Numerous studies have shown that the concomitant use of NSAIDs and anticoagulants increases the risk of GI adverse events such as ulceration and bleeding. Because prostaglandins play an important role in hemostasis, and NSAIDs affect platelet function, concurrent therapy of ibuprofen with warfarin requires close monitoring to be certain that no change in anticoagulant dosage is necessary. Several short-term controlled studies failed to show that ibuprofen significantly affected prothrombin time or a variety of

ADVIL COLD & SINUS NIGHTTIME

ADVIL COLD & SINUS PLUS

ADVIL COLD, SINUS & FLU EXTRA STRENGTH

Ibuprofen, Pseudoephedrine Hydrochloride and Chlorpheniramine Maleate Caplets

CHILDREN'S ADVIL COLD & FLU MULTI-SYMPTOM

Ibuprofen, Pseudoephedrine Hydrochloride and Chlorpheniramine Maleate Suspension

other clotting factors when administered to individuals on coumarin-type anticoagulants. Nevertheless, the physician, should be cautious when administering Advil products to patients on anticoagulants.

Antihypertensives

Combinations of ACE inhibitors, angiotensin-II antagonists, or diuretics with NSAIDs might have an increased risk for acute renal failure and hyperkalemia. Blood pressure and renal function (including electrolytes) should be monitored more closely in this situation, as occasionally there can be a substantial increase in blood pressure.

Prostaglandins are an important factor in cardiovascular homeostasis and inhibition of their synthesis by NSAIDs may interfere with circulatory control. NSAIDs may elevate blood pressure in patients receiving antihypertensive medication. Two meta-analyses have observed this relationship for NSAIDs as a class and for certain NSAIDs in particular, but ibuprofen did not significantly affect blood pressure in either meta-analysis. Consistent with this lack of effect, a study by Davies et al showed that ibuprofen 1600 mg/day for 14 days did not attenuate the antihypertensive effect of two β -adrenergic blockers. Houston et al showed no effect of three weeks' therapy with ibuprofen on the antihypertensive efficacy of verapamil, but it is not known whether this lack of interaction extends to other classes of calcium channel blockers.

When renal perfusion pressure is reduced both prostaglandins and angiotensin II are important mediators of renal autoregulation. As a class, the combination of an NSAID and angiotensin converting enzyme inhibitor theoretically may have the potential to decrease renal function. One study found a clinically significant decrease in renal function in 4 of 17 patients treated with hydrochlorothiazide and fosinopril who received ibuprofen 2400 mg/day for one month. In contrast, Minuz found no effect on the antihypertensive effect of enalapril or on plasma renin or aldosterone following two days' treatment with ibuprofen 1200 mg/day.

The relationship of ibuprofen and antihypertensives is clearly not well defined. The benefits of concomitant medication should be analysed and compared to the potential risks before being prescribed. If ibuprofen is being recommended for long-term use, then periodic monitoring of blood pressure may be useful. Blood pressure monitoring is not necessary if ibuprofen is being recommended for short-term use as an analgesic.

Cough-cold/allergy Medications

The use of other decongestants, cough and cold medications, allergy medications or medications containing pseudoephedrine or ibuprofen should be avoided as it can increase the risk of serious side effects and overdose.

Cyclosporine

There is an increased risk of nephrotoxicity.

CYP2C9 Inhibitors

Concomitant administration of ibuprofen with CYP2C9 inhibitors may increase the exposure to ibuprofen (CYP2C9 substrate). In a study with voriconazole and fluconazole (CYP2C9 inhibitors), an

ADVIL COLD & SINUS NIGHTTIME

ADVIL COLD & SINUS PLUS

ADVIL COLD, SINUS & FLU EXTRA STRENGTH

Ibuprofen, Pseudoephedrine Hydrochloride and Chlorpheniramine Maleate Caplets

CHILDREN'S ADVIL COLD & FLU MULTI-SYMPTOM

Ibuprofen, Pseudoephedrine Hydrochloride and Chlorpheniramine Maleate Suspension

increased S(+)-ibuprofen total exposure (AUC) by approximately 80 to 100% has been shown. Reduction of the ibuprofen dose should be considered when potent CYP2C9 inhibitors are administered concomitantly, particularly when high-dose ibuprofen is administered with either voriconazole or fluconazole.

Digoxin

Ibuprofen has been shown to increase serum digoxin concentration. Increased monitoring and dosage adjustments of digitalis glycoside may be necessary during and following concurrent ibuprofen therapy.

Diuretics

Clinical studies, as well as random observations, have shown that ibuprofen can reduce the natriuretic effect of furosemide and thiazides in some patients. This response has been attributed to inhibition of renal prostaglandin synthesis. During concomitant therapy with ibuprofen, the patient should be observed closely for signs of renal failure as well as to assure diuretic efficacy.

Glucocorticoids

Some studies have shown that the concomitant use of NSAIDs and oral glucocorticoids increases the risk of GI adverse events such as ulceration and bleeding. This is especially the case in older (> 65 years of age) individuals.

H-2 antagonists

In studies with human volunteers, coadministration of cimetidine or ranitidine with ibuprofen had no substantive effect on ibuprofen serum concentrations.

There are no known interactions when chlorpheniramine maleate and H-2 antagonists are used concomitantly.

Hypoglycaemic Agents

Ibuprofen may increase hypoglycaemic effects of oral antidiabetic agents and insulin.

Lithium

Ibuprofen produced an elevation of plasma lithium levels and a reduction in renal lithium clearance in a study of eleven normal volunteers. The mean minimum lithium concentration increased 15% and the renal clearance of lithium was decreased by 19% during this period of concomitant drug administration. This effect has been attributed to inhibition of renal prostaglandin synthesis by ibuprofen. Thus, when ibuprofen and lithium are administered concurrently, subjects should be observed carefully for signs of lithium toxicity.

Methotrexate

Ibuprofen as well as other NSAIDs has been reported to competitively inhibit methotrexate accumulation in rabbit kidney slices. This may indicate that ibuprofen could enhance the toxicity of methotrexate. Caution should be used when ibuprofen is administered concomitantly with methotrexate.

Monoamine Oxidase Inhibitors

Advil products should not be used concomitantly with MAO inhibitors or for 14 days after stopping the MAOI drug. MAO inhibitors are prescribed for treatment of depression, psychiatric or emotional conditions, or Parkinson's disease. Hypertensive crisis and other serious adverse reactions have been reported in patients using pseudoephedrine or other sympathomimetic drugs such as ephedrine in combination with or shortly after discontinuing MAO inhibitors (See [2 CONTRAINDICATIONS](#)).

Phenytoin

Concomitant chlorpheniramine may delay the hepatic metabolism of phenytoin, potentially resulting in phenytoin toxicity. Two cases of phenytoin toxicity have been reported in patients who took chlorpheniramine concomitantly.

A 28-year-old woman who was taking 250 mg phenytoin daily for treatment of epilepsy began using chlorpheniramine (12 to 16 mg daily) for hay fever. Two days later, developed involuntary movements of the lower jaw and face. She did not have ataxia or nystagmus. Two weeks after beginning concomitant chlorpheniramine, she had a serum phenytoin concentration of 30 micrograms/mL, which was above the upper limit of the therapeutic range (25 micrograms/mL). When evaluated 1 month after she had stopped taking chlorpheniramine, her abnormal movements had ended, and her serum phenytoin concentration was 16 micrograms/mL.

A young woman with a history of epilepsy and prior treatment with phenytoin began taking 4 mg chlorpheniramine three times daily to treat a rash. One week after beginning chlorpheniramine, she resumed treatment with phenytoin (100 mg three times daily). Over the ensuing week, she rapidly developed drowsiness, ataxia, diplopia, tinnitus, and episodes of occipital headaches with vomiting. Upon admission to hospital, she was drowsy and unable to stand, with gross bilateral horizontal nystagmus and cerebellar ataxia. Plasma concentrations of phenytoin were initially in the toxic range but decreased to therapeutic levels after chlorpheniramine was discontinued. At the same time, the patient's neurological signs and symptoms resolved.

Selective Serotonin Reuptake Inhibitors (SSRIs)

Studies report an increased risk of gastrointestinal (GI) ulceration and bleeding when Ibuprofen as well as other NSAIDs are taken concomitantly with selective serotonin reuptake inhibitors (SSRIs) than when either class of drugs is taken alone (See [Gastrointestinal](#)).

Other CNS Depressant Drugs

Caution is necessary if these products are used by patients who are taking sedatives or tranquilizers.

Other Drugs

Advil products should be used with caution when other drugs, also having a high affinity for protein binding sites, are used concurrently. However, while ibuprofen binds extensively to plasma proteins, interactions with other protein-bound drugs occur rarely. Caution should be used when taking Advil products in conjunction with probenecid, thyroxine, antibiotics (e.g. levofloxacin), corticosteroids or benzodiazepines.

Quinolones

NSAIDs can increase the risk of convulsion associated with quinolone antibiotics.

Zidovudine

There is an increased risk of hemarthroses and haematoma in HIV (+) haemophiliacs.

9.5 Drug-Food Interactions

Interactions with food have not been established.

9.6 Drug-Herb Interactions

Interactions with herbs have not been established.

9.7 Drug-Laboratory Test Interactions

These products contain chlorpheniramine, an antihistamine that interferes with skin tests for allergy. Antihistamines may inhibit the cutaneous histamine response, thus producing false-negative results. Antihistamine-containing drugs should be discontinued at least 72 hours before skin testing begins.

10 CLINICAL PHARMACOLOGY

10.1 Mechanism of Action

Ibuprofen

Like other nonsteroidal anti-inflammatory drugs (NSAIDs), ibuprofen is an analgesic, antipyretic, and anti-inflammatory medication. The principal mechanism of action of ibuprofen and other NSAIDs is inhibition of prostaglandin biosynthesis. Prostaglandins contribute to fever, pain, and inflammation by sensitizing tissues to pain- and inflammation-producing mediators such as histamine, 5-hydroxytryptamine, and kinins. The committed step in prostaglandin biosynthesis is catalyzed by prostaglandin endoperoxide synthase, also known as cyclooxygenase. NSAIDs decrease prostaglandin biosynthesis by inhibiting cyclooxygenase.

A recent study confirmed that ibuprofen 400 mg provided a significantly faster onset of relief as measured by first perceptible relief, meaningful relief, percent attaining complete relief, and superior overall analgesic efficacy compared to acetaminophen 1000 mg for relief of episodic tension-type headache.

ADVIL COLD & SINUS NIGHTTIME

ADVIL COLD & SINUS PLUS

ADVIL COLD, SINUS & FLU EXTRA STRENGTH

Ibuprofen, Pseudoephedrine Hydrochloride and Chlorpheniramine Maleate Caplets

CHILDREN'S ADVIL COLD & FLU MULTI-SYMP TOM

Ibuprofen, Pseudoephedrine Hydrochloride and Chlorpheniramine Maleate Suspension

Pseudoephedrine Hydrochloride

Pseudoephedrine acts directly on both alpha- and, to a lesser degree, beta-adrenergic receptors. It is believed that alpha-adrenergic effects result from inhibition of the production of cyclic adenosine-3',5'-monophosphate (AMP) by inhibition of the enzyme adenylyl cyclase, whereas beta-adrenergic effects result from stimulation of adenylyl cyclase activity. Like ephedrine, pseudoephedrine also acts indirectly by releasing norepinephrine from its storage sites.

Pseudoephedrine acts directly on alpha-adrenergic receptors in the mucosa of the respiratory tract, producing vasoconstriction that results in shrinkage of swollen nasal mucous membranes, reduction of tissue hyperaemia, oedema, and nasal congestion, and, thereby, an increase in nasal airway patency. Drainage of sinus secretions is increased, and obstructed eustachian ostia may be opened.

Chlorpheniramine Maleate

Chlorpheniramine belongs to the alkylamine class of antihistamines and is a reversible, competitive inhibitor of the interaction of histamine with H₁ receptors. H₁-receptor antagonists effectively block the action of histamine, which includes increased capillary permeability, oedema, and wheal. Flare (erythaema) and itching, manifestations of the action of histamine on nerve endings, are suppressed by H₁-receptor antagonists. In addition, H₁ antagonists inhibit the vasoconstrictor effects of histamine. H₁ antagonists inhibit most responses of smooth muscle to histamine but have little effect on allergic bronchoconstriction in humans, which is caused primarily by mediators other than histamine, such as leukotrienes and platelet activating factor.

Chlorpheniramine is a first-generation antihistamine and, as such, has effects on the central nervous system (CNS), including diminished alertness, slowed reaction time, and somnolence. Patients vary in their susceptibility to such effects, and some patients may experience stimulation rather than sedation. Alkylamine antihistamines are less likely to depress the CNS and cause sedation than another class of antihistamines, the ethanolamines, including diphenhydramine.

In addition to the H₁ receptor, chlorpheniramine has affinity for muscarinic cholinergic receptor subtypes m1-m5. The drug's anticholinergic activity may be related to its ability to reduce nasal secretions.

10.2 Pharmacodynamics

Ibuprofen

Animal Pharmacology

Cyclooxygenase inhibitors such as ibuprofen and other NSAIDs reduce thromboxane A₂ production and release, thereby decreasing platelet aggregation. Like many other NSAIDs, ibuprofen inhibits platelet aggregation, as demonstrated in vivo by prevention of platelet disposition in aortopulmonary arterial bypass grafts in dogs. The drug's protective action against pulmonary embolism in rabbits injected intravenously with arachidonic acid may also relate to inhibition of platelet aggregation. The decreased platelet aggregation may be due in part to a reduction in membrane fluidity.

The penetration of ibuprofen into rabbit and rat fetuses was investigated. Rabbits and rats in late pregnancy were given single oral doses of 60 and 20 mg/kg respectively of C¹⁴-labeled ibuprofen. Rabbits were killed 3 hours after dosing, and rats were killed 1.5 hours after dosing. Blood samples were

ADVIL COLD & SINUS NIGHTTIME

ADVIL COLD & SINUS PLUS

ADVIL COLD, SINUS & FLU EXTRA STRENGTH

Ibuprofen, Pseudoephedrine Hydrochloride and Chlorpheniramine Maleate Caplets

CHILDREN'S ADVIL COLD & FLU MULTI-SYMPTOM

Ibuprofen, Pseudoephedrine Hydrochloride and Chlorpheniramine Maleate Suspension

collected from the mothers and foetuses. The concentrations of radioactively labelled material were similar in maternal and foetal blood, indicating that ibuprofen and its metabolites readily crossed the placenta and entered the foetal circulation.

Human Pharmacology

In healthy volunteers, platelet aggregation decreased significantly at a dosage of 1800 mg per day of ibuprofen given over a period of 28 days. Ibuprofen influenced ADP-induced aggregation to a lesser extent than collagen-induced aggregation. Platelet aggregation induced by recalcification of citrated platelet-rich plasma (a thrombin-induced reaction) was not influenced by ibuprofen treatment. Likewise, ibuprofen did not affect whole blood clotting time on recalcification or prothrombin time. Bleeding time measured 2 hours after administration of ibuprofen showed a significant, dose-related increase.

Pseudoephedrine Hydrochloride

Animal Pharmacology

In dogs, pseudoephedrine acts as a vasopressor and vasoconstrictor with positive inotropic and chronotropic effects. In all these effects, pseudoephedrine is less potent than ephedrine. The bronchodilating potencies of pseudoephedrine and ephedrine in anaesthetized dogs are approximately equal, but pseudoephedrine produces a greater degree of nasal decongestion with less cardiovascular involvement than ephedrine. Pseudoephedrine increases plasma corticosterone levels and produces hyperglycemia in mice.

Human Pharmacology

Pseudoephedrine at doses up to 180 mg is approximately one-fourth as potent as ephedrine in producing tachycardia and increased systolic blood pressure; diastolic pressure is unchanged. After a single dose of pseudoephedrine 180 mg immediate release, three divided doses of 60 mg, or a sustained-release 180-mg dose, increases in heart rate and diastolic blood pressure were noted. At doses from 60 mg to 240 mg, few changes in pulse rate were noted, and no abnormalities or ectopic beats were noted on an electrocardiogram; at 210 mg, changes in diastolic blood pressure were noted.

Single pseudoephedrine doses of 180 mg produced minor elevations in systolic blood pressure (about 7 mmHg), minor increases in heart rate (about 9 beats per minute), and no changes in diastolic blood pressure in healthy subjects. Single doses of 60 mg had minimal effects.

Clinical studies of the cardiovascular effects of pseudoephedrine in subjects with controlled hypertension have produced differing results. A single 60-mg dose of pseudoephedrine compared with placebo produced significant increases in mean systolic blood pressure and heart rate in 20 hypertensive subjects. Mean diastolic blood pressure and mean arterial pressure also increased, but not significantly. Beck et al found minimal increases in blood pressure and heart rate in patients with medically controlled hypertension treated with 120 mg sustained-release pseudoephedrine twice daily. In other studies, pseudoephedrine at standard doses had no significant effect on systolic or diastolic blood pressure. In subjects with phaeochromocytoma, pseudoephedrine increased blood pressure and plasma noradrenaline concentration.

In children 6 to 12 years of age given 30-mg and 60-mg doses of pseudoephedrine in a pharmacokinetic study, pulse rate increased significantly at 4 hours postdose, particularly after the 60 mg dose. No clinically important adverse effects on blood pressure or on the central nervous system were noted.

ADVIL COLD & SINUS NIGHTTIME

ADVIL COLD & SINUS PLUS

ADVIL COLD, SINUS & FLU EXTRA STRENGTH

Ibuprofen, Pseudoephedrine Hydrochloride and Chlorpheniramine Maleate Caplets

CHILDREN'S ADVIL COLD & FLU MULTI-SYMPTOM

Ibuprofen, Pseudoephedrine Hydrochloride and Chlorpheniramine Maleate Suspension

A dose-related increase in frequency of sinus arrhythmias was observed after treadmill exercise in healthy subjects receiving pseudoephedrine. The mean number of episodes of arrhythmia during recovery from exercise was 0.17, 2.17, and 4.33 in subjects pretreated with placebo, pseudoephedrine 60 mg, and pseudoephedrine 120 mg, respectively. Short-lived unifocal premature ventricular contractions were experienced by two subjects.

In an investigation of the effects on pseudoephedrine on uterine and foetal blood flow, 12 healthy, pregnant women between 26 and 40 weeks of gestation ingested a 60-mg dose of pseudoephedrine. Doppler blood flow measurements taken during the first 3 hours after drug ingestion showed no significant alterations in maternal or foetal circulation.

Pseudoephedrine at a dose of 180 mg was reported to produce no significant mood alterations or changes in subjective ratings of mental state. In a study of the effects of pseudoephedrine on day- and nighttime central nervous system activity, there was no evidence of impairment of daytime activity as measured by objective tests (critical flicker fusion, choice reaction time, simulated car tracking test, and Sternberg Memory Scanning Test) or subjective tests (analog rating scales). Improvements were seen in psychomotor function (choice reaction time) and information processing (critical flicker fusion). Detrimental effects on nighttime central nervous system activity indicative of sleep disturbances (electroencephalogram, Leeds Sleep Evaluation Questionnaire) were noted with pseudoephedrine at doses of 60 mg and 120 mg. See 7 Warnings And Precautions, [Neurologic](#) for further information about the CNS effects of pseudoephedrine.

Pseudoephedrine administered as a single 60-mg dose or 120-mg dose or administered at 1–2 mg/kg had no significant effect on exercise performance. Pseudoephedrine at doses of 60 mg and 120 mg had no effect on the time required to reach 85% maximal predicted heart rate on a treadmill or to return to baseline heart rate; on blood pressure at rest, during exercise, or in the recovery period; or on post-exercise blood glucose and insulin levels.

The effect of pseudoephedrine as a bronchodilator is small at a 210-mg dose and is approximately one-half that of ephedrine. In a study of subjects with reversible airway obstruction, pseudoephedrine at 60 mg and 180 mg produced no significant bronchodilation.

Chlorpheniramine Maleate

Animal Pharmacology

H1-receptor antagonists such as chlorpheniramine protect guinea pigs from death by asphyxia after small doses of histamine and also protect guinea pigs from anaphylactic bronchospasm.

Human Pharmacology

In a placebo-controlled study in healthy subjects, a single 4-mg dose of chlorpheniramine did not alter total peripheral resistance or oxygen uptake during submaximal exercise.

Several studies have investigated the CNS effects of chlorpheniramine.

In doses of 2 to 4 mg, chlorpheniramine can alter the EEG, as demonstrated by increases in the mean electrical energy content. In a placebo-controlled crossover study in healthy adult subjects, an 8-mg dose of chlorpheniramine slowed cognitive processing, evaluated by recording of evoked potentials, and increased the occurrence of drowsiness, subjectively assessed by the subjects.

ADVIL COLD & SINUS NIGHTTIME

ADVIL COLD & SINUS PLUS

ADVIL COLD, SINUS & FLU EXTRA STRENGTH

Ibuprofen, Pseudoephedrine Hydrochloride and Chlorpheniramine Maleate Caplets

CHILDREN'S ADVIL COLD & FLU MULTI-SYMPTOM

Ibuprofen, Pseudoephedrine Hydrochloride and Chlorpheniramine Maleate Suspension

In a placebo-controlled crossover study in elderly subjects, an 8-mg dose of chlorpheniramine slowed cognitive processing and caused somnolence, which was rated using a visual analog scale. Decreased performance and increased sleepiness are caused by S-(+)-chlorpheniramine (also known as d-chlorpheniramine or dexchlor-pheniramine), which has high affinity for the H₁-receptor, but not by its enantiomer, R-(-)-chlorpheniramine. Cognition performance in an attention-demanding task decreased significantly after a 2-mg intravenous dose of d-chlorpheniramine (equivalent to a 4-mg dose of the racemic mixture); the decreased performance was associated with changes in functional neuroimaging.

In a double-blind crossover study, driving performance was evaluated after treatment of subjects with d-chlorpheniramine (6 mg bid), terfenadine (60 mg bid), or placebo. Six of the 10 subjects could not complete the 150-minute driving test because of impaired performance after taking d-chlorpheniramine, whereas all subjects completed the driving test after taking terfenadine or placebo. The percentage of alpha wave in the EEG during driving was higher with d-chlorpheniramine than with terfenadine or placebo, indicating a risk of dozing while driving after treatment with d-chlorpheniramine.

Among 2172 postmortem blood samples from pilots who had died in aircraft accidents in the United States from 1991 to 1996, 2% contained chlorpheniramine. The average concentration of chlorpheniramine in the blood was approximately tenfold greater than the therapeutic concentration.

Co-administration of ranitidine, an H₂-receptor antagonist, decreased some of the side effects of chlorpheniramine, including sleepiness and, to a lesser degree, tiredness, inability to concentrate, and dryness of mouth.

10.3 Pharmacokinetics

Absorption

Ibuprofen

Ibuprofen is a racemic mixture of R-(-) ibuprofen and S-(+) ibuprofen. R-(-) ibuprofen undergoes extensive (53% to 65%) enantiomeric conversion to S-(+) ibuprofen in humans. S-(+) ibuprofen is the pharmacologically active enantiomer.

Ibuprofen is rapidly absorbed after oral administration. Serum concentrations reach a peak within 1 to 2 hours in adults and in children. Food decreases the rate but not the extent of ibuprofen absorption.

Pseudoephedrine Hydrochloride

After oral administration, pseudoephedrine is readily and completely absorbed from the gastrointestinal tract, with no evidence of first-pass metabolism. The absorption rate of pseudoephedrine, as measured by its urinary excretion rate, is significantly increased by the concurrent administration of aluminium hydroxide gel, is decreased by kaolin, and is unaffected by sodium bicarbonate. After oral administration of syrups containing 60 mg or 120 mg of pseudoephedrine, peak plasma pseudoephedrine concentrations of 180 ng/mL to 422 ng/mL, respectively, were obtained at 1 to 2 hours.

In a study of five children aged 6 to 12 years receiving 2 mg/kg of pseudoephedrine up to a maximum dose of 60 mg, the peak concentration (C_{max}) was 338 ng/mL, T_{max} was 1.86 hours, and t_{1/2} was 4.61 hours. More recently, Simons et al characterized the pharmacokinetics of pseudoephedrine in children

ADVIL COLD & SINUS NIGHTTIME

ADVIL COLD & SINUS PLUS

ADVIL COLD, SINUS & FLU EXTRA STRENGTH

Ibuprofen, Pseudoephedrine Hydrochloride and Chlorpheniramine Maleate Caplets

CHILDREN'S ADVIL COLD & FLU MULTI-SYMP TOM

Ibuprofen, Pseudoephedrine Hydrochloride and Chlorpheniramine Maleate Suspension

with seasonal allergic rhinitis. The results are presented in Table 4.

Pharmacokinetic Parameter	Pseudoephedrine 30 mg (N = 7)	Pseudoephedrine 60 mg (N = 7)
C _{max} (ng/mL)	244± 21	492±72
T _{MAX} (h)	2.1±0.3	2.4±0.2
t _{1/2} (h)	3.1±0.5	3.1±0.4
AUC (ng/mL/h)	1260±126	2414±336
Cl (mL/min/kg)	10.3±1.2	9.2±0.7
V _{dss} (L/kg)	2.6±0.3	2.4±0.4

Note: Values are means standard error of the mean (SEM). AUC = area under the plasma concentration versus time curve, Cl = clearance, V_{dss} = steady-state volume of distribution.

In a study in 25 children 6 to 11 years of age, the absorption of pseudoephedrine from an Advil Cold & Sinus tablet (ibuprofen 200 mg/pseudoephedrine 30 mg) was found to be equivalent to the absorption of pseudoephedrine from a Sudafed tablet (pseudoephedrine 30 mg) (Table 5).

Treatment	AUC _L (ng•h/mL)	AUC _I (ng•h/mL)	C _{max} (ng/mL)	T _{max} (h)	t _{1/2} (h)
Advil Cold & Sinus Tablet	1565.7 (530.5)	1859.0 (611.3)	265.8 (86.8)	2.2 (1.0)	4.6 (1.0)
Sudafed Tablet	1510.5 (561.1)	1791.9 (526.2)	236.0 (72.5)	2.3 (0.9)	4.7 (0.6)

Note: Values are means (SEM). AUC_L = AUC to last measurable concentration, AUC_I = AUC extrapolated to infinity.

The absorption rate of pseudoephedrine, as measured by its urinary excretion rate, is significantly increased by the concurrent administration of aluminium hydroxide gel, is decreased by kaolin, and is unaffected by sodium bicarbonate. Food appeared to delay absorption of pseudoephedrine from syrup formulations and controlled-release capsules but had no effect on absorption from a suspension.

Chlorpheniramine Maleate

Chlorpheniramine is detectable in plasma within 30 minutes after oral administration. Plasma concentrations of chlorpheniramine peak at approximately 2 hours post-dose and gradually fall over the

next 46 hours. Oral bioavailability has been reported as 25% to 50%.

Chlorpheniramine is a racemic mixture of R(-) chlorpheniramine and S(+) chlorpheniramine. After an oral dose, serum concentrations of S(+) chlorpheniramine are approximately double those of R(-) chlorpheniramine, because of slower clearance of S(+) chlorpheniramine.

Distribution

Ibuprofen

After oral administration, the volume of distribution of ibuprofen was 0.1–0.2 L/kg in adults and 0.18–0.22 L/kg in febrile children. At therapeutic concentrations, ibuprofen is extensively bound to whole human plasma and binds primarily to site II of purified albumin.

Pseudoephedrine Hydrochloride

The volume of distribution of pseudoephedrine ranged from 2.64 L/kg to 3.51 L/kg in single- and multiple-dose studies. Pseudoephedrine concentration-time data after oral administration are well described using a one body compartment model with first-order absorption and elimination. The approximate plasma clearance of pseudoephedrine is 0.44 L/h/kg.

Chlorpheniramine Maleate

Chlorpheniramine is widely distributed, with reported volumes of distribution ranging from 2 to 8 L/kg. In a patient who died of overdose, chlorpheniramine was detected in the brain, lungs, kidneys, and liver. Chlorpheniramine is approximately 70% bound to plasma proteins.

Metabolism

Ibuprofen

The plasma half-life ($t_{1/2}$) of ibuprofen in adults and children is 1.5 - 2.0 hours. There is no appreciable plasma accumulation of ibuprofen or its metabolites with repeated doses. Two major metabolites, 2-[4-(2-carboxypropyl)phenyl] propionic acid and 2-[4-(2-hydroxy-2-methyl)propyl]phenyl propionic acid, have been identified in plasma and in urine. Parent drug and metabolites are excreted primarily in the urine. Bile and faeces are relatively minor elimination routes. Approximately 80% of an ibuprofen dose is recovered in urine within 24 hours, primarily as carboxymetabolites and hydroxymetabolites, both conjugated and unconjugated.

Cytochrome P450 (CYP) 2C9 has been identified as the most important enzyme in the oxidative metabolism of R(-) and S(+) ibuprofen. Ibuprofen does not appear to induce the formation of drug-metabolizing enzymes in rats.

There is no evidence of changes in metabolism or elimination of ibuprofen with advanced age. A pharmacokinetic evaluation of ibuprofen in subjects 65 to 78 years of age compared with young adult subjects (22 to 35 years of age) found no clinically significant difference in the pharmacokinetic profiles of ibuprofen for the two age groups. Furthermore, there was no statistically significant difference between the two age groups in the urinary excretion pattern of the drug and its major metabolites. The

ADVIL COLD & SINUS NIGHTTIME

ADVIL COLD & SINUS PLUS

ADVIL COLD, SINUS & FLU EXTRA STRENGTH

Ibuprofen, Pseudoephedrine Hydrochloride and Chlorpheniramine Maleate Caplets

CHILDREN'S ADVIL COLD & FLU MULTI-SYMPTOM

Ibuprofen, Pseudoephedrine Hydrochloride and Chlorpheniramine Maleate Suspension

pharmacokinetic results for ibuprofen in children are similar to findings in adults.

Pseudoephedrine Hydrochloride

Less than 1% of pseudoephedrine is eliminated by hepatic metabolism. The major biotransformation of pseudoephedrine is N-demethylation to the active metabolite norpseudoephedrine.

Because pseudoephedrine is a weak base, with a pKa of 9.2, its half-life is dependent on urinary pH. The serum half-life increases as urine pH increases, varying from 1.9 hours at pH 5.6 to 21 hours at pH 7.8. At urine pH greater than 7.0, pseudoephedrine is extensively reabsorbed in the renal tubules, and therefore its excretion rate is dependent on urine flow rate. Higher flow rates decrease the intratubular drug concentration and the time for reabsorption, leading to greater renal clearance. When urine pH is acidic, renal reabsorption is negligible and urine flow does not influence clearance of the drug.

In a study in children in which the urine pH was 6.5, pseudoephedrine had a shorter half-life (3.1 hours) and faster clearance (9.2 to 10.3 mL/min/kg) than in studies of similar design in adults in which the urine pH was not controlled or reported. Fifty-six percent of the pseudoephedrine dose was recovered in the urine within 12 hours, and an additional 10% was recovered over the period from 12 to 24 hours.

The shorter terminal elimination half-life of pseudoephedrine in children may reflect greater renal tubular secretion or reabsorption in children than in adults. The faster clearance rate and smaller volume of distribution in children than in adults is probably due to the relatively lower lean body mass in children. Over the 30-mg to 60-mg dose range, the kinetics of pseudoephedrine in children were not dose dependent.

Chlorpheniramine Maleate

Although human and animal data are inconclusive, it appears likely that chlorpheniramine and its metabolites may cross the placenta and appear in the milk of lactating mothers.

The elimination half-life of chlorpheniramine is approximately 20 hours in adults. In a study of eight healthy, elderly women (mean age, 68 years), the mean serum elimination half-life was 23 hours. The clearance of chlorpheniramine is higher and the elimination half-life is shorter in children than in adults.

Extensive first-pass metabolism of chlorpheniramine occurs and may be saturable. Demethylated metabolites (didesmethyl and monodesmethyl derivatives) have been identified, as well as polar metabolites: an alcohol and an acid.

Elimination

Ibuprofen

Thirty minutes after oral ingestion of 400 mg of ibuprofen, the concentration in breast milk was found to be 13 ng/mL. The milk:plasma ratio was 1:126, and the exposure of a suckling infant to ibuprofen was calculated to be approximately 0.0008% of the maternal dose. Studies in animals indicate that ibuprofen is transported across the placenta.

Pseudoephedrine Hydrochloride

Pseudoephedrine is excreted largely unchanged in urine, with 43% to 96% recovered in 24 hours. Norpseudoephedrine recovery from urine ranged from less than 1% to 7%.

ADVIL COLD & SINUS NIGHTTIME

ADVIL COLD & SINUS PLUS

ADVIL COLD, SINUS & FLU EXTRA STRENGTH

Ibuprofen, Pseudoephedrine Hydrochloride and Chlorpheniramine Maleate Caplets

CHILDREN'S ADVIL COLD & FLU MULTI-SYMP TOM

Ibuprofen, Pseudoephedrine Hydrochloride and Chlorpheniramine Maleate Suspension

Pseudoephedrine is presumed to cross the placenta and to enter the cerebrospinal fluid. Approximately 0.4% to 0.7% of an oral dose is excreted in breast milk over 24 hours. Pseudoephedrine levels two to three times higher in milk than in plasma have been reported. Adverse effects (irritability, excessive crying, disturbed sleeping patterns) were reported in a breast-fed infant whose mother had taken a long-acting oral decongestant (120 mg d-isoephedrine sulfate, 6 mg dexbrompheniramine) twice daily. Discontinuation of the medication and substitution of an artificial formula for the next two feedings were associated with resumption of normal behaviour by the infant within 12 hours.

Chlorpheniramine Maleate

Chlorpheniramine and its metabolites are excreted primarily via the kidneys. Faecal excretion accounts for less than 1% of the dose administered. The percentage of unchanged drug recovered in the urine has ranged from 0.3% to 34%, depending on urine pH, rate of urine flow, and whether single or multiple doses were given.

11 STORAGE, STABILITY AND DISPOSAL

Temperature:

Advil Cold & Sinus Nighttime, Advil Cold & Sinus Plus, Advil Cold, Sinus & Flu Extra Strength and Children's Advil Cold & Flu Multi-symptom should be stored in tightly closed containers at room temperature (15 to 30°C).

Others:

Keep in a safe place out of the reach and sight of children.

12 SPECIAL HANDLING INSTRUCTIONS

Not applicable.

PART II: SCIENTIFIC INFORMATION

13 PHARMACEUTICAL INFORMATION

Drug Substances

Proper name: Ibuprofen

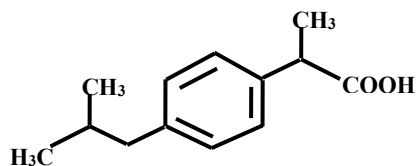
Chemical name: α -methyl-4-(2-methylpropyl) benzeneacetic acid

Other names: p-isobutylhydratropic acid

2-(4-isobutylphenyl)-propionic acid

Molecular formula and molecular mass: $C_{13}H_{18}O_2$
206.28 daltons

Structural formula:



Physicochemical properties: White or almost white powder or crystals with a characteristic odour.

Solubility: Low solubility in water (<0.1 mg/mL), soluble 1 in 1.5 of alcohol, 1 in 1 of chloroform, 1 in 2 of ether, and 1 in 1.5 of acetone. Ibuprofen is also soluble in an aqueous solution of alkali hydroxides and carbonates.

pKa value: pKa = 4.43

Melting Point: 75-77°C

Proper name: Pseudoephedrine hydrochloride

Chemical name: {S-(R*, R*)- α -{1-(methylamino)ethyl} benzenemethanol hydrochloride

Other names (+)-Pseudoephedrine hydrochloride

Molecular Formula and molecular mass: $C_{10}H_{15}NO \cdot HCl$

201.70 daltons

ADVIL COLD & SINUS NIGHTTIME

ADVIL COLD & SINUS PLUS

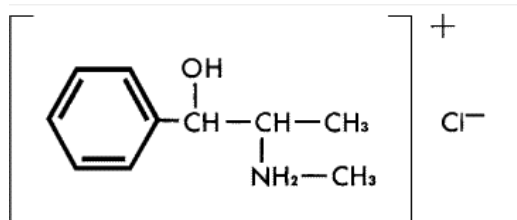
ADVIL COLD, SINUS & FLU EXTRA STRENGTH

Ibuprofen, Pseudoephedrine Hydrochloride and Chlorpheniramine Maleate Caplets

CHILDREN'S ADVIL COLD & FLU MULTI-SYMP TOM

Ibuprofen, Pseudoephedrine Hydrochloride and Chlorpheniramine Maleate Suspension

Structural Formula:



Physicochemical Properties: White powder or crystals

Solubility: Soluble in water, alcohol, and chloroform

pKa and pH values: pKa = 9.2, pH = 5.9 in an aqueous solution of 1 in 200

Melting Point: 180-186°C

Proper name: Chlorpheniramine maleate

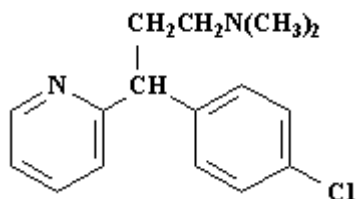
Chemical name: γ -(4-Chlorophenyl)-N,N,-dimethyl-2-pyridinepropanamine maleate

Other names 2-[p-chloro- α -(2 dimethylaminoethyl)benzyl]pyridine

Molecular Formula and molecular mass: C₂₀H₂₃ClN₂O₄

390.90 daltons

Structural Formula:



Physicochemical Properties: White crystals

Solubility: Soluble in water, alcohol, and chloroform

pKa and pH values: pKa = 9.2, pH = 5 in a 2% aqueous solution

Melting Point: 130-135°C

ADVIL COLD & SINUS NIGHTTIME

ADVIL COLD & SINUS PLUS

ADVIL COLD, SINUS & FLU EXTRA STRENGTH

Ibuprofen, Pseudoephedrine Hydrochloride and Chlorpheniramine Maleate Caplets

CHILDREN'S ADVIL COLD & FLU MULTI-SYMP TOM

Ibuprofen, Pseudoephedrine Hydrochloride and Chlorpheniramine Maleate Suspension

14 CLINICAL TRIALS

14.1 Clinical Trials by Indication

Efficacy of Ibuprofen/Pseudoephedrine/Chlorpheniramine in Allergic Rhinitis

A 7-day study of the efficacy and safety of ibuprofen, pseudoephedrine hydrochloride and chlorpheniramine maleate caplets in subjects with seasonal allergic rhinitis was conducted. To qualify for the study, subjects were required to have (1) at least a 2-year history of seasonal allergic rhinitis involving any of the following symptoms: runny nose, itchy/watery/red eyes, nasal congestion, sneezing, itchy nose/throat/palate, allergy-associated headache, facial pain/pressure/discomfort, and (2) a history of at least moderate headache, and/or facial pain/pressure/discomfort that worsened during the allergy season and responded to nonprescription analgesics. An additional entry criterion was a positive skin prick test in response to a standard pollen/grass/tree/mold extract within the past 2 years.

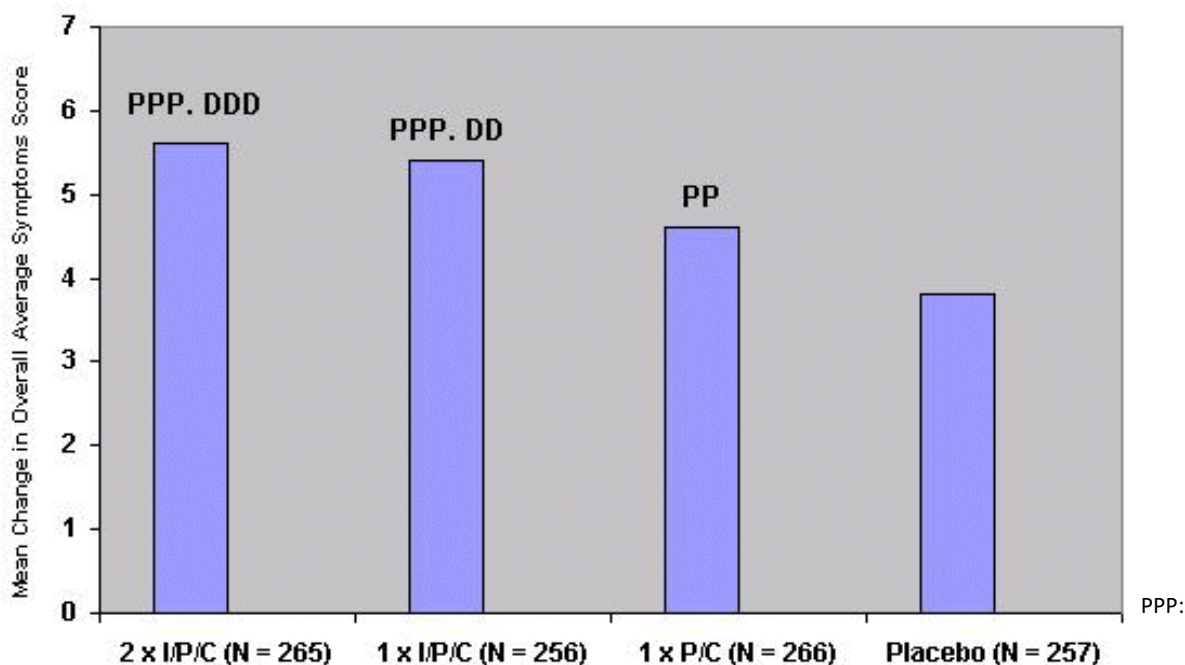
Subjects who qualified for the study underwent a run-in phase during which they assessed the severity of their allergy symptoms (nasal congestion, sneezing, rhinorrhea, itchy nose/throat/palate, itchy/watery/red eyes, and headache/facial pain/pressure/discomfort) using a 4-point categorical scale (0 = none to 3 = severe) in the morning and evening. Subjects returned to the clinical study site when they were experiencing at least moderate allergy-associated headache and/or facial pain/pressure/discomfort and had assessed the severity of their allergy symptoms twice daily during the preceding 3 days. Subjects who returned to the site were given the first dose of study medication if they had at least moderate allergy-associated headache and/or facial pain/pressure/discomfort and had a summed allergy symptom score of at least 48 out of a possible 108 from the six previous twice-daily assessments (baseline assessment).

The subjects ranged in age from 12 to 85 years (mean age, 34 years). They were randomly assigned to double-blind treatment with either (1) placebo, (2) ibuprofen/pseudoephedrine/chlorpheniramine, 400 mg/60 mg/4 mg (two caplets), (3) ibuprofen/pseudoephedrine/chlorpheniramine, 200 mg/30 mg/2 mg (one caplet), or (4) pseudoephedrine/chlorpheniramine, 30 mg/2 mg (one tablet). Subjects were to take three doses of their medication per day (morning, midday, and evening, approximately 6 hours apart) for 7 days, regardless of whether they experienced allergy symptoms.

Subjects assessed the severity of their allergy-associated pain at 2 and 3 hours after the first dose of study medication. Before each subsequent dose of study medication, they indicated whether they were experiencing allergy-associated headache and/or facial pain/pressure/discomfort. On the evening of Day 1 and on each morning and evening of Days 27, subjects assessed the severity of their allergy symptoms. On the evening of Day 7, they provided a global evaluation of the study medication.

The improvement in overall average total symptoms score relative to baseline was greater in the groups treated with the combination of ibuprofen, pseudoephedrine, and chlorpheniramine (1- and 2-caplet doses, 1 x I/P/C and 2 x I/P/C) than in the group treated with placebo (Figure 1). Results for the 1 x I/P/C group were similar to results for the 2 x I/P/C group. Treatment with 1 x I/P/C provided more benefit than treatment with the double combination, pseudoephedrine and chlorpheniramine (1 x P/C). Results similar to those for the overall average symptoms score were obtained for the overall average antihistamine symptoms score and for the morning and evening overall symptoms scores. Figure 1.

Figure 1. Change from Baseline in Overall Average Symptoms Score in Subjects with Allergic Rhinitis (Study AD-99-02)



Significantly better than placebo, $p < 0.001$; PP: $p < 0.01$

DDD: Significantly better than the Double Combo (1 x P/C), $p < 0.001$; DD: $p < 0.01$.

Pain intensity was less and the percentage of subjects with allergy-associated pain was less in the groups treated with I/P/C (either 1-caplet or 2-caplet doses) than in the placebo group or the group treated with P/C (Table 5). The group treated with P/C was similar to the placebo group in pain intensity, although its percentage of subjects with allergy-associated pain was less. Treatment with the 1 x I/P/C provided more benefit than treatment with P/C. Results were similar for the 1- and 2-caplet doses of I/P/C. In the subjects' overall evaluation, I/P/C and P/C were superior to placebo; results were similar among the three active treatment groups (Table 6).

Table 6. Efficacy Results of a 7-Day Study in Subjects with Allergic Rhinitis (Study AD-99-02)

Efficacy Parameter	Treatment Group				Pairwise Comparison, Difference and p-value				
	2 x I/P/C N=265	1 x I/P/C N=256	1 x P/C N=266	Placebo N=257	2 x I/P/C vs Placebo	1 x I/P/C vs Placebo	1 x I/P/C vs 1 x P/C	2 x I/P/C vs 1 x I/P/C	1 x P/C vs Placebo
Mean change from baseline in overall average symptoms score (SD)	5.6 (3.5)	5.4 (3.5)	4.6 (3.3)	3.8 (3.5)	1.8 <0.001*	1.6 <0.001*	0.8 0.007*	0.2 0.376	0.8 0.009*
Mean change from baseline in average antihistamine symptoms score ^a (SD)	2.9 (1.9)	2.8 (1.9)	2.4 (1.7)	1.9 (1.8)	1.0 <0.001*	0.9 <0.001*	0.4 0.012*	0.1 0.390	0.5 0.003*
Mean change from baseline in morning symptoms score (SD)	5.4 (3.4)	5.2 (3.6)	4.5 (3.5)	3.8 (3.6)	1.6 <0.001*	1.4 <0.001*	0.7 0.041*	0.2 0.298	0.7 0.024*
Mean change from baseline in evening symptoms score (SD)	5.6 (3.7)	5.8 (3.8)	4.9 (3.4)	4.0 (3.7)	1.6 <0.001*	1.8 <0.001*	0.9 0.005*	-0.2 0.532	0.9 0.005*
Mean time-weighted sum of pain intensity differences over 3 hours ^b (SD)	2.8 (2.2)	2.8 (2.5)	2.1 (2.0)	2.0 (2.1)	0.8 <0.001*	0.8 <0.001*	0.7 <0.001*	0.0 0.553	0.1 0.583
Percentage of subjects with allergy-associated pain	51.6	48.4	56.0	61.6	-10.0 <0.001*	-13.2 <0.001*	-7.6 0.006*	3.2 0.262	-5.6 0.034*
Mean overall evaluation ^c (SD)	2.0 (1.1)	2.0 (1.1)	1.8 (1.1)	1.3 (1.1)	0.7 <0.001*	0.7 <0.001*	0.2 0.105	0.0 0.883	0.5 <0.001*

Abbreviations: I, ibuprofen 200 mg; P, pseudoephedrine hydrochloride 30 mg; C, chlorpheniramine maleate 2 mg; SD, standard deviation.

* p # 0.05 in favour of the first treatment listed

^a Sneezing, itchy/watery/red eyes, itchy nose/throat/palate.

^b Because of missing data, the number of subjects included for this parameter was 2 to 4 fewer per treatment group than for other efficacy parameters.

^c Based on a 5-point scale: 0 (poor) to 4 (excellent).

ADVIL COLD & SINUS NIGHTTIME

ADVIL COLD & SINUS PLUS

ADVIL COLD, SINUS & FLU EXTRA STRENGTH

Ibuprofen, Pseudoephedrine Hydrochloride and Chlorpheniramine Maleate Caplets

CHILDREN'S ADVIL COLD & FLU MULTI-SYMPTOM

Ibuprofen, Pseudoephedrine Hydrochloride and Chlorpheniramine Maleate Suspension

Efficacy of Individual Active Ingredients

Published studies have documented the efficacy of 200-mg and 400-mg doses of ibuprofen in treating mild to moderate pain, including sore throat pain, headache, and muscle aches in adults.

The antipyretic efficacy of ibuprofen has been demonstrated in adults at doses of 200 and 400 mg and in children at doses of 5 to 10 mg/kg. Ibuprofen is effective in treating the pain of sore throat in children.

A randomized, double-blind, placebo-controlled study in 179 subjects with nasal congestion secondary to upper respiratory tract infection showed a statistically significant increase in total nasal airflow 2 hours after single oral doses of pseudoephedrine 60 mg or ibuprofen 400 mg plus pseudoephedrine 60 mg. Time-weighted sums of changes in nasal airflow relative to baseline were greater with both active treatments than with placebo (Table 7).

Table 7 Mean Nasal Air Flow (Standard Deviation) after Single Doses of Pseudoephedrine 60 mg or Ibuprofen 400 mg plus Pseudoephedrine 60 mg in Subjects with Upper Respiratory Infection

Treatment	N	Mean Nasal Air Flow Rate (mL/sec)		P Value versus Placebo ^a	
		First 4 Hours Postdose	Entire 6-Hour Period Postdose	First 4 Hours Postdose	Entire 6-Hour Period Postdose
Placebo	58	106 (362)	194 (569)	---	---
Pseudoephedrine 60 mg	61	247 (387)	406 (580)	0.068	0.061
Ibuprofen 400 mg + pseudoephedrine 60 mg	60	266 (481)	412 (639)	0.015	0.021

^a Pairwise comparisons. Additional pairwise comparisons showed no significant differences between the two active treatments ($p = 0.524$ for the first 4 hours postdose, 0.653 for the entire 6-hour period postdose).

Pseudoephedrine at a dose of 60 mg increases maximal nasal inspiratory flow rate and produces objective improvement in nasal airway resistance. A single 60-mg oral dose of pseudoephedrine produced marked nasal decongestant effects within 30 minutes of administration, lasting for at least 4 hours.

In 40 subjects with nasal congestion associated with the common cold, two 60-mg doses of pseudoephedrine 4 hours apart produced no significant difference in maximum unilateral nasal airflow or total nasal air flow over a 7-hour period; however, minimum unilateral nasal air flow was significantly increased. A single 60-mg dose of pseudoephedrine administered to subjects with nasal congestion due to the common cold significantly increased total nasal minimum cross-sectional area and nasal volume measured by acoustic rhinometry. There was no significant change in nasal area as measured by active posterior rhinomanometry.

In a double-blind, randomized study, the decongestant activity of pseudoephedrine was dose related over the range of 30 to 60 mg, as measured by total nasal air flow (sum of left and right nares) in 112 subjects with nasal congestion associated with allergic rhinitis (Figure 2). At most time points postdose, the decongestant effect of the combination of ibuprofen 200 mg plus pseudoephedrine 30 mg was midway between that seen for pseudoephedrine 45 mg and 60 mg and greater than the decongestant effect of pseudoephedrine 30 mg (Table 8).

Figure 2. Mean Change in Nasal Air Flow after Single Oral Doses of Pseudoephedrine in Subjects with Allergic Rhinitis

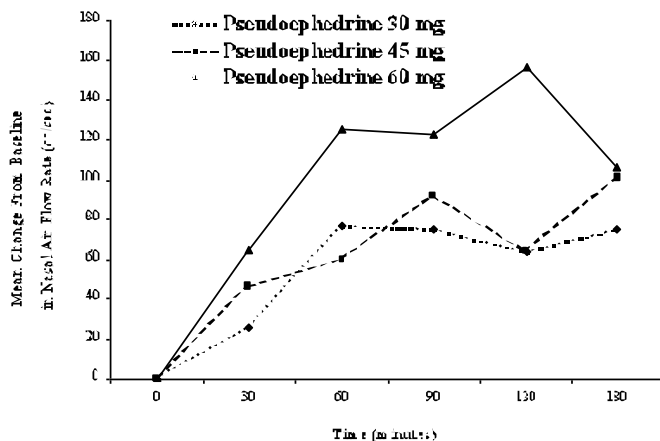


Table 8 Mean Nasal Air Flow (Standard Deviation) after Single Doses of Pseudoephedrine (30, 45, or 60 mg) or Ibuprofen 200 mg plus Pseudoephedrine 30 mg in Subjects with Allergic Rhinitis

Treatment	N	Mean Nasal Air Flow (mL/sec) at Specified Time Postdose, in Minutes						
		-30 Min	0 Min	30 Min	60 Min	90 Min	120 Min	180 Min
Pseudoephedrine								
30 mg	28	440 (185)	365 (101)	394 (152)	442 (174)	440 (173)	429 (158)	440 (155)
45 mg	28	406 (153)	356 (134)	401 (138)	416 (146)	450 (169)	423 (159)	457 (182)
60 mg	28	422 (143)	328 (119)	393 (157)	454 (217)	451 (196)	485 (214)	435 (136)
Ibuprofen 200 mg + pseudoephedrine 30 mg	28	416 (147)	365 (143)	416 (196)	454 (173)	429 (154)	468 (177)	477 (201)

Note: Time 0 = time of administration of study medication. Min = minutes.

Chlorpheniramine is similar in efficacy to other antihistamines for the treatment of symptoms of allergic rhinitis. Early clinical trials conducted at the Mayo Clinic established the effectiveness of chlorpheniramine at a dosage of 4 mg every 4 to 6 hours in treating symptoms of pollen allergy, including ocular redness, itching, and watering of the eyes and itching, running, and blockage of the nasal passages. Several recent controlled clinical trials have been conducted with chlorpheniramine in seasonal allergic rhinitis. Many of the studies used chlorpheniramine as the positive control in evaluations of the safety and efficacy of non-sedating antihistamines.

In a single-blind study, subjects scored their seasonal allergic rhinitis symptoms (postnasal drip, runny nose, sneezing, itchy nose, nasal congestion, watery eyes, and itchy eyes) at baseline and at the end of 2 weeks of treatment with cetirizine (5 to 10 mg daily), chlorpheniramine (4 mg three to four times daily), or terfenadine (60 mg twice daily). Pseudoephedrine could be taken as needed. Chlorpheniramine was more effective than terfenadine in reducing total symptom severity and in relieving sneezing.

In a double-blind study, subjects scored their allergic rhinitis symptoms (nose blows, sneezes, running and itching of nostrils, watery eyes, postnasal drip, dry nose, itchy throat, cough) during 4 weeks of treatment with placebo (N = 27), chlorpheniramine (N = 23), or another antihistamine, azelastine. The patients treated with chlorpheniramine (4 mg four times daily) had lower symptoms scores relative to baseline than those treated with placebo, although the difference was not statistically significant, possibly because of the small sample size.

14.2 Comparative Bioavailability Studies

Two pharmacokinetic studies were conducted. Study AD-99-01 compared the single-dose pharmacokinetics of ibuprofen, pseudoephedrine, and chlorpheniramine caplets with the pharmacokinetics of the individual active ingredients. Study AD-99-03 compared the single-dose pharmacokinetics of ibuprofen, pseudoephedrine, and chlorpheniramine caplets administered under fasted conditions versus with food.

As shown in Tables 9-A, 9-B, and 9-C, ibuprofen, pseudoephedrine, and chlorpheniramine from two caplets were absorbed at the same rate and extent as the individual active ingredients in the reference treatments [ibuprofen in Nuprin (two tablets), pseudoephedrine in Sudafed Nasal Decongestant (two tablets), and chlorpheniramine in Chlor-Trimeton 4 Hour Allergy (one tablet)]. Confidence intervals for the pharmacokinetic parameters fell within the acceptable bioequivalence range.

As shown in Tables 10-A, 10-B, and 10-C, the absorption of ibuprofen, pseudoephedrine, and chlorpheniramine from two caplets was not significantly affected by administration with food. However, T_{max} values for pseudoephedrine and chlorpheniramine were increased by approximately 1 hour when administered with food.

Table 9-A
Summary Table of the Comparative Bioavailability Data
IBUPROFEN
(2 x 200 mg)
From measured data
Geometric Mean
Arithmetic Mean (CV%)

Parameter	Test ^a	Reference ^b	% Ratio of Geometric Means	90% Confidence Interval
AUC _T (mcg.h/ml)	110.06 112.01 (18.51)	113.40 115.50 (20.26)	97.06	92.44 - 101.86
AUC _I (mcg.h/ml)	111.95 114.00 (18.90)	117.67 119.78 (20.27)	95.19	90.75 - 99.00
C _{max} (mcg/ml)	31.63 32.91 (25.88)	34.42 35.47 (23.29)	91.89	84.67 - 99.97
T _{max} (h)*	1.84 (48.07)	1.88 (61.85)		
T _½ (h)*	1.89 (18.05)	1.99 (18.53)		

- a Ibuprofen in Advil Cold & Sinus Nighttime.
b Ibuprofen in Nuprin Tablets, Bristol-Myers, U.S.A.
* Expressed as the arithmetic mean (CV%) only.

Table 9-B
Summary Table of the Comparative Bioavailability Data
PSEUDOEPHEDRINE
(2 x 30 mg)
From measured data
Geometric Mean
Arithmetic Mean (CV%)

Parameter	Test ^a	Reference ^b	% Ratio of Geometric Means	90% Confidence Interval
AUC _T (ng.h/ml)	1809.17 1842.55 (20.30)	1718.09 1769.50 (25.13)	105.30	101.32 - 111.48
AUC _I (ng.h/ml)	1836.93 1870.14 (20.07)	1749.04 1800.86 (25.02)	105.03	101.15 - 111.06
C _{max} (ng/ml)	230.55 236.04 (22.80)	225.08 231 (25.01)	102.43	98.96 - 107.37
T _{max} (h)*	1.69 (42.65)	1.71 (42.93)		
T _½ (h)*	4.84 (17.64)	4.85 (19.32)		

- a Pseudoephedrine HCl in Advil Cold & Sinus Nighttime.
b Pseudoephedrine HCl in Sudafed Nasal Decongestant Tablets, Warner-Lambert Consumer Healthcare, U.S.A.
* Expressed as the arithmetic mean (CV%) only.

Table 9-C
Summary Table of the Comparative Bioavailability Data
CHLORPHENIRAMINE
(2 x 2 mg for test and 1x 4 mg for reference)
From measured data
Geometric Mean
Arithmetic Mean (CV%)

Parameter	Test ^a	Reference ^b	% Ratio of Geometric Means	90% Confidence Interval
AUC _T (ng.h/ml)	141.45 150.31 (40.02)	133.79 140.73 (34.20)	105.72	99.06 - 111.05
AUC _I (ng.h/ml)	160.33 179.86 (63.93)	151.08 162.47 (43.61)	106.13	98.84 - 111.62
C _{max} (ng/ml)	7.54 7.79 (29.68)	7.05 7.29 (26.72)	106.96	101.13 - 111.88
T _{max} (h)*	3.10 (33.57)	3.40 (46.01)		
T _½ (h)*	21.06 (75.51)	20.58 (44.63)		

a Chlorpheniramine maleate in Advil Cold & Sinus Nighttime.

b Chlorpheniramine maleate in Chlor-Trimeton Tablets, Schering-Plough Healthcare, U.S.A.

* Expressed as the arithmetic mean (CV%) only.

Table 10-A
Summary Table of the Comparative Bioavailability Data
IBUPROFEN
(2 x 200 mg)
From measured data
Geometric Mean
Arithmetic Mean (CV%)

Parameter	Reference ^a	Test ^b	% Ratio of Geometric Means	90% Confidence Interval
AUC _T (mcg.h/ml)	124.60 125.66 (14.04)	111.70 113.66 (19.73)	89.65	86.46-92.97
AUC _I (mcg.h/ml)	127.24 128.39 (14.34)	115.04 117.19 (20.27)	90.41	87.11-93.84
C _{max} (mcg/ml)	31.83 32.25 (17.52)	28.21 29.48 (32.98)	88.64	79.29-99.04
T _{max} (h)*	1.73 (53.91)	1.57 (53.67)		
T _½ (h)*	1.95 (16.31)	2.08 (15.04)		

a Ibuprofen in Advil Cold & Sinus Nighttime (Fasted).

b Ibuprofen in Advil Cold & Sinus Nighttime (Fed).

* Expressed as the arithmetic mean (CV%) only.

Table 10-B
Summary Table of the Comparative Bioavailability Data
PSEUDOEPHEDRINE
(2 x 30 mg)
From measured data
Geometric Mean
Arithmetic Mean (CV%)

Parameter	Reference ^a	Test ^b	% Ratio of Geometric Means	90% Confidence Interval
AUC _T (ng.h/ml)	1999.47 2035.68 (20.35)	1895.21 1968.14 (30.20)	94.79	88.58-101.42
AUC _I (ng.h/ml)	2030.09 2069.89 (20.07)	1926.29 1997.17 (29.53)	94.89	88.73-101.47
C _{max} (ng/ml)	219.76 223.75 (19.73)	202.31 206.25 (21.92)	92.06	84.33-100.48
T _{max} (h)*	1.52 (38.68)	2.80 (48.75)		
T _½ (h)*	4.91 (16.77)	4.73 (15.69)		

a Pseudoephedrine HCl in Advil Cold & Sinus Nighttime (Fasted).

b Pseudoephedrine HCl in Advil Cold & Sinus Nighttime (Fed).

* Expressed as the arithmetic mean (CV%) only.

Table 10-C
Summary Table of the Comparative Bioavailability Data
CHLORPHENIRAMINE
(2 x 2 mg)
From measured data
Geometric Mean
Arithmetic Mean (CV%)

Parameter	Reference ^a	Test ^b	% Ratio of Geometric Means	90% Confidence Interval
AUC _T (ng.h/ml)	154.75 167.75 (42.23)	151.09 162.37 (40.58)	97.64	93.04-102.47
AUC _I (ng.h/ml)	180.87 202.55 (51.08)	178.95 196.26 (45.23)	98.94	92.72-105.58
C _{max} (ng/ml)	7.53 8.00 (40.64)	6.74 6.97 (27.69)	98.56	83.40-96.17
T _{max} (h)*	2.88 (29.76)	3.94 (49.49)		
T _½ (h)*	25.70 (44.45)	26.91 (23.90)		

a Chlorpheniramine maleate in Advil Cold & Sinus Nighttime (Fasted).

b Chlorpheniramine maleate in Advil Cold & Sinus Nighttime (Fed).

* Expressed as the arithmetic mean (CV%) only.

Children's Advil Cold & Flu Multi-symptom

Two pharmacokinetic studies of Children's Advil Cold & Flu Multi-symptom were conducted. One study compared the single-dose pharmacokinetics of ibuprofen, pseudoephedrine and chlorpheniramine in an open-label, single-centre, randomized, three-way cross-over trial of the suspension under fed and fasted conditions and the caplet under fasted conditions performed in healthy adults (N=26).

The other pharmacokinetic study was a one-period, one-treatment, single-dose, open-label, multicentre study of the suspension formulation performed in children 6 to <12 years of age with symptoms of allergic rhinitis (N=30).

As shown in Tables 11-A, 11-B, and 11-C, ibuprofen, pseudoephedrine, and chlorpheniramine in Children's Advil Cold & Flu Multi-symptom Suspension were absorbed at the same extent (AUC) under fasted and fed conditions. The rate of absorption (C_{max}) were equivalent for pseudoephedrine and chlorpheniramine under fed conditions; whereas food decreased the rate of absorption of ibuprofen.

As shown in Tables 12-A, 12-B and 12-C, equivalent bioavailability for pseudoephedrine and chlorpheniramine have been demonstrated with the ibuprofen/pseudoephedrine/chlorpheniramine suspension versus the caplet. However, the maximal concentration (C_{max}) of ibuprofen from the suspension formulation is greater than that of the caplet formulation.

Table 11-A
Summary Table of the Comparative Bioavailability Data
IBUPROFEN
20 mL of Suspension (100 mg/5 mL)
From measured data
Geometric Mean
Arithmetic Mean (CV%)

Parameter	Reference ^a	Test ^b	% Ratio of Geometric Means	90% Confidence Interval
AUC _T (mcg.h/ml)	115.50 119.04 (25.58)	106.12 108.27 (20.95)	91.88	85.16-96.96
AUC _I (mcg.h/ml)	118.77 122.44 (25.67)	113.58 116.60 (24.59)	95.63	88.58-101.16
C _{max} (mcg/ml)	39.14 40.52 (25.83)	22.47 22.98 (20.74)	57.41	51.66-62.78
T _{max} (h)*	0.78 (47.58)	1.32 (72.13)		
T _{1/2} (h)*	2.39 (17.28)	2.80 (29.39)		

a Ibuprofen in Children's Advil Cold & Flu Multi-symptom Suspension (Fasted).

b Ibuprofen in Children's Advil Cold & Flu Multi-symptom Suspension (Fed).

* Expressed as the arithmetic mean (CV%) only.

Table 11-B
Summary Table of the Comparative Bioavailability Data
PSEUDOEPHEDRINE HYDROCHLORIDE
20 mL of Suspension (15 mg/5 mL)
From measured data
Geometric Mean
Arithmetic Mean (CV%)

Parameter	Reference ^a	Test ^b	% Ratio of Geometric Means	90% Confidence Interval
AUC _T (mcg.h/ml)	2006.17 2048.36 (20.02)	1923.20 1968.08 (20.71)	95.86	91.12-100.35
AUC _I (mcg.h/ml)	2041.41 2084.65 (20.06)	1954.14 1998.66 (20.49)	95.73	90.98-100.21
C _{max} (mcg/ml)	208.47 211.38 (16.79)	203.72 206.50 (16.35)	97.72	94.27-100.64
T _{max} (h)*	1.80 (35.52)	2.81 (35.55)		
T _½ (h)*	5.54 (19.54)	5.12 (21.95)		

a Pseudoephedrine HCl in Children's Advil Cold & Flu Multi-symptom Suspension (Fasted).

b Pseudoephedrine HCl in Children's Advil Cold & Flu Multi-symptom Suspension (Fed).

* Expressed as the arithmetic mean (CV%) only.

Table 11-C
Summary Table of the Comparative Bioavailability Data
CHLORPHENIRAMINE MALEATE
20 mL of Suspension (1 mg/5 mL)
From measured data
Geometric Mean
Arithmetic Mean (CV%)

Parameter	Reference ^a	Test ^b	% Ratio of Geometric Means	90% Confidence Interval
AUC _T (mcg.h/ml)	162.26 170.77 (32.75)	163.05 171.82 (33.33)	100.48	94.22-106.92
AUC _I (mcg.h/ml)	180.80 193.50 (39.20)	182.28 196.06 (40.70)	100.82	93.57-108.29
C _{max} (mcg/ml)	7.86 7.95 (15.79)	7.39 7.48 (16.15)	94.03	88.97-98.69
T _{max} (h)*	3.23 (43.08)	3.56 (27.63)		
T _½ (h)*	21.55 (30.13)	21.62 (33.58)		

a Chlorpheniramine maleate in Children's Advil Cold & Flu Multi-symptom Suspension (Fasted).

b Chlorpheniramine maleate in Children's Advil Cold & Flu Multi-symptom Suspension (Fed).

* Expressed as the arithmetic mean (CV%) only.

Table 12-A
Summary Table of the Comparative Bioavailability Data
IBUPROFEN
20 mL of Suspension (100 mg/5 mL) for Test
2 x caplets (IBU 200 mg, PSE 30 mg and CHLOR 2 mg/caplet) for Reference
From measured data
Geometric Mean
Arithmetic Mean (CV%)

Parameter	Test ^a	Reference ^b	% Ratio of Geometric Means	90% Confidence Interval
AUC _T (mcg.h/ml)	115.50 119.04 (25.58)	122.00 125.06 (23.15)	94.67	87.94-100.13
AUC _I (mcg.h/ml)	118.77 122.44 (25.67)	126.55 129.71 (23.08)	93.85	87.11-99.48
C _{max} (mcg/ml)	39.14 40.52 (25.83)	29.91 30.89 (26.69)	130.89	118.08-143.48
T _{max} (h)*	0.78 (47.58)	1.88 (58.77)		
T _{1/2} (h)*	2.39 (17.28)	2.36 (13.42)		

a Ibuprofen in Children's Advil Cold & Flu Multi-symptom Suspension (Fasted).

b Ibuprofen in Advil Cold & Sinus Plus Caplets (Fasted).

* Expressed as the arithmetic mean (CV%) only.

Table 12-B
Summary Table of the Comparative Bioavailability Data
PSEUDOEPHEDRINE HYDROCHLORIDE
20 mL of Suspension (15 mg/5 mL) for Test
2 x caplets (IBU 200 mg, PSE 30 mg and CHLOR 2 mg/caplet) for Reference
From measured data
Geometric Mean
Arithmetic Mean (CV%)

Parameter	Test ^a	Reference ^b	% Ratio of Geometric Means	90% Confidence Interval
AUC _T (mcg.h/ml)	2006.17 2048.36 (20.02)	2055.13 2102.83 (21.14)	97.62	92.94-102.35
AUC _I (mcg.h/ml)	2041.41 2084.65 (20.06)	2093.34 2142.51 (21.25)	97.52	92.83-102.25
C _{max} (mcg/ml)	208.47 211.38 (16.79)	221.04 224.62 (17.59)	94.31	90.99-97.14
T _{max} (h)*	1.80 (35.52)	1.70 (39.92)		
T _{1/2} (h)*	5.54 (19.54)	5.61 (19.69)		

a Pseudoephedrine HCl in Children's Advil Cold & Flu Multi-symptom Suspension (Fasted).

b Pseudoephedrine HCl in Advil Cold & Sinus Plus Caplets (Fasted).

* Expressed as the arithmetic mean (CV%) only.

Table 12-C
Summary Table of the Comparative Bioavailability Data
CHLORPHENIRAMINE MALEATE
20 mL of Suspension (1 mg/5 mL) for Test
2 x caplets (IBU 200 mg, PSE 30 mg and CHLOR 2 mg/caplet) for Reference
From measured data
Geometric Mean
Arithmetic Mean (CV%)

Parameter	Test ^a	Reference ^b	% Ratio of Geometric Means	90% Confidence Interval
AUC _T (mcg.h/ml)	162.26 170.77 (32.75)	166.43 176.79 (34.63)	97.49	92.03-104.43
AUC _I (mcg.h/ml)	180.80 193.50 (39.20)	187.56 203.08 (40.45)	96.4	90.18-104.36
C _{max} (mcg/ml)	7.86 7.95 (15.79)	7.93 8.05 (16.98)	99.09	94.49-104.82
T _{max} (h)*	3.23 (43.08)	3.22 (47.66)		
T _{1/2} (h)*	21.55 (30.13)	21.97 (35.28)		

a Chlorpheniramine maleate in Children's Advil Cold & Flu Multi-symptom Suspension (Fasted).

b Chlorpheniramine maleate in Advil Cold & Sinus Plus Caplets (Fasted).

* Expressed as the arithmetic mean (CV%) only.

15 MICROBIOLOGY

No microbiological information is required for this drug product.

16 NON-CLINICAL TOXICOLOGY

Ibuprofen

Single Dose Toxicity Studies

Single-dose toxicity studies have been conducted in mice, rats, and dogs.

The LD₅₀ values for ibuprofen in mice and rats, expressed as mg/kg of body weight, are as follows:

Mice	Oral	800 mg/kg
	Intraperitoneal	320 mg/kg
Rats	Oral	1600 mg/kg
	Subcutaneous	1300 mg/kg

ADVIL COLD & SINUS NIGHTTIME

ADVIL COLD & SINUS PLUS

ADVIL COLD, SINUS & FLU EXTRA STRENGTH

Ibuprofen, Pseudoephedrine Hydrochloride and Chlorpheniramine Maleate Caplets

CHILDREN'S ADVIL COLD & FLU MULTI-SYMPTOM

Ibuprofen, Pseudoephedrine Hydrochloride and Chlorpheniramine Maleate Suspension

Acute signs of poisoning were prostration in mice and sedation, prostration, loss of righting reflex, and laboured respiration in rats. Death occurred within 3 days from perforated gastric ulcers in mice and intestinal ulceration in rats, irrespective of the route of administration.

Single ibuprofen doses of 125 mg/kg and above in dogs caused emesis, transient albuminuria, faecal blood loss, and erosions in the gastric antrum and pylorus. No ill effects were seen with doses of 20 or 50 mg/kg.

Multi Dose Studies

The primary toxic effect of ibuprofen in repeated doses in rats is intestinal damage. At a dosage of 180 mg/kg/day for 26 weeks, ibuprofen alters the organ-to-body weight ratio of certain organs, such as the liver, kidneys, gonads, and secondary sex organs, although no histological abnormalities have been observed and the effects are reversible. The liver and kidney enlargement may be a reflection of work hypertrophy associated with the metabolism and excretion of the compound, whereas the significance of the effects on other organs is unknown. When administered in lethal doses (540 mg/kg/day), ibuprofen produces mild kidney lesions in addition to intestinal damage.

Carcinogenicity

In rats given 180 mg/kg/day of ibuprofen orally for 55 weeks and 60 mg/kg/day for the next 60 weeks, the only specific pathological effect observed was intestinal ulceration. There was no evidence of tumour induction, indicating that ibuprofen is not carcinogenic in rats. Ibuprofen is not teratogenic when given in toxic doses (60 mg/kg/day) to rabbits or in ulcerogenic doses (180 mg/kg/day) to rats.

Teratology Study in Rabbits

New Zealand white rabbits were given 0, 7.5, 20 and 60 mg/kg daily of ibuprofen from day 1 to day 29 of pregnancy. The mean fetal weight was unaffected; litter size was unaffected at the lower doses. Congenital malformations did occur in both treated and untreated groups with no consistent pattern except for one litter of 4 young with cyclopia. The results of this experiment indicate that ibuprofen is not teratogenic when given in toxic doses to rabbits.

Teratology Study in Rats

Newly-mated female albino rats were given ibuprofen in doses of 0, 7.5, 20, 60 and 180 mg/kg/day from day 1 to day 20 of pregnancy; ibuprofen exhibited no embryotoxic or teratogenic effects even when administered at ulcerogenic doses.

Penetration of Ibuprofen into the Rabbit and Rat Fetus

Rabbits and rats in late pregnancy were given single oral doses of 60 and 20 mg/kg respectively of C¹⁴ labelled ibuprofen. Rabbits were killed three hours after dosing and rats killed 1.5 hours after dosing when maternal and fetal blood was collected. Similar concentrations of radioactive ibuprofen were detected in both the mother and fetus indicating that the drug and its metabolites readily crossed the placental barrier into the fetal circulation.

Genotoxicity

ADVIL COLD & SINUS NIGHTTIME

ADVIL COLD & SINUS PLUS

ADVIL COLD, SINUS & FLU EXTRA STRENGTH

Ibuprofen, Pseudoephedrine Hydrochloride and Chlorpheniramine Maleate Caplets

CHILDREN'S ADVIL COLD & FLU MULTI-SYMPTOM

Ibuprofen, Pseudoephedrine Hydrochloride and Chlorpheniramine Maleate Suspension

Ibuprofen has shown no genotoxicity in the in vitro bacterial mutation assay in the presence and absence of S9 using *Salmonella* Typhimurium TA1535, TA1538, TA97a, TA100 and TA102. It was also tested in an in vivo sister chromatid exchange assay in the bone marrow cells of mice dosed orally or intraperitoneal and showed weak genotoxicity in the sister chromatid assay. There was no difference in the occurrence of chromosomal aberrations in cultured human lymphocytes in patients before or after treatment with ibuprofen. A recent study in mouse bone marrow cells suggested a potential for chromosomal aberrations after oral dosing. Overall, it was not genotoxic in vitro but was weakly mutagenic in vivo.

Pseudoephedrine Hydrochloride

Mice injected with toxic doses of pseudoephedrine manifest increased motor activity, piloerection, and mydriasis, and they eventually die in respiratory exhaustion. The intravenous LD₅₀ in mice is approximately 90 mg/kg. The approximate oral LD₅₀ values are 726 mg/kg (mice), 2206 mg/kg (rats), 1117 mg/kg (rabbits), 105 mg/kg (beagle dogs), and 307 mg/kg (mongrel dogs). Toxic effects of pseudoephedrine include increased respiratory activity, salivation, and lacrimation; loss of pupillary reflex in reaction to light; tremor, convulsions, and cardiac arrhythmias.

The LD₅₀ values for pseudoephedrine, expressed as mg/kg of body weight, are as follows:

Mice	Oral	726
	Intravenous	90
Rats	Oral	2206
Rabbits	Oral	1117
Dogs, beagle	Oral	105
Dogs, mongrel	Oral	307

Chlorpheniramine Maleate

The toxicity profile of chlorpheniramine maleate in rats and mice includes excitation, muscle tremor, ataxia, and convulsive seizures followed by respiratory depression and death. The following LD₅₀ values (mg/kg body weight) have been reported for chlorpheniramine maleate.

Mice	Oral	121, 162, 142
	Intraperitoneal	73, 76.7
Rats	Oral	118, 680
	Subcutaneous	89

No compound-related effects were reported after chlorpheniramine maleate was administered by gavage to groups of eight male and eight female rats 5 days per week for 6 weeks at doses of 5 or 10

ADVIL COLD & SINUS NIGHTTIME

ADVIL COLD & SINUS PLUS

ADVIL COLD, SINUS & FLU EXTRA STRENGTH

Ibuprofen, Pseudoephedrine Hydrochloride and Chlorpheniramine Maleate Caplets

CHILDREN'S ADVIL COLD & FLU MULTI-SYMPTOM

Ibuprofen, Pseudoephedrine Hydrochloride and Chlorpheniramine Maleate Suspension

g/kg per day. Two rhesus monkeys administered 20 mg/kg per day 5 days per week for 7 weeks showed no apparent adverse effects. Rhesus monkeys administered chlorpheniramine maleate 15 mg/kg 6-7 days per week for 105 weeks experienced cardiac arrhythmias and fainting episodes and died of cardiac failure.

A reproductive toxicology study of chlorpheniramine maleate in rats at doses of 5, 10, or 20 mg/kg per day showed no effects on fertility or on frequency of foetal abnormalities. The percentage of pups dying during lactation was greater and the mean body weight of offspring on day 4 of lactation was less in the 20 mg/kg dose group than in the control group. Chlorpheniramine maleate was associated with decreased body weight of offspring in two other reproductive toxicology studies in rats, and, in one of the studies, decreased postnatal survival, but not with any major abnormalities in the offspring. Haley and Berndt categorized chlorpheniramine as having unknown effects or no reported adverse effects on the conceptus. Genotoxicity tests of chlorpheniramine maleate were generally negative.

Carcinogenicity

Under the conditions of a National Toxicology Program 2-year gavage study, there was no evidence of carcinogenicity in F344/N rats or B6C3F1 mice of either sex administered chlorpheniramine maleate in water 5 days per week for 2 years. The maximum doses were 30 mg/kg in male rats, 60 mg/kg in female rats, 50 mg/kg in male mice, and 20 mg/kg in female mice.

PATIENT MEDICATION INFORMATION

READ THIS FOR SAFE AND EFFECTIVE USE OF YOUR MEDICINE

Advil Cold & Sinus Nighttime

Ibuprofen, Pseudoephedrine Hydrochloride and Chlorpheniramine Maleate Caplets

Read this carefully before you start taking **Advil Cold & Sinus Nighttime** and each time you get a refill. This leaflet is a summary and will not tell you everything about this drug. Talk to your healthcare professional about your medical condition and treatment and ask if there is any new information about **Advil Cold & Sinus Nighttime**.

Serious Warnings and Precautions

- If you have diabetes, glaucoma or difficulty in urination due to an enlarged prostate, do not take this drug unless directed by a doctor.
- Use with caution in those with heart failure, high blood pressure or other conditions that may cause excess fluid collecting in tissues.
- Use with caution in patients at risk of gastrointestinal tract irritation, including those with a history of peptic ulcer, diverticulosis, or other inflammatory disease of the gastrointestinal tract such as ulcerative colitis or Crohn's disease. Symptoms may include feeling faint, vomiting blood, bloody or black stools. The chance of stomach bleeding is higher if you are: age 60 or older, have had stomach ulcers or bleeding problems, take a blood thinner or steroid drug, take with other drugs containing an NSAID like acetylsalicylic acid (ASA), ibuprofen, naproxen, or prescription anti-inflammatory drugs, or have 3 or more alcoholic drinks every day while using this product.
- Use with caution in patients at risk of kidney problems, such as those with heart failure, liver disease, the elderly or those using diuretics.
- Advil Cold & Sinus Nighttime should not be used during the third trimester of pregnancy.
- Talk to your doctor if you are trying to conceive, in your first or second trimester of pregnancy or if breastfeeding.
- Stop use immediately if you observe blood in the urine or you develop urgent, frequent, painful or difficult urination.

What is Advil Cold & Sinus Nighttime used for?

- Fast, temporary relief of the combined symptoms associated with colds including: runny nose, sneezing, itchy watery eyes, headache, nasal congestion, minor aches and pains, sore throat, and sinus pain.

ADVIL COLD & SINUS NIGHTTIME

ADVIL COLD & SINUS PLUS

ADVIL COLD, SINUS & FLU EXTRA STRENGTH

Ibuprofen, Pseudoephedrine Hydrochloride and Chlorpheniramine Maleate Caplets

CHILDREN'S ADVIL COLD & FLU MULTI-SYMPTOM

Ibuprofen, Pseudoephedrine Hydrochloride and Chlorpheniramine Maleate Suspension

Page 64 of 91

How does Advil Cold & Sinus Nighttime work?

Ibuprofen reduces pain and fever. Pseudoephedrine hydrochloride is a nasal decongestant. Chlorpheniramine maleate is an antihistamine.

What are the ingredients in Advil Cold & Sinus Nighttime?

Medicinal ingredients: Ibuprofen, pseudoephedrine hydrochloride and chlorpheniramine maleate.

Non-medicinal ingredients: Carnauba wax, corn starch, croscarmellose sodium, FD&C red no. 40, FD&C yellow no. 6, glyceryl behenate, hypromellose, iron oxide black, microcrystalline cellulose, polydextrose, polyethylene glycol, pre-gelatinized starch, propylene glycol, silicon dioxide, and titanium dioxide.

Advil Cold & Sinus Nighttime comes in the following dosage forms:

Each caplet contains ibuprofen 200 mg, pseudoephedrine hydrochloride 30 mg and chlorpheniramine maleate 2 mg.

Do not use Advil Cold & Sinus Nighttime if you have or are:

- allergic/hypersensitive to acetylsalicylic acid (ASA), ibuprofen, other salicylates, other NSAIDs, pseudoephedrine or other sympathomimetic amines, chlorpheniramine maleate or any of the ingredients in Advil Cold & Sinus Nighttime (Refer to the nonmedicinal ingredients section of this insert)
- active or recurrent stomach ulcer or gastrointestinal (GI) bleeding or active inflammatory bowel disease (e.g. Crohn's, colitis)
- taking a monoamine oxidase inhibitor (MAOI; e.g. drugs for depression or Parkinson's disease) or for 14 days after stopping the MAOI drug, ASA or other NSAIDs including any other ibuprofen product
- nasal polyps (swelling of the inside of the nose)
- asthma
- allergic manifestations such as anaphylaxis (sudden severe life-threatening allergic reaction) urticaria/hives, rhinitis (stuffed or runny nose that may be due to allergies), skin rash or other allergic symptoms
- dehydrated (significant fluid loss) due to vomiting, diarrhea or lack of fluid intake
- been diagnosed with severe high blood pressure or have heart disease
- right before or after heart surgery
- serious liver disease
- severe kidney disease
- high potassium in the blood

ADVIL COLD & SINUS NIGHTTIME

ADVIL COLD & SINUS PLUS

ADVIL COLD, SINUS & FLU EXTRA STRENGTH

Ibuprofen, Pseudoephedrine Hydrochloride and Chlorpheniramine Maleate Caplets

CHILDREN'S ADVIL COLD & FLU MULTI-SYMPTOM

Ibuprofen, Pseudoephedrine Hydrochloride and Chlorpheniramine Maleate Suspension

- thyroid disease
- Raynaud’s Syndrome (a disorder of the circulatory system)
- Systemic Lupus Erythematosus
- in your third trimester of pregnancy.

To help avoid side effects and ensure proper use, talk to your healthcare professional before you take Advil Cold & Sinus Nighttime. Talk about any health conditions or problems you may have, including if you have or are:

- blood clotting disorder (such as hemophilia)
- breathing problems or chronic lung disease (such as asthma, emphysema or chronic bronchitis)
- diabetes
- difficulty in urination due to prostate enlargement or bladder neck obstruction
- glaucoma
- high blood pressure
- mild to moderate kidney disease
- mild to moderate liver disease
- any other serious disease
- under doctor’s care for any serious condition
- Trying to conceive, pregnant or breastfeeding
- At 20 weeks or later in pregnancy, your use of NSAIDs may need to be monitored by a doctor due to the rare risk of kidney problems in the unborn baby which may result in decreased amniotic fluid volume and other complications
- taking sedatives or tranquilizers (as they may increase drowsiness), or any other drug including over the counter drugs
- Use with caution in the elderly
- Long-term continuous use may increase the risk of heart attack or stroke

Other warnings you should know about:

- The use of NSAIDs, like Advil Cold & Sinus Nighttime, in the second trimester of pregnancy should be restricted to the lowest dose necessary for the shortest possible duration
- Do not smoke or drink alcohol while using this product. Alcohol may increase drowsiness.

Tell your healthcare professional about all the medicines you take, including any drugs, vitamins, minerals, natural supplements or alternative medicines.

The following may interact with Advil Cold & Sinus Nighttime:

- acetaminophen
- acetylsalicylic acid (ASA)
- allergy medications

- anticoagulants (blood thinning medications)
- antidepressants
- anti-hypertensives (blood pressure medications)
- antibiotics (levofloxacin and quinolone)
- benzodiazepines
- cold medications
- corticosteroids
- cyclosporine
- CYP2C9 inhibitors (fluconazole and voriconazole)
- diabetes medication (including insulin and oral antidiabetic agents)
- digoxin
- diuretics (water pills)
- lithium
- methotrexate
- monoamine oxidase inhibitors
- nonsteroidal anti-inflammatory drugs (NSAIDs); including naproxen and ibuprofen
- phenytoin
- probenecid
- thyroxine
- tranquilizers or other sedating drugs
- zidovudine

How to take Advil Cold & Sinus Nighttime:

Usual dose:

- Adults and children 12 to 65 years: Take 1 or 2 caplets every 4- 6 hours as needed. Do not exceed 6 caplets in 24 hours, unless directed by a doctor.
- Do not give to children under 12.

Overdose:

If you think you, or a person you are caring for, have taken too much Advil Cold & Sinus Nighttime, contact a healthcare professional, hospital emergency department, or regional poison control centre immediately, even if there are no symptoms.

Missed Dose:

Continue to take 1 or 2 caplets every 4-6 hours as needed after a missed dose. Do not take twice the recommended dose following a missed dose.

What are possible side effects from using Advil Cold & Sinus Nighttime?

Stop use and ask a doctor if:

- you show signs of stomach bleeding
- sore throat pain lasts more than 2 days
- symptoms worsen or last more than 5 days
- fever lasts more than 3 days
- you are nervous, dizzy or can't sleep
- any new symptoms appear

These are not all the possible side effects you may have when taking Advil Cold & Sinus Nighttime. If you experience any side effects not listed here, tell your healthcare professional.

Take with food or milk if upset stomach occurs.

Advil Cold & Sinus Nighttime may occasionally produce unwanted side effects, such as heartburn, constipation, nausea, bloating, dry mouth, nervousness or sleeplessness. Stop use and contact a healthcare professional if these symptoms worsen or persist.

This product may cause drowsiness. Be careful when driving motor vehicles or operating heavy machinery.

The risk of having side effects may be decreased by using the smallest dose for the shortest duration of time.

Serious side effects and what to do about them			
Symptom / effect	Talk to your healthcare professional		Stop taking drug and get immediate medical help
	Only if severe	In all cases	
UNCOMMON			
Sudden severe headache accompanied by confusion, seizures, vomiting sensation or changes in vision. These may be signs of a serious condition.			✓
Symptoms of allergic reaction, including rash, severe itching/redness, blisters, swelling, or trouble breathing			✓
Blood in vomit, bloody or black stools			✓
Abdominal pain, vomiting, diarrhea		✓	

Serious side effects and what to do about them			
Symptom / effect	Talk to your healthcare professional		Stop taking drug and get immediate medical help
	Only if severe	In all cases	
Ringing or buzzing in the ears / dizziness		✓	
Change in vision		✓	
Fluid retention		✓	

If you have a troublesome symptom or side effect that is not listed here or becomes bad enough to interfere with your daily activities, tell your healthcare professional.

Reporting Side Effects

You can report any suspected side effects associated with the use of health products to Health Canada by:

- Visiting the Web page on Adverse Reaction Reporting (<https://www.canada.ca/en/health-canada/services/drugs-health-products/medeffect-canada.html>) for information on how to report online, by mail or by fax; or
- Calling toll-free at 1-866-234-2345.

NOTE: Contact your health professional if you need information about how to manage your side effects. The Canada Vigilance Program does not provide medical advice.

Storage:

Store at room temperature (15 to 30°C).

Keep out of reach and sight of children. This package contains enough medicine to seriously harm a child.

If you want more information about Advil Cold & Sinus Nighttime:

- Talk to your healthcare professional
- Find the full product monograph that is prepared for healthcare professionals and includes this Patient Medication Information by visiting the Health Canada website: <https://www.canada.ca/en/health-canada/services/drugs-health-products/drug-products/drug-product-database.html>; or by contacting the sponsor at www.advil.ca or by calling 1-888-788-8181.

This leaflet was prepared by Haleon Canada ULC.

Date of Authorization: MAY 16, 2025

ADVIL COLD & SINUS NIGHTTIME
ADVIL COLD & SINUS PLUS
ADVIL COLD, SINUS & FLU EXTRA STRENGTH
Ibuprofen, Pseudoephedrine Hydrochloride and Chlorpheniramine Maleate Caplets
CHILDREN'S ADVIL COLD & FLU MULTI-SYMP TOM
Ibuprofen, Pseudoephedrine Hydrochloride and Chlorpheniramine Maleate Suspension

PATIENT MEDICATION INFORMATION

READ THIS FOR SAFE AND EFFECTIVE USE OF YOUR MEDICINE

Advil Cold & Sinus Plus

Ibuprofen, Pseudoephedrine Hydrochloride and Chlorpheniramine Maleate Caplets

Read this carefully before you start taking **Advil Cold & Sinus Plus** and each time you get a refill. This leaflet is a summary and will not tell you everything about this drug. Talk to your healthcare professional about your medical condition and treatment and ask if there is any new information about **Advil Cold & Sinus Plus**.

Serious Warnings and Precautions

- If you have diabetes, glaucoma or difficulty in urination due to an enlarged prostate, do not take this drug unless directed by a doctor.
- Use with caution in those with heart failure, high blood pressure or other conditions that may cause excess fluid collecting in tissues.
- Use with caution in patients at risk of gastrointestinal tract irritation, including those with a history of peptic ulcer, diverticulosis, or other inflammatory disease of the gastrointestinal tract such as ulcerative colitis or Crohn's disease. Symptoms may include feeling faint, vomiting blood, bloody or black stools. The chance of stomach bleeding is higher if you are: age 60 or older, have had stomach ulcers or bleeding problems, take a blood thinner or steroid drug, take with other drugs containing an NSAID like acetylsalicylic acid (ASA), ibuprofen, naproxen, or prescription anti-inflammatory drugs, or have 3 or more alcoholic drinks every day while using this product.
- Use with caution in patients at risk of kidney problems, such as those with heart failure, liver disease, the elderly or those using diuretics.
- Advil Cold & Sinus Plus should not be used during the third trimester of pregnancy.
- Talk to your doctor if you are trying to conceive, in your first or second trimester of pregnancy or if breastfeeding.
- Stop use immediately if you observe blood in the urine or you develop urgent, frequent, painful or difficult urination.

What is Advil Cold & Sinus Plus used for?

- Fast, temporary relief of the combined symptoms associated with colds including: runny nose, sneezing, itchy watery eyes, headache, nasal congestion, minor aches and pains, sore throat, and sinus pain.

ADVIL COLD & SINUS NIGHTTIME

ADVIL COLD & SINUS PLUS

ADVIL COLD, SINUS & FLU EXTRA STRENGTH

Ibuprofen, Pseudoephedrine Hydrochloride and Chlorpheniramine Maleate Caplets

CHILDREN'S ADVIL COLD & FLU MULTI-SYMP TOM

Ibuprofen, Pseudoephedrine Hydrochloride and Chlorpheniramine Maleate Suspension

Page 71 of 91

How does Advil Cold & Sinus Plus work?

Ibuprofen reduces pain and fever. Pseudoephedrine hydrochloride is a nasal decongestant. Chlorpheniramine maleate is an antihistamine.

What are the ingredients in Advil Cold & Sinus Plus?

Medicinal ingredients: Ibuprofen, pseudoephedrine hydrochloride and chlorpheniramine maleate.

Non-medicinal ingredients: Carnauba wax, corn starch, croscarmellose sodium, FD&C red no. 40, FD&C yellow no. 6, glyceryl behenate, hypromellose, iron oxide black, microcrystalline cellulose, polydextrose, polyethylene glycol, pre-gelatinized starch, propylene glycol, silicon dioxide, and titanium dioxide.

Advil Cold & Sinus Plus comes in the following dosage forms:

Each caplet contains ibuprofen 200 mg, pseudoephedrine hydrochloride 30 mg and chlorpheniramine maleate 2 mg.

Do not use Advil Cold & Sinus Plus if you have or are:

- allergic/hypersensitive to acetylsalicylic acid (ASA), ibuprofen, other salicylates, other NSAIDs, pseudoephedrine or other sympathomimetic amines, chlorpheniramine maleate or any of the ingredients in Advil Cold & Sinus Plus (Refer to the nonmedicinal ingredients section of this insert)
- active or recurrent stomach ulcer or gastrointestinal (GI) bleeding or active inflammatory bowel disease (e.g. Crohn's, colitis)
- taking a monoamine oxidase inhibitor (MAOI; e.g. drugs for depression or Parkinson's disease) or for 14 days after stopping the MAOI drug, ASA or other NSAIDs including any other ibuprofen product
- nasal polyps (swelling of the inside of the nose)
- asthma
- allergic manifestations such as anaphylaxis (sudden severe life-threatening allergic reaction) urticaria/hives, rhinitis (stuffed or runny nose that may be due to allergies), skin rash or other allergic symptoms
- dehydrated (significant fluid loss) due to vomiting, diarrhea or lack of fluid intake
- been diagnosed with severe high blood pressure or have heart disease
- right before or after heart surgery
- serious liver disease
- severe kidney disease
- high potassium in the blood
- thyroid disease

ADVIL COLD & SINUS NIGHTTIME

ADVIL COLD & SINUS PLUS

ADVIL COLD, SINUS & FLU EXTRA STRENGTH

Ibuprofen, Pseudoephedrine Hydrochloride and Chlorpheniramine Maleate Caplets

CHILDREN'S ADVIL COLD & FLU MULTI-SYMPTOM

Ibuprofen, Pseudoephedrine Hydrochloride and Chlorpheniramine Maleate Suspension

- Raynaud’s Syndrome (a disorder of the circulatory system)
- Systemic Lupus Erythematosus
- in your third trimester of pregnancy.

To help avoid side effects and ensure proper use, talk to your healthcare professional before you take Advil Cold & Sinus Plus. Talk about any health conditions or problems you may have, including if you have or are:

- blood clotting disorder (such as hemophilia)
- breathing problems or chronic lung disease (such as asthma, emphysema or chronic bronchitis)
- diabetes
- difficulty in urination due to prostate enlargement or bladder neck obstruction
- glaucoma
- high blood pressure
- mild to moderate kidney disease
- mild to moderate liver disease
- any other serious disease
- under doctor’s care for any serious condition
- Trying to conceive, pregnant or breastfeeding
- At 20 weeks or later in pregnancy, your use of NSAIDs may need to be monitored by a doctor due to the rare risk of kidney problems in the unborn baby which may result in decreased amniotic fluid volume and other complications
- taking sedatives or tranquilizers (as they may increase drowsiness), or any other drug including over the counter drugs.
- Use with caution in the elderly.
- Long-term continuous use may increase the risk of heart attack or stroke

Other warnings you should know about:

- The use of NSAIDs, like Advil Cold & Sinus Plus, in the second trimester of pregnancy should be restricted to the lowest dose necessary for the shortest possible duration
- Do not smoke or drink alcohol while using this product. Alcohol may increase drowsiness.

Tell your healthcare professional about all the medicines you take, including any drugs, vitamins, minerals, natural supplements or alternative medicines.

The following may interact with Advil Cold & Sinus Plus:

- acetaminophen
- acetylsalicylic acid (ASA)
- allergy medications
- anticoagulants (blood thinning medications)

- antidepressants
- anti-hypertensives (blood pressure medications)
- antibiotics (levofloxacin and quinolone)
- benzodiazepines
- cold medications
- corticosteroids
- cyclosporine
- CYP2C9 inhibitors (fluconazole and voriconazole)
- diabetes medication (including insulin and oral antidiabetic agents)
- digoxin
- diuretics (water pills)
- lithium
- methotrexate
- monoamine oxidase inhibitors
- nonsteroidal anti-inflammatory drugs (NSAIDs); including naproxen and ibuprofen
- phenytoin
- probenecid
- thyroxine
- tranquilizers or other sedating drugs
- zidovudine

How to take Advil Cold & Sinus Plus:

Usual dose:

- Adults and children 12 to 65 years: Take 1 or 2 caplets every 4- 6 hours as needed. Do not exceed 6 caplets in 24 hours, unless directed by a doctor.
- Do not give to children under 12.

Overdose:

If you think you, or a person you are caring for, have taken too much Advil Cold & Sinus Plus, contact a healthcare professional, hospital emergency department, or regional poison control centre immediately, even if there are no symptoms.

Missed Dose:

Continue to take 1 or 2 caplets every 4-6 hours as needed after a missed dose. Do not take twice the recommended dose following a missed dose.

What are possible side effects from using Advil Cold & Sinus Plus?

Stop use and ask a doctor if:

- you show signs of stomach bleeding
- sore throat pain lasts more than 2 days
- symptoms worsen or last more than 5 days
- fever lasts more than 3 days
- you are nervous, dizzy or can't sleep
- any new symptoms appear

These are not all the possible side effects you may have when taking Advil Cold & Sinus Plus. If you experience any side effects not listed here, tell your healthcare professional.

Take with food or milk if upset stomach occurs.

Advil Cold & Sinus Plus may occasionally produce unwanted side effects, such as heartburn, constipation, nausea, bloating, dry mouth, nervousness or sleeplessness. Stop use and contact a healthcare professional if these symptoms worsen or persist.

This product may cause drowsiness. Be careful when driving motor vehicles or operating heavy machinery.

The risk of having side effects may be decreased by using the smallest dose for the shortest duration of time.

Serious side effects and what to do about them			
Symptom / effect	Talk to your healthcare professional		Stop taking drug and get immediate medical help
	Only if severe	In all cases	
UNCOMMON			
Sudden severe headache accompanied by confusion, seizures, vomiting sensation or changes in vision. These may be signs of a serious condition.			✓
Symptoms of allergic reaction, including rash, severe itching/redness, blisters, swelling, or trouble breathing			✓
Blood in vomit, bloody or black stools			✓
Abdominal pain, vomiting, diarrhea		✓	

Serious side effects and what to do about them			
Symptom / effect	Talk to your healthcare professional		Stop taking drug and get immediate medical help
	Only if severe	In all cases	
Ringing or buzzing in the ears / dizziness		✓	
Change in vision		✓	
Fluid retention		✓	

If you have a troublesome symptom or side effect that is not listed here or becomes bad enough to interfere with your daily activities, tell your healthcare professional.

Reporting Side Effects

You can report any suspected side effects associated with the use of health products to Health Canada by:

- Visiting the Web page on Adverse Reaction Reporting (<https://www.canada.ca/en/health-canada/services/drugs-health-products/medeffect-canada.html>) for information on how to report online, by mail or by fax; or
- Calling toll-free at 1-866-234-2345.

NOTE: Contact your health professional if you need information about how to manage your side effects. The Canada Vigilance Program does not provide medical advice.

Storage:

Store at room temperature (15 to 30°C).

Keep out of reach and sight of children. This package contains enough medicine to seriously harm a child.

If you want more information about Advil Cold & Sinus Plus:

- Talk to your healthcare professional
- Find the full product monograph that is prepared for healthcare professionals and includes this Patient Medication Information by visiting the Health Canada website: <https://www.canada.ca/en/health-canada/services/drugs-health-products/drug-products/drug-product-database.html>; or by contacting the sponsor at www.advil.ca or by calling 1-888-788-8181.

This leaflet was prepared by Haleon Canada ULC.

Date of Authorization: MAY 16, 2025

ADVIL COLD & SINUS NIGHTTIME
ADVIL COLD & SINUS PLUS
ADVIL COLD, SINUS & FLU EXTRA STRENGTH
Ibuprofen, Pseudoephedrine Hydrochloride and Chlorpheniramine Maleate Caplets
CHILDREN'S ADVIL COLD & FLU MULTI-SYMP TOM
Ibuprofen, Pseudoephedrine Hydrochloride and Chlorpheniramine Maleate Suspension

PATIENT MEDICATION INFORMATION

READ THIS FOR SAFE AND EFFECTIVE USE OF YOUR MEDICINE

Advil Cold, Sinus & Flu Extra Strength

Ibuprofen, Pseudoephedrine Hydrochloride and Chlorpheniramine Maleate Caplets

Read this carefully before you start taking **Advil Cold, Sinus & Flu Extra Strength** and each time you get a refill. This leaflet is a summary and will not tell you everything about this drug. Talk to your healthcare professional about your medical condition and treatment and ask if there is any new information about **Advil Cold, Sinus & Flu Extra Strength**.

Serious Warnings and Precautions

- If you have diabetes, glaucoma or difficulty in urination due to an enlarged prostate, do not take this drug unless directed by a doctor.
- Use with caution in those with heart failure, high blood pressure or other conditions that may cause excess fluid collecting in tissues.
- Use with caution in patients at risk of gastrointestinal tract irritation, including those with a history of peptic ulcer, diverticulosis, or other inflammatory disease of the gastrointestinal tract such as ulcerative colitis or Crohn's disease. Symptoms may include feeling faint, vomiting blood, bloody or black stools. The chance of stomach bleeding is higher if you are: age 60 or older, have had stomach ulcers or bleeding problems, take a blood thinner or steroid drug, take with other drugs containing an NSAID like acetylsalicylic acid (ASA), ibuprofen, naproxen, or prescription anti-inflammatory drugs, or have 3 or more alcoholic drinks every day while using this product.
- Use with caution in patients at risk of kidney problems, such as those with heart failure, liver disease, the elderly or those using diuretics.
- Advil Cold, Sinus & Flu Extra Strength should not be used during the third trimester of pregnancy.
- Talk to your doctor if you are trying to conceive, in your first or second trimester of pregnancy or if breastfeeding.
- Stop use immediately if you observe blood in the urine or you develop urgent, frequent, painful or difficult urination.

What is Advil Cold, Sinus & Flu Extra Strength used for?

- Fast, temporary relief of the combined symptoms associated with colds and flu including: stuffy nose, fever, minor body aches, sore throat, headache, runny nose, sneezing, itchy, watery eyes and sinus pain.

ADVIL COLD & SINUS NIGHTTIME

ADVIL COLD & SINUS PLUS

ADVIL COLD, SINUS & FLU EXTRA STRENGTH

Ibuprofen, Pseudoephedrine Hydrochloride and Chlorpheniramine Maleate Caplets

CHILDREN'S ADVIL COLD & FLU MULTI-SYMPTOM

Ibuprofen, Pseudoephedrine Hydrochloride and Chlorpheniramine Maleate Suspension

Page 78 of 91

How does Advil Cold, Sinus & Flu Extra Strength work?

Ibuprofen reduces pain and fever. Pseudoephedrine hydrochloride is a nasal decongestant. Chlorpheniramine maleate is an antihistamine.

What are the ingredients in Advil Cold, Sinus & Flu Extra Strength?

Medicinal ingredients: Ibuprofen, pseudoephedrine hydrochloride and chlorpheniramine maleate.

Non-medicinal ingredients: Carnauba wax, corn starch, croscarmellose sodium, glyceryl behenate, hypromellose, iron oxide black, iron oxide yellow, microcrystalline cellulose, polydextrose, pre-gelatinized starch, propylene glycol, silicon dioxide, and titanium dioxide.

Advil Cold, Sinus & Flu Extra Strength comes in the following dosage forms:

Each caplet contains ibuprofen 400 mg, pseudoephedrine hydrochloride 60 mg and chlorpheniramine maleate 4 mg.

Do not use Advil Cold, Sinus & Flu Extra Strength if you have or are:

- allergic/hypersensitive to acetylsalicylic acid (ASA), ibuprofen, other salicylates, other NSAIDs, pseudoephedrine or other sympathomimetic amines, chlorpheniramine maleate or any of the ingredients in Advil Cold, Sinus & Flu Extra Strength (Refer to the non-medicinal ingredients section of this insert)
- active or recurrent stomach ulcer or gastrointestinal (GI) bleeding or active inflammatory bowel disease (e.g. Crohn's, colitis)
- taking a monoamine oxidase inhibitor (MAOI; e.g. drugs for depression or Parkinson's disease) or for 14 days after stopping the MAOI drug, ASA or other NSAIDs including any other ibuprofen product
- nasal polyps (swelling of the inside of the nose)
- asthma
- allergic manifestations such as anaphylaxis (sudden severe life-threatening allergic reaction) urticaria/hives, rhinitis (stuffed or runny nose that may be due to allergies), skin rash or other allergic symptoms
- dehydrated (significant fluid loss) due to vomiting, diarrhea or lack of fluid intake
- been diagnosed with severe high blood pressure or have heart disease
- right before or after heart surgery
- serious liver disease
- severe kidney disease
- high potassium in the blood

ADVIL COLD & SINUS NIGHTTIME

ADVIL COLD & SINUS PLUS

ADVIL COLD, SINUS & FLU EXTRA STRENGTH

Ibuprofen, Pseudoephedrine Hydrochloride and Chlorpheniramine Maleate Caplets

CHILDREN'S ADVIL COLD & FLU MULTI-SYMPTOM

Ibuprofen, Pseudoephedrine Hydrochloride and Chlorpheniramine Maleate Suspension

- thyroid disease
- Raynaud’s Syndrome (a disorder of the circulatory system)
- Systemic Lupus Erythematosus
- in your third trimester of pregnancy.

To help avoid side effects and ensure proper use, talk to your healthcare professional before you take Advil Cold, Sinus & Flu Extra Strength. Talk about any health conditions or problems you may have, including if you have or are:

- blood clotting disorder (such as hemophilia)
- breathing problems or chronic lung disease (such as asthma, emphysema or chronic bronchitis)
- diabetes
- difficulty in urination due to prostate enlargement or bladder neck obstruction
- glaucoma
- high blood pressure
- mild to moderate kidney disease
- mild to moderate liver disease
- any other serious disease
- under doctor’s care for any serious condition
- Trying to conceive, pregnant or breastfeeding
- At 20 weeks or later in pregnancy, your use of NSAIDs may need to be monitored by a doctor due to the rare risk of kidney problems in the unborn baby which may result in decreased amniotic fluid volume and other complications
- taking sedatives or tranquilizers (as they may increase drowsiness), or any other drug including over the counter drugs
- Use with caution in the elderly
- Long-term continuous use may increase the risk of heart attack or stroke

Other warnings you should know about:

- The use of NSAIDs, like Advil Cold, Sinus & Flu Extra Strength, in the second trimester of pregnancy should be restricted to the lowest dose necessary for the shortest possible duration
- Do not smoke or drink alcohol while using this product. Alcohol may increase drowsiness.

Tell your healthcare professional about all the medicines you take, including any drugs, vitamins, minerals, natural supplements or alternative medicines.

The following may interact with Advil Cold, Sinus & Flu Extra Strength:

- acetaminophen
- acetylsalicylic acid (ASA)

- allergy medications
- anticoagulants (blood thinning medications)
- antidepressants
- anti-hypertensives (blood pressure medications)
- antibiotics (levofloxacin and quinolone)
- benzodiazepines
- cold medications
- corticosteroids
- cyclosporine
- CYP2C9 inhibitors (fluconazole and voriconazole)
- diabetes medication (including insulin and oral antidiabetic agents)
- digoxin
- diuretics (water pills)
- lithium
- methotrexate
- monoamine oxidase inhibitors
- nonsteroidal anti-inflammatory drugs (NSAIDs); including naproxen and ibuprofen
- phenytoin
- probenecid
- thyroxine
- tranquilizers or other sedating drugs
- zidovudine

How to take Advil Cold, Sinus & Flu Extra Strength:

Usual dose:

- Adults and children 12 to 65 years: Take 1 caplet every 4- 6 hours as needed. Do not exceed 3 caplets in 24 hours, unless directed by a doctor.
- Do not give to children under 12.

Overdose:

If you think you, or a person you are caring for, have taken too much Advil Cold, Sinus & Flu Extra Strength, contact a healthcare professional, hospital emergency department, or regional poison control centre immediately, even if there are no symptoms.

Missed Dose:

Continue to take 1 caplet every 4-6 hours as needed after a missed dose. Do not take twice the recommended dose following a missed dose.

What are possible side effects from using Advil Cold, Sinus & Flu Extra Strength?

Stop use and ask a doctor if:

- you show signs of stomach bleeding
- sore throat pain lasts more than 2 days
- symptoms worsen or last more than 5 days
- fever lasts more than 3 days
- you are nervous, dizzy or can't sleep
- any new symptoms appear

These are not all the possible side effects you may have when taking Advil Cold, Sinus & Flu Extra Strength. If you experience any side effects not listed here, tell your healthcare professional.

Take with food or milk if upset stomach occurs.

Advil Cold, Sinus & Flu Extra Strength may occasionally produce unwanted side effects, such as heartburn, constipation, nausea, bloating, dry mouth, nervousness or sleeplessness. Stop use and contact a healthcare professional if these symptoms worsen or persist.

This product may cause drowsiness. Be careful when driving motor vehicles or operating heavy machinery.

The risk of having side effects may be decreased by using the smallest dose for the shortest duration of time.

Serious side effects and what to do about them			
Symptom / effect	Talk to your healthcare professional		Stop taking drug and get immediate medical help
	Only if severe	In all cases	
UNCOMMON			
Sudden severe headache accompanied by confusion, seizures, vomiting sensation or changes in vision. These may be signs of a serious condition.			✓
Symptoms of allergic reaction, including rash, severe itching/redness, blisters, swelling, or trouble breathing			✓
Blood in vomit, bloody or black stools			✓
Abdominal pain, vomiting, diarrhea		✓	

Serious side effects and what to do about them			
Symptom / effect	Talk to your healthcare professional		Stop taking drug and get immediate medical help
	Only if severe	In all cases	
Ringing or buzzing in the ears / dizziness		✓	
Change in vision		✓	
Fluid retention		✓	

If you have a troublesome symptom or side effect that is not listed here or becomes bad enough to interfere with your daily activities, tell your healthcare professional.

Reporting Side Effects

You can report any suspected side effects associated with the use of health products to Health Canada by:

- Visiting the Web page on Adverse Reaction Reporting (<https://www.canada.ca/en/health-canada/services/drugs-health-products/medeffect-canada.html>) for information on how to report online, by mail or by fax; or
- Calling toll-free at 1-866-234-2345.

NOTE: Contact your health professional if you need information about how to manage your side effects. The Canada Vigilance Program does not provide medical advice.

Storage:

Store at room temperature (15 to 30°C).

Keep out of reach and sight of children. This package contains enough medicine to seriously harm a child.

If you want more information about Advil Cold, Sinus & Flu Extra Strength:

- Talk to your healthcare professional
- Find the full product monograph that is prepared for healthcare professionals and includes this Patient Medication Information by visiting the Health Canada website: <https://www.canada.ca/en/health-canada/services/drugs-health-products/drug-products/drug-product-database.html>; or by contacting the sponsor at www.advil.ca or by calling 1-888-788-8181.

This leaflet was prepared by Haleon Canada ULC.

Date of Authorization: MAY 16, 2025

ADVIL COLD & SINUS NIGHTTIME
ADVIL COLD & SINUS PLUS
ADVIL COLD, SINUS & FLU EXTRA STRENGTH
Ibuprofen, Pseudoephedrine Hydrochloride and Chlorpheniramine Maleate Caplets
CHILDREN'S ADVIL COLD & FLU MULTI-SYMPOM
Ibuprofen, Pseudoephedrine Hydrochloride and Chlorpheniramine Maleate Suspension

PATIENT MEDICATION INFORMATION

READ THIS FOR SAFE AND EFFECTIVE USE OF YOUR MEDICINE

CHILDREN'S ADVIL COLD & FLU MULTI-SYMP TOM

Ibuprofen, Pseudoephedrine Hydrochloride and Chlorpheniramine Maleate Suspension

Read this carefully before you start taking **Children's Advil Cold & Flu Multi-symptom** and each time you get a refill. This leaflet is a summary and will not tell you everything about this drug. Talk to your healthcare professional about your medical condition and treatment and ask if there is any new information about **Children's Advil Cold & Flu Multi-symptom**.

Serious Warnings and Precautions

- If your child has diabetes, glaucoma or difficulty in urination due to an enlarged prostate, do not take this drug unless directed by a doctor.
- Use with caution in those with heart failure, high blood pressure or other conditions that may cause excess fluid collecting in tissues.
- Use with caution in patients at risk of gastrointestinal tract irritation, including those with a history of peptic ulcer, diverticulosis, or other inflammatory disease of the gastrointestinal tract such as ulcerative colitis or Crohn's disease. Symptoms may include feeling faint, vomiting blood, bloody or black stools. The chance of stomach bleeding is higher if you are: age 60 or older, have had stomach ulcers or bleeding problems, take a blood thinner or steroid drug, take with other drugs containing an NSAID like acetylsalicylic acid (ASA), ibuprofen, naproxen, or prescription anti-inflammatory drugs, or have 3 or more alcoholic drinks every day while using this product.
- Use with caution in patients at risk of kidney problems, such as those with heart failure, liver disease, the elderly or those using diuretics.
- Children's Advil Cold & Flu Multi-symptom should not be used during the third trimester of pregnancy.
- Talk to your doctor if your child is trying to conceive, in their first or second trimester of pregnancy or if breastfeeding.
- Stop use immediately if child has difficulty or pain when urinating.

What is Children's Advil Cold & Flu Multi-symptom used for?

- Temporarily relieves the combined symptoms associated with cold and flu: stuffy nose, fever, minor body aches, sore throat, headache, runny nose, sneezing, itchy, watery eyes and sinus pain.

How does Children's Advil Cold & Flu Multi-symptom work?

ADVIL COLD & SINUS NIGHTTIME

ADVIL COLD & SINUS PLUS

ADVIL COLD, SINUS & FLU EXTRA STRENGTH

Ibuprofen, Pseudoephedrine Hydrochloride and Chlorpheniramine Maleate Caplets

CHILDREN'S ADVIL COLD & FLU MULTI-SYMP TOM

Ibuprofen, Pseudoephedrine Hydrochloride and Chlorpheniramine Maleate Suspension

Ibuprofen reduces pain and fever. Pseudoephedrine hydrochloride is a nasal decongestant. Chlorpheniramine maleate is an antihistamine.

What are the ingredients in Children's Advil Cold & Flu Multi-symptom?

Medicinal ingredients: Ibuprofen, pseudoephedrine hydrochloride and chlorpheniramine maleate.

Non-medicinal ingredients: Carboxymethylcellulose sodium, citric acid, edetate disodium, FD&C blue no. 1 (berry flavour only), FD&C red no. 40, flavour, glycerin, microcrystalline cellulose, polysorbate 80, purified water, sodium citrate, sodium benzoate, sorbitol, sucralose, xanthan gum.

Advil Children's Advil Cold & Flu Multi-symptom comes in the following dosage forms:

Each 5 mL or 1 teaspoon of oral suspension contains ibuprofen 100 mg, pseudoephedrine hydrochloride 15 mg and chlorpheniramine maleate 1 mg.

Do not use Children's Advil Cold & Flu Multi-symptom if your child has or is:

- allergic/hypersensitive to acetylsalicylic acid (ASA), ibuprofen, other salicylates, other NSAIDs, pseudoephedrine or other sympathomimetic amines, chlorpheniramine maleate, or any of the ingredients in Children's Advil Cold & Flu Multi-symptom (Refer to the non-medicinal ingredients section of this insert)
- active or recurrent stomach ulcer or gastrointestinal (GI) bleeding or active inflammatory bowel disease (e.g. Crohn's, colitis)
- taking a monoamine oxidase inhibitor (MAOI; e.g. drugs for depression or Parkinson's disease) or for 14 days after stopping the MAOI drug, ASA or other NSAIDs including any other ibuprofen product
- nasal polyps (swelling of the inside of the nose)
- asthma
- allergic manifestations such as anaphylaxis (sudden severe life-threatening allergic reaction) urticaria/hives, rhinitis (stuffed or runny nose that may be due to allergies), skin rash or other allergic symptoms
- dehydrated (significant fluid loss) due to vomiting, diarrhea or lack of fluid intake
- been diagnosed with severe high blood pressure or have heart disease
- right before or after heart surgery
- serious liver disease
- severe kidney disease
- high potassium in the blood
- thyroid disease
- Raynaud's Syndrome (a disorder of the circulatory system)

ADVIL COLD & SINUS NIGHTTIME

ADVIL COLD & SINUS PLUS

ADVIL COLD, SINUS & FLU EXTRA STRENGTH

Ibuprofen, Pseudoephedrine Hydrochloride and Chlorpheniramine Maleate Caplets

CHILDREN'S ADVIL COLD & FLU MULTI-SYMP TOM

Ibuprofen, Pseudoephedrine Hydrochloride and Chlorpheniramine Maleate Suspension

- Systemic Lupus Erythematosus
- in their third trimester of pregnancy.

To help avoid side effects and ensure proper use, talk to your healthcare professional before you take Children’s Advil Cold & Flu Multi-symptom. Talk about any health conditions or problems you may have, including if your child has or is:

- blood clotting disorder (such as hemophilia)
- breathing problems or chronic lung disease (such as chronic bronchitis)
- diabetes
- difficulty in urination due to prostate enlargement or bladder neck obstruction
- glaucoma
- high blood pressure
- mild to moderate kidney disease
- mild to moderate liver disease
- any other serious disease
- under doctor’s care for any serious condition
- taking sedatives or tranquilizers (as they may increase drowsiness), or any other drug including over the counter drugs
- trying to conceive, pregnant or breastfeeding
- At 20 weeks or later in pregnancy, your use of NSAIDs may need to be monitored by a doctor due to the rare risk of kidney problems in the unborn baby which may result in decreased amniotic fluid volume and other complications
- Use with caution in the elderly
- Long-term continuous use may increase the risk of heart attack or stroke
- Children’s Advil Cold & Flu Multi-symptom may cause drowsiness or excitability. Do not use when child is engaged in activities requiring mental alertness.

Other warnings you should know about:

- The use of NSAIDs, like Children’s Advil Cold & Flu Multi-symptom, in the second trimester of pregnancy should be restricted to the lowest dose necessary for the shortest possible duration

Tell your healthcare professional about all the medicines your child takes, including any drugs, vitamins, minerals, natural supplements or alternative medicines.

The following may interact with Children’s Advil Cold & Flu Multi-symptom:

- acetaminophen
- acetylsalicylic acid (ASA)
- allergy medications
- anticoagulants (blood thinning medications)

- antidepressants
- anti-hypertensives (blood pressure medications)
- antibiotics (levofloxacin and quinolone)
- benzodiazepines
- cold medications
- corticosteroids
- cyclosporine
- CYP2C9 inhibitors (fluconazole and voriconazole)
- diabetes medication (including insulin and oral antidiabetic agents)
- digoxin
- diuretics (water pills)
- lithium
- methotrexate
- monoamine oxidase inhibitors
- nonsteroidal anti-inflammatory drugs (NSAIDs); including naproxen and ibuprofen
- phenytoin
- probenecid
- thyroxine
- tranquilizers or other sedating drugs
- zidovudine

How to take Children’s Advil Cold & Flu Multi-symptom:

Usual dose:

- Shake well before use. Use only the measuring device provided. Doses below may be repeated every 6 hours while symptoms persist, up to 4 doses a day, or as directed by a doctor. If possible, use weight to dose; otherwise use age.

Weight	Age	Dosage
--	Under 6 years	DO NOT USE
21.4 – 43.0 kg / 48 – 95 lbs	6 – 12 years	10 mL = 2 teaspoons

Do not exceed the recommended dose unless directed by a doctor.

Overdose:

If you think you, or a person you are caring for, have taken too much Children’s Advil Cold & Flu Multi-symptom, contact a healthcare professional, hospital emergency department, or regional poison

control centre immediately, even if there are no symptoms.

Missed Dose:

Give your child the missed dose as soon as you remember. Do not give twice the recommended dose following a missed dose.

What are possible side effects from using Children's Advil Cold & Flu Multi-symptom?

These are not all the possible side effects you may have when taking Children's Advil Cold & Flu Multi-symptom. If your child experiences any side effects not listed here, tell your healthcare professional.

Take with food or milk if upset stomach occurs.

Children's Advil Cold & Flu Multi-symptom may occasionally produce unwanted side effects, such as heartburn, constipation, nausea, bloating, dry mouth, nervousness or sleeplessness. Stop use and contact a healthcare professional if these symptoms worsen or persist.

Talk to your doctor if:

- Your child does not get any relief within 24 hours
- Redness or swelling is present in the painful area
- Sore throat is severe, lasts for more than 2 days or occurs with a fever or headache
- Cold symptoms do not improve within 3 days
- Symptoms worsen or are accompanied by a high fever (>38°C) or the production of thick yellow/green phlegm
- Your child shows signs of stomach bleeding
- Your child is nervous, dizzy or can't sleep

The risk of having side effects may be decreased by using the smallest dose for the shortest duration of time.

Serious side effects and what to do about them			
Symptom / effect	Talk to your healthcare professional		Stop taking drug and get immediate medical help
	Only if severe	In all cases	
UNCOMMON			
Sudden severe headache accompanied by confusion, seizures, vomiting sensation or changes in vision. These may be signs of a serious condition.			✓

Serious side effects and what to do about them			
Symptom / effect	Talk to your healthcare professional		Stop taking drug and get immediate medical help
	Only if severe	In all cases	
Symptoms of allergic reaction, including rash, severe itching/ redness, blisters, swelling, or trouble breathing			✓
Blood in vomit, bloody or black stools			✓
Abdominal pain, vomiting, diarrhea		✓	
Ringing or buzzing in the ears / dizziness		✓	
Change in vision		✓	
Fluid retention		✓	

If your child has a troublesome symptom or side effect that is not listed here or becomes bad enough to interfere with your child's daily activities, tell your healthcare professional.

Reporting Side Effects

You can report any suspected side effects associated with the use of health products to Health Canada by:

- Visiting the Web page on Adverse Reaction Reporting (<https://www.canada.ca/en/health-canada/services/drugs-health-products/medeffect-canada.html>) for information on how to report online, by mail or by fax; or
- Calling toll-free at 1-866-234-2345.

NOTE: Contact your health professional if you need information about how to manage your side effects. The Canada Vigilance Program does not provide medical advice.

Storage:

Store at room temperature (15 to 30°C).

Keep out of reach and sight of children. This package contains enough medicine to seriously harm a child.

This package has a child resistant cap. Do not use if breakable ring is separated or missing.

If you want more information about Children's Advil Cold & Flu Multi-symptom:

- Talk to your healthcare professional
- Find the full product monograph that is prepared for healthcare professionals and includes this Patient Medication Information by visiting the Health Canada website: <https://www.canada.ca/en/health-canada/services/drugs-health-products/drug-products/drug-product-database.html>; or by contacting the sponsor at www.advil.ca or by calling 1-888-788-8181.

This leaflet was prepared by Haleon Canada ULC.

Date of Authorization: MAY 16, 2025