

**Product Monograph**  
**Including Patient Medication Information**

Pr **MIRENA**®

Levonorgestrel-releasing Intrauterine System (52mg) to deliver  
up to 20 mcg levonorgestrel per day

Progestogen

Bayer Inc.  
2920 Matheson Blvd East  
Mississauga, Ontario  
L4W 5R6  
[www.bayer.ca](http://www.bayer.ca)

Date of Authorization:  
2025-07-30

Control No:294675

© 2025, Bayer Inc.  
® TM see [www.bayer.ca/tm-mc](http://www.bayer.ca/tm-mc)

**Recent Major Label Changes**

1 Indications	2024-02
1 Indications, 1.2 Geriatrics	2024-02
2 Contraindications	2024-02
4 Dosage and Administration, 4.2 Recommended Dose and Dosage Adjustment	2024-02
4 Dosage and Administration, 4.4 Administration	2024-02
4 Dosage and Administration, 4.5 Missed Dose	2024-02
7 Warnings and Precautions, Genitourinary	2024-02
7 Warnings and Precautions, Monitoring and Laboratory Tests	2024-02
7 Warnings and Precautions, Reproductive Health	2024-02
7 Warnings and Precautions, 7.1.4 Geriatrics	2024-02

**Table of Contents**

**Certain sections or subsections that are not applicable at the time of the preparation of the most recent authorized product monograph are not listed.**

**Table of Contents.....2**

**Part 1: Health Professional Information .....4**

**1 Indications .....4**

    1.1 Pediatrics..... 4

    1.2 Geriatrics..... 4

**2 Contraindications .....4**

**3 Serious Warnings and Precautions Box.....5**

**4 Dosage and Administration.....5**

    4.1 Dosing Considerations ..... 5

    4.2 Recommended Dose and Dosage Adjustment ..... 5

    4.3 Reconstitution..... 5

    4.4 Administration ..... 5

    4.5 Missed Dose..... 13

**5 Overdose ..... 13**

**6 Dosage Forms, Strengths, Compositions, and Packaging ..... 14**

**7 Warnings and Precautions ..... 14**

    General..... 14

    Carcinogenesis and Mutagenesis..... 15

    Cardiovascular..... 15

    Driving and Operating Machinery..... 16

    Endocrine and Metabolism..... 16

Gastrointestinal.....	16
Genitourinary.....	16
Hematologic.....	17
Hepatic/Biliary/Pancreatic.....	17
Monitoring and Laboratory Tests .....	17
Neurologic.....	18
Ophthalmologic.....	18
Perioperative Considerations .....	18
Psychiatric.....	18
Reproductive Health .....	18
Sexual Function/Reproduction .....	18
Skin.....	22
7.1 Special Populations.....	22
7.1.1 Pregnancy/Intrauterine pregnancy.....	22
7.1.2 Breastfeeding.....	22
7.1.3 Pediatrics.....	22
7.1.4 Geriatrics .....	22
<b>8 Adverse Reactions .....</b>	<b>22</b>
8.1 Adverse Reaction Overview.....	22
8.2 Clinical Trial Adverse Reactions .....	23
8.3 Less Common Clinical Trial Adverse Reactions.....	24
8.4 Abnormal Laboratory Findings: Hematologic, Clinical Chemistry and other Quantitative Data..	24
8.5 Post-Market Adverse Reactions.....	24
<b>9 Drug Interactions.....</b>	<b>26</b>
9.2 Drug Interactions Overview .....	26
9.3 Drug-Behaviour Interactions.....	26
9.4 Drug-Drug Interactions .....	26
9.5 Drug-Food Interactions.....	26
9.6 Drug-Herb Interactions .....	26
9.7 Drug-Laboratory Test Interactions.....	26
<b>10 Clinical Pharmacology.....</b>	<b>26</b>
10.1 Mechanism of Action .....	26
10.2 Pharmacodynamics.....	27
10.3 Pharmacokinetics.....	30
<b>11 Storage, Stability, and Disposal .....</b>	<b>32</b>
<b>12 Special Handling Instructions .....</b>	<b>32</b>
<b>Part 2: Scientific Information .....</b>	<b>33</b>
<b>13 Pharmaceutical Information .....</b>	<b>33</b>
<b>14 Clinical Trials .....</b>	<b>33</b>
14.1 Clinical Trials by Indication.....	33
<b>16 Non-Clinical Toxicology.....</b>	<b>36</b>
<b>Patient Medication Information .....</b>	<b>39</b>

## Part 1: Health Professional Information

### 1 Indications

MIRENA (levonorgestrel-releasing intrauterine system) is indicated for:

- conception control for maximum up to 8 years
- treatment of idiopathic menorrhagia following appropriate diagnostic investigation for up to 5 years in individuals accepting the contraceptive effect of MIRENA

#### 1.1 Pediatrics

**Pediatrics (<18 years of age):** No data are available to Health Canada; therefore, Health Canada has not authorized an indication for pediatric use.

#### 1.2 Geriatrics

**Geriatrics:** MIRENA has not been studied in individuals over the age of 65 years. No data are available to Health Canada, therefore, Health Canada has not authorized an indication for geriatric use.

### 2 Contraindications

MIRENA (levonorgestrel-releasing intrauterine system) is contraindicated in individuals with the following conditions:

- known or suspected pregnancy
- current or recurrent pelvic inflammatory disease
- lower genital tract infection
- postpartum endometritis
- undiagnosed abnormal uterine bleeding
- uterine anomalies including fibroids if they distort the uterine cavity
- uterine or cervical malignancy
- known or suspected progestin-dependent neoplasia, including breast cancer
- cervicitis
- cervical dysplasia
- active liver disease or dysfunction
- actual benign or malignant liver tumors
- septic abortion within the previous three months
- hypersensitivity to levonorgestrel or any of the other ingredients in the formulation or components of MIRENA. For a complete listing, see the [6 Dosage Forms, Strengths, Compositions, and Packaging](#) section of the Product Monograph.
- bacterial endocarditis
- established immunodeficiency
- acute malignancies affecting blood or leukemias
- recent trophoblastic disease while hCG levels are elevated
- a previously inserted intrauterine device (IUD) that has not been removed
- conditions associated with increased susceptibility to pelvic infections

### 3 Serious Warnings and Precautions Box

- Hormonal contraceptives **DO NOT PROTECT** against Sexually Transmitted Infections (STIs) including HIV/AIDS. For protection against STIs, it is advisable to use latex or polyurethane condoms **IN COMBINATION WITH MIRENA**.
- Cigarette smoking increases the risk of serious adverse effects on the heart and blood vessels. Individuals should be counseled not to smoke (see [7 Warnings and Precautions - Cardiovascular](#) section).
- **Uterine Perforation may occur with the use of intrauterine contraceptives including MIRENA** (see [7 Warnings and Precautions - Uterine Perforation](#) section).

### 4 Dosage and Administration

#### 4.1 Dosing Considerations

Not Applicable

#### 4.2 Recommended Dose and Dosage Adjustment

##### Conception Control

Following insertion into the uterine cavity, MIRENA is effective for conception control up to 8 years. If after 8 years, continued use of MIRENA is desired, a new MIRENA system should be inserted immediately after the old one is removed.

##### Treatment of Idiopathic Menorrhagia

Following insertion into the uterine cavity, MIRENA is effective for treatment of idiopathic menorrhagia for up to 5 years. If after 5 years, continued use of MIRENA is desired, a new MIRENA system should be inserted immediately after the old one is removed. Data on use for this indication beyond 5 years are limited.

For estimated *in vivo* release rates of LNG from MIRENA for different points in time, please see [10 Clinical Pharmacology – 10.3 Pharmacokinetics](#).

#### 4.3 Reconstitution

Not Applicable

#### 4.4 Administration

##### Medical Examination/Consultation

Before insertion, the MIRENA user must be informed of the efficacy, risks and side effects of MIRENA. A thorough history and physical examination should also be performed prior to insertion, including a blood pressure determination. Breasts, liver, extremities, and pelvic organs should be examined. Cervical smear (Papanicolaou smear) should be performed as needed, according to healthcare professional's evaluation. Pregnancy and sexually transmitted infections should be excluded and any genital infections must be successfully treated. For timing of insertion to exclude pregnancy see [4 Dosage and Administration – Insertion, Removal and Replacement](#). The position of the uterus and the size of the uterine cavity should be determined. Fundal positioning of MIRENA is particularly important in order to ensure uniform exposure of the endometrium to the progestogen, prevent expulsion and maximize efficacy. Because irregular bleeding is common during the first months of therapy, it is

recommended to exclude endometrial pathology before insertion of MIRENA (see [7 Warnings and Precautions – Genitourinary: Bleeding irregularities](#); and [8 Adverse Reactions](#)). It is also important to counsel individuals about how their bleeding pattern may change after insertion of MIRENA. The instructions for insertion should be followed carefully. Users of MIRENA should be re-examined 4 to 12 weeks after insertion and once a year thereafter, or more frequently if clinically indicated.

MIRENA is not suitable for use as a postcoital contraceptive.

### ***Insertion, Removal and Replacement***

In individuals of fertile age, MIRENA should be inserted within seven days of the onset of menstruation. In this case no back up contraception is needed. MIRENA can be inserted any time during the cycle if the healthcare professional can be reasonably certain (as defined by the World Health Organization) that the individual is not pregnant. If insertion is more than seven days since menstrual bleeding started, a barrier method of contraception should be used or the MIRENA user should abstain from vaginal intercourse for the next seven days to prevent pregnancy. Consider the possibility of ovulation and conception before using this product. MIRENA may be replaced by a new system at any time during the cycle. The system can also be inserted immediately after first trimester abortion.

Insertions following second trimester abortion should be postponed for a minimum of 6 weeks or until the uterus is fully involuted. If involution is delayed, wait until involution is complete before insertion.

Postpartum insertions should be postponed until the uterus is fully involuted, and not earlier than six weeks after delivery. If involution is substantially delayed, consider waiting until 12 weeks postpartum. In case of a difficult insertion and/or exceptional pain or bleeding during or after insertion, the possibility of perforation should be considered and appropriate steps should be taken, such as physical examination and ultrasound.

If bleeding irregularities develop during prolonged treatment, appropriate diagnostic measures should be undertaken.

For conception control, the system should be removed or replaced after 8 years of use.

For idiopathic menorrhagia, the system should be removed or replaced after 5 years of use. Data on use in this indication beyond 5 years are limited.

MIRENA can be removed by applying gentle traction on the threads with forceps. The use of excessive force during removal may cause damage to the system. After removal of MIRENA, verify that the system is intact.

If the threads are not visible, determine the location of MIRENA by ultrasound or other methods. If MIRENA is found in the uterine cavity, it may be removed using forceps. This may require dilatation of the cervical canal or other surgical intervention, such as hysteroscopy.

During difficult removals (i.e., removal through a tight cervical canal or surgical removal after perforation), the hormone cylinder may slide over and cover the horizontal arms. This situation generally does not require further intervention once the system is verified to be intact. The reporting rate for hormone cylinder dislocation/shifting with MIRENA is approximately 7 per 1 million insertions.

If the user wishes to continue using MIRENA, a new system can be inserted at the time of removal of the old one. If pregnancy is not desired, removal should be carried out within 7 days of the onset of menstruation in users of fertile age provided the user is experiencing regular menses.

If the system is removed at some other time or the user does not experience regular menses and has had intercourse within a week, they are at risk of pregnancy unless a new system is inserted immediately following removal. If MIRENA will not be replaced, the individual should consider starting a new contraceptive method a week prior to removal.

Insertion and removal may be associated with some pain and bleeding. The procedure may cause a fainting spell or precipitate a seizure in an epileptic individual. It is recommended to wait 24 to 48 hours before having sexual intercourse in the event of general discomfort after insertion of MIRENA.

### **Expulsion**

For Expulsion, see [7 Warnings and Precautions – Sexual Function/Reproduction; Expulsion](#).

### **Lost Removal Threads**

If the threads are not visible upon follow-up examination, they may have retracted into the uterus or broken, or MIRENA may have broken, perforated the uterus, or been expelled. If the length of the threads has changed from the length at the time of insertion, the system may have become displaced (see [7 Warnings and Precautions – Sexual Function/Reproduction; Expulsion](#)). Pregnancy must be excluded and the location of MIRENA must be verified by sonography, X-ray (MIRENA is radiopaque), or by gentle exploration of the uterine cavity with a probe. If MIRENA is displaced, remove it. A new MIRENA may be inserted at that time or during the next menses if it is certain that conception has not occurred.

### **Insertion Instructions**

Before insertion, the MIRENA user must be informed of the efficacy, risks and side effects of MIRENA.

**Because the insertion technique is different from other intrauterine devices, it is important that health care professionals receive training on the correct insertion technique.**

**Health care professionals should become thoroughly familiar with the insertion instructions in their entirety before insertion of MIRENA**

MIRENA is supplied in a sterile package which should not be opened until required for insertion. MIRENA is sterilized with ethylene oxide. Do not resterilize. MIRENA is for single use only. Do not use if the seal of the sterile package is broken, or if the package is damaged or opened. The exposed product should be handled with aseptic precautions. Insert MIRENA before the expiry date indicated on the label.

MIRENA is supplied with Insertion Instructions, as well as a reminder card in the outer package. Complete the reminder card and give it to the MIRENA user after insertion.

In individuals of fertile age, MIRENA is inserted into the uterine cavity using the enclosed inserter within seven days of the onset of menstruation by carefully following these insertion instructions ([Figure 1](#)). In this case no back up contraception is needed. MIRENA can be inserted any time during the cycle if the healthcare professional can be reasonably certain (as defined by the World Health Organization) that the individual is not pregnant. If insertion is more than seven days since menstrual bleeding started, a barrier method of contraception should be used or the MIRENA user should abstain from vaginal intercourse for the next seven days to prevent pregnancy. Consider the possibility of ovulation and conception before using this product. MIRENA is not suitable for use as postcoital contraceptive. It can be replaced by a new system at any time during the menstrual cycle. For additional information on the timing of insertion, please see the [4 Dosage and Administration - 4.4 Administration; Insertion, Removal and Replacement](#) subsection of the Product Monograph.

A physical examination including pelvic examination, examination of the breasts and cervical smear should be performed prior to insertion. Conduct a gynecological examination of the individual to establish the size and position of the uterus and to exclude pregnancy or other genital tract contraindications for the use of MIRENA.

### Preparation for Insertion

Visualize the cervix with the aid of a speculum and thoroughly cleanse the cervix and vagina with a suitable antiseptic solution.

Grasp the upper lip of the cervix with a tenaculum or suitable holding forceps to stabilize the uterus. If the uterus is retroverted, it may be more appropriate to grasp the lower lip of the cervix. Gentle traction on the holding forceps can be applied to straighten the cervical canal. The forceps should remain in position and gentle traction on the cervix should be maintained throughout the insertion procedure.

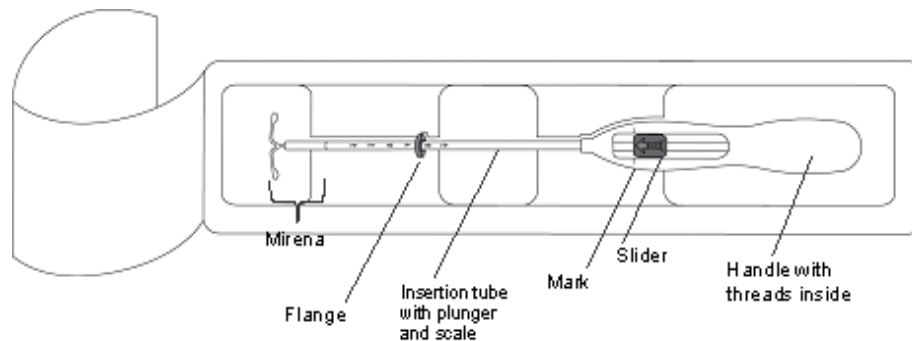
Gently advance a uterine sound through the cervical canal to the fundus to determine the depth and confirm the direction of the uterine cavity, and to exclude any evidence of intrauterine abnormalities (e.g., uterine septum, synechiae or submucosal fibroids) or a previously inserted intrauterine contraceptive which has not been removed. If difficulty is encountered, consider dilatation of the canal. If cervical dilatation is required, consider using analgesics and/or paracervical block.

### Insertion

#### Step 1—Opening of the sterile package

- First, open the sterile package completely ([Figure 1](#)). Then use aseptic technique and sterile gloves.

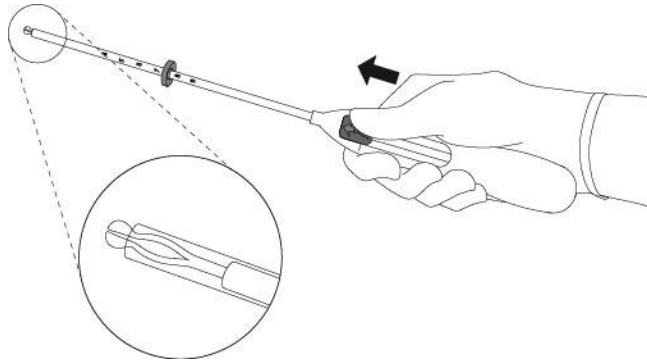
Figure 1: Sterile Package Containing MIRENA



#### Step 2—Load MIRENA into the insertion tube

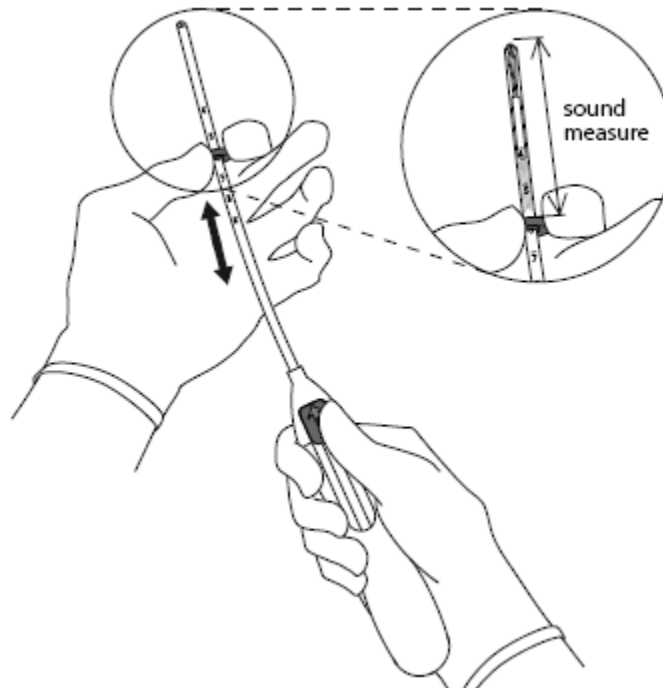
- To load MIRENA into the insertion tube, push the slider **forward** in the direction of the arrow to the furthest position ([Figure 2](#)).
- **IMPORTANT!** Do not pull the slider downwards as this may prematurely release MIRENA. **Once released, MIRENA cannot be re-loaded.**

Figure 2: Loading MIRENA into the Insertion Tube

**Step 3—Setting the flange**

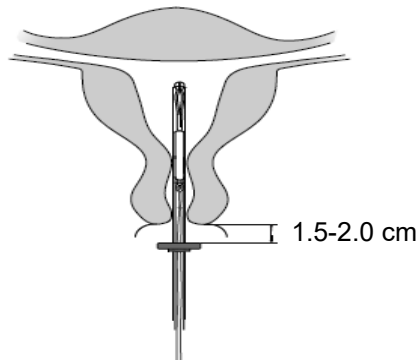
- Holding the slider in the furthest position, set the **upper** edge of the flange to correspond to the sound measurement of the uterine depth ([Figure 3](#)).

Figure 3: Setting the Flange to the Uterine Depth

**Step 4—MIRENA is now ready to be inserted**

- While holding the slider in the **furthest** position, gently advance the inserter through the cervical canal and into the uterine cavity **until the flange is approximately 1.5 to 2.0 cm from the external cervical os** ([Figure 4](#)).
- **NOTE: Do not advance flange to the cervix at this step.** Maintaining the flange 1.5 to 2 cm from the cervical os allows sufficient space for the arms to open (when released) within the uterine cavity.
- **IMPORTANT! Do not force the inserter. If necessary, dilate the cervical canal.**

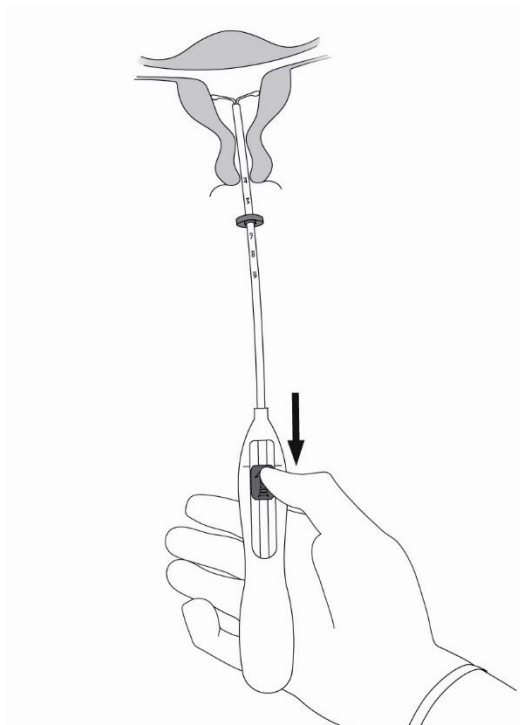
**Figure 4: Advancing the Inserter Until Flange is 1.5 to 2 cm From Cervical Os**



**Step 5—Release the arms**

- While holding the inserter steady, **pull the slider to the mark** to open the horizontal arms of MIRENA ([Figure 5](#)). Wait approximately 10 seconds for the horizontal arms of MIRENA to open completely.

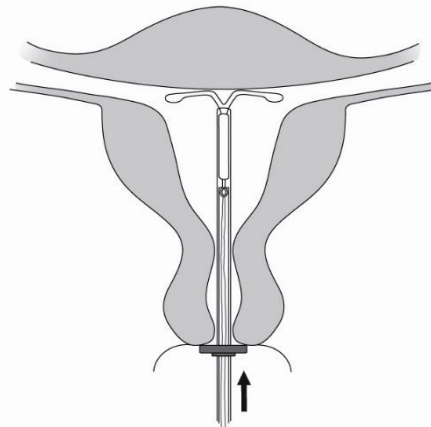
**Figure 5: Releasing the Arms of MIRENA**



**Step 6—Advance to fundal position**

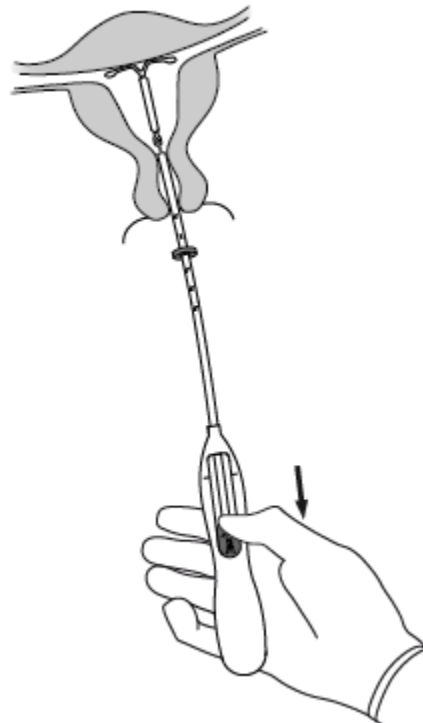
- Advance the inserter gently towards the fundus of the uterus **until the flange touches the cervix** or you feel fundal resistance. MIRENA should now be in the desired fundal position ([Figure 6](#)).

Figure 6: MIRENA in the Fundal Position

**Step 7—Release MIRENA and withdraw the inserter**

- While holding the inserter in place, pull **the slider all the way down** to release MIRENA from the insertion tube ([Figure 7](#)). The threads will release automatically from the internal thread lock of the inserter.
- Gently remove the inserter by pulling it out.
- **Cut the threads perpendicular** to the thread length, for example, with sterile curved scissors, leaving about 2-3 cm visible outside of the cervix. NOTE: Cutting the threads at an angle may leave sharp ends.

Figure 7: Releasing MIRENA from the Insertion Tube



MIRENA insertion is now complete.

**IMPORTANT!**

If you suspect that MIRENA is not in the correct position, check placement (for example, with transvaginal ultrasound). Remove the system if it is not positioned properly within the uterine cavity. A removed system must not be re-inserted.

If there is clinical concern and/or exceptional pain or bleeding during or after insertion, appropriate and timely measures and assessments, for example ultrasound, should be performed to exclude perforation.

Users of MIRENA should be re-examined 4 to 12 weeks after insertion and once a year thereafter, or more frequently if clinically indicated.

**Use of Sanitary Pads or Menstrual Cups**

The use of sanitary pads is recommended. If tampons or menstrual cups are used, they should be changed carefully to avoid inadvertently pulling the MIRENA removal threads.

**Removal/Replacement of MIRENA***Timing of Removal*

- MIRENA should not remain in the uterus after 8 years. For conception control, remove MIRENA after 8 years of use. For idiopathic menorrhagia, remove MIRENA after 5 years of use.
- If pregnancy is not desired, the removal should be carried out during menstruation, provided the user is still experiencing regular menses. If removal will occur at other times during the cycle, consider starting a new contraceptive method a week prior to removal. If removal occurs at other times during the cycle and the user has had intercourse in the week prior to removal, they are at risk of pregnancy.

*Tools for Removal***Preparation**

- Gloves
- Speculum

**Procedure**

- Sterile forceps

*Removal Procedure*

- Remove MIRENA by applying gentle traction on the threads with forceps ([Figure 8](#)).
- If the threads are not visible, determine location of MIRENA by ultrasound.
- If MIRENA is found to be in the uterine cavity on ultrasound exam, it may be removed using a narrow forceps, such as an alligator forceps. This may require dilation of the cervical canal. After removal of MIRENA, examine the system to ensure that it is intact.

Removal may be associated with:

- Some pain and/or bleeding or vasovagal reactions (for example, syncope, or a seizure in an epileptic individual).

- Breakage or embedment of MIRENA in the myometrium that can make removal difficult. Analgesia, paracervical anesthesia, cervical dilation, alligator forceps or other grasping instrument, or hysteroscopy may be used to assist in removal.

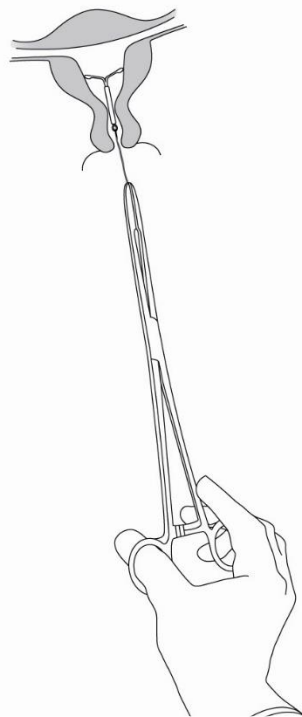
#### *Replacement*

If after 8 years for conception control, continued use of MIRENA is desired, a new MIRENA should be inserted immediately after the old one is removed.

MIRENA should be replaced if symptoms of idiopathic menorrhagia return. If after 5 years for idiopathic menorrhagia, continued use of MIRENA is desired, a new MIRENA should be inserted immediately after the old one is removed.

A replacement MIRENA can be inserted at any time during the menstrual cycle.

**Figure 8: Removal of MIRENA**



#### **4.5 Missed Dose**

MIRENA should be removed after 8 years for conception control and after 5 years for idiopathic menorrhagia. If the user wishes to continue using MIRENA, a new system can be inserted replacing the old system. If the system has been used for a longer period of time than 8 years for conception control, pregnancy should be ruled out before insertion of a new system.

#### **5 Overdose**

Not applicable. MIRENA is an intrauterine system.

For the most recent information in the management of a suspected drug overdose, contact your regional poison control centre or Health Canada's toll-free number, 1-844-POISON-X (1-844-764-7669).

## 6 Dosage Forms, Strengths, Compositions, and Packaging

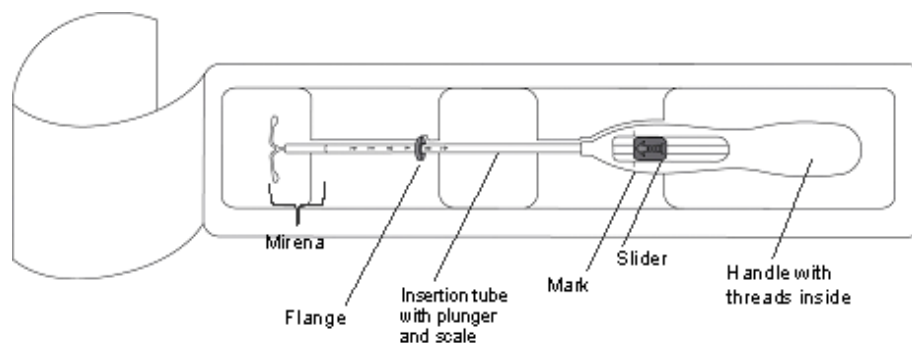
Table 1: Dosage Forms, Strengths, and Composition

Route of Administration	Dosage Form / Strength / Composition	Non-Medicinal Ingredients
Intra-uterine	Intrauterine system / 52 mg levonorgestrel (LNG)	barium sulphate, iron oxide, polydimethylsiloxane, polyethylene, silica

Each MIRENA contains 52 mg of levonorgestrel in a cylindrical-shaped reservoir composed of a matrix of levonorgestrel and polydimethylsiloxane. The reservoir is mounted on the vertical arm of a T-shaped frame made of polyethylene and covered with a rate-controlling membrane of polydimethylsiloxane and silica. The white T-frame is pigmented with barium sulphate, which makes it visible in X-ray examination. Brown polyethylene removal threads attached to the T-frame are pigmented with black iron oxide.

MIRENA is in a sterile package within the Evolserter ([Figure 9](#)). The Evolserter, which is used for insertion of MIRENA into the uterine cavity, consists of a symmetric two-sided body and slider that are integrated with flange, lock, insertion tube and plunger. The outer diameter of the insertion tube is 4.4 mm. The vertical stem of MIRENA is loaded in the insertion tube at the tip of the inserter. The arms are pre-aligned in the horizontal position. The removal threads are contained within the insertion tube and handle. Once MIRENA has been placed, the inserter is discarded.

Figure 9: MIRENA Evolserter



## 7 Warnings and Precautions

Please see the [3 Serious Warnings and Precautions Box](#) at the beginning of Part I: Health Professional Information.

### General

MIRENA should be used with caution in individuals who have migraine, focal migraine with asymmetrical visual loss or other symptoms indicating transient cerebral ischemia, severe headache, marked increase in blood pressure or active or previous severe arterial disease such as stroke or myocardial infarction (see [7 Warnings and Precautions – Cardiovascular; Hematologic; Neurologic](#)). Removal of MIRENA should be considered if any of the above conditions occur during use.

Cases of breast cancer have been reported in users of MIRENA (see [7 Warnings and Precautions – Carcinogenesis and Mutagenesis](#)).

MIRENA is intended for use only in individuals of child-bearing age.

MIRENA is not suitable for use as a postcoital contraceptive.

***Insertion, Removal and Replacement Precautions***

See [4 Dosage and Administration](#) – [Insertion, Removal and Replacement](#) and [Insertion Instructions](#).

**Carcinogenesis and Mutagenesis**

***Breast Cancer***

Cases of breast cancer have been reported in users of MIRENA (see [8 Adverse Reactions](#)).

The incidence rate of breast cancer in association with MIRENA use has been analyzed in a large Finnish epidemiological study using hospital registry data and cancer diagnoses derived from the Finnish Cancer Registry. In this study, the incidence rate of breast cancer in 17,360 MIRENA users (a total of > 58,000 person years with MIRENA, and > 150,000 person years of follow-up) was not statistically significantly different compared to the occurrence of breast cancer in 4,863 control MIRENA non-users. In addition, the incidence rate of breast cancer among these MIRENA users has been compared to the average breast cancer incidence rates in Finland. There was no indication of a statistically significant difference between the MIRENA users and average Finnish female population in any of the age groups studied (30-54 years). Although these studies do not support a causal relationship between MIRENA and the development of breast cancer, an elevated breast cancer risk cannot be totally excluded, since these studies did not control for confounding factors such as use of oral hormonal contraception by control subjects, genetics and lifestyle and environmental factors such as smoking and alcohol.

Increasing age, inherited mutations, and a strong family history are the most significant risk factors for the development of breast cancer. Other established risk factors include nulliparity, first full-term pregnancy after the age of 30, menarche before the age of 12, never breastfed a child, and daily alcohol consumption. In some individuals, the use of hormonal contraceptives may accelerate the growth of an existing but undiagnosed breast cancer. More thorough studies are needed to determine the definitive link between hormonal contraceptive use and the potential risk of breast cancer. There is currently no conclusive evidence of an association between MIRENA use and development of breast cancer or progression of subclinical breast cancer. There is no reason to change prescribing habits at present.

Breast self-examination should be discussed with individuals receiving hormonal contraceptives. Individuals should be instructed to notify their healthcare professionals whenever any masses are detected.

**Cardiovascular**

An individual benefit-risk assessment in relation to continued use of MIRENA should be carried out in the event of arterial thrombosis. In particular, removal of MIRENA should be considered if severe arterial disease such as stroke or myocardial infarction occurs. In addition, MIRENA should be used with caution in individuals with a previous history of severe arterial disease such as stroke or myocardial infarction. Individuals with a history of thromboembolic disorders should be made aware of the possibility of a recurrence (see [7 Warnings and Precautions](#) – [Hematologic](#) and [8 Adverse Reactions](#) – [8.5 Post-Market Adverse Reactions](#)). There have been postmarket reports of cardiovascular events, including myocardial infarction and stroke in MIRENA users, although a causal relationship with MIRENA could not be clearly established in these cases.

***Predisposing Factors for Coronary Artery Disease***

Cigarette smoking increases the risk of serious cardiovascular side effects and mortality. Hormonal contraceptives increase this risk, especially with increasing age.

Other individuals who are independently at high risk for cardiovascular disease include those with diabetes, hypertension, abnormal lipid profile, or a family history of these risk factors.

### **Hypertension**

If a significant elevation of blood pressure in previously normotensive or hypertensive individuals occurs at any time during MIRENA use, MIRENA removal should be considered.

### **Congenital or Valvular Heart Disease**

MIRENA should be used with caution in individuals with congenital or valvular heart disease who are at risk of infective endocarditis.

### **Driving and Operating Machinery**

The effect of MIRENA on the ability to drive or use machines has not been studied. Users should be advised not to drive or use machines until they know how they react to MIRENA.

### **Endocrine and Metabolism**

#### **Glucose Tolerance**

Combination and progestogen-only oral contraceptives, including those containing levonorgestrel, may affect glucose tolerance in some users. Diabetic individuals, and those with a family history of diabetes, should be observed closely to detect any alterations in carbohydrate metabolism. Young diabetic individuals whose disease is of recent origin, well controlled and not associated with hypertension or other signs of vascular disease such as ocular fundal changes, should be closely observed. One published clinical study indicated no change in mean daily insulin requirements in MIRENA users with Type 1 diabetes over a 12-month period.

### **Gastrointestinal**

Gastrointestinal disorders have been reported (see [8 Adverse reactions – 8.2 Clinical Trial Adverse Reactions](#)).

### **Genitourinary**

#### **Bleeding irregularities**

Because irregular menstrual bleeding or spotting is common during the first few months of use, endometrial pathology should be excluded prior to insertion of MIRENA. Irregular bleeding patterns in users of MIRENA could mask the signs and symptoms of cervical or endometrial cancer. If bleeding irregularities develop after prolonged use, appropriate diagnostic measures should be undertaken.

Prolonged menstrual bleeding may occur during the first few months, however with continued use, bleeding patterns vary from regular scanty menstruation in some users to infrequent bleeding or amenorrhea in others. Infrequent bleeding and amenorrhea develop gradually in 57% and 16% of users during the first year of use, respectively. By the end of year 8 of MIRENA use, infrequent bleeding and amenorrhea are experienced by 26% and 34% of users, respectively. Reduced bleeding increases the level of blood hemoglobin. Hemoglobin and serum ferritin levels have been shown to increase after insertion of MIRENA among users with anemia due to heavy menstrual bleeding.

The possibility of pregnancy should be considered if menstruation does not occur after six weeks or more of amenorrhea, following a pattern of regular menses. A pregnancy test is not necessary in amenorrheic users unless indicated by other symptoms.

## Hematologic

An individual benefit-risk assessment in relation to continued use of MIRENA should be carried out in the event of thrombosis. In particular, removal of MIRENA should be considered if venous thromboembolic disease such as deep vein thrombosis or pulmonary embolism occurs. Individuals with a history of thromboembolic disorders should be made aware of the possibility of a recurrence (see [7 Warnings and Precautions – Cardiovascular](#) and [8 Adverse Reactions – 8.5 Post-Market Adverse Reactions](#)). There have been postmarketing reports of arterial and venous thromboembolism (ATE, VTE) in MIRENA users, although a causal relationship with MIRENA could not be clearly established in such cases. Epidemiological studies have indicated that individuals using progestogen-only oral contraceptives may have a slightly increased risk of venous thromboembolism; however, the results are not statistically significant.

Appropriate diagnostic and therapeutic measures should be undertaken immediately if there are symptoms or signs of thrombosis in users of MIRENA. Symptoms of thromboembolism include: unilateral leg pain and/or swelling, sudden severe pain in the chest whether or not it radiates to the left arm, sudden breathlessness, sudden onset of coughing, any unusual severe prolonged headache, sudden partial or complete loss of vision, diplopia, slurred speech or aphasia, vertigo, collapse with or without focal seizure, weakness or very marked numbness suddenly affecting one side or part of the body, motor disturbances and acute abdomen. Symptoms or signs of retinal thrombosis are: unexplained partial or complete loss of vision, onset of proptosis or diplopia, papilledema, or retinal vascular lesions.

### ***Other Risk Factors for Venous Thromboembolism***

Other generalized risk factors for venous thromboembolism include but are not limited to a personal history, a family history (the occurrence of VTE in a direct relative at a relatively early age may indicate genetic predisposition), severe obesity (body mass index  $\geq 30$  kg/m<sup>2</sup>) and systemic lupus erythematosus. The risk of VTE also increases with age and smoking. The risk of VTE may be temporarily increased with prolonged immobilization, major surgery, or trauma. Also individuals with varicose veins and leg cast should be closely monitored.

## Hepatic/Biliary/Pancreatic

Steroid hormones may be poorly metabolized in individuals with impaired liver function. Acute or chronic disturbances of liver function may necessitate the discontinuation of hormonal contraceptive use until markers of liver function return to normal (see [2 Contraindications](#)).

To date, no studies have examined whether the avoidance of the first-pass effect through the liver, as with non-oral hormonal contraceptives, lessens concerns in individuals with liver conditions.

### ***Jaundice***

Individuals who have had jaundice should be given hormonal contraceptives only with great care and under close observation. If jaundice develops in an individual using MIRENA, consideration should be given to removing the system. Hormonal contraceptive-related cholestasis has been described in individuals with a history of pregnancy-related cholestasis. This condition may recur with subsequent hormonal contraceptive use (see [2 Contraindications](#)).

## Monitoring and Laboratory Tests

### ***Physical Examination and Follow-up***

See [4 Dosage and Administration – Medical Examination/Consultation](#).

**Neurologic*****Headache***

MIRENA should be used with caution in individuals with a history of migraine headache, including migraine with focal neurological symptoms. The onset or exacerbation of migraine or the development of headaches with a new pattern that is recurrent, persistent or severe requires evaluation of the cause and consideration to remove MIRENA (see [7 Warnings and Precautions – General; Cardiovascular](#)).

**Ophthalmologic*****Contact Lenses***

Any eye problems or discomfort occurring during use of a hormonal contraceptive, including those relating to the use of contact lenses, should be assessed. If this occurs, an ophthalmologist should be consulted. Temporary or permanent cessation of wear may be advised.

**Perioperative Considerations*****Thromboembolic Complications – Postsurgery***

MIRENA users who require surgery associated with prolonged immobilization should be followed closely for signs and symptoms of thromboembolism.

**Psychiatric**

Individuals with a history of emotional disturbances, especially the depressive type, may be more prone to have a recurrence of depression while using MIRENA. In cases of a serious recurrence, consideration should be given to removing MIRENA, since the depression may be drug-related.

**Reproductive Health****Sexual Function/Reproduction*****Ectopic Pregnancy***

Individuals with a previous history of ectopic pregnancy, tubal surgery, or pelvic infection carry a higher risk of ectopic pregnancy. Carefully consider the possibility of an ectopic pregnancy in individuals who become pregnant while having MIRENA in place. Pregnancies with MIRENA use are rare, however, when a user becomes pregnant with MIRENA in situ, the relative likelihood of ectopic pregnancy is increased. Up to half of the pregnancies that occur with MIRENA in place are ectopic. The possibility of ectopic pregnancy should be considered in the case of lower abdominal pain, especially in association with missed periods, or if an amenorrheic user starts bleeding.

Individuals who choose MIRENA should be told about the risk of ectopic pregnancy, including the possibility of impaired fertility or loss of fertility. Educate users to recognize and report to their healthcare professional any signs and symptoms of ectopic pregnancy.

Combined data from prospective clinical trials with MIRENA reveal an overall rate of ectopic pregnancy of 0.06 per 100 person-years. A similar ectopic pregnancy rate has been reported in a postmarketing surveillance study with data from over 17,000 MIRENA users. In a large, prospective, comparative, non-interventional, cohort study with an observation period of 1 year, the ectopic pregnancy rate with MIRENA was 0.02 per 100 person-years.

**Expulsion**

Partial or complete expulsion of MIRENA may occur resulting in the loss of efficacy. Symptoms of the partial or complete expulsion of MIRENA may include bleeding or pain; however, a system may be expelled from the uterine cavity without the user noticing it. Since MIRENA decreases menstrual flow, an increase in menstrual flow may indicate an expulsion.

In a five-year clinical trial, the net cumulative expulsion rate ranged from 3.4 per 100 users in year one to 4.9 in year five. Expulsion rates for MIRENA are comparable to those observed for copper IUDs.

In a large, retrospective, cohort study (mean observation time of 2 years) in LNG IUS and copper IUD users (N=326,658), the overall incidence of expulsion was 2.74 per IUS/IUD insertions. The incidence of expulsion was 7.75 per 100 insertions among users with IUS/IUD insertion immediately after delivery (i.e., 0-3 days following delivery); and the incidence was 2.95 per 100 insertions among users without documented delivery in the past 52 weeks. The expulsion rate among users at other postpartum intervals were generally similar to that of users without delivery in the past 52 weeks. The risk of expulsion appears to be increased with insertions immediately after delivery (see [8 Adverse Reactions – 8.5 Post-Market Adverse Reactions](#)) and appears to be increased after second-trimester abortion based on these limited data.

Analysis of expulsion risk factor among users who had not delivered within 12 months before insertion (228,834 users) showed an increased expulsion risk in:

- Users with history of heavy menstrual bleeding: the incidence of expulsion was 7.37 per 100 insertions in users with a recent history ( $\leq 12$  months before insertion) and 9.24 per 100 insertions in users with both recent and past history ( $> 12$  months), compared to users without any prior diagnosis of menorrhagia (2.10 expulsions per 100 insertions).
- Users with greater than normal BMI at the time of insertion: this risk increases gradually with increasing BMI. Compared to users with normal BMI (2.14 expulsions per 100 insertions), the incidence of expulsion was 5.39 per 100 insertions in users with morbid obesity ( $\text{BMI} \geq 40$ ).

Users should be counselled on the possible signs of expulsion and how to check the threads of MIRENA. Advise them to contact their healthcare professional if the threads cannot be felt and avoid intercourse or use a barrier contraceptive (such as condoms) until the location of MIRENA has been confirmed. If expulsion is suspected based on ultrasound, consider further diagnostic imaging such as x-ray.

A partially expelled MIRENA should be removed. A new system can be inserted at that time provided pregnancy has been excluded.

The risk of expulsion may be increased when the uterus is not completely involuted at the time of insertion. Delay MIRENA insertion a minimum of six weeks or until uterine involution is complete following a delivery or a second trimester abortion.

**Ovarian Cysts (Delayed Follicular Atresia)**

Since the contraceptive action of MIRENA is due mainly to its local effect on the uterus, ovulatory cycles with follicular rupture usually occur in individuals of fertile age. Sometimes atresia of the follicle is delayed and folliculogenesis may continue. These enlarged follicles cannot be distinguished clinically from ovarian cysts.

Ovarian cysts have been reported as an adverse drug reaction in 6.8%-8.2% of MIRENA users when MIRENA was used as a contraceptive (duration of use from 1 to 5 years), and in 5.5%-10.4% of MIRENA users when MIRENA was used to treat menorrhagia (duration of use from 6 months to 5 years). In a

large clinical trial (n=2,246), the rate of functional ovarian cysts was 1.2 per 100 person-years. Cysts are usually small and disappear spontaneously within a few months.

Most of these cysts are asymptomatic, although some may be accompanied by pelvic pain or dyspareunia. In most cases, the ovarian cysts disappear spontaneously over a two to three month period. Should this not occur, continued ultrasound monitoring and other diagnostic or therapeutic measures are recommended. Rarely, surgical intervention may be required.

### ***Pelvic Infection***

The inserter provided with MIRENA helps protect the system from contamination with micro-organisms during insertion, thereby minimizing the risk of pelvic infection. The exposed product should be handled with aseptic precautions (see [4 Dosage and Administration – Insertion Instructions](#)). Known risk factors for pelvic inflammatory disease include multiple sexual partners, frequent intercourse and young age. Less common causes of pelvic inflammatory disease include pelvic actinomycosis and pelvic tuberculosis, both of which are extremely rare. In clinical trials, total combined upper genital infections were reported in 3.5% of MIRENA users. More specifically, endometritis was reported in 2.1%, pelvic inflammatory disease in 0.6%, and all other upper genital infections in  $\leq 0.5\%$  of users overall. These infections occurred more frequently within the first year. There is an increased risk of PID during 20 days following the insertion of IUDs related to the insertion procedure. Thereafter, the risk of PID during the use of IUDs or MIRENA is small. Users should be advised to report to their healthcare professionals promptly if they experience symptoms suggestive of PID.

If recurrent endometritis or pelvic infections are experienced, or if an acute infection does not respond to treatment within a few days, MIRENA must be removed.

### ***Actinomycosis***

Actinomycosis has been associated with IUDs. Remove MIRENA from symptomatic users and treat with antibiotics. The significance of actinomyces-like organisms on Pap smear in an asymptomatic IUD user is unknown, and so this finding alone does not always require MIRENA removal and treatment. When possible, confirm a Pap smear diagnosis with cultures.

### ***Sepsis***

There have been very rare postmarket reports of Group A streptococcal sepsis temporally associated with MIRENA insertion. Because death from Group A streptococcal (GAS) is more likely if treatment is delayed, it is important to be aware of these rare but serious infections. Aseptic technique during insertion of MIRENA is essential in order to minimize serious infections such as GAS.

### ***Uterine Perforation***

Partial perforation (uterine embedment) or complete perforation of the uterus wall or cervix may occur during insertion, although the perforation may not be detected until later. Pregnancy may result from partial or complete perforation. If partial or complete perforation occurs, MIRENA must be located and removed; surgery may be required. Partial perforation (uterine embedment) can result in difficult removal. Delayed detection of perforation may result in migration outside the uterine cavity, adhesions, peritonitis, intestinal perforation and obstruction, abscesses and erosion of adjacent viscera. The number of uterine perforations is linked to the experience of the person inserting the system. Removal of a perforated IUS was associated (in a few cases) with sliding/separating of the hormone cylinder. During clinical trials with MIRENA, perforation occurred at a rate between 0.1 and 1 per 1000 insertions. These clinical trials excluded breast-feeding individuals.

In a large, prospective, comparative, non-interventional, cohort study (1 year follow-up period) in MIRENA and copper IUD users (N = 61,448), the incidence of perforation was 1.3 (95% CI: 1.1 – 1.6) per 1000 insertions in the entire study cohort; 1.4 (95% CI: 1.1 – 1.8) per 1000 insertions in the MIRENA cohort and 1.1 (95% CI: 0.7 – 1.6) per 1000 insertions in the copper IUD cohort. Extending the observational period to 5 years in a subgroup of this study (N = 39,009 individuals using MIRENA or copper IUD), the incidence of perforation detected at any time during the entire 5-year period was 2.0 (95% CI: 1.6 – 2.5) per 1000 insertions; 2.1 (95% CI: 1.6 – 2.8) and 1.6 (95% CI: 0.9 – 2.5) for MIRENA and copper IUD, respectively.

The study showed that both breastfeeding at the time of insertion and insertion up to 36 weeks after giving birth were associated with an increased risk of perforation (see [Table 2](#)). These risk factors were confirmed in the subgroup followed up for 5 years. Both risk factors were independent of the type of IUD inserted.

**Table 2: Incidence of perforation per 1000 insertions for the entire study cohort observed over 1 year, stratified by breastfeeding and time since delivery at insertion (parous individuals)**

	Breastfeeding at time of insertion	Not breastfeeding at time of insertion
Insertion ≤ 36 weeks after delivery	5.6 (95% CI 3.9-7.9; n=6047 insertions)	1.7 (95% CI 0.8-3.1; n=5927 insertions)
Insertion > 36 weeks after delivery	1.6 (95% CI 0.0-9.1; n=608 insertions)	0.7 (95% CI 0.5-1.1; n=41910 insertions)

The risk of perforation may be increased in individuals with abnormal uterine anatomy or with fixed retroverted uteri.

To reduce the possibility of perforation postpartum, MIRENA insertion should be delayed a minimum of 6 weeks after delivery or until uterine involution is complete. If involution is delayed, consider waiting until 12 weeks postpartum. Inserting MIRENA immediately after first trimester abortion is not known to increase the risk of perforation, but insertion after second trimester abortion should be delayed until uterine involution is complete.

To reduce the possibility of perforation, it is important to follow the recommended insertion technique (see [4 Dosage and Administration – Insertion Instructions](#)).

Inform individuals before the procedure about the risk of uterine perforation and educate them on possible signs of this complication, including, but not limited to, severe low abdominal pain, which may be associated with bleeding after the procedure, loss of threads, or change in thread length. Individuals with higher risk factors for uterine perforation should be carefully followed up. See [8 Adverse Reactions – 8.5 Post-Market Adverse Reactions](#) for results from another large retrospective cohort study for risk factors of uterine perforation.

#### **Uterine Embedment**

Embedment of MIRENA in the myometrium may occur. Embedment may decrease contraceptive effectiveness and result in pregnancy. An embedded MIRENA must be removed. Embedment can result in difficult removal, and may require surgery.

**Fertility:** The use of MIRENA does not alter the course of future fertility. Upon removal of MIRENA, individuals return to their normal fertility (see [10 Clinical Pharmacology – 10.2 Pharmacodynamics](#)).

## Skin

Skin and subcutaneous tissue disorders have been reported (see [8 Adverse Reactions](#) – [8.2 Clinical Trial Adverse Reactions](#)).

### 7.1 Special Populations

#### 7.1.1 Pregnancy/Intrauterine pregnancy

The use of MIRENA during an existing or suspected pregnancy is contraindicated (see also [2 Contraindications](#)). If pregnancy occurs with MIRENA in place, MIRENA should be removed since any intrauterine system left in place may increase the risk of abortion and preterm labour. Removal of MIRENA or probing of the uterus may result in spontaneous abortion. In the event of an intrauterine pregnancy with MIRENA in place, consider the following:

- a) Risk of septic abortion
- b) Continuation of pregnancy

If MIRENA cannot be removed or the user chooses not to have it removed, they should be warned that failure to remove MIRENA increases the risk of miscarriage, sepsis, premature labor, and premature delivery. Ectopic pregnancy should be excluded. The user should be followed closely and advised to report any abnormal symptoms, such as fever, chill, cramping, abdominal pain, bleeding, vaginal discharge, or leakage of fluid.

- c) Long-term effects and congenital anomalies

When pregnancy continues with MIRENA in place, long-term effects on the offspring are unknown. Congenital anomalies in live births have occurred infrequently. There have been few cases of masculinization of the external genitalia of the female fetus following local exposure to levonorgestrel during pregnancy with an LNG-IUS in place.

#### 7.1.2 Breastfeeding

Hormonal contraceptives are not recommended as the contraceptive method of first choice in breast-feeding individuals. A published study indicated that during lactation, 0.1% of the daily maternal dose of levonorgestrel could be transferred to the newborn via milk. Although levonorgestrel has been found in the breast milk of MIRENA users, there does not appear to be a detrimental effect on growth or development of breast-fed infants whose mothers started using the product after six weeks postpartum. Progestogen-only contraceptive methods do not appear to affect the quantity and quality of breast milk. However, isolated cases of decreased milk production have been reported with MIRENA.

#### 7.1.3 Pediatrics

**Pediatrics (<18 years of age):** No data are available to Health Canada; therefore, Health Canada has not authorized an indication for pediatric use.

#### 7.1.4 Geriatrics

MIRENA has not been studied in individuals over the age of 65 years.

## 8 Adverse Reactions

### 8.1 Adverse Reaction Overview

The majority of MIRENA users experience changes in menstrual bleeding pattern after insertion of MIRENA. Over time, the frequency of amenorrhea and infrequent bleeding increases, and the frequency

of prolonged, irregular and frequent bleeding decreases (see [7 Warnings and Precautions – Genitourinary: Bleeding irregularities](#); and [10 Clinical Pharmacology – 10.2 Pharmacodynamics](#)).

The serious adverse reactions of ectopic pregnancy, intrauterine pregnancy, sepsis, pelvic inflammatory disease, perforation, expulsion and ovarian cysts are discussed in [7 Warnings and Precautions](#).

## 8.2 Clinical Trial Adverse Reactions

Clinical trials are conducted under very specific conditions. The adverse reaction rates observed in the clinical trials; therefore, may not reflect the rates observed in practice and should not be compared to the rates in the clinical trials of another drug. Adverse reaction information from clinical trials may be useful in identifying and approximating rates of adverse drug reactions in real-world use.

Adverse drug reactions (ADRs) were collected from a total of 3,754 study participants using MIRENA during 9 clinical trials in contraception (n=3422) and 10 clinical trials in menorrhagia (n=332), worldwide. The length of treatment varied between studies: from 3 months to 5 years in the MIRENA menorrhagia studies and from 1.5 months to 5 years in the MIRENA contraception studies.

ADRs were more common during the first months after insertion of MIRENA, and then gradually decreased over time. The ADR safety profile was consistent across the two indications.

**Table 3: Number and Percentage of Participants (≥1.0%) with Treatment-related AEs (ADRs) by Preferred Term<sup>a</sup> – FAS for all Contraception and Menorrhagia Studies with MIRENA**

System organ class / preferred term	N= 3754 Very Common (≥10%)	N= 3754 Common (≥1% to <10%)
Gastrointestinal disorders		Abdominal pain Nausea Pelvic pain
General disorders		Pain
Infections and infestations		Vaginal infection
Injury, poisoning, and procedural complications		Procedural pain
Investigations		Weight increased
Musculoskeletal and connective tissue disorders		Back pain
Nervous system disorders		Headache
Psychiatric disorders		Depression Libido decreased Nervousness

System organ class / preferred term	N= 3754 Very Common (≥10%)	N= 3754 Common (≥1% to <10%)
Reproductive system and breast disorders	Amenorrhea Hypomenorrhea Menstrual disorder Metrorrhagia	Breast pain Breast tenderness Dysmenorrhea Genital hemorrhage IUD complication Menometrorrhagia Menorrhagia Menstruation irregular Oligomenorrhea Ovarian cyst Polymenorrhea Vaginal/genital discharge
Skin and subcutaneous tissue disorders		Acne Skin disorder

a MedDRA Version 11.0 coding

N=total number of participants;

Note: In original study reports causalities of related AEs are defined as 'Yes', 'Possible', 'Probable', or 'Certain'

A separate study with 362 participants who have used MIRENA for more than 5 years showed a consistent adverse reaction profile in years 6 through 8 as shown in [Table 3](#). By the end of year 8 of use, amenorrhea and infrequent bleeding were experienced by 34% and 26% of users, respectively; irregular bleeding occurred in 10%, frequent bleeding in 3%, and prolonged bleeding in 3% of users. In this study, 9% of participants reported the adverse event of weight gain; it is unknown if the weight gain was caused by MIRENA.

### 8.3 Less Common Clinical Trial Adverse Reactions

Not applicable

### 8.4 Abnormal Laboratory Findings: Hematologic, Clinical Chemistry and other Quantitative Data

Not applicable

### 8.5 Post-Market Adverse Reactions

The most commonly occurring adverse events (i.e., in greater than 10% of users) that are observed post marketing with MIRENA are uterine/vaginal bleeding (including frequent, prolonged or heavy bleeding, spotting, oligomenorrhea, amenorrhea) and benign ovarian cysts.

In a large, prospective, comparative, non-interventional, cohort study (1 year follow-up period) in MIRENA and copper IUD users (N = 61,448), the incidence of perforation was 1.3 (95% CI: 1.1 - 1.6) per 1000 insertions in the entire study cohort; 1.4 (95% CI: 1.1 - 1.8) per 1000 insertions in the MIRENA cohort and 1.1 (95% CI: 0.7 - 1.6) per 1000 insertions in the copper IUD cohort. This study showed that breastfeeding at the time of insertion and insertion up to 36 weeks after giving birth are independent risk factors for perforation (see [7 Warnings and Precautions – Sexual Function/Reproduction: Uterine Perforation](#)).

In a large retrospective cohort study (mean observation time of 2 years) in LNG IUS and copper IUD users (N=326,658) the impact of breastfeeding and timing of postpartum IUD insertion on uterine perforation and IUD expulsion was assessed. For uterine perforation, the study results indicated that the risk of uterine perforation was highest in participants with IUD insertion  $\leq 6$  weeks postpartum. Immediate postpartum insertion (0–3 days) findings are limited due to the relatively small number of insertions occurring within this time interval. Participants who were breastfeeding at the time of insertion were at 33% higher risk of perforation (adjusted hazard ratio [HR]=1.33, 95% confidence interval [CI]: 1.07–1.64) compared to participants who were not breastfeeding at the time of insertion. Progressively lower risk of uterine perforation was observed in postpartum time windows beyond 6 weeks, in both breastfeeding and not breastfeeding participants. For expulsion, the study showed that the risk of expulsion is increased in participants with history of heavy menstrual bleeding, and in participants with greater than normal BMI at the time of insertion; this risk increases gradually with increasing BMI. The study also showed that the risk of expulsion is increased with insertions immediately after delivery (i.e., 0-3 days following delivery) (see [7 Warnings and Precautions – Sexual Function/Reproduction; Expulsion](#)).

Undesirable effects are more common during the first months after insertion and subside during prolonged use. In addition to the adverse events observed in clinical trials, the following undesirable effects have been reported in users of MIRENA, although a causal relationship with MIRENA could not always be confirmed.

**Table 4: Adverse Reactions Identified in Postmarketing Surveillance**

Gastrointestinal disorders:	abdominal bloating
General disorders and administration site conditions:	expulsion, device breakage
Investigations:	blood pressure increased
Nervous system disorders	migraine
Reproductive system and breast disorders:	breast cancer, breast tension, mastalgia, pelvic pain, uterine perforation
Skin and subcutaneous disorders:	chloasma, hirsutism, alopecia, hypersensitivity including rash, pruritis, urticaria and angioedema

Device breakage has been reported with the use of MIRENA. This can occur with MIRENA in place or during its removal. The broken pieces should be located and removed; surgery may be required. Check device integrity when removing MIRENA.

Isolated postmarketing cases of decreased milk production have been reported in individuals using a LNG-IUS.

The removal threads may be felt by the partner during intercourse.

The following ADRs have been reported in connection with the insertion or removal procedure of MIRENA: procedural pain, procedural bleeding, insertion-related vasovagal reaction with dizziness or syncope. The procedure may precipitate a seizure in an epileptic individual.

## 9 Drug Interactions

### 9.2 Drug Interactions Overview

The prescribing information of concomitant medications should be consulted to identify potential interactions.

### 9.3 Drug-Behaviour Interactions

The effect of MIRENA on the ability to drive or to use machines has not been studied. Users should be advised not to drive or use machines until they know how they react to MIRENA.

### 9.4 Drug-Drug Interactions

No drug-drug interaction studies have been conducted with MIRENA.

The effect of hormonal contraceptives may be impaired by drugs which induce liver enzymes, specifically cytochrome P450 enzymes. The influence of these drugs on the efficacy of MIRENA has not been studied, but it is not believed to be of major importance due to the local action of MIRENA.

#### ***Substances increasing the clearance of levonorgestrel***

Substances which may increase the clearance of levonorgestrel include phenytoin, barbiturates, primidone, carbamazepine, rifampicin, and possibly also oxcarbazepine, topiramate, and products containing St. John's wort.

#### ***Substances with variable effects on the clearance of levonorgestrel***

When co-administered with sex hormones, many HIV/HCV protease inhibitors and non-nucleoside reverse transcriptase inhibitors can increase or decrease plasma concentrations of the progestin.

#### ***Substances decreasing the clearance of levonorgestrel (enzyme inhibitors)***

Strong and moderate CYP3A4 inhibitors such as azole antifungals (e.g., fluconazole, itraconazole, ketoconazole, voriconazole), verapamil, macrolides (e.g., clarithromycin, erythromycin), diltiazem and grapefruit juice can increase plasma concentrations of the progestin.

### 9.5 Drug-Food Interactions

Interactions with food have not been established.

### 9.6 Drug-Herb Interactions

Interactions with herbal products have not been established.

### 9.7 Drug-Laboratory Test Interactions

Interactions with laboratory tests have not been established.

#### ***Tissue Specimens***

Pathologists should be advised of MIRENA therapy when specimens obtained from surgical procedures and Pap smears are submitted for examination.

## 10 Clinical Pharmacology

### 10.1 Mechanism of Action

MIRENA consists of a small polyethylene T-shaped frame with a cylindrical reservoir containing levonorgestrel around the vertical arm of the T frame ([Figure 10](#)). MIRENA is a long acting reversible contraceptive (LARC). After insertion into the uterus, MIRENA releases levonorgestrel continuously for

up to eight years. Intrauterine administration allows a very low daily dosage, as the hormone is released directly to the target organ. MIRENA contains a total of 52 mg levonorgestrel. The *in vivo* levonorgestrel release rate 24 days after insertion is approximately 21 mcg per day, decreasing continuously to approximately 19 mcg per day after 1 year, to 11 mcg per day after 5 years and to 7 mcg per day after 8 years of use (see [Table 7](#)). MIRENA does not contain any estrogen.

**Figure 10: MIRENA (levonorgestrel-releasing intrauterine system)**

polyethylene T-shaped frame



cylindrical reservoir containing levonorgestrel

polyethylene removal threads

## 10.2 Pharmacodynamics

The contraceptive action of MIRENA is due mainly to the local progestogenic effect of levonorgestrel on the uterine cavity. It produces a strong antiproliferative effect on the endometrium and causes a thickening of the cervical mucus which prevents passage of sperm through the cervical canal. Ovulation is inhibited in some users. Clinical trials with MIRENA were performed in parous participants mainly over the age of 18 years; results from these studies involving more than 7,600 person-years of use indicate an overall Pearl index of 0.11. The 5-year cumulative gross pregnancy rates in these trials ranged from 0 to 1.2 per 100 participants.

Normal menstruation returns quickly after removal of MIRENA. After 5 years of use in clinical trials, the return of normal cyclical endometrial morphology was observed to occur from 1 to 3 months after removal of MIRENA. The use of MIRENA does not alter the course of future fertility; upon removal of MIRENA, individuals return to their normal fertility. Users requesting the removal of MIRENA for reasons of planning a pregnancy were followed for 24 months. During the 24-month period, nearly 90% of these individuals were able to get pregnant.

The duration and volume of menstrual bleeding and menstrual blood loss gradually decreases during the first few months of use. With continued use, bleeding patterns vary from regular scanty menstruation in some users to oligomenorrhea or amenorrhea in others.

During the first 90 days, prolonged bleeding is experienced by 22% and irregular bleeding by 67% of users after postmenstrual insertion of MIRENA, decreasing to 3% and 19% at the end of the first year of use, respectively. Concomitantly, amenorrhea is experienced by 0% and infrequent bleeding by 11% during the first 90 days, increasing to 16% and 57% at the end of the first year of use, respectively ([Table 5](#)). Reduced bleeding has been shown to increase the level of blood hemoglobin and ferritin in users who have anemia from heavy menstrual bleeding.

**Table 5: Percentage of participants meeting the criteria for different patterns of bleeding during the first 90 days and at the End of Year 1**

<b>MIRENA</b>	<b>First 90 days</b>	<b>End of year 1</b>
Amenorrhea	0 %	16 %
Infrequent bleeding	11 %	57 %
Frequent bleeding	13 %	1 %
Prolonged bleeding	22 %	3 %
Irregular bleeding	67 %	19 %

The menstrual bleeding patterns of 1,495 participants enrolled in a clinical trial were examined for the first 12 months after MIRENA insertion. The number of combined days of vaginal bleeding or spotting decreased from a mean of 16.1 days during the first month, to a mean of 3.8 days during the 12<sup>th</sup> month (see [Table 6](#)).

**Table 6: Number of Combined Vaginal Bleeding / Spotting Days During the first 12 Months After MIRENA Insertion**

Interval (in 30-Day Segments)												
Days												
	<b>1 - 30</b>	<b>31 - 60</b>	<b>61 - 90</b>	<b>91 - 120</b>	<b>121 - 150</b>	<b>151 - 180</b>	<b>181 - 210</b>	<b>211 - 240</b>	<b>241 - 270</b>	<b>271 - 300</b>	<b>301 - 330</b>	<b>331 - 360</b>
N	1,495	1,472	1,422	1,297	1,237	1,199	1,168	1,142	1,113	1,079	1,055	988
mean	16.1	11.2	8.5	7.1	6.4	5.8	5.2	4.8	4.5	4.3	4.1	3.8

The altered menstrual bleeding pattern that occurs with MIRENA use is a result of the direct action of levonorgestrel on the endometrium and is not due to the suppression of the ovulatory cycle. There is no clear difference in follicle development, ovulation, or estradiol and progesterone production in users with different bleeding patterns. Ovarian function is normal and estradiol levels are maintained even when users of MIRENA are amenorrheic.

The effect of MIRENA on ovarian function depends on plasma levonorgestrel levels achieved. While marked interindividual variation is observed, plasma concentrations are relatively constant within each individual. Patterns of ovarian function in MIRENA users include normal ovulatory cycles, anovulatory cycles with some inhibition of estradiol production, anovulation with high follicular activity and ovulation with an inadequate luteal phase. In general, anovulatory cycles correlate with higher plasma levels of levonorgestrel, and are more frequent in the first year of MIRENA use. Functional ovarian cysts may occur in relation to preovulatory arrest of follicular development in any individual, and are associated with progestogen-only methods of contraception.

Endometrial histology has been investigated in clinical studies examining the intrauterine release of levonorgestrel at rates ranging from 10 to 40 mcg/day. Participants with anywhere from 3 to 84 months of exposure to continuous levonorgestrel release showed endometrial glandular atrophy and decidualized stroma throughout the period. Local inflammation and focal necrosis compatible with the intrauterine mode of administration were observed.

In one study, cervical histology was evaluated by examining cervical smears from 1,355 participants using MIRENA over a period of five years. A total of twelve smears indicated moderate to severe cervical dysplasia. Large multicentre studies have not detected differences in cervical cytology between participants using MIRENA and those using copper IUDs.

### 10.3 Pharmacokinetics

#### Absorption

The intrauterine release of levonorgestrel results in the absorption of the drug into the systemic circulation. More than 90% of the released levonorgestrel is systemically available. Estimated *in vivo* release rates of levonorgestrel from MIRENA for different points in time are provided in [Table 7](#).

**Table 7: Estimated *in vivo* release rates of LNG from MIRENA**

Time	Estimated <i>in vivo</i> release rate [micrograms/day]
24 days after insertion	21
1 year after insertion	19
3 years after insertion	14
5 years after insertion	11
<b>Average over 5 years</b>	<b>15</b>
8 years after insertion	7
<b>Average over 8 years</b>	<b>13</b>

After insertion of MIRENA, levonorgestrel is detectable in serum/plasma after 1 hour. The maximum concentration is reached within 2 weeks after insertion and amounts to about 180 pg/ml (CV 38.3%). Following intrauterine insertion of MIRENA, the *in vivo* release rate of levonorgestrel is 21 mcg per day 24 days post insertion. In correspondence with the declining release rate, the geometric serum/plasma concentration of levonorgestrel declines continuously as shown in [Table 8](#).

**Table 8: Estimated Total LNG plasma concentrations**

Time after insertion	Total LNG plasma concentrations [pg/ml] (geometric CV%)
24 days	175 (37.6)
2 months	169 (37.1)
1 year	159 (37.4)
3 years	139 (37.8)
5 years	123 (38.2)
8 years	100 (39.9)

Because of the low drug levels in plasma, the systemic effects of the progestogen are minimized.

### Distribution

Levonorgestrel is bound to serum albumin and to sex hormone-binding globulin (SHBG). The relative distribution (free, albumin-bound, SHBG-bound) depends on the SHBG concentration in the serum. Less than 2% of the total serum drug levels are present as free steroid. Levonorgestrel binds with high affinity to SHBG. Accordingly, changes in the concentration of SHBG in serum result in an increase (at higher SHBG concentrations) or in a decrease (at lower SHBG concentrations) of the total levonorgestrel concentration in serum. The concentration of SHBG declined on average by about 20% during two months after insertion of MIRENA and remained stable thereafter, increasing only slightly until the end of the 8 years of use.

For levonorgestrel, the mean apparent volume of distribution is about 106 L.

### Metabolism

Levonorgestrel is extensively metabolized. The most important metabolic pathways are the reduction of the  $\Delta^4$ -3-oxo group and hydroxylations at positions  $2\alpha$ ,  $1\beta$  and  $16\beta$ , followed by conjugation. CYP3A4 is the main enzyme involved in the oxidative metabolism of levonorgestrel. The available *in vitro* data suggest that CYP mediated biotransformation reactions may be of minor relevance for levonorgestrel compared to reduction and conjugation.

The terminal half-life in serum is in the range of 14 to 20 hours after single-dose administration.

### Elimination

Levonorgestrel is excreted as metabolites at about equal proportion in urine and feces. The metabolites have little or no pharmacological activity. The principal metabolite in urine is tetrahydronorgestrel which accounts for approximately 25% of the radioactivity recovered from the urine after administration of radiolabeled levonorgestrel. A published study indicated that during lactation, 0.1% of the daily maternal dose of levonorgestrel could be transferred to the newborn via milk.

### Special populations and conditions

- **Pediatrics (< 18 years of age):** Controlled clinical trials were done in previously parous individuals aged mainly over 18 years. Use of this product before menarche is not indicated.
- **Geriatrics:** MIRENA has not been studied in individuals over the age of 65 years.
- **Sex:** MIRENA is intended for use only in individuals with a uterus, of reproductive age.
- **Pregnancy and breastfeeding**
  - **Pregnancy:** MIRENA is not indicated for use in pregnancy (see also [2 Contraindications](#) and [7 Warnings and Precautions – 7.1 Special Populations: 7.1.1 Pregnancy/Intrauterine Pregnancy](#)).
  - **Breast-feeding:** Progestogen-only contraceptive methods do not appear to affect the quantity and quality of breast milk (see also [7 Warnings and Precautions – 7.1 Special Populations: 7.1.2 Breast-feeding](#)).
- **Hepatic Insufficiency:** MIRENA is contraindicated in individuals with acute liver disease or liver tumors (see also [2 Contraindications](#) and [7 Warnings and Precautions](#))
- **Renal Insufficiency:** MIRENA has not been studied in individuals with renal impairment.
- **Obesity:** Risk of expulsion is increased in individuals with greater than normal BMI at the time of insertion; this risk increases gradually with increasing BMI (see also [7 Warnings and Precautions – Sexual Function/Reproduction: Expulsion](#)).

### 11 Storage, Stability, and Disposal

Store at room temperature (between 15°C and 30°C). Protect from moisture and direct sunlight.

Keep out of reach of children and pets.

Used MIRENA systems should be considered biohazardous waste. Care should be taken to ensure the remaining hormonal ingredients are not introduced into water/sewer systems.

### 12 Special Handling Instructions

MIRENA should be handled with aseptic precautions. Used MIRENA systems should be considered biohazardous waste.

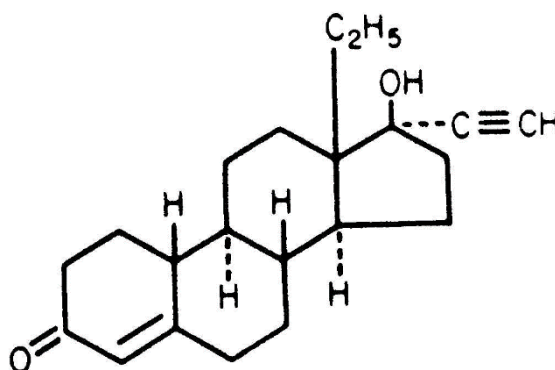
## Part 2: Scientific Information

### 13 Pharmaceutical Information

#### Drug Substance

<b>Non-proprietary name of the drug substance:</b>	Levonorgestrel
<b>Chemical name:</b>	18,19-Dinorpregn-4-en-20-yn-3-one, 13-ethyl-17-hydroxy-, (17 $\alpha$ )-(-)
<b>Molecular formula and molecular mass:</b>	C <sub>21</sub> H <sub>28</sub> O <sub>2</sub> 312.45

#### Structural formula:



#### Physicochemical properties:

Levonorgestrel is a white to off-white crystalline powder, practically insoluble in water and slightly soluble in ethanol, in vegetable oils, in chloroform, in ether and in alkaline solutions. The melting range is between 232°C and 239°C.

## 14 Clinical Trials

### 14.1 Clinical Trials by Indication

#### Contraception

Clinical studies with MIRENA (levonorgestrel-releasing intrauterine system) consistently show high contraceptive efficacy. The contraceptive efficacy of MIRENA was studied in three clinical trials in which a total of 2,379 participants were enrolled. One trial compared MIRENA (n=1,821) to a copper IUD (n=937) over a period of 5 years with a resultant Pearl index of 0.09 for MIRENA and 1.26 for the copper IUD. After completion of this trial, 168 participants from the MIRENA group enrolled in a second clinical trial and had a new MIRENA system inserted for four years. Results after 6,404 person-months of experience revealed a Pearl index of 0 (zero). A third MIRENA trial was noncomparative and enrolled 390 participants for 5 years with a resultant Pearl index of 0.24. Combined data from three clinical trials provides 91,133 person-months of experience. There were a total of 8 pregnancies, giving a Pearl Index of 0.11, representing approximately 99.9% efficacy.

The contraceptive efficacy of MIRENA during extended use beyond 5 years was studied in the MIRENA Extension Trial, a multi-center, open-label, uncontrolled study conducted in the United States. The trial

enrolled participants 18 to 35 years of age who had been using MIRENA for not less than 4.5 years and not more than 5 years at enrollment. The population consisted of 362 participants using MIRENA. Of these 47.2% were nulliparous. The study population was predominantly White (75.4%); 14.1% of the participants were Black/African American, and 2.5% were Asian. The weight range was 38.5–163.5 kg (mean weight: 75.6 kg) and mean BMI was 27.9 kg/m<sup>2</sup> (range: 15.4–57.7 kg/m<sup>2</sup>).

The pregnancy rate calculated as the Pearl Index (PI) was the primary efficacy endpoint used to assess contraceptive efficacy. The PI was based on 28-day equivalent exposure cycles; evaluable cycles excluded those in which back-up contraception was used unless a pregnancy occurred in that cycle. The PI for the 6th year of use based on the 1 pregnancy that occurred during Year 6 and within 7 days after MIRENA removal or expulsion and 3,870 evaluable cycles was 0.34 with a 95% upper confidence limit of 1.88 and the PI for the 7th year of use based on the 1 pregnancy that occurred during Year 7 and within 7 days after MIRENA removal or expulsion and 3,232 evaluable cycles was 0.40 with a 95% upper confidence limit of 2.25. The PI for the 8th year of use based on no pregnancies occurring during Year 8 and within 7 days after MIRENA removal or expulsion and 2,534 evaluable cycles was 0.00 with a 95% upper confidence limit of 1.90.

The cumulative 3-year pregnancy rate for Years 6, 7 and 8 was estimated by the Kaplan-Meier method. Based on 2 pregnancies (1 in Year 6 and 1 in Year 7) and 10,216 exposure cycles, the cumulative pregnancy rate at the end of the 3-year period of extended use (Years 6,7 and 8) was 0.68% with a 95% upper confidence limit of 2.71%.

#### Treatment of Idiopathic Menorrhagia

The pivotal menorrhagia study was a prospective, randomized, active-controlled, multicenter study in participants randomized to MIRENA or medroxyprogesterone acetate (MPA; 10 mg given orally, once daily for 10 consecutive days starting on the 16<sup>th</sup> day of each menstrual cycle) over 6 cycles. Participants with a normal length of menstrual cycle consisting of 21 to 35 days and withdrawal bleeding with menstrual blood loss (MBL)  $\geq$ 80 mL measured at baseline were included in the study. Efficacy of both treatments was demonstrated using the objective alkaline hematin method for measuring MBL. The primary efficacy variables were the absolute change in MBL from baseline to the end-of-study and the proportion of participants with successful treatment. Successful treatment was defined as end-of-study MBL < 80 mL and a decrease in value of  $\geq$  50% of baseline MBL.

**Table 9: Summary Demographics in Menorrhagia Pivotal Trial**

Study Number	Trial Design	Study Drug	Duration	No. of Participants <sup>a</sup>	Mean Age years (range)
309849	Open-label, randomized, multicenter, parallel	Test product: MIRENA 52 mg (20 mcg/24 hrs)	6 cycles	N=82	38.3 (26 – 50)
		Comparator: Medroxyprogesterone acetate 10 mg po od administered for 10 consecutive days beginning on the 16th day of the menstrual cycle	6 cycles	N=83	39.3 (26 – 53)

No.=number; od=once daily; po=oral administration

a FAS=full analysis set

## Study Results

MIRENA was found to be superior to MPA for reductions in median MBL from baseline to end-of-study ( $P < 0.001$ ) (see [Table 10](#)). The proportion of participants who achieved successful treatment was also statistically and clinically significant in favor of the MIRENA treatment group (see [Table 11](#)).

**Table 10: MIRENA vs MPA, The Absolute Change in MBL from Baseline to End-of-Study - Study 309849, FAS**

Treatment Group	N	Median Baseline MBL (mL) [range]	Median End-of-Study MBL (mL) [range]	Change from Baseline to End-of-Study (mL) [range]	P-value <sup>a</sup> Between Treatment Groups
MIRENA	79	147.96 [68.3 to 431.4]	7.10 [0.0 to 1435.6]	-128.78 [-393.6 to 1242.2 <sup>b</sup> ]	P < 0.001
MPA	81	154.20 [63.4 to 456.0]	121.47 [0.0 to 437.7]	-17.77 [-271.5 to 78.6]	

FAS=full analysis set; MPA = medroxyprogesterone acetate tablets; N=number of participants; primary analysis set for efficacy

- a Statistical test: Wilcoxon-test. Significance level of the statistical test is 0.05 (two-sided).
- b One subject experienced heavy blood loss thought to have resulted from the expulsion of MIRENA.

**Table 11: MIRENA vs MPA, The Proportion of Participants with Successful Treatment<sup>a</sup> - Study 309849, FAS**

Assessment	MIRENA N=82 (n) [%]	MPA N=83 (n) [%]	% Difference between treatment groups	95% CI	P-value <sup>b</sup> Between Treatment Groups
Successful Treatment	67 (84.8%)	18 (22.2%)	62.59	50.56 – 74.61	P < 0.001
End-of-Study MBL < 80 mL	71 (87.7%)	24 (29.6%)	58.02	45.77 – 70.28	P < 0.001
Decrease in End-of-Study MBL > 50% of Baseline MBL	67 (84.8%)	22 (27.2%)	57.65	45.14	P < 0.001

CI=confidence interval; FAS=full analysis set, primary analysis set for efficacy; MPA=medroxyprogesterone acetate tablets; N=number of participants

- a Successful treatment is defined as: End-of Study MBL < 80 mL and decrease in End-of-Study MBL > 50% of Baseline MBL
- b Statistical test: Pearson's Chi-squared test. Significance level of the statistical test is 0.05 (two-sided).

## Continuation Rate

The continuation rate for MIRENA in a five-year clinical trial in 390 participants was 56%. The desire to become pregnant was the most common reason for discontinuing MIRENA (about 20% of all discontinuations). Other discontinuations were due to medical reasons (predominantly hormonal, menstrual problems, and pain).

## General Information

The following table gives typical pregnancy rates for various forms of birth control, including no birth control. The reported rates represent the number of individuals out of 100 who would become pregnant within the first year of use.

**Table 12: Reported Pregnancies per 100 Individuals Within the First Year of Use**

Hormonal Intrauterine system (IUS)	less than 1
Copper Intrauterine device (IUD)	less than 1
Subdermal Implant	less than 1
Progesterone Injection	6
Combined hormonal contraceptive (pill, patch or ring)	9
Diaphragm	12
Male condom	18
Female condom	21
Sponge, spermicide	12-28
Withdrawal method	22
Natural family planning	24
No method	85

## 16 Non-Clinical Toxicology

Toxicology studies were performed on all the components of MIRENA: the "unfilled polymer", the "levonorgestrel-releasing reservoir", the "membrane tubing", the polyethylene "T-body" and the polyethylene "removal threads".

The unfilled polymer is the polydimethylsiloxane (PDMS) polymer after peroxide catalysis. The unfilled polymer is mixed in an equal ratio with levonorgestrel, to form the levonorgestrel-releasing reservoir. The unfilled polymer is also mixed with inert colloidal silica to form the membrane tubing, which covers the levonorgestrel reservoir and serves to control the release rate of levonorgestrel from MIRENA.

### Acute toxicology

The USP systemic injection test in mice on the unfilled polymer, membrane tubing, T-body and removal threads did not show any signs of toxicity.

### Mutagenicity

Extracts of the unfilled polymer, membrane tubing, T-body and removal threads were evaluated for mutagenic potential in the following *in vitro* and *in vivo* tests: reverse gene mutation *in vitro* in four *Salmonella typhimurium* and one *Escherichia coli* strains of bacteria, TK mutation test in mouse lymphoma L5178Y cells *in vitro*, chromosomal aberrations in human peripheral blood lymphocytes *in vitro*, and the induction of micronuclei in the bone marrow of mice.

Extracts of the unfilled polymer did not show any evidence of mutagenic or clastogenic activity *in vitro* and did not induce chromosomal changes or other damage to micronucleus formation in polychromatic erythrocytes *in vivo* after intraperitoneal administration to mice.

Saline and aqueous extracts of the levonorgestrel-releasing reservoir were negative except for the chromosomal aberration test in CHO cells. Treatment of cultures of CHO cells with the highest dose of DMSO extracts of the levonorgestrel-releasing reservoir, which were also precipitating, resulted in small increases in the number of cells with aberrations (attributed to polyploidy) in a single culture at the 20 and 44 hour sampling times during the second of two independent experiments. Pure levonorgestrel was not mutagenic or clastogenic in any of the tests. No clastogenic effect was detected for saline or arachis oil extracts tested *in vivo* in the mouse micronucleus test. The results of these studies indicate that it is very unlikely that the materials used in the levonorgestrel-releasing reservoir of MIRENA would cause genetic damage in humans under the conditions of clinical use.

Saline and nonaqueous extracts of the T-body containing low-density polyethylene (with 20%-24% barium sulphate), and of removal threads containing high-density polyethylene (with 1% iron oxide) were not mutagenic or clastogenic *in vitro* and did not induce chromosomal changes or other damage to micronucleus formation in polychromatic erythrocytes *in vivo* after intraperitoneal administration to mice.

#### **Local tolerance studies**

Saline and nonaqueous extracts of the unfilled polymer, membrane tubing, T-body and removal threads were evaluated for biocompatibility using the following *in vitro* and *in vivo* test systems: cytotoxicity test in mouse fibroblasts, guinea pig maximization test, intracutaneous test in rabbits, systemic injection test in mice, pyrogen testing, muscle implantation test in rabbits and a test for hemolysis.

The results of these tests indicated acceptable biocompatibility of both the unfilled polymer and the membrane tubing. No remarkable *in vitro* cytotoxicity or hemolysis was detected. There was no evidence of delayed contact hypersensitivity, intracutaneous injection site irritation or test article-related clinical signs of systemic toxicity including pyrogenicity, after treatment with saline or sesame oil extracts.

In the muscle implantation test for the unfilled polymer, very thin encapsulation was observed on the test article implants and in one of the negative control implants. This was correlated with minimal microscopic changes (few to moderate inflammatory cells) in both test and control implants, indicating that the unfilled polymer was well tolerated.

A similar result was observed in the muscle implantation test for the membrane tubing, a very thin encapsulation of the test and control implants which was detected at necropsy on Day 90 was correlated with minor microscopic changes (fibrosis), indicating that the membrane tubing was well tolerated.

With regard to the low-density polyethylene T-body, no remarkable *in vitro* cytotoxicity or hemolysis was detected. There was no evidence of delayed contact hypersensitivity, intracutaneous injection site irritation or test article-related clinical signs of systemic toxicity, including pyrogenicity after treatment with saline or sesame oil extracts. In the muscle implantation test for the T-body, a very thin encapsulation of one test article implant which was detected at necropsy on Day 90 was correlated with only minor microscopic changes (minimal to slight fibrosis, minimal necrosis and minimal hemorrhage). The same test for the removal threads showed a very thin encapsulation of the test article and USP negative control plastic implants which were detected at necropsy on Day 90, and were correlated with only minor histology (minimal to slight fibrosis). The results of these tests indicate that both the T-body and the removal thread were well tolerated.

#### **Long-term toxicity**

A one-year intrauterine toxicity study of MIRENA was conducted in Rhesus monkeys using a smaller modified version of the system delivering 12.3 mcg levonorgestrel per day. The raw materials were the same as those used in the formulation of MIRENA with the exception that the polydimethylsiloxane polymer was catalyzed using stannous octoate rather than peroxide. The system caused suppression of ovulation in four of eight monkeys, reduced uterine weights and resulted in the expected decidual endometrial changes. Cervical morphology was within normal limits and there was a slight shortening of partial thromboplastin time (which was also seen in the monkeys implanted with inert devices). Plasma levels of levonorgestrel varied between 0.1 and 0.4 ng/mL.

Overall, there was no significant difference observed between the monkeys with the levonorgestrel-releasing intrauterine system and those with the inert intrauterine system used in the study.

### **Reproductive and developmental toxicology**

A smaller modified version of MIRENA was used for a reproductive toxicology study in rabbits. It consisted of a cylinder (diameter 2.4 mm, length 7 mm) with an inner core (5 mm) containing 12 mg levonorgestrel mixed with polydimethylsiloxane polymer, with a polydimethylsiloxane polymer membrane fitted over the core for release rate control. The release rate was calculated to be 3.5 mcg levonorgestrel per day. One system was put into each uterine horn of the pregnant rabbits.

Treatment did not have any adverse effect on litter parameters such as body weight and gross pathology, embryonic or fetal development. One rabbit in the treatment group had a hemorrhagic endometrium observed at Caesarean section. No treatment-related adverse effects were observed.

### **Detailed pharmacology**

Levonorgestrel is a 19-nortestosterone derivative with potent progestogenic effects, but no significant estrogenic activity.

In rabbits, evidence of transformation of the endometrium was observed after subcutaneous administration of 0.01 mg levonorgestrel corresponding to 2 mcg/kg/day. Transformative effects are also histologically recognizable in the rabbit endometrium when levonorgestrel is administered orally in doses ranging from 0.03 to 0.3 mg per animal corresponding to approximately 6 to 60 mcg/kg/day.

In pregnant rats, ovariectomized within the first 4 days after conception, the subcutaneous administration of 0.002 mg levonorgestrel had a blastocyst-maintaining effect. The antiestrogenic or progestogenic activity of levonorgestrel has also been demonstrated in various test models in rats and mice. The potency of levonorgestrel is significantly higher than progesterone and about 83 times stronger than chlormadinone acetate.

Levonorgestrel does not have any significant estrogenic activity and androgenic effects are only detectable after large doses. Levonorgestrel also influences the gonadotrophic function of the anterior lobe of the pituitary gland in all experimental tests.

Like other progestogens, relative large doses of levonorgestrel lead to increases in insulin secretion in rats and dogs.

## Patient Medication Information

### READ THIS FOR SAFE AND EFFECTIVE USE OF YOUR MEDICINE

Pr **MIRENA**<sup>®</sup>

#### Levonorgestrel-releasing Intrauterine System

This Patient Medication Information is written for the person who will be using **MIRENA**. This may be you or a person you are caring for. Read this information carefully. Keep it as you may need to read it again.

This Patient Medication Information is a summary. It will not tell you everything about this medication. If you have more questions about this medication or want more information about **MIRENA**, talk to a healthcare professional.

#### Serious warnings and precautions box

- Hormonal birth control including MIRENA **DOES NOT PROTECT** against Sexually Transmitted Infections (STIs) including HIV/AIDS. To protect yourself against STIs you can use condoms with MIRENA.
- Cigarette smoking increases the risk of serious side effects on the heart and blood vessels. You should talk to your healthcare professional about the risks of smoking.
- MIRENA may become attached to (embedded) or go through the wall of the uterus. This is called perforation. If you experience severe abdominal or pelvic pain with or without vaginal bleeding contact your healthcare professional immediately.

#### What MIRENA is used for:

MIRENA is used:

- to prevent pregnancy for up to 8 years
- to treat heavy menstrual bleeding without a known reason, for up to 5 years, in individuals who:
  - are able to use a hormonal birth control method, and
  - have had their first period (called menarche).

MIRENA has not been studied in individuals over the age of 65 years.

#### How MIRENA works:

MIRENA is an intrauterine system (IUS). It is placed in your uterus by your healthcare professional. MIRENA works by slowly releasing a low amount of a hormone called levonorgestrel directly into the uterus every day. Levonorgestrel is similar to a sex hormone produced naturally by the body. It is also used in many birth control pills (the “Pill”).

MIRENA may work to prevent pregnancy in several ways including:

- reduces the normal monthly thickening of the lining of the uterus,
- thickens the mucus in the cervix (this makes it harder for sperm to pass through the cervix), and
- impairs sperm movement and function.

Together, these actions prevent the sperm and egg from coming into contact and work together to prevent pregnancy.

These effects of levonorgestrel also decrease abnormally heavy menstrual blood loss.

MIRENA does not contain any estrogen.

Clinical trials found that there were about 2 pregnancies per year for every 1,000 individuals using MIRENA.

MIRENA is a long acting reversible contraceptive (LARC). LARCs are highly effective in preventing pregnancy. They can be used for a long period of time and are easy to use.

#### Other Ways to Prevent Pregnancy

Other methods of birth control are available to you. When used properly, other methods of birth control work well enough for many individuals.

The table below shows the typical pregnancy rates for different methods of birth control. It also shows the pregnancy rate when no birth control is used. The rates show the number of individuals out of 100 who would become pregnant within the first year of use.

Reported Pregnancies per 100 Individuals Within the First Year of Use

Hormonal Intrauterine system (IUS)	less than 1
Copper Intrauterine device (IUD)	less than 1
Subdermal Implant	less than 1
Progesterone Injection	6
Combined hormonal contraceptive (pill, patch or ring)	9
Diaphragm	12
Male condom	18
Female condom	21
Sponge, spermicide	12-28
Withdrawal method	22
Natural family planning	24
No birth control	85

The pregnancy rates listed in the table vary widely. This is because of differences in how carefully and regularly individuals use each method of birth control. Regular users may have lower pregnancy rates. Others may expect pregnancy rates in the middle ranges. This does not apply to IUSs, IUDs and hormonal implants because they are placed in the uterus or implanted in the body and do not depend on user compliance.

#### **The ingredients in MIRENA are:**

Medicinal ingredients: levonorgestrel

Non-medicinal ingredients: barium sulphate, black iron oxide, polydimethylsiloxane, polyethylene, silica

#### **MIRENA comes in the following dosage form:**

Intrauterine system (IUS): 52 mg levonorgestrel

**Do not use MIRENA if:**

- you are:
  - allergic to levonorgestrel, or to any of the other ingredients of MIRENA, or to the components of the container
  - pregnant, or if you think you are pregnant
- you have or had any of the following conditions:
  - pelvic inflammatory disease (PID)
  - an infection in your lower genital tract (vagina, vulva, cervix)
  - an uterus infection after having a baby
  - bleeding from the vagina that has not been explained
  - a uterus condition that changes the space inside your uterus, such as large abnormal growths (fibroids)
  - an infection of the cervix
  - abnormal cell growth in the cervix
  - a known or suspected tumour that is caused by progestogen (a hormone). This includes breast cancer
  - liver disease/ problems or tumour
  - an infection of your uterus after having an abortion in the past 3 months
  - an infection of the heart valves or lining of the heart (bacterial endocarditis)
  - immunodeficiency disorder
  - cancer affecting the blood, or if you have blood cancer (leukemia)
  - tumours related to pregnancy (trophoblastic disease)
  - cancer of the uterus or the cervix
  - any condition that increases your risk of pelvic infections
  - you have an inserted intrauterine device (IUD) that has not been removed

**To help avoid side effects and ensure proper use, talk to your healthcare professional before you use MIRENA. Talk about any health conditions or problems you may have, including if you:**

- are breastfeeding
- have given birth in the last 36 weeks
- have ever had an ectopic pregnancy (development of a fertilized egg outside the uterus). Ectopic pregnancy is more likely if you accidentally become pregnant while using MIRENA
- have had surgery on your fallopian tubes
- have a history of ovarian cysts. There is an increased risk of cysts on the ovary
- have an unusual menstrual bleeding pattern or a history of heavy menstrual bleeding
- have an unusual or unpleasant (e.g., smelly) vaginal discharge or vaginal itching
- have or have a history of strokes, heart attacks or any heart problems
- have or have a family history of high blood pressure or abnormal blood fat levels
- have an abnormality of your heart or if you have any problem with your heart valves
- are diabetic or have a family history of diabetes
- have or had liver problems, including jaundice (a yellowing of the skin, whites of the eyes and/or nails)
- have or have a family history of blood clots (thrombosis)
- are taking any other medications
- have a history of migraine, dizziness or blurred vision
- have severe headaches

- have a history of emotional problems like depression
- wear contact lenses
- smoke
- are overweight or have a higher than normal body mass index (BMI  $\geq 40$  kg/m<sup>2</sup>)
- have Systemic Lupus Erythematosus, an autoimmune condition

**Other warnings you should know about:**

MIRENA was not studied in individuals less than 18 years old.

If you see a different healthcare professional, tell them that you are using MIRENA.

Tell your healthcare professional if you are scheduled for any lab tests. Certain tests may be affected by hormonal birth control. Also, tell your healthcare professional if you are scheduled for surgery requiring prolonged bed rest.

MIRENA should be used under the supervision of a healthcare professional. Visit your healthcare professional 4 to 12 weeks after you have MIRENA placed. You should have a follow-up visit at least once a year. Your visits may include a blood pressure check, a breast exam, an abdominal exam and a pelvic exam, (including a Pap smear). Carefully follow all directions given to you. Otherwise, you may become pregnant.

If you and your healthcare professional decide that, for you, the benefits of MIRENA outweigh the risks, you should be aware of the following:

**Blood and heart problems (including blood clot in legs, lungs, heart, eyes, or brain)**

You should talk to your healthcare professional about risk factors for blood clots and other heart problems.

Tell your healthcare professional right away if you notice the following:

- Sharp pain in the chest, coughing blood, or sudden shortness of breath. These could be signs of a blood clot in the lung.
- Leg pain and/or swelling. These could be signs of a blood clot in the leg.
- Crushing chest pain or heaviness. These could be signs of a heart attack.
- Sudden severe or worsening headache or vomiting, dizziness or fainting, eye or speech problems, or weakness or numbness in an arm or leg. These could be signs of a stroke.
- Sudden blurry or full loss of vision, eye pain or eye pressure. These could be signs of a blood clot in the eye.

Any of these conditions can cause death or disability. Blood clots also occur rarely in the eye, resulting in serious vision problems. It can also happen in a blood vessel leading to an arm or leg, resulting in damage to or loss of a limb.

**Breast cancer**

Cases of breast cancer have been reported in users of MIRENA. Major risk factors for breast cancer are increasing age and a strong history of breast cancer in the family (mother or sister). Other established risk factors include having your period before 12 years old, never having a child, having your first full pregnancy after 30 years old, never having breast fed a child, and drinking alcohol everyday.

Tell your healthcare professional if you see any breast lumps. Your healthcare professional should show you how to do breast self-examinations when you are using MIRENA.

**Diabetes**

If you have diabetes and use MIRENA, your blood sugar levels should be watched closely.

**Infections**

In the first 3 weeks after placement of an IUS/IUD, there is an increased risk of a serious pelvic infection called pelvic inflammatory disease (PID). Other known risk factors for PID include multiple sexual partners, frequent intercourse, and young age.

PID can cause serious problems such as difficulty getting pregnant, development of a pregnancy outside the uterus (ectopic pregnancy), or pelvic pain that does not go away. PID is usually treated with antibiotics. More serious cases of PID may require surgery.

Tell your healthcare professional right away if you have any of these signs of PID: long-lasting or heavy bleeding, unusual vaginal discharge, low abdominal (stomach area) pain, painful sex, chills or fever.

**Ectopic pregnancy**

While using MIRENA, the risk of pregnancy is low. However, if you accidentally become pregnant while using MIRENA, an ectopic pregnancy is more likely. This means that the pregnancy is not in the uterus. Ectopic pregnancy is a serious condition. Tell your healthcare professional if you have lower abdominal pain, especially if you have missed a period and/or have unexpected bleeding. These can be signs of an ectopic pregnancy.

**Cysts on the ovary**

Cysts (fluid filled sacs) on the ovary commonly occur in individuals using MIRENA. These cysts usually disappear within a few months on their own. However, cysts can sometimes cause pain and may need medical attention.

**Uterine perforations**

MIRENA may become attached to or go through the wall of the uterus. This is called perforation and it happens most often during placement. Perforation is uncommon. If this happens, MIRENA must be removed.

The risk of perforation is higher in individuals who are breastfeeding when MIRENA is placed. The risk is also higher when MIRENA is placed up to 36 weeks after a delivery. The risk of perforation may be increased in individuals with a differently shaped uterus or with a uterus that is fixed and leaning backward.

**Use while breastfeeding**

Hormonal birth control methods should not be used as a first choice for preventing pregnancy in individuals who are breast feeding. Small amounts of levonorgestrel, the hormone in MIRENA, have been found in the milk of breast-feeding individuals using MIRENA. However, it does not appear to affect the growth or health of your baby when you start using MIRENA 6 weeks after delivery. Levonorgestrel does not appear to affect the amount or the quality of breast milk. You can use MIRENA during breast feeding. However, isolated cases of decreased milk production have been reported among individuals using MIRENA.

**Use in pregnancy**

If you become pregnant with MIRENA in place, you should have it removed as soon as possible. If it is left in place during pregnancy, the chances of having a miscarriage or early delivery increase. It is not

known if MIRENA can cause long-term effects on the baby if it stays in place during pregnancy. Removing MIRENA may cause a miscarriage. If MIRENA cannot be removed, talk to your healthcare professional about the benefits and risks of continuing the pregnancy, and possible effects to your unborn child.

### **Use after pregnancy and abortion**

After childbirth, MIRENA should be placed only after the uterus has returned to its normal size. MIRENA should not be placed for at least 6 weeks after delivery.

MIRENA can be placed right after an abortion which took place in the first three months (first trimester) of pregnancy. If an abortion takes place in the second trimester, placement of MIRENA should be delayed for 6 weeks or until the uterus has returned to normal size.

### **Pregnancy after stopping MIRENA**

If you wish to become pregnant, ask your healthcare professional to remove MIRENA. Your usual level of fertility should return soon after removal. Nearly 90% of individuals wishing to become pregnant conceive within 24 months after removal of the system.

### **Broken MIRENA**

MIRENA may break, most often during a difficult removal. Broken pieces must be found and removed. Surgery may be needed to do this.

### **Driving or using machines**

The effect of MIRENA on the ability to drive or to use machines has not been studied. Do not drive or use machines until you know how you react to MIRENA.

### **How MIRENA will affect my periods:**

MIRENA will affect your menstrual cycle. For the first 3 to 6 months, your period may become irregular and the number of bleeding days may increase. You may also have frequent spotting or light vaginal bleeding. In some cases, you may have heavy or prolonged bleeding during this time. Contact your healthcare professional if this persists.

Overall, you are likely to have a gradual reduction in the amount and number of bleeding days each month. Some individuals using MIRENA eventually find that their periods stop altogether.

When MIRENA is removed, periods should return to normal.

### **I may stop having periods:**

Over time, your menstrual period may gradually disappear when using MIRENA. This is because of the effect of the hormone on the lining of the uterus. The normal monthly thickening of the uterine lining with blood does not happen, therefore there is little or no bleeding, as happens during a usual menstrual period. It does not necessarily mean you have reached menopause or are pregnant.

If, however, you are having regular menstrual periods and then do not have one for 6 weeks or longer, it is possible that you may be pregnant. You should speak to your healthcare professional.

**Tell your healthcare professional about all the medicines you take, including any drugs, vitamins, minerals, natural supplements or alternative medicines.**

**The following may interact with MIRENA:**

Certain drugs may interact with MIRENA. They can make it less able to prevent pregnancy. Hormonal birth control may become less reliable if you are also taking drugs that affect the liver (such as primidone, barbiturates, phenytoin, carbamazepine, rifampicin, and griseofulvin) at the same time. MIRENA is unlikely to be affected by these drugs. This is because it releases a very small amount of hormone directly inside your uterus. If you are taking other medications, ask your healthcare professional if you need to use an additional method of birth control.

MIRENA is visible during X-ray exams.

**How to use MIRENA:****What it looks like:**

MIRENA consists of a small, white, T-shaped frame made from soft, flexible plastic. The vertical and horizontal arms of the T are approximately 3 cm in length. The vertical arm is surrounded by a narrow cylindrical shaped reservoir that contains levonorgestrel. Two brown coloured fine plastic threads are attached to the tip of the vertical arm. These threads are intended to be used for removal of MIRENA. The threads can also be used to check MIRENA once it is in place.

**How MIRENA is placed:**

Before MIRENA is placed, you will have a pelvic exam to determine the position and size of your uterus. You may also have a Pap smear and a breast exam. If necessary, you may also have other tests (i.e., for infections including STIs).

Your healthcare professional will place the thin flexible plastic tube of the insertion device containing MIRENA into your uterus. At this point you may feel a little discomfort.

Once MIRENA is in the correct position, your healthcare professional will withdraw the tube and leave MIRENA in your uterus. Your healthcare professional will trim the removal threads to a suitable length. This procedure will only take a few minutes.

Most individuals experience either no pain or only mild pain during placement of MIRENA. Some individuals may experience some discomfort. You may wish to discuss the need for a painkiller or local anesthetic with your healthcare professional.

Some individuals may feel faint after MIRENA is placed. This feeling goes away after a short rest. The placement procedure may precipitate a seizure in individuals with epilepsy. After placement you may feel some cramp-like menstrual pain; however, this usually stops within a few days.

It is uncommon, but part or all of MIRENA may go through the wall of the uterus during placement and come to rest outside the uterus. If this happens MIRENA must be removed.

#### **When to place MIRENA:**

MIRENA should be placed within 7 days of starting your period. In this case, no back up birth control is needed. If it is certain that you are not pregnant, MIRENA may also be placed at any other time during your cycle. Tell your healthcare professional if you have had unprotected sex since your last period. If MIRENA is placed more than 7 days since your period started, use a condom or diaphragm, or do not have sex for the next 7 days. MIRENA cannot be used as emergency birth control.

When replacing an existing MIRENA for a new one, it is not necessary to wait for your period. MIRENA can be placed at any time of the cycle.

#### **How quickly MIRENA starts to work:**

MIRENA starts to work right away if it is placed within 7 days of the start of your period. It is best to wait 24-48 hours before having intercourse in case of discomfort. If MIRENA is placed more than 7 days after the start of your period, use a condom or diaphragm for the next 7 days. Alternatively, do not have sex for the next 7 days.

A reduction in menstrual blood loss should be apparent from the first menstrual cycle.

#### **How often I should have MIRENA checked:**

You should have MIRENA checked approximately 4 to 12 weeks after it is placed, again at 12 months and then once a year until it is removed.

You should receive a reminder card from your healthcare professional after the placement of MIRENA. Keep this card until MIRENA is removed and bring it with you to every medical appointment.

#### **How to check if MIRENA is in place:**

After each menstrual period or about once a month, you should check by feeling if the two threads are still in place. Your healthcare professional will show you how to do this. Do not pull on the threads as you may accidentally pull MIRENA out.

If you cannot feel the threads, this may indicate that MIRENA has fallen out (expulsion) or gone through the uterus (perforation). See your healthcare professional and in the meantime use another method of birth control (like condoms) that does not include hormones. You should also see your healthcare professional if you can feel the lower end of MIRENA itself.

#### **Feeling MIRENA during sexual intercourse:**

After MIRENA is placed, it is recommended to wait 24 to 48 hours before having sexual intercourse. During sexual intercourse, you or your partner should not be able to feel MIRENA. If you can feel MIRENA, or any pain or discomfort, avoid having sex until your healthcare professional has checked if MIRENA is still in the correct position.

The removal threads may be felt by your partner during intercourse.

**Using tampons or menstrual cups:**

Use of sanitary pads is recommended. If tampons or menstrual cups are used, you should change them with care so as not to pull the threads of MIRENA.

**MIRENA can fall out:**

Although unlikely, MIRENA may fall out on its own. MIRENA could be pushed out either fully or partially during your period. This is called expulsion. This is more likely to occur:

- If you are overweight or have heavy periods.
- Right after the birth of a baby or after a second trimester abortion.

If MIRENA is out of place, it may not work as expected. If this happens, you are not protected against pregnancy.

Some symptoms of an expulsion are pain and abnormal bleeding. MIRENA may also come out without you noticing. An unusual increase in the amount of bleeding during your period might be a sign that this has happened.

If you think MIRENA has come out (fully or partially), avoid intercourse or use another method of non-hormonal birth control (like condoms) and talk to your healthcare professional. They might do an x-ray to confirm if MIRENA has fallen out. MIRENA should be removed if it is pushed out partially. MIRENA can be replaced with a new one once pregnancy is ruled out. Your healthcare professional will decide what is best for you.

**Removal of MIRENA:**

MIRENA can be easily removed by your healthcare professional at any time if you wish to become pregnant.

For prevention of pregnancy, MIRENA should be removed or replaced after 8 years.

For treatment of heavy menstrual bleeding, MIRENA should be removed or replaced after 5 years.

You may become pregnant upon removal of MIRENA if you have had sexual intercourse during the previous week. You could become pregnant as soon as MIRENA is removed, so you should use another method of birth control if you do not want to become pregnant. Talk to your healthcare professional about the best birth control methods for you, because your new method may need to be started 7 days before MIRENA is removed to prevent pregnancy.

Tell your healthcare professional if you have had sexual intercourse during the week before.

**Missed dose:**

Your healthcare professional can place a new system after removing the old system if you wish to continue using MIRENA:

- after 8 years (for prevention of pregnancy),
- after 5 years (for treatment of heavy menstrual bleeding).

If the same MIRENA system has been left in place for longer than 8 years, you may become pregnant. Pregnancy should be ruled out before placement of a new system.

**Possible side effects from using MIRENA:**

These are not all the possible side effects you may feel when taking MIRENA. If you experience any side effects not listed here, tell your healthcare professional. Please see the box called “Serious Warnings and Precautions”.

- acne/oily skin
- skin disorder, dark patches of skin
- nausea
- hair loss
- infection of the ovaries, fallopian tubes or uterus
- painful periods
- discharge from the vagina
- vaginal bleeding
- excess hair on the face, chest, stomach or legs
- breast pain and tenderness
- lower sex drive
- feeling nervous
- weight gain
- breakage of the device
- increased blood pressure

Side effects with MIRENA are more common during the first months of use; they gradually decrease over time. Differences in your menstrual bleeding are the most common side effects of MIRENA during the first months after the system is placed, but these effects should decrease over time.

Other common side effects might include abdominal pain and absence of menstruation. If these symptoms do not go away or if you think you are reacting poorly to MIRENA please tell your healthcare professional.

Few individuals using MIRENA after delivery have reported less milk production.

**Serious side effects and what to do about them**

Frequency / Side Effect / Symptom	Talk with your Healthcare Professional		Get immediate medical help
	Only if severe	In all cases	
<b>Very common</b>			
<b>Cysts on the ovaries:</b> Pelvic pain, painful intercourse, abdominal bloating or swelling, pain during bowel movements. (Cysts usually disappear on their own within a few months and may not show symptoms. Serious cysts are uncommon.)	✓		
<b>Vaginal bleeding changes:</b> Increased or decreased menstrual bleeding, spotting, infrequent periods or absence of bleeding	✓		

Frequency / Side Effect / Symptom	Talk with your Healthcare Professional		Get immediate medical help
	Only if severe	In all cases	
<b>Vaginal infection (inflammation of the vaginal or surrounding area):</b> Itching, or unusual or increased discharge from the vagina		✓	
<b>Common</b>			
<b>Abdominal pain</b>		✓	
<b>Depressed Mood/Depression:</b> Sad mood that won't go away. If you have a history of depression, your depression may become worse		✓	
<b>Expulsion (MIRENA has fallen out):</b> An unusual increase in the amount of bleeding during your period		✓	
<b>Headache</b>	✓		
<b>Pelvic or back pain</b>		✓	
<b>Uncommon</b>			
<b>Dizziness</b>		✓	
<b>Feeling of fullness or tightness in the abdomen</b>	✓		
<b>Intrauterine pregnancy, miscarriage, or ectopic pregnancy:</b> Persistent lower abdominal pain, together with nausea or breast tenderness and/or vaginal bleeding		✓	
<b>Migraine</b>		✓	
<b>Pelvic infection:</b> Persistent lower abdominal pain, together with fever or unusual discharge from the vagina		✓	
<b>Perforation of the uterus</b> [attached to (embedded) or gone through the wall of the uterus]: Severe lower abdominal pain which may be together with bleeding		✓	
<b>Very rare</b>			
<b>Allergic reaction</b> including itchiness, rash, swelling of face and lips, cheeks, tongue and/or throat			✓
<b>Sepsis and septic shock</b> (infection of the blood): fever or dizziness, chills, high or very low body temperature, little or no urine, low blood pressure, palpitations, rapid breathing, rapid heartbeat			✓

Frequency / Side Effect / Symptom	Talk with your Healthcare Professional		Get immediate medical help
	Only if severe	In all cases	
<b>Unknown</b>			
<b>Deep vein thrombosis</b> (blood clot in the deep veins of the leg or arm): Swelling, pain, arm or leg may be warm to the touch and may appear red			✓
<b>Pulmonary embolism</b> (blood clot in the lung): Chest pain that may increase with deep breathing, cough, coughing up bloody sputum, shortness of breath			✓
<b>Stroke</b> (bleeding or blood clot in the brain): Sudden numbness, weakness or tingling of the face, arm, or leg, particularly on one side of the body, sudden headache, blurry vision, difficulty swallowing or speaking, or lethargy, dizziness, fainting, vomiting, trouble understanding, trouble with walking and loss of balance			✓

If you have a troublesome symptom or side effect that is not listed here or becomes bad enough to interfere with your daily activities, tell your healthcare professional.

#### Reporting side effects

You can report any suspected side effects associated with the use of health products to Health Canada by:

- Visiting the Web page on Adverse Reaction Reporting ([canada.ca/drug-device-reporting](http://canada.ca/drug-device-reporting)) for information on how to report online, by mail or by fax; or
- Calling toll-free at 1-866-234-2345.

*NOTE: Contact your healthcare professional if you need information about how to manage your side effects. The Canada Vigilance Program does not provide medical advice.*

#### Storage

Store MIRENA at room temperature (between 15°C and 30°C).

Protect MIRENA from moisture and direct sunlight.

Keep out of reach and sight of children and pets.

Do not throw away any medicines via wastewater or household waste. Ask your healthcare professional how to throw away medicines you no longer use. These measures will help to protect the environment.

**If you want more information about MIRENA:**

- Talk to your healthcare professional
- Find the full product monograph that is prepared for healthcare professionals and includes the Patient Medication Information by visiting the Health Canada Drug Product Database website (<https://www.canada.ca/en/health-canada/services/drugs-health-products/drug-products/drug-product-database.html>); the manufacturer's website <http://www.bayer.ca> or by calling Bayer at 1-800-265-7382.

This leaflet was prepared by:

Bayer Inc.  
2920 Matheson Blvd East,  
Mississauga, Ontario  
L4W 5R6  
Canada

Date of Authorization: 2025-07-30

© 2025, Bayer Inc.

® TM see [www.bayer.ca/tm-mc](http://www.bayer.ca/tm-mc)

VORDERSEITE / FRONT PAGE

Reminder Card  
Carte aide-mémoire

DIN 02243005



Levonorgestrel-releasing Intrauterine System (52 mg) /  
Système intra-utérin contenant 52 mg de lévonorgestrel

© TM/MC see/voir [www.bayer.ca/tm-mc](http://www.bayer.ca/tm-mc)

RÜCKSEITE / BACK SIDE

MIRENA User's Name / Nom de la personne utilisant MIRENA

Healthcare professional Name / Nom du professionnel de la santé

Healthcare professional Contact Details / Coordonnées du professionnel de la santé

Tel / Tél. :

E-Mail / Courriel :

91394647



Date of Insertion / Date de l'insertion    Latest date of removal / Date limite du retrait

Remove or replace MIRENA after 8 years for prevention of pregnancy or after 5 years for heavy menstrual bleeding. See your healthcare professional when you want to have MIRENA taken out. Faites retirer ou remplacer MIRENA après 8 ans pour la prévention de la grossesse ou après 5 ans pour le traitement des saignements menstruels abondants. Consultez un professionnel de la santé pour ce faire.

Concerns / Questions / Problèmes?

Bayer Inc., Mississauga, Ontario, L4W5R6, Canada [www.mirena.ca](http://www.mirena.ca)