

PRODUCT MONOGRAPH
INCLUDING PATIENT MEDICATION INFORMATION

^{Pr}**CANDESARTAN CILEXETIL**

Candesartan Cilexetil Tablets

Tablets, 4 mg, 8 mg, 16 mg and 32 mg, Oral use

Angiotensin II AT₁ Receptor Blocker

Manufactured by:

Alembic Pharmaceuticals Limited,
Alembic Road, Vadodara 390003,
Gujarat, India.

Date of Initial Authorization:

APR 25, 2014

Imported and Distributed by:

Alembic Pharmaceuticals Canada Ltd.
225 Gibraltar Road, Unit 5
Vaughan, Ontario
L4H 4P9, Canada

Date of Revision: JUL 29, 2025

Submission Control Number: 295042

RECENT MAJOR LABEL CHANGES

None at time of the most recent authorization

TABLE OF CONTENTS

Certain sections or subsections that are not applicable at the time of the preparation of the most recent authorized product monograph are not listed

RECENT MAJOR LABEL CHANGES	2
PART I: HEALTH PROFESSIONAL INFORMATION	4
1 INDICATIONS	4
1.1 Pediatrics.....	4
1.2 Geriatrics.....	4
2 CONTRAINDICATIONS	4
3 SERIOUS WARNINGS AND PRECAUTIONS BOX	5
4 DOSAGE AND ADMINISTRATION	5
4.1 Dosing Considerations.....	5
4.2 Recommended Dose and Dosage Adjustment	5
4.4 Administrationp	7
4.5 Missed Dose	7
5 OVERDOSAGE	7
6 DOSAGE FORMS, STRENGTHS, COMPOSITION AND PACKAGING	8
7 WARNINGS AND PRECAUTIONS	9
7.1 Special Populations	10
7.1.1 Pregnant Women	10
7.1.2 Breast-feeding.....	11
7.1.3 Pediatrics.....	11
7.1.4 Geriatrics	12
8 ADVERSE REACTIONS	12
8.1 Adverse Reaction Overview	12
8.2 Clinical Trial Adverse Reactions	13
8.3 Less Common Clinical Trial Adverse Reactions	16
8.4 Abnormal Laboratory Findings: Hematologic, Clinical Chemistry and Other Quantitative Data.....	17
8.5 Post-Market Adverse Reactions.....	17
9 DRUG INTERACTIONS	18
9.1 Serious Drug Interactions.....	18

9.2 Drug Interactions Overview	18
9.4 Drug-Drug Interactions	19
9.5 Drug-Food Interactions	22
9.6 Drug-Herb Interactions	22
9.7 Drug-Laboratory Test Interactions.....	22
10 CLINICAL PHARMACOLOGY.....	22
10.1 Mechanism of Action	22
10.2 Pharmacodynamics	23
10.3 Pharmacokinetics	23
11 STORAGE, STABILITY AND DISPOSAL.....	25
12 SPECIAL HANDLING INSTRUCTIONS	25
PART II: SCIENTIFIC INFORMATION	26
13 PHARMACEUTICAL INFORMATION	26
14 CLINICAL TRIALS	27
14.1 Efficacy and safety studies	27
14.2 Comparative Bioavailability Studies.....	29
15 MICROBIOLOGY	32
16 NON-CLINICAL TOXICOLOGY.....	32
17 SUPPORTING PRODUCT MONOGRAPHS	36
PATIENT MEDICATION INFORMATION	37

PART I: HEALTH PROFESSIONAL INFORMATION

1 INDICATIONS

CANDESARTAN CILEXETIL (candesartan cilexetil tablets) is indicated for:

- Hypertension
 - The treatment of mild to moderate essential hypertension.
 - CANDESARTAN CILEXETIL may be used alone or concomitantly with thiazide diuretics.
 - The safety and efficacy of concurrent use with calcium channel blockers have not been established.
- Heart Failure
 - The treatment of NYHA Class II and III heart failure with ejection fraction \leq 40% in addition to standard therapy, with or without an ACE inhibitor.

1.1 Pediatrics

Pediatrics (6 to 17 years of age):

- Hypertension

CANDESARTAN CILEXETIL is indicated for the treatment of essential hypertension in children and adolescents 6 to 17 years of age (see [7.1.3 Pediatrics](#), [14 CLINICAL TRIALS](#)).
- Heart Failure

The safety and efficacy of candesartan cilexetil in the treatment of heart failure has not been established in children and adolescents <18 years.

1.2 Geriatrics

Geriatrics (> 65 years of age): No overall differences in safety or effectiveness were observed between these subjects and younger subjects, and other reported clinical experience has not identified differences in responses between the elderly and younger patients, but greater sensitivity of some older individuals cannot be ruled out.

2 CONTRAINDICATIONS

CANDESARTAN CILEXETIL is contraindicated in:

- Patients who are hypersensitive to this drug or to any ingredient in the formulation or component of the container. For a complete listing, see [6 DOSAGE FORMS, STRENGTHS, COMPOSITION AND PACKAGING](#).
- Children aged <1 year.
- Pregnant women (see [7.1.1 Pregnant Women](#)).
- Nursing women (see [7.1.2 Breast-feeding](#)).

- Combination with aliskiren-containing drugs in patients with diabetes mellitus (type 1 or type 2) or moderate to severe renal impairment (GFR < 60 mL/min/1.73m²) (see [Dual Blockade of the Renin-Angiotensin System \(RAS\), Renal](#), and [9.4 Drug-Drug Interactions](#)).
- Patients with rare hereditary problems of galactose intolerance, the Lapp lactase deficiency or glucose-galactose malabsorption.

3 SERIOUS WARNINGS AND PRECAUTIONS BOX

Serious Warnings and Precautions

- When used in pregnancy, angiotensin receptor (AT₁) blockers (ARBs) can cause injury or even death of the developing fetus. When pregnancy is detected, CANDESARTAN CILEXETIL should be discontinued as soon as possible (see [7.1.1 Pregnant Women](#)).

4 DOSAGE AND ADMINISTRATION

4.1 Dosing Considerations

The dosage of CANDESARTAN CILEXETIL must be individualized.

4.2 Recommended Dose and Dosage Adjustment

Hypertension

Adults

Initiation of therapy requires consideration of recent antihypertensive treatment, the extent of blood pressure (BP) elevation, salt restriction, and other pertinent clinical factors. The dosage of other antihypertensive agents used with CANDESARTAN CILEXETIL may need to be adjusted. BP response is dose related over the range of 4 - 32 mg.

The recommended initial dose of CANDESARTAN CILEXETIL is 16 mg, once daily when used as monotherapy. Total daily doses of CANDESARTAN CILEXETIL should range from 8 - 32 mg. Doses higher than 32 mg do not appear to have a greater effect on BP reduction, and there is relatively little experience with such doses. Most of the antihypertensive effect is present within 2 weeks and the maximal BP reduction is generally obtained within 4 weeks. For patients with possible depletion of intravascular volume (e.g. patients treated with diuretics, particularly those with impaired renal function) consideration should be given to administration of a lower dose. If BP is not controlled by CANDESARTAN CILEXETIL alone, a thiazide diuretic may be added (see [9.4 Drug-Drug Interactions](#)).

Concomitant Diuretic Therapy

In patients receiving diuretics, CANDESARTAN CILEXETIL therapy should be initiated with caution, since these patients may be volume-depleted and thus more likely to experience hypotension following initiation of additional antihypertensive therapy.

Whenever possible, all diuretics should be discontinued 2 – 3 days prior to the administration of CANDESARTAN CILEXETIL, to reduce the likelihood of hypotension (see [Hypotension](#)). If this is not possible because of the patient's condition, CANDESARTAN CILEXETIL should be administered with caution and BP monitored closely. Thereafter, the dosage should be adjusted according to the individual response of the patient.

Dosage Adjustments in the Presence of Pathologies

Hepatic Impairment

Mild to moderate hepatic impairment: No dosage adjustment is necessary.

Severe hepatic impairment and/or cholestasis: There is only limited experience. In patients with severely impaired hepatic function, a lower initial dose of 4 mg should be considered.

Renal Impairment

Mild renal impairment: No dosage adjustment is necessary

Moderate or severe renal impairment or patients undergoing dialysis: A lower initial dose of 4 mg should be considered.

Dosage Adjustments in Special Populations

Pediatrics (6 to 17 years of age)

- Patients weighing <50 kg: The recommended starting dose is 4 mg once daily.
In some patients whose BP is not adequately controlled, the dose can be increased to 8 mg once daily.
The maximum dose is 8 mg once daily
- Patients weighing ≥ 50 kg: The recommended starting dose is 8 mg once daily.
In some patients whose BP is not adequately controlled, the dose can be increased to 16 mg once daily.
The maximum dose is 16 mg once daily.

The dose should be adjusted according to BP response.

Most of the antihypertensive effect is attained within 4 weeks.

Doses >32 mg have not been studied in pediatric patients.

For children with possible intravascular volume depletion (e.g. patients treated with diuretics, particularly those with impaired renal function), CANDESARTAN CILEXETIL treatment should be initiated under close medical supervision and a lower starting dose than the general starting dose above should be considered (see [7.1.3 Pediatrics](#)).

Geriatrics (> 65 years of age)

No dosage adjustment is necessary for elderly patients. As greater sensitivity of some older patients cannot be ruled out, appropriate caution is recommended (see [7.1.4 Geriatrics](#)).

Heart Failure**Adults**

The usual recommended initial dose for treating heart failure is 4 mg once daily. The target dose is 32 mg once daily which is achieved by doubling the dose at approximately 2 week intervals, as tolerated by the patient. CANDESARTAN CILEXETIL can be administered with other heart failure treatments including ACEIs, beta-blockers, diuretics, digoxin, and/or spironolactone.

No initial dose adjustment is necessary for elderly patients or in patients with renal or hepatic impairment.

Pediatrics (6 to 17 years of age)

The safety and efficacy of candesartan cilexetil in the treatment of heart failure have not been established in children and adolescents <18 years of age.

Geriatrics (> 65 years of age)

No dosage adjustment is necessary for elderly patients. As greater sensitivity of some older patients cannot be ruled out, appropriate caution is recommended (see [7.1.4 Geriatrics](#)).

4.4 Administration

CANDESARTAN CILEXETIL should be taken once daily, at approximately the same time each day, with or without food.

4.5 Missed Dose

If a patient misses a dose of candesartan cilexetil and remembers within 12 hours, the patient should take the dose as soon as possible and then go back to the regular schedule. If it is more than 12 hours after the patient remembers, they should not take the missed dose; the next dose should be taken on time.

A double dose of candesartan cilexetil should never be taken to make up for a missed dose.

5 OVERDOSAGE

Limited data are available in regard to overdosage in humans. The most likely manifestations of overdosage would be hypotension, dizziness and tachycardia; bradycardia could occur from reflex parasympathetic (vagal) stimulation. In case reports detailing overdosage [≤ 672 mg candesartan cilexetil] in adults, patient recovery was uneventful.

If symptomatic hypotension should occur, supportive treatment should be instituted and vital signs monitored. The patient should be placed supine with the legs elevated. If this is not

sufficient, plasma volume should be increased by infusion of, for example, isotonic saline solution. Sympathomimetic drugs may also be administered if the above-mentioned measures are not sufficient.

Candesartan cilexetil is not removed from the plasma by hemodialysis.

For the most recent information in the management of a suspected drug overdose, contact your regional poison control centre or Health Canada's toll-free number, 1-844 POISON-X (1-844-764-7669).

6 DOSAGE FORMS, STRENGTHS, COMPOSITION AND PACKAGING

Table 1 - Dosage Forms, Strengths, and Composition

Route of Administration	Dosage Form / Strength/Composition	Non-medicinal Ingredients
Oral Use	Tablet: 4 mg, 8 mg, 16 mg or 32 mg	Carboxymethylcellulose calcium, corn starch, hydroxypropyl cellulose, iron oxide red, lactose monohydrate, magnesium stearate, polyethylene glycol.

Description

Candesartan cilexetil 4 mg tablets are light pink, round, biconvex uncoated mottled tablets debossed with '291' on one side and break line on other side, available in bottles of 30, 100 and 1000 tablets, unit dose cartons of 30 tablets (3 blisters x 10 tablets), 30 tablets (2 blisters x 15 tablets) and 100 tablets (10 blisters x 10 tablets).

Candesartan cilexetil 8 mg tablets are light pink, round, biconvex uncoated mottled tablets debossed with '292' on one side and break line on other side, available bottles of 30, 100 and 1000 tablets, unit dose cartons of 30 tablets (3 blisters x 10 tablets), 30 tablets (2 blisters x 15 tablets) and 100 tablets (10 blisters x 10 tablets).

Candesartan cilexetil 16 mg tablets are light pink, round, biconvex uncoated mottled tablets debossed with 'L293' on one side and break line on other side, available in bottles of 30, 100 and 1000 tablets, unit dose cartons of 30 tablets (3 blisters x 10 tablets), 30 tablets (2 blisters x 15 tablets) and 100 tablets (10 blisters x 10 tablets).

Candesartan cilexetil 32 mg tablets are light pink, round, biconvex uncoated mottled tablets debossed with 'L294' on one side and break line on other side, available in bottles of 30, 100 and 1000 tablets, unit dose cartons of 30 tablets (3 blisters x 10 tablets), 30 tablets (2 blisters x 15 tablets) and 100 tablets (10 blisters x 10 tablets).

7 WARNINGS AND PRECAUTIONS

Please see [3 SERIOUS WARNINGS AND PRECAUTIONS BOX](#).

Cardiovascular

Dual blockade of the Renin-Angiotensin System (RAS): There is evidence that co-administration of angiotensin receptor antagonists (ARBs), such as candesartan cilexetil, or of angiotensin converting enzyme inhibitors (ACEIs) with aliskiren increases the risk of hypotension, syncope, stroke, hyperkalemia and deterioration of renal function, including renal failure, in patients with diabetes mellitus (type 1 or type 2) and/or moderate to severe renal impairment (GFR < 60 mL/min/1.73m²). Therefore, the use of CANDESARTAN CILEXETIL in combination with aliskiren-containing drugs is contraindicated in these patients (see [2 CONTRAINDICATIONS](#)).

Further, co-administration of ARBs, including candesartan cilexetil, with other agents blocking the RAS, such as ACEIs or aliskiren-containing drugs, is generally not recommended in other patients, since such treatment has been associated with an increased incidence of severe hypotension, decreased renal function (including acute renal failure), and hyperkalemia.

Avoid the concomitant use of ACE inhibitors and ARBs in patients with diabetic nephropathy.

If dual blockade therapy is considered necessary, this should only occur under specialist supervision and subject to frequent close monitoring of renal function, electrolytes and blood pressure.

Hypotension: Occasionally, symptomatic hypotension has occurred after administration of candesartan cilexetil. It is more likely to occur in patients who are volume-depleted by diuretic therapy, dietary salt restriction, dialysis, diarrhea or vomiting, or undergoing surgery with anesthesia. In these patients, because of the potential fall in blood pressure (BP), therapy should be started under close medical supervision. Similar considerations apply to patients with ischemic heart or cerebrovascular disease, in whom an excessive fall in blood pressure could result in myocardial infarction or cerebrovascular accident (see [8 ADVERSE REACTIONS](#)).

Heart Failure: Patients with heart failure given candesartan cilexetil commonly have some reduction in BP. Caution should be observed when initiating therapy.

Triple combination of CANDESARTAN CILEXETIL with an ACE-inhibitor and a mineralocorticoid receptor antagonist used in heart failure is also not recommended. Use of these combinations should be under specialist supervision and subject to frequent close monitoring of renal function, electrolytes and blood pressure.

Valvular Stenosis: There is concern on theoretical grounds that patients with aortic stenosis might be at particular risk of decreased coronary perfusion when treated with vasodilators because they do not develop as much afterload reduction.

Driving and Operating Machinery

The effect of candesartan cilexetil on the ability to drive and use machines has not been studied, but based on its pharmacodynamic properties candesartan cilexetil is unlikely to affect this ability. When driving vehicles or operating machines, it should be taken into account that dizziness or weariness may occur during treatment. Exercise caution when driving or operating a vehicle or potentially dangerous machinery.

Endocrine and Metabolism

Hyperkalemia

Heart Failure: In heart failure patients treated with candesartan cilexetil, hyperkalemia may occur. During treatment with CANDESARTAN CILEXETIL in patients with heart failure, periodic monitoring of serum potassium is recommended, especially when taken concomitantly with ACE inhibitors and potassium-sparing diuretics such as spironolactone.

Renal

Renal Impairment: As a consequence of inhibiting the renin-angiotensin-aldosterone system (RAAS), changes in renal function have been seen in susceptible individuals. In patients whose renal function may depend on the activity of the RAAS, such as patients with bilateral renal artery stenosis, unilateral renal artery stenosis to a solitary kidney, or severe congestive heart failure, treatment with agents that inhibit this system has been associated with oliguria, progressive azotemia, and rarely, acute renal failure and/or death. In susceptible patients, concomitant diuretic use may further increase risk.

The use of ARBs, including CANDESARTAN CILEXETIL, or ACEIs with aliskiren-containing drugs is contraindicated in patients with moderate to severe renal impairment (GFR <60 mL/min/1.73m²) (see [2 CONTRAINDICATIONS](#) and [9.4 Drug-Drug Interactions](#)).

Use of CANDESARTAN CILEXETIL should include appropriate assessment of renal function.

Heart Failure: In heart failure patients, increases in serum creatinine may occur. Dosage reduction, and/or discontinuation of the diuretic, and/or CANDESARTAN CILEXETIL, and/or volume repletion may be required. Monitoring of serum creatinine is recommended during dose escalation and periodically thereafter.

Renal Transplantation: There is limited experience regarding the administration of candesartan cilexetil in adult patients with renal transplant.

7.1 Special Populations

7.1.1 Pregnant Women

CANDESARTAN CILEXETIL is contraindicated during pregnancy (see [2 CONTRAINDICATIONS](#)). Drugs that act directly on the RAAS can cause fetal and neonatal morbidity and death when administered to pregnant women. When pregnancy is detected, CANDESARTAN CILEXETIL should be discontinued as soon as possible.

Epidemiological evidence regarding the risk of teratogenicity following exposure to ACEIs during the first trimester of pregnancy has not been conclusive; however, a small increase in risk cannot be excluded. Given the current evidence available on the risk with ARBs, similar risks may exist for this class of drugs. Patients planning pregnancy should be changed to alternative anti-hypertensive treatments which have an established safety profile for use in pregnancy. When pregnancy is diagnosed, treatment with ARBs should be stopped immediately, and, if appropriate, alternative therapy should be started.

The use of ARBs during the second and third trimesters is known to induce human fetotoxicity (decreased renal function, oligohydramnios, skull ossification retardation) and neonatal toxicity (renal failure, hypotension, hyperkalemia).

Animal data: Oral doses ≥ 10 mg candesartan cilexetil/kg/day administered to pregnant rats during late gestation and continued through lactation were associated with reduced survival and an increased incidence of hydronephrosis in the offspring. Candesartan cilexetil given to pregnant rabbits at an oral dose of 3 mg/kg/day caused maternal toxicity (decreased body weight and death) but, in surviving dams, had no adverse effects on fetal survival, fetal weight, or external, visceral, or skeletal development. No maternal toxicity or adverse effects on fetal development were observed when oral doses ≤ 1000 mg candesartan cilexetil/kg/day were administered to pregnant mice.

7.1.2 Breast-feeding

It is not known whether candesartan is excreted in human milk, but significant levels have been found in the milk of lactating rats. Because many drugs are excreted in human milk, and because of their potential for adversely affecting the nursing infant, a decision should be made whether to discontinue nursing or to discontinue the drug, taking into account the importance of the drug to the mother (see [2 CONTRAINDICATIONS](#)).

7.1.3 Pediatrics

Pediatrics (6 to 17 years of age):

In utero exposure: Infants with a history of *in utero* exposure to ARBs should be closely observed for hypotension, oliguria, and hyperkalemia. If oliguria occurs, attention should be directed toward support of blood pressure and renal perfusion. Exchange transfusion or dialysis may be required as a means of reversing hypotension and/or substituting for impaired renal function; however, limited experience with those procedures has not been associated with significant clinical benefit. Candesartan cilexetil is not removed from plasma by dialysis.

Animal data-Heart development: In preclinical studies in normotensive neonatal and juvenile rats, candesartan caused a reduction in relative and absolute heart weights. As in adult animals, these effects were considered to result from the pharmacological action of candesartan. At the lowest dose of 10 mg/kg, exposure to candesartan was 7-54x those found in children aged 6 to <17 years who received 16 mg of candesartan cilexetil. Since a NOAEL (no observed adverse effect level) could not be established in these studies, the safety margin for the effects on heart weight could not be determined. The clinical relevance of this finding is unknown.

Black pediatric patients: The antihypertensive effect of candesartan is less pronounced in Black patients compared with non-Black patients.

Volume-depleted patients: For children with possible intravascular volume depletion (e.g. patients treated with diuretics, particularly those with impaired renal function), CANDESARTAN CILEXETIL should be initiated under close medical supervision and a lower starting dose should be considered (see [4 DOSAGE AND ADMINISTRATION, Pediatrics](#)).

Renal impairment: Candesartan cilexetil has not been studied in children aged 6 to 17 years with renal impairment (see [4 DOSAGE AND ADMINISTRATION, Pediatrics](#)).

Hepatic impairment: There are no data on the effects of candesartan cilexetil in pediatric patients with hepatic impairment.

Type 1 diabetes: There is no experience regarding the administration of candesartan cilexetil in children aged 6 to <17 years with type 1 diabetes.

7.1.4 Geriatrics

Geriatrics (> 65 years of age): No overall differences in safety or effectiveness were observed between subjects >65 years of age and younger subjects. In addition, other reported clinical experience has not identified differences in responses between the elderly and younger patients, but greater sensitivity of some older individuals cannot be ruled out.

8 ADVERSE REACTIONS

8.1 Adverse Reaction Overview

Hypertension

Adults

Potentially serious adverse reactions reported rarely with candesartan cilexetil in controlled clinical trials were syncope and hypotension.

Pediatrics (6 to 17 years of age)

The adverse reaction profile of candesartan cilexetil as a treatment for hypertension in pediatric patients appeared similar to that seen in adults. However, the frequency of all adverse events (AEs) seemed higher.

Sinus arrhythmia, which was not reported in adults, was observed in 2.9% and 2.0% of pediatric patients taking candesartan cilexetil for 4 weeks and 1 year, respectively.

Heart Failure

Severe adverse reactions most commonly seen in adult heart failure patients taking candesartan cilexetil in controlled clinical trials were hypotension, hyperkalemia and renal impairment.

8.2 Clinical Trial Adverse Reactions

Clinical trials are conducted under very specific conditions. The adverse reaction rates observed in the clinical trials; therefore, may not reflect the rates observed in practice and should not be compared to the rates in the clinical trials of another drug. Adverse reaction information from clinical trials may be useful in identifying and approximating rates of adverse drug reactions in real-world use.

Hypertension

Adults

Candesartan cilexetil was evaluated for safety in >8700 patients treated for hypertension, including 677 treated for ≥ 6 months and 626 for ≥ 1 year. Of these, 8694 were treated with candesartan cilexetil monotherapy in controlled clinical trials.

In placebo-controlled clinical trials, discontinuation due to AEs occurred in 2.9% and 2.7% of patients treated with candesartan cilexetil monotherapy and placebo, respectively.

In the double blind, placebo-controlled trials, the overall incidence of AEs showed no association with dose, age or gender. In these trials, the following AEs reported with candesartan cilexetil occurred in $\geq 1\%$ of patients, regardless of drug relationship:

Table 2 Adverse events that occurred in $\geq 1\%$ of patients regardless of drug relationship

	Candesartan cilexetil n = 1388	Placebo n = 573
	(%)	(%)
Body as a Whole		
back pain	3.2	0.9
fatigue	1.5	1.6
abdominal pain	1.5	1.3
peripheral edema	1.0	0.7
Digestive		
nausea	1.9	1.3
diarrhea	1.5	1.9
vomiting	1.0	1.2
Nervous/Psychiatric		
headache	10.4	10.3
dizziness	2.5	2.3

	Candesartan cilexetil	Placebo
	n = 1388	n = 573
	(%)	(%)
Respiratory		
upper respiratory infection	5.1	3.8
coughing	1.6	1.1
influenza-like symptoms	1.5	0.8
pharyngitis	1.1	0.4
bronchitis	1.0	2.2
rhinitis	1.0	0.4

Clinical trials in which doses ≤ 32 mg were administered did not result in a significant increase in any of the AEs listed above.

Pediatrics (6 to 17 years of age)

Candesartan cilexetil was evaluated for safety in 240 hypertensive pediatric patients aged 6 to 17 years during a 4-week placebo-controlled clinical trial and in 235 pediatric patients in the 1-year open-label extension study. A total of 213 pediatric patients from the placebo-controlled trial enrolled in the open-label study. There were 178 patients who were treated for ≥ 1 year.

The adverse reaction profile of candesartan cilexetil in pediatric patients appeared similar to that seen adults. However, the frequency of all AEs seemed higher.

In the placebo-controlled clinical trial, the most common AEs ($\geq 3\%$ of patients) were cough, dizziness, headache, pharyngolaryngeal pain and upper respiratory tract infection. Dizziness was the most common drug-related AE.

In the open-label extension study, 3 out of 240 pediatric patients aged 6 to 17 years experienced worsening renal disease. The association between candesartan and the exacerbation of the underlying condition could not be excluded.

Sinus arrhythmia, which was not reported in adults, was observed in 2.9% and 2.0% of pediatric patients taking candesartan cilexetil for 4 weeks and 1 year, respectively.

Heart Failure

The AE profile of candesartan cilexetil in adult heart failure patients was consistent with the pharmacology of the drug and the health status of the patients. In the CHARM-Alternative and CHARM-Added studies comparing candesartan cilexetil in total daily doses ≤ 32 mg once daily to placebo, 23.2 % of candesartan cilexetil and 18.4% of placebo patients discontinued the treatment due to AEs.

In these trials, the following AEs reported with candesartan cilexetil occurred in $\geq 1\%$ of patients and with higher frequency than placebo, regardless of drug relationship.

Table 3 Adverse events reported in CHARM-Alternative and CHARM-Added and occurring with frequency of $\geq 1\%$ regardless of drug relationship

	Candesartan cilexetil n=2289	Placebo n=2287
	(%)	(%)
Body as a Whole		
Fatigue	1.4	0.9
Cardiovascular Disorders		
Hypotension	20.9	11.0
Syncope	3.3	3.2
Coronary artery disorder	4.2	3.5
Cardiac arrest	1.3	1.1
Blood Disorders		
Anemia	2.8	2.3
Gastro-Intestinal System Disorders		
Diarrhea	2.4	1.1
Gastroenteritis	1.1	0.7
Liver and Biliary System Disorders		
Cholelithiasis	1.1	0.9
Metabolic and Nutritional Disorders		
Hyperkalemia	7.6	2.6
Dehydration	2.5	1.3
Nonprotein nitrogen increased	1.3	0.3
Uremia	1.1	0.5
Gout	1.0	0.9
Musculo-Skeletal System Disorders		
Arthrosis	1.2	1.0
Nervous System Disorders		
Dizziness	3.4	2.1

	Candesartan cilexetil n=2289	Placebo n=2287
	(%)	(%)
Headache	1.0	0.7
Urinary System Disorders		
Renal function abnormal	14.3	7.2
Renal failure acute	3.0	1.8

8.3 Less Common Clinical Trial Adverse Reactions

Hypertension

The following AEs were reported at an incidence of < 1% in controlled clinical trials (in >1 patient, with higher frequency than placebo):

Body as a Whole: allergy, asthenia, pain, syncope.

Cardiovascular: angina pectoris, circulatory failure, flushing, hypotension, myocardial infarction, peripheral ischemia, thrombophlebitis.

Central and Peripheral Nervous System: hypertonia, hypoesthesia, paresthesia, vertigo.

Gastrointestinal: constipation, dry mouth, dyspepsia, toothache.

Hearing: tinnitus.

Metabolic and Nutritional: diabetes mellitus, hyperkalemia, hyponatremia.

Musculoskeletal: arthritis, arthropathy, myalgia, myopathy, skeletal pain, tendon disorder.

Blood: anemia, epistaxis.

Psychiatric: depression, impotence, neurosis.

Reproductive: menopausal symptoms.

Resistance Mechanism: otitis.

Respiratory: laryngitis.

Skin: eczema, pruritus, rash, skin disorder, sweating, (rarely) urticaria.

Urinary: abnormal urine, cystitis.

Vision: conjunctivitis.

AEs reported at a rate >1% but at about the same or greater incidence in patients receiving placebo, in studies using daily doses >16 mg: albuminuria, arthralgia, chest pain and sinusitis.

Other AEs reported at an incidence of $\geq 0.5\%$ from >3200 patients treated worldwide include anxiety, dyspnea, fever, gastroenteritis, hematuria, hyperglycemia, hypertriglyceridemia, hyperuricemia, increased creatinine phosphokinase, palpitation, somnolence and tachycardia.

Heart Failure

The following listed AEs occurred in <1% of patients treated with candesartan cilexetil but in ≥ 2 patients and with more frequent occurrence in the candesartan cilexetil group than in the placebo group (CHARM-Alternative and CHARM-Added).

Liver and Biliary System Disorders: hepatic function abnormal.

Skin and Appendages Disorders: angioedema, pruritus, rash.

White Cell and Resistance Disorders: granulocytopenia, leukopenia.

8.4 Abnormal Laboratory Findings: Hematologic, Clinical Chemistry and Other Quantitative Data**Clinical Trial Findings****Hypertension**

In controlled clinical trials, clinically important changes in standard laboratory parameters were rarely associated with administration of candesartan cilexetil.

Liver Function Tests: In controlled clinical trials, elevations of AST and ALT (> 3x the upper limit of normal) occurred in 0.3% and 0.5%, respectively, of patients treated with candesartan cilexetil monotherapy compared to 0.2% and 0.4%, respectively, of patients receiving placebo.

Serum Potassium: A small increase (mean increase of 0.1 mEq/L) was observed in hypertensive patients treated with candesartan cilexetil alone but was rarely of clinical importance.

Creatinine, Blood Urea Nitrogen, and Sodium: Infrequent minor increases in blood urea nitrogen (BUN) and serum creatinine as well as decreases in sodium were observed.

Hemoglobin and Hematocrit: Small decreases in hemoglobin and hematocrit (mean decreases of approximately 0.2 g/dL and 0.5 volume %, respectively) were observed in patients treated with candesartan cilexetil alone but were rarely of clinical importance. Anemia, leukopenia and thrombocytopenia were associated with withdrawal of 1 patient each from clinical trials.

Hyperuricemia: Hyperuricemia was rarely found (0.6% of patients treated with candesartan cilexetil and 0.5% of patients treated with placebo).

Heart Failure

Increases in serum creatinine, potassium and urea, and decreases in hemoglobin and hematocrit were observed.

8.5 Post-Market Adverse Reactions

In post-marketing experience, the following have been reported in patients treated with candesartan cilexetil:

Blood and lymphatic disorders: thrombocytopenia

Cardiac disorders: atrial fibrillation, bradycardia, cardiac failure, palpitations

Digestive: abnormal hepatic function and hepatitis (very rare)

Gastrointestinal disorders: pancreatitis

General disorders and administration site conditions: chest pain, malaise, sudden death

Hematologic: agranulocytosis, leukopenia and neutropenia (very rare)

Immunologic: angioedema (involving swelling of the face, lips and/or tongue) (rare), hypersensitivity

Infections and infestations: pneumonia

Investigations: blood creatinine increased, fall

Metabolic and Nutritional Disorders: hyperkalemia and hyponatremia

Musculoskeletal System: muscle pain, muscle weakness, myositis and rhabdomyolysis

Nervous system disorders: cerebrovascular accident, loss of consciousness, presyncope

Psychiatric disorders: confusional state

Respiratory System Disorders: cough, pulmonary edema

Skin and Appendages Disorders: pruritus, rash and urticarial

Urogenital System: renal impairment, including renal failure in elderly susceptible patients (see [Renal](#))

9 DRUG INTERACTIONS

9.1 Serious Drug Interactions

Serious Drug Interactions

- CANDESARTAN CILEXETIL is contraindicated in combination with aliskiren-containing drugs in patients with diabetes mellitus (type 1 or type 2) or moderate to severe renal impairment (GFR < 60 mL/min/1.73m²) (see [2 CONTRAINDICATIONS](#) and [9.4 Drug-Drug Interactions](#)).

9.2 Drug Interactions Overview

In vitro studies indicate that cytochrome P450 isoenzyme CYP 2C9 is involved in the biotransformation of candesartan to its inactive metabolite. Based on *in vitro* data, no interaction would be expected to occur *in vivo* with drugs whose metabolism is dependent upon cytochrome P450 isoenzymes CYP1A2, CYP2A6, CYP2C9, CYP2C19, CYP2D6, CYP2E1 or CYP3A4.

Interaction studies have only been performed in adults.

9.4 Drug-Drug Interactions

The drugs listed in Table 3 are based on either drug interaction case reports or studies or potential interactions due to the expected magnitude and seriousness of the interaction (i.e. those identified as contraindicated).

Table 4 Established or Potential Drug-Drug Interactions with Candesartan Cilexetil

Proper Name	Source of Evidence	Effect	Clinical Comment
Agents Increasing Serum Potassium	T	Candesartan cilexetil decreases the production of aldosterone.	Potassium-sparing diuretics or potassium supplements or other drugs that may increase potassium levels (e.g., heparin, co-trimoxazole) should be given only for documented hypokalemia and with frequent monitoring of serum potassium. Potassium-containing salt substitute should also be used with caution.
Diuretics	CT	Patients on diuretics, and especially those in whom diuretic therapy was recently instituted, may occasionally experience an excessive reduction of blood pressure after initiation of therapy with CANDESARTAN CILEXETIL.	The possibility of symptomatic hypotension with the use of candesartan cilexetil can be minimized by discontinuing the diuretic prior to initiation of treatment and/or lowering the initial dose of candesartan cilexetil (see 7 WARNINGS AND PRECAUTIONS, Hypotension). No drug interactions of clinical significance have been identified with thiazide diuretics in patients

Proper Name	Source of Evidence	Effect	Clinical Comment
			treated with ≤ 25 mg hydrochlorothiazide with 16 mg CANDESARTAN CILEXETIL for 8 weeks.
Digoxin	CT	Combination treatment with candesartan cilexetil and digoxin in healthy volunteers had no effect on AUC or C_{max} values for candesartan compared to candesartan cilexetil alone.	No dosage adjustment.
Dual blockade of the Renin-Angiotensin-System (RAS) with ARBs, ACEIs or aliskiren-containing drugs	CT	Clinical trial data have shown that dual blockade of the renin-angiotensin-system (RAS) through the combined use of ACE-inhibitors, angiotensin II receptor blockers or aliskiren is associated with a higher frequency of adverse events such as hypotension, hyperkalemia and decreased renal function (including acute renal failure) compared to the use of a single RAS-acting agent.	Dual blockade of the RAS with ARBs or ACEIs and aliskiren-containing drugs is contraindicated in patients with diabetes and/or renal impairment (see 2 CONTRAINDICATIONS). The combined use of ARBs, ACEIs or aliskiren-containing drugs is generally not recommended [see 7 WARNINGS AND PRECAUTIONS, Dual Blockade of the Renin-Angiotensin-System (RAS)].
Enalapril	CT	While there is no clinically relevant interaction between candesartan and enalapril, patients with renal impairment showed a higher exposure to both drugs. This is consistent with the known pharmacokinetics of these 2 compounds.	Dosage may need to be adjusted based on the response of the patient.

Proper Name	Source of Evidence	Effect	Clinical Comment
Lithium Salts	CT	As with other drugs which eliminate sodium, lithium clearance may be reduced.	Serum lithium levels should be monitored carefully if lithium salts are to be administered.
Non-steroidal anti-inflammatory drugs (NSAIDs)	CT	<p>Attenuation of the antihypertensive effect may occur when simultaneously administering ARBs and NSAIDs; i.e. selective COX-2 inhibitors, acetylsalicylic acid and non-selective NSAIDs.</p> <p>As with ACEIs, concomitant use of ARBs and NSAIDs may lead to an increased risk of worsening of renal function, including possible acute renal failure, and an increase in serum potassium, especially in patients with poor pre-existing renal function.</p>	<p>The combination ARBs and NSAIDs should be administered with caution, especially in older patients and in volume depleted patients. Patients should be adequately hydrated and consideration should be given to monitoring renal function after initiation of concomitant therapy and periodically thereafter.</p> <p>If combination use is necessary, monitor renal function, serum potassium, and blood pressure closely. Dose adjustments may be required.</p> <p>Patients with heart failure may be at particular risk.</p>
Warfarin	CT	When candesartan cilexetil was administered at 16 mg once daily under steady state conditions, no pharmacodynamic effect on prothrombin time was demonstrated in subjects stabilized on warfarin.	No dosage adjustment.

Proper Name	Source of Evidence	Effect	Clinical Comment
Other		No significant drug interactions have been reported with glyburide, nifedipine or oral contraceptives co-administered with candesartan cilexetil to healthy volunteers.	No dosage adjustment.
Legend: C= Case Study; CT= Clinical Trial; T= Theoretical			

9.5 Drug-Food Interactions

CANDESARTAN CILEXETIL may be taken with or without food (see [4 DOSAGE AND ADMINISTRATION](#)).

9.6 Drug-Herb Interactions

Interactions with herbal products have not been established.

9.7 Drug-Laboratory Test Interactions

Interactions with laboratory tests have not been established.

10 CLINICAL PHARMACOLOGY

10.1 Mechanism of Action

Candesartan cilexetil antagonizes angiotensin II by blocking the angiotensin type one (AT₁) receptor. Angiotensin II is the primary vasoactive hormone of RAAS with effects that include vasoconstriction, stimulation of aldosterone secretion and renal reabsorption of sodium.

Candesartan cilexetil, a prodrug, is rapidly converted to the active drug, candesartan, during absorption from the gastrointestinal tract.

Candesartan blocks the vasoconstrictor and aldosterone secreting effects of angiotensin II by selectively blocking the binding of angiotensin II to the AT₁ receptor in many tissues, such as vascular smooth muscle and the adrenal gland. Its action is therefore independent of the pathways for angiotensin II synthesis. There is also an AT₂ receptor found in many tissues, but it plays no known role in cardiovascular homeostasis to date. Candesartan has a much greater affinity (> 10,000 fold) for the AT₁ receptor than for the AT₂ receptor. The strong bond between candesartan and the AT₁ receptor is a result of tight binding to and slow dissociation from the receptor.

Candesartan does not inhibit ACE, also known as kininase II, the enzyme that converts angiotensin I to angiotensin II and degrades bradykinin, nor does it bind to or block other hormone receptors or ion channels known to be important in cardiovascular regulation.

10.2 Pharmacodynamics

Candesartan inhibits the pressor effects of angiotensin II infusion in a dose dependent manner. After 1 week of once-daily dosing of 8 mg candesartan cilexetil, the pressor effect was inhibited by approximately 90% at peak (4-8 hours after dosing) with approximately 50% inhibition persisting at 24 hours.

Plasma concentrations of angiotensin I, angiotensin II, and plasma renin activity, increased in a dose-dependent manner after single and repeated administration of candesartan cilexetil to adult healthy subjects, hypertensive and heart failure patients. A decrease in the plasma concentration of aldosterone was observed when 32 mg of candesartan cilexetil was administered to hypertensive patients.

Animal Pharmacology: In isolated rabbit aorta helical strips, candesartan at 3×10^{-11} to 10^{-9} M decreased the maximal contractile response induced by angiotensin II. Candesartan at a concentration of 1 nM completely inhibited the response to angiotensin II in a concentration range of 10^{-10} - 10^{-7} M, an angiotensin II concentration which elicited a full concentration-response curve in the absence of candesartan. The dissociation rate of [3H]-candesartan binding from bovine adrenal cortical membranes, *in vitro*, was 5× slower ($t_{1/2} = 66$ min) than that of [125 I]- angiotensin II binding ($t_{1/2} = 12$ min).

10.3 Pharmacokinetics

Absorption: Following oral administration of candesartan cilexetil as a tablet, the absolute bioavailability of candesartan is estimated to be approximately 15%. After tablet ingestion, the peak serum concentration (C_{max}) is reached after 3-4 hours. Food does not affect the bioavailability of candesartan after candesartan cilexetil administration.

Distribution: The volume of distribution of candesartan is 0.13 L/kg. Candesartan is highly bound to plasma proteins (>99%) and does not penetrate red blood cells. The protein binding is constant at candesartan plasma concentrations well above the range achieved with recommended doses. In rats, it has been demonstrated that candesartan does cross the blood-brain barrier. It has also been demonstrated in rats that candesartan passes across the placental barrier and is distributed in the fetus.

Metabolism: Candesartan cilexetil is rapidly and completely bioactivated to candesartan by ester hydrolysis during absorption from the gastrointestinal tract. It undergoes minor hepatic metabolism by O-deethylation to an inactive metabolite. *In vitro* studies indicate that cytochrome P450 isoenzyme CYP 2C9 is involved in the biotransformation of candesartan to its inactive metabolite. Based on *in vitro* data, no interaction would be expected to occur *in vivo* with drugs whose metabolism is dependent upon cytochrome P450 isoenzymes CYP1A2, CYP2A6, CYP2C9, CYP2C19, CYP2D6, CYP2E1 or CYP3A4.

Elimination: Total plasma clearance of candesartan is 0.37 mL/min/kg, with a renal clearance of 0.19 mL/min/kg. Candesartan is mainly excreted unchanged in urine and feces (via bile). When candesartan cilexetil is administered orally, about 26% of the dose is excreted as candesartan in urine. Following an oral dose of ¹⁴C-labeled candesartan cilexetil, approximately 33% of radioactivity is recovered in urine and approximately 67% in feces. Following an intravenous (iv) dose of ¹⁴C-labeled candesartan, approximately 59% of radioactivity is recovered in urine and approximately 36% in feces. Biliary excretion contributes to the elimination of candesartan. The elimination half-life of candesartan is approximately 9 hours. After single and repeated administration, the pharmacokinetics of candesartan are linear for oral doses ≤32 mg. Candesartan and its inactive metabolite do not accumulate in serum upon repeated once-daily dosing.

Special Populations and Conditions

- **Pediatrics (6 to 17 years of age):** Pediatric (6 to 17 years of age) hypertensive patients that received a 16 mg dose of candesartan cilexetil had exposure similar to adults given the same dose. The pharmacokinetics (C_{max} and AUC) were not modified by age, sex or body weight. From the dose-ranging studies of candesartan cilexetil, there was a dose related increase in plasma candesartan concentrations.

Candesartan cilexetil pharmacokinetics have not been determined in children and adolescent (6 to 17 years of age) with renal insufficiency.

- **Geriatrics:** The plasma concentration of candesartan was higher in the elderly (≥ 65 years old) (C_{max} was approximately 50% higher, and AUC was approximately 80% higher) compared to younger subjects administered the same dose. The pharmacokinetics of candesartan were linear in the elderly, and candesartan and its inactive metabolite did not accumulate in the serum of these subjects upon repeated, once-daily administration.
- **Sex:** No gender-related differences in the pharmacokinetics of candesartan have been observed.

- **Hepatic Insufficiency**

Mild to moderate hepatic impairment: There was an increase in the AUC of candesartan of approximately 20%. There was no drug accumulation in plasma in these patients.

Moderate to severe hepatic impairment: C_{max} and AUC increased up to 5x in a very small group administered a single dose of 16 mg candesartan (see [4 DOSAGE AND ADMINISTRATION, Hepatic Impairment](#)).

- **Renal Insufficiency**

Mild to moderate renal impairment (GFR 31-60 mL/min/1.73m²): C_{max} and AUC of candesartan increased by 40-60% and 50-90%, respectively, but $t_{1/2}$ was not altered, compared to patients with normal renal function (GFR >60 mL/min/1.73m²) during repeated dosing. There was no drug accumulation in plasma.

Severe renal impairment (GFR 15-30 mL/min/1.73m²): The increases in C_{max} and AUC were 40-60% and 110%, respectively. The terminal t_½ of candesartan was approximately 2x in patients with severe renal impairment, and these changes resulted in some accumulation in plasma.

Patients undergoing hemodialysis: The pharmacokinetics of candesartan were similar to those in patients with severe renal impairment (see [4 DOSAGE AND ADMINISTRATION, Renal Impairment](#)).

11 STORAGE, STABILITY AND DISPOSAL

Store between 15°C to 30°C.

12 SPECIAL HANDLING INSTRUCTIONS

Not applicable.

PART II: SCIENTIFIC INFORMATION

13 PHARMACEUTICAL INFORMATION

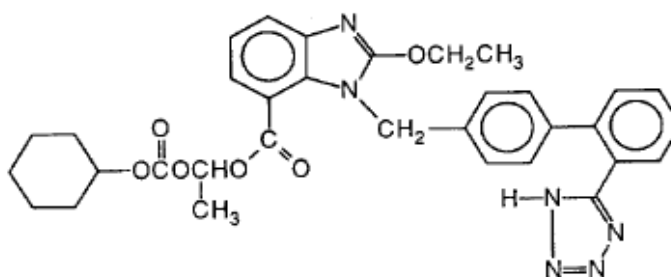
Drug Substance

Proper name: candesartan cilexetil

Chemical name: (±)-1-(Cyclohexyloxycarbonyloxy)ethyl-2-ethoxy-1-[[2'-(1H-tetrazol-5-yl)biphenyl-4-yl]methyl]-1H-benzimidazole-7-carboxylate

Molecular formula and molecular mass: C₃₃H₃₄N₆O₆
610.66 g/mol

Structural formula:



Physicochemical properties:

Description:

Candesartan cilexetil is a white to off-white powder. Candesartan cilexetil is sparingly soluble in methanol and practically insoluble in water.

Melting Point:

163° C with decomposition.

Table 5 - Partition Coefficient of Candesartan Cilexetil

pH of Aqueous Layer	Partition Coefficient (K at 20°C)	
	Ethyl Ether	1-Octanol
1.1	>1000	>1000
6.9	>1000	>1000
8.9	141	>1000

$$K = \frac{\text{Concentration of Candesartan Cilexetil in the organic layer}}{\text{Concentration of Candesartan Cilexetil in the aqueous layer}}$$

14 CLINICAL TRIALS

14.1 Efficacy and safety studies

Hypertension

Adults

Candesartan cilexetil causes a dose-dependent reduction in arterial blood pressure (BP). Systemic peripheral resistance is decreased, while heart rate, stroke volume and cardiac output are not significantly affected. No first dose hypotension was observed during controlled clinical trials with candesartan cilexetil.

Most of the antihypertensive effect was seen within 2 weeks of initial dosing, and the full effect in 4 weeks. With once-daily dosing, BP effect was maintained over 24 hours with trough to peak ratios of BP effect generally >80%. Candesartan cilexetil had an additional BP lowering effect when added to hydrochlorothiazide.

The antihypertensive effect was similar in men and women and in patients <65 and ≥65 years. Candesartan cilexetil was effective in reducing BP regardless of race, although the effect was somewhat less in Blacks (usually a low-renin population) than in Caucasians.

In long-term studies of ≤1 year, the antihypertensive effectiveness of candesartan cilexetil was maintained and there was no rebound after abrupt withdrawal.

Candesartan cilexetil reduces urinary albumin excretion in patients with type II diabetes mellitus, hypertension and microalbuminuria. In a 12-week study of 161 mildly hypertensive patients with type II diabetes mellitus, candesartan cilexetil 8 - 16 mg had no effect on mean A1c.

Pediatrics (6 to 17 years of age)

The antihypertensive effects of candesartan cilexetil were evaluated in hypertensive children aged 6 to < 17 years in a randomised, double-blind, multicentre, 4-week dose-ranging study. A total of 240 patients were randomised to receive either placebo or low (2/4 mg), medium (8/16 mg) or high (16/32 mg) doses of candesartan cilexetil in a ratio of 1:2:2:2. For children who weighed < 50 kg, the doses of candesartan cilexetil were 2, 8 or 16 mg once daily. For children who weighed ≥50 kg, the candesartan cilexetil doses were 4, 16 or 32 mg once daily. Of those enrolled, 47% were Black patients and 29% were female; mean age ± SD was 12.9 ± 2.6 years. In addition, the majority of patients were ≥95th percentile for body mass index (BMI) (68.8%) and suffered from primary hypertension (90.2%).

The placebo subtracted effect at trough for sitting systolic BP/ sitting diastolic BP for the different doses ranged from 4.9/3.0 to 7.5/6.2 mm Hg.

In children aged 6 to <17 years, there was a trend for a lesser effect on BP in Black patients compared to non-Black patients. This was similar to what was observed in adults with hypertension.

Comparative Effects

The antihypertensive efficacy of candesartan cilexetil and losartan potassium have been compared at their once daily maximum doses, 32 mg and 100 mg, respectively, in patients with mild to moderate essential hypertension. Candesartan cilexetil lowered systolic and diastolic blood pressure by 2 to 3 mm Hg on average more than losartan potassium when measured at the time of either peak or trough effect. Both agents were well tolerated.

Heart Failure

In heart failure patients, candesartan cilexetil administration resulted in a dose-related increase in plasma renin activity and angiotensin II concentration, and a decrease in aldosterone levels.

The effects of candesartan cilexetil on mortality and hospitalization due to Congestive Heart Failure (CHF) were evaluated in 2 studies, CHARM-Alternative and CHARM-Added. These were multinational, placebo-controlled, double-blind studies in patients with New York Heart Association (NYHA) functional class II to class IV CHF. Only 3% of the patient population within each of these studies had Class IV CHF as a baseline characteristic. CHARM-Alternative (n=2,028) included patients with a LVEF \leq 40% not treated with ACE inhibitors because of intolerance. CHARM-Added (n=2,548) was carried out in patients with LVEF \leq 40% tolerant of ACE inhibitors and treated with ACE inhibitors. In these studies patients were randomised to receive either placebo or candesartan cilexetil in addition to standard therapy. Candesartan cilexetil was titrated from 4 mg or 8 mg once daily to 32 mg once daily (mean 23 mg) or the highest tolerated dose. Patients were followed for \leq 4 years, with a median of 40 months. Standard therapy included diuretics, β -blockers, ACE inhibitors, digoxin and spironolactone.

The primary composite endpoint of cardiovascular (CV) mortality or first CHF hospitalisation was significantly reduced with candesartan cilexetil in comparison with placebo in CHARM-Alternative (hazard ratio (HR) 0.77, 95% CI 0.67-0.89, $p < 0.001$) and in CHARM-Added (HR 0.85, 95% CI 0.75-0.96, $p = 0.011$). This corresponded to a relative risk reduction of 23% and 15%, respectively.

Table 6 CHARM – Alternative: Primary Endpoint and its Components

Endpoint (time to first event)	Candesartan Cilexetil (n=1013)	Placebo (n=1015)	Hazard Ratio (95% CI)	p-value (logrank)	Relative Risk Reduction	Absolute Risk Reduction
CV death or CHF hospitalisation	334	406	0.77 (0.67-0.89)	<0.001	23%	7.0%
CV death	219	252	0.85 (0.71-1.02)	0.072	15%	3.2%
CHF hospitalisation	207	286	0.68 (0.57-0.81)	<0.001	32%	7.7%

NOTE: In CHARM-Alternative, 14 patients needed to be treated for the duration of the study (median 34 months) to prevent 1 patient from dying of a CV event or being hospitalised for treatment of HF.

Table 7 CHARM – Added: Primary Endpoint and its Components

Endpoint (time to first event)	Candesartan Cilexetil (n=1276)	Placebo (n=1272)	Hazard Ratio (95% CI)	p-value (logrank)	Relative Risk Reduction	Absolute Risk Reduction
CV death or CHF hospitalisation	483	538	0.85 (0.75-0.96)	0.011	15%	4.4%
CV death	302	347	0.84 (0.72-0.98)	0.029	16%	3.6%
CHF hospitalisation	309	356	0.83 (0.71-0.96)	0.013	17%	3.8%

NOTE: In CHARM-Added, 23 patients needed to be treated for the duration of the study (median 41 months) to prevent 1 patient from dying of a CV event or being hospitalised for treatment of HF.

The secondary composite endpoint of all-cause mortality or first CHF hospitalisation was also significantly reduced with candesartan cilexetil in CHARM-Alternative (HR 0.80, 95% CI 0.70-0.92, p=0.001) and CHARM-Added (HR 0.87, 95% CI 0.78-0.98, p=0.021). This corresponded to a relative risk reduction of 20% and 13%, respectively.

Treatment with candesartan cilexetil resulted in improved NYHA functional class in CHARM-Alternative (p=0.008) and CHARM-Added (p=0.020).

14.2 Comparative Bioavailability Studies

A randomized, two-way, single-dose, crossover comparative bioavailability study of CANDESARTAN CILEXETIL 8 mg tablets (Alembic Pharmaceuticals Canada Ltd.) and PrATACAND® 8 mg tablets (AstraZeneca Canada Inc.) was conducted in healthy, adult, Asian male subjects under fasting conditions. Comparative bioavailability data from 44 subjects that were included in the statistical analysis are presented in the following table:

SUMMARY TABLE OF THE COMPARATIVE BIOAVAILABILITY DATA

Candesartan (1 x 8 mg) Geometric Mean Arithmetic Mean (CV %)				
Parameter	Test ¹	Reference ²	% Ratio of Geometric Means	90% Confidence Interval
AUC _T (ng·h/mL)	806.1 832.0 (27.1)	866.5 910.9 (33.2)	93.0	88.0 – 98.4
AUC _I (ng·h/mL)	833.2 861.9 (28.0)	888.1 934.5 (33.5)	93.8	88.8 – 99.1
C _{max} (ng/mL)	76.6 79.1 (29.7)	89.8 93.8 (32.0)	85.3	79.5 – 91.4
T _{max} ³ (h)	4.5 (2.0 – 6.0)	4.0 (2.0 – 6.0)		
T _½ ⁴ (h)	10.3 (29.5)	9.5 (18.9)		

¹ CANDESARTAN CILEXETIL tablets, 8 mg (Alembic Pharmaceuticals Canada Ltd.)

² PrATACAND® (candesartan cilexetil) tablets, 8 mg (AstraZeneca Canada Inc.)

³ Expressed as the median (range) only

⁴ Expressed as the arithmetic mean (CV %) only

A randomized, two-way, single-dose, crossover comparative bioavailability study of CANDESARTAN CILEXETIL 32 mg tablets (Alembic Pharmaceuticals Canada Ltd.) and PrATACAND® 32 mg tablets (AstraZeneca Canada Inc.) was conducted in healthy, adult, Asian male subjects under fasting conditions. Comparative bioavailability data from 34 subjects that were included in the statistical analysis are presented in the following table:

SUMMARY TABLE OF THE COMPARATIVE BIOAVAILABILITY DATA

Candesartan (1 x 32 mg) Geometric Mean Arithmetic Mean (CV %)				
Parameter	Test ¹	Reference ²	% Ratio of Geometric Means	90% Confidence Interval
AUC _T (ng·h/mL)	4918.9 5188.6 (36.3)	4731.3 5061.0 (41.4)	103.5	96.9 – 110.4
AUC _I (ng·h/mL)	5039.7 5315.6 (36.5)	4860.9 5198.3 (41.4)	103.2	96.7 – 110.1
C _{max} (ng/mL)	438.1 474.6 (42.9)	470.7 514.9 (47.7)	92.5	84.1 – 101.8
T _{max} ³ (h)	3.6 (1.5 – 8.0)	3.9 (2.0 – 8.0)		
T _½ ⁴ (h)	8.1 (18.2)	8.3 (23.8)		

¹ CANDESARTAN CILEXETIL tablets, 32 mg (Alembic Pharmaceuticals Canada Ltd.)

² Pr[®] ATACAND[®] (candesartan cilexetil) tablets, 32 mg (AstraZeneca Canada Inc.)

³ Expressed as the median (range) only

⁴ Expressed as the arithmetic mean (CV %) only

The bioequivalence of 1 candesartan cilexetil 32 mg tablet and 2 candesartan cilexetil 16 mg tablets was established in a single-blind, single-dose, randomised, 2-period crossover study in 50 (33 M/17 F) healthy volunteers. During each treatment period, subjects received candesartan cilexetil as a single oral dose of either 1 x 32 mg or 2 x 16 mg. The 2 treatment periods were separated by a washout of 6-14 days. The 90% confidence intervals for the ratio of 1 candesartan cilexetil 32 mg tablet versus 2 candesartan cilexetil 16 mg tablets for AUC_{0-inf} and C_{max} fell entirely within the equivalence range of 80-125%.

**Table 8 Pharmacokinetic comparison of Candesartan cilexetil
1 x 32 mg tablet versus 2 x 16 mg tablets**

Candesartan cilexetil (32 mg dose as either 1 x 32 mg or 2 x 16 mg) From measured data, uncorrected for potency				
Geometric Mean[#] Arithmetic Mean (CV%)				
Parameter	Test* (1 x 32 mg)	Reference† (2 x 16 mg)	% Ratio of Geometric Means[#]	90% Confidence Interval[#]
AUC _(0-t) (nmol.h/L)	6038.5 6396.2 (23.5)	6056.7 6458.3 (26.2)	99.7	95.9; 103.7
AUC _(0-∞) (nmol.h/L)	7032.6 7255.3 (23.8)	7085.3 7384.2 (28.4)	99.3	95.6; 103.0
C _{max} (nmol/L)	559.6 625.0 (32.0)	548.1 616.8 (32.7)	102.1	95.5; 109.1
T _{max} [§] (h)	4.64 (28.7%)	4.64 (30.9%)		
T _{1/2} [§] (h)	9.47 (35.3%)	9.70 (41.7%)		

* Candesartan cilexetil 32 mg tablets

† Candesartan cilexetil 16 mg tablets identical to the tablets currently on the Canadian market (i.e., Candesartan cilexetil 16 mg tablets, DIN 02239092) by AstraZeneca Canada Inc.

§ Expressed as the arithmetic mean (CV%) only

Based on the least-square means

15 MICROBIOLOGY

No microbiological information is required for this drug product.

16 NON-CLINICAL TOXICOLOGY

General Toxicology

Acute Toxicity:

Table 9 Acute toxicity

Route	Species	Sex	LD₅₀ Values
intraperitoneal	mouse	female	891
		male	807

Route	Species	Sex	LD ₅₀ Values
intraperitoneal	rat	female	1210
		male	940
intravenous	mouse	female	1,170
		male	1,120
intravenous	rat	female	1,550
		male	1,350
oral study with active metabolite (candesartan) and related substances	mouse	female male	>2,000 mg/kg for all substances tested
oral	mouse	female male	>2,000 mg/kg
oral	rat	female male	>2,000 mg/kg
oral	dog	male	>2,000 mg/kg
oral (4 week study)	monkey	female male	>60 mg/kg

Chronic Toxicity: The toxic potential of candesartan cilexetil was evaluated in a series of repeated-dose oral toxicity studies of ≤26 weeks in rats and ≤1 year in dogs. The “no toxic effect” dosage levels were concluded to be 10 mg/kg/day in the rat and 20 mg/kg/day in the dog.

Table 10 Toxicity upon repeated oral administration

Species/ Strain	Number of Animals per Group	Duration and Route of Administra- tion	Daily Dose (mg/kg)	Results
rat/F344	4 M+4 F	4 weeks dietary	0 600 2,000 6,000	Food consumption decr. in F at 2,000 mg and in M+F at 6,000mg dose level. Urea N ₂ incr. in M at ≥ 600 mg dosing, and in F at 6,000 mg dosing. Erythrocyte count, hematocrit value, hemoglobin concentration decr. in ≥ 2,000 mg groups. Extramedullary hemapoiesis in all male spleens, hypocellularity in bone marrow of 2 F and gastric ulcer/erosion in 2 F of

Species/ Strain	Number of Animals per Group	Duration and Route of Administra- tion	Daily Dose (mg/kg)	Results
				6,000mg group. Hypertrophy of juxtaglomerular cells in kidneys and atrophy of zona glomerulosa in adrenal gland in all treated groups -- expected pharmacological responses. "No toxic effect": 2,000 mg/kg/day.
rat/F344	10 M+10 F	13 weeks dietary	0 300 1,000 3,000	No deaths. Body weight gain suppression in M at $\geq 1,000$ mg level. Slight decr. in erythrocyte count, hematocrit value, hemoglobin concentration in F of 300 mg group, M+F at $\geq 1,000$ mg dose. Incr. inorganic phosphorus in all M groups, decr. Triglycerides ($\geq 1,000$ mg male group) and incr. cholesterol (3000 mg male group).
rat/F344/ Jcl	10 M+10 F	26 weeks oral	0 1 10 100 1,000	No treatment-related deaths, nor abnormal appearance, clinical signs, ophthalmoscopy and urinalysis. Decr. in body weight gain and food consumption (M, 1000 mg dose, week 25). H ₂ O intake + urine output incr. (M, 100, 1,000 mg dose). RBC parameter values decr. (M: 10-1,000 dose; F: 100-1,000 dose). Heart wt. decr. in all except M at 1 mg dose. Ratio of kidney wt.:body wt. incr. in M ≥ 10 mg dose, and in F ≥ 100 mg dose level. In M at 1000 mg level, incr. in adrenal wt., decr. in thymus wt. Hypertrophy of juxtaglomerular cell and intimal proliferation of interlobular arteries on kidneys of M+F at 10-1,000 mg. Minor incr. in erosion of stomach in M+F at 1,000 mg. "No toxic effect": 10 mg/kg/day.
rat/F344/ Jcl	10 M+10 F	2 week study of candesartan cilexetil and rel.	300 (283.2 mg can.cil. +	No effects by related substances on the changes caused by candesartan cilexetil alone. No toxic effects caused by related substances.

Species/ Strain	Number of Animals per Group	Duration and Route of Administra- tion	Daily Dose (mg/kg)	Results
		substances, oral	16.8 mg rel. sub.)	
dog/Beagle	3 M+3 F	29-31 days oral gavage	0 20 100 300	No animals died during dosing. Decr. erythrocyte parameters in 1 F in each of 100 mg and 300 mg groups. Dark red focus in stomach mucosa in 1 F at 300 mg dose level. Regeneration of tubular epithelium and dilatation of kidney tubules in 1 F at 100 mg level, 2 F at 300 mg level. Mononuclear cell infiltration in kidney in 2 F in both 100 mg and 300 mg groups. Erosion of stomach mucosa in 1 F at 300 mg. No testicular abnormalities. "No toxic effect": 20 mg/kg/day.
dog/Beagle	4 M+4 F	26 weeks oral	0 4 20 100	Suppression of body wt. and decr. erythrocyte parameters in F at 100 mg. Hypertrophy of juxtaglomerular cells at all dosage levels. Plasma levels of candesartan cilexetil dose-dependent.
dog/Beagle	4 M+4 F	52 weeks oral	0 4 20 100 300	No clinical signs, effects on body wt., food consumption, physiological measurements, urine output, H ₂ O intake, hematology, coagulation, or organ wts. Hypertrophy of juxtaglomerular cells at all dosage levels. Regeneration of renal tubule incr. in 100-300 mg dose groups. Plasma levels of candesartan cilexetil and metabolite M II dose-dependent. "No toxic effect" at 20 mg/kg/day in dog.

Carcinogenicity

The carcinogenic potential of candesartan cilexetil was studied in rats after administration in the diet for 24 months. Dose levels were 100, 300 and 1000 mg/kg/day (50 male and 50 female rats per group). No alteration in tumour profile was observed. A 2-year oral gavage study of

candesartan cilexetil in mice was performed at daily dosages of 3, 10, 30 and 100 mg/kg/day. There was no alteration in the tumour profile.

Reproductive and Developmental Toxicology

Fertility: In studies concerning male and female rat fertility, no adverse effects were found on the reproductive organs. Mating performance, fertility and necropsy findings were unaffected by candesartan cilexetil treatment of males at 0-300 mg/kg/day from 9 weeks before mating to the day before necropsy, and similar findings were observed in females treated from 2 weeks before mating to day 7 of gestation. Fetuses showed no treatment-related abnormalities in mortality, weight, sex ratio, placentae or upon external, visceral or skeletal examinations.

Effects on the development of the kidneys: Animal studies with candesartan cilexetil have demonstrated late fetal and neonatal injury in the kidney. The mechanism is believed to be pharmacologically mediated through effects on the RAAS. The RAAS plays a critical role in kidney development. RAAS blockade has been shown to lead to abnormal kidney development in very young mice. Administering drugs that act directly on the RAAS, such as candesartan cilexetil, can alter normal renal development. Therefore, CANDESARTAN CILEXETIL is contraindicated in children < 1year old (see [2 CONTRAINDICATIONS](#)).

Mutagenicity

In vitro studies [bacterial mutagenicity, gene mutation in mammalian (mouse) cells and cytogenic tests (hamster lung cells)] showed that candesartan cilexetil has no mutagenic activity in these systems. Study at the highest doses of the candesartan metabolites (2.5 and 5 mM in the 24-hour treatment series, and 1.25 and 2.5 mM in the 48-hour treatment series) suggested cytotoxicity-mediated clastogenicity as a mechanism for the breakage-type chromosome aberration effects observed. *In vivo* studies (micronucleus test in mouse, and unscheduled DNA synthesis assay in rat) indicate that candesartan cilexetil and its metabolites are neither mutagenic nor clastogenic.

17 SUPPORTING PRODUCT MONOGRAPHS

ATACAND® tablets, 4 mg, 8 mg, 16 mg and 32 mg, submission control number: 283034, Product Monograph, CHEPLAPHARM Arzneimittel GmbH, Germany (JUL 11, 2024).

PATIENT MEDICATION INFORMATION**READ THIS FOR SAFE AND EFFECTIVE USE OF YOUR MEDICINE****PrCANDESARTAN CILEXETIL
(candesartan cilexetil tablets)**

Read this carefully before you start taking **CANDESARTAN CILEXETIL** and each time you get a refill. This leaflet is a summary and will not tell you everything about this drug. Talk to your healthcare professional about your medical condition and treatment and ask if there is any new information about **CANDESARTAN CILEXETIL**.

Serious Warnings and Precautions

CANDESARTAN CILEXETIL should not be used during pregnancy. Taking CANDESARTAN CILEXETIL during pregnancy can cause injury or even death to your baby. If you/your child discover that you/they are pregnant while taking CANDESARTAN CILEXETIL, stop the medication and contact your/their healthcare professional as soon as possible.

What is CANDESARTAN CILEXETIL used for?

CANDESARTAN CILEXETIL is used to treat:

- mild to moderate high blood pressure in children (6 to 17 years of age) and adults. It may be used alone or in combination with diuretics (water pills).
- heart failure in adults. It may be used alone or with medicines called angiotensin-converting enzyme (ACE) inhibitors.

How does CANDESARTAN CILEXETIL work?

CANDESARTAN CILEXETIL is an angiotensin receptor blocker (ARB) that helps relax blood vessels. This makes it easier for your heart to pump blood around your body. You can recognize an ARB because its medicinal ingredient ends in “-**SARTAN**”.

This medicine does not cure your/your child’s disease. It helps to control it. Therefore, it is important to continue taking CANDESARTAN CILEXETIL regularly even if you/your child feel fine.

What are the ingredients in CANDESARTAN CILEXETIL?

Medicinal ingredient: Candesartan cilexetil.

Non-medicinal ingredients: Carboxymethylcellulose calcium, corn starch, hydroxypropyl cellulose, iron oxide red, lactose monohydrate, magnesium stearate, polyethylene glycol.

Candesartan cilexetil comes in the following dosage forms:

Tablets: 4 mg, 8 mg, 16 mg and 32 mg.

Do not use CANDESARTAN CILEXETIL if:

- You/your child are allergic to CANDESARTAN CILEXETIL or to any non-medicinal ingredient in CANDESARTAN CILEXETIL tablets.
- You/your child have experienced an allergic reaction (angioedema) with swelling of the hands, feet, or ankles, face, lips, tongue, throat, or sudden difficulty breathing or swallowing, to any ARB. Be sure to tell your healthcare professional that this has happened to you/your child.
- You/your child are already taking a blood pressure-lowering medicine that contains aliskiren (such as Rasilez) and you/your child have diabetes or kidney disease.
- You/your child are pregnant or intend to become pregnant. Taking CANDESARTAN CILEXETIL during pregnancy can cause injury and even death to your baby.
- You/your child are breastfeeding. It is possible that CANDESARTAN CILEXETIL passes into breast milk.

- Your child is less than 1 year old
- You/your child have one of the following rare hereditary diseases:
 - Galactose intolerance
 - Lapp lactase deficiency
 - Glucose-galactose malabsorption

Because lactose is a non-medicinal ingredient in CANDESARTAN CILEXETIL.

To help avoid side effects and ensure proper use, talk to your/your child's healthcare professional before you/your child take CANDESARTAN CILEXETIL. Talk about any health conditions or problems you/your child may have, including if you/your child:

- Have experienced an allergic reaction to any drug used to lower blood pressure, including angiotensin converting enzyme (ACE) inhibitors.
- Have or have had heart problems such as heart attack, heart failure and narrowing of an artery or a heart valve.
- Have had a stroke.
- Have heart failure.
- Have diabetes.
- Have kidney or liver problems.
- Are on dialysis.
- Are dehydrated or suffer from excessive vomiting, diarrhea, or sweating.
- Are taking a salt substitute that contains potassium, potassium supplements, or a potassium-sparing diuretic (a specific kind of "water pill" that makes your body keep potassium) or other drugs that may increase potassium levels such as heparin and co-trimoxazole.
- Are on a low-salt diet.
- Are taking an angiotensin converting enzyme (ACE) inhibitor. You can recognize ACE inhibitors because their medicinal ingredient ends in "-PRIL".
- Are taking an ACE inhibitor together with a medicine which belongs to the class of medicines known as mineralocorticoid receptor antagonists (for example, spironolactone, eplerenone). These medicines are for the treatment of heart failure.

Other warnings you should know about:

Use of anesthesia: If you/your child are about to have a surgery or dental procedure with anesthesia, be sure to tell your/your child's healthcare professional that you/your child are taking candesartan cilexetil.

Driving and using machines: Before you/your child perform tasks which may require special attention, wait until you/your child know how you/they respond to CANDESARTAN CILEXETIL. Dizziness, lightheadedness, or fainting can especially occur after the first dose and when the dose is increased.

Monitoring: During your/your's child treatment with CANDESARTAN CILEXETIL, your/your child's healthcare professional may monitor:

- Your/your child's kidney function
- You/your child's blood pressure
- The amount of electrolytes in your/your child's blood (such as potassium).

Blood Tests: CANDESARTAN CILEXETIL can cause abnormal blood test results. Your/your child's healthcare professional will decide when to perform blood tests and will interpret the results.

Tell your healthcare professional about all the medicines you take, including any drugs, vitamins, minerals, natural supplements or alternative medicines.

Serious Drug Interactions

Do not use CANDESARTAN CILEXETIL if you/your child take:

- medicines that contain aliskiren that are used to lower blood pressure and you/your child have diabetes or kidney disease.

The following may also interact with CANDESARTAN CILEXETIL:

- Medicines that increase the potassium in the blood, such as a salt substitute that contains potassium, potassium supplements, potassium-sparing diuretic (a specific kind of “water pill”), or other drugs that may increase potassium levels such as heparin and co-trimoxazole.
- Lithium, used to treat bipolar disease.
- Nonsteroidal anti-inflammatory drugs (NSAIDs) such as ibuprofen, naproxen, and celecoxib, used to reduce pain and swelling.
- Blood pressure- lowering medicines, including diuretics (“water pills”) or angiotensin converting enzyme (ACE) inhibitors.
- Mineralocorticoid receptor antagonists such as spironolactone and eplerenone, used to treat blood pressure and heart failure.

How to take CANDESARTAN CILEXETIL:

- Take/give CANDESARTAN CILEXETIL exactly as your/your child’s healthcare professional has told you. Check with your/your child’s healthcare professional if you are not sure.
- It is recommended that the dose is taken at about the same time every day. Take/give CANDESARTAN CILEXETIL once a day.
- If you/your child take diuretics (i.e., “water pills”), your/your child’s healthcare professional may ask you/your child to temporarily stop taking them 2 or 3 days before you/your child start your/their treatment with CANDESARTAN CILEXETIL. They may also reduce their dose during your/your child’s treatment. Furthermore, your/your child’s healthcare professional may also prescribe you/your child other medications depending on your/your child’s condition. Follow their instructions carefully.

Usual dose:

Adults and children (6 to 17 years of age):

Your/your child’s healthcare professional will decide on the best dose of CANDESARTAN CILEXETIL for you/your child and how long you/your child will take it. Your/your child’s dose will depend on:

- Other medication you/your child take
- The severity of your/your child's condition
- The health of your/your child’s kidney and liver
- How you/your child respond to treatment

Your/your child’s healthcare professional will monitor your/your child’s health throughout your/your child’s treatment and may increase or decrease your/their dose as needed.

Overdose:

If you think you, or a person you are caring for, have taken too much CANDESARTAN CILEXETIL, contact a healthcare professional, hospital emergency department, regional poison control centre or Health Canada’s toll-free number, 1-844 POISON-X (1-844-764-7669) immediately, even if there are no signs or symptoms.

Missed Dose:

If you/your child miss a dose of CANDESARTAN CILEXETIL and remember within 12 hours, you/your child should take your/their usual dose as soon as possible. Then go back to your/your child's regular schedule. But if it is more than 12 hours when you/your child remember, do not take/give the missed dose. Just take/give the next dose on time. Do not take/give a double dose.

What are possible side effects from using CANDESARTAN CILEXETIL?

These are not all the possible side effects you/your child may have when taking CANDESARTAN CILEXETIL. If you/your child experience any side effects not listed here, tell your/your child's healthcare professional.

Side effects may include:

- dizziness, falls
- drowsiness, difficulty falling asleep or staying asleep (insomnia)
- rash
- diarrhea, vomiting, nausea, constipation
- headache
- back or leg pain, muscle cramps
- cough
- sore throat
- dry mouth
- cold symptoms
- infection in the lungs (pneumonia)
- fainting spells
- confusion
- fatigue, lack of energy
- pain or swelling of the hands, arms, legs or feet

Side effects in adults and children are similar, but may occur more often in children.

Serious side effects and what to do about them			
Symptom / effect	Talk to your healthcare professional		Stop taking drug and get immediate medical help
	Only if severe	In all cases	
COMMON			
Fast, Slow or Irregular Heart Beat	√		
Hypotension (low blood pressure): dizziness, fainting, light-headedness, blurred vision, nausea, vomiting, fatigue (may occur when you go from lying or sitting to standing up)	√		
Increased levels of potassium in the blood: irregular heartbeats, muscle weakness and generally feeling unwell		√	
UNCOMMON			
Allergic Reaction: rash, hives, swelling of the face, lips, tongue or throat, difficulty swallowing or breathing			√
Hematuria (blood in urine)		√	

Serious side effects and what to do about them			
Symptom / effect	Talk to your healthcare professional		Stop taking drug and get immediate medical help
	Only if severe	In all cases	
Kidney Disorder: change in frequency of urination, nausea, vomiting, swelling of extremities, fatigue.		√	
Liver Disorder: yellowing of the skin or eyes, dark urine, abdominal pain, nausea, vomiting, loss of appetite		√	
Shortness of breath, difficulty breathing (Dyspnea, Pulmonary edema)	√		
RARE			
Rhabdomyolysis: muscle pain that you cannot explain, muscle tenderness or weakness, dark brown urine		√	
VERY RARE			
Decreased Platelets: bruising, bleeding, fatigue and weakness		√	
UNKNOWN FREQUENCY			
Anemia (decreased number of red blood cells): fatigue, loss of energy, looking pale, shortness of breath, weakness		√	
Chest Pain		√	
Decreased White Blood Cells: infections, fatigue, fever, aches, pains, and flu-like symptoms		√	
Inflammation of the Pancreas: abdominal pain that lasts and gets worse when you lie down, nausea and vomiting		√	
Stroke (cerebrovascular accident): face or arm weakness, abnormal speech and blurred vision, loss of consciousness		√	

If you/your child have a troublesome symptom or side effect that is not listed here or becomes bad enough to interfere with your/your child's daily activities, tell your/your child's healthcare professional.

Reporting Side Effects

You can report any suspected side effects associated with the use of health products to Health Canada by:

- Visiting the Web page on Adverse Reaction Reporting (canada.ca/drug-device-reporting) for information on how to report online, by mail or by fax; or
- Calling toll-free at 1-866-234-2345.

NOTE: Contact your health professional if you need information about how to manage your side effects. The Canada Vigilance Program does not provide medical advice.

Storage:

- When you first open the package, if you find any damage to the plastic seal or foil which exposes the tablet, ask your pharmacist to check the package.

- Do not transfer CANDESARTAN CILEXETIL to any other pill containers. Keep in the original package at room temperature (15°C to 30°C) and in a dry place. Do not keep CANDESARTAN CILEXETIL in the bathroom.
- Do not keep or use CANDESARTAN CILEXETIL after the expiry date indicated on the package. Return any unused medicines, which you know you will no longer need, to your pharmacy for disposal.

Keep out of reach and sight of children.

If you want more information about CANDESARTAN CILEXETIL:

- Talk to your healthcare professional.
- Find the full product monograph that is prepared for healthcare professionals and includes this Patient Medication Information by visiting the Health Canada website: <https://www.canada.ca/en/health-canada/services/drugs-health-products/drug-products/drug-product-database.html> or by calling 1-610-455-5125 or mail to salpathan@gmail.com.

This leaflet was prepared by Alembic Pharmaceuticals Limited.

Manufactured by:

Alembic Pharmaceuticals Limited
Alembic Road, Vadodara 390003,
Gujarat, India.

Imported and Distributed by:

Alembic Pharmaceuticals Canada Ltd.
225 Gibraltar Road, Unit 5
Vaughan, Ontario
L4H 4P9, Canada

Last revised: JUL 29, 2025